

THE GUIDER

VOLUME 51 - No. 3 - MARCH 1964 - PRICE NINEPENCE



Off to Brownie Revels—10 Eastland (Church Army) Flock, Nairobi, Kenya, with Sister Daisy Martin

Photo from the Church Missionary Society

fundraising

1964

all the year round

with our



EVERYDAY RANGE

OF BIRTHDAY CARDS AND ITEMS FOR FUNDRAISING
YES AND FOR THE FIRST TIME OUR EVERYDAY
SAMPLE PARCEL IS AT A SPECIAL PRICE AND
ON SALE OR RETURN

We have refrained from illustrating any of the items from our Everyday Range in this advertisement for one very simple reason, we cannot begin to show the colour and design of Birthday Cards, Stationery, etc. in black and white, but if you care to drop us a line we will send you, without obligation, full details of the complete range, our generous terms, plus a full colour brochure, and an order form for a full Sample Range on 'sale or return' which enables you (as a representative of a Voluntary Organisation) to see, and still without committing yourself to any outlay, the range of Birthday Cards, Stationery, Handnotes, and a host of other fast selling sundry items. "Webb's" Fundraising ranges will bring you Funds all the year round because our products and designs are produced with *your* customers in mind.

Our service for Fundraising includes exclusive designs, excellent profit margins, (at least 33½% on cost), generous credit terms, and a speedy personal service.

Drop us a line right away for full details, order forms, a full colour brochure, and be on your way to Raising Funds by what must surely be the most pleasant method—selling Cornbow and Ivory products—obtainable only from T. E. Webb & Co. Halesowen.

T. E. WEBB & CO. LTD.
(DEPT. 1)

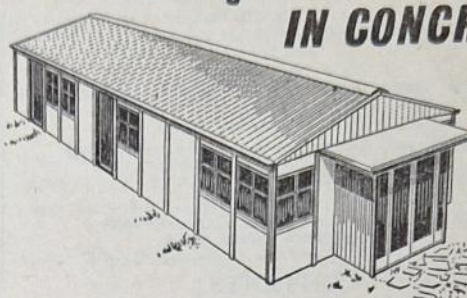
FINE ART HOUSE · LITTLE CORNBOW · HALESOWEN · BIRMINGHAM



Bank with
N.P.
the experts
with the
friendly
approach

NATIONAL PROVINCIAL BANK LIMITED

BUILD YOUR OWN HEADQUARTERS— IN CONCRETE!



Just think of it . . . your own permanent Headquarters in concrete! Not just a dream, but a reality with Compton Sectional Concrete Units. Walls, frames, facias, doors and windows come to you in standard sections for easy assembly under supervision. And your new home will be an investment, too. When local organisations see what an attractive building you've erected, they'll want to hire it from you when it's not in use! Why not discuss it at your next meeting? As a first step, write for the fully illustrated Compton Universal Building Catalogue; it's quite free, and you'll be under no obligation whatsoever.

Sectional Concrete Buildings Limited, Fenny
Compton, Nr. Leamington Spa, Warwickshire.
Tel: Fenny Compton 291/5.

Name
Address

COMPTON

"When I was your age . . ."

. . . is an expression which wise Guiders probably avoid. However, you can pass on the benefit of your experience in more tactful ways. For instance, at your Guides' age you were perhaps already a member of the Youth Hostels Association. To meet the needs of Guiders and others who wish to introduce young people to hostelling, the Y.H.A. has extended the Leader Card Scheme. Up to 15 non-members between 9 and 20 years of age may be taken to any hostel or hostels by a leader who is already an experienced member. A new leaflet, "Introduction to Adventure", gives details.

Some of your older Guides may be interested in going hostelling on their own. A colourful new folder, "Wherever You Go" will help to give them the necessary encouragement.

G.64

To Y.H.A., Trevelyan House, St. Albans, Herts.

Please send me *Introduction to Adventure* and . . . copies
of *Wherever You Go*.

Name

Address

THE GUIDER

THE OFFICIAL ORGAN OF THE GIRL GUIDES ASSOCIATION
(Incorporated by Royal Charter)

Patrons
H.M. THE QUEEN
H.M. QUEEN ELIZABETH THE QUEEN MOTHER
President
H.R.H. THE PRINCESS ROYAL
Chief Ranger, British Commonwealth and Empire
H.R.H. THE PRINCESS MARGARET
Chief Guide
OLAVE, LADY BADEN-POWELL, G.B.E.
Chief Commissioner of the Commonwealth
MISS ANSTICE GIBBS, C.B.E.

CONTENTS

Comment of the Month; Notes of the Month	69
Amendments to P.O.R.	70-85-88-89
Wear—and When	71
The Brownie Flower Good Turn; Points of View	72
From the Private Diary of a District Commissioner; The Discoverers Challenge	73
C.H.Q. Notices	74-76
Notice Board	76
Training Pages:	
Is This Your Problem? Thinking Up Ideas	77-78
March	78-79
Look!	79
Making the Best of Camp. 1. Preparation	80-81
For Your Pack This Month	81-82
New Field: Carpentry	82-83
Brownies Out and About	84
In Memoriam	86
Classified Advertisements	87, 95
Look Ahead Again	90-91
'Spotlight' in Scotland; Commonwealth Books	91
Where to Train	92-94



SCOTTISH HEADQUARTERS SHOPS

16 COATES CRESCENT,
EDINBURGH 3
and
1 SCOTT STREET,
GLASGOW C.3

Open: Weekdays 9 a.m. - 6 p.m. Saturdays 9 a.m. - 1 p.m.

RIVER IN THE SUN



Floating down the Rhone from Lyons through Provence to the Mediterranean, with a week of lazing, sailing and underwater swimming in the sun. ANYONE can enjoy the novel charms and excitements of this magnificent sunlit canoe cruise. The camps by the water's edge, the rugged scenery, picturesque villages and stately towns by the riverside—Valence, Avignon, Arles; finally you will rejoice to see the beautiful bay of La Couronne with its gorgeous strip of inviting sand. Moderate prices fully inclusive of instruction, equipment, meals and travel. All you need are your own towels! Other perfect no-worry open air P.G.L. holidays are: Canoe Camping on the Wye; Sailing English Lakes; Three-in-One Wales—Sailing, Pony Trekking and Canoeing; Canoeing in Yugoslavia and Poland, and Watersports holidays in Spain. Free brochures giving details of all our holidays, Adventure Weekends, and Canoe Hire Service.

P. G. L. HOLIDAYS

36 THE BOAT HOUSE, LETCHWORTH, HERTS.



WHISTLES for SOUND VALUE

Full range in Metal and Plastic

J. HUDSON & CO. (Whistles) LTD.

BARR STREET HOCKLEY BIRMINGHAM 19



a clear case for Cash's

WOVEN NAME TAPES

From your Draper and Outfitter

THE GUIDER

Official magazine of the Girl Guides Association
(Incorporated by Royal Charter)

Comment of the Month

'You don't mean her for a Guider? She wouldn't do at all. She's so square that she has to get a special kind of hat' (from *The Kangaroo Valley Company*, by Valerie Nichols, the September serial in *THE GUIDER*.)
Question. Is there any room in the Movement for the 'Square' Guider?

Perhaps the answer lies in the description of his mother by a teenage son: 'You're all right, Mum; you're square but your corners are rubbed off!'

Contributed by MISS MOLLIE SOUTTER, *Discoverers Challenge Secretary for Scotland.*

Notes of the Month

THE COMMONWEALTH CIRCLE

MAY I through you correct a misapprehension about membership of the Commonwealth Circle? I have found that a number of Guiders living in this country believe that they can join only by invitation. May I therefore assure them that this is not so and that we welcome new home members. We should be especially glad to welcome more members who are the same age as our Overseas visitors who are students—i.e. 20 to 35. I do hope therefore that Guiders who are within reach of London and who are interested in meeting members of the Movement from other parts of the Commonwealth will think about joining us—we should be so pleased to have them.

The Circle was formed in 1941 and its special responsibility is to forge links of friendship between adult members of the Movement in the Commonwealth who are visiting this country and to offer hospitality to our visitors. There are monthly gatherings of the Circle at C.H.Q. or the Guide Club and 2 or 3 events in addition to the regular meetings. These have recently included a reception at the Hall of one of the City Companies, parties at Hampton Court, Thinking Day Parties at Baden-Powell House, and a visit to the Commonwealth Institute. All meetings and programmes are advertised in *THE GUIDER*. We also hope that members may be able sometimes to arrange to meet the visitors independently for sight-seeing, shopping, and Guide activities and to entertain them in their own homes.

Requests to join should be sent to the Hon. Secretary, Miss H. Boley, c/o Overseas Dept., C.H.Q. The subscription is 5s. a year.

Naturally the number of home members must be limited or we might not all be able to get into the meetings! There is, however, no waiting list at present, so I hope that anyone who is within reach of evening meetings in London and would like to join us will do so as soon as possible. We shall be delighted to see them.

HELEN MCSWINEY
(Chairman, Committee of Management
of the Commonwealth Circle)

IS THIS YOU?

HAVE YOU

- (a) a lively Pack that loves to go out; and
- (b) a shortage of ideas for keeping them happily and profitably busy? With you in mind Miss Gladys Potter has written six articles giving plenty of suggestions for 'getting out and getting "on"' this spring and summer. The first is on page 84.

FEBRUARY'S PATROL ACTIVITY

THIS was contributed by Beryl Martin, and not, as stated in the heading, by Jean Dixon. We apologise to Miss Martin and to Miss Dixon for this error.

H.M. QUEEN ELIZABETH, THE QUEEN MOTHER

We know that Readers will wish us to express their pleasure in the good news of our Patron's rapid recovery from the operation that caused such anxiety throughout the Commonwealth, and brought such sad disappointment to our members, among others, in Australia and New Zealand.

Before her marriage Her Majesty was a Scottish Guide Commissioner; and, of course, we all value the continued support that we have received from her and her family.

Her return to public life will bring widespread pleasure; for the warm interest she shows in all her public duties is deeply and widely appreciated — while journalists and press photographers have been heard paying her very high, spontaneous tributes in voicing their appreciation of her graciousness and sympathy towards their difficulties in doing their work.

Cambridge News photo



H.M. The Queen Mother in Cambridgeshire in November (she made a point of speaking to Queen's Guides forming a Guard of Honour).

AMENDMENTS TO P.O.R.

January to December 1964

All these amendments, except those marked *, are included in the new edition of P.O.R., to be published, price 2s. 6d., in mid-March (please do NOT ORDER BEFORE 15th MARCH).

Rule 5**THE RIGHT OF APPEAL**

Delete first paragraph and substitute:

Every member has the right of appeal through the usual channels. If necessary, the Executive Committee of the Council (as set out on page 7 of the Royal Charter) may order a formal enquiry into the circumstances of the case. Appeals and inquiries that are pending should be confidential to those immediately concerned. (See Rule 22, Section 2.)

Rule 25**THE GUIDER**

Delete: Preliminary Qualifications (See Rules 4, 83, and 98).

***Rule 32**

Delete and substitute:

Appointment of a Brownie Guider

1. Before appointing a Guider the Commissioner must satisfy herself:
 - (a) That she has the personality, character, and steadfastness of purpose that will enable her to lead her Pack.
 - (b) That she has a real interest in, and understanding of, the girl of the particular age group with which she is to work.
 - (c) That she is in agreement with the fundamental aims and methods of the movement (See Rule 1); intends to adhere loyally to its rules and policy, and is prepared, if not already enrolled, to make the Threefold Promise.
 - (d) That she has had sufficient preliminary training to enable her to start work with her Pack, and is willing to be further trained. A Cadet holding a Leaving Certificate not more than one year old may be considered to have received this preliminary training.
 - (e) In the case of an attached Pack, that she is acceptable to the church, school, or community authority. (See Rules 4, 83, and 98).
2. Before confirming an appointment by the issue of a warrant, the Commissioner must satisfy herself through personal contact, through visits to the Pack, and, if desired, through a written paper:
 - (a) That the Guider has reached the required age for the particular appointment, that is:—Brown Owl: 21 years of age; Tawny Owl: 18 years of age.

NOTE: At her discretion, the Commissioner may grant a warrant to a Brown Owl at the age of 20, and to a Tawny Owl at 17½.

- (b) That the Guider has worked with her Pack for three months.
- (c) That she has read *The Brownie Pack* and *The Brownie Book*, and has received sufficient further training to enable her to understand and apply the principles and methods of Guiding outlined therein.

NOTE: This further training may be received through:

- (i) A Cadet Company.
- (ii) Pre-warrant training courses and sessions.
- (iii) Observation for at least a month of meetings and activities of the Pack of an experienced Guider.
- (iv) Experience in her own Pack under the guidance of her Commissioner, a Trainer, or experienced Guider.
- (v) Individual instruction given informally.
- (vi) *The Pre-Warrant Training Course for Brownie Guiders* (Correspondence Course).
- (vii) An individual written paper based on her reading and her own experience in her Pack.

In most cases a combination of several of these methods will be desirable.

- (d) That she is helping the Brownies to grow in understanding and practice of the Promise, Law, and Motto.
- (e) That she is making the right use of the Pow-wow, the Six system, and Brownie ceremonies.
- (f) That she can tell a story to Brownies in such a way as to hold their interest.
- (g) That she understands the purpose and value of the tests, and is able to teach and test in the requirements for the Brownie Enrolment, Second Class, and Intermediate tests.
- (h) That she understands the importance of outdoor activities in the Brownie programme, and knows the facilities for such activities in her own neighbourhood.
- (i) That she has read the current issue of *The Blue Pamphlet of the World Association*, has some knowledge of the world-wide aspect of the movement, both within the British Commonwealth and in other countries, and can apply it in her Pack.
- (j) That she has the ability to share in the planning of a balanced programme over a period of time, and to be responsible for carrying through a whole meeting satisfactorily.
- (k) That she has kept, or been responsible for keeping, satisfactory Pack accounts and other records.
- (l) That she understands her own, and her Pack's, place within the District, and the importance of co-operation between Pack and Company.

NOTE: Before issuing a warrant to a Guider who has already held one in another capacity or area, the Commissioner must decide how much further training and/or experience is necessary for the above requirements to be fulfilled.

In order to retain her warrant a Guider must keep herself up-to-date by attending Guiders' meetings and refresher training sessions or courses from time to time (day, evening, residential, etc.) and by reading *The Guider* and other appropriate publications. She must also show that she is continuing to share in the running of her Pack in a satisfactory way.

WEAR — AND WHEN

by Muriel Jobling
Guide Adviser, C.H.Q.

STIMULATED by the recent articles in THE GUIDE, the Company were discussing hair-styles and make-up.

'Captain,' said Hazel (aged eleven and *not* shy!), 'why don't you use that brown stuff they put on eyebrows?'

'She is beginning to wonder if I am really "with it",' thought Captain—and this prompted the question of what being 'with it' in matters of uniform might mean in 1964.

Most people would readily admit that nowadays our uniform for Guides is attractive, and that it looks smart when it is properly worn. We struggle, of course, with the berets on top of the modern hair-styles for the older girls, and we acknowledge that white socks are neither necessary nor suitable wear for some older girls. But how many of us are realistic enough to recognize that, while there is still a time and place for official uniform, there may be occasions when something else is more suitable?

INFORMAL OCCASIONS

A few weeks ago my Patrol Leaders and Seconds came out one Saturday afternoon to practise utensil-less cooking. Nothing had been said about uniform and, without exception, they arrived in anoraks and jeans. Some were blue—where the Guides had camped and been persuaded to choose this colour in good time before Mother did their holiday shopping; others were not. But everyone was warm and suitably clad.

On another occasion, when seven of the younger Guides came out into the local park to do their 'nature' and some 'stalking', again all wore jeans and anoraks, and no one was troubled by the incessant stream of small boys who used to follow us

round in the days when the Guides chose to wear uniform to do these tests. Fortunately, too, as no self-respecting youngster would dream of wearing anything but flat-heeled shoes with jeans, one was saved the painful sight experienced last summer of walking back from Church behind two Patrol Leaders attending a training at Waddow and watching them totter with difficulty in their patent high-heeled shoes.

With thoughts of the Discoverers Challenge in mind in the winter months, can one make a plea for a sensible approach to what the Guides are allowed to wear in the out-door activities they will be pursuing? The question is sometimes asked, 'But are we covered by insurance, if we do this?' The answer is, 'Yes'.

In P.O.R. you will find that navy blue shorts have been official wear on informal occasions for quite some time but there are still some schools of thought that seem to ignore this and would have us stalking and camping and hiking in our best skirts and navy blue gabardine coats, even when the weather is quite unsuitable. Camp dresses and shorts and shirt are official summer uniform and the Guides are entitled to wear these at their Company meetings and in camp. In most instances, is it not more sensible to arrive at the camp site suitably dressed and ready to begin work, than to see a procession of Guides dodging into the first tent and rummaging at the bottom of their kit-bags to get out of their uniforms and into something cooler? The uniforms will look much better too, if they are brought out clean and uncreased when the Company is going to Church or taking tea with the local landowner.

'SENSE AND SENSIBILITY'

Then, again, for Guiders. Do we really need to wear our hats or berets when we are climbing Great Gable with the Guides—or walking in the Forest? We would not do these things on holiday, so why do we consider them necessary if we go from camp?

Young people today are very conscious of dress and good grooming and perhaps a more sensible approach on our part to 'what to wear and when' will persuade Hazel and the many others like her that Captain is still 'with it'. They, in their turn, may then listen more readily to our requests that, on the occasions when they are wearing uniform, both at Company meetings and in public, their shoes and hair-styles and general deportment must do credit to themselves and to the Movement to which they belong.

Do your own **DUPLICATING**



Registered Design No. 891156

BLAIKRAY Rotary Dupli-
cator £11.15.0d.

Semi-Rotary Models

"EMPHAS" Postcard

Outfit £1.16.0d.

"EMPHAS" Foolscap

Outfit £5.15.0d.

Send for details and sample prints, with no obligation and no representatives, from the makers:—

BLAIKLOCK, GRAY LTD., HOCKLEY, ESSEX

Suppliers by mail for 15 years

Here is a guaranteed rotary duplicator. You can produce 60 perfect reproductions a minute of letters, reports, etc., with this remarkable **BLAIKRAY DUPLICATOR**.

Just the machine for club secretaries, small businesses, schools, church and social workers.

JOSEPHINE BUTLER HOUSE LIVERPOOL
CHURCH OF ENGLAND TRAINING COLLEGE FOR
SOCIAL WORKERS

The college offers training to women of Christian conviction, of any denomination, who want to further the ministry of the Church in the sphere of personal relationships and family life, under statutory or religious auspices

For further information apply to:—

The Principal, 34 Alexandra Drive, Liverpool, 17.

THE BROWNIE FLOWER GOOD TURN

SOMETIME during this month THE BROWNIE will contain the news of the Flower Good Turn. Unless you have started making plans after reading the article in the January GUIDER, this will be the first time your Brownies will have heard about it, and they will be wanting to have a Pow-wow to plan what they are going to do.

Will you encourage them to write to THE BROWNIE and tell us about their particular Good Turn? There will be a special coupon printed in THE BROWNIE each week during May, and every Pack that writes in to tell us about the good turn it has done will be mentioned by name in the magazine. Photographs and drawings will be very welcome.

Some Packs have already made plans. We have heard of one District which is doing things in a big way when

their new Headquarters is opened. They're producing windowboxes full of flowers for the great day, and afterwards the boxes are going to the Old People's Homes. One Pack is planning Brown and Gold Flowers for the Church Garden, and rumours have reached us of plans to decorate the Children's Corner in Church with flowers, and to send some to a hospital and to old people living alone.

This is something all Packs can join in, town or country, large or small, and it will be a happy way of celebrating the first appearance of the Rosebuds in May 1914.

Perhaps you know something of the early history of the Rosebuds, which may interest your Brownies; if so will you write in to tell us too, so that we can tell the Brownies of 1964 something about the Rosebud of 1914.



Points of View

Modern Guiding

I WAS interested to read the letter from C. A. Topham about 'non-Guidey' events. During last winter the Guides in the village Company here arranged two 'Twist and Record Evenings'. Each Patrol was responsible for inviting their own guests and for providing refreshments. They brought along their own records (only the Guides themselves know the latest and best ones!) and with a few games, the evenings went with a swing. Guide night was changed from Wednesday to Friday so that everybody could stay a little longer. In our particular case the Guides, in Patrols, arranged everything themselves, and the Guiders had relatively little to do.

I feel that this sort of evening may well be recommended as a departure, once in a while, from normal Guiding activities.

E. A. HADLEY

[Captain, 1st Hindleap Coy.,
Worcs.]

Carol Singing

IN REPLY to the letter on page 53 of the February GUIDER, may I tell you our experience?

I took a party of Brownies out Carol Singing, on a very cold night. We were out about an hour. Only about half the people we called on bothered to answer the door. We suspected that the others preferred their T.V. programmes to our singing. Perhaps they did not even hear us!

On the credit side I must add that one person who did come to the door congratulated us on our singing and gave us a donation, even though she does not usually support carol singers.



We had the satisfaction of sending twelve shillings to the National Children's Home as a result of our effort. It wasn't much, but we felt we had worked hard for it, and we know the recipients were grateful.

Perhaps the number of children 'carol singing' from late October onwards has made people less responsive to genuine efforts on behalf of charity.

Dare I add that I am not sure about Brownies being allowed to go Carol Singing? P.O.R. Page 3, Rule 6 (5) does not mention Brownies. They are not, however, forbidden, so I hope we may continue our efforts.

JEAN BURT

REED'S EDUCATIONAL TRAVEL

DANISH SPECIAL—30th Aug.-9th Sept.

11 days holiday to Denmark—from 29 Guineas

Travel to **ELSINORE** and return; accommodation and full board; excursions to **COPENHAGEN** and **SWEDEN**; berths and meals; insurance.

INNSBRUCK 12th-21st August from 25 gns.

SWITZERLAND 17th-26th August from 24 gns.

BELGIAN COAST—one week—from £8 7s. 6d.

All prices include travel from London and return; insurance; full board at the resort; One **LEADER** **FREE** with every **TEN** young people.

Reed's Educational Travel Service Ltd. (M/Gr)
3 New Square, London W.C.2. (HOLborn 0171)



O FRABJOUS DAY! I've caught a Brownie Guider. Too easy. Old Guide, now married, waiting to be asked. Refrained from murmuring that she might have offered. Husband in favour. Must lend her Ailsa Brambleby's books. Told her between us we must find second and if possible third helper before opening Pack.

A.G.M. safely over. Circulation of minutes, report and accounts with invitations cut business time to a minimum and gave speaker a chance. Also platform party felt livelier and even looked so. One L.A. member unable to attend meeting, impressed by report, doubled subscription. L.A. provided wonderful home baked tea as usual.

22nd February provided record sum of Thinking Day pennies thanks to stories culled from COUNCIL FIRE and used as yarns beforehand. World Flag hoisted on Municipal Buildings after delay due to blocking of exit on to roof by builders' gear too heavy for girls to shift. Workmen who came to rescue formed unofficial Colour escorts. One said he reckoned 'Cubs was the best years of my life'.

Despair! Brownie Guider uncaught. Husband posted abroad. Same mail brought resignation—Mrs. Pooter's. Wrote sadly of my lack of enterprise, courage, and confidence in crabbing plans for climbing with Guides: how can Guiding prosper when all Commissioners are square? James asked why depressed. Told him and asked where I was to find new Captain. He said advertise. I said snarkily, in *The Times*? He replied mildly, try local papers first. I said, too dangerous, what might I get? He said probably nothing, but if I made it a general appeal for help for Guiding I might contact others like that girl now going abroad. Said would think it over. Is there something in it?

Two Patrols have fluffed second round of Discoverers Challenge, one of them let down by one member who failed to turn up for no good reason. Sticky interview with parents of P.L. who had been literally sick with disappointment. Gathered they wanted Offending Child and parents drummed out of town. Adopted reasonably sympathetic attitude. Asked Father if in his experience irresponsibility was not curse of the age and what did he do about it in business? Triggered off reply worthy of Rotarian luncheon. Subsequent discussion led to unanimous conclusion that lesson was hard for daughter but useful. Promised to see that Offending Child did not go scot free. Said I thought Captain would deal with anything left over by the Patrol but would have a word with her about it. James says hopes I don't meet the O.C. in the street as look as if I might murder her. Reply that a self-respecting jury would call it justifiable homicide. James says come off it and have I never ever let anybody down? I go chastened to get supper.

THE DISCOVERERS CHALLENGE



Two sections of the Challenge should now be completed and the Patrols ready to embark on the third part. We know over 4,500 Patrols accepted the Challenge in December, but in order to assess how many approximately will be entitled to come to the camps we are dependent on County Challenge Secretaries being kept up to date with the numbers that finish the tests each month.

Commissioners, Testers, Guiders, and the Patrols themselves are much to be congratulated on the successful completion of the tests so far. Getting Patrols together in January required a big effort, and Commissioners and Testers showed amazing adaptability in meeting Patrols at times and places often most inconvenient to them. Our thanks are due to all who have thus helped the Guides get through so far. We hope the Guides' enjoyment of the cooking, and their thrill of achievement when they had accomplished their three mile expedition and secret good turn will have made the time spent on the test seem worth while. The March section will be tested at Division level. It is not, however, intended to be the sole responsibility of the Commissioner or C.A. The net for Testers should be spread as widely as possible, especially in those Divisions where many Patrols are taking part. The holders of camping qualifications will probably be appointed as Testers for the camping skills, but other parts of the Challenge may well be tested by any experienced Guiders or anyone from outside the Movement interested in the subjects concerned.

It's now time to begin to think seriously about the **Challenge Camps**. These will be held in various parts of the United Kingdom during the week-ends of May 22-24; May 29-31; June 5-7.

Particulars of each camp will be circulated through the Counties concerned, but information applying to all of them is being published in *THE GUIDE* of 28th February. It is most important for the Patrols to understand that they will each run their own little camp, and will bring their own food. In addition to this each Guide will be asked to pay a small fee to meet the cost of hiring marquees, transport of equipment, etc. The fee will of necessity vary in different localities.

A programme of exciting activities is being prepared for all the camps, and it is wonderfully encouraging and most gratifying to hear that the camps are to be visited by Our President, H.R.H. The Princess Royal, The Chief Guide, The Chief Commissioner and Deputy Chief Commissioner of the Commonwealth, and The Chief Commissioners of the Countries of the United Kingdom.

Our most grateful thanks are due to our President for having graciously consented to come to one of the camps, and to the Chief Guide and to all the Chief Commissioners for sparing the Discoverers so much of their valuable time. How proud the successful Patrols will be to have the privilege of meeting them.

APPOINTMENTS

Cadet Adviser, England: MRS. J. G. HARTRIDGE, vice Miss E. Hardy (from 1st January, 1964).

Brownie Adviser, Ulster: MISS L. KENNEDY, vice Mrs. Magee.

International Adviser, Ulster: MRS. S. HARVEY, Vice Mrs. Morton.

Assistant Camp Adviser for England: MISS K. PENNYCUICK.

RESIGNATION

Deputy Chief Commissioner, England: THE HON. EDITH HAZLERIGG, J.P.

HEADQUARTERS AWARDS FOR GOOD SERVICE

Beaver

MRS. N. R. BARTLETT, Deputy Commissioner for Nyasaland.

MISS ELIZABETH DERHAM, Captain, 1st Slyne-with-Hest Coy., Lancs. N.W.

MRS. W. H. GILBERT, County Commissioner, Morayshire.

MRS. CATHERINE KWANTES, County Commissioner, Glamorgan West.

MRS. LAING, Deputy Chief Commissioner for Overseas.

MRS. PARKER-BOWLES, Deputy Chief Commissioner of the Commonwealth.

MRS. D. A. SMART, Division Commissioner, Lancaster and Morecambe, Lancs. N.W.

MISS DAGNY STROMWALL, District Commissioner, Rustington, Sussex.

Medal of Merit

MRS. NOREEN BARKER, lately County Camp Adviser, North Down, Ulster.

MRS. W. G. BERRY, lately Division Commissioner, Chorley, Lancs. N.W.

MRS. E. A. BRIGGS, District Commissioner, St. Annes, Lancs. N.W.

MISS ETHEL HORSFIELD, District Commissioner, Leyland, Lancs. N.W.

MISS Q. V. LAWRENCE, Brown Owl, 4th Fareham Pack, Hants.

MRS. J. MACLEOD, Division Commissioner, Lewis, and Asst. County Commissioner, Ross-shire.

MRS. SARAH MAGEE, Brown Owl, 4th Lisburn 'B' Pack, Ulster.

MISS KATHLEEN R. SHEARER, Lieutenant, No. 2 District S.W. Division Ranger Coy., Glasgow.

MISS MURIEL WHEATLEY, Division Secretary, Wandsworth West, London S.W.

MRS. MARGARET ISOBEL WRIGHT, District Commissioner, Manama.

Oak Leaf

MISS E. BROWN, District Commissioner, Humbleton, Durham.

MRS. M. DOREEN CHAMBERS, lately District Commissioner, St. Albans West, Herts.

MISS IVY FANNER, Captain, 1st Fontmell Magna Coy., Dorset

MISS MARIE J. GOSS, District Commissioner, Lustleigh and Bovey Tracey, Devon.

MRS. F. HAYDEN, Brown Owl, 8th Hove (Holy Cross) Pack, Sussex.

HEADQUARTERS

MISS MARGARET HENDERSON, District Commissioner, No. 1. District, N.N.E. Division, Glasgow.

MISS PHYLLIS MAY HOOKER, Brown Owl, 7th Canterbury Pack, Kent E.

MISS ELSIE KNOWLES, Captain, 11th Exeter (Royal Deaf School) Coy., Devon.

MRS. NANCY LINDSAY, District Commissioner, No.1. District, S.W. Division, Glasgow.

MISS ADELAIDE M. MACFARLANE, Division Commissioner, Eastern Division, Dunbartonshire.

MISS AGNES E. PENNY, Brown Owl, 1st Latimer Pack, London N.W.

FORTITUDE AWARDS

Badge of Fortitude

ELSPETH MCCAULEY, Sixer, 138th Belfast Pack, Ulster.

SHEILA WILKINSON, P.L., 12th Camberwell Green Coy., London S.E.

MERITORIOUS CONDUCT AWARDS

Letter of Commendation

WENDY KIRK, Guide, Melton Mowbray, Leics.

CHRISTINE HAMER, Guide, Melton Mowbray, Leics.

THE COMMONWEALTH CIRCLE

THE MARCH meeting will take place at The Guide Club, 46 Belgrave Square, London S.W.1 on Tuesday 24th March, at 6.30 p.m. Mrs. Dunsheath will show slides and talk about the Mountain Adventure Camps that she organizes.

EXTENSION COMPETITIONS, 1964

COMPETITIONS will be held for all groups of the Extension Section, and further details may be obtained from the Extension Secretary, C.H.Q.

It is hoped that the Guiders will encourage their Brownies, Guides, or Senior Branch members to take part in these competitions, which are based on topical events, and should be within the scope of all handicapped girls.

EXCHANGE OF YOUTH LEADERS WITH FRANCE UNDER S.C.N.V.Y.O. AUSPICES

IT IS HOPED to send a party of 30 Youth Leaders (men and women) to France for a 15 day visit at the end of July. Anyone interested should apply to the International Secretary, C.H.Q. on a C.H.Q. nomination form as soon as possible, but not later than Monday, 27th April.

Dates: 26th July—10th August.

Cost: £30-£35 (possible grant aid).

Age: 25-35 years.

Qualifications: At least two years in the Guide Movement. A working knowledge of French. Ability and willingness to pass on what she has learned.

A paper selection will be made.

The object of the visit would be to gain a closer insight into the organization of the Youth Service and the facilities for reception and international exchange between the two countries, and to make possible personal contact between leaders who might themselves promote further exchange.

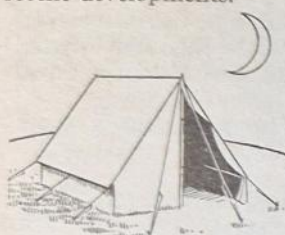
NOTICES

EXPIRED AIR FILMSTRIP

SINCE the first Girl Guides Association Expired Air Filmstrip was produced, the Royal Life-Saving Society has made two definite pronouncements on the use of this method of artificial respiration:—

1. Speed in applying the method is so essential that it is inadvisable to take time over expelling water from the body before beginning it;
2. Friction to increase circulation, once breathing has been resumed, is no longer advocated. It is thought to place too great a strain upon the heart.

It is hoped that those who have this strip will either cut out frames No. 8, 9, and 25 or pass them over quickly with a word of explanation when showing it in order to keep our teaching in line with the most recent developments.



THE CAMP OF THE NEW MOON (Adventure in Handcraft)

BE SURE your Guides and Senior Branch members (14-16-year-olds) read about this special camp in THE GUIDE of 28th February and the March SENIOR BRANCH NEWS. The camp will be held at Foxlease from 8th-17th August.

'HURRICANE FLORA' APPEAL

IT HAS been decided to close this appeal, which has now exceeded £280.

On behalf of the Guides of Jamaica, Commonwealth Headquarters gratefully acknowledge the many donations received from all over the British Isles. The money was raised in a great variety of ways and some details of these will be sent to Jamaica.

HOLIDAY CAMP FOR GUIDERS IN FINLAND

THE FINNISH Girl Guides Association invites British Guiders to a holiday camp, the object being to help Finnish Guiders to improve their English.

Date: 10th-22nd August. Trips can be arranged before or after the camp, if desired.

Place: Punkaharju, in S.E. Finland.

Accommodation: In a house by a lake.

Cost: 16s. per day, plus travel to and from Finland.

Applications: To the International Secretary, C.H.Q., enclosing a letter of recommendation from the applicant's Commissioner, not later than 30th April. Individuals will be expected to make their own travel arrangements.

LIST OF CAMP ADVISERS—CORRECTIONS

Hampshire: West Hants., New Forest Division. MISS PINCHIN's address should be Martins, Brook, Lyndhurst.

Staffordshire: Beaudesert. MISS E. D. KIRBY's address should be 381 Birmingham Road, Walsall.

SUMMER HOLIDAY AT OUR CHALET

MAY 2-14. Cost about £32. Apply, with Commissioner's written recommendation, to International Secretary, C.H.Q., by 31st March. For details, see Feb. GUIDER.

CAMP HELPERS

Camp Secretary needed for Foxlease and another for Waddow, from about mid-July to mid-September. Ideal summer job for Guider who is a keen camper. **Blackland and Hindleap Warren Camp-Sites.** Two Rangers, Cadets, or young Guiders needed at each camp-site to help from end of July to end of August.

For details of both camps write to the Secretary, Commonwealth Training Department, C.H.Q.

ANOTHER MOUNTAIN ADVENTURE CAMP FOR GUIDERS

FOLLOWING the success of last year's Mountain Adventure Camp, C.H.Q. is planning a similar event in the Chamonix area during August 1964, again under the leadership of Mrs. Dunsheath.

Dates: 11th August-25th August inclusive.

Cost: Approximately £26.

Qualifications: Age—20 years or over. Doctor's certificate of physical fitness. Ability to carry a 20 lb. rucksack, walking 5 or 6 hours a day. Commissioner's recommendation. Holder of Camper's licence or candidate for same. (Mountaineering experience is NOT necessary.)

Applications: Numbers will be limited to 15, and anyone interested in this camp should apply on a C.H.Q. nomination form (obtainable from County International Representatives) not later than 31st March.

Note: An article on the 1963 camp appeared on page 22 of the January GUIDER, and a photograph on page 63 of the February issue.

C.H.Q. STAFF VACANCIES

Guider with legal training for part-time work with the Trust Corporation at Commonwealth Headquarters—Solicitor or Managing Clerk with experience of conveyancing.

The Trust Corporation is responsible for more than 200 properties for local units.

Hours and fee by arrangement.

Secretary/Shorthand Typist with good secretarial experience and able to take responsibility.

Senior Clerk able to take charge of Periodicals Subscription Section and periodicals accounts.

Juniors—School-leavers 15-16 years. Shorthand-Typist, Typist, or Clerk.

Saleswoman for camp showroom.

Saleswoman with a flair for display.

If you are interested in any of the above posts, please write or telephone to the Personnel Officer for an appointment.

Five day week in offices.

Five and a half in shop with occasional extra time off.

Three weeks paid holiday a year.

Special staff rates in C.H.Q. Restaurant.

Salaries competitive with other business houses.

Good working conditions.

Work of special interest to all members of the Movement.

FRIENDS OF FOXLEASE AND WADDOW

HAVE you gained happiness and friendship from Guiding? If so, why not become a Friend of Foxlease or Waddow? In return for their subscriptions (minimum 5s. per year) Friends will receive an Annual Letter on Thinking Day and invitations to special events in addition to being welcome at either Training Centre at any time: they will not be called upon to make money-raising efforts.

Monies from subscriptions will not be used to defray general expenses but for the benefit of those who train at Foxlease and Waddow, by providing extra amenities that otherwise could not be afforded by the Movement. Friends will also form a closer link of good will and friendship through the Training Centres for all members from home and overseas.

Waddow. A Garden Party has been arranged for Wednesday, 3rd June. Invitations will be sent to all Friends of Waddow who have joined before that date.

Send your subscription now to The Hon. Secretary, Friends of —, at the Training Centre chosen.

EAST/WEST CONFERENCE IN INDIA

World Association conference in connection with U.N.E.S.C.O. Major Project to Promote Mutual Appreciation of Eastern and Western Cultural Values. GREAT BRITAIN has been invited to send one delegate to this Conference, which promises to be of immense interest and importance.

Place: The International Centre, New Delhi.

Dates: CONFERENCE 26th October-6th November. TOUR 6th-11th November.

Languages: English and French (conversational knowledge of French an asset).

Travel: By sea or air according to circumstances.

NOTICE BOARD

ENGLISH LAND RANGER ADVENTURE COURSE

At Whitehall, Buxton, Derbyshire, 7th-17th August. Limited places. Apply at once to Miss Heys-Jones, 23 Denbigh Gardens, Richmond, Surrey, enclosing stamped addressed envelope. Rock climbing, orienteering, pot-holing, canoeing, and pony trekking. This counts as a 'residential week' for the Duke of Edinburgh's Award.

THE BIBLE IN SCOUTING AND GUIDING

A CONFERENCE for Scouters and Guiders in the north-east of England, at Girl Guides Headquarters, 15 Cookridge Street, Leeds, Saturday, 18th April 3-8 p.m.

The Conference is sponsored by the Church Army and is open to Scouters and Guiders of all denominations. Tickets, price 3s. including tea, may be obtained from: The Guide (or Scout) Department, Church Army, 55 Bryanston Street, London, W.1.

ANNUAL SCOUT AND GUIDE CLUB CAMP

THE 7th Inter-Collegiate Rally, Hertfordshire County Scout Training Ground, Shenley, from 18th-27th August, cost £6 10s. inclusive. Particulars from Anthony Chandler, College of St. Mark and St. John, King's Road, London S.W.10.

Cost: The cost of all travel and accommodation will be the responsibility of the Girl Guides Association. The delegate will have only to find pocket money.

Age: 18-25 years inclusive.

Qualifications: The delegate must be knowledgeable about the traditions and way of life of Great Britain. She will be expected to make some study of Eastern culture if she has not already a special interest in this field. She must be able and willing to take an active part in discussion and prepared, on returning home, to share with others what she has learnt.

THE COUNCIL FIRE for January/March contains further information about this conference. Details of programme and application form, etc. will be sent to those interested, who should send a stamped addressed foolscap envelope to the International Department, C.H.Q. No applications accepted after 16th April.

STAFF FOR AMERICAN GIRL SCOUT CAMP IN GERMANY

APPLICATIONS are invited for staff members to work at Camp Lachenwald, near Marburg, Germany from either: 20th June-25th July or 27th July-29th August. The campers will be American Girl Scouts resident in the North Atlantic area.

Return travel expenses will be paid plus a small amount of pocket money.

Staff positions are:—

Arts and Crafts Counsellors, Interpreters, Unit Leaders (minimum age 21 years), Assistant Unit Leaders (minimum age 20 years), and Counsellors (minimum age 18 years).

Apply to the International Secretary, C.H.Q., for further details, enclosing Commissioner's recommendation.

TRAINING WEEKEND AT FOXLEASE FOR ROMAN CATHOLIC GUIDERS

APRIL 17-21. Apply by 15th March to Mrs. Harper, Sunnyside, Iwerley, Nr. Stourbridge, Worcs. (with 7s. 6d. deposit and s.a.e.). For details, see Feb. GUIDER.

FOR JEWISH GUIDES AND BROWNIES

ANNUAL SERVICE, Wembley Synagogue, Forty Avenue, Wembley, Middx., 24th May, 3.30 p.m. All welcome. Write: Mrs. Sturman, 30 Manor View, London N.3.

HELPERS WANTED AT WOODLARKS CAMPS

THE FOLLOWING camps are in great need of voluntary helpers: please write to the appropriate organizer:

May 1-7 **Pack Holiday:** Mrs. Strover, Woodlarks, Farnham, Surrey.

June 20-July 4 **Durham Post Rangers:** Miss J. Williams, 3 Rhondda Road, Hylton Red House, Sunderland, Durham.

July 25-August 1 **Worcester 'Discoverers':** Miss M. Allen, Spinney Cottage, Bricklehampton, Nr. Pershore, Worcs.

August 15-22 **'Pathfinders':** Miss V. Hill, 62 Alma Road, Clifton, Bristol.

ALL-ENGLAND 'CONTACT' WEEKEND

BOOKINGS are coming in fast. Apply right away to Miss Ann Redfern, 27 Dulverton Road, Aigburth, Liverpool 17, sending 10s. deposit.

TRAINING PAGES

Is This Your Problem? Thinking Up Ideas

by Ailsa Brambleby

THINKING up ideas . . . Is this the problem? Why, then, cheer up—it's been solved for us already!

Ever since Guiding started in 1910, a host of able, ingenious, energetic women of all ages, aptitudes, and backgrounds have been pouring floods of ideas into our Movement. For fifty-four years this rich and varied store has been accumulating like money in a bank, and our only problem is to discover how we can best take possession of this, our inheritance.

One of the easiest ways is by attending Trainings at which Guiders, specially qualified for the job, will pass on many of the old ideas and also keep us abreast of the new. What's more, if there's any subject we particularly want, the Trainer will be glad to try to include it for us—especially if we give her a little warning!

At these Trainings we shall certainly be introduced to much of our own Guide literature, which covers a vast field ranging from *Scouting for Boys* to our present-day periodicals. How can we run short of ideas if we use these imaginatively?

There's *THE GUIDER* with definite practical ready-made activities, and with fascinating suggestions for us to develop for ourselves.

Then there's *THE GUIDE*. Do you agree with the Commissioner who said that, when called upon at short notice to take a Guide meeting, all she had to do was to look in *THE GUIDE* and she found masses of material on which she could build at once?

And what about our two-year-old, *THE BROWNIE*? Mingle with any flock of Brownie Guiders and within a few minutes one hears the words, 'How did we manage before we had *THE BROWNIE* magazine?' As you know, this is full of things to make, to do, to discover, and to learn. Have you noticed, by the way, how many of the stories in 'The Promise Corner' give the germ of an idea for enrolment talks or Guides' Owns? If an idea is really sound and true it applies to all ages, though naturally the presentation differs.

In the same way, all Branches can glean something from *THE SENIOR BRANCH NEWS* and *THE COUNCIL FIRE*. Not only does the latter lift us out

of our own narrow field, but it gives us stories, testwork tips, handcrafts, news, views, and stimulating thoughts, all spiced with the excitement and newness of coming from another country.

Maybe it's this newness of ideas that we particularly want, not just the ones written in the past by other Guiders. Again we've not the slightest

cause for despair.

You can hardly pick up a copy of the *READER'S DIGEST* without finding a theme for a Guides' Own or a controversial point worth discussing with the older girl. When we listen to the radio, we hear of a story that illustrates one of the Laws; of a tragedy that could have been averted by the application of a little Guide knowledge; of Semaphore being used in an emergency. T.V. fans can see new handcraft ideas and new ways of exchanging knowledge through the various quizzes and panel games. Even the 'commercials' may help us—especially when they introduce some new product.

Of course there's the saying that 'There's nothing new under the sun'; but what about foam rubber, plastic covered wire, shiny coloured clothes pegs, detergents? One fascinating way to think up ideas is to study each new product as it appears on the market and decide what possible use could be made of it in the Company or Pack. Maybe we'll draw the line at issuing Green Shield stamps instead of our conventional sticky-back stars—still, it's an entertaining thought! Finding good uses for waste products—match-boxes, empty toilet rolls, old hot-water bottles, tennis rackets bereft of their strings—can spark off ideas if only we'll let our imaginations rip . . .

'Let our imaginations rip'. We're back at *THE GUIDER* again. All of us will remember how in the January 1963 issue the then Adviser for Training suggested that we might focus our thoughts on any one object and think of all the suggestions it conjured up for activities. Maybe it was a bunch of twigs, a skipping-rope, old newspapers, a ball. It's incredible how much easier it is to begin to develop ideas if one starts from one definite object.



In the same way, if we can seize upon one definite thought as a starting-point, what a help it is! Our present Training Adviser gave us a wealth of starting-points in her September article 'The Complete Instrument'.

An imaginative follow-through of some of these ideas would keep us well stocked for months.

One of the most rewarding of idea-promoters is 'The Problem'. It is immensely satisfying to take hold of a source of irritation, tackle it, and make it serve us rather than infuriate us.

Take, for example, that nasty sticking-up piece of root in the camp kitchen. Of course the Cook Patrol know it's there, but that doesn't stop them from tripping over it a dozen times a day—and as for its effect on Q.M.... But suppose Captain challenges the Leaders to see who can invent the most useful kitchen gadget using the offending root as an essential part?

Could the same kind of approach be used when we're faced with a very awkward clubroom—or maybe with a very awkward individual? In the same way, would it be possible to cash in on our own

mistakes and weak spots and somehow turn them to advantage?

So the problem really becomes not one of *thinking* up ideas but of selecting them. We all know the answer to this. Before we consider any idea—new or second-hand—we need to think deeply about our own Units—their likings, their needs, their opportunities.

As we try to work these out, we'll find without doubt that one of the girls' greatest needs is to have the chance to think up and try out *their own* ideas—and once the group is well and truly off on this we shall be faced with a completely new set of problems—lively, stimulating ones—ones fitting for a 'movement'.

This Movement of ours is a way of life in this world. The world is full of ideas for us to tap, and as we use and adapt the old ones, think up the new, and try to keep pace with those of our Units, we suddenly realize to our surprise that instead of just drawing from the great sum of ideas in our Guiding bank, we are, in our turn, putting some in to swell the capital!

MARCH

by
Elizabeth
Pleydell-Bouverie

SUDDENLY—or didn't we notice it until now?—it is almost light enough to spend the first ten minutes of the meeting out of doors, anyhow in 'near' daylight.

Marcus Woodward suggested that a good woodcraft name for March was 'Moon of Good Hope', because, as he said, 'no month is bigger with promise'. The lambs have guessed that spring is near, and their games together are curiously akin to those of young children. In the country if you are lucky—and very quiet—you may discover for yourself the meaning of 'Mad as a March hare'; for at this time hares can occasionally be seen prancing

round one another and almost boxing with their front paws, and performing other antics, supposedly competing with one another for their chosen mates. Crocus may be in full glory, and white and blue wild violets; also, early daffodils are appearing everywhere. The wind blows away the cobwebs from eyes and minds, and acts as a sort of spring cleaner to both country and town.

It is the time of the Spring Equinox (see October article), and there will be high tides observable not only at the seaside but also on any tidal river, and in estuaries. Some of the Guides may remember the dreadful floods on the East Coast one March, and others may have been evacuated from houses near the Thames in London when the basements and ground floors were invaded by the overflowing river. The Guides may have learnt about neap and spring tides at school, but these are more understandable if one can actually see the tide coming in higher and going out further; so if you have opportunity to show this to them, do not neglect it.

A quick activity game outside might take the form of a Patrol Challenge: one Patrol challenging another (or, if you have a very small Company, one Guide another) to complete certain actions in quicker time; the losers could take on one another, and the winners do the same, so that everyone keeps active and need not drop out.

In November we noticed the birds banding them-



Nesting Blackbird

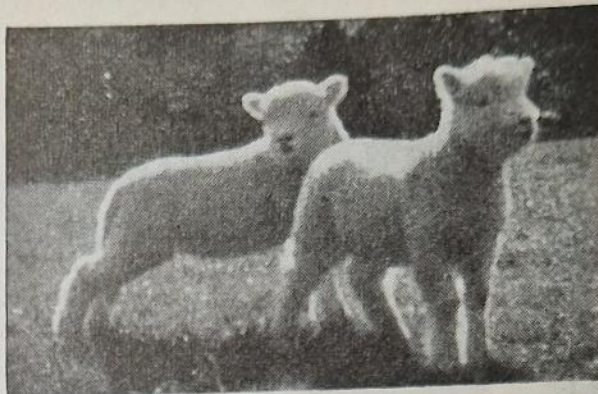
THE GUIDER

selves into flocks, often male and female separately; in March we can see them breaking up into pairs again. This may happen gradually or very quickly. Someone who watched the behaviour of starlings in a city reported that on a Monday she saw huge flocks of them passing over in the morning and evening, on Tuesday the flocks seemed smaller, by Thursday the birds were going over in fours or fives, and by the end of the week all seemed to be in pairs and no longer flying all at the same time.

The earliest of the migrants may be heard, and sometimes seen, at this time of year: chaff-chaffs, house martins, even an early swallow, and many others. The Guides and Brownies might enjoy some form of an 'I saw it first' competition. It would be a good plan to send Guides out in pairs not from the same Patrol, so that each pair could play against one another all the time and if they like score for their Patrols too. Finds might include flowers, birds, trees in bud or flower, tadpoles or even frogs, and early butterflies such as Brimstone or Tortoiseshell. Many of these can be seen in most towns as well as the country. Don't believe reports of hearing a cuckoo! April is their month.

The Easter holidays are not far off now, when one hopes there may be some hiking activities. One does not often hear of 'fuzz-sticks' nowadays, but you will find them described in one of the yarns in *Scouting for Boys*, and the Guides (specially the town ones who have not such ready access to punk as the country ones) could profitably spend a little while out of doors making fuzz-sticks to start their fires on their first hike. (Make sure there is time for them to clear up the chippings afterwards.)

A small Company, or the older members of a larger one, might enjoy this observation game that I met last year. On one table were spread some 20-30 pictures of groceries and household necessities, cut from magazines. The Guides were told these were on my shopping-list, and they were given three minutes to memorize them. On another table well away from the first were at least as many pictures, some of the same and others of a different variety (e.g. tomato soup instead of mushroom, plain flour instead of self-raising, etc.). The Guides were told that the



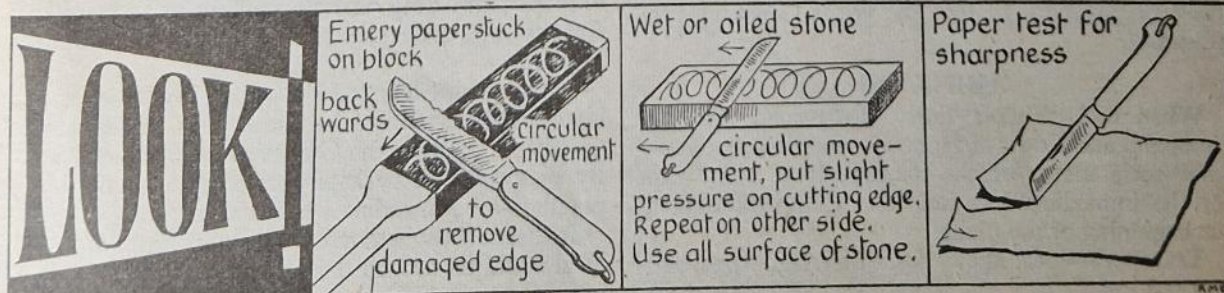
Natural curiosity

shopping-list had been mislaid, and they had to do their best to remember what was on it (getting some help from the second set of pictures, they could write down this list). A variation could be pictures from seedsmen's catalogues, advertisements of gramophone records, or anything of which you could get sufficient pictures.

Another observation test for indoors that could be adapted for outdoors without difficulty is this: the Guides or Brownies are told at the beginning of the meeting that it is likely birds may appear in the clubroom during the meeting, for short periods only, and that points will be given for noticing them. Card pictures, either with the names or not, according to the experience of the Company or Pack, will then be introduced every now and then in odd places by the Guider, left for a few moments, and then unobtrusively removed: a robin on Captain's hat, a blue-tit hanging from the edge of the table, a blackbird on a windowsill, etc. Flowers, leaves, wild animal pictures, etc., could be used.

The March winds will have blown down lots of twigs, etc., from the trees, so take advantage of this to practise fire-lighting, perhaps trying to get a fire going with wood from one sort of tree only, so that Guides can see for themselves which are the best, anyhow for starting a fire.

From now on, determine that more and more of the meeting shall happen out of doors, and plan accordingly!





Making the Best of Camp

1. Preparation

by C. M. Smith



HOW WONDERFUL it would be if facilities were available for every Guide to camp from Spring to autumn! And how different is the true situation! For some, life under canvas occupies $\frac{1}{52}$ of the year, for the weekenders only $\frac{2}{365}$, and for too large a proportion nothing at all!

No one is satisfied with this state of affairs. The time factor deters most of us from increasing the meagre ration. But all of us could *extract* more from our two or seven days, could pack more into them, could lose fewer precious camp moments—if our Companies embarked on this adventure better prepared.

From the start there must be right thinking. Camp must not be regarded as an **EXTRA** by the Company and the parents; it must be A NATURAL AND ESSENTIAL PART of the annual PROGRAMME. It must not be *Captain's* camp but the *Guides'* camp, for which plans and preparations are made by the Guider and with the Guides.

There must be right training: the Patrol system used throughout the year is the best preparation of all. A Company used to a lively and practical application of the Guide Law as something to live by is likely to enjoy camp from start to finish.

There must be right testing. The Tenderfoot and Second Class tests must be able to 'take the strain'. The hoisting of Colours must be such as will really stand twelve hours of tug and flap during a stormy camp day, the square lashing on the washing-up gadget must be able to take the weight of a bowl piled with Patrol plates and mugs.

Thinking, training, testing—from the beginning of September with an eye on next August's camp. What other preparations fit into the year's Company programmes?

THINKING

When and Where? Early discussions with the Company and Court of Honour. Mapping practice—small-scale maps for the journey, large-scale maps for the immediate location. The Company is in at the beginning of the plans.

Transport—local knowledge of haulage firms, railway services.

THE GUIDER

Finance—thrift training for everyone. Savings started early.

Equipment. Where is this coming from? If it has to be hired or borrowed, this should be done well in advance. Sizes of tents (and dixies) need clearly marking. If the Company possesses its own equipment this has to be done only once.

Here is practical application of the Guide motto.

Personal kit. Discuss very early what will be needed. Birthdays, or even Christmas, may produce billy-cans, rucksacks, camp-blankets, or mug and plate sets. Spring is Jumble Sale time, when it is possible to find the kitbag or the navy gabardine in good condition. All this is training in thrift and in being prepared. We are all thinking together and the camp is OURS.

TRAINING

As early as possible a visit should be made to the chosen site. If the P.Ls.—or even one—can be included in the party, this is helpful. A personal visit, even if the site is under snow, is invaluable—no map or C.A.'s description is a good substitute. Details collected at this visit will show where special training is required.

Trees. Are the Company familiar with the particular kind in the neighbourhood of the site? It is no use to be 'good at a beech' if there isn't one for miles.

Will dead branches have to be brought down from a height? If so, practise rope throwing.

Will it be necessary to use a saw?

Surroundings. It is good wide-game country? Perhaps extra time on map reading and use of the compass will make these games more successful and more fun.

Is this a bird-haunted site—if so, by what special kinds? Can something be done, even in the winter months, to improve the Guides' control and stalking? By pictures, and perhaps recordings, can the bird-population be introduced beforehand?

Is there somewhere handy where at least one Patrol meal could be cooked daily? In preparation for this, new menus could be thought out and Q.M. given fair

warning! She may need extra bits and pieces, supplies of cooking foil, and extra matches.

Are there facilities for bridge building, raft making, ladders? If so, besides having the necessary materials available, the skills required may need extra practice so that all the opportunities offered by the site may be used to the full.

All the Company will enjoy planning the site, learn much about sun time, and save a great deal of time on arrival. On a sheet of paper showing compass points, positions of trees, water-supply etc., the camp can be rearranged until satisfaction is achieved.

Q.M. needs to get her stores lists in good time. To help with these and the planning of the menu is good home-making training. In these tin-and-packet days the Guides can learn at camp much about thrift and good feeding. They also learn—and discover—what help is needed to ‘understand the rules of health’.

Gadgets. Good trustworthy gadgets are both time and labour-saving and need to be erected during the first hours of the camp. To be worth while, training is needed in the choice of string, tools (knife or saw), and wood. The Patrol should decide exactly what is required for the gadget in mind. Practice with a ‘specimen bundle’ is useful, and a visit to a hazel copse, especially before the leaves are out, is helpful in indicating just what would be worth cutting.

Tent pitching and screening. Even if this can be done only once it contributes to a smoother and speedier ‘settle in’. Skill and speed increase with every practice until Patrol homes spring up like magic. If real practice is impossible, much can be done by diagram, sheets of paper, etc. At least names such as brailing, guys, runners can be learnt. Camp language can be very confusing to new campers.

But camp has almost begun with the first trial pitch, and that wonderful moment when the Patrol disappears into its ‘house’ and settles down to decide exactly where everything will go.

Thinking and preparing together makes the camp ‘OURS’ from the beginning, the new camper loses much of her homesickness because she knows a little of what to expect and has had a finger in so many of the pies.

Training throughout the year ensures skill and confidence. Lucky are the Guides for whom special camp-training days can be arranged by Captain or District. But working within the framework of normal meetings and programmes, every Guide can go to camp well equipped.

TESTING

Thinking aright, training aright—testing? Of course this will reach the required standard, and the limit even a two-day camper can reach will be a very wide one.



by Marjorie M. Hulme

THE Pow-wow ring is an excellent place for getting to know one's Brownies better and for them to learn to co-operate as a Pack. We have a number of ideas that we use from time to time in the Pow-wow Ring.

ENROLMENT TEST GAME

Sometimes when a recruit is nearly ready for enrolment the Brownies sit in a circle on the floor and Brown Owl puts cards face down on the floor. Each card contains a question on the Enrolment Test: e.g., ‘What is your Six Rhyme?’ ‘Can you show how to make the Brownie Sign?’ The Brownies sit passing a ball round the circle under their raised knees and singing to the tune of ‘Mulberry Bush’, ‘The ball goes round under our knees; Now YOU tell us the answer, please.’

The Brownie who has the ball on ‘YOU’ goes into the middle, picks up a card, reads out the question and gives or demonstrates the answer.

A ‘FEELING’ GAME

This form of Kim's game is most popular with Brownies. They sit in a circle on the floor and cover their eyes while Brown Owl puts a number of small, familiar objects on a newspaper in the middle and covers them with a fairly large square cloth. One Brownie is chosen to go into the middle and to grope under the cloth until she feels one of the objects. When she has decided what it is, she lets it go, goes back to her place, and describes it to the rest of the Pack. Those who think they know what it is put up their two Brownie fingers as a sign, and Brown Owl asks. The Brownie who guesses correctly goes into the middle for the next turn. Any Brownie who cannot decide what the object is when she touches it goes back to her place and another Brownie is chosen. This can of course be played as a Six game, with one Brownie from each Six coming out to feel

under the cloth and then going back to describe the object to her Six, or drawing it, so that they have to guess what it is.

TIP, TAP, TOE

One of the oldest games I know is still much loved by many Brownies and is played in the Pow-wow Ring. Divide the Brownies into threes and name them: **Tip, Tap, Toe**, round the circle. The first three are told to go to the door and choose something they can see outside and to come back and describe it to the others. **Tip** says what it looks like—its general shape. **Tap** says what colour it is and what it feels

like, and **Toe** says how big it is. The others wait until the three have finished and then those who wish to guess put up their fingers and **Tip, Tap, and Toe** choose one in turn until the object is guessed.

We have to watch and make sure that the three who go out wait at the door for only a few seconds, or the rest of the Pack become restless. It is as well to play **Tip, Tap, Toe** at two consecutive Pack meetings, using half the Pack each time, otherwise the game tends to drag.

One learns quite a lot about one's Brownies when watching them take part in these activities.

A New Field

CARPENTRY

by Mona Johnson

HAVE you ever thought of carpentry as an interest for a Senior Branch Unit? It is no longer an occupation for males alone. Nowadays large numbers of women attend evening classes and become good carpenters, turning out useful articles of furniture; and quite a number learn to build their own boats.

There may be a brother, father, or friendly Rover willing to come to instruct the Unit; or members of

with, some rough wood should be provided, so that sawing and drilling can be tried out before work is started on the good materials. Mistakes cannot be very easily disguised.

EASY PROJECTS

A simple article that can be made with very little practice is a **book-rack** (see FIG. 1). Work out your own design for the ends.

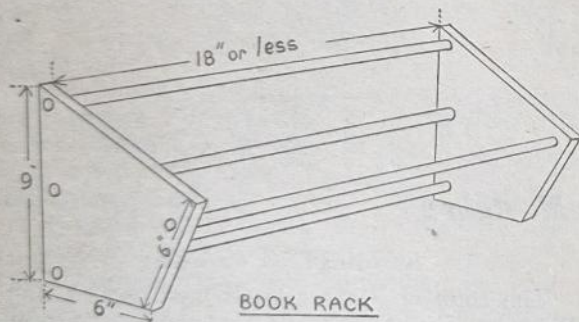
All that is needed are two solid pieces of wood for the ends and dowling rod for the bars. This is bought ready prepared at any wood store. Holes are drilled in the end-pieces, and the dowling is glued in place with one of the synthetic resin glues, which are very strong. Be sure to follow the directions for use given on the container.

Book-shelves are always in demand. Small sets can be made simply by glueing and screwing the shelves (screwing from the outside of the side-pieces). Triangular blocks are glued and screwed underneath. A sheet of hardboard should be tacked to the back to keep it all square. These shelves should not be longer than 24 inches.

Coffee tables can be made from plywood tops and legs bought ready-made, which need only screwing into suitable solid supports fixed to the underside of the tops.

FINISHES

The finish on most articles can be kept very simple. On oak and other hard woods wax is a lovely finish, as it brings out the natural grain. A seal should be applied before the wax polish, as this prevents dirt entering the grain of the wood. Much hard rubbing will be needed to bring up the surface. Wood may be stained before waxing. Use a



the Unit may be able to attend evening classes, which are not expensive—and tools are provided.

TOOLS

When you start your own group you must consider the tool question. Expensive, complicated equipment is not necessary. Most households can lend a few items, and by pooling these a basic kit can often be produced at very little cost. The following will be needed:—

Screwdrivers, pliers, handsaw, tenon saw, hammer, hand drill, brace and bits, chisels ($\frac{1}{2}$ in. and $\frac{3}{4}$ in.), set square, rulers, mitre blocks, smoothing-plane, sandpaper (medium and fine).

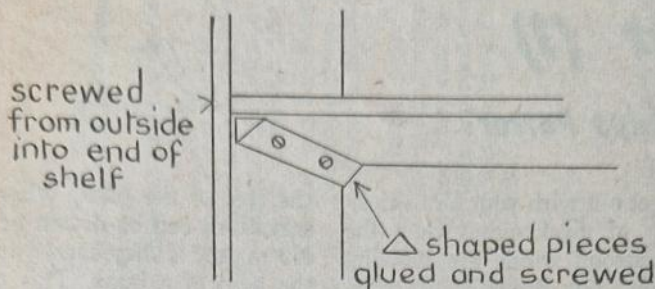
A firm bench or table will be needed. To start

THE GUIDER

wood stain of the desired colour, and wax as before. French polish is much more complicated, but a

afraid that you are getting all the work done for you. Remember that the finished article has to be taken

SHELVES method of fixing



synthetic preparation that gives good results can be used.

out of the room or shed in which it has been built—so measure well before you start.

BOAT-BUILDING

Boat-building sounds very complicated, but many Crews and Ranger Units have made canoes and dinghies with no outside help. Kits save much time and the need for complicated tools, and the wood is shaped ready for assembly. There will still be a good deal of work before you have a boat, so do not be

BOOKSHELF

Books to help you: *Woodwork for Pleasure* by G. A. Hutchinson (Collins' Nutshell Books, 5s.). *Do It Yourself No. 1*, by Barry Bucknell (Arco, 12s. 6d.). *Woodwork in Pictures*, by Dennis Taberner (Grant, 15s.).



by Isabel N. Anderson

'Twas on a Monday Morning...

Equipment per Patrol. Long string, rope, scissors, tent pegs or drawing-pins, a mail order catalogue. (These catalogues are changed every few months and it is not difficult to obtain an old one from an agent of a firm. P.L.s might help by asking families and neighbours, especially if they have a fortnight's notice.)

Each P.L. is given the following instructions (or some of them—depending on the size of Patrols and time available).

1. Cut out pictures of pyjamas, nylon slip, white shirt, socks, towels.... Group them to show the order in which they would be laundered in a family wash.
2. Improvise a clothes-peg or fix up a drying-line that doesn't need pegs. Demonstrate its use.
3. Choose a set of laundry equipment for (a) a big family in a house with garden and (b) parents and baby in a small flat. The total cost in each case (apart from a washing-machine) should not exceed £10.
4. Make a 'spider'.
5. Any ideas for pressing a tie (not drip-dry) in camp?

Notes. (a) This is not a competition but the Guides might like to vote on the results of 2, 4, and 5.

(b) The 'spider' is a long drying-line over a small area, with one central upright (a pole, a slender tree, a netball post, a broom) guyed from the top like a flag-pole. If the Guides must be indoors a model is possible on a table leg with drawing-pins for pegs. String spirals downwards, knotted to the guys, like a web.

HOW? THE P.L.s' TRAINING

Revise camp gadgets, especially the guying of flagpoles and making of drying-lines. P.L.s. might like to test the best method of twisting string. Is it quicker (and stronger) to twist the ends of one long taut string in opposite directions until it twists up on itself or to fix one string and wind a second round it? Discuss with the Leaders different types of airing-rack and iron. (Can they use a steam iron?) What other ideas have you for the use of catalogues?

WHY?

Can your P.L.s. **organize**? Will they use their Guides' skills, realizing that the inexperienced can both **help** (to cut out) and **learn** (for camp or Laundress badge)? Will they discover which Guide is **resourceful** (Items 2 and 5), learn something more about **leading a discussion** (Items 1, 3, and 5), how to **encourage** the shy one (with few gadgets in her kitchen?), and how to help people to assess the real merits of goods so brightly advertised in the catalogues?

THE GUIDER

BROWNIES Out and About (1)

by Gladys Potter



TOO COLD in March to get out with your Brownies? But March is the month of awakening, when the earth begins to stir and strong winds are blowing away the cobwebs of winter. The Brownies are restless indoors, they want to be outside, and this is the time to arouse their interest in the wonders that lie beyond the clubroom door. But you must be subtle about it. A Brownie's enthusiasm is an elusive thing, popping up in unexpected places and yet failing to appear just when you have worked hardest to kindle it. If you can ally her natural curiosity to her need to be doing and making, and direct both to the world outside, you will have a good chance of starting her on the exciting road of nature discovery.



Adopt
a
tree

First let each Six make a notebook: the usual simple kind of thing—folded sheets of paper, probably about 8 in. x 6 in., held together with a plaited cord. When you have made a notebook, of course you want to write something in it, so put on your coats and go for a walk to some place where there are trees.

Pass the time on the way by spotting bird's nests. Are they last year's nests or this year's? Even in the town there is plenty of evidence of nest-building under eaves and gutters. Do the Brownies know which bird of a species actually builds the nest: the cock or the hen? Ask them to watch out during the week and, if they can spot a pair of blackbirds who are building, to tell you if it is the cock or his drab-coloured mate who does the work.

Let each Six choose a tree and find out all they can about it—shape, colour, how far round the trunk,

the feel of the bark. When they get back these observations can be drawn or written in the notebooks. No matter if they cannot identify the trees even with the help of a book. This can come later when they return to see: whose tree is first in leaf, first in flower, first to have a bird's nest; which has the biggest leaves or the brightest-green leaves; which is the best to shelter under on a sunny day. In the autumn interest can be revived by watching for the fruit, and for the changing colour of the leaves and their eventual fall. In this way, with a little friendly rivalry, the Brownies can be persuaded to look at a tree in all its detail, to learn to describe it, and to contrast it with other trees. As a short-term policy this will help with testwork; the long-term results are incalculable.

EASTER EGGS

Easter falls in March this year. Could your Brownies bring eggs to boil, either using bought dyes or (more fun) experimenting with their own? Anemone petals and gorse blossom, for instance, make excellent dyes and the outer skin of an onion wrapped round an egg before boiling will give a delightful patchwork of shades. Names or messages can be written on afterwards with a wax pencil or the colour can be scratched off.



If boiling the eggs at your meeting is not possible, take them ready boiled but not coloured. The Brownies can paint faces on them and make for each a little stand by joining a strip of cardboard into a ring, and each egg can have a pointed hat made by twisting a square of paper like an old-fashioned sweet bag.

Have you ever tried with your Brownies the traditional Easter Monday pastime of rolling hard-boiled eggs down a grassy slope?



Rule 46

Delete first sentence and substitute:

The Guide age is 10½-16.

THE GUIDE

*Rule 50

Delete and substitute:

Appointment of a Guide Guider

1. Before appointing a Guider the Commissioner must satisfy herself:
 - (a) That she has the personality, character, and steadfastness of purpose that will enable her to lead her Company.
 - (b) That she has a real interest in, and understanding of, the girl of the particular age group with which she is to work.
 - (c) That she is in agreement with the fundamental aims and methods of the movement (See Rule 1); intends to adhere loyally to its rules and policy, and is prepared, if not already enrolled, to make the Three-fold Promise.
 - (d) That she has had sufficient preliminary training to enable her to start work with her Company, and is willing to be further trained. A Cadet holding a Leaving Certificate not more than one year old may be considered to have received this preliminary training.
 - (e) In the case of an attached Company, that she is acceptable to the church, school, or community authority. (See Rules 4, 83, and 98).
2. Before confirming an appointment by the issue of a warrant the Commissioner must satisfy herself through personal contact, through visits to the Company, and, if desired, through a written paper:
 - (a) That the Guider has reached the required age for the particular appointment, that is: Captain: 21 years of age, Lieutenant: 18 years of age.
- NOTE: At her discretion the Commissioner may grant a warrant to a Captain at the age of 20 and to a Lieutenant at 17½.
- (b) That the Guider has worked with her Company for three months.
- (c) That she has read *The Guide Company* and *Scouting for Boys* (full edition) and has received sufficient further training to enable her to understand and apply the principles and methods of Guiding, as outlined therein.

NOTE: This further training may be received through:

- (i) A Cadet Company.
 - (ii) Pre-warrant training courses and sessions.
 - (iii) Observation for at least a month of meetings and activities of the Company of an experienced Guider.
 - (iv) Experience in her own Company under the guidance of her Commissioner, a Trainer, or experienced Guider.
 - (v) Individual instruction given informally.
 - (vi) *The Pre-Warrant Training Course for Guide Guiders* (Correspondence Course).
 - (vii) An individual written paper based on her reading and her own experience in her Company.
 - (viii) Local Education Authority Youth Leaders' Courses.
- In most cases a combination of several of these methods will be desirable.

- (d) That she is helping the Guides to grow in understanding and practice of the Promise, Law, and Motto.
- (e) That she is making the right use of the Patrol System, including Court of Honour and the training of her Patrol Leaders.
- (f) That she understands the purpose and value of the tests and is able to teach and test in the requirements for Tenderfoot and Second Class.
- (g) That she understands the importance of camping and outdoor activities in the Guide programme, knows the facilities for such activities in her own neighbourhood, and accepts the responsibility of ensuring that her Guides have the opportunity of camping.
- (h) That she has read the current issue of *The Blue Pamphlet of the World Association*, has some knowledge of the world-wide aspect of the Movement, both within the British Commonwealth and in other countries, and can apply it in her Company.
- (i) That she has the ability to share in the planning of a balanced programme over a period of time, and to be responsible for carrying through a whole meeting satisfactorily.
- (j) That she has kept, or been responsible for keeping, satisfactory Company accounts and other records.
- (k) That she understands her own and her Company's place within the District, the importance of co-operation between the Company and the Pack, and the follow-through to Rangers and Cadets, or some other group according to the needs and interests of the individual.

NOTE: Before issuing a warrant to a Guider who has already held one in another capacity or area, the Commissioner must decide how much further training and/or experience is necessary for the above requirements to be fulfilled.

In order to retain her warrant a Guider must keep herself up to date by attending Guiders' meetings and refresher training sessions, or courses from time to time (day, evening, residential, etc.), by reading *The Guider*, and other appropriate publications. She must also show that she is continuing to share in the running of her Company in a satisfactory way.

QUEEN'S GUIDE

Rule 60

Clause 4. At end of first sentence add:

(The District Commissioner may apply to the country's Guide Adviser for permission to substitute a piece of service similar to those already listed. Such application is to be made before the service is undertaken.)

After (h) add:

Where relevant, if it is more beneficial to the person being helped, two half days may be substituted for one whole day.

GUIDE PROFICIENCY BADGES

Please turn to page 88 for Rule 63.

EXTENSION SECTION

Will Extension Guiders please note that Alternative Tests have now been incorporated in Rule 87, whereas formerly they have been available only in the separate leaflet *Alternative Tests* (C.H.Q., 6d.).

IN MEMORIAM

THE COUNTY OF BRISTOL Girl Guides have suffered a grievous loss in the death, on January 1, of **Miss Nellie Andrews**, after a long illness borne with great faith and courage. Her devotion to Guiding was an inspiration to all who knew her. She was Captain of 49th St. John's Company, 1925-9 and 1934-6, Ranger Captain also 1929-36; District Commissioner South 3, 1929-34, and Division Secretary South Bristol 1948-56. On her retirement she became a County Vice-President and a member of South 3 Trefoil Guild. Her interest in the Movement was alive to the end. She will be greatly missed in South Division and by her many friends in the Movement.

Of her it can be truly said, 'Well done, thou good and faithful servant.'
F.A.S.

Miss Cathrine Wallis of Wantage, Berkshire, died on 30th December after a very short illness. She had given 45 years' service. Enrolled as a Ranger in 1919, she later became Lieutenant of the 9th Hammersmith Coy. and Captain of the 8th Hammersmith Coy. In 1940 she became District Commissioner and Camp Adviser of Brook Green District. In 1960 she received The Medal of Merit. In 1961 she returned to Wantage and became Captain of 1st East Challow Coy. and Wantage District Captain and Camp Adviser. She will be remembered with great affection and gratitude for her devotion and service to Guiding in Hammersmith and Berkshire.
B.M.K.

Miss Rose Wright, who died suddenly on January 2, will be remembered by Bristol South 1 Division for her loyal and faithful service to Guiding, 1929-57. She served the Movement in the church where she worshipped and worked for many of its committees.

During these years she was warranted as Tawny Owl, Brown Owl, Lieutenant, Captain, and Ranger Captain.

Miss Wright will be held in high esteem by all Guides whose lives have been enriched by her devoted service.
F.A.S.

It is with great regret that we have to announce that **Elizabeth Angela Hampton** passed on to Higher Service on 8th December, after five years of suffering. At the age of 13 she had a brain operation, and after some months at home she went back to school and Guides as Patrol Leader and also Pack Leader. She gained First Class and became a Queen's Guide, the latter with tremendous effort. The Badge of Fortitude was presented to her by Princess Margaret in November, 1962. For a year she was Lieutenant in the 1st Dudley Company, although by then not able to walk or use her hands fully. She was a much loved Guide and known throughout Dudley Division as a shining example of determination and courage, and she carried the spirit of Guiding into whatever she did and wherever she went. We are proud to have known Elizabeth and to have had her with us since her Brownie days.

BERTHA F. LLOYD

WITH the death of **Mrs. Page-Phillips** (née Caulfeild) we have lost a personality, who came into the Movement in 1919 after World War I. She took her first Warrant in the Weybridge District of Surrey, and later became Commissioner. She was immensely popular and most efficient in all that she undertook. On her marriage in 1929 she came with her husband to the living of Melbury Osmund, Dorset, and there, as a Guider, and later in Wiltshire, as District Commissioner for Wilton, her work was untiring. It is in Wimborne Minster, in Dorset again, that she will be so well-remembered in more recent years.

As Commissioner she had the welfare of Guiding very much at heart and in 1950 her resignation was received with the greatest regret. But it was not the end of the story. As a County Vice-President and a Member of the Trefoil Guild, Kathleen Page-Phillips will be remembered with warm affection as one whose interest and support never flagged, in spite of failing health. Her vivid personality, courage, and loyalty to Guiding will not be forgotten by those who knew her.
V.G.

IT WILL come as shock to many to know that **Gulielma Bayne-Jardine** passed to her rest on 28th January following an accident. Had she lived only a few weeks longer, she would have given 40 years of active service to Guiding.

When we came to live in Binfield nearly 35 years ago she was Captain of the 1st Binfield Guides, and Brown Owl of the 1st Binfield Brownies. Later she became District Commissioner of Bracknell.

After retiring from this post, she became Commissioner, and later District Commissioner for Ascot, an appointment she held until the time limit. Then, as there was no one forthcoming to take her place as Brown Owl at the Barclay School for the partially-sighted, she continued to hold this important post for the rest of her life.

Anyone who has known her work intimately, as I have for so many years, would agree that the qualities which stood out most in her wonderful record of service were her complete lack of ostentation, her single-mindedness, her tenacity of purpose, and her loyalty to the cause she served so well.

M. S. JACOB

Because of our difficulties in fitting in all the essential articles and notices, and finding adequate space for 'Points of View', we would ask readers to send brief 'In Memoriam' notices. Articles from the local press give details that—we deeply regret—we simply cannot find space for; and only those who know the one who has passed to higher service can know the points essential for this magazine to publish. Our readers' co-operation would save editorial time and anxiety, as such notices of so well earned appreciation cannot be dealt with hurriedly, or easily shortened without full knowledge of those concerned. —EDITOR

Classified Advertisements

EMPLOYMENT OFFERED

- Ipswich and East Suffolk Hospital** (630 beds). Complete General Training School for Nurses. Applications are invited from well-educated girls wishing to enter as Student Nurses. For further particulars and advice re pre-training occupation, please write to: The Matron Superintendent, Ipswich and East Suffolk Hospital, Training School for Nurses, Angelsea Road, Ipswich.
- Wiltshire Education Committee.** Residential staff required April for Rowdeford Special (E.S.N.) Girls' School, near Devizes (40 boarders, 20 day girls, aged 10-16): **Matron-Housekeeper**—experienced if possible; **Cook**; **Assistant Matron** (trainee suitable). Full particulars and application forms may be obtained by sending s.a.c. (foolscap) to Chief Education Officer, County Hall, Trowbridge, Wilts.
- Evangelical Christian lady** required to assist in home for up to eight children, of varying ages, in Surrey. Experience with children essential. Box No. 222.
- Abbots Bromley, Rugeley, Staffs.** Required immediately. **Matron** for Junior Boarding house of 35 girls. Resident. School holidays. Apply Headmistress.
- Part time warden.** Small county camp-site. Bungalow offered in return for services. Suit married couple. Member of either movement preferred. Box No. 220.
- St. Christopher's, Burnham on Sea.** Girls' Preparatory Boarding School (7-12 years). Required for Summer Term (or Autumn) **Assistant Senior Matron**. 90 boarders. 4 matrons in all. Some experience necessary. Comfortable accommodation. Good salary for suitable applicant. Apply immediately with copies of testimonials to Headmistress.
- Wiltshire Education Committee:** Trowbridge Victoria Secondary Commercial School, **ETHANDUNE GIRLS' HOSTEL** (24 boarders, girls, 13-16 years of age). Applications invited for the post of: **Resident Assistant Matron**. Salary scale £615-680 per annum less £150 for board and lodging. Further particulars and application forms by sending s.a.c. to P. W. Inglis, Clerk to the Governors, Heather Shaw, St. Thomas Road, Trowbridge, Wilts.
- Superintendent and assistant** required for small mother and baby home. Salary, diocesan scale. Apply: Rev. J. F. Poole, 132 Trinity Street, Huddersfield.

FOR SALE

- Advertising Pencils,** Superb Ballpens, Combs, Brushes, gold-stamped with any name, raise funds quickly—easily. Fancy Goods, Toys. Details—Northern Novelties, Bradford, 2.
- Help to increase your Company funds** with scent cards, lavender, etc. Send 5s. P.O. or crossed cheque to R. Ramsdale Ltd., 58 Pall Mall, Chorley, Lancs.
- Guider's log-book—Surrey 1932-1957.** Offers? Little Clermont Cottage, Station Road, Preston Park, Brighton 6.
- Funds, Bazaars, Fetes.** Raise funds with our parcels of attractive and inexpensive costume jewellery sent on Sale or Return. 50% profit on cost. You pay only for what you sell. The rest you return. Send for details to actual manufacturers:—E. & M. Davies Ltd., 136 Goldhawk Road, London W.12.
- Fund Raising? Ball Pens** are used by everyone. We supply Platignum and Bic makes at reduced wholesale rates. Your Company title etc. can be diastamped as required. Pen cases in various colours (including Girl Guide colours). Profit over 50 per cent on cost. Details/Samples on request. Thompson & Robinson Ltd., 20 Churchfield Road, London, W.3. Tel. ACOrn 8770.

North Surrey's Leading Uniform Supplier. Commonwealth Headquarters Uniforms, Equipment, and Publications always in stock. The Q.M. Stores, 298 High Street, Sutton, Surrey. VIGilant 8655. Commonwealth Headquarters Official Agents.

ACCOMMODATION

- Summer Holidays?** Shanklin I.O.W., Snowdon Private Hotel. Friendly atmosphere—management ex-Scouter and Guider. Guiders, Scouters, families, friends welcome. 2 min. sea, 5 min. town. Brochure: G. & D. Morris, Queens Road, Shanklin, Tel. 2853.
- Holiday Accommodation,** Eastbourne, Sussex. Bed, breakfast and evening meal, or full board, weekends October-March; three minutes sea. Apply Mrs. Jebb or Miss Cox, Alex House, 8 Willowfield Road.
- For a quiet holiday or rest in the New Forest,** apply Miss Sandy, Goldfinches, Meerut Road, Brockenhurst, Hants. (late of Balmer House), who will be pleased to send details.
- Wimbledon Guider welcomes visitors** to London. Bed and breakfast; comfortable double room; easy journey to town; moderate terms. Box 209.
- 6 Berth Caravan to let** from 1st March onwards, on well equipped site, at Pevensey Bay, Nr. Eastbourne. Apply Miss D. E. Wells, 57 Wydehurst Road, Croydon, Surrey.
- Furnished flat, Dartmoor farmhouse,** electricity, bathroom, 2 bedrooms. Miss Earle, Manaton, Devon.
- Guernsey, Country House,** paying guests—full board. Single room 8 gns. weekly, shared room (2 beds) 7½ gns. each. Box 217.
- Caravan near Aberdovey.** Small private site overlooking bay, 4 berth, Dunlopillo beds, mod. cons., well equipped. Lovely view. Beautiful surrounding country. Mrs. Hopwood, 6 Barkworth Close, Anlaby, Hull (58312). S.A.E.
- Devon Coast (Near Lynmouth).** Holiday flats, from £6 6s 0d. weekly, Lugg, Caen House, Goodleigh Road, Barnstaple.
- Caravan to let on small site** (four others only) at Brancaster, N. Norfolk coast: 4 berths, equipped, Calor gas, flush sanitation. Sea 1 mile. 6 gns. weekly. Miss Lambert, 55 Gerard Road, Harrow, Middlesex.
- Ornithologist,** Guider's husband, conducts highland/over-seas field holidays March/Nov. Colin Murdoch, Pitmain Beag, Kingussie, Inverness-shire. (S.A.E.).
- Guider, middle-aged, with dog,** desires holiday companion. Share expenses. July or August. Box No. 221.
- Devon country house** 4 miles sea. Bed and Breakfast, evening dinner. Own produce, poultry, eggs. H & C. Car essential, free parking. Mrs. Bowry, Parkview, Yardbury Hill, Colyton. 506.
- Ashdown Forest, Sussex.** Country cottage to let; or double room, meals as required. Nr. Blackland and Hindleap. Miss M. Swan, Briars, Forest Row.
- Caravan, 4 berth, near Waddow.** Enquiries, 83 Henthorn Road, Clitheroe.
- The Old Rectory,** Fittleworth, Sussex, for Conferences and Houseparties. Brochures on request.
- Anglesey:** For list of camp-sites and other details please write to Mrs. Clark, 16 Tiscoed, Beaumaris, Anglesey.
- Would you like to spend a holiday at Waddow?** 4-Berth Caravan available, fully equipped, including sheets and blankets. Calor Gas cooker and lighting. Situated near the house. Good centre for coastal resorts, Lake District, Yorkshire Dales. £3 3s. per week, or 10s. per night. Apply: Secretary, Waddow Hall, Clitheroe, Lancs.

Rule 63 GUIDE PROFICIENCY BADGES

HIKER

Delete present syllabus and substitute:

1. Go on at least eight hikes and keep brief notes.
The hikes are to include three with cooking (menus to be given); five for exploring, to include two different types of hike e.g. bird watching, following a stream, visiting places or buildings of interest. Cooking is not essential. On each occasion at least three miles is to be covered on foot. The hikes may be spread over a period of not more than two years prior to the test.
2. Know the responsibilities involved with regard to trespassing, gates, crops, game preserves, woodings, and lighting fires.
3. Fit up and be able to use a pocket first aid case suitable for hiking.
4. At the test, cook in the open two dishes of her own choice, one with utensils, and one without.

SICK NURSE

Delete present syllabus and substitute:

1. Know the qualities needed in a sick nurse, and be able to illustrate these by giving examples. Know the sick nurse's duties with regard to her own health.
2. *The Room.* Know the good points to look for when choosing a sick room, and how to make the best use of the ventilation, heating, and lighting available. Know how to clean and tidy a room without raising the dust.
3. *Infection.* Know how infection is spread, and the simple precautions to be taken when nursing an infectious patient at home. Know how to disinfect crockery and linen.
4. *Bedside Nursing.* Know where in her own area backrests, commodes, and other equipment can be obtained or borrowed. Show how to make a bed with the patient in it, including the changing of sheets, and arranging the pillows comfortably. Know the uses of a drawsheet and mackintosh, and how these can be improvised. Know what is needed for the morning and evening toilet, and how to help a patient to wash in bed, give a mouth wash, and brush hair gently. Know which areas of a patient's body are subject to pressure in bed, and how soreness of these areas can be prevented. Show how to help a patient to get up and sit in a chair. Take and record the temperature, pulse, and respiration rate.
5. *Diet.* Know the constituents of a well-balanced diet and why this is necessary for recovery. Prepare and serve one of the following: egg custard, jelly, milk pudding, fresh fruit drink, or flavoured milk drink. Set an invalid's tray, and show how to feed and give a drink to a patient who needs help.
6. *Medicines.* Show how to give medicines by mouth and an inhalation. Know how to store medicines and pills so that they can be no danger to small children.
7. *Dressings and Bandaging.* Show how to apply a cold compress and a Kaolin poultice, and a clean dry dressing to any part of the arm or leg, securing it with a roller bandage.
8. *Observation.* Know what to include in a report for the doctor.

NOTE: The tester must be a State Registered Nurse, or an instructor in Home Nursing to one of the bodies listed below.

The holder of one of the following qualifies for the badge.

1. BRITISH RED CROSS SOCIETY.
Aged 11 to 16. The Junior Home Nursing Certificate, Part 1 and Part 2.
2. ST. JOHN AMBULANCE ASSOCIATION.
Preliminary Certificate in Home Nursing.
3. ST. ANDREW'S AMBULANCE ASSOCIATION.
Preliminary Certificate in Home Nursing.
4. THE LONDON COUNTY COUNCIL.
Certificate in Home Nursing.

NOTE: Examinations and instruction must be conducted in accordance with the rules of the body concerned.

Rule 67 THE RANGER UNIT

1. *At end of first paragraph add:* or, if it consists of Rangers of two or more sections, a Senior Branch unit.
Second paragraph, *delete* eight and *substitute* five.

*Rule 68 THE RANGER GUIDER

Delete and substitute:

Appointment of a Ranger Guider

1. Before appointing a Guider the Commissioner must satisfy herself:
 - (a) That she has the personality, character, and steadfastness of purpose that will enable her to lead her unit.
 - (b) That she has a real interest in, and understanding of, the girl of the particular age group with which she is to work.
 - (c) That she is in agreement with the fundamental aims and methods of the movement (See Rule 1); intends to adhere loyally to its rules and policy, and is prepared, if not already enrolled, to make the Three-fold Promise.
 - (d) That she has had sufficient experience to enable her to start work with her unit, and is willing to be further trained.
 - (e) In the case of an attached unit, that she is acceptable to the church, school, or community authority. (See Rules 4, 83, and 98).
2. Before confirming an appointment by the issue of a warrant the Commissioner must satisfy herself through personal contact, through visits to the unit, and, if desired, through a written paper:
 - (a) That the Guider has reached the required age for the particular appointment, that is: Captain: 23 years of age, Lieutenant: 20 years of age.
 - (b) That the Guider has worked with her unit for three months, and has studied the outlook and problems of the girl of Ranger age.
 - (c) That she has read *Hints for Ranger Guiders and Commissioners*, and has received sufficient training to enable her to understand and apply the principles and methods outlined therein.

NOTE:

This training may be received in a variety of ways, e.g., attendance at courses for Ranger Guiders and at Local Education Authority Youth Leaders' Courses; observation of Ranger Units and of groups of other youth organizations; experience in her own unit with help from a Trainer, experienced Ranger Guider, or Commissioner, or from *Train Yourself to be a Ranger Guider* (published by C.H.Q.).

- (d) That she is helping the Rangers to grow in understanding and practice of the Promise, and is fully aware of the influences that challenge the principles expressed in it.
- (e) That she understands the purpose and value of the scheme of Ranger training (both general and specialized) and the using it in such a way as to meet the needs of the Rangers of her unit.

NOTE: A Ranger Guider is not expected to train her Rangers in all the subjects contained in the various tests, but she must know the facilities available, and be able to procure the help of suitably qualified people to meet the needs of the Rangers in this respect.

- (f) That she is using whatever method of self-government is best suited to her own unit.
- (g) That she has read the current issue of *The Blue Pamphlet of the World Association*, has some knowledge of the world-wide aspect of the movement, both within the British Commonwealth and in other countries, and can apply it in her unit.
- (h) That she has the ability to share in the planning of a balanced programme over a period of time, and to be responsible for carrying through a complete meeting, event, expedition, project, etc., satisfactorily.
- (i) That she has kept or been responsible for keeping satisfactory unit accounts and other records.
- (j) That she understands the place of the Senior Branch within the movement, and her own and her unit's place within her District or Division and in relation to other youth organizations and groups.

NOTE: Before issuing a warrant to a Guider who has already held one in another capacity or area, the Commissioner must decide how much further training and/or experience is necessary for the above requirements to be fulfilled.

In order to retain her warrant a Guider must keep herself up to date by attending Guiders' meetings and refresher training sessions, or courses from time to time (day, evening, residential, etc.), by reading *The Guider*, and other appropriate publications. She must also show that she is continuing to share in the running of her unit in a satisfactory way.

Rule 92

UNIFORM

PART I A.1. The Adult Uniform... Shoes after Brown add or Black.

Rule 94

CAMPS AND HOLIDAYS

2 (a) **Camping without a qualification**

Add: (iii) With the permission of her District Commissioner and C.A. a Senior Branch Guider who has attained the age of 21 years and holds a

warrant may take her Rangers or Cadets on a cruising holiday or other holiday not under camping conditions provided that:

(a) She has proved that she has a practical knowledge of first aid as laid down in clause (iv) of the licence test (Rule 95, 2 (a)) and adapted to the conditions of the type of holiday she intends to take.

(b) She shows a knowledge of the cooking and storage of food and the planning of a balanced menu.

The Commissioner must satisfy herself that the Guider has the necessary powers of organization and the ability to be responsible for a group over a prolonged period.

Rule 95 ADMINISTRATION AND QUALIFICATIONS

2. THE CAMPING QUALIFICATIONS

(a) **The Camper's Licence.**

Qualifications
(ii) *Delete and substitute:* Have attended throughout a Guide camp as a member of the staff.

Test

(i) *Delete last sentence* (Before being awarded the licence...) *and substitute:* Before being awarded the licence the candidate should run a successful camp, showing that she understands the importance of a varied and interesting programme, and that she is able to make the best use of local facilities.

(b) **The Guider's Camp Permit**

Qualifications

Add (iv) Have attended throughout a Guide camp as a member of the staff.

(c) **The Pack Holiday Permit**

Delete first paragraph and substitute:

The holder of a Pack Holiday permit may take Brownies for holidays in furnished houses, schools, or suitable halls, approved by the C.A. In special circumstances permission may be given to occupy an empty house. Brownies may not be taken to camp either by themselves or with Guides.

Qualifications

(iv) *Delete and substitute:* Have assisted throughout a Pack Holiday.

Test

At end add: Before being awarded a Pack Holiday permit the candidate should run a Pack Holiday.

Rule 102

BOATING

9. *Delete:* on the sea, tidal waters or large lakes.

Rule 104

AWARDS

2. FORTITUDE

The Badge of Fortitude

First sentence. *Delete* Guide and substitute member of the movement.

Delete rest of paragraph.

Third paragraph (The Certificate of Merit...)

Delete whole paragraph and substitute: The Letter of Commendation for Fortitude is awarded for other cases of fortitude under suffering.

4. MERITORIOUS CONDUCT

First paragraph *Delete* is and substitute may also be.

Look Ahead Again!

by Jane Lindsay, Hair Consultant to Sunsilk

LAST month we gave you some hints about hair care, which we hope will help you when you are discussing with your Company the importance of good grooming.

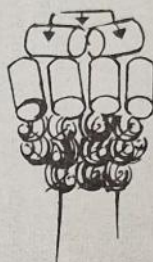
This month, we will try to give you some advice about setting and styling your own hair.

Although it is essential to have your hair cut by a professional hairdresser, it is not difficult to learn to set and style your hair at home. Watch your hairdresser closely when you have your hair professionally set, and then follow the same pattern when you shampoo and set it yourself.

Begin by combing your hair through in the direc-

Check by unwinding the rollers holding the longest tresses.

If you have difficulty keeping your hair in shape between shampoos, a home perm could be the answer—particularly now that curls are back in fashion. There are several home perms to choose from, so first decide on the kind of result you wish to achieve, and then look for the product most suited to your type of hair. It is essential always to follow the manufacturer's instructions. Home perms can be divided into two types—those that need a neutralizer to set the wave and those that are self-neutralizing. The first method takes less time to complete, and the second is less trouble.



SETTING AND BRUSHING OUT INSTRUCTIONS

Brush hair through and then arrange fringe. Beginning with neckline hair, divide off into small sections and back-brush from root to tip. Work up to crown section, then brush hair into a smooth built-up effect. Press waves into side of face and tease out into 'wings'. Spray lightly.

tion of the style you have chosen. Have ready a number of rollers in varying sizes, and remember that whatever style you choose it is best to take small tresses of hair and use large rollers. Starting with the front hairline section, comb each tress in an upward and forward direction, then roll. This ensures that the rollers lie on the scalp and not on a cushion of hair. Start winding without pulling until about half way down the tress, then increase the tension gradually. Secure the roller firmly with a grip or pin. Before brushing out, make sure the hair is completely dry.

Some standard perms can be used with either curlers or rollers. The curler technique is best for greasy or very fine hair; the roller technique can be used on normal, dry, or easily waved hair. The firmness of the result depends on the size of the roller and the length of the processing time.

Choosing a style to suit the shape of your face is not difficult. Most women's magazines have photographs of hair styles, and your hairdresser will probably be able to cut your hair so that you can dress it into that particular style.



MESOWAX keeps camps dry

This miracle waterproofing emulsion is ideally suited for treating medium- and heavy-weight tents, marquees, covers, and all canvas sports equipment. Withstands downpour from above and rubbing from below, preserving the canvas yet allowing it to "breathe", so avoiding stuffiness. Simply applied by brush. fast-drying MESOWAX is obtainable, brightly coloured or colourless, in 1-pint tins to 40-gallon drums.

4/6 pint. 8/- quart. 14/- 1/2 gallon. 23/- 1 gallon (1 gallon covers up to 200 sq. ft.). Available from Camping, Scout & Guide Stores, Halfords, Gamages and Grocers'.

For further details and colour guide, write to:

GRANGERSOL LIMITED
Dept. G, Imperial Way, Watford Tel.: Watford 24086

ST. HELIER HOSPITAL CARSHALTON, SURREY

(10 Miles from Central London)

SCHOOL OF NURSING AND MIDWIFERY

Applications are invited from young men and women of good education for Student Nurse training in the above hospital. Terms commence May, September and January. Block system of training.

ALSO

For pupil Nurse Training which takes two years. Schools commence March, July and November. Consideration is given to every applicant with a sincere desire to nurse. A brochure and further particulars may be obtained from

Matron, Miss M. K. Bomford.



Left: Last month we showed you photographs of a uniformed Guider before and after styling. Here she is again, without her hat and with the same style adapted for everyday life.

Right: When wearing a beret, comb 'wings' into a normal waved effect and tuck fringe to one side.



This Guider sometimes wears spectacles, so she was careful to choose a style that softens the severe look spectacles sometimes give. When wearing spectacles, always avoid a style with a hard hair line, and bring the side hair forward to break the line of the arms.

Nowadays there are so many different and attractive types of spectacles that no one need mind being short-sighted. Like your hair style, spectacles should be chosen to flatter the shape of your face.

If your face is round, choose elongated spectacles. For a long, oval face, square heavy spectacles are best.

To counteract a square jaw, light oval frames are becoming.

The colour of the frames themselves is a matter of taste, but if you like them to be inconspicuous they should blend with your hair and skin colouring. If you prefer something bolder, the thick, dark frames are sophisticated and can be very flattering.

If you have any questions about your hair, Miss Jane Lindsay will be pleased to answer them if you write to her at 43 Portman Square, London W.1.

SPOTLIGHT ON GUIDING IN SCOTLAND

FROM 14th to 21st March the public will have an opportunity of 'looking in' on the many activities of Brownies, Guides, and Senior Branch members all over Scotland. In Edinburgh, at the Waverley Market, there will be a Brownie Pack Holiday house and shoe-shine stall, a B.-P. House where Guides will be seen working for the Little House Emblem, an International stand, a real camp-site, and a Highland scene where Senior Branch members will be demonstrating some of their adventurous pursuits. Refreshments will be prepared on the spot and sold by the Guides and Brownies. The exhibition will be opened each evening by a well-known personality, after which a light-hearted Revue will be staged. On Sunday Guiding films will be shown instead. A service will be held on the camp-site on Sunday, and each week night there will be an Epilogue. **Saturday, 14th March and Monday 16th-Friday 20th, 6-10 p.m.; Sunday 15th, 3-9 p.m. Saturday 21st, 3-10 p.m.**

March 1964

THE BRITISH COMMONWEALTH: BOOK RECOMMENDATIONS FOR GUIDERS

Canadian Short Stories (O.U. Press, 8s. 6d.)

West Indian Short Stories (Faber, 16s.)

New Zealand Short Stories (O.U. Press, 8s. 6d.)

It is worth while to obtain a copy of one of these books, read it for yourself, and try it on the Company. A wide view of life in general in these countries can be gleaned from this kind of reading, and perhaps the spur to read more of one of the authors you like best.

A Grave for a Dolphin and *Care of Serpents*, by Denti di Pirajno (Andre Deutsch) are both fascinating books of short stories about Northern Africa—exciting, intriguing, and thought-provoking.

A MESSAGE FROM JOHNNIE

JOHNNIE (Foxlease) is delighted with the beautiful dog bed sent to him anonymously by a kind friend (or friends). Thank you very much indeed.

THE GUIDER



Foxlease

GUIDERS attending trainings at Foxlease, Waddow, Netherurd, Broneirion, Lorne, and the Training Ship are eligible for Training Bursaries. A Guider may receive only one Bursary to help her to attend one training, and she must not have received a Bursary before. In exceptional circumstances, however, a Commissioner may recommend a Guider for a second Bursary. This applies particularly when a Guider is changing to another Branch or becoming a Commissioner. Fare Bur-

Where to Train

TRAINING BURSARIES

saries are available only for the nearest Training Centre.

Fee Bursary: This entitles a Guider to attend Foxlease, Waddow, Broneirion, Netherurd, Lorne, or the Training Ship, at half-rate for a shared room.

Fare Bursary: Assistance is given to Guiders on the basis of four-fifths of the railway fare in excess of £1, and is available only for the nearest Training Centre.

Angela Thompson Bursaries: These are available for any Promise and



Lorne

Law training (not necessarily held at a C.H.Q. Training Centre) and are of the same value as the Fee Bursary mentioned above.

GUIDERS should apply for these Bursaries through their District Commissioners, who will write to the Secretary, Training Department, C.H.Q. When applying, the District Commissioner should state the name of the Guider, the Training Centre, and date of the training. Application must be made at least a fortnight before the training.

COMMONWEALTH HEADQUARTERS

Application for trainings at Foxlease, Waddow, Netherurd, Broneirion, and Lorne should be made direct to the Training Centre concerned. Each application must be accompanied by a deposit of 7s. 6d. (in the case of Netherurd, 5s.) and a stamped addressed envelope. Please state in original application whether you are a Brownie, a Guide, or a Senior Branch (state Section) Guider. Guiders attending weekend trainings may leave on Sunday evening or during Monday if unable to stay for the whole weekend.

FOXLEASE

Lyndhurst, Hants.

MARCH

6-9 Commissioners (by invitation)
13-17 Wiltshire
20-23 Guide and Brownie Guiders
26-31 Guide and Brownie Guiders; special sessions for Commissioners (Easter)

APRIL

3-7 Guide and Brownie Guiders
10-14 Guide and Brownie Guiders (Out of Doors in Town and Country)
17-20 Roman Catholic Guiders (Applications for this Training to Mrs. Harper, Sunnyside, Iwerley, Nr. Stourbridge, Worcs.)
24-28 Guide and Brownie Guiders (Helping the Individual Guide); special sessions for Commissioners

MAY

1-5 Guide and Brownie Guiders
8-10 Oxfordshire

15-19 Guide and Brownie Guiders (Whitsun)

22-26 Guide and Brownie Guiders (emphasis on Tests and Testing); special sessions for Commissioners
29-31 Hertfordshire

JUNE

1-6 Holiday Period
9-16 Guide and Brownie Guiders
19-23 Guide (special sessions on The Patrol) and Brownie Guiders
26-29 Hampshire

JULY

3-7 Senior Branch Guiders (all Sections)
3-10 Guide and Brownie Guiders
14-21 Guide and Brownie Guiders and Commissioners (Mothers and Babies)
24-28 Guide and Brownie Guiders
31-AUG. 7 Guide and Brownie Guiders

AUGUST

11-18 Patrol Leaders' Training
21-31 Cadet Leadership Training (age 16-19 years. Not more than 2 Cadets from one unit can be accepted)

SEPTEMBER

4-14 Holiday Period (there will be optional Training Sessions Sept. 11-14)
18-22 Bank of England Scout & Guide Club
25-28 Essex East

WADDOW

Clitheroe, Lincs.

MARCH

6-10 Guide and Brownie Guiders

13-17 Guide and Brownie Guiders (Preparation for Camp and Pack Holiday)

Special sessions for Commissioners
20-22 Cheshire
26-31 Leadership Training (for Easter) 15-18-year-olds

APRIL

3-7 Camp-Fire
10-14 Guide (special sessions on The Patrol) and Brownie Guiders
17-21 Guide and Brownie Guiders
24-26 Lancs. S.

MAY

1-3 Derbyshire
8-12 Guide and Brownie Guiders (Out of Doors in Town and Country); special sessions for Commissioners
15-20 Patrol Leaders' Training

(Whitsun)

29-JUNE 2 Guide and Brownie Guiders

JUNE

5-7 Lincolnshire North
12-14 Yorkshire North Riding
19-23 Manchester
26-30 Guide and Brownie Guiders (emphasis on 1st Class) Special sessions for Commissioners

JULY

25-AUG. 5 *Patrol Leaders' Training

AUGUST

1-12 *Patrol Leaders' Training (in Camp)
11-18 (a) Guide and Brownie Guiders
(b) Extension Guiders
21-31 Drama Workshop

WHERE TO TRAIN

SEPTEMBER

- 4-8 Guide and Brownie Guiders
11-15 Guide and Brownie Guiders
(*Training the Patrol Leader*); special sessions for Commissioners
18-21 Nottinghamshire
25-29 Guide and Brownie Guiders
(*Planning the Programme the year round*)

Fees at Foxlease and Waddow

Shared room per day ...	15s. 0d.
per week ... £4	10s. 0d.
Double room per day ...	17s. 6d.
per week ... £5	5s. 0d.
Single room per day ... £1	0s. 0d.
per week ... £6	0s. 0d.

COUNTY TRAININGS AT FOXLEASE AND WADDOW

Counties wishing to have a County weekend at Foxlease or Waddow in 1965 should apply to the Secretary, Commonwealth Training Department, C.H.Q., not later than 1st June, 1964.

TRAINING SHIP 'GOLDEN HINDE'

APRIL

- 4-11 Surrey West
11-18 Guides

MAY

- 15-22 Berkshire
23-26 Weekend Booking

JUNE

- 20-27 Available for Counties or Colleges

JUNE

- 27-JULY 4 Available for Counties or Colleges

JULY

- 4-11 Duke of Edinburgh's Award and Senior Branch
11-18 Duke of Edinburgh's Award and Senior Branch
18-25 Guides and Senior Branch
25-AUG. 1 Senior Branch

AUGUST

- 1-8 Guiders
8-15 Senior Branch
15-22 Sussex
22-29 Senior Branch
29-SEPT. 5 Senior Branch

SEPTEMBER

- 5-12 Guides
12-19 Senior Branch, Guiders, Trefoil Guild, and Friends of the Ship

FOR further details apply to the Secretary of the *Golden Hind*, c/o Branches Office, Commonwealth Headquarters, 17-19 Buckingham Palace Road, London S.W.1.

ENGLAND

THE FOLLOWING TRAININGS will be held at C.H.Q. Applications to be made to the Secretary, English Training, C.H.Q., enclosing the appropriate fee, and a stamped addressed envelope.

SENIOR BRANCH GUIDERS There will be a general training for all Senior Branch Guiders, to which Commissioners and Guide Guiders will be welcome, on Saturday 14TH MARCH,

from 11 a.m.—6 p.m., and Sunday, 15TH MARCH, from 2—6 p.m. Fee for the weekend 4s., which does not include tea.

LONE GUIDERS There will be a training for all Lone Guiders on Friday, 3RD APRIL, from 7-9 p.m., and Saturday, 4TH APRIL, from 10.15 a.m.—6.30 p.m. Post Guiders will also be welcome on Saturday. Fee 4s. for weekend or 3s. for Saturday only.

Meals will be arranged for the weekend and details sent to applicants later.

SEA RANGER GUIDERS There will be a Sail-training weekend for Sea Ranger Guiders at **Whale Island, Portsmouth**, from 24TH—26TH APRIL, 1964. Please keep the date free. Further details from Miss P. Thorner, 52 Wallace Road, Northend, Portsmouth.

SCOTLAND

Netherurd House, Blyth Bridge, West Linton, Peebles-shire

MARCH

- 6-9 Ayrshire and Bute
13-16 Perthshire
20-23 Guide and Brownie Guiders
26-31 Residential Training for Duke of Edinburgh's Award Scheme

APRIL

- 3-6 City of Dundee
10-13 Stirlingshire
17-20 Extension Guiders
24-27 Guide and Brownie Guiders

MAY

- 1-4 County Durham
8-11 Commissioners
15-18 Guide and Brownie Guiders

- 22-25 Scottish Handcraft Circle
29-JUN. 1 Edinburgh South-West and Handicapped Trefoil Guilds

JUNE

- 5-8 Baptists
The Fees at Netherurd are the same as those at Foxlease and Waddow.

WALES

Broneirion, Llandinam, Mont.

MARCH

- 6-8 Montgomery County Booking
13-15 Welsh Trainers' Weekend Conference
21-25 West Glamorgan Patrol Leaders
28-APRIL 2 Patrol Leaders' Training (Easter)

APRIL

- 6-10 Monmouthshire Patrol Leaders
17-19 Staffordshire County Booking
24-26 Denbighshire County Booking

MAY

- 1-3 West Glamorgan County Booking

- 8-10 Commissioners and Senior Branch Guiders

- 15-19 Brownie and Guide Guiders (Whit.)
Guiders may stay at Broneirion until 23rd on holiday if they wish.

- 23 Scout Association A.G.M.
29-31 Trefoil Guild Conference

JUNE

- 5-7 Drama in Guiding

Where to Train — continued

9-16 West Glamorgan Handicapped Children's Holiday
19-21 Central Glamorgan County Booking
26-28 Monmouthshire County Booking

JULY
18-25 Patrol Leaders' Training
30-Aug. 6 Patrol Leaders' Training

AUGUST
10-17 Central Glamorgan Patrol Leaders
20-27 Training for Guides 15+
31-SEPT. 5 Patrol Leaders' Training

SEPTEMBER
11-13 Closed
18-20 Closed
25-27 L.E.A.

OCTOBER
2-4 Shropshire County Booking
9-11 Cardiff and East Glamorgan Guiders under 25
16-18 Guide First Class (Training and Testing)
23-25 Guide First Class (Training and Testing)
30-Nov. 1 Central Glamorgan County Booking

NOVEMBER
6-9 Brownie and Guide Guiders
13-15 International Interviews—By invitation

ULSTER

Lorne, Craigavad, Co. Down

MARCH
7-9 East Belfast Scouters
20-22 Trainers

APRIL
3-5 Guide Guiders
10-12 South Down Guiders
17-19 Patrol Leaders

APRIL
24-26 Ulster Trefoil Guild
MAY
1-3 Co. Armagh
15-17 Belfast Trefoil Guild
22-24 Finaghy Local Association
29-31 34th Belfast Trefoil Guild

Fees at Lorne

Shared room per night...	12s. 6d.
per week ... £3	15s. 0d.
Double room per night...	14s. 0d.
per week ... £4	7s. 6d.
Single room per night...	16s. 6d.
per week ... £5	0s. 0d.

CAMPING AND PACK HOLIDAYS

All applications for Camp Sites must be accompanied by a stamped addressed foolscap envelope.

Foxlease and Waddow Camp Sites
APPLICATIONS for sites should be addressed to the Secretary, and the envelope marked 'Camp'. Suggested dates should be given, with possible alternatives, and approximately numbers, and (in the case of Foxlease) whether an equipped site is required. At Foxlease, camps may begin on any weekday; at Waddow, Saturday is preferred. During the main season bookings may be only for one week.

A non-returnable booking-fee of 2s. 6d. per head must have been paid before a booking can be confirmed.

An equipped site is now available at Waddow for Patrol Camps or Ranger overnight hikes situated near the house. Solid shelter available. Applications should be made to the Secretary, Waddow Hall.

Blackland Farm, East Grinstead, Sussex

APPLICATIONS for camp-sites should be made to the Warden. Indoor camping facilities are available all the year round and 'Restrop' is furnished for parties of ten. It is also ideal for Pack Holidays.

Ynysgarn, Criccieth, N. Wales

APPLICATIONS for details of this C.H.Q. unequipped site, situated near the sea, should be made to the Secretary, Commonwealth Training Department, C.H.Q.

Warren Beach Camp, on Lord Montagu's Estate at Beaulieu

This site has five fields, each with solid shelter. Private beach. Open from Whitsun to 10th September. Sites may be booked now from the Recorder, Miss N. Knox, Forest Lodge, Bordon, Hants.

Ulster Camp Site, Glen Road, Craigavad, Co. Down

Approximately 8 miles from Belfast on Co. Down coast near 'Lorne'. It is fully equipped for 40 campers (one large or 2 small camps). Excellent hut for solid shelter with Calor gas. Bookings, which begin on 1st January, to Miss M. Williams, 3 Riverside, Church Road, Holywood, Belfast, N. Ireland.

Hindleap Warren, Forest Row, East Grinstead

Details of these unequipped sites (solid shelter available) from Miss Swan, Ballards, Forest Row, Sussex.

Magilligan Camp Site

Co. Londonderry, N. Ireland

THREE sites, each fully equipped for 25-30 campers. Sandy soil, drains easily. Miles of beach. Large hut on site: three rooms, one with open fire-place. Small Calor gas stove. Printed information list from the Secretary, Mrs. R. F. Scott, St. Paul's Rectory, Garvagh, Coleraine, N. Ireland.

Lorne Camp-Sites

THERE ARE two fully equipped sites at Lorne. Bookings, which begin on 1st January, to Miss E. Henshall, 743 Shore Road, Newtownabbey, Co. Antrim.

Pack Holiday House, Waddow

APPLICATIONS for Pack Holidays in 1964 should be made to the Secretary, Waddow Hall; they must be accompanied by a written recommendation from the Guider's C.A.

Come to Lorne for Your Summer Holidays

LORNE is open for Holiday Bookings during July and August. It makes an excellent centre within easy reach of the sea, country, or town, and there are many pleasant and interesting excursions possible by coach. Guiders may come on their own or bring parties of Guiders, aged 14 or over. Patrol Duties are kept to the minimum. Uniform need not be worn.

Packed meals can be provided for excursions or 2s. 6d. deducted from bill if visitors are out for a main meal.

Fees are 15s. per day, including all meals. Applications should be sent to the Guider-in-Charge, Lorne, Craigavad, Co. Down, Northern Ireland, with 5s. deposit.

Small 300-year-old cottage, Shropshire, to let furnished—to Guiders and their families. Two bedrooms (double, single). Sitting-room (double studio couch). Dining-room, kitchen, bath. Indoor Elsan, E.L., Mains water. Secluded position; garden; village and buses $\frac{3}{4}$ mile; Bridgnorth 3 miles. 3 guineas weekly. Miss Bythell, Morville Hall, Bridgnorth, Shropshire.

Furnished Cottage, between Chepstow and Monmouth, near river Wye. All mod. con. Accommodate 5. 5-9 guineas weekly. Not available July 11-August 8 or August 22-September 5. M. Ewen, 26 Leckford Road, Oxford.

TYPING AND DUPLICATING

All classes of **Duplicating and Typewriting** neatly and accurately executed by Guider. Prompt delivery. Discount to Guiders:—Alert Typewriting Bureau, 1 Peasmarsh, Gillingham, Dorset.

CAMP AND PACK HOLIDAY

Any Easter camp requiring Cadet's help? Contact Miss Munday, 7 Beckett Avenue, Shrivenham, Berks.

Lake District, Village Institute to let for short periods. Easter to Sept. Suitable for groups. Details HINDMOOR, NEWLANDS, Keswick, Cumberland.

Berkshire County Camp Site, Donnington Castle House, Newbury. Suitable for group or company camps. 3s. 6d. per head per week (including wood). Equipment available. Swimming, Newbury Baths. Apply: Miss A. Travers, Natesby, Bradfield, Reading.

South Devon Coast. Wiscombe Cottage, Kingston, available for Guides. Private Beach. Equipment for 20. Miss Dampney, 41 Seymour Park, Plymouth.

Guider required to take Guides camping week or weekend. Mrs. Fountain, 31 Benson Close, Lichfield, Staffordshire.

Ty Bach Twt, equipped cottage at Leahurst to let for Guiders and Brownie Pack Holidays. Accommodation for 10 girls and 2 adults indoors. Tents may be pitched in orchard. 1s. 6d. per head per night. Highest recommendations. Apply for further information to Cottage Secretary, Mrs. Orrell, Rhowniar Lodge, Nr. Towyn, Merioneth.

Irish Girl Guide Cottage, near Cork and Blarney; good touring centre. 12 bunks; mod. cons. Inquiries with international reply coupon to: Miss E. M. Moore, Ryehouse, Hettyfield, Douglas Road, Cork. Phone 31001.

Two warranted Brownie Guiders (without Pack Holiday Permits), with some Brownies, would like to join a Pack Holiday in the Easter holidays. Available dates: March 20 to 23, March 31 to April 9, April 18 to 25. Box No. 219.

Snowdonia. Cottage near entrance Watkin Path. Calor Gas, bath, etc.; sleep eight. Suitable Senior Branch or Guiders. Rental £5 per week for Guiding activities. Apply Sawbridge, 15 Friar Road, Brighton 6.

UNIFORM

Guider's Battledress Jacket, 36 in. Good condition. £2 Box No. 223.

Navy coat and skirt, 36 in. bust, 40 in. hip. Blue nylon shirt, brown tie, worn only 3 times. £8. Box 218.

COMING EVENTS

Harrow Rover/Ranger Conference and Camp W/E 9-10 May. Send S.A.E. for details to Ron Sando, 3 Adderley Road, Harrow Weald, Middx.

Worcestershire Rover/Ranger Conference 21-22nd March. Apply Miss J. Roberts, 39 Prospect Road, Stourport-on-Severn.

Lincolnshire Senior Branch/Senior Scout Conference, April 25th-26th, 1964, Seathorne, Skegness. Age 15-21. S.A.E. Angela Packer, 6 Lawn Avenue, Skegness, Lincolnshire.

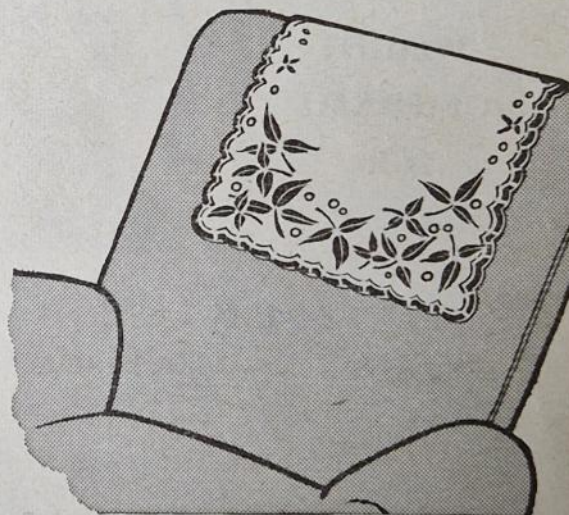
Raising funds can be fun...

... if you use our special Sale or Return Plan. More than 1,500 churches and many Guide Companies and Parents' Support Groups, have already benefited from the Plan. Many have raised over £50 in just a few weeks!

The Plan is simple and involves absolutely no risk.

First, we send you a small assorted parcel of our attractive handmade household linens—individually packed and ready for sale: dressing-table sets, chair-back covers, tray cloths and table mats, in a wide variety of colours—all of our own manufacture and available to you at little over cost price. Then, when the goods have been sold and cash is available, you send us a cheque or money order to clear your invoice returning any unsold items for credit. Remember, you pay *after* you have sold the goods—there is positively no risk.

If the idea appeals to you, why not send in the coupon below right away—full details and a free sample, or a parcel if you so wish, will be sent to you at once.



TO HYGART LTD., Scouthead Mill, Oldham

Please send me full details of your Plan together with a *Free Sample/a Sale or Return Parcel* £11 12s. (*delete whichever is not applicable).

NAME (BLOCK LETTERS PLEASE)

ADDRESS

COMPANY

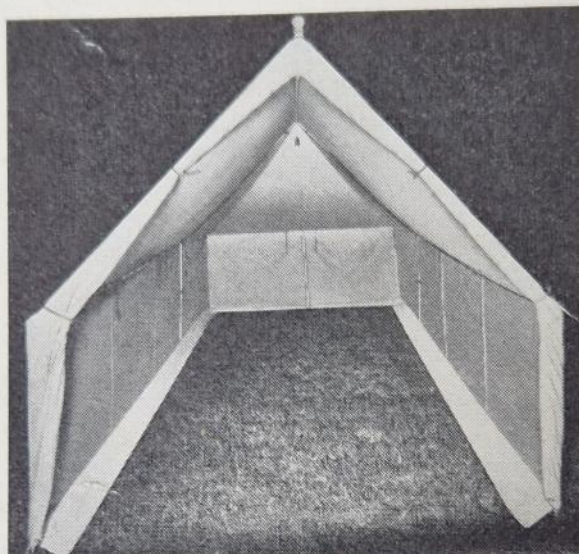
3/GR/63

'GUIDE' FRAME TENT

THIS IS IT !!! ORDER EARLY

WEIGHT
OF CANVAS
26 lb.

WEIGHT
OF FRAME
21 lb.



STEEL FRAME
NO POLES

VERY EASY
TO PITCH
WET
OR
FINE

PRICE

£26 - 15 - 6

FLOOR AREA
HEIGHT
WALLS

12 ft. 6 in. x 7 ft.
6 ft. 6 in.
3 ft.

Made from GREEN 'BEESWING' TENT FABRIC,
ROOF SECTION of METAL FRAME made in ONE PIECE
joined together by COLLAPSIBLE SPRINGS, after roof section
is assembled the uprights fit into appropriate sockets.

FRAME AND TENT PACKED IN SEPARATE VALISES

CARRIAGE FREE IN U.K.

THE GIRL GUIDES ASSOCIATION

17-19 BUCKINGHAM PALACE ROAD, LONDON, S.W.1.

ALSO BRANCHES IN

London: 124 Newgate St., E.C.1; 183 Clapham Manor St., S.W.4; 19 Green Lanes, Palmers Green, N.13.
Birmingham: 5 Ryder St., 4. Cardiff: 20 Working St. Ipswich: 5 Tacket St. Leeds: 62 The Headrow, 1.
Liverpool: 20 Richmond St., 1. Oxford: 17 The Turl (Broad Street End).

Printed by The Riverside Press Ltd., London and Whitstable, and published by The Girl Guides Association, 17-19 Buckingham Palace Road, S.W.1. All communications with regard to subscriptions, editorial matters and advertisements should be addressed to Publications Dept., Girl Guides Association. Subscription including postage, 11s. 6d. for 12 months Great Britain, 11s. overseas. Trade Agents: Messrs. Horace Marshall & Son Ltd., Publishing Department, Temple House, Tallis Street, London, E.C.4.