

THE GUIDER

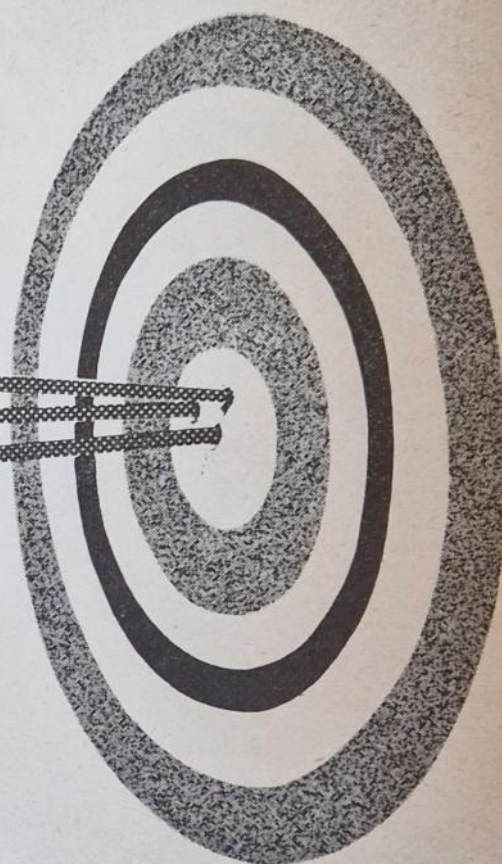
VOLUME 52 - No. 3 - MARCH 1965 - PRICE NINEPENCE



THE BROWNIES' TURN!

Brownies at Seremban, Malaya, show Miss Anstice Gibbs, Chief Commissioner of the British Commonwealth, some of their handcrafts during her recent Commonwealth tour

Take aim!



Your fund raising target can be reached more surely and easily if you visit an exhibition of T. E. Webb & Co. Ltd.'s 1965 Christmas Card Range *NOW!*

These exhibitions are designed to give you and your Committee a preview of the wonderful new collection of Christmas cards and other fund raising items.

DETAILS OF EXHIBITIONS

EDINBURGH Caledonian Hotel 30th—31st March

GLASGOW St. Enochs Hotel 2nd—3rd April

STOKE-ON-TRENT North Staffordshire Hotel 6th—7th April

NEWCASTLE-ON-TYNE Royal Station Hotel 27th—28th April

MIDDLESBROUGH The Corporation Hotel 30th April—1st May

All Exhibitions are open 10.30 a.m.—8.30 p.m.

See next months issue for details of Exhibitions in Wolverhampton, Liverpool, Leicester, Leeds and Belfast.

T. E. Webb & Co. Ltd.

Dept. 1, LITTLE CORNBOW, HALESOWEN,
BIRMINGHAM.

* Complete Reply Paid Card included in this issue for our free Full Colour Brochure giving details of "All the Year Round" items for your fund raising.



Learn to knit with **PATONS**



Learn to knit with **PATONS**

*Easy-to-follow
wall charts at a
special low price
-ONLY 7¹/₆ EACH!*

These concise explanatory charts by Patons are wonderful aids for the knitting teacher. Printed on extremely hard-wearing material with metal supports top and bottom, they're ideal for fixing on classroom walls. By reading the simple instructions and following the clear illustrations, your girls will be taken, step by step, through the fundamentals of knitting. Each chart measures 26 x 34 inches.

Chart I describes, in detail, casting on, the knit increase and decrease, purling, the purl increase and decrease and casting off. Chart II explains more complicated techniques: the over principle, cable stitches, twists and turns, finally illustrating how knitwear should be made up so that a neat, tailored finish is achieved.

Patons & Baldwins have subsidised the cost of these extremely useful charts - the price to you is only 7/6d. Order yours now, as many copies as you wish.



N337

Fill in this coupon and post to:

**PATONS & BALDWINS LIMITED,
DEPT. 10, GREAT WEST ROAD, BRENTFORD, MIDDXX.**

Name

Address

No. copies Chart I No. copies Chart II

I enclose P.O./Cheque for

March 1965

67

THE GUIDER

A PROVED PLAN

to help you raise funds



Over 450 Guide Companies and Scout Troops . . .

and over 2,000 churches have already benefited from our special Sale or Return Plan, in some cases raising over £50 in a few weeks.

Individually packed and ready for sale . . .

our attractive handmade household linens are sent to you in an assorted parcel of dressing table sets, chairback covers, tray cloths and table-mats, in a wide variety of colours. All of our own manufacture, the goods are available to you at little over cost price, enabling you to raise funds quickly while still giving excellent value for money.

'Sale or Return' means absolutely no risk . . . only when the goods have been sold, and money is available, do we ask you to clear your invoice, at the same time returning any unsold items for credit.

Why not send in the coupon below . . . it will bring you a free sample tray cloth and full details of the Plan—or a first parcel if you so wish. Post it today.

To Hyngart Ltd., Scouthead Mill, Oldham, Lancs.

Please send me full details and a free sample/ 'Sale or Return' parcel value £11 12s. 0d. (delete whichever is not applicable).

Name
(Block letters please)

Address

Company and signature of Captain

6/GR/87

THE GUIDER

THE GUIDER

OFFICIAL MAGAZINE OF THE GIRL GUIDES
ASSOCIATION

(Incorporated by Royal Charter)

Patrons

H.M. THE QUEEN
H.M. QUEEN ELIZABETH THE QUEEN MOTHER

President

H.R.H. THE PRINCESS ROYAL

Chief Ranger, British Commonwealth
H.R.H. THE PRINCESS MARGARET

Chief Guide

OLAVE, LADY BADEN-POWELL, G.B.E.

Chief Commissioner of the British Commonwealth
MISS ANSTICE GIBBS, C.B.E.

CONTENTS

The Winston Churchill Memorial Trust	69
The New Holiday Permit	69
Over to YOU From the Working Party	70
The Spirit of Service	70
Our Public Image (5)	71
What! Another New Badge?	72
Census of Membership—1963-1964	73
Points of View	74-75
Private Diary of a District Commissioner	76
Miss Gibbs Visits Pakistan (2)	76
Training Pages	
A Guide's Eye View of Camp (3)	77
P.L. in Charge	78
'What Every Woman Knows'	78
It's Brownies!	79
Brownies on Their Own	80
Woodcraft: Insects	80
The Duke of Edinburgh's Award	82
Looking Ahead to Pack Holidays	84
Amendments to P.O.R.	85, 87
Headquarters' Notices	88-89
Where to Train	90



SCOTTISH HEADQUARTERS SHOPS

16 COATES CRESCENT,
EDINBURGH 3

and
1 SCOTT STREET,
GLASGOW C.3

Open: Weekdays 9 a.m. - 6 p.m. Saturdays 9 a.m. - 1 p.m.

THE GUIDER

Official magazine of the Girl Guides Association
(Incorporated by Royal Charter)

SIR WINSTON CHURCHILL

TRIBUTES to Sir Winston and expressions of sympathy were sent to Miss Gibbs from the World Committee and Guide Associations in many parts of the world.

Miss Gibbs sent the following letter to Lady Churchill:

'The Committee of the World Association of Girl Guides and Girl Scouts, the British Girl Guides Association and the leaders of Associations in other countries pay their tribute of homage to the memory of Sir Winston.'

We pray that the 5½ million members for whom we speak and the future generations may know the inspiration given to us by his shining example of courage, loyalty and service to mankind.

To you we offer our heartfelt sympathy.'

The New Holiday Permit

(Details of the new Holiday Permit appear in the 'Amendments to P.O.R.' on page 87)

THE new Holiday Permit is designed to bring a clarification to the whole aspect of taking any kind of a holiday with Guides or Senior Branch members other than a camp under canvas. It is in no way meant to be any kind of stumbling block in the way of running such a holiday, but does give the basic requirements needed by the Guider or Commissioner in charge.

The holder of a Camper's Licence or Camp Permit need not also take the Holiday Permit if she wishes to run a holiday, but must qualify in age.

This means that there are now only two qualifications covering taking Guides or Senior Branch members—the Camper's Licence or Permit for camps and the Holiday Permit for all holidays other than camps. By 'holiday' is meant any group of Guides or Senior Branch members staying in a house, hostel, chalet, hotel, Guide House, or boat, etc. and applies also to those taking such a holiday abroad. In other words, the Holiday Permit is required by anyone taking a party on a holiday of any kind other than a camp under canvas or under camp conditions. The Licence for indoor camps will now be discontinued and will be replaced by this new qualification.

The basic requirements are those relating to First Aid, catering and organizing ability and are the common-sense things that one would expect of anyone planning to be in charge of a group over a period of time away from home. It is hoped that the actual test will be simply achieved and it is not expected to become any sort of a difficulty to the running of such holidays where the Guider has the necessary knowledge. Many people, already experienced at taking such holidays, will find that their Commis-

sioner will recommend the issue of the Holiday Permit without delay.

It should be remembered that some holidays which involve boating or bathing will also require certain other qualifications, and a check should be made of these at an early date in the planning.

The responsibility for issuing the Holiday Permit will lie with the Camp Testers in each County, working in close co-operation with the local Commissioner who recommends its issue.

Please do not feel that this is just one more bit of red-tape to get in the way of your plans. It is to help, not to hinder, and it is hoped that you will look upon it as assurance that as far as you are able you have the right knowledge and ability to make the very best use of the time away, in order that those in your care may have a happy, healthy and worthwhile holiday.

BETTY COMMON
[Camp Adviser, C.H.Q.]

THE WINSTON CHURCHILL MEMORIAL TRUST

Details of the nation-wide Fund in memory of Sir Winston have already been announced in the press. The sponsors of the Appeal have asked for the support of all national voluntary organisations.

The Executive Committee of the Girl Guides Association has warmly welcomed this Appeal and is confident that members of the Movement will do their utmost to help, locally, in whatever way is suitable for them.

THE WORKING PARTY

GIVES SPACE THIS MONTH FOR YOUR PROBLEMS, SUGGESTIONS AND QUERIES

Please write your comments above, cut this out, and return it by *1st April* to the Secretary of the Working Party, Girl Guides Association, Commonwealth Headquarters, 17-19 Buckingham Palace Road, London, S.W.1.

STOP PRESS: On closing date for answers to questions in November GUIDER. Warm thanks from the Working Party to all who have contributed. The response has been most helpful and encouraging. We look forward to your continuing interest.

MARGARET L. MARTIN (Chairman)



The Spirit of Service

WHEN Lord Kilbrandon, Chairman of the Standing Consultative Committee on Youth and Community Service in Scotland, the counterpart of the Youth Service Development Council in England, broadcast an appeal for the Trefoil School on Sunday, 7th February, he spoke of it as a remarkable example of the spirit of service. He sketched briefly the history of the school from the early days of evacuation in the last war when Guiders found themselves in charge of a home for physically handicapped children to the now well-known Trefoil School. He said he could think of no one that it would be more of a privilege to help than the wildly cheerful bunch of children going round in their calipers and wheelchairs in their beautiful country home near Edinburgh.

Money will come, it is hoped, even for the latest extensions which will make the school more up-to-

date and convenient for staff and children but without people of purpose and adaptability to carry on the work the special type of service which has always been given to the boys and girls cannot be maintained. The Trefoil School believes that, if the opportunity could be brought before them, such people are still to be found in Guiding, and that the Movement would wish to ensure the continuance of the Trefoil School in the same spirit which inspired its inception and subsequent development.

Leading members of such professions as physiotherapy, occupational therapy and social work see in the post of Assistant Guider-in-Charge ample scope for such qualifications, and the Scottish Home and Health Department is prepared to assist with the transfer of superannuation without loss of status. Anyone interested in a post at the Trefoil School, and in particular that of Assistant Guider-in-Charge, should contact the Hon. Secretary at the Trefoil School, Gogar, Edinburgh, 12.

THE GUIDER

Exhibitions and Displays

THESE give splendid opportunities for good publicity, however big or small the occasion, but the publicity will only be *good* if we take time and trouble and forethought to plan.

We suggest the following as first principles. Decide on:

1. What you want to get across.
2. Who are to be your public?
3. Where the exhibition/display is to be held?
4. What your theme is to be, bearing in mind the character of any meeting, rally and/or type of event with which the exhibition is connected?

Having decided on the theme, proceed to:

1. Choose your colour scheme.
2. Select material available (you must be up-to-date in your material and discard anything that is irrelevant or not first class).
3. Keep your exhibition or display simple.
4. Add life to your display (where practicable) by the use of live models or bowls of flowers, or perhaps some exhibits displayed on an electric turntable.
5. Put your public in the picture with short explanatory headlines, using good lettering, either free-hand or 'Letraset' or cork lettering or similar types.
6. Be prepared to use any aspect of any branch of the Movement and be quite sure that you are presenting the most up-to-date image of Guiding (both in activities and uniform).
7. Be imaginative in your presentation and let it be compelling.

Some General Thoughts

1. Decide on the focal point of the exhibition/display, i.e. the point which most people will see on first looking at the display and plan to put your most important exhibit there.
2. Be bold in your colouring if you are experienced; otherwise Guide blue with stone go well together.
3. Be on the lookout for props; many household articles, garden and camp equipment make excellent props, i.e., small plastic clothes-horse, small step ladder, small chair, small forms and stools, trugs, tubs, good gadget wood, orange boxes—all these imaginatively used can help to build up an interesting display.
4. Use and look for local talent and professionals such as display managers, art masters, senior students



*Illustrated by
Jennetta Vise*

and artistic friends. (Local Associations can sometimes be of immense help in this direction).

5. Look at good and original window displays and be prepared to adapt them to your own needs.

6. Encourage and give what help you can to Guiders and Commissioners in their display experiments, trying where possible to encourage the discarding of those shockingly executed jumble sale posters—and the like!

7. Remember that exhibits should be at different levels.

8. Arrange for extra lighting where necessary; this is very important.

9. Give time for preparation down to the last detail and also time to clear up; sufficient helpers will insure speed.

10. Do not think that everything must be made by members of the Movement. In other words, get as much expert help from 'outsiders' as possible.

11. Remember that stewards should be smart and attractive and well informed.

12. Now for a word about window displays and exhibitions in the foyers of cinemas which are very good publicity if well done and provide the opportunity of presenting the Guide Movement to a very wide public. The theme and presentation should be simple and the exhibits big enough to be seen from a distance.

In conclusion, it has been our experience that the interest shown by members of the general public in a good display or exhibition is quite amazing and can stir their imagination and increase their interest in the Movement in a way that nothing else can do as effectively. If Brownies, Guides and Senior Branch members are demonstrating some typical activity of their branch then the value of the occasion is greatly increased.

NOTE: On application to the Public Relations Department at C.H.Q. (with stamped addressed label enclosed) 'Hints on Exhibitions and Window Displays', a list of display material available for hire, and a list of films and film strips will be sent.

What! Another New Badge?

by M. E. Brimelow



YES! It's called 'Be Prepared' and the syllabus is on page 85.

Why?

'Something for everyone' is the aim of our wide range of badges—we cater for the artistic girl, the practical girl, the reader, the writer, the home lover, the naturalist. Many Guides also enjoy the sort of activity we might call essentially 'Guidey'—challenge and surprise, the emergency and the 'have a go at this' type of thing—in fact, all that we envisage by 'Being Prepared'. Many Guiders devise Patrol and individual challenges which call out all the qualities of preparedness, quick thinking, and response, which keep the Guides on their toes and make them beg for 'another one like that, please!'

Many people regretted the passing of the Queen's Guide 'Be Prepared' test—not because it 'weeded out' the unsuitable candidates but because the Guides enjoyed it so!

This new badge has therefore been devised to give Guides the fun and satisfaction of showing how their training has developed their ability to respond to an unexpected situation. All Guides aim at being prepared—now some will have the chance to show it at a test.

Training For It?

Apart from the badges required, special training should not be necessary. All your exciting games and challenges, camping, especially Patrol camps, wide games, expeditions—all these are preparation, and Guiders who use these activities need only keep their eyes open for those Guides who show an increasingly sensible and quick response. In fact, this is a badge which is essentially part of our existing programme and not outside it.

Testing It?

Look at the syllabus and note the words 'enjoyment of the challenge'. This is the whole key to the test—it's meant to be fun! Testers who catch the spirit of it will plan a challenge that the girl will enjoy, even if she discovers she is not as prepared as she thought. A Guide who fails will nevertheless be longing for another go—so she should be told how long she needs to continue practising and learning to be prepared before applying again. (Six months of Guide training at its best can work wonders!) She need not be tested by the same person next time—variety is part of the nature of this badge.

Can one standardize this sort of test? No! Except in so far as it is always to be practical, stimulating and fun! Life's emergencies don't always come to those best fitted for them and we have to do what we can in each situation. Let it be understood from the start that tests will be different and not necessarily equal in length or difficulty. If two Guides can say, 'Gosh, my test was fab!' whatever the content was, they had equally good tests.

Should lack of knowledge fail her? No—one can't know everything, but she should show common sense in dealing with the situation. Probably this would be 'emergency action and call in an expert!' If First Aid, or subjects from the other badges she has taken, are included, they should provide opportunities for a Guide to use the knowledge she has, and not be looked on as chances to catch her out or re-test her.

Testers

Who should test? Only Guiders who want to! They need to be prepared, too: the Guide may not do what one expects at all!



WHISTLES
for
SOUND VALUE

Full range in Metal
and Plastic

J. HUDSON & CO. (Whistles) LTD.
BARR STREET HOCKLEY BIRMINGHAM 19

a
clear
case
for



Cash's

WOVEN NAME TAPES
From your Draper and Outfitter

CENSUS OF MEMBERSHIP

1963 and 1964

	ENGLAND		SCOTLAND		ULSTER		WALES		British Guides in Foreign Countries		GRAND TOTAL	
	1963	1964	1963	1964	1963	1964	1963	1964	1963	1964	1963	1964
Commissioners	2,674	2,688	664	667	96	93	220	218	25	21	3,685	3,699*
Secretaries	3,486	3,425	240	239	46	47	179	168	6	6	3,957	3,885
Guides	33,391	34,065	7,861	7,909	1,216	1,301	1,513	1,561	183	193	44,164	45,029**
Guide Clubs, Members of	651	745	9	9	51	67	152	162	—	—	701	800
Cadets	2,171	2,147	504	534	156	147	323	350	9	6	2,878	2,910
Land Rangers	5,228	5,267	670	644	56	56	209	187	—	—	6,386	6,414
Sea Rangers	3,049	2,928	229	210	58	8	28	28	—	—	3,545	3,381
Air Rangers	428	519	42	39	—	—	—	—	—	—	498	613
Guides	174,375	174,666	41,302	39,382	5,646	5,580	8,982	9,154	459	547	230,764	229,329
Brownies	223,556	232,048	50,166	50,424	6,042	6,507	10,629	10,933	1,854	1,874	292,247	301,786
Lones (Rangers and Guides)	538	446	106	116	—	—	10	15	25	31	679	608
TOTALS	449,547	458,944	101,793	100,173	13,311	13,806	22,286	22,822	2,561	2,697	589,504	598,454*

* This includes twelve unattached Commissioners.

** Included in this total are at least 648 Rangers who, also being Guides, are not included in Ranger totals. Extension Section totals are now included in relevant Branch totals.

	AGE GROUPS		TREFOIL GUILDS	
	1963	1964	1963	1964
Local Associations	1,226	1,222	428	412
Guide Clubs	54	52	1	2
Senior Branch Units	—	—	—	—
Cadet Companies	180	167	43	45
Land Ranger Companies	588	593	72	76
Sea Ranger Crews	285	297	22	24
Air Ranger Flights	48	51	3	4
Guide Companies	9,619	9,422	1,830	1,836
Brownie Packs	11,339	11,507	2,305	2,353
Lone Companies	54	53	13	13

	AGE GROUPS		TREFOIL GUILDS	
	1963	1964	1963	1964
7½ years	32,339	35,378	8,846	9,429
8 years	61,598	64,712	13,086	13,073
9 years	69,377	71,134	13,850	13,882
10 years	61,476	64,533	11,577	11,414
11 years	48,159	51,445	12,934	13,007
12 years	44,845	44,825	10,567	9,961
13 years	38,628	36,433	9,152	8,693
14 years	26,341	23,856	6,537	6,178
15 years	13,644	12,630	3,790	3,301
16 years	6,889	6,135	1,825	1,547
17 years	4,173	5,238	976	1,206
18 years	2,989	3,330	954	871
19 years	2,437	2,214	907	804
20 years	2,277	2,223	825	809
21 and over	34,375	34,858	5,967	5,998
TOTALS	449,547	458,944	101,793	100,173

	AGE GROUPS		TREFOIL GUILDS	
	1963	1964	1963	1964
Local Associations	1,226	1,222	428	412
Guide Clubs	54	52	1	2
Senior Branch Units	—	—	—	—
Cadet Companies	180	167	43	45
Land Ranger Companies	588	593	72	76
Sea Ranger Crews	285	297	22	24
Air Ranger Flights	48	51	3	4
Guide Companies	9,619	9,422	1,830	1,836
Brownie Packs	11,339	11,507	2,305	2,353
Lone Companies	54	53	13	13

	AGE GROUPS		TREFOIL GUILDS	
	1963	1964	1963	1964
7½ years	32,339	35,378	8,846	9,429
8 years	61,598	64,712	13,086	13,073
9 years	69,377	71,134	13,850	13,882
10 years	61,476	64,533	11,577	11,414
11 years	48,159	51,445	12,934	13,007
12 years	44,845	44,825	10,567	9,961
13 years	38,628	36,433	9,152	8,693
14 years	26,341	23,856	6,537	6,178
15 years	13,644	12,630	3,790	3,301
16 years	6,889	6,135	1,825	1,547
17 years	4,173	5,238	976	1,206
18 years	2,989	3,330	954	871
19 years	2,437	2,214	907	804
20 years	2,277	2,223	825	809
21 and over	34,375	34,858	5,967	5,998
TOTALS	449,547	458,944	101,793	100,173

	AGE GROUPS		TREFOIL GUILDS	
	1963	1964	1963	1964
Local Associations	1,226	1,222	428	412
Guide Clubs	54	52	1	2
Senior Branch Units	—	—	—	—
Cadet Companies	180	167	43	45
Land Ranger Companies	588	593	72	76
Sea Ranger Crews	285	297	22	24
Air Ranger Flights	48	51	3	4
Guide Companies	9,619	9,422	1,830	1,836
Brownie Packs	11,339	11,507	2,305	2,353
Lone Companies	54	53	13	13

	AGE GROUPS		TREFOIL GUILDS	
	1963	1964	1963	1964
7½ years	32,339	35,378	8,846	9,429
8 years	61,598	64,712	13,086	13,073
9 years	69,377	71,134	13,850	13,882
10 years	61,476	64,533	11,577	11,414
11 years	48,159	51,445	12,934	13,007
12 years	44,845	44,825	10,567	9,961
13 years	38,628	36,433	9,152	8,693
14 years	26,341	23,856	6,537	6,178
15 years	13,644	12,630	3,790	3,301
16 years	6,889	6,135	1,825	1,547
17 years	4,173	5,238	976	1,206
18 years	2,989	3,330	954	871
19 years	2,437	2,214	907	804
20 years	2,277	2,223	825	809
21 and over	34,375	34,858	5,967	5,998
TOTALS	449,547	458,944	101,793	100,173

	AGE GROUPS		TREFOIL GUILDS	
	1963	1964	1963	1964
Local Associations	1,226	1,222	428	412
Guide Clubs	54	52	1	2
Senior Branch Units	—	—	—	—
Cadet Companies	180	167	43	45
Land Ranger Companies	588	593	72	76
Sea Ranger Crews	285	297	22	24
Air Ranger Flights	48	51	3	4
Guide Companies	9,619	9,422	1,830	1,836
Brownie Packs	11,339	11,507	2,305	2,353
Lone Companies	54	53	13	13

	AGE GROUPS		TREFOIL GUILDS	
	1963	1964	1963	1964
7½ years	32,339	35,378	8,846	9,429
8 years	61,598	64,712	13,086	13,073
9 years	69,377	71,134	13,850	13,882
10 years	61,476	64,533	11,577	11,414
11 years	48,159	51,445	12,934	13,007
12 years	44,845	44,825	10,567	9,961
13 years	38,628	36,433	9,152	8,693
14 years	26,341	23,856	6,537	6,178
15 years	13,644	12,630	3,790	3,301
16 years	6,889	6,135	1,825	1,547
17 years	4,173	5,238	976	1,206
18 years	2,989	3,330	954	871
19 years	2,437	2,214	907	804
20 years	2,277	2,223	825	809
21 and over	34,375	34,858	5,967	5,998
TOTALS	449,547	458,944	101,793	100,173

	AGE GROUPS		TREFOIL GUILDS	
	1963	1964	1963	1964
Local Associations	1,226	1,222	428	412
Guide Clubs	54	52	1	2
Senior Branch Units	—	—	—	—
Cadet Companies	180	167	43	45
Land Ranger Companies	588	593	72	76
Sea Ranger Crews	285	297	22	24
Air Ranger Flights	48	51	3	4
Guide Companies	9,619	9,422	1,830	1,836
Brownie Packs	11,339	11,507	2,305	2,353
Lone Companies	54	53	13	13

	AGE GROUPS		TREFOIL GUILDS	
	1963	1964	1963	1964
7½ years	32,339	35,378	8,846	9,429
8 years	61,598	64,712	13,086	13,073
9 years	69,377	71,134	13,850	13,882
10 years	61,476	64,533	11,577	11,414
11 years	48,159	51,445	12,934	13,007
12 years	44,845	44,825	10,567	9,961
13 years	38,628	36,433	9,152	8,693
14 years	26,341	23,856	6,537	6,178
15 years	13,644	12,630	3,790	3,301
16 years	6,889	6,135	1,825	1,547
17 years	4,173	5,238	976	1,206
18 years	2,989	3,330	954	871
19 years	2,437	2,214	907	804
20 years	2,277	2,223	825	809
21 and over	34,375	34,858	5,967	5,998
TOTALS	449,547	458,944	101,793	100,173

	AGE GROUPS		TREFOIL GUILDS	
	1963	1964	1963	1964
Local Associations	1,226	1,222	428	412
Guide Clubs	54	52	1	2
Senior Branch Units	—	—	—	—
Cadet Companies	180	167	43	45
Land Ranger Companies	588	593	72	76
Sea Ranger Crews	285	297	22	24
Air Ranger Flights	48	51	3	4
Guide Companies	9,619	9,422	1,830	1,836
Brownie Packs	11,339	11,507	2,305	2,353
Lone Companies	54	53	13	13

	AGE GROUPS		TREFOIL GUILDS	
	1963	1964	1963	1964
7½ years	32,339	35,378	8,846	9,429
8 years	61,598	64,712	13,086	13,073
9 years	69,377	71,134	13,850	13,882
10 years	61,476	64,533	11,577	11,414
11 years	48,159	51,445	12,934	13,007
12 years	44,845	44,825	10,567	9,961
13 years	38,628	36,433	9,152	8,693
14 years	26,341	23,856	6,537	6,178
15 years	13,644	12,630	3,790	3,301
16 years	6,889	6,135	1,825	1,547
17 years	4,173	5,238	976	1,206
18 years	2,989	3,330	954	871
19 years	2,437	2,214	907	804
20 years	2,277	2,223	825	809
21 and over	34,375	34,858	5,967	5,998
TOTALS	449,547	458,944	101,793	100,173

	AGE GROUPS		TREFOIL GUILDS	
	1963	1964	1963	1964
Local Associations	1,226	1,222	428	412
Guide Clubs	54	52	1	2
Senior Branch Units	—	—	—	—
Cadet Companies	180	167	43	45
Land Ranger Companies	588	593	72	76
Sea Ranger Crews	285	297	22	24
Air Ranger Flights	48	51	3	4
Guide Companies	9,619	9,422	1,830	1,836
Brownie Packs	11,339	11,507	2,305	2,353
Lone Companies	54	53	13	13

	AGE GROUPS		TREFOIL GUILDS	
	1963	1964	1963	1964
7½ years	32,339	35,378	8,846	9,429
8 years	61,598	64,712	13,086	13,073
9 years	69,377	71,134	13,850	13,882
10 years	61,476			

ALL THE YEAR
ROUND LINES FOR

FUND RAISING

BIRTHDAY CARDS, NOTELETS,
STATIONERY, TABLEWARE,
GIFT NOVELTIES

Send for everyday list
and details.

LESWYN CARDS LTD.

- *The private independent company —
- *giving a personal service which ensures
- *PER RETURN POSTAL SERVICE of the
- *Highest Quality Goods.

SEE OUR EXHIBITIONS AT LEEDS

METROPOLE HOTEL

Thurs. and Fri. 29th and 30th April

MANCHESTER

GRAND HOTEL

Tues. and Wed. 4th and 5th May

BIRMINGHAM

GRAND HOTEL

Wed. Thurs. Fri. and Sat. 12th, 13th, 14th
and 15th May.

WOLVERHAMPTON

CIVIC HALL (GREEN ROOM)

Tues. and Wed. 18th and 19th May



All enquiries receive the
personal attention of
Mr. L. G. Harris, Director.

LESWYN

CARDS LIMITED

Union House, Boldmere Road,
Sutton Coldfield.

Tel. SUT. 7389

THE GUIDER

A 'Let's Share It' Page

I AM glad the Training Pages are considered important in THE GUIDER. Everyone seems to come upon a time when there is a dearth of ideas, but I wonder what happens to some of the bright ones by ordinary Guiders?

Could we have a 'Let's Share It' page devoted to ideas which Brownie and Guide Guiders found fun with their own groups?

M. J. RICH

[Brown Owl, 4th Bookham Pack, Surrey N.]

(Would a 'Let's Share It' feature be useful?—EDITOR)

Genuine Quotes!

Despite these times of change, some girls are quite content with Guides as they are. We have been discussing some of the new ideas from recent GUIDERS at our Company meetings. Here are some of the comments, all genuine quotes.

THE NEW HATS: 'Can't we go on wearing our berets?'

THE SERVICE FLASH: 'Unnecessary.' 'There are too many badge tests already.' 'It's too like the Bronze Duke of Edinburgh's Award.' 'You get a real sense of achievement from finishing First Class; the Service Flash won't feel worth the same.' (This last from a 13 year-old who is not First Class.)

JOINT ACTIVITIES WITH BOYS: 'Ugh.' 'Yes, let's. It would be fun.' 'Suit yourself. I don't mind whether we do or not.'

CHANGES IN THE LAW: 'No.' 'There'd be no point being a Guide if we didn't have a law.' 'I like the thought that it makes a link with all the Guides there have ever been.' 'B.-P. meant Guides to be these things and we should keep the law as he wrote it for us.' 'These words (honour, courteous, loyalty) give me a wonderful picture of a knight on a beautiful horse, sweeping off his shining helmet as he bows. Honest and polite don't make me feel anything.'

RECORD SESSIONS: 'What for?' 'There's not enough time for all we want to do as Guides and plenty of other times we can play records.'

CAMP PATROLS NAMED AFTER POP GROUPS: 'Revolting.'

FINAL COMMENT FROM LIEUTENANT: 'The Movement seems to be trying to please too many people and will end by pleasing none.'

These remarks are all from average girls living on the outskirts of an industrial town. Though I am in my thirties, my two lieutenants are both under 20, and the Guides the full age range of 11 to 16. All the quotes are from girls aged 13-plus.

View

How do those who complain that Guiding is out of date, explain the current craze for camping and barbecues?

As for keeping the older girls, I think Jean Dixon has got to the heart of this problem when she writes in the November 1964 GUIDER, 'What we do matters, but how we do it matters more.' I can't help feeling that if the Captain who contacted her ex-Guides through the paper round (page 305 October GUIDER) had devoted so much time to them whilst they were still with her, they would probably never have left. Adventure is all very well but the feeling that someone cares about us can be just as thrilling.

Who has all these Guides who are so delighted at the chance to take up new interests? The perennial complaint from girls in this Division is that the weeks are not long enough to fit in all they want to do.

In answer to J. Griffith (June 1964 GUIDER) teaching the Law was never easy, but I don't think the 'new morality' makes it any more difficult—just more essential. 'Love in action' may concisely sum up the whole meaning for an adult, but this is far too indefinite for a twelve-year-old. I think that in these days of shifting values, many adolescents appreciate the fact that in Guides they meet people who know what they believe in.

New hats we may have to put up with, but please don't let us have so many new things that Guiding is changed out of recognition.

RENE SLADEN


[Captain, 4th Penwortham Company,
Preston, Lancashire]



Contributed by J. W. Johnstone

Preparations for camp start early!

March 1965



NP

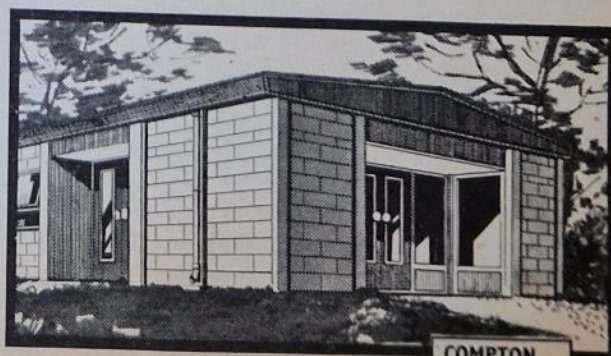
is pleased to offer
understanding
and friendly advice
at each of its
1600 Branches

NATIONAL PROVINCIAL BANK

YOUR OWN COMPANY HQ NOW

- EASILY AND QUICKLY ERECTED
- VERY ECONOMICAL IN PRICE
- WILL LAST YOU A LIFETIME

Compton concrete buildings offer made-to-measure accommodation at off-the-peg prices. Send for free colour catalogue today.



COME TO
COMPTON
ALWAYS

COMPTON
BUILDINGS
LIMITED
47 Fenny Compton
Near Leamington
Spa, Warwicks.
Tel: Fenny
Compton 291-5.



REGRET to record row, small size, in District but hopeful good may come, thanks to G.I.S. When I told James he said what is G.I.S., is it new floor polish? Said how ignorant, G.I.S. is or was Guide International Service which did relief work after war in Greece, Holland, Germany and Malaya. James said sounds interesting but what has it to do with District anyway. Said it is a long story, will you listen? Replied that depends on story.

All started when District offered only poor support to Division training 25 miles away. Too far they said. Reminded them of good bus, train service and possibility of arranging lifts. Still said too far, too time consuming. Got cross, knowing several young Guiders go to same town regularly dancing. Spoke my mind. Meeting not amused.

Next morning drank coffee with Mrs. Fluter to 'meet someone interesting'. Someone was G.I.S. member now breeding ponies in Welsh hills. Cannot now tell all stories (James looked relieved) but this one was about how she helped with a 'Foxlease' in Germany for Guiders from Displaced Persons' Camps: there was little public transport and they had practically no money. Some hitch-hiked over 100 miles to get there, some took two days and nights by train in cattle-truck, some brought by lorry by friendly relief teams. It was winter and bitterly cold. When they arrived they said when do we start training. At night they sat up into small hours copying Guide and Scout books. They took no rest hours and as there was very little to eat (we were all of us hungry) meals were quickly over. We said you work too hard. They said leave us alone, we must work for the children. It is more important than you know. They were not solemn people in spite of all they had suffered. They sang and danced a lot but they were deadly serious about their training. If you care enough, they said, you have to do it.

After pause I said, she's coming to talk to District. Those women had nothing else to do, don't forget that, said James, but let her come. Will it help, I said. It could do no other, said James, but whether it gets them to Division training remains to be seen.

Miss Gibbs Visits Pakistan

(Continued from February GUIDER)

ON the 9th December Miss Gibbs addressed a meeting of the officials from Government Welfare Departments and members of Voluntary Social Welfare Agencies on 'The Role of Guiding in Social Welfare.' She told the audience how Guiding can, and does, play an active part in the social welfare of the country and was full of praise for the Social Welfare Projects of the Pakistani Guides: ADULT LITERACY; GROW MORE FOOD; BETTER HOMES and DIGNITY of LABOUR.

On the same day Miss Gibbs left for Karachi where she was received at the airport by Begum Wazir Ali, Karachi Girl Guide Commissioner, and Mrs. Kabraji, International Secretary. That evening at Guide Headquarters she spoke about her Commonwealth visit to a gathering of Rangers, Guiders and Principals of schools. Next morning Begum Ispahani, a member of the Guides Association Executive Committee, showed Miss Gibbs the Children's Club which she runs in her own garden.

Speaking about Guiding at the Seminar on 'The Role of Social Welfare in the National Development', organised by the Social Services Co-ordinating Council, the Chief Commissioner for the Commonwealth praised the work and programme of the Pakistan Girl Guides Association.

That same evening, at a dinner given by Begum Wazir Ali, Miss Gibbs met again some of her friends, from Government and business circles, who are interested in social welfare in different fields. This brought Miss Gibbs to the end of her tour of Pakistan and on the morning of 12th December she left for Bombay, taking with her our greetings and good wishes to the Guides of Great Britain.

SHABIRAN HAYAT

[Secretary, Publications and Public Relations,
Pakistan Girl Guides Association]

COMING IN APRIL

The Chief Commissioner for the Commonwealth will be writing about her recent Commonwealth tour.

EVERYONE CAN DO IT!

If you have Guides, Brownies or members of the Senior Branch who are interested in feeding birds, they would, I am sure, be interested in a leaflet published by the Wildlife Youth Service. Readers are invited to fill in answers to various questions about the birds they feed; nothing technical, just ones such as 'What foods did you use', 'When did you watch the feeding' and so on. To get the leaflets apply to: WYS/YOC Bird Feeding Project, 120a London Road, Morden, Surrey, and enclose 6d. in stamps. To take part in this country-wide project, the leaflets should be sent for immediately as the closing date is 30th April and forms have to be returned by 10th May, 1965.



TRAINING PAGES

A Guide's Eye View of Camp (3)

DEAR JENNIFER,

Home from camp—and so much happened there since I last wrote. I don't think I've stopped talking since I came home!

The Guiders woke us each morning by a rising whistle and then we just had breakfast when it was ready. The Guiders made their own but came as guests to Patrols for the other meals, changing Patrols each day. You really get to know them that way, chatting over meals. I'd never have guessed that Lieutenant has a sister who is a ballet dancer. She's promised to show me some of her photos sometime.

On Wednesday morning we were wakened—wait for it—at 3.30 a.m. but Sue had known all about it. We were to get up and climb our hill to see the dawn, in silence. Before we set off we got a hot drink and bread and butter. It really was awful getting up then but it was worth it. I'd never been out of doors at that time before and everything seemed so strange and different; with not talking you heard every sound. There were funny little blobs of mist like cotton wool in the valleys. We had prayers at the top, taken by the P.L.s. (they'd had it all planned). I can't really describe what it was like, but I don't think I'll ever forget that sunrise.

On Thursday we did our Patrol Good Turn. An old couple have just been given one of the estate cottages and the garden was in a bit of a mess so each Patrol took a turn at helping to clear it. The old man loves pottering in the garden but this wilderness was too much for him. It was hard work and would have been dull if we hadn't been doing it together! It was lovely to see the old man's face when he was telling us what he was going to plant in the bit we'd cleared.

I forgot to tell you, earlier in the week we found a big tree quite near the camp, so we made a rope ladder; it's really so simple! We slung it over a branch by putting a rope over first (now I see why you have to throw a rope up as well as along for First Class!) Then we all got up into the tree and from then on we had all our Patrol meetings to plan things there.

We didn't have a challenge, like the one we had last year. Do you remember all those exciting things to make and do and points for each, but we wouldn't have had time. Anyway, what we were doing were real things, not just made up ones where you had to pretend things, and it was silly really to have four bridges over the same stream at the same place when one would have done, and you could jump it anyway! We did have one competition but it was a real thing—to make

a table decoration for visitors' day. We entertained our guests ourselves of course, but Q.M. had plenty of boiling water ready in case we had more than we could cope with. Pat made our decoration and it won! Sue chose her as she's good with her hands but not much good at games. I wouldn't have thought of it, but I'd better start if I'm ever to be a P.L.!

One day the P.L.s. set off after Rest Hour with Captain on some special expedition. They always have some time off like that, often in the late evening, but it's all secret. This time it was earlier and Mary was very pleased as she was in charge of the Patrol and thought it marvellous practice for her Patrol Camp Permit which she hopes to do next year. Sue and all the other P.L.s. have it already! I can see it is much easier to do it when you're camping in Patrols at the Company camp, so some day, maybe . . . ? !

We had good weather most of the time but one afternoon it started raining and forgot to stop. Captain called the P.L.s. and they decided to get up a concert. Our concert was really good. It was amazing how quickly ideas came once we got a start. I can't tell you them all, but we had a Beat Group (Curly and the Rollers) and 'Ten Green Bottles' was quite up to Black and White Minstrels' standard.

I simply must stop, though I haven't told nearly all, as I've actually promised to make camp macaroni and cheese for supper. Mum says it's a pity we don't have a camp like that more often!

Write soon.

Love,

JEAN

(Have you asked yourselves any questions while you were reading these letters? Did you think 'I wonder what sort of letters Jean would have written to her friend if she had been at my last camp?' Did you perhaps think 'I wonder what sort of letters my Guides will write describing our next camp?' Perhaps you had to say 'What are my Guides missing because they never get to camp?' Maybe you protested 'My Patrol Leaders wouldn't manage to cope with such a camp.' How can you train them in responsibility throughout their years in the Company so that they can take such things in their stride? Start asking yourselves some of these questions now, and take action where necessary! You will have read between the lines of Jean's letters that it is a thousand times worth it!—EDITOR)

Next Month: Follow-on to Discoverers' Challenge

P.L. in Charge

by Mary Cunningham

LIFE for many of our Guides is a pretty civilized affair. Often it is a real effort for them to get into isolated and remote areas. Paradoxically, this very civilization makes it quite possible for any Guide to be placed in circumstances in which she will really need all her ingenuity and knowledge to survive. Get this idea across to the P.L.s. as something really possible, not just another of Captain's bright ideas. What do shipwrecked people and plane crash survivors really do?

The 'Shipwrecked on a Desert Island' theme is not unusual. Probably your Guides are quite familiar with carefully typed instructions telling them to light a fire, erect a shelter, find food and show a distress signal. If such a disaster actually happened there would be no typewritten instructions. It would be up to the Guides themselves to survive.

Training for P.L.

At P.L.s' trainings encourage common sense and questions. Ask for the basic requirements for survival. Food and water will come to mind most readily but P.L.s. may need prodding to realize that shelter is also of paramount importance in many circumstances. Exposure is a killer, and climate and terrain must be taken into consideration.

How did the pioneer women of America shelter their families? Indian squaws, the Voortrekkers, the Bedouins, Highlanders who took to the heather after the Jacobite risings, gypsies of the New Forest, all these survived under primitive conditions. The Guides will be able to think of other examples.

Preparation

Divide the preparation into weeks. One week for ideas and research on various shelters for various

places. Do Red Indians use diagonal lashings at the top of their wigwams? Use another week for food research. Really cook and eat nettle-tops or very young bracken shoots. Where can water be found? How can it be purified if necessary?

A bow and arrow will kill small birds and animals at close range, but there is the Sixth Guide Law, so stalk your animals and get within range without frightening them but use targets to improve your marksmanship. Tickling trout may be an ideal way of replenishing the larder but is apt to be unpopular with water bailiffs. Practise in streams; even an old stickleback can move pretty fast at times.

Finally comes the Patrol's own particular preparation. Here come those typewritten slips again, a different one for each Patrol. Captain prepares details of actual disasters where shelter could have been of great benefit, such as:

'Walkers lost on Derbyshire Hills'.

'Plane down in New Guinea Jungle'.

'Castaway for Christmas'.

During this week the Patrol gets together the shelter material they might reasonably expect to find in such an area. This may require a certain amount of imagination and ingenuity but it is important that the materials gathered should be suitable for shelter building.

Grand Finale

A Saturday would be ideal for the grand finale when all the Patrols prove that they really could survive under their own particular difficulties for at least a day. Some of them might be able to sleep in their shelters. Is there a Guide Service Flash candidate raring to go?

'What Every Woman Knows'

by Ailsa Brambleby

EVERY WOMAN KNOWS it's important to have variety in meals. It's dull to know that because it's Monday we shall inevitably be faced by cold meat or that there's no need to look at the calendar if we're eating shepherd's pie as it's bound to be Wednesday!

It's even duller for our Guides and Brownies to know that because it's meeting-night the menu will be the usual game and roll-call and inspection and subs. and tests all dished up in the same order and possibly in the same way as usual.

We all approach a meal with more interest and better appetite when there's a chance of a surprise dish or even of an old one served up in a new way. Similarly, the members of our units will arrive more alert, more interested and ready to take part if there's a good chance of a surprise item, a new slant or an unexpected challenge.

A well-balanced diet is necessary but to give the maximum benefit it needs to be presented in as many different and interesting ways as possible.

It's Brownies!

by Edna Odell, Brownie Adviser for England



THE baby bangs endlessly with his spoon; the child rocks himself to sleep; our feet tap to a military band; the Beatles 'send' the younger generation; dancers work themselves into a frenzy it's the rhythm that does it, satisfying something deep down. It's a fundamental thing to which we all respond; it helps to get things done, witness the sea shanty, the Negro work songs, or the infantry covering miles with the help of a simple tune.

Brownies want rhythm, they need it and we, like Universal Providers, must try to give it to them. Don't panic, no one is going to add a clause to the Golden Bar 'Recognize six rhythms' and guitar-playing will not be required of Brownie Guiders! Mercifully, for Owls are not noticeably musical birds and rhythm is only part 'music'. Of course Brownies should sing, often, but if we aren't confident enough to start songs, there will certainly be someone who can do it for us. If children are moving to music we should see that they do so rhythmically, our 'Brownie song' should be 'skipped' not 'dragged'.

Most of our rhythm training isn't musical and certainly isn't under any specific test-work clause. Like 'Duty to God' it is all pervading and goes on practically unnoticed by the Brownies, like breathing, that rhythm which is life. Thinking of breathing, do we take steps to provide fresh air to breathe? Getting out when feasible? Having what ventilation is possible in the church hall? Keeping down the dust on the floor? How about skipping? 'In good style' includes continuous breathing and rhythm. It comes in ball-bouncing too.

How else do we give a feeling of rhythm? In our routine, that framework on which we build our weekly meetings. (Please note, not the time-table we cling to, not the time schedule from which we dare not digress, but just the barest outline, enough to give continuity, a feeling of security, a few things we can expect to happen at Brownies.) The odd occasion when we 'ditch' even these and do something completely different will only make us more conscious of the normal rhythm. There will be rhythm, too, in every Pack meeting; the change of pulse, the hectic chasing game before the quiet of a story, the short period of solid concentration and the activity for sheer fun.

We can help to make children conscious of the seasons with their ageless rhythms:

*'Spring for sowing,
Summer for growing,
Autumn for reaping,
Winter for sleeping'.*

They can set seeds in plastic cream pots, throw-away drinking cups or egg boxes; they can enjoy the colour and variety of summer, matching, collecting or

arranging; they can have a share, however small, in harvesting, perhaps gathering conkers to make dolls' house furniture. We can make them aware of the bareness of winter which suddenly shows the shape of trees and lets them see stars on their way home. We have to do some of this because it's in our 'nature' but it is also part of our own nature. We no longer till the ground for our daily bread but we do get tremendous satisfaction from contact with the seasons. What better way is there of bringing home to any child the permanence of a Promise than by the story of the rainbow, the token of God's Promise that 'while the earth remaineth'

How else do we give Brownies rhythm? It is there in the constant over and under of the darning stitch; it can be made more obvious by the use of colour, drawing a bright thread through the oatmeal backing of a swab or floorcloth. What of the 'turned down hem and the fancy tack'? The timeless attraction of Assisi cross-stitch embroidery, of the Greek key patterns lies in the endless repetition of the same simple motif and the tacking stitch gives similar opportunity.

We give children rhythm, but Brownie Guiders, in the interest of self-preservation, should use, for their own ends, anything which children find easy and enjoyable. They enjoy rhythmic chanting, so they might as well chant something we want them to learn. Of course we don't want parrots, repeating without understanding, but the actual learning can be a start for your explanation, and may well be what Brownies come back to when your words of wisdom are forgotten. The old Health Rule rhyme is not poetry and certainly isn't all we want them to know about health, but its very doggerel makes it stick. Chanting 'A's for alright and it's on the right' may help a child to start off on her semaphore. Singing (to the tune of 'In and Out the Windows') 'St. George's Flag for England (three times) Straight red cross on white ground' doesn't take a minute at the beginning of a flag game; it can be done while the cards are put out. We make the shape with our arms and legs and say 'slant' instead of diagonal for the other flags. Singing it stays in the mind better than a wordy harangue.

Every time we set a compass before a game, Brown Owl can chant her pared-down party piece:

*'A compass shows where north is,
If we put it level and let it rest.
When I'm looking at north, south is behind.
The left points to west
And the right to the east. Weeee!'*

It all comes back, as happens so often in our Guiding, to using what children want, not only to serve our immediate purpose but to enable them to enjoy so much more of life.



Illustrated by
Elizabeth Wall

Brownies On Their Own

by Doris Mitchell

MOST Guiders have their fair share of the acquisitive instinct, so many of them have that shelf in a dark cupboard or box under the bed laden with all the oddments which may 'come in useful some time'; it is to this that the Guider can go when she needs some activity which can be done by Brownies on their own as most children enjoy the opportunity to express themselves individually, and the sense of achievement which something produced by their own efforts can give. This may be the chance for the shy, quiet child, who is not good at games, or who finds knots and semaphore difficult, to excel; it is certainly an opportunity for Guiders to observe their Pack and get to know the Brownies as individuals—or perhaps to do some much needed testing if the whole Pack is working on its own.

One of the most versatile methods by which Brownies can work alone is the making of scrapbooks. These can be undertaken by one or two children, perhaps the Golden Hand Brownies, or by quite a big group, such as those working for Golden Bar, or by every member of the Pack. The book itself can be made from wallpaper (that odd roll from the box under the bed!), shelf paper, or brown paper flattened, if necessary, by ironing. The sheets can be stapled to-

gether or joined with a plait threaded through punched holes.

The subjects suitable for scrapbook making are limitless: nature, the promise, the royal family, health, international, children's pictures, which may result in a Good Turn gift to a nursery or hospital, recipes or home hints for 'Mothering Sunday' or the Brownie stall at the bazaar or illustrated diaries of Pack or local events. The sources of supply are equally wide: THE BROWNIE, other magazines of all sorts, postcards, Christmas cards, newspapers, calendars, free leaflets such as those issued by Ro.S.P.A. and travel brochures. If the Guider supplies a start from her own store, the Brownies will probably be able to add to it themselves, for they also are acquisitive by nature and the collecting of material is half the fun.

Arrangement of the various items in the book needs care as on this largely depends the attractiveness of the finished article. A little training can be thrown in here, and the Brownies encouraged not to overcrowd the pages, and to group all the contents of one page as effectively as possible before fixing any of it. Paste can be used for this, or small strips of 'Sellotape' across each corner of the picture or article—a less messy but more expensive method, and again Brownies need to be taught to use the 'Sellotape' economically. Apart from this, however, there is very little expenditure, and besides its many possibilities the making of scrapbooks is also one of the cheapest and easiest ways in which Brownies can profitably be occupied on their own.

Woodcraft

Insects

by Margaret Haggerty

Do you realize that insects form 4/5th of the world's animal population and that each year they eat enough food to give 250 million people an adequate diet?

On the credit side they enable us to grow many of our crops, quite apart from the fact that large numbers are creatures of great beauty and interest.

A quick method of deciding if a small creeping animal is an insect or not is to count its legs. All insects have six legs. This means that spiders with eight legs and wood-lice with fourteen are excluded from the class.

The majority are less than one millimetre in size, but there are still many of the 20,000 or so species in this country which can be seen, at all seasons, with the naked eye. To find insects:

WINTER: Strip bark from fallen branches. Examine stems of dead plants and straw stacks.

SPRING: Look under stones near ants' nests.

SUMMER: Look among flowers. Hang an umbrella on a tree and shake the branch.

AUTUMN: Shake fallen leaves over a white cloth.

Seize opportunities as they arise to generate a spark of interest. Perhaps you may find some of the following insects in camp or on your next hike.

Ladybird—useful

Most are red with black spots, a few are black with red spots, but the number of spots varies with the species. We have 40 different species; how many can you find?

The name comes from the Middle Ages when these little beetles were dedicated to the Virgin and called 'beetles of Our Lady'. The nursery rhyme

*'Ladybird, Ladybird, fly away home,
Your house is on fire, your children alone'*

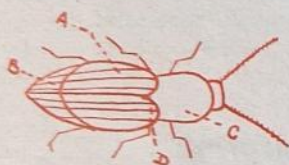
probably comes from the traditional burning of the hop vines at the end of the harvest; the vines would be heavily covered with young ladybirds at that time.

Click-beetles—harmful

Attracted to lights at night and often found in undisturbed grass-land. There are many species, which vary in colour and size, but all are flat and elongated.

Place the click-beetle on its back. It will leap into the air with a loud click and probably land on its legs—hence its other name of 'skipjack'. It does this by the point midway down its back pressing on the body with a tiddleywink action, so flipping the insect into the air. Find one and try it out.

A young click-beetle is a wireworm, which lives in the soil for four years feeding upon plant roots. This insect is definitely not a gardener's friend.



Click-beetle

- A. Light brown
- B. Dark brown
- C. Dark brown
- D. 'Point'

Frog hopper—concealed in its cuckoo spit

The little insect inserts its feeding tube into the plant stem and sucks out juices which causes a sticky substance to pass out of the end of its body. Next it sucks air through its body and this causes a mass of bubbles to form in the sticky secretion. In this way it is well protected against various dangers.

Earwig—harmful

Find them under stones, in flowers, pine cones, etc. Can you recognize males and females? It is easy if you look at the pincers at the end of the body.

Female earwig's pincers



Male earwig's pincers



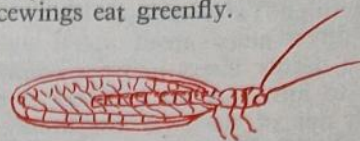
Glow-worms

Mostly found in the south of England, e.g. round the Oxford County Camp-Site.

Glow-worms are beetles, but though the male can fly the female has no wings; therefore, at night, as the female is crawling along she causes the hind end of her body to glow like a lamp, which enables the male to see her and fly down to her.

Lacewing—useful. (Size $\frac{1}{2}$ in. approx.)

Attracted to house light at night. These are delicate, charming insects, usually bright green with a golden eye. Young lacewings eat greenfly.



Lacewing

Do not encourage the collecting of insects, unless you think it is a hobby which is going to last and lead to a serious study of a particular group. Drawings or photographs make better records for they do not reduce the numbers of our rarer species still further. Try these activities with—

BROWNIES

1. **A belt on the ground:** how many insects can you find in the circle?

2. **Folded paper insects:** see the various books on the subject of Japanese paper folding.

3. **Pond dipping:** EQUIPMENT NEEDED: Net or grapy strainer; enamel dish; spoon or specimen tube; tin on string.

METHOD: Put some reasonably clear water in the dish. Sweep the scoop through the water, weeds, or top of the mud. Tip the contents into the dish. (If the scoop contains a lot of mud wash this away first.) Catch the animals with the spoon or tube and transfer to the tin. (NOTE: A tin is much safer than a jam jar.)

Tap water will do very well for the aquarium when you arrive home.

Watch for animals that attack and eat other animals. Isolate them, and feed on scraps of raw meat.

2. and 3. are ideal for Pack Holidays.

GUIDES

1. Which Is Right?

Each Patrol has a card divided into squares and a collection of letters A, B and C.

Read out a statement with three endings. The Patrol puts the letter of the correct ending in the first square, and so on. E.g., oak apples—(a) Contain an insect grub; (b) Are good to eat; (c) Will grow into new oak trees.

A bee carries pollen to the hive—(a) In its mouth; (b) All over its body; (c) On its legs.

If bacon rests against the muslin of the larder expect to find—(a) young—(a) Death watch beetles; (b) ladybirds; (c) bluebottles.

2. Adapt some of the well known party games, like —Name the Insect

Put statements round the room. The Guides decide what insect is described: e.g., St. George killed it... and the quickest way to travel (*Dragon fly*); 'Arsenic and old...' and part of a bird (*Lacewing*); Played in summer (*Cricket*).

Both these games need following up with pictures, or, better, direct observation.

3. Anything To Declare?

Make up a story about secret agents trying to smuggle a deadly insect into the country. They have a permit to introduce six harmless types but propose to switch one of these for the deadly variety. Have four posts: (a) Insect Farm; (b) Foreign Customs; (c) British Customs; (d) Experimental Station.

Each Patrol sends one or two people to each post. In turn, each post inspects the six insects (large pictures). The Patrols re-gather and try to decide when the exchange took place and what the deadly insect looks like.

SENIOR BRANCH

Invite an expert on beekeeping or insect photography to the meeting. Insects are normally a very neglected group in most programmes, so why not give a new slant to the activities through which you put across Guide training by making use of them?

If you know little about them, don't worry. We are not concerned with teaching a lot of facts. Rather, we should try to arouse the interest of the girl, so that she

might follow the subject up for herself, or, we can use the medium of insects for developing powers of observation, self-control, etc. If the only thing achieved is that someone takes a second look at something, seen unseeingly in the past, then we have done a little to open eyes and minds to the wide variety of life that surrounds us, showing the incredible glory and intricacy of God's creation.

USEFUL BOOKS

'I Spy'—*Insects*, (News Chronicle, 1s.).

The Observer Book of Common Insects and Spiders, by E. F. Linssen and L. Hugh Newman (Warne, 5s.).

Insects of British Woodlands, by R. Neil Chrystal (Warne, 16s.).

Insects and Spiders, by H. Trevor Jones (Warne, 3s. 6d.).

Wayside and Woodland Series: Bees, Wasps, Ants and Allied Insects of the British Isles, by Edward Step, F.L.S. (Warne, 15s.).

The Junior Naturalist's Handbook, by Geoffrey G. Watson (A. and C. Black, 12s. 6d.). (This gives clear instructions about where to look, how to collect, preserve, mount, record, etc., as well as giving details of the British Junior Naturalists' Association.)

For Guide and Senior Branch Guiders

The Duke of Edinburgh's Award

by Marjorie Stopford, Duke of Edinburgh's Award Adviser, C.H.Q.

MEMBERS of the movement who wish to work for the Award can do so either through their own Units, assisted by the County Co-ordinator, or through school, work or a club. In any case, they can use badges and tests that cover certain parts of the Award. It may be of special interest to Guides or Senior Branch members of 14 plus who want something more while remaining in the Movement.

The method of training and assessing should be carefully noted as it is different from that which is usually used in the Guide Movement. The age groups are different, too, as they are from fourteen to twenty, not twenty-one. The great point to bear in mind is that the candidate must be working for the Award when she completes any subject. This means that she cannot use any badge or certificate which she has gained before she starts working for the Award. The only exceptions to this are Life Saving, First Aid and Home Nursing certificates which may have been gained up to one year previously.

It is essential that any Guider who has Guides or Rangers who want to do the Award should study the *Leaders' Handbook* carefully and also get in touch with her County Co-ordinator; most Guide counties have appointed one. Handbooks are obtainable from C.H.Q. and all branch shops for 1s. 6d., postage 6d.

Equivalent Qualifications

It has been agreed that a girl who qualifies for a badge awarded by a youth organization may also be

credited with passing a condition of the Duke of Edinburgh's Award provided that:

(a) The activity is the same: (b) the conditions are similar in all main essentials, in particular the time required of six months for an Interest: (c) the standard passed for the badge in question is not less than that required for the same activity in the Award Scheme. This is not retrospective, it only applies to work done by a girl at the same time as she is working for the Award.

The Award is divided into four Sections: DESIGN FOR LIVING, PURSUITS AND INTERESTS, ADVENTURE, TRAINING FOR SERVICE, each one increasing through the Bronze, Silver and Gold stages.

Design for Living

This is a homemaking section with a syllabus for each subject. In all syllabuses it is stated how many training sessions are required to acquire the knowledge. The length of sessions is not stated and some of them may be in the form of practical work. Sometimes the same person will take all sessions, but it may be more suitable for different people to take different parts. As for Ranger certificates, a Guider can take sessions if she has the necessary qualifications. A different person will assess at the end, in close co-operation with whoever has given the training. The emphasis, in all Sections of the Award, is on the ability of the candidate to carry through a project.

The following Tests, Badges or Certificates can be

used when training in this Section but the Award Syllabus must be covered.

Ranger and Guide	Duke of Edinburgh's Award
Guide Service Flash, part I, could be used as an introduction to ...	Make-up and hair styles.
Home Planning Certificate, Ranger Star, part 3, can be used when doing	Entertaining and possibly some others e.g. Acquiring your home; Furnishing and Decoration.
Electrician certificate covers a small part of ...	Use and Care of electrical equipment.
Cook certificate, plus jam making, goes to second level of	Planning meals for the family.
Laundress certificate covers part of	Modern Home Washing.
Flower arranging certificate goes to second level of	Floral decoration.
The Samaritan, First Aid and Home Nursing certificates and Emergency Helper, Health and Sick Nurse badges cover a large part of the Good Manners clause which is necessary for each participant with the first 'Design for Living' subject taken.	

Pursuits and Interests

This section of the Award aims to offer incentive and encouragement for the discovery and development of interests and aptitudes demanding initiative and perseverance. There is a syllabus for some of the project but the chief virtue lies in the continuance of the project for the required time. What is achieved at the end depends at what stage the subject is started, i.e., whether it is a new interest or one that a candidate has pursued for some time previously.

In the case of all interests there should be, throughout the period, contact between the candidate and a knowledgeable adult who can assess the progress and help or advise when necessary. Having regard to this, it will be seen that just to gain a badge could not in itself qualify, but in some cases a badge syllabus can be used and, if necessary, be enlarged for the Award. The arrangement of the Award syllabuses is being changed at the moment so care should be taken to check with the latest (1965) *Leaders' Handbook*.

The following Tests, Badges and Certificates can

be used in the Interests Section as they are similar to the Award Syllabus:

Ranger and Guide	Duke of Edinburgh's Award
Aircraft recognition certificate could be used. Leading Air Ranger covers some parts of ...	Aircraft Recognition
Astronomer certificate covers nearly all of ...	Astronomy
Oarsman certificate covers part of	Boating
Canoeist certificate covers most of	Canoeing
Cooking certificate can be used for	Cooking at Home
Bellringer certificate 1st level of	Church Bell Ringing
Drama certificate can be part of the Interest of	Drama
Motor Mechanic certificate and Land Ranger Maintenance test covers much of the equivalent Interest of	Motor Cars, Engineering and Maintenance
Handwork certificate covers much of	Embroidery
Folk Dance certificate or Country Dancer badge	English Folk Dancing
A.B. test covers some of	Meteorology
Water Naturalist	Natural History
Art certificate could be used for	Painting
Next Month: Adventure: Training for Service, etc.	

Age groups for the Award

BRONZE: 14-20: SILVER: 15-20: GOLD: 17-20

Charts setting out the comparison between the Award and the Guide and Senior Branch tests in more detail are available from Branches Department at C.H.Q. on receipt of a stamped addressed foolscap envelope.—EDITOR

FROM NEWSOM—FOR US

MARCH

'Very often the only way to be realistic is to use the imagination as an aid to responsible living, thus developing conscience from the stage of taboo to the level of insight.'

[From 'Half Our Future', a Report of the Central Advisory Council for Education (England)]

Looking Ahead to Pack Holidays

by Mildred Leeson

A Brownie promises to do her best to help other people especially those at home, but it is for the practical teaching of such things as washing-up, table-laying, cooking and fire-lighting that we lack facilities in our Pack meeting. Pack Holiday, however, gives the ideal opportunity for the Brownies both to learn such skills and to practise them.

The words 'Pack Holiday' can give a new and exciting meaning to testwork. Whether or not a Brownie is one of the fortunate members of the Pack going on Pack Holiday this year, she will still enjoy the thrill of making a table napkin ring or a duster holder, or of knitting a kettle holder or dishcloth that is to be used on Pack Holiday, and will use her best efforts to make the article worthy of a place in the Pack's holiday equipment. Folding clothes is worthwhile when they are to be packed in a case for travelling, or kept tidily in a drawer or locker, and there is a real sense of achievement for the Brownie who, having practised her clothes folding at Pack meetings, gains commendation when drawers or lockers are inspected on Pack Holiday.

What an opportunity we have, too, on Pack Holiday, to form 'Health Rule' habits which are taught at the Pack meeting. Fresh air and exercise we have in abundance. Helping with the cooking will make the Brownies observant of 'wholesome fare', and we can ensure that there are facilities for washing hands before meals and after going to the lavatory and the time to do so. Bath and bed-time are one of the happiest times of the day—whether the 'bath' is a large sink or a proper bath. The ventilation of bedrooms becomes even more important when a number of Brownies are sleeping in one room. The pooling of sweets has many advantages—the likelihood of sticky pillows and clothing is avoided, wasps are not attracted and appetites for the regular good meals provided are not impaired.

Yes, a week of this life is indeed worth six months of teaching in the Pack meetings.

Getting to Know our Brownies

In a whole year of meetings we could not get to know our individual Brownies so well as we do when living with them for a week on Pack Holiday. What is more, they get to know us and to have more confidence in us, for if our Pack Holiday is well organized, properly staffed and the programme not overcrowded, we can give the Brownies our full and sympathetic attention during the

whole of the time. The example set by the Guiders, Senior Branch members or Pack Leaders is, of course, as important as ever. With our help and guidance, the Brownies will grow in courtesy and the keeping of their law, in the give and take of living in a larger community than the family circle and, above all, in the first part of their Promise.

On Sunday the programme is planned round attendance at church or other place of worship. Throughout the week proper time and thought is given to morning and evening prayers, and due thanks are rendered for our food through grace at meal-times. The 'Quiet Corner' contains our prayer cards or prayer books and suitable reading material and pictures. A place where the Brownies can keep the treasures found out of doors will encourage their sense of wonder and praise for the world God has created.

Programme Opportunities

Through the year our plans to take the Pack out of doors depend very much on the weather. The night of our meeting is so often the one wet night of the week! How different on Pack Holiday, when every day the countryside is available to us. The Brownies enjoy exploring the countryside and seashore near their Pack Holiday house and for town Brownies a visit to a farm is a great thrill. Arrangements for this can usually be made with a local farmer. Here is an opportunity of giving training in courtesy to the farmer and kindness to animals.

The local Camp Adviser will have a wonderful fund of knowledge of the locality to impart and will know where wild flowers are to be found and what birds and animals may be seen, and it is well worth contacting her to see if she is able to come herself and spend some time with the Brownies or can suggest someone else.

The Camp Adviser will also know if there is a Guide camp in the vicinity that the Brownies could visit. A child who has experienced Pack Holiday will look forward to the adventure of camp, and will already have training in many qualities that go to make a happy camper. She will have been given the discipline of a well-planned daily programme, she will have become self-reliant and capable of looking after her own belongings in an orderly manner, and she will have learnt the necessity for each member of a team to do her share of the work, as well at the end of the holiday and in the packing-up as at the beginning when playing her part in the housework and washing-up is a novelty.



Illustrated by C. Towner



Rule 26

Clause 4. *Delete* 'or Secretary' and substitute 'Secretary or Adviser'.

Rule 28

THE UNIT

Clause 2. *Add:* Or a pack of less than 12 Brownies.

Rule 31

THE BROWNIE PACK

1st line *delete:* consists and substitute should consist.

Rule 45

BROWNIE PROFICIENCY BADGES

COLLECTOR

Clause 1. *Delete* 'of one of the following' and substitute 'illustrating a hobby or interest, e.g. stamps etc'.

THRIFT

Clause 1. *Delete and substitute:*

Have a savings account (in a savings bank or approved security such as savings stamps or certificates) of at least three months' standing and show that she has added to it regularly.

Clause 3. *Add:* and be prepared to quote two other examples that indicate that she understands the meaning of thrift.

Rule 59

GUIDE FIRST CLASS

Some of the clauses have been re-worded. The new wording is as follows:

3. (b) Know something of the origin and growth of the Guide Movement in her own country and in the world. Prove this in an interesting way chosen by the candidate and approved by the Commissioner. *Delete note.*

4. Show in six practical ways that she understands the meaning of thrift. *Delete present clause.*

9. Prove by her personal appearance and through discussion that she is genuinely interested in good health and grooming. *Delete present clause.*
Alternative: Hold the Health badge.

11. Throw a rope accurately three times out of four:
(a) Upwards for a definite purpose to a height three times that of the candidate.
(b) as at present.

Delete note.

12. Know her neighbourhood thoroughly so that she can direct a stranger within a radius of half a mile (town) or one mile (country) of her home or Guide H.Q. to the nearest churches; doctor; telephone, pillar box, post and/or telegraph office; garage and/or filling station; police station, bus and railway stations, town hall and other well-known buildings; give approximate times needed to reach each place. At the test draw a rough sketch map showing the way and the distance from one given point to another. Know to what places the main roads lead.

Alternative: Hold the Pathfinder badge.

Delete present clause.

13. Show how to use a compass (16 points); find direction by the sun and stars. Be able to find the way from one point to another following (a) a street map (b) an Ordnance Survey map.

Alternative: Hold the Map Reader Badge.

Delete present clause.

14. Take two Guides who have not themselves passed this clause for a half-day hike, to include cooking a meal out-of-doors.

Delete note.

NOTE: *Delete from:* 'one of the following badges' to: 'Country's Headquarters' and substitute: an additional proficiency badge to be determined by the country's Guide Adviser.

Rule 63

GUIDE PROFICIENCY BADGES

After Basket-Maker insert new badge

BE PREPARED (Letters B.P. with Arrow).

1. Hold the First Aid or Emergency Helper badge.

2. Hold one of the following badges:

Fire Fighter, Pioneer, Rescuer, Signaller.

3. Pass a Be Prepared test, arranged by the tester, to include improvisation, dealing with a sudden emergency, coping with change of plans, unexpected situations, and difficult or unusual jobs.

NOTE: Throughout the test the candidate will be judged on her common sense and enjoyment of the challenge presented.

COMMONWEALTH KNOWLEDGE

Clause 1. *Delete and substitute:*

Discuss with the tester the meaning of the term 'The Commonwealth'. Using a non-Commonwealth bloc map point out ten different Commonwealth countries, at least one from each of the following regions:

(a) The New World.

(b) Europe and Asia.

(c) Africa.

(d) Australasia and Pacific.

Explain how each country is represented in the World Association of Girl Guides and Girl Scouts.

Choose one country from each region, state when it became independent and what form of independence it has. If it is not independent indicate briefly how much self-government it has today and how it became part of the Commonwealth.

Clause 3. *After the words* 'five different things' *insert* (not postage stamps)

POULTRY FARMER

Clause 2. *Delete and substitute:*

Set a hen, set up a brooder, and rear chicks or ducklings or turkeys.

4. (b) *Delete and substitute:*

Understand the elements of feeding of poultry and the use of simple drugs to prevent disease.

5. (a) *Delete and substitute:*

Clean out and disinfect the inside and creosote the outside of a poultry house.

After SKATER insert new badge.

SPEAKER (A Guide with a microphone)

1. Say from memory a short poem or passage of verse of her own choice, lasting not less than one minute and not more than two minutes.
2. After a short time for preparation, read aloud a passage provided by the tester.

3. (a) Introduce, and thank, a visitor to a meeting.

(b) Prepare and take Guide prayers, or speak for not less than three minutes on a subject given to her five minutes beforehand.

4. Talk with the tester about something interesting which she has done or seen recently.

GREATER PROFITS

FUND RAISING MADE EASY ALL-THE-YEAR-ROUND

33 $\frac{1}{3}$ % PROFIT
SENSATIONAL NEW
ALL-THE-YEAR-ROUND
SCHEME BY
MILLER GREETINGS

A MINIATURE
GREETINGS
CARD SHOP
IN A HANDY
CARRYING CASE
AT HOME
NO INITIAL
OUTLAY

CARDS FOR
ALL OCCASIONS
-ON APPROVAL

- * BIRTHDAYS
- * AGES & RELATIONS
- * ANNIVERSARIES
- * GETWELLS
- * BIRTH CONGRATS. ETC.

REPEAT ORDERS
-ANY QUANTITY
-ANY TITLE

ORDER NOW
-PAY LATER



POST TO:

MILLER
GREETINGS

(GREAT BRITAIN) LIMITED
REMBRANDT WORKS
 ALL SAINTS' ROAD, BURTON-ON-TRENT.
 Telephone: BURTON 3772/3

Post the coupon for details of
 NEW MILLER GREETINGS CARD SCHEME
 (By return of post - without obligation)

NAME _____

ADDRESS _____

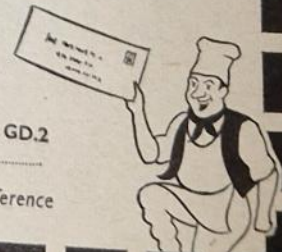
ORGANISATION _____

POSITION _____

GD.2

If already a Miller Greetings customer, please quote Account Reference
 in this space

(Are you over 21 years
 of age? YES/NO.
 (Delete as applicable))



TRAVELLER (A Steamer)

1. Make the following preparations for a visit she is intending to make to a foreign country:
Through books, personal contacts, etc. make herself acquainted with the country, including its monetary system, food, rates of exchange, vaccination regulations, rules of the road, national anthem, flags, and Guide uniforms, and type of clothes suitable to be worn there. Know how to obtain a passport and where to obtain help abroad should an emergency occur.
2. Know the customs regulations of her own country as they apply to herself.
3. Be able to talk in an interesting way about her own country and contribute a suitable item to camp-fire.
4. Wear uniform correctly and know the rules concerning the wearing of uniform when travelling abroad. Know how to obtain an International Letter of Introduction.

NOTE: The badge is to be awarded *after* the visit has been made.

Rule 69, 2 Recognition of Sea Ranger Crews

- (a) (ii) *Delete: twenty and substitute: 15.*

Rule 87

EXTENSION SECTION

3. The County Extension Secretary is *now to be known as* The County Extension Adviser.
At end of first sentence insert:
The term of appointment is for an initial period of five years which may be extended by three years and by a further two years, after which there should be a break of at least three years before the appointment is held again by the same person.

Rule 95, 2. THE CAMPING QUALIFICATIONS

- (a) *Licence for Indoor Camps: Delete this section.*
After (b) add new qualification:

THE HOLIDAY PERMIT

The holder of a Holiday Permit is entitled to take Guides and/or Senior Branch members on any type of holiday other than a camp under canvas.

Qualifications

- (i) Have attained the age of 21 years.
- (ii) Hold a warrant.

NOTE: At their discretion the Commissioner and C.A. may recommend a Guide who has attained the age of 20 years.

Test

1. (a) Show a practical knowledge of basic first aid, including the treatment for shock, bleeding, cuts, fractures, sprains, burns, bites (including snake bite), stings, and concussion, and be able to apply it under the conditions encountered on an outdoor holiday.
(b) Understand the use of a clinical thermometer.
(c) Know how to equip a first-aid case suitable for a holiday.
 2. Have knowledge of the cooking and storage of food, and the planning of balanced menus.
 3. Have the necessary power of organization and the ability to be responsible for a group over a prolonged period.
- Exemption:* A holder of the Camper's Licence, or the Guide's Camp Permit who has attained the required age, is deemed to have qualified for the Holiday Permit.

(d) THE QUARTERMASTER CERTIFICATE.

Qualifications

- (i) *Delete 18 and substitute 17.*

Rule 96 INTERNATIONAL RELATIONS

- 5 (b) *Qualifications of the Guide-in-Charge*
Our Chalet, Hostels, etc. *Delete and substitute: The Guide in Charge must hold the Holiday Permit.*

Rule 99 BOY SCOUTS

4. Uniform

Insert as (a):

For joint activities only (see 3. (b)) Senior Scouts/Rovers and Rangers may wear a scarf of design approved by the County Commissioner and the Guide responsible for the Senior Branch in the County. Guides may wear a tie of the same colours.
Re-letter the rest of the section.

Rule 102 BATHING

4. HOLIDAYS AFLOAT.

Delete first sentence and substitute: A Guide in charge of a cruise or holiday afloat must hold the Holiday Permit.
Category A: Delete: A Guide aged 21 or over must be in charge of the party.
Categories B and C: Delete: The member of the Association in charge must hold a camping qualification and
Category D: Delete: Camping qualifications and substitute: Camper's Licence or Guide's Camp Permit.

After Rule 103 add

ADVENTUROUS ACTIVITIES

Instruction for an adventurous activity, i.e. ski-ing, water-ski-ing, skin-diving, mountain activities, rock climbing, pot-holing or caving, should, whenever possible, be given by an outside expert. Instruction may only be given by a member of the movement if she holds the necessary qualification required by the National Association for the activity. For further details apply to the Senior Branch Secretary, C.H.Q.

Rule 104 AWARDS

1. GALLANTRY AND LIFESAVING

Delete from: The Certificate of Merit to the end.

2. FORTITUDE *Delete this whole section.*

3. GOOD SERVICE *Re-number as 2.*

Delete the Letter of Commendation meritorious service.

4. MERITORIOUS CONDUCT *Re-number as 3.*

Delete whole section and substitute:

The Star of Merit * (*navy blue ribbon with gold edges*).

An award given to any member of the movement, who without risk to her own life has showed initiative and devotion to duty, or has displayed great courage or fortitude, often under suffering.

If the Star of Merit is awarded jointly to a number of Guides in the same unit it carries the right to add red cords to the colours of the unit.

Add new paragraph: COMMENDATION.

When it is appropriate a Certificate of Merit or a Letter of Commendation may be awarded for gallantry or life saving or for meritorious conduct.

* *This award is to take effect from 1st April.*

AWARD FOR MERITORIOUS CONDUCT

The Executive Committee has instituted a new award for meritorious conduct including fortitude, to be known as the Star of Merit (see page 87). The Badge of Fortitude, which has hitherto been given mainly to members of the Extension Section for showing fortitude under suffering, will now be discontinued. The Extension Committee has welcomed this which is a further step towards preventing any feeling on the part of the handicapped girl of separation from the rest of the Movement.



No one has any doubts about the great courage shown by members of the Movement under physical suffering (19 Badges of Fortitude were awarded in 1964), but there are many people, both adult and children, who also show great courage and fortitude through their devotion to duty. There has often been a wish to recognize some outstanding achievement of this kind but up to now there has been no appropriate award.

The new Star of Merit will embrace all acts of meritorious conduct and may be awarded to any member of the Movement who, without risk to her own life, shows initiative and devotion to duty, or displays great courage or fortitude often but not essentially under suffering.

The institution of this award and the abolition of the Badge of Fortitude will take effect from 1st April, 1965. After that date applications for the Star of Merit may be made in the usual way to the Secretary of the Awards Committee at C.H.Q.

CONGRATULATIONS

Our congratulations to the following members of the Movement whose New Year Honours were awarded for Public Services:

MISS MURIEL ORSMAN, O.B.E., County Commissioner for Central Glamorgan.

MISS SYLVIA PERRY, M.B.E., State Commissioner for Western Australia.

IN MEMORIAM

SUSAN MARSH, aged 18, Tawny Owl of the 52nd Croydon (St. Oswald's) Pack, who died in December, was awarded the Badge of Fortitude last year for her courage after the amputation of her right arm. She went on to pass all her exams, achieved her goal and began at University in September. Susan was a Brownie and Guide in the 47th Croydon Pack and Company, and her acceptance of life has been an inspiration to all who met her and her wonderful example will live on.

MRS. W. M. ROBINSON, who died in January, was Lieutenant of the 1st Swanmore Company from 1925 to 1927 and Captain from 1927 to 1932. She was also District Commissioner of Bishop's Waltham.

A JOB WITH PEOPLE?

Everyone seems to ask for a job 'with people'. We have a particularly interesting one shortly becoming vacant. If you have initiative, tact, commonsense and some administrative experience, and are over 25, write for details: Personnel Officer, Girl Guides Association, 17-19 Buckingham Palace Road, London, S.W.1.

(For other Staff Vacancies see page 89.)

THE GUIDER

Headquarters'

U.S. GIRL SCOUT CAMP IN GERMANY, 1965

Applications are invited for staff members to work at Camp Lachenwald, near Marburg, Germany, from either 21st June-24th July or 26th July-28th August. The campers will be American Girl Scouts resident in the North Atlantic area. Return travel expenses will be paid, plus a small amount of pocket money.

Staff positions include Arts and Crafts, Interpreters, and Unit Leaders. Anyone interested should apply to the International Secretary, C.H.Q., for further details, enclosing their Commissioner's recommendation. Applications will be accepted in the order in which they are received and passed on to the North Atlantic Girl Scouts for final selection. No applications will be accepted after 12th April.

STUDY VISIT TO BERLIN

The Educational Interchange Council (Incorporated) is hoping to send a group of sixteen senior workers in the youth service to spend a fortnight in Berlin, at the invitation of the Senator for Youth and Sport of West Berlin, to study the Youth Service in that city against the background of the political situation.

Anyone who is interested should apply for further details to the International Secretary, C.H.Q., on a C.H.Q. nomination form (obtainable from County International Representatives) as soon as possible, but not later than *Wednesday, 24th March, 1965*.

Dates: Friday, 17th September—Sunday, 3rd October.

Cost: Approximately £36 (possible grant aid).

Qualifications: At least two years in the Guide Movement; a working knowledge of German; be able and willing to pass on what has been learned.

CAMP HELPERS NEEDED

Camp Secretary: One each needed for Foxlease and Waddow from approximately mid-June to mid-September. Ideal summer job for Guider who is a keen camper. For details write to the Secretary, Commonwealth Training Department, C.H.Q.

Camp Secretary and House Orderly: One of each needed at Broneirion, Training Centre for Wales, from approximately mid-July to mid-September. For details write to Guider-in-Charge, Broneirion, Llandinam, Montgomeryshire.

Blackland Camp-site: Two Rangers, Cadets or young Guiders are needed to help from the end of July to the end of August. For details write to the Deputy General Secretary, C.H.Q.

Notices

APPOINTMENT

Chairman, Cadet Committee, C.H.Q.
MRS. C. L. CARTER, vice MRS. A. LAING.

COMING EVENTS

The Commonwealth Circle will hold its next meeting on Thursday, 25th March, at the Guide Club, 46, Belgrave Square, London, S.W.1. at 6.30 p.m. Miss Anstice Gibbs, C.B.E., Commonwealth Chief Commissioner, will speak about her recent tour in the Commonwealth.

C.H.Q. SHOP MANAGER

Owing to the impending retirement of the C.H.Q. Shop Manager applications are invited from members of the Movement for this vacancy. This position calls for someone with first-class sales experience, ability to control staff and an extensive knowledge of the Movement. Please write for application form to: Personnel Officer, The Girl Guides Association, 17-19 Buckingham Palace Road, London, S.W.1.

FOXLEASE

Residential Secretary wanted in the spring. Short-hand, typing and accounts. Good salary. All found. For further details apply the Guider-in-Charge, Foxlease, Lyndhurst.

COMMONWEALTH KNOWLEDGE BADGE

It will be noted in the alterations to P.O.R. that Clause 1 of the Commonwealth Knowledge Badge has been amended. The Guide Committee wishes to point out that these alterations were necessary to bring the requirements up to date with present day conditions.

NOTICE BOARD

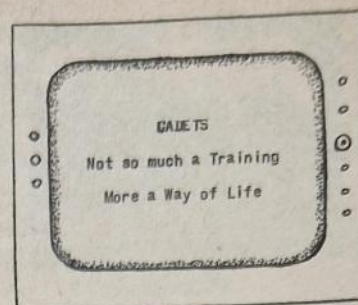
Lady Hoare's Thalidomide Appeal: if any other counties are thinking of following Northamptonshire's lead by helping with jumble collections for the above Appeal would they please note that Brigadier Chatterton, D.S.O. would be very pleased to answer enquiries if they would write to him at 78 Hamilton Terrace, London, N.W.8. (Tel. Lords 0231.)

The Annual General Meeting of the Catholic Guide Guild for the Dioceses of Westminster and Southwark will take place at 5.15 p.m. at the Convent of Perpetual Adoration, Horseferry Road, London, S.W.1 on 21st March, preceded by a day of recollection; assemble 11 a.m.

ADDRESS FOR C.H.Q.

The correct address of C.H.Q. is:
17-19 Buckingham Palace Road, London, S.W.1.
P.O. Box 269 no longer applies and if used causes a delay in delivery.
Telephone: Victoria 6242 (7 lines).
Telegrams: Girguidus Sowest, London.

CADET LEADERSHIP COURSE, 1965



Place: Llandaff House, Penarth, Glamorgan.

Dates: 30th July to 9th August, 1965.

(For full details see page 60 February GUIDER).

ALL ENGLAND LONE CAMPS, 1965

There will be an All England Lone Ranger Camp and an All England Lone Guide Camp, running independently, at Belmont Park, Belmont, Faversham, Kent from 29th July—9th August 1965. Cost £4 5s. 0d. (including a trip to Canterbury and Dover). Further details of both Camps can be obtained from your County Lone Secretary.

C.H.Q. STAFF VACANCIES

Senior Shorthand Typists

PUBLIC RELATIONS DEPARTMENT: Good speeds and experience essential. Age 20+.

TRAINING DEPARTMENT: Good speeds and knowledge of Movement essential.

Clerk Typists

EQUIPMENT DEPARTMENT: 1 Junior, aged 15/16.
PERIODICALS DESPATCH: 1 Junior to work Addressall Machine, filing, some typing, etc.

Clerks

EQUIPMENT DEPARTMENT: 3 Experienced Stock Control Clerks, aged 20+.

SALES DEPARTMENT: 1 Junior Clerk.

DESPATCH DEPARTMENT: 1 Senior Clerk, typing an advantage.

STOCKROOM: 1 Assembly Clerk.

Packers

2 required.

Shop Assistants

1 Part-time Saleswoman from 11 a.m.-4.0 p.m. daily.

2 Saleswomen for Saturday mornings from 9 a.m.-1.0 p.m.

2 Full-time Saleswomen.

All posts have a five-day week except the Shop Assistants. Three weeks' annual leave. Subsidised lunch in restaurant on premises. Pension Scheme. Good working conditions.

Apply MRS. BRIERLEY, PERSONNEL OFFICER.



Foxlease

GUIDERS attending trainings at Foxlease, Waddow, Netherurd, Broneirion, Lorne, and the Training Ship are eligible for Training Bursaries. A Guider may receive only one Bursary to help her to attend one training, and she must not have received a Bursary before. In exceptional circumstances, however, a Commissioner may recommend a Guider for a second Bursary. This applies particularly when a Guider is changing to another Branch or becoming a Commissioner. Fare Bur-

Where to Train

TRAINING BURSARIES

saries are available only for the nearest Training Centre.

Fee Bursary: This entitles a Guider to attend Foxlease, Waddow, Broneirion, Netherurd, Lorne, or the Training Ship at half-rate for a shared room.

Fare Bursary: Assistance is given to Guiders on the basis of four-fifths of the railway fare in excess of £1, and is available only for the nearest Training Centre.

Angela Thompson Bursaries: These are available for any Promise and



Broneirion

Law training (not necessarily held at a C.H.Q. Training Centre) and are of the same value as the Fee Bursary mentioned above.

GUIDERS should apply for these Bursaries through their District Commissioners, who will write to the Secretary, Training Department, C.H.Q. When applying, the District Commissioner should state the name and date of the training. Application must be made at least a fortnight before the training.

COMMONWEALTH HEADQUARTERS

(Please note new scale of fees at Foxlease and Waddow)

Application for trainings at Foxlease, Waddow, Netherurd, Broneirion, and Lorne should be made direct to the Training Centre concerned. Each application must be accompanied by the appropriate deposit and a stamped addressed envelope. Please state in original application whether you are a Brownie, a Guide, or a Senior Branch (state Section) Guider. Guiders attending weekend trainings may leave on Sunday evening or during Monday if unable to stay for the whole weekend.

The training Centres also accept other bookings from organizations outside the Guide movement (e.g., L.E.A.'s, Church groups, etc.) which, owing to lack of space, are not listed.

FOXLEASE

Lyndhurst, Hants.

- MARCH
5-8 Senior Branch Guiders (All Sections)
12-15 Guide (*emphasis on Guide Service Flash*) and Brownie Guiders
19-22 Commissioners, Guide and Brownie Guiders
26-29 Guide and Brownie Guiders
- APRIL
2-5 London N.W.
9-12 All-London
15-26 Leadership Training for Guide Guiders (See page 382 Dec. GUIDER)
30-MAY 3 Guide and Brownie Guiders
- MAY
7-10 London S.W.

- 14-17 Guide and Brownie Guiders (*emphasis on outdoors in town and country*)
21-24 Guide and Brownie Guiders
28-31 Cambridgeshire

JUNE

- 4-11 (1) Guide and Brownie Guiders
(2) Extension Guiders
15-22 Commissioners, Guide and Brownie Guiders (Mothers and Babies: Guiders may bring children under 5)
25-28 Guide and Brownie Guiders

JULY

- 2-5 London S.E.
6-13 International Song, Dance, Drama, and Handcraft
16-19 Guiding, Scouting and the Churches
23-26 Guide and Brownie Guiders
30-AUG. 10 *Patrol Leaders

AUGUST

- 14-21 Leadership Training (for 15-18-year-olds)
24-31 Guide and Brownie Guiders

SEPTEMBER

- 3-6 Trefoil Guild (For Presidents, Chairmen, Treasurers and Secretaries) (*Not more than two will be accepted from any one Guild but a third may apply for the waiting list*)
7-14 Holiday Week
17-19 Camp Fire
24-27 Guide and Brownie Guiders (*emphasis on Tests and Testing*)

OCTOBER

- 1-4 Guide and Brownie Guiders (*emphasis on training the Patrol Leader*)
8-11 London N.E.
15-18 Commissioners (*by invitation*)
22-25 Guide and Brownie Guiders
29-Nov. 1 Dorset

NOVEMBER

- 5-8 Senior Branch (*all sections*)
12-15 Guide and Brownie Guiders
19-22 Middlesex West
26-29 Drama Party

WADDOW

Clitheroe, Lancs.

MARCH

- 5-8 Camp-Fire (*especially for those who have not attended a similar training before*)
12-15 Guide and Brownie Guiders
19-22 Lancs. N.W.
26-29 Guide (*emphasis on Guide Service Flash*) and Brownie Guiders

APRIL

- 2-5 Commissioners (*by invitation*)
9-12 Guide and Brownie Guiders (*special places for Lone Guiders*)
15-22 Leadership Course for Guides and members of the Senior Branch between the ages of 15 and 18 years.
24-MAY 3 Leadership Training for Guide Guiders (see page 382 Dec. GUIDER)

MAY
 1-3 Guide and Brownie Guiders
 7-10 Guide (*emphasis on training the Patrol Leader*) and Brownie Guiders
 14-17 Yorkshire W.R.N.W.
 21-24 Guide and Brownie Guiders
 28-30 Congregational Guiders

JUNE
 4-11 *Patrol Leaders
 18-21 Guide and Brownie Guiders
 25-28 1. Senior Branch (all Sections)
 2. Guide and Brownie Guiders

JULY
 2-5 Guide and Brownie Guiders (Sessions for Commissioners)
 9-12 1. Guide and Brownie Guiders
 2. Camp Fire
 16-18 Public Relations for the Guide Movement
 23-AUG. 2 *Patrol Leaders

AUGUST
 7-SEP. 2 Holiday Period

SEPTEMBER
 10-13 Music and Drama in the Company and Pack
 17-19 Guide and Brownie Guiders
 24-27 Guide and Brownie Guiders (*emphasis on outdoors in town and country*)

OCTOBER
 1-4 Co. Durham
 8-11 Guide and Brownie Guiders (*emphasis on tests and testing*)

15-18 Commissioners, Guide and Brownie Guiders
 22-25 Guide and Brownie Guiders
 29-Nov. 1 N.E. Lancs.

NOVEMBER
 5-8 Guide and Brownie Guiders
 12-15 Senior Branch (All Sections)
 19-22 Guide and Brownie Guiders
 26-29 Music Party

County Trainings at Foxlease and Waddow

COUNTIES wishing to have a County weekend at Foxlease or Waddow in 1966 should apply to the Secretary, Commonwealth Training Department, C.H.Q. not later than 1st June, 1965.

* Patrol Leaders' Trainings

GUIDERS are reminded that only two Patrol Leaders can be accepted from any one Company and that they must be 13-14 years of age and not have attained their 15th birthday by 1st August, 1965. They must not have attended any previous training at a Training Centre and must be able to stay the whole time. Guiders are therefore asked not to apply for places at more than one Centre. Places will be allocated on 1st March, 1965, and applications, with a deposit of 12s. 6d. and a stamped addressed foolscap envelope, should reach the Training Centre by that date.

Fees at Foxlease and Waddow
Shared room per day ... 20s. 0d.
 (Minimum fee for weekend £2)
 per week ... £6 0s. 0d.
Double room per day ... 25s. 6d.
 (Minimum fee for weekend £2 11s. 0d.)
 per week ... £7 13s. 0d.
Single room per day ... 30s. 0d.
 (Minimum fee for weekend £3)
 per week ... £9 0s. 0d.
Deposit 12s. 6d.

TRAINING SHIP

APRIL 'GOLDEN HINDE' 1965

3-10 Maintenance
 10-17 Guides

JULY
 3-31 Weekly trainings for Senior Branch (accepted for Duke of Edinburgh's Award residential course)
 31-AUG. 14 Weekly trainings for Senior Branch

AUGUST
 14-21 Guiders
 21-SEPT. 4 Weekly trainings for Senior Branch

SEPTEMBER
 4-11 Guides
 11-18 Senior Branch
Fee: £5 5s. 0d. per week, deposit £2 returnable up to six weeks before commencement of training.

Requests for application forms should be sent to the Secretary, *Golden Hinde*, Branches Office, C.H.Q. and must be accompanied by a stamped (4½d.) addressed foolscap envelope.

ENGLAND

The following trainings will be held at C.H.Q. Applications to be made to the Secretary, English Training, C.H.Q., enclosing the appropriate fees.

Brownie: There will be two evening trainings for Brownie Guiders on Tuesday, 23rd and 30th March, from

7 p.m.-9 p.m. under the title of 'Not so much a programme....' Fee 2s. for the course.

Guide: There will be a training for Guide Guiders on Saturday, 15th May, from 11 a.m. to 6 p.m. on 'The Guide Service Flash' and on Sunday, 16th May, from 2 p.m. to

6 p.m. on 'The Promise in a changing world'. Fee for the weekend 6s. 6d. including tea on both days.

Senior Branch: There will be a general training for all Senior Branch Guiders on Saturday, 22nd May, from 10.30 a.m.-7 p.m. Fee 4s. 6d. including tea.

SCOTLAND

NETHERURD HOUSE, Blyth Bridge, West Linton, Peebles-shire

MARCH
 5-8 Guide and Brownie Guiders (*Suggestions for spring programmes for Companies and Packs*)
 12-15 Guide and Brownie Guiders (*places reserved for Ayrshire and Bute*)
 19-22 Guide and Brownie Guiders (*places reserved for the County of the City of Edinburgh*)
 26-29 Guide and Brownie Guiders (*Ideas for getting out—games, activities, meetings, preparation for Camp and Pack Holiday*)

APRIL
 2-5 Guide and Brownie Guiders (*Company and Pack entertaining themselves and others. Ideas for camp-fires, open nights, etc*)
 9-12 Guide Guiders (*How you can help your P.Ls.*) Brownie Guiders (*Emphasis on the Six*)
 15-20 Residential Training for Duke of Edinburgh's Award
 23-26 Guide and Brownie Guiders (*places reserved for Glasgow North-West Division*)
 30-MAY 3 Commissioners

MAY
 7-10 Extension Guiders
 14-17 Guide and Brownie Guiders (*Special summer opportunities for Pack and Company—Brownie projects, Patrol ploys, etc.*)
 21-24 Guide and Brownie Guiders (*places reserved for Perthshire*)
 28-31 Edinburgh South-West and Handicapped Trefoil Guilds
JUNE
 4-7 Guide and Brownie Guiders (*places reserved for Lanarkshire*)
 11-14 Scottish Handcraft Circle

March 1965

JULY
 2-6 *Patrol Leaders
 9-13 *Patrol Leaders
 16-19 'Towards the Service Flash'
 (Guides 14 and over)
 22-30 *Patrol Leaders' Woodcraft
 Camp
 23-30 *Patrol Leaders' Training
 Week (by invitation)

AUGUST
 12-20 *Patrol Leaders' Woodcraft
 Camp
 13-20 *Patrol Leaders' Training
 Week (by invitation)
 24-31 Commonwealth Week
NOTE: *Applications for Patrol
 Leaders' trainings will be
 accepted on and after
 15th April.

Fees at Netherurd

Shared room per day ... 15s. 0d.
 per week ... £4 10s. 0d.
 Double room per day ... 17s. 6d.
 per week ... £5 5s. 0d.
 Single room per day ... £1 0s. 0d.
 per week ... £6 0s. 0d.
 Deposit 5s. 0d.

WALES

BRONEIRION, Llandinam, Mont.

MARCH
 5-7 Guide and Brownie Guiders
 (places reserved for Mont-
 gomeryshire)
 12-14 Prospective Trainers
 19-21 Woodcraft (to include
 sessions on Brownie, Guide
 and Senior Branch testwork,
 pioneering, orienteering,
 etc.)
 26-28 Trainers' Conference
APRIL
 2-4 Guide and Brownie Guiders
 (emphasis on Guide Service
 Flash)
 10-14 Flintshire Patrol Leaders
 17-22 Training for Guides 15+
 26-MAY 1 Patrol Leaders
MAY
 7-9 Guide and Brownie Guiders
 (places reserved for West
 Glamorgan)
 14-16 Welsh Folk Culture
 21-23 Leicester Division
 28-30 Guide and Brownie Guiders
 (places reserved for Den-
 bighshire)

JUNE
 4-8 Brownie and Guide Guiders
 Guiders may stay at Bron-
 eirion until the 12th on
 holiday if they wish
 18-20 Monmouthshire
 25-27 Chairmen and Secretaries
 of Welsh Training Com-
 mittees

JULY
 17-24 Patrol Leaders
AUGUST
 12-17 Monmouthshire Patrol
 Leaders
 20-25 Cardiff and East Glamorgan
 Patrol Leaders
 27-31 Brownie and Guide Guiders
 (Bank Holiday)

SEPTEMBER
 3-8 Senior Branch Members
 and Patrol Leaders

OCTOBER
 1-3 Nottingham
 8-10 Cardiff and East Glamorgan
 15-17 Drama Training
 22-24 Commissioners and Senior
 Branch Guiders

29-31 Brownie and Guide Guiders
 (places reserved for Central
 Glamorgan)

NOVEMBER
 5-7 Pack Holiday and Indoor
 Camp Training
 12-14 International (By invitation)
 26-28 Welsh Camp Advisers

Llandaff House, Penarth, Glamorgan

JULY 30-
AUGUST 9 Cadet Leadership Course
 (For full details see page
 60 February GUIDER)

Fees at Broneirion

Shared room per day ... 13s. 6d.
 per week ... £4 2s. 0d.
 Double room per day ... 15s. 6d.
 per week ... £4 14s. 0d.
 Single room per day ... 17s. 6d.
 per week ... £5 7s. 6d.
 Deposit 7s. 6d.

ULSTER

LORNE Craigavad, Co. Down

MARCH
 5-7 South Belfast
 12-14 County Antrim
 19-21 Guide and Senior Branch
 (age 14-17)
 26-28 Patrol Leaders
APRIL
 2-4 Senior Branch and Young
 Guiders' Adventure

MAY
 14-16 Belfast County Trefoil
 Guild
 21-23 Finaghy Local Association
 29-31 Ulster Trefoil Guilds Con-
 ference

JUNE
 4-6 34th Trefoil Guild
 11-13 Irish Trefoil Guilds

JULY & AUGUST Open for holiday
 visitors. (See page 93)

Fees at Lorne

Shared room per day ... 15s. 0d.
 per week ... £4 10s. 0d.
 Single room per day ... 16s. 6d.
 per week ... £4 19s. 0d.
 Deposit 5s. 0d.

CAMPING AND PACK HOLIDAYS

Foxlease and Waddow Camp-Sites

APPLICATIONS for sites should be
 addressed to the Secretary and the
 envelope marked 'Camp'. Suggested
 dates should be given with possible
 alternatives and approximate numbers
 and (in the case of Foxlease) whether
 an equipped site is required. For
 fuller details see February GUIDER.

NOTE: All Foxlease sites are
 booked from 24th July to 21st
 August.

Pack Holiday House, Waddow

APPLICATIONS for Pack Holidays in
 1965 should be made to the Secre-
 tary, Waddow Hall; they must be
 accompanied by a written recommen-
 dation from the Guider's C.A.

Blackland Farm, East Grinstead Sussex

APPLICATIONS for camp-sites should
 be made to the Warden. Indoor
 camping is possible all the year
 round and there are special facilities

for mixed camping. 'Restrop' is
 furnished for parties of ten. It is also
 ideal for Pack Holidays.

Brownsea Island

CAMPING on Brownsea Island is still
 at the experimental stage so far as
 Guides are concerned. There will,
 however, be sites available for
 Guiders' and Senior Branch camps
 from Whitsun to September. Further
 information can be obtained from the
 Deputy General Secretary, C.H.Q.

Ynysgarn, Criccieth, N. Wales

UNEQUIPPED sites are available at this lovely sea-side camping ground belonging to C.H.Q. There is solid shelter and 'Elsans' are available on all sites. Further details and application forms may be obtained from the Deputy General Secretary, The Girl Guides Association, Commonwealth Headquarters, 17-19 Buckingham Palace Road, London, S.W.1.

Netherurd Camp-Sites

SITES are available, fully equipped, and there is a Brownie House.

Ulster Camp Site, Glen Road, Craigavad, Co. Down

APPROXIMATELY 8 miles from Belfast on Co. Down coast near 'Lorne'. Fully equipped for 40 campers (one large or 2 small camps). Excellent hut for solid shelter with calor gas. Bookings began on 1st January and all correspondence for the coming season should be sent to Miss A. Lamb, 59 Circular Road, Belfast 4.

Lorne Camp-Sites

THERE ARE two fully equipped sites at Lorne. Bookings to Miss E. Henshall, 743 Shore Road, Newtownabbey, Co. Antrim.

Magilligan Camp Site Co. Londonderry, N. Ireland

THREE sites, each fully equipped for 25-30 campers. Sandy soil, drains easily. Miles of beach. Large hut on site: three rooms, one with open fire-place. Small Calor gas stove. Printed information list from the Secretary, Mrs. R. F. Scott, St. Paul's Rectory, Garvagh, Coleraine, N. Ireland.

Irene McKibbin Memorial Cabin

FULLY equipped for 12 Rangers or Cadets. Available for summer holidays. Situated in the grounds of the Ulster Training Centre. For all details please send a s.a.e. to Mrs. E. T. H. McBride, 17 Adelaide Park, Belfast 9.

HOLIDAYS

There are still vacancies at **Waddow** from the 7th to 14th and 14th to 21st August, 1965. Charges are as follows: Single or double room £7 10s. per week; shared room £7 per week. Packed meals will be provided, or a deduction of 2s. 6d. made from your account if you are out for a main meal. If you are willing to help with the household chores a deduction of 10s. per week will be made from your account.

The **Cottage** is still available for *Whit Week* or any time after the

28th August. The **Caravan** is available at *Whitsuntide* and after the 4th September.

Guiders and their families or friends are welcome to spend a holiday at Waddow from Monday to Friday at any time, unless there is a mid-week conference which fills the house. Applications for any of the above should be made to the Secretary, Waddow Hall, Clitheroe, Lancs.

Come to Lorne

During July and August, **Lorne** is open to Guiders or members of the

Trefoil Guild as a holiday centre. Come on your own or make up a party. Guides (over 14 years) or members of the Senior Branch welcome with their Guiders. House duties are light and uniform need not be worn. Fees 17s. 6d. per day including all meals. Packed meals provided or 2s. 6d. deducted from the bill if you are out for a main meal.

Applications to the Guider-in-Charge, Lorne, Craigavad, Co. Down, Northern Ireland with 10s. deposit.

TRAINING MODELS FOR THE EXPIRED AIR METHOD OF ARTIFICIAL RESPIRATION

Where reference is made in P.O.R. to the Expired Air Method of Artificial Respiration it is now necessary for the Guide actually to *demonstrate* the method (and not merely 'have attended a demonstration'). We therefore feel that the following list of training models, which have been recommended by the British Red Cross Society, will be of particular interest.

'**Siebe Gorman Manikin**' for mouth-to-mouth (to nose) method only. Of elementary design, this model is easily transported and is helpful for training, but does not fully demonstrate the 'sealing' of mouth or nose. Available from Stores and Supply Department, B.R.C.S. Price: £13 0s. 6d.

'**The Breath of Life Manikin**' for mouth to mouth (to nose) method only. Comparable with the 'Siebe Gorman Manikin' in design, the model head gives an indication of the method of 'sealing' the casualty's mouth. A helpful aid for elementary training, easily transportable. Obtainable from Educational and Scientific Plastics Limited, Holmethorpe Ave., Holmethorpe, Redhill, Surrey. Price: £16 13s. 6d.

'**The Cheshire Wilson Resuscitation Trainer**' for training in mouth-to-mouth (to nose) resuscitation only. A mask held over the face of a live 'casualty' is attached by a tube to an inflatable lung strapped round

the waist. A double face-piece enables the operator to blow into the mask without affecting the 'casualty', and to sense essentially the same feeling of resistance as is felt in an actual case. Available from Cheshire Wilson (U.K.) Safety Services Limited, 46, Bull Street, Darlaston, S. Staffs. Price: £5 0s. 0d.

'**The Ambu Manikin**': Details can be obtained from the Ambu Agency, 41 Orchard Park Avenue, Giffnock, Renfrewshire, Scotland.

'**Resusci—Anne**': These life-like, inflatable, full size models with realistic heads are suitable for mouth-to-mouth (to nose). It is desirable that some form of mask is used and gauze dental squares are suggested as a suitable means of disposable mask. This model can be obtained from Stores and Supply Department, National Headquarters, B.R.C.S. price £36 10s. 0d., plus carriage.

Classified Advertisements

The Girl Guides Association takes no responsibility for statements made in any advertisement here or elsewhere in the magazine, or for any subsequent correspondence in connection therewith. The right is also reserved to refuse any advertisement not considered suitable. Advertisements for the sale of second-hand clothing (except uniform) cannot be accepted. (Uniforms for sale should not be sent to C.H.Q. Advertisers receive communications from applicants.) All advertisements must be received not later than the 1st of the month for the following month's issue. **Please note charges: 6d. per word personal** (uniform measurements count as one word); **1s. per word trade**; Box No. 2s. 6d., (for members of the Movement, 1s. 6d.). **Please send money with advertisement, 10% discount for series of 12.**

EMPLOYMENT OFFERED

Ipswich and East Suffolk Hospital (630 beds). Complete General Training School for nurses. Applications are invited from well-educated girls wishing to enter as Student Nurses. For further particulars and advice re pre-training occupation, please write to: The Matron Superintendent, Ipswich and East Suffolk Hospital, Training School for Nurses, Anglesea Road, Ipswich.

Canadian Caravan Mission. Vacancies women teachers, religious education, women drivers. Church of England. Expenses, return fare if stay 18 months. Salary in winter. Eva Hasell, Dacre, Penrith, Cumberland.

Mother and Baby Home (12 beds) requires **Residential Matron.** Nursing experience and moral welfare training preferred although qualities of character more important. Salary in accordance with qualifications and experience. Further particulars from Secretary, St. Nicholas House, 20 Alphington Road, Exeter.

Baden-Powell House will have a vacancy for a **young cook** commencing in April. Preferably with Scout or Guide connection and to work as one of team. Apply to the Warden, Baden-Powell House, Queen's Gate, London, S.W.7.

Mother requires temporary help in the home. Two daughters (Brownies); live with family. Near Bournemouth. Davies, 8 Lakewood Road, Highcliffe, Hants.

The Guide Club requires two dining-room Assistants, with some reception duties. Preferably two friends willing to share large room. Appointment from late March. Apply the Secretary, The Guide Club, 46 Belgrave Square, London, S.W.1.

FOR SALE

Funds. Mothering Sunday Brooches. Box of 50 assorted brooches sent post free on sale or return to sell at 3s. 6d. each. Specially reduced price for Mothering Sunday gifts. Your profit 1s. 2d. per brooch. Order immediately. Pay only for brooches sold. E. & M. Davies Ltd., 166 Goldhawk Rd., London, W.12.

Fund Raising? Ball Pens are used by everyone. We supply Platignum ball pens at reduced wholesale rates. Your Company title, etc., can be diestamped as required. Pen cases in various colours (including Girl Guide colours). Profit over 50 per cent on cost. Details/Samples on request. Thompson & Robinson Ltd., 20 Churchfield Road, London, W.3. Tel. ACOrn 8770.

Funds, Bazaars, Fêtes. Raise funds with our parcels of attractive and inexpensive costume jewellery sent on Sale or Return. 50% profit on cost. You pay only for what you sell. The rest you return. Send for details to actual manufacturers:—E. & M. Davies Ltd., 6 Wendell Road, London, W.12.

Help to increase your Company funds with scent cards lavender, etc. Send 5s. P.O. or crossed cheque to R. Ramsdale Ltd., 58 Pall Mall, Chorley, Lancs.

North Surrey's Leading Uniform Supplier: Commonwealth Headquarters Uniforms, Equipment, and Publications always in stock. The Q.M. Stores, 298 High Street, Sutton, Surrey. VIGILANT 8655. Commonwealth Headquarters Official Agents.

Advertising Pencils, Superb Ballpens, Combs, Brushes gold-stamped with any name, raise funds quickly—easily. Fancy Goods, Toys. Details—Northern Novelties, Bradford, 2.

£1 profit on every 52s. parcel. 144 Toys or 72 1s. Toys, or 48 1s. Toys, or selections dearer Toys, Stationery or Jewellery. Each parcel costs 52s. plus 3s. postage. (Additional parcels 2s.). Alternatively make your own choice from our catalogue giving **lowest wholesale prices.** J. E. Thomas and Sons (Cuffley) Ltd., 2a Handsworth Road, London, N.17.

Mothering Sunday, March 28th. See Fund raising advertisement above. E. & M. Davies Ltd., 166 Goldhawk Rd., London, W.12.

WANTED

Hairplaits Wanted (human hair). Register for immediate cash or offer to: Joy Block, 11 Northdene Gardens, London, N.15.

ACCOMMODATION

Holiday accommodation, Sussex. Bed, breakfast and evening meal, or full board, weekends October—March; three minutes sea. Apply Mrs. Jebb or Miss Cox, Alex House, 8 Willowfield Road, Eastbourne (9572).

Isle of Wight, Shanklin, Snowdown, Queen's Rd. Tel. 2853. Small hotel, two mins. sea front, near to shops and buses. Catering for Guiders, their families and friends. Terms B/B and D. 7-9 gns. Fully recommended. Prop: ex-Scouters G. & D. Morris.

Cliftonville, Margate. Invicta, 30 Sweyn Rd., Minute sea, shops. Bed, breakfast, evening dinner. Good food, homely welcome awaits. Proprietress, Guider.

Furnished flat, Dartmoor farmhouse, 2 bedrooms, bathroom, electricity, fishing. Earle, Manaton, Devon.

Cornish Guider welcomes visitors. Bed and breakfast, central all coastal resorts. Apply Mrs. Annear, Hugus, Threemilestone, Truro.

Snowdonia. Cottage near entrance Watkin Path. Calor gas, bath, etc., sleep eight. Suitable Senior Branch or Guiders. Rental £5 per week for Guiding activities. Apply Sawbridge, 15 Friar Road, Brighton, 6.

New Forest. Comfortable accommodation available for quiet holidays. Apply Miss Sandy, Goldfinches, Brockenhurst, Hants., who will be pleased to send details.

Furnished cottage near Derbyshire Dales: Accommodate 12; Senior Branch members and Guiders. For details send S.A.E. to Secretary, Miss G. Sidebotham, 36 South Avenue, Buxton.

Attractive Garden Chalet to let with everything for two people (except linen) £5 5s. weekly, plus 10s. 6d. towards calor gas. Bury, 5 Kenystyle, Penally, Tenby, S. Wales.

Wiscombe Cottage, Bigbury Bay, Devon. Overlooking sea; accommodates 20. Guides and Rangers only. Further details, write Mrs. Jenkins, 165 Woodford Avenue, Marsh Mills, Plymouth.

Devon country house, 4 miles sea. B/B, evening dinner. Own produce. H. & C. Car essential. Free parking. Mrs. Bowry, Parkview, Yardbury Hill, Colyton 506.
Devon coast. Holiday flats from £5 5s. weekly. Lugg, Caen House, Goodleigh Road, Barnstaple.

CAMPING AND HOLIDAYS

Gipsy horse drawn caravans, self-hire and organized. Also pony trekking and canoeing. Matt Murphy, Banteer 4, Ireland.

Glamorgan West Camp Sites, Apply to C.C.R., Mrs. T. W. Davies, The Rectory, Reynoldston, Swansea.

Combe Martin, North Devon coast. Parish Church offers accommodation for 25-30 juniors and officers. Two large halls, room for officers. Kitchen with electric cooker etc., wash-room and 5 lavatories. Crang, Trafalgar House, phone 3266.

Brightlingsea, Essex, 22 ft. caravan next to sea. One double, two single and one half-size berths. Mrs. Taylor, 26 Kings Avenue, Buckhurst Hill, Essex. (BUC. 7702).

Dorset, overlooking Lyme Bay: Four-berth caravan with direct access to beach. Fully equipped. Cooker and heater: Balson, Beaucroft Lane, Wimborne, Dorset.

Selsey West Sands, six berth caravan. Fully equipped, excluding linen. Calor gas. Flush Toilets. Entertainments. 7 Clarence Road, Redhill, Surrey.

Caravan Towyn/Aberdovey. Private site overlooking sea. 4 berth; 'Dunlopillo' beds; mod. cons; well equipped. Mrs. Hopwood, Barkworth Close, Anlaby, Hull. (58312).

Modern fully-equipped Church Centre on main bus route and near underground, in south London, available as hostel for parties of Guides or Brownies during month of August. Write for brochure to Booking Agent, c/o St. Peter's Vicarage, Bishopsford Road, Morden, Surrey.

HAULAGE

Haulage; camping equipment any distance. Fully insured for equipment and personal. F. G. Tester and Son, Ardingly, Sussex. Ardingly 258.

UNIFORM

Guider's uniform, worn once, hat 6½, belt, dress. H. 44. W. 32. B. 40. Tie, cardigan, 36. £4. Portwain, 8 Queenscourt, Wembley Park, Middx.

For Sale Guider's suit, hat, belt Apply Box No. 359.

Commissioner's tailor-made new style uniform, waist 33 in; bust 42 in.; hips 47 in. £5. 2 fur-felt berets 6½ 7s. 6d. each; white shirt, bust 40 in, neck 15, 7s. 6d. Guider's belt, 30 in. 2s. 6d. Shoulder bag, 10s; shoulder haversack, 15s. As a whole, £7 or sold separately. Box No. 360.

Guider's serge uniform. Excellent condition. B.36., W.26., fur-felt hat, belt. £5. Box No. 363.

Guider's full uniform, new style, 36, 28, 40, good condition. £4. O.N.O. 170 Clay Lane, Birmingham, 26.

COMING EVENTS

North Riding Rover/Ranger Conference 'Cum-and-Sea' at Middlesbrough on 27th-28th March. S.A.E. for details to Conf. Sec., 3 Mickledales Drive, Marske-by-the Sea, Yorks.

Moot '65 (Ranger/Cadet participation) at Melksham, Wiltshire, 1st and 2nd May. Details (s.a.e. please) from G. McLean, 8 Pembroke Rd., Melksham, Wilts.

CAMPING AND PACK HOLIDAYS

Q.M. Wanted for Pack Holiday 31st July to 7th August. Two friends welcomed. Box No. 361.

Grade 'A' Lifesaver Wanted: Warren Beach, Beaulieu, 13th to 20th August. Expenses paid. Mrs. Kirby, 92 Hersham Road, Walton-on-Thames.

Brown Owl wishes to join Pack Holiday for experience, Easter 15th to 20th April. Rossiter, Bury Farm, Wick, Bristol.

Willing Guider wishes join Pack Holiday, with few Brownies for experience. Preferably Whit or Trinity. Box No. 362.

Wanted: Life Saver, Guide camp, Seaton, Devon. 30th July-9th August. Miss Hall, 46 Chapel Street, Marlow, Bucks.



WEXHAM PARK HOSPITAL SLOUGH, BUCKS

The first phase (300 beds) of this new District Hospital will open in the autumn.

The hospital will be a Training School for State Registration, training based upon the General Nursing Council's 1962 syllabus. Applications for general training can now be considered.

If you would like to train in this really modern hospital, write to Matron for full particulars.

**Wexham Park Hospital,
Temporary Office,
Cippenham Nurses' Hostel,
Cippenham Lane, Slough, Bucks.**

You are 'with it'!
in the New

GUIDE CAP

**MADE OF
NAVY BLUE
PROOFED MELTON**

PRICE

6/6

Packing and Postage 1/6d. extra



**HEAD
MEASUREMENT
SIZES INCHES**

1	20½—21
2	21¼—21¾
3	22—22½
4	22¾—23¼

NOW ON SALE AT ALL OUR SHOPS

THE GIRL GUIDES ASSOCIATION

17-19 BUCKINGHAM PALACE ROAD, LONDON, S.W.1.

ALSO BRANCHES IN

London: 124 Newgate St., E.C.1; 183 Clapham Manor St., S.W.4; 19 Green Lanes, Palmers Green, N.13.
Birmingham: 5 Ryder St., 4. **Cardiff:** 20 Working St. **Ipswich:** 5 Tacket St. **Leeds:** 62 The Headrow, 1.
Liverpool: 20 Richmond St., 1. **Oxford:** 17 The Turl (Broad Street End). **York:** 14 Goodramgate.

Printed by The Riverside Press Ltd., London and Whitstable, and published by The Girl Guides Association, 17-19 Buckingham Palace Road, London, S.W.1 (VICTORIA 6242). All communications with regard to subscriptions, editorial matters and advertisements should be addressed to Publications Dept., Girl Guides Association. Subscription including postage, 11s. 6d. for 12 months Great Britain, 11s. overseas. Trade Agents: Horace Marshall & Son Ltd., Distribution Centre, 8-11 St. John's Lane, London, E.C.1.