

Heather Hill

IMPLEMENTATION ISSUE

THE GUIDER

VOLUME 54 - No. 1 - JANUARY 1967 - PRICE ONE SHILLING



TOMORROW'S GUIDE

THE GUIDER

OFFICIAL MAGAZINE OF THE GIRL GUIDES ASSOCIATION

Patrons

H.M. THE QUEEN
H.M. QUEEN ELIZABETH THE QUEEN MOTHER

President

H.R.H. THE PRINCESS MARGARET,
COUNTESS OF SNOWDON

Chief Guide

OLAVE, LADY BADEN-POWELL, G.B.E.

Commonwealth Chief Commissioner

MRS. DEREK PARKER BOWLES

Letters to the Editor

'Tomorrow's Guide'

Olive Hillbrook asked pioneer Guiders for their opinion of the Working Party report. A lot of evidence was collected and it was considered that though the Founder's basic principles are still valid, a new outlook and incentives are needed and that the importance of set basic tests are exaggerated and should go. I agree that the tests as they are now should go, but find it difficult to over-emphasize the importance of the kind of tests as originated by Baden-Powell. They were so definite that the girls could test themselves. This they did and became the pioneers of the Girl Guides.

The Founder found that by offering a boy (or girl) a series of short, definite tests, or challenges, with a badge to wear as each group had been passed, astonishing results were produced. To his surprise, country after country wanted to, and did, join his Movement.

B.-P. said that he wrote especially for the duller boy. 'Help him with his test and if he still cannot do it, pass him on the amount of effort he has put in, for character is of more value than some special skill. This will give him such encouragement that he may overtake those to whom learning presents no difficulty.'

The emphasis on studying each girl's interests and ambitions was stressed by the Founder. I am glad that this is still appreciated but not, I hope, at the cost of a set challenge from without, common to the others. For instance, I have friends who plan their holidays to bird-watch and they put down their love of birds to having had to know six birds for their Second Class test! Leaving the choice entirely to the Guides themselves may well result in boredom and no follow-up.

A Guider is free to challenge her Guides in ways suitable to them and their surroundings. That is ideal, and B.-P.'s wish, but because imagination and time was, and still is, in short supply, many a Guider was glad to fall back on the basic tests. Now she must

think for herself, discuss it with her Guides and District Commissioner, with help from the books.

Baden-Powell said 'Don't start with long explanations.' A boy (or girl) wants to do things, so it is good that the Working Party suggests that a recruit should *do* something, as settled between her Guide Guider and herself, to prove her intention and power to keep the Guide Law instead of merely repeating it.

'Present day needs must be met by present day methods' says the Working Party. It was the fact that they were different that caught the imagination of the first Guides in 1908; away from coddling parents, to discipline, duty and a uniform denoting service; away from teachers, to a partnership with an adult; away from shut doors and indoor entertainment, to adventure in the open, learning things most people did not know.

That present day methods have changed is, in part, due to our Founder's teaching. His methods are widely used. If 'present day methods' mean 'look wide, co-operate with others, study your Guides' reactions and be willing to change,' I am all for it, and grateful for the trouble taken, and especially to read that our Founder's Patrol System is an integral part of the new programme.

A. M. MAYNARD

As a Guide, twenty years ago, Guiding was a recreational activity and I enjoyed the freedom and scope it gave me outside school hours. Today, as a Guider and a Primary Schoolteacher, I am appalled and unhappy at the sameness of school and Guiding today. Activities of each overlap to such an extent that Guiding has, in some way, become a continuation of school . . . I have tried to fight this but at Trainings we are shown and persuaded to use new methods of approach and visual aids which I and the girls see all day long. I pointed this out to a Trainer once who was demonstrating the use of the flannelgraph as an aid to map-reading. The Trainer failed to see my

COVER PICTURE: *Press Photographic Services*

This issue of THE GUIDER brings to you all my very best wishes for 1967.

On pages 19-22 you will find a timetable for the implementation of all the many items which are the result of the Working Party Report.

Ann Parker Bowles

Chief Commissioner



point at all and felt that we had to keep up with modern ideas. I agree, but need they be quite so educational and school-like?

The language of *Scouting for Boys* with the Founder's good, commonsense ideas seem to be lost in the language of the educationalists . . . I realize that schools are broadening their scope but is not the Guide Movement becoming too sophisticated?

I would be interested to know if any other Guider or Trainer has felt the danger of trying so hard to be 'with it' to satisfy the modern times that our Guide identity is being lost to the youngsters who may really want an exciting alternative, with a stress on the outdoors, to school and youth club.

JOYCE HARGRAVE-WRIGHT
[Guide Guider, 1st Sandhurst Company, Surrey West]

As a Brownie Guider I am particularly pleased with the suggestion to put the Brownie badge into a Trefoil, and for the other ideas, like the salute, which will make for closer integration of Pack and Company.

W. M. HOOPER
[Brownie Guider, 1st Puriton Pack, Somerset]

Having been unable to put down *Tomorrow's Guide* during the past week I felt that I must add my congratulations to the Working Party for all its hard work. The basic 'things that matter' have been retained and the rather narrow limits of the present tests turned into more exciting and far reaching training. My aim for 1967 is to accept the challenge of the Report right away. May I end by thanking, too, all those who contribute articles to *THE GUIDER* and help us month by month to be 'with it' in Guiding.

B. M. ALDERTON
[Guide Guider, 1st Shenfield Company, Essex West]

Lifesaving on Pack Holiday

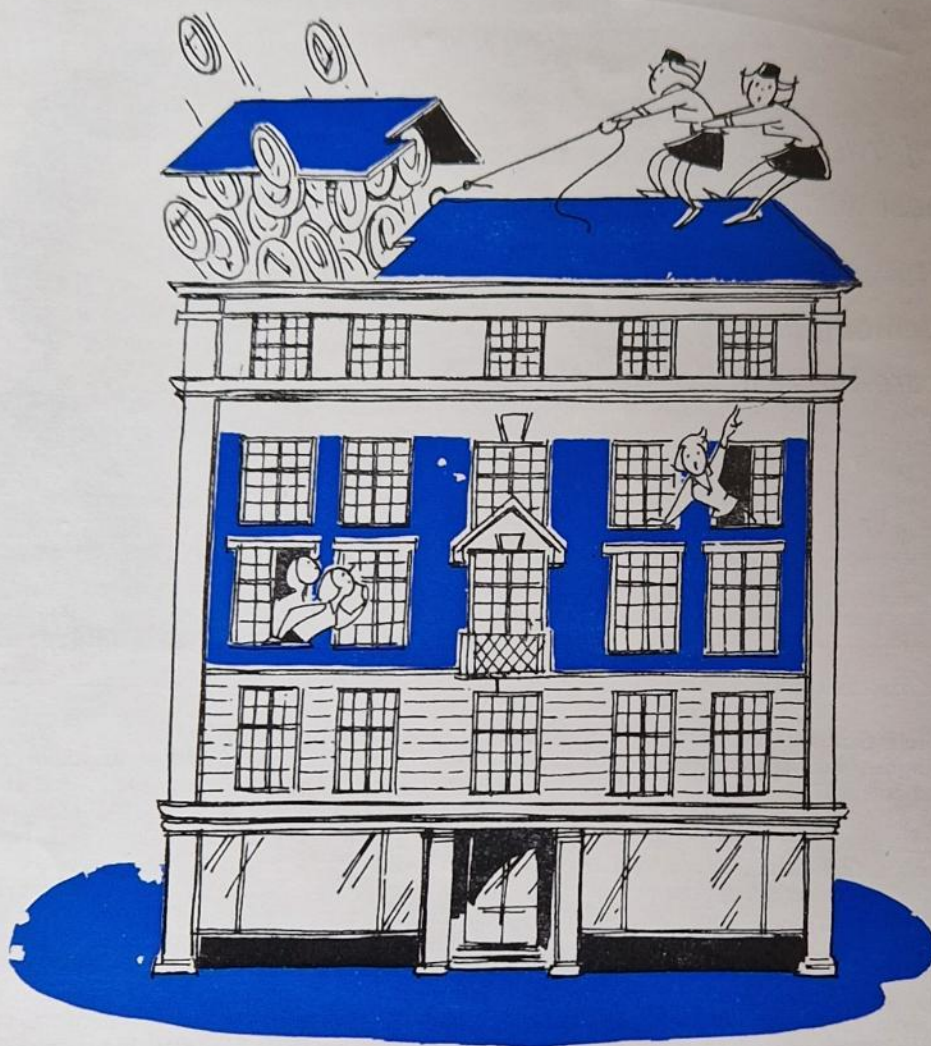
My congratulations to Miss Watts of 1st Ashted Pack on retaking her Bronze Medallion at the age of 46. I can beat her by 4 years as I renewed my Lifesaver's Badge as I achieved my half century. Like her, I did this solely for the purpose of taking my Pack on holiday. What fun is there for Brownies if they can't swim when at the seaside?

This year, however, my courage failed me, and unable to find a lifesaver apart from Pack Leader who is only 14, at the suggestion of the local C.A. I contacted the police in the town where we stayed. What fun we had on Pack Holiday this year! The Brownies adored their 6 ft. 4 in. local policeman lifesaver who found time every day to come swimming with us. Having every confidence in him their swimming quickly improved and at the end of the week seven Brownies were the proud possessors of a Swimmer's Badge.

While agreeing with Miss Fripp that we should do all we can to foster the interest of Guides in life-saving with a view to taking responsibility for life-saving at camp, etc., I sometimes think we are a bit insular in the Guide Movement and don't make enough use of outside facilities that are available. True, there may not always be a policeman available, but the Police would probably know someone in the district who could help. Other Brownie Guiders may be glad of this possibility. Of course, in eight or nine years time this Pack will have at least seven lifesavers of its own! We might even attempt a Channel Swim; the enthusiasm is there.

JOAN GUTHERIDGE
[Brownie Guider, 12th Westminster Pack,
London N.W.]

(*Letters to the Editor* continued on page 28)



RAISE THE ROOF AT C.H.Q.

THANK YOU to all the Districts which have already contributed to 'Raising the Roof'.
The total now stands at £11,000, and we badly need thousands more shillings to complete the job.

As you will see from the picture, we have a long way to go.

Please send the contributions from your District if you have already collected most of the money and are just waiting for the final oddments.

Don't think that it is too late to raise some money for C.H.Q. There is no closing date.

We need our fifth floor so badly, to serve the Movement more efficiently and to give space for some of you to stay the night when you visit London.

Raise the shillings NOW and help today's and tomorrow's Guide.

Please address your envelopes to the

Finance Department,

Girl Guides Association,

17-19 Buckingham Palace Road,

London, S.W.1.

and mark it 'for the attention of Miss Dolley'.

Illustrated by Jennetta Vise

MAKE THIS YOUR NEW YEAR RESOLUTION

Send for our
New All the Year Round
Fund Raising Catalogue **NOW!**

Don't take any risks, deal direct with the actual
manufacturers.

If you are already a customer, a copy of this new full colour
catalogue will be sent to you automatically.

EXHIBITIONS:

A series of Exhibitions in most of the principal Cities
and Towns in Britain, showing the complete 1967
range of All the Year Round and Christmas cards is
being arranged. Details of these will appear in the
next issue.

WRITE TODAY TO
T.E. Webb & Co. Ltd.
Little Cornbow Halesowen
Birmingham

POST TODAY TO		T.E. WEBB & CO. LTD. LITTLE CORNBOW HALESOWEN BIRMINGHAM	
NAME PRIVATE ADDRESS	BLOCK LETTERS ONLY PLEASE		
ORGANISATION OR CHARITY REPRESENTED			
ADDRESS OF YOUR HEADQUARTERS			
YOUR OWN POSITION IN THE ORGANISATION			
ARE YOU OVER 21?			Dept No 1

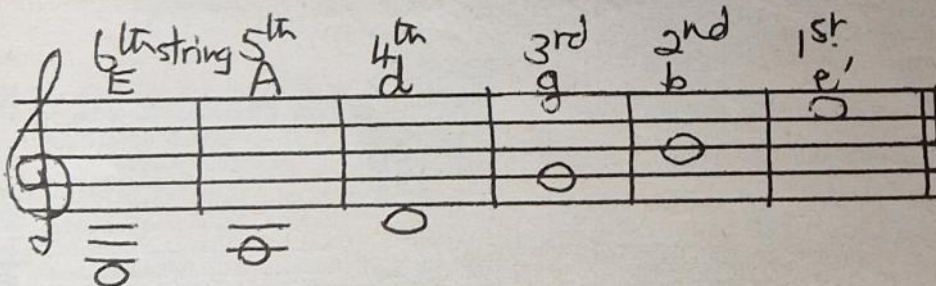
A Guitar at Camp-Fire

SO YOU HAVE BEEN given a guitar for Christmas or have found one in the attic or been offered one at a folksong club? Whatever the source, a guitar can be fun to play and an asset at camp-fire. It can help to support voices, keep them in tune and give the rhythm, while you can accompany your own folksong singing or your Brownies' recorder playing.

A guitar is not so easy to play as the recorder, and it really is worth having lessons and learning to play it properly. (Many local education authorities are now teaching the guitar at evening classes). It is, however, possible to teach yourself simple accompaniments to camp-fire songs, and as it is a quiet instrument and hardly ever makes an ugly sound, your family may tolerate your practice!

The Spanish type guitar is the most suitable, and nylon strings are essential if you are going to do finger plucking (steel strings are louder, but harsher, and a plectrum is then essential if you do not want to cut your fingers to pieces). There are many ways of strumming, but this is a method that, while fairly simple, should not mean that you have anything serious to unlearn when you go to a teacher.

First, make sure the strings are in tune. Check them with a piano or recorder and screw the pegs until the strings are tight enough. The bass strings will probably stay in tune but your top strings may go out in a warm room and need frequent retuning at first. Here are their notes (called 'open strings'). Note that the two outside strings are exactly two octaves apart, and must match perfectly.



Sit in a low chair (a fireside chair without arms is ideal), and rest your guitar comfortably between your knees so that it faces away from you at right angles to the floor, not on your lap. If you want to see what your hands are doing, prop a mirror on a chair facing you, then you will not be tempted to turn the guitar to a horizontal position to look.

Try from the beginning to play by feel, and look at your hands as little as possible. This is important if you are going to accompany at camp-fire later and must watch your group (or the conductor, if there is one). Your right elbow presses on the widest part of your guitar and your hand comes over, well arched, to pluck the strings. If you press hard and get the guitar balanced, your left hand will be able to move smoothly up and down the fingerboard without really having to hold the neck up and take its weight.

Now pluck the 6th string (farthest from the ground) with your thumb and then the 1st, 2nd, and 3rd with your middle three fingers held together; feel as if you are closing your fist and pulling the strings inward instead of pulling upwards, to get the best tone. You will now get the chord of E minor—shown by the symbol over music as Em.



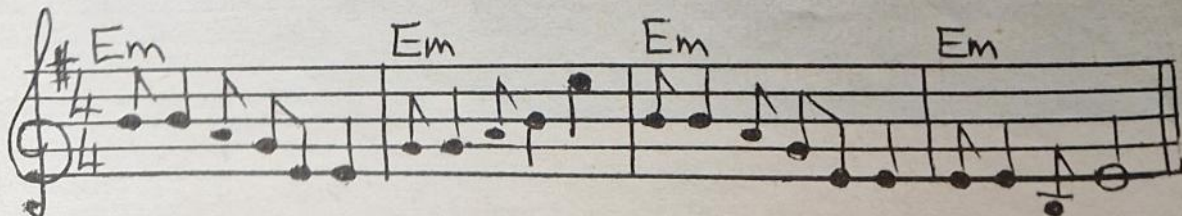
Play in this rhythm



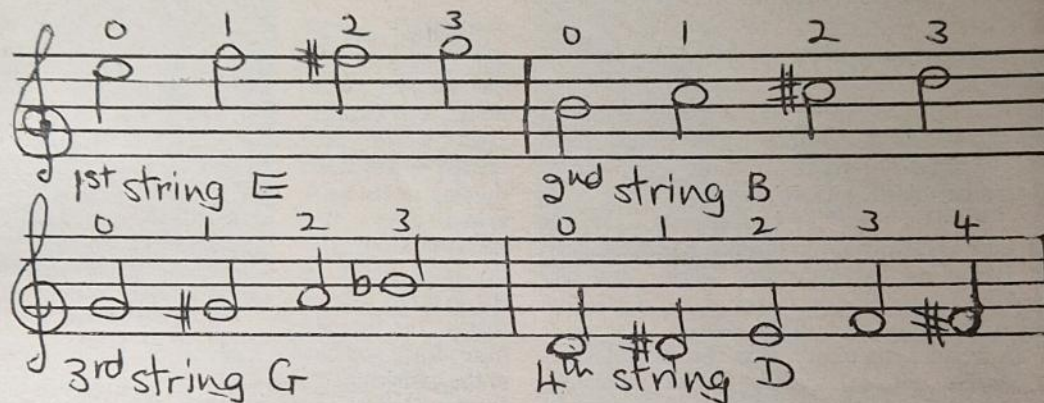
You can now accompany 'My paddle's keen and bright' (yes, really!).

Get into the habit of singing as you play.

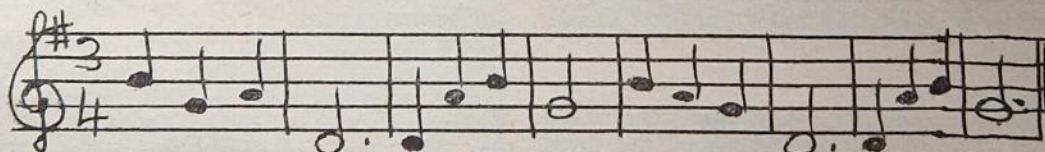
Try varying the rhythmic pattern, but keep to one chord for the moment.



Playing melodies: You can use the guitar either to play chords or tunes or, later, a combination of the two. To get used to finding the different notes on the fingerboard with the left hand, it is a good thing to pick out tunes. Keep your right thumb on the body of the guitar to steady your hand and pluck with 1st and 2nd finger alternately, while you concentrate on what your left hand is now up to. The fingerboard has frets and as you press a finger down hard just behind a fret, each one as you go up the board raises the note a semitone. We use O for an open string and 1, 2, 3, 4, for the 1st, 2nd and 3rd frets. As far as possible keep the 1st finger for the 1st fret, the 2nd for the 2nd and so on. (This sounds obvious but you will not do it automatically.)



Now we can play 'Brownie Bells'. Have your 2nd finger ready over the 2nd fret on the 3rd string; the whole tune can otherwise be played on the open 2nd, 3rd and 4th strings. You know the tune:



Now put your 3rd finger on the 3rd fret of the 2nd string, and with this and the 2nd, 3rd and 4th open strings you can play 'Taps'.



Now see how many tunes you can pick out by ear. Try the following, beginning on the note given in brackets:
 'O Come All Ye Faithful': 'Hark the Herald Angels Sing': 'Campfire's Burning': 'Fairy Lullaby': 'From Out the Battered Elm Tree': 'Chalet Song': (All begin on D).
 'Angels from the realms of glory': 'Rock a my soul': (Begin on B).
 'Kumbaya': 'Holly and the Ivy': (Begin on G).

F sharp is a bit of a stretch, but is easier if you keep your left thumb well *behind* the neck and arch your hand well over towards you.

Next time we shall learn two chords (G and D7) with which you can accompany at least six well-known camp-fire songs, and then four more which will give you an enormous repertoire; we shall also publish the chord symbols for a number of songs which you can copy into your printed song-books over the notes.

DAAPHNE BIRD

The 19th World Conference

by Joyce Baxter, General Secretary,
Girl Guides Association

*'Much have I travell'd in the realms of gold,
And many goodly states and kingdoms seen.'*

SO WROTE Keats a hundred and fifty years ago, and so might the British delegation on their return from the 19th World Conference, held in Tokyo from 28th September to 8th October, 1966.

It was 'the first time' in so many ways. It was the first time the World Conference had been held in Asia. It was the first time any World event had been held in Japan. For so many of us, it was the first time we had ever been to the East.

It is no wonder, therefore, that this World Conference stands out so sharply in the memory. Everyone attending will have her own landmarks to look back on. I would like to highlight a few of them for you.

The theme of the Conference was 'Love through Knowing and Understanding.' This was beautifully expressed at the Opening Ceremony, in the presence of the Crown Princess Michiko, the Prime Minister, the Minister of Education and many other distinguished guests.

The Opening Ceremony

The parade of the flags of member countries, a familiar item at all opening ceremonies, was given a new and delightful setting in Tokyo by an accompaniment on that lovely instrument, the koto. Sitting tranquilly on their heels, and plucking gracefully at their instruments, a group of women and girls in black and green kimonos added great charm to this part of the opening ceremony.

The Girl Scouts of Japan combined their organizing ability with simple, graceful effect on other occasions too. One of these was the huge Rally, mentioned by the Chief Guide in the December *GUIDER*. It was difficult to remember that some of the unusual, beautiful things we were shown were, in fact, ordinary badge work, and that many of the girls were awarded their badges as a result of that wonderful afternoon's display. Amongst the memorable items were a dance by more than a hundred girls, in black and white kimonos, fluttering red fans, and a display of calligraphy in Chinese characters in which each girl's lettering, on white paper on a vivid red backcloth, spelt out, when finally assembled, the Guide Law and our theme 'Love through Knowing and Understanding.'

Another memorable occasion was the Closing Ceremony. The Guides' Own which preceded it was most moving in its quiet simplicity. We gathered informally in the grounds of the famous Meiji shrine, and listened

to readings and chants from all the faiths represented in the gathering. Then, each of us carrying a Japanese lantern walked up to the hall, where the President of the Girl Scouts led everyone in the singing of a song especially composed for the occasion. Finally, our lanterns glowing in the dusk, we walked back to the coaches, saying goodbye as we went to the hundreds of Girl Scouts who were lining the route and who broke into cheers and goodbyes as the coaches moved off.

Now to the Conference itself. Those of us who are familiar with television pictures of United Nations meetings will be able to imagine our Conference sessions, with delegates from thirty-four Full Member Countries and eighteen Tenderfoot Member Countries. A microphone on the table for each delegation and instantaneous translation helps everyone who is not at home in the official languages, English and French.

Policy and Decisions

What do people do at World Conferences? This question is so often asked. The World Conference makes the policy for the World Association and empowers the World Committee to implement its decisions. It considers applications for Tenderfoot or Full Membership of the World Association. It approves the accounts for the last three years and considers the budgets for the following three years. It studies the income and expenditure, and when the income is not enough to meet the World's needs (as is now the case), it approves measures to augment the funds.

It hears reports from all the World Centres, and discusses suggestions for their future programme and ways in which they might be more fully used.

The Conference considers proposals for future



Crown Princess Michiko who gave one of the opening speeches

World events, where they are to be held and whether they really meet a need.

It is not possible, or suitable, for the World Conference to get down to brass tacks and try to work out exact details of time and place and how to plan the programme—so it empowers the World Committee to implement the plans for events chosen, and to fit them in during the next three years.

One of the most important items is reports on developments in Member Countries. One realizes how close is the thinking and how similar the problems! (At the 19th World Conference it was so interesting to hear how many countries had re-considered their programmes or were currently doing so).

A Common Purpose

The most absorbing part of the World Conference agenda is the question of how best to help develop Guiding. Here, for a delegate, is perhaps the most inspiring experience of the whole Conference—to be able to see this immensely varied gathering representative of all the racial groups of the world—European, African, Asian and the people of the Western Hemisphere—all united in their belief in Guiding and in a common purpose to bring it to as many young people as possible.

I have tried to show, first of all, that the World Conference has a job to do. It is also the most stimulating get-together of friends and a wonderful forum for ideas and suggestions. An idea that may be old and well-worn for a long established Association is just the thing for a newer Association trying to feel its way. An old idea may be given a new twist. A very worrying problem for one country may seem more hopeful of solution amongst sympathetic friends.



A traditional dance by a Girl Scout and a Brownie during dinner—one of the many delightful entertainments arranged for the Conference



Two Japanese Guiders show Miss Baxter how to use chopsticks

At these World Conferences, the power house of Guiding, member countries sit down to the problems together and on their constructive approach to the future, and their guidance to the World Committee, the future of Guiding throughout the World so largely depends.

Some decisions taken at the 19th World Conference

The elections to the World Committee and the admission of full and tenderfoot member countries were reported in the December GUIDER.

Other decisions

The term 'tenderfoot member' has been dropped and 'Associate Member' will be the future description of Associations which are working towards full membership of the World Association. (Great Britain brought this recommendation to the Conference as we thought that 'tenderfoot member' was not appropriate in modern times and often led to involved explanations.)

The 20th World Conference in 1969 will be held in Finland.

The Annual Quota will be increased from 1967 for Full and Associate Members.



Where to Train

Lorne, Craigavad, Co. Down

TRAINING BURSARIES

GUIDERS attending trainings at Foxlease, Waddow, Netherurd, Broneirion, Lorne, and the Training Ship are eligible for Training Bursaries. A Guider may receive only one Bursary to help her to attend one training, and she must not have received a Bursary before. In exceptional circumstances, however, a Commissioner may recommend a Guider for a second Bursary. This applies particularly when a Guider is changing to another Branch or becoming a Commissioner. Travel Bur-

saries are available only for the nearest Training Centre.

Fee Bursary: This entitles a Guider to attend Foxlease, Waddow, Broneirion, Netherurd, Lorne, or the Training Ship at half-rate for a shared room.

Travel Bursary: Assistance is given to Guiders on the basis of four-fifths of their travelling expenses in excess of £1, and is available only for the nearest Training Centre.

Angela Thompson Bursaries: These are available for any Promise and Law training (not necessarily held at

a C.H.Q. Training Centre) and are of the same value as the fee bursary.

Guiders who apply for any of these bursaries should do so through their District Commissioners who will write direct to the Secretary, Training Department, C.H.Q. When applying, the District Commissioner should state the name and date of the training. Application must be made at least a fortnight before the training. Many L.E.As. also give generous help towards this type of Guiders' Training and a request for such assistance should be made direct to the Local Authority concerned

COMMONWEALTH HEADQUARTERS

Application for trainings at Foxlease, Waddow, Netherurd, Broneirion and Lorne should be made direct to the Training Centre concerned. Each application must be accompanied by the appropriate deposit and a stamped addressed envelope. Please state in original application whether you are a Brownie, a Guide, or a Senior Branch (state Section) Guider. Guiders attending weekend trainings may leave on Sunday evening or early Monday if unable to stay for the whole weekend.

The Training Centres also accept other bookings from organizations outside the Guide movement (e.g., L.E.As., Church groups, etc.) which, owing to lack of space, are not listed.

Telephone calls are accepted between the hours of 8 a.m. and 8 p.m. only at Foxlease (Lyndhurst 2638) and at Waddow (Clitheroe 3186).

FOXLEASE Lyndhurst, Hants.

FEBRUARY

- 10-13 1. Brownie Guiders
2. Commissioners' Course Part 1. (by invitation)
- 17-20 Brownie and Guide Guiders (Emphasis on World Guiding).
- 24-27 Guide Guiders, Senior Branch Guiders (For all who work with the over 14 age group)

27-MAR. 1 Commissioners' Course. Part 2 (by invitation) (mid-week)

MARCH

- 3-6 Brownie and Guide Guiders (Preparation for Camp and Pack Holiday)
- 10-13 Brownie and Guide Guiders
- 17-20 Brownie and Guide Guiders
- 23-28 Norfolk (Easter)

31-APRIL 3 Brownie and Guide Guiders ('Surprise' Weekend)

APRIL

- 7-9 Middlesex West
- 14-17 English Trainers
- 21-24 London South West
- 28-MAY 1 Brownie and Guide Guiders (Emphasis on Outdoor Activities)

MAY

- 5-8 Devonshire
- 9-11 Commissioners and L.A. Representatives (mid-week) (by invitation)
- 12-15 Brownie and Guide Guiders
- 19-22 English Trainers
- 26-30 1. Guiders of all Branches (Training for Leisure, including worthwhile creative activities for all ages).

2. Camp-fire Leaders (by invitation) (Long weekend)

JUNE

- 2-5 Adventure Weekend (Senior Branch members and Guiders of all Branches aged 17-24 years)
- 9-12 English Trainers
- 16-19 Brownie and Guide Guiders
- 23-25 Suffolk
- 29-JULY 6 Brownie and Guide Guiders and Commissioners. (Children up to 5 years may be brought)
- 11-18 Holiday week
- 21-24 Brownie and Guide Guiders
- 27-AUGUST 3 Leadership Training (15-18-year-olds)

AUGUST

- 8-17 Patrol Leaders
- 22-29 Combined Arts Week

WADDOW Clitheroe, Lancs.

JANUARY

- 20-23 1. Camp-fire
2. Commissioners' Course Part 1. (by invitation)
- 27-30 Brownie and Guide Guiders

FEBRUARY

- 3-6 Manchester University Scout/Guide Club
- 7-9 Commissioners' Course, Part 2. (by invitation) (mid-week)

- 10-13 Lancashire S.E. Camp Training
17-20 Brownie and Guide Guiders (*Emphasis on World Guiding*).
24-27 North West Area C.As.
- MARCH**
3-6 Northumberland
10-13 Brownie and Guide Guiders (*A special 'Help Yourself' Weekend*)
17-20 Brownie and Guide Guiders (*Special sessions on Promise and Law*)
23-28 Birmingham (*Easter*)
31-APRIL 3 English Trainers
- APRIL**
7-10 Guide Guiders Senior Branch Guiders (*For all who work with the over-14 age group*)
14-17 Staffordshire
21-24 Brownie and Guide Guiders
28-MAY 1 Commissioners and L.A. Representatives (*by invitation*)
- MAY**
5-8 English Trainers
12-15 Brownie and Guide Guiders
19-22 Lincolnshire South
26-JUNE 1 Patrol Leaders' Training
- JUNE**
2-5 English Trainers
16-18 Ruby Jubilee
24-26 Brownie and Guide Guiders

- JULY**
1-8 Extension Week
14-16 Brownie and Guide Guiders

Patrol Leaders' Trainings

Guiders are reminded that only two Patrol Leaders can be accepted from any one Company. They must not have attended any previous training at a Training Centre and Guiders are asked not to apply for places at more than one Centre. The Patrol Leaders must be 13-14 years of age and have not attained their 15th birthday by 1st August, 1967. They must be able to attend the whole training.

Places for the Patrol Leaders' Training at Waddow from 26th May to 1st June will be allocated on 1st January, 1967. Places will be allocated for the Patrol Leaders' Training at Foxlease from 8-17 August after 1st March. Applications, with a deposit of 12s. 6d. and a stamped addressed foolscap envelope, should be sent to the Secretary, Waddow Hall, Clitheroe, Lancashire, or to the Secretary, Foxlease, Lyndhurst, Hants., by the appropriate date.

- Fees at Foxlease and Waddow**
Shared room per day ... 20s. 0d.
(Minimum fee for weekend £2)
per week ... £6 0s. 0d.
Double room per day ... 25s. 6d.
(Minimum fee for weekend £2 11s. 0d.)
per week ... £7 13s. 0d.

- Single room** per day ... 30s. 0d.
(Minimum fee for weekend £3)
per week ... £9 0s. 0d.
Deposit 12s. 6d.

TRAINING SHIP GOLDEN HINDE

- MARCH**
23-APRIL 1 Maintenance
1-8 Senior Branch
- MAY**
27-JUNE 3 Guides (over 14) (*Bank Holiday*)
- JULY**
1-8 Senior Branch and Duke of Edinburgh Award candidates
8-15 Senior Branch and Duke of Edinburgh Award candidates
15-22 Senior Branch and Duke of Edinburgh Award candidates
22-29 Senior Branch
29-AUGUST 5 Guiders
- AUGUST**
5-12 Senior Branch
12-19 Guides over 14 and Senior Branch under 16
19-26 Senior Branch
26-SEPTEMBER 2 Senior Branch
- SEPTEMBER**
2-9 Guides over 14
9-16 Senior Branch
- Applications, enclosing a stamped addressed foolscap envelope, should be sent to the Secretary, Branches Office, C.H.Q.

ENGLAND

Extension Guiders: There will be a training for all Extension Guiders of England on Saturday, 4th March, from 10 a.m.—6 p.m. at Commonwealth Headquarters, 17-19, Bucking-

ham Palace Road, London, S.W.1. Applications to be made to the Secretary, English Training Dept., C.H.Q., enclosing training fee of 3s. and a stamped addressed foolscap envelope.

Further details of meals and possible hospitality, etc. will be sent to applicants later.

SCOTLAND

NETHERURD HOUSE, Blyth Bridge, West Linton, Peeblesshire

- JANUARY**
6-9 Glasgow Northern District Cub Scouters
13-16 Patrol Leaders
20-23 Training Committee
27-30 Guide and Brownie Guiders (*Getting down to it: 1967 is not a waiting room*)
- FEBRUARY**
3-6 Jordanhill Youth Leadership Course Students
10-13 Guide and Brownie Guiders (*Using the programme to meet the needs of the individual; noticing the individual*)

- MARCH**
3-6 Senior Branch Guiders
10-13 Commissioners
17-20 Trainers
23-28 Residential Course: Duke of Edinburgh Award Scheme
31-3 APRIL Guide and Brownie Guiders (*using the programme to meet the needs of the individual: assessing her needs and capabilities*)
- APRIL**
7-10 Commissioners
14-17 Trainers
21-24 Lanarkshire Youth Leaders' Course (*Guider Section*)

- 28-1 Guide and Brownie Guiders
- MAY**
5-8 Commissioners
12-15 Trainers

Fees at Netherurd

- Shared room** per day ... 17s. 6d.
per week ... £5 5s. 0d.
Double room per day ... £1 0s. 0d.
per week ... £6 0s. 0d.
Single room per day ... £1 2s. 6d.
per week ... £6 15s. 0d.
Deposit 5s. 0d.

WALES

FEBRUARY

4-5 Welsh Association of Youth Clubs

MARCH

3-5 Guide and Brownie Guiders (places reserved for Montgomeryshire)

10-12 Trainers, Commissioners and Chairmen of Training Committees (by invitation)

18-23 Patrol Leaders' Training (Easter) Guides 15+

APRIL

14-16 Trainers, Commissioners and Chairman of Training Committees (by invitation)

21-23 Welsh Folk Culture

28-30 Guide and Brownie Guiders (places reserved for Central Glamorgan)

BRONEIRION, Llandinam, Mont.

MAY

5-7 Guide and Brownie Guiders (places reserved for West Glamorgan)

26-30 (Bank Holiday) Guide and Brownie Guiders (husbands and children can be accommodated)

JUNE

2-4 Guide and Brownie Guiders (places reserved for Cardiff and East Glamorgan)

9-11 Guide and Brownie Guiders (places reserved for Monmouthshire)

16-18 Commissioners

24 Welsh Biennial Meeting

JULY

4-11 West Glamorgan. (Handicapped children's holiday)

15-22 West Glamorgan Patrol Leaders

26-AUGUST 2 Patrol Leaders

AUGUST

5-12 Central Glamorgan Patrol Leaders

16-23 Patrol Leaders

FEES AT BRONEIRION

Fees have had to be increased from 1st January, 1967, and are as follows:

Shared room per day ... 17s. 6d.
per week ... £5 5s. 0d.

Double room per day ... £1 0s. 0d.
per week ... £6 6s. 0d.

Single room per day ... £1 2s. 6d.
per week ... £6 15s. 0d.

ULSTER

LORNE, Craigavad, Co. Down

24-26 Commissioners and Senior Branch Guiders

MARCH

3-5 County Antrim

10-12 Trainers

17-19 North Down

31-APRIL 1 Londonderry County

MAY

12-14 Finaghy Local Association

19-21 Belfast County Trefoil Guild

JUNE

9-11 Irish-Trefoil Guilds

FEES at Lorne

Shared room per day ... 15s. 0d.

Single room per day ... 16s. 6d.

Deposit 7s. 6d.

JANUARY

13-15 Londonderry City Patrol Leaders

20-22 Trainers

27-29 Camp Training

FEBRUARY

3-5 Guide Guiders

10-12 Brownie Guiders

17-19 International Selection (by invitation)

CAMPING AND PACK HOLIDAYS

Foxlease and Waddow Camp Sites

Applications for sites should reach Foxlease by 6th January, 1967, and will be considered during or after the second week of January. They should be addressed to the Secretary and the envelope marked 'Camp'. Suggested dates, with alternatives and approximate numbers, should be stated and whether an equipped site is required. Camps may begin on any weekday.

Applications for sites at Waddow should be addressed to the Secretary and the envelope marked 'Camp'. Suggested dates should be given with possible alternatives and approximate numbers, and it should be stated whether an equipped site is required. It is preferred that camps start on a Saturday.

A 5s. deposit (which is forfeit if the booking is cancelled) and a stamped addressed foolscap envelope should be enclosed with applications to both Foxlease and Waddow.

Unequipped Camp-sites at Waddow

Two camp-sites, complete with solid shelter and each designed for thirty campers, will be available at Waddow during the 1967 season. The

charge will be 9d. per head per night. This is an opportunity for campers with their own equipment to come to Waddow. Applications should be made in the usual way.

Waddow Pack Holiday House

Applications for 1967 should be made to the Secretary, accompanied by a written recommendation from the Guider's C.A. A stamped addressed foolscap envelope should be enclosed.

Broneirion Camp-sites and Pack Holiday House

Applications for camp-sites and the Brownie Pack Holiday House at Broneirion should be addressed to the Montgomeryshire C.C.A., Mrs. B. Michael, Gorsty, Hyssington, Montgomeryshire, and *not* to Broneirion.

Netherurd Camp-sites

Two fully equipped sites are available. Applications to the Secretary will be accepted after January 1st. There is also a Brownie House.

Ulster Camp-site, Glen Road, Craigavad, Co. Down

Approximately 8 miles from Belfast on the Co. Down coast near 'Lorne'. Fully equipped for 40 campers (one large or two small camps). Excellent hut for solid shelter. Calor gas. Bookings will be accepted on and after 1st January and should be sent to Miss N. Pratt, 22, Bangor Road, Holywood, Co. Down.

Lorne Camp-sites

There are two fully equipped sites at Lorne. Bookings will be accepted on and after 1st January and should be sent to Miss B. Crawford, 84 Church View, Holywood, Co. Down.

Magilligan Camp-site, Co. Londonderry

Three sites, fully equipped for 25-30 campers. Sandy soil, drains easily. Expanse of beach. Large hut on the site containing three rooms, one with an open fireplace. Small calor gas stove available. A printed information list can be obtained from the Secretary, Mrs. R. F. Scott, St. Paul's Rectory, Gervagh, Coleraine, N. Ireland.

A Northern Ireland Holiday

Lorne, eight miles from Belfast on the shore of Belfast Lough, makes a good centre for sightseeing or touring in Northern Ireland. During July and August, Lorne welcomes Guiders or members of the Trefoil Guild on holiday. Come on your own or make up a party. Members of the Senior Branch and Guides over 14 years welcome with their Guiders.

Come and see Northern Ireland or just spend a quiet holiday in beautiful surroundings. House duties are light and uniform need not be worn.

Fees £1 per day, including all meals. Packed meals provided or 2s. 6d. deducted from the bill if you are out for a main meal. Applications, with 10s. deposit, to Guider-in-Charge, Lorne, Craigavad, Co. Down, Northern Ireland.

The Cottage and Caravan at Waddow

The Cottage, fully equipped and accommodating up to six people, is available for the use of members of the Movement and their friends throughout the year.

Charges are:- £1 1s. 0d. per night (minimum of £2 10s. 0d. per weekend and maximum of £5 10s. 0d. per week) plus 5s. per person per night. Linen, including kitchen towels, is supplied.

The four-berth caravan may be hired for holidays at any time. Charges are £4 10s. per week regardless of the number of people using it.

Bookings may be made for the Cottage or caravan six months ahead and applications should be addressed to the Secretary, Waddow Hall, and a stamped addressed envelope enclosed.

TRAINING FOR RESIDENTIAL WORK WITH CHILDREN AND YOUNG PEOPLE

For those who want interesting and challenging work in the service of the community, there are many opportunities in residential work in Children's Homes, Approved Schools, Remand Homes and Special Schools for Handicapped Children.

Twelve months courses of general training are open to women over 18 and men over 21; married couples can be considered.

Experience with children or young persons is required or can in some cases be arranged before training.

Courses specially designed for those definitely wishing to work with difficult adolescents are open to candidates over 21 and preferably over 23.

Applications should be made at once for courses commencing in the autumn of 1967 at the following centres from whom further particulars and application forms can be obtained. Address your enquiry, preferably on a post card to:

TUTOR IN CHARGE, CHILD CARE COURSE

General courses

Ipswich Civic College, (C14) Rope Walk, Ipswich
The Martineau Teachers Centre, (C14) 225, Bristol Road, Birmingham, 5
The Centre of Further Education, (C14) Marygate, York
Dr. Barnardo's Homes, (C14) Staff Training Centre, Woodford Bridge, Essex
National Children's Home, (C14) Stephenson Hall, 85c, Highbury Park, London, N.5
(Mainly for their own staff.)

Specialised courses for those wishing to work specifically with adolescents

Selly Oak Colleges, (C14) Birmingham, 29
Ruskin College, (C14) The Rookery, Old Headington, Oxford
Vaughan College, School of Social Work, (C14) University of Leicester, 107 Princess Road, Leicester

Grants are available to cover fees, maintenance and expenses.

Central Training Council in Child Care, (C14) Home Office,
Horseferry House, Dean Ryle Street, London, S.W.1.

FUND RAISING

WE CAN SUPPLY you with Rolltip retractable pens, non refillable pens, diaries, address books, notebooks, and rainhats. All printed with the name of your organisation. Profit on all these items is well over 50% Details and samples:

THE DOUGLAS SUPPLIES CO.

34 Princes Street, Ipswich, Suffolk
Tel. 55182-76130

Don't be on the losing side...

order **Cash's** WOVEN NAME TAPES now!



From your Draper and Outfitter

The Promise and Law

For the Brownie, the Guide, the Ranger, the Cadet
and the Guider

'In this material age with distractions and pleasures more than ever accessible, the training of the spirit is becoming correspondingly difficult and is too largely neglected. Our objective in the Scout and Guide Movement is to give such help as we can in bringing about God's Kingdom on earth . . .'

THE FOUNDER (from *Scouting and Youth Movements*)

THE Founder never feared to speak plainly and honestly about the aim of Guiding and Scouting. In all his writing he makes it clear that, 'no man is much good unless he believes in God and obeys His Laws.'

It would have been strange, indeed, if the Working Party had recommended a break with this fundamental principle of Guiding. In fact, as we know, it has reaffirmed the Movement's commitment to the Promise and Law.

Yet certain changes have been made. It was H. G. Wells who wrote: 'once a species has lost its ability to adapt itself to its changing environment its end is in sight': the Working Party was aware that institutions must move with the times but it remembered that their success in doing so must always be in proportion to their continuing awareness of the past.

The Promise remains a condition of membership for us all. Never before could such a sentence have been written really meaning all. Never before have Brownies been able to make the threefold Promise in the same way as Guides and members of the Senior Branch. Now a Brownie will make her Promise and it will be symbolised by her threefold salute and eventually by a new badge; she will never make her Promise again but she will renew it as a Guide and as a Ranger or Cadet and promise to keep the Guide Law.

The Working Party wished us to gain a sense of common purpose and unity through many of its suggestions and ideas. Surely nothing could give us more stability of purpose than for us all to share the Promise, which is the foundation of Guiding, but if there is to be strength and impact in this new approach the Promise must be understood by everyone who makes it. The new Promise has been re-phrased so that the clause 'to do my duty to God' now 'stands alone so that it can be shown to be the first and overall purpose.'

Guides accept voluntarily the challenge of the Promise and Law, and those of us working with a unit recognize that to many the first Promise is indeed a challenge, and, if it is one, we share it. Some young people come to Guiding with a simple faith, some are helped to deepen this understanding by recognizing God's command of the universe through

the consistent laws of nature; some make a 'jump of faith' because of the help they receive from their home, their church or school, others because of the way of life of their Guider, or through Pack or Company prayers and Guides' Own Services. The Working Party has made clear the aims and motive of Guiding; if for a moment we feel inadequate for the task let us remember the initiative is with a seeking God.

A Guide makes three Promises, but the third, to obey the Brownie or Guide Law, is to some extent how she will try to carry out her duty to God, her Queen and other people. It was felt by the Working Party that the laws must be positive and understandable by young people and some revised wording has helped to express the laws in more meaningful terms.

The wording is new, the course of action which keeping them imposes is as old as time. When the Founder gave us the Law he was not from his imagination presenting a good idea, he was expressing moral laws which are as old, or older, than the Commandments.

In every situation a Guide must choose what action to take: she must prefer one way because measuring it against some standard it seems the 'better' way. If it is better to speak the truth rather than lie, if it is better to be honest rather than steal, then the laws are setting a rational and righteous standard in words which young people can appreciate and act upon.

The Working Party hopes the Promise will be comprehensive to all those who wish to join the Guide Movement. In discontinuing the use of the expression 'on my honour' it is hoped that the words which might confuse younger members of the Movement have been removed, and that the clear statement 'I promise' has now been given strength and added meaning. This makes promise taking simple but binding, it lays on an individual the responsibility to do her best: this imposes upon her Guider the responsibility of helping her discover her best and how it can be used in a way that is 'well pleasing'. The programme as we know it now, and the Eight-Point Programme, are tools which aim, through fun and enjoyable activities and experiences, to help each girl make the best of her intellect, her technical ability and her inborn concern for others.

It is suggested that we should begin using the new Promise and Law at the beginning of the New Year. It happens that it is the time when we remember how the Wise Men came; somewhere there is a link here. . .

J.G.

(As mentioned on page 15, there will be further articles on 'The Promise' in the March, April, May and June GUIDERS.—EDITOR)



Illustrated by Jennetta Vise

Here We Go!

MOVING towards TOMORROW we may be, but 1967 is still TODAY, and let's not forget it—a day with its own value and importance, and not merely a PRELUDE TO TOMORROW. For the young people in our Units it is one whole year of their life there, perhaps their very first as a Brownie or their last as a Ranger or the one in which they take over the leadership of a Patrol. To spend this year in an atmosphere of 'waiting', however eagerly, for the next is not the best use of their time, however much we all rightly feel the need to prepare ourselves for its coming. Our Brownies, Guides and Senior Branch must be able to live this year to the full *now* through the best that the present offers (and this includes those new things that can come into effect from this month and throughout 1967).

The TRAINING PAGES for this year have been planned with this in mind.

January to July will be geared to this two-fold purpose:-

1. To help us to make the fullest possible use of our present programme, using it with imagination and understanding to meet this year's needs.
2. Through this good use of the present to help us all to prepare the ground for the future.

There will be several series of articles, e.g.:-

Being and Doing—the Promise, for each age group.
Each One a Person—noticing the individual, assessing her needs, abilities and achievements, etc.

Learning (and teaching) Useful Skills (see page 23).
Providing Incentives and 'impelling into experiences' (See this page)

Practical Activities for all age groups (see pages 17-18).

Things We Do Together (see page 25 for 'Thinking')
B.-P. Had a Word For It—human relationships and all that!

Mainly for Commissioners (the first is on page 16).

From September to December we shall discover together something of what the new approach to Guiding will actually mean in our own Units, with specific ideas on the working of the **Eight-Point Programme**.

Throughout the year there will also be information on the change-over e.g. dates for completion of present tests, targets for the last three months or so, explanations (for example see page 14 for the 'Promise and Law' article) of what is involved in some of the changes and their implication—all things that will help us to make the most of TODAY as we move towards TOMORROW.

Providing Incentives

'It is neglect not to impel people into experience'

KURT HAHN

THOSE whose names appear in the New Year Honours List or who win fame through some new performance in a spacecraft are always ready to point out to interviewers that their success has only been

made possible through the support of their colleagues or the work of the team of back-room boys. Behind the lesser achievements of our own lives many of us would gratefully acknowledge that it was a word of

encouragement at the right moment, a gentle nudge (or a harder push!) in the right direction or perhaps it was a book that was a source of inspiration or a demonstration which brought a topic alive that led us on to these satisfying experiences.

Some of the youngsters in our Units seem to be born with boundless enthusiasm and clear cut ambitions and are a great joy to deal with for they find a tremendous amount of satisfaction in our programme and have a great deal to give, but the many others who lack quite this degree of initiative are the ones who derive most benefit from our efforts to provide the 'gentle nudge' that sends them forward exploring the opportunities that Guiding offers. Kurt Hahn's phrase 'to impel people into experience' expresses so well what Guiders in all Branches are trying to do for their members. It is by encouraging them to participate fully in a well-balanced programme that we help each individual to grow in the widest sense.

What are, briefly, some of the incentives we use to this end?

A word of praise for an emerging talent can nourish the seed which grows through taking the interest further (through a Proficiency Badge?) into an absorbing hobby in adult life.

Challenges and competitions can stimulate them to attempt something new or difficult, bring something to a better standard through practice, working

on their own or extending their experience of working in a group.

The basic tests act as incentives when the girls can see what has to be tackled; they are led on to the next step and perhaps to a further widening of experience through the Duke of Edinburgh's Award Scheme.

Recognition in the form of badges and certificates has a definite appeal, so have charts for recording progress.

The special occasions from welcoming a visitor to participating in an international camp, provide the need for special effort—whether of shoe polishing or research into family life in Israel.

Using the help and tests of other organizations gives a wider outlook and standards to match up to.

Short term targets act as a spur. For instance, can we this year exploit the glamour of being 'the last Guides to take the First Class test'?

A current interest among the group—hard to predict but easy to spot; when it occurs, it can be built on while it lasts.

In these pages in the next few months we shall be hearing more about this question of incentives, and while considering how to extract the greatest value from the present programme and trying out the ideas offered, we shall be helped to see a clearer picture of the purpose of the activities, which is vital in preparing ourselves for next year's changes.

JENNIFER LINES

Mainly for Commissioners

Manpower Targets for 1967

JANUARY 1967—the beginning of a year during which the pattern of Guiding as we have known it will gradually change; the month for good resolutions and the month when, after the spate of parties and Good Turns, Commissioners occasionally have time to sit and plan the year's campaign and earmark priorities.

From among the welter of priorities which beset every Commissioner planning ahead, it is obvious that this year the necessity to find enough adult leaders to satisfy the demand of girls to join the Movement must be paramount. The 'Working Party Report' offers us the freedom to make new appointments to spread the load of administrative work and of the running of units. This sounds wonderful on paper, but how is it to be translated into practice? Where are we to look for the District Assistants, the extra Ranger Guiders and the Unit Helpers which we all need so badly?

Before doing anything active about this question, Commissioners will find they are wise to get together

and think. County Commissioners with their Divisions, and Division Commissioners with their Districts, will need to talk over together the plan of campaign. They will consider the present 'man-power' position in each area; they will think about the possibilities of re-deploying their present Commissioners, Secretaries, Guiders and Camp Advisers into those jobs most suited to their capabilities. They will make sure that everyone understands the need for consultation where re-deployment seems the right thing, so that the Chairman of the Training Committee is consulted before any proposal is made to ask a Camp Adviser, for instance, to change her job, and that the County Commissioner is always approached for advice and approval before any names are submitted for changes in Commissioners' jobs.

Division Commissioners will know, within their own Division boundaries, which Districts need Assistants, and what qualifications those Assistants should possess to complement the qualifications of the District Com-

missioner. Only when the Division and District Commissioners have a clear overall picture in their minds of the needs of their own area can they really get down to the job of finding adults to fill these new openings.

Every Commissioner will realise that she cannot find all these extra people by herself; she must use every possible source at her disposal to search for them. One of her particular missions in life in the next months may be to tour her area, talking to her Local Associations, Trefoil Guilds, Support Committees, parents, University and College Clubs and other bodies which have any connection with, or interest in, Guiding, telling them of the need and making sure they know what are the qualifications and the uses of the people for whom she is asking them to look, and again making certain that all such suggested names are referred to her before any action is taken, for the responsibility of appointment lies with her.

On this tour of her area she may well find people who would make good District Commissioners, who, if they knew that they could be provided with an Assistant with technical knowledge and experience, would be prepared to tackle the more purely administrative and liaison work. There will be plenty of scope for much re-deployment of man-power in many Districts.

The Important Odd Jobs

The Commissioner is going to find it essential to 'sell' the idea of finding extra adult help to her Guiders. Comparatively few Guiders, even nowadays, really look for the outside expert to come and give a short course on their own subject. Comparatively few use the capable mother, Trefoil Guild member, college student home for a few months or other useful adult to take over the dozen 'odd jobs' in any Units that

do not need either trained Guiding skill or the necessity to wear uniform or be warranted.

Finding the Right People

Once the Guider knows what she may use and accepts the immense value of the proposed Unit Helpers and specialist instructors, she will discover a vast source of untapped willing help available from adults who have only a little time to give. Having 'sold' the idea of the value of this type of help, she will also find it necessary to help her Guiders to find the right people with the ability to be a good influence and to get on well with the girls of the age range of the Unit where they will help.

Where will the search begin? Everywhere and anywhere that people go for business or pleasure. Women's Institutes, Townswomen's Guilds, Soroptomist Clubs, Inner Wheel, Church and Chapel Women's Fellowships, Young Wives' Clubs, School and College staff rooms, the coffee mornings and the sherry parties, the chance encounter at the bus queue, shop counter, or even the next-door patient in the hospital ward may produce just the person you are looking for.

Deploying Our Forces

We are at the beginning of the implementation programme and now is the time for planning and consulting at every level rather than for hasty action. Let us be certain that we know what we want, how we can deploy our forces to the best advantage for everyone, and where we can look for the extra help. Let us be ready to find and welcome, and train if necessary, the complete newcomer who brings an objective viewpoint and a wide interest to Guiding. So, for January 1967, think together, consult together, and plan your campaign, before moving on to the next stage.

For Your Programme Book

Ginger Beer, Sweet-making, a Penny Fair or . . . ?

1. Tell your Guides how the Guides of Montgomeryshire gave money to build kitchens for schools in Basutoland (now named Lesotho). Find more about this in the March 1966 GUIDER.

2. Give each Patrol 2s. Challenge them to make it grow. Time will be needed in the meeting for the Patrols to discuss, to plan and maybe to work at a project—perhaps indoors, perhaps out.

3. Some time in March collect the proceeds for the 'Guide Friendship Fund' or 'Save the Children Fund' or where the Guides choose. Give some small trophy for the most original idea for using the 2s. and remind the Patrols that every little helps.

(Remember Guides may not collect in streets or from door to door).

D. M. SANDFORD

An Indoor Stalking Game in the Dark (for Guides)

1. Each P.L. is blindfolded and guards her Patrol home, to which there is only one entrance and within which there is a known amount of 'treasure', e.g. shells, beads.

(Lights Out)

2. Guides scatter and try to get into other Patrol homes; this is done by going up to the P.L. singly and letting her try to identify them by feeling.

3. If the P.L. cannot recognize who it is, that Guide goes in and takes a treasure; if the P.L. does recognize and name her, she must go away and cannot try that Leader again until she's tried one of the others.

4. If a Guide gets a treasure she goes back to her own Patrol home (but must not say who she is). If the P.L. recognizes her, she puts the treasure in her

own home (and if desired can change places with the P.L.) If the P.L. does not recognize her, that treasure is 'lost', i.e. goes to Guider.

5. *At the same time* each Patrol sends one member to be blindfolded (we called them 'batwomen', but that will depend on your Company). These 'batwomen' try to catch any of the other Guides except those guarding the homes or anyone a home guard is trying to identify. Anyone caught changes places with the 'batwoman'. The 'batwoman' then becomes an ordinary member of her Patrol and tries to get hold of another Patrol's treasure like the rest.

D. S. ELLABY

(A simpler 'hiding and collecting game' for Brownies is 'The Crown Jewels'.)

The Crown Jewels

Apparatus: About 30 pieces of 'jewellery' (pictures cut from magazines, pasted on to old Christmas cards, with values clearly marked on reverse). Could be made beforehand by Brownies.

Activity: Place jewellery round room. Guider, Pack Leader or older Brownie guards jewels by walking slowly round room.

Brownies hide or make themselves small anywhere in room, creeping up and collecting as many pieces of jewellery as possible when guard is not looking in their direction. If detected, Brownie drops piece and may not pick that particular piece up again.

Scoring: Brownies count value of jewellery collected by all the Six or even groups.

M. A. BAMBER

Rules of Health Games

Have you tried a **Dolls' Baby Show or Beauty Contest?**

Give adequate warning that the show will take place shortly. All aspects of the doll's grooming will be taken into consideration. You may charge a small entry fee if you wish, using the money to help with a Good Turn. The Brownie is completely involved in the preparation of her dolls and sees the end result.



Miming Game

Make cards with one important way of keeping the health rules printed on each, e.g. 'wash your hands before eating'. Scatter them on the floor.

Brownies skip round in a ring, singing to the tune of 'Here we go round the Mulberry Bush'

Illustrated by Juliet Clarke

*'This is the way we keep the health rules
keep the health rules (twice)*

*This is the way we keep the health rules
Because we are Brownies.'*

Whoever stops at the pre-arranged mark on the floor goes to the centre, picks up a card and mimes what is written on it. The other Brownies guess what hint to keeping healthy it represents.

GLADYS PHILLIPS

'Lend a Hand' Reminder

As well as being helpful to the girl herself, quite a lot can be learnt about the home background of a recruit from the following activity based on the 'helping at home' part of the Promise.

Each recruit draws round her own hand on a double sheet of golden paper which has the fold at the wrist end. The hand shapes are then cut out, leaving them joined together at the wrist, and 'Lend a hand' written on the outside.

This pair of special Brownie hands is then taken home and everything a recruit does to help during the week is written or drawn on them. The finished product is returned for inspection and comment the following week.

Try it—you may be surprised at the result!

J. McQUEENEY

Listening to Music (an excellent mixed Senior Branch activity)

It must start on general level and grow in depth and breadth by progressive familiarity. Don't plunge straight into Bartok or even Bach! Enlist help of a knowledgeable amateur and ensure a good gramophone and sound recordings. Essentially time must be given regularly—each meeting over a period and radio 'home listening' also undertaken if possible.

Most people appreciate rhythm; start here, with easy recordings of such as Russ Conway, the better pop groups, etc. and progress through such as Mendelssohn's 'Italian Symphony', Handel's 'Queen of Sheba' and so on.

Study (1) orchestral instruments—how different shapes produce different sounds; (2) the function of the leader, the conductor, etc. Progress to concertos.

Choral work: Start with the best choirs singing familiar carols and oratorios onwards to better-known operatic works, individual voices, etc.

An interesting idea: Link music, fashion and architecture of different periods: how they relate: the monks, plainsong, austere buildings—through to XVIII century music of Mozart, Georgian architecture, decorative clothing, etc., and on to obvious relationship in present day.

Aim ultimately at recognizing the type of music, the instruments performing and a fine performance from a mediocre one.

The more-informed listener appreciates the actual sounds of a composition, its rhythm, form, the virtuosity of the performers, interesting details, etc.—but it takes time!

E. HYATT

'TOMORROW'S GUIDE'

DEAR COMMISSIONERS AND GUIDERS OF THE U.K.,

This is the first time I am writing to you as your Chief Commissioner. For the past ten years Miss Gibbs has been our Chief Commissioner and has set an example which it will be very hard to follow. Much has been written in praise of Miss Gibbs and I can only add my personal thanks to her for all the kindness and help she has shown me whilst I was her Deputy. I am truly grateful.

It is with a great sense of humility that I take over from her. To find oneself as Chief Commissioner of so great a Movement is a prospect which would daunt the bravest heart. During the time I have been Deputy Chief Commissioner I have learnt a great deal about what goes on in the different aspects of the Guide Movement. I never cease to marvel at the unselfish dedication of so many people. There are few material rewards for this dedication but the very strength of our organization is the most obvious reward of all. One cannot measure service with a ruler but we can enjoy in so many ways the results of service.

We are entering on a new phase and the next year or two should be exciting and very interesting.

Now I will introduce to you a timetable for the implementation of all the many items which are the result of the Working Party Report. The timetable, which you will find on pages 20-21 of THE GUIDER, should be read in conjunction with the Report.

In making these plans, the Executive Committee has been very much aware that people want to start on what is new as soon as possible. At the same time, we must avoid beginning things before we have the necessary information to do them properly, for the way we begin will set the pace for the future. Another consideration has been the need to keep the implementation plans simple, with as few different starting dates as possible. It has therefore been agreed that there will be two main dates when items will come into effect, as follows:

1. January 1967—that is, immediately

Items in this group are those which can easily be separated from the rest of the new programme and for which there seems to be no reason to delay. These items are referred to in the Schedule as *Group I*.

2. When the Handbooks are ready—as early as possible in 1968

These items, referred to in the Schedule as *Group II*, are those which cannot easily be put into action without the Handbooks—the new Programme and much that is closely linked with it. This group also includes a few items for which considerable preparation is still required, as, for example, with the camping changes.

The Executive Committee would have liked to have given a definite date for *Group II*, but in view of the difficulties of estimating the exact length of time which must be allowed for producing a large number of Handbooks it was agreed to defer this decision.

In addition to the recommendations which will come into effect in *Groups I* and *II*, there are a number which are described as follows:

As Soon as Possible in 1967

These cannot begin at once but need not wait for *Group II* and the starting dates will be published as they are available.

Continuing Activity

These items are not new but require to be continued with renewed energy.

Already in Hand

Already Implemented

Still under Consideration

Further decisions and dates for their implementation will be published in due course.

Although the Report speaks for itself, and we hope the new Programme and the Handbooks will do likewise, the Executive Committee feels that every Commissioner, District Assistant and Guider will want to avail herself of some form of short introductory training before embarking on the new Programme. To this end an outline plan for training has been agreed and details are given after the Implementation Schedule.

Following the Schedules are some Notes which include, for your convenience, a list of the items in *Group I* on which we can now begin. The amendments to *P.O.R.* which relate to these are on pages 30, 32 and 34.

I hope you will feel that these plans are wise ones. We are all impatient to get started on the exciting things which lie ahead.

It is a great privilege for me to be your Chief Commissioner at this very vital stage in our history, and I am well aware that I can achieve nothing without the kindness, without the co-operation and without the unselfish help of every single one of you. It is my earnest hope that you will give me these things unstintingly and for my part you have my promise that I will do everything in my power to make a success of my task.

Ann Parker Bowles

CHIEF COMMISSIONER

Tomorrow's Guide

SCHEDULE FOR THE IMPLEMENTATION OF

ITEMS RESULTING FROM THE WORKING PARTY REPORT

(NOTE: Numbers in left-hand margin refer to Working Party recommendations and the decisions of the Executive Committee as set out in the Report. For explanation of terms used in right-hand margin, see the Chief Commissioner's letter on page 19.)

1- 4	New Promises and Laws come into use.	Group 1	44	Fuller co-operation between adults of Scout and Guide Movements.
5- 6	Amended Religious Policy adopted.	Group 1	45	Three sections for girls retained.
7	New definition of Aims and Methods adopted.	Group 1	46-48	New age ranges come into effect.
8	GUIDER becomes collective term for adults holding active uniformed appointments.	Group 1	49-53	Eight Point Programme comes into effect.
9-11	New names for Guiders come into use.	Group 1	54	Plans for presentation of new Programme.
12	Term SPECIALIST TRAINER.	No change	55	Appointment of Programme Advancers.
13-15	New Section names come into use.	Group 1	56	Search for ways to reduce self-help Handbooks.
16	RANGER GUIDE replaces Cadet and Ranger.	Group 1	57-62	Changes in Brownie Ceremonies, and Six Names come into effect.
17	Term EXTENSION.	See Rec. 76	63	New Brownie Badge comes into effect.
18	PATROL LEADERS' COUNCIL replaces Court of Honour.	Group 1	64	Brownie three-finger Salute adopted.
19	GUIDES' OWN SERVICE replaces Guides' Own and Guiders' Own.	Group 1	65	Senior Branch changed to Ranger Service Units and all Units into Guide Service Units.
20	Guide Sign becomes Salute.	Group 1	66-67	New plans for Ranger Guide Service Units.
21	Left handshake.	No change	68	New Ranger Guide Service Units formed.
22	Uniformed Movement.	No change	69	Eight Point Programme for Ranger Service Units.
23	Intensified efforts by Uniform Committee to keep in touch with needs and desires of Movement.	Continuing activity	70	Administration of Ranger Guide Service Units.
24	Realistic weekly subscriptions by members.	Continuing activity and periodic review	71	Age for Ranger Guiders.
25	Camp charges adequate to cover all expenses.	Continuing activity	72	New uniform for Rangers available.
26	Commissioner's responsibility in annual checking of Unit Accounts.	Continuing activity	73	Lones where possible belong also (home) units.
27	Re-examination of Membership Subscription.	Periodic review	74	Lone Enrolment Badge discontinued.
28	Possible moving of main trading functions outside London.	Still under consideration	75	Separate events for Lone members.
29-32	New arrangements at Headquarters regarding members of Executive Committee, Committee Structure, and Commonwealth Headquarters administration; also Country and County administration.	May, 1967	76	Title EXTENSION retained but use absolutely necessary.
33	Professional study of organization and method at Commonwealth Headquarters.	Still under consideration	77	Active steps to increase Pack Holiday Permit.
34	Means for every Guider and holder of Appointment Card to have THE GUIDER.	Still under consideration	78	Revised method adopted for training for Pack Holiday Permit.
35	New system introduced of Warrants for Commissioners, Guiders and their Assistants, and Appointment Cards for other appointments.	May, 1967	79	Testing for 'outdoor' badges by possibility of District Commissioners.
36-37	Simplified arrangements for obtaining Badges and Registered Goods come into effect. (Details in April GUIDER).	May, 1967	80-82	Changes in camping qualifications come into effect.
38	Appointment of District Assistants becomes permissible where right person can be found.	Group 1	83	New arrangements for camping come into effect.
39	Appointment of Unit Helpers becomes permissible where the right person can be found.	Group 1	84	Simplification of camp forms and forms comes into effect.
40	One Training Diploma introduced.	Group II	85	Consultation regarding joint Standing Committee.
41	Reconsideration of position regarding Training Certificates.	At a future date	86	More help for Counties to publicize.
42	No longer mandatory for Trainers to hold Unit Warrants.	Group I	87	Possibility of joint Scout/Guide Senior Sections.
43	Study of methods for continuing training for Commissioners, Trainers, and Guiders.	Continuing activity		

* (With the exception of Brownie Enrolment Ceremony. I. Details of this ceremony February GUIDER together with Guides.)

TRAINING

It has been agreed by the Executive Committee that the timetable of training events throughout the year will be on the following lines. Plans will be made for arrangements within Countries and Counties.

en adult supporters	Already in hand
ments.	No change
tained.	Group I (optional)
effect.	Group II (definite)
omes into use in all	Group II
new Programme.	Already in hand
ne Adviser.	Already implemented
ice selling price of	Already in hand
monies, Six Rhymes	Group II*
o effect.	
es into use.	Group II
te adopted.	Group I
to Ranger Guide	Group I
its known as Ranger	
uide Service Section.	Still under consideration at time of going to press
ervice Units can be	Group I
for Ranger Guide	Group II
Guide Service Sec-	May, 1967
s available.	Group I
ong also to 'normal'	As soon as possible in 1967
discontinued.	Group I
members.	Group II
but used only when	No change
ack Holiday facilities.	Group I
for training and test-	Group II
rmit.	
dges becomes respon-	Group II
missioner.	
ifications come into	Group II
mping administration	Group II
rms and camp census	Group II
joint Scout/Guide	Already in hand
to improve their	Still under consideration
Guide periodical for	Still under consideration
e of Recommendation 61, the	
emony, which will be in Group	
mony will be published in the	
ther with a new ceremony for	

IG SCHEDULE

ve Committee that there will be a common
hout the United Kingdom and that this
will be varied to suit local conditions and
Counties will be made in the usual way.

November 1966
to
February 1967
February
and
March
April
and
May
September
to
November

Guiders' training will from now on be geared to the Implementation Schedule. Until September this training will be transitional, aiming to help the Guider make good use of the present year, emphasising activities common to both old and new programmes, and giving ideas for moving from one to the other. From September onwards all Guider trainings will be on the new programme.

The Training Pages in THE GUIDER will be an essential source of help on the new thinking. During the coming months they will be transitional and from September will be based entirely on the new Programme.

THE BROWNIE, THE GUIDE and THE SENIOR BRANCH NEWS will follow similar schemes.

NOTES ON IMPLEMENTATION SCHEDULE

It will be seen from the Schedule that the following are the items in Group I to come into effect immediately.

(Further details can be found in the P.O.R. amendments on pages 30, 32, 34 and in the Working Party Report itself.)

- 1, 3 New Promise and Law for Brownie Guides.
- 2, 4 New Promise and Law for Guides, Ranger Guides and adult members.
- 61 Brownie Enrolment Ceremony (also new Guide Enrolment Ceremony).
- 20, 64 Present Guide Sign becomes Salute for all members, including Brownie Guides.
- 7 New definition of Aims and Methods of Movement, as given in amendment to P.O.R.
- 5, 6 Amended Religious Policy, as given in amendment to P.O.R.
- 46, 47, 48 New age grouping (optional until 1968)
- 68 New Ranger Guide Service Units can be formed.
- 71 Age of Ranger Guiders
- 38 Appointment of District Assistants as soon as right people can be found.
- 39 Appointment of Unit Helpers as soon as right people can be found.
- 42 Trainer's Unit Warrant no longer mandatory.
- 73 Lone members where possible are linked also to 'normal' (home) Unit.
- Certain new terminology:**
- 8 GUIDER as collective term for adults holding active uniformed appointments.
- 9 ADULT LEADER whenever appropriate outside the Movement.
- 9 BROWNIE GUIDER replaces Brown Owl.
- 10 ASSISTANT BROWNIE GUIDER replaces Tawny Owl.
- 11 GUIDER GUIDER
- ASSISTANT GUIDE GUIDER } replaces Captain and Lieutenant.
- RANGER GUIDER }
- ASSISTANT RANGER GUIDER }
- 13-15 & 65 Section names come into use including term 'Brownie Guide'.
- 16 Ranger Guide replaces Cadet and Ranger
- 17, 76 Title EXTENSION used only when absolutely necessary.
- 18 PATROL LEADERS' COUNCIL replaces Court of Honour.
- 19 GUIDES' OWN SERVICE replaces Guides' Own and Guiders' Own.

NEW PROMISE AND LAWS AND SALUTE

Apart from people who are to be enrolled in the immediate future and may wish to make the old Promise, from now on the new one should be used. It seems likely that by Thinking Day the new Promise and Salute will be universally known and in use.

It is not necessary for present members to re-make the Promise, although anyone who wishes is, of course, at liberty to do so. Although Brownies now use three fingers for the salute when making the Promise, they will continue to wear the Brownie World Badge because it is worn by Brownies all over the world.

New 'Promise and Law Cards' are now available at 3d. each. (Brownie Promise and Law Cards, 2d.) Packing and postage, 8d. per dozen.

AMENDED RELIGIOUS POLICY

An article on this subject will be published in the February GUIDER.

NEW AGE GROUPING

It is clearly important that we should begin at once to move towards the new age grouping, as given in the P.O.R. amendments, but in doing so we must not neglect the needs of present members. The new age ranges are therefore to be optional during 1967, becoming definite when the items in Group II are implemented in 1968. This means, for example, that a Guide of 16 who has badges she wants to finish can stay on to do so, while a Brownie Guide can join on her 7th birthday or a Guide on her 10th if that is desirable.

It should be noted that the new programme is intended to last a maximum of around 3 years for a Brownie Guide, and around 4 for a Guide or Ranger

Guide. This means that a bright Brownie joining on her 7th birthday is likely to be ready for Guides by her 10th, and for Rangers by her 14th, or, at latest, 15th birthday. Those who join later, or are less mature, will tend to move on somewhat later all along the line.

NEW NAMES FOR GUIDERS

Although the 'official' names for Guiders are as given on page 21, (and as given in P.O.R. amendments), the Working Party Report recognizes that Units may want to choose their own names by which to address their Guiders. They recommend that Brownies should definitely do this, and comment that many may continue to use 'Brown Owl'.

APPOINTMENT OF DISTRICT ASSISTANTS

While it is permissible from now on to appoint District Assistants, District Commissioners will want to consult with their Division Commissioners before going ahead. Although it is hoped that many of these people will be appointed in time to benefit from the trainings next autumn, it would be a great pity to appoint a District Assistant without making sure first that she is the best available person for the job.

Commissioners are advised to re-read paragraphs 95-106 of *Tomorrow's Guide* and the Executive Committee's amendment to recommendation 38 before making any appointments.

APPOINTMENT OF UNIT HELPERS

Here, too, it will be wise for Guiders to pause for thought, and for consultation with the District Commissioner, and not to rush too hurriedly into making appointments.

WADDOW'S RUBY JUBILEE

16th - 18th June, 1967

We want *you* to come and share the celebrations with us and bring your Guider friends.

Arrangements: You may (a) Come for the weekend to Waddow, Clitheroe, Lancashire, as a member of a small party and camp on one of Waddow's sites. Bring your own equipment and be entirely self-supporting. (b) Come for the weekend and join the Central camp which will be equipped and staffed. (c) Come for the day on Saturday and/or Sunday bringing your own food. Tea, coffee, biscuits, etc. will be on sale.

Programme: There will be plenty of free time for you to meet your friends. The Chief Guide will be there and many of the people who have been responsible for

caring for Waddow during the past forty years. Plans are in hand for your entertainment and there will be a spectacular camp-fire on Saturday night. The weekend will close on Sunday afternoon with a service.


Application: If you wish to camp, apply as soon as possible to Miss P. Sugden, The Old Rectory, Sandown Park, Liverpool, 15., enclosing a stamped addressed, foolscap envelope.

If you are coming as a member of a self-supporting unit, only one member of the group need apply for an application form. Space will be limited for camping, so to avoid disappointment, please book early.

If you prefer to come by day apply to Miss I. Siddall, Holly Bank, Cleckheaton, Yorkshire, enclosing a stamped, addressed, foolscap envelope.

The completed application forms must be returned by 1st May, 1967. We are sorry that it will be impossible to provide any accommodation inside the house.

Cost: Contributions towards the expenses of the weekend will be needed and Guiders will be asked to pay a small fee for the privilege of joining in the Ruby Jubilee Celebrations.



**PENNANTS
BADGES · FLASHES**

'Quotations forwarded by return'

P & R PUBLICITY LTD.

The Broadway, Pitsea, Basildon, Essex. Telephone: Vange 2123

Learning Useful Skills —

'I learned it in the Guides', said a young trainee nurse when complimented on the way she had made a bed, and many's the occasion when others have said the same. 'In the Guides'—or the Brownies or the Rangers—it's there that many a useful skill has been learned and then found still to be useful years later when the laundry is done up week by week with a packer's knot or the family is kept warm and dry and well-fed on a wet camping holiday.

There are some things that it is useful to know how to do (see JUST HOW and BE PREPARED by Miss Maynard for some of them); there is a satisfaction in learning how to do them well ('Man is a skill-hungry animal' and we neglect that hunger to our

peril). Of course 'technical skill' is not everything—no one ever really thought it was—but useful skills are worth acquiring and where more reasonable to expect to learn some of them than 'in the Brownies' or 'the Guides' or 'the Rangers', where 'Lend a Hand', 'Be Prepared' and 'Giving Service' require at least some degree of handiness.

For the next few months we shall look at some of the useful skills being learned 'in the Guides'. There will be hints on how to learn and teach, ways of practising, sources of further help, and on keeping the purpose of it all well in mind. We hope to have some linking articles in the other periodicals from time to time.

J. M. C.

THERE can be few more obviously purposeful skills to learn than this. Its link with the motto, Law and Promise is clear; its need is as great in 1967 (and 1968) as ever it was; it is a skill for which we can never depend entirely on the professional as it may be too late before one is found.

Half-knowing and wrong-doing in First Aid are dangerous so it is not a skill to be acquired through methods of experiment and discovery or trial and error; it is something for which practice is essential.

For those who learn, First Aid stimulates imagination and sympathy as people practise, trains judgement and decision, puts self in second place and gives an opportunity for the exercise of understanding and compassion. It is a thoroughly relevant-to-life activity!

THIS MONTH: FIRST AID



In the Pack

RECENTLY I had the privilege of meeting the chief of our village rescue squad. I recognized him by the splendid badges he wore designed in red ink on his anorak sleeve. When I asked him what the squad did he told me with shining eyes that he had already saved two girls' lives when they fell off their bicycles! Andrew is nine, just the age of a Brownie, and to him First Aid was thrilling and real. This is how it must be with our Brownies and no amount of looking at pictures and talking will get this across; we must get down to practice, and then more practice.

Knees and Fingers

In our Golden Hand test the Brownie has to show that she can deal with a grazed knee and a cut finger, two of the most common injuries among children. She also learns about fire and how to deal with burning clothes. It can be a challenge for two Brownies to work out together how to bandage a knee, perhaps using a chart, but after the first time they will then need more practice in order that when faced with a real accident they will know automatically what to do. I say 'automatically' because it is only

when a thing is learnt thoroughly that one is able to get down calmly to coping, regardless of fear or nerves.

It's fun to have a daub of mud and a streak of the Guider's lipstick plastered on one's knee; it is also a very worth-while way of giving practice. A grazed knee is always muddy and this is hard to learn about without the real thing, but as soon as a Brownie wipes her first piece of clean cotton wool across the knee she finds it brown with mud and can understand instantly that it would be unwise to put that swab back into the centre of the cut, so she takes another piece of cotton wool, and another, until the knee is clean. It is the only way of killing the idea of false economy of the one miserable little blob of cotton wool. Expensive? No, cotton wool is very cheap, and you wouldn't be stingy on a real cut so don't teach the Brownies to be.

Everyday Incidents

We talk of 'First Aid' and this means, literally, the first assistance given at the moment the accident happens, when there may be no First Aid kit handy. Give the Brownies a written situation. 'Mary is on her way home from school when she trips, etc.', or 'Your Sixer was peeling the potatoes when she cut her finger.' Challenge the Brownies to tackle these situations with what they find around them, perhaps using a head scarf as a triangular bandage or a clean handkerchief folded into a triangle for the finger. Possibly the only 'instant First Aid' might be to hold up the finger or put it under the cold tap and call for mother.

When teaching about clothes on fire link it with teaching firelighting. If you learn that a fire needs air to make it burn, you will understand about excluding air to put the fire out.

Use the 'Brownie Handbook'

The points to stress about dealing with clothes on fire are listed in *The Brownie Book*. If you have not done this before, try giving the book to a small group of Brownies and asking them to prepare to act what to do for the rest of the Pack to see. In this way they will check carefully that they have included each point and the whole Pack will learn from it.

Try to teach in such a way that every child understands the danger and yet is equipped with the knowledge of what to do instantly and without panic. Learning about First Aid is always popular with Brownies, but let us make sure that our aim is to give each Brownie the knowledge to deal practically with an emergency rather than just a skill to pass a test.

ELIZABETH TOWNER

CORRECTION

Please note that in the list of Awards on page 431 of the December *GUIDER*, owing to a printer's error, the District and County of Miss G. Barnard, District Commissioner, Reigate, Surrey East were given as Tottenham High Cross, Middlesex East. We apologise for this mistake.

In the Company

For 'Hints on First Aid for Guides' (and young or inexperienced Rangers, too, perhaps) see the first of three articles by Mrs. Howden on page 27. This will be followed in February and March by 'Progress in First Aid,' and 'Practical First Aid.'

In THE GUIDE for January there will be hints on 'Folding and Using a Triangular Bandage' (6th January) 'How to Stop Bleeding' (13th January) 'How to Cope with Fright, Fainting, Shock and Unconsciousness' (20th January) 'How to Treat Burns and Scalds' (27th January).

Useful Books

The Teaching of Brownie Tests (1s. 6d., postage 6d.) and *The Golden Hand Test* (1s., postage 6d.) *Help Yourself to Be Prepared* (1s., postage 6d.) *Be Prepared*, (1s. 6d., postage 6d.) *Manuals of the British Red Cross Society and St. John Ambulance Association and St. Andrew's Ambulance Association* (6s., postage 1s.) *The Junior Manuals* of the above (3s. 6d., postage 6d.).

For instructors to teach a group of Guides or Rangers apply to the local branch of the British Red Cross Society, or St. John Ambulance Association or St. Andrew's Ambulance Association. If you want someone to come to the group rather than for the group to attend an existing course remember to:

- give as long notice as you can (instructors are busy too), and to enclose a s. a. envelope.

- say exactly what aspects are to be covered (send a copy of the appropriate syllabus of badge or certificate).

- ask the advice of the instructor as to how long a course is necessary for the syllabus to be covered with plenty of time for practice.

- give some idea of numbers (not too many at a time) and of the age and previous experience of those attending.

- make plans for additional practice in activities that give opportunities for deciding what has to be done as well as doing it.

- enquire about financial arrangements for use of equipment or travel expenses, etc.

In testing First Aid skill remember

that the Brownie, Guide or Ranger must 'show what she would do when . . . ' not 'say what she would do if . . . '

that the *whole* treatment matters, from start to finish, so it's no good just inspecting a finished arm sling; you must watch it being put on.

that accidents are not usually met with tidily arranged on the clubroom floor with all necessary equipment ready to hand; we need to present a situation to be dealt with rather than an isolated skill to be demonstrated.

Next Month in 'Learning New Skills': Using rope and string.

Thinking Together

THINKING Day has a habit of being suddenly upon us. We are barely over the Christmas holidays before we discover that we should be 'doing something' about a celebration. Guiders might like to assess their own Guides and Brownies before discussing matters with them. How mature is their thinking? How real is Guide friendship to them? Do they think with pride that their Guiding is better than that of Guides in other countries? If so, whose fault is that? Has the Guider unwittingly encouraged this 'Britain is Best' attitude by accepting a rather slapdash attempt of another country's Guide uniform for a Thinking Day ceremony? Do we ever teach an overseas song as so much gibberish without attempting to translate it? Brownies and Guides need to be helped to realize what a valuable contribution to Guiding every country makes and what sacrifices, often so much greater than our own, it is prepared to make in order to be members of the world family.

In the early plans and discussions it should first be decided what the Pack or Company expects to get out of the occasion:

- (a) Pleasure from a partyish evening?
- (b) A reason for a joint meeting?
- (c) An occasion for practising Hostess Badge?
- (d) A deeper understanding of World Friendship?
- (e) Some lasting result for themselves (a penfriend, a new friendship with an overseas visitor living in the area?).
- (f) Some lasting result for others (a contribution to 'Oxfam,' some gift to a Company abroad, friendship for an immigrant family?).

The age, maturity, size, control and level of understanding of the Company or Pack will decide the aim chosen. The Patrol Leaders are usually excellent judges, knowing what they can rise to and what is beyond them.

The aim decided, how is it to be reached? From a large pool of ideas it could be decided whether the ceremony is to be a major or minor affair, absorbing the whole or only part of the evening; is it to be confined to Pack or Company or to be a social function? If guests are to be invited, shall they be the Pack, the Scouts, other organizations, mums, overseas visitors, relations with knowledge of other countries? If non-British visitors are invited what sort of evening will they enjoy. How can we give as well as receive?

What programme is to be followed? National dancing (well done), singing (well practised), films, transparencies, exhibitions or displays by Patrols? If these decisions were made in December some of the holidays might be used for preparation and Patrol outings centred round visits to 'national' shops, places where national food is exhibited or served, museums, Commonwealth exhibitions, travel bureaux, libraries, etc.

Souvenirs could be collected and arranged and stamps, posters, picture post cards, photographs, etc. mounted to make attractive decorations.

Again, the Packs and Companies will make an individual choice. The Patrol Leaders will be able to discuss what approach will be best. Do they really like

dressing up and learn from this activity or is this method 'too young'? Do they respond to the sung or spoken word or need to learn through their hands—touching, making, perhaps attempting a simple native craft (and through this learning respect for the craftsman). How much physical activity do they need and can this be geared to Thinking Day activities?

Thought, ideas, consultations, decisions shuttle backwards and forwards from Guider to Patrol Leader to Patrol, from the Brownie Guider to Brownie. Out of it all a pattern emerges that belongs to the Pack or Company. Ready-made material will, of course, be incorporated, new ideas will find a place. The Guide Guider, Brownie Guider, P.L., may be commissioned to write something that says this or that, makes one point clear or suggests a definite line of thinking. If it is really the work of the girls themselves, it is not likely to be sentimental or vague and neither below nor above their capabilities.

Mrs. Burnet's suggested ceremony on page 38 is modern in thought, short, simple and very direct in appeal. It may be exactly the thing your Company needs for its finale to a Thinking Day evening or your Company may take the germ of this idea and adapt it to suit its own requirements.

One final word—what is a sincere and moving ceremony in 1967 may be a flop in 1968. A Company is never the same twelve months later. Re-think!

C. M. SMITH

(For Senior Branch Guiders: Much of what lies behind the Thinking Day celebrations listed by Miss Smith apply equally to Senior Branch Units. Is anything else in her contribution applicable to them? Rangers and Cadets are capable of strenuous thinking and costing, generous action. Thinking Day can provide a starting point for both. What about a year-through project to increase understanding and give practical help to an immigrant family or a Company overseas?)





An Idea for a Thinking Day Activity in the Pack

ON the day, as the Brownies arrive, each Six collects enough tickets for each member of the Six to travel by a jet plane, a liner, a steam yacht, a helicopter, a cargo boat, a hovercraft and a ferry so that the late ones will not hold up the proceedings.

We get into a ring at the Airport, make sure we're all here, and tidy, and then give the Pack Leaders our Thinking Day Pennies to send to the Thinking Day Fund, in case we lose them on the journey. Luckily, tickets have been paid for out of Pack Funds (so it's a good thing we didn't forget our subs. too often!).

Into our huge jet plane, the Pack forming the correct shape, and over the Atlantic Ocean to the U.S.A. Here we meet a 'Brownie Scout' in uniform, standing by her flag, waiting to welcome us and help our Brownie Guider teach us one of her games, called 'Dollar, Dollar'. Before we leave, each Six is given a little bag of flour and our Brownie Guider explains that this comes from the great wheat belt of America and is to help us make a Brownie Cake when we get home.

The pack then progresses round the world; on to INDIA by steam yacht, to hear their Brownie story and receive dried fruit for the cake. On to BURMA by helicopter to play 'Combs to Sell' and be given spices, and then on to a cargo boat bound for AUSTRALIA for a ball game called 'Walk About' and some bags of sugar. A bit of a rush to catch the ferry for NEW ZEALAND, where there is just time to see some of the beautiful flowers from which their Sixes get their names and to be given pats of golden butter before joining the liner which will take us back to EUROPE. Here we land in THE NETHERLANDS and a Kabouter turns us all into windmills before collecting some eggs to make the final ingredient of our cake and put us on board the hovercraft for a noisy flight back to our HOME TOWN.

Safely back in the Hall, all the 'goodies' are put into a cake tin and popped into an 'oven' to cook. While this goes on, the Assistant Brownie Guider helps the Brownies to find the places they have been to on a map of the world and suddenly, the Brownie Guider calls the Sixers to take the cake, now cooked and ready to eat, out of the oven. After singing 'Happy Birthday to You' for the Chief Guide, each Brownie cuts a slice for the person next to her . . .

Silence while munching, then each Six reads a prayer from a 'Brownie Country', Pack Leader reads

one for Brownies of the World and 'Brownie Bells' from *The Brownie Book*.

Where does a poor insular Guider get all these details? Here are some suggestions:

Brownies of the World Painting Books, 1-5, 1s. 6d. each, postage 6d.

Brownie Stories of the World, 1-4, price 1s., postage 6d.

Games From Many Lands—1 and 2, 2s. each, postage 6d.

Now read this article through again and see if you can find any reason why your Thinking Day ceremony should not be planned and prepared by the Brownies themselves. Given the books, each Six could choose a country producing a given ingredient (the local library will provide for this, or maybe, your Guide Guider, via the Pack Leaders), colour and cut out the Brownie and the flag and make stands for them. You'll find you also get many things from the countries themselves from the Brownies, stamps, curios, national costume dolls and so on. With the tickets to make as well, every member of the Six would be well occupied for the whole of the allotted preparation time. Could someone suggest that, as the country you (the Brownie Guider) have chosen to prepare for is a bit short of equipment for their Test-work, one evening might be spent in making or packing some small, suitable gifts for one of the Packs there as a Good Turn?

Could this be the 'Shape of Things to Come'? Lots of the new Eight Points in this venture—mind, character, creative ability, relationships with other people and readiness and ability to help others. The Sixers are given an opportunity to organize their Sixes to work in harmony, according to their individual capabilities.

Which way gives the Guider the greater amount of preparation? This should help to reassure those of us who are afraid that the new freedom will give us much more interesting work.

J. RIGDEN



Illustrated by Catharine Towner

THE GUIDER

Foundations of First Aid—1

by E. D. Howden, S.R.N., S.C.M.

GUIDES usually like First Aid. Guiders, unfortunately, often do not! To the Guides it is something rather dramatic and at the same time something real and necessary. The youngest Guides may find themselves rendering aid usefully at school or at home. In fact, they may long for someone to have an accident so that they can put their knowledge to the test, but they often fail to prepare a few simple materials for use should the need arise.

First Aid can be defined as the minimum help necessary at the time of the accident to prevent immediate danger of death or to prevent the injury sustained from becoming worse. Treatment must be simple and effective. Thorough and accurate teaching must be given because, in a real accident or emergency, there is no room for 'dithering' and a bad mistake may result in permanent injury to the patient. The mistake may be due to inaccuracy, it may be due either to too casual or too enthusiastic treatment or it may be the result of misunderstood teaching.

All training should be as practical and as realistic as possible. Talking should take about one fifth of the time allowed, demonstration about one fifth, and the rest should be spent in supervised practice. It is only when you actually do something that you begin to learn how much or how little you really know.

The sessions can vary in length from about 10 minutes to 40 minutes, according to the amount of work planned. It can be a Company training with perhaps a doctor, nurse, or Red Cross, St. John or St. Andrew's Ambulance Instructors to give the talk and demonstration and then to help with the supervision of the practical work.

On the other hand, it can be a Leaders' Training on the same pattern. Patrol Leaders would then be expected to pass their knowledge on to the Patrols, with the Guiders moving round to see that there is accurate teaching and to check that the practical work is done correctly. If it isn't, the P.L.s. and Guides should immediately be shown how it should be done.

Before the Guides can give urgent treatment they must learn what to do and have plenty of supervised practice. It's wisest if one process is taught at a time thoroughly and then publicly checked after a demonstration by each Patrol, with criticisms so that anything which has not been grasped by members of the Patrol can be explained again at once.

Acting is invaluable in the teaching and practice of First Aid and in the testing too.

Some Companies like to stage 'emergencies' during the course of a meeting. When you first attempt this,

Illustrated by Elizabeth Wall

it is wise to warn the Guides that 'queer things' may happen during the course of the evening. Be sure that you have the necessary equipment. Brief the 'casualties' carefully beforehand. Keep everything as simple and realistic as possible including the acting. The Guides are sure to overact. Get them really to think the part. Someone could 'feel faint' or 'faint.' Another could feign a sprained wrist or ankle, or perhaps have 'grit in the eye'. Even in these small incidents the Guides should be encouraged in the right attitude towards the injured. They should show common sense, care and consideration for the patient, and self control.

More elaborate 'accidents' need a little more preparation, but patients, First Aiders and onlookers all learn what to do when faced with a real accident. It is important that the incident should be as realistic as possible so casualties should be 'faked' by using make-up. Your local Red Cross, St. John Ambulance Association or St. Andrew's Ambulance Association Unit may be able to help you with this. If not, there is a handbook called 'Casualty Simulation' available from these Associations which will show you how to 'fake' injuries. The injuries 'sustained' should be possible in the situation chosen. Household mishaps can be staged in the hall, but street, building, drowning and other outdoor accidents must be staged out of doors.

Here are a few simple incidents. One Patrol can provide the actors, another the First Aid team and the rest of the Company are the spectators. They must watch and at the end comment on both the acting and the treatment.

1. Severe cut on the ball of the thumb from a bread knife carelessly used.
2. Cut legs from falling on rocks at Company hike.
3. Scald on foot. Handle of pot was too hot to hold.
4. Badly sprained ankle. Story of twisted foot getting off bus.
5. Asphyxia . . . small Guide shut in cupboard by troublesome boys 'just for fun'. (Not too much realism here!)
6. Guide goes down hard on her back and head on a very slippery slide and is unconscious. (Could be a very slippery floor.)

Allow about 10 minutes for the staging of the accident and making up. About 5 minutes should be quite long enough for the First Aid, followed by general comments and the Guider's summing up.

These incidents should not only give practice in First Aid, but should lead to discussion on the safety measures which can be taken to prevent accidents for, when all is said and done, 'Prevention of the accident is the best First Aid'.

Next Month: Progress in First Aid



Talking 1/5,
Demonstration 1/5,
Practice 3/5

Letters to the Editor—continued from page 3

Advice Needed

Could any of your readers give us some advice? We are about to acquire a Division H.Q. where the hall, having been built as a garage, has a concrete floor. We want suggestions for suitable covering, warm and long lasting. Can anybody give us ideas? My address is 12 College Green, Worcester.

ALETHEA ELIOT
[Division Commissioner, Worcester]

'Miss Trad's' Cap

Being, I imagine, in the same age group as 'Miss Trad', I am inclined to endorse James' remark about her appearance in the new cap. Poor 'Miss Trad'. I am sure she does not want to be considered 'with it' nor to recapture her lost youth but merely to be a credit to the Movement . . . Unfortunately in the matter of hats her choice is limited to the rather expensive but very poor imitation of an air hostess's cap or an all-enveloping bowl-shaped monstrosity. Incidentally, I think the cap would be much improved by being made a little deeper as it is too shallow for some heads.

E. I. M. IRWIN
[Guide Guider, 1st Brockley Hill (R.N.O.H.)
Company, Stanmore, Middlesex]

Guide/Scout Good Turn in Swansea

We know that members of the Movement do good turns to Old Age Pensioners, but it may be of interest to read of how a District here in Swansea combined with Scouts to help. Mr. Tudor Venn, an Assistant Scout Leader, asked me if Guides of 15-18 would join Scouts of that age in a pilot scheme. I thought that it would appeal to them and the scheme was launched at a meeting of Guides and Scouts who were interested.

Small teams, working together every Saturday throughout the summer, helped some twenty cases. Details of elderly people in need of help were supplied by the Corporation Welfare Department and the

Swansea Old Age Welfare, and every week Mr. Venn sent me a card saying how many Guides were needed for that Saturday's job and I let him know the names and addresses of the Guides available. They were told what job there was to be done and what equipment they'd need. Parents were most helpful.

The jobs were assessed by adults before the Scouts and Guides moved in and the work was inspected afterwards. In most cases it was gardening, cutting overgrown grass, etc., and next year I'll suggest painting and decorating as I have had two rooms in my own house painted and papered as 'bob a job' work and very well done it was.

In addition to the work done, the old people enjoyed having young people to talk to for a whole day. Someone to talk to makes all the difference when one lives alone as so many old people do.

Of course no Guide or Scout accepted any money, but it was suggested that if the pensioners were very insistent they could send a small donation to the Treasurer towards the material and tools needed for the jobs.

CHRISTINE KIRBY
[District Commissioner, Swansea West]

NEW SINGING GAMES BOOK

Singing Games From Far and Near, compiled by Mary Chater (Girl Guides Association, 3s.) This booklet is a selection of games—some old favourites and some published in this country for the first time. Brownie Guiders will find singing games for different occasions from many parts of the world; quick, lively ones to 'let off steam' and the slightly longer game which provides scope for dramatisation. These varieties are loved by Brownies because they provide opportunity to dress up and mime.

The words and directions are printed clearly and the music, easily followed, can perhaps be played on a recorder by a Brownie to enable the Pack to learn the tune. A 'new look' gay cover stimulates interest immediately and I can picture Brownies picking up the book and asking to play the games.

D.R.C.

NATIONAL COLLEGE FOR TRAINING YOUTH LEADERS

Men and women wishing to train as qualified full-time youth leaders are invited to apply to the Registrar, The National College for the Training of Youth Leaders, Humberstone Drive, Leicester for particulars of the one-year full-time course, beginning 12th September, 1967.

Applicants should be 23 or over and should normally have five passes at Ordinary level in the General Certificate of Education, or their equivalent.

Residence will be provided if required. Grant aid calculated according to means will comprise at the maximum a maintenance grant of £173 10s. 0d. for resident students, free tuition, and free term-time residence (or an additional maintenance grant for day students). Grants for vacations and dependants are available in certain cases.

? Do you live in Scotland?

If so buy from

The SCOTTISH GUIDE SHOPS

16 Coates Crescent, Edinburgh, 3. (Tel: 225-3483)
and

1 Scott Street, Glasgow C.3. (Tel: DOU. 6288)

Your unit will benefit from
The Discount Scheme

Headquarters' Notices

WESTMINSTER ABBEY, 25th FEBRUARY

The Dean of Westminster Abbey will conduct a short service at 11 a.m. in commemoration of the Founder's birthday during which wreaths will be laid on behalf of the Scouts and Guides on his memorial in the Abbey.

Any members of the Movement who are in London on that day will be welcome. Tickets are not needed. Please arrive early—not later than 10.45 a.m.

KING GEORGE JUBILEE TRUST FUND CAMPING GRANT, 1967

It is hoped that a Camping Grant will again be available from the King George Jubilee Trust in 1967. This grant is intended to help in purchasing campsites, buying or replacing camp equipment, repair or erection of huts. Application forms may be obtained from the Secretary, Commonwealth Training Department, C.H.Q., and should be returned, fully signed, through the Country's Camp Adviser, to reach C.H.Q., not later than **1st March, 1967**. Late applications cannot be considered. (Scotland, please apply to S.H.Q. for forms.)

COMING EVENTS

The Commonwealth Circle A.G.M. (for members only) will be held on Tuesday, **24th January, 1967**, at 6.30 p.m. in C.H.Q. Library. A talk will be given by Mrs. Parker Bowles, Commonwealth Chief Commissioner.

APPOINTMENT

Deputy Chief Commissioner for England: The Hon. Mrs. Gervas Clay.

AWARDS

Training
Brownie Training Diploma: Miss J. McQueeney, South Lancashire.

SOCIAL WORKERS NEEDED IN U.S.A.

The Lighthouse Settlement near Philadelphia is populated by 3,000 people of European origin who work in the cotton mills. Workers from Britain are required to help the professional American staff with the organization of activities for all age groups, in the arts, sport, camping, etc. and at the same time gain experience in social service. There will be opportunities to attend part-time courses in community organization at a local college. For further details apply to the International Secretary, C.H.Q., not later than **31st January, 1967**.

GIFT OF UNION FLAGS

As Canada now has a new national flag, a number of Canadian Guide Companies have kindly sent us their Union Flags. Flags to hoist or to carry are available for use by Companies in this country.

Will Guiders whose Guides or Senior Branch members would like to have a flag write to the Secretary of the Overseas Department at C.H.Q., stating which type of flag they prefer. Applications will be dealt with in the order they are received and should contain an addressed label, plus 1s. 6d. for postage.

WANTED: CAMP SECRETARIES

Foxlease requires a Camp Secretary from approximately mid-June to mid-September. This is an ideal job for a Guider who is a keen camper. For details write to the Secretary, Commonwealth Training Department, C.H.Q.

A Camp Secretary is needed at **Broneirion**, the Guide Training Centre for Wales, from approximately mid-June to mid-September. For details, write to the Guider-in-Charge, Broneirion, Llandinam, Montgomeryshire.

HELPERS FOR BLACKLAND FARM CAMP-SITE

Two Rangers, Cadets or young Guiders are needed to help at Blackland Farm Camp-site near East Grinstead, Sussex, for periods of 2-3 weeks between the end of July and early September. This is an interesting job for two friends. A knowledge of camping is essential. For details apply to the Deputy General Secretary, C.H.Q.

A COMPETITION

What Do You Know About France? This competition is open to any British born Guide or Senior Branch member, resident in the U.K., who is not under 15 nor over 16½ years of age on 1st March, 1967 and who will be taking French at 'O' level in G.C.E. in the summer of 1967. Intending competitors should write to the International Secretary, C.H.Q. for details. The 1st prize will be a **free place on a 14-day visit to Paris** at Easter from 24th March to 8th April, 1967, arranged by **Creative Travel Services Ltd.**, 182 Aldersgate St., London, E.C.1. The visit includes attendance at a French language course for G.C.E. candidates to be held at the Ecole Alliance Française in Paris.

(continued on page 36)

January 1967

ALTERATIONS TO P.O.R AS A RESULT OF GROUP IMPLEMENTATION

NOTE:

Throughout the book the following alterations in terminology should be assumed:

BROWNIE GUIDER for Brown Owl
 ASSISTANT BROWNIE GUIDER for Tawny Owl
 GUIDE GUIDER for Guide Captain
 ASSISTANT GUIDE GUIDER for Guide Lieutenant
 ASSISTANT RANGER GUIDER for Ranger/Cadet Captain
 PATROL LEADERS' COUNCIL for Company Court of Honour
 BROWNIE GUIDE for Brownie
 RANGER GUIDE for Land Ranger, Sea Ranger, Air Ranger and Cadet

SECTION for Branch

RANGER GUIDE SERVICE SECTION for Senior Branch

BROWNIE GUIDE SECTION for Brownie Branch

GENERAL PRINCIPLES AIMS AND METHODS

Rule 1

Delete and substitute

1. Fundamental Principles

The Girl Guides Association (hereinafter referred to as the Association) adheres to principles laid down in the Promise and Law.

Membership is voluntary, and open to girls and their adult leaders without discrimination as to race, religion, or any other circumstance, provided they are willing to make the Promise.

The Association as such is non-political in the sense that as a body it abstains from any form of party political activity.

Aims

To provide a programme embracing a wide range of leisure-time activities and interests, which, while enjoyable in themselves, have an underlying educational purpose, namely, to develop individual character based on the values expressed in the Promise and Law.

Method

The method is based initially on the Patrol System with the emphasis on learning through games and practical activities. As a member of a Brownie Guide Six, a Guide Patrol, or a group within a Ranger Guide Service Unit, the girl learns to work with others, thus gaining understanding of personal relationships. In this way she is given opportunities to place as responsible member of the community in a democratic society. Training in various skills and crafts, including those related to home-making, and participation in outdoor activities are aimed at developing an all-round person, self-reliant, and self-disciplined, with a desire to use what she has learnt in the service of others.

NOTE: In the next edition of P.O.R. a statement will appear on an early page, before Rule 1, as follows:

'The Girl Guides Association

Founder: Sir Robert Baden-Powell, K.C.B., K.C.V.O., subsequently created Lord Baden-Powell of Gilwell

History

The Girl Guides Association was founded in 1910 as a sister organization to the Boy Scouts Association and based on the same principles. It was incorporated by Royal Charter in 1922.'

MEMBERSHIP

Rule 3

1. *Delete* the words '... or the twofold Promise of the Brownies (See Rule 36).'

RELIGIOUS POLICY

Rule 4

Delete the present rule and substitute:

1. Any girl of whatever religious faith may become a Guide, provided that she is prepared to make the Promise. Every member of the Movement at her enrolment is committed to doing her duty to God. Every member of the Movement is encouraged to be active in the practice of a religious faith.

2. The following detailed procedures have been established in order to carry out these principles:

(a) Where a Guide is not attached to any Church, the Guider should, in consultation with the girl's parents, endeavour to put her in touch with one. In the case of a member of the Ranger Guide Service Section the principle of parental consultation should be applied in a manner suitable to her age.

(b) The Commissioner should try to ensure that there are enough unattached Units in her area to enable girls of all faiths to join the Movement. In places where there can only be one unit, the Unit should not be restricted to members of any one Church.

(c) Where a Unit consists of Guides from various Churches, such members should be encouraged to attend the worship of their own Churches. For such Units, at meetings or in camp, any form of prayer or divine service should be of the simplest character, attendance being voluntary. It is the rule of certain Churches that their members may take part only in certain circumstances in any religious observances other than those of their own Church. It is the responsibility of the Guider to know what the rules of such Churches are in this matter (see 'Duty to God', Section IV) and to see that those in the Unit to whom this applies respect the rules of their Churches. A Guide must not attend a service other than that of her own Church, without the consent of her parents. (See Rule 98, Section 3, Public Parades.)

(Continued on page 32 so that you can cut out alterations if you wish.—EDITOR)

Classified Advertisements

The Girl Guides Association takes no responsibility for statements made in any advertisement here or elsewhere in the magazine, or for any subsequent correspondence in connection therewith. The right is also reserved to refuse any advertisement not considered suitable. Advertisements for the sale of second-hand clothing (except uniform) cannot be accepted. (Uniforms for sale should not be sent to C.H.Q. Advertisers receive communications from applicants.) All advertisements must be received not later than the 1st of the month for the following month's issue. **All charges: 1s. per word. (for members advertising uniform, camp sites, coming events, etc—6d. a word). Box No. 2s. 6d. (for members of the Movement, 1s. 6d.) Please send money with advertisements. 10% discount for series of 12.**

THE GUIDE CLUB

The Guide Club would welcome new members. Past and present members of the Movement and members of Trefoil Guilds and Local Associations are eligible.

Entrance fee: £2 2s. Annual subscription: £5 5s. Juniors (18-22 years), entrance fee: £1 1s. annual subscription: £3 3s.

Overseas Membership; Entrance fee: £2 2s. annual subscriptions: 10s. 6d. plus 15s. for every consecutive four weeks when using the Club.

Luncheon Membership; annual subscription: 30s.

Single room, bed and breakfast, £1 10s.

Double room (with basin) bed and breakfast 27s. 6d. (without basin) 25s. (Reduction of 1s. 6d. per night for stay of 2 nights or more.)

Members may bring guests, including husbands, to stay at the Club. All particulars from the Secretary, 46 Belgrave Square, London, S.W.1 Tel: BELgravia 7616.

OLAVE HOUSE

Olave House (World Association of Girl Guides and Girl Scouts) is open all year to members, ex-members, and Local Associates. Bed and Breakfast, 17s. 6d. to 25s. Residents: special terms. Warm comfortable house. Garden. Easy access to all parts of London. Nearest Underground station, Earls Court. Applications to the

Guider-in-Charge, 45 Longridge Road, London, S.W.5. Telephone: FRObisher 2574 (Guider-in-Charge): FRObisher 2605 (Guests).



ACCOMMODATION

Holiday accommodation, Sussex. Bed, breakfast and evening meal, or full board, weekends October—March. Apply Mrs. Jebb or Miss Cox, 8 Willowfield Road, Eastbourne (29572).

Two newly decorated and furnished flats, for 2 to 3 persons each. Short period or winter let offered. Apply Guider-in-Charge, Broneirion, Llandinam, Mont.

Devon country house nr. Seaton. B. and B., E.D. Own produce. H. and C. bedrooms. Beach hut. Car essential. Mrs. Bowry, Park View, Yardbury Hill, Colyton. 506.

Devon coast. Holiday flats from £5 5s. weekly. Lugg, Caen House, Goodleigh Road, Barnstaple.

Guiders: Bring your families and friends to **Shanklin** for a friendly holiday. Hotel run by ex-Scouter & Guider. Charmingly situated within two mins. sea & lift, 5 mins. station, shops & buses. S.A.E. appreciated for brochure. Terms from 8 gns. D. Morris, Snowdon Private Hotel, Queen's Rd., Shanklin, Phone 2853.

Attractive garden hut to let; fully equipped 2 people (except linen), 2 single beds, calor gas cooking and lighting. Two miles Tenby, near sea and golf links. £6 6s. weekly. Bury, 5 Kenstyle, Penally, Tenby, South Wales.

Flat, Dartmoor: All electric. 2 bedrooms. Fishing. Long/short lets. Earle, Manaton, Devon.

EMPLOYMENT OFFERED

Guiders with some catering experience required to assist at Adventure Centre any periods April—September 1967. Details: P.G.L. Holidays, Ross-on-Wye.

Three trainees are required at the **Princess Mary Village Homes** to take part in a pilot scheme of in-service training for the residential care of girls. The course, which will be of one year's duration, will be partly practical and partly theoretical. This opportunity is offered to women (married or single) with a genuine interest in work with children, especially adolescent girls. Selection will be made according to the candidates suitability for the work rather than on academic qualifications. Salary during training will be £545 less £133 for board and lodging if required. For further particulars please write, telephone or call upon the Headmistress, Princess Mary Village Homes, Addlestone, Surrey (Weybridge 42255).

FOR SALE

With our help your fête will be a greater success than ever! Come and see our extensive range of toys, stationery and other interesting lines at 25% off retail price. Also our famous pre-packed parcels—144 6d. toys or 72 1s. toys or 48 1s. 6d. toys or selection stationery at 52s. each parcel. Carriage 4s. 6d. under £3, 6s. over £3. Orders over £20 carriage free. Price lists from J. E. Thomas & Son (Cuffley) Ltd., 2a Handsworth Road, London, N.17.

Used Camping Equipment at very competitive prices. Sleeping bags, tents, camp-beds, air-beds etc. List: P.G.L. Holidays, Ross-on-Wye.

Funds, Bazaars, Fêtes: Raise funds with our parcels of attractive and inexpensive costume jewellery sent on sale or return. 50 per cent profit on cost. You pay only for what you sell. The rest you return. Send for details to actual manufacturers:—E. & M. Davies Ltd., 166 Goldhawk Road, London, W.12.

Printed British Ball Pens, 40s. gross. This includes 36-letter advert. Advertising pencils 35s. gross. Postage 4s. 6d. Pioneer Pencil Company, Victoria Road, Huyton, Lincs.

Spring Fayres. Can we help you? We should be pleased to send two dozen of our Fancy Dutch Aprons. Sale or return. Please send P.C. for particulars. Walter and Fisher, 120 Portland St., Manchester, 1.

Fund Raising? Ball Pens are used by everyone. We supply Platignum ball pens at reduced wholesale rates. Your Company title, etc., can be diestamped as required. Pen cases in various colours (including Girl Guide colours). Profits over 50 per cent on cost. Details/Samples on request, Thompson & Robinson Ltd., 20 Churchfield Road, London, W.3. Tel. ACOrn 8770/3205.

5d. each! The total cost for the supply of full length British **Ball Point Pens**, die-stamped in gold with your Company or Charity. Minimum quantity, one gross. Please print your requirements (maximum 30 letters) and send 60s. for 144 printed pens. J. E. Thomas and Son (Cuffley) Ltd., 2a Handsworth Road, London, N.17.

(Continued on page 36)

THE GUIDER

- (d) Where a Unit is composed of members of one Church, it is expected that in consultation with the religious authorities the Guider will arrange such observances as may be considered best.
- (e) *As present Clause 4;*
- (f) *As present Clause 5;*
- (g) *As present Clause 8, Renumber (a) and (b) as (I) and (II), add (III)*

For Baptist Units: Information from the Young People's Department Secretary of the Baptist Union of Great Britain and Ireland or the Baptist Missionary Society.

NOTE: At end of Rule 4 add: 'A Guides' Own Service is an act of worship conducted for members of the Movement by a member, or members, of the Movement.'

RULE 21 THE COMMISSIONER

- Para: 4. *Delete* 'In exceptional Commissioner.'
- Add:* 'The District Commissioner may appoint one or two District Assistants to help her to carry out her duties (see Rule 22). This is a warranted appointment. The District Assistant need not hold a warrant as a Unit Guider.'

After Para: 5 add new Para: 6 and renumber remaining ones accordingly.

- Para: 6. 'Before confirming the appointment of a District Assistant by the issue of a warrant, the District Commissioner must satisfy herself that the person in question
- (a) Has a wide outlook and experience of girls in the age group or groups with which she will work.
- (b) Has the necessary knowledge and understanding of the principles and methods of Guiding.
- Para: 7. (old para: 6) After ' appointment of a Commissioner' add 'and District Assistant.'
- Para: 8. (old para: 7) After 'Assistant Commissioner' and before 'tenders her resignation' add 'or District Assistant.'

RULE 24 THE GUIDER

- Para: 2. *Delete* paragraph beginning 'The District Guider . . . may be appointed.'

THE BROWNIE

Rule 29 *Delete and substitute:*

'A Brownie is a girl between her 7th and 11th birthdays who is a member of the junior section of the Girl Guides Association. Three years should normally be the maximum time in the Pack.'

RULE 33 THE BROWNIE SIX

Delete the word 'Fairy'

RULE 36 THE ENROLMENT OF A RECRUIT

Form of Enrolment:

Delete the present Law and substitute:

'A Brownie thinks of others before herself and does a good turn every day.'

Delete the present Promise and substitute:

'I Promise that I will do my best:

To do my duty to God,
To serve the Queen and help other people

and

To keep the Brownie Law.'

Rule 37

Delete the word 'sign' from the title of this Rule.

2. THE SALUTE

Delete and substitute:

'Three fingers of right hand upright, the little finger bent with the thumb touching. The hand raised to shoulder level. The three fingers symbolise the threefold Promise.'

Delete: '(See Rule 109)'

Para: 3. **The Sign.** *Delete.*

RULE 45 THE GUIDE

Delete and substitute:

The 10th birthday is the minimum age at which a girl may join a Guide Coy. The minimum age for moving on to the Ranger Guide Service Section is the 14th birthday, and the maximum age for remaining in the Guide Company is the 16th birthday. Four years should normally be the maximum time in the Company.

RULE 54 THE ENROLMENT

Delete the present Promise, and substitute:

'I promise that I will do my best:

To do my duty to God,

To serve the Queen and help other people

and

To keep the Guide Law.'

Rule 55

Delete the word 'sign' from the title of this Rule.

(Continued on page 34)

How many legs has a crocodile?



Find out! Come on the London Zoo Quest

To provide an exciting event in your summer programme and to celebrate the Scouts' Diamond Jubilee, the Zoological Society of London has arranged a special Zoo Quest competition. It's open to parties of any number of Scouts, Guides, Cub Scouts or Brownies. Prizes will be awarded in each group.

Not only is the Zoo Quest a wonderful way to visit London Zoo, it's also loads of fun for everyone. The questions may not be quite the same as the one above, but they can all be answered by keen observation.

The Zoo Quest lasts from April 15th to May 27th, 1967 (including Sundays). For full details, write now for a special Zoo Quest leaflet to: The Main Office, The Zoological Society of London, Regent's Park, London, N.W.1.



There's always something new at

London Zoo

Regent's Park

(Information Bureau: PRImrose 3544)

January 1967

TULIP TIME IN HOLLAND— EASTER 1967

One week's holiday at 20 gns. including excursions to Amsterdam, Delft Potteries, Keukenhof Park, Rotterdam, Haarlem, Volendam, Marken, etc.

Holidays also arranged from 10 gns. to:

Belgian Coast, Austria, Italy, Switzerland etc.

Physically handicapped groups especially welcomed.

REED'S EDUCATIONAL TRAVEL SERVICE LTD.,
Kipling House, 43 Villiers Street, London, W.C.2.
(WHI 3361)

SPEND YOUR MONEY AT HOME THIS YEAR

SCOTLAND—AVIEMORE in the heart of the **CAIRNGORMS**: 7 days for 19 gns. (including travel).

Glorious walks in the mountains, pony trekking, swimming, canoeing, ice-skating, dancing, folk-lore!

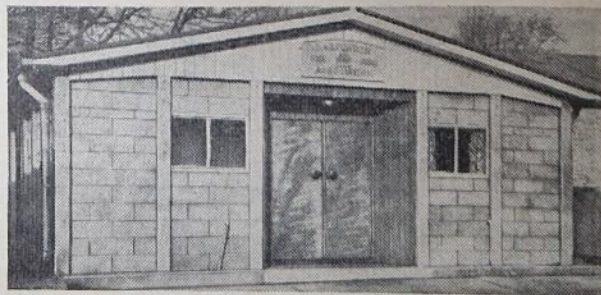
HASTINGS: 7 days for 8 gns. (July fully booked)
Accommodation in modern hostel overlooking the sea; good grounds for games; also suitable for adults as conference centre.

REED'S EDUCATIONAL TRAVEL SERVICE LTD.,
Kipling House, 43 Villiers Street, London, W.C.2.
(WHI 3361)

"We have one of the finest headquarters in the county— thanks to COMPTON"

says Mrs. Vera Baum, Chairman of the Building Committee,
Harpenden Girl Guides Association.

There are many special features about the Compton Building in use as a Girl Guide Headquarters at Harpenden—yet they are all basic Compton Universal components . . . an outstanding example of Compton adaptability in practice.



Exceptionally spacious, with absolutely clear floor space since no roof supports are required, and extremely attractive in every way, the Harpenden Girl Guides headquarters shows what can be done with a sectional concrete building—when it's a Compton.

"No other building came near our requirements" Mrs. Baum told us. "We had to keep our expenditure below £2,000—and that we did, which for a building 65' x 24' is truly remarkable".

Mrs. Baum's committee found the Compton Planning Team most helpful—as will you if you ask their advice, which is sound, free and without obligation.

COMPTON BUILDINGS LTD.

47 Penny Compton, Nr. Leamington Spa., Warwicks.
Tel. Penny Compton 291/3

ALTERATIONS TO P.O.R. AS A RESULT OF GROUP I IMPLEMENTATION

(continued from page 32)

Rule 55

The Guide Law

Delete and substitute as follows:

1. A Guide is loyal and can be trusted.
2. A Guide is helpful.
3. A Guide is polite and considerate.
4. A Guide is friendly and a sister to all Guides.
5. A Guide is kind to animals and respects all living things.
6. A Guide is obedient.
7. A Guide has courage and is cheerful in all difficulties.
8. A Guide makes good use of her time.
9. A Guide takes care of her own possessions and those of other people.
10. A Guide is self-controlled in all she thinks, says, or does.

The Salute

Delete and substitute:

'Three fingers of right hand upright, the little finger bent with thumb touching. The hand raised to shoulder level. The three fingers symbolise the threefold promise.'

Delete '(See Rule 109)'

The Sign. Delete.

Rule 87

Delete Para. 1 and substitute:

LONES

(a) Purpose

'To supplement by correspondence Guide or Ranger Guide training for girls, who, by reason of work, studies or distance from their nearest unit, cannot take a full part with this unit.'

(b) Method

(I) A girl in these circumstances who wishes to join as a Guide or Ranger will be put in touch by the Unit Guider with the County Lone Secretary or Lone Guider. Her programme of training and activities will be arranged with the help of the Unit Guider and Lone Guider.

Similar arrangements can be made for a girl who has been an active member of a unit but who cannot continue on the same basis.

(II) In exceptional circumstances a girl may join a Lone Unit if she is unable to be also attached to an ordinary unit.

C.H.Q. STAFF VACANCIES

RECEPTION DEPARTMENT

We have a further vacancy for a **Shorthand-Typist** who must be capable of conducting a conversation in French and translating letters, etc. French shorthand not needed.

FINANCE DEPARTMENT

Finance Department requires a **Junior** who must be interested in figures. There would be plenty of opportunity for advancement in this Department depending on ability. Would this opening interest one of your older Guides or Rangers?

C.H.Q. SHOP

Senior Sales Assistants with experience, full-time.
Sales Assistants, full-time, over 21 years.
Sales Assistants, part-time, over 21 years.

EQUIPMENT DEPARTMENT

Mail Order Clerk, knowledge of the Movement preferred.

Experienced Invoice Typist. This could be part-time if applicant is able to give about 4 days per week.

Full-time **Invoice Typist** required.

Office Junior for our Sales Manager's office. There would be opportunities to improve her status. Age: 15-16.

Assembly Clerks

Packers with some experience.

For further details please apply to **Miss V. Chambers, Personnel Officer, C.H.Q.**

WADDOW

Two Junior House Assistants required immediately.

Posts suitable for members of the Senior Branch who have time to fill before taking up a career. Details from the Guider-in-Charge, Waddow Hall, Clitheroe, Lancs.

C.H.Q. Art and Handwriting Competitions, 1967

GENERAL RULES

1. Entries must be the competitor's own unaided work and done in her own time i.e. not during a school art lesson.
2. There will be no entrance fee.
3. **Closing date:** 30th April, 1967.
4. **Age groups:** 7½-8 years, 9-10 years, 11-12 years, 13-15 years, 16-20 years.
5. On the back of the picture or handwriting entry, please write in the top right-hand corner: Name, age, address in full, name and number of your unit. Failure to comply with this rule may lead to disqualification.

ART COMPETITION

1. **Subjects:** (a) A market. (b) Free choice.
2. **Size of paper:** Either 22 in. by 30 in. (Imperial size), or 11 in. by 15 in.
3. **Media:** Free choice.
4. **Entries,** marked 'Guide Art Competition', must be addressed to: Travel Department, Girl Guides Association, 17-19 Buckingham Palace Road, London, S.W.1.
5. Three prizes are offered in each age group (details to be given later).

HANDWRITING COMPETITION

1. **Section A.** Any style of handwriting (but not lettering) may be used (5 age groups—see item 3). **Section B.** Formal lettering or manuscript, with decoration if desired, e.g., initial letters or borders. (3 age groups—see item 3.)
2. **Entries** are to be written on unlined paper, size 10 in. by 8 in.
3. **Subjects:** **Section A. Age group:** 7½-8: Nursery Rhyme up to 30 words. 9-10: First six verses of a Psalm (any version of the Bible may be used:

Authorised, Revised, Knox, Douai or New English). 11-12: 100 words from a story book (state title and author of book). 13-15: Paragraph (about 100 words) from the leading article in a newspaper (state paper, page number and date). 16-20: Passage (about 100 words) from any book (novel, biography, travel or essay) you have recently read (state title and author of book, etc.).

Section B. Age group: 11-12, 13-15, 16-20. A copy in any style of formal lettering of the following: *The Girl Guides Association, of which Her Royal Highness, The Princess Margaret, Countess of Snowdon, is President, has its Commonwealth Headquarters at 17-19 Buckingham Palace Road, London, S.W.1.*

Judging will also take account of lay-out and spacing to accord with the size of paper used.

4. **Entries,** marked 'Guide Handwriting Competition', must be addressed to: Travel Department, Girl Guides Association, 17-19 Buckingham Palace Road, London, S.W.1.
5. The number of prizes in each age group will depend on the standard and number of entries.

NOTES: 1. The judges retain the right to withhold awards in any case where the standard achieved is not considered high enough. 2. (a) *Handwriting Competition* entries will not be returned. (b) *Art Competition:* It is regretted that it is not possible to undertake to return entries by post after the competition, other than those which are selected for display at Headquarters. Entries chosen for hanging will be returned at the end of May, 1968. All other entries will be kept for three months after 1st May, 1967 and may be collected from C.H.Q. during that time; any unclaimed after that period will be destroyed.

Next Month: Hints to Competitors

IN MEMORIAM

The sudden death in October of MISS VERA MACFALL was a very sad loss to Guiding and to her many friends in Cheshire. Already an experienced Guider and C.A. when she came into the county over twenty years ago, 'Mac' immediately fitted herself to help wherever needed. In the village of Whitley where she made her home she had at various times run Brownies, Guides and Rangers as well as being a loyal Church Council worker and member of the Women's Institute. As Division Commissioner, she served on the County Committee for ten years and was awarded the Medal of Merit. As Queen's Guide Assessor for Cheshire she remembered and followed with interest the progress of all Guides she had tested. It was through her great love of Camping that 'Mac' gave her outstanding service to the Movement. She had been a Green Diploma Guider since 1948 as well as Assistant C.C.A. Her annual Company camps, training camps, small permit camps or tests for outdoor badges

were all equally important to her and she realized their great value in the Guide training programme. 'Mac' really served Cheshire and always gave of her utmost and her organizing ability and high standard in all she did endeared her to many friends in and out of the county.

P.F.J.

MRS. HYLDA ROWLEY, Brown Owl of the 35th Brentry Methodist Pack, Bristol, who died on 7th November, lived for her Brownies. She gave many years to the Guide Movement and was always cheerful and helpful.

Mrs. Rowley showed great fortitude during her illness and will be greatly missed by all in the Blaize District and West 2 Division.

E.M.W.

HEADQUARTERS' NOTICES—continued from page 29

NOTICE BOARD

An invitation is extended to a special Leadership Course at Netherurd, West Linton, Peeblesshire from 28th July to 5th August to any Cadet or Ranger in the U.K. who is helping to run a Pack or Company (and is 17 by 28th July).

Cost: £8, inclusive of outings and other small expenses. (It is hoped that some grant-aid may be available to help with fares.)

How to apply: Write for an application form to your own Country's Cadet Adviser, enclosing a stamped addressed envelope before 31st January.

NOTE: Each of the U.K. countries has an allocation of places for this event and as numbers are very limited preference will be given to those who have not previously attended such a course; others will be put on a waiting list. Those who attended the Cadet 50th Birthday Week will know how exciting

this kind of course can be and some of the same team are running it, so apply *early*!

Reduced Rates at Zoos: Referring to the notice in the October, 1966 GUIDER on page 352 about reduced rates for entrance tickets to the London and Whipsnade Zoos it is regretted that new rates will come into effect on 15th March. **London Zoo:** Adults, 5s., children and young people under 18, 2s. 6d. **Whipsnade:** Adults, 4s. 6d., children and young people under 18, 2s. 3d. The rates for **Chessington Zoo** remain the same: Adults (over 14) 3s., children (under 14), 1s. 6d.

When applying for a voucher to the Reception Department at C.H.Q. please give: 1. name of zoo. 2. date of visit. 3. name of Pack/Company and the numbers of adults and children. If you are uncertain of numbers please state maximum. The group can be any number but must be accompanied by adults or responsible leaders, the proportion being at least 5%.

Classified Advertisements—continued from page 31

FOR SALE

Advertising Pencils, superb Ball Pens, Combs, Brushes, etc., gold-stamped Company name, raise funds quickly, easily, Bran Tub Toys. Details Northern Novelties, Bradford, 2.

COMING EVENTS

Windermere II (Croydon R/R Conference) 11th, 12th February 1967. Apply, Peter Moore, 87 Virginia Rd., Thornton Heath, Surrey.

SAGGA JOURNAL

Stimulating articles and new ideas in the new SAGGA Journal from Scout and Guide Graduate Association, 9 Charlbury Road, Shrivenham, Swindon, Wilts., 2s. quarterly, 7s. 6d. annually, post free.

CAMPING AND HOLIDAYS

Holiday House to let, for 12 Brownies, Guides or Senior Branch and 4 leaders, in Somerset, Bristol 11 miles. Fully equipped except for bedding. Details from Mrs. Probert, 13 Melrose Place, Bristol, 8.

Gorwelion Camp-sites, Wigfach, near Bridgend, Glamorgan. Please note that applications for 1967 should be made to Miss Dorothy Sheppard, 12a Heal Tymaen, Upper Boat, Pontypridd, and not to Miss P. Tudor who will be out of the country.

Good Camp-site, Wirral beauty spot. R. Williamson, Bankfoot, Radymere, Bebington, Wirral. Tel BRO 2115.

Horse-drawn Gipsy Caravans, self-hire. The world's most unique holiday. Matt Murphy, Banteer, 10, Ireland.

Bookings invited from groups to use **Y Bwthyn Bach, Broneirion Pack Holiday House** in off seasons. Suitable for S.B./P.L.s and adult members. Apply Sec., Broneirion, Llandinam, Mont.

'Solvig' 67 ft. Baltic Ketch for charter with Skipper. East coast or Continent. 12 berths £144 per week; £42 per weekend. Also available for residential weekends this winter, £24 with 16 berths. Peter Light, Firs Chase, West Mersea, Essex. Phone W. Mersea 308.

20 ft. 4 berth caravan, Llwyngwrl, Merionethshire. All amenities, near beach. 179 Walmley Road, Sutton Coldfield. (ASH. 2603).

N. Cornwall: 20 ft. 4-berth caravans to let. Quiet site overlooking Treyarnon Bay. Surfing, golf. Apply, Young, Harford Bridge Park, Tavistock, Devon.

Caravan to let on small site at Brancaster, N. Norfolk coast; sea ½ mile: calor gas: flush sanitation. 8 guineas weekly. Miss Lambert, 55 Garard Road, Harrow, Middlesex.

Lyme Regis Church Hall: available 19th July to 5th September. Accommodation comprises large and small halls, kitchen, usual conveniences. Suitable Brownie Pack or Guide holiday. Terms moderate. Apply details, The Secretary, School House, Church St.

Brightlingsea, Essex: Ideal holiday centre for children and sailing enthusiasts. 22ft. caravan by sea, 4/5 berths. Mrs. Taylor, 26 King's Avenue, Buckhurst Hill, Essex. (Buc 7702).

Dorset, overlooking Lyme Bay: Four-berth caravan with direct access to beach. Fully equipped. Cooker and heater.—Balson, Beaucroft Lane, Wimborne, Dorset.

Young Parties. Unique exciting holidays with Sailing... Snorkelling... Water Skiing... Pony Trekking... Canoeing... Caving... Sea Cruising... Dutch Barge Tour. P.G.L. tours are imaginative and entertaining, they offer the thrill of Adventure with Variety and Fun. Choice of holidays in England, Wales, Holland, France and Spain especially planned for young people aged 12-14, 15-18 and over 18. Also special programmes for School and Guide Groups. Canoe Hire Service for independent use. 16 m.m. colour Films on Loan; Canoeing, Sailing and Pony Trekking Adventure Weekends and Secondhand Equipment Sales Service. All details and free illustrated brochure from **P.G.L. Holidays**, Dept. 36, Adventure House, Station Street, Ross-on-Wye, Herefordshire.

Furnished Cottage near Derbyshire Dales: Accommodate 12 Senior Branch members and Guiders. For details send S.A.E. to Secretary, Miss R. Morten, 73 Macclesfield Old Road, Buxton. Tel. 3827.

Far and Near



(Right) (L to R) Mother St. Francis, Training Adviser for Uganda, Miss W. Saiti, Assistant Trainer for Kenya, and Miss Marie-Joseph Lacroix, Training Adviser for the Congo, making a table during a Trainers' Training at Nairobi

(Below) Carmarthen Brownies give the Chief Guide a rousing welcome in St. David's Memorial Hall during her visit in November. Behind the Chief are Miss M. Phillips, Carmarthenshire County Commissioner, and the Hon. Gwenllian Philipps, Chief Commissioner for Wales

During the visit of the Secretary of State for the Colonies to the British Solomon Islands in August, his wife, Mrs. F. Lee, asked to see something of Guiding. She is seen on the right with Mrs. Davies, wife of the Acting High Commissioner, and Miss F. Stock, watching Guides in the 1st and 2nd Buñana Companies perform the stick dance. Mrs. Lee also met the Gizo and Lago Brownies and Guides at Gizo and those from Auki and Fiu at Auki



Photo: 'East African Standard'



Photo: West Wales Life

A Thinking Day Ceremony

by *Buntly Burnet*

HAS the idea of 'something for Thinking Day' suddenly had to be produced like a rabbit out of a hat? If this happens in *your* Pack or Company the Brownies and Guides have had no time really to work towards Thinking Day—they have been given an idea hastily prefabricated by their Guiders. Brownies (perhaps in Pow-wow) and Guides in various projects throughout the year should try to be internationally minded and aware of the wider world outside their little circle. The Brownies will not need quite such a long planning time, spontaneity and sincerity in whatever ceremony they decide to perform are the mainsprings of their plan. The Guider may perhaps suggest and quietly direct their plans, as the Brownies' own ideas sometimes need slight pruning for ceremonial occasions.

The Guides' plans should be very thorough, accurate knowledge is their aim. The world is large and the idea of world fellowship does tend to be a rather vague, sentimentally-coloured picture. Each Patrol might undertake to choose one country belonging to the World Association, perhaps one with which they already have slight links, and well in advance of February make a really thorough study

based on questions which come to their minds in Patrol Time. Not only questions such as—'What kind of uniform do they wear?' and 'Have they a different name from us?', but also questions such as—'What is their religion?', 'Have they always enough to eat?', 'What games do they play?', 'Do they know about television?', 'What kind of music do they like?' and so on and so on. Finally, as Thinking Day approaches and they gather in their pennies, they may perhaps feel that they are rather a more personal gift than in some previous years. Here is a suggestion for a simple ceremony:

The Company is in horse-shoe formation, seated in Patrols. Each Patrol has its gift of Thinking Day Pennies in a bag, and a small night-light or candle in a safe holder in front of it. The hall should be darkened, but not completely dark.

A *space capsule*, or *satellite*, composed of six Guides close together with linked arms in a circle, facing outwards, appears. They could be simply costumed or in uniform, and it is suggested that an electric torch, attached to the belt of each girl, could be effective.

The *satellite* comes into the horse-shoe and moves round past each Patrol, rotating as it goes. It takes up a central position when it has circled the horse-shoe. The six Guides kneel, unlinking arms and revealing one smaller Guide, dressed in a tunic (ideally, silver coloured) and with some kind of exciting antennae or band on her head. She speaks:

'I span the Earth so fast and it seems to me that the countries of the Earth should now be closer to one another in every way, but this does not seem to be so.'

'I see intolerance where there should be understanding.'

'I see greed where there should be a thoughtful sharing of the world's goods.'

'There is bitterness and weariness and the statesmen of the world grow cynical. Who will help?'

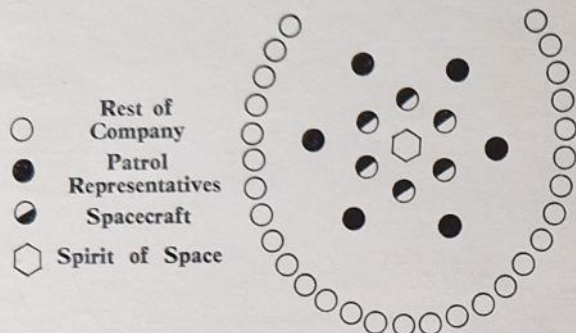
At this, the representative of the first Patrol lights her candle and says:

'We pledge ourselves to try to understand and draw closer to the Guides of . . . (name of country) and offer this gift in the name of the Founder and of Friendship.'



THE GUIDER

The Patrol representative goes forward with the gift, hands it to the *Spirit of Space* and kneels down. Each Patrol representative repeats this pledge and handing over of gift, and now the ceremony looks like this:



The 'Spirit of Space' Receives the Gift

At the end of this, the Patrol representatives remain in position while 'Taps' is first sung and then softly hummed.

The Patrol representatives return to their Patrols.

The *Space Satellite* re-forms to hide the *Spirit* (who now carries the gifts) and exits, rotating smoothly, as the candles are blown out and the lights in the hall go up.

Illustrated by Jennetta Vise



Extracts From the Private Diary of a District Commissioner

JAMES said, one of your Brown Owls is in the hall, she looks upset. I said, I have no Brown Owls. James, not having read GUIDER, said, my poor girl, have you gone mad?

Miss Huckleberry greeted me tearfully. 'I've just seen it, she said, that implementation thing. I have a Pack meeting tonight. What are Brownies to call me?' What they've always called you, I said. 'But there are no more Brown Owls,' said Miss H., with something like a wail. As far as I know there are as many this morning as there were last night, I said. I have received no resignations. Come into study. Let us look up Working Party Report. There you are, under recommendation 9 . . . 'that Brownie Packs be encouraged to decide on the special name they wish to use for their own Guiders within their own Pack. Many may continue to use "Brown Owl"'.

Oh, said Miss Huckleberry, I hadn't really read it, I just thought . . . Too many people are just thinking, I said, and it is doing no good. I have come to the conclusion that many of us are afraid of new ideas, we glance at them sideways and move away instead of welcoming them and looking at them squarely in the face. I once read somewhere that for many people thinking is only rearranging of their own prejudices (saw Miss H. looking slightly stunned). Perhaps your Brownies would think it fun to choose a new name for you. Why not ask them? When you're talking in Pow-wow about the new Promise and Law you could tell them that there is now a chance to have a name for you that would be really yours, chosen for you by them and therefore special to the Pack. There's no hurry. All these things are going to take time and nobody is going to make the Brownies stop calling you Brown Owl.

Met Miss Huckleberry three days later. I asked them, she said, we had a long talk about it and in the end they said they would go on calling me Brown Owl for time being but one of them said I wasn't a bit like an owl and she would like to call me Berry, and some of the others thought that was a good idea, so perhaps . . .

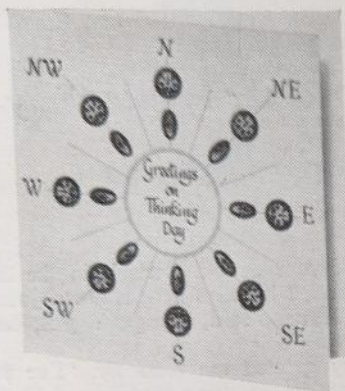
Would you like it? I asked. She looked at me, round, red and smiling. I think I would, she said.

Thinking Day Greeting Card, etc. for WEDNESDAY, 22nd FEBRUARY

OFFICIAL CARD
(with envelope)

6d

Packing & Postage 9d. per dozen.



MINIATURE WORLD CHARM
for bracelet or pendant

2/-

Packing & Postage 6d.



THINKING DAY—ORDER OF SERVICE

26/- per 100

Packing & Postage 2/6 per 100

THINKING DAY LEAFLET

(English or French)

Packing & Postage 6d.

GIFT OF FRIENDSHIP LEAFLET

(English or French)

Packing & Postage 6d.

THINKING DAY STAMPS per sheet
(Sheets of 12 adhesive stamps)

Packing & Postage 9d. per dozen.

4d

6d

6d

3d

GIFTS FOR THINKING DAY

★ ★ ★ ★ ★ ★ ★

E.P.N.S. Tea Spoon

with oxidised Trefoil Badge

Packing & Postage 9d.

8/6

PRESENTATION BOX

(To hold 6 spoons)

15/-

Packing & Postage 1/4



National Book Sale - 1967

22nd FEBRUARY to 4th MARCH

AT C.H.Q. SHOP ONLY

(open on Saturday mornings 9 a.m.-1 p.m.)

AN EXCELLENT SELECTION OF BOOKS AT GREATLY REDUCED PRICES—CHOOSE
YOUR BOOK IN A SHOP WHERE THE STAFF IS PLEASED TO WELCOME YOU
AND HELP YOU TO FIND JUST THE BOOK YOU NEED.

**AT COMMONWEALTH HEADQUARTERS SHOP, 17-19 BUCKINGHAM PALACE ROAD,
LONDON, S.W.1.**

AT THE ASSOCIATION'S BRANCH SHOPS

London: 19 Green Lanes, Palmers Green, N.13.

Birmingham: 5 Ryder Street, 4.

Liverpool: 20 Richmond Street, 1.

Cardiff: 20 Working Street.

AT SCOUT AND GUIDE SHOPS:

London: 124 Newgate Street, E.C.1.

London: 183 Clapham Manor Street, S.W.4.

London: 55 Woodgrange Road, Forest Gate, E.7.

Ipswich: 5 Tacket Street.

Leeds: 62 The Headrow, 1.

Oxford: 17 The Turl (Broad Street end).

York: 14 Goodramgate.

AT SCOTTISH GUIDE SHOPS

Edinburgh: 16 Coates Crescent, 3.

Glasgow: 1 Scott Street, C.3.

AT ULSTER GIRL GUIDE HEADQUARTERS

32 Great Victoria Street, Belfast, 2.

Printed by The Riverside Press Ltd., London and Whitstable and published by The Girl Guides Association, 17-19 Buckingham Palace Road, London, S.W.1. (VICTORIA 6242). All communications with regard to subscriptions, editorial matters and advertisements should be addressed to Publications Dept., Girl Guides Association. Subscriptions including postage 17s. for 12 months Great Britain, 15s. 6d. overseas. Trade Agents: Horace Marshall & Son Ltd., Distribution Centre, 8/11, St. John's Lane, Clerkenwell, London, E.C.1.