

THE GUIDER

VOLUME

55

No. 6

JUNE

1968



PRICE
ONE
SHILLING



Princess Margaret, arriving at C.H.Q. for the morning session of the Annual General Meeting, is greeted by Mrs. Derek Parker Bowles and Miss Thora McCarthy
Photo: Sport & General

THE GUIDER

OFFICIAL MAGAZINE OF
THE GIRL GUIDES ASSOCIATION
(Incorporated by Royal Charter)



Patrons

H.M. THE QUEEN
H.M. QUEEN ELIZABETH, THE QUEEN MOTHER

President

H.R.H. THE PRINCESS MARGARET,
COUNTESS OF SNOWDON

Chief Guide

OLAVE, LADY BADEN-POWELL, G.B.E.

Commonwealth Chief Commissioner

MRS. DEREK PARKER BOWLES

IN THIS ISSUE

<i>Annual General Meeting</i>	191
<i>The President's Address</i>	192
<i>Annual Report by the Chief Commissioner</i>	193
<i>The Queen's Birthday Telegram</i>	195
<i>Book Reviews</i>	196
<i>In Memoriam</i>	197
<i>Letters to the Editor</i>	198
<i>News Flash on the Service Flash</i>	200
<i>Glenbrook</i>	200
<i>Where to Train</i>	201
<i>Searching for Rural Craftsmen</i>	204
<i>Organizing a Swimming Gala</i>	205
<i>Learning to Look at Pictures</i>	206
<i>The Brownie Song</i>	208
<i>Putting Pen to Paper—Letters</i>	209
<i>Here's How to Prevent Accidents</i>	211
<i>Ask Yourself</i>	212
<i>Headquarter's Notices</i>	213
<i>Guide Friendship Fund</i>	221
<i>Classified Advertisements</i>	223
<i>V.S.O.—Guide Project</i>	225
<i>All-England Ranger Round-Up</i>	226

FRONT COVER

Her Royal Highness the Princess Margaret delivers the Presidential Address at the Annual General Meeting at St. James's Palace.

Photo: BIPPA

ANNUAL GENERAL MEETING

THE Annual General Meeting was held on Tuesday, 23rd April, at Commonwealth Headquarters in the morning and at St. James's Palace in the afternoon. Our President, Her Royal Highness The Princess Margaret, Countess of Snowdon, took the Chair at both sessions.

In the morning Her Royal Highness presided at a meeting of the Council at which elections to the Executive Committee and Council were approved (see page 194).

At St. James's Palace in the afternoon, the Picture Gallery where the meeting was held was full to capacity some time before the meeting was due to start, and an over-flow was accommodated in the Matted Hall. The attendance was in the region of 400 people—including Guiders from various parts of the world, and guests from other organizations.

The Princess opened the proceedings with her Presidential Address, and the Chief Commissioner, Mrs. Derek Parker Bowles, presented the Annual Report of the Committee of the Council. The audited statement of accounts was presented by Mr. P. C. Barnett, Honorary Treasurer.*

The guest speaker was Mrs. M. L. Kellmer Pringle, B.A., Ph.D., Dep.Ed.Psych., who was introduced by Mrs. Jessica Blooman. Mrs. Kellmer Pringle, who is Director of the National Bureau for Co-operation in Child Care, gave a most interesting talk in which she outlined some of the work and aims of the Bureau. She said that the work can be defined under three headings—firstly, to make more readily available what is already known about children. The second aim is to improve lines of communication, and the third to help to contribute new knowledge in the field of child care. The Bureau, said Mrs. Kellmer Pringle, now has 90% of local authorities in membership, as well as voluntary and professional organizations and university departments. She pointed out that in the last thirty years, the standard of physical health of children has developed enormously. The next step forward, she said, is in the field of emotional and intellectual development. It is in this sphere that her Organization has a great deal to contribute.

The meeting closed with an expression of thanks given by Mrs. C. L. Carter to Her Royal Highness

*see page 215

(Continued on page 195)



On the President's left is the Chief Guide, and on her right the Commonwealth Chief Commissioner. Far left of our picture is the guest speaker at the Annual General Meeting, Mrs. M. L. Kellmer Pringle, Director of the National Bureau for Co-operation in Child Care.
Photo: BIPPA

THE PRESIDENT'S ADDRESS

I AM so pleased to be with you again for the Annual General Meeting, and I should like to welcome all our guests, both from this country and from overseas.

Last year was one of hard work, patience and preparation for the new programme. It must sometimes have seemed difficult to wait for the publication of the Handbooks, and there were obvious problems in preparing the Brownies, Guides and Rangers for the change in the programme before the books appeared.

Now the great moment has arrived, and I am sure that all of you who have had the opportunity to study the Handbooks will agree that the authors have done a magnificent job. These attractively produced books should stimulate the girls now embarking on the new programme, and will also be of the greatest assistance to the Guiders.

At this stage it is vital that the Guiders should receive special help in learning the best ways to put the new programme into practice. With this in mind, every effort is being made to provide extra opportunities for training, such as weekend courses at the Training Centres and evening sessions in the Districts.

It is most encouraging that in this transitional period, which might have been difficult, our numbers have risen to the highest total ever recorded. A particularly welcome increase is in the number of Guides going to Camp—7,549 more than the previous year—making 120,639 in all.

We must not let the exciting changes which are taking place in this country make us forget that ours is an international Movement. Again this year, Members of our Association have visited Guides all over the world, and many visitors from overseas have come to see us in this country.

This should help to remind us that although we are changing our approach to Guiding in this country, its essential quality remains the same—something beyond tests and challenges and badges.

I hope that in the coming year we will be able, through our new programme, to express this quality more fully than ever before.

THE ANNUAL REPORT BY THE CHIEF COMMISSIONER, CHAIRMAN OF THE EXECUTIVE COMMITTEE

FIRST of all may I say, Ma'am, how grateful we are to you for your continued and continuous interest in our affairs. You have given us generously of your time. You have attended two Executive Committee Meetings, and I don't think I need tell the Meeting what an endurance test that is! You took the Chair at the Annual General Meeting last year, and you flew by helicopter to Blackland Farm in July and spent the day in Camp there. And once again you are with us today, and on behalf of us all I extend to you a very warm welcome.

We welcome too the World Chief Guide, Lady Baden-Powell, who has been as active as ever. She attended the Westminster Abbey Service on February 25th, and visited Waddow for the Ruby Jubilee celebrations. Overseas she visited, amongst other places, New Zealand, Australia, Canada and Malta—a programme which would exhaust a Goliath, and yet here she is looking as fit as ever.

Awards

We are delighted with the award of the M.B.E. to Miss Thöra McCarthy, who became our General Secretary in June. We also congratulate Miss F. Glean, Island Commissioner for Granada and Mrs. Collymore-Woodstock, Chief Commissioner for Jamaica, on their M.B.E.s.

Two Silver Fish and 80 Laurel Awards were made in 1967. This was the first year of the Laurel Award and the Committee had a somewhat difficult task in establishing a standard for this award, but we hope we have succeeded.

There was an increase in awards for gallantry and there were 17 Stars of Merit granted, including several emergency awards due to the grave condition of the people concerned. Each of these showed fine examples of courage and devotion.

International

Turning to the International scene, two members of the Association, holders of the Duke of Edinburgh's Gold Award were chosen to join the party of three boys and three girls selected to represent the United Kingdom on the Commonwealth Gold Award expedition to Canada, which included a visit to Expo '67. Six Ranger Guides took part in the first cruise for girls in the ship 'Sir Winston Churchill'.

Journeys were arranged for many people to places as far apart as Belize, Helsinki, Botswana, the Holy Land and Hong Kong. Parties also attended the Quebec Provincial Camp and the Canadian Heritage Camp.

Thanks to the generosity of the Juliette Low World Friendship Fund, two Rangers were able to visit the U.S.A. and two Rangers visited Sangam. Visits were also made to Liechtenstein's first International Camp. Twenty-one physically handicapped Rangers, of which 16 were in wheelchairs, went to Switzerland.

I would like to pay tribute to those helpers who did such a marvellous job in looking after these girls. I know it would be the wish of you all that I express our gratitude to them.

England has appointed an Immigrants Adviser to help bring more immigrant girls into Packs, Companies and Ranger Units.

With regard to Voluntary Service Overseas, two Brownie Guiders went to Rhodesia, one to Kenya and one to Fiji. Excellent reports have come in on the work done by our volunteers.

As a small return for all that the United States of America has done for us through the Juliette Low Fund, a party of American Girl Scouts came here for five weeks. They were guests of various English Counties and of Scotland, Ulster and Wales and they spent a week in London where they were entertained by the London Counties and Commonwealth Headquarters.

Training

Turning now to training, during the summer 21 Commissioners and Guiders from Australia, Bahamas, Botswana, Cyprus, Guyana, Hong Kong, Jamaica, Lesotho, Mauritius, Nigeria, Trinidad, Uganda and Zambia attended a two-month course. Trainers from the United Kingdom are at present working in Rhodesia and Botswana, while Jamaica, Australia, Mauritius and Trinidad have also had visiting trainers. Trainers in the United Kingdom themselves have received special training because of the new Eight Point Programme.

Scotland has appointed a second full time trainer and has purchased a second mobile training unit.

Many training conferences, especially for Commissioners and their assistants, have been held and it was unfortunate that foot and mouth disease led to trainings at Foxlease and Waddow being cancelled over the last five weeks of 1967.

A training conference was held in October for 150 County Press and Public Relations Advisers at Commonwealth Headquarters.

Camping

As you have heard from Her Royal Highness, a record number of campers showed the increasing interest in this branch of our activities. You will read in the Annual Report the details of this.

England now owns Glenbrook which is an outdoor activity centre in Derbyshire. It has 9 acres of ground, some of which is suitable for camping.

Other Activities

We are sorry to report that there was a bad fire at Netherurd in January.

We have had several ventures at home. Guides and Scouts took part in the International Boat Show, and the Bank of England and Westminster Bank asked us

to take part in the Venture 1967 Exhibition in the City of London. In fact a three-course meal was cooked on open fires on the steps of the Royal Exchange and the result was offered free to city workers.

Among 32 Radio and Television broadcasts, a patrol from Portsmouth made seven appearances on Southern Television in a series of Epilogues explaining the meaning of Thinking Day.

Creative activity has progressed well and Art, Music, Handcraft, Handwriting and other subjects have all been carried on successfully.

The new programme has meant heavy demands on the Association as publishers. You do not need me to tell you how distressed everyone concerned was over the crisis regarding the distribution of the Handbooks: we are at present enquiring into the reasons and will be issuing a statement. However, despite all this the Handbooks have been received with great enthusiasm and delight, and we are greatly indebted to the Authors for their inspiration and hard work, which was very much done against the clock.

Miss Wallis Myers has retired as Editor of THE GUIDER, and I would like to take the opportunity of thanking her for all the work she has done for us and the skill that she has shown as Editor. A new General Editor has joined us to take over the editing of all four magazines.

Uniform modifications have continued and we hope that we shall now be able to carry on for some time without further major changes.

I know many of you will be glad to see the raising of the roof. It will mean, I hope, more comfort and efficiency, and it also provides, besides offices, a dormitory to sleep 23 people.

A new committee structure came into force last May. We have of course had some growing pains, and after two years this will be reviewed. There are two new main committees, the Activities Committee and the Finance/Business Management Committee to co-ordinate and make recommendations to the Executive. Ten Committees have been disbanded, although they still appear in the report. Country and County structure has been altered to match the Commonwealth Headquarters organisation.

Census

The annual census again showed an increase in membership in the United Kingdom, the general increase being 30,701 which is the highest ever; we

have also broken the record for adult leaders with an increase of 2,257. Total membership is now 674,935—also a record—of which 59,883 are adult leaders.

Trefoil

The Trefoil Guild held a training course and have helped Commonwealth Headquarters in a variety of ways.

Retirements

After 9 years as Secretary to the English Office, Miss Mollie Walker, M.B.E., has retired. She holds the Chief's Diploma, the Beaver and the Silver Fish, all of which show how much she has done for us and we wish her a happy retirement.

Miss Rosemary Hoare, M.B.E., retired as Guider-in-Charge at Foxlease and we would like to thank her for all she did there.

Miss Diana York has retired as Guider-in-Charge of Waddow. To her also our grateful thanks.

The Guide Friendship Fund

Over £6,000 was contributed during the year, making over £14,000 raised since the fund started three and a half years ago.

Golden Jubilee

We congratulate the Malaysian, Singapore and Ceylon Guide Associations which have all celebrated their Golden Jubilee during 1967.

Independence

During the year the following Caribbean Islands obtained Association Statehood within the British Commonwealth: Anguilla, Antigua, Dominica, Grenada, Nevis, St. Kitts, St. Lucia.

The Commonwealth Circle

The Commonwealth Circle continued to give great help by means of monthly socials, the highlight of the year being a reception at the Guildhall at which the Chief Guide was present.

I should like to conclude on a personal note. You will have heard in this Report a list of achievements; as Chief Commissioner I know only too well that in order to get these achievements we have had disappointments, annoyances and, naturally enough, a few failures. In life one can seldom have the one without the other and I am deeply conscious that this must be so. Through all the various stages I have been supported in the most generous way by all those who work with me. I am deeply appreciative of all that help and thank them from the bottom of my heart.

EXECUTIVE COMMITTEE AND COUNCIL ELECTIONS

Election to the Executive Committee:

The Hon. Mrs. Gervas Clay
Mrs. P. Matheson
Mrs. W. Robinson
Miss M. Simmons, J.P.

Election to the Council:

The Hon. Lady Gibbs, C.B.E.
Miss H. McSwiney, O.B.E.

The following nominations from the Countries and Overseas Committees were ratified:

Mrs. Dennistoun-Sword
Mrs. Macdonald
Mrs. Jean Morgan
Mrs. P. M. Noaks, M.B.E.
The Lady Primrose
Lady Sinclair
Lady Willoughby

The Greetings Telegram sent to H.M. The Queen on 21st April

ON THE OCCASION OF YOUR MAJESTY'S BIRTHDAY, IT IS MY PRIVILEGE TO SEND THE BEST WISHES OF ALL THE MEMBERS OF THE GIRL GUIDES ASSOCIATION, AND TO EXPRESS TO YOUR MAJESTY OUR LOYALTY AND DEEP AFFECTION.

(signed) ANN PARKER BOWLES

The Queen's Reply

Telegram to: Mrs. Parker Bowles

17/19 Buckingham Palace Road, S.W.1.

I THANK YOU AND ALL THE MEMBERS OF THE GIRL GUIDES ASSOCIATION MOST SINCERELY FOR YOUR KIND CONGRATULATIONS ON MY BIRTHDAY.

(signed) ELIZABETH R.

A.G.M., 1968

(continued from page 191)

for graciously presiding. Mrs. Carter said that the Princess's young and gay approach was a tremendous benefit to the Association, particularly in view of the new programme. She recalled a remark made by a Ranger Guide during the All-England Round-Up which Her Royal Highness had attended three days previously. What a shame, said the Ranger, that Princess Margaret wasn't allowed to go on the dodgems! Mrs. Carter said that this was really a great compliment to our President, as well as an indication of Guiding's new approach.

After the meeting, members had tea in the beautiful Throne Room and Queen Anne's Room. The perfect surroundings of St. James's Palace helped to make this year's A.G.M. a particularly enjoyable occasion.

J.V.R.

THE ANNUAL REPORT

We think members would like an amplification of the statement concerning the purchase of Glenbrook, which may not have left them with the right impression of how the finances were arranged. An anonymous donor has generously lent £14,000 for a number of years so that 'England' should be able to buy the property for that sum. The Association was thus not called upon to finance this payment, but has undertaken to underwrite this amount should England not be able to repay the loan when it becomes due.

We also apologise to Mrs. V. Armstrong that her name was omitted from the list of Council Members printed at the beginning of the Annual Report.

BOOK REVIEWS

Switch on, Switch off, by Janet McNeel. Faber and Co. 18s.

THIS collection of six one-act plays is written for participation by both sexes, and is intended primarily for use by drama classes.

The plays are all based on recognizable situations, and the themes are designed to stimulate discussion on some aspect of society's values today. One of the six is written as burlesque and tilts at modern advertising methods.

In the hands of an experienced leader, these might be useful material for joint participation by Rangers and Venture Scouts. They could be used either as play readings, forming the basis of discussion groups, or as a performance; the latter end product might well follow the former activity.

E.C.H.

Drama. Education Survey 2. Dept. of Education and Science. 9s. 6d.

THIS is a fascinating and most readable Government Report on a subject which touches much of our work in Guiding.

The report looks at varying aspects of a complex subject, one it has stated 'of whose real identity there is no general agreement'. Some teachers will use it as a medium for teaching the value and use of words, others claim its benefit as a means of expression through the body (especially in association with music), most will admit its use as a stimulant, some claim a special value to the backward child, and others a contribution to the education of the more gifted.

Section 2 of the report looks at drama activities in varying types of school at all age levels from nursery schools upwards in which a study has been made of the abilities of both the pupils and the teaching staff. It is interesting to note the statement that 'any arrangement for creating groups of children of differing ages and abilities tends to create opportunities for a more vigorous imaginative life than in narrower groupings by age or ability. The younger children are enriched by the older and the older seem to respond to a sense of responsibility which in imaginative terms leads to a greater variety of work'. This should be an encouragement to those who hope to extend the use of drama in Guiding, as we work naturally in all units with an age range of several years, and a cross section of environmental background and intelligence.

Section 3 studies aspects of school drama—movement, speech, improvisation, etc., etc. and the use of allied activities such as music and handcrafts.

Section 4 deals in rather general terms with Drama in Youth Organizations, but does not seem to offer much encouragement to groups not blessed with ideal facilities or expert drama leaders.

Much of the rest of the report looks at the more professional aspects of drama education—through the training college, the professional theatre and children's theatre,* and with other organizations concerned with teaching drama. The reader may tend to skip through these sections, but should not miss the conclusions which give much food for thought.

* The subject of Children's Theatre is covered in much greater detail in a report of The Arts Council of Great Britain, 4 St. James Square, S.W.1, 'The provision of theatre for young people in Great Britain', price 2s. 6d.

E.C.H.

Capacity, comfort & long life!

Brown Best rucksacks are designed and built for a long, hard life. The quality of materials and workmanship make this equipment the natural choice of experts... men who conquered Everest and crossed Antarctica!

A wide range of styles covers every purpose, and the slight extra cost of BB rucksacks means a world of difference in use.

Send the coupon for catalogue and nearest dealer.

TRIPAX COMBINATION RUCKSACK

Aluminium carrying frame with harness (£32.9) and canvas pack with harness (£35.6) Can be supplied separately or together as a framed rucksack. Other models from 29/9.



Name _____

Address _____

Send to: _____

G1

BROWN BEST & CO LTD

102 Old Kent Road, London, S.E.1. 'Phone: 01-703 8111-2

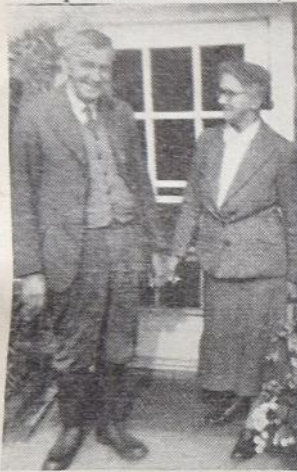
Don't be on the losing side...

order **Cash's** WOVEN NAME TAPES now!

From your Draper and Outfitter

In Memoriam

THE news of the death of Mr. J. BARKLEY MACADAM in April must have brought back to many of us memories of camping at Blackland Farm, East Grinstead, during the first twenty years of its use as a Headquarters permanent site. When in 1938 the Girl Guides Association accepted the generous offer from the Manor Charitable Trust for the use of 200 acres of their land for camping, Mr. Macadam, who had just retired from farming in East Anglia, was appointed as Warden. In co-operation with the Blackland Farm Management Committee, he started with great enthusiasm on creating a permanent site able to accommodate a large number of camps, and within weeks, tents were being pitched on the fields of 'Blacklands'. With the outbreak of war, when it was discovered that camping in the South of England would still be allowed if tents were camouflaged and pitched under trees, Mr. Macadam realized the



Mr. and Mrs. Macadam, photographed in 1957.

possibilities of the woods at Blacklands. All the camp sites were moved under cover and the Guides, debarred from their normal sites, came in their hundreds to camp at Blacklands. There they found a warm welcome from Mr. and Mrs. Macadam who were quite undaunted by all the difficulties and dangers of wartime camping. Looking back over the years one is filled with admiration and gratitude for all they did for us and our Guides in those days.

With the coming of peace, the camps moved out on to the fields again, more sites were opened, Nissen huts were purchased as solid shelter from the Army. As Mr. Macadam continued to work with wholehearted enthusiasm, more and more Guides came there to camp, to his great joy and satisfaction, for his interest in the children themselves was very real. During the last year of his wardenship, he had the pleasure of seeing the much-needed groundsman's house built, through the generosity of the Manor Trust. Everyone who had known him through his twenty years at Blacklands was delighted when the Blacklands Committee decided to call it 'Barkley Cottage', after him.

At the beginning of 1957 Mr. Macadam retired and went with his family to live at Chilworth in Surrey, where, as would be expected, he soon became involved in many local activities. His interest in Blacklands remained with him to the last and when in 1965 the first attempt was made to produce a Blacklands Brochure, he gave valuable assistance in providing information about its early history.

Mr. Macadam never forgot any help and co-operation which he received from those who came to Blacklands

and was generous in expressing his appreciation. In sending our sympathy to Mrs. Macadam and her family, we would like to assure her that all she and her husband did for Blacklands will not be forgotten.

O.L.H.

MISS JESSIE BOWLER died at her home in Henfield, Sussex, on 13th April after a short illness. An enthusiastic Guider, she formed the first Guide Company in Lewisham in South-East London. This company recently celebrated its Golden Anniversary and invited Miss Bowler. Unfortunately she was unable to attend, so they sent her a piece of anniversary cake.

After her retirement from teaching she came to live in Henfield, where she was associated with more Guiding.

J.F.H.

Post Guiders of a certain vintage must have been sorry to read of the death of MISS SIBYL OWSLEY, for many years Brown Owl of the South-East London Post Pack. She was a wonderful Brown Owl, with a great understanding of children—especially handicapped children; her simple and direct approach to Guiding 'sparked' an enthusiastic response in children and adults alike. Once, when asked if she would help during an Extension Training, she protested 'I'm far too shy and stupid to do anything like that'; but when she could be persuaded—generally to play the part of a Brownie at enrolment or a going-up ceremony—one felt how much her heart was in her work. Her Pack Letters were a joy, and made one long to be a Brownie and do such interesting things, and the annual Pack Party in a friend's garden at Sydenham was a great event. Miss Owsley herself said 'I love the mums from Bermondsey at the party—they do so enjoy picking flowers to take home'; but mums or Brownies or fellow-Guiders, I think we all loved and appreciated Sibyl Owsley.

E.B.B.

SHELTER

You will know that a well organized jumble sale can raise at least £50, so if each Guide Company in the United Kingdom organized a jumble sale on one day the Girl Guide Movement would raise £1½ million! What you probably don't know is that £1½ million could rehouse over 40,000 families who are at present living in appalling housing conditions—five or six sharing one bed, rain dripping through the roof, 30 or more sharing one toilet—perhaps even one cold water tap and one cooker.

Shelter is the National Campaign for the Homeless, and at their H.Q. at 86 Strand, London, W.C.2. Ken Willson is working on the biggest Jumble Sale ever—the Jumble Sale of the Year on 5th October. If you are interested, please contact Shelter for further details.



LETTERS TO THE EDITOR

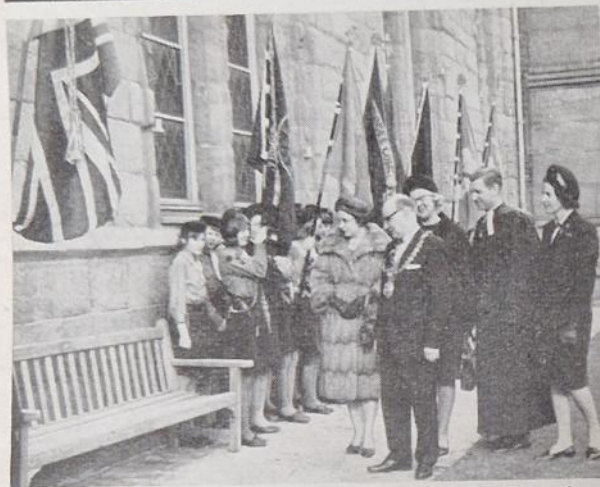


Photo: Dundee Courier & Advertiser

PUBLICITY FORTNIGHT PRESENTATION

A garden seat was presented to the citizens of Dundee by the County of Dundee Girl Guides Association during Publicity fortnight. All Units contributed to the gift which was handed over by County Commissioner Mrs. M. Fallon to Lord Provost Alex McKenzie. The seat is outside the City Church and was presented after the Annual Church Parade.

(MRS.) DOROTHY CUNNINGHAM
Dundee Press Adviser

USING AN OPPORTUNITY

Through my profession as Health Education Officer I was invited to speak at Assembly at the local Secondary Modern School, and the subject of my talk was to be any aspect of health or welfare that I chose. When offered any Thursday in February, and also the opportunity to conduct the whole of Assembly, I naturally chose 22nd February. I explained the significance of this date, and asked if any Guides attending the school would like to help by taking an active part, in uniform.

The Headmistress was most co-operative and called together all the Guides in the school. I explained the plan to them and asked if they would like to join me in it. I made it clear that singing would be involved, and this would mean staying behind after school to practise. I had the help of another Guider who trained the 'choir' and was pianist on 22nd February. We had four practices of about an hour, and a final quick run-through on the morning of the Assembly. A Guide Patrol Leader and a Ranger Guide were chosen as 'readers' and joined me on the platform.

The theme we chose was, 'Think, and Thank'. The prayers were part of Michel Quoist's 'Thank You' and the singing of Max Saunderson's West Indian setting of 'The Lord's Prayer'. The reading was the story of the healing of the deaf and dumb man and I spoke on how we discovered deafness in babies, showing the rattles and toys used; how deaf children were taught, and how they as ordinary people could help the deaf child to fit into the community. The whole school joined us in singing 'Thank You for every new good morning', taken from 'Youth Praise'.

At first, the Guides were a little apprehensive about appearing at school in their uniforms and we heard several say 'I'm the only one in my form', but they felt afterwards that it had been excellent publicity. One of the questions most frequently asked was on the difference in the uniforms of the two on the platform and this helped promote interest in our newly formed Ranger Guide Unit.

(MISS) LOIS FARR
Lincolnshire South

FOOD SUPPLIES FOR CAMPS

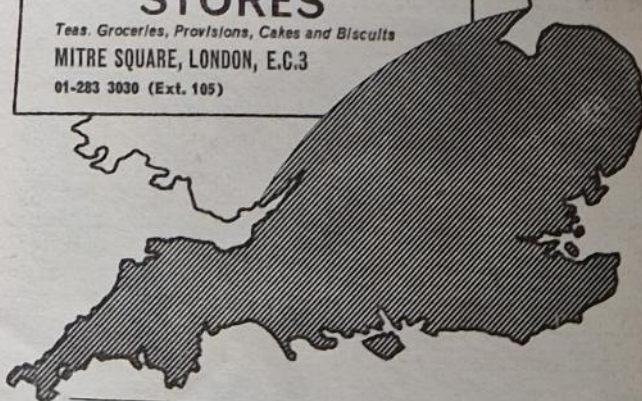
If you are camping anywhere within the area shaded on this map write to the International Stores. Special discounts are allowed to Camping Parties and you will be assured of obtaining top quality Supplies together with a first-class service.

INTERNATIONAL STORES

Teas, Groceries, Provisions, Cakes and Biscuits

MITRE SQUARE, LONDON, E.C.3

01-283 3030 (Ext. 105)



Wherever you go... take the Ever Ready bright lights with you



Get yourself a Solar torch. It's tough, lightweight, non-corrosive. The sort of torch you can take anywhere—and it can take it. From 7/6 (batteries extra).

The EverReady Glowlight is just the lamp for cabins, a camping or caravans. Gives a soft welcoming glow—good for the kid's sleeping quarters too! Only 14/- (batteries extra).

Cut through the darkness with an Ever Ready Space Beam. The heavy duty hand lamp with the big, bright beam. Just 30/11 (battery extra).



The Ever Ready Co (GB) Ltd · Ever Ready House · 1255 High Road · Whetstone · London N20

NEWS FLASH on the SERVICE FLASH

DATE	SERVICE	TIME		SIGNED
		Hrs.	Mins	
May 4	House to house Aluminium Collecting	3.	30	AD
May 11	Patient for gas attack practice	3.	10	SLB
May 21	Washing up at Canteen	2.	30	AW
May 24	Mending books from hospital library	1.	10	Keg.

IF the above chart rings a bell then you will remember the National Service Badges which Guides earned during the last war and the satisfaction they had doing many varied but useful pieces of service. It was fun to collect the signatures on the card—matron, air-raid warden, first-aid post superintendent etc.—and to see the hours mounting up until 96 was reached and the badge and the date strip achieved.

Today's Guides can have this same experience, although the jobs will be different, and there is no war-effort incentive.

Service plays a big part in any Guide's eight point programme, and the daily good turn, without thought of reward or badge, is an important feature of Guiding, today as yesterday. We all know, however, that the prospect of a badge to be earned can be an aid in motivating a girl to learn reliability and stick-ability, and so the new Service Flash has been instituted. (See Guide Handbook, p.72. Guide Guiders' Handbook p.62 and chapter 10).

Any Guide can work for and achieve the Flash, and it is expected that many of the younger ones will take to the idea with enthusiasm. They are usually the ones with more time to spare, and they can do many useful service jobs. Some Guides may earn the Flash by a continuous piece of service, but others will enjoy filling-in the cards (now on sale at C.H.Q. shops) until their 40 hours are completed.

The service must be renewed during the two years after the Flash is awarded or the badge removed. If possible, however, encourage the girls to keep up their 'Guide action' every year. Perhaps they can try to do more hours each year until they complete 96 as did the war-time Guides.

The Service Flash is required of Queen's Guides but there is no separate standard for candidates, and the Flash is intended as a spur to every one of today's Guides to give service and to enjoy the giving.

Have you begun?

M. ELIZABETH BRIMELOW

GLENBROOK

DURING the week before Easter, Glenbrook became alive and a happy and a friendly atmosphere soon prevailed as Rangers and Guiders from many Counties arrived to help decorate the house. They came equipped with their own paint and emulsion rollers etc., and some even brought their paper hanging tools! Everyone worked extremely well and the standard of work completed was very high—work of which they and those who use the house can well be proud. Some stayed several days, while others came for the day and the length of day worked, the brief moments snatched for elevenses, tea and lunch, not to mention the work continued after supper, would have caused any trade union to strike! All who came gave of their best in time and standard of work, for this was their house and they were pleased to have the opportunity to help in this way.

A seed was sown amongst those who came to work, of enthusiasm and appreciation for this house and a determination to spread the news, so that as many as possible will hear more about it and its possibilities and opportunities. Some travelled back the following week-end a distance of 200 miles to continue the good work.

75 Rangers and Guiders took part in this project and England is grateful to all those who gave, and are

still giving, so generously of their time, energy and talents. It can be a proud record that the decoration of this lovely house was carried out by our own members and the builders estimate that we have saved ourselves about £700 by doing this! The workers themselves were thrilled to see the enthusiasm of the local Guides who arrived with brooms to sweep and tidy the drive and yard. They too gave of their best and the standard of work was excellent. The snowdrop patrol were heard discussing plans to plant snowdrops next autumn. They obviously felt they had taken on some responsibility for the outside of the house.



Decorators at work.

Photo: Mary Heys Jones

Where to Train

TRAINING BURSARIES

GUIDERS attending Guider trainings at Foxlease, Waddow, Netherurd, Broneirion and Lorne are eligible to apply for Training Bursaries. A Guider may receive only one such bursary, except in special cases where the Commissioner may recommend a subsequent award, e.g.: where a Guider changes her Section or becomes a Commissioner, etc.

Fee Bursary: This entitles a Guider to a reduction of half the fee for a shared room. She may request to be in a single or double room but will have to pay the extra charge above that allowed by the bursary.

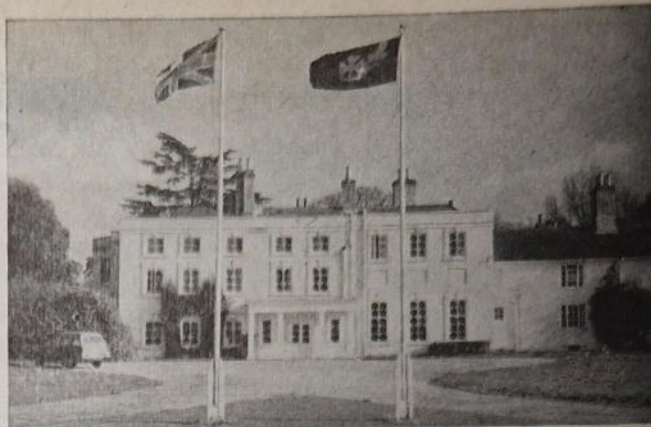
Travel Bursary: This entitles a Guider to a grant covering travelling expenses in excess of 30s. and is available only for the nearest Training Centre. A travel bursary, in addition to a fee bursary, is allowed only in cases of special need and a

detailed recommendation from the Commissioner is required. Payment of this grant is made at the Training Centre on production of the bursary form.

Angela Thompson Bursaries: These are available for any Promise and Law Training (not necessarily held at a C.H.Q. Training Centre) and have the same value as a fee bursary.

Application for Training Bursaries must be made through the District Commissioner who applies direct to the Secretary, C.H.Q. Training

Department, stating the name of the Guider concerned and the date and place of the training. At least a fortnight's notice should be given. Bursaries cannot be issued in retrospect. Not more than one-third of the places at any one weekend can be covered by bursary grants and Commissioners are asked to indicate priorities if applying for a number of bursaries. Many L.E.As. give generous help towards Guider trainings and a request for such assistance should be made direct to the Local Authority concerned.



Waddow Hall, Clitheroe, Lancashire

COMMONWEALTH HEADQUARTERS

An application to attend a training at any Guide Training Centre should be sent direct to the appropriate Guider-in-Charge, and must be accompanied by the correct amount of deposit and a stamped addressed envelope. Applicants should also state the type of training for which they are attending, as there may be several different courses running at any one weekend. It is realised that many Guiders have to leave on the Sunday evening of a weekend training but sessions are arranged on the Monday if there is sufficient demand.

Telephone calls are accepted only between the hours of 8 a.m. and 8 p.m. at Foxlease (Lyndhurst OHA 128-2638) and at Waddow (Clitheroe 02.002-3186), except in emergencies.

FOXLEASE

Lyndhurst, Hants.

JUNE

- 7-10 Brownie, Guide and Ranger Guiders
(General Training)
- 14-17 Ranger Guiders and Camp Trainers
(By invitation) (Outdoor pursuits for the Ranger age group).

- *20-27 (a) Guiders of all Sections
(Guiders may bring their children under 5 years)
- *24-27 (b) Commissioners

JULY

- 5-8 Brownie, Guide and Ranger Guiders
(General Training)
- 12-14 Friends of Foxlease
- 16-23 'Training for Leisure' (including camp-fire, local exploration, handicrafts, etc. (For Guiders of all Sections currently working with a unit)

- 27-AUGUST 3 Ranger/Venture Scout Leadership Week
(Rangers aged 15-18 years by the first day of the training)

AUGUST

- 6-15 Patrol Leaders
(By invitation)
- 17-24 English Trainers
(By invitation)
- 30-SEPTEMBER 9 Holiday Period

SEPTEMBER

- 13-16 Essex East
- 20-23 Brownie and Guide Guiders
- 27-30 (a) District Commissioners
(b) Ranger Guiders

OCTOBER

- 4-7 Bedford
- 11-14 Brownie and Guide Guiders
- 18-21 Middlesex West
- 25-28 Extension Guiders

NOVEMBER

- 1-4 Hampshire
- 8-11 All Sections
(Preparing your Christmas activities)
- 15-18 Brownie, Guide and Ranger Guiders
- 22-25 Brownie and Guide Guiders

*Commissioners are welcome to attend the whole Training Week of 20th-27th June and special sessions will be held for them from 24th-27th.

WADDOW

Clitheroe, Lancs.

JUNE

- 7-10 Lincolnshire
- 14-17 Brownie, Guide and Ranger Guiders
(General Training)
- 21-24 Brownie, Guide and Ranger Guiders
(Making the most of your surroundings)
- 28-JULY 1 Brownie, Guide and Ranger Guiders
(General Training)

JULY
 5-8 Brownie and Guide Guiders
 19-22 Trefoil Guild (for Guild officials, active or prospective; Presidents, Chairmen, Secretaries, Treasurers, and County Advisers of up to 2 years experience. Only 2 applications accepted from any one Guild).

JULY
 27-AUGUST 3 English Trainers
 (By invitation)

AUGUST
 6-13 Homecrafts and Creative Activities for all Sections.
 16-19 Brownie and Guide Guiders
 23-30 Arts Week
 (By invitation)

*31-SEPTEMBER 3 A Holiday Weekend

SEPTEMBER
 6-9 Brownie and Guide Guiders
 13-15 Scouter/Guider Conference (Joint Activities for the 14+ age group)
 (by invitation)
 16-19 Division and District Commissioners

20-23 (a) Ranger Guiders
 (b) Camp Trainers
 (by invitation)
 27-30 Lancs. South

OCTOBER
 4-7 Durham
 11-14 Brownie and Guide Guiders
 Guiders of all Sections
 18-21 (preparing your Christmas activities)
 25-28 Brownie and Guide Guiders

NOVEMBER
 1-4 (a) Guitar Playing
 Beginners and elementary
 (b) Introduction to Dance/Drama
 8-11 Brownie, Guide and Ranger Guiders
 15-18 Methodist Guiders
 22-25 English Camp Advisers
 (by invitation)
 29-DECEMBER 2 Central Yorkshire Scouters

* Any Guider wishing to attend the following weekend's training could stay on as holiday until then.

Fees at Foxlease and Waddow

Shared room per day ... 20s. 0d.
 (Minimum fee for weekend £2)
 per week ... £6 0s. 0d.

Double room per day ... 25s. 6d.
 (Minimum fee for weekend £2 11s. 0d.)
 per week ... £7 13s. 0d.

Single room per day ... 30s. 0d.
 (Minimum fee for weekend £3)
 per week ... £9 0s. 0d.
 Deposit 12s. 6d.

TRAINING IN BOATING ACTIVITIES

A Course for Ranger Guides and 12 Guiders will be held on T.S. Neptune at Ravens Ait, Surbiton, Surrey, from 17th-23rd August. Further details under Headquarters Notices, page 215.

SCOTLAND

NETHERURD HOUSE, Blyth Bridge, West Linton, Peeblesshire

As a result of the fire it will be some time before the roof can be rebuilt and training resumed at Netherurd but Scottish Headquarters has been very fortunate in making alternative arrangements. Trainings will continue to be held at Callendar Park College of Education at Falkirk and applicants will be sent further details. Scottish Guide Headquarters greatly appreciate the privilege of using this new hostel.

JUNE
 7-9 Scottish Handcraft Circle
 14-16 Trefoil Guilds

Patrol Leaders' trainings will be held at Netherurd as usual during July and August. Applications, enclosing 5/- deposit and a foolscap envelope should be made to the Secretary, Netherurd.

JULY
 5-9 Patrol Leaders
 12-16 Patrol Leaders
 18-26 Patrol Leaders' Woodcraft Camp
 19-26 Patrol Leaders' Week
 (by invitation)
 31-AUGUST 5 Patrol Leaders
 (by invitation)

AUGUST
 8-16 Patrol Leaders' Woodcraft Camp
 9-16 Patrol Leaders' Week
 (by invitation)
 23-25 Clydebank West District Patrol Leaders

Applications for trainings will continue to be made to the Secretary, Netherurd House.

Fees for Trainings at Callendar Park—17s. 6d. per day.
 Deposit—5s.

WALES

BRONEIRION, Llandinam, Mont.

JUNE
 7-9 Brownie, Guide and Ranger Guiders. (Places reserved for Monmouthshire)
 14-16 Brownie and Guide Guiders (places reserved for Montgomeryshire)
 18-25 West Glamorgan Handicapped Children's Holiday
 28-30 Trainers' Conference
JULY
 5-12 International Training (Swedish/Welsh Week)

22-27 Patrol Leaders 12-14 years
 31-AUGUST 5 Patrol Leaders 12-14 years
 9-14 Central Glamorgan, Patrol Leaders
 19-24 Patrol Leaders 12-14 years
 30-SEPTEMBER 3 Rangers and young Guiders working for Leadership Certificate or Warrant.

Fees at Broneirion

Shared room per day ... 17s. 6d.
 per week ... £5 5s. 0d.

Double room per day ... £1 0s. 0d.
 per week ... £6 6s. 0d.

Single room per day ... £1 2s. 6d.
 per week ... £6 15s. 0d.

Deposit 10s.

ULSTER

LORNE, Craigavad, Co. Down

JUNE
14-16 Irish Trefoil Guilds

Fees at Lorne
Shared room per day ... 15s. 0d.
Single room per day ... 16s. 0d.
Deposit 7s. 6d.

CAMPING AND PACK HOLIDAYS

C.H.Q. Camp Sites

Ynysgarn, Criccieth, N. Wales

Details of these 2 un-equipped sites may be obtained from The Secretary for C.H.Q. Camp-sites, c/o General Secretary's Dept., C.H.Q.

Blackland Farm, nr. East Grinstead, Sussex

Equipped and unequipped sites. Apply to:—The Warden, Blackland Farm, nr. E. Grinstead, Sussex.

In all cases please enclose a stamped, addressed *foolscap* envelope for the reply.

Brownsea Island, Poole Harbour

Apply for information and booking forms to:—Mrs. Dyke, Wendover, The Avenue, Sherborne, Dorset.

Foxlease and Waddow Camp Sites

Applications for sites at Foxlease and Waddow should be addressed to the Secretary, and the envelope marked 'Camp'. Suggested dates should be given with possible alternatives, and approximate numbers, and please state if an equipped or unequipped site is required. Camps may begin on any weekday at Foxlease but Waddow prefers camps to begin on a Saturday.

A 5s. deposit (forfeited if the booking is cancelled) and a stamped addressed foolscap envelope should be enclosed.

Waddow Pack Holiday House

Applications for Pack Holidays in 1968 should be made to the Secretary and must be accompanied by a written recommendation by the Guiders' C.A. A stamped addressed envelope should be enclosed.

Broncirion Camp Sites and Pack Holiday House

Applications to Mrs. B. Michael, Gorsty, Hyssington, Montgomeryshire.

Netherurd Camp Sites

Applications to the Guider-in-Charge, Netherurd, West Linton, Peeblesshire.

Ulster Camp Site, Craigavad, Co. Down

Applications to Miss N. Pratt, 22 Bangor Road, Holywood, Co. Down.

Lorne Camp Sites

Applications to Miss B. Crawford, 84 Church View, Holywood, Co. Down.

Magilligan Camp Site, Co. Londonderry, N. Ireland

Applications to Mrs. R. F. Scott, Derrymore House, Limavady, Co. Londonderry.

Lorne—The Irene McKibbin Memorial Cottage

Ranger Units and Guiders are invited to come for their holidays to the newly built Cottage in the grounds of the Ulster Training Centre.

The Cottage is fully equipped for parties of twelve and full details can be obtained from Mrs. E. T. H. McBride, 17 Adelaide Park, Belfast, BT9 6FX, s.a.e. please.

Holidays at Lorne

This Training Centre will be open to Guiders and members of the Trefoil Guild for holidays. Apply to the Guider-in-Charge, Lorne, Craigavad, Co. Down, Ulster.

Full details of the above appeared in the March GUIDER.

EUROPEAN CUB SCOUT CONFERENCE

The first European Cub Scouts Commissioners' Conference was held in Vienna in the Autumn of 1967 and Miss Peggy Moor, a diploma'd Trainer attended as the representative of the United Kingdom Girl Guides Association. During the weekend some of the main implications for the future of Cub Scouting in Europe were discussed and among the facts that emerged the following taken from a summary made by Mr. Barry Moule, H.Q. Commissioner for Cub Scouts were of particular interest.

Information: It was felt by the delegates that there was a need for Cub Scout Leaders, first in Europe, then in the world to know more of each other's problems and the ways used to overcome them. The main difficulty was one of communication. This was a fundamental problem facing the (Scout) World Bureau and European Committee—not only in collecting information but making it available.

Leader Training: A variety of factors were put forward for consideration including:—

- (a) There should be more opportunities for Cub Leaders to meet together and Europe was a natural unit for this purpose.
- (b) Leader Trainers should have personal experience of International Scouting.

- (c) The move towards greater freedom of choice in boy training meant that leaders needed a greater understanding of child psychology and this must be put to them in an acceptable way.
- (d) A course should give a leader:—
 - (i) an awareness of the nature of the boy he is leading.
 - (ii) an awareness of his own ability to lead.
 - (iii) self confidence so that he can assess his own problems and know where and who he can turn to for assistance.

Boy Training: Consideration was given to the need to study closely the characteristics of children. Were they different in different countries? This, it was felt, was important because although countries shared most of the activities in their programmes, the pattern of training had to meet individual requirements. It was felt that a study on this would be a worthy subject for an international survey.

Co-education: It was important that Scouting and Guiding looked at this together, and the Conference endorsed the (Scout) European Committee's recommendation to try co-operation as far as social conditions and traditions allow in each country and report on the experience gained.

SEARCHING FOR RURAL CRAFTSMEN

by VIOLET BIBBY

MOST of us bring home souvenirs of local crafts when we go abroad, large straw hats, pottery dishes, gay beach bags, but how many of us know that here in Britain we still have hundreds of craftsmen tucked away in the countryside, making a variety of beautiful things?

The Rural Industries Bureau, 35 Camp Road, Wimbledon Common, S.W.19, issues a list of country workshops (please enclose a stamped addressed foolscap envelope), but it is more fun if we use our week-end outing or summer holidays as treasure hunts, finding the craftsmen and women ourselves, talking to them and seeing them at work.

How can we do this? Where do we start? All crafts begin where there are suitable materials at hand. In marshy parts of the country you will find rushes and osiers. Rushes are cut by the River Deben in Suffolk and in the village of Debenham, woven into a variety of mats and baskets. If you see that willows have been cut ask any local inhabitant where the basket maker lives, or look out for a cottage with long osiers propped up at the side.



The open markets in country towns can offer clues. Sometimes you can see, among the fruit and vegetables, a stall with lace, baskets, leather work. You may be able to find out who the local maker was and go and see him at work. Real craftsmen love talking to those who appreciate their work, so long as you do not mind them going on working as they talk, and as they do not mass produce, they can make orders to special measurements at little or no extra cost. I have ordered and watched being made a square basket that I needed, which would have been useless to most people. I once drew with a stick on the dusty floor the shape I needed for an ornamental trough to replace the broken one in our garden foun-

Illustrated by
Catharine Towner



tain. It was thrown for me as I stood there, I was allowed to make my own pattern in the soft clay all round the rim, then left it to be fired and collected it later. If you can do this without interrupting the craftsman's work, he will usually be delighted at the new challenge to his skill and you will have something which is unique.

If you are camping at a farm, the farmer will know of any local craftsmen, or the vicar will tell you. I once found in Buckinghamshire a lace worker who made me some traditional point lace, a skill that is fast dying out. The vicar directed me to a thatched cottage and I found her outside, she could only do the fine points in good light, working away at her hard pillow, the bobbins flying, pins jabbing.

In Wales you will find woollen mills that used to make the traditional Welsh flannel now making gaily coloured striped flannel to make into casual shirts. You can watch the wools being dyed and woven and order special lengths. In the wilder parts of Scotland and Ireland you can buy beautiful jerseys in hard wearing wools from the women who sit knitting at the cottage doors. These have traditional patterns knitted into them, patterns that you cannot buy in the shops. I wondered why this was until I asked an old lady on the island of Aran. She told me that the various patterns had originally belonged to certain families and were knitted into the tops of sea-boot stockings. Winter storms sometimes wrecked the fishing boats and when bodies were washed up the women could identify them by their stockings. This luckily rarely happens today, but the beautifully embossed patterns of the Aran jerseys can still be seen in the west of Ireland, patterns that still retain their bold beauty in spite of soaking in sea water, which is why they are now so prized by yachtsmen.

Perhaps you would like to see this summer how many craftsmen you, or your Company can find? Follow the clues as I have suggested, be careful that you do not interrupt a workman unnecessarily and waste his time and you will find that you have added some examples of beautiful handiwork to your home at little cost, and helped to keep alive some of our traditional crafts.

A series on rural crafts is currently appearing in THE GUIDE.

THE GUIDER



Illustrated by Jennetta Vise

A Swimming Gala

A SWIMMING gala could be organized by a Unit for its own members, perhaps as a special camp activity if swimming forms a major part of the camp programme. This gala would be organized by the Patrol Leaders' Council while at camp probably as an inter-patrol competition. It might include such activities as raft building and transporting the Patrol, 'cock fighting', leap frog over and ducking under a partner as well as the usual race and style swimming events. The organization and administration of this type of gala will be tailored to suit each individual Unit.

The more formal gala is usually for the Guides and Rangers of a District or Division or it could be a joint activity with Scouts, separate events being included for Guides, Rangers, Scouts and Venture Scouts.

A committee of three or four people should be elected to organize the gala on the following lines:—

1. When the date and time of the gala has been fixed application has to be made for the reservation of a public swimming bath. This should be done well before the proposed date, if possible giving up to six months' notice especially if it is intended to hold the gala on a Saturday evening. Some authorities will only allow such a booking on a Saturday, as on other evenings it would interfere with the public use of the bath. One or two alternative dates should be given in case the first date is not available. The heaviest bookings for galas are in September and October, so if a date is chosen outside these two months and the town is well supplied with swimming baths shorter notice may be possible, particularly if an alternative date and bath would be acceptable. Charges for the use of the bath will be £3 per hour, possibly with a reduction to £2 for an organization whose members are under 21 years. For a new bath the charge will be £5 per hour with the possibility of a similar reduction. These charges and booking conditions are general but the gala committee will naturally check with their local authority. The charge may seem rather high but even so the gala is being very heavily subsidised by the local rates and a further reduction of charges is most unlikely.

2. Prepare and send out entry forms which must be returned at least two weeks before the gala date. It is essential to have the names of all competitors entered on the forms so that the programme can be set out in order of events with heats and semi-finals arranged so that no swimmer is asked to swim in two race events following one another.

3. Competitors' entrance tickets and the time of their event, or a programme, must be sent to all swimmers and an entrance ticket and programme to all officials.

4. Posters and tickets must be prepared and distributed; as the gala is amateur sport no entertainment tax is charged.

5. No swimming gala should last more than two hours and the organizers must therefore be ruthless in keeping the number of events down. A short gala with a quick succession of events is better than a large number of events with long gaps between them. Slickness of presentation is the keynote of success both for the swimmers and the audience.

6. Events should be included in the programme for all levels of ability and for the various special aquatic skills that the Guides and Rangers may be practising. They themselves will have plenty of suggestions. Events such as retrieving objects from the bottom of the bath, obstacle race, diving, surface diving, long plunge, swimming in clothes and undressing in the water are a few of the skills that occur in the awards of the R.L.S.S. and the A.S.A. If some of these events are included they increase the range of skill demanded and thus widen the selection of competitors which would not then be limited to speed swimmers. These events also add to the entertainment for the spectators.

The events to be included in the programme should be known by the Units long enough beforehand—probably not less than three months—so that the Guides can train adequately for the events. For some Guides swimming may become a major part of their Guide programme for a while.

The number of events each swimmer is allowed to enter should be limited as each event may involve a swimmer in the heat, semi-final and final on the night of the gala.

7. The width of the bath governs the number of competitors who may be started in a race but there should never be more than eight.

This consideration and the number of entries governs the number of events in the programme. Never allow swimmers to enter races on the spot, but allow the starter to consolidate heats if swimmers have failed to report to the stewards.

8. Short exhibitions of 5 to 10 minutes or a diving competition are usually arranged in the middle of the programme to allow time between heats and finals. Sometimes a short water polo match ends the programme to give the recorders time to check final scores.

9. In diving competitions the visual system of

(Continued on page 210)

TRAINING
PAGES



Illustrated by Jennetta Vise

PICTURES

*'We are so made
We love first when we see them painted
Things we have passed a hundred times
Nor cared to look'.
Ruskin.*

PICTURES open our eyes to beauty, and help us to see things to which we have been blind before. This perception will enrich the whole of life. Most people enjoy the obvious, the delight of fresh green trees and grass in the spring, blue seas, autumn tints, sunlight on snow. The artist shows us that skies that we thought were just grey are, in fact, full of subtle colours; that mist and even fog have their own charm; that black mud can reflect the sunset; and that the ordinary things we use every day in the kitchen and about the house have their own beauty.

The first problem we face when we want to encourage our Brownies, Guides or Rangers to appreciate art is to obtain reproductions. Here are three choices. You could:—

1. Have a fairly large picture so that a group could look at it at one time. The S.P.C.K. publish reproductions of famous religious pictures at a very reasonable cost. Art books can be borrowed from Public Libraries. Medici prints are very good but more costly.
2. Have several smaller copies of the same picture. Most galleries sell postcard size reproductions.
3. Buy some transparencies. This is the best way of all, for then any number of people can see the slide at the same time.

Next comes the question of what to show. Pictures by great artists are the best. Even a Brownie will appreciate these, though second best might not appeal. Here are some suggestions:—

'St. Francis and the Birds'	Giotto
'Adoration of the Magi'	Fabrizio
'St. George and the Dragon'	Tintoretto
'The Larder'	Peter de Hooch
'The Angelus'	Millet
'The Bent Tree'	Corot
'The Young Warrior'	Rembrandt
'The Fighting Temeraire'	Turner

If there is a story attached to the picture this could be read while the children look, or there may be a poem that will fit.

When looking at pictures a common mistake is to see too many at a time. For Brownies and young Guides one picture is really enough. Rangers might look at six, perhaps either by one artist or by those of the same school of painting. Even so, one should be studied with special care. A good idea is to play a kind of Kim's game. Perhaps you have chosen Tintoretto's 'St. George and the Dragon'. Let the girls look at the picture either while you tell them the story, or in silence. Then remove the picture and ask one girl to describe St. George, another the princess, another the dragon, another the sky, another the landscape and the castle, and so on. Then you could look at the picture for another minute and check the answers. Again remove the picture and ask the girls to write down all the things that are rose red, all the things that are blue. Look again, and point out the special beauties, the gleam on the satin of the princess's dress, the strength of the horse, the soft colours of the landscape, and the sea, the fear expressed in the princess's hands almost more than in her face.

Having studied this picture, if you are lucky enough to live near the National Gallery you could take your Guides to see the original, going first to the picture they know, before they become dazed by the multitude of lovely things. If you have no gallery nearby, you will have to be content with reproductions. Later on, when your Rangers, Guides or Brownies travel, they will greet as an old friend some picture you have shown them years before, and through knowing it will be aware of its beauty.

MARJORIE COBHAM

An article on looking at pictures will appear in the 26th June issue of THE BROWNIE.



St. George and the
Dragon
by
Tintoretto,
*reproduced by courtesy
of the National
Gallery.*

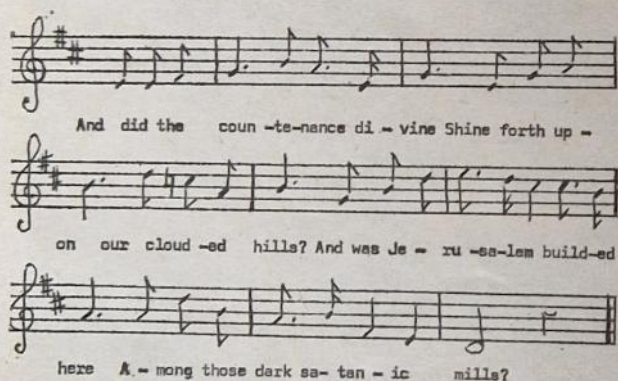
MUSIC IN—OR OUT—OF DOORS

THE BROWNIE SONG

HAVE you had a go at teaching the Brownie Song yet, (page 18 in the Brownie Guide Handbook) or do you feel that it is 'strictly for the birds' or whatever your favourite expression is for something that seems out-of-touch with reality?

I can well imagine dozens of reasons for not teaching it. For one thing you need to be able to read music, or else have a friend to sing it to you often enough for you to feel safe about passing it on to your Pack. Even this presupposes that you can sing with a certain amount of confidence as well as dealing with that little matter of 'being in tune'.

You may feel that time, tune and words are all too difficult for your Pack, but just think a minute and remember that those same little dears in morning Assembly at school may quite well be singing very successfully . . .



or many another hymn of similar difficulty.

Whether the above is suitable material for them could be a nice point for a debate on another page at another time, but it warns us not to under-estimate what our groups of sevens-to-tens can do musically and in other fields. Now to deal with the problems of putting over the song. If you are musical, enjoy singing and have a tradition in your Pack of being ready for anything that's new then probably you will already have taught the song and can skip the rest of this article. If, however, you are a Guider who cannot read music or, with half-remembered knowledge from school days can just pick out a tune on the piano I do suggest that you seek help before frustration sets in.

Try to find a group of Guiders or Guides with light, musical voices who will learn the song and make a tape of it to use at your meeting. The Brownies can skip through the 'Guiders' Gate' while the tape is being played rather than sitting down to

learn it 'in cold blood'. After using it that way several times you will find that a lot has gone in painlessly and then the polish, such as joining in with good clear words, or giving the last note two full beats before the 'at' is hissed at us, can be applied.

Possibly you have no tape-recorder and very little idea as to where to find your suitable singing group. This is where your District Commissioner can help as she will know whether there is a Guide Company or Ranger Unit who would take on this bit of service. While they (whoever you eventually net) are making one tape they might just as well sing the song about ten times through, leaving a few inches of tape in between, then cut up the tape and add a 'leader' at the beginning and a 'trailer' at the end of each. This could be a simple and inexpensive way of making the song available to many Packs, but of course it would be a good idea to state that these little tapes are available in the Division News Sheet or whatever means of communication exists in your 'neck of the woods'. The cost shared between a District or Division would be small and usually someone will produce a tape-recorder for a good cause. In this case there is no need to worry unduly about the quality of reproduction.

If you have a Specialist Trainer living in your District, or a Camp Fire Leader, do use her, as naturally 'live' teaching of a song is the better approach. You know your Pack and can help her over the speed at which the Brownies skip; you may also be able to produce a few recorder players who could learn the tune to help you at future meetings. I had the pleasure of writing to a Pack to congratulate them on producing a tape of the Brownie Guide Song with recorder accompaniment on the night that the Handbooks first appeared. This was not imposed on them by an over zealous musical Guider, it came from a Brownie leafing through the book and saying, 'Oh look, some music, may we try it?' Luckily there was a musical Guider handy and it does make a difference!

Lastly, don't be disheartened if your Brownies make mistakes or take quite a while to learn the new song. Haven't we all heard Brownie Bells with variations? Not to mention the former Brownie Song which received every interpretation from a lethargic walk to a gay skip. Try to introduce your Pack to the music so that when they are part of perhaps a hundred and twenty others at Revels they too will be able to join in with that gathering note . . . 'We're'—and then be off to a good skip as the tune lilts along. Meanwhile plans are well away to provide a little record to be on sale at Headquarters at a reasonable cost and though this may not solve all the problems it could be of some help to a harassed Guider.

HETTIE G. SMITH

We apologise for the fact that the wording to the Jamaican Camp Grace (May GUIDER) was wrongly spaced. A correct version of the Grace will be published in the 7th June issue of THE GUIDE.—Editor.

THE GUIDER







MAKE YOUR FUND RAISING BLOSSOM



Are your fund raising efforts wilting?
Could they do with a boost?

Well, here's the answer, a chance to get
your fund raising activities blooming—
by selling Birthday and Christmas cards
and sundries from the wonderful Webb
Ivory Range.

Just look how Webb Ivory can give your
fund raising a really rapid growth.

-  **Widest range of top quality
Greetings Cards and Sundries.**
-  **Exclusive Designs.**
-  **Real Value for Money.**
-  **Prompt and efficient
attention to orders.**
-  **Generous Profit Margins.**
-  **Many Bonus Payments.**



WEBB IVORY LTD

(Formerly T.E. Webb & Co. Ltd.)

LITTLE CORNBOW · HALESOWEN · WORCESTERSHIRE · Tel 021-550-2451

Now turn over and see
just a few of the items
from the exciting 1968
Webb Ivory Catalogues.



just a few of the Christmas from the exciting WEBB IV

1. Christmas Impressions.

A pack of 6 gay, colourful cards with short informal greetings inside. Deckle edged and produced in good quality embossed board. Size $4\frac{1}{2} \times 7$ ", singlefold. With envelopes. 6 for 3/-

2. Big Value Christmas Cards

A pack of 12 singlefold cards, all different traditional Christmas designs with short verse greetings. 12 for 2/6

3. The Connoisseur Box

Ten highest quality Christmas cards with envelopes, in a wide variety of styles. 10 for 5/11

4. Gaypack Balloons

A pack of 24 brightly coloured balloons in a variety of shapes and sizes. 24 for 2/6

5. Ivory Galaxy

A pack of 12 assorted Christmas cards with envelopes—different styles and designs. Very good value. 12 for 2/11

6. The Prize 14 Box

A box of 14 assorted Christmas cards. Designs vary from the traditional snow scenes to contemporary drawings, from photographic reproductions of winter landscapes to the more formal still life studies. A really wide selection. 14 for 3/11

7. Lumière

A set of cards from our Ivory Continental range. Two each of 6 fascinating and unusual designs by Spanish artists. 12 for 5/11

8. Christmas Wrapping paper

Sheet size 20×28 ". Colourful and attractive designs. Wonderful value at 3d. per sheet

9. Hi-Style Wrap

Six charming continental designs on super quality paper. 5d. per sheet

CALENDAR



Christmas Card Packs and Sundries IVORY 1968 Range

10. Hi-Style Gift Cards

Designed to match the Hi-Style wrapping paper. 12 for 2/-

11. Ivory Luxury Gift Cards

A pack of 10 gold corded gift cards, 2 each of 5 different Christmas designs. 10 for 1/6

12. Gift Boxes

A set of 5 Christmas Gift Boxes. Assorted sizes and designs. Supplied flat in a polythene pack, they are easily made up and require no glueing or pinning. Just 2 of the 5 superb designs are shown. 5 for 3/3

13. An attractive Christmas table centre

With its holly leaves and berries, poinsettias and bells, sprinkled with gold glitter. 9" dia. approx. 3/6 each

14. Festival Pack

An assortment of wrapping paper and gift dressings. 41 items for 2/11

15. Scenic Turnover Calendar

Size 8" x 10 1/2". Twelve beautiful prints showing 1 for each month, spiral bound in white plastic with hanging loop. 5/6

16. Krazy Karacter Balloons

A pack of 9 novelty balloons depicting famous comic characters. Gay assorted colours and shapes. 9 for 2/6

17. Fluffy Twins Calendar

Size 7 1/2" x 9 1/2" approx. With calendar tab and ribbon for hanging. Another attractive design for our very extensive calendar range. 2/11

18. Peg Christmas Card Hangers

Super Value this year. 60 hangers for 1/-

19. Assorted Pack of Tree Decorations

Five glittering shatterproof decorations in assorted shapes and sizes. Strong and completely safe. 5/9 per pack



More and more National Charities and thousands of small organisations are benefiting from the Webb Ivory Service each year. This is your guarantee of satisfaction and service. Join them and make sure 1968 is your bumper fund raising year.

NAME
 PRIVATE ADDRESS
 ORGANISATION REPRESENTED
 ADDRESS OF HEADQUARTERS
 YOUR OWN POSITION IN THE ORGANISATION ARE YOU OVER 21

3rd fold

GUC

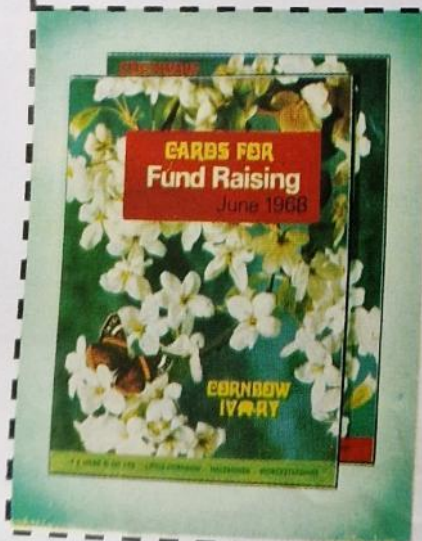
POSTAGE
 WILL BE
 PAID BY
 LICENSEE

NO POSTAGE
 IS NECESSARY
 IF POSTED IN
 GREAT BRITAIN
 OR
 NORTHERN
 IRELAND

BUSINESS REPLY SERVICE
 LICENCE No. BM. 2055

WEBB IVORY LTD.
LITTLE CORNBOW
HALESOWEN
WORCESTERSHIRE

2nd fold



don't delay complete
 the REPLY-FORM now for

**2 FREE full
 colour brochures**

of the entire 1968 Webb
 Ivory range and full
 details.

**WEBB
 IVORY**

**Britains largest
 manufacturer of
 Christmas Cards**

1st fold



it's simple...

Webb Ivory keep administration and accounting formalities to a minimum. A careful record is kept of your purchases and you make only one payment at the end of the season.

it's effective...

Webb Ivory have an expert design and market research team which ensures that the entire range is constantly up-to-date with public demand.

it's profitable...

We allow an extremely generous profit margin on all items in our range, both cards and sundries.





Illustrated by Jennetta Vise

LETTERS

'OH AY, letters,' said Congreve, 'I had letters—I am persecuted with letters—I hate letters—nobody knows how to write letters.' Many of us feel that the pen is a leaden instrument but all of us, Guiders, Secretaries and Commissioners are faced with the necessity of writing letters, and of helping Brownies, Guides and Rangers to do the same.

Roughly, you can make three categories: asking, informing and thanking, and all need to be legible, lucid and complete. This means a good think before you start, or some of the most important points will end up in the postscript. A fourth category is keeping in touch, but the requirements here are a little more elastic.

(a) Asking

1. Enquiries about pack holiday houses, camp sites, etc. Not all campers require the same trimmings and the C.A. will be greatly helped if, besides the date and duration, which you are not likely to forget, she knows the number of people coming. It is a good idea to tell her if you are cooking in the patrols, as this may affect the wood situation, if you or your Guides are very inexperienced, as this may affect some sites. She will appreciate having a telephone number of someone who can be reached in a hurry at the last minute if some crisis, such as foot-and-mouth or deluging rain put a site out of use and alterations have to be made. Do not forget to enquire about charges.
2. Someone to do something: speak at a meeting, judge a competition, take a training or course of instruction, play the guitar, etc. Be precise in your requirements. It is exasperating and time-wasting to be told 'Well, I'll leave it to you'. Again date, time, place and duration are essential. Most people like to know when they are likely to get home. Say if you will meet them, and if so when and where, or give exact directions for finding your meeting place. If you can, say how many people you expect. Ask a speaker if she will be willing to answer questions at the end. Tell a Trainer

the particular needs and experience of the Guiders, or the aim of the Rangers in doing the course.

(b) Informing

It is good public relations to send news to your local paper, parish magazine or church newsletter. It is often best to write an account and send it with a covering letter to the editor expressing the hope that it will be of interest to his paper. (Do not expect it necessarily to appear in the same form as you wrote it.) If you want a reporter to cover your gala or church service give the editor plenty of notice of the event. Know the publication deadline and get your material in in good time.

(c) Thanking

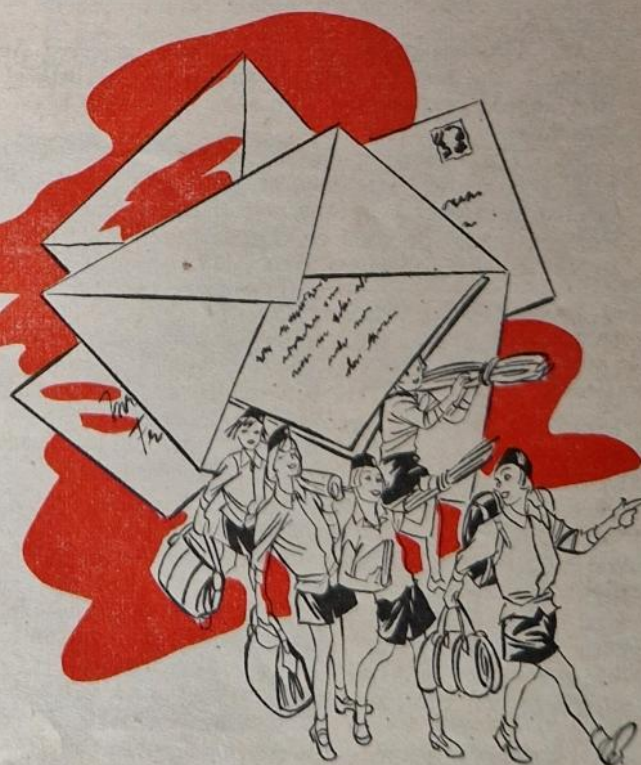
The contents are not hard to write but to remember to write such a letter so often is. We depend a great deal on good will, and letters are an essential part of this, so whether the service be large or small someone should write to say thank you. (Whenever appropriate that 'someone' should be one of the Brownies, Guides or Rangers themselves.)

(d) Keeping in Touch

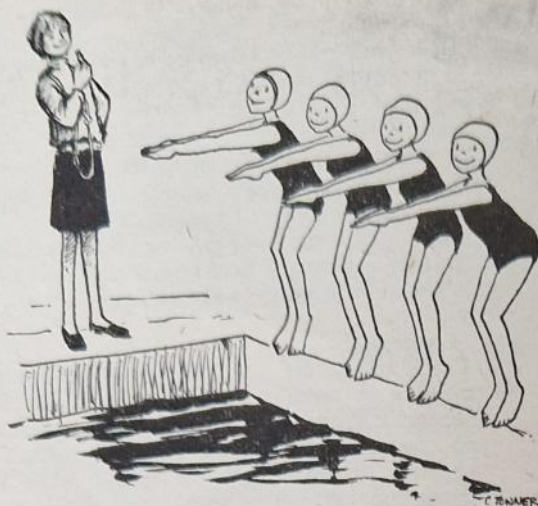
'These letters, methinks, should be as free and easy as one's discourse, not studied as an oration nor made up of hard words like a charm.' Someone said this in 1653 and it is still true, so relax and enjoy it.

When, Not What

Half the problem of letter writing is knowing when to write, and when to phone or visit. Letter writing



Illustrated by Elizabeth Wall



Organizing a Swimming Gala (continued from page 205)

judging should be used as this gives the divers and the spectators a greater interest in the event. In this system each judge has a set of cards numbered 1 to 10. After the dive each judge selects the number of points he considers it is worth and on the referee's signal all the judges show their cards simultaneously.

10. The finishing point in all races must be clearly stated on the programme. If a race finishes other than at the end of the bath, a pole should be fixed firmly across the bath at the finishing point by the time the race ends.

11. Official guests will have chairs reserved for them in the best position. If this is on the bathside they should be provided with some protection against splashing.

12. The following officials will be needed at the gala and if they are inexperienced should be well briefed beforehand by the organizing committee:— Referee (whose decision on any disagreement between judges is final), Starter; Announcer; Judges; Time-

keepers (if needed); Timing Judges; Competitors Stewards; Whips; Diving Judges (not less than three); Ticket Collectors; First Aider; Life Saver; Reception Committee for official guests.

Benefits to be gained from a Swimming Gala

It can be a real encouragement to the Guides to improve their swimming ability by giving something specific to train for, and therefore leading to higher achievement and an increased interest in swimming at all levels.

It is an opportunity for bringing the Units together for an enjoyable event in friendly competition.

If well organized, it is a good spectator event and therefore good publicity for the Association locally.

Some Guides may discover the benefit of regular training and develop a lasting interest in a branch of swimming such as speed or long distance swimming, life saving, survival or one of the other aquatic activities that can be enjoyed today.

B. E. STRUTT

(continued from previous page)

is essential if you wish to give detailed information or want an exact record or statement. The corollary of this is that there are certain occasions when it is better not to put things in writing, notably when you need an avenue of escape or when there are a number of ends to tie up or a clutch of awkward problems to solve. It is useful to have a copy of 'enquiring' or 'arranging' letters if only because you will then not wake up with a sickening lurch in the middle of the night wondering whether or not you dealt with a vital point. Keep copies of correspondence dealing with buildings, etc., you may need to refer to them in times to come. It is quite a good thing to take a copy whenever you type, provided you remember to throw it away when it ceases to have any relevance. One Division Commissioner, clearing out her files on retirement, threw out a batch of letter copies booking halls and hiring cups dated ten years before. These are not vital documents once the event they relate to is over.

Formality in letter writing does not mean unfriendliness, and it is probably best to be reasonably formal with strangers, especially those outside the Movement. Chattiness grows naturally and is not to be forced.

Stamped addressed envelopes are too often forgotten. If you are asking people to give their time or lend their land to you or give you permission to do something, you should not expect them to pay to answer you. It is a good insurance to send a S.A.E. to anyone from whom you need a fairly prompt answer. Somehow a stamp nags at the conscience in a way an unanswered letter never can. Maybe you've noticed that when it's been your turn to reply?

'That's a rather sudden pull up, ain't it, Sammy?' enquired Mr. Weller. 'Not a bit on it,' said Sam, 'she'll vish there was more, and that's the great art of letter writin'.'

Don't believe it!

JENNIFER HEWITSON

HERE'S HOW

TO PREVENT ACCIDENTS

1967 was 'Stop Accidents Year' and the Director General of Ro.S.P.A., Brig. R. Storey, wrote this:—

'This is what "Stop Accidents Year" is all about:—

- 1) To make the unthinking realize that accidents don't just happen to someone else.
- 2) To get across to fatalists that accidents are not bound to happen but are nearly always caused by people making mistakes.
- 3) To teach the willing just how easily they can learn to help stop accidents.'

Assuming that Brownies, Guides and Rangers can be found among the willing—how can we help them to learn? Brig. Storey goes on—

'There is nothing cissy about doing things the safe way. In fact, the safe way is the only efficient way, whatever one may be doing. Most people would accept this in relation to anything they clearly recognize as a dicey activity, such as adjusting factory machinery working at heights handling firearms or taking part in winter sports. But it is equally true of more everyday matters such as cooking the dinner, chopping firewood, using a ladder, wiring up electrical appliances, motoring, cycling or crossing the road. All these call for skill and care if we or others are not to end up having an accident that needn't have happened.'

There's scope in some of the Interest Badges and Service Certificates, e.g.

for Brownies

Safety in the Home, and clauses in Cyclist, Pony Rider.

for Guides

Accident Prevention, and clauses in Skater, Child Nurse, Fire-fighter, Cyclist.

for Rangers

Clauses in Firefighter, Skier, Explorer, Air Crew, etc.

The care we take in the 'everyday activities' of Pack or Company or Ranger Unit will help them to learn the necessary skill and care, e.g.

Keep an axe sheathed.

Have steady fireplaces, etc.

The Brigadier goes on:

'Of course, life would be intolerable if we were to

try to wrap everyone up in cotton wool. This is the last thing that Ro.S.P.A. wants to do. We realize that taking a risk is one of the pleasures of life, particularly for the young. All we ask is that the risk should be a considered one, that it should not endanger anyone else and that it should be tackled efficiently. In other words, the risk must be recognized, and measured, and reduced to a minimum by the application of skill and careful preparation.'

Have you a copy of the Safety Rules leaflet, published April '68? (See also Appendix 6 in Ranger Guide Handbook.) Our Association has taken steps 'to recognize, measure and reduce to a minimum' the risks involved in some of our more risk-prone activities.

It's up to us to help the Brownies, Guides and Rangers to understand the Safety Rules and to carry them out.

Here are some of the practical hints that were given in Ro.S.P.A. publications during Stop Accidents Year—

If there is a pedestrian crossing, use it.

When you are driving, wear the safety belt correctly adjusted and make your passenger wear one too.

When you are motor cycling, wear a helmet.

If you are a parent, see that your children learn to swim and know their Kerb Drill.

When you are sailing, wear a B.S.I. approved lifejacket.

In your home, keep cleaners and medicines where children cannot possibly reach them, guard every fire.

Renew loose screws and connections on electrical equipment.

Replace light bulbs as soon as they burn out—darkness masks danger.

At work wear the eye, head and other protective equipment provided. And don't leave booby traps for others; pick it up.

When you are using hand tools, keep your hands behind the cutting edge.

Store all sharp knives and tools safely.



Photo: Windsor, Slough & Eton Express

This 'casualty' was a simulated one enacted by a member of the Casualties Union, who are pleased to co-operate in exercises of this kind.

(Continued overleaf)



Illustrated by Jennetta Vise

HOW can I really get to *know* the Rangers in the Unit?

I know, of course, the basic facts about each girl—how old she is; the job she does; the form she's in at school; her home address. This sort of data is briefly but carefully written up for reference.

But this, of itself, gives me no clue as to why Jean, who seems so immature at times, remained perfectly calm under the pressure of exams last week, while Mary, normally so dependable and adult, is beginning to flap around in ever decreasing circles at the prospect of starting work shortly.

Is it any of my business, anyway, to be concerned with what the Rangers do over and above their Guiding activities? In fact, can one make a distinction between where Guiding begins and ends? Every Ranger at her Investiture promises to be of service to the community, and this is surely capable of the widest possible interpretation.

'Life is for living and sharing.' How, then, can I help Mary and Jean to set themselves high standards in all they try to do, unless I first *know* them as individual people? How can I help each one to make 'real progress according to her own abilities and limitations' unless I know something of what these gifts and shortcomings are?

How am I going to get to know them? Would one way simply be by being around when the Rangers are planning this and doing that, quite content to be in the background most of the time, but equally prepared to provide 'a listening ear' should any Ranger want it?

Should I go as far as to try (unobtrusively but quite deliberately) to create an opportunity to get to know the girl who never has any ideas of her own (why not?) or her friend who seems so very bumptious (is this a cover for shyness?) Might a lift home in the car after the meeting, or a washing-up session together after a social evening, or simply a walk home from the bus stop in the dark create a possible opportunity?

Indirect methods need tact and infinite patience but maybe they are worth it in the end.

ANNE CARTER

Here's How to Prevent Accidents
(continued from preceding page)

NOW STOP AND THINK

Are there any possible sources of accidents in equipment, furnishing, etc. in your home, garage and garden?

If so write them down and leave the list in a prominent position until you've dealt with them.

What about your place of work? Write these down too and then find out who is responsible for putting them right.

Or your place of worship? (do ditto).

Or a public building or park in your neighbourhood? (do ditto).

Or your Unit's usual meeting place? How far are you responsible? Do you know the person to whom you should report any potential danger? How can the Brownies, Guides and Rangers be helped to feel their responsibility too?

What about plans for Pack Holiday/Camp/Holiday afloat? It isn't enough to *read* the Safety Rules. We have to act on them faithfully. And don't forget that it is in the 'everyday things' too that action has to be taken—in lighting a fire, cooking on a raised fireplace, and even walking home along the road.

The need to stop accidents did not end in 1967!

JUNE FEATURES

THE BROWNIE, THE GUIDE and THE RANGER

THE BROWNIE

5th June	Animal Lover issue
12th June	Hints on Writer's badge
19th June	Making things from raffia
26th June	Safety on Holiday picture series

THE GUIDE

7th June	Take Care of your Face
14th June	Sketching series begins
21st June	Mid-summer issue
28th June	In Camp: A Prayer to Use, A Song to Learn, A Thing to Make

THE RANGER (20 pages)

June	A Round-Up of the Round-Up
------	----------------------------

THE BROWNIE is published every Wednesday, price 6d., THE GUIDE every Friday, price 9d., and THE RANGER monthly, price 6d. Please encourage your Brownies, Guides and Rangers to place a regular order with a local newsagent or order direct from C.H.Q.

Headquarters' Notices

HANDBOOKS

The enquiry into the breakdown of deliveries is still taking place, and a statement will be issued as soon as possible.

Meanwhile it has been verified that all books sent from the Printers to the haulage contractors for delivery have been cleared from the warehouses of the local carriers. We are very sorry to hear, however, that some Districts are still short of books. County Commissioners have been informed of plans to make good the shortages, and the missing books will be sent to your District Commissioner as soon as possible after we have received the details.

If you have unfortunately received some faulty copies of the Handbooks, these too will be replaced and your District Commissioner will give you the necessary instructions.

AWARDS

Good Service

Silver Fish

MRS. J. P. MOFFETT, M.B.E., Deputy Chief Commissioner.

Laurel Award

MISS B. ALLIN, District Commissioner, Ipswich West, Suffolk.

MRS. BASFORD, Division Commissioner, Stechford, Birmingham.

MISS D. CAMPBELL, Guide Guider, 26th Belfast Company, City of Belfast.

MRS. CHASTY, Extension Adviser for Ulster.

MISS B. E. S. GLANVILL, Brownie Guider, 196th Birmingham Pack, Birmingham.

MRS. GLOVER, Lone Adviser for Yorkshire, W.R.S.

MISS V. R. GREEN, Extension Adviser for Birmingham.

MRS. GRIFFITHS-EYTON, lately District Commissioner, Towyn, Merionethshire.

MISS K. I. J. HARBORD, Guide Guider, 5th Brondesbury Company, Middlesex East.

MISS D. M. HODGSON, Ranger Guider, Hall Green Division Ranger Guide Unit, Birmingham.

MRS. LEWIS, District Commissioner, Morriston, Glamorgan, West.

MISS E. PRICHARD, District Commissioner, Springfield, Birmingham.

MRS. WHEATLEY, Division Commissioner, Dartford, Kent West.

MISS D. M. WILSON, Division Commissioner, South Tyrone, Co. Tyrone.

MRS. WOOLDRIDGE, District Commissioner, Coleshill, Warwickshire.

MRS. WYSEHALL, lately District Commissioner, Stoneleigh, Greater London with Surrey North.

Meritorious Conduct

Star of Merit

JUNE BARNETT, Ranger Guide, S.R.S. 'Victorious', Beckenham, Kent West. June has made every possible effort to take part in Ranger activities and shows a great sense of humour when trying to

overcome her difficulties. She has a keen sense of responsibility in her duty as a Ranger Guide to give service to others—this she has done as a Sunday School Teacher and as a helper with a Brownie Pack. Everyone has been deeply impressed by June's pleasant and cheerful manner.

ELISABETH COLLINS, Guide, att. to 26th Glasgow Company, City of Glasgow. Elisabeth sustained a head injury some 6 years ago but has always enjoyed every activity to her fullest ability. She has made great effort to make herself independent and by her enthusiasm encourages the other girls. Elisabeth now hopes to become a Ranger Guide.

MARIANNE COLLINS, Guide, 1st Sparsholt Company, Hampshire. We are sad to report that since the Award was presented Marianne has died.

MISS M. COLEMAN, Ranger Guide Guider, 114th Bradford West Ranger Guide Unit, Yorkshire W.R.N.W. Miss Coleman's courage and approach to life, her outstanding deep faith and tremendous capacity for overcoming her disabilities are shining examples to all. She has always been meticulous down to the last detail in her planning for the Ranger Guides and is a great asset in camp from the morale point of view—she has an indomitable sense of humour.

DEBORAH HORSNELL, Guide, 1st Essex Post Company. Nothing ever daunts Deborah, although she is usually in a wheelchair she was determined to stand and say her Promise at her enrolment and, through courage, she managed to do so. Since then she has passed some of her Second Class, has taken part in Patrol activities and cooked out-of-doors—all of this whilst in her wheel-chair.

LYNDA OLDHAM, Brownie Second, 1st Aldridge Pack, Staffordshire. Lynda joins in all Pack activities and does a very good job whenever her Sixer is away. She learnt to skip which was difficult for her but she tried very hard and managed to do the required amount—the other Brownies do not have to help her—she is completely independent.

KAREN SIDDLE, Guide, 12th Slough (St. Michael's) Company, Buckinghamshire. Karen joins in all that the Company does and her ready smile and manifest courage set the highest of examples. She has a great determination to make light of her adversities—tiresome calipers and long periods confined to bed.

DOROTHY SIMPSON, Guide, 1st Brockley Hill (R.N.O.H.) Company, Middlesex West. Dorothy has been very patient—displaying great courage and fortitude throughout her treatment. All the time she has been in hospital Dorothy has shown a keen interest in Guiding even when not allowed to move at all. She is very anxious to get on with her test work and badges. Dorothy has been very patient—displaying great courage and fortitude.

Certificate of Merit

PAMELA EDWARDS, Patrol Leader, 1st Wingerworth Company, Derbyshire.

JANET ELAINE PARRY, Brownie Guide, 1st Gwernaffield Pack, Flintshire.

(Continued on page 215)

The girls who don't have a chance.



Mary shares this small bed with 3 other children every night.



This little girl lives in a disgusting room with peeling wallpaper.



Diane was sent to Granny's for Christmas. She's still there.

These are some of the innocent victims of Britain's housing problem. Living in slums. Or 'in the care of the State'. Unless we can rescue their families, they have no chance. No chance of a happy childhood. No chance of growing up to be normal people. SHELTER is trying to help. Trying to raise money to rescue some of the 3 million people who are living in slums. Please help SHELTER.

Support SHELTER'S Jumble Sale of the Year.

We are asking any units interested in helping our campaign to hold a jumble sale for us.

Think of the money you'll raise. And think how many families you can rescue.

Post this coupon now.

Jumble Sale of the Year Oct. 5th.

Post to: Ken Willson, Room GJ6, Jumble Sale of the Year, SHELTER, 86, Strand, London, W.C.2.

We will organise a Jumble Sale, please send full information.

NAME

ADDRESS

GIRL GUIDE COMPANY



SHELTER The National Campaign for the Homeless

THE GUIDER

MARGARET SPOONER, Brownie Guide, 11th Purley (St. Swithun's), Surrey East.
SHEILA WOOLF, Brownie Sixer, 3rd Ross Pack, Herefordshire.

NEW PUBLICATIONS

The first of the new publications planned in conjunction with the New Programme are now available at C.H.Q. and the Branch Shops. **Syllabuses for Brownie Guide Interest Badges**, price 1s. 6d. (postage 10d.). A compact booklet for the use of Commissioners, containing the syllabuses of the Brownie Guide Interest Badges—each syllabus occupying a separate page. A perforated edge makes it easy to extract individual syllabus for distribution to the tester concerned.

Badge Tests—Hints to Commissioners and Testers. Price 5d. (postage 4d.). A comprehensive booklet giving guidance to Commissioners and Testers on Badge tests for Brownie Guides, Guides and Ranger Guides. It does *not* list individual syllabuses of badges but is designed to help those concerned in testing. Interest Badges, Biennial Service Badges, Patrol Interest Pennants and Ranger Guide Certificates are all covered and there are also two short but invaluable sections on Basic Principles and General Information.

Safety Rules of the Girl Guides Association. Price 4d. (postage 4d.). 'All members of the Association and all visitors (whether from the United Kingdom or abroad) taking part in activities sponsored by the Association must observe the Safety Rules laid down by the Association.' This is the opening statement in the leaflet and sums up the reason why it is essential for every Guider to have a copy. Guidance is given on Safety Rules for general Adventurous Activities and specific instructions are laid down for Air Safety, Land Safety (including Hill-Walking and Road Safety) and Water Safety (including Bathing and Boating).

BOATING ACTIVITIES

'Albion', the last remaining Norfolk Wherry moored at How Hill on the river, close to Barton Broad, has been booked for two weeks in July for **Sailing and Boating activities for English Ranger Guides**. Ten Rangers and two Guiders can be accommodated on board (sleeping in hammocks), and approximately twenty in camp nearby. Weather permitting, each person should get at least one full day of sailing in 'Albion' as well as plenty of experience in the 10 ft. lugsail dinghies and 19 ft. lugsail Half-decker which will be available. It is also hoped to have the use of some canoes. The dates are 6th-13th July and 13th-20th July and the cost is £7 7s. 0d. per person per week, whether in camp or aboard 'Albion'. Applications to be sent, as soon as possible and enclosing a stamped addressed foolscap envelope, to Miss M. E. Chance, J.P., c/o The English Office, C.H.Q. All applicants must be able to swim 50 yards.

RAVEN'S AIT

For further details of the Training referred to on page 202, apply to the Secretary, Programme Dept., C.H.Q. enclosing a stamped addressed foolscap envelope. In the event of more than 12 Guider applications being received preference will be given to those dealing with over 14 age group. The cost of the Training is £6 15s.

WANTED: WARDEN

A Warden is required for **Glenbrook** the English Activities Centre, situated in Bamford, Derbyshire.

A small, pleasant, modern flat is provided. The position would be suitable for a married couple with part-time duties for both. Please apply to the Chairman of the Glenbrook Management Committee, c/o The English Office, C.H.Q.

THE ANNUAL REPORT

This excellent publication is now on sale at the remarkably low price of one shilling. This year its format is slightly changed—more pictures and less script—which will make it even more attractive. The cost of production far exceeds the shilling, but the Finance and Business Managements Committee is prepared to subsidize the Annual Report so that it can be widely distributed within the Movement and outside it.

It goes without saying that this Annual Report will contain much that is both interesting and useful to every member of the Movement whatever her age, but what is even more important is that through this publication the public can be given an overall picture of our Movement.

Of course it is very important for County Commissioners to distribute the Report* to many non-Guide key people in her County but it is equally important that Brownie Guides, Guides, Ranger Guides and Guiders should show it to their friends. If every Unit bought one or two copies of the Report and showed it to a few non-Guide friends when the Unit had finished with it, this would really put the Movement on the map. (*Postage 6d.)

GUIDE FILMS

It is with much regret that with the change in training programme throughout the Movement, it has been decided that the following four films must be withdrawn from circulation:

The Guide Log Branching Out
The Brownies Take Your Choice

For the moment the only Guide films available on hire are two on Guiding in Kenya, a public relations type film 'Could this be you?', (all available from Town and Country Productions Ltd., 21 Cheyne Row, London S.W.3, Tel: Flaxman 7950) one or two silent amateur made films on Extension Guiding (from Miss Enid White, 133 Bells Hill, Barnet, Herts. Tel.: Hadley Green 1942); and the following available from the Central Film Library, Government Buildings, Bromyard Avenue, Acton, London, W.3:

Journey Into Friendship
Hands Across the Sea
The Wider World
The Trefoil School

(Continued on page 217)

Guides!

Win a pair of Wayfinders for girls

What do you look for when you buy shoes? Good materials? Style? Comfort? Your opinion could win you a pair of Wayfinders shoes for girls—quite free. On the coupon you'll find a list of Wayfinders features. Place them in what, in your opinion, is their correct order of importance by numbering them 1 to 6, then complete the sentence "I choose Wayfinders because" in not more than 8 words. There are 20 pairs of Wayfinders to be won—5 for Brownie Guides, 5 for Girl Guides, 5 for Ranger Guides, 5 for Guiders. So think hard and send in your entry today.

P.S. Even if you don't manage to win a pair of Wayfinders, you'll find them at your local Guides Shop. Wayfinders are recommended by the Girl Guides Association.

In my opinion, the correct order of importance of Wayfinder features is as follows:

..... Compass in heel Good value for money
 Zodiac signs Top quality materials
 3 months guarantee Smart style

(complete in not more than 8 words)

"I choose Wayfinders because....."

Name.....

Address.....

SEND TO WAYFINDERS, 151 OXFORD STREET, LONDON, W1.

WAYFINDERS 

compass in heel
plus free spare

top quality
material

style

WAYFINDERS
GUARANTEE

3 months
guarantee

great value for
money from 39/11

zodiac signs
on sole plus
explanation
on box lid

As soon as funds are available the Association will commence work on a new documentary. If any reader has a personal link with a likely financial sponsor or useful suggestions to make in this connection please write at once to Commonwealth Headquarters, Public Relations Department, at 17-19 Buckingham Palace Road, London S.W.1.

AMENDMENT TO SWIMMER BADGE

In accordance with recommendations of the Amateur Swimming Association, Diving boards in many school and public Swimming Baths have been removed, because there is insufficient depth of water to enable diving to be done with safety. For this reason an alternative to the diving clause has been added to the syllabus for Swimmer Badge for Guides. Clause 5. Dive from a height of at least 3 feet.

Where there are no facilities for diving the District Commissioner may give permission for the following clause to be substituted: Plunge 10 yards in one minute or under.

Note: A plunge is a standing dive made head first from a firm take off (i.e. side of bath). The body must be kept motionless, face downwards and no progressive action shall be imparted to it other than the impetus of the dive.

NOTICE BOARD

COMMONWEALTH DAY

Commonwealth Day on Saturday, 8th June will be celebrated in London by a Multi-Faith Act of Witness in the Guildhall in the presence of Her Majesty the Queen. The Lord Mayor and Sheriffs will be attending in State. Admission by invitation only. The Heads of the Christian Denominations are asking their Ministers in Churches throughout the United Kingdom to make Intercession for the Commonwealth in their Services held on Sunday, 9th June.

Commissioners requiring a copy of the Queen's Message (which is confidential until 8th June) should apply direct to: The Royal Overseas League, Park Place, St. James, S.W.1, marked 'for the attention of Mr. Daniels'.

COMMONWEALTH CIRCLE

The Commonwealth Circle Summer Reception will be held at The Mansion House (by kind permission of The Lord Mayor) on Wednesday, the 12th June, 1968 from 6.30 p.m. Members are reminded to apply for tickets for themselves and guests to the Hon. Sec. Commonwealth Circle, c/o Overseas Department at C.H.Q. not later than 31st May. The Chief Guide will be present, and Rt. Hon. The Lord Mayor for part of the evening.

RETREAT FOR ANGLICAN GUIDERS AND SCOUTERS

As already announced this is to be held at the Southwark Diocesan House, 'Greyladies', Dartmouth Row, London, S.E.10 from Friday, 19th October to Sunday, 20th October. Conductor: The Rev. F. E. Pinder, Scout County Chaplain for the Boroughs of Southwark, Greenwich and Lewisham.

Details and application forms from:—Miss M. Joyce Furze, The Gables, 11 Wantage Road, Lee, London, S.E.12.

THE MOUNTAIN CODE

Published by the Central Council of Physical Recreation, The Mountain Code is designed not only for climbers and fell-walkers but for everyone who visits the countryside in pursuit of pleasure. The Code is comprehensive and covers the following headings—Be Prepared; Consider Other People; Be Weather Wise; Respect the Land, and Help Conserve Wild Life. Copies of the Code are available from the C.C.P.R. (Mountain Code), 26 Park Crescent, W.1, on receipt of a 3d. stamped addressed envelope (9 x 6 ins.).

UNICEF RECORD

'Star Spectacular', a long-playing record of 'hits' by famous singing stars—Cliff Richard, Cilla Black, Paul Jones, Matt Monro, The Seekers, and eleven others will be released in June. All proceeds for this record will be donated to UNICEF—The United Nations Children's Fund. By buying this record the children will be helped, and a voucher may be purchased for 22s. 6d., which can then be exchanged for the record by any retailer. To obtain the voucher, send a cheque or postal order to the U.K. Committee for UNICEF, 123 Regent Street, W.1.

ZOO QUEST

Information leaflets about the Zoo Quest, which has been organized by the London Zoological Society are now available from C.H.Q. Public Relations Department. (Please send stamped addressed foolscap envelope or label.) There are plenty, so ask for supplies for distribution to Patrol Leaders and Guiders' Trainings as well as for Company and Pack use. The questionnaire is not included in the leaflet, but will be handed to applicants at the main entrance of the London Zoo on arrival.

This Quest will provide Brownies with a Pack Venture or would make a good Patrol Expedition. Long distance units coming to London for sight-seeing could include a visit to the London Zoo in their programme.

PHOTOGRAPHIC COMPETITION

Valuable and interesting prizes including cameras are offered in a free entry photographic competition to be run this year for visitors to Whipsnade Park Zoo.

The competition, for amateurs only, is organized by the Zoological Society of London. There are classes for adults and 14-and-unders, for black-and-white prints and colour transparencies and there are two separate themes. The first is 'Best Animal Picture' and the second is the picture which portrays the 'Open-Air Zoo'.

The contest will run from 1st May to 30th September, 1968. Copies of rules and entry forms will be available at Whipsnade and London Zoos and can be obtained by post from 'Photo-Comp', Whipsnade Park Zoo, Dunstable, Beds. (Please send s.a.e.) A sheet of hints and tips on taking pictures of animals will also be available.

The very foundations of good camping



Trust Hampton tent pegs to keep your tent intact! Our comprehensive range of tent pegs feature a wide range of designs, including the tubular 'Samson', durable 'Atlas' and the 'Anker' the peg with double the holding power of the conventional peg. When you buy 'Hampton' you buy safety. Available in all good camping accessory stores everywhere.

See the entire range in our fully illustrated brochure.
THE HAMPTON WORKS (STAMPINGS) LTD.,
Twynning Road, Stirlchley, Birmingham 30.

? Do you live in Scotland?

If so buy from

The SCOTTISH GUIDE SHOPS

16 Coates Crescent, Edinburgh, 3. (Tel: 225-3483)

1 Scott Street, Glasgow C.3. (Tel: DOU. 6288)

3 Magdalen Place, Dundee

Your unit will benefit from

The Discount Scheme



**BE PREPARED
WITH AN
ACME
WHISTLE**

Full range in Metal and Plastic
Officially Approved

Obtainable from all Scout and
Guide depots

THE GUIDER

CHQ STAFF VANCANCIES

Personal Assistant to the General Secretary

We are anxious to appoint a Senior member of Staff to this position. The successful applicant must be experienced in office administration and should also have reasonable shorthand and typing speeds. A knowledge of Committee work would be an advantage. Initiative and a 'go-ahead' personality needed! This vacancy would be in a Senior Salary Range.

Wages Clerk—Finance Department

A responsible and experienced member of staff to deal with the wages of those staff who are paid weekly.

This position would also be in a Senior Salary Range.

Senior Secretary—Fund Raising Committee

An excellent and worthwhile job for a woman of more mature years. She would work in close liaison with the Chairman of the Committee and carry definite responsibilities. Carries very good salary of a senior nature. This position could be part-time, salary pro-rata.

Senior Secretary for our Deputy General Secretary

A position with similar duties as the P.A. for the General Secretary. A responsible and absorbing post requiring initiative, good speeds and, preferably, a knowledge of Committee work.

Senior Secretary for our Overseas Department

The work of the Department is both varied and interesting and provides many opportunities for one who likes meeting Guide visitors from all over the world.

Opportunities for Teenagers

Shorthand Typist to help with the Duke of Edinburgh's Award Scheme and with our Handcraft Department. Day Release can be arranged.

Record Keeper for our Registrations Department. This Department has the care of the Records of Guiding Personnel and Units. It also issues warrants and Certificates which are hand-printed.

Typing positions

We have senior vacancies for Clerk/Typists and Invoice Typists.

Clerical

General Clerk, preferably with a knowledge of typing for our Finance Department. Dealing mainly with Sales invoicing.

Sales Assistants for our C.H.Q. Shop.

All Staff work a 35-hour week and we have a Restaurant on the premises—staff are given House Luncheon Vouchers so lunch is very inexpensive. Main-line stations, Underground and a wide selection of Bus Routes are all within minutes of C.H.Q. We have three weeks' holiday per year, there is a pension scheme and generous sick pay arrangements.

Mrs. Dodd, Personnel Officer, will be very happy to give you any further details.

SUCCESSFUL FUND RAISING a complete service by MILLER

OVER
50

BEST SELLERS TO CHOOSE FROM

There are over 50 best selling lines in the Miller range of Christmas card packs and sundries. They have been carefully selected to give first class value for money and a variety to suit all pockets and tastes. Our range is constantly changing to keep abreast of the demands of today's market, so you can be sure that there will be no difficulty in selling Miller Cards and Sundries.

FREE FULL COLOUR SALES LEAFLETS

To help our customers with their sales efforts, we provide free full colour leaflets of all the items in our range. A copy of this leaflet and an order form, can be left with a prospective purchaser, so they can order at leisure.



FREE
GIFTS

BAKERS
DOZEN

45% PROFIT
ON OUTLAY

Most Charity Christmas Cards carry a profit margin of about 33½% and in fact this is the standard rate we offer at Miller. However, we have an exclusive offer to boost the profit margin. If you order a dozen packs at any one time, you receive an extra pack free—making 13 packs in all. This enables you to increase your profit to 45%.

SAMPLE PARCEL

In order to give you an idea of the quality and variety in the Miller range, we offer you a pre-packed sample parcel, at a greatly reduced price. This parcel contains one of each card pack and sundry item in our range, all contents can be sold to make money for your organisation.

To give our customers extra profit for the funds of their favourite charity or good cause, we offer free gifts if you spend £40 or more.



The more you spend the better is the gift and here are some of the wonderful gifts that are available to customers this year. Illustrated are just a few of the items from this year's exciting range of Miller gifts.

MILLER GREETINGS (GREAT BRITAIN) LIMITED **QUEENSBIDGE WORKS QUEEN ST**
BURTON ON TRENT Tel: 0BU 3 62719

ORDER
NOW -
PAY
LATER

Post the coupon below for our unique descriptive colour brochure and FREE sample cards.

NAME

ORGANISATION

ADDRESS

POSITION

Are you over 21 years of age? YES/NO (Delete as applicable)
If already a Miller Greetings customer
please quote Account Reference in this space.

GU/1



**NOW
THEY'VE
CHANGED
TO—**

LESWYN

for FUND RAISING

FREE!

* * Illustrated bumper
* * Christmas colour-catalogue

COMPLETE & POST TO-DAY THE
PREPAID CARD ENCLOSED IN THIS ISSUE

CHRISTMAS CARD PACKS
GIFT WRAPS . DECORATIONS
BIRTHDAY CARDS . FANCY GIFTS
STATIONERY . TABLEWARE

LESWYN
CARDS LTD

SUTTON COLDFIELD Tel. SUT 7398

THE GUIDER



GUIDE FRIENDSHIP FUND

KENYA! The Guide Friendship Fund project this month is to help the Guides of Kenya. Briefly what do your Guides and Brownie Guides know about this African country? That it is an Associate Member Country of the World Association with about 4,500 or more active members of the Movement, with a headquarters in Nairobi. That it is the country in all the world the World Chief Guide loves best for it is there at Nyeri she lived for some years with the Founder, the first Lord Baden-Powell of Gilwell. It was there B.-P. died in 1941 at the age of eighty-four. The first Guide Company started in Nairobi in 1920 and still exists.

As in most of the African countries Guiding started in the towns, and has now spread up-country, to the villages, and the rural areas. Public transport is not an easy matter and many villages are rather cut-off. There are some good roads but the majority are a bit rough and a serviceable car is needed. And it is just

this that the G.F.F. hopes to give to the Guide Association of Kenya this summer—in fact as soon as possible, for the need is urgent.

With a car, similar to the one we gave to Sierra Leone, it will be possible for Commissioners, Trainers and Guiders to go to those rural areas, to visit and stay with the Guides, Brownie Guides and Rangers and help them, give them training and fresh inspiration and encouragement.

If you happen to be a new Guider, or if your unit has not yet helped the Friendship Fund, you may like to send for leaflets and stickers to show them. These are *free*. Just send name and address and a 4d. stamp please to: Guide Friendship Fund, Girl Guides Association, c/o Overseas Department, 17-19 Buckingham Palace Road, London, S.W.1, and of course any donations to that address, too, please. Thank you for all the help we have received in the past.

V.A.

To Organizers of Fetes, Bazaars etc.

We should be pleased to send a selection of Ladies attractive Fancy Aprons

Sale or Return

Please let us know the date of the event giving name of Company, or send Post Card for further particulars.

Walter & Fisher

120 Portland Street, Manchester 1
Central 4000

TRAINING FOR RESIDENTIAL WORK WITH CHILDREN AND YOUNG PEOPLE

For those who want interesting and challenging work in the service of the community, there are many opportunities in residential work in Children's Homes, Approved Schools, Remand Homes and Special Schools for Handicapped Children.

Twelve months courses of training are open to women over 18 and men over 21; married couples can be considered.

Residential experience with children or young persons is normally required but can in exceptional cases be arranged before training.

Applications should be made at once for courses starting in the Spring of 1969 at the following centres from whom further particulars and application forms can be obtained. Address your enquiry, preferably on a postcard, to: **Tutor in Charge, Residential Child Care Course.**

The College of Commerce, (E27) Colchester, Avenue, Cardiff.

North-Western Polytechnic, (E27) 62/66 Highbury Grove, London, N.5.

The Technical College, (E27) Frederick Road, Salford, 6.

Lamorbey Park, (E27) Burnt Oak Lane, Sidcup, Kent.

Grants are available to cover fees, maintenance and expenses.

Secretary, Central Training Council in Child Care (E27) Home Office, Horseferry House, Dean Ryle Street, London, S.W.1.

CHRISTMAS is a long way off..

See just a few of
the wonderful items
from our 1968 Bro-
chures illustrated in
FULL COLOUR
on centre pages.



but when it comes to fund raising time's getting short. You can make a lot of money for your favourite charity or good cause by selling Christmas cards and sundry items from the exciting 1968 Webb Ivory range.

No matter what the size of your organisation, Webb Ivory offer the same first-class service—generous profit margins, prompt and efficient attention to orders, bonus payments, exclusive card designs.

Don't let Christmas creep up on you, be prepared—take advantage of it. Fill in and post the coupon **NOW** for copies of the new Webb Ivory Brochures and full details of the Webb Ivory service.

WEBB IVORY LTD
(FORMERLY T.E.WEBB & CO. LTD)

LITTLE CORNBOW, HALESOWEN, WORCS.

NAME

PRIVATE ADDRESS

ORGANISATION REPRESENTED

ARE YOU OVER 21?

ADDRESS OF YOUR HEADQUARTERS

YOUR OWN POSITION IN THE ORGANISATION

G6

If you are already a customer, a copy of the brochures will be sent to you automatically

THE GUIDER

Classified Advertisements

The Girl Guides Association takes no responsibility for statements made in any advertisement here or elsewhere in the magazine, or for any subsequent correspondence in connection therewith. The right is also reserved to refuse any advertisement not considered suitable. Advertisements for the sale of second-hand clothing (except uniform) cannot be accepted. (Uniforms for sale should not be sent to C.H.Q. Advertisers receive communications from applicants.) All advertisements must be received not later than the 1st of the month for the following month's issue. **Please note charges: 1s. per word (for members advertising uniform, camp sites, coming events, 6d. a word).** Box No. 2s. 6d. (for members of the Movement, 1s. 6d.) **Please send money with advertisements.** 10% discount for series of 12. **To reply to a Box No.,** please address your envelope to: Box. No. xxx, c/o THE GUIDER, The Girl Guides Association, 17/19 Buckingham Palace Road, London, S.W.1. Please make sure the address is as far to the right of the envelope as possible in order for us to re-direct your enquiry.

ACCOMMODATION

IN CENTRAL LONDON: Olive House is open 365 days a year. It is conveniently situated for everyone who is connected with the Guiding Movement, who is visiting London for Conferences, Trainings, Reunions, Theatres and Shopping Sprees. The nearest underground station is Earls Court. The costs are 17s. 6d. to 25s. per night, and there is H. and C. in every room. (Sorry—no accommodation for men!) We are often full—but do remember that it is always well worth asking. Please write to Miss Marshall, **Olive House**, 45 Longridge Road, London S.W.5. Telephone FRObisher 2574. **Olive House belongs to the World Association of Girl Guides and Girl Scouts.**

Holiday accommodation, Sussex. Bed, breakfast and evening meal, or full board, weekends October—March. Apply Mrs. Jebb or Miss Cox, 8 Willowfield Road, Eastbourne (29572).

Herne Bay: Bed, Breakfast. Mrs. Bradford, 3 Salisbury Road, Tel.: 2611.

Wales: Ideal. Mountain—river walking, fishing—riding. Warm welcome all ages. Woodlands, Sennybridge, Breconshire.

Blackpool: 'Westcliffe Private Hotel'. Lounge, T.V., Dining Room, H & C all rooms. Adjoining Promenade. From 27s. 6d. per day. Families welcome. Brochure. Proprietors, R. & S. Winter (Guider), 46 King Edward Avenue, Blackpool. N.S. Tel.: 52943.

Tynllan Farm, Portmadoc. Homely, B & B. 5 gns. Special arrangements for Guides. McNeill.

EMPLOYMENT OFFERED

Services Welfare. Opportunities for women aged about 25-50 to do worthwhile work for H.M. Forces overseas. Good conditions and allowances. First tour, Germany. Apply WRVS (SW), 17 Old Park Lane, W.1.

Nurse/Companion required, semi-invalid Guider, small Cotswold cottage in Painswick, some personal help, only light domestic duties. Comfortable home for able retired person or widow. Salary arranged at interview. Miss L. Rowell, 98 Stroud Road, Glos. Tel. Glos. 21018.

FOR SALE AND FUND RAISING

All types of Balloons, Lucky Dip Toys, Carnival Novelties, Paper Plates, Plastic cups and spoons, **Dolls for dressing,** etc. At Trade prices. Also sale or return scheme. For full details send large s.a.e. today. D. Glover (Wholesale), Dept. GD8, 203 Scholes Lane, Cleckheaton, Yorks. Cleck. 3450.

Advertising Pencils, superb Ball Pens, Combs, Brushes, etc., gold-stamped Company name, raise funds quickly, easily, Bran Tub Toys. Details Northern Novelties, Bradford 2.

LESS than 3d. each! 144 Full-length Conway Stewart Ball Point Pens die-stamped in gold with your Company or charity for only 35s. Pencils printed for the same price. Please print your slogan (maximum 36 letters) and add 4/6 Standard Carriage. J. E. Thomas & Son (Cuffley) Ltd., 2A Handsworth Road, London, N.17.

An offer to Guiders in S.E. England for up to 20% discount on all makes of furniture and carpets has been made by a leading firm of furnishers. For details telephone: Farnborough 54043 evening—Hither Green (Hit) 2159 day time.

Increase your Company funds with scent cards. Send 4d. s.a.e. for details and samples to: R. Ramsdale Ltd., 58 Pall Mall, Chorley, Lancs.

Printed British Ball Pens. 40s. gross, plus postage 4s. 6d. this includes 36 letter and spaces advert. **Advertising pencils** 35s. gross plus postage 3s. Pioneer Pencil Company, Victoria Road, Huyton, Liverpool.

Double your money raising funds for Guides, Brownies and other organizations. Gold stamped Advertising Pencils/Keys Fobs, etc. Fully guaranteed. Details and samples to: Dept. Q., B. W. Advertising & Publicity Gifts Ltd., 12a Halstead Place, Bradford, 7.

Ball Pens—die-stamped with your Company title, etc. we supply the new 'Conway Stewart' streamline, refillable model. (All guaranteed). Available at specially reduced wholesale rates. Profits exceed 50%. Details & Samples: Thompson & Creighton, 202 Heaton Road, Newcastle-on-Tyne, 6.

Fund Raising Ball Pens are used by everyone. We supply Platinum ball pens at reduced wholesale rates. Your Company title, etc., can be die-stamped as required. Pen cases in various colours (including Girl Guide colours). Profits over 50 per cent on cost. Details/Samples on request. Thompson & Robinson Ltd., 20 Churchfield Road, London, W.3. Tel. ACOrn 8770/3205.

Organizers of Bazaars, Fêtes and Funds. We welcome both personal buyers and mail orders for our extensive range of **toys and stationery** at wholesale prices, and **Sale Price Jewellery.** Send for our Price Lists. **ALSO** pre-selected parcels:—144 6d. Toys OR 72 1s. Toys OR 42 1s. 11d. Toys OR Selection Toys 1s. to 5s. 11d. or Selection assorted stationery. Each parcel 54s. plus 4s. 6d. postage. Two or more parcels 6s. postage. J. E. Thomas & Son (Cuffley) Ltd., 2A Handsworth Road, London, N.17.

When replying to advertisements please mention THE GUIDER

Funds, Fêtes, Bazaars. Sell Costume Jewellery at 50% profit on cost. Toys at 33 1/3% profit. All sent post free on Sale or Return. You pay only for what you have sold. The rest you return. No outlay, no obligation. Send for details to B. & M. Davies Ltd., 101 Askew Road, London, W.12.

Used Postage Stamps of Great Britain bought on or off paper. S.A.E. for details to A. E. Short, 2 Toynbee Close, Eastleigh, Hants.

CAMPING, HOLIDAYS AND CARAVANS

Teens and Twenties. Your dream holiday of sunshine and watersports. Free col. broc. P.G.L. Adventure Holidays, Dept. 105, Ross-on-Wye.

Sidmouth Guide Headquarters to let for Pack Holidays, 14th August onwards. Mossop, Overtoun, Sidmouth.

Perfect Holiday for 12-20's—pony trekking, sailing, canoeing, caving. Free col. broc. P.G.L. Adventure Holidays, Dept. 105a Lake Llangorse, Breconshire.

UNIFORM

Guider's uniform, new style for sale. Good condition (B. 34 in. W. 24 in.) Belt and hat also. £5 10s. Box No. 517.

Guider's Uniform, tailored. As new. 38 in. 26 in. 38 in. £5 5s. Box No. 519.

Wanted: Guider's Jacket and Skirt. 48-50 in. bust. 50-52 in. hips. Also check shirt 48-50 in. bust. Box No. 518.

Wanted: District Commissioner's uniform, bust 36 in., H. 38-40 in. Box No. 520.

Guider's new-style uniform and summer dress, bust 38 in., hips 40 in., excellent condition. £8. Box No. 522.

Guider's uniform (old-style) 5ft. 2in. 36 in. hip, as new Cost £10. Offers. Box No. 523.

GUIDERS WANTED

Lifesaver—Grade 'B' required. Guide camp, Brownsea Island, 13th-20th July. Mrs. Lloyd, 63 Dulle Avenue, Wellingborough, Northants.

Wanted: helpers, Pack holiday, 13th-20th July. Sunbury-on-Thames, Box No. 521.

TAPE WANTED

If any Guider who attended the Round-Up and has a tape recording of the Chief Guide's speech she would be willing to lend, please contact Miss Jean Hardy, 46 Stonehill Road, Gt. Shelford, Cambridge.

COMING EVENT

Midsummer Dance with Paddington Rovers at St. Stephen's School, Westbourne Park Road, W.2., at 7.30 p.m. on Saturday, 29th June.

TO HIRE

12 Seater Transit Buses for hire. May and October £17 15s. 0d. per week. June and September £20 per week. July and August £21 per week. Plus £15 returnable deposit. No Mileage Charge. Continental Hire: 12 Seater Transit Buses £25 per week. Transit Caravans £34 per week. Tel.: 01-890 5702/3.

TEAS

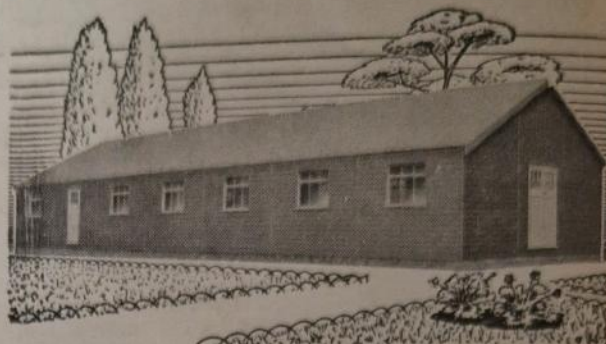
Matlock L.A. offers teas for parties visiting Matlock. Moderate prices. Book in advance to Mrs. J. Crowder, 29 Imperial Road, Matlock, Derbyshire.

POSTAL COURSE

Private Investigation. The essential Postal Course for everybody interested in subtlety, know-how, ingenuity and craft. Details: Ex-Inspector Meek (Metropolitan Police), 20 Old Tiverton Road, Exeter.

THE GUIDER

Ideally suited for your Company H.Q.



The following Guide Companies are using Hardun's De-luxe Sectional Timber Buildings:

Anglesey Girl Guides
Hammersmith Girl Guides
Acton Division Girl Guides
1st Royal Eltham Guide Company

HARDUN & SONS LTD.

HORTON ROAD · WEST DRAYTON · MIDDX.

Tel.: West Drayton 4040 (20 lines)

DO YOU REQUIRE FUNDS?

If so we can help you. We can supply diaries, Conway Stewart retractable and non-refillable pens, address books, notebooks, rainhats, combs in cases, pencils and key rings. All printed with the name of your organisation, starting in quantities from 3 dozen upwards. Details and samples:—

THE DOUGLAS SUPPLIES CO.,
14 Clarkson St., IPSWICH, SUFFOLK.

Telephone Ipswich 55182 & 76130



MESOWAX

keeps camps dry

This miracle waterproofing emulsion is ideally suited for treating medium- and heavy-weight tents, marquees, covers and all canvas sports equipment. Withstands downpour from above and rubbing from below, preserving the canvas yet allowing it to "breathe", so avoiding stuffiness. Simply applied by brush, fast-drying MESOWAX is obtainable, brightly coloured or colourless, in 1 pint tins to 40 gallon drums.

5/- pint 8/9 quart 15/- 1/2 gallon 25/- 1 gallon
(1 gallon covers up to 200 sq. ft.)

Available from Camping, Scout and Guide Stores, Halfords, Gamages and Grose's

For further details and colour guide, write to

GRANGERSOL LIMITED

DEPT G2., IMPERIAL WAY WATFORD TEL: WATFORD 24086

V.S.O./GUIDE PROJECT WITH G.G.A. OF AUSTRALIA in Papua and New Guinea, 1969

This project is under the GRADUATE/PROFESSIONALLY QUALIFIED SCHEME of Voluntary Service Overseas and therefore carries a different scale of pocket money and allowances, etc., from the assignments within V.S.O. Cadet Scheme. Guide Leadership is accepted as the required qualification, and the word 'graduate' is not to be taken literally. It will be essential for the successful Volunteer to attend a V.S.O. Briefing Course.

Date of Project

From January 1969 for one or two years. Preference would be given to a Volunteer offering two years.

Age

24-34 years inclusive.

Volunteers

A Guider holding a Guide Training Certificate or an experienced Guide Guider, with knowledge of all sections.

Qualifications

The candidate must:

- (1) Have a tolerant, adaptable personality with the ability to work happily with Guiders of many races. Enterprise and resourceful approach to awkward situations and unknown conditions will be needed.
- (2) Be physically fit with good stamina, capable of travelling round the territory, sometimes under difficult conditions. (Transport would be by plane, jeep, canoe, trawler or on foot). V.S.O. will require candidates to have a medical certificate.
- (3) Possess a Driving Licence.

Project

To train adults in Guide, Brownie and Ranger 'old' syllabuses in simple English.

Accommodation

A flat will be provided at the Territory Headquarters in Port Moresby, where there is also a car. When travelling, accommodation is provided by the Territory Association or through private hospitality.

Uniforms

Two complete uniforms will be paid for yearly by the Girl Guides Association of Australia.

Finance

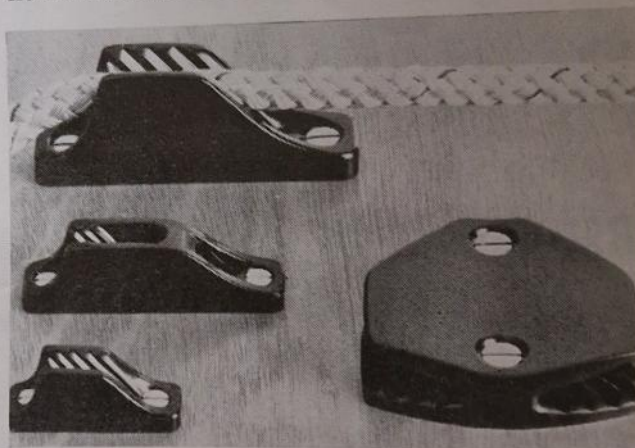
- (a) The return fare will be paid by V.S.O.
- (b) Living expenses and pocket money of approximately £3 per week would be the responsibility of the Girl Guides Association of Australia, as well as all fares and expenses incurred while travelling round the territory.
- (c) An equipment allowance of £40 and a terminal grant on return to the United Kingdom of approximately £100 is paid by V.S.O. with a £50 mid-tour grant for a volunteer staying two years.

Selection

- (a) A selection will take place at C.H.Q., followed by a V.S.O. Board for the final candidate to be chosen on the following day. These dates will be announced later.

MOULDED NYLON CLEATS

One of the eighteen products gaining a 1968 Council of Industrial Design Award was the 'Clamcleat' range of rope cleats. Made in moulded nylon plastic, the cleats are suitable for any application where ropes, cordage, or plastic-coated lines have to be held securely yet be quickly released. The rope self-jams in the special tapered grooves of the cleat causing an efficient grip that increases with the load. Different versions cater for ropes varying from $\frac{1}{8}$ in. diameter to $1\frac{1}{4}$ in. circumference; the larger sizes have been tested satisfactorily with a load of 1,000 lbs. dead weight. The 'Clamcleat' is already well known to yachtsmen and domestically it can be used to hold anything from a clothes airer to a tennis net. There are no moving parts to go wrong and there is no danger of fraying the rope. The one-piece nylon plastic moulding is virtually unbreakable and requires no maintenance. Prices range from 3s. 9d. to 18s. 9d.



Our photograph shows the complete range of 'Clamcleat' rope cleats—'Mini', 'Junior', 'Vertical' and 'Horizontal'. Made by Clamcleats Ltd., Welwyn Garden City, Herts. Photograph: The Council of Industrial Design.

- (b) V.S.O. will be responsible for the expenses of those attending the final V.S.O. Selection Board.
- (c) Where necessary, a grant will be available towards the cost of fare and accommodation for the C.H.Q. Selection.

Applications

Application forms are obtainable from Country's H.Q., AS SOON AS POSSIBLE.
 England—Secretary for England, 17-19 Buckingham Palace Road, London, S.W.1.
 Scotland—The General Secretary, 16 Coates Crescent, Edinburgh 3.
 Wales—Commonwealth and International Adviser for Wales, Miss R. Whittingham, Bryn Iorwyn Manor, Caergwrle, Nr. Wrexham, Denbighshire.
 Ulster—The Secretary, 16 College Square North, Belfast BT1-6AT.

June 1968



ALL-ENGLAND

RANGER ROUND-UP

'THIS is a tremendous occasion'.

This opening phrase used by the England Chief Commissioner, the Hon. Beryl Cozens-Hardy, J.P., in her introductory message in the All-England Ranger Guide Round-Up Programme, adequately describes the event.

From 2.30 p.m. on Wednesday, 17th April, two thousand five hundred Ranger Guides and a small proportion of Ranger Guiders arrived at Butlin's Camp, Bognor Regis to take part in the first-ever All-England Ranger Guide Round-Up. They were joined by Guides from abroad and a team of personalities who were representative of many walks of life. Also present were officials from Dr. Barnardo's; The British Red Cross Society; Christian Aid; Oxfam; Salvation Army; Save the Children Fund and the Sue Ryder Homes who were to receive gifts



THE GUIDER

presented during the Round-Up on behalf of their respective organizations.

The programme quickly got under way. It was an ingenious concoction of the formal and informal—service and leisure, dancing, drama, music and fashion, talent spotting and worship—just a few of the many aspects that combined to create the whirl of activity throughout the five days of the Round-Up.

The first of the real 'highlights' came with the visit of the World Chief Guide on Friday, and the following day H.R.H. The Princess Margaret, President of the Association arrived to spend the afternoon with the Rangers and was able to see some of the activities taking place. Among these was a performance of 'The Quest' presented by the Theatre Workshop. Work had been going on continuously on this production since Wednesday. There had been little time for rehearsal and all the costumes and props had been made by the Rangers themselves.

Sunday—and the closing day of the gathering. A Ranger Guide Service was conducted by the Very Rev. Edward Patey, Dean of Liverpool who took as his theme 'Finding God through Service to Others.' The Final Round-Up followed and it was time to depart.

Many different and lasting memories and impressions will remain with those who had the privilege of taking part in the Round-Up but one thing was certain—'It was a tremendous occasion'—all present made sure of that!

The All-England Round Up will be featured in the June issue of *THE RANGER*.



The picture at the top of page 226 shows Princess Margaret arriving at the Round-Up. At the foot of the page, Rangers present gifts to Salvation Army representatives.

* * *

On this page: **top left;** the Gloucester County Challenge entry for Movement to Music; **centre left;** Rangers from Korea, Italy, the Netherlands and Germany; **bottom left;** the 1st Westminster Ranger Guide Service Unit entry for the Musical Instrument County Challenge. The top picture in this column shows the Chief Guide posing for some 'happy snaps'; the final shot shows voluntary service at Cambridge House L.C.C. Holiday Home, Bognor.

Photos: John Torrance



June 1968

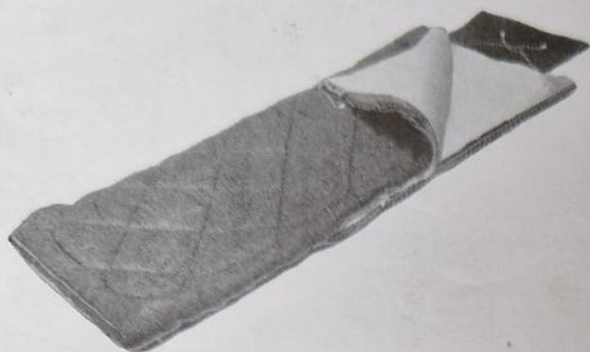
The following are extracts from letters received by Mrs. Canadine, Chairman of the All-England Ranger Guide Round-Up Committee.
From Lady Juliet Smith, Lady-in-Waiting to H.R.H. The Princess Margaret:—

'Her Royal Highness was particularly impressed by the really beautiful articles which had been made by so many Rangers and given to different charities. The Princess thought that the standard of workmanship was extremely high.'

from the Chief Guide:—

'What can I say, in adequate words, to express how tremendously impressed I was by all that I saw and heard and felt yesterday. I do thank you and all your Committee, helpers, supporters and everyone for that truly lovely welcome that you all gave me'.

BUY YOUR SLEEPING BAG FROM A **COMMONWEALTH HEADQUARTERS SHOP** POINTS TO NOTE BEFORE YOU BUY . . .



Adequate Filling—

Easy Glide Zipper—

Strong Cover and Lining—

Convertible to Quilt—

Well Made—

Best Value for Your Money

SEE OUR FULL RANGE AT CH.Q. OR BRANCH SHOPS.
BE SURE OF A RELIABLE SLEEPING BAG

Our Range includes:—

‘GUIDE CONVERTIBLE’

‘RANGER CONVERTIBLE’

‘CAREFREE CONVERTIBLE’

‘CAPRICE’

‘DE LUXE’ AND LINING

‘REGENT’—KING SIZE

‘CYCLIST’—SHAPED

COVER	LINING	FILLING	PRICE	Packing and Postage
NYLON	NYLON	ACRILIC	79/6	4/6
NYLON	NYLON	TERYLENE	99/6	4/6
NYLON	NYLON	TERYLENE	£5 12s. 6d.	5/-
COTTON	COTTON	DACRON	£4 17s. 6d.	5/-
NYLON	NYLON	TERYLENE	£7 12s. 6d.	5/-
Dicel Crepe	TAFFETA	TERYLENE	£6 19s. 6d.	5/-
COTTON	COTTON	DOWN	£5 12s. 6d.	5/-

For those who want ‘Nothing but the Very Best’—

‘BLOODHOUND DE LUXE’ (the world’s finest Terylene Sleeping Bag)

as used by SIR FRANCIS CHICHESTER on his HISTORIC VOYAGE ROUND THE WORLD.

£12 10s. 0d. Post free in U.K.

Without pillow—£11 5s. 0d.

SLEEPING BAG LINING to protect the inside of your Bag—
‘Y.H. Pattern’. Easily washable. 15s. 3d. Packing & Postage 1/6

AT COMMONWEALTH HEADQUARTERS SHOP, 17-19 BUCKINGHAM PALACE ROAD,
LONDON, S.W.1.

AT THE ASSOCIATION’S BRANCH SHOPS

London: 19 Green Lanes, Palmers Green, N.13.

Birmingham: 5 Ryder Street, 4.

Liverpool: 20 Richmond Street, 1.

Cardiff: 20 Working Street.

AT SCOUT AND GUIDE SHOPS

London: 124 Newgate Street, E.C.1.

London: 183 Clapham Manor Street, S.W.4.

London: 55 Woodgrange Road, Forest Gate, E.7.

Ipswich: 5 Tacket Street.

Leeds: 62 The Headrow, 1.

Oxford: 17 The Turl (Broad Street end).

York: 14 Goodramgate.

AT SCOTTISH GUIDE SHOPS

Edinburgh: 16 Coates Crescent, 3.

Glasgow: 1 Scott Street, C.3

Dundee: 3 Magdalen Place.

AT ULSTER GIRL GUIDE HEADQUARTERS

16 College Square North, Belfast 1.

Printed by the Riverside Press Ltd., London and Whitstable and published by The Girl Guides Association, 17-19 Buckingham Palace Road, London, S.W.1. (01-834 6242). All communications with regard to subscriptions, editorial matters and advertisements should be addressed to THE GUIDER, Girl Guides Association. Subscriptions including postage 17s. for 12 months Great Britain, 15s. 6d. overseas. Trade Agents: Surridge Dawson & Co. (Productions) Ltd., 26 Aberdour Street, London, S.E.1.