

The Guider

VOLUME 56 No. 6

JUNE 1969

PRICE ONE SHILLING AND SIXPENCE





just
out
 two new bigger-than-ever
 full colour catalogues
 packed with ideas for...

FUND RAISING

Here are two exciting full colour catalogues packed with fund raising ideas for 1969. Christmas cards, everyday cards, stationery, sundries and gifts, are all illustrated in full colour for your customers to make their selection in the comfort of their own home.

Many organisations are already making large profits on sales from the Webb Ivory range which offer a selection of over 700 quick selling lines. Up to 33% profit on outlay can easily be made to swell the funds of organisations such as charities, clubs, churches, Scout and Guide movements.

*Don't delay send now for **your** free full colour catalogues.*

WEBB IVORY

WEBB IVORY LTD
LITTLE CORNBOW
HALESOWEN, WORCS.



Regional Showrooms at:-

LONDON

90 Judd Street, London W.C.1
 Tel: TERMINUS 8461

MANCHESTER

Lancaster House, Whitworth St.
 Manchester 1,
 Tel: CENTRAL 1289

GLASGOW

96-100 Brunswick Street,
 Glasgow C.1 Tel: 041-552 1750

NAME _____

PRIVATE ADDRESS _____

ADDRESS OF YOUR HEADQUARTERS _____

Organisation represented _____ Are you over 21? _____

Your own position in the Organisation _____

GU/6

THE GUIDER

The Guider

OFFICIAL MAGAZINE OF
THE GIRL GUIDES ASSOCIATION
(Incorporated by Royal Charter)

Patrons

H.M. THE QUEEN
H.M. QUEEN ELIZABETH, THE QUEEN MOTHER

President

H.R.H. THE PRINCESS MARGARET,
COUNTESS OF SNOWDON

Chief Guide

OLAVE, LADY BADEN-POWELL, G.B.E.

Commonwealth Chief Commissioner
MRS. DEREK PARKER BOWLES



contents

Queen's Birthday Telegram	190
Mixed Units	191
Book Reviews	192
Pot or Not?—A plain guide to drug dependence	193
Diamond Jubilee	194
C.H.Q. Art and Handwriting Competition	195
Guide Friendship Fund	196
Glenbrook—Stables into a Cottage	198
Letters to the Editor	199
Private Diary	200
Training Pages	201-208
Here at C.H.Q.	209
Headquarters' Notices	210
Where to Train	212
Classified Advertisements	216
In Memoriam	219
Olave House 30th Birthday Celebrations	220
Be Prepared for Camp	221

Annual Report

The Annual Report, 1968, of the Girl Guides Association, is now on sale at the remarkably low price of 1s. With very little text but nine pages of pictures it is even more attractive than in previous years. The cost of production far exceeds the shilling but the Association is prepared to subsidise the Report so that it can be widely distributed within the Movement and outside it.

It goes without saying that this Annual Report will contain much that is both interesting and useful to every member of the Movement, whatever her age, but what is even more important is that through this publication the public can be given an overall picture of our Movement.

Of course it is very important for County Commissioners to distribute the Report* to many non-Guide key people in their counties but it is equally important that Brownie Guides, Guides, Ranger Guides and Guiders should show it to their friends. If every Unit bought one or two copies of the Report and showed it to a few non-Guide friends when the Unit had finished with it, this would really put the Movement on the map.

* postage 6d.

front cover

The President, Her Royal Highness The Princess Margaret, Countess of Snowdon, leaves Baden-Powell House after the Annual General Meeting on 14th May, accompanied by the Chief Commissioner, Mrs. Derek Parker Bowles.

Photo: U.P.I.

Windsor

The Scout Association held its annual St. George's Day Parade at Windsor on Sunday 27th April. 1,000 Venture Scouts and their Leaders took part in the parading. Mrs. Parker Bowles attended and was presented to Her Majesty The Queen.

* * *

Over 700 Guides spent a weekend, 3rd and 4th May at Windsor. The two-day programme was completely filled and included excursions by coach and river to Runnymede, Windsor Castle, Eton and Hampton Court.

The World Chief Guide was present and before attending the service held in St. George's Chapel and meeting Ranger Guides (bottom left) she was chief guest at a luncheon party for County Commissioners at the Manor, Binfield, Berks. The photograph (bottom right) shows from left to right: Mrs.

Derek Parker Bowles, The Chief Commissioner; Olave, Lady Baden-Powell, The World Chief Guide; The Hon. Beryl Cozens-Hardy, The Chief Commissioner for England; Mrs. Vernon Stratton, Assistant County Commissioner for Berkshire; The Hon. Mrs. Gervas Clay, The Deputy Chief Commissioner for England.

photo: Jeremy Grayson



photo: Scout Association

photo: The Times



Leswyn challenge fund raisers to find a better service

NEW FULL COLOUR CHRISTMAS CATALOGUE

First, complete and post
the coupon below.

* If you live in the Mid-
lands, visit our exhibition
at Imperial Hotel, Birm-
ingham.

Mon. 2nd June to Sat.
7th (10 a.m. to 8 p.m.
daily).

LESWYN

LESWYN CARDS LIMITED, UNION DRIVE
BOLDMERE RD SUTTON COLDFIELD WARMS TEL:021-354 7389

To LESWYN CARDS LIMITED, Union Drive
Boldmere Road, Sutton Coldfield, Warwickshire.

NAME (Mr. Mrs. Miss)

.....

.....

G669



The Greetings Telegram sent to H.M. The Queen on 21st April

ON THE OCCASION OF YOUR MAJESTY'S BIRTHDAY, IT IS MY PRIVILEGE TO SEND THE BEST WISHES OF ALL THE MEMBERS OF THE GIRL GUIDES ASSOCIATION, AND TO EXPRESS TO YOUR MAJESTY OUR LOYALTY AND DEEP AFFECTION.

(signed) ANN PARKER BOWLES

The Queen's Reply

Telegram to: Mrs. Parker Bowles

17/19 Buckingham Palace Road, S.W.1.

PLEASE CONVEY MY SINCERE THANKS TO ALL THE MEMBERS OF THE GIRL GUIDES ASSOCIATION FOR THEIR KIND MESSAGE OF CONGRATULATIONS ON MY BIRTHDAY.

(signed) ELIZABETH R.

Joint Conference for Scouters and Guiders

County Commissioners Mrs. A. W. Bass and Mr. G. Terrill were among the Scouters and Guiders attending a joint conference held at Sawtry Village College on Saturday, 29th March.

'Faith or Failure'—duty to God, was the theme of this first combined training since the amalgamation of Huntingdon and Peterborough.

The trainer, Mr. K. H. Stevens, Deputy Chief Executive Commissioner, said the ability to lead young people in the growth of religion was perhaps the most difficult task facing the Movement's leaders today. It was necessary to realise one's absolute inexperience because each youngster was individual and a different approach was needed each time.

Having respect for authority, life, marriage, truth and ourselves were aspects of 'Behaving like a Christian' discussed by groups. Personal example,

and the according of respect for a younger person's point of view, emerged as important factors.

After a short break for tea and the showing of a film on modern missionary work in Kenya, there followed group workshops on play-acting, communication, craftsmanship, exhibitions and worship.

The results of the afternoon's talk and thought were reported in a 'Talkback' session, and groups demonstrated by mime, play-acting, discussion, use of newspaper cuttings and modern equipment such as the tape-recorder, that methods other than talking are often more meaningful to young people when dealing with religious topics.

The conference closed with a Scouters' and Guiders' Own Service and a vote of thanks by Mrs. Bass to Mr. Stevens and all those responsible for a thought provoking afternoon and evening.

S.M.

THE GUIDER

Mixed Units

FOR many years there has been successful co-operation between Units and individual members of the Guide and Scout Movements. In recent years this trend has increased and the promotion of mixed activities has led to the setting up of Guide and Scout Clubs and joint training groups of varying kinds. The results of the survey held recently by both Headquarters showed clearly that a need exists for some formal arrangement by which mixed Units of Ranger Guides and Venture Scouts can be officially recognised. The following arrangements have been approved by the Executive Committee of the Girl Guides Association and the Committee of the Council of The Scout Association and are in accordance with the terms of the Royal Charters granted to both Associations.

Membership

A member of a mixed Unit must either be or become a member of the Guide or Scout Movements and will belong to the Ranger Guide or Venture Scout Sections.

On the Scout side the members will normally be Venture Scouts, although it will be permissible for a Scout over 14 years to join if agreed by both the Unit and the Scout Leader concerned. On the Guide side, membership will be restricted to Ranger Guides.

It may be necessary, in some cases, to create a Guide or Scout Unit with which the individual members of the Mixed Unit can be officially registered. (See Paragraph 1(c) under recognition.)

Recognition

For a Mixed Unit to be officially recognised the following requirements must be met:

1. All members of the Mixed Unit to be members of a registered Ranger Guide Unit or Venture Scout Group, either existing and already registered, or specially formed and registered. This can be achieved by one of the following methods:—
 - (a) A Mixed Unit may be formed by combining a registered Ranger Guide Unit and a registered Venture Scout Unit. Any person wishing to become a member of such a Mixed Unit from outside the Guide or Scout Movement must become a member of the registered Ranger Guide or Venture Scout Unit.
 - (b) A Mixed Unit may be formed from members of a number of Ranger Guide Units or Venture Scout Units. Some of the existing B.-P. or Scout/Guide Clubs come into this category.

(c) A Mixed Unit could be formed where no registered Ranger Guide Unit or Venture Scout Unit exists at the present time. In such a case it will be necessary for a Ranger Guide and/or a Venture Scout Unit to be specially created and registered in the normal way by Scout and/or Guide Headquarters. The members of the Mixed Unit will then be members of an officially registered Ranger Guide or Venture Scout Unit and such matters as insurance will be covered automatically.

2. A form of application for recognition (obtainable through the normal registration channels) to be completed and signed by the appropriate Guide and Scout Commissioner.
3. There must be at least one Guide and one Scout Adult Leader appointed to the Mixed Unit. They will be warranted by their respective Associations as Leaders of one of the Units to which the individual members belong.
4. The local appointment of Adult Leaders to a Mixed Unit must be approved jointly by the appropriate Scout and Guide Commissioners. On the Guide side this will be the County, Division or District Commissioner according to the area served by the Mixed Unit. On the Scout side this will be the District Commissioner of the District in which the Mixed Unit will operate.

Administration

Responsibility for a Mixed Unit will be shared by the local Guide and Scout Commissioners.

Insurance

Members of Mixed Units will be covered through Guide and Scout Headquarters as appropriate.

Membership Subscriptions

Members of Mixed Units will pay their subscriptions to their respective Headquarters through the registered Ranger Guide or Venture Scout Unit of which they are members.

Census

Mixed Units as such, will not be shown separately in the Annual Census return. The individual members will appear in the normal annual return completed in respect of the registered Ranger Guide or Venture Scout Unit of which they are members.

Advice on Organisation

A leaflet is being prepared for the guidance of Commissioners, Guiders and Scouters and will be issued shortly.

Safety and Activity Rules

The rules of the two Movements are sometimes different, but work has begun to produce a common set of safety rules for use by Mixed Units and for activities involving members of both Movements.

BOOK reviews

Practical Camp Cookery, by E. M. Anderson. Brown, Son and Ferguson, 14s.

Every Guider who has the responsibility of feeding Guides in camp will welcome this new edition of the quartermaster's best friend.

Since 1936 Miss Anderson's book of camp recipes with its clear instructions for preparation and cooking and many useful hints on quantities, food values and storage, has been the standby of generations of campers. Now, just when we were wondering how we were going to adapt the valuable information contained in it to the new programme, with its emphasis on Patrol camping and its encouragement of indoor holidays, we find that Miss Anderson has done it for us and produced a revised edition with a new section on Patrol Camping including 24 basic recipes giving quantities for seven people, and an improved section on stoves.

No Company should go to camp without a copy of PRACTICAL CAMP COOKERY. If you have an old copy it is well worth buying a new one too and taking both.

B.K.A.

Notes on Camps and Holidays, Girl Guides Association, 9d., postage 6d.

This is a concise leaflet drawn up to give a wide range of useful information on running Camps, Holidays and Pack Holidays. It is designed for the use of Commissioners, Camp Advisers and Guiders, so that each may see her own part of the planning necessary to undertake whatever type of camp or holiday is under consideration. The leaflet shows very clearly the part each plays to achieve the teamwork necessary for happy worthwhile camps and holidays. It aims to complement the information given in P.O.R. and the Handbooks, and contains a useful appendix for the planning of Extension Group Camps and holidays. This leaflet gives excellent value for the modest sum of 9d. and every Commissioner, Camp Adviser and Guider would be wise to have a copy for quick and easy reference.

B.C.

Camps and Holidays, Girl Guides Association, 7s. 6d., postage 1s. 3d.

One's interest is aroused in the first few pages of this book (which replaces CAMPCRAFT) and remains so throughout. Miss Robertson writes from experience and with a sense of humour, passing on to her readers many useful tips, and a great deal of information.

The book emphasises the need for planning, and the part played by the Patrol System. It presents camps and holidays as adventures which should not be missed.

It is a must for new campers, and refreshing reading for those already experienced.

M.K.

THE GUIDER



Music and the Physically Handicapped, Disabled Living Activities Group, Central Council for the Disabled, 5s.

Because they suspected the disabled had difficulties in their access to music, the Disabled Living Activities Group initiated a study into the place of music in the lives of the physically handicapped. This report shows the results: namely, that the disabled cannot always participate in music; and that steps could, and should, be taken to improve their situation. The survey was planned to embrace the musical needs of all disabled people beyond school leaving age. Three areas were selected for enquiry—a large city in the North of England; a new town in the South East, and a mining valley in South Wales.

It was found that problems, particularly in the case of young persons, seem often to centre on the fact that the disabled have been brought up apart from the ordinary community, and so experience difficulty in their integration with it. Difficulties in participating in the musical life of the community, the panel suggests, are symptomatic of these general difficulties, and some suggestions are made for improving the situation. In exploring the position, enquiries were made wherever the disabled could be expected to take part in music to see if they were in fact doing so; and wherever the able-bodied were taking part to see if the disabled were there as well. The results show how many opportunities are missed.

All Guiders who are in a position to influence and increase the enjoyment by the disabled of music in all its forms should read the report.

J.V.R.

Camping and Hill Trekking, by Squadron Leader P. F. Williams, R.A.F. Pelham Books Ltd., 30s.

Based on practical experience, this easily digested book will be found useful by both beginners and the more experienced in camping and hill trekking.

Its sound advice on choice of equipment, clear instruction in the reading and understanding of a map and the use of a Silva compass are backed by good illustrations. These together with hints on route planning and survival techniques, make it particularly valuable to Ranger Guides.

Guiders too will appreciate its suggestions for activities and practices leading to expeditions and its well founded advice on preparations and safety precautions.

It is a comprehensive book worthy of a place on the bookshelves of any Ranger Unit.

J.D.

Pot or Not?

by A. J. Wood, M.B., B.Sc., D.P.H.

Family Doctor Publications, 1s. 6d.



reproduction by courtesy Family Doctor Publications

'DRUGS' is a five-letter word guaranteed to raise the emotions and produce the sort of moralising statements that cut very little ice with anybody and none at all with modern youth. Today's teenager, in fact, is just not interested in second-hand opinions. She is interested in experimenting, in finding out for herself. Fair enough for most things, but not for drugs, where experimenting may lead inescapably on to the perils of addiction.

Pot or Not?, by Dr. A. J. Wood, has been written especially for young people—to give them the hard facts without moralising, exhortation or admonition. It states what happens when you take drugs, the risk of addiction, the treatment and the chances of cure. It looks at smoking and alcohol as well as amphetamines, cannabis and the so-called 'hard' drugs. It is intended to provide a basis of factual information which young people, especially those still at school, can use in order to discuss the whole subject for themselves and draw their own conclusions.

Guiders could well find this booklet very useful when the question of drug taking is raised, whether in normal discussion or as a personal problem of a Guide.

The following are some of the points made by Dr. Wood:

The reason why

'Why is it that a small proportion of young people deliberately seek out illegally obtained drugs and take them without bothering about the dangers or the law? There are, of course, a few who do it just for the satisfaction of breaking the law. Others do it in an attempt to find freedom from their personal limitations or to challenge society in general, or as a gesture of freedom from social restriction. The tragedy is that the drugs they take may rob them of the very freedom they are seeking. . . . If they cannot find in people the friendship and help they need, they may decide to try drugs as a substitute for friendship.'

Pep Pills

'Pep pills are so-called because unlike alcohol which dulls the brain's activity, these pep-up or stimulate the brain. They reduce feelings of tiredness or dullness and make a person feel more lively. They usually contain a drug called amphetamine. . . . It became known that drugs of this sort could help people stay awake when studying for exams or going to a late party. And so the habit of taking pep pills

or purple hearts developed amongst teenagers. . . . After a while the pills no longer seem to have so much effect and larger ones are needed. . . . But as the dose is increased, other effects show themselves. Behaviour can be so stimulated that it becomes aggressive and dangerous. . . . Eventually the pills no longer satisfy or their effects become too disastrous and something else will be sought to satisfy the craving for such stimulation.'

Pot (cannabis)

'The effect of marijuana, or cannabis, varies both according to its source and to the personalities of the people who smoke it. . . . Even though many cannabis smokers do not appear to be harmed by the habit, the consequences can be serious. The will to work or make any effort may fade and some people have lost their jobs or dropped out of university as a result.'

LSD

'LSD is a drug which is being used at an experimental level in psychiatry and with care and skilled understanding may possibly have uses in that field.'

'For a few, the mental effects can be very prolonged and may recur unexpectedly months afterwards. These effects resemble the serious mental illness, schizophrenia. For this minority, drug misuse constitutes an appalling risk of permanent mental damage.'

Hard Drugs

'The problems of addiction are not confined to the tolerance, withdrawal symptoms and craving. There is also the risk of serious infection from dirty syringes and needles. Jaundice and other illnesses can pass in this way and abscesses frequently develop at injection sites. . . . The addict . . . is quite likely to die while still in his 'teens.'

'When a dangerous habit robs a person of his freedom of action, or normal instincts for preservation, the community has a problem too.'

Success and Failure

'Some drugs help people, at least temporarily, to resolve their difficulties without necessarily having any harmful effects. But there are two major difficulties. The first is that drug taking can become a substitute for making decisions and taking action to solve problems. The second is that some drugs, if taken often, have serious long-term secondary effects on both the body and the mind.'



. . . Keeping You Informed

PLANS for the Diamond Jubilee are going well ahead at C.H.Q. and when we have the necessary information available, we shall be telling you more about what is happening and what is going to happen. We have had our first main co-ordinating committee meeting, four sub-committees have met, and we have all realised that to make a success of anything, one needs careful preparation in good time. What preparations are you making with your own Unit? I expect you are making plans for your Unit celebrations and District, Division, County, Area and Countries are making their plans.

I very much hope that every member will want to enter into the whole spirit of Diamond Jubilee year and will want to take part in as much as possible. With so much happening at all levels, the Movement will receive a great deal of publicity and the wise Guider will start planning now.

Have you thought of starting to raise money to help towards the expenses involved with the Diamond Jubilee, whether it is to help pay for one of your members to get to one of the National Services (if she has been lucky enough to be chosen), or to take part in the Theatre Workshop for Wembley, or just to buy a ticket and travel to Wembley and enjoy it as a member of the audience? There are bound to be lots of extra expenses and if you start saving *now* it will not be so heavy when the time comes. Why not start a Diamond Jubilee Bank and let the Brownies, Guides and Rangers pay into this, so much a week, or month, or just as and when they like? It's worth thinking about.

And now what about the publicity side? Everything we do must be of the highest possible standard not forgetting that when in uniform, we are the publicity agents for our Movement. Are we *all* satisfied that we and all our members are the best agents a Movement such as ours could have, or do we have to admit that perhaps we have become rather slack over some details?

We recently had such a wonderful gathering of over 3,000 members who attended the Service at Westminster Abbey on the occasion of the Chief Guide's 80th birthday. It was the most wonderful occasion, but one regretfully had to say that the standard of uniform was not good. Can we all please

do something about this and try to smarten ourselves and all our members? Some were a credit to themselves and to the Movement, with uniform all correct and worn well, including shoes, coat, handbag etc., but some were the reverse. Again if we start now it will not be so difficult suddenly to have to smarten ourselves up when the Diamond Jubilee time comes and when we will be much more in the public eye.

Please let us all make every effort to wear only the correct uniform and to wear it well. It pays to be particular about detail and there is no doubt that if one looks good, one also feels good and if you feel good, you enjoy everything much better and you will be better agents for the Movement of which we are all so proud.

Amelia Collins

Chairman of the
Diamond Jubilee Committee

* * * *

To Counties

If you are hoping to put on a Pageant or Spectacle in 1970 and would appreciate help with script and production, watch

The July GUIDER

for details of *A WEEK-END TRAINING* from 7th to 9th November for Producers, at which they will work together on a script. The script has not been written specifically for the Diamond Jubilee Celebrations, but could, if desired, be adapted for this occasion.

12th C.H.Q. Art and Handwriting Competition



GENERAL RULES

1. Entries must be the Competitor's own unaided work and done in her own time i.e. not during a school art lesson.
2. There will be no entrance fee.
3. The closing date will be 31st October, 1969.
4. Age groups will be:
7½-8 years, 9-10 years, 11-12 years, 13-15 years, 16-20 years.
5. On the back of the picture or handwriting entry, please write in the top right-hand corner:
Name
Age
Address in full
Name and number of your Unit.

Failure to comply with this rule may lead to disqualification

ART COMPETITION

1. Subjects: (a) Travel; (b) Free choice.
2. Size of paper:
Two sizes only. No other size will be accepted. Either 22 inches by 30 inches (Imperial size) or 11 inches by 15 inches.
3. Media:
Free choice.
4. Entries, marked 'Guide Art Competition', must be addressed to:
Programme Department,
Girl Guides Association,
17-19 Buckingham Palace Road,
London, S.W.1.

HANDWRITING COMPETITION

1. Two sections:
Section A. Any style of *handwriting* (but not lettering) may be used. (5 age groups—see item 3.)
Section B. Formal lettering or manuscript, with decoration if desired, e.g. initial letters or borders. (3 age groups—see item 3.)
2. Entries in the lowest age group (7½-8) may be written on lined paper. Entries in the four higher age groups should be on *unlined* paper.

One of the winning entries in the 1968 Competition



3. Subjects:

Section A. Age group:

- (1) 7½-8 Nursery Rhyme or Verse up to about 30 words.
- (2) 9-10 St. Mark's Gospel: Chapter VI. Verses 7-9 (inclusive). Any version of the Bible may be used: Authorised, Revised, Revised Standard, Knox, Douai, or New English.
- (3) Up to some 50 words about your family.
- (4) 11-12 Up to 80 words from a story book.
- (5) 13-15 Paragraph (about 80 words) from a newspaper article, or magazine.
- (6) 16-20 Passage (about 100 words) from any book, novel, biography, travel or essay you have recently read.

NOTE For entries in Groups (3) to (5) the title, author, page, etc. should appear at the head of the script. Entries of subjects other than that particularly specified for a particular age group, will be disqualified.

Section B. Lettering:

Three age groups only. To copy out in any style of formal lettering.

- (3) 11-12

In the beginning God created the heaven and the earth. And the earth was without form and void: and darkness was upon the face of the deep. And the spirit of God moved upon the face of the waters.

- (4) 13-15

- (5) 16-20

THE CHURCHILL PLATE

'He expressed the unconquerable spirit of the Nation.'
Sir Winston Leonard Spencer Churchill,
K.G., O.M., C.H., F.R.S., M.P.
Royal Academician. Prime Minister of Great Britain 1940-1945: 1951-1955.
British Subject and Honorary Citizen of the United States of America.
This plate is one of a limited edition of five thousand.

Judges will also take account of lay-out and spacing to accord with the size of paper used.

4. Entries, marked 'Guide Handwriting Competition', must be addressed to:

Programme Department,
Girl Guides Association,
17-19 Buckingham Palace Road,
London, S.W.1.

5. The number of prizes in each group will depend on the standard and number of entries.

NOTES

- a. The Judges retain the right to withhold awards in cases where the standard achieved is not considered high enough.
- b. **Handwriting Competition** entries will not be returned.
- c. **Art Competition.** It is regretted that it is not possible to undertake to return entries by post after the competition, other than those which are selected for display at Headquarters. Entries chosen for hanging will be returned in the winter, 1970. All other entries will be kept for three months after 1st November 1969, and may be collected from C.H.Q. during that time; any unclaimed after 1st February 1970 will be destroyed.

PRIZES

There will be exciting prizes for the winners in each group.
Art: 16-20 age group:—There will be a Travel Bursary of £50 to be used in some project to be chosen by the winner in consultation with C.H.Q. and the Guide Association concerned. Details of other prizes will be given as soon as possible.

The Association is considering the possibility of reproducing one or more of the winning paintings as greeting cards. No firm decision can be taken about this until the winning entries have been chosen, but if a painting is found to be suitable, a bonus cash payment will be made.



GUIDE FRIENDSHIP FUND



How to get information—how to find out

This is really a plea, an earnest plea to you all!

Guide Headquarters and the World Bureau receive far too many letters asking for information on the Commonwealth, on World Guiding or on certain countries. What happens to those letters? If they go to C.H.Q. someone in the Overseas Department or the International Department sends them on to the enquirer's own County Commonwealth Adviser or International Adviser, whose job it is to answer the query.

If a Guide writes direct to the World Bureau, someone there has to send the letter to the International Secretary at C.H.Q. who in turn sends it to the County International Adviser.

All this takes time, and costs double postage.

Please, will you make sure that any Guide wanting information for her Commonwealth Knowledge Badge, Guide Friendship Badge or Traveller Badge, or for the Patrol Purpose Plan in Chapter 9 of the Handbook (page 217) does *not* write to C.H.Q. or the World Bureau but to her own County Commonwealth or International Adviser.

This also applies to Rangers working for their Leadership Certificate.

Of course, anyone wanting to know about the Guide Friendship Fund writes to me: Hon. Secretary of the Guide Friendship Fund, c/o Commonwealth Headquarters.

Diamond Jubilee 1970

Many counties are starting to plan. Thinking caps are on, brainwaves are flying around, special committees set up are buzzing with ideas! Some counties and Divisions have already written to us for projects for Diamond Jubilee Year. We, too, have our thinking caps on; we, too, are buzzing with ideas. So here is another plea: IF in your County, Division or District you are considering doing something through the Guide Friendship Fund please write to us as soon as you can. This will help us very greatly to work out our special projects for next year, to decide on the countries most needing help and to think out exciting, worthwhile and interesting projects both overseas and in our own country. If you want your *own* project I'm sure we can give you one.

Present Projects

Just to remind you that for the summer months we are specially helping certain countries with camp-

ing equipment and Brownie Pack holidays: Rhodesia (for both), Sierra Leone, Nigeria, Dahomey, Madagascar and Paraguay. Rangers are asked to help the Ranger Clubs in Botswana—an immensely worth while project. Next month I hope to tell you about other needs in our Branch Associations overseas because at the Commonwealth Commissioners' Conference at Foxlease this month, to be held just before the World Conference in Finland, we will be meeting the Commissioners and hearing more about the urgent needs of their countries.

The World Conference

It is so thrilling to think of all that is happening in Finland. Countries applying for membership to our world family, bringing the total of Member Countries from eighty-one to ? ? ? ? ? This is anybody's guess, but look out for next month's GUIDER and the COUNCIL FIRE. And this does affect the Guide Friendship Fund because countries newly independent or young in Guiding need financial aid, practical encouragement by gifts of equipment, Guide books etc., all of which we can give through the spontaneous generosity of members of our Movement. For further information, for free leaflets, posters and stickers, write to: The Guide Friendship Fund, c/o Girl Guides Association, 17 Buckingham Palace Road, London, S.W.1. (And please enclose a 4d stamp.)

Late News

We have just received two such very grateful letters. One from Tristan da Cunha telling us that our gift parcels of equipment, books, etc. had arrived safely. As these had been despatched from London on 4th July last year we were thankful to know they really had reached their destination six months later! The other letter was from the Turks Islands, West Indies. These parcels of equipment and uniform material had been despatched last November and arrived in Grand Turk, Turks Islands on 11th April.

So although we may have our Comets and Concordes and we can fly to Australia in a matter of hours, there are still some distant lands where the arrival of a ship bringing gifts and goods from Britain must be very heart-warming and exciting.

As Mrs. Clinton from Turks Islands says: '... I cannot tell you how very thankful we are for the gift sent to the Guides and Brownies. It is just wonderful and big-hearted of you all ...' V.A.

International Weekend at Gilwell Park

The International Weekend held annually at Gilwell Park, the Scout training centre, will this year take place on 11th-13th July. The aim of the weekend is to promote international Scouting and Guiding and all members of the Scout and Guide Movements over the age of fourteen may attend. Guides and Rangers wishing to go must have their application form signed by their District Commissioner and should be experienced campers.

This year the camp takes on a Japanese flavour with The House of the Gilwell Moon where one may partake of the famous tea ceremony, the making of Japanese kites and exhibitions of art and culture. There will also be other national stands, and members of previous expeditions abroad will be on hand to inform and advise prospective travellers of the planning, cost and assistance required for group camps.

All campers are required to provide their own tents and cooking equipment and will be expected to do their own catering. Provisions can be obtained from the providore. Visitors are welcome on the Saturday afternoon provided that they make their own catering arrangements.

The fees are: campers 7s. 6d. (includes programme and pennant)
visitors 3s. 6d. (includes programme and pennant)

Application forms are obtainable from and when completed should be returned to: The Hon. Registrar, Mr. R. H. Sinclair, 99 Woodlands Avenue, London, N.3, not later than 1st July.

Help The Aged

In 1968 over £500,000 was raised in order to help old people in desperate plight particularly during the winter. This year, it is hoped to treble the amount.

Efforts to raise money to provide sheltered housing and Day Centres for the old and needy will be concentrated on during the 'Youth Crusade to Help the Aged' from 19th May to 13th June. If you would like to help, write to the address below and tell them your plans.

Literature, posters and organisational advice are available from: Help the Aged, Room 442, Greater London House, Hampstead Road, London, N.W.1. Tel.: 01-387 0116. Ext. 77.

What's Cooking?

Anything you like—with Camping Gaz

An efficient Guide can always knock up a scratch meal with the minimum of equipment. But the ability to serve tasty, well cooked food is equally important. And with Camping Gaz cooking units you can prepare everything from a fresh, hot cuppa to a full size dinner.



Standard Double Burner

This high pressure double burner might well be basic equipment for every company. On this, and other Camping Gaz stoves, you can cook man-size meals quickly and efficiently.

Bleuet S.200

An efficient lightweight stove that goes easily in a rucksack. Absolutely clean. Gives instant heat, for approximately 3 hours. The ideal stove for cooking a quick snack or preparing a hot drink.



Lumogaz 'C' Lantern

The Lumogaz 'C' lantern gives you a lighting equivalent of a 75-80 watt bulb—works off the 200 cartridge, obtainable almost anywhere in the world!

The Camping Gaz range of butane fuelled stoves, lanterns and heaters is designed for every application and to suit every budget.

Send now for full details

I would like to know more about
Camping Gaz International.
Please send me FREE illustrated catalogue.

Name _____

Address _____



G.D.G.

Camping Gaz International,
PTC, Dorking, Surrey.

Glenbrook

Stables Into a Cottage

THE Ranger Guides of England are asked to make possible the conversion of the stables at Glenbrook into a cottage for the Warden and his family. This will make more accommodation available in the house which already has a long waiting list for bookings.

Could you contribute towards the alteration by buying:

a brick	—2s. 6d.	a door	—£10
a tile	—5s.	a cupboard	—£20
a stair	—£1	equipment for	
a window	—£5	the kitchen	—£100

Perhaps you could organise a sponsored walk, or a sponsored cycle ride. Could your Rangers run a barbeque party, or a garden party, or a discotheque party?

You may have better ideas. Any money raising effort would help.

If a sponsored walk is chosen would Guiders please make sure that Rangers have permission from their parents. It must be agreed by your Commissioner and



the police must also give prior permission for each walk and should be approached before details are finalised. Start to plan at once as all walks and cycle rides should be finished by 1st December, 1969.

Official cards are to be used by every walker and rider. These are available from Miss Heys-Jones at the address given below. The cards have space for sponsors to fill in the amount per mile they promise to pay after the completed walk or ride. Each Unit should appoint a member to send for the cards (price 3d. each plus 9d. postage). She will then also receive fuller particulars. Ranger Guides may invite Guides to help them with these projects. Brownies are not eligible.

It is recommended that not more than 30 people take part in each walk. Parties should start at intervals if numbers are larger.

All contributions should be sent to: Miss Heys-Jones, 23 Denbigh Gardens, Richmond, Surrey.



SOUVENIR PENNANTS

CLOTH BADGES · PRIZE RIBBONS
Send for New 1969 Price List
P & R PUBLICITY LTD.
The Broadway, Pitsea, Basildon,
Essex. Tel: Vange 2123

CAMPING · BOATING · HOLIDAYS

Why not have your annual camp or adventure holiday afloat this year and explore our beautiful canals on a traditional narrow boat steered by our own competent skipper?

Rates £4 10s. per head per week, send s.a.e. for brochure to: Canal Transport Services, Norton Canes Dock, Lime Lane, Pelsall, Staffs. Tel. Brownhills 4370.

?Do you live in Scotland?

If so buy from

The SCOTTISH GUIDE SHOPS

16 Coates Crescent, Edinburgh, EH3 7AH. (Tel: 225-3483)

1 Scott Street, Glasgow C.3. (Tel: DOU. 6288)

3 Magdalen Place, Dundee, DD1 4NN. (Tel: Dundee 22262)

Your unit will benefit from

The Discount Scheme

Why not visit the Southampton Scout and Guide Equipment Centre

22 London Road, Southampton

TEL. 20348

SO1 2AF

The place for all

OFFICIAL UNIFORMS and PUBLICATIONS

Post orders dealt with promptly

DISCOUNT SCHEME FOR ALL UNITS



Opinions expressed in these columns are not necessarily those of the Editor

The Moment to Decide

I would have thought that the least Christian of qualities was intolerance, yet this is what comes to mind on reading the letters of M. E. Waterson and E. E. Bowles (May GUIDER).

No one questions that Guiding is founded on religious principles—what I do wonder is how the Movement is to attract young Guiders if they are met with such a black-and-white attitude as expressed in these letters.

Is there no room in these people's minds for the thought that young Guiders are themselves at a formative time of life when ideas and beliefs are still being worked out? Supposing a Guider has complete respect for the religious principles of Guiding, but cannot in all honesty accept them *yet* as her own? The important word is 'yet'.

The diehards of Guiding would throw her out, I suppose. I find that very sad and discouraging.

JACQUELINE SARGINSON, Assistant Guide Guider,
2nd Alexandra Park Company, East Middlesex.

Realism or Prohibition?

I read with dismay of the revised fees for Foxlease and Waddow and I am sure many others will feel the same.

You write of realistic prices, but I fail to agree, when I consider advertisements in the same GUIDER offering holidays, all services provided at 10½ gns. these apparently affording a living for the advertiser. Undoubtedly, a lovely house such as Foxlease requires costly upkeep, but after all our training does not benefit from this, and as trainees are required to do many domestic chores between sessions, this must cut staff costs considerably.

I have enjoyed my two visits to Foxlease, especially my second last Autumn, when I and my Assistant were converted absolutely from very 'Anti New Programme' to very 'Pro New Programme'. This was mainly due to the excellent Trainer, but it required the whole weekend to achieve this result. Therefore I write with feeling for the many Guiders who will be unable to visit Foxlease because of prohibitive costs. Personally, I am dependent on my husband's retirement pension, but I am sure Guiders with young families and single persons will also find difficulty in meeting the new fees. I know many are helped by District funds, but all Districts are not wealthy, so please, please, H.Q., think again.

MRS. DORIS PAGE, Brownie Guider, 1st Normandy Pack,
Surrey.

Ask Us First

Isn't it time that the powers-that-be realised that many ordinary Guiders are not accepting all the words of wisdom expressed in the Handbooks and articles in THE GUIDER and remember that the old programme, while needing some renovation, had much to offer the children of today,

because it was largely the work of a genius, our Founder? And isn't THE GUIDER the right medium to be used for previous consultation with ordinary Guiders to produce better ideas? For instance, the arrangements of the Challenges could have been more practical and useful and the designs for the Journey badges more attractive.

Sometimes I wonder if 'the experts' forget that the members of our Movement do not rely on it entirely for their growth and education for life.

MARGARET P. SMITH, Brownie Guider, 3rd Hampstead
Garden Suburb Pack, London.

Programme Department comments: *There was prior consultation before the publication of the Working Party Report, through THE GUIDER and in many other ways, on how far the former programme was meeting present needs. The 'experts' are 'ordinary Guiders' with 'ordinary' Units.*

'They also serve'

I refer to the last paragraph Page 91, *A Handbook for Guiders, Brownie Guide Section.*

Annually around St. George's Day the question of Brownies not parading with the rest of the Movement is brought to my notice by the Brownies, and as each year goes by I find it more difficult to give any real reason as to why they should not. Oh yes, I've tried the 'not big enough, not old enough to understand' reasons, but when I see some of the tiny Cubs running along at the end of a parade trying to keep up with the Scouts and Guides, and one or two struggling with their large flags, I have to admit to myself that these Brownies have a point. I feel quite sure that most of them are capable of doing just as well and, in some cases, better. Once inside the Church or a Hall I agree we are all part of the Movement, but in the words of one of my Brownies last year at the St. George's Day Parade, 'Why must we always slip in through another door or right at the end, as if we are not supposed to be there?'

These young girls are at an age when they enjoy wearing a uniform and I am sure would be a credit to the Guide Movement if only given a chance, and I think that if they were used to marching at an earlier age they would not be half so self-conscious parading in a Guide uniform.

Do other Brownie Guiders get this same problem and if so have they found an explanation which really satisfies the Brownies?

MARGARET ATKINS, Brownie Guider, 1st Crawley Down
Pack, Sussex.

Programme Department comments: *Brownies are allowed to take part in suitable Youth events at the discretion of the Commissioner. See, Here at C.H.Q. Page 209.*

No Real Dilemma

With reference to 'Oakwood's Dilemma'—May GUIDER—surely Sarah wears socks, and Mum's nylon stockings wouldn't shrink would they? I do think sometimes that parents deliberately put obstacles in the way if they think other people have more control of their children. Of course, sometimes they can't be bothered or don't want their homes messed up.

I may say that most of 'my parents' are only too willing to let their children do jobs around the house.

JOAN M. TAGGART, Brownie Guider,
58th Croydon Pack, Surrey.

EXTRACTS FROM THE PRIVATE DIARY OF A DIVISION COMMISSIONER



IT'S the hat business, I said. Taking up millinery? said James. I thought Fanny wore a very eye-catching thing when I last saw her. I'm thinking of *Guide* hats, I said. I thought you didn't wear them any longer, said James. I'm sure I've seen you—It depends on the occasion, I said. You need a sense of occasion to know when to wear a hat. Can't you do something about those curtains of hair girls pull over their faces, said James. Fashion, I said, we're slaves to it. Your Rangers are a good looking lot, said James, but at your last parade most of them looked ghastly—all hair and practically no hat, like a row of tea cosies with tiny teapots perched on top. And now there's their silly business of hats in camp, I said. Surely nobody wears hats in camp, said James. What about colours? I said. James said, that's different. It's one of those occasions you were talking about. It can be, I said, but it too often isn't. Then it's the fault of the R.S.M.—I mean the Guider, said James. What should she do? I said, have 'em out on parade and roar at them? Don't be silly, darling, said James mildly. You tell me what *you* should do, after all you're the Commissioner.

With Rangers I think it's a case of helping them to see themselves in context, I said. They think of themselves as blonde and beautiful and assume that everything they put on enhances the effect. It never occurs to them that they need go halfway to meet the clothes and the hats they wear—posture, grooming and all that if they are not to look messy. And how do you get that across? asked James. By inviting a beauty consultant and a hairdresser to work with them, I said, that's what we're going to do in the Division.

And Guides and colours in camp? said James. Discussions in Patrol and at Leaders' meetings, I said, you know—what do colours stand for—what do we as a group like to do about them—what is our form of ceremonial like? Hats and suitable clothing for the Colour Party, of course, and it could be hats or no hats for the rest, said James. Indeed it could, I said, as long as the Company itself is really taking care of the occasion.

Gauntlet

GAUNTLET is the magazine of the Duke of Edinburgh's Award Scheme and is published three times a year (price 2s. per copy). However, as part of the launching of the 'New Look' Award scheme a special edition called GAUNTLET 69 has been issued and is now on bookstalls throughout the country.

In GAUNTLET 69 are many interesting and unusual sidelights of the Award—descriptions of work of Gold Award holders, the Award in the Commonwealth countries, the Award in industry—to name but some.

The bulk of the magazine is taken up with the new look of the Award scheme and future plans 'Into the Seventies'. All four aspects of the Award are detailed and illustrated with photographs of some Award candidates in action.

GAUNTLET 69 is well worth buying for your own interest and your Unit's interest whether or not you take part in the Award scheme.

A copy of the special edition is being sent to every Gold Award holder but although the majority of them have been traced, a number have moved from the address on the Award files. Any Gold holder who does not receive a copy may apply to the Award Office, 2 Old Queen Street, London, S.W.1.

MOVEMENT, a new magazine for people concerned with youth work, now succeeds the former SAGGA JOURNAL. Among its aims are the stimulation of debate and the encouragement of research in the field of youth work, service and leadership.

Although Scouting and Guiding is its primary concern, entry will be made into the other fields of service to youth.

Published quarterly, MOVEMENT costs 3s. per copy or 12s. for four, post free. Subscriptions should be sent to Roger Miller, 33 Ivy Road, Gosforth, Newcastle-upon-Tyne, NE3 1DB.

Limited supplies are available from C.H.Q.

PRECISION MARCHING COMPASS

PRICE
ONLY **15/-**
P. & P. 1/6



As used by thousands all over the world. Simple to use. Look through magnifying lens with hairline guide in hinged cover gives immediate reading of degrees & miles. Luminous

markings, graduated black rotating dial card calibrated in white and adjustable bezel. Folds into robust self-protecting compact plastic case only 2½" diameter x 1".

Quantity discount for clubs, etc. Only 10/- each in dozen lots. P. & P. 3/-.

C. W. WHEELHOUSE & SON

9/13 BELL ROAD,
HOUNSLOW,
MIDDX.

Phone 01-570 3501

Training

Brownie Guides

First steps - First meeting - Fun - Frustrations - Faith

*(the Five F's of a Five-week-old
Brownie Guider)*

by Barbara Huntley

Illustrated by Jennetta Vise



FOR three years I have been away from Brownies at College, and then as Guide Lieutenant. Five weeks ago I returned to the same Pack as a single handed Brownie Guider. Before, as Tawny Owl I worked under the old system, and now I am faced with a Pack of twenty-two girls who are just changing to the new 'look'.

First steps, therefore, were to get hold of the Brownie Handbook, Pocket Books, Guider's book and everything else new, and read the lot! A good look around C.H.Q. and a visit to another Brownie Pack helped bridge the three year gap. I started with a fresh approach—having had time to forget the old. And how much more exciting the new programme seemed! I then decided it was about time the Pack's presence was felt in the Church and put up a poster asking for recruits—and then got worried lest I was flooded with recruits! At the December Church Parade the Brownies decided to sing to the church, so we made 'shakers' and practised singing with them. We then thought it would be fun to have an Open Evening and sing to parents, so this started us off on the Pack's first Venture—preparations for this continued in January.

First meeting—my enthusiasm almost dampened by torrential rain, and suffering from mental indigestion from all the books I had read, I arrived at my first Brownie meeting. Having dried out I was faced with my first Brownies. Of course, as Lieutenant I was no stranger to the Pack, and they knew I was taking over from the old Brownie Guider as she was expecting a baby, but I was not expecting their casual 'Hello, Brown Owl, shall we get the toad-stool out?' From then on the meeting proceeded as if I'd always been Brown Owl! I discovered that none of the Brownies had any badges and in my first enthusiasm I had them all look for badges they would like to take—and horrified by the diversity of subjects and the prospect of ensuring that each child was ready for the badge I quickly limited them to two only for this month! I ended the first meeting with a list of things to find out, and things to do.

Fun. Yes, isn't it all fun? The children are fun,

their enthusiasm, 'Brown Owl can we . . . may we . . . let's do . . .', their energy 'Let's do it again' and their boundless imagination 'Let's pretend . . .'. Last week I was presented with a rather macabre white modelled hand with Lend a Hand written on its palm. By the end of the meeting it had a broken finger that necessitated first aid!

Being a Leader is fun, more fun now than ever before. One is freer to do different things in the meetings than one was when we were tied to the old Golden Bars and Golden Hand. It's fun to be part of a large district, and to be able to meet with other Leaders. And it's great to be able to meet with other Packs and Companies, and to show the children that we are part of a world-wide organisation—no racial discrimination here!

Frustrations. In five weeks I have learnt what a lot I still have to learn about Brownies! I have had two new recruits and discovered that a few more pairs of hands are essential. Everyone is so keen! And I seem to fight a losing battle against time—our meeting never seems long enough. The Brownies arrive earlier than they should and are keen to 'get going', and have to be reluctantly dragged home by parents afterwards! I discovered that new badges and equipment were almost non-existent in the Pack, but a trip to C.H.Q. soon solved that problem. And how thankful I am for a helpful District Commissioner!

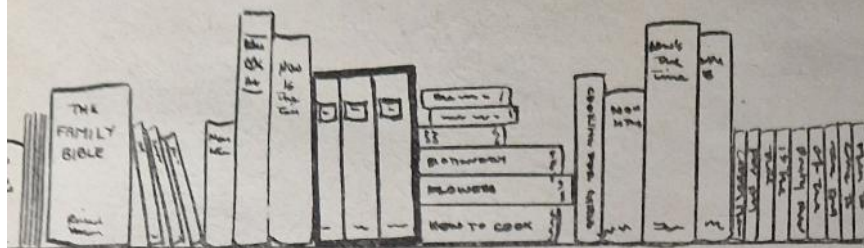
Faith. I am sure all Leaders have a sense of inadequacy at times. How can we cope? What do I say? How can I find time to do it? Having run the Pack for a short while as Tawny I would never have taken on a Pack again single-handed if it had not been for my own personal faith in God. Not just as part of the Promise I made years ago as a Guide, but as faith that is part of my life. A belief in God as an ever present Helper and Guide, the One who understands and loves both the Brownies and me.

At the end of five weeks my enthusiasm remains. And I know that it will continue because the enthusiasm of the children is infectious—as all Guiders will agree—and that is one infectious 'disease' I don't mind catching!

USING BOOKS

in the Guide Company

By Tavia Maclean



SOME people say there is less need to read now that we have Radio, T.V. and Tape Recorders as means of communication, but there is in fact a greater need. A century ago a scholar could store in his head the information about Rameses, King of Egypt; nowadays the information about Rameses fills a whole library. Three quarters of the world's technologists and scientists are living at the present time, and their knowledge is filling more books than the world has previously known.

As Guiders we cannot pretend to be knowledgeable about all the subjects in which the girls in our Units show interest, but we must do our best to provide or help them find sources of information. We must also try to stimulate interest in new topics. Books are of vital use in both these instances.

Every Unit should have a small reference library of Headquarters publications. A Book List to aid selection can be obtained from any Headquarters Shop. In my Unit I also have a number of cheap publications to stimulate interest and a few simple reference books. In the first category I have a number of I-Spy Books and use them as a guide to planning challenges during meetings, on hikes, and at camp. Some of the titles I have found of most use are 'I-Spy Trees', 'I-Spy The Sky', 1s. 6d.; 'I-Spy Churches', 1s.;

'I-Spy Archaeology', 'I-Spy British Wild Animals' 2s. 6d. I find the interest created by making their own discoveries has led the girls on to want to read a book of information. At this stage I provide a number of Ladybird books, price 2s. 6d. each, and a few of the titles I think particularly valuable are 'Our Land in the Making', 'Understanding Maps', 'What to look for in Spring'.

More expensive books can be borrowed from the Public Library. I frequently borrow Craft or Wild Life books, and take them to a meeting. I then use the book as a source of information with a group who are interested in that topic, or at a Leader's training. Quite frequently a girl will later borrow the book from the Library on her own ticket.

The Guide Handbook provides hundreds of starters to create an interest and nearly all of these can be expanded by the right use of books:

Page 98 *Cooking on a wood fire* . . . would the Patrol like to try some more exciting recipes? They could use 'Help yourself to Hike Cookery'.

Page 115 *Birds* . . . A Guide filling the chart naming the birds, a casual question to her, 'Can birds count?' and follow up with 'There's a good article about birds counting written by the Hutmans, it might help with bird watching; perhaps you'd like to read it, and then try it with a friend' ('The Teacher's Book of Nature Study', G. D. Fisher, 40s.).

Page 217 *Thinking Day* . . . The Company discussing Thinking Day and one Patrol decides to make an exhibition about another country. They find information in 'Trefoil Around the World', books in the Young Traveller series and in travel brochures.

Page 139 *Life in camp* . . . Guides discuss what they would like to do in camp, Guider listens in, then collects relevant books, and adds more of her own selection. As a minimum you want books of prayers, books on pioneering and books on wild life. These books need to be protected from the weather as far as possible so it is a good idea to cover them with clear Fablon, and keep them in a tin. If a Guide borrows one to identify a wild flower, do try to check later that she has been successful; some Guides have very little help with this at school, and would appreciate being shown how to use a reference book.

If you do not know where to find a book to help your Guides with a certain topic look at the Bibliography at the back of the Guide Handbook. Some of the books listed at the back of the Ranger Guide Handbook are also useful for Guides. Your local librarian will help by providing suitable titles, and if you read a review of a new book in THE GUIDER your librarian will usually obtain it for you.

THE GUIDE, 9th May issue carried an article on covering a book, and Guiders could well find this of use and interest when using books in the Company or Unit.

THE GUIDE, 18th July will be explaining to readers the general principles of indexing, classifications and uses of local libraries. This would be a helpful article not only for Guides, but for Guiders also.

THE RANGER regularly publishes reviews of the latest books on a wide range of subjects.

—Editor.

INCIDENT COURSES

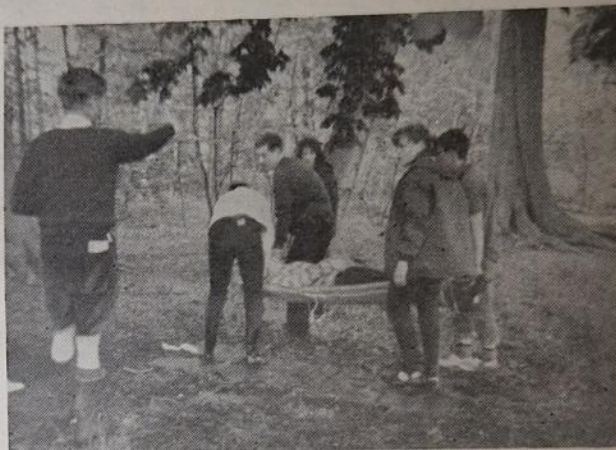
by A. Joyce Cheney

WHAT is an Incident Course? It is a series of practical tasks to be carried out in various places which teams of Guides visit in turn, deal with the incident, and are given points accordingly. These Incident Courses can be of two types—those of an orienteering nature, where each incident has to be dealt with at a certain map reference, and those where all the incidents take place in one large field or open space. Both types are enjoyed by the Guides and can form a very worthwhile Patrol activity for any time of the year.

In arranging any Incident Course the numbers taking part in each team is an important factor. Ideally four to a team works very well, and can be achieved at Patrol Leaders' Trainings and with mixed teams of Scouts and Guides. The time to be spent at each incident also needs consideration. In the orienteering type of course, the teams will take some time working out map references and journeying between check points. So it is as well in this case to have shorter incidents which, for instance, can be dealt with in five minutes. Such incidents could include timing a team to rope themselves together and cross 'a stream' by means of stepping stones, timing the pitching of a hike tent, or seeing how high a flagstaff can be erected in three minutes.

On the other hand, when all the incidents are taking place in one field, the time spent at each can be considerably longer. The suggested times in this type of course would be 15-20 minutes for each incident, and then 5 minutes for the teams to move on to the next. Such incidents could include first aid, a blindfold trail, erecting a rope bridge and crossing it, etc.

When organising an Incident Course which is to take place in one field, the Patrol Leaders should each be given a score card which will tell them at which check point their team will have to start and all the other check points in the order in which they have to be visited. The Guider or Helper at each check point needs to have her own score sheet on which it should be clearly stated how many marks should be given; for example, 5 for leadership, 5 for correct treatment, 5 for



A first aid incident at a Scout and Guide Camp

correct knots, etc. The organiser will also need a master score sheet on which to record all the marks and at the end to work out the winners.

With the orienteering type of course the teams are told to gather at a certain starting point, which is given as a map reference. They are then given a card giving map references in the order they are to be visited. It is very important that the map references given should indicate a clearly defined map symbol, especially when the teams are using a 1 inch Ordnance Survey map. Any map with a smaller scale than 1 inch to a mile is not suitable. Definite check points on a 1 inch or larger scale map would be a church, a station, a junction of two roads, etc. Compass work can also be brought in, and a check point could be defined as 'stand at map reference 075231 and enter the building to the South-East of this point'.

Having been given the score cards the teams are then sent off at 3, 5, 7 or 10 minute intervals, depending on how many teams are entered. With this type of Incident Course it is as well to have a time limit, and teams should lose points if they do not arrive back within the given time.

Night Incident Courses are very popular. It is even more important to see that each map reference in a night event has a definite symbol on the map, and to see that the teams do understand that it is essential that they report back within a certain time even if they haven't finished the course. All teams should carry a torch and compass, and above all the importance of keeping together must be impressed upon them.

It can be seen that careful planning and foresight are needed and the time and effort spent beforehand will save mistakes, annoyance and troublesome difficulties later.



LET'S HAVE

a—

RANGER UNIT COMMITTEE MEETING

by Marjorie Brindley

Illustrated by Elizabeth Wall

THE title suggests that it is a thought which has just occurred to a member of the Unit or Committee, but in fact, once a Committee is established (usually by voting in secret ballot), the meetings should take place at regular intervals, or at least on dates arranged in advance.

Who serves on such a Committee? Any members whom the Unit agrees are eligible. This can be very varied, e.g. a proportion of the total number in the Unit, or 'officers' (Secretary, Treasurer etc.) plus an agreed number, plus the Ranger Guider(s)—there is no laid down membership—in fact, it could be the whole Unit where the numbers are very small, and this would not be a constituted Committee, but a Unit business meeting.

What does the Committee do? This again varies—the Committee will certainly deal with the 'business' of the Unit, e.g. finance (money to be raised, bills for payment etc.) decisions on such things as participation in local Youth events, service projects etc., etc. It may be that the Unit Committee is also responsible for the Programme, or there may be a separate Committee which deals with this all important job.

Whatever the main or total business of the Unit Committee, there are some ways in which it can be helped to be a success.

As already mentioned, the date of a meeting must be agreed well in advance—usually the last item on the agenda is 'Date and place of next meeting'. But, this is not enough—a reminder needs to be given the week before the meeting, either verbally or in writing. The agenda must be drawn up by the Chairman and Secretary, to include items submitted by the Unit, so that every member knows the business in hand for the next meeting.

Who is the Chairman? It could be a Ranger Guider or a Ranger—if the latter, she will need some help at first as it is a skilled job. (See notes on District Meeting, Feb. GUIDER.)

Who is the Secretary? A Ranger voted by the Unit. She too may need guidance in minute taking and writing, for it is most important that

the minute book is correct and up to date, and that the whole set-up should be run in a businesslike way. This is very valuable, though often unrecognised, training for the future!

When and where is the meeting to be held? 'When' is often the biggest problem as it is usually difficult to avoid the heaviest homework nights and other commitments, since it is important to have long enough time to deal satisfactorily with all items.

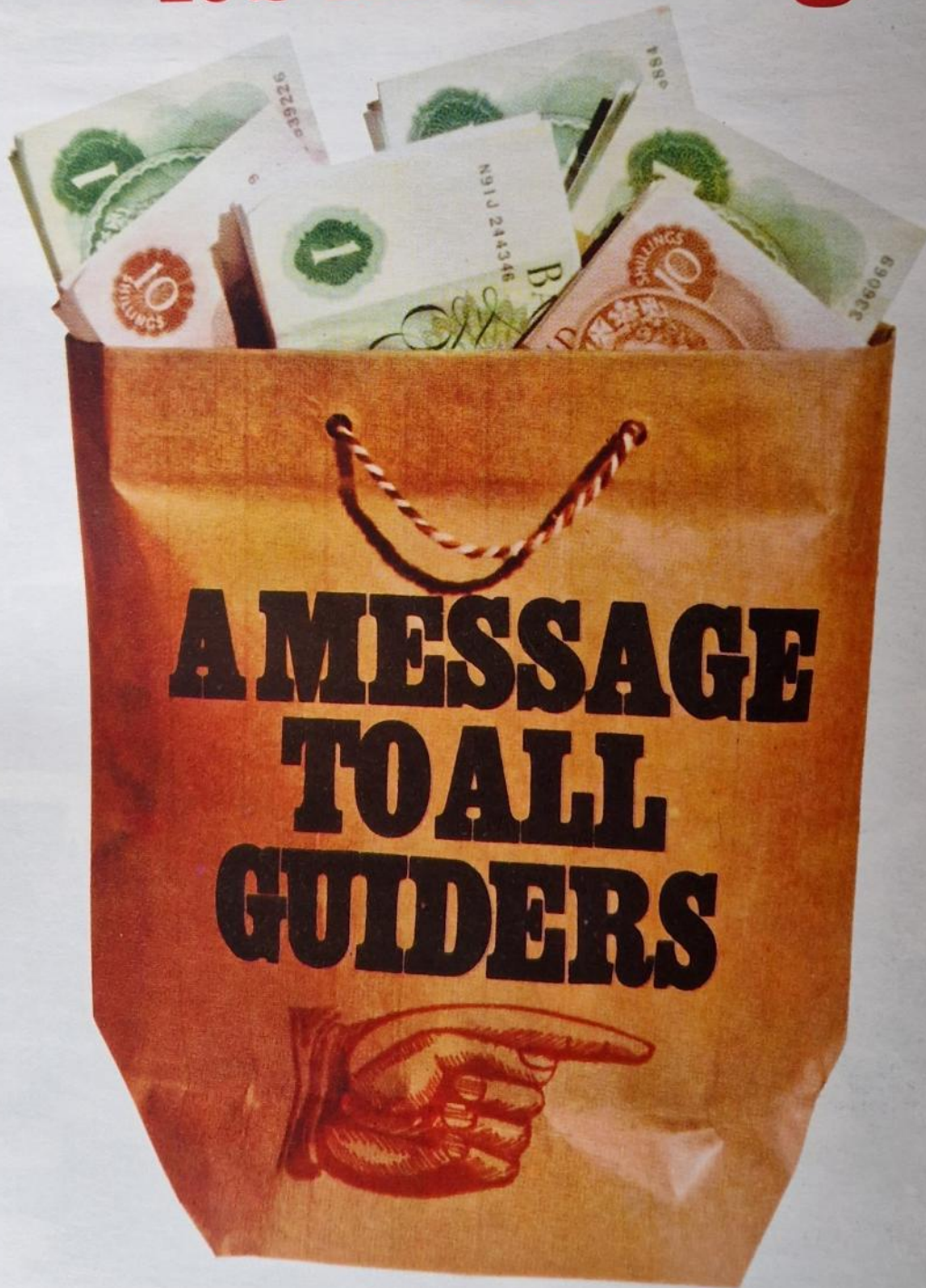
'Where' is generally much less of a problem—it could be held at the Unit's usual meeting place, or at the home of one of the Committee members or Guiders. In someone's home often provides the right setting, and this is very important! A relaxed atmosphere, with a feeling of togetherness for a real purpose. As always, the Chairman has a vital part to play, not in putting over *her* ideas and conclusions, but in bringing every member of the Committee into a vital rôle—expressing opinion, thinking through a situation, coming to a conclusion, being involved in the plans for carrying out a decision. This is not easy for many of the members, especially those new to Committee work, but it is up to the Chairman to steer a course in which everybody participates. Sometimes it is even necessary to obtain a view or decision by asking each individual member to voice a comment. At times a deadlock seems to be reached when nobody can suggest the next move, and it often pays at such a juncture for the Guider, whether in the Chair or as a member, to withdraw, maybe to make the coffee, and invariably the solution has been found when she returns.

Does this indicate that it is better for a Guider not to attend a Unit Committee meeting? This is entirely up to each Unit, and once general Committee procedure is understood, there may be no need for a Guider to be present.

Can a Unit function effectively without a Committee or regular Unit business meetings? So much training value for the future comes through the use of the Committee system in self-government and self-programming, that it is something which should be part of every Ranger Guide Service Unit.

FUND RAISING

- it's in the bag





STOP SHOPPING AROUND FOR FUND RAISING IDEAS

No need to look any further, Webb Ivory, Britain's largest Christmas card Manufacturers offer a complete fund raising service to all charities, churches, clubs and similar organisations. The comprehensive Webb Ivory range of Christmas Cards, Sundries and Gifts ensure big profits for your Company. Here are the reasons why Webb Ivory will give a great boost to your fund raising.

- Widest range of top quality Greetings Cards and Sundries.
- Exclusive Designs.
- Real Value for Money.
- Prompt and efficient attention to orders.

- Generous Profit Margins—up to 50% on outlay by using our exclusive Unit Method.
- Many Bonus Payments.

- 1 CANDLETONES**
Twelve really beautiful cards produced on top quality gloss board. There are six designs to the series, all of which are deckle-edged with a short formal greeting on page 3. **12 for 5/11**
- 2 CHARLES DICKENS**
Four scenes of Victorian London associated with Charles Dickens make up this delightful collection of twelve cards. A quotation from Dickens appears on page 2. **12 for 5/-**
- 3 SNOWSCAPES**
A gay coloured border adds to the attractiveness of this set of 12 snow-scene cards. The cards are four-fold with a short verse appearing on page 3. A popular card which will be in great demand. **12 for 3/6**
- 4 LES ENFANTS**
This card is produced on top quality board, with deckled edges and a short sincere greeting on page 3. The set is supplied in an acetate lidded box. **10 for 5/11**
- 5 CANDLE CHARACTERS**
Two 3½"-high wax figure candles, one Father Christmas and one choir-boy; a Christmas novelty that will appeal to children and adults alike. Individually wrapped and packed in a mail order carton. **2 for 4/11**



6 KRAZY KARACTER BALLOONS

A pack of nine novelty shaped balloons in assorted colours with various famous comic characters.
9 for 2/9

7 SINCERE WISHES

A most unusual series, but very attractive. These cards have a novel overlapping fold which opens to reveal the verse inside. Six designs which will prove very popular.
6 for 3/-

8 YOUNG SHEPHERD

6 for 2/6

9 THREE SHEPHERDS

6 for 3/-

10 MOTHER AND CHILD

6 for 4/6

11 WESTMINSTER ABBEY CHOIR

6 for 6/-

12 CHRISTMAS GREETINGS

6 for 5/-

Six cards of the same design, each card bears the simple greeting: With Best Wishes for Christmas and the New Year.

13 PEG CARD HANGERS

Sixty plastic card pegs complete with cord to make the displaying of your greeting cards that much easier.
60 for 1/-

14 DIARY

A useful Planner Diary with detachable cover in brown imitation leather. The diary contains calendars for 1969 and 1971 and contains helpful metric conversion tables in the back.
3/11

15 FESTIVAL PACK

An assortment of Christmas Gift Dressings, containing:

- 6 sheets Wrapping Paper, 19" x 29"
- 12 Strung Tags
- 14 Metallic Seals
- 2 Christmas Labels
- 3 Matching Tags
- 9 ft Tinsel Gift Ribbon

2/11

16 SPANIEL PUPPY CALENDAR

Size 10" x 12"

5/11

17 COLOURFUL BRITAIN CALENDAR

Size 7½" x 9½"

3/11

18 CHRISTMAS TREE WITH BAUBLES

A beautiful white cascade tree complete with ten mirrorbrite baubles. The tree breaks down into three separate pieces for storage.
59/11



16

CALENDAR



17



18

15

££££££££

Your organisation is sure of raising more funds in 1969 with the Webb Ivory Fund Raising Service. More National Charities and thousands of smaller organisations are benefitting from the service—this is your guarantee of satisfaction. Why not join them?

NAME
PRIVATE ADDRESS

ORGANISATION REPRESENTED
ADDRESS OF HEADQUARTERS

YOUR OWN POSITION
IN THE ORGANISATION

ARE YOU
OVER 21?

CGU/1

3rd FOLD

POSTAGE
WILL BE
PAID BY
LICENSEE

NO POSTAGE
IS NECESSARY
IF POSTED IN
GREAT BRITAIN
OR
NORTHERN
IRELAND

SECOND CLASS

BUSINESS REPLY SERVICE
LICENCE No. BM 2055

WEBB IVORY LTD.
LITTLE CORNBOW,
HALESOWEN,
WORCESTERSHIRE

2nd FOLD

don't delay complete
the **REPLY-FORM** now for
2 FREE full
colour catalogues

(100 PAGES) of the entire 1969
Webb Ivory range - and full details.



**WEBB
IVORY**

**Britain's largest
manufacturer of
Christmas Cards**

offer a
FUND RAISING
service which
is...

SIMPLE

Webb Ivory keep administration and accounting formalities to a minimum. A careful record is kept of all your purchases and you make one payment—at the end of the season.

EFFECTIVE

Webb Ivory have an experienced design and market research team which ensures that the entire range is up-to-date with public demand.

PROFITABLE

We allow an extremely generous profit margin on all items in our range.



Illustrated by Catharine Towne

WHAT WE HAVE DONE

By Isabel N. Anderson

1. 'I Like . . .'

'Can we have records one evening at Guides?' was the initial request from a P.L. That started it, each Patrol wanted time to play its favourites to the rest of us, as we agreed to have half an hour during four of our meetings, at monthly intervals, given over to a Patrol for its choice. Then . . . 'I think they should say why they like them' said someone and a small voice added, 'but, Cap, not everyone's got records anyway'. So we decided our scope and agreed that each Guide should be able to show, read or play something she liked, a record, a poem, a picture, a photograph, etc.

Result: A series of fascinating half hours. The first was devoted to records—the latest Beatle hit, part of the sound track of Goldfinger ('I like violence in music!') some of Tchaikovsky's ballet music, and finally the Hallelujah chorus. We were due for a second session of records but the all-important plug on the player was the wrong sort so in haste the Patrol concerned devised a game for us to play that they liked. (Quick thinking (?) and perhaps a lesson in being prepared in advance especially with regard to electric plugs.) Next we saw a collection of ore-bearing rocks gathered on holiday, a collection of trolls ('Fancy anyone wanting more than one!') and a set of photographs taken from unusual angles ('My sister at Art school took them') and the fourth Patrol produced a display of string puppet manipulation, and some ideas on the uses of Spirograph patterns.

Was it a Success? Interest was aroused among the Guides, the Guiders were fascinated by new light on the young, some girls had practice in saying why they liked something, others showed discipline in listening to someone else. Perhaps most important, the original idea came from the Guides, and was adapted by them to give everyone a chance, especially the non-possessors of records. What is 'success' anyway in a Guiding context?

2. Disaster Bags

Our District Commissioner discovered that in cases of earthquake, avalanche, flood, etc., the Red Cross organisation rushes lots of equipment to the site. Included in the packages are Disaster Bags, each one containing such things as washing kit, a toy, notebook and pencil, a ball, a hair-ribbon etc. and each homeless child is given a bag of his very own. In September at the Guiders'

Continued overleaf



BE A FERRET

By Jennifer Hewitson

HOW did you react when you read on page 34 of the Ranger Guider's Handbook the remark by Dr. Macalister Brew on leadership? 'The ideal leader is rather like a well-set jelly!—sufficiently firm to retain its integral shape whatsoever the adolescents may do or say, and yet sufficiently resilient to stand such onslaughts without cracking.' Do you feel like a well-set jelly, or more like a blancmange, thick and wobbly? Leadership has many responsibilities, and working with Rangers often means that the lines are more blurred than with any other age group. It is as the Handbook says on page 33, 'leadership from behind', and it is well to note that the analogy is that of the shepherd and not of the sheepdog. What help can you find in the Handbook when you are trying to define your role as a leader, either to yourself or to some other person? The index lists Leadership Certificates, but this is not quite what you are after, so you must ferret around for yourself and you will have a rewarding hunt.

Part One of the Handbook sets you firmly in a relationship to your work in the Movement as a whole: page 12 shows your relationship with the group and the individual, page 13 the freedom and trust which you enjoy, page 15 your responsibility commitment, and page 16 the crux of your role as a shepherd in a self-programming and self-governing Unit. Page 33 suggests the

penalties of attempting to impose your ideas on the Rangers, even when the motives are of the best, and page 40 shows that there is no need for the Ranger Guider to rush about like a scalded cat in an effort to provide her Unit with the great variety of experience it needs.

Can you sit back without twitching while your Rangers learn how to run a business meeting (page 45)? This is all part of leading, though it can be thoroughly frustrating. You may be the sort of person who hands over the accounts with a sigh of relief, like the Guider whose books only balanced with the help of the item G.O.K. 15s. 4d. 'What is this?' asked her Commissioner. 'God only knows,' replied the Guider. Before you hand over, read page 46.

Your attitude, your honesty, your flexibility in meeting the situation as it arises is an important part of your leadership, because when the atmosphere is right, things happen. See pages 52, 54, 76, 77, 86, 89.

Right at the beginning (page 12) your work was shown as related to the group and to the individual. This is helpfully expanded later on, pages 48/49/50, and in a slightly different manner on page 62 and (with the personal note book) on page 70.

In essence though, the rewards and responsibilities of the Ranger Guider's work are summed up on page 36. You may not have anything tangible to sew on your sleeve or pin to your uniform, but you will have an endlessly interesting time. Look up the sub-section on pages 103/104 entitled 'The Guider's Job' and see just what richness of opportunity you have as a Ranger Guider.

Continued from previous page

meeting, we agreed to ask our Units if they would consider equipping such bags as part of their Christmas Good Turn. Most Units agreed to do so, in Patrol groups or Pack groups. The list of things to include was copied and the bags, supplied by the Red Cross, were distributed, and work began.

Result: At our Carol Campfire, the Youth Organiser for the Red Cross came to receive fifty completed bags and told us that we had supplied a quarter of the daily quota as British Red Cross dispatches 200 a day to various part of the world.

A Success? The Red Cross organisers are very thrilled that we are working WITH them in this way. Patrols have worked together on this project, though in some Units, help at the very last minute was needed from Company funds to complete the list of contents. From the Guider's point of view, we have increased our sense of unity as we don't usually have a District Good Turn . . . if only every Unit had joined in and had kept to its undertaking. (How can we help people to plan according to their resources, to say when they are finding things too much, to think ahead so that projects get finished?)

3. 'Edible Hats'

A voice at a P.Ls. Council . . . 'My Patrol would like to have refreshments at Guides sometimes'. 'Any ideas how?' 'Yes, we thought we could have pop or squash on hot days, and sell for Patrol funds.' 'All right, you organise it for us.' But, whatever the weather, such drinks have never materialised at our meetings—yet! So the Guiders put their heads together and out of the blue said 'Let's have a competition for edible headwear, the week after next'.

Result: At first great apprehension ('What do you mean? We haven't got to put food on our hair surely?') in the end great fun and much showing of ingenuity. We had rice paper cones with a helter-skelter of Smarties round them, coronets of individual Swiss rolls on a foil pie tray, sausage rolls in Tupperware, kept on by a string, straw hats covered with fruit gums, etc. The winner, by vote was three oranges joined with cocktail sticks with a pyramid of jelly babies on cocktail sticks on each one, the whole thing kept on with a bright orange ribbon.

A Success? By all accounts yes! After all we ate, and ate—but not the one made from the outside leaves of a cabbage still on a piece of stalk!

WHY NOT TRY —

From A Handbook for Guiders: Brownie Guide Section.

Treasure Bag (Page 38).

'Pass round a closed bag in which are such objects as a box of matches, a tea-spoon, a button, etc. Each Brownie puts a hand into the bag as it reaches her and then draws a Good Turn she could do making use of the object she has felt.'

Played just as suggested this is a quiet activity, to be taken towards the end of the evening, or just before Pow-wow, where it could stimulate discussion on the Good Turn, and probably lead to individual plans for a Good Turn on the following day. It might be helpful to let the Brownies do their drawings within their Six Group, so that any Brownie completely devoid of an idea can be helped by the others. This gives the Sixer a chance to help—all good for Relationships!

You might like to try this in a more active manner!

- 1) Let each Six have a dice, which is thrown in turn. When any Brownie shakes a six, she comes out to get an object from the Treasure Bag. Continue until each Six has 3, 4 or more objects. Then each Six can mime a Good Turn, bringing in each object. A mime per object, at first, but when the Brownies get the idea, one mime bringing in all the objects.
- 2) Let each Six make up a story, each Brownie contributing a sentence, to show how all the objects could be used in one Good Turn.

These miming activities need no scoring and are not competitive, but the rest of the Brownies can applaud or comment on good ideas.

L.W.

.... and a different approach from another Guider

Treasure Bag (Page 38). You may find that this good idea for suggesting Good Turns means that the Brownies will have rather a long wait for a turn if you have a full Pack. If so, have four identical bags, one for each Six. Pass them round the Six, e.g. until you call 'Stop'. The Brownies holding the bags feel for an object and then go away and carry on with their drawing while the rest continue to pass the bags round. Six turns will be enough for all to take part, and it will not matter if the Sixes are uneven. Afterwards, in Pow-wow, the drawings can be compared and the suggestions discussed. A few felt tipped pens are a great help.

Having gone to the trouble of collecting these bags of objects, which cannot be used too frequently in this way or the ideas become stale, you may like this variation. Have the Pack in a ring with the bags fairly evenly spaced round. Pass. When you say 'Stop' name an object in the bag. The first Brownie to pick out the object by feeling only is the winner and is awarded a spill. A Brownie is Wide Awake.

Six Balance (Page 47).

'The Brownies hold hands in Sixes. At "Go" all curtsey sit. Decide which Six is first with everyone in a good position and which can stay sitting longest. Next try this in a circle, and then with the circle facing outwards.'

Your Brownies are sure to find this activity fun and you may like to extend it by letting each Six think up balancing challenges and challenge the other Sixes. These will probably be individual as there is less scope if they have to hold hands. Remind the Brownies that they must practise so that they are really good, because when they challenge the others they are really suggesting that they are unbeatable! This will be more fun if there is some simple apparatus which can be utilised such as logs, tree trunks, a low wall, bench or strong stool or chair. You can either score individually or vote for the best Six.

Pack Concerts (Page 54).

'Suggest that each Six produces at least one item to perform to the Guiders. This may uncover much local talent of which you may be able to make use later. (If ever a performance is given to an invited outside audience, proper rehearsals must, of course, be held, and a good standard achieved.)'

Brownies enjoy impromptu concerts but sometimes they are very stuck for ideas and you get either some of the poorest 'telly' or something they have done at school. If this is so, introduce them to some very simple puppets. There are ideas for these in the Brownies' own Handbook, page 64. To begin with, introduce those which can be made and used in the same evening. For some reason Brownies who are very stiff and inhibited when acting or taking part in a charade or other acting game, will become completely natural when speaking for a puppet. It is as though they forget that they can still be seen and recognised for themselves. I have had very satisfactory results with the most simple devices—a) a face marked on a thumb nail with a ball pen. b) the outside of a matchbox pushed over two fingers, one side first covered with pink gummed paper, and a face drawn on this with a pen or felt tip. Hair can be added with wool. A duster over the hand before the box is put on helps the illusion. One of my Sixes did Snow White and (some of) the Seven Dwarfs in this way most effectively, using dabs of cotton wool for hair and beards. c) Another quick way is to carve up a potato, gouge out enough to put a finger in, and pin a coloured paper garment round the neck, using ordinary dressmakers' pins.

Run and Find (Page 61).

'Round the room are pictures of half a dozen Brownies from other countries. The Guider calls out, "Which Brownie wears a green tie?" The Brownies run round, find the answer, return to their ring and sit down. Later flags of the countries may be added.'

Pictures for this game may be found in **THE BROWNIE** and in the painting books available at C.H.Q. shops. These pictures are easily traced and can then be coloured by a group of Brownies or by the whole Pack if you want a lot.

(Continued on page 208)

I WORK WITH Mentally Handicapped Ranger Guides

by N. Bolton

WHEN we started with a Guide Company of twelve, the first thought was 'What can we teach these mentally handicapped girls?' That was some years ago and now we have a Ranger Unit of twelve, some of the girls being from the original Guide Company, which was disbanded when younger children of sufficiently high grade were no longer admitted to the Hospital. I hope the words Mentally Handicapped will not deter any Guider or helper who has been asked to work with a Unit. It is quite hard work as everything takes twice and sometimes three times longer than normal girls would take and a lot of improvisation has to be done. For instance, learning the Law and Promise is a big task but by making a scrap book, cutting out pictures to illustrate the Law and writing under each picture (you may have to write letters one at a time to be copied), you find they will learn and understand the Law and Promise.

'Try one of these or something similar' says the new Handbook, and we find with a little thought we can do something from each section. Keep fit for instance, a brisk walk around the Hospital wards once a day, not much, but to these girls a challenge. A visit to an outside Ranger Unit to see a flower arranging demonstration was a huge success. As our Rangers live in a hospital they never get a chance to do small things for themselves, so it was quite a thrill to be able to 'have a go' at our next meeting with twigs and a few flowers.

Sweet and cake making (the kind that does not need cooking) packed into small coloured paper bags and given to an old or sick friend (after a few have been sampled, of course) is a popular 'trying something new and thinking of others' service.

Another interesting meeting was when we went to our Parish Church and with the Rector's permission we took brass rubbings. While two girls were doing this three others were practising carrying the colours, as we go to Church Parade once a month with the other Units. The rest had a conducted tour of the Church, afterwards changing around so that each had a turn at the different activities. The brass rubbings we mounted and made into calendars which we sold to raise money for our Christmas Good Turn.

During the years we have had several weeks of day camping and one year seven girls camped with an ordinary Unit sleeping in tents and joining in all the camp activities. Last year with four

Guiders and eight Rangers we went to our County Brownie Hut and camped inside for five days. As we were blessed with fine weather we were able to be out of doors every day, doing all the camping activities girls love doing. I am still wondering if it was meant as a compliment when one Ranger said, 'We love camp sausages, we never get them burnt in Hospital'. I think camping and camp fire cooking is the one thing the Rangers like doing best. These are only a few of the things we have done over the years, other projects have been embroidery, gardening, soft toy and puppet making, leather work and knitted squares for blankets for an African Mission Station. We also make our own Christmas and Get Well cards.

One main thing to remember when taking a Mentally Handicapped Unit, always know what you are going to do at your meeting, but be prepared to adapt. For instance, if it is a nice day go for a walk instead. If you live in the country let the girls see how many birds, trees, or flowers they can see, if it is a walk among shops and houses, how many houses with green doors, or with telephones, or shop signs with the letter T in the name. These all help to the interest of the walk and teach the girls to notice things.

Scrapbook making is a wonderful way to learn, from pressing flowers and twigs to International Guiding, and afterwards the books can be passed on to children's clinics, doctors' or dentists' waiting rooms.

Don't be discouraged if it takes twelve months or more to knit one garment, the thrill the girl gets when it is finished is worth all the time spent on it. You must have plenty of help, as you will find some girls learn some things more quickly than others, so you will have to have many small groups.

If you have a sense of humour and lots of patience you will find the work, though often frustrating, in the end well worthwhile.

Why Not Try?

Continued from page 207

I have found that this is another activity which is not easy with a full Pack and have sometimes varied it by numbering the Sixes and having only one or two Brownies from each Six searching for the answer to the question. The Brownie who finds the picture to which you are referring may bring it to you and be awarded a token for being quick. I have found it an advantage to have plenty of pictures, even if some are 'repeats'. M.G.

Here At C.H.Q. Here At C.H.Q. Here At C.H.Q. Here At C

Annual General Meeting

This article has to go to press too early for me to be able to tell you about the Annual General Meeting on 14th May. This will, of course, be fully reported in our July issue.

Chief Guide visits C.H.Q.

The Chief Guide is often glimpsed at C.H.Q. when she comes here for Committee meetings or official functions, but on 30th April she came for the express purpose of meeting and talking to the members of staff. Those who have heard the Chief Guide talk about her world-wide experience of Guiding will know what an inspiration she is to all of us. After her short talk the Chief Guide shook hands with all the new members of staff.

Miss Grace Dutt

C.H.Q. has just said farewell to one of the longest serving members of the staff—Miss Grace Dutt, who

cluding the International Camp at Hall Barn, and the Centenary World Camp at Windsor where she was responsible for the management of the C.H.Q. shop in the 'Market'. During the war years Miss Dutt was a full-time Brownie Trainer, and also worked in Forestry Camps and Fruit Picking Camps.

Her service 'in the field' enabled Miss Dutt to appreciate the Guiders' viewpoint, and the desire to satisfy the customer was always uppermost in her thoughts. No matter how lowly or menial the task, Miss Dutt applied herself wholeheartedly, often working with the staff in the sections under her control, giving a helping hand and encouragement. Her practicability, laced with a sense of humour, on many occasions made light of a heavy load.

In 1957 Miss Dutt was awarded the Beaver. She earned the respect and affection of all who worked with her and we now wish her a long and happy retirement so well deserved.



Miss Dutt

photo: C.H.Q. Periodicals

has retired after giving 44 years' valued service. She joined the shop staff in 1925 as salesgirl and was later transferred to the Buyers' offices as clerk. Miss Dutt became responsible for the Mail Order section of the Equipment department, and traversed via the role of Deputy Equipment Manager to finally becoming Sales Manager.

Until recent years she was an active member of the Movement, having been a Guider for Brownies, Guides and Cadets, also Camp Adviser. She qualified for the Brownie Training Certificate and the Camp Training Diploma.

Miss Dutt attended most of the big camps, in-

Guide Service Stars

As you know, these stars became obsolete with the introduction of the new programme in 1968. We do, however, have stocks of these in 2nd-9th year. It is possible that Guiders might find these useful in awarding points for camp plays etc., and if anyone would like a supply at 1d. each, please write to C.H.Q. marking the envelope 'STARS' and enclosing a stamped addressed envelope appropriate to the quantity ordered.

Brownie Guide Participation in Parades

The Executive Committee have agreed that Brownie Guides may take part in suitable youth events in any manner considered desirable, at the discretion of the Commissioner. The possibility of Brownies carrying their Pack Pennants uncased on such occasions is recognised. (See paragraphs 10(3) and 52 in P.O.R. 1969).

Guider's Camp Dress

The Guider's Camp Dress illustrated on page 221 is already proving very popular. It caused a great deal of favourable comment when it was worn by the younger members of C.H.Q. Staff when they waited on the luncheon guests during the Annual General Meeting.

The Camp Dress is being worn by some of the shop staff in all our branches and sales are leaping ahead now that Guiders can see how attractive the dresses look when worn.

Thöra McCarthy
General Secretary

hcn

headquarters' notices

APPOINTMENTS & RESIGNATIONS

Public Relations Adviser. Mrs. E. F. Hatch as Public Relations Adviser from 1st May, 1969. (vice Miss B. A. Fripp resigned.)

Commissioner for British Guides in Germany. Mrs. J. Cordingly as Commissioner for British Guides in Germany from 1st May, 1969. (vice Mrs. V. Erskin-Crum resigned.)

Deputy Chief Commissioner for England. Miss M. E. Chance, J.P. as Deputy Chief Commissioner for England from 1st June, 1969.

Assistant Extension Adviser for England. Miss T. Scarffe as Assistant Extension Adviser for England (Hospital, P.H. and Epileptic Packs and Companies) from 1st November, 1968. (vice Mrs. Gentry resigned.)

Outdoor Activities Adviser for England. Miss W. Naunton as Outdoor Activities Adviser for England from 1st January, 1969. (vice Miss M. Heys-Jones resigned.)

Boating Activities Adviser for England. Miss E. Sutliff as Boating Activities Adviser for England from 1st January, 1969. (vice Miss M. Chance resigned.)

Brownie Guide Assistant Programme Adviser for England. Miss M. Leeson as Brownie Guide Assistant Programme Adviser for England from 15th March, 1969. (vice Miss E. Odell resigned.)

Sales Manager. Mr. L. Saunders as Sales Manager (vice Miss Grace Dutt retired.)

C.H.Q. AWARDS

GOOD SERVICE

Silver Fish

Mrs. Derek Parker Bowles, Chief Commissioner for the Commonwealth.

Laurel Award

Miss I. Baugh, Brownie Guider, 15th Hereford (St. Martin's), Herefordshire.

Miss E. Bellefontaine, Division Commissioner, Edmonton, Middlesex East.

Mrs. O. Brown, County Commissioner for Bristol.

Mrs. J. G. Downward, County Commissioner for Hertfordshire.

Mrs. Eatough, Queen's Guide Recorder for Lancashire, South East.

Miss M. L. Finlow, District Commissioner, Coventry Godiva, Warwickshire.

Mrs. Hoblyn, County Commissioner for Dorset.

Miss D. Isherwood, County Camp Adviser for Lancashire South East.

Mrs. D. E. Jones, District Commissioner, Coventry Charterhouse, Warwickshire.

Miss A. A. Joseph, Division Commissioner, Chester, Cheshire.

Mrs. Leckie, J.P., Guide Guider, 8th City of Aberdeen, City of Aberdeen.

Miss E. M. Mickleburgh, District Commissioner, Biscot, Bedfordshire.

Mrs. A. L. Mills, County Secretary for Denbighshire.

THE GUIDER

Mrs. E. Montgomery, C.C.I.A. for Sussex East.
Miss H. M. Owen, Guide Guider, 25th City of Coventry (All Saints), Warwickshire.
Mrs. Painter, Secretary, English Extension Committee and Division Secretary, Thurrock, Essex West.
Miss E. M. Paul, District Assistant, Woodside, Cheshire.

GALLANTRY

Silver Cross

Pauline Riley, Patrol Second, 10th Fulham (St. Matthew's) Company, London, North West.

Pauline was at home looking after her brother Gerald with whom she was watching television, and her two younger brothers who were upstairs in bed when she smelt burning and saw that the hall was full of smoke. She raised the alarm with neighbours taking Gerald with her and then returned home, and although she could hardly see or breathe made her way upstairs into the children's room, groped her way to the cot where she found one brother and picked him up, and then the other whose hand she held and took them both to the stairs handed one to the neighbour and ran down the stairs with the other. Fortunately no one was injured. The banisters were too hot to hold and started to burn at the bottom. The fire had by this time taken such a hold that the Fire Brigade had to enter the house by an upper window and use breathing apparatus. Pauline's courage and presence of mind helped save the lives of the younger members of her family.

MERITORIOUS CONDUCT

Star of Merit

Audrey Bostock, Guide, 1st Lower Peover Company, Cheshire.

Audrey's example of courage and fortitude when she had a leg amputated has been an encouragement and help to many. She has accepted the situation calmly and tries hard with her artificial limb. She is a grand girl in every respect, always cheerful, willing and takes a full part in all Company events.

Penelope Margaret Curry, Guide, 200th Bristol (Christ Church Cotham) Company.

Penny has been a keen Brownie and is now an enthusiastic Guide, never complaining even when faced with disappointments and having to bear pain. She is an inspiration both to Guides and Guiders by her dogged perseverance and complete selflessness. Her unceasing good humour is always evident.

Ann Firth, Guide, 14th Stockport Company, Cheshire.

Following an accident playing hockey, Ann had to lose a leg, and although things have often been very difficult for her she has always been most cheerful and a great example to everyone. Determined to overcome her handicap she maintains her merry disposition.

Joyce Gillson, Guide, 3rd Diss (Salvation Army) Company, Norfolk.

Throughout all her troubles Joyce has remained happy, never grumbles, and takes a keen interest in everything happening around her. She has had to spend a lot of time in heavy plaster which meant that she was almost

immobilised. Joyce has been a keen Brownie and Guide. Susan McCabe, Brownie Guide, 35th Preston (St. Paul's) Company, Lancashire, North West.

Susan has been a very good Brownie. She attends all the Pack meetings that she is able and takes part in as much as possible. She tries very hard not to be any worry to her family and everyone is very proud of her.

Certificate of Merit

Christine Aze, Patrol Leader, 1st Lake Company, Isle of Wight.

Rosemary Boyd, Ranger Guide, Irvine 'A' R.G.S.U., Ayrshire & Bute.

Marian Ford, Guide, 3rd St. Leonard's Company, Sussex, East.

Susan Margaret Rushton, Patrol Leader, 9th Stoke Company, Staffordshire.

Carol Ann Shackleton, Brownie Guide, 1st Taplow & Hitcham Pack, Buckinghamshire.

Hazel Smith, Ranger Guide, Lately 1st London Post Rangers, London, North West.

Anne Elizabeth Willsher, Guide, 1st Fordoun Company, Kincardineshire.

Letter of Commendation

Andrena Hampson, Guide, 1st Colwyn Bay Company, Denbighshire.

BROWNIE PACK OVERNIGHT VENTURES

An increasing number of Brownie Packs are seeking permission to undertake Pack Ventures that involve their members in being away from home for one night. A Pack Venture of this kind is one that should have a special purpose, and the overnight stay should be incidental only in achieving the desired visit, excursion or play. It should in no way be interpreted as a miniature Pack Holiday; proper accommodation should be used where meals are provided, and no household duties are involved.

To cover the situation the following has been agreed, and details will be included in future editions of P.O.R. and the Brownie Guider's Handbook.

A warranted Brownie Guider of 21 years or over who holds the Pack Holiday Permit may take members of her own Pack on an overnight venture under the following conditions:—

- (a) The number of Brownies must not exceed 18.
- (b) The party must stay in properly equipped accommodation.
- (c) The permission of the District Commissioner must be obtained *before* detailed plans are made.
- (d) A minimum of two adults (18 years or over) must be present throughout.

CUB SCOUT INSTRUCTORS

Ranger Guides who are interested in giving service by becoming Cub Scout Instructors often want to know how they get appointed and how they can train themselves for the job.

A Cub Scout Instructor must be 16-20 years old, and a Ranger is appointed by the Cub Scout Leader with the approval of the Ranger Guider. She wears her normal Ranger uniform. There is no badge of rank for a Cub Scout Instructor.

Cub Scout Instructors' courses are arranged by Scout Districts and Counties for appointed Cub Scout Instructors.

Preliminary self training on the lines of Part I of the

Brownie Leadership Certificate but based on the study of the Cub Scout Leader's Handbook with visits to Cub Scout Packs would be useful but there is no set syllabus or certificate for this training.

The experience of being a Cub Scout Instructor is in itself a preparation for future Leadership as a Cub Scout Leader and a Ranger Cub Scout Instructor over the age of 18 is eligible to attend a Basic Training Course for Scouters.

MIXED UNITS

See page 191.

INSURANCE FOR CAMPS AND HOLIDAYS

Adult non-Guide helpers attending camps, holidays and acting as official members of staff are covered under the terms of our C.H.Q. insurance policies.

It should be noted, however, that this cover does not extend to husbands or children of Guiders who may be present, even though the former may be helping unofficially.

BROWNSEA ISLAND

Camping sites are available on Brownsea from April to the end of September. Cooking is by Calor Gas only but all necessary equipment for this is provided. Applications to camp, with a foolscap stamped addressed envelope, should be made to Mrs. Dyke, Wendover, The Avenue, Sherborne, Dorset.

WANTED: WARDENS FOR CHIGWELL ROW

JOINT WARDENS required (man and wife) at the Girl Guides Camping Ground, Chigwell Row, Essex. Post available to married couple over 35 years of age, one of whom can follow own occupation. Details, with application form, from the Chairman, Chigwell Row Camp Committee, c/o Girl Guides Association, 17/19, Buckingham Palace Road, London, S.W.1.

NOTICE BOARD

COMMONWEALTH CIRCLE

The Commonwealth Circle Summer Reception will be held at Drapers' Hall, Throgmorton Street, E.C.2 (by kind permission of the Court of the Drapers' Company) on Monday, 16th June, from 6.30 p.m. The Chief Guide will be present.

SOUTHWARK CATHOLIC GUIDE GUILD

There will be a church parade on 29th June at 3.15 p.m. at St. George's Cathedral, Southwark. Guide Units to assemble at 2.15 p.m. in Museum Park, Kennington Road Side, Brownie Guide Units in Cathedral Car Park by 2.30 p.m. Further information can be obtained from the Guild Secretary, Flat 3, Edward Road, Bromley, Kent. Tel. 460 9738.

CATHOLIC GUIDE GUILD ARCHDIOCESE OF WESTMINSTER

Catholic Guides and Brownie Guides Parade at Westminster Cathedral 6th July, 1969. Guides and Companies assemble in The Mall not later than 3.45 p.m. Brownie Guiders assemble in Ambrosden Avenue, on the tower side of the Cathedral, not later than 4 p.m. V.I.P.'s. and guests assemble in the precincts at 4 p.m. All colour bearers wishing to take part must attend a rehearsal at 1 p.m. sharp, in the Cathedral.

SERVICE TO THE COMMUNITY COURSE

The Scout Association's second Service to the Community Course will be held at Keele University, Staffordshire, from 16th-23rd August and it is hoped that

(Continued on page 215)

Where to train

TRAINING BURSARIES

GUIDERS attending Guider trainings at Foxlease, Waddow, Netherurd, Broneirion and Lorne are eligible to apply for Training Bursaries. A Guider may receive only one such bursary, except in special cases when the Commissioner may recommend a subsequent award, e.g.: where a Guider changes her Section or becomes a Commissioner, etc.

Fee Bursary: This entitles a Guider to a reduction of half the fee for a shared room. She may request to be in a single or double room but will have to pay the extra charge above that allowed by the bursary.

Travel Bursary: This entitles a Guider to a grant covering travelling expenses in excess of 30s. and is available only for the nearest Training Centre. A travel bursary in addition to a fee bursary, is allowed only in cases of special need and a detailed recommendation from the Commissioner is required. Payment of this grant is made at the Training Centre on production of the bursary form.

Angela Thompson Bursaries: These are available for any Promise and Law Training (not necessarily held at a C.H.Q. Training Centre) and have the same value as a fee bursary.

Application for Training Bursaries must be made through the District Commissioner who applies direct to the Secretary, C.H.Q. Training Department, stating the name of the Guider concerned and the date and place of the training. At least a fortnight's notice should be given. Bursaries cannot be issued in retrospect. Not more than one-third of the places at any one week-end can be covered by bursary grants and Commissioners are asked to indicate priorities if applying for a number of bursaries. A number of L.E.As. give generous help towards Guider trainings and a request for such assistance should be made direct to the Local Authority concerned.

THE GUIDER



Commonwealth Headquarters

An application to attend a training at any Guide Training Centre should be sent direct to the appropriate Guider-in-Charge, and must be accompanied by the correct amount of deposit and a stamped addressed envelope. Applicants should also state the type of training for which they are attending, as there may be several different courses running at any one weekend. As so many Guiders have to leave on Sunday, training sessions at a two-day weekend will stop at teatime on that day unless otherwise stated. If sufficient notice is given that it is wanted, every effort will be made to provide sessions for a group until Monday. Individuals who are able to stay over until Monday to enjoy the surrounding country and other amenities of the Centres are most welcome to do so.

The minimum age for Guiders attending trainings at the Centres is 17 years.

Telephone calls are accepted only between the hours of 8 a.m. and 8 p.m. at Foxlease (Lyndhurst OHA 128-2638) and at Waddow (Clitheroe 02.002-3186), except in emergencies.

FOXLEASE Lyndhurst, Hants.

JUNE

- 9-13 Commonwealth Commissioners' Conference
- 17-24 Guiders of all Sections (who may be accompanied by their children aged under 5). (Some sessions for Commissioners)

- 27-29 General Training Brownie, Guide and Ranger Guiders. (Some places reserved for Cambridgeshire) (Full)

JULY

- 4-6 Supporting the Programme. Division Commissioners (allocation through counties)
- 11-13 The Handbooks. All Sections (allocation through counties)
- 18-20 Brownie and Guide Guiders
- 25-AUGUST 1 Leadership within the Movement. Rangers aged 16 years up who are working on the Leadership Certificate.

AUGUST

- 5-13 Patrol Leaders
- †15-20 Brownie and Guide Guiders. General training with special opportunities to learn about world Guiding
- 22-25 The Promise through the Programme (allocation through counties)
- 29-SEPTEMBER 8 Holiday period

SEPTEMBER

- 12-14 West Midland Area Trefoil Guild
- 19-21 Sussex East County
- 26-28 District Commissioners

OCTOBER

- 3-5 Dorset
- 10-12 Guide and Ranger Guiders
- 17-19 Wiltshire
- *24-26 Brownie, Guide and Ranger Guiders
- 31-NOVEMBER 2 London S.W.

NOVEMBER

- *7-9 Brownie, Guide and Ranger Guiders
- 14-16 Handcrafts and Homecrafts. All Sections.
- 21-23 Brownie and Guide Guiders
- 28-30 East Kent

DECEMBER

- 5-7 The Promise in Action. Rangers aged 16-19 years

WADDOW Clitheroe, Lancs.

JUNE

- 6-8 General Training, Guide and Ranger Guiders
13-15 English County Arts Advisers (by invitation)
20-22 Lancashire N.W.
27-29 Yorkshire W.R.S.

JULY

- 4-7 The Handbooks. All Sections (allocation through counties)
11-13 Guide Guiders with two or three of their own P.Ls. (Full)
18-21 The Promise through the Programme (allocation through counties)
25-AUGUST 1 Patrol Leaders (Full)

AUGUST

- 8-10 Brownie and Guide Guiders
15-22 Certificated and outdoor Specialist Trainers and experienced campers. Outdoor Activities (allocation through counties)

Summer Bank Holiday

- 29-SEPTEMBER 1 Sharing your skills—Specialist Trainers and prospectives (allocation through counties)

SEPTEMBER

- 5-7 Friends of Waddow
†12-14 Campfire (priority given to newcomers up to 1st July, 1969)
19-21 Guide and Brownie Guiders
26-28 Cheshire County

OCTOBER

- †3-5 Creative Activities. All Sections
10-12 Durham
17-19 Guide and Ranger Guiders
24-26 District Commissioners
31-NOVEMBER 2 Lancashire S.W.

NOVEMBER

- 7-9 The Promise in Action. Rangers aged 16 to 19 years
*14-16 Brownie, Guide and Ranger Guiders
*21-23 Brownie, Guide and Ranger Guiders
28-30 (a) Folk Song and Dance
(b) Guitar, Beginners and elementary (state experience when applying)

††Bookings will be accepted for a short weekend for those who cannot attend the whole period.

†Creative activities

This weekend will have something for everyone. It is hoped to include the following:

- Drama and Dance
A Barn Dance
Puppets and Mobiles
Handcrafts for all ages
Campfire singing
Guitar playing
Handbell ringing
Come and try something new!

*Brownie, Guide and Ranger Guiders

The two asterisked trainings at each centre will be linked; the second following on from the first, but each complete in itself. Some places will be reserved initially for Guiders who may be able to take advantage of this opportunity to get a more comprehensive course by attending both weekends. This does not preclude application in the ordinary way by Guiders who can attend only one weekend.

‡Campfire weekend

Have you ever been to a Campfire weekend? If not this is your chance. Up to 1st July priority is being given to Guiders who have not attended this kind of training before, and we hope that this will encourage many newcomers. You can be sure of a warm welcome and a very stimulating light-hearted weekend. After 1st July the training will be open to all-comers so apply soon if you hope to get a place.

Fees at Foxlease and Waddow (as from 1st July, 1969)

Shared room per day 27s. 0d.
(Minimum fee for weekend £2 14s. 0d.)
per week £8 0s. 0d.

Double room per day 34s. 0d.
(Minimum fee for weekend £3 8s. 0d.)
per week £10 4s. 0d.

Single room per day 40s. 0d.
(Minimum fee for weekend £4 0s. 0d.)
per week £12 0s. 0d.

Deposit £1 0s. 0d. (cheque or postal order only)

Bookings made before 1st April for trainings after 1st July will be charged at the old rates

Scotland

NETHERURD HOUSE Blyth Bridge, West Linton, Peeblesshire

JUNE

- 6-8 Guiders. 'Making music and acting'
13-15 Edinburgh South-West and Handicapped Trefoil Guilds
16-18 New Commissioners

JULY

- 4-8 Patrol Leaders
11-15 Patrol Leaders
17-25 Patrol Leaders' Woodcraft Camp.
18-25 Patrol Leaders' Week (by invitation)
29-AUGUST 5 British Nordic Gathering (by invitation)

AUGUST

- 11-19 Patrol Leaders' Woodcraft Camp
12-19 Patrol Leaders' Week (by invitation)
29-SEPTEMBER 1 Finaghy Local Association

SEPTEMBER

- 5-7 S.C.P.R. Keep Fit Group
12-14 Brownie and Guide Guiders
19-21 Brownie and Guide Guiders
26-28 Ranger Guides (including sessions for Ranger helpers in Packs and Companies)

Fees at Netherurd

Shared room per day 17s. 6d.
per week £5 5s. 0d.
Double room per day £1 0s. 0d.
per week £6 0s. 0d.
Single room per day £1 2s. 6d.
per week £6 15s. 0d.
Deposit 5s. 0d.

Wales

BRONEIRION Llandinam, Mont.

JUNE

- 6-8 Guide and Brownie Guiders (places reserved for Monmouthshire)
14 Biennial Meeting of the Council

- 25-JULY 2 West Glamorgan Handicapped Children's Holiday

JULY
*21-26 Patrol Leaders, 12-14 years
*29-AUGUST 4 Patrol Leaders, 12-14 years

AUGUST
*8-14 Patrol Leaders, 12-14 years
*18-23 Pack Leaders
29-SEPTEMBER 2 Ranger Leadership Certificate

OCTOBER
3-5 Camp and Pack Holiday Training (places reserved for Derbyshire)
10-12 Leicestershire
17-19 Camp Advisers' Conference (by invitation)
24-26 Brownie, Guide and Ranger Guiders
31-NOVEMBER 2 International (by invitation)

NOVEMBER
7-9 Orienteering
14-16 Handcrafts for Christmas (All sections)
21-23 Prospective Trainers
28-30 Pre-Warrant

DECEMBER
5-7 University Scout and Guide Clubs

*Places allocated through Counties

Fees at Broneirion

Shared room	per day	17s. 6d.
	per week	£5 5s. 0d.
Double room	per day	£1 0s. 0d.
	per week	£6 6s. 0d.
Single room	per day	£1 2s. 6d.
	per week	£6 15s. 0d.

Deposit 10s.

Ulster

Lorne, Craigavad, Co. Down
No forward dates available.

Camping, Holidays and Pack Holidays

Foxlease and Waddow Camp Sites

Applications for sites at Foxlease and Waddow should be addressed

THE GUIDER



Broneirion

to the Secretary, and the envelope marked 'Camp'. Suggested dates should be given with possible alternatives, and approximate numbers, and please state if an equipped or un-equipped site is required. Camps may begin on any weekday at Foxlease but Waddow prefers camps to begin on a Saturday.

A 5s. deposit (forfeited if the booking is cancelled) and a stamped addressed foolscap envelope should be enclosed.

Waddow Pack Holiday House

Applications for Pack Holidays in 1969 should be made to the Secretary and must be accompanied by a written recommendation by the Guiders' C.A. A stamped addressed envelope should be enclosed.

Broneirion Camp Sites and Pack Holiday House

Applications to Mrs. B. Michael, Gorsty, Hyssington, Montgomeryshire.

Netherurd Camp Sites

Applications to the Guider-in-Charge, Netherurd, West Linton, Peeblesshire.

Ulster Camp Site, Craigavad, Co. Down

Application to Miss N. Pratt, 22 Bangor Road, Holywood, Co. Down.

Lorne Camp Sites

Applications to the Camp Secretary, Lorne, Station Road, Craigavad, Co. Down.

Magilligan Camp Site, Co. Londonderry, N. Ireland

Applications to Mrs. R. F. Scott, Derrymore House, Limavady, Co. Londonderry.

Lorne—The Irene McKibbin Memorial Cottage

Ranger Units and Guiders are invited to come for their holidays to this Cottage in the grounds of the Ulster Training Centre.

The Cottage is fully equipped for parties of twelve and full details can be obtained from Mrs. Grace A. McBride, Site 9, Upper Dunmurry Lane, Dunmurry, Belfast. S.a.e. please.

Holidays at Lorne

This Training Centre will be open to Guiders and members of the Trefoil Guild for holidays. Apply to the Guider-in-Charge, Lorne, Craigavad, Co. Down, Ulster.

Full details of the above appeared in the March Guider.

C.H.Q. Staff Vacancies

Resident post at Foxlease, Lyndhurst, Hants., for qualified **Lady Cook/Caterer**. Used to handling staff. Maximum number to cater for approximately 50, 1½ days off per week plus 3 weeks annual holiday. Salary £750-£850 according to age and experience. Regret no accommodation for children.

Assistant to the Overseas Secretary

The Assistant to our Overseas Secretary will be a senior member of our Staff.

She will act as Administrative Assistant to our Overseas Secretary who is in charge of the Overseas Department.

The Assistant will be responsible, in conjunction with the Overseas Secretary, for the day to day running of the Department and for the delegation of work to the Secretarial Staff. She will be directly responsible to the Overseas Secretary in whose absence she will act as Deputy.

The Overseas Department works closely with the Chief Commissioner for the Commonwealth who is the link with the Associations of the independent countries of the Commonwealth, and with the Deputy Chief Commissioner who looks after the Branch Associations in the non-self-governing countries of the Commonwealth.

The Department, therefore, has a very large post-bag and gives advice and help on a wide variety of subjects and problems.

We anticipate that the successful applicant will have experience in general office administration and dealing with staff; will be interested in the Commonwealth; get on well with people and have a sense of humour with a lively personality.

It will be obvious from the above that for a position of this nature it will be a distinct advantage to have had experience within the Association.

Although there is Secretarial Staff it would be valuable to have a knowledge of shorthand and the ability to type.

Age range preferred: 25-35.

Salary range: £850-£1,100 per annum.

Needed by early autumn—an **Administrative Assistant to the Training Department Head**. This is a responsible senior position involving confidential administrative work and the organisation of staff. Good secretarial ability is required, together with a sound knowledge of Guiding. Experience of training/camping would be an advantage.

Age range approximately 25 to 40 years.

Salary according to age and experience.

International/Travel Department needs a **keen girl** of perhaps 16-18 able to type, happy to use a dictaphone and to assist generally in this very busy and interesting office. This job will give an excellent training in office practice and at the same time give a bit more scope to a girl with something extra! Could be opportunities to use French.

Our General Secretary needs a **'Girl Friday'** to join the secretarial staff of her Department. Must be able to type and enjoy helping with our various important Committees. She could learn to use a dictaphone and should enjoy helping generally. The perfect job for a keen girl who wants experience in the workings of a busy and happy Department.

Sales Assistants are urgently needed for our Shop, both permanent and for the summer season only. Salaries according to age and experience. Guiding experience would be an asset but is not essential.

All staff work 35 hours per week and have 3 weeks holiday annually. We have an excellent restaurant and House Luncheon Vouchers are provided.

C.H.Q. is within 5 minutes walk of Victoria main line and underground stations, bus routes and shops.

Telephone or write for further details of any of the above vacancies to Mrs. Kempton, Personnel Manager, 01-834 6242.

Notice Board (continued from page 211)

School Teachers, Social Workers, Youth Leaders and other interested persons will join with members of the Scout and Guide Movements in investigating the important and growing aspect of our National Life. The minimum age is 18 years, and the inclusive cost of the Course is 6 gns. Full details and application forms from: The Director of Leader Training, Gilwell Park, Chingford, E.4.

The Course aims to explore the various ways in which volunteer personnel of both sexes from the 14-20 age group can render service to the community.

THE ASSOCIATION OF METHODIST SCOUTERS AND GUIDERS

The launching of the above Association will take place at a weekend conference at Scarborough, on October 17th-19th, 1969. If you would like further details, or booking form please apply to Miss Musselwhite, Methodist Youth Department, 2 Chester House, Pages Lane, Muswell Hill, London, N.10.

Classified Advertisements

The Girl Guides Association takes no responsibility for statements made in any advertisement here or elsewhere in the magazine, or for any subsequent correspondence in connection therewith. The right is also reserved to refuse any advertisement not considered suitable. Advertisements for the sale of second-hand clothing (except uniform) cannot be accepted. (Uniforms for sale should not be sent to C.H.Q. Advertisers receive communications from applicants.) All advertisements must be received not later than the 1st of the month for the following month's issue. **Please note charges: 1s. per word (for members advertising uniform, camp-sites, coming even's, 6d. a word).** Box No. 2s. 6d. Please send money with advertisements. 10% discount for series of 12. **To reply to a Box No.,** please address your envelope to Box No. xxx, c/o THE GUIDER, The Girl Guides Association, 17/19 Buckingham Palace Road, London, S.W.1. Please make sure the address is as far to the right of the envelope as possible in order for us to re-direct your enquiry.

ACCOMMODATION

IN CENTRAL LONDON: Olave House is open 365 days a year. It is conveniently situated for everyone connected with the Guide Movement, who is visiting London for Conferences, Trainings, Reunions, Theatres and Shopping Spree. The nearest underground station is Earls Court. The costs are 20s. to 30s. per night, and there is H. and C. in every room. (Sorry—no accommodation for men!) We are often full—but do remember that it is always well worth asking. Please write to Miss Marshall, **Olave House**, 45 Longridge Road, London, S.W.5. Telephone FRObisher 2574. **Olave House belongs to the World Association of Girl Guides and Girl Scouts.**

Holiday Accommodation, Sussex. Bed, breakfast and evening meal, or full board, weekends October—March. Apply Mrs. Jebb or Miss Cox, 8 Willowfield Road, Eastbourne (29572).

EMPLOYMENT OFFERED

Foxlease will need **Junior House Assistants** in September. If any of your older Guides or Rangers enjoy meeting people and would like to spend six months or longer working in a Guide Training Centre, please apply to the Guider-in-Charge, Foxlease.

Two young residential cooks required to work as members of staff team. Scout or Guide connections an advantage. Apply to: The Warden, Baden-Powell House, Queen's Gate, London, S.W.7.

Required urgently: educated, active woman (35/50) with initiative as Resident Housekeeper, London School. Good salary, own flatlet, all found. Good references essential. Apply Principal, Queen's Gate School, 133 Queen's Gate, S.W.7.

Companion/car driver required for handicapped English woman. Some nursing experience desirable and country lover. Comfortable home beside Lough Erne, N. Ireland. Daily maids employed. Box No. 572.

Required in September, 1969: Two assistant matrons for Senior Boarding Houses of 35 girls aged 12 to 18. Some first aid experience desirable for one post. Comfortable bed-sitting rooms; good salary. Apply with names of referees and testimonials to: Headmistress, Tormead School, Guildford.

Would you like an interesting secretarial job in a most pleasant part of London within a short distance of Westminster Abbey and St. James' Park? The National Assembly of the Church of England can offer you a post in one of its many central departments in Church House, Dean's Yard, London, S.W.1, covering the law, inter-Church relations, education, social work and finance. Candidates must be competent Shorthand/Typists with a good educational background, capable of using their initiative and willing to take responsibility. Progressive salary, five day week, three weeks' holiday. Applications in writing to Miss O. Norton, Room 559, Church House, Dean's Yard, London, S.W.1.

Widcombe Mother and Baby Home. Assistant required in Mother and Baby Home, starting September. Applicants should preferably be trained nursery nurses or young women requiring one year's Social Work experience before training. The Home has accommodation for twelve mothers and babies and five Shelter beds. Good accommodation and conditions. Salary £350-£400 with full board and residence. Applications to the Matron, Widcombe, 36 Grasmere Road, Streatley, Luton, Beds.

FOR SALE AND FUND RAISING

Advertising Pencils, superb Ball Pens, combs, brushes, etc., gold-stamped Company name, raise funds quickly, easily. Bran Tub Toys. Details: Northern Novelties, Bradford 2.

3½d. each!—Printed Ball Point Pens. 144 full-length Conway Stewart ball pens die-stamped in gold with your Company or Charity for only 39s. 144 printed pencils 35s. Please print your slogan. (Maximum 30 letters) and add 4s. 6d. standard carriage. J. E. Thomas & Son (Cuffley) Ltd., 2A Handsworth Road, London, N.17.

An offer to Guiders in S.E. England for up to 20% discount on all makes of furniture and carpets has been made by a leading firm of furnisiers. For details telephone: Farnborough (Kent) 54043.

Dolls for dressing, small toys, paper cups, balloons, money-making novelties. Send large s.a.e. for wholesale trade lists. D. Glover (Wholesale Toys) Ltd., Dept. GD 10, 203 Scholes Lane, Cleckheaton, Yorks.

Organisers of Bazaars, Fêtes and Funds. We welcome both personal buyers and mail orders for our extensive range of toys and stationery at wholesale prices. Send for price lists. Also pre-selected parcels:—144 6d. toys OR 72 1s. toys OR 38 1s. 11d. toys OR selection toys 1s. 11d. to 5s. 11d. OR Selection assorted stationery. Each parcel 54s. plus 4s. 6d. postage. Two or more parcels 6s. postage. J. E. Thomas & Son (Cuffley) Ltd., 2A Handsworth Road, London, N.17.

Rally or Jamboree this year? Pennants and badges for camp-sites, Jubilees and all occasions. For quotation send sketch, state size, colours and quantity. Russell King, 48 Crofton Lane, Orpington, Kent.

Printed British Ball Pens. 42s. gross, plus postage 4s. 6d. This includes 36 letters and spaces advert. Advertising Pencils 37s. 6d. gross, plus postage 3s. Pioneer Pencil Company, 3 Tithebarn Street, Liverpool 2. Central 8166.

British Ball Pens: Gold printed up to 35 letters and spaces, 38s. per gross, all colours, any assortment, quick delivery. Fund Raisers/Key fobs/Badges/Retractable, S.A.E. for list or send 3s. 6d. (refundable) for 10 different samples. Westfield Limited, Dept. 23, 135 Tennant Street, Birmingham 15.

Funds, Fêtes, Bazaars. Sell Costume Jewellery at 50% profit on cost. Toys at 33½% profit. All sent post free on Sale or Return. You pay only for what you have sold. The rest you return. No outlay, no obligation. Send for details to E. & M. Davies Ltd., 101 Askew Road, London, W.12.

Increase your Company funds with scent cards. Send s.a.e. for details and samples to: R. Ramsdale, 58 Pall Mall, Chorley, Lancs.

Ball pens printed 39s. gross (including postage). S.a.e. sample: Ventura Wholesale, 28 Lynwood Avenue, Slough, Bucks.

Double your money raising funds for Guides, Brownies, and other organisations. Gold stamped Advertising Ballpens/Pencils/Key fobs, etc. Fully guaranteed. Details or 6 samples for 2s. 6d. to: B. W. Publicity, Dept. 'Q', 33 Hird Road, Low Moor, Bradford.

Ball pens for Fund Raising. As one of the largest wholesalers in the United Kingdom who specialise in the die-stamping of ball pens, we offer your Company the most competitive rates available. First class quality, speedy service, full guarantee, nett result. Large profits. We supply the 'Conway Stewart' and 'Reliance' ball pens which are both retractable and refillable, plus our 'Stylo' non-refillable model, we also offer our new 'Conway Fybriter' which is available in eight ink colours, all of these can be die-stamped with a wording of your choice. If you require the best, we can supply you! All at unbeatable wholesale rates. Send today for our Fund Raising list. Thompson and Creighton, 202 Heaton Road, Newcastle-upon-Tyne, NE6 5JJ.

Cups and Saucers: Best value ever. Attractive glazed earthenware sets in choice of Royal blue or green. Only 108s. for 144 piece pack or 10s. for sample 12 piece set. Send c.w.o. stating colour choice to: Censter Limited, Dept. G., 30 Hill Street, London, W1X 7FU.

Tea Chests for sale 5s. 6d. each (collect). Apply: Goddard & Son (house furnishers), High Street, Brentford 560-7127. Removals and furniture at discount.

CAMPING AND HOLIDAYS

Warwick near. Indoor camping accommodation and room for a few tents, 2gns. per person per week. 1/10th deposit required on booking. No linen. Most dates available. Room in house for elderly parents if required, 3½gns. each per week. All fully equipped and with cooking facilities. S.a.e. Miss E. S. Tait, The Old House, Longbridge Corner, Warwick, Barford 201.

Felin Bach — Caernarvonshire — County Camp-Site. Large camping area and indoor accommodation suitable for Pack Holidays, available all the year round. Snowdonia National Park half-a-mile, climbing, hill-walking and safe bathing within easy reach. Apply to: Miss M. Chambres, Tirionfa, Tanyralit, Pen-y-groes, Caerns.

Dorset, overlooking Lyme Bay, Guider's own 4-berth caravan, direct access Chessil Beach. Balson, Beacroft Lane, Wimborne, Dorset.

Switzerland: 22nd-31st August, 1969. Guiders, Rangers, Guides welcome to join Williton District at chalet near 'Our Chalet'. Cost £30. Mrs. J. M. Martin, Highbridge House, Williton, Somerset.

Sidmouth near. Country cottage to let from 14th July, sleep 12, 25gns. per week. Fully equipped, no linen. Miss E. S. Tait, The Old House, Longbridge Corner, Warwick, Barford 201. S.a.e. 1/10th deposit per week on booking.

Guiders. If you are camping at Ashburnham Place, Ashburnham, nr. Battle, Sussex or in the vicinity this summer, you should contact George Phillips, Phillips Stores, Boreham Street, nr. Hailsham, Sussex for all your food requirements, etc. Good discounts given and all goods delivered. Write for further information direct to Mr. Phillips.

Overland India/Nepal with onward or return connections. Depart London 1st October. Arrive Nepal 10th December. Cost £130 inclusive of food, travel and insurance. M. A. Gibbs, 4 Pleydell Road, Swindon, Wilts.

Llwyngwril, 20ft. 4-berth, near sea. All amenities. 179 Walmley Road, Sutton Coldfield. 021-351 2603.

To Let: West Cork, Fully furnished cottage. June-July. Long let preferred. All mains. Near shops, churches, sea, mountains. Sleep 5. £2 10s. 0d. weekly. Box No. 575.

GUIDER WANTED

Help, possibly Q.M. appreciated. Camp 19th July-2nd August. Could include few Guides. Box No. 573.

UNIFORM

Guider's new style uniform, bust 36in., hips 38in., hat £3 Kings Langley 4596.

Guider's new style uniform complete including summer dress. B. 40in., W. 32in., H. 44in. £4. Cook, Churchill Farm, Alderminster, Stratford-upon-Avon, Warwicks.

COMING EVENT

Venture Scouts/Ranger Guides. Due to the huge success of Venture 68, we are holding Venture 69 at Belvoir Castle, residence of His Grace The Duke of Rutland, on 13th/14th September, 1969. Details: The Secretary, Venture 69, 8 Cecil Street, Grantham, Lincs.

TEAS

Matlock L.A. offers teas for parties visiting Matlock. Moderate prices. Book in advance to Mrs. J. Crowder, 29 Imperial Road, Matlock, Derbyshire.

BUSES FOR HIRE

12 Seater Transit Buses for hire. May and October £18 15s. 0d. per week. June and September £21 per week. July and August £22 per week. Plus £25 returnable deposit. No mileage charge. **Continental Hire:** 12 Seater Transit Buses £50 per week. Transit Caravans £50 per week. Tel.: 01-890 5702/3.

Please note: All advertisements for Venture Scout/Ranger events published in THE GUIDER and THE RANGER must be accompanied by signature of County Commissioner.

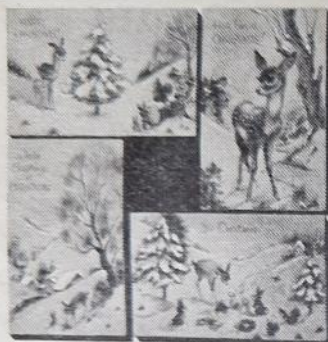
When replying to advertisements please mention
THE GUIDER

DO YOU REQUIRE FUNDS?

If so we can help you. We can supply diaries, Conway Stewart retractable and non-refillable pens, address books, notebooks, rainhats, combs in cases, pencils and key rings. All printed with the name of your organisation, starting in quantities from 3 dozen upwards. Samples of pens sent free of charge, or complete sample set sent on receipt of 4s. postal order.

THE DOUGLAS SUPPLIES CO.,
14 Clarkson St., IPSWICH, SUFFOLK.
Telephone Ipswich 55182 & 76130

IT PAYS TO RAISE FUNDS WITH MILLER



TERRIFIC SELECTION

Many best selling lines, all carefully chosen to offer maximum appeal to the present market, are included in the Miller range of Christmas card packs and sundries. They all offer first class value for money and there is a variety to suit all pockets and tastes.

A FULL COLOUR CATALOGUE illustrating the range of cards and sundries available is provided **FREE** to every Miller customer. A copy of the catalogue and order forms can be left with prospective purchasers enabling them to make their choice at leisure.

BAKERS DOZEN



In addition to the profit margin of 33 $\frac{1}{3}$ % on cost Miller have an exclusive offer to boost your funds even more. If you order a dozen packs of any series at any one time, you receive an extra pack free making 13 in all. This enables you to increase your profit to 45% on cost.

SAMPLE PARCEL

This is a great opportunity to see the quality and variety of the Miller range for yourself. A pre-packed parcel, containing a selection of cards and sundries in the range, is available to you at a greatly reduced cost.

All the contents can be sold to raise funds for your organisation.

FREE GIFTS

We give our customers extra profits for their funds, by offering free gifts to those spending £40 or more during the season. The more you spend the better the gift.

MILLER GREETINGS (GREAT BRITAIN) LIMITED **QUEENSBIDGE WORKS QUEEN ST**
BURTON ON TRENT Tel: 0803 62719

**ORDER
NOW-
PAY
LATER**

Post the coupon below for our unique descriptive colour brochure and **FREE** sample cards.

NAME

ORGANISATION

ADDRESS

POSITION

Are you over 21 years of age? YES/NO (Delete as applicable)

If already a Miller Greetings customer, please quote Account Ref. in this space.

SPECIAL SERVICE FOR IRELAND—details from

MILLER GREETINGS (IRELAND) LTD. Broadway Printing Works, Mullingar, Co. Westmeath

GU/1

In Memoriam

MISS HELEN K. ANDERDON died in April at Taunton and Guiding lost one of its earlier members who gave yeoman service in many spheres.

She was a Guide and Ranger Captain, District Commissioner, Guide and Camp Trainer in her home county of Somerset before becoming Secretary at Waddow in 1935. After war broke out, the Training Centre became a children's hospital on 11th September, 1939. Already a V.A.D., Helen added looking after children, till the nursing staff was complete, to her secretarial work.

Efficiency is perhaps the first word that springs to mind when recalling Helen Anderdon's life: a meticulous secretary and trainer and a skilled needlewoman. I remember an occasion during the hard winter of 1939-40 when frozen snow lay thick in the Waddow grounds, sheep belonging to the grazing tenant were in difficulty and Helen asked me to help save them. She knew how to turn them over on to their feet and soon had bottles of warm milk ready for them.

Never of robust health, Helen Anderdon left Waddow after an operation and soon was appointed General Secretary at Headquarters, which post she held until 1947, having been awarded a Beaver in 1945. Ill-health she treated impersonally and few people knew that was the reason of her retirement to her home town of Taunton.

E.M.B.

* * *

Members of C.H.Q. staff in the difficult war years pay tribute to Miss Anderdon's kindness and constant concern for their welfare: the present General Secretary Miss McCarthy, recalls that Miss Anderdon was always ready to do more than her fair share of fire-watching at night, and Miss Singleton, her Secretary, writes that 'she was the first to reach H.Q. in the morning and the last to leave, and she never asked anyone to do a job she wouldn't have tackled herself'.

Portsmouth Division suffered a very great loss by the death of Miss G. L. M. BARRELL in February. She came into Guiding as Assistant Guider of St. Simon's Company in 1921, and in spite of severe physical disabilities took a very active part in the work of all branches of the Movement—Rangers, Guides and Brownies. She was District Commissioner for South Portsmouth in 1929 and later for Cosham and Drayton and then Paulsgrove. After 45 years' Guiding, Miss Barrell decided to restrict her attention to Handicapped Guides and was awarded the Medal of Merit and, later, the Long Service Medal.

Her integrity, humanity and unfailing willingness to give help wherever needed, have been a continual inspiration to all who knew her and she will always be remembered with affection and gratitude by the Division.

J.C.W.

Ex-members of the 8th Ipswich (Tacket Street) Brownie Pack will be sorry to learn of the sudden death on 15th February of Miss DOROTHY FRANCIS, who was a Brownie Guider for over twenty years. Dorothy was very fond of children and loved working with the Brownies, and was also a Sunday School Teacher with the Tacket Street Congregational Church.

During the past 3 years she enjoyed working at Dr. Barnardo's Homes in Ipswich and Felixstowe. When unable to continue in active Guiding Dorothy became a member of the Trefoil Guild.

B.J.W.

Many Guiders in both India and Borneo will share in Somerset's sorrow at the death on 7th April, after a

short illness, of MRS. MABEL GATFORD. In the early 1930s Mrs. Gatford joined the Movement in Patna as both a Ranger and a Guide Captain.

In 1936 she was warranted as a District Commissioner and later became Travelling Provincial Commissioner. From then onwards she was deeply immersed in the United Provinces and was awarded the Beaver for her work.

In 1949 Mrs. Gatford went with her husband to Borneo where she was Colony Commissioner for four years, having started the Movement there. She was awarded the Coronation Medal for her service. As a lasting memorial to her work in Borneo a Headquarters was built in Jesselton and named the Gatford Hut.

In 1954 Mrs. Gatford settled in Burnham-on-Sea and became Bridgwater Division Commissioner.

She had so many qualities which endeared her to all who knew her—complete integrity, a great sense of fair play and tremendous sympathy and understanding of people. All of us knew that nothing was either too small or too great for her consideration.

Since her retirement as Division Commissioner Mrs. Gatford became a Tester for the Commonwealth Knowledge Badge. She will be sadly missed for she truly was 'a friend to all'.

F.H.M.

With the death of MISS GERTRUDE PAUL on the 5th April, after an illness of many months, Guiding has lost a true Guider—one after the Founder's own heart. Berkshire is the poorer for her passing, and particularly Wokingham District, where she had held a Warrant as Guider of the 1st Wokingham Company since March 1947. Of Swiss nationality, her Guiding started in England in 1938, when she was Warranted to an East Peckham Company. During most of the Second World War she was in Scotland doing land work. On coming to Wokingham she immediately took up active Guiding again.

She was a great character, with a strong and unshakeable sense of what she considered right or wrong. Nothing was too insignificant, or too dull, if thereby she could be of use and lend a helping hand. She had a great sense of humour and refreshing way of putting things.

To give real Guiding to her Company was her big aim and only last summer, when she was already far from well, she attended some week-end camps so that all could sample camping even if they could not go to the main Company Camp.

She was awarded a Good Service Certificate in 1961. A truly wonderful person, although she would have been the last to describe herself as such, she will be sadly missed.

S.D.deV.

We regret to have to report the death, on 21st April, of Miss LUCY VICKERY.

Miss Vickery was enrolled into the Guide Movement nearly fifty years ago. Many of her earlier years were spent running the 1st Greenford Rangers and as 'Vic' she was still known to many of her Rangers.

During the 1930s she went on several holidays abroad with Guides and Rangers, including a visit to Our Chalet. In 1951 she moved to Penzance, Cornwall where she formed, and ran until very recently, a Brownie Pack, and a Guide Company, at St. Mary's Church. In 1960 she was awarded the Oak Leaf for good service to the Movement.

She will be missed by her many friends both in and outside the Movement.

M.B.

June 1969

Olave House

30th Birthday Celebrations

FRIDAY, 2nd May was celebration day at Olave House, the World Association Centre in London. The occasion was the thirtieth birthday of the London Centre, the second of the four Centres to be opened.

The Day began with the opening of a May Fair at eleven o'clock. Throughout the house there were displays of handcrafts of many nations and these could be bought at very reasonable prices. Cakes and biscuits were also on sale and one was pleasantly surprised at the unfamiliar flavours of these fancies. Visitors could try their luck at the various competition stalls where everyone was sure of winning a prize.

The staff had obviously worked very hard to decorate the rooms and as thirty years is the pearl anniversary, white or pearl was the basic colour of most displays. The flower arrangements were very attractive and added to the feeling of warmth and friendliness pervading the house.



photo: C.H.Q. Periodicals



Lunch was served between twelve and two o'clock and many of the staff of C.H.Q. took this opportunity of combining their lunch break with a visit to the Centre.

A magnificent birthday cake, decorated with a may-pole, was made by the cook at Olave House (see photograph). The figures round the cake, there are thirty of them, are dressed in the uniforms of World Members and were a present from the Guides of Denmark. Lady Baden-Powell, World Chief Guide, was invited to cut the cake and this she duly did in the late afternoon.

The day continued with a Folk Song evening, with the singing led by Margaret Newman. This was well attended as, in addition to those people already in London, members from other parts of the country and abroad had arrived to join in a staff re-union week-end which followed the May Fair.

Olave House had the sum of approximately £250 which will be used to pay for the 30th Birthday Celebrations throughout the year and also to buy a permanent memento of the occasion.

LOST
without
Cash's
quality woven name tapes
The best to be found!
Orders before July, 2-3 weeks' delivery



THE GUIDER



MESOWAX

keeps camps dry

This miracle waterproofing emulsion is ideally suited for treating medium- and heavy-weight tents, marquees, covers and all canvas sports equipment. Withstands downpour from above and rubbing from below, preserving the canvas yet allowing it to "breathe", so avoiding stuffiness. Simply applied by brush, fast-drying MESOWAX is obtainable, brightly coloured or colourless, in 1 pint tins to 40 gallon drums.

5/- pint 8/9 quart 15/- 1/2 gallon 25/- 1 gallon
(1 gallon covers up to 200 sq. ft.)

Available from Camping, Scout and Guide Stores, Halfords, Gamages and Grose's

For further details and colour guide, write to

GRANGERSOL LIMITED

DEPT G5., IMPERIAL WAY WATFORD TEL: WATFORD 24086

Be Prepared for Camp

The summer must come soon—hours spent in the camp kitchen or pitching tents in the heat of the mid-day sun—are you prepared? Have you bought your new Camp Dress designed specially for these situations? Wear it as a simple sleeveless shift, or if you hate baring your biceps or losing your waist we provide sleeves and a belt all at the very reasonable prices given below.

It is a practical cotton garment which will stand up to hard wear and washing.

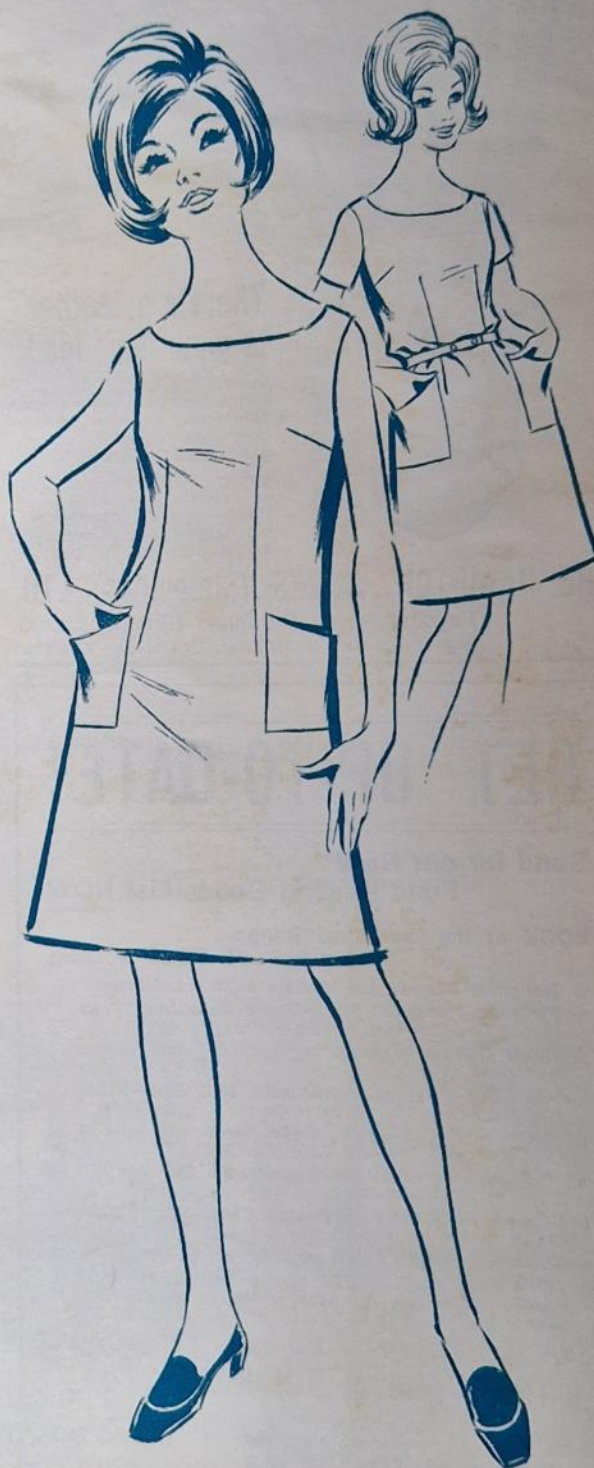
Don't be caught napping, place your order immediately and be ready for camp in good time.

Bust sizes	Bust sizes
32"—31s. 6d.	38"—34s. 6d.
34"—32s. 6d.	40"—35s. 6d.
36"—33s. 6d.	42"—37s. 6d.

(Postage and packing 2s. 6d.)

Order from Mail Order Department, C.H.Q.

Scottish orders should be sent direct to Edinburgh but dresses will be for sale over the counter in the Glasgow and Dundee Shops.



Date.....	
Name	
(Block Capitals please)	
Address	
.....	
.....	
.....	
Please Supply:	
Quantity:	Size
..... Guider/Ranger Camp Dress	
..... Patterns for above @ 2s. 6d.	
	each
..... Yds. material for above @ 6s.	
	per yd.
I enclose P.O./Cheque value	

In the article 'Spring Bonnets' in last month's GUIDER the Guider's beret was priced at 35s. Please note that price should be 33s.



There's a feather
in your cap, too!

Every experienced camper knows the value of Hampton Tent Pegs, from the famous "Bulldog" to the established "Samson". Strong, light, compact and economical. We know "how", and, judging by the large sale of Hampton Accessories, so do you!

THE HAMPTON WORKS (Stampings) LTD.

Twynning Road, Stirchley, Birmingham 30.
and at London, Manchester, Bristol and Glasgow.

COMING THIS MONTH

THE BROWNIE

- June 4th Brownie Guide Pet Show number (1st set of results)
Last article Swimmer Badge series.
June 11th Discoverer Badge series commences.
Pet Show—2nd set of results.
June 18th Collector Badge series commences. Details of Art Competition. Shell Handcraft. Garden Flowers Chart.

THE GUIDE

- June 6th Amusing children. Make a Sitter Groundsheet. Sir Malcolm Sargent.
June 13th Making a Camp Oven. Make a Sleeping Bag. Photographing Wild Animals.
June 20th Preserving Wild Life. Cooking with a Camp Oven. Photographing Trees and Plants.
June 27th Special Issue—Investiture of the Prince of Wales. Ways of Mounting Photographs.

Plus regular features—serials and stories, letters to the Editor, charts, overseas news, crosswords and quizzes.

THE RANGER

Make Your Own Ranger Flag; The beginning of a series on Making a Speech; Ranger Scene; Book Reviews; Letters to the Editor.

GET UP-TO-DATE!

Send for our NEW
Fund Raising Goods List NOW

LOOK at the Increased Range . . .
stamped with YOUR wording

- ★ Platignum Fibre-Tipped Markers in 10 Ink Colours
- ★ Platignum 'Auditor' Metal-Tipped Retractable Pens (4 Ink Colours—Two Writing Points)
- ★ Guide Colours available in 'Premier' and 'Renown' Ball pens
- ★ 'RENOWN' Retractable-Refillable Ball Pens—NEW! (Quality at Fantastic Price Rates)
- ★ Stamped Key Fobs—Everyone needs and uses them (8 Colours of Leather, Gold Stamped)
- ★ Platignum 'Premier'—the preferred Ball Pen (Now in 12 Colour Combinations)
- ★ Unbreakable Combs in Pocket Cases—Gold Stamped (3 Styles available attractive colours)
- ★ ECONOMY BALL PENS. Quality at Economy Prices
- ★ FOUR DIFFERENT TYPES of our UNIQUE PERSONAL NAME SETS—Only available from ourselves. Perfect gifts

PROFITS FROM 50% TO 200% ON OUTLAY

THOMPSON & ROBINSON LTD.

01-992 6770

Vaun House
Churchfield Road
LONDON W.3

01-992 3205

BE A WATER RAMBLER

on board one of our camping narrow boats.
Single boat fitted out for 12; a pair of boats fitted for 24 (crewed by experienced boatman).

Also—6 berth luxury cruiser.

FOXTON CANAL CARRIERS LTD.

Foxton, Nr. Market Harborough, Leics.



**BE PREPARED
WITH AN
ACME
WHISTLE**

Full range in Metal and Plastic
Officially Approved
Obtainable from all Scout and
Guide depots

photo: Middlesex County Press

A joint jamboree of British Guides and American Girl Scouts was held at West Ruislip USAF base on Saturday 19th April. Ideas were exchanged and the differences between the Associations were discussed. There was a very full programme which included a demonstration of authentic American Indian dances and a song festival. (right) Making mementoes of the occasion.



round and about

Some of the performers who took part in the 1st Scottish Folk Fest held at B.-P. House, Edinburgh on Saturday, 12th April. Many of the singers travelled a great distance to be there and the evening, which was well attended, was pronounced a success

photo: Scotsman Publications Ltd.

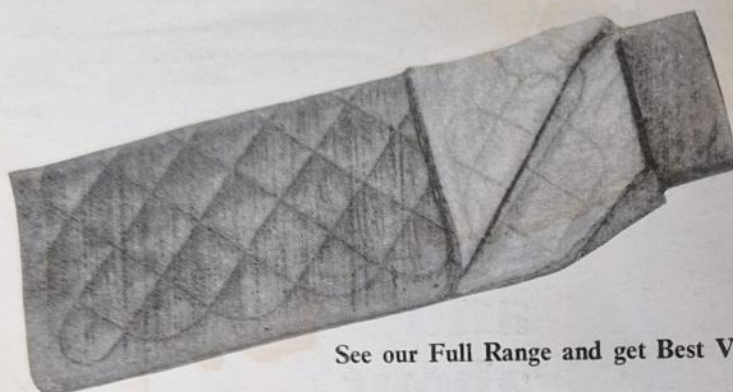
At their annual social party held at C.H.Q. on 23rd April the Commonwealth Circle were hosts to Guiders and Scouters from many parts of the world. The photograph shows some of the guests who joined in the folk singing which was led by Brian Sims

photo: C.H.Q. Periodicals



***Did you enjoy National Camping week visiting
camp displays in Commonwealth Headquarters Shops?***

**NOW IS THE TIME TO BUY YOUR SLEEPING BAG
WITHOUT PURCHASE TAX WHILE STOCKS LAST**



**POINTS TO CHECK
BEFORE YOU BUY**

Adequate filling
Strong Cover & Lining
Convertible to Quilt
for Home use
Easy glide zipper
Well made

See our Full Range and get Best Value For Your Money

Our Range includes:—

'NEW GUIDE CONVERTIBLE'

'RANGER CONVERTIBLE'

'CAREFREE CONVERTIBLE'

'CYCLIST'—SHAPED

'TANGO'

'DE LUXE'

'REGENT'

	Cover	Lining	Filling	Price	Packing and Postage
'NEW GUIDE CONVERTIBLE'	NYLON	KNITTED NYLON	TERYLENE	90s. 6d.	4s. 6d.
'RANGER CONVERTIBLE'	NYLON	KNITTED NYLON	TERYLENE	£5 5s. 0d.	4s. 6d.
'CAREFREE CONVERTIBLE'	NYLON	NYLON	TERYLENE	£5 14s. 6d.	5s.
'CYCLIST'—SHAPED	COTTON	COTTON	DOWN	£5 19s. 6d.	5s.
'TANGO'	PRINTED NYLON	KNITTED NYLON	TERYLENE	£6 9s. 6d.	5s.
'DE LUXE'	NYLON	NYLON	TERYLENE	£6 15s. 6d.	5s.
'REGENT'	DICEL CREPE	TAFFETA	TERYLENE	£6 19s. 6d.	5s.

SLEEPING BAG LINING to protect the inside of your Bag—

'Y.H. Pattern'. Easily washable. **15s. 9d.** Packing & Postage 1s. 6d.

**AT COMMONWEALTH HEADQUARTERS SHOP, 17-19 BUCKINGHAM PALACE ROAD,
LONDON, S.W.1.**

AT THE ASSOCIATION'S BRANCH SHOPS

London: 19 Green Lanes, Palmers Green, N.13.

Birmingham: 5 Ryder Street, 4.

Liverpool: 20 Richmond Street, LI 1EG.

Cardiff: 20 Working Street, CF1 2SF.

AT SCOUT AND GUIDE SHOPS

London: 124 Newgate Street, E.C.1.

London: 183 Clapham Manor Street, S.W.4.

London: 55 Woodgrange Road, Forest Gate, E.7.

Ipswich: 5 Tacket Street.

Leeds: 62 The Headrow, LS1 8EJ.

Oxford: 17 Turl Street, OX1 3DH.

York: 14 Goodramgate, YO1 2LQ.

AT SCOTTISH GUIDE SHOPS

Edinburgh: 16 Coates Crescent, 3.

Glasgow: 1 Scott Street, C. 3.

Dundee: 3 Magdalen Place.

AT ULSTER GIRL GUIDE HEADQUARTERS

16 College Square North, Belfast 1.

Printed by the Riverside Press Ltd., London and Whitstable and published by The Girl Guides Association, 17-19 Buckingham Palace Road, London, S.W.1. (01-834 6242). All communications with regard to subscriptions, editorial matters and advertisements should be addressed to THE GUIDER, Girl Guides Association. Subscriptions including postage 22s. for 12 months Great Britain, 21s. overseas. Trade Agents: Surridge Dawson & Co. (Productions) Ltd., 136-142 New Kent Road, London, S.E.4.