

# The Guider

VOLUME 56 No. 7

JULY 1969

PRICE ONE SHILLING AND SIXPENCE







*H.R.H. The Princess Margaret, in the Chair at the Annual General Meeting, listens to the World Chief Guide's talk*

photo: U.P.I.



# The Guider

## Patrons

H.M. THE QUEEN

H.M. QUEEN ELIZABETH, THE QUEEN MOTHER

## President

H.R.H. THE PRINCESS MARGARET,  
COUNTESS OF SNOWDON

## Chief Guide

OLAVE, LADY BADEN-POWELL, G.B.E.

## Commonwealth Chief Commissioner

MRS. DEREK PARKER BOWLES

OFFICIAL MAGAZINE OF  
THE GIRL GUIDES ASSOCIATION  
(Incorporated by Royal Charter)



## contents

The President's Address	228
The Annual Report by the Chief Commissioner	229
Executive Committee and Council Elections	230
Book Reviews	231
Diamond Jubilee—The Latest Information	233
Hair Care	234
Letters To The Editor	237
Private Diary	240
International Code of Signals	240
Training Pages	241-248
Here at C.H.Q.	249
Headquarters' Notices	250
Where To Train	252
Classified Advertisements	255
In Memoriam	258
Insurance For Sponsored Walks and Sponsored Swims	259
Guide Friendship Fund	261

## Annual General Meeting

The Annual General Meeting was held on Wednesday, 14th May, at Commonwealth Headquarters in the morning and at Baden-Powell House in the afternoon. Our President, Her Royal Highness the Princess Margaret, Countess of Snowdon was unfortunately owing to illness unable to attend in the morning, but took the Chair at the afternoon session.

The Princess opened the proceedings with her Presidential Address (reprinted in full overleaf), and the Chief Commissioner, Mrs. Derek Parker Bowles presented the Annual Report of the Committee of the Council. The audited statement of accounts was presented by Mr. P. C. Barnett, Honorary Treasurer\*. This year it was decided that the guest speaker should be from inside the Movement, and who better to talk about Guiding than the World Chief Guide herself, Olave, Lady Baden Powell. The Chief Guide, who was introduced by Mrs. M. Liddell, gave as always a most inspiring and moving talk.

The meeting closed with an expression of thanks given by Miss E. L. Browne, Chief Commissioner for Ulster, to Her Royal Highness for graciously presiding.

\*The Annual Report, containing nine pages of pictures of Guiding's highlights in 1968, is available from C.H.Q. and branch shops price 1s., postage 6d.

## front cover

The Chief Commissioner for Ceylon, Mrs. S. Wijesinha, being presented to Her Royal Highness The Princess Margaret at the Commonwealth Commissioners' Conference held at Foxlease. A report of the Conference will be in the August issue of The Guider.

photo: U.P.I

July 1969

227

THE GUIDER





*The President, arriving at Baden-Powell House, is greeted by the World Chief Guide*

*photo: London Express*

## THE PRESIDENT'S ADDRESS

**I** AM so glad to be with you today and to welcome to our Annual General Meeting so many friends from outside the Movement as well as Guide Leaders from Overseas.

The past year has been a happy and successful one. The census for 1968 shows an increase in all sections of the Movement, and it is particularly good news that a greater number of adult leaders feel able to take up Guiding each year. There is an increase of two and a half thousand Guiders over the total of the previous year, which is most encouraging as so often it is only the lack of a leader which prevents a new unit from being formed.

One of the great events of 1968 was The Ranger Round-Up and I visited Bognor to share this experience with the many thousands of Rangers who attended. There was an extremely wide variety of things to do, and the Round-Up helped to underline the many opportunities offered by this section of the Movement to girls with imagination and leadership.

We have seen many changes in our approach to Guiding in the last few years, but there is one principle which has never changed. From a Brownie's first Good Turn onward, every member of the Movement learns that she is expected to help other people. A very practical way of doing this is through The Guide Friendship Fund. In the five years of its existence £25,000 has been collected and used to help Guides and other young people in 48 different countries. The special Christmas Appeal last year seemed to capture the imagination of Guides, Brownies and Rangers everywhere, for they sent £5,300 which will be used by the Royal Commonwealth Society for the Blind to treat thousands of children in Asia and Africa, and in many cases will save their sight.

Two very important events took place on Thinking Day this year. The first was the special service in Westminster Abbey to mark the Chief Guide's 80th Birthday, and the second was the presentation of the Silver Fish to Mrs. Parker Bowles for her exceptional record of service to the Movement.

I should like to congratulate you all on the achievements of the past year, and give you my best wishes for the future.



# The Annual Report by The Chief Commissioner, Chairman of The Executive Committee

MAY I start, Ma'am, by expressing the gratitude of all of us to you for your great interest during the past year. I, personally, have enjoyed our frequent discussions on a variety of subjects and problems and I can only say that it is such a wonderful asset to have as our President someone as helpful as yourself and some one with such a considerable knowledge of Guiding.

We are so delighted to have our Chief Guide with us today and we have the added pleasure of her being our speaker for this meeting. I would like to thank her for all she has done to help and inspire us during the past year.

The first and longest part of the Report concerns the new Programme. The initial teething troubles of trying to get individual handbooks all out to the Movement at about the same time ('all' being over 1,000,000 in the first edition) is a thing of the past and now we have a steady progress in the new approach to Guiding. It might interest you to know that our Badge Makers have had to take on a 'night shift' to cope with the ever-growing demand for badges which in itself shows the popularity of the new 8-point Programme.

Our gratitude and congratulations are extended to all those in the United Kingdom and the Commonwealth whose work for the Movement has been recognised in the Queen's Honours List and also by our own Guide Awards, and may I say that no honour has given us more pleasure than the award of the Silver Fish to our President.

The Report outlines the appreciation we all owe to our Trainers throughout the four United Kingdom countries and to those who keep the Training Centres always available to us. All four countries have had a busy year in the Training field. Netherurd, in Scotland, was unfortunately partly destroyed by fire which put the house temporarily out of action. We are delighted that the repairs were so speedily and successfully carried out.

Broneirion in Wales celebrated its 21st birthday during the year.

It would take all day to speak of the countless and varied forms of help which our members gave so

readily to the Community, so only a few of the many service projects undertaken here and overseas are mentioned in the Report.

You will see how enthusiastically we are supported by members of the Trefoil Guild and Local Associations. Also how these two held the first ever Joint Conference at the Festival Hall last October, and very successful it was too.

The Guide Club reports increased Membership.

## Voluntary Service Overseas

Two special Guide projects should be noted this year. Two Guide Guiders went to Rhodesia and a Guide Guider returned from Fiji after a successful and happy year. This is the third pair to have gone to Rhodesia and the second girl to go to Fiji, so obviously the experiment has been a great success and it seems as if a good deal of enjoyment and benefit has been gained on both sides. In addition to these V.S.O. Guiders there are 31 V.S.O. girls who have been or still are Guides who are actively helping with Guiding in the countries where they are working.

Publications have had an enormously busy year due a great deal to the new Programme. Equipment too have been very busy because of our ever-growing membership. We were lucky to find more warehouse space in to which we could overflow, before the walls of C.H.Q. burst apart. I would like to mention here my grateful thanks to our Equipment Board for their tireless efforts on our behalf.

Camping tells the same story of greater numbers and as one who lives on top of a County Campsite I can personally vouch for the pleasure camping gives to so many.

All this growth in activities and in membership has meant much work for our Public Relations side and we have had great help and co-operation through outside publicity in explaining about ourselves to the public at large. Our participation in various exhibitions (such as the joint one with the Scouts at Westminster Abbey) have been much enjoyed.

As you have heard already, England's main event was the Butlin's 'Round-Up' with its varied programme. There was also the opening of the English



Outdoor Activities Centre in Derbyshire by the Chief Guide. This is proving a very popular and successful venture.

Scout and Guide co-operation has gone ahead at all levels and the Headquarters Scout and Guide Policy Co-ordinating Committee continues to meet regularly for useful discussion.

#### International and Commonwealth Fields

1968 was yet another year in our history of constant exchange between Guides, Rangers and leaders with their opposite numbers across the world. Over 4,000 Guides from this Country travelled abroad last year. A few examples of this are in the Report. The story of each year's work in our Branch Associations and with the newly independent Countries starting on membership of the World Association is too long to tell here, but is a real and living part of the contribution British Guiding endeavours to make.

We were sad during the year to lose Dame Elizabeth Hoyer Millar who was one of my Deputy Chief Commissioners but delighted to welcome Mrs. Laing. We were also sorry to say goodbye to Lady Roden as Chief Commissioner for Ulster and I would like to take this opportunity of thanking both of them for all their help. May I at the same time welcome Ulster's New Chief Commissioner, Miss Browne.

Thanks are due to so many people that the small

paragraph in the Report must seem inadequate. I hope all of you here well realise how widespread are the friends and supporters of Guiding and how greatly we appreciate each and every effort, and may I specially mention just a few. My thanks are due to my Deputies and the Vice-Chairman of the Executive for all their help and support and also my sincere thanks to the Chief Commissioners of the Countries for all they too have done. I also would like to thank our Treasurer for his care of our Finances and patience and to all the Advisers who give so generously of their time. To Miss McCarthy and Miss Mitchell and all the staff at C.H.Q. a very special thank you for their loyal and devoted service. I hope that they may all feel their efforts have been rewarded when I remind you that the overall increase in membership during the year was 19,572.

You have, Ma'am, spoken kindly of me and my Silver Fish. Having been connected with Guiding for a great number of years, I can appreciate the very great honour which I have received, and in expressing my heartfelt thanks for it I know only too well that what little I have done to deserve it would not have been possible without the helpfulness and the kindness of so many of you who are here today.

I have great pleasure in presenting for adoption the Annual Report.

## Executive Committee and Council Elections

#### Election to the Executive Committee

Dr. K. Benson Evans (Re-elected)  
Mrs. E. F. Hatch  
Dr. Helen Laird  
Mrs. H. A. White

#### Election to the Council

The Hon. Mrs. W. Birkbeck, J.P.  
Mrs. M. Bowe  
Mrs. T. A. H. Coltman, J.P.  
Miss F. H. Gwilliam, C.B.E., M.A.  
Lady Hobson  
Lady Rosemary Muir  
Miss M. Walker, M.B.E.

*The following nominations from the Countries and Overseas Committees were ratified:*

Mrs. A. Carter, J.P. Miss A. V. Collins Mrs. A. Frankland Lady Howard Mrs. V. Stratton Mrs. Owen Walker Miss C. M. Wyatt, O.B.E.	}	English Committee
--	---	----------------------

Mrs. Ramsey Tullis Dame Elizabeth Hoyer-Millar, D.B.E. Mrs. R. W. B. Purvis Miss Rosemary Whittingham— Mrs. J. Haughton, C.B.E.— Mrs. R. A. H. Vaughan-Cox—	}	Scottish Executive Committee Welsh Executive Committee Ulster Executive Committee Overseas Committee
---	---	--



# BOOK reviews

photos:  
Council for  
Small  
Industries  
in Rural  
Areas



Longstraw Thatching

**Catering for Residential Activities**, compiled by Daphne Shipman. Scripture Union, 10s. 6d.

Q.M.'s. for camps and indoor courses will find a great deal of practical help in **CATERING FOR RESIDENTIAL ACTIVITIES**.

In addition to the usual 'balanced menus' found in every book of this nature there are recipes and quantities given for 50 people (for young people's appetites at that) as well as notes on ordering and the mysteries involved with catering packs.

Particularly helpful are chapters 1 and 4. 1 deals with the preliminaries involved in large-party catering such as finding suitable helpers, contacting tradesmen, looking at the facilities and general domestic detail. 4 outlines a suggested daily routine to follow.

The chapter on food for lightweight expeditions is useful and contains good advice but the suggestion that one takes fresh fruit and meat on such an expedition is not always practical.

S.M.M.

**The Brownies and their Animal Friends** by Verily Anderson. Brockhampton Press, 10s.

This is a wholly delightful story in which the author writes with a wide knowledge of modern Brownies and Brownie lore. A great deal of advice on how to arrange quests and how to gain badges is cleverly hidden in this tale which is so full of incident and excitement that all Brownies will find it difficult to put the book down until it is finished.

M.R.M.

**Along the Pennine Way**, by J. H. B. Peel. Cassell & Co. Ltd., 36s.

This is a fascinating story of a Way that covers two hundred and fifty miles from Edale in Derbyshire to Kirk Yetholm in Roxburghshire. To create this route new rights of way were devised, old footpaths were cleared and eventually Britain's longest footpath was created. It passes through many northern counties and finally crosses a wild and lonely moorland Border.

The author, who is well known for his many books on country topics, has a way of bringing to life the many characters who have lived near the Pennine Way. The most famous perhaps were the Brontë sisters who lived at Haworth, Yorkshire where they wrote their remarkable novels.

Although this is an expensive book it has the added attraction of many beautiful photographs and will provide pleasurable reading as well as taking its place as a reference book.

O.M.C.

**Shell Book of Country Crafts**, by James Arnold. John Baker, 30s.

When you look at an interesting object do you ever wonder how it was made? Most of us have seen thatched roofs, wrought iron work, old farming implements, pottery, saddles and harnesses, but have we ever thought of how they originated and the skill involved? The book does not detail the making of them, but does give a fine description of how the various crafts were started.

The craftsmen were named after their art, and the names have been handed down through the centuries and still exist to this day as our own surnames—Potter, Thatcher, Horner, Turner, and Weaver.

The author tells us how it was discovered that such simple things as trees could be of great use and made into tools, and how they improved when other materials were used in conjunction with them.

This book is very colourful with many photographs and illustrations. It contains a list of museums where examples of these ancient crafts can be seen. And for those who would like to see the craftsmen actually at work, there are addresses to which one can write so this can be arranged.

L.M.

**Birds of Asia**, by John Gould and Abram Rutgers. Methuen, 72s.

This is a very handsome book and a delight to anyone who admires the work of John Gould. It contains good reproductions of 160 of the plates which appeared in his posthumously published **BIRDS OF ASIA**, and if some of the birds are not as naturally drawn as we have become used to in the work of Gillmor, Peterson and others they are all a pleasure to study. The text matter, which is new, has been written by the Dutch ornithologist Abram Rutgers. It is adequate, but the style of production with wide margins and the text confined to the page opposite the plate, reduces the information given.

R.J.C.

**Anthology of British Tongue-Twisters**, by Ken Parkin. Samuel French, 6s.

Those with a love of the English language for its own sake will revel in this amusing and cleverly arranged anthology of all those tongue-twisters in which we delight. It includes the usual 'Peter Piper picked' as well as cosmic ones like 'slim satellites sending scintillating signals' and those with sly references to current affairs—'blissful Betty blithely backing Britain'. You will find your own favourite twister in this book and a whole host of new ones which will keep you amused for hours. It is a good book to have lying around at a party or to pack in your rucksack to amuse your Guides on a long journey or on a wet day in camp.

S.M.M.





**just  
out**

two new bigger-than-ever  
full colour catalogues  
packed with ideas for...

# FUND RAISING

Here are two exciting full colour catalogues packed with fund raising ideas for 1969. Christmas cards, everyday cards, stationery, sundries and gifts, are all illustrated in full colour for your customers to make their selection in the comfort of their own home.

Many organisations are already making large profits on sales from the Webb Ivory range which offer a selection of over 700 quick selling lines. Up to 33% profit on outlay can easily be made to swell the funds of organisations such as charities, clubs, churches, Scout and Guide movements. *Don't delay send now for **your** free full colour catalogues.*

## WEBB IVORY

**WEBB IVORY LTD**  
**LITTLE CORNBOW**  
**HALESOWEN, WORCS.**



**THE GUIDER**

*Regional Showrooms at:-*

**LONDON**

90 Judd Street, London W.C.1  
Tel: TERminus 8461

**MANCHESTER**

Lancaster House, Whitworth St.  
Manchester 1.

Tel: CENTRAL 1289

**GLASGOW**

96-100 Brunswick Street,  
Glasgow C.1 Tel: 041-552 1750

NAME \_\_\_\_\_

PRIVATE ADDRESS \_\_\_\_\_

ADDRESS OF YOUR HEADQUARTERS \_\_\_\_\_

Organisation represented \_\_\_\_\_ Are you over 21? \_\_\_\_\_

Your own position in the Organisation \_\_\_\_\_

GU/7





## ... The Latest Developments

IN the March copy of THE GUIDER we gave you brief information concerning our main Diamond Jubilee events and we are now in a position to give you further details in connection with these.

The allocation of numbers for each event will be worked out by countries in proportion to the numbers eligible to attend the various events and you will be getting this information via your County Commissioner.

**Westminster Abbey, 16th May at 11.00 a.m.** This service is planned with Anglican and Free Church members especially in mind, as Roman Catholic and Jewish Services are also being held. This service is for members of Guide age upwards, i.e. 10 years and is for uniformed members only (Trefoil Guild will have a token number of seats which will be allocated by their Executive).

**Westminster Cathedral, 16th May at 11.30 a.m.** This service is for members of Guide age upwards, i.e. 10 years and is for uniformed members only (Trefoil Guild will have a token number of seats which will be allocated by the Executive).

**St. John's Wood Synagogue, 17th May at 3.30 p.m.** As the number of Jewish Guides is so much smaller than Christians, it is likely that any Jewish member who wishes to attend will be able to do so. This includes Brownie Guides, Trefoil Guild members and retired members.

**Joint Act of Worship at Wembley, 6th September 1970.** In response to many requests a Joint Act of Worship will take place the Sunday following the Wembley performances. This is *likely* to take place in the morning and tickets will be issued on a first come, first served basis (not allocated) but further information and how to apply for tickets will be issued later. This act of worship will be for all faiths.

**Diamond Jubilee Spectacle, The Empire Pool, Wembley.** There will be five performances:

Wednesday evening—2nd September 1970  
Thursday evening—3rd September 1970  
Friday evening—4th September 1970  
Saturday afternoon—5th September 1970  
Saturday evening—5th September 1970

*For clarification at this stage we are using the terms: Part A and Part B.*

**Wembley—Part A.** The first part of Wembley entertainment will be a modern presentation of traditional material based on Guiding and is to be rehearsed, as was the Wembley Spectacle in 1960 at four or five different centres within commuting distance of London and Wembley.

If your County is taking part in this, you will be receiving details via your County Commissioner.

**Wembley—Part B.** Theatre Workshop. This will

be a demonstration, using all the latest techniques, of young people creating their own spectacle through music, dance and drama. Mr. Frank Whitten has agreed to produce this Part B, with the help of a Guide Production Team and in order to achieve the desired effect in an arena as big as that at Wembley, he requires a guaranteed minimum of 500 performers (preferably 450 Guides and 50 Scouts). Performers are to be between the ages of 14 and 24 and are required to be in residence in the neighbourhood of Wembley from 22nd August to 6th September for rehearsals and performances, and in addition to having an aptitude for dance and drama the girls must be physically very strong, for it will be very strenuous, involving long hours of work, but it will be an exciting and unique occasion. Every County in the United Kingdom is being invited to send performers.

**Young Adults' Gathering 'Argosy'—Birmingham, 31st July-11th August 1970.** It is hoped that there will be 200 delegates between the ages of 18 and 25 at this gathering, 100 from the United Kingdom and 100 guests from abroad. The programme will include five main sections: Drama, Art, Folk Lore, Homes and Crafts. Qualifications for delegates are:

- (a) Able to speak one other language if British.
- (b) Active Guiders, Rangers or members of Scout and Guide Universities' Clubs.
- (c) Have the intention of remaining in active Guiding for a further two years.
- (d) Be willing to accept responsibility for the hospitality of one guest from another country, either in her own home or nearby, for six days after the event.
- (e) Be able to be at the Gathering for the full time and free for the hospitality period afterwards.

**Unifying Theme—Three Cheers Challenge.** It is suggested that where possible this should take place during the main dates for celebration, May to September inclusive. The Challenge should be optional and should be an opportunity for those taking part to have fun and to give service and to share their celebrations with other people outside as well as in the Movement. The scheme can be planned and carried out by an individual, Patrol or Unit but the sub-committee felt that to fit in to our normal working pattern, the Brownies should be encouraged to work as a Pack, Guides as a Patrol and Rangers as a group or individually. Further details for each Unit will be available later.

*Amelia Bolles*

Chairman of the  
Diamond Jubilee Committee

(see also page 262)



# Hair Care

By Jane Lindsay



*A softly waved style like this one is flattering to an older face.*

WITH today's accent on youth, there's no shortage of advice and hints on hair care for the young. But for those of us who are a little older? Our hair presents just as many problems, perhaps more. And all too often advice for us is overlooked.

We asked Jane Lindsay, the hair care expert at Elida, to give us some help. This is what she advised:

## CONDITION IS ALL-IMPORTANT

The condition of our hair is always important, but it becomes even more so as we grow older. The roots of the hair are nourished by the blood supply to the scalp. In middle age, the circulation tends to slow down and this sometimes results in dull, lifeless hair. The condition can be improved by regular scalp massage with the pads of the fingers. Brushing helps too, but be careful to use only a natural bristle brush—nylon and other man-made bristles can damage the hair. Even with a natural bristle brush, care should be taken that the hair isn't broken. Tangles should be treated with caution, and combed out from the ends of the hair, working upwards to the roots. Special care must be taken when the hair is wet, for it is then at its most vulnerable.

Diet is an important factor in the hair's health. Try to eat plenty of vitamins and protein-based foods, such as eggs, fish, and cheese.

A good conditioner is invaluable. There are two basic types of conditioner; the first (like Elida's Cream Silk) is applied to wet hair immediately after shampooing, left on the hair for a minute and then rinsed off. It coats each hair shaft with a transparent film which smooths the roughened cells, combats electricity and gives the hair a beautiful, lasting sheen. The second type of conditioner is applied to dry hair, either as a cream or as a spray-on gloss. It gives an instant shine, but the conditioner is removed by brushing so the effect is not lasting.

## WHAT CAUSES LOSS OF HAIR

Excessive loss of hair is generally caused by illness, worry, pregnancy or bad diet. But often what seems to be abnormal hair loss is really nothing of the sort. Everyone loses a certain amount of hair each day—anything from 20-100 hairs is quite usual. But some people find that the greatest loss occurs twice a year, generally in the Spring and Autumn. Then, too, hair that is really out of condition can break off so close to the root that it seems as though it had fallen out. (This sometimes happens if the hair has been overbleached, over-permed or wound

too tightly on to rollers.) If, however, the loss of hair seems unusually heavy, or if individual hairs can actually be pulled out of the scalp without pain, a doctor or trichologist should be consulted as soon as possible.

Naturally thin hair can't be thickened, but careful styling can help to disguise the problem. 'Club' cutting gives an illusion of body, and the hair should be kept to jaw level or shorter.

## COLOURING GREY HAIR

Colourants are easier to use now than ever before, and the choice of products and shades is enormous.

Hair that is up to 50% grey can be covered most successfully with the modern type of semi-permanent colourant, such as Elida's Melody range. (Semi-permanent colourants are particularly good for home use: a little of the colour washes out with each shampoo, so that there is no build-up of colour and root re-touching is never necessary.) Melody lasts through eight-ten shampoos, depending on the type and condition of the hair, and a special applicator included in each pack makes the colourant really easy to use.

Most hair colourant manufacturers supply colour charts for their products, which makes selection much simpler. When colouring grey hair, look for the shade nearest to the hair's natural colour or, if anything, a little lighter. When the hair turns noticeably grey, the complexion sometimes fades and a shade that is only just a little darker than the hair's natural colour may look harsh and ageing.

Be careful, too, of any colour with more than a hint of auburn in it. Hair that has lost its natural colour picks up red tones very easily, and the effect can be a bit unnatural. The 'cooler' shades are usually the most flattering.

## STYLING

Older faces are best suited by short, simple styles. Soft waves are easier to wear than curls, and they give a

*(Continued opposite)*



# Our Chalet

3715 Adelboden, Switzerland

## BOOKING PERIODS—1970

**Winter Season:** Our Chalet will be open from 22nd December, 1969 to 8th March, 1970 and from 25th March to 4th April, 1970 (Easter).

### Summer Season:

1. 24th May-2nd June, Falk Memorial Training on the World Association.
2. 7th June-14th June, Trefoil Guilds; husbands invited.
3. 16th June-25th June.
4. 28th June-9th July.
5. 12th July-23rd July.
6. 26th July-6th August.
7. 9th August-20th August.
8. 23rd August-3rd September.
9. 6th September-17th September, Friends of Our Chalet (Theme: Switzerland).
10. 20th September-1st October.

All applications should be made to the Guider-in-Charge of Our Chalet.

For the winter season, for which there are no fixed periods, applications will be considered from 1st August, 1969.

For the summer season applications will be considered from 1st October, 1969.

### Hair Care

(Continued from previous page)

more youthful effect. Severe, sculptured styles and hair that is longer than chin length are best left to the very young. Regular cutting is essential, both for the condition of the hair and for the shape of the style. Most women find that a trim every four weeks is best.

Being a Guider means a variety of activities. A versatile style is important, and one that is easily manageable. If you are taking your Company camping this summer, for instance, you won't want to fill up precious storage space with a set of hair rollers! Have the hair trimmed just before the trip starts, keep a hat or scarf available for particularly wet or windy days—and then forget all about hair problems.



Here is how to set the attractive hair style shown opposite

Bookings may be made for part of a period but not between one period and the next.

Summer periods 4, 5, 6, 7, 8 are open to active members of Girl Guide and Girl Scout Associations. Winter season from 15th January to 8th March and summer season periods 2, 3, 4, 9, 10 are open to all members of National Associations past and present.

**NOTE: OUR CHALET WILL BE OPEN FOR EASTER 1970.**

**7th-14th June**—This period is intended primarily for members of Trefoil Guilds, Old Guides, etc. Husbands will be welcome and will be accommodated in Hami's or Squirrel House.

**Falk Memorial Scholarships** are available for summer periods 2, 3, 4, 9, 10 and in winter from 15th January to 8th March.

## Youth Festival of the Arts

From 9th-16th August young people from all over the world will gather in Edinburgh to share in a festival of the arts. There will be orchestral music from Germany, Holland, England; folk music from Turkey and Norway; dancing from Cyprus, Denmark and India, as well as choirs, exhibitions, amateur cinema films and theatre productions.

For full details and advice on travel and accommodation write to: The Festival Director, International Youth Festival, 29 Queen Street, Edinburgh 2, enclosing s.a.e.

## GET UP-TO-DATE!

Send for our **NEW**  
**Fund Raising Goods List NOW**

LOOK at the Increased Range . . .  
stamped with **YOUR** wording

- ★ Platignum Fibre-Tipped Markers in 10 Ink Colours
- ★ Platignum 'Auditor' Metal-Tipped Retractable Pens (4 Ink Colours—Two Writing Points)
- ★ Guide Colours available in 'Premier' and 'Renown' Ball pens
- ★ 'RENOWN' Retractable-Refillable Ball Pens—NEW! (Quality at Fantastic Price Rates)
- ★ Stamped Key Fobs—Everyone needs and uses them (8 Colours of Leather, Gold Stamped)
- ★ Platignum 'Premier'—the preferred Ball Pen (Now in 12 Colour Combinations)
- ★ Unbreakable Combs in Pocket Cases—Gold Stamped (3 Styles available attractive colours)
- ★ ECONOMY BALL PENS. Quality at Economy Prices
- ★ FOUR DIFFERENT TYPES of our UNIQUE PERSONAL NAME SETS—Only available from ourselves. Perfect gifts

PROFITS FROM 50% TO 200% ON OUTLAY

**THOMPSON & ROBINSON LTD.**

01-992 8770

Vaun House  
Churchfield Road  
LONDON W.3

01-992 3205



# LESWYN -THE POPULAR NAME WITH FUND- RAISERS

\* Send for  
details  
& FREE  
Christmas  
Catalogue

LESWYN CARDS LTD,  
SUTTON COLDFIELD WARMS TEL: 021-354 7389

To LESWYN CARDS LIMITED, Sutton Coldfield, Warwickshire.  
Please send me your FREE catalogue without obligation:-

Name (Mr. Mrs. Miss) .....

G769





### Points on the Programme

I was very interested in the letter from Peggy West (May GUIDER) on the new Guide Programme.

Having just completed the first year, this item came under discussion at our last Patrol Leaders' Council.

We all agreed that the Guide Handbook is invaluable, and a lot of hard work has gone into compiling it, but we felt that in addition, a set test (with alternatives) covering the Eight Points—one test for each coloured Eight Point badge, each one becoming harder towards the last badge—would have been received with more enthusiasm, and would have been a greater challenge to the Guides.

We have had a year packed with interest, covering all the Eight Points, for full Company, Patrol and individual Guide, but even so to a Guide, although she knows she has taken part in all these activities, we still think there was something to be said for the little test card on which the Guide herself knew just what stage she had reached in her Guiding.

DORIS ARNOLD, Guide Guider, 27th Banner Cross Company, Sheffield.

THE GUIDE, 25th April issue, carried a chart to be used by Patrols or individual Guides as a progress record. Have your Guides tried using this?—Editor

\* \* \* \*

All my Guides prefer Test Cards to be signed, and my P.Ls are lost because the Guides in their Patrols all want to do something different.

Also Brownies coming up at 10 years old are not mixing with older Guides, consequently at 13 years I am now having Guides leave.

I think the age should be 11 as before—once a ten year old is enrolled there is not one badge she is really capable of taking for six months or more—she tends to still want to play Brownie games and some have even signed their way through the Handbook not having done one thing.

My Lieutenants are in agreement with me. We have had endless discussions as to how to get the Programme over, but it comes down to the same thing every time—Guides do not like it, nor do we.

MABEL D. SMITH, Guide Guider, 1st Willesborough Company, Kent.

\* \* \* \*

Our Company did not lose any members—in fact it has grown considerably during the past year—but my Lieutenant and I both felt a gap where 2nd and 1st Class used to be.

We, too, worked out our set of 'Challenges' based on the 8 points. The passing of these is not compulsory but is encouraged by the Patrol Leaders as they get points for their Patrol for each clause passed. We have now worked out a set of 'Challenges' for the second year each of which has a reference to a page of the Guide Handbook, e.g. 'Know how to hoist colours'—Page 130

and 'Light a fire out of doors and cook on it'—Page 96. We hope that by drawing the Guides' attention to certain pages of the Handbook we will get over their feeling of not knowing where to start. This feeling is I am sure common amongst all Guides especially in a Company with very young Patrol Leaders, who are lost themselves and feel at a loss to help their Patrols. The Challenges give them something concrete to work at with their Patrols.

We do not spend a great deal of time on these Challenges and have done a lot of other things during the year, including hiking, skating, swimming, camping, entertaining our parents and singing carols at an Old Folk's Home. Nevertheless we feel the Challenges are a very useful background to our Patrol and Company meetings.

(MRS.) BARBARA M. COX, Guide Guider, 2nd Belmont Company, Surrey.

\* \* \* \*

I am sure many Guiders would support the view that we are being asked to throw out the baby with the bath water. Our programme did need bringing up to date in various details but not the elimination of the basic skills and testing of them. The test card was a delight to very many Guides and the passing of different items brought a sense of achievement which no amount of challenges can give. The Duke of Edinburgh's scheme is based on tests, why scrap our system which has worked so well? For the highly organised successful Company with experienced Guiders the programme seems to work reasonably well but it has been found with a small village Company started last year that there is little enthusiasm for the Handbook (which could with advantage have been condensed to half the size), that the proficiency badges are much too difficult for the average young Guide and that it is extremely difficult to run a Company on the new lines when it is quite new and consists of very young children who so far have produced not more than one potential leader. Perhaps it would be better to have a Club rather than a Guide Company for such children?

Something more constructive, please, for the new Guider working for her warrant.

AN ACTING GUIDE GUIDER—name and address supplied.

**Programme Department Comments:** Guide 'skills' are still required for carrying out many of the activities suggested. A challenge is a 'test' freely chosen, not imposed. The challenges in the Guide Handbook may be accepted in any order and at any time, to fit in with the programme of the Patrol and the Company. The Handbook contains 'cards' for each girl to record her achievements. Some Interest Badges require more preparation than others but for all of them the progress made is more important than the standard reached (see Badge Tests—Hints to Commissioners and Testers, price 5d.)

The Duke of Edinburgh's Award Scheme offers a wide choice of training and achievements, and the girl is assessed on the progress she makes in each section.

### Giving and Gaining

I was the fortunate Commissioner who had the School for the Deaf Guide Company (May GUIDER) in my District and I would like to say that we gained far more than we gave by working with them.

When possible two or three deaf Guides would join other Companies at weekly meetings. They were always courteous, their camping first class. On public parades they often led the District because of their smart uniformed appearances. At a District Efficiency Competition a few years ago when 10 Companies took part, the School for the Deaf Company achieved 4th place. We now have deaf Brownies as regular members of a Church



Pack much to the joy of the present District Commissioner and Guiders.

Yes, we are fortunate in having Extension Companies and Packs. Also children's convalescent and holiday homes in this Division from which some of the most active are introduced to Guiding and enrolled in the nearest Pack. Guides are welcomed as helpers in these homes and thus find interesting and worthwhile service projects. Rangers, Unit Helpers, Trefoil Guild and Local Association members are all very busy and happy giving help when Guiders need it.

Our thanks to Guiders like Miss Doreen Woodford who are prepared to give such dedicated service to Extension Guiding and allow us to join in.

A GRATEFUL COMMISSIONER.—name and address supplied

### Grin and Bear it

Poor Sarah! is she never going to learn how to wash socks, clean out a cupboard or make her bed?

I noticed in the article 'Oakwood's Dilemma' how pleased her parents were when Brown Owl achieved where they had failed, namely to encourage Sarah to clean her shoes. So why the sudden distress when Brown Owl suggests further domestic chores? Upset in a fastidiously run household?

Is it not the place of the parents to direct and encourage their children in the art of domesticity, or would they prefer to raise a generation of incapable individuals?

Surely one lost pair of socks or a wet cupboard for a few days or even a week of anxiety over one unmade bed is worth it if it helps the youths of this world to grow up able to help themselves and others?

'Oakwood's Dilemma', the caption should read:

'Is there a moral in this for Brownie Parents?'

ENID P. RUDD, Assistant Brownie Guider,  
29th Bradford Pack, Yorks.

### Windsor Weekend

Saturday 3rd May dawned fine if misty, considerably helping the arrival of 700 Guides and Rangers from all over England at the I.C.I. establishment at Slough, Bucks. Luggage was speedily removed by Venture Scouts to the local schools where we were to sleep, while delegates were given an excellent lunch in the vast canteen. In the afternoon, coaches took us on various outings, to Hampton Court, Windsor Castle, and in our case to Windsor for a steamer trip. After high tea at I.C.I., we packed into the hall at Slough College of Technology for a rousing sing-song and the thrill of seeing and hearing Lady Baden-Powell. 300 of us slept at the College, the Guides and Rangers in the hall and gymnasiums, the Guiders in the staff common-room, but all (except a lucky few who pushed the easy chairs together) on a very hard floor! Supper drinks and breakfast were provided at the schools, and the Sunday morning was occupied by more coach trips, to Runnymede, Windsor and Eton. Those of us who went to Eton had a most interesting time finding answers to a local knowledge quiz, before another good lunch at I.C.I.

Then came the climax and the reason for the whole weekend. We were taken to the Victoria Barracks at Windsor for a parade through the tourist-thronged streets, led by the band of the Lifeguards; to the Castle where one delegate from each county lined the steep steps of St. George's Chapel in a guard of honour; into the Chapel itself for a lovely service attended by the World Chief Guide. We gave thanks for Guiding and all it means to us, and re-dedicated ourselves to our high

ideals of obedience, faith and service. Our exit was through the magnificent Garter Chapel, and even then our exciting weekend was not quite at an end, for we were given a tasty tea before starting our journeys homeward.

S. DOLLEMORE, Guider-in-charge, Bucks. Delegation.

I am sure that the Guides and Rangers from all over England who went to the Windsor weekend would like to join me as I say a very big thank you to everyone for making the week-end possible and so enjoyable. There was a lovely atmosphere all the time and the organisers and helpers were very kind and extremely patient (especially with the sleepless girls on Saturday night!).

It was a truly wonderful experience and one, I am sure, that will never be forgotten.

BERYL HOOPER, Ranger Guide, Surrey East.

### Swap Talk

Many Ranger Units are those of a District or Division and consequently there are fewer opportunities for the Guiders to get together than for Guide and Brownie Guiders.

At a Division Training, a group of us enjoyed meeting and talking together so much that we decided to meet again informally. Since then we have had four meetings and some profitable discussions.

What do we discuss? We air our problems. How do you use the Handbook? How do you get them to do something other than chat? What do you think about...? We sometimes find answers but if not we've probably been given some suggestions and the more experienced Guiders can often help those just starting.

We have planned a Ranger Display for the Division A.G.M. and are in process of planning a get-together for the Rangers in the Division for next Autumn.

Our Units are very different, but exchanging ideas for meetings can be helpful and we're hoping to combine Units for some courses for the D. of E. Award.

Our meetings aren't all serious discussion—there's always time for coffee and chat, and we've found them interesting as well as useful. Perhaps other small groups of Guiders, Ranger Guides, Guides and Brownies would like to try them too.

ROSALIE WELLS, Ranger Guider, 1st Catford Ranger  
Guide Service Unit, London, S.E.

## Royal Gala Film

A Royal Gala Film performance in the presence of Her Royal Highness The Princess Anne, is being held in aid of the Scout Association at the Empire Theatre, Leicester Square, on the evening of Monday, 21st July. The film, 'Alfred The Great', stars David Hemmings, Michael York, Prunella Ransome and Colin Blakely.

Special price tickets are available at 1 gn. each for the members of the Scout and Guide Movements. For tickets please apply *quickly* to: Kay Clay, The Scout Association, 25 Buckingham Palace Road, London, S.W.1, enclosing your remittance. Please note that uniform or evening dress should be worn.





# If you collect 'Lord Baden-Powell'

-you'll find the Founder  
counts towards your Collector's Badge!



Yes, Lord Baden-Powell himself is one of fifty famous Britons specially chosen by Brooke Bond for their latest and greatest picture card series. It's called 'FAMOUS PEOPLE 1869-1969'. We've included sportsmen - from W. G. Grace to Sir Alf Ramsey. Scientists - from Darwin to Whittle. Heroines and heroes -

Florence Nightingale, Gordon of Khartoum, Sir Francis Chichester. And even Charlie Chaplin (who's as British as they come!). 50 beautiful full-colour cards in all. Free cards in all packets of Brooke Bond Tea and Tea Bags. And the album to keep them in is only 6d from grocers' shops. Start collecting *now!*

## Full-colour Wall Chart

A beautiful Brooke Bond 'Famous People' Wall Chart measuring 30" x 40" is available, featuring all the Famous People in the card series. The cost is only 5/-, including special packing and postage. Fill in the coupon, and post with Postal Order, Money Order (or cheque) for 5/- to: Brooke Bond Wall Charts, Heathrow House, Bath Road, Cranford, Middx.

Name \_\_\_\_\_

Address \_\_\_\_\_  
\_\_\_\_\_  
\_\_\_\_\_



New *FAMOUS PEOPLE* Picture cards - FREE with Brooke Bond Tea and Tea Bags



# International Code of Signals

EXTRACTS FROM THE PRIVATE DIARY  
OF A DIVISION COMMISSIONER



As from the 1st April, 1969 the single letter meanings of the International Code of Signals have been radically altered. The new meanings are given below:

- A I have a diver down, keep well clear at slow speed
- B I am taking in or discharging or carrying dangerous goods
- C Yes—affirmative or the significance of the previous group should be read in the affirmative
- D Keep clear of me I am manoeuvring with difficulty
- E I am altering my course to starboard
- F I am disabled, communicate with me
- G I require a pilot \*I am hauling nets
- H I have a pilot on board
- I I am altering my course to port
- J I am on fire with dangerous cargo on board, keep well clear of me
- K I wish to communicate with you
- L You should stop your vessel instantly
- M My vessel is stopped and making no way through the water
- N No—negative or the significance of the previous group should be read in the negative
- O Man overboard
- P (In harbour.) All persons report on board as the vessel is about to proceed to sea \*(at sea) my nets are fast to an obstruction
- Q My vessel is healthy. I require free pratique
- R No meaning
- S My engines are going astern
- T \*Keep clear of me, I am engaged in pair trawling
- U You are running into danger
- V I require assistance
- W I require medical assistance
- X Stop carrying out your intentions and watch for my signals
- Y I am dragging my anchor
- Z I require a tug \*I am shooting nets

\*For fishing vessels only. When made by sound may only be made in compliance with the requirements of the international regulations for preventing collisions at sea—rules 15 and 28.

K and S have special meanings as landing signals for small boats with crews or persons in distress—International Convention for Safety of Life at Sea 1960, chapter 5, regulation 16.

## TO GIRL GUIDES AND KINDRED ORGANISATIONS

WE are prepared to send you a selection of Ladies' Fancy Aprons and Scatter Cushion Covers (also dress lengths and net curtaining material, if available), for your bazaar.

### SALE OR RETURN

Please write for further particulars giving name of unit and approximate date of event to:

Walter and Fisher, 120 Portland St., Manchester, M1 4PS.

James said, you look a little put out, are you? It's this hobby business, I said. Whose? said James, I haven't noticed you with palette and brushes lately. The dangers of hobbies in general, I said. There is no such thing as a hobby in general, said James, with a distinct air of triumph, the nature of a hobby is to be particular. Stop trying to be clever, I said, it is Mrs. Pretty who has made the answers. The Mrs. Pretty who pots? said James. Clay and ovens and all that? The same, I said. Well, she's just been to a County Arts Training and she's furious. Why? said James. Because she was expected to sing a bit and dance a bit and try lino cutting and watercolour sketching and whittling and choral speaking. Quite a programme, said James, and what did she want to do? Model in clay, I said, everything else according to her is a waste of time. Then she should go to classes, said James, W.S.A. or something. Your Guide training is to give a glimpse of possibilities rather than to instruct in techniques, isn't it? Yes, I said, unless it is advertised as specialised. Well, she'll know next time, said James cheerfully. Oh- but that's not the worst, I said, I've been making enquiries about her Company. They've been up to their eyes in clay since the New Programme began. They've made plates and cups and mugs and figures for bazaars and exhibitions and presents—and their members are a third down in the census. All because of Mrs. Pretty's pottery? said James. You mean the kids have just walked out without protesting? Without using our regular channels of protest if you like to call them such, I said—the Patrol system. Mrs. Pretty hasn't understood the system which worries her much more than her taste for modelling in clay. Of course Guiders are encouraged to share their hobbies, but only in the context of the interests and expressed wishes of the girls. James puffed pipe thoughtfully. Odd, he said, we none of us seem to be prepared to listen fully to the young, our university professors, our parents, our employers, our Guiders either. Apparently B.-P. still has something to say to all of us. It's a pity we don't listen more carefully.



THE key words for visual aids are simple and bold. Lettering should be large, unadorned, and in a colour which is easy to read. Good examples of colouring and lettering can be seen on our motorways, where it is essential that the motorist should get the message quickly. Notices and posters are better on a piece of card, it is more durable than paper. If the notices are to be displayed indoors and drawing pins cannot be used, there is a new substance called Plastitak which does not mark surfaces and can be used over and over again (supplied by Philip and Tacey).

1. There are a number of mechanical aids which facilitate lettering:

*U.N.O. Stencil*, expensive to buy in the first instance but very clear and good. These can only be used with special black ink. C.H.Q. sell one of these stencils which can be used for printing a Guide badge design.

*Letraset*, these are cheaper but expendable as each symbol can be used only once, but there are several copies of each symbol on the sheet. They are very easy to use, you place the symbol where you want it on the paper and rub it off with the blunt end of a ball point pen or pencil.

*Felt Pens*, used on unprinted newspaper can be used for rapid visual aids, built up with the audience before you, if you have clear handwriting or the ability to sketch.

2. Display boards can be purchased but a great many more can be made with very little expense:

*Cardboard*, old display cards can often be acquired from shops and stores; these frequently have a small strut at the back and are free standing. Notices can be pinned to them, or painted on them if you first block out the original sign with a coat of distemper.

*Teazlegraph*, can be made from brushed nylon, or better still from nylon velvet. The nylon should be stretched over thick cardboard, or over a piece of hardboard. Pictures can be affixed to the nylon if the picture has a small piece of Velcro stuck at each corner. Arnold's of Leeds sell small squares which can be used instead of



By Tavia Maclean

Illustrated by Elizabeth Wall

Velcro, these are sold by the sheet, and are cheaper if you want to use a large number.

Nylon velvet with a foam back can be attached to a cane to make a portable Teazlegraph which will roll up when not in use.

*Cellograph*, this is a board covered with plastic material. You can write on this with a felt pen, to clean it completely afterwards you need ITN Cleaner. Plastic Cellograph letters and notes of music can be purchased from Philip and Tacey, who also sell sheets of coloured plastic which you can cut to your own design.

*Magnetic Board*, an old tin tray can be used for this purpose. The tray will still be effective if it is painted or covered with a piece of material. Any picture to be displayed on this board needs a small magnet or a piece of magnetic strip affixed to its back. The magnet can be stuck in place with Bostik. This kind of board can be used to display 3D models.

3. There are several types of projector which are very good visual aids. They can often be borrowed from your L.E.A.

*Epidiascope*, used to project pictures or pages direct from a book. It can be used in making enlargements of a picture, you project the picture on to a sheet of paper and then draw around the image.

*Film Strip, Still and Ciné Projector*, when using these you often need to point out a feature in the picture, there is now an arrow torch available which is very good. It has a fine beam which can be directed from a fair distance.

*Overhead Projector*, material to be displayed by this projector must be drawn or written with a felt pen on a sheet of acetate. This is the type of projector used on T.V. when the picture is built up line by line as you watch the screen. Material can also be prepared beforehand for use with this projector, but if the acetate is to be exposed to the heat for long the edges need to be bound, otherwise they curl up.

Footnote: Visual Aids & Art Materials can be obtained from Matthews, Drew & Shelbourne Ltd., 78, High Holborn, W.C.1.—Editor.

## VISUAL AIDS CENTRE

LETTERING AIDS: DISPLAY BOARDS:  
OVERHEAD PROJECTOR: ACCESSORIES:  
FELT & FIBRE TIP MARKERS.

MATTHEWS, DREW & SHELBOURNE LTD.  
78, HIGH HOLBORN. LONDON. W.C.1.



## BE A FERRET

By  
Jennifer  
Hewitson



Illustrated by Elizabeth Wall

'OF course a Commissioner is a natural ferret,' said my informant, with a touch of superiority. 'Her job largely consists of ferreting out information for others, and ferreting out people to do a hundred and one different jobs. Why write an article suggesting that they be what they are?' All the same, I wish I had not looked up the dictionary definition. 'Half-tamed variety of polecat kept for driving rabbits from burrows, killing rats, etc.' (Half-tamed Polecat?). This is not nearly so attractive a picture as the Handbook description on pp. 12/13. (Intelligent, concerned, self-disciplined, friendly, enthusiastic, respected, liked, knowledgeable . . .). So now that we all feel better let us close the dictionary, only acknowledging that the definition is not far off the mark when it comes to encouraging (rather than driving) people into new interests, and dealing with difficulties and disposing of problems.

The Commissioners' Handbook is not difficult to use. It is well subtitled and indexed, so that when we start ferreting we shall probably be looking for guidance on something that is a little harder to define than Leadership Certificates and Supporters' Committees. The heart of the District Commissioner's responsibility is laid out on p.71, and it would perhaps deepen our understanding of this 'family' if we were to ferret through the Handbook with the idea of cohesion in our mind, instead of the more usual search for precise information. Start in the obvious place on pp. 7-9 and get down to fundamentals on pp. 18/19.

Like the Eight Point Programme itself the various facets of the Commissioner's work overlap, but keeping in mind the idea of 'family cohesion' it seems that her tasks are practical help, deepening understanding, and taking the 'family' into the outside world. Pp. 21/22 show the Commissioner in relation to practical help, particularly stressing the need for offering trained help. This also takes the family out into the world. Pp. 33/34 show the Commissioner how she may

widen the horizons of the Units in her District and p. 36 how she may bring the 'world' into the family.

Practical help demands co-operation and Organisation. P.39 (pooling) is one way in which a District is helped to become a family at more than District Meeting level. And at this level, too, the Commissioner will find help on pp.75/76 as she seeks to get cohesion among her Guiders. The Commissioner must also look after the migratory members of her family by co-operating with the Lone Adviser (p.78).

Family life is weakened when the head of the family is away too long. P.109 advises on the theory and practice of Unit visiting, one of the most important, most pleasurable and most demanding of the Commissioner's tasks. More particularly with the older Guides and Rangers she can see, while visiting, where she can help relate them to the Youth Service, and help to widen their interests (p.181).

Some of the Commissioner's activities on behalf of her family have the effect of throwing stones into a pond and causing ripples to spread far beyond the original splash. What might she find in the way of help when searching for Pack Holiday sites (p.26)? How many people will she attract or repel by her attitude and approach to others (p.92)? She has a responsibility beyond her own immediate activities (p.151) and represents Guiding willy-nilly to other organisations with whom she comes in contact (p.171).

The Commissioner must have ideas and information tucked away in her mind to help with the interpretation of the Programme, sometimes in difficult situations. (p.28 Out Throughout.) She must understand family growth (p.31) and her own life (p.72) in relation to her District family. She must run a good District Meeting (p.74), understand and deal with the training needs in her District (p.97) and look after trainers when they visit her family (p.107). When trouble looms turn to pp. 130/131 and remember that Archbishop Temple's words quoted on p.159 apply to more than attached Units.

Perhaps you feel now that a real ferret has a much easier time of it. Read the Conclusion on p.193 and take heart, and remember that encouraging list of adjectives on pp.12/13, even if some are a little difficult to live up to all the time.

### THE GUIDE IN JULY

Of special interest:

- 11th July Beginning a three-part picture series on building backwoods shelters.
- 11th, 18th July Learning to swim and the rules for water safety.
- 25th July What to look for on the beach.



## I WORK WITH Blind Guides and Brownies

By Wendy H. Pelowe & Maureen R. Cullen

'OH, Maureen, I'm in a spot of trouble. It's the Blind Company, you know. It's the last Unit I want to close. Do you think you could help out for a few weeks?' 'Me? I've had no experience or contact with blind children'—but, being unable to refuse, I embarked upon a new adventure.

The Ranger Speaker was a Home Teacher for the Blind. During her talk two Rangers knew their quest for Duke of Edinburgh's Service was over. They would work with the Blind Company. Later on, the Brownie Guiders resigned, and one of the Rangers—me!—became 'Brown Owl'.

Hence, the staffing of our Units—recounted for you to show that anyone can work in the Extension Group who is willing to accept a challenge; and those of you working with 'ordinary' Units are facing just as severe a challenge. So we hope news of our Programme will give you some inspiration too.

If experience is one of the most valuable forms of teaching any success in working with these blind children is due to just that. In addition we found the acquiring of one particular skill helpful—braille. We soon realised, independently of each other at first, that we had inherited school-bound Units, in which previous programmes included games and testwork, where girls were amused in the safe confines of one room, while resident staff had a rest. The girls had been given what was considered good for blind and dull children—no consideration for their development entered into any planning.

'Smelly knots, I'm not doing smelly knots. I'm not playing any silly old game. I hate it, it's boring. I can't do anything—I'm blind you know.' This was our reception. What a hopeless situation for these girls. What utter despair. What could we hope to do? Gradually we offered more attractive activities and testwork in real situations. We joined in every District activity possible; we felt we belonged to Guiding. At last Guiding was accepted on its own merit. We even became ambassadors, in running an Eisteddfod cup for Camp Fire Singing. What now, we thought?

'A Christmas Good Turn, we don't do Good Turns, other people do them for us.' Had we failed?—no, this problem became an opportunity to look wide and move into the sighted world. A successful concert for the elderly included braille readings, singing, dancing and piano playing and became the first of a series of concerts—later for raising funds and broadening to include dance, drama and plays. Later still our sponsored swim raised over £50 for arthritics. We joined spon-

*The 142nd Royal School for the Blind Company and Pack on a day's visit to London.*



sored walks and went on to hike and cook, Guide fashion. The Guides were at last interested in living a full life. They were enjoying a sighted world, as yet totally unexplored, and we were discovering almost anything attemptable could be overcome. The Guides benefited—and so did we Guiders, having now acquired the attitude for such leadership. We expected more of 'ordinary' Guides, a raising of standards all round.

The Brownies were of slightly higher ability and had had less of institutional life. We were keen to widen their outlook too, but, obviously, the approach needed adjustment for this particular need. Joint lessons with the local primary school were flourishing, so the Brownies were getting to know local children, and some were invited to tea. So we handpicked children to join the Brownie-Pack, an equal number of blind and sighted. This joint Pack has flourished for three years. It meant we had transport for joining local events, our Pack Holidays no longer needed surplus adults, our Brownies gained in confidence through physical activities at speed.

We finally decided these girls could take a treat and still retain their new-found character: a day at Foxlease and Brownsea Island for the Guides, and at a Welsh farm for the Brownies; and a most exciting day in London, including a self-service meal! People thought we were mad with this undertaking. 'What will they get out of it?' Little did they know one ambition of the Company was to travel on the London Underground in rush hour!

Some of our Guides are now Rangering in sighted Units; and one is about to become an Assistant Brownie Guider with a sighted Pack. We hope these girls will find these challenges as exciting as we found our challenge in working with the blind.



# Training

The final article in the series: 'Let's have a . . .'

THIS series has been about various kinds of group meetings which are built in to our system of self-government and self programming in Guiding.

The authors have dealt with five subjects—the Pow-wow, P.Ls' Council, Ranger Committee, District Meeting and Division Meeting. On the face of it one would not expect these subjects to have much in common; the deliberations, for example, of the District or Division team are unlikely to bear a very strong resemblance to the decision-making process of a Brownie Pack!

Yet, looking back through the articles, it is surprising how the same hints and suggestions recur again and again. 'Can the Chairman help the group by encouraging a contribution from everyone?' 'Let us do all we can to evoke an atmosphere of friendly, adult responsibility.' 'It is important that the whole set-up should be run in a business-like way.' Brown Owl may have her notices: Brownies will practically always have their news.' The quotations are from four different articles, but the points made are common to the whole series.

The truth is, of course, that there are certain processes which underly what goes on when any group of human beings meet together to discuss, make decisions, and learn from one another as they do it. Age groups, personalities, aims and procedures vary, but the laws that make a group tick, or fail to tick, stay the same.

The Guider who has become accustomed to leading through the Pow-wow, P.Ls' Council or Ranger Committee, whether she is Chairman of either of the last two or not, or the Commissioner who leads through Division or District Meeting, usually finds her own way to the practical skills that she needs to get her group working. At the same time it can improve these skills if they are seen in the context of a few basic principles which apply to all group leadership. This may be done in a very simple way under five headings.

## 1. Removing the bubble-packs

Most people arriving for a meeting are each shut up in a kind of personal psychological bubble-pack.



The pack, which is thicker round some people than others, is a form of self-defence; it is especially thick if a person is shy, anxious, embarrassed, new to the group, or in any other way feeling at a disadvantage.

So long as all, or even some of its members are isolated in this way, the group will not begin to tick. It is the leader's job to help each person shed her bubble-pack as quickly as possible, so that she can be the ordinary person who is underneath.



Hence the importance of welcoming each group member, making her feel relaxed and at home, realising that she has an integral part to play but that she will not be asked to do anything to make her feel stupid. And this initial sense of security must be maintained, or on go the bubble-packs again!

## 2. Arrangement of seating

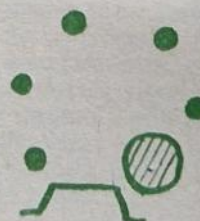
The way people are seated affects the way they behave. A group seated like this



expects to be addressed by the leader and perhaps to answer back, but not to communicate with one another. For full inter-communication, all should be able to see and hear the rest thus;



In a room with a fireplace, that is probably the natural focal point and the chairman may do well to sit beside it.



For a small group and when a formal atmosphere is desired, to sit round a table may help.





## There's Skill IN GETTING A GROUP TO TICK

By Elizabeth Carnegie

This is why it is important before a meeting to give some thought to the arrangement of the room.

### 3. Setting up lines of communication

The leader, whether she is in the chair or not, probably takes the first steps in creating lines of communication. If her welcome, opening remarks, and introduction of the subject for discussion are pleasant, acceptable, clear and stimulating, she evokes immediate interested response in each member of the group, at once establishing the beginning of two-way communication between herself and them.



Their interest aroused, one or two members begin to respond to one another, perhaps increasing the lines of communication thus:



After a few minutes, if the leader is able to bring everybody into the discussion, each aware of and interested in what the others are saying, the ideal situation develops, thus:

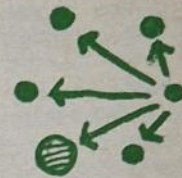


Here two-way communication is going on between all members; this should be the aim of every group leader.

4. Avoiding snags which check communication  
**Discussion-hoggers.** The leader who is too didactic or talks too much, or who allows one group member to talk too much, gets the group stuck in a situation like this:



or this:



When this happens all communication stops and the danger of new bubble-packs begins.

**Odd men out.** It is easy for one, or more than one person to be left out of the discussion entirely, or for some reason deliberately to withhold themselves, thus:



or thus:



The leader watches for this and does her best to draw in the odd men out.



**Splinter groups.** If the leader allows the discussion to fall apart into unintended sub-groups, communication between the members of the group as a whole ceases.

The leader's job is to hold the group together and keep it to the subject under discussion. And so on. The reader will be able to add more diagrams of snags met in her own experience.

### 5. Coming to a satisfactory conclusion

The point under discussion, be it large or small, having been clearly introduced and fully discussed by everybody, must then be brought to a satisfactory conclusion. This is probably done by means of a re-statement of such common mind as has been arrived at, or if necessary by a vote. Whatever the method, members should end up clear in their minds as to what has been discussed, what, if anything decided, and that each has played her full part. They then proceed happily to the next point, or go home content and looking forward to the next meeting.

There is certainly skill in getting a group to tick, and it is a skill which every unit Guider and Commissioner needs to learn and to go on practising, for it is absolutely basic to leadership in Guiding.



## WHY NOT TRY—

From a Handbook for Guiders; Ranger Guide Service Section.—P.73.

*'The giving of service, if it is to be useful, must meet a real rather than a manufactured need'.*

### Short-term service projects:

These can be best when the Rangers are young, very busy or from a scattered area, and normally consist of one concerted effort, e.g. clearing litter; providing refreshments at a meeting; mending prayer or hymn books; replacing door hinges or broken window-panes at the Unit meeting place; taking an elderly person (especially if the Rangers have a car) to the chiropodist, the hairdressers or to see the fruit trees in blossom; taking the disabled in wheelchairs to do Christmas or birthday shopping.

The main point of these activities is that there is little or no advance preparation, and the Rangers see a quick result.

### Concentrated service projects:

These are mainly fairly short-term activities, but longer than a day probably, and they often involve something requiring everyone's help in different ways for a defined period . . . such as, a service camp (dividing up for the service needs, and the duty group etc. who deal with cooking and other chores), a school holiday play-group (scope to cope with children of all ages and interests), decoration of an elderly person's living room, a community centre or church room.

### Long-term service:

This can be some project involving one individual or the Unit as a whole, and can be something that needs a little time each day or week, and is continuous—such as calling on an old person (on the way home from school several Rangers could 'share' one person), getting a little shopping, a prescription at the chemist, posting letters, or getting a daily newspaper. The local milkman, health visitor or other neighbours could often tell you where there is a real need—and you could have an 'I need help' sign—such as a drawn curtain, or a newspaper in the window. Once started, this type of service must be continued at all costs, and it is better not to attempt something like this if the Rangers feel their enthusiasm might wear off.

Other examples of long-term service are helping with Cubs, Brownies and Guides, or Sunday School, bell-ringing; helping with library books at the local hospital; assisting at the nearest child welfare clinic or children's public library; visiting spastics or children confined to wheelchairs, or helping newly-arrived immigrant families to learn English.

### Try a service 'theme of the month' . . .

This is an idea which has been tried, and found successful to keep the idea of service in the Rangers' minds . . . Choose a theme for the month, and try to offer practical help in any way you can. You might choose 'people', 'practical tasks with things', 'animals' or 'services with no visible end-product'.

This type of activity can engender an awareness of useful service, and observance by the Ranger, and although not excluding service opportunities in other fields can help her to concentrate her efforts to a particular end.

Above all, before undertaking any form of service, remember that advance training and help may be necessary, and that all jobs are not for everyone—it is as important to know what you *would* do as an individual (would you be able to do anything for a dying animal in the street), as to know what you *could* do (once you have had the necessary training). Why not try?

M.E.R.



From A Handbook for Guiders—Brownie Guide Section.

**Hidden Hints—Page 68.** *'Give the children, on separate strips of card, a series of hints on a specific job. They then arrange the hints in the right order and, if possible, do the job. (This is suitable for shoe-cleaning, fire-lighting, tea-making, some cooking, answering the telephone, etc.)'*

Write out, on separate pieces of cardboard, some of the hints given in the Brownie Guide Handbook, on shopping, using the telephone, tying up a parcel, washing clothes etc. Turn to pages 86, 102, and you'll find the instructions very straightforward. These cards you will find useful for helping individual Brownies prepare for their challenge, but try using them as a game. Give each Six the cards belonging to a specific job. These they place in a heap some distance in front of their Six. Each Six has a dice which is thrown in turn. When a Brownie shakes a six she picks up a card. When all cards are picked up the Six arranges them in the correct order.

To score, each Six goes to another Six's corner, armed with the Brownie Handbook, and checks the order, probably leaving an agreed number of tokens or spills behind as their assessment. The game could end here, but why not carry it further, and let each Six mime or demonstrate the particular activity, the remaining Sixes watching critically to see all is done?

L.W.



## WHY NOT TRY—Setting yourself a Challenge?



By  
Audrey Chase

Illustrated by  
Catharine Towner

LET'S say 'To try to help all the Company (Guides and Guiders including myself) to develop ourselves as individuals, to contribute to a group (Patrol/Company) and to appreciate each other in the process'.

All on condition that you give yourself time to observe, that you use the Patrol system and the Guiders' Handbook.

**First Step** Take 'A Handbook for Guiders: Guide Section' and read 'Jenkins Kim' on page 111, 'Which One' on page 119 and paragraph five of page 157. Note that these are but three of the hundreds of ideas in the book. Resolve that you as an original person can and will adapt and expand on someone else's ideas.

Discuss the ideas set out below at P.Ls.' Council but do not disclose the nature of the challenge you have set yourself. Instead, take the

**Second Step** and using para 5 of page 157 as the idea, challenge every Guide to bring to the next meeting something she has made using her hands. It must be something small which she will be prepared to give away and she is not to show it to, or discuss it with, any other Guide until told she may. It must be treated as Top Secret.

**Third Step** Before the next meeting prepare sufficient numbered cards (approx. 1in. x 1in.) one for each Guide, plus a covered box or bag in to which the gifts can be placed and not be visible. Collect a number of pictures, preferably picture postcards, used Christmas cards etc. You will need about twice as many as the number of Guides, and resist the temptation to collect only those you like! You need a variety including some you dislike.

**Fourth Step** At the next meeting, each Guide on arrival places her gift in the box or bag provided by you, and at a later stage you display the gifts on a table, each one numbered. Each Guide makes a list with the numbers down one side and then looks at the gifts and tries to guess who made what, placing a name by a number. When this has been done, each Guide claims her own gift and all check to see who had most correct answers.

Encourage them to talk about the things they have made, and if there is a need allow them time to teach each other.

At this stage you may have to break in to interest groups and have other things up your

sleeve for those who do not wish to learn from another.

Either way, you should within 15 minutes, be in a position for the

**Fifth Step** which is to play 'Jenkins Kim', page 111, in Patrols, and having briefed your P.Ls. you can leave them to it.

**Sixth Step** Your collection of cards will be displayed and each Guide asked to choose the picture she would most like to own for herself. She takes this back to her Patrol corner. 'Guiders can circulate discussing the pictures chosen and asking Guides for their reasons . . . taking mental notes of the reasons for choice particularly when these are surprising! From the individual choices the Patrol is asked to choose one they would like to send to someone they know. This to be a real live person e.g. someone in hospital, a lonely old lady, a Guide from another Company and to be prepared to say why they have chosen it, (Original idea 'Which One' page 119) and to discuss which if any of the gifts would be suitable. Suggest that the card should be made into a greeting card, or a cheery letter written, the present to be parcelled and sent or delivered by the next Guide meeting.

The Guides may wish to exchange the remaining presents or take them home to Mother. The important thing is that the gifts are given away. Perhaps a Guide or Patrol might make up a prayer thanking God for giving us talents, asking His blessing on the recipients of the gifts etc?

Just three simple ideas and an aim . . . and a Guide Company! This project would have to be spread out over several meetings and might grow into something much bigger.

### How to evaluate:—

Did this project help every girl to try out something she had not attempted before?

Did they have to observe things and people . . . and did you?

Did they practise self control?

Did you all learn something about choosing for yourself and choosing for others?

Did they learn the give and take of working in a group?

Were the Leaders leading?

Did any others show signs of leadership in the interest groups?

Did they learn to appreciate each other. Did you learn things about them?

Was it fun?

Was it Guiding?

If you can answer Yes to all or some of these questions, plus the many you will ask yourself, you haven't done so badly have you?

Now set yourself another challenge using different ideas and different situations using the Guiders' Handbook as a 'starter'.





A. A. Milne wrote a poem 'Cherry Stones', which ends—

*'Oh, there's such a lot of things to do and such a lot to be  
That there's always lots of cherries on my little cherry tree!'*

THERE is such a choice of 'cherries' in the Brownie programme nowadays, that the different things chosen to do bear out the statement that no two Packs are alike.

Take three Packs three miles or so from one another.

**Pack No. 1.** started on Challenges when they received their Handbooks, and now some Brownies have completed Journeys and are proudly wearing their badges. Before Christmas they decided to embark on the Venture of producing a Nativity Play in aid of the Old Age Pensioners, and spent busy weeks rehearsing the play and carols. The play was successful, and the hall full, which resulted in a worthwhile gift for the Old People. The Brownies feel a sense of achievement in having met their challenges, and the play has meant more progress under the Eight Points in working together, creating an artistic performance and lending a hand.

**Pack No. 2.** decided to start on a 'Keep Fit Venture' leading to Sports. A Health Frieze was made, some Brownies worked at the Keep Fit challenges on the Footpath and Road. Pow-wow chose the races, made financial arrangements for prizes, set the date—the only possible date, and it was wet! So the Sports had to be indoors! In September the Brownies decided they would like to make things to sell to get money for a Christmas Good Turn. Bulbs were planted, and meetings spent modelling, pasting and painting, etc. Interest was awakened in Artist, Toymaker and Needleworker badges. Refreshments were provided at the Sale, and one Brownie took her Hostess badge. Everyone was involved (recruits, who had not made anything, wrote the invitations) and all on the Footpath and Road met 'making things' challenges. The selling, and serving and clearing of refreshments were shared. Satisfaction was felt when the takings were counted and they

## WHAT WE HAVE DONE

By Jean Phillips

realised that their work would really help children in need. Now this Pack is settling down to Journeys, although there is a whisper about an Entertainment.

**Pack No. 3.** a brand new one, started happily in September with their green pocket books and the manufacture of a Pool for their Brownie Ring. By the time some had made their Promise, a party, to which children from a Home should be invited, was planned, and it was decided to put on a play, in which everyone was to take part, and to invite the Brownies' parents, too. This was carried out, the Brownies learning their parts and working together as a Pack, showing progress in being wide awake and being friendly in addition to lending a hand.

In another County the Packs all decided to embark on Ventures. One decided on a Parents' Evening. (This combined Journeys and Venture neatly.) The feature of the Evening was a display showing what Brownies do. Each item was work done by Brownies as parts of their Journeys and each girl was ready to explain what it was all about. The whole thing was introduced musically by the Brownies, the singing accompanied by the percussion instruments they had made.

A second Pack invited some 'Over 80's' to go to Church with them. This involved making invitations, writing and telephoning to car drivers to arrange transport. The Brownie Guider saw the Vicar, the Brownies practised the hymns, one was chosen to read a lesson, and others to take the collection. They met the old people at the Church gate, helped them into Church, found books, etc. Afterwards there were 'thank-you letters' to the drivers, and the making of a Scrapbook about the whole event. A real 'Brownies are Friendly' effort.

Another Pack, quite a new one, was asked to help at the Church Fete. They started by sowing nasturtium seeds; all contributed sweets to fill a large glass jar; they rehearsed a play in which all took part. When the day came, the Brownies were able to decorate their stall with nasturtiums, and they ran the competition 'Guess the number of sweets in the jar' entirely themselves (the Guiders were involved in the tea tent!) and gave two performances of the play during the course of the Fete.

All these schemes have involved Brownies planning and working together and have given pleasure to others and themselves.

'There's such a lot of things to do' if you are going to be a Brownie—and there are plenty of cherries!





THE Whitsun holidays have again brought a stream of visitors to C.H.Q. and parties of Brownies and Guides have again been crowding round the assistant editors' desks, fascinated to watch their own magazines being put together.

Recent visitors to the editorial office have also included the Editor of the Norwegian magazine for Brownies, and the Editor of MATILDA (the Guide magazine in Melbourne) Miss Margaret Shaw. Unfortunately, Miss Shaw arrived unexpectedly just at the time that THE GUIDER, THE RANGER and THE GUIDE were being passed for press, but she said she enjoyed her afternoon watching the wheels go round.

During her impromptu visit to C.H.Q. Miss Shaw was delighted also to have a chance to meet several members of the 'hierarchy' including Mrs. Parker Bowles.

#### Pews for Nyeri

The Chief Commissioner has agreed that a donation of £50 be sent from C.H.Q. to cover the cost of two pews in a new church being built at Nyeri, Kenya (where the Founder is buried and where the Chief Guide will also be buried). Each pew will bear an inscription, the first to read as follows—'In memory of our Founder, Robert Baden-Powell, O.M., from the Guides of the Commonwealth—February 22nd, 1857 to January 8th, 1941'. The second will read—'To commemorate the 80th Birthday of the World Chief Guide, Olave Baden-Powell from the Guides of the Commonwealth—February 22nd, 1969'.

#### Unit Record Books

At the end of 1967, when the Handbooks were printing, and the contents still unknown to all but the very few concerned with their production, it was realised that a new series of Unit Record Books would be required and that Guiders would be asking for them immediately after 18th March, 1968.

Those 'in the know', though hard pressed, drew up plans of what they judged would be needed. It was all guess work as the new programme was as yet untried, and in the event some of the guesses were wrong! An agreement with Brown, Son and Ferguson authorises them to be the sole publishers of our Record Books so we consulted them about the

production. It was our guess that 30 pages would be sufficient in the Company Record Books and we based it on the fact that normally only new Companies buy these complete books, and they would not need a great number of sheets.

What we did not do was to make clear to Brown Son & Ferguson that small packets of refills would be needed to bring the pages up to the required number for larger Companies. Brown, Son & Ferguson were unaware that the binders would have to contain extra sheets and did not make them large enough. Both these difficulties have now been overcome.

We realise that the content of the books does not suit everybody—but then no two Units are alike and no two Guiders wish to keep records in the same way! Brownie Guiders in particular may miss their old 'register'. We looked at it and found it impossible to adapt to the more flexible new Programme. When everything has shaken down and we know what is wanted we may be able to produce alternative books for those who do not care for 'loose leaf'.

We would welcome constructive suggestions from Guiders with experience of keeping records in their Units. Points to remember are: 1. That the needs of varied Units with varied numbers and types of programme should be taken into account; 2. That the records should be simple to keep and easy to understand; 3. That the cost of production should be kept as low as possible. (Brown, Son & Ferguson have looked into the cost of binders and find any type other than that used would be more expensive and/or less efficient).

We realise that the cost of these new Record Books came as a shock to many. All the time Brown, Son & Ferguson were producing the old books the type was standing and the same die being used for stamping the covers. When suddenly everything had to be re-set and re-made the cost leapt up. These costs had to be absorbed by 5,000 books, not 300,000 as with the Guide Handbook!

We are very sorry for the shortcomings of these Unit Record Books and hope you will adapt them as far as possible to your needs. As and when the opportunity arises they will be modified in the light of ever-increasing experience and we hope we shall then be able to satisfy most Guiders most of the time.

#### Notes for Parents

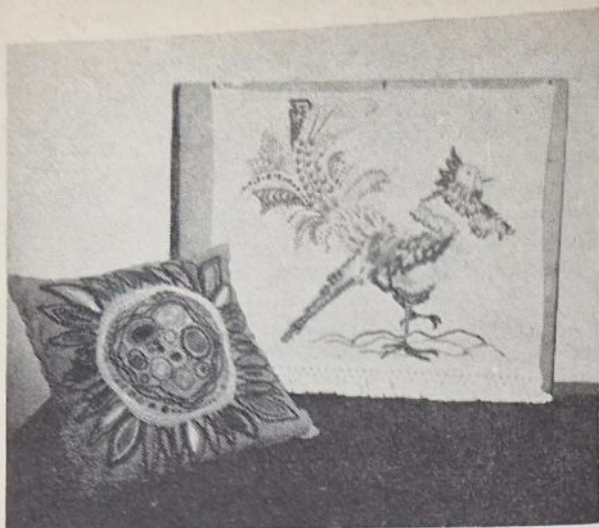
In response to several requests from Guiders, four sets of Notes for Parents have been produced dealing respectively with Brownie Guides, Guides, Pack Holidays and Guide Camps. The purpose of the Notes is to answer some of the questions which Guiders are frequently being asked by Parents when their daughters first join the Pack or Company.

These Notes will be invaluable to many Guiders and are obtainable from C.H.Q., price 3d. each.

#### Handcraft Depot

I am delighted to report that two workers from the Handcraft Depot recently won awards in the Sewing Competition organised by the Hand Crafts Advisory Association for the Disabled. Miss E. Morris





gained 90% in marks for her Garden Cushion (there were 74 entries in this class). Miss B. O'Hagan gained 80% in marks for her Embroidered Panel, and in this particular class there were 294 entries. The prize-winning work is shown on this page, and the embroidered panel is for sale—details from Handcraft Depot.

#### Camp Dress

Once again a reminder—don't forget to order your Camp Dress while stocks last. Although the weather hasn't on the whole inspired us to think about light clothes, the camping season will be on us before we know it. See page 221 of the June GUIDER for details.

**Thöra McCarthy,**  
General Secretary.

## hqn headquarters' notices

### APPOINTMENT & RESIGNATION

#### Guider-in-Charge, Foxlease

Miss Marjorie King (vice Miss Beryl Gibson, acting Guider-in-Charge).

### AWARD

#### Meritorious Conduct

##### Star of Merit

May Hunter, Patrol Leader, 22nd Perth Company, Perthshire.

May has shown remarkable courage and takes pleasure in doing many things which one would expect to be beyond her capabilities. She has to wear a metal brace neck support. Her bright cheerful personality has always been an example to the other Guides by whom she is held in high esteem and regard.

News of this award was not published with the list in the June issue of THE GUIDER as it had not been presented at the time of going to Press.

### KI-RO SYLLABUS

Copies of the Guide and Brownie Ki-Ro Syllabus are now available from: Miss M. Williams, 38 Park Drive, Marshall's Park, Romford, Essex.

THE BROWNIE Syllabus comprises two grades—one pocket book for each grade—9d. each or 8s. 6d. per dozen.

THE GUIDE Syllabus consists of four grades. Complete syllabus 3d. per copy.

### PROGRAMME IN MIXED UNITS

Following the statement issued recently that Mixed Units of Ranger Guides and Venture Scouts may now apply for joint recognition by both Headquarters, questions are being asked about the programme to be followed in those Units where the members share all their training activities.

Although the Training schemes for Ranger Guides and Venture Scouts are different they are not incompatible, and it should be possible to plan programmes that enable members to follow the scheme of their own

Association through shared activities and experiences. Both sections will benefit by this sharing even though they may not wish to pursue some of the activities to the same depth and there may be occasions when they wish to train separately. Separate interest groups are normal practice in many Units of both Associations.

Members of Mixed Units therefore wear the uniform and badges of their own section and through joint organisation and planning share the enjoyment that Scouting and Guiding offers. Hints on the running of Mixed Units will be available shortly in leaflet form.

### COPIES OF 'THE RANGER' WANTED

Are there any readers with copies of THE RANGER published during the year 1950 to spare? If so, the Librarian at C.H.Q. would be pleased to hear from you. Please do not send copies until advised.

### ACCIDENT PREVENTION PACKS

The pack of material which the Royal Society for the Prevention of Accidents prepared for use in the training for this badge, now has Assessor's Notes included.

Guiders who have already purchased a pack from RoSPA may obtain a copy of these notes, free, by sending a stamped addressed foolscap envelope with the request to RoSPA. Those who have not bought the pack, but would like the notes, may obtain them for 1s. postage paid. In every case the address to apply to is:—RoSPA, Terminal House, 52 Grosvenor Gardens, S.W.1.

### SPONSORED SWIMS *See also page 259*

Sponsored swims by members of the Movement may be undertaken provided:

1. that the money earned goes to a project from which the swimmer does not directly benefit. (This is in order to protect the amateur status with Swimming Associations of members of the Movement.)
2. that the water safety rules are observed (P.O.R. Rule 56) and in addition to these when the swim is undertaken in deep (open) water, i.e. in a river or lake or in the sea, one responsible adult swimmer must be available in a boat to keep watch on every two swimmers.

### COMMONWEALTH CIRCLE

The Commonwealth Circle will meet at C.H.Q. on Wednesday, 23rd July, 1969 at 6.30 p.m. and afterwards will visit St. Bride's Church, Fleet Street.



## C.H.Q. Staff Vacancies

**Stock Controller** in charge of small staff. Responsible to Sales Manager. Experience in retail stock control an advantage. Senior Staff appointment.

**TRAINING DEPARTMENT.** Needed by early autumn, an **Administrative Assistant** to the Department Head. This is a responsible senior position involving confidential administrative work and the organisation of staff. Good secretarial ability is required, together with a sound knowledge of Guiding. Experience of training/camping would be an advantage.

Age range approximately 25 to 40 years.  
Salary according to age and experience.

**ASSISTANT TO THE OVERSEAS SECRETARY**—will be a Senior member of our Staff and will act as **Administrative Assistant** to our Overseas Secretary. The Assistant will be responsible, in conjunction with the Overseas Secretary, for the day to day running of the Department and for the delegation of work to the Secretarial Staff. She will be directly responsible to the Overseas Secretary in whose absence she will act as Deputy.

We anticipate that the successful applicant will have experience in general office administration and dealing with staff; will be interested in the Commonwealth; get on well with people and have a sense of humour with a lively personality.

For a position of this nature it will be a distinct advantage to have had experience within the Association.

Although there are Secretarial Staff it would be valuable to have a knowledge of Shorthand and the ability to type.

Age range preferred: 25-35.

Salary range: £850-£1,100 per annum.

### FOXLEASE

Resident post at Foxlease, Lyndhurst, Hants., for qualified **Cook/Caterer**. Used to handling staff. Maximum number to cater for approximately 50. One and a half days off per week, plus three weeks annual holiday. Regret no accommodation for children.



**Secretary** required to the Diamond Jubilee Co-ordinating Committee. This is a Senior appointment for an experienced lady with good secretarial skills for approximately 18 months but with a possible permanency after that time. Age between 25-45. Salary negotiable.

**Secretary/Shorthand Typist**—for Press Officer. Exciting job for a girl interested in Film production, Press, Radio, T.V. and organising Exhibitions. Experience and initiative needed together with good secretarial skills. Age 20 plus.

A **Shorthand Typist** is needed in our Overseas Department. Good speeds and initiative are required for unusual and interesting work dealing with both the independent and non-self governing countries of the Commonwealth. Salary commensurate with age and experience.

**'Girl Friday'**. Our General Secretary needs a 'Girl Friday' to join the secretarial staff of her Department. Must be able to type and enjoy helping with our various important Committees. She could learn to use a dictaphone and should enjoy helping generally. The perfect job for a keen girl who wants experience in the workings of a busy and happy Department.

**Good Copy Typist** needed by our Commonwealth Training Department for interesting and varied work. Must be accurate but fantastic speed not essential!

**Audit Stock Taker**—Age 25 plus—required at the Greencoat House Warehouse, to count items of stock so that figures may be checked against record cards. Salary not less than £14 a week.

Can you sell? **Sales Assistants** urgently required for C.H.Q. Shop, both senior and junior. Preferably Members of the Movement but this is not essential. 35 hour week!

**Telephone Query Clerk** needed in our Headquarters Shop on Saturday mornings. The queries are usually of a general nature but there would be a senior member of staff available for any question over policy, etc.—this position offers great interest to someone who enjoys being of help to others. Hours: 9.0 a.m. to 1.0 p.m. every Saturday. Age immaterial.

All staff work 35 hours per week and have 3 weeks holiday annually. We have an excellent restaurant and House Luncheon Vouchers are provided.

C.H.Q. is within 5 minutes walk of Victoria main line and underground stations, bus routes and shops.

Telephone or write for further details of any of the above vacancies to Mrs. Kempton, Personnel Manager, 01-834 6242.



# Where to train

## TRAINING BURSARIES

**GUIDERS** attending Guider trainings at Foxlease, Waddow, Netherurd, Broneirion and Lorne are eligible to apply for Training Bursaries. A Guider may receive only one such bursary, except in special cases when the Commissioner may recommend a subsequent award, e.g.: where a Guider changes her Section or becomes a Commissioner, etc.

**Fee Bursary:** This entitles a Guider to a reduction of half the fee for a shared room. She may request to be in a single or double room but will have to pay the extra charge above that allowed by the bursary.

**Travel Bursary:** This entitles a Guider to a grant covering travelling expenses in excess of 30s. and is available only for the nearest Training Centre. A travel bursary in addition to a fee bursary, is allowed only in cases of special need and a detailed recommendation from the Commissioner is required. Payment of this grant is made at the Training Centre on production of the bursary form.

**Angela Thompson Bursaries:** These are available for any Promise and Law Training (not necessarily held at a C.H.Q. Training Centre) and have the same value as a fee bursary.

**Application for Training Bursaries** must be made through the District Commissioner who applies direct to the Secretary, C.H.Q. Training Department, stating the name of the Guider concerned and the date and place of the training. At least a fortnight's notice should be given. Bursaries cannot be issued in retrospect. Not more than one-third of the places at any one week-end can be covered by bursary grants and Commissioners are asked to indicate priorities if applying for a number of bursaries. A number of L.E.As. give generous help towards Guider trainings and a request for such assistance should be made direct to the Local Authority concerned.



## Commonwealth Headquarters

An application to attend a training at any Guide Training Centre should be sent direct to the appropriate Guider-in-Charge, and must be accompanied by the correct amount of deposit and a stamped addressed envelope. Applicants should also state the type of training for which they are attending, as there may be several different courses running at any one weekend. As so many Guiders have to leave on Sunday, training sessions at a two-day weekend will stop at teatime on that day unless otherwise stated. If sufficient notice is given that it is wanted, every effort will be made to provide sessions for a group until Monday. Individuals who are able to stay over until Monday to enjoy the surrounding country and other amenities of the Centres are most welcome to do so.

Any Guider may apply to attend a training at the Centres provided she has reached the minimum age of 17 years.

Telephone calls are accepted only between the hours of 8 a.m. and 8 p.m. at Foxlease (Lyndhurst OHA 128-2638) and at Waddow (Clitheroe 02.002-3186), except in emergencies.

### FOXLEASE Lyndhurst, Hants.

#### JULY

- 4-6 Supporting the Programme. Division Commissioners (allocation through counties)
- 11-13 The Handbooks. All Sections (allocation through counties)
- 18-20 Brownie and Guide Guiders

25-AUGUST 1 Leadership within the Movement.  
Rangers aged 16 years up who are working on the Leadership Certificate.

#### AUGUST

5-13 Patrol Leaders  
11-15-20 Brownie and Guide Guiders. General training with special opportunities to learn about world Guiding

22-25 The Promise through the Programme (allocation through counties)

#### 29-SEPTEMBER 8 Holiday period SEPTEMBER

12-14 West Midland Area Trefoil Guild  
19-21 Sussex East County  
26-28 District Commissioners

#### OCTOBER

3-5 Dorset  
10-12 Guide and Ranger Guiders  
17-19 Wiltshire  
\*24-26 Brownie, Guide and Ranger Guiders

31-NOVEMBER 2 London S.W.

#### NOVEMBER

\*7-9 Brownie, Guide and Ranger Guiders  
14-16 Handcrafts and Homecrafts. All Sections.  
21-23 Brownie and Guide Guiders  
28-30 East Kent

#### DECEMBER

5-7 The Promise in Action.  
Rangers aged 16-19 years

### WADDOW Clitheroe, Lancs.

#### JULY

- 4-7 The Handbooks. All Sections (allocation through counties)
- 11-13 Guide Guiders with two or three of their own P.Ls. (Full)
- 18-21 The Promise through the Programme (allocation through counties)
- 25-AUGUST 1 Patrol Leaders (Full)

#### AUGUST

8-10 Brownie and Guide Guiders



- 15-22 Certificated and outdoor Specialist Trainers and experienced campers. Outdoor Activities (allocation through counties)

#### Summer Bank Holiday

- 29-SEPTEMBER 1 Sharing your skills—Specialist Trainers and prospectives (allocation through counties)

#### SEPTEMBER

- 5-7 Friends of Waddow  
 †12-14 Campfire (priority given to newcomers up to 1st July, 1969)  
 19-21 Guide and Brownie Guiders  
 26-28 Cheshire County

#### OCTOBER

- †3-5 Creative Activities. All Sections  
 10-12 Durham  
 17-19 Guide and Ranger Guiders  
 24-26 District Commissioners  
 31-NOVEMBER 2 Lancashire S.W.

#### NOVEMBER

- 7-9 The Promise in Action. Rangers aged 16 to 19 years  
 \*14-16 Brownie, Guide and Ranger Guiders  
 \*21-23 Brownie, Guide and Ranger Guiders  
 28-30 (a) Folk Song and Dance  
 (b) Guitar, Beginners and elementary (state experience when applying)

††Bookings will be accepted for a short weekend for those who cannot attend the whole period.

#### †Creative activities

This weekend will have something for everyone. It is hoped to include the following:

- Drama and Dance
- A Barn Dance
- Puppets and Mobiles
- Handcrafts for all ages
- Campfire singing
- Guitar playing
- Handbell ringing

Come and try something new!

\*Brownie, Guide and Ranger Guiders

The two asterisked trainings at each centre will be linked; the second following on from the first, but each complete in itself. Some places will be reserved initially for Guiders who may be able to take advantage of this opportunity to get a more comprehensive course by attending both weekends. This does not preclude application in the ordinary way by Guiders who can attend only one weekend.

#### †Campfire weekend

Have you ever been to a Campfire weekend? If not this is your chance. Up to 1st July priority was given to Guiders who have not attended this kind of training before to encourage newcomers. From 1st July the training will be open to all-comers so apply soon if you hope to get a place. You can be sure of a warm welcome and a very stimulating light-hearted weekend.

#### Fees at Foxlease and Waddow

Shared room per day	27s. 0d.
(Minimum fee for weekend £2 14s. 0d.)	
per week	£8 0s. 0d.
Double room per day	34s. 0d.
(Minimum fee for weekend £3 8s. 0d.)	
per week	£10 4s. 0d.
Single room per day	40s. 0d.
(Minimum fee for weekend £4 0s. 0d.)	
per week	£12 0s. 0d.

Deposit £1 0s. 0d. (cheque or postal order only)

Bookings made before 1st April for trainings after 1st July will be charged at the old rates

## Scotland

#### NETHERURD HOUSE Blyth Bridge, West Linton, Peeblesshire

#### JULY

- 4-8 Patrol Leaders  
 11-15 Patrol Leaders  
 17-25 Patrol Leaders' Woodcraft Camp.  
 18-25 Patrol Leaders' Week (by invitation)

29-AUGUST 5 British Nordic Gathering (by invitation)

#### AUGUST

- 11-19 Patrol Leaders' Woodcraft Camp  
 12-19 Patrol Leaders' Week (by invitation)

29-SEPTEMBER 1 Finaghy Local Association

#### SEPTEMBER

- 5-7 S.C.P.R. Keep Fit Group  
 12-14 Brownie and Guide Guiders  
 19-21 Brownie and Guide Guiders  
 26-28 Ranger Guides (including sessions for Ranger helpers in Packs and Companies)

#### OCTOBER

- 3-5 District Teams  
 10-12 Brownie and Guide Guiders

- 17-19 Brownie and Guide Guiders

- 24-26 Ranger Guiders

- 31-2 NOVEMBER Advanced (by invitation)

#### NOVEMBER

- 7-9 Commissioners and Trainers  
 14-16 Guiders of all Sections—Handcrafts  
 21-23 Brownie and Guide Guiders  
 28-30 Brownie and Guide Guiders

#### DECEMBER

- 5-7 Commissioners and Trainers  
 12-14 Prospective Certificated Trainers

#### Fees at Netherurd

Shared room per day	17s. 6d.
per week	£5 5s. 0d.
Double room per day	£1 0s. 0d.
per week	£6 0s. 0d.
Single room per day	£1 2s. 6d.
per week	£6 15s. 0d.

Deposit 5s. 0d.

## Wales

#### BRONEIRION Llandinam, Mont.

#### JULY

- \*21-26 Patrol Leaders, 12-14 years

- \*29-AUGUST 4 Patrol Leaders 12-14 years

#### AUGUST

- \*8-14 Patrol Leaders, 12-14 years

- \*18-23 Pack Leaders

- 29-SEPTEMBER 2 Ranger Leadership Certificate

#### OCTOBER

- 3-5 Camp and Pack Holiday Training (places reserved for Derbyshire)

- 10-12 Leicestershire

- 17-19 Camp Advisers' Conference (by invitation)

- 24-26 Brownie, Guide and Ranger Guiders

- 31-NOVEMBER 2 International (by invitation)

#### NOVEMBER

- 7-9 Orienteering  
 14-16 Handcrafts for Christmas (All sections)

- 21-23 Prospective Trainers  
 28-30 Pre-Warrant

#### DECEMBER

- 5-7 University Scout and Guide Clubs

\*Places allocated through Counties  
 Fees at Broneirion, see overleaf



#### Fees at Broneirion

Shared room per day	17s. 6d.
per week	£5 5s. 0d.
Double room per day	£1 0s. 0d.
per week	£6 6s. 0d.
Single room per day	£1 2s. 6d.
per week	£6 15s. 0d.

Deposit 10s. 0d.

#### Lorne



## Ulster

#### Lorne, Craigavad, Co. Down

##### SEPTEMBER

- 19-21 Ulster Trefoil Guild Conference
- 27 Day Training (by invitation)

##### OCTOBER

- 3-5 a) Belfast Trefoil Guild  
b) Trainers—Saturday only
- 10-12 Finaghy Local Association
- 17-19 East Belfast Division
- 24-26 South Belfast Division
- 31-2 NOVEMBER Ranger Guide Guiders

##### NOVEMBER

- 7-9 a) Guitar  
b) Campfire Leaders
- 14-16 Brownie Guiders
- 21-23 West Belfast Division
- 28-30 Ranger Guides—Leadership Certificate

##### DECEMBER

- 5-7 Guide Guiders—under 25 years
- 12-14 Singing at Christmas (by invitation)

##### 1970

##### JANUARY

- 9-11 County Antrim Patrol Leaders

#### Fees at Lorne

Shared room per day ...	17s. 6d.
Single room per day ...	19s. 0d.
Deposit	10s. 0d.

## Camping, Holidays and Pack Holidays

#### Foxlease and Waddow Camp Sites

Applications for sites at Foxlease and Waddow should be addressed to the Secretary, and the envelope marked 'Camp'. Suggested dates should be given with possible alternatives, and approximate numbers, and please state if an equipped or un-equipped site is required. Camps may begin on any weekday at Foxlease but Waddow prefers camps to begin on a Saturday.

A 5s. deposit (forfeited if the booking is cancelled) and a stamped addressed foolscap envelope should be enclosed.

#### Broneirion Camp Sites and Pack Holiday House

Applications to Mrs. B. Michael, Gorsty, Hyssington, Montgomeryshire.

#### Netherurd Camp Sites

Applications to the Guider-in-Charge, Netherurd, West Linton, Peeblesshire.

#### Ulster Camp Site, Craigavad, Co. Down

Application to Miss N. Pratt, 22 Bangor Road, Holywood, Co. Down.

#### Lorne Camp Sites

Applications to the Camp Secretary, Lorne, Station Road, Craigavad, Co. Down.

#### Magilligan Camp Site, Co. Londonderry, N. Ireland

Applications to Mrs. R. F. Scott, Derrymore House, Limavady, Co. Londonderry.

#### Lorne—The Irene McKibbin Memorial Cottage

Ranger Units and Guiders are invited to come for their holidays to this Cottage in the grounds of the Ulster Training Centre.

The Cottage is fully equipped for parties of twelve and full details can be obtained from Mrs. Grace A. McBride, Site 9, Upper Dunmurry Lane, Dunmurry, Belfast. S.a.e. please.

#### Holidays at Lorne

This Training Centre will be open to Guiders and members of the Trefoil Guild for holidays. Apply to the Guider-in-Charge, Lorne, Craigavad, Co. Down, Ulster.

Full details of the above appeared in the March Guider.

## ? Do you live in Scotland ?

If so buy from

### The SCOTTISH GUIDE SHOPS

- 16 Coates Crescent, Edinburgh, EH3 7AH. (Tel: 225-3483)
- 1 Scott Street, Glasgow C.3. (Tel: DOU. 6288)
- 3 Magdalen Place, Dundee, DD1 4NN. (Tel: Dundee 22262)

Your unit will benefit from

### The Discount Scheme

## BE A WATER RAMBLER

on board one of our camping narrow boats. Single boat fitted out for 12; a pair of boats fitted for 24 (crewed by experienced boatman).

Also—6 berth luxury cruiser.

### FOXTON CANAL CARRIERS LTD.

Foxton, Nr. Market Harborough, Leics.



# Classified Advertisements

The Girl Guides Association takes no responsibility for statements made in any advertisement here or elsewhere in the magazine, or for any subsequent correspondence in connection therewith. The right is also reserved to refuse any advertisement not considered suitable. Advertisements for the sale of second-hand clothing (except uniform) cannot be accepted. (Uniforms for sale should not be sent to C.H.Q. Advertisers receive communications from applicants.) All advertisements must be received not later than the 1st of the month for the following month's issue. **Please note charges: 1s. per word (for members advertising uniform, camp-sites, coming events, 6d. a word).** Box No. 2s. 6d. Please send money with advertisements. 10% discount for series of 12. To reply to a Box No., please address your envelope to Box No. xxx, c/o THE GUIDER, The Girl Guides Association, 17/19 Buckingham Palace Road, London, S.W.1. Please make sure the address is as far to the right of the envelope as possible in order for us to re-direct your enquiry.

## THE GUIDE CLUB

46 Belgrave Square, London, S.W.1  
(01-235 7616)

**Guiders, Trefoil Guild and Local Association members** are eligible to join. (Husbands of club members may join as Associate Members.)

**Entrance Fee:** £2 2s. (Junior, 18-22 years, £1 1s.)

**Subscription:** £5 5s. (Junior, £3 3s.)

**Overseas Members:** 10s. 6d. p.a. plus 15s. for every four weeks during which the club may have been used.

**Associates:** £2 2s. annual subscription only.

**Luncheon Members:** £2 2s. annual subscription only. Full members may bring guests, including husbands, to stay at the Club. Bed and breakfast from £1 12s. 6d. (single room) to £1 7s. 6d. per person (double room).

## ACCOMMODATION

**IN CENTRAL LONDON:** **Olave House** is open 365 days a year. It is conveniently situated for everyone connected with the Guide Movement, who is visiting London for Conferences, Trainings, Reunions, Theatres and Shopping Spree. The nearest underground station is Earls Court. The costs are 20s. to 30s. per night, and there is H. and C. in every room. (Sorry —no accommodation for men!) We are often full—but do remember that it is always well worth asking. Please write to Miss Marshall, **Olave House**, 45 Longridge Road, London, S.W.5. Telephone FRObisher 2574. **Olave House belongs to the World Association of Girl Guides and Girl Scouts.**

**Holiday Accommodation, Sussex.** Bed, breakfast and evening meal, or full board, weekends October—March. Apply Mrs. Jebb or Miss Cox, 8 Willowfield Road, Eastbourne (29572).

## EMPLOYMENT OFFERED

**Foxlease** will need **Junior House Assistants** in September. If any of your older Guides or Rangers enjoy meeting people and would like to spend six months or longer working in a Guide Training Centre, please apply to the Guider-in-Charge, Foxlease.

**Organising Secretary:** A part-time Organising Secretary for **The Trefoil Guild**, Girl Guides Association, 17 Buckingham Palace Road, London, S.W.1, is required from mid-November. Knowledge of the Guide Movement is essential. Please apply, with details of age, experience and salary required for a 30 hour week, to The Lady Alport, The Cross House, Laver de la Haye, Colchester, by 15th September.

**Baden-Powell House:** a vacancy for a young working resident Housekeeper is available. For further details apply to the Warden, Baden-Powell House, Queen's Gate, South Kensington, London, S.W.7.

**Tormead School, Guildford.** Required in August, 1969: Housekeeper with good experience for large boarding and day school. Good salary, comfortable accommodation. Apply in writing with names of referees to the Headmistress. Also required two Assistant Matrons.

## FOR SALE AND FUND RAISING

**Advertising Pencils,** superb Ball Pens, combs, brushes, etc., gold-stamped Company name, raise funds quickly, easily. Bran Tub Toys. Details: Northern Novelties, Bradford 2.

**Funds, Fêtes, Bazaars.** Sell **Costume Jewellery** at 50% profit on cost. **Toys** at 33½% profit. All sent post free on Sale or Return. You pay only for what you have sold. The rest you return. No outlay, no obligation. Send for details to E. & M. Davies Ltd., 101 Askew Road, London, W.12.

**Increase your Company funds** with scent cards. Send s.a.e. for details and samples to: R. Ramsdale, 58 Pall Mall, Chorley, Lancs.

**An offer to Guiders** in S.E. England for up to 20% discount on all makes of furniture and carpets has been made by a leading firm of furnisiers. For details telephone: Farnborough (Kent) 54043.

**Dolls for dressing,** small toys, paper cups, balloons, money-making novelties. Send large s.a.e. for wholesale trade lists. D. Glover (Wholesale Toys) Ltd., Dept. GD 10, 203 Scholes Lane, Cleckheaton, Yorks.

**3½d. each!—Printed Ball Point Pens.** 144 full-length Conway Stewart ball pens die-stamped in gold with your Company or Charity for only 39s. 144 printed pencils 35s. Please print your slogan. (Maximum 30 letters) and add 4s. 6d. standard carriage. J. E. Thomas & Son (Cuffley) Ltd., 2A Handsworth Road, London, N.17.

**Rally or Jamboree this year?** Pennants and badges for camp-sites, Jubilees and all occasions. For quotation send sketch, state size, colours and quantity. Russell King, 48 Crofton Lane, Orpington, Kent.

**Printed British Ball Pens.** 42s. gross, plus postage 4s. 6d. This includes 36 letters and spaces advert. Advertising Pencils 37s. 6d. gross, plus postage 3s. Pioneer Pencil Company, 3 Tithebarn Street, Liverpool 2. Central 8166.

**British Ball Pens:** Gold printed up to 35 letters and spaces, 38s. per gross, all colours, any assortment, quick delivery. FundRaisers/Key fobs/Badges/Retractable. S.A.E. for list or send 3s. 6d. (refundable) for 10 different samples. Westfield Limited, Dept. 23, 135 Tennant Street, Birmingham 15.

**Organizers of Bazaars and Funds.** We welcome both personal buyers and mail orders for our extensive range of toys, stationery and Christmas Cards at wholesale prices. Send for price lists. ALSO pre-selected parcels—144 6d. toys OR 72 1s. toys OR 38 1s. 11d. toys OR Selection Stationery OR Selection Christmas Cards. Each parcel 54s. plus 4s. 6d. postage. Two or more Parcels 6s. postage. J. E. Thomas & Son (Cuffley) Ltd., 2A Handsworth Road, London, N.17.

**Paying 1s per 100 G.B. pictorial stamps** on paper. Minimum sending 200. S. E. Short, 22 Orchard Road, Havant, Hants.



Tea Chests for sale 5s. 6d. each (collect). Apply: Goddard & Son (house furnishers), High Street, Brentford 560-7127. Removals and furniture at discount.

Double your money raising funds for Guides, Brownies, and other organisations. Gold stamped Advertising Ballpens/Pencils/Key fobs, etc. Fully guaranteed. Details or 6 samples for 2s. 6d. to: B. W. Publicity, Dept. 'Q', 33 Hird Road, Low Moor, Bradford.

Ball pens for Fund Raising. As one of the largest wholesalers in the United Kingdom who specialise in the die-stamping of ball pens, we offer your Company the most competitive rates available. First class quality, speedy service, full guarantee, nett result. Large profits. We supply the 'Conway Stewart' and 'Reliance' ball pens which are both retractable and refillable, plus our 'Stylo' non-refillable model, we also offer our new 'Conway Fybriter' which is available in eight ink colours, all of these can be die-stamped with a wording of your choice. If you require the best, we can supply you! All at unbeatable wholesale rates. Send today for our Fund Raising list, Thompson and Creighton, 202 Heaton Road, Newcastle-upon-Tyne, NE6 5JJ.

### CAMPING AND HOLIDAYS

Felin Bach — Caernarvonshire — County Camp-Site. Large camping area and indoor accommodation suitable for Pack Holidays, available all the year round. Snowdonia National Park half-a-mile, climbing, hill-walking and safe bathing within easy reach. Apply to: Miss M. Chambres, Tirionfa, Tanyrallt, Pen-y-groes, Caerns.

Kennack Sands, Cornwall. 20ft. 4 berth caravan. 8-13 guineas, close beach, brochure available. Greenaway, 27 New Row, Mylor Bridge, Falmouth.

### GUIDER WANTED

Wanted: Lifesaver for Guide camp 13th/20th August, Norfolk coast. Expenses paid. Hutton, 'Roselyn', Dorchester, Oxfordshire.

Lifesaver wanted, small camp Cromer, 9th-16th August. Expenses paid. Phone Rearsby 362 or 200.

Lifesaver required for Guide camp, Dorset, 13th-22nd August, also Q.M. wanted. Box No. 579.

Lifesaver wanted, Guide camp near Newton Abbott, Devon, 9th-16th August. Expenses paid. Box No. 581.

Urgent: Lifesaver required camp, Beer, Seaton, Devon. Expenses paid. 26th July-2nd August. Pearce, 119 Sudbury Avenue, Wembley, Middlesex.

### UNIFORM

For Sale: Guider's jacket. B. 38 ins., skirt W. 28 ins., H. 40 ins. Complete £4. Hutton, 'Roselyn', Dorchester, Oxfordshire.

Guider's uniform, jacket and skirt, bust 36 ins., hips 38 ins., good condition. Price £3 ONO. K. Mountstephens, 11 Barn Close, Northolt, Middlesex.

Guider's new type uniform, B. 36 ins., W. 28 ins., H. 40 ins. Height 5 ft. 5½ ins. Hat, blouse, £6. Box No. 576.

Guider's uniform urgently wanted. 44 ins. bust, 46 ins. hips. Box No. 577.

Guider's jacket and skirt, 36 ins. bust, 40 ins. hips, also hat. Box No. 578.

For sale: Guider's new style tailor made complete uniform. B. 38 ins., H. 40/42 ins. £7 o.n.o. Box No. 580.

For Sale, Various items Guider, Scouter and Lady Scouter uniform. Good condition. Details: Mrs. Nunn, 56 Barrington Road, Hornsey, London, N.8. Please S.A.E.

THE GUIDER

### COMING EVENTS

7th Scout and Guide Folk Festival. 2 different separate performances. 20th September in the Storm Hut at Gilwell Park, Essex, and 4th October at Amersham, Bucks. Please send s.a.e. to Brian Sims, 52 Orchard Road, Seer Green, Bucks. for details and tickets (3s. 6d.). Limited number for each evening.

Venture Scouts/Ranger Guides. Due to the huge success of Venture 68, we are holding Venture 69 at Belvoir Castle, residence of His Grace The Duke of Rutland, on 13th/14th September, 1969. Details, s.a.e. The Secretary, Venture 69, 8 Cecil Street, Grantham, Lincs.

### BUSES FOR HIRE

12 Seater Transit Buses for hire. May and October £18 15s. 0d. per week. June and September £21 per week. July and August £22 per week. Plus £25 returnable deposit. No mileage charge. Continental Hire: 12 Seater Transit Buses £50 per week. Transit Caravans £50 per week. Tel.: 01-890 5702/3.

Please note: All advertisements for Venture Scout/Ranger events published in THE GUIDER and THE RANGER must be accompanied by signature of County Commissioner.

### DO YOU REQUIRE FUNDS?

If so we can help you. We can supply diaries, Conway Stewart retractable and non-refillable pens, address books, notebooks, rainhats, combs in cases, pencils and key rings. All printed with the name of your organisation, starting in quantities from 3 dozen upwards. Samples of pens sent free of charge, or complete sample set sent on receipt of 4s. postal order.

THE DOUGLAS SUPPLIES CO.,  
14 Clarkson St., IPSWICH, SUFFOLK.  
Telephone Ipswich 55182 & 76130

### PRECISION MARCHING COMPASS

PRICE ONLY 15/-  
P. & P. 1/6



As used by thousands all over the world. Simple to use. Look through magnifying lens with hairline guide in hinged cover gives immediate reading of degrees & miles. Luminous markings, graduated black rotating dial card calibrated in white and adjustable bezel. Folds into robust self-protecting compact plastic case only 2½" diameter x 1".

Quantity discount for clubs, etc. Only 10/- each in dozen lots. P. & P. 3/-.

C. W. WHEELHOUSE & SON

9/13 BELL ROAD,  
HOUNSLOW,  
MIDDX.

Phone 01-570 3501



# Fund Raisers:

## Make money with this Free Barnardo's Gift Catalogue!

It's **NEW** and crammed full of wonderful Christmas cards, toys and gifts.

Barnardo's have produced a wonderful new catalogue packed full with a fabulous selection of Christmas cards and top value gifts—many with famous brand names—Prestige, Ronson, Kodak, Raleigh, Tri-ang and many more. Everything is illustrated in full colour and carries Barnardo's unique guarantee of satisfaction. Fund raising is made easy—the catalogue does the work for you! Your fund gets a profit of 5/- in the £ on cards and 2/- in the £ on gifts. And all this still leaves a good profit for Barnardo's and helps a really worthwhile cause—children in need. Don't delay, send for your free copy now.

- \* Top value gifts and cards at really competitive prices!
- \* Famous brand names!
- \* Great opportunity to raise record funds!

**HOW TO FOLD**  
Pull out page and cut along dotted line only. Fold A then again B. Fold C. Fold back D and tuck in flap with Barnardo's address on the outside

Send now  
for this  
**FREE**  
CATALOGUE

NAME \_\_\_\_\_

PRIVATE ADDRESS \_\_\_\_\_

ORGANISATION REPRESENTED \_\_\_\_\_

ADDRESS OF HEADQUARTERS \_\_\_\_\_

YOUR POSITION \_\_\_\_\_

A15

NO POSTAGE  
STAMP  
NECESSARY IF  
POSTED IN  
GREAT BRITAIN  
OR NORTHERN  
IRELAND

FIRST  
CLASS

POSTAGE  
WILL BE  
PAID BY  
LICENSEE

BUSINESS REPLY SERVICE  
Licence No. IV 539

BARNARDO PUBLICATIONS, LTD.  
P.O. BOX 20, TANNERS LANE,  
BARKINGSIDE, ILFORD, ESSEX.



UP TO  
**5/-** in the £  
PROFIT  
FOR YOUR  
FUNDS!



## In Memoriam

The death occurred, in April, of MISS FREDA BONAS and she will be sadly missed in Derbyshire Guiding. Freda Bonas was one of the first to join the 1st Derby Company in 1910 and as Guiding grew she did a great deal to help build the foundations and held a number of appointments both in Derby and the County. She was a keen camper and was the first County Camp Adviser and later County Secretary. When the war came she became involved in many other activities and had to give up active Guiding but she still retained her interest and until her death was a Trustee of the Derby Division H.Q. and a County Vice-President. Her wise advice and help in these capacities was greatly valued.

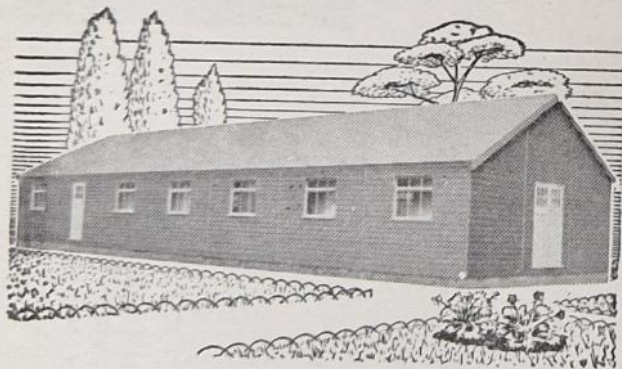
B.M.

LADY EVERETT, the widow of Sir Percy Everett, Hon. Treasurer of the Girl Guides Association for thirty-two years, who died at Elstree on 13th May, had a hand in the development of the Movement in its very early days. She was an active member of the first Committee at Headquarters, which then met weekly, and among other work Lady Everett helped to prepare the material in 1910 for the forerunner of today's GUIDER—two pages on Guide matters in HOME NOTES, published weekly by Messrs. C. Arthur Pearson whose literary manager was Sir Percy Everett.

Guiding in Hertfordshire, too, owes a great deal to Lady Everett where she was County Secretary for twenty years and a District Commissioner for thirty.

T.W.M.

## Ideally suited for your Company H.Q.



The following Guide Companies are using Hardun's De-luxe Sectional Timber Buildings:

Anglesey Girl Guides  
Hammersmith Girl Guides  
Acton Division Girl Guides  
1st Royal Eltham Guide Company

**HARDUN & SONS LTD.**  
HORTON ROAD • WEST DRAYTON • MIDDX.  
Tel.: West Drayton 4040 (20 lines)

THE GUIDER

MRS. DOROTHY GETHING, who died in April at the age of 77, was a Guider in the 39th Birmingham (St. George's) Guide Company from 1923-1928. Subsequently she gave a great deal of service to the Guide Association, in Sutton Coldfield Division. She was a District Secretary; then Division Secretary from 1954-1965 (during which time she received a Thanks badge); for many years, until 1968, she undertook the task of ensuring the prompt delivery of county news sheets throughout a large Division. Her regular attendance at meetings of the 7th Sutton Coldfield Guide Company's meetings enabled it to continue at times when there was no Guider of a suitable age to be warranted as Captain. Happily she was present at their 25th birthday party in March when they were able to express appreciation for all her support.

Guiding played a very great part in Mrs. Gething's life, and she leaves with us an example, hard to emulate, of the Law put into action, particularly in the way of unfailing kindness and cheerfulness in all adversities.

B.S.

Anglesey Guiding has suffered a tragic loss in the death of MARJORIE JONES, Assistant Guide Guider of the 2nd Holyhead Company, at the age of 21.

She devoted all her spare time to Guiding and was Secretary of the Local Association of the Holyhead Scout Council.

We who are left to carry on can only express our gratitude for one who kept the Guide Promise to the end and always did her best.

G.J.

Guiders and Guides of the Leighton Buzzard District were saddened by the death on 25th April, 1969 of MRS. NELL LITTLER, Captain of the 2nd Leighton Buzzard Guide Company and District Assistant since February 1968. Her Guiding life started with the 1st Northolt Company (Middlesex) where she was a Guide and Ranger. In 1956 she returned to Guiding and became first a T.O. and then took over the 2nd Leighton Buzzard Guide Company and with an enthusiasm which always communicated itself, she built it up to its full complement of 36 members. Within two years this Company which had had four Captains in one had the distinction of being the first Leighton Buzzard Company to bring the County Shield to the District.

It will be in the camping field that Nell will be missed the most. Here again her great enthusiasm and love of the out-of-doors inspired her Company and the District as a whole to keep up a high standard.

Memories of Nell will long remain with her friends in the District.

J.E.J.

Derbyshire and especially the Derby Division, has lost a valued friend through the death, in April, of MISS RUTH MORRIS.

Ruth Morris has been closely connected with the Derby Division since 1929, when she was appointed Commissioner for the North District and Guiding grew and made great strides under her leadership. In 1944 she became Division Commissioner and worked very hard to get Guiding back to normal after the war years. After her retirement in 1950 she joined the Trefoil Guild and continued as a member of the Derby Executive Committee, in both of which she took a great interest. She also represented G.F.S. Guides on the Girls' Friendly Society Diocesan Council for many years. Ruth will be remembered with affection by all those who worked with her.

B.M.



# Insurance for Sponsored Walks and Sponsored Swims

ALL Members of the Movement taking part in Sponsored Walks and Swims as Members of the Movement, must have the approval of their Commissioner. Guiders should also obtain written permission from the parents of all girls taking part.

The Royal Society for the Prevention of Accidents has drawn up a list of safety precautions for Sponsored Walks. These must always be followed:—

1. A minimum age of at least 16 years is preferable.
  2. If younger persons are included they should be supervised by responsible adults.
  3. Suitable walking footwear should be worn.
  4. If night walking is involved light coloured clothing, visible to drivers, should be worn plus, if possible, reflective armbands.
  5. The Police should be asked for their advice on choice of route, time and day and their directions must be obeyed.
  6. Walkers should be started at intervals, mass starts are dangerous.
  7. The start and finish should be off the road.
  8. Participants should be reminded of the requirements in Part I and on page 27 of the old Highway Code and in Part I and on page 46 of the new edition of the Highway Code.
  9. They should be instructed, where there is no footpath, to walk on the right hand side of the road facing oncoming traffic.
  10. Any vehicle used in a supervisory capacity should not travel at a slow speed and thus cause obstruction to other traffic.
  11. If a gate has to be opened make sure that it is shut again, so that cattle cannot stray on to the highway.
  12. There should be a follow up system to ensure that no participant remains behind requiring help.
- In addition to the above precautions it is advised that training should be undertaken beforehand (in the form of shorter walks gradually increasing in distance) and that check points en route are essential.

If a walk is organised by Members of the Movement only for Members of the Movement then the Headquarters Insurance Policies will automatically apply assuming that they have complied with the above regulations. If the event is only at Unit or District level C.H.Q. need not be notified. If, however, it is at Division or County level full details, including the expected number of entrants, must be sent to C.H.Q. at least two weeks in advance of the event.

A Sponsored Walk organised by an outside body is usually covered by a special insurance taken out by the organising body. If a Unit is invited to take part then the girls will also be covered by both the Headquarters' Policies. This is again assuming that all the above conditions are followed. C.H.Q. do not require to be informed of walks of this type. If, however, a girl who happens to be a Guide just decides to take part in a Sponsored Walk she will not be covered by the Headquarters' Policies in any way, unless she was invited to participate through her Guider or Commissioner.

Some Units have organised walks not only for themselves but also for any non-members who wish to take part. In this case both the Headquarters' Insurance Policies will operate in full for the Members of the Movement involved, *but non-members will not be covered in any way*. It is therefore, advisable for additional insurance to be taken out to cover this. Our Brokers, Messrs. Durnell & Fowler, Ltd., 1 Seething Lane, London, E.C.3 can arrange this either through C.H.Q. or direct. Cover of this type may take some time to arrange and C.H.Q. should, therefore, be notified with full details at least one month in advance of the proposed date.

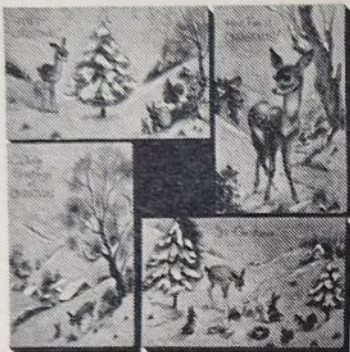
Any Unit taking part in a Sponsored Swim will be covered by both the Headquarters' Insurance Policies **if it is held in swimming baths**. The number of girls in the water at any one time should be restricted so that it is easy to keep track of them all and there must be a sufficient number of qualified lifesavers present. Sponsored Swims in any place other than Swimming Baths i.e. river, lake, sea, **are not automatically covered by the Headquarters' Policies** and C.H.Q. *must* be notified with full details well in advance of the event, so that additional cover can be arranged.

If a Guider is in any doubt as to whether or not she is covered by the Headquarters' Insurance Policies for a Sponsored Walk or any other event, she should send full details to Mrs. J. F. S. Patrick, Finance Department, Girl Guides Association, 17/19 Buckingham Palace Road, London, S.W.1, who will then advise her.

*See also in Headquarter's Notices—page 250*



# IT PAYS TO RAISE FUNDS WITH MILLER



## TERRIFIC SELECTION

Many best selling lines, all carefully chosen to offer maximum appeal to the present market, are included in the Miller range of Christmas card packs and sundries. They all offer first class value for money and there is a variety to suit all pockets and tastes.

**A FULL COLOUR CATALOGUE** illustrating the range of cards and sundries available is provided **FREE** to every Miller customer. A copy of the catalogue and order forms can be left with prospective purchasers enabling them to make their choice at leisure.

## BAKERS DOZEN



In addition to the profit margin of 33 $\frac{1}{3}$ % on cost Miller have an exclusive offer to boost your funds even more. If you order a dozen packs of any series at any one time, you receive an extra pack free making 13 in all. This enables you to increase your profit to 45% on cost.

## SAMPLE PARCEL

This is a great opportunity to see the quality and variety of the Miller range for yourself. A pre-packed parcel, containing a selection of cards and sundries in the range, is available to you at a greatly reduced cost.

All the contents can be sold to raise funds for your organisation.

## FREE GIFTS

We give our customers extra profits for their funds, by offering free gifts to those spending £40 or more during the season. The more you spend the better the gift.

**MILLER GREETINGS** (GREAT BRITAIN) LIMITED **QUEENSBIDGE WORKS QUEEN ST**  
**BURTON ON TRENT Tel: 0BU3 62719**

**ORDER  
NOW-  
PAY  
LATER**

Post the coupon below for our unique descriptive colour brochure and **FREE** sample cards.

NAME

ORGANISATION

ADDRESS

POSITION

Are you over 21 years of age? YES/NO (Delete as applicable)

If already a Miller Greetings customer, please quote Account Ref. in this space.

SPECIAL SERVICE FOR IRELAND—details from

**MILLER GREETINGS (IRELAND) LTD.** Broadway Printing Works, Mullingar, Co. Westmeath

GU/2



## GUIDE FRIENDSHIP FUND



A story with a happy ending—or perhaps only a beginning?

It began about three years ago when a certain District collected and saved £57 which they sent to the Guide Friendship Fund to help the hungry in Lesotho. That, to all intents and purposes, was the end of the story but as it turned out it was not so. Last autumn a letter came from a Father Anthony, home on leave from Lesotho. He asked if he might visit the Brownies and Guides in the District and tell them all about the water scheme they had financed for his schools. This he did, showing the loveliest slides of the country, the carrying of the tanks by the women up the mountain to the spring, the laying of the plastic pipe and finally the turning on of the taps.

It thrilled the Brownies and Guides, wrote the County Commissioner, to meet Father Anthony and to see for themselves so realistically how their money had been used. Gifts were brought from the children in Lesotho and the Brownies and Guides gave gifts for Father Anthony to take back with him to his children in the schools.

### Beyond their own islands

The Guides of the Gilbert and Ellice Islands have for some time been saving and collecting used postage stamps to send to us because we can sell them in aid of the Guide Friendship Fund. Quite recently a large package reached us with a note saying: '... some of these stamps are sent by the 1st Onotea Sunbeam Group. This is the first time stamps have been collected and sent from an "outer island" group. This may not seem of very much consequence to you but to us it is a great step forward. *Guiding is helping to widen the vision of our young people beyond their own islands...*'

### By way of saying 'thank you'

A year ago the G.F.F. gave £100 to the Guides of Gibraltar when they urgently needed help over their camp site. Recently, after working to earn money themselves, they sent us £120 for the G.F.F.—£20 has sponsored a blind child overseas, and £100 has bought braille books to equip a library at a school for the blind in Uganda. This was a most heart-warming and practical way of showing gratitude and we, too, were very grateful to them.

### Helping others to go to camp

More Guides than ever went to camp in Britain last year. This must mean we enjoy camping, enjoy the outdoor life, enjoy the challenge camping offers even in our unpredictable English weather.

July 1969

Doesn't this also mean that other Guides all over the world could enjoy camping given the chance? Children all the world over enjoy much the same things. But they haven't all got the same chance to enjoy them. True, in a few countries today where obstacles are not overcome and where camping isn't one of the most important parts of Guide training.

Many haven't the chance because they cannot afford to buy camp equipment. Many countries are really quite poor compared with ourselves today. By next year we shall have camped for sixty years! And we aren't tired of it yet! So isn't it up to us to help Guides in those poorer countries, those newer countries, to have the same chance as we have of experiencing the wonderful fun and friendliness, the training and teaching that a week in camp offers?

Donations sent to the Guide Friendship Fund during July and August will go towards camp equipment or grants for camp for Guides in many other countries, particularly Nigeria, Rhodesia, Sierra Leone, Dahomey, Madagascar and Paraguay. Many Units cannot do anything unless we help them.

Why cannot they help themselves just as our Guides do? Why don't they earn, save and collect money? They do try, they all try, but it is very difficult in many places where conditions and circumstances are so different from ours.

### After the holidays

Next month I shall be writing about several new projects. Again I do urge any Unit, District, Division or County that may be thinking of having a Diamond Jubilee Project and wanting to do something to help Brownie Guides, Guides or Rangers overseas, PLEASE to write to us as soon as possible so that we may make some suggestions. 'Child "Cheers" child with a helping hand' can well be one of our slogans for next year.

V.A.

Posters, leaflets, stickers and information about the G.F.F. are sent free, but please enclose a 4d. stamp for postage.

All correspondence and donations should be addressed to: GUIDE FRIENDSHIP FUND, Girl Guides Association, 17 Buckingham Palace Road, London S.W.1.



## MESOWAX

keeps camps dry

This miracle waterproofing emulsion is ideally suited for treating medium- and heavy-weight tents, marquees, covers and all canvas sports equipment. Withstands downpour from above and rubbing from below, preserving the canvas yet allowing it to "breathe", so avoiding stuffiness. Simply applied by brush, fast-drying MESOWAX is obtainable, brightly coloured or colourless, in 1 pint tins to 40 gallon drums.

5/- pint 8/9 quart 15/- ½ gallon 25/- 1 gallon  
(1 gallon covers up to 200 sq. ft.)

Available from Camping, Scout and Guide Stores, Halfords, Gamages and Grose's

For further details and colour guide, write to

**GRANGERSOL LIMITED**

DEPT G.6, IMPERIAL WAY WATFORD TEL: WATFORD 24086



## Diamond Jubilee Producers' Training, 7th—9th November 1969

Here are some details of this weekend, which was briefly mentioned in the June issue.

The purpose of this training is to give practical assistance to county producers who are hoping to present a Pageant or Spectacle in their areas for the Diamond Jubilee celebrations. Sessions will generally take the form of rehearsals of a script which gives scope for varying numbers of cast; incorporates music, song and dance with the acting, and could be adapted for Jubilee Year. There will be opportunities for questions and discussions about problems which

can arise.

The whole approach during the weekend will centre round the need to arouse enthusiasm in a cast—preferably a large one—and the necessity to produce, for Diamond Jubilee Year, performances which are full of vitality and spontaneity.

The training will be at Scout and Guide House, 14 Faraday Street, Manchester 1. For fuller particulars please apply to the Training Secretary at C.H.Q., 17-19 Buckingham Palace Road, London S.W.1.

### Scout and Guide Clubs

If you are going on to University or College this autumn, you may be interested in the college Guide and Scout Club. A full list of Clubs together with the names and addresses of the Club Secretaries are in the July issue of *THE RANGER*—so write off to the Club Secretary of your college and have the satisfaction of having a set of ready made friends when you get there.

### Gandhi Centenary

The UNESCO has called upon its member nations to observe the period to 2nd October, 1969 as Gandhi Centenary Year to promote interest in the life and work of Mahatma Gandhi, and a small exhibition consisting largely of books and photographs, with a

short film strip and tape recordings is being offered, free of charge, to any interested party. For further details apply to: Mr. John Mountjoy, U.K. Committee for the Gandhi Centenary, India House, Aldwych, London, W.C.2.

### Sports Award

Robinson's Barley Water, the soft drink manufacturers are offering a series of sporting awards to further the development of young British sportsmen and women under the age of 19 years.

If you have a girl in your Unit who is good at sport (any type of sporting activity) encourage her to enter. Further details and application form can be obtained from leaflets attached to bottles of Robinson's Barley Water.

To Benefit the Scout Association

a

### ROYAL GALA FILM

in the presence of

Her Royal Highness The Princess Anne

### ALFRED THE GREAT

at the

Empire Theatre, Leicester Square

on

MONDAY, 21st JULY, 1969

Apply now with remittance for tickets at 15, 10, 5, 3, 2 or 1 guinea each from:

THE SCOUT ASSOCIATION,  
25 BUCKINGHAM PALACE ROAD,  
LONDON, S.W.1.

Telephone: 01-834 6005

### SPECIAL ANNOUNCEMENT

(To help you over this summer!)

#### 7 DAYS ON THE BELGIAN COAST

Under 14: £12 17s. 6d.; 14/21: £14 7s. 6d.

#### SWITZERLAND—ADELBODEN—7 DAYS

Under 14: £26 5s. 0d.; 14/21: £28 0s. 0d.

LESS 10%

Staying in a Hotel. A cancelled booking for 22nd July enables us to offer a 10% reduction for this date for Switzerland. Part credit terms can be given for Switzerland, and to help you over this short notice.

Write IMMEDIATELY to:

Reed's Educational Travel Service Ltd.,  
The Old Rectory, All Saints, Hastings. Hastings 7995

# LOST

without

## Cash's

quality woven name tapes

*The best to be found!*

Orders before July, 2-3 weeks' delivery





# "Pilgrim's Progress"

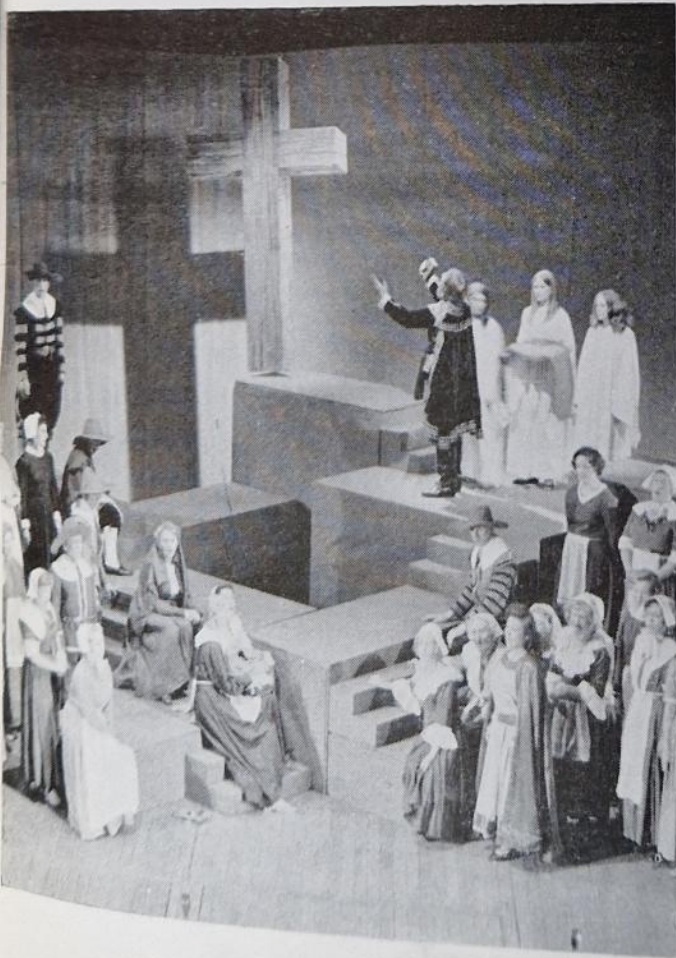
As part of the 50th Anniversary celebrations of the Scout International Training Centre at Gilwell Park, John Bunyan's 'Pilgrim's Progress' was presented at the Odeon, Golders Green, for a week from 9th June. Several members of the Guide Movement took part. Picture 1 shows Christian (Ron Meyer) at The Cross before starting his journey to the Celestial City. Picture 2 shows the ballet which opened the scene in The Delectable Mountains. Picture 3 shows Christian and his companion resting in the Delectable Mountains. The adaptation was by Hugh Ross Williamson, production by Ralph Reader.

photos: Harold Wyld



3

1



2

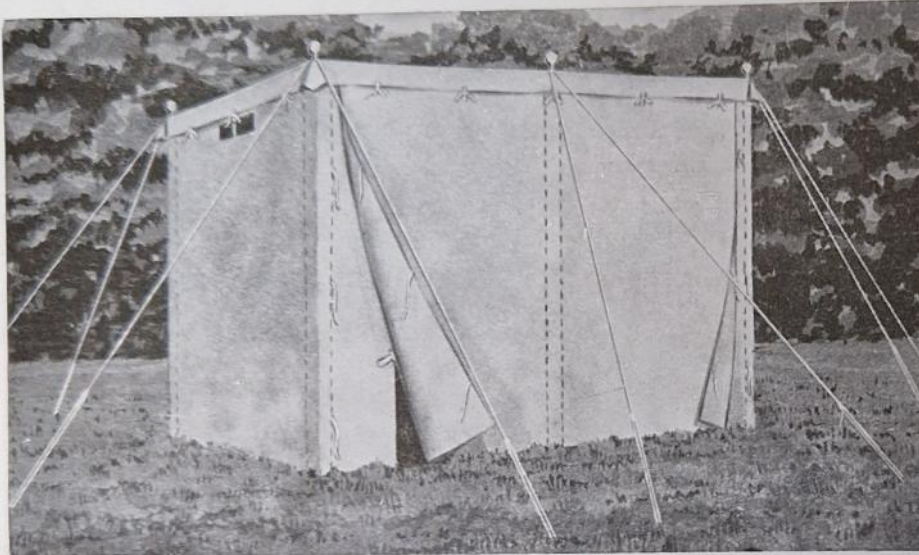




## Latrines or Wash Cubicles

**DOUBLE** Walls made from Superior Quality Hessian, door at each end with 14in. overlap. Detachable roof of Wax-proofed Canvas. Complete with six jointed upright poles, guy lines, runners, pegs and dollies.  
**Size:** 7ft. x 3ft. 6in. (cubicles 3ft. 6in. square). Height at front 6ft. 6in. Height at back 6ft.  
 All packed in bag. Weight approx. 30lbs. *Carriage free. £18 9s. 6d.*

**SINGLE** As above but with one door with 14in. overlap. Complete with four jointed upright poles.  
**Size:** Cubicle 3ft. 6in. square. Height at front 6ft. 6in. Height at back 6ft.  
 All packed in bag. Weight approx. 18lb. *Carriage free. £10 9s. 6d.*



## LIGHTWEIGHT LATRINE

Not illustrated  
 Navy Blue Best Quality Nylon.  
 58in. zip with double puller.  
 Jointed wooden poles. Nylon guy lines, runners and skewer pegs. Size 2ft. 8in. square.  
 Height 4ft. 10in.  
 Weight 4lb. 12oz.  
 Packed 17in. x 6in.  
**£5 2s. 6d.**

*Packing and Postage 5s.*

## Fire Shelters

(ADJUSTABLE)

Made from Green Cotton Duck, two jointed upright poles and one jointed ridge pole.

Complete with guy lines, runners, pegs and eyelets for adjustment of canvas.

All packed in bag.

Size 12ft. x 8ft. 8in. Weight 17lb.

*Carriage free. £11 14s. 9d.*

Extra upright poles to use with altar fires, 6ft. 12s. 6d. each. 6ft 6in. 13s. 3d. each



**AT COMMONWEALTH HEADQUARTERS SHOP, 17-19 BUCKINGHAM PALACE ROAD, LONDON, S.W.1.**

**AT THE ASSOCIATION'S BRANCH SHOPS**  
 London: 19 Green Lanes, Palmers Green, N.13.  
 Birmingham: 5 Ryder Street, 4.  
 Liverpool: 20 Richmond Street, LI 1EG.  
 Cardiff: 20 Working Street, CFI 2SF.

**AT SCOUT AND GUIDE SHOPS**  
 London: 124 Newgate Street, E.C.1.  
 London: 183 Clapham Manor Street, S.W.4.  
 London: 55 Woodgrange Road, Forest Gate, E.7.

Ipswich: 5 Tacket Street.  
 Leeds: 62 The Headrow, LS1 8EJ.  
 Oxford: 17 Turl Street, OX1 3DH.  
 York: 14 Goodramgate, YO1 2LQ.  
**AT SCOTTISH GUIDE SHOPS**  
 Edinburgh: 16 Coates Crescent, EH3 7AH.  
 Glasgow: 1 Scott Street, C.3.  
 Dundee: 3 Magdalen Place, DD1 4NN.  
**AT ULSTER GIRL GUIDE HEADQUARTERS**  
 16 College Square North, Belfast 1.

Printed by The Riverside Press Ltd., London and Whitstable and published by The Girl Guides Association, 17-19 Buckingham Palace Road, London, S.W.1. (01-834 6242). All communications with regard to subscriptions, editorial matters and advertisements should be addressed to THE GUIDER, Girl Guides Association. Subscriptions including postage 22s. for 12 months Great Britain, 21s. overseas. Trade Agents: Surridge Dawson & Co. (Productions) Ltd., 136-142 New Kent Road, London, S.E.4.