

# The Guider

VOLUME 57 No. 2 FEBRUARY 1970

PRICE ONE SHILLING AND SIXPENCE



# WEBB IVORY

## 1970 EXHIBITIONS

February 1970

# The Guider

## Patrons

H.M. THE QUEEN  
H.M. QUEEN ELIZABETH, THE QUEEN MOTHER

## President

H.R.H. THE PRINCESS MARGARET,  
COUNTESS OF SNOWDON

## Chief Guide

OLAVE, LADY BADEN-POWELL, G.B.E.

## Commonwealth Chief Commissioner

MRS. DEREK PARKER BOWLES

OFFICIAL MAGAZINE OF  
THE GIRL GUIDES ASSOCIATION  
(Incorporated by Royal Charter)



## contents

Launching TODAY'S GUIDE	44
Day Camping	45
Film and Filmstrip	46
Presenting a Pageant	47
Letters to the Editor	48
Art and Handwriting Competition, 1969 Results	50
Care International	52
Book reviews	53
Private Diary	56
Training Pages	57-64
Here at C.H.Q.	65
Headquarters' Notices	66
Where to Train	68
Classified Advertisements	72
In Memoriam	75
Foot Health	76
Prelude to The Wembley Spectacle, Diamond Jubilee Notes	78, 79

## editorial

As Editor of both periodicals, I should like to thank readers of THE GUIDER for all their valuable help in getting TODAY'S GUIDE off to such an excellent start. At the time of going to press with this issue, only three editions of TODAY'S GUIDE (2nd, 9th and 16th January) have appeared, but already it seems certain that the new newspaper is reaching a far wider readership than the old GUIDE magazine which it replaced. This is due in no small measure to the efforts of Guiders to stimulate interest among Guides in advance of the publication date. County Press and P.R. Advisers have been untiring in their efforts to publicise TODAY'S GUIDE by arranging for copies to be on display in Public Libraries and other likely spots. To all who have helped to spread the word, our grateful thanks.

## front cover

The launching of TODAY'S GUIDE—Guides representing 1921 and the present day cut the magnificent cake specially made by Maison Lyons.

photo: J. Wilson Clark

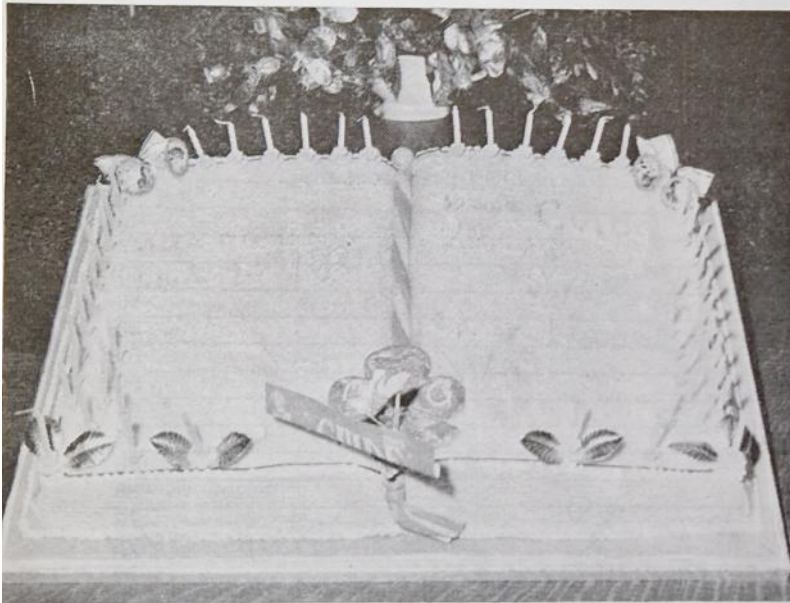


photos: J. Wilson Clark

1.



2.



3.

## Launching TODAY'S GUIDE

The party held on 31st December in the Council Chamber at C.H.Q. had a double purpose; to celebrate the Golden Jubilee of THE GUIDE, and to launch the first edition of it in its new form, TODAY'S GUIDE.

1. Mr. Ron Jeffries, General Editor of the Scout Association, proposed the toast to the new newspaper. He was introduced to Mrs. J. P. Moffett, O.B.E., Deputy Chief Commissioner, who was hostess at the party in the absence of Mrs. Parker Bowles.
2. Two Guides, one in 1921 uniform carrying a copy of the first issue of THE GUIDE, the other in modern uniform carrying TODAY'S GUIDE, performed the official cake cutting ceremony. They were watched by (left to right) Mrs. Jean Rush, General Editor, Mrs. Moffett and Miss T. McCarthy, M.B.E., General Secretary.
3. The cake, by Maison Lyons.
4. The display boards which showed THE GUIDE magazine as it had progressed through the years and the build-up of TODAY'S GUIDE from the receiving of copy to the finished printed newspaper. These displays can now be seen on the 4th floor at C.H.Q.
5. The TODAY'S GUIDE staff cut the cake for distribution to the guests. (left to right) Miss Ann Martin, advertising; Miss Susan Marples, Assistant Editor; Mrs. Jean Rush; Miss Lynda Morin, Editorial Assistant; Mrs. I. D. Beck, Publications Manager

5.



4.





# DAY CAMPING

by

**Elizabeth Robertson**

**L**AST summer I spent nine weeks in the U.S.A. studying Day Camping. The project began with a thorough briefing at Girl Scout National Headquarters in New York and continued with six weeks practical experience in Rhode Island, visiting Day Camp sites, observing the staff training and the administration required both in the office and on the site, and finally participating in the actual running of Day Camps: I came away not only impressed by the wonderful way in which the Girl Scouts administer this type of camping and its value for their girls, but convinced that this is a form of camping which could be adapted by us with great benefit to the Girl Guide Movement at this stage in its development.

**What is a Day Camp?** 'Day Camping' means that girls go each day to a chosen site and have a full programme of outdoor activities, returning home at night, or at whatever hour is convenient.

**Where are Day Camps held?** Almost anywhere—an established camp-site, a bit of sea-shore, a wood, a corner of the local park, even someone's garden—anywhere that will provide the facilities for girls to enjoy an outdoor experience together.

**Who goes to a Day Camp?**—Girls of Brownie or Guide age. It may be that a Brownie Pack or Guide Company would prefer to hold its own Day Camp but it can be even more fun to make these District, Division or County events where girls from different Units meet together and have the added experience and fun of getting to know each other through the joint activities. Some Day Camps I saw were held specially for under-privileged children who were not Guides, and these were really very successful. Other Day Camps were held for a mixture of such children and Guides and also had very great value for both. Ideally girls are divided into Units no larger than the maximum size of a Company or Pack. Such divisions could be made either on an age basis or by programme preference.

**How long does such a Day Camp last?** In the U.S.A. it was felt that a minimum of eight sessions was required to make it a worthwhile experience. This might not always be easy for us, but from what I observed, I agree that some sort of continuity and opportunity to progress from day to day is an essen-

tial feature of Day Camping—perhaps a week or, as a bare minimum, two consecutive weekends.

**How is a Day Camp staffed?** Staff requirements would be an all over Guider-in-Charge, an experienced Guider responsible for each Unit with at least one assistant. In the U.S.A. some Day Camp staff are paid, but many are volunteers. One feature of Day Camp is that often Guiders who cannot be away from home overnight are available to help. Interested mothers may well be willing to come as assistants and Rangers interested in Leadership Training or simply in this excellent form of service would make most welcome staff members. Many Day Camps in the U.S.A. had special units where young children of staff were cared for—a good idea to copy. However, one essential of successful Day Camping is thorough training of staff beforehand—training in how to run the camp using the Patrol system, training in how to help the girls to choose a programme that will make the best use of the natural facilities of the site.

**What other features of Day Camping have to be considered?** Cost? This will depend on whether transport to the site has to be 'laid on' or whether public transport can be used. The girls will probably bring a packed lunch but if hike cooking is planned this will have to be budgeted for, as will items required for programme requests (e.g. rope for pioneering projects, handcraft items, etc.). Shelter for wet weather is another important item, and may have to be included in budgeting if a marquee or other form of shelter has to be hired. Girls would, of course, be issued with a kit list.

*(Continued overleaf)*



## Film and Filmstrip

**Perpetual Spring**, a new 16mm colour sound film. Duration 23 minutes. Available for hire, at a charge of £1 per day, from Sound Services Film Library, Kingston Road, Merton Park, London S.W.19. The Film Library will accept applications from 1st March.

To make a short prestige film about three-quarters of a million Guides scattered throughout the United Kingdom, presented an interesting challenge. The Guides in many places and of all ages who appear on the screen, with the exception of Her Royal Highness, the Princess Margaret; The Chief Guide; and Mrs. Derek Parker Bowles, are anonymous and represent all those who belong to the Guiding family which has grown over 60 years to become the largest youth organisation in the U.K. and part of a great international movement.

*Perpetual Spring*, as its title suggests, emphasises the continuous and continuing youthfulness of Guides. It opens with a specially written theme song sung by Janie Marden who, like everyone else in the film production team, has had personal connections with Guiding. She was a Brownie. After brief glimpses of the past, the film steps firmly into the present and the future. Guides are shown making the Promise in settings that symbolise England, Scotland, Wales and Northern Ireland. The scenes which follow demonstrate how girls can choose to implement the Promise in varied and exciting activities and forms of service to the community. The cameras follow Guides to Switzerland where they receive hospitality or spend a holiday at Our Chalet. At home Brownies enjoy Pack Holidays, Guides plan their own Patrol camps, and the never-failing appeal of camping and some of its attendant activities are shown. At the Commonwealth Chief Commissioner's Conference at Foxlease, Brownies at play are watched by Her Royal Highness the Princess Margaret and Mrs. Derek Parker Bowles. The film ends on a note of pageantry at St. George's Chapel, Windsor. Led by the Band of the Life Guards, nearly 1,000 Guides walk to the Service. The commentator's final words sum up the film 'Across the most valuable, formative years of their lives, Guiding scatters the petals of Perpetual Spring.'

Joan Jenkins (known as Joan Piper in her film work) and the Menai film production team would like to thank all Guides who appeared on the screen and all those people who worked behind the scenes and also members of the Film Guiding Panel for their helpful comments and friendly liaison.

*continued from page 45*

**What is the value of Day Camping?** First and foremost is the fact that it gives girls the opportunity to enjoy the out-of-doors. Learning to take part along with others in these pursuits, to contribute ideas make the whole project an invaluable community experience. For many it would be an opportunity to take outdoor badges and progress in all eight points of the programme. To the girl who never has an opportunity to go to camp, it gives a taste of outdoor living, while the more timid girl may be less fearful of camping after attending Day Camp. Many Guiders, too, may gain in Day Camp, the

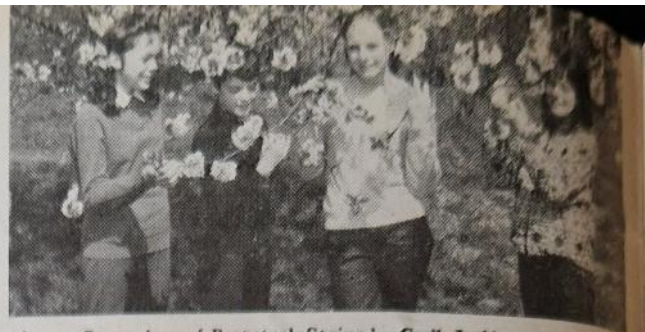


photo: Scene from 'Perpetual Spring'—Cyril Jenkins

**They are Waiting for You:** a new filmstrip (89 frames) with sound track (23 minutes). Single frame filmstrip with soundtrack and booklet with projection notes, written commentary and other information are on sale at CHQ shop. Price: £2 12s.

There has been a great need for a filmstrip of this kind, and although many will be disappointed that it is not available on hire, it is such a good piece of publicity for the Movement that most counties will consider it is worth every penny to buy a copy for themselves to hire out to Divisions and Districts.

'They' are the girls who are waiting to join the Guides. 'You' are the prospective Guiders and Unit Helpers (men and women).

The colour photography by Cyril Jenkins, brisk commentary by John Witty, recorded voices of women who have become Guiders and Unit Helpers and light-hearted music with vocal effects, combine to make an informative and entertaining appeal to all those outside as well as inside the Movement who could be trained as Guiders or use their skills as Unit Helpers.

The eight-point programme is explained showing many activities of Brownies, Guides, Ranger Guides, Guiders and Helpers. The five training centres and one world centre, Our Chalet, are shown. Her Royal Highness the Princess Margaret is seen at Foxlease. The Chief Commissioner and The World Chief Guide make their own personal appeals and people are advised to get in touch with the local District Commissioner or write to The General Secretary at C.H.Q.

As everyone knows, there is still a great demand for more adult help, both uniformed and otherwise, and there are so many untapped sources. It should therefore be the Diamond Jubilee resolution of every District in the United Kingdom to show this filmstrip to at least one non-Guide gathering this year. It could be school-leavers, women's clubs or organisations, or perhaps at a Rotary Club meeting. *Don't miss this opportunity. See your Commissioner now.*

The Girl Guides Association wishes to express its grateful thanks to Webb Ivory Limited for their generous sponsorship of this filmstrip.

courage to pursue camping one stage further.

**Why not experiment with Day Camping?** Try it at your County Camp-site—limiting numbers the first time. Rope in your Pack Holiday expert to help with the Brownie Units. Try it at your local park (with enthusiastic Rangers to help) for children whose mothers are still at work during the school holidays. Try it for a specific purpose—nature-craft, orienteering, pioneering.

If you do experiment, The Camp Adviser at Commonwealth Headquarters would be interested to hear about it—so please send her a report and do write and ask if you want more information.

# PRESENTING A PAGEANT

by

**Joyce Boucher**

IN LAST month's GUIDER Miss Jackson gave us a comprehensive account of what is involved in 'Putting on a show', with invaluable advice about so many aspects. This short article is an attempt to go into more detail about one form of entertainment she mentioned—the pageant.

There seems no doubt that all over Great Britain counties, divisions and districts are preparing and rehearsing this form of presentation to celebrate the Diamond Jubilee. There has sometimes been a mistaken notion that it is easy to put on a pageant either because we can modernise that script from last time, or because some people still envisage the production as a long procession of characters dressed in historical costume and not doing anything very much. Audiences too seem sometimes to expect to be bored—as if pageants could not be exciting or dramatic. It may be of course that these misconceptions no longer apply, but in case any of them do, here are a few, basic rules which might help.

## The Script

Make sure that the script is possible before you agree to produce it. The script for a pageant should have been written specially for the particular event to be celebrated. It should have vitality, conviction and truth. It should give the audience great pleasure, colour, immense variation and, if at all possible, opportunity for audience participation. It is usually best to have narrators and have little or no dialogue for the performers, since pageants are usually performed in large indoor arenas or out-of-doors. Actors can

sometimes mime while narrators speak, but generally it is advisable to keep the narrative short and to the point. Audiences do not listen intently to detailed historical background. Make sure that the script is suitable for the playing area—gentle scenes between two small characters are completely lost except on a very small stage. Opportunities for improvised crowd work have great possibilities and simple plots, whether drawn from history or fantasy, are best.

## The Production

Vitality is a first essential and continuity and pace are the ways to achieve it in a pageant. You need first-class stage management so that there are no gaps. Avoid scene changes and let the performance proceed without a break. Make sure that the cast know exactly what they are doing both off-stage and on, and that you have sufficient assistants to man every entrance and co-ordinate all the comings and goings. Every part of the action—narration, acting, music, sound effects, lighting should be exactly dovetailed. The narrators need to be experienced, particularly in microphone technique—a loud-speaker system is a must in any large playing area. Persuade your designer to have the minimum of scenery and what there has to be, easily transportable by the cast. The cast must feel that they are part of something exciting and have a great responsibility to the audience. They must therefore discipline themselves—and the producer must help them to achieve this. Above all they must believe in the presentation and delight in being in it. Then, and only then, will their audience share in their delight.



OUR 1970 PRICE LIST  
WILL BE GLADLY SENT  
ON REQUEST SHOWING  
OUR FULL RANGE OF  
PRODUCTS

## SOUVENIR PENNANTS BADGES

P&R PUBLICITY LTD  
THE BROADWAY · PITSEA  
BASILDON · ESSEX  
TEL · VANGE 2123

Have Your Next

## CAMP AFLOAT

on board one of our camping narrow boats on Midlands canals. Single boat fitted out for 12; a pair of boats fitted for 24 (crewed by experienced boatman).

Winter week-ends available

UNION CANAL CARRIERS LTD.,  
214 Whittington Road, London, N.22  
(Booking Dept.)



Opinions expressed in these columns are not necessarily those of the Editor

### Mountain Leadership

Thank you for the excellent article by L. Johnson on Mountain Leadership Training (December GUIDER). I heartily endorse what she says. I believe strongly in the need to take young people on adventurous activities, and for the leaders of such expeditions to realise very fully the responsibilities of doing so, and the skills necessary for these activities to be achieved with safety. The training given at a centre like Plas y Brenin is extremely beneficial both for young people who have had years of experience and for those who are just entering the exciting life of mountain walking.

And what about suggesting to Rangers that they try the C.C.P.R. Mountain Activities courses? They could scarcely ask for a more varied and enjoyable holiday.

My husband and I, and also my sister, have had such a wonderful time on these courses that we can hardly wait to go back for another.

I must add that the cost of the M.L.C. Logbook has had to be raised to £1, but since our training is heavily subsidised (a week's residential course, with every comfort, costs only £13-16) we can scarcely grumble.

JUDITH A. CAVELL, Guide Guider,  
1st Hillmorton Company, Rugby, Warwicks.

### Guider's Uniform

May I make two suggestions about the present Guider's uniform. Why not wear on the shoulder of the official blouse the name-tape of one's Unit? Also, in colder weather, such as autumn or winter camps, why not wear a black polo-neck sweater with the tie snuggling under the collar—I have tried this, and it looked very smart and sensible.

CAROL A. CHRISTIE, Guide Guider,  
145th Edinburgh Company.

**Equipment Department comments:** *To wear the Unit name-tape would be a retrograde step, as the name-tape on a Guider's blouse was always optional and with the introduction of the blue/white blouse it was felt desirable that nothing whatsoever should be sewn on it. With regard to the suggestion for a black polo-necked sweater—it would be inappropriate as all our uniform is navy blue and the official uniform is as it stands: a v-necked jumper and the tie worn only with the blouse.*

### Pioneering in Pontesbury

Currently there is much talk of modernising the outlook of Scouting and Guiding and the advisability of closer co-operation between the organisations for the good of both. We are aware that there are many problems, but we feel that the experience of Scouts and Guides in this area, may be of use to other groups and

companies seeking closer co-operation; but as yet unable to see the way ahead.

Scouting and Guiding was revived in the Pontesbury area in September 1967 and from the beginning there has been close co-operation between the uniformed organisations at Scout, Guide, Cub-Scout and Brownie levels.

From the beginning it was obvious that co-operation was desirable, not only in fringe activities, but also in central organisation. At the formation of the Group Scout Council the Guiders were invited to become full Ex-Officio Members, so that all matters of importance might be discussed fully to ensure the closest co-operation in the efforts to train all our young people towards citizenship.

One of the biggest difficulties of all organisations is Finance, and it was decided to unify these efforts of fund raising in one Supporters' Association. This avoided conflicting family loyalties, fund raising activities and unnecessary duplication of personnel. It also appeared sensible, in that the building to be used was shared by both organisations and necessitated common maintenance; this was made the responsibility of the Supporters' Association.

Because of the present national structure of the organisations, we found it necessary for each section individually to maintain their own financial independence having an equal share of fund raising centrally.

Later the leaders of the Scouts, Cub Scouts and Brownies of the neighbouring village of Minsterley were invited to join the Pontesbury Council. We are now, therefore, a joint Scout Council of Pontesbury/Minsterley with co-opted Members of the Sister organisations of both villages.

One major item of expenditure is the high capital cost of camping equipment, and in this also, we have been able to share the cost and amenity.

Close co-operation at an organising level has given rise to many joint activities among our young people, including joint camps, Jamborees, Social and Religious Activities.

We cannot stress too strongly that this arrangement at Council level is the governing factor in our ease of organisation and success in all functions.

J. WILSON, Public Relations Officer,  
Pontesbury/Minsterley Scout Council.

### Those Darn Bells

The ringers of Guildford Cathedral would have exceptional difficulty in 'ringing in the new' on the bells of the cover of the January GUIDER as the bells are hung upside down. Alternatively *The Ringing World* has an Australian photographer.

MR. J. ROUSE, Doncaster, Yorks.

*This was a 'deliberate mistake'. We felt that if printed the right way up the picture would not give a feeling of ringing in the New Year and we hoped no-one would notice. We were wrong. Thank you to the dozens of readers who have pointed out the error.*—EDITOR

### Brownie Guide Dress

I read with interest of the 'Good News' of the Terylene/Cotton Brownie Guide Dress.

I thought, at last, no excuse for a crumpled Pack now, and all Brownie Guides will at last look smart and uniform, until I read that the cotton dress will still be available. I sincerely hope that this means while stocks

last, as I can hear Brownie Guides already saying 'My uniform is more expensive than yours' or 'My mum couldn't afford a Terylene Uniform,' causing a little jealousy in the Packs don't you think?

Can we please have the new Terylene by all means, but the cotton only while stocks last?

I'm sure every Mum would prefer to buy a longer lasting durable uniform than a cotton and also she likes her Jane to be like Mary, if they belong to the same Movement.

The Leaders have smartened themselves of late, the Guides look smarter on parade, let's help the younger members to be smart, too.

Is it possible to have a stiffened belt of self material instead of the leather belt for Brownie Guides as this item of uniform is very expensive? Even if it meant putting a little extra on the dress it would work out cheaper than the leather.

(Miss) G. B. DALE, Brownie Guider, 1st Stocking Farm (St. Luke's) Pack, Leicester.

**Equipment Department comments:** *It has been agreed that for the time being at least we should run the cotton dress, for the simple reason that we would not wish to preclude any children from joining Brownies because their mother could not afford the more expensive terylene uniform.*

*It has until recently been the practice of the Association to run two qualities, so I do not think such a situation creates any precedent.*

## A Penny for Thought



Brownie recruit to mother: '... and I've got to polish a penny with vinegar until it shines.'

Mother: 'Why must you do that?'

Brownie: 'To give to a Lady's baby.'

Mother, surprised: 'What's the baby called?'

Brownie: 'Powell.'

(extract from a Thinking Day card sent to the Chief Guide)

## BOOK NOW FOR THE 1970 HARLEM GLOBETROTTERS SHOW

at the

**EMPIRE POOL, WEMBLEY**  
Friday, May 15—Saturday, May 23  
(exc. Sunday, May 17)

Nightly performances at 7.45 p.m.

**SPECIAL OFFER!**

**TO GIRL GUIDES, THEIR FAMILIES & FRIENDS**

WEMBLEY ARE ONCE AGAIN PLEASED TO OFFER TOP PRICED SEATS (20/- and 16/-) FOR THE FLAT RATE OF 7/- EACH FOR FOUR HARLEM GLOBETROTTERS' PERFORMANCES:

**BOOK NOW-PAY LATER:** For parties of 20 or more, payment may be deferred until 23 April.

Normal Admission Prices (All performances)

FULL PRICE: 30/-, 24/-, 20/-, 16/-, 12/-, 6/-.  
PARTY RATE: 28/-, 22/-, 18/-, 14/-, 10/-, 6/-.  
CHILDREN: 15/-, 12/-, 10/-, 8/-, 6/-, 3/-.

PLEASE COMPLETE THIS ORDER FORM AND SEND TO: HARLEM BOX OFFICE, EMPIRE POOL, WEMBLEY, MIDDX. (Tel: 01-902 1234).

MON. 18th MAY at 7.45 p.m.
TUES. 19th MAY at 7.45 p.m.
WED. 20th MAY at 7.45 p.m.
THUR. 21st MAY at 7.45 p.m.

Please send..... tickets at 7/- each for one of the performances marked 1, 2, 3, 4 (in order of preference)

Name .....

Address .....

Unit Title .....

I enclose stamped addressed envelope and Cheque/P.O. for £ : : made payable to Wembley Stadium Ltd. & crossed.

### STOP PRESS — ORDER NOW

You may obtain advance copies of the OFFICIAL 1970 FOOTBALL ASSOCIATION CUP FINAL PROGRAMME by sending your name and address on a gummed label together with remittance as follows:—

1970 F.A. CUP FINAL PROGRAMME OFFICE,  
WEMBLEY STADIUM LTD.,  
WEMBLEY, MIDDLESEX.

1 copy - 2/6; 2 copies - 4/6; 3 copies - 6/9;  
4 copies - 9/-; 5 copies - 11/3; 6 copies - 13/6.  
(includes postage and packing)

**ALL ORDERS MUST BE RECEIVED BY 21st MARCH, 1970**

This is a Wembley service for the benefit of Television viewers and Radio listeners. Programmes will be despatched 7 days before day of match.

## C.H.Q. ART and HANDWRITING COMPETITION, 1969 RESULTS

### PAINTING

#### 7-8 years

1st Nicola Allsford, 8th Mortlake & East Sheen Brownie Guide Pack, Surrey.

2nd Kathryn Fisher, 37th Cambridge Brownie Guide Pack, Cambridgeshire.

3rd Judith Anderson, 3rd Hornsea Brownie Guide Pack, Yorks.

#### 9-10 years

1st Beverley Saunders, 1st Bakewell Brownie Guide Pack, Derbyshire.

2nd Julie Lambden, 1st Bourne End Brownie Guide Pack, Bucks.

3rd Jane Barber, 173rd Sheffield Guide Company, Yorks.

#### 11-12 years

1st Daphne Robins, 1st Dortmund Guide Company, B.F.P.O. 20.

2nd Janice Haynes, 1st Kingaroy Guide Company, Queensland, Australia.

3rd Naleni Vijayatilaka, 12th Galle Guide Company, Ceylon.

#### Special Award

Fong Fun Yee, 6th Kowloon North Guide Company, Hong Kong.

Corrine Hatton, 12th Warrington Brownie Guide Pack, Lancs.

#### 13-15 years

1st Sepali de Silva, 1st Colombo Guide Company, Ceylon.

2nd S. Ratnawathie, 12th Galle Guide Company, Ceylon.

3rd Sin Ying, 6th North Kowloon Guide Company, Hong Kong.

#### 16-20 years

1st Jinapalie Mutunayake, 7th Galle Ranger Company, Ceylon.

2nd Priyani Jayasinghe, 30th Colombo Ranger Company, Ceylon.

3rd S. S. Samarasinhe, 12th Galle Ranger Company, Ceylon.

### HANDWRITING

#### 7-8 years

1st Catriona J. Gillespie, 14th Paisley Brownie Guide Pack, Renfrewshire.

2nd Hilary Wakeham, 10th Reigate Brownie Guide Pack, Surrey.

3rd Margaret Wilson, 1st Crumlin Brownie Guide Pack, County Antrim.

#### 9-10 years

1st Elizabeth Clarke, 18th Ilford West Brownie Guide Pack, Essex.

2nd Donna Sadd, 4th Ealing Brownie Guide Pack, London.

3rd Elaine Hudson, 1st Bakewell Brownie Guide Pack, Derbyshire.

#### 11-12 years

1st Lynette H. Walker, 11th Rochdale Guide Company, Lancashire.

2nd Ann Luck, 1st Matfield Guide Company, Kent.

3rd Sally Ann Rickett, 5th Saffron Waldon Guide Company, Essex.

#### 13-15 years

1st Susan Weaver, 165th Birmingham Guide Company.

2nd Anne Montgomery, 2nd Charlton East Guide Company, Manchester.

3rd Maureen Laezari, 6th Kano Guide Company, Nigeria.

#### 16-20 years

*Commended only*

### LETTERING

#### 11-12 years

*Commended only*

#### 13-15 years

1st Angela Wilks, 1st Sharnbrook Guide Company, Beds.

2nd Tan Geok Yen, 6th Singapore Guide Company, Singapore.

#### Special Awards

Hildi Hawkins, 9th Putney Guide Company, London.

Josephine Hamer, 11th Cambridge Guide Company, Cambridge.

#### 16-20 years

1st Julie Kermode, Southern District R.G.S.U., Isle of Man.

## Welsh Venture Scout/ Ranger Guide Camp, 1970

Calling all Ranger Guides aged 16-20 in the United Kingdom! The Welsh Scout Council has invited a contingent of Rangers (approximately 50) to join their Venture Scout Camp at Esgair, Nr. Machynlleth on 7th-15th August, 1970. Cost £10 including all activities: surfing, boating, rock climbing, etc. (Guide safety rules will be adhered to). You may apply as an individual or as a group, but must have camped for at least a week as a Ranger unless a member of a party accompanied by an experienced leader.

Application forms can be obtained from: Miss Joan Ambrey, 30 Basseleg Road, Newport, Mon. These will require the signature of your Commissioner. Apply at once (enclosing a stamped, addressed, foolscap envelope), as places will be allocated in the order in which they are received.

THE GUIDER

## Webb Ivory

Will Guiders please note that Webb Ivory Ltd., the greetings card and stationery manufacturers, have now moved their London office from Judd Street to 224-236 Walworth Road, London, S.E.17. Many Units and Companies now avail themselves of the Webb Ivory Fund Raising Service and may not yet have noticed, on the advertisements, the change of address. Opening hours at the new premises are:

#### January-August

9.30 a.m.—5.30 p.m. Mon.-Thurs.

9.30 a.m.—5.00 p.m. Fri.

#### September-December

9.30 a.m.—5.30 p.m. Mon., Tues., Thurs.

9.30 a.m.—8.00 p.m. Wed., Fri.

9.00 a.m.—12 noon Sat.

# Light a Candle for *Thinking Day*

*Sunday, 22nd February, 1970*

*There is still time to remember your friends in the U.K. with this card specially designed for Jubilee Year by Rosalie Brown*

Card, with envelope, approximate size  $6\frac{1}{4}$  in. x  $8\frac{1}{4}$  in., to post flat. **10d**

The card has a very attractive appearance with gold printing on the Guide blue base and a blue, silver and green jubilee badge printed on the white background of the candle.

**A SERVICE FOR THINKING DAY**  
or 39s. per 100

**6d**

**THINKING DAY LEAFLET**

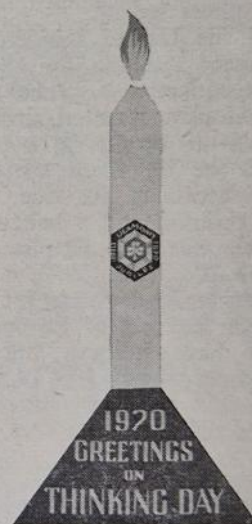
**6d**

**GIFT OF FRIENDSHIP LEAFLET**

**6d**

**THINKING DAY STAMPS** (sheet of 10)

**6d**




---

## **NATIONAL BOOK SALE — 1970**

Annual Event

**25th February to 7th March**

(for personal shoppers at C.H.Q. Book Shop)

Flower Arranging—Gardening—Cookery—Travel—Stagecraft  
Horses—Sport—Sewing, etc.

**BOOKS from 3/6 upwards**

**GENUINE BARGAINS — MANY AT HALF PRICE**

# Care International

by

Mary Birkbeck

**T**HINKING DAY 1970 is upon us. 1970 sees the beginning of the seventh successive Decade in which Guiding has made itself felt—and being our Jubilee Year, we are going to see that it makes a greater impact than ever before. Let us, however, remember that though Guiding had British beginnings—it spread so fast to other countries that 1970 is in fact the Diamond Jubilee of World Guiding. Perhaps, in this context—a Re-Thinking Day would be more apt—when we take stock and while looking outwards and thinking of our fellow Guides in other countries we look also at ourselves trying to see ourselves as others see us.

'We loved the United Kingdom but the British just do not care' said the Traveller. This statement, if we face it squarely, is probably alarmingly true. We are notoriously reserved, insular and superior, we are critical—if people do not do things in the same way as we do them ourselves we condemn them. These attitudes are due no doubt to our geographical position and a hangover from the days when Britannia ruled the Empire and the waves!

What now? We enter 1970, a tiny island, in a big world—not really counting for very much abroad—we may soon be part of Europe whether we care or not. We have become International Citizens whether we care or not. But to make a success of this new role into which we have automatically been cast—we have simply got to care and to care internationally.

We live in an age of sit-ins, teach-ins, love-ins. How wonderful if 1970 could see us indulging not only in a care-in but a care-international! If we could give our Units a lead—which would show them, their families and the many non-Guides with whom they come in contact how much it matters to care.

Our country, all countries, are becoming daily

more cosmopolitan—all of us have more and more chances of meeting people of other nationalities—for this it is not even necessary to travel—there are great numbers of foreign visitors and residents in our country—in almost every town and village. Many of these people do not know what it is to get inside a British home and have had no chance to make British friends. In Guiding today we make use of experts. When thinking internationally, many of these people could help us—while we in our turn could make them realise that we care about them. None better to tell a Unit about Italy, Jamaica, Germany, the United States, than an Italian, a Jamaican, a German or an American. And they don't have to be Guides for this. If they can tell us of the eating and sleeping habits, the school and working lives of their fellow countrymen, it is an eye-opener for those who are often totally unaware that people in other countries live differently. Best of all it helps the realisation that wherever we come from, we are all people and although problems and habits may vary, the need for care and understanding remains the same.

Caring involves many qualities we expect from our Guides but it is essential if they are to achieve the full benefit from international experiences—whether at home with foreign visitors or travelling abroad within or without the Movement.

It means:

**Courtesy**—consideration, never being too ready to criticise, putting people at ease.

**Awareness**—that all people are different but all have something to teach and to offer.

**Respect**—for other nationalities' ways of life, ideas and conventions.

**Enthusiasm**—for shared activities—laughter with others and at ourselves.

These qualities can move mountains and are among the greatest contributions that Guiding can make. People, the world over, suffer from a lack of caring—a suffering which we can help to alleviate.

Thinking Day. A day when we think of fellow Guides in their millions, all over the world. But thinking on one day is not International Guiding—nor is it being an International citizen. We have to think all through the year and to care all the time.

If we are lucky enough to go abroad, to be part of package holidays, we must not forget contact with the people of the countries we visit. Personal relationships are there to be fostered. We live in an age of crowds—but crowds are composed of individuals and the individual must become more and more important if we are to live full and happy lives. And as Guides, as we go to our camps abroad and meet our foreign guests for our Jubilee celebrations, let us remember our unique opportunity to meet people of other nationalities on a common ground. We have promised to serve our Queen and so our country, here then is a real way to fulfil this promise—a contribution to International happiness and goodwill—to make Thinking Day 1970, the beginning of the Care International Decade, thus helping the traveller to say, 'We loved the United Kingdom and how much the British care'.



## The SCOTTISH GUIDE SHOPS

16 Coates Crescent, Edinburgh, EH3 7AH. (Tel: 225 3483)

1 Scott Street, Glasgow, C.3. (Tel: 332 6288)

3 Magdalen Place, Dundee, DD1 4NN. (Tel: Dundee 22262)

**COLLECT THE DISCOUNT SCHEME STAMPS  
TO BENEFIT YOUR UNIT**

# BOOK reviews

## Scripture Union Publications

The Scripture Union has again published a selection of interesting books for younger and older readers. It is refreshing to find stories that are exciting and compelling reading and also give a message of hope and inspiration to the readers. The 'Inspector Speed' series for 14-year-olds and upwards provides who-dun-its with a difference, not for the really blood-thirsty but solving mysteries with brilliant deduction. Large, good value paperbacks at 6s. each. For younger readers of 7-12, *The Tanglewoods Secret* is an exciting tale of unexpected happenings to a brother and sister and projects a helpful message in a subtle way.

*Family Prayers* 1970 (6s.) and *Let's Talk to God* (5s.) are ideal handbooks for home use and also for Guiders and Youth Leaders who are sometimes seeking the right words in their prayers, whether personal or in public. Practically every situation and need is covered in these latest collections.

*Within These Four Walls* (5s.) gives questions and answers on many problems of daily life and seeks to guide thoughtful people towards making a house a happy home. M.R.M.

## Education and Christian Parents, by Peter Cousins. Scripture Union, 8s.

This is a readable book which will help parents, with all types of schools in mind, to understand the rapidly changing methods of education in an equally rapidly changing world. They will learn the basic reasons for much that goes on in teaching and the values that go into the making of the good or bad 'tone' of a school.

The purpose of education and parental upbringing is to equip children physically, mentally and spiritually to take their place in the adult world and Peter Cousins stresses the importance of Parent-Teacher co-operation, 'The interested parent has the interested child'.

This book should help parents to be not only interested but informed. Christian parents have a challenge in upholding Christian values in a world where there is a threat of their decline. E.B.S.

## SUN SEA SAND SPORT

## ST. MARY'S BAY SCHOOL JOURNEY AND HOLIDAY CENTRE St. Mary's Bay, Romney Marsh, Kent. (Phone Dymchurch 3251)

Dormitory accommodation, separate rooms for leaders. 35 acres of playing fields, 100 yards from sandy beach. Free sports equipment, film shows, concerts, indoor recreation rooms. Riding, canoeing and trampolining.

THE IDEAL HOLIDAY CENTRE FOR  
GUIDES AND RANGERS  
WRITE FOR FREE ILLUSTRATED BROCHURE

## A Heroine In Her Time, a life of Dame Helen Gwynne-Vaughan 1879-1967, by. Molly Izzard. Macmillan, 70s.

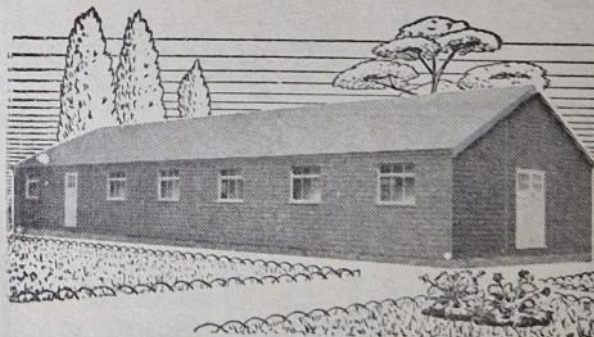
'The history of Dame Helen is in some respects a history of how women's ideas about themselves changed.' This claim in the preface perhaps explains why readers will find this biography stimulating and often provocative—it does throw light on the changing pattern of our time. At the age of 71, Dame Helen Gwynne-Vaughan wrote a manuscript account of her full and eventful life and this has naturally provided the author with a framework.

After her husband's early death, when she had already made her mark as a botanist, Dame Helen Gwynne-Vaughan took command of the newly formed WAACS in France in the first world war and later re-organised the WRAF, and she was Director of the A.T.S. from 1938-1941. Perhaps for those who like the main character in a biography to emerge clearly and quickly the author, an A.T.S. driver for three years, has included too many transient details about the organisation of the A.T.S.

In such a busy life—all Dame Helen's interests, political, service and academic, reinforced each other, and contributed to . . . a reputation for soundness, ability and a genial willingness to be of use' there is naturally only a brief reference to her chairmanship of our Executive Committee for over nine years. Yet it is a pity that Mrs. Izzard has not troubled to check on the main aims of Scouting and Guiding when she writes: 'the last thing a Scout or Guide was expected to do was think.' I prefer to remember Dame Helen's own assessment of the Guide Movement: 'We are not training girls to be Guides, we are training them to train themselves . . .'. T.W.M.

(continued overleaf)

## Ideally suited for your Company H.Q.



The following Guide Companies are using Hardun's De-luxe Sectional Timber Buildings:

Anglesey Girl Guides  
Hammersmith Girl Guides  
Acton Division Girl Guides  
1st Royal Eltham Guide Company

## HARDUN & SONS LTD.

HORTON ROAD • WEST DRAYTON • MIDDX.

Tel.: West Drayton 4040 (20 lines)



## Seventy Years of Scout Stamps

Edinburgh will be the venue for the 1970 Annual Meeting of the Scottish section of the Scout Stamps Collectors Club, to be held on Saturday, 7th February at 2.30 p.m.

On display at the meeting will be selections from all the leading Scout stamp collections in Scotland with items dating back to the historic Siege of Mafeking in 1900 and as recent as the theme of 'Scouts and outer space'.

The display will be held at Scottish Scout Headquarters, 44 Charlotte Square, Edinburgh 2. Interested collectors should contact the Regional Representative: Mr. Stanley K. Hunter, 34 Gray Street, Glasgow, C3.

## Take Part in Sport 1970

*Take Part in Sport 1970* is an illustrated booklet, produced by the C.C.P.R., which encourages people over the age of 17 to take up a new sport or to sharpen their performance in the sports they are already practising. In the booklet are listed many of the courses available for sports such as archery, canoeing, dance, judo, lawn tennis, sailing, trampolining and water ski-ing. There are also a few courses arranged in co-operation with the governing body of each sport.

The 32-page booklet is available from the C.C.P.R. (Dept. B.), 26 Park Crescent, London, W1N 4AJ. It is free of charge but please enclose a 6in. x 9in. stamped, addressed envelope when writing.

## London Dinghy Exhibition

The London Dinghy Exhibition will be held on 7th-8th March at the Crystal Palace Recreation Centre. During the exhibition there will be a series of lectures ranging through the following subjects: sail setting for the best results; how to arrange a regatta; teaching children; maintaining and repairing g.r.p. hulls; surface coating; sailing holidays and dinghy cruising. There will also be demonstrations covering: tuning your rigging; rescue boat techniques; distress flares; outboard motor maintenance; D.I.Y. wetsuits. Throughout the exhibition there will be shown a continuous series of new sailing films.

Tickets cost 4s. each (3s. for schoolchildren) and are available in advance from the London Dinghy Exhibition Organiser, C.C.P.R., 160 Great Portland Street, London, W.1. There will be a special reduction of 25 per cent for parties of twelve or more if ordered in advance.



## When funds for new premises are limited

Don't let limited funds—or fear of building delays—prevent you building new premises or adding to existing ones. With a Compton single-span sectional concrete building you can have new headquarters, club room, pavilion or any similar building fully operational within days of delivery. AND AT  $\frac{1}{2}$  OF THE COST OF A COMPARABLE BRICK BUILDING.



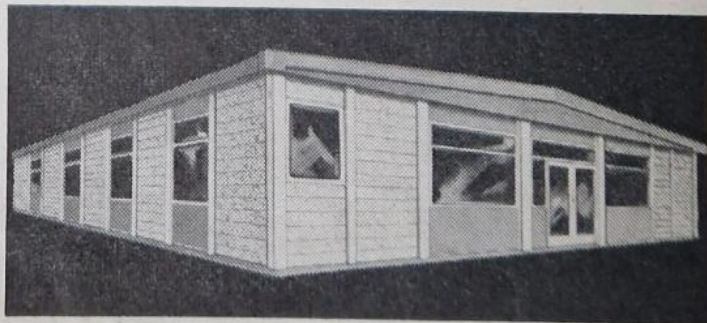
## ...it's time for a COMPTON CONCRETE BUILDING

**Low Cost**—from only 8/- a square foot ● **Speedy erection** ● up to 40' wall-to-wall clear floor space ● every inch of which is utilised ● 3 heights 8½', 10', 12'; 6 widths 20', 24', 28', 32', 36', 40' and any multiples of these sizes ● **Modern, highly attractive exterior** ● **Strict quality control, full guarantee.**

Literature giving full information will be sent to you on request or, if you wish, our technical experts will attend your premises—without obligation—to render any assistance you require in selecting, planning and costing your building.

**COMPTON UNIVERSAL BUILDINGS**

47 Fenny Compton, Nr. Leamington Spa, Warwickshire.



# Great News for FUND RAISERS

UP TO 60% PROFIT

on our  
**Conway Stewart  
printed ball pens**

Hexagon or retractable.  
SEND P.O. (or stamps) to  
the value of 2/- for  
SPECIMEN PENS, also  
lists of over 100 other  
Fund Raising Ideas.  
PRINTED WITH THE  
NAME OF YOUR  
ORGANISATION  
(see illus.)  
10-DAY  
SERVICE.



# LESWYN

CARDS LTD

SUTTON COLDFIELD - WARWICKSHIRE

021-354 7389

## EXTRACTS FROM THE PRIVATE DIARY OF A DIVISION COMMISSIONER



HAVE YOU had a good meeting? said James. I expected you back an hour ago. Sorry, darling, I said, the agenda wasn't long but we had some very useful talk afterwards; that nice new Guider, Polly Flinders, has the oddest ideas. What about? said James, nudism in camp or the ritual importance of the cold bath? I am ignoring your foolish suggestions, I said, she thought no Guider could go to a Training Centre unless accompanied by her Commissioner; she said she had wanted to go to Foxlease ever since she joined two years ago but that her Commissioner was always too busy to go with her. How do such crazy ideas get about? said James. I can guess, I said, several years back we were pushing hard for Division and District Commissioners to take their Guiders with them because shy Guiders enjoy a group visit and the idea caught on and there were groups everywhere. James said, You mean that the day came when A said to B 'How did you get to Foxlease?' and B said 'We went in a group and A reported to C 'you go in a group to Foxlease' and C told D 'you have to go in a group to Foxlease', it all seems rather improbable, said James. There is nothing more improbable than people, I said, I remember once helping some Guiders with ceremonial and explaining that, when about-turning, one always turns by the right, never by the left; one of them reported afterwards that I had said that there was no left turn in Guiding! Well, well, said James, and what are you going to do about Polly? She's off on her own as soon as it can be arranged, I said. James picked up the January GUIDER and thumbed through the pages. There seems to be plenty on offer, he said, what about Holiday Adventure Week at Waddow, she could take a girl friend along to that, or she could take her husband to Foxlease in June—father and the kids it seems. She has neither at present, I said. Then she had better learn to dig a little deeper in May, said James and added sounding, I thought, unnecessarily surprised, I must say there's plenty of variety in these programmes and if the places are as pleasant as they are said to be . . . . You wouldn't care to accompany me to Foxlease in June? I said. It is strawberry time. Wait until there is a holiday week for grandfathers, said James, and then I might consider it.



### More about TODAY'S GUIDE The Treasure Trail and Guide meetings

by Diana Sandford

**T**HINKING DAY—Easter activities—TODAY'S GUIDE—The Treasure Trail—a County Challenge—camp preparation—Patrol Purpose Plans—Patrol Pennants—the Diamond Jubilee—the Three Cheers Challenge—a Handbook full of possibilities—ideas of their own—and so on . . . . These are just some of the numerous opportunities open to Guides at the moment and all of them within the scope of the eight point programme! Some Guiders, though, could still be wondering where to begin and some Companies could be missing out on the excitement of things altogether. It is vital to plan programmes well ahead and, if Guiding is going to work well, the girls must have the chance to share in the planning from the very beginning.

Most Patrols will be helped by buying the TODAY'S GUIDE newspaper regularly; and by the Guider assisting them to use it fully. In fact thousands of Guides will have already begun to take it since the first edition was published last month. Thousands of them, too, will have started on the Treasure Trail, which is planned to give incentive to Patrols. There is still time for Guides to begin this as the first entries do not have to be in until mid-March. The second part of the Trail will appear towards the end of February so the Guides can set to work straight after Thinking Day. All four parts of the Trail are planned to fit in with coming events; for instance if the Guides are hoping to go to camp later on in the year two things could be accomplished together if they choose to do one of the sections involving camp preparation. For Patrols finding difficulty meeting over holidays there is at least one part that can easily be divided between the individuals and done at home.

A Guider can assist her Guides along the Trail by helping them make their choice wisely. She can give more help by drawing their attention to instructions or aiding them to find information needed; and much of this can be got from TODAY'S GUIDE, or from their handbooks. TODAY'S GUIDE will also give details about forwarding the entries. Guiders can encourage these to be dispatched in good time and check that they are accurately addressed and packaged. Where Guides would like to submit Patrol entries Guiders will need to see they have enough time to work together.

In last month's GUIDER the article about TODAY'S GUIDE showed how Guiders could help their Patrol Leaders plan time with their Patrols and how this could be worked into the Guide meetings. It would be a fortunate Guider whose Guides always needed exactly the same length of time for Patrol meetings, for when the moment comes at least one Patrol will probably finish earlier than expected and another be pleading for still more time! The Guider will always need to be flexible and to use her own judgment about the answer she will give.

Patrol activities are a major part of Guiding and so is the Guider's work in helping them to be a reality; but however Patrol-minded a Company may be, Guides will also enjoy the many varied combined efforts of the Company as a whole.

After the Guider has helped the Patrol Leaders plan their Patrol time she will need to think about the rest of the meeting. At Patrol Leaders' Council the P.L.s should also have their share in this. For instance, if a Company Easter project is being considered different ideas could be mooted and Patrols consulted, or Patrol Leaders could previously have asked their Patrols for their ideas.

There are no set patterns for meetings and programmes will vary from week to week but at this time of year one Company's could look something like this:

#### March 3rd

10 mins. Game  
40 mins. **Patrol time** to select Patrol activities from Treasure Trail, Handbook etc. . . Discuss possible Easter project. P.L.s collect subs.  
35 mins. Noises off activity (Guiders Handbook)  
20 mins. Sing song—including new Easter songs.  
5 mins. Prayers.

Make plans for P.L. Council meeting before next week. At it make rest of term's plans and continue to discuss eight point badge awards.

#### March 10th

30 mins.  
Operation clean up! i.e. inspection by P.L.s; bring shoe polish, iron etc. to tivate on the spot (P.L.'s Ideal)  
30 mins.  
**Patrol time** as planned by P.L. Council. P.L.s collect subs.  
35 mins.  
Patrols to decorate boxes and egg cartons for giving away Easter eggs.  
10 mins.

Lively game for Susan to do Pre-promise 'Keep fit' challenge.

5 mins.  
Prayers.

#### March 17th

60 mins.  
**Patrol time:** Last week's Patrol activity (contd.) as arranged in P.L. Council.  
P.L.s collect subs.  
15 mins.  
Quick outdoor activity (Guiders' Handbook).  
15 mins.  
Curate coming to tell Guides about Easter Monday's Church ramble and to suggest needy people for next week's gifts.  
20 mins.  
Susan's Promise Ceremony. Prayers.

#### March 24th

30 mins.  
Singsong, including Prayers (Easter theme).  
15 mins.  
Surprise item—materials to make Easter bonnets; husband to judge!  
40 mins.  
**Patrol time:** Patrol paint eggs to put in own decorated boxes—make plans to deliver them.  
Subs.  
25 mins.  
Patrols make plans for holidays. (e.g. Treasure Trail) etc.

Make date for P.L. Council meeting.

# In The Public Eye

by Elizabeth Carnegie

AN afternoon during the summer holidays, in the crowded Post Office of the town nearest to our County Camp Site. A dozen or so girls enter, recognisable, despite the variegated array of half-uniform, as Guides. They suck iced lollies; others chew vigorously; all chatter noisily as they jostle with one another to buy stamps, to use the telephone box, to write postcards on the one small ledge provided. Mysteriously the room clears. There seems no space, somehow, for anybody who is not a member of this happy but unappealing group.

A week later the same Post Office is again full of people, a number of whom turn out to be Guides. Unobtrusive this time, in neat uniform, they show one another their recent purchases and wait patiently and quietly for their turn at the counter. People look interested. Somebody asks where they are from, do they know about the castle on the hill, did they mind last night's thunderstorm.

Two groups from two successive camps on the same site. All know plenty about camping, but one lot knows far better than the other how to go out together shopping for stamps. For one group the public eye sparkles; for the other it narrows a little, in mild, or not-so-mild disapproval.

This year the public eye will be more than usually aware of Guiding. Jubilee celebrations and publicity mean that Brownies, Guides and Rangers will be widely recognised and observed as they travel to events, take part in events, even as they appear in small Post Offices. What broad steps can we take, at County and at more local level, to help Guides do themselves justice when they appear in public?

### 1. Plan well in advance

Everyone in the Pack or Company wants to look her best in public, and there will be few parents who are not prepared to spend something, improvise, knit, sew or mend, or encourage their daughter to do so, to this end—providing they have due warning as to what is required and why. Short notice and seemingly unreasonable demands seldom achieve the desired result.

### 2. Bring everyone into the planning

In our anxiety that things should be 'just so', we adult leaders are tempted simply to decide at the centre what is to happen and then to issue copious instructions as to exactly what each girl is to bring, wear, do, eat, sing—even, it has been known, when she is to laugh! Then we are surprised that so many fail to do what we said, or do not demonstrate the initiative supposed to be characteristic of Guiding!

Large events need careful central planning, but it can be done so that everyone has room to use her own imagination and to join in planning her own part in what the public is going to see.

For example, instead of bleak orders saying: 'Guides will do this, and this, and this,' we might say: 'Remember that the public will judge Guiding by what you look like and how you behave. Plan together how to look correct and at your best—there is a picture in your Handbook to help—how you will walk along the streets, go in the bus or train, arrive at the church, so as to cause the least trouble to other people,' and so on.

It may not be possible for all to share directly in planning the actual programme of a big event, but at least each can be impelled into thinking out in Six or Patrol her own appearance and behaviour, her own part in what the public is going to see.

### 3. Remember throughout the object of the exercise

As we plan and carry out any public appearances, large or small, this year, we must remember all along the object of the exercise—that the public should see what is Guiding, not what it isn't.

'Guiding belongs to the girl', say our Handbooks, and this must be seen by everybody to be truly so. Good forward corporate planning, well briefed, un-panicky adults determined to remain in the background, and Guides who have felt from the outset that the event is truly theirs—these will combine to let loose the charm and appeal of young people enjoying themselves in disciplined, responsible freedom. And what more can the public eye demand than that?

## Not Just on Thinking Day

'A foreigner is just someone from another country until you get to know him, and then he's a friend.'

(from the Brownie Guiders' Handbook)



THINKING DAY can be a 'starter'. Perhaps a girl sees for the first time that she does belong to a World-wide Family. But she still has a long way to go before she comes to discover that she has, through Guiding, turned many foreigners into many friends.

How can we help her?

The three pages that follow aim to give a number of widely varied ideas, some of which will probably appeal to you and your Brownies, Guides, or Rangers. Some are for 'on the doorstep' activities—some are way overseas; some are easy to do—some need planning, saving towards, real effort; some are group activities, for the Pack, Patrol, the Company or the Ranger Unit—some are for individuals to work on; some are ideas for service—some for thinking for yourself—some for making things.

All need thinking round.

Perhaps an idea as it stands may need a bit of modifying to appeal to your group of girls; or a look at the source from which it was drawn may set you off to discover a still better one.

Perhaps the mention of 'language' or 'customs' set you thinking afresh about preparations for going abroad next summer. (How valuable is that 'Holidays Abroad' chapter in the new *Camps and Holidays*; and the 'Travel Folder' obtainable through County International Adviser.)

Perhaps mention of Foxlease reminds you of the Guider from Ceylon you met at Waddow, and you may think 'Why didn't I ever give the Brownies a demonstration of sari-dressing when I got back?'

Perhaps you think again about the importance of a transfer form—not only for the Guide moving to Johannesburg, but also for the one who moved into the next District. That 'remarks' space—referring to strengths and difficulties, to a Guide's progress towards her eight-point badge—can be so helpful in ensuring her quick adoption as a real member of the new Unit.

Perhaps you recall that rather cold welcome your Guides gave to Narinder last week, and think hard about how to help them learn that we're all colours and races in Guiding, and world friendship begins at home. Perhaps someone from the Community Relations Commission would come to one of our District Meetings—or even to the Local Association Annual General Meeting—to help us to understand the customs and cultures of other races.

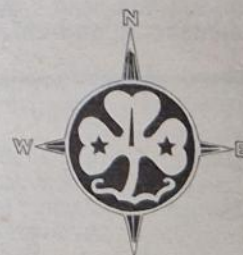
Perhaps you think again about ordering the *Council Fire*. Why do we take it?

'To see how other people live.' 'To look for service ideas—and activity ideas sometimes—for our Pack/Company/Unit (for what other countries have done as well as what they need).' 'To find pictures of Guiding overseas to interest the Unit.' 'To find out what happened at the World Conference—and what's been happening since.' 'To keep my French brushed up!'

Perhaps some of the District Guiders start talking about holidays abroad and bemoaning that they're not included in this month's nationally-organised invitation to 'Rangers and Young Guiders'. And you start thinking 'Why not organise a party of our own? And why not ask someone experienced (Training Committee or County International Adviser will know who) to come with us and help us so that next year we might even dare and be able to take our own older Guides and Rangers abroad?'

All this needs a lot of thinking round.

But that's what Thinking Day is for, isn't it?



## Training

### Not Just on Thinking Day FOR YOUR BROWNIES

'Shirley had a French girl staying with her, so she brought her to Brownies, and I was her Sixer. So I had to help her understand the games.'

'The United States Air Base quite near here has a Pack of Brownies called Brownie Scouts, and we're going to a meeting with them next week, and they're coming to visit us in Pack Holiday.'

'We enjoyed the Brownie Game from Italy that came in the Summer issue of *The Council Fire*.'

'After reading in Pow-wow a letter from Suzette in Cape Town, we wrote to ask her if her Brownies would like to be our Pen-pals. We have sent and received two letters already. Each Six writes part of the letter.'

(From THE BROWNIE)

'At Pack Holiday, we all made squares for a cot blanket and when it was finished we sent it to a hospital in Africa and they wrote back and sent us a photograph.'

'Several months before Christmas all the Brownies in Kersten's (Danish) Flock were busy making little felt Christmas Tree Brooches and decorating them with tiny coloured beads.'

(From THE BROWNIE)

'At Pow-wow Janice showed us a gorgeous scarf her Australian aunt had sent for her birthday. Next week we're all going to try to bring something from another country. If we can't find anything else, we're to look in Mum's store cupboard.'

'We "decided to have our Brownie Revels on the 4th July this year" so someone suggested—"Let's make it an American 4th July Celebration".'

#### Have you used?

*Singing Games from Far and Near* 2s. 6d.

*Games from Many Lands, Part I* 2s. 6d.

*Games from Many Lands, Part II (rev.)* 2s.

*Let's have an Overseas Programme* 2s. 6d.

*Brownies of the World Painting Books,*

Nos. 1-5 1s. 6d. each

*Brownie Stories of the World,*

Nos. 1-5 1s. each

A doll dressed  
as a Swedish  
Brownie

photo:  
C.H.Q.  
Periodicals



'We save all our foreign stamps and send them to the Guide Friendship Fund.'

(Send them c/o The Girl Guides Association, mark them 'Guide Friendship Fund', remember to cut them off the envelope and that British stamps should *not* be included.)

'We gave Ann a doll dressed as a British Brownie to take with her for the Cyprus Brownies, when she went to live with her sister there.'

'We went round Guide Headquarters, and there was a big case full of Brownie Badges only some of them were Bees and Birds and things; but lots of them were just like ours!'

'All the Churches in our town are joining together for Christian Aid Week and we're going to buy a fishing boat to cheer up a village in Uganda. The schools are making models for an exhibition, and we and the Guides and the Scouts and the Girls' and Boys' Brigades are to put on a Concert one evening. Our bit is going to be a Pack Venture of course.'

'Could we all dress up as Brownies of different countries?

Could we learn and perform some of their singing games?

Could we choose one special country, make a model of the Brownie and her surroundings, learn to cook a meal she eats and to play a game she enjoys?'

(From page 78 of the Brownie Guide Handbook—and had you realised how many uniforms and badges of other countries are shown on pages 74 and 75?)

## Not Just on Thinking Day

### FOR YOUR GUIDES

We had a Finnish Guide in camp, and it was terrific. She showed us how to make teapot stands out of little log sections. They look fabulous if you match up the grain a bit.'

'I have just moved from England to South Africa, and before I moved I belonged to the 1st Milford Company, Surrey. Now I belong to 25th Johannesburg.'

(From THE GUIDE)

'Food from India—Chapatties.

Take 8 tablespoonfuls of whole-wheat flour  
 $\frac{1}{2}$  teaspoonful of salt  
 3 tablespoonfuls of soft cooking fat  
 Some cold water

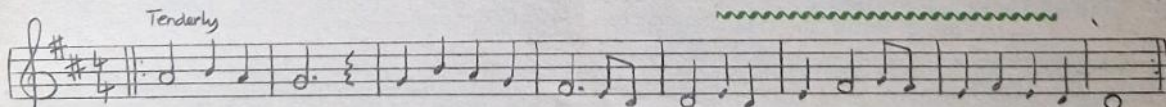
(From THE GUIDE)

'Did you know that Joanna is learning some Urdu from Fawziah (who's in her Patrol), so that she can talk to Fawziah's mother when she meets her?'

'When it came to doing the collection for Commonwealth Knowledge Badge, I had to go and see all kinds of people. Our Commissioner had a fabulous necklace from Rhodesia; and she put me on to someone on the Local Association who showed me all the things she'd brought back from New Zealand. I had to write to our County Commonwealth Adviser, too, because I got stuck on the "religions and customs" of the country I'd chosen, and she helped me a lot.'

We've just learned this song from Israel

Tenderly

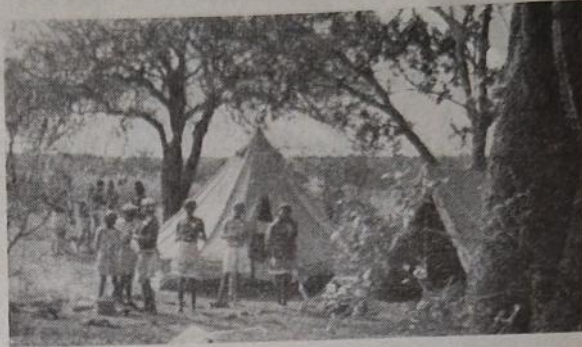


1. Dayi, Do-yi Dayi, Hear my lul-la - bay —, Bayi, Ba-yi Ba-yi —, Sleep and do not cry.  
 2. Dayi, Do-yi Dayi, Sleep and do not cry —, Bayi, Ba-yi Ba-yi —, Hear my lul-la-bay.

(From TODAY'S GUIDE)

#### Have you used?

Chansons de Notre Chalet (selection of songs as sung at Our Chalet)	2s. 6d.
International Songs	1s.
Overseas Songs	1s. 6d.
Songs from the French	6d.
The World Sings	2s.



Camping in Rhodesia

'Did you know that the Guide Friendship Fund had given a wheel-chair to the Extension Guides in Surinam, and sent over £5,000 last April to help work with blind people? Then we helped make it possible for Guides to camp in Nigeria and Rhodesia and Sierra Leone, and Dahomey and Madagascar and Paraguay; then there was a van for Hong Kong Guides; and the Christmas Good Turn project was to build and furnish a room in the new Jamaican National Children's Home.'

This month we shall all be concentrating on the Thinking Day Fund—see page 65.

'When we visited Foxlease we were specially thrilled with all the drums and headdresses in West Africa's bedroom.'

'I was lucky enough to be chosen to represent Bedfordshire and my country at the International Guide and Scout Rally known as the Jublo Jamborette in Tiveden, Sweden.'

(From THE GUIDE)

'Where do "Little Scouts" have a leaf for a totem, and a "Frog Story" as their "Brownie Story"?'

(From the Guide Handbook, page 213)

(Trefoil Around the World—will provide answers to these and many other questions)

'Somehow the Guides need to find that Danes, and Americans, and Africans, and Chinese are not only delightfully different from but also endearingly like themselves. They need if possible to go even further and find that there are no Danes and Americans and Chinese in the lump, but Hanne and Gay, and Gulshan and Lily, each one an individual in her own right and not just a member of a race or nation.'

(From the Guide Guiders' Handbook, page 180)

# Training

## Not Just on Thinking Day —For Your Rangers

'We had a good discussion about the most important things we'll need to be able to say in Spanish when we go to Spain next year.'

'There was a Malaysian Guider staying in the town, so we asked her if she would come to Rangers, and she showed us how to cook a Chinese meal.'

'Christine wrote to Voluntary Service Overseas, and she's going off to Kenya this summer.'

'Do you know that in Germany people will stare at you in horror if you cut your potatoes with a knife . . . it just isn't done!'

(From the Ranger Guide Handbook, page 167)

'Last time I stayed at Olave House—I know it was exceptional, but that weekend there were nineteen different nations represented!'

'We used the World Conference "Reflections on the Theme"—from the autumn issue of *The Council Fire*—as the basis of our Ranger Act of Worship, and found they really got us thinking. We got onto "sacred cows" being really sacred to Hindus and decided that we'd just got to find out more about what other people believed.'

'During the visit I received three requests (one Algerian and two Tunisian) to correspond with English Ranger penfriends.'

(From a letter in THE RANGER)

### Have you tried?

Circle Chit-Chat (see page 84 of the Ranger Guider's Handbook) as a way of getting even the least forthcoming of the Rangers talking about things like 'race' and 'customs' and 'religions'.

### Have you read?

*Notes for Guiders on Religious Faiths* 1s. 6d.  
*Teaching Human Rights* 3s.  
(from Council for Education in World Citizenship)  
*Help yourself to go abroad,*  
E. M. Beveridge 1s.

### Do You and Your Brownies/Guides/Rangers know

The World Song by Jean Sibelius  
Words 9d., Music 4s. 6d.

### Have You Read?

The Blue Pamphlet of the World Association of Girl Guides and Girl Scouts—in Arabic (available also in English if preferred!) 1s. 6d. *Trefoil Around the World* 7s. 6d.

'There are quite a lot of foreign girls in the town working in the hotels through the summer, so we thought we'd invite them to our Open Evening.'

'A party of Rangers from our District had a wonderful Youth Hostelling trip through Germany, Austria and Italy last year. We wondered about going to Our Chalet. . . .'

Applications for 'Our Chalet' should be addressed to The Guider in Charge, Our Chalet, Adelboden, SWITZERLAND.

Applications for the summer period are considered from 1st October. (Full details are given in the August 1969 GUIDER.)

'Some of the Rangers have been asked by the Local Education Authorities to take a brief training so that they can help with English classes in the homes of Indian and Pakistani women.'

'Some of the older Guides seemed shy of coming up to Rangers, so we invited them all to an American supper. We started at Jean's with Erwtensoeep (it's a pea soup from the Netherlands—she'd found the recipe in *Guide Games and Recipes*) we went on to our Commissioner's for Indian Curry; Swiss Bircher-muesli with Brenda; and French coffee at Skip's.'

'Our town is linked with a German town, and a big party came over this summer, including some Youth Groups. We volunteered to act as town guides one weekday, and were given some special places to take them to. It meant an awful lot of work beforehand, but it was well worth it.'

'We went to visit the Commonwealth Institute in Kensington. It's all a fantastic bit of architecture, and they've got some wonderful displays, and show films all the time in rooms alongside. In the evening they have entertainments—we were mad that we couldn't stay for the Sitar Music and Indian Dancing that evening.'

For Commissioners

## The Commissioner and Camp

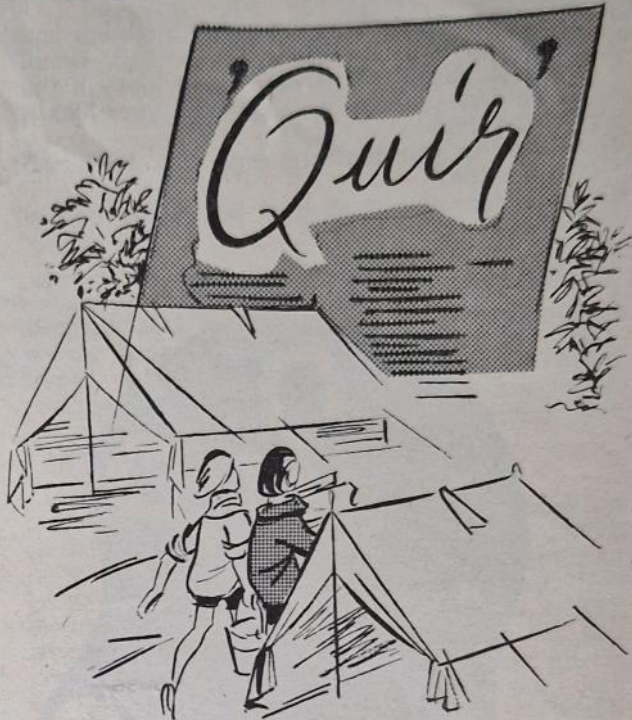
by Dorothy Meadus

illustrated by Elizabeth Wall

Is there a Commissioner who has not, at some time, relaxed under a hair-dryer with a copy of the latest glossy? Is there one who can put up a strong resistance to 'This month's Quiz' and having succumbed to it, has honestly scored the maximum points?

Is there one who has not had the slightest tussle with her honour when it comes to recording personal failings?

Commissioners are invariably game for anything. So, with a ballpoint pen poised, try this one:



1. What was your Division/District percentage of campers this year?

- a) over 75%
- b) under 75% but over 50%
- c) under 50% but over 25%
- d) under 25%
- e) don't know

2. Were you

- a) satisfied with this?
- b) dissatisfied but have not time to do anything about it?
- c) dissatisfied but have already arranged something to improve the numbers?

3. Can you name the Guiders in your District who

- a) have no camp or Pack holiday qualification and who see no reason for getting one?
- b) have no camp or Pack holiday qualification but have a genuine regret that it is not possible at present to get one?
- c) have no qualification but seize every opportunity for training so that their girls are able to experience enjoyment of the out-of-doors in other ways?
- d) have a qualification and whose standard of camping you know well?

4. When did you last have a chat with your Camp Trainer, Camp Adviser or District Assistant (Camp or Training)?

- a) Was it before last season's camps and Pack holidays?

- b) After the holidays, to review them and make plans for the coming year?
- c) Even more recently than (b) to discuss changes of situations and personnel?
- d) Not at all?

5. Your County probably holds at least one Training Camp each year. Do you

- a) successfully encourage your Commissioners/ Guiders to attend?
- b) encourage them but with little success?
- c) go with them to the camp?
- d) visit the camp and where possible spend the time with your Guiders?

6. Have you

- a) conscientiously considered each Guider, as to whether she is a suitable person to run a camp, Pack or Ranger holiday?
- b) thought about it and discussed their training programme with your C.A. or District Assistant?
- c) allowed them to make numerous preparations for their first camps and holidays and only then realised that you had done nothing about their training?
- d) not really thought about your responsibility at all?

7. Have you equally conscientiously been through their 'Application to Camp' forms and

- a) made sure that they have the right helpers and equipment?

# Training

- b) checked and then decided that although you were not satisfied the arrangements would have to stand? (You were dead lucky if the camp was successful. Don't push your luck a second time!)
- c) refused to sign the form until alterations had been made?
- d) quite forgotten that this was your responsibility?

## 8. Have you

- a) your own well read copies of 'Camps and



Holidays' and 'Notes on Camps and Holidays'?

- b) encouraged your Guiders to read them?
- c) as (b) but also seen that each Guider has, at least, her own copy of 'Notes on Camps and Pack Holidays' (Price 9d.)?

## 9. Have you read the paragraphs or chapters related to the 'Out-of-Doors' in

- a) the Commissioners' Handbook?
- b) any one of the Ranger, Guide or Brownie Guiders' Handbooks?
- c) all of them at least once?
- d) all of them and referred to them constantly?

## 10. Have you made sure that

- a) your District Assistant or C.A. is training the Guiders to help the Guides in out-of-door and camping activities?
- b) the Guiders' interest is being stimulated in a number of ways?

## Division Commissioners Did you

- a) opt out after the second question deciding that this quiz did not apply to you?
- b) try to answer all the questions with various Commissioners in mind?
- c) realise anew the importance of the District Commissioner's job and wonder what you could do to help her?

The answers are obvious and scoring entirely up to you but District and Division Commissioners can award themselves an extra ten points if they found, while working the quiz, that they were already arranging some plan of action as a result of their answers.

A further bonus to those who have an up-to-date reference copy of each of the forms needed for the out-of-doors pursuits undertaken by Rangers, Guides and Brownies.

## COMING THIS MONTH

### THE BROWNIE

The issues of 4th, 11th and 18th February contain various items for use on or around Thinking Day and include a New Zealand singing game and a Frieze of Animals of Other Lands. The Discoverer Badge series ends on the 11th February and the Musician and Knitter Badges series starts on 25th February. The Thinking Day issue is 18th February. The BROWNIE contains regular features such as All Your Own, Promise Corner and puzzles.

### THE FEBRUARY RANGER

The February issue will contain an article by Barbara Vise—When You Meet a Looking Glass; It's an Idea . . . Panel Discussion; Recipes for Thinking Day and Shrove Tuesday; At Your Service . . . The Ambulance Service; Five Ways to Die in the Mountains—a warning guide to those who go hill walking or mountain climbing. There will also be the regular features—Ranger Scene, Letters, notices, pictures and book reviews.

### TODAY'S GUIDE

Patrol Leaders' Pages—a new regular feature incorporating P.L.P.; Patrol Leaders' Notebook; Patrol Camp Cooking Card; ideas for Patrol outings; camp items; etc.

6th Feb. Make up a Thinking Day ceremony chart, Details of Track 1 of the Treasure Trail.

13th Feb. Chart about camp, articles to help with the Treasure Trail.

20th Feb. Leaf Skeletons chart, Details of Track 2 of the Treasure Trail.

27th Feb. Patrol Easter Good Turns, help with the Treasure Trail.

Throughout the month the Commonwealth Knowledge Badge will be detailed at length.

Every week there are Letters to the Editor, Pets' Corner, Overseas items, puzzles, County Badge Exchange and many other articles.

Here At C.H.Q. Here At C.H.Q. Here At C.H.Q. Here At C



### Illness at C.H.Q.

During the Christmas and New Year period, activities at C.H.Q. were seriously curtailed by illness. Among the casualties were the Chief Commissioner Mrs. Parker Bowles, who was in hospital for several weeks, as well as Miss Mitchell, the Deputy General Secretary, and myself. Quite apart from the difficulties caused by us all being away from the office at the same time, we were very disappointed to be unable to attend the staff party. As I write, Miss Mitchell and myself are recovered, but Mrs. Parker Bowles is still convalescing.

### On the subject of Thinking Day . . .

#### . . . Service

The Dean of Westminster will conduct a short Service in commemoration of the Founder, on Saturday, 21st February at 11.00 a.m., during which wreaths will be laid on his Memorial in the Abbey.

No tickets will be issued and any member of the Movement will be welcome. Space, however, for the congregation will be limited as the Service will be held in the Nave only.

#### . . . Fund

Just a reminder to Guiders and Commissioners sending in contributions for the Thinking Day Fund. Will you please mark envelopes 'Thinking Day' and address them to the Finance Department at C.H.Q. Money orders and postal orders should be crossed and made payable to the Girl Guides Association, and a stamped addressed envelope enclosed so that a receipt can be sent to you.

#### . . . Shop Hours

We have noticed in recent years that less and less Guides visit C.H.Q. before attending the service in Westminster Abbey, for they know they must get to the Abbey early in order to get a place. This means that crowds of visitors flood into C.H.Q. after the service, many of them wishing to buy items in the shop. It has been decided this year to keep the shop open an additional half hour, until 1.30 p.m., on Saturday, 21st February, to enable those coming from the Abbey to make their purchases at leisure.

#### . . . C.H.Q. Tours

As there is a special lunch at which C.H.Q. staff will be 'at home' to ex-members of staff on 21st February, will Guiders please note that tours of the building must finish at 12.45 on that day—in other words the last tour must commence at 12.15 p.m.

#### 'Flu Epidemic

My article this month seems rather preoccupied with illness, but I must refer to the tremendous help given by Guides in many districts during the recent 'flu epidemic. At one hospital in Essex, 40 Scouts and Guides helped out with all sorts of tasks when 120 nurses were away sick.

*Theresa Hudson*

General Secretary



Left: The TODAY'S GUIDE window of the C.H.Q. shop. Reflected in the photograph are the buildings of the Royal Mews. Photo: J. Wilson Clarke

# hqn headquarters' notices

## NEW YEAR HONOURS

Mrs. M. M. Chauvel, of New South Wales, has been awarded the M.B.E. for services to the Girl Guide Movement.

## TRAINING FOR ROMAN CATHOLIC GUIDERS

The Catholic Guide Advisory Council are holding a Training for Roman Catholic Guiders at St. Mary's College of the Sacred Heart, Fenham, Newcastle-Upon-Tyne, NE4 9YH, the weekend of 10th-12th April, 1970. The trainers will be Sister Edna and Miss Williams, assisted by Miss Robson. The trainings will be based on the Jubilee Theme 'Three Cheers' as a Service Project incorporating Camping and Discovery. Fees—£5 full board for the weekend including Conference Fee. Reduced terms for day Trainees. Many County Education Authorities will allow grants to Guiders attending these trainings and Guiders are advised to make enquiries locally, regarding these. Application forms are available from Mrs. Harper, Sunniways, Iwerley, Stourbridge, Worcs. Completed forms enclosing 22s. 6d. deposit (which includes Conference fee) must reach Mrs. Harper, at above address, on or before 22nd March, 1970.

## ENGLISH EXTENSION GUIDERS

A training day for all Extension Guiders will be held at the Birmingham Guide Headquarters, Trefoil House, Brownsea Drive, Blucher Street, (off Holloway Head), Birmingham 1, on Saturday, 14th March, 1970. The training will commence at 10.30 a.m. and finish at 6.40 p.m. Coffee, lunch and tea will be available at an overall cost of 10s. per head, payable on the day. Applications to be made to: The Secretary, English Training, English Office, C.H.Q., enclosing a s.a.e. and training fee of 3s.

**LOST**  
without  
**Cash's**  
quality woven name tapes  
*The best to be found!*



## RANGER GUIDER/VENTURE SCOUTER LEADER TRAINING

This training, to be held at Gilwell, 22nd-28th August 1970, will include practical help in planning Unit programmes, expeditions and projects of all kinds; discussions on joint activities, and suggestions for co-operation at local level. Here is a chance for Ranger Guiders whose Units are involved or interested in joint activities. Why not make up a party from your own area?

The Course will cost £10. For further details and application forms please apply to: The Director of Leader Training, Gilwell Park, Chingford, London, E.4.

## BOATING TRAINING

*T.S. Foudroyant*, Portsmouth Harbour.

A training in all aspects of boating for Rangers and Guides aged 14-20 years will take place on 15th-22nd August from the *T.S. Foudroyant*, the only wooden walled ship afloat in the world. Cost: £10 2s.

Applicants must be able to swim 50 yards.

Applications, enclosing stamped, addressed, foolscap envelope, to The English Office, The Girl Guides Association, 17-19 Buckingham Palace Road, London, S.W.1.

## BADGE AND CERTIFICATE SYLLABUSES

Amendments to Badge and Certificate Syllabuses will be published annually in September issues of *THE GUIDER*.

## BROWNSEA ISLAND

Camping sites are available on Brownsea Island from April to the end of September. Cooking is by Calor Gas only but all necessary equipment for this is provided. Applications to camp, with a foolscap, stamped addressed envelope, should be made to Mrs. Dyke, Wendover, The Avenue, Sherborne, Dorset.

## 'HELPERS' FOR BLACKLAND

Once again we are asking for the help of two young Guiders, Cadets or Rangers (over 16 years of age) at the C.H.Q. Camp site—Blackland Farm, East Grinstead Sussex, during the peak camping season. Could you offer your services for any of the following periods:-

**Whitsun** Friday May 22nd to Saturday, May 30th.

**Summer** Friday, July 17th to Friday July 31st.

Friday, July 31st to Friday, August 14th.

Friday, August 14th to Saturday, August 29th.

Two 'Helpers' are on duty together, and assist the Warden with a wide variety of jobs in connection with camps held on this lovely estate. We particularly welcome offers of help from two friends.

Can YOU offer your help? If so, please write for further details and an application form to:- Miss Furze, Secretary to the Blackland Committee, The General Secretary's Department, C.H.Q.

## NOTICE BOARD

### FOLK IN SCOTLAND

A Folk Workshop will be held in conjunction with the second Scottish Scout and Guide Folkfest to be held in Glasgow on Saturday, 4th April.

Further details from Sandy Veitch, The Scout Association, Scottish Headquarters, 44 Charlotte Square, Edinburgh, EH2 4HQ. Please mark the envelope 'Folkfest'.

### COMMONWEALTH CIRCLE

The 'Thinking Day' party will be held at Baden-Powell House on Monday, the 23rd February 1970 when Lord Baden-Powell will be present to represent The Chief Guide and will give a talk.

## C.H.Q. Staff Vacancies

A Grade 1 Shorthand/Typist is required for the English Office. This Office is the heart of Guiding in England and the job offers interest and variety. Membership of the Movement is a 'must' Age is immaterial but applicants should be willing to take some responsibility.

**Export Invoice Typist.** A senior member of staff for the overseas Mail Order work.

**Lady Clerk** to do straightforward figure work with some general clerical duties. A bright willing person with an interest in the job and with initiative is needed.

**Clerks for record keeping** in our Registrations Dept. are required. There are many aspects to the work of this office and there is plenty of variety. No experience needed but good hand-writing most important.

**Senior Shorthand Typist** needed as Secretary to the Head of our Finance Department. This is an interesting and highly confidential position requiring good secretarial experience. Accuracy in typing figures essential, but other mathematical qualifications not necessary. Might suit an older lady—but age is really immaterial.

All staff work 35 hours per week and have three weeks' holiday annually. We have an excellent restaurant and House Luncheon Vouchers are provided. C.H.Q. is within five minutes' walk of Victoria main line and underground stations, many bus routes and excellent shops.

Telephone or write for further details of any of the above vacancies to Mrs. Kempton, Personnel Manager at C.H.Q. Tel. 01-834 6242.

### The Guide Shop

There is a vacancy for a reliable, responsible and conscientious person as **Deputy to the Manageress** in the **Birmingham Guide Shop**. This is a very interesting appointment but applicant must be adaptable and interested in figures and display work. Good salary, pension scheme, six-day opening—five-day working week. If you are between 25 and 35 years and interested in such a position, please ring Mrs. Woolcott 021-236 6289 for appointment.

### Trefoil Guild

**ORGANISING SECRETARY**, part-time, required for Trefoil Guild Office at Girl Guides Association Commonwealth Headquarters, London. Recent experience in the Guide Movement preferred. A senior position for lady aged 35-50, involving overall responsibility for Department. Secretarial qualifications and organising ability. Salary and hours by arrangement. Apply to Trefoil Guild Office, Girl Guides Association, 17-19 Buckingham Palace Road, London S.W.1, for application form.

### CONWAY STEWART QUALITY BALL PENS

Diastamped with 33 Gold Letters and Spaces

**30/- PER GROSS**

Standard Charge of  
6s. Post and Packing  
Any Quantity

Orders Despatched Same Day

Sale or return—Full refund on pens returned  
Samples free—Please try before you buy.

**Abbey Wholesale,  
77 Liverpool Road, Stoke, ST4. 1AE.**

For All Your Diamond Jubilee Events

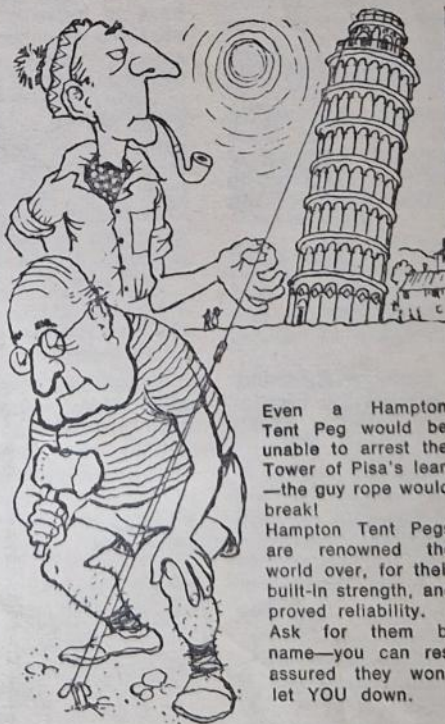
**SOUND-HIRE** A.P.A.E.

**MOBILE PUBLIC ADDRESS SERVICE**

Outside Broadcast Unit  
(24 hour service)

Radio Controlled  
Rally; Fete; Sports;  
Meetings etc. etc.

139 Downhills Way,  
Tottenham,  
London, N.17.  
Tel: 01-888 5994



Even a Hampton Tent Peg would be unable to arrest the Tower of Pisa's lean—the guy rope would break! Hampton Tent Pegs are renowned the world over, for their built-in strength, and proved reliability. Ask for them by name—you can rest assured they won't let YOU down.

**THE HAMPTON WORKS (Stampings) Ltd.**  
Twynning Road, Stirchley, Birmingham 30.  
Also at London, Manchester, Bristol and Glasgow.

# Where to train

## TRAINING BURSARIES

**GUIDERS** attending Gulder trainings at Foxlease, Waddow, Netherurd, Broneirion and Lorne are eligible to apply for Training Bursaries. A Gulder may receive only one such bursary, except in special cases when the Commissioner may recommend a subsequent award, e.g.: where a Gulder changes her Section or becomes a Commissioner, etc.

**Fee Bursary:** This entitles a Gulder to a reduction of half the fee for a shared room. She may request to be in a single or double room but will have to pay the extra charge above that allowed by the bursary.

**Travel Bursary:** This entitles a Gulder to a grant covering travelling expenses in excess of 30s. and is available only for the nearest Training Centre. A travel bursary in addition to a fee bursary, is allowed only in cases of special need and a detailed recommendation from the Commissioner is required. Payment of this grant is made at the Training Centre on production of the bursary form.

**Angela Thompson Bursaries:** These are available for any Promise and Law Training (not necessarily held at a C.H.Q. Training Centre) and have the same value as a fee bursary.

**Application for Training Bursaries** must be made through the District Commissioner who applies direct to the Secretary, C.H.Q. Training Department, stating the name of the Gulder concerned and the date and place of the training. At least a fortnight's notice should be given. Bursaries cannot be issued in retrospect. Not more than one-third of the places at any one week-end can be covered by bursary grants and Commissioners are asked to indicate priorities if applying for a number of bursaries. A number of L.E.As. give generous help towards Gulder trainings and a request for such assistance should be made direct to the Local Authority concerned.



## Common- wealth Headquarters

An application to attend a training at any Guide Training Centre should be sent direct to the appropriate Gulder-in-Charge, and must be accompanied by the correct amount of deposit and a stamped addressed envelope. Applicants should also state the type of training for which they are attending, as there may be several different courses running at any one weekend. As so many Guiders have to leave on Sunday, training sessions at a two-day weekend will stop at teatime on that day unless otherwise stated. If sufficient notice is given that it is wanted, every effort will be made to provide sessions for a group until Monday. Individuals who are able to stay over until Monday to enjoy the surrounding country and other amenities of the Centres are most welcome to do so.

Any Gulder may apply to attend a training at the Centres provided she has reached the minimum age of 17 years.

Telephone calls are accepted only between the hours of 8 a.m. and 8 p.m. at Foxlease (0421-28638) and at Waddow (02-002-3186), except in emergencies:

### FOXLEASE Lyndhurst, Hants.

#### FEBRUARY

- 6-8 General Training. Ranger Guiders
- 13-15 General Training. Brownie and Guide Guiders
- 27-MARCH 1 Bristol

#### MARCH

- 6-8 General Training. Brownie and Guide Guiders
- 13-15 Oxfordshire

- 20-22 General Training. Brownie and Guide Guiders
- 26-31 Birmingham

#### Easter

#### APRIL 3-5

1. Prospective Campfire Leaders and others interested in leading Campfires.
2. District Commissioners and District Assistants (*Responsibility for training in the District*)

- 10-12 1. General Training. Brownie and Guide Guiders

2. Diploma Candidates (*by invitation*)

- 17-19 1. Guiding Overseas (*by invitation*)

2. Outdoor Activities
- London N.W.

#### 24-26

#### MAY

##### 1-3

- 'Dig a little Deeper'. Practical skills workshops for Guiders who wish to pursue a subject in depth. (see January Gulder)

##### 8-10

- Division Commissioners (*allocation through counties*)

##### 15-17

- General Training Brownie and Guide Guiders

##### 22-26

- Trainers — Diploma'd, Certificated and Specialist

#### Spring Bank Holiday

##### 29-31

- General Training Brownie and Guide Guiders

#### JUNE

##### 5-7

1. District Commissioners with three of their own Unit Guiders (*one from each section*)

2. Camp Training (*in camp*) for Guiders working for camp qualifications

##### 10-16

- Brownie and Guide Guiders, accompanied by their husbands, and children aged between 2 and 8 years

##### 19-21

- General Training Brownie and Guide Guiders

##### 26-28

- Essex East

- JULY**  
3-5 Friends of Foxlease  
10-12 Leadership Skill Work-  
shops (see January  
Guider)  
17-19 General Training Brownie,  
Guide and Ranger Guiders  
(Emphasis on World  
Guiding)  
24-26 1. A course for trainers  
on training Commissioners  
2. Using your Handbooks  
Brownie and Guide  
Guiders  
31-August 10 Holiday Activity  
Period
- AUGUST**  
\*14-24 Patrol Leaders  
28-September 4 Ranger Advent-  
ure Week (for Rangers of  
any age including Duke of  
Edinburgh Award Candi-  
dates)
- WADDOW**  
Clitheroe, Lancs.
- FEBRUARY**  
6-8 General Training. Brownie  
and Guide Guiders  
13-15 Leadership Skill Work-  
shop. All sections  
20-22 1. Revise your musician-  
ship  
2. Training the trainer—  
(a course for Tutors, by  
invitation)  
27-MARCH 1 N.W. Area Camp  
Advisers
- MARCH**  
6-8 General Training. Brownie  
and Guide Guiders  
13-15 Becoming a Homemaker.  
Guide and Ranger Guiders  
20-22 1. Guiding Overseas  
(by invitation)  
2. Ranger Trainers, Dip-  
loma'd, Certificated and  
prospectives  
26-31 Prospective Trainers (by  
invitation)
- Easter**
- APRIL**  
3-5 1. Lone Guiders, and any  
other Guide or Ranger  
Guiders operating 'postal  
Guiding'  
2. Recorder Playing for  
Beginners  
10-12 'The Promise in Our  
Society.' All Guiders and  
Commissioners  
17-19 General Training. Ranger  
Guiders  
24-26 General Training. Brownie  
and Guide Guiders
- MAY**  
1-3 Northumberland  
8-10 General Training Brownie  
and Guide Guiders  
15-17 General Training Guide  
and Ranger Guiders.

- 22-27 Pack Holidays (by invita-  
tion)  
Spring Bank Holiday  
29-31 Lancashire S.E.

- JUNE**  
5-7 'Dig a little Deeper'  
Practical Skills Workshops  
for Guiders who wish to  
pursue a subject in depth  
(see January GUIDER)  
12-14 1. General Training  
Brownie and Guide  
Guiders  
2. Camp Training (in  
camp) for Guiders work-  
ing for camp qualifications  
19-21 District Commissioners  
and/or District Assistants  
(Responsibility for train-  
ing in the District)  
26-28 1. Trainers (Use of Case  
Study method)  
2. Dance Drama

- JULY**  
3-5 1.—General Training  
Brownie and Guide  
Guiders  
2. Diploma Candidates  
(By Invitation)  
10-12 Practical outdoor activities  
(see January GUIDER)  
17-19 General Training Brownie  
and Guide Guiders  
\*24-31 Patrol Leaders

- AUGUST**  
7-14 Holiday Adventure Week  
(see January GUIDER)  
19-24 Challenge to Achievement  
(Rangers aged 16 to 19  
years including Duke of  
Edinburgh Award candi-  
dates — see January  
GUIDER)  
28-1 September House Party for  
Diamond Jubilee Year

#### \*Patrol Leaders' Trainings

Guiders are reminded that only two Patrol Leaders can be accepted from any one Company. They must not have attended any previous training at a Training Centre and Guiders are asked not to apply for places at more than one Centre. The Patrol Leaders must have attained their 12th birthday, but not their 14th birthday by 1st February, 1970 (i.e. they will be between 12½ and 14½ at the time of the training).

They must be able to attend the whole training.

#### Training Notes

Guiders are reminded that full details of many of the Trainings listed appeared in the centre pages of the January GUIDER.

**Places for the Patrol Leaders'**  
Training at both Centres will be allocated on 1st March, 1970. Applications each with a deposit of £1 and a stamped addressed fools-cap envelope, should be sent to the Secretary at the training centre concerned by the appropriate date.

Counties wishing to have a County weekend at Foxlease or Waddow in 1971 should apply to the Secretary, Training Department C.H.Q. not later than 1st March, 1970.

(Chairmen please note earlier date for these applications.)

#### Fees at Foxlease and Waddow

Shared room per day 27s. 0d.  
(Minimum fee for  
weekend £2 14s. 0d.)  
per week £8 0s. 0d.

Double room per day 34s. 0d.  
(Minimum fee for  
weekend £3 8s. 0d.)  
per week £10 4s. 0d.

Single room per day 40s. 0d.  
(Minimum fee for  
weekend £4 0s. 0d.)  
per week £12 0s. 0d.

Deposit £1 0s. 0d. (cheque or  
postal order only)

## Scotland

#### NETHERURD HOUSE

Blyth Bridge, West Linton,  
Peeblesshire

#### FEBRUARY

- 6-8 Jordanhill Youth Leader-  
ship Course Students  
13-15 Commissioners

#### MARCH

- 6-8 Guide and Brownie  
Guiders  
13-15 Guide and Brownie  
Guiders  
20-22 District Trainings (by  
invitation)  
26-31 Residential Course—Duke  
of Edinburgh Award  
Scheme

#### APRIL

- 3-5 Guide and Brownie  
Guiders  
10-12 Music and the Eight  
Points—Guiders of all  
sections  
17-19 Guide and Brownie  
Guiders  
24-26 Guide and Brownie  
Guiders

MAY  
1-3 Outdoor Training—Guide  
and Ranger Guiders

#### Fees at Netherurd

Shared room per day £1 2s. 6d.  
Double room per day £1 5s.  
Single room per day £1 7s. 6d.  
Deposit 10s. 0d.

## Wales

### BRONEIRION

Llandinam, Mont.

#### FEBRUARY

20-22 World Guiding in the Unit  
for Guiders (all sections)  
and Rangers.

27-MARCH 1 Student Christian  
Movement

#### MARCH

6-8 Training towards Pack  
Holiday Permit and  
Camper's Licence  
13-15 Brownie Guiders & Guide  
Guiders & Campfire  
Leader Course (3  
Groups)

20-22 Trainers' Conference  
26-31 Patrol Leaders 12-14 years  
Easter

#### APRIL

3-8 Patrol Leaders 12-14 years  
10-12 Guiders & Patrol Leaders  
(Guide Guiders with two  
or three of their own  
Patrol Leaders)

17-19 Brownie, Guide and  
Ranger Guiders (places  
reserved for West Glam-  
organ)

24-26 Brownie, Guide and  
Ranger Guiders (places  
reserved for Cardiff and  
East Glamorgan)

#### MAY

1-3 Trefoil Guild  
8-10 Commissioners and Dis-  
trict Assistants.

15-18 Promise and Law through  
Whitsun the Programme (all sec-  
tions)

22-26 Guide & Brownie Guiders  
(Husbands and Children  
may be accommodated)

#### Spring Bank Holiday

29-31 Brownie and Guide  
Guiders

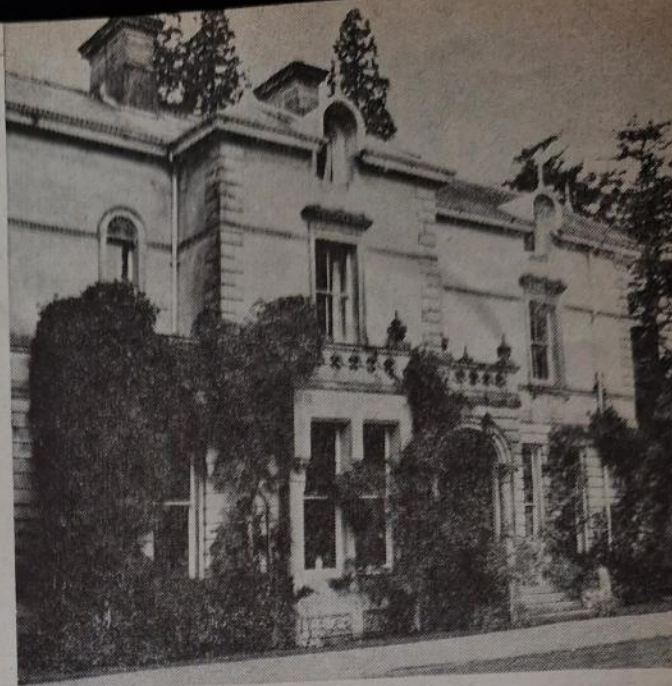
#### JUNE

5-7 Brownie, Guide & Ranger  
Guiders (places reserved  
for Monmouthshire)

12-14 Brownie, Guide and  
Ranger Guiders (places  
reserved for Shropshire)

20 Friends of Broneirion

Broneirion



#### JULY

3-10 International Gathering  
17-19 Diamond Jubilee Eistedd-  
fod.  
24-31 C.H.Q. Ranger Leadership  
Course

#### Fees at Broneirion:

Shared room per day 17s. 6d.  
per week £5 5s. 0d.  
Double room per day £1 0s. 0d.  
per week £6 6s. 0d.  
Single room per day £1 2s. 6d.  
per week £6 15s. 0d.  
Deposit 10s. 0d.

## Ulster

### LORNE

Craigavad, Co. Down, Ulster

#### FEBRUARY

6-8 County Tyrone Guiders  
13-15 Jubilee preparations (by  
invitation)

20-22 County Antrim Guiders  
27-MARCH 1 Commissioners &  
Trainers

#### MARCH

6-8 County Londonderry  
13-15 Tyrone Guide Adventure

#### APRIL

3-5 Brownie Guiders—8-point  
programme in action  
10-12 South-East Belfast Division  
17-19 Guide Guiders — Pro-  
gramme planning  
24-26 Trefoil Guild Conference

#### Fees at Lorne

Shared room per day ... 17s. 6d.  
Single room per day ... 19s. 0d.  
Deposit 10s. 0d

## Camping, Holidays and Pack Holidays

### Waddow Camp-sites

Applications for sites in 1970  
should be addressed to the Sec-  
retary and the envelope marked  
'Camp'. Suggested dates should  
be given with possible alternatives  
and approximate numbers. It is pre-  
ferred that camps begin on Satur-  
day. Please state whether an  
equipped or unequipped site is  
required.

A 10s. deposit (which is forfeit  
if the booking is cancelled) and a  
stamped addressed foolscap en-  
velope should be enclosed with  
the applications.

### Waddow Pack Holiday House

Applications for Pack Holidays in  
1970 are now being considered and  
should be made to the Secretary.  
The application must be accom-  
panied by a written recommenda-  
tion from the Guider's C.A. and  
a stamped addressed foolscap en-  
velope enclosed.

### Foxlease Camp-sites

Applications for sites should  
be addressed to the Secretary and  
the envelope marked 'Camp'. Sug-  
gested dates with alternatives and

approximate numbers should be stated and whether an equipped site is required. Camps may begin on any weekday.

A 10s. deposit (which is forfeit if the booking is cancelled) and a stamped addressed **foolscap** envelope should be enclosed with the application.

#### **Blackland Farm C.H.Q. Camp-site, East Grinstead, Sussex**

Equipped and unequipped sites available. This C.H.Q. site of 175 acres is near Ashdown Forest and has excellent facilities for adventurous camping. Climbing and Pioneer equipment can be borrowed and there is a swimming pool on the site.

'Restrop', a furnished bungalow, is available for parties of fourteen, ideal for small Pack Holidays.

Full details about Blackland and 'Restrop', as well as 'The Story of Blackland' (9d.), are available from: The Warden, Blackland Farm, East Grinstead, Sussex. Please enclose a **foolscap**, stamped, addressed envelope.

#### **Broneirion Camp-sites and Pack Holiday House**

Applications for sites and Brownie Pack Holidays at Broneirion will be considered from 1st January, 1970. They should be addressed to the Montgomeryshire C.A., Mrs. B. Michael, Gorsty, Hyssington, Montgomeryshire and not to Broneirion.

Bookings for dates outside school holidays for the Brownie House, direct to Guider in Charge. Storage heaters have now been installed.

#### **Netherurd Camp-sites**

Two fully equipped sites are available and there is also a Brownie House. Applications for camp-sites are now being taken. Applications for the Brownie House will be taken now—during Scottish school holidays (July and half August) priority will be given to Scottish Packs.

An equipped caravan is available at Netherurd for holiday bookings by Guiders and their friends—weekends or longer periods. Bookings from 1st January, 1970.

#### **Fees**

Brownie House: From Easter 1970 onwards: Brownie Pack Holidays 2s. per head per night, 14s. per week. Guide and Ranger bookings 3s. per head per night.

Camp Sites: For 1970 camping season: weeks' camps 12s. 6d. per head per week; week-end camps 3s. per head per night; Patrol Permit camps 2s. 6d. per head.

#### **Lorne Camp-sites**

Between Belfast and Bangor on the Co. Down coast, Lorne offers fully equipped, or unequipped camp-sites with solid shelter. Calor gas available. Bookings should be sent to the Camp Secretary, 'Lorne', Craigavad, Northern Ireland.

#### **Ulster Camp-site, Glen Road, Craigavad, Co. Down**

Approximately 8 miles from Belfast on the Co. Down coast near Lorne. Fully equipped for 40 campers (one large or two small camps). Excellent hut for solid shelter. Calor gas. Bookings should be sent to Miss N. Pratt, 22 Bangor Road, Holywood, Co. Down.

#### **Magilligan Camp-site**

Three sites, fully equipped for 25-30 campers. Sandy soil, drains easily. Expanse of beach. Large hut on the site containing three rooms, one with an open fireplace. Small calor gas stove available. An information list can be obtained from the Secretary, Mrs. R. F. Scott, Derrymore House, Limavady, Co. Londonderry.

#### **Irene McKibbin Memorial Cottage**

In the grounds of the Ulster Training Centre, Lorne, Northern Ireland.

Cottage available for Ranger holidays. Fully equipped for 12 persons. Electricity, running water. Full details from Mrs. Grace A. McBride, 9 Creden Hill, Dunmurry, Belfast, s.a.e. please.

#### **Holiday at 'Lorne', Northern Ireland.**

Lorne will be open as a holiday centre during July and August. Members of the Trefoil Guild or Guiders make up a party or come on your own. Rangers welcome with their Guiders.

In pleasant grounds with lovely views and quiet surroundings on the shore of Belfast Lough, Lorne is only six miles from Belfast and a good centre for sight-seeing tours.

FEES: £1 per day inclusive of all meals. Packed meals for those out for the day. Overnight bookings, 'bed and breakfast' accepted. Bookings may run any day of the week.

Special terms for parties of 20 or over, and for parties or Guide Companies taking the full number of places (30) and wishing to do their own cooking and catering.

Full details from the Guider in Charge, Lorne, Craigavad, Co. Down, Northern Ireland.

#### **DO YOU REQUIRE FUNDS?**

If so we can help you. We can supply diaries, Conway Stewart retractable and non-refillable pens, address books, notebooks, rainhats, combs in cases, pencils and key rings. All printed with the name of your organisation, starting in quantities from 3 dozen upwards. Samples of pens sent free of charge, or complete sample set sent on receipt of 4s. postal order.

**THE DOUGLAS SUPPLIES CO.,**  
34 Princes Street, IPSWICH, SUFFOLK  
Telephone Ipswich 55182 & 76130

Are you arranging a group holiday, study project sports weekend or conference? Last year we welcomed groups from France, The Netherlands, Germany, Belgium, the U.S.A., and Czechoslovakia as well as Great Britain.

Outdoor facilities include a swimming pool, tennis courts, large sportsfield and a riding school. Spacious indoor facilities include a large games room, a ballroom, cafe lounge, lecture and study rooms. Special courses in riding, sailing, hockey, and English for foreign groups.

Full details of all facilities from: **THE NORFOLK INTERNATIONAL STUDY/HOLIDAY CENTRE**, Dept. G, Hemsby, near Great Yarmouth, Norfolk.

# Classified Advertisements

The Girl Guides Association takes no responsibility for statements made in any advertisement here or elsewhere in the magazine, or for any subsequent correspondence in connection therewith. The right is also reserved to refuse any advertisement not considered suitable. Advertisements for the sale of second-hand clothing (except uniform) cannot be accepted. (Uniforms for sale should not be sent to C.H.Q. Advertisers receive communications from applicants.) All advertisements must be received not later than the 1st of the month for the following month's issue. Please note charges: 1s. per word (for members advertising uniform, camp-sites, coming events, 6d. a word). Box No. 2s. 6d. Please send money with advertisements. 10% discount for series of 12. To reply to a Box No., please address your envelope to Box No. xxx, c/o THE GUIDER, The Girl Guides Association, 17/19 Buckingham Palace Road, London, S.W.1. Please make sure the address is as far to the right of the envelope as possible in order for us to re-direct your enquiry.

## ACCOMMODATION

**IN CENTRAL LONDON: Olave House** is open 365 days a year. It is conveniently situated for everyone connected with the Guide Movement, who is visiting London for Conferences, Trainings, Reunions, Theatres and Shopping Spree. The nearest underground station is Earls Court. The costs are 20s. to 30s. per night, and there is H. and C. in every room. (Sorry—no accommodation for men!) We are often full—but do remember that it is always well worth asking. Please write to Miss Marshall, **Olave House**, 45 Longridge Road, London, S.W.5. Telephone FRObisher 2574. **Olave House** belongs to the World Association of Girl Guides and Girl Scouts.

**Holiday Accommodation, Sussex.** Bed, breakfast and evening meal, or full board, weekends October—March. Apply Mrs. Jebb or Miss Cox, 8 Willowfield Road, Eastbourne (29572).

**Florida Hotel, Bude, Cornwall.** On Summerleaze beach. Ideal for families, walking, swimming, surfing. Terms from £11 to £14.10.0d. adults, children from £3. Proprietors: Mr. & Mrs. W. H. Russell, (Glider). Brochures. Tel: 2451.

**I.O.W. Small Guest House**, 3½ miles Ventnor, in the beautiful Undercliffe. Ideal for touring with plenty of car space. On main No. 16 bus route. Sea views from all rooms. A warm welcome awaits old and new friends. Children welcome; also small dogs. B.B. & D. with F.B. on Sundays. Terms 11½gns. weekly (34s. 6d. per day). WED./WED., SAT./SAT. bookings. Brochure from G. & D. Morris, Fleet House, Undercliffe, St. Lawrence, Ventnor, I.O.W. Phone: Niton 360.

**To Let:** Bed-sitting room, kitchen, own meters, £1 13s. 6d. weekly. Fermor, 32 Trossachs Road, East Dulwich, S.E.22.

## EMPLOYMENT OFFERED

**Foxlease needs Junior House Assistants.** If any of your older Guides or Rangers enjoy meeting people and would like to spend six months or longer working in a Guide Training Centre, please apply to the Guider-in-Charge, Foxlease.

## GUIDER-IN-CHARGE FOR 'LORNE'

A Guider-in-Charge is required as soon as possible for the Ulster Guiders' Training Centre, Co. Down. This appointment covers a wide field of interests with good living conditions. The house is situated in 20 acres of ground, 8 miles from Belfast, and overlooking Belfast Lough. Training qualifications not essential.

Full particulars on application to The Secretary, Ulster Girl Guides, 16 College Square North, Belfast 1, Northern Ireland.

Littlehampton on the sea front: Resident domestic required at the **Mary Macarthur Holiday Home** for Working Women. Open all the year, good conditions,

Staff TV, own bedroom. Apply in writing to Mrs. Heald, 20 South Terrace, Littlehampton, Sussex.

**Wanted: Two friends**, with some nursing experience, to run small home for four disabled women. S/c flat. Strover, Audubon House, 73A Lodge Hill Road, Farnham, Surrey.

**English Ranger Guide Activity Centre, Glenbrook**, Bamford, Near Sheffield. Wanted—a residential part-time Caretaker/Warden with outdoor pursuits experience. Practical knowledge as Instructor preferred. Apply to: The Secretary for England, Girl Guides Association, 17-19 Buckingham Palace Road, London, S.W.1.

## FOR SALE AND FUND RAISING

**39/- per gross—Printed Ball Point Pens.** 155 Full-Length Conway Stewart Ball Pens die-stamped in gold with your Company or Charity for only 39/-. 144 Printed Royal Sovereign Pencils 39/-. Please print your slogan (maximum 30 letters) and add 4/6 standard carriage. J. E. Thomas & Son (Cuffley) Ltd., 2a, Handsworth Road, London, N.17.

**Pennants—has your County got its own Jubilee pennant?** Has your camp-site a badge? Send s.a.e. and sketch, state colours, size and quantity for quotation by return, or telephone Orpington 29460. Russell King, 48 Crofton Lane, Orpington, Kent—badge manufacturer for schools, clubs, organisations.

**Double your money raising funds** for Guides, Brownies, and other organisations. Gold stamped Advertising Ballpens/Pencils/Key fobs, etc. Fully guaranteed. Details or 6 samples for 2s. 6d. to: B. W. Publicity, Dept. 'Q', 33 Hird Road, Low Moor, Bradford.

**Funds, Fêtes, Bazaars.** Sell Costume Jewellery at 50% profit on cost. Toys at 33½% profit. All sent post free on Sale or Return. You pay only for what you have sold. The rest you return. No outlay, no obligation. Send for details to E. & M. Davies Ltd., 101 Askew Road, London, W.12.

**Need Money?** Our Pens and Badges have raised many thousands of pounds for Brownie and Guide Associations and other worthy causes. Free catalogue or three 5d. stamps for samples. Westfield Ltd., Dept. 23, 135/9 Tennant Street, Birmingham, 15.

**Ball pens for Fund Raising.** As one of the largest wholesalers in the United Kingdom who specialise in the die-stamping of ball pens, we offer your Company the most competitive rates available. First class quality, speedy service, full guarantee, nett result. Large profits. We supply the 'Conway Stewart' and 'Reliance' ball pens which are both retractable and refillable, plus our 'Stylo' non-refillable model, we also offer our new 'Conway Fybriter' which is available in eight ink colours, all of these can be die-stamped with a wording of your choice. If you require the best, we can supply you! All at unbeatable wholesale rates. Send today for our Fund Raising list, Thompson and Creighton, 202 Heaton Road, Newcastle-upon-Tyne, NE6 5JJ.

An offer to Guiders in S.E. England for up to 20% discount on all makes of furniture and carpets has been made by a leading firm of furnisiers. For details telephone: Day, Farnborough (Kent) 57401, Evening Farnborough 54043.

Small dolls for dressing, lucky dip toys, paper tableware, punch boards, balloon race equipment and novelty balloons. All good fund raisers at Carnivals and Fêtes. Send large s.a.e. for full wholesale lists to D. Glover (Wholesale Toys) Ltd., Dept GD.11, 203 Scholes Lane, Cleckheaton, Yorks. Tel: 3450.

Imprinted British Ball Pens 40s. gross, postage 4s. 6d. this includes 36 letters and spaces advert. Printed Pencils with 36 letters and spaces advert. and Trefoil if desired 38s. 6d. gross, postage 3s. Printed Pocket Pencils with cap and 24 letters and spaces, Trefoil if desired, suitable for Diamond Jubilee year, 36s. gross, postage 3s. Diamond Jubilee year retractable ball pens £6.50d., postage 4s. 6d. Pioneer Pencil Company, 3 Tithebarn Street, Liverpool, 2.

Advertising Pencils, superb Ball Pens, combs, brushes, etc., gold-stamped Company name, raise funds quickly, easily. Bran Tub Toys. Details: Northern Novelties, Bradford 2.

Wanted: copy of 'Pixie O'Shaughnessy' in good condition —urgently needed. Box No. 596.

N.Cornwall—20ft. 4 berth caravans to let. Quiet site overlooking Treyarnon Bay. Surfing, golf. Apply Young, Beggar's Hatch, Harford Bridge, Tavistock, PL19 9LS.

Dorset, overlooking Lyme-Bay, Guider's own 4 berth caravan, direct access Chessil Beach. Balson, Beacroft Lane, Wimborne, Dorset.

Pony Trekking in Welsh Mountains. Special group rates. Open Easter. S.a.e. Dobbs, Llandduesant, Llangadog, Carmarthenshire.

Pony Trekking, Breconshire/Monmouthshire National Park area. Private field or residential. S.a.e. for brochure to: Grange, (G), Capel-y-ffin, Abergavenny, Mon.

East Devon. Approved private camp-sites. Quiet, close to shops/sea. Particulars (s.a.e.): J. Fuke, Couchill Farm, Seaton, Devon, EX12 3AL.

Seascale, Cumberland Coast. Hall suitable for Pack Holidays. Safe beaches, shops, railway. Close Wasdale, Eskdale. Details from: Vicar, Seascale, Cumberland.

Cornwall. Near Bude. Old modernised cottage, 4 bedrooms, main services, all electric, fully equipped for 6. Details, s.a.e. Miss Aldrick, 16 The Close, Kenilworth, Warwicks.

Beautiful Merionethshire, Llwyngrwl, 20ft. 4 berth. Near sea, all amenities. 179 Walmley Road, Sutton Coldfield. 021-3512603.

Pleasant camp-site secluded, not isolated. Ideal 30-40

arrangement with Warden. Chigwell is a delightful site only a short bus ride from Hainault Station which is on the Central Line direct to the West End of London. It is an ideal spot for Companies wishing to see London. Details write: Warden, Chigwell Row Camp-site, Lambourne Road, Chigwell Row, Essex.

Buckmore Park. Maidstone Road, Chatham, Kent. District Scout camp-site—Activity Centre—Pack Holidays. Open throughout the year for week-end/day visitors, winter indoor week-ends, summer camps, Venture/Ranger week-end and Guide camps. Indoor heated swimming pool, indoor roller rink, rifle range, karting, assault course and pioneering in over 200 acres of woodland. Write for details.

Pevensey Bay, near Eastbourne, six berth caravan, beach-side site. Regret no dogs. Miss D. Wells, 57 Wydehurst Road, Croydon, CR0 6NJ.

Please note: All advertisements for Venture Scout and Ranger events published in THE GUIDER and THE RANGER must be accompanied by signature of County Commissioner.

WHEN REPLYING TO ADVERTISEMENTS  
PLEASE MENTION THE GUIDER.

Make This The Best Jumble Sale Ever  
Two colour specially designed Jumble Sale Posters  
1s. 6d. each.

Send for free sample and order form to:

REGENT STUDIO  
(Screen Printers)

5 Stafford Road, Great Yarmouth

THE GUIDER



**THE GIRL GUIDES ASSOCIATION**  
presents its **DIAMOND JUBILEE** Celebration  
at  
**THE EMPIRE POOL WEMBLEY**  
on

**September 2nd, 3rd, 4th & 5th, 1970 at 7.30 p.m.**  
(Matinee on Saturday September 5th at 3 p.m.)

**Act Now!**

Prices of Admission 24/-, 20/-, 16/-, 12/-, and 6/-.

Postal Applications for block bookings can be made to the **Diamond Jubilee Office**, The Girl Guides Association, C.H.Q., 17/19 Buckingham Palace Road, S.W.1. from March 1st to May 18th and Box Office, Empire Pool, Wembley, Middlesex from June 1st, 1970.

**JUBILEE ACT OF WORSHIP**

Empire Pool, Wembley. Sunday, September 6th at 11.30 a.m.

Please send me ..... tickets at 1/- each.

Remittance enclosed .....

Cheques to be made payable to the Girl Guides Association

Signed .....

Address' .....

.....

.....

## In Memoriam

The death occurred on 16th September, 1969 of Miss HILDA COOPER. One only needed to meet and talk with Hilda Cooper to know at once that she was a person one could respect and trust. She was one of the first to be enrolled as a Guide in London, in 1910. She worked untiringly for Guiding in Islington for 30 years from 1922 to 1952 as Guide Captain, Ranger Captain, District Secretary, District Commissioner, Assistant Division Commissioner and Division Secretary, and was awarded the Certificate of Merit in 1952 for her services. She retired to Bexhill-on-Sea, and even there she continued her service to Guiding for nine years as a member of the Local Association.

Her many friends and associates, both within and outside the Movement, will find it hard to re-form the link that was provided by Hilda, who will always be remembered for her example of true Guiding put into practice.

D.B.

MRS. WILLIAM CUNNINGHAM died on Monday, 1st December, 1969 at Glencairn, Port Lewaigue, Isle of Man. The death of Mrs. 'Will', as she was affectionately known to so many Guides and Guiders, marks the end of a life devoted to Guiding and Scouting in the Isle of Man.

In 1939 she became Island Guide Commissioner which appointment she held until she retired in 1952. All through these years she supported and encouraged the Movement and was honoured by the award of the Beaver for outstanding service to Guiding. In 1944 she and her husband generously gave the first joint headquarters and in 1955 a move was made to the present Cunningham House.

The last official function Mrs. Will attended was when His Excellency the Lieutenant Governor and Lady Stallard first visited Cunningham House about four years ago.

Her sympathy with all our problems, her unfailing interest and never-ceasing generosity, and the charm of her personality will long be remembered by all who were fortunate enough to have known and worked with her in Guiding.

M.M.

CHRISTOPHER GURNEY of Northrepps Hall, Norfolk, died while walking in his beautiful woods on 27th November. This news will come as a shock to the thousands of Guides who have camped at Northrepps during the last 50 years. Mr. Gurney found room for Scout and Guide camps on every corner of his estate, looking over the sea, tucked away in the woods, on his lawn and in his garden. Each camp was welcomed with a cheery visit from him, the flag flying, a woodpile ready. Every Sunday Northrepps Church was packed with all campers brought by farm lorries and family cars for a joyful combined service. If ever a camp was flooded out the Guides were transported to the Hall which was put at their disposal for drying out and cooking. Our heartfelt gratitude is due to Christopher Gurney for his hospitality and overwhelming kindness. Our deepest sympathy goes to his family in their sad loss.

C.E.P.

The Carmarthenshire Girl Guide Movement suffered a great loss on the 16th October, 1969, when the death of Mrs. MARCIA THOMAS occurred.

Division Commissioner for Carmarthen, Mrs. Thomas' association with the Movement commenced in 1927 when she was warranted as an assistant cub master.

In 1947 she became Captain of the 1st Carmarthen Guide Company, in which position she remained until her illness. She gained her Guider's Camp Permit in 1947 and her great love of camping was known throughout the County. It was in 1953 she became a District Commissioner, and later Division Commissioner for Carmarthen.

Mrs. Thomas was known to her many friends for her love of the Guide Movement. She was an example and

inspiration to all who knew her and the courage with which she bore her pain was the true spirit of the 7th Guide Law.

'Marcia' as she was known by her friends, had a quiet and unassuming character, and she really understood the meaning of goodwill between people. She gave much of herself to others—her caring attitude, her tolerance and sense of humour, endeared her to all who knew her.

The world can ill-afford to lose such a personality.

M.H.W.

The death of COLONEL J. S. WILSON, a Vice-President of the Scout Association, one time Camp Chief of the Scout International Training Centre at Gilwell Park, and formerly Director of the Boy Scouts' World Bureau, is a great loss to Scouting throughout the world. Commissioners, Guiders and members of the Trefoil Guild will remember Colonel Wilson was largely responsible for the formation of the International Fellowship of Former Scouts and Guides, inaugurated at Lausanne in 1953, shortly before his retirement from the Bureau. After serving as Honorary Adviser and Treasurer for six years he became Honorary President in 1959.

Colonel Wilson began Scouting in India in 1917 and during his twenty years at Gilwell he was largely responsible for the development of the Wood Badge Training Scheme for Scout leaders and its adoption throughout the world. In 1938 he succeeded Mr. Hubert Martin as Honorary Director of the then Scout International Bureau: after the war he gave all his time to the work of the World Bureau, travelling all over the world to help and advise in Scouting's development. Colonel Wilson was a very close friend of the Founder and of the World Chief Guide, and Olave, Lady Baden-Powell attended his funeral service at East Farleigh Church in Kent on 23rd December.

## WRITE NOW FOR DETAILS OF OUR SUMMER HOLIDAYS TO: REED'S EDUCATIONAL TRAVEL SERVICE LIMITED

—for really personal service—  
and

GIVE YOUR GUIDES SOMETHING TO LOOK FORWARD  
TO SOMETHING TO SAVE UP FOR

We can offer you the chance to visit:

**SPA:** in the heart of the Ardennes; an ideal spot for optional excursions into Holland, and Germany, from only £16 15. 3. for 8 days, or break the monotony of the winter months and go for a weekend from £10 2. 6. one excursion included.

**FROM FLOWERFIELDS TO WOODLANDS:** giving you the opportunity of seeing both the sights of Holland and Belgium, keeping the coach throughout, for 8 days, from only £26 12. 6.

**SWITZERLAND:** for those who prefer the mountain scenery, Adelboden, Trubsee, Interlaken and Thun are just waiting for you, 10 days from £22 9. 3.

**THE BELGIAN COAST:** for a cheap holiday, at your doorstep, go to Knokke, from £15 9. 9.

**CALAIS:** travel by the new, fast Hovercraft, and stay for a weekend from £11 10. 0. with excursions.

Write to: Reed's Educational Travel Service Ltd., (Dept. G.) The Old Rectory, All Saints, Hastings, Sussex, Tel. Hastings 7995.

# FOOT HEALTH

by D. G. Hall, M.Ch.S.

THE foundation of good foot health is laid during the early years and it is important that we instruct young people on the care of their feet if they are to continue to lead active and useful lives into their middle and late years. Guiders will find an opportunity to assist in this aspect of foot health education when answering questions put by Guides and by supervising foot hygiene when at camp.

## Hygiene

The general rules of foot hygiene are that the feet should be washed at least once a day using warm, not hot, water. A flannel, sponge or soft nailbrush can be used together with a good soap. On those occasions when the feet are tired it is refreshing to plunge them into cold water after washing and to repeat the alternation of warm and cold water two or three times, it is never a good idea to soak the feet for long as this will soften the skin too much.

The feet should be dried thoroughly with a rough towel and particular attention should be given to the area between the toes. A light dusting of talcum powder completes the drying and more talc can be sprinkled into the clean socks or stockings before putting them on.

Socks or stockings should be changed daily and when washing them it is useful to put a little antiseptic into the water. In the case of woollen socks a check for shrinkage should be made after repeated washing.

The principle of wearing 'shoes for the occasion' is particularly important when applied to outdoor activities and care in fitting is just as necessary as for everyday shoes. Shoe size alone cannot be relied on as there are many size systems available and, in any case, growing feet can change rapidly. Shoes or boots should be long enough and wide enough to allow the toes to function properly and deep enough not to press on the top of the toes and they should be held to the foot by an adjustable strap or lace. Remember that when fitting walking shoes or boots, socks or stockings of the appropriate thickness should be worn; it is recommended that for such activity two pairs are worn, one thick and one thin or two medium weight pairs.

## Foot Inspection

Sometimes, in spite of the care that has been taken, trouble still develops and it is a good idea to hold a foot inspection a few weeks before embarking on a camp or trek. In this way any problems can be dealt with in good time by referring to a local State Registered Chiropodist. It is even possible that the chiropodist might be willing to carry out the inspection if sufficient notice is given.

The sort of conditions that might be apparent are callous, corn, verruca, or athlete's foot. A callous is an area of hard skin and a corn is an area of hard skin with a definite centre to it. The presence of either of these is indicative of something wrong with the function of the foot and advice should be sought. A verruca shows itself as an area of hard skin with red or black specks in it and the condition is particularly common in girls between twelve and fourteen-years-old. As it is infectious it should be dealt with because of the risk of infecting others in the group. For the same reason it is necessary to look for signs of 'athlete's foot' which is an infection by a fungus showing itself as a raw itchy area between the toes.

It is possible that a Guide might be undergoing a course of treatment at the time of the annual camp and the co-operation of the Guider in seeing that any instructions are carried out is appreciated. However, if he is aware of the situation the chiropodist will adjust the treatment so that it interferes as little as possible with the girl's activities.

## Preparation

The commonest hazard for those undertaking long walks for the first time is a blister. The feet should be prepared for at least two weeks beforehand by applying methylated spirit liberally every night. If in spite of this a blister develops the area should be painted with a weak solution of iodine and a piece of elastic adhesive strapping applied firmly over the part. This should be done as soon as the least discomfort is felt as a blister can develop very quickly and if rubbing continues it can break and could easily become infected. *Never break a blister!*

The first-aid kit should contain the following items for dealing with foot and ankle problems.

2 inch crêpe bandage or Setons' Tubigrip. (Size G4)

Elastic adhesive strapping.

Aerated adhesive dressing for broken blisters or abrasions.

Weak solution of Iodine for unbroken blisters.

Foot powder (e.g. Boots' Sped)

Antiseptic (e.g. Dettol)

If the camp is to last for more than a week it is also advisable to take along some nail clippers and make sure that when the nails are cut they are not too short and that they are cut straight across and not rounded like the finger nail.

### Suitable footwear

Guiders are often asked for advice on the type of footwear to be used for walking and climbing. In general a boot is essential for mountain walking and is advisable for any long distance walking. Rock climbing should be considered a separate activity and special boots should be obtained unless anyone has the desire to copy Gwen Moffatt and climb barefooted. The best mountain walking boots, which are only available from specialist shops, are usually padded well around the ankle and have a stitched-in tongue and are bought with a sole appropriate to the terrain to be covered, but they are very expensive and it is unrealistic to expect girls to spend a lot of money on boots that they will probably outgrow in a season.

The *Wayfinder* range of boots provides a reasonable compromise and if those for girls are not available, those for boys should prove suitable. Care must be taken in fitting because they are not manufactured in a variety of widths. The *Tuf* range of men's boots, though not delicately feminine, should supply an acceptable alternative, remembering that two pairs of socks will take up some space.

*Wayfinder* boots and shoes are available from *Bata* and *Dolcis* shops.

Spanish fell boots are not recommended as they can quickly become saturated with water. The problem of exposure is such that wet feet can turn a mishap into a tragedy.

Boots should be as waterproof as possible and use of Dubbin dressing, if recommended by the manufacturers, will help to ensure this.

If boots do get wet inside they can be dried out overnight by using *Dri-pak* or alternatively by stuffing them with newspaper.

Flat laces should be fitted and the first tie should be made firmly over the instep with the heel of the foot placed well back in the boot. When the foot is firmly held in this manner the lacing up the front of the ankle can be separately adjusted. It will be found that some adjustment is necessary particularly when changing from up-hill to down-hill walking. The outer sock is turned down over the top of the boot to prevent small stones getting in.

Healthy feet make a great contribution not only to the pleasure received from outdoor activities but also to our general well-being.

We owe it to ourselves to make sure that we follow the rules and we owe it to those in our charge to advise and encourage them to follow our example.

## TOOT-N-CARMEN

Don Wiggell



Brown Owl said we could bring our pets tonight, she said we should be kind to stray animals—



—this one wandered into our garden last night—



—I hope she likes it!



## **Prelude to the Wembley Spectacle**

photos: C.H.Q. Periodicals



A DIAMOND JUBILEE Producers' Training was held at Foxlease over the weekend 2nd-4th January. During this time those concerned with the Wembley production were introduced to, listened to and exchanged views with, Joyce Boucher, producer of Diamond Circus, Frank Whitten, producer of Images and Reflections and John Terry, the overall stage manager.

From the training came . . . ideas tossed around, agreements, disagreements, fun, spirit and above all vitality . . .

**A big drum, of course, painted in the brightest colours**  
Where can I get a Rolls Royce?

*They are Intruders, in crimson and white and shining . . .*

**Elephants are out. Wembley won't have them**

All I want is 120 scarlet poles

*I suppose any Sousa march would do?*

**We need thousands of sequins . . .**

Yes, go-karts are noisy but what's wrong with noise?  
*And then the Merry-go-rounds begin to turn and we have that lovely hurdy-gurdy music*

**Has anyone a penny farthing bicycle or a horsecab to lend me?**

If that is what the performers want, they'll have it. After all, at Theatre workshop they create the entertainment

*There'll be a Big Top in the centre with Little Tops all round*

**I want them all to be suntanned before they arrive for rehearsals**

And then they suddenly become aware of other family groups and realise that they are not alone in the world

**The arena is more than 200 feet long**

Oh! those lovely Edwardian hats!

*Anybody know a Guide song of the Twenties?*

**It'll be all right on the night**

#### Photographs

Far left: *top*, Frank Whitten (left) with John Terry; *centre*, Mirror exercise, a study in communication and concentration; *bottom*, Joyce Boucher encouraging trainees to use imagination and vitality.

Left: *top*, Frank Whitten putting forward his ideas to an attentive group; *bottom*, watched by Joyce Boucher, the crowds 'roll up'.

#### Wembley Box Office

Don't miss the first booking date, 1st March, see page 74 for details.

#### Jubilee Stickers

These stickers were designed with a two-fold purpose, to be used either on plain paper to convert into a Jubilee poster or to be used on a car or house window.

If the sticker is required for the latter purpose it should be applied to the outside of the window. Rain should not affect it as it is quite waterproof.

February 1970

## Diamond Jubilee Film Festival



Why not enter this Festival? You may not have tried film making but here is a chance to make a start. It is bound to be exciting and you might find your results better than you anticipate.

As part of the Diamond Jubilee celebrations we are having a WORLD FILM FESTIVAL open to Guides and Girl Scouts in member countries of the World Association. There are two categories—professional and amateur.

#### The Amateur Class

The production team must be made up entirely with members of the Guide/Girl Scout Movement.

The film can be of any subject you choose; any gauge; sound or silent; black-and-white or colour.

There is no limit to the number of films which can be entered and no entry fee.

Application forms should be returned by 1st March, 1970.

Please write for an entry form to: Diamond Jubilee Office, Girl Guides Association, 17-19 Buckingham Palace Road, London, S.W.1.

Films and Prints should reach the above address by 1st April, 1970.

Judging will take place in London.

After the films have been judged and awards made, a selected number will be shown in London to a specially invited audience and then offered for special Diamond Jubilee showings throughout the United Kingdom.

#### Order of Service Sheet

A Special Diamond Jubilee Service Sheet is now on sale from the Diamond Jubilee office at 4d., per copy. This is slightly less than cost price and we therefore are unable to give any further reduction.

This Order of Service has been produced at the request of the Movement and has been designed to form part of the Diamond Jubilee celebrations and can be used in a church, hall or out-of-doors, and can be led by one or more Ministers or by Guiders.

#### Important

Please note that when ordering Three Cheers Challenge Leaflets and Order of Service Sheets, these must be ordered *direct* from the Diamond Jubilee Office and *not* included in any Mail Order.

*Amelia Bollen*

Chairman of the  
Diamond Jubilee Committee

THE GUIDER



## Diamond Jubilee Year—1970

### 60 Glorious Years!

### ARE YOU PREPARED TO CELEBRATE?

Is your uniform 100 per cent smart?

It is four years since the 'new look' Guider uniform was introduced.

### TIME FOR A NEW HAT? A NEW BLOUSE?

#### Air Hostess Caps

Small, medium and large

**24/6**

#### Blouse—blue/white

To fit bust 32 in.—44 in.

**33/11**

#### Fur/felt beret

6 $\frac{5}{8}$  in., 6 $\frac{1}{4}$  in., 6 $\frac{7}{8}$  in., 7 in.,  
7 $\frac{1}{8}$  in., 7 $\frac{1}{4}$  in., 7 $\frac{1}{2}$  in.

**33/-**

### SOUVENIRS

Have you received your brochure in full colour? Extra copies available on request to Equipment Department, C.H.Q. Mark your envelope 'Brochure' and send a s.a.e. 6 in. x 5 in. How about a copy for your Guides to take home? Maybe Mum was a Guide. Lots of lovely ideas for gifts—and useful things for yourself.

#### AT COMMONWEALTH HEADQUARTERS SHOP, 17-19 BUCKINGHAM PALACE ROAD, LONDON, S.W.1.

**AT THE ASSOCIATION'S BRANCH SHOPS**  
London: 19 Green Lanes, Palmers Green, N.13.  
Birmingham: 5 Ryder Street, 4.  
Liverpool: 20 Richmond Street, LI 1EG.  
Cardiff: 20 Working Street, CF1 2SF.

**AT SCOUT AND GUIDE SHOPS**  
London: 124 Newgate Street, E.C.1.  
London: 183 Clapham Manor Street, S.W.4.  
London: 55 Woodgrange Road, Forest Gate, E.7.

Ipswich: 5 Tacket Street.  
Leeds: 62 The Headrow, LS1 8EJ.  
Oxford: 17 Turl Street, OX1 3DH.  
York: 14 Goodramgate, YO1 2LQ.  
**AT SCOTTISH GUIDE SHOPS**  
Edinburgh: 16 Coates Crescent, EH3 7AH.  
Glasgow: 1 Scott Street, C.3.  
Dundee: 3 Magdalen Place, DD1 4NN.

**AT ULSTER GIRL GUIDE HEADQUARTERS**  
16 College Square North, Belfast 1.

Printed by The Riverside Press Ltd., London and Whitstable and published by The Girl Guides Association, 17-19 Buckingham Palace Road, London, S.W.1. (01-834 6242). All communications with regard to subscriptions, editorial matters and advertisements should be addressed to THE GUIDER, Girl Guides Association. Subscriptions including postage 22s. for 12 months Great Britain, 21s. overseas. Trade Agents: Surridge Dawson & Co. (Productions) Ltd., 136-142 New Kent Road, London, S.E.4.