

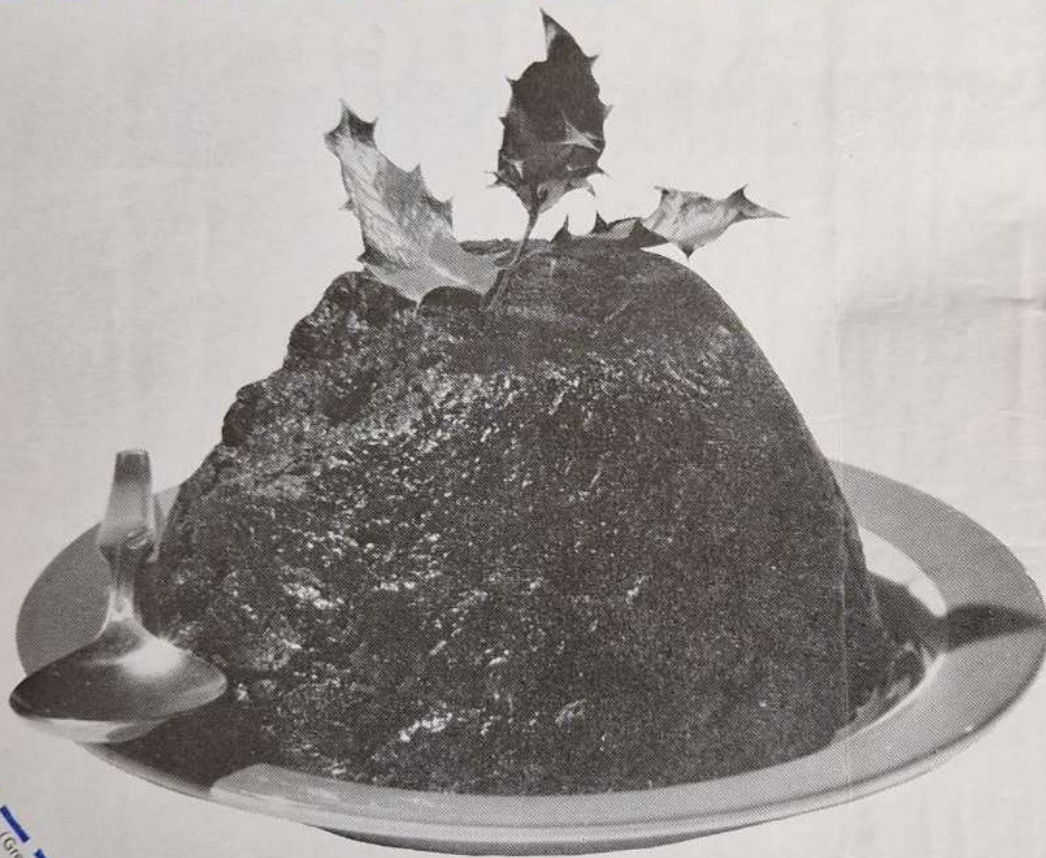
The Guider

VOLUME 58 No. 9 SEPTEMBER 1971

PRICE 9p



PROOF OF THE PUDDING...



... is in the eating

The best way to sample the Miller Greetings fund raising service is to look through our catalogue of Christmas Cards and Gifts—a complete guide to successful fund raising.

So take your first bite now by sending for the latest copies of the Miller Catalogues— You'll want to come back for more.

Free Gift Scheme

Bakers' Dozens

Free Full Colour

Extended Credit Facilities

Sample Parcels

Catalogues

MILLER GREETINGS
(GREAT BRITAIN) LIMITED

QUEENSBIDGE WORKS QUEEN ST BURTON ON TRENT Tel: 0283 62719

To MILLER GREETINGS (Great Britain) LTD
PLEASE SEND ME COLOUR CATALOGUES AND FULL DETAILS OF YOUR FUND RAISING SERVICE

NAME
ADDRESS

Are you over 18 years of age
YES/NO delete as applicable

Account Ref. No.
—if you are already a Miller Greetings customer

GU/9

ORGANISATION
POSITION

The Guider

Patrons

H.M. THE QUEEN

H.M. QUEEN ELIZABETH, THE QUEEN MOTHER

President

H.R.H. THE PRINCESS MARGARET,
COUNTESS OF SNOWDON

Chief Guide

OLAVE, LADY BADEN-POWELL, G.B.E.

Chief Commissioner

MRS. DEREK PARKER BOWLES

OFFICIAL MAGAZINE OF
THE GIRL GUIDES ASSOCIATION
(Incorporated by Royal Charter)



contents

| | |
|------------------------------------|------------------|
| Let's Face It—Smoking | 325 |
| Calling G.I.S.! | 326 |
| News for Canoeing Enthusiasts | 327 |
| Your Letters | 329 |
| National Guide Festival of Song | 330-331 |
| Airing and Sharing | 332 |
| Book Reviews | 334 |
| Training Pages | 335-338, 343-346 |
| Census of Membership 1970 and 1971 | 340-341 |
| Here at C.H.Q. | 347 |
| Headquarters' Notices | 347, 350-353 |
| Where to Train | 348-350 |
| Classified Advertisements | 354-355 |
| Guide Friendship Fund | 356 |
| In Memoriam | 356 |
| What's On | 357 |

editorial

Advance notice was given in last month's issue (page 312) of the Calor Homecraft Award competitions which begin this month. **All Guiders are advised to refer to this article for dates and other information about the three sections.**

Since going to press with that article, we have received confirmation that the winning Guide Patrol will stay at 'Ticalli', the Mexican Guide house, from 24th July to 6th August, 1972. All their expenses, and those of two Guiders, will be paid by Calor Gas Ltd.

In the Brownie section, for which the prize is a Pack Holiday for the winning Pack and three adults, it has been decided to offer an alternative prize. If for any valid reason the winning Pack is unable to go on a Pack Holiday, each Brownie in the Pack may choose either a bicycle, a camera, or a transistor radio, for herself.

front cover

A specially good day for Gold Award winner Barbara Jarvis (Guider). After the presentation at Buckingham Palace she was allowed a 20 minute interview with Prince Philip for Radio Nottingham, where she regularly contributes to Scout/Guide programmes. The picture shows her outside CHQ interviewing Sylvia Salmon, a Ranger Guide from Coventry.

Photo: John Warburton



NATIONAL GUIDE LAWN TENNIS TOURNAMENT

The Finals of this Tournament, sponsored by Webb Ivory Ltd., were played on 24th July at the Queen's Club, London. In the picture are (left to right) Mr. A. Gentles, Managing Director, Webb Ivory Ltd., Mr. G. Lawson, Publicity Manager, Webb Ivory Ltd., Jane Pye (Anglia) runner-up, Mary Dutch (Scotland), the winner, Mr. J. Moore, Manager of the Lawn Tennis Foundation, and Mrs. Parker Bowles, who presented the cup to the winner.

photo: Sport and General

SCRAPBOOK FROM CANADA

In order to record their love and gratitude to the World Chief Guide a group of Brownies, Guides and Rangers of the Parkland Area of Alberta got together and made a scrapbook for presentation to CHQ.

Mrs. Jeanne Tearne, a Guide Guider of Elnora, Canada, recently visited CHQ with Canadian Guides, and they are seen here presenting the scrapbook to Mrs. Parker Bowles.

photo: CHQ Periodicals



DUKE OF EDINBURGH AWARD PARTICIPANT

HRH The Duke of Edinburgh recently visited Wiltshire to meet participants of the Duke of Edinburgh Award Scheme. Ranger Guide Alison Spencer, of the Melksham Rangers, is seen here with her display, which was among several displays and demonstrations specially devised for the occasion.

photo: David Harwood

Let's face It

(3) Smoking

by Jean V. Rush

IN 1604, King James I said: 'Smoking is a custom loathsome to the eye, hateful to the nose, harmful to the brain, dangerous to the lungs, and in the black stinking fume thereof nearest resembling the horrible Stygian smoke of the pit that is bottomless'.

Considering the accepted standards of hygiene in those days, when the nobility never ventured into the streets without a pomander to protect their noses, it's surprising that King James felt so strongly. Nevertheless, what he says is true and nowadays we know even more sinister things about what smoking does to us. For instance, lung cancer is responsible for 1 in 8 deaths of people who smoke at least 20 cigarettes a day, compared with 1 in 300 of non-smokers.

Having always been a non-smoker, simply because I dislike the taste and smell of cigarettes, I have until recently felt vaguely guilty when refusing a cigarette, as this invariably brought forth the comment, 'Haven't you any vices?' and nobody likes to feel a prig! But over the past few years there has been a marked change of attitude by the smoker to the non-smoker, who, nowadays, instead of being regarded as a crank is often envied. It seems clear that the majority of smokers would like to give up the habit, either for health or economic reasons.

The most important problem of all is one which concerns Guiders very strongly: how to dissuade young children from starting to smoke. Health hazard statistics have no impact on children, for whom old age begins at thirty.

An organisation was set up recently under the auspices of the Royal College of Physicians with the title ASH (Action on Smoking and Health Ltd.). Its aims are to use every means open to it to discourage smoking and to act as an information centre on smoking and health and to stimulate and support research.

Their first conference, 'Smoking Today', was held at the Royal College of Physicians on 25th June and attended by members of the medical and teaching professions, and representatives of youth organisations. Two of the sessions were of particular interest to us: 'Smoking and Women', a discussion panel including Lady Summerskill and Marjorie Proops, and 'Why Young

People Smoke', during which a panel of young people gave their views, followed by a general discussion.

Lady Summerskill made the point that modern teenagers are affluent enough to be able to smoke to excess; the way to dissuade them is not through appealing to their sense of economy, but by trying to put across the fact that smoking itself has no glamour, in fact is a habit that detracts from one's appearance and attractiveness. She mentioned that during a visit recently to a factory which makes glass eyes, she was shown a special section which makes yellowed glass eyes for smokers! This and other facts would, she felt, do much to reduce the attraction of smoking.

Marjorie Proops said that, having previously smoked 40 cigarettes a day, she gave up completely five months ago, and the first time she had really felt a craving to smoke was at this conference! The ideal when giving up smoking is to protect oneself from the thought and sight of cigarettes. She felt that although cigarette advertising has been banned from TV, equal harm is done by actors being seen smoking.

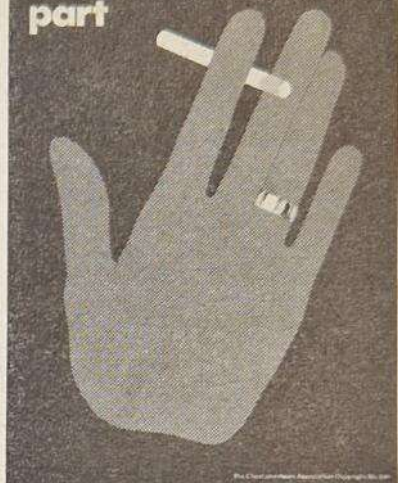
During the session on smoking and youth, it was stated that smoking by young girls is greatly on the increase, and the age at which children begin smoking is often 9 or 10. One young girl made the point that if a 14-year-old is asked if she smokes, she is likely to think of marijuana—the smoking of ordinary cigarettes is taken so much for granted by the young.

Part of an anti-smoking tape produced by ASH was played, including the voices of Cliff Richard, Vidal Sassoon and Tony Blackburn, but the reaction of the young people present was lukewarm. The tape is intended for loan to youth organisations, but it was felt that more forceful arguments were needed.

No conclusions were reached, but all present agreed that it was vital to create a state of affairs in which the young would never want to begin smoking.

(Continued overleaf)

Till ill-health
us do
part



Smoking—continued from previous page

To sum up, the deterrents put forward to influence young people were, broadly:

- 1) Remove the glamorous image and replace it by emphasis on the unattractive and distasteful aspects of smoking.
- 2) Ban smoking in all public places.
- 3) Emphasise the expense.
- 4) Draw attention to the humorous and ridiculous aspect of the smoking habit.

Guiders who are interested in the smoking problem may obtain posters and leaflets from ASH. Titles include: 'Why should I stop smoking?'; 'How to stop smoking'; 'Smoking—20 questions and the answers'; 'Smoking and health now', etc.

The address to which to send for further information about ASH—and also to send donations which are desperately needed, is 11, St. Andrew's Place, Regent's Park, London N.W.1.

CORRECTION

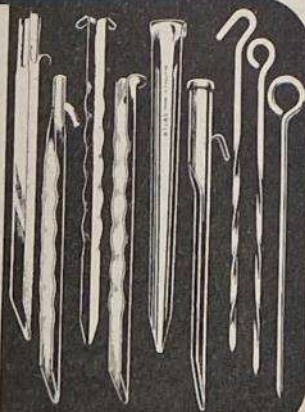
In the article entitled 'Drugs' in the July GUIDER the price of the book *All About Drugs* by Bergel and Davies, published by Thomas Nelson and Sons Ltd., was given as £4.10. We are asked to point out that the new edition is £2.20. We apologise for the error.



HAMPTON Camping Accessories are synonymous with experienced camping the world over. They are renowned for their practical design, built-in strength, lightweight and proved reliability. Ask for them by name.

HAMPTON CAMPING ACCESSORIES

THE HAMPTON WORKS (STAMPINGS) LTD.,
Twynning Road, Stockley,
Birmingham, B30 2XZ.
Also at London, Manchester, Bristol and Glasgow.



Calling G.I.S.! Calling G.I.S.!

This once familiar call, from the post-war years when the Guide International Service was in action in Europe and Malaya, gathered together large numbers of former G.I.S. members at the end of June, for a final reunion. Thirty years have passed since the first discussions took place, which led to the formation of the G.I.S. (Readers with long memories may recall that in June 1951 both THE GUIDER and THE GUIDE celebrated the tenth anniversary of the G.I.S.)

The Guide International Service grew out of the urgent desire of many Guides, during the Second World War, to send help to their Guide friends in the war-devastated countries, as soon as this might be practicable. The story of the G.I.S. and its work in five different countries is told in Phyllis Stewart Brown's record *All Things Uncertain*. The publication of this book in April 1966 was the occasion for a previous reunion, held at the Guide Club, the natural location for a G.I.S. gathering. In 1947 several G.I.S. volunteers, recently returned from Europe, helped to start the Guide Club—indeed the present Secretary, Beryl Gibson, is a former member of the Greek Team, who also served in Germany later on.

Once again the Guide Club was chosen as the right setting—this time for a final reunion, on 26th June. The large number of G.I.S. members who responded to the call stretched the Club to capacity, and beyond. For this reason it was unfortunately not possible to issue invitations to a number of old associates and officials of other organisations, with whom the G.I.S. worked so happily, long ago—and also many former Guide Headquarters staff, who gave us such strong support, at the time. To all these we record our continuing gratitude.

The final reunion was in every way a memorable and happy occasion. There was a splendid welcome from our beloved Rosa Ward, without whom the Guide International Service would never have become a living reality. There were greetings from many overseas members, sent from distant parts of the world. There was news of continuing work for refugees and displaced persons, from Sue Ryder's organisation, from Muriel Gofton of Cala Sona and from Joyce Pearce of the Ockenden Venture, which has now adopted an orphanage in Vietnam. Much is still being done in many other directions by former G.I.S. members, including Phyllis Croft's outstanding contribution in the veterinary world towards the alleviation of pain and fear in animals. After these impressive reports of current activities in different fields, there was a moving and heartening talk from Dr. Woodard, to give us fresh courage for our work. Then there was a splendid surprise visit from the Chief Guide, who always took such a vivid interest in our fortunes and came to join our reunion for tea. And above all, there was the delight of meeting old friends again and exchanging news and views.

Some of us went on to further meetings. Members of the Greek Team spent a happy weekend in Sussex—and found that after twenty-five years we had not really changed very much and that the bond that linked us together as G.I.S. members was as firm as ever. The reunion has shown us once again that the spirit of G.I.S. lives on, and those who were privileged to serve in its teams have been reminded that this is to be counted among the 'things that remain'.

ALISON DUKE

THE NEW GUIDE POSTER

This has been reprinted with this new illustration (right) and is now on sale, price 2p from C.H.Q. and Branch shops, and through *Guidemail*. The poster is sized 20 ins. x 15 ins. and shows these two Guides with the titling GIRL GUIDES, leaving good space for announcements.

NEWS FOR CANOEING ENTHUSIASTS

The Girl Guides Association has recently become a member of the **British Schools Canoeing Association** and of the **British Canoe Union**, and it is hoped that members of the Movement will make full use of the facilities and assistance available.

The B.S.C.A. is concerned with the education of young people in canoeing matters. It makes information available to Youth Organisations and, from time to time, organises special Training Courses for those responsible for young canoeists.

The B.S.C.A. has negotiated for the purchase of lifejackets of the recognised specification at advantageous prices and has also gained reductions to the present cost of Licences issued by the British Waterways Board.

The B.C.U., with whom an Associate Membership has been taken out, is the governing body of the sport of canoeing in Great Britain and Northern Ireland.

The B.C.U. has a coaching scheme which is available to anyone who wants to learn to canoe properly and safely, and help may be obtained from Area Coaching panels which have been established throughout the country. It also has a scheme of tests at all grades from Novice to the fully qualified Coach.

The B.C.U. is actively campaigning for improved facilities for the recreational use of water by canoeists, and negotiates with authorities regarding the scale of charges where applicable. An advisory service is maintained regarding canoe touring at home and abroad.

Members can make use of the B.C.U. Library of canoeing films and film strips.

Individual members of The Girl Guides Association gain no personal privileges from the Association's membership of the B.C.U., but it is hoped that they will themselves join the B.C.U.

Further information on specific points in connection with our membership of these two bodies may be had from: Miss B. Baker, Deputy Training Secretary, C.H.Q.



The Council Fire

NEW SUBSCRIPTION RATES

The subscription rates for *THE COUNCIL FIRE* have remained unchanged since 1957. Since then the cost of production and printing has continually risen but, in spite of every effort being made to economise, a heavy subsidy has been required for the past few years.

At the 46th Session of the World Committee it was agreed that, from 1st January, 1972, the subscription rates will be raised as follows:

| | | |
|---------------|-----------|------------------|
| 1 year | 50p | postage |
| 3 years | £1.30 | included |
| 5 years | suspended | |
| single copies | 13p | postage included |

It is hoped that readers will understand and sympathise with the reasons why this decision has been taken.

WINGS APPEAL SEPT. 13th-18th

**GIVE FOR
THOSE WHO
GAVE**



THE GUIDER



STANEMUIR ADVENTURE CENTRE

Edinburgh Girl Guides have just achieved the realisation of a long cherished dream. Their new Adventure Centre at Stanemuir, three-quarters of a mile East of Carnwath and 25 miles from Edinburgh, was opened on Saturday, 19th June, by Mrs. Denholm, Scottish Chief Commissioner, before a large invited company of Brownies, Guides, Rangers, Guiders and guests. The building is purpose designed by a leading firm of Architects, advised by Guide experts, equipped for all seasons, and it will be available for Brownie Pack holidays and for Guides, Rangers and Guiders to enjoy adventure activities and leadership training.

For the Brownie, this is a Pack Holiday house, a home from home where she will have the job of doing her own home-making—no 'make-believe' here but the do-it-yourself real thing. She will have the fun of living with her own group and learn independence away from her family, but within the security of her Brownie Guide Pack.

For the Guide, this is an Adventure Centre providing facilities for many varied activities out-of-doors with her Patrol—the fun of exploring, of camping, of getting to know the world of nature, and there will be opportunities for training in special skills—canoeing, orienteering and hill-walking outside; crafts, music-making and drama inside.

For the Ranger, this is a place of widening horizons, a base from which to go further afield, from which to plan and carry out long distance expeditions and overnight projects; a place for getting together for discussion and thinking things through and for the development and pursuit of leisure interests both out-of-doors and indoors.

For all age groups the Centre will be a place where living, working and playing together they will find renewed inspiration, exchange ideas, learn new skills and relax and enjoy the countryside; in short a place which will encourage the growth of the Guide Spirit.

K. WILKIE

Winston Churchill Travelling Fellowship, 1972

The Winston Churchill Memorial Trust, established as a result of the National Appeal in 1965, is a unique form of memorial. It enables men and women who might never otherwise have the chance, to travel abroad, to widen their knowledge not only in their own field of activity, but also of other people's lives and work in different parts of the world, and as a result of the experience they gain, to contribute more effectively to their profession, community and country.

There are no age limits; academic or professional qualifications are not needed, but candidates must be citizens of the United Kingdom, and must be able to convince the selectors of the worth of their project and that they have the knowledge and initiative to make full use of the Fellowship both while they are abroad and when they come back.

The grants cover all Fellowship expenses, the average length of which is three months. Interviews will be held in London in January 1972 and successful candidates will be expected to start their travels during that year.

Among the subjects for the awards for the Fellowship in 1972 are Sculpture and Carving; Sight, Hearing, Speech and Occupational Therapy; Teaching and Super-

vision of Children under Five; Care of the Mentally Handicapped; Accountancy; Garden Centres and Horticulture; Participation in Sport; Adventure and Exploration.

To apply, send your name and address only on a postcard in September to The Winston Churchill Memorial Trust, 10, Queen Street, Mayfair, London W1X 7PD. You will receive an explanatory leaflet and a form to complete which must be returned before November 5th, 1971.

We would be very pleased to know at CHQ if any Guider is awarded a Fellowship.

ARE YOU READY FOR 1972?

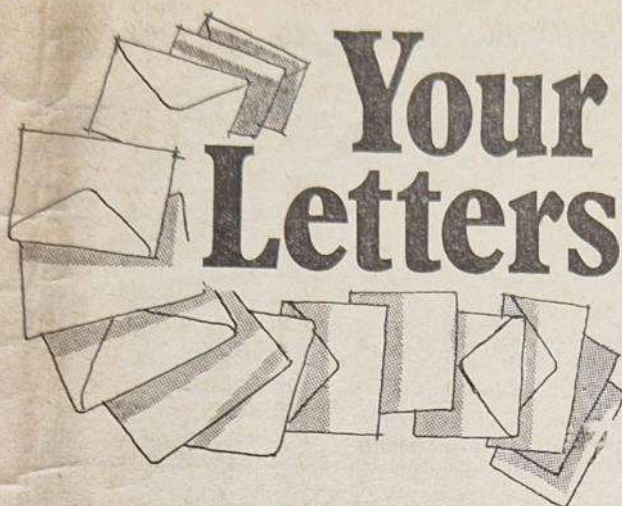
Start planning next year's holiday abroad for your girls right now. We will make all the travel arrangements for you, meals en route, insurance, group passports, excursions, etc.

Plenty of places to choose from, too, such as SPA, in the Belgian Ardennes, HOLLAND during tulip time, ADELBODEN, INTERLAKEN etc. in the Swiss mountains, VOSS, Norway, or, if you don't feel so adventurous, how about the BELGIAN COAST with its sand-dunes and usual seaside attractions?

2½% discount off all bookings before Christmas, and one free place with every 15 persons.

Write today for our brochure and price-list.

REED'S EDUCATIONAL TRAVEL SERVICE LTD.
The Old Rectory, All Saints, Hastings, Sussex.



Your Letters

Plea for Uniform Tidiness

Looking over the last few months' issues of TODAY'S GUIDE we were very disconcerted to see so many pictures of untidy Guides. How can we expect the girls to come to Guides looking neat and tidy when they see pictures of others who are far from so.

May we please make a plea to Guiders to encourage their Guides to be neat and tidy at all times so that besides heightening the public image of the Guide Movement they are also helping to set a good example to their sister Guides.

It only takes a few moments to check uniforms over, and if they are enjoying the rest of the meetings they will respect and accept their Guider's fussiness when they receive compliments about their appearance. So please can something be done about it?

SR. EILEEN, (MRS.) S. MACRAE,
(MISS) A. PERRIS (Guiders)

Look out for an article on uniform in next month's GUIDER.—Editor.

Safety in the Mountains

I was interested to read the letter from Veronica Ballard (July GUIDER) on the subject of mountaineering, although I am not in complete agreement with the sentiments expressed.

The Mountain Leadership Certificate should not be regarded as a specialist qualification, but rather as a basic requirement for all leaders either to possess, or to be working towards. I would consider it essential for all Guiders taking parties into the hills to attend a M.L.C. Introductory course or to be of similar standard.

It is largely through the realisation of the need to provide basic training in mountain leadership, that the Surrey Scout and Guide Mountaineering Club will be running a Mountain Leadership Certificate Introductory Course. It will cover four weekends in October, November and December. The course has the approval

The opinions expressed in this column are not necessarily those of the Editor.

of the Mountain Leadership Training Board and will thus count as the first part of that certificate.

(Miss) A. M. NUNN, Assistant Mountaineering Representative for West Surrey.

(Details of the club and its activities can be obtained from: The Secretary, S.S.G.M.C., 72 Brockley Combe, Otlands Avenue, Weybridge, Surrey.)

Brownie First Aid Badge

In the final clause of the Brownie First Aid Badge, the Brownies have to 'Show on a manikin that you can perform artificial respiration by the mouth-to-mouth or mouth-to-nose method. Tell the tester of some accidents following which you might have to give artificial respiration.'

I have discussed this with other Brownie Guiders and they all agree with my Assistant and myself that it is ridiculous to expect a child of Brownie age to be able to attempt this feat. In fact how many Brownies would be called upon to perform mouth-to-mouth resuscitation? I do think they should know of accidents when artificial respiration is required but I don't think they could do it. What would be a far more useful activity for a Brownie on the scene of an accident would be to be able to make a 999 call without being flustered, which in actual fact is not included in the badge.

Both myself and my Assistant have tried the mouth-to-mouth method on a manikin and we had a struggle, so goodness knows how a Brownie is supposed to succeed.

I would be very interested to hear how other Brownie Guiders feel about this.

LUCY SPICER, Brownie Guider, 5th Haslemere Brownie Pack, Surrey West.

FOXLEASE

*It was not so much prescience of the past,
Or even, necessarily that it would last;
For there was too much content there:
And happiness is transient, endures nowhere.*

*Though old, with upper floors that creaked—
At every footfall, like a sailing ship, it leaked
With sound—the house had abundance of light.
No moated grange, this place knew not Time's spite.*

*Outside where azaleas flamed in rich grass,
White clouds in blue came slowly to pass,
Fields undulated in the wind's green waves—
Far and near met under heavy forest leaves;
And in the glare of open sunlight, where Time was
spent,
I found the infinite perfection of the stilled moment.*

William Oxley

THE GUIDER

Enter your Pack, Company or Unit *NOW* for the **NATIONAL GUIDE FESTIVAL OF SONG**

in co-operation with the BBC

You may find yourselves

- (a) On Local Radio
- (b) Having a trip to London
- (c) Possibly appearing on TV or even
- (d) Taking part in a new *Long Playing Record*

Find out from your Country/Region Headquarters who your County Festival Liaison is, and send for an

APPLICATION LEAFLET with full details

There is an entry fee for all competitors of only 10p.

There are four groups with certain 'Set Songs' for everyone to practise and plenty for you to think about with Free Choice.

GROUP 1

Brownies (Pack Entry)

Two Set Songs

(a) Doktor Eisenbart
(Second Book of Campfire Songs)

(b) The Carnival
(see opposite page)

One Free Choice

GROUP 2

A Guide Company or
Composite Guide Group
up to 40 Voices

Two Set Songs

(a) Linstead Market
(Chalet Song Book)

(b) Keep A'Rowing
(Diamond Jubilee Song Book)

Two Free Choice

GROUP 3

Composite Entry
Guides, Rangers and
Guiders (5-40 people)
or Rangers only.

One Set Part Song

One Set International Song.

(a) Tree Song
(First Book of Campfire Songs)

(b) La Villanella
(Chalet Song Book)

GROUP 4

Solo/Duo/Trio/Quartet
either 8-14 years or 14
years and over.

Two Free Choice

For All Groups: Free choice may include original composition and **ALL** items may include instruments if desired.

Should your Pack, Company or Unit be chosen by your County they will go with the other groups to present a full County programme before a panel of judges. This will possibly be in co-operation with **Local Radio Stations**. The application leaflet must be kept carefully as it will go to all the heats and will be signed by the judges (a good souvenir to keep). Should your Pack, Company or Unit win they will compete again at Country/Regional level, and if they are lucky enough to be chosen to represent their Country/Region they will come to London for two or three days to take part in the finals, where there will probably be **National Radio**. This, and the production of an LP, will take place during the week after Easter (April 4, 5 and 6, 1972). The adjudicators will reserve the right to bring forward to London additional items for the LP where there is potential from the point of view of talent or content. Extra credit will be given at this final stage to the form in which each Country/Region presents its programme of winning groups as a whole (scope for production).

Some suggestions for songs which might be included on the new LP are listed below in case anyone would like to select one for *Own Choice*. There is no compulsion to do so as everyone is entirely free to choose what she wishes.

Your Co-ordinator in London, C.H.Q., is Mrs. Diana Russell-Cowen, Press Officer, phone 01-834 6242.

Diamond Jubilee Song Book

Cheelo, Cheelo

Pokare Kare

Suitors

Swing Low, Sweet Chariot

Praise the Lord O My Soul

Second Book of Campfire Songs

Fairy Lullaby

The Gypsy's Wedding

Fireside Songs in Two Parts

The Lark in the Morn

First Book of Campfire Songs

Rosen Fra Fyen

The Chalet Song Book

Dona Nobis Pacem

Wayfarer's Grace

Planting Rice

A Ram Sam Sam

Bell Yodel

Faith, Folk and Clarity

Family of Man

When I Needed a Neighbour

International Songs

Chantons le Feu

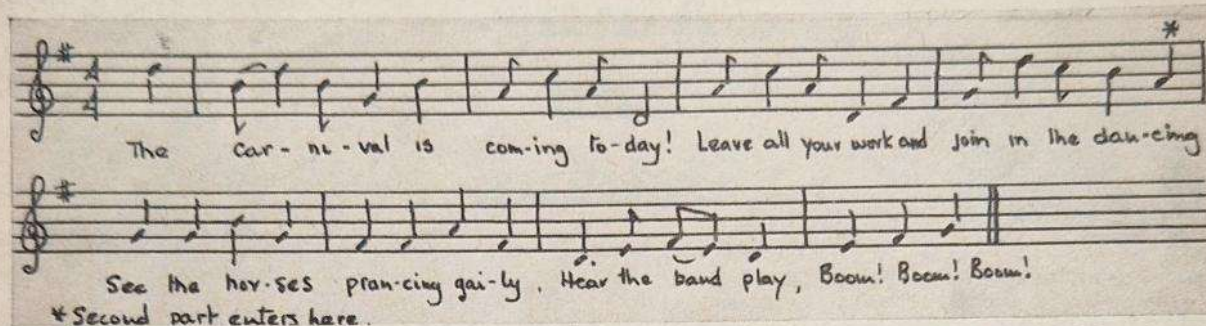
Other songs which may appear in the Periodicals shortly are:
Village Dance (In Kent County Song Book, now out of print)

Weggis Song, Rover, Freedom Train, Marianina.

THE GUIDER

THE CARNIVAL

by S. Stevens



This simple part-song with its lively tune, is one of the set songs for the Brownie Pack Entry of the Festival of Song. It offers much scope for percussion, as well as use of recorder and chime bars.

This is the only correct version of the song available, so, Guiders, if your Brownie Pack is entering the Festival please use only the version that is printed here.

Common Market Information

E.E.C. Wall Charts, Educational Productions Ltd.,
17 Denbigh Street, London, S.W.1. Produced in
collaboration with the European Movement (British
Council), 78 Chandos House, Buckingham Gate,
London, S.W.1, 45p set of three.

One of the foremost questions in people's minds at the moment is the, to most of us, perplexing and vexed question of the Common Market. There are widely divergent views on the subject but these three wall charts under review show very clearly the benefits we can expect to reap from entry, although No. 3 does indicate the bleaker side of the bargain.

Chart 1 sets out to show, pictorially, how the E.E.C. works with regard to the free movement of goods and people. Do I glimpse unfettered travel in the not too distant future, with the dearest wish of Ernest Bevin, one time Foreign Minister, coming true? He said: 'My policy? It is simple—I want to go to Victoria Station and buy a ticket to anywhere I like without any of this damned foolery about passports and visas!' It also shows how in the last 2,000 years various dictatorships have forced European countries into unity, albeit not very peaceful unity, on several occasions. I am moved to wonder why the Norman Conquest, not only of this country, but also of Italy and Sicily, was omitted. Are we frightened of this aspect? The Normans left their mark so successfully in this country that it seems inevitable that now, 905 years later, we should link our lot with that of France.

Chart 2 indicates how successful the Common Market has been among the Six. Trade, Industry, Agriculture and Living Standards are all covered and it is only too

evident that with regard to living standards the U.K. has been left well behind.

Chart 3 sets out very clearly the 'For' and 'Against'. 'For'. As part of an enlarged Community we are a force with which to be reckoned. In the nuclear age we are dependent on the goodwill of our neighbours and must remember that 'No man is an island'.

'Against'. This is shown as follows: Some loss of sovereignty, Rise in the cost of living, Possible weakening of Commonwealth links.

It is very much to be hoped that with regard to the last problem this will be resolved before we sign the Treaty of Rome.

B.G.

Johnson Publications Ltd. have just issued in newspaper form the complete **Text of the Treaty of Rome** at the minimal sum of 10p. Until now this has only been obtainable through H.M. Stationery Office at 82½p. It is a wonderful opportunity for the man in the street to learn for himself the facts behind the case for entry into the European Economic Community. For the layman it is not an easy document to read but is of vital interest in view of our possible imminent involvement with Europe.

Included in the newspaper are: The Case for Joining the Common Market; The Case Against; Legal Aspects of Joining Especially in Relation to the Crown; Unofficial Plans for Holding a Referendum on the Question of Entry.

B.G.



BE PREPARED
WITH AN
ACME
WHISTLE

Full range in Metal and Plastic

Obtainable from all Scout and Guide depots



Airing and Sharing



Today's Standard of English

Many of your readers will have been interested by the points raised in your last issue about the standard of English required for the Writer's badge and the methods of teaching in this field. As an ex-tester and Guider and also as a present teacher I may be able to bring some comfort to Mrs. Barrett.

First of all it should be recognised that there has been a change of emphasis in this area in that we are more concerned with communication than with correctness. No longer do we ask children to produce faultless, if stilted, English. Rather we ask them to express themselves as vividly as they can so that we and the rest of the class may share their experiences and ideas. English is no longer an isolated curriculum subject but a tool to be used efficiently.

It is of course perfectly true that this approach may lead to a disregard for correctness of grammar and spelling but it is very interesting that Mrs. Barrett does not mention faulty punctuation which is surely much more important. It is very rare for a mis-spelt word to bring the confusion that a wrongly placed comma or a missing apostrophe can create.

The question of how spelling is best improved is one that is troubling most educationalists today but it does seem that the old method of learning and writing out spellings does not produce better spellers since the children fail to carry their learning into their writing. Many teachers will correct a piece of work and ask the child to make a fair copy if the piece in question is going to be displayed or submitted to a tester and this at first seems a reasonable procedure. Unfortunately it is usually the case that it is the slowest worker or the least able child who will have to make the greatest effort in the first place and if she is then faced with a formidable task of correcting and rewriting she *will* be discouraged from making further effort.

Poetry is another vexed question. The phrase 'recognised verse form' is open to a variety of interpretations but Guiders and testers should perhaps remember that some of our greatest poets in this age, D. H. Lawrence and T. S. Eliot to name but two, have been using a free verse form containing rhythm rather than rhyme. Asking a child to twist her thoughts into a laboured metre and rhyme is truly not teaching her anything about poetry.

Finally I was particularly distressed to read that Mrs. Barrett does not *dare* to show her work to her local tester. Are testers really such ogres as this makes them sound? Perhaps if she were to pluck up courage and

talk to the tester involved she would find not only sympathy with her very natural feeling that children's work should be correctly presented but also with my feeling that the freshness and originality which is apparent in so much children's writing should not be stifled by undue demands for perfection in spelling and grammar.

CHRISTIAN DUFF (Name and address supplied)

The Young Guider

Like Miss P. Holman, whose letter appeared in the July GUIDER, I also hold an Assistant Guide Guider's Warrant. I am 19 years old and have now been running my Company for over three years, due to the lack of Guiders and Unit helpers in our area. I think that possibly the Guide Guider's Warrant age could be lowered to 18, although personally I would prefer someone older and more experienced because I find that it is very hard to maintain discipline when one is so near the age of the Guiders with whom one is dealing.

As regards camping, perhaps Miss Holman, if she is experienced enough, could take her licence, as I did last summer, or perhaps if she is also a Ranger she could take her Patrol Leaders camping using her Ranger Camp Permit, if she holds this. I really cannot see that there are that many problems attached to not holding a Guide Guider's Warrant because all the Guider qualifications of the Association (excepting the Pack Holiday Permit and the Training qualifications) can be taken by the 18-year-old Guider. The Guiders' Handbook, in fact, states that a Guider holding a Warrant can, with the permission of her Camp Adviser and District Commissioner, take a camp of no more than three nights with a maximum of eight leaders.

(MISS) ANNE-MARGARET DONNELLY, Assistant Guide Guider, 2nd Willesden Green (St. Mary Magdalen) Guide Company, Middx. East.

Brownies in Parades

With reference to the letter in the July GUIDER asking that Brownies be allowed to attend Parades, surely the Commissioner's permission is all that is necessary? (See P.O.R. page 20.) It even states in P.O.R. (page 64) that we are now allowed to carry the Brownie Pennant on such occasions, which previously we were unable to do.

I was a little disconcerted to find no footnote to the letter, pointing out the above regulations, and I trust that I am not misinterpreting the rules.

(MISS) ANN LLOYD EDWARDS, Brownie Guider, 4th Wembley Central (St. Joseph's) Brownie Guide Pack.

It is correct that Brownies may take part in suitable youth events in any manner considered desirable, at the discretion of the Commissioner. The possibility of Brownies carrying Pack Pennants is recognised.—Training.



FOLK FEST 5

At the end of this month we will be getting ready for the opening of the Box Office on 1st October. Booking Forms are coming in steadily—is yours among them? If not, look back to the July issue of *THE GUIDER* or write to us for a booking form and apply **AT ONCE**.

Don't let your Unit miss this grand opportunity of sharing in this our most ambitious performance of Folk Fest, in the Royal Albert Hall's Centenary Year. Come as a Unit, a District or just with a party of friends, but write **NOW** before the 'House Full' notices go up!

COMING THIS MONTH

THE BROWNIE

1st Sept.: Commencing series of Brownie Sign-post Pictures for Colouring.

8th Sept.: Details of Calor Homecraft Award Competition.

15th Sept.: First article on Jester Badge.

22nd Sept.: For Booklover Badge—beginning of a series; How to draw the Promise Badge.

29th Sept.: Commencing a new serial.

TODAY'S GUIDE

3rd Sept.: Uniform Chart; Health Badge (1); For The New Guide—The Patrol.

10th Sept.: Planning an Autumn Fair (1); Health Badge (2); Calor Homecraft Award—Details, Entry Form.

17th Sept.: Planning an Autumn Fair (2); Health Badge (3).

24th Sept.: Using your Guide Handbook; Planning an Autumn Fair (3).

THE RANGER

THE September issue of *THE RANGER* contains: Entry form and details of the Calor Homecraft Award; List of Scout and Guide Clubs in Universities; Winter and Spring booking periods for Our Chalet, and the results of the National Guide Lawn Tennis Tournament. Also our usual features.

CALOR HOMECRAFT AWARDS

SEPT'71 MARCH'72

The biggest competition ever organised in conjunction with the Association is just about to start. There are separate sections for Brownies, Guides and Rangers, each with its own exciting prizes and trophies.

Full details and entry forms will appear in the Brownie on September 8th, Today's Guide on September 10th and in the September issue of *The Ranger*. Make sure your unit doesn't miss these important issues, otherwise it'll be too late!



CALOR GAS at home, at camp, and in industry

BOOK ** REVIEWS

The Young Elizabeth, by Alison Plowden. Macmillan, £2.75.

Most biographies of Elizabeth I have concentrated on her reign. This book provides a vivid account of the first twenty-five years of her life, from her birth in 1533 up to her accession in 1558. The hazards and fluctuating fortunes of her early life, from the execution of her mother, Anne Boleyn, to her own spell in the Tower, do much to explain her emergence as a steely, subtle and enigmatic Queen. Although the author gives the political background, she is principally concerned with the story of a remarkable child growing into womanhood. Compulsive reading for all those interested in Tudor history.

J.V.R.

Flags of All Nations, Brown, Son & Ferguson Ltd., £1.35.

Included in this chart of 381 illustrations are the important flags of all members of the British Commonwealth and all other independent states. Also included insofar as they are known to exist, are the state and national flags on land or at sea, ensigns and army, navy, air force and civil air flags.

This is a most comprehensive chart and in spite of the large number of flags shown there has been no loss of clarity.

The chart is probably too expensive to be recommended to individuals to buy but Guiders may like to consider one for their Company, Patrol or Unit. It would prove most useful and would be money well spent.

P.T.

A Tangle of Islands, by L. R. Higgins. Robert Hale, £2.30.

Many books have been written about Scotland, but far fewer have been written about the hundreds of islands, many uninhabited, off its west coast.

In 'A Tangle of Islands' L. R. Higgins, in the form of a series of descriptions and photographs of visits, by himself and his two young companions over many years, builds up a fascinating picture of the islands and their natural history, particularly the bird life.

The narrative with its wealth of observation on weather, boating, camp cooking and other lore will appeal to the young or older Guide interested in the outdoor life. The author's enthusiasm, even after a fortnight's rain, and his keen powers of observation will not fail to encourage young nature lovers.

C.J.M.

The Magic Fishbone, by Charles Dickens. Hamlyn Group, 80p.

Anyone looking for a gift for a girl of 9 to 11 years would do well to consider this delightful fairy story.

It is written as by a child of seven, and manages to capture the charm that very young writers so often have. What makes the book really unusual, however, are the exquisite full colour illustrations by Dagmar

Berkova, and the unusually high quality paper and binding. All in all, this book is exceptionally good value and one which any child will treasure for many a long year.

J.V.R.

The 'Creative Crafts Book' Series: 1. **Paper Toy Making**. 2. **Gifts and Games**, by Joan Moloney. Ward Lock Limited, £1.30 each.

Paper Toy Making

Paper is one of the most versatile of play materials and this versatility is well demonstrated in this book which contains simple illustrations and step by step diagrams for making a number of attractive toys and gifts—among them masks, greeting cards, book marks, toys.

Children of Guide age and also adults would enjoy making these articles—all that is needed is a little imagination, patience and a large waste-paper basket.

Gifts and Games

Here are plenty of ideas for games which will help fill in time during those long summer holidays and also during the wet winter ones. Here too, are instructions for attractive gifts to make, many of which would be suitable for bazaars and fêtes. The clear diagrams and illustrations would be an incentive to anyone who is at all interested in handicrafts to try their hand at some of these articles. Some of the toys could be made by children of Guide age, but mostly adult help would be necessary.

P.T.

CHQ BOOK REVIEW

Brownie Guide Pocket Book 4, The Girl Guides Association, 4p.

With the reprinting of Pocket Book 4, all four books have now incorporated the alterations found to be necessary as a result of using the original books over a period of time. Book 4 is the last to be revised and here the changes are more extensive than in the other three books. The type has been changed, the pages rearranged, and additional material included to make it of more value to the increasingly mature older Brownie.

DO YOU REMEMBER?

'... it really was me, and the other person in the picture was Miss Helen Talbot, the then County Commissioner for all Surrey,' writes the Chief Guide in a letter to us about the photograph on page 317 of the August GUIDER.

We have it on good authority, therefore, that the person nearest the camera was not Agnes Baden-Powell as we so shortsightedly reported last month!

Further information from one of our readers about the occasion is that the rally was for Guides (not Guides and Scouts in those days!) at Stoke Park, Guildford. Seven thousand members of the Movement were present, and Lady Baden-Powell took the salute at the march past.

We should like to thank all those who wrote in to us.

Ready to make her Promise The Brownie

by Leonora Wilson

Illustrated by Jennetta Vise

SOMETIMES they come with big sister, or with friends or perhaps they come with Mum, these newcomers to Brownies. And they come in all shapes and sizes, some large, some small, some shy, some extremely conversational.

So many questions, so much activity, so little time that often we cannot find the answer to our own question—how exactly can we help those newcomers through the first Pre-Promise stages?

How do they learn, and who helps them? Well, of course, much is absorbed unconsciously, simply by being with the Pack, hearing the Brownie Song, talking to their Six or at Pow-wow, listening to the Brownie Story, noticing how fairly the games are played.

But there must be definite training, of course, and here two things are important: the Guider and the Books, and in that order. **Below are some suggestions of how the Guider, using the Books, can prepare the newcomers for their entry into 'Brownies'.**

The Pocket Book No. 1

This can be handed out almost immediately and once the newcomer has inscribed her name and the Six have added theirs, she feels she belongs.

With many of the pages she needs help, as for example on page 6 the L.A.H. page. I find it helpful to let her tackle this after a preliminary game with the Pack.

Lend a Hand Game

Apparatus required: Pictures of household objects e.g. cup and saucer, duster, handbrush, letter etc. cut from books or drawn by the Brownies themselves. These are placed upside down in the centre of the room. The Sixes, in corners, shake their dice, and each Brownie shaking a six can collect a picture. When sufficient are collected the Six discuss together, and finally each Brownie in the Pow-wow ring says how she can Lend a Hand with the object on her card. This will help the new Brownies to complete the L.A.H. page in their book.

Brownie Law Game

Apparatus required: Drawings or pictures of 'places' e.g. church, home, playground, street pasted on cardboard with paper-clip attached.

The new Brownies fish for these with magnet fishing rods. When all the 'fish' are landed,



they hunt round the room for names of people, which have been hidden—e.g. minister, teacher, mother. These are placed with appropriate places and arranged for the Brownie Guider to admire later. This will give her the opportunity to discuss pages 10-11 of the Pocket Book and arrange for them to be completed.

The Guiders' Handbook

Some of the activities suggested on pages 36-37 are helpful at this early stage, and later. So the new recruit helps her Six to draw the pictures in the Presents Game and is beginning to think of her Duty to God or she joins in the Six mime to understand ways in which she can serve the Queen. These are only two suggestions.

The Brownie Handbook

As the Guiders' Handbook has useful suggestions for Pack and Six activities, so the Brownie Handbook is useful at this stage for the quiet talk with the new recruit or the new group.

The Brownie Story can be read and discussed, the page on uniform studied. Again an activity is a good 'lead in'.

Matching Pictures

Apparatus required: a piece of cardboard on which are drawn 'outlines' e.g. a church, a dog, a flower, a pillar box, and pictures to fit these outlines. The new Brownie, even if reading is not her strong point, will have no difficulty in fitting the picture to the right outline. This gives a Brownie Guider an opportunity of talking with the new recruit about her home, her pets, her church etc. and paves the way for a visit to the home, which is another Pre-Promise essential.

And if a Brownie Guider finds this talking difficult, she can turn back to the Brownie Handbook and read and look at the pictures on the Promise pages. This often sparks off discussions, talks, and confidences, thus building up a relationship between you and the new Brownie, which is perhaps the most important aspect of these early weeks with the Pack.

..... The Guide

by Joan Tainsh

'I PUT my hand up to be saved.' That was Vivienne's somewhat unexpected comment when asked what she had done about trying to keep her Promise. The Guide Handbook tells us that there are three stages to becoming a Guide: Finding Out About Guiding, Meeting A Challenge, Making The Promise. I would like to think that finding out what sort of people Guides are and completing eight challenges helped Vivienne to see that the third requirement must be some sort of religious commitment.

Girls come to the Company and find themselves facing this Promise for many differing reasons: 'I enjoyed Brownies, now I want to be a Guide'; 'I want to go to camp'; 'I am prepared to make the Promise because it is definite and shows us what to do'; 'Being ready to make the Promise means being friendly and helpful to everyone even if she is not our crowd'; 'It keeps us under control.'

How can we help these girls to a real awareness of what making the Promise means? For most recruits the life of the Patrol and of the Company gives them the best insight into what being a Guide means, and how the Promise can be lived out. The recruit will have probably made new friends, enjoyed the Patrol, shared in their secrets, plans, laughter and groans; understood what it means to be useful as a member of a team in a game or competition or good turn; contributed to a discussion when the Patrol Leader considered with her Patrol the agenda for the next Patrol Leader's Council meeting; have been encouraged to think for herself and give reasons for her suggestions; proved herself to be reliable and considerate.

She will have done something worthwhile and exciting out of doors, been on a breakfast hike, climbed a hill, followed an orienteering trail, been on a jog or collected litter on the beach?

She may have learned new songs for the Division song festival or made a musical instrument to accompany the singing.

She might have learnt how to make something artistic such as a bookmark by arranging petals and leaves between transparent adhesive plastic (Self Training Scheme Page 230 Guide Handbook) for the Michaelmas Fair.

Her understanding of courage and being cheerful in all difficulties would have been furthered, no doubt, when she was made to keep

a dental appointment instead of accompanying the Patrol on a tour of the docks.

What an achievement when her prayer was chosen for the Harvest Guides' Own, and it was her enthusiasm which encouraged the Patrol Leader to enter the competition in TODAY'S GUIDE.

Maybe she was present when the Filipino Guider visiting the Company danced 'Tinakling' in and out of bamboo poles and for the first time she was aware of the possibilities of world friendships through Guiding.

All these and many more are the activities happening in many Units. In fact they represent the Unit's Eight Point Programme. While some Guides are concerned with organising, creating and implementing the Unit's Programme plans, the recruits are joining in, participating, enjoying, thinking, finding out and preparing to make the Promise.

The Guider and Patrol Leader assess if the recruit has been challenged in all the eight points, and together they will decide if the girl needs to be challenged further. This, perhaps, is the time for one or more Challenges to be designed especially to suit the recruit, e.g. being kinder to her sister, not biting her nails, learning to use her hands more, eating fewer sweets.

Linking all her Challenges with the Promise and helping her to see how they could be starters to further progress is the Guider's job when she talks to her before the Promise ceremony is planned.

Has she found out what Guiding is about?

Has she experienced something of World Guiding?

Does she know the Promise and Law?

Does she wear her uniform well?

Does she understand what making the Promise really means?

What can the Guiders do now to create the atmosphere and the opportunities for achieving the Pre-Promise Challenges?

1. If you have not done so recently why not re-read chapters 1 and 2 of the Guide Handbook to be fully aware what the recruits are reading and expecting to find. Would it be useful for Patrol Leaders to do the same?

2. Help the Patrol Leaders find things for the recruit to do in carrying out Patrol and Unit activities, so that she is included as much as possible. Help the P.L. spot challenges for the recruit.

3. Make sure the Patrol Leader realises, when her recruit is a Brownie, that she has already made a Promise and needs to be challenged somewhat differently than a complete newcomer to Guiding.

4. When the Patrol Leaders' Council is planning programmes remind them to allow time for Promise Ceremonies.

5. Make sure she has access to a Handbook. Arrange payments by weekly instalments perhaps.

6. Clarify in your own mind what the Promise means to you, expect a standard based on the Laws and finally as a Company, as recruits, and as Guiders enjoy your Promise Ceremonies and make them memorable, happy and meaningful occasions.



people and of camping. Anyway, we heard that she'd tried a sauna bath, with her cousin (Fitness), been to see the exhibition of Tudor costumes from the TV *Henry VIII* plays, and also learned 6 guitar chords (Arts), helped at the camp for handicapped Guides for two days (People, Service, Outdoors) and worked out arrangements for the races at the fête (Thinking, Service, People). Her mother has been to a short course on Cooking with yeast, and Susan has learned from her how to make wholemeal rolls that need to be tasted to be believed (Home). We were promised a few samples at the next meeting.

We needed to do something to help Susan, who hasn't been a Guide before, to think about the Laws and the Promise, which although they underline, in theory, all we plan to do in our Unit (some of which comes off and some of which doesn't!), hadn't been thought about explicitly recently. We do have prayers at most meetings and the Rangers lead it, as individuals, or in groups of two or three. We keep a book with a page each time, to record the basic theme (picture? quotation? song? . . .) together with a brief list of the things read, listened to, looked at, prayed over etc. Susan hasn't taken a leading part in this yet.

In our Unit we find it hard to settle down in cold blood to talk about God or the Guide Laws, but rarely does a month go by without our discussing (or arguing?) about politics (local bye-election issue, Common Market terms . . .) or problems of population or pollution (RTZ prospecting in Lake District, 'Anything is better than an unwanted baby' . . .) or disasters (E. Pakistan refugees, earthquake in Chile, the mentally handicapped, how should help be organised? . . .) and does God really care when so many folk seem to have the dice loaded against them? To be honest, most of us haven't any facts to back up our opinions, and often we are just repeating what someone else has said—or saying the opposite in order to be provoking. Still, perhaps if we realise this, it's a step in the right

(Continued on page 346)

... The Ranger

by Isobel Anderson

illustrated by Jean de Lemos

THE other day our Ranger Council was finishing . . .

'Any other business?'

'I think I'm ready to make my Promise,' said Susan.

The Rangers all looked up with a start; they weren't used to Susan speaking, and hardly knew her yet. Aged 15, she had joined us a couple of months ago, not having been a Guide. Since then, she'd joined in the things we'd done, including helping to organise the races at our District Guide and Scout Fête, but she hadn't been able to come Youth Hostelling in Derbyshire with us over the August holiday weekend.

'I've done something from each of the "Have you ever?" ideas in my Handbook,' she added.

When we heard her list of new things tried, we were quite impressed. Susan is obviously well organised, and some of us were rather shown up by her way of tackling the Pre-Investiture Challenge. Most of us hadn't realised that she'd managed a couple of days at the Extension Camp—her first experience of handicapped

Training

YOU'VE heard of them—Foxlease and Waddow, the first in the New Forest, Hampshire, and the second on the banks of the River Ribble, near Clitheroe in Lancashire.

In case you haven't visited either and are wondering whether you might, here are some general facts:

You don't need to wait for permission or an invitation, or someone else to take you. If you are over 17 years and an acting or warranted Guider (19½ in the case of prospective Ranger Guiders) simply apply straight to the Guider in Charge.

Once accepted you may look forward confidently to the following: A warm welcome, and an informal relaxed atmosphere. A comfortable bed in a well furnished bedroom, some of which have their own bathrooms, and nearly all of which have washhand basins with hot and cold water. Good food and pleasant rooms to relax in; good company, and lots of opportunity to make new friends and to exchange ideas with others; training sessions geared to *your* needs (provided you have remembered to send these in good time beforehand).

It doesn't matter how little you feel you know beforehand—the purpose of the Centres is to make sure that you leave a course with more knowledge and more confidence.

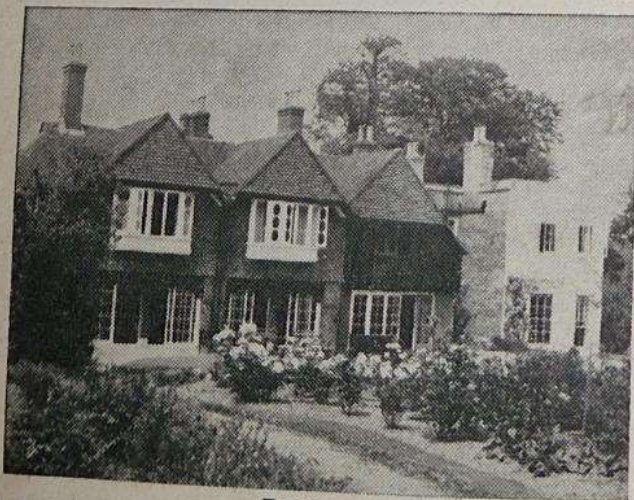
All that has been said about the CHQ Centres applies equally to the Country Training Centres of Netherurd, Broneirion and Lorne—the houses vary, the setting is different, but the welcome, the friendship and the purpose are the same, and you will never regret making the effort to go.

C.H.Q. Training Centres

**Programme Notes September 1971—
Easter 1972**

General Training Weekends

These are always the first to fill, so it is wise



Foxlease

THE GUIDER

WHAT TO AT THE C.H.Q.

to book well ahead. At these weekends there is usually an emphasis on section training, and Guiders are given help in running their own Units. The Guider's job is examined and discussed in relation to the age-group with which she is dealing; programme skills and activities are tried out and talked over. Some other major topics may be dealt with at combined sessions, e.g. The Promise in the programme, World Guiding, programme links between sections, etc., etc. If Guiders send in special requests beforehand every effort is made to meet these, but remember that the Trainer is a working woman too, and has to plan her training programme well in advance.

Some General weekends have a particular emphasis, e.g. Outdoor Activities, Using the Handbooks, etc., and these are advertised in THE GUIDER.

Making the Most of the Programme

Waddow January 14th/16th

Foxlease March 17th/19th

These will offer a special opportunity for District groups to attend a Training Centre together. The District Commissioner or District Assistant is invited to bring with her up to six other Guiders from her District. Those bringing the maximum will be offered two fee bursaries and those with 3 to 5 Guiders will get one fee bursary.

The weekends will include opportunities to work together as a District group and to discover the support a District team can give to one another.

There will be particular help with programme planning and time will be allowed to discuss matters which are particular to the Commissioner, the District Assistant and to the three sections—Brownie, Guide and Ranger.

Those who have been on previous weekends of this nature have spoken enthusiastically about them; they have found them a means of

This feature continues on page 343.
When the Census Figures are detached your
Training Page supplement will be as usual.

Guide to a good turn that can raise the group funds you need

Spastics Cards. The one way you can positively help Spastics in Britain and at the same time raise *real* funds to help support your group. Selling Spastics Charity Cards is easy and profitable. This is why:-

You can choose from a superb range of beautifully designed Cards, all sent on a sale or return basis (which means no worries about committing valuable funds).

Scout and guide groups actually receive the cards at very special discounts—30% below the consumer cost, and for your convenience all items are marked with the recommended selling price.

Spastics Cards are immensely popular with thousands of Christmas-card buyers, because *ALL* the profit we make is used directly to help spastics in many, many ways.

Special window streamers and display units (if you have the facilities to use them) are available.

If you would like to see just how Spastics Charity Cards can really help your group, cut out the coupon now and we'll send you full colour brochures with a portfolio of samples (the portfolio is returnable).

Spread some Christmas cheer

Buy SPASTICS CHARITY CARDS



To: Spastics Cards Ltd., The Ridgeway, Iwer, Buckinghamshire.
 Please send me: (quantity) Brochures

Name
 Company
 Address
 Block capitals

09-71

CENSUS OF MEMBERS

| | GRAND TOTALS | | NORTH WEST ENGLAND | | NORTH EAST ENGLAND | | MIDLANDS ENGLAND | | ANGLIA |
|--|--------------|---------|--------------------|--------|--------------------|--------|------------------|--------|--------|
| | 1970 | 1971 | 1970 | 1971 | 1970 | 1971 | 1970 | 1971 | 1970 |
| Commissioners | 4,234 | 4,302* | 470 | 480 | 489 | 482 | 430 | 493 | 480 |
| Secretaries | 4,334 | 4,417† | 667 | 649 | 570 | 596 | 436 | 465 | 595 |
| District Assistants | 1,493 | 1,594 | 179 | 197 | 169 | 198 | 170 | 180 | 241 |
| Guiders | 53,856 | 54,053 | 6,518 | 6,552 | 6,066 | 6,081 | 5,738 | 6,296 | 6,903 |
| Guide Clubs, Members of | 532 | 532 | 75 | 40 | 75 | 97 | 100 | 102 | 48 |
| Ranger Guides | 21,273 | 20,950 | 2,597 | 2,584 | 2,124 | 2,192 | 2,007 | 2,175 | 2,737 |
| Guides | 289,900 | 295,183 | 35,544 | 35,364 | 32,474 | 33,333 | 30,177 | 33,842 | 37,483 |
| Brownie Guides | 368,615 | 376,872 | 44,070 | 44,438 | 41,016 | 41,955 | 41,329 | 46,082 | 49,000 |
| Lones (Ranger Guides and Guides) | 272 | 212 | 25 | 1 | 15 | 10 | 2 | — | 48 |
| TOTALS | 744,509 | 758,115 | 90,145 | 90,305 | 82,998 | 84,944 | 80,389 | 89,635 | 97,535 |

*These totals include 12 unattached Commissioners
†Included in this total are at least 1,292 Ranger Guides, who also
‡One County Extension Group total

| | | | | | | | | | |
|------------------------------------|--------|--------|-------|-------|-------|-------|-------|-------|-------|
| Local Associations | 1,907 | 1,914 | 126 | 132 | 137 | 145 | 170 | 187 | 257 |
| Guide Clubs | 57 | 55 | 7 | 6 | 7 | 7 | 11 | 8 | 6 |
| Ranger Guide Service Units | 2,233 | 2,267 | 302 | 292 | 220 | 232 | 230 | 265 | 291 |
| Guide Companies | 13,051 | 13,243 | 1,637 | 1,633 | 1,546 | 1,572 | 1,414 | 1,576 | 1,641 |
| Brownie Guide Packs | 17,297 | 17,663 | 2,047 | 2,079 | 1,990 | 2,032 | 1,905 | 2,117 | 2,292 |
| Lone Units | 38 | 26 | 3 | — | 4 | 2 | 1 | — | 8 |

AGE GROUPS

| | | | | | | | | | |
|---------------------|---------|---------|--------|--------|--------|--------|--------|--------|--------|
| 7 years | 81,348 | 87,443 | 9,914 | 10,286 | 9,050 | 9,558 | 8,673 | 10,243 | 9,960 |
| 8 years | 113,132 | 116,369 | 13,394 | 13,698 | 12,523 | 13,072 | 12,689 | 14,182 | 15,227 |
| 9 years | 114,970 | 115,500 | 13,738 | 13,724 | 13,122 | 13,072 | 13,158 | 14,414 | 16,072 |
| 10 years | 108,102 | 111,919 | 13,298 | 13,328 | 12,115 | 12,682 | 12,097 | 13,584 | 14,390 |
| 11 years | 80,169 | 81,287 | 9,517 | 9,729 | 8,992 | 9,314 | 8,526 | 9,529 | 10,471 |
| 12 years | 71,802 | 71,618 | 8,882 | 8,462 | 8,151 | 8,085 | 7,341 | 8,320 | 9,417 |
| 13 years | 51,140 | 51,533 | 6,282 | 6,080 | 5,587 | 5,830 | 5,278 | 5,803 | 6,515 |
| 14 years | 30,731 | 29,827 | 3,621 | 3,657 | 3,317 | 3,092 | 3,027 | 3,187 | 3,737 |
| 15 years | 15,791 | 15,103 | 2,023 | 1,870 | 1,571 | 1,532 | 1,549 | 1,574 | 1,766 |
| 16 years | 6,139 | 5,906 | 747 | 721 | 601 | 598 | 564 | 624 | 825 |
| 17 years | 6,720 | 6,574 | 882 | 860 | 715 | 691 | 656 | 665 | 778 |
| 18 years | 4,468 | 4,343 | 568 | 552 | 469 | 492 | 434 | 433 | 478 |
| 19 years | 3,605 | 3,213 | 436 | 343 | 403 | 341 | 326 | 340 | 319 |
| 20 years | 2,415 | 2,201 | 277 | 287 | 310 | 257 | 236 | 212 | 191 |
| 21 and over | 53,977 | 55,279 | 6,566 | 6,708 | 6,072 | 6,328 | 5,835 | 6,523 | 7,389 |
| TOTALS | 744,509 | 758,115 | 90,145 | 90,305 | 82,998 | 84,944 | 80,389 | 89,633 | 97,535 |

TREFOIL

| | | | | | | | | | |
|-----------------|--------|--------|-------|-------|-------|-------|-------|-------|-------|
| Guides | 794 | 812 | 118 | 120 | 87 | 87 | 88 | 105 | 98 |
| Members | 16,438 | 17,077 | 2,287 | 2,390 | 1,907 | 1,870 | 1,448 | 1,742 | 1,837 |

Included in these totals are 2 extra Territorial

UNIT H

| | | | | | | | | | |
|--------|-------|-------|-----|-------|-----|-----|-----|-------|-------|
| TOTALS | 8,314 | 9,377 | 894 | 1,023 | 791 | 952 | 867 | 1,112 | 1,280 |
|--------|-------|-------|-----|-------|-----|-----|-----|-------|-------|

BERSHIP 1970 and 1971

| ENGLIA | | SOUTH WEST ENGLAND | | LONDON AND SOUTH EAST ENGLAND | | SCOTLAND | | ULSTER | | WALES | | British Guides in Foreign Countries | |
|--------|--------|--------------------|--------|-------------------------------|---------|----------|---------|--------|--------|--------|--------|-------------------------------------|-------|
| | 1971 | 1970 | 1971 | 1970 | 1971 | 1970 | 1971 | 1970 | 1971 | 1970 | 1971 | 1970 | 1971 |
| 30 | 439 | 547 | 532 | 612 | 635 | 797 | 836 | 114 | 114 | 248 | 246 | 32 | 33 |
| 05 | 544 | 637 | 710 | 909 | 929 | 229 | 215 | 42 | 42 | 166 | 181 | 8 | 13 |
| 11 | 251 | 218 | 221 | 267 | 294 | 165 | 171 | 38 | 39 | 43 | 40 | 3 | 3 |
| 03 | 6,437 | 6,698 | 6,800 | 9,589 | 9,611 | 8,529 | 8,456 | 1,487 | 1,479 | 2,029 | 2,018 | 299 | 323 |
| 18 | 32 | 105 | 99 | 68 | 78 | 34 | 52 | 3 | 4 | 24 | 28 | — | — |
| 17 | 2,655 | 2,808 | 2,772 | 4,293 | 4,276 | 2,773 | 2,576 | 679 | 587 | 1,206 | 1,081 | 49 | 52 |
| 13 | 35,566 | 35,885 | 37,152 | 52,463 | 54,137 | 46,773 | 46,479 | 6,277 | 6,188 | 11,787 | 11,965 | 1,037 | 1,157 |
| 10 | 47,397 | 46,866 | 48,397 | 66,453 | 68,677 | 55,904 | 55,762 | 7,216 | 7,431 | 14,470 | 14,264 | 2,291 | 2,469 |
| 18 | 45 | 71 | 86 | 40 | 13 | 62 | 53 | — | — | 7 | 4 | 2 | — |
| 15 | 93,366 | 93,835 | 96,769 | 134,694 | 138,650 | 115,266 | 114,600 | 15,856 | 15,884 | 29,980 | 29,827 | 3,721 | 4,050 |

Commissioners and 73 unattached Secretaries.
who, also being Guiders, are not included in Ranger Guide totals.
ne County less—transferred to Midlands.
up totals are now included in relevant section totals.

| | | | | | | | | | | | | | |
|---|-------|-------|-------|-------|-------|-------|-------|-----|-----|-----|-----|-----|-----|
| 7 | 215 | 301 | 299 | 294 | 309 | 452 | 458 | 42 | 44 | 125 | 122 | 3 | 3 |
| 7 | 5 | 7 | 8 | 13 | 16 | 2 | 3 | 1 | 1 | 3 | 1 | — | — |
| 1 | 268 | 298 | 293 | 426 | 448 | 285 | 300 | 64 | 57 | 112 | 109 | 5 | 3 |
| 1 | 1,565 | 1,659 | 1,653 | 2,372 | 2,400 | 1,905 | 1,927 | 301 | 320 | 531 | 548 | 45 | 49 |
| 2 | 2,208 | 2,215 | 2,242 | 3,059 | 3,168 | 2,623 | 2,644 | 349 | 358 | 707 | 697 | 110 | 118 |
| 8 | 6 | 9 | 9 | 4 | 3 | 7 | 6 | — | — | 2 | — | — | — |

ROUPS

| | | | | | | | | | | | | | |
|---|--------|--------|--------|---------|---------|---------|---------|--------|--------|--------|--------|-------|-------|
| 0 | 10,452 | 9,896 | 10,848 | 13,654 | 15,442 | 14,678 | 15,143 | 1,798 | 1,595 | 3,169 | 3,326 | 556 | 550 |
| 7 | 14,788 | 14,538 | 15,017 | 20,886 | 21,579 | 16,492 | 16,723 | 2,100 | 1,969 | 4,585 | 4,530 | 698 | 811 |
| 2 | 14,840 | 14,568 | 15,107 | 21,176 | 21,500 | 16,049 | 15,728 | 1,944 | 1,960 | 4,454 | 4,421 | 689 | 734 |
| 0 | 14,168 | 13,799 | 14,202 | 19,788 | 20,524 | 16,005 | 16,059 | 1,810 | 2,446 | 4,134 | 4,250 | 666 | 676 |
| | 10,197 | 10,174 | 10,484 | 14,817 | 14,987 | 12,455 | 12,058 | 1,595 | 1,450 | 3,288 | 3,152 | 334 | 387 |
| | 8,526 | 8,882 | 9,137 | 12,857 | 13,006 | 11,593 | 11,507 | 1,476 | 1,439 | 3,002 | 2,891 | 201 | 245 |
| | 6,003 | 6,495 | 6,383 | 9,014 | 9,245 | 8,578 | 8,511 | 1,254 | 1,319 | 2,014 | 2,210 | 123 | 149 |
| | 3,432 | 3,738 | 3,726 | 5,462 | 5,399 | 5,401 | 5,101 | 1,018 | 929 | 1,353 | 1,221 | 57 | 83 |
| | 1,703 | 1,883 | 1,858 | 2,968 | 2,811 | 2,620 | 2,478 | 677 | 609 | 702 | 638 | 32 | 30 |
| | 716 | 750 | 758 | 1,186 | 1,163 | 865 | 783 | 253 | 211 | 333 | 325 | 14 | 7 |
| | 717 | 706 | 674 | 1,217 | 1,209 | 1,233 | 1,205 | 210 | 250 | 313 | 297 | 9 | 6 |
| | 420 | 458 | 447 | 837 | 828 | 852 | 801 | 147 | 187 | 220 | 179 | 3 | 4 |
| | 287 | 393 | 338 | 672 | 648 | 720 | 644 | 158 | 138 | 174 | 132 | 3 | 2 |
| | 133 | 237 | 205 | 372 | 359 | 578 | 572 | 115 | 104 | 96 | 67 | 1 | 5 |
| | 6,984 | 7,318 | 7,585 | 9,788 | 10,037 | 7,147 | 7,287 | 1,301 | 1,278 | 2,143 | 2,188 | 335 | 361 |
| | 93,366 | 93,835 | 96,769 | 134,694 | 138,737 | 115,266 | 114,600 | 15,856 | 15,884 | 29,980 | 29,827 | 3,721 | 4,050 |

GUILDS

| | | | | | | | | | | | | |
|-------|-------|-------|-------|-------|-------|-------|-----|-----|-----|-----|---|----|
| 94 | 126 | 133 | 153 | 153 | 81 | 82 | 16 | 15 | 25 | 20 | — | 1 |
| 1,801 | 2,590 | 2,765 | 3,016 | 3,092 | 2,364 | 2,425 | 454 | 445 | 395 | 379 | — | 23 |

uilds and 145 Members not under any Country.

LPERS

| | | | | | | | | | | | | |
|-------|-------|-------|-------|-------|-------|-------|----|----|-----|-----|----|----|
| 1,435 | 1,252 | 1,255 | 1,765 | 1,994 | 1,134 | 1,253 | 57 | 41 | 224 | 271 | 50 | 41 |
|-------|-------|-------|-------|-------|-------|-------|----|----|-----|-----|----|----|

NEED FUNDS?

THIS 5 STAR PLAN HAS RAISED OVER

£30,000

Hyngart's 5 star plan works on the principle of maximum returns for minimum effort. Successful fund-raising depends on a simple operation, suited to your organisation, with no capital outlay and therefore no risk . . .



1 THE PLAN IS PROVED. Over 800 Guide Companies and Scout Troops have proved the formula for success—sometimes raising £50 and more in a few weeks.



2 SALE OR RETURN. This means absolutely no risk—only when the goods have been sold do we ask you to clear your invoices, returning any unsold items for credit.



3 SIMPLE AND FAST. Goods ordered by you are quickly dispatched and the plan is organised to give you maximum returns for the minimum effort and paperwork.



4 LOW PRICE. These attractive handmade household linens are sent to you in an assorted parcel of dressing-table sets, chairback covers, tray-cloths and tablemats in a wide variety of colours. All of our own manufacture, they are available to you at little over cost price, enabling you to raise funds quickly while still giving good value for money.



5 EASY TO SELL. The goods are unique in style and design. Individual packing makes them easy to sell and they are ideal as gifts.

Send the coupon to: Mr. J. Gartside at Hyngart and obtain full details—or have a trial parcel.

To **HYNGART LTD.**,
Scouthead Mill, Oldham, Lancs.
Please send full details and a free sample/sale or return trial parcel value approx. £13 (delete whichever is not applicable).

NAME
ADDRESS
..... **BLOCK**
..... **LETTERS**
..... **PLEASE**
UNIT **GR155**

FUND RAISING

DIARIES FOR 1972 NOW IN STOCK, SELL THESE AND MAKE A 100% PROFIT

We can also supply Notebooks, Platignum Retractable Pens, N.R. Pens, Rainhats, Address Books, Leather and Plastic Key Fobs, Combs in Cases and Fuse Pak Sets. All these items are supplied with your printing details.

SEND 20p NOW FOR A SAMPLE PACK TO:

DOUGLAS SUPPLIES COMPANY,
34 Princes Street, Ipswich, Suffolk
Telephone Ipswich 55182



A WARM WELCOME AWAITS YOU . . .

OLAVE HOUSE IS OPEN to anyone connected with the Guide movement who is visiting London for Conferences, Trainings, Shopping Sprees, Theatres.

Write to: 45 Longridge Road, London S.W.5.



The SCOTTISH GUIDE SHOPS

16 Coates Crescent, Edinburgh, EH3 7AH. (Tel: 225 3483)
1 Scott Street, Glasgow, C.3. (Tel: 332 6288)
53 South Tay Street, Dundee DD1 1NP (Tel: Dundee 22262)

**COLLECT THE DISCOUNT SCHEME STAMPS
TO BENEFIT YOUR UNIT**

Have Your Next

CAMP AFLOAT

on board one of our camping narrow boats on Midlands canals. Single boats fitted for 12 (with or without experienced boatman), pairs of boats fitted for 24 (with experienced boatman).

UNION CANAL CARRIERS LTD.
214 Whittington Road, London, N.22
(Booking Dept.)

EXPECT TRAINING CENTRES

welding their District together, as well as being of help to each person individually.

Guitar Beginners

Foxlease January 28th/30th
Waddow February 4th/6th

This really does mean beginners, and is not for those who already know a bit about guitar playing. The groups are limited to ten or twelve so that each person can get some individual help. By the end of the weekend you should be able to play a few simple chords, and with practice to get on quite a long way on your own. Because numbers are kept small it is a good idea to book early.

'Handcrafts on a Shoestring'

Waddow February 4th/6th

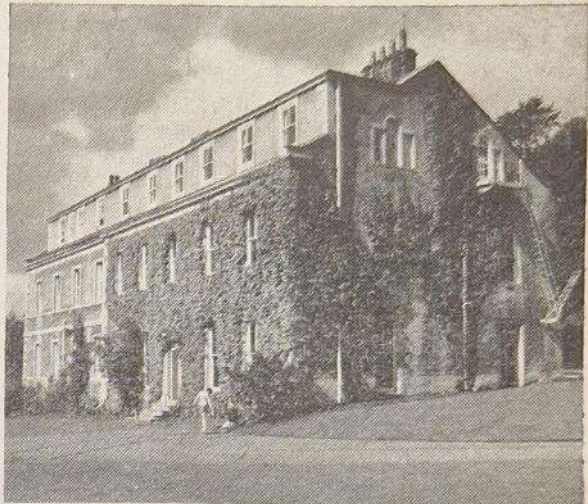
There's a lot of junk in many of our houses, which we hesitate to throw out on the basis that 'it will come in useful some day'. If you would like to discover *how* to make it useful, this weekend will provide a good many ideas which can be used with your Unit, and which cost next to nothing.

'1775 And All That'

Foxlease February 18th/20th

Anyone who has attended one of the previous 'historical' weekends organised by Mr and Mrs John FitzMaurice Mills will tell you that these are an experience not to be missed.

1775 was the date at which one of the major reconstructions at Foxlease took place, and it is recorded for all to read on a drainpipe on the front of the house. As to what happened, who caused it to happen and how it all looked and felt in those far away days of nearly 200 years ago you must come to Foxlease to discover.



Waddow

You'll learn a lot, you'll laugh a lot, and you will certainly end up with plenty of new programme ideas for your Unit.

Out and About

Foxlease March 30th/April 3rd (Easter)

This will be a long weekend of outdoor activities of many kinds—orienteeing, birdwatching and fossil hunting and looking at old churches are just a few of the things that come to mind. Take your wellington boots and waterproofs—the weather won't impede activities.



Courses At Glenbrook

Are you planning for next year? Then look out in future issues of THE GUIDER and THE RANGER for the Glenbrook programme of Courses.

These will include a chance to go gliding, climbing, riding, caving, canoeing, walking, lightweight camping, expeditions by land and water, sub-aqua and other activities, and many other interests.

This feature began on page 338. When the Census Figures are detached your Training Page supplement will be as usual.

Training

Peeps into a Programme Book—4

A MONTH

with the

1st TOWNEND PACK

by RIKKI

Illustrated by Jennetta Vise



AUGUST has really been a month without the Pack, except for one outing. We have a break of four weeks as the children and we are away on holiday, although I know two Packs which meet throughout the month as there is a need and demand for meetings in their areas.

While on holiday we spent several days by the sea, and walking along the beach I found myself picking up shells for the Brownies. Many of the gift shops had shell novelties for sale, which gave me ideas for the Pack. Once I returned home I tried them out. Small jars or plastic containers can be covered with shells, using a plastic cement, to make vases or plant pots if the plastic containers have a hole pierced in the base using a heated four inch nail held with pliers. Shell boxes can be made in a similar way using suitable small cardboard cartons such as chocolate boxes, and sticking the shells on with a strong glue. I also tried the pictures illustrated in *THE BROWNIE* magazine, 7th July, using brightly coloured paper stuck on to the card, which set the shell pictures off very well. A few days later I saw shell pictures on sale in our local florists, and they had used twigs for the stems of the shell flowers. Round pictures can be made, using the tops of plastic containers. Two holes are pierced in the lid, wool threaded through for hanging it, and then it is filled with plastic cement, which is the base on to which the shells are placed. When I had finished my picture and went to hang it up I discovered my picture was upside down. Just as well I had tried out the ideas first—better one mistake than twenty-four! I can see that we are going to enjoy using our shells in September; I hope the Brownies remember to bring some back with them.

I had a spare hour one day as I had a dental appointment, so instead of rushing into the library and out again, I had time to browse, both in the adult section, and the children's corner. In future I shall be borrowing reference books, especially for identification of plants and trees. There were also many interesting handcraft books with quite simple things in them to make. I came away with one on Christmas decorations, rather a long time in advance I know, but often when it gets to December I cannot find things to do with the Pack. I have started a handcraft notebook to put down some of these ideas for future reference in case the book is not available when I next need it. I also looked through the story books and found one on folk stories from different parts of the world, one or two of which I particularly enjoyed.

I have never had the courage to tell the Pack a story, having always read it, but having looked at the Hints on page 116 of the *Brownie Guiders' Handbook*, I have decided to have a go at it next month. I was walking down the road thinking of one story, telling it to myself and just never saw or heard a friend until I had almost passed her! What she must have thought of me I do not know. At least I was not saying it out loud—I keep that for when I am having a bath and the water can drown my voice.

Some of the Brownies were free to accept the invitation for the Pack to visit the Guides while they were in camp. As they were only camping on a farm fifteen miles away, we went for the whole day, arriving in time for elevenses, and morning prayers, taken by the Patrols. The excited Brownies, wearing borrowed Pack Holiday uniforms, were quickly adopted by the four

THE GUIDER

Mainly for Commissioners

HELP !

This letter is a reply from Marjorie McMillan to a Guider who has problems with the programme. It does not aim at solving them but tells of an idea for helping Districts to solve their own difficulties—the Study Group Scheme.

3 Glenside Drive,
Ballygoodwill.

Dear Katie,

Need I make apologies and excuses for my poor correspondence? You know me well enough to know how I fill my days up.

I noted in your last letter that you were having troubles over awarding the Eight Point Badge in your Guide Unit. Poor you, I'm sure they are only teething troubles. You know you have only been with the Unit for six months and, really, dear old Mrs. Blue never gave up running her Company on the old Second Class programme.

What a pity you don't have District Study Groups! You may remember how I told you last Autumn that I was undertaking the Leadership of our District Group and how apprehensive I was about it all. We have now had three Study Groups in the District and I have attended a Tutorial Group before each. At each Tutorial we receive copies of the papers we are going to use with our groups. Then we discuss the material on the papers and how we are going to present it to our Groups, with Miss Deery, one of our Trainers. This is a great help.

I have a wonderful group. We meet in our new District Commissioner's drawing room. As she was not in Guiding before she is finding the papers very interesting and she is certainly getting to know her District. My only fear at times is that we may overtake her, because she seems to get involved in everything we are doing. Every Company in the District has a representative in the Study Group and sometimes we have two Guiders from some Units.

Our first paper was on the Pre-Promise challenge. Miss Brimelow, who wrote the Papers, had given us a sample Pre-Promise Challenge for a girl called Tessa to discuss. Tessa and her wonderful Patrol Leader quite put us to shame. We found in our Group that we all had problems over the Pre-Promise Challenge—some were mutual such as a lack of time to give each Guide the individual attention she needs and to train

(Continued overleaf)

Guide Patrols who proceeded to take them on a tour of inspection. They then helped the Guides with the rope ladders and bridges, learning the various knots, round turn and two half hitches, sheetbend, and double overhand, and what is more they knew why they were using those knots. Lunch was followed by rest hour, and then a Wide Game, when the Patrols following clues were all trying to find the 'stolen goods' hidden on the farm. When the 'stolen goods' were found to be sweets, they were appreciated by all. After supper the Guides had a campfire earlier than usual so that the Brownies could join in before we had to leave. In fact the Patrol Leaders had really planned the day well, so that the Brownies really became part of the camp, and now they are all anxiously waiting for the time when they can be Guides. On the way home I thought the Brownies would be tired, but they chattered all the way, about the gadgets they had seen, the rope bridges, and the food. I thought Wendy looked thoughtful and was unusually quiet; finally she said in a puzzled tone, 'Why was the game we played this afternoon called a "Wild Game", Brown Owl?'

Must begin to think and plan our meetings for the next month. We shall be busy with the shell craft, and the other highlight will be **Brownie Revels**. All the Packs in the District have been invited to a Hobby Horse Gymkhana, so we will be making Hobby Horses one meeting, using either cardboard or stuffed socks as heads on sticks.

When we arrive at the Revels there is to be a parade when rosettes are to be awarded (the Guides have made one for every Brownie). Afterwards each Guider is responsible for a 'Gymkhana Race' all to be held simultaneously—mine is the potato race. Each Pack is to be divided into groups, and two or three groups from different Packs will form a unit for the afternoon, moving round the course from race to race. At the end there will be the finals, and rosettes will again be awarded. Then after tea we will finish with a short sing-song using the one or two Brownie songs printed in THE BROWNIE magazine recently, and ones from the record 'Singing Along with the Girl Guides'.

Looking back, perhaps it has not been a month without the 1st Townend Pack after all—they seem to have kept me busy, though in a different way.

Training

Help!—continued

our Patrol Leaders. Some Units had their own peculiar problems. Our newest Unit have difficulty because they have no experienced Patrol Leaders, as they have just been in the Company about the same length of time as the other Guides and they are all very young.

The second paper was on Programme Ideas from the Handbook. Here we had suggested pages from The Guide Handbook from which to work out programmes for Guide meetings. Our first study group lasted about three hours and everyone arrived at the second saying that they would have to hurry home for this or that. A couple of married Guiders reluctantly left us early to attend to family duties, declaring that they never knew there was so much in The Guide Handbook before. Young Janet, who had a date the following evening, kept telling us that she would have to go home and wash her hair—but she left around midnight still bewailing her hair.

You would have found the third paper most helpful as it was on the awarding of the Eight Point Badge. I think it was during this session that our group showed how, during the three months we had been meeting together, we had grown into a family. We confessed freely to our lack of Programme planning and record keeping and training our Patrol Leaders. We saw each other's problems and were anxious to help each other. Indeed at the end there was eager anticipation expressed by all for our beginning again in the Autumn. One young Guider said that even if we did nothing else, it was just great to be able to get together once a month. This has been such a success in our area I am sure it won't be long until it spreads to all Districts, then I'll be interested to hear all your views.

I hope your camp goes well and that you are blessed with good weather.

Yours

Muff.

Muff's faith is justified as this experimental training scheme is now to be extended so that it can be available to most Districts.

All Countries and Regions are making their plans for the Autumn and Spring so that Trainers can start Tutorials for those District Commissioners or Assistants who would welcome help with their job of giving support to their Brownie, Guide and Ranger Guiders. If you are one such District Commissioner or Assistant—HELP is coming! You will hear all about it as soon as your County is ready to start. Then no one will be able to write to one of your Guiders saying 'What a pity you don't have District Study Groups.'

REMEMBER THE NAME—DISTRICT STUDY GROUPS—COMING SOON. DON'T MISS YOUR OPPORTUNITY!

M. E. BRIMELOW

Ready to Make her Promise—The Ranger

(Continued from page 337)

direction. Such subjects just happen, usually, and we find we're in the middle of something deep without realising it.

Not all of us are members of a church though some of us are, and a couple teach in Sunday School, but we try to be honest with ourselves and we are all searching out a faith to live by. As a missionary-Guider from Africa told us on Thinking Day, God says 'You shall search for me and you will find me, if you seek me with your heart.' The Guiders (and Commissioner too) sometimes get put in the hot seat when we quiz them on matters of faith, and why don't humans live up to their profession. It seems that those of us who have come up through Brownies and Guides, and/or who have parents with a definite faith, have perhaps had it too easy. When we become Rangers we need to consider hard. What do we as individuals, really believe? Why? How does what we believe affect what we do? Can we stand our ground against teasing or even rejection by other people because of our beliefs? Could we keep any of those guiding standards of the Laws, not in the relatively easy situations of home and school, but at work, in an office, shop, factory? What is this Ranger commitment to serve our fellow men going to involve?

Last year, our Unit knitted and crocheted tiny garments for the local unmarried mothers' shelter, and we discovered one thing in doing it and talking about it, i.e. what a tremendous help it is to be able to face some of life's good and bad times, its happinesses and its difficulties together. The Ranger group has a sense of firm basis, and an atmosphere of helping each other. That means a lot.

Yes, Susan is getting ready to make her Promise. As she wants to work in a hospital eventually, we're thinking of having the Investiture on 18th October—St. Luke's Day—and we expect that she will have ideas about the setting of the ceremony. Each one seems different—see Chapter 4 in the Handbook. We'll go on helping her to think out the implications and we know that her thoughts will help us. After the Investiture we'll have another Ranger to support, and to join in supporting each of us, in learning to serve God and other people—a serious purpose, but in our Unit, often a gay procedure.

8-page pull-out

HERE AT C.H.Q.

May I say 'Hello' to all of you in my first article for THE GUIDER? I am Mrs. Lysia Whiteaker and I have now assumed the position of General Secretary at C.H.Q. vice Miss Thöra McCarthy, whom I know you will all miss after her splendid years of service.

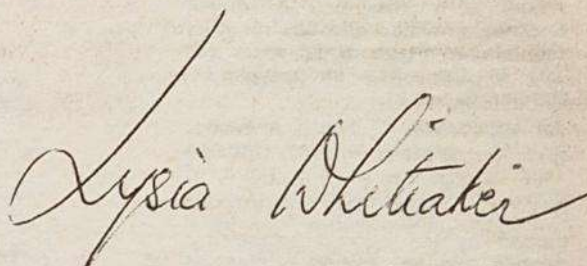
When I arrived on 14th June I was thrown headlong into the preparations for the A.G.M., the Finance Committee Meeting, the Executive Meeting, preparation of papers for next year's World Conference to be held in Canada and, as a delightful and less formal introduction, the opening of Beaverbrook Lodge at Foxlease on 19th June.

You may imagine that I have been living with—and in—papers for the past few weeks as there are so many and varied activities which are carried out at C.H.Q. for Countries and Regions, the Commonwealth and the World, and in relationship to other associations.

In the course of these few weeks I have attended various committee meetings at C.H.Q., have met informally with the Scouts and have attended a most interesting meeting of S.C.N.V.Y.O.

The help I have received from Miss McCarthy, her deputy, our advisers and heads of departments and their staff, and the kind welcome from Country and Regional Commissioners makes my introduction to C.H.Q. much easier.

I hope I may continue to serve you as well as Miss McCarthy and all our General Secretaries have served you in the past.



General Secretary.

hqn headquarters' notices

APPOINTMENTS AND RESIGNATIONS

NORTH EAST ENGLAND

Arts Adviser, Miss N. Buckley.

MIDLANDS

Camp Adviser, Miss A. L. Butler.

Chairman, Arts Committee, Mrs. O. A. L. Mills.

LONDON and SOUTH EAST ENGLAND

Air Activities Adviser, Squadron Leader Joan Hopkins.
General Secretary Designate, Mrs. J. McPhee. (Vice Miss Lilian Jones, resigned.)

C.H.Q. AWARDS

Silver Fish

Mrs. R. G. Cameron—Western Australia, Lately Assistant State Commissioner.

GOOD SERVICE

Laurel Award

Mrs. T. W. Macdonald, County Commissioner for Greater London with Surrey, North.
Mrs. W. H. Parfitt, Assistant County Secretary (Finance) for Greater London with Surrey, North.

MERITORIOUS CONDUCT

Star of Merit

Gillian Holland, Brownie Sixer, 65th Oldham (St. Stephen's) Company, Lancashire, South East.

Gillian has shown great courage and cheerfulness coping with her ill-health and during her recent stay in hospital, in which she has undergone surgery and several painful and tedious procedures, she never made a fuss and the medical and nursing staff were most impressed by her bravery. Gillian is a very keen Brownie, cheerful and helpful, and a good Sixer and at one time even attended meetings with her leg in a plaster cast, when she had a broken leg.

Lorna Jones, Ranger Guide, Devizes District R.G.S.U., Wiltshire.

We are sad to report that Lorna has died since the Award was presented.

Virginia Mitchell, Patrol Leader, 1st Westborough Company, Surrey, West.

Not only is Virginia a cheerful and helpful member of her Company but, despite her severe handicap and pain, she has endeavoured to participate actively in every challenge and venture. At no time has she ever been heard to complain and her persistent courage and determination

(Continued on page 350)

Where to train



HOW TO APPLY

Any Guider may apply herself to attend a training course at the Centres, provided she has reached the minimum age of 17 years (or 19½ in the case of prospective Ranger Guiders).

An application to attend a Guider training course at any Guide Training Centre should be sent direct to the appropriate Guider-in-Charge, and must be accompanied by the correct amount of deposit and a stamped addressed envelope. Applicants should also state the type of training for which they are attending, as there may be several different courses running at any one weekend. As so many Guiders have to leave on Sunday, training sessions at a two-day weekend will stop at tea-time on that day unless otherwise stated. If sufficient notice is given that it is wanted, every effort will be made to provide sessions for a group until Monday. Individuals who are able to stay over until Monday to enjoy the surrounding country and other amenities of the Centres are most welcome to do so.

Telephone calls are accepted only between the hours of 8 a.m. and 8 p.m. at Foxlease (Lyndhurst) 042-128 2638, and at Waddow (Clitheroe) 02-002 3186, except in emergencies.

FOXLEASE

Lyndhurst, Hants, SO4 7DG.

SEPTEMBER

- 3-5 Airing and Sharing (Trainers. All categories)
- 10-12 Anglia
- 17-19 Sussex East
- 24-26 General Training, Guider and Guide Guiders

OCTOBER

- 1-3 General Training, Brownie and Guide Guiders

Commonwealth Headquarters

- 8-10 1. Ranger Guiders (Emphasis on Programme Planning)
- 2. Brownie and Guide Guiders (General Training)

15-17 Dorset

22-24 S.W. England (District Commissioners)

29-31 General Training, Brownie and Guide Guiders

NOVEMBER

- 5-7 1. District Commissioners
- 2. Division Commissioners
- 12-14 London and S.E. England
- 19-21 Kent West
- 26-28 General Training, Brownie and Guide Guiders

DECEMBER

- 3-5 Camp-Fire
- 29-2 JANUARY. New Year Party

JANUARY

- 7-9 1. General Training, Brownie and Guide Guiders
- 2. Anglia (Campfire Leaders)

14-16 District and Division Commissioners (by allocation)

21-23 Wiltshire

- 28-30 1. Ranger Guiders
- 2. Guitar Playing (for complete beginners)

FEBRUARY

- 4-6 Greater London with Surrey North
- 11-13 General Training, Brownie and Guide Guiders
- 18-20 1775 And All That (for Guiders and Rangers of 17 and over with an interest in the Antiques and Architecture of the time)

MARCH

- 3-5 South West England
- 10-12 General Training Brownie Guide and Ranger Guiders (places for Guiders working with Extension Groups)

17-19 Making the Most of The Programme (District Commissioners / Assistants with up to 6 other Guiders)

24-26 General Training, Brownie and Guide Guiders

30-3 APRIL (Easter) Out and About (A weekend of outdoor activities for all Guiders and Ranger helpers of 17 and over)

WADDOW

Clitheroe, Lancs., BB7 3LD

SEPTEMBER

- 3-5 Further Reflections (by invitation)

- 10-12 1. Ranger Guiders
- 2. Westmorland

17-19 General Training, Brownie and Guide Guiders

24-26 Midlands

OCTOBER

1-3 Durham

8-10 General Training, Brownie and Guide Guiders

15-17 N.W. England

22-24 Nottinghamshire

29-31 General Training, Brownie and Guide Guiders

NOVEMBER

- 5-7 N.W. England (Arts Advisers)

12-14 General Training, Brownie and Guide Guiders. (Places reserved for Guiders working with Extension Groups)

19-21 1. District Commissioners

2. Division Commissioners

26-28 General Training, Brownie and Guide Guiders

DECEMBER

3-5 Yorkshire Central Scouters

30-3 JANUARY New Year Training (Brownie and Guide Guiders)

JANUARY

- 7-9 Ranger Guiders
14-16 Making the Most of The Programme (District Commissioners / Assistants with up to 6 other Guiders)
21-23 General Training Brownie and Guide Guiders
28-30 N.W. England (Camp Advisers)

FEBRUARY

- 4-6 1. Handcrafts on a Shoe-string
2. Guitar Playing (for complete beginners)
11-13 Manchester Scout/Guide Club
18-20 S.E. Lancashire (Winter Camp Training)
25-27 District and Division Commissioners (by allocation)

MARCH

- 3-5 General Training Brownie and Guide Guiders
10-12 Cheshire Forest
17-19 General Training Brownie and Guide Guiders
24-26 Teesside
30-3 APRIL (Easter) S.E. Lancashire (Pack Holiday Training)

Fees at Foxlease and Waddow

| | |
|-------------------------|------------------------------------|
| Shared room per day | £1.35 |
| Minimum fee for weekend | £2.70 |
| per week | £8.00 |
| Double room per day | £1.70 |
| Minimum fee for weekend | £3.40 |
| per week | £10.20 |
| Single room per day | £2.00 |
| Minimum fee for weekend | £4.00 |
| per week | £12.00 |
| Deposit | £1.00 cheque or postal order only. |

Scotland

NETHERURD HOUSE
Blyth Bridge, West Linton,
Peeblesshire
SEPTEMBER

- 3-5 SCPR Keep Fit Group
10-12 Folk Fest
17-19 Brownie and Guide Guiders
24-26 Brownie and Guide Guiders (places reserved for Stirlingshire)

OCTOBER

- 1-3 Rangers
8-10 Brownie and Guide Guiders (Places reserved for Dundee)
15-17 Brownie and Guide Guiders
22-24 Brownie and Guide Guiders



Foxlease

Fees at Netherurd

| | |
|---------------------|-------|
| Shared room per day | £1.15 |
| Double room per day | £1.25 |
| Single room per day | £1.35 |
| Deposit | 50p |

Wales

BRONEIRION
Llandinam, Mon. SY17 5DE
SEPTEMBER

- 3-5 Outdoor Pursuits, Ranger Guiders and Camp Advisers. (Expeditions and lightweight camping.)
24-26 General Training (Places reserved for Herefordshire)

OCTOBER

- 1-3 Preparation for Christmas (Drama)
8-10 Training Conference—Commissioners (all levels) and District Assistants
15-17 Camp Advisers (by invitation)
22-24 New to the Job—(Guiders and Commissioners)
29-31 International Selection Weekend

NOVEMBER

- 5-7 General Training, Brownie and Guide Guiders
26-28 University Scout and Guide Clubs
12-14 Welsh Association of Youth Clubs
19-21 Training towards Pack Holiday Permit and Campers' Licence

DECEMBER

- 3-5 Music for Christmas (Guitar, carol singing, bell ringing)

MARCH

- 10-12 Ranger Guiders
17-19 —
24-26 Approaches to Worship

- 30-4 APRIL (Easter) Patrol Leaders (not more than two per Unit—open to all Counties)

*Patrol Leader Training

Applications from Counties other than those stated will be received and put on a waiting list.

Fees at Broneirion

| | |
|---------------------|-------|
| Shared room per day | £1.15 |
| Double room per day | £1.25 |
| Single room per day | £1.40 |
| Deposit | 50p |

Ulster

LORNE
Craigavad, Co. Down, Ulster
OCTOBER

- 2 Trainers' day
15-17 The Patrol and the Programme (for Guiders in Belfast County)
22-24 South East Belfast Division
29-31 Brownie Guiders. General Training

NOVEMBER

- 5-7 County Tyrone
12-14 Guidelines for Guide Guiders (for Guiders who are new to the job or have not attended a week-end training)
19-21 East Belfast Division
26-28 Guidelines for Brownie Guiders (see note for 12-14 November)

DECEMBER

- 3-5 Arts Week-end (for all Guiders to enjoy, to learn skills and get ideas to take back to their units)

Fees at Lorne

£2 for the full weekend. A reduction will be made for a shorter stay.

Deposit £1

(Continued overleaf)

THE GUIDER

(Continued from previous page)

Bursary Help

GUIDERS attending Guider training courses at Foxlease, Waddow, Netherurd, Broneirion and Lorne are eligible to apply for Training Bursaries. A Guider may receive only one such bursary, except in special cases when the Commissioner may recommend a subsequent award, e.g.: where a Guider changes her Section or becomes a Commissioner, etc.

Fee Bursary: This entitles a Guider to a reduction of half the fee for a shared room. She may request to be in a single or double room but will have to pay the extra charge above that allowed by the bursary.

Travel Bursary: This entitles a Guider to a grant covering travelling expenses in excess of £1.50 and is available only for the nearest Training Centre. A travel bursary in addition to a fee bursary is allowed only in cases of special need and a detailed recommendation from the Commissioner is

required. Payment of this grant is made at the Training Centre on production of the bursary form.

Angela Thompson Bursaries: These are available for any Promise and Law training course (not necessarily held at a C.H.Q. Training Centre) and have the same value as a fee bursary.

Application for Training Bursaries: Must be made through the District Commissioner who applies direct to the Secretary, C.H.Q. Training Department, stating the name of the Guider concerned and the date and place of the training course. At least a fortnight's notice must be given. Bursaries cannot be issued in retrospect. Not more than one third of the places at any one weekend can be covered by bursary grants and Commissioners are asked to indicate priorities if applying for a number of bursaries. A number of L.E.As. give generous help towards Guider training courses and a request for such assistance should be made direct to the local authority concerned.

Camping Holidays and Pack Holidays

Beaverbrook Lodge

Bookings for Beaverbrook Lodge for the period 1st January 1972 to 30th September 1972 will be accepted from 1st August, 1971. Applications should be sent to the Secretary Foxlease, Lyndhurst, Hants. SO4 7DG, together with an initial deposit of £1 (which is forfeit if the booking is cancelled). A stamped addressed foolscap envelope should be enclosed. It is anticipated that bookings will be heavy so, please, give alternative dates. Priority will be given to applicants who have not already stayed in Beaverbrook Lodge. Applications for the period 1st October, 1971 to 31st March, 1972 will be accepted from 1st April, 1972, and should not be sent before that date.

Headquarters' Notices—continued from page 347

have been a great example of the Guiding spirit to everyone. Both Guides and Guiders feel it is a privilege to have known and worked with Virginia.

Valerie Self, Brownie Sixer, 39th Brighton (St. Wilfred's) Pack, Sussex, East.

In spite of that fact that Valerie has never been completely free from pain or discomfort, she has never cried or even seemed depressed. On the contrary, she always has a ready smile and, as far as her disability allows, joins in all forms of school and Brownie activity. Her quiet courage and fortitude is greatly admired and also her determination. As a Brownie, Valerie helps her Six in many ways and went on Pack Holiday last year. She is considered an example to her Pack and a credit to the Movement.

Trudie Warren, Patrol Second, 1st Lake Company, Isle of Wight.

Following an accident with a bus, Trudie had to have both her legs amputated below the knee. While in hospital she showed an excellent Guide spirit and never once complained. As soon as she returned home she went back to Company meetings and entered into every part of the programme, except very lively games, even attending Fire Precaution training at the local Fire Station; she was one of a team of four entered for the Area Youth Contest. Trudie faces the future squarely with joy and determination and a great measure of independence.

Certificate of Merit

Pat Conway, Guide, 6th Slough (Methodist) Company, Buckinghamshire.

Wendy Rowsell, Brownie Guide, 1st Walcot (St. Andrew's) Pack, Wiltshire.

C.H.Q. RANGER WEEKEND

We still have a few places left for the C.H.Q. Ranger Weekend on 2/3 October, 1971. For an application form

write to: Miss B. Baker, Deputy Training Secretary, The Girl Guides Association, 17-19 Buckingham Palace Road, London SW1W 0PT. (For details see August GUIDER.)

THE CATHOLIC GUIDE GUILD, ARCHDIOCESE OF WESTMINSTER

The Meeting of the above Guild will be held on Saturday, 2nd October, at St. Vincent's Convent, Carlisle Place, SW1 from 3-6 p.m. All Guiders welcome.

COMMON GROUND IN CHRISTIAN EDUCATION

The Methodist Youth Department is organising a study conference to look at the purpose of Christian Education in the Uniformed Organisations. A limited number of places are available to any Methodist Guiders who wish to attend. The conference will be held at Cliff College, Calver, near Sheffield, from 18th-20th February, 1972, and the cost will be £4.25. A special application form is available from The Methodist Youth Department, 2 Chester House, Pages Lane, Muswell Hill, London, N10 1PZ. The last date for applications is 31st December, 1971. Those who are accepted will be notified by 24th January, 1972.

THE SCOUT AND GUIDE TRUST FUND

The value of a Share Unit in the above Common Investment Fund as at 30th July, 1971, was 33.45p-35.21p.

Income was distributed for the last half-year at the rate of £0.0072 per share.

ORDERING OF PENNANTS AND FLAGS

At the end of August the CHQ Registration Department will be dispersed to the various Regional Headquarters. No pennants or flags can therefore be checked at CHQ and in future this will be done by the various Regional Headquarters.

- (1) In future all orders for pennants or flags from traders or individual customers should be addressed to their Regional Headquarters. See list below.
- (2) When placing the order the customer should send it in the normal manner, together with the cash, to her Regional Headquarter. (Money orders or cheques should be made payable to The Girl Guides Association.)
- (3) Regional Headquarters registration section will then check the wording, after which they will pass it, together with the cash, to **Guidemail**, CHQ, for ordering. Please note if you are ordering a number of items, send your order to **Guidemail**, CHQ, but the order for a pennant or flag should be written out separately and sent to the Regional Headquarters with the cheque.

North West Region

Miss Doris Plummer,
Regional General Secretary,
The Girl Guides Association,
1 Ribblesdale Place,
Preston, Lancs.

North East Region

Miss Letty Hanson,
Regional General Secretary,
The Girl Guides Association,
106 Heworth Green,
York.

Midlands Region

Miss Eileen Cramp,
Regional General Secretary,
The Girl Guides Association,
102 Market Street,
Ashby-de-la-Zouch.

Anglia Region

Mrs. H. E. Weston,
Regional General Secretary,
The Girl Guides Association,
Perne Road,
Cambridge.

South West Region

Mrs. E. M. Day,
Regional General Secretary,
The Girl Guides Association,
20/22 Minster Street,
Salisbury.

London & South East Region

Regional General Secretary,
The Girl Guides Association,
29 Wellesley Road,
Croydon.

Wales

Miss Joan Rogers,
Regional General Secretary,
The Girl Guides Association,
Victoria House,
1a Clare Road,
Cardiff, CF1 8RA.

Scotland

Miss A. K. James,
Regional General Secretary,
The Girl Guides Association,
16 Coates Crescent,
Edinburgh,
EH3 74H.

Ulster

Miss M. Smyth,
Regional General Secretary,
The Girl Guides Association,
16 College Square North,
Belfast, BT1 6AT.

CAMPING EQUIPMENT

Owing to circumstances beyond our control we have, in many cases, been unable to supply orders for camping equipment. Unfortunately our main supplier was involved in a take-over and re-organisation and in consequence could not fulfil our orders.

We regret any inconvenience or disappointment which may have been caused and have made plans accordingly for next season to avoid a recurrence of such a situation.

SCOUTER/GUIDER RETREAT 22nd-24th October

Owing to unforeseen circumstances this Retreat has had to be cancelled, but anyone who so wishes is invited to join a Retreat being held the previous weekend at Dartmouth House. The Conductor will be the Rev. Canon Gordon Davies, Canon Missioner for South-wark Diocese, and a good friend of Scouting and Guiding. All details from: Miss M. J. Furze, The Gables, 11 Wantage Road, Lee, SE12 8NA.

ASSOCIATION OF METHODIST SCOUTERS AND GUIDERS

The annual gathering will be held 15th-17th October, 1971, at Gilwell Park, Chingford, E4. The theme is Christian Leadership and booking forms can be obtained from Mr. A. Gardener, Methodist Youth Department, 2 Pages Lane, Muswell Hill, N10 1PZ.

MOVIEMAKING AT GILWELL

Films for publicity and entertainment purposes are costly when produced professionally. There is no reason why an amateur-made film should not help to put local Scouting and Guiding on the map.

Anyone with an interest in this subject should not miss the chance to do just that—by attending the Scout and Guide Training at Gilwell 29/31 October (see August GUIDER for details) or write to The Scout Association, Publicity Department, 25 Buckingham Palace Road, London SW1W 0PY.

(Continued overleaf)

MIXED ACTIVITIES—TRAINING OPPORTUNITIES AT GILWELL PARK

2nd/8th October—For Ranger Guiders and Venture Scout Leaders

We realise that not many people are free for nearly a week in October but some Ranger Guiders may feel that it is worth attending for a weekend or a long weekend in order to get help and information on mixed activities and to discuss with others their experiences, problems and successes in this field. Trainers from both Associations are helping to plan this event, which is one of particular relevance at this time in our joint histories.

* * *

17th/19th December—For Adult Leaders of Mixed Units

There is to be a Training/Conference for Adult Leaders of Mixed Units at Gilwell over the weekend of 17th/19th December, 1971. The purpose of this is to exchange experiences, to iron out problems and to discuss possible future plans. The weekend is to be organised jointly by a training team representative of both Associations.

Guiders who are helping to run a Mixed Unit and who would be interested to attend this Conference should send their enquiries in the first instance to the Training Secretary at C.H.Q.

SCOUT AND GUIDE CLUBS IN UNIVERSITIES AND COLLEGES

Will Guiders please note that a list of secretaries of University Scout and Guide Clubs is published in the September issue of THE RANGER. This list is especially helpful to Ranger Guiders who will be leaving the Unit to attend College or University.

It is hoped that Commissioners will maintain regular contact with these Clubs.

ALCOHOLIC DRINKS AT SCOUT AND GUIDE EVENTS

Concern has been expressed from time to time that alcoholic drink has been available at certain joint Scout and Guide events where a high proportion of delegates are under age. The Scout and Guide Policy Co-ordinating Committee discussed this at a meeting and agreed that it was the duty of both Associations to set high standards and that organisers of such events should be aware of the trust placed in them by parents. It was therefore agreed that alcoholic drinks should not be permitted at joint activities where there are any participants known to be under age.

However, since then it has been realised that this decision is neither practical nor desirable. The Committee of the Council of The Scout Association, and the Executive Committee of The Girl Guides Association has therefore agreed to offer the following guidance to both Movements:

'All Leaders whether involved with mixed events or not, should be aware of the current licensing laws concerning young people and encourage our members to conform to them responsibly. If any alcoholic drink is being provided for social and similar events then adequate alternative refreshments should be available for those who prefer not to drink alcohol or are under age.'

COMMONWEALTH CIRCLE

The Commonwealth Circle will meet for a Wine and Cheese party on Thursday, 23rd September, 1971, at 6.30 p.m.

The recent purchase tax cuts announced by Mr. Barber, Chancellor of the Exchequer, have been passed on to the Movement.

Prices on items of uniform have been reduced as can be seen from the list below.

| CODE | OLD SELLING PRICE | NEW REDUCED SELLING PRICE |
|--------|--|---------------------------|
| 8000 | Brownie Belts | 40p |
| 8036 | Brownie Knitted Caps | 56p |
| 8019 | Brownie Berets | 32p |
| | Note: Brownie dresses all tax free | |
| 8820 | Guide Overblouses— | |
| | Size 4—no tax | £1.87½ |
| | Size 6 & 8—no tax | £1.90 |
| | Size 9, 10, 12 | £2.12½ |
| | Size 14 & 16 | £2.25 |
| 8440 | Guide Caps | 52½p |
| 8548 | Track Suits | £6.75 |
| 8408 | Guide Belts | 63p |
| 8713 | Ranger Aquamarine Blouses | £2.00 |
| 8743-6 | Ranger Caps | 82½p |
| 8905 | Uniform suit (complete) in Trevira/Sarille | 81p |
| 8904 | Trevira/Sarille skirts | All sizes less 12p |
| 8706 | Guiders blue/white blouses | All sizes less 5p |
| 7540 | Shoulder Bags | £1.97 |
| 6120 | Powder Compacts | £1.39 |
| | | £1.80 |

OUR CHALET 3715 ADELBODEN SWITZERLAND

(telephone 033 73 12 26)

Winter Season 1971-1972
January 16th-January 29th
February 27th-March 5th

Easter

Summer Season 1972

1. May 19th-June 1st
2. June 4th-June 15th
3. June 18th-June 29th
4. July 2nd-July 13th
5. July 17th-July 31st

Sunday, July 30th: 40th Anniversary

6. July 29th-August 3rd
7. August 6th-August 17th
8. August 20th-August 31st
9. September 3rd-September 14th
10. September 17th-September 28th

December 22nd-March 5th

Headquarters' Parties
Friends of Our Chalet

March 26th-April 9th

Whitsun
Friends of Our Chalet and Trefoil Guilds
Walking Week
Walking Week
Drama and Song Session (by selection only)

Open House for Celebrations of 40th Anniversary
Walking Week

Applications should be made to the Guider-in-Charge. For the winter season applications will be considered from 1st August, 1971. For the summer season applications will be considered from 1st October, 1971. Preference will be given to applications for a whole period, though they can be made for part of a period, but not between one period and the next.

Summer periods 3, 4, 7, 8, are only open to active members of Girl Guide and Girl Scout Associations. The winter season from January 10th to March 5th and the summer season periods 1, 2, 9, 10, are open to all members of National Associations past and present.

All sessions, with the exception of the Drama and Song session, are open for application by groups or individuals. Walking Weeks, Friends of Our Chalet and Trefoil Guilds will only take part of the accommodation available.

Further information is available from Country/Regional Headquarters.

C.H.Q.

STAFF VACANCIES

Senior P/A Secretary to our Director of Trading. An excellent position for a lady with initiative who has experience and who likes responsibility. Good shorthand and typing speeds.

Age: It is unlikely that anyone less than 25 would have the necessary experience.

Well spoken girl (could be school-leaver) needed to train for switchboard in our **Services Department**. Must be able to type and be willing to learn duplicating, post and general office duties.
Age: 15-17.

A good **General Clerk** for our Equipment Department. No typing needed. Someone interested in simple figure work dealing mainly with collating details for our machine operator.
Age: immaterial, up to 50.

Mail Order Export Invoice Typist with experience needed. Good knowledge of English and ability to compose own letters to countries all over the world.
Age: mid-20's.

Guider-In-Charge,

Olave House

Applications are invited for the post of Guider-in-Charge at Olave House, London, to be appointed on 1st February, 1972.

The successful applicant will have an ability to communicate with young people, some experience of leadership in the Movement, knowledge of hostel, hotel or large household management including training of staff, general knowledge of finance and office management, and preferably another language besides English.

The commencing salary is £1,200 (£750 + £450 board and lodging) reviewed annually, plus uniform allowance, and one month's holiday per annum. Bedroom, sitting room and bathroom are provided. The new Guider-in-Charge will have the opportunity of attending next year's World Conference in Canada with all expenses paid.

Those interested should write for an application form to Miss Elisabeth Brodrick, Chairman, Olave House Committee, 89 Chatsworth Court, Pembroke Road, London W8 (not to Olave House). Closing date for applications is 30th November, 1971.

Classified Advertisements

The Girl Guides Association takes no responsibility for statements made in any advertisement here or elsewhere in the magazine, or for any subsequent correspondence in connection therewith. The right is also reserved to refuse any advertisement not considered suitable. Advertisements for the sale of second-hand clothing (except uniforms) cannot be accepted. (Uniforms for sale should not be sent to C.H.Q. Advertisers receive communications from applicants.) All advertisements must be received not later than the 1st of the month for the following month's issue. Please note charges: 5p per word (for members advertising uniform, camp-sites, coming events, 3p a word). Box No. 13p. Please send money with advertisements; 10% discount for series of 12. To reply to a Box No., address your envelope to: box number concerned, c/o THE GUIDER, The Girl Guides Association, 17/19 Buckingham Palace Road, London, SW1W 0PT. Please make sure the address is as far to the right of the envelope as possible in order for us to re-direct your enquiry.

ACCOMMODATION

Olave House, (Our Ark) 45 Longridge Road, London, S.W.5. Telephone 01-370 2574.

2 Holiday Flats at Broneirion. Each fully equipped for 3-4 people. Electric storage heaters. Dogs not admitted. All details from Sec., Broneirion, Llandinam, Mont., Wales.

EMPLOYMENT OFFERED

Foxlease needs Junior House Assistants. If any of your older Guides or Rangers enjoy meeting people and would like to spend six months or longer working in a Guide Training Centre, please apply to the Guider-in-Charge, Foxlease.

WHAT ME?

a Church Army Sister? What could I do? You could be an Officer serving God and His Church in the Mission, Parish, Social, Youth or Forces departments of the Church Army.

Why not test your vocation with the Church Army?

Write for details of training to:—

Sister A. Baggott, C.A., The Church Army, 185 Marylebone Road, London N.W.1.

Love babies, animals, country, cooking, general house-craft? Want plenty of free evenings? Happy, warm modernised farmhouse. Ex-Ranger Guider welcomes mother's help, 6-12 months. Mod. cons., excellent 'daily', own farmland. Mrs. Clay, St. Hilary, Cowbridge, Glamorgan.

FOR SALE AND FUND RAISING

Organisers of Fetes and Funds. We welcome both personal buyers and mail orders for our extensive range of toys and stationery at wholesale prices, send for price lists. Also pre-selected parcels:—144 2½p Toys, or 72 5p Toys, or 38 10p Toys, or Selection Stationery or Christmas cards. Each parcel £2.70 plus 27p postage. Two or more parcels 35p postage. J. E. Thomas & Son (Cuffley) Ltd., 2A Handsworth Road, London N17 6DD. Tel: 01-808 6948.

An offer to Guiders in S.E. England for up to 20% discount on all makes of furniture and carpets has been made by a leading firm of furnisiers. For details telephone Farnborough (Kent) 57401 or 54043.

Advertising Pencils, superb Ball Pens, combs, brushes, etc., gold-stamped Company name, raise funds quickly, easily. Bran Tub Toys. Details: Northern Novelties, Bradford 2.

Guaranteed attractive British ball pens: Imprinted with 20 letters advert: £1.87½ gross, postage 20p. Imprinted with 30 letters advert: £1.95 gross, postage 20p. Pencils HB Imprinted with 30 letters: £1.92½ gross, postage 15p. Retractable ball pens imprinted with 22 letters: £5.00 gross, postage 24p. Retractable 'Trefoil' ball pens: 6 dozen £2.75, postage 20p; 3 dozen £1.50, postage 15p. Printed plastic Pennants from 75p dozen. Printed Comb/cases, Badges, Balloons, Rainhood/cases. Send 13p samples or call. Pioneer Pencil Company, 3 Tithebarn Street, Liverpool, L2. Tel: 051-236 8166.

Dolls for dressing—all sizes, balloons, fancy hats, bran tub toys, larger toys etc. Send large s.a.e. for wholesale lists to D. Glover Ltd., Dept. G.D17, 203 Scholes Lane, Cleckheaton, Tel. 3450.

£1.95 per gross—Printed Ball Point Pens, 144 full-length Conway Stewart Ball Pens die-stamped with your Company or Charity for only £1.95. 144 Printed Conway Stewart Pencils £2.10. Please print your slogan (maximum 30 letters) and add 24p standard carriage. J. E. Thomas & Son (Cuffley) Ltd., 2A Handsworth Road, London N17 6DD.

'Fund Raising'

can we help you!!

Fantastic Profits
Competitive Prices

Efficient & Speedy Service

Plus the best in Quality Goods

Seven types of ball pens—Fibre

pens—Pencils—Combs

all can be die-stamped with your

Company name etc.

Samples and details

write to:

Every item we supply

—IS FULLY GUARANTEED



THOMPSON & CREIGHTON

202 HEATON ROAD,

NEWCASTLE-ON-TYNE NE6 5JJ

THE LARGEST WHOLESALERS OF BALL
PENS IN THE UNITED KINGDOM

Abbey Stamps—attractive 'Superstamps' free. Send 3p (postage) and request approvals, stating interests. Abbey Stamps (G), 15 Gordonbrae, Mansfield, Notts.

Sale or Return: Double your money—Costume Jewellery parcels sent post free without obligation. Ideal fund raisers. Details from: E. & M. Davies Ltd., 356 Uxbridge Road, London W12 7LL.

Easier fund raising and bigger profits. Free Christmas card and stationery catalogues. Free extended credit facilities, 25% discounts, plus sales bonus and approval parcel service. Details from: Talisman Greetings Ltd., P.O. Box 37, The Old School, Marlton, Paignton, Devon.

Camp-Fire Blanket Badges, County, Camp-site and District Badges, pennants, bannerettes, car stickers and new patented wall shields (minimum order 50 from 38p each). Please send sketch and state quantity required to Russell King, 48 Crofton Lane, Orpington, Kent, or telephone Orpington 29460.

Double your money raising funds for Guides, Brownies, and other organisations. Gold stamped advertising Ballpens/Pencils/Key fobs, etc. Fully guaranteed. Details or 6 samples for 13p from: B. W. Publicity, Dept. 'Q', 98 Market Street, Thornton, Bradford.

FUND RAISING . . . 200% PROFIT ON OUTLAY!
Ball-pens imprinted up to 30 characters on barrel. Blue, black, red or green ink, (retail 4p) £1.55 per gross (min. 3 gross), £1.42½ per gross (6 gross lots).
Retractable ball-pens. Blue ink, up to 24 characters on barrel (retail 5p) £3.30 per gross (1 gross min.).
Carriage paid—C.W.O.—Discounts for larger quantities.
Stamp for cat. of 20 speedy fund raisers and Soft Toys at keenest wholesale prices.
THE PROVINCIAL SUPPLIES CO., 1 Lewins Yard, Chesham, Bucks, Tel: 71401.

Fund Raising Events everywhere buy our Goldfish, with plastic carry home bags, because of the big profits and extremely small cost. Details by return post, Dept. G., Middlesex Goldfisheries, Lampton Road, Hounslow.

Bran Tub Toys, 100% Profit on outlay. Undressed dolls and other Fund Raisers. S.a.e. for details: Nye's Novelities, Dept. G/4, 173 Cambridge Road, Hitchin, Herts.

Your Christmas Bazaar. Fancy aprons, scatter cushion covers supplied 'sale or return'. Write for details: Walter and Fisher, 120 Portland Street, Manchester M. 4PS.

Dark Blue Cotton 36 ins. wide, good strong quality 16 pence yard. Send s.a.e. for cutting to: Hartleys Fabrics, 6 Swadford Street, Skipton, Yorks.

CAMPING AND HOLIDAYS

Felin Bach — Caernarvonshire — County Camp-site. Large camping area and indoor accommodation suitable for Pack Holidays, available all the year round. Snowdonia National Park half-a-mile. Climbing, hill-walking and safe bathing within easy reach. Apply to Miss M. Chambres, Tirionfa, Tanyraillt, Pen-y-groes, Caerns.

UNIFORM

Guider's hat, skirt, jacket, blouse and belt. Almost new. 26 in. waist, 38 in. hips. £5 complete or offers. Box No. 660.

COMING EVENTS

11th Scout and Guide Folk Festival, 23rd Oct. at Amersham, Bucks. For full details and tickets (20p) please send s.a.e. to Brian Sims, 52 Orchard Road, Seer Green, Bucks. Don't delay.

Blaydon Conference has moved to Dipton. Our ninth conference will be held 27th/28th November. For details, please send s.a.e. to: Mrs. I. M. Slater, 113 Bryan's Leap, Burnopfield, Newcastle-upon-Tyne.

The Association of Methodist Scouters and Guiders will hold their Annual Gathering at Gilwell, 15th-17th October, 1971. Cost £4.25. Please apply to Methodist Youth Dept., 2 Chester House, Pages Lane, Muswell Hill, London, N10 1PZ.

10th Bromley Guides celebrate 50th Anniversary, 19th November. Old members/friends please contact us with names of others possibly interested, Box No. 659.

Outlook—the Scout Guide Conference West Glamorgan would like to see you there! Remember the date—25th/26th March, 1972. Watch this page for more information.

Pre-Christmas Pantomime. Southall District Guides and Scouts will present 'Mother Goose' at Greenford County Grammar School, Ruislip Road, Greenford, Middlesex, on 28th, 29th and 30th October. Evening performances at 7.30 p.m. with Saturday matinee at 3 p.m.: Tickets 35p and 25p with a 10p reduction for children under 14 and Scouts and Guides in uniform. All seats reserved. Please telephone 01-574 7806 after 6 p.m.

Leigh's 22nd Rover/Ranger Conference, 9th/10th October, 1971. Enquiries to Miss Susan Smith, Hon. Sec., Fern Bank, Green Lane, Leigh, Lancs. Price £1.75.

BUSES FOR HIRE

12-seater Transit Buses for hire. January-April £20.50; May and October £21; June and September £23; July and August £26 per week. Plus £25 returnable deposit: No mileage charge. Tel: 01-890 9931.

When replying to advertisements please mention
THE GUIDER.

QUALITY FUND RAISING and ADVERTISING PENS

COSMO Retractable UP TO 50 GOLD LETTERS

ONLY £1.98 PER HALF GROSS

For better pens send 3p stamp for catalogue or 3x3p stamps for range of samples including COSMO, SCRIPTO SPRINT, GLOWLIGHT etc.

Lapel Badges Your own design made to order. 2x3p stamps for catalogue and samples.

FROM 1p TO 7½p

WESTFIELD LTD DEPT 23, 135/9, TENNANT STREET, BIRMINGHAM B15 1EZ

TOP QUALITY BALL PENS

Die stamped with 33 Gold Letters and Spaces

£1.75 PER POST PAID
(35/-) GROSS

ORDERS DESPATCHED SAME DAY

Sale or return—full refund on pens returned

Samples free—please try before you buy

ABBAY WHOLESALE
77 LIVERPOOL ROAD, STOKE, ST4 1AE



GUIDE FRIENDSHIP FUND

GOOD NEWS from JAMAICA!

At long last has come the news we have been waiting for—work has actually begun on the building of the Children's Home in Kingston and it is progressing fast. After endless delays and frustrations the contract was finally signed and now all should go forward speedily and in 1972 the new Home will be ready for occupation.

CHICKENS FOR UGANDA!

At Boroboro, a village in Uganda, there is a group of girls, aged 14 to 19, who for various reasons left school early and so have little academic education and little chance of earning a living. Most of them grow a little cotton for the family but do not earn enough to buy themselves a dress. Several schemes were tried without success until the District Veterinary Officer in Lira promised his help in a project for chicken farming. The idea is to raise poultry. This project can go on all the year round; the girls can all be involved in it and earn some money without having to work full-time because they have to cook at home for the family; and there is a demand for large fresh eggs in the area.

To launch this scheme £250 is needed for a deep litter hen house, and £250 to buy the chickens and

feed them for the first six months. After six months, if well fed and cared for, the hens should give a 50 per cent return, i.e. 100 chickens should lay 50 eggs in the first six months, 70 in the next six months.

Many girls are clamouring to join the Group because they realise the great opportunity offered to them, with a training and a promise of a salary according to the amount of work they do and the profits from the scheme.

It does seem a most worthwhile scheme and one which the Guide Friendship Fund might help. If any Brownie, Guide or Ranger Units or Districts would like to be associated with this chicken-project do please write and say so. We would love to send £500 to start the scheme in one area for a group of these African girls and so help them to build up a sound future for themselves, and at the same time provide good food for their families and the villagers.

CARING FOR THE AGED

Each year our Christmas good turn through the Guide Friendship Fund has been to help children in need. This year we want to turn our thoughts and our giving towards helping to make Christmas a happier time for as many elderly people as we possibly can, both overseas in certain countries where so many aged people are destitute, hungry, sick, and here at home where there are those who are lonely or living in squalid surroundings. Next month we will give full details of ways in which we can help, i.e. £5 will provide food for 1 year for 1 old person in Hong Kong, etc., etc.

V.A.

All correspondence and donations should be sent, please, to: The Guide Friendship Fund, The Girl Guides Association, 17/19 Buckingham Palace Road, London SW1W 0PT.

Leaflets, posters, stickers, etc., sent on application free, but please enclose a 3p stamp for postage.

BETTER BRITAIN COMPETITION

This is a competition for young people, organised and sponsored by the Nature Conservancy, the Civic Trust, and Shell. It is a new competition to encourage groups of young people to improve the quality of the environment in which they live.

Its main purpose is to involve young people in the study, care and improvement of land or buildings near their home or school.

The competition is open to any group of young people, aged 10 to 20, in the United Kingdom. Guides are asked to bring the competition to the notice of their Guides or Rangers.

Full details, and an application form can be obtained from: The Nature Conservancy, Attingham Park, Shrewsbury, Salop, SY4 4TW.

The application forms must be signed by the person who will be in charge of the project, on or before 15th October, 1971, and the completed reports by the entrants are required by 31st July, 1972.

In Memoriam

At the time of her death in a road accident, GWYNEDD WRIGHT was Chairman of the Cheltenham Trefoil Guild.

Miss Wright was Commissioner, Trainer and County Ranger Adviser for Gloucestershire, and is also remembered with great affection by the original members of the Sea Ranger crew of *S.R.S. Bellerophon*. Her friends will miss her kindly generosity and absolute loyalty.

E.I.C.

LADY COCHRANE MEMORIAL FUND

Knowing that there are many friends of Lady Cochrane who would wish to subscribe to this fund, a small committee has been formed of which Enid, Lady Burnham is Chairman.

It is hoped to start a fund to further the interests of the Guide Movement in England which were always very close to Lady Cochrane's heart.

As plans begin to materialise readers will be kept up-to-date in the periodicals with further developments. Be sure to look out for what is being suggested.

A Guide to current entertainment **What's on**

Opera

ROYAL OPERA HOUSE, COVENT GARDEN

8th Sept.-2nd Oct.—Two cycles of *Der Ring des Nibelungen* by Richard Wagner.

SADLER'S WELLS THEATRE, Rosebery Avenue, E.C.1.

The English Opera Group are appearing at the theatre from 17th-25th September. The programme is as follows:

17th, 21st, 24th—*King Arthur*.

18th, 20th, 22nd—*The Turn of the Screw*.

23rd, 25th—*A Midsummer Night's Dream*.

SADLER'S WELLS THEATRE

The National Folk Ballet of Korea—6th-11th Sept.

The National Folk Ballet of Korea—The Little Angels—is composed of thirty-two Korean children aged between eight and fifteen and this year is making its first appearance in Britain.

Exhibitions

International Handicrafts and Do It Yourself Exhibition.

EMPIRE HALL, Olympia, London, 27th Aug.-11th Sept.

Think of everything to do with 'Do It Yourself'—central heating, woodwork, kitchen units, craftwork etc., and you will find it at this annual exhibition—which promises to be bigger and better than ever before. Over 200 exhibitors will demonstrate all the latest materials and techniques which cover every aspect of home decorating.

The largest single exhibit is a two storey Georgian house completely decorated and furnished.

For Guiders taking Guides or Rangers to the exhibition there is a wonderful display of traditional and modern types of craftwork. Entries from a national Leisurecrafts competition will be on show and these can be bought, the proceeds being donated to the Save the Children Fund.

The exhibition will be open daily (except Sundays) from 27th August until 11th September, 10 a.m.-9 p.m. admission 25p, children under 16, 15p.

The following is a list of events in principal cities:

Edinburgh

4th—East of Scotland Terrier Club Dog Show—Portobello Town Hall.

20th-25th—'They do not Grow on Trees'—Play—Church Hill Theatre.

23rd-27th—Autumn Gardening Exhibition.

Leeds

18th-19th—Yorkshire Budgerigar Society Show—Corn Exchange.

Plymouth

3rd-10th—Devonport Carnival.

7th—Concert by the Plymouth Orchestral Society—Plymouth Guildhall.

10th-17th—Plymouth and District Lawn Tennis Championships—Mannamead Lawn Tennis Club.

15th-29th—Exhibition of Victorian Art—City Art Gallery.

24th-31st—Plymouth Regatta Week.

Ballet

The London Festival Ballet will be appearing at the Royal Festival Hall until 16th September.

The programme for the summer season is as follows:

Until 4th September—*Beau Danube, Giselle*.

6th-11th September—*The Sleeping Beauty*.

13th-16th September—*Les Sylphides, Scheherazade, Petrouchka*.

Guest artists for the season will be Liliana Cusi and Peter Breuer. Liliana Cusi is Prima Ballerina of La Scala, Milan, and danced in London earlier this year in the Royal Gala Performance at the Coliseum. Peter Breuer, her partner, is a Principal Dancer with the Dusseldorf Ballet and is considered one of the most promising young dancers in Europe today. He, too, has danced in London before—at Festival Ballet's last Christmas season.

The two are dancing the leading roles in *Giselle*

on the 2nd and 4th September and in *The Sleeping Beauty* on the 7th and 10th September. Liliana will also be dancing the principal ballerina role in *Scheherazade* on the 13th, 14th, 15th and 16th September.

Performances are at 7.30 nightly with a Saturday matinee at 3.00 p.m. Booking information may be obtained from the Box Office, Royal Festival Hall, London, S.E.1. Telephone: 01-928 3191.

Autumn Tour 1971

London Festival Ballet's Autumn Tour dates are as follows:

Beau Danube, Giselle, Bournonville Diverts, Petrouchka, Graduation Ball.

1st November, Bradford

22nd November, Hull.

29th November, Norwich.

6th December, Birmingham.

Nutcracker, Bournonville Diverts, Petrouchka, Graduation Ball.

8th November, Manchester.

15th November, Sunderland.

Nutcracker, Beau Danube, Giselle.

13th December, Southampton.

Nutcracker.

27th December, 3rd January, 10th January, Festival Hall, London.

Coppelia, Triple Bill, Sleeping Beauty.

17th January, New Victoria, London.

FILMS AT THE COMMONWEALTH INSTITUTE, KENSINGTON HIGH STREET, LONDON

30th Aug.-5th Sept.—Almost a Way of Life (Malaysia). Terrific and Tranquil (Trinidad).

6th-12th Sept.—The Kingdom of Swaziland.

13th-19th Sept.—All You Have To Do Is Dig (Australia). My Belly is Changing (Papua and New Guinea).

20th-26th Sept.—Invitation to Enchantment (India). South to the Sun (Malta).

27th Sept.-3rd Oct.—Harvest for Tomorrow (Botswana and Kenya). Pipeline to Forcados (Nigeria).

Admission is free and performances are continuous. Approximate times are:

Monday-Friday—12.15, 1.15, 3.00.

Saturday—2.45, 3.30, 4.25.

Sunday—3.30, 3.50, 4.40.

THE GUIDER does not take responsibility for last minute alterations to programmes.



Liliana Cusi

photo: Anthony Crickmay



**10,000 SOLD
FROM C.H.Q. ALONE**

'SINGING ALONG' WITH THE GIRL GUIDES

(BBC Records Mono Red 67m)

OVER 150 VOICES DRAWN FROM BROWNIES, GUIDES, RANGERS AND GUIDERS. GATHERED INFORMALLY AT THE BBC STUDIOS, THEY PRODUCED THIS FABULOUS LONG PLAYING RECORD.

HEAR THEM SINGING: HEY DEE ROON — TIMBER YELL — THE BROWNIE SONG — HOL'YO'HAN' — KUM BA YAH — TZENA — IMAGES & REFLECTIONS — PLUS NINETEEN MORE SONGS:

£1.07¹/₂

SELECTIONS FROM 'GUIDEMAIL' with Guiders in mind !

- | | | |
|------|--|-------------------------------------|
| 4872 | GUIDERS SOLID LEATHER HANDBAG. NAVY BLUE WITH GILT FITTINGS. | £3.00 |
| 6120 | COMPACT BY STRATTON. SUITABLE FOR SOLID OR LOOSE POWDER. TRANSLUCENT BLUE ENAMEL LID MOUNTED WITH GUIDE BADGE. GIFT BOXED. | £1.80 |
| 2054 | CAR BADGE. EMBLAZONED WITH THE TREFOIL ON BLUE BACKGROUND. 3 ¹ / ₂ " DIAMETER AND COMPLETE WITH FIXING BOLTS. | 52¹/₂p |
| 5087 | SENATOR DE LUXE PEN SET. 4 BALLPOINT PENS, ASSORTED COLOURS. FITTED FOR READY USE INTO A TREFOIL STAMPED BASE. | 75p |

EVERYTHING TO COVER THE GUIDERS NEEDS WILL BE FOUND IN THE CURRENT EDITION OF THE 'GUIDEMAIL' CATALOGUE OR BOOKLIST — UNIFORMS — STATIONERY — GIFTS — CAMPING ITEMS — TENTS — COMPASSES — HAVERSACKS — RUCKSACKS. REMEMBER THAT EVERYTHING IS COVERED BY THE 'GUIDEMAIL' GUARANTEE OF SATISFACTION AND IS POST FREE IN THE U.K.

POST FREE IN THE U.K. FROM



(Dept G)

COMMONWEALTH HEADQUARTERS
17-19 BUCKINGHAM PALACE ROAD, LONDON SW1W 0PT

THE ASSOCIATION'S BRANCH SHOPS

London: 19 Green Lanes, Palmers Green, N13 4TT.
Birmingham: 5 Ryder Street, 4.
Liverpool: 20 Richmond Street, L1 1EG.
Cardiff: 20 Working Street, CF1 2SF.

SCOUT AND GUIDE SHOPS

London: 124 Newgate Street, E.C.1.
London: 55 Woodgrange Road, Forest Gate, E.7.
Ipswich: 5 Tacket Street.
Leeds: 62 The Headrow, LS1 8EJ.
Oxford: 17 Turl Street, OX1 3DH.
York: 14 Goodramgate, YO1 2LQ.
Harrow: 104 Hindes Road.

THE GUIDER

LESWYN per return service....
send for details of our FUND-RAISING APPROVAL PARCEL
 (which includes a FREE SPECIAL GIFT OFFER)



CHRISTMAS CARDS
 BIRTHDAY CARDS
 STATIONERY & TABLEWARE
 CHRISTMAS DECORATIONS
 GIFT WRAP
 FANCY GIFTS
 CHILDREN'S PASTIMES
 PRINTED BALL PENS



CHRISTMAS '71, Full Colour Catalogue now available

LESWYN
CARDS LTD

(Guider Division)
 Sutton Coldfield, Warwickshire.
 Telephone: 021-354 7389

To: LESWYN CARDS LTD.

Please send me details of your FUND RAISING APPROVAL PARCEL (with FREE GIFT OFFER) and a copy of the LESWYN CHRISTMAS CATALOGUE FOR FUND RAISERS.

Name

Address

G971

"We first raised funds through Webb Ivory over 11 years ago —and still do!"

says the Guide Guider of a Northumberland Guide Unit



'Thanks to Webb Ivory we've already raised over £650. We've used the Service since the formation of our Guide Unit and have proved it to be an excellent way of fund raising—both easily and profitably and each year we know we can rely on a consistent income.

As any Guide Guider will tell you Guide Units are always needing to raise funds to cover such things as camping and other equipment, building and improving their headquarters, etc.

This was our problem too, but we solved it so easily. We find everyone so enthusiastic about the Webb Ivory cards and gifts and we now take advantage of bulk buying to give us maximum profits.

Thanks to our Webb Ivory fund raising efforts we've achieved a 10 year ambition when we recently opened our new 80ft x 60ft. Headquarters building which is a hall complete with kitchen and toilet facilities.

We've been Webb Ivory customers for a long time now and as we've always had complete satisfaction that's the way we'll stay—it's enjoyable and so financially rewarding.'

The Guide Guider with Mrs. M. W. Wilson and Mrs. K. Jobey the Fund Raising Organisers.

Another happy Webb Ivory customer —there are thousands more. Below are some of the ways Webb Ivory have helped them —and could help you—to successful fund raising with the minimum effort.

NAME _____

PRIVATE ADDRESS _____

ADDRESS OF HEADQUARTERS _____

Organisation represented _____

Your own position in the Organisation _____

Are you over 18? _____

GU19

Up to 50% profit on outlay; fantastic range of Christmas and Birthday Cards, Christmas Decorations, Calendars, Stationery items, Gifts, etc.; at least two months credit on all purchases (so that you can sell goods before you have to pay for them); full colour catalogues to boost your selling efforts; sample parcel to show you just how good Webb Ivory products are. Write now for full details.

Raise Funds all the year round with



WEBB IVORY LTD.
LITTLE CORNBOW, HALESOWEN, WORCS.

Regional Showrooms at:

LONDON 224-236 Walworth Road, London S.E.17. Tel: 01-701 0965

HALESOWEN Little Cornbow, Halesowen, Wores. Tel: 021-550 2481

MANCHESTER Lancaster House, Whitworth St., Manchester 1. Tel: CENTRAL 1289

GLASGOW 96-100 Brunswick Street, Glasgow C.1. Tel: 041 552 1750

Printed by the Riverside Press Ltd., London and Whitstable and published by The Girl Guides Association, 17-19 Buckingham Palace Road, London SW1W 0PT. (01-834 6242). All communications with regard to subscriptions, editorial matters and advertisements should be addressed to THE GUIDER, Girl Guides Association. Subscriptions including postage £1.38 for 12 months Great Britain, £1.20 overseas. Trade Agents: Surridge Dawson & Co. (Productions) Ltd., 136-142 New Kent Road, London, S.E.1.