

g^uider



Volume 60
Number Six
June 73

12p

"The only Fund Raising method we use is the Webb Ivory Service"



*says
the Fund Raising
Organiser of a
Beckenham Baptist
Guide and
Ranger Unit.*

'We have used many fund raising methods over the years but undoubtedly Webb Ivory Fund Raising is the most successful. We have been dealing with Webb Ivory now for more than six years, during which time we have developed a very happy relationship with our customers both inside and outside the Church. Our customers come back to us time and time again throughout the year, primarily because the goods we offer through the Catalogues are of such tremendous good value for money. Raising funds with Webb Ivory helps us to meet people, but perhaps more important, it does not interfere with our normal guiding activities. Yes, our fund raising is enjoyable and profitable, and I am pleased that it eliminates the begging aspect that is all too often associated with other fund raising methods. We are happy with Webb Ivory Fund Raising - so happy that we now do it to the complete exclusion of all other fund raising methods.'



WEBB IVORY LTD.

LITTLE CORNBOW, HALESOWEN, WORCS.

Regional Showrooms at:

LONDON 224-236 Watworth Road, London, S.E.17, Tel: 01-701 0965

HALESOWEN Little Cornbow, Halesowen, Worcs, Tel: 021-550 2451

MANCHESTER Lancaster House, Whitworth St., Manchester 1, Tel: CENTRAL 1289

GLASGOW 8 Elliott Place, Clydeside Industrial Centre, Glasgow, Tel: 041-221 2484

Please send me
Colour Catalogue and
full details of your
Fund Raising Service

Name _____

Address _____

Position _____

Are You Over 18? _____

If you do not wish to deface this magazine by
cutting out the coupon then please write to
us separately for details, quoting

Dept. GU6

guider

**OFFICIAL MAGAZINE OF
THE GIRL GUIDES ASSOCIATION**
(incorporated by Royal Charter)

PATRONS

HM THE QUEEN
HM QUEEN ELIZABETH, THE QUEEN MOTHER

PRESIDENT

HRH THE PRINCESS MARGARET,
COUNTESS OF SNOWDON

CHIEF GUIDE

OLAVE, LADY BADEN-POWELL, GBE

CHIEF COMMISSIONER

MRS DEREK PARKER BOWLES, CBE

Contents

Editorial, Guiding Roundabout	224
Feedback	226
Queen's Birthday Telegram, Chief Guide's Request	227
Focus on Conservation	229
Our Commonwealth Headquarters	230
'Spotlight '73'	232
Letters	235
Diary of a QM	237
Those Were the Days	238
Crystal Palace 1909	239
Airing and Sharing	240
Training	241
CHQ Training Centres	245
HQ Notices	246
Home and Away	249
Where to Train	251
Guide Friendship Fund	257
Classified Advertisements	259
Back to Camp	261
What's On	262

Cover

Members of Spotlight '73 rehearse 'Children of the Sun'. In the foreground is Kathryn Hunt of 1st Droylsden and Clay-ton Ranger Guide Unit, a full-time student at the Muriel Tweedy School of Dancing. More pictures from Spotlight on page 232.

Photo: John Warburton

EDITORIAL: MRS J. V. RUSH (Editor)
MISS J. V. KING (Assistant Editor)

ADVERTISEMENTS: MISS A. M. MARTIN

ALL COMMUNICATIONS TO: Guider, GIRL GUIDES ASSOCIATION, 17-19
BUCKINGHAM PALACE ROAD LONDON SW1W 0PT 01-834 6242

Printed by The Riverside Press Ltd., London and Whitstable and published by The Girl Guides Association
Subscriptions, including postage, £1.86 for 12 months Great Britain, £1.74 overseas
Trade Agents: Surridge Dawson & Co. (Productions) Ltd., 136-142 New Kent Road London SE1

editorial

LAST October, when we announced the impending changes in this magazine, we announced with regret that we would also have to increase the price of THE BROWNIE from 3p to 4p, with effect from last January. This increase never took place, as the price freeze was announced by the Government shortly afterwards and we decided we must honour the freeze and not carry out a straight price increase. This has meant that THE BROWNIE has been published at a loss for many months, but we hope this will soon turn to a profit with the introduction of the new BROWNIE on 4th July (see page 226). Although the price will be increased from 3p to 4p from that date, the enlarged format and colourful layout will mean that it's still excellent value for money. The same goes for TODAY'S GUIDE, which keeps its price of 5p but changes to a new format on 6th July.

A Guider remarked to me recently that there was enough in each issue of TODAY'S GUIDE to supply her with programme ideas for the next six months. I hope this doesn't mean that Guiders keep the good news to themselves! We are so dependent on the Guider to encourage her Brownies, Guides or Rangers to buy their own copies of the magazines.

Although we get all the magazines to our distributors earlier than ever before, we still hear the occasional complaint about late delivery from those readers who order from their newsagents. We take up every complaint, but unfortunately the method of distribution means it is just impossible for us to guarantee the exact day on which copies arrive, especially in outlying districts. Subscription copies are posted direct from our printers, and for this reason they invariably arrive first. We therefore advise any reader who really needs to receive her copy 'on the dot' to take out a subscription. It is rather more expensive, because you have to pay postage; but to offset this we have generous discounts for three and five year subscriptions. If you would like more details write to Subscriptions, Periodicals Department, CHQ.

JVR

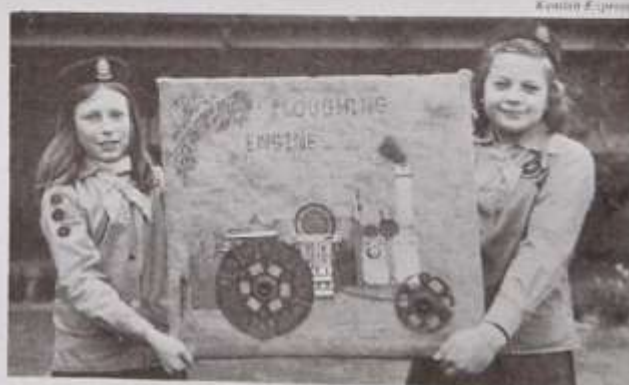
Brownie 'good turns' can be varied as these pictures show. The 3rd Dereham Pack of Norwich (right) knitted enough squares to make seven blankets for the Red Cross; the 2nd Hedge End Pack, of Hampshire, entertained Senior Citizens and gave them each a box of groceries (below).



Express Photo Press



R. W. Holmes



Kentish Express

Epworth Herald

Guides of the 1st Ruckinge Company proudly show their winning entry in an Ashford, Kent, collage competition (above). A very popular exhibition at Ewell, Surrey, museum recently, showed how Guides Camp and Brownies help (right).



GUIDING ROUND ABOUT

Part of the training at a recent Young Leaders Weekend held near Guildford, was a session on outdoor games (right). The weekend called 'Spring into Action' was a great success.



Mrs A Francis

Guiders enjoy a wine and cheese party held by Westgate and Birchington District, to raise funds to build a Guide Hall (below).

Photo: Thames Gazette Picture Agency



Slough Evening Mail

Brownies from Staines took part in a sponsored roller skating session (above) to raise money for the local gang show.

Activities at last year's South West Lanes Ranger Camp included Kayak rescues (right) and making and using rope bridges (bottom centre).



C M Cocks

'Goldilocks and the three Bears,' proved to be a popular pantomime when it was performed by the 1st Buxton (Congregational) Guides (below).



Buxton Advertiser & Herald



C M Cocks



Kent & Sussex Courier

A popular stand at the Rusthall, Kent, Fair was a Hot Dog Stand run by the local Guides (above).

A folk service held at St Aidan's Church, Broughty Ferry, for the Rangers, Guides and Brownies, was led by four singing Queen's Guides calling themselves the 'Ferry Four' (below).



Dundee Evening Telegraph

feedback..feedback..feedback..feedback..

TODAY'S guide

'GOOD things come in small packages' is an old saying – not always accurate! However, we hope it will be true of the new-look TODAY'S GUIDE which we are launching on 6th July. We told you last month about plans for THE BROWNIE, but at that time plans had not been finalised for the changes in TODAY'S GUIDE which we mean to bring about at the same time. The new TODAY'S GUIDE will have more pages, but they will be smaller, and will be stapled together instead of the present newspaper format. There will be colour on every page, instead of just on the front, and new designs and artwork will give the whole thing a completely new look. Are you encouraging your Guides to have a copy *each*? We hope so, because only in this way can we sell enough copies to cover our costs, and thereby offer better value for money in the future. The new TODAY'S GUIDE will cost the same (5p) and there will be four Patrol Leaders' Pages, so that these will form a supplement in the centre on the lines of the Training Pages in GUIDER. There is lots of value on the other pages of TODAY'S GUIDE too, and every single item is directly linked to the Eight Point Programme if only you think about it and find the link! We are making a special feature of articles to help with Self Training Schemes given in the Guide Handbook, in addition of course to our old favourites, and the articles on Camp Preparation Pennant, with other articles and charts on various aspects of Camp, give a complete preparation for the camping season.

Do you really show your Guides how to use their own magazine? Do you encourage them to take part in the competitions, all of which are based on the Guide programme and are constructive as well as fun? The present competition is sponsored by London Festival Ballet, who are giving tickets for their new production of *Cinderella*, either in London or on tour, to the prizewinners. The Patrol section is a collage illustrating a scene from *Cinderella*, and the individual section is a design for *Cinderella's* ball gown, or one or both of the *Ugly Sisters*. Full details are in the 1st June issue of TODAY'S GUIDE, and the closing date is 29th June, so if your Guides are not already taking part, please tell them all about it.

The next competition we have lined up coincides with the new format; we will be publishing details from 22nd June onwards, but entry forms will be in the 6th July issue, and the closing date will be 27th July. This will be based on questions about the geographical locations of various fruits, and will be sponsored by the German Fruit Juice Bureau, who sponsored a highly successful quiz with us last year. They will be giving some excellent prizes, such as a transistor radio, in addition to some German fruit juice.

Also during July we will be announcing a competition sponsored by Findus, which will take the form of a quiz about different types of fish. Although Findus specialise in frozen food, the competition is by no means restricted to this, and finding the answers should prove intriguing as well as instructive. Every Patrol to enter this competition will receive a free booklet of fish recipes, and 'Cold Facts', a booklet about refrigeration. Both are in colour and beautifully illustrated.

In the autumn we will be running a competition sponsored by Woolworth's, who are giving an electric sewing machine and 20 skirt lengths as prizes. Details are not yet complete but we will keep you informed.

Our competition sponsors are always impressed at the high standard of the entries, particularly in anything connected with handcraft. Unfortunately the number of entries is not always high – although there were over 700 for the recent Chef Cat Quiz and over 850 for the Easter collage in THE BROWNIE. Perhaps your Guides need a little encouragement to get them to make the effort – we can't afford to advertise, so we really are dependent on the Guider in the field to do our publicity for us. Please help us to give the new look TODAY'S GUIDE the success we feel it deserves.

By the way, for the benefit of those who are collecting 'B-P, Soldier and Scout', the picture story of B-P currently serialised in TODAY'S GUIDE, we are keeping the weekly instalments the same size when we change our format. If you missed the announcement about this fascinating and valuable series, see page 186, May GUIDER, for special offer order form.

THE RANGER

So as not to be left behind, THE RANGER too has a slightly new look this month. Unfortunately, the low circulation makes it impossible for us to put on extra pages or make it any bigger, but we are trying to pack as much as possible into it. The June issue pays special attention to June brides – and in fact to all those who are planning marriage in the not too distant future. If you are a Ranger Guider, do you encourage all your Rangers to buy their own magazine? Most of them can afford the modest 3p, and if we could increase our sales this would enable us to make bigger and better plans for the future.

A competition is also planned for Rangers, to be sponsored by Findus. The really professional standard of entries for the Calor Homecraft Award has inspired us to run another cookery competition – this time for a fish recipe. Findus will be giving away booklets to every competitor (see details under TODAY'S GUIDE heading), as well as major prizes. More information about this competition in the June RANGER, and entry form in July.

JVR

THE BROWNIE

As we mentioned last month, THE BROWNIE is also changing. Larger than the present one, it will contain more helpful hints, more illustrations and more colour. The first issue will be on sale on 4th July and promises to be a bumper issue. The German Fruit Juice Bureau are sponsoring a colouring competition, and we hope that Brownie Guiders will encourage all their Brownies to enter. All entries will have to be accompanied by a Readers Coupon from the 4th July BROWNIE, as the entries are being judged by the sponsors.

With the new look we are hoping you will continue to send in letters about Pack activities. But now we can use more photographs, including colour (although they will be black and white when published). We would also like to receive poems and drawings that are the Brownies' unaided work.

Let us try to get all Brownies interested in their own magazine.

DB

feedback..feedback..feedback..feedback..

THE QUEEN'S BIRTHDAY



The following was sent to Her Majesty The Queen on the occasion of her Birthday:

On the occasion of your Majesty's birthday, it is my privilege to send the best wishes of all the members of The Girl Guides Association and to express to Your Majesty our loyalty and deep affection.

Ann Parker Bowles

Her Majesty's reply:

I thank you and all members of The Girl Guides Association most sincerely for your kind congratulations on my birthday.

Elizabeth R.

The Annual General Meeting of the Association was held in London on 10th May. A full report will be published in the July GUIDER.



From the World Chief Guide

I am now at a new stage in my life, my travelling days are over, my years have caught up with me, and I cannot be as active as of yore.

Now, in this semi-retirement stage, I am looking for someone kind and like-minded, to come and share my life and home with me.

I have a wonderful 'daily' (Monica) who cleans the apartment, but I need somebody to shop and cook simple meals. Whoever comes will be able to lead a life of her own, whilst enjoying board and lodging, 'telly', and a small salary.

Any offers?

Lady Baden-Powell

Anyone wishing to apply for this position should address their applications to The Lady Baden-Powell, Reception Committee, Girl Guides Association, 17-19 Buckingham Palace Road, London SW1W 0PT. Please mark the top left hand corner of the envelope, 'Chief Guide'.

SPECIAL CONCESSIONS

FOR ALL THE FAMILY

WEMBLEY presents the AMERICAN SPECTACULAR

MIAMI BEACH WATER SHOW

(FIRST TIME IN ENGLAND)

GUIDES CAN PURCHASE TICKETS FOR THEIR FAMILY AND FRIENDS AT THE SPECIAL CONCESSION PRICE OF 50p EACH FOR THE £1.20 PRICED SEATS AT THE FOLLOWING EVENING PERFORMANCES, COMMENCING AT 7 pm IN THE INDOOR EMPIRE POOL AND SPORTS

ARENA, WEMBLEY:

PERFORMANCES

TUESDAY	AUGUST	7	14	21	28	BOOK NOW PAY LATER FOR PARTY BOOKINGS
WEDNESDAY	AUGUST	8	15	22	29	
THURSDAY	AUGUST	9	16	23	30	
FRIDAY	AUGUST	3	10	17	24	

A SHOW FOR ALL THE FAMILY

LAUGHS – THRILLS – SPILLS

SEE! AMERICA'S LARGEST WATER CIRCUS

CHAMPION HIGH DIVERS	– SKILL AND MAGIC
COMEDY ON THE HIGH BOARD	– SPLIT SECOND TIMING
THE LOVELY AQUA MAIDS	– COLOUR, RHYTHM, COMEDY
ACROBATIC DIVING STARS	– THRILLS IN MOTION
CIRCUS AND VARIETY ACTS	– NEW TO WEMBLEY

A SPECIAL SETTING OF FOUNTAINS – DIVING POOL AND A SWIMMING POOL WITH FULL SIZE STAGE WILL BE INSTALLED:

PAYMENT FOR PARTY BOOKINGS (20 or more seats) may be deferred until 16 July.

INDIVIDUAL BOOKINGS (Less than 20 seats) CASH WITH ORDER FORM.

BOOKING FORM (CONCESSIONS)

MIAMI BEACH WATER SHOW

To: EMPIRE POOL BOX OFFICE, WEMBLEY STADIUM LTD,
WEMBLEY, MIDDLESEX HA9 0DW.

Please reserve seats for the EVENING PERFORMANCE on (Date)
at the SPECIAL CONCESSION PRICE of 50p each. PO/MO/CHEQUE enclosed for £ : p.

NAME ADDRESS

NAME OF UNIT – AND TELEPHONE NUMBER



Brownies of the 31st and 35th Portsmouth Packs plant a tree in Milton Park (top left) to replace a diseased elm. Guides and Brownies from 1st Gregson Lane Company and Pack, Preston South, also take an active part in Plant a Tree Year (bottom left).

Miss W J Rees



Lancashire Evening Telegraph



Focus
on
Conservation

Young Volunteers

by
**Jean
Rush**

FROM the wealth of reports, press releases and bulletins on various aspects of conservation that are sent to me every week, one fact clearly emerges: young people are needed all over the country to help with this vital work. The Guide Movement is obviously an ideal organisation to help, but the problem is often to show the Guider how her Unit can fit into any particular scheme for improving or preserving the environment. In this series we are trying to supply ideas, and more practical help in the form of names and addresses of organisations that need volunteers – particularly young helpers. Here are some more – and we will always be pleased to pass on details of others.

Outset

This is a registered charity that needs young people who will give one day's work to brightening up the environment, in addition to other work such as helping the old or disabled. Outset also needs some full-time volunteer organisers; they can pay board and lodging, pocket money and expenses. For further details write to **John Kingsbury, 30 Craven Street, London WC2.**

Council for the Protection of Rural England

This body is well known to us, but it is interesting to note that they are looking for help with fund raising activities in the London area. The CPRE publishes a bi-monthly bulletin, which gives a wealth of useful information – particularly of practical help needed by other bodies in the field of conservation. The bulletin may be obtained on subscription for 75p per year. Write to **CPRE, 4 Hobart Place, London SW1.**

Homes for old bottles

Non-returnable bottles are of course a major pollution problem. A Doncaster firm will collect 'worthwhile' loads of bottles within a radius of 130 miles of Doncaster and also in London. They re-process them so that they can be used to make more glass bottles, or in manufacturing tiles, paint and abrasive papers. For more information – including what they consider a 'worthwhile' quantity – write to the **Yorkshire Bottle Co Ltd, Tickhill Road, Bawtry, near Doncaster, or telephone Doncaster 710531.**

National Conservation Corps

The Corps has a full programme of residential tasks organised from now until the end of September, for which volunteers are urgently needed. The sites are spread all over England, Scotland and Wales, and the tasks are varied

and mostly fairly tough, but not too tough for older Guides and Rangers. Accommodation is in tents, hostels or schools, and all the work is satisfying and desperately needed. Write for a printed leaflet giving full details of all the tasks, with dates and sites, to **National Conservation Corps, Zoological Gardens, Regents Park, London NW1 4RY.**

Plant a Tree

The Plant a Tree Campaign has received so much publicity, both here and elsewhere, that there is no need to elaborate on its aims and objects. Many Guides are already actively involved, and some have already sent details of their activities. Mrs B J N Edwards, Arts Adviser of NW Lancashire, has sent a most interesting script of an entertainment which is described as 'basically a documentary in which we take the subject of trees round the world'. One Company has used the script for a Thinking Day ceremony, another as a preliminary to a tree planting ceremony. The Plant a Tree Campaign Newsletter announces that Darlington Guides planted six trees in local parks in February. We know from our press cuttings that there have been many others.

A full list of publicity material available for the Plant a Tree Campaign was given in the March GUIDER. To this is now added a three-minute cartoon film, described as impressionistic, but aimed at stimulating interest in trees. 16 mm copies are available on free loan, from the **Film Library, Department of the Environment, Thames House South, Millbank, London SW1P 4QH.**

Speakers who are prepared to talk on tree topics at conferences or special meetings on the tree planting campaign, can now be provided by the Department of the Environment. A speaker's brief, useful for small informal meetings, is also available. Write to **Miss L J Maxey, Room C10/13, Department of the Environment, address as above.**

A leaflet describing how to make a 'tree of life', showing amounts collected in the form of new leaves, can be obtained from the **Promotions Unit, Department of the Environment, address as above.**

Tailpiece

Finally, a happy anecdote of 'paradise regained'. A recent issue of the Council of Europe Newsletter tells us that 63 varieties of fish have returned to the middle reaches of the Thames and are flourishing there, as a result of efforts to reduce the river's pollution.



Drawings by Jean de Lemos

Our Commonwealth Headquarters,

Its Service and our Membership Subscriptions

by
Lysia Whiteaker
General Secretary

FROM time to time I am asked how the Commonwealth Headquarters' share of membership subscription is used, and I often note that this subscription is referred to in counties or districts as either a levy or a quota, implying something quite different.

The amount contributed annually by enrolled members of the Movement has been 40p since 1971. It is interesting to note that this amount was fixed for three years, although the cumulative cost-of-living index for 1970-1972 rose by roughly 26 per cent.

In 1971 this subscription was shared between Commonwealth Headquarters, the three countries and six Regions of England. Regions shared in the following manner:

Commonwealth Headquarters — 60 per cent

Regions and Counties — 40 per cent

In 1972 the subscription was re-allocated in the following way by Executive decision:

Commonwealth Headquarters — 55 per cent

Regions and Counties — 45 per cent

The three countries of Scotland, Ulster and Wales receive a slightly different percentage.

No organisation as large and complex as ours, serving as it does an ever-increasing number of young people, can function without a National Headquarters.

When the England office ceased to exist in 1971, six Regional Headquarters were established in order to provide representation more easily. By establishing these offices, greater emphasis was placed on better communication, closer relations and direct representation. Chief Commissioners of the three countries and six regions participate in the Association's policy-making as they are members of the Executive Committee of the Council.

Our share of the membership subscription is stretched

as much as possible to cover many — but not all — of our Commonwealth Headquarters requirements. Out of 55 per cent (22p per member) retained by Commonwealth Headquarters, contributions are made to the following services provided for the Movement:

(a) Personal Injury Insurance for every member of the Movement.

(b) Legal Liability Insurance for Guiders — increased from £50,000 to £100,000 in 1972, and very much higher in 1973.

(c) Payment of the World Association subscription. Our Contribution has now increased from £7,000 to £11,000.

(d) Training and Programme work and provision of a paid full-time team of qualified trainers.

(e) Assistance to 26 Branch Associations and a number of dependent territories throughout the Commonwealth. This includes providing Trainers, registration of Units, warranting Guiders, trainings in the United Kingdom, help with constitutions, administration and policy.

(f) Hospitality to members from all parts of the world and arranging for attendance at International Events by Guides, Ranger Guides, Guiders and Commissioners.



(g) Representation at Europe Region and World Conference level.

(h) Representation at United Kingdom Youth Conferences and on the National Council of Voluntary Youth Services.

We need other income in order to remain viable and to set aside a reserve against inflation while meeting all our commitments. How do we get this extra income? The



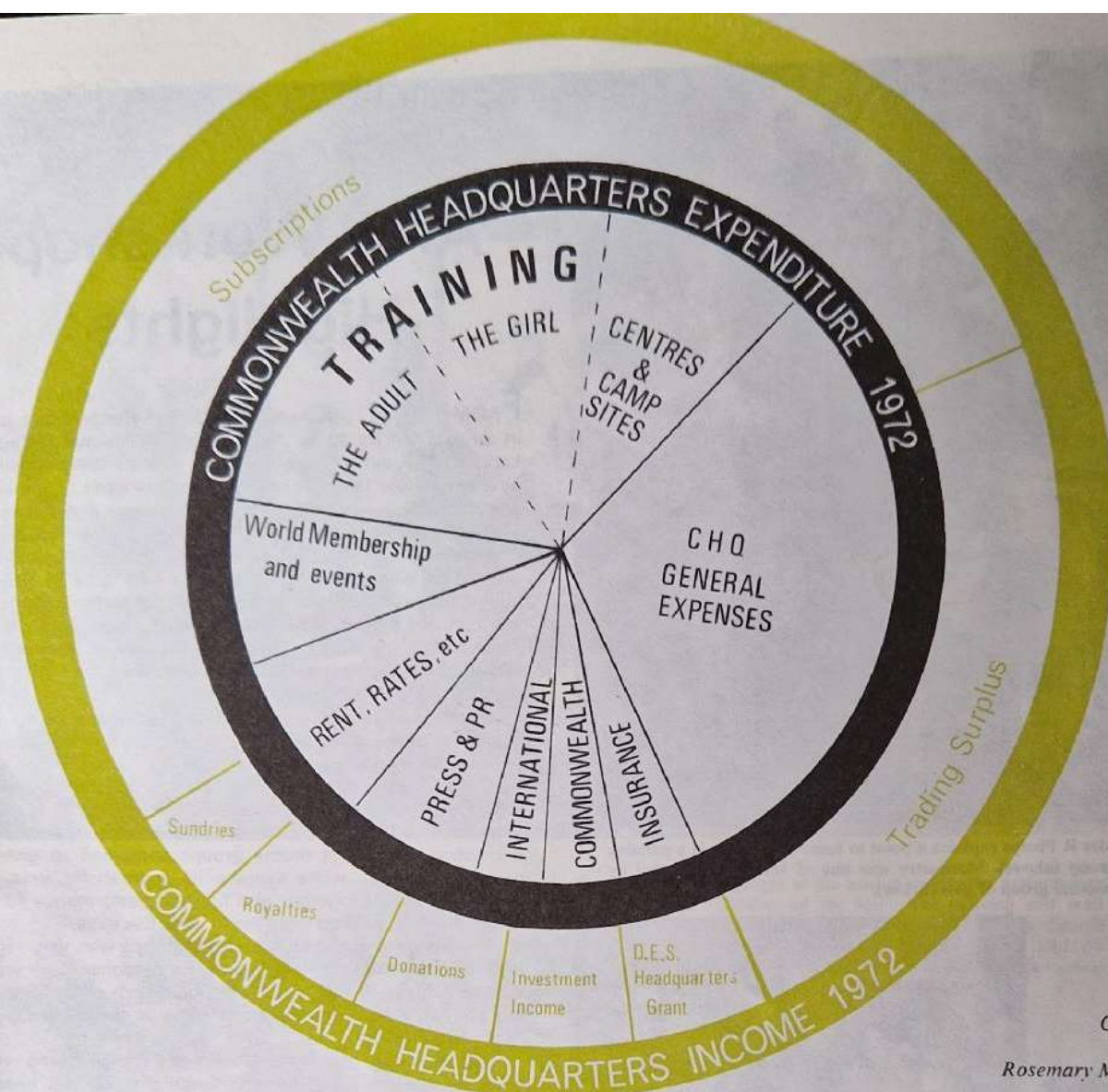


Chart
by
Rosemary Millis

Ministry of Education gives us an annual Headquarters Grant and we receive other small grants, donations, bequests and shares of legacies.

We maintain a Trading Division which provides the Movement with uniform, equipment, books and items which we feel are necessary, useful and attractive to members of the Movement. We try to sell our goods at low competitive prices while maintaining a profitability ratio which supplements the partial income derived from membership subscriptions. We invest a proportion of our monies in order to obtain an interest income. We welcome new projects which may become sources of additional revenue, such as our BBC records in 1971 and 1972, the Folk Fest Record, and the Olive Baden-Powell rose.

Thus we are able to meet further costs and services through part of the membership subscriptions and other income. A few of these costs and services are outlined below:

Salaries and maintenance of Commonwealth Headquarters, including shop, restaurant, dormitory, back-up warehouse and four branch shops in England and Wales.

Salaries and maintenance of two Commonwealth Headquarters Training Centres – Foxlease and Waddow – plus their camp-sites, Blackland/Ynysgain camp-sites and contribution to Brownsea Island expenses, the latter shared equally with the Scout Association.

Day-to-day work of Advisers. Every Department works to either a voluntary Adviser or Chairman and voluntary committee members.

Links with the World Bureau and preparation of travel documentation, briefing papers etc, for official delegates at World and other conferences.

Preparation of national press and media work and action as spokesmen for the Movement on many issues.

Preparation of leaflets, posters, modern Public Relations material for use within the Movement and for such events as the Boat Show, Tennis Tournament, conferences, etc.

Preparation and editing of handbooks, POR, and all published training material.

Editing of three section magazines and GUIDER.

Execution of all Committee work and promulgation of Executive decisions to the Movement.

Overall registration and final census information for Annual Reports.

Property, Trust Corporation and legal work.

Maintenance of archives.

These are but a few of the many things we do. There are about 225 staff employed by Commonwealth Headquarters, its warehouse and Branch Shops, Training Centres and Camp-sites.

Out of this number, about 125 are directly or indirectly involved in trading and finance. The others are directly involved in Guiding and many of the staff are not only employed by Commonwealth Headquarters, but also give their voluntary services as Guiders and Commissioners.

This is our Commonwealth Headquarters – yours and mine! It is home to many thousands who visit us from overseas and from the United Kingdom. Did you know that we have a dormitory on the top floor which Guide and Ranger Guide Units may book for weekends in London? Do you know that we will arrange tours of Commonwealth Headquarters when you visit London?

Come and see what we do and how we do it – it's ours and it's here to serve us all.

Spotlight '73

Arts Workshop Highlights



Mrs R Phelps explains a point to some of the girls in a painting group (above). Marquetry was one of several crafts tried by another group of girls (below).



Another craft which proved a favourite with this group was macramé (below), while the dance group practised for their performance (right).



FROM 13th to 19th April, Guides and Rangers took part in an arts workshop at the Froebel Educational Institute, London. The aim of Spotlight '73 was to bring together girls who show talent in one or more branches of the arts, and auditions were held through the Regions, resulting in 160 girls between 14 and 18 with special abilities being chosen. Work was divided into six main study groups and a great deal was gained from working with girls of similar ability, under the guidance of professional staff. The groups were: choral singing (Miss Hettie Smith), craft work (Miss Tavia MacLean), dance (Miss Netta Willsheer), drama (Mr David Male), orchestra (Mr George Odam), and painting and sketching (Mrs R Phelps).

At the end of the course, guests were invited to an exhibition of the wide variety of art and craft work accomplished during the period, and to watch 'Children of the Sun'. This can only be described as a 'happening', bringing together as it did the work of all the groups to tell the story of the flowering and fall of the Inca nation. The orchestra, dance and drama groups combined to give a presentation that, while keeping its spontaneity, was an amazingly pulled together and finished performance for a group that had worked together for only five days.

The standard achieved by all the groups was very high, and the staff must be gratified at the response they were able to achieve in such a short period. Much of the sketching and painting, involving some unusual techniques, was really outstanding.

One feels sure that those Guides and Rangers who were lucky enough to be picked for Spotlight '73 will benefit enormously from the experience. Furthermore, they will be able to pass on and share the experience and thereby broaden the work of their own Units.

JVR





The highlight of the workshop was the performance of 'Children of the Sun'. The painting and craft groups provided the costumes and standards (above); the dancing and drama groups told the story (left and bottom left); and the music group provided the orchestra (bottom right).



photos: John Warburton



FOR YOUR CAMP OR PACK HOLIDAY BE SURE YOU HAVE —



X9823	CAMPS AND HOLIDAYS A comprehensive camping manual for Guiders.	Weight 7 oz.	Price 37½p
X5651	QUARTERMASTER IN CAMP A handy pocket sized reference book for the QM.	Weight ½ oz.	Price 12½p
X5510	SAFETY RULES	Weight ¼ oz.	Price 3p
X5513	SAFETY RULES FOR JOINT ACTIVITIES All the safeguards you must take for any activity.	Weight 2 oz.	Price 4p
X5650	PACK HOLIDAYS A comprehensive manual for Guiders taking a Pack Holiday.	Weight 4 oz.	Price 16p

FOR YOUR CONVENIENCE, USE:

X9352	CAMP KIT LIST	Weight 2 oz.	Price 6p
X9353	PACK HOLIDAY KIT LIST	Weight 2 oz.	Price 5p
9354	CAMP/HOLIDAY HEALTH FORMS	Weight 2 oz.	Price 6p

IN CASE OF EMERGENCY BE SURE YOU HAVE AN UP-TO-DATE COPY OF:

X9725 or X9726	FIRST AID MANUAL, SJAB	Weight 10 oz.	Price 40p
	FIRST AID MANUAL, BRCS	Weight 10 oz.	Price 40p

EVERY GUIDER SHOULD HAVE HER OWN RECORD BOOK TO HOLD WARRANT CARD AND RECORD APPOINTMENTS, etc.

9410	GUIDERS RECORD BOOK Each Record Book contains the new Adult Leader Syllabus but these can be bought separately — Code 9409 price 2p.	Weight 4 oz.	Price 10p
------	--	--------------	-----------

PACKING AND POSTAGE CHARGES

For parcels not exceeding	4oz add 4p	For parcels not exceeding	4lb add 29p
	6oz add 9p		6lb add 33p
	10oz add 13p		10lb add 44p
	1½lb add 19p		14lb add 55p
	2lb add 24p		18lb add 66p

For parcels over 18lb add 77p

Orders over £15.00 in value are sent carriage free

BY POST from . . .

THE GIRL GUIDES ASSOCIATION,
(Dept. G),
COMMONWEALTH HEADQUARTERS,
17-19 BUCKINGHAM PALACE ROAD,
LONDON SW1W 0PT.

THE ASSOCIATION'S SHOPS:

London: 17/19 Buckingham Palace Road,
SW1W 0PT.
London: 19 Green Lanes, Palmers Green,
N13 4TT.
Birmingham: 5 Ryder Street, B4 7NE.
Liverpool: 20 Richmond Street, L1 1EG.
Cardiff: 20 Working Street, CF1 2SF.

SCOTTISH GUIDE SHOPS:

Glasgow: 1 Scott Street, G3 6NU.
Edinburgh: 16 Coates Crescent, EH3 7AH.
Dundee: 53 South Tay Street, DD1 1NP.

ULSTER GIRL GUIDE HEADQUARTERS:

16 College Square North, Belfast 1.

SCOUT AND GUIDE SHOPS:

London: 124 Newgate Street, EC1.
London: 55 Woodgrange Road, Forest Gate, E7.
Ipswich: 5 Tackett Street, IP4 1AU.
Leeds: 62 The Headrow, LS1 8EJ.
Oxford: 17 Turt Street, OX1 3DH.
York: 14 Goodramgate, YO1 2LQ.
Harrow: 104 Hinds Road.

LETTERS

Opinions expressed in these columns are not necessarily those of the Editor.

Those were the days

THE best page in *Guider* (to me) is the one bearing the words, 'Those were the Days', with a picture of a Girl Guide of past days. This picture, if I remember correctly, was on the cover of the old Gazette, and bore the words, 'Turn to the Right, and Keep Straight'. Yes, those were the days. Then, Guides smelt of the open air and campfires, (even if you hadn't been to camp) and adventure. Then after that came school companies, and somehow, although they were nice enough, the magic had gone. School companies, so far as my experience went, smelt of prefects and tidy uniforms and good behaviour. But they had their merits, oh yes.

Now 'Girl Guides' smells of something like TV, not a very nice smell. Why? There are no smug, self-satisfied young men such as I see on 'the box', no silly inane jokes, no nastiness. On the contrary, I know there must be dedicated women, and lively girls. Perhaps this is because I am out of it now; I do not meet the dedicated women, and I do not know the lively girls. In church they look demure, I only read *Guider*. Whence comes this rather unpleasant whiff? I see the word 'Pollution'. Will the word 'Fluoridation' soon appear? Something has fled. The magic has gone. Something I don't like altogether has come in its place.

K O Rand.

Yes, the illustration was taken from the *Girl Guide Gazette*. We should be interested in readers' comments on Miss Rand's view of present day Guiding. Editor.

'Today's Guide'

I WOULD like to write in praise of *Today's Guide*. I think the articles are first rate, very interesting and varied.

I get lots of ideas for things to do at meetings, and we always use the prayers you print. I cut out any article that I think would be useful to keep, and some weeks there is not much paper left.

Don't make the puzzles, etc, too difficult, sometimes when I try them with the Guides, the younger ones find them rather advanced.

I am pleased that you have an article on 'Home-Made Cooking Pots', as last week one of our Guides asked if they could 'Fire Light' this week, using home-made cooking pots. So your article will be a useful item to cut out and share with them.

Best wishes on the continued success of *Today's Guide*.

(Mrs) G Bingham,
Lutterworth, Rugby.

See the special notice on page 226 for our future plans.
Editor.



Guiding Authors

I AM DOING research into girls' fiction of the twentieth century, and I wonder whether any of your readers could help me with information about authors of stories on Guide themes?

I would particularly like to discover whether any of the following authors were directly involved in the Girl Guide Movement, and should be grateful to hear from any readers who might have had

Guide Fashions

I ENCLOSE a picture (right) of our two Girl Guide Companies, at our fashion show held on 28th April, in the Alloway Parish Church Hall.

The clothes were supplied by 'Arnotts' of Ayr (House of Frazer), and the models were three five-year-olds, six Brownies from the two Brownie Packs, six Girl Guides from the two Companies, four mothers, one Guider and one ex-Guider.

We held two shows, one in the morning and one in the afternoon, taking £55 from the sale of tickets. We supplied coffee or tea and biscuits at both shows. The money was divided between the two Companies and both are giving at least half to local charities, and putting the remainder in Guide funds.

(Mrs) M Maclean,
1st Alloway Company.

See Guide Training Page 242. Editor.



European Hike

TWELVE of us from Sussex West assembled at Horsham Station at the start of a Springboard '72. After an uneventful journey to Dover and across the English Channel, we arrived in Ostend. The next day we went by train to Luxembourg City.

We left the next morning complete with boots and haversacks and all ready to walk. Everything went well until we had our packed lunch; we lost the footpath. But, map and compasses at the ready, we soon got our bearings.

Echternach is situated on the German Border and we spent two nights there. I think we all trekked across the border, passed the Customs Posts. One Guide returned with a hat badge from a German Customs officer and the promise of a Luxembourg one - which she got the next day.

The next morning we set off again; and again we lost the path when we resumed after lunch. But once again our Guide training came to our rescue and we continued our walk to Beaufort.

After a day in Ettelbruck where some of us went up in the chair lift, we left for Bruges, and a day of sight-seeing and shopping before going on to Ostend and home.

Everyone agreed that the holiday had been worthwhile. The chance to meet other travellers and swap stories had all been part of the fun.

P M Farr,

7th Horsham Guide Company.

personal contact, or correspondence, with some of these prolific writers of girls' fiction: Ethel Talbot, May Wynne, Winifred Darch, Dorothea Moore, Elsie Jeanette Oxenham, Christine Chaundler.

I would welcome correspondence, addressed to me at 46 Overbury Avenue, Beckenham, Kent, about these or any other authors who were active in the Girl Guide Movement.

With thanks,

Mary Cadogan.

ADVERTISEMENT

FUND RAISING WITH NESTLÉ'S

As most Youth Organisations now know, THE NESTLÉ CO. LTD. in co-operation with LANE & PARTNERS LTD. have produced this exclusively packaged dessert milk chocolate bar, now available to all Youth Groups, Clubs, and Schools in the UK for fund raising. Due to the success of this scheme NESTLÉ have decided to make this product available to all bona fide Youth Organisations at ANY TIME OF THE YEAR.

This means that you are now able to order and take delivery whenever your individual sales begin.

Each Dessert Milk Chocolate Bar is made by THE NESTLÉ CO. LTD. from the finest chocolate beans. Each bar weighs a full 3½ oz. and is covered with golden aluminium foil and packaged in a beautiful chocolate brown wrapper embossed in gold lettering. No one is authorised to sell this particular package except bona fide organisations and schools within the UK. Each bar is guaranteed fresh by the makers.



THE PROFIT

PRICE REDUCTIONS (V.A.T.) As of 1st April, 1973

Suggested selling price to the public per bar	- - - - -	13½p
Your total cost per bar	- - - - -	8½p
Your net profit per bar	- - - - -	5p
Your net profit per Outer	- - - - -	90p

HOW TO SELL

Sell to all relatives and friends of your Company. Have chocolate stalls at fêtes, bazaars and local sales of all kinds. Ideal suggestions for prizes.

Join up with your Church in their fund raising efforts.

Sell by the Outer as these chocolate bars make excellent all the year round presents, particularly suitable for Christmas gifts.

HOW TO ORDER

Simply fill in the order below. SEND NO MONEY WITH ORDER. You will be invoiced when your order arrives and payment is required 30 days after invoice date. When paying your invoice simply remit 8½p per bar to THE NESTLÉ CO LTD. and keep 5p per bar for your Company.

We regret we cannot accept orders for less than 10 Outers (180 bars), and we cannot give credit for unsold stocks.

PLEASE ALLOW APPROXIMATELY TEN DAYS FOR DELIVERY AND POST ORDER TO:

LANE AND PARTNERS LTD., 6 CURZON PLACE, LONDON, W.1

Cut Here

PLEASE
SUPPLY

☐ OUTERS

Normal Minimum Order 15 OUTERS (270 bars)

SPECIAL OFFER to GUIDERS - Minimum order 10 OUTERS (180 bars)

1 OUTER = 18 BARS. 1 OUTER £1.53

My Sale Date Begins

Number of Members in Company

Name of Company

Name

Address (For delivery 9 a.m.-5 p.m.)

Signature

TERMS NET 30 DAYS FROM INVOICE DATE

Tel. No.:

DEPOT No.

CUSTOMER No.

FOR OFFICE USE

ORDER No.

Diary of a QM

by
Daphne Pilcher

WHERE are the tomatoes?' I enquired, missing a dixie.

'Here, QM,' replied a small, cheerful Guide.

There, in the dixie at the edge of the fire, was a large tin of tomatoes, unopened. The Cook Book had said 'Put tin of tomatoes in dixie and place at edge of fire.' Just as well they only required heating through and that could be done while we were eating our cereal, but I now realised my Cook Book needed greater explanation. Bit late to change for this year's camp but I'll note it for future reference. Struggling not to think of my smokey, tear grimed countenance next to Captain's model of perfection, I tried to be glad that 'God has created a new day'.

I hoped that my change of Cook Patrol after lunch would herald better things, but, as becoming a little harassed over supper preparations, I urged someone to bring me a medium sized dixie, I was brought up short by a loud stage whisper.

'What's a dixie?'

And the answer, 'I think she means one of these large saucepan-like things.'

Mental note. Camp training before camp is essential. Terms we take for granted are Greek to the new Guide Camper.

Monday morning breakfast. In vain I tried to explain that things would get on much faster if only they would let the fat melt before starting to fry. Why didn't I bring a record to camp? 'Don't stoke the fire from the side, don't put on little pieces, stoke it decently. Don't put the dixie lids, inside down, on the grass. You can see that wood isn't dead; it still has green leaves on it. Where is the water patrol?' Anyway breakfast was on time and we are all still on speaking terms.

Tomorrow evening Kentish cream. Must remember to make the jelly early this morning so as to give it time to set, but remember not to let it set too firmly before whipping in the evaporated milk. Late Monday evening, won't that jelly ever show signs of setting. Half an hour later; heavens! it has set solid. Oh well, the Guides won't know the difference.

We're going out for the day on Tuesday, and amid the usual rush and bustle of getting off for the bus, the second delivery of groceries turn up. Just about the last straw.

Sandwiches are not very appetising so I decided on bread rolls. Marvellous idea till Captain poked me in the ribs at six o'clock this morning and said cheerfully, 'Don't forget you've 80 rolls to butter and the girls will never get them done.'

The first half of this amusing diary appeared on page 205 of May Guider. The author has agreed to QM a group camp and is organising breakfast before Sunday church.

'I never want to see another roll, nor for that matter a pork pie.' My feelings are not helped by the fact that by lunch time Captain will be 20 miles away from us being wined and dined by the County Commissioner.

I wanted a nice easy meal for supper, having been out all day, so decided on fish cakes. The fish cakes could be collected while out. It worked all right, but I felt rather an idiot asking for 80 fish cakes and seeing the resultant look on the salesman's face.

Ugh! Thought this weather was too good to last. Still if you've never camped in the rain you've never really camped. Do hope I checked that the wood pile was covered last night. Anyhow I've kindling in the store tent so the fire ought to start. Half an hour later; thank heavens for fire lighters. Been a bit extravagant, but it's been worth it. Hope I can hold out without using the fire shelter. Ours gives permanent back ache and drips down the back of one's neck.

It is no good. I simply must visit the lats. 'Rangers please keep an eye on these puddings so they don't boil dry.' Away longer than anticipated since first aid was required and Captain wasn't around. I arrived back just in time to see Rangers, somewhat red faced, hauling a dry dixie off fire. Rapid inspection. It could be worse. Perhaps Captain won't notice the slight marks. Anyhow it wasn't one of the new ones, thanks be.

We've been asked not to bury rubbish. What on earth am I going to do with the 'Ug?' The 'Ug' being the result of trying to produce rice and mince for lunch. How that rice expanded! We made oceans too much.

Captain and a Ranger took pity on me and made a late night excursion. The rice has disappeared and I've asked no questions.

'QM just look at them!'

'Horrors there must be more than 40? Oh no.' I asked for 40 kippers, but the fishmonger has sent 40 pairs. 'Guides, I hope you've all got good appetites. I can hardly send them back.'

Can't think why I worried. All the kippers disappeared.

Having found a breathing space I turned my attention to the younger members of my Cook Patrol. One small soul seemed rather useless, so I thought I would find a nice simple job for her. 'Janet can you divide these potatoes equally between the bowls?' Five minutes later Janet hadn't moved. 'What's up.'

'Please QM what does divide mean?'

Just try counting up to ten. On second thoughts make it 20.

Life is bad enough without an activity being carried on virtually in your kitchen with the genial request from high up, 'Just keep an eye on it. It is really self explanatory.' Don't you believe a word of it. It will keep you fully occupied and Captain will look pained when you explain that lunch is late because of your extramural activities.

Young Sue is a faddy eater. However does her mother manage with her at home. Apparently the latest is that she doesn't like mushroom soup. She only likes tomato. Still the Ranger reckons

she can manage her. Sue has consumed the mushroom soup.

'How did you manage it?'

'Told her it was yellow tomatoes.'

Just goes to show. She even said she liked it. I wonder what her mother will say when she goes home and asks for yellow tomatoes?

I'm beginning to feel just like a mother bird must feel when always faced with hungry chicks with their mouths open. No sooner do I clear one meal than they appear to be arriving for the next. Still I suppose I'd be worrying if they weren't eating!

The toilet rolls are running short. Must do something about those that got soggy at the beginning of camp. Ever tried drying them out on the end of the kitchen fire. Don't! It's a waste of time. They either remain soggy or go up in smoke. The Ranger seemed to enjoy the experiment however.

Those peas are ready for draining. Can you both manage? Take pot holders and mind the water doesn't splash. It will be boiling.'

Carol and Judy returned rather inclined to giggle.

Myself in a resigned voice, 'How many went down the grease trap?'

'Well - er - most of them, QM. But it's okay. We got most of 'em back.'



Jean de Lemos

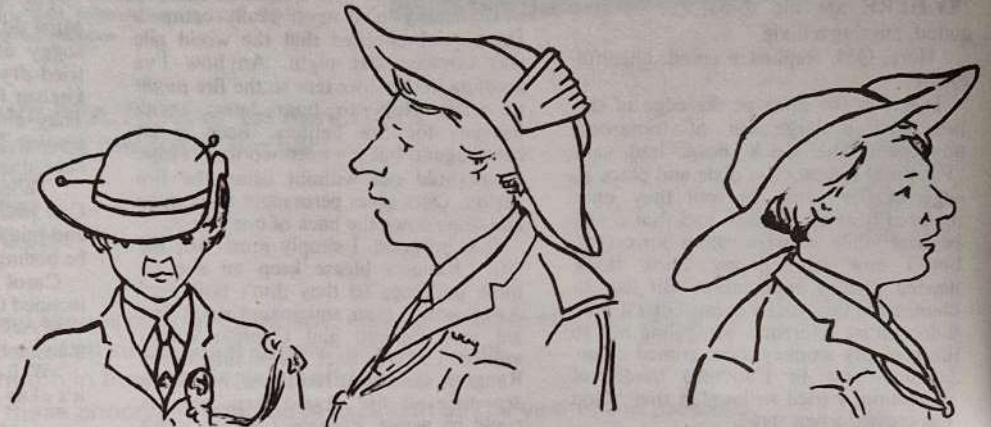
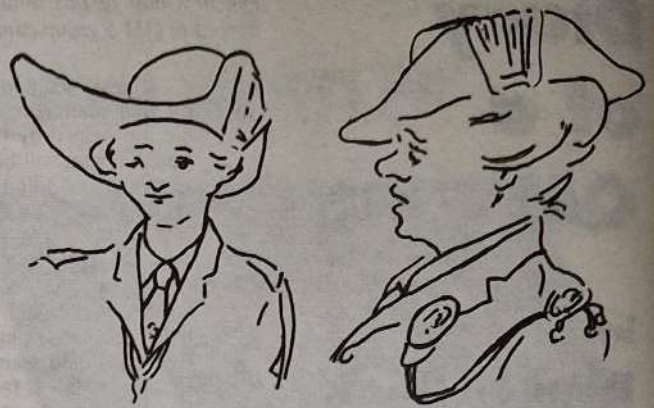
Oh well, what the eye doesn't see the heart doesn't grieve after, and the grease trap had just been changed.

For seven days I've been protesting that I do *not* want the outside of the dixies cleaned at any price. Now I do want some cleaned I'm still fighting a losing battle, and as for Barbara! Her dixie may be clean, but she needs a bath.

The left-overs are not too bad. A few things unfinished, such as coffee, but on the whole we've eaten more or less as I expected. We've had all the stuff out at the hall and made quite sure all is dry and clean. The kids did a good job, but however hard they try one always seems to bring back half the field.

On thinking back I don't mind if I am QM again next year. Captain and I are still the best of friends. The Guides are still with us. And the conversation has already begun to turn to Next Year!

THOSE were the DAYS



plus ça change

from Girl Guides' Gazette, June, 1923



plus c'est la même chose!

Jean de Lemos

A Guide Remembers

CRYSTAL PALACE 1909

ON Thinking Day, Dunmow District Guiders gave a dinner in honour of their District Commissioner, Mrs Boswell, who retires shortly, and presented her with a table cloth embroidered with all their names. On 25th February at the District Thinking Day party, Mrs Boswell was presented with a silver salver engraved with the trefoil, from all Dunmow District Guides, Brownies, Local Association and friends, and a book in which every Guide, Brownie and Guider had written her name. Mrs E Woodley, District Assistant, writes: 'For the Guiders, Guides and Brownies of Dunmow District this was a very sad day, as our District Commissioner is known and loved by every one of us. To us she is all that a Guide should be. Warm, a friend to us all from the smallest Brownie to the oldest Guider. A calmer of troubled waters, a champion, tactful, and encouraging, but the fiercest defender of Guiding, and her Guides in any adversity.'

Mrs Boswell will have many happy memories to take with her into retirement, for as one of the original Crystal Palace Guides she has been in the Movement since the very earliest days. Here are some of her reminiscences.

MY COUSIN was in the Scouts at the Worlds End Chelsea Hall and I used to go to the Band of Hope in the next room. As I was first out I would go into the Scout room to wait for my cousin. They would be mending boots so I joined in and I would also make the cocoa before the meeting closed.

One evening the Scout Master said that he would take them all to a rally and told me I could go with my cousin. He put a Scout hat on my head and a scarf round my neck and said, repeat the Scout Promise after me. He then shook my left hand and said 'You are now a Girl Scout.'

So on a misty morning in September, I dressed up and went to the Crystal Palace with my cousin. He took me to a small group of girls all dressed as I was and left me with them. B-P read the King's speech and then the parade started. We joined in at the rear and got a good cheer. One of the girls asked if B-P would inspect us, so we lined up and he came over to us. One girl fell over her skirt in the excitement. B-P said, What do you call yourselves? and we replied, Girl Scouts. He smiled, and turning to his officer said, These girls have set me a problem.

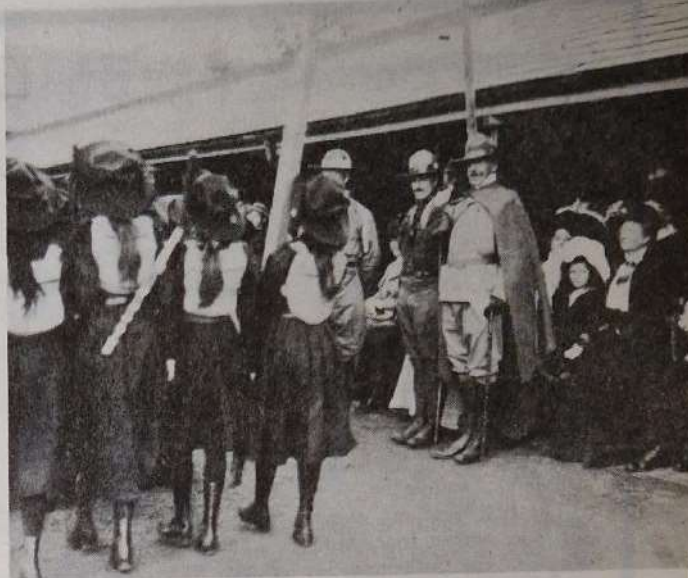
In 1910 I remember the Scout Master telling me that the doctor's wife had started Guide meetings in her kitchen and I could help her and be sure to take my Scout Book with me. There were only three girls at the meeting so I was made Corporal. It was B-P's sister Agnes that started Girl Guides.

In 1912 we moved to South Kensington and I went to Guide meetings at Queensbury Palace. B-P was married the same year and we were asked to take a penny towards buying a car for him.

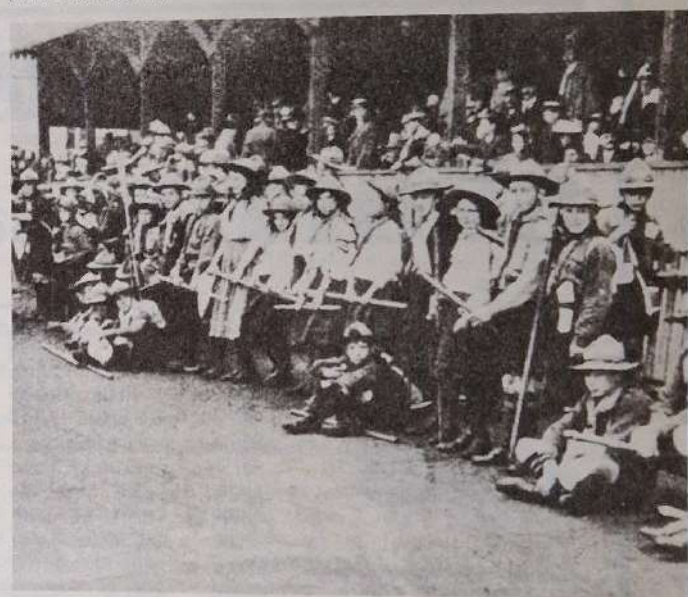
At the outbreak of war in 1914 I helped at Chelsea Workhouse as I was a Girl Guide. It was as good as a reference and it started me off on my nursing career.

In 1916 we moved again, this time to Cromwell Road and I went to Guide meetings at St. Johns Church, Earls Court.

I remember, I went to see a Jamboree at Olympia in 1920 and waited outside with several others to see B-P. He recognised me and asked how my uncle was, and then he asked me if I was still Guiding. I said I was but would be getting married soon. He replied that I should carry on with Guiding. I asked him how long he would carry on with the Scouts and his reply was, Until I am 80 and you do the same.



photos: Scout Association



Scenes from the Crystal Palace Rally.

I came to live in Takeley, Essex when my mother moved. One day a Guide came to the door collecting and my mother said, I will certainly help, my daughter has been a Guide for years.

In 1940 I was still Guiding, this time in Takeley. I was made Captain of Takeley and remained there until 1963 when I became assistant to Mrs Gardiner.

When my husband became ill in 1965 I had to give up and nursed him till his death in 1966.

Mrs Gardiner retired in 1969 and I was back in Guides again, though this time as District Commissioner for Dunmow District.

Through Guiding I have had the opportunity of meeting people I would not otherwise have met. I went to King Edward's funeral in May 1910 and shook hands with Kings and Queens and members of the Royal family.

Camping has given me the opportunity of seeing new places.

B-P gave me, and my cousin, a medal with a picture of himself on it before he went away in 1914.

In 1970 I was presented to Her Majesty the Queen at the Banqueting Hall, Whitehall.

And now with a host of wonderful memories of Guiding, I am approaching retirement. My warrant expired in February, 1973.

Camping Sons

I HAVE just returned from the Cheshire Wirral County AGM where we had an excellent speaker, Miss Stella Cuncliffe.

I quote from her talk: 'Guiding is about camping.'

This cheered me enormously as this is what I have built my Company on. I started the Company five years ago with three Brownies from our Pack and now, have a full Company and a waiting list.

The first year my eldest son was almost four years old and my youngest 3½ months. As I had only

camped twice before in my life I arranged for my Guides to join another Camp that year.

The following year I was QM at a Camp of 60 and I took my licence. William was now six and John 2½.

In 1971 I took Guides from different Companies to Derbyshire and had the maximum number permitted counting the boys.

So last year with a non-guiding non-Camping friend acting bravely as the third adult, I was able to run a Company Camp.

This year my eldest son is nine years old. Officially as I have a non-Camping

husband I cannot Camp. For this year, as I had already arranged my Camp when the new rules came out, I have been told I can take my sons but we must sleep apart and have separate toilet facilities.

Why these rules? What are they for? Why a third adult? Well trained Guides act well in an emergency – that is what we train them for. Half my Company have brothers. Do they have separate toilets for them at home? All my Guides' parents knew I had two sons and they camped with me.

Many Guiders must be in

the same position as myself, they have coped with nappies and wet sleeping bags, etc. and looked forward to the day when their sons would help to put up the tent.

Why cannot the staffing of Camps be left to the discretion of Camp Advisers and District Commissioners, they should know their Guiders, we cannot Camp without their permission.

With the shortage of willing adult leaders cannot the Movement encourage, rather than make difficulties for their Leaders?

Elizabeth Shand,
Wirral, Cheshire.

airing and sharing....



Tuck Shop

A PART from the fact that it may give Guiders twinges of conscience about encouraging sweet-eating, the idea of a tuck-shop is very useful in many ways. It provides a steady, though not excessive source of income; it adds an extra interest to Guide meetings and rounds off the evening on a social note; it is little trouble to organise.

To organise a tuck-shop, you must have access to a Cash and Carry warehouse, or some kind of contact in the trade. Once established, you simply find out what sweets are fashionable at the moment, and stock up with a few varied boxes. Don't buy too much at first. One possible pitfall is the occasional Guide who 'for-

gets' her subs, but then mysteriously finds money for the tuck-shop. This obviously needs watching.

If you want drinks, these can be brought from the warehouse, or some companies will deliver soft drinks to your home. If orange squash seems simpler, you can buy a half-gallon or one-gallon container from any store or Cash and Carry, and sell it in cups, diluted. Of course all the goods are bought at wholesale prices, then sold at normal shop prices. After a few weeks some profit will mount up. Many Guiders have also found that a Camp tuck-shop helps with Camp expenses too.

Looking after the tuck-shop is a good job for an assistant Guider, Unit helper or parent, and an older Guide. Most children spend vast amounts in sweetshops, so there is no reason why some of its profits should not go to benefit their Guide Company.

Jacky Sarginson,
London.

2 Slants on Reading

WHILE I agree with everything that Mrs Edwards says in 'New Slants on Reading' (May *Guider*), I believe that not enough encouragement is given to young children. I feel strongly that they should be encouraged to read both at school and at home. We all know it's far easier to sit them in front of the television and tell them to watch 'Larry the Lamb' or 'Sooty' while you get on with something else; instead of spending a little time reading them a story. But isn't it more important that they should be able to read, than that the washing up is done in time for you to watch 'Crossroads'?

When my two boys were small, I spent hours reading to them and listening to them read. Consequently they are both avid readers and still pursue all 101 other things that youngsters enjoy.

(Mrs) M Smith,
London.

Opinions expressed in these columns are not necessarily those of the Editor.

THANK you for the article you wrote in the April issue of *Guider*. We have had some enquiries as a result and hope to get others.

If only Brownie Guiders would look out at the Brownie stage for the young gifted, I am sure that we would have less trouble later on, and the children would indeed be stretched.

In my youth, I was a Brownie, Guide and finally a Ranger, but have, of course, unfortunately, 'dropped out' for many years.

If we can be of any help to Guiders who write to you direct we would be glad to do so.

Our new Director Mr Henry Collis has spent a great many years active in the Scout Movement and would be particularly pleased to give any help to the Association in this matter.

Many thanks.

(Mrs) Margaret Branch,
Hon. Gen Secretary,
National Association for
Gifted Children Limited,
27 John Adam Street,
London WC2N 6HX.

BROWNIE PRAYER TIME

Leonora Wilson

TO A NEW Guider, prayer time is often the most difficult part of the Brownie meeting. We can get ideas for games and activities from other Guiders, from trainings and from books, but prayer time – no!

The Brownie Prayer Book, available at CHQ shops is invaluable for a new Guider, for the prayers are varied, well chosen, suitable for the girl of Brownie age and appropriate for her many activities. Perhaps at first, we have selected and read the prayers ourselves but later, we have felt that this was not sufficient and that our Brownies should be just as involved in prayer time as in any other activity. So the Brownies take part, choosing prayers singly or in groups, with perhaps some help from the Guider.

When Brownies write prayers the words they use are often very direct and to the point and, as a result, probably more effective as group prayers than those written in the flowing language of the adult. If prayer is talking with God, then the subject of the prayer should be what is occupying the Brownie's

thoughts and ideas. So, in a Brownie meeting concerned with 'Health', pictures of children skipping and running or conversely, pictures of children in hospital, could be given to a small group, to suggest ideas for the closing prayers. Pictures of homes, of flowers and trees, of a tiny baby, of the seaside act as a stimulus.

Of course, writing their own prayers doesn't happen every evening, nor should it. The Guider and the Assistant Guider, and perhaps the Pack Leader may take their turn so that the Brownies feel that prayer is for everyone. The Brownie Guider may introduce well known prayers of the church or she may turn to a hymn book; 'Lord, keep us safe this night,' 'Jesus' hands were kind hands,' 'All good gifts around us.' She may feel able to add a simple, short prayer in her own words as, for example, after a Pow-Wow planning a concert for Oxfam, she could pray quite simply:

'Lord, we remember these children who have not enough to eat. Help us to help them.'

Many Packs have compiled their own prayer books, including both original prayers and well known favourites. In some Packs, it is tradition that when a Brownie leaves for Guides, she adds a prayer to the Pack Book. Prayers on cards are also useful. They can be decorated with pictures and kept in a wallet. (This could be made by Brownies as a Lend a Hand Challenge on the Brownie Road.)

If we can help our Brownie to see that all our doings can be brought to God in prayer, making prayer a natural thing, we shall have given her a great source of strength for the future. 'When it's a cold, grey foggy morning,' said one Brownie to her mother one winter's day, 'I shut my eyes and I think of Pack Holiday prayers on the terrace at Barmoor and it makes the day seem brighter!'

Prayer Books: The Brownie Prayer Book; Rosalie Wakefield CHQ. Time and Again Prayers; Oxford University Press. Let's Talk to God; Zinnia Bryan. Scripture Union Brownie Prayer Cards; CHQ.

The Brownie Road FUN OUT OF DOORS

Peggy Moor

BROWNIE

JOURNEYS, Ventures and Interest Badges make up an integral part of the Brownie Programme. Analytically minded Guiders may like to think how their own Pack Programmes link to make a rich satisfying whole, which Brownies will subconsciously appreciate.

Let us apply this method to the Road Challenge to 'take care of a living thing over a period of time'.

Pet's Pow-Wow

Find out which pets are most popular in the Pack. A pictorial graph adds interest to this. Gummed paper symbols of the Brownies' pets are stuck in appropriate columns.

This can be followed up by inviting a suitable speaker to give advice on caring for pets. Sources for speakers may be an RSPCA Inspector, local Vet, police dog trainer, riding school instructor, or a farmer.

Pet's Scrap Book

Brownies contribute to the scrap book by adding to it, photos or drawings of the pet they are taking care of, accompanied by a

write-up in story or diary form. Although this is a contribution to the challenge it is important that the Brownie is also given a chance to talk of her experience to the Guider, or if sufficiently confident, to the Pack.

Some Brownies prefer to look after growing things. Strange seeds was a Pack Venture for everyone, but of extra importance for those working at the Road Challenge.

After looking at a good collection of Autumn Fruits brought for the Footpath Challenge, the Brownies in Pow-Wow decided to try growing some of these unfamiliar seeds. Next week they brought as many seeds from wild fruits as they could find, as well as cartons in which to plant them. The cartons, after removing advertisements with a soap pad, were decorated with scraps of adhesive vinyl covering. At a further meeting, seeds were planted in potting compost, clearly labelled and committed to individual care.

This on-going activity brought talking points to Pow-Wow for

weeks, as acorns, sycamore wings, apple pips, hips and haws germinated. Brownies, although fascinated, are sometimes disheartened at the slow rate of growth of some seeds, so to counteract some inevitable failures it is advisable to ensure some success by planting more reliable seeds and bulbs at the same time.

From experience, new Guiders may appreciate this tip: It is essential that Guiders anticipate the out of doors challenge well in advance, to avoid too long a delay in the achievement of the Road Badge!

Possible Ventures

1. Pack Outing to local Zoo
2. Visit to a Farm
3. Grow Bulbs for:
 1. Pack Bulb Show
 2. Church Decoration
 3. Gifts to elderly people
 4. Cultivate grounds of the Church or meeting place.

Interest Badges

Some of the activities mentioned may stimulate an interest in Animal Lover, Collector, Gardener, Pony Rider or Discoverer Badges.

GUIDES AT PRAYER

I OFTEN say my prayers – but do I ever pray? – and do the wishes of my heart go with the words I say? What is praying? 'Thinking about God? Thanking God? Loving God?'

Thinking of God involves remembering the beauty and wonder of His creation, the goodness in the world and in people, and the marvel of Life itself. Talking with God and thanking Him for His bounty inevitably leads to thinking about people, those who help us, and those whom we can help.

Let PL's Council plan the programme of Prayers for a period; sharing the planning, choosing, writing and leading of Prayers will render Worship more meaningful. The Guider must be available to help as required, or to provide 'Starters', until the Patrol is able to devise Company Worship unaided.

Encourage Patrols to involve as many members as possible. Emphasise need to rehearse sufficiently. Clarity of speech, confidence that comes from each girl knowing her role in an Act of Worship is of vital importance.

Experiment with a variety of material and media suitable for encouraging Patrols to plan and carry through and lead Prayers.

Source of Prayers and Readings.

Patrol or Company Prayer Book; containing poems, prayers, readings, quotations, original or found by Guides illustrated with drawings or cut-out pictures. Encourage Guides to write poems and prayers, and help them to search out – and use, some of the more traditional ones; scorn not the old and simple, remember that prayers of the moment are of special value.

A simple theme eg 'Hands.' Provide picture of 'Praying Hands' (Albrecht Durer) and appropriate story. Suggest Patrol make a list of 'kinds of hands' eg that work ... that create ... with an object to illustrate each one, then plan a simple litany with each Guide placing her object on the ground saying, 'We praise Thee with hands that ...' Response by Patrol, 'We praise Thee, O Lord.'

Story and Recorded Music, to introduce theme eg 'The World Family' or 'Who is my neighbour'.

Hilda Cox

Biblical reference 'The Good Samaritan'. Listen together to recording 'Black and White', He's got the whole world in his hands'.

Visual Aids. Theme eg 'God's wonderful world' or 'Our Heritage'. Show a seasonal picture, collection of natural specimens eg spring flowers, autumn berries, designs based on snow crystals, a Semi-precious stone. Can each Patrol find poems, readings, prayers, or each girl make one separate comment about specimen observed?

Topical Subjects. Christian festivals. Local history and events. Press headlines. Chance remarks made by Guides, eg 'I don't know where to start.' 'It isn't really fair.'

Theme, eg Courage, responsibility, seasonal use of legends of Saints or Union Jack. (Perhaps an opportunity for mime and drama improvisation.)

Useful book for the Guider, *Praise and Thanksgiving*, GGA. For the Guide, *Prayers for all the Family*, Epworth Press. *Live and Pray*, Church Information Office.

GUIDE

May We Recommend

A DRESS SHOW

Jean Rush

FIRST of all, why a dress show? Could it be the result of a Company or Patrol effort at dressmaking or crocheting? Or is it for a parents' evening with the idea of enlightening them about camp kit with other clothes included for entertainment, or is it a money raising effort as a change from jumble and coffee.

This is one project almost certain to meet with plenty of support.

Let each Patrol organise one section of the show, with a short interval between each part. The PLs can decide whether one Patrol will show sports gear, one party clothes, and so on; or whether each Guide should model her own favourite outfit. (Training: thinking for yourself.)

Once a date is fixed, allow about four meetings for preparations. The first week, each Guide might bring the outfit she wants to wear. An open discussion will soon establish who are the most fashion conscious, and they can help the less confident ones with suggestions and ideas for borrowing accessories. (Training: colour schemes and taste: exploring the arts.)

The second week, all the outfits should be tried on together with the swapped or borrowed accessories. Any really outlandish getups can be diplomatically toned down, or added to accordingly. This week, too, draw up a list of VIP guests to be invited – not forgetting the local press! Selling should by now be under way if it is to be a fund raising affair.

On week three, work out a running order. A good idea is to start with casual clothes, then on to more formal clothes and party gear. This week begin to rehearse the models in how they will show the clothes. It's unlikely you can obtain the traditional 'cat walk' but any platform will do. If there's no platform in the hall, arrange the chairs length ways and mark your cat walk on the floor. The main hazard is a fit of giggles and the best safeguard against this is for the models to gaze into space above, not at, the audience. They should never look at the floor, and they must practise walking and turning until they are sure of their movements. Background music is

essential, and the models can use dance movements, but they must still move slowly, remembering that the object is to let everyone see the clothes from every angle.

Walking well in spotlessly clean and pressed clothes, with shoes, hands, and hair all at their best is real Training in keeping fit.

Week four is the final dress rehearsal. Take the chance of a little extra fund raising by selling coffee and cakes in the interval.

If it is a success, why not repeat it at a local children's hospital or old people's home? (Training: giving service.)

Just one last thought. Every dress show must have a compere. This could well be undertaken by two or three of the Guides modelling perfect Guide uniform.

Does it all sound just too much of an ordeal? Well, there is another way. Many stores are only too anxious to put on shows for special groups provided you can guarantee a minimum number. They provide and organise everything and your funds benefit. It's much less bother – but not nearly so much fun.

Our Rangers' Ambitions

To be Invested in a Church Tower/Up a Mountain

I HAVE recently become a Ranger Guider in another Unit, and one of my immediate worries was that all Rangers working towards Investiture were automatically expected to go through the established form of Investiture Ceremony. In my previous Unit, the tradition had been for every girl to choose her own venue and form of Ceremony. This method proved to be thought provoking for everyone whether Invested or not, as although the Ranger had freedom of choice for her Investiture Ceremony, the Unit expected her to have valid and meaningful reasons to back up her choice.

While out on a hike one Sunday in the early spring with the new Unit, an older Ranger took a deep breath and said, quite impromptu, how she loved the spring when everything was so new and fresh – it gave her renewed inspiration in all that she did. I immediately grasped the opportunity which confronted me: Yes, I said, I know what you mean, I too feel that way about the Spring, that is why my ambition was to be invested as a Ranger during my first lightweight camp at Easter; I felt that I was embarking on some new, exciting challenge in life and I wanted to take my Promise as a Ranger in congenial surroundings to this enterprise. It had occurred to me while working towards my Investiture that I needed to rethink thoughts which, in many instances were not even my own, but those imposed on me by my family, upbringing and tradition or friends or acquaintances who had influenced or impressed me.

'Invested in Camp!' was the surprised reply, from all the Rangers nearby, 'surely you can't have a Ceremony in an open field?' Why not, I asked, there is no reason at all why a Ranger should not choose to be invested in a church tower or on a mountain, providing it is meaningful to her. After all, some people choose to worship in a Church which has a service full of pomp and ceremony, others to go where the service is plain and divorced from all ceremony; each would feel very unhappy in the other's place of worship, and it is essential for the individual to worship in an atmosphere and surroundings congenial to their needs. Some people need

Kim Taylor

to have the air of ceremony about them to provoke their mind to worship, others would find themselves too interested in watching all that was going on and their prayers would be forgotten. Why then should this not be the same for a Ranger who is taking an important step when she is Invested – surely she should have congenial surroundings meaningful to that moment.

As a result of that brief introduction into the thoughts on Investiture shown by the Rangers, my aim during the next few months was to make them all aware, through various means, that people do not have to see and do things in the same way, and that hidden ambitions to be different are, at times,

ture for the new Rangers, and secondly I wanted to bring fresh thinking to all the others.

Quite unknowingly our beliefs and attitudes are so often set and formed by people closest to us. This of course, is good where the example set is worthy of copying. However, the proof of growing up must be to question everything, and often a girl of Ranger age has secret longings and ambitions to do or be something different from what is expected of her. Some parents are wise and readily accept that their child earns the right as she becomes an adult, to form her own attitudes on every aspect of life. However, many girls do not enjoy the privilege of having parents with such foresight and



RANGER

common to us all. A series of discussions were arranged on religion, arrangements made for the Unit to attend various Church services in the area. We had a personal quiz in which each girl had to search inwardly for the answers as to why she went to Church regularly each Sunday, or why she did not; what was her strongest desire; why was she a Ranger; what did the Promise mean to her now that she was a Ranger as compared to what it meant as a Guide; had she learnt to think more deeply about what the Laws really meant in day-to-day living? My aim was two fold, firstly I wanted to set a different approach to the Investi-

therefore keep their inner ambitions locked away. This is where the Ranger Guider can help by making the opportunity to seek out these inner longings of the girls in her Unit, whether they be minor, frivolous ambitions like wanting to conduct an orchestra, or something of more significance such as wanting to be invested as a Ranger at the local Physically Handicapped Hospital, because it was there that the girl first realised the true meaning of Rangering. In this way the Guider will get to know the girl better and also make the girl become more aware of herself – another step forward to growing into an adult.

AM I JUST A RUBBER STAMP?

MY Warrant has arrived and I am a fully-fledged District Commissioner. The first few months have been fun – visiting Brownie and Guide Units and eating with chopsticks with the Rangers. Whatever was I worried about?

But now I seem to be surrounded by forms all requiring the signature of the District Commissioner – ME! Some don't produce too many headaches, even hall letting forms which make me responsible for any damage; after all, the Guides and Brownies have been using these halls for years and have never been any trouble.

However, suddenly it is spring; the entire District wants to 'enjoy the outdoors' and Camp forms are brought to me by eager Guiders from all sections. I must make sure that all is well.

The Guider of 1st Blank Company is taking her Licence, she is an experienced Guider, thorough and meticulous and has camped before at the same local site. Parent's consent forms have been completed and meetings held with

the 'Mums' to discuss any problems; the staff are all fully trained but I must ask Mrs Blank whether she has checked on insurance coverage for the removal van which is to transport girls and equipment. That done, I can send off C9 to the CCA with a clear conscience.

Jane Brown wants to get her Patrol Camp Permit before leaving for Rangers, she is a sensible girl and both she and her PS have camped regularly; arrangements have been made with one of our LA members (an ex-Guider) for the girls to camp at the end of her large garden two or three miles outside town, and the 'Dads' have agreed to act as chauffeurs. They seem to have organised themselves.

I'm rather worried over Mrs Brownie Guider's Pack Holiday; there's no doubt she is enthusiastic but rather inclined to think it will be 'all right on the night'. Is she really sure that our nice Mrs Red Cross will be free that particular week and is her Ranger helper over 18 and not just 17 and a bit? Perhaps

Nancy Montague

I had better put that one aside until I have had a chat with Mrs BG.

The Rangers are planning two holidays, a week in France and a long-boat cruise. Their Guider has frequently travelled abroad and is a very experienced camper; both she and Karen (a Queen's Guide) speak French and, as passport, travel and camping arrangements are all satisfactory and the other Rangers have camped before as Guides, it should be a happy experience.

Plans for the cruise are nearly completed; they are hiring a boat with a licensed crew, the girls can all swim and a neighbouring Ranger with a Life Saver Certificate will be going with them.

Have I made sure that we all remember that we are responsible for other people's children and that holiday plans are well thought out and followed through? If so, I can go ahead and sign all those forms beginning with a 'C' and followed by various numbers. How grateful I am to my CCA and to POR for helping me through my first experience of holiday form-filling.

DISTRICT

THE FOUNDER SAID

Janet Cozens

THE principles of Scouting are all in the right direction. The success in their application depends on the Scoutmaster and how he applies them. Many a Scoutmaster would probably desire I should give him all particulars in detail. But this would in reality be an impossibility, because what suits one particular troop and one kind of boy will not suit another within a mile of it, much less those scattered over the world and existing under totally different conditions.'

So wrote B-P in Aids to Scoutmastership – and he might have added 'many of the detailed particulars which suit the boys of 1923 will not suit those of 1933 ...' He was saying in effect 'Here's our purpose, to provide opportunities for young people to grow as individual persons, and in relationship with other human beings, with the rest of the created world and with the Creative Spirit at the heart of it all; and here are the principles underlying a method that can help to achieve that purpose for a variety of boys and girls in different times and places.'

I have just returned from the Diploma'd Trainers' Conference, 1973, where the theme was 'Guiding in a Changing World.' 'So what?' you might say, 'It's always been a changing world hasn't it?' Yes it has, and Guiding has been able to develop along with the change while continuing to be based on the original principles. We were helped at this Conference to look with urgency but without fear at the nature of our changing world and at the ways in which it will affect 'the physical and social environment of the girls with whom we work'.

Technological development in food production, transport, medicine, industry, communication; changes in the pattern of family life and social needs; Europeanisation, movements of population, mass media; changing attitudes to authority, to accepted standards of behaviour; re-organisation of schools and new teaching methods; new ways of expressing religious conviction, and caring. All these were thrown at us for our consideration as they affect the world in which Guiding

has to meet the needs of young people with the help of adults.

When the Working Party had finished taking evidence and weighing it up, they stated, 'The original principles and methods of The Founder have stood the test of time.' They did not list them, (as he did not) but with the help of other Guiders of vision, produced a way in which those principles could be worked out with tomorrow's Guide whoever and where ever she might be, and whatever changes might affect the world of the day after tomorrow.

As we go on giving opportunities through Guiding to girls of today and tomorrow and the day after, we shall need to be aware of the road ahead in our local communities, nationally and in the world; we shall need to refer to the touchstone which the Handbooks give us; we shall need re-interpreters from time to time; most of all we shall need Guiders of understanding and imagination. 'Success' said B-P, 'depends on the Scoutmaster' – and that's as true in 1973 as it was when he wrote it.

Programme Notes

October 1973 – March 1974

GENERAL TRAINING WEEKENDS

Of all the weekends at the Training Centres these are the most popular, offering to Guiders invaluable help in running their own Units and carrying out the programme. The Guider's job is examined and discussed in relation to the age group with which she is dealing. Skills and activities are tried out and talked over and some combined sessions may be held, focusing on topics such as World Guiding, the promise in The Programme or programme links between Sections. Every effort is made to include special requests sent in beforehand by Guiders, but remember – the Trainers are also working women, and have to plan their programmes well in advance.

Some general weekends do have a special emphasis eg Outdoor Activities, International, etc and these are always published in GUIDER.

MAKING THE MOST OF THE DISTRICT

Foxlease
14th/16th September
18th/20th January

Waddow
21st/23rd September
1st/3rd February

These opportunities for District groups to attend a Training centre together, have proved most popular, and have been found by some to be a way of blending the District together.

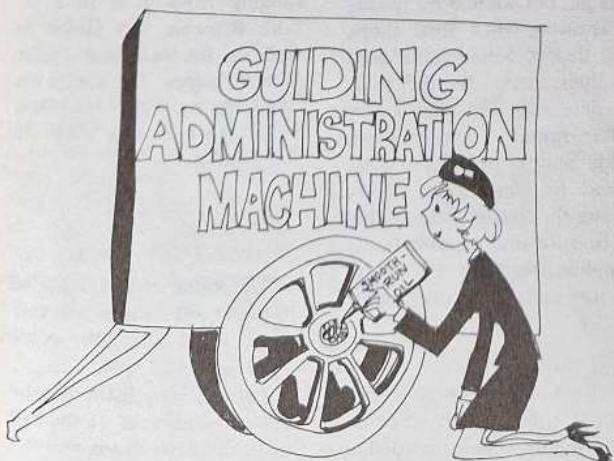
The weekends include a chance to work together as a District, and to discover the support members of a District can be to one another. They also include help with programme planning and time is allotted to discuss other matters, which relate particularly to the Commissioner and to the Guiders of each Section.

District Commissioners are invited to bring up to seven of their Guiders from the District. Those bringing the maximum will be offered two free bursaries and parties of not less than four will qualify for one bursary.

OILING THE WHEELS

Foxlease 15th/17th February

This weekend course is designed especially for those who are concerned with the administration of Guiding at all levels. Commissioners and Secretaries will find it especially valuable, particularly those who are new to their jobs and are still uncertain as to channels and procedure. There will be sessions on such subjects as Public Relations, Finance, Insurance, Chairmanship, the preparation of Agendas and Minutes etc. Counties might like to send a couple of carloads of selected representatives. (To be repeated at Waddow later in 1974.)



BROWNIE GUIDERS TAKING PACK HOLIDAY PERMITS IN 1974

Foxlease 8th/10th February
(The main group this weekend is for Brownie and Guide Guiders.)



Jean de Lemos

A special 'small group' course is offered to Brownie Guiders who have already gained their Pack Holiday experience and who hope to take their Pack Holiday Permit test in 1974. This will be a weekend for picking up ideas for your programme and tips for the smooth organisation of your Pack Holiday so that you may embark on it with extra knowledge and confidence.

RANGER GUIDERS TRAINING CONFERENCE

Foxlease 22nd/24th March

Because Ranger Guiders usually get together in small numbers, we are offering a Training Conference to give an opportunity for 50 or more of them to meet for a weekend. The programme will include not only training sessions but also opportunities to confer on matters of common policy and concern. The new Guider will be as welcome as the 'old hand'. (To be repeated at Waddow later in 1974.)

HQ NOTICES

CHQ Awards Good Service

Silver Fish: Miss Mary Lambie, State Commissioner for South Australia.

Laurel Award

Miss A Thorne, Division Commissioner, Swindon South, Wiltshire.

Meritorious Conduct Certificate of Merit

Elaine Green, Guide, 1st Krefeld Company, Germany.

Meritorious Conduct

STAR OF MERIT

Lorraine Lund, Brownie Guide, 1st Sutton Pack, Yorkshire West Riding North West. For many years Lorraine has been severely handicapped but has maintained a cheerful countenance throughout all her difficulties and has tolerated her incapacity remarkably well. She has adapted herself to her handicap without complaint, never having been heard to say that she could not do a particular thing, and often attempting the impossible. Throughout her stay in hospital for her operation and the long period lying flat in plaster afterwards, Lorraine has remained her usual cheerful self. Even in the face of disappointments and set-backs she has retained her customary happy smile and continued to display the determination and courage she has shown from the beginning. Her cheerfulness in adversity is considered outstanding and it is felt her behaviour reflects the very highest ideals of the Guide Movement.

Dianne Wharrod, Brownie Sixer, 10th Wallsend Pack, Northumberland. Dianne has been a Brownie for several years now and takes a full part in all Pack activities. Except when in hospital, she has never missed a meeting. Keen to do everything that she possibly can, she attends all the Brownie Revels and outings, taking part in any competitions. Dianne has gained a number of proficiency badges and is a very capable Sixer. She is unfailingly cheerful and it is said

she is the happiest member of the Pack. During her admission to hospital for numerous operations, Dianne has always been cheerful and has accepted all her treatment and disability in a most courageous manner, refusing to let her physical handicaps affect her in any way.

Appointments

Swimming Consultant to the Outdoor Activities Adviser: Mrs P Hannelly as from 1st March, 1973.

Canoeing Consultant to the Outdoor Activities Adviser: Mrs B Judd as from 1st March, 1973.

Commissioner for British Guides in Germany: Mrs H E Roper. (Vice Mrs G de E Collin.)

Salvation Army National Director for Guides: Captain Rosemary Horne as from 19th April, 1973. (Vice Major Elsie Pull.)

Tent Exhibition

Many Units are interested in buying their own tents, but owing to the expense, are a little reluctant to buy without first seeing them pitched. Because of this CHQ Equipment Department will be holding an exhibition of tents at Blackland Farm, East Grinstead, from 25th May for two weeks.

Emergency Team Patrol Interest Pennant

On the advice of the British Red Cross Society it has been decided to delete clauses 3(a) and 3(b) and to substitute the following:

3. Carry a person on an improvised stretcher.

Commonwealth and International Circle

Two events have been arranged for June. On Saturday, 16th June, members and guests are meeting at 2.15 pm in Royal Hospital Road, Chelsea, to visit the Royal Hospital, Chelsea. (Tea, by kind invitation of Mrs Kenneth Nichols, at 167 Cranmer Court, Sloane Avenue, SW3.)

On Thursday, 28th June, the Summer Reception will

be held in the Clothworkers' Hall, Dunster Court, Mincing Lane, EC3, at 6.30 pm by kind permission of the Master and Court of Assistants of the Clothworkers' Company. Tickets obtainable by members from the Hon. Treasurer, c/o CHQ. (Nearest underground: Tower Hill.)

International Scout and Guide Club

Meetings take place every Monday, 8 pm at Baden-Powell House, Queen's Gate, London. All visitors are welcome.

Programmes for June include: 4th: Folk Dance; 11th: Visit to Temple Inns of Court; 18th: Dowsing; 25th: Participation Theatre.

Guide Handbook

The Guide Handbook (Second Edition) is now on sale in CHQ Shop and Mail Order Department. As you will know from the March *Guide* this is the edition in which a number of the badge syllabuses have been altered. Otherwise the book remains unchanged, so if you buy a copy from another shop or depot which has not yet used up all the old stock all you need to do is to ask for a copy of the amended syllabuses to go with it. This should be supplied free with new First Edition books. It is also available price 4p to update old First Edition books. The same applies to the Brownie Handbook and the Amendment supplement is 4p.

We did not release the Second Edition of either book until our stock here at CHQ was nil, but we had no means of knowing when other shops and depots would have used up their stocks, so there will, of necessity, still be a few First Edition copies being sold. Shops and depots are asked to clear these before selling the Second Edition, but to be sure that customers are supplied free with the appropriate updating amendment leaflet.

Annual Report

The Annual Report is published this month. Packed with pictures and up to date

information you'll find it supplies all sorts of invaluable background news.

Do you know, for instance, whether membership is rising or falling? What CHQ expenses are? Which countries became full members of the World Association during the year, or how many overseas visitors called at CHQ?

It's all there, and more, in the 1972 Report which is on sale (price 12p) at CHQ and Branch Shops or through CHQ Mail Order Department, plus postage and packing 5p. It's money well spent from Unit funds but make sure your copy does a double job by passing it on to parents, friends or badge testers once you've finished with it yourself.

CHQ and Branch Shop

With immediate effect, cheques can only be accepted in our shops if accompanied by a cheque card.

Also, from Saturday 5th May, 1973, the Girl Guides Headquarters shop hours will be: Monday-Friday 9-5.30, Saturday 9-5.00. This will remain in operation until further notice.

Badge Transfers

CHQ Public Relations Department has for sale, a new sheet of dry transfer badges, replacing Letraset. It is made by Transplus, has the advantage that it stores well without deterioration, applies easily without cracking, and is produced on a small sheet which handles easily.

It contains 44 badges, ranging from $\frac{1}{8}$ in to 3 in, both Brownie and Guide as well as Brownie and Guide World badges. The sheets are available in white or black. Price 44p including VAT; 3p for p and p.

The Scout and Guide Trust Fund

The value of a Share Unit in the above Common Investment Fund on 30th April, 1973 was: 41.15p-43.22p.

Income was distributed for the last half-year at the rate of £0.0085 per share.

Southwark Catholic Guide Guild Annual Parade

The service will be in the form of a Folk Mass and will be held on Sunday 8th July, 1973, at Southwark Cathedral, St Georges's Road, SE1, commencing at 3.00 pm sharp.

All attending must be in the Cathedral at 2.50 pm.



Only six months to FOLK FEST!

We are busy sorting out all the applications for the FOLK FEST WORKSHOP and AUDITIONS on 14th/15th July at CHQ. Ian Grant and his friends from the recording and TV 'works' have planned an exciting programme for the workshop, which includes a Ceilidh at Cecil Sharp House. The Audi-

Colours will move at 2.55 pm with Priest's procession.

Units will assemble in Cathedral car park by 2.15 pm. Colours and Readers to be at Cathedral by 1.00 pm for rehearsal.

Notices will be sent to all members and Units of the Guild. Anyone not a member will be welcomed and can obtain further details from the Hon Secretary: Miss M Holton, 22 Minster Road, Bromley, 01-460 9466.

tion Panel is also going to be hard, and it's grand to see lots of new names as well as many established Folk Fest friends amongst the would-be performers.

Booking forms for the FOLK FEST 6 performances on Saturday, 1st December at 7 pm and Sunday, 2nd December at 2.30 pm appeared in the April issues of *The Ranger* and *Guider*. If you haven't got a copy write to Folk Fest 6, CHQ, enclosing a stamped addressed envelope, and we will send you a form. Applications have been rolling in since April - so don't wait till the last minute to send in yours.



If you would like to work at the Association's Headquarters in Buckingham Palace Road, write giving details of your skills to the Personnel Manager. Vacancies occur from time to time in our various departments for office staff, sales staff, restaurant staff, packers, etc.

* * *

Applications for all vacancies should be made to Mrs Eileen Earnshaw, Personnel Manager, Girl Guides Association, 17-19 Buckingham Palace Road, London SW1W 0PT. All staff work a 35-hour, five-day week, with three weeks' paid holiday per annum and contributory pension scheme after initial period.

There is a restaurant on the premises, and house luncheon vouchers are provided.

Foxlease

Due to the rearrangement of staff the following vacancies occur:

Assistant Secretary (age 20-25). Applicants should be interested in administration and have a high standard of typewriting.

Assistant Cook/Housekeeper. Applicants should have minimum 'A' level Cookery (or equivalent) and be interested in all aspects of housekeeping.

Both posts are residential.

INSURANCE VACANCY exists at CHQ for dealing with correspondence, eg, policy renewals, claims, Guiders' problems, etc. Member of Movement preferred, should be business like and cheerful with some office experience.

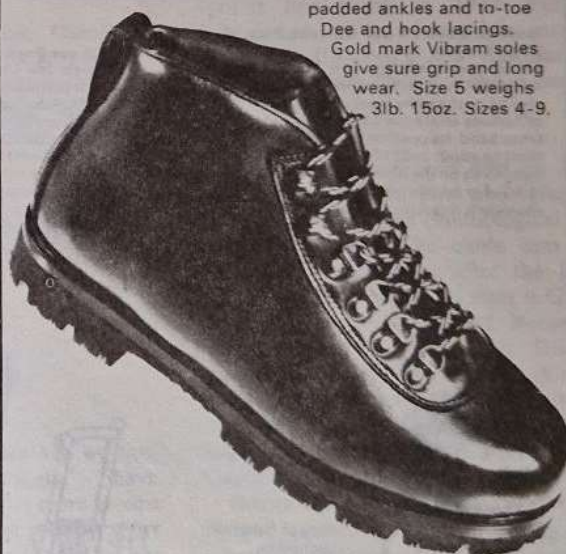


We are a unique family business with 30 years experience in mountain boot designing - selling the most complete range of mountain clothing and equipment imaginable.

try one for size

F.E.B. Rambler

Made to our own specifications. The guaranteed waterproof welts support one piece uppers of black hide, bellows, tongues, leather linings, padded ankles and to-toe Dee and hook lacing. Gold mark Vibram soles give sure grip and long wear. Size 5 weighs 3lb. 15oz. Sizes 4-9.



Write for our Catalogue and Price List to

Ellis Brigham

Write or Phone

Manchester
6/14 Cathedral Street,
Telephone 061-834 0161

Liverpool
73 Bold Street, Liverpool 1
Telephone 051-709 6912

Snowdonia
Capel Curig
Telephone Capel Curig 232

Cornwall
Market Jew Street, Penzance.
Telephone 5828

Bristol
162 Whiteladies Road, Bristol.

Postal Dept
Wellington Place, Liverpool Rd
Manchester.
Telephone 061-833 0746

your tomorrow is our concern today



With the increasing complexity of all equipment over the last few years, not least in the rucksack field, it is becoming increasingly difficult to find your way through the complexity of alternatives. Here is an outline of logical approach to selection —

First of all identify your activities

Remember that whilst a sac should serve as many purposes as possible, pick one as near as possible to your requirements. One problem with youths and guides is that the item they pick is only likely to be correct for 6 months of its many years of life. We suggest you try the following formula.

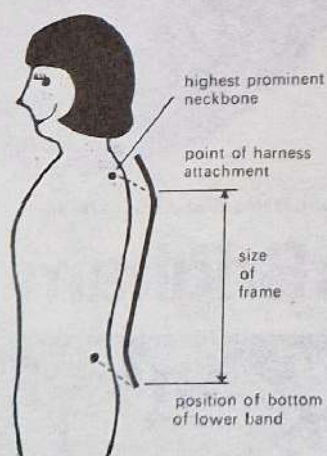
Guide going to camp and a few short hikes—purchase Alaskapack and 'U' Tube & harness. Following years

more longer hikes undertaken—purchase Tote-em or K2 Frame, 2 years later going in for more serious lightweight camping, Duke of Edinburgh Award Expedition—purchase padded waist belts & 2 Stuff Sacs. Always the right equipment at the right time.

Find out more about these and other karrimor products by sending for our 73 Catalogue

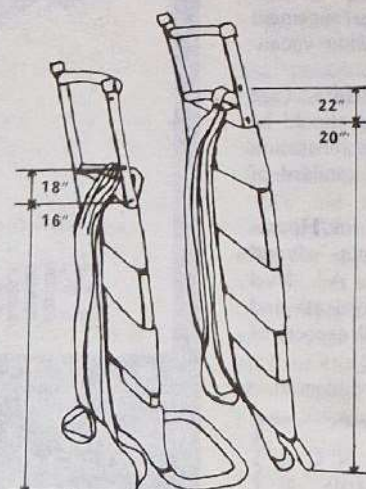
How to Select Your Correct Size of Pack Frame

Measure vertically from your highest prominent neckbone to your hip bones. Your pack frame should be the same measurement between point of harness attachment and bottom of the lower cross band. Its position on the back, however, must be about 2-3" lower to allow the cross band to sit on the hips.
N.B. — For frames which don't go above the shoulders, this sizing is useful but not essential.



Sizes of our Pack Frames

Our Tote-em and K2 Frames are, because of their screw joints adjustable for size. The Tote-em Frames from 16" to 18", and the K2 Frames from 20" to 22". Sizing is even more critical when a padded waist belt is used, because if the frame is too large the rolling movement of the hips when you walk causes the pack frame to swing.



Tote-em Junior



Tote-em Senior
(Cotton Duck)



Tote-em Senior
(Nylon)



Annapurna



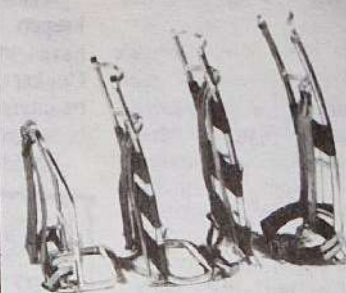
Alaskapack



Everest Orienteer
(with Stuff Sacs)



Illustrated below left to right
A3 Frame, Tote-em Frame,
K2 Frame, Orienteer Frame MKIII



karrimor Avenue Parade Accrington, Lancashire
Weatherite Products Limited

home and away

Putting on a Panto

Have you ever thought of putting on a pantomime to boost Company, District or Division funds? If you have but didn't know quite where to begin, you will be interested to learn about the British Pantomime Association. This association exists to help both professionals and amateurs.

For a small annual fee you can become a member of the BPA. This entitles you to use their unique reference libraries, receive photocopies of any non-copyright material in the library, receive a copy of the bi-annual magazine *Panto* and attend lectures, exhibitions, conferences and outings.

The BPA can also supply members with playscripts at slightly less than the normal price. To date they have editions of *Aladdin* and *Cinderella*. Also some original and adapted pantomime scripts have remained unpublished for various reasons. Synopses of these scripts will appear in *Panto* and members of BPA can apply for copies of these scripts from the association.

Further information and membership forms can be obtained by writing to **British Pantomime Association, 170 Clarence Gate Gardens, London NW1.**

Princess Margaret Medal

When HRH Princess Margaret visits Staffordshire in July she will be officiating at the University of Keele's degree ceremony in her capacity of Chancellor.

After the ceremonies she will be presented with the first of a limited edition of medallions made by Wedgwood. These medallions are pale blue and white and feature a profile of the Princess which was created from photographs taken by her husband, Lord Snowdon.

YHA Annual Report

In 1972 the Youth Hostels Association acted as hosts to delegates of the 29th Conference of the International Youth Hostel Federation. Delegates came from all over the world including both sides of the 'Iron Curtain', Suez Canal and the Irish Border. A report of this conference can be found in the YHA's annual report which was issued recently.

Also included in the report are details of area membership and overnight visitors; types of field studies for school parties and organised holidays for individuals are also listed.

Copies of the report and financial statement can be obtained from **YHA Sales, 29 John Adam Street, London, WC2N 6JE.**

Young Bird Watchers

THE Young Ornithologists' Club, the Junior Section of the Royal Society for the Protection of Birds, have as their emblem, the kestrel. In the latest issue of the club's magazine a special project is being launched concerning this bird. The young readers are being asked to help the society conduct a survey into the behaviour of kestrels.

It has come to the attention of the YOC that kestrels are appearing along the 1,000 miles of motorways in Britain. This is because the grass verges have provided homes for a large variety of small rodents. It was not long before the kestrels began taking advantage of this new source of food; and now they can be seen, hovering over motorways waiting for any opportunity to swoop.

The YOC members are being asked to notice, as accurately as possible, where they see these birds, and to notify the club before 1st September.

If any of your Brownies, Guides or Rangers see these 'motorway kestrels' or want information on joining the club, you should write to **Young Ornithologists' Club, The Lodge, Sandy, Bedfordshire, SG19 2DC.**



Sesame

A small company of men and women, calling themselves 'Kats' have recently made a film so that more groups can enjoy their art. They portray short scenes in a way that is neither ballet nor mime. The group travel the country performing to groups of deaf, elderly, mentally and physically handicapped. If you would like more information please write to **Mrs J Lyford, c/o Sesame, George Bell House, Bishop's Hall, 8 Ayres Street, London SE1 1ES.**

Aphasic Children

THE Invalid Children's Aid Association has just started to build a new school for children with speech and language disorders. Situated near Mansfield, Nottinghamshire, the foundation stone of Dawn House was laid by Leslie Crowther on 4th May.

ICAA pioneered work with aphasic children of average intelligence. These children, who are unable to communi-

cate, have many emotional and behavioural problems as a result of the frustration they feel. At present the John Horniman School in Sussex provides training for children between the ages of five and nine. Studies have shown that when a child leaves this school at nine years, there is a marked backward slide because of the lack of additional training.

For this reason the ICAA have obtained the approval of the Department of Education and Science to take children between the ages of five and 13 at Dawn House.

The new school will be residential with a small day unit for local children. Special equipment, small classes, speech therapists and audiologists will all help to ease the training of these children. Provision is also being made for nursery classes for two to six year olds.

Dawn House School should be ready for its first pupils in 1974. Further information can be obtained by writing to **Invalid Children's Aid Association, 126 Buckingham Palace Road, London, SW1W 9SB.**

In Memoriam

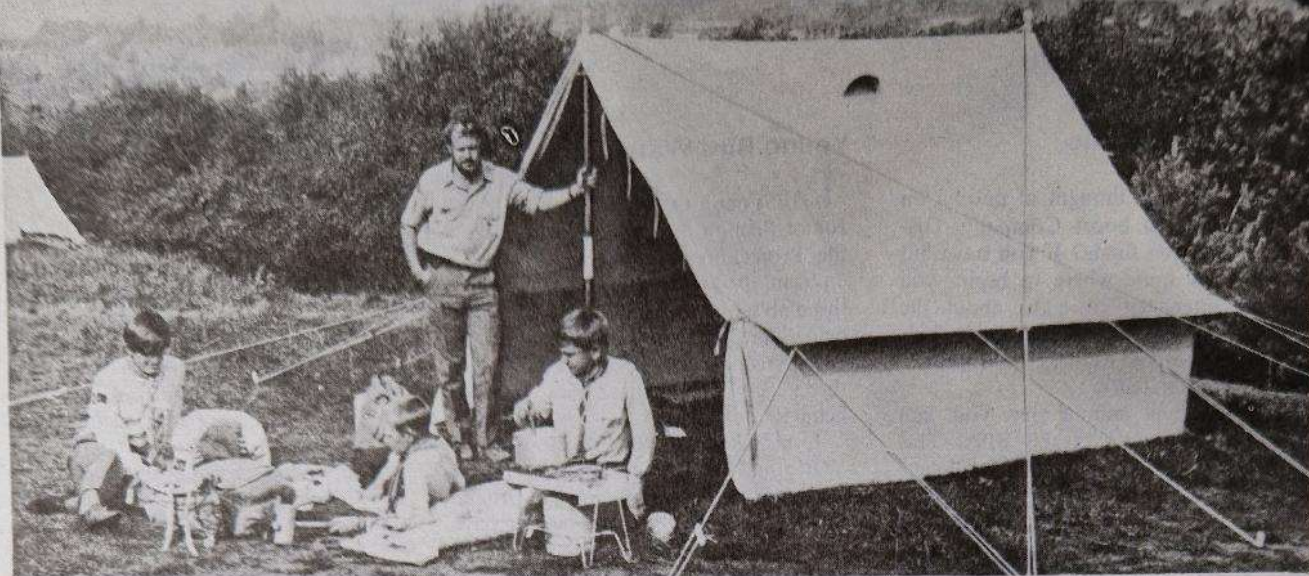
Clemence Acland, who died on 10th March, was a gifted bird photographer and well known in the ornithological and zoological worlds. She came into the Guide Movement soon after the First World War and helped to start a Guide Company in the village of Banstead, Surrey, where she was later District Commissioner for 15 years. Almost immediately she was asked to return to her war-time research work in South Wales and her early warrants as a Guide Captain were in the Cardiff area.

Before the Second World War Clem Acland visited Poland, touring the country with Madame Malkowska, and when she was over 70 delighted many an audience with her recent pictures of wildlife taken in South Africa and North East Africa. **To the end of her life she took pleasure in sharing her knowledge with beginners and experts alike.** OLH

Miss Bessie Williams BA, who founded the 1st Milford Haven Guide Company in 1918, died on 17th March in a Swansea Nursing home. She was dearly loved in Pembrokeshire, and had taken a keen interest in Guiding throughout her life. She will be sadly missed by all members of the Movement, and by the many people who attended a memorial service and paid tributes to her for her outstanding contribution to Milford Haven.

MD

Blacks

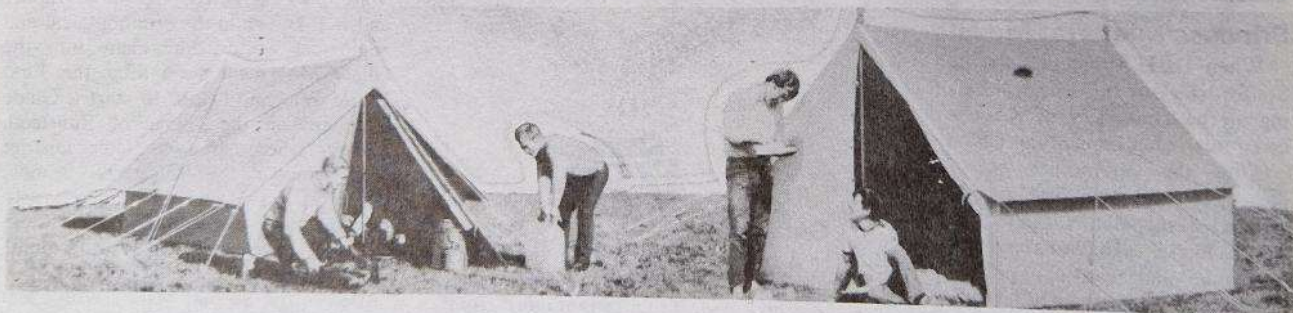


Our Ridge Tents have been popular for many years with Scouts, Guides and other Youth Organisations – made from excellent materials, these tents have an outstanding record of reliable service and long life.

Stormhaven (illustrated above) has doors at both ends, fitted wall pockets, ample mudband and roof ventilators – choice of wooden or alloy poles. 10 ft long x 8 ft wide, 7 ft high at centre with 3 ft walls. **From £61.05.** (Larger model also available.)

the Ridge Tent Specialists

Blacks Tents First Because Blacks Tents Last.



NIJER, another of Blacks famous ridge tents – has peg out doors at front, three-sided bay at rear, opens both ends – choice of wooden or alloy poles. **From £62.70.**

A tent and marquee hire service is available from **Sidcup** – write for full details and rates of hire.

All prices quoted are inclusive of V.A.T.

ICELANDIC; a long established favourite – doors at each end, ventilators in roof, ample mudband and clothes cord along inside – choice of wooden or alloy poles. **From £51.70.** (Larger model also available.)

Our branches in Nottingham, Stoke-on-Trent and Sutton, Surrey, are officially appointed stockists for Scout and Guide equipment – many other branches in most major cities of the UK. Listed in our Free Catalogue available on request.

Please send my **FREE Blacks of Greenock** full-colour catalogue.

NAME

ADDRESS

466

Blacks of Greenock

Head Office

Port Glasgow, Renfrewshire, PA14 5XN
and Ruxley Corner, Sidcup, Kent, DA14 5AQ

Where to train

HOW TO APPLY

Any Guider may apply herself to attend a training course at the Centres, provided she has reached the minimum age of 18 years. (At the discretion of the Commissioner a member aged 17½ who is working on the Adult Leader's Certificate may also apply for a Guider course.)

An application to attend a Guider training course at any Guide Training Centre should be sent direct to the appropriate Guider-in-Charge, and must be accompanied by the correct amount of deposit and a stamped addressed envelope. Applicants should also state the type of training for which they are attending, as there may be several

different courses running at any one weekend. As so many Guiders have to leave on Sunday, training sessions at a two-day weekend will stop at tea-time on that day unless otherwise stated. If sufficient notice is given that it is wanted, every effort will be made to provide sessions for a group until Monday. Individuals who are able to stay over until Monday to enjoy the surrounding country and other amenities of the Centres are most welcome to do so.

Telephone calls are accepted only between the hours of 8 am and 8 pm at Foxlease (Lyndhurst) 042-128 2638, and at Waddow (Clitheroe) 0200-23186, except in emergencies.



the District. (District Commissioners with up to seven of their Guiders)

Out-of-Doors (places reserved for Northamptonshire)

CHQ

FOXLEASE
Lyndhurst, Hants. SO4 7DG

25-2 JUNE

(Bank Family Week Holiday) (Brownie and Guide Guiders who may be accompanied by their husbands and children aged 2-8 years)

JUNE

8-10 Kent East
15-17 Guitar Playing for Beginners
22-24 General Training. Brownie and Guide Guiders

29-1 JULY London South West

JULY

6-8 Friends of Foxlease
14-21 Holiday Week (for the Trefoil Guild and other members, friends or mothers)

26-3 AUGUST Patrol Leaders' Week

AUGUST

18-15 Wider Horizons (for Duke of Edinburgh's Award Candidates aged 16 and over)

20-27 Summer School for new and prospective (Bank Holiday) Commissioners

SEPTEMBER

1-8 Adventure Week (for those aged 16 and over)

7-9 General Training. Brownie and Guide Guiders

14-16 Making the Most of the District (District

Commissioners with up to seven of their Guiders)

21-23 Oxfordshire
28-30 Dorset

OCTOBER

5-7 South West England (by allocation)
12-14 General Training. Brownie and Guide Guiders

19-21 Creative Activities for Christmas
26-28 General Training. Ranger Guiders and Venture Scout Leaders

NOVEMBER

2-4 Middlesex West
9-11 General Training. Brownie and Guide Guiders

16-18 The World is Your Neighbour (all sections - emphasis on World Guiding)

23-25 Training in the District. District Commissioners and Assistants (Division Commissioners welcome to attend)

30-1 DECEMBER

General Training. Brownie and Guide Guiders

DECEMBER

7-9 Winchester Diocese
31-6 JANUARY New Year Houseparty

JANUARY 1974

11-13 Hampshire North (Andover Division)

19-20 Making the Most of

25-27 General Training. Brownie and Guide Guiders

FEBRUARY

1-3 Hampshire West
8-10 1. General Training. Brownie and Guide Guiders

2. Pack Holiday Group

15-17 Oiling the Wheels (Commissioners, Secretaries, etc) (Outside booking)

MARCH

1-3 Dorset Education Committee
8-10 South West England (by allocation)

15-17 General Training. Brownie and Guide Guiders

22-24 Ranger Guiders' Training Conference. London & S E England (by allocation)

WADDOW

Clitheroe, Lancs. BB7 3LD

JUNE

1-3 Lancashire North East

8-10 1. General Training. Ranger Guiders

2. Concentrated First Aid Course

15-17 Lancashire North West

22-24 General Training. Brownie and Guide Guiders

29-1 JULY Friends of Waddow

JULY

6-8 Yorkshire West Riding South
13-15 Student Weekend
20-22 General Training - Emphasis on the

28-4 AUGUST Holiday Week (for the Trefoil Guild and other members, friends or mothers)

AUGUST

9-17 Patrol Leaders' Week
22-29 Young Leaders Week (Bank Holiday)

SEPTEMBER

7-9 North West England (by allocation)
14-16 Leicestershire

21-23 Making the Most of the District (District Commissioners with up to seven of their Guiders)

28-30 Teesside

OCTOBER

5-7 General Training. Brownie and Guide Guiders

12-14 Lancashire South

19-21 General Training. Brownie and Guide Guiders

26-28 Midlands England (by allocation)

NOVEMBER

2-4 General Training. Brownie and Guide Guiders

9-11 North West England (by allocation)

16-18 Durham
23-25 Yorkshire W.R.S (Huddersfield Division)

30-2 DECEMBER Yorkshire Central Scouters

DECEMBER
7-9 Salford Deanery

29-3 JANUARY New Year Houseparty
JANUARY 1974
11-13 North West England

The most worthwhile way of boosting your Company's funds

That's what selling Spastics Cards can mean to your Company.

Because not only are they a proven method of raising real funds for your Company, but they also make a considerable contribution to the relief of Spastics' suffering.

Spastics cards are attractively designed and attractively priced to appeal to every kind of Christmas card buyer.

Your Company qualifies for the extremely generous discount of 30% off the recommended retail selling price of cards and 15% off gifts.

Do your Company and spastics a good turn this year.

Cut out the coupon below and, completely without obligation, we'll send you up to ten full colour brochures and a summary order form, free of charge.



Spread some Christmas Cheer. Buy Spastics Charity Cards.

To: Spastics Cards Ltd.,
The Ridgeway, Iver,
Buckinghamshire.
Please send me:—

(quantity) brochures,

Name _____
Company _____
Address _____

(BLOCK CAPITALS PLEASE)

(by allocation)
18-20 General Training, Brownie and Guide Guiders
25-27 Cheshire Forest

FEBRUARY

1-3 Making the Most of the District (District Commissioners with up to seven of their Guiders)
8-10 General Training, Brownie and Guide Guiders
15-17 Lancashire North East
22-24 (Outside booking)

MARCH

1-3 Lancashire South East (Winter Camp Training)
8-10 General Training, Brownie and Guide Guiders
15-17 North West England (by allocation)
22-24 General Training, Brownie and Guide Guiders
29-31 Division Commissioners with their Division Secretaries and District Commissioners

Foxlease - Wider Horizons

Remember that those who are unable to come for the whole week may apply for the period 11th-15th August only

Fees at Foxlease and Waddow

Shared room per day £1.75, per week £12.25. Minimum fee for weekend £3.50.
Double room per day £2.20, per week £15.40. Minimum fee for weekend £4.40.
Single room per day £2.60, per week £18.20. Minimum fee for weekend £5.20.

These prices are for members of The Girl Guides Association only.

Deposit £1.00 cheque or postal order only.

Scotland

NETHERURD HOUSE
Blyth Bridge, West Linton, Peeblesshire

JUNE Lightweight Camping for Ranger Guiders and their Rangers
8-10 Scottish Handcraft Circle

30-5 JULY PHAB Course

JULY
11-17 Canadian/Scottish Exchange Group

19-27 Patrol Leaders Woodcraft Camp



20-27 Patrol Leaders' Week (by invitation)

AUGUST

3-7 Patrol Leaders
9-17 Patrol Leaders' Woodcraft Camp
10-17 Patrol Leaders Week (by invitation)
24-26 Patrol Leaders
30-4 SEPTEMBER European Gathering for Young Leaders WAGGS

SEPTEMBER

7-9 Edinburgh and Midlothian Keep-Fit Group
*14-16 Brownie and Guide Guiders (includes booking from Aberdeenshire)
*21-23 Brownie and Guide Guiders (includes booking from Fife)
*28-30 Brownie and Guide Guiders (includes booking from Edinburgh Barnton Division)

OCTOBER

5-7 Brownie and Guide Guiders
12-14 Rangers
*19-21 Brownie and Guide Guiders (includes booking from Glasgow South-Eastern Division)
26-28 Brownie and Guide Guiders

NOVEMBER

*2-4 Brownie and Guide Guiders (includes booking from Glasgow North-East Division)
9-11 Ranger Guiders and County Leadership Advisers
16-18 Brownie and Guide Guiders
*23-25 Brownie and Guide Guiders (includes booking from Renfrewshire)

30-2 DECEMBER

Prospective Certificated Trainers (by invitation)

DECEMBER

7-9 Commissioners and Trainers
14-16 Trainers (by invitation)

NOTE: At all trainings marked* places are available for booking by Guiders from areas other than the County or Division named.

Patrol Leaders - applications for Patrol Leaders' training will be accepted now.

Fees at Netherurd

Shared room, per day (24 hours) £1.50;
Double room, per day (24 hours) £1.75;
Single room, per day (24 hours) £2.00.

Deposit - £1.00. Training fee for non-residents - 50p per weekend.

Wales

BRONEIRION

Llandinam, Mont. SY17 5DE

JUNE

2 Local Association Gathering
8-10 Enjoying the out-of-doors (Guiders of all Sections)
15-17 General Training (places reserved for Cardiff and East Glamorgan)
19-26 West Glamorgan Handicapped Children's Holiday
29-1 JULY General Training for Extension Guiders (and those with handicapped girls in their Units)

JULY

6-8 Painting, Drawing and Print Making (a weekend for Guiders of all Sections)
11 'Friends of Broneirion' Gathering
13-17 'Enjoy Broneirion' - (training and leisure for Guiders of all Sections)
26-30 General Training (husbands and children may be accommodated)

AUGUST

3-7 Guiders with their Patrol Leaders
10-12 Pack Leaders under 14 years
16-21 Patrol Leaders under 14 years (open to all Counties)
24-28 'Have You Ever?' (Bank (Guides and Rangers Holiday) 14 years and over)
31-2 SEPT Guiders aged 25 years and under (all Sections)

SEPTEMBER

7-9 Prospective Trainers (by invitation)
20-30 Montgomeryshire LEA

OCTOBER

5-7 General Training (Places reserved for Monmouthshire)
12-14 General Training (Places reserved for Denbighshire)
19-21 Welsh Camp Advisers Conference
26-28 International Training (Places allocated to Counties)

NOVEMBER

2-4 The Unit's preparation for Christmas - Art and Music
9-11 Brush up your Basic Skills (Guiders of all Sections)
16-18 Making the Promise Central (Guiders of all Sections)
23-25 1. Training for Commissioners (D/Assistants welcome to attend)
2. University Scout

and Guide Clubs Conference

30-2 DECEMBER World Guiding in your Unit (Guiders of all Sections)

DECEMBER

7-9 Celebrating Christmas

Fees at Broneirion

Shared room per day £1.50.
Double room per day £1.75.
Single room per day £2.00.
Deposit £1.00.

Glenbrook

OUTDOOR ACTIVITIES

TRAINING CENTRE,
Barnford, Nr Sheffield S30 2AL

JULY

21-28 This is now FULL

AUGUST

12-18 All or Nothing Course for Ranger Guides. This period is being reserved for Rangers to come for all or part of the time, in small groups or singly and to join in whatever they feel like. A very few vacancies.



18-25 This is now FULL

SEPTEMBER

14-16 Adventure Course for Ranger Guides and Venture Scouts from Mixed Units and from Units working together. NOW BOOKING.

OCTOBER

26-29 A chance to further your skill in outdoor activities. NOW BOOKING.

NOVEMBER

16-18 Reserved for Guide Patrol Leaders; minimum age 12 at date of course. Activities for you and your Patrol. NOW BOOKING.

DECEMBER

7-9 Outdoor activities and Leadership. (This is the course which has previously been advertised for November 16th/18th.) NOW BOOKING.

SEASIDE



Boscastle youth hostel, Cornwall, is a National Trust property right by the harbour.

TOWN

King's Lynn youth hostel, Norfolk, is part of the 16th century Thoresby College, opposite the famous Guildhall.



COUNTRY



Tanners Hatch youth hostel in the Surrey woods.

The YHA has 250 hostels all over England and Wales offering inexpensive bases for a variety of activities. Please write for details, stating number of leaflets required.

To YHA (England and Wales), Trevelyan House, St. Albans, Herts. Please send

Come Hostelling

Basic information about hostelling for individuals, with map and enrolment form. ☐

Introduction to Adventure

Details of Leader Card Scheme for those wishing to introduce parties of youngsters to hostelling. ☐

Name

Address

G733

Meridian

One of 5 new Packs in BB's latest range

Meridian — something really new in Rucksack design. Opens all round at top and bottom for easy packing. Front pocket and four large side pockets with nylon zips. Made in bright orange nylon. Just one of five exciting models in an all-purpose range of 27 popular packs.



★ Find out about the PAKKABED — the new fit-your-figure air bed for lightweight camping.

Brown Best & Co Ltd.

47 Old Woolwich Road, London SE10 9PU. Phone: 01-858 1325-6.

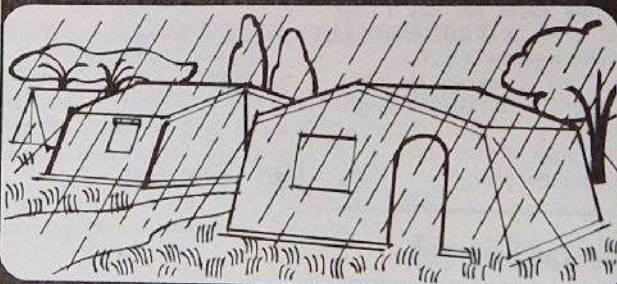
Send me 1973 Rucksack & Pakkaped Catalogue.

Name

Address

G.2

WATER PROOFING-



USE MESOWAX

Ideal waterproofing for light, medium and heavyweight tents, awnings, latrines and covers, suitable, too, for camping and sports gear. One application proofs closely woven fabrics and withstands rubbing underneath. Mesowax is a free-flowing emulsion applied direct from the tin and allows canvas to 'breathe'. Available as colourless and in ten strong colours.

34p ½-litre 58p 1-litre £1.14 2½-litre £1.87 5-litre
Prices are subject to VAT.

Five litres covers approximately 200 sq. ft. Mesowax is stocked by camping and sports stores, Halfords, Millets, Ships Chandlers, Scout and Guide shops.



Grangersol Ltd., Dept. G10, Imperial Way, Watford, Herts. Tel: Watford 24086 or 27753

Bursary Help

TRAINING BURSARIES may be applied for by Guiders attending Guider training courses at the Training Centres, who have not previously had such a Bursary (except under certain conditions on the recommendation of the Commissioner). Each year Countries/Regions are allocated a share of the funds available for this purpose, and the number of Bursaries which can be issued from these quotas is therefore limited.

A **Fee Bursary** entitles a Guider to a grant of £1.25 for a two-day weekend and 50p for each additional day.

A **Fare Bursary** carries a rebate of a Guider's travel expenses in excess of £2.00 and is available only for travel to the nearest Training Centre.

Angela Thompson Bursaries are available to any Guider attending a Promise and Law or similar training (not necessarily at a Training Centre).

APPLICATION FOR A BURSARY: No application form is required; District Commissioners should apply, on behalf of their Guiders, direct to the Training Secretary, CHQ (Commissioners in Scotland should write to Scottish Headquarters) **after a Guider has been accepted for the training.** In the case of a County Weekend applications should be sent to the County Training Chairman concerned.

All applications must arrive at CHQ at least **TWO WEEKS BEFORE THE TRAINING** and Bursaries cannot be issued at shorter notice or in retrospect.

FULL DETAILS or the conditions of issue and how to apply are available from the Training Secretary, CHQ.

Camping Holidays and Pack Holidays

Foxlease Camp-sites

Applications for sites should be addressed to the Secretary and the envelope marked 'Camp'. Suggested dates with alternatives and approximate numbers should be stated and whether an equipped site is required. Camps may begin on any week-day.

A 50p deposit (which is forfeit if the booking is cancelled) and a foolscap s.a.e. should be enclosed.

Beaverbrook Lodge

Applications should be sent to the Secretary, Foxlease, together with an initial deposit of £1 (which is forfeit if the booking is cancelled). A stamped addressed foolscap envelope should be enclosed. Please give alternative dates. Priority will be given to applicants who have not already stayed in Beaverbrook Lodge. Applications for the period 1st October, 1973, to 31st March, 1974, will be accepted now.

Waddow Camp-sites

Applications for sites should be addressed to the Secretary and the envelope marked 'Camp'. Suggested dates should be given with possible alternatives and approximate numbers. It is preferred that camps begin on Saturday. Please state whether an equipped or unequipped site is required.

A 50p deposit (which is forfeit if the booking is cancelled) and a foolscap s.a.e. should be enclosed.

Waddow Pack Holiday House

Applications should be made to the Secretary. The application must be accompanied by a written recommendation from the Guider's CA or Pack Holiday Adviser and a foolscap s.a.e. enclosed.

Waddow Caravan - 4-berth

This is available for bookings throughout the year.

Particulars from the Secretary, Waddow enclosing s.a.e.

Waddow Cottage

This provides full accommodation for six people and is available to members of the Movement, their families and friends throughout the year. The cottage is heated by means of an oil-fired boiler. For details apply to the Secretary, Waddow, enclosing s.a.e.

Netherurd Camp-sites and Brownie House

Two fully equipped sites are available and applications will be taken now. There is also a Brownie House (fully booked for Easter/Whitsun and Summer Pack Holidays).

Netherurd Caravan

An equipped caravan is available at Netherurd for holiday bookings by Guiders and their friends for weekends or longer periods. Apply to the Secretary, Netherurd, for further details enclosing s.a.e.

Broneirion Camp-sites and Pack Holiday House

Applications for sites and Brownie Pack Holiday House should be addressed to Mrs Kwantes, Tavistock House, 76 Parcwern Road, Sketty, Swansea, Glamorgan (Swansea 24967).

Booking for dates outside school holidays for the Brownie House should be made direct to the Guider-in-Charge. Storage heaters have now been installed.

Lorne Camp-sites

Between Belfast and Bangor on the Co. Down coast, Lorne offers fully equipped or unequipped camp-sites with solid shelter. Calor gas available. Applications should be sent to Mrs E. Thompson, 14 Woodland Avenue, Bangor, Co. Down.

Holidays at Lorne

Lorne will be open as a holiday centre during July and August. In pleasant grounds with lovely views and quiet surroundings on the shore of Belfast Lough, Lorne is only six miles from Belfast and is a good centre for sightseeing tours.

Special terms for parties or Guide Companies taking the house and wishing to do their own cooking and catering.

Full details from the Guider-in-Charge, Lorne, Craigavad, Co. Down, Ulster.

Irene McKibbin Memorial Cottage

In the grounds of Ulster Training Centre, Lorne. A cottage available for Ranger holidays, fully equipped for 12 persons, with electricity and running water. Full details from Mrs Grace A. McBride, 9 Creden Hill, Dunmurry, Belfast, enclosing s.a.e. please.

Ulster Camp-site, Glen Road, Craigavad, Co. Down

Approximately eight miles from Belfast on the Co. Down coast near Lorne. Fully equipped for 40 campers (one large or two small camps). Excellent hut for solid shelter and Calor gas. Bookings should be sent to Miss N. Pratt, 22 Bangor Road, Hollywood, Co. Derry, enclosing s.a.e.

Magilligan Camp-sites

Three sites, fully equipped for 25-30 campers. Sandy soil; drains easily; expanse of beach. Large hut on the site containing three rooms, one with open fireplace. Double Calor gas stove for each site. An information list can be obtained from the Secretary, Mrs R. F. Scott, Derrymore House, Limavady, Co. Londonderry. Please enclose s.a.e.

Blackland Farm, East Grinstead, Sussex.

Equipped and unequipped sites available with facilities for swimming, climbing and pioneering (for which equipment can be borrowed).

'Restrop' a furnished bungalow for 25 (bunk beds for 20) is also available.

Full details about Blackland and 'Restrop' as well as copies of the booklet 'The Story of Blackland' (5p) are available from The Warden, Blackland Farm, East Grinstead, Sussex. Please enclose a foolscap s.a.e.

Brownsea Island

There are eight camp-sites for Guides and Scouts on Brownsea Island and the Villano (maximum accommodation 30) is an ideal holiday place for Guiders, Rangers and members of the Trefoil Guild. Full details and application forms may be obtained from: Mrs B. B. Dyke, Wendover, The Avenue, Sherborne, Dorset, enclosing a foolscap s.a.e.

Glenbrook Camp-sites

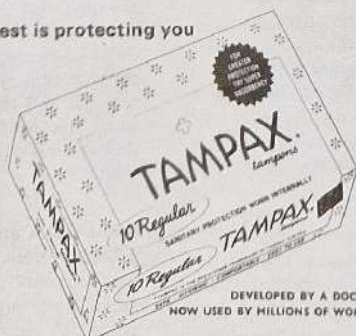
Applications for sites should be sent to Mrs Shepherd, Guider-in-Charge, Glenbrook Outdoor Activities Training Centre, Bamford, Nr Sheffield S30 2AL.

Smashing on the sidelines



She's smashing on the court, too. In neat, brief tennis whites—who'd ever believe it's "that time" of the month? She uses Tampax tampons. Plays tennis and enjoys any other sport as well—whenever she chooses! Worn internally, Tampax tampons can't show. Can't bulge. Can't chafe. They're easy to insert and remove. For extra safety, the withdrawal cord is chain stitched the entire length of the tampon. It won't pull off. That's dependable protection. It's a pretty safe bet that the girl who's always ready and set for the game uses Tampax tampons.

Our only interest is protecting you



TAMPAX TAMPONS ARE MADE ONLY BY TAMPAX LIMITED, HAVANT, HANTS.

SOMETHING NEW FOR £17.90

AN IN-EXPENSIVE HOLIDAY for 7 days in August/September at **HASTINGS** in our own holiday home. Three meals per day, good beds and a very friendly atmosphere. Centre of town; lovely walks; ample space for meetings, rallies and camp-fires. Included is a day trip to **ONE** of the following:

- (a) **ZEEBRUGGE** by boat and coach visiting **SLUIS** in Holland and medieval **BRUGGE** with a boat trip on the canals or
- (b) a day in **BOULOGNE** by **Hovercraft**, a completely new experience for young people.
- (c) **OR** a day trip to London with dinner.

AGES 10-13	£17.90
14-21	£18.90
ADULTS	£20.90

Fully inclusive, two Leaders **FREE** with every 30 young people. Special requirements are catered for.

Reply:

REED'S EDUCATIONAL TRAVEL SERVICE LTD.,

The Old Rectory,
All Saints, Hastings, Sussex.
(Hastings 7995).



Travel the English canals on a real narrow boat fitted out for a well equipped camping holiday at an economic price. We cater for groups of all sizes and you have the choice of boats with experienced crews or the chance to steer yourself.

Write for a fully illustrated brochure to:
UNION CANAL CARRIERS

Booking Office | 214 Whittington Road, London N22.
Phone 01 888 4780.
Base | Canal Side, Little Braunston,
Nr. Rugby, Warks. Phone Rugby 890784



GUIDE FRIENDSHIP FUND



Before treatment
and vitamin A
(left). After treat-
ment (right).



BLINDNESS amongst children is a world problem, a world-wide tragedy. It is far too immense a problem for us to tackle on a world-wide basis, we must leave that to the larger organisations. But there is a challenge that we in Britain, through our Guide Friendship Fund, can tackle.

The rate of blindness is probably highest in India. So the Royal Commonwealth Society for the Blind have offered us this challenge: Uttar Pradesh – a state in north-central India – with a population of over 82 million, many millions more than the UK, nearly seven times as many as in the whole of Australia, has a desperately high rate of blindness. There are 30 eye hospitals in different parts of the state. Dr Kapoor, a great eye doctor and his teams of eye doctors and nurses, believe wholeheartedly that 'prevention is better than cure'. They do cure by cataract operations and treatments, but if only blindness amongst babies and young children can be prevented then there will not be the thousands of people groping their way through life in darkness.

So what does he propose? And what can we do?

He wants to make it possible for mothers to bring their babies to one of the eye hospitals or centres as soon as they notice that the child's eyes are not seeing properly. There the child can receive treatment and the mother instruction. Treatment may mean injections for a period of one, two or six months, with correct feeding to include the essential vitamin A without which a child will go blind. Instruction for the mother will include care for her baby, and the right diet to save her baby's eyes, so that when treatment is completed she can go back to her village and not only bring up her own baby correctly, and her future babies, but help the other women in the village; and so

gradually save the sight of all the little children, who under existing conditions are so tragically threatened with total blindness.

So where do we come in? As always it is money that is needed. But this is not beyond our means. We have had wonderful response during the past few years for our many and varied projects, and we are confident that our Guides, Ranger Guides and Brownie Guides will not fail us in this – perhaps our greatest challenge.

Dr Kapoor has said that £3.00 will pay for the treatment and the instruction when a mother takes her baby to one of the hospitals. So that every £3.00 we give – and we shall do it through the Royal Commonwealth Society for the Blind, a Society so many of us know so well and so greatly admire – will prevent a child from going blind! £3 to save a child's eyes! £3 to preserve sight, to give a child the chance to see as well as we can see, to live to enjoy life and to see the world in which he lives.

This is going much further than the 5p's worth of vitamin syrup I mentioned last month. This is what the RCSB hope we may be able to do. Our target might be:

- save one pair of eyes and teach one mother = £3
- save 100 pair of eyes and teach 100 mothers = £300
- save 1,000 pairs of eyes and teach 1,000 mothers = £3,000

Then think of the far-reaching effect of each mother spreading the good news, protecting her other children, teaching the other women the simple truth of a 'cupful of green vegetables per day!'

Will you talk about this in Pow-Wow, at Guide meetings and with your Rangers? Send for details about this project, and for up to date news of the Guide Friendship Fund and when you write please send a 3p stamp for postage.

Donations and letters to: GUIDE FRIENDSHIP FUND, Girl Guides Association, 17-19 Buckingham Palace Road, London SW1W 0PT.

VA



WHAT ME?

a Church Army Sister? What could I do?

You could be an Officer serving God and His Church in the Mission, Parish, Social, Youth or Forces departments of the Church Army.

Why not test your vocation with the Church Army?

Write for details of training to:-
Sister A. Baggott, C.A., The Church Army,
185 Marylebone Road, London NW1 5QL

CLASSIFIED ADVERTISEMENTS

THE GUIDE CLUB

The Guide Club, 46 Belgrave Square, London SW1. Tel: 01-235 7616. Membership (Home and Overseas) for members and ex-members of the Movement over 18 including Trefoil Guild and Local Associations. Members may bring guests, including husbands, to stay at the Club. Apply Secretary.

ACCOMMODATION

Olive House (Our Ark), 45 Longridge Road, London SW5. Tel: 01-370 2574.

Ex-Guider offers holiday accommodation in seventeenth century, Devonshire farmhouse, glorious views. Ideal touring, local farm and garden produce. Stamp for brochure. Mrs J. Haiselden, New Phillis-hayes, Upottery, Honiton, Devon EX14 9PF. Tel: Upottery 228.

2 Holiday Flats at Broneirion. Each fully equipped for 3-4 people. Electric storage heaters. Dogs not admitted. All details from Sec., Broneirion, Llandinam, Mont., Wales.

Holiday in St Albans (London 20 miles) offered in exchange for holiday for two near coast. Mutual arrangements. 51 Gurneycourt Road, St Albans.

EMPLOYMENT

Resident Administrative Assistant (female) required for South Coast Home and Workshop for the Disabled. Interesting post. No experience necessary. Driver, preferred. Apply: The Secretary, Searchlight, Newhaven, Sussex. Telephone Newhaven 4007.

Required, lady companion for ex-Guider, fond of country and dog. Good home, car available. Write: Thomas, Little Bones, South Kilworth, Rugby.

Resident Jill-of-all-Trades required for Home for teenage girls with problems. Suitable for young (or youngish) person interested in social or youth work to be third member of a team. Applications to Sister G. Rudman, CA. The Beacon, 5 St Saviours Road, St Leonards-on-Sea, Sussex, TW38 0AS.

FOR SALE AND FUND

RAISING

£1.95 per gross Printed Ball Point Pens, 144 full-length Conway Stewart Ball Pens die

stamped with your Company or Charity for only £1.95. 144 Printed Conway Stewart Pencils £2.10. Please print your slogan (maximum 30 letters) and add 25p standard carriage. Baker Ross, formerly J. E. Thomas & Son (Cuffley) Ltd, 2a Handsworth Road, London N17 6DD. Tel: 01-808 6948.

Sale or return. 50% profit on cost. Costume Jewellery parcels sent post free without obligation. Ideal fund raisers. Details: E. & M. Davies Ltd, 356 Uxbridge Road, London W12 7LL.

Advertising Pencils, superb Ball Pens, combs, brushes, etc, gold-stamped Company name, raise funds quickly, easily. Bran Tub Toys. Details: Northern Novelties, Bradford 2.

Pennants and Blanket Badges printed to your design for camp-sites, rallies, Brownie Houses, Jubilees, eg 1,000 stick-on Blanket Badges at 4p each. We also make Scout, County and District Badges (minimum 1,000), Wall Shields, coloured Key Fobs and Pendants. No price lists. Please send sketch and state quantity and colours to: Russell King, 48 Crofton Lane, Orpington, Kent (or telephone Orpington 29460).

An offer to Guiders in SE England for up to 20% discount on all makes of furniture and carpets. For details telephone Farnborough (Kent) 57401 or 54043.

Jewellery You Can Make quickly and easily with real polished gemstones. Send s.a.e. for free colour leaflet and instructions. R. H. Hill Promotions (G) Ltd, 23 Church Street, Welwyn, Herts.

Dolls for dressing, Carnival Novelties. Balloons, Balloon Race Equipment, Bran Tub and Larger Toys, Fancy Hats, for your Summer Fête or Autumn Bazaar. Money back guarantee. Prompt delivery. Send s.a.e. for Trade Lists: D. Glover, (Wholesale Toys) Ltd, Dept LO 3, 203 Scholes Lane, Cleckheaton, Yorkshire. Telephone: Cleckheaton 3450.

Fund Raising. Year after year Guide Units everywhere regularly buy our Goldfish with plastic carry-home bags. Big profits, small outlay. Details from: Mr Long, Middlesex Goldfisheries, 6 Berwyn Avenue, Hounslow TW3 4ET.

Organisers of Fetes and Funds.

We welcome both Personal buyers and Mail Orders for our extensive range of Toys and Stationery at wholesale prices, send for catalogues. Also pre-selected parcels: 144 2½p Toys or 72 5p Toys or 38 10p Toys or Selection Stationery. Each parcel £2.70 plus 27p postage. Two or more parcels 35p postage. Baker Ross, formerly J. E. Thomas & Son (Cuffley) Ltd 2a Handsworth Road, London N17 6DD. Tel: 01-808 6948.

Ideal for Fund Raising: High quality tights and one size Knee-Highs to sell in your Units and to your friends - will bring you 20p in the pound profit. Tights from £1.56 per doz (five shades including grey). Knee-Highs £1.95 per doz (white or coloured). Samples sent on request from: Customer Guide Limited, Elm Street Mill, Burnley, Lancs.

Bran Tub Toys, undressed dolls and other fund raisers at many reduced wholesale prices. S.a.e. for catalogue: Nye's Novelties, Dept/G, 173 Cambridge Road, Hitchin, Herts.

CAMPING AND HOLIDAYS

Summer Camp! Hire your Patrol Tent, Marquee and Camp Equipment from Blacks of Greenock. Low rental charges. Write to: Dept 332 Blacks Camp Hire Service, Ruxley Corner, Sidcup, Kent, DA14 5AQ or 70 East Hamilton Street, Greenock PA15 2UB.

Buckmore Park, Maidstone Road, Chatham ME5 9QG, Kent District Camp-site - Activity and Pack Holiday Centre. Open throughout the year for weekend/day visitors, winter indoor weekends, summer camps and Pack Holidays. Venture/Ranger weekend and Guide camps. Indoor

heated swimming pool, indoor roller rink, rifle range, karting, assault course, abseiling climbing and pioneering in over 200 acres of woodland. Usual Camp or Holiday form required. Write for details.

Felin Bach, Caernarvonshire, County Camp-site. Large camping area and indoor accommodation suitable for Pack Holidays, available all the year round. Snowdonia National Park half-a-mile. Climbing, hill-walking and safe bathing within easy reach. Apply to Miss M. Chambers, Tirionfa, Tanyralit, Pen-y-groes, Caerns.

Hike-Camp with the Fell Club. S.a.e. 12 Ravenswood Crest, Stafford.

Camping on traditional Narrow Boat, starting from the centre of Birmingham. Details: J. Minton, 'Victoria', Gas Street Basin Birmingham, 1.

Pack Holiday accommodation. Lancing. Owing to cancellation, weeks commencing August 11th, 18th and 25th available. Mrs. Shopland, 9 Penhill Road, Lancing, Sussex.

Tents, awnings repaired, zips fitted. Moderate charge. 32 Martins Road, Hanham, Bristol, BS15 3EW.

WANTED

Early Twentieth Century Girls' books: ex-Guider collector offers good price for bound volumes Girl Guide Gazette, Guide and Guider (pre 1934); Camp Fire Girls' Manuals; Vols 2 and 3 of the Girl Guides' Book (Carey's early books/first editions of E. J. Oxenham, D. F. Bruce, D. Moore, W. Darch, K. Oldmeadow, E. Brent-Dyer, Tatham, 57 The Close, Salisbury, Wiltshire.

UNIFORM

Guider's uniform, little worn, fine serge, tailormade coat and skirt, 40 in, 42 in, 22 in long; shirt; cap 7. £5. Box No 694.

GUIDERS

WANTED

Lifesaver needed for Guides camping Bosherton, Pembrokeshire, 4th-11th August. Reply: Mrs Morfee, 22 Amphion Court, Pembroke Dock, Pembrokeshire.

The Girl Guides Association takes no responsibility for statements made in any advertisement here or elsewhere in the magazine, or for any subsequent correspondence in connection therewith. The right is also reserved to refuse any advertisement not considered suitable. Advertisements for the sale of second-hand clothing cannot be accepted (except uniforms). Uniforms for sale should not be sent to HQ, advertisers receive communications from applicants. All advertisements must be received not later than the 1st of the month for the following month's issue. ALL CHARGES 5p per word. BOX NUMBER 20p EXTRA. PLEASE SEND REMITTANCE WITH ADVERTISEMENT TO: Miss A. M. Martin, Advertisement Supervisor, The Girl Guides Association, 17/19 Buckingham Palace Road, London SW1W 0PT. 10% discount for series of 12. To reply to a Box Number, address your envelope to Box Number concerned, c/o GUIDER.

CLASSIFIED ADVERTISEMENTS

GUIDES WELCOME

Guide Company camping near Windsor, August 1st-August 8th, welcomes any Guides to camp with them whose own Guider unable to camp. Box No 693.

BUSES FOR HIRE

Transit Vans for Hire. 18/22 cwt. Weekly rate £19.00, daily rate £3.50. 30 cwt. Weekly rate £26.00, daily rate £5.50. Deposit £25.00. Mileage charge 2p per mile.

When replying to advertisements please mention Guider.

12 Seater Minibuses for Hire. November to April £28.00, May and October £31.00 per week. June and September £33.00, July and August £36.00 per week. Deposit £25.00. No mileage charge. Tel: 01-890 9931. 10% VAT on all the above charges. (Excluding deposits.)

LATE CLASSIFIED

Forest Glade Camping Site, Kentisbeare, Culmpton, East Devon. Tel: Broadhembury 381. 3½-acre field reserved for Guides and Scouts surrounded by 400 acres of trees. Small swimming pool, mini-tennis court, modern wc. See for details marked 'Guides'.



Two books

'INSECTS COMMON IN BRITAIN'

-over 100 easily observed insects illustrated. 25p post 4p

'COMMON WILD TREES & SHRUBS'

-shows over 40 common wild trees & shrubs. 25p post 4p

CHIMERA, 27 WOODHURST ROAD, LONDON, W3 6SS

TENTS, FLYSHEETS, etc. YOU CAN SAVE MONEY

If you do your own making and repairs on an ordinary sewing machine. We supply everything for the job. Canvases most weights and colours up to 60in. width. Zips. Metal Poles. Threads, PVC all accessories. Do not call until you have sent SAE for full range of samples and free literature on tent making.

Edward Barnes, Hawksfold Fernhurst, Haslemere, Surrey.

GUIDE SHOPS TO SERVE YOU

AT

IN SCOTLAND

EDINBURGH:

16 COATES CRESCENT,
EDINBURGH EH3 7AH.
TEL 225 3483.

GLASGOW:

1 SCOTT STREET,
GLASGOW G3 6NU.
TEL 332 6288.

DUNDEE:

53 SOUTH TAY STREET,
DUNDEE DD1 1NP.
TEL DUNDEE 22262.

YOUR UNIT BENEFITS BY COLLECTING DISCOUNT STAMPS

karrimor



now stocked by
Headquarters

The burner uses methylated spirits. It is effective (boils 1 litre of water within 10 mins.), adjustable and explosion-proof. It is supplied with nesting pans in three set sizes. Using a dirt-free fuel an all-in-one outfit gives it great advantages.

The Trangia Swedish Stormcooker



karrimor

Products Ltd.

Avenue Parade Accrington
Lancashire

200% PROFIT ON OUTLAY

Imprinted Ball-Pens from £1.44 per gross. Retractable from £2.94 per gross. Many other imprinted fund-raisers plus Punchboards, Soft Toys and novelty items. Please send stamp for illustrated lists before ordering.

THE PROVINCIAL SUPPLIES CO.,
1 GARDENFIELD LANE, BERKHAMSTED, HERTS.
TEL: BERKHAMSTED 6527.

GB a topical musical revue

"It entertained me very much indeed" - Harold Hobson, SUNDAY TIMES.

An honest, humorous and hopeful look at Great Britain today.

WESTMINSTER THEATRE

Palace Street, Buckingham Palace Road,
London S.W.1. Tel: 01-834 0283. One minute from Guide Headquarters.

Special rates for parties of 20 or more.

Camping - Climbing - Ski-ing - Walking

THE OUTDOOR CENTRE (Halifax) LTD

3 PRINCES ARCADE, HALIFAX HX1 1RX

Specialising in Lightweight Equipment and Clothing

Telephone 0422-65549

back to camp



During a week's camp the activities can be as varied as using natural materials to do a collage (left), and practising pitching a lightweight tent (below).



An important part of every Guide's camp knowledge is the making of a shelter with bracken (top left), a ground sheet (below) or anything else that comes to hand.

Once the shelter is finished and tested (below), Guides practise knots, square lashing and gadget making (above).



Every camp has its own special activities, and when the Guides of Cardiff East Division visited their County Camp-site (where all these pictures were taken) they made and flew a kite (right).



Photos by D. Hunt

QUALITY FUND RAISING and ADVERTISING PENS

ONLY **£1.35** PER 100 PRINTED
FOR MARTELLA GUIDES COMPANY

Guaranteed top quality. Printed up to 36 gold letters. Quick delivery. Send 2x3p stamps for illustrated catalogue and assorted samples.

Lapel Badges



PLAQUES! TROPHIES! CUPS! MEDALS!



WESTFIELD LTD
DEPT 75, 135-9, TENNANT STREET
BIRMINGHAM B15 1EZ

COME CAMPING ON THE CANALS THIS SUMMER

In one of our better equipped camping narrow-boats. Parties of 12, up to 48, with first-class skippers to make everyone's holiday really enjoyable.

FOXTON BOAT SERVICES, LTD.
Foxton,
nr. Market Harborough,
Leics.
Tel: Kibworth 2285.

WHAT'S ON WH WHAT'S ON WH WHAT'S ON WH WHAT'S

Ballet

The Royal Ballet, Royal Opera House, Covent Garden

The season runs from 8th June until 4th August. The programme for June will include: *The Sleeping Beauty* and *Romeo and Juliet*, both with Makarova and Nureyev; *Giselle*; *Symphonic Variations*; *La Fille mal gardée* with Park and Blair; and *Prodigal Son* with Nureyev.

Opera

Sadler's Wells Theatre, Rosebury Avenue

From 11th June for three weeks the Alvin Alley City Centre Dance Theatre. Programmes include *Flowers* with guest artist Lynn Seymour; *Choral Dances*, music by Benja, in Britten; *The Lark Ascending*, music by Vaughan Williams.

Royal Opera House, Covent Garden

The programme for June will include: *Il Trovatore*; *Lucia di Lammermoor*; *Wozzeck*; *Owen Wingrave*; *Il Barbiere di Siviglia*.

Victoria and Albert Museum

Master Drawings of the Roman Baroque from the Kunstmuseum, Düsseldorf.

Until 15th July: One of the finest collections of seventeenth and eighteenth century Italian drawings - mainly of human figures - chosen from the Roman Baroque School. The exhibition concentrates on 11 leading artists; rather than the whole school, therefore giving a much clearer impression of Baroque Art. The artists are: Bernini, Calanducci, Guglielmo Cortese, Cortona, Gaspard Dughet, Gaulli, Lanfranco, Maratta, Mola, Giuseppe Passeri and Sacchi.

Music Room, Norfolk House

7th: Miss Ruth Dyson.

14th: Misses Juliet and Pamela Bruce.

21st: Miss Jill Severs and Miss Jenny Ward-Clarke.

Westminster Abbey

College Garden is now open to visitors on Thursdays between 12.00 and 5 pm until September.

The garden, thought to be the oldest in England, is bounded on two sides by

the fourteenth century precinct wall remaining from the days of the monastery of Westminster. The monks grew herbs here to provide simple remedies for the sick and the garden has been under cultivation for some nine centuries.

Royal Festival Hall

8th: The Kinks.

20th: Menuhin Festival Orchestra.

Purcell Room

5th: The Osiris Ensemble.

10th: David Ward, piano.

New Films

Brother Sun, Sister Moon

Franco Zeffirelli is perhaps best known for his film interpretation of Shakespeare's *Romeo and Juliet*. His first film since then is entitled *Brother Sun, Sister Moon*. The story of St Francis of Assisi, it covers his teenage years.

As in Zeffirelli's earlier film, the stars of *Brother Sun, Sister Moon* are mostly newcomers. Graham Faulkner who stars as Francis, worked with a gamekeeper before turning to acting, so the thought of working with animals in his first film did not daunt him. Judi Bowker portrays St Clare, the childhood friend of Francis, who gave up great wealth to follow him. Pope Innocent III is played by Sir Alec Guinness.

Snowball Express

In the true Walt Disney tradition, *Snowball Express* is a real family film.

All the Walt Disney ingredients are there; a bungling hero who manages to survive despite his blundering; a long suffering wife and family; a large St Bernard who is chicken-hearted; a villain who turns out to have a soft-centre; spills, chases and the triumph over evil.

Dean Jones as the hapless heir brings his infamous 'ordinary guy' to the screen once again. Harry Morgan as the old-timer who cons the family into giving him a home is priceless; and Keenan Wynn as the villainous businessman is a true Disney scoundrel.

It's good to know that family films are still being made, especially when they have the unbeatable Disney stamp.

GB, a topical revue, is playing to full houses at the Westminster Theatre. The show is a quick-fire mixture of sketches and musical numbers which gives the 11 artists a chance to show all their talents. (See advertisement on page 260)



Graham Faulkner as he appears in *Brother Sun, Sister Moon*.

Nationwide

Aberdeen

9th: Hazelhead Park - Aberdeen Highland Games.

17th: Stonehaven, Kincardineshire - Stonehaven Vintage Car Rally.

14th-23rd: Music Hall - Ideal Homes Exhibition.

Birmingham

4th-9th: Alexandra Theatre - Sadler's Wells Opera Company.

16th: Cannon Hill Park - Highland Gathering and National Tug-of-War Championships.

16th: Town Hall - City of Birmingham Symphony Orchestra.

Edinburgh

5th-7th: Church Hill Theatre - Festival of Plays and Dramas by Secondary Schools of Edinburgh.

19th-22nd: Ingliston - Royal Highland Show.

Folkestone

23rd-29th: The Leas and Leas Cliff Hall - International Folklore Festival.

Great Yarmouth

Until 23rd: Central Library - Guild of Arts and Craftsman's Annual Exhibition.

Hastings

27th: Round Table Carnival.

Leeds

30th: City of Leeds and Carnegie College - Festival of Scottish Dancing.

Plymouth

7th-9th: St Budeaux Parish Church - Festival of Flowers.

16th-17th: English Schools Sailing Championships.

16th-30th: Elizabethan Fortnight.

20th: Guildhall - Concert by the London Mozart Players. 7.30 pm.

Wakefield

29th-29th July: Art Gallery, Wentworth Street - Art Exhibition.

Weston-Super-Mare

1st-30th: English Embroideries Exhibition.

Worcestershire

12th-14th: Malvern - Three Counties Agricultural Show.

York

19th-8th July: Museum Gardens - Mystery Plays.

18th-24th: Theatre Royal - 69 Theatre Company: *Shaw's Arms and the Man*.

18th: Empire Theatre - Folk Festival.

18th-20th: Arts Centre - York Shoe-string Theatre: *Papadopoulos Rex*.

24th: York Minster - City of Birmingham Symphony Orchestra.

25th: Central Hall - Film: *Ballet into Film - Swan Lake*.



do things with Miller

How many times has your Company enthusiastically discussed special projects and activities – only to find that sufficient cash is just not available. Many Companies over the years have found themselves in similar unfortunate situations – that is, of course, until they discovered the real value of the Miller Fund Raising Service.

Ask yourselves – as progressive Guiders isn't it time for you to get together with Miller so that your Company is assured a substantial, regular income.

Miller Fund Raising is easy and very profitable. Attractive catalogues sell for you popular lines in Greetings Cards, Stationery and Gifts – you collect the generous profits.



Our new full colour Catalogue is yours for the asking.

MILLER GREETINGS (Great Britain) Ltd, Queensbridge Works, Queen Street,
Burton-on-Trent. Tel: Burton-on-Trent 62719 (STD Code 0283)
PLEASE SEND ME COLOUR CATALOGUES AND FULL DETAILS OF YOUR FUND
RAISING SERVICE

NAME _____
ADDRESS _____
Are you over 18 years of age
YES/NO delete as applicable
Account Ref. No.: _____
—if you are already a Miller Greetings customer GU6 _____
ORGANISATION _____
POSITION _____

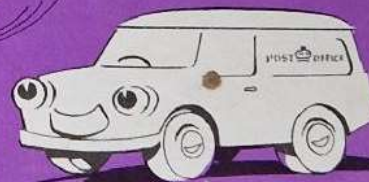
LESWYN CARDS LTD,
SUTTON COLDFIELD,
WARWICKSHIRE,
B73 5TF.

HURRY!

...the demand
for the new

LESWYN

Fund Raising
Catalogue
is going to
be high



To: **LESWYN** CARDS LTD, SUTTON COLDFIELD, WARWICKS., B73 5TF

Please send me a Free copy of the NEW FULL COLOUR CATALOGUE - now available - 'Bigger and Better Fund Raising'

NAME _____

ADDRESS _____

GUIDER DIVISION