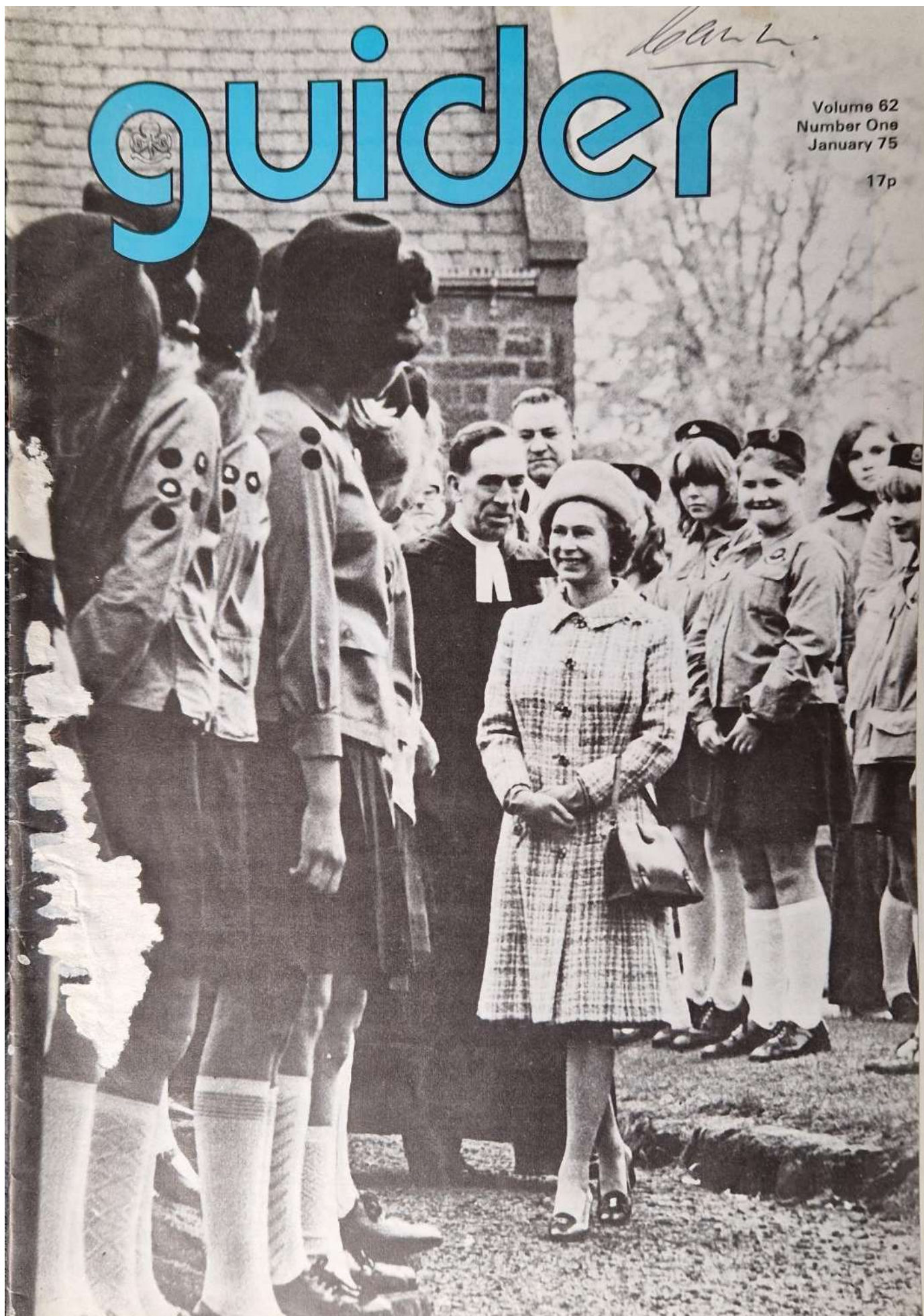


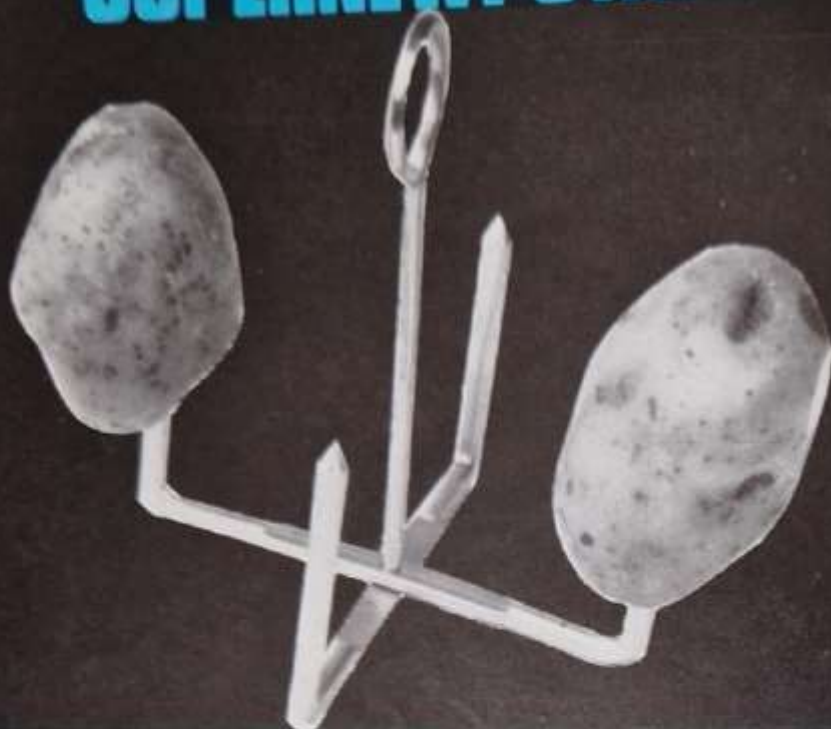
guider

Volume 62
Number One
January 75

17p



SUPERNEW POTATO BAKERS



Super high speed potato baker, cooks potatoes in just half the normal time. Heat travels to the centre through the metal prongs. Recommended by the Potato Marketing Board. ONLY 60p for two in the Webb Ivory Catalogue.

SUCCESSFUL SIMPLE MONEY MAKERS

and no half baked fund raising results with Webb Ivory



Birthday Cards

Beautiful range of exclusive Birthday cards from just over 3p.



Stationery

Super top value stationery items at really low prices. 100 sheet writing pad 20p.



Novelties

Big selections of competitively priced kitchen aids. Egg slicer and quarterer only 80p.

Q. What's Webb Ivory then?

A. Simply the biggest and most popular fund raising service in Britain.

Q. Selling potato bakers?

A. Yes, they're best sellers. Along with hundreds of other fast-selling, low-cost items in the super Webb Ivory colour catalogue.

Q. Like what?

A. Greeting cards for just over 3p each. Stationery items (a fantastic range), games, novelties, gadgets, kitchen and household aids, gifts — there's something for everyone.

Q. So where does the fund raising come in?

A. Easy! Every item sold means 33 1/3% to 50% profit on cost for your group funds. In fact, the goods are so attractive and are such big value, they virtually sell themselves.

Q. Sounds great! What's the cost?

A. Absolutely nothing to start! Money comes rolling in before you lay out a single penny.

Q. Fantastic! How can I find out more?

A. Just post this coupon. By return you'll get full details and a free copy of the new 1975 Webb Ivory colour catalogue.

Q. Any strings?

A. NO! None whatsoever. So post that coupon now. You have everything to gain!

Webb Ivory Limited, Little Cornbow, Halesowen, West Midlands B63 3AG

There's no question about it; the Webb Ivory Fund Raising Service sounds just what we need. Please send full details and free colour catalogue.



NAME _____

ADDRESS _____

COMPANY _____

GIFT _____

I AM OVER 18



guider

Published 1st of each month

OFFICIAL MAGAZINE OF
THE GIRL GUIDES ASSOCIATION
(incorporated by Royal Charter)

PATRONS

HM THE QUEEN
HM QUEEN ELIZABETH, THE QUEEN MOTHER

PRESIDENT

HRH THE PRINCESS MARGARET,
COUNTESS OF SNOWDON

CHIEF GUIDE

OLAVE, LADY BADEN-POWELL, GBE

CHIEF COMMISSIONER

MRS DEREK PARKER BOWLES, CBE

Contents

Guiding Round About	4
Duke of Edinburgh Service in Ghana	6
Visit to America	7
County Commissioners' Conference 1974	8
Gilwell Park	10
Mrs Kamarusi Remembers	11
A Good Thing Should Be Shared	12
Airing and Sharing	13
Greetings Cards	14
Webb Ivory Tennis Championships	15
World Conference	17
Those Were The Days	19
Link News	20
Training	21
HQ Notices	25
Brownie Diamond Jubilee	26
Where To Train	29
Free Booklets	33
Mainly For Rangers	34
Home and Away	37
Launching Guide Friendship	38
Classified Advertisements	39
What's On	42

Cover

Her Majesty the Queen talked to 50 Patrol Leaders from all over Perthshire after attending morning service at Meigle recently. The Guides were gathered for a weekend Camp at Belmont.

Photo courtesy of Dundee Courier and Advertiser

We apologise to Webb Ivory for having failed to thank them in the December issue for sponsoring our cover picture, which was in full colour.

EDITORIAL: MRS J V RUSH (Editor)
MISS J V KING (Assistant Editor)
MR S D MILLS (Sub Editor)

ADVERTISEMENTS: MISS A M MARTIN

ALL COMMUNICATIONS TO: **Guider** GIRL GUIDES ASSOCIATION
17-19 BUCKINGHAM PALACE ROAD LONDON SW1W 0PT 01-834 6242

Printed by The Riverside Press Ltd, London and Whitstable and published by The Girl Guides Association.
Subscriptions, including postage, £2.64 for 12 months Great Britain, £2.46 overseas.
Trade Agents, Surridge Dawson & Co, (Productions) Ltd, 136-142 New Kent Road London SE1.



The Hon Mrs Gervais Clay was a guest of Cheshire Border Brownies who held a DJ rally last year. Also present were the Wombles who emphasised the Womble theme the girls had chosen.

Evening Sentinel



Members of the Rufforth (York) Brownie Pack gave a scrapbook about the Pack to Elizabeth Colwill (right). Elizabeth is a Brownie in Auckland, New Zealand, and was over here on holiday.

The 1st Burslem Guide Company celebrated the Company's Diamond Jubilee with a party and a special cake (left).



Yorkshire Evening Press

After 50 years with the local association Miss N Clarke (below) is leaving Uckfield, Sussex. In her honour the Guides held a party and wore some old uniforms.

Several weeks of hard work resulted in these Brownies and Cubs from Ilford (below) being presented with Cycling Proficiency Certificates by Chief Inspector Ratcliffe.



Guides from the 1st, 2nd and 3rd Sutton Common Companies line up for tea (below) at their summer Camp at Blacklands Farm.



Leicester Mercury



Two members of the 56th Leicester (St John the Baptist) Guides are seen above with the Lord Mayor of Leicester, Mrs Irene Pollard, at the start of last year's anti-Litter Campaign.

Evening Argos



A Brownie from North Hereford learns to make decorations (below) at the day Camp held on Hereford race course.



Hereford Evening News



At last year's Camp a nun helped the 25th Wimbledon Company move their equipment (left).

Bucks Standard



Olney Rangers (right) held a creative ability test and set a quiz for Mrs J Gibbard, Division Commissioner, Mrs J Knibbs, District Commissioner and Mrs M Styles.



Northamptonshire Newspapers Ltd

When Irchester, Northamptonshire, held a Knockout Competition they finished with a camp sing arranged by the local Guides and Brownies (above).



Mr John Fox, Gillingham Divisional Education Officer is seen above presenting swimming badges and Silver Awards to members of the 2nd A Gillingham Guides.

Peterborough Advertiser Co Ltd



The 2nd Dogsthorpe Brownies Pack Holiday started with a sing song under the leadership of their coach driver (above). Mrs Barbara Beevis of the Milk Marketing Board (below) found the Guides of the Mote Division, Kent, an appreciative audience for her cooking demonstration.

Kent Messenger



Kent Messenger



Brownies, Guides and Rangers of the Maidstone Mid-Kent Division listen to the Rev Christopher Duncan (left), after a service at which the collection was in aid of the GFF.



Halfax Evening Courier

A coffee morning organised by the 6th Rastreck Salvation Army Company (right) was a great success.

Burnley Evening Star



When Burnley Brownies held special revels for DJ year, their guest of honour was Rupert Bear (left), who presented the prizes.

Duke of Edinburgh's Award Journey in Ghana

by Kathleen Vincent
(Ranger)

I WAS ONE of a party of fourteen people representing the D of E Award Scheme in Staffs to visit Ghana for three weeks at Easter. Needless to say we had a marvellous time and it was a wonderful experience which I shall always treasure. It is such a different world and we had such a full programme that it is difficult to know where to begin to tell you about our visit.

We spent two of the three weeks travelling the country, covering nearly 2,500 miles and seeing more of Ghana than the average Ghanaian sees in his lifetime. I found it hard to visualise Ghana as being roughly the same size as Great Britain, for by British standards to travel 200/300 miles in a day is quite a journey, but to the Ghanaians it is nothing. The roads were often little more than dirt tracks with frequent obstacles such as potholes, goats, chickens, and police barriers, but nevertheless a fairly high speed could be maintained, unless the rain preceded you and washed away the road.

Apart from our work camps and stay at the Game Reserve, we stayed in Ghanaian schools. Unfortunately our visit coincided with their school holiday and so Award candidates travelled sometimes 50 to 60 miles back to school to look after us. I felt disappointed for them, that after all their efforts our time with them was so short and we were unable to get to know them better.

While we stayed in the schools we ate Ghanaian food, eating in their dining halls. The Ghanaian diet is not to be recommended to the weight watchers as it is mostly carbohydrates. Our meals were usually a variation of yam, rice, fried plantain and different stews. We very soon became accustomed to the food and, to the delight of the Ghanaians, at least attempted to eat everything which was put before us. But I don't think we enjoyed the meals as much as the fruit which was cheap and plentiful: bananas, pineapples, oranges, coconut, pawpaws, and mangoes.

We were overwhelmed by the natural friendliness and hospitality of the people of Ghana and soon felt very much at home, and have made a great many friends. It did not take us long to get used to the extreme heat and humidity, and after the intense heat of the north we found the south quite mild.

On our travels we called at many places of interest, which proved welcome breaks in the journey. It is hard to say which are the most memorable aspects of our trip, although I think we all enjoyed our stay in the north, and in particular the work camps. My work was at a small village in the far north, called Binaba, where I helped in the rebuilding of the Anglican Church. There were eighteen of us altogether; eight from Staffordshire, and ten Ghanaians. Ghana being a strong Christian country, the villagers were delighted to see us helping with their Church, and even more, to have us staying with their families in the huts and taking an interest in the village life. Our jobs were to dig 'laterite', a type of shale, load it onto a cart pulled by a particularly obstinate donkey, and transport it by this means to the Church a quarter of a mile away, where we scattered it on the floor and pounded it down. We also acted as labourers to the masons, fetching and carrying and mixing cement and concrete.

The villagers made us feel most welcome and their greetings were particularly moving. Emmanuel the husband of the family where I stayed is a former teacher in the village and is now training to be a priest at Legon University near Accra, so he has to leave his wife Dorkus and three children in Binaba over 400 miles away, during term time. But they are not alone, for within the compound live Emmanuel's brother Joseph and his wife and family and their parents. They made us feel most comfortable; we slept in a room off the courtyard which was spotlessly clean and the walls decorated with finger painting done by Dorkus.

It is hard to believe their homes are made from mud for they have the appearance of cement and concrete, and the walls and floors are as smooth as our own. The mid-day heat proved fatal, usually 140°F, and we found it wise to keep in the shade, doing our work early morning, 6 am till 11.30 am and late afternoon 3.30 pm till 6 pm. We all enjoyed our stay in Binaba and dearly wished to stay longer, and were sorry when the time came to say goodbye to the many friends we had made, particularly the dozens of children who had followed us everywhere during our stay.

In Ghana we were received by three prominent chiefs. The Asantelene, Chief of the Ashanti and the richest and most influential chief in Ghana, was the first and gave us a splendid reception at his beautiful palace. In Wa we were received by another Chief, the Wa Na. This was a Moslem region with a beautiful palace and mosque. Wa Na appeared to be quite an old man, but obviously still had an eye for the girls, as he asked two of our party to stay and be his wives! At Sandema in the North we met the Sandam Nab, who had arranged a marvellous display of dancing for us, unique to Sandema. It is the custom that you never speak directly to a chief but through his linguist, so you do not pass on any evil spirits. This we did, except for the Asantelene, who spoke directly to us.

What Ghana lacks in scenic beauty it certainly makes up for in its beautiful wildlife, gorgeous flowers and distinctly colourful birds and butterflies. We were disappointed that although we found our stay in the Game Reserve a welcome tranquil rest, we saw little wildlife (no elephants!).

In my opinion the visit was a huge success, everyone got along well together. The badge of Achimota School, where we stayed in Accra, was a piano keyboard and the story behind it was: 'you can play a good tune on the white notes; you can play a good tune on the black notes, but for perfect harmony you must use both black and white'. This we thought was very true and I think we learned a great deal from the Ghanaians, and they from us. We had a lot to learn about Ghana, its people, and their cultures and the visit certainly broadened my somewhat limited knowledge and understanding of West African countries and their way of life. Ghana is a country of vast differences within itself, mainly due to climate and geographical conditions. The south having high rainfall, industry, electricity, communications, in fact everything which accompanies a prosperous area, and many factors are due to the Akosombo Dam and Volta Lake project. Indeed, there is still poverty in the south, but not on the scale of the north where their livelihood depends on how much rain falls. There is little or no industry and little variety in the crops grown, mainly maize; and the children suffer from malnutrition. The north of Ghana borders on to the area stricken with drought which we have heard so much about in recent months and it is to be hoped that the plans to build a dam on the Black Volta, so providing irrigation and electricity to the north, get under way very soon, or else they will soon be facing the same problems as Ethiopia. In spite of whatever their circumstances, the Ghanaians are always cheerful, with a friendly smile and an awful lot of respect especially for the British, and photographs of England and the Royal Family are commonplace on the walls of a Ghanaian home.

The success of our visit was due to the hard work in organising our tour by the National Award Committee in Ghana, their Chairman, Mr Cato, and organiser Mr Moss working over there with VSO.

Unfortunately I did not meet many Guides or Rangers as most companies are attached to schools and do not meet in the holidays. I briefly met Mrs Eshun, the national secretary and District Commissioner, together with a few Guides and Rangers at the Gold Award Presentation at the Castle on our first day. On our return to Accra, Mrs Eshun came to Achimota School to find me and with no more ado took me off on a guided tour, first to the Guide Training Centre which is a lovely building set in 11½ acres of peaceful countryside and accommodating 45/50 people.

When we arrived at the HQ in Accra, Mrs Berko, the National Trainer, had arrived and I had an interesting and amusing talk with her. She had done her training over here, at Netherurd, Broneirion and Waddow, and so knew a great deal about Great Britain and our people, and was able to tell me of some lovely stories of experiences over here.

I returned to say farewell on Thursday morning to find that Miss Senlor had arranged a lunch in my honour, so accompanied by two friends off we went to a marvellous lunch in an extremely relaxed atmosphere, thoroughly enjoying ourselves and also meeting the Chief Commissioner. They were all charming ladies, extremely friendly and hospitable. They certainly extended a big hand of friendship to myself and my friends and I felt very proud to belong to the Guide Movement.

Visit To America



by 1st Molerey
District Rangers

OUR FIRST VISIT IN America was to the Los Angeles City Hall, where we were allowed to go into a chamber and listen to a debate. The Mayor had a special welcome printed to the 'English Girl Scouts' on the front of the agenda and presented me with a signed parchment of Greetings and Welcome, and headed with the City of Los Angeles Coat-of-Arms.

We then appeared on Channel 5, and visited the oldest market in Los Angeles, dating back to Spanish times, a predominant feature of which is the exhibition, for sale, of Mexican leather work.

Hollywood Film Studios proved an interesting and exciting trip. We went across the 'Red Sea', which parted for us, and a bridge which collapsed while we were crossing.

We met another Girl Scout Group, who invited us to tea and entertained us with a lovely decorated cake.

On the first Sunday we went to a Japanese Church which trains young men for missionary work. Everyone was dressed very informally and had coffee, biscuits and a chat afterwards.



After leaving Church, we had lunch at a real Chinese restaurant where they brought us a selection of all their dishes to try before we ordered.

A visit to the Grand Canyon National Park was our next big event. For this we were in civvies, for which all were very pleased, as it was too hot for our uniforms. The heat was such, in fact, that only the minimum of clothing was necessary. We started at 2.00 am and the trip was a 12-hour ride through desert, mountains and scrubland for 500 miles. We had one very short stop to see the Great Hoover Dam, which generates all the electricity for California.

It is difficult to describe the Grand Canyon and certainly I cannot do it justice but, briefly, it occupies some 217 miles of the Colorado River. At the South Rim the river has cut the Canyon to almost a mile deep and from four to eighteen miles wide. It is regarded as one of the seven natural wonders of the world. Descent can be made either on foot or by mule down a narrow trail cut into the Canyon walls by Government Engineers. The journey to the bottom is, I believe, about seven-and-a-half miles, but the heat in the Gorge is so intense that it becomes a question of the survival of the fittest. A Girl Scout and two Rangers went down four miles on mules and found it a rather frightening experience, but they were glad they had achieved it.

We met, by chance, a young American Scouter who had been down 142 times, and said he could make it 143 if any of the girls were interested. Three of them made it six miles down.

There is a variety of wild life in the Canyon and in the National Park. Apart from mammals and birds, there are 25 species of reptiles. There are deer at the Canyon Rim, wild sheep and donkeys and, at night, there is the coyote and ring-tail cat. We stayed two days and two nights in real log cabins or huts. There are shops dotted about where one can buy a tremendous variety of things and the buses in the Park take you from one to the other, the driver explaining the area through which you are riding.

The natural orientation of the Canyon serves to make both sunrises and settings very spectacular and, I am told, particularly beautiful from the many specially constructed vista platforms. On

the outward journey I took a photo of the sun rising over a mountain - over the bus driver's shoulder.

We spent a wonderful day in Disneyland, a happy place of fantasy with thousands of people all being young again. There are hotels, shops, bands, railways, buses, wagons, horses and carts, wonderful waterways and fountains.

Another experience was a tour of the California Institute of Technology, known as Caltech, which is an independent privately supported College. We were escorted through most of it and it is a most wonderful place.

From there to the Huntington Library Art Gallery and Botanical Gardens. The Library was full of old writings, including Shakespeare, and books in gold leaf. Most of the buildings are beautiful, finished mostly in various marbles, dating back to Spanish times. There are huge specially constructed gold fish 'Bowls' in the grounds and some of the gold fish were the largest I have ever seen. They appeared to be the size of small salmon!!

On the Thursday before we all returned home, I was taken by a Guide on a tour of the Hawaiian Islands. We flew out from Los Angeles at 7.30 pm and, until we returned on Monday morning, I was taken everywhere to hotels and restaurants, flying from one island to another, then touring by coach or hire car during the day. This was a fantastic tour which I felt very privileged to be given, with such a charming companion as Mrs Sullivan, Girl Scout Leader (Seas).

The Polynesian Cultural Center has no parallel. The wonderful handicrafts, floral arrangements, singing and dancing, and the beauty of the settings, are difficult to describe.

The countryside is very varied and beautiful, some places having no rain, others having plenty. In the rain area is a fern forest with ferns as big as trees and the wild mauve orchid grows everywhere and the garlands are made from these.

Touring Hawaii volcanoes we saw the old lava flows, going over the road which was cracked as recently as July. The roads are closed if danger is expected but there was a minor eruption on this occasion where it wasn't expected and the road was not closed. We had lunch on the edge of a steaming volcano, and you could smell the sulphur in the car even with all the windows closed. We walked through a crater tube and large tunnel formed by the lava and we saw the Hawaiian Volcano Observatory by the Sulphur Bank.

Back in New York we were met by a charming Girl Scout Leader who quickly did some shopping for our breakfast after finding two cafes closed. After a rest we had lunch and were then taken by car to another part of New York to meet two more Leaders who took us around the City. We went to the Girl Scout HQ and then on to a hall where another group gave us an evening meal and rushed us off to the airport from where we took our last flight home, arriving at Heathrow at 11.25 am on Wednesday, September 11th.

The Rangers and I will ever be indebted to Mrs Burton and her girls for their organisation and unstinted help, and to the parents who so generously opened their homes to the Rangers. Every home was a happy one.



County Commissioners' Conference 1974

ON WEDNESDAY, 16th and Thursday 17th October, two hundred County Commissioners from all parts of the United Kingdom converged on London for a two-day Conference. On the Tuesday evening before the Conference opened, our Chief Commissioner, Mrs Derek Parker Bowles, welcomed us to her 'At Home' in the Council Chamber at Commonwealth Headquarters. From that moment on the scene was set. The noise level increased as the first polite incidentals of conversation grew into earnest discussion. How important it is that Commissioners and Guiders in general have opportunities to meet socially, as well as at meetings or in a Training situation.

By 10.30 the following morning, we were seated in the Westminster Theatre for a Meditation which had been

and her Advisers, or by introducing a session. This led to a feeling of involvement which permeated the two days and contributed to the success of the Conference.

A session entitled 'Good News Since Last We Met', provided a kaleidoscopic picture of Guiding around the United Kingdom. There was good news from Ulster, London and South East England, rural Northumberland; and from our General Secretary, Mrs Lysia Whiteaker, an outline of the involvement of Guiding with those outside the Movement, and how those inside it influence change. This session was an excellent source of ideas, and it emphasised for me the fact that we must retain a flexible programme in Guiding, which will allow for different interpretations according to the needs of a particular area.

'One Man's View of the Society in which we soon may find Ourselves', the title of a talk by Mr Keith Inns, Governor HM (Boys) Prison, Wormwood Scrubs, provided us with much to talk about over lunch, and formed a basis for discussion about the way in which Guiding should be heading during the next five years, and related sub-themes. The suggestions and urgent problems which emerged during these discussions are being considered, and will be passed to the appropriate bodies for consideration and further action.

Wednesday drew to a close with an International Miscellany which was introduced by our International Commissioner, The Hon Mrs Birkbeck, JP, and included slides and a fascinating commentary by Miss Siromi Rodrigo, of the World Bureau. Here we saw and heard of the important part Guides play in service to the community in developing countries. Mrs Allan Laing, Deputy Chief Commissioner, and Vice-Chairman of the 22nd World Conference Hostess Country's Planning Committee, then captured for us the atmosphere evoked by the different



John Adair, lecturer, with Mrs Derek Parker Bowles

planned by a County Commissioner, who is also the Guide Section Representative on the Association's Religious Panel. The Meditations prior to the first sessions on both days were helpful and apt.

After the Welcome by Mrs Derek Parker Bowles the purpose of the Conference was outlined by the Chairman of the Planning Committee and elected member of the Executive, Dr Helen Laird. It was intended that our thinking should be stimulated toward a consideration of the way in which Guiding should be heading during the next five years, bearing in mind the needs of children, which are not being met in the school situation or at home. A parallel aim of the Conference was to deepen our understanding of our job as Commissioners and of Leadership in general. These themes had emerged from the many suggestions as to the form the Conference should take, submitted to the Planning Committee, by County Commissioners. As many County Commissioners as possible took an active part in the Conference, in one way or another, by submitting suggestions prior to the event, by leading discussion groups, by putting questions to the Chief Commissioner

Dr Helen Laird





The platform party

hostess countries at the time of each World Conference. She set before us the aims of the present Committee, the main concern being that each delegate should leave the United Kingdom with happy memories of us, and that as many members of our Association as possible should meet delegates, be involved in some way, and feel the impact of our World Association of Girl Guides and Girl Scouts, which transcends so many barriers of colour, class and creed.

Knowing, of course, that Commissioners have interests outside Guiding, many of us managed to visit the theatre, or go to a concert on Wednesday evening. We nearly increased our Guiding membership by one rather disapproving gentleman who became hooked in the umbrella of one of our CC's in the lift from the Piccadilly Line to the world outside. Try as he would, he was firmly hooked, and our helpless laughter, and his obvious disapproval, did not help. What a pity that so many of those busy City gentlemen have lost their sense of humour and what a necessary characteristic it is for a Commissioner to possess!

The first session on the second day of the Conference was entitled 'Matters of the Moment'. Here we saw our Chief Commissioner and some of her advisers consider questions which had been submitted prior to the Conference. It became obvious that because we are a progressive and forward thinking organisation, we are constantly facing problems to which there can be no immediate answer. Where this was so, the Chairman

Keith Inns, Governor HM (Boys) Prison,
Wormwood Scrubs



Photos:
E Joyce
Hay

promised that all questions would be considered most carefully by the appropriate Committee, and we are grateful for the direct contact and communication which this session afforded us.

The second session on Thursday took the form of Topic Sessions during which we were helped to consider various aspects of the County Commissioner's job, ie understanding it, carrying it out, helping other Commissioners, interpreting the Promise, fostering the Programme, the Public Relations



A discussion session

Angle, the Adult Leader's Certificate and the County Commissioner's position as the Leader of Guiding in her County. These sessions were much appreciated and gave us an opportunity to share our problems, draw on each other's experience, and gain new ideas. A further session, entitled 'The Challenge Ahead', underlined this subject of Leadership. Mr John Adair, MA BLitt, PhD FR Hist S, Author, Lecturer and Consultant, provided us with just what we needed, an understandable translation of some of the best methods employed in Industrial Training for Management. Miss Stella Cunliffe, elected member of the Executive, ensured that we understood the implications for Guiding for the future. Our Chief Commissioner's summing up 'Forward into the Second Half of the '70s', drew to a close a Conference which was stimulating, thought provoking, and fun. I mention the latter point, because it occurs to me that whatever role we play in Guiding, if we are to be the right kind of Leaders for young people today, we must retain the laughter, enthusiasm and *joie de vivre* of childhood.

A County Commissioner



GILWELL PARK, the Scout Association's International Training Centre and Camping Ground, is at Chingford, 12 miles from the centre of London. It is situated on the edge of Epping Forest and is in a most delightful setting, ideal for camping and residential courses. The course members are accommodated in frame tents on the training field, with a separate tent being provided for ladies.

Members on the course I attended were divided up into six patrols of six or seven members. There were forty-one course participants, including two Ranger Guiders, myself and Mrs Jean Vincent. There were six tutors, one assigned to each group. Five tutors were leader trainers from various Scout Counties, and the sixth was Miss Brenda Hughes, Ranger Guide Trainer, Tom Wylie, the assistant Director of Leader Training at Gilwell Park, was the course leader and Hugh Davies training assistant to the course.

As I am a Ranger Guider, this course was of interest to me, especially in the field of joint activities. The Saturday and Sunday sessions discussed the Leader's relationship with the Unit and the Leader's role and training needs. The aims and methods of the Venture Scout/Ranger Guide Unit were linked with this. A film was shown as part of these sessions.



The Training field

On the Monday afternoon and following into all of Tuesday, the Patrols were engaged in a management exercise. Each Patrol was given the collective role of a new Leader. This was a hypothetical Unit for the purpose of the exercise. All communications between the Leader and a central office known as 'the brain' were written and posted, and replies were brought back to the Patrol by the training assistant. This was an exercise in group cohesion and the various approaches of each group to the problems sent to it by 'the brain'. This took a day and a half and at the end of that time each group had created its own format and come to its own conclusions. The ways of dealing with the problems taught the group a lot about itself, and through the evaluation we learned about each other. This exercise was the most valuable part of the course for me, as all the objectives of the course were actually played out by the group.

The rest of the course was planned by the participants to cater for their own individual needs. Each tutor group submitted a list, via their tutor, of the needs of each individual. Obviously, forty individual courses could not be catered for, but it was found that a lot of people had similar needs, and

Venture Scout Leader/ Ranger Guider Course Gilwell Park

by
Valerie Davies,
Ranger Guider

sessions were offered, giving three alternatives. Some sessions were repeated so that the widest possible choice could be offered. Examples of these sessions were, planning a Unit expedition, counselling individuals, work with small groups, joint activities, and community service.

The course was self-catering in Patrols and the Tuesday evening was 'International Guest Night'. Each Patrol chose a meal from a list of various different countries and invited a guest (in my group's case, the group tutor and my husband Hugh, a training assistant). Wine and sherry could be bought from the stores, and table cloths, candles and all the trimmings were provided. It was a delicious meal, and provided an informal social occasion in which to get to know each other better.

The last session of the course on the Thursday evening was a slide show of International Scouting and Guiding. This was very interesting as it showed developments, particularly in Europe, toward co-operation in the two Movements. John Huskins, Director of Leader Training, gave a very informative talk on the international aspects and growth of the two movements. A film shown after this was called *Gilwell Place and People*, giving a history of Gilwell and Epping Forest, and showing Gilwell training courses today. This was an excellent film, which I would recommend to all Guiders as an introduction to Gilwell Park.

At the end of the week I felt I had gained a lot from the course itself and also gained tremendously within the relationship of the Patrol. Seven individuals, who started off on Saturday as total strangers, developed through living and working together into a group of people in complete harmony. This to me, set the seal on the course.

Every year one Venture Scout course is held at Gilwell Park which specifically accommodates Ranger Guiders. Many of the Venture Scout Leaders had expected more Ranger Guiders to be on the course so they could pool ideas as regards joint activities and learn about their opposite numbers in Guiding. I would hope that as a result of reading this article, more Ranger Guiders will feel encouraged to go on next year's course, the details of which are advertised in *Scouting and Guider* round about October or November. I would certainly recommend this course to Ranger Guiders.



Gilwell will accept applications only from warranted Guiders with about two years experience.

Mrs Kamarusi Remembers her Guiding in Fiji



Mrs Kamarusi, who is seen here with her husband after she received the Laurel Award, was seconded from the Education Department of Fiji. She has now returned to teaching, but is continuing her association with the Girl Guides as a trainer.

WHEN I FIRST joined the Girl Guide Movement I was mostly attracted by the singing, tying knots and the uniforms. I had little idea that the Girl Guides Association would influence my whole life, until I was asked to work for the Girl Guides of Fiji in 1964. I did not know that it would eventually take me to New Zealand and all parts of Fiji, where I worked with the uniformed members and interested people in Guiding.

I moved around from one island to another by boat or aeroplane; on Viti Leon I travelled by buses, outboards, on horseback and on foot. I stayed with people of different races and religions; I tried to speak their language and eat their food. In some areas I formed Brownie Packs, Guide Companies and Ranger Units, and trained new Leaders, both male and female. I worked with women's clubs, church people and members of the Methodist Youth Fellowship. At the same time I tried to correlate Guiding together with their work.

While in New Zealand I was mostly involved with Guiding work, attending trainings, Camping, visiting interesting places and meeting different people in Guiding.

I remember when I first entered the Girl Guide office I was like a Brownie at a 'Flying Up' Ceremony; when she flies out of the ring into the world she is lost until the Guider comes and takes her into the Guide Company. I remember the time when the outboard was nearly capsized

near Washington Lighthouse when we went for a Camp at Leonka. The missing of my canvas shoes on the clothes line after a cross country walk.

I remember when I walked from Bua to Dama because there was no road; when I came to an Indian settlement the mothers brought me their children, they thought I was a nurse. I remember when I lay down by a tree and fell into a deep sleep because I was so tired and Dama was still a long way to go.

I remember early one morning I lit a fire in an area on Ovalan Island where the people of Moturiki could see the smoke before they would send an outboat to pick me up. I remember when I fell into a ditch on a dark night after a camp fire; when I travelled up to Wainimala and the weather was very bad. The road was rough and slippery and the water was rising quickly in the Wainimala River. I spent a night in a hut in the bush because my feet were so sore. The next day the chief from the next village sent a boy with a horse to follow me, and I was still walking when the horse reached me at 4.30 pm. I was so pleased that I could ride the horse. But he threw me and I was only saved by bushes growing by the roadside which I grabbed, and pulled myself up onto the road again. The road was so narrow, only eight inches wide. On the right was a high slope of soapstone and on the left a 12 to 15 foot drop with bamboo cuttings at the bottom.

All these little things meant so much to me. It's wonderful to remember all the little things that we did together in Guiding; learning the activities of Guiding from the four Sign Posts, the solving of Guiding problems, and above all when we were united together as one under one roof and the sharing of Guiding fun.

I would like to thank all the Fiji Girl Guides Association for giving me such a wonderful opportunity; and also the New Zealand Girl Guides Association.

Happy Guiding to you all.

Pakistan says 'Thank you'

It was very kind of you to send a generous donation of Rs 2,330.00 on behalf of your Girl Guides to help the people of our country affected by the unprecedented floods of 1973. Your donation has been utilised to meet the building costs of a flood relief centre in Papeen, a village in Sialkot district of the Punjab Province, which was badly affected by the floods. The village was selected by the district authorities as there was a great need for such a shelter there. During 1973 this village was completely washed away. After a year the villagers started building their new houses. They are happy to see that the Girl Guides are taking interest in them, and helping toward their rehabilitation work.

This centre will be used as a Flood Relief Shelter during floods and a Community Centre and Dispensary during normal times. I enclose a photograph showing Begum M H Sherazee, Deputy National Commissioner and Provincial Commissioner, Punjab fixing the stone at the Centre. The

writing on the stone is in Urdu and English. It reads:

**PAKISTAN GIRL GUIDES ASSOCIATION
RELIEF-CUM-COMMUNITY CENTRE**

The Centre has been made possible by donation from Girl Guides of different countries of the World.



A Good Thing Should be Shared

I WOULD LIKE to share with you the delights of an 'Eight Day Drama Course' run by RADIUS (The Religious Drama Society of Great Britain) this year at Lady Mabel College, Wentworth Woodhouse, Rotherham.

I stepped off the train on a cold showery afternoon in August and was greeted by a small group of people surrounded by cases, guitars, rucksacks etc. 'Hello, are you going on the Radius Drama Course? Come along and meet some of the others, there's quite a crowd round the corner, the bus should be here soon.' There was nothing cold about the welcome! Before long we were packed like sardines on the College bus and everyone seemed to be chattering at once. 'Which class did you put down?' 'I hope I get in the Music Class' 'The Workshop was super last year' 'I wonder what we shall do in the Study Group?'

On arrival we dumped our cases in the allotted rooms, found out who else was sharing the same Hostel and went for a cup of tea. We then met the Tutors and were officially welcomed. Dinner was followed by a short Service and a 'Getting to know you' session.

The theme of the Course was 'New and Old'. The daily programme followed more or less the same pattern; breakfast 8.30 am followed by a short Service, the rest of the morning being taken up with a lecture, classes or group work and, of course, a coffee-break! After lunch we were free to walk, swim, play tennis or 'snooze' until 4 pm, when it was time for a 'cuppa'. Then came group work for a couple of hours. After dinner there was a varied programme, including the film *Hamlet*, a Music Appreciation session, a play followed by a discussion, a 'Sing Together' evening which included several of our own campfire favourites. (I discovered later the Leader was using some of our books!) Country and Square Dancing took place each evening and informal dance sessions were held in the bar. The evening worship, sometimes organised by young volunteers, was most enjoyable, and every care was taken to cater for the wide age group, which ranged from 16 to 60.

When booking for the Course we were asked to choose one group from the following: Study Group, Workshop, Producers' Group, Movement Study, Production of a set script, Costume Design. Classes, held three times during

the week, covered the art of make-up, speech, renaissance dance, problems of amateur producers of religious drama, stage design, making good use of difficult space, music, singing, creating and exploring.

I joined the Workshop Group and remember well the spacious gym, in which we were soon to feel so much at home, the relaxation exercises, the warming up sessions, the small mixed group (about the size of a Patrol) working planning, discussing and laughing before coming together to work on an improvisation based on Daniel Defoe's *Journal of the Plague Year* under the direction of Brian E. Cook (Head of the Drama Dept of the Arts Educational Trust). This included speech - individual and choral, mime, a London street market scene and a ballade (which I still sing in the bath). For this group the ladies were asked to take a long skirt, and with the addition of scarves and an apron or two, the effect was pleasing. One or two of the men borrowed the cassocks of the clergy on the course! The pathos of the harrowing time in 1665 and the humour which unites people in time of stress, culminated in the portrayal of The Great Fire of London. What a scope for acting activities here!

Having gone through relaxation exercises lying down, we were to learn in the speech class - taken by Orlin Corey, at one time Professor of English in American Universities - just how much can be done to relieve tension before making that speech or announcement to a sea of expectant faces. A few deep breaths, a stretch and a yawn - Oh yes, it does work, I've tried it! What silly things we said over and over again, what funny faces we pulled. It wasn't easy balancing on one leg, but how much we learned about good speech and communication in a relaxed manner.

By Thursday each group was ready, and the last two days were spent in sharing with the others what each group had experienced.

After dinner on Friday came the summing up, the plans for next year's course and the final Service, followed by a social evening.

As I stood on the platform at the station the next morning I was asked: 'I'm so glad you enjoyed your first Radius Drama Course. Are you coming next year?' 'Yes,' I replied, 'I would love to and I'm hoping to bring some more Guiders with me.'

Anon



Paul Thompson explains how to make corn dollies (above). Sunset entertain at the Singers Swap Shop (below).



Kingsdown Folk Weekend



Guides watch closely as Paul Thompson explains a tricky point (above). Tideway Folk Group entertain (left).



AIRING & SHARING



Brownie Totems

The unavoidably, greatly increased, price of totems should not deter any Pack from having one. When I took over this Pack we set to and made our own in papier maché, a material the Brownies always enjoy working in. It was made in three sections, for ease of storage: the top, the stalk and the base. A ceiling light shade of the appropriate shape made an ideal mould; a piece of plastic pipe covered with papier maché to within 2 inches of either end made a firm stalk; and the base was built up on a round of cardboard. Two smaller lengths of plastic tube, one in the centre of the top and the other in the base, left slots when removed, into which the stalk could be firmly fitted.

When the papier maché was thoroughly dry, the Brownies enjoyed painting their handiwork. We used poster paints, colouring the top red, the underpart and the stalk brown, and the base green to represent grass. White paper circles were stuck on the red top and the whole was varnished by me with a clear varnish.

It proved a most successful venture, and the totem is in continuous use.

Monica J McCloud (Mrs)

Brownie Guider,

1st Highfield Brownie Guides

Brownie Song

Do your Brownie Packs sing the Brownie Song really well? Having visited a number of local Packs I find that they have great difficulty in mastering the tune, whereas all Brownies (and their Guiders) could cope satisfactorily with the old Brownie Song. The children seem to manage the first two lines quite well, but after that it goes astray. One Brownie told me that this was because it changed into a minor key! Occasionally I have tried to help the Brownies, but on returning some months later the tune has usually disintegrated into a peculiar slow dirge. At least two Packs seem to have given up and sing the old Brownie Song which, although lacking in artistic merit, was extremely easy to learn.

Would the Brownies do better if they only sang the first part of the song to 'help our homes and land' and

changing the last but one note from E to G and the last note from D to G?

Or why not an entirely new tune which is easier to learn?

Vera B V Davis (Mrs)

Assistant Division Commissioner, Southgate

The Brownie

I thought I would pass on to you some of the comments made by my Brownies on showing them the magazine for Brownies. The excellent page on bulb planting (9th October) prompted this, and we all found the page wonderfully helpful as we were planting bulbs.

Please may we have many more on other helpful subjects. I don't think reprints matter when the contents are both good and useful; we change readers every three years anyway, apart from Guiders like me!

The other overriding comment was 'Oh! It's like a Brownie newspaper', or 'Oh! a newspaper of our own!' I must say this put it in a new light for an old reader too. Before, I thought it was a poorly presented magazine which I accepted because I understood the cost involved, but now as a Brownie newspaper it is excellent. The only newspaper I know with good, kind, happy news and helpful ideas too! Would it, I wonder, be possible to develop this newspaper idea? I don't think one needs to change the contents so much as the Guiders' pre-conception of a magazine.

Pauline Carmichael,

1st Polegate and Claygate Brownies

Other Brownie Guiders please note. Editor

Guide Badges

I would like to know other people's views about getting badges. We don't pretend that we are the perfect Guide Company, we aren't very spectacular in the getting of badges, and in the last ten years we have procured only one Queen's Guide. We don't push very hard. Our regular badges are perhaps predictable; Flower Arranging, First Aid, Friend to Animals, Friend to the Deaf, Child Nurse, Health, etc. Some of the more spectacular or individual, as you can see, are absent; these, we feel, are real interest badges,

and cannot be taught in large groups. Our badges, I must add, are not gained in large armfuls, clearly though we would like them to be. So much depends on attendance, who is there on the night of the tests or the training.

Anyway, we plod along, interspersing our badge work with a good deal of amusement in the way of wide games, play acting, games in general, and real theatre productions. But, apart from the theatre and one or two sponsored walks, nothing is very highly organised, and a good deal of it is off the cuff, not to say spontaneous. We have recently come in for a sharp attack by some newcomers to our area, who have seen Guides very much better organised elsewhere. This I can well believe. They are keen to the point of severe criticism, that we should really go in for armfuls of badges. By armfuls they mean double figures on every sleeve. This gives a child a real sense of achievement, and this is its great argument. We would be very interested to hear readers comment on the acquiring of badges as the main aim for a Guide Company.

Audrey Brayne

Sheringham, Norfolk

Today's Guide

I am writing to you to say how helpful I have found the recent editions of *Today's Guide*. Especially ideas for Hallowe'en, as in Scotland most of the children go out 'guising' at this time. Even the newcomers like myself are phasing out Guy Fawkes celebrations in view of recent firework accidents, and are encouraging 'guising' as we are in a rural area.

Thank you once again for a very interesting magazine.

S Hale (Mrs)

Guide Guider, 1st Rosneath Peninsula Guide Coy

Thank you. We hope you'll find the monthly Today's Guide even more useful.

Lady Cochrane

Readers who remember Lady Cochrane may be interested to hear that the Southern Westminster Local Association have awarded two trophies in her memory, to be presented annually to the Guide Company and Brownie Pack in the District

who carry out the most useful service to the community during the year.

This year the Guide Trophy has been won by the 30th Westminster Company, who have attended St George's Hospital every Friday. The matron has highly praised the reliability of the Guides and the cheerful willingness with which they carry out their tasks. Other Guides have helped to take meals to old people at week-ends and in the holidays, and others have helped to clean the church.

The 3rd Westminster Pack won the Brownie Trophy. They produced some posters entitled 'Keep Britain Tidy' and put this into practice by tidying up the churchyard.

Miss Joan Gutheridge

Hon Treasurer, 5th Westminster LA

Mrs Proudlock

At the end of August, Mrs Gwen Proudlock ended her term as District Commissioner for the Marton and Nanthorpe District of East Middlesbrough. It was decided that the District would give her a thank you party, but this quickly spread to her Guiding friends throughout Cleveland.

On Monday, 14th October, over 250 Guides, Brownies, Rangers and Guiders from the District had an hour's sing-song before the adults arrived, finishing with *Brownie Bells and Taps*.

At 7.45 the real purpose of the evening took place. A member of each Unit in the District presented her with table mats along with a vase of flowers from the District. Mrs S Moore, the new Commissioner, then presented a stainless steel meat dish and gravy boat from the Guiders. On behalf of Mrs Proudlock's many friends in Guiding, Miss M Thompson, the Division Commissioner, then gave her ten crystal goblets on a silver-plated tray.

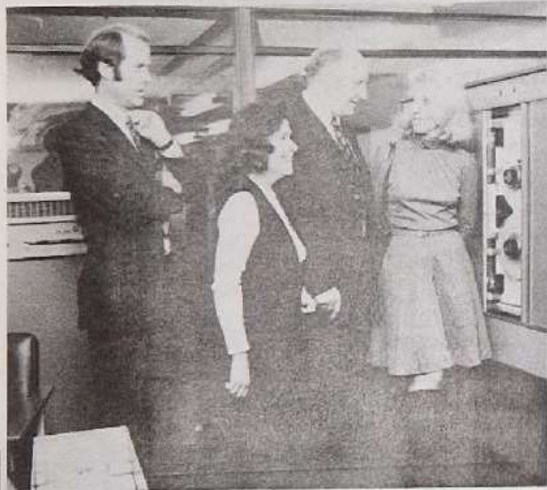
Throughout the evening Mrs Proudlock kept informing us that she was not retiring from Guiding, as she is still our County Press and Public Relations Adviser, but we all thank her most sincerely for all she has done.

Dorothy Pickering
Guide Guider, 1st Marton Guides

Greetings Cards

HOW MANY Christmas cards were popped through the nation's letter boxes by the time Christmas Day 1974 arrived? No doubt we shall soon all be reading in the Press what the actual figure was. One thing is certain, it will probably be considerably more than the previous year's figure, that is, of course, if the activities of Guide Companies and Brownie Packs throughout the length and breadth of the country have anything to do with it. For there is no doubt whatsoever that Guides, Guiders and Brownies are realising more than ever before that the annual ritual of satisfying the nation's apparently insatiable appetite for greetings cards and associated stationery items can provide the means for a pleasant, appropriate, but above all, a lucrative form of fund-raising.

Why greeting card fund-raising is becoming increasingly popular throughout the Movement is a question we put to one or two of the more successful selling companies recently. From the varied answers that were forthcoming, there was consistency in the attitude of a number of Companies, which appeared to provide the basic reasons for the growing attractiveness of this particular form of



Above and top: Mr Archie Gentle (Managing Director of Webb Ivory) and Mr George Lawson (Publicity Manager) show their newly-installed computer to Mrs Jean Rush and Miss Ann Martin, Editor and Advertisement Manager of **Guider**. During our visit to the Webb Ivory factory, the computer was hard at work processing thousands of Christmas orders from Guiders all over the country.

fund-raising. These were:-

1, it is good to fulfil a genuine service to friends and relations by providing items that they want to buy anyway. 2, it eliminates all the element of begging or asking for donations. 3, most people buy at least a few cards, particularly at Christmas, which means that everyone is a potential customer. 4, people like to buy from a catalogue because they can be more selective. 5, we get a guaranteed profit of at least 25 per cent for our efforts without having to commit ourselves to stockholding. 6, the value for money we can give makes customers anxious to buy from us.

And so by the end of the year, thousands of Guide Companies between them, from the Webb Ivory catalogues alone, raised funds running well into six figures. Money that will provide the start, and in many cases the finish also, of some expensive and ambitious projects.

Some will find their dream for a new headquarters building fulfilled this year, others will see new equipment, uniforms, perhaps a summer outing, or maybe simply a party for the old folks come to fruition; all are projects that can only lead to more successful Guiding and to the general betterment of the Movement.



But what happens from now on? With the rush and excitement of the Christmas season now passed, we would have thought that most organisers would be putting their feet up until next Christmas. Not at all. Webb Ivory tell us that at least 50 per cent of their Guide customers continue selling from the very moment their new catalogue is available. 'We like to keep in touch with our customers and friends,' said the fund-raising organiser of one Company, 'besides, it helps us reach a turnover figure that guarantees a five per cent bonus from Webb Ivory, which is perhaps as good a reason as any for going-it in the Spring!'

In our chat to Webb Ivory we asked them whether they are doing anything different this year for their customers. Their range, though showing the inevitable increases in prices, is, they say, still not only competitive in price and quality with what is available in the shops, but in many cases just not available in the shops! An attractive Travel/Cooling/Heating bag will be sent out free with every sample parcel, and something new is a 42-piece quality stainless steel cutlery set for only £3.90. There's also a chance for free double size blankets, together with a free chance in a competition for a Weekend in Paris for two or transistor radios, in addition to that minimum 25 per cent profit on sales from their catalogues. Good fund-raising for 1975!

STOP PRESS!

STOP PRESS!
At the time of going to press, copies of the Guiding '75 Calendar, published by Webb Ivory, are still available price 45p. Below are a few of the really delightful photographs, featured in the calendar in full colour. If you haven't a copy, send for one right away to: Mail Order Dept, The Girl Guides Association, 17-19 Buckingham Palace Road, London SW1W 0PT. Please enclose 15p small order surcharge.



National Guide Lawn Tennis Tournament

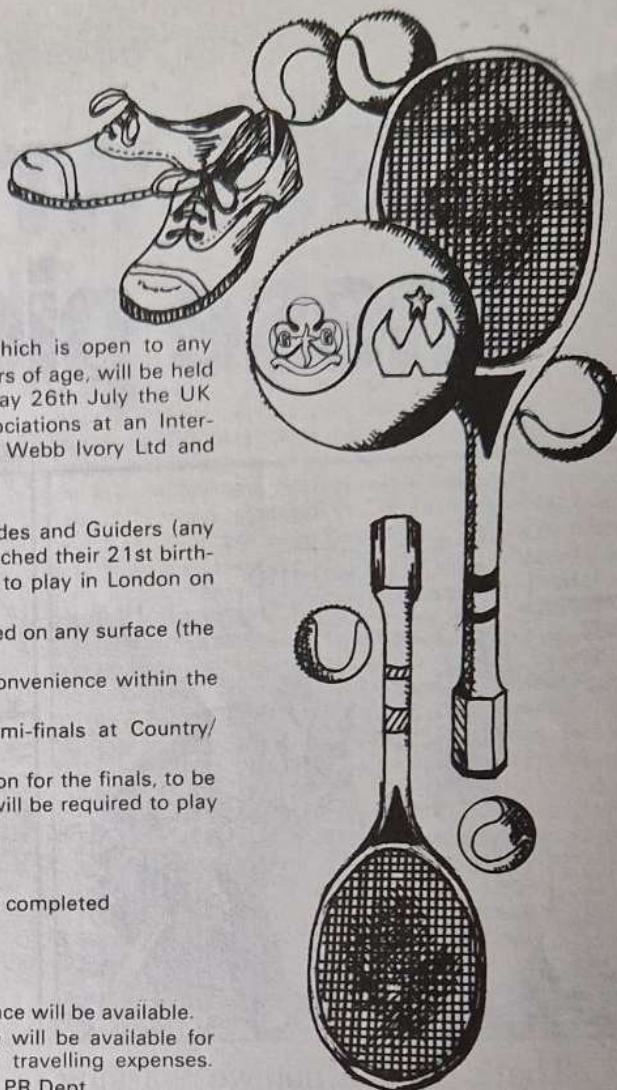
THE FINALS of the 1975 Webb Ivory Championship, which is open to any member of the UK Guide Movement between 14 and 20 years of age, will be held at the Queen's Club, London on Friday 25th July. On Saturday 26th July the UK Champion will play representatives of overseas Guide Associations at an International Guide Tennis Tournament also to be sponsored by Webb Ivory Ltd and held at the Queen's Club.

The details of the tournament are as follows:

1. Entry is individual and open to all Guides, Ranger Guides and Guiders (any section), between 14 and 20 years (ie who have not reached their 21st birthday by 26th July, 1975). All competitors must be free to play in London on these dates should they win.
2. The Tournament will be limited to singles matches played on any surface (the finals will be on hard courts).
3. Units/Counties will arrange rounds to suit their own convenience within the time schedule in clause 6.
4. The winning girl in each County will compete in semi-finals at Country/Region level.
5. All nine Country/Region winners will be invited to London for the finals, to be held at Queen's Club on 25th July, and the champion will be required to play at the International Tournament on 26th July.
6. Time schedule:

March to June 1975	Unit/County rounds
By 7th July	Country/Region semi-finals completed
25th July	National finals
26th July	International Tournament
7. Finance:
 - (a) *County Rounds*: It is unlikely that financial assistance will be available.
 - (b) *Country/Region Semi-Finals*: Financial assistance will be available for hire of courts etc and to help with competitors' travelling expenses. Countries/Regions should apply to CHQ Press and PR Dept.
 - (c) *National Finals*: Financial assistance will be available for competitors' travelling and overnight expenses, hire of courts, etc. Countries/Regions should apply to CHQ Press and PR Dept.
 - (d) *International Tournament*: CHQ Press and PR Dept will meet extra overnight expenses of UK champion.
8. The tournament will be played according to the rules of the Lawn Tennis Association.
9. It is suggested that each County should appoint a representative to act as liaison within the County and with their Country/Region Headquarters.

Two helpful booklets, *Let's Play Tennis* and *Diet and Training for Sportsmen* are available free from the Lawn Tennis Foundation, The Queen's Club, West Kensington, London W14. Please enclose a stamped, addressed, foolscap envelope when writing.



I would like to take part in the Webb Ivory Tennis Championship 1975.

Name:

Address:

Telephone No:

County:

District:

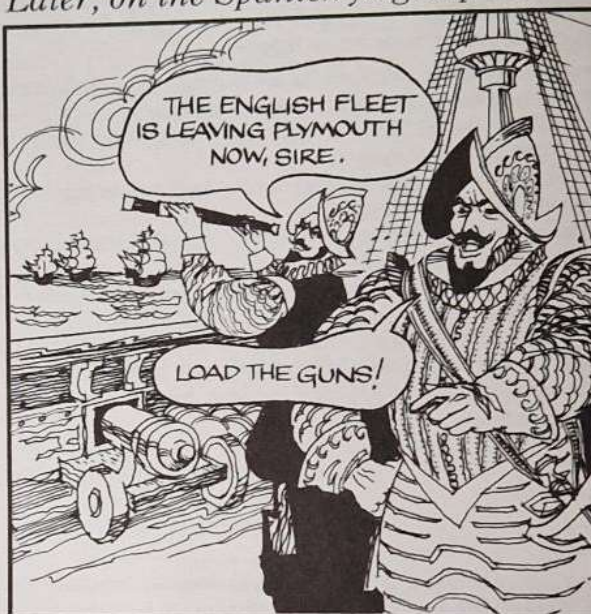
Unit:

Age:

(Hand this form to your Unit Guider/Commissioner)

What's wrong with these pictures?


Later, on the Spanish flagship...



That's the question we're asking girls and boys all over Britain*, in the advertising launch of Brooke Bond's new picture card series—*Inventors and Inventions*.

There are 50 full-colour cards to collect, from packets of Brooke Bond tea and tea bags. And the illustrated card-album, with extensive background detail on inventions and inventiveness, is only 8p from grocers and food stores. All in all, a fascinating picture of how our technological civilisation arose.

High-quality educational Wall Chart: all card illustrations and texts, plus additional information, are available to you on a full-colour 30" x 40" Wall Chart, costing only 30p incl. p & p and V.A.T.

 Brooke Bond Oxo Ltd.

Requests for this chart, with remittance, should be addressed to: Brooke Bond Oxo Ltd, Wall Chart Dept, Parkway House, Sheen Lane, East Sheen, London SW14 8LU.

* In case you didn't know, it's the telescopes—they weren't invented until twenty years *after* the Spanish Armada.

NEW
BROOKE
BOND
PICTURE
CARDS



'Inventors and Inventions'
CARDS free with Brooke Bond
Tea and Tea Bags ALBUM 8p
at grocers.



Special Offer – Do Not Miss

Brownie World Venture

THE DISTRICT meeting ploughed on. The Commissioner said 'About UK '75...', and I groaned inwardly. Oh no! Here we go again. They'll want some cash. Hostessing a World Conference must cost the earth.

But when we listened, it wasn't like that. Not at all. Of course we need money, but we all collect used postage stamps, that should be fairly painless. Quite fun, in fact, for Brownies. Get them in on Dad's office post, local factories – if all of us gathered from all our Christmas Cards? We could have a Pack competition, with a tiny prize. After all, no skill is required, only perseverance.

As it is World Conference year, when we are especially conscious of being a family, we shall DO as a Pack, rather than as individual Brownies. You know the friends in North, South, East and West we all sing about every week? Well, 'they' want to make that more meaningful.

So what are we going to do? A WORLD VENTURE. In the early part of 1975, say from Thinking Day up to the World Conference, each Pack holds four meetings, each based in some way on one of the four points of the compass where there are Brownie friends. In preparation for the first meeting, the Brownie Guider should write to the County Badge Secretary requesting a World Venture Badge package and enclosing an addressed label. In return she will receive a package containing 24 badges (six more than the recommended number of Brownies in a Pack) and a visual aid for the meetings. (Surplus badges could be

pooled at the District meeting, but remember to keep some badges for Brownies who join the Pack between February and June 1975). The visual aid will consist of a chart and four separate adhesive sections, one section to be stuck on the chart after each special meeting. The end result will be an attractive visual aid for the Pack which will show that we have thought of our Brownie friends in North, South, East and West throughout the four meetings.

Now, some of us will DO these meetings in a big way and some will DO it small, but we'll all DO it. I started thinking – we could collect pictures (and stamps!), play games (there's a new Brownie Games Book), Brownie stories of the World, Singing Games (*From Far and Near*), songs (each County has some Campfire Leaders who could help out with these), so many people have emigrated there must be many with relatives who could tell us of other lands, there are students at the Tech from all over the world, we might try some foreign food, we might dress up, lots of people have been abroad and have wonderful slides they would show us, (and there will be all sorts of other ideas in *Guider*). Whoopee! Four meetings and there's the spin-off; all those stamps, what about Collector's Badges? If four Brownies wrote about the evenings they had, plus an accompanying letter, then they might be halfway to the Writer's Badge. If we had visitors to meetings, what better way of earning a Hostess Badge and World Friendship Badge for as many as will, and also many bits of journeys crossed off.

All this for the price of a label and £1.15 (includes postage) for the package of badges and visual aid. A bargain indeed. Do not miss this chance to be 'in' on something big – UK '75.

(Badges should be worn in uniform on the right breast until the end of 1975.)

There will be four articles to help with the Venture in **THE BROWNIE** magazine, issues of 22nd and 29th January, and 5th and 12th February. – Editor.

Special Commemorative Covers to Mark the World Conference

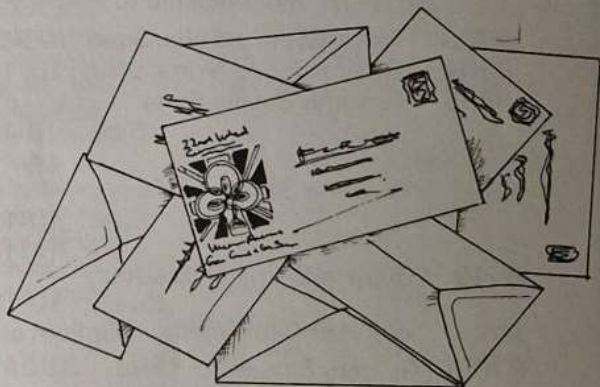
THE Girl Guides Association is producing a special commemorative cover (or envelope) to mark the 22nd World Conference to be held in the United Kingdom in 1975. It has been designed by Colin Wodhams and incorporates the colourful symbol of the 22nd World Conference. Each cover will contain a printed card giving details of the World Association of Girl Guides and Girl Scouts and background information about the 1975 Conference.

Covers will be on sale at 25 pence each, which includes postage within the United Kingdom, in Guide Shops and at the University of Sussex during the Conference. You can order by post and there is a generous discount for orders of 25 or more placed before 1st March, 1975. Bulk orders after that date will receive a smaller discount.

These covers are bound to be popular not only with collectors of stamps and commemorative covers but also with those who want to keep a record of Guiding in 1975, or publicise the World Conference. All covers ordered in advance, or bought at Sussex University, will be posted in a special posting box installed by the Post Office in the University. They will then have the distinction of being franked with a specially designed hand stamp, the date on which will be changed on each day of the Conference.

If you prefer to buy unserviced covers, and address and stamp them yourself, these covers will be available at the lower price of 20 pence each: in which case the cover will not bear the special hand stamp unless, of course, you have it posted at Sussex University.

These souvenirs of the Conference would make wonderful presents for stamp collectors. We weren't successful in our application to the Post Office for a special commemorative stamp but we will have a special commemorative cover. Get your order in early. For order form see page 38.



The following prayer is being used by members of the Communities Guild of the Trefoil Guild (members of religious communities who are members of the Trefoil Guild).

We publish it here as we think that others may like to use it in preparation for the 22nd World Conference.

Father of all, whose desire it is that every child should learn to love with Your Love, we bring before you members of the Guide Movement throughout the world as they look ahead to their World Conference.

May those who plan and prepare know Your Presence and be sensitive to Your Purposes.

When the time for the Conference comes, may those who attend, recognising You in one another, feel truly free to work together as instruments of Your Will and Your Peace.

3 Good reasons



for buying your uniform from Guide Shops

1. Prices that are very competitive.
2. Quality – All our uniforms are made to the standards demanded by the Association.
3. Service – All our Shops are staffed by personnel who are qualified to advise you on your purchases.

8903	Trevira/Sarille Suits. Sizes: 10, 12, 14, 16, 18, 20, 22, 24.								
8904	Trevira/Sarille Skirts. Sizes: 10, 12, 14, 16, 18, 20, 22, 24.								Price £16.28
8905	Terylene/Saville Suits:								Price £6.30
		Size	10-12	£15.02	Size	18-20	£16.52		
			14-16	£15.68		22-24	£16.62		
8908	Terylene/Saville Skirts:	Size	10-12	£4.50	Size	18-20	£4.98		
			14-16	£4.70		22-24	£5.08		
8549	Guiders Bri-nylon Slacks:	Size	10-16	£3.80	Size	18-22	£4.14		
8741	Woolfelt Cap, small, Medium and Large								
8706	Guiders Blouse:	Size	32-34	£3.94	Size	36-40	£4.03		Price £1.86
		Size	40-44	£4.15					

Carriage Charge 15p on all orders under £5.

(Mail Order Dept.)
17/19 Buckingham Palace Road
London SW1W 0PT

THE ASSOCIATION SHOPS:
London: 17/19 Buckingham Palace Road,
SW1W 0PT.
London: 19 Green Lanes, Palmers Green,
N13 4TT.
Birmingham: 5 Ryder Street, B4 7NE.
Liverpool: 20 Richmond Street, L1 1EG.
Cardiff: 209 City Road, Roath, CF2 3XX.

SCOUT AND GUIDE SHOPS:
London: 124 Newgate Street, EC1

London: 55 Woodgrange Road,
Forest Gate, E7.
Ipswich: 5 Tacket Street, IP4 1AU.
Leeds: 62 The Headrow, LS1 8EJ.
Oxford: 17 Turl Street, OX1 3DH.
York: 14 Goodramgate, YO1 2LQ.
Harrow: 104 Hindes Road.

SCOTTISH GUIDE SHOPS:
Glasgow: 1 Scott Street, G3 6NU.
Edinburgh: 16 Coates Crescent, EH3 7AH.
Dundee: 53 South Tay Street, DD1 1NP.

Tackling the Programme

(5) Fitness

E B Mackay

THE *Ranger Guide Handbook* says that 'fitness depends on the right diet, the right amount of sleep, the right balance between work and play and the right amount of exercise in the open air', or as the sprightly nonagenarian (those of over four score years and ten) said to the TV interviewer who commented on her fitness, 'I live a sensible life.'

What do we mean by fitness? One answer the dictionary gives is 'sound bodily health', another is 'appropriateness'. I think I prefer the latter, meaning that we are fit for the appropriate occasion. The footballer or hockey player has a different kind of fitness to that of the rambler or mountaineer. The hockey player is fit, she can keep up her speed for the duration of a game of hockey, she can tackle well and she can hit a ball well, but would she last a whole day on the hills, walking say 15 to 20 miles? Likewise, would a rambler, who can ramble all day, have the wind for a game of hockey?

For Rangers we must think of fitness for the appropriate occasion. How can we, as their Guiders, help them? Let us think of the girls preparing for their Duke of Edinburgh expedition at silver level. The ultimate distance on foot is 16 miles, although they can do less on their practice journeys and so build up to that distance. Can we help them before the practice journeys? We are conditioned to a life of cars or public transport for travel. We walk to the nearest bus stop or station, usually about five minutes, and it is the same at the other end. Perhaps we are only on the bus for two or three stops. Why use the bus then? One could walk all the way. For those with longer bus or train journeys they could walk part of the way, and either get on at a stop or two later or get off a stop or two earlier, or both! Does father always have to walk the dog? Stairs are good for the legs. The muscles are toned up better if we use every step and straighten our legs at each one. Using the stairs instead of the lift or escalator

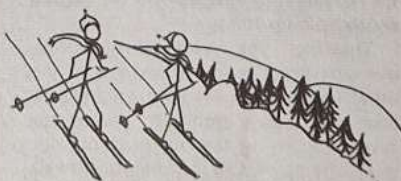
definitely helps. So gradually the legs are prepared for those longer expeditions, but it takes longer than a week of sacrifice! Most of those ideas mentioned will also help to strengthen the legs for cycling should the Rangers prefer that.

For Duke of Edinburgh expeditions or for hillwalking or rambling it is better to wear boots on the feet. The female feet are not



used to boots, neither to the weight nor to the more rigid support round the ankles, so buy boots well in advance and wear them in before expedition day.

The *Ranger Handbook* suggests all sorts of exciting things under 'learn to be fit'. Ski-ing, climbing, sailing, archery, training for hillwalking, mountaineering. In 'enjoy the out-of-doors' you can train to sail, row and rock-climb; have you tried pot-holing or skin-diving? These are just a few from those two headings, but perhaps as the *Ranger Guider* you wonder just how you can help with these activities.



Your local education authority will probably have outdoor centres with experts to run them, or who are willing to help you. In most regions there are Army Youth Teams. They usually run weekend camps in both summer and winter, and they give help and training in most of the more unusual sports and pastimes, including trampolining and rifle shooting. Enquiries at your local Army recruitment office will give you details for your own area.

Most sports have a national Association. The Sports Council, 26-29 Park Crescent, London, will tell you about the one your Rangers are interested in, and may also tell you who your local contacts are. For Scotland it is the Scottish Sports Council, 3 Queensferry Street, Edinburgh. Both these councils have national centres in mountainous regions where they run courses of varying standards, and not only in mountaineering. The Youth Hostels Association and the Scottish Youth Hostels Association run adventure holidays. For ski-ing there is the National Ski Federation of Great Britain at 118 Eaton Square, London, and the Scottish National Ski Council at Collace House, Kinrossie, Perthshire.

Still feel you are not proficient? Why not find out about your Rangers' interests? Your local library covers most interests and they may well be the people to tell you who your local contacts are, for archery or riding or whatever. Appropriateness - make your mind 'fit' for the 'fitness' of your Rangers.



Ann Teasdale

Training Ideas

Encouraging The Patrol To Try 'The Arts'

Marion Prior

THE ARTS cover such a wide range of activities that it is more than likely that some aspect is covered in every meeting. Yet, despite the popularity of the Arts, I am sure there are some who need help in taking the first steps toward new enjoyment. Take Music for example.

It is easy for the Guides to 'let Captain take Campfire,' but many Patrol members may enjoy making music with their Patrols. How can Guiders help Guides to do this.

PL's Training. Think with the girls about singing, finding the note, starting off and doing it well, and have a few practise runs with other leaders, then try leading their Patrols in singing. When I took over my present Company all the leaders were used to doing this, as my predecessor relied on them, being no singer herself.

Have they read the syllabus for the Campfire Pennant? Are there some skills or types of material needed there which could be passed on at a PL's training. Good use can be made of the

cassette tape recorder, for it is an excellent aid to memory, which ensures a faithful recalling of what has been learned.

Instrument Making. Pages 237-239 of the Handbook give some ideas for starters, and many more will be forthcoming once a start is made. Several books and sets of work cards have been published which incorporate further ideas.

Having made and decorated the instruments, of course, they must be used, perhaps to accompany singing, or a sound effect for a mimed story or a puppet play. (How quickly we have incorporated the skills of other arts eg handcrafts, and drama, with our musical skills.)

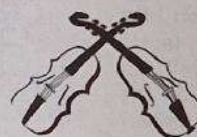
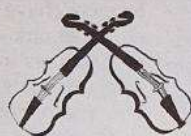
Special Items at Campfire. When the challenge to produce an item is issued to a Patrol, do their thoughts turn to 'stunts' they have seen elsewhere, and which are somewhat hackneyed? Can we, as Guiders, help them to think creatively, and to get over the idea that a special item can be one of many

things, and need not necessarily be a humorous item.

Memorable items in my experiences include three flautists at a PL's training at Foxlease, who played a round most beautifully; a display of unwanted items found round Camp which had been 'Wombleised' and several original sets of words to various simple tunes which immortalise the camps, occasions and people for whom they were written.

Music-making of all kinds, but specially singing, can be used to give service, and Patrols can be on the look out for opportunities. Perhaps an old folk's ward would welcome half an hour of 'Songs of Praise', live, and a chat with the singers. Christmas opportunities abound, of course, but there are many weeks between Christmas when no one extra looks in to say halo.

Once you have encouraged your Patrols to try the Arts, especially music, I'm sure you will find a great deal more is learned than just the specific skill.



Encouraging The Patrol To Try 'Thinking For Yourself'

Elizabeth Towner

SQUEALS of nervous laughter issued from the darkened room, where a group of Guides sat in a circle passing gruesome objects from hand to hand, a cauliflower, or is it a brain? A hand made by pouring plaster of paris into a rubber glove, wet chamois-leather, etc. They were indeed thinking for themselves, and wild were the imaginations that Hallowe'en night.

Open at the last chapter in the *Guide Handbook*, and the Guides will find many similar really good ideas, all of which are particularly well suited for the PL to organise. The Guider might feel that the PLs would get started if she asked all the Patrols to choose one of the sense training games found on page 280. One Patrol will have an exciting time the following week blindfolding each other in turn and sniffing curry and coffee, etc, and another Patrol really determined to think for themselves, will try something not in the book, and come up with the idea of being blindfolded and tasting ingredients offered by their PL on a teaspoon.

Some amusing games which really

encourage the Patrol to think might be of the acting type. Ask each Patrol to act a story in sound (Handbook page 291) or if they need more help ask for a nursery rhyme, and from behind the curtain you will get the crashing noise of a falling egg and the clip clop of horses feet for the other Patrols to guess. Acting a proverb is fun too, and so is inventing a scene having been given just the first, or last line of the script.

A Guider wondering where she can suggest the Patrol turns to next, might well point out to the PL the clauses in the Observer Badge which require sense training ability.

Thinking for yourself probably overlaps more points than any of the other seven. A Guide who organises a hike is probably going to record the hike as enjoying the out of doors and the planning of it as thinking for herself. Similarly the Guide who chooses the colours and shape for a lampshade and learns how to cover it, is not just exploring the arts, but also thinking for herself. The Eight Point Badges progress record will have

entries as varied as 'Produced a Patrol Prayer Book', 'Taught a game at a Meeting', 'Planned a Thinking Day Ceremony', 'Invented a Camp Gadget' and 'Wrote to *Today's Guide*'. We do not want the Guides to think of this part of the programme as being easy, and it may be a good idea if the Patrol Leaders plan with their Patrols to have a special effort at signing up some of the Patrol Purpose Plans in the chapter. You might start the ball rolling by suggesting that the programme for a whole meeting is based on thinking for yourself; certainly you, the Guider, will have no difficulty in finding an item or two to add to the evening. The chapter in the *Guiders' book* includes Kim's Games, Observation, etc, and they are all well tried winners. It may be that teaching Guides to think for themselves is one of the most important aspects of a Guider's job. After all, are we helping to produce a nation of folk who just sit in front of a TV set watching whatever comes next, or are we trying to start them on the road to living full and interesting lives?

Training Ideas

New Year Pow-Wow

Dorothy O'Donnell

THE EXCITEMENT of Christmas is over. You will have checked your records and made notes of various items that did not get finished because of Christmas activities. These will be fitted into the first few meetings of the New Year. What then? A whole New Year ahead, and a blank programme book. Now is the time to make plans, not your own, but those of the Brownies. The Pack belongs to the Brownies, so go to them for the ideas and the planning will follow. Shall we make a personal New Year Resolution to sit back at Pow-Wow and listen, guide and direct, their ideas to match their capabilities, and not to impose our own likes and dislikes.



What shall we start talking about? Will the event of the year be the Pack Holiday? Bookings have to be made and transport arranged, so we want an early decision. Do they want the recipe as before? Or is there somewhere to go or something they would love to do that would be possible if planned for in time? Several are interested in pony riding, so it will take longer to find suitable accommodation near a riding school. Perhaps swimming is the thing now that there is a local pool, and extra plans are needed to arrange for life savers. Could Pack Leader qualify in time? The decision may be to go back to the same County Pack Holiday House as last year, but a different programme is requested. With six months in hand there is time to find a helper with a skill or interest to add highlights to the programme. Mary's mother is very interested in your activities

and she has lived abroad. Would she come and help? A French theme with menus in French, a wide game with pictures and shapes and French sub-titles might be new. Add on games and songs already in our Brownie repertoire, go to the library for extra information, borrow a French dictionary for each Six, etc.

Talking and Planning the Pack Holiday will have brought us to our next thought; who is going? The young ones' parents will need a visit to explain Pack Holidays, but have we planned for Susan? She will be eleven in June, but is she staying with us or going on to Guides in time to Camp with them? Captain will probably want Susan established in the Company and taking part in training and preparation for Camp. Perhaps it will be advisable for her to go to Guides now, and not to be rushed into it all at Easter. Therefore make a note to see Susan and her mother next week.

This has reminded us of our Guide Company. Would the Brownies like to know more about the Guides, have a Venture with them, or just pay them a visit? Remembering also that the Company will be making their plans for 1975, find out at Pow-Wow what the Brownies would like to do and go along to the PL Council and see if the Guides will co-operate. Have you ever visited them at Camp or had a joint picnic? Planning in good time can usually avoid a clash of dates with other functions. Early planning means getting in first for the booking for that picnic site or church hall.

Having made the big plans in outline, let us turn to the weekly meetings for the next six months. Will we be taking part in the usual functions? The District Thinking Day, the Church Bazaar, Summer Meetings in the park?; they all need thinking about. Has it ever occurred to us to ask the Brownies if they want to continue as before or would they prefer a change? At another Pow-Wow, ask their views, and take them to the District meeting or Church Council. Your Pack's views at a District Meeting may inspire a new District Brownie Event, or your church might find that Brownies are much more capable of helping than pressed 'volunteers'. The Pow-Wow may only be a directive to yourself and Tawny to be more adventurous.

Do your Ventures just happen?

Does something happen at the meeting or follow on from an interest badge which leads to a Venture? With all this Spring and Summer ahead, if we think, talk and plan now we could have a really special Venture. Other Packs seem to do such adventurous things and yet their Guiders are not experts, nor their Brownies angels. Is the only difference the time spent planning? But what shall we do? What do the Brownies want to do, service for others, entertainment, exhibitions? Talk to them first, get their ideas and then seek the expert's help and advice. If they want to help old folk or other children ask the Local Welfare people if your help is needed, and how best you could give it. Who needs entertaining? Perhaps the Over 60s Club would appreciate it. Will the local Library help you with your exhibition? Perhaps no great ideas are forthcoming, but there is still time to spare, and a little Venture can be like B-P's acorn and grow into an Oak size Venture.



All these plans depend upon you and your Pow-Wow. Why not have a quick re-read of Chapter 19 of the *Guide Handbook*? You may decide the very first Pow-Wow of the year should be a discussion with the Brownies on how to improve your own special Pow-Wow. Once you have an established Pow-Wow, the ideas will flow and the plans can be made.

Training for the Commissioner and her team of Guiders

Thinking Day Preparations

Kathryn Benson-Evans

(Leader of British Delegation to World Conference 1975)

WELL, here it is at last, 'World Conference Year! It's a date we have been working towards for some months and in fact it's rather a relief that the time has come round at last and we can begin to celebrate! But do we really all know what, or how, we shall celebrate? And what difference does, or should, it make to us as Guiders and to the girls in our Districts? What are we going to do locally to catch something of the air of excitement and importance of this event that has not been held in the UK for 25 years? Now that Christmas and New Year celebrations are behind us and Thinking Day lies ahead, what an opportune moment this could be for starting District and Unit projects and activities that will stimulate interest in International Guiding, and assist those who will be representing our Movement abroad, or welcoming overseas visitors here during the coming summer.

Did you see the *Greetings for Thinking Day* in the Spring issue of *The Council Fire*? These are a fascinating reminder of the great diversity but also common interests in the World Association. I wonder how many of the girls and Guiders really understand what it is like to be a Guide in some of the other Member Countries? The past editions of *Guider* and *The Council Fire* have, under headings such as Development, Environment, Girls and Women and International Events, given articles telling us of how by schemes to help with, eg illiteracy, growing of food, health problems and family planning. Guiding is meeting the challenging situations encountered by many of our world membership. Couldn't this news be spread to a wider field? What marvellous public relations material this is and what a lot our girls would learn if they put on a display for their families and the general public. This could be as a static display in a public building or as a live performance acting or miming some of the situations and the projects organised to help meet these. Home news is 'good' too, so it pays to include UK service projects and the exciting work done with the money from the Guide Friendship Fund and the Thinking Day Fund for promotion in Guiding. Experience shows that such events are very appropriate moments for a recruitment drive too! Many areas are planning displays of gifts that have been made to give to the delegations at

the World Conference and these should be other colourful and interesting public relations events and an opportunity for those who went abroad last year to retell their experiences.

Later in the year, members of the delegations will probably be touring the UK either before or after the Conference, and both formally and informally. Would we be thrilled, or a bit ashamed, if they met us and our girls unexpectedly? What about a 'Know Ourselves' or 'See Ourselves as Others See Us' sort of project? If we were some of the overseas visitors, would we feel stimulated and enthused by our meeting with members (ie you and me) of the Founder's country? Would we go back to our own land enriched by the enthusiasm, friendship and sincerity that we had experienced from members of the Movement in the UK. Or would we be disappointed? Even if visitors do *not* happen to come our way isn't this a good yardstick anyway? When did we last take a long, cool look at ourselves? Everyone knows that no two women ever have the same idea about clothes, so we're sure to differ about what makes a good uniform. But having one, whichever it is, do we look as attractive as we can in it or are we so rushed that buttons are missing or that it needs a clean?

Just how open-minded are we about eating (and preparing) overseas food? Could more be done to help Guiders, girls and parents to appreciate the need to overcome conservative ideas? Books like the *Encyclopaedia of World Cookery* published by Spring Books would be a worthwhile buy for the District Library to lend around to Guiders and especially helpful for Guides working on Hostess and Cooks badges, and for Rangers with the Design for Living section of the D of E Award. And how useful it would be for anyone going as an aide to the Conference to know the preferences and taboos of food for some of the countries.

Another type of project could be a 'Let's be informed' one. From which countries will the delegations be coming? What decisions will be made? Are we sure of our History and the Reasons for our Programme? What are our Aims and Principles and how do we differ from other Youth movements in the UK and what are our common aims? Are we up to date with all the

events for World Conference Year, or should a check be made again on the information in last year's issues of *Guider* and any County Notices?

At the girls' level they might enjoy working out the possible air lines or shipping routes that the delegates could take to attend the Conference; trying to work out simple phrases of greetings and thanks in other languages with an 'each one teach one' plan; collecting wrappers off goods and discovering with which member countries we trade and in what sort of goods; or finding out about the natural history of some of the countries as different from our own. Obviously if a definite invitation has been sent to representatives of certain countries then projects can be linked with them specifically and uniforms, badges etc studied in addition. Otherwise some Units might like to 'adopt' a country to study in depth.

Many of these activities will help Guiders with the section of the Adult Leaders' Certificate called 'Guiding beyond your District' and also help the Guides and Rangers with the relevant badges and certificates.

To keep up interest and to help to bear various events in mind it might be possible for the more creative and artistic members to design a weekly calendar on the style of an Advent Calendar with doors or windows to open to reveal when the 'stepping stone' events for the District take place. This could start on Thinking Day with a ceremonious opening of the first 'door' and end with the Opening and subsequent events of the World Conference. At this time those of us who are in the delegations would ask that you will all pray that any decisions we make should be the right ones for World Guiding now, and in the future, and for you as its individual members.



HQ NOTICES

CHQ Awards

Meritorious Conduct Star of Merit

Valerie Robinson, Guide, 4th
Didecot Company, Oxfordshire.

Throughout the very difficult period she spent in hospital after undergoing major surgery, Valerie was full of perseverance and she overcame many of her difficulties in a very short time. Since then she has shown great determination to re-adjust herself to everyday life, and has faced many obstacles bravely and cheerfully. Valerie has worked hard at her studies and at Guiding, gaining her Queen's Guide Award and Patrol Leader's Permit. She also takes a full part in the life of her local community and manages to fit in voluntary service as well.

Letter of Commendation

Lynn Regan, Guide, 13th
Boreham Wood Company,
Hertfordshire.

Gallantry

Silver Cross

Bridget Hooper, Guide, 2nd
Fyfield Company, Essex West.

Last Spring, Bridget and her younger sister and brother were walking beside a flooded brook which was in full spate, when suddenly her sister slipped and fell into the water, which was very deep. Bridget unhesitatingly jumped in after the little girl and managed to catch hold of her, before both of them were swept downstream by the fast-flowing current. Then Bridget succeeded in grasping an overhanging branch and clung to it, supporting her sister until help arrived. Their father entered the water and caught hold of the younger girl but Bridget was swept further downstream, where she again caught hold of a branch. After many rescue attempts, Bridget was eventually reached and dragged to safety. Although in the water for nearly thirty minutes, Bridget showed no sign of panic and kept her head throughout the ordeal, thereby saving her sister's life and making her own rescue possible.

International Uniforms

The Press and Public Relations Department are sorry that the entire stock of Guide and Brownie International Uniforms is now booked for Thinking Day.

May we remind you that a deposit is being charged as from the 1st of January 1975 on uniforms, and there is a 5p charge for duplicated notes on *The History of Guide Movement* and *Rosebuds to Brownie Guides*.

The Silver Elephant

We offer our congratulations to Dame Anstice Gibbs, DCVO,

CBE, Chief Commissioner of this Association from 1956 to 1966, who was recently granted the Silver Elephant their highest award by the Bharat Scouts and Guides for services given to Guiding and Scouting in India in enabling them to set up and consolidate a joint National organisation.

Thinking Day

The Dean of Westminster will conduct a short Service in commemoration of the Founder, on Saturday 22nd February, at 11.00 am, during which wreaths will be laid on the Memorial in the Abbey.

No tickets will be issued and any member of the Movement will be welcome. Seats, however, for the congregation are limited as the Service will be held in the Nave only.

Doors will be open at 10.00 am and while the congregation assembles, a choir will lead with singing of songs from other lands.

Guide Handbook

It has just been brought to our notice that the booklet of Amendments to Guide syllabuses, which was published in 1973 to enable owners of the first edition of the *Guide Handbook* to up-date it, does not contain the revision to the Speaker badge. Please note that an additional clause was added, which is as follows:
(5) Show that you can introduce and thank a speaker.

The syllabus as printed in the second edition of the *Guide Handbook* is correct.

We apologise for the inconvenience caused by this omission.

Ynysgair Criccieth, North Wales

Applications for the use of two unequipped Sites within a few minutes of the sea can now be made to:-

The Deputy General Secretary, Commonwealth Headquarters, 17-19 Buckingham Palace Road, London SW1W 0PT.

Please enclose a foolscap stamped addressed envelope for Site Information Sheets.

Introduction to Mountain Leadership and Caving Courses

The National Scout Caving Activity Centre, Whenside Manor, Dent, Near Sedburg, Yorkshire, 26th April - 3rd May, 1975.

The next Mountain Leadership Course - which will count as the first stage toward gaining an MLC, and Caving Course - geared for either the beginner or experienced, will run alongside one another over these dates. They are open to those of

18 and over interested in mountaineering and caving activities.

The cost will be £26.00 (plus VAT) and although it is hoped that grant aid will be available for those with the highest travelling expenses, those taking part are advised to apply for an LEA grant if possible. **The closing date for applications is 8th March, 1975**, so write now to the Training Secretary, CHQ, for details.

Special Opportunity for First Aid Training

Foxlease and Waddow May 15th/18th 1975

Having regard to the fact that we now ask Guiders who act as First Aiders at Camps, holidays etc., to ensure that their knowledge of First Aid is up to date, we are providing a special opportunity for a limited number to undertake a crash three-day course at Foxlease and Waddow over the above dates.

We know that not everyone can take Friday off work for such a purpose, but as numbers are to be limited we hope that there may be enough people who can take a day of annual leave or arrange their domestic responsibilities so as to be free to start sessions at 10 am on Friday morning.

Instruction is in co-operation with the British Red Cross Society, who have pioneered this time saving course as an alternative to the usual eight-week two-hour session variety. The course will certainly be one of concentrated hard work, but will give those who qualify an up to date certificate in basic First Aid, and more confidence to carry out the job of First Aider at a Camp or Pack Holiday. Early application is advised.

Young Leaders' Week Waddow

March 27th/31st, 1975

Those working on the Young Leaders' Scheme have very much enjoyed their weekends at Foxlease and Waddow in the past. They have come away having many friends and new experiences to help them when they return to work with their Packs and Companies.

The cost of the course this year is £8. Some Local Authorities will make grants to those attending leadership courses and it is always worthwhile applying to them; reduced rail fare vouchers are obtainable from your Country/Region HQ for those under 18.

If you would like to come and share some of your own ideas with others of your age - that is, 16 and over - do write to the Guider-in-Charge at Waddow for an application form.

Today's Guide

Unfortunately we have had such a demand for the *Today's Guide* issues containing the two halves of the World Conference booklet (13th September and 27th September) that these two issues have completely sold out. If by any chance you have been unable to obtain copies, there's no need for your Guides to miss out on this exciting Challenge. If you can borrow a copy of the booklet, it will be quite in order for you to take photostats of it. We do apologise for disappointing a number of readers, but although we had extra copies of these two issues printed we had a far bigger demand than we expected.

Blackland Farm

CHQ Camp site, East Grinstead, Sussex

Helpers needed. Guiders or Rangers over 16 are required at this site for the period 23rd - 31st May and for fortnightly periods during the peak camping season, ie mid-July to end of August.

Knowledge of camping essential. Two helpers required for each period, therefore interesting job for two friends. Further details from: The Deputy General Secretary, The Girl Guides Association, 17-19 Buckingham Palace Road, London SW1W 0PT.

(Please send foolscap stamped addressed envelope).

Commonwealth and International Circle

The Commonwealth and International Circle Annual General Meeting for members only will be held at Commonwealth Headquarters at 6.30 pm on Tuesday, 28th January, 1975. (All members will be notified by post.)

After the business meeting Dame Anstice Gibbs, Chairman of the 22nd World Conference Hostess Country's Planning Committee, will speak about the World Conference.

International Scout and Guide Club

In addition to other activities, regular meetings are held on Mondays at 8.00 pm at Baden-Powell House. Visitors and new members are always welcome.

1975

January 6th: Welcome '75

January 13th: This England

January 20th: Happy Hoe-down

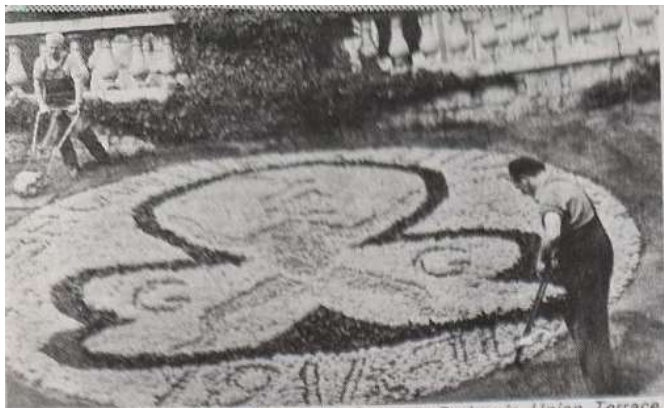
Dance

January 27th: Graham's

Mystery Evening

CHQ Restaurant

The restaurant at CHQ will be open for lunch on Thinking Day, Saturday, 22nd February, 1975. Group bookings must be received in advance not later than 10th February. Apply to Reception, CHQ. Also, for that Saturday only, the CHQ shop will remain open until 3 pm.



A floral display depicting the Brownie Badge in Union Terrace Gardens, Aberdeen.

Aberdeen Journals Ltd

BROWNIE DIAMOND JUBILEE

BROWNIES THROUGH THE AGES

Sixty years ago was when it all began,
And as we turn the pages,
A lifetime it will span.

Lord Baden-Powell thought it out,
Rosebud was the name.
They wore no special uniform
But the badges were the same.
A little Rosebud made of brass
Was worn so long ago,
But from very small beginnings
A mighty oak did grow.

Rosebuds changed to Brownies,
They much preferred the name.
For Brownie folk do useful jobs
And try to play the game.

They had a little acorn badge
And this they proudly wore,
And made the Brownie Promise
To keep for evermore.

They learned about the Union Jack,
First Aid and so much more,
They all enjoyed a challenge
And kept the Brownie Law.

The name then changed to Brownie Guide
And this we use today.
We make the Brownie Promise
In a special kind of way.
We're proud to wear the Brownie badge,
And shine it when we can,
Outside is a Trefoil,
Inside – a Brownie man.

1914
TO
1974

To the Guide world family
All of us belong,
From north, south, east and west they come
To join the happy throng.

Let us thank our Founder,
But for him there would not be
Any Brownies anywhere,
Or a Diamond Jubilee.

Members of the 116th St Chad's Brownies watch as their tallest sunflower is measured. The champion of the DJ growing project measured 115 inches.



Sheffield Newspapers

Beckett Newspapers Ltd



East Kent Times

Ramsgate Brownies dressed up for their DJ Revels (above). Division Commissioner Mrs Di Swanwick, (bottom left), cuts the special DJ cake at Worthing Central District Brownie celebrations.

As a Diamond Jubilee Service, 164 Birmingham Brownie Packs have, between them, collected one and three quarter million used postage stamps for the Royal Commonwealth Society for the Blind. The money gained from the sale of these will go toward saving the sight of children in India.

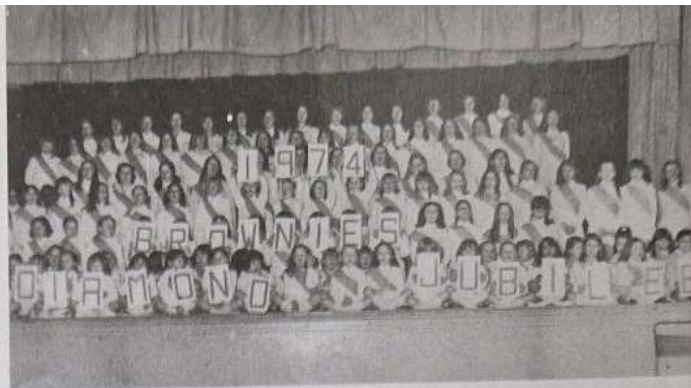
Seventy Birmingham Brownie Packs have made displays of 60 stamps from their collections. These displays are on show at Birmingham Guide Headquarters, Trefoil House.

Molly Basford
Chairman, Birmingham
Trefoil Guild



Helenburg Advertiser

A Dumbartonshire Brownie hands over a cheque for two dogs to be trained as Guide dogs (above). To commemorate the fact that the money was raised in DJ year, the dogs will be called Jubilee and Brownie.



Hull Daily Mail

St Andrews District Brownies of Hull West held a concert (above and right) as their DJ project. The money raised is going to the Humberside Kidney Appeal.

South Yorkshire Rotherham Advertiser



Rotherham Division Brownies dressed as very realistic cannibals at their DJ Revels (above).



Children's Camp

Mary York

IN CAMBRIDGESHIRE Guiding circles the 'Children's Camp' is now a well-known annual event, and may be commended to other groups of Rangers, Young Leaders and older Guides as a very enjoyable and worthwhile form of service.

The Camp is run in conjunction with the social services department for children known to be disturbed, to have difficult homes and behavioural problems. This year the Camp was for 24 boys and girls aged 8-13 years with as many helpers; Rangers, Guiders, Guiders' husbands and a number of older Guides.

To many of us a 1:1 ratio of helpers to children seemed very high until we say how many bed-wetters we had, saw how much help was needed with tents and clothing, games and handwork, and until we realised the individual attention and care that each child so desperately needed.

King Arthur and the Knights of the Round Table was an inspired theme. Imagination and improvisation ran riot. Silver fertilizer sacks became armour, newspaper and cardboard liberally covered with emulsion paint made helmets, swords and shields. The coats of arms may not have been acceptable to the College of Arms, but they

were a joy and delight to the young knights and their ladies, and provided much colour and splendour to the mock battles and jousting ceremonies.

Tears at the last Camp Fire, during the night and when some of the children were collected, showed that they had enjoyed themselves, and many were reluctant to leave the Camp. But there is the reunion to look forward to, and for many next year's Camp. This year some of the helpers and their families will be keeping in touch with individual children.

We know that the children enjoyed the Camp and were helped by this contact with the caring young people they met there. We know too that the helpers gained a tremendous amount from their contact with the children; an awareness of some of the conditions that other young people are brought up in, a better understanding of the needs of less fortunate children, and the satisfaction of seeing the children respond and in the course of the week become happier and more relaxed. The physical and mental exhaustion was forgotten as we watched the children thoroughly enjoying the Camp and all its activities, and wanting to know how soon we could meet again.



CHQ books for all occasions

If you don't already have our book list send for your copy today – it contains lots of interesting and informative books on Guiding, Camping, First Aid and many other subjects of interest to Guides and Guiders.

*available at all Guide shops
and Mail Order Dept*
The Girl Guides Association
17/19 Buckingham Palace Road
London SW1W OPT

THE ASSOCIATION SHOPS:

London: 17/19 Buckingham Palace Road, SW1W OPT.
London: 19 Green Lanes, Palmers Green, N13 4TT.
Birmingham: 5 Ryder Street, B4 7NE.
Liverpool: 20 Richmond Street, L1 1EG.
Cardiff: 209 City Road, Roath, CF2 3XX.

SCOTTISH GUIDE SHOPS:

Glasgow: 1 Scott Street, G3 6NU.
Edinburgh: 16 Coates Crescent, EH3 7AH.
Dundee: 53 Tay Street, DD1 1NP.

SCOUT AND GUIDE SHOPS:

London: 124 Newgate Street, EC1.
London: 55 Woodgrange Road, Forest Gate, E7.
Ipswich: 5 Tacket Street, IP4 1AU.
Leeds: 62 The Headrow, LS1 8EJ.
Oxford: 17 Turl Street, OX1 3DH.
York: 14 Goodramgate, YO1 2LQ.
Harrow: 104 Hindes Road.

Where to train

HOW TO APPLY

Any Guider may apply herself to attend a training course at the Centres, provided she has reached the minimum age of 18 years. (At the discretion of the Commissioner a member aged 17½ who is working on the Adult Leader's Certificate may also apply for a Guider course.)

An application to attend a Guider Training Centre should be sent direct to the appropriate Guider-in-Charge, and must be accompanied by the correct amount of deposit and a stamped addressed envelope. Applicants should also state the type of training for which they are attending, as there may be several different courses running at any one weekend. As so many Guiders have to leave on Sunday, training sessions at a two-day weekend will stop at tea-time on that day unless otherwise stated, if sufficient notice is given that it is wanted, every effort will be made to provide sessions for a group until Monday. Individuals who are able to stay over until Monday to enjoy the surrounding country and other amenities of the Centres are most welcome to do so.

Telephone calls are accepted only between the hours of 8 am and 8 pm at Foxlease (Lyndhurst) 042-128 2638, and at Waddow (Clitheroe) 0200-23186, except in emergencies.

Bursary Help

The Fee Bursary entitles a Guider to a grant of £1.50 for a two-day weekend and 50p for each additional day.

The Fare Bursary (available only for travel to the nearest Training Centre) carries a rebate of a Guider's travel expenses in excess of £2.00.

The Angela Thompson Bursary is available to any Guider attending a Promise and Law or similar training (not necessarily at a Training Centre).

HOW TO APPLY: Full details of the conditions of issue and how to apply are available from the Training Department,

CHQ. No application form is necessary, and District Commissioners may apply on behalf of their Guiders, after they have been accepted for the training, direct to the Training Department; Scottish Commissioners should write to Scottish Headquarters. In the case of county weekends Commissioners should apply to their County Training Chairman/Adviser. Except in very special circumstances, on the recommendation of her Commissioner, a Bursary cannot be issued to a Guider who has previously had one, nor can one Guider receive a Fee and Fare Bursary.

Commissioners are asked not to apply for bursaries for Guiders able to get LEA grants. All applications must arrive at CHQ at least TWO WEEKS BEFORE THE TRAINING and Bursaries cannot be issued at shorter notice or in retrospect.

CHQ

FOXLEASE
Lyndhurst, Hants SO4 7DG

JANUARY

3-5 The Year Ahead (general training for Guiders of all sections)

10-12 1. General Training. Brownie and Guide Guiders

†2. Guitar Playing for Beginners
17-19 Ranger Guiders' Training (Commissioners welcome)

24-26 Making the Most of the District (District Commissioners with up to seven of their Guiders)

31-2 FEBRUARY Wiltshire

FEBRUARY

7-9 New to Guiding (Commissioners and Guiders of all sections)

14-16 General Training. Brownie and Guide Guiders

(Outside booking)

21-23

28-2 MARCH
1. Progress through the Programme. (General training for Brownie and Guide Guiders with two or more years' experience)

2. Guiders taking Pack Holiday Permits in 1975

MARCH

7-9 General Training. Brownie and Guide Guiders

14-16 South West England (by allocation)

21-23 General Training. Brownie and Guide Guiders (places reserved for Isle of Wight)

27-5 (Easter) "Lions and Leopards" - Arts Workshop (by allocation)

APRIL

11-13 Making the Most of the District (District Commissioners with up to seven of their Guiders)

18-20 London North West General Training. Brownie and Guide Guiders

MAY

2-4 Middlesex West

9-11 †Commissioners with their LA Chairmen

15-18 †Concentrated First Aid Course

16-18 General Training. Brownie and Guide Guiders

23-1 JUNE Commissioners' (Bank †Family Week Holiday)

JUNE

6-8 Creative Activities in the Programme (training for Guiders of all sections)

13-15 General Training. Brownie and Guide Guiders

JULY

4-6 General Training. Brownie and Guide Guiders. (Places reserved for World Conference Delegates)

11-13 †Friends of Foxlease
16-22 †Holiday Week (members and friends or mothers, and Trefoil Guild)

24-31 Patrol Leaders' Week

AUGUST

2-9 †Holiday Week (Unit Guiders with up to nine of their Guides or Rangers)

9-16 †Holiday Week (Unit Guiders with up to nine of their Guides or Rangers)

16-23 †Holiday Week (Unit Guiders with up to nine of their Guides or Rangers)

23-30 (Bank Holiday) †Holiday Week (Unit Guiders with up to nine of their Guides or Rangers)

WADDOW

Clitheroe, Lancs BB7 3LD

31 DECEMBER-5 JANUARY

1975 The Choice is Yours (Skills - practice groups for campfire; or Crafts or Guitar Beginners)

JANUARY

10-12 Prospective Certificate and Specialist Trainers

17-19 New to Guiding (Commissioners and Guiders of all sections)

24-26 Making the Most of the District (District Commissioners with up to seven of their Guiders)

31-2 FEBRUARY General Training. Brownie and Guide Guiders.

FEBRUARY

7-9 Greater Manchester North

14-16 Training the Young Leader (County Leadership Advisers, Commissioners and Guiders)

21-23 (Outside booking)

28-2 MARCH North West England (by allocation)

MARCH

7-9 General Training. Brownie and Guide Guiders

14-16 Cheshire Forest and Cheshire Border

21-23 Division Commissioners with their District Commissioners and Division Secretaries

27-31 (Easter) Young Leaders' Week

APRIL

4-6 General Training. Brownie and Guide Guiders

11-13 General Training. Brownie and Guide Guiders (including crafts, wide games and other outdoor activities)

18-20 General Training. Brownie and Guide Guiders

25-27 General Training. Brownie and Guide Guiders (places reserved for Cambridgeshire East)

MAY

2-4 District Commissioners and District Assistants (sessions on the Adult Leader's Certificate)

9-11 General Training. Brownie and Guide Guiders

15-18 †Concentrated First Aid Course

London Festival Ballet

Artistic Director: Beryl Grey, C.B.E.

NEW VICTORIA THEATRE

January 20 to February 8, 1975

COPPELIA

January 20 to 25

DANCES FROM NAPOLI
PRODIGAL SON (In Ragtime)

January 27 to
February 1

SWAN LAKE

February 3 to 8

Nightly at 7.30 p.m.

Saturday Matinees at 3.00 p.m.

BOOKINGS NOW OPEN

BOX OFFICE TELEPHONE: 834 0671

ROYAL FESTIVAL HALL

December 26 to January 11

THE NUTCRACKER

Twice Daily at 3 and 7.30
(January 7, 8, 9, 10 at 7.30 only)

BOX OFFICE TELEPHONE: 928 3191

G 75

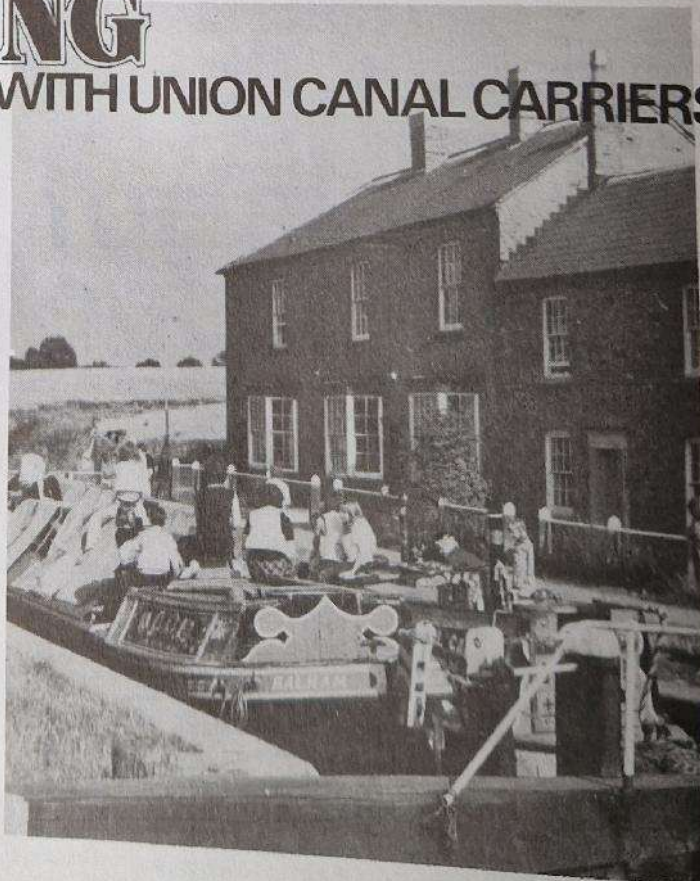
CAMPING AFLOAT WITH UNION CANAL CARRIERS

Travel the English canals on a real narrow boat specially adapted for comfortable living, steered by a helpful and experienced boatman to ensure your trip goes smoothly. We cater for groups of all sizes and offer a choice of routes to suit everyone's taste.

Costs can be as low as £4 per person per week, including VAT, or if you prefer we can offer single boats to steer yourself.

Write or phone for fully illustrated brochure to:
UNION CANAL CARRIERS,
Canal Side, Little Braunston,
Daventry, Northants NN11 7HJ.

Phone: Rugby 890784



16-18 For Good or Evil' (An opportunity for Guiders of all Sections to discuss today's choice for young people.)

23-26 Making the Most of the District (District Commissioners with up to seven of their Guiders)

30-1 JUNE General Training. Brownie and Guide Guiders

JUNE 6-8 11. Commissioners with their LA Chairmen.
2. Certificated Trainers (with five or more years experience)

13-15 † Friends of Waddow

20-22 11. Prospective Campfire Leaders
2. Guitar and Recorder Playing for Beginners

27-29 General Training. Brownie and Guide Guiders

JULY 4-6 General Training. Brownie and Guide Guiders (Places reserved for World Conference Delegates)

11-13 Making the most of the District (District Commissioners with up to seven of their Guiders)

18-25 Patrol Leaders' Week
29-5 AUGUST North West England (by allocation)

AUGUST 9-16 † Holiday Week (Unit Guiders with up to nine of their Guides or Rangers)

23-30 † Holiday Week (Bank Members and Holiday) friends or mothers, and Trefoil Guild)

County Weekends - 1976

Counties wishing to book a County Weekend at Foxlease or Waddow in 1976 should apply to the Training Secretary, CHQ not later than 3rd March, 1975.

The programme for the whole of 1976 is drawn up immediately after this date, and once this is completed, no further applications can be considered.

Patrol Leaders' Weeks

Guiders are reminded that only two Patrol Leaders can be accepted from any one Company. They must not have attended any previous training at a Training Centre and Guiders are asked not to apply for places at more than one Centre.

The Patrol Leaders must have attained their 12th birthday but not their 14th birthday by 1st February (ie

they will be between 12½ and 14 at the time of the week). They must be able to attend for the whole week, which will cost £14.

Places for Patrol Leaders' Weeks at both Centres will be allocated on 1st March 1975. Applications, each with a £1.00 deposit and a foolscap sae, should be sent to the Secretary at the Training Centre concerned, to arrive not later than 28th February.

Commissioners Family Week

It will be necessary to charge VAT on fees for husbands and children attending the Commissioners' Family Week.

Fees at Foxlease and Waddow:
Shared room, per day £3.00;
Double room, per day £3.50;
Single room, per day £4.00;
† Courses or events so marked will be subject to VAT.

For a full week the above prices are subject to a 15 per cent discount.

These prices are for members of the Girl Guides Association and the Scout Association only.

Deposit £1.00 - cheque or postal order only.

Scotland

NETHERURD HOUSE Blyth Bridge, West Linton, Peeblesshire

JANUARY

10-12 Patrol Leaders
17-19 Brownie and Guide Guiders

24-26 Chairmen of County Training Committees

31-2 FEBRUARY (outside booking)

FEBRUARY

7-9 Advanced (by invitation)

14-16 Residential Training for Young Leaders

28-2 MARCH Brownie and Guide Guiders (includes booking from Alnwick/Bedford Division)

MARCH

7-9 Brownie and Guide Guiders (includes booking from Midlothian)

14-16 Brownie and Guide Guiders (includes booking from Glasgow ENE Division)

21-23 Prospective Certificated Trainers - by invitation

27-31 Residential Course - (Easter) Duke of Edinburgh's Award Scheme

Fees at Netherurd

The new rates are as follows:

Shared room, per day £2.00;
Double room, per day £2.25;
Single room, per day £2.50;

Deposit - £1.00. Training fee for non-residents - 50p per weekend.

Wales

BRONEIRION Llandinam, Mont SY17 5DE

MARCH

7-9 Making the Most of the District (Commissioners and their Guiders)

14-16 General Training (Places reserved for Gwynedd)

21-23 General Training (Places reserved for Birmingham)

28-1 APRIL PLs under 14 (Easter) years (Open to all Counties)

APRIL

4-6 Arts Workshop for Wales

11-13 Young Leaders and Leadership Advisers

18-20 General Training (Places reserved for Cheshire Wirral)

25-27 General Training (Places reserved for Montgomery)

MAY

2-4 Ranger Guiders with two of their Ranger Committee members

3 Day Conference for Welsh Public Relations Advisers

9-11 Pre-Warrant (Emphasis on the Adult Leader's Certificate)

17 Day Conference - Welsh County Personnel

18 Open Day - House and Gardens

23-27 PLs under 14 years (Bank Holiday) (Open to all Counties)

30-1 JUNE Welsh Trainers' Conference

JUNE 13-15 General Training (Places reserved for Central Glamorgan)

18 'Friends of Broneirion' Gathering

27-29 (Outside booking)

JULY 19-26 Young Leaders' Week (Rangers and Young Leaders' working on Leadership)

31-4 AUG. Girls' Course (14 years and over)

AUGUST 7-11 PLs under 14 years (open to all counties)

15-17 Guiders with their own Patrol Leaders

22-26 'Patrol in Action' (Bank Holiday) (groups of not less than four girls from a genuine Patrol)

Fees at Broneirion:

Shared room, per day £1.75;

Double room, per day £2.00;

Single room, per day £2.25;

Non-residents, per day 50p

Glenbrook

GLENBROOK OUTDOOR ACTIVITIES TRAINING CENTRE Bamford, Nr Sheffield S30 2AL

All courses cost £6.00 unless otherwise stated. The cost covers all activities except Pony Trekking and Gliding, for which a supplement must be paid.

FEBRUARY

14-16 The Peak District in Winter. Ranger Guides and Guiders. Venture Scouts and Scouters. Hillwalking, Caving with the possibility of snow activities (weather permitting)

28-2 MARCH Outdoor Activities. Guiders and Ranger Guides. Hillwalking, Caving, Orienteering, Gliding and Climbing (weather permitting)

APRIL

1-6 Expedition Planning for Rangers and Young Leaders. The course will include training for overnight expeditions (including one night under canvas or in a Youth Hostel). Suitable for Silver and Gold D of E standard. Cost £9.00.

MAY

9-11 Adventure Course, A Guider with up to three Guides or Rangers aged 13-15 years. Pony Trekking, Canoeing, Orienteering, Hillwalking, Swimming.

JUNE

6-8 Adventure Course. A Guider with up to three Guides or Rangers aged 13-15 years. Pony Trekking, Canoeing, Orienteering, Hillwalking, Swimming.

AUGUST

23-30 'All or Nothing' Course. Rangers. Come and enjoy a leisurely week in the Peak District doing as little as you wish, or be energetic and try your hand at several outdoor activities. Cost £16.00.

If you really want to help, help the deaf.

The terrible thing about charity appeals is that they all seem so deserving, don't they. It seems so invidious to choose a few, and ignore so many. Maybe if the deaf were in some way visibly deformed they would appear more deserving. As it is, unless deafness is personally encountered, it takes considerable imagination to appreciate the horror of living a lifetime in silence.

Next time you encounter anyone, child or adult, who appears dull, dim-witted, or uncommunicative, consider for a moment that they might be deaf. If they are, then your very understanding is a real help. You see, the better you understand deafness, the better you'll understand the deaf.

It's to helping people understand the deaf, and helping the deaf live with deafness, that the RNID devotes its resources. But only by means of donations, covenants and bequests can this work continue. Please give what you can to our funds.

To the deaf, more than any other afflicted people, actions really do speak louder than words.

The Royal National Institute for the Deaf

(Patron: HRH The Duke of Edinburgh KG)

105 Gower Street, London WC1E 6AH
Telephone: 01-387 8033



"Obviously a casual camper - experienced campers
always use Hampton Tent Pegs...
that's elementary my dear Watson"

HAMPTON Camping Accessories
are synonymous with experienced
camping the world over.
They are renowned for their
practical design, built-in strength,
lightweight and proved reliability.
Ask for them by name.

HAMPTON CAMPING ACCESSORIES

THE HAMPTON WORKS (STAMPING) LTD.
Tapping Road, Stochley,
Birmingham, B36 3JZ.
Also at London, Manchester, Bristol and Glasgow.



SOLE AGENTS in the Republic of Ireland:
The Leisure Works (Ireland) Ltd.
New York and London 01-387 8033

Would you like to work at:



OLAVE HOUSE

45 Longridge Road, London SW5

There are vacancies for a GUIDER-IN-CHARGE and an ASSISTANT GUIDER-IN-CHARGE at this World Centre. Interesting and challenging posts for those keen to work with young people of all nationalities. Salary: Guider-in-Charge £1,500; Assistant Guider-in-Charge £950, negotiable, both plus full board, and lodging, laundry, etc, and comfortable accommodation. Further details and application forms from Mrs Owen Hughes, Compton Dundon, Somerton, Somerset.

Your Own Chalet - In Holland . . .

After five years of arranging happy and successful summer camps in Switzerland we are proud to announce a new Camptours chalet in Holland - a beautifully converted farmhouse on a lakeside site in the province of Friesland, close to the old Zuider Zee.

The chalet provides a large day-cum-dining room, a kitchen fully equipped for group self-catering, an attractive dormitory and bedrooms, and separate quarters for leaders. Altogether an ideal centre from which to explore the lakes, canals, and beaches, and interesting old towns of Friesland and, as always, we have a friendly local 'rep' helping each party to make the most of their stay.

A full ten days here, plus rail/sea travel from London, costs just £37.25 for adults, £33.25 for 14/21 year-olds, and £29.75 for those under 14. Parties may also join at Harwich, to where there is a direct train service from the North and Midlands, at a reduced price.

Send the coupon for full details of all the Camptours chalets, in Holland and Switzerland, and our ever-popular campsite at Interlaken where all equipment is now provided on-site.

Next year widen your horizons, go somewhere different, go Camptours.

To Camptours, Devon House, High Street, Cranleigh,
Surrey GU6 8AG (Tel: 04866 3027). Please send me
details of your centres in Switzerland and Holland.

Name

Address

G/1/75

Kellogg's have recently published a small booklet entitled *Bran - The Natural Answer to an Old Problem*.

Kellogg's also have a recipe booklet giving you new ideas for cooking with All Bran and Bran Buds. There are raisin buns, spice cakes, meat moulds and caraway cheese scones. If you would like a copy of these booklets fill in the coupon and send it to **Lexington International Public Relations Ltd, 8 Hill Street, London W1X 8DQ.**

Free Booklets

cooking with
Kellogg's
ALL-BRAN
AND
Bran Buds



**GUIDER
BOOKLET OFFER**

**To: Lexington
International
Public Relations
Ltd**

8 Hill Street,
London W1X 8DQ
Please send me
free Kellogg's
booklets
mentioned in
January *Guider*.

Name: _____

Address: _____

Camping Holidays and Pack Holidays

Foxlease Camp Sites

Application for sites next year should reach Foxlease by 6th January 1975 and will be considered during the week commencing 13th January. They should be addressed to the Secretary and the envelope marked 'Camp'. Suggested dates with alternatives and approximate numbers should be stated, and whether an equipped site is required. Camps may begin on any weekday.

A 50p deposit (which is forfeited if the booking is cancelled) and a foolscap sae should be enclosed.

Beaverbrook Lodge

Applications should be sent to the Secretary, Foxlease giving alternative dates and enclosing an initial deposit of £1.00 (which is non-returnable) and a foolscap sae. Priority will be given to applicants who have not already stayed in Beaverbrook Lodge. Applications for the period 1st April, 1975 - 30th September, 1975 will be accepted now.

Waddow Camp-sites

Applications for sites next year will be considered during the first week of January 1975. They should be addressed to the Secretary and the envelope marked 'Camp'. Suggested dates with alternatives and approximate numbers should be stated and whether an equipped site is required. It is preferred that camps begin on Saturday.

A 50p deposit (which is forfeited if the booking is cancelled) and a foolscap sae should be enclosed.

Waddow Cottage and Caravan

Both are available for bookings throughout the year. For details apply to the Secretary enclosing sae.

Waddow Pack Holiday House

Applications for Pack Holidays in 1975 should be sent to the Secretary. The application must be accompanied by a written recommendation from the Guider's CA or Pack Holiday Adviser and a foolscap sae enclosed.

Netherurd Camp-sites, Brownie House and Holiday Caravan

Applications for camp-sites will be taken from 1st January, 1975.

Applications for the Brownie House will be taken on 1st December, 1974 (form of application available from 1st November). During Scottish school holiday periods (Easter, July, half August) priority will be given to Scottish Packs.

A three-berth holiday caravan is also available.

Broneirion Camp-site and Brownie House

Only one small camp-site - equipped for 24, which number cannot be exceeded. Applications for camp-site and Brownie House will be considered from 1st January, 1975 and should be sent to Miss P Lynch, 3a Pentwyn Court, Whitchurch, Cardiff, CF4 7BY enclosing sae.

Bookings for the Brownie House, outside school holidays, for Guide and Ranger groups and also for Highgate, Ranger Adventure Cottage, should be sent to the Guider-in-Charge, Broneirion.

Lorne Camp-sites

Lorne offers fully equipped or unequipped camp-sites with solid shelter. Calor gas available. Applications should be sent to Mrs E Thompson, 14 Woodland Avenue, Bangor, Co Down.

Irene McKibbin Memorial Cottage, Lorne

A cottage available for Ranger holidays, fully equipped for 12 persons, with electricity and running water. For details apply to Mrs Brenda Weatherup, 32 Circular Road, Belfast BT4 2GA, enclosing sae.

Ulster Camp-sites (nr Lorne)

Fully equipped for 40 campers (one large and two small camps). Excellent hut for solid shelter and Calor gas. Bookings should be sent to Miss N Pratt, 22 Bangor Road, Hollywood, Co Down enclosing an sae.

Magilligan Camp-sites

Three fully equipped sites with double Calor gas stove for 25-30 campers. Also large 3-room hut with an open fire-place. For details apply to Mrs R F Scott, Derrymore House, Limavady, Co Londonderry, enclosing sae.

Blackland Farm, East Grinstead, Sussex

Equipped and unequipped sites available with facilities for swimming, climbing and pioneering (for which equipment can be borrowed) also Restrop, a furnished bungalow for 25 (bunk beds for 20) - details write to the Warden enclosing sae.

Brownsea Island

Eight camp-sites (for Guides and Scouts) are available as well as The Villano (maximum accommodation 30) for holidays for Rangers, Guiders or Trefoil Guild. Apply to Mrs B B Dyke, Wendover, The Avenue, Sherborne, Dorset, enclosing sae.



When You Meet an 'If Only'

IF ONLY thoughts can drown your real life down a wishing well.

This kind of thought crops up about the past, the present and the future and, in all tenses, can be dangerous unless you tackle it with common sense.

Perhaps you are one of the people who look in the glass and think how wonderful it would be if your reflection were different in every feature. But supposing you suddenly became a different girl. You wouldn't know yourself, you wouldn't be *you*, and who knows whether or not you would care a brass button for the new edition! But without all that wishing, and with just a bit of skill and will, you can probably make the very best of yourself and feel pleased about it.

Perhaps you think of all the times when you have been thoughtless, rash, unkind, quick-tempered even to the point of quarrelling and saying 'I hate you!', and realise afterwards that the venom did neither you nor your sparring partner any good at all. Don't brood about it for ever or go into your shell. Don't think, 'If only I hadn't!' too often. Make up your mind that next time you won't let those angry words hatch out into needless argument.

You may, perhaps, think what happiness there would be *if only* you had plenty of money — a large car, a brilliant boy-friend, a witty tongue, a marvellous opportunity to go to Venice and drift around in a gondola, enough talent to write and get a book published, a whole outfit of new clothes all of the right length; that you lived in the country, that you lived in London; that you could ride a horse, skate without a cushion strapped on to your behind, sail a boat.

We all know that life doesn't dance along just like that, but wishing may start you off on the right track. If you want something with all your heart that is the first step, but usually the other more practical steps that follow are more difficult. Have you read the story of *The Little Mermaid*: when she lost her tail, you might have thought she would find her feet in life, she so much wished to be a happy human.

Wishing you knew how to make a cyclamen come up in its pot next



Chicken and Mushroom Bourguignonne

- 2 tbsps oil
- 1½ ozs butter or margarine
- 1 chicken — 3½/4 lbs
- 4 ozs unsmoked bacon cut in 1 in cubes
- 12 ozs small onions
- 8 ozs button mushrooms
- 1 clove garlic, finely chopped
- 1 pint Charbonnier red table wine
- 1 bayleaf and ½ tsp dried mixed herbs

Heat butter and oil in frying pan and brown chicken all over. Remove chicken and fry bacon cubes, whole onions, mushrooms with garlic until lightly brown. Replace chicken and pour on Charbonnier. Season well with salt and pepper and add bayleaf and herbs. Cover pan and bring to boil. Reduce heat and simmer gently for 1 hour or until chicken is tender. Remove chicken to a hot serving dish. Drain vegetables and arrange round chicken. Boil cooking liquor until thick and reduce to about a pint. Spoon a little sauce over chicken and vegetables and serve rest separately. Serves 4-6.

Enjoy your PARTY HOLIDAY (in tent or house)
at the **METHODIST YOUTH CENTRE,**
Mundesley-on-Sea, Norfolk.
(now under new management)
Lots of attractions for 1975!
Write for details or phone Mundesley 720325.

ALSO:— Camp Site available early & late season.

MAINLY FOR

year won't do the trick for you, or for the flower. Find out and administer the right treatment and then you'll probably have much better results than I have ever managed in that particular case. I have always just wished I knew how.

There was a day, too, when I thought it would be good if I could speak Spanish. Only the other day, I remembered that it would still be nice if I could. That's the sort of tango a wish, backed by no effort of will, leads you.

Most of us, I believe, have these 'if only' thoughts from time to time, but if we want them to have any chance of coming true, we need first of all to look at them hard and decide if we really want them to happen; and then, if we think they are good ideas, have another careful look to find out what we must do to bring them off in triumph.

Doing this, you may feel rather like a sub-editor with a well-sharpened blue pencil, trimming down to hard fact, cutting out any cushiony padding. Because that is what so many wishes of this kind really are to some people. They see them as cushions of laziness for people to buoy themselves up without making an effort to fulfil their potential; for people who would rather not start from where they are in life, but would prefer to murmur 'if only...' as if those two words were the final amen to show that nothing can be done.

But this wishing to do things quickly, without hard work, is skimming over the surface of life. There is an absolute joy in discovering one day that, because you have thought it out, worked it out, really *made* it happen, you can at last do one more thing that you have always wanted to do. When you have battled every step of the way to get, for instance, into that romantic Venetian gondola, the reward is as good as a fortune!

If you don't believe this, perhaps it is a pity you didn't come with me, some years ago, to an exhibition of paintings by handicapped boys and girls. Some of them attended the exhibition in their wheel chairs and there, on the walls, was the speed and excitement of movement, the thrill of it, and the understanding of it. Some of the painters, might be confined to their chairs for life, but I couldn't feel that either their minds or feelings were similarly restrained.

Too many of us won't analyse what we want to do, and what we are capable of doing. Let's all come down to earth and see from there where the roots of our success are likely to be planted.

With bad habits of ingrained worry, too, it won't save you or do you any good to murmur three times, 'if only, if only, if only,' meaning 'If only I had a calmer temperament and a better grasp of things!' What you want here — and what *I* want here! — is a bit more common sense, and that great thing for which we should all of us work in our way: a greater amount of faith in life.

Barbara Vise

We apologise to readers for the omission of the clue for 19 down in the Christmas crossword, and thank all readers who have pointed this out. *Editor.*

RECIPES



Pineapple Coleslaw with Frankfurters

- 8-12 ozs white cabbage, finely shredded
- 1 small can pineapple cubes
- 3 celery stalks, diced
- 2 tbsps chopped nuts
- 3 tbsps mayonnaise
- 3 tbsps sour cream
- pinch sugar
- 1 can frankfurters

Combine cabbage, drained pineapple cubes, celery and nuts in a bowl. Beat mayonnaise and sour cream with pinch of sugar, add salt and white pepper to taste. Toss cabbage mixture with dressing. Drain frankfurters and cut into chunks. Place in middle of serving dish with coleslaw round the outside. Garnish with spring onions. Serves 4.



RANGERS

Women are Equal

IN THESE DAYS of more and more sexual equality it is encouraging to find that the Department of Employment have recently concluded a survey that shows that any differences between men and women are not of ability. Many people believe that because on average men are more aggressive than women, then this fact is always true. The survey shows that this is not so. Individual women are often more aggressive than individual men.

The lines of differences and potential fall along set 'sex rules' that have been bred into our lives. Women must be unsuitable for bricklayer, car mechanic, television newsreader or airline pilot because there are no women in these jobs. But on the other hand the so-called 'women's occupations' such as nursing, cooking, shop assistant and secretary are constantly invaded by men. There is no reason why jobs should be restricted to a certain sex because of ability, only the view that 'women have never been bricklayers and men have never been secretaries'.

But today these dividing lines are slowly being worn away. Women are entering the professions and driving trucks. They are no longer second-class wage earners.

These reports show that on average women's wages are rising faster than men's, and women with a higher education are more likely to work than those without. In 1971 38 per cent of all employees were women and 62 per cent of these were married.

The survey concluded that the differences between the sexes are far outweighed by the similarities. But because of our cultural training we do not apply for certain jobs because 'that is a man's job' or 'that is a woman's job'. Because of this attitude, not only are we, as individuals, losing out, but the country and industry are wasting or losing a lot of potential talent.

According to another survey made by the Department of Education the average household expenditure in 1973 was £39.43. This is a statistic that cheers my mother greatly, when she peers into her purse in the middle of the week and finds that 99 per cent of my father's £10 pension has already been spent.

Reading on she finds that the increase in spending of 12.5 per cent has more than been covered by the 14.6 rise in the average income. This is also a relief to my mother when she remembers that a year earlier she was 'making do' on twice as much as what she now has in her purse.

The report goes on to tell her that she has had to spend less than £1 more a week on food in the last year. This was in the year of the 5½p pint of milk and the 1½p loaf of bread.

If she carries on reading she finds that everything has been done to help her find the ideal place to live in the British Isles. If she would rather spend more on food and fuel than on housing, then she should be living in Northern Ireland. But if she lived in Scotland she would pay more on clothes and footwear. On the other hand she would find that people living in the North of England spent less on average on food, clothing and housing but spent more on drink than the rest of the islands. Living in the South East she will be pleased to learn that she spent more than anyone else for those wonderful services that are provided.

But one thing that the report does accomplish is that it clears up the mystery of that smoke screen that covers the land beyond the line that stretches from Carlisle to Newcastle. Our Scottish cousins are heavier smokers than the English, Welsh or Irish.

Janet King

Ranger films ★ Ranger films ★ Ranger films ★ Ranger films ★ Ranger films

EARTHQUAKE



Earthquake, the first 'feely' film (now showing at the Empire, Leicester Square) would provide a great treat for youngsters with nerves of steel, but not so much fun for the headache-prone Guider! By means of a new technique called 'sensurround', the film manages to reproduce in all its horror, and all too realistically, the effects of a major earthquake in a large city (Los Angeles). The spectacular scenes of shaking and crumbling buildings are accompanied by noises and vibrations which make the audience feel that the cinema itself will cave in at any moment. Cinerama was never like this!

JVR



FOR SOME REASON, perhaps best-known to film producers themselves, animal films tend to be lump-in-the-throat sentimental dirges that have you reaching for your handkerchief before the lights go down.

All Creatures Great and Small, based on the famous James Herriot books, *If Only They Could Talk*, and *It Shouldn't Happen to a Vet* is for the most part an exception; at least in its dealings with the animals. Unfortunately the actors don't get off quite so lightly.

Set in Yorkshire in 1937, the story concerns the arrival of a newly-qualified young vet, Simon Ward, who has applied for the job as assistant to another veterinary surgeon, Siegfried Farnon (Anthony Hopkins). His youth and lack of experience initially go against him in his dealings with the local people, but he soon proves his worth; scoring a big hit across the operating table with Helen Anderson (Lisa Harrow) when she brings him her dog with a dislocated hip. Dog is cured and romance blossoms.

Animal lovers need look no further, and Anthony Hopkins and Simon Ward fans should be quite happy too. The former is excellent in his role as the eccentric vet, Siegfried. His performance lifts the film above itself, which in the circumstances is quite an achievement.

GRB

All Creatures Great and Small



QUALITY FUND RAISING and ADVERTISING PENS

6135 PER 100 PRINTED
All prices include VAT
Guaranteed top quality. Printed up to 36 gold letters. Quick delivery. Send 2x4p stamps for illustrated catalogue and assorted samples.

Lapel Badges



Your own design made to order. 4p stamp for catalogue and samples.

PLAQUES! TROPHIES! CUPS! MEDALS!

Buy direct and save 50%. Prices from 25p. Send 4p stamp for illustrated catalogue.

WESTFIELD LTD

DEPT 23 WESTFIELD HOUSE,
HELENA ST. B'HAM B1 2RJ

Guides™ come Camping afloat on the English Canals

It's exciting and great fun - try it and see!

Using genuine narrow-boats specially converted for eating and sleeping, you may cruise at your leisure along miles and miles of inland waterways.

Write to:- Dept. 10
Threefellows Carrying
37 Forest Street,
Sutton-in-Ashfield, Notts.
Telephone (06235) 5615

Send for illustrated brochure giving full details.



FETES BAZAARS ALL FUND RAISERS

Fully guaranteed ball pens and pencils die-stamped in gold with your name or slogan (maximum 30 letters), please print name.

ALSO

Extensive range of TOYS - STATIONERY - FANCY GOODS - DOMESTIC STATIONERY & PRE-SELECTED PARCELS all at whole-sale prices. Send SAE for detailed price list from:

BAKER ROSS

Dept. G.U.I.
2a Handsworth Road, London N17 6DD

Tel. 01-808 6948

The leader of the pack.

GROUP NAME TAPES

Cash's QUALITY WOVEN NAME TAPES
J & J. Cash Limited, Kingfield, Coventry CV1 4DU

WHAT ME?

a Church Army Sister? What could I do?
You could be an Officer serving God and His Church in the Mission, Parish, Social, Youth or Forces departments of the Church Army.

Why not test your vocation with the Church Army?

Write for details of training to:-
Sister J. Pyke, C.A., The Church Army,
185 Marylebone Road, London NW1 5QL

First Aid Training Is Essential

Make it interesting and your students will find it easier to absorb.

Use 'PLASTIFOL'
PLASTIC WOUND REPLICA



to make demonstrations realistic and your team will gain the knowledge to deal with, and be emotionally prepared to cope with, all types of accidents. They are perfectly safe to use and are quickly attached to the skin. Start now to build up a complete range. Send 10p in stamps for a colour booklet giving details of wounds available, casualty faking hints, suggested incidents, etc.

BROWNINGS LTD. Dept G, 69 Aberdeen Street,
HULL, Yorkshire.

IDEAL FUND RAISERS FOR YOUR UNIT

We supply Ball Pens, Combs, Pencils, Key fobs, Rain-hoods, P.V.C. Goods, Diaries, Christmas Cards, Christmas Paper, Calendars, etc. All are excellent Fund Raisers - Good Quality - We give Full Guarantee. All orders are completed within 5 days of receipt. Send now for our 1975 price list.

Quality Goods - Full Guarantee - Speedy Service



THOMPSON & CREIGHTON (ADVERTISING) LTD.
North Tyne Industrial Estate,
Whitley Road, Longbenton,
Newcastle upon Tyne NE12 9SN.

Telephone: 0632 669511
Please send a stamped addressed envelope.

GUIDE

TO SERVE YOU

AT

EDINBURGH:

GLASGOW:

DUNDEE:

SHOPS

IN SCOTLAND

16 COATES CRESCENT,
EDINBURGH EH3 7AH.
TEL. 225 3483.
1 SCOTT STREET,
GLASGOW G3 6NU.
TEL. 332 6288.
53 SOUTH TAY STREET,
DUNDEE DD1 1NP.
TEL. DUNDEE 22262.

YOUR UNIT BENEFITS BY COLLECTING DISCOUNT STAMPS

home and away

Free in Today's Guide

A booklet, *Potatoes - A Value for Money Shopping Guide*, has recently been published by the Potato Marketing Board. It contains information on how to buy, store, prepare and cook potatoes; it tells you what to look for when buying potatoes and gives you a guide for the size of the best buys. This useful booklet will be given away free in the February issue of *Today's Guide*, which will be on sale on 15th January.

Metrication Booklet

A little book, *Nuttalls Metrication in the Home* by Helen Perrin, has recently been published by Frederick Warne & Co Ltd. Pocket or handbag size, it could prove invaluable to anyone who has problems converting Imperial measures to metric. Nothing is forgotten; there are weights, lengths, temperature, sizes, even metric cookery. It is strange to find that if you are 5 ft 3 ins tall and weigh 9 stone, when we go metric you will be 1.60 metres and weigh 57.2 kilogrammes. At 15p this booklet would be 15p well spent. It can be obtained from bookshops or from the publishers at 40 Bedford Square, London WC1B 3HE.

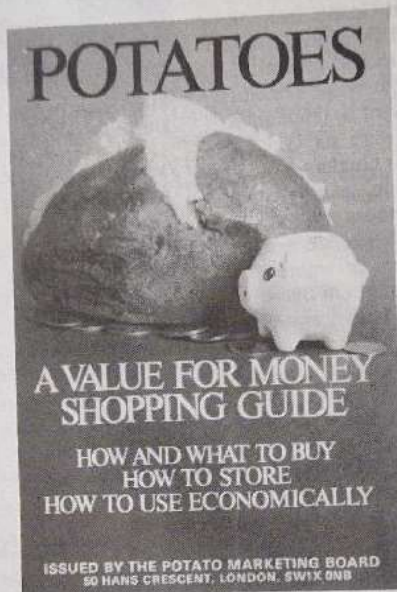
Sport and the Disabled

The Disabled Living Foundation, in connection with Town and Country Productions, have just produced a 16mm film entitled *Not Just A Spectator*. The film shows that disabled people are not just restricted to watching sports but can, in fact, take part in a great many of them.

This 35-minute documentary, narrated by Robert Dougall, shows that with perseverance disabled people, young and old alike, can participate in sports such as swimming, rock climbing, archery, horse riding etc with the aid of experienced coaches.

The film is available on hire for £3.24 from **Town and Country Productions Ltd**, 21 Cheyne Row, London SW3 5HP.

NOT JUST A SPECTATOR



Youth Hostels

In 1974 membership of the Youth Hostels Association (England and Wales) was the highest ever. More and more people are deciding to spend their holidays exploring the English countryside. Over 5,000 families have taken advantage of the scheme that gives free membership to children between the ages of five and 15 when both parents become members. Although the cost of accommodation and meals have been forced up by rising prices, the membership fee remains the same. If you would like details on how to join, write to the YHA at **Trevelyan House, 8 St Stephens Hill, St Albans, Herts AL1 2DY**.

The 1975 Handbook is now available free to members. Non-members can obtain a copy, price 20p, from the above address. The handbook contains details

of 254 hostels in England and Wales. There is a small map showing the position of each hostel and details on the facilities available, how to reach the hostel and the distance to the next hostel.

Invalid Children

The 86th Annual General Meeting of the Invalid Children's Aid Association took place in November and the annual report is now available. It contains a review of new ventures, reports from the ICAA schools, and the financial report. The Association also publishes a quarterly bulletin, leaflets about their schools and a list of films available from them. If you would like any of this literature write to the Association at **126 Buckingham Palace Road, London SW1**.

The Association are still asking for toys and games for the children attending their new school at Rainworth, near Mansfield, Nottinghamshire. (See October *Guider*.)

In Memoriam

Evelyn Freda Sexton died in hospital recently, and will be particularly remembered for her long association with Guiding in Boston, Lincs. She joined the Movement in 1926 and stayed with her Company to become the Assistant Guider before leaving in 1934 to form the 7th Boston Brownie Pack. Freda had been with this Pack for over 36 years, and had almost completed 50 years of unbroken service in the Movement. She was also Division Secretary for North Holland and District Secretary for Boston South. The generations of Guides who have passed through her Company, and the many who, through her, are themselves Guiders, are a lasting tribute to the wonderful service she so joyfully gave to Guiding.

NS

FORTHCOMING ATTRACTIONS IN FEBRUARY ISSUE OF TODAY'S GUIDE

Spud Quiz; Recipes for Thinking Day; Valentine's Day; Pancake Day; Mardi Gras in Trinidad; Handywoman and Entertainer Badges; Eight Page PLs Supplement plus lots of ideas for Thinking Day.

HAVE ALL YOUR GUIDES SEEN A COPY OF TODAY'S GUIDE?

Launching Guide Friendship

Lilian Akingemi
2nd Frodsham Guides

AT THE BEGINNING of this year the Girl Guides from all over Great Britain had saved up for the RNLI's special year. On the 2nd November a new lifeboat was launched at a small village in Wales called Aberdovey. The lifeboat wasn't one of the big ones, it was an inshore boat. I myself went to the launch with the party from Cheshire Forest. There were six Guides, five Brownies including my little sister, and four Guiders.

We all set off at nine o'clock in the morning, leaving early because it would take three and a half hours to get to Aberdovey. We went in four private cars. When we got to Chester the reporter from the *Chester Chronicle* wanted to have a picture of all of us to put in the newspaper. On our way we stopped at our halfway point, which was Bala Lake. The day wasn't very nice, so we decided to have our dinner when we got to Aberdovey. Some of the places that we passed through were Bala, Towyn, Dolgellau, Ruthin and Mold.

We were shown into the Dovey Yacht Club, where we were to have our dinner and get changed into our Guide uniforms. After lunch we went to have a look round the Lifeboat Station, and we saw the boat that was to be launched. While we looked round a lot of other Brownies, Guides and Rangers arrived.

We were entertained by the Towyn Silver Band before the service of dedication, which started at 2 pm. The Chief Commissioner was there, and so was Mrs M E Keen, representative of the Central Appeals committee RNLI. During the service a story was told about a girl, aged 13, her father and two other children aged nine and seven. They had gone out sailing on the Aberdovey coast in tough weather conditions. The father had fallen overboard and the 13-year-old had thrown him a life jacket. She then fired a distress signal. As the boat sank she threw the other two life jackets.



Mrs Derek Parker Bowles with the lifeboat crew and Brownies and Guides

When the inshore lifeboat came they found the girl supporting the other two in the water. Later on they found her father, still alive.

I was very pleased to go to Aberdovey, because our Unit had held a coffee morning and evening for the Guide Friendship Fund (RNLI). After the service we were kindly provided with a hot cup of tea, sandwiches etc. We were very pleased to have these because we were cold and wet.

Later on, Mrs Walker had arranged with the Captain for us to go on the boat. We all had to climb down some steep iron steps, off the jetty onto the boat. While we were on there we had some photographs taken. After this we all said 'Thank You' and made our way back home.

Letter from RNLI

I feel I must write and express our very warmest thanks for everything the Guides and Brownies have done in 'The Year of the Life boat', to help the RNLI. To have raised already as much as £15,000 when your original target was £5,000 speaks for itself, and I do hope you will find some means of expressing our thanks to every one of the girls who helped or contributed in any way. We really are most grateful.

NIGEL DIXON

Director, Royal National Lifeboat Institution.

ORDER FORM to be sent to:

Commemorative Cover,
c/o UK '75 Office,
The Girl Guides Association,
17-19 Buckingham Palace Road,
London SW1W 0PT, UK.

Please use block capitals.

Name.....

Address.....

Country.....

SPECIAL COMMEMORATIVE COVER

ORDER FORM

	No	Value
Single Covers at 25p each.		
Multiples of 25 covers at £5.65 per 25. (Orders to be received by 1st March '75)		
Multiples of 25 covers at £6.05 per 25. (Orders received after 1st March '75)		
Multiples of 25 unserviced covers at £4.25 per 25. (Orders received before 1st March '75).		
Multiples of 25 unserviced covers at £4.65 per 25. (Orders received after 1st March '75)		
Single unserviced covers at 20p each.		

Please remember to attach addresses to which covers should be sent.

UK Customers -

I enclose a Cheque/Postal Order made payable to The Girl Guides Association.

Value £

Overseas Customers -

I enclose a STERLING Cheque/Draft payable in the UK to The Girl Guides Association. Value £

CLASSIFIED ADVERTISEMENTS

THE GUIDE CLUB

The Guide Club, 46 Belgrave Square, London SW1. Tel: 01-235 7616. **Membership (Home and Overseas)** for members and ex-members of the Movement over 18 including Trefoil Guild and Local Associations. Members may bring guests, including husbands, to stay at the Club. **Non-members** of the Club should enquire about **SAME DAY BOOKING SCHEME** for one night only. Apply Secretary.

FOR SALE/FUND RAISING

Advertising Pencils, Ball Pens, Combs, Diaries, etc., gold stamped Company name, raise funds quickly, easily: Bran Tub Toys, details: Northern Novelities, Spencer House, 26/28 Spring Gardens, Bradford BD1 3HE.

Wall Charts. Wide range of activities covered including camping, map-reading and outdoor pursuits. Write for free illustrated list to SCOUTING Magazine, Baden Powell House, Queen's Gate, London SW7 5JS.

accommodation suitable for Pack Holidays, available all the year round. Snowdonia National Park half-a-mile. Climbing, hill-walking and safe bathing within easy reach. Apply to Mrs P Roberts, Bryn Meurig, Celyn Avenue, Penmaenmawr LL34 6LR, Caerns.

Park Wood. The Sidney Tidy Scout Activity Centre is available for Guide camps, courses and Pack Holidays, with bunk house accommodating 36, catering and lecturing facilities. Ideally situated 8 miles north of Brighton seafront on a bus route and close to South Downs. Details from R A Wady, 9 The Drove, Brighton BN1 5NN (0273 505585).

Come to Glasbury on Wye for your summer camp. Pony Trek in the Black Mountains of Powys and canoe on the River Wye. Large sae: Paul Greenow, 11 Dgeddi Villas, Llanigon, Hay on Wye, Hereford HR3 5PZ.

In 300 acres Forests - 2½ acre flat field set aside for Guides - flush toilets, water laid on. Sae

camping, sleeping accommodation for 30, large dining hall, covered veranda, kitchens with full calor gas cookers, boilers and fridges, fully equipped first aid hut, 3½ acre lake for all water activities. Camp shop selling sweets, ice-cream, badges, etc. Brownie House which sleeps 24. Early booking advised. Further details from: The Warden, Mr J Featherstone, 6 Moulsham Chase, Chelmsford, Essex CM2 0TA. Sae please.

Small camp-site in lovely Kent countryside. Send stamp for brochure to Miss J Kane, 30 New Road, Meopham, Kent, DA13 0LS. Telephone 0474 813629.

Pack Holidays in the Peak National Park. Indoor accommodation in the Hathersage Memorial Hall. Particulars from: John Cave, Roslyn Crescent, Hathersage, Sheffield. Phone: Hathersage 490.

Chigwell Row Camp site, Oaklands Farm, Chigwell Row, Essex, has equipped and unequipped sites available for 1975. Solid shelter on each site. flush toilets, tuck shop and well stocked canteen; bread, milk, meat, etc. supplied by arrangement with the Warden. Swimming pool on site. Chigwell is a delightful site only a short bus ride from Hainault station which is on the Central Line direct to the West End of London. It is an ideal spot for Companies wishing to visit London from camp. Details from: The Warden, Chigwell Row Camp-site, Oaklands Farm, Chigwell Row, Essex. Sae please.

Chigwell Row Camp-site, Oaklands Farm, Chigwell Row, Essex. **Ruby Jubilee**. In 1975 Chigwell Row Site celebrates 40 years of camping. Special weekend camp 27th, 28th and 29th June. Camp-fire Saturday evening and Thanksgiving Service in the Camp Chapel on Sunday. Why not make up a party to come to Chigwell Row for this weekend. Details from: Mrs J Bennett, 19 Hereford Road, Wanstead, London E11 2EA. **Canal Camping Holidays**/Weekends on 'pair' of working narrow boats ELSTREE and LYRA for 12/24 persons. Sae please to: T&A Collier, 5 North Street, Leighton Buzzard, Beds.

Explore the Waterways of England in 'Romulus', a fully equipped converted narrow boat, available for group charter by the week or weekend. Weekend cruises in the London area until Easter and from September. Weekend and longer week cruises are based on Braunston and Worcester, between Easter and September. Full details from: Waterway Educational Holidays, 115 Hillbury Road, Warlingham, Surrey CR3 9TG.

Camping Narrow Boats. 12 berth single and 24 berth pairs fitted with bunks, cooker, sink unit and full inventory. Operated by experienced skippers on the cruise of your choice. Warwickshire Fly Boat Co., 149 Hollyfast Road, Coventry CV2 3JZ.

Welsh Ranger Outdoor Pursuits Centre, Highgate, Broneirion, Llandinam, Powys, SY17 5DE. Hill cottage with access only from Broneirion, steep climb and no road. Available March to November. Sleep 15. Rangers, Venture Scouts or mixed parties, or older Guides 13+, must have suitably qualified Leader in charge. Ideal for hillwalking, pony trekking, swimming. No equipment for out-door activities provided. 10p per head per night, plus metered electricity for cooking, heating and immersion water heater. Bathroom and fully equipped kitchen, no beds. Bookings and further information: Guider-in-charge, Broneirion. Deposit 50p per party.

Holiday offered free to two Guiders with camp experience. Self-contained accommodation at Glenbrook for two weeks starting 24th May, 1975 and for four weeks starting 2nd August, 1975 in return for supervision of camps.

Holiday House to let for 12 Brownies, Guides or Rangers and four leaders. In Avon County, Bristol 11 miles. Fully equipped except for bedding. Details from: Mrs Probert, 43 Alma Vale Road, Bristol BS8 2HL.

(Continued on page 41)

Please note: All advertisements for Venture Scouts/Ranger events published in Guider must be accompanied by the signature of the Guilde County Commissioner.

GUIDERS

TURN YOUR PICTURES INTO POUNDS

The *Girl Guide Annual* and the *Brownie Annual* pay reproduction fees for colour and black-and-white pictures of Guide and Brownie activities.

Please put name and address on pictures, caption factually, and send with stamped addressed envelope to the Editor, Green Acres, Kidnappers' Lane, Cheltenham, Gloucestershire GL53 0NP.

CAMPING/HOLIDAYS

Buckmore Park, Maidstone Road, Chatham ME5 9QG. Kent District Camp-site - Activity and Pack Holiday Centre. Open throughout the year for weekend/day visitors, winter indoor weekends, summer camps and Pack Holidays, Venture/Ranger weekends and Guide Camps. Indoor heated swimming pool, indoor roller rink, rifle range, karting, assault course, abseiling, climbing and pioneering in over 200 acres of woodland. Usual Camp or Holiday form required. Write for details.

Felin Bach, Caernarvonshire, County Camp-site. Large camping area and indoor

brochure (aerial photograph 7p to 'Guides', 'Forest Glade', Kentisbeare, Cullompton, East Devon. Tel: Broadhembury 381.

Dudsbury Guide Camp, near Bournemouth. Fully equipped Pack Holiday House for eighteen Brownie Guides. Guide House open all year round, so ideal for out of season weekends. Unequipped camp-site with permanent shelter and flush toilets. Applications: Miss G M Read, 21 Gainsborough Road, Bournemouth, BH7 7BD.

St Luke's Scout and Guide Camp, Skreens Park, Roxwell, Essex. 25 acres of mainly grassland for Company

The Girl Guides Association takes no responsibility for statements made in any advertisement here or elsewhere in the magazine, or for any subsequent correspondence in connection therewith. The right is also reserved to refuse any advertisement not considered suitable. Advertisements for the sale of second-hand clothing cannot be accepted (except uniforms). Uniforms for sale should not be sent to CHQ, advertisers receive communications from applicants. All advertisements must be received not later than the 1st of the month for the following month's issue. **ALL CHARGES 5p per word. BOX NUMBER 20p EXTRA. PLEASE SEND REMITTANCE WITH ADVERTISEMENT TO: Miss A M Martin, Advertisement Manager, The Girl Guides Association, 17/19 Buckingham Palace Road, London SW1W 0PT. 10% discount for series of 12. To reply to a Box Number, address your envelope to Box Number concerned c/o GUIDER.**

TWO INTERESTING VACANCIES AT CHQ



After Winter follows Spring

and we at Headquarters are already thinking about the coming camping season, and our Camp Buyer is looking for a competent Typist (with some shorthand) to assist her with editing catalogues, general buying etc.

Also, our Programme Department require a Shorthand Typist to help with Heraldry, Duke of Edinburgh Awards etc.

Further details of these two vacancies and others may be obtained from:

Mrs Eileen Earnshaw,
Head of Personnel,
17-19 Buckingham Palace Road,
London, SW1.

Tel: 01-834 6242 Ext 37



If Accommodation Is Your Problem We May Be Able To Help You

TOP QUALITY BALL PENS

Diastamped with 30 Gold Letters and Spaces

£1.35
PER 100 PENS
(VAT PAID)

★ STANDARD CHARGE
★ POST & PACKING
★ 40 PENCE

ORDERS DESPATCHED SAME DAY

Sale or return – full refund on pens returned

Samples 3½p stamp – please try before you buy

ABBEE WHOLESALE

77 LIVERPOOL ROAD, STOKE ST4 1AE

COME CAMPING ON THE CANALS NEXT SUMMER

in one of our better equipped camping narrow-boats. Parties of 12, up to 48, with first-class skippers to make everyone's holiday really enjoyable.

FOXTON BOAT SERVICES, LTD.
Foxton,
nr. Market Harborough,
Leics.
Tel: Kibworth 2285.

All that
Glitters isn't
Gold



Our catalogue isn't – what we
mean is – it's something different
from the usual catalogue – how
different? write for a copy &
find out for yourself
Karrimor Box 651, Avenue Parade
Accrington Lancashire
England

CLASSIFIED ADVERTISEMENTS

continued from page 39

Midlothian Guide Training Centre, Vogrie House, Greenbridge, near Edinburgh. Pack Holiday House, fully equipped Camp-site with solid shelter for 30. For House apply to: Mrs Burns, Sauchside Farm, Ford, Midlothian. For Camp-site apply to: Mrs Calder, 25 Harburn Road, West Calder, Midlothian.

Camp-site, entirely private, sheltered, 1 1/4 miles sea, for camps wishing to participate in organised riding, at reduced rates. Phone, wood on premises. All tradesmen deliver. Mrs E. Gale, Buckler's Bid Riding Stables, Burton Bradstock, Nr Bridport, Dorset.

Pony Trekking in Welsh Mountains. Beginners, parties and families welcome. Sae: Dobbs, Llanddeusant, Llangadog, Dyfed.

Pony Trekking in Black Mountains (National Park). Private camp field or residential. Ponies kept on centre. Approved by POB and WTS. Sae for brochure: Grange Trekking Dept G, Capel-y-Ffin, Abergavenny, Monmouthshire.

Warren Beach, Beaulieu, Hants. Camp-sites with huts. Private Beach. No husbands or boys over 7. Apply: Miss Knox, Whitehill Chase, Bordon, Hants.

Cornwall, Florida Hotel, Bude. On Summerleaze Beach. Ideal for families, walking, swimming, surfing. Proprietors, Mr and Mrs Russell, (ex-Guider). Tel: 2451.

Ex-Guider offers holiday accommodation in seventeenth century, Devonshire farmhouse, glorious views. Ideal touring, local farm and garden

produce. Children and good dogs welcome. Stamp for brochure. Mrs J Haiselden, New Phillishayes, Upottery, Honiton, Devon EX14 9PF. Tel: Upottery 228.

Cudham, Kent. Equipped sites with solid shelter also unequipped sites, in 98 acres woods and valleys with scope for all types of Guide activities and Brownie Revels. Heated indoor accommodation for Pack Holidays, Guide, Trefoil and Guiders' weekends. Details: Warden, Overshaws, Cudham Lane North, Cudham, Sevenoaks, Kent. Sae please.

Wanted old-type trek carts. Can collect 10 miles radius Bromley. Information to Warden, Guide camping grounds, Overshaws, Cudham, Kent. Biggin Hill 73413.

Minutes from the sea, early and late season Camp-site at the Methodist Youth Centre, Mundesley-on-Sea, Norfolk. Tel: Mundesley 720325.

N. Cornwall. 20 ft 4 berth caravan to let. Quiet site overlooking Treyarnon Bay. Apply: Young, Beggar's Hatch, Harford Bridge, Tavistock, PL19 9LS.

Fairthorne Manor Scout Camp-site. 16 acres of grassland surrounded by woodland, near River Hamble. Shared by Scouts and Guides. Ideal for boating activities - canoes for hire. Centrally situated for numerous places of interest. Ample firewood provided. Flush toilets. For brochure write: Mr M D Veal, 19 Alfriston Gardens, Sholing, Southampton SO2 8GB Hants. Tel: 0703 432223

Any time of the year, it's a great holiday at the Methodist Youth Centre, Mundesley-on-Sea, Norfolk. Large parties

catered for and accommodated in three large houses, plus tents in summer. Now under new management, the Centre offers lots of attractions for 1975. Write for details or phone Mundesley 720325.

Furnished cottage (all electric) near Derbyshire Dales. Accommodates 12. For details - sae to: Mrs Miller, Small Dale Farm, Small Dale, Buxton, Derbyshire SK 17 8EA.

COMING EVENTS

10th Sedan Chair Rally. Gilwell, 9th-11th May, '75. Barn Dance, Film Show, Bell Ringing, Archery, etc. Plus the Great Race. Open to Rangers, Venture Scouts and members of Scout and Guide Associations up to the age of 25. Apply: L J Burkett, 65 Torcross Road, S Ruislip, Middlesex. Sae please.

Merseyfolk '75. Liverpool Philharmonic Hall, Saturday, 15th March. Folk Singers apply now to take part in the third successful Merseyfolk. Write now to: Merseyfolk, 69 Egerton Road, Liverpool L15 2HN.

PETS

'Purrfect' homes needed for neutered cats of all ages. Elderly cat-lover most distressed that cats will have to be 'put down' if homes not found. Cat would need to be collected from Wandsworth (London) area. Further details from Box No 726.

Social Deprivation. A SAGGA Seminar to discuss - What are the Movements doing? How should they be involved? Guests The Chief Scout and Mrs J Blooman, Deputy CC (Guides). February 8/9th, 1975. Islington Scout Centre, London. Details: Tony Hale, 45 Telford Avenue, London SW2

BUSES FOR HIRE

Transit Vans For Hire. 18/22cwt Weekly rate £19.00, daily rate £3.50. 30 cwt weekly rate £26.00, daily rate £5.50. Deposit £25.00. Mileage charge 3p per mile. **12 Seater Minibuses For Hire**. October to April £38.00 per week, £7.50 per day. May to September £40 per week, £9.00 per day. No mileage charge, £25.00 Deposit. 8% VAT on all the above charges (excluding deposits). Tel: 01-890 9931.

UNIFORM

Guider's Uniform size 12, including blouse, hat, £6.00. Mrs Middle, 3 Ashford Drive, Pontesbury, Shrewsbury, Salop SY5 0QP.

LATE UNCLASSIFIED

Bran Tub Toys. Undressed Dolls and other Fund Raisers at Wholesale Prices. Sae for Catalogue: Nye's Novelties, Dept/G, 173 Cambridge Road, Hitchin, Herts.

THIRD MERSEYFOLK CONCERT



A SCOUT & GUIDE FOLK CONCERT

All proceeds to charity

in the
LIVERPOOL PHILHARMONIC HALL

on SATURDAY, 15th MARCH 1975 at 7.30 pm

TICKETS 65p, 55p and 35p

TICKET ORDER FORM

To: "Merseyfolk", 69 Egerton Road, Liverpool L15 2HN
(Telephone 051-733 2195 or 051-724 2407)

Quantity	Cost
..... Box(es) (6 seats) @	£3.90
..... Upper Stalls @	55p
..... Stalls @	55p
..... Balcony @	35p

Total
Less Discount

£ :

Party Discounts

For parties of
11 - 20 - 1 free ticket
21 - 30 - 2 free tickets
31 - 40 - 3 free tickets
Etc.

I enclose Cheque/P.O. for the above tickets (less discount) value £..... Payable to "Merseyfolk" together with a stamped addressed envelope.

Name
Address Tel. No.

200% PROFIT ON OUTLAY

Imprinted ball-pens, key fobs, combs, booklets, diaries, punchboards and many other speedy fund raisers.

Please send 4p stamp for full catalogue.

THE PROVINCIAL SUPPLIES CO.,
1 Gardenfield Lane, Berkhamsted, Herts.
Tel. Berkhamsted 6527 (STD: 04427 6527)

EASTLEIGH GANG SHOW 1975

Town Hall - Eastleigh March 3rd-8th

Booking Forms from:
Mrs. P. Boyes, 35 St. Margaret's Road,
Bishopstoke, Eastleigh, Hampshire.
(encl. s.a.e.)

CARDIFF SCOUT & GUIDE GANG SHOW

NEW THEATRE, CARDIFF
17th - 22nd MARCH, 1975

DETAILS FROM: **LYN JOSTY**
36 ST CADOC ROAD, CARDIFF

WHAT'S ON WH WHAT'S ON WH WHAT'S ON WH WHAT'S

Twiggy makes her pantomime debut in *Cinderella* at the Casino Theatre, Old Compton Street

Ballet and Opera

London Festival Ballet, New Victoria Theatre

January programme comprises *Coppelia*, *Prodigal Son (In Ragtime)* and *Dances from Napoli*.

English National Opera

will be performing Rossini's *The Barber of Seville*, Wagner's *The Mastersingers of Nuremberg*, plus *Pagliacci* and *Cavalleria Rusticana*.

Royal Opera, Covent Garden

Verdi's *La Traviata* and Puccini's *Madame Butterfly* are the main features this month.

Royal Ballet

A Tchaikovsky month, with the company performing *The Sleeping Beauty* and *Anastasia*. Triple bills include *Scenes de Ballet*, *Enigma Variations*, *Elle Syncopations* and *Daphnis and Chloe*.

Concerts

14th: Queen Elizabeth Hall - The Kings Singers.

15th: Royal Festival Hall - BBC Symphony Orchestra.

17th: Royal Festival Hall - *Otello* (Certificate 'U'). Film version of Verdi's opera, directed by Herbert von Karajan.

19th: Royal Festival Hall - Royal Philharmonic Orchestra, conductor and soloist Yehudi Menuhin.

24th: Royal Festival Hall - The Spinners. Popular traditional folk group.

27th: Royal Festival Hall - A concert by Yehudi and Hephzibah Menuhin.

Exhibitions

British Museum

Until 5th Jan: Churchill the Writer
Victoria and Albert Museum

Jan: An exhibition of water colours and drawings by Winslow Homer.

Until 26th Jan: A 'Workshop Exhibition' for children is being presented on the theme of the human form seen through the eyes of the sculptor. Distorting mirrors, seaside-type 'peep-shows', audience participation and a sculptor's studio are all put to use, and

A scene from the London Festival Ballet's production of *Coppelia*



there are examples of the work of such legendary figures as Michelangelo, Rodin, and Henry Moore.

Reed House, Piccadilly

Until 10th Jan: Polyfilla Schools Arts Exhibition.

Electrum Gallery

Until 11th Jan: Christmas Exhibition of Contemporary Jewellery

Royal Academy

Until March: Turner 1775-1851 (see December *Guider* for review)

Shows and Plays

Unicorn Theatre, Great Newport Street

Jack and the Beanstalk (see December *Guider*) continues until 19th Jan. From 25th Jan the presentation will be *The Hour of The Werewolf*, a play for 8-13 year olds by Brian Hayles.

Purcell Room

3rd: Little Angel Marionette Theatre

National Theatre, Old Vic

28th Jan: Opening night of Ibsen's *John Gabriel Borkman*, starring Dame Peggy Ashcroft, Sir Ralph Richardson and Wendy Hiller. Directed by Peter Hall.

London Palladium, Argyll Street

Throughout January. *Hans Christian Andersen* - Tommy Steele stars in this, the first ever stage version of the famous musical.

New Victoria Theatre, Victoria Street

Max Bygraves in his own Christmas musical show *Swingalongamax*.

Westminster Theatre, Palace Street

Until 1st Feb: *Give A Dog A Bone*, the pantomime's eleventh season. Party rates available at all performances. Special pantomime teas are a good idea for parties. For the box office telephone 01-834 0283.

A Day of London Theatre

An interesting and comprehensive full-day programme which includes a matinee performance of *Give A Dog A Bone*. Price £1.20 (+10p VAT) per person, £1.00 (8p VAT) for parties of 30 or more. For further information ring box office (see above).

Casino, Old Compton Street

Throughout Jan. *Cinderella* - starring Twiggy with Harry H Corbett and Wilfred Brambell, *Steptoe and Son*.

Mermaid Theatre, Blackfriars

Throughout Jan. Spike Milligan in *Treasure Island*.

London Coliseum, St Martin's Lane

Throughout Jan. *Peter Pan* - starring Susan Hampshire; and Michael Denison as Captain Hook.

Shaftesbury, Shaftesbury Avenue

Throughout Jan: *The Wombles Christmas Show*.



Shaw Theatre, Euston Road

Throughout Jan: *Old King Cole*.

Duke of York's, St Martin's Lane

Throughout Jan: *Paddington Bear*.

Nationwide

Birmingham

16th: Town Hall - City of Birmingham

Symphony Orchestra

18th: Museum and Art Gallery - The Brahms Piano Quartet.

Until 1st March: Alexandra Theatre - *Babes in the Wood*.

Bristol

Until 8th Feb: Bristol Old Vic, Theatre

Royal - *Cowardy Custard*.

Cambridge

Until 25th Jan: Arts Theatre - *Puss in Boots*.

Gloucester

Until 18th Jan: Leisure Centre - Mister Pastry's Christmas Show.

Lancashire

Until 15th Feb: Royal Court Theatre, Liverpool - The Ken Dodd Laughter Show.

Until 1st Feb: Empire Theatre, Liverpool - *Cinderella*.

Until 1st Feb: Belle Vue, Manchester - International Circus Startime.

Until 8th March: Opera Theatre, Manchester - The Mike Yarwood Spectacular.

Until 8th March: Palace Theatre, Manchester - The Black and White Minstrel Show.

Scotland

Until 3rd Jan: Grantown-on-Spey - New Year and Hogmanay Special.

Sussex

Until 7th Jan: White Rock Pavilion, Hastings - *Puss in Boots*.

Tyne and Wear

Until 8th Feb: Theatre Royal, Newcastle - *Cinderella*.

Until 20th Feb: Empire Theatre, Sunderland - *Jack and the Beanstalk*.

NOTE TO GUIDERS

We shall be happy to publish any event happening in your area under *Nationwide*, as long as the item is sent to us at least TWO months in advance.

INFLATION!

DESPITE



Fund Raisers
have enjoyed
another
wonderful year,
hundreds of
organisations
have benefited
from the service
created by
LESWYN

Gifts

Stationery

Gift
wrap

Tableware

Christmas
Cards

Birthday
Cards

...contact the people with the bright ideas

LESWYN

CARDS LTD
(GUIDER DIVISION)

SUTTON COLDFIELD · WARWICKSHIRE B73 5TF Telephone 021-354 7389

FUND RAISING BREAKTHROUGH



Here's the **complete** answer to fund raising problems — the 'Miller Package Deal'. It's been carefully planned and designed to give your company sure success.

Everybody will want to buy from the wide range of top quality greeting cards, stationery and gifts at unbeatable, value-for-money prices.

The 'Miller Package Deal' contains everything you need for really profitable fund raising.



MILLER PACKAGE DEAL

Voluntary organisations all over the country are already making big profits with Miller. The Miller Package Deal makes fund raising easy, enjoyable and profitable. Post the coupon today for full details and Free Colour Catalogues — there's no obligation, of course.

To:
**MILLER GREETINGS
(Great Britain) LIMITED**
Queensbridge Works, Queen St.,
BURTON UPON TRENT.
DE14 1BR

**BIRTHDAY
CARDS
FROM ONLY
3½p**

**BIG
PROFITS
AT
LEAST 33⅓%
ON OUTLAY**

**CASH
BONUSES
&
FREE GIFT
SCHEME**

**SAMPLE
PARCELS
WITH
FREE
GIFTS**

**FREE FULL
COLOUR
CATALOGUES**

**NO CASH
OUTLAY
PROFIT
NOW
— PAY LATER**

Please send me free colour catalogues and full details of your Fund Raising Service.

NAME _____
ADDRESS _____
Organisation Represented _____ Tel: No. _____
GUT _____

(I am over 18 yrs of age)

**ACT NOW
NO RISK-
NO OBLIGATION**