

Volume 62
Number Two
February 75

17p

THIS SUPER NEW SHARPENER UPPER

Ingenious sharpener suitable for knives, scissors, etc. Sharpens to a razor-keen edge quickly and easily. Will give a lifetime of service. Only 39p in the Webb Ivory Catalogue.



ANOTHER FUNDRAISER RAIDER from WEBB IVORY -a cut above the best



EVERY TYPE OF GREETING CARD

including a beautiful range of exclusive Birthday Cards from just over 3p.



STATIONERY

Super top value stationery items at really low prices. 100 sheet writing pad 20p.



NOVELTIES

Egg slicer and quarterer at only 80p, plus lots of other competitively priced kitchen aids and gift novelty items.

Q. Why do we at Webb Ivory know our service to be the best?

A. Because results, plus our thousands of satisfied customers, prove we are the biggest and most popular fund raising service in Britain.

Q. O.K. But what's special about your featured Knife sharpener?

A. Well, it's an excuse for a good headline! But seriously, it's a first rate gadget at a sensible price and is just one of hundreds of fast selling, low cost items to be found in the Webb Ivory Catalogue.

Q. We need fast selling items, what do you recommend?

A. It's up to you to choose from cards from just over 3p each, a wide range of stationery items, games, novelties, gadgets, kitchen aids... there's something for everyone.

Q. But exactly how does all this make money for us?

A. Easy, every item sold means between 33% and 50% profit on cost. This is all money for your company. The goods are so attractive and are such big value they virtually sell themselves.

Q. Sounds a winner, but how much will it cost?

A. It is a winner and it will cost you absolutely nothing to start. Then money comes rolling in **before** you lay out a single penny.

Q. But I expect we can't choose what goods to sell?

A. You are wrong. You and your customers choose whatever goods **you** want from the catalogue. **You** can sell what you like, **when** you like and you never have to take-in stock. And there are lots of extras thrown in — you may want to order a Sale or Return Sample Parcel and secure a FREE Travel Bag worth up to £4.50. — Beat that!

Webb Ivory Limited, Little Cornbow, Halesowen, West Midlands B63 3AG

There's no question about it; the Webb Ivory Fund Raising Service sounds just what we need. Please send full details and free colour catalogue.

NAME _____

ADDRESS _____

COMPANY _____



GU 2

I AM OVER 18



guider

Published 1st of each month

OFFICIAL MAGAZINE OF
THE GIRL GUIDES ASSOCIATION
(incorporated by Royal Charter)

PATRONS

HM THE QUEEN

HM QUEEN ELIZABETH, THE QUEEN MOTHER

PRESIDENT

HRH THE PRINCESS MARGARET,

COUNTESS OF SNOWDON

CHIEF GUIDE

OLAVE, LADY BADEN-POWELL, GBE

CHIEF COMMISSIONER

MRS DEREK PARKER BOWLES, CBE

Contents

Guiding Roundabout	48
Executive Committee Report	50
Thinking Day	51
International Commissioner's Report	52
Mainly for Rangers	54
World Conference – The University of Sussex	57
Launching the monthly Today's Guide	59
Letters	61
Those Were The Days	63
Training	65
Programme Notes	70
In Brief	71
Where To Train	73
HQ Notices	78
Home and Away	81
Classified Advertisements	82
Books	85
What's On	87

Cover

These Brownies, Guides and Rangers from Windsor gave a display of dances from Commonwealth countries for 1974 Thinking Day celebrations. Some of the girls dressed in the countries' national costumes and others in the different Guide uniforms.

Photo: The Windsor Express

EDITORIAL: MRS J V RUSH (Editor)
MISS J V KING (Assistant Editor)
MR S D MILLS (Sub Editor)

ADVERTISEMENTS: MISS A M MARTIN

ALL COMMUNICATIONS TO: **Guider** GIRL GUIDES ASSOCIATION
17-19 BUCKINGHAM PALACE ROAD LONDON SW1W 0PT 01-834 6242

Printed by The Riverside Press Ltd, London and Whitstable and published by The Girl Guides Association.
Subscriptions, including postage, £2.64 for 12 months Great Britain, £2.46 overseas.
Trade Agents, Surridge Dawson & Co. (Productions) Ltd, 136-142 New Kent Road London SE1.



Heath England Newspapers Ltd

Guides from the United Reform Church in Banbury, Oxfordshire, admire a cuddly cushion made by Sarah Barford (above). The Hon Mrs Gervas Clay is seen (below centre) showing a greetings card from the World Chief Guide to members of the Rodborough Guides when they celebrated their Diamond Jubilee.

Bayldon Standard Recorder



Members of the 1st Pitsea and Vange Brownies with some of the money they raised with a sponsored silence (above).

Smiling members of the 2nd Kennington Company (below) with some of the items to be sold at their 'penny sale'.



Stroud News & Journal

The Division Commissioner for South Bradford, Miss D P Ellis (below), receives the new Division standard from Rev G S Beck, after the dedication service.



Money raised by Audrey Gill and Susan Christie in a back-garden sale was handed over to Blythwood Eventide Home, Inverurie, in front of their Brownie Pack (left).



Mr White Inverurie

Brownies of the 20th Scarborough (St James') Brownie Pack, planted 28 lbs of bulbs in their church garden (right).



Scarborough Evening News



Evening Mail

The generation gap seems to have been forgotten as 99-year-old Mr Herbert Mortimer talks to Slough Ranger Joanna Manisier (above). Brownies of the 1st Peterchurch Pack raised money toward a Red Cross Ambulance with a sponsored silence. They are seen below presenting the cheque to Mrs Redman.



Hereford Times

A gypsy supper was a chance for one member of the Springfield Guides, Chelmsford, to show her 'skill' as a palmist (below).



The Essex Chronicle

Dudley Herald



Two young Indians hold a pow-wow with a young 'pale face', while they wait for their turn in the 1st and 3rd Brierley Hill Brownies junior gang show (below left).

In the last few years members of the 12th Bury St Edmunds Pack have written letters, messages and done other things to help the Possum Users Association and Mrs Mary Stevenson in particular. Recently the Pack held a sale for Possum and Mrs Stevenson went along to thank the Brownies (right).



Bury Free Press

The 43rd Dundee Brownie Pack were wearing their Brownie Smiles when they posed for the party picture below.

The Courier, Dundee



Staffordshire Sentinel



The Bandmaster of the 1st Kidsgrove Scout and Guide Band, Mr John Swindles, is seen receiving the North Midlands drill section trophy from Mr Leslie Thomas, who also donated the trophy (left). Members of the 3rd Hutton Guide Company (below) are seen with the Shenfield and Hutton Rotary Club Youth Community Service Award and Mitchell Memorial Plaque which they won.



Birmingham Age

ITEMS OF INTEREST FROM THE EXECUTIVE COMMITTEE MEETINGS OF OCTOBER AND DECEMBER 1974

Guide membership of the Scout and Girl Guide Consultative Committee was confirmed as:

Mrs Derek Parker Bowles, CBE
The Lady Baden-Powell
Lady Daphne Bailey
Miss A Bickersteth
Mrs A G Douglas
Miss B Hughes
Miss B Rylie
Mrs R Stanley-Smith
Mrs L Whiteaker, MBE

The first meeting of this committee was held on Thursday, 24th October, 1974 at Girl Guide Headquarters.

VAT Exemption for Association Training Centres – Foxlease and Waddow

After submitting evidence to HM Customs and Excise, Adult Leader Training Courses for Guiders and Commissioners at Foxlease and Waddow have been declared exempt from VAT under Item 1(b) of Group 6 of Schedule 5 to the Finance Act, 1972.

APPOINTMENTS AND RESIGNATIONS

Guide Consultant to the Programme/Training Adviser

The appointment was reported of Miss I Anderson as Guide Consultant to the Programme/Training Adviser for an initial period of three years as from 1st January, 1975

Ranger Guide Consultant to the Programme/Training Adviser

The re-appointment was reported of Miss M Graham as Ranger Guide Consultant to the Programme/Training Adviser for a further period of two years as from 1st May, 1974.

National President for Salvation Army Guides

The Executive Committee approved the request from the Salvation Army that Mrs G Dalziel as British Commissioner for the British Territory, be appointed National President.

Area Director – Salvation Army Guides and Brownies

To report that Mrs Captain A Lyne has been appointed Salvation Army Director for Eastern Counties Division (vice Mrs Major A Wall).

Deputy Chief Commissioner – North East England

To report that Miss A N Taylor has been appointed Deputy Chief Commissioner for North East England.

Central Council of the Trefoil Guild

To report the appointment of Mrs J P Moffett, MBE, as the Executive nominee to the Central Council of the Trefoil Guild (vice Miss R Tuckwell, OBE, JP).

The resignation of Miss M Chance, JP, Chief Commissioner for North West England, as from the 5th December, 1974, was received with regret. Mrs A Carter, JP has been appointed to succeed Miss Chance.

Mrs S Mustoe was appointed to the Fund-Raising Committee (vice Lady Ward) on her retirement.

Mrs Arthur Carter, the new Chief Commissioner, NW England, standing with the Lancashire East Standard (formerly Lancashire North East). She was a Guide at school and has served as a Guider, Division Commissioner, County Commissioner for Lancashire NE and Chairman of the County Training Committee.

OVERSEAS COMMITTEE

Appointments and Resignations

The Executive Committee noted the following appointments approved by the Overseas Committee at their meeting on 5th November, 1974.

Antigua

Mrs Ethel Henry – Assistant Commissioner.

Fiji

Mrs G Paras Ram – Deputy Commissioner.

Hong Kong

Miss Celine Wong Po Wan – Assistant Commissioner.

The following appointments were noted:

British Virgin Islands

Mrs W W Wallace – President.

Gilbert and Ellice Islands

Mrs W Summers – President.

Montserrat

Mrs N D Matthews – President.

ANNUAL GENERAL MEETING

It was confirmed that the Annual General Meeting would take place on Tuesday, 22nd April, 1975. Lady Dartmouth has agreed to be the guest speaker at the afternoon session at The Fishermongers' Hall.

APPLICATION FOR ASSOCIATE MEMBERSHIP OF THE WORLD ASSOCIATION

Bahamas The Overseas Committee agreed that all our constitutional powers should be transferred to the Bahamas Girl Guides Association and the Executive Committee approved the signing and sealing of the Deed of Transfer, to make the Bahamas Girl Guides Association completely independent.

Warren Beach It was confirmed that South West England would continue to administer Warren Beach for a further period of two years on behalf of the Association.

Other items pertaining to the 1975 Tennis Tournament, UK '75 plans, amendments to PDR etc, will be appearing separately in forthcoming issues of *Guider*.





Thinking Day

22nd February

ONCE AGAIN Thinking Day is almost with us. Many of us will be asking 'What has happened to the last 12 months, they have gone so quickly.' But nevertheless in those months, Girl Guides and Girl Scouts around the world have been busy. They have taken six of the world's problems and tried to do something about them.

In urban areas where the population is doubling every 11 years, girls are helping with sanitary campaigns, helping to find accommodation for the homeless and helping to run nurseries so mothers can work. They are helping in hospitals and helping to clean up public places. They are teaching first aid and nutrition, and even helping to build roads and grow herbs.

In areas where they find any of the world's 800 million illiterate, they are running training courses, organising classes for groups and individuals in their homes. They are also helping produce textbooks and other material for adults.

In areas where they find any of the world's 250 million unemployed, they are helping children to learn a trade, they are teaching sewing, embroidery and secretarial work. They are organising workshops, running clubs for girls who cannot find work and helping with vocational guidance schemes.

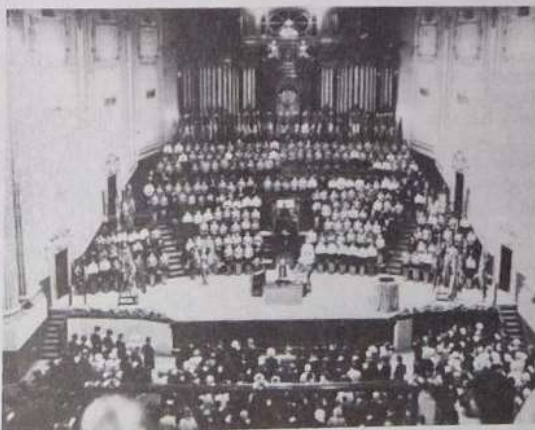
In areas where they find any of the world's 1,500 million hungry people they are rearing poultry, growing crops and teaching farming methods. They are building water pumps, sinking wells, preparing waste land for cultivation and explaining food preservation and balanced diets.

In areas where they find any handicapped people, they are helping in hospitals and homes, arranging holidays, running workshops and arranging handcraft classes. They are also helping to train leaders to work with the handicapped, and providing special Guide textbooks.

In areas where there are floods, hurricanes, earthquakes and other 'natural disasters', they are cleaning up and rebuilding, giving accommodation to those who have lost their homes, distributing food and clothes, collecting blood plasma and operating relief centres and camps.

All of this has been made possible by the money collected through the Thinking Day Fund. Members of the Movement all over the world put their 'pennies' into the Fund, and people all over the world benefit from it.

When we give our contribution to the Fund, we are telling people that we care about each other. Maybe our caring and giving will help other people to care and give. We can only hope as we lay our 'pennies' in the Trefoil this year.



Brownies, Guides and Rangers celebrate Thinking Day.



International Commissioner's Report

THE ASSOCIATION seeks to promote friendship among girls of all nations as a contribution to International understanding. This phrase from the International chapter in POR seems a fitting theme for this report, which covers the year 1st September, 1973 to 31st August, 1974.

The year began with the Arab/Israeli war, continued through oil embargoes, strikes, the three day week, rapid inflation, violence in our streets and a bomb attack on the Tower of London full of sight-seeing children, and closed with war and atrocities in Cyprus. To bring this really home to us was the sad situation of Turkish Cypriot Guides, guests of members of this Association, unable to return to their homes and not knowing if their families were dead or alive. All



surely very hard to understand and only having the effect of hardening attitudes and prejudices among young people throughout the world. This must make it more important than ever that within this world-wide youth organisation we should strive harder than ever to create a climate of informed understanding; to help combat veritable disagreements between people, both individuals and nations.

The question of understanding is something vital which concerns every member of the Movement. All adult leaders have a responsibility toward this end, whether or not we are directly involved with people of other nationalities. Our attitudes, yours and mine, influence others, and one should perhaps begin by resolving never to make sweeping generalisations about other countries.

We were again delighted to welcome many overseas Guiders to various Camps and other events in the United Kingdom. Worcester, Leeds, Guildford, West Yorkshire, West Lincolnshire and Derbyshire all ran International Camps, to which about 600 Guides from abroad were invited, either through this Headquarters or privately. Peak '74, the joint International Camp run by the Derbyshire Scouts and Guides was the largest, with approximately 300 overseas guests, including delegates from Barbados, Bermuda, Kenya, Mexico, The Philippines, Trinidad and Tobago and Tunisia. We had no reports of unkind weather, and all were able to carry out their programmes as planned.

The visit of the Turkish Cypriot Guides and their leader to the Leeds and West Yorkshire West Camps co-incided with the outbreak of war in Cyprus. I would like to thank all those concerned for the wonderful help and comfort they gave to these unfortunate girls, separated from their families at such a time of crisis and anxiety. All but two have now been able to return home, and those remaining here have been joined by their families.

Some 200 Guides from overseas camped here independently or were invited privately by members of our Association, and we hope that yet more will be able to come during World Conference Year.

The season ended on a happier note when representatives from 31 member countries of WAGGGS attended the Juliette Low Seminar on Development at Olave House, this being one of four similar events being held at the four World Guiding centres.

Visits Abroad

Reports sent by members of the Movement who went abroad this year reveal a number of gaps in their preparation beforehand. Most are carefully selected and carefully briefed, which made it all the more difficult for the individuals who were asked to 'fill in a form and go', or for another unfortunate who fainted under the weight of her own kit. CIA's are asked to be sure to see that sound advice is given and light-weight equipment loaned to all those going abroad.

The enormous increase in travel costs has taken its toll, the total number of Guides who went abroad having fallen from 4,834 to 3,358. The number of people in parties arranged by CHQ was 210.

Their increased costs were to a certain extent offset by a higher level of funding from the British Council and Commonwealth Youth Exchange Council. It should be remembered that all members of the Movement aged 16-30 are eligible for these grants, provided their programme includes personal contacts with members of a recognised youth organisation in the hostess country.

Belgium

A small group from South West England joined a Brussels Company for their Camp in the Ardennes. Guiders from Oxford and Kent West attended the annual training for Young Leaders at Mozet.

Denmark

The Danish Girl Guides Association ('Blue Guides') recently joined forces with their equivalent Scout Association, and 18,000 people assembled for their first joint National Camp at Hvalspund near Aalborg. A small British handicapped group from Scotland and North East England took part, as well as several other British parties who had received private invitations from Danish friends.

Finland

Every four or five years a Camp of the Four Winds, representing the four main aspects of the programme, has been held in Finland. Backwoods camping, the Arts, 'International' and the Sea were this year's 'winds'. Really interesting sessions were provided for by four host groups and the hospitality was very successful.

France

Three invitations to the Guide de France Village at Melan were accepted. A week for the Jeunes en Marche (Ranger/Scout age) was enjoyed by a group from London and South East, though not all were sufficiently good at French to play a full part in the discussions.

The Village de Jeunes had wider International representation which was appreciated by young Guides from Guernsey and Gloucestershire. In addition two Guiders attended a training for prospective trainers from 31st August - 7th September. A member of the International Department staff attended a training for Guide de France Leaders from the North of France at St Quentin-en-Tourmont in March, and another helped on the staff of the annual briefing weekend for Leaders of groups going abroad.

Germany

The BDP, the open Association, which now includes boys in its membership, held a large Camp at their national centre, Immenhausen, near Kassel. The 400 campers came from Germany, Switzerland and the UK, as well as Canadian, American and other NATO Forces' children. The organisation was generally considered excellent and the wide choice of activities included folk and modern dancing, hot-air ballooning, Indian bead work, macrame, photography and ball games.

Guyana

Golden Jubilee celebrations provided an opportunity for Guyana Girl Guides to hold their first International Camp. A group representing most parts of the UK attended, under the leadership of Miss Margaret King, of Lanarkshire.

Iceland

The Scout and Guide Jamboree was held at the Training Centre at Ulfjoysvatn on a lovely site overlooking a lake. Ten Rangers from throughout the UK, with Miss Jenny Price, of Lancashire South as Leader, represented the GGA. The programme included a conservation project, and a 24-hour hike following a Viking track.

Netherlands

Eradicating trees called Bird Cherries was only one of the activities at the Work Camp organised by Scouting Nederland at Ommen, though the others were less strenuous and included sight-seeing.

The campers were Welsh, Swiss, German, French, Canadian and Dutch, plus staff members. This small International group was an ideal setting for getting to know people, and following as it did a week staying with a member of the Netherlands International Committee, this project could justifiably be described as one of the most interesting and educational events of the year.

Anloo, in the province of Drenthe, near Groningen, was the site of a Camp attended by four handicapped Guides and three helpers from the Midlands. Travelling, in particular crossing Amsterdam, proved difficult and tiring, but good weather and an enjoyable programme compensated for this.





Guides, held International Camps this year. The latter was held at Leikvinnar in the grounds of the Association's Training Centre. Forty-four Guides of five nationalities took part. The programme was interesting but strenuous, and the need for participants to be really fit and well-equipped for this type of Camp was again obvious.

The KFUK Camp at Seljord was very different in that 3,600 were present. Bible studies, traditionally part of the Programme in a KFUK Camp, started each day; and the wide variety of activities and beautiful weather combined to make this an unforgettable experience.

Our Chalei

The special Music and Song Session had representatives from 12 countries, including three from the UK. The programme was planned so that everyone was able to take a full part in the sight-seeing excursions as well as the music sessions.

Sangam

A surprising number of applications were received for the 'Know India' session from 24th January to 12th February. Six Guiders from different parts of the country were eventually selected.

Four exciting days were spent in Delhi, then on to Bombay by air and then train to Poona and 12 days at Sangam. Most of the time was taken up with sessions on India; customs, handicrafts, caste and social system and festivals, etc.

Sierra Leone

'We are receiving such happiness, through meeting people and partaking in their activities,' wrote Rosemary Speakman, a Sheffield Guider, who with two Rangers spent a fortnight in Sierra Leone in April. They took part in discussions on Guiding, gave service in a Cheshire Home for handicapped children, a health clinic and an old peoples' home.

Other quotes from the reports tell their own story:

'Cheshire Homes, the girls and boys were physically handicapped and moved around on knees and bottoms. They were so happy their handicap was soon forgotten'. . . 'The Health Clinic. . . Mothers carried children on their backs strapped with a length of material. . . There is a large infant mortality rate'. . . 'while we were there we saw a child being born. It really made our day. The mother was my age (22) and already this child was her fourth.'

Sweden

This year parties of ten from Anglia, the Midlands, North West England and Ulster were at three different Camps at the invitation of the Swedish Covenant Youth Association (SMU), the Swedish Scouts and Guides (Svenska Scoutförbundet) and the Temperance Association (NSF). The latter was a sailing Camp held on the island of Vassaro.

The integration of boys and girls in all Swedish Scouting activities is now completely accepted. This means that Camp programmes tend to be physically tough and include much pioneering, hiking and sport. Far from presenting a picture of permissiveness, the strong spiritual commitment of these associations, and the considerable amount of time given to worship and Bible study, has received much comment in this year's reports.

Switzerland

Anne McCrae and Alysoun Paterson of Ross-shire camped with Guides from the Mannedorf-Urtikon-Oetwil district. For a first journey abroad on their own, it was relatively without incident, and they enjoyed the experience of different camping methods and a strenuous programme.

A small group under the leadership of Miss Susan Bunting, Wiltshire, joined a Camp at Oberwald.

Another Camp was held at the National Training Centre at Cauco. Two Rangers had an interesting time taking part in a project, discovering how the inhabitants of the valley had lived in times gone by.

Trinidad and Tobago

Another Commonwealth country celebrating its Diamond Jubilee of Guiding this year, Trinidad and Tobago held a Camp in April. Fifteen other countries were represented and a total of 350 were in Camp at Tobago. New experiences abounded. Sleeping tents made of bamboo and palm leaves, with polythene sheeting for a roof; flying fish for lunch and marching to a calypso band.

USA

A special project sponsored by the Mid-Island Council of Girl

Scouts, entitled 'Women in Action', was attended by Judith Weinberg of Middlesex East. At the conference she learnt about the careers open to women in the United States, and about the running of the American Government.

Conferences and Gatherings for Adult Leaders

Perhaps the most important adult conference of the year took place in Reykjavik, Iceland from 31st August to 7th September. Here, representatives of 23 countries, 67 Guide delegates and 88 Scout delegates, met for the first joint European Scout and Guide Conference.

The main theme, 'How does European Guiding and Scouting respond to the most urgent needs of European youth?' was presented by Ulla Berglin of Sweden. In discussing the theme it was found that the needs of the young in every European country were almost the same, and this discovery did much to bring the participants together.

The Scout and Guide European Committees had separate sessions, and it was decided by the Scout section to alter their cycle of conferences, in order that the next and future European Conference could be held jointly with the Girl Guide representatives. The next conference will take place in Killarney, Ireland, in 1977.

Earlier in the year the second and third gathering for Young Leaders, the German-speaking and French-speaking seminars, took place in Bonn and Florence respectively.

Another conference organised by the Scout and Guide European Committees was held at the European Youth Centre of the Council of Europe at Strasbourg. The theme was the role of Guiding and Scouting in European Migration.

The bi-annual conference organised by the Guide Promise and Law, and the Scout Duty to God conferences took place this year near Baarn, in the Netherlands. The joint gathering adopted the name, Christian Conference for Guiding and Scouting, for the purpose of this year's conference. The following extract of the report, written by Captain Donald Woodhouse, British Scout Representative on the Planning Committee, summarises other accounts of this Conference:

The theme of peace was not a pious exercise but was quickly related to conflict and those delegates who remembered the tensions of Denmark in 1970 and the questions engendered in England two years ago, saw the present theme and experience as a continuation of very important studies and of ongoing desires for a Law and Promise to be relevant to the contemporary world.

The European Scout Training Symposium was held at Turin, Italy, from the 12th - 16th June. Miss Mary Ramsay represented the UK Guiding and was one of the few female participants.



British Guides in Foreign Countries

The appointment of Miss Marjorie Emsley, a full-time trainer, 'with special responsibilities for BGIFC' has proved a very happy solution to many people's problems. Although her help is of necessity often restricted to letters, it is warmly appreciated by Guiders in many parts of the world.

We are happy to report that the number of Units in the Arabian Gulf continues to increase. We welcome Mrs Workman as new Commissioner for British Guides in Bahrain and Mrs Marsh as Commissioner for British Guides in Kuwait.

Nearer home Mrs Stenton has become the new District Commissioner at AFCENT, Netherlands, and Mrs Rogers, District Commissioner at SHAPE, Belgium.

The overall census figures have risen slightly on last year's totals, and the 1974 figures for BGIFC Brownies, Guides and Rangers in different parts of Germany.

No praise is too high for the BGIFC Guiders, their approach and enthusiasm, often when they are new to Guiding, are a lesson to us all. Standards are high, and children are getting the best out of every activity. The support they get from both Army and RAF is much appreciated, and at the same time perhaps indicative of the wonderful work that is being done.

Mary Birbeck

International Commissioner



Paddling their own Canoe

THE 4th Aughton Ranger Guides have been in existence for some time, but with a shortage of Leaders they have had several ups and downs. The Unit has now picked up to 14 regular members, with two Leaders. A shortage of funds soon became apparent so fund raising became inevitable.

CHRISTMAS CROSSWORD

Both Guiders and Rangers sent in entries for our Christmas Crossword, so we decided to give two prizes, one to each section. The winners are:

Miss E Penhaligon, Hunthay Dairy, Axminster, Devon. Axminster Division Ranger Guide Unit.

Mrs O Swindell, 52 Pennine Avenue, Riddings, Derbyshire. 1st Riddings (Guides & Brownies).

Here are the answers:

Clues Across:

1. Diamond
5. Attend
10. Rose
11. One
12. Poker
14. Peat
15. Easy
16. Earth
17. Sewn
18. Style
19. Epee
20. Newt
22. Ill
25. Leap
27. Pry
29. Ewe
31. Other
34. Ass
36. Age
37. Pint
38. Ace

40. Spreads

42. Ado
43. Ripe
44. Egg
46. Steel
48. Stun
51. Inventor
52. Stampede
53. Yen

Clues Down:

1. Deposition
2. Askew
3. Oars
4. Dry
5. Asp
6. Tee
7. Eaten
8. Doorstep
9. Bethlehem
13. Ean

21. Way

23. Leech
24. Law
26. Peer
28. Ringing
30. Flat
31. Ogre
32. Tee
33. End
35. Sad
36. Apple
39. Cos
40. Sieve
41. Son
42. Aria
43. Rend
44. Eel
45. Gas
47. Tie
48. Sty
49. Toe
50. Urn

Books on Wheels

Since 1962, the Women's Royal Voluntary Service has run a Books On Wheels Service for the Housebound. There is a constant demand for reading matter from people who are confined to the house due to infirmity, illness or physical handicap, and the WRVS, working in conjunction with Regional and County Libraries, employs voluntary helpers to meet this demand. They take books round to their 'customers', and time is always allowed for a friendly chat.

However, the WRVS is anxious to introduce the Books On Wheels Service into new areas throughout the country, and to attract new volunteers who wish to do some kind of community work. To publicise the scheme, they have released a film called *Books On Wheels*, showing the work involved, and the need for expansion. The 16mm colour film, which runs for sixteen minutes, was shot in Nottinghamshire, where the service first started, and where, through close co-operation with the County Library, the WRVS is now supplying over seven hundred housebound readers. The film is

available, at no cost, from all WRVS Regional Offices; if you would like further information on this or other WRVS films, or about the organisation itself, your local Regional Office will be only too willing to help. If any member of the Movement is interested in helping with the Books On Wheels scheme, they, too, should apply to a Regional Office.



RANGERS

A Different Kind of Challenge

MY TWIN SISTER and I are Lone Guides, and we finished the syllabus for our Queen's Guide Award in May. We had thought of giving up Guiding as our Lone Guider had retired, but we saw the Ranger Page in *Guider*, and this made us think again. There was an advertisement from the Youth Service Officer for a 'Girls Only' sailing course on the Baltic, so we applied and were lucky enough to get in. So did Christine Burrage, from Bielefeld.

We had all been Guides and were all determined to take this as a Pre-Investiture Challenge. We had met last summer at the 'Dimmer See' where Julie and I took our 'C' helm, sailing a Bo'sun Dinghy and also passed our Boatswain Badge.

Monday 26th August 1974

Christine's parents collected us from Lübbecke and drove us to Kiel. It took four hours and we arrived at 1.30 pm. Bob Gallagher, the YSO, arrived and we stowed our kit bags on *Chandoor II*, which was a six berth, 3 ton cruiser.

We had fine weather and a fairly light breeze, so we decided to sail across to Kiel Olympic Harbour, which is a large place full of buildings, cafes and even an indoor swimming pool with a diving board and a glass roof with a gallery above. There were many boats of all shapes and sizes which made the harbour colourful and worth seeing.

We found that the ship was easier to rig than the Bo'sun. I took the helm, and the boat was not as heavy as I had expected, responding beautifully to the helm. We returned to Kiel and spent the night there.

Tuesday 27th August

We got up earlier than we had planned as a nice wind had sprung

up. We were going to sail to Fåborg in Denmark. Firstly, we headed for the Isle of Fynn; I was at the helm, but we changed around to give everyone a try. About an hour and a half later we found ourselves in the middle of German Naval manoeuvres — subs, minesweepers, aircraft carriers, torpedo boats, everything. A German minesweeper actually buzzed us, which was most unusual.

Once for about an hour I had to steer by compass, which is very difficult. Then at last we could see land! Looking through Mr Gallagher's binoculars we could make out fields and cows, and then we could see our harbour and a building beyond which turned out to be a slaughter house.

After supper, Army Compound rations of goulash and instant potato mix, we had a quick 'recce' round the harbour and eventually went to bed, our feet aching from all the walking.

Wednesday 28th August

We had fresh rolls, milk and cornflakes for breakfast, which was a change from the Compo-rations! After that we went to explore Fåborg, which is a fairly large harbour town, full of shops and people. We got back late for lunch, but luckily Mr Gallagher had started the salad. We decided to return to Kiel at 1 o'clock, and so after lunch we hoisted up the jib and mainsail and set sail for Kiel. I started helming, but after having a sea-sickness pill I fell asleep over the helm, and I was carried down to my berth where Christine, also suffering from the pill's after effects, was already sleeping. Julie then took over at the helm; the wind dropped and twelve hours later Julie nearly rammed Kiel light-house! By then I had woken up, and we re-entered the harbour by engine and sail. We arrived safely; very tired, but it was an exhilarating experience.

Thursday 29th August

We woke up to glorious sunshine, and after breakfast we cleaned the yacht, so that it was 'ship shape and Bristol fashion' for the group of boys who were taking over after lunch. We left reluctantly, and drove back to Lübbecke where Christine stayed overnight before going back to Bielefeld.

Johanna Goodson
(ex 1st Herts Lone Guide Co)



Month's Good Buy

This set of long stemmed glasses and matching carafe can be bought in any large branch of Woolworth. The set, called *Bistro*, costs £1.99.

Young Leaders' Training Weekend

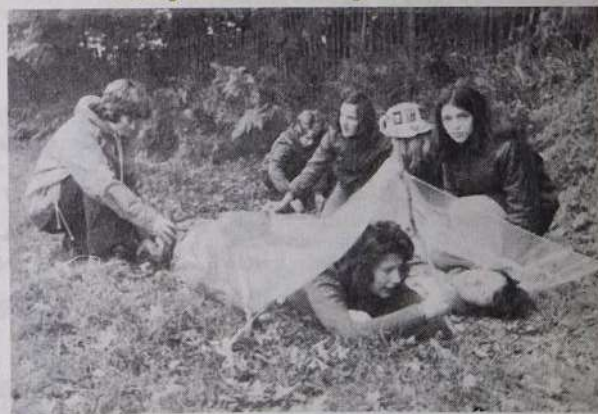
About 18 Young Leaders attended a training weekend run by the Surrey County Young Leaders' Adviser, Mrs F Bradshaw, the Divisional Camp Adviser, Mrs E Brewer, and a Guide Trainer, Mrs L Day.

The weekend included walks, writing up the discoveries, making various pieces of Camp equipment and practising a number of party games which they could teach, and proved popular and successful.

Young Leaders test their home-made washing-up bowl to see if it will hold water (below).

Knowing how to pitch a tent (below right) is important before you teach the skill.

Being able to build a waterproof shelter with what you carry could save a life, and these Young Leaders can be seen (top right) trying theirs for size.



photos:
Mrs A
Francis

MAINLY FOR RANGERS

Pancakes Neapolitan

Pancakes: 4 oz flour; $\frac{1}{4}$ level tsp salt; 1 egg; $\frac{1}{2}$ pint milk; oil for frying.

Filling: 1 oz butter; $\frac{1}{4}$ tbsp olive oil; 1 lb onions, peeled and sliced; 1 can tomatoes (14 oz); 1 can anchovies, chopped; 3 tbsps tomato puree; 8 stuffed olives, sliced; 1 chicken stock cube; 1 level tbsp basil; salt and ground pepper.



Flour Advisory Bureau

Garnish: 1 tomato, sliced; 8 stuffed olives.

Pancakes: Sift together flour and salt. Add egg, then gradually beat in half the milk to make smooth batter. Beat in rest of milk and pour batter into a jug. Lightly oil 7in frying pan and heat until hot. Pour in enough batter to cover bottom of pan, tilting pan so that batter is evenly coated. Cook until underside is lightly brown, turn and cook other side. Slip out onto warm plate, cover and keep hot. Repeat until all batter is used to make 8 pancakes in all.

Filling: Melt butter and oil in a pan. Add onions and cook gently for 5 minutes or until fat is absorbed. Add tomatoes, anchovies, tomato puree, olives, stock cube and seasoning. Cover and cook very slowly for 20 minutes, stirring occasionally. Divide mixture between 8 pancakes. Roll pancakes up and place in ovenproof dish. Cover with foil and heat through in oven at 375 degrees F/Mark 5 for about 15 minutes if pancakes are warm, or 25 minutes if cold. Decorate with tomato and stuffed olives.

Italian Baked Cod Cutlets

4 cod cutlets
1 large (15 oz) can tomatoes
2 tbsps clear honey



Paul Kemp

Juice of small lemon
1 tbsp tomato puree or ketchup
1 sliced onion
1 green pepper, cut in rings
1 bayleaf
 $\frac{1}{4}$ tbsp dried oregano

Put cutlets in a lightly greased ovenproof dish. Pour juice from tomatoes into a bowl and mix together with honey, lemon juice, tomato puree and oregano. Place sliced onion, pepper rings and tomatoes over fish and pour on sauce, adding crumbled bayleaf. Cover and bake at 375 degrees F/Mark 5 for 30 minutes.

On this page are recipes from around the world to help you plan a Thinking Day meal.

Beef and Mushroom Stroganoff

1 lb rump or frying steak cut into strips $\frac{1}{4}$ in wide
4 tbsps seasoned flour
2 medium onions
4 tbsps olive oil
15 oz can cream of mushroom soup
 $\frac{1}{4}$ lb button mushrooms, washed and sliced
3 tbsps tomato puree
Freshly ground black pepper
 $\frac{1}{4}$ tsp paprika pepper
Juice of 1 lemon

Toss strips of meat in seasoned flour. Finely chop onions and together with meat fry in oil until meat is browned. Add can of mushroom soup and stir well. Add mushrooms, tomato puree and season to taste with peppers and lemon juice. Bring to boil and simmer for 5 minutes, and serve with savoury rice, peas and carrots.



Honey Raisin Brittle

3 cups puffed rice
3 cups seedless raisins
1 cup sugar
 $\frac{1}{2}$ cup water
salt
2 tbsp butter or margarine
 $\frac{1}{2}$ cup honey

Heat the puffed rice in the oven until the kernels will crush between the fingers. Warm the raisins, a mixing bowl and buttered tin. Boil the sugar, honey and water until a sample of the mixture forms a hard ball when tested in cold water. Add salt and butter. When the mixture comes to the boil again, remove from the fire and pour over raisins and puffed rice in the warm bowl. Mix thoroughly and pour into the buttered tin. Allow to harden, loosen at edges, turn out and cut into strips.

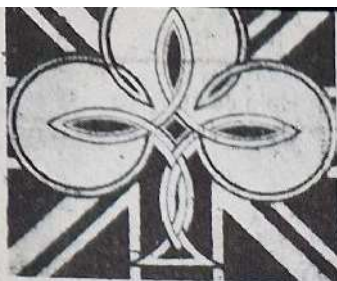
RECIPES



Dutch Apple Cake

10 oz flour
1 oz caster sugar
3 tbsps baking powder
 $\frac{1}{2}$ tsp salt
4 oz butter
2 oz grated cheese
6 fluid oz milk (approx)
3 large eating apples
2 oz brown sugar
 $\frac{1}{4}$ level tsp cinnamon
Melted butter

Sift flour, caster sugar, baking powder and salt together. Rub in butter and then mix in cheese. Add enough milk to make a soft, but not sticky dough. Turn out on floured board and knead lightly. Pat out dough thinly in ungreased swiss roll tin, approx 10in x 14in. Pare and core apples and slice thinly. Arrange in rows across dough with a small space between rows. Sprinkle on brown sugar and cinnamon mixed together. Brush over with melted butter. Bake in pre-heated oven at 425 degrees F/Mark 6 for 25 minutes until golden brown.



Background to World Conference

The University of Sussex

'Thinking Day is a time for rejoicing, as we realise that we each have our own part to play in this vast World Fellowship. Each of us receives kindly thoughts from all our friends far afield, and at the same time we are adding our own share of Goodwill and Friendship in the world itself, as we carry out our many Guiding activities, and are governed by our Promise and our Laws.

With the holding of the World Conference in Sussex this summer, some of you may meet some of those who will be at the receiving end of your thought waves on 22nd February.

My loving thoughts will be with you all as you take your share in all that Guiding means and stands for, and how proud I am of all your achievements and successful work of all kinds.'

Olave Baden-Powell
World Chief Guide

The above is part of the World Chief Guide's Thinking Day Message to Guides in which she sends the Association her thoughts on the occasion of the World Conference, which as you know will be held at Sussex University. This modern University is described below.

*'The Downs are sheep, the Weald is corn,
You be glad you are Sussex Born!'*

So wrote Rudyard Kipling, one of the numerous English poets who gained their inspiration from the Sussex countryside. Just as the Downs and the Weald are part and parcel of our County of Sussex, so our University has become an integral part of our heritage.

Although the establishment of a university in Brighton had been thought of for some years before the First World War, it was not until after the Second World War that the combined efforts of the Local Authorities of East and West Sussex and Brighton, Eastbourne and Hastings, with the support of various civic, religious and academic bodies, succeeded in persuading the University Grants Committee to allocate sufficient funds to enable a start to be made on the necessary building work.

The University of Sussex thus became the first of the new English universities created in the 1960s, and the first students were enrolled in 1961.

A campus site of 200 acres about four miles from the centre of Brighton in Stanmer Park was designated for this purpose by the Brighton Local Authority and Sir Basil Spence, the architect of the new Coventry Cathedral, was commissioned to produce a master plan for the buildings. His influence can be seen, among other things, in the barrel roof structures which provide a characteristic theme throughout all the main buildings.

The campus is undulating, well wooded parkland, and provides an ideal setting for the complex of university buildings.

In addition to buildings for teaching, for research and allied activities, there are five Halls of Residence known as Park Houses and also a Park Village. There are buildings which provide for the social life of the university and for the Health Service, a large refectory and dining hall and

administrative buildings. One building of special interest is the uniquely designed Meeting House where, on the upper floor, Christian worship can be enjoyed, and on the ground floor students can meet and free ranging discussions take place.

The aim of all concerned in the creation of the University has been to develop a place where people, from the youngest undergraduate to the oldest professor, learn together. It is a place where learning consists not only of the development of the academic and intellectual process, but also of the development of the complete individual. Here an undergraduate is expected to devote time, not only to academic studies, but also to learning how to live.

Students are expected to learn how to manage their own financial affairs, and to take a responsible attitude to their social relationships. Self discipline, with regard to the allocation of time between academic studies and other activities, is an important part of learning how to live. There are ample facilities for sport, and the Gardner Centre for the Arts provides a focal point for the study of the arts, including amateur dramatics and music. Opportunities for the practice of community service and many other interests are readily available.

The University has about 4,000 students and they live both on the university site and in guest houses and flats in the seaside towns of Brighton and Hove. There are excellent transport services to and from Brighton, and these are used extensively by the students.

From the beginning, those who planned the principles on which the University should develop, aimed at creating an institution which would approach the learning process from a new angle, and move away from the traditional idea of rigid subject boundaries. For this reason, students are required to relate their special subject to the broader background of knowledge generally.

The University of Sussex is still developing, and each year the curriculum is enlarged by adding new subjects for study, and new buildings are planned to accommodate these developments.

The new approach to learning and the aims originally set by those who planned the University are, however, always being maintained and the University, as a consequence, goes from strength to strength.

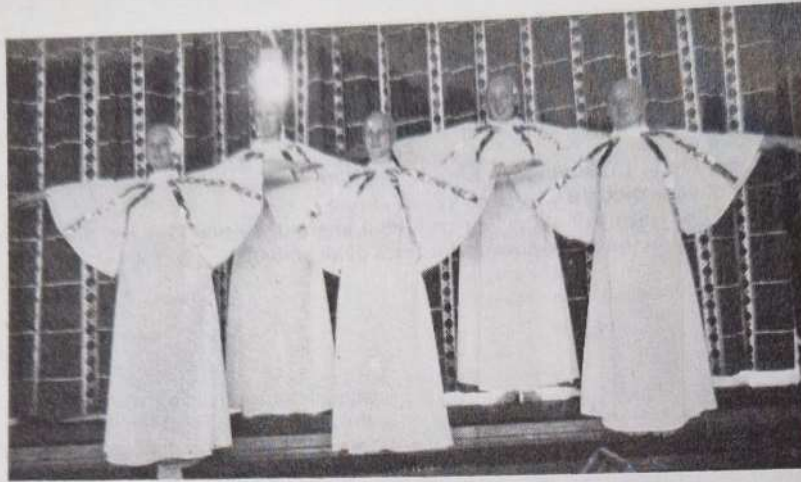


The Gardner Centre where the World Conference delegates will confer

YOU'RE ONLY

YO-YO

YOUNG ONCE



You're Only Young Once or *YO-YO* as it is known, is a show put on every two years by the Bexleyheath Scouts and Guides. This original and lively show was produced by Peter Forbes and his assistant Peter Silver. The orchestra of young people gave an excellent performance under the baton of John Bogg, and the costumes were all handmade under the guidance of Valerie Montgomery. The highlight of the show was the group's version of *Jesus Christ Superstar* (above, below, left and right), and even the 'Angels' skullcaps (above) were hand crocheted. Other items included a series of songs by the 'girls' with a money theme (bottom left) and *Cinderella* (bottom right).





Launching the monthly Today's Guide

This interesting report, written by Guide Christine Longland, was first printed in Guiding in Wiltshire. We think that Christine's reactions to her visit to CHQ will interest readers of Guider. — Editor.

Christine looks
at the new *Today's
Guide* at the
party

Ken Rush

CAMP was over and *Today's Guide* presented a challenge to Guides all over the country. It was to write a letter saying in not more than 100 words why we liked the magazine. I sat down that evening and wrote it and after starting time and time again it was written to my satisfaction.

The next week I went to stay with a friend and on the Wednesday Mummy telephoned and told me the good news. I was one of the seven winners and would I please reply saying whether or not I could go to Headquarters, a party was being given to launch a new monthly magazine for Guides. 9 am found me at the table hurriedly writing my letter of acceptance and then rushing off to catch the post.

The following Wednesday I was up very early to get ready to go to London. I was going by train and that added to the excitement.

We had to wear correct full uniform (because members of the press were to be there) and be at Headquarters not later than 11 am.

When I arrived I went up to Reception and was taken into the office to have a quick uniform check. The receptionist was quickly satisfied and I was taken back to the reception room to meet the other six Guides as they arrived. We were soon all complete and Coral Smith (sub-editor) introduced herself to us. A few minutes later we met Mrs Jean Rush (Editor) who took us to the Council Chamber where we had many photographs taken, some for the front cover of the new magazine and others for the *Guider*. As we had all left home early it was very difficult to

concentrate for our eyes kept straying to the two tables laden with food, but the cameras continued to flash for apparently they wanted individual photographs for our local newspapers too.

When the photographs were completed other guests began to arrive and, after a few minutes, the room was crowded.

Up shot Mrs Rush's hand for silence so the Guides followed suit, shortly followed by the ex-Guide guests (non-Guides looked bewildered!) this was so that Mrs Parker Bowles (Chief Commissioner) could say a few words about the new magazine and tell the guests why there were seven Guides in the room. Mrs Rush then announced that it was time to eat, so after making sure everyone had a plate we tucked in.

Lunch was over and coffee was being served and everyone was chattering again. The Guides were given their prizes of New World Cookery Books and printed cotton T-shirts, as New World sponsored the competition.

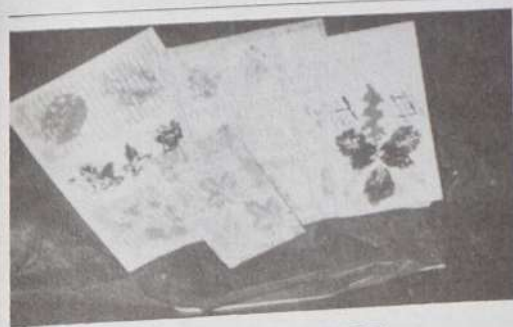
We mingled with all the guests, chattering here and there. I was very pleased to have a talk to Mrs Parker Bowles and have now her autograph on a Diamond Jubilee Serviette along with Mrs Joyce Price's, who was the Australian Chief Commissioner and is now a member of the World Committee.

Soon the guests gradually dispersed and our parents came to collect us, so we all said our goodbyes and thank-yous.

I popped up to the Library to see Lady Betty who was helping there, how nice it was to see a familiar face.

And so my prize-winning day was over. It was a marvellous experience which I thoroughly enjoyed. I am now looking forward to the new *Today's Guide*, in the making of which I feel that I have played a small part if only having my photograph on the cover.

CHRISTINE LONGLAND, P S Robin Patrol 1st Alderbury Coy.



2nd PRIZE

16th Ilkeston (St John's) Pack, Derbyshire,
62 ' Diamonds '

The following Packs gained 20 or more Diamonds, and have therefore been awarded a Certificate:

1st Leagrave Pack, Bedfordshire
1st Woodley Pack, Stockport

20th North East (Moston Methodist)
Pack, Manchester
1st Allington (St Nicholas) Pack, Kent Weald
1st Wethersfield Pack, NE Essex
1st Blendon Pack, Greater London, Kent
1st Newbold-on-Avon, Warwickshire

BROWNIE DIAMOND JUBILEE COMPETITIONS FINAL RESULTS

1st PRIZE

3rd Stamford East Pack, Rutland,
111 ' Diamonds '

3rd PRIZE

1st Rustington Pack, Sussex,
42 ' Diamonds '

1st Innsworth (RAF) Pack, Gloucestershire
6th Chandlers Ford Pack, Hampshire West
2nd Kegworth Pack, Leicestershire
12th Chester (St Mark's) Pack, Cheshire Forest
19th Ilkeston (St John's) Pack, Derbyshire
2nd Allington (St Nicholas) Pack, Kent Weald

**BOOK NOW for LESS THAN HALF PRICE SEATS
SPECIAL CONCESSION**

FOR ALL GUIDES, THEIR FAMILIES AND FRIENDS TO SEE

Those fabulous basketball wizards



**Warlem
Globetrotters**



EMPIRE POOL, WEMBLEY

MONDAY MAY 5 to SATURDAY MAY 17 (at 7.45 pm (inc Sunday)

CONCESSION OFFER — Tickets priced at £1.70p for 70p each

for performances listed on Booking Form below

Full price	£2.40	£2.00	£1.70	£1.20	70p
Party rate	£2.20	£1.90	£1.60	£1.10	60p
Children (not Sat)	£1.20	£1.00	85p	60p	35p

BOOKINGS FOR THIS SPECIAL CONCESSION (AT THE PERFORMANCES NOTED) WILL ONLY BE ACCEPTED ON THE DETACHABLE FORM BELOW

CASH WITH ORDER

BOOKING REF

**SPECIAL CONCESSION
GIRL GUIDES**

Please send Tickets at 70p each (normal price £1.70)
for one of the performances listed below, marked 1, 2, 3, 4 in order of preference

MON. MAY 5 at 7.45 pm		MON. MAY 12 at 7.45 pm	
TUES. MAY 6 at 7.45 pm		TUES. MAY 13 at 7.45 pm	
WED. MAY 7 at 7.45 pm		WED. MAY 14 at 7.45 pm	
		THUR. MAY 15 at 7.45 pm	

Name.....

Address.....

UNIT TITLE

Tel No.....

I enclose CHEQUE/P.O. to the value of £

p made payable to WEMBLEY STADIUM LTD and crossed

LETTERS

Swiss Holiday

My Company has also been to Adelboden this year, travelling with Camptours and I second all that Mrs Lawes has said about the firm, but my point in writing was to tell you how sensible we found the new Guide trousers and the cardigan with Trefoil (pattern by Paton and Baldwin) for travel.

On leaving Stratford-upon-Avon for Adelboden we had twenty-four hours of journey ahead of us. Our Guides looked smart all dressed alike and on arrival they still looked as neat and tidy as when they had started. We found the trousers warm on the Dover/Ostend ferry and most useful on outings up mountains and by chair lift.

We had with us camp dresses and these were worn for church, visits to town and the never-to-be-forgotten visit to 'Our Chalet'.

May I congratulate the Girl Guides Association on giving the Guides a really useful outfit which I'm sure will be worn on many hikes and for many outdoor activities in the future.

P J Penny (Mrs)

1st Stratford-upon-Avon Coy

Knitting instructions for the cardigan with Trefoil were published in 26th October, 1973 issue of Today's Guide. Copies are still available from Periodicals Dept, CHQ.

Editor

Knots vs Semaphore

Yes, I agree that knots can be very useful and perhaps more useful than semaphore. However, semaphore can be great fun and introduces Brownies to a subject quite different from any they might do at school.

The Brownie Programme gives ample scope for any activity to be introduced, provided it is legal! There are several games and activities that can be included in a meeting which can act as a stimulus and starting off point for Brownies to learn about knots, or about any other skill which a Guider would like to share with her Brownie Pack.

The ideas in the Brownie

Guide Handbook are intended to act as guide lines and are suggestions only; Guiders are quite free to decide, together with the Brownies, what will be undertaken for each challenge on the Journeys. The particular challenge need not be one mentioned in the Handbook. Ventures offer many opportunities for learning skills.

In fact, knots are mentioned on page 84, Brownies Help at Home, and pages 106 - 108 give an illustration of how to tie string round a parcel.

No doubt there are Guiders who feel strongly that other subjects should be part of the programme, but I do hope they are not holding back passing on skills and interests to the Brownies just because there is no mention of the particular subject in the Handbook. If they are, then Trainers throughout the country will have cause for concern, as it would appear that one of the principles of the Programme has not been sufficiently emphasised to these Guiders who, because of this lack of communication, may feel that they are wasting some of their talents and because of this become to feel dissatisfied with the Programme which has so much to offer.

Mrs M A Griffin
Wirral, Merseyside

Cobbler Badge

A few weeks ago one of our Guiders asked for the syllabus for the Cobbler Badge. On looking at the amendments it tells me to write to HQ. This I did, only to find that the syllabus is exactly the same as printed in the *Guide Handbook*. Can anyone tell me why I had to waste time and money writing for something which I already knew? Most Guiders are quite busy people, with families to look after, so why give them extra work that is not necessary.

Mrs Gwen Morris,
Asst Guider, 1st Boxmoor Coy

We are sorry that the booklet of Amendments did not make it clear that the Cobbler Badge syllabus was

unchanged but that the alteration lay in the fact that it is no longer printed in the Second Edition of the Handbook, and the owners of that edition can only obtain the syllabus on application.
Programme Dept.

Braille Service

I am connected with a braille service which I would like to tell readers of *Guider* about. It is available for letters or articles for any blind person; letters in either direction (to or from the blind person, if she can use a braille machine). We can write on her braille paper a 'transcription' of what she brailles, thus securing a degree of confidentiality in her correspondence. We do not charge unless we use a total of more than 40 sheets in any calendar year. If more than 40, the charge is only 25p per 100 sheets. I usually braille letters myself for despatch within 48 hours of receipt, as I feel they ought to get top priority. Other tasks go on our 'waiting list', and it may be two months or more before transcribers are free to tackle them.

Lt Col Micklam
*Whitchurch Lodge,
Henstridge
Templecombe,
Somerset*

Opinions expressed in these columns are not necessarily those of the Editor.

Armfuls of Badges

Audrey Brayne, January *Guider*, invites views about getting badges: I grasp my pen with zeal. Audrey, I firmly believe that you are right not to regard armfuls of badges as the mark of success of a Guide Unit, nor indeed of an individual Guide. Interest Badges are awarded in recognition of effort (the Guide's not ours) and if we, the Guiders, organise all the teaching,

testing, etc not only have we taken from the girl a large number of the areas in which she could have 'made effort', but if the badge work cuts across the Patrols and what they would otherwise be engaged in, then it is positively counter-productive. By all means let us encourage our Guiders to personal or group endeavour over badges, but let us not rob them of opportunities for using their initiative, nor the opportunities for growth in human relationships afforded by working in a Patrol.

How dull it would be if Guide meetings were merely for badge work. B-P thought they should be fun and so do I. The other things your Unit does 'with a good deal of amusement' sound much more like REAL Guiding, so long as you are doing it in Patrols. Guiders are not meant to 'be organised' but to organise themselves, then they have so many more opportunities to make progress. A full programme, worked in Patrols, planned by the P.L. Council and rightly steered by the Guiders will naturally involve personal development of the type which the Eight Point Award covers. It is the important badge.

So I hope that you will stand firm against the 'newcomers in your area' who see badge collecting as Guiding. Hold fast to a full, fun-filled, spontaneous (though not unplanned, I wonder what you mean by 'off the cuff'?) I hope you have a programme book and don't just turn up at meetings and see what happens) and not badge ridden programme.

Our aim should be to acquire Eight Point Badges awarded by a critical yet understanding P.L. Council in recognition of a years 'Progress in the carrying-out of her Promise' (*Guider's Handbook* p 61).

Moira Johnson
*1st Cheltenham Guide Unit,
Gloucestershire.*



★ SAVE UP TO 33 1/2%

On Manufacturers' Recommended Prices

TENTS (La Prairie - Hungenries - Ma Cabane - Return, etc.) A.B.C. CARAVAN AWANINGS, GAS STOVES, LUGGERS - Duffley - S.M.S. - Weekend - Grillo-gast LI-LO AIR MATTRESSES, SLEEPING BAGS, ICE-BOXES, etc.

MARQUEES

READY TO ERECT

from only £197.50

COMPLETE WITH ACCESSORIES SEE LIST



BRITISH ARMY UNIVERSAL MARQUEES

Fantastic offer of Marquees as supplied to the forces. Previously used but in excellent condition. Made to the highest specifications in Genuine Ex Govt. Tentage.

Example: 30ft. x 20ft. includes:-
2 Rivet Ends - One Roof Section - Four 27ft. walls - Eight 35ft. bracing lines - Two 35ft. weather lines - Pin Valise - Maul - 82 pegs - One 9ft. Ridge Pole (in 1 section) - Two 12ft. upright Poles (in 2 sections) - 32 Wall Poles - Eight 30in. stakes - 1 Large Valise.

Sizes approx:
20ft. x 20ft. £197.50
30ft. x 20ft. £275.00

All Marquees 12ft. high - Side Walls 5ft. 6in.
Carr. £5.50 per Marquee

EXTRA MARQUEE SECTIONS £75

Marquees can be extended in 5ft. sections. Genuine Ex Govt. tentage (previously used but in excellent condition) each section comprises: One 9ft. centre section - One 9ft. Ridge Pole - One 12ft. Upright Pole - 2 Wall sections - Two 30in. stakes - 6 side wall poles - 18 pegs - 1 Double weather line - 2 bracing lines.

'JUMBO' 3-WAY SLEEPING BAG



£4.25

Carr. 30p
Also available:
Blue label 30 x 40 £3.95
Carr. 30p
Red label 26 x 36 £3.75
Carr. 30p

LUXURY BAG OR BEAUTIFUL DOUBLE BED QUILT

★ 36 oz. Gold Label 'Terylene' filled (maximum comfort, no lumps) ★ Nylon cover and lining. (Attractive extra hand wearing) ★ Jumbo Size 6ft. 3in. x 2ft. 4in. (Plenty of room for comfort) ★ Zip all round (for rapid conversion) ★ Lightweight - easy wash - quick dry. Colours: Light Blue, Dark Blue, Bottle Green, Maroon.

The 'Jumbo' is designed and produced by craftsmen using only the best materials and the most modern machinery. So soft and cosy that blankets or sheets are not necessary. The unique decorative stitching is especially attractive as well as extra strong.

USE 'JUMBO' 3 WAYS

1. Luxury bag 6ft. 3in. x 2ft. 4in. approx.
2. Open up to make a delightful bed quilt 6ft. 3in. x 4ft. 8in. approx.
3. Zip 2 bags together for a really wonderful double sleeping bag 6ft. 3in. x 4ft. 8in. approx.

Also available

44 oz. KING SIZE JUMBO
£5.25 Carr. 30p. Gold label. Terylene filled.

NYLON SLEEPING BAG INNER 95p Carr. 3p
Super soft, hand-wearing, drip-dry. Will add years of life to your sleeping bag. Double size £1.90, Carr. 18p.

4 STAR DE LUXE LIGHTWEIGHT NYLON RIDGE TENT

- ★ WATERPROOF
- ★ ROTPROOF
- ★ WINDPROOF
- ★ STORMPROOF



ONLY £9.75 Carr. 25p

WEIGHT ONLY 3lb.

Superb olive green tear resistant proofed Nylon. Beautifully styled with built-in groundsheet, zip front 4' nylon lines, metal pegs. Complete with wooden 3ft. 6in. high, 9in. walls. Sleeps 2 adults. With aluminium poles £10 carr. 25p. Aluminium ridge pole £1. Flysheet can be supplied £4.75 P/P extra comfort £1.25. P/P 15p.

14ft. RIDGE TENT EASILY CONVERTS TO A 4 ROOM CHALET

£75

Carr. £1.75 WITH FLY SHEET

The famous ARMY 160 POUNDER 14ft. long, 14ft. wide, 7ft. high 27in. walls. Superb Ex Govt. tentage - guaranteed - stormproof. Dutch lacing doorways each end, doors can be rolled up. With accessories - pegs, poles, mallet and valise. Flysheet Grade 1, 14ft. x 19ft. £22.50; Carr. £1. Unused Tent complete all accessories £97.50; Carr. £1.75. Unused Flysheet £30; Carr. £1. Unused Groundsheet, 14' x 14', extra tough rubberised canvas, eyelets all round, untearable. Weight 28lbs. £12.50 Carr. 50p. Also Tent as above 14ft. ridge x 9ft. Grade 1, £48.00 Carr. £1. Flysheet Grade 1, £22.50 Carr. £1. Unused £30 Carr. £1.

FOR HIM - FOR HER BERGEN TYPE RUCKSACK

£7.50



100% proofed Blue-Grey Cotton Canvas. Leather shoulder & straps. Carries 50lb. (packed 24in. x 20in.) Centre pouch, side pkts. 2 inner containers. FRAME MODEL 15in. £3.50 p/p 15p. LARGE FRAMELESS MODEL £2.00 p/p 15p. HIKERS MODEL SMALL £1.25 p/p 15p.

Genuine Continental 17in. Frame Model



The very latest model TOILET TENT

£7.75

carr. 25p

Easy to erect. Made to our own specifications, strong black weather-proof material, white cotton lining 6ft. front, 5ft. rear, 4ft. wide 4ft. deep. Strong front zip. With lines to each pole. Also larger Model £9.25 carr. 25p. Superb white, tear resistant, tentcloth, 6ft. front, 5ft. rear, 4ft. 6in. wide, 4ft. 6in. deep. Water, rot & storm proof. Ideal cooking or bathing Tent. All Models with Sectional Lightweight Alloy Poles, 75p extra.

Genuine British Army CAPE GROUND SHEETS

Heavy 3-ply rubberised, waterproof, untearable canvas, 6ft. x 3ft. with cape attachment. Ideal Groundsheet or waterproof protective garment. Also unused £1.25. P/P 15p.

£1.50

P/P 15p

★ Carr. & P/P charges apply UK mainland only. Extra for Channel Isles & N. Ireland, etc. Goods despatched UK only.

Open Mon Sat. Early closing Thurs. All measurements approx.

H. C. BRIGGS (CAMPING EQUIP.) LTD (G) 88 FOREST RD., WALTHAMSTOW, LONDON, E17 8JH

Tel: 01-520 2705 2 minutes from Blackhorse Rd Station - Victoria Line

WHY PAY MORE? THE SUPER TRENT

IS ONLY £8.50 p&p 25p



Beautifully styled in superb 50oz. Kingfisher Blue proofed cloth, 3-zip door, lightweight sectional upright poles. Approx. 6ft. 6in. long - 5ft. wide - 4ft. high - 18in. walls - 6lbs. approx. Lightweight sectional alloy ridge poles £1 p/p 25p. Waterproof ground sheet £1 p/p 25p. Standard flysheet £5.25 Carr. 25p. Deluxe Nylon down-to-earth flysheet - 30in. extension £7.50 Carr. 25p.

LIGHTWEIGHT BELL-END RIDGE TENT SLEEPS 4 ADULTS



ONLY £35 Carr. 75p

Complete with Inner Tent - Separate Down-to-earth Flysheet with Bell-End & Seven-in Ground Sheet

Also smaller model £22.50 Carr. 65p. Approx. 8ft. 6in. long, 4ft. 9in. wide, 4ft. 6in. high, 12in. walls, weight 15lbs.

Superbly made in tightly woven super strong canvas. Styled with 2 spacious pockets and 4in. upright mudguards. Door has 2 ventilators and 2-way zip. Flysheet has smart front canopy.

Superb Duralum 3-piece ridge and upright poles. Extra strong guy lines with rubber adjusters, alloy pegs. Size approx. 10ft. (inc. bell-end) 6ft. high, 8ft. wide, 6ft. 6in. ridge, 18in. walls. Size packed: 26in. x 14in. x 6in. Colours: Flysheet Blue, inner Tent Orange. Weight 23lb.

CHEMICAL TOILET £2.50 CARR 50p

Direct from Ministry of Health Racasan Portable Chemical Toilets

As supplied to Ministry of Health & in orig. cartons. Steel galvanised container, wooden seat & lid. Strong handle. Approx. 16in. high x 12in. x 12in. Weight 11lbs. Racasan Sanitary Fluid £1.20 per gal. Carr. 15p.

DUAL PURPOSE KIT BAGS Grade One

Tough hardwearing double texture lightweight waterproof canvas. Can be carried as kit bag or kit bag style, 35in. long, 35 in. circ. Also Unused larger model 36in. long, 45in. circ. £3 Carr. 15p.

£1.50 Carr. 15p

THOSE were the DAYS



Edinburgh Guides with the Goodwill Message for New Zealand, piped by a Boy Scout Troop along the Castle Esplanade. The message was then taken through Midlothian, East Lothian and Berwick and on to Oxford.

The first World Conference took place at St Hugh's, Oxford, in 1920 and the Chief Guide wrote in *Girl Guides' Gazette* 'it went off splendidly... and it was delightful to welcome delegates and correspondents from Belgium, Denmark, Holland, Italy, Poland, Portugal, Roumania, Russia, Serbia, Sweden, Switzerland and the United States of America.' The second World Conference was held in Cambridge in 1922, and the third and sixth at Foxlease.

Mrs Maurice Liddell, who has contributed so many amusing articles to *Guider* and edited *The Council Fire* for nearly thirty years, has gladly given us permission to re-print her '1950 Conference Diary', first published in the October, 1950. **Council Fire.**

TWM

15th July

It has begun! For months and months we have been sitting in committees and corresponding and planning. Up to this very moment the 13th World Conference seemed remote and insubstantial — a growing sheaf of papers! Familiar names on lists and in letters have turned into real live people talking a dozen different languages. (In the days to come we realise we are in for Kim's game on a grand scale!)

Evening

We all pack into the little boat which takes us down the Thames from Charing Cross to the Tower of London, where the London Guides have prepared a magnificent supper party. The Tower, with its great walls and turrets, its moat and Traitors' Gate, is indeed the toy fort of our nursery days grown suddenly to immense proportions... Now it is time for the Ceremony of the Keys, a ceremony which has taken place at precisely the same hour for nearly seven hundred years.

Sunday, 16th July

Into buses pile all the delegates (they will get used to this as time goes

on) and away for a tour of Eton, Windsor and Hampton Court. More fascinating history...

Monday, 17th July

To the Mansion House to be received by the Lord Mayor, the first citizen of London, and then into buses once more for the drive to Foxlease or to Oxford for the World Committee Session. A flurried 'organiser' says: 'I feel just like a sheep dog, but the delegates aren't a bit like sheep.' To which her friend replies: 'If someone has succeeded in spreading Guiding throughout her country she is a person of forceful personality. Would you expect this crowd to behave like sheep?'

Friday, 21st July

Bustle, bustle, bustle — chatter, chatter. We are all united once more at St Hugh's.

Sunday, 23rd July

It is grand to be one of the 150 enthusiastic, efficient, splendid people assembled at St Hugh's but it is also rather nice to be reduced to one of two invited out to lunch by one of the delightful inhabitants of Oxfordshire. It is rather nice to converse during the meal without having to shout to make sure your next-door neighbour hears the very important thing you have to say!

Thursday, 27th July

Our Aides have evidently been working into the small hours to make our uniforms worthy of today's great occasion. As we look back in the years to come at this delightful afternoon at Buckingham Palace what shall we chiefly remember? Without doubt it will be the graciousness, the dignity and the simplicity of Her Majesty, who spoke to each one of us so charmingly that even the shyest felt happy and at ease.

Friday, 28th July

Here we are again watching two teams of dancers, each perfect in its own way. 'The Father of Morris Dancing', a veteran of over eighty, plays a concertina across his knee for dance after dance. Somebody asks why the dancers wear bells strapped below the knee and 'Father' replies: 'They've been worn for two hundred

years. I had it from my father and he from his.'

Now it is the turn of the Guide team from Ulster in their saffron dresses beautifully embroidered by fellow Guides. So light of foot are they that if one could bear to shut one's eyes one would not know that a dozen healthy young women are jiggling and springing across the floor.

Saturday, 29th July

I went early to the camp-fire site. Ten thousand Guides streamed past me, walking six abreast... There was not a moment's confusion as they were shepherded to their places. Down the roped-off alleyways the delegates slowly advanced preceded by their national flags. In between the cheers the marchers could hear the high-pitched voices cry out: 'Look, that's Switzerland!' 'And there's South Africa!' 'And the good old Stars and Stripes!'

Then came the climax of the ceremony when the Guides, bearing the Scrolls of Friendship on the last lap of the long, long trail from the furthest corners of the United Kingdom, came running into the arena and handed their messages to HRH Princess Margaret, who in turn presented them to the twenty-seven delegates. But there were twenty-eight scrolls. Who is the last one for? For our own Chief Guide, of course. How the Guides cheered.

Princess Margaret cannot have remained unmoved by the tremendous reception the Guides then gave her. She said: 'I have just handed the delegates a scroll on which is written a message... It is a simple message, but a very personal one from us to you, and I speak for all the Guides of Great Britain when I say that it brings you our warmest feelings of friendship... I feel that between us all there is a deep understanding which keeps us close in spirit and purpose...'

Now the camp-fire is lit — the perfect ending to this strenuous Conference. It was good to mix with the Guides again and to think humbly and yet proudly, 'That is why we are here.'



the right tents...

Our range of Camping Equipment is specially selected from the best manufacturers in Europe – and we take pride in knowing that our merchandise is among the best in quality and price available today

Backpacker 11 Extreme



Pennine



...at the right price

7014 Pennine (illustrated)

2/3 person Hikers tent. It's chic appearance appeals to the fastidious yet it is designed to withstand the most arduous weather conditions. In two-tone Green, the Pennine has external light alloy poles, double puller zip door for ventilation control plus adjustable rear ventilator to provide a through flow of air.

Specifications: Cotton. Width: 152 cm. Length: 214 cm. Height: 127cm. Weight: 4.98 gm. Price **£31.30**

7047 Backpacker 11 Extreme (Illustrated)

Designed for two persons, made from high tenacity nylon with ultra violet inhibitors. Fly sheet is P.U. coated and inner have silicone protection which will allow vapour to permeate for absolute water proofing. With full down to earth fly sheet all round, the front bell offers a storage or cooking area. 'A' zip doors. Sewn-in groundsheet. Aluminium poles. Specifications: Colours: Blue or Green. Width at front: 137 cm tapering to 91.5 cm at rear. Length:

203 cm. Height: 122 cm at front and 76 cm at rear. Weight: 4.4 lb. Price: **£48.90**

7052 Premier

This tent has tie tape doors and comes complete with sewn in P.V.C. groundsheet and two metal uprights. This **extremely low priced tent is recommended for the beginner camper who doesn't intend to camp in rough weather conditions.**

Specifications: Width: 122 cm. Length: 198 cm. Height: 91 cm. No walls. Price: **£8.60.**

7031 Explorer

Made from 7 oz cloth. A large ridge Tent that is ideal for 5-6 girls, the tent has a four panel bell end fitted with special ventilation, front canopy over doorway, nylon zip doorway and two wall pockets. Tent comes complete with metal poles, pegs and coulene guy lines. Also guy lines for storm setting.

Specifications: Width: 190 cm. Length: 412 cm with 295 cm ridge. Height: 183 cm. Walls: 76 cm. Price **£55.35.**

Guide Mail Order

The Girl Guides Association
17/19 Buckingham Palace Road
London SW1W 0PT

THE ASSOCIATION SHOPS:

London: 17/19 Buckingham Palace Road, SW1W 0PT.
London: 19 Green Lanes, Palmers Green, N13 4TT.
Birmingham: 5 Ryder Street, B4 7NE.
Liverpool: 20 Richmond Street, L1 1EG.
Cardiff: 209 City Road, Roath, CF2 3XX.

SCOTTISH GUIDE SHOPS:

Glasgow: 1 Scott Street, G3 6NU.
Edinburgh: 16 Coates Crescent, EH3 7AH.
Dundee: 53 Tay Street, DD1 1NP.

SCOUT AND GUIDE SHOPS:

London: 124 Newgate Street, EC1.
London: 55 Woodgrange Road, Forest Gate, E7.
Ipswich: 5 Tacket Street, IP4 1AU.
Leeds: 62 The Headrow, LS1 8EJ.
Oxford: 17 Turl Street, OX1 3DH.
York: 14 Goodramgate, YO1 2LQ.
Harrow: 104 Hindes Road.

Training for the Commissioner and her team of Guiders

An excursion into community living

Joyce Scropton

WHAT ON EARTH can the girls get out of a fortnight's cruise that they can't get out of a fortnight's Camp? said a Guide Leader when she learned that it had taken two years to plan and organise the first Guide/Scout cruise. That's a good question, but the answer is somewhat complex.

The cruise involved some 800 Ranger Guides, Venture Scouts, Guides and Scouts and 150 Guide and Scout Leaders, and 'involvement' is the operative word. To mount a venture of this magnitude meant that, in the first instance, the relationships had to be right (and these we consciously worked on), that everyone knew what their job was and was prepared to do it. For this may have been an educational cruise, in the fullest sense, but unlike school educational cruises which take place in term-time, this was a holiday; and for the leaders it was a working holiday with many limitations on free time. It was above all, however, an exercise in community living, plus an opportunity to learn new skills and a chance to meet members of the Guide and Scout Movements from another country.

The pre-cruise preparations were detailed, and in the very early stages the young people were allocated to 'watches' (Guides and Scouts, Rangers and Venture Scouts) with Guide and Scout Leaders jointly in charge of each 'watch'. The leaders arranged for the young people in their 'watches' to meet each other beforehand so that some kind of relationship was established, and they also met parents to explain what the cruise was about. Watch leaders also had meetings with the cruise leaders (the two County Commissioners) and the programme organisers, so that as far as possible problems could be anticipated and everything that could be covered, hopefully, was.

The programme was wide in its scope and as informal as we could

make it. The Education Staff of the ship gave excellent talks on the places to be visited, and also bridge commentaries as the ship came into port. Our Guide and Scout leadership provided the body of the programme and arranged courses on Navigation, Signalling, Photography, First Aid, Home Nursing, Clay Modelling, Jewellery Making, Map-making, Music-making and an Arts Workshop. During the course of the cruise, groups of young people were on the bridge and in the engine room learning how a ship worked, and doing many odd jobs around the ship with various members of the crew. In their spare time they played deck games, swam in the pool, watched films, took part in the Water Olympics, ran a Deck Fair, talked with each other in the common-rooms and danced in their own discotheque. They slept in dormitories and learned to have a care for those of their number who did not want to be constantly 'living it up' but wished to sleep. Also they soon learned not to leave kit strewn around, because space is limited on board ship.

All of us learned how to live in a 'closed' community from which, unlike Camp, there is no escape. There is no hiding place on board ship, either from yourself or anyone else. We had to accept that in addition to the normal rules governing community living, there were the ship's regulations, which a few of the older Ranger Guides and Venture Scouts found somewhat inhibiting at first. But at sea safety is the governing factor and rules which at first sight appeared 'restricting' were there for the protection of everyone and the greater good of the whole, and the necessity of interpreting these so that everyone understood the reasons for them became of prime importance. The rugged individualists had to learn to live as members of a group, in which the group itself was more important than the individual. This applied

also to short visits where local customs had to be respected and understood, and our impact as members of the Guide and Scout Associations of the United Kingdom had to be recognised as almost ambassadorial in its implications. This was particularly true of Gibraltar, where the Governor and local politicians came on board, and where any behavioural excesses ashore were certain to be magnified, since Gibraltar is not large and the eruption of 800 young people on the Rock could not remain unnoticed! The richly rewarding contact with the Guides and Scouts and their Leaders on Gibraltar proved to be the highspot of the cruise, and here the reality of membership of a world movement came alive. The freedom to explore given to us by the smallness of the Rock, a common language and common currency plus the friendship of the Gibraltar Guides and Scouts made this, our first landfall, a very significant one for us all.

So, what ultimately did we achieve? Firstly it was a joyful experience, very hard work but great fun. Secondly, the whole thing proved a very fertile ground for learning, not just about the places visited but also more about ourselves. This learning process was an accelerated one since we were constantly thrown into each other's company in an unfamiliar community situation. A Guide summed it up three months after the cruise, when she wrote 'The cruise was the making of M. She has grown as a person and matured so much since she came back. I am very grateful she had that kind of experience, because she learned so much from it.'

Overleaf are Quickies for Thinking Day for Rangers, Guides and Brownies. Dozens more ideas for Thinking Day activities will be found in January and February Issues of THE BROWNIE, and in the February TODAY'S GUIDE. — Editor.

Quickies for Thinking Day

Maureen Graham

'SIMPLY putting on a funny hat is not International Guiding' said Alix Liddell. Nor can 'Quickies for Thinking Day' ever play more than a small part in the international aspect of the Ranger programme. Our job as Guiders is to foster the feeling of world citizenship that is particularly strong in this age group. All we do must be linked with real people, and most of the following suggestions are only starters which may however develop into longer term projects with the aim of deeper understanding.

The most useful piece of equipment you can have is *Trefoil Round the World* (price 35p) with its information on every member country of the World Association. It contains data on badges, laws, age groups, history etc. This book, the WAGGGS publication *The Council Fire* plus uniform and flag charts, give the Guiding angle while public libraries, films, TV and local experts provide the rest.

Using this material, Rangers can spend an enjoyable evening making sets of badge cards, mottoes, flags etc which can later be used in adaptations of many familiar games. These can be tried out in the Unit or, for example, when a Young Leader is helping the local Guides to discover more about World Guiding. What about Happy Families? eg 'Please may I have the flag of Sweden' (to go with Var Redo); or Pelmanism with matching pairs of uniforms and badges; or World O? This is like Bingo where one covers a squared off card of questions with the appropriate answer till the card is complete, eg who designed the World Flag? Do you remember Railway Riots? Use member countries of the World Association instead of UK railway stations. An up-to-date list of members is always in the *Council Fire*.

Perhaps one of the following activities may suit your Unit for an evening.

Collect and display twenty souvenirs from abroad. Ask the Rangers to guess where they come from. Each pair then chooses two

of them, draws the badge, finds the flag, learns the motto and discovers two interesting facts about the history of Guiding in each country from TRTW.

Invite a guest from another country to tell of life there. Entertain with a traditional Scottish, English, Irish or Welsh meal.

Rangers can show holiday slides from different countries followed by an observation quiz. Rangers who provide slides should also prepare the questions.



Tourists abroad! Challenge the Rangers in advance to have at least one hour where no English is spoken. Each must come prepared with at least four useful phrases in any language. All communication is to be through signs, drawing (not writing) or the chosen language.

Take your Unit to spend an evening with a friend who has lived abroad. Maybe the Brownie Guider or District Commissioner will be just the person whose house is full of interesting treasures to examine.

Have a musical evening, relax to the recorded sound of Hawaiian guitars or get up and dance to a Scottish reel.

In advance ask each group of Rangers to choose a foreign

country and provide a representative dish for the others. This may be a good opportunity to use a Ranger's house and invite an overseas student.

Invite a Guide who has done the Commonwealth Badge to give her 'presentation' or illustrated talk on her chosen country to the Ranger Unit. This can prove to be a very useful link between the sections.

Use greetings for Thinking Day from *Council Fire* and put these on cards for the Brownies and Guides to see. These can be helpful in a joint Thinking Day ceremony. One idea is to light a candle for each country while the greeting is read out. Candle making is another enjoyable play.

Innumerable crafts from abroad spring to mind. Have you tried Japanese origami, Indian bead weaving, Danish straw mobiles?

Ask the Rangers to produce a four-minute tape about Guiding in another country. This could include songs, a potted history, description of uniform and so on.

Make up a quiz about the World Conference. Have the reference books available for answers, so that the Rangers find out for themselves.

As well as being World Conference Year, 1975 has been designated by the General Assembly of the United Nations as International Women's Year, so encourage the Rangers to keep their eyes open for news of that also. Show this article to your Unit and it is very likely that one idea or another will spark off far better ones of their own. Never forget however, that the best 'Quickie' of all is a real person from another country, be it the Chinese restaurant owner, the immigrant teenager, the foreign tourist, the student nurse, the exchange teacher or a Ranger's aunt, cousin or friend.

Happy Thinking Day! Why not start it off by climbing a hill with your Rangers to watch the dawn, and link your thoughts with the Guides of New Zealand who start it off each year.

Quickies for Thinking Day

Isobel Anderson

THINKING DAY for many Guides is a compound of an enjoyable birthday party (the Chief Guide's), an important ceremony that needs planning and rehearsing, a solemn occasion, including prayers for Guides in other countries, and an opportunity to give presents to Guides all over the world through the Thinking Day Fund. These facets of 22nd February mean that the event does need careful planning by the Patrol Leaders' Council, or in the case of a District celebration, by the Guiders' Meeting. If the day is going to have a real meaning for the Guides, if we are going to be able to find someone of another nationality to visit us, if we are really going to be sincere in our prayers for world peace, we need to think ahead and make our arrangements in advance.

Nevertheless there may be an opportunity for some quick activities to spark off the interest, to catch the imagination, to teach some facts about our World Association and to help our Unit's programme along. I expect some of you will find these suggestions unoriginal, but they may help others.

1. **Stamps.** Can your keen philatelists bring stamps issued by other countries showing Scouts and Guides. What uniforms do they wear? What food might they eat? Possibly they may have stamps showing scenes or buildings of that country. What are the houses made of? What is transport like? How do the people dress?
2. **A Quiz.** Each Patrol might find five questions about World Guiding, the answers to them being found in the *Guide Handbook*. In turn challenge other Patrols to find the answers. Allow time to make sure everyone has understood the answers and if possible add to them from your own knowledge.
3. **A new Song.** Have you got your copies of the new Guide Song-books 1 and 2? Can you plan a world tour in song?
4. **Food Labels.** Ask each Guide to bring a label off food from abroad. See if you can find out between you how it is grown and processed? How long has it spent getting to us? Was it picked green and ripened on the way, or was it linned on the spot? Where is the

country of origin on the map?

5. Challenge each Patrol to make an 'Alphabet of World Guiding' using all available resources, such as copies of *Trefoil Round the World* (35p from Guide shops), biographies of the Founder and the Chief Guide, books on the story of Guiding, eg *The Girl Guides* by Alix Liddell, and *The Story of the Four World Centres* (published by WAGGGS, from the Guide shops).
6. Use the charts of badges and uniforms if you have them (some are out of print and some are just coming into the shops again) and have a quiz on them. Can each Patrol find a country which has a badge with a tree on it. A badge with a cross on it, or a map. The name of the country, or some other words (what do they mean?) and what is on every badge?

7. Count up in each Patrol, and in the Unit (including the Guiders), and see in how many languages someone can say 'Hallo', 'Goodbye', 'Please' and 'Thank you'. The results may surprise you. Can the Guides find out any more for next week?
8. Ask the Patrols to act out how they would greet a Guide from another country at an airport or railway station, if they didn't speak a common language.
9. On a blank world map, find and colour in the parts of the world where there are Guides. Do you know any parts of the world where there were Guides once, but where the Movement is no longer allowed? Poland and Zaire are examples of this. You might like to remember girls and adults who made the Promise who still live there and pray for them.
10. From a copy of *Trefoil Round the World* prepare several sets of three or four countries in which most of them have something in common but one is an odd one out. Can the Guides spot which is which? You might find three full members of WAGGGS and put them with one Associate member, or three founder members with one recent one, or three places represented by the United Kingdom and one which represents itself, and so on. Information about different sorts of members can be found also, in the record booklets for the World Conference Challenges recently in *Today's Guide*.

11. From *Trefoil Round the World*, find different names for Guides and/or Brownies used in different countries, and make anagrams of them. Can the Patrols spot the right order for the letters?

12. Taps was introduced in 1920 at the First International Conference held at Oxford. Check that you get the timing right, especially for the line 'safely rest'. Why not try to learn some of the second parts if you have some good singers in the Unit.

13. There is a new edition of the *Chalet Song Book* and it contains the Sangam Song as well as the Chalet Song, and the one for Our Cabaña. Do you know them all?

14. If you are good at telling stories to the Guides, tell them about finding the site of Our Chalet, or about some of the adventures of the Guide International Service, which can be found in *All Things Uncertain*. These things are part of our Guiding heritage and the Guides have a right to hear about them. If you think you are no good at telling stories, listen to yourself when talking to a friend and recounting exactly what happened to you at sometime, and you'll realise that most of us can do it, but some of us don't! If you decide to have a go, it's worth practising when you're in the bath or taking the dog round the block.

15. Share current news about the World Conference in Sussex this summer or about World Guiding. To have this at your finger-tips, you may need to keep a close watch on international news in *Guider*, *Today's Guide* and *The Council Fire*. This last one is the quarterly publication of WAGGGS and is only 50p for a year's subscription. In a recent issue, it was reported that Mrs Helvi Sipilä of Finland had come to the UK to present the Chief Guide with United Nations Food and Agricultural Organisation's Ceres Medal. Mrs Sipilä was at one time the Chairman of a Guide World Conference and she is now Assistant Secretary General at the United Nations with special responsibility for Social and Humanitarian Affairs. It makes one a little prouder than before to belong to the Guide Movement when one hears her say that it was Guiding that first sparked off her interest in international affairs, doesn't it?

BROWNIE

Training Ideas

Quickies For Thinking Day

Gwen Knight

WITH TWO or three weeks to go to your Thinking Day Meeting perhaps these ideas may help you in celebrating it with your Pack. A Brownie Thinking Day Television Show is fun, with the television easily made from a cardboard box. Each Six selects a country where there are Brownies, and then using the Brownie Handbook pages 74-5, or the Brownie painting books, each Brownie finds out about one thing such as the uniform, national costume, food and homes. They can also make use of library books, magazines and brochures. All the information is presented pictorially on pieces of paper large enough to fill the 'screen', and while an 'announcer' from the Six reads a commentary, each picture is held in place. Between each Six's broadcast a game could be played. Afterwards the pictures could be stapled together to make a Six booklet, or the pictures cut out and made into a wall hanging for the Six corner, using a piece of thick card hung up with wool.

the previous week to be exchanged with another Pack, the Guide Company, or between the Brownies themselves. Cards can be folded and then cut out in the shape of a candle, and strips of paper can be folded concertina-wise to form a string of Trefoils, see page 167 of the Brownie Handbook for design. Cut them out, making sure that the folds at the side are not cut, and the Brownies can then colour them in to make another type of card.

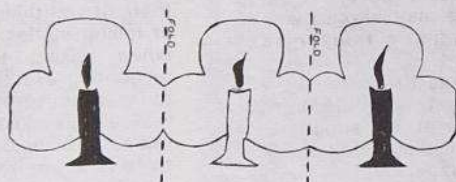
Attractive candles can be made using cardboard rolls with a strip of red, yellow or orange tissue paper, wound round the top of the roll and attached with adhesive tape, and then twisting the paper to form a flame. The rest of the roll is then covered in brightly coloured paper to form the candle, which could be decorated with a Brownie badge from another country, coloured, cut out and then stuck on the candle. The Brownies could also colour pictures from the painting books and mount them on card during the weeks previous to the

Thinking Day trails are often enjoyed by Brownies. If the hall is large enough each Six could follow a wool trail to a picture of a Brownie with food from her country, such as brown wool to an American Brownie with a hamburger, green wool to a Danish Brownie with open sandwiches, or a Swiss Brownie with chocolate. If your hall is not large enough for a trail another Thinking Day challenge is, make the flag for Denmark, and find out the colour of the Danish uniform. With the help of an adult or Pack Leader learn to say hello in another language, then give the Brownies letters which will finally give them the clue as to where their Brownie and food are hidden. Before sitting down to a Thinking Day 'meal', perhaps they could sing the Fijian grace from the *Diamond Jubilee Songbook*.

Perhaps you know somebody who has travelled abroad and would come and show the Brownies some 'treasures' or would be willing to tell them just a little about life in that country. Is there someone who has been to one of the four World Centres and could tell the Brownies about them.

Finish your meeting with the prayer on page 167 of the Brownie Handbook or possibly prayers written by the Sixes for the Brownies about whom they have thought especially that evening.

As well as enjoying these activities there will be opportunities for Brownies to make progress on the Journeys; ie Footpath-Make Things and Friendly; Road-Friendly and Lend a Hand; Highway-Do Our Best, and the first part of Brownies are friendly.



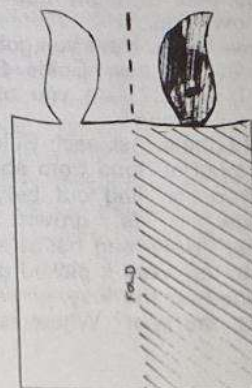
Brownie cut-out dolls, page 63 in the Brownie Handbook, are fun to make. The Brownies may get a better result if they have a template for the outline, easily made from the Brownie illustrated in the Brownie Handbook page 23, or of an African Brownie from one of the painting books. Having the basic outline, the uniforms of different Brownies can easily be drawn and coloured. The Pack might like to choose Brownies from countries whose initial letters would spell out Thinking Day. Having made the dolls, perhaps there would be time to paint a backcloth using card from old cereal packets, to include scenery, flag, houses, etc, against which the doll might stand. These could be arranged in Six corners or as a Pack display round a World Badge, or using a globe as suggested on page 62 of the *Brownie Guiders Handbook*. Pennies for the Thinking Day Fund could be placed here as well.

Thinking Day Cards can be made

Thinking Day Meeting. These cards could also be used for Pack 'About Jump'.

Games from other countries can be found in various games books. Could a Brownie from each Six select a game to play at your thinking Day Meeting, being responsible for any equipment that may be required and possibly taking it if she is capable? Have you tried the following games from the *Guiders Handbook*: Know Your Friends, and Run and Find.

To help the Brownies realise that it is important that they are helpful to others, try the Welcome Game, page 37, and the Story Without End, page 44, using a situation such as a visitor from overseas being lost locally and needing to find the way somewhere to which the children can direct her. Who, What and Why, page 55, could be played, giving situations such as: you are Mother on holiday in another country and need some milk but have left your phrase book in the car.



3 Good reasons



for buying your uniform from Guide Shops

1. Prices that are very competitive.
2. Quality – All our uniforms are made to the standards demanded by the Association.
3. Service – All our Shops are staffed by personnel who are qualified to advise you on your purchases.

8903	Trevira/Sarille Suits. Sizes: 10, 12, 14, 16, 18, 20, 22, 24.	Price £16.28
8904	Trevira/Sarille Skirts. Sizes: 10, 12, 14, 16, 18, 20, 22, 24.	Price £6.30
8905	Terylene/Saville Suits:	
	Size 10-12 £15.02	Size 18-20 £16.52
	14-16 £15.68	22-24 £16.62
8908	Terylene/Saville Skirts:	
	Size 10-12 £4.50	Size 18-20 £4.98
	14-16 £4.70	22-24 £5.08
8549	Guiders Bri-nylon Slacks:	
	Size 10-16 £3.80	Size 18-22 £4.14
8741	Woolfelt Cap, small. Medium and Large	Price £1.86
8706	Guiders Blouse:	
	Size 32-34 £3.94	Size 36-40 £4.03
	Size 40-44 £4.15	
1338	Guide World Badge (metal) 12p	

Carriage Charge 15p on all orders under £5.

Guide Mail Order

The Girl Guides Association
17/19 Buckingham Palace Road
London SW1W 0PT

THE ASSOCIATION SHOPS
London: 17/19 Buckingham Palace Road,
SW1W 0PT
London: 19 Green Lanes, Palmers Green,
N13 4TT
Birmingham: 5 Ryder Street, B4 7NE
Liverpool: 20 Richmond Street, L1 1EG
Cardiff: 209 City Road, Roath, CF2 3XX

SCOUT AND GUIDE SHOPS
London: 124 Newgate Street, EC1

London: 55 Woodgrange Road,
Forest Gate, E7

Ipswich: 5 Tacket Street, IP4 1AU
Leeds: 62 The Headrow, LS1 8EJ
Oxford: 17 Turt Street, OX1 3DH
York: 14 Goodramgate, YO1 2LQ
Harrow: 104 Hindes Road

SCOTTISH GUIDE SHOPS:
Edinburgh: 16 Coates Crescent, EH3 7AH
Glasgow: 1 Scott Street, G3 6NU
Dundee: 53 South Tay Street, DD1 1NP

Programme Notes

April – September 1975

General Training Weekends

Of all the weekends at the Training Centres these are undoubtedly the most popular, offering to Guiders invaluable help in running their own Units and in carrying out the Programme. Here is something for both new and experienced Guiders; skills and activities are tried out and talked over, and some sessions may be held focusing on such topics as World Guiding, the Promise in the Programme, or Programme Linking between Sections. Every effort is made to include Guiders' special requests sent in beforehand; but please remember that the trainers are also working women and so have to plan their programmes well in advance.

Some General Training weekends have a special emphasis, eg Outdoor Activities, Certificates, etc and these are always specially noted in the 'Where to Train' pages.



At Both Centres

Making the Most of the District

Foxlease 11th – 13th April

Waddow 23rd – 26th May

11th – 13th July

19th – 21st September

These weekends are now becoming so much a 'fixture' at the Training Centres, that most Counties must have sent a District team at one time or another. However, with so many boundary changes having taken place, new Districts may find this a wonderful opportunity of going to a training designed for them and really getting to know one another. As on previous occasions, two fee bursaries will be awarded to a full party of eight, and one fee bursary to a party of four.

Concentrated First Aid Course

Foxlease 15th – 18th May

Waddow 15th – 18th May

Having regard to the fact that we now ask Guiders to act as First Aiders at Camp and Holidays, etc, to ensure that their knowledge of First Aid is up-to-date, we are providing a special opportunity for a limited number to undertake a three-day crash course at both Centres on the above dates. We know that not everyone can take the Friday off work for such a purpose, but as numbers are limited we hope that there may be enough of them who can take a day's annual leave or arrange their domestic responsibilities so as to be free to start sessions at 10 am on Friday morning. Instruction is in co-operation with the British Red Cross Society, who pioneered this time-saving course as an alternative to the usual 8-week 2-hour session variety. The course is certainly one of concentrated hard work, but will give those who qualify an up-to-date certificate in basic First Aid, and more confidence to carry out the job of First Aider at Camps or Pack Holidays.

Improving Your Skills

Foxlease 6th – 8th June

Waddow 6th – 8th June

20th – 22nd June

Quite a month for opportunities for many Guiders to take a refresher course in their particular skills, or learn a new one!

Foxlease offers you a weekend of Creative Activities which we hope will include music, art, crafts, and if possible, hand-bell ringing.

Waddow offers a refresher weekend (6th – 8th June) for any Certificated trainer with five or more years' experience; here is an opportunity to improve your skills and gain fresh inspiration. For the prospective Campfire Leader there is a special group (20th – 22nd June), and alongside this another for the budding guitar and recorder playing enthusiasts. These are chances to get special help on your subject through the benefit of being in small groups. But for just this reason, book early!

Commissioners and their Local Association Chairmen

Foxlease 9th – 11th May

Waddow 6th – 8th June

This type of weekend has not been held at the Training Centres for some time. They offer a chance for Commissioners to introduce their Local Association Chairmen to a Training Centre and to take part in a training of mutual benefit and interest. In this special year of the World Conference it is perhaps of particular importance that the public should be well informed about UK Guiding, and our Local Associations who play such an important role in this respect may welcome this opportunity to know and understand our Programme and aims and the scope of our work.

FOXLEASE

Commissioners' Family Week

23rd May – 1st June

The success of the previous Family Weeks has led to requests for a similar opportunity for Commissioners who may be accompanied by their husbands and children. As for other such weeks, there will be training sessions for Commissioners in the mornings but afternoons will be free for family activities; there will also be some optional activities/sessions for those who wish to join them.

As letters to *Guider* have testified these weeks have been very happy events for all who took part, but because the inclusion of families puts certain limitations on the accommodation we would advise you to book as early as possible.

WADDOW

'For Good or Evil' – Guiders of all Sections

16th – 18th May

The world of today is full of choices for the young adult of tomorrow; greater opportunities – the easy option; more personal freedom – less consideration for others. But though the choices are many, are they all for good – or evil? This weekend is offered to Guiders of all Sections in response to the cry, often heard, 'If only there was time to talk about it...' Here is YOUR chance. Please come to share with others topics of common concern, and with the aid of the Trainers and some mutual self-help, we hope you will return home with some ideas to consider and more confidence to give help to the girls in your Unit.

IN BRIEF

Honour for Brownie Guider Leader

Mrs Paula Hammond, a Brownie Guide Leader of the 4th Attenborough Pack and a Queen's Guide, has been appointed Justice of the Peace for the County of Nottinghamshire.

Paula, who lives in Attenborough, is one of the youngest JPs to be appointed in the County. Her many activities include being founder and secretary of the Attenborough ladies' hockey club, a member of the parochial church council, the WI, the tennis club, committee member of the Scout and Cub Parents' Association, committee member of the Beeston pre-school playgroup association, assistant



youth club leader, and a member of the national association for the welfare of children in hospitals. In addition to all this, she runs her own play school.

Learning about the Handicapped

During the last weekend of September, Blackmore, our Worcestershire Pack Holiday house Nr Malvern, was overflowing with Guides and Scouts. About 50 Ranger Guides and Venture Scouts from all parts of Worcestershire were together exploring "Needs and Opportunities" in relation to the handicapped. Seven severely mentally handicapped teenagers camped with us on Saturday night and three physically handicapped adults came for the afternoon.

This was a real experience of integration for all those involved. So often the handicapped are segregated and herded together in clubs of their own. This undesirable fact is emphasised by the organisers of the Worcestershire

Society for the Disabled in a recent letter in a local paper. Highlights of the weekend were the disco on Saturday night and the horse riding on Sunday. Most of our mentally handicapped guests had never been on a horse before, but they took to it like ducks to water.

The weekend ended with a panel discussion, each of whose members had special experience in dealing with various aspects of helping the handicapped. A short Act of Worship devised by the Rangers and Ventures and a cup of tea concluded an inspiring weekend.

E A Treadwell (Dr)

Extension Adviser for Worcestershire.

Dorset County Trefoil Guild Weekend at Brownsea Island

13 - 15 September, 1974

On Friday, 13 September, seven members of the Highcliffe Trefoil Guild packed our bags and went off to Brownsea Island for the weekend. There we met members of other Dorset Trefoil Guilds.

We stayed at Vilano, a sturdy villa which has been adopted for the Guide and Scout Movements. There was a large dormitory with two tier bunks for sleeping which were very comfortable. There were three bedrooms upstairs, but I am sure more fun was derived from sleeping in the dormitory. A private beach was there for our use, only a few steps from the front door.

We spent most of our time during daylight hours walking around the island. We saw the huge stone which commemorates the site of B-P's first Camp, and where Scouting and Guiding really began. We went on a conducted nature walk and the wild life of the island was pointed out to us. We also made friends with the peacocks and their baby chicks.

After so much activity the food which our GM, Mrs Nell

Cook, of Poole Trefoil Guild, had provided for us was much enjoyed by all.

Every evening we all gathered in the lounge where a log fire was burning, for a sing song and many a laugh.

Needless to say, our trepidation at meeting the Dorset Guilds (we joined the County after the recent border changes) was unfounded. We made some good friends and got on very well with Miss Symonds, The Trefoil Guild Chairman for Dorset, who helped to create the informal atmosphere.

The weather was glorious on Friday and Saturday, but the break in the weather Sunday did not stop us going out. We held our own service on Sunday morning, with various members taking part. Miss Symonds pointed out to us the importance of Guiding ideals in the world today.

Although we had a wet journey home, we were all in a happy mood after a most enjoyable weekend.

E M Medcroft

Hon Sec, Highcliffe Trefoil Guild



My last Assistant loved a joke - she always threatened to fall out on that bend.



(See advertisement on page 8/2)

Remember your first time?

Remember how grateful you were when someone introduced you to Tampax tampons? Perhaps it was your elder sister or your class-mate at school. Someone who knew how important it is to feel fresh, comfortable and confident all the time.

Remember what a world of difference Tampax tampons made when you had your period? You could enjoy holidays and sports as never before, sure and confident with the internally worn, dependable sanitary protection. And Tampax tampons are so easy to use. Disposal is easy, too, since the applicator and the tampon are both flushable.

You probably know someone special who doesn't know how special Tampax tampons are. Maybe it's your younger sister or a favourite friend. Tell her about Tampax tampons. And when she thinks of her first time, she'll think of you and thank you.

The internal protection more women trust

TAMPAX
tampons

MADE ONLY BY TAMPAX LIMITED, HAVANT, HAMPSHIRE

make your own kind of music...



... with the ESPANA Spanish Guitar – Approved and recommended by our Music Consultant.

7222 Espana Spanish Guitar

Features: Nylon Strings, Fan strutting, Wide finger board, neck shaped in Spanish style, Nickel silver frets, Ivorine roller machine heads; Excellent workmanship, handmade in Spain.

Price: £15.75.

7223 Guitar Carrying Case in P.V.C. material; extra £2.95.

From:

Guide Mail Order

Girl Guides Association
17-19 Buckingham Palace Road
London SW1W 0PT

Where to train

HOW TO APPLY

Any Guider may apply herself to attend a training course at the Centres, provided she has reached the minimum age of 18 years. (At the discretion of the Commissioner a member aged 17½ who is working on the Adult Leader's Certificate may also apply for a Guider course.)

An application to attend a Guider Training Centre should be sent direct to the appropriate Guider-in-Charge, and must be accompanied by the correct amount of deposit and a stamped addressed envelope. Applicants should also state the type of training for which they are attending, as there may be several different courses running at any one weekend. As so many Guiders have to leave on Sunday, training sessions at a two-day weekend will stop at tea-time on that day unless otherwise stated, if sufficient notice is given that it is wanted, every effort will be made to provide sessions for a group until Monday. Individuals who are able to stay over until Monday to enjoy the surrounding country and other amenities of the Centres are most welcome to do so.

Telephone calls are accepted only between the hours of 8 am and 8 pm at Foxlease (Lyndhurst) 042-128 2638, and at Waddow (Clitheroe) 0200-23186, except in emergencies.

Bursary Help

The Fee Bursary entitles a Guider to a grant of £1.50 for a two-day weekend and 50p for each additional day.

The Fare Bursary (available only for travel to the nearest Training Centre) carries a rebate of a Guider's travel expenses in excess of £2.00.

The Angela Thompson Bursary is available to any Guider attending a Promise and Law or similar training (not necessarily at a Training Centre).

HOW TO APPLY: Full details of the conditions of issue and how to apply are available from the Training Department, CHQ. No application form is necessary, and District Com-

missioners may apply on behalf of their Guiders, after they have been accepted for the training, direct to the Training Department; Scottish Commissioners should write to Scottish Headquarters. In the case of county weekends Commissioners should apply to their County Training Chairman/Adviser. Except in very special circumstances, on the recommendation of her Commissioner, a Bursary cannot be issued to a Guider who has previously had one, nor can one Guider receive a Fee and Fare Bursary.

Commissioners are asked not to apply for bursaries for Guiders able to get LEA grants.

All applications must arrive at CHQ at least **TWO WEEKS BEFORE THE TRAINING** and Bursaries cannot be issued at shorter notice or in retrospect.

CHQ

FOXLEASE
Lyndhurst, Hants SO4 7DG

31 JANUARY -2 FEBRUARY

7-9 Wiltshire
New to Guiding (Commissioners and Guiders of all sections)

14-16 General Training. Brownie and Guide Guiders

21-23 (Outside booking)

28-2 MARCH

1. Progress through the Programme. (General training for Brownie and Guide Guiders with two or more years' experience)
2. Guiders taking Pack Holiday Permits in 1975

MARCH 7-9

General Training. Brownie and Guide Guiders

14-16 South West England (by allocation)

21-23 General Training. Brownie and Guide Guiders (places reserved for Isle of Wight)

27-5 APRIL "Lions and Leopards" - Arts Workshop (by allocation)

APRIL 11-13 Making the Most of the District (District

Commissioners with up to seven of their Guiders)

18-20 London North West
25-27 General Training. Brownie and Guide Guiders

MAY 2-4

9-11 Middlesex West
Commissioners with their LA Chairmen

15-18 Concentrated First Aid Course

16-18 General Training. Brownie and Guide Guiders

23-1 JUNE Commissioners' (Bank Holiday)
Family Week

JUNE 6-8

Creative Activities in the Programme (training for Guiders of all sections)

13-15 General Training. Brownie and Guide Guiders

JULY 4-6

General Training. Brownie and Guide Guiders. (Places reserved for World Conference Delegates)

11-13 Friends of Foxlease

16-22 Holiday Week (members and friends or mothers, and Trefoil Guild)

24-31 Patrol Leaders' Week

AUGUST 2-9

Holiday Week (Unit Guiders with up to nine of their Guides or Rangers)

9-16 Holiday Week (Unit Guiders with up to nine of their Guides or Rangers)

16-23 Holiday Week (Unit Guiders with up to nine of their Guides or Rangers)

23-30 Holiday Week (Unit Guiders with up to nine of their Guides or Rangers)

(Bank Holiday)

SEPTEMBER 12-14

Leicestershire

19-21 London and SE England (by allocation)

26-28 Sussex East

WADDOW Clitheroe, Lancs BB7 3LD

31 JANUARY -2 FEBRUARY

General Training. Brownie and Guide Guiders.

FEBRUARY 7-9

Greater Manchester North

14-16 Training the Young Leader (County Leadership Advisers, Commissioners and Guiders)

21-23 (Outside booking)

28-2 MARCH North West England (by allocation)

MARCH 7-9

General Training. Brownie and Guide Guiders

14-16 Cheshire Forest and Cheshire Border

21-23 Division Commissioners with their District Commissioners and Division Secretaries

27-31 Young Leaders' Week

APRIL 4-6

General Training. Brownie and Guide Guiders

11-13 General Training. Brownie and Guide Guiders (including crafts, wide games and other outdoor activities)

18-20 General Training. Brownie and Guide Guiders

25-27 General Training. Brownie and Guide Guiders (places reserved for Cambridgeshire East)

MAY 2-4

District Commissioners and District Assistants (sessions on the Adult Leader's Certificate)

9-11 General Training. Brownie and Guide Guiders

15-18 Concentrated First Aid Course

16-18 "For Good or Evil" (An opportunity for Guiders of all Sections to discuss today's choice for young people.)

23-26 Making the Most of the District (District Commissioners with up to seven of their Guiders)

30-1 JUNE General Training. Brownie and Guide Guiders

JUNE 6-8

11. Commissioners with their LA Chairmen.

2. Certificated Trainers (with five or more years experience)

13-15 Friends of Waddow

HOW ABOUT HOSTELS?

If you're taking your Guides walking on a long distance footpath, exploring a National Park, visiting a historic town . . . youth hostels offer ideal overnight accommodation. There are 253 hostels all over England and Wales, plus 4,000 in other countries. The charges are low and the welcome is friendly. Find out more!



Coniston Coppermines Hostel in the Lake District National Park



Boscastle Hostel on the Cornish coastal path.



Stratford-upon-Avon Hostel near Shakespeare's birthplace.

To YHA, Trevelyan House, St. Albans, Herts.
Please send

COME HOSTELLING

Basic information about hostelling for individuals, with map and enrolment form. ☐

INTRODUCTION TO ADVENTURE

Details of leader card scheme for those wishing to introduce parties of youngsters to hostelling. ☐

Name

Address

G51

A SPECIAL OCCASION



FLEECE-LINED SWEATSHIRTS

are ideal for camps, jamborees and special occasions.

Have a badge, emblem or mascot to your own exclusive design flocked on to the front.

Look distinctive and feel proud.

Comfortable and long-lasting. Choice of 12 colours.

TOP QUALITY T SHIRTS

with your own wash-fast printed badge or emblem are available in 13 colours.

For special occasions let your T shirts say it all.

EXCELLENT FUND RAISING POTENTIAL

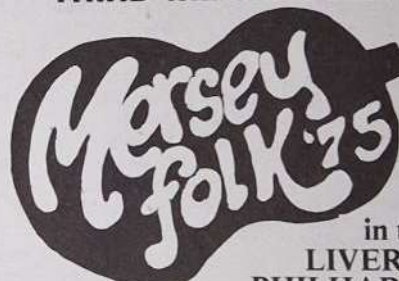
Easy to order, easy to sell, easy to add up profits. It puts the fun into fund raising.

ASK FOR A COLOURED BROCHURE & PRICE LIST

DANSONS

8 STATION ROAD LONDON N3 2RY 01-346 1063

THIRD MERSEYFOLK CONCERT



**A SCOUT
& GUIDE
FOLK
CONCERT**

All proceeds
to charity

in the

**LIVERPOOL
PHILHARMONIC HALL**

on SATURDAY, 15th MARCH 1975 at 7.30 pm

TICKETS 65p, 55p and 35p

TICKET ORDER FORM

To: "Merseyfolk", 69 Egerton Road, Liverpool L15 2HN

(Telephone 051-733 2195 or 051-724 2407)

Quantity	Cost
..... Box(es) (6 seats) @	£3.90
..... Upper Stalls @	55p
..... Stalls @	55p
..... Balcony @	35p

Total
Less Discount

£ :

Party Discounts

For parties of

11 - 20 - 1 free ticket
21 - 30 - 2 free tickets
31 - 40 - 3 free tickets
Etc.

I enclose Cheque/P.O. for the above tickets (less discount) value £..... Payable to "Merseyfolk" together with a stamped addressed envelope.

Name

Address

Tel. No.

- 20-22 11. Prospective
Campfire Leaders
12. Guitar and Re-
corder Playing for
Beginners
- 27-29 General Training.
Brownie and Guide
Guiders
- JULY
4-6 General Training.
Brownie and Guide
Guiders (Places
reserved for World
Conference
Delegates)
- 11-13 Making the most of
the District (District
Commissioners with
up to seven of their
Guiders)
- 18-25 Patrol Leaders' Week
North West
29-5 AUGUST England (by allocation)

- AUGUST
9-16 1. Holiday Week (Unit
Guiders with up to
nine of their Guides
or Rangers)
- 23-30 1. Holiday Week
(Members and
friends or mothers,
and Trefoil Guild)

- SEPTEMBER
5-7 General Training
Brownie and Guide
Guiders
- 12-14 North Tyneside
- 19-21 Making the Most of
the District (District
Commissioners with
up to seven of their
Guiders)
- 26-28 West Yorkshire West

County Weekends - 1976
Counties wishing to book a
County Weekend at Foxlease
or Waddow in 1976 should
apply to the Training
Secretary, CHQ not later than
3rd March, 1975.
The programme for the
whole of 1976 is drawn up
immediately after this date,
and once this is completed, no
further applications can be
considered.

Patrol Leaders' Weeks
Guiders are reminded that
only two Patrol Leaders can be
accepted from any one
Company. They must not have
attended any previous training
at a Training Centre and
Guiders are asked not to apply
for places at more than one
Centre.
The Patrol Leaders must
have attained their 12th
birthday but not their 14th
birthday by 1st February (ie
they will be between 12½ and
14 at the time of the week).
They must be able to attend
for the whole week, which will
cost £14.
Places for Patrol Leaders'
Weeks at both Centres will be
allocated on 1st March 1975.
Applications, each with a

£1.00 deposit and a foolscap
sae, should be sent to the
Secretary at the Training
Centre concerned, to arrive not
later than 28th February.

Holiday Weeks
For details of Holiday Weeks,
see HQ Notices Page 70.

**Commissioners
Family Week**
It will be necessary to
charge VAT on fees for
husbands and children
attending the Commissioners'
Family Week.

Fees at Foxlease and Waddow:
Shared room, per day £3.00;
Double room, per day £3.50;
Single room, per day £4.00;
† Courses or events so
marked will be subject to
VAT.

For a full week the above
prices are subject to a 15 per
cent discount.

These prices are for
members of the Girl Guides
Association and the Scout
Association only.

Deposit £1.00 - cheque or
postal order only.

Scotland

NETHERURD HOUSE
Blyth Bridge, West Linton,
Peebleshire
31 JANUARY-2 FEBRUARY
(outside booking)

FEBRUARY
7-9 Advanced (by invita-
tion)

14-16 Residential Training
for Young Leaders

28-2 MARCH Brownie
and Guide Guiders
(includes booking
from Alnwick/Bedford
Division)

MARCH
7-9 Brownie and Guide
Guiders (includes
booking from Mid-
lothian)

14-16 Brownie and Guide
Guiders (includes
booking from Glas-
gow ENE Division)

21-23 Prospective Trainers - by
invitation

27-31 Residential Course -
(Easter) Duke of Edinburgh's
Award Scheme

APRIL
4-6 Residential training
for Young Leaders
(includes booking
from Glasgow)

11-13 Brownie and Guide
Guiders (includes
booking from
Edinburgh SE Divi-
sion and Glasgow
NNE Division)

18-20 Brownie and Guide
Guiders (includes
booking from
Glasgow SW
Division)

25-27 Brownie and Guide
Guiders and Guide
Brownie (includes
Guiders)

MAY
2-4

booking from
Northumberland)

9-11 District com-
missioners (sessions
for new Commis-
sioners)

16-18 Brownie and Guide
Guiders (includes
fun in, and
enjoyment of, the
out of doors).

23-25 Brownie and Guide
Guiders (includes
booking from West
Lothian)

Fees at Netherurd
The new rates are as follows:

Shared room, per day £2.00;
Double room, per day £2.25;
Single room, per day £2.50;

Deposit - £1.00. Training fee
for non-residents - 50p per
weekend.

Wales

BRONEIRION
Llandinam, Mont SY17 5DE

MARCH
7-9 Making the Most of
the District (Com-
missioners and their
Guiders)

14-16 General Training
(Places reserved for
Gwynedd)

21-23 General Training
(Places reserved for
Birmingham)

28-1 APRIL PLs under 14
(Easter) years (Open to all
Counties)

APRIL
4-6 Arts Workshop for
Wales

11-13 Young Leaders and
Leadership Advisers

18-20 General Training
(Places reserved for
Cheshire Wirral)

25-27 General Training
(Places reserved for
Montgomery)

MAY
2-4 Ranger Guiders with
two of their Ranger
Committee members

3 Day Conference for
Welsh Public Rela-
tions Advisers

9-11 Pre-Warrant
(Emphasis on the
Adult Leader's
Certificate)

17 Day Conference -
Welsh County
Personnel

18 Open Day - House
and Gardens

23-27 PLs under 14 years
(Open to all
Counties)

30-1 JUNE Welsh Trainers'
Conference

JUNE
13-15 General Training
(Places reserved for
Central Glamorgan)

18 'Friends of
Broneirion'
Gathering

27-29 (Outside booking)

JULY
19-26 Young Leaders'
Week (Rangers and
Young Leaders'
working on
Leadership)

31-4 AUG. Girls' Course (14
years and over)

AUGUST
7-11 PLs under 14 years
(open to all counties)

15-17 Guiders with their
own Patrol Leaders

22-26 Patrol in Action
(Bank Holiday) (groups of not less
than four girls from a
genuine Patrol)

Fees at Broneirion:
Shared room, per day £1.75;
Double room, per day £2.00;
Single room, per day £2.25;
Non-residents, per day 50p

Glenbrook

GLENBROOK
OUTDOOR ACTIVITIES
TRAINING CENTRE
Bamford, Nr Sheffield
S30 2AL

All courses cost £6.00 unless
otherwise stated. The cost
covers all activities except
Pony Trekking and Gliding, for
which a supplement must be
paid.

FEBRUARY
14-16 The Peak District in
Winter. Ranger
Guides and Guiders.
Venture Scouts and
Scouters. Hill walk-
ing. Caving with the
possibility of snow
activities (weather
permitting)

28-2 MARCH Outdoor Activ-
ities. Guiders and
Ranger Guides. Hill
walking. Caving.
Orienteering. Gliding
and Climbing
(weather permitting)

APRIL
1-6 Expedition Planning
for Rangers and
Young Leaders. The
course will include
training for overnight
expeditions (in-
cluding one night
under canvas or in a
Youth Hostel).
Suitable for Silver
and Gold D of E
standard. Cost
£9.00.

MAY
9-11 Adventure Course, A
Guider with up to
three Guides or
Rangers aged 13-15
years. Pony
Trekking. Canoeing.
Orienteering. Hill
walking. Swimming.



Meet the loneliest person in the world

People talking, children laughing. The song of a bird, the purr of a contented cat. Because we're used to hearing such sounds, we take them for granted. But try to imagine how much would go out of our lives if they were missing. That is the loneliness of deafness.

The aim of the RNID is to help *all* who live in this world of silence. We have special schools for children, hostels for young adults, residential homes for the elderly. We run laboratories that provide test and research facilities, a welfare service and the world's largest information service devoted entirely to deafness. Which leaves us with one big problem - money.

Those who are cut off from sounds don't have to be cut off from people. With your help, the deaf won't have to face their loneliness alone.

We depend on donations, covenants and bequests to continue our work. Every contribution, however small, will enrich the lives of those who suffer in silence.

So please give us something.

The Royal National Institute for the Deaf

(Patron: HRH The Duke of Edinburgh KG)

105 Gower Street, London WC1E 6AH

Telephone: 01-387 8033

Send for your copy today
of our fabulous, colourful

new catalogue

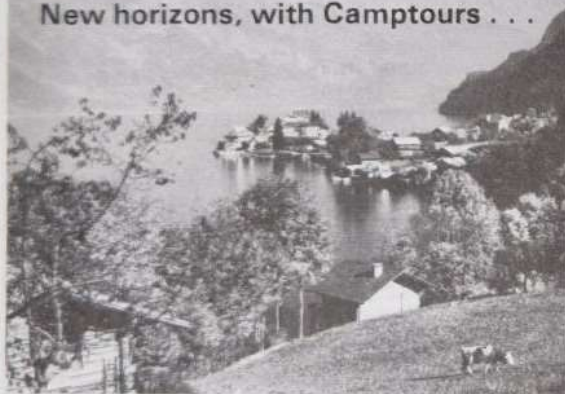
containing 28 pages illustrating and listing
everything you need for Uniform and
Camp and 12 page booklist, and
many other miscellaneous items.

write to:

Mail Order Dept.,

Girl Guides Association,
17/19 Buckingham Palace Road,
London SW1W 0PT

New horizons, with Camptours . . .



This view of the picturesque village of Iseltwald, nesting on the wooded shore of Lake Brienz, is typical of the superbly beautiful Alpine scenery of the Bernese Oberland. Our 1975 programme offers several new self-catering chalets for groups in the Oberland, as well as our popular campsite and chalets at Inter-laken and Adelboden, and also introduces new centres on Lake Lucerne and in Holland. Travel quickly by rail and boat and rely on our local representatives to ensure a happy and successful camp. Next year discover new horizons, with Camptours. Send the coupon for details.

To CAMPTOURS, DEVON HOUSE, HIGH STREET, CRANLEIGH,
SURREY (Tel: 04866 3027). Please send me details of your
summer camps in Switzerland and Holland.

Name

Address

G/2

All that
Glitters isn't
Gold



Our catalogue isn't - what we
mean is - it's something different
from the usual catalogue - how
different? write for a copy &
find out for yourself
Karrimor Box 651, Avenue Parade
Accrington Lancashire
England

JUNE
6-8

Adventure Course. A Guider with up to three Guides or Rangers aged 13-15 years. Pony Trekking. Canoeing. Orienteering. Hill-walking. Swimming.

AUGUST
23-30

All or Nothing Course. Rangers. Come and enjoy a leisurely week in the Peak District doing as little as you wish, or be energetic and try your hand at several outdoor activities. Cost £16.00.

Camping Holidays and Pack Holidays

Foxlease Camp-sites

Application for sites should be addressed to the Secretary and the envelope marked 'Camp'. Suggested dates with alternatives and approximate numbers should be stated, and whether an equipped site is required. Camps may begin on any weekday.

A 50p deposit (which is forfeited if the booking is cancelled) and a foolscap sae should be enclosed.

Beaverbrook Lodge

Applications should be sent to the Secretary, Foxlease giving alternative dates and enclosing an initial deposit of £1.00 (which is non-returnable) and a foolscap sae. Priority will be given to applicants who have not already stayed in Beaverbrook Lodge. Applications for the period 1st April, 1975 - 30th September, 1975 will be accepted now.

Waddow Camp-sites

Applications for sites should be addressed to the Secretary and the envelope marked 'Camp'. Suggested dates with alternatives and approximate numbers should be stated and whether an equipped site is required. It is preferred that camps begin on Saturday.

A 50p deposit (which is forfeited if the booking is cancelled) and a foolscap sae should be enclosed.

Waddow Cottage and Caravan

Both are available for bookings throughout the year. For details apply to the Secretary enclosing sae.

Waddow Pack Holiday House

Applications for Pack Holidays in 1975 should be sent to the Secretary. The application must be accompanied by a written recommendation from the Guider's CA or Pack Holiday Adviser and a foolscap sae enclosed.

Netherurd Camp-sites, Brownie House and Holiday Caravan

Applications for camp-sites will be taken from 1st January, 1975.

Applications for the Brownie House will be taken on 1st December, 1974 (form of application available from 1st November). During Scottish school holiday periods (Easter, July, half August) priority will be given to Scottish Packs.

A three-berth holiday caravan is also available.

Broneirion Camp-site and Brownie House

Only one small camp-site - equipped for 24, which number cannot be exceeded. Applications for camp-site and Brownie House will be considered from 1st January, 1975 and should be sent to Miss P. Lynch, 3c Pentwyn Court, Whitchurch, Cardiff, CF4 7BY enclosing sae.

Bookings for the Brownie House, outside school holidays, for Guide and Ranger groups and also for Highgate, Ranger Adventure Cottage, should be sent to the Guider-in-Charge, Broneirion.

Lorne Camp-sites

Lorne offers fully equipped or unequipped camp-sites with solid shelter. Calor gas available. Applications should be sent to Mrs E. Thompson, 14 Woodland Avenue, Bangor, Co. Down.

Irene McKibbin Memorial Cottage, Lorne

A cottage available for

Ranger holidays, fully equipped for 12 persons, with electricity and running water. For details apply to Mrs Brenda Weatherup, 32 Circular Road, Belfast BT4 2GA, enclosing sae.

Ulster Camp-sites (nr Lorne)

Fully equipped for 40 campers (one large and two small camps). Excellent hut for solid shelter and Calor gas. Bookings should be sent to Miss N. Pratt, 22 Bangor Road, Hollywood, Co. Down enclosing an sae.

Magilligan Camp-sites

Three fully equipped sites with double Calor gas stove for 25-30 campers. Also large 3-room hut with an open fireplace. For details apply to Mrs R. F. Scott, Derrymore House, Limavady, Co. Londonderry, enclosing sae.

Blackland Farm, East Grinstead, Sussex

Equipped and unequipped sites available with facilities for swimming, climbing and pioneering (for which equipment can be borrowed) also Restrop, a furnished bungalow for 25 (bunk beds for 20) - details write to the Warden enclosing sae.

Brownsea Island

Eight camp-sites (for Guides and Scouts) are available as well as The Villano (maximum accommodation 30) for holidays for Rangers, Guiders or Trefoil Guild. Apply to Mrs B. B. Dyke, Wendover, The Avenue, Sherborne, Dorset, enclosing sae.

At the recent National Scout Bandmaster Conference held in Coventry the Girl Guides Association was represented by Mrs Bowness-Smith a Guider from London and South-East England Region. These two photographs show Mrs Bowness-Smith giving instructions to Bell-Lyre or Glockenspiel players and then joining in with one band.



National Scout Bandmaster Conference



HQ NOTICES

New Year Honours for Guiding

All members of the Movement send their congratulations to:

Mrs M F English, who was awarded the MBE for 'service to Guiding'. (Mrs English is Headquarters' Programme and Training Commissioner in New Zealand.)

Miss T M B Jackson, who was awarded the MBE for 'services to the Girl Guides, Corby'. (Miss Jackson has served for many years as a Guider in Northamptonshire, as a Trainer and a Camp Adviser, and from 1964-1967 was Deputy Drama Adviser, CHQ.)

Miss M M Smyth, who was awarded the MBE for 'service to the Girl Guides Association in Ulster'. (Miss Peggy Smyth was appointed General Secretary of the Ulster Girl Guides Association in 1961 and has given outstanding service; she has served as a Guider and Trainer for many years.)



Miss M M Smyth MBE

Training Diploma

Miss Christine Hollier, Middlesex West Training Diploma (Guide).

Thinking Day Service

Westminster Abbey at 11 am Saturday, 22nd February, 1975

All members of the Movement are welcome to the above Service. No tickets will be issued, but seating accommodation will be limited. The doors will be opened at 10 am. Details of international songs and the hymns which will be sung can be found in *The Brownie* issues of 1st January and 12th February and the

January issue of *Today's Guide*.

Guiders are reminded that Units should visit cloak-rooms before entering the Abbey.

For that Saturday only, the CHQ shop will remain open until 3 pm.

Insurance

Among the many enquiries for advice about the Association's Insurance policies which are received by the Insurance Department at Commonwealth Headquarters, we are asked from time to time the question whether the policies apply in the event of non-compliance with POR.

These are technical matters, and the answers which the Insurance Department gives are on the basis of a technical interpretation of the policy contract, and they must NEVER be used as grounds for not applying POR. All claims are scrutinised at Commonwealth Headquarters, and failure to fully comply with POR could make it impossible to support any claim. Indeed, our Insurance Department goes to great lengths to emphasise that failure to comply with POR will not only result in increased claims and higher premiums, which can only result in higher membership fees, but could also bring restrictions into the Association's policy covers.

The Jewish Guide Advisory Council in 1975

1) The Annual General Meeting will be held in London on Tuesday, 15th April at 8 pm. All Jewish Guiders, Guiders with Jewish girls in their Units, and their friends will be welcome. The guest speaker will be Miss E Allen Williams, Heraldry Consultant, CHQ.

2) The Act of Worship will be held in London on Sunday, 27th April at 3 pm. All Jewish Brownies, Guides, Rangers, Young Leaders and Guiders, together with members of their Units (Jewish or otherwise) will be most welcome.

Further details of these events can be obtained from Mrs I C Emanuel, 101 Baron's Keep, Gliddon Road, London W14 9AX.

Girl Guides Association, SBA, Cyprus

Since our notice in the December issue of *Guider*, money has been received from the following sources:

Limassol and Berengaria Supporters' Committee.

Daffodil and Poppy Patrols, 2nd Campbell Company.

Loose change in Company box, 2nd Campbell Company.

Primrose and Scarlet Pimpernel Patrols, 3rd Campbell Company.

1st St Peter's Limassol - £12.50.

2nd Berengaria - £16.85.

Commissioner's Handbook

The new *Commissioners' Handbook* has been published and is available from the CHQ shop and other Guide shops, price 75p. There will be a review of this book in the March issue of *Guider*.

Films

Featured in this month's issue of *Today's Guide* is the famous Trinidad Carnival. The Information Attache at the Trinidad and Tobago High Commission has a colourful Carnival film which is available on loan, free of charge, as well as other films about Trinidad and Tobago. Your County Commonwealth Adviser has the High Commission address and details of other sources of films.

Duke of Edinburgh Award Winter Expeditions

As Easter is at the end of March this year, Guiders are reminded that any Expedition planned for wild country will be subject to the special conditions relating to Winter Expeditions.

Approval for a Gold Expedition in wild country must be obtained from CHQ through the Country and Region Co-ordinators at least six weeks ahead, and the plans must be agreed by the Expedition Panel for the area being visited.

The Supervisors/Assessors must hold the winter Mountain Leadership Certificate.

World Conference Booklet

In January *Guider* it was announced that the *Today's Guide* World Conference booklet was no longer available unless you wished to photostat it yourself. However, the booklet has now been reprinted and can be obtained from your Region/Country HQ, price 7p. Please send a sac, no smaller than 9½ in x 6½ in.

Opportunity Knocks...

Foxlease 2nd - 9th August
9th - 16th August
16th - 23rd August
23rd - 30th August

Waddow 9th - 16th August

... for those wishing to take small parties of Guides or Rangers for a week's holiday in the New Forest or on the edge of the Yorkshire Moors.

At *Foxlease* accommodation will be in a Georgian House situated on the edge of the Forest. You will be expected to plan your own Programme, which could include any of the following: Forest walking, deer stalking, bird and badger watching (though the latter may be a little elusive), searching for fossils, a visit to a Cathedral City, or to Brownsea Island where the Founder held the

At *Waddow* you can go walking over the hills and fells, explore the witch country and many fascinating villages, visit abbeys, castles and Roman remains, go bird-watching, fossil hunting by the river, or follow nature trails.

It will not be necessary for leaders of parties to hold a Holiday Permit, as qualified and experienced Guiders will be present to comply with POR requirements. Leaders should, however, obtain the consent of their own Commissioners before making an application.

For full details please write to the Guider-in-Charge of Foxlease or Waddow (for addresses see 'Where to Train' pages).

Continued
on page 81

home and away

New Year's Honours

Congratulations to the following:

Mrs G Abraham, awarded the MBE for 'services to the community in Abertillery'. (Mrs Abraham is Press and PR Adviser and Commonwealth and International Adviser for Gwent, and has served as a Guider, Commissioner and County Arts Adviser.)

Miss G S Dearden, lately Secretary, Isle of Man Central Council, British Red Cross Society, has been awarded the MBE. (Miss Dearden has served as Island Commissioner, as a CCA and District and Division Commissioner.)

Miss V A Graver, who was awarded the MBE for 'nursing service to the community'. (Miss Graver is a District Commissioner in Kenya.)

Miss C E Hepworth, lately a member of the Dewsbury, Batley and Mirfield Hospital Management Committee, has been awarded the MBE. (Miss Hepworth is now Vice-President for Leeds and served for many years as a Guider and Commissioner.)

Keep Your House Warm

If you are having trouble keeping warm at home this winter, then the following tips issued by the National Federation of Builders' and Plumbers' Merchants will help you survive until the spring.

1. Wrap up your roof.
2. Draught-proof your doors.
3. Insulate your walls.
4. Work on your windows.
5. Coddle your hot water cylinder.
6. Twiddle your controls to achieve adequate heating with minimum consumption.
7. Check your standby heating.
8. Boost your standby lighting with oil lamps and battery powered lamps.
9. Be prepared - invest in a fire extinguisher.
10. If the worst comes to the worst, spare a thought for an elderly neighbour.

Further details on home insulation may be obtained from most of the 460 NFBPM Authorised Home Improvement Centres throughout the UK, a list of which is available free from the NFBPM, High Holborn House, London WC1 6SP.

Job Satisfaction

Anyone who is concerned with employing other people would find a new leaflet from the Department of Employment interesting reading. The Work Research Unit have been looking into why people find their jobs less satisfying. Their reasons and the advice they offer could help to make your place of work a happier one. If you would like a copy of this leaflet write to the **Work Research Unit, Department of Employment, 11 Tothill Street, London SW1H 9LN.**

Wheelchair Holidays

Have you ever wondered how people confined to wheelchairs manage to get around for holidays? Many of them are lucky enough to be included in the WRVS Winged Fellowship Trust. This relatively new charity aims to build or convert property for holiday accommodation so that the handicapped are as independent as possible. Most of these people holiday in the UK, but a few are able to go to the Continent on an exchange basis. Last year ten disabled people went to Switzerland, and this year it is hoped to send groups to France, Switzerland and Iran. Part of the cost of these holidays is met by the disabled themselves, but the nature of their handicaps often makes finance a problem. If you would like to help send a disabled person on holiday you can get further information from **Winged Fellowship Trust, 58 College Road, Dulwich, London SE21.**

CSAC Annual Report

Throughout 1974 the Consumer Standards Advisory Committee (CSAC) has continued to carry out its main function of putting forward the consumer viewpoint in the preparation of British Standards and of stimulating a wider knowledge of British Standards. There has also been increased collaboration with other organizations working in the fields of consumer affairs and education. Their annual report is now available and can be obtained from the **CSAC, British Standards Institution, 2 Park Street, London W1A 2BS.**

Nature Conservancy Council

Just over a year ago the Nature Conservancy Council was set up. They have a statutory function to establish and maintain nature reserves, carry out research into conservation, and they control licensing to protect birds and animals. At the end of last year the Council produced a booklet containing a Statement of Policies. If you would like a copy of this booklet or further information write to the NCC at **19-20 Belgrave Square, London SW1X 8PY.**

Erratum

The credit line for the article 'Mexico 74', in the December *Guider* should have read 'by Hettie Smith and Hazel Hodges'. We apologise to Miss Hodges for omitting her name, and we thank Miss Smith for pointing this out.

Town and Country Planning

Many changes are taking place at the moment in Local Government, and one system of planning is giving way to another as demands are made on planners to solve problems created by technological, economic and social change. In order to keep up to date and understand the limitations of planning, a new book, *The New Citizens' Guide to Town and Country Planning* will prove invaluable. The book may be obtained from local booksellers, or from **The Planning Bookshop, Town and Country Planning Association, 17 Carlton House Terrace, London** or direct from **Charles Knight and Co Ltd, Sovereign Way, Tonbridge, Kent.**

Shelter Calendar

The National Campaign for the Homeless, Shelter, have included a calendar with one of their latest leaflets. As well as information about the organisation the leaflet also gives fund raising suggestions. If you would like a copy of this leaflet and more information about Shelter write to them at **86 Strand, London WC2R 0EQ.**

Tongue-Twisters

BBC Enterprises are bringing out an LP record and cassette entitled 'What Can I Do?' of songs, tongue-twisters and games, presented by Gordon Snell.

Release date is 4th February, record No. REC199 Mono, price £1.46. Cassette No MRMC 023 Price £1.75. It will be available from all record shops. It is advisable to quote numbers when ordering (To be reviewed next month).

Exhibition of Brownie Competition Winners

The exhibition of winning entries in the Brownie Diamond Jubilee competition is now on show in the restaurant at CHQ.

It has proved to be so popular that it has been decided to continue it until further notice.

Results of the Pack prize appear on page 59.

In Memoriam

An appreciation of Miss **Mervyn Newnham, OBE**, who died on 9th January, will be published in the March *Guider*.

continued on page 81

FEBRUARY is 'fill dyke month'

and we at CHQ have vacancies to fill in the following Departments:

EQUIPMENT
PUBLISHING
PUBLIC RELATIONS
INTERNATIONAL
PROGRAMME/TRAINING
RECEPTION

For further details please write or phone

Mrs. Eileen Earnshaw,
Head of Personnel,
The Girl Guides Association,
17/19 Buckingham Palace Road,
LONDON SW1W 0PT.

TELEPHONE 01-834 6242 EXT 37

Guides - come Camping afloat on the English Canals

It's exciting and great fun - try it and see!

Using genuine narrow-boats specially converted for eating and sleeping, you may cruise at your leisure along miles and miles of inland waterways.

Send for illustrated brochure giving full details.

Write to:- Dept. 10
Threefellows Carrying
37 Forest Street,
Sutton-in-Ashfield, Notts.
Telephone (06235) 5615



QUALITY FUND RAISING and ADVERTISING PENS

ONLY £1.35 PER 100 PRINTED
All prices include VAT
25th MARLEPOOL GUIDE COMPANY

Guaranteed top quality. Printed up to 36 gold letters. Quick delivery. Send 2x4½p stamps for illustrated catalogue and assorted samples.

Lapel Badges

Your own design made to order. 4½p stamp for catalogue and samples.

PLAQUES! TROPHIES! CUPS! MEDALS!

Buy direct and save ££'s. Prices from 25p. Send 4½p stamp for illustrated catalogue.

WESTFIELD LTD

DEPT 23 WESTFIELD HOUSE,
HELENA ST. B'HAM B1 2RJ

For your RAMBLING HOLIDAY

CASTLEBAR'S NINTH INTERNATIONAL FOUR-DAYS' WALKS

Month: JUNE 1975

Dates: 26th - 29th (4 days inclusive)

Particulars from: The Secretary,
International Four Days' Walks, Rush Street,
Castlebar, Co Mayo, Ireland.

IDEAL FUND RAISERS FOR YOUR UNIT

We supply Ball Pens, Combs, Pencils, Key fobs, Rain-hoods, P.V.C. Goods, Diaries, Christmas Cards, Christmas Paper, Calendars, etc. All are excellent Fund Raisers - Good Quality - We give Full Guarantee. All orders are completed within 5 days of receipt. Send now for our 1975 price list.

Quality Goods - Full Guarantee - Speedy Service

THOMPSON & CREIGHTON (ADVERTISING) LTD.
North Tyne Industrial Estate,
Whitley Road, Longbenton,
Newcastle upon Tyne NE12 9SN.

Telephone: 0632 669511
Please send a stamped addressed envelope.



The leader of the pack.

GROUP NAME TAPES

Cash's QUALITY WOVEN NAME TAPES
J & J Cash Limited Kingfield, Coventry CV1 4DU.

TOP QUALITY BALL PENS

Diastamped with 30 Gold Letters and Spaces

£1.35
PER 100 PENS
(VAT PAID)

★
★
★
★
STANDARD CHARGE
POST & PACKING
40 PENCE

ORDERS DESPATCHED SAME DAY

Sale or return - full refund on pens returned

Samples 3½p stamp - please try before you buy

ABBNEY WHOLESALE

77 LIVERPOOL ROAD, STOKE ST4 1AE

home and away

Continued from p. 79

In Memoriam

Guiding in Argyll has lost one of its most dedicated members. **Jean Allan** joined the Movement in 1921 as Lieutenant of the Sandbank Company. She took over as Captain in 1922 and continued to lead the Company for 35 years. During that time she held practically every position in the County - District Commissioner, Division Commissioner, County Commissioner, County Camp Adviser, Trainer and finally County President. For nearly 50 years, the Cowal Guides have been indebted to Miss Allan for their home in Dunoon and their camping ground in Hafton. As well as her Guiding activities Miss Allan has served on the County Council. She was awarded the 'Silver Fish' for her great service to Guiding.

JW

The North Wight District and many other Guiding friends in the Isle of Wight pay tribute to the long service in

Guiding of **Miss Mary Hewitt** who died on 3rd November, 1974, after some months in hospital. Miss Hewitt had been a Ranger and a Brownie Guider, Guide Guider and was Badge Secretary for N. Wight until the time of her illness. After her retirement from active Guiding she was tester for the Brownie Golden Hand and tested 'Thrift' badges for Guides and Brownies. She will be sadly missed by many friends.

MH

Miss Queenie Lawrence's death on 13th October has left a gap in Fareham Division which will be difficult to fill. Miss Lawrence had been in the Guide Movement since 1923 when she joined as a Brownie. She was a much loved and respected Guider, her qualities were absolute reliability and steadfastness. Her tact, strong commonsense, counselling and above all, her friendliness, never looking for reward,

led her to be awarded the Medal of Merit in 1964.

She set a wonderful example to all who came under her care, and her memory and inspiration will live on.

PMC

News of the untimely death of **Mrs Kay Rouse** on the 24th September came as a shock to many of her friends in Guiding in the Wakefield Division, where she had been a Guide Guider, Ranger Guider and latterly District Commissioner. Her Guiding activities extended beyond the confines of the Wakefield Division, where she will be remembered as an enthusiastic and able Ranger Guider. Despite increasing ill-health Kay continued her work as a District Commissioner until the end, giving unstintingly of her time to the Movement and to the girls and Guiders in her care. She will be remembered with affection by all who came into contact with her.

EW

HQ NOTICES.....

continued from page 78

Introduction to Mountain Leadership and Caving Courses

The National Scout Caving Activity Centre, **Wherside Manor, Dent, Nr Sedburg, Yorkshire.** 26th April - 3rd May, 1975.

The next Mountain Leadership Course - which will count as the first stage toward gaining an MLC, and Caving Course - geared for either the beginner or experienced, will run alongside one another over these dates. They are open to those of 18 and over interested in mountaineering and caving activities.

The cost will be £26.00 (plus VAT) and although it is hoped that grant aid will be available for those with the highest travelling expenses, those taking part are advised to apply for an LEA grant if possible. **The closing date for applications is 8th March, 1975,** so write now to the Training Secretary, CHQ, for details.

The Commonwealth and International Circle

'A Caribbean Carnival' for the Thinking Day Party will be held at CHQ on Tuesday, 18th February, at 6.30 pm for members and their guests from overseas.

Short Term Investment Service

Monthly interest rate after deduction of management commission.

October	10.43%
November	10.38%
December	10.50%

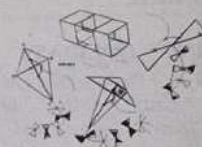
Scout and Guide Trust Fund

On 31st December, 1974 the value of a share in the above Fund was:

for selling purposes	21-29p
for buying purposes	22-35p
interest only yield	10-07%

The interest only yield does not include any capital appreciation and is based on the share buying price on the date stated.

TODAY'S GUIDE



a mag for all seasons

Have you seen the new TODAY'S GUIDE yet? The February issue has been on sale since January 15th, with all sorts of Thinking Day ideas.

March issue on sale February 15th

contains items for St David's Day, St Patrick's Day and Easter; Cat Project Competition; self training schemes, collective badge emblems, PLUS eight page Patrol Leaders' Supplement - planning towards Easter with the Patrol (double page chart), planning the Promise ceremony, Wind Play with kites, and more.

DON'T MISS MARCH ISSUE
ON SALE FEB 15th, PRICE 15p.

CLASSIFIED

ADVERTISEMENTS

THE GUIDE CLUB

Guide Club, 46 Belgrave Square, London SW1. Tel: 01-235 7616. **Membership (Home and Overseas)** for members and ex-members of the Movement over 18, including Trefoil Guild and Local Associations. Members may bring guests, including husbands, to stay at the Club. **Non-members** of the Club should enquire about **SAME DAY BOOKING SCHEME** for one night only. Apply Secretary.

FOR SALE/FUND RAISING

Advertising Pencils, Ball Pens, Combs, Diaries, etc, gold stamped Company name, raise funds quickly, easily: Bran Tub Toys, details: Northern Novelties, Spencer House, 26/28 Spring Gardens, Bradford BD1 3HE.

Wall Charts. Wide range of activities covered, including camping, map-reading and outdoor pursuits. Write for free illustrated list to SCOUTING Magazine, Baden-Powell House, Queen's Gate, London SW7 5JS.

T-Shirts Jamboree surplus, excellent £1.00. Hermitage, 2 Palace Green, Croydon CR0 9AG.

Bran Tub Toys. Undressed Dolls and other Fund Raisers at Wholesale Prices. Sae for Catalogue: Nye's Novelties, Dept/G, 173 Cambridge Road, Hitchin, Herts.

CAMPING - HOLIDAYS

Buckmore Park, Maidstone Road, Chatham ME5 9QG. Kent District Camp-site - Activity and Pack Holiday Centre. Open throughout the year for weekend/day visitors, winter indoor weekends, summer camps and Pack Holidays, Venture/Ranger weekends and Guide Camps. Indoor heated swimming pool, indoor roller rink, rifle range, karting, assault course, abseiling, climbing and pioneering in over 200 acres of Woodland. Usual Camp or Holiday form required. Write for details.

Felin Bach, Caernarvonshire, County Camp-site. Large camping area and indoor accommodation suitable for Pack holidays, available all the year round. Snowdonia National Park half-a-mile.

Climbing, hill-walking and safe bathing within easy reach. Apply to Mrs P Roberts, Bryn Meurig, Celyn Avenue, Penmaenmawr LL34 6LR, Caerns.

Come to Glasbury on Wye for your summer camp. Pony Trek in the Black Mountains of Powys and canoe on the River Wye. Large sae: Paul Greenow, 11 Dgeddi Villas, Llanigon, Hay on Wye, Hereford HR3 5PZ.

In 300 acres Forests - 2½ acre flat field set aside for Guides - flush toilets, water laid on. Sae brochure (Aerial photograph 7p) to 'Guides', 'Forest Glade', Kentisbeare, Culmpton, East Devon. Tel: Broadhembury 381.

Pony-Trek, sail, canoe, cave, at our Self-Catering Centre in the heart of the Black Mountains in Wales. Ideal for groups for outdoor activity holidays or courses to RYA/BCU Certificates standards. Details PGL Holidays Ltd, 140 Ross-on-Wye HR9 7AH. Tel: (0989) 4211. Evening/weekends Much Marcle 609.

Park Wood. The Sidney Tidy Scout Activity centre is available for Guide Camps, courses and Pack Holidays, with bunk house accommodating 36, catering and lecturing facilities. Ideally situated eight miles north of Brighton seafront on a bus route and close to South Downs. Details from R A Wady, 9 The Drove, Brighton BN1 5NN (0273 505585).

Austria-Osterreich-Salzburg Guiding Abroad

Camping facilities at Zellhof. Accommodation in own houses-camping area. Swimming in lake alongside. Walking, hiking and everything for a good Guide camp. Already visited by many British Groups. Monika Kronberger would be pleased to send details by return post.

Huttenbergstrasse 6, A-5020 Salzburg, Austria

Sunspot Adventure - Ride, sail, snorkel, canoe on our thrilling programme in the South of France - shown on BBC Holiday '73. Also Mediterranean Riding and Dutch Barge Holidays. Brochure PGL Holidays Ltd, 142 Ross-on-Wye HR9 7AH.

Tel: (0989) 4211. Evening/weekends Much Marcle 609.

Small Camp-site in lovely Kent countryside. Send stamp for brochure to Miss J Kane, 30 New Road, Meopham, Kent, DA13 0LS. Telephone 0474 813629.

Holiday Cottage. Manchester County's Outdoor Centre, Seven Springs. Disley. Fringe of Peak District. Guiders, Trefoils with family/friends, sleeps six. Sae: Miss Mellor, 54 Lord Street, Dukinfield, Cheshire.

Canal Camping Holidays/Weekends on 'pair' of working narrow boats ELSTREE and LYRA for 12/24 persons. Sae please to: T&A Collier, 5 North Street, Leighton Buzzard, Beds.

Explore the Waterways of England in 'Romulus', a fully equipped converted narrow boat, available for group charter by the week or weekend. Weekend cruises in the London area until Easter and from September. Weekend and longer week cruises are based on Braunston and Worcester, between Easter and September. Full details from: Waterway Educational Holidays, 115 Hillbury Road, Warlingham, Surrey CR3 9TG.

Camping Narrow Boats. 12 berth single and 24 berth pairs fitted with bunks, cooker, sink unit and full inventory. Operated by experienced skippers on the cruise of your choice. Warwickshire Fly Boat Co, 149 Hollyfast Road, Coventry CV2 3JZ 4228.

Glasgow Girl Guide Camp-site and Pack Holiday House, Gartocharn. Overlooking Loch Lomond, large camping area, including four equipped sites. No solid shelter. Pack Holiday House equipped for 18 Brownies. Applications from 1st February for camp-site to: Miss Fyfe, 36 Balshagray Drive, Glasgow G11 7DD. Applications for Pack Holiday House to: Mrs MacGregor, 31 Crosslees Drive, Glasgow G46 7DY.

South West Area. Wootton Fitzpaine Village Hall available for Pack Holidays. In beautiful country; 1½ miles by field path from the sea at Charmouth. Charge £8 per week. For particulars apply to: Mrs Kennedy, Tempest House,

Hawkechurch, Axminster, Devon EX13 5UW.

Aberdeen Girl Guides Association, Fyfe House, Keithhall, by Inverurie. Fully equipped cottage for 22; Guiders' room, Dormitory, Living-room, Kitchen, Toilets, Shower; converted stone barn for games, etc, garden and field area. Particulars from: Mr K Young, 91 Craigton Road, Aberdeen AB1 7TY. Telephone 33989.

Brownie and Guide Hall for Pack Holidays. Near shops, sea, country and 'world's smallest public railway'. Enquiries to: Hall Secretary, 8 Green Lane Avenue, Hythe, Kent CT21.

Bracklesham Bay Camp. Seven acres of flat fields protected by surrounding trees. Mains water, no sanitation. Sea only ¼ mile away. Riding tuition available. Applications and enquiries to: Rodney Eborn, Regency House, Clayton Lane, Bracklesham, Sussex. Tel: 024362 534.

Welsh Ranger Outdoor Pursuits Centre, Highgate, Broneirion, Llandinam, Powys, SY17 5DE. Hill cottage with access only from Broneirion, steep climb and no road. Available March to November. Sleep 15. Rangers, Venture Scouts or mixed parties, or older Guides 13+, must have suitably qualified Leader in charge. Ideal for hillwalking, pony trekking, swimming. No equipment for out-door activities provided. 10p per head per night, plus metered electricity for cooking, heating and immersion water heater. Bathroom and fully equipped kitchen, no beds. Bookings and further information: Guider-in-charge, Broneirion. Deposit 50p per party.

Canoe Hire Service. River Wye and River Ardeche (France). Details PGL Holidays Ltd, 141 Ross-on-Wye HR9 7AH. Tel: (0989) 4211/5. Evening/weekends Much Marcle 609.

Camp-site, entirely private, sheltered, 1½ miles sea, for camps wishing to participate in organised riding, at reduced rates. Phone, wood on premises. All tradesmen deliver. Mrs E Gale, Buckler's Bid Riding Stables, Burton Bradstock, Nr Bridport, Dorset.

The Girl Guides Association takes no responsibility for statements made in any advertisement here or elsewhere in the magazine, or for any subsequent correspondence in connection therewith. The right is also reserved to refuse any advertisement not considered suitable. Advertisements for the sale of second-hand clothing cannot be accepted (except uniforms). Uniforms for sale should not be sent to CHQ, advertisers receive the following month's issue. ALL CHARGES 5p per word. BOX NUMBER 20p EXTRA. PLEASE SEND REMITTANCE WITH ADVERTISEMENT TO: Miss A M Martin, Advertisement Manager, The Girl Guides Association, 17/19 Buckingham Palace Road, London SW1W 0PT. 10% discount for series of 12. To reply to a Box Number, address your envelope to Box Number concerned c/o GUIDER.

Northern Heights Activity Centre, Edgwarebury Lane, Elstree, Herts. The joint camp-site of Middlesex East Guides and Greater London-North Scouts. Open all year, this secluded camp-site covers 7½ acres of land, including Patrol sites. Excellent amenities which include toilets and showers. Some camp equipment available. Within easy reach of central London; convenient access from M1. Rates and details from: Mrs B Gibbs, 3 Sandringham Gardens, London N8 9HU.

Midlothian Guide Training Centre, Vogrie House, Gorebridge, near Edinburgh. Pack Holiday House, fully equipped for 26. All electric. Also fully equipped Camp-site with solid shelter for 30. For House apply to: Mrs Burns, Sauchenside Farm, Ford, Midlothian. For Camp-site apply to: Mrs Calder, 25 Harburn Road, West Calder, Midlothian.

Pony Trekking in Welsh Mountains. Beginners, parties and families welcome. Sae: Dobbs, Llanddeusant, Llangadog, Dyfed.

Pony Trekking in Black Mountains (National Park). Private camp field or residential. Ponies kept on centre. Approved by POB and WTS. Sae for brochure: Grange Trekking Dept G, Capel-y-Ffin, Abergavenny, Monmouthshire.

Warren Beach, Beaulieu, Hants. Camp-sites with huts. Private beach. No Husbands or boys over seven. Apply:

Miss Knox, Whitehill Chase, Bordon, Hants.

Cornwall, Florida Hotel, Bude. On Summerleaze Beach. Ideal for families, walking, swimming, surfing. Proprietors, Mr and Mrs Russell, (ex-Guider). Tel: 2451.

Ex-Guider offers holiday accommodation in seventeenth-century Devonshire farmhouse, glorious views. Ideal touring, local farm and garden produce. Children and good dogs welcome. Stamp for brochure. Mrs J Haiselden, New Phillishayes, Uptonery, Honiton, Devon EX14 9PF. Tel: Uptonery 228.

Cudham, Kent. Equipped sites with solid shelter, also unequipped sites, in 98 acres woods and valleys, with scope for all types of Guide activities and Brownie Revels. Heated indoor accommodation for Pack Holidays, Guide, Trefoil and Guiders' weekends. Details: Warden, Overshaws, Cudham Lane North, Cudham, Sevenoaks, Kent. Sae please.

N Cornwall. 20 ft 4-berth caravan to let. Quiet site overlooking Treyarnon Bay. Apply: Young, Beggar's Hatch, Harford Bridge, Tavistock, PL19 9LS.

Fairthorne Manor Scout Camp-site. 16 acres of grassland surrounded by woodland, near River Hamble. Shared by Scouts and Guides. Ideal for boating activities - canoes for hire. Centrally situated for numerous places of interest. Ample firewood provided. Flush toilets. For brochure

write: Mr M D Veal, 19 Alfriston Gardens, Sholing, Southampton SO2 8GB Hants. Tel: 0703 432223.

Crawley Division camp-site (Little Trees). Two unequipped sites with shelter 10p per night. Enquiries: Miss P. Pilbeam, 69 Oak Way, Northgate, Crawley, Sussex.

Cumbria North Guide camp-site, Low Moor End Farm, Ennerdale, Cumbria. Equipped and non-equipped sites in lovely part of Lake District. Send sae for brochure to: Miss J. Ashton, 34 Gillfoot Road, Egremont, Cumbria.

COMING EVENTS

10th Sedan Chair Rally. Gilwell, 9th-11th May, '75. Barn Dance, Film Show, Bell Ringing, Archery, etc. Plus the Great Race. Open to Rangers, Venture Scouts and members of Scout and Guide Associations up to the age of 25. Apply: L J Burkett, 65 Torcross Road, S Ruislip, Middlesex. Sae please.

Social Deprivation. A SAGGA Seminar to discuss - What are the Movements doing? How should they be involved? Guests The Chief Scout and Mrs J Blooman, Deputy CC (Guides). February 8/9th, 1975. Islington Scout Centre, London. Details: Tony Hale, 45 Telford Avenue, London SW2.

18th Scout and Guide Folk Festival, Saturday, 15th March at Amersham, Bucks. 25p. Sae please to: Brian Sims, 52 Orchard Road, Seer Green, Bucks. HP9 2XU.

UNIFORM

Wanted: Guider's uniform, blouse and hat. In good condition, size 16. Box No 727.

BUSES FOR HIRE

Transit Vans For Hire. 18/22 cwt Weekly rate £19.00, daily rate £3.50. 30 cwt weekly rate £26.00, daily rate £5.50. Deposit £25.00. Mileage charge 3p per mile. **12 Seater Minibuses For Hire**. October to April £38.00 per week, £7.50 per day. May to September £40 per week, £9.00 per day. No mileage charge, £25.00 deposit. 8% VAT on all the above charges (excluding deposits). Tel: 01-890 9931.

PETS

'Purrfect' homes needed for neutered cats of all ages. Elderly cat-lover most distressed that cats will have to be 'put down' if homes not found. Cat would need to be collected from Wandsworth (London) area. Further details from Box N 726.

Please note: All advertisements for Venture Scouts/Ranger events published in Guider must be accompanied by the signature of the Guide County Commissioner.

When replying to advertisements please mention GUIDER.

Stamps for Collectors

At the end of January a new stamp was issued by the Post Office. The stamp, in aid of charity, will be on sale for one month and will cost 4½p first class postage plus 1½p surcharge. Many charities will benefit from the sale of this stamp, including those concerned with physical and mental ill health and disability, addiction and dependency, and the welfare, rehabilitation and care of the sick and disabled. These stamps will also be available from the Philatelic Bureau for a full year.

A set of stamps that will be available after 19th February is a set of four to commemorate the bi-centenary of the birth of Joseph Mallord William Turner. Four of this well known English artist's paintings have been incorporated into the stamps; on the 4½p is the *Burial at Sea*, on the 5½p is *Steamer in a Snowstorm*, on the 8p is *Arsenal at Venice*, and on the 10p is *St Laurent*. As you can see from the photograph (right) these four stamps could make a very attractive addition to a stamp collection for just 28p from any Post Office.



BRITISH PAINTERS

Turner

1975

CARDIFF SCOUT & GUIDE GANG SHOW

NEW THEATRE, CARDIFF
17th - 22nd MARCH, 1975

DETAILS FROM: LYN JOSTY
36 ST CADOC ROAD, CARDIFF

GUIDE SHOPS
TO SERVE YOU
AT
EDINBURGH:
GLASGOW:
DUNDEE:



IN SCOTLAND

16 COATES CRESCENT,
EDINBURGH EH3 7AH.
TEL. 225 3483.
1 SCOTT STREET,
GLASGOW G3 6NU.
TEL. 332 6288.
53 SOUTH TAY STREET,
DUNDEE DD1 1NP.
TEL. DUNDEE 22262.

YOUR UNIT BENEFITS BY COLLECTING DISCOUNT
STAMPS

FETES BAZAARS ALL FUND RAISERS

Fully guaranteed ball pens and pencils die-stamped in gold with your name or slogan (maximum 30 letters), please print name.
£2.50 per gross, P & P 40p up to £3, 50p over £3.

ALSO

Extensive range of TOYS - STATIONERY - FANCY GOODS - DOMESTIC STATIONERY & PRE-SELECTED PARCELS all at whole-sale prices. Detailed price list from:

BAKER ROSS

2a Handsworth Road, London N17 6DD

Tel. 01-808 6948

COME CAMPING ON THE CANALS NEXT SUMMER

in one of our better equipped camping narrow-boats. Parties of 12, up to 48, with first-class skippers to make everyone's holiday really enjoyable.

FOXTON BOAT SERVICES, LTD.
Foxton,
nr. Market Harborough,
Leics.
Tel: Kibworth 2285.

THE CHURCH ARMY

We require women called of God
to be Evangelists

Is God calling YOU to join us?

Women 18 - 35 years of age. 3 Year Training Course.
35 - 49 years of age. 1 Year Training Course.

(For residential work only)

Opportunities for service in Parishes, Mission Work, Homes, Hostels, Youth, Social Care.

For further details write to:

Sister J. A. Pyke, (Ref GU/2)
The Church Army, 185, Marylebone Road,
London, N.W.1. 5QL

EQUALITY FOR WOMEN!

Morden Park Insurance Brokers Ltd
ANNOUNCE

Reduced Motor Insurance Premiums for
GUIDERS

joining, Scouters, Civil Servants, Advanced Drivers. **SPECIALISTS** in all classes of insurance we welcome your enquiries for all personal and business insurances, mortgages and investments **M.P.I.B. Ltd. Brent House, Kenton Road, Harrow HA3 8BT.**

Tel: 01-907 0111

S. MARTIN'S COLLEGE, LANCASTER

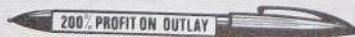
New B.Ed. Degree in
COMMUNITY & YOUTH WORK & TEACHING

Ordinary (3 years) Honours (4 years)
Good study and sports facilities
Near Lake District and Pennines

Course starts September 1975

Further details: **The Registrar, Dept. CYS 2**
S. Martin's College, Lancaster LA1 3JD

Some places available on other B.Ed. Courses



Imprinted ball-pens, key fobs, combs, booklets, diaries, punchboards and many other speedy fund raisers.

Please send 4½p stamp for full catalogue.

THE PROVINCIAL SUPPLIES CO.,
1 Gardenfield Lane, Berkhamsted, Herts.
Tel. Berkhamsted 6527 (STD: 04427 6527)

TENTS - FLYSHEETS - WATERPROOF CLOTHING

You can save 50% or more
If you make and repair on an ordinary sewing machine.
We supply everything, canvases, nylons, all weights. Zips, metal poles, threads, PVC groundsheeting, all accessories. Do not call until you have sent SAE for full range of samples and free literature on tent making.
EDWARD BARNES, GG, Hawksfold, Fernhurst, Haslemere, Surrey.

Does every girl in your Pack buy

THE BROWNIE

The February issues contain such useful items as ideas for Thinking Day, nature stories and hints on the Gardener's Badge (series starts on 26th); as well as letters, poems, pictures, etc sent in by Brownies.

Brownie on sale every Wednesday
price 4p

BOOK

REVIEWS REVIEWS REVIEWS

The Brownies and the Wedding Day by Verily Anderson. Published by Brockhampton Press £1.10.

This is an exciting adventure story, which makes excellent bedtime reading. It all begins when Amanda and Tulip, members of a Brownie Pack, find a monster on the common. And it ends with Tawny's wedding. The events in between make this book a worthwhile addition to your book collection. **PP**

The Pollution Handbook, Mabey, Penguin Education, 70p

This well-illustrated paperback is based on the use made of the water and air pollution study kits prepared by the Advisory Centre for Education and sponsored by the *Sunday Times*. Supported by many samples of the work of children, mainly 10 to 13 years of age, it is a record of enthusiasm, energy and really worthwhile projects carried out in 1971 (into water pollution) and in 1972 (into air pollution) which have not only benefitted the children, but attracted the keen support of parents and teachers and involved many other adults in the search for information. Although primarily a text book and a report, it would be difficult to find a publication more likely to encourage others to do something similar. **EMC**

My Fairytale Cook-book, R C Scriven. Peter Lowe £1.75

This is a most attractive and unusual book with 20 classic fairy tales from many different parts of the world. Some, like *Sleeping Beauty* and *Little Red Riding Hood*, are well-known, but others are less familiar, yet full of interesting characters and magical events. Linked to the stories are thirty-two recipes easy enough for children to cook themselves, but naturally with parents there to supervise. Some dishes need no cooking at all, while some are for slightly more experienced cooks. The instructions are given in easy-to-follow steps and no complicated kitchen equipment is needed. This

book could be the answer to the constant questions, 'What Can I Read?' and 'What Can I Do?' **OMC**

Encyclopedia of Bible Stories (re-told by Jenny Robertson), Scripture Union/Purnell £2.95

This comprehensive collection of Bible stories is indeed encyclopaedic in content. No child is likely to be deterred from exploring its contents because it looks dull. The layout throughout is excellent and the illustrations are of an exceptionally high standard. Even more important, the actual re-telling of the Biblical narratives are sensitive and accurate, and in no place is anything important added to or subtracted from the original; both palatable and unpalatable facts are plainly presented.

Some minor criticisms would be the omission of the stories of Esther and Job, and of one or two places in the Old Testament stories where the author has experimented rather unsuccessfully with different methods of narration, but these are small points to set against the whole. A particularly good idea is the reference at the end of each chapter to the relevant passage in the Bible. This book is highly recommended for children from five to nine years old, and is very reasonably priced. **NB**

How to Make Rings and Other Things by Elsie B Ginnett, £2.50; **Tall Book of Candle Crafting** by Gary V Guy, £2.80; **Beauty Recipes from Natural Foods** by Anne Marsh, £1.20; **Pictures Without a Camera** by T J Marino, £1.20. Oak Tree Press.

The first is rather an expensive craft to learn, but it could be the means of making your own Christmas and birthday gifts. Every step has clear instructions and photographs of how to make plain silver rings, textured rings and rings with intricate patterns. Flint castings for pendants and key rings are included, as are buttons and belt buckles.

Candles also make excellent gifts and are fun to make. The *Tall Book of Candle Crafting* tells you how to make straightforward block candles, as well as the more exotic flower and figure candles. This book can introduce you to something that is fun to make, fun to give and fun to receive.

Pictures Without a Camera and **Beauty Recipes from Natural Foods** deal with fun things to do for yourself. The latter tells you how to make everything from stinging nettle hair tonic to rose water body rub and from strawberry facial cream to yogurt face mask. The former explains how to make pictures using photographic paper and light.

All four of these books could introduce you to a new hobby for the long winter evenings. They may seem a little expensive, but anyone of them could give you hours of fun trying out something new. **JVK**

Human Space - Survival, Wright, Penguin Education, 70p

This is one of a small series of closely linked books said to be for those in the middle years of schooling, i.e. children of nine to 13. Much of the book is more suited to older children. Sentences such as: 'The survival system is a simple way of summing up the survival potential of any given group of people in any given place,' do not encourage reading 'straight through' which is one of the suggested approaches. There is much of interest to children, although some parts of the survival guides will be of more academic interest to children than anything else. The suggestion that young children should light petrol fires, 'the petrol may explode', is positively dangerous and no child of nine to 13 should get himself into such a position that he has to leap on the bonnet of a car for safety. **EMC**

Junior Tennis by Harry 'Cap' Leighton. Oak Tree Press, £1.50.

Anyone starting to learn the game of tennis would do well to read this book. The author's idea of getting to know the ball and how it bounces before you pick up a racket is, in my opinion, a good one. But the book does have its drawbacks. The step-by-step instructions are easy to follow, but the photographs that are supposed to clarify each point are fuzzy

and difficult to understand. One very helpful section is the glossary of tennis terms. But like any sport, you can only learn so much about tennis from a book. There comes a time, very early on, when you have to go to a professional teacher. **JVK**

Outdoor Pursuits for Disabled People by Norman Croucher. Disabled Living Foundation, 75p

This little book marks the first step in the right direction for a lot of people. Written by a young man who has climbed the Matterhorn despite the fact that he has two artificial legs, it explains that people don't have to be excluded from outdoor pursuits just because they are disabled.

With the correct supervision and training, people with a handicap can take part in activities from swimming and water skiing to gliding and sand yachting. They can dive, row, camp, and shoot or go caving, cycling or riding.

The book gives a short summary of the sport and then lists people to contact for those interested. Useful addresses, such as that of the British Sports Association for the Disabled are listed, and there are also suggestions for books giving further information.

Now that the first step has been taken, the Disabled Living Foundation are hoping to take the second in the near future, with a book about outdoor pursuits for the mentally handicapped. **JVK**

Curious Naturalists, Tinbergen, Penguin Education, 85p

This paperback autobiography is a revised edition of a book first published in 1958. It is in every sense very good value. In it the author, who is Professor of Animal Behaviour at Oxford, describes the activities, and some of the discoveries, of a small group of scientists with whom, at some time, he has been associated in the study of animal behaviour. Although the chapters deal with sand and digger wasps, camouflage in nature and gull communities, there is, among the fascinating descriptions of experiments and observation, a wealth of other natural history. The illustrations and photographs are good and the lists of further sources of information useful. **EMC**

WHAT'S ON WH WHAT'S ON WH WHAT'S ON WH WHAT'S

Ballet and Opera

Royal Ballet, Covent Garden

The Sleeping Beauty, *Swan Lake* and *La Fille mal gardée* are the main features of the February programme. Triple bills include *Les Sylphides*, *Enigma Variations*, *Raymonda Act III*, *La Bayadère*, *Agon* and a new Hans Van Manen ballet. Among the principal dancers will be Rudolf Nureyev, Merle Park and Antoinette Sibley.

Royal Opera, Covent Garden

There are three operas in this month's repertoire; Mozart's *La clemenza di Tito*, *Tannhäuser* by Wagner and a new production of Verdi's *Un ballo in maschera*.

English National Opera, London Coliseum

A superb programme from this company for February. It consists of a new production, Mozart's *The Magic Flute*, plus Rossini's *Count Ory*, Benjamin Britten's *Gloriana*, *Der Rosenkavalier* by Richard Strauss, and Bizet's magnificent *Carmen*.

London Festival Ballet, New Victoria Theatre

The Company will be performing *Swan Lake* until 8th February, when they leave London to go on tour (see *On Tour*).

D'Oyly Carte Opera Company

The Company's season at the Sadler's Wells Theatre continues throughout February.

On Tour

Royal Ballet, Stratford-upon-Avon

The Royal Ballet will be visiting the Royal Shakespeare Theatre from 3rd-15th February. Their repertoire will include *Les Sylphides*, *The Invitation*, *A Wedding Bouquet*, *Giselle*, *Pineapple Poll*, *The Dream* and *Les Rendezvous*.

London Festival Ballet, Eastbourne

The Festival Ballet will be visiting Eastbourne from the 24th February. Their programme will include *Coppelia*, *Les Sylphides* and *Prodigal Son*.



Exhibitions

British Museum

7th Feb until 30th April: An exhibition of drawings by the legendary Michelangelo Buonarroti is being presented to mark the 500th anniversary of his birth. There will be 179 drawings on show, including studies for some of his best-known works.

Royal Academy

Until March: Turner 1775-1851 (see *December Guider* for review).

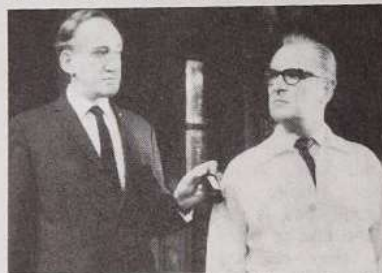
Bethnal Green Museum

Until 16th: Children and their toys in English art.

Science Museum

Until April: A reconstruction of an astronomical clock, a working model of the Universe built by Italian physician Giovanni Dondi in 1364, is on show throughout the month.

The original model is said to have been 16 years in the making, and centuries in advance of its time.



The Pay-Off, starring Nigel Patrick (above right) and Dulcie Gray, is a whodun-it with enough twists and turns in the plot to satisfy most thriller addicts. Now showing at the Comedy Theatre, with generous party bookings for groups of 12 or more, eg £1.75 stalls reduced to £1.00.

Concerts Films and Plays

Royal Festival Hall

5th Feb: BBC Symphony Orchestra
11th: Royal Philharmonic Orchestra
12th: London Symphony Orchestra
16th: London Philharmonic Orchestra, conductor Sir George Solti
24th: English Chamber Orchestra
16: *Queen Elizabeth Hall* - *Under Milk Wood* (certificate A A). Richard Burton, Elizabeth Taylor, Peter O'Toole and Vivien Merchant star in film version of this marvellous play by Dylan Thomas.

23rd: *Purcell Room* - Michael Muskett's Museum of Music, a series of concerts for children and adults.

(Left) *Les Sylphides*: Royal Ballet.

'The airship Hyperion' - a mid-air sequence from 'The Island At The Top Of The World'. This film is showing at the Leicester Square Theatre and other selected cinemas.



14th-15th: *Royal Albert Hall* - English Folk Dance and Song Society Festival.

National Theatre, Old Vic

The production of Ibsen's *John Gabriel Borkman* (see January *Guider*) continues until 24th Feb. The 25th sees the opening of Shaw's *Heartbreak House*, with Eileen Atkins, Colin Blakely, and Anna Massey. It is directed by John Schlesinger, who directed the award-winning film *Midnight Cowboy*.

The Island at the Top of the World, Walt Disney Productions.

A wealthy Englishman, Sir Anthony Ross, and an American archaeologist, Prof John Ivarsson, set out in a giant airship, the *Hyperion*, to search for Sir Anthony's son, who is missing in the Arctic. With only two clues and an Eskimo guide, who is too terrified of the 'evil spirits' to be of much use to them, they endure a nerve-racking flight inside the polar circle until they eventually discover an unknown island at the top of the world. A colourful, exciting film which the children will thoroughly enjoy. **AMM**

Nationwide

Avon

5th-8th Feb: Playhouse, Weston-super-Mare - Northern Dance Company.

Birmingham and West Midlands

22nd Feb: Town Hall, Birmingham - City of Birmingham Symphony Orchestra present a *Viennese Night*.

Until March: Alexandra Theatre, Birmingham - *Babes In The Wood*

Until March: Coventry Theatre, Coventry - *Jack and the Beanstalk*

Lancashire

Until 8th Feb: Forum Theatre, Manchester - *Babes In The Wood*

Until 8th: Library Theatre, Manchester - *Pinocchio*

Until 15th: Royal Court Theatre, Liverpool - *The Ken Dodd Laughter Show*.

Scotland

28th Feb-3rd March: Grantown-on-Spey, Morayshire - *Nordic Winter Games*

Tyne and Wear

Until 8th Feb: Theatre Royal, Newcastle - *Cinderella*.

Surrey

8th Feb: Ebbisham Hall, Ashley Road, Epsom - Surrey Epsom West 4, 7, 11 Epsom Methodist Guides, Scouts, Brownies, Cubs Gang Show. Also on 9th, 14th and 15th.

15th: Guildford Cathedral, Guildford - Royal School of Church Music Festival.



**Fund
Raising
Ideas
Galore!**

**You can always rely on Leswyn
to produce the goods all through the year**

**Birthday Cards,
Gift Stationery,
Kitchenware Etc.**

Write for details!

**LESWYN
CARDS LTD**

(GUIDER DIVISION)
SUTTON COLDFIELD,
WEST MIDLANDS, B73 5TF
TEL 021-354 7389

Simmons 29 Knewood

FUND RAISING BREAKTHROUGH



Here's the **complete** answer to fund raising problems — the 'Miller Package Deal'. It's been carefully planned and designed to give your company sure success. **Everybody** will want to buy from the wide range of top quality greeting cards, stationery and gifts at unbeatable, value-for-money prices. The 'Miller Package Deal' contains everything you need for really profitable fund raising.



MILLER PACKAGE DEAL

**BIRTHDAY
CARDS
FROM ONLY
3½p**

**BIG
PROFITS
AT
LEAST 33⅓%
ON OUTLAY**

**CASH
BONUSES
&
FREE GIFT
SCHEME**

**SAMPLE
PARCELS
WITH
FREE
GIFTS**

**FREE FULL
COLOUR
CATALOGUES**

**NO CASH
OUTLAY
PROFIT
NOW
— PAY LATER**

Voluntary organisations all over the country are already making big profits with Miller. The Miller Package Deal makes fund raising easy, enjoyable and profitable. Post the coupon today for full details and Free Colour Catalogues — there's no obligation, of course.

To:
**MILLER GREETINGS
(Great Britain) LIMITED**
Queensbridge Walks, Down St.,
BURTON UPON TRENT,
DE14 1ER.

Please send me free colour catalogues and full details of your Fund Raising Service.

NAME _____
ADDRESS _____
Organisation _____ Tel: No. _____
Represented _____
GUZ _____

(if over 18 yrs of age)

ACT NOW
NO RISK
NO OBLIGATION