



# guider

Volume 62  
Number Three  
March 75

17p



# IT'S A KNOCKOUT

## SO.....



The WEBB IVORY free full colour catalogue contains hundreds of items, including:-

- \* Britain's finest range of birthday cards from just over 3p. each.
- \* Outstanding greeting cards for all occasions.
- \* A superb range of stationery items in modern and traditional designs.
- \* Pastime and activity items for children.
- \* Useful kitchen and household aids.
- \* Gifts and novelties for all the family.

**NO CASH OUTLAY-  
BIG CASH RETURNS**



## don't forget

Carolyn,

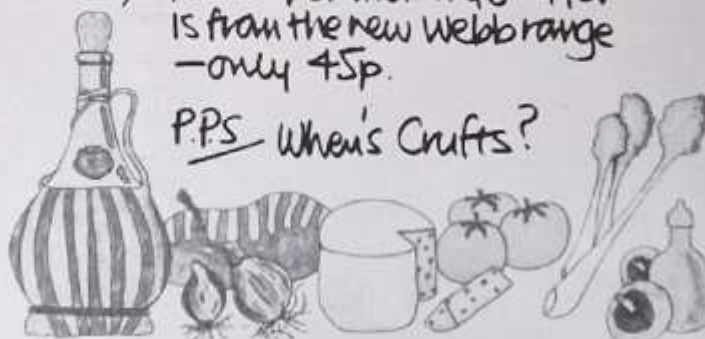
Sent off for the new Webb Ivory catalogue yet? It's a real knockout, terrific range of low priced items. John's right, Webb Ivory is the biggest and best Fundraising service in Britain.

Had super sales already. Get that Webb Ivory catalogue quick and you'll reach your target and get your new goods in no time.

Maureen.

P.S. This super memory jogger is from the new Webb range - only 45p.

P.P.S. When's Crafts?



reasonable  
induced  
govern-  
n legal  
s now  
unions  
certain  
wed,  
unning



**WEBB IVORY LIMITED**  
Little Cornbow, Halesowen,  
West Midlands, B63 3AG

Please send me, without obligation, my free catalogue & full details of the Webb Ivory Fund Raising Service. I am over 18.

Name \_\_\_\_\_

Address \_\_\_\_\_

GU3

Organisation \_\_\_\_\_



# 990 guider

Published 1st of each month

OFFICIAL MAGAZINE OF  
THE GIRL GUIDES ASSOCIATION  
(incorporated by Royal Charter)

## PATRONS

HM THE QUEEN

HM QUEEN ELIZABETH, THE QUEEN MOTHER

## PRESIDENT

HRH THE PRINCESS MARGARET,  
COUNTESS OF SNOWDON

## CHIEF GUIDE

OLAVE, LADY BADEN-POWELL, GBE

## CHIEF COMMISSIONER

MRS DEREK PARKER BOWLES, CBE

## Contents

Guiding Roundabout	92
Brownie Overnight Venture Permit	94
Access On Rivers	95
Coca-Cola Heritage Year Youth Award	96
Letters	97
Mainly For Rangers	98
Airing and Sharing	101
Those Were The Days	102
Amendments to POR	103
Home and Away	107
Training	109
HQ Notices	115
Where To Train	117
World Conference	123
Book Reviews	125
Classified Advertisements	127
What's On	130

## Cover

Our cover picture this month shows Marylene Landry, the cook at Netherurd for 10 years, preparing for her last training weekend. Marylene returned home to her native Switzerland at the end of 1974. We are grateful to Webb Ivory for generously sponsoring our cover picture.

Photo: Elizabeth Paterson

EDITORIAL: MRS J V RUSH (Editor)  
MISS J V KING (Assistant Editor)  
MR S D MILLS (Sub Editor)

ADVERTISEMENTS: MISS A M MARTIN

ALL COMMUNICATIONS TO: **Guider** GIRL GUIDES ASSOCIATION  
17-19 BUCKINGHAM PALACE ROAD LONDON SW1W 0PT 01-834 6242

Printed by The Riverside Press Ltd, London and Whitstable and published by The Girl Guides Association.  
Subscriptions, including postage, £2.64 for 12 months Great Britain, £2.46 overseas.  
Trade Agents, Surridge Dawson & Co, (Productions) Ltd, 136-142 New Kent Road London SE1.





Aberdeen Journals Ltd

Brownies from all over Aberdeen watch (above) as some of their 40,000 bulbs are planted in West St Nicholas' churchyard. The bulbs were donated to celebrate Brownie DJ year.



The Grantham Journal

Brownies, Guides and Rangers from the 2nd Palmers Green Units (above) lead the singing around the Christmas tree in Trafalgar Square. A collection raised enough money to buy a guide dog for the blind.



Evening Tribune

## GUIDING ROUND ABOUT

Stockingford Guides (left) prepare to serve tea to thirsty visitors at their Church bazaar. Members of the 1st Higham Ferrers (St Mary's) Brownies resting after their sponsored walk (right).



Northampton Evening Telegraph



P.R. Caheri

A sponsored bounce was arranged by Brownies from the 6th Lowestoft St Margaret's Pack (above). The record was over 400 bounces from one Brownie.

A bazaar run by Guides, Scouts and Cubs from Seal, Kent was a great success (below).



Stemands News



Nobby the TV Chimp was guest of honour, together with Mrs C H Martin, Leicestershire County President, Miss M Badham, Director of Twycross Zoo and Mrs J G Hartridge, County Commissioner (above) at the opening of their County Bazaar.

East Grinstead Brownies (below) watch as Miss Hylda Simmons, the most senior Brownie Guider in the Division, cuts the cake as 'Queen of the Rosebuds' at their DJ party.



East Grinstead Courier





Ron Farnsworth

Sgt Major Bennett of 8th Army Youth Team (above) presents the shield to the Fullarton Ranger team who won the 22nd Youth Club Shooting Championships held at Dundonald Camp, Troon.



G O Elton

Miss J Smith, CCA for Oxfordshire helps clear small trees from a camping area (above). The trees were replanted as a future windbreak.

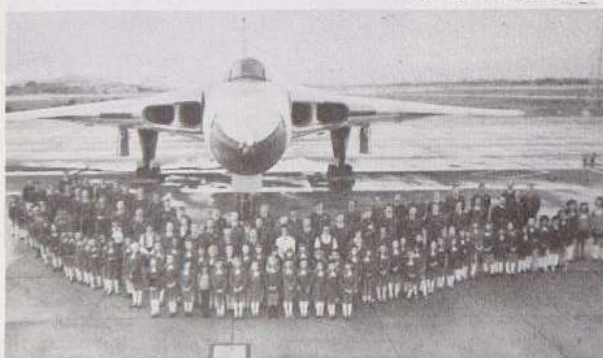


Blackpool Gazette & Herald



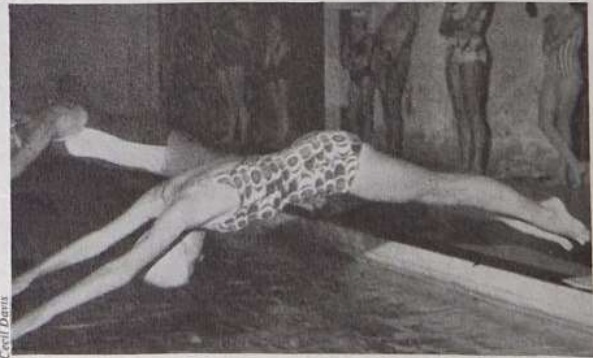
Leicester Mercury

Mrs Betty Jones, Dip Trainer, who returns shortly to Gloucestershire, was presented with the Bauhinia Award by the Hong Kong Girl Guides Association to show their appreciation of her work as Training Adviser. Guides from Fylde South Division sing Camp Fire songs during their inter Unit Challenge Shield Competition (left). Three members of the 15th Leicester Guides and 18th Leicester Brownies (right) rehearsing for a show they gave to residents of Hadrian House, Thurmaston.



Command Public Relations

Brownies in Cyprus celebrated their Diamond Jubilee with members of No 9 (Vulcan) Squadron who were also formed in 1914 (above). During the recent emergency some of these Brownies were trapped in a bus and showed courage and self-control while the danger lasted. In less than a year the 1st Barton Latimer Guide Company had raised enough money to present this television (below) to the accident ward of Kettering General Hospital.



Cecil Davis

Guides and Rangers get off to a flying start at the beginning of the Under 16 freestyle final at the Greater London West County Gala (above). Members of the 2nd Wisbech Brownies Pack show their pancakes to one interested observer before the start of a relay pancake race (below).



Northampton Evening Telegraph



Eastern Daily Press



# Brownie Overnight Venture Permit

Enid Binns

**A**RE YOU a busy housewife with a family, have a full time job or other commitments and although you would like to take a Pack Holiday Licence (Permit) and take your Brownies away, you just cannot be away for five nights? Have you wished you could take your Brownies on an Overnight Venture so that you could spend more time on a Nature project, or do some handcraft that takes more than an hour, or have you no kitchen at your meeting place and your Brownies would love to cook and entertain visitors? Well then, the new Overnight Venture Permit is for you.

An Overnight Venture is *not* a mini Pack Holiday but an extended Pack Venture in fully equipped accommodation which has been approved by your Camp Adviser or Pack Holiday Adviser. Many Counties now have Pack Holiday Houses, or school camps where you are housed and fed, and both these and others are suitable for Ventures. When the Association is considering a new qualification, the safety of the children must be considered, and we do not want to put too much strain on our overworked willing adults. The Venture Permit is therefore for you to take your own Pack only, and you need to be a warranted Brownie Guider and 21 years old. Your Commissioner will see that you are given help to acquire the necessary skills needed and that you realise the importance of discipline and organisation. She will see that you can put all this into practice when looking after Brownies for a day and a night. You will get some of your training with someone else's Pack on an Overnight Venture or a Pack Holiday, or by getting a Pack Holiday Licence (Permit) holder to sit in with your own Pack on their first Venture so that you can gain experience in settling in, running a good programme, feeding the children and cleaning and clearing up together at the end, etc. The first Overnight Venture you organise and run yourself will be visited, and if satisfactory you will be given your Permit. The Venture is visualised as one night away from home, but under some circumstances such as travelling many miles to a Brownie function and having to sleep a second night before returning home, then your County Camp Adviser or Pack Holiday Adviser can give you permission for a two night stay.



When planning Ventures we do try to include the whole Pack in some way I know, but as with a Pack Holiday many of us who have taken children away feel that eight years old is quite young enough, the seven-year-old will probably get two or three opportunities later. This will mean that about 18 of your Brownies will want to go, which is the number most Pack Holiday Houses will accommodate. If there are over 18 children, including those of the staff, then more help is needed, the minimum being one adult to six children. I find even with 18 Brownies that four adults and two Pack Leaders or Young Leaders make a good team and no one is over worked and we all enjoy being with the children. If your Pack has not been on a Pack Holiday or Overnight Venture before, then I suggest 'starting small'. What about taking your 12 eldest first and then you will have some 'old hands' the next year when you take more Brownies.

A well-run Overnight Venture is a most satisfying and rewarding time, when you get to know your Brownies far better than at weekly meetings and they, of course, get to know you! You will then have much more knowledge of the children, so that future Brownie meetings will be better planned to stretch them and give them a real challenge and sense of achievement. You will find the official requirements and conditions for this Permit in the amendments to POR this month.

I hope this Brownie Overnight Venture Permit will help many of you have the enjoyment of taking your Brownies away for a worthwhile Venture. Have fun!





# Access on Rivers

*We are grateful to the Editor of the British Canoe Union magazine, Canoeing in Britain, for permission to quote news on access on rivers from time to time.*

## Dart Access Agreement

An agreement has been reached between the riparian owners of the river Dart, who have been very co-operative and helpful, and the Outward Bound School, Devon in Holne Park, Ashburton, acting on behalf of the BCU.

This agreement applies to the Dart upstream of Totnes, the sections commonly canoed being NEWBRIDGE (MR711709) to HOLNE BRIDGE (MR730706); to DART BRIDGE (MR746667), STAVERTON (MR784637) and TOTNES (MR806604). Beyond Totnes the river is tidal.

Those who canoe the Dart should note that: The river down to Totnes is only open for canoeing out of the fishing season, ie approximately 1st October to 14th February each year. The only agreed access points are NEWBRIDGE, HOLNE BRIDGE, DART BRIDGE, BUCKFASTLEIGH, STAVERTON and TOTNES. All parties must check in at the Outward Bound School (Holne Park MR732702) before entering the water. The agreement is that there should be a minimum of three in the party, at least one BCU member in charge, and all members must be equipped with helmets and buoyancy aid or lifejacket. There should only be a maximum of ten in each group on the water. (It helps if big parties split into more than one group to avoid congestion.) The School will issue a permit which can be shown to water bailiffs or owners who may question the party. It is essential that the Outward Bound School is informed in writing two weeks before any intended trip.

It is only going to be possible to keep this river open to canoeists if everybody co-operates with the owners, who are going out of their way to help. They do not wish to restrict access, but in previous years obstructive parking, debris left in the river, large parties of 20 plus, etc, has nearly resulted in total closure of this river. If all who canoe on the Dart behave sensibly, then it will remain open for us to enjoy.



## Irresponsible Behaviour on the Derwent

*Following some pretty irresponsible behaviour by canoeists on the Derwent last year there have been justifiable protests made to the BCU by firms affected.*

We have received, via the East Midland Regional Office of the Sports Council, a letter from the Via Gallia Colour

Company in Matlock, Derbyshire that during one of the first weekends in October, when there was heavy canoeing



activity on their stretch of the Derwent, some irresponsible persons opened one of the river shutters. They point out that such unauthorised interference with their turbine installations can cause damage amounting to thousands of pounds.

Some years ago desperate efforts were made to establish some form of agreement between the anglers and canoeists on the river Derwent, and such incidents as reported to us are the more indefensible because, on that occasion, Via Gallia Colour Company were particularly helpful and supported our case for the sharing of the use of the river.

*Please see that members of our Association are never amongst those guilty of such behaviour.*

## Improved Access in the NE

Two years have gone by with landowners almost 100 per cent impressed by the fact that canoeists can

discipline themselves when, regrettably, canoeing is said to interfere with fishing.

Details of access agreements for the Tyne, Northumberland and Wear can be had from Mr E Palmer, 108 Holly Avenue, Newcastle-upon-Tyne, 2, on receipt of an sae.





# Coca-Cola Heritage Year Youth Award

*Entry forms must be in by the  
end of this month*



**S**INCE the outline articles on European Architectural Heritage Year (September and October), there has been much publicity in the newspapers, radio and television.

Do we know the history of our village/town/city? The least we could do is be more aware of our own surroundings (make a list, do research, put on a play or sketch). In a year of the World Conference and the many international camps being organised, should we not ensure we have something to tell our visitors?

Almost every day one passes something of great interest or beauty. I know myself, when a guest is staying, one bothers to go and see some place of merit, or they remark on something and one realises it's been there all the time if only we had noticed. Let's all be like visitors to our own familiar surroundings, be more aware, open our eyes; and if there is something we feel ashamed of, or as a pretend visitor we feel sad about, then that's probably a possible project for our European Architectural Heritage contribution.

The best way to mark your effort to help preserve our history, is by entering the Coca-Cola Heritage Year Youth Award. The entry form is in an explanatory leaflet obtainable from your Country/Region office or the Reception Department at Commonwealth Headquarters.

This Award fits in with our programming. The Duke of Edinburgh Award, and any Units Wombling for the World could enter these activities in this Award Scheme. It is not a competition, but a way of recording the part being played by young people in this very worthwhile year, and the survival of our characteristic environment.

Your local Youth Office may be pleased to help you with a project. Several counties have expressed interest in helping youth groups involved in schemes.

Amongst entries already registered with Coca-Cola from Girl Guides are:



Bishopston  
Ranger Guides,  
Swansea.

Survey of lime kilns - search, photograph talk to historians etc, make maps, compare geology, make drawings, paintings, diagrams and models and mount exhibition.

Cefn Coed Girl  
Guides, Merthyr  
Tydfil.

Cleaning disused railway line to form clearway for walkers in area.

2nd Talke Guide  
Co, Stoke-on-  
Trent.

Beautify site of village's 13th century cross in preparation for professional restoration of cross itself, and excavating village well.

1st Hornsea  
Guide Co,  
Humberside.

Planning town trail, incorporating places of historical and architectural interest and producing duplicated guide book.

2nd Rugby  
Rangers, Rugby.

Compile for church archives map and record of churchyard undergoing modernisation, local eminent Victorians, flora and fauna.

1st Ranger  
Guide Unit, Tre-  
forest, Mid Glam.

Nature trail in Gwynno Forest near to public car park and improve look of car park area.

1st Neath  
Ranger Guides.

Canal restoration.

1st Llŵchwr  
Ranger Guides,  
Llanelli.

Study of reason for building new motorway, effects of this kind of 'progress' on countryside, animals and people.

Newton Girl  
Guides.

Mapping and cataloguing headstones and inscriptions at three very old churches in Newton.

Long Ashton  
Ranger Guides,  
Avon.

Survey recorded on film and tape used to stimulate local interest and appreciation of buildings in and around village.

Wirral County  
Ranger Guides,  
Merseyside.

Walk and clear footpaths in Wirral of glass and rubbish; report problems to Ramblers Assoc. and proceed in conjunction with them.

120th Beauchief  
Baptist Girl  
Guides, Sheffield.

Planting trees in Eccleshall Woods, and caring for young saplings. Regular litter clearance.

To make the record complete it is important to have photographs. Local newspapers would probably be pleased to hear of your participation and take photographs for you.

*Rosene Baden-Powell*

The Lady Baden-Powell,  
GGA Representative on European  
Architectural Heritage Year Youth Panel.



# LETTERS

## Scottish Photos

I would like to say how informative and helpful *Guider* is. In every issue there is, to quote a fellow Guider, 'a little bit of something for everyone.' But, and it is a large but, is it policy not to publish many photographs from Scotland? I realise that the magazine must have a smaller circulation here, but in many issues (apart from paid advertisements) we just do not exist. Or, and I am afraid this may be the case, do very few people ever send photographs to you?

In the three most recent issues (out of around sixty photographs) only two were from Scotland. Both of these were in the January issue, which also carried the beautiful cover photograph of Her Majesty the Queen at Meikle.

(Mrs) Catherine W R Reid,  
Public Relations Adviser,  
Midlothian.

We hasten to assure Mrs Reid and our many readers in Scotland that there is no policy against pictures from their country. But we can only publish pictures we receive. I hope we have made amends by using a full colour photograph taken at Netherurd as this month's cover picture.

Editor.

## Guide Songbooks

'Lacking in Airs and Graces'. No, I don't mean we in the Guide Movement are less refined than we were.

I was extremely disappointed to find that the 'all embracing' *Girl Guide Song Books*, 1 and 2, did not include many of our old favourites. As an illustration, only three of the suggested 11 songs and hymns for the Thinking Day Service at Westminster Abbey are included in the new books.

I thought, from the pre-publication write-up, that we were in future, only going to require two song books, instead of having to have a handful of small ones to plough through every time we have guests or new Guides at Camp Fire.

I wonder what other Guiders think about this?

Janette I M Wylie  
2nd Troon Guide Coy,  
Ayrshire

## Cyprus News

This is to let you know that we survived. The happy island that is known so well is happy no more. One third of the population has been uprooted and are living as refugees, many still in tents, and a bitter cold wind has started. Our Guides did a wonderful job helping with the refugees, looking after the children and the old people, distributing the clothing and foodstuffs that the Guides of Greece sent us, and many similar things.

I was busy all summer doing First Aid, helping the Red Cross and also working at Headquarters, even though I had many relatives (refugees) staying with us.

Now that schools are opened I go whenever I have free time. There is so much to be done to help the less fortunate to alleviate their hardships. We hope and pray that a solution may be found and our lovely island becomes happy once more.

(Mrs) Takoahy Devlelian,  
Nicosia, Cyprus.

Opinions expressed in these columns are not necessarily those of the Editor.

## Brownie 'Wives'

I must tell you of some amusing replies I have had to an advertisement I put in our local weekly paper, for help in the running of a second Brownie Pack. I said . . . Brownies 32 little girls on waiting list would anyone willing to help please contact Mrs Workman . . .

To date I have had five replies; two ladies showed no further interest when they heard it was an unpaid job, one 'gentlemen' wanted to know whether it was with a view to marriage! Today another man rang up all the way from Abu Dhabi to know whether it was an escort service, and finally a young American wife rang up who really might be able to help.

Mrs Workman,  
Bahrein.

## Crossword Winners

I was delighted to receive your lovely book on *Fun with Paper Modelling*, for my efforts in your Crossword in *Guider*. I had bought a craft book with a Christmas Book Token I had received, but it did not contain a chapter on paper modelling, so we can tackle another craft with the Guides and Brownies, and I'm sure we shall all enjoy the fun of learning and look forward to some results.

(Mrs) O Swindell,  
Riddings, Derbyshire.

I was delighted to receive the books as a prize from the Christmas crossword. I would like to say that it was a Unit effort, and now the books are going around to all of the Rangers, who are finding them most interesting. Thank you.

Eileen Panhaligan  
Axminster, Devon

We would like to thank everyone who wrote in, and we are glad that so many of you enjoyed testing your crossword skill despite the missing clue - Editor.

## Guider's Image

We often hear about the image of our Movement, created by the girls themselves, but do we ever think about the image we as Guiders create? I recently had reason to telephone someone concerning a booking for summer Camp, unfortunately the farmer was out so I asked his wife if she knew of the arrangements made to visit the site. Her reply was, 'Oh no, my husband deals with arrangements for camping. All I ever see of the Guide Movement is a trail of elderly ladies tramping about the place at odd times.'

Is this only an impression or is it a true image? Are there fewer young Guiders who can either be bothered or spare the time to take Guides camping? Is it because of the rules concerning Guiders' sons, or is it that the older Guiders are the only ones experienced enough to understand the importance of Camp in the Guide programme?

I should be very interested to hear the views of other people both within and outside the Movement. If it is a true image what can we do about it?

(Mrs) Maria Readon  
1st Blackfen Coy, Kent

## TV Star?

A new recruit came into Brownies on her first evening and said to her mother: 'Is that lady Brown Owl or is she Black Arrow?'

Joyce Hines  
7th Alverstoke, Hants

## Brownie Song

Having read Mrs Vera Davis' letter in the January *Guider* I felt I must write about the new Brownie Song. Our Pack have enjoyed singing it right from the start and seem to find no difficulty in keeping in tune. They sing the tune to 'lah' as they skip into the Brownie Ring and so it cannot 'disintegrate into a peculiar slow dirge'. If the time is taken from the first Guide record, *Singing Along With the Girl Guides*, it is easy to skip to. Please don't let us have it altered again. We do sing the whole song when we are in the Ring.

Dorothy Watkins  
1st Windsor (YWCA) Pack

## Knitting Pattern

We apologise for not giving the price of *Today's Guide* containing the Trefoil Cardigan Knitting Pattern. (Page 61 February *Guider*.)

Copies are 8½p each including postage, and obtainable from Periodicals Department, CHQ. Those who have already written will receive their copies if they will kindly send remittance. We apologise to them for any inconvenience caused.

Editor

We apologise to Mrs B Bright, Assistant Brownie Guider, 1st Oadale (St David's) Brownie Pack, Gwent, for not crediting her for the poem which appeared on page 28 of the January *Guider* - Editor.



## Ranger Litany

This Litany by 7th High Wycombe Rangers may inspire you to try composing your own Litany or other forms of worship for use in your Unit.

Lord we thank you for the world we live in, for health to enjoy it, and friends to enjoy it with. Lord, hear us.

Response: Lord, graciously hear us.

We thank you for trees and flowers, birds and animals, rivers and lakes, hills and mountains, and the opportunities Guiding gives us for exploration. Lord, hear us.

Response: Lord, graciously hear us.

We have so much to thank you for, Lord; but so often we misuse the world and opportunities you give us. We ask you to forgive our weakness in this way. Lord, hear us.

Response: Lord, graciously hear us.

# MAINLY FOR

Forgive us, Lord, when due to our greed, others go short. Forgive our lack of concern for those living in poverty. Lord, hear us.

Response: Lord, graciously hear us.

We have so much to be thankful for, Lord; we ask you to give us the enthusiasm to accept opportunities to learn more of your world and make it a better place to live in. Lord, hear us.

Response: Lord, graciously hear us.

We ask you, Lord, to make us really care about those with less of the world's resources than we have, and to make us realise that we receive nothing that is not a gift of your grace.

## Almond and Chocolate Easter Cake



Cake: 6 oz self-raising flour; 1½ level tsp baking powder; 6 oz soft margarine; 6 oz caster sugar; 3 eggs; 2 oz flaked almonds; few drops almond essence.

Icing: 3 oz butter; 8 oz light soft brown sugar; 3 tbsps water; 1 level tbsp instant coffee; 2 oz plain chocolate; 8 oz icing sugar, sieved.

Decoration: 2 oz sugared almonds.

Cake: Sift together flour and baking powder into mixing bowl. Add rest of ingredients and beat for two minutes until pale and fluffy. Divide mixture between two greased and bottom lined eight inch sandwich tins. Level surface and bake at Mark 3/325F, for 40-45 minutes, until well risen and firm to touch.

Icing: Place all ingredients except icing sugar in saucepan and heat gently until dissolved. Do not allow to boil. Remove from heat, stir in icing sugar and beat until a smooth, spreading consistency. Use half of icing to sandwich two cakes together. Spread or pipe other half on top of cake and decorate with sugared almonds.

## RECIPES



### Easter Chicken

about 3 lb chicken, jointed  
salt and pepper  
½ oz flour  
1 oz dairy butter  
2 tbsps oil  
1 small onion  
1 level tsp tarragon  
½ pint apple juice  
1 lemon

Rub chicken joints well with salt and pepper and dust with flour. Heat butter and oil in a wide pan, fry chicken until golden brown on both sides. Finely chop onion and sprinkle into pan with tarragon. Pour in apple juice, cover and bake at mark 3/375F, or simmer on top of stove for 45-50 minutes. Lift chicken on to serving plate and keep hot. Strain chicken juices into a saucepan, add grated lemon rind, bring to boil and check seasoning. Pour sauce over chicken and serve with creamed potatoes and green salad.

## Festive Occasion

LONDON FESTIVAL BALLET has been advertising in *Guides* for many years, and many Guides and Brownies have been taken to their productions as a special treat. It's taken for granted that the traditional, classical ballets are ideal entertainment for children, to be "grown out of" like pantomimes as one gets older; yet those who take the trouble to look beyond the fairy tales and pretty costumes will discover a lifelong interest, for, in my opinion, ballet is the most satisfying of all the arts, giving (at its best) a perfect combination of movement, music and decor. Festival Ballet was formed for the Festival of Britain, and since then has brought its lavish productions of the classics to audiences all over this country and abroad. For their



Rudolf Nureyev

25th anniversary season at the London Coliseum in April, Rudolf Nureyev is directing and dancing in his own production of *Sleeping Beauty*; this, of all the classics, is a work that never becomes boring to even the most frequent balletgoer, yet always holds the interest of the "first timer" too.

Another great event scheduled for the company's anniversary season, will be the first London appearance of Galina and Valery Panov, the dancers who were at last allowed to leave Russia for Israel after years of lobbying from the West. They will be dancing in eight performances from the beginning of May, in various works including *Giselle* and *Petrouchka*; but don't raise your hopes too high of getting up a party to see the Panovs, because the demand for tickets for their long awaited appearance will be terrific, but it's well worth a try if you send off now.

Of course it isn't necessary to come to London to see this excellent

company, and the next time they are appearing in your area why not make a point of going to see them, not in a classical work but in a triple bill? This means three short ballets, usually in completely contrasting styles. For instance, from 3rd to 8th March they are at the New Theatre Oxford, where for the second half of the week they are presenting a triple bill of *Petrouchka*, *Etudes* and *Echoing of Trumpets*. The first is a typically Russian work from the days of the Diaghilev ballet, to music by Stravinsky; the middle ballet is a study in pure classical exercises and dance to music by Czerny; and *Echoing of Trumpets* is a dance drama about the atrocities committed in a Czechoslovakian village in the Second World War. If this doesn't sound like your idea of a typical evening at the ballet, I hope it has aroused your interest. If you've only seen *Nutcracker* you haven't even scratched the surface of what ballet has to offer.

JVR



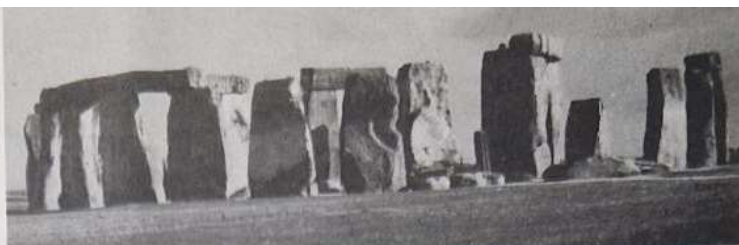
A scene from *Echoing of Trumpets*



# RANGERS

## AN ARCHITECTURAL QUIZ

Why not test your knowledge and try this quiz for Architectural Heritage Year. We will give a prize to the first correct answer opened on March 31st.



Stonehenge

1. About how old are the Pyramids?
2. About how old is Stonehenge?
3. Name one of the seven wonders of the Ancient World.
4. Name another.
5. Name the great round temple in Rome.
6. Name the most famous Greek temple.
7. What is the simplest Greek column called?
8. What is the most elaborate Greek column called?  
(The middle type with horns or volutes is the Ionic)
9. What ancient race loved water?
10. What have they left behind which gives evidence of this?
11. What name do we give to a rounded arch?
12. What name do we give to a pointed arch?
13. Which is older, Westminster Abbey or Westminster Hall?
14. When were our present Houses of Parliament built?
15. What is fan vaulting?
16. What is a hammerbeam roof?

17. What is 'wattle and daub'?
18. What are headers and stretchers?
19. What is a flying buttress?
20. What is a lych gate?
21. Which is the most famous French Cathedral?
22. Which is the most famous Italian Cathedral?
23. Which cathedral is most famous for its coloured glass windows?
24. Which town is most famous for its mosaics?
25. Which architect wrote in Latin 'If you wish to see my memorial, look around you'?
26. What building was he speaking of?
27. What was Grinling Gibbons famous for?
28. What was Capability Brown famous for?
29. What is an Oriel Window?
30. What is a Venetian Window?  
Here are two unusual terms used in a formal garden
31. What is a Gazebo?
32. What is a ha-ha?

- Four terms from church architecture
33. What is the chancel?
  34. What is the reredos?
  35. What are the cloisters?
  36. What is a crypt?
  37. What is a porticulis?
  38. What is a campanile?
  39. Where is the Woolworth Building?
  40. Where is the Pentagon?
  41. Where is the Capitol?
  42. Where is the Empire State Building?
  43. Name a suspension-type bridge?
  44. What kind of bridge is the Forth Railway bridge?
  45. The World's largest tapestry is in an English Cathedral. Which one?
  46. Where was it woven?
  47. Who designed the Crystal Palace and Chatsworth glasshouses?
  48. What was the Crystal Palace built for?
  49. Civic planning on the grand scale produced - 'The Georgian City' of ...?
  50. Civic planning on the grand scale produced - 'The Regency Terraces' of ...?

### RANGERS - Going to College or University this autumn? If so, this is for YOU!

On the 4th/6th July a Student Weekend will be held in Beaverbrook Lodge, Foxlease.

Those Rangers and Venture Scouts who were at the last event voted it 'a winner' and pressed for another. So, in response to popular demand, here is another chance for members of both Associations, hoping to go to College or University this autumn, to meet and be introduced to the opportunities offered by college life in general and in particular SSAGO (the Student Scout and Guide Organisation); to take an up-to-date look at Scouting and Guiding, at future trends - a subject on which we will be hoping for your views - and to enjoy a social atmosphere while doing it. First year students are also very welcome.

Last time the biggest criticism was that there were too few boys. So, if your Unit has Venture Scout contacts tell them about this event and perhaps you might come as a joint party? The cost is £3.50 (plus VAT) and full details can be had from the Training Secretary, CHQ.

THE JANUARY edition of *Guider* featured an account of the Young Delegates' Camp organised by the International Fellowship of Former Scouts and Guides last summer. The B-P Scout Guild member from Edinburgh, who represented Great Britain, reported on the discussions and ideas that came out of them. Most of these ideas are identical with those on which LINK is based, and the activities suggested very similar to many being carried out by LINK members now, while giving some good ideas for the future.

From this report it is clear that the World Organisation for former members of our Movements, is concerned to involve more younger members in the interesting field of activities that it opens up. Encouragement is being given to younger members to attend the next General Assembly of IFOFSG by the waiving of the Conference fee for them.

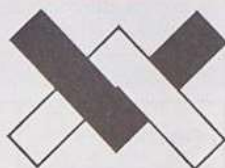
We hope that at least one member of LINK will be able to attend the Assembly in Aalborg, Denmark, in August, 1975, and the Trefoil Guild is making available a Bursary of £50 to help with the cost of travel. In addition to the five-day meeting, our Danish hosts are offering three days' hospitality in private homes. A large number of members of both Guilds will be going and it should be a wonderful experience.

WITH FOOD prices rising all the time, have any of you considered trying to grow your own vegetables? If so, then March is the ideal time to start, before the sun and wind begin to extract vital moisture from the soil. Fisons Garden Products have some very useful hints on how to approach this economically, while still obtaining the maximum result. For potatoes, peas and beans trenches are ideal because they economise the materials used in preparing the soil; now is the time to start sowing early vegetables like carrots, onions and parsnips, but remember to leave early peas until the end of the month - they tend to rot if sown too early.

The most important things to remember about vegetable gardening are the need for careful soil preparation and the correct use of fertilisers. Fisons Garden Products have a wide range of fertilisers, specifically designed for vegetable gardening, available from most garden centres.

Additionally, could the Unit use this as a service for the elderly? Many older people would be delighted to receive gifts of vegetables which they may not be able to afford otherwise. Or could you help them with their own vegetable gardens, and perhaps plant some flowers for them?

SDM



Full details of the General Assembly may be obtained from LINK Office, Girl Guides Association, 17-19 Buckingham Palace Road, London SW1W 0PT.

### Weekend Camp, September, 1975

For those who cannot go so far, but want to meet other LINK members and enjoy various energetic activities there will be a Weekend Camp at Foxlease from 5-7th September, 1975.

This is open to all LINK members and their children. The New Forest Link will be planning the activities and, if their own programme is anything to go by, it should be fun.

Details about this event will be circulated to all registered Links.

### Magazine News-sheet

The LINK Committee has decided that the interim measure of circulating *The Trefoil* containing a page of LINK news to every member should be discontinued. A duplicated news-sheet will be sent to all members four times a year; this will be timed to coincide with the start of college vacations when Links are likely to be circulating their own plans to members.

It was agreed that *Guider* is of greater value to LINK members, and that they should be encouraged to read this publication in which the Editor kindly allows us this space for LINK news. News of LINK will, of course, be published in *The Trefoil* from time to time, for the interest of members of the Trefoil Guild.



Karrimor Rucsacs, Pacsacs and Tents are available through all Guide Shops and Guide Mail Order as well as most Camping and Climbing Shops. Send for fully illustrated catalogue today.

**karrimor**  
for loads of  
reasons



FELLMAN 40

BAMBAINO I



BAMBAINO II



EDELWEISS



FIORLAND



TACPAC



TOTE-EM 50



# karrimor

Avenue Parade, Accrington, Lancs., England.





## Guide Badges

I would like to reply to 'Guide Badges' in the January issue. I personally am very suspicious of Guides and Scouts who have armfuls of badges. So many badges indicate to me a passing interest only and proficiency in none, with perhaps very few exceptions. We have the Eight Point Programme which sets the emphasis on effort rather than set standards and I believe it is right to have some badges for interest only. I do feel very strongly however, that we should not make the mistake of letting our Guides believe that everything is for everybody, because life is not like that. Some of us are born to do great things with little effort, some are able to do great things with great effort and some of us are able to do little things only with great effort; and I believe it is far more help to any child and teenager, to help them over and round their limitations rather than to pretend they are not there.

Do you not think that it would be a good thing to have interest badges and proficiency badges, and to have a standard for the latter which can be relied upon?

Sometimes I think we have gone just a little too far in the casual approach to life. Surely as Guiders we should be helping to raise standards of integrity, etc, with the backing of the Association, instead of being provided with loopholes for slipping out of things. Perhaps our 'pink elastic' is losing its stretch, and sagging too much.

**B A Lees**  
Osmondthorpe District,  
Leeds

How I agree with Audrey Brayne in her remarks about Guide Interest badges. Many girls these days lead very busy lives, spending a great deal of time on sports, music and Church activities, so that they have very little time outside the weekly Guide meeting, for individual badge work. At one time, there was great motivation for Guides to gain certain badges, and First Class badge work could easily be included in the programme. This motivation has been removed to a large

extent, and if the interest badge is to be the natural outcome of a genuine interest, it is difficult to include badge work in the weekly programme.

Many Guides do not want to gain individual badges because they find sufficient fulfilment in their Patrol and Unit activities. These are often the popular girls who gain success in many aspects of their lives, whereas a girl who is not popular and has an unsatisfactory concept of herself in relation to her peers, needs to have the satisfaction of proving herself in some way, perhaps by gaining an armful of badges.

The character, personality and ability of the girl inside the uniform is not necessarily reflected by the badges on the sleeve, and if Unit and Patrol activities are based on the Promise and Law and include the Eight Points, some girls will enjoy their Guiding without the extra pressures of individual badge work, while others will choose to do the extra work entailed in gaining badges. It is however, important that tests should be of a sufficient, though flexible, degree of difficulty, to enable each candidate to feel that she has accomplished something worthwhile.

**Margaret Wensley**  
5th Cardiff Guide Coy

With reference to Audrey Brayne's letter in the January issue, in which she asks for opinions on getting badges. We are a Company which, in her words, 'plods along'. I find that there is the girl whose one ambition is an armful of badges, but there is also the opposite who, though continuing to progress and learn, has no desire to display her achievements on her arm.

In this Company a number of badges, eg Accident Prevention, First Aid, etc, are taken as a group activity by the majority of the girls. However, so long as the Guides are progressing in their Eight Points, are enjoying their Guiding and are getting many and varied activities, thus making for a busy and thinking Company, do badges matter so much?

By all means encourage badges, but not to the point

of discouraging the less ambitious Guide.

**Beryl Davies**  
1st Wem Guide Company,  
Salop

## Friendship Badge

I consider the Brownie Friendship Badge to be one of the more difficult interest badges to gain, but like to encourage Brownies on the Highway to take it, as they cover a good part of the syllabus in their Brownies are Friendly challenge. However, I feel it is made even more difficult for them by the fact that much helpful material is out of print. The *Brownie Stories of the World* have not been available for some time, which makes it difficult for many Brownies, as there seems to be no alternative source of information. Are these books to remain out of print indefinitely? If so, would it not be possible to publish some of the stories in *The Brownie* magazine? I know that the girls do not have to choose to know a story, but as it is written in the syllabus I do feel that the girls should be able to obtain the information if they want it.

I recently tried to obtain *Brownies Around the World* (having been fortunate to buy a copy of Book Two last year), only to be told that this, too, is out of print. These books contain stacks of useful information about Brownies in other countries, badges, tests, games, etc, all very helpful for the badge, and also useful for Thinking Day and World Venture meetings.

**(Mrs) Elizabeth Brown,**  
2nd Glastonbury Pack,  
Somerset.

The series of books *Brownie Stories of the World* were published by the World Association of Girl Guides and Girl Scouts, who decided that these would not be reprinted, although it may still be possible to obtain some from Guide shops and depots. We would certainly consider publishing some of them from time to time in *The Brownie*.

The *Brownies Around the World* Books One and Two are published by the

Canadian Girl Guides Association, and as our supplies are shipped from Canada at intervals, we are temporarily out of stock, but these books are not out of print.

**Programme Secretary.**

## Brownie Song

I agree with Mrs Vera Davis (January *Guider*) that the Brownie Song is difficult to learn, but I disagree entirely that it should be altered or scrapped altogether. This is surely a Brownie challenge, which can be mastered by practice and determination. If the Brownie Guider learns the tune thoroughly and sings loudly, then the Brownies will soon learn the notes correctly. It only has to be done once, because new Brownies coming in will learn from the others. Alternatively it can be tapped out with one finger on the piano; there must be one Brownie in the Pack who is learning to play the piano.

I had the same trouble with the simple tune Happy Birthday To You. There were so many different versions of the third line that I had to insist on everyone singing in unison. Now I have no trouble with Happy Birthday or The Brownie Song. The only problem we encounter is that they skip around the floor like elephants, but I suppose we can't expect them to do two things at once. Or have I just given myself an idea for a new challenge?

**(Mrs) Barbara Bunn,**  
Brownie Guider,  
1st Ynyshire (St Anne's),  
Central Glamorgan.

## Young Leader's Scheme

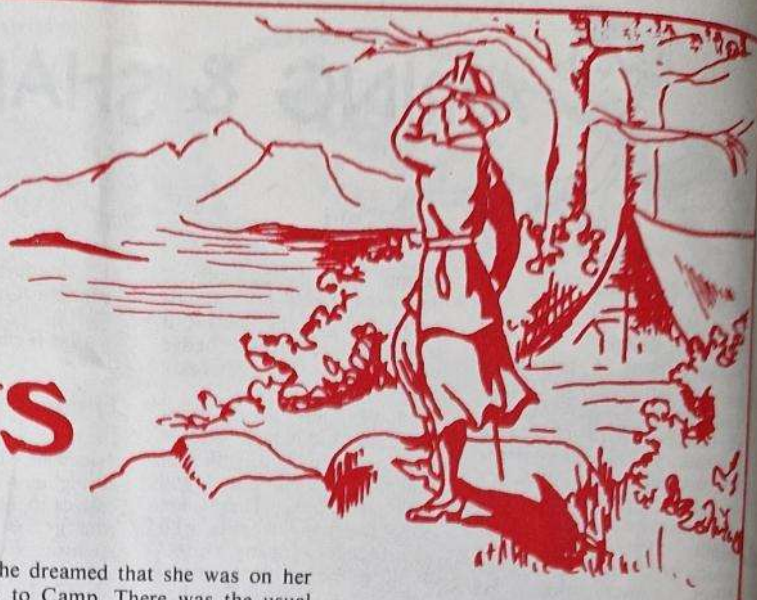
We are grateful to all those who have written to us about the above scheme.

Although we shall not be publishing the letters, they have all been read and discussed, and the comments carefully noted for future reference.

The Executive Committee has agreed not to make any major changes in the scheme at this stage; but you will have seen the amendments that have been agreed as published in this issue (see page 105).



# THOSE were the DAYS



'Here in the UK we have a superb inheritance of music in Guiding from our own and other countries which has been growing steadily over the past 40 years,' writes Miss Hettie Smith in the foreword to **Girl Guide Song Book 1 and 2**, published by the GGA in 1974, and in this extract from the **Guider** you will find many points of interest about the choice of Camp-fire songs. It was written 30 years ago by Miss Elizabeth Hartley, then Assistant Commissioner for Music, to whom we owe so many memorable and delightful Camp-fires, and who never forgot to bring home a new song or a new melody when she was abroad.

Glancing backwards again on one of these occasions to '52 and the giant Camp-Fire at Hall Barn, Beaconsfield (when Lord and Lady Burnham were our kind hosts) let CEH describe it: 'At the forefront was the fire ... which burned clear and high and lighted the dancers, who added so much to everybody's enjoyment by their performances and their gay costumes. 8,000 visiting Guides were present and over 1,000 campers, singing so well that it was hard to believe that they were not members of a giant choral society ... In one sense, I suppose they were, because that capacity for concentration, that co-operative spirit and self-control, which are the results of Guide training, contribute very largely to the success of any performance.'

Spring and summer Camps all over the UK are just around the corner, so  
'Light up the fire and form a ring,  
Let the music echo.'

TWM

ONCE UPON A TIME A Guider who had spent a morning of strenuous activity sorting camp equipment sat herself down in the sunshine, ate her lunch of spam sandwiches, and promptly fell asleep.

She dreamed that she was on her way to Camp. There was the usual chaos at the station, the Guides were in their usual state of excitement, and she had the usual sinking feeling in the pit of her stomach. Everything in her dream appeared to be normal when the Guider noticed a group of strangers, who behaved as if they had every intention of accompanying the party to Camp. The Guider realised that prompt action must be taken: she pushed her way through the crowd and spoke to them. There were six of them - three fat dirty old women, a tall man smoking a cigar, a little black boy and a woman carrying a case, which obviously contained a musical instrument. They all maintained that the Guides wouldn't go to Camp without them! The Guider was in a fever, the train was coming in, and then a bee zoomed past her nose and she woke up.

Laughing a little at the absurdity of her dream, the Guider returned to the camp equipment. The Guides were coming to help her after school and soon after four o'clock she heard them coming across the field, singing:

*Sambo had an uncle, an uncle very fat.*

As they crossed the brook the song changed.

*Three women in the churchyard sat,*

*Ooooooooooh! Ooooooooooh!*

*And they were very fat ...*

The Guider shuddered. 'So they are coming to Camp, and it wasn't a dream.' Then she squared her shoulders and stood up. 'Over my dead body only!' she said, and went cheerfully out to greet the Guides.

What did she do next, do you think? Gathered the Guides round her and lectured them severely on their choice of songs? Mercifully she was a sensible woman and avoided these particular pitfalls.

When she talked the matter over with her Lieutenant she was greeted with 'Are you going highbrow? Preserve us!'

The Guider sped to the attack. 'The tunes have neither charm nor variety, the rhythm is commonplace, the stories are unattractive: they are bad taste.'

'Phew!' said the Lieutenant. 'What is taste?'

The Guider thought for a moment. 'Isn't taste the faculty by which we discern whether a thing is good or bad?'

'It seems to me that in most of us that faculty is missing. What are you going to do about that?'

What are we going to do about that? The camping season will soon be upon us. Singing is an important part of the programme. Now is our chance.

By overhauling our personal repertoire of songs before we leave for Camp with as much care as we devote to overhauling our other equipment so that we take with us some songs which are new to the Company, which will be acceptable to the Guides and are good of their kind. There must be no hint of good versus bad when they are introduced. They must stand or fall on their own merits, and if we play our part skilfully they will stand and in time will become the Company's first choice.

Camp-Fire is a time of enjoyment and acting, story-telling and games have their part in it as well as songs of all types. There are Red Men, Shantymen, Cowboys, Piccaninnies, Pirates and an array of enchanting animals waiting to accompany us to Camp - to mention only a few of our real friends. In these days of crowded travel, there is no room for rubbish. Leave it behind.



## AMENDMENTS TO POR 1974

The Association's Training Adviser is now known as the Association's Programme/Training Adviser; the Association's Training Secretary as the Programme/Training Secretary; and the Association's Training Department, as the Programme/Training Department.

Please amend your copy of POR by inserting Programme before Training in the following places:

21. The Council Chart on P.31 (CHQ Committee Structure and The Advisers)
- 38, 2 The Lone Scheme
- 50, 2 (b) and (c). The Training Qualifications
- 51, 3 and NOTE Recognition of Ranger Guide Units
52. Flags

Trefoil Guild Advisers at all levels are now known as Trefoil Guild Chairmen.

Please amend your copy of POR as follows:

### 24. Appointments for a Country/Region of the United Kingdom

After Clause 4 insert:

5. The Trefoil Guild Chairman of a Country/Region. (See 41, 7 (a)) Term of appointment as in 23, 7, and renumber succeeding Clauses.

### 25. The County Organisation

2. 4th Sentence. After local Commissioners insert and the County Chairman of the Trefoil Guild.

### 26. Authorisation of Appointment

- 2 (a) At the end add: Chairman of a Trefoil Guild.

### 27. County Appointments

The County Trefoil Guild Adviser. Delete Adviser and substitute Chairman.

### 41. The Trefoil Guild

Delete Adviser and substitute Chairman in all appropriate places.

- 41.1.1 Delete 2nd sentence and substitute To be recognised a Guild must be approved by the local Commissioner and the County Chairman.

### 5. Persons Authorised to Enrol/Invest New Members

3. Delete her own Assistant Guiders and
8. Finance
4. Money-Raising. At end of (a) add: Guides are not permitted to call at private dwellings or offer their services therein for the purpose of raising money.

### 19. The Association's Awards

2. Good Service After The Silver Fish insert new clause: The Beaver (navy blue ribbon with bright blue edges). An award for outstanding service to the Movement.

### The Council

21. Page 31. Delete The Camp Adviser.

### 25. The County Organisation

2. The County Commissioner. Delete 2nd sentence and substitute In consultation with the Country/Region Commissioner she may appoint an Assistant County Commissioner. In exceptional circumstances she may appoint more than one Assistant County Commissioner.

37. The Ranger Guide Section
6. Mixed Units. Delete Mixed and substitute Joint wherever it occurs.
41. The County Adviser (now Chairman). This should read The County Adviser (now Chairman) is appointed by the County Commissioner ... (This was a misprint and is wrong only in some copies.)
11. Registrations and Disbandments. Delete 2nd sentence and substitute To be recognised a Guild must be approved by the local Commissioner and the County Chairman.
13. LINK After (c) insert new clause
- (f) Registration. A Link must be approved by the local Commissioner and the County Trefoil Guild Chairman or Link Organiser, and registered at Country/Region Headquarters through the Assistant County Secretary (Registrations). It is registered under the name of the village, borough, town or district where its headquarters is situated, and may in addition have a name that has a geographical or historical origin.

Re-letter succeeding clauses.

### 47. General Requirements for Camps/Holidays

At end add

For further information and details of test syllabuses see NOTES ON CAMPS AND HOLIDAYS.

### 48. Camps/Holidays with Special Conditions Attached

6. Overnight Expeditions
- (d) Brownie Pack Overnight Ventures. Delete this clause.
49. The Camping Qualifications
2. The Pack Holiday Permit. Delete Permit and substitute Licence wherever it occurs.

After Pack Holidays insert or Pack Overnight Ventures.

Conditions (ii) Delete and substitute There must be a minimum of three adults (including the licence holder) on the staff throughout the holiday. If the addition of young children of staff causes the total number of children to exceed 18, the ratio of adult staff to children must be not less one to six.

Insert new Clause 4. The Pack Overnight Venture Permit may be gained by a Guider holding a warrant in the Brownie Section. With the permission of her District Commissioner the holder is entitled to take Brownies of her own Pack on a Pack Overnight Venture. The Permit is valid only while the Guider holds a warrant in the Brownie Section.

### Requirements

- (i) Have attained the age of 21 years.
- (ii) Be recommended by the District Commissioner and the Pack Holiday Adviser or CA, who must be satisfied that the candidate has the necessary experience and powers of organisation to be responsible for a group of her own Brownies throughout the day and night, and understands the importance of social behaviour and public relations.



# 3 Good reasons for buying your uniform

## from Guide Shops

- 1** Prices that are very competitive
- 2** Quality – all our uniforms are made to the standards demanded by the Association
- 3** Service – All our shops are staffed by personnel who are qualified to advise you on your purchases

**8903 Trevira/Sarille Suites**  
sizes 10, 12, 14, 16, 18, 20, 22, 24  
Price £16.28

**8904 Trevira/Sarille Skirts**  
sizes 10 to 24  
Price £6.30

**8905 Terylene/Sarille Suits**  
sizes:  
10–12 £15.02  
14–16 £15.68  
18–20 £16.52  
22–24 £16.62

**8909 Terylene/Sarille Skirts:**  
sizes: 10–12 £4.50  
14–16 £4.70  
18–20 £4.98  
22–24 £5.08



**8549 Guiders Bri-nylon Slacks**  
sizes:  
10–16 £3.80  
18–22 £4.14

**8741 Woolfelt Cap, Small.**  
Medium and Large  
Price £1.86

**8706 Guiders Blouse**  
sizes:  
32–34 £3.94  
36–40 £4.03  
40–44 £4.15

There is a 15p small  
order surcharge on all  
orders under £5.

## Mail Order Dept

The Girl Guides Association  
17/19 Buckingham Palace Road  
London SW1W 0PT

**THE ASSOCIATION SHOPS:**  
London: 17/19 Buckingham Palace Road,  
SW1W 0PT.  
London: 19 Green Lanes, Palmers Green,  
N13 4TT.  
Birmingham: 5 Ryder Street, B4 7NE.  
Liverpool: 20 Richmond Street, L1 1EG.  
Cardiff: 209 City Road, Roath, CF2 3XX.

**SCOUT AND GUIDE SHOPS:**  
London: 124 Newgate Street, EC1

London: 55 Woodgrange Road,  
Forest Gate, E7.  
Ipswich: 5 Tacket Street, IP4 1AU.  
Leeds: 62 The Headrow, LS1 8EJ.  
Oxford: 17 Turl Street, OX1 3DH.  
York: 14 Goodramgate, YO1 2LQ.  
Harrow: 104 Hindes Road.  
**SCOTTISH GUIDE SHOPS:**  
Edinburgh: 16 Coates Crescent, EH3 7AN.  
Glasgow: 1 Scott Street, G3 8NU.  
Dundee: 53 South Tay Street, DD1 1NP.



## ARE YOU INTERESTED IN WORKING IN LONDON?

**International**  
**Camping Training**  
**Sales Public Relations**



Easter is nearly here so why not get 'cracking' and start a new job!

We at C.H.O. have vacancies in the above Departments so why not give us a ring. Hours to suit where possible. 15p a day Luncheon Vouchers, London Weighting and Threshold Payments in addition to basic salary.

Contact: **Mrs Eileen Earnshaw, Head of Personnel**  
17/19 Buckingham Palace Road,  
London SW1W 0PT  
01-834 6242 Ext 37 (Day)  
01-977 7037 (Evening)

Send for your copy today  
of our fabulous, colourful

# New Catalogue

containing 28 pages illustrating and listing everything you need for Uniform and Camp a 12 page booklist, and many other miscellaneous items.

write to:

## Mail Order Dept.,

Girl Guides Association,  
17/19 Buckingham Palace Road,  
London SW1W 0PT

(iii) Have acquired the necessary skills and knowledge for organising and taking charge of a Pack Overnight Venture, and have acted as a member of staff throughout a Pack Holiday or Pack Overnight Venture.

### Conditions

- (i) A Pack on an Overnight Venture must stay in fully equipped accommodation approved by the Pack Holiday Adviser or CA. The Venture should not include more than one night away, but with the permission of the Pack Holiday Adviser or CCA may be extended to include a maximum of two nights. There must be a minimum of three adults, including the Permit Holder, on the staff throughout the Venture. If the number of children including the young children of staff exceeds 18 the ratio of adult staff to children must be not less than one to six.
- (ii) A Guide holding a Pack Holiday licence may take a Pack other than her own on an Overnight Venture provided that a Guide of the Pack concerned is present throughout.
- (iii) All Brownies taking part in a Pack Overnight Venture must have attained the age of eight.
- (iv) The District Commissioner must satisfy herself that the staff for a Pack Overnight Venture have sufficient experience to deal with first aid, health, and, if required, catering.

### Visit to Pack Overnight Venture

The Guide's own Commissioner, or Pack Holiday Adviser, or CA must visit the first Pack Overnight Venture organised by a Brownie Guide and make a report. If the report is satisfactory the Guide is issued with a Pack Overnight Venture Permit.

5. (formerly 4.) **The Ranger Camp Permit.** At end of 1st sentence add or Young Leader\*

7. (formerly 6.) **The Quartermaster Certificate,** 1st sentence *Delete* a Guide or a Ranger Guide and *substitute* an adult member of the Association.

8. (formerly 7.) The Camp First Aid Certificate NOTE *Delete* biennially and *substitute* triennially

59. **The Adult Uniform**

2. **Summer Uniform.** *Delete Summer and substitute Alternative*

60. **The Ranger Uniform.** *After Ranger insert and Young Leader's*

2. **Summer Uniform.** *Delete Summer and substitute Alternative*

6. **Positioning of Badges After Leadership Bar insert** (*While working for the*

*Young Leader's Certificate*). *After \*Service Star (bottom right) insert*

*Leadership Bar (after gaining the Young Leader's Certificate).*

Page 85.

### Changes of Address:

**Wales:** (some copies only) 209 City Road,  
Cardiff CF2 3XX

**Ulster:** (some copies only) Room 304, Bryson House,  
28 Bedford Street,  
Belfast BT2 7FE

**London and S.E. England:** 32 Dingwall Road,  
Croydon CR9 3LQ.

\*For her test a Young Leader must run a Camp for Guides under the conditions laid down in 49, 5. (formerly 4.).



# CHQ books for all occasions

If you don't already have our Book List send for your copy today - it contains lots of interesting and informative books on Guiding, Camping, First Aid and many other subjects of interest to Guides and Guiders.

## Rangers and the Duke of Edinburgh Award

- X5152 Duke of Edinburgh Award Programme 60p  
X5151 Duke of Edinburgh Award Handbook 30p

## Guides and the Out-of-Doors

- X9064 Firelighting Chart 8p  
X9065 Stalking Chart 10p  
X5274 Wild Flowers of the Hedgerows\* 30p  
X5142 Nature Discoverers Notebook 7½p  
X5264 Woodland Book for Guides and Brownies £1.00  
X5267 What's That Tree? 20p  
X5273 Tree Scraps 4p

## Brownies and their Safety Training

- X5187 My Home Safety Book 10p  
X5185 My Road Safety Book 10p  
X5186 My Second Road Safety Book 10p  
X5189 My Country and Seaside Safety Book 10p  
X5088 Find the Dangers in the Cottage Chart 2½p

\* Also now in stock: X5059 Wild Flowers of the Marshland; X5060 Wild Flowers of the Coast; X5061 Wild Flowers of the Woodland; X5062 Wild Flowers of the Moors and Heath. All 30p.



available at all Guide shops  
and Mail Order Dept  
**The Girl Guides Association**  
17/19 Buckingham Palace Road  
London SW1W 0PT

### THE ASSOCIATION SHOPS:

London: 17/19 Buckingham Palace Road, SW1W 0PT.  
London: 19 Green Lanes, Palmers Green, N13 4TT.  
Birmingham: 5 Ryder Street, B4 7NE.  
Liverpool: 20 Richmond Street, L1 1EG.  
Cardiff: 209 City Road, Roath, CF2 3XX.  
**SCOTTISH GUIDE SHOPS:**  
Edinburgh: 16 Coates Crescent, EH3 7AH.  
Glasgow: 1 Scott Street, G3 6NU.  
Dundee: 53 Tay Street, DD1 1NP.

### SCOUT AND GUIDE SHOPS:

London: 124 Newgate Street, EC1.  
London: 55 Woodgrange Road, Forest Gate, E7.  
Ipswich: 5 Tacket Street, IP4 1AU.  
Leeds: 62 The Headrow, LS1 3EJ.  
Oxford: 17 Turl Street, OX1 3DH.  
York: 14 Goodramgate, YO1 2LQ.  
Harrow: 104 Hindes Road.



# home and away

## International Women's Year

By now many of you must have heard that 1975 has been designated International Women's Year by the United Nations. Of special interest to members of the Movement is the fact that Mrs Helvi Sipilä, who was Chief Commissioner of the Finnish Girl Guides and a member of the World Committee, and is now the Assistant Secretary General for Social Development and Humanitarian Affairs (the highest ranking woman in the UN General Secretariat) has been named as Secretary General for the International Women's Year. Events during IWY include Women's World Day of Prayer on 7th March and International Women's Day on 8th March. Further information on events can be obtained by writing to **The Secretary, Women's National Commission, Queen Anne's Chambers, 41 Tothill Street, London SW1H 9JX.** Films about such things as suffragettes, jobs and other female activities can be hired for small charges from the **Central Film Library, Government Building, Broomyard Avenue, Acton, London W3.**

## Shoppers Fair Deal

A booklet, *Fair Deal*, has recently been published by the Office of Fair Trading. At some time or another we all wonder just what our rights are in connection with buying goods or using a service. This little booklet explains it simply and clearly; everything you need to know about being a consumer is together in one book. It tells you how to shop wisely, your rights as to any 'buy now, pay later' scheme and what to do when things go wrong. It goes on to explain how the law can help you and how you can help to get a fair deal. A very useful chapter explains what association deals with which complaint and gives you many useful addresses. Copies of this booklet will be on show in your local libraries or can be obtained from your local Consumer Advice Centres, Citizens' Advice Bureau or your local authority Trading Standards and Consumer Protection Departments.

## Children's Art Exhibition

This year the National Exhibition of Children's Art is being organised by the Kellogg Company of Great Britain. Children are being asked to submit paintings, drawings, collages or craftwork. A jury will then decide on 600 to 700 to show in the exhibition which will be held in London during September and October and will then go on to other major cities. There are four age groups (under seven up to 17 years) and every entry accepted will receive a certificate. There are also monetary prizes including a £350 grant for art training for the entrant showing the most promise. Closing dates are 15th March, 1975 for pictures and between 14th April and 9th May for crafts. If you would like an application form they are available from **Kellogg's National Children's Art Exhibition, Trafford Park Autopoint, Ashburton Road East, Trafford Park, Manchester M17 1SB.**

## Consumer Report

The winter edition of the Consumer Report published by the Consumer Standards Advisory Committee of the British Standards Institution is now available. The report gives news of a new code that covers the servicing of household electrical appliances. It explains about standards for toothpaste, vending machines and display refrigerators. The report also tells you where to hire a filmstrip or slide set illustrating how to wire plugs to three different appliances. If you would like a copy of this report write to the CSAC at the **British Standards Institution, 2 Park Street, London W1A 2BS.**

## Young Ornithologists

The Young Ornithologists' Club celebrates its tenth anniversary this year. Also this year, the club's magazine *Bird Life* is being printed in colour for the first time and is coming out six times a year instead of four. The first issue of this 'new look' magazine contains articles about the North American ruddy duck and how rooks and crows use the motorways to increase their food supplies. There are also details of holidays. If you would like details about the YOC write to them at **The Royal Society for the Protection of Birds, The Lodge, Sandy, Bedfordshire SG19 2DL.**

## In Memoriam

The Camberley Division of the West Surrey Girl Guides remembered their Division Commissioner, **Joan Cranstone**, during their Thinking Day services. Joan, who died on 30th June, 1974, led a life which was a fine example of selfless service, and many thousands of young people benefited from her work. She first became a Guider in Hampshire, but in July, 1974, started working with the Girl Guides in the Camberley area, giving a total of almost thirty years of voluntary service. Throughout much of this service she worked full time, which involved a daily journey to London. Her Division covered the new Surrey Heath Borough and in this area she had Rangers, Guides and Brownies, and she visited each Unit often. Guiders come and go constantly, but Joan's work and energy ensured that Units were kept in being; when immediate replacements could not be found she often stepped in herself. This combined with administration, meant that all her spare time was devoted to the Guide Movement. **MDE**

Left to right: Miss Mervyn Newnham, OBE, Miss D Powell and Miss M Grant at a Commissioners' and Guiders' Training at Kloof, near Durban, in 1952.



Many old Guides and Brownies from Surrey West will grieve to hear of the death of **Henriette Jacques**, who for fifty-five years so greatly helped and enriched Guiding.

The immense enthusiasm which inspired the early Guides was to stay with her from her enrolment in 1919 throughout her life. She was an inspired teacher with seemingly endless energy and wide interests, and as Captain and Brown Owl of 1st Cranleigh Company and Pack for over thirty years she passed on to hundreds of Guides and Brownies the fun and friendship, the love of camping and the out-of-doors, and the highest ideals of the Guide Movement. Many will remember the strong handclasp and warm words with which they were welcomed into the Movement: 'The strength of the chain is in its weakest link. So live that ye may learn to bear the strain.'

**UJB**

**Mervyn Newnham**, who died on 9th January, gave a lifetime of service to Guiding. A Guider in Bristol in 1918, then Commissioner and Camp Adviser, she gained her Training Diploma in 1928 and was awarded a Chief's Diploma in 1933. During the Second World War, from 1936 - 1945, she was Guider-in-Charge of Foxlease; this responsibility she combined with local Guiding in Lyndhurst. Mervyn Newnham then became Head of Training for England and, subsequently, Training Adviser for Overseas. She had already had experience of training Guiders in South Africa and Rhodesia. In 1948, she was one of the UK representatives at the World Conference in the USA. Mervyn Newnham's local Guiding continued in Sussex as Commissioner for Hove and, later, as County Commissioner in the years preceding the division of the county. A very vital appointment (1961-1968) was that of Chairman of the Religious Panel at CHQ.

This long string of facts and dates supplies a framework for the memories of those who worked with Mervyn. It gives no indication of her humble, transparent, dynamic personality. She spurred us on in whatever capacity we served. Her opinion was always completely honest and impersonal, in spite of the depth of her affections. She was one of those rare people who can withstand their friends and admirers, if need be. We thank God for Mervyn; for her loving kindness and joy, for her humility and integrity and for her wisdom and good sense, and we remember gladly that she continued to serve others - her Church, her community, her friends and all misfortunates - to the best of her ability, even in the last sad months of disablement, borne with such courage.

Deo gratias.

**MCC**



**YOUR PROFIT**  
**£10.80**  
per minimum order

**A FUND-RAISING SUCCESS STORY**

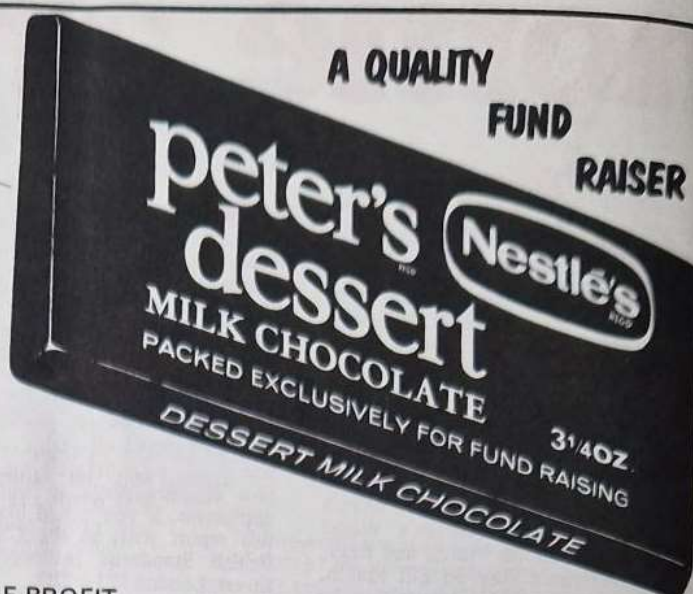
As most Youth Organizations now know, THE NESTLÉ CO. LTD. in co-operation with LANE & PARTNERS LTD. have produced this exclusively packaged dessert milk chocolate bar, now available to all Charities, Youth Groups, Clubs and Schools in the U.K. for fund-raising.

Due to the success of this scheme NESTLÉ have decided to make this product available to all bona fide Youth Organizations at ANY TIME OF THE YEAR.

This means that you are now able to order and take delivery whenever your individual sales begin.

Each Dessert Milk Chocolate Bar is made by THE NESTLÉ CO. LTD. from the finest chocolate beans. Each bar weighs a full 3½ oz. and is covered with golden aluminium foil and packaged in a beautiful chocolate brown wrapper embossed in gold lettering.

No one is authorized to sell this particular package except bona fide organizations and schools within the U.K. Each bar is guaranteed fresh by the makers.



**THE PROFIT**

Suggested selling price to the public per bar	23½p
Your total cost per bar	17½p
Your net profit per bar	6p
Your net profit per Outer	£1.08

**HOW TO SELL**

Sell to all relatives and friends of your Organization. Have chocolate stalls at Autumn and Spring fêtes, bazaars and local sales of all kinds at any time.

Join up with your Church in their pre-Christmas and pre-Easter fund-raising efforts.

Sell by the Outer as these chocolate bars make excellent Christmas and Easter presents.

**HOW TO ORDER**

Simply fill in the order. SEND NO MONEY WITH ORDER. You will be invoiced when your order arrives and payment is required thirty days after invoice date. When paying your invoice simply remit 17½p per bar to THE NESTLÉ CO. LTD. and keep 6p per bar for your organization.

**We regret we cannot accept orders for less than 10 Outers (180 bars), and we cannot give credit for unsold stocks.**

Delivery is FREE

Please allow 2 weeks for delivery, and 4 weeks during the Pre-Christmas and Pre-Easter peak periods.

PLEASE ORDER PROMPTLY TO AVOID DISAPPOINTMENT AND POST ORDER TO:

**LANE AND PARTNERS LTD., 59 SOUTH AUDLEY ST., LONDON, W.1.**

Please cut here

PLEASE  
SUPPLY

☐ OUTERS

Normal Minimum Order 15 OUTER (270 bars)  
SPECIAL OFFER - Minimum order 10 OUTER (180 bars)

1 OUTER = 18 BARS. 1 OUTER £3.15

My Sale Date Begins.....

Number of Members in Organization .....

Name of Organization .....

Name .....

Address (For delivery 9 a.m. - 5 p.m.)

Signature .....

TERMS NET 30 DAYS FROM INVOICE DATE

Tel. No. ....

DEPOT No.

☐ ☐

CUSTOMER No.

☐ ☐ ☐ ☐ ☐ ☐

FOR  
OFFICE  
USE  
ONLY

ORDER No.



# BROWNIE

## Training Ideas

### Easter Good Turns In The Pack

Brenda Robinson

**P**OW-WOW had been difficult. It was the kind of night when the Brownies were dim, and no ideas at all had emerged when we had broached the subject of Easter Good Turns. 'We did one at Christmas' was not very encouraging, but perhaps that was how they felt. 'What can we do that is different?' I asked my Assistant Guider, as we sat talking after the Pack meeting. 'If we started them with some ideas to discuss,' she replied, 'I think it might help.' I was sceptical, because my ideas and theirs did not always match, but it was worth a try. 'We could have one big Good Turn which might grow into a Venture, such as a flower show, then give the flowers away, which would help all the Pack, or little Good Turns which would help progress on the Journeys. A small decoration to give old Mrs Dykes, maybe a saucer filled with soil or moss, with flowers, leaves and oddments stuck in and an eggshell, painted and placed upside down on a stick, to make a toadstool in the middle (help with fun out of doors on the Footpath). A prayer for Easter, neatly written on a card, decorated and hung with a plaited thread or ribbon (Do Their Best, Highway). These could be given to the children's ward at the hospital or, if they were very simple, offered to the primary Sunday School. An Easter egg made of papier mâché (Make Things, Footpath) with something inside made at Brownies, say peppermint creams, would be nice for Mum or Dad. Dust all the Church pews, so that they were very clean for all the people in their new clothes on Easter Sunday (help with Help at Home on the Footpath). 'Ideas were beginning to flow which would fit into our programme and help the individual Brownie to progress. We went home hoping it would work.

Next week, Pow-Wow came, with our suggestions. 'Let's do them all,' said Susan, 'we could all do the Venture and our own Good Turns as well.' The Venture grew; classes for the Flower Show were sorted out, an arrangement of wild flowers, of garden flowers, a small arrangement not more than 2" across, a miniature garden, an Easter garden, six different wild flowers. 'We shall invite our

parents and give them tea,' stated Amanda, and the others joyfully agreed. It was getting out of hand, but we were progressing. 'Shall we ask the Vicar who would like the flowers. Perhaps someone is lonely and needs cheering up, or perhaps we could take them to the hospital?' More discussion, and the Vicar came out top of the vote. I sat back and wondered what a Pack in the middle of a large city or from blocks of flats would do, without gardens, fields and woods. Perhaps they would have to think earlier than us and grow flowers in pots for the flower show, or make small arrangements with paper flowers. Wider classes too, a poster for Easter, Easter cakes, a picture to be painted of Spring. I brought



the Brownies back to reality by asking them if they were going to do individual Good Turns as well. 'Of course,' they said, 'Mr Brent told us last week that Jesus died at Easter and rose to bring joy, and we must also bring joy.'

We produced a large sheet of paper and began to write our ideas. Venture, Flower Show; classes were printed, with spaces for Brownies to fill in their names. The Brownies were divided into groups to make the invitations, the Easter cards which would go out with the flowers after the show, the tea and cakes arrangements, including the washing up, the plans for hostessing the visitors, and the two Brownies who had been waiting for an opportunity to do their

Hostess badge, the Brownies who were going to be furniture movers, getting tables and chairs ready.

I thought this would be sufficient for Easter but the Brownies were keen to do their own Good Turns, so another piece of paper came out and we noted our individual Good Turns, if they wanted to do them. Many followed our ideas and several chose to make up a prayer, decorate the prayer card and give it to the young ones at Junior Church. Some had their own ideas and some did not want to do anything, which was understandable.

My assistant and I made a list of things we would need to bring, such as card and crayons for the invitations and cards, but we found that the Brownies would bring most of it. I was glad, as we could not afford much money out of our precious subscriptions, and I did not want to stop the Brownies once they had become enthusiastic.

The next two weeks were busy ones at Brownies, working and planning together and individually. Some Brownies needed help in planning the exhibits, others we knew would receive help at home. Jane, our recruit, complained that she was not a real Brownie yet, so what could she do? Her Sixer soon told her about Brownie Good Turns! We wondered if order would ever come from chaos, but looking back now it was very successful. Excited Brownies showed exhibits to parents, or to us if parents did not arrive, some old ladies and gentlemen had received flowers and greetings, the Sunday School were delighted with the prayer cards and the Brownies had unknowingly progressed.

Easter Good Turns can be incorporated into our programme, helping on our Ventures and Journeys and enabling each Brownie to progress. Sometimes our Good Turns can just be centered on the home, sometimes much wider. Sally made tea at our Flower Show and progressed on the Highway. Jane helped to carry the tea without spilling it, that was progress too. Jane normally sat out of everything. We had enjoyed our Easter Good Turns, all of us. We had worked together, progressed individually, and it had been fun.



## Celebrating Easter In The Unit

Isabel Anderson

**E**ASTER. What train of thought does that word start? It may be the Christian Festival of death and resurrection, of abundant life, of renewal of hope. For some it is Spring, with upsurging energy and new growth as seeds sprout and buds burst. For others, holidays may have priority, with hopes of relaxation, travel, warmer weather, and getting out-of-doors, or possibly it means spring cleaning, house decorating, gardening or perhaps annual audits and stock-taking. And your Guides? What does Easter mean for them? Will you celebrate this joyous time of year together?

Might you worship as a Company? Possibly you might help to decorate the church, or study the account of the Cross and Resurrection at Unit prayers. The good readers amongst the Guides might try reading an extract from the end part of Dorothy Sayers radio play *'The Man Born to be King'*; your library will have a copy. As well as the joyful outcome, there is a serious side to this particular celebration. I wonder what thoughts Guides have had when they discussed 'For there is nothing lives but something dies...' (Noyes); quoted on P80 of the Guide Handbook. Some of the older ones might like to delve into the meaning of 'My soul thou shouldest keep perpetual Lent in the inmost centre of thy being, and everlasting Easter on thy face' (Campbell-Morgan).

In Guiding, celebrations often overflow into service for others. What will it be this year? Weeding gardens and preparing for planting? Spring cleaning? Why not make a special effort to get windows really sparkling so that the spring sunshine cannot show up layers of grime? Did you visit the local old folks to sing carols and leave gifts last Christmas? They would welcome another visit now, especially if you take some flowers, and sing an Easter carol or hymn. People who live in high-rise flats might love to receive primroses and daffodils, and perhaps the District Nurse or

Social Worker could tell you of someone like that.

What form will your enjoyment of the out-of-doors take during the holidays? A breakfast hike, tree spotting, a ramble along a canal towpath looking for signs of spring, or a walk to sketch a village church? There's a link with European Architectural Heritage Year here too.



I expect your Guides are growing too, and will soon be needing the next size of shoe and blouse. Are they growing as Guides too, learning to live together in Patrols and to make and carry out their Eight-Point Programme (with or without Guider help)? Supposing we think that our Unit would benefit from some of the activities already mentioned. Just how might we introduce them into the Company programme? The difficulty is that the more ideas the adults have, and the more capable they are at organising Guides, the less chance the young get to produce and carry out their own ideas. Be honest, to what extent is your Unit's programme decided by the Guiders, and arranged by them?

Of course a short idea can be put in from the Guider as her 'Challenge' for the month, eg one evening you can say casually 'I wonder how many windows we could clean between us in the holidays?' If the Guides respond, you could all learn what equipment is needed and how to do it in your own time during, say the next

fortnight. Then you are ready to start work (and counting) as soon as the schools break-up, and to find the grand total when everyone is back again.

Other activities need more time to plan and arrange. In these cases the Guider's task is to present the merest whiff of the idea, eg 'Shall we do some good turns to celebrate Easter?' If the PLs Council agrees, everyone can contribute ideas. They may have quite different ideas from us, and wherever possible we should help them make their ideas work, provided obviously that they are legal and within the spirit of the Promise! The young are sometimes over-ambitious and our job may be, by helping them to visualise and think ahead, to realise that modifications are sometimes needed to the original scheme. There's a lesson here for us too. The Guides have been known to overcome all difficulties and the idea that the Guider thought was quite impracticable turns out to work extremely well! If suggestions are lacking, then can the Handbook or the Guiders help? If our ideas are really needed, we have to decide whether to give them the first glimmer of an idea to develop or whether to suggest several ideas and make them choose. Thus the Guides grow as people.

T S Eliot, in his poem *The Rock*, wrote 'take no thought for the harvest, but only for a proper sowing...' A Joyful Easter to you all.





## Celebrating Easter In The Unit

Susan Stevens

### Something to make

**H**AVE YOUR RANGERS thought of Easter gifts for old people in homes and hospitals? Although remembered at Christmas, at Easter they tend to be forgotten. Everyone delights in the first flowers, and tiny posies already arranged in small containers will bring a little spring to their bedsides. Polythene containers can be cut to size from squeeze bottles; the trade markings can be removed with wire wool and the outsides painted or decorated with motifs cut from old fancy wrappings, cards or paper doilies. Cardboard containers may be used, lined with foil to make them watertight. Frozen food trays filled with saturated moss could be used for short stemmed flowers or to obtain a miniature garden effect. An important point to remember when using lightweight containers is that they should be made stable. A little gravel in the bottom will ensure this.



Bringing as much pleasure as the gift itself is the feeling that someone has 'bothered'. Many old people seldom see visitors, especially young people, and a ten minute chat with a lively teenager means more to them than you may realise, and will be treasured for a long time afterwards. Talking to old people is not always easy, and discussion beforehand, using the experience of Rangers who have

frequent contact with elderly relations or neighbours, will be helpful. Looking to the future, a project of this kind may lead to regular visiting and a valuable service to the community.



### Something to do

Among the oldest beliefs in our folk tradition are those concerning the sunrise on Easter morning. One of these was that the sun danced for joy to celebrate the risen Christ, and that those who climbed to the top of a hill at dawn might be fortunate enough to see it and be blessed throughout the year. As late as the middle of the last century, people went in large numbers to local hilltops to watch the 'sun leap' and, as some maintained, change colour and swing round and round like a wheel. In some districts the belief was also held that in the first few moments after the sun had risen, the image of the Lamb and Flag appeared in the centre of the sun's disc, the Lamb no longer slain but carrying the red cross banner of Victory.

It is unlikely that this tradition is kept anywhere today, but the unquestioning faith which led generations of our forebears to do so is worth thinking about. Whatever one's reasons for so doing, there can be fewer more meaningful ways of greeting Easter Day than by getting up before dawn, watching with a group of friends as the sun rises on the beauty of creation on a spring

morning, and then walking on together to early Communion. Afterwards, steaming coffee and hot rolls at someone's house.

Missing from this? The usual last minute scramble to Church. Gained? Try it with your Rangers and discover for yourselves.

### Something to think about

I read in a book  
That a man  
Called Christ

Went about  
Doing good  
It is very disconcerting  
That I am often  
So easily content  
With just  
Going about.

*Dr Toyhiko Kagawa of Japan*

'Just going about' can be translated in so many different ways today. Can we find examples in the newspapers; in the attitudes of those with whom we mix daily; in the way in which we ourselves live our lives? Can we take another look at the life of Christ and the ways in which he went about doing good? Can we take another look at our Promise and take the example of His life to help us keep it in ours? Can we be reminded in celebrating Easter that:

Christ has no body on Earth now  
but ours; no hands but ours, no feet  
but ours . . . ours are the feet with  
which He is to go about doing  
good . . .





# DISTRICT

*Training for the Commissioner and her team of Guiders*

## Unity Through Diversity

Jean M Potter

**W**HAT makes Guiding different from other Youth organisations is the centrality of the Promise and Law. How often have we heard this said, or said it ourselves, at Trainings. And then we go on to emphasise how these things should be brought into all aspects of our meetings, from the collecting of subs (honesty), to reverence for the Union Flag, and service to the community.

For some Guiders, especially those running Units not specifically attached to any Church, the first clause of the Promise may be dealt with by the request for the Bluebell PL to read a prayer at the end of the meeting. And more often than not, that prayer will finish with the familiar phrase 'Through Jesus Christ our Lord, Amen'.

But should there be any Jewish girls in that Company, such a prayer would not be acceptable to them. Yet, with a little forethought, and perhaps discussion of the matter in PL's Council, prayers which are addressed to God, or Lord God, as in the Old Testament, and have no reference to Christ, are not difficult to find, or even devise, and will be acceptable to both Jews and Christians. Perhaps the finding or composing of prayers which will not offend people of different faiths might be an interesting challenge for Guides, Patrols, or even Guiders, especially in areas where there are communities of different ethnic origins.

But it is not just in the content of Pack or Company prayers that the Guider needs to be aware of the religious beliefs which people of different faiths hold, especially when those beliefs affect what they eat or wear, or the way in which they behave.

When preparing Camp menus, or even having a local cook-out, the Guider must remember that many Jews and Muslims do not eat pork, and most Hindus do not eat beef, so a variety of sausages must be purchased. Sometimes children of these faiths will not be allowed to eat with other people because the food will not have been prepared in accordance with their religious beliefs, particularly in regard to Kosher meat. Again, some families may be strict vegetarians, not only on health, but also on religious grounds, as, for example, many Hindus, because they believe in the sanctity of all living things. If one can avoid

giving offence in such matters, it pays off in the long run.

Emphasis on modesty in dress is another thing which we may not always think about since the mini-skirt had its heyday. But many Muslims do not like to see their daughters exposing certain parts of their bodies, especially their legs. Hence, of course, the elegance of the sari, and the acceptability of trousers, often worn under a tunic. In some areas in this country schools have relaxed strict insistence on school uniform, and the girls are allowed to wear trousers.



This is also allowed within our Movement when requested. This same emphasis on modesty is also the reason why Asian girls are often reluctant to go swimming, especially in places where there is mixed bathing. Some strictly orthodox Muslims have refused to let their teenage daughters attend co-educational schools. Many parents still believe it is not right for them to mix freely with boys for they believe in and practise arranged marriages and purdah for their womenfolk. In such circumstances it would be understandable if some girls did not take part in joint Ranger-Venture activities.

Another religious practice which can affect girls of Guide age is the prescribed fasts, especially that kept by Muslims during the 30 days of Ramadhan, when no food or drink is taken between dawn and dusk. Guiders should make it their duty to find out the dates of the main religious festivals which are kept by Jews (eg New Year, Atonement, Passover etc) and Muslims (eg Id-ul-Fitr and Id-ul-Adha) if they have girls of these faiths in their Units. They can avoid such activities as might clash with these festivals, in the same way as they would avoid Christmas and Easter Day. On the other hand, the

understanding and sharing of these festivals could enrich the life of the whole Unit, and lead to a deeper understanding between people of different faiths. Again, a Guider should remember that, just as the first day of the week is the Christian holy day, so from dusk on Friday to dusk on Saturday is the Jewish Sabbath when services are held in synagogues, while Muslims keep Friday as their particular day for corporate prayer, and the Koran is recited in local mosques where these are available.

For convenience sake we talk about Christians and Jews, Muslims and Hindus, Sikhs and Parsees. But we must remember that there can be considerable differences of custom and tradition even within one faith. Hard and fast rules cannot be laid down, but the beliefs of each individual must be recognised, taken into account, and accepted if true relationships between people of different faiths are going to be established. Just as within the Christian religion there are Roman Catholics, Anglicans, Methodists etc so a Jew may belong to the Orthodox, Reform or Liberal tradition. Again, a Hindu may worship the divinity of Brahma, Vishnu or Shiva; and Muslims, while united in their belief in Allah, may come from as widely differing areas as Pakistan, Arabia, East Africa or Nigeria.

Yet in spite of these differences in beliefs, customs and traditions, girls from a variety of backgrounds can be members of the Girl Guide Movement. For as long as they believe in God, and can therefore make the Promise which includes loyalty to their religious beliefs, as well as to the secular power and community in which they find themselves, there is nothing to debar them from the Movement. This, surely, is our strength, that within the unity of the Movement there can be such diversity. Let us make full use of that diversity to enrich our Sixes and Patrols, our Packs and Companies, our Districts and Divisions, so that the whole Movement will be strengthened through the greater understanding which will be generated when people from different backgrounds really get to know one another, and accept each other as individuals, rather than as members of a particular class, sect or nationality, which is, so often, impersonal and which can be divisive.



★ SAVE UP TO 33%  
On Manufacturers Recommended Prices

TENTS (La Prairie - Hungaroma - Ma Cabana - Belton, etc.) A.B.C. CARAVAN AWNINGS, GAS STOVES  
(Tilley - Dudley - S.M.S. - Weekend - Grillo-gee) LI-LO AIR MATTRESSES, SLEEPING BAGS, ICE-BOXES, etc.

# MARQUEES

READY TO ERECT

from only **£197.50**

COMPLETE WITH ACCESSORIES SEE LIST



## BRITISH ARMY UNIVERSAL MARQUEES

Fantastic offer of Marquees as supplied to the forces. Previously used but in excellent condition. Made to the highest specifications in Genuine Ex Govt. Tentage.

Example: 30ft x 20ft. includes:-  
2 Roof Ends - One Roof Section - Four 27ft. walls - Eight 35ft. bracing lines - Two 36ft. weather lines - 16ft. Valse - Maul - 82 pegs - One 9ft. Ridge Pole in 1 section - Two 12ft. upright Poles in 2 sections - 32 Wall Poles - Eight 30in. stakes - 1 Large Valse.

Sizes approx.  
20ft x 20ft. £197.50  
30ft x 20ft. £275.00

All Marquees 12ft. high - Side Walls 5ft. 6in.  
Carr. £5.50 per Marquee

## EXTRA MARQUEE SECTIONS

£75

Carr. £1.75  
Marquees can be extended in 9ft. sections. Genuine Ex Govt. tentage (previously used but in excellent condition) each section comprises One 9ft. centre section - One 9ft. Ridge Pole - One 12ft. Upright Pole - 2 Wall sections - Two 30in. stakes, 6 side wall poles - 18 pegs - 1 Double weather line - 2 bracing lines.

## 'JUMBO' 3-WAY SLEEPING BAG



£4.25

Carr. 30p

LUXURY BAG OR BEAUTIFUL DOUBLE BED QUILT

★ 36 in. Gold Label 'Terylene' filled maximum comfort. No lumps! ★ Nylon cover and lining. (Attractive extra hand wearing) ★ Jumbo Size 6ft. 3in. x 2ft. 4in. (Plenty of room for comfort) ★ Zip all round (for rapid conversion) ★ Lightweight - easy wash - quick dry. Colours: Light Blue, Dark Blue, Bottle Green, Maroon.

The 'Jumbo' is designed and produced by craftsmen using only the best materials and the most modern machinery. So soft and cosy that blankets or sheets are not necessary. The unique decorative stitching is especially attractive as well as extra strong.

### USE 'JUMBO' 3WAYS

1. Luxury bag 6ft. 3in. x 2ft. 4in. approx.
2. Open zip to make a delightful bed quilt 6ft. 3in. x 4ft. 8in. approx.
3. Zip 2 bags together for a really wonderful double sleeping bag 6ft. 3in. x 4ft. 8in. approx.

Also available  
44oz. KING SIZE JUMBO  
£2.25 Carr. 30p. Gold label. Terylene filled.

NYLON SLEEPING BAG INNER 95p Carr. 9p  
Super soft, hard-wearing, drip-dry. Will add years of life to your sleeping bag. Double size £1.90, Carr. 18p. Cotton sleeping bag inner single £1.50 p/p 9p Double £3 p/p 9p.

## 4 STAR DE LUXE LIGHTWEIGHT

- ★ WATERPROOF
- ★ ROTPROOF
- ★ WINDPROOF
- ★ STORMPROOF

## NYLON RIDGE TENT

ONLY **£9.75** Carr. 25p

WEIGHT ONLY 3lb

Superb olive green tear resistant proofed Nylon. Beautifully styled with built-in groundsheet, zip front 4" nylon lines, metal pegs. Complete with wooden sectional poles. Size 6ft. 4in. long, 4ft. 6in. wide, 3ft. 6in. high, 9in. walls. Sleeps 2 adults.

With aluminium poles £10 carr. 25p. Aluminium ridge pole £1. Flysheet can be supplied £4.75 P/P 25p. Blanket Groundsheet Liner and Protector for extra comfort £1.25 P/P 15p.

## 14ft. RIDGE TENT EASILY CONVERTS TO A 4 ROOM CHALET

£75

Carr. £1.75

WITH FLY SHEET

The famous ARMY 160 POUNDER 14ft. long, 14ft. wide, 7ft. high 27in. walls. Superb Ex Govt. tentage, guaranteed stormproof. Dutch lacing doorways each end, doors can be rolled up. With accessories - pegs, poles, maul and valse. Flysheet Grade 1, 14ft. x 14ft. £22.50 Carr. £1. Unused Tent complete all accessories. £97.50 Carr. £1.75. Unused Flysheet £30. Carr. £1. Unused Groundsheet: 14' x 14', extra tough rubberised canvas, eyelets all round, untearable. Weight 28lbs. £12.50 Carr. 50p. Also Tent as above 14ft. ridge x 9ft. Grade 1, £45.00 Carr. £1. Flysheet Grade 1, £22.50 Carr. £1. Unused £30 Carr. £1.

### FOR HIM - FOR HER

## BERGEN TYPE RUCKSACK

Carr. £7.50

100oz. proofed Blue-Grey Cotton Canvas. Leather shoulder & straps. Carries 50lb. (packed 24in. x 20in.) Centre pouch; side pkts. 2 inner containers.

FRAME MODEL 15in. £4.50 p/p 15p.  
LARGE FRAMELESS MODEL £2.50 p/p 15p.  
HIKERS MODEL SMALL £1.50 p/p 13p.



Genuine Continental 17in. Frame Model

## The very latest model TOILET TENT

£7.75

carr. 50p

Easy to erect. Made to our own specifications. Strong black weather-proof material, off white cotton lining 6 ft. front.

5ft. rear, 4ft. wide, 4ft. deep. Strong front zip. With sectional wooden poles, pegs & lines. Double guy lines to each pole. Also larger Model £9.25 carr. 50p. Superb white, rear resistant, tentcloth, 6ft. front, 5ft. rear, 4ft. 6in. wide, 4ft. 6in. deep. Water, rot & storm proof.

Ideal cooking or bathing Tent. All Models with Sectional Lightweight Alloy Poles. 75p extra.

### Genuine British Army

## CAPE GROUND SHEETS

Heavy 3-ply rubberised, waterproof, untearable canvas, 6ft. x 3ft. with cape attachment. Ideal Groundsheets for waterproof protective garment.

Also unused £2.25 P/P 15p.

used but perfect

£1.50

P/P 15p

★ Carr. & P/P charges apply UK mainland only. Extra for Channel Isles & N. Ireland, etc. Goods despatched UK only.

Open Mon-Sat. Early closing Thurs. All measurements approx.

H. C. BRIGGS (CAMPING EQUIP.) LTD (G) 88 FOREST RD. WALTHAMSTOW, LONDON, E17 6JH

Tel: 01-520 2705 2 minutes from Blackhorse Rd Station - Victoria Line

### WHY PAY MORE?

## THE SUPER TRENT

IS ONLY

£8.50

p&p 25p



Beautifully styled in superb 5 ozs. Kingfisher Blue proofed cloth, zip door, lightweight sectional upright poles. Approx. 6ft. 6in. long - 5ft. wide - 4ft. high - 15in. walls - 6lbs. approx. **Lightweight sectional alloy ridge poles £1 p/p 25p. Waterproof ground sheet £1 p/p 25p. Standard flysheet £5.25 Carr. 25p. Deluxe Nylon down-to-earth flysheet + 30in. extension £7.50 Carr. 25p.**

## LIGHTWEIGHT BELL-END RIDGE TENT SLEEPS 4 ADULTS

ONLY **£35** Carr. 75p



Also smaller model £22.50 Carr. 65p. Approx. 8ft. 6in. long, 4ft. 9in. wide, 4ft. 6in. high, 12in. walls, weight 15lbs.

Superbly made in tightly woven super strong canvas. Styled with 2 spacious pockets and 4in. upright mudguards. Door has 2 ventilators and 2-way zip. Flysheet has smart front canopy.

Superb Duralum 3-piece ridge and upright poles. Extra strong guy lines with rubber adjusters, alloy pegs. Size approx. 10ft. (inc. bell-end) 6ft. high, 8ft. wide, 6ft. 6in. ridge, 18in. walls. Size packed: 28in. x 14in. x 6in. Colours: Flysheet Blue, inner Tent Orange. Weight 23lb.

## MICRO

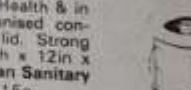
ONLY **£35** Carr. 75p

Complete with Inner Tent - Separate Down-to-earth Flysheet with Bell-End & Saw-in Ground Sheet

## CHEMICAL TOILET

£2.50 Carr 50p

Direct from Ministry of Health Racasan Portable Chemical Toilets. As supplied to Ministry of Health & in orig. cartons. Steel galvanised container, wooden seat & lid. Strong handle. Approx. 16in. high x 12in. x 12in. Weight 11lbs. Racasan Sanitary Fluid £1.20 per gal. Carr. 15p.



## DUAL PURPOSE KIT BAGS

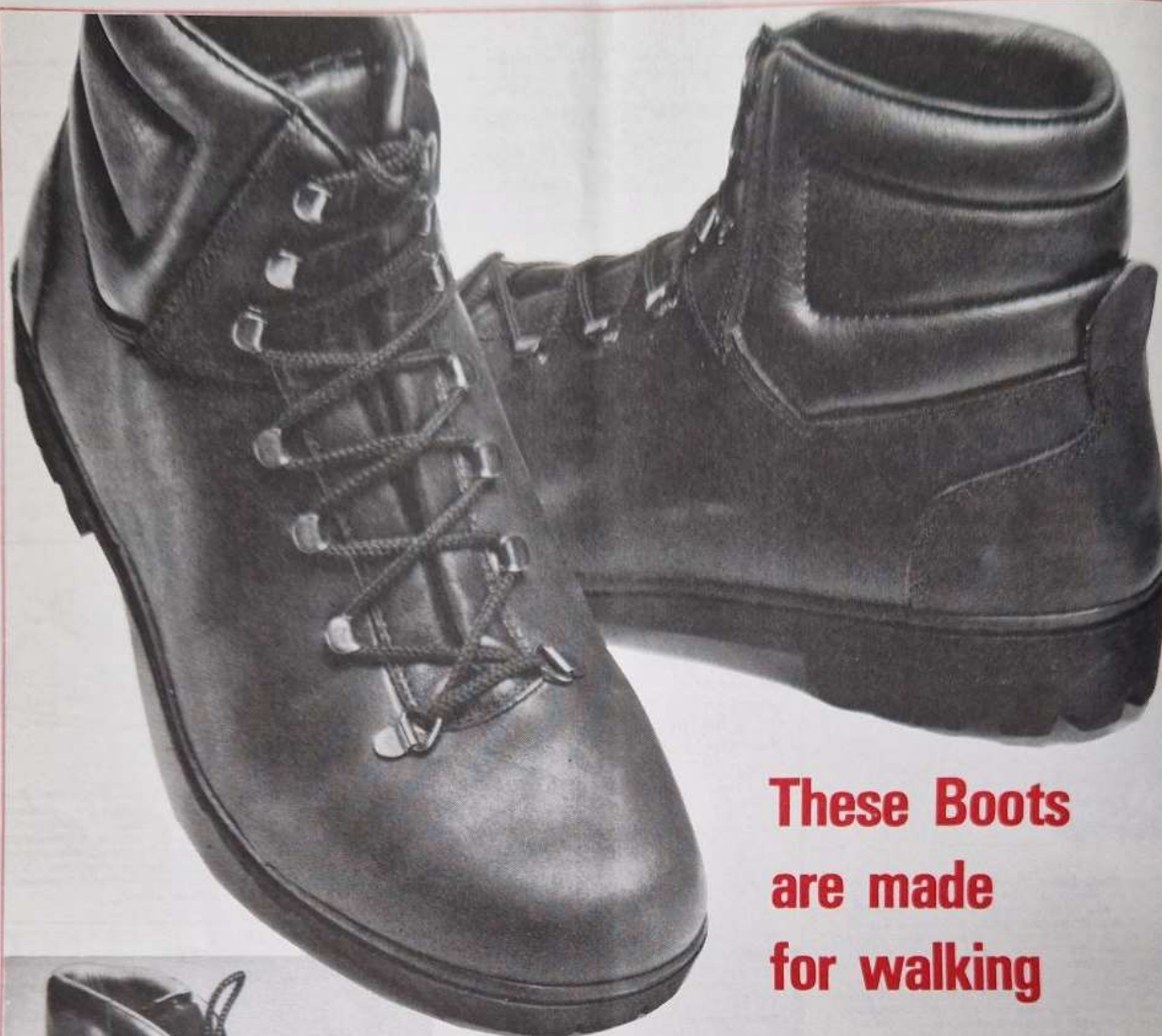
Grade One

Tough hardwearing double texture light-weight waterproof canvas. Can be carried grip or kit bag style. 35in. long, 35 in. circ.

Also Unused larger model 36in. long, 45in. circ. £3. Carr. 15p.

£1.50 Carr. 15p.





## These Boots are made for walking



### 7960 RAMBLER BOOT (illustrated above)

Lightweight Italian boot with a dark tan full grain leather upper which is fully leather lined. The padded leg of the boot superbly supports, protects and comforts the ankles. The tongue is bellowed and the sole and heel unit is Vibram Iseran.

One pair of size 42 (8) weighs 3½ lbs.

**PRICE £13.40**

**SIZES: 36-43**

### 7965 MONTE ROCCA BOOT (illustrated left)

This lightweight boot is ideal for the casual walker. The leather is supple and the sole flexible so it requires no breaking in.

**SIZES: 36-43** **PRICE £10.85.** Other sizes available on request.

### BOOT SIZE CONVERSION CHART

English	3½	4½	5½	6	6½	7½	8½	9
Continental	36	37	38	39	40	41	42	43

Socks available, also Kiwi Wetproof.  
Send for catalogue for further details.

available at all Guide shops and  
Mail Order Dept.

**The Girl Guides Association**  
17/19 Buckingham Palace Road,  
London SW1W 0PT.

#### THE ASSOCIATION SHOPS:

London: 17/19 Buckingham Palace  
Road, SW1W 0PT.

London: 19 Green Lanes, Palmers  
Green, N13 4T.

Birmingham: 5 Ryder Street, B4 7NE.

Liverpool: 20 Richmond Street,  
L1 1EG.

Cardiff: 209 City Road, Roath,  
CF2 3XX.

#### SCOTTISH GUIDE SHOPS:

Edinburgh: 16 Coates Crescent,  
EH3 7AH.

Glasgow: 1 Scott Street, G3 6NU.

Dundee: 53 Tay Street, DD1 1NP.

#### SCOUT AND GUIDE SHOPS:

London: 124 Newgate Street, EC1.

London: 55 Woodgrange Road,  
Forest Gate, E7.

Ipswich: 5 Tacket Street, IP4 1AU.

Leeds: 62 The Headrow, LS1 1BE.

Oxford: 17 Turl Street, OX1 3DH.

York: 14 Goodramgate, YO1 2LO.

Harrow: 104 Hinds Road.



# HO NOTICES

## CHQ Awards

### GOOD SERVICE

#### Laurel Award

Miss M. Adams, Brownie Guide, 1st Aston Clinton Pack, Buckinghamshire.

Mrs B. Duffield, Assistant County Outdoor Activities Adviser (Boating), Dorset.

Miss D. S. K. Ellaby, Training/Programme Adviser, South West England.

Mrs C. Euman, Division Commissioner, Thames, Kent West.

Mrs M. Kenrick, District Commissioner, Warwick, Warwickshire.

Mrs W. E. S. Whittingham, Division Commissioner, West Leicester, Leicestershire.

### MERITORIOUS CONDUCT

#### Star of Merit

Helen Hadfield, Guide, 2nd Finchampstead Company, Berkshire.

We are told that, despite her illness, during the whole time that she has been a Brownie then a Guide, Helen has always participated in the various activities as much as she possibly could. Her own enjoyment and enthusiasm have earned the admiration of fellow Guides and Guiders alike. Far from being absorbed with herself, she is always thinking of, and is concerned for, the other children around her.

Sheila Pepper, Ranger Guide, 1st Manor RGU, Leicestershire.

Sheila is a most cheerful young woman with boundless energy and enthusiasm for life and people. She has displayed great physical and mental endurance over many years of suffering and, as a Guide, overcome many difficulties to gain her Queen's Guide Badge, among other achievements. Always willing and keen to try something new, she never gave up but kept trying again, with a smile. She has taken part in all Guiding activities, including sponsored events for fund-raising and camping, taking her share of the duties and even attending an international Camp. Sheila never seems to think of her disability and does not allow it to prevent her from helping others in various ways.

Hazel Rimmer, Brownie Sixer, 2nd Lydiat Pack, Sefton.

We are sad to report that Hazel has died since the award was presented.

### Certificate of Merit

Gillian Kent, Brownie Guide, 7th Bleckley (St Mary's) Pack, Buckinghamshire.

Katharine Lee, Brownie Guide, 4th Cullercoats Pack, North Tyneide.

Tracey O'Connor, Brownie Guide, 2nd Huntingdon Pack, Cambridgeshire West.

## Health Emergencies in Camp

The question as to whether, in an emergency, a Guider may act in *loco parentis* to give permission for a child to have an anaesthetic or undergo an operation in a situation where it is impossible to contact the parents, has caused us to consult with our legal department and we bring the following to the attention of all Guiders:

A Guider may, in such an emergency, act in *loco parentis* provided that she has taken all reasonable and necessary precautions beforehand, ie:

- The Camp/Holiday Health form has been fully completed and signed;
- The date given for the return of the form has allowed time for the Guider to note any special points;
- When parents state they will be away from home and cannot be contacted by phone, the Guider has discussed other arrangements for consultations in case of emergency and/or obtained their written permission to act on their behalf;
- The Guider must be aware of any religious objection which the parents may hold.

## Insurance

Difficulties have arisen in the paragraph headed 'For Unit Funds and Property other than Buildings' on page 3 of our pamphlet, *What Every Guider should know about Insurance*.

We have re-written this as follows, which should please be substituted:

'Guide property and equipment kept in a building, whether belonging to the Unit or an outside party (including that kept in a Guider's residence), should be insured and the sum insured should be regularly reviewed to make allowance for inflation. For certain equipment, eg a projector, consideration should be given to "All Risks" insurance. These insurances can be arranged through our insurance brokers, Willis, Faber & Dumas Ltd, 54 Leadenhall Street, London, EC3P 3AX, or through any insurance company, agent or broker.

Money belonging to the Unit is not covered under the CHQ policies. Separate insurance for this purpose should be arranged.'

## World Badge

Charts of a design suitable for making hassocks, cushion covers, etc in Needlework tapestry are available by post from Programme/Training Department, price 10p each. Please send a stamped addressed envelope, not smaller than 9 in x 4 in.

## Ad Hoc Committee

The Council, at their Annual General Meeting in May 1974, agreed to set up an Ad Hoc Committee 'to examine the Constitution and functions of the Council and of the Executive Committee'.

The nine elected members on the Committee are all currently involved in Guiding and are employed or concerned in varying professions, for example, Education, Civil Service, Local Government and the Probation Service.

The Ad Hoc Committee will be writing to Counties and Regions seeking information from Guiders, and you may already have received a letter or discussed this at your Division or District Meeting. If, in addition, anyone wishes to submit views directly to the Ad Hoc Committee they should be sent to Mrs K. Taylor, 37 Cormorant Walk, Chelmsford, Essex CM2 8BG, by the end of April 1975, giving your position held in Guiding and area in which you work.

## Cello on Loan

We are once again able to offer on loan, for a period of not less than two years, two 'cellos. Applicants for one of these instruments must have passed Grade VI Associated Board, or equivalent, but applications for the other can be from less experienced girls. All applications should be addressed to Miss D. Lockett, MBE, Keeper of CHQ Musical Instruments, c/o Programme/Training Department, and should contain a report on the applicant's Guiding from her District Commissioner and a report from her Music Teacher.

## Bury St Edmunds

Why not arrange a School visit to the historic town of Bury St Edmunds? It is full of interest for children of all ages. The town is small and compact so that pupils do not become overtired when exploring the places of interest.

The spacious Abbey Gardens, ideal for a picnic lunch, adjoin the Cathedral. A feature of the visit is a conducted tour of the Cathedral lasting about an hour and arranged to suit the age group of the children. The Cathedral is a busy one and it is necessary to make advance arrangements, which should be made to the Head Verger, The Cathedral Office, Bury St Edmunds, Suffolk, as soon as possible. Telephone Bury St Edmunds 4933, STD Code 0284.

## Accident Prevention

A special pack, produced by RoSPA, is designed to help prepare Guides for this Badge. The material can be used over and over again, so it is a good investment for Company funds.

The pack costs 50p and is obtainable from CHQ and

RoSPA, Royal Oak Centre, Brighton Rd, Purley CR2 2UR.

## A Holiday With A Purpose

Voluntary helpers are required for summer camps at Woodlarks Camp Site, Farnham, Surrey. If you would like to help the physically handicapped contact the Camp Leader of the week (enclosing a sae).

24th-31st May Birmingham Extension Guides, Miss V Greene, 3 Inverclyde Road, Birmingham B20 2LE. (021-554 6185)

21st June - 4th July Durham Post Rangers, Miss J Williams, 3 Rhondda Road, Hylton Red House, Sunderland, Co Durham. (Sunderland 73929)

19th-26th July Discoverers, Miss R Barnes, 19 Kendrick Road, Reading, Berks. (Reading 82109)

26th July - 2nd Aug Chailey Heritage Guides, Miss S Blades, Blatchets, Allington Road, Newick, Nr Lewes, Sussex. (Newick 2732)

9th-16th Aug Pathfinders, Miss A Cann, 20 Southlands Road, Weymouth, Dorset. (Weymouth 71274)

## Folk Fest 7

The Auditions and Workshop for the next event are to be held on 3rd/4th May, 1975, at CHQ. Closing date for applications is 31st March, so write now for information if you wish to attend.

Watch *Guider* for details of the Box Office arrangements for the performances at the Royal Albert Hall on 29th and 30th November, 1975.

## CHQ Summer Holiday at Our Chalet

Dates: 3rd - 13th September 1975. Costs: £65.00 approx.

This includes return rail/sea fare and accommodation. Should sufficient applications be received to enable the group to qualify for party rates the costs should be slightly less.

For further information and application contact your County International Adviser or Country/Region Headquarters.

## Our Cabaña

### Adult Adventure Session

Join a one or two week session at Our Cabaña coinciding with the UN Year of Women. Discover the enchantment of Mexico and explore the role of women in our changing world.

Dates: 31st October - 8th November, 1975 or 31st October - 12th November, 1975.

Cost: £5.20 approx daily for board and lodging, £8.50 - £12.80 approx for programme expenses.

Travel by air: 14/21 day excursion fare is £209.60 as at 23.1.75; plus bus and taxi fare from airport to Our Cabaña.

For further details apply to your Country/Region International Adviser.

(Continued on page 121)



# London Festival Ballet

Artistic Director: Beryl Grey, C.B.E.

## London Coliseum

April 16 to May 14, 1975

### Rudolf Nureyev's New Production of *THE SLEEPING BEAUTY*

AND

### *The European Debut of the Panovs*

Repertoire also includes:

Swan Lake  
Giselle  
Les Sylphides  
Prodigal Son (In Ragtime)  
Parade

Petrouchka  
Echoing of Trumpets  
Etudes  
The Lady and The Hooligan  
Harlequinade Pas de Deux

Nightly at 7.30 pm

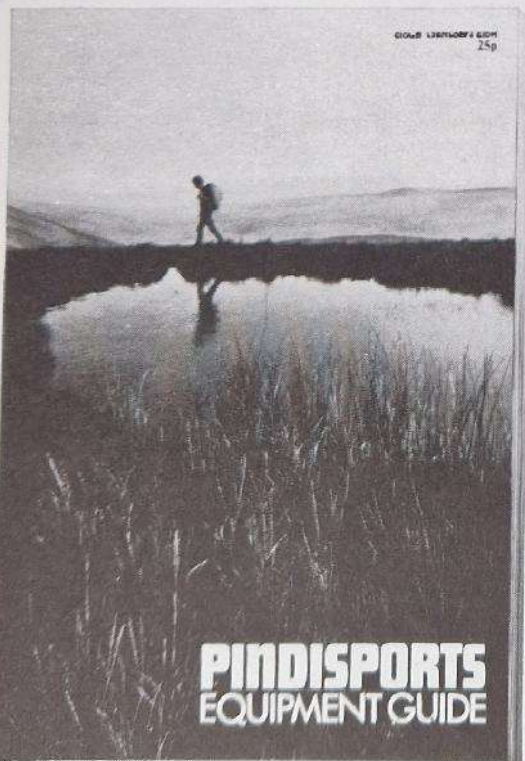
Saturday Matinees at 2.30 pm

**LONDON COLISEUM**

St Martin's Lane, London WC2N 4ES

Box Office Telephone: 01-836 3161

# STAY UP TO DATE!



Pindisports Equipment Guide is essential reading for anyone moving or living in the hills and mountains.

Full of hints, facts and photographs describing the latest trends, materials and designs. — It covers

SLEEPING BAGS · LIGHTWEIGHT TENTS · FOOTWEAR · CLOTHING · LOAD CARRYING · STOVES & CANTEENS · SAFETY & SURVIVAL

From Pindisports 30p inc. post.

Backpacking & Climbing Catalogue published March 1975 **FREE**.

## **PINDISPORTS**

14-18 Holborn, London EC1

373-375 Uxbridge Road, Acton W3

1098 Whitgift Centre, Croydon, Surrey

27-29 Martineau Square, Birmingham

01-242 3278

01-992 6641

01-688 2667

021-236 9383



# Where to train

## HOW TO APPLY

Any Guider may apply herself to attend a training course at the Centres, provided she has reached the minimum age of 18 years. (At the discretion of the Commissioner a member aged 17½ who is working on the Adult Leader's Certificate may also apply for a Guider course.)

An application to attend a Guider Training Centre should be sent direct to the appropriate Guider-in-Charge, and must be accompanied by the correct amount of deposit and a stamped addressed envelope. Applicants should also state the type of training for which they are attending, as there may be several different courses running at any one weekend. As so many Guiders have to leave on Sunday, training sessions at a two-day weekend will stop at tea-time on that day unless otherwise stated, if sufficient notice is given that it is wanted, every effort will be made to provide sessions for a group until Monday. Individuals who are able to stay over until Monday to enjoy the surrounding country and other amenities of the Centres are most welcome to do so.

Telephone calls are accepted only between the hours of 8 am and 8 pm at Foxlease (Lyndhurst) 042-128 2638, and at Waddow (Clitheroe) 0200-23186, except in emergencies.

## Bursary Help

The Fee Bursary entitles a Guider to a grant of £1.50 for a two-day weekend and 50p for each additional day.

The Fare Bursary (available only for travel to the nearest Training Centre) carries a rebate of a Guider's travel expenses in excess of £2.00.

The Angela Thompson Bursary is available to any Guider attending a Promise and Law or similar training (not necessarily at a Training Centre).

**HOW TO APPLY:** Full details of the conditions of issue and how to apply are available

from the Training Department, CHQ. No application form is necessary, and District Commissioners may apply on behalf of their Guiders, after they have been accepted for the training, direct to the Training Department; Scottish Commissioners should write to Scottish Headquarters. In the case of county weekends Commissioners should apply to their County Training Chairman/Adviser. Except in very special circumstances, on the recommendation of her Commissioner, a Bursary cannot be issued to a Guider who has previously had one, nor can one Guider receive a Fee and Fare Bursary. Commissioners are asked not to apply for bursaries for Guiders able to get LEA grants.

All applications must arrive at CHQ at least **TWO WEEKS BEFORE THE TRAINING** and Bursaries cannot be issued at shorter notice or in retrospect.

## CHQ

FOXLEASE  
Lyndhurst, Hants SO4 7DG

28 FEBRUARY - 2 MARCH

1. Progress through the Programme. (General training for Brownie and Guide Guiders with two or more years' experience)
2. Guiders taking Pack Holiday Permits in 1975

MARCH

7-9 General Training. Brownie and Guide Guiders  
14-16 South West England (by allocation)

21-23 General Training. Brownie and Guide Guiders (places reserved for Isle of Wight)

27-5 (Easter) APRIL "Lions and Leopards" - Arts Workshop (by allocation)

APRIL

11-13 Making the Most of the District (District Commissioners with up to seven of their Guiders)

18-20 London North West  
25-27 General Training. Brownie and Guide Guiders

MAY

2-4 Middlesex West  
9-11 †Commissioners with their LA Chairmen

15-18 †Concentrated First Aid Course

16-18 General Training. Brownie and Guide Guiders

23-1 JUNE Commissioners' (Bank Holiday) †Family Week

JUNE

6-8 Creative Activities in the Programme (training for Guiders of all sections)

13-15 General Training. Brownie and Guide Guiders

JULY

4-6 General Training. Brownie and Guide Guiders. (Places reserved for World Conference Delegates)

11-13 †Friends of Foxlease  
16-22 †Holiday Week (members and friends or mothers, and Trefoil Guild)

24-31 Patrol Leaders' Week

AUGUST

2-9 †Holiday Week (Unit Guiders with up to nine of their Guides or Rangers)

9-16 †Holiday Week (Unit Guiders with up to nine of their Guides or Rangers)

16-23 †Holiday Week (Unit Guiders with up to nine of their Guides or Rangers)

23-30 †Holiday Week (Unit Guiders with up to nine of their Guides or Rangers)

SEPTEMBER

12-14 Leicestershire  
19-21 London and SE England (by allocation)  
26-28 Sussex East

WADDOW

Clitheroe, Lancs BB7 3LD

28 FEBRUARY - 2 MARCH North West England (by allocation)

MARCH

7-9 General Training. Brownie and Guide Guiders

14-16

Cheshire Forest and Cheshire Border Division Commissioners with their District Commissioners and Division Secretaries  
21-23 Young Leaders' Week

27-31 (Easter)

APRIL

4-6 General Training. Brownie and Guide Guiders

11-13 General Training. Brownie and Guide Guiders (including crafts, wide games and other outdoor activities)

18-20 General Training. Brownie and Guide Guiders

25-27 General Training. Brownie and Guide Guiders (places reserved for Cambridgeshire East)

MAY

2-4 District Commissioners and District Assistants (sessions on the Adult Leader's Certificate)

9-11 General Training. Brownie and Guide Guiders

15-18 †Concentrated First Aid Course

16-18 "For Good or Evil" (An opportunity for Guiders of all Sections to discuss today's choice for young people.)

23-26 (Bank Holiday) Making the Most of the District (District Commissioners with up to seven of their Guiders)

30-1 JUNE General Training. Brownie and Guide Guiders

JUNE

6-8 11. Commissioners with their LA Chairmen.  
2. Certificated Trainers (with five or more years' experience)

13-15 †Friends of Waddow  
20-22 11. Prospective Campfire Leaders  
12. Guitar and Recorder Playing for Beginners

27-28 General Training. Brownie and Guide Guiders





## Sewing up your future

You've begun to see your hobby as serious work. You've decided that your sewing course is a stepping stone to a future career.

It's an exciting thought, and you just can't wait for the future to happen. You've also decided on your sanitary protection – for now and in the future.

It's Tampax tampons, the choice of more modern women all over the world. Tampax tampons are worn internally where they can't be felt and can't interfere with movement.

They're dependably absorbent and protect you comfortably. The protection to start with today.

The protection for all the months and years ahead.

The internal protection more women trust

**TAMPAX**  
tampons

MADE ONLY BY TAMPAX LIMITED, HAVANT, HAMPSHIRE

**Ellis Brigham**  
is

the greatest  
shop

with the  
greatest gear

at the  
keenest  
prices

**A warm welcome for all  
Climbers and Ramblers.**

**Manchester**  
6/14 Cathedral Street,  
Manchester, M4 3FU  
Telephone 061-834 0161

**Cornwall**  
Market Jew St Penzance Telephone 5828

**Snowdonia**  
Capel Curig Telephone Capel Curig 232

**Liverpool**  
73 Bold Street, Liverpool 1  
Telephone 051-709 6912

**Bristol**  
162 Whiteladies Road, Bristol  
Telephone Bristol 311157

write for catalogue

Postal Dept Wellington Place, Liverpool Rd, Manchester 061-833 0746



**JULY**  
4-6 General Training, Brownie and Guide Guiders (Places reserved for World Conference Delegates)  
11-13 Making the most of the District (District Commissioners with up to seven of their Guiders)  
18-25 Patrol Leaders' Week  
29-5 AUGUST North West England (by allocation)

**AUGUST**  
9-21 †Holiday Weeks (Unit Guiders with up to nine of their Guides or Rangers)  
23-30 †Holiday Week (Members and friends or mothers, and Trefoil Guild)

**SEPTEMBER**  
5-7 General Training Brownie and Guide Guiders  
12-14 North Tyneside  
19-21 Making the Most of the District (District Commissioners with up to seven of their Guiders)  
26-28 West Yorkshire West

**Concentrated First Aid Course**  
For fuller details about this special course please see 'February' Guide, page 70, for the Programme Notes.

**Holiday Weeks**  
For details of Holiday Weeks, see HQ Notices Page 121.

**Commissioners Family Week**  
It will be necessary to charge VAT on fees for husbands and children attending the Commissioners' Family Week.

**Fees at Foxlease and Waddow:**  
Shared room, per day £3.00;  
Double room, per day £3.50;  
Single room, per day £4.00;

† Courses or events so marked will be subject to VAT.

For a full week the above prices are subject to a 15 per cent discount.

These prices are for members of the Girl Guides Association and the Scout Association only.

Deposit £1.00 - cheque or postal order only.

## Scotland

**NETHERURD HOUSE**  
Blyth Bridge, West Linton, Peebleshire

28 FEBRUARY - MARCH 2  
Brownie and Guide Guiders (includes booking from Alnwick/Bedford Division)

**MARCH**  
7-9 Brownie and Guide Guiders (includes booking from Midlothian)

14-16 Brownie and Guide Guiders (includes booking from Glasgow ENE Division)

21-23 Prospective Certificated Trainers - by invitation

27-31 Residential Course - Duke of Edinburgh's Award Scheme

**APRIL**  
4-6 Residential training for Young Leaders (includes booking from Glasgow)

11-13 Brownie and Guide Guiders (includes booking from Edinburgh SE Division and Glasgow NNE Division)

18-20 Brownie and Guide Guiders (includes booking from Glasgow SW Division)

25-27 Brownie and Guide Guiders

**MAY**  
2-4 Brownie and Guide Guiders (includes booking from Northumberland)

9-11 District commissioners (sessions for new Commissioners)

16-18 Brownie and Guide Guiders (includes fun in, and enjoyment of, the out of doors).

23-25 Brownie and Guide Guiders (includes booking from West Lothian)

**Fees at Netherurd**  
The new rates are as follows:  
Shared room, per day £2.00;  
Double room, per day £2.25;  
Single room, per day £2.50;  
Deposit - £1.00. Training fee for non-residents - 50p per weekend.

## Wales

**BRONEIRION**  
Llandinam, Mont SY17 5 DE

**MARCH**  
7-9 Making the Most of the District (Commissioners and their Guiders)

14-16 General Training (Places reserved for Gwynedd)  
21-23 General Training (Places reserved for Birmingham)  
28-1 APRIL PLs under 14 years (Open to all Counties) (Easter)

**APRIL**  
4-6 Arts Workshop for Wales  
11-13 Young Leaders and Leadership Advisers  
18-20 General Training (Places reserved for Cheshire Wirral)  
25-27 General Training (Places reserved for Montgomery)

**MAY**  
2-4 Ranger Guiders with two of their Ranger Committee members.

3 Day Conference for Welsh Public Relations Advisers  
9-11 Pre-Warrant (Emphasis on the Adult Leader's Certificate)

17 Day Conference - Welsh County Personnel  
18 Open Day - House and Gardens

23-27 PLs under 14 years (Open to all Counties) (Bank Holiday)  
30-1 JUNE Welsh Trainers' Conference

**JUNE**  
13-15 General Training (Places reserved for Central Glamorgan)  
18 'Friends of Broneirion' Gathering (Outside booking)

27-29 **JULY**  
19-26 Young Leaders' Week (Rangers and Young Leaders' working on Leadership)  
31-4 AUG. Girls' Course (14 years and over)

**AUGUST**  
7-11 PLs under 14 years (open to all counties)  
15-17 Guiders with their own Patrol Leaders  
22-26 'Patrol in Action' (groups of not less than four girls from a genuine Patrol) (Bank Holiday)

**Fees at Broneirion:**  
Shared room, per day £1.75;  
Double room, per day £2.00;  
Single room, per day £2.25;  
Non-residents, per day 50p

## Glenbrook

**GLENBROOK OUTDOOR ACTIVITIES TRAINING CENTRE**  
Bamford, Nr Sheffield S30 2AL

All courses cost £6.00 unless otherwise stated. The cost covers all activities except Pony Trekking and Gliding, for which a supplement must be paid.

**MARCH**  
28-2 Outdoor Activities. Guiders and Ranger Guides. Hill walking, Caving Orienteering, Gliding and Climbing (weather permitting)

**APRIL**  
1-6 Expedition Planning for Rangers and Young Leaders. The course will include training for overnight expeditions (including one night under canvas or in a Youth Hostel). Suitable for Silver and Gold D of E standard. Cost £9.00.

**MAY**  
9-11 Adventure Course. A Guider with up to three Guides or Rangers aged 13-15 years. Pony Trekking, Canoeing, Orienteering, Hill walking, Swimming.

**JUNE**  
6-8 Adventure Course. A Guide with up to three Guides or Rangers aged 13-15 years. Pony Trekking, Canoeing, Orienteering, Hill walking, Swimming.

**AUGUST**  
23-30 All or Nothing Course. Rangers. Come and enjoy a leisurely week in the Peak District doing as little as you wish or be energetic and try your hand at several outdoor activities. Cost £16.00.

## 1975 Guide Tennis Tournament

Have your tennis players entered for this year's Webb Ivory Championship? This year the finals, to be played at Queen's Club, Kensington, on Friday 25th July, will be followed by an extra International day, Saturday 26th July, when the UK Champion will play representatives of overseas Guide Associations. Ask your Commissioner to get full details of this exciting opportunity to widen international friendship, or see January Guide. Handbills and entry coupons are now available through Counties.



## LEADERS! are you leading?

How much do you know about mental illness and handicap? It's not a remote problem, it affects families, friends and each one of us — now and in the future. MIND's Youth Leaders' Pack deals with the subjects that your youth group will want to discuss. It's all part of the 'Youth in Mind' programme of stimulating educational activities, supported by over 20 national youth organisations. This is MIND action for youth groups because mental health is a real issue. Order the Pack (ready in mid-April) and find out how real.

The Pack on mental health —  
What it contains:

- \* How to use the Pack
- \* Youth Leader's notes
- \* The Family as a functioning system
- \* And what about you?
- \* Self Awareness
- \* Society and mental health
- \* How do we communicate?
- \* Growing up
- \* What is counselling?
- \* Dealing with a crisis
- \* Some terms used in the mental health field
- \* Families with problems
- \* People in your neighbourhood
- \* MIND careers, information sheet
- \* Youth Leader's Book List
- \* Young People's Book List
- \* Information on play, drama, fund raising ideas, MIND publications, leaflets on family planning, marriage guidance, Posters, and other display material.

## 3 million people need your help

MIND is helping youth groups nationwide to run **MIND MARATHON DAYS** throughout June. Will your group join them? You can make this a day to help your own youth group and the many thousands of people affected by mental illness and handicap. Any Saturday or Sunday will do for a sponsored event to raise money — half for YOU and half for MIND. Turn your sympathy into action and become a **MIND MARATHON DAY** money-raiser — groups which raise the most money will also get a prize from MIND. Fill in the coupon below for free fund raising literature only, or for the **YOUTH LEADER'S PACK**, and start planning your **MIND MARATHON DAY — NOW**.

Order Form      Cost per Pack (incl. postage and packing) £1.00

Please supply \_\_\_\_\_ Leaders' Pack/s

Name \_\_\_\_\_

Address \_\_\_\_\_

Enclosed is my cheque/PO for £ \_\_\_\_\_  
(Made out to MIND (N.A.M.H.))

Please send fund raising ideas and literature for MIND Marathon Day only. ☐

Please complete and return to The Appeals Department, MIND,  
22 Harley Street, London W1N 2ED, allowing 10 days for delivery.  
Published by National Association for Mental Health

### New horizons, with Camptours . . .



This view of the picturesque village of Iseltwald, nesting on the wooded shore of Lake Brienz, is typical of the superbly beautiful Alpine scenery of the Bernese Oberland. Our 1975 programme offers several new self-catering chalets for groups in the Oberland, as well as our popular campsite and chalets at Inter-laken and Adelboden, and also introduces new centres on Lake Lucerne and in Holland. Travel quickly by rail and boat and rely on our local representatives to ensure a happy and successful camp. This year discover new horizons, with Camptours. Send the coupon for details.

To CAMPTOURS, DEVON HOUSE, HIGH STREET, CRANLEIGH,  
SURREY (Tel: 04866 3027). Please send me details of your  
summer camps in Switzerland and Holland.

Name .....

Address .....

G/3

# BRYAN STOKES

Buy your boots, clothing, ruck-  
sacks and equipment from  
Bryan Stokes Mail Order.

No item is too large or too small to  
bother us — send for our catalogue and pick your  
gear at home.

Our gear comes from all over Britain and the Continent,  
all personally chosen to ensure quality at competitive  
prices.

Send for catalogue to:

**Bryan Stokes**  
9 Charles Street, Sheffield  
Telephone 27525



## Camping Holidays and Pack Holidays

### Foxlease Camp-sites

Application for sites should be addressed to the Secretary and the envelope marked 'Camp'. Suggested dates with alternatives and approximate numbers should be stated, and whether an equipped site is required. Camps may begin on any weekday.

A 50p deposit (which is forfeited if the booking is cancelled) and a foolscap sae should be enclosed.

### Beaverbrook Lodge

Applications should be sent to the Secretary, Foxlease giving alternative dates and enclosing an initial deposit of £1.00 (which is non-refundable) and a foolscap sae. Priority will be given to applicants who have not already stayed in Beaverbrook Lodge. Applications for the period 1st October, 1975 -

31st March, 1976 will be accepted from the 1st April, 1975.

### Waddow Camp-sites

Applications for sites should be addressed to the Secretary and the envelope marked 'Camp'. Suggested dates with alternatives and approximate numbers should be stated and whether an equipped site is required. It is preferred that camps begin on Saturday.

A 50p deposit (which is forfeited if the booking is cancelled) and a foolscap sae should be enclosed.

### Waddow Cottage and Caravan

Both are available for bookings throughout the year. For details apply to the Secretary enclosing sae.

### Waddow Pack Holiday House

Applications for Pack Holidays in 1975 should be sent to the Secretary. The application must be accompanied by a written recommendation from the Guider's CA or Pack Holiday Adviser and a foolscap sae enclosed.

### Netherurd Camp-sites, Brownie House and Holiday Caravan

Applications for camp-sites and the Brownie House should be sent to the Secretary.

During Scottish school holiday periods (Easter, July, half August) priority will be given to Scottish Packs.

A three-berth holiday caravan is also available.

### Broneirion Camp-site and Brownie House

Only one small camp-site - equipped for 24, which number cannot be exceeded. Applications for camp-site and Brownie House should be sent to Miss P Lynch, 3c Pentwyn Court, Whitechurch, Cardiff CF4 7BY enclosing sae.

Bookings for the Brownie House, outside school holidays, for Guide and Ranger groups and also for Highgate, Ranger Adventure Cottage, should be sent to the Guider-in-charge, Broneirion.

### Lorne Camp-sites

Lorne offers fully equipped or unequipped camp-sites with solid shelter. Color gas available. Applications should be sent to Mrs E Thompson, 14 Woodland Avenue, Bangor, Co Down.

### Irene McKibbin Memorial Cottage, Lorne

A cottage available for Ranger holidays, fully equipped for 12 persons, with electricity and running water. For details apply to Mrs Brenda Weatherup, 32 Circular Road, Belfast BT4 2GA, enclosing sae.

### Ullster Camp-sites (nr Lorne)

Fully equipped for 40 campers (one large and two small camps). Excellent hut for solid shelter and Color gas. Bookings should be sent to Miss N Pratt, 22 Bangor Road, Hollywood, Co Down enclosing a sae.

### Magilligan Camp-sites

Three fully equipped sites with double Color gas stove for 25-30 campers. Also large 3-room hut with an open fireplace. For details apply to Mrs R F Scott, Derrymore House, Limavady, Co Londonderry, enclosing sae.

### Blackland Farm, East Grinstead, Sussex

Equipped and unequipped sites available with facilities for swimming, climbing and pioneering (for which equipment can be borrowed) also Restrop, a furnished bungalow for 25 (bunk beds for 20) - details write to the Warden enclosing sae.

### Brownsea Island

Eight camp-sites (for Guides and Scouts) are available as well as The Villano (maximum accommodation 30) for holidays for Rangers, Guiders or Trefoil Guild. Apply to Mrs B B Dyke, Wendover, The Avenue, Sherborne, Dorset, enclosing sae.

## HQ NOTICES.....

(Continued from page 115)

### Introduction to Mountain Leadership/Caving Courses

Wharfedale Manor, Yorkshire.

Those interested are reminded that the deadline for the return of applications is 8th March, 1975.

### International Scout and Guide Club

The International Scout and Guide Club meets at 8.00 pm every Monday at Baden-Powell House, in addition to weekend activities. Scout and Guide visitors are always welcome. March meetings: 10th, Open Evening. Special evening to explain all about the club and its many activities. The Scout International Commissioner will be the guest speaker; 17th, Folk Song. A lively evening with professional guest entertainers; 24th, The New British. The problems and views of the immigrants and visitors to Britain (with films).

### Camp Activity Advisers

Camp Activity Advisers are wanted for Foxlease, Waddow and Blacklands during the peak camping periods, ie during the

Spring Bank Holiday week and from July to the end of August.

Those who undertake this invariably enjoy themselves, and Advisers are free to suggest and organise any type of outdoor activity or plays which they feel will appeal to the Guides and are suitable for the sites.

We are happy to accept offers for any period, from a week to five weeks! All your expenses are paid! At Blacklands you have a caravan at your disposal and at Foxlease and Waddow you live in the house. Two friends, working together, are most welcome!

If you are interested write to the Training Secretary at CHQ giving the dates you can offer.

### Blackland Farm - CHQ Camp-site East Grinstead Sussex

Help needed: Guiders, Young Leaders or Rangers over 16 are required to help at this site for the period 23rd - 31st May and for fortnightly periods during the peak camping season, ie mid-July to the end of August. Knowledge of camping essential. Two helpers required for each

period, therefore, interesting job for two friends.

Further details from: The Deputy General Secretary, The Girl Guides Association, 17-19 Buckingham Palace Road, London, SW1W 0PT. (Please send a foolscap stamped addressed envelope.)

### Opportunity Knocks...

Foxlease 2nd - 9th August  
9th - 16th August  
16th - 23rd August  
23rd - 30th August

Waddow 9th - 21st August

... for those wishing to take small parties of Guides or Rangers for a week's holiday in the New Forest or on the edge of the Yorkshire Moors.

At Foxlease accommodation will be in a Georgian House situated on the edge of the Forest. You will be expected to plan your own Programme, which could include any of the following: Forest walking, deer stalking, bird and badger watching (though the latter may be a little elusive), searching for fossils, a visit to a Cathedral City, or to Brownsea Island where the Founder held the experimental Camp for boys in 1907. There will be someone to give advice, to help with handicrafts and activities for the evenings.

At Waddow you can go walking over the hills and fells, explore the witch country and many fascinating villages, visit abbeys, castles and Roman remains, go bird watching, fossil hunting by the river, or follow nature trails.

It will not be necessary for leaders of parties to hold a Holiday Permit, as qualified and experienced Guiders will be present to comply with POR requirements. Leaders should, however, obtain the consent of their own Commissioners before making an application.

For full details please write to the Guider-in-Charge of Foxlease or Waddow (for addresses see 'Where to Train' page 117).

### Brownie World Venture Badge Correction

#### January Guider Page 17

Brownie Guiders should write to their local Badge Secretary for these packs. They are not available through CHQ and Branch Shops.

**TOW A TRAILER**  
WITH  
**INDEPENDENSION**  
**MECHANICAL SERVICES LTD.**  
KAT STREET, BOLTON, LANCs. Tel: 382821



**BOOK NOW for LESS THAN HALF PRICE SEATS  
SPECIAL CONCESSION**  
FOR ALL GUIDES, THEIR FAMILIES AND FRIENDS TO SEE

**Those fabulous basketball wizards**



**Harlem  
Globetrotters**



**EMPIRE POOL, WEMBLEY**

MONDAY MAY 5 to SATURDAY MAY 17 at 7.45 pm (inc. Sunday)

**CONCESSION OFFER – Tickets priced at £1.70 for 70p each**

for performances listed on Booking Form below

**Normal Admission Price**

Full price	£2.40	£2.00	£1.70	£1.20	70p
Party rate	£2.20	£1.90	£1.60	£1.10	60p
Children (not Sat.)	£1.20	£1.00	85p	60p	35p

BOOKINGS FOR THIS SPECIAL CONCESSION (AT THE PERFORMANCES NOTED) WILL ONLY BE ACCEPTED ON THE DETACHABLE FORM BELOW

**CASH WITH ORDER**

PLEASE COMPLETE THIS ORDER FORM – ENCLOSING THE APPROPRIATE REMITTANCE and send to

**HARLEM BOX OFFICE  
EMPIRE POOL & SPORTS ARENA  
WEMBLEY HA9 0DW MIDDLESEX (Tel: 01-902 1234)**

**BOOKING REF.**

**SPECIAL CONCESSION  
GIRL GUIDES**

Please send Tickets at 70p each (normal price £1.70)  
for one of the performances listed below, marked 1, 2, 3, 4 in order of preference

MON. MAY 5 at 7.45 pm		MON. MAY 12 at 7.45 pm	
TUES. MAY 6 at 7.45 pm		TUES. MAY 13 at 7.45 pm	
WED. MAY 7 at 7.45 pm		WED. MAY 14 at 7.45 pm	
THUR. MAY 8 at 7.45 pm		THUR. MAY 15 at 7.45 pm	

Name.....  
Address.....  
I enclose CHEQUE/P.O. to the value of £.....  
UNIT TITLE.....  
Tel. No.....  
made payable to WEMBLEY STADIUM LTD and crossed





## Background to the World Conference

# 'Super Wombles'

The Ranger Badge for World Conference Year (See below)



**W**OMBLING FOR THE WORLD sounds very exciting. We know all about sponsored litter gathering, but how do we become 'Super Wombles'?

Most 'super' people become that way through a mixture of talent, work and perseverance. Rangers have talent and a great willingness to work for a good cause. Perseverance is the most difficult to achieve because we have to overcome discouragement, especially when the river bed we so laboriously cleaned in May has grown another crop of junk in June. A 'Super Womble' never says 'We've done it, it's someone else's turn'. She fixes another clean-up evening (with fork supper to follow) and cleans it all over again.

We may start wombling near home, at our meeting place. Is there a 'glory hole' behind the spare chairs, or a scrap heap outside at the back? Start there. Then going further afield, offer your help to local organisations, the Council, the WRVS, the churches, etc. What about cleaning up the old church-yard? As you scrub the stones or hack down the weeds, you may unearth an intriguing reminder

of the past and perhaps become interested in local history. Are you a collector of odd epitaphs or do you think all grave-stones should be levelled and the space made into a recreation ground for the living? Is sentiment about antiquity a good thing? Should we give money to preserve old buildings or only to relieve human want? Are spiritual values as expressed and preserved in a Cathedral worth supporting? Would you, as a 'Super Womble', organise a money-raising effort for Canterbury Cathedral?

Super Wombling is wombling that gives rise to thought and discussion, to new experiences and discoveries. Is the preservation of wild life more important than motorways or reservoirs? Does the environment in which people live have any effect on them? Such questions and many others can arise from a simple service project to beautify an eyesore.

We may start our Wombling on Wimbledon Common, but as 'Super Wombles' we could go on from there through discussion and widening experience to make the World our Wimbledon.



**T**HE THREE special World Conference Badges are now available from local Badge Secretaries. Do make sure your girls set an example to everyone else by wearing their badges correctly, as shown on the sketches here. The positioning of the badges on the right breast of the uniform is most important, so do note carefully their relation to tie and other badges on both Guide and Brownie uniforms.

Full details of costs and wearing instructions are:  
**Brownie World Venture Badge (1342):** May be worn in uniform above Venture Badge on right breast by all members of Packs taking part in the World Venture (see January 1975 issue of *Guider*). Price - £1.15 (includes postage and packing) per pack of Visual Aid plus 24 badges. (1342A) Extra badges if required - 4p each.

**Guide World Challenge Badge (1343):** May be worn in uniform on right breast in line with Patrol Emblem by all members of Units taking part in the Challenges (see *Guider* and *Today's Guide* September - December 1974). Price - 4p each.

**Ranger Womble Badge (1344):** Any member of a Unit taking part in a special conservation project in 1975 may apply for a badge. These are for camp hats/blankets, etc only - they may NOT be worn on uniform. (See *Guider* November 1974 issue.) Price - 4p each.

All the above badges are available only through local Badge Secretaries and may only be worn during 1975.



A Teesdale

### Commemorative Covers

Remember there is still a bulk discount for orders of 25 or more. (See January *Guider* or send s.a.e. to: UK '75 Office).

### Festival Of Stamps

Festival Hall, London 2nd-6th May

Did you know that on 6th May it will be 135 years since Rowland Hill introduced his Penny Post? Now 6th May is known as Britain's National Stamp Day, and the Stamp Collecting Promotion Council have chosen Scouts and Guides to be the junior theme of their exhibition in the Festival Hall from 2nd to 6th May. There will be a special display on the history of Guiding and Scouting and a star feature of it will be the Commemorative Cover which the Association is issuing to commemorate the World Conference.

Admission charges are 50p for adults and 15p for children under 16, but the Stamp Collecting Promotion Council will send you complimentary party tickets for up to 25 people for any day other than Sunday if you write to Michael Clarke, 172b New King's Road, London SW6 4NE, or you might like to use the complimentary ticket printed here.

Stickers - 3"x3" (5306); 1/2"x1" with titling (5305) from CHQ and Branch Shops. 5p per sheet.

## FESTIVAL OF STAMPS '75

Royal Festival Hall  
London

Friday to Tuesday - 2nd to 6th May  
10 a.m. to 7.30 p.m. except

Sunday - 10 a.m. to 6 p.m.

Admit two without charge

Visitors under 16 years must be accompanied by an adult

The Organisers of the Festival of Stamps  
reserve the right to refuse admission

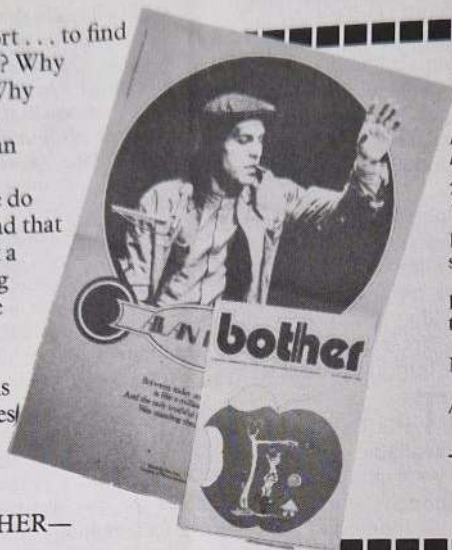


# At last a magazine for young people who care about injustice

Why BOTHER to make an effort . . . to find out about developing countries? Why BOTHER about them at all? Why BOTHER when despite all our groaning, we still have more than enough? Why . . .

This magazine shows that some do bother, care and understand, and that something has to be done about a basic injustice. Groups of young people throughout the U.K. are bringing about a new level of awareness, raising money and raising the hopes and aspirations of people in developing countries by supporting their projects. BOTHER will tell you what is happening—what you can do.

PLEASE BOTHER—



It's up to you.

Fill in the coupon deleting whichever is inapplicable and send to: Young Oxfam, 274 Banbury Road, Oxford OX2 7DZ. Tel. Oxford 56777

I would like 3, 6, 9, or 12 monthly subscriptions of Bother regularly

Please find enclosed 25p, 50p, 75p or £1 to cover postage and handling

Name \_\_\_\_\_

Address \_\_\_\_\_

**bother**

## If you really want to help, help the deaf.

The terrible thing about charity appeals is that they all seem so deserving, don't they? It seems so invidious to choose a few, and ignore so many. Maybe if the deaf were in some way visibly deformed they would appear more deserving. As it is, unless deafness is personally encountered, it takes considerable imagination to appreciate the horror of living a lifetime in silence.

Next time you encounter anyone, child or adult, who appears dull, dim-witted, or uncommunicative, consider for a moment that they might be deaf. If they are, then your very understanding is a real help. You see, the better you understand deafness, the better you'll understand the deaf.

It's to helping people understand the deaf, and helping the deaf live with deafness, that the RNID devotes its resources. But only by means of donations, covenants and bequests can this work continue. Please give what you can to our funds.

To the deaf, more than any other afflicted people, actions really do speak louder than words.

### The Royal National Institute for the Deaf

(Patron: HRH The Duke of Edinburgh KG)

105 Gower Street, London WC1E 6AH  
Telephone: 01-387 8033

## Now the Brown Best TRANSIT

Something  
really  
outstanding  
in  
Rucksack  
conception



New designs, new materials  
all contribute to Brown Best's long-term leadership in quality rucksack production.

Now, Brown Best have produced the front opening TRANSIT giving easy access to articles at the bottom of the pack without taking out those at the top. Packing and unpacking is quicker, and easier. The special front closure provides access without fully opening the pack in rainy weather. Send coupon now for 1975 catalogue giving details of 22 rucksacks, frames and accessories.

### To Brown Best & Co. Ltd

47 Old Woolwich Road, London SE10 9 PU (01-858 1329)

Please send me the 1975 catalogue

Name \_\_\_\_\_

Address \_\_\_\_\_



# BOOK

## REVIEWS REVIEWS REVIEWS

Jesus Folk, edited by Peter Knight. Galliard, 70p.

This is the fourth book in the Faith, Folk and Clarity series, edited by Peter Knight. The theme of the book is 'who do men say that I am?' and all the songs are concerned with the life of Christ and His relationship with men. Many of the songs can be found elsewhere in contemporary folk hymn collections; others are traditional. Although the quality of the songs, both from the musical and literary angle, is not always of the best, many of the songs have an appeal, and this book will no doubt find its place in the song collections of those interested in religious folk music.

SBS

**This is the Way We Dress Up and Play.** Janet Barker, illustrated by Ken Astrop. The Hamlyn Group, 95p.

There are not many children who do not enjoy dressing up and improvising costumes out of old blankets, sheets and cardboard boxes. Here, at last, is the ideal book for young children (and mums!) which explains, step-by-step, how to improvise characters out of everyday things. If you cannot sew on a button you can make a Zulu Warrior, Humpty Dumpty or a sunflower costume. Brownies will love this whether or not they have a reputation in the Pack for acting.

AMM  
**Brownie Cook-Book**, by Verily Anderson. Brockhampton Press, 30p.

Every Brownie will want a copy of this lovely, exciting cook book. There are recipes for every age group. Seven-year-olds could have a Teddy or Doll Tea-party, Chapter Two will help them with this. Don't home made chocolate eggs sound delicious - perhaps older Brownies would like to try these as a special for a Hostess Badge at Easter time? Then there are the helpful things and Chapter 11 - 'Mummy's Day in Bed' will give them ideas for preparing surprise meals for Mother if she is not feeling well. 'A Cook-and-Bring Party' is a lovely idea for a Brownie Party.

The Brownies could try to purchase this book with pocket money they have saved.

DB

**The Focal Point, Epilogues for Scout and Guide Meetings.** Promise Publications, 2 Meon Walk, Riverdene, Basingstoke, Hants RG21 2OX, 25p post free.

Most of us are anxious that the few minutes of Worship at Company meetings or at Camp should not be an 'odd prayer tacked on', but an integral part of the programme, a focal point where all that has happened and all the people present, are gathered together in a wholehearted offering to God.

Some Guiders and Guides find this easy to achieve. Far more of us find it exceedingly difficult. Some have given up trying.

Here is a book which seems likely to be very helpful indeed. Under a variety of broad headings, such as The Wonder Of The World, The Sense Of Hearing, Rules, Caring, Autumn and Harvest, it groups together practical Guide activities, related subjects for discussion and suggestions for prayers which might, in a few sentences, help the Guides offer the evening's or day's experiences to God. There are also some practical hints and a most useful index.

It is a practical book, simple to use and up to date in content. At present in duplicated form, the intention is that later it will be revised and published in print.

EC

**A Guide to the Birds of Wales.** David Saunders. Constable, London, £2.50.

This is a book for keen ornithologists. Included is a chapter on each Welsh County, with information concerning birdwatching locations, bird reports, details of ornithological societies and general information on county avifauna. There are some good black and white photographs throughout the book, as well as some useful maps and a check list of the birds found in each county. There is also an interesting appendix to the book: a list of birds' names in both English and Welsh.

DB

**Creating from Remnants - Stitchery with Imperfect Fabrics.** by Ethel Jane Beitler. Oak Tree Press Co Ltd, £1.45.

This book is full of ideas

showing how to transform almost any unsightly mark, hole or tear in a fabric into a design feature that gives your material new life. Perhaps you have the patience to create an elegant quilt out of damaged sheets or old scraps of material; or an elegantly embroidered pillow out of a remnant that cost practically nothing. The techniques used are embroidery, quilting and applique, none of them needing great sewing skill. The stitches are shown in clear step-by-step diagrams and many photographs show how to use them. If you follow the clever ideas and instructions in this unique book, you may never need to throw anything away again!

OMC

## RECORD

**What Can I Do?** presented by Gordon Snell with Marilyn Cotton, Geoff Bodenham, Derek Craft and Anthony Foster and members of the Girl Guides Association. BBC Records; record no REC 199, £1.46 and cassette no MRMC 023, £1.75.

As a record, *What Can I Do?* is ideal for entertaining young children on wet afternoons; but as a cassette it is excellent as a calming influence on restless children on long car journeys. Being confined to a car for hours on end can be a novelty that soon wears off, and then parents have the problem of trying to keep sons and daughters occupied. With this cassette the problem is solved. All children love to sing and they can join in with Guides and Brownies and sing nursery rhymes, *Heidi*, *Mr Bango* and even action songs like *If You're Happy and You Know It*. Long before they grow tired of singing Gordon Snell will have led them on to play *I Spy* or *Simon Says* (all the actions can be done sitting down). Tongue Twisters are such that even mum and dad will be trying to say them. But the pick of this bag of 'goodies' is left until the end. That old standard *Ten Green Bottles* has such fun sound effects and you will be asked to play it again and again. In my opinion this will keep children so well entertained that it will become a firm favourite and take the tears out of long journeys. *What Can I Do?* is available from all Guide and record Shops.

JVK

## CHQ BOOKS

### A Handbook for Commissioners

This 'new version', as the Chief Commissioner calls it in the foreword, really is new - in appearance and content. Since the publication of the 1968 Handbook for Commissioners, there have been changes and developments in Guiding. To bring that one up to date by tinkering with it would have been difficult and unsatisfactory (we have suffered too often from such 'tinkerings' in the past); to produce a new book was not easy either, but it is satisfactory, and contains the kind of information and guidance which Commissioners are looking for now. Several people have contributed to the book, but thanks to careful co-ordination and editing, it is not disjointed. Chapter 1 gives the same account of the essential elements of Guiding as does Part 1 in the Guiders' Handbooks. The second chapter offers practical help on 'how to recognise when Guiding's principles are being applied' in the Units, and how by her own attitude and approach, a Commissioner can foster their application.

Subsequent chapters give a comprehensive account of a Commissioner's responsibilities, with advice as to how to carry them out in District, Division and County, while emphasising, in a phrase from the introduction, that 'you are not expected to do it all yourself'. (Here I wish there had been more about District Assistants.) There is advice for Secretaries in 'Business Matters', and Advisers can find hints for themselves in the section on Advisory Help.

Certain procedures have been clarified but where there are several good ways of doing a thing, this too, is made clear.

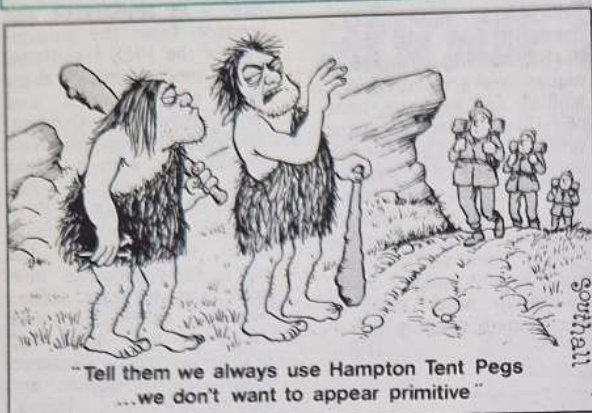
The paper, the print, and the lay-out all help to make the book easy to use; there are wide margins with references to corresponding sections in POR; there is a clear index and a useful bibliography (though I do wonder why no mention is made of so relevant a book as *Training Methods*).

This book should help all Commissioners to foster 'better Guiding for the girls' - and to enjoy doing it.

JMC



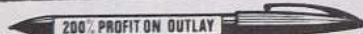
We apologise to Messrs Baker Ross, that due to a Printer's error the 1974 Advertisement copy was published in the February *Guider*. Would readers please note correct details on Page 128



HAMPTON Camping Accessories are synonymous with experienced camping the world over. They are renowned for their practical design, built-in strength, lightweight and proved reliability. Ask for them by name.

## HAMPTON CAMPING ACCESSORIES

THE HAMPTON WORKS (STAMPING) LTD.,  
Tennyng Road, Scrobbly,  
Birmingham, B36 2XZ.  
Also at London, Manchester, Bristol and Glasgow.



Imprinted ball-pens, key fobs, combs, booklets, diaries, punchboards, and many other speedy fund raisers.

Please send 4½p stamp for full catalogue.

THE PROVINCIAL SUPPLIES CO.,  
1 Gardenfield Lane, Berkhamsted, Herts.  
Tel. Berkhamsted 6527 (STD: 04427 6527)

### TENTS - FLYSHEETS - WATERPROOF CLOTHING

You can save 50% or more

If you make and repair on an ordinary sewing machine. We supply everything, canvases, nylons, all weights. Zips, metal poles, threads, PVC groundsheeting, all accessories. Do not call until you have sent SAE for full range of samples and free literature on tent making.  
EDWARD BARNES, GG, Hawksfold, Fernhurst, Haslemere, Surrey.

**GUIDES - come Camping on the English canals**  
in genuine narrow-boats fully equipped for living on board while cruising leisurely along miles and miles on inland waterways, exploring the district of your choice - it's great! Write for full details to **Threefellows Carrying Dept. 10**, 37 Forest Street, SUTTON-in-ASHFIELD, Nottinghamshire. Telephone (06235) 5615.

### A CAREER IN NURSING?

Find out more at Summer Schools for Future Nurses. One week courses in a holiday setting for young people aged 15-19. 26th July-23rd August, 1975, at Bath, Edinburgh, Hampshire, Liverpool ('A' Level Students), and Worthing. Fees: £23/24. Write for details: Summer Schools' Registrar, Nurses' Christian Fellowship, 277a Ewell Road, Surbiton, Surrey KT6 7AX.

## WESTMINSTER THEATRE



"THE FUNNIEST,  
JOLLIEST,  
PRETTIEST  
AND  
CLEVEREST  
CONCOCTION  
THAT HAS HIT  
LONDON FOR  
MANY YEARS"

*Evg. News*

Based on the verses & stories of EDWARD LEAR

THE 5th LONDON SEASON OF  
"THE BEST CHILDRENS SHOW IN TOWN"  
*Guardian*

**FEB. 20th to MARCH 29**

Combine a trip to  
**THE OWL & THE PUSSYCAT  
WENT TO SEE....**

with a visit to GUIDE HEADQUARTERS  
which is just around the corner from  
the theatre. There are special party  
rates for Guides and Brownies...

Ring: 01-834 0283 for details.

then for 2 weeks commencing Easter Monday  
March 31st at the Ashcroft Theatre Tel: 688 9291

## EQUALITY FOR WOMEN!

Morden Park Insurance Brokers Ltd  
ANNOUNCE

Reduced Motor Insurance Premiums for  
GUIDERS

joining, Scouters, Civil Servants, Advanced Drivers. SPECIALISTS in all classes of insurance we welcome your enquiries for all personal and business insurances, mortgages and investments.  
M.P.I.B. Ltd. Brent House, Kenton Road, Harrow HA3 8BT.

Tel: 01-907 0111

## QUALITY FUND RAISING and ADVERTISING PENS

ONLY **£1.35** PER 100 PRINTED

All prices include VAT

Lapel Badges



Your own design made to order. 4½p stamp for catalogue and samples.

Guaranteed top quality. Printed up to 36 gold letters. Quick delivery. Send 2x4½p stamps for illustrated catalogue and assorted samples.

PLAQUES! TROPHIES! CUPS! MEDALS!

Buy direct and save ££'s. Prices from 25p. Send 4½p stamp for illustrated catalogue.

**WESTFIELD LTD**

DEPT 23 WESTFIELD HOUSE,  
HELENA ST. B'HAM B1 2RJ



# CLASSIFIED

# ADVERTIS

# EMENTS

**THE GUIDE CLUB**  
Guide Club, 46 Belgrave Square, London SW1. Tel: 01-225 7818. **Membership (Home and Overseas)** for members and ex-members of the Movement over 18, including Trefoil Guild and Local Associations. Members may bring guests, including husbands, to stay at the Club. **Non-members** of the Club should enquire about **SAME DAY BOOKING SCHEME** for one night only. Apply Secretary.

**EMPLOYMENT**  
Cook required for Scottish Guides' Training Centre, Temporary or permanent. Qualifications not essential. Apply Secretary, Netherurd House, Blyth Bridge, West Linton, Peebleshire.

## PART-TIME CLUB LEADER

Applications are invited for post of Active Part-time Leader with Guiding experience for long-established Girls' Club in Shorehitch, London N1. Three nights weekly 6.00-8.30. Club activities closely linked to Guide and Brownie Programmes. Applicants should be able to act on own initiative in planning and handling club activities, including handicrafts, for an age range of 7-15 years. Remuneration by arrangement. Apply to: Mrs E. Taber, 145 Hampstead Way, London NW11.

## FOR SALE/FUND RAISING

**Advertising Pencils, Ball Pens, Combs, Diaries, etc.** gold stamped Company name, raise funds, quickly, easily: Bran Tub Toys, details: Northern Novelties, Spencer House, 26/28 Spring Gardens, Bradford BD1 3HE.

**Wall Charts.** Wide range of activities covered, including camping, map-reading and outdoor pursuits. Write for free illustrated list to SCOUTING Magazine, Baden-Powell House, Queen's Gate, London SW7 5JS.

**Bran Tub Toys.** Undressed Dolls and other Fund Raisers at Wholesale Prices. See for Catalogue: Nye's Novelties, Dept/G, 173 Cambridge Road, Hichin, Herts.

**Sale or Return.** 50 per cent profit on cost. Costume Jewellery parcels sent post free without obligation. Ideal fund raisers. Details: E & M Davies Ltd, 356 Uxbridge Road, London W12 7LL.

**Lucky Dip Toys,** plain and Carnival Balloons with feathers, Balloon Race equipment. Dolls for Dressing, also toys up to 50p for Fetes and

Bazaars. Send large sac for Trade Lists: D Glover (Wholesale Toys) Ltd, Dept L03, Braxholme Mills, Bailiff Bridge, Brighouse, Yorks. Tel: Brighouse 79298 STD 04847.

## CAMPING/HOLIDAYS

**Buckmore Park, Maidstone** Road, Chatham ME5 9QG. Kent District Camp-site - Activity and Pack Holiday Centre. Open throughout the year for weekend/day visitors, winter indoor weekends, summer camps and Pack Holidays, Venture/Ranger weekends and Guide Camps. Indoor heated swimming pool, indoor roller rink, rifle range, karting, assault course, abseiling, climbing and pioneering in over 200 acres of Woodland. Usual Camp or Holiday form required. Write for details.

**Felin Bach, Caernarfonshire,** County Camp-site. Large camping area and indoor accommodation suitable for Pack holidays, available all the year round. Snowdonia National Park half-a-mile. Climbing, hill-walking and safe bathing within easy reach. Apply to Mrs P Roberts, Bryn Meurig, Celyn Avenue, Penmaenmawr LL34 6LR, Caerns.

**Come to Glasbury** on Wye for your summer camp. Pony Trek in the Black Mountains of Powys and canoe on the River Wye. Large sac: Paul Greenow, 11 Dgeddi Villas, Llangon, Hay on Wye, Hereford HR3 5PZ.

**In 300 acres Forests** - 2+ acre flat field set aside for Guides - flush toilets, water laid on. See brochure (Aerial photograph 7p) to 'Guides', 'Forest Glade', Kentisbeare, Cullompton, East Devon. Tel: Broadhembury 381.

## Austria-Osterreich-Salzburg Guiding Abroad

Camping facilities at Zellhof. Accommodation in own houses-camping area. Swimming in lake alongside. Walking, hiking and everything for a good Guide camp. Already visited by many British Groups. Monika Kronberger would be pleased to send details by return post. **Huttenbergstrasse 6, A-5020 Salzburg, Austria**

**Sunspot Adventure** - Ride, sail, snorkel, canoe on our thrilling programme in the South of France - shown on BBC Holiday '73. Also Mediterranean Riding and Dutch Barge Holidays. Brochure PGL Holidays, 142 Ross-on-Wye HR9 7AH. Tel: (0989) 4211. Evening/weekends Much Marcle 609.

**Small Campsite** in lovely Kent countryside. Send stamp for brochure to Miss J Kane, 30 New Road, Meopham, Kent, DA13 0LS. Telephone 0474 813629.

**Holiday Cottage.** Manchester County's Outdoor Centre, Seven Springs, Disley. Fringe of Peak District. Guiders, Trefoils with family/friends, sleeps six. Sac: Miss Mellor, 54 Lord Street, Dukinfield, Cheshire.

**Canal Camping Holidays/Weekends** on "pair" of working narrow boats ELSTREE and LYRA for 12/24 persons. Sac please to: T&A Collier, 5 North Street, Leighton Buzzard, Beds.

**Camping Narrow Boats.** 12 berth single and 24 berth pairs fitted with bunks, cooker, sink unit and full inventory. Operated by experienced skippers on the cruise of your choice. Warwickshire Fly Boat Co, 149 Hollyfast Road, Coventry CV2 3J 4228.

**Canoe Hire Service.** River Wye and River Ardeche (France). Details PGL Holidays, 141 Ross-on-Wye HR9 7AH. Tel: (0989) 4211/5. Evening/weekends Much Marcle 609.

**Bracklesham Bay Camp.** Seven acres of flat fields protected by surrounding trees. Mains water, no sanitation. Sea only 1/2 mile away. Riding tuition available. Applications and enquiries to: Rodney Eborn, Regency House, Clayton Lane, Bracklesham, Sussex. Tel: 024362 534.

**Northern Heights Activity Centre,** Edwarebury Lane, Elstree, Herts. The joint camp-site of Middlesex East Guides and Greater London-North Scouts. Open all year, this secluded camp-site covers 7 1/2 acres of land, including Patrol sites. Excellent amenities which include toilets and showers. Some camp equipment available. Within easy reach of central London; convenient access from M1. Rates and details from: Mrs B Gibbs, 3 Sandringham Gardens, London N8 9HU.

**Midlothian Guide Training Centre,** Vogrie House, Gorebridge, near Edinburgh. Pack Holiday House, fully equipped for 26. All electric. Also fully equipped Camp-site with solid shelter for 30. For House apply to: Mrs Burns, Sauchenside Farm, Ford, Midlothian. For Camp-site apply to: Mrs Calder, 25 Harburn Road, West Calder, Midlothian.

**Wiston Lodge,** Biggar, Lanarks, ML12 6HT. Flat camp-site situated in 50 acres of woodland. Tents/marquee for hire; fully equipped camp kitchen/shelter. Indoor Pack Holiday accommodation. Grounds include swimming pool, hockey pitch, tennis courts, lightweight camp-sites. Instruction in hill-walking, canoeing, expedition. Resident Guide Outdoor Specialist Trainer. Apply to Mrs B Judd.

**Pony Trekking** in Black Mountains (National Park). Private camp field or residential. Ponies kept on centre. Approved by POB and WTS. Sac for brochure: Grange Trekking Dept G, Capel-y-Ffin, Abergavenny, Monmouthshire.

**Pony-Trek, sail canoe, cave,** at our Self-Catering Centre in the heart of the Black Mountains in Wales. Ideal for groups for outdoor activity holidays or courses to RYA/BCU Certificates standards. Details PGL Holidays, 140 Ross-on-Wye HR9 7AH. Tel: (0989) 4211. Evening/weekends Much Marcle 609.

**Warren Beach,** Beaulieu, Hants. Camp-sites with huts. Private beach. No Husbands or boys over seven. Apply: Miss Knox, Whitehill Chase, Bordon, Hants.

**Cudham, Kent.** Equipped sites with solid shelter, also unequipped sites, in 98 acres woods and valleys, with scope for all types of Guide activities and Brownie Revels. Heated indoor accommodation for Pack Holidays, Guide, Trefoil and Guiders' weekends. Details: Warden, Overshaws, Cudham Lane, North Cudham, Sevenoaks, Kent. Sac please.

**Fairthorne Manor Scout** Camp-site. 16 acres of grassland surrounded by woodland, near River Hamble. Shared by Scouts and Guides. Ideal for boating activities - canoes for hire. Centrally situated for numerous places of interest. Ample firewood provided. Flush toilets. For brochure write: Mr M D Veal, 19 Alfriston Gardens, Sholing, Southampton SO2 8GB Hants. Tel: 0703 432223.

**Cumbria North Guide Camp-site.** Low Moor End Farm, Ennerdale. Cumbria. Equipped and non-equipped sites in lovely part of Lake District. Send sac for brochure to: Miss J. Ashton, 34 Gillfoot Road, Egremont, Cumbria.

(Continued on page 129)



## IDEAL FUND RAISERS FOR YOUR UNIT

We supply Ball Pens, Combs, Pencils, Key fobs, Rain-hoods, P.V.C. Goods, Diaries, Christmas Cards, Christmas Paper, Calendars, etc. All are excellent Fund Raisers - Good Quality - We give Full Guarantee. All orders are completed within 5 days of receipt. Send now for our 1975 price list.

Quality Goods - Full Guarantee - Speedy Service

THOMPSON & CREIGHTON (ADVERTISING) LTD.  
North Tyne Industrial Estate,  
Whitley Road, Longbenton,  
Newcastle upon Tyne NE12 9SN.

Telephone: 0632 669511  
Please send a stamped addressed envelope.



## GUIDE SHOPS

TO SERVE YOU

at

EDINBURGH:

GLASGOW:

DUNDEE:



IN SCOTLAND

16 COATES CRESCENT,  
EDINBURGH EH3 7AH.  
TEL. 225 3483.  
1 SCOTT STREET,  
GLASGOW G3 6NU.  
Tel. 332 6288.  
53 SOUTH TAY STREET,  
DUNDEE DD1 1NP.  
TEL. DUNDEE 22262.

YOUR UNIT BENEFITS BY COLLECTING DISCOUNT  
STAMPS

## COME CAMPING ON THE CANALS THIS SUMMER

in one of our better equipped camping narrow-boats. Parties of 12, up to 48, with first-class skippers to make everyone's holiday really enjoyable.

FOXTON BOAT SERVICES, LTD.  
Foxton,  
nr. Market Harborough,  
Leics.  
Tel: Kibworth 2285.

## Springlow

Concentrated meal packs for Campers and Backpackers - remember concentrated food means less weight and bulk to carry. Meals include: Curries, Stews and Omelettes - send for our catalogue, it describes no less than 50 packs. Springlow Sales Ltd Marsland Industrial Estate, Werneth, Oldham, Lancs. Tel: 061-624 7904  
Now Available from Guide Shops



## BE PREPARED

WITH AN  
**ACME**  
WHISTLE



Full range in  
Metal and Plastic

Obtainable from  
all Scout and  
Guide depots



manufacturers:

J. Hudson & Co. (Whistles) Ltd.,  
Barr St., Birmingham, B19 3AH  
Phone: 021-554 2124 & 2125.

Established 1870

## FETES BAZAARS ALL FUND RAISERS

Fully guaranteed ball pens and pencils die-stamped in gold with your name or slogan (maximum 30 letters), please print name.

**ALSO**

Extensive range of TOYS - STATIONERY - FANCY GOODS - DOMESTIC STATIONERY & PRE-SELECTED PARCELS all at wholesale prices. Send SAE for detailed price list from:

**BAKER ROSS**

Dept. G.U.3

2a Handsworth Road, London N17 6DD

Tel. 01-808 6948

## TOP QUALITY PENS

Diastamped with 30 Gold Letters and Spaces

£1.35  
PER 100 PENS  
(VAT PAID)

★ STANDARD CHARGE  
★ POST & PACKING  
★ 40 PENCE

ORDERS DESPATCHED SAME DAY

Sale or return - full refund on pens returned

Samples 3½p stamp - please try before you buy

**ABBAY WHOLESALE**

77 LIVERPOOL ROAD, STOKE ST4 1AE

## THE CHURCH ARMY WE REQUIRE WOMEN CALLED OF GOD TO BE EVANGELISTS IS GOD CALLING YOU TO JOIN US?

Women 18 - 35 years of age. 3 Year Training Course.  
35 - 49 years of age. 1 Year Training Course.  
(For residential work only).

Opportunities for service in Parishes, Mission Work,  
Homes, Hostels, Youth, Social Care.

For further details write to:  
Sister J. A. Pyke, (Ref G3)

The Church Army, 185, Marylebone Road,  
London, NW1 5QL



## CLASSIFIED ADS

(Continued from page 127)

**Oaklands Farm, Chigwell**  
Row, Essex. Waltham Forest  
South Division, equipped  
camp-site. Within easy reach  
of Central London. Enquiries  
welcomed. Apply: Mrs Wood,  
157 Colchester Road, Leyton  
E10 6HG. Telephone 01-539  
8491.

**Come camping to Luxembourg.** The Association  
des Girl-Guides Luxem-  
bourgeoises (AGGL) has three  
places at your disposal: (1) The  
International Guide Centre,  
situated 61 Route de Treves,  
Luxembourg. It is located on  
an old small fort of the fortress.  
There are 20 beds in rooms,  
showers, sanitary facilities,  
kitchen and dining room, both  
well equipped, large living  
room. The Centre is sur-  
rounded by a big meadow. It is  
available only to Guiders and  
Rangers. Price: 30 Belgian  
francs per person per night. (2)  
The National Training Centre  
at Colpach, near the Belgian  
border, at the Southern end of  
the Luxembourg Ardennes.  
There you have the full use of a  
large camping place, a chalet  
with eight beds, a large living  
room, a kitchen and sanitary  
facilities. Price: 25 Belgian  
francs per person per night. (3)  
The third place belongs to the  
Guide Company of Esch. Esch/  
Alzette is situated near the  
French border. There are 20  
mattresses, one large living  
room, a kitchen, sanitary  
facilities and a little separate  
room for Guiders. Price: 30  
Belgian francs per person per  
night. For further details,  
please apply to: Association  
des Girl-Guides Luxem-  
bourgeoises, 61 Route de  
Treves, Luxembourg (Grand  
Duchy of Luxembourg).

**Peak District. Gt. Hucklow**  
Scout Activity Centre.  
Centrally heated building.  
Bunk and bed accommodation  
for 46. Suitable mixed parties.  
Fully equipped kitchen with  
electric cooking. Showers, Dry-  
ing Rooms, Dining Room,  
Lounge. Ideal for climbing, fell-  
walking, caving, canoeing, glid-  
ing, riding, swimming.  
Brochure from: Booking Secre-  
tary, Scout HQ, Trippet Lane,  
Sheffield, S1 4EL. 0742 24018.  
**Interested in Outdoor Leisure**  
and Activity? Then contact  
Allenheads Lodge, Northum-  
berland. Accommodation avail-  
able year round for 28 persons.  
Overnight rate of £1 per  
person including use of  
sleeping bag, pillow, boots and  
anorak. All equipment and  
instruction available for  
Rambling, Rock Climbing, Ski-  
ing, Grass Skiing, Canoeing,  
Back Packing, etc. Fabulous  
centre in the North Pennines  
for historical and industrial

archaeological studies. For  
colour brochure or further  
information contact: Chris  
Catling at Allenheads Lodge,  
Allenheads, Northumberland.  
Tel: Allenheads 239.

**Budlake School, Broadclyst.**  
This hall is ideal for Pack  
Holidays. It is an old school  
consisting of one large room  
with sliding door (making  
separate sleeping accommoda-  
tion for Guiders). A kitchen  
complete with electric cooker,  
refrigerator, hot water heater,  
etc., and toilet and washing  
facilities which are being  
extended and modernised this  
year. It will sleep up to 24  
comfortably and there are  
camp beds. There is also a play-  
ground and orchard and plenty  
of beautiful countryside  
around with woods and  
gardens close by. The property  
belongs to the National Trust  
and is part of Killeton Estate.  
Particulars: Mrs E Wakeling,  
15 St James Road, Exeter.

**On the Coast of Devon.** Parish  
Hall, Combe Martin,  
accommodation for 30  
persons. Apply for brochure:  
A Woodward, Resthaven,  
Castle Street, Combe Martin,  
N Devon. Phone 2613.

**Sevenoaks Kent, Church Hall**  
(URC) available for Brownie/  
Guide Holidays, mid-July-  
September. Enquiries: H  
Clarke, 63 Seal Hollow Road,  
Sevenoaks, Kent.

**Pack Holidays.** Scout and  
Guide HQ available for Pack  
Holidays. Brownies Cubs, etc.,  
all mod cons, wooden block  
floor. Write for details, terms,  
etc., to: F Wellman, 11  
Steppes, Langton Matravers,  
Swanage, Dorset. Tel:  
Swanage 3952.

**Pack Holiday accommodation.**  
Church Centre. All electric.  
Fully equipped, inc. camp  
beds. On bus route, near parks  
and downs. For brochure see  
to: Ball, 41 St. Benets Grove,  
Carshalton, Surrey.

**Furnished cottage** (all electric)  
near Derbyshire Dales. Accom-  
modates 12. For details - see  
to: Mrs Miller, Small Dale  
Farm, Small Dale, Buxton,  
Derbyshire SK17 8EA.

**Cornwall, Florida Hotel, Bude.**  
On Summerleaze Beach. Ideal  
for families, walking, swim-  
ming, surfing. Proprietors, Mr  
and Mrs Russell, (ex-Guider).  
Tel: 2451.

**Ex-Guider offers holiday**  
accommodation in seventeenth-  
century Devonshire farm-  
house, glorious views. Ideal  
touring, local farm and garden  
produce. Children and good  
dogs welcome. Stamp for  
brochure. Mrs J Haiselden,  
New Phillishayes, Upottery,  
Honiton, Devon EX14 9PF.  
Tel: Upottery 228.

**Bed and Breakfast.** Five  
minutes beach, country walks.

Pennels (Guider) 'Rupert  
House', Charmouth, Dorset.

**Holiday Accommodation.** Bed  
and breakfast, 'Simpsons', 4/  
5 Meadow Walk, Polruan-  
Fowey, Cornwall, PL23 1QT.  
Suitable sailing, walking,  
swimming.

**Cornwall near Rock and**  
Polzeath. Bungalow to let all  
electric, sleeps 10. Tel:  
Orpington 23446.

**N Cornwall.** 20 ft 4-berth  
caravan to let. Quiet site over-  
looking Treyarnon Bay.  
Apply: Young, Beggar's  
Hatch, Harford Bridge, Tavis-  
tock, PL19 9LS.

**To Let - 22ft 5 berth caravan,**  
mod cons. Private site, 4 miles  
Newquay, Cornwall. Apply:  
Appleton, Benny Mill, Newlyn  
East, Newquay. Tel: Mitchell  
202.

**Guider-owned caravan.** Private  
farm site. Sleep 5. Axminster  
33278.

**Fellow Guiders - holiday in**  
comfortable 4-berth caravan  
equipped, fridge, cooker  
heater, washbasin, chemical  
lavatory. Private 1/2 acre  
garden, twist Tavistock and  
Cornwall. Farmland surround-  
ings, beautiful views. See  
details: Hoatson, 2 Colcharton  
Cottages, Lumburn, Tavistock,  
Devon.

### UNIFORM

**Two Guider's uniforms** size 16,  
Trevira and Collier Gabardine,  
good condition. £7 each. Mrs  
Hart Dyke, Clough House,  
Bamford, Sheffield. Tel:  
Bamford 378.

### GUIDERS WANTED

**Wanted: Brownie Guider** for  
Pack Holiday 9th August -  
16th August, 1975. Cudham  
Camp-site. Can offer two  
places for Brownies. No  
qualifications needed. Box 728.

### COMING EVENTS

**10th Sedan Chair Rally.**  
Gilwell, 9th-11th May, '75.  
Barn Dance, Film Show, Bell  
Ringing, Archery, etc. Plus the  
Great Race. Open to Rangers,  
Venture Scouts and members  
of Scout and Guide Associa-  
tions up to the age of 25.  
Apply: L J Burkett, 65  
Torcross Road, S Ruislip,  
Middlesex. See please.

**18th Scout and Guide Folk**  
Festival. Saturday, 15th March  
at Amersham, Bucks 25p. See  
please to: Brian Sims, 52  
Orchard Road, Seer Green  
Bucks. HP9 2XU.

**1st Bennetts End Guide**  
Company, Hemel Hempstead,  
Herts, celebrate their 21st  
Birthday on 26th April, 1975.  
Any interested ex-Guider  
please contact Mrs Fowler. H  
H 2909.

**Worthing District Scout and**  
Guide Gang Show, 'Gee it's a  
Wonderful Life', the Pier  
Pavilion, Worthing. March  
29th to April 5th. Seats: 35p to  
75p bookable from:  
McCormack, 67 Hillside

Avenue, Worthing, or Box Office.

### BUSES FOR HIRE

**Transit Vans for Hire.** 18/  
22cwt. weekly rate £26.00,  
daily rate £5.00 30cwt weekly  
rate £35.00, daily rate £7.00.  
Deposit £25.00. Mileage  
charge 3p per mile. **12 Seater**  
**Minibuses for Hire.** October to  
April weekly rate £46.00, daily  
rate £8.00. May to September  
weekly rate £48.00, daily rate  
£9.50. Deposit £25.00. No  
mileage charge. 8 per cent  
VAT on all the above charges  
(excluding deposits). Tel: 01-  
890 9931.

### LATE UNCLASSIFIED

**Guider's tailored costume,** bust  
44 ins, blouse, hat (all as new).  
£10. Box No 729.

**Wanted: Guider's uniform,** 18-  
20. Hedges, 17 Mount  
Pleasant Drive, Bournemouth  
(phone 35687).

**Ex-Guider/Unit helper** will  
help camp if small dog allowed.  
Own tent, not QM. Box No  
730.

**Fund Raising.** Try our  
Goldfish with plastic carry-  
home bags. Big attraction,  
small cost. For details send  
stamp only: Middlesex  
Goldfisheries, 6 Berwyn  
Avenue, Hounslow, TW3 4ET.

**Camp-site** for up to 40, entirely  
private, sheltered, 1 1/2 miles sea.  
For camps wishing to  
participate in riding. Phone,  
wood on premises. All  
tradesmen deliver. Full details  
from: Mrs E Gale, Buckler's  
Bid Riding Stables, Burton  
Bradstock, nr Bridport, Dorset.

### SUMMER CAMP PLANS FALLEN THROUGH?

Don't despair. Camptours  
can help. We can still offer,  
for instance, the following  
12-day trips, by rail: To  
Switzerland; 1st July, Inter-  
laken, well-equipped camp  
site for 10-50 persons; 2nd  
July, Adelboden, chalet for  
15-24 persons; 11th July,  
Stoos, near Lake Lucerne,  
chalet for 20-50 persons;  
22nd July, Adelboden,  
chalet for 18-24 persons;  
10th August, Stoos, Chalet  
for 12-25 persons; 27th  
August near Interlaken,  
chalet for 25-35 persons.  
To Holland, old farmhouse,  
lakeside site in Friesland;  
14th July, 10-50 persons;  
24th July 10-35 persons;  
25th August, 10-35  
persons. Also several other  
possibilities for large or  
small parties.  
Camptours camps are  
happy camps - see letters,  
November and February  
Guider and not as ex-  
pensive as you may think.  
Write or telephone for  
details and our 1975  
brochure: Camptours,  
Devon House, High Street,  
Cranleigh, Surrey.  
Telephone: (04866) 3027.



# WHAT'S ON WH WHAT'S ON WH WHAT'S ON WH WHAT'S

## Ballet and Opera

### Royal Ballet, Covent Garden

The main features this month are the Tchaikovsky ballets *Swan Lake* and *Anastasia*. Also being performed are Chopin's *The Concert and Dances at a Gathering*, Ravel's *Daphnis and Chloë*, and Mahler's *Song of the Earth*, plus *Les Sylphides*, *Enigma Variations* and *Raymonda Act III*.

### Royal Opera, Covent Garden

There are three operas in this month's repertoire; *Wozzeck* (in English) by Alban Berg, Wagner's *Tannhäuser* and Rossini's *Il barbiere di Siviglia*.

### D'Oyly Carte Opera Company, Sadler's Wells Theatre

The D'Oyly Carte will be presenting their Gilbert and Sullivan repertoire at Sadler's Wells until 22nd March. Their programme includes *The Mikado*, *HMS Pinafore*, *The Pirates of Penzance*, *Iolanthe*, *The Gondoliers* and *Cox and Box*. After the 22nd, the Company moves to the Savoy Theatre, Strand, until 5th April.

### English National Opera, London Coliseum

During March the ENO will be performing *Gloriana* by Benjamin Britten, Wagner's *The Ring Cycle* (opens 13th), *Count Ory* by Rossini, Gilbert and Sullivan's *Patience* (opens 20th) and Bizet's *Carmen*.

The ENO is now running a Party Booking scheme at the Coliseum offering seats at considerably reduced prices for parties of 20 or more. Further reductions are being offered to parties of children and students, and visits can be combined with a pre-theatre supper or a conducted tour. It is also possible to buy a book of ten vouchers for £4.00, exchangeable for Balcony seats worth £5.90. If you are interested in any of these schemes, write to the Publicity Office, English National Opera, London Coliseum, St Martin's Lane, London WC2N 4ES.

### National Ballet of Canada

The National Ballet of Canada makes one of its rare appearances in this country from April 2nd to 12th at the London Coliseum. They will be performing *Coppelia*, *Giselle* and *Don Juan*. For details of party bookings ring the Coliseum Box Office (01-836 3161).



## On Tour

### Ballet For All

During March the Ballet For All touring company will be visiting Aldershot (4th), Sheffield (6th-8th), Croydon (11th-15th), Melbourn (17th), Corby (18th), Newark (19th), Colville (20th-21st), High Wycombe (27th) and Southend (29th).

### Royal Ballet New Group.

This company will be appearing at the Pavillion Theatre, Bournemouth from 3rd-8th March. Their programme will include *Concerto*, *The Dream*, *Giselle*, *Facade*, *Les Sylphides*, *Arpeges*, *Pineapple Poll* and a new ballet, *Shukumei*.

## Concerts, Shows and Plays

### National Theatre, Old Vic

Ibsen's *John Gabriel Borkmann* and Shaw's *Heartbreak House* (see January and February *Guider* for reviews) continue throughout March, in conjunction with a new production of Samuel Beckett's *Happy Days*. This compelling play opens on 13th, and stars Dame Peggy Ashcroft and Alan Webb. It is directed by Peter Hall, who was the director of Beckett's first London production - *Waiting For Godot* in 1955.

### London Palladium

Tommy Steele stars in the musical *Hans Christian Andersen*. If you want to see this excellent show, you would be advised to book now due to the exorbitant demands for tickets.

## Exhibitions

### Victoria and Albert Museum

Permanent Display: The V&A has opened a new permanent display of Italian, French and Flemish sculpture. It includes the superb chancel from the Florentine church of Santa Chiara.

### British Museum

Until 30th April: Drawings by Michelangelo (see February *Guider* for review).

Until June: Grime's Graves - Prehistoric Flint Mines.

### Science Museum

Until April: The Dondi Clock (see February *Guider* for review).

19th-22nd March: The Museum is showing a film entitled *Prehistoric Man In Europe*.

### New Horticultural Hall

31st March-5th April: *Photography At Work* Exhibition.

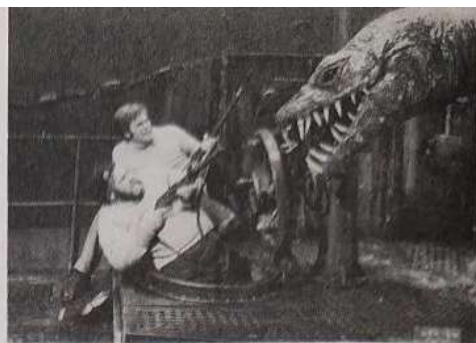
### Central Hall, Westminster

17th-20th March: National Model Railway Exhibition.

### Olympia

The annual *Daily Mail* Ideal Home Exhibition will be in residence at Olympia from the 4th-29th March (including Good Friday). There will be the usual varied displays, ranging from small domestic appliances to fully

Antoinette Sibley, one of the Royal Ballet's principal dancers, in a scene from the Company's production of *Swan Lake*.



A nasty moment from the film *The Land That Time Forgot* (cert. U), which opens at the Odeon, Marble Arch on 20th, and is on general release next month. It tells the story of a U-boat which discovers a strange land near the South Pole, where prehistoric animals and primitive tribes are just some of the problems which face the heroes.

furnished houses, portraying all that is best and new in modern home making. A special attraction this year will be a 400 ft long garden walk, complete with floral displays, fountains and water gardens, which extends the length of the Hall. The Exhibition will be open from 10 am until 9 pm (except Sundays), admission 65p for adults (50p after 5 pm) and 50p for children (40p after 5 pm). If anybody is interested in obtaining advance tickets, which are available at the cheaper admission prices, they should apply to the Chief Cashier, *Daily Mail* Ideal Home Exhibition, New Carmelite House, London EC4Y 0JA.

## Nationwide

### Lake District

A dial-the-weather service for climbers and other visitors to the Lake District will be in operation daily from Easter onwards. It is produced in conjunction with the Meteorological Office, and the number to dial is Windermere 5151.

### Birmingham and West Midlands

11th March: Town Hall, Birmingham - Julian Bream and John Williams; a joint recital from Britain's two leading classical guitarists.

28th: Town Hall, Birmingham - City of Birmingham Symphony Orchestra perform Elgar's *The Dream Of Gerontius*.

### Cheshire

14th and 15th March: Chester - Speech and Drama Festival.

### Lancashire

15th-18th March - Winter Gardens, Blackpool - International Hairdressing and Beauty Fair.

31st March-5th April: Blackpool - Dance Festival for Juniors.

### Scotland

14th-17th March: Caledonian Hotel, Aberdeen - Antiques Fair.

25th-29th: King's Theatre, Glasgow - The Glasgow University Cecilian Society will be performing the Richard Strauss opera *Die Fledermaus*.

## Sport

Until 3rd March: Grantown-on-Spey, Morayshire - Nordic Winter Games.

19th-22nd: Wembley, London - All-England Badminton Championships.

28th: Tinsley Green, West Sussex - World Marbles Championships.

29th: River Thames, London - The Varsity Boat Race from Putney to Mortlake.





**Fund  
Raising  
Ideas  
Galore!**

**You can always rely on Leswyn  
to produce the goods all through the year**

**Birthday Cards,  
Gift Stationery,  
Kitchenware Etc.**

**Write for details!**

**LESWYN  
CARDS LTD**

(GUIDER DIVISION)  
SUTTON COLDFIELD,  
WEST MIDLANDS, B73 5TF  
TEL' 021- 354 7389



# FUND RAISERS

**make  
more money  
this year**



Make this the year when your company raises more money than ever before. You could do it easily, with Miller Fund Raising. Voluntary organisations have proved it time and again—it really works. **Everybody** wants to buy from the wide range of top quality greeting cards, stationery and gifts at unbeatable, value-for-money prices. The 'Miller Package Deal' contains everything you need for highly successful fund raising.



## MILLER PACKAGE DEAL

Voluntary organisations all over the country are already making big profits with Miller. The Miller Package Deal makes fund raising easy, enjoyable and profitable. Post the coupon today for full details and Free Colour Catalogues—there's no obligation, of course.

**BIRTHDAY  
CARDS  
FROM ONLY  
3½p**

**SAMPLE  
PARCELS  
WITH  
FREE  
GIFTS**

**BIG  
PROFITS  
AT LEAST 33⅓%  
ON OUTLAY**

**FREE FULL  
COLOUR  
CATALOGUES**

**CASH  
BONUSES  
&  
FREE GIFT  
SCHEME**

**NO CASH  
OUTLAY,  
PROFIT  
NOW  
-PAY LATER**

Please send me free colour catalogues and full details of your Fund Raising Service.

NAME \_\_\_\_\_

ADDRESS \_\_\_\_\_

Tel. No. \_\_\_\_\_

Organisation Represented \_\_\_\_\_

(I am over 18 years of age)

GU3

To:

**MILLER GREETINGS  
(Great Britain) LIMITED**

Queensbridge Works,  
Queen Street,  
BURTON UPON TRENT,  
DE14 3LP.

**ACT NOW**  
NO RISK-  
NO  
OBLIGATION