



# guider

Volume 62  
Number Five  
May 75

17p



# IT'S NEVER TOO EARLY



The Webb Ivory free full colour Christmas Catalogue contains hundreds of Super Christmas and everyday items including:-

- \* Beautiful Christmas cards at fantastically low prices.
- \* Christmas gift wraps, trees, decorations and novelties.
- \* Birthday cards and super stationery items.
- \* A new range of kitchen and household aids.
- \* Gifts, children's items, novelties, and many more top quality lines, at very attractive prices.

**NO CASH OUTLAY  
UP TO 50% PROFIT ON COST**

Make sure 1975 ends with a record breaking fund raising year for your Company by writing for the new Webb Ivory catalogue — NOW.

Went to 14th. Somarstone's weekly meeting yesterday was a bit envious to hear they'd made £270 from Webb sales last year. Really must give it a swing this year reckon we could make £150 our target. (We are bigger than Somarstone)  
Please send coupon for the new Webb book out in June. Must get cracking early. probably best possible way of getting cash to replace mini bus for early spring. Suggest we launch to all parents at our next parents meeting. So please organise quickly reckon we could have 50 books but start with 25.

Guday

P.S. Would be nice to beat Somarstone's figure next year.



Memory Jogger —  
Price 45p —  
Webb Ivory Catalogue.

asonable  
nduced  
govern-  
m legal  
s now  
unions  
certain  
wed.  
unning



**WEBB IVORY LIMITED**  
Little Cornbow, Halesowen,  
West Midlands, B63 3AG

Please send me, without obligation, my free catalogue & full details of the Webb Ivory Fund Raising Service. I am over 18.

Name \_\_\_\_\_

Address \_\_\_\_\_

Organisation \_\_\_\_\_ GU5



# guider

Published 1st of each month

**OFFICIAL MAGAZINE OF  
THE GIRL GUIDES ASSOCIATION  
(incorporated by Royal Charter)**

**PATRONS**

HM THE QUEEN  
HM QUEEN ELIZABETH, THE QUEEN MOTHER

**PRESIDENT**

HRH THE PRINCESS MARGARET,  
COUNTESS OF SNOWDON

**CHIEF GUIDE**

OLAVE, LADY BADEN-POWELL, GBE

**CHIEF COMMISSIONER**

MRS DEREK PARKER BOWLES, CBE

## Contents

Guiding Roundabout	180
Chief Commissioner's Message	181
World Conference	182
Religious Festivals During May	183
Blackland	184
Here At CHQ	185
Mainly For Rangers	186
Airing and Sharing	188
Guider in Production	189
Like Parting With A Friend	190
Those Were The Days	191
Home and Away	193
HQ Notices	195
Training	197
Where To Train	205
Classified Advertisements	211
We're Brownie Guides	215
Girl Guide Friendship Fund	217
World Children's Day	217
What's On	218

**EDITORIAL:** MRS J V RUSH (Editor)  
MISS J V KING (Assistant Editor)  
MR S D MILLS (Sub Editor)

**ADVERTISEMENTS:** MISS A M MARTIN

**ALL COMMUNICATIONS TO:** Guider GIRL GUIDES ASSOCIATION  
17-19 BUCKINGHAM PALACE ROAD LONDON SW1W 0PT 01-834 6242

Printed by The Riverside Press Ltd, London and Whitstable and published by The Girl Guides Association.  
Subscriptions, including postage, £3.00 for 12 months Great Britain, £2.76 overseas.  
Trade Agents, Surridge Dawson & Co, (Productions) Ltd, 136-142 New Kent Road London SE1.

## Cover

This month's cover picture shows Rangers of the 1st Taff Unit towing a 12 foot model from Pontypridd to Barry. Their ordeal raised £315 for the Barry Lifeboat, and to celebrate afterwards they went for a trip in the Lifeboat.

*Photo: Western Mail & Echo*





Miss Sally Steer of the Milk Marketing Board (above) shows a group of Guides from Crewe North District how to prepare a range of savoury and sweet dishes.

The Crewe Chronicle



Members of the 100th Edinburgh Brownie Pack (Grantont Parish Church) are seen above making toffee apples to sell in aid of the Scottish National Institution for the war blinded.

The Scotsman Publications Ltd



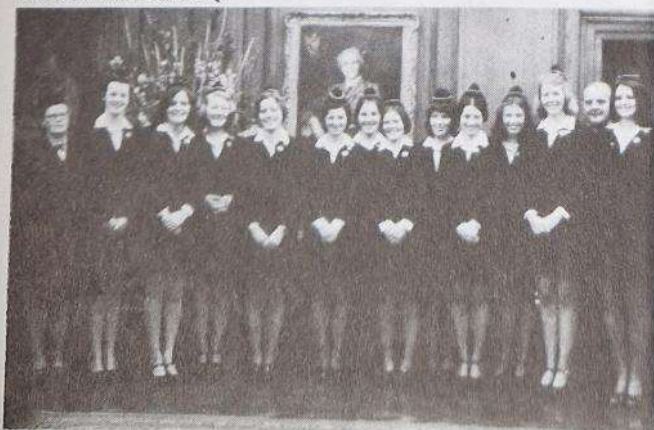
The Assistant Guide of the 45th Belfast Company, Alison Greer, is seen centre left. For several years she has played hockey for Ulster and Ireland and this season has been captain of Ireland's Hockey XI.

Rangers from the 1st Fulham Ranger Unit are seen right at their Division's annual church parade.



The 10th Ilford Guides (above) seen setting off for Camp last year, hope that this year's holiday is just as much fun.

Members of the 2nd Newport East (Toc H) Rangers are seen below with Miss D Saffin, Ranger Guider and D of E co-ordinator and Rev A G Knight, chief administrative Padre of Toc H, when they received their D of E Gold Awards at CHQ.



Robert Broadner

## GUIDING ROUND ABOUT



Sheffield Newspapers Ltd

When St Augustine's Brownie Pack, Sheffield, presented toboggans to Tapton Mount School earlier this year (above) they didn't think they would get the weather to try them out as soon as they did.

Watched by Cynthia Morris, District Commissioner, Pat Morris, District Commissioner, Mr J Mattock, Borough Recreation Officer and Ann Duff, Division Commissioner, Brownies from Burnley plant rose trees.



Brian Duff





Rangers from Herne Bay (above) check their equipment before setting off for a self-catering holiday in Switzerland.

Cheshire Observer



Members of the 2nd Christleton Brownies (left) and friends getting ready for a sale of work at the Scout Hut. Guides from the 1st Bexhill Company are seen below giving a gift to 92-year-old Mrs Blanche Lattimore, the oldest resident of Alexander Court.



Bexhill-on-Sea Observer

The Mayor of Medway, Cllr Ron Foster (below) helps members of the 4th Walderslade Pack plant bulbs in the grounds of an old people's home.

Chatham Standard



## TO COMMISSIONERS, GUIDERS AND RANGERS

**JUNE 23rd 1975:** This will be a great day in the history of our Association. For the first time for 25 years, we are the hostess country for the triennial Conference of the World Association of Girl Guides and Girl Scouts. On that day, as Honorary Chairman of the Conference, I will be welcoming on your behalf, some 300 guests from most of the 91 member organisations of the World Association.

I wish there were room and opportunity for all of you to visit Sussex University and meet the delegates, but unfortunately this just cannot be. However, with our UK delegation, Aides and Staff; Observers; some Brownies, Guides and Guiders who will welcome delegates on their arrival, some Rangers helping with parts of the programme, and Guides forming a choir at the Act of Worship, as well as all those at the Orbit Camp, we will be as fully represented as is possible for the Hostess Country.

I thank everyone for the interest shown through the wonderful gifts for our guests, which are in production all over the United Kingdom; through the Brownie World Venture; through the Guide World Conference Challenge; and the Ranger 'Wombling' events. I hope that all Brownies, Guides and Rangers will be having the special badges, which are available, to show that they have taken part in a World Conference activity.

Now I am suggesting at the request of the Executive Committee that each one of you wears her Promise Badge or a World Badge wherever you are, and whatever you may be wearing, on 23rd June, so that everyone will know how proud and happy we are to be welcoming our visitors to this country on that day.

With every good wish,

*Ann Parker Bowles*

Ann Parker Bowles  
Chief Commissioner





## Background to World Conference

# Our Delegation

ONCE every three years, the members of the World Association of Girl Guides and Girl Scouts meet in Conference to exchange ideas and experiences and to consider the policy of Girl Guiding and Girl Scouting.

Organisations which are either Full or Associate Members are each entitled to appoint two delegates, and Mrs Jessica Blooman and I will be representing the



**Dr Kathryn Benson-Evans**  
Elected member of GGA Executive Committee, Training Adviser for Wales, Senior Lecturer at University College, Cardiff.

United Kingdom in this capacity this year. In addition, Full Member Organisations may also appoint official visitors, the number being determined by the size of the National Girl Guide and Girl Scout Organisation.

The United Kingdom is entitled to five visitors, and Mrs R Vaughan Cox, Dr



**Dr Helen Laird**  
Elected member of GGA Executive Committee, Research Scientist in the Leukaemia Unit at Glasgow University.



**Mrs Avril Lyne**  
Assistant International Adviser for Anglia Region, Division Commissioner for South Lincoln, Member of the Lincolnshire Committee of Voluntary Service Overseas.

Helen Laird, Mrs Avril Lyne, Miss Mary Ramsay and Miss Barbara Ryrie will be completing our delegation, with Miss Jill Campbell as a reserve. We have been appointed by the Executive Committee from nominations submitted to them, and are representative of the different aspects to be found within our organisation. Four of us, Mrs Blooman, Dr Laird, Miss Ryrie and myself have been privileged to represent you at previous World Conferences, and so have some experience of the methods of work and responsibilities.



**Miss Barbara Ryrie**  
Programme/Training Adviser to GGA, District Commissioner for Wilston, Wiltshire.

It will be strange not to have our Chief Commissioner, Mrs Derek Parker Bowles, as our leader this time. We shall miss her leadership, but wish her every success as Honorary Chairman of the Conference. She is, of course, helping us at all stages of our preparation for the work of the Conference, as are our General Secretary and all Departments at Headquarters, who readily supply any background material that we require.

(Continued on page 203)



**Mrs Jessica Blooman**  
Deputy Chief Commissioner of the GGA and Chairman of Finance Committee, Principal Probation Officer for Berkshire.



**Miss Mary Ramsay**  
Full time trainer for the GGA, Outdoors Activities Adviser for London and SE Region.



**Mrs R Vaughan-Cox**  
Commissioner for Branch Associations, County Commissioner for Middlesex West.



# Religious Festivals During May

by Jean M Potter  
and Josephine Kinchin

*This is the second in a series about religious festivals. We apologise to both Mrs Potter and members of the Sikh religion for mis-spelling their festival of Baisakhi last month.*

**May 4th.** This is the date on which the Greek Orthodox Christians will this year celebrate **Easter**, the festival which commemorates the resurrection of Jesus Christ from the dead.

**May 6th.** Buddhists from Thailand and Sri Lanka will be celebrating the festival of **Wesak** when the birth, enlightenment and death of the Buddha (Teacher) Gautama are remembered. Gautama is supposed to have been born in India about 550 BC and at the age of 35 became 'enlightened' as he sat beneath the tree of wisdom. He then set out for the city of Benares in order to 'establish the kingdom of righteousness, to give light to those enshrouded in darkness, and open the gate of immortality to men'.

The Buddha then gathered disciples around him and instructed them in his beliefs, which included the four 'sublime verities':

- 1) Pain is inseparable from existence.
- 2) Pain is the off-spring of desire.
- 3) Existence can only cease with Nirvana.
- 4) Nirvana can only be attained through the extinction of desire.

It is only through the purification of countless existences that the soul may be absorbed at last into Nirvana the Blest, a state where all desire is extinct. This extinction of desire is acquired by the fulfilment of eight conditions: right view, right judgment, right language, right purpose, right practice, right obedience, right memory and right meditation.

In addition, the Buddha's followers were forbidden to kill, lie, steal, commit adultery or fall into drunkenness; and were encouraged to cultivate the virtues of charity, purity, patience, courage, contemplation and knowledge.

Gautama continued to teach these doctrines for another 45 years, and eventually died when nearly eighty years of

age. The festival of Wesak is celebrated by the offering of flowers, incense and candles at the shrines of Buddha.

**8th May.** On this day, Christians of the Western tradition remember the occasion on which, 40 days after the resurrection, Jesus Christ entered into the divine glory at the conclusion of his earthly ministry.

It is known as **Ascension day**.

**16th May** or the sixth of Sivan in the Jewish Calendar, is the day on which **Shavout** falls this year.

This festival, sometimes called the Feast of Weeks, marks the end of the harvest which begins with the harvest of the barley on the first day of Passover, and ends with the harvest of the wheat 49 days (seven weeks) later. The 50th day is the Pentecost holiday of Shavout. (Pentecost comes from the Greek word 'Pentekostos' meaning fifty.)

It is also said that seven weeks or 49 days elapsed from the time Moses led the Israelites from their bondage in Egypt until they received the Law, the Ten Commandments, at Mount Sinai. It is this event which dominates the holiday both

in prayer and in custom, and the Book of Ruth, which mentions the barley and wheat harvests, is read in synagogues on Shavout.

It is the Jewish custom to observe the seven weeks leading up to Shavout as a period of mourning when, except for certain days, no weddings or celebrations may be held.

**18th May.** It was while the Jews were gathered together to celebrate the feast of Pentecost, that the gift of the Holy Spirit was given to the followers of Jesus Christ.

Christians usually call this Festival of the Holy Spirit **Whitsunday**, derived from the 'white' robes frequently worn for christenings on that day.







# BLACKLAND

What is it?

Where?

Who can visit?

by Pat Jackson

**D**O YOU live in the South East? If you do then you will probably be fortunate enough to know all about Blackland Farm, or at least know of it. But you may be one of the thousands (literally) who are unaware of its existence, so let me put you in the picture.



The Tuck Shop

Blackland, once a farm, but now lent to the Girl Guides Association, by the Manor Charitable Trustees is about four miles from East Grinstead, Sussex, and offers facilities for Brownies, Guides and Rangers. For the Brownies there is Restrop, a superbly equipped Pack Holiday House, with separate dormitory and dining accommodation, and lots of space where Brownies can play safely. For the Guides and Rangers there are 20 equipped camp-sites, most of which have excellent weather shelters, and several unequipped ones. Guides and Rangers can also use Restrop during the winter months.

Good impression so far? But what about facilities, activities, etc?

To mention just a few important items: wood is in very good supply, already sawn into long strips and delivered close to each site. Local shops deliver to the Camp 'yard' and milk is delivered daily. You can even have fish and chips delivered if it's on your Camp menu. Blackland has its own souvenir/tuck shop which also sells useful things such as butane cartridges, toilet rolls and matches, the kind of items that even experienced campers can run short of. Each equipped site has permanent wash and lat cubicles, the latter being Elsan-type with a nearby pit. Every site has its own water tap. For fuller details write to Mr Burgess, Warden, Blackland Farm, East Grinstead, Sussex, with a sae please.

Still interested? Then read on.

One big attraction is the swimming pool. Although fairly small, unheated and in the open air, it is very popular, even

on cold days, and most Camps/Pack Holidays book a daily session. The pool is centrally situated in a wooded valley that runs parallel to the camp-sites and is very secluded. During the past few seasons it has been the focal point of many interesting activities, many of which would not be allowed in public pools, such as It's A Knock-Out competitions, raft sailing and midnight Promise ceremonies with floating candles.

Another attraction is the assault course, erected and maintained by the Service Crew. Naturally the extensive woodland, which is part of the site, provides excellent opportunities for wide-games, nature trails, and all the varied activities that the girls enjoy in Camp. There is also a stream, nearby reservoir, and rocks, all of which can be enjoyed without the use of transport from Camp.

Do I hear a muttered, 'All very good if you know how to make rope bridges, plaster casts of birds' footprints, climb rocks, etc.' Don't worry. During the main holiday periods there is a resident activity adviser, two if you're lucky. This person is an experienced camper, often a trainer, who volunteers to spend time helping organise activities, such as those mentioned above, for the Guiders who would like such assistance. (Of course a Camp that wishes to remain completely self-contained may do so.) Sometimes the Activity Adviser will organise a united Camp fire, activity display or Guiders' get-together (with a cuppa!) and, of course, be on hand to give help and/or advice where she can.

So that's Blackland - briefly. Worth suggesting to your Brownies, Guides or Rangers? Why not ask them and see? You could also volunteer to be an Activity Adviser: it's great fun, especially if you have a friend who will help too. At Blackland everyone has the opportunity to meet other members of the Movement from all over the country, and sometimes from abroad too. Give it a try sometime.







*As was announced last month in the Executive Committee Report, we are re-introducing, as a quarterly feature, this popular page. We hope it will provide a better understanding of what goes on at Commonwealth Headquarters.*

**M**ANY different visitors came to CHQ during the first quarter of 1975. We were particularly happy to welcome Captain Rosemary Horne, Salvation Army National Guide Organiser, and Miss Barbara Stevens of Australia, the new Guider-in-Charge at Olave House. It is good to know that this World Guide centre in London is again fully functional.

We were also delighted to see many younger visitors such as the Girl Scouts from Ohio in the USA, and the hundreds of Brownies and Guides who came to CHQ to eat and rest after the Thinking Day Service at Westminster Abbey. Attendance this year was estimated at over 4,000 and astonishingly they all appeared to get to the right place at the right time and safely home again. On other occasions, however, we have heard of lost children, so Guiders *do* please count heads in your party at all stopping points on your journey.

#### **The 22nd World Conference**

The World Conference is now only a few weeks away and overseas delegates will arrive on 21st and 22nd June. CHQ will be remaining open for the whole of that weekend so that they can be met and seen safely on their way to Sussex.

In February a Press Conference chaired by the Chief Commissioner was held to launch publicity for the World Conference. Speakers at the conference were Mrs Allan Laing, Deputy Chairman of UK '75 Hostess Planning Committee, Dr Perin Banker and Mrs Halina Sivell of the World Bureau. Interest is now mounting daily.

#### **Foxlease**

Foxlease might have been affected by a proposed by-pass road for Lyndhurst. Those of us who know Foxlease will be interested to hear that five alternative routes were proposed, three of which would have affected Foxlease in some way. This Association accordingly briefed Queen's Counsel to look after our interests at a public enquiry in January, the results of which are not expected for some time. The plan finally chosen should not materially affect Foxlease, but as soon as a decision is announced we will report it.

#### **A Musical Movement**

Musical instruments from the Association's collection have been loaned to both Hilary Boulding of Newcastle upon Tyne and Mary Charlton of Potters Bar, Herts, and many of you will be as delighted as we are to know that Hilary, who is now reading music at St Hilda's College, Oxford, has been allotted the Association's most prized violin Spiritus Sorsana to take with her. Mary is now teaching having, last year, gained a bronze medal for cello and her licentiate Diploma in Music (teachers). In her exams she scored the third highest marks in the British Isles for honours in music. (See also page 190.)

#### **CHQ Move**

Trading Division, as you will have seen in the April issue, will be moving to Altrincham near Manchester at the end of July.

#### **Guiding History**

The importance of archives is not generally recognised, and our Archivist is always delighted to be given the opportunity of seeing photographs, uniforms and other material with a Guide background. She is always willing to advise on the value of such items as, for instance, the 1919 uniform and photographs brought in by Mrs Lawrence of Ilford last month. Material like this is invaluable to our records, so please do let us know if you know of anything like it being disposed of.

#### **Whitehall Spinners**

Postal charges, as everyone knows, have risen alarmingly and, at CHQ, we are trying to economise. Those of you in regular correspondence with us are therefore likely, in future, to receive several letters in the one envelope, or second class mail. Whatever we feel about these increases, however, we must give full marks to the Post Office for ingenuity recently. A Guide, wanting a copy of the Spinners badge syllabus, followed the instructions in her handbook and wrote to 'Training Department, Commonwealth Headquarters'. Unfortunately she did not add any further address and her letter was delivered to the Foreign and Commonwealth Office in Whitehall, who very kindly forwarded it to its rightful home in Buckingham Palace Road.

*Lysia Whiteaker*

Lysia Whiteaker  
General Secretary





Discussion Group.

## Focus 10

ONLY a small number of Scottish Ranger Guides and Young Leaders were able to make the trip to London for the now famous 'Think-In' at Commonwealth HQ. Their enthusiasm for the idea of having a Scottish Ranger/Young Leader Conference to celebrate the World Conference has now resulted in 'Focus 10'.

This event will take place at Lanark from 6th-8th June, 1975. Rangers and Young Leaders from all over Scotland will be housed in Lanark Grammar School. During the weekend attention will be 'focused' on the '10' Guide Laws, hence the title. Participants will be asked to bring with them items relating to the laws, so that a display can be mounted on the Friday evening.

Conservation projects in the area will take place on the Saturday. These involve such varied activities as helping with the restoration of Robert Owen's village of New Lanark, cleaning the headstones and clearing the weeds in the old graveyard there, repairing a path quaintly called Jacob's Ladder in the local Nature Reserve, taking part in an

Young Leaders at New Lanark.



archaeological 'dig', and helping to prepare exhibits for a Museum which depicts a village street of the Victorian era.

Sunday will be spent discussing deeper aspects of the relevance of the Law and Promise for young people today. We envisage a gathering of three or four hundred Rangers and Young Leaders and hope the results of this Conference will have far-reaching effects on Scottish Guiding.

Elizabeth Paterson

## ARCHITECTURAL QUIZ ANSWERS

About 4500 years (c 2580 BC)  
About 4000 years (c 2180 BC  $\pm$  105)

Listed at end  
The Pantheon  
The Parthenon (in Athens)  
The Doric (order)  
Corinthian (order)  
The Romans

Their baths, or aqueducts  
A Norman arch  
A Gothic arch  
Westminster Abbey 1245-69  
Westminster Hall 1397-99  
1840-1860

These are attractive rib vaultings shaped like a fan which build up the ceiling. (Kings College Chapel)

This is based on short beams protruding at right angles from the walls upon which other beams are placed to support the roof.

Building material used in older timbered houses. The walls are upright stakes interwoven with reeds and branches. Mud is then daubed over all.

Headers are bricks placed at right angles to a wall surface, stretchers are bricks placed with their length in the direction of the wall surface.

This an arch or half-arch transmitting the thrust of a vault or roof from the upper part of a wall to an outer support or buttress.

This is the covered gate at the entrance to a churchyard where the procession halts to rest the coffin - originally to await the officiating clergy.

Nôtre Dame in Paris.

St Peter's in Rome

Chartres, France.

Ravenna Italy.

Sir Christopher Wren.

St Paul's Cathedral.

His wood-carving. (Usually fruit, flowers and birds in lime wood) 17th century.

His landscape gardening (18th century).

This a bay window, upstairs, protruding and usually built out on a bracket support.

This is three-part window - the middle one taller than the others, with a rounded top.

This is a summer-house, usually built on a wall to look out onto a fine view.

This is a sunken ditch, walled on the garden side, sloping on the other, made at the edge of the garden to give an uninterrupted view of the landscape and incidentally to keep cattle out.

The part of the church for clergy and choir - usually at the East end.

behind the altar.

This is a covered walk-way round an open square (it usually connects a cathedral or great church to monastery, etc).

This is a space underneath (the chancel) the church usually used for burial or monuments.

This is a strong grating at a castle gateway which slides up and down to shut off the bridge.

This a bell-tower - usually built separately from the building it serves.

In New York.

In Washington.

In Washington or Rome.

In New York.

Menai Straits, Severn, Clifton, Golden Gate.

Cantilever.

Coventry Cathedral.

In France.

Sir Joseph Paxton.

The 1851 Exhibition.

Bath.

Cheltenham or Brighton or Leamington Spa or the Regency terraces of N London.

## THE SEVEN WONDERS OF THE ANCIENT WORLD:

1. The Pyramids of Giza in Egypt (still standing).
2. The Temple of Diane of the Ephesians.
3. Tomb of King Mausolus of Caria (hence 'mausoleum').
4. The Hanging Gardens of Babylon.
5. The marble, gold and ivory Statue of Jupiter at Olympia.
6. The Colossus of Rhodes (hence Colosseum or colossal statue).
7. The Lighthouse at Alexandria.

Only fragments of these remain

Above are the answers to the March Architectural Quiz. The winning entry was sent in by the 1st Bonnyrigg, Lasswade and Rosewell Ranger Guide Unit, from Eskbank, Dalkeith. We congratulate these girls who were over 90% correct in their answers to this difficult quiz.



## Ranging Fashion - Ranging Fashion

Woolworth's summer fashion collection, as usual, boasts a wide range of attractive and colourful clothes at very reasonable prices. The maxi pinafore dress (left) comes in easy-care polyester in brown, green or navy against a cream background. The sizes available are 12-16, price £5.99. The 1950's style circular skirt (right) is also easy-care polyester, and comes in apricot, blue, cream or lilac in sizes 10-14, price £3.99. The polyester/cotton blouse pictured with it has cape sleeves and a tie waist, and is available in a red, lilac or turquoise flower print against a cream background. Price £3.49 in sizes 10-14.





# RANGERS

WIMBLEDON COMMON doesn't only have the Wombles to boast about. Wimbledon windmill (pictured) is one of Britain's last remaining windmills which still has its sails intact. It was built by Charles March in 1817, and is still in working order, despite the need for regular repairs, which include new sails in 1969 and the loss of its grinding machinery.

However, a recent survey revealed that the timbers of the windmill are infested with pests, including dry rot and death watch beetle. In order to maintain the future safety of the mill, and its position as a local and historic landmark, the owners have decided to launch a national 'Wimbledon Windmill Appeal', tying in with the Heritage Year campaign to restore and/or improve historic buildings. The target for the appeal is £20,000. The plans are to develop one floor as a 'windmill museum' that will be open to the Public, although due to the expense involved the grinding machinery will not be replaced.

Rangers are being asked to 'Womble for the World' as their part in World Conference Year. What better way to put this into practice than to help with the restoration of the Wombles' very own personal windmill? If you would like to help, donations should be sent to Mr

**Save the  
Wombling  
Windmill!**



John Lambert, Secretary of the Appeal, The Windmill, Wimbledon Common, London SW19 5NR.

**SDM**

*It was here, in Wimbledon Windmill, that the founder wrote his book, Scouting For Boys.*



## Spring Lamb Casserole

- 6-8 baby lamb cutlets
- 2 tbsps oil
- 1 tbsp Tabasco pepper sauce
- Salt and freshly ground black pepper
- $\frac{1}{2}$  lb peas (fresh or frozen)
- 1 lb baby carrots
- 1 lb tinned or fresh new potatoes
- 2 beef stock cubes
- 2 pts water

To garnish: chopped parsley  
Brown the lamb cutlets gently in oil. While cooking, sprinkle with half tablespoonful of Tabasco pepper sauce, salt and black pepper. Mix peas, carrots and potatoes in an oven proof casserole. Place the cutlets in the vegetables. Make up stock with meat juices, add remaining half tablespoonful of Tabasco pepper sauce and pour into casserole. Cover and cook in a moderate oven at Gas Mark 4/350F for approximately 30 minutes. Serves three to four.

## RECIPES



## Baked Orange Sunflowers

- 4 large oranges
- 4 tbsps raisins
- 2 ozs chopped nuts
- 4 tbsps clear honey
- 2 tbsps lemon juice
- 2 tbsps water

With a sharp knife, pare the orange rinds down into eight pieces, but do not cut away at the bottom. Gently open out orange segments. Fill orange centres with the raisins and chopped nuts. Cut out four pieces of kitchen foil large enough to enclose the oranges. Carefully fold back orange rind, tucking in the ends (see photo). Place each sunflower on a piece of buttered foil and place in a baking tray. Heat honey with water and lemon juice until honey is dissolved. Spoon over oranges, twist foil to make a parcel and bake at Gas Mark 4/350F for 15 minutes. Unwrap sunflowers and serve with whipped cream or ice cream. Serves four.



## Let Battle Commence!

From 24th to the 26th May, at Penton Park, Penton Mewsay, Hampshire, the famed Sealed Knot Society of Cavaliers and Roundheads will re-enact the local battle fought on the 18th October, 1644, between a victorious King Charles I and the Parliamentarians. This promises to be an exciting and colourful spectacle, with 1,500 participants dressed in 17th Century military costumes, and supported by cannon and cavalry. An added attraction will be a 17th Century fair and side shows. The gates open at 12 o'clock each day, and the battle is scheduled to last from 3 pm until 4.30 pm. Admission is 50p for adults and 25p for children, with special arrangements for coach parties. There is also a free car park.







# AIRING & SHARING

## Out For the Night

I have just read the details of the Brownie Overnight Venture Permit. While I consider this Permit an excellent idea, as a Pack Holiday Permit holder I was disappointed to see one thing. We must still exclude our seven-year-olds. We now have the ironic situation of being able to take a child just a few days past her eighth birthday away for a week while another, perhaps only a week younger cannot even be taken away for one night. I do realise that lines must be drawn, but must they be so rigid? Believe me, if parents do not think their children are old enough they will not let them come, and this applies to more of our activities than just Pack Holiday.

Perhaps I can illustrate my point with two examples from my Pack. They both concerned seven and three quarter-year-olds, both as it happened with older sisters in the Pack. The older sisters were Pack Holidaying and in both cases the parents considered the younger child old enough to go also. These Brownies of two-and-a-half terms standing were disappointed at not being able to join their sisters on the holiday. For one of them next year never came as the family moved, and the Pack to which the Brownie transferred do not go on Pack Holiday.

I wonder how many Guiders could quote similar examples from their own Packs.

**J R Shaw,**

*Brownie Guider,*

*2nd Linsdale Pack, Beds*

*A great deal of consultation and discussion took place on this particular point, and it was put to the vote by the Programme/Training Committee. It is worth noting that the final decision was weighted by the Brownie biased members of this Committee, who are active Guiders running Packs and*

*holding Pack Holiday Licences themselves. It was felt that during her life in the Pack a Brownie would probably have several opportunities to experience an Overnight Venture. Eighteen is still regarded as the ideal maximum number for a residential event and most Pack Holiday Houses will accommodate just that number and no more. Of course it's bad luck for the few who may miss out altogether, but when was life fair to everyone!*

**Training Secretary**

## Guide Badges

Having read other views on using meeting time for Interest Badge work, I would like to put forward the reason why we use some of our evenings to work with the Guides for Badges.

Left to themselves the girls do not do anything at home toward Badges. But they look with envy during Division events at other Guides wearing them and love to actually gain Badges themselves. So, we hope to encourage the girls to try new interests and ideas for leisure time, and to give them opportunities for activities their parents don't do with them, most families being content to fill their evenings with 'telly', as well as giving them the satisfaction of following something through to a standard deserving the reward of a Badge to wear.

A few do go on to work on their own for Badges of their own special interest, but I have heard other Guiders deploring the apathy regarding spending time at home working on Badges, and the lack of parental encouragement.

**Gay Coleshott (Mrs),**

*6th Moreton Guide Coy, Wirrall, Cheshire*

**Opinions expressed in these columns are not necessarily those of the Editor.**

## Guider's Image

With reference to the letter from Mrs Maria Reardon in the March issue of *Guider*, I would like to state the case for the young Guider who cannot 'be bothered or spare the time to take Guides camping'. I am a young Guider who would like very much to take her Company to Camp, but is prevented from doing so by the restrictive and time consuming process of obtaining a Camper's licence. This would require that I attend weekly trainings throughout the winter in Wolverhampton, an hour and a half's bus journey from my home; and as a full-time medical student, I could neither afford the time nor the money, and my Company funds could not stand the strain of subsidising me to the tune of 50p a week. Apart from these considerations, my previous experience of Guider Trainings, in this area at least, is that they are designed for those who know nothing about Guides; and since I gained my Queen's Guide Award in the not-too-distant past, I really feel that my time could be better spent. Let us have a system similar to that of the Scouts, where any warranted Scouter may take his Troop to Camp with the permission of his DC. A Guider could then train herself, in her own time, and Commissioners could satisfy themselves that Guiders were sufficiently competent and responsible to take Guides camping by a couple of personal visits. In this way, I feel sure that more Guiders would find themselves able to run Camps, and one would find experienced Campers who could give advice and instruction when needed more frequently than in the present situation, where licence-holders are few and are hard pressed with running District and Divisional Camps.

Yes, Mrs Reardon, the image of 'elderly ladies' is a

true one; not because we young Guiders do not care, but because the Movement forgets that we have other commitments. It would seem then, that we are very much needed, and not only to change the public image; yet we are discouraged by the yards of red tape and innumerable training sessions which the Movement would see fit to add to our already busy lives.

**Anne Chilton,**

*9th Oldbury (Our Lady & St Hubert RC) Coy, Warley*

**...or not to Pray?**

I should like to protest against the suggestion made in the article 'Unity Through Diversity' (March *Guider*) that Christian Guiders should modify their Company prayers to suit non-Christians. Surely non-Christians can be excused from prayers, as used to be done when Roman Catholics did not wish to take part in Company worship?

I feel that the non-Christian will not be impressed by a Christian who is willing to modify her form of worship. The words 'Through Jesus Christ, Our Lord' are surely the most important in the prayer.

I am prepared to say that all people have a right to their own religious beliefs, but I am not willing to say that my faith must be altered to suit those of other faiths.

**D H Harrup,**

*1st Crewe Green,*

*Cheshire Border*

*I would certainly agree that within the Guide Movement no one should be expected to 'alter their faith'; in fact, one hopes it may be strengthened through membership of the Association.*

*However, we must remember that the Movement is a religious and not a purely Christian organisation, and therefore in Open Units, if there are children from different faiths, their beliefs must be respected.*

**Jean Potter**





# Guider in Production

*The first of an occasional series of articles about the departments at CHQ.*

*Left to right: Stuart Mills, Ann Martin, Jean Rush, Veronica Cruise, Janet King.*

EVERY MONTH your copy of *Guider* is pushed through the letter box and, we hope, read from cover to cover. But do you ever stop and wonder how the magazine gets put together? Some of you, we know, have visions of 'them up there' sitting round a dixie, dropping in pieces of paper, and stirring them with a large wooden spoon. Sometimes we wish this were true. We would like to introduce you to the people who make the *Guider* possible, and to tell you how it is done.

Mrs Jean Rush is the Managing Editor, and responsible not only for *Guider* but also *Today's Guide* and *The Brownie*. It is her job to read what you, the readers, send in and decide whether we can use it in *Guider* or not. The letters you write on almost every subject imaginable also arrive on Mrs Rush's desk. If they concern a matter of policy she passes them on to the appropriate department, and they, in turn, either answer them direct or return it to be published with a comment.

Miss Ann Martin is the Advertisement Manager and keeps a steady supply of ad's coming from various agencies and companies. Those of you who have uniforms to sell, events to announce, or Camps to staff, write to Miss Martin. She then helps you to word your classified advertisement, if you need help, and tells you how much it will cost. When agencies send in 'display' advertisements, all the copy has to be checked to ensure that it does not conflict with the Association's policies.

The Assistant Editor is Miss Janet King, one of whose jobs is to co-ordinate the editorial copy that Mrs Rush wants in the magazine, with the advertisement copy that Miss Martin wants in. At a monthly editorial conference the Managing Editor and the Assistant Editor decide what will appear on each page of the next month's magazine.

It is then the job of the Assistant Editor to get the copy ready for the printer. More often than not this involves re-typing, as the printer likes the copy set out in an easy to read way. Then the copy has to be checked for grammatical errors, incorrect facts, etc. By now Miss King knows which page the copy will appear on, so she makes sure it is not too long and then decides whether it will be two columns, three, or even four.

The fourth member of the staff is Mr Stuart Mills, the Sub Editor. His is the unenviable task of helping Miss King. He also has the task of collating the What's On page, and every month the same cry can be heard as he tries to sort out Nationwide - 'I do wish people would let us know in time' (or words to that effect).

Once the copy has returned from the printers as 'galleys' (long strips of type), it has to be carefully read. Then between them, Miss King and Mr Mills (supervised and advised by Mrs Rush), decide how each page will look and lay it out with illustrations, before sending it back to the printers. Finally, a proof of each page is seen and read yet again by each member of staff, before the printers are told to go ahead and print your magazine. Once it is printed, Miss Cruise sends out subscription copies and deals with queries about late deliveries, etc.

*The Brownie* and *Today's Guide* are produced in the same way.

We have acquired two young men in the department, Mr Mills and Mr Bexfield, Assistant Editor of *Today's Guide*. Our days are not just hard work. In the last six months many things have helped to brighten our days. During school holidays, Miss D Bond, Editor of *The Brownie*, and her assistant, Miss Pam Price, are visited by many Packs on their tours around CHQ. The surprise, and, I might add, delight on the faces of the youngest Brownies to the oldest *Guider* when they see these young men, brightens our day.

Many memorable moments in the department spring to mind, like the enjoyment we get at opening the thousands of entries in *The Brownie* competitions, and the pounds of rice that have come off the collages and on to our floors; the phone call from the man who thought he remembered a present day Camp Site as a run-down area just after the war; the lady who wanted us to sing the Elf Six song over the phone; the day that someone left a briefcase near the back door and the bomb squad arrived. The list could go on.

Now that you have been introduced to us all, why not bring your Units up to meet us, see how the magazines are put together, and meet and see the other people who help to make headquarters the special place it is. Book your visits in advance through Reception Department.

## A New Guider's Thoughts on Thinking Day

AS I SAT in the church waiting for the Thinking Day Procession to start, I thought back over the last six weeks of feverish activities.

Eight weeks ago I knew very little about Guiding and nothing at all about Thinking Day. I had plunged in at the deep end after Christmas and agreed to take a small company of Guides, not realising what was ahead! But oh, how much I have learnt in a short space of time, because of Thinking Day. Through meetings with other Guiders, and helping the Guides with their various Thinking Day projects, we have all got to know each other so quickly. In the past six weeks my Guide Company has doubled its numbers, and the new Guides have also been drawn into the preparations for the Thinking Day Party and Ceremony, and like myself, have learnt more about the World Wide Organisation as they have found out about the customs and uniforms of other countries.

As the procession of Guides and Brownies moved slowly up the church I checked on the four Guides from my own Company. Yes, Kathy had managed to get her red tie right for the South Africa uniform, Gail looked fine in her Camp dress with a green sash for Zambia, Jane was alright now, after a last minute panic when she couldn't find her card with Liberia printed on it, and Pat had at least managed to find a suitable way to tie her hair back; so all was well. I said a silent 'thank you' to the Trefoil Guild for providing navy blue uniforms for us (what would I have done without their help?)

I smiled as I looked round the church and saw many familiar faces that were strangers to me eight weeks ago. I didn't feel 'new' any longer. I was part of the District, part of the Division, part of the County, and most important of all, part of the World Wide Organisation of Guiding.

(Mrs) E Martin





## Like Parting with a Friend



**O**VER THE YEARS, CHQ has been given or loaned a series of musical instruments to be used by members of the Movement. To have one of these instruments on loan, a girl must have reached a certain standard in her musical training and be fairly active as a Guide, Ranger or Guider.

All the instruments are named and many have interesting stories to tell. On this page we would like to tell you some of those stories and introduce you to the instruments.

### DIANA

I am a violin that was presented to the Girl Guides Association in 1925 by Miss Sibyl Mounsey Heysham. Before this I belonged to the Chief Guide, Olave Lady Baden-Powell. In 1943 William Hill and Sons (who are responsible for keeping us instruments in good condition) presented the bow which accompanies me. We are both insured, as are all the instruments, and the bow is engraved with the Trefoil. I was helping Jane Bultz of Bournemouth with her musical studies. In 1974 I accompanied Jane when she went on an Italian tour with the West Sussex Youth Orchestra. But now I am with Ann Williams of Cheltenham.

### SIBYL

I am also a violin presented to the Association by Miss Sibyl Mounsey Heysham in 1948. I have been helping Janet Litherland and have been played in Chichester Cathedral. When Janet went to Italy with the West Sussex Youth Orchestra I went too, and was very proud when Janet was named as leader of the second violins. On that tour I had a reunion with Diana. At the moment I am in the strongroom awaiting re-allocation.

### SPIRITUS SORSANA

I am a violin, made by W E Hill & Son and presented to the Association by Mrs D Jeffreys in 1957, the Baden-Powell Centenary Year. Until November 1974, I was helping Hilary Minto, a Ranger from Northumberland. Together we attended a British Youth Symphony Orchestra course where I had a reunion with Evelyn. Hilary has also played me with the Junior Philharmonic Orchestra.

### EVELYN

I am a violin loaned to the Girl Guides by Miss Mary Scott Evans in 1950. I am accompanied by the Sartory Bow. Early in 1974 I went up to Newcastle upon Tyne to help Hilary Boulding, who is a Ranger. She has now returned me to CHQ and has been offered the help of Centenary.

### GEORGE PANORM

I am a violin who was loaned to the Association in 1957 and then in 1973 I became a gift to the Guides from Mrs Chadwick. I was down in Cornwall helping Ellan Reeves, who is a Guide. Every week we played with the Tamer String Players and we were members of the first violins with the Cornwall Youth Orchestra. Today I am helping Ranger Lesley Beazley in South Ockenden, Essex.

### BUSHRIDGE

When Mrs Bushridge decided to give the Association a violin in 1965 in gratitude for her daughter's pleasure as a member of the Movement, she gave me. Earlier this year I went down to Kent to join 13-year-old Susan Dart.

### WINIFRED

I am a German-made violin presented to the Association by Miss Nancy Green in 1969. At present I am with Judith Preston in Wolverhampton. Judith is a Patrol Leader and working hard on her music grades.

### LUCY

I am a violin at present helping Lisa Marchant of Brighton with her music studies.

### DOROTHY

I am an 18th Century French violin who was loaned to the Association in 1973 by Mrs Fitzwilliam. At the moment I am with Barbara Cross who is a Ranger.

### HELEN

I am a violin loaned to the Association by Miss A M Baker in 1972. At present I am in Yorkshire with Sandra Finlay. Sandra plays in many concerts, including the 25th Jubilee Concert at her college. We also went to a Music Day in Wakefield when Sandra coached the string section of the orchestra.

### TYSON

I am a violin at present in the strongroom. I am available to beginners including Brownie Guides.

### ESTHER

I am the Association's only Viola and was presented to them by Miss Gwyneth Parry Morgan in 1951. At present I am in York with Wendy Brownbridge. Wendy is an Assistant Guide Guider and plays me in her college's orchestras.

### WM FORESTER

Mrs McNab presented me, a Violoncello, to the Association in 1959. Early in 1974 I was returned to the Association and am waiting to go out and meet my next member of the Movement. Mary Charlton, whom I helped for some time, is now teaching music. Mary was recently awarded a Bronze Medal for cello with the third highest marks in the British Isles.

### THOS SMITH

I am a Violoncello loaned to the Association in 1950 by Mrs Keen. I was attending college in Edinburgh with Patricia McCorquodale. Patricia played me during the first performance of a special work to celebrate her cathedral's 750th anniversary. But I was recently returned to CHQ, and after a visit to Hills will be going to help another young musician.



# THOSE were the DAYS

The first Head of Training, appointed in 1918, was Mrs Julian Strode who, as Gladys Cobb, was a Guide in 1911 in the Company at St James's, Malvern. (A fellow Guide was Alison Cargill, now Mrs Greenlees, a Vice-President of the GGA.)

By the end of 1917 Mrs Strode was among the first to earn her Red Cord Diploma at the residential training school at Abbey Lodge, West Malvern, run by Miss Field and Miss Riley under the direction of Miss Alice Baird. One of the qualifications for a Trainer was 'that she really understands the Guide spirit' and it was during Mrs Strode's time as Head of Training that the guide-lines for training and camping, all over the country, were laid down so successfully. As far back as 1920 she invited every County Commissioner to nominate a camper to represent her county, and these representatives met at a training camp to exchange ideas. Mrs Strode's idea for Camp Advisers was turned down in 1921, on the grounds that no more 'officials' were needed, but it was accepted about two years later and a licence test for Guiders followed.

In this extract from *The Girl Guides' Gazette*, published 50 years ago, called 'Guiding Seen from a Backwater', Mrs Strode gives us all a timely reminder that Guiding is the girls' Movement, and it is knowledge of the day-to-day lives of the Brownies, Guides and Rangers that really help a Guider to run a good Unit.

TWM

IN THE OLD, old days of cocks' feathers and chevrons, many, many years ago, people talked of the spirit of adventure and freedom and enterprise stalked abroad. Then, a visit to a neighbouring Company was an affair of great excitement, for who could tell what the next door Captain had invented in the way of drill and ceremonial, or even what new pattern uniform you might meet?

In these days we know better of course. Drill is drill and ceremonial – see 'Drill Book'. In those days a camp-fire was just a fire – sticks and smoke and flame and glowing ash; we sang *Three Blind Mice* and *White Sand and Grey Sand* and it was all very elementary.

But Guiding is a Movement, we must remind ourselves, and certainly it moves (we might even say it 'buzzes'). Certainly Guiding is a science now. For a Guider who is a good Captain should (at least) be a

first-class folk-dancer, and at the same time be on the way to the Army Signaller's Badge, and have at least at her finger-tips the contents of the 'Drill Book', the 'Book of Rules' and 'Campcraft'. She must also have a sound knowledge of nursing, hygiene, civics, etc, and be a life-saver, if possible, and, of course, know several of the excellent hand-books on the proficiency badges...

In the old days we had the Hand-book – which after all was written by the Chief. Now everyone studies psychology, which has been described as 'the art of saying what everyone knows in words that nobody knows' so we can really deal adequately with the problem of 'the girl'.

And the Guides? After all, it is the Girl Guide Movement, isn't it? What about Lizzie and Laura and Nellie and all the rest, and their lives and problems in the light of that extremely difficult thing – the Guide Law?

Oh, the Guides? With so much advance they must be all right. Everyone knows that it is only a sign of extreme age to think old days are best!

In a backwater there is plenty of time to think and sometimes I can't help wondering...

## Looking Back to Rosebud Days

If you're a Brownie Guider and are visiting CHQ at any time do ask 'Reception' if you can see the 'Brownie Diamond Jubilee' cuttings books which include many newspaper cuttings and pictures of all the wonderful good turns, parties, thanksgiving services and outings held all over the country to celebrate this happy event.

An Ipswich Brownie, Katharine Ball, tried to help us in our search for a metal rosebud badge for exhibition at CHQ, and she had the thrill of seeing her letter published in *The Daily Telegraph*. So far, we haven't

obtained a badge for exhibition, but one of the members of the Much Hadham Rosebud Pack (whose picture is published below), Mrs W M Day, has sent us one to see. Another Rosebud, Miss Vera Walker, of Exeter, tells us *she* wore a silk embroidered rosebud badge sewn on the left side of her navy blue jersey. Has anyone seen one of these? (All offers for exhibition, please, to the Archivist at CHQ.)

Miss Walker writes: 'I joined the 3a Bristol Guide Company as a Rosebud when I was nine. At our meetings the three Guide Patrols went into their corners and the Rosebuds, in charge of Lieutenant, into the 4th corner. (At that time the Guides and the younger ones attended the same meetings.) We were taught to do knots and, following the St John's Ambulance First Aid Book, we learned bandaging and First Aid... and sometimes Rosebuds acted as patients for the Guides, especially for stretcher drill. It was all tremendous fun and we would sing camp-fire songs before we went home, ending every meeting with *God Save the King*.

'During the First World War, as food became more difficult to get, Guides and Rosebuds took farm eggs to wounded soldiers in a convalescent home. We took two trams to Clifton Downs and then walked across the famous suspension bridge. (There were no buses and very few people had cars.) Later, as a Guide, I went to camp with my sister at the foot of Dunkery Beacon: because of the war, we were not allowed to sleep in tents and Molly and I stayed at the Post Office: our luggage was loaded on a farm cart and we walked the two miles to Wootton Courtenay. It was on this walk I discovered several wild flowers I had not seen before and I spent so much time picking whortleberries I was given the nickname of "Whortle"!'



The Much Hadham, Hertfordshire, Rosebud Pack, 1914. Miss M Elders, the Rosebud in the middle of the back row now lives in Woking, Surrey. (Does any reader recognise anyone else? If so, please write to the Archivist at CHQ.)





**YOUR PROFIT**  
**£10.80**  
per minimum order

**A FUND-RAISING SUCCESS STORY**

As most Youth Organizations now know, THE NESTLÉ CO. LTD. in co-operation with LANE & PARTNERS LTD. have produced this exclusively packaged dessert milk chocolate bar, now available to all Charities, Youth Groups, Clubs and Schools in the U.K. for fund-raising.

Due to the success of this scheme NESTLÉ have decided to make this product available to all home side Youth Organizations at ANY TIME OF THE YEAR.

This means that you are now able to order and take delivery whenever your individual sales begin.

Each Dessert Milk Chocolate Bar is made by THE NESTLÉ CO. LTD. from the finest chocolate beans. Each bar weighs a full 3½ oz. and is covered with golden aluminium foil and packaged in a beautiful chocolate brown wrapper embossed in gold lettering.

No one is authorized to sell this particular package except bona fide organizations and schools within the U.K. Each bar is guaranteed fresh by the makers.



**THE PROFIT**

Suggested selling price to the public per bar	23½p
Your total cost per bar	17½p
Your net profit per bar	6p
Your net profit per Outer	£1.08

**HOW TO SELL**

Sell to all relatives and friends of your Organization. Have chocolate stalls at Autumn and Spring fêtes, bazaars and local sales of all kinds at any time.

Join up with your Church in their pre-Christmas and pre-Easter fund-raising efforts.

Sell by the Outer as these chocolate bars make excellent Christmas and Easter presents.

**HOW TO ORDER**

Simply fill in the order. SEND NO MONEY WITH ORDER. You will be invoiced when your order arrives and payment is required thirty days after invoice date. When paying your invoice simply remit 17½p per bar to THE NESTLÉ CO. LTD. and keep 6p per bar for your organization.

We regret we cannot accept orders for less than 10 Outers (180 bars), and we cannot give credit for unsold stocks.

Delivery is FREE

Please allow 2 weeks for delivery, and 4 weeks during the Pre-Christmas and Pre-Easter peak periods.

PLEASE ORDER PROMPTLY TO AVOID DISAPPOINTMENT AND POST ORDER TO:

**LANE AND PARTNERS LTD., 59 SOUTH AUDLEY ST., LONDON, W.1.**

Please cut here

PLEASE  
SUPPLY

☐ OUTERS

Normal Minimum Order 15 OUTERS (270 bars)  
SPECIAL OFFER - Minimum order 10 OUTERS (180 bars)  
1 OUTER = 18 BARS. 1 OUTER £3.15

My Sale Date Begins.....

Number of Members in Organization.....

Name of Organization.....

Name.....

Address (For delivery 9 a.m. - 5 p.m.).....

Signature.....

TERMS NET 30 DAYS FROM INVOICE DATE

Tel. No. ....

DEPOT No.

☐ ☐

CUSTOMER No.

☐ ☐ ☐ ☐ ☐ ☐

FOR  
OFFICE  
USE  
ONLY

ORDER No.



# home and away

## Tree Survey

The Tree Council are launching a National Tree Survey and they are asking everyone to help. They have issued leaflets with details of how to present your results to the right people. It tells you what to check when you record a tree or clump of trees, how to mark a map and how to make a chart of your findings. Many of you planted a tree in 'Plant a Tree Year', but it is now time to look after our existing trees. If you would like to help, write to **The Tree Council, Room C10/13, 2 Marsham Street, London SW1P 3EB**, for a copy of their leaflet.

## Farm Open Days

If you are a Guider with a city or town Unit, how many of your girls have ever visited a farm? This year why not take advantage of Farm Open Days and take members of your Unit to see how lambs are sheared or crops harvested? In 26 counties up and down the country farmers are inviting members of the public to come and see them on certain days. If you would like to know the dates and addresses of the farms, write for information to **The Project Officer, Farm Open Days, Association of Agriculture, 78 Buckingham Gate, London SW1E 6PE**.

## Sponsored Swims

Last year's sponsored swim in aid of the Friendship Group of Charities was so successful that they are holding another this year. Any group that would like to take part can hold their swim when and where they wish, so long as the money is sent in before the end of 1975. The money raised in this way will be divided between the Association for Spina Bifida and Hydrocephalus, Invalid Children's Aid Association, National Association for the Welfare of Children in Hospital, National Society for Autistic Children, National Society for Mentally Handicapped Children and the Lady Hoare Thalidomide Trust. If you would like further details of sponsor forms write to **Mrs Valerie Abrahams, 170 Portland Crescent, Queensbury, Middlesex**.

## Arctic Adventure

Thomas Cooke Adventure Club are organising a backpacking trek down the King's Way in Swedish Lapland this summer. The route, starting inside the Arctic Circle at Abisko, runs south for 132 miles through what has been called 'the last great wilderness in Europe', with overnight stops at mountain huts. The party, which will be limited to 15-20 in number, will leave London Airport on 19th July, and the full cost, including travel, accommodation and food, will be about £200. If you are interested, and can afford it, a leaflet, which includes a reservation form, is available from **Thomas Cook Adventure Club, 45 Berkeley Street, London W1A 1EB**.

## Handbills

Copies of the handbill, 'Join Our Happy Family', are still available. The handbills are to remind members of the Movement that there is a magazine for their particular section that aims to help them. *The Brownie, Guider* and the 'new-look' *Today's Guide* are featured on the colourful handbill. If you would like copies for your Unit, write to the Periodicals Dept at CHQ.

## Scout Association President

The vacancy for the President of The Scout Association, created by the death of HRH the Duke of Gloucester, has now been filled. As Patron of the Association Her Majesty the Queen has appointed HRH the Duke of Kent. Although he has not been a member of the Association, the Duke's father was Commodore of the Sea Scouts for 13 years.

## Hair Care

The Institute of Trichologists has published a leaflet entitled *Your Hair And Its Care*. This leaflet is designed to satisfy the constant demand for information concerning all facets of hair care, and deals with the basic facts in comprehensible and non-specialist language. If you would like a copy of this leaflet, or details of local registered members in practice, write to the **General Secretary's Office, Institute of Trichologists (Incorporated), 228 Stockwell Road, Brixton, London SW9 9SU**, including a stamped addressed envelope.

## In Memoriam

**Phyllis Barlee**, who died at the end of January, will be remembered by those who worked with her in India between the two world wars as one of the outstanding British Guiders who helped to build up Guiding. She had been a Guide at Princess Helena's College, Ealing, and when she joined her parents in Bombay helped with Bluebirds and then served as a District Commissioner for Satara where her father was the District Officer.

Phyllis was General Secretary for the Guide Movement in India for two years and, after earning her Eagle Owl Diploma, became the first Brownie Trainer in India. When her father retired as a High Court Judge in 1937 the family settled in Suffolk and soon afterwards Phyllis Barlee volunteered for the ATS. Members of the Guide Movement are proud she was the first holder of the title 'Queen's Cadet' after passing out of an ATS Officers' Training Unit in Surrey.

OLH

(Some of Phyl Barlee's friends hope to compile a record of her life)

The Hon **Cicely K Brooks**, who died on 10th February, will be remembered with affection and gratitude for her varied work in Lancashire where she had

fifty years. She led SE Lancashire through the difficult war years when her businesslike ability and efficient chairmanship were appreciated. Miss Brooks was instrumental in dividing the very large county into three separate, workable ones, and in 1946 she was awarded the Beaver for outstanding service to the Movement. Crawshaw Hall, her home, was open to Guides for meetings, and training and camps were held in the grounds.

Miss Brooks had been a JP for twenty-eight years and she will be remembered, too, for her work for moral welfare, the RSPCA, SSAFA and especially her church, St John's, Crawshawbooth.

FBB

'I should like to pay a tribute to **Elizabeth Fry's** great kindness, sense of humour, courage and understanding,' writes Elisabeth Lotz, a former International Commissioner in Switzerland. Indeed, many friends will wish to record their appreciation of all that Miss Fry, who died on 4th March, gave to Guiding. She began as a Guide and Ranger Guider in Kensington in the 'twenties and later she also served as a District and Division Commissioner, a Trainer and a Camp Adviser.

For over 35 years many Guides and Rangers have enjoyed camping at Sarrat in Hertfordshire, a site Miss Fry generously gave to Hampstead and St Marylebone Divisions in 1938. During the Second World War she worked for the Red Cross and St John Ambulance Brigade, and from 1949-1951 she was the Secretary of the Catholic Guide Advisory Council.

In World Guiding Miss Fry gave generously of her time and talents as Treasurer of the World Bureau and as Chairman of Our Ark, now Olave House.

TWM

Guiding in the Cherwell Division and Banbury District of Oxfordshire, has lost one of its most dedicated and admired members. **Miss Mary Wakelin** died suddenly after a happy Thinking Day evening with her Company and Brownies. She started the 1st Grimsbury Company, Banbury, over 40 years ago and her Guides will never forget the sound common sense, enthusiasm and fun she brought into Guiding, and the wonderful example set to those who came under her care. She was a tower of strength to all, and gave unstintingly of her time. She was District Commissioner, Division and Assistant County Camp Adviser, and was awarded the Oak Leaf for services to Guiding.

CH

In March *Guider* we said that Joan Cranstone took up her first appointment in Camberley in July, 1974. This should have read July, 1947.



**SPECIAL OFFER!**

Family 'Giant' Ridge Tent in superb heavyweight Nylon, Silver grey roof, golden brown cotton front, rear and walls. Proofed nylon sewn-in Groundsheet. Alloy Poles (uprights and ridge), heavy nylon Guy Lines. Size approx. 10'6" long 8' wide, 6'6" high, 30" walls. Sleep 4/6. Today's value £47.50. Our price £27.50, carriage 50p.

# MARQUEES

**READY TO ERECT**

**from only £197.50**

**COMPLETE WITH ACCESSORIES SEE LIST**



## BRITISH ARMY UNIVERSAL MARQUEES

Fantastic offer of Marquees as supplied to the forces. Previously used but in excellent condition. Made to the highest specifications in Genuine Ex Govt. Tarpaulin. Example: 30ft. x 20ft. includes: - 2 Roof Ends - One Roof Section - Four 27ft. walls - Eight 35ft. bracing lines - Two 36ft. weather lines - Pin Valise - Maul - 82 pegs - One 9ft. 36ft. Pole (in 1 section) - Two 12ft. upright Poles (in 2 sections) - 32 Wall Poles - Eight 30in. stakes - 1 Large Valise.

Sizes approx.  
20ft. x 20ft. £197.50  
30ft. x 20ft. £275.00

All Marquees 12ft. high - Side Walls 5ft. 6in.  
Carr. £5.50 per Marquee

## FIRE PROTECTION

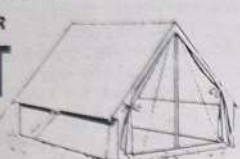
Genuine ex-Home Office Stirrup Pumps complete with 25ft. of heavy rubber covered hose and 5-gallon galvanised steel water container. Protect your family and dwelling with this ingenious fire fighting appliance. An absolute must for all campers, caravanners and site owners. Price £4.75 plus 50p carriage.

## WHY PAY MORE?

### THE SUPER TRENT

IS ONLY

**£8.50** p&p 25p



Beautifully styled in superb 5 ozs. Kingfisher Blue proofed cloth, zip door, lightweight sectional upright poles. Approx. 6ft. 6in. long - 5ft. wide - 4ft. high - 18in. walls - 6lbs. approx. Lightweight sectional alloy ridge poles £1 p.p. 25p. Waterproof ground sheet £1 p.p. 25p. Standard flysheet £5.25 Carr. 25p. Deluxe Nylon down-to-earth flysheet + 30in. extension £7.50 Carr. 25p.

## 14ft. RIDGE TENT EASILY CONVERTS TO A 4 ROOM CHALET

**£75**

Carr. £1.75



The famous ARMY 160 POUNDER 14ft. long, 14ft. wide, 7ft. high 27in. walls. Superb Ex Govt. tentage, guaranteed stormproof. Dutch lacing doorways each end, doors can be rolled up. With accessories - peg, poles, mallet and valise. Flysheet Grade 1, 14ft. x 19ft. £27.50; Carr. £1. Unused Tent complete all accessories £97.50 Carr. £1.75. Unused Flysheet £30. Carr. £1. Unused Groundsheet: 14' x 14', extra tough rubberised canvas, eyelets all round, untearable. Weight 28lbs. £12.50 Carr. 50p. Also Tent as above 14ft. ridge x 9ft. Grade 1, £45.00 Carr. £1. Flysheet Grade 1, £27.50 Carr. £1. Unused £30 Carr. £1.

## LIGHTWEIGHT BELL-END RIDGE TENT SLEEPS 4 ADULTS

## MICRO

ONLY **£35**

Carr. 75p.



Also smaller model £22.50 Carr. 65p. Approx. 8ft. 6in. long, 4ft. 9in. wide, 4ft. 6in. high, 12in. walls, weight 15lbs.

Superbly made in tightly woven super strong canvas. Styled with 2 spacious pockets and 4in. upright mudguards. Door has 2 ventilators and 2-way zip. Flysheet has smart front canopy. Superb 'Dur-alum' 3-piece ridge and upright poles. Extra strong guy lines with rubber adjusters, alloy pegs. Size approx. 10ft. (inc. bell-end) 8ft. high, 8ft. wide, 6ft. 6in. ridge, 18in. walls. Size packed: 28in. x 14in. x 6in. Colours: Flysheet Blue, inner Tent Orange. Weight 23lb.

## The very latest model TOILET TENT

**£7.75**

carr. 50p



All models with sectional lightweight alloy poles 75p. Extra.

So easy to erect. Made to our own specifications in super strong black weatherproof material with off white cotton lining. Size 6ft. front by 5ft. rear, 4ft. wide, 4ft. deep. Strong front zip. Supplied with sectional wooden poles, pegs and lines. Double guy lines to each pole for extra stability. ALSO LARGER MODEL £9.25 Carr. 50p. In superb off white, tear resistant, proofed fabric. 6ft. front, 5ft. rear, 4ft. 6in. wide, 4ft. 6in. deep. Water rot and stormproof. Ideal cooking or bathing tent.

## MAIL ORDER CAMPING BARGAINS

Order Now!!

Save 20-50%

	LIST PRICE	OUR PRICE
907 Gas Container (Filled) (Unfilled £6.95)	£10.99	£8.50
904 Gas Container (Filled)	9.98	6.50
Lumogaz 'C200' Automatic Lantern	8.50	6.25
Lumogaz 'R' Automatic Lantern	6.95	5.25
Lumostar 4' high Standard Automatic de-luxe Lamp	19.90	10.00
<b>CAMPING STOVES (High Pressure)</b>		
S.M.S. Stainless Steel 'Slimline' Double Burner	9.45	5.85
S.M.S. Stainless Steel 'Supreme' Double Burner	10.95	7.30
S.M.S. Stainless Steel 'De-luxe' Double Burner (in case)	15.58	7.75
S.M.S. Stainless Steel 'Slimline' Double Burner & Grill	15.30	8.95
S.M.S. Stainless Steel 'Supreme' Double Burner & Grill	16.89	10.25
S.M.S. Stainless Steel 'De-luxe' Double Burner & Grill	19.72	12.25
Frame Toilet Tents de-luxe model	22.75	11.75
Tilley 'Trio' S. Burner and Grill	13.54	9.75
Camping Blankets All Woollen LW 90" x 50" Rose only	2.50	1.50
Tilley Talisman Double Burner and Grill	25.53	17.50
Dudley 'Countess' (Low Pressure) Double Burner & Grill + Reg.	22.50	15.50
<b>CAMP KITCHENS</b>		
Beantalk Kamp Kitchen 'Standard'	11.50	7.95
Veritas Kamp Kitchen 'Romany'	12.90	8.50
S.M.S. 'Bantam'	14.91	9.95
S.M.S. 'Major'	18.59	12.50
S.M.S. 'Bantam' (with Hanging Larder)	17.11	11.50
<b>CAMPARI 'BARGAINS'</b>		
'Seazy' I. Airbed (With pillow) 76in. x 30 in	5.25	4.25
'Seazy' Double Airbed (with pillow) 75in x 46in.	9.75	6.25
'Limzy' King Size Air Mattress, single 74in. x 30in.	8.95	6.75
'Limzy' King Size Air Mattress, double 78in. x 51in.	18.95	10.50
Nylon 'High Pack' Rucksacks (all models) from		6.50
Ridge Tents Nylon Lighweights (Built-in Groundsheets) plus flysheet		16.75
Inflatable Boat Yacht Tender II	37.50	27.50
<b>ELSAN TOILETS</b>		
Elsan model 'Mini'	8.41	7.30
Elsan model 'Bristol'	15.31	12.50
Elsan model 'Porta Flush'	52.30	40.00
Porta Potti model '33'	32.25	27.50
Tilley Parafin 'Stormlight' Pressure Lantern	12.38	9.75
Continental Camp Beds De-Luxe model, with raised head	4.95	3.25
Camping Tables German De-luxe model, 32in x 24in.	8.50	6.50

## CHEMICAL TOILET £2.50 Carr 50p

Direct from Ministry of Health Recasen Portable Chemical Toilets. As supplied to Ministry of Health & in orig. cartons. Steel galvanised container, wooden seat & lid. Strong handle. Approx. 16in. high x 12in x 12in. Weight 11lbs. Recasen Sanitary Fluid £1.20 per gal. Carr. 15p.



## Ex-Govt. Grade one DUAL PURPOSE KIT BAGS

Tough hardwearing double texture light-weight waterproof canvas. Can be carried grip or kit bag style. 35in. long, 35in. circ. Also Unused larger model 36in. Long, 45in. circ. £3. Carr. 15p.

Large **£1.50** Carr. 15p

## Genuine British Army CAPE GROUND SHEETS

Heavy 3 ply Rubberised, waterproof, untearable canvas. 6ft. x 3ft. with cape attachment. Ideal Groundsheets or waterproof protective garment.

Used but perfect **£1.50**

Also unused £2.25, P/P 15p

FOR HIM - FOR HER

## BERGEN TYPE RUCKSACK

Carr. 20p **£7.50**



1Coz. proofed Blue-Grey Cotton Canvas. Leather shoulder & straps. Carries 56lb. (packed 24in. x 20in.) Centre pouch, side pkts. 2 inner containers. FRAME MODEL 15in. £4.50 p/p 15p. LARGE FRAMELESS MODEL £2.50 p/p 15p. HIKERS MODEL SMALL £1.50 p/p 13p.



Genuine Continental 17in. Frame Model

\* Carr. & P/P charges apply UK mainland only. Extra for Channel Isles & N. Ireland, etc. Goods despatched UK only.

## H. C. BRIGGS

(CAMPING EQUIP.) LTD (G) 88 FOREST RD. WALTHAMSTOW, LONDON, E17 6JH.

Tel: 01-520 2705 2 minutes from Blackhorse Road Station - Victoria Line Open Mon-Sat. Early closing Thurs. All measurements approx.

We promise prompt despatch  
Please add 50p CARRIAGE ON ALL ORDERS



# HQ NOTICES

## Handbooks

Everyone will understand that, with costs increasing daily, we have been forced to put up the prices (prices that we have held for two years) of the Brownie and Guide Handbooks for this year's editions. We were also overtaken by an increased demand. The year's supply, printed early in 1974, sold out in ten months. We had allowed for one month's overlap, but even so we were out of stock for some weeks. We are sorry about this, and have increased our print order for 1975. So as not to delay further the reprint of *The Brownie Guide Handbook* we had to print it without the price, as this was not finally settled at the time, and we apologise for any inconvenience this may cause.

The new price of *The Brownie Guide Handbook* is 55p and of *The Guide Handbook* 60p.

## Commonwealth Institute

In this month's *Today's Guide* we are featuring the Commonwealth Institute. May we repeat the plea that Guiders wishing to take parties of Guides to the Institute should be sure to book the visit in advance. Forms can be obtained from the Institute or your County Commonwealth Adviser. By booking your visit, the staff at the Institute will be prepared for your Guides and will offer them questionnaires on the exhibits, a room in which to eat their lunch and, if you wish, reserved seats in the cinema. Guiders can also obtain advance particulars of events to take place on application to the Institute.

## Training Diploma Award

Miss A Kirkwood, Belfast. (Guide.)

## Mervyn Newnham Memorial Fund

Those of her friends who would like to contribute to a memorial to Mervyn

Newnham at Foxlease, where she was Guider-in-Charge from 1937-1945, should send their contributions to Miss Evelyn Nuttall at Nythfa, Llanefydd, Denbigh, Clwyd. Cheques should be made out to her for the 'Mervyn Newnham Memorial Fund'. It is regretted that it will not be possible to send receipts.

The form the memorial will take has not yet been decided, but it will be something of lasting value that Foxlease needs. Suggestions will be welcome, but the nature of the gift will eventually be decided in conjunction with the 'Friends of Foxlease'. It is hoped that an announcement can be made at the 'Friends of Foxlease' Annual General Meeting at Foxlease on 12th July.

## Opportunity knocks...

Foxlease 2nd - 9th August  
9th - 16th August  
16th - 23rd August  
23rd - 30th August  
Waddow 9th - 21st August

... for those wishing to take small parties of Guides or Rangers for a week's holiday in the New Forest or on the edge of the Yorkshire Moors.

At Foxlease accommodation will be in a Georgian House situated on the edge of the Forest. You will be expected to plan your own Programme, which could include any of the following: Forest walking, deer stalking, bird and badger watching (though the latter may be a little elusive), searching for fossils, a visit to a Cathedral City, or to Brownsea Island where the Founder held the experimental Camp for boys in 1907. There will be someone to give advice, to help with handicrafts and activities for the evenings.

At Waddow you can go walking over the hills and fells, explore the witch country and many fascinating villages, visit abbeys, castles and Roman remains, go bird watching, fossil hunting by the river, or follow nature trails.

It will not be necessary for leaders of parties to hold a Holiday Permit, as qualified and experienced Guiders will be present to comply with

POR requirements. Leaders should, however, obtain the consent of their own Commissioners before making an application.

For full details please write to the Guider-in-Charge of Foxlease or Waddow (for addresses see 'Where to Train' page 205).

## Scout & Guide Trust Fund

Monthly interest rate after deduction of management commission.

Jan '75	10.125%
Feb '75	10.0%
Mar '75	9.81%

On 27th March, 1975 the value of a share in the above Fund was:

for selling purposes	30-67p
for buying purposes	32-8p
interest only yield	6-99%

The interest only yield does not include any capital appreciation and is based on the share buying price on the date stated.

## Southwark Catholic Guide Guild

St George's Cathedral, Southwark. Annual Parade and Folk Mass, 29th June, 1975 at 3.00 pm. Full details in *June Guider*.

## Something in Common

Foxlease 28th/30th November, 1975

For several years both Associations have co-operated to provide opportunities for Ranger Guiders and Venture Scout Leaders to attend jointly organised trainings. Foxlease now opens its doors to welcome leaders of Ranger and Venture Scout Units, or of Joint Units, to a general training geared to giving you the chance to share your experiences with others and to discuss topics related to your job of working with this age group.

The title of the weekend sets the theme, which is aimed at putting the emphasis on the common ground which both Associa-

tions must cover to achieve the same aims.

Ranger Guiders who have attended joint courses at Gilwell felt they had gained a lot from the experiences which such gatherings offer to pool ideas and to get to know your 'opposite number'. We hope that Venture Scout Leaders will join us this time at Foxlease, so do make these dates known to them.

## International Scout and Guide Club

Meetings take place every Monday, 8.00 pm at Baden-Powell House, Queen's Gate, London. All visitors are welcome. Programmes for May include: 5th, Talk on Caving; 12th, Annual General Meeting; 19th, Film Making; 24th-26th, Activity Weekend.

## Syllabus for Guide Interest and Service Badges

In order to keep down costs, the 1974 edition of this booklet contains the syllabuses of only 43 of the most widely used Badges. We felt that testers of Badges rarely taken, could have the syllabuses copied for them from *The Guide Handbook* rather than that everyone should have to pay a much higher price for this booklet.

## Joint Units Leaflet

A revised edition of this leaflet is now available free, from Country/Region HQ.

## Book List

We regret that errors have occurred in the order of the Book List in the new catalogue for 1975. Would you please note: Pages 18/19, items from X9095-X9073 should appear under the Brownie section. Page 22, items X9163 to end of page should appear under the Guide section. Page 24, items under the heading Charts should appear in the Guide section. Our apologies for the inconvenience caused.



# MEET THE NEW CO-ORDINATES **JACKET/SKIRT/PINAFORE DRESS**

In drip dry *non-iron* jersey crimplene



8751 Jacket Size: 10-20 £17.50  
22-24 £18.77

8752 Skirt Size: 10-20 £8.00  
22-24 £8.50

8753 Pinafore Dress £8.26

8754 Pattern (dress only) 28p

8755 Material 66" wide £2.44  
per metre

8706 Guider Blouse: 32-34 £3.94  
36-40 £4.03  
40-44 £4.15

All co-ordinates may be purchased separately.



## OR PLAN FOR THOSE SUMMER DAYS AHEAD

8767 Summer Uniform Dress in terylene/cotton

Size	10 £7.04	Size	16 £7.32
	12 £7.13		18 £7.41
	14 £7.24		20 £7.78
	Size 22 £7.88		

8700 Ranger/Guide & Guider Camp Dress

Sizes 10-20 £1.62

8421 Camp Shirts in knitted bri-nylon

Sizes 30/32 £2.67  
34/36 £2.93  
38/40 £3.20

8549 Slacks in stretch bri-nylon

Sizes 10-16 £3.80  
18-22 £4.14

All orders under £5 subject to 15p small order surcharge

## Mail Order Dept

The Girl Guides Association  
17/19 Buckingham Palace Road  
London SW1W 0PT

### THE ASSOCIATION SHOPS:

London: 17/19 Buckingham Palace Road  
SW1W 0PT.  
London: 19 Green Lanes, Palmers Green,  
N13 4TT.  
Birmingham: 5 Ryder Street, B4 7NE.  
Liverpool: 20 Richmond Street, L1 1EG.  
Cardiff: 209 City Road, Roath, CF2 3XX.

### SCOUT AND GUIDE SHOPS:

London: 124 Newgate Street, EC1.

London: 55 Woodgrange Road,  
Forest Gate, E7.

Ipswich: 5 Tacket Street, IP4 1AU.  
Leeds: 62 The Headrow, LS1 8EJ.  
Oxford: 17 Turl Street, OX1 3DH.  
York: 14 Goodramgate, YO1 2LQ.  
Peterborough: 97 Bridge Street.  
Harrow: 104 Hinds Road.

### SCOTTISH GUIDE SHOPS:

Edinburgh: 16 Coates Crescent, EH3 7AH.  
Glasgow: 1 Scott Street, G3 6NU.  
Dundee: 53 South Tay Street, DD1 1NP.



## Training Ideas

# We've Booked The Methodist Hall

Muriel Hopkinson

**O**F COURSE I realised they would have to go to Rangers soon. After all, they were 14 now, but they were so useful in the Company and it had taken such a lot of time and hard work to turn them into good Patrol Leaders and Seconds. No, we'd wait until the Autumn as planned and then perhaps a suitable Ranger Guider would appear, and perhaps some of the other Guides would be ready to take on the Patrols by then, although I certainly couldn't see that there was anybody in the least bit suitable at the moment. Anyway, we'd planned to take them to Our Chalet as Guides in July and turn them tidily into Rangers at the beginning of the Autumn term, and besides I wasn't ready yet. Really, they were ungrateful, and it would spoil all my plans.

In the end I didn't have any say in the matter. They took things into their own hands, decided that Easter was just the time for a new beginning and booked the Methodist Hall. After all, hadn't I always told them that Rangers ran their own show? If I could just look in and perhaps make the coffee they could manage the rest; Alison had agreed to be the Chairman (it said you needed one in the book) Linda would be the Secretary, and Sandra had already bought a book

thought it would be easy but it really needed such a lot of planning and they were so young, and how could I replace them in the Company?

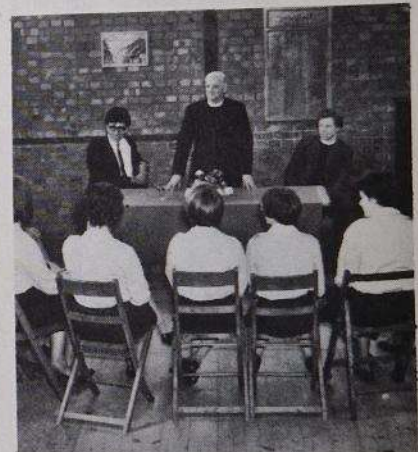
Just as I'd predicted, it wasn't long before they ran into difficulties. Not many people want to travel long distances in a rural area to speak to a group of eight or nine teenagers and, of course, most things cost money and they hadn't much of that yet. It took all the resources and expertise of my nearest and busiest friends to get us through this sticky patch, but the enthusiasm of the new Rangers (I was even beginning to think of them as Rangers now) and their sheer *jole de vivre* was so infectious that somehow we managed to get through the Summer term with quite a useful programme, while plans for our trip abroad kept spirits up.

At last, our long awaited trip to Our Chalet became reality and was better than our wildest dreams. Even I could see that, although they were the youngest group there, and by far the least experienced walkers and over-night hikers, they were learning fast and were really quite sophisticated young ladies, ready for all that Rangering has to offer. The end of our fortnight in Switzerland came, addresses were exchanged with Girl Scouts and Rangers from as far apart as Finland and the USA, fond farewells and promises to write often were made, and all too soon, we were on our way home again, with cameras full of never to be forgotten experiences to be re-lived and savoured for a long time to come.

Autumn arrived, and things were going to be a bit flat now after that wonderful summer. Would they find it difficult to get enthusiastic about the sort of activities our limited resources and facilities would allow? Again I had underestimated them, and they had a lot to look forward to; their first invitation to a Ranger/Venture Scout Activities Camp had been received for October and needed advance planning and they were all working hard on their pre-Investiture Challenge. There were several invitations to County Ranger events and they were also planning their first big money-raising venture.

The first investiture took place on a cliff-top 25 miles from home one Sunday afternoon in early December; the same spot on which we had all met four years ago when they were at their first Guide

Camp. There were lots of reminiscences as we walked down the hill to cook our tea. They'd forgotten the frying pan, so wasn't it lucky that there was a group of Australian Scouts at the farm who invited the Rangers to add their sausages



to the already sizzling barbecue? I wondered at the girls' self-confidence as they stood around the fire afterwards, completely at ease with their new-found friends. Were these really my rather immature PL's of ten months ago?

Well, it's really rather a pity that they've found themselves a Guider. She's been along to several meetings now, and as soon as she finishes her three months' work away from home, I don't suppose they'll need me at all. Ah well! I'll be able to concentrate on the Company more, and as soon as those three bossy 14-year-olds move up to Rangers, there will be new PL's to train, and the County International Camp is looming on the horizon. Yes, there's a lot to do in the Company, so I suppose that it's a good thing that the Rangers can cope without me. On the other hand, we've had lots of fun Rangering during this past year. At least I'm not like those Guide Guiders who hang on to their girls too long when they really are ready for Rangers. Why, I can't wait to get rid of them these days! I wonder if they've got room for Pam? Now, there's a girl who's really ready for the Ranger programme.



to write the subs in. They'd invited Michele from the other end of the District and Debbie from the next town, so it was bound to work! I wasn't sure about it at all, it wasn't in the least bit as I'd planned; if only they'd wait. They



# DISTRICT

*Training for the Commissioner and her team of Guiders*

## Training The

**A** GAIN AND AGAIN at Training Committees the Division Representatives ask for a Patrol Leaders' training. Telling them it is the job of the Unit Guider to train her own PL's according to their needs, although true, does not give them an adequate or convincing reply. What can we do to help our Patrol Leaders get the necessary training?

Firstly, it is possible to have a happy and interesting gathering of PL's at a central point where they are almost certain to enjoy themselves. They can learn some games and try out a few plays with which to occupy their Patrols



over a number of weeks. There is greater benefit if someone takes time and trouble to include the right kind of activity and help them to see the possible variations.

Secondly, how about Miss Dunnitt gathering some Guiders together in the District or Division and giving them some training in the form of activities which their Patrols can do with the PL's in charge? Yes, it is sure to be of help, especially if Miss Dunnitt can draw from the Guiders the how, why, and wherefore of the activities, and help them to see that they may need adapting for particular circumstances. It helps if she also points out that a PL of 12, with help beforehand and trust in her capabilities, is really quite capable of organising a Patrol. Perhaps there could be an exchange of ideas at District Meetings, commenting on their effectiveness next time if tried out by particular Units. Fireside training can be very valuable

when all the thoughts necessary before, during, and after more advanced Patrol activities can be talked through over a cuppa in the informal, less time consuming atmosphere of someone's home.

Perhaps the best method is, whenever possible, to have PL's and their Guiders together for a training session. On such occasions Cassie, Jo and Pat can not only try out ideas but put their heads together to discover why they worked or why they didn't, and whether they are suitable for their own Patrol, remembering Mr Fidget, the caretaker, who might prove more awkward than usual if the Hawks start lighting candles inside tin cans on his floor. The fact that someone has helped the Hawk PL to see what is necessary in the way of preparation, and the confidence she has gained through the training, will convince him that it will be all right. The fact her Guider knows that she is capable, having been there and seen her in action, will help too.

Here is a variable blue-print for such a training if you would like to try it in your District or Division, or ask your Training Committee if they can help you to organise something on these lines both with, and for you. Not more than 30 PL's are advised, together with their 10 or 12 Guiders. Divide them quickly into groups, the Guiders can help. Then the 'Patrols' settle into a chosen place



and the Guiders can gather in two or more groups, out of the way but visible.

A 'Getting to Know You' activity is useful, then two or three quick and varied games such as Button Kim, Kick the Box, etc, with instructions for each game being given to a different PL every

time. Remember to allow time for making notes.

Having previously asked the Guiders to take note of their own PL's in



particular, and to observe generally with a view to noticing something specific about someone, such as 'Sally took care of an obviously newer PL', or 'Penny was very efficient' the Patrols can then try out something requiring more organisation, eg Silhouettes; Toffee Marshmallows (using butane gas); Buddy Burners; reconstructing a crime from a set up incident (Young Leaders would be useful here). If all the Patrols can have different activities it will help the Guiders to realise this can work.

It is useful while these are going on if the Guiders can have a Handout on which are such questions as: If a recruit was in this Patrol would she have completed any part of her Pre-Promise Challenges? What are the snags for you? List four points where individual progress can be made, etc. The Guiders can wander round and see what is happening, but advise them not to help unless specifically asked to do so.

There may be time for an outside ploy, bringing in timing and wider organisation. Ask the Guiders to discuss what build up is desirable for such activities, then, to round off, try to include some food for thought. One idea is to have pieces of ruled paper for the Patrols on which they can record activities done under the appropriate Eight-Point heading; possible follow up etc. You could have a large Eight-Point star suitably marked, on which pieces of card with details of things tried or other aspects such as 'returning equipment to Guider' can be placed, together with a spill in the centre if they consider the Promise was incorporated in any way



## Patrol Leader

Ilma Bailey

You can ask their reasons, or not ask if you prefer.

Such a training should help a PL to learn something, practise her skills, have an opportunity to organise, widen her horizons and deepen her understanding of Guiding, while giving her fun at the same time. The Guiders can be helped to see what is possible in Patrols, be encouraged to let PL's take a more responsible part in Unit affairs, and learn that by standing back and looking and listening they can learn so much more about individuals, and be better able to meet their needs.

The Patrol Leaders have a new book to give them increased confidence and ideas to try out, but they may need your help to make the best use of this excellent little book. How can you help? It seems more difficult if you are single-handed and have little time. It is vital to the efficient running of a self-governing Unit that regular Patrol Leaders, Councils and PL trainings are held. If you have no spare evenings, consider restricting the first meeting of each month, or half-term, to PL's only. The talking, planning together and facilitating of their ideas will more than pay dividends in the remaining weeks of the month or half term.

If you are not single handed, then your Assistant may be happy to cope

meeting later. In summer you could be outside. Well – couldn't you?

The Patrol Seconds will also welcome the chance to be in charge, all



previously arranged, of course. If the Patrols have already made suggestions, maybe at PL Council, and even decided their 'line of action' for a few weeks, then during this time together you can help them sort it all out into a workable whole, dovetailing ideas and giving practical aid where this seems either necessary or desirable. A little regular help is usually the most useful. Have you tried briefing the PL's at the beginning of the evening with such remarks as 'Elaine, will you notice how your two recruits deal with ...' or 'Melanie, try to include ...'? Then, while the Patrols with Seconds in charge clear up at the end, take a few minutes for a short evening evaluation session, and ask for their observations. It is worthwhile, over a period of time, to have the PL's for about ten minutes at the end to evaluate the evening while the others sing, play a game or just clear up. Include it in your planning. 'Was everyone in your Patrol interested in ...? Why was Rosalind so awkward ...? Could you think of a better way of ...? You will be amazed at the difference in the awareness of your PL's.

Try not to impose your wishes on the Patrols, or expect them to do everything together at the same time. PL's often like to try out ideas from the Handbook on each other to check their own skills and organising ability. Always be ready to help them arrange something, to teach a skill or help prepare a number of

activities. Have a few plays up your sleeve, or rather at the end of your programme book, and pat yourself on the back if they are not needed for weeks on end. Try not to spoon feed your PL's; if the Robins forget the matches and the sausages go unfried, let them go without, providing only the Robins are affected and there are no hungry Brownie Guides or visitors involved. They are more likely to remember next time.

Frequent checks on individual and Patrol progress with the PL will help her to assess her own Patrol. It need only take about ten minutes per Patrol, and



only one Patrol per week, so that over a month or so the whole Unit can be helped in this way. Perhaps you can plan ahead for five or six weeks and, during one of those weeks, arrange for a few Seconds to be in charge, so that you can help some PL's during the actual meeting rather than altogether. It is, of course, necessary for all the PL's to meet together to discuss Unit matters and learn from each other at intervals, but the job of training them does not seem so formidable or time consuming if you can think of it as a gradual task rather than a mammoth job done once during a long period.

Try it and see, then share your findings with the other Guiders in your District and so help each other, for any adult who can help another adult, or young person, is doing the job of training, and we all have something to give along these lines.



with part of the evening occasionally, while you have the PL's together.

If you have no second room, have them at someone's house and go to the



# BROWNIE

## Training Ideas

### The Pocket Books

Leonora Wilson

**I** SUPPOSE Pocket Book No 1 sells the best! It's so obviously and instantly useful in helping the new Brownie-to-be learn the words of the Promise and get some idea of its meaning. It helps with uniform too and of course, it is something for Mum to see. By working through the Pocket Book with the Brownie Guider or with Pack Leaders a little at a time, the new arrival can prepare herself for her Promise Ceremony and life as a Brownie. There's no doubt that Pocket Book No 1 fills the bill.

But what about Pocket Books 2, 3 and 4? Perhaps their usefulness is not quite so obvious, or perhaps we have used them and given up when the Brownies, in their zeal and enthusiasm, happily filled in every page, regardless of instructions. Or the books have gone home and never come back, having been grabbed by the baby or torn by the dog or covered with jam. Some books may have been safely kept in a pocket, only to end their days in the washing machine. So, is it worth struggling with Pocket Books? Yes, I think it is!



It is worth taking a little trouble to plan out the use and supervision of the Pocket Books. On my own copies I have put the letter W in the top right-hand corner of certain pages. Pack Leader copies these into other Pocket Books and when the Brownies receive them they are told that W means wait and

they know that these pages will be dealt with at the Brownie Meeting. They find out too that they can have a lot of fun



working out some of the ideas with other Brownies. The following are suggestions:

Book 2 – Brownies Keep Fit (pages 7 and 8): Toothbrushes and hands can be prepared at the Brownie Meeting and the Challenge completed at home.

Being Wide Awake (page 18): This can be the basis of a 'one handed' Challenge session.

Book 3 – Brownies Do Their Best (page 9): This can provide fun with codes, and games with secret messages can be devised.

Have A Try (page 19): This can start with Challenges at Brownies and be completed at home.

Book 4 – Brownies Make Things (page 11): This can produce a flurry of literary activity, and Fun out of Doors (page 20) can be preceded by compass activities with the Pack or just a group.

Some times, Brownies are 'stumped' with certain pages, and activities or games in the Pack can give ideas. The Lend a Hand in Book 2 (page 14) and Book 3 (page 15) can be put in a hat, then each Six draws out a name and acts a good turn using that object. Other Sixes could guess that object.

The Do Their Best page in Book 4 (page 8) is difficult for a Brownie to complete unaided. Write out about sixteen adjectives on separate cards, eg

willing, neat, brave, reliable, and then devise some method of collecting them, such as searching for their hiding places or fishing them out of a pond with a magnet. When collected, the word BROWNIE GUIDE is made from the initial letters, and if there are too many adjectives, useful discussion can arise from the selection of the best one.

Some may say that the Brownies should fill in their Pocket Books unaided, but I have yet to meet a Brownie who can do that. In any case, there are still plenty of pages which the Brownies can complete themselves. Even so, they often enlist the aid of Mum or Dad while Pack Leader can be a useful ally. Brownies can get fun out of both methods.

It is perhaps better to use the Pocket



Books at intervals rather than every week. Sometimes, they will remain for safety in the Pocket Book Box in the Brownie Cupboard. At other times, they will go to and fro between home and the Brownie Meeting for several weeks.

It is worthwhile for the Brownies, Guider and her helpers to plan together how they will use the Pocket Books. Once a plan is made and put into operation, the newer Brownies will learn from the Guiders and the other Brownies how the Books are used, and once established the use of the Pocket Books will add colour, gaiety and satisfaction to the Brownie Meeting.





## What gives you a warm, comfortable, good night's sleep and comes in bags?

'Terylene' fillings.  
Specially developed by ICI for sleeping bags.

And once you've made sure the sleeping bag you're buying has the 'Terylene' label, you can relax.

Because then you'll know that you'll be warm and comfortable.

'Terylene' filled sleeping bags are light. They're washable. Mildew and rot proof. And because they

come in a choice of four different filling weights, you'll get one that suits your needs exactly. From camping to sailing, mountaineering to caravanning. Or simply as a handy piece of instant bedding for the home.

So make sure the sleeping bag you buy has the 'Terylene' label, because then you'll know exactly what you're getting into.



'Terylene' and ICI Roundel are Registered Trademarks of ICI.



# PAPOOSE

## PAPOOSE 7519

This ideal carrier has been developed to aid parents with young children who wish to continue their outdoor activities. Constructed from nylon coated tubular steel and attractive 2 oz Red Nylon Fabric. Suitable for children from six months to 3½ years. Price: £6.35.

## PAPOOSE CAPE X7520

This nylon cape fully protects the child and goes right over the outside of the Papoose frame.

Colour: Red. Price: £2.35.

There is a small order surcharge of 15p on all orders of less than £5.



# THE PROTECTORS

## PROTECTORS

The protective clothing that's always one step ahead of the others. Use of advanced nylons and waterproof coatings make this range of protective clothing unbeatable value.



## SAILING SMOCK CAGOULE OVERJACKET

**SAILING SMOCK** Colours: Red, Orange, Yellow.

7793 Small: 7794 Medium: 7795 Large: Price £5.90

**CAGOULE** Colours: Royal, Orange, Olive.

7790 Small: 7791 Medium: 7792 Large: Price: £6.80

**OVERJACKET** Colours: Royal, Yellow, Navy, Orange, Olive.

7846 Small: 7847 Medium: 7848 Large: Price: £6.50

**STANDARD TROUSERS** Colours: Royal, Orange, Olive, Navy.

7849 Small: 7850 Medium: 7851 Large: Price: £4.10.

There is a small order surcharge of 15p on all orders of less than £5.

Size Chart	Adult Sizes	Chest or Bust	Inside Leg
	Small	36"	28"
	Medium	40"	30"
	Large	44"	32"

available at Guide shops and  
Mail Order Dept,  
The Girl Guides Association  
17/19 Buckingham Palace Road,  
London SW1W OPT.

## THE ASSOCIATION SHOPS:

London: 17/19 Buckingham Palace Road, SW1W OPT.

London: 19 Green Lanes, Palmers Green, N13 4TT.

Birmingham: 5 Ryder Street, B4 7NE.

Liverpool: 20 Richmond Street, L1 1EG.

Cardiff: 209 City Road, Roath, CF2 3XX.

## SCOTTISH GUIDE SHOPS:

Glasgow: 1 Scott Street, G3 6NU.

Edinburgh: 16 Coates Crescent, EH3 7AH.

Dundee: 53 Tay Street, DD1 1NP.

## SCOUT AND GUIDE SHOPS:

London: 124 Newgate Street, EC1.

London: 55 Woodgrange Road, Forest Gate, E7.

Ipswich: 5 Tacket Street, IP4 1AU.

Leeds: 62 The Headrow, LS1 8EJ.

Oxford: 17 Turl Street, OX1 3DH.

York: 14 Goodramgate, YO1 2LQ.

Peterborough: 97 Bridge Street.

Harrow: 104 Hindes Road.





## Background to World Conference

### Our Delegation

(Continued from page 182)

At the 22nd World Conference, our working day will be from 8.45 am until 9.45 pm and will consist of a mixture of sessions and discussion groups attended by the whole delegation. We shall be seated as countries in alphabetical order, as in the United Nations and other international meetings. Simultaneous translations and copies of all papers will be available in English, French and Spanish. Plenary sessions include Finance and the Thinking Day Fund, Privileges and Responsibilities of Members, Joint Activities and Girl Guide/Boy Scout relationships, one category of membership, a study of future World Conferences and reports from sub-committees, the four World Centres and the World Bureau. We will also make plans for the next triennium. Time is set aside for delegation meetings so that we can discuss how to vote in the light of any new information received at the Conference. The Conference theme is 'Spiritual and Moral Values', and will be presented by a group of young people prior to the discussion.

There are two closed sessions attended by the delegates only. These are to consider applications for membership of the World Association of Girl Guides and Girl Scouts and to elect the four new members of the World Committee. While these are in progress, the visitors can choose to attend discussion groups on topics such as 'WAGGGS and the World Today', 'Guiding for the girl', 'Training for the leader', and 'From here to the girl'. The conference agenda was

circulated in February, and these members of the delegation who were also at the 21st World Conference in Canada are kindly undertaking to work on certain topics into which they researched last time. The previous and past delegations are meeting to discuss the 22nd World Conference Agenda items and to put forward recommendations for the Executive Committee to discuss. In this way we are given guidance as to how to vote on behalf of you all. At first this may not seem a very representative method, but all kinds of ideas, points of view and actions from your Regions and Countries throughout the past Triennium are the basis of the thinking that goes on at the Executive Committee. Added to this is the information from trainers, the Departments at Headquarters and the reports from our representatives attending conferences, trainings and seminars at home and abroad.

Each Member Organisation has one vote and motions or amendments are carried by a simple majority, except for those relating to membership of the World Association, Finance and Amendments to the World Association Constitution and Byelaws that require a two-thirds majority vote. As a Full Member, the UK has a right to vote on all matters. Voting is either by a roll call vote and/or a show of hands, or, for decisions such as the venue for the next meeting of the World Conference and Election of the World Committee Members, by secret ballot. Daily bulletins and summaries keep us up to date on information.

Welcome periods of relaxation, when we can get to know the other delegations, will be at meal times, the

visit to the 'Orbit '75' Camp, the all-day programme arranged by the UK and ending with supper with the Guides on the way back, and an evening's home hospitality. In addition, it will be just as exciting for us as for our overseas friends when we accept the very gracious invitation of Her Majesty the Queen, to attend a reception at Buckingham Palace, and to have our President, HRH The Princess Margaret, officially open the Conference.

After the Conference, some of us will be going immediately to the Training Centres to help to welcome any overseas delegates who will be attending the trainings and activities there. We shall later compile a report for the Executive Committee and will be writing articles for *Guiding* to keep you all informed of what went on at the Conference. We also hope that you will ask us to the Regions to talk to some of you. Some of us may also find that we have been elected to serve on Committees for the World Association, and in this way we shall continue to serve Guiding on a World level throughout the next three years. We are indebted to all of those who have helped to train us in so many ways in the past years, and will remember them with gratitude and affection as we do our best to carry forward the thinking that took place at Sussex, and to act on the decisions taken there on your behalf. Please spare us a little room in your prayers, to help us do credit to the ideals of the Founder.

*Kathryn Benson-Evans*

**Dr Kathryn Benson Evans,  
Leader of the British Delegation.**

## BOOK REVIEWS

**The Chief - the life story of Robert Baden-Powell by Eileen K Wade.** Wolfe Publishing Ltd, £2.75.

'There would have been no Scouts, no Guides, today, if B-P had not been the great and unique man he was,' writes today's Chief Scout, Sir William Gladstone, in the foreword to *The Chief*, and perhaps it will be because they want to discover for themselves

what kind of man the Founder was, and what his training methods were, that Guiders of the '70s will be keen to read this book. India, The Cape, Zululand, The South African War, A Second Life, are some of the chapter headings.

The author is Eileen Wade, who worked with the Founder for 27 years as his private secretary. This book was first published in 1924

under the title of *The Piper of Pax*; now Mrs Wade has revised it and added a chapter covering the period from 1924 until B-P's death in 1941. (Incidentally, if the book is re-printed, I hope two statements in the last chapter will be amended - the Founder's wife was acclaimed World Chief Guide in 1930, not 1924, and the Queen of the Netherlands is the daughter, not the daughter-in-law, of Queen Wilhelmina.)

*The Piper of Pax* was illustrated with some of



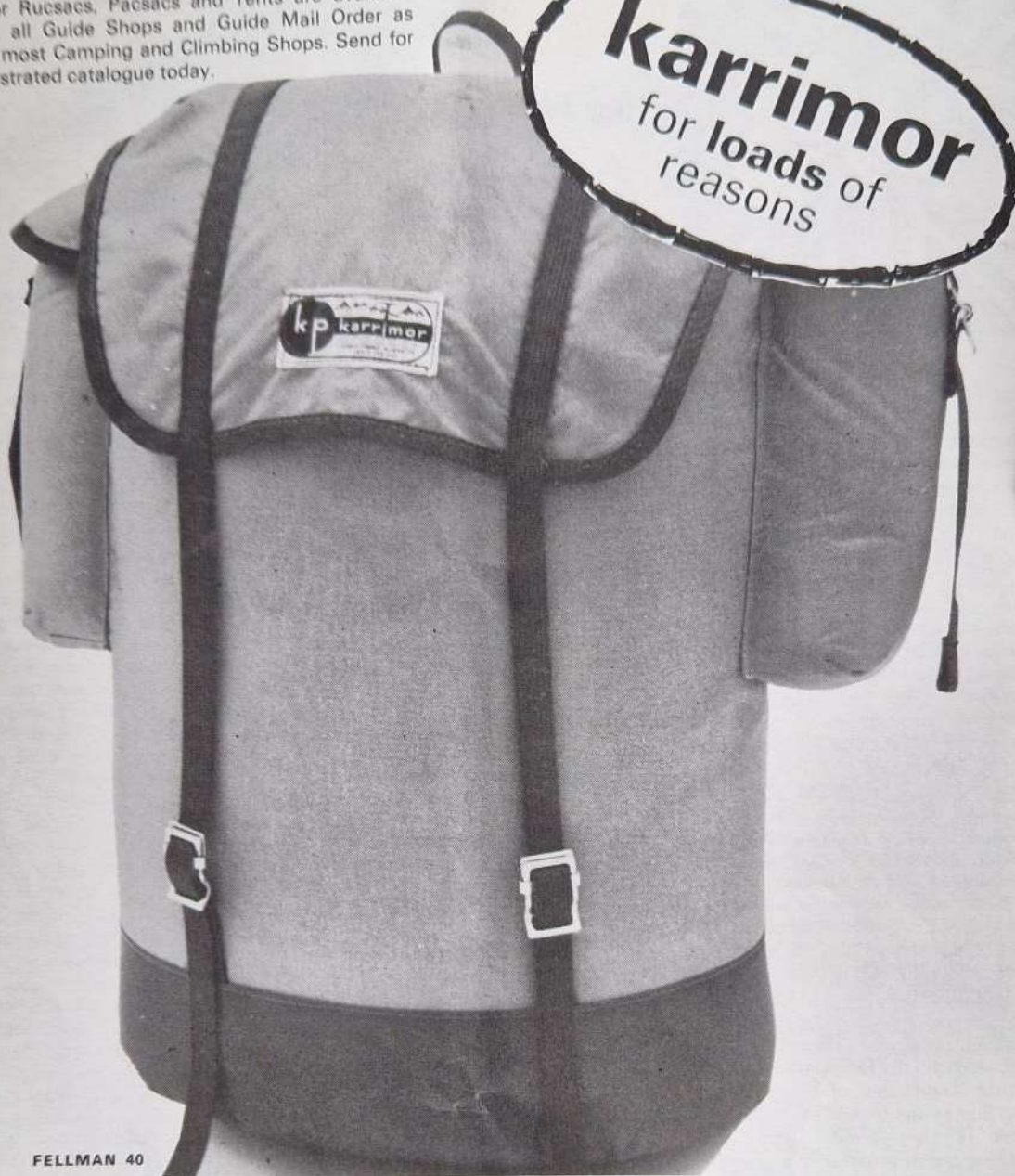
B-P's drawings; the revised edition includes 32 excellent photographs.

**TWM**



Karrimor Rucsacs, Pacsacs and Tents are available through all Guide Shops and Guide Mail Order as well as most Camping and Climbing Shops. Send for fully illustrated catalogue today.

**karrimor**  
for loads of  
reasons



FELLMAN 40

BAMBAINO I



BAMBAINO II



EDELWEISS



FIORLAND



TACPAC



TOTE-EM 50



# karrimor

Avenue Parade, Accrington, Lancs., England.



# Where to train

## HOW TO APPLY

Any Guider may apply herself to attend a training course at the Centres, provided she has reached the minimum age of 18 years. (At the discretion of the Commissioner a member aged 17½ who is working on the Adult Leader's Certificate may also apply for a Guider course.)

An application to attend a Guider Training Centre should be sent direct to the appropriate Guider-in-Charge, and must be accompanied by the correct amount of deposit and a stamped addressed envelope. Applicants should also state the type of training for which they are attending, as there may be several different courses running at any one weekend. As so many Guiders have to leave on Sunday, training sessions at a two-day weekend will stop at tea-time on that day unless otherwise stated, if sufficient notice is given that it is wanted, every effort will be made to provide sessions for a group until Monday. Individuals who are able to stay over until Monday to enjoy the surrounding country and other amenities of the Centres are most welcome to do so.

Telephone calls are accepted only between the hours of 8 am and 8 pm except in emergencies.

## Bursary Help

The Fee Bursary entitles a Guider to a grant of £1.50 for a two-day weekend and 50p for each additional day.

The Fare Bursary (available only for travel to the nearest Training Centre) carries a rebate of a Guider's travel expenses in excess of £2.00.

The Angela Thompson Bursary is available to any Guider attending a Promise and Law or similar training (not necessarily at a Training Centre).

HOW TO APPLY: Full details of the conditions of issue and how to apply are available

from the Training Department, CHQ. No application form is necessary, and District Commissioners may apply on behalf of their Guiders, after they have been accepted for the training, direct to the Training Department; Scottish Commissioners should write to Scottish Headquarters. In the case of county weekends Commissioners should apply to their County Training Chairman/Adviser. Except in very special circumstances, on the recommendation of her Commissioner, a Bursary cannot be issued to a Guider who has previously had one, nor can one Guider receive a Fee and Fare Bursary.

Commissioners are asked not to apply for bursaries for Guiders able to get LEA grants.

All applications must arrive at CHQ at least TWO WEEKS BEFORE THE TRAINING and Bursaries cannot be issued at shorter notice or in retrospect.

## CHQ

FOXLEASE  
Lyndhurst, Hants SO4 7DG

Tel: (Lyndhurst) 042-128 2638.

MAY  
2-4 Middlesex West  
15-18 †Concentrated First Aid Course  
16-18 General Training, Brownie and Guide Guiders

JUNE  
6-8 Creative Activities in the Programme (training for Guiders of all Sections)  
13-15 General Training, Brownie and Guide Guiders

JULY  
4-6 General Training, Brownie and Guide Guiders. (Some places reserved for World Conference Delegates)  
11-13 †Friends of Foxlease  
16-22 †Holiday Week (members and friends or mothers, and Trefoil Guild)

24-31 Patrol Leaders' Week

AUGUST  
2-9 †Holiday Week (Unit Guiders with up to nine of their Guides or Rangers)

9-16 †Holiday Week (Unit Guiders with up to nine of their Guides or Rangers)  
16-23 †Holiday Week (Unit Guiders with up to nine of their Guides or Rangers)  
23-30 †Holiday Week (Unit Guiders with up to nine of their Guides or Rangers)  
(Bank Holiday)

SEPTEMBER  
12-14 Leicestershire  
19-21 London and SE England (by allocation)  
26-28 Sussex East

OCTOBER  
3-5 London South West  
10-12 General Training Brownie and Guide Guiders  
17-19 Surrey West  
24-26 South West England (by allocation)  
31-2 NOVEMBER General Training Brownie and Guide Guiders

NOVEMBER  
7-9 Dorset  
14-16 Helping the Young Leader (County Leadership Advisers, Commissioners and Guiders)  
21-23 Making the Most of the District (District Commissioners with up to seven of their Guiders)  
28-30 'Something in Common' (A general training for Ranger Guiders and Venture Scout Leaders)

DECEMBER  
5-7 Take Another Look (A refresher weekend for any qualified trainer)

WADDOW  
Clitheroe, Lancs BB7 3LD  
Tel: (Clitheroe) 0200 23186.

MAY  
2-4 District Commissioners and District Assistants (sessions on the Adult Leader's Certificate)  
9-11 General Training, Brownie and Guide Guiders  
15-18 †Concentrated First Aid Course

30-1 JUNE General Training Brownie and Guide Guiders

JUNE  
6-8

11. Commissioners with their LA Chairmen.  
2. Certificated Trainers (with five or more years' experience)  
†Friends of Waddow  
13-15 †1. Prospective Campfire Leaders  
20-22 †2. Guitar and Recorder Playing for Beginners  
27-28 General Training, Brownie and Guide Guiders

JULY  
4-6

General Training, Brownie and Guide Guiders (Some places reserved for World Conference Delegates)  
11-13 Making the most of the District (District Commissioners with up to seven of their Guiders)  
18-25 Patrol Leaders' Week  
29-5 AUGUST North West England (by allocation)

AUGUST

9-21 †Holiday Weeks (Unit Guiders with up to nine of their Guides or Rangers)  
23-30 †Holiday Week (Members and friends or mothers, and Trefoil Guild)

SEPTEMBER

5-7 General Training Brownie and Guide Guiders  
12-14 North Tyneside  
19-21 Making the Most of the District (District Commissioners with up to seven of their Guiders)  
26-28 West Yorkshire West

OCTOBER

10-12 Cumbria North and South  
17-19 West Mercia  
24-26 General Training Brownie and Guide Guiders  
31-2 NOVEMBER Ranger Guiders Training (Commissioners welcome)

NOVEMBER

7-9 Lancashire East  
14-16 General Training Brownie and Guide Guiders  
21-23 Greater Manchester West  
28-30 North West England (by allocation)



# Guiders

Going to:

- Camp?
- Pack Holiday?
- Pack Overnight Venture?
- Ranger Holiday?

Then you need the following books

- **Camps and Holidays** X9172 40p
- **Pack Holidays** X9133 16p
- **Camp Cooking** X9185 40p

Send for our new Book List and Uniform/Camping Catalogue today

All orders under £5 are subject to a 15p surcharge



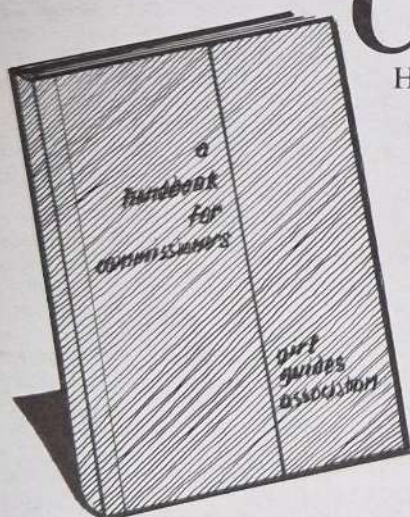
# Commissioners

Have you your own copy of the NEW EDITION of

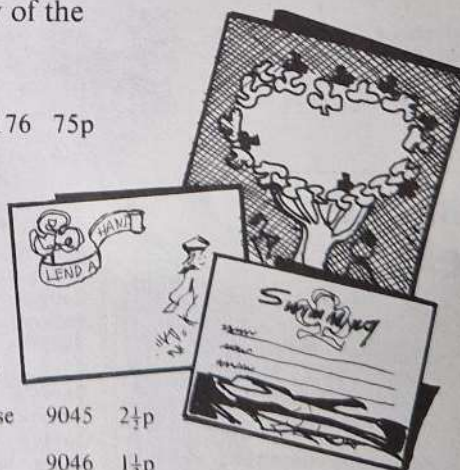
**A Handbook for Commissioners?** X9176 75p

Secretaries need one too.

What about certificates for your District Events?



- **Guide General Purpose** 9040 3½p
- **Brownie General Purpose** 9045 2½p
- **Swimming** 9046 1½p



## Mail Order Dept

**The Girl Guides Association**  
17/19 Buckingham Palace Road  
London SW1W 0PT

**THE ASSOCIATION SHOPS:**  
London: 17/19 Buckingham Palace Road, SW1W 0PT.  
London: 19 Green Lanes, Palmers Green, N13 4TT.  
Birmingham: 5 Ryder Street, B4 7NE.  
Liverpool: 20 Richmond Street, L1 1EG.  
Cardiff: 209 City Road, Roath, CF2 3XX.  
**SCOTTISH GUIDE SHOPS:**  
Edinburgh: 16 Coates Crescent, EH3 7AH.  
Glasgow: 1 Scott Street, G3 6NU.  
Dundee: 53 Tay Street, DD1 1NP.

**SCOUT AND GUIDE SHOPS:**  
London: 124 Newgate Street, EC1.  
London: 55 Woodgrange Road, Forest Gate, E7.  
Ipswich: 5 Tacket Street, IP4 1AU.  
Leeds: 62 The Headrow, LS1 8EJ.  
Oxford: 17 Turl Street, OX1 3DH.  
York: 14 Goodramgate, YO1 2LQ.  
Peterborough: 97 Bridge Street.  
Harrow: 104 Hinds Road.



## TRAINING NOTES

### Concentrated First Aid Course

For fuller details about this special course please see 'February' Guiders, page 70, for the Programme Notes.

### Holiday Weeks

For details of Holiday Weeks, see HQ Notices Page 195.

### Something in Common

For details see HQ Notices page 195.

### Fees at Foxlease and Waddow:

Shared room, per day £3.00;  
Double room, per day £3.50;  
Single room, per day £4.00;

† Courses or events so marked will be subject to VAT.

For a full week the above prices are subject to a 15 per cent discount.

These prices are for members of the Girl Guides Association and the Scout Association only.

Deposit £1.00 – cheque or postal order only.

30-1 JUNE Edinburgh SW and Edinburgh and Glasgow Handicapped Trefoil Guild.

## JUNE

6-8 Lightweight Camping for Ranger Guiders and their Rangers.

13-15 Scottish Handcraft Circle.

27-30 Patrol Leaders

## JULY

5-12 Scottish Challenge Camp Week

17-25 Patrol Leaders' Woodcraft Camp

18-25 Patrol Leaders' Week (by invitation)

## AUGUST

1-4 Patrol Leaders

7-15 Patrol Leaders' Woodcraft Camp

8-15 Patrol Leaders' Week (by invitation)

22-24 Patrol Leaders

29-31 Music and Campfire for Guiders of all Sections (Visit to Edinburgh Festival Event on Saturday evening)

## SEPTEMBER

12-14 Ranger Guides

19-21 Brownie and Guide Guiders

26-28 Brownie and Guide Guiders (includes booking from Fife)

## OCTOBER

3-5 Brownie and Guide Guiders (includes booking from County Durham and South Tyne)

10-12 Brownie and Guide Guiders (includes booking from City of Aberdeen)

17-19 Brownie and Guide Guiders

24-26 Brownie and Guide Guiders (includes booking from Perthshire)

### Fees at Netherurd

The new rates are as follows:

Shared room, per day £2.00;

Double room, per day £2.25;

Single room, per day £2.50;

Deposit – £1.00. Training fee for non-residents – 50p per weekend.

## Wales

### BRONEIRION

Llindinam, Mont SY17 5 DE

## MAY

2-4 Ranger Guiders with two of their Ranger Committee members.

3 Day Conference for Welsh Public Relations Advisers

9-11 Pre-Warrant (Emphasis on the Adult Leader's Certificate)

17 Day Conference – Welsh County Personnel

18 Open Day – House and Gardens

23-27 PLs under 14 years (Open to all Counties)

(Bank Holiday) JUNE Welsh Trainers' Conference

30-1 JUNE Welsh Trainers' Conference

JUNE 13-15 General Training (Places reserved for Central Glamorgan)

18 'Friends of Broneirion' Gathering (Outside booking)

27-29 JULY Young Leaders' Week (Rangers and Young Leaders' working on Leadership)

19-26 AUG. Girls' Course (14 years and over)

31-4 AUGUST

7-11 PLs under 14 years (open to all counties)

15-17 Guiders with their own Patrol Leaders

22-26 'Patrol in Action' (groups of not less than four girls from a genuine Patrol)

(Bank Holiday)

Fees at Broneirion:

Shared room, per day £1.75;

Double room, per day £2.00;

Single room, per day £2.25;

Non-residents, per day 50p

Pony Trekking and Gliding, for which a supplement must be paid.

## MAY

9-11 Adventure Course. A Guider with up to three Guides or Rangers aged 13-15 years. Pony Trekking, Canoeing, Orienteering, Hill walking, Swimming.

## Scotland

### NETHERURD HOUSE

Blyth Bridge, West Linton, Peeblesshire

## MAY

2-4 Brownie and Guide Guiders (includes booking from Northumberland)

9-11 District Commissioners (sessions for new Commissioners)

16-18 Brownie and Guide Guiders (includes fun in, and enjoyment of, the out of doors).

23-25 Brownie and Guide Guiders (includes booking from West Lothian)

## Glenbrook

### GLENBROOK

### OUTDOOR ACTIVITIES

### TRAINING CENTRE

Bamford, Nr Sheffield

S30 2AL

All courses cost £6.00 unless otherwise stated. The cost covers all activities except

## NOVEMBER

7-9 Leadership in the Hills. This Course is for Guiders and Rangers over 17 and is intended for anyone interested in taking parties of young people on the hills and who require help with D of E expeditions

## Heritage Year Diary

### May

7-31 London. Exhibition of books on historic buildings and places. National Book Centre, Albemarle Street.

7-17 Brighton. Gothic. An exhibition at Brighton's museum and art gallery.

7-18 Brighton. The Grand Tour. A festival of concerts and lectures on the historic tours of Europe.



9-30 Leicester. Leicester's Heritage. An exhibition at the museum and art gallery.

16-18 Bromsgrove, Worcester. Avoncroft Museum of Buildings Annual Conference. The theme will be European Architectural Heritage Year.

28-29 Stafford Schools' Heritage Year Exhibition. Can be seen in the County Council marquee at the Staffordshire Agriculture Show.



## Cool and refreshing

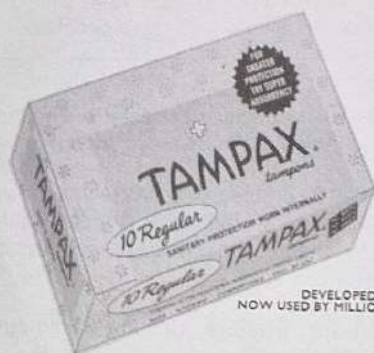
A dip in the cool water on a hot day is invigorating. Makes you feel alive and glad to have relief from summer's heat. And having your monthly period doesn't interfere at all because you protect yourself with internally worn Tampax tampons. When properly inserted, they expand in three directions to fit the contours of your body and so provide you with highly absorbent protection. You'll never feel the tampon. You'll always feel comfortable.

And you can swim whenever you like. No matter how warm the weather, you'll never have to sit it out at the edge of the pool.

Like a cool dip in the water, Tampax tampons help make summer a more pleasant experience.



The internal protection more women trust



DEVELOPED BY A DOCTOR  
NOW USED BY MILLIONS OF WOMEN

MADE ONLY BY TAMPAX LIMITED, HAVANT, HAMPSHIRE

# Ellis Brigham

simply -  
the best

NORTH-SOUTH-  
EAST-WEST  
**ELLIS BRIGHAM**  
IS THE BEST !!

YOU CAN'T  
SAY *THAT!*

WHY NOT?  
IT'S TRUE  
AND THEY GIVE  
**SUPER VALUE**

BUT IT'S **CORNY!**

MAYBE - BUT  
IT'S ABOUT TIME  
WE **SAID IT**

OH! ALL RIGHT-  
BUT SAY IT  
**LOUDER**

NORTH-SOUTH-  
EAST-WEST  
**ELLIS BRIGHAM**  
IS THE **BEST!!!**

**Manchester**  
6/14 Cathedral Street,  
Manchester, M4 3FU  
Telephone 061-834 0161

**Liverpool**  
73 Bold Street, Liverpool 1  
Telephone 051-709 6912

**Cornwall**  
Market Jew St Penzance Telephone 5828

**Snowdonia**  
Capel Curig Telephone Capel Curig 232

**Bristol**  
162 Whiteladies Road, Bristol  
Telephone Bristol 311157

write for catalogue

Postal Dept Wellington Place, Liverpool Rd., Manchester 061-833 0746



## Camping Holidays and Pack Holidays

### Foxlease Camp-sites

Application for sites should be addressed to the Secretary and the envelope marked 'Camp'. Suggested dates with alternatives and approximate numbers should be stated, and whether an equipped site is required. Camps may begin on any weekday.

A 50p deposit (which is forfeited if the booking is cancelled) and a foolscap sae should be enclosed.

### Beaverbrook Lodge

Applications should be sent to the Secretary, Foxlease giving alternative dates and enclosing an initial deposit of £1.00 (which is non-returnable) and a foolscap sae. Priority will be given to applicants who have not already stayed in Beaverbrook Lodge. Applications for the

period 1st October, 1975 - 31st March, 1976 will be accepted now.

### Waddow Camp-sites

Applications for sites should be addressed to the Secretary and the envelope marked 'Camp'. Suggested dates with alternatives and approximate numbers should be stated and whether an equipped site is required. It is preferred that camps begin on Saturday.

A 50p deposit (which is forfeited if the booking is cancelled) and a foolscap sae should be enclosed.

### Waddow Cottage and Caravan

Both are available for bookings throughout the year. For details apply to the Secretary enclosing sae.

### Waddow Pack Holiday House

Applications for Pack Holidays in 1975 should be sent to the Secretary. The application must be accompanied by a written recommendation from the Guider's CA or Pack Holiday Adviser and a foolscap sae enclosed.

### Netherurd Camp-sites, Brownie House and Holiday Caravan

Applications for camp-sites and the Brownie House should be sent to the Secretary.

During Scottish school holiday periods (Easter, July, half August) priority will be given to Scottish Packs.

A three-berth holiday caravan is also available.

### Broneirion Camp-site and Brownie House

Only one small camp-site - equipped for 24, which number cannot be exceeded. Applications for camp-site and Brownie House should be sent to Miss P Lynch, 3c Pentwyn Court, Whitchurch, Cardiff CF4 7BY enclosing sae.

Bookings for the Brownie House, outside school holidays, for Guide and Ranger groups and also for Highgate, Ranger Adventure Cottage, should be sent to the Guider-in-charge, Broneirion.

### Lorne Camp-sites

Lorne offers fully equipped or unequipped camp-sites with solid shelter. Calor gas available. Applications should be sent to Mrs E Thompson, 14 Woodland Avenue, Bangor, Co Down.

### Irene McKibbin Memorial Cottage, Lorne

A cottage available for Ranger holidays, fully equipped for 12 persons, with electricity and running water. For details apply to Mrs Brenda Weatherup, 32 Circular Road, Belfast BT4 2GA, enclosing sae.

### Ulster Camp-sites (nr Lorne)

Fully equipped for 40 campers (one large and two small camps). Excellent hut for solid shelter and Calor gas. Bookings should be sent to Miss N Pratt, 22 Bangor Road, Hollywood, Co Down enclosing a sae.

### Magilligan Camp-sites

Three fully equipped sites with double Calor gas stove for 25-30 campers. Also large 3-room hut with an open fireplace. For details apply to Mrs R F Scott, Derrymore House, Limavady, Co Londonderry, enclosing sae.

### Blackland Farm, East Grinstead, Sussex

Equipped and unequipped sites available with facilities for swimming, climbing and pioneering (for which equipment can be borrowed) also Restrop, a furnished bungalow for 25 (bunk beds for 20) - details write to the Warden enclosing sae.

### Brownsea Island

Eight camp-sites (for Guides and Scouts) are available as well as The Villano (maximum accommodation 30) for holidays for Rangers, Guiders or Trefoil Guild. Apply to Mrs B B Dyke, St Crispins, The Avenue, Sherborne, Dorset, enclosing sae.

## CAMPING AFLOAT WITH UNION CANAL CARRIERS

Travel the English canals on a real narrow boat specially adapted for comfortable living, steered by a helpful and experienced boatman to ensure your trip goes smoothly. We cater for groups of all sizes and offer a choice of routes to suit everyone's taste.

Costs can be as low as £5 per person per week, including VAT, or if you prefer we can offer single boats to steer yourself.

Write or phone for fully illustrated brochure to:

UNION CANAL CARRIERS,  
Canal Side, Little Braunston,  
Daventry, Northants NN11  
7HJ.

Phone: Rugby 890784





## If you really want to help, help the deaf.

The terrible thing about charity appeals is that they all seem so deserving, don't they? It seems so invidious to choose a few, and ignore so many. Maybe if the deaf were in some way visibly deformed they would appear more deserving. As it is, unless deafness is personally encountered, it takes considerable imagination to appreciate the horror of living a lifetime in silence.

Next time you encounter anyone, child or adult, who appears dull, dim-witted, or uncommunicative, consider for a moment that they might be deaf. If they are, then your very understanding is a real help. You see, the better you understand deafness, the better you'll understand the deaf.

It's to helping people understand the deaf, and helping the deaf live with deafness, that the RNID devotes its resources. But only by means of donations, covenants and bequests can this work continue. Please give what you can to our funds.

To the deaf, more than any other afflicted people, actions really do speak louder than words.

### The Royal National Institute for the Deaf

(Patron: HRH The Duke of Edinburgh KG)

105 Gower Street, London WC1E 6AH  
Telephone: 01-387 8033



HAMPTON Camping Accessories are synonymous with experienced camping the world over. They are renowned for their practical design, built-in strength, lightweight and proved reliability. Ask for them by name.

### HAMPTON CAMPING ACCESSORIES

THE HAMPTON WORKS (STAMPINGS) LTD.,  
Twynning Road, Stirchley,  
Birmingham, B30 2XZ.  
Also at London, Manchester, Bristol and Glasgow.



## WHY NOT TAKE OUT A SUBSCRIPTION TO

NEW SUB	
RENEWAL	

# TODAY'S GUIDE

AND  
OR

# THE BROWNIE

Please send me a copy of **TODAY'S GUIDE** every month for one year starting with the ..... issue. Enclosed please find £2.76 (British Isles) £2.52 (Overseas).  
(Includes postage)

(BLOCK CAPITALS)

NAME: .....  
ADDRESS: .....

SEND TO:  
The Finance Dept.,  
The Girl Guides Association,  
17/19 Buckingham Palace Road,  
London SW1W 0PT.

Please send me a copy of **THE BROWNIE** every week for one year starting with the ..... issue. Enclosed please find £4.94 (British Isles) £4.16 (Overseas).  
(Includes postage)

(BLOCK CAPITALS)

NAME: .....  
ADDRESS: .....

SEND TO:  
The Finance Dept.,  
The Girl Guides Association,  
17/19 Buckingham Palace Road,  
London SW1W 0PT.



# CLASSIFIED

# ADVERTISEMENTS

## THE GUIDE CLUB

**Guide Clubs**, 46 Belgrave Square, London SW1. Tel: 01-235 7616. **Membership (Home and Overseas)** for members and ex-members of the Movement over 18, including Trefoil Guild and Local Associations. Members may bring guests, including husbands, to stay at the Club. **Non-members** of the Club should enquire about **SAME DAY BOOKING SCHEME** for one night only. Apply Secretary.

## EMPLOYMENT

**Glenbrook: Girl Guides Outdoor Activities Centre**, Bamford, Derbyshire, needs Warden/Housekeeper. Self-contained two-roomed flat with kitchen and bath. Accommodation free in return for over-seeing duties. Suit married couple or two friends. Essential requirements someone with authority and knowledge of Guiding. House used mainly week-ends. Applications to: Miss Watkinson, Springcroft, 49 Valley Road, Barlow, via Sheffield S18 5SL.

## FOR SALE/FUND RAISING

**Advertising Pencils**, Ball Pens, Combs, Diaries, etc., gold stamped Company name, raise funds quickly, easily: **Brain Tub Toys**, details: Northern Novelties, Spencer House, 26/28 Spring Gardens, Bradford BD1 3HE.

**Sale or Return**, 50 per cent profit on cost. Costume Jewellery parcels sent post free without obligation. Ideal fund raisers. Details: E & M Davies Ltd, 356 Usbridge Road, London W12 7LL.

**Lucky Dip Toys**, plain and Carnival Balloons with feathers, Balloon Race equipment. Dolls for Dressing, also toys up to 50p for Fetes and Bazaars. Send large sae for Trade Lists: D Glover (Wholesale Toys) Ltd, Dept L03, Bransholme Mills, Bailiff Bridge, Brighouse, Yorks. Tel: Brighouse 79298 STD 04847.

**Fund Raising**. Try our Gold fish with plastic carryhome bags. Big attraction, small cost. For details send stamp only: **Middlesex Goldfisheries**, 6 Berwyn Avenue, Hounslow, TW3 4ET.

**Brain Tub Toys**. Undressed Dolls and other Fund Raisers at Wholesale Prices. Sae for Catalogue: Nye's Novelties, Dept/G, 173 Cambridge Road, Hitchin, Herts.

**Outdoor materials** for all purposes. Coated nylon, Venise. PVC/Nylon. Cotton canvas. Terylene fillings. Borg fur fabric. Velcro. Nylon zips. Very competitive prices. Quick personal service. Sae for details and samples: **Pennine Boats**, Hardknott, Holmbridge, Huddersfield.

**Blanket Badges and Pennants** printed on to felt to your own design, for fetes, rallies, camps, Brownie day-outs and all special occasions. Minimum normally 50. Badges also made for hats (enamelled) and woven in strips for Counties (similar to Brownie Diamond Jubilee Badge) and camp-sites and International events. Please send sketch or sample with stamped addressed envelope, stating the type of badge required, quantity, size, colours. We will also be pleased to quote for all embroidered school and club badges, both washable type and blazer type. Sorry no brochures or lists. **Russell King**, 48 Crofton Lane, Orpington, Kent (Orpington 29460).

**Scout and Guide Stamp Catalogue**, 1975 edition, 40p from: R. Lee, 57 The Jordens, Coventry.

## WANTED

**Wanted**: 1969 and 1973 Brownie Annual. Mrs Wakeling, 42 Sackville Road, Southend-on-Sea, Essex.

**Wanted**: Record 'Memories of the Gang Show' Music for Pleasure Mono 1180 EMI, or any other including 'Crest of a Wave'. Telephone Guildford 73677.

## CAMPING/HOLIDAYS

**Buckmore Park**, Maidstone Road, Chatham ME5 9QG. Kent District Camp-site - Activity and Pack holiday Centre. Open throughout the year for weekend/day visitors, winter indoor weekends, summer camps and Pack Holidays. Venture/Ranger weekends and Guide Camps. Indoor heated swimming pool, indoor roller rink, rifle range, karting, assault course, abseil-

ing, climbing and pioneering in over 200 acres of woodland. Usual Camp or Holiday form required. Write for details.

**Budlake Hall** for Pack Holidays. Details in March Guide. Apply to: Mr W Daw, 2 Rivermead Road, Exeter.

**Camp-site** minutes from the sea. Holiday amenities on camp and plenty of space. Site approved by Camp Adviser. Write for details to the Chief Warden, Methodist Youth Centre, Paston Road, Mundesley-on-Sea, Norfolk NR11 8BN. Tel: Mundesley 720325.

**Felin Bach** (Caernarfonshire County Camp Site) Caerhraw, Gwynedd. Large un-equipped camping area for Guides and Rangers, and indoor accommodation for Pack Holidays, available all the year round. Snowdonia National Park half a mile. Climbing and hill-walking within easy reach. Safe bathing at Dinas Dinlle or Bangor Baths. Apply to: Mrs P Roberts, Bryn Meurig, Celyn Avenue, Penmaenmawr, LL34 6LR, Gwynedd.

**Lake District**: We can offer you residential accommodation for 24 persons (mixed parties) in a new Scandinavian designed building based on The Great Tower National Scout Camp. All types of outdoor pursuits equipment and instruction is available. The Centre is ideally situated for sailing and canoeing on Lake Windermere and Fell Walking and Climbing in the South Lakes area. Parties must be self-catering (fully equipped kitchen). Please write for brochure and further details to: The Venture Forth Base, Cartmel, Grange-over-Sands, Cumbria LA11 7ST. Please enclose a stamped addressed envelope.

**Croydon**: small camp-site available. Hall for wet weather. Apply: Mrs Brimble, 35 Farm Fields, Sanderstead, Surrey.

**Village Hall** with kitchen and usual offices plus surrounding grassland for camping. Between Bridgwater and Glastonbury. Details from: J Graham, Manor Farm, Stawell, Bridgwater, Somerset.

**Holiday Together** on the Norfolk Coast. Still some vacancies for the coming season. Write for new brochure to the Chief Warden, Methodist

Youth Centre, Paston Road, Mundesley-on-Sea, Norfolk NR11 8BN. Tel: Mundesley 720325.

**Sunport Adventure** - Ride, sail, snorkel, canoe on our thrilling programme in the South of France - shown on BBC Holiday '73. Also Mediterranean Riding and Dutch Barge Holidays. Brochure PGL Holidays, 142 Ross-on-Wye HR9 7AH. Tel: (0989) 4211. Evening/weekends Much Marcle 609.

**Explore The Peak District** - from Manchester County Girl Guides' Outdoor Centre, Disley, Cheshire. Ranger Den available for holidays throughout the year. Accommodates 12, fully equipped. Bookings and further information: Mrs Nancy Bowker, 58 Westmorland Avenue, Dukinfield, Cheshire, 061-338 2401.

**Canoe Hire Service**. River Wye and River Ardeche (France). Details PGL Holidays, 141 Ross-on-Wye HR9 7AH. Tel: (0989) 4211/5. Evening/weekends Much Marcle 609.

**Pony Trek**, sail, canoe, cave, at our Self Catering Centre in the heart of the Black Mountains in Wales. Ideal for groups for outdoor activity holidays or courses to RYA/BCU Certificates standards. Details PGL Holidays, 140 Ross-on-Wye HR9 7AH. Tel: (0989) 4211. Evening/weekends Much Marcle 609.

**Explore Dumfries** and Galloway. Holiday cottage equipped for five (except linen), outskirts village; electricity, bath, garage. Hill walking, bird-watching. Available till 14th June, 28th-12th July, 23rd August onwards. Mrs Hall, Craighearn, Moniaive, Thornhill, Dumfriesshire. Tel: Moniaive 292.

**Fairthorne Manor Scout Camp-site** 16 acres of grassland surrounded by woodland, near River Hamble. Shared by Scouts and Guides. Ideal for boating activities - canoes for hire. Centrally situated for numerous places of interest. Ample firewood provided. Flush toilets. For brochure write: Mr M D Veal, 19 Allfriston Gardens, Sholing, Southampton SO2 8GB Hants. Tel: 0703 432223.

(Continued on page 213)

The Girl Guides Association takes no responsibility for statements made in any advertisement here or elsewhere in the magazine, or for any subsequent correspondence in connection therewith. The right is also reserved to refuse any advertisement not considered suitable. Advertisements for the sale of second-hand clothing cannot be accepted (except uniforms). Uniforms for sale should not be sent to CHQ, advertisers receive communications from applicants. All advertisements must be received not later than the 1st of the month for the following month's issue. **ALL CHARGES 5p per word. BOX NUMBER 20p EXTRA. PLEASE SEND REMITTANCE WITH ADVERTISEMENT TO: Miss A M Martin, Advertisement Manager, The Girl Guides Association, 17/19 Buckingham Palace Road, London SW1W 0PT. 10% discount for series of 12. To reply to a Box Number, address your envelope to Box Number concerned c/o GUIDER.**



## Wing Your Way to CHQ



### PART-TIME TEMPORARY STAFF

Would you consider helping us on a short term basis at CHQ? No specific skill required, just plain commonsense. Help required from now until the end of July or August, 1975.

### FULL-TIME PERMANENT STAFF

CHQ Shop requires staff in the **BOOKS** section and the **CAMPING** section.

Some experience preferable but an interest in either of these subjects may suffice for the enthusiast.

Please contact:  
Mrs D E Earnshaw,  
The Girl Guides Association,  
17-19 Buckingham Palace Road,  
London SW1W 0PT

# BRYAN STOKES



Buy your boots,  
clothing, rucksacks  
and equipment from  
"Bryan Stokes Mail  
Order".

Our gear comes from all over  
the Continent, all personally  
chosen to ensure quality  
at competitive prices.  
No item is too large or too  
small to bother us.  
Send 35p for our catalogue  
which includes a 25p Buying  
Voucher (25p will be deducted  
from any purchase you make  
on surrender of the Voucher.)

Send for catalogue to:

## Bryan Stokes

9 Charles Street, Sheffield. Telephone 27525

# FOLK FEST



NOW IS THE TIME TO PLAN  
YOUR GROUP OR COMPANY'S  
PRE-XMAS OUTING!

ROYAL ALBERT HALL LONDON

SATURDAY  
NOVEMBER 29 AT 7 PM

SUNDAY  
NOVEMBER 30 AT 2.30 PM

THE INTERNATIONAL SCOUT AND GUIDE FOLK MUSIC FESTIVAL STAGED BY IAN GRANT

TO: FOLK FEST 7 BOX OFFICE, ROYAL ALBERT HALL, KENSINGTON GORE, LONDON SW7 2AP.

Please supply tickets as follows:

SATURDAY NOVEMBER 29 1975 - 7pm

.....(no) at £2.00 each Total £.....  
.....(no) at £1.50 each Total £.....  
.....(no) at £1.00 each Total £.....  
.....(no) at 80p each Total £.....  
.....(no) at 50p each Total £.....

NB: Box Office opens October 6

SUNDAY NOVEMBER 30 1975 - 2.30pm

.....(no) at £2.00 each Total £.....  
.....(no) at £1.50 each Total £.....  
.....(no) at £1.00 each Total £.....  
.....(no) at 80p each Total £.....  
.....(no) at 50p each Total £.....

To avoid disappointment in the event of your first choice being sold out, please complete the form to show your second choice of seats and write a large "X" alongside.

I enclose a cheque/postal order payable to "Royal Albert Hall" for a total remittance of £.....together with a STAMPED ADDRESSED ENVELOPE.

name..... address.....

Don't delay your order !  
It's the most popular  
Scout and Guide Show  
in the country.



## CLASSIFIED ADVERTISEMENTS

(Continued from page 211)

**Bracklesham Bay Camp.** Seven acres of flat fields protected by surrounding trees. Mains water, no sanitation. Sea only 1/4 mile away. Riding tuition available. Applications and enquiries to: Rodney Ebourn, Regency House, Clayton Lane, Bracklesham, Sussex. Tel: 024362 534.

**Come camping to Luxembourg.** The Association des Girl-Guides Luxembourgeoises (AGGL) has three places at your disposal: (1) The International Guide Centre, situated 61 Route de Treves, Luxembourg. It is located on an old small fort of the fortress. There are 20 beds in rooms, showers, sanitary facilities, kitchen and dining room, both well equipped, large living room. The Centre is surrounded by a big meadow. It is available only to Guiders and Rangers. Price: 30 Belgian francs per person per night. (2) The National Training Centre at Colpach, near the Belgian border, at the Southern end of the Luxembourg Ardennes. There you have the full use of a large camping place, a chalet with eight beds, a large living room, a kitchen and sanitary facilities. Price: 25 Belgian francs per night per person. (3) The third place belongs to the Guide Company of Esch. Esch/Alzette is situated near the French border. There are 20 mattresses, one large living room, a kitchen, sanitary facilities and a little separate room for Guiders. Price: 30 Belgian francs per person per night. For further details, please apply to: Association des Girl-Guides Luxembourgeoises, 61 Route de Treves, Luxembourg (Grand Duchy of Luxembourg).

**Peak District.** Gt. Hucklow Scout Activity Centre. Centrally heated building. Bunk and bed accommodation for 46. Suitable mixed parties. Fully equipped kitchen with electric cooking. Showers, Dry-ing Rooms, Dining Room, Lounge. Ideal for climbing, fell-walking, caving, canoeing, gliding, riding, swimming. Brochure from: Booking Secretary, Scout HQ, Trippet Lane, Sheffield, S1 4EL. 0742 24018.

**Interested in Outdoor Leisure and Activity?** Then contact Allenheads Lodge, Northumberland. Accommodation available year round for 28 persons. Overnight rate of £1 per person including use of sleeping bag, pillow, boots and anorak. All equipment and instruction available for Rambling, Rock Climbing, Ski-ing, Grass Ski-ing, Canoeing, Back Packing, etc. Fabulous centre in the North Pennines for historical and industrial archaeological studies. For colour brochure or further information contact: Chris Catling at Allenheads Lodge, Allenheads, Northumberland. Tel: Allenheads 239.

**On the Coast of Devon.** Parish Hall, Combe Martin, accommodation for 30 persons. Apply for brochure: A Woodward, Resthaven, Castle Street, Combe Martin, N Devon. Phone 2613.

**Pack Holiday accommodation.** Church Centre. All electric. Fully equipped, inc camp beds. On bus route, near parks and downs. For brochure see to: Ball, 41 St Benets Grove, Carshalton, Surrey.

**Ex-Guider offers holiday accommodation** in seventeenth century Devonshire farmhouse, glorious views. Ideal touring, local farm and garden produce. Children and good dogs welcome. Stamp for brochure. Mrs J Haiselden, New Phillishayes, Uptonery, Honiton, Devon EX14 9PF. Tel: Uptonery 228.

**Bungalow** overlooking valley St Just (1m) Penzance (8m). All electric plus Raeburn Cosy. Five beds. Garage. Well furnished, no linen. Not available school holidays. Details: Hartley, Cottage, Dousland Yelverton, Devon.

**Guider-owned caravan.** Private farm site. Sleep 5. Axminster 33278.

**Camping Narrow Boats.** 12 berth single and 24 berth pairs fitted with bunks, cooker, sink unit and full inventory. Operated by experienced skippers on the cruise of your choice. Warwickshire Fly Boat Co, 149 Hollyfast Road, Coventry 0203-33 4228.

### GUIDERS WANTED

**Wanted:** Quartermaster for Company camp near St Albans, 2nd-9th August, 1975. If interested ring: L M Foreman, 01-432 1693 (office).

### UNIFORM

**Wanted:** Guider's suit, size 16. Beardmore, 13 New Road, Reading. Tel: 84209.

**Guider's uniform** urgently required, also blouse and summer uniform, size 10. Box No 733.

**Wanted:** Guider's uniform, good condition, size 16. Box No 734.

**Wanted:** Guider's uniform, size 14. Trevira or Terylene. Mrs Davis, 5 Manor Way, Croxley Green, Rickmansworth, Herts.

**Guider's uniform,** suit, shirt, hat, tie. Generous size 10, price £10. Condition as new. Hiking Boots, vibram soles, size 5, colour brown, worn twice. Price £5. Mrs Hocking, 45 South Close, Medmenham, Marlow, Bucks.

### INSURANCE

**Insurance.** Reduced motor premiums for Guiders, Scouters, Civil Servants, Advanced Motorists. Specialists in all classes of insurance. We welcome all your insurance enquiries including home, life, mortgages, pensions and investments. Contact Morden Park

Insurance Brokers Ltd, Brent House, Kenton Road, London HA3 8BT. Tel: 01-907 0111.

### BUSES FOR HIRE

**Transit Vans for Hire.** 18/22cwt. weekly rate £26.00, daily rate £5.00 30cwt weekly rate £35.00, daily rate £7.00. Deposit £25.00. Mileage charge 3p per mile. **12 Seater Minibuses for Hire.** October to April weekly rate £46.00, daily rate £8.00. May to September weekly rate £48.00, daily rate £9.50. Deposit £25.00. No mileage charge. Eight per cent VAT on all the above charges (excluding deposits). Tel: 01-890 9931.

### LATE UNCLASSIFIED

**Canal Camping/Cruising** low-cost, carefree holidays in genuine narrow-boats with living accommodation for up to 12 to a boat. Explore inland waterways. Choice of route. It's great. Send for brochure giving dates still available. Threefellows Carrying (Dept G) 37 Forest Street, Sutton-in-Ashfield. Notts. Telephone (06235) 5615.

**Association of Methodist Scouters and Guiders Annual Conference,** Gilwell Park, 24th - 26th October, 1975. Details from: Mrs K Forward, 152 Whiteacre Road, Ashton-under-Lyne, OL6 9PS (sae).

**Please note:** All advertisements for Venture Scouts/Ranger events published in *Guider* must be accompanied by the signature of the Guide County Commissioner.

When replying to advertisements please mention GUIDER.

### TOW A TRAILER

WITH **INDESPENSION**  
MECHANICAL SERVICES LTD.  
RAY STREET, BOLTON, LANCs. Tel: 382821

### TENTS - FLYSHEETS - WATERPROOF CLOTHING

You can save 50% or more

If you make and repair on an ordinary sewing machine. We supply everything, canvases, nylons, all weights. Zips, metal poles, threads, PVC groundsheeting, all accessories. Do not call until you have sent SAE for full range of samples and free literature on tent making.  
EDWARD BARNES, GG, Hawksfold, Fernhurst, Haslemere, Surrey.

### 200% PROFIT ON OUTLAY

Imprinted ball-pens, key fobs, combs, booklets, diaries, punchboards, and many other speedy fund raisers.  
Please send 5p stamp for full catalogue.  
THE PROVINCIAL SUPPLIES CO.,  
1 Gardenfield Lane, Berkhamsted, Herts.  
Tel. Berkhamsted 6527 (STD: 04427 6527)

### THE BROWNIE

May issues of *The Brownie* contain all the popular pages of All My Own, News and letters that Brownies around the country have sent in. Special features include such items as a knot chart, hints on badges and information about the World Conference, with a World Conference chart in the 4th June issue.

### TODAY'S GUIDE

The May issue of *Today's Guide* contains all the features that are becoming firm favourites, as well as special items such as preparations for a Patrol Camp, information about a Sellocraft competition and how to make a good job of turfing.



## Give your tent a rain coat.

Grangersol produce two very practical waterproofers, Mesowax and Fabsil. A coat of either is just what you need in bad weather.

Mesowax is a brush-on waterproofing emulsion for weathered canvas of all weights including tents, awnings and covers. It lets canvas breathe, preventing stuffiness and condensation. It comes in cans up to 5 litres, colourless or in ten colours.

Fabsil is a mildew-resistant water-proofer for weathered

canvas, cotton, nylon and terylene. It helps preserve and keep them clean and lets the material breathe, and is easily applied by brush or spray.

Fabsil is colourless and available in cans or handy aerosols.

So to keep things warm and dry under canvas, get a waterproof coat from Grangersol.

And put it on before it rains. Available from Camping and Sports stores, Hairdors, Blacks, Millers, Wakefields, Ships Chandlers, Scout and Guide shops.



Grangersol Ltd. Dept. G17 Imperial Way,  
Watford, Herts.  
Telephone: Watford 24086/27753

### THE SCOUT ASSOCIATION, GILWELL PARK, CHINGFORD, LONDON E4 7QW

APPLICATIONS ARE INVITED for the post of residential Housekeeper at The Scout Association's Training Establishment on the edge of Epping Forest.

Full particulars including salary, emoluments and application form may be obtained from The Administrator at the above address.

## GUIDERS

### TURN YOUR PICTURES INTO POUNDS

The *Girl Guide Annual* and the *Brownie Annual* pay reproduction fees for colour and black-and-white pictures of Guide and Brownie activities.

Please put name and address on pictures, caption factually, and send with stamped addressed envelope to the Editor, Green Acres, Kidnappers' Lane, Cheltenham, Gloucestershire GL53 0NP.

Everything for the great outdoors...  
is indoors at Graham Tiso.

Whatever you need in outdoor equipment you'll find a great selection at Graham Tiso.

Boots, outdoor wear, tents, rucksacks, anoraks, climbing equipment, pack frames and a lot more.

You'll find good value, the best names — and free expert advice from assistants who share your interest.

For everything outdoors get inside information from Graham Tiso.



## GRAHAM TISO

—leaders in leisure

13 Wellington Place Leith Edinburgh  
Tel: 031-554 0804

## FETES BAZAARS ALL FUND RAISERS

Fully guaranteed ball pens and pencils die-stamped in gold with your name or slogan (maximum 30 letters), please print name.

### ALSO

Extensive range of TOYS — STATIONERY — FANCY GOODS — DOMESTIC STATIONERY & PRE-SELECTED PARCELS all at whole-sale prices. Send SAE for detailed price list from:

### BAKER ROSS

Dept. G.U.5

2a Handsworth Road, London N17 6DD

Tel. 01-808 6948

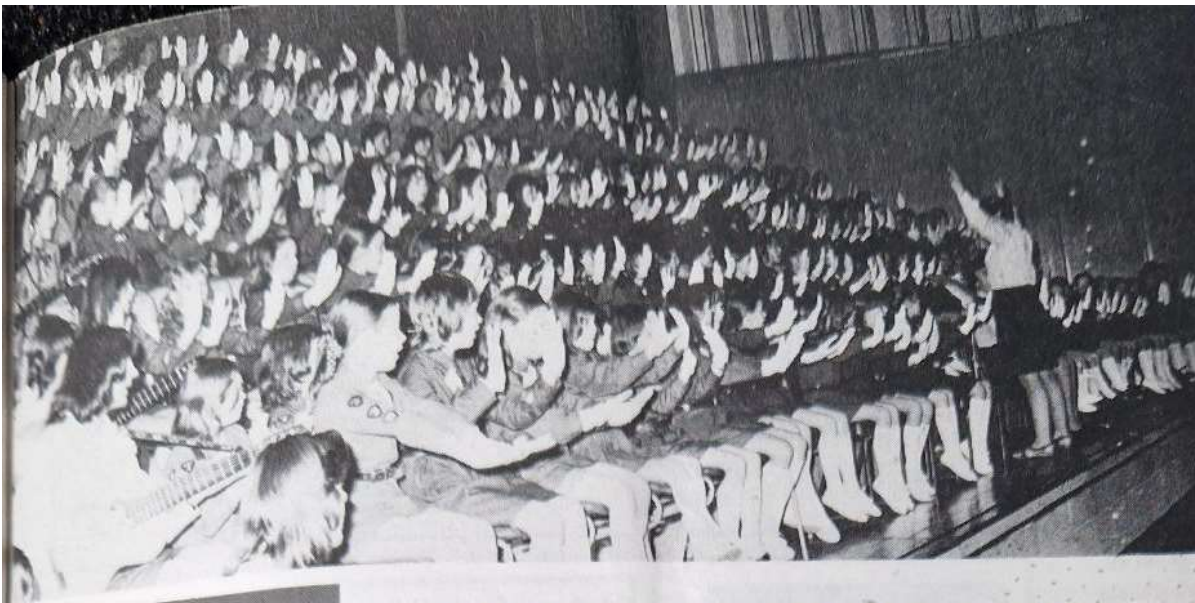
## COME CAMPING ON THE CANALS THIS SUMMER

in one of our better equipped camping narrow-boats. Parties of 12, up to 48, with first-class skippers to make everyone's holiday really enjoyable.

### FOXTON BOAT SERVICES, LTD.

Foxton,  
nr. Market Harborough,  
Leics.  
Tel: Kibworth 2285.





## WE'RE BROWNIE GUIDES

In November last year the County of Greater Manchester West put on two performances of their revue *We're Brownie Guides*. Over 2400 people saw the show, including the Lady Baden-Powell, seen left with the guard of honour. The choir of Brownies, Guides and Rangers (above) supported over 660 Brownies, who acted out the Eight Point Programme.



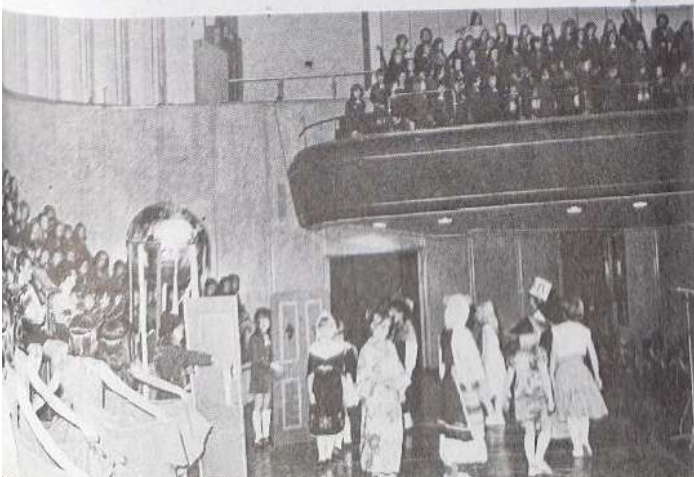
Brownies from the Urmston Division acted 'Brownies are Wide Awake' and included this realistic dragon (left) in the story of St George.



Salford Brownies told how 'Brownies are Friendly' and those representing China had to learn to play with diabolos (left).



According to the Brownies from Eccles, Brownies have been keeping fit through the ages, as we can see from these Victorian girls (above). The performance was brought to a close by Brownies of Sale, helped by representatives from the other Divisions (left). The theme for their finale was 'This Wonderful World'.





## GUIDE

## SHOPS

TO SERVE YOU

at

EDINBURGH:

GLASGOW:

DUNDEE:

IN SCOTLAND

16 COATES CRESCENT,  
EDINBURGH EH3 7AH.  
TEL. 031-225 3483.  
1 SCOTT STREET,  
GLASGOW G3 6NU.  
Tel. 041-332 6288.  
53 SOUTH TAY STREET,  
DUNDEE DD1 1NP.  
TEL. DUNDEE 22262.

YOUR UNIT BENEFITS BY COLLECTING DISCOUNT  
STAMPS

### Springlow

Concentrated meal  
packs for Campers and  
Backpackers –  
remember  
concentrated food  
means less weight  
and bulk to carry.  
*Meals include:*  
Curries, Stews and  
Omelettes – send for  
our catalogue, it  
describes no less  
than 50 packs.

SPRINGLOW Sales Ltd  
Marsland Industrial  
Estate, Werneth,  
Oldham, Lancs.  
Tel: 061-624 7904

Now Available from Guide Shops



### TOP QUALITY PENS

Diastamped with 30 Gold Letters and Spaces

£1.35	★	STANDARD CHARGE
PER 100 PENS	★	POST & PACKING
(VAT PAID)	★	40 PENCE

ORDERS DESPATCHED SAME DAY

Sale or return – full refund on pens returned

Samples 5½p stamp – please try before you buy

### ABBAY WHOLESALE

77 LIVERPOOL ROAD, STOKE ST4 1AE

**THE CHURCH ARMY**  
WE REQUIRE WOMEN CALLED OF GOD  
TO BE EVANGELISTS  
IS GOD CALLING YOU TO JOIN US?

Women 18 – 35 years of age. 3 Year Training Course.  
35 – 49 years of age. 1 Year Training Course.  
(For residential work only.)

Opportunities for service in Parishes, Mission Work,  
Homes, Hostels, Youth, Social Care.

For further details write to:

Sister J. A. Pyke, (Ref. G4),  
The Church Army, 5 Cosway Street,  
London NW1 5QL.

Telephone: 01-262 0756

## IDEAL FUND RAISERS FOR YOUR UNIT

We supply Ball Pens, Combs, Pencils, Key fobs, Rain-hoods, P.V.C. Goods, Diaries, Christmas Cards, Christmas Paper, Calendars, etc. All are excellent Fund Raisers – Good Quality – We give Full Guarantee. All orders are completed within 5 days of receipt. Send now for our 1975 price list.

Quality Goods – Full Guarantee – Speedy Service

THOMPSON & CREIGHTON (ADVERTISING) LTD.  
North Tyne Industrial Estate,  
Whitley Road, Longbenton,  
Newcastle upon Tyne NE12 9SN.



Telephone: 0632 669511  
Please send a stamped addressed envelope.

A novel fund-raising item which will sell at any  
time of the year.

### PRINTED YELLOW DUSTERS

Every housewife, every motorist a potential buyer!

Our stock designs of Trees in Britain, Horses in Britain, Birds in Britain, etc. are designed to incorporate your local wording.

Send for free samples and prices today!

**GEO. O'BRIEN BAKER LTD.**

4/6/8 Tapster Street, Barnet, Herts.  
Tel: 01-449 2424.



### canal cruises

EDUCATIONAL &  
HOLIDAY CANAL CRUISES  
FOR PARTIES OF 24

● Week, Weekend and Five-day-long  
Trips for Guides, Scouts, Schools, Youth  
Club, etc.

**T. & A. COLLIER**

5 North Street,  
Leighton Buzzard, Beds.  
Tel: PUFFIN 2124

### QUALITY FUND RAISING and ADVERTISING PENS



All prices  
include  
VAT

Guaranteed  
top quality.  
Printed up to 36

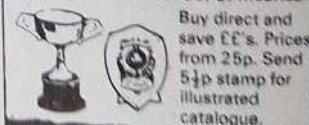
gold letters. Quick delivery.  
Send 2x5½p stamps for illustrated  
catalogue and assorted samples.

#### Lapel Badges



Your own design made to order. 5½p  
stamp for catalogue and samples.

#### PLAQUES! TROPHIES! CUPS! MEDALS!



Buy direct and  
save ££'s. Prices  
from 25p. Send  
5½p stamp for  
illustrated  
catalogue.

### WESTFIELD LTD

DEPT 23 WESTFIELD HOUSE,  
HELENA ST B' HAM B1 2RJ





**YOU** WILL see that we are now the GGFF. It has been felt for some time that the word 'Guide' in the minds of the public does not necessarily signify 'Girl Guides Association'. There are other Guides (ie mountain guides) which may cause misunderstanding in people's minds. So it was decided that we should be called *Girl Guide Friendship Fund*.

**Mutual Aid?** From whom, to whom? The dictionary says the word mutual means 'felt or done by each to the other'. The Mutual Aid Scheme of the World Association was started some years ago so that the needs of some countries might be made known to those who would like to help them. As a result many Guide Associations struggling to keep going have been greatly helped. These few extracts from letters seem to reflect the true value of both giving and receiving through Mutual Aid:

'We feel much indebted to the Mutual Aid Scheme and hope one day we shall have the blessing of giving too.' 'It makes things happen where it could not possibly happen at all without the scheme.'

'... while it would be quite easy to think of a few specific needs, the needs of other countries are quite likely to be greater than ours.'

Perhaps any of us might have written the last quotation. In many Units it is the same story; 'Mandy hasn't brought her sub, tonight'; 'Sally's Mum says she can't afford to pay for her uniform'. We might get a message from the County Commissioner; 'The Quota is going up' or a note from the Vicar; 'Very sorry but the PCC have increased the rent of the hall, I'm afraid the Guides will have to pay more'.

We come home from the Guide meeting thoroughly depressed, and then pick up *Guider*. Yes there it is, a stirring appeal on the GGFF page: 'Ghana urgently needs

tents... El Salvador badly wants cooking pots and pans... Surinam cannot afford to print its enrolment cards... But we want tents, we want camp cooking equipment, we want...

The following week Sally's Patrol Leader came in waving *Today's Guide*. 'We must do something to raise some money for those poor Guides in El Salvador who haven't any pots and pans. Where is El Salvador?' They have an effort and raise money and joyfully purchase a postal order and send it off to the GGFF, *because it's for somebody else and not for themselves*.

And this is our problem, isn't it? To keep alive the joyous spirit of giving, so strong in the hearts of our members when they know someone else is in need, and at the same time to 'keep our own house in order'. The fact remains that people will sponsor an effort, when a Guide or Brownie is working for a good cause, far more willingly than if they are appealing for their own funds.

Last year was an exceptional year with every Brownie out to do her best for Diamond Jubilee Year, and raising fantastic sums of money for many good causes, including the Lifeboats and Handicapped Brownies. We cannot expect another record year, we do not ask for it. But we do believe that in many, many instances 'the needs of other countries are likely to be greater than ours'.

And these are just a few of the needs asked for in the Mutual Aid list: *Surinam* - 1,000 enrolment cards for Brownies. *El Salvador* - four eight-man tents (they have never had tents and have only 'camped' in houses and never had the joy of real camping), and Cooking Equipment for Camp. *Ivory Coast* - a Sewing Workshop for the older Guides and Rangers to learn dressmaking and embroidery, so helping them to make their own clothes and later earn a living, in a country where this, for girls, is not easy. *Surinam* - sets of gardening tools. The girls can then be taught and encouraged to grow vegetables at home, and so contribute to the national agricultural and horticultural schemes. *Zambia* - a Sewing Workshop. *Ghana* - six Stormhaven Tents.

And so in this World Conference Year here in the UK it does seem fitting that we should do our best to give what we can afford to help our Guide and Brownie friends in other Member Countries of the World Association.

**VA**

*An Information Sheet all about the Girl Guide Friendship Fund, and Stickers are sent FREE to Guiders who would like them. Please send a 5½p stamp for postage. Requests and DONATIONS should be addressed to: Girl Guide Friendship Fund, Girl Guides Association, 17/19 Buckingham Palace Road, London SW1W 0PT.*

## World Children's Day

15th June

**T**HE United Nations Children's Fund is asking our support on World Children's Day this year for its work to improve the health and education of children in the Yemen Arab Republic, one of the poorest countries of the world, and, unlike many other Arab states, without any oil resources. Ninety per cent of the people are illiterate and a shortage of trained manpower is one of the greatest obstacles to its development. In some areas infant



mortality is 46 per cent, mostly due to polluted water and bad sanitation compounded with malnutrition.

UNICEF is helping to provide safe water supplies to Yemeni villages. The pipe down this primitive street is of vital importance since it brings safe water to a central place in the village. Before, every day the women would walk with their water pots on their heads, sometimes many miles to the nearest well to get clean water, or buy it expensively from the donkey tank carts. A source of safe water acts too as a spur to growth in other ways; the opening of a school where the appalling problem of illiteracy can be tackled, or the opening of a rural dispensary where mothers and children can get treatment when they are sick, and instruction in nutrition and hygiene. The two young women on the right in this photograph are home visiting nurses.

Please encourage your Guides and Brownies to help the children of the Yemen Arab Republic on World Children's Day this year. Further information from the UK Committee for UNICEF, 99 Dean Street, London W1V 6QN.

**Jean Erskine**



# WHAT'S ON WH WHAT'S ON WH WHAT'S ON WH WHAT'S

## Ballet and Opera

### Royal Ballet, Covent Garden

The May programme comprises *Coppelia*, *Giselle* and triple bills featuring *Arpège*, *Les Rendezvous*, *Shukumei*, *Grosse Fuge* and *Pineapple Poll*.

*Shukumei* and *Arpège* are being performed in London for the first time. *Shukumei* is told in the manner of the Japanese Theatre, and has a specially composed score by the famous Japanese Jazz/rock musician, Stomu Yamash'ta. The season will end on 16th May.



A scene from the Royal Ballet's new production, *Shukumei*.

### Royal Opera, Covent Garden

The Royal Opera will be performing Verdi's *Il Trovatore*, Rossini's *Il Barbiere di Siviglia*, Michael Tippett's *King Priam* and *Elektra* by Richard Strauss. *King Priam* is being performed in English.

### London Festival Ballet

The Festival Ballet finish their 25th Anniversary season at the London Coliseum on 14th May and will then embark on a tour of Australia. The Panovs will be dancing in *Harlequinade Pas de Deux*, *The Lady and the Hooligan*, *Giselle* and *Petrouchka*, and the programme is completed by *Les Sylphides*, *Prodigal Son*, *Parade*, *Etudes*, *Echoing of Trumpets* and *Sleeping Beauty*.

## On Tour

### English National Opera

The first ENO touring company will be performing at Grand Theatre, Leeds (1st-10th), New Theatre, Oxford (12th-24th) and Manchester Opera House (27th-7th June). Their repertoire comprises *Mary Stuart*, *Patience*, *A Masked Ball* and *Gloriana*, and Wagner's *The Ring Cycle* will be presented at Leeds and Manchester.

The second company, who are touring on a weekly basis, will be appearing at Theatre Royal, Nottingham (1st-3rd), Royal Court Theatre, Liverpool (5th-10th), Bristol Hippodrome (12th-17th), Coventry Theatre (19th-24th) and Congress Theatre, Eastbourne (27th-31st). They will also be playing the Gaumont Theatre in Southampton during the first week of June. Their itinerary will feature *The Magic Flute*, *Count Ory*, *La Traviata* and *Manon*.

### Royal Ballet

Following their season at the Royal Opera House, the touring section of the Royal Ballet will visit The Festival Theatre, Paignton from 19th until 24th May. They will be performing

Robert Stephens and Caroline Blakiston (right) in a scene from *Murderer*, by Anthony Schaffer, who also wrote the highly acclaimed *Sleuth*. This intriguing thriller is now showing at the Garrick Theatre, Charing Cross Road. Seat prices are £1, £2, £2.50 and £2.90



*Les Rendezvous*, *Giselle*, *Les Sylphides*, *Prodigal Son*, and *Concerto*.

## Exhibitions

### Victoria and Albert Museum

8th (until 15th June): *The Shakers*. A portrait of life and production in a religious community in the early days of America.  
1st (until 22nd June): *Chinese Jade*. A comprehensive display of jade carvings, with 500 exhibits spanning Chinese history from 1500BC up to the 20th Century.

### British Museum

9th (until 31st Dec): *Turner Watercolours*. This is by way of a sequel to the Turner exhibition at the Royal Academy earlier this year (see December *Guider*).  
Until 29th June: *Grime's Graves*: Prehistoric Flint Mines.

### Royal Hospital, Chelsea

21st-23rd: 1975 Chelsea Flower Show.

## Theatres and Concert Halls

### National Theatre, Old Vic

The May repertoire comprises Ibsen's *John Gabriel Borkmann*, Harold Pinter's *No Man's Land* (premiered last month), Shaw's *Heartbreak House* and *Happy Days* by Samuel Beckett. For more information on these plays, see this year's previous *Guiders*.

During May, the NT continues its programme of provincial visits. *Heartbreak House* will be performed at Theatre Royal, Norwich (12th-18th) and Theatre Royal, Newcastle (26th-1st June).

### Royal Festival Hall

3rd: Cleo Laine's 6th Annual Spring Collection. Accompaniment by the John Dankworth Orchestra.

6th: London Symphony Orchestra, conductor André Previn.

7th: Philadelphia Orchestra, conductor Eugene Ormandy.

10th: Guitar recitals by John Williams, with supporting musicians.

17th: Alan Stivell in concert. If you can, go to see this marvellous interpreter of Celtic folk songs from Brittany and his native Scotland.

18th: London Symphony Orchestra, conductor André Previn.

20th: Royal Philharmonic Orchestra.

24th: Tribute to Duke Ellington. Memorial concert for the great jazzman, featuring the Chris Barber Band, Humphrey Littleton and special guests.

30th: *Ludwig Van Beethoven* (Cert U). A colour film of Beethoven's life and work.

25th: Purcell Room - Michael Muskett's Museum of Music. The fifth in a series of concerts for young and old.

26th: Purcell Room - The Mistry Family. A recital of traditional Indian music.

30th: Queen Elizabeth Hall - London Bach Orchestra.

## Sport

3rd: Wembley Stadium - FA Cup Final.

5th-17th: Empire Pool, Wembley - Harlem Globetrotters Basketball.

24th: Wembley Stadium: International Football, England v Scotland.

31st-6th June: Isle of Man - International TT Motorcycle Racing.

## Nationwide

### Avon

23rd (until 1st June): Bath - Bath Festival.

### Berkshire

22nd-25th: Home Park, Windsor - Royal Windsor Horse Show.

### Birmingham

2nd: Birmingham Hippodrome - *Genesis* in concert. One of Britain's most colourful and adventurous pop groups.

3rd: Birmingham Cathedral - Birmingham Festival Choral Society. A performance of Verdi's *Requiem*.

17th-27th: Cannon Hill Park, Birmingham - 1975 Tulip Festival.

24th: City Centre, Birmingham - Lord Mayor's Procession.

### Gloucestershire

8th: Bisley, Stroud - The Blessing of The Wells.

### Kent

16th-18th: Biggin Hill - International Air Fair.

31st: Coxheath, Maidstone - World Custard Pie Championships.

### Middlesex

10th: Northern Heights, the Scout and Guide Activity Centre off Barnet Lane, Elstree, is the venue for a fête entitled *Roman Holiday*, open to members, relatives and friends. Guides and Scouts from the Counties of Middlesex East and Greater London North will present a Roman Pageant, Roman Arena events and stalls and side-shows. Visitors are welcome to come in costume if they wish. The fête opens at 1.30 and will continue until 6 pm. In the evening there will be a Roman Banquet, but numbers will be limited. Anybody interested in attending the banquet should ring 01-398 4799; tickets are £5. Admission to the fête itself is 10p, either by programme (available from Scout and Guide Leaders) or at the gate.

### Oxfordshire

15th-26th: Henley-on-Thames - Henley Boat Festival.

### Sussex

6th-18th: Brighton Festival.

### Wales

16th-31st: Sophia Gardens Pavilion, Cardiff - Welsh Ideal Home Exhibition.

## STOP PRESS

At the time of going to press we have just heard that the Royal Ballet's season at the London Coliseum, due to start on 3rd June has been cancelled. See June *Guider* for any further developments.



NEW LESWYN FUND RAISING CATALOGUE STOP

NOW IN ITS FINAL STAGES OF PREPARATION STOP

AVAILABLE NEXT MONTH STOP

FULL OF FUND RAISING IDEAS STOP

START FUND RAISING THE LESWYN WAY...

## LESWYN *for Fund Raising 1975*



don't miss the boat...

Send for your free copy now!

**LESWYN**  
**CARDS LTD**

(Guider Division)  
Sutton Coldfield, West Midlands B73 5TF Tel: 021 354 7389



# FUND RAISERS

**make  
more money  
this year**



Make this the year when your company raises more money than ever before. You could do it easily, with Miller Fund Raising. Voluntary organisations have proved it time and again—it really works. **Everybody** wants to buy from the wide range of top quality greeting cards, stationery and gifts at unbeatable, value-for-money prices. The 'Miller Package Deal' contains everything you need for highly successful fund raising.



## MILLER PACKAGE DEAL

Voluntary organisations all over the country are already making big profits with Miller. The Miller Package Deal makes fund raising easy, enjoyable and profitable. Post the coupon today for full details and Free Colour Catalogues—there's no obligation, of course.

**BIRTHDAY  
CARDS  
FROM ONLY  
3½p**

**SAMPLE  
PARCELS  
WITH  
FREE  
GIFTS**

**BIG  
PROFITS  
AT LEAST 33⅓%  
ON OUTLAY**

**FREE FULL  
COLOUR  
CATALOGUES**

**CASH  
BONUSES  
&  
FREE GIFT  
SCHEME**

**NO CASH  
OUTLAY,  
PROFIT  
NOW  
- PAY LATER**

Please send me free colour catalogues and full details of your Fund Raising Service

NAME \_\_\_\_\_

ADDRESS \_\_\_\_\_

Tel. No. \_\_\_\_\_

Organisation Represented \_\_\_\_\_

(I am over 18 years of age)

GU5

To:  
**MILLER GREETINGS  
(Great Britain) LIMITED**  
Queensbridge Works,  
Queen Street,  
BURTON UPON TRENT,  
DE14 3LP.

**ACT NOW**  
NO RISK-  
NO  
OBLIGATION