

# CUNDEER

Volume 63  
Number 2  
February 1976  
20p





# DISCOVER why some Guide Companies are a cut above the rest



With the help of Webb Ivory fund raising profits, they are able to carry out all kinds of large or small projects, such as buying new canoes and camping equipment, painting their headquarters or even purchasing a new mini-bus for the Company. Surely that's what **your** Company needs. The super new Webb Ivory catalogue will give you that all-important extra fund raising edge. It's jam-packed full

with hundreds of popular, low-priced greeting cards, stationery, attractive gifts items and novelties, exciting children's games and a wealth of useful kitchen aids, utensils and gadgets — all illustrated in beautiful full colour — **and every item sold provides up to 25% profit for your Company.** So look sharp! Cut out and post the coupon today. Discover Webb Ivory . . . and discover what you've been missing.

## The Webb Ivory Fund Raising Catalogue-

**gives you that extra edge**

Please send, without obligation, free Webb Ivory catalogues and full details of your fund raising service.



**Webb Ivory Limited**

Little Cornbow, Halesowen,  
West Midlands B63 3AG

Name \_\_\_\_\_

Address \_\_\_\_\_

Tel: \_\_\_\_\_

Organisation \_\_\_\_\_

I am over 18

AB9B



# GUIDER

OFFICIAL MAGAZINE OF THE GIRL GUIDES ASSOCIATION

(incorporated by Royal Charter)

**PATRONS**HM THE QUEEN  
HM QUEEN ELIZABETH, THE QUEEN MOTHER**PRESIDENT**HRH THE PRINCESS MARGARET,  
COUNTESS OF SNOWDON**CHIEF GUIDE**

OLAVE, LADY BADEN-POWELL, GBE

**CHIEF COMMISSIONER**

MRS OWEN WALKER, JP

**CONTENTS**

Guiding Roundabout	48-49
A Day for thinking . . . and a Day for Action	50
New Year's Honours	50
Message for Thinking Day from the World Chief Guide	51
Guiding International	51
They do it for Love	52
The National Trust Corporate Membership	54
Why do I do it?	54
Women and their rôles	55
Home and Away	56
In Memoriam	57
Calling All Brownie Guiders	58
Airing and Sharing	59
Some Religious Festivals during February	61
Guide Alice	63
Training Calendar	64
Training Pages	65-68
Programme Notes	70
HQ Notices	71
Review	72
Guider Coupon Offers	75
The Three G's	77
Classified	79
Mainly for Rangers	82-83
What's On	86

**COVER**

In Avon North last year's Thinking Day began with a flag-raising ceremony in The Centre, Bristol. Taking part were Brownies, Guides, Rangers and Guiders of The Hengrove District. Also present during their Thinking Day celebrations, to make the day truly international, were visitors from The Solomon Islands, Ghana, Gambia and Zambia.

photo: Bristol Evening Post

EDITOR: MRS J V RUSH  
ASSISTANT EDITOR: MARTIN HEDGES  
ADVERTISEMENT MANAGER: MISS A M MARTIN  
ALL COMMUNICATIONS TO: Guider GIRL GUIDES ASSOCIATION  
17-19 BUCKINGHAM PALACE ROAD LONDON SW1W 0PT 01-834 6242





Kent and Sussex Courier

District Commissioner Mrs Prudence Phillips (centre), and Guider Mrs Betty Wright, with six members of the recently re-formed Company of Guides in Uckfield in Sussex.

Below: Guides taking a turn on the dance-floor during a training course in Bath.



Bath Weekly Chronicle

Below: District Commissioner, Mrs M Churchill, tries to light the candles at the Guide Fair, held at Wootton Bassett Guide HQ.

Wiltshire Newspapers



South Lancs Newspapers

Rag-Dolls, egg-shells pictures, embroidery and felt toys helped the 2nd Rainhill Brownie Pack win a craft competition - between 1st, 2nd, 4th and 5th Packs. Mrs Joan Martlew, Division Commissioner for Knowsley, presents the trophy to Mrs June Tinnior, 2nd Rainhill Brownie Guider.

Northampton Courier and Echo



Surrey and South London News Group

Three happy Brownie Guiders cooking the food at Epsom Parish Church's recent Fair.



Nicola, left, is seventeen. Through her Ranger friends she is slowly catching up on the experiences that, only two years ago, would have seemed beyond her reach. Her treatments in America for a rare illness have helped her enormously, but it is with her friends, the Guides and Rangers of Quinton and Hackleton near Northampton, that she improves most. And why is she standing on her head? It's all part of the treatment, and it works. Meanwhile the costs of her flights back and forth to the States are presenting problems for the Volunteers of the Nicola Bradshaw Fund.





Wigan Observer

Ashton near Wigan offered its contribution to Architectural Heritage Year, in a display at the local library. Pictured above are some of the Guides and Rangers of Ashton that helped to make it a success.



Newbury Weekly News

Above: Over a hundred Brownies, Guides and Rangers raised money for a therapeutic pool at Battle Hospital, Reading, in this sponsored swim organised on behalf of the Guides by the Thames Valley Round Table.

# - GUIDING ROUNDABOUT -



Hampshire Chronicle Group Newspapers

Following the County conference of Hampshire North Guiders in November of last year, a Service of Dedication was held at St John the Baptist Church, Alresford. Alton's new Division Standard was blessed by the Rector, Canon G E Beechey, RD.

Brownie Tamar Craggs was the Eastern region winner in the English Sewing competition. Her prize was a party dress, and a chance to distribute toys at a local hospital.

Below: Some of the 70 Brownies, Cubs, Guides and Scouts that were shown how to administer the 'Kiss of Life' at a meeting organised by the Red Cross Society's Pentridge Branch, in Staffordshire.

Stafford Newsletter



Newsletter Belfast



The Minister of State, Mr Roland Moyle, guest of honour at the annual Assembly of the Ulster Girl Guides, with Mrs T A Dickson (left), Chief Commissioner for Ulster, Mrs J W Haughton, CBE, MA (centre), and Mrs W E Greeves, MBE, JP (Vice Presidents).





# A day for thinking . . .



by Rosemary Cawkell

**T**HE 22nd February is the day set aside by more than 6 million members of the Girl Guide Movement to think especially of their World Chief Guide and of the Founder, and of each other.

Celebrations vary from country to country, but one custom will not change, and that will be the giving of a Thinking Day Penny to the special Thinking Day Fund.

Here at CHQ we are continually being asked 'where does the money go, how is it used; couldn't we give the money we collect to the Girl Guide Friendship Fund as the children like to know how their pennies will be used; we will send our Thinking Day pennies but can we send the collection taken at our Thinking Day Service to a local charity?'

To answer the first two (and consequently the last two) questions where does the money go and how is it used, it is useful to read the preface in Trefoil Round the World; any issue of The Council Fire; and the World Association Triennial Reports. We give our pennies to help develop the wonderful world friendship which so many of us had an opportunity to experience in 1975; we give our pennies to help bring Guiding to countries which are only now joining us in this world wide movement, countries such as Afghanistan, and Bahrain.

We in the United Kingdom, where Guiding has been established for 65 years, can have no idea of what it is like to want to introduce Guiding to our country, to our young people, starting from nothing but with a strong desire to succeed.

We have a Programme and books; we have Uniforms and Badges; we have Guiders and Trainers; we have an established standing in the field of youth work - it is all too easy and perhaps we take too much for granted.

1975 was International Women's Year, a year of world wide activity to advance the role of women, particularly in countries where tradition is slow to change. Guiding is one sure way of training girls and women to take their place in

a modern society; in a world where more and more women can take a leading role in their countries' affairs; but unless we, with our established organisation, are willing to help by contributing generously to the Thinking Day Fund the development of Guiding will be affected.

With this fund the World Association can send trainers abroad; they can help with the planning of programmes, advise and encourage the leaders in so many ways; they can do this because *you* have given *your* help, *your* Thinking Day Penny.

Can we really say we do not know how the money will be used? Can we not try to show our Guides and Brownies what an important part they play in helping their Guide sisters overseas, to get them to understand how thrilled the children are to receive a visitor from another country who will teach them games and activities and bring news of Guides throughout the world? Can we not explain that there would be no Girl Guide Friendship Fund project for, say, camping equipment for El Salvador if Guiding had not been established with the help of outside assistance, organised by the World Association and paid for by grants from the Thinking Day Fund?

Can we not help the local charity at other times of the year?

Let us make 1976 the year in which we made the Thinking Day Fund come alive for our Guides and Brownies.

We say we shall be thinking of World Guiding at our celebrations for Thinking Day - can we express our thoughts also through a definite action, a contribution to the Thinking Day Fund.

# . . . and a day for action

## New Year Honours

**A**LL MEMBERS of the Movement will want to send their congratulations to Mrs Allan Laing, who has been awarded the OBE. Mrs Laing served as a Deputy Chief Commissioner of the Girl Guides Association for seven years until September 1975. She was Chairman of the Fund Raising Committee at CHQ and Vice-Chairman of the UK '75 Committee. Earlier, while Deputy Chief Commissioner for Overseas Territories, Mrs Laing visited Guide Associations in Gibraltar, Cyprus and Malta. As a member of the Working Party and on the Executive Committee, her



wide experience was invaluable.

Mrs Laing has also served as a Cadet Guider and County Commissioner in Huntingdonshire and as Senior Branch Adviser, CHQ. Her practical knowledge of Guiding was a great asset as a speaker and when representing the United Kingdom at Commonwealth and World Conferences.

Readers of GUIDER will also wish to congratulate Mrs E L Goodchild, of Queensland, Australia, who was awarded an MBE for service to the Guide Association and the community' and Mrs J G Lloyd, of Western Australia, who was awarded the BEM for 'service to the community and the Girl Guides Association.'



## Thinking Day Message from the World Chief Guide



*The Chief Guide with the General Secretary, Mrs Lyvia Whiteaker, MBE, and the Deputy General Secretary, Miss Editha Mitchell, during her visit to CHQ last September.*

My loving thoughts will be with you all most especially on Thinking Day when I shall be joining with you remembering our Guide Friends throughout the world.

*Olave Baden-Powell*

## Guiding International by Eileen Mignot

**A** THIEF IN BRUSSELS; a child crying in Whitehall; and a nightingale singing in Germany; at first glance there seems to be no connection, and yet to me they are all symbols of an exciting venture in Guiding.

In April, a group of Guiders from all over Great Britain met for the first time in London and set off for Mozet, the centre of the Guides Catholique de Belgique in Belgium. The first night was spent at a Youth Hostel in Brussels – a hostel where the warden crowded us into a windowless room and we determinedly refused to think of fire hazards. During the night our Trainer had her car broken into, and all her clothes and equipment stolen. Disaster? It could have been but here the spirit of Guiding took over and the rest of the weekend was transformed. We shared our belongings and shared in activities, learning a lot about how to take groups abroad. We also discovered a lot about true unity and caring. The culmination of the weekend was a service in the Chateau chapel (a converted barn). Here, in simple surroundings, we shared with the local priest and villagers in the Mass and the Peace ceremony. We, in English, and our hosts in French, made our intercessions and responses, and we were as one, our denominational and racial differences of no importance.

It was fitting that a follow-up Training to this Mozet experiment should be held at Olave House, where the whole atmosphere is of international friendship. In our room there was a Nigerian student who felt the cold, so for her sake we endured without comment the closed windows during a hot stuffy night. America and Australia were also represented, and Olave House became a vivid reality of fellowship, rather than just a name in a book.

It seemed appropriate that Remembrance Day should fall during the weekend, and a group of us went through the crowds to the Cenotaph. As Big Ben struck the hour, a silence, which could be felt in its very intensity, fell over that vast crowd. Only the wail of a child broke the moment – a cry maybe symbolising the folly and waste of so many lives, our world still being torn by violence. The future lies in the balance, but it is for us to do what little we can in our own niche, in the hope and conviction that Good will prevail.

Later that afternoon we heard a tape recording of an insignificant little brown bird singing over a busy canal in Germany. At first we heard only the steady roar of traffic, but then, soaring high above the din, came the powerful song of the nightingale.



# They do it for

## A report on Folk Fest, with pictures

IT WAS THUS THAT Rolf Harris summed up the motivation behind Folk Fest 7, from producer Ian Grant to the smallest Guide who took part.

To the audience, Folk Fest is an entertaining show, refreshing and full of zest, surprising in the talent which it produces and the swing with which it bounces along, yet, in reality it is so much more than this. The show itself only represents the tip of the iceberg. It is all that goes before, from the first auditions to the moment when the house lights dim, which is the essence and spirit of this venture.

### A catalyst

Producer Ian Grant is the catalyst. At the auditions, with a mixture of top rate professionalism, patience and good humour, he pinpoints potential in each act that he chooses. Over the months, by letter, phone call and visit he develops, refines and polishes. Performers converge upon Baden-Powell House the evening before the first performance. The show begins to gel; no artistic temperament here! Individual ambition drops into second place as the cast unites in a common aim: to produce the best show of which they are capable. The generation gap disappears as staff and performers work together, good humoured banter seeing everyone through crises of lost tickets, laddered tights and broken guitar strings.

### Professional Production

Saturday morning sees everyone arriving at the Albert Hall, the Production Team, Sound and Lighting engineers appear, Rolf Harris, compère for the two shows, arrives, and one wonders, fleetingly, what their services would cost in ordinary circumstances. Rehearsals commence. Rolf, in addition to his commitment, signs autographs; gives hints; instils confidence; chats with everyone; organises an impromptu sing-song and gets to know the performers. One is constantly aware of the cast, gaining in poise and skill under the quiet direction of the Producer: an anecdote here; a lighting effect there; a shift of emphasis; a quick microphone adjustment. Under expert professional direction one sees the show begin to take shape, and only minutes before the audience begins to arrive rehearsals

end. The show begins, and is over in a flash, so it seems.

A quiet interlude on Sunday morning brings everyone together for the Act of Worship – this year with the theme



'Who am I, and what is my purpose in life?' Slides, readings, prayer, song develop the theme. Afterwards a performer says: 'It made me stop and think why I am here.' Sunday afternoon, and the second performance, a little more streamlined, a little more confident.

Moments which I remembered were the blind Greek girls, their gaiety, their confidence, their unerring feel for tonality and phrase in expressing the haunting quality of their native folk music. The sensitive musicianship of Nigel Benson in his performance of 'Armstrong'; 'Rubbish' with their zany, infectious humour and obvious love of the comic side of life; the delightful voice of Georgina Crosbie, the punch of the Russells; the warmth and depth of Rainbow Wood; the poise of Alan Asbridge, who held an audience of several thousand with impromptu humour for what seemed like a lifetime, during a technical hitch; the



# Love

by Susan Stevens

Bexley Squares and their expert caller.

What, as a performer, do you gain from taking part in this event? Apart from the fun and excitement of perform-



ing in such a building before such a large audience, there is much to be learned, albeit unconsciously, from the experience of working in a professional situation, with all its problems, challenges and rewards. From the months of single-minded effort in getting your contribution to the highest possible standard which you can achieve. From finding the courage that it takes to grin and start all over again, when the song that sounded great in the living room at home pales into insignificance in the vastness of the Albert Hall. From accepting the nerve-racking responsibility of being on stage in exactly the right place at exactly the right time, without comment or question, knowing that once there, the success of the show rests, for a few moments, on your shoulders. From the glow that is felt when the audience responds to you, laughs at your jokes, joins in your song. When the rest of the cast, who were



Photographs by Bill Carden, FRPS

*This page: Rolf Harris also entertained as well as compering; Joyce Young; The Russells; The 1st Greece; Voce Venture.*

*Opposite page, from left to right: Nigel Benson; The Singing Six; Rolf Harris talking to Ian Grant; The Bexleyheath Square Dancers; one of the Fifth Aughton Folk after an autograph.*

strangers yesterday, and who are now valued friends, applaud you backstage because they want you to succeed. From that first trip on the underground; that first opportunity to stand on your own feet away from home; from that first experience with young people from all kinds of environment.

Yes, they do it for love. Talk to the performers and you will find that back home they share their music in all kinds of ways with all kinds of people, all 'for love'. Love of spreading happiness, of giving pleasure to other people; of the countryside around them in the shape of its folk heritage; and of doing their best in a way that is also part of a common desire for good. Look beyond the guitars and the folk image. Folk Fest may be the sound of music, but is it not also the sound of what Guiding and Scouting is all about?





**D**o you know that the Girl Guides Association is a member of the National Trust and that if you are planning a visit with your Company or Pack to any National Trust property, you may use the CHQ corporate membership ticket?

Founded in 1895, the National Trust for places of Historic Interest or National Beauty preserves for our enjoyment our finest countryside and buildings. All over the United Kingdom it owns land and property, from coastline to moorland, mountain to valley, Roman castles, country cottages, town dwellings, even nature reserves and bird sanctuaries. Our landscape is so rich and varied that, no matter where you live, there is sure to be a National Trust property somewhere within reach of a day's outing. Your telephone directory will list nearby properties under 'National Trust'.

CHQ has a Junior Corporate Membership which may be used by parties of up to 30 young people (under 21 years of age) and two Leaders. Write to the Receptionist at CHQ stating the date on which you would like to borrow tickets and which property you would like to visit. Please enclose a stamped addressed envelope for reply and remember that it is advisable to book well in advance as the demand may be heavy. It is also not only courteous but wise to contact the Custodian of the property before your visit in order to make quite sure they are able to cope with the arrival of a group, and, if necessary, arrange a guided tour for you.

Under our Junior Corporate Membership, you may apply to the National Trust's Junior Division for a lecture on the work of the Trust. No fee will be charged, but you will be expected to meet the speaker's expenses. This could well provide the opportunity for you to encourage your Brownies, Guides and Rangers to develop an interest in rescuing or preserving the best of our heritage for ours and future generations' enjoyment. They may wish to become actively involved in supporting the National Trust, or to join in conservation work on Trust properties during the summer, such as the restoration of the Stratford and Avon Canal – a project which gave wonderful proof of the amount that can be achieved by volunteer labour.

For further details of CHQ's Junior Corporate Membership write with sae to the Receptionist, CHQ.

For further details of the National Trust and its plans for 1976, write, with sae, to: **The National Trust, 42 Queen Anne's Gate, London, SW1 H9AS.**

**E Joyce Hay**

## Why do I do it?

by a Brownie Guider, Wyn Burton

**W**e've cancelled our Brownie Meeting tonight because it is Bonfire Night. Everyone agrees it is the wisest thing to do. Especially me! I have longed for a Wednesday night when I could be free to watch my favourite programmes, or just sit and do nothing. (Funny, I don't think the programmes can be as good as usual tonight – of course I prefer the other channel – but the family are midway through the serial!). Ah well! I could find some Brownie work to do – No! The break will do me good. People often ask me 'Why do you do it?' When I am greeted by 24 Brownies who arrive at 5.30 pm for a 6.30 meeting, plus anxious Mums with names for the lengthy waiting list, I think I know why – but at 7.30 pm when the Brownie who has whitened my hair considerably, is collected by her mum, who assures me her daughter is always like that – a good thing really – it proves she is not ill!!! I wonder!

We have been trying to do some very simple handwork, we were shown at a Guider's Training, but I do not remember struggling to get glue out of our hair, or drying out our clothes – nor do I remember the Trainer wondering how to salvage the pieces of valuable card that had been cut on the dotted lines! – I suppose we could repair them with clear tape! – how many feet should we allow to produce a six inch strip?

Why do I do it? – It couldn't be because the Brownie chosen to carry the Pack Pennant decided to honour us by wearing her brand new red tights, could it? – Or the two Brownies sitting in front of the VIP's at the



drawing  
by Jean de  
Lemos

United Carol Service, who never expected to see one of their schoolboy friends, in the choir wearing a 'Night-gown'! (Brownies are supposed to spread happiness – but in Church!). After the Brownie Meeting, as I enjoy a cup of tea and watch the news, and see the state of the world, I wonder! – But wait! Scattered around the world today are Delegates who came to the World Conference, and accepted gifts of handwork actually made by our Brownies, who in turn received *Thank-you Letters* – A glimmer of hope for World Friendship, right here in our Pack?

When I think of all the Hikes, Campfires, Revels, Camps and Pack Holidays – not to mention the day-by-day fun, I have enjoyed during the last 50 years since I was enrolled – I am glad that my Grandchildren are in the Movement – I would hate any child to miss the advantages, and they will, unless we, who owe so much to those who gave their time for our benefit, are willing to go on *Doing It!*

As I get ready for bed, and realise that I am not destined to solve the World's problems I pick up my Guide Badge, and as it shines in my hand, it seems to sing the well known children's hymn – *You in your small corner, and I in mine* and I know why I do it!



# Women and their Rôles

by M P Fullerton

FOR THREE DAYS, twenty-five men and women from countries in NW Europe listened to experts, and discussed in plenary and group dialogue the wide-ranging problems connected with the rôle of women. The Conference, organised by Denmark, was partly financed by UNESCO. Its content was suggested by the Europe Committee of World Association of Girl Guides and Girl Scouts.

## Should men and women be equal or similar?

The Conference began with an introduction by a psychologist from Copenhagen University, who dealt with the influence of education on the rôles of men and women in society. Using quotations from (for example) *A Room of One's Own* by Virginia Woolf, it was pointed out that although men and women grow into their rôles from birth, neither sex need feel limited in the realisation of himself or herself as an individual human being.

A former Danish woman MP who had attended the International Women's Year Conference in Mexico, suggested in her talk that women could only achieve results in the fight for true equality if they were prepared to understand and to participate in political life. In contrast, some fundamental thoughts on women in the Bible were presented by Hannah Christensen, a Baptist Social Worker with a particular interest in the work of the World Council of Churches. Her belief in the value of Christianity in our search for better goals was tempered by discussion of the barriers limiting women's fulfillment in cultures other than our own.

Further discussions followed on the Mexico Conference which gave hope that now, at least, World Governments

subsistence economies and the tribal system. Wide cultural differences were found within each of these, often because of differing colonial and missionary influences. Mrs Boserup outlined the type of work undertaken by women in the Third World. For example, in rural areas tasks such as collecting firewood, making household equipment and growing the family food supply are perhaps the dominant occupations and allow women a full share in the hard life of the village. In urban areas women do the less well paid jobs in food processing factories if they can work at all, but lack of job opportunities often forces them to turn to begging or prostitution to provide for their families. Mrs Boserup concluded that only by an improvement in the economy and better terms of trade could standards of life be improved for women in the Third World.

Later, an archaeologist from Copenhagen Museum who had lived as a Muslim woman for long periods in Kurdistan and in Egypt, made us realise the dangers of trying to help women in the Third World when we have no first-hand experience of their situation.

The final talks and discussions of the Conference centred on the significance of sex rôles in Scouting and Guiding, and focused on the practical problems of forming and running joint organisations.

Ulla Berglin (former Vice-Chief Guide of Sweden) suggested that we in Guiding were training girls to assume men's rôles through stressing the positive traits of leadership, independence, initiative and resourcefulness. Surely what was intended by the founders of the Girl Guide Movement in the early 20th century.



had been alerted to the problems of women everywhere. Showing concern about women's unused talents, it had agreed to investigate why girls are falling out of the educational system and why lower-paid jobs are done by women. Results will be brought to another Conference in Tehran in 1980. It also stressed the need for a continuing communication between women everywhere if their potential was to be realised.

## The Third World

A talk on *Opportunities for Girls and Women in the Third World* was given by Ester Boserup, the well-known writer on Third World problems. She emphasised the need to appreciate the geographical backgrounds of the two main cultures of the world – the culture of older urban civilisations and that of other countries not yet far removed from

Bente Hansen, Danish Guide Chief Commissioner, described how, three years ago, Danish Scouts and Guides became one organisation. She felt that, in spite of initial problems, the advantages far outweighed the disadvantages, not only from an administrative and financial point of view, but also educationally and socially, since the new-look organisation was likely to attract more support from young people.

The Conference concluded with various recommendations: a report to the *Council Fire*; a resolution to the WAGGGS Europe Committee – on the need for factual information on the effects of gender rôles in Guiding and Scouting. It was hoped that all delegates to the Conference would pass on something of what they had learned to their own National Organisations.



# HOME &

## Nursing for the Family

Too many people end up in a mess when they try to nurse a sick, handicapped or elderly relative at home. Now, the British Red Cross Society wants to give people — men as well as women — a new opportunity to learn how to cope when a relative needs constant care.

At the beginning of 1976, Red Cross Branches up and down the country launched a programme called *Nursing for the Family*. It consists of a series of four lecture-demonstrations, each about 1½ hours

on the basic 'dos' and 'don'ts' of looking after a relative will be on sale at the demonstrations.

Miss Muriel Skeet, the British Red Cross Society's Chief Nursing Officer says: 'If you are not confident that you would be able to cope if faced with the problems of sickness, old age or handicap then *Nursing for the Family* would help you. We won't turn you into a qualified nurse but at least we'll make your life that little bit easier.'

Miss Skeet stressed that *Nursing for the Family* is designed for both

families. Very little is done to relieve their stress and families have to struggle alone to maintain their unity. They have many different and desperate needs. In some cases a special residential school for the children could mean the difference between a normal family relationship and one that is permanently shattered.

*A Child Of Mine* is the powerful ten minute film which shows John Horniman School, for children with severe speech and language defects. Invalid Children's Aid Association's school is one of the few places in the country where they can get the help they need so badly.

Many parents of handicapped children are near breaking point. But they can survive their ordeal if they are given help by trained social workers.

If you would like to arrange to show this film, please write for a booking form, to: **Invalid Children's Aid Association, 126 Buckingham Palace Road, London SW1W 9SB**, quoting *Guider*.



**Do YOU know how to give a bed bath?**



**Do YOU know the correct way of giving medicines?**

long, and will teach the basic skills needed to nurse a relative at home.

*Nursing for the Family* is different from any other Red Cross nursing course. It has been specially packaged and designed to help ordinary members of the public cope with the problems that could hit any family. It is not meant to create expert nurses!

Only the very basics will be taught. For example, among the subjects covered will be changing a bottom sheet with a patient in bed, turning and lifting a bedridden patient, giving a bed bath, feeding a helpless patient, giving medicine, taking a temperature, giving a bedpan, and lifting an incapacitated patient.

Boxed reminder cards giving hints

men and women. 'Who knows whether it will be the husband or wife who will need nursing care at home?' she asked.

*Nursing for the Family* can help anyone look after a relative who is in need of constant care. Unless you are already trained in basic nursing procedures it could help even you. Please ask people who may be interested to contact the local Branch of the **British Red Cross Society**, under **British** or **Red Cross** in your telephone directory.

## A Child of Mine

One in twenty children is either physically, mentally or emotionally handicapped. Anxiety is common in their

## Be a Barnado helper

Barnado's has come a long way since its founder, Dr Barnado, opened his first centre for homeless boys in 1870. Nowadays, the society helps handicapped children and the victims of cruelty, as well as the homeless, and offers guidance to foster-parents and families overwhelmed by problems. But Barnado's itself has a problem, namely inflation, which is affecting its badly-needed expansion plans. So why not give some of your spare hours to Barnado's? Become a Barnado Helper and help, in many different ways, to raise money to provide protection and loving care for these unfortunate children. All enquiries to: **Dr Barnado's, Tanner's Lane, Barking-side, Ilford, Essex IG6 1QG**.

## Sight for sore eyes

The BBC, which runs a weekly radio programme for the blind called *In Touch* is anxious that all blind and partially-sighted people should get to know about the accompanying quarterly bulletin also called *In Touch*. The bulletin is published in April, July, October and January. It is free from the BBC providing a sae for *each* issue is sent, to: **In Touch, BBC Broadcasting House, London W1A 1AA**.

Articles from last October's issue included *Learning Braille without a teacher*, *Braille bank statements*, *Airline Discounts for blind passengers*.

## Re-opening of the Dales Rail Service

As transport has been increasingly given over to the car in many rural areas of Britain, it is encouraging to see, in one place at least, positive



# AWAY

steps are being made to reverse this trend. Since the closure of the beautiful and historic Settle to Carlisle local passenger train service, Pennine residents and visitors alike, have been forced to take to the narrow roads in their cars, which in turn has led to traffic jams on fine weekends.

The Dales National Parks Authority, in conjunction with surrounding local councils have found a solution that seems to solve everybody's problem. They charter bus and rail services at the time that they are needed.

Since May, on one weekend every month, the lines are re-opened to trains from Leeds, which call at the old local stations – long since closed, before terminating at Appleby. Buses meet the trains at certain stations, taking the visitor further into the park, where they can take part in a guided walk, or work out their own programme of activities. The residents, too, benefit by the service as they can make a shopping trip to Leeds or Bradford.

The service has generous concessions on already cheap fares, and special weekend tickets make this beautiful area accessible to the serious camper.

Useful information such as this can be found in each issue of the Council for the Protection of Rural England's quarterly bulletin. Copies can be obtained from **4 Hobart Place, London SW1.**

## Adopt a Granny Scheme

This is a Scheme whereby groups, families or individuals can change the life of one old person by adopting him or her as their very own Granny or Grandad. It costs £25.00 a year to adopt a new grandparent and this money is used by Help the Aged to meet the needs of one old person in any one of about 50 countries.

The names of prospective grandparents are given to Help the Aged by accredited Agencies all over the world, usually Church or International relief organisations. These Agencies will be responsible for seeing that the money which Help the Aged sends them for the care of a particular grandparent is actually spent on or by that particular grandparent.

The money will provide the grandparent with things like nutritious food, medicine when it is needed, and extra shelter. Obviously the needs of each individual grandparent are different, but the grandparents live in such poor parts of the world that we can say for certain the money will be used to provide the difference between mere existence and living. For further information write to: **Help the Aged, 8-10 Denman St, W1A 2AP**, quoting *Guider*.

## News from Cyprus SBA

An interesting ceremony was conducted on Sunday, 14th December when some of the Colours which had been recovered from former Packs and Companies in Limassol and Berengeria were laid up at St Andrew's Church RAF Akrotiri (Church of Scotland and Free Churches).

The Parade Service during which this took place was conducted by Padre John and attended by Cubs, Scouts, Brownies and Guides from Akrotiri, the SBA's Commissioner for Guides and the District Commissioner from Episkopi who was formerly District Assistant at Berengeria.

The Colours laid up were from the following Units: 1st Berengeria Brownie Pack; 2nd Berengeria Brownie Pack; 1st St. Peter's, Limassol Pack; 2nd Limassol Brownie Pack; 1st Campbell Guide Company, Limassol; 2nd Campbell Guide Company, Limassol; 2nd Campbell Guide Company, Limassol; 1st Berengeria Guide Company.

## In Memoriam

To us in West Riding South **Mrs Margaret Crowther's** death on 5th December, 1975, came as a deep sorrow rather than a shock. For almost two years she had been bed-ridden and paralysed but no one ever heard a word of self-pity and one could only be thankful she no longer suffered.

As the vicar said at her funeral it can never be known how many lives Peggy Crowther's had touched nor how far her influence had stretched. She was a magistrate for many years and had been Chairman of the Board of Directors of her husband's mill after his death 22 years ago.

After her own family, Guiding was her greatest interest and we cannot be too grateful for her generosity in all sorts of ways to the Movement. Her list of appointments, too long to print here, showed her versatility. She helped to run a Company in her own village in school holidays some years before her first appointment as District Commissioner for Huddersfield in 1922. She served on the Finance Committee at CHQ in 1961 and in 1958 was awarded the Beaver.

Peggy Crowther's courage is an example to us all. We loved her dearly and shall remember her with pride. **HH**

**Miss Betty Fripp's** many friends in this country and overseas will have been saddened to read of her death on 23rd December, 1975. An appreciation will be published in the *March Guider*.

When one reads that in 1955 **Miss J A Lindsay** received the Medal of Merit from the Girl Guides Association for 35 years of meritorious service, the casual reader probably thinks – something attempted, something done.

**Miss Lindsay** taught us to love flowers, birds and shells and the stars, to respect and love the open-air life and, above all to enjoy everything. I

hope we have done so and certainly by the number of enthusiastic Guiders and Guides in the county at present – many trained by **Miss Lindsay** – her influence would appear to be here still. Officially she was Captain of 1st Thurso Guides; sometime District Commissioner, sometime Camp Adviser and Camp commandant; latterly vice-president, but to hundreds of grateful Guides she was 'Miss Lindsay' very much loved and admired.

**Thurso Guides and Guiders**

**Ethel Marshall**, who died recently in Woodford, linked the Guides of today with the earliest days of Guiding. As the Captain of the 1st Woodford Company from 1915 to 1946, and Woodford District Commissioner from 1916 to 1946, she had worked in the North East London Division under Mrs Ralph Bingham when Miss Agnes Baden-Powell was Chief Guide, and later, in Essex after the re-arrangement of Division boundaries.

Ethel was responsible for the development of no fewer than seventeen companies in Woodford before the Second World War and Guiding was kept alive by her enthusiasm. After her retirement, she organised the local Trefoil Guild until she was over eighty years old. Some of the Guild members still called her Madam, a proof that their association with her went back to the earliest days of the Guide Movement.

**JCG**

Leighton Buzzard District was saddened this year by the death of **Mrs Marydale Murray** in June after a long and painful illness. She had a long Guiding life, starting as a Brownie and in adulthood, first as a Brownie Guider in Wales and then as a Guide Guider in Leighton Buzzard District. She became District Commissioner four years ago and served the District well. Marydale loved camping and even when it was apparent her health was failing she gained her Camper's licence. Her courage and cheerfulness throughout her illness were an example to all of us. Marydale, we miss you. 'Go well and safely.'

**JJ**

On 24th September the Guide Movement in Cumbria North lost a much loved friend and supporter, **Miss M G Waugh**, who died just before her 90th birthday.

Throughout her life she had given valued support to, and taken an active interest in, many Community interests, particularly the Girl Guides throughout the County for all of which she was awarded the MBE in 1963.

In the middle 1930's she was District Commissioner for Girl Guides in the Gosforth District and from 1941 was Division Commissioner for West Cumberland for 10 years. At the time of her death she was the keen and active Division President for the large coastal area of Cumberland.

Gwen Waugh was unfailingly interested in all youth activities and gave unstintingly of her time, talents and great encouragement to all engaged in a great variety of causes. These included the SSAFA, the YWCA, the Lifeboat Society, Alexandra Rose Day, and the Church of England Children's Society. Her great love of people, springing from strong religious convictions, was the mainspring of all she did, and those who are continuing in the work are greatly indebted to and inspired by her memory.

**FS**



# Calling all Brownie Guiders!

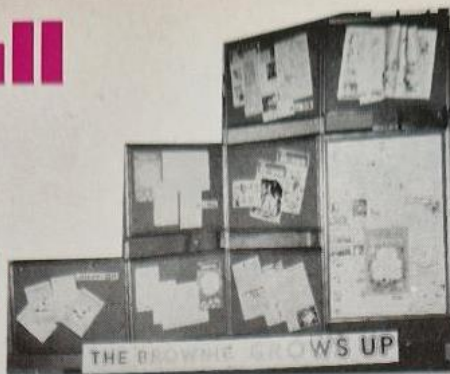


Photo: E Joyce Hay

A PARTY was given at CHQ last December to announce plans for a new look for THE BROWNIE magazine. The first issue appeared on 7th January, and Brownie Guiders have by now been able to judge for themselves whether the new magazine contains what they want, and need. Reaction from the educational press (including The Times Educational Supplement) has been favourable, and THE BROWNIE is now thought to be one of the very few weeklies containing an appreciable quantity of reading matter for this age group. However, what really matters is whether the readers approve, and we hope they will. We have tried to cover the whole age range, from the very young Brownie to those on the point of going up to Guides, with articles to appeal to every age. Those for the youngest Brownies are printed in very large type, and something completely new is the introduction of nature notes, handcrafts and recipes all presented in easy to follow strip cartoon form.

The response from Brownies for any project is always very heartening, and we were not surprised when 1,000 entered a painting competition sponsored by Burbank Toys, last November. The three winners were invited to our party, where they received prizes of Barbie Doll sets and also the very first three Brownie dolls, just introduced by Burbank. The main part of their prize, however, was an enormous box of toys (see picture) for each Brownie to donate to a children's charity of her choice. Look out for more details of this in a future issue of THE BROWNIE. The Brownies at the party were given advance copies of the new magazine, and if this tiny 'test market' is anything to go by, the future looks bright.

Another happy event celebrated at the party, was the successful first year of TODAY'S GUIDE as a monthly. Sales rose enormously throughout the year, and it's clear from letters to the Editor that TODAY'S GUIDE fills the bill. Three Guides, winners of the Everest Competition sponsored by John West, were invited to the party to receive their prizes and to help cut a huge cake made and donated by John West. The cake was iced in blue and

yellow, in the shape of a Trefoil more than two feet wide. After an excellent buffet lunch (ingredients kindly donated by various advertisers and sponsors, prepared and served by Periodicals staff) we were only able to demolish about half of this delicious cake. We thought we would like to share our celebration with the Westminster Centre for the Disabled (just behind CHQ). The remains of our

## 'The Brownie' Grows Up



No-one can resist Mr Potato.

buffet lunch and the cake, filled with mandarin oranges and fresh cream, were greatly enjoyed by the patients at the Centre, especially as we arrived just in time for tea.

Mr Potato, in the shape of Mr Griffiths of the Potato Marketing Board, was a most popular figure at the party, serving hot baked potatoes which nobody could resist.

The main object of the party was to attract advertising revenue – a most vital factor in the success or failure of any magazine. The general feeling could be summed up as follows: both TODAY'S GUIDE and THE BROWNIE should go from strength to strength in 1976.

We have done our part, and now look to you for support. There are still thousands of Brownie Packs and Guide Companies that have never heard of THE BROWNIE and TODAY'S GUIDE. The only way we can reach them is through you, the Guider. Do you play your part, by using and encouraging your Unit to use your own section magazine?

Jean Rush



Brownies can't wait to undress their Barbie doll prizes.



All these toys were given to children's charities.

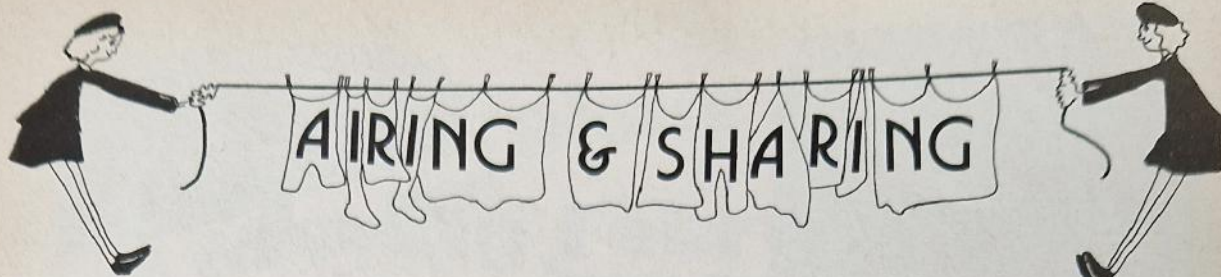


The Editor cuts TODAY'S GUIDE birthday cake.



Photo: Ken Rush  
All the Brownies and Guiders acted as hostesses in serving the birthday cake.





### Challenges – a rush?

Glad to hear *Airing and Sharing* still exists! As I had only found *Letters* lately I had wondered.

Have I only dreamt it or were we given advice originally about suitable periods of time for Brownie Journeys to take? My own memory has led me to see that Brownies do not gallop through the Footpath Badge, for instance, in three months, as some could quite easily. The idea is to Challenge each child, as we all know, and to help the Brownies to develop interests and 'Lend Hands' so Journeys can be leisurely and should be challenging for varying periods, according to each child's ability. Others' views, please.

**A Brownie Guider**  
(name and address  
supplied)  
North Yorkshire

### Less philosophy please

I have just read through some of this month's GUIDER over a quick cup of coffee while the baby's asleep and the washing is soaking. You say you would like our suggestions. Here are some of mine.

The GUIDER itself. The first five pages of November's 'special' issue were full of philosophical hopes and ideas which were marvellous in themselves, but not as inspiring as some concrete, down-to-earth suggestions of how some of the Guiders at the conference tried to fulfil these philosophies in their Units. The only piece in these articles which comes to my mind now is that about saving time in boiling potatoes! A fellow Guider agrees with me that excerpts of the actual discussions and ideas between Guiders, some of those notes recorded at meal times, would have been far more interesting. Is it too late for them to be included in another issue? Perhaps you might be interested in some humble efforts we have made in our Unit.

**Handbooks.** While these are jolly and colourful, they have somehow lost their bite. I find my son's *Wolf Cub Handbook*, circa '62-'63, very useful for our Brownies. I have been reading to them from the chapters on Health in *Pow Wow* lately and wish I had not lost my *Scouting for Boys*, the handbook we used as Guides. In my mind the high standards of Baden-Powell and his emphasis on fun, have nothing to do with changing fashion or age but remain as true today as ever.

**Publicity.** Guiding has only started up here again after a gap of several years. I have found in many cases complete ignorance of what it is all about. We have had a new Brownie Pack for three years now and a tiny Guide Company for two years, and it is just beginning to sink in, what Guiding is about and our Pack and Company are becoming a real part of the village life. We have children from about six different schools in the Pack and Company, from very different social strata. But I cannot get over to people what an LA is or why they should support it, two parents are on the local one now but in this District there seems only support from parents who tend to give up when daughters give up active Guiding.

I know publicity is expensive, but I do think it would pay and perhaps a more explicit name than *Local Association* would help. I talked hard about the World Conference but I think some people thought it was in my imagination as in this part of the world it failed to reach the papers or television.

**R Coales (Mrs)**  
*Guide Guider, Amersham*

### Keep In Memoriam

In reply to the letter in December's issue of the GUIDER referring to 'Guider Problems', the Subs in our Guide Companies are collected by each Patrol Leader and then passed to the Guider, thus obliterat-

ing the otherwise lengthy task of collecting Subs.

I am afraid I do not agree with Margaret Hughes who says a little less of the 'In Memoriam'. I think Guiders should be remembered for the work they have put into and the joy they have given to girls in the Movement.

A problem page might be a good idea in the right perspective, but I think this might put some of our Commissioners out of a job, because they are there to help us with our problems. We can also get immediate answers from our Commissioners which you cannot get from a problem page.

I would just like to say that I think the Girl Guide Association does a marvellous job in the publication of valuable information for all our benefit.

**Rosalie Sault**  
*Walsall East Division*

### Provoked into writing

Your request for suggestions and ideas as to where the Guide Movement should be going has provoked me into writing. Here in Castlefields, Shrewsbury we have started a Guide Company, from nothing, over the past year and have been very disappointed at the lack of support, funds, loans or anything from the Association. This is a low income area, socially deprived, with parents working late hours or nightshift and mothers working evenings as cleaners. There is very little spare cash for extras.

The Company has grown from three Guides to 24 over the year, and is just solvent after payment of the £12 registration fee, which was very hard to raise.

We have no equipment, no bank account and we are only solvent because the local church has not yet made a formal charge for the time of the hall.

The call for a parents committee concluded with one Guide parent turning up.

The Guides themselves would like to become a part of the Movement; they

would like to go camping, to meet others of their own age; they would like, although they don't normally get to express it, to get out of their environment for a short while, but without some more positive support it would seem unlikely that the Company will survive and, as previously, close down after a year or two.

May I suggest that the Association consider donating some of the funds raised during each year to groups in such deprived areas of the country, either as direct grants for tents, equipment etc, or in the form of an interest-free loan, repayable over, say 5 years, to get new Companies on their feet and into the Movement completely.

In the end we must think more of the Guides lost to the Movement than the accumulation of association funds.

**L S Hindmarch**  
*Guider, Shrewsbury*

### Eight Point Badge

While appreciating the flexibility of the Eight Point Programme, and not wanting to cut down on variety in any way, I do feel a more structured Eight Point Badge would be a help to Guiders, PLs and Guiders. On reading the very interesting Durham Conference Reports, I realise representatives must have been good and experienced Guiders, and they are quite able to operate the Programme. But what about the new Guide Guider?

In our Division we recently had a discussion on the loss of 13 year olds to the Guide Movement, and we were a group of ordinary Guiders, some experienced and some quite new. It was felt nearly unanimously that we needed a more definite Eight Point Badge in the Third Year, perhaps resembling the old First Class. The only dissenting voice was from a very experienced Guider who had been in the Movement well before the new Programme

continued on page 77





**insist on this label**



**The Sign of Quality,  
Reliability, Best Value**

**These Boots  
are made  
for walking**



**RAMBLER BOOT** (illustrated above)

Lightweight Italian boot with a dark tan full grain leather upper which is fully leather lined. The padded leg of the boot superbly supports, protects and comforts the ankles. Vibram Iseran sole and heel unit and bellows tongue.

One pair of size 42 (8) weighs 1.7 kg. **PRICE £14.75**  
**SIZES: 36-43**

**MONTE ROCCA BOOT** (illustrated left)

This lightweight boot is ideal for the casual walker. The leather is supple and the sole flexible so it requires no breaking in.

**SIZES: 36-43** **PRICE £12.90** Other sizes available on request.

**BOOT SIZE CONVERSION CHART**

English	3½	4	5	5½	6½	7½	8	9
Continental	36	37	38	39	40	41	42	43

Socks available, also Kiwi Wetproof.  
Send for catalogue for further details.

available at all Guide shops and  
**Mail Order Dept,**  
**The Girl Guides Association,**  
Trading Service,  
Atlantic Street,  
Broadheath,  
Altrincham,  
Cheshire WA14 5EQ.  
Telephone: 061-941 2237/9

**THE ASSOCIATION SHOPS:**

London: 17/19 Buckingham Palace  
Road, SW1W 0PT.  
London: 19 Green Lanes, Palmers  
Green, N13 4T.  
Birmingham: 5 Ryder Street, B4 7NE.  
Liverpool: 20 Richmond Street, L11EG.  
Cardiff: 209 City Road, Roath,  
CF2 3XX.

**SCOTTISH GUIDE SHOPS:**

Edinburgh: 16 Coates Crescent,  
EH3 7AH.  
Glasgow: 1 Scott Street, G3 6NU.  
Dundee: 53 Tay Street, DD1 1NP.

**SCOUT AND GUIDE SHOPS:**

London: 124 Newgate Street, EC1.  
London: 55 Woodgrange Road,  
Forest Gate, E7.  
Ipswich: 5 Tacket Street, IP4 1AU.  
Leeds: 62 The Headrow, LS1 BEJ.  
Oxford: 17 Turl Street, OX1 3DH.  
York: 14 Goodramgate, YO1 2LO.  
Harrow: 104 Hindes Road.  
Peterborough: 97 Bridge Street.



# Some Religious Festivals during February

by Jean Potter

**5th FEBRUARY:** This is the day of **Vasanta Panchami**, the Spring festival which falls on the fifth day of the Hindu month of Magh. The celebration is dedicated to Sarasvati, the wife of Brahma, the creator (see August *Guider*). She is the goddess of literature, music and fine arts, and is nearly always represented as a pleasant faced lady holding a Vina, a popular stringed instrument of the Hindus, similar to a guitar.

Buddhism. About two hundred years after the death of the Buddha there were differences of opinion among the many monks and Sanghas, which had grown up amongst the Buddhist communities in India, about how some of the rules, or code of discipline for life, in the monasteries, should be kept. A council of monks was held at Patna at which it was decided that a minority group were interpreting the Vinaya wrongly. Representatives of this group therefore moved away up the Ganges valley and set up new communities which were to prepare the way for the emergence of a new type of Buddhism, now known as Mahayana Buddhism. This branch of Buddhism emphasised the relevance of the faith for lay people, teaching that the idea of complete enlightenment (nirvana) was something toward which every man, whether monk or layman, could make progress. Anyone who was far advanced on the path to 'nirvana' could give help to those who were not so far advanced. Such people were known as 'bodhisattvas', from words meaning those who had the essence (sattva) of enlightenment (bodhi), and their compassion for others less enlightened than themselves, was an important part in the total scheme of things whereby everyone could eventually attain salvation. The scope of salvation was therefore widened in this new form of Buddhism, which led to it being called the great (Maha) means of salvation (Yana). It was this branch of Buddhism which was later to spread to China, Korea and Japan, where it developed into what is now known as Zen Buddhism, and also to Tibet.

Meanwhile, representatives of the original Buddhism, who called themselves the Elders, had embarked on a programme of missionary expansion which took them all over India, and to the island of Ceylon - now Sri Lanka (see June *Guider*). Later, this branch of Buddhism spread to the South East Asian countries of southern Burma, and what is now known as Thailand, Cambodia, Laos and Vietnam. This older form of Buddhism is known as the 'Doctrine of the Elders', or **Theravada Buddhism**.

**15th FEBRUARY:** On the full moon day of February, Theravada Buddhists, particularly those in Thailand, Burma and Cambodia, celebrate **Magha Puja**. During this festival they remember the day on which the Buddha ordained one thousand two hundred and fifty disciples, all of whom received enlightenment. They also remember the Buddha's teaching, known as the Vinaya, which lays down the strict rule of discipline for monks or 'bhikkhus' (see October *Guider*).

The 'Dhammapada' or 'The Path of Virtue', the oldest Buddhist text now in existence, also describes the way in which Bhikkhus should behave. The following are some extracts from it:

'Restraint of the body is good. Restraint of speech is good. Restraint of the mind is good. Restraint everywhere (ie in the eye, ear etc) is good. The bhikkhu restrained everywhere is freed from all suffering.'

'He who is controlled in hand, controlled in foot, controlled in speech, possessing the highest control (of mind), delighted within, composed, alone, contented, he is called a bhikkhu.'

'Sweet is the speech of the bhikkhu who has tamed his tongue, who speaks wisely, who is not puffed up, and who expounds the meaning of the text.'

'The bhikkhu who abides in loving-kindness, who takes delight in the Teaching of Buddha, attains the Happy Haven of Peace (Nirvana) which is the calming of conditioned things.'

This is also the date on which the Mahayana Buddhists commemorate the **Parinirvana** of the Buddha.

At Gautama Buddha's enlightenment (see May *Guider*) all evil tendencies such as greed, hatred and illusion, which cause continual rebirth into human existence, had been eradicated. The Buddha was therefore ready to enter into the perfect state of nirvana, attained when all evil passions have been extinguished, and the person is ready to be released from the limitations of his mortal condition. However, Gautama's physical body had to continue until its mortal life force was spent, which did not occur until he reached the age of eighty years, when travelling to Kusinara in modern Uttara Pradesh. He then underwent pari-nirvana (death of the body) and entered into the state of nirvana.

**28th FEBRUARY:** **Shrivratrī**, which means 'Shiva's Great Night' is observed throughout India as a fast in honour of Shiva, the destroyer (see August *Guider*).

Drawing by Anne Osborne



Shiva, the destroyer

Shiva was condemned by Brahma to the existence of a mendicant who wanders eternally, delighting in the society of ghosts, imps and devils who haunt cremation grounds and wild places. He has no palaces in which to live, and is therefore also the god of ascetics. He is believed to have taken on certain manifestations in order to destroy specific demons.

Those who worship Shiva as the Supreme Being, regarding Brahma and Vishnu as subordinate to him, are known as Shaivas. Sculptured figures of the dancing Shiva, in both stone and metal, are among some of the masterpieces of Indian art.

All Hindus are expected to keep vigil on the night of Shrivratrī but the following day is spent in feasting and gaiety. Part of these celebrations include large fairs held on river banks or sea shores, to which pilgrims flock in their thousands. Many of them also bathe in the rivers or seas nearby as part of their devotions.



BOOK NOW FOR LESS THAN HALF PRICE SEATS

# SPECIAL CONCESSION

FOR ALL GUIDES, THEIR FAMILIES AND FRIENDS TO SEE  
Those fabulous basketball wizards



## Harlem Globetrotters



### EMPIRE POOL, WEMBLEY

MONDAY MAY 10 to SATURDAY MAY 22 at 7.45 pm  
(Sunday at 6 pm)

**CONCESSION OFFER - Tickets priced at £2.00 for 85p each**

For performances listed on Booking Form below

BOOKINGS FOR THIS SPECIAL CONCESSION (AT THE PERFORMANCES NOTED)  
WILL ONLY BE ACCEPTED ON THE DETACHABLE FORM BELOW

CASH WITH ORDER

PLEASE COMPLETE THIS ORDER FORM - ENCLOSING THE APPROPRIATE  
REMITTANCE with stamped addressed envelope and send to:  
HARLEM BOX OFFICE  
EMPIRE POOL & SPORTS ARENA  
WEMBLEY HA9 0DW MIDDLESEX (Tel: 01-902 1234)

BOOKING REF.

**SPECIAL CONCESSION  
GUIDER**

Please send Tickets at 85p each (normal price £2.00) for one  
of the performances listed below, marked 1, 2, 3, 4 in order of preference

MON, MAY 10 at 7.45 pm		MON, MAY 17 at 7.45 pm	
TUES, MAY 11 at 7.45 pm		TUES, MAY 18 at 7.45 pm	
WED, MAY 12 at 7.45 pm		WED, MAY 19 at 7.45 pm	
THUR, MAY 13 at 7.45 pm		THUR, MAY 20 at 7.45 pm	

Name .....

UNIT TITLE .....

Address .....

Tel No .....

I enclose CHEQUE/P.O. to the value of £

made payable to WEMBLEY STADIUM LTD and crossed

Normal admission prices for other performances:

Full price	£2.80	£2.40	£2.00	£1.50	80p
Party rate	£2.60	£2.20	£1.90	£1.40	70p
Children half price (not Sat)	£1.40	£1.20	£1.00	75p	40p



**A**LICE was getting very tired of watching her brother Scout and having nothing to do; once or twice she had tried to follow the trail that he was laying but she had no Company or uniform.

Suddenly a large white rabbit ran close by and Alice began to stalk it. She was just in time to see it disappear round a large sign-post which pointed to 'The Boy Scout's Rally, The Crystal Palace'.



In another moment round went Alice after it, and found herself flying, flying, flying...

She had plenty of time to look about and wonder what was going to happen next and then, thump, thump, down she came on a heap of dry leaves. Before her was a long road winding away into the Future and the White Rabbit was still in sight, hurrying down it. Alice was close behind it when it turned a corner and was no longer to be seen, and she found herself in the hall of No 25 Buckingham Palace Road, which seemed to be partly her brother Jackie's property and was full of his things. There were interesting looking doors round the hall leading away to Friendship and Adventure and Service but they were locked. All at once she came upon a three-legged table of solid glass with nothing on it except a tiny, golden key, labelled *Girl Guiding*. Alice hoped that it would open one or all of the doors, but the table was so high she could not reach the key, and the table leg was too slippery to climb up.

'Come, there's no use in crying like that!' said Alice to herself, rather sharply. 'Leave off, this minute.' (She generally gave herself very good advice, though she did not always follow it).

Soon her eyes fell on a little gold box that was lying under the table. In it was a very small cake with the words *Eat Me* marked in trefoils. The baker had thoughtfully written out the recipe: *Take equal quantities of honour, loyalty,*

# Guide Alice

**T**HESE famous scenes from *Alice in Wonderland* and *Through the Looking Glass* were parodied for *The Guider* in 1935 by Phyllis Pease, with apologies to Lewis Carroll, and we thought they would still appeal 41 years later! The illustrations are by E. Davison, with apologies to Tenniel.

TWM

*usefulness, friendliness, courtesy, kindness, obedience, cheerfulness, thrift and purity and mix well. Add the three-fold promise to bind them together, and bake in a warm heart for a life-time.*

'Well, I'll eat it, and see what happens,' said Alice to herself.

'Curiouser and curiouser!' remarked Alice. 'I am opening out like the largest telescope that ever was.'

Of course she could now reach the key, and found to her joy that it opened every one of the doors. Just then her head struck against the roof of the hall, but she went on growing and growing. Her head was in Britain but her limbs were rapidly extending throughout the world.

After a time Alice heard voices outside. 'That arm sticking out of the window has got no business in a house of this size, go and build it another,' the Chief Scout was saying.

After a little while a shower of bricks came rattling in at the window from all over the Guide world and Alice noticed that they began to build themselves into a wonderful new house that was large enough to contain her, at No 17-19 Buckingham Palace Road.

It was before she outgrew her first house that Alice first met the Chief Scout. They looked at each other for some time in silence and then he said: 'Who are you?'

Alice replied rather shyly: 'I am a Girl Scout. I want to learn to do the things that you are teaching Jackie to do.'

'But you can't be a Scout,' said the Chief. 'The boys would object, and the grown-ups too. You can be a Guide, if you like.'

'Is that all?' said Alice, swallowing down her temper as well as she could. 'I don't want to do the things I used to do, like fancy needlework and reciting poetry and that!'

'Repeat "You are old, Father Robert"', said the Chief Scout.

Alice folded her hands and began: 'You are old, Father Robert,' the young Scout said, 'And your hair has become very grey; Yet you've all sorts of mad-hatter schemes in your head Come, tell me the reason, I pray!'

'In my youth,' said the Chief, as he smiled at the maid, 'I learned to be still and behold; Which brought me out right at the top of my trade And taught me that silence is gold.'

'You are old,' said they both, 'one would hardly suppose You would bear with our juvenile folly, Yet you laugh at our nonsense in verse and in prose, What makes you so sporting and jolly?'

'I've harked to two verses, and that is enough,'

Said the General: 'Behave yourself, mind!'

Do you think I can listen all day to such stuff?

Shut up, or I'll leave you behind!'

'That's not said right,' said the Chief Scout decidedly. 'I should never say "shut up" to a lady.'



'Not quite right, I'm afraid,' said Alice timidly.

There was silence for some minutes and then he strode away into the world where other little mushrooms were beginning to spring up, merely remarking as he went: 'One day, Alice, you shall visit Yourself across the seas.'

(Continued next month)



# HOW TO APPLY

Any Guider may herself apply to attend a training course at the Centres, provided she has reached the minimum age of 18 years. (At the discretion of the Commissioner a member aged 17½ who is working on the Adult Leader's Certificate may also apply for a Guider course).

An application to attend a Guider Training Centre should be sent direct to the appropriate Guider-in-Charge, and must be accompanied by the correct amount of deposit and a stamped addressed envelope. Applicants should also state the type of training for which they are attending, as there may be several different courses running at any one weekend. As so many guiders have to leave on Sunday, training sessions at a two-day weekend will stop at tea-time on that day unless otherwise stated. If sufficient notice is given that it is wanted, every effort will be made to provide sessions for a group until Monday. Individuals who are able to stay over until Monday to enjoy the surrounding country and other amenities of the Centre are most welcome to do so.

## FOXLEASE

Lyndhurst, Hants SO4 7DG  
Tel: (Lyndhurst) 042-128 2638.

## WADDOW

Clitheroe, Lancs BB1 3LD  
Tel: (Clitheroe) 0200 23186.

30-1 Sefton  
6-8 New to Guiding (For Adults new to the Movement)  
13-15 Greater Manchester North  
27-29 Camp and Pack Holiday Training

## Trainings marked 'General' are for Brownie and Guide Guiders.

5-7 General Training  
12-14 Making the most of the District (District Commissioners with up to seven of their Guiders)  
19-21 General Training  
26-28 Midlands England (by allocation)

2-4 Helping the Young Leader (County Leadership Advisers, Commissioners and Guiders)  
9-11 General Training  
2 Diploma d Trainers (with up to seven years experience)  
15-19 Duke of Edinburgh Gold Award Course (Easter) (Rangers, young Leaders and girls outside the Movement)  
23-25 1 Practical Programme Skills (Guiders of all Sections)  
2 Music Side Group (Brownie Guiders)  
30-2 Lincolnshire South

7-9 Merseyside South  
14-16 General Training  
21-23 Something in Common (General Training for Ranger Guiders and Venture Scout Leaders)

11-13 Friends of Waddow  
18-20 Northamptonshire  
25-27 General Training

## February

30-1 Buckinghamshire  
6-8 General Training  
13-15 Building the Training Team (County Training Advisers with their prospective trainers and link trainers)  
27-29 1 Ranger Guiders  
12 An introduction to Heraldry

## March

5-7 General Training  
12-14 South West England (by allocation)  
19-21 General Training  
26-28 Hampshire North

## April

2-4 Making the most of the District (District Commissioners with up to seven of their Guiders)  
9-11 General Training  
15-19 Duke of Edinburgh Gold Award Course (Easter) (open to boys and girls from any Operating Authority)  
23-25 London South East  
30-2 General Training (including crafts, wide games and outdoor activities)

## May

7-9 Middlesex East  
14-16 General Training  
21-23 Essex East  
28-5 Family Holiday Week (Guiders with their husbands and children aged 2-8 Holiday years)

## June

11-13 Hertfordshire  
18-20 General Training  
25-27 Campfire and Prospective campfire Leaders

BRONEIRION  
Llandinam, Mont SY17 5DE

NETHERURD HOUSE  
Blyth Bridge, West Linton,  
Peeblesshire

6-8 Young Leaders  
13-15 General Training (Glasgow SE Division)  
27-29 General Training

6 or 7 District Commissioners (non-residential, one-day training)  
12-14 Prospective Certificated Trainers - by invitation  
19-21 General Training (Ayrshire)  
26-28 General training (Dumbartonshire)

2-4 Guide Guiders - Patrol System and PL Training  
9-11 General Training (Renfrewshire)  
15-19 Residential Course - D of E Award Scheme  
23-25 General Training (Dundee)  
30-2 General Training (Roxburghshire)

7-9 Guide Guiders (also Herefordshire)  
15 Welsh Relations Advisers  
16 Welsh Advisers (Arts, Leadership and Training Chairmen)  
21-23 Welsh Camping and Outdoor Activities Training Conference  
28-30 Patrol Leaders (West Glamorgan)

4-6 General Training (also Dyfed)  
11-13 General Training (also Central Glamorgan)  
18-20 General Training (places reserved for Montgomery)  
25-27 General Training

Fees at Netherurd  
Shared room, per day £2.00  
Double room, per day £2.25  
Single room, per day £2.50  
Deposit - £1.00 Training fee for non-residents - 50p per weekend

## BURSARIES:

Full details of the conditions of issue and how to apply are available from the Training Secretary, CHQ.  
The Fee Bursary entitles a Guider to a grant of £2 for a two-day weekend and 75p for each additional day.  
The Fare Bursary (available only for travel to the nearest Training Centre) carries a rebate of a Guider's travel expenses in excess of £3.00.  
The Angela Thompson Bursary is available to any Guider attending a Promise and Law or similar Training (not necessarily at a Training Centre).  
No application form is necessary. District Commissioners should apply on behalf of their Guiders, after they have been accepted for the Training, direct to the Training Secretary, CHQ, Scottish Headquarters.  
Commissioners should write to Scottish Headquarters.  
All applications must arrive at least TWO WEEKS BEFORE THE TRAINING. Bursaries cannot be issued at shorter notice or in retrospect.

# TRAINING CALENDAR



# Challenges Along the Road

**M. Leeson**

When some skipping ropes were needed for Brownie equipment I suggested that we purchased a sashcord, cut it into suitable lengths and whip the ends. The Brownies, wanting to use the skipping ropes for the Roadway Keep-Fit Challenge, decided to Lend a Hand by learning to whip rope and making the equipment, and for the next two or three weeks they were engrossed in doing so. 'Can we try them now?' we were asked. Soon we heard 'Can you do this?' as Keep Fit Challenges emerged.

Brownies often need suggestions for the Keep Fit Challenges. If general activities involving balancing, ball-bouncing, etc are included in the Pack Programmes we can observe which demand an effort from the individual Brownie.

Before using triangular bandages as blindfolds in an activity they will need to be washed and ironed - another opportunity

for Brownies to Lend a Hand in the Pack. Younger Brownies need help when the Pack is employed in seasonal handcraft. Cleaning and tidying the Pack's equipment box or cupboard is also good practice for the House Orderly Badge.

When Brownies chose using a public telephone call box as their Wide Awake Challenge the Young Leader attached to our Unit produced *Hidden Hints* equipment (see Brownie Guiders' Handbook, page 68; Young Leader's syllabus, Part II, 3 (a)). After reading the hints in their Handbook and learning from the use of this equipment the Brownies went with a Unit Helper to the local call-box and telephoned messages to people, with whom previous arrangements had been made.

Brownies Make Things at home and at school and if we encourage them to show these to us we can assess their ability and make suggestions for this Challenge.

If sufficient facilities exist, Brownies can learn to Help at Home by washing socks at the Brownie meeting, taking the wet laundry home in a polythene bag. On a fine summer evening the socks can be hung out, and be partly dry by home time (clothes line knot having been previously learnt and practised).

Since the Fun Out of Doors Challenge is carried out over a period of time, it is helpful if the Brownie makes notes on her work for it, and the results. The Guider needs to show a continual interest in the Brownies' efforts and notes. Brownies in our Unit growing hyacinths for the local deaf/blind community were faced with a further Challenge as they realised the need to communicate with the recipients in due course. This has led to their becoming more Wide Awake by studying the Deaf/Blind hand alphabet and passing an eye-and-memory test on it.

## The Pack prepares for the Bazaar

**J. Fisher**

Top: a Wendy hedgehog.  
Middle: Gonk, made from old tights.  
Bottom: a foam soap container.

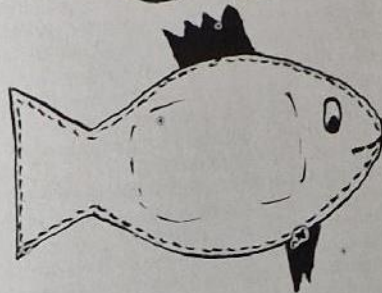
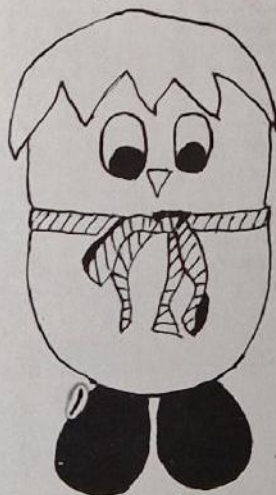
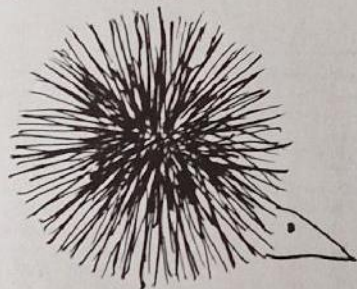
Do the above words fill you with horror, or with glee? Probably your reaction will be influenced by the facilities available and usable at your meeting place, but sooner or later (and often with amazing regularity) we are either requested or volunteer to help at such a fund-raising effort.

What to start producing then? Here are some general suggestions which I have found sell well.

Simple stationery items go well; shopping lists (off-cuts of paper stapled into a cover decorated with sticky-paper cut-outs or felt pens), notelets decorated with potato prints (have you tried using an ink pad . . . it's far less messy than paint?); wrapping paper also decorated with potato prints; birthday and Christmas cards, depending on the time of year, made from old greetings cards stuck on to sugar paper - don't forget envelopes which can also be made by the Brownies to fit.

Household Items. Tea pot stands made from ceramic tiles, bought for a few pence each, based with self-stick plastic foam or felt, and decorated with sticky plastic cut-outs, letter cases, pension books, and blotters can all be made from scrap card and sticky backed plastic (and if you ask around, you can usually acquire remnants), painted or decorated detergent bottles cut down make very useful containers for pencils, kitchen utensils etc (printing can be removed with steel pads), so do empty tins with plastic lids.

Toys and Novelties are always popular with small purchasers, or you might be looking after the bran-tub, when it is so much nicer to have hand-made gifts. Simple glove puppets; toys based on the woolly ball with felt features; mice or any simple animal made from scraps of fur fabric. All sell quickly; Gonks made from old tights with felt and ribbon decorations.



Bathroom Items. Decorated jars, filled with bath salts; containers (detergent bottles or clear plastic jars) filled with cotton wool balls; thin plastic foam soap containers . . . plastic cut into an animal or flower shape, 2 pieces sewn together with thick cotton and large running stitches with a slit in the back to take a bar of soap or soap oddments; face flannels or mitts made from scraps of towelling; childrens sponges in animal shapes cut from oddments of plastic foam, which can often be found for a few pence at market stalls.

Seasonal Items. Well made gift-tags (and not only for Christmas); Christmas decorations or Easter chicks and other novelties; bulbs and plants grown from cuttings, sold in attractively decorated pots made from ex-food containers; bunches of annual flowers grown in the Brownies' own gardens; simple paper flowers in topical colours.

Perhaps you feel that very few of these suggestions meet your particular needs . . . where else do we look for ideas? I am sure your Brownies will have many suggestions to make, and encourage them to look in, or bring to share, any books of *things to make* that they may have. The local children's library is one of the next best sources of ideas; there are so many excellent books of this type available now. I find it helpful to be constantly on the look-out for possible bazaar items, and to keep a section in my games ideas book for these ideas. Finally at the bazaar, when I am sure you will sell out in record time, have a good look round, and spot likely ideas for the next time round!

# BROWNIE



# Making a Challenge during a Meeting

I. Anderson

RECENTLY I had the opportunity to hear about three girls who had been Brownies and who had joined different Companies. Let's call them Elizabeth, Betsy and Beth. They made their Guide Promise within a few weeks of each other in December and January. I was able to hear what they had done for their Pre-Promise Challenge, and to discover who had set them the challenges and why certain ones were chosen. I'm going to share my findings with you, as they may provide talking points for you to discuss with other Guiders and/or Patrol Leaders.

	Elizabeth	Betsy	Beth
Patrol	Red Arrow	Redstart	Robin
Patrol Programme	Work for Cyclist Badge, try map-reading, practise carols.	Start new patrol log-book, do work for Homemaker and Hostes with others in company.	Learn to make sweets to give to pensioners for Christmas.
Company Programme	Plan for money raising for trip abroad next year. Take part in carol service with District.	Hostess and Homemaker course. Carols.	Prepare for day in London during holidays. Collect medicine bottles for country doctor. Prayers on Guide Laws.
Laws	Learn them by heart (Suggested by Guiders, as she ought to know them).	Read chapter, <i>Living is Choosing</i> in Handbook. (Set by Guider as the PL couldn't think of anything).	Discuss pin-men pictures on pages 40-41. (Done with Patrol Second during Patrol Time. Idea from Patrol as 'they make you think').
Fitness	Walk six miles (on an expedition) during holidays (Reason: to show patrol that she could! She only did 4 miles, but it was accepted as a good effort).	Keep Health Record for 2 weeks. (Set by PL because we've always done it like this).	In Patrol time discuss plans for menus and hygiene of eating on day out in London. (Suggested by Patrol as they were doing it anyway).
Thinking	Keep personal account of pocket-money spending for one month. (Set by P L as it would be a useful skill).	Solve codes on p284-5. Make up code for Patrol. (Set by Guider because PL couldn't think of anything. Betsy was disappointed that no one solved the one she made up).	Help Patrol with Quiz on World Guiding information in Handbook. (Idea came from PL).
People	Went to Christmas party with Scouts though she didn't really want to (Idea from Guider - 'to help her join in').	Do Good Turn for an old lady. (Suggested by Betsy as her mother helps with Meals-on-Wheels).	Find out and make list of Patrol names and addresses and phone numbers and schools. (Idea from list in Handbook, agreed by Patrol as it is 'so useful').
Outdoors	Go on cycle ride with others doing Cyclist Badge.	Find out about Redstart (Idea from PL as it is Betsy's Patrol Emblem and they needed something on it for new Log-book).	Learn to find north by stars. (Suggested by Patrol as several evenings were clear star-lit ones, and they were doing it with her).
Homemaking	Make cakes for Patrol to try one Patrol time. (Suggested by PL).	Learn ways of folding table napkins. (Idea from B who had heard lady help Hostesses to do this).	Make mince-pies for pensioners (Idea from Beth as she'd missed the first part of the sweet making practice because they had started before she joined the Robins).

Well, they are some of the plans and progress to date. I'm sure we will appreciate that we have only a superficial knowledge of these Guides and their Patrols, but do these findings make you want to ask lots of questions? They certainly have that effect on me. Also, I've made some resolutions for myself for the future - I wonder if your resolutions are the same as mine?

I believe that a Guide's Pre-Promise challenge should be done mainly in the context of the Patrol's life within the Company. She can use her brains to help forward the group's projects, for example, and sometimes this may mean that she brings some equipment from home, but surely most of her Challenge is carried out as a Guide in a Patrol. Often girls are asked to 'go home and make something (or learn something) and to bring the result next week.' I know we are individuals, but joining Guides is mainly about joining a Patrol isn't it?

The challenge suggested can (indeed must) be discussed with the girl herself. Surely an atmosphere within the Patrol of 'We're going to do... can you help us...?' or 'Do you think you might manage to...?' or 'Is there one of these (on pages of the Guide Handbook) that you've never done? Would you like to try it? We'll all help you...' I wonder how far did Elizabeth think she might walk for her fitness challenge before she set out? Did any one go with her? Why did the PL Guider etc, set her those challenges? Could they have been objectives for other older members of the patrol, or did they really fit Elizabeth?

A Challenge set for one recruit may prove to be of such value to her and so enjoyed that it may be used again for another girl. However if our reasons ever degenerate into 'We had to do this... so you must do it too' or 'We've always done it this way' it is time we did a bit of rethinking about our purposes for new Guides, and reread the Guiders' Handbook pages 60-61.

The ideas in the Guide Handbook are there for our use. I believe in many instances it will be possible to find Challenges suitable for a recruit. Such Challenges can usually be carried out within the Patrol and Unit Programme. If you find a specially appropriate idea that is an alternative to those mentioned, the Guide-to-be can write it in at the bottom of the list - that's what the spaces are for after all!

One other finding - some of the most successful Challenges (just what do we mean by this word... successful? for whom? how do we know?) apparently were those suggested not by the Guider or the PL but by the Patrol group. The members obviously felt a joint responsibility for their new member.

## GUIDE



# Service In The Unit

B. Hughes

A verbatim report of the Unit in Council:

Chairman: The next item on the agenda - Service. Pat, would you introduce that?

Pat: We haven't given any Service for about six months. We've been so busy with our HQ, but now that's finished we ought to decide what we are going to do.

Chairman: any ideas?

Joan (a 14-year-old): What sort of things have you done?

Pat: The usual things like parcels, parties, carol-singing, visiting old people, doing their shopping and chatting, taking some of the spastics from Lynton Court out regularly, helping at Tower Court Children's Home...

Carol: ... there was also the year we chopped up the remains of Mr Smith's fence and delivered it as firewood to the old people.

Joan: How did you find out which old people have open fires?

Carol: The WRVS gave us names and addresses. Some of us spent whole evenings with the people we visited, helping them, talking and listening, it was very interesting.

we are not planning for future Rangers. It's very difficult to be sure that we can keep up long-term service, with exams and holiday jobs as well.

Ann: I agree with Chris.

Chairman: Anybody disagree? Right, short term it is. Now is it to be direct or indirect service?

Joan: What's the difference?

Chairman: Direct service means we are dealing with people face to face. With indirect we are not; for instance the delivering of firewood was direct, but helping with the survey was indirect.

Carol: Wouldn't it be better to find out

person living in a dreary dark room, to have it all redecorated in nice bright colours; it would make her feel so much more cheerful.

Ranger Guider: Would it?

Wendy: Of course it would. No-one likes brown paint and old fashioned wallpaper.

Chris: How do you know? Manufacturers wouldn't make it if no-one wanted it.

Wendy: Well, it's better for them to live in bright surroundings anyway. And we know it's something we can do. Look at this room.

Anne: Think how long it took us. We would have to get a move on if we were doing it for someone else. We'd have to work every night until it was finished.

Chris: And we'd have to let the old person choose their own colour scheme, whatever you think, Wendy.

Chairman: We'd also need to be trained in how to do it properly. We haven't hung paper or painted a ceiling.

Guider: We haven't painted a panelled door, either.

Wendy: Well, if someone taught us all that we could offer our services to the old people in the area.

Guider: We could, but I think we must consider all the implications. Apart from training, we *must* let the old people choose their own colour schemes whether we like them or not. We would be committed to working every night until the job was completed. This may seem all right now and for the first job, but are you sure you will want to keep it up when the fourth and fifth jobs are being done?

Catherine: I overheard a conversation on the bus the other day. A woman said how difficult it is to do the shopping with three children under five. I wondered if we could offer a creche once a week, say Thursday or Friday when the Supermarkets stay open late, and look after children while their parents go shopping.

Chris: Hey, that's a great idea.

Anne: We'd have to limit the numbers.

Sarah: Would we be allowed to do it?

Pat: We'd have to decide the best place to hold it.

Chairman: Well, we have lots of ideas. Suppose we go away and find out if any of these are really needed and if so, where, and would we be able, or allowed to do them.



drawings  
by  
Jean de  
Lemos

Susan: We also helped in the reviewing of that wheel-chair survey made by Rangers and Venture Scouts about five years ago. We found quite a lot of improvements had been made in access to toilets, shops and buildings of interest and amusement.

Chairman: So what are we going to do?

Pat: We ought to decide whether it's going to be short or long-term. If it is short, that should be fairly easy, but if it's long term we must think very hard, because if we start something we must see it through and we might find new Guides coming in won't be interested.

Chris: I think it should be short term, then

what is needed first and decide that later.

Ann: Yes, it would.

Chris: I agree.

Chairman: Very well. Who are we going to help, the old, the young or the handicapped?

Sarah: I suggest we do something for children. We haven't done anything for them for ages.

Wendy: On the other hand, children get a lot done for them. The local homes are well looked after by Rotary Clubs and the Round Table; I think we should concentrate on the elderly. How about some redecorating? Think how nice it would be for an old

# RANGER



# Fulfilling a Purpose

A. Henderson

The importance of District Events in a girl's Guiding life cannot be overstressed but one should be wary of only relating these events to the awarding of trophies. Comments from my friends on 'trophies' covered making a bonfire, putting in a melting pot - as museum pieces they need to be on a shelf, marked 'Relics of the Past'. I am tempted to say (please without any disrespect to the donors) that perhaps fulfilling a purpose for these trophies should be to follow the comments of my friends, but realising these are only our views and understanding that perhaps others feel differently, I offer the following thoughts.

Quotes:

*'Beware of being tied to trophies presented long ago for competitions now out of date, and automatically competed for ever since.'*

*'Competition can certainly add incentive and fun to an event but too often it merely rewards the already successful at school and eliminates first those who need to practise the most.'*



*discover the natural habitat of animals!*

A great deal to think about in the above two quotations from the Commissioners Handbook. I have thought about it and it seems to me that we must ensure that the element of competition in our District events should

- fulfil a purpose other than the winning of the trophy - too often the award becomes the prime objective and not the taking part.
- be planned to give the most equal opportunity to all involved - considering the wide variety of skills and capabilities of girls and Guiders.
- in some ways involve opportunities for everyone to excel and with an element of recompense or satisfaction for all.
- perhaps involve new stretching experiences with lots of challenge and fun.

Perhaps a), b) and c) could be covered by d). What do you think?

Now, who chooses the event? I could glibly answer 'the girls of course,' but, as we know, a certain amount of stimulation must come from the Guiders. The ideas of the girls will always be more successful but it is sometimes necessary to give helpful hints, and with this excuse I give a few suggestions, but only read further on the understanding that you *only put forward the ideas, the girls choose whether or not to accept. They in fact might choose not to award the actual trophy.*

**A baby in need** - Make a layette for a baby. Could cover - choice in content of layette - raising funds for materials - shopping trip to buy materials - making layette - choice of where to donate - presentation - then perhaps acquiring a photograph of baby *in all its glory.*

**All Creatures Great And Small** - Plan a trip in the countryside and discover the natural habitat of animals and birds in that locality. Find out all you can, then and after, about these creatures and illustrate new found knowledge incorporating story, picture, drawing, miming, acting, etc.

**Thrifty Is Her Middle Name** - Going to Camp or Pack Holiday? Make a collection of useful articles (from old or damaged clothes) that are necessary on holiday or at camp, eg dish bags, pot holders, aprons, dish cloths, hand towels, sitting mats, pillow covers, tidy holdalls, etc.

**Being Together Is Fun** - Plan a fifteen minute *entertainment*. Have fun preparing and doing it, as well as entertaining your friends. With this event it is good to have some *goodies* to eat, perhaps prepared by girls in another Section. Following the event visits could be made to Old Folks or Children's Homes.

**Who Are We?** - Guides are girls in a real world, not just girls in brown, blue or aquamarine who meet once a week. Compile a magazine about what you do at home, at School, at Church and at your meeting to illustrate what is being a Guide. The magazine can be presented to church, school, club, home, or individual people, etc, at a District social event.

**Living Off The Land** - Plan, prepare, cook and serve a meal which might have been served two hundred years ago when people, living in crofts were self-sufficient. Might be possible to incorporate invitations to other sections, parents or friends.

**Surprise Journey** - (Planned by Guiders and girls come together for an evening or an afternoon with no prior knowledge of activities.) The United



*a surprise journey?*

Kingdom is the most wonderful country in the world. Using this idea of pride in country and incorporating activities involving our Promise and The Eight Point Programme plan a *round trip* journey around the country (various points in the space available) stopping for a short time at each place doing an activity and travelling on. There could be ten to fifteen *stopping places* with girls starting off at different points. Advisable, perhaps not to bring *quickest time* element.

**My God Is No Stranger** - Encouraging girls to see God as a Creator, a Provider and a Friend, they could keep a log-book illustrating the ways in which they see and meet God in their daily lives. Probably a month would be about the maximum time involved and if it was done in Sixes and Patrols then it would give time for weekly chat and keeping of log. Using material from the log books, perhaps a Guides' Own Service or a Church Service would be a meaningful ending.

Other ideas could include, Revels, Sports Meetings, Swimming Galas, Tennis and Netball Knockout Competitions, Outdoor Cooking Without Utensils, Collages, Shell Pictures, etc.

Events should, of course, be adapted for your own girls and could involve Sixes, Patrols or Units. **Have Fun!**

## DISTRICT



9-11 General Training 16-18 Friends of Foxlease 18-24 tHoliday Week (Guiders, their friends or mothers, and Trefoil Guild members) 27-4 Patrol Leaders' Week	9-11 Student Weekend 16-18 General Training 23-30 Patrol Leaders Week	17 Friends of Broneirion Gathering 23-28 Patrol Leaders under 14 years (Open to all Counties)
10-17 tHoliday Week (Unit Guiders with up to nine of their Guides or Rangers) (Bank allocation) (by Holiday)	7-21 tHoliday Period (Unit Guiders with up to nine of their Guides or Rangers) 27/28-4 tHoliday Week (Guiders, their Bank friends or mothers, and Trefoil Guild Holiday members)	2-7 Patrol in Action (Groups of, not less than four Guides from a Patrol) 16-21 Training for 16-18-year-old Young Leaders or Rangers working on leadership. 26-31 Patrol Leaders under 14 years (Open to all Counties)

#### Fees at Foxlease and Waddow:

Shared room, per day £3.00  
Double room, per day £3.50

#### Training Notes

Holiday Period - for details of holidays or parties of Guides and Rangers at Foxlease and Waddow see below.

#### Fees at Broneirion

As from 1st March, 1976 the fees will be as follows:

Shared room, per day £2.25

Double room, per day £2.50

Single room, per day £2.75

Deposit £1.00.

## OUTDOOR ACTIVITIES

Camps - Pack Holidays - Courses etc.

Opportunity Knocks Again...

at Foxlease, 7-17 August

at Waddow 7-21 August

... for Guiders wishing to take up to nine Guides or Rangers for a holiday at our lovely Training Centres in the New Forest and on the edge of the Yorkshire Moors. You will be expected to plan and be responsible for your Programme during the holiday, but there will be someone there to advise and to give help with handcrafts and activities for the evenings.

At Foxlease - a lovely Georgian house on the edge of the Forest, your Programme could include any of the following: forest-walking, deer-stalking, bird and badger-watching (though the latter may be a bit elusive), fossil hunting, visiting a cathedral city, or Brownsea Island where the Founder held the experimental camp for boys in 1907.

At Waddow - where the friendly stone house stands above the weir of the river Ribble you can go walking over the hills and fells, explore the witch country and many fascinating villages, visit abbeys, castles and Roman remains, go bird-watching or fossil-hunting by the river, or follow nature trails.

It will not be necessary for party leaders to hold a Holiday Permit, as qualified and experienced Guiders will be present to comply with POR requirements. Leaders should, however, obtain the consent of their own Commissioners before making an application.

For full details please write to the Guider-in-Charge of Foxlease, or Waddow (for addresses see 'Where to Train' page). At Foxlease and Waddow holidays may be taken at any time between the dates given above.

#### Waddow Cottage and Caravan

Both are available for bookings throughout the year. For details apply to the Secretary enclosing sae. The old caravan has been replaced with a modern one with much better facilities, including water and electricity.

#### Holidays at Lorne

Lorne will be open as a holiday centre during July and August. In pleasant grounds with lovely views and quiet surroundings on the shore of Belfast Lough, Lorne is only six miles from Belfast and is a good centre for sight-seeing tours.

Special terms for parties or Guide Companies taking the house and wish-

ing to do their own cooking and catering.

Full details from the Guider-in-Charge, Lorne, Craigavad, Co Down, Ulster.

Irene McKibbin Memorial Cottage, Lorne

A cottage available for Ranger holidays fully equipped for 12 persons, with electricity and running water. For details apply to Mrs Brenda Weatherup, 32 Circular Road, Belfast BT4 2GA, enclosing sae.

#### Beaverbrook Lodge

Applications should be sent to the Secretary, Foxlease giving alternative dates and enclosing an initial deposit of £1.00 (which is non-returnable) and a foolscap sae. Priority will be given to applicants who have not already stayed in Beaverbrook Lodge. Applications for the period 1st April, 1976-30th September, 1976 will be accepted now.

Outdoor Activities Training Centre, Bamford, Nr. Sheffield S30 2AL

Courses cost £6.00 unless otherwise stated. This covers all activities except Pony Trekking and Gliding, for which a supplement must be paid.

## CAMPSITES

#### Foxlease Camp-sites

Application for sites should be addressed to the Secretary and the envelope marked 'Camp'. Suggested dates with alternatives and approximate numbers should be stated, and whether an equipped site is required. Camps may begin on any weekday.

A 50p deposit (which is forfeited if the booking is cancelled) and a foolscap sae should be enclosed.

#### Waddow Camp-sites

Applications for sites should be addressed to the Secretary and the envelope marked 'Camp'. Suggested dates with alternatives and approximate number should be stated and whether an equipped site is required. It is preferred that Camps begin on Saturday.

A 50p deposit (which is forfeited if the booking is cancelled) and a foolscap sae should be enclosed.

#### Waddow Pack Holiday House

Applications for Pack Holidays in 1976 should be sent to the Secretary. The application must be accompanied by a written recommendation from the Guider's CA or Pack Holiday Adviser and a foolscap sae enclosed.

## Training Notes

#### County Weekends 1976

Counties wishing to book a County Weekend at Foxlease or Waddow in 1977 should apply to the Training Secretary, CHQ, not later than 1st March, 1976. The programme for the whole of 1977 is drawn up immediately after this date, and once this is completed no further applications can be considered.

#### PL's Weeks

Guiders are reminded that only two PL's can be accepted from any one Company. They must not have attended any previous training at a Training Centre and Guiders are asked not to apply for places at more than one Centre.

The PL's must have attained their 12th birthday but not their 14th birthday by 1st February (ie they will be between 12½ and 14 at the time of the week). They must be able to attend for the whole week.

Places for PL's weeks at both Centres will be allocated during March applications, each with a £1.00 deposit and a foolscap sae, should be sent to the Secretary at the training Centre concerned to arrive NOT LATER THAN 1st MARCH.



# Programme Notes

April - September, 1976

## General Training Weekends

Most popular of all at the Training Centres are these weekends, which offer to Brownie and Guide Guiders invaluable help in running their Units and in carrying out their Programme. There is something for new and experienced Guiders; skills and activities are tried out and talked over, there may be special sessions focusing on special topics. Trainers make every effort to include special requests sent in beforehand by Guiders – but please remember that trainers have to plan their Programmes well in advance.

Weekends with a special emphasis (such as crafts, outdoor activities, etc) are always especially noted in the 'Where to Train' or the 'Outdoor Activities' pages.

### FOXLEASE

General Training (with a special emphasis)

April 30th/2nd May

Coming in the spring, this weekend gives Guiders an opportunity to get ideas for camps and Pack Holidays during the coming summer, as crafts, wide games and other outdoor activities will be included in the programme.

Family Holiday Week

May 28th/5th June

This is for Brownie and Guide guiders who may be accompanied by their husbands and children. As before, there will be training sessions for Guiders in the mornings, but the afternoons will be free for family activities; there will also be some optional activities/sessions for those who wish to join them.

Campfire – and Prospective Campfire Leaders

June 25th/27th

This weekend will be one especially for those who will be looking for ideas or a chance to brush up their skills for the summer evenings ahead around the fire. There will also be special help for the prospective Campfire Leader who is perhaps hoping to gain her Campfire Leader's Certificate this year, so don't forget to mention this when applying to Foxlease.

Commissioner's Training

September 10th/12th

Although there are other opportunities in the counties for commissioners, some might like to go to Foxlease at this lovely season and share a training with others from further afield. The scope of the job is so wide that Commissioners may like to join with others, covering many of these aspects.

### WADDOW

Diploma'd Trainers

April 9th/11th

At a recent training weekend a plea was made for 'refresher opportunities' for Diploma'd trainers, and this is just such a chance. It will be a side-group limited this time to trainers with up to seven years experience as a Dip, and will be led by Miss Ailsa Brambleby and Miss Marjorie Emsley.

Practical Programme Skills

April 23rd/25th

This weekend is for Guiders of all three Sections; those of you who feel you need help, whether you are new to a Unit or have run one for some time, this is the weekend especially geared to your needs.

Something in Common

May 21st/23rd

Following the success of a similar training held at Foxlease in November, this is a general training, geared to giving Ranger Guiders and Venture Scout Leaders, whether or not they run joint Units, the chance to discuss topics particularly related to working with this age group and to share experiences. As the title suggests, the emphasis is on the common ground which both Associations must cover to achieve the same aims, and it is hoped that a lot will be gained by pooling ideas.

Please make this opportunity known to Venture Scout Leaders in your area, as joint participation in the discussions is a vital ingredient to the success of such an event.

## Campsites continued from page 69

Netherurd Camp-sites, Brownie House and Holiday Caravan

Applications for Camp-sites and camp and Pack holidays for the Brownie House will be taken now. During Scottish School holiday periods (Easter, July, half August) priority will be given to Scottish Packs.

A three-berth holiday caravan is also available. Apply to the Secretary.

Broneirion Camp-site and Brownie House

Only one small Camp-site equipped for 24, which number cannot be exceeded. Applications for Camp-site and Brownie House will be considered now and should be sent to: Miss P Lynch, 3C Pentwyn Court, Whitchurch, Cardiff CF4 7BY enclosing sae.

Bookings for the Brownie House, outside school holiday, for Guide and Ranger groups and also for Highgate, Ranger Adventure Cottage, should be sent to the Guider-in-Charge, Broneirion.

Ulster Camp-sites, Glen Road (nr Lorne)

Fully equipped for 40 campers (one large and two small camps). Excellent hut for solid shelter and Calor gas. Bookings should be sent to Mrs F R Lee, 45 Gortland Park, Belfast BT5 7NU enclosing a sae.

Magilligan Camp-sites

Three fully equipped sites with double Calor gas stove for 25-30 campers. Also large three-room hut with an open fire-place. For details apply to Mrs R F Scott, Derrymore House, Limavady, Co Londonderry, enclosing sae.

Lorne Camp-sites

Lorne offers fully equipped or un-equipped Camp-sites with solid shelter, Calor gas available. Applications should be sent to Mrs F Hartley, 1 Station View, Carnalea, Bangor, County Down.

Brownsea Island

Eight Camp-sites (for Guides and

Scouts) are available as well as The Villano (maximum accommodation 30) for holidays for Rangers, Guiders or Trefoil Guild. Apply to Mrs B B Dyke, Wendover, The Avenue, Sherborne, Dorset, enclosing sae and deposit of 50p.

Ynysgain Camp Site, Criccieth, North Wales

Applications for the use of two unequipped Camp sites, within a few minutes of the sea can be made to The Deputy General Secretary, Commonwealth Headquarters, 17-19 Buckingham Palace Road, London SW1 OPT, enclosing a foolscap sae for Site Information Sheet.

Blackland Farm, East Grinstead, Sussex

Equipped and unequipped sites available with facilities for swimming, climbing and pioneering (for which equipment can be borrowed) also Restrop, a furnished bungalow for 25 (bunk beds for 20) – details write to the Warden enclosing sae.



# HQ NOTICES

## CHQ Awards

**Meritorious Conduct**  
Letter of Commendation  
Deborah Jillings, Patrol  
Leader, 5th High Barnet  
Company, Middlesex East.

## New Year Honours

We congratulate the following members of the Movement:

Mrs M E Monplaisir, a Commissioner for St Lucia for ten years, who was awarded an OBE for 'service to the community';

Mrs G Deoki, President of the National Women's Council in Fiji, who was awarded an OBE. Mrs Deoki was formerly Commissioner for Guides in Fiji.

## Thinking Day Service Westminster Abbey

Saturday, 21st February, 1976

The doors will open at 10 am for the Service which will begin at 11 am. The Dean has kindly allowed us the use of the whole Abbey so there will be more seats available.

If you are coming your Unit will want to join in the singing with the choir before the Service, so if they do not already know them we suggest they learn some of the following: *Go well, Go safely; Kum ba Yah - Diamond Jubilee Song Book; Thank you for every good new day - Youth Praise 1; Morning, evening, noon and night - Guide Song Book 1; Allelu, Praise ye the Lord - Guide Song Book 2; A thanks round, One World - Canadian Diamond Jubilee Song Book; Dona Nobis Pacem, It's a small world, Sing for joy - Chalet Song Book.*

## HYMNS

*All people that on earth do dwell - Tune: The Old Hundredth. Praise and Thanksgiving - Tune: Morning has broken. Lord of all power, I give you my will - Tune: Slane.*

## Chief Commissioner to appear on BBC TV Programme

The Chief Commissioner, Mrs Owen Walker, JP, will be interviewed and the Guide Movement featured in the BBC TV Programme *Pebble Mill* on Monday, 23rd February, at 1.00 pm

## Olave House Open Day

What does your Unit know about the four World Centres - and particularly the one virtually on their doorstep? What do YOU know about them - and especially about Olave House?

There will be an Open Day at Olave House (45 Longridge Road, London SW5) on Saturday, 21st February, 1976 from 12 noon until 5 pm. Buses 31 and 74 pass the end of the road. Nearest Underground Station is Earl's Court, only a short walk away, on the District and Piccadilly lines. The Friends of Olave House together with the Committee, Staff and Residents of the House are organising the event to raise money for the needs of Olave House and for the Thinking Day Fund. There will be an entry fee of 5p per person; inside will be a stall, tombola, sale of souvenirs, exhibitions and other attractions including, it is hoped, a film show. Hot snacks and other refreshments will be available.

Why not combine your trip to the Abbey with a visit to Olave House and make Thinking Day, 1976 truly memorable for your Unit? If you are not going to the Abbey why not bring them along anyway?

We look forward to meeting you on 21st February.

## Thinking Day Service: CHQ Shop

The CHQ Shop will remain open until 3.00 p.m. on Saturday, 21st February.

## Roman Catholic Guiders Training Weekend

This will be held at Christ's College, Woolton Road, Woolton, Liverpool, 23rd/25th April, 1976 under the

auspices of the Catholic Guide Advisory Council. Cost of weekend, Friday Supper/Sunday Tea will be £12.50. Daily including supper £3.50 per day. Applications and Deposit of £2.00 (non-returnable) with SAE for reply to be sent to: Mrs J M Harper, Sunnyside, Norton Road, Iwerley, Stourbridge, West Midlands, DY8 2RX before 1st April, 1976. Guiders please note, you may apply personally to your Local Authorities and County Educational Officers for grants towards fees etc. Christ's College is a well known residential Teacher's Training College with outdoor facilities. Accommodation is in single rooms. With the Theme Looking Wider there will be Training sessions for all Branches including outdoor activities. Non-Catholic friends of Catholic Guiders will be welcome.

## International conferences

The Educational Interchange Council (Incorporated) has announced a further series of International Conferences to be held during 1976 at the International House, Sonnenberg, in the Harz Mountains, to which they will be sending groups of young people and adults, between the ages of 16 and 25 years. The cost will be £65 per person.

Conference themes include Culture and Education Today, Industry and Society, Freedom and Order in East and West.

For further information send a stamped addressed envelope to: The Educational Interchange Council (Incorporated), 43 Russell Square, London, WC1B 5DG.

## SSAGO thanks and appeal to students

The Student Scout & Guide Organisation would like to thank all the Officials of the Girl Guides Association who co-operated with their publicity campaign this summer. Nearly every University/College Scout &

Guide Club has increased its membership - three Clubs now having over 100 members. Many inquiries were received about starting new Clubs, including some from Eire, Malta and Australia. If you know of any students who might be interested in joining or starting a Scout & Guide Club please persuade them to contact the SSAGO Secretary, c/o Public Relations Dept, Girl Guides Association, CHQ.

## Waddow

### Music Side Group Weekend for Brownie Guiders 23rd-25th April

The purpose of this side group weekend is to help Brownie Guiders with musical activities in their Packs. Work in hand is to publish suitable material, some of which will be explored during the weekend.

## Training Diploma Award

Miss Bridget Cusack, Edinburgh, Training Diploma (Guide).

## Blackland Farm Camp Site East Grinstead, Sussex

HELPERS during the peak camping season, ie 28th May - 5th June and for fortnightly periods between 17th July - 28th August are this year being drawn from Ulster and London and South East England only. Camping experience essential. Two helpers required for each period - interesting job for two friends.

Guiders, Young Leaders or Rangers over sixteen years of age, from these areas should apply for further information to their own HQ, enclosing a stamped addressed foolscap envelope: The General Secretary, Ulster GGA, Room 304, Bryson House, 28 Bedford Street, Belfast, BT2 7FE; The General Secretary, London and SE England GGA, 32 Dingwall Road (YWCA), Croydon, CR9 3LQ.

continued on page 72



### Local Association/ Trefoil Guild Conference

Wednesday, 26th May,  
1976

Priority places for delegates to the Conference have now been allocated, and a small surplus of seats still remains. Any member of a Local Association/Trefoil Guild or Supporters' Committee who wishes to attend may therefore now apply direct to the CHQ Trefoil Guild office to be placed on the reserve list. Those applying should enclose the conference fee of £4 which will be returned if space is unavailable.

### Correction

We apologise for any confusion that arose from last month's HQ notice, page 19, about the Commonwealth Institute. The shop referred to should have been the Institute's own shop, not CHQ shop.

Editor.

### National Scout/ Guide Orchestra

The Scout Association and the Girl Guides Association are planning to hold a Residential Orchestral Course, to take place at Gilwell Park from 27th December, 1976-2nd January, 1977. Further details will be announced in *Guider*.

### Short Term Investment Service

Monthly interest rate after deduction of management commission:

October, 1975, 10.25%;  
November, 1975,  
10.344%.  
December, 1975,  
10.175%.

Add .5% for deposits of  
£2500 and over.

'The Guides have come'. I should think the author will always remember those four words, shouted excitedly by Greek girls serving doughnuts in Athens in a NAAFI to three members of the first Guide International Service team to go overseas. 'Two girls leapt across the counter and embraced us, much to the astonishment of the troops. They were Greek Guides and had recognised us by our trefoil flash.'

Before the team left England early in 1944, the members had been told to contact the Greek Guide Chief Commissioner on arrival in Athens, but this was impossible in the chaotic conditions after the German occupation and a civil war. (Incidentally, the GGA was one of the few voluntary organisations which had a team complete and ready when the call came).

What makes this book absorbing reading for Guiders of all ages is the author's retentive memory for the small, graphic details and the occasional comic moments of relief work: in an Athens hotel, with no glass in the windows, no lights and no water in the bathroom, you can picture the team doing country dancing on the landing to get warm before racing into bed, or trying to count rations for hungry people in a detention centre by the light of a broken hurricane lamp.

There is a delightful pen portrait of the Bishop who, when his Palace was searched in Amphissa, calmly sat in his chair and afterwards produced his radio from under the folds of his cassock, and of the Brigadier at Livadhia whose bark proved worse than his bite!

'We just had to get on with the job ourselves - no British Army in sight, in fact, no British at all,' writes Muriel Lees when she set out with Georgie Hall and Alison Duke in a three-ton lorry for Amphissa, the base for the most devastated area in Greece where people were living in the mountains in goat sheds and rubble. How well this GIS team 'got on with the job' you can read in *A Job in a Lifetime*.

After the war was over, Muriel Lees returned to Greece with friends for a holiday. She invited the Guide Commissioners to dinner and one of her friends asked Mrs Zarifi, the Chief Commissioner, in what way the GIS team had helped most. She paused for a moment or two, and then said very earnestly: 'They gave us hope.'

TWM

### Scout & Guide Trust Fund

On 31st December, 1975, the value of a share in the above Fund was:

36.82 p for selling purposes;

38.67p for buying purposes;

6.33% interest only yield.

The interest only yield does not include any capital appreciation, and is based on the share buying price on the date stated.

## STAFF VACANCIES

at

### Commonwealth Headquarters

Senior Editorial Assistant to run the Books Section of the Girl Guide Publications. Publishing experience essential. Knowledge of Guiding helpful. Interesting position. Preferred age 30's.

Good basic salary, plus London Weighting, plus house Luncheon Vouchers. Possible help with accommodation.

Apply:

MRS. E. EARNSHAW,  
PERSONNEL MANAGER,  
The Girl Guides Association,  
17-19 Buckingham Palace Road,  
London SW1W 0PT.  
Tel: 01-834 6242. Ext. 18.

## COME AND JOIN US . . . . cooking in the Cotswolds - serving by the seaside - cleaning in the Cairngorms

are amongst the seasonal vacancies (March to October) available at 32 guest houses operated by HF Ltd where off duty time can be used to enjoy a variety of outdoor pursuits.

For full details send coupon to: Domestic Manager, HF Ltd, 142 Great North Way, London NW4 1EG or telephone 01-203 3381, extn 41.

Name .....

Address .....



## From Cottages



Lilac Cottage at Ellingstring in the Yorkshire Dales

## TO CASTLES



St Briavels Castle in the Wye Valley

There are 255 youth hostels all over England and Wales, in varied and often picturesque buildings. They are situated near long distance footpaths, by the sea, in National Parks and historic cities. The accommodation is inexpensive, and ideal for those who enjoy meeting new people in a friendly, informal atmosphere. Why not try it one weekend soon!

to YHA, Trevelyan House, St Albans, Herts.

Please send

### COME HOSTELLING ☐

Basic information about hostelling for individuals, with map and enrolment form.

### INTRODUCTION TO ADVENTURE ☐

Details of leader card scheme for those wishing to introduce parties of Guides to hostelling.

Name .....

Address .....

G61

## Your tampon should be the most trusted tampon

For years, women all over the world have put their trust in Tampax tampons. They are by far the number one choice. In fact, more women use Tampax tampons than all other menstrual tampons combined. An important reason for this choice is the protection Tampax tampons give. More than sufficient, dependable protection for your normal needs.

Here are some questions and answers about menstrual protection and Tampax tampons. The answers will help you understand why the word "trust" and Tampax tampons are linked so closely in the minds of women in more than one hundred countries.

#### Does "absorbency" mean "protection"?

Not necessarily. A tampon can be highly absorbent and still not prevent accidents from happening. For your protection, a tampon must be designed to absorb menstrual flow adequately, be easy to insert correctly, expand gently to fit your inner contours, and be simple to withdraw.

Tampax tampons measure up to all of these requirements. The tampon is made of softly compressed, highly absorbent cotton. It is encased in a slim, smooth container-applicator that makes it easy to insert the tampon into the proper position for maximum protection and comfort. After insertion, the Tampax tampon expands in all three directions — length, breadth and width — to conform to the contours of the vagina so that the chance of leakage or bypass is minimal. Upon removal, the Tampax tampon slims itself so that it is as easy and simple to withdraw as it is to insert and is readily disposable. The withdrawal cord is chain stitched the entire length of the tampon.

#### How small is the Tampax tampon?

Prior to use, the Tampax tampon itself is quite small (about 1 3/4 inches long and 1/2 inch in diameter) and is hygienically protected by its container-applicator. This container-applicator guides the tampon into its correct position. Your fingers need never touch the tampon. When the tampon is properly placed, you can't even feel it's there.

#### What about disposal?

Upon removal, just drop the Tampax tampon into the toilet. Both the tampon and the applicator are completely flushable and biodegradable. The applicator tubes are made of spirally wound strips of paper that are held together with water-soluble glue. In moments — the time it takes to wash one's hands — the paper strips unwind and are as safe to dispose of as two facial tissues.

#### How economical are Tampax tampons?

In spite of all their advantages, Tampax tampons are still more economical than other tampons. They come in packets of 10's and 40's in both Regular and Super sizes. The 40's in particular make Tampax tampons the most economical you can buy.

Now, here's a question for you: "Shouldn't your tampon be the most trusted tampon?"

# TAMPAX

*tampons*

The internal protection more women trust

MADE ONLY BY TAMPAX LIMITED, HAVANT, HAMPSHIRE



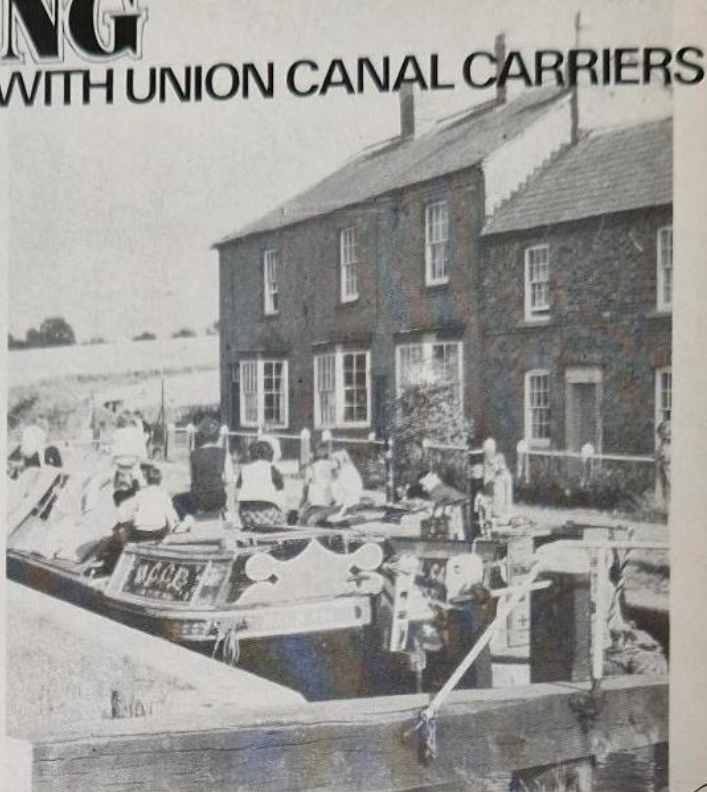
# CAMPING AFLOAT

Travel the English canals on a real narrow boat specially adapted for comfortable living, steered by a helpful and experienced boatman to ensure your trip goes smoothly. We cater for groups of all sizes and offer a choice of routes to suit everyone's taste.

Costs can be as low as £5 per person per week, including VAT, or if you prefer we can offer single boats to steer yourself.

Write or phone for fully illustrated brochure to:  
UNION CANAL CARRIERS,  
Canal Side, Little Braunston,  
Daventry, Northants NN11 7HJ.

Phone: Rugby 890784



A novel fund-raising item which will sell at any time of the year.

## PRINTED YELLOW DUSTERS

Every housewife, every motorist a potential buyer!

Our stock designs of Trees in Britain, Horses in Britain, Birds in Britain, etc, are designed to incorporate your local wording.

Send for details and prices today!

**GEO. O'BRIEN BAKER LTD.**

4/6/8 Tapster Street, Barnet, Herts EN5 5TX  
Tel: 01-449 2424.

## THE CHURCH ARMY

WE REQUIRE WOMEN CALLED OF GOD  
TO BE EVANGELISTS  
IS GOD CALLING YOU TO JOIN US?

18-35 years — Three Year Course.

35-49 years — One Year Course.

(For residential work)

Opportunities in various kinds of Social and Evangelistic work.

Write for further details:

Sister J Pyke, CA (Ref G2)

5 Cosway Street,

London NW1 5NR

Telephone: 01-262 1360

## VISIT YOUR WORLD CENTRE IN 1976

Explore London, visit Theatres and Art Galleries, see the shops, meet Guides and Girl Scouts from all over the world — stay at

### OLAVE HOUSE

Brochure (6½p stamp please)

Applications:  
Guider-in-Charge,  
Olave House, 45 Longridge Road,  
London SW5



## TOP QUALITY PENS

Diestamped with 30 Gold Letters and Spaces

£1.35  
PER 100 PENS  
(VAT PAID)

★ STANDARD CHARGE  
★ POST & PACKING  
★ 40 PENCE

ORDERS DESPATCHED SAME DAY

Sale or return — full refund on pens returned

Samples 2x8½p stamps — please try before you buy

## ABBAY WHOLESALE

77 LIVERPOOL ROAD, STOKE ST4 1AE



## ROSS FREEZER FORUM

**E**ASY to read and attractively designed with full colour illustrations and photographs, the booklet comprises 48 pages packed with information, hints and recipes specially for the home freezer owner. Topics such as Choosing a Freezer to Suit Your Family; Maintenance; Thawing and Cooking; Packaging and How to Freeze the Basic Foods are covered, and advice offered on how to use a freezer efficiently, effectively and economically. A selection of appetising recipes, to prepare both for and from the freezer, have been created and tested. There are quick and simple snacks, such as Kipper Pizza Wheel and Curried Vegetable Soup; economical family meals – Beefburger Bake, Crispy-Topped Cod, Ginger and Pear Trifle; and more elaborate ideas for special

occasions – Mushroom Stuffed Plaice with Asparagus Cream Sauce; Raspberry Sorbet; Seaflax; Mulled Fruits – and many, many more. Freezer Forum is edited by Jean Cole, the Ross



freezer expert, who also heads their advisory service.

Please send me a copy of **Ross Freezer Forum**, and include me on your Mailing list for **Ross Freezer Forum News**. I enclose a 7" x 9½" stamped (11p) addressed envelope. I saw this coupon in *Guider*.

Name .....

Address .....

Town .....

County .....

Postcode .....

Send this coupon and see to: **Jean Cole, Ross Freezer Forum, 10 Doughty Street, London WC1 2PL.** This offer is good in UK only.

## MEAT APPEAL MEALS

**T**HIS is the title of a new 12-page full colour booklet presented by Tyne Brand, one of Britain's leading producers of quality canned meats.

As well as giving a detailed background history of the Company and its



products, the booklet contains many family recipes for such comforting dishes as steak, lentil and potato hotpot, steak, kidney and butter bean pudding and steak and onion stew with

egg and herb dumplings. There are quick recipes, too for such favourites as beef risotto, spaghetti bolognese and chilli con carne. Round-the-clock-snacks include, for example, Geordie potatoes, beef and bacon pizza, porky puffs and savoury toast.

The recipes are economical and, with few exceptions, use common 'store-cupboard' ingredients. They're ideal for Saturday lunch after a busy morning shopping... marvellous, too, for when the children unexpectedly bring back their friends to supper.

The big colour pictures should set one drooling... steaming steak and kidney pudding, just turned out, the rich gravy coating the chunks of meat as the spoonfuls are heaped on to the proffered plates, steak and mushroom garden pie, the pastry puffed up and golden, and a slice cut out just to tempt the appetite. Surprise Cottage Pie, the potato enriched with cheese... soft and creamy... forked up... just waiting to be scooped into. And there are others equally seductive. Stay away if you're on a diet!

Please send me a copy of **Meat Appeal Meals booklet**. I saw this coupon in *Guider*.

Name .....

Address .....

Town .....

County .....

Postcode .....

Send this coupon to: **Meat Appeal Meals booklet, Westminster Marketing, Box 14, Harrow, Middlesex.** This offer is good in the UK only.

# Coupon Offers

## OXO METRICATION CHART

**A** quick see-at-a-glance chart, therefore, permanently handy on the wall, will be a most useful addition in the kitchen, especially as many people may not be buying new cook books and will have to work out the new weights and measures from old recipes.

Please send me a copy of the **Oxo Metrication conversion chart**. I enclose a stamped (9p) addressed label (not envelope). I saw this offer in *Guider*.

Name .....

Address .....

Town .....

County .....

Postcode .....

Affix  
9p stamp

Cut out this label and send it, bearing a 9p stamp, to: **Metrication Conversion Chart Offer, Oxo Meal Planning Service, Leon House, High Street, Croydon CR9 1JQ.**



## Ask the deaf if silence is golden

You can be sure that anyone who tells you silence is golden, isn't deaf.

It's not just a matter of not hearing. Deafness can also mean not being able to learn. Or read and write. Or communicate. Or do anything fulfilling with your life.

The RNID aims to help *all* who suffer from deafness to overcome these problems. We provide a special school for children, a hostel for young adults, residential homes for the elderly. We run special laboratories, and a welfare service. Unfortunately, it all takes a lot of money.

We depend on donations, covenants and bequests to continue our work. We can't make silence golden but, with your contribution, we can at least go on relieving some of the problems.

So please give us something soon.

The Royal National Institute for the Deaf

Room 16A,  
105 Gower Street, London WC1E 6AH  
Tel: 01-387 8033

The Royal National Institute for the

**deaf**

helps deaf people to live with deafness

(Patron: HRH The Duke of Edinburgh, KG)

## A summer camp in Switzerland . . .



Your very own Swiss chalet, with a fully equipped kitchen, day/dining room, leaders room and dormitories, beautifully situated amidst the lakes and mountains, fields and forests, of Central Switzerland (by Lake Lucerne) or the Bernese Oberland, makes the perfect centre for a very special summer camp.

Camptours prices, which are still surprisingly low, include your journey from London (or your home town if you wish) to your chalet, all accommodation expenses other than meals, and the full time services of our young, friendly, and knowledgeable local representatives, who will help you to make the most of every minute of your stay. Make your next summer camp a very special one.

with a little help from

**camptours**

SUMMER CAMPS IN EUROPE

To: Camptours, Devon House, High Street, Cranleigh, Surrey, GU6 8AG (Tel: 04866 3027).

Please send me details of your summer camps in Switzerland and Luxembourg.

Name .....

Address .....

G2/76

## HIGH IDEALS

The same high ideals to which a Guide subscribes apply equally to those of a Policewoman.

Certainly as far as principles and service are concerned. This may account for the numbers of former Guides who join the Police Service.

You will receive a warm welcome in the Thames Valley Police and the friendship of colleagues with similar aspirations.

It is a fine, modern Force, headed by a Chief Constable who is, himself, Chairman of Oxfordshire's County Scout Council.

For full details of a truly satisfying and exciting career as a Policewoman write or telephone Inspector Peter Horseman, Careers Officer, Thames Valley Police, Police Headquarters, KIDLINGTON, Oxon. Telephone 4343.



## Try an **HF** Youth Centre Holiday at home or abroad

Send for HF's imaginative programme of Youth Centre holidays for 1976. Based on the lowest possible charges. Offering a generous proportion of free places for leaders. Just tell us where you want to go, how you wish to travel, length of stay, approx. number in party and what you want to pay. We'll give you a detailed programme backed by the expertise and a reputation built up over 61 years.

### HOLIDAYS AT HOME

at 7 Youth Centres plus special Youth Party facilities at 24 HF Adult Centres, beautifully situated throughout UK. THREE-IN-ONE ADVENTURE HOLIDAY, sailing, pony trekking, canoeing. SEVERN SAFARI - cruising by canoe. Spring and Autumn cruises in Scottish waters.

### HOLIDAYS ABROAD

In Austria, Belgium, France, Holland, Norway, Switzerland, SUNSPORT ADVENTURE - canoeing, riding, sailing, snorkelling in South of France. 'FLOATEL' holidays cruising Dutch canals.

### SPECIAL FORTNIGHT AT STAITHES for Uniformed Organisations

For 2 weeks beginning 6th August HF aim to bring together as many uniformed organisations as possible for a joint adventure holiday at Staithes. Programme includes inter-group competitions and sports, excursions, camp fire and barbecue. Book now for one week or two.

### HOLIDAY FELLOWSHIP LTD (Dept 454)

142 Great North Way,  
London NW4 1EG (01-203 3381)

Name .....

Address .....

Post this coupon now  
for illustrated brochure.





## Airing and Sharing cont. from p.59

was implemented, with a very clear idea of what Guiding is about. It is more difficult for the Guider who comes in new to the Movement, without the background experience.

It is a new Challenge for our 13 year olds we want.

Margaret Branch,  
Exeter

Why all the secrecy? Sh! - don't let anyone know you have been a Brownie. After three years of working for Brownie Badges and tests my daughter has now, become a Guide. But did she fly up in a blaze of glory as it was in my young day? How proud we were to receive our beautiful Brownie Wings badge to wear on our Guide Uniform. Not so nowadays - you creep in at the back door to Guides and no one must know you have ever been a Brownie. Why bother to have Brownies if they carry no outward sign that they have even passed any tests etc before becoming Guides? Even the Scouts have their Link Badge to show they have been Cub Scouts.

Frankly, I am puzzled by what I see to be a backward step. Surely a child who has been a Brownie deserves some recognition of the work she has done and is not the same as a child who enters Guiding for the first time at eleven years old. I should like to hear other views on this subject.

M Bulley  
'A former Guider'  
Enfield

### Joint Activities

My Guide Guider's husband was taken very ill, and she

was unable to carry on with Guides. With the help of my father, a Scout Leader, I continued to run Guides. Programming was difficult, as Scouts and Guides were both at the same time, on the same night. Would it not have been easier to run joint activities?

Unfortunately, the District Commissioner at the time, did not agree, and would not allow joint activities. It was about four months before a new Guider was found, and when she arrived, there were only four Guides, including myself, left. What a waste of Guides. They could have been kept interested if joint activities had been allowed, but they preferred to join the local Youth Club where they could go canoeing, camping etc with boys and girls. The help came too late.

I therefore, would like to see joint activities (even if few at first) to commence regularly.

S Nay  
Asst. Brownie Guider  
Ipswich

### Formality at Camp

Having taken Guides to Camp for the last twenty years, I know very well that the pattern of camping is changing rapidly and for the better. However, I now feel convinced that we must be less fussy about Camp Uniform. Do the colours of trousers and shirts matter all that much on the campsite? For many mothers the cost of a Guide uniform is quite enough without any other extra expense. Few Companies can afford to

keep a stock of Camp Uniforms. A Guider's Camp Uniform can last many years because she has not grown out of it! Have we thought enough of our growing? Other countries are not so rigid, has our Movement moved enough with the times?

(Name and address supplied)

We know that many hard-up Units/Districts do accumulate over the years a complete range of camp Uniform by means of gathering items at jumble sales, buying back when Guides leave, making up remnants etc and hiring these out for a small sum in order to build up a replacement fund. Should we start thinking about Camp Uniforms as part of Camp equipment? There are many Brownie Packs which do just this for Pack Holidays.

Programme/Training  
Department

### M/S Batory - Can Anyone Help?

Does anyone who was Guiding in the late thirties and early forties remember Miss E M Pearson, who was a Leader on a Polish ship, M/S Batory, which evacuated 480 children from the United Kingdom to Australia in 1940?

The ship became known as *The Singing Ship* because whenever the children needed heartening or to be distracted from the dangers of U-boats Mrs Meta Maclean sat down at the piano and led the singing. She was an Australian and she later wrote a book about this experience, called *The Singing Ship*. The book has now been republished by Cedric Chivers Ltd, Portway, Bath.

Research at CHQ among our records has proved unfruitful and I cannot find Miss Pearson's address. I would be grateful for help from any reader of *Guider*.

A reunion for some of the evacuees, now middle-aged, was held on board M/S Batory in Tilbury on February 20th, 1969, before the *Singing Ship* went into retirement. There, at the piano was Mrs Meta Maclean, and the old songs were sung again. Several names are mentioned in *The Daily Express* of February 21st, 1969, in which an account of the reunion appears and in case they may provide a clue in finding Miss Pearson they are: Helen Mann, Nancy Bogaerts, Mrs Joan Floweres, of Grays, Essex, and a steward, Hoefft Leon, who used to smuggle ice cream cornets to the children.

Thora Wallis Myers  
(CHQ Archivist)

### Germany Calling

My daughter has been a Brownie Guide for three years, and this is as close as I have been to the Movement. In the two years as a Brownie in England, she was given no encouragement and had no Interest Badges. Yet here, she has gained four Interest Badges, and is working for two more.

So please give your British Guiders in Germany a mention. They really do a grand job, and always on the move to various stations with their husbands, the fact that there are still BGIG is a tribute to them all - and a Challenge to those who follow.

Jo Bolton (Guider)  
BFPO 40

by Sheila Graber





# The exciting co-ordinate Range

## Jacket, Skirt, Pinafore Dress

A smart fashion designed range of garments in Jersey knit crimplene of the highest quality, made by a company who supply air hostess uniforms to some of the world's leading airlines.

The jacket has a fashionable collar and reverses and the skirt is A-line. The suit and pinafore dress are co-ordinates. The skirt or dress may be worn with the jacket.

All garments have been test-marketed by busy members of the Movement who all reported favourably, particularly on the non-crush easy care qualities of these garments.

### Jacket Size:

50492	10	£17.50
50500	12	£17.50
50518	14	£17.50
50526	16	£17.50
50534	18	£17.50
50542	20	£17.50
50559	22	£18.77
50567	24	£18.77
50575	26	£18.77

### Skirt Size:

50583	10	£8.00
50591	12	£8.00
50609	14	£8.00
50617	16	£8.00
50625	18	£8.00
50633	20	£8.00
50641	22	£8.50
50658	24	£8.50
50666	26	£8.50

### Pinafore Dress Size:

50674	10	£8.26
50682	12	£8.26
50690	14	£8.26
50708	16	£8.26
50716	18	£8.26
50724	20	£8.26
50732	22	£8.26
50740	24	£8.26
50757	26	£8.26

### Pinafore Dress Pattern Size:

51227	10	43p
51235	12	43p
51243	14	43p
51250	16	43p
51268	18	43p
51276	20	43p
51284	22	43p
51292	24	43p
51300	26	43p

**IMPORTANT:** May we stress that the amendments to the suit are so slight that no one need feel they must replace their present uniform unless they wish to do so, as it will continue to be official uniform.

## SEND FOR CATALOGUE

Available at Guide shops and  
Mail Order Dept,  
The Girl Guides Association  
Trading Service, Atlantic Street,  
Broadheath, Altrincham, Cheshire WA14 5EQ.

### THE ASSOCIATION SHOPS:

London: 17/19 Buckingham Palace  
Road, SW1W 0PT.  
London: 19 Green Lanes, Palmers  
Green, N13 4T.  
Birmingham: 5 Ryder Street, B4 7NE.  
Liverpool: 20 Richmond Street,  
L1 1EG.  
Cardiff: 209 City Road, Roath,  
CF2 3XX.

### SCOTTISH GUIDE SHOPS:

Edinburgh: 16 Coates Crescent,  
EH3 7AH.  
Glasgow: 1 Scott Street, G3 6NU.  
Dundee: 53 Tay Street, DD1 1NP.

For orders less than £10.00  
in value please add 30p  
small order surcharge.



# CLASSIFIED...

## FOR SALE/FUND RAISING

**Advertising Pencils**, Ball Pens, Combs, Diaries, etc. gold-stamped Company name, raise funds quickly, easily; Bran Tub Toys, details: Northern Novelties, Spencer House, 26/28 Spring Gardens, Bradford BD1 3HE.

**Sale or Return.** 50 per cent profit on cost. Costume Jewellery parcels sent post free without obligation. Ideal fund raisers. Details: E & M Davies Ltd, 356 Uxbridge Road, London W12 7LL.

**Blanket Badges** and Pennants printed on to felt to your own design, for fetes, rallies, campsites, Brownie day-outs and all special occasions. Minimum normally 50. Badges also made for hats (**Enamelled**) and **woven** in strips for Counties (similar to Brownie Diamond Jubilee Badge) and camp-sites and International events. Please send sketch or sample with stamped addressed envelope, stating the type of badge required, quantity, size, colours. We will also be pleased to quote for all embroidered school and club badges, both washable type and blazer type. Sorry no brochures or lists. Russell King, 48 Crofton Lane, Orpington, Kent. (Orpington 29460).

## KARRIMOR CATALOGUE

Our catalogue has a reputation for being distinctive, informative and enjoyable reading on all matters technical and practical. If you would like a catalogue, please send us an 8½p stamp and if you'd like a colour poster as well, include a total of 25p.

Karrimor International Ltd, (GG) Avenue Parade, Accrington, Lancashire, England.

**Outdoor Materials** for all purposes. PU coated nylon. Ventile. PVC coated nylon. Ripstop nylon. Cotton canvas. Borg fur fabric. Terylene fillings. Velcro. Nylon zips. New additions late 1975: Nylon tent fabric (used 1975 Everest expedition). Wet

suits and kits. Polyester sewing thread. Quick service. Personal attention. Sae for details and samples: Pennine Boats, Hardknott, Holmbridge, Huddersfield, Yorkshire.

## CAMPING/HOLIDAYS/ACCOMMODATION

**Buckmore Park**, Maidstone Road, Chatham, Kent ME5 9QG. A District camp-site and Activity Centre for Cubs, Scouts, Venture Scouts, Brownies, Guides and Rangers. Open all year for day visitors, weekend and weeks' camps and summer camp. Six indoor units with heating and hot water and 53 camp-sites in over 200 acres of woodland. Indoor heated swimming pool, indoor roller skating, rifle range, archery range, abseiling and climbing, five-a-side, tennis, karting, assault course, pioneering, Scout and Guide Club, hot showers and fully stocked shop. Write for details.

**Felin Bach** (Caernarvonshire County Camp-site) Caeathraw, Gwynedd. Large unequipped camping area for Guides and Rangers, and indoor accommodation for Pack Holidays, available all the year round. Snowdonia National Park half a mile. Climbing and hill-walking within easy reach. Safe bathing at Dinas Dinlle or Bangor Bath. Apply to: Mrs P Jones, Bryn Meurig, Celyn Avenue, Penmaenmawr, Gwynedd LL34 6LR

**Park Wood.** The Sidney Tidy Scout Activity Centre. Available for Guide camps, courses and Pack Holidays with bunkhouse accommodating 36, catering and lecturing facilities. Ideally situated eight miles from Brighton seafront on bus route and close to South Downs. D S Johnston, 20 Highbank, Brighton BN1 5GB. (0273-507000).

**Warren Beach**, Beaulieu, Hants. Camp-sites, with huts. Private beach. Regret no husbands or boys over seven. Apply: Warden, Miss Knox, The Cottage, Whitehill Chase, Bordon, Hants.

**Cudham, Kent.** Equipped sites with solid shelter, also unequipped sites in 98 acres woods and valleys. Scope for all types of Guide activities and Brownie Revels. New local swimming baths on bus route.

Heated indoor accommodation for Pack Holidays, Guide, Trefoil and Guiders' weekends. Details: Warden, Overshaws, 144 Cudham Lane North, Cudham, Sevenoaks, Kent. Sae please.

**Sunspot Adventure.** Ride, sail, snorkel, canoe on our thrilling programme in the South of France - shown on BBC Holiday '73. Also Mediterranean Riding and Dutch Barge Holidays. ABTA member. Brochure PGL Young Adventure Ltd, 142 Ross-on-Wye HR9 7AH. Tel: (0989) 4211. Evenings/weekends, Much Marcle (053184) 609.

**Explore the Waterways** of England in 'Romulus', a fully equipped converted narrow boat, available for group charter by the week or weekend. Weekend cruises in the London area until Easter and from September. Weekend and longer week cruises are based on Braunston, between Easter and September. Full details from: Waterway Educational Holidays, 115 Hillbury Road, Warrington, Surrey CR3 9TG.

**Camping Narrowboat.** Based Gloucester 12 berths. Full inventory. Crew. Hire from £65 pw. Sae Stroudwater Carriers Ltd, 7 Stringers Close, Rodborough, Stroud, Gloucester GL5 3RB. Tel: Stroud 2915.

**Canal Camping Boats.** 12-berth single and 24-berth pairs of canal narrow boats equipped with comfortable bunks, a full size cooker and sink unit and full inventory of crockery, cutlery, pots and pans, etc. Operated by experienced skippers. Warwickshire Fly Boat Co, 149 Hollyfast Road, Coventry (0203 33 4228).

**Are you going to Camp this summer?** You are, then come to Maes-yr-haf Farm, Glasbury on Wye. Camp-site has easy access, water supply and wc. Pony trekking arranged, hard hats provided, member Black Mountain Riding Association, PTSW approved and licensed Powys CC. Sae Paul Greenow, 11 Dgeddi Villas, Llanigon, Hay on Wye, Hereford HR3 5PZ.

**Pony Trekking** holidays from farm in Welsh mountains. Sae Dobbs, Llanddeusant, Llangadog, Dyfed. Tel: Gwynfe 277.

**For School parties.** For Guides' parties. For Private Students or individuals - come to Ker Charles, 8 Boulevard L'hotelier, Dinard. The welcoming house.

**Interested in Outdoor Leisure and Activity?** Then contact Allenheads Lodge, Northumberland. Accommodation available year round for 28 persons. Overnight rate of £1 per person including use of sleeping bag, pillow, boots and anorak. All equipment and instruction available for Rambling, Rock Climbing, Ski-ing, Grass Ski-ing, Canoeing, Back Packing, etc. Fabulous centre in the North Pennines for historical and industrial archaeological studies. For colour brochure or further information contact: Chris Catling at Allenheads Lodge, Allenheads, Northumberland. Tel: Allenheads 239.

**Come camping to Luxembourg.** The Association des Girl-Guides Luxembourgeoises (AGGL) has three places at your disposal. 1. THE INTERNATIONAL GUIDE CENTER, situated 61 Route de Trèves, Luxembourg. It is located on an old small fort of the fortress. There are 20 beds in rooms, showers, sanitary facilities, kitchen and dining room, both well equipped, large living room. The centre is surrounded by a big meadow. It is available only to Brownies, Guides and Rangers. Price: 40 Belgian francs per person and per night. 2. THE NATIONAL TRAINING CENTER at Colpach, near the Belgian border at the southern end of the Luxembourg Ardennes. There you have the full use of a large camping place, a chalet with 8 beds, a large living room, a kitchen and sanitary facilities. Price: 30 Belgian francs per night and per person. 3. The third place is belonging to the Guide Company of Esch. Esch/Azette is situated near the French border. There are 20 mattresses, one large living room, a kitchen, sanitary facilities and a little separate room for Guiders. Price: 30 Belgian francs per person per night. For further details, please apply to Association des Girl-Guides

(cont on page 81)

The Girl Guides Association takes no responsibility for statements made in any advertisement here or elsewhere in the magazine, or for any subsequent correspondence in connection therewith. The right is also reserved to refuse any advertisement not considered suitable. Advertisements for the sale of secondhand clothing cannot be accepted (except uniforms). Uniforms for sale should not be sent to CHQ, advertisers receive communications from applicants. All advertisements must be received not later than the 1st of the month for the following month's issue. ALL CHARGES 8p per word, BOX NUMBER 40p EXTRA. PLEASE SEND REMITTANCE WITH ADVERTISEMENT TO: Miss A M Martin, Advertisement Manager, The Girl Guides Association, 17/19 Buckingham Palace Road, London SW1W 0PT. Ten per cent discount for series of 12. To reply to a Box Number, address your envelope to Box Number concerned c/o GUIDER.



## THE ANSWER TO YOUR SEATING PROBLEMS:



PRICE: £3.10 EACH

Our CB.100 Stacking Chair is of stronger than average construction, built to withstand the heavy demands of public usage. The chair shell is made in unbreakable polypropylene and satisfies all requirements for comfort and posture.

There is also a comprehensive range of stacking tables.

For further details, write to:

CARLTON-BROOKES ASSOCIATES LIMITED,  
61 Tower Street, Dudley, West Midlands, DY1 1ND.  
Telephone: Dudley 213782.

ESP

## Anatomical models



### "Breath of Life"

Training in resuscitation techniques is made easier with the "ESP Breath of Life". A realistic and inexpensive model, easily portable and of robust design.

For details of our range of over 100 models  
please write or phone:

**Educational & Scientific Plastics Limited**

Holmethorpe Avenue Redhill Surrey Tel: Redhill 62787/8

## FOURTH MERSEYFOLK CONCERT



**A SCOUT  
& GUIDE  
FOLK  
CONCERT**

(All proceeds  
to charity)

in the

LIVERPOOL

PHILHARMONIC HALL

on SATURDAY, 13th MARCH 1976 at 7.00 p.m.

TICKETS 75p, 65p and 45p

### TICKET ORDER FORM

To: "Merseyfolk", 3 Long Lane, Liverpool 19  
(Telephone 051-724 2407)

Quantity	Cost
..... Box(es) (6 seats) @ £4.50 .....	
..... Upper Stalls @ 65p .....	
..... Stalls @ 65p .....	
..... Balcony @ 45p .....	
Total	
Less Discount	
£	:

### Party Discounts

For parties of  
11 - 20 - 1 free ticket  
21 - 30 - 2 free tickets  
31 - 40 - 3 free tickets  
Etc.

I enclose Cheque/P.O. for the above tickets (less discount)  
value £..... Payable to "Merseyfolk" together  
with a stamped addressed envelope.

Name.....  
Address.....  
Tel. No. ....

Send for your copy of our NEW

## 1976 Catalogue

40 PAGES - UNIFORM - CAMP - GIFTS  
BOOKS - PENNANTS - FLAGS  
SHIELDS, etc.

**insist on this label**



OFFICIAL UNIFORM & EQUIPMENT  
Supplied by  
**THE GIRL GUIDES  
ASSOCIATION**

**The Sign of Quality,  
Reliability, Best Value**

Write to:

MAIL ORDER DEPT.,  
GIRL GUIDES ASSOCIATION,  
Trading Service, Atlantic Street,  
Broadheath, Altrincham, Cheshire WA14 5EQ.  
Enclose 9p Stamped Addressed Envelope  
245mm x 165mm.



## Classified ... contd from 71

Luxembourgeoises, 61 Route de Trèves, Luxembourg (Grand Duché of Luxembourg).  
Brittany: Simple hostel accommodation/camping. Individuals or groups (11 under 18 plus adults). Also small-group cycling holidays for French/British children aged 11-15. Sae please: Keith Staddon, 21 Queen's Avenue, Watford.

**Sheffield County Outdoor Activities centre.** Enjoy a Winter/Spring holiday in 'Renwick', a new, centrally heated building, sleeping 20/22. Suitable for Rangers, Guides, small conferences and Pack Holidays. Large heated barn 'Plimsoll' also available with kitchen, sleeping area, toilets, showers. There are two equipped camp-sites, two un-equipped (one small) wood, water, lavatories, showers, large barn with fireplace for use of campers. Tuck/Gift shop. On boundary of Peak District, National Park, close to historic house and many Derbyshire attractions. Please send foolscap sae to: Mrs H Greenshields, 21 Hallam Grange Crescent, Sheffield S10 4BA, for all details.

**Pony-Trek, Sail, Canoe, Cave,** at our Self-Catering Centre, in the heart of the Black Mountains in Wales. Ideal for groups for outdoor activity holidays or courses to RYA/BCU Certificate standards. Details: P G L Young Adventure Ltd, 140 Ross-on-Wye HR9 7AH. Tel: (0989) 4211. Evenings/weekends, Much Marcle (053184) 609.

**Aberdeen Girl Guide Association,** Fyfe House, Keithhall, by Inverurie. Fully equipped cottage for 22; Guiders' room, dormitory, living-room, kitchen, toilets, shower; converted stone barn for games, etc. Garden and field area. Particulars from: Mrs K Young, 91 Craigton Road, Aberdeen AB1 7TY.

**Small camp site** in lovely Kent countryside. Equipped for camps not more than 24. Send stamp for brochure to: Miss J E Kane, 30 New Road, Meopham, Kent DA13 0LS. Tel: 0474-813629.

**Midlothian Guide Training Centre,** Vogrie House, Gorebridge, near Edinburgh. Pack holiday house, fully equipped for 26. All electric. Also fully equipped camp-site with solid shelter for 30. For House apply to: Mrs Burns, Sauchenside Farm, Ford, Midlothian. For Camp-site, apply to: Mrs Armstrong, 160 Lanark Road West, Currie, Midlothian.

**Bracklesham Bay Camp?** Seven acres of flat terrain divided equally between two fields, protected by neighbouring trees in countryside surroundings. Mains water, but no sanitation on site. Sea only 1/2 mile away. Riding tuition also available. Applications and enquiries: Rodney Eborn, Regency House, Clayton Lane, Bracklesham Bay, Sussex. Tel: Bracklesham Bay 534.

**Camp-site** - entirely private, sheltered, 1 1/2 miles sea. Phone, water, wood handy. Tradesmen deliver. Riding available at reduced fees. This is our 12th season. Already booked 7th-14th August. Mrs E Gale, Buckler's Bid Stables, Burton Bradstock, nr Bridport, Dorset. Tel: Netherbury [030 888] 327 after 4 pm).

**St Luke's Scout and Guide camp-site,** Skreens Park, Roxwell, Essex. 25 acres of grassland interspersed with trees, 3 1/2 acre lake for all water activities. Ideal for Company camps. Kitchens with full color cookers and boilers, electric fridges. Brownie House sleeping 24. Fully equipped first aid hut, large dining hall and covered veranda, flush toilet blocks. Camp shop selling sweets, ice-cream, badges, etc. Further details from: Warden, Mr J Featherstone, 6 Moulsham Chase, Chelmsford, Essex. Sae please.

**N. Cornwall** - 20 ft 4-berth caravan to let. Quiet site overlooking Treyarnon Bay. Toilet facilities. Young, Beggar's Hatch, Harford Bridge, Tavistock PL19 9LS.

**Canoe Hire Service.** River Wye and River Ardeche (France). Details: P G L Young Adventure Ltd, 141 Ross-on-Wye HR9 7AH. Tel: (0989) 4211/5. Evenings/weekends, Much Marcle (053184) 609.

**Pack Holiday accommodation.** Church Centre. All electric. Fully equipped, inc. camp beds. On bus route, near parks and downs. For brochure, sae to: Ball, 41 St Benets Grove, Carshalton, Surrey.

**Pack Holidays, Hove,** Church Hall, August. Approved for 18 Brownies and six others. Buses, sea, shops, handy. Large field adjacent, electricity included - £25 pw. Further details: Mrs Randall, 31 Rothbury Road, Hove.

**Cottage,** quiet village situation, Bath six miles, public transport, sleeps 2+. Bath 28080.

## COMING EVENTS

**The Sedan Chair Rally,** Gilwell, 7th-9th May, 1976. Barn dance, film show, competitions plus the Great Race. Open to Rangers, Venture Scouts and adult members of Scout and Guide Associations up to 25 years. Apply: L Burkett, 65 Torcross Road, 5th Ruislip, Middlesex. Sae please.

**Campfire Leaders' Training Course,** Tolmers Scout Camp, Herts. 28th-29th February. Details: Sae, W R Marshall, 141 Lambourne Road, Chigwell Row, Essex.

**20th Scout and Guide Folk Festival** and performers reunion. Saturday, 6th March at Amersham. 30p. Sae please to: Brian Sims, 52 Orchard Road, Seer Green, Bucks HP9 2XU.

**'HMS Discovery'.** Training courses aboard this historic ship for Guides and Rangers. Send sae for details to: Mr J Cartwright, 23 Halstead Road, London N21 3EG.

**A Welsh Scout Council** Camp for Venture Scouts and Rangers 16-18, will be held near Machynlleth, from 29th July to 7th August, 1976. Activities include fishing, aqua lung, mountaineering, mountain walking, pioneering, archery, a conservation project, canoeing, forestry, rural crafts, obstacle course and a few other things. Cost £17.50. Staff also needed. For details for both staff and customers, write to: Christopher Cory, Mount Stuart House, Mount Stuart Square, Cardiff CF1 6QL. (Please mark envelope DyH).

## INSURANCE

**Insurance.** Reduced motor premiums for Guiders, Scouters, Civil Servants, Advanced Motorists. Professional advice for all classes of insurance. We welcome enquiries for Group vehicles and premises, your home, life, mortgage, pension and investment requirements. Morden Park Insurance Brokers Ltd, 66 Silver Street, Enfield EN1 3EA. Tel: 01-366 1312/3.

## TRANSIT FOR HIRE

**Transit Vans for Hire.** 18/22 cwt weekly rate £26, daily rate £5; 30 cwt weekly rate £35, daily rate £7. Deposit £25. Mileage charge 3p per mile. **12-seater Minibuses for Hire.** October to April weekly rate £46, daily rate £8. May to September weekly rate £48, daily rate £9.50. Deposit £25. NO MILEAGE CHARGE. Eight per cent VAT on all the above charges (excluding deposits). Tel: 01-890 9931.

**If you are camping** on or near Anglesey, contact us for competitive quotations for supply Coach transport outward and return journeys. We can also advise and quote on any day tours you may require during your stay. Coach sizes 20-53 seaters. Ellis Coaches, Llangefni 723304, Anglesey.

## LATE UNCLASSIFIED

**For sale.** Guider's navy suit, size 16, £7. Good condition. 4 St Nicholas Road, Hythe, Kent.

**Sevenoaks, Kent,** Church Hall (URC) available for Brownie/ Guide holidays, mid July-September. Enquire: J Clarke, 63 Seal Hollow Road, Sevenoaks, Kent.

**Well furnished** cottage, Shaftesbury, Dorset. Good holiday centre, sleeps four, all electric, garage. Details: Stevenson, 76 Hillside Road, Northwood.

**Get your Signaller Badge** with the help of our specially designed Morse Cassettes. Two unique and interesting 60-minute cassettes will be sent by return post for only £5.42 plus 53p VAT p/p. Tapetalk, PO Box 99 (G), Milton Keynes MK3 5BR (0908) 77710.

**Worcs County Camp-site.** One equipped site, four un-equipped sites. Solid shelter. Apply: Mrs Rimmer, 1 Hayes Bank Road, Malvern, enclosing sae.

**Guider's tailor made uniform,** size 12. Jacket and skirt, 100% worsted, hardly worn, £8.00. Box No 740.

**Please note:** all advertisements for Venture Scouts/ Ranger events published in *Guider* must be accompanied by the signature of the Guide County Commissioner.

**When replying to advertisement please mention GUIDER.**

**TOWA TRAILER**  
For business or leisure make the best use of your vehicle  
WITH MECHANICAL SERVICES  
FREE COLOUR BROCHURE FROM  
BELMONT ROAD, BOLTON.  
TELEPHONE 58434(24Hrs)

## TENTS - FLYSHEETS - WATERPROOF CLOTHING

You can save 50% or more

If you make and repair on an ordinary sewing machine. We supply everything, canvases, nylons, all weights. Zips, metal poles, threads, PVC groundsheeting, all accessories. Do not call until you have sent SAE for full range of samples and free literature on tent making.  
**EDWARD BARNES, GG,** Hawksfold, Fernhurst, Haslemere, Surrey.



# The Prince of Wales' Award

**WHY?** Wales has many beautiful places, but all too often parts of its environment are depressed and lack people who care, people with leadership and initiative. Governments and local councils can tackle much needed tasks, but now more than ever they are suffering from shortages of money. The time has come for the young people of Wales to take a strong lead in action to improve our surroundings. With the active support of The Prince of Wales' Committee, a steering group of young people is promoting a campaign for Youth Action 1976. Unless we all contribute to the conservation and improvement of the Welsh environment, much that is fine and good may be lost forever.

**WHO CAN HELP?** Schools, colleges, youth clubs, other groups of young people and individuals are being urged to take part in the campaign. Local authorities and voluntary organisations have been asked to identify tasks for project action by young people. Industrial companies and other donors are being approached to sponsor worthwhile schemes. But above all the campaign's success will depend on the enthusiasm and energy of young people and, often, their teachers and leaders all over Wales.

**WHAT CAN BE DONE?** One of the campaign's main tasks is to encourage and assist practical voluntary projects in both urban and rural areas, helping where possible with money, advice or materials and equipment. International youth work-camps will also be organised during the summer to mobilise action on larger-scale problems. A Young Environmental Scientist Competition for Secondary Schools in Wales is being held in conjunction with BBC TV. And, as in past years, The Prince of Wales' Award will give recognition to outstanding projects throughout Wales.

Can you help by identifying local problems for action or by organising a group of young people to tackle a particular scheme? Dozens of small but worthwhile projects all over Wales will have a tremendous effect on improving our environment.

## Project Examples

In past years, The Prince of Wales' Committee has had contact with a wide range of projects undertaken by young people. Some schemes received The Prince of Wales' Award, some were assisted by the Committee with advice, equipment, materials and money.

# MAINLY FOR RANGERS



These are a few examples:

Young naturalists near Criccieth developed a pond and nature reserve on waste farmland.

A team from a special school in Gwent cleared a derelict railway station to create a picnic site.

Primary school pupils planted trees as part of a local community project on waste land in the middle of a Swansea housing estate.

A footbridge across a canal in Welshpool was built by boys from a Dr Barnardo's school.

Young people from a special school in Powys have designed a nature trail for the handicapped along a disused railway track.

An Anglesey primary school worked on an imaginative project on the now-rare red squirrel.

Scouts and pupils from a Wrexham secondary school reopened overgrown footpaths and cleared rubbish from streams.

A team from a special school in Llandudno installed a slate slab on a lake causeway on Snowdon to describe the history of the site.

A Dyfed ATC group rebuilt a ruined seawall at Parrog.

Students from University College, Aberystwyth, worked on the conservation of sand dunes near Newquay for the National Trust.

The Glamorgan Naturalists' Trust organised a series of weekend training courses to prepare young people for leadership of voluntary work parties.

Pupils in a Gwent primary school produced a teaching pack on the industrial past of their valley.

HRH The Prince of Wales launched Youth Action '76 at a meeting last November. He called for young people all over Wales to take part and come up with positive ideas for action to improve the environment.

Any project may be eligible for The Prince of Wales Award. Application forms giving full details can be obtained from: The Prince of Wales Committee, 15 Wellfield Court, Bangor, Gwynedd. Telephone Bangor 4559.

# Woolworth's Weather News

This well-made, telescopic umbrella features news and views from popular papers, so you won't be short of reading matter while waiting at the bus stop in the pouring rain. Among the newsclips are a crossword (minus clues!), a cinema guide, and plenty of fashion and general news.

When not in use the umbrella folds down easily and fits into its matching outer case. It is available from larger Woolworth stores, price just £1.99.



# Valentine Recipes

## No-Bake Valentine Cakes

These little chocolate hearts need no baking, take only minutes to prepare and are then left to set in the 'fridge. Use a writing nozzle and ice on the names – or make one big heart for your favourite person. Heart shapes can be made using 3" strips of large size cooking foil folded over and over lengthways until the strip is  $\frac{1}{2}$ " wide. This firm strip can then be shaped into a heart, pinning or stapling the ends together.

2 level tbsps of cocoa or drinking chocolate

1 level tbsp caster sugar

1 tbsp clear honey

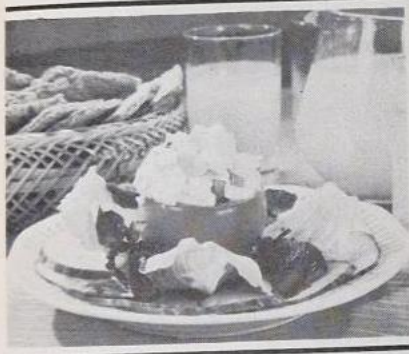
4 ozs margarine

1 oz finely chopped nuts

8 ozs of digestive biscuits – crushed

Melt the cocoa or drinking chocolate with the sugar, honey and margarine in a pan over low heat. Stir until completely dissolved. Remove from heat and add the chopped nuts and biscuit crumbs. Mix well. Make heart shapes from cooking foil (as above), grease lightly on the insides and place on a greased baking tray. Fill the hearts with the mixture, pressing down well. Refrigerate for several hours.

These recipes are supplied courtesy of The Honey Bureau.



## Cottage Cheese Stuffed Tomatoes

4 large ripe tomatoes  
8 oz carton cottage cheese  
1 spring onion, chopped, or 1 tbsp chopped chives  
1 stick celery, chopped  
1 eating apple, chopped  
Pepper  
Cut tops off tomatoes and scoop out

centre. Turn upside down to drain. Mix remaining ingredients together; season with a little pepper to taste. When ready to serve divide the mixture between the tomato cups, replace lids and serve on a bed of mixed green salad vegetables. Serves four.

Recipe courtesy of Eden Vale Products.

# MAINLY FOR RANGERS

## Honey Filled Ice Hearts

Why not give yourself a Valentine's Day treat with this ice cream serving suggestion from The Honey Bureau – two vanilla ice-cream hearts sandwiched together with a nutty honey filling! If you don't want to go to the bother of cutting heart shapes, try simply cutting the block into quarters and making four square 'sandwiches'.

1 block dairy ice-cream

Small bunch grapes

$\frac{2}{3}$  tbsps finely chopped nuts

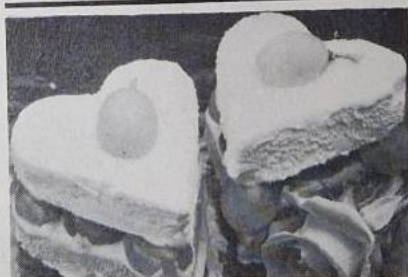
3 tbsps honey (set or clear)

1 tbsp liqueur or flavouring essence of choice

Peel the grapes and mix together with the nuts, honey and liqueur or essence. Cut the ice-cream into hearts using a heart shaped cutter or knife. Place two hearts on a plate, add a generous spoonful of the grapes, nuts and honey and then top with another heart. Decorate each heart with half a grape, put a red rose on the plate and serve at once.

## This Month's Honey Tip

Short of sugar? Use 25% honey to 75% sugar in jam making or 50/50 if you want a softer set jam. Use similar pro-



portions in cake making but remember to reduce the liquid content of the cake proportionately.



## Honey Apple Hearts

5 tbsps clear honey

4 tbsps fresh white breadcrumbs

3 eating apples, peeled, cored and diced

1 tbsp lemon juice

Grated rind of  $\frac{1}{2}$  lemon

2-3 tbsps sultanas

2 tbsps finely chopped nuts

$\frac{1}{4}$  lb puff pastry

Milk or beaten egg to glaze

Caster sugar

Put the honey in a pan and leave over low heat until dissolved. Remove from heat and stir in the other ingredients. Mix well together. Roll out the pastry very thinly and cut out heart shapes. Put a teaspoon of the mixture on to half the hearts, cover with the others and seal the edges with milk. Place on a wet baking tray, brush with milk or beaten egg and bake in a pre-heated oven, 375°F/Gas No 5 for 25 minutes until golden. Cool on a wire rack and dust generously with caster sugar before serving.



# MARQUEES

READY TO ERECT from only £197.50

COMPLETE  
WITH  
ACCESSORIES  
SEE LIST



## BRITISH ARMY UNIVERSAL MARQUEES

Fantastic offer of Marquees as supplied to the forces. Previously used but in excellent condition. Made to the highest specifications in Genuine Ex. Govt. tentage.

Example: 30ft x 20ft includes:-

Two Roof Ends - One Roof Section - Four 27ft Walls - Eight 35ft Bracing Lines - Two 36ft Weather Lines - Pin Valise - Maul - 82 Pegs - One 9ft Ridge Pole (in one section) - Two 12ft Upright Poles (in two sections) - 32 Wall Poles - Eight 30in Stakes - One Large Valise.

Sizes approx. 20ft x 20ft £197.50. 30ft x 20ft £275.00.

All Marquees 12ft high - Side Walls 5ft 6in.  
Carr. £5.50 per Marquee.

## EXTRA MARQUEE SECTIONS

Marquees can be extended in 9ft sections. Genuine Ex-Govt. Tentage (previously used but in excellent condition). Each section comprises: One 9ft Centre Section - One 9ft Ridge Pole - One 12ft Upright Pole - Two Wall Sections - Two 30in Stakes, Six Side Wall Poles - 18 Pegs - One Double Weather Line - Two Bracing Lines.

£75 Carr. £1.75

## MAIL ORDER DISCOUNT BARGAINS

	LIST PRICE	OUR PRICE
<b>CAMPING GAZ INTERNATIONAL</b>		
Grilligaz Dble. Burner & Grill, low pressure stove (with reg.)	£26.84	£18.50
907 Gaz Container (unfilled for post £7.00)	£11.50	£8.50
904 Gaz Container (unfilled for post £6.50)	£10.50	£7.50
Lumogaz C200 Automatic Lantern for use with C200 Cart.	£9.25	£6.75
Lumogaz C200 Lantern for use with C200 Cart.	£8.50	£6.25
Lumogaz 'R' Lantern	£7.00	£5.25
Belvedere Lantern, Automatic, 150 watt light	£9.98	£7.00
Lumostar 4ft High Standard Lamp, Automatic de-luxe	£19.90	£10.00
Baby C400 Heater, incl. C400 Cartridge	£10.60	£7.50
Standard Dble. Burner	£9.98	£7.50
<b>CAMPING STOVES (HIGH PRESSURE)</b>		
Tilley Talisman	£26.00	£18.50
S.M.S. Stainless Steel 'Slimline' Double Burner	£9.45	£5.85
S.M.S. Stainless Steel 'Supreme' Double Burner	£10.95	£7.30
S.M.S. Stainless Steel 'De-luxe' Double Burner (in case)	£15.58	£7.75
S.M.S. Stainless Steel 'Slimline' Double Burner & Grill	£15.30	£8.95
S.M.S. Stainless Steel 'Supreme' Double Burner & Grill	£16.89	£10.25
S.M.S. Stainless Steel 'De-luxe' Double Burner & Grill	£19.72	£13.25
Tilley Trio 'S. Burner and Grill	£13.54	£9.75
<b>CAMP KITCHENS</b>		
Beanstalk Kamp Kitchen 'Standard' K	£12.50	£8.50
Veritas Kamp Kitchen 'Romany'	£12.90	£8.50
S.M.S. 'Major'	£18.59	£12.50
Lucy Blue Camp Kitchen	£9.75	£7.50
<b>'CAMPARI' BARGAINS</b>		
'Seazy' I' Airbed (with pillow) 76in x 30in	£5.25	£4.25
'Limzy' King Size Air Mattress, single 74in x 30in	£8.95	£6.75
'Limzy' King Size Air Mattress, double 78in x 51in	£15.95	£12.95
Nylon Waterproof Rucksack (Bergen style)	£8.50	£5.50
Ridge Tents Nylon L/wghts. (Built-in Grdshs) plus Flyshs.	£22.50	£15.75
Inflatable Boat Yacht Tender	£50.00	£37.50
<b>CAMPING ACCESSORIES</b>		
Tilley Paraffin 'Stormlight' Pressure Lantern	£14.82	£10.50
Continental Camp Beds De-luxe model, with raised head	£5.50	£3.50
Camping Tables German De-luxe model, 32in x 24in	£8.50	£6.50
Frame toilet Tents De-luxe Model	£22.75	£11.75
Camping Blankets, all woolen L/w 90in x 50in. Rose only.	£2.50	£1.50
Dble. Box Sided Waffle Air Mattress (King sized d/luxe)	£18.50	£12.75
Toilet Tents, zip doorway, 3ft x 3ft		£6.95
Sleeping Bag 38oz, all round zip (Polywarm)		£4.75
L-Lb, model 'Universal' Airbed, 72in x 29in	£6.50	£4.25
Electrolux Refrigerator, Model Ram 24, Showroom models	£63.50	£45.00
Baby Cot, blue Canvas, collapsible metal frame	£8.75	£5.75

**H. C. BRIGGS (CAMP EQUIP) LTD.**

2 mins. Blackhorse Rd. Station - Victoria Line

(Dept. G), 88 Forest Road, Walthamstow,  
London, E17 6JH  
Tel: 01-520 2705

All measurements shown are approx. Cash orders despatched by return. Cheque seven days. Please add 50p carriage on all orders except where stated. Goods despatched UK only. Open Monday - Saturday 9 a.m. - 6 p.m.



Going to camp or just out for the day - ensure that you have the right clothing and equipment.

Send 35p for our catalogue which includes a 25p Buying Voucher (25p will be deducted from any purchase you make on surrender of the Voucher).

# BRYAN STOKES

9 Charles Street, Sheffield, Yorks.

Telephone: 0742 27525

# The karrimor Trangia

Swedish Stormcooker

The burner uses methylated spirit. It is effective (boils 1 litre of water within 10 mins.), adjustable and explosion-proof. It is supplied with nesting pans in three sizes. Using a dirt-free fuel and being an all-in-one outfit gives it great advantages. Available from all Guide Shops and Guide Mail Order.



KARRIMOR (GDR 2) Avenue Parade,  
Accrington, Lancashire.







## On Tour

Did you know that the Royal Ballet has a group of dancers touring the country to bring ballet to those who could not see it in the ordinary way? The Group is called Ballet for All, and during their Spring tour they will be presenting two different programmes in each place. One is called *The World of Giselle* and the other *Romeo and Juliet*; ballet and play.

If you have already been to ballet, this will give you a fascinating glimpse behind the scenes. If you think you would not enjoy ballet, I am sure a visit to Ballet For All would make you change your mind. Why not enquire about party bookings if you live near any of the places mentioned below and get up a group to 'Explore the Arts' in a most unusual way.

Ballet For All's tour is as follows:

4th to 6th February; Playhouse – Weston-Super-Mare. 10th-14th February; Mercury Theatre – Colchester. 17th-21st February; Palace Theatre – Watford. 24th February; Civic Centre – Whitchurch. 25th, 26th February; Prince of Wales Theatre – Colwyn Bay. 27th February; Dragon Theatre – Barmouth. 2nd-6th March; Gateway Theatre – Chester. 9th-13th March; MacRobert Centre – Stirling. 16th March; Ingleborough Community Centre – Ingleton. 17th March; Arts Centre – Bingley. 18th March; Riley-Smith Hall – Tadcaster. 19th March; Girls Grammar School – Goole. 20th March; Civic Centre – Castleford. 23rd-27th March; Ashcroft Theatre – Croydon.



*La Fille Mal Gardée*

The **Royal Ballet** touring company are in Stratford-upon-Avon on the 7th and moving to York and later Liverpool: for dates see Nationwide listings. Ballets in the repertoire include *Giselle*, *Coppelia* and a new ballet by David Morse, *Pandora*, based on the Greek myth of Pandora's release of the World's troubles, leaving only hope to comfort mankind.

## Opera and Ballet

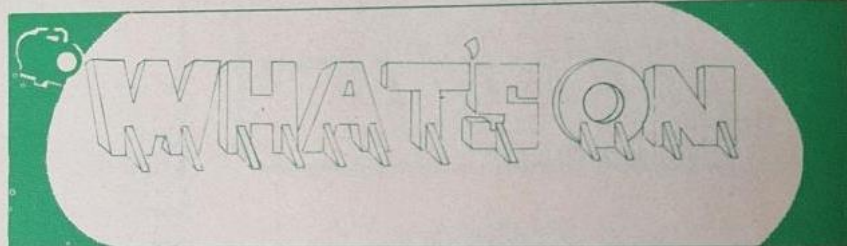
During February, the **Royal Opera** are giving performances of *Benvenuto*

*Cellini*, *Cavalleria Rusticana*, *Pagliacci*, (both designed by Franco Zeffirelli) and *La Clemenza di Tito*. In the first half of March, **La Scala** Company will play Covent Garden as part of an exchange scheme with the Royal Opera. **La Scala** will give one performance of Verdi's *Requiem* as part of their repertoire. More news of this event next month.

The ENO's new production this month is *Tosca*. Puccini's most dramatic and splendid opera is here translated into English in a new version, by Edmund Tracey. First night is on the 4th, with other performances on 7th, 13th, 18th, 21st, 25th, 27th. The last performance of *The Ring of the Nibelung* begins with *The Rhinegold* on the 19th. Also being staged this month are *Der Rosenkavalier*, *La Belle Hélène* and *The Merry Widow*.

To join the Mailing list of the English National Opera and the Royal Opera House, phone 01-836-0111 for an application form.

On 12th February, the **English National Opera** Company are giving a Gala Performance in aid of the ENO and Sadler's Wells Benevolent Fund.



Scenes and Arias from such diverse works as *Dido and Aeneas* and *The Gondoliers* are on the programme. Enquiries to the **Gala Box Office**, **London Coliseum**, St Martins' Lane, London WC2N 4ES.

Continuing in the series of lunchtime lectures held at the **Coliseum** this month there is *Just reminiscing*, given by Dame Eva Turner on the 16th, and *A Music critic at the opera* given by Stephen Walsh, of the *Observer*, on the 23rd. Each talk begins at 1.00 pm. Accommodation is limited, so come early: admission 50p with a light buffet included.

Sir Frederick Ashton's first major ballet for the **Royal Ballet** since his retirement in 1970 has its World Premiere at the **Royal Opera House** on 12th February. This new one-act ballet – *A Month in the Country* – is freely based on the Russian playwright Turgenev's play of the same name, and set to three orchestral pieces by Chopin, arranged by John Lanchbery, who conducts the first three performances. *A Month in the Country* will be part of a triple bill with *Petrushka*, in which Wayne Sleep dances the title role, and Balanchine's *Serenade*, which returns to the repertoire on 7th February, when Natalia Makarova and David Ashmole make their debuts in the ballet.

Also returning to the repertoire on 7th February will be Robbins' *Afternoon*

of a *Faun* and MacMillan's *Elite Synchronisations*. The same evening, *Twilight* enters the repertoire of the **Royal Ballet**.

*La Fille mal Gardée* re-enters the repertoire at the matinee on 21st February, when Wendy Ellis makes her **Royal Opera House** debut as Lise.

## Exhibitions

The British Museum reports a number of new additions to their permanent exhibitions. The already comprehensive coverage of the Parthenon, made possible by Lord Elgin's removal and subsequent donation of large portions of its decorative stonework in the early 19th century, is now completed with details of the architectural aspects of the building.

Sir John Addis, lately Her Majesty's Ambassador to the People's Republic of China, has donated his collection of Chinese porcelain to the museum. The Festival Brochure, concerning the *York Festival and Mystery Plays* which take place this year from 11th June to 4th July, is now available. If you would like to receive a copy, write to **The Admini-**

**strator, York Festival and Mystery Plays**, 1 Museum Street, York YO1 2DT.

At the **V and A**, the exhibition *The Making of the Wombles* continues until the end of the month. A nicely balanced show brings together the older child's delight in seeing behind the scenes of anything as familiar as a TV programme, and the younger child's amazement at the new surroundings of their very own Wombles. This exhibition would make a worthwhile focus for a Brownie visit to the museum, if a reason is needed.

## Nationwide

**Birmingham**, Town Hall, 12th February. English Chamber Orchestra.

**Birmingham**, Town Hall, 14th February. City of Birmingham Symphony Orchestra.

**Glasgow**, The Glasgow University Cecilian Society at the Kings Theatre, Glasgow, 17th-21st February, *The Bartered Bride* by Smetana.

**Lincolnshire**, Boston, Lecture, 17th February. My Life with Delius, by Eric Fenby.

**Liverpool**, Royal Court Theatre. 16th-21st February. Royal Ballet on Tour.

**Oxford**, Ashmolean Gallery, 1st-29th February *Scots Painting*.

**York**, Theatre Royal, 9th-14th February. Royal Ballet on tour.



THE NEW LESWYN CATALOGUE  
Now Available! - Full of  
BIGGER & BETTER  
FUNDRAISING IDEAS



**25%  
PROFIT  
ON SALES!**

Birthday Cards,  
Gift Wraps,  
Stationery,  
Kitchen & Tableware,  
Children's Pastimes,  
Cosmetics,  
Gifts & Novelties.

Send for your free copy NOW!

**LESWYN**  
CARDS LTD  
(GUIDER DIVISION)

SUTTON COLDFIELD,  
WEST MIDLANDS, B73 5TF  
TEL: 021-354 7389



# START BUILDING YOUR NEW H.Q.



**'With that  
little tool kit?  
How?'**

Easy, because this handy, pocket-size set does something very special. **It can make you up to 25% fund raising profit for your Company** — and so can every other top quality, big value item in the full colour Miller Fund Raising catalogue. It contains a fascinating range of greeting cards and stationery, gifts and games, novelties, kitchen and household aids and many more popular, fast-selling products, all of which can help your Company to buy new sports gear, put you on the road to an overseas camping holiday or provide the money for anything else you want to do. Just show the catalogue around to family and friends and — instantly — you're fund raising! It's as simple as that.

## **Miller** FUND RAISING

Building funds the Miller way sounds exactly right for us. Please send details of the Miller Fund Raising service, together with copies of your catalogue.

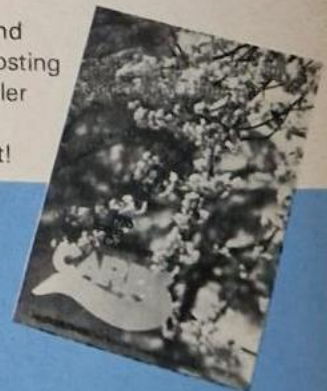
Name \_\_\_\_\_

Address \_\_\_\_\_

Organisation Represented \_\_\_\_\_

Tel. No. \_\_\_\_\_ (I am over 18 years of age)  
LB9B

Lay the foundation for future fund raising success now. Start by posting the coupon for full details of Miller Fund Raising — and see how little things really can mean a lot!



**Miller Greetings (Great Britain) Ltd.,  
Queen Street, Burton upon Trent DE14 3LP**