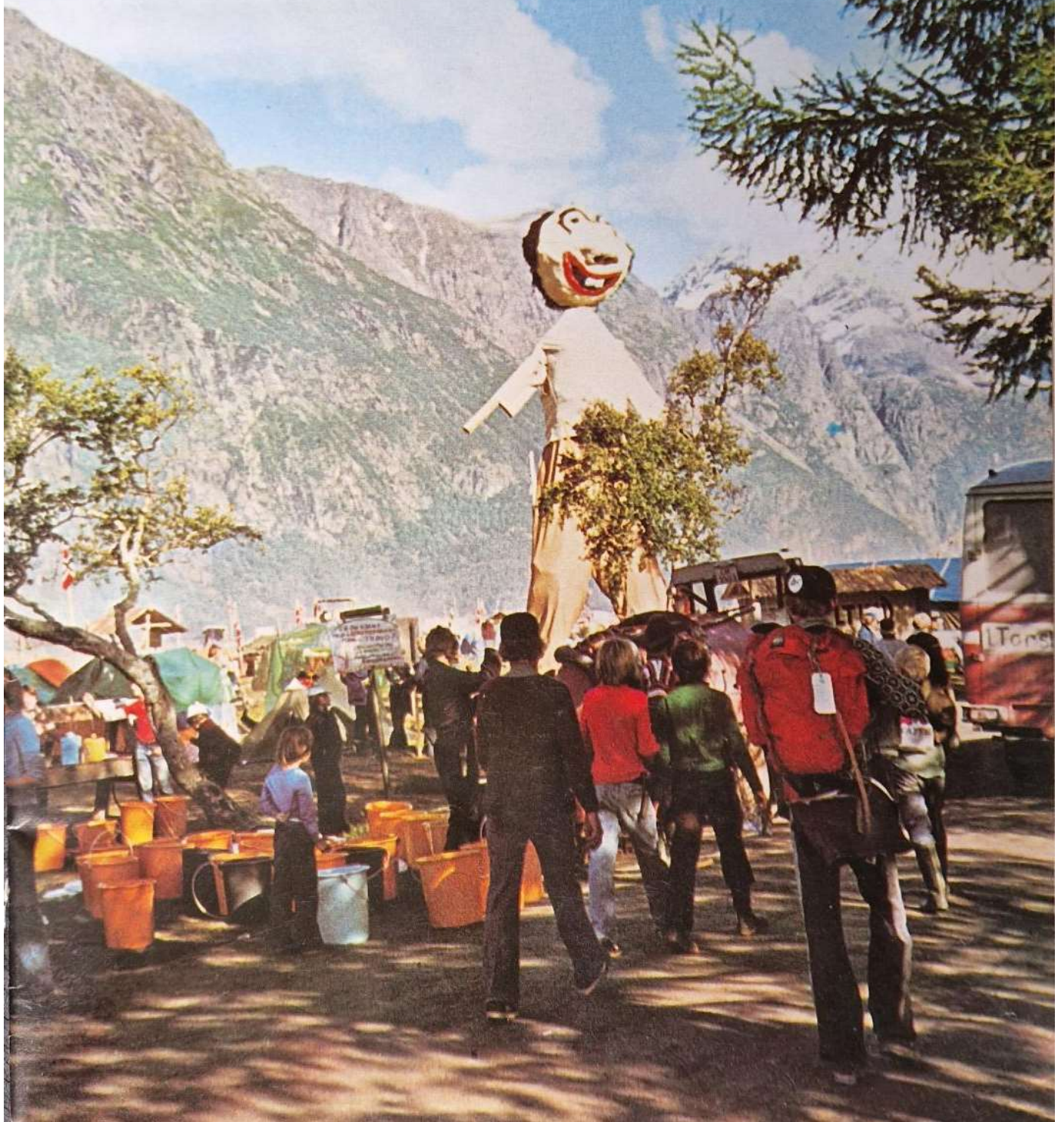


Guider



Volume 64
Number Five
May 1977
25p



Florence takes the lead when it comes to Fund Raising.

Fund raising with Webb Ivory is easy and fun when lots of people join in. And for Jennie Miles' Guide Company, that even includes her grandad and his dog, Florence!

Whenever grandad takes Florence for a walk, he gives her the Webb Ivory catalogue to carry, and when he visits friends and neighbours with Florence he's able to show them all the hundreds of superb cards, gifts and handy household items.

Grandad and Florence always seem to come home with an order — which isn't surprising when you consider that everything in the Webb Ivory catalogue offers such

tremendous value for money! What's more, every order gives up to 25p in the £ profit towards the Guides' funds!

You could put more bounce into your fund raising programme, even if you haven't got a super dog like Florence to help. Because with Webb Ivory you can raise all the money you need quickly and enjoyably, with *no initial outlay* and *no risk* whatsoever.

Take the lead in your Company's fund raising programme.

Send off the coupon today for full details of the Webb Ivory Fund Raising Service — and a free copy of the colour catalogue.

Fund raising with Webb Ivory -
so easy with everyone joining in.

Please send me, without obligation, my FREE COLOUR
CATALOGUE and full details of Webb Ivory Fund Raising

Name _____

Address _____

Company _____

Tel: _____

(I am over 18 years of age)

BK3E



WEBB IVORY LIMITED Little Cornbow,
Halesowen, West Midlands. B63 3AG

Guider

OFFICIAL MAGAZINE OF THE GIRL GUIDES ASSOCIATION
(incorporated by Royal Charter)

PATRONS

HM THE QUEEN

HM QUEEN ELIZABETH, THE QUEEN MOTHER

PRESIDENT

HRH THE PRINCESS MARGARET, COUNTESS OF SNOWDON

CHIEF GUIDE

OLAVE, LADY BADEN-POWELL, GBE

CHIEF COMMISSIONER

MRS OWEN WALKER, JP

Contents

Guiding Roundabout	196, 197
The World Committee	198
Guiding Events this year	199
Miss Maynard's Birthday	201
Celebrating the Ranger Jubilee	202, 203
True Grit	205
The Walter Donald Ross Trophy	206
Executive Committee Minutes	207
Letters	209
Mainly for Rangers	211
Training Pages	213, 214, 215, 216
Home and Away	218
Training Calendar	220, 221
Trefoil School/T.G. Services	223
Rest Assured (Insurance)	224, 225
Thinking Day in London	226
HQ Notices	227
Classified	228, 229
Weekend in Belgium	231
What's On	234

EDITOR: MRS JEAN V RUSH

ASSISTANT EDITOR: MISS LORNA HANWELL

ADVERTISEMENT MANAGER: MISS ANN M MARTIN

ALL COMMUNICATIONS TO: Guider GIRL GUIDES ASSOCIATION

17-19 BUCKINGHAM PALACE ROAD LONDON SW1W 0PT 01-834 6242

World Children's Day, 15th June

XEROPHTHALMIA – the form of blindness caused by a deficiency in Vitamin A – is the special theme for World Children's Day this year. It is common among young children in countries such as Bangladesh, India and Indonesia where serious malnutrition exists and the normal diet is based on rice. Without the necessary quantity of Vitamin A the pigment of children's eyes is affected and their sight deteriorates until they are totally blind.

A Vitamin A capsule costing only one penny given



to children twice a year can prevent Xerophthalmia, and basic teaching to their mothers about nutrition and the importance of such foods as green vegetables and carrots rich in Vitamin A can often eradicate the cause of it.

UNICEF is providing these capsules and this teaching wherever children are at risk from Xerophthalmia. Please encourage your Guides and Brownies to support World Children's Day this year. Further information available from the UK Committee for the United Nations Children's Fund, 46-48 Osnaburgh Street, London NW1 1YD.

Cover

Our cover this month shows a happy group of Tyneside Guides at the gateway of sub-camp 'Trolltinde', part of a Norwegian Scout National Camp at Åndalsnes. About 13,500 were camping," reported Helen Whitehouse, who took the photograph. "It was just like a Scout and Guide town."

GUIDING ROUNDAABOUT



Bath & West Exonian Chronicle



Mid Kent Gazette

(Left) Brownies, Guides and Rangers from Bath took part in an international folk dancing and singing early this spring.

(Above) Caring helpers... these Guides from Hollingbourne playing hostess at a special party for mentally handicapped children from the Maidstone area.



Glasgow Herald

(Below) At Celle in Germany a new Guiding Centre has been opened. Mrs Vaughan-Cox (second from left) attended as the personal representative of the Chief Guide, and visited many Guides and Brownies in Lower Saxony and Berlin during her two-week visit. Pictured with Mrs Vaughan-Cox are: (left to right) Commissioners Mrs Hopkins, Mrs Wooldridge and Mrs Miles.



Rhine Army News



Lutonian Free

(Above) The 1st Haverhill Ranger Guides taking part in a sponsored table tennis event in the Ranger room at Haverhill Scout and Guide HQ. £129 was raised to be used to purchase camping equipment and extra furnishings for the Ranger room.

(Left) Standing to attention... Princess Margaret visited Glasgow last year and passed through a Guard of Honour of Brownie Guides in the Sighthill area of the city.



Miss M Viney

A nostalgic picture of the 4th Romford (St John's) Guides, Brownies and Rangers. This year, 50th Anniversary celebrations took place, and the first Brownie Guider, Mrs Hewitt and the first Guide Captain (now Mrs French) were able to attend. Mrs Hewitt is second on the left, near the vicar, and the Guide Captain is on his other side.



Lynde Regis News



Hendon Times



North Herts Gazette

Left, the Hitchin Ranger Guides – two teams of girl footballers who came out on top in a recent six-a-side competition. With their shields are captains Debbie Smy (left) and Geraldine Field, who led the over-16 and under-16 competitions respectively. Right, the Rangers setting off on their Jubilee Walk.

Almost lost amid a sea of faces is Mrs Margaret Hawthorne, retiring Divisional Commissioner at her send-off party in Downage. She well deserved a rousing cheer, after an active Guiding life of 22 years. Mrs Hawthorne, you may be able to spot her – is the one in the middle who's not flailing her fists!

Above left are the 1st Uplyme Brownie Guides at their Thinking Day party. The Brownies dressed up in uniforms of other countries, and candles were lit as a tribute to Lady Baden-Powell, the World Chief Guide, and to other Members of the Movement.



North Herts Gazette



Peterborough Evening Telegraph

Looking back to Easter: last Easter these Newborough Brownies held an Easter Bonnet Parade. The Brownies, (left to right), Juliet Lister, Clare Slater and Clare Conway, won Easter Egg prizes.

Right, raising the cash... Cheadle and Uttoxeter Guide Division raised £850, proceeds of a sponsored walk around Uttoxeter Racecourse. The Ranger, Guide and Brownie are Rosemary Cliff, Tracy Rich and Tracey Shaw, and they're presenting a cheque to Nursing Officer Mrs Margaret Roberts for the N. Staffs maternity Hospital special care baby unit.



Staffordshire Sentinel

The Hampshire North Guides in this picture are taking part in a Crafts Day at Harriet Costello School, Basingstoke. Fourteen different sessions were in progress during the day, and included dancing, music and drama.



Miss P. Jennings

Horses for causes (sic)... A group of Guides from Washington, Co Durham donated the sum of £50 to the Eighton Banks Animal Refuge, the sum having been raised by means of a sponsored litter clean up. The delighted founder of the Refuge, Mr Bryson (pictured), said 'It costs £80 a week for dog and cat food alone; I think when children do this sort of thing it is worthy of the highest praise.'



Sunderland Echo

The Work of the World Committee

by
Rosemary Cawkell

SINCE its formation in 1928 the work of the World Committee has obviously grown with the spread of Guiding throughout the world, but many other factors have increased their work on our behalf, and one of these has been the development of the United Nations and its related organisations since World War II. This is probably the least known part of the Committee's work as it rarely directly affects the actual Guider in her work with her Unit, but it does affect the standing and political involvement of the world-wide Movement and as such must concern us all.

The World Committee, as we know, is appointed by the World Conference to act on their behalf and to implement decisions taken at a World gathering. To help them with their work the World Committee appoints a number of sub-committees, each with its own Chairman. Members of sub-committees are elected by the World Committee from nominations submitted by Member countries before each World Conference. As on the World Committee members of sub-committees do not represent their national organisation but are chosen for their particular professional knowledge or wide experience. They serve for a term of three years but are eligible for re-appointment up to a maximum of nine consecutive years.

If we look at the responsibilities of these sub-committees we can get some idea of the overall responsibility of the World Committee.

Finance

The World Association derives its funds from the annual quota paid by Member countries, donations, legacies and income from investments and, of course, the Thinking Day Fund – as explained in the WAGGGS publication Basics. The committee is responsible for the administration of these funds, the annual budget and the general financial policy.

Promotion

This committee embraces a wide range of activities, from Public Relations to Mutual Aid: from helping pre-Associate countries working towards membership to assisting Members with, say, the development of their programmes. The members of this committee are drawn from the World Committee itself, and not appointed from nominations made by countries. At present there are five members of the World Committee appointed as Liaison Members for specified groups of countries and as their title implies, they liaise between the countries concerned and the sub-committee. In addition, the Chairmen of the Regional Committees serve on this sub-committee.

Constitutions

Before any country can be admitted to membership of the World Association, it has to have a constitution approved by the World Committee and the Constitutions sub-committee is responsible for ensuring that the proposed document meets the requirements laid down in the World Association Constitution. Any Member country wishing to amend its constitution must submit the proposed amendments to the World Committee and this is first considered by the sub-committee. The drafting of a constitution can be a daunting task at any time, but the task becomes much easier with the expert help and advice given by the members of this sub-committee.

World Centres

There is a sub-committee for each of the four World Centres, and members elected to serve on each committee usually live in the area of the world in which the centre is located. This is rather important as each Centre takes on the characteristic of its country and the programmes reflect this – for instance Our Cabaña specialises in arts and crafts and folk music so that the members of the sub-committee should be familiar with South American culture and traditions.

Regional Committees

In addition to the sub-committees there are five regional committees. The World Association is grouped informally into regions: Western Hemisphere, Asia Pacific, Africa and Europe. There is also an Arab Regional Group. Each regional committee is represented by its Chairman on the Promotions sub-committee of the World Committee.

These informal groups are a fairly recent development although the Western Hemisphere was active as a 'region' in 1940. The activities of each region vary but the aim is to provide a means of communication within a geographical area for the exchange of ideas, news, etc. The United Kingdom, obviously, is within the Europe region and each year there are a number of opportunities for participation in seminars and conferences organised by the Europe Committee. These seminars and conferences can be extremely valuable as not only do they offer opportunities for the exchange of information they often spark off new ideas which can be developed to mutual advantage.

United Nations and associated agencies

The World Committee is responsible for maintaining relations with United Nations organisations and agencies, and this aspect of its work is the least understood

simply because it is too remote from the individual Guider's involvement with her Unit. It is, however, vital for such relations to be maintained. The World Association, with its 94 member countries, can make a significant contribution to national development and world peace, and it is important that its point of view should be heard. To do this the World Committee has teams of representatives in Geneva, New York and Paris. These teams represent the World Association within the category of International Non-Governmental Organisations (INGO's) at the United Nations in Geneva and New York, at UNESCO in Paris, and at FAO in Rome. They maintain contact, explain the object of the World Association and report back to the World Committee on trends, programmes, etc, which will be of interest. They do not attend all the meetings but select those which are of particular interest such as meetings relating to women and girls, ie, Status of Women Commission. The teams also contribute to meetings of other INGO's which are relevant to a youth organisation, and have helped organise conferences for representatives of INGO's. (The term International Non-Governmental Organisation covers a very wide range of organisations, from the Red Cross, Scouts and YMCA to International Planned Parenthood Federation and the World Wildlife Fund.)

The World Association's interest in United Nations affairs can be put into perspective if we liken it to the Girl Guides Association's Legal Adviser's scrutiny of all Bills going through Parliament, or to our own interest in local council business – will the Guide Hut be affected by the application for planning permission...?

The 1977 World Committee Meeting

Before the World Committee commenced its meetings on the 28th April, each sub-committee had held its own meetings and submitted its report. Consideration of these reports will have been only a part of the World Committee's work for they will have been planning the agenda for the 23rd World Conference to be held next year in Iran, as well as preparing the Triennial Report.

This then is an outline of the regular work of the World Committee. Its role is vital. It ensures that our principles and aims remain as the Founder intended, that our voice is heard internationally in a constructive way, that new and Member countries receive help and support. All the members of the World Committee, its sub-committees, the regional committees, the teams of representatives, give their time voluntarily but they could not carry out this work without the back-up support of the World Bureau.

SILVER JUBILEE T-SHIRTS

Every girl will want one! Beautiful design on front. Special prices for BROWNIE and GUIDE UNITS: From 85p. Shop prices could be twice ours! No minimum order. Sale or return can be arranged. Send £1 for sample and details (Money back if not delighted) to: M. Garaway (G) 35 North Meadow Road, Cricklade, Swindon, Wilts.

QUEEN'S SILVER JUBILEE

ACT NOW – Send for our Colour Catalogue of 50 different items.

Brookmont Business Gifts, Dept C,
141 Royal Exchange, Cross Street, Manchester.
Tel: 061-832 8744.

Guiding events this year



Jean de Lemos

19 May	Annual General Meeting, Royal Festival Hall
5/6/7 June	HM The Queen's Silver Jubilee
8/9/10 June	Open Days CHQ Special handstamp for commemorative cover
22 July	Girl Guide Lawn Tennis Tournament Queen's Club London
8/9/10 September	Golden Jubilee of Waddow Hall The Girl Guides Association's Northern Training Centre, Clitheroe, Lancs. Special handstamp for commemorative cover
9/10/11 September	Country Commonwealth & International Advisers Conference, York.
16/18 September	Arts Advisers Conference Bath
23-25 September	County Commissioners Conference Royal Holloway College, London
29 October	Folk Fest 8, Royal Albert Hall, London. See form, p.235
29 October	Service in St Paul's Cathedral London to mark end of celebrations for Ranger Diamond Jubilee Year.
22 December	Carol singing, Trafalgar Square



Current Staff vacancies at CHQ:

1) Secretary to the Head of PRESS & PUBLIC RELATIONS.

2) Assistant to the TRAINING SECRETARY.

In addition to Basic salary we pay a London Weighting Allowance and House Luncheon Vouchers; 20 days Annual Holiday. Offices only 5 minutes walk from Victoria Station.

Mrs Eileen Earnshaw (Personnel Officer)
17-19 Buckingham Palace Road
London, SW1W 0PT.
Tel: 01-834 6242, extn. 18

WADDOW HALL

RESIDENTIAL APPOINTMENT

ASSISTANT to the SECRETARY/TREASURER of
WADDOW HALL TRAINING CENTRE

mid the beautiful Lancashire countryside near Trough of Bowland.

Some shorthand would be helpful. Typing essential. Ability to cope with accounts to Trial Balance.

Salary negotiable.

Apply:

Guider-in-Charge,
Waddow Training Centre,
Clitheroe, Lancs, BB7 3LD

Identify with Cash's

Approved suppliers of shoulder titles. Available in quantities of 3, 6 or 12 dozen, on navy, black or white grounds from local drapers or Guide shops.



1ST KINGFIELD

Cash's

J. & J. Cash Limited, Kingfield Road,
Coventry CV1 4DU Tel: 0203-23001

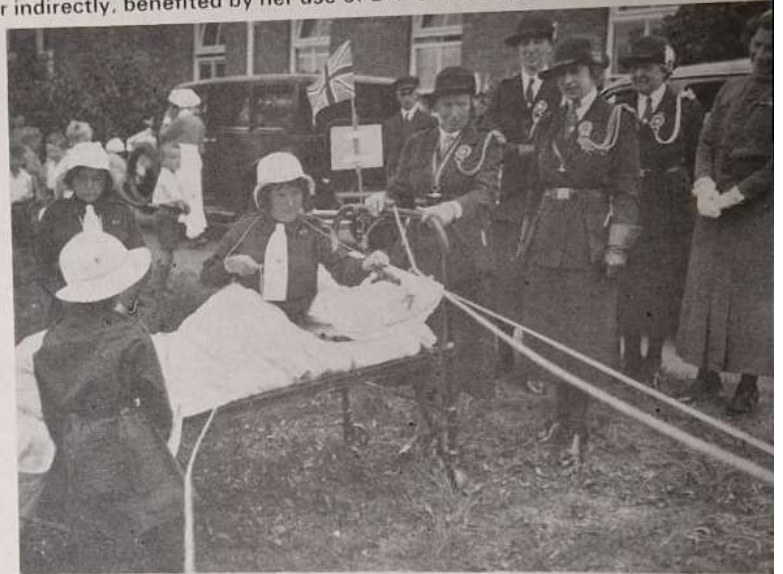
A Very Special Birthday: Guiding salutes the 'Carpenter'

Agnes Maynard, OBE (twice a Silver Fish) was nicknamed the 'Carpenter' by the Founder because of her creative and practical skills. 'Shyness disappears with a nickname,' she told Cadets years later. 'The Founder gave me something valuable. It has been an easy way of making friends.'

On 17th May, Miss Maynard celebrates her 100th birthday. Greetings and love and thanks from us all, from the Chief Guide to the newest Brownie, to one who by her wisdom, imagination, sense of fun and understanding of the child enriched Guiding for all who knew her or, however indirectly, benefited by her use of B-P's methods.



'May we have Scouting for girls?' Miss Maynard wrote in a letter to B-P in 1909. When he said 'yes, but I'm too busy to organise anything at the moment', she went steadily ahead with her own 1st Wimbledon Company in 1910, her camps in Kent and Surrey (when the luggage travelled on a trek-cart and the 'under-fives' came too so that the campers could qualify for Child Nurse badge), her trainings in her own home and, from 1918 onwards, her famous London and South of England Training School for Guiders, known as the 'Goats'.



A summer day in July, 1936, when Miss Maynard (at head of bed), District Commissioner for Queen Mary's Hospital, Carshalton (where there were 14 Guide Companies and 11 Brownie Packs), organised displays for Princess Mary's visit, including a breeches buoy demonstration. 'It is by doing that you live' Miss Maynard used to say, and through her skill and imagination many a handicapped child enjoyed the thrills of Guiding.

Happy Birthday, Carpenter Happy Birthday, indeed!

At Foxlease on 26th May for the Ruby Jubilee in 1962. (L to R) Miss Maynard, the World Chief Guide, and Miss Margaret Martin. 'Foxlease has always stood for the wonderful feeling of being wanted,' Miss Maynard once said. 'For me that feeling started in 1916 at my first conference when our Chief Guide called me to join her group and help in a discussion on Brownies. I, who had always avoided groups, knew a new joy from that moment.'



A happy occasion at CHQ on 15th April, 1958, during 'Book Week'. Miss Maynard spoke about 'Books and Guiding' and one of the audience demonstrated how to use a gadget from her book, 'Just How'.



Merseyside South Ranger Guides and Guiders, before the Rangers' Jubilee walk to Prescott.

CELEBRATING THE RANGER DIAMOND JUBILEE

RANGER JUBILEE celebrations got off to a good start on 6th February. These pictures of the National Walk speak for themselves and show just a few of the many and varied activities the Rangers combined with their 77-minute walks. Perhaps no record was created, but those who set off at 2 pm, knowing that all over the UK there were others doing exactly the same, must have felt a deep sense of unity and association with their fellow Rangers.

Sixty years is a long time and fashions in words change, as well as in dress. The 1917 Rangers would have gone on a hike, wearing large hats, long skirts and black stockings. In those days girls would never have worn slacks or jeans, and I doubt if anyone had ever heard of the word *anorak*. Just as our ideas of dress have changed over the years, so has the whole Rangers' programme, which now emphasises flexibility and covers interests in all fields of twentieth century life. But the underlying purpose remains the same, and today's Rangers are still the same at heart. Wherever their Walk took them on 6th February — they were on the right road.

DMO



West Glamorgan Rangers, above, completed their 77 minute walk in torrential rain!

Below after an act of worship Ranger Guides in Herefordshire walked from Dinmore Hill to West Hope for a barbecue.



Northamptonshire Rangers walked from St Mary's Church, Far Cotton, to Nazareth House where they entertained the old folk.



Northants Chronicle & Echo

350 Ranger Guides from 36 Birmingham Units walked to the city centre where they began celebrations by releasing balloons (left).

Lancashire Rangers from Whittle-le-Woods used their energy to give a beauty treatment to the historic Houghton Tower (below).



Sunday Mercury



Lancashire Evening Post



Right, Rangers from Barrow, Ulverston, Dalton, Kendal and Windermere with Rangers from North Cumbria on top of Dun Mail Raise presented the Lord Lieutenant of Cumbria, Mr John Wade, with a joint message of goodwill to send to the Queen.



Ranger Guides from Malvern and Upton-on-Severn, left, had a three-legged walk to their camp-site in Blackmore Park.

Below, Blackburn Rangers exchanged a scroll with Preston Rangers at Samlesbury Hall.



Below, Belfast Rangers prepared a scroll with greetings to Her Majesty.



GUIDER Crossword No. 5

by Brenda Hughes

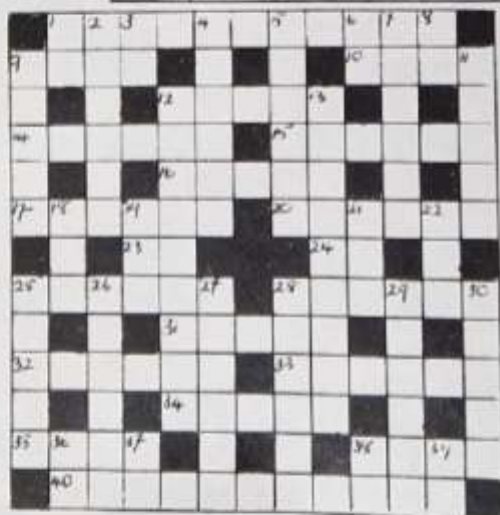
A small prize will be awarded for the first correct entry opened each month. Send entries to: The Editor, GUIDER, Girl Guides Association, 17-19 Buckingham Palace Road, London SW1W 0PT.

Across

1. Clean top set (anag.) (11)
9. Good for a Spaniard. (4)
10. ——— poor Yonick. (4)
12. Seats are worth having. (5)
14. A nasal tumour? (6)
15. See air run relating to nerves. (6)
16. Days of yore. (5)
17. Antonio almost forfeited his life because he stood this for Bassanio. (5)
20. I'm reds, skin. (6)
23. Lo! he makes an exclamation. (2)
24. A man, used to drive geese. (2)
25. Dresses fish, in the garden. (6)
28. Worn north of the border. (5)
31. Came out of a shell. (5)
32. Unfasten. (6)
33. I'm hanging my head and agreeing. (6)
34. Mishap, beheaded and re-arranged will suck the plants. (5)
35. One of the 'dreary, gloomy, friendly' ones. (4)
38. There is nothing better than a pool to mark the boundary. (4)
40. A bird for a windy night? (11)

Down

1. A childish father. (2)
2. He deals in eggs. (6)
3. Negative. (2)
4. You can do it without difficulty. (6)
5. No deep will provide this. (6)



6. A curtailed sailor shows gratitude. (2)
7. ———s and excursions on the outskirts of battle. (6)
8. Behold, indeed, it comes before ti. (2)
9. Many who are cheated. (5)
11. The seats are given up for money. (5)
12. Open fruit producers of lichens. (9)
13. Dark. (9)
18. Look at us even now, to find same purpose. (3)
19. A very large division of geological time. (3)
21. Can be soft or hard, but only the hard become young. (3)
22. Cuttlefish produce this. (3)
25. The ——— of the vine. (5)
26. Nut kernels. (6)
27. A little lobe. (6)
28. Favourably gracious. (6)
29. The name Lionel gives a vitrified coating. (6)
30. Bristles. (5)
36. The 'Senior Service' in short. (2)
37. For example. (2)
38. Little Mother. (2)
39. Comes in front of me. (2)

Crossword No. 4 solution

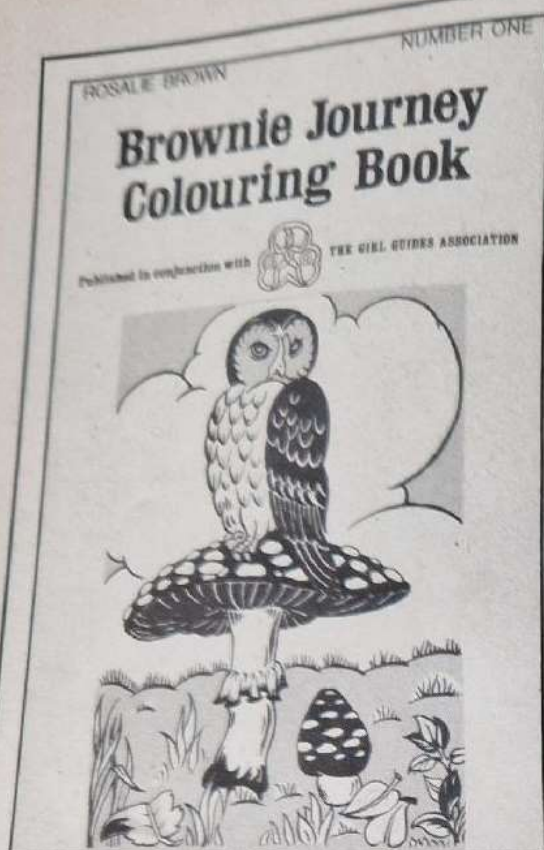


GUIDER Crossword No. 5 entry coupon

Name

Address

Date



Calling all
Brownie Guiders!

Brownie Journey Colouring Books

ROSALE BROWN

has drawn

FOUR BROWNIE COLOURING BOOKS

for your Brownies' fun and enjoyment.

They will also find that some pictures will teach them things, too, as everything is based on Brownie activities, from the Promise, through each Journey, to some Interest Badges.

Your Pack can obtain their
BROWNIE JOURNEY COLOURING BOOKS

from any Guide Shop for only 45p each,
or direct from the Publisher at the address below.

(Don't forget to add 10p for postage)

JOHN GOODCHILD PUBLISHERS
70 Carrington Crescent, Wendover, Bucks.

True Grit

OR Confessions of a Cornish Commissioner's husband

by M. Browning

JUST before our wedding my wife received a letter which read 'We are so pleased that you are coming to us. We want you to be our Commissioner'. So that is how I became the Commissioner's Husband. My first job was to drive my wife to the Guide Hut, and wait outside with a book. It was then I saw a new aspect of my bride. Captain, in a panic, came out into the road and called urgently to dawdling Guides: 'I told you to be in time - and now the Commissioner is here!' But clearly by the end of the meeting they had learnt that their new Commissioner was no fire-breathing dragon. 'May I come again, please?' she asked. 'Yes please!' chanted the girls in reply.

Soon after that, we went to a Guide sale. A very small child who was working for her Hostess Badge was allocated the job of looking after me. Imagine the close attention I received! Imagine the ensuing indignation! But

They telephoned the Commissioner to say they were stranded. We told them to wait in the Show Secretary's tent, and I set out to 'rescue' them. It is difficult to go into a show ground when everyone is leaving, but a stroke of inspiration made me ask a Police Inspector for help. In a trice he had held up all the traffic and the two girls were fetched as if they were royalty. Seventy-five miles I drove for those darlings.

Visiting a Guide Camp caused my only embarrassment. The Commissioner was asked to judge a fancy dress competition. The girls were able to use only the things that Guides normally take to camp. The ingenuity was breathtaking, but I was lost for words when one Guide entered as *Tarzan*, wearing briefs and holding to her front a small nightdress case shaped as a lion!

Once two Guiders came to our home for a talk with my wife, the Commissioner. Their car failed to start for the return journey, so I offered to take them, if they were agreeable to one of them sitting in the luggage space of our small sports car, with the hood lowered (it was a cold night). They agreed with alacrity when I put this proposition to them, and quite forgot that they were matrons, chattering like a couple of young girls throughout the 'adventure'. Trouble came, however, when one of them felt too young and carefree to use the conventional mode of exit from a car, and instead hopped jauntily over the side,

spoiling the effect rather by catching her foot and disappearing upside down. I saw with horror a pair of Guider's legs sticking up in the air and waited with bated breath for the screams of anguish. None came. They were still thrilled with the ride.

When an odd-job man is needed, I am there. Once at a Brownie meeting the Brownie Guider had said: 'And

now we must raise the money to buy a toadstool'. Before we said goodbye, I announced that I had a Piskie friend named Ulf, who would gladly make a toadstool for the Brownies. In all, he made three, and the Brownies shouted their ringing thanks loudly enough to be heard on Bodmin moor.

As the Commissioner's husband I've made friends with dozens of Guides and Brownie Guides and their parents. But I remember with greatest joy the occasion half a century ago when a Scouter said: 'Perhaps you would like to finish with a song the American Scouts sing'. So at that camp-fire we were one of the first groups in this country to be introduced to *Taps*. Even now, whenever I hear *Taps* sung, I feel amply rewarded for my long connection with the Movement, and the work it has involved.



how could I have said 'no' to such a hostess?

However, the time came for me to 'do my bit', when we went to visit a Brownie Pack Holiday. The Brownies were just finishing lunch, and were planning a game of rounders. I offered my services as washer-up for the group of thirty or forty. It took time to convince the Guiders that (a) I really did want to do a Boy Scout good turn and (b) that I was really quite adept at such things, because until I married again I had been a working 'housewife' for years. I took pleasure in the glee of the Brownie washer-uppers: 'We don't have to do it!'

At the Annual Agricultural Show held in our district, the Guides took an active part. They had a demonstration camp, possibly doing camp-fire cooking for 150. It was fun to be at the Show the day before and to see all the activity as the stands were prepared. An unexpected job came when two young Guides missed their bus home,



Illustrations: Jean de Lemos

POSTERS/HANDBILLS TO PUBLICISE THE PERIODICALS

Up-to-date and brand new Posters/Handbills are offered free of charge to readers of *GUIDER*. These brightly coloured posters/handbills which publicise *BROWNIE*, *TODAY'S GUIDE* and *GUIDER* may be pinned up in your meeting hall or at conferences/camps etc.

If you would like a poster or a few handbills please complete this coupon and send it to: Periodicals Department, Girl Guides Association, 17/19 Buckingham Palace Road, London SW1W 0PT. Please mark 'Poster' or 'Handbill' in the top left hand corner of your envelope.

PLEASE SEND ME

POSTERS
HANDBILLS

as announced in May *GUIDER*

NAME

ADDRESS

GUIDER
coupon
offer

The Walter Donald Ross Trophy

ON Saturday, 19th February, the members of the 156th Belfast Ranger Guide Unit proudly received from their Chief Commissioner, Mrs Rosemary Dickson, a replica of the Walter Donald Ross Trophy, which she presented on behalf of the World Association of Girl Guides and Girl Scouts.

Representatives of the Hospital Authority and the various Churches to which members of the Unit belong were at the presentation. Congratulatory letters were read out, including one from the Girl Scouts of the Philippines who themselves had been the recipients of the trophy.

Mr Donald Ross of Vancouver presented the trophy in 1950 to be awarded annually to a Girl Guide/Girl Scout Company/Troop or Patrol, throughout the world, for outstanding service or achievement.

In the intervening years, this award was presented 20 times, three times to Units in the United Kingdom. Four times Units have also been runners up. Now by their sustained weekly help since 1969, to the Purdysburn

Hospital for the Mentally Ill, this Ranger Unit of Ulster has gained the trophy on the last occasion it will be presented, as the donor has died.

Since they started the service project, the members of the Unit have given on average 16 hours service a week, which involved such service as ward duties, the setting up and running of a social club for patients, the organising of inter-hospital com-

petitions and parties at the festive seasons. As well as this, the members have become 'caring' friends to the individual patients.

We warmly congratulate the Belfast Rangers in setting a seal on this particularly fine record of service by members of our Association.

EGM



Century Newspapers Ltd

Lightweight Camping, part four

Choosing a stove

by
Kim Taylor

The lightweight camper/backpacker needs some means of heating meals when in the field. The simplest method of doing this would be to make a woodfire - this way there need be no additional weight added to the pack. However, not every landowner permits fires on his land; if, for example, the land is too dry he would withhold permission. On the other hand there may not be any wood available. In this age most 'countrymen' are also conservationists and have no wish to cut down or collect wood. These are only a few reasons why the 'light-weight' camper cannot rely on the surrounding countryside to provide fuel. The alternative to the wood fire is the portable stove.

There are numerous types of portable stoves on the market and these may be divided, for ease of discussion, into three categories according to the fuel they use:

1. Solid Fuel
2. Liquid Fuel
3. Gas

1. **Solid Fuel** - Solid Fuel stoves are the simplest, consisting of a stand and base plate. The block of fuel (usually compacted hexamine or some other easily combustible substance) is placed on the base plate, the billy on the stand, and away you go. These stoves are only really suitable in dire emergency, when no other means of heating is available. The fuel blocks usually last about ten minutes each and need to be replaced continually if cooking for any length of time. This method is inefficient as the heat produced by the blocks is intense only for the major part of the burning time and can easily be dissipated by wind or breeze action.

2. **Liquid Fuel** - There are three types of liquid fuel, petrol, paraffin and methylated spirits. Liquid fuel stoves work on a system of forcing the fuel, under pressure, up the stem of the stove, from the tank and forcing the fuel through a small jet at the top, where it is ignited and an intense flame produced which provides the heat. Liquid fuel stoves need some means of pre-heating the fuel so that when it leaves the jet it does so

as a gas and not liquid. Petrol stoves are pre-heated by allowing some of the petrol to dribble out of the jet before it has gasified into the cup, which is provided halfway up the stem. This 'surplus' petrol is then burnt and the stove pumped to build-up pressure within the tank. As the petrol leaves the jet as a gas it is ignited and is ready to heat your meal.

The heat generated by the burning petrol in the cup 'pre-heats' ie warms the stem which helps the gasification, once the burner is operative the heat generated by the burner keeps the gas flowing, assuming the pressure in the tank remains constant.

Paraffin stoves operate on the same principle as petrol stoves, but since paraffin will not ignite easily an agent is required to ignite it - methylated spirits is used for this purpose. The meths is poured into the cup and preheats the stem which produces the gas when pumped; from this point on the procedure is the same as for petrol stoves. Methylated Spirit stoves need no pre-heating, so once the burner is ignited, cooking can commence.

All the liquid fuel stoves have a tank which is capable of being sealed by a cap, so for short expeditions a full tank will suffice. For long trips polythene bottles with watertight screw caps may be used to transport paraffin or methylated spirits, but petrol is best carried in a metal bottle. Old brake fluid cans can be used as very efficient petrol containers. It is just as well, however, to put the bottle in one or two polythene bags to ensure against accidents. It is advisable not to pack your matches near the fuel.

Never pump a liquid fuel stove inside a tent, it could set the tent alight.

3. **Gas Stoves** - These are available for use with unsealable and re-sealable throw-away containers. Spare containers are easily carried in your pack, but remember to keep them out of the sun and away from direct heat. There are many varieties of gas stove manufactured by different companies, all of which are equally good, but if you intend to camp abroad use a stove which will take Gaz cartridges; these contain butane and are readily available on the Continent.

Cartridges of the *Calor* or *primus* variety contain propane, which is not readily available abroad. The method of using this stove is basically the same as for a domestic gas stove.

Remember - keep stoves away from tent walls - they can burn, melt or singe the fabric. All cartridges, and stoves complete with cartridges, are better kept outside a tent which is used for sleeping purposes (especially those with sewn-in ground-sheets) - as there is always the possibility of their being knocked over.

ITEMS OF INTEREST FROM THE EXECUTIVE COMMITTEE MEETING HELD ON 3rd FEBRUARY, 1977

BEFORE commencing the business of the Meeting the Chairman, on behalf of all Executive Committee members, welcomed The President, Her Royal Highness The Princess Margaret, who attended the morning session of the Meeting.

The Chairman also welcomed Mrs Manasseh, deputising for Lady Alport on behalf of The Trefoil Guild.

Glenbrook Activities Centre

It was reported that Miss B Carradus has been appointed as Guider-in-Charge at Glenbrook with effect from April, 1977.

The Hon Beryl Cozens-Hardy has generously donated £1,000 and a further £552.65 has been received from donations and covenants towards the building and equipment at Glenbrook, thus bringing the total of donations at 3rd February to £3,552.65.

The Constitution and Terms of Reference of the Glenbrook House Committee, approval of which had been deferred at the December Executive Committee Meeting, were received and approved.

Girl Guide Friendship Fund

Members were pleased to hear of the great response to the Christmas Projects; Children's Kidney Failure Research, Winged Fellowship Trust, Age Concern, and Guide Dogs for the Blind; and to know that all four organisations would receive their cheques on the 18th February at Commonwealth Headquarters.

Commonwealth and International News

The Commissioner for Branch Associations said that the Pacific Conference which was held at the end of 1976, and chaired jointly by Miss Mary Hopkirk of New Zealand and Miss Betty Fisher, Deputy Programme/Training Adviser for Scotland, had been very successful.

The following appointments were ratified:

President, Solomon Islands	— Mrs C H Allen
Commissioner for Belize	— Mrs E J R Robinson
Deputy Commissioner for Belize	— Mrs H S Tucker

Members of the Committee received copies of letters of appreciation that had been received from the Turkish Scout and Guide Association and The British Red Cross Society, regarding the donation of £500 to help with relief work in North East Turkey following the recent earthquake.

World Association of Girl Guides and Girl Scouts

Members were pleased to learn that the World Committee would be meeting at Commonwealth Headquarters from 27th April to 5th May and from 27th November to 4th December 1977.

National Honour

It was reported that Mrs Parker Bowles had been created a Dame Commander of the Royal Victorian Order in the New Year's Honours and should in future be addressed as Dame Ann Parker Bowles, DCVO, CBE. A telegram of congratulations had been sent by The Chief Commissioner to Mrs Parker Bowles on behalf of the Association.

Ranger Guide Diamond Jubilee Badges

The badges were on sale — the metal badge was temporarily out of stock as the initial order of 10,000 had been sold. The compass badge designed by Sandy Agnew from Co. Londonderry was shown to Committee members who expressed their appreciation; T-shirts and Sweat Shirts will be on sale in the Spring; the commemorative Cover and Jubilee Stickers are now available.

St Paul's Cathedral Service on 29th October

It was reported that the committee dealing with arrangements for the service would meet during the following week. Dr Rae, Head Master of Westminster School, has kindly agreed to preach. The City of London School has offered facilities for tea to take any overflow

from the Guildhall. The Lord Mayor has provisionally accepted an invitation to attend the Service.

Youth Charter towards 2000 Conference

Miss Ryrie, leader of the Association's delegation to the above Conference, gave a brief and interesting report on the Conference to date. As well as the official report being produced by the Conference secretariat, Miss Ryrie hoped that the under-18 and over-18 members of the Association's delegation would also write reports which would be amalgamated for presentation to the Executive at a later date. (There was an article in April *GUIDER*.) — Editor.

The Executive Committee expressed their gratitude to Miss Ryrie for so ably leading the delegation.

Trefoil Guild

In the absence of Lady Alport, Mrs Manasseh explained the recommendations concerning revisions to the Constitution of the Trefoil Guild Council and these were approved.

It was noted that the term 'Councillor' will in future be replaced by the words 'elected member of the Council of the Trefoil Guild'.

International Commissioners' Meeting — Denmark 4th–6th March, 1977

Lady Baden-Powell advised that the following points had been put forward for the 'Airing and Sharing' Session:

- discussions about invitations from Joint Associations to single sex Associations and vice versa;
- encouragement of communication after initial invitation has been received;
- a suggestion that information should be given to an Association when units are camping in that country by private arrangement, as assistance may be required in an emergency;
- a discussion of mutual respect for the customs of different countries.

The Executive Committee agreed that these above points should be put forward for discussion.

Extension Adviser

Mrs A Gentry has been re-appointed as Extension Adviser until September, 1978. The Chairman said that a reply had been received from Mr Ennals to the Association's letter of 16th December, 1976, addressed to Mr A Morris, Minister for the Disabled, stating that the phasing out of tricycles for the disabled was being reconsidered in the light of the thousands of protests he had received and there would be further consultation on the subject before decisions were made.

Commonwealth Day

The proposal to introduce a simultaneously observed day was made by the Canadian Government at the Commonwealth Summit Conference in Jamaica in 1975. Two conditions were laid down — first that it should be a day which was of no national significance in any of the member countries, and secondly that it should be a day on which children everywhere were attending school. A firm date now agreed is the second Monday in March each year. In 1977 this will be Monday 14th March.

For this year only there will also be a Commonwealth Week in the UK, from 12th to 17th June, when the Commonwealth Heads of Government met in London.

Minibus Report

Since receiving the Minibus Report from the National Council for Voluntary Youth Services, copies of which had been sent to all United Kingdom General Secretaries, The Chief Commissioner had learned that David Hunt, Conservative MP for the Wirral, was bringing a Private Member's Bill to be debated in Parliament on the 11th February, 1977. The National Council for Voluntary Youth Services had asked all members to lobby their MPs in order to support this Bill and The Executive Committee agreed to sending copies of a tabled suggested letter to their Members of Parliament, asking for support for Mr Hunt.

Lynia Whitaker
General Secretary, CHQ

This is a Karrimor Advertisement

who's geared up to testing?

It isn't possible to pound around the hills, camping, climbing, fell running and be isolated from other equipment. If you're testing sacs and reporting upon their performance, it comes as second nature to jot down notes regarding all the other equipment you use or witness in use. To be able to carry out my own testing programme for sacs and tents, I have of course worn through many pairs of boots - trousers - sweaters - water-proofs - I've also used sacs and tents from manufacturers both at home and abroad. Between myself and my testing panel are some very strong views regarding some equipment available for outdoor activities, equipment actually advised as mountaineering equipment and sold by shop staff, who have little involvement in any aspect of mountain activity. I have several times had to persuade "students" to take an item back to a shop for replacement.

If specialist gear proves faulty it is my experience, gained mostly from my contact with people who come to the hills, that you're far more certain to get immediate replacement of the item if purchased at a reputable mountaineering shop.

The task of a full time professional equipment tester is not the glamorous life some believe it to be. It doesn't need me to list here the types of weather conditions to be found in mountainous areas on any 200 days in any year. That's the minimum total of full-mountain days I record each year, and this includes approximately 100 overnight camps. (As high as 132 in one year). Compare this with the about 40-50 overnights for a full time instructor in a Centre, and around 20-30 for a keen backpacker.



My specific tasks have been to put Karrimor equipment through serious "real" situations. Naturally all my other "non-Karrimor" gear goes through equally testing trials. One of the difficult things to do is ensure that my reporting on test equipment is not biased because I am a "Karrimor man". The fact that I operate from my home in the centre of the Lake District helps in that my mind doesn't become clouded with what the factory's constraints are or with what they might want to hear from the tests. Of most help in keeping balanced opinions is the fact that before I regard a test as thorough, it must have been used by novices, experienced amateurs and full time professionals, over a range of seasons weather. My frequent visits to centres all over the country often results in my acting as a stand-in Instructor and/or an M.L.C. assessor. My reports therefore are an amalgam of opinions from each of the appropriate groups. Sometimes my own personal opinion is at variance with one or all the groups, in which case I make this clear, and state why if I am able to.

LOG EXTRACT

"Quite a good testing day today. Steady drizzle throughout the walk over Kentmere Fells, turning to sleet at Nan Bield pass and with strong wind. Most of the group very damp, some very wet with condensation or penetration from ill fitting jacket/anorak/cagoule hoods.

One member got totally lost during his "lead" and put us well behind schedule for intended campsite. (At one time leader said we were just beneath High Street summit when we were in fact just beneath Thornthwaite Crag!)

The group found it was no easy matter pitching some tents on the "enforced site", alright on a level site which can be selected when you've plenty of time to cruise around, but it's an entirely different matter having to get a tent up wherever, when you really just have to get a tent up. Jest ye not: This isn't an exaggerated fantasy concocted by a mountain instructor — this some time, some place and in some weather will happen to you. I have on more than one occasion, felt real sympathy for a struggling trainee instructor, and yet to rush out of my warm, dry comfortable tent to assist would remove that greatest of training aids: personal experience. All too often I hear the bawdy repartee of some tough looking guy admitting to be a very experienced hard-man in the pub on Monday, only to find him an inexperienced fumbling mountaineer on a Tuesday. By Friday it's quite surprising how that quiet, feeble-looking lass of Monday has emerged as the resilient competent leader, with Monday's "tough-guy" prepared to follow her anywhere. In no activity is the saying "Never judge a book by its cover" more relevant — don't be misled by physique, epic accounts, or an array of personal gear.



Met an American lad en route High Peak to Fairfield, doing the Horseshoe. Only landed in Manchester previous day. Wanted to "do something in Lakes before tackling Ben Nevis day after tomorrow. Have to be back in Manchester in 5 days". He had no mountain type gear, and his "buttles" were in a plastic shopping bag. So much for the U.S. gear freaks!

Today was just one of those days. A student broke a leg — we had the first snow of the year — my new boots had blistered my feet and we were a long way from assistance. Brewed up in the Survival Unit and thought "things could be worse". Just then I noticed the main harness buckle on my sac was broken — I cursed the Scandinavian Super Sac I happened to be testing — knocked over the stove and scalded my knee. "I'm sure none of this would have happened if that nice fellow hadn't broken his leg!"

The following log extracts were first printed in the Karrimor 1976 equipment guide.

Some training bodies adhere to their "what to pack and carry" lists regardless of the age, physique fitness or sex of pupil. Some of the lads in the group had done quite a bit of hill-walking and found little difficulty with the 20-25 lbs loads. Some of the new lads found the same weight hard work up the iced section on Swirral Edge, Helvellyn. One of the experienced men in the party who was wearing a high load was caught by a strong gust and the "floating" hip belt permitted the top of the unit to travel far enough for him to lose balance.

The testing sessions have been punctuated by discussion regarding the use of hip belts. The original use was to transfer the loading off the shoulders and onto the hip. A second use, and one of importance, is to give stability to the high load. (A high load can be described as a pack reaching from mid-torso to mid-head and above). Many high load users, some of them full-time instructors, are divided as to the use of a hip belt at river crossings and exposed ridges. During our tests it was discovered that if a "fixed" type hip belt (Karrimor style) is fastened tightly across the hips then there is much less swing of the frame and balance is easier to maintain than with the "floating" type hip belt. If high load is carried it seems far from a safe procedure to unfasten the hip belt when faced with a delicate balance situation.

- N.B.1. Sacs may be roped across or alternate routes selected.
- N.B.2. Control and communication is extremely difficult at fast-flowing river crossings and they should be avoided whenever possible.

We have listened to voices from many sources in respect of packing a sac. The vertical zone method is, in theory, good but the actual process of packing requires that the sac be either on its "back" or at an angle which is awkward to maintain when packing even with the front-loading sac there are common problems. With a frameless sac the heavier items are often awkwardly shaped and nearly always angular, making it difficult to get a moulding shape for the wearer's back. With the framed unit the problem is that those same awkward items pinch the material against the frame and cause abrading and loss of proofing. One of the most popular methods used during the year has been to roll the Karrimat and insert as a vertical tube, let it unwind to the full extent of the sac and then continue packing using the traditional horizontal zone method as a basis. This method has some advantages: it keeps angular edges inside the sac out of contact with other hard surfaces and so minimises the impact damage to materials and contents. It helps keep temperatures away from extremes — no melted butter or frozen gas.

Ken Ledward, Dunnerdale, Lake District December '76.

This page is an extract from the 1977 edition, Karrimor Annual Digest. If you would like to read all 16 pages please send a 10p stamp to Mrs. C.R. Long Karrimor International Limited Avenue Parade, Accrington, Lancashire.

Letters.....

Ranger Birthday

On 15th May, we will be holding our Ranger Reunion; no, not our Diamond Jubilee – but our thirty-fourth birthday. The 8th Acton Land Rangers of St Peter's, Southfield Road, London W3, was started by Miss Beatrice Watts and Miss Charlotte Jacobs in 1943 and every year about ten 'old Rangers' plus 'Cap' and 'Lefty' get together to swap the year's news, read letters from those too far away to come in person, and relive in their imagination past hikes and holidays.

We have a Brownie Guider in Hinchley Wood and one in Australia. Guiders in Heston and Hampshire, and a Cub Mistress in Newcastle. Our children include several Young Leaders.

Together we were Brownies, Guides and Rangers at St Peter's, and now we feel we can truly call ourselves a 'large family of Guiding'.

Mrs V L Tynan,
Guider, 4th Heston Company.

Can You Help?

Wanted: "The Joyous Venture"
Has any reader a spare copy of a leaflet called "The Joyous Venture" by Mrs Osborne Hann? It was given to newly enrolled Guides, included hints on keeping the Promise and Law, and was written in the late 20's or early 30's.

If anyone has a copy, please send it to me at CHQ.

T. Wallis Myers,
(Headquarters Archivist)

Playing The Game

A very new recruit, on being asked by her mother "What is Thinking Day", replied: "It's the day when you think of Brownies and Guides all over the world." "Oh," said her mother, "What about the Rangers?" "The Rangers?" replied the recruit. "Oh, they're in Glasgow." (She meant the football team.)

Joyce Clark,
Brownie Guider,
Inverkeithing, Fife.

Christmas Crackers

It was a disaster from the beginning. The littlest Brownie rushed in ten minutes late and promptly fell over one of the back screens and lay on her side, sobbing and screaming at full volume. Dropping everything, haloes, headdresses, robes, the lot, we picked her up, bathed her wounds and after a thorough examination

decided thankfully that it was not, after all, a hospital case.

Meanwhile, the record player which had been covering some of the noise, lost volume suddenly and inexplicably. The littlest Brownie announced flatly in between sobs that she was not, repeat not, going to be a shepherd. We were already two angels short... of which one had a speaking part. The main prop, a wooden animal, had been forgotten and someone had to run home for it. The prompter had left her spectacles behind, and peered myopically at the script. The piano at the wrong end of the room was the only unlocked one so all the singing was done, with only moderate success, by 'remote control'.

The children, once started, seemed determined to get through the business in the shortest possible time and went right on with the hillside scene before the props were changed – as there were no curtains they managed this without difficulty.

The angels shuffled out to make their brief impact, omitting to sing the first verse of *Nowell* to herald their entrance, so Pack Leader and Snowy sang from the wings. The middle angel suddenly remembered that she must hold out her arms to show the wings and shot them out with such force that she knocked off the smallest angel's halo, which understandably caused a certain amount of chaos.

I think the parents enjoyed the cup of tea served at the interval!

Clare Pierson (Mrs),
Harrogate,
Yorks.

Guiding the Viewer

What a wonderful pleasure it was to see our one and only World Chief Guide on the television programme, 'Jim'll Fix It'. She is dearly loved by us all, and those of us who have met her are invariably left feeling refreshed and even more ready to carry on the 'good work' in Company or Pack.

The Chief Guide did a wonderful PR job for the Guide Movement, in her TV appearance, and the Brownie visitor also spoke very well. The Guide Movement is proud of them both. Our thanks should go to Jimmy Saville, too!

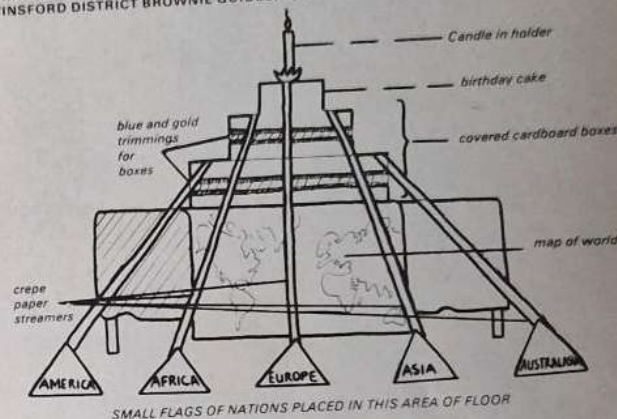
Ellen E Latham,
Assistant Guide and
Ranger Guider,
1st Crewe Green Companies,
Cheshire.

How we celebrated Thinking Day

We built a large birthday cake, with one candle to remind us of our Founder, Lord Baden-Powell. Five streamers were stretched from the cake, across the map of the world, to name-cards of the five continents. Flags for each country made by the Brownies were placed in the appropriate continent. A colourful touch was brought to the proceedings by a parade of Brownies in overseas uniforms and national costumes, and visitors were entertained with songs and dances from around the world.

Joan Locke,
Brownie Guider,
2nd Winsford (St Joseph's)
Pack,
Cheshire.

THINKING DAY CEREMONY BY MIDDLEWICH AND WINSFORD DISTRICT BROWNIE GUIDES, 1977



SMALL FLAGS OF NATIONS PLACED IN THIS AREA OF FLOOR

Books Re-quest

I am a Guide Guider and I wonder if other Guiders can help me in an unusual quest for certain girls' books by Elsie Oxenham. Her books are largely out of fashion now, but I feel sure the author must have had connections with Guiding as there are numerous mentions, in detail, of Guide Companies and Camp Fire, and her interests and principles are certainly the same as those of the Guide Movement.

I am particularly seeking for *Girls of the Hamlet Club* and books written just before the Second World War, which include *Rosamund's Victory*, *Maidlin to the Rescue*, *Joy's New Adventure*, *Rosamund's Tuckshop*, *Maidlin Bears the Torch* and *Rosamund's Castle*.

I have searched the second-hand bookshops in vain, and should be so pleased to hear from any of your readers who can be of help.

Mrs B Goodfellow,
13, Heyterbury Road,
Southbourne,
Dorset.

Abbey Service

May 1, on behalf of the Exmouth District Guides, say 'thank-you' to all who organised the Thinking Day Service in Westminster Abbey. We were some of the lucky ones to get into the Abbey – standing at the end of the row in which Lord and Lady Baden-Powell and the Chief Commissioner were seated. 'The great Think Day', as the Chief Guide described it, began for us on Saturday, 19th February.

CHQ was bursting at the seams, but everyone managed to buy something as a memento of their visit.

The afternoon was spent at the Commonwealth Institute. The Fashion Parade was thoroughly enjoyed, as too were the spectacular displays arranged by the Commonwealth countries.

Arriving back in Exmouth at 10 pm, we all agreed the 50th Anniversary of Thinking Day had been a memorable day.

Joan M Welch,
Guide Guider,
1st Littleham Guide Company.



Denys J Branch

SUN FUN SEA SURF...



Take a lot of each, add some friends and you've got a time called summer. Add Tampax tampons. And you've got a time called problem-free. How do you use them? Simple. All the instructions you need are inside the packet. So make this your month to try Tampax tampons. You'll understand the difference. And that's for sure.

The internal protection more women trust



MADE ONLY BY
TAMPAX LIMITED, HAVANT, HAMPSHIRE

MARQUEES

READY TO ERECT

£325 COMPLETE

Carr. £7.50

SIZE: 29' x 20'

12' high
5'6" side
walls.

also
SIZE: 19' x 20'
£255 complete.
Carr. £7.50

**COMPLETE
WITH
ACCESSORIES
SEE LIST**



**BRITISH ARMY
UNIVERSAL MARQUEES**

Fantastic offer of Marquees as supplied to the forces. Previously used but in excellent condition. Made to the highest specifications in Genuine Ex. Govt. tentage.

Example: 29ft x 20ft includes:-

Two Roof Ends - One Roof Section - Four 27ft Walls - Eight 35ft Bracing Lines - Two 36ft Weather Lines - Pin Valise - Maul - 82 Pegs - One 9ft Ridge Pole (in one section) - Two 12ft Upright Poles (in two sections) - 32 Wall Poles - Eight 30in Stakes - One Large Valise. 12ft high - Side Walls 5ft 6in. Carr. £7.50 per Marquee.

★ EXTRA MARQUEE SECTIONS £95 complete Carriage £1.75
Marquees can be extended in 9 ft sections. Genuine Ex-Govt. tentage (previously used but in excellent condition). Each section comprises: One 9 ft centre section - One 9 ft ridge pole - One 12 ft upright pole - Two wall sections - Two 30 in stakes, six side wall poles - 18 pegs - One double weather line - Two bracing lines.

14 ft. RIDGE TENT

Excellent Grade One Condition

The famous ARMY 160 POUNDER. 14ft. long and 14ft. wide, 7ft. high 27in. walls. Superb ex-Govt. tentage, guaranteed stormproof. Dutch lacing doorways each end. doors can be rolled up. With accessories - pegs, poles, mallet and valise. Flysheet Grade 1, 14ft. x 19ft. £35, carr. £1.50. Unused tent complete all accessories £150. Carr. £2.50. unused Flysheet £50, carr. £1.50. Unused Groundsheet 14ft. x 14ft. extra tough rubberised canvas, eyelets all round, untearable. Weight 28lbs. £15, carr. £1.50.

£115 Carr. £2.50

MAIL ORDER DISCOUNT BARGAINS

CAMPING GAZ INTERNATIONAL	LIST PRICE	OUR PRICE
Grillogaz Dble. Burner & Grill, low pressure stove (incl. regulator) old model (callers only).	£29.98	£22.50
907 Gaz Container (unfilled for post £7.50)	£13.98	£9.50
904 Gaz Container (unfilled for post £7.00)	£12.75	£8.50
Lumogaz C200 Automatic Lantern for use with C200 Cart.	£10.49	£7.25
Lumogaz C200 Lantern for use with C200 Cart.	£9.98	£6.75
Lumogaz 'R' Lantern, Automatic.	£9.75	£6.75
Belvedere Lantern, Automatic, 150 watt light	£11.98	£8.00
Lumostar 4ft High Standard Lamp, Automatic de-luxe	£19.99	£8.50
Baby C400 Heater, incl. C400 Cartridge	£11.98	£7.50
CAMPING STOVES (HIGH PRESSURE)		
Tilley Talisman	£30.58	£22.50
S.M.S. Stainless Steel 'Slimline' Double Burner	£11.83	£7.50
S.M.S. Stainless Steel 'Supreme' Double Burner	£16.63	£8.50
S.M.S. Stainless Steel 'De-luxe' Double Burner (in case)	£21.65	£9.50
S.M.S. Stainless Steel 'Slimline' Double Burner & Grill	£20.73	£14.50
S.M.S. Stainless Steel 'Supreme' Double Burner & Grill	£23.22	£15.50
S.M.S. Stainless Steel 'De-luxe' Double Burner & Grill	£26.95	£18.50
Tilley 'Trio' S. Burner and Grill	£17.50	£12.50
CAMP KITCHENS		
Beanstalk Kamp Kitchen 'Standard' K	£15.00	£10.50
Beanstalk Kamp Kitchen extension shelf		£2.25
S.M.S. 'Major' Camp Kitchen (callers only)	£23.87	£15.00
S.M.S. Cadet Camp Kitchen (1975 model)	£14.58	£10.50
Lucy Blue Camp Kitchen	£10.75	£8.50
'CAMPARI' BARGAINS		
'Seazy I' Airbed (with pillow) 76in x 30in	£6.50	£4.75
'Limzy' King Size Air Mattress, single 74in x 30in	£8.95	£7.25
'Limzy' King Size Air Mattress, double 78in x 51in	£18.50	£13.50
Nylon Waterproof Rucksack (Bergen style)	£8.50	£5.50
Ridge Tents Nylon L/wghts. (Built-in Grdshs) plus Flysh.	£25.00	£19.50
CAMPING ACCESSORIES		
Camp Beds (French model) with raised head	-	£3.50
Ronson 'Picnicker' Stove, de luxe model	£8.75	£4.50
Tilley Paraffin 'Stormlight' Pressure Lantern	£17.77	£12.50
Vapour Lux Paraffin Pressure Lantern	£14.82	£10.50
Continental Camp Beds De-luxe model, with raised head	£6.50	£4.25
Camping Tables German De-luxe model, 32in x 24in	£8.50	£6.50
Frame toilet Tents De-luxe Model (Carriage £1.50)	£24.75	£12.75
Camping Blankets, Lightweight, 90in x 50in. Rose only	£2.50	£1.50
Dble. Box Sided Waffle Air Mattress (d/luxe) with pillow.	£18.50	£13.50
Sleeping Bag 38oz, round zip (Polywarm)	£10.45	£6.75
Li-Lo, model 'Universal' Airbed, 72in x 29in	£6.50	£3.75
Crypton Fluorescent Striplight 8 watt. Runs off 12v batt. 14" long	£6.50	£4.25
Crypton Slimline model, 13 watt, 24 in long, for caravans	£7.50	£5.25
Baby Cot, blue Canvas, collapsible metal frame	£8.75	£5.75
Amoco Insulated Coldbox with tap, 18 1/2 lit.	£12.50	£8.50

H. C. BRIGGS (CAMP EQUIP.) LTD.

(Dept. G), 88 Forest Road, Walthamstow,

London, E17 6JH

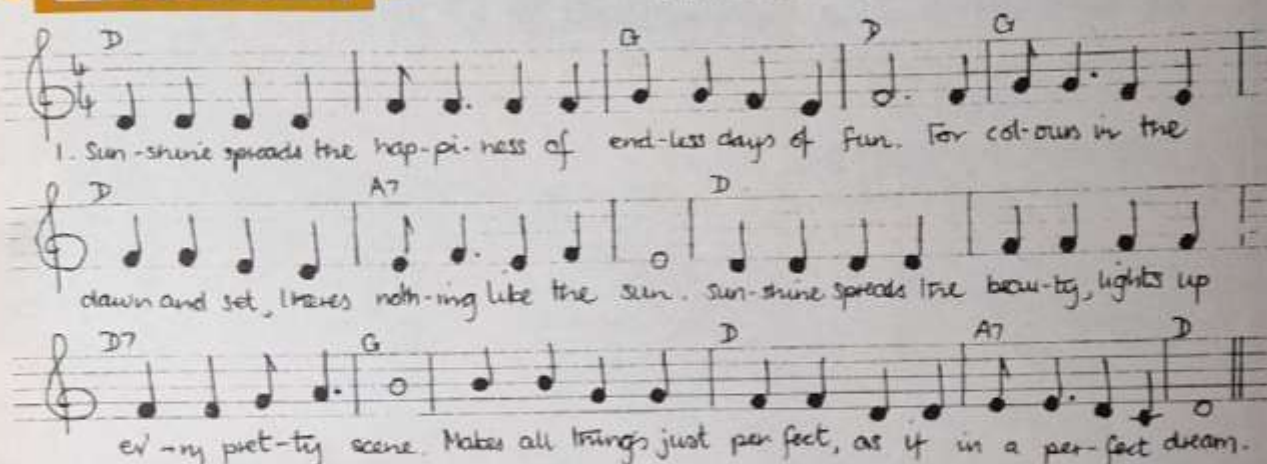
Tel: 01-520 2705

2 mins. Blackhorse Rd. Station - Victoria Line

All measurements shown are approx. Cash orders despatched by return. Cheque seven days. Please add 50p carriage on all items except where stated. Goods despatched UK only. Open Monday - Saturday 9 a.m. - 6 p.m.

MAINLY FOR RANGERS

Although the quest for a Ranger Song for 1977 did not attract such a large entry as was hoped, and produce a Jubilee winner to top The Ranger 'Pops', some interesting material was sent in. From this, the song below was chosen as a pleasant, 'singable' song which it was felt most Rangers would enjoy adding to their repertoire. So, with our thanks to all those who sent in contributions, we publish 'Sunshine' written and composed by Crompton District Ranger Unit, Devon.



Sunshine

1. Sunshine spreads the happiness of endless days of fun
For colours, in the dawn - and set - there's nothing like the sun.
Sunshine spreads the beauty, lights up every pretty scene -
Makes all things just perfect, as if in a perfect dream.
2. Sunshine makes us happy, it makes everything worthwhile
A glowing sun with warming light makes everybody smile
With the sun's rays dancing, how can anybody say that they are bored?
This is just another gift we thank you for, Oh Lord.

3. A light from Heaven shines on us in gold and sparkly hue
We see these beams of gentle strength and know it's all come true.
That warmth and power in golden shafts are spreading all over this land.
Spreading the message that power from God is always close at hand.

National Scout/Guide Orchestral Course - 28th December, 1977 - 2nd January, 1978

- ★ Details of the second National Scout/Guide Orchestral Course were published in last month's *GUIDER*. If you would like to attend, apply to the Programme Secretary for an application form without delay. The closing date for the receipt of application forms is now 1st July.

The Flipside of Sir Winston Churchill

The poem below was written by Jill Bennett, of the 4th Hereford Ranger Unit. Jill was a member of the all-girl crew of the Schooner Sir Winston Churchill, Britain's main entry in the Transatlantic Tall Ship Race, Summer 1976. The Sir Winston Churchill came second overall.

Congratulations on your epic voyage
What a wonderful time you must have had.
Appeared on a blank piece of paper sent to me
By a friend.
Wonderful time ... my mind ... wanders
Wonderful time ... it rang in my ears
America ...

New York ...
Boston ...
Wonderful ... my mind ... wanders
"Royal Globe" ...

SIR WINSTON CHURCHILL

Wonderful ... it rang in my ears.

"Gee, just listen to that accent"
"Keep talking ... Gee ... isn't it great?"
"How many on board?"
"42" exclaimed ... click ...
"I know you've been asked this a million times before but ... click"

"you know Surrey? my
Auntie Phyllis's Uncle's Nephew lives there
Do you know her? Now what's her name? ...
Click ... Mrs Smith I think ... click"
(Gin and tonic number 1) with ice of course.

"How many girls?"
"42" ... exclaimed ... click.
"Do you like America?" "Gee isn't that
Accent great?" "Now ... you say
11 men on board and how many girls?"
"42? I thought it was 38" Click ...
(Gin and tonic number 2) (even more ice)
"How about that George?"

"Gee ... click ... I must ask this ...
You actually sail it! up the rigging" ...
Click ...
"my little girl just loves to hear English"
Click ...
"Would you mind signing this?"
Girls! Girls! Girls! Smile!
"Gee ... we think you're great!"
"Keep it up!"
42 girls ... exclaimed ... click ...
"Bonny ... did you hear that? ... can ... we
come below?" (Gin and tonic number 3 liced)
"Gee look at them!"
"You actually sleep there?"
"Frank! Frank! take the girls over there!"
"George! where's your camera?"
"Hello." "where do you come from?"
"Hereford ... mmm ... near London?"
Anywhere near London?
The South?
South East

oh well ...
"Gee, don't you just feel great?"
(Gin and tonic number 4 (with ice - new lot))

"Isn't your accent cute. Just listen"
"How many girls on board?"
"42" ... exclaimed ... click.
"How about that?"
"I didn't catch your name? ... Jill ...
Oh yes you live in London ... and you
sleep down THERE! MY!
You like AMERICA? ... good ...
we like ENGLAND."

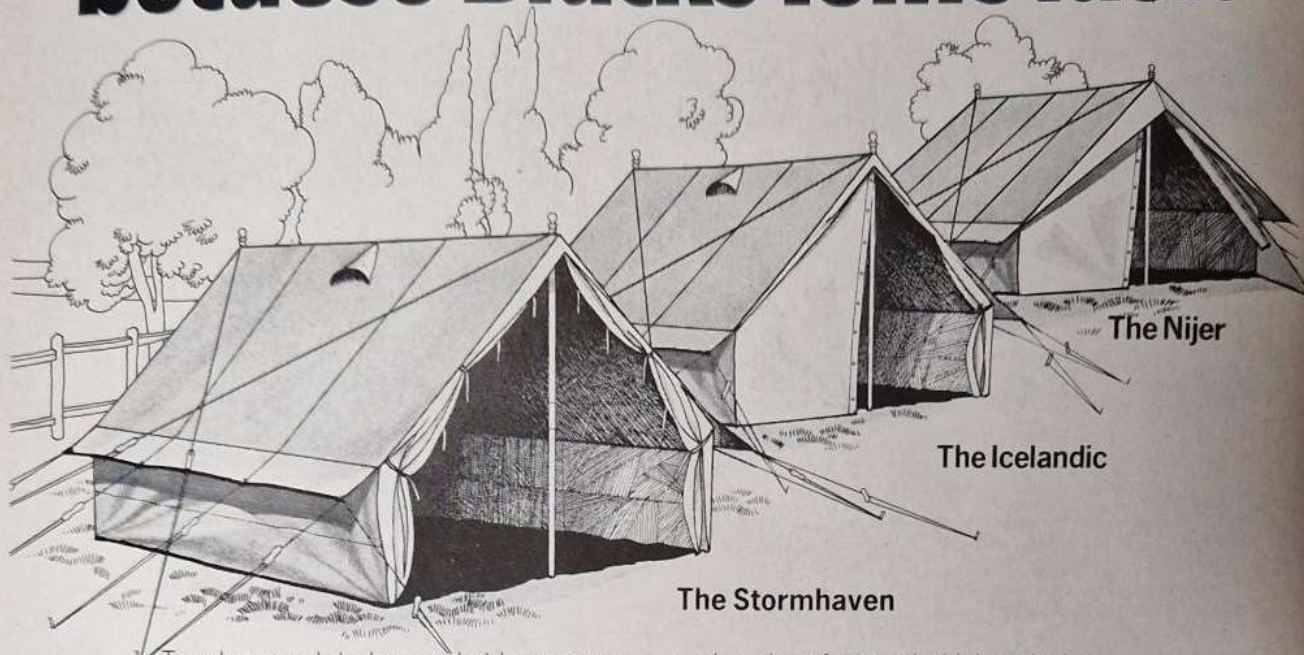


Jill Bennett



Hereford Times

Blacks Tents first- because Blacks Tents last!



Tough enough to be used at base camp on the 1972 Everest Expedition, Blacks Patrol Tents have long been a favourite with scouts, guides and youth organisations who want a robust, easy-to-handle tent that is totally reliable – whatever the weather. Strongly made in weather-resistant cotton duck, these world-renowned patrol tents have the added advantage of offering lightweight alloy poles as an alternative to wood.

The Nijer opens at both ends, with peg-out doors at front and a three-sided bay at rear. It measures 305cm x 213cm (10' x 7') x 200cm (6' 6") high at centre. Weight with alloy poles 20.6kg (44¾ lb). **£135.75.**

The Icelandic comes in two sizes both 200cm (6' 6") high. Special features include ventilators in roof panels, mudband/ draught cloth at the foot of walls and a clothes cord along the inside wall. Doors at

each end are fastened with loop lacing. The First Size is 305cm x 245cm (10' x 8'): **£119.50** and the Second Size is 400cm x 245cm (13' x 8'): **£135.75.**

The Stormhaven also comes in two sizes and, in addition, features extra height 215cm (7') plus heavier roof canvas and fitted wall pockets. The Standard Model measures 305cm x 245cm (10' x 8') and costs **£135.75.** The larger Special Model measures 365cm x 245cm (12' x 8') and costs **£155.50.**

Also available is the ever-popular Budget Patrol Tent, robustly made throughout of blue 'Protex 7' cotton cloth with zip fastened doors at each end. **£89.50.**

Available from all good camping shops throughout the country.

**SEND TODAY FOR OUR 1977
FULL COLOUR CATALOGUE.**

Please send me my 28 page G/P/5/77
Camping Catalogue.
I enclose 8 1/2p stamp to cover return postage.

Name _____

Address _____

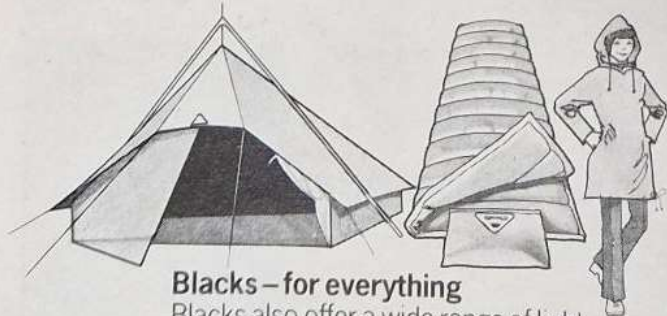
County/Postcode _____

Please send to: Port Glasgow, Renfrewshire, PA14 5XN
or Ruxley Corner, Sidcup, Kent DA14 5AQ.

**Better
made by**



**Blacks
of Greenock**



Blacks – for everything

Blacks also offer a wide range of light-weight tents, many suitable for backpacking; also rugged weatherproof clothing, and 30 different models of sleeping bags.

Ideas for the Summer

by
Joyce Hopkins



IF WE only had time! this is often the cry but appreciating the out-of-doors is a priority for our girls and, with this in mind, let's have ideas 'up our sleeves' or, in this case, in our brief-case.

What a joy for the Commissioner who, when asked by the Brownie Guider to 'do something with the Pack', can produce an activity which will help the Brownies on their way to discovering nature, be it in town or country.

An idea that the Brownies love is to make what I call 'Nature Pop-ups'. To make them they take two pieces of cardboard, one 12 x 30 centimetres and the other 11½ x 30 centimetres. Mount a flower or leaf on the top of the narrower strip of cardboard and print its name at the top, then cover that half with clear Fablon. Take the other piece of cardboard and cut it in half width-wise and stick the two sides together, so that it will make a slip-over cover for the card with the flower/leaf. On the cover print 'Pop-up' and then list three or four facts about the leaf/flower (size, number of petals, colour, hairy or smooth, etc.). Slip the long strip inside the cover and pull down until it is level with the top of the cover.



Jean de Lemos

Now they have their 'Pop-up'. The Brownie can challenge someone to say what is the leaf or flower that will 'pop-up', using the facts on the cover as clues.

Now it is time to leave the Pack and visit our Guides, possibly taking something 'in case'!

A polythene bag full of grass, twigs, cotton, etc, for the Guides to try and make a bird's nest. This is great fun and makes them realise just how clever are our birds. The Guides can collect any extra bits and pieces they want, but it helps to give them a start.

Our visit to the Ranger Unit will, of course, be quite different, although our aim is the same. What



Jean de Lemos

about a 'Nature Tips for Beauty' bag! Take your bag of tricks and display them and ask the Rangers what they think they could use the objects for, eg, cucumber (for refreshing the eyes - lay a slice on the eyelids and relax for five minutes), inside of a grapefruit skin (as an astringent), oatmeal (for a face pack), lemon (to whiten the hands), fruit and nuts (for the 'inner man'), etc, etc. This will lead to a lot of discussion and chit-chat.

I fear that the brief-case is becoming very well-worn, but what fun we have had from our 'Pedlar's Pack'.

Out And About Quiz

1. Who spins but uses no wool or cotton? (Spider)
2. What plant or flower gives a yellow rub-on dye? (buttercup, coltsfoot, etc)
3. I have some narrow strips of cardboard, paper clips, a bag of plaster of Paris, a polythene bottle

of water, an empty margarine carton and an old spoon. What am I going to do? (Make plaster casts)

Do any of these questions inspire you to get 'out and about' with your young people?

COMMISSIONER training



Appreciating the Outdoors

by
Margaret Irwin

'Nature study will show you how full of beautiful and wonderful things God has made the world for you to enjoy.'
B-P

'ARE YOUR Brownies energetic, wide awake, full of questions and ready for new discoveries?' 'Good, then they are equipped to enjoy the out-of-doors'. 'Oh, are they?' you may say. 'What about me? I know very little about the wonders of nature and certainly am unable to answer all the Brownies questions.'

Does this really matter? Unfortunately, many Guiders think that knowledge is necessary, but take comfort from the paragraphs headed 'Lack of Knowledge', 'Too much Knowledge' in your 'Handbook for Guiders' (page 70). Your enthusiasm and interest shared with that of your Brownies is the starting point, and as your skills progress alongside those of your Pack, you will, I assure you, be rewarded tenfold by their lively and enthusiastic response.

Here are several suggestions to help you in the planning of your Summer Programme, and to help your Brownies to develop their appreciation of the many gifts God has given them thus enabling them to fully enjoy the wonders of His creation and ultimately to a further understanding of their Promise.

To help the Brownies have 'seeing eyes'

Give each Six drawing paper/pencil/crayons. Tell the Six to draw the gate/door of field, playground, hall, each Brownie in the Six to contribute to the picture.

When complete compare pictures giving points for detail – hinges, locks, panels. Don't expect excellent



results the first time but try it again a few weeks later. You'll find the observant Brownies are your artists – could you lead them to further challenges?

To appreciate colour and form in natural materials

One piece of card per Six. Working in Sixes find a collection of natural materials – stones, leaves, twigs

– to make a picture of a Brownie Badge (Brownie Handbook Page 74). An attractive centre for a Promise Ceremony. Could this idea stimulate a Brownie to make her own collage picture or to choose a Journey Challenge?

Make a 'feeling creature'

It must have – a smooth head, a rough body – a prickly tail, legs to stand and eyes to see!

Use any natural materials you can find. Brownies can work in two or Sixes. The composition of 'creature' will vary according to available material – it may be necessary in town to use selected odds and ends or previously collected natural material.

Here the Brownies are encouraged to be observant, sensitive and creative with natural materials.

Could a Footpath Brownie make a collection of leaves of different textures for her challenge? Could you spot the talented model maker and lead her further to her Craft Interest Badge?

Several of the Brownies will need your interest and encouragement to complete this task. Have an odds and ends box ready – plasticine, glue, scissors, sticky tape, paper fasteners, etc. Nothing is more frustrating than to have a 'creature' that will not hold together!

To help your Brownies question and wonder

Give your Sixers an envelope containing six simple questions.

The Brownies find and observe a living creature and answer the questions (could be an insect, bird, animal according to surroundings). Questions such as What colour is it? How big is it? Where did you find it? How many legs has it? are suitable. The Six answer the questions, and in so doing describe their creature to the rest of the Pack, without using its name – the Pack endeavour to guess the name!

This activity will lead your Brownies to question and wonder and possibly to refer to books for their answer – further information may be given to the Pack the following week. Could this lead to an interested Brownie to her Discoverers Badge?

Guiders, take every opportunity to help your Brownies develop a fascination for the out-of-doors, but remember, the best opportunities are not always planned – they just happen.

'Look! Look! Brown Owl'. How often have you heard this? Take time to enjoy their interests, share their curiosity – you may be privileged to enjoy a discovery that they will never forget!

Have you tried Scribble Prints?

(Page 75 Brownie Guiders Handbook).

These prints which are very simple to make look very attractive mounted on coloured card and covered with transparent material. They can be made into tablemats, glass mats, calendars and pictures.

We have also arranged them attractively on a thick white paper to make covers for our Brownie Handbooks – Look up the Brownie Artist and Book Lover Badge.

BROWNIE training

Out of Doors With the Guides



' Enjoyment of the outdoors is not something that you have to sell ' (Guider's Handbook). This enjoyment is the starting point from which the Guider encourages the girls to seek further through providing them with activities sparked off by the Guider's own enthusiasm and interest.



What can your Patrols find living or growing in a wall – either in the country or in the town – mosses, flowers, insects etc. – Where do they live/grow?

Starling



Finch



Owl



Blackbird



Suggest that Patrols put out different food for birds – bread, fat, nuts etc., and observe which birds prefer which foods. What sort of beaks do they have, how do they fly?

Make charts showing flight patterns.



Goldfinch



Wagtail



Missel thrush



Woodpecker

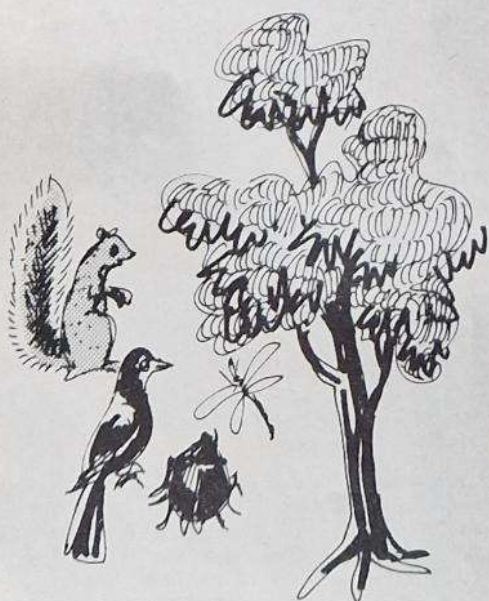


Starling

Suggest that over an agreed area Guides look for wild flowers which have these three different types of petals.



Which ' families ' do they belong to?



We are told that over 100 different living things have their habitat in a tree. Challenge Patrols to see how many they can observe in a given time.

by
**Katherine
Dongworth**

GUIDE training

Out of Doors with the Rangers

by
Jean Brinkworth

'Use what talents you possess. The wood would be very silent if no birds sang there except those who sang best.'

Van Dyck

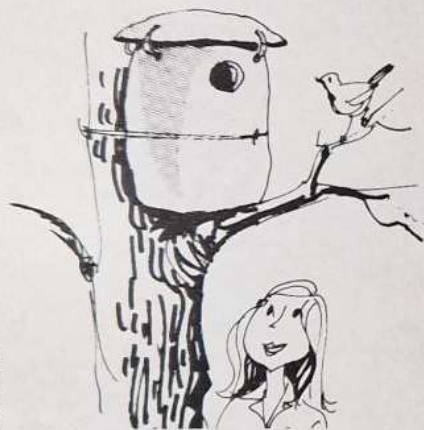
NOT ALL Rangers are taking Botany and Zoology and have been trained to observe and classify what they see. But camping, D of E expeditions and any out-of-doors activity give opportunities that all can share for looking, listening and marvelling at God's wonderful creation. Brightly-coloured waterproofs, a must for hill-walking and climbing, will make it difficult to get close to wild life. The tantalising near-misses may encourage the planning of special expeditions in unobtrusive garb, just to observe – or challenge the more enterprising Ranger to bring back evidence with camera or tape-recorder. Records of bird-song (such as 'Bird Sounds in Close-up', Marble Arch Records, MAL1102) and little books like the RSPB Guide to British Birds will help with identification.

A rich variety of bird-life can be found even in towns, and the handy Ranger can make a bird table to bring them closer for observation. (Have you noticed the amazing

the saucer turns over to form the lid. Cut a round entrance hole a couple of inches (50 mm) from the top. This should be $1\frac{1}{2}$ in (28 mm) for bluetits, no more than $1\frac{1}{2}$ in (38 mm) for larger garden birds. Drill two small holes in the bottom for drainage. The lid is tied on with string through small holes drilled near the edge and others near the rim of the box. Paint the outside brown and attach the box firmly to a tree or drainpipe with loops of string or wire round the middle, resting it on something for support. If you are too late for this nesting season, have boxes ready for putting up in the autumn so that birds can get used to them. (They also sell well at bazaars!).

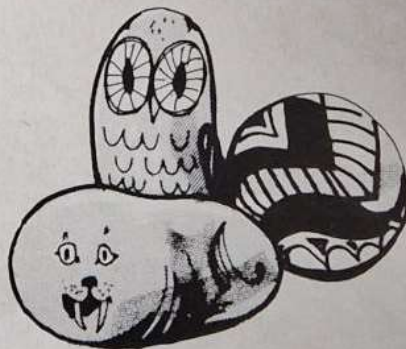
Ever marvelled at a cobweb? You can make the wonder last. Take a tin of white spray and paint and spray a dry cobweb, preferably on both sides. Hold a piece of card behind it to avoid paint going on the surroundings – I forgot to do this once and the paint is still on the greenhouse panes to prove it. Now bring up a piece of black cartridge paper or card to the cobweb, which will stick to it. After a few seconds cut the cobweb free with scissors. They make unusual pictures and provide interesting designs for embroidery and nail-and-thread patterns.

No Ranger has ever kicked a stone along when out of doors, but few think of examining or collecting stones and pebbles. They can be found anywhere, in an endless variety of colours, textures and shapes. Have your Rangers tried painting stones? Make sure the stone is clean and dry, and it will take a good pattern from water or poster colours used fairly thickly. Unless the natural colour of the stone is to be part of the design, it is best to prepare an opaque ground by using white emulsion paint. Subtle or vivid shades can be applied with a fine artist's brush to give designs as simple or as complex as you like. Flat pebbles make a fine base for painting miniatures if you have a steady hand.



variations in patterns and colouration of common birds like sparrows and starlings?) Or a nest-box can be quite exciting when it attracts a family. Here's how to make an unusual one.

Take a jar or bottle at least 4 in (100 mm) diameter and 6 in (150 mm) high and an old saucer at least $5\frac{1}{2}$ in (140 mm) across. Grease the sides and base of the jar and the upper surface of the saucer with Vaseline. Make a thick paste with plaster of Paris (chemist or craft shop) or exterior grade Polyfilla and coat the greased surfaces of the jar (not the neck) and the saucer really thickly. Leave the outside rough to give a rustic appearance. When set hard, dunk the jar in water and with gentle twisting the cast will come free. Level the top edge with a sharp knife. The cast from



Have You Tried . . .

Paper making? See the 'Shell Country Book', a wonderful source of ideas. Or try 'Pressed Flower Pictures' by Pamela McDowell and 'Natural Collage' by Sally Miles. Or subscribe to 'Oasis', the magazine of Conservation Gardening (Oasis, PO Box 237, London SE13 5QU).

Have you ever thought of . . . pencil sketching as a summer activity? It is said that anyone can learn to draw. First you need to use your eyes. Really look at flowers, trees, clouds, the sky-line, then try to get the general outline, no details, just the shading of petals, light and shade of the clouds, trees, bushes or buildings on the sky-line. Observation is the secret of sketching. Why not have a go and see how you and the Unit get on?

RANGER training



1977 IS WORLD RHEUMATISM YEAR

Organizations all over the world are uniting to seek a new deal for the 2,000 million victims of Arthritis and other rheumatic diseases.

Please make this your year to help Britain's own Arthritis and Rheumatism Council (ARC) to expand its increasingly hopeful programme of research into the causes and cure of these cruel diseases.

This research is financed entirely from

voluntary donations and legacies.

We will gladly provide

a speaker, literature and display material for your special World Rheumatism Year event, supply sponsor forms for your WRY Knit In, or arrange a showing of ARC's new colour film 'No Surrender—The Battle Against Arthritis'.

Please write for further information, or send your contribution, to:

WORLD RHEUMATISM YEAR RESEARCH FUND THE ARTHRITIS AND RHEUMATISM COUNCIL

Faraday House, 8-10 Charing Cross Road, London WC2H 0HN

Patron of the Council: H.R.H. The Duchess of Kent



Better camping begins at Binleys

Quality tents, trailer tents, awnings, camp equipment, clothing, accessories.

ALL AT BUMPER DISCOUNTS

(And every tent backed by Binleys unique 'No Quibble' 12 months guarantee).

Send now for your Binleys 'Better-Camping' Catalogue. 56 pages. Fully illustrated. In colour. Send only 50p (including p & p) to Dept. G,

Binleys,

Victoria Street, Kettering,
Northants NN16 0BU.

Telephone: 0536 81071/873173.

Or visit BINLEYS 'BETTER-CAMPING' CENTRES



Binleys

BINLEYS 'BETTER CAMPING' CENTRES

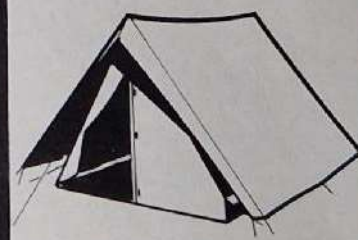
Extensive indoor display of tents at
KETTERING Victoria Street (off Montagu Street)
NORTHAMPTON Ashburnham Road (nr Football Ground)
Extensive outdoor display of tents (open April–October) at
MILTON KEYNES Cosgrove Lodge Park Over 75 tents on display
BILLING AQUADROME Billing Park, Northampton Over 45 tents on display

Large Hawley Goodall
THAMES RIDGE TENT
10' long and 12' long



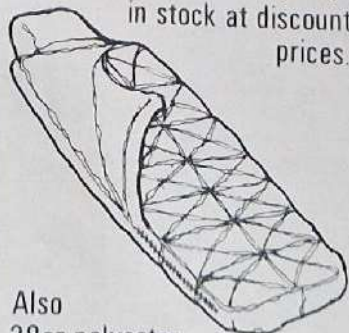
At very special discount prices

Two man lightweight
TOURING TENTS complete with
flysheet & sewn in groundsheet



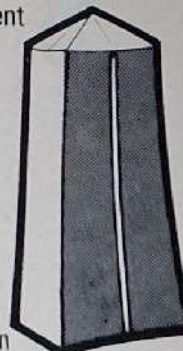
only £17.95

Blacks specialist sleeping bags
in stock at discount
prices.



Also
38oz polyester
fitted with zip guard £4.99

TOILET TENTS
Nylon toilet tent
complete
with frame
£11.95



Canvas toilet
tent £15.95

Racasan, Elsan
& Porta Pottis at discount prices

Pet Hates

The PDSA's latest news-sheet deals with the hazards to pets which can arise now that the long, light, 'pottering in the garden' evenings have arrived. All poisonous substances for use in the garden should be stored with care.

Accidents to pets have been much less common since compounds of Aldrin, Dieldrin and DDT ceased to be available to the amateur gardener, but creosote remains a hazard. Cats can burn their paws with it, or injure themselves more seriously if it is ingested in the animal's attempts to lick it off. To remove creosote, take as much as possible off the parts affected, with rags or paper. Then wash with a suitable cleanser, such as Swarfega or Dirty Paws, (otherwise an animal shampoo or soap), and rinse well – but never use detergent. The same procedure applies for the removal of machine oil from an animal's coat or paws.

One substance which claims more and more victims among cats and dogs each year is Ethylene Glycol, which is widely used as an anti-freeze – so car-owners should check that this now really is safely stored away.

One last suggestion: rabbits are not the most intelligent of creatures, and a tame rabbit could damage itself by eating certain poisonous weeds or

plants. When your child gives the pet rabbit a run in the garden, tell her to make sure that the animal stays away from the area planted with foxgloves or poppies – or at any rate, prevents it from eating those plants.

New Town Amenities

The Right Reverend Robin Woods, KCVO, The Lord Bishop of Worcester, laid a foundation stone to commemorate the start of work on the YMCA project at the Church Hill Centre, Redditch, recently. The



£130,000 YMCA Youth and Community Centre development also incorporates 72 one-person and two-person flats, providing urgently-needed accommodation for single people and young marrieds in the new town.

In addition, the Centre will provide youth and social facilities for the entire estate, which is the town's largest housing development.

Work on the project is expected to be completed by late autumn this year.



KEEP BRITAIN TIDY

War on Waste

The Wombles, Project Spikey, a certain diminutive comedian – all have been 'doing their bit' to combat litter-bugging; a slovenly and all too common vice in this country.

Now, the Keep Britain Tidy group has produced a guide and publicity material to help organisers of clean up schemes. These are available free of charge on supply of a 6½p postage stamp. 'Clean up projects' provide an opportunity for interested bodies (eg Youth Groups) to raise funds for the Queen's Silver Jubilee Appeal Fund through sponsored work; surely far more meaningful and worthwhile than sponsored walks? For sponsorship forms and/or further information, write to: **Clare Hardwick, Press and Information Officer, Keep Britain Tidy Group, Bostel House, 37 West Street, Brighton, BN1 2RE. Tel: (0273) 23585/6/7/8.** Please mention **GUIDER** when you write.

In Memoriam

The death of **Mrs Jeannette Askey** (née Billing) on 11th January 1977. County Badge Secretary and Queen's Guide Recorder, is a great loss to the County of Cambridgeshire East. She was enrolled in 1917 in the Clapham High School Company in SW London, and since then had given many years of loyal service to the Movement in various capacities; as a Guide Captain, later a Ranger Captain, and then as a District Commissioner in Clapham and Clapham Park; she was also a Secretary to the All London Swimming Committee. When her husband retired to Cambridge 18 years ago she continued as District Commissioner, first for Shelford and then for Whittlesford; she was a highly efficient County Badge Secretary and Queen's Guide Recorder.

Jeannette Askey will be sadly missed by her many friends.

KMW

In November, 1976 **Mary Coleman**, of Baildon, Shipley died and West Yorkshire West lost one of its most inspired and inspiring personalities.

Brain-damaged from birth, Mary had great difficulty with learning both to walk and talk, but eventually succeeded, by dint of great determination. She became a Guide, as might any able-bodied girl, and, later, as a Ranger, was commended by the Chief Com-

missioner for England for her perseverance, fortitude and courage. She went on to become the Guider of the 114th Bradford Rangers, a Unit for handicapped girls. In 1967 she was awarded the Star of Merit.

A great lover of beauty, she could always see the best in people, and gave unstintingly of herself to help spastic children at a local assessment centre, where, by her own example, she encouraged them to live their lives to the full.

Those of us who had the privilege of knowing her are deeply grateful for the example she gave.

LJPM

A crowded Memorial Service was held at Reading in February for **Vi Hamilton**, who will be remembered by a great many people, both outside and within the Guide Movement.

She was a Brownie, Guide, Ranger, Lieutenant, in 4th Reading, West District, and for many years Skipper of 1st Tilehurst R.S. Euryalus Ranger Unit, later becoming County Boating Advisor, having previously been the District one.

Vi received the Good Service Certificate and the County Good Service Badge.

Outdoor and water activities were her greatest interest. She was a gold medal swimmer and

life saver at an early age, swimming tester and organiser.

Vi's time and vitality were given unstintingly to camping, mountaineering, visits to Our Chalet, and numerous other undertakings. Much of her time was spent at the County Ranch River site at Mapledurham, boating, and camping each week-end.

Vi Hamilton gave so much to us all, and we feel sad at her untimely death, but we shall carry on where she left off, as she would have wished.

MH

Mrs Millicent Rowe began her Guiding in the Scottish Borders in 1919, starting with Rangers, and early on she took a Chirnside Company camping in France. Summers were spent teaching the girls of Caithness the art of Guiding, including camping, and she also helped many Lone Guides all over Scotland.

No problem was ever too much for Millicent Baird, as she then was, and after her marriage to Vivian Rowe she carried on her Guiding on the Kolar goldfield, near Mysore, and her trainings from north to south were appreciated by Guiders in India of all creeds. The bronze Beaver awarded to Mrs Rowe in India was for service to Scouting as well as to Guiding.

When her husband retired Mrs

Rowe moved to Salisbury where she became CCA for Wiltshire; later, in Hampshire, known now as 'Beaver', she trained and camped and hundreds of Guides will remember her remarkable campfires. In 1974 she was awarded the Hampshire County Rose Brooch for long and loyal service.

ADE

The sudden death on 26th November, 1976 of **Dorothy Mavis Worthington** at the early age of 49, shocked and saddened us all in Leicestershire. Brought up in Leicestershire and a Guide from her early years, Dorothy later trained as a nurse and went to South Africa, where she was matron of a small hospital. There, she married and on returning to Leicester trained as a teacher. Her love of youth and Guiding brought her back into the Movement as a Brownie Guider, then a Guide Guider and in 1968 Founder and Leader of the Wigston Ranger Unit. In 1972 she became a District Commissioner and later County Ranger Liaison Guider. She strongly believed in joint activities and did much to remove the barriers to closer co-operation between the two sections.

Dorothy lived her life for others and through her Church found a deep faith in God. She will long be remembered with love and gratitude by us all.

JC

Camping Afloat



Travel the English canals on a real narrow boat specially adapted for comfortable living, steered by a helpful and experienced boatman to ensure your trip goes smoothly. We cater for groups of all sizes and offer a choice of routes to suit everyone's taste. Costs can be as low as £7.00 per person per week, including VAT, or if you prefer we can offer single boats to steer yourself.

Write or phone for fully illustrated brochure to: UNION CANAL CARRIERS LTD., Canal Side, Little Braunston, Daventry, Northants NN11 7HJ. Phone: Rugby 890784

No one need be alone on an HF Holiday

Maybe you're a natural loner. So, if you prefer the companionship of nature to that of man, HF provides the ideal base for your holiday and leaves the rest to you. But if you wish to be one of a friendly party, an HF Guest House Holiday ensures congenial companionship, whether you are with your family or on your own, plus perfect facilities for a walking holiday with a wide variety of outdoor pursuits and an exciting programme of optional excursions.

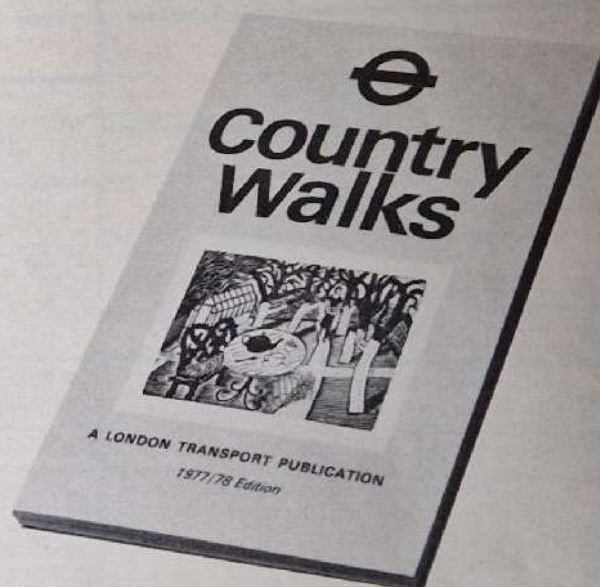
This year you can take your pick of 35 HF Centres situated amidst some of the most beautiful scenery in the British Isles. Write to-day for HOLIDAYS THAT ARE DIFFERENT 77 which tells you all about HF Guest House holidays, Special Activity Holidays, Young World Holidays for the 17 - 30's and Holidays Abroad.



HOLIDAY FELLOWSHIP

(Dept 22) 142 Great North Way,
London NW4 1EG
(01-203 3381)

15 walks that give you plenty to talk about.



Long walks, short walks, seasonal walks, you'll find lots of excitingly different ideas in London Transport's new Country Walks book.

More than that, we give you full details of the places of interest you'll pass.

So you'll never find yourself lost for words.

Country Walks, complete with diagrams for each walk and directions on how to get to starting points by London Transport 80p* from all Underground stations (where you buy your tickets), London Transport Travel Enquiry Offices, and at bookshops.

You can also order by post from the Publicity Shop, 280 Old Marylebone Road, NW1 5RJ.



*Some copies of the earlier book are still available, price 65p.

TRAINING

	FOXLEASE Lyndhurst, Hants SO4 7DG Tel: (Lyndhurst) 042-128 2638.	WADDOW Clitheroe, Lancs BB 7 3LD Tel: (Clitheroe) 0200 23186.	BRONEIRION Llandinam, Mont. Powys SY17 5DE
May	6-8 Division Commissioners with up to three of their District Commissioners 13-15 Cardiff and East Glamorganshire County 20-22 General Training 27-29 Making the Most of the District (District Commissioners with up to seven of their Guiders)	6-8 Birmingham County 13-15 General Training 20-22 1. Ranger Guiders 2. Guide Section Trainers 27-29 General Training	13-15 General Training (Places for Montgomeryshire) 18 Friends of Broneirion 20-22 Welsh County Personnel Conferences 27-29 General Training
June	3-11 Family Week (B. Hol.) 17-19 General Training 24-26 1) General Training 2) Heraldry Side Group *(see note below)	3-7 Duke of Edinburgh Gold Award (B. Hol.) Course (Girls only) 10-12 Friends of Waddow 24-26 Sefton County	5-10 Patrol Leaders under 14 years (Open) 17-19 General Training (Places for Central Glamorgan) 25 Welsh L.A. Conference
July	1-3 Making the Most of the District (District Commissioners with up to seven of their Guiders) 8-10 1. Music Specialist Trainers and Prospectives (by invitation) 2. Campfire Leaders and Prospectives 15-17 Friends of Foxlease 18-25† Holiday week (Guiders and Trefoil Guild Members, their friends and mothers) 28-6 August Patrol Leaders' Week	1-3 General Training 8-10 South Yorkshire County 14-24† Holiday Weeks (Guiders with their Guides/Rangers)	1-3 Young Leaders 8-10 Commissioners (Places for Shropshire) 15-17 Brownie Guiders - Music in the Pack 24-30 Family Week (Guiders with their husbands and children)
Aug	9-16† Holiday periods (Guiders with 17-24† their Guides/Rangers) 27-3 SEPT. Guider Holiday Week (B. Hol.)	13-20 Patrol Leaders' Week 25-4† Holiday Weeks (Guiders, Trefoil Guild SEPT. Members, their friends and mothers) (B. Hol.)	3-9 Holiday Period (Unit Guiders with up to nine of their Guides or Rangers) 24-30 'Diemwnt 77' Welsh Ranger Event
Sept	9-11 Sussex West County 16-18 General Training 23-25 Sussex East County 30-2 Ranger Guiders' Training. (Places for Oct. Venture Scout Leaders)	9-11 Golden Jubilee Weekend (Flower Festival) 16-18 General Training 23-25 North Tyneside County 30-2 1. General Training OCT. 2. Music Specialist Trainers and Prospectives (by invitation)	16-18 General Training (Places for Gwynedd) 23-25 Making the Most of the District (Places for West Glamorgan) 30-2 General Training (Places for Clwyd)
Oct	7-9 Woking Division 14-16 Dorset County 21-23 General Training 28-30 London North West County	7-9 Durham and South Tyne County 14-16 Greater Manchester West County 21-23 Midlands (by allocation) 28-30 Cumbria South County	7-9 General Training ... Brownie, Guide and Ranger (Places for Gwent) 14-16 Training Conference for Welsh Camp Advisers 22 Welsh Trainers and Commissioners Conference 25-30 West Glamorgan Patrol Leaders
Nov	4-6 South West England (by invitation) 11-13 Hampshire East County 18-20 General Training 25-27 London and South East England (by invitation)	4-6 Lancashire East County 11-13 General Training 18-20 West Yorkshire West County 25-27 Making the Most of the District (District Commissioners with up to seven of their Guiders)	4-6 International Weekend 11-13 General Training 25-27 International Weekend
Dec	2-4 Trainers' Training (by invitation)		2-4 Christmas Arts Weekend.

announcements

Heraldry Side Group

This opportunity is of particular interest to those with some experience of Heraldry; it has arisen as a result of a very successful 'Introduction to Heraldry' weekend held in 1976. Write to The Guider-in-Charge, Foxlease as soon as possible to secure a place at the weekend.

Guider Holiday Week, Foxlease 27th August/3rd September.

Designed for the Guider who is prepared to give up some of her Holiday for training purposes, Foxlease is planning this special week. Training sessions will take place most mornings and the remainder of the day will be free so that Guiders can have the time to appreciate the beauty of the New Forest and the surrounding Countryside and Coastline.

Camps & Holidays

Foxlease Camp-sites

Application for sites should be addressed to the Secretary and the

envelope marked 'Camp'.

A 50p deposit and a foolscap sae should be enclosed.

Foxlease Annexe makes an ideal centre for Rangers. Available Easter, Spring Holiday and periods in the summer. For details apply to The Secretary, Foxlease, Lyndhurst, Hants, enclosing a sae.

Beaverbrook Lodge

Applications for the period 1st October, 1977-31st March, 1978 will be accepted now.

Waddow Camp-sites

Applications for sites should be addressed to the Secretary and the envelope marked 'Camp'. A 50p deposit and a foolscap sae should be enclosed.

Waddow Cottage and Caravan

Both are available for bookings throughout the year. For details apply to the Secretary enclosing sae.

Waddow Pack Holiday House

Applications for Pack Holidays should

outdoor activities

be sent to the Secretary and must be accompanied by a written recommendation from the Guider's CA or Pack Holiday Adviser and a foolscap sae enclosed.

Foxlease Holiday Periods August 9th-16th; 17th-24th.

Waddow Holiday Weeks July 14th-24th.

This is a golden opportunity for Guiders wishing to take up to nine Guides or Rangers for a Holiday at either the Training Centre in the New Forest or on the edge of the Yorkshire Moors. Planning your Programme during your holiday will be entirely your or your girls' responsibility.

Guiders need not hold a Holiday Permit as qualified experienced Guiders will be present to comply with POR regulations. However you need the consent of your own Commissioner before applying.

For full details please write to the Guider-in-Charge of the Training Centre you wish to visit.

CALENDAR

NETHERURD HOUSE
Blyth Bridge, West Linton,
Peeblesshire. Tel: 096 88 208

GLENBROOK Bamford, Nr. Sheffield, S30 2AL
COURSES FOR 1977

6-8 Lightweight Camping (for Ranger Guides and their Rangers)
13-15 Let's Celebrate The Queen's Jubilee!
20-22 General Training (including West Lothian)
27-29 Brownie and Guide Guiders - enjoy the out-of-doors

10-12 Edinburgh South West Division Trefoil Guild

1-5 Patrol Leaders
8-11 Patrol Leaders
15-22 Patrol Leaders Week (by invitation)
15-22 Patrol Leaders' Camp - Pioneering Plus

5-12 Patrol Leaders' Week (by invitation)
5-12 Patrol Leaders' Camp - Pioneering Plus
19-21 Patrol Leaders

May

June

Aug

Sept

Nov

13-15 Course B/77 Skills Courses for Guiders/Rangers of 16 or over
1 Canoeing - holders of Canoeist Permit or equivalent to gain experience/training for Canoeing Charge Permit/BCU Proficiency (Inland) Certificate.
2 Caving - for those wishing to gain experience and knowledge of local caves.
3 Climbing - for those wishing to gain experience and knowledge of local climbs.

24-26 Course C/77 Adventure Course for Guides (aged 12 to 14 inclusive)

26-29 Ranger Jubilee Celebration Camp

16-18 Course E/77 Adventure Course for Ranger Guides/Venture Scouts

11-13 Leadership in the hills.

For information, and details of fees, write to the Secretary, enclosing foolscap sae

'GENERAL' TRAININGS AT ALL CENTRES ARE FOR BROWNIE AND GUIDE GUIDERS

Fees at Foxlease and Waddow:
Shared room, per day £3.50
Double room, per day £4.00
Single room, per day £4.50
Deposit £2.00 cheque or postal order only. † Subject to VAT

These prices are for members of the Girl Guides and Scout Associations only. For a full week prices are subject to a 15% discount.

Fees at Broneirion
Shared room, per day £3.00
Double room, per day £3.25
Single room, per day £3.50
Deposit £1.00

Fees at Netherurd
Shared room, per day £3.00
Double room, per day £3.25
Single room, per day £3.50
Deposit £1.00
Training fee for non-residents 50p per weekend.

HOW TO APPLY

Any Guider may herself apply to attend a training course at the Centres, provided she has reached the age of 18 years. (At the discretion of the Commissioner a member aged 17½ who is working on the Adult Leader's Certificate may also apply for a Guider course).

An application to attend a Guider Training Centre should be sent direct to the appropriate Guider-in-Charge, and must be accompanied by the correct amount of deposit and a sae. Applicants should also state the type of training for which they are attending, as there may be several different courses running at any one weekend. As many guiders have to leave on Sunday, training sessions at a two-day weekend will stop at tea-time on that day unless otherwise stated. If sufficient notice is given that it is wanted, every effort will be made to provide sessions for a group until Monday. Individuals able to stay over until Monday to enjoy the surrounding country and other amenities of the Centre are welcome to do so.

BURSARY HELP AVAILABLE

No application form is required. District Commissioners should apply to Training Dept., C.H.Q. (Scottish Commissioners to S.H.Q.) on behalf of their Guiders for further details.

The Fee Bursary entitles a Guider to a grant of £3.00 for a two-day weekend and £1.00 for each additional day.

The Fare Bursary (available only for travel to the nearest Training Centre) carries a rebate of a Guider's travel expenses in excess of £3.00.

The Angela Thompson Bursary is available to any Guider attending a Promise and Law or similar Training (not necessarily at a Training Centre).

camping

Netherurd Camp-sites, Brownie House and Holiday Caravan

Applications for Camp-sites and the Brownie House will be taken now. During Scottish school holiday periods priority will be given to Scottish Packs.

A 3-berth holiday caravan is also available.

Broneirion Camp-site & Brownie House

Applications for camp site and Brownie House should be sent to: Miss P Lynch, 3c Pentryn Court, Whitchurch, Cardiff, CF4 7BY, enclosing sae.

Bookings for Brownie House outside school holidays should be sent to the Guider-in-Charge, Broneirion, Llandinam, Powys, SY17 5DE.

Highgate Centre, Broneirion

This cottage will sleep 15 (no beds). Available for Rangers, mixed groups, or Guides over 13, with suitably qualified Guider. Write c/o Broneirion.

courses

May be used for Silver Duke of Edinburgh Award expeditions provided the booking is made by either the assessor or supervising adult.

Ynysgairn, Criccieth, North Wales

Applications should be made to: Mrs Griffith, Swn-y-Gwynt, Penrhyndeudraeth, Gwynedd, enclosing a foolscap sae.

Lorne Camp-sites

Applications should be sent to Mrs F Hartley, 1 Station View, Caralea, Bangor, Co Down.

Irene McKibbin Memorial Cottage, Lorne

A cottage available for Ranger holiday. For details apply to Miss Hilda Hirst, 119 Haypark Avenue, Belfast 9, enclosing sae.

Ulster Camp-sites, Glen Road (near Lorne)

Bookings should be sent to Mrs F R B

Lee, 45 Gortland Park, Belfast BT5 7NU enclosing sae.

Magilligan Camp-sites

For details apply to Mrs R F Scott, Derrymore house, Limavady, Co Londonderry, enclosing sae.

Blackland Farm, East Grinstead, Sussex

Equipped or unequipped campsites. Restrop, a furnished bungalow for 25 persons, Barkley Ranger Cottage equipped for 16 persons. Also two fully equipped caravans which can be hired for summer weekends. For details contact The Warden, enclosing an sae.

Brownsea Island

Camp-sites (for Guides and Scouts) are available.

Apply to Mrs B B Dyke, Holm Oak, Tinneys Lane, Sherborne, Dorset, enclosing foolscap sae.



Waterproof and Preserve Canvas Tents, Covers, Awnings, Camping Equipment with

MESOWAX

Proofing for all weights of canvas, tents, awnings, covers, latrines and sports gear. Easily applied by brush - colourless or coloured. Available in 1/2 litre, 1 litre, 2 1/2 litre and 5 litre tins.

FABSIL

Waterproofs and mouldproofs canvas. Ideal for anoraks, raincoats, sails and leather. Apply by brush or spray. Available in Aerosol cans, and 1 litre, 2 1/2 litre and 5 litre tins.



Available from camping and sports stores, also Halfords and Millets

GRANGERSOL LTD.

Dept G2, Imperial Way, Watford, Herts. Tel: Watford 24086/27753

SAVE MONEY ON SWEETS

Try our 10 lb
BUMPER PACK
of high-quality,
ten variety,
wrapped
VILLAGE
ASSORTMENT
(normal value £7.00),
for only £5.00 inc. VAT
and P & P

Cheques/PO's please to:

**COTTAGE
CONFECTIONERY**
Tunnel Cottage,
Hopwood, Alvechurch,
Worcs. B48 7AT

CARLTON-BROOKES STACKING CHAIRS & TABLES

buy direct-at
factory prices



- ★ So LIGHTWEIGHT
- ★ So STRONG
- ★ So COMFORTABLE
- ★ So STACKABLE
- ★ Colours available
RED · BLUE · GREEN
BROWN · CHARCOAL

★ PRICES FROM £3.54



- ★ WASHABLE
HEAT RESISTANT
ARBORITE TOP

STRONG 1" STEEL LEGS

2' x 2' £11.95 3' x 2' £13.37 6' x 2' £21.46

Send for further details; DEPT C.J.3

CARLTON-BROOKES ASSOCIATES LTD
61 Tower St. DUDLEY W. Midlands
DY1 1ND Tel: DUDLEY (0384) 213782



A Great Badge For A Great Year!

A cloth badge to wear with pride today and keep as a souvenir of Silver Jubilee Year. It looks great on anoraks, rucksacs and so on and each badge bought means another donation to The Queen's Silver Jubilee Appeal. Join the thousands of Guides and Scouts already wearing theirs. Simply send the Order Form below. Badges are available in packs of 25 only, but may not be worn on Guide uniform.

To: The Queen's Silver Jubilee Badges,
The Scout Association, Baden-Powell House,
Queen's Gate, London SW7 5JS.

Please send Jubilee Badges
(Multiples of 25 only price £5.00 per pack)

I enclose £.....
Please write your name and address clearly in
BOTH panels.

Record Copy

Address Label

The Scout Association, Baden-Powell House, Queen's Gate, LONDON SW7 5JS

PINDICONTRACTS CAMPING CLIMBING BACK- PACKING GEAR

For bulk purchases, Pindicontracts specialise in bringing you the best gear at the most competitive prices.

Write or call Martin Penstone for quotation.

PINDICONTRACTS

373/5 Uxbridge Road, Acton, London W3.
Telephone: 01-992 6641.

For customers in the Midlands contact:
Alan Dunningham at 27-29 Martineau Square, Birmingham.
Telephone: 021-236 9383.

The Trefoil School



OUR PICTURE shows HRH Princess Elizabeth with some of the Scouts and Guides at Polkemmet, near Edinburgh, after she had opened the Trefoil School – her first official engagement in

Scotland – on 26th September, 1945.

The Trefoil School for physically handicapped boys and girls is now closed as the pioneer work achieved through Guiding en-

couraged Local Authorities to start their own schools – and by last summer all the pupils were absorbed into new schools.

For over 35 years the Trefoil School, recognised by the Scottish Education Department, offered a happy home to many children in a place where cheerfulness, independence and helpfulness to others, and the development of interests of all kinds, were fundamental principles. The School really grew from that September day in 1939 when a small group of Edinburgh Guiders and Rangers helped with war-time evacuation of handicapped children.

At present it is being run as a Holiday Centre for the disabled and it is hoped it may be possible to develop it into an Adventure Centre. The Trefoil School Committee is encouraged by the continued interest shown by readers. Watch *GUIDER* for further news.

Thora Wallis Myers
CHQ Archivist

Rededication services for The Trefoil Guild

arranged in connection with the
**Queen's Silver Jubilee and
the Treble The Trefoil campaign**



MAY

- | | |
|---|---------|
| 1 Wimborne Minster | 2.30 pm |
| Llandaff Cathedral | 2.00 pm |
| Edinburgh, St George's West Church | |
| 4 Pickering Parish Church | 7.00 pm |
| 7 Liverpool Cathedral | 3.00 pm |
| Basingstoke Trinity Hall | 5.15 pm |
| Leatherhead, Royal Blind School | 3.00 pm |
| 8 Putney, Home for Incurables | |
| Glasgow Cathedral | 2.30 pm |
| Falkirk Parish Church | |
| Kilmarnock, The Laig Church | |
| Ayr, Trinity Church | |
| Darlington St. Methodist Church | |
| Wolverhampton | 3.00 pm |
| 11 Hereford Cathedral | 7.00 pm |
| 12 Coleford Baptist Church | 6.00 pm |
| 13 Middlesbrough, St Mary's Church Hall | 7.00 pm |
| Hampshire East | |

- | | |
|---|---------|
| 14 Guildford, Parish Church of Holy Trinity | 3.00 pm |
| Middle Chinnock Church | |
| (gathering 2.45 pm followed by Service) | |
| 15 Northampton, St Matthew's Church | 3.00 pm |
| Chichester Cathedral | 7.00 pm |
| Downpatrick Cathedral | 3.30 pm |
| Wealdstone, Holy Trinity Church, High St. | |
| North Finchley Baptist Church | 3.00 pm |
| Framlingham Church | |
| 21 Canterbury Cathedral | 3.15 pm |
| London, St Martin in the Fields | |
| Southwark Cathedral | 3.00 pm |
| 22 Chelmsford Cathedral | |

OCTOBER

- | |
|-------------|
| 15 Bath |
| 22 Coventry |

Rest Assured:

Insurance policies for the Guide Movement

We are pleased to announce that, with immediate effect, all benefits under our Personal Accident and Medical Expenses Policy, except Item 8, have been doubled. Full details of the new cover are given below.

THERE are two policies which benefit the personnel of the Movement:
The Guiders' Indemnity Policy
The Personal Accident and Medical Expenses Policy. Premiums:
Commonwealth Headquarters pays the premium in respect of both policies.

Who is covered?

- The total active membership of the Association in the United Kingdom and the British Guides in Foreign Countries.
- Any Guides of other countries who are visiting the United Kingdom on an official Guide invitation.
- Trefoil Guild members when helping temporarily with active Guiding or when attending organised Guild gatherings.
- Non-Guide helpers when undertaking any specific voluntary service in connection with any Guiding activity.

Notes:

- Members suffering from any form of physical disability are covered under the policies except for any claim arising directly or indirectly from such disability.
- There is no provision for:-
 - Ex-members who are not Trefoil Guild members.
 - Paid workers.
- It is not a condition of eligibility that the member must be in uniform at the time of the incident which gives rise to a claim, but the policies only apply when a member is participating in a recognised Guiding activity.

Personal Accident and Medical Expenses Policy (Moral Liability)

This insurance is not a full cover against accident or illness, and members desiring this are advised to cover themselves adequately by personal insurance.

The policy will pay the sums within its limits in respect of any injuries sustained through accident occurring during any organised Guiding activities including the necessary travel thereto and therefrom, and any illness which may be contracted during the period of any Guide Camp, Pack Holiday, or visit abroad.

Although compensation can be claimed under the Personal Accident and Medical Expenses Policy for accidents which may occur, it should be borne in mind that the schedule of compensation is limited.

Exposure is not covered unless it is a direct result of an insured peril, i.e. accident or illness.

Claims: Commonwealth Headquarters must be notified immediately an accident or illness occurs. Failure to comply with this within seven days may invalidate the claim when made.

A Guider may correspond direct with Commonwealth Headquarters unless within the County a particular desire is expressed for claims to go through other channels. (It is usual for a Guider to inform her Commissioner of any incident occurring which involves illness or accidental injury to persons or damage to property.) A Guider who incurs expenses or feels morally responsible for expenses incurred should claim under this policy. It is not dependent on the attitude of the parents as to whether a claim is made or not. A claim form will be sent to the Guider to be filled in; this must be returned to Commonwealth Headquarters immediately and all bills and accounts for expenses incurred must be sent as soon as possible. When arranging treatment, Guiders and parents should first take all possible steps to obtain such treatment under the National Insurance Act.

Schedule of Compensation

1. Death	Within 12 Calendar Months from date of Accident	ANY ONE INDIVIDUAL	£400
2. Permanent total loss of sight of both eyes			£1000
3. Permanent total loss of sight of one eye			£400
4. Total loss of two limbs			£1000
5. Total loss of one limb			£400
6. Permanent total loss of sight of one eye and loss of one limb			£1000
7. Permanent and irrecoverable total disablement from accidental injuries certified after twelve months' treatment, other than loss of limbs or eyes as above provided			£1000

8. Medical and other expenses including loss of deposits, as follows:-

*£50

- To pay for loss of travel and accommodation expenses paid in advance or for which there is a contractual liability for an Insured Person for whom no substitute is found consequent upon the cancellation or proportionately for the curtailment of a Camp or period of travel caused by:-
 - The Insured Person sustaining accidental bodily injury or becoming ill.
 - The death, injury or illness of the Insured Person's husband, wife, parent, father-in-law, mother-in-law, child, brother, sister, fiancée.
 - Compulsory quarantine or jury service of any Insured Person.
 - Cancellation or curtailment of scheduled public transport services consequent upon strikes, riots, and civil commotions provided the announcement or outbreak of the strike occurs after the insurance is effected.
- To pay additional repatriation expenses where applicable necessarily incurred by the Insured Person consequent upon death, sudden illness or injury of the Insured Person's husband, wife, parent, father-in-law, mother-in-law, child, brother, sister, fiancée resident in the United Kingdom.
- To pay additional travel and accommodation expenses incurred by the Insured Person consequent upon the cancellation or curtailment of scheduled public transport services caused by riots, strikes or civil commotions commencing during the period of insurance.

Underwriters' Limit of Liability in the aggregate under Sections 8(a), 8(b) and 8(c) £10 any one Insured Person*.

- To pay medical, hospital and treatment expenses and additional hotel and repatriation costs where applicable necessarily incurred by the Insured Person including compulsory quarantine.
- To pay reasonable travel and hotel expenses of an Insured Person, relative or Officer who is required to travel to, remain with or escort a severely incapacitated Insured Person.

With regard to Sub-Sections 8(d) and 8(e) Underwriters will only be liable:

Following an ACCIDENT or

By reason of ILLNESS (common to both sexes) arising during participation in any recognised or official indoor or outdoor Camp, training course or other activity involving domicile away from home. Provided always that the illness be diagnosed or the indisposition be such as to require initial treatment during the period of Camp, Course or Activity, but in no case shall the benefit extend to infectious contagious diseases developing after the individual concerned has left the scene of Camp, Course or Activity.

N.B. No claim arises for services rendered under the National Services Act, 1946.

9. Weekly compensation as a result of Temporary Total Disablement - Limit of 26 weeks.

By accident or illness as defined by Benefit 8.

Payable at the rate of £8 per week per individual to those who have left school on the date on which the accident or illness occurs. Claims under £8 not recoverable.

*Memo

In respect of Accidents and/or illness occasioned outside the British Isles the following amended limits apply:

- Benefit 8 increased to £200
- Sub Limit applicable to Sections 8(a), 8(b) and 8(c) increased to £50.

No separate premium is required for these additional benefits which will automatically apply to all recognised parties.

Guiders' Indemnity Policy (Legal Liability)

This policy provides reasonable cover for all liabilities in respect of:

- Injury to any member of the Movement during her organised Guiding activities.

- (b) Legal liability to the public for personal injury or property damage by reason of any proved negligence on the part of a member in the course of normal Guiding activities.

Rallies and Fêtes: Under (b) this applies to forms of public entertainment, organised by any Guide Unit or District, ie dances, whist drives, concerts, displays or similar functions, in or out of doors.

Flying: Guiders should in no circumstances allow any girl to take a flight by aeroplane or glider until she has produced a completed form signifying a parent's consent. The form should be kept by the Guider.

Claims: If any allegation is made against a Guider in respect of an accident or damage to property, **Commonwealth Headquarters** should be notified immediately and full details given.

No liability of any sort should be incurred or admitted or any offer of payment made, without written consent from Commonwealth Headquarters or the Underwriters with whom the insurance is placed.

In order for a claim against a Guider to succeed the negligence of the Guider must be proved.

Important Notes

1. It is of the utmost importance that any **AGREEMENTS, FORMS OF INDEMNITY OR WAIVERS OF LEGAL RIGHTS AGAINST**

OTHER PERSONS OR ORGANISATIONS be submitted to CHQ, Insurance Department for approval before signature. Failure to do so would contravene the terms of our Policy and could invalidate cover.

2. **THE GUIDERS' INDEMNITY POLICY** covers only the Legal Liability of the Association and its Members, and of voluntary helpers. It **DOES NOT COVER ACTS OF NEGLIGENCE BY INSTRUCTORS ACTING ON BEHALF OF OTHER ORGANISATIONS**, who should be covered by their own organisations. Guiders are asked to exercise caution when making arrangements with other organisations, since they frequently seek to make us responsible for the acts of their own personnel – see previous paragraph.
3. **THE CHQ POLICIES DO NOT COVER PERSONAL EFFECTS OR MONEY** of members, and private insurance arrangements should be made for valuable items. For **PACK HOLIDAYS** we can arrange cover to include baggage and money and would draw attention to the details published in last month's **GUIDER**.
4. For **PARTIES TRAVELLING ABROAD** additional insurance is essential. The Executive Committee have laid down certain minimum requirements and we have arranged special policies to comply with these requirements – see last month's **GUIDER** for details.

TOP QUALITY PENS

Diestamped with 30 Gold Letters and Spaces

£1.62	★	STANDARD CHARGE
PER 100 PENS	★	POST & PACKING
(VAT PAID)	★	60 PENCE

ORDERS DESPATCHED SAME DAY

Sale or return – full refund on pens returned

Samples 2x8½p stamps – please try before you buy

ABBEY WHOLESALE

77 LIVERPOOL ROAD, STOKE ST 4 1AE

PICTURES, PLEASE!

Pictures in colour and black-and-white of Guide and Brownie activities are required for the

GIRL GUIDE ANNUAL

and the

BROWNIE ANNUAL

Please give name of Company or Pack and briefly describe subject. Reproduction fee paid and pictures returned after use. Send with stamped and fully addressed envelope for return to:

**ROBERT MOSS, GREEN ACRES,
KIDNAPPERS' LANE,
CHELTENHAM, GLOS. GL53 0NP.**



NST



CAMPING COACH TOURS

by

BRITISH SCHOOLCOACH

with

**GUARANTEED FIXED
PRICES**

We still have availability at our most attractive Brittany Camp Site at St. Cast on the beautiful Emerald Coast, for 8-day holidays on the following dates:

11th June – 18th June –

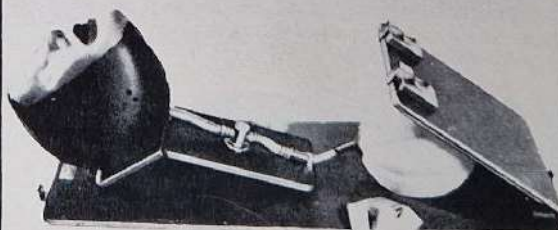
25th June – 16th July – 20th August '77

Write for full details to:

**NST FREEPOST,
1 All Hallows Road, Bispham,
Blackpool. FY2 0BR.
(Tel: 0253 52525. 8 lines)**

ESP

Anatomical models



"Breath of Life"

Training in resuscitation techniques is made easier with the "ESP Breath of Life". A realistic and inexpensive model, easily portable and of robust design.

For details of our range of over 100 models
please write or phone:

Educational & Scientific Plastics Limited

Holmethorpe Avenue Redhill Surrey Tel: Redhill 62787/8

Standing Room Only

(Thinking Day activities in London this year)



E. Joyce Hay

Some of the crowds who visited the CHQ shop after the Abbey Service on 19th February.



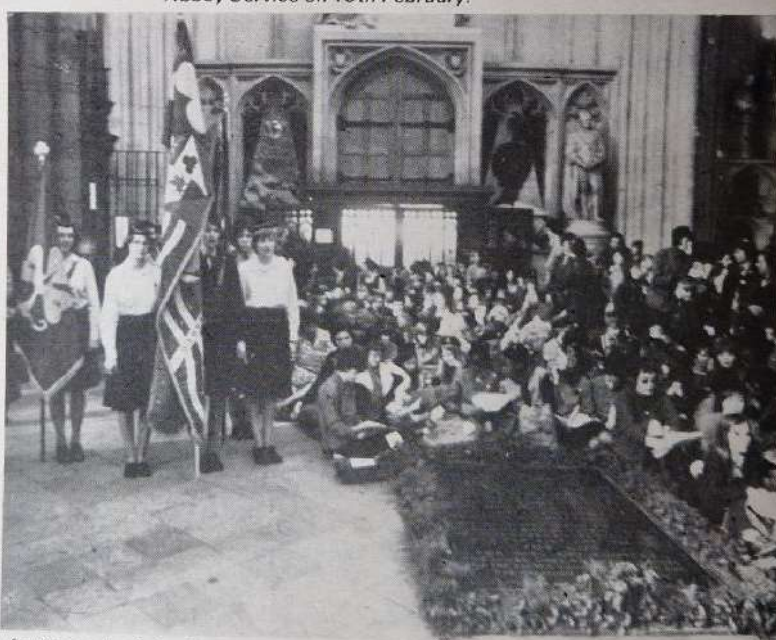
E. Joyce Hay

The January sales were never like this . . . Some of the hundreds who queued to get in to the CHQ shop after the Abbey Service on 19th February.



E. Joyce Hay

Above, taking refreshment at Olive House on Thinking Day this year.



Keystone Press

At the tomb of the Unknown Warrior in Westminster Abbey during the Thinking Day Service.



Keystone Press

Left, Sir William Gladstone, the Chief Scout, chats to a Brownie and a Cub Scout, following the Westminster Abbey Service.

Mr and Mrs R McNabb of Slough, Berkshire, showing their collection of badges and historical material to some of the many (over 1,000) Guides who visited Olive House.



E. Joyce Hay

HQ NOTICES

CHQ Awards

Meritorious Conduct

Star of Merit
Christine Smith, Guide, 10th Milton Company, Kent West.

Since babyhood, Christine has been admitted to hospital frequently and undergone extensive surgery. She has suffered many setbacks but has managed to remain cheerful and meet each one with determination. Christine makes light of her suffering and all who have come into contact with her have enjoyed her sunny nature and been inspired by her courage. Christine takes an independent, active part in her Company and is an asset to her Patrol.

Post Box

Please note that the Post Box will be closed for the month of June as so far this year a great number of requests for pen-friends have been received, many of which are still waiting for links, and the Post Box Secretary will be on holiday.

New Style Camp Dress

Ranger/Guide Camp Dress - This is now available in a new style with collar and revers (similar to the Guide Camp Dress), in terylene and cotton material, sizes 10, 12, 14 and 16 at £5.43 and sizes 18, 20, 22, 24 and 26 at £6.09. Patterns and materials also available, GGA Trading Service, Atlantic Street, Broadheath, Altrincham. (All orders under £10 subject to surcharge of 30p.)

Our Cabaña

Our Cabaña extends a warm welcome to you to join them for a ten-day adventure in the

company of other Guide and Girl Scout Adults.

Session: Arts and Flowers of Mexico
Dates: 27th October to 6th November

OR
9th - 19th November, 1977

Cost: US \$12.00 daily for room and board
US\$40.00 - 45.00 for programme fees.

For further information about Our Cabaña and application for the session contact your County International Adviser, Country/Region International Adviser or Country/Region General Secretary.

Jubilee Song

We have received some requests for a Guide song to commemorate Her Majesty The Queen's Silver Jubilee.

The attention of Guiders is drawn to the February issue of *TODAY'S GUIDE*, in which a special song written by the Assistant Music Consultant, Mrs Stevens, was published.

National Scout/Guide Orchestral Course

Details of the next course to be held at Gilwell from 28th December to 2nd January 1978 were published in last month's *GUIDER*. Please make this event known to Guides and Rangers, as there are many budding musicians in our Units today. Closing date for applications is 1st July. Application forms are available from the Programme Secretary.

Waddow 'Fantasy' July 29th-30th

August 7th
Owing to the many other Jubilee events taking place this year and the limited support offered for the projected 'Fantasy', it has been decided that it must be cancelled. Waddow's other Jubilee events are going ahead as planned.

Foxlease: Coming Events

The Foxlease House Committee is arranging two events to take place at Foxlease later this year.

The first is in July and is to be a Flower Festival with a Royal flavour. This will take place on the 13th and 14th July when Foxlease will be open to all member of the Movement and to the public.

The second event is an auction of antiques and other treasures on 21st September.

For full details of these two events please write to the Secretary at Foxlease, Lyndhurst, Hants. SO4 7DG, sending an sae.

The Queen's Silver Jubilee

Print blocks of the Scout and Guide Silver Jubilee badge are available as follows:

1" (25 mm) £1.30 plus 11p p&p
1½" (30 mm) £1.30 plus 11p p&p
2" (50 mm) £1.40 plus 11p p&p
3" (75 mm) £1.51 plus 11p p&p

Please apply to Press and Public Relations Department, CHQ.



The Queen's Silver Jubilee Publicity Pack available from Press and Public Relations Department, price 75p plus 25p p&p contains photos of the Queen and Princess Margaret as members of the Association.

CHQ Musical Instruments

Two instruments are presently available for loan for a period of two years. One is 'Esther', a viola, and applications are invited from players holding Grade VI or higher. The other is 'Perowne', a violin suitable for a less experienced player. Application forms can be obtained from the Programme Secretary.

Short Term Investment Service

Monthly interest rate after deduction of management commission.

December 1976	14.22%
January 1977	13.72%
February 1977	11.6875%

Additional 0.5% pa for deposits of £2,500 and above.

Scout and Guide Trust Fund

On 28th February 1977, the value of a share in the above Fund was:

38.08p for selling purposes
39.97p for buying purposes
6.5% interest only yield

The interest only yield does not include any capital appreciation and is based on the share buying price on the date stated.

International Scout and Guide Club

Meetings take place every Monday, 7.45 pm at Baden-Powell House, Queen's Gate, London. All visitors are welcome. Programmes for May include: 2nd, Old English Customs; 9th, Annual General Meeting; 16th, A View of Elba; 23rd, Egyptian Evening; 30th, Mastermind Quiz.

CA Appointment

West Yorks. West, Wharfedale Division, CA: Mrs Boardman, 92 Brooklands Lane, Menston, Ilkley. All enquiries re Hesley Wood Camp-Site, now S. Yorks County, should go to Miss M Carr, 67 Dove Road, Wombwell, Barnsley, Yorks.

The Three G's



by Sheila Graber

Classified.....

FOR SALE/FUND RAISING

Advertising Pencils. Ball Pens, Combs, Diaries, etc. gold-stamped Company name. Raise funds quickly, easily. Bran Tub Toys, details: Northern Novelties, Spencer House, 26/28 Spring Gardens, Bradford BD1 3HE.

Sale or Return. 50 per cent profit on cost. Costume Jewellery parcels sent post free without obligation. Ideal fund raisers. Details: Caritas Jewellery, 356 Uxbridge Road, London W12 7LL.

Dolls for Dressing. Carnival, Advertising and Race Balloons, Lucky Dip Toys, Wood Balls, etc. Send large sae for stock list: D Glover (Wholesale Toys) Ltd, Braxholme Mills, Bailiff Bridge, Brighouse, Yorks. Tel: 719298.

New Fund Raisers. Bran Tub Toys. Undressed Dolls. Plus 100s of Money Raising Items. Wholesale prices. Money back guarantee. See for catalogue. Nye's Novelties, Dept/G, 173 Cambridge Road, Hitchin, Herts.

Outdoor Materials for all Purposes. The most comprehensive range available. Prompt personal service. Keen prices. Ripstop nylon. Glazed siliconed nylon. PU/Nylon (four weights). Neoprene/Nylon. PVC/Nylon. Ventile. Plastic coated knitted nylon. Borg pile fabric. Terylene fillings. Polyester heavyweight zips. Thread. Velcro. Wet suits and kits. Sae for details and samples: Pennine Boats, Hard Knott, Holmbridge, Huddersfield, Yorkshire.

CAMPING/HOLIDAYS

The University College of Wales, Aberystwyth. Self-contained, fully furnished, self-catering holiday flats. Premier position overlooking Cardigan Bay. Theatre, Swimming Pool, Squash on Campus. Ideal centre for family holidays, clubs, schools, Church and Chapel holiday parties. Walking, fishing, narrow gauge railways. Tours of the Campus arranged. Send details including dates and numbers family/party to: W T Davis, Dept HA, The University College of Wales, King Street, Aberystwyth.

For School parties. For Guides' parties. For Private

Students or individuals - come to Ker Charles, 8 Boulevard L'hotelier, Dinard, the welcoming house.

Bracklesham Bay Camp? Seven acres of protected fields in countrified surroundings. Sea only 1/4 mile away. Mains water, no sanitation. Riding tuition available. For details apply: Rodney Eborn, 'Regency House', Clayton Lane, Bracklesham Bay, Sussex. Tel: Bracklesham Bay 670534.

Felin Bach (Caernarvonshire County Camp-Site) Caeathraw, Gwynedd. Large unequipped camping area, for Guides and Rangers, and indoor accommodation for Pack holidays, available all the year round. Snowdonia National Park half a mile. Climbing and hill-walking within easy reach. Safe bathing at Dinas Dinlle or Bangor Baths. Apply to: Mrs P Jones, Bryn Meurig, Celyn Avenue, Penmaenmawr LL34 6LR, Gwynedd, with foolscap sae.

Buckmore Park, Maidstone Road, Chatham, Kent ME5 9QG. A District camp-site and Activity Centre for Cubs, Scouts, Venture Scouts, Guides and Rangers. Open all year for day visitors, weekend and weeks' camps and summer camp. Six indoor units with heating and hot water and 53 camp-sites in over 200 acres of woodland. Indoor heated swimming pool, indoor roller skating, rifle range, archery range, abseiling and climbing, five-a-side tennis, karting, assault course, pioneering, Scout and Guide Club, hot showers and fully stocked shop. Write for details.

Broadstairs. Church Hall for Guide or Brownie camps. 20th July to 7th September. Enquiries to: Arthur Scott, 4 Gratton Road, Broadstairs. Tel: Thanet (0843) 64041.

Guider-owned caravan. Private farm site. Sleep five. Axminster 33278.

On the North Coast of Devon Parish Hall Combe Martin. Accommodation for 30 persons. Apply for brochure: A Woodward, Resthaven, Castle Street, Combe Martin, Devon. Tel: Combe Martin (027-188) 2613.

Scotland. Try-a-sport-a-day. Gliding, riding, archery, sailing, canoeing, orienteering, grass ski-ing, gliding, fly fishing,

riding. Groups, families or individuals. EBA Ltd, 7 Greenhill Street, Dingwall, Ross-shire. Tel: Dingwall 2462.

Hertfordshire County Camp-site. Bentley. Heath, Potters Bar. Sites or indoor accommodation. Easy reach St Albans, Hatfield, London etc. Sae to: K Wells, 8 Dove Lane, Potters Bar, Herts. Tel: 57980.

Pen-y-beacon Pony Trekking Centre offers approved Wye Valley camp-site, for your summer or weekend camp. Farmhouse/pony trekking holidays. Reduced rates for off season bookings. Stamp appreciated. 11 Dgeddi Villas, Llanigon, Hay on Wye, Hereford.

Well Furnished House, Minehead, Somerset. Good holiday centre. Sleeps five; all electric; garage. Details: Tate, 41 Elmfield Avenue, Teddington, Middlesex.

Sunsport Adventure - ride, sail, snorkel, canoe on our thrilling programme in the South of France - shown on BBC Holiday '73. Also Mediterranean Riding and Dutch Barge Holidays. ABTA member. Brochure P G L Young Adventure Ltd, 142 Station Street, Ross-on-Wye, HR9 7AH. Tel: (0989) 4211/7. Or evenings and weekends Fownhope (043277) 535.

Croydon: Small unequipped camp-site available. Hall for wet weather. Apply: Mrs Brimble, 35 Farm Fields, Sandrestead, Surrey.

Period Cottage in grounds of Village Inn (1677). Two double bedrooms, lounge with inglenook and beams, shower, kitchen, Newly decorated and furnished. In beautiful country near Eastbourne, Battle, Michelham Priory, Herstmonceux Castle and Downs. Tel: Herstmonceux 3108.

INSURANCE

Association Members. We offer specially reduced premiums for Motor Insurance with Lloyds. Send details for quotation without obligation. Orchard Glen Insurance Services, Orchard Glen, White Horse Lane, Rhodes Minnis, Canterbury, Kent, CT4 6XP. Tel: 0303 862819.

A Happy Brownie. A Happy Family - Until something terrible happens to Mummy or

Daddy. If either should die no one could replace them but, hardship at least can be lessened, for as little as £2 a month. Contact us for advice and quotation - Orchard Glen Services - see above address.

Insurance. Reduced motor premiums for Guiders, Scouters, Civil Servants, Advanced Motorists. Professional advice for all classes of insurance. We welcome enquiries for Group vehicles and premises, your home, life, mortgage, pension and investment requirements. Morden Park Insurance Brokers Ltd, 66 Silver Street, Enfield EN1 3EA. Tel: 01-366 1312/3.

TRANSIT FOR HIRE

Transit Vans for Hire. 18/22 cwt, weekly rate £30. Daily rate £6; 30 cwt weekly rate £40. Daily rate £8. Deposit £25. Mileage charge 4p per mile. Crew-Bus 12 seater. October to April weekly rate £55. Daily rate £11. May to September weekly rate £62. Daily rate £12. Mini-Bus 12 seater. October to April weekly rate £57. Daily rate £11.50. May to September weekly rate £64. Daily rate £12.50. 8% VAT on all above charges (excluding deposits). Deposit £25, no mileage charge. Four Point Garage Ltd, 110 High Street, Feltham, Middlesex. Tel: 01-890 9931.

UNIFORM

Guider's suit, size 12s, skirt length 20 inches. Good condition. £6. Box No 6.

BADGES

Wanted: Guide County Badges in exchange for Berkshire. 36 Priest Avenue, Wokingham, Berkshire.

COMING EVENTS

Wood Green District Scout Park Golden Jubilee Horse Show (Novice only). Date 18th June at Scout Park, Gordon Road, Bounds Green, London N11. Show Secretary: P J Boundy, 7 Ashley Crescent, Wood Green, London N22. Enclose sae for particulars.

Step We Gaily. The second year, folk weekend at Frylands Wood Scout Camp near Croydon, Surrey. 9th, 10th, 11th September, 1977. John Foreman, Wild Oats and

The Girl Guides Association takes no responsibility for statements made in any advertisement here or elsewhere in the magazine, or for any subsequent correspondence in connection therewith. The right is also reserved to refuse any advertisement not considered suitable. Advertisements for the sale of secondhand clothing cannot be accepted (except uniforms). Uniforms for sale should not be sent to CHQ, advertisers receive communications from applicants. **ALL COPY MUST BE RECEIVED BY 21st OF THE SECOND MONTH PRECEDING PUBLICATION** (eg 21st MAY FOR THE JULY ISSUE). **ALL CHARGES 8p per word. BOX NUMBERS 40p EXTRA. PLEASE SEND REMITTANCE WITH ADVERTISEMENT TO: Miss A M Martin, Advertisement Manager, The Girl Guides Association, 17/19 Buckingham Palace Road, London SW1W 0PT. 10% discount for series of 12. To reply to a Box Number, address your envelope to Box Number concerned c/o GUIDER. Please enclose SAE when replying to Box Numbers.**

Special Announcement Special Announcement
SPECIAL ANNOUNCEMENT
CAMPTOURS wish to announce a special 6-day tour to Switzerland, departing on Tuesday, 27th September, for Guiders and other leaders interested in taking parties to our chalets in the Bernese Oberland during 1978.

THE price will be greatly subsidised and is expected to be about £50.00, including first-class coach travel from London, full-board hotel accommodation in Interlaken, visits to each of our chalets in the region and several local excursions.

In the event of a party booking eventually being made half of the cost of the tour will be offset against the party account.

We plan to make this an interesting and enjoyable occasion for all concerned and would welcome your Company. Please return the coupon for full details.

To: Camptours, Devon House, High Street, Cranleigh, Surrey, GU6 8AG.
(Tel: 04866 3027).

Please send me details of your special tour for leaders.

Name

Address

Special Announcement Special Announcement

dancing to Skinners Rats, plus Workshops to interest all the family. Don't miss the fun, send sae NOW for further details to: 'Step We Gaily' publicity (GU), 5 Ashley Road, Thornton Heath, Surrey CR4 6HW.

LATE UNCLASSIFIED

Bargain: 40 Secondhand 6 foot benches of strong oak construction with metal folding legs @ £4.50 each. Tel: Stevenage (0438) 820080.

Bernese Oberland, Adelboden, Switzerland. To let: Holiday accommodation, 32 places, self-catering, full facilities, showers, etc., excursions, mountain walks, ski-ing. Price 6 Francs per person. Ferienlager, Motondo, 3715 Adelboden, Switzerland.

PONY TREKKING CENTRE

Set in the beautiful Welsh countryside, affiliated to P.T.S.W., offers Trekking Holidays for all ages. Novice, experienced and complete beginners catered for. Friendly atmosphere, farmhouse accommodation. Inclusive terms from £35 per week. Parties and unaccompanied children welcome.

S.A.E. further details: M Gilchrist, Riding Centre, RHYDYCROESAU, Oswestry, Salop.



Horsham Division Camp Sites NOW FULLY BOOKED. Please, no more 'phone calls.

Please note: all advertisements for Venture Scouts/Ranger events published in *GUIDER* must be accompanied by the signature of the Guide County Commissioner.

When replying to advertisements please mention *GUIDER*.

Dreams can come true

This view of the romantic old town of Thun is typical of Swiss lakeland scenery with its green meadows and forests, tumbling rivers and waterfalls, blue lakes and snow-capped mountains. For children and teenagers it's the nearest thing to wonderland. Why not take your Company to Switzerland, and see their dreams come true?

With Camptours you can have your very own Swiss chalet, with full facilities for self-catering. We make all the travel arrangements and friendly local staff are always on hand during your stay to assist with excursions and other activities. It's all so easy to arrange, and costs less than you might imagine. If it's too late for this year it's not too early to be planning for '78. So send the coupon now for our illustrated brochure.

camptours
 SUMMER CAMPS IN EUROPE

To: Camptours, Devon House, High Street, Cranleigh, Surrey, GU6 8AG (Tel: 04866 3027).

Please send me details of your summer camps in Europe.

Name

Address

G5/77

SonEtLumiereSonEtLumiereSonEtLumiere

**SON
 ET
 LUMIERE**

at
DOVER CASTLE
May 12th to Sept. 24th
Nightly - Excluding Sundays
 with
ROY DOTRICE
 and
BARBARA JEFFORD

Ring Dover (0304) 203224 for details

SonEtLumiereSonEtLumiereSonEtLumiere

GUIDES and BROWNIES T-Shirts OR Sweat shirts



Top quality washable shirts. Range of super colours, including White, Sky, Navy, Turquoise, Scarlet, Yellow, Green, Blue. Prompt delivery.

FROM
£1.75

SPECIAL PERSONALISING SERVICE! Have YOUR Unit name and emblem embossed on the shirt at 4p per letter extra. Special discounts for Group orders. Design service available for SPECIAL EMBLEMS if required. Shirts contain varying proportions of cotton/viscose/polyester according to availability. Details on request.

Prices (complete with emblem)

T SHIRTS (Sizes 22"-30") **£1.75**,

(Sizes 32"-40") **£1.99**, (Sizes 42"-44") **£2.20 P & P 25p**

SWEAT SHIRTS (Sizes 34"-44") **£4.50 P & P 35p**

Wording 4p per letter extra. State colour required (give alternative choice) AND EXACT CHEST SIZE.

CREWMASTER (Dept GB5), 27/41 Oldfield Circus, NORTHOLT, MIDDLESEX. Tel: 01-422 3344

For people who put life into living!

Sport & Outdoor Activity Wear
Proved by performance
since 1909

Send for free colour brochure, stating the sport in which you are interested to:

Bukta, Brinksway, Stockport

Enclosing stamp to cover postage.

Bukta

Tours of interest to Guiders ^{H+C} **Travelaway** Limited

1977 Summer Brochure featuring tours to:

Belgian Coast	5 days from £35.75
Valkenburg	5 days from £44.90
Paris	5 days from £45.90

with other tours to France and Holland plus tours to Poland, Bulgaria, Russia, Tunisia, Morocco, Switzerland, Austria, Spain and Sailing Courses off the Welsh Coast.

1977/78 Ski Brochure featuring tours to:

Italy, Austria, Switzerland, France, Bulgaria, Rumania from £91.30 including:

Return air flight with Laker Airways • Return Coach transfer • Full board accommodation • Hire of skis and boots • 6 x 2 hrs. ski instruction • Full Comprehensive Insurance •

Travelaway Tour points will help your planning

- ★ One per ten free place ratio
- ★ Travel abroad by British Coach from home with choice of excursion package included in the costs shown above.

- ★ Simplified Reservation procedure and really personal service.
- ★ Comprehensive insurance cover at Lloyds, includes baggage, money and personal accident cover.
- ★ Really competitive prices.

For your personal copy of our Travelaway brochures contact Bruce Harding or Tony Cunningham on Hurstpierpoint (0273) 834393 or just return the coupon below.

Please send by return my personal copy of the 1977 Summer Travelaway programme ☐

Please send by return my copy of the 1977/78 Winter Brochure (please tick appropriate box) ☐

Name
(BLOCK CAPITALS PLEASE)

Address

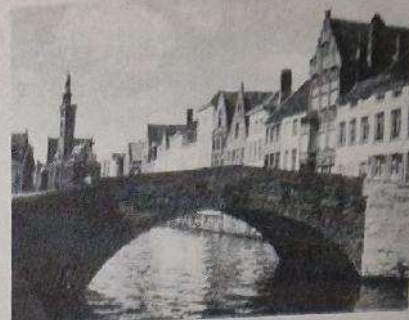
Day Telephone No.

Home Telephone No.

H&C Travelaway Ltd., Norton House, 79 High Street, Hurstpierpoint, Hassocks, West Sussex, BN6 9RE.

A Weekend in Belgium

by J. Coughlin
B. Devonport



WE two Guiders had never been abroad before so we were keen to find out all we could about the dangers and pitfalls of taking Guides to foreign parts! First, we had to get our own passports, which was actually very easy, and we were assured that getting a group passport is no more difficult – just a matter of filling in a longer form. Next, we changed our sterling into Francs, and were told about banking arrangements for group travel.

Our day of departure, Friday, 25th February, dawned at last ... a grey and miserable morning. In true Guide fashion(?) we were all on time, and the coach left Victoria for Dover.

Passing through customs went smoothly and we were told it was even easier with a group passport, as only the leader would then have to leave the coach. We embarked on the oldest and hottest ship of the Thoreson line, but the crossing was short and we were soon recalled to the coach for disembarkation at Calais. We passed quickly through customs and then settled down for the journey to Ostend. At the French/Belgian border customs appeared to be a formality as we flashed our passports and a smile at the young officer who boarded our coach.

Arriving at the hotel we got ourselves into pairs to share the twin bedded rooms – each complete with bathroom, toilet, bidet and shower! By this time we should have realised, even if we had not been told earlier, that it was carnival weekend in Ostend. We had eaten our dinner watching children go by in fancy dress, making faces at us through the windows – in the nicest way, of course! Fireworks and brass bands could be heard in the distance and we

couldn't wait to get out and join in the throng. What a bonus for us to see the town en fete. We were pelted with confetti as we made our way to the town square and even managed to collect some ourselves to throw back! The bandsmen didn't seem to worry about the crowds of people following them, and where, I wondered, would we have found brass bands playing at midnight in the middle of an English town?

Before going to bed, in true British tradition we opened our window for some refreshing sea air ... I think every man, woman and child in Ostend must have passed under our window, chatting gaily (and loudly) to their friends. Fortunately the beds were comfortable, we were tired, and slept soundly.

Up at 8 am on Saturday to eat a Continental breakfast before joining the coach to visit Bruges, Blankenburg and Brednes. Our courier for the day was a Belgian, who took us first to the little lace shop in Bruges. We did not see any lace being made, but there were many articles of exquisite Bruges lace on display. We crossed over the bridge to visit the Beguinage, a series of 13th century houses where Knights' daughters lived when the Knight was killed in the Crusades. It is now a Convent, but one of the small houses was open to the public; this delighted the historians among us and is surely a 'must' for all Guide visitors.

Now came a delightful surprise – a trip along the canals on boats brought out of their winter rest just for us. This was a beautiful way to see the rear of mediaeval houses, study the architecture and get the 'feel' of the town. Bruges has twenty-eight churches and

the sky-line is dotted with steeples and towers; we visited one church where we saw a statue of the Madonna and Child by Michelangelo.

By the time we had finished dinner, we thought we knew how American tourists feel when they 'do' Europe in forty-eight hours ... tired! So most of us went to bed, though some went out to enjoy the night life of Ostend.

Sunday saw us rising early, as we wanted to go to Mass at 8.30 in the Cathedral. This was a really worthwhile half-hour, though we were surprised to be given change when we put some Francs into the collection ... even more surprised when a second collection was taken later in the Service ... no change given that time. Afterwards we found out from a more knowledgeable member of our party that the first collection was a 'seat fee'.

A final exploration of Ostend came next, before we took the ferry home. Now came one final surprise; we were to be allowed on to the bridge in parties of six to eight. What a treat! This is sometimes allowed if permission is requested but it obviously helps if the purser is a Scouter, as ours was!

After that final treat it really was just a matter of waiting to get home and the sad moment of 'Goodbyes'. Everyone we had met had been interested in our Movement and had shown us courtesy and kindness. The *Travelaway* staff had been efficient without being officious and the Guider organising the trip was always there to make sure everything went well. Thanks to them all from two Guiders who now find it much easier to contemplate taking groups of Guides further afield than we had ever ventured before.



Buy Direct at BUDGET Prices!

- VERY BEST QUALITY
- CHOICE OF COLOURS
- CHEAPEST PRICES
- STACKING TABLES
- EXTRA ROBUST CONSTRUCTION

ASK FOR COMPLETE LITERATURE TODAY!

STACKING CHAIRS

Budget Furniture Co. DEPT 49
58 NORWOOD ROAD, LONDON SE24
TEL 01-658 0774 671 2980

TENTS – FLYSHEETS – WATERPROOF CLOTHING

You can save 50% or more

If you make and repair on an ordinary sewing machine. We supply everything, canvases, nylons, all weights. Zips, metal poles, threads, PVC groundsheeting, all accessories. Do not call until you have sent SAE for full range of samples and free literature on tent making. We give free sewing instructions.
EDWARD BARNES, GG, Hawksfold, Fernhurst, Haslemere, Surrey.

TENT CLOTH AND ZIPS

Manufacturers Bargains: 36" MATERIAL Blue, Orange 75p yd., pp 9p yd. TENT ZIPS Twin Puller 20p ft. any length, pp 8p each. 48" PVC GROUND SHEETING or Mudwalling 76p yd., pp 9p yd. 60" DOUBLE PROOFED NYLON various colours 95p yd., pp 9p yd. MANY MATERIALS IN STOCK. Clear PVC, Window Netting, Tape, Nylon-backed PVC, Polyester, eyelets, etc. Cash with order or S.A.E. for free cloth samples.

TARLINGS

(Dept. G.A.), 170 Romford Road, Aveley, Essex RM15 4PJ.

70367 B.P. The Man who lived twice 50p
 72132 Olave Baden-Powell 30p
 61465 All things uncertain 50p



Small Order Charge of 30p
 on all orders under £10.00



GIRL GUIDES Trading Service

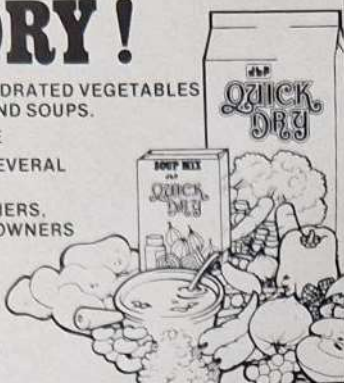
THE GIRL GUIDES ASSOCIATION
 TRADING SERVICE
 Atlantic Street Broadheath
 Altrincham Cheshire WA14 5EQ
 Telephone 061 941 2237

Girl Guides

BUY DRY!

- BUY QUICK DRY! DEHYDRATED VEGETABLES, FRUIT, PIE FILLINGS AND SOUPS.
- SAVE TIME AND SPACE
- KEEP IN STORE FOR SEVERAL MONTHS
- IDEAL FOR CARAVANNERS, CAMPERS AND BOAT OWNERS
- Send for price list and brochure to:

J. L. PRIESTLEY & Co.
(Catering Service)
93 High Street, Heckington
Sleaford, Lincs. NG34 9QU
Quote ref. no. G1



SUNNY HASTINGS

Saturday July 30th to Saturday August 6th
(only week available)

7 DAYS for £25

(2 Leaders free with
25 Guides)

3 Leaders free with
40 Guides)

FULL BOARD and accommodation in large house and garden, near sea. Swimming pool and lovely walks. Includes a day trip to FRANCE and a day trip to BRIGHTON

REED'S EDUCATIONAL TRAVEL SERVICE LTD.
The Old Rectory, All Saints,
Hastings, Sussex. Tel: Hastings 427995

IDEAL FUND RAISERS FOR YOUR UNIT

We supply 11 various ball pens, nylon tip pens, combs, pencils, key fobs, rainhoods, p.v.c. goods, 9 various types of diaries, calendars, various rulers, set squares, book matches, wallets, etc. etc. All are excellent Fund-Raisers - Good Quality.

We give Full Guarantee. All orders are completed within seven days of receipt. Send now for our price list. Please send 9p on a self addressed label/envelope.



THOMPSON & CREIGHTON (Advertising) LTD.
Dept. G/13,
North Tyne Industrial Estate,
Whitley Road, Longbenton,
Newcastle upon Tyne NE12 9SN.
Telephone: 0632 669511/2

FETES BAZAARS ALL FUND RAISERS

Fully guaranteed ball pens and pencils die-stamped in gold with your name or slogan (maximum 30 letters), please print name.

ALSO

SPECIAL JUBILEE ITEMS
Extensive range of TOYS - STATIONERY - FANCY GOODS - DOMESTIC STATIONERY & PRE-SELECTED PARCELS all at whole-sale prices. Send SAE for detailed price list from:

BAKER ROSS

Dept GU5
2a Handsworth Road, London N17 6DD Tel. 01-808 6948



SCOTLAND'S GUIDE SHOPS

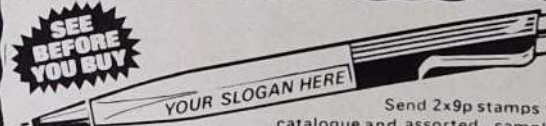
Supply all your Guiding needs,
Uniform, Camp Equipment, Books,
Gifts, etc.

EDINBURGH 16 Coates Crescent, Edinburgh EH3 7AH.
Tel: 031-225-3483
GLASGOW 1 Scott Street, Glasgow G3 6NU.
Tel: 041-332-6288
DUNDEE 6 Panmure Street, Dundee DD1 2BW.
Tel: Dundee 22262
ABERDEEN 11 Albyn Place, Aberdeen AB1 1YE.
Tel: Aberdeen 20875

Your Unit will benefit from our Discount Seals!

QUALITY FUND RAISING and ADVERTISING PENS

SEE
BEFORE
YOU BUY



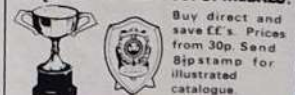
Send 2x9p stamps for
catalogue and assorted samples.

Lapel Badges



Your own design made to order. 81p stamp
for catalogue and samples.

PLAQUES! TROPHIES! CUPS! MEDALS!



Buy direct and
save 25%. Prices
from 30p. Send
81p stamp for
illustrated
catalogue.

WESTFIELD LTD

DEPT 23 WESTFIELD HOUSE
HELENA ST B'HAM B1 2RJ.

A novel fund-raising item which will sell at any
time of the year.

PRINTED YELLOW DUSTERS

Every housewife, every motorist a potential buyer!

Our stock designs of Trees in Britain, Horses in
Britain, Birds in Britain, etc. are designed to
incorporate your local wording.

Send for details and prices today!

GEO. O'BRIEN BAKER LTD.

4/6/8 Tapster Street, Barnet, Herts EN5 5TX
Tel: 01-449 2424.

COME CAMPING ON THE CANALS

Charter a traditional narrow boat, fully fitted to accom-
modate 12 people in camping or luxury standard; 24
people per 'pair' of boats, with first-class skippers to make
everyone's holiday really enjoyable.

Or self-drive a luxury 4 or 6-berth.

Full details on request.

FOXTON BOAT SERVICES LTD.,
Bottom Lock, Foxton,
Market Harborough, Leics.
Tel: Kibworth 2285.

WHAT'S ON

Exhibitions

At the Imperial War Museum, Lambeth Road, London SE1, a Silver Jubilee Exhibition is running, entitled 'Women at War 1914-1918'. The exhibition, which continues until 30th October, was opened by Princess Anne on 24th March. Of particular interest will be an introductory section on suffragettes, and personal relics of Edith Cavell, Dr. Elsie Inglis, Vera Brittain (mother of Mrs Shirley Williams) and other notable women. This exhibition, like many of their previous ones, is enlivened by film and photographs from the museum's own collections and from other museums and institutions throughout Britain. Hours of opening: Weekdays 10 am-5.30 pm, Sundays 2 pm-5.30 pm. Admission: Adults 30p, children and OAPs 20p.

Art

The Invalid Children's Aid Association is presenting an exhibition of handicapped children's art at the Royal Exchange, London, to be opened on 2nd May at 11.30 am by a team of sporting personalities including David Wilkie and Henry Cooper. Admission to the exhibition is free of charge, and the nearest tube station is Bank. Many of the entries at the exhibition are of a remarkably high standard, particularly if one bears in mind the nature of some of the children's afflictions (eg, those suffering from Muscular Dystrophy must have found the co-ordination and control necessary in executing their paintings and collages particularly trying). Look out for the lovely collage 'The Icon', the vivid painting entitled 'A plane crash', the illustration of the sad tale of a girl who grew spaghetti instead of hair; and the beautiful batik banner made as a joint effort by children in hospital. No doubt you will find your own favourites. It's quite a large exhibition, and well worth a visit. LMH



Above. Ravens at the Tower was an entry submitted by two educationally subnormal children.

Cinema

Freaky Friday

The latest Walt Disney offering, out as usual just in time for the school holidays and on nationwide dis-

tribution, is this unusual comedy. It tells of a rebellious teenager and her harassed mother who both wish, at the same moment, that they could be in the other one's shoes for a day, and the wish is immediately granted. It isn't nearly so much fun as either anticipates, and Ellen, her mind now imprisoned in her 13-year-old daughter's body, finds that childhood isn't the bed of roses she had remembered it to be, as she creates havoc in school at one class after another, ending by shooting into her own goal in a disastrous hockey match. Meanwhile, Annabel in her mother's body proceeds to wreck every labour saving device in the house and causes appalling embarrassment by trying to flirt with the teenage boy next door.

The climax is the usual car chase, varied this time by becoming tangled with a water-ski show. Judging from the reaction of the press preview audience, this is a film that all ages can enjoy. JVR



Theatre

At the Chichester Festival Theatre (Box Office Tel. (0243) 86333), *Waters of the Moon* by N C Hunter opens on 10th May, and continues through to 2nd July. Directed by John Clements, the cast includes Ingrid Bergman, Wendy Hiller, Dandy Nichols and Brian Spink. Ingrid Bergman plays the worldly beauty, Helen Lancaster, who makes such an impact on the residents of a private country hotel on the edge of Dartmoor.

With its sensitive intermingling of comedy and pathos, the play, which was first performed in Accession Year, is a welcome revival.

Jubilee Celebrations

Her Majesty the Queen and HRH The Duke of Edinburgh will be present at the Pageant of Scottish Youth to be held in Edinburgh's Meadowbank Sports Centre. The pageant opens on Wednesday, 25th May, at 10 am. In the evening, HRH The Prince of Wales will attend an England/Scotland International at the same venue, and present the winning team with the

Jubilee Trophy. All proceeds of the pageant and soccer match are to be donated to the Queen's Silver Jubilee Appeal Fund. Admission to the pageant is as follows: Adults (seated) £1, under-16s and OAPs (seated) 50p. Adults (standing) 50p, under-16s, and OAPs 25p. Groups between ten and fifty in number can obtain a 20 per cent reduction on the prices quoted above.

Ballet

A feast of ballet at popular prices continues this month in London. At the London Coliseum, the **London Festival Ballet** season gives us Nureyev's production of *Sleeping Beauty* for the week commencing 2nd May, and the following week Dame Alicia Markova's reconstruction of *Les Sylphides* (see April GUIDER). Monday to Wednesday this shares the bill with *Prodigal Son* in ragtime (to Scott Joplin music), and the latter half of the week with Massine's Spanish classic *Three Corners Hat* to de Falla's music, and the gay *Graduation Ball*. Week commencing 16th May is *Nutcracker*, and 23rd to 27th a triple bill of *Sanguine Fan* (the ballet version of *Lady Windermere's Fan*), *Echoing of Trumpets* and *Gaité Parisienne*. Write to the **Box Office, Coliseum, St Martin's Lane, WC2** for details of reduced rates for party bookings.

Meanwhile, **Sadler's Wells Royal Ballet** continue their spring season at Sadler's Wells Theatre. 2nd to 4th May, Sir Robert Helpmann will be appearing in the role of Dr Coppélius in *Coppelia* for the first time for many years. 5th and 6th May is a triple bill of *Birdscape*, *Gemini* and the ever-popular *Pineapple Poll*. *Summertime* and *The Two Pigeons* will be given on 7th and 9th May, and on 10th and 11th May another triple bill of *Gemini*, *Raymonda Act III* and *Checkmate* - Ninette de Valois' intriguing ballet in which the dancers act out a game of chess. The season ends with the delightful *La Fille Mal Gardée* (12th to 14th). Here too there are excellent reductions for party bookings, especially for groups of young people. You can ring Sadler's Wells Theatre Box Office at 01-837-1672 between 10 am and 8 pm Monday to Friday. JVR

In Brief

Birmingham - 16 May, Town Hall: Dory Previn.

Gateshead - Exhibition of juke-boxes and record sleeves, Shipley Art Gallery, Prince Consort Road. 1st-8th May.

Great Yarmouth - Gilbert and Sullivan Society present Ruddigore, Windmill Theatre, Marine Parade. 4th-7th May.

Hatfield - Exhibition: National British Crafts Exhibition *Living Crafts '77*, Hatfield House. 6th-9th May.

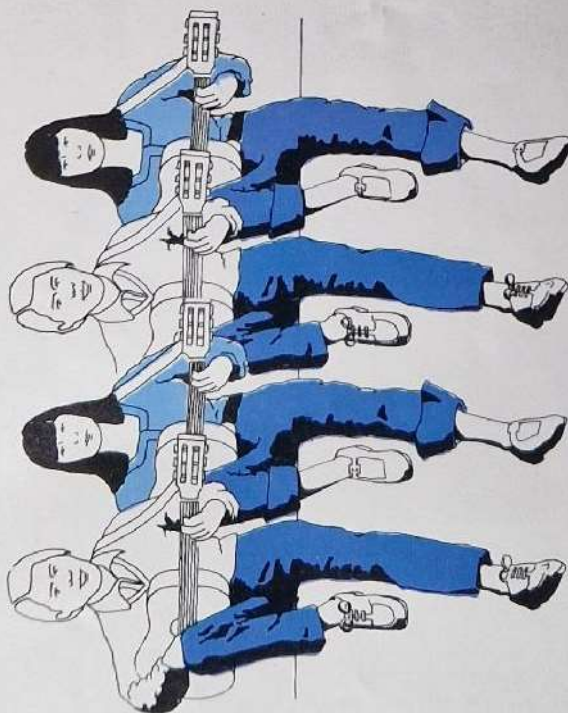
Preston - Play: Charlie's Aunt, Playhouse, Market St. West. 7.30 pm, 21.23-28 May.

Ramsgate - See How They Run (play), Granville Theatre. 26th, 27th, 28th and 30th May.

Sedburgh - Concert: Steve Race - 'My Music & Yours', Powell Hall, Sedburgh School, Sedburgh. 7.45 pm.

FOLKFEST 8

ROYAL ALBERT HALL LONDON
SATURDAY, 29th OCTOBER, 1977 AT 7 PM.



The International Scout & Guide
Folk Music Festival
Produced and Directed by
IAN GRANT

BOX OFFICE OPENS 1st JULY 1977
Booking form alongside



Apply to Folk Fest 8 Box Office
The Scout Association, Gilwell Park, Chingford, London E4 7QW

Please supply tickets as follows:

Number and Position of seats required	Total
Grand Tier Box Seats at £2.50 each	£
Loggia Box Seat at £1.75 each	£
2nd Tier Box Seats at £1.25 each	£
Stalls at £1.75 each	£
Stalls at £1.25 each	£
Arena at £1.25 each	£
Arena at £1.00 each	£
Balcony at £1.00 each	£
Balcony at 60p each	£
Orchestra at £1.25 each	£
Orchestra at £1.00 each	£

To avoid disappointment in the event of your first choice being sold out, please complete the form to show your second choice of seats and write a large "X" alongside.

I enclose a cheque/postal order payable to The Scout Association for a total remittance of £ together with a STAMPED ADDRESSED ENVELOPE.

Name

Address

Susie Sellars- the Prof.

Susie's earned quite a reputation for herself lately as the lass who can come up with simple, logical solutions to almost any problem.

So when the Guides were discussing their fund raising programme for the year ahead, they naturally turned to the 'Prof.' for help.

After a few moments of whizzing mental arithmetic, she wrote down the missing formula.

The Miller Leswyn Fund Raising Service.

"Just like any complex problem, the solution is obvious once the right formula is applied", proclaimed Susie. "All we do is send for lots of Miller Leswyn catalogues, then we show them to all our friends and neighbours. They'll be delighted to see low priced greeting cards, gifts, handy kitchen gadgets and household items all beautifully illustrated. The prices are so very reasonable too, so we're sure to take masses of orders. And I've computed that our funds make up to 25p in the £ profit with every single order. Next problem?..."

The Miller Leswyn Fund Raising formula is unquestionably the answer.

"Now we've found the formula let's go for results — send the coupon off today!"

Miller Leswyn

Miller Leswyn Ltd.

Queen Street, Burton upon Trent DE14 3LP

Please send me, without obligation, my free Miller Leswyn catalogue plus full details of Miller Leswyn fund raising.

Name _____

Address _____

Tel. _____

Company _____

(I am over 18 years of age) MK2E

CARDS
1977 Spring Collection

10/10/77 29. Brook Way (2)