



Guider



Volume 66
Number Nine
September 1979
25p

"We're beating the drum for Webb Ivory"



Say the 11th Wigan East Guides and Rangers, and after 15 years' successful fund raising with Webb Ivory they certainly know what they're talking about. Over the years, they've raised around £1,700 through the Webb Ivory service: "It's been our main source of income," says Mrs. Lily Parkinson, District Assistant and fund-raising organiser. "We've found the money invaluable for so many things — camping equipment, camping holidays, a stereo system, Company and Unit Colours, and of course the band instruments."

Started in 1977 by the Ranger Unit, the Band has been a big success story. "We play at Church Parades, Divisional Parades, local schools, and everyone thoroughly enjoys themselves," Mrs. Parkinson says. "In fact, the Band has proved so popular that the Guides wanted to join too — that meant more instruments, so you can imagine how pleased we were when we realised that we were going to make even more money than we expected on last year's Webb Ivory fund

raising campaign. It meant there was no problem about buying the bugles we wanted, and now the Band's up to 27 members, both Guides and Rangers."

With the help of a dedicated 18-strong Supporters' Committee, the 11th Wigan East find that raising funds the Webb Ivory way is very simple. "It's such a good service and their deliveries are always very quick," says Mrs. Parkinson. "We certainly couldn't have managed our camping holidays all over the country without the Webb Ivory fund raising service."

Like the 11th Wigan East, your Company or Unit could help raise those much needed funds, easily and enjoyably, through the Webb Ivory Fund Raising Service. **Why not find out more right away? Just write to Webb Ivory at the address below, and we'll send you full details, absolutely free and with no obligation.**



Webb Ivory Limited,
(Dept. DQ4J) , FREEPOST, Little Cornbow, Halesowen, West Midlands, B63 1BR

Webb Ivory-A Great Guiding Service

Published 1st of each month

Guider

OFFICIAL MAGAZINE OF THE GIRL GUIDES ASSOCIATION
(incorporated by Royal Charter)

PATRONS

HM THE QUEEN
HM QUEEN ELIZABETH, THE QUEEN MOTHER

PRESIDENT

HRH THE PRINCESS MARGARET, COUNTESS OF
SNOWDON

WORLD CHIEF GUIDE, 1930-1977

OLAVE, LADY BADEN-POWELL, GBE

CHIEF COMMISSIONER

MRS OWEN WALKER, JP

EDITORIAL

H.R.H. The Princess Margaret visited the Association's Trading Service at Broadheath, near Altrincham, Cheshire, for the first time in June. The morning was spent at Broadheath, meeting members of the Movement and staff and later, Her Royal Highness visited the Ashley Training Centre for Greater Manchester West at Mobberley, Cheshire. Here she was entertained by approximately 470 Brownies, Guides and Rangers who, with 100 adult leaders, presented a varied programme of activities, culminating in the presentation of a playlet, 'Noah's Ark'.

A photograph of the visit appears on this month's cover and for fuller coverage, turn to pages 392 and 393.

Editor

Contents

Roundabout	388, 389
Retirement of Lyn Joynt, Director of World Bureau	390
Mrs Marion J Greeves, MBE, JP	390, 391
Ulster Walks Ten Feet Tall	391
HRH The Princess Margaret visits Broadheath	392, 393
La Soufrière Volcano erupts on St. Vincent	394
A project to help the Boat People	394, 395
Children in the Local Community	395, 396
Pack Holiday Panics	396
Nominations for Vacancies on the Council of the GGA in 1980/	
CHQ's Finance Committee	396, 397
Our Cabaña	398
One Happy Family!	399
CHQ Rogues' Gallery	400
Airing and Sharing	401, 423
Mainly for Rangers	402, 403
Letters	405

A Daring Venture	407
Training Pages	409, 410, 411, 412
Double Acrostic	413
Training Calendar	414, 415
Camps and Holidays	417
Book Reviews	417
Trefoil Tourney	418
Programme Notes	419
HQ Notices	421
Walking (for) the Dog	423
From Dream to Reality	425
Home and Away	426
On the Cards	427
In Memoriam/GGFF	429
Classified Ads	431, 432
What's On	433, 434
SSAGO	434

EDITOR: JEAN V RUSH

ASSISTANT EDITOR: LORNA HANWELL

SUB EDITOR: RACHEL SIMON

ADVERTISEMENT MANAGER: ANN M MARTIN

ALL COMMUNICATIONS TO: Guider GIRL GUIDES ASSOCIATION
17-19 BUCKINGHAM PALACE ROAD LONDON SW1W 0PT 01-834 6242

Cover

This month's cover shows Her Royal Highness The Princess Margaret's visit to the Ashley Training Centre for Greater Manchester West near Mobberley, Cheshire, in June. Many local Brownies, Guides and Rangers were at the Centre to entertain their distinguished guest, who as you can see, was greeted in fine style.
Photograph: Terry Hope.

Printed by The Riverside Press Ltd, London and Whitstable and published by The Girl Guides Association. Subscriptions, including postage, £4.14 for 12 months Great Britain; £4.02 overseas. Trade Agents, SurrIDGE Dawson & Co (Productions) Ltd, 136-142 New Kent Road, London SE1.

GUIDING Roundabout



The Press & Journal, Exeter

On 29th April, Beechgrove 37th and 37th A Brownies, Guides and Rangers celebrated their Golden Jubilee with the original Guide, Brownie and Ranger Leaders. Thanks Badges were awarded to the original leaders, who are pictured receiving their Badges, and are, left to right, Miss Clara Guthrie (original Guide Captain), Miss Isobel Dean (formerly Ranger Captain), and Mrs Joyce Crookshanks (original Brown Owl).



Mrs J.M. Fitch

Above, Brentwood East District's Ranger Unit Flag, which was designed by Assistant Ranger Guider Sandra Fitch, and worked by herself and a Ranger, Margaret Lankow. It was blessed at a service held at All Saints' Church, Hutton, Brentwood, last year.

Right are some of the 28 Asian children who have joined newly-formed Brownie Guide and Ranger groups which meet at Leamington Spa. They are supported by the Progressive Asian Ladies' Group, and Ranger Guider Mrs Harinder Toor said: 'Until now, there has been nowhere for Asian girls to go, although there are plenty of organisations for Asian boys'. The group is expected to become more racially mixed, as British children join their school friends.



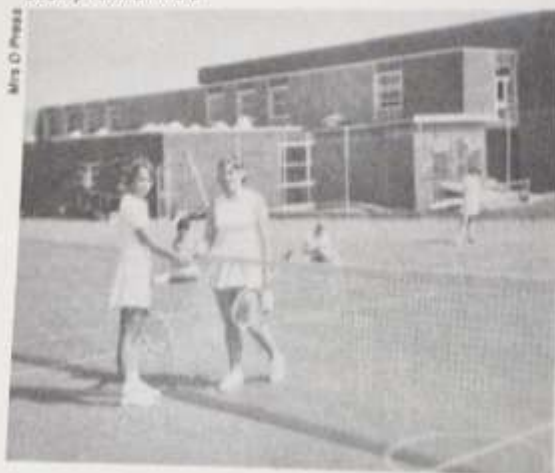
Heart of England Newspapers

Right, utterly at their mercy is Midlands Chief Commissioner Mrs Jean Hartridge, perilously suspended over a muddy stream by this group of Worcestershire Guides.



Worcester Evening News

Below, Charlotte Davidson, of the 2nd Branksome (All Saints) Ranger Unit was runner-up to Gaynor Yorath (right) of Wallisdon Ranger Unit, after their match at the Dorset County Tennis Finals.



Mrs O. Pears



East Grinstead Observer

Buzby got off the line to his dear old mum for a few hours when he came to the Crawley Down and Turners Hill Scouts' Fair in May. But Buzby wasn't feathering his own nest - the organiser, Dorothy Heasman, said she hoped that more than £200 had been raised for a new village Scout HQ.



Putting their worst feet forward are Guide Helen McIntyre of the 1st Sharpness (St Andrews) Coy with her DC, Miss P Spiers. A remarkable 'feat' of 'anything you can do, I can do worse' occurred when Miss Spiers visited Christine to tell her that she could transport her, pot leg and all, to the next Guide activity — and Miss Spiers herself slipped and broke her leg inside Helen's house!



Mrs Sonia Nicolle (left) is married to a headmaster — who set some appropriately difficult questions to Guides who were competing for a trophy. Here, Mrs Nicolle shows Pembrokeshire County Commissioner Mrs Kathleen Phillips some amusing answers proffered by the Guides.



Ecclesham Church in Sheffield was the setting for a garden party in June, when proceeds went towards India's Goodwill village for orphaned children. Here, Brownie Guide salesgirls outnumber customers at their stall by seven to one!



His Royal Highness the Duke of Kent visited RAF Abingdon this summer when he picked out two particularly smart uniformed figures with whom to speak — Brownies Sarah Middleton and Sally Wilkins, who meet at the RAF station regularly, under Brownie Guider Mary Atkins.

Earlier this summer, in the grounds of Arundel Castle, the annual parade of Catholic Guides and Brownies took place, with over 600 Guides and Brownies present. Guides are here passing the saluting base, where the salute is being taken by the Very Revd Canon B Thom, of Arundel Cathedral.



HRH Prince Charles delighted this group of Guide helpers when he made a point of chatting to them at Devon County show.



Above, members of Menai Bridge Ranger Guide Unit present a cheque to Bangor Ambulance Service for their Cardiac Arrest Unit. This cheque represented part of the sum raised by Rangers in Anglesey who took part in a sponsored walk.



World Bureau Retirement:



LYN JOYNT

I had the privilege of working very closely with Lyn Joynt for four years after her appointment as Director of the World Bureau in 1971.

It was fun! She had such a sense of humour as well as a keen and constructive mind, and an ability to see ways through complicated matters with clarity and foresight. Paramount for her are the high principles of the Movement, and she has never forgotten that the most important people are those whom we all serve — the young people.

In the course of her work of promoting Girl Guiding and Girl Scouting throughout the world, she visited many countries and made necessary contacts with all involved with the well-being of the Movement, from the highest in the land to the smallest Brownie. She had a real gift for communication with children, she was able to grasp their attention whether talking to small groups or large rallies.

The work of the Director of the World Bureau involves much com-

mittee and conference work, not only in London but in different parts of the world. In spite of all the time taken with business of this type, Lyn never forgot the objectives of the World Association — to provide girls with opportunities for self-training, and the promotion of unity, international friendship and understanding between Girl Guides and Girl Scouts around the world. For Lyn, every day was Thinking Day, and every day was praying day.

After a distinguished career in the Women's Royal Army Corps, Lyn came, after a period with the YWCA, to an equally distinguished career in World Guiding, for which the World Association of Girl Guides and Girl Scouts will always owe her a real debt of gratitude. I know that now she has reached the age of retirement, she will continue to make superb use of all her time, talents and energy — as well, I hope, as making time for well-earned relaxation.

Let me finish this inadequate tribute by quoting some extracts from an address which Lyn made to the 1978 World Conference in Iran:

'In this our Golden Jubilee Year, you might perhaps argue that we should be looking forward to see where we are going. My dear friends, I believe that first we have to look back to our beginnings and see from whence we came, and see if we have the direction that we need to take us to whatever the future holds for us.

Our beginnings were in simplicity. The Founder was an educationalist, a philosopher of high degree — and he had enough confidence never to be ashamed of simplicity Can we go back to our simplicity? So that it is meant to

be fun, and so that ordinary people are able to play this game, and that ordinary adults like you and me are able to learn and develop with our children as we learn, and have fun in doing it.

. . . this Movement of ours is unique in that the centre of it, the Promise and Law, is so simple it can be understood by the youngest child, and yet it is so all-embracing that it gives security to you and me as adults when we have to face the more complicated sort of life.

. . . Let us remember the spiritual basis on which we are founded . . . and let us go from this Conference back to our own countries and ask that we will have the strength to continue in the next decade of our life to serve and to dedicate ourselves to the one thing, the only thing, that matters — and that is, the Child.'

These extracts speak for themselves. They demonstrate clearly the quality of leadership which Lyn has given to Girl Guiding and Girl Scouting throughout the world, and for which we must all say a sincere *Thank You, Lyn.*

Beryl Cozens-Hardy

THERE are few people who have not been touched at some time by an exceptional life. Ulster Girl Guides are blessed by one such — Mrs Marion J Greeves who passed on to Higher Service on 4th July. Although the record of service given by Mrs Greeves speaks of her dedication and generosity, it cannot capture the qualities which drew people to her and made her so beloved by young and old alike. These qualities are those listed in the blessing so often used in Guiding — 'the grace of courage, gaiety and the quiet mind'.

Mrs Greeves was the most truly humble of people, but she did not sit back and let the world pass by; she was at the front getting things done, and, like the Founder, refusing to accept that what was right and necessary could be impossible. Guiding in County Armagh retains a special quality which was acquired when Mrs Greeves was County Commissioner from 1939 to 1949 and this County is a living example of the fact that Guiding is caught rather than taught. As Ulster International Adviser, Mrs Greeve strengthened many overseas links and arranged some memorable visits of delegates to the Province; the personal contact with the young Ulster Representatives remaining her first priority. The Marion Greeves Brownie House stands in the grounds of Lorne as a lasting memorial to her enterprise and



Miss Lyn Joynt, World Bureau Director, with Guides and Rangers at an Ipswich AGM.

Ulster Walks Ten Feet TALL

People could be forgiven for thinking that Guiding in Ulster would be at a low ebb, considering the unfortunate publicity our province has had in the last ten years, but Guiding here is flourishing, despite the Troubles. We have vast numbers of Brownies and long waiting lists for many Packs.

Most units meet in Church Halls but are open to all creeds and the Guide Association in Ulster makes a great contribution to unifying all classes and creeds. Every County in the province has a Guide House, but the centre of all activities is at Lorne, a beautiful house on the shores of Belfast Lough, of which we are very proud. The house is used for Trainings and conferences and, during the summer, as a holiday house. In the grounds a Brownie Pack Holiday House and a Ranger cottage have been built, and four fully equipped Camp Sites surround the house.

In 1976, structural repairs to the

house were urgently required, with an estimated cost of £25,000, but with cheerful enthusiasm the Guides of Ulster tackled the problem. So successful were their efforts that the final total was £42,000, enabling the committee to refurbish as well as repair the Training Centre.

Basic training in Ulster is the same as in the rest of Britain and we sing the same songs and play the same games. However, I recently discovered that Ulster Guides play a game called 'Captain's Ball', of which the rest of the British Guides have never even heard.

Cut off by a narrow strip of water from the rest of Guides in Britain, Ulster Guides are rather isolated. Some of us do visit camps and conferences there and abroad, bringing back stories of the World Wide organisation. Hearing these reports, Guides and Guiders all longed to know more of the greater world of Guiding. Then, with the visit to Ulster of Miss Lyn Joynt, Director

of the World Bureau, the *WORLD* came to Ulster.

During her week in the province, she met Guides from all parts of Northern Ireland, ending by spending her last evening with Belfast Guiders at a supper at Holywood.

She visited Camp Sites and Guide Houses. She had lunch with Patrol Leaders training for their Camp Permits, and coffee with the Trefoil Guild at Lorne.

The Guides put on displays and exhibitions for her benefit. She was entertained at Government House and interviewed on television and radio. Her visit will long be remembered in Ulster, for she brought us the World of Guiding and now Ulster Guides are walking ten feet tall for the Director of the World Bureau has shown them that they are not forgotten and they know that they are truly members of the eight million Guides throughout the Free World. THANK YOU, LYN JOYNT.

Evelyn Belford, *PRO*, Ulster.

In Memoriam Mrs Marion J Greeves, MBE, JP

generosity. Most of this generosity is unknown to all but the recipients who had seemingly impossible financial problems solved; and solved in the most



understanding and gentle way. When Ulster Chief Commissioner from 1952 to 1962, Mrs Greeves made many lasting friendships at CHQ and under her leadership, Guiding in the Province grew and prospered. For her outstanding contribution to Guiding Mrs Greeves was awarded the Silver Fish in 1957. The Ulster Trefoil Guild has always valued the fact that Mrs Greeves was their President and her interest and support

was a great source of strength to the Guilds.

Mrs Greeves was the daughter of Mr George Cadbury and Dame Elizabeth Cadbury. During the First World War, she met her husband in France, where she was serving with a Society of Friends Ambulance Unit. She came to live in Portadown, Co Armagh, after her marriage. During the years that followed she took an ever-increasing part in local welfare work and was especially interested in facilities for old people. She served on the Armagh County Council and was on the Board of Governors of Friends School, Lisburn, being Chairman for a term. The local Music Festival Association had her unfailing support and involvement over the past 50 years.

Mrs Greeves was a member of the Ulster Senate before the Northern Ireland Parliament was dissolved. When attending Senate meetings she would travel by train so as to have the journey time to read the official papers, thus absorbing the volume of additional reading and paper work this important appointment entailed.

All this, and much more, service undertaken by Mrs Greeves did not crowd out those who came first in her heart — her sons and daughters and their families. The number of grandchildren and great-grandchildren grew as the years passed, but each had a

special place. When Mrs Greeves made a welcome call at Ulster Headquarters she always seemed to be en route — to collect a boy at a model shop; to watch a cricket match; to feed a grandchild at a city restaurant; or in some other way to bring happiness in the form the child would most appreciate — and she obviously enjoyed these occasions quite as much as the young ones.

Mrs Greeves organised her days so that she always arrived on time at each appointment and with her 'homework' done; and so had time to share the joys and sorrows of others. Down the years I know that I have not been the only one to have a mental picture of Mrs Greeves each time the hymn containing 'Let our ordered lives confess the beauty of Thy peace' is sung — we who fuss or muddle our way through each day have much to learn from this beloved leader and friend; at least we know now beyond doubt that true faith results in gifts beyond human comprehension.

Her family, and especially her daughter Rosemary, our present Ulster Chief Commissioner, who is so like her mother, have our loving sympathy and thoughts at this time.

Peggy Smyth,
Ulster General Secretary
1963-1978



Terry Hope

Above, the Princess shares a joke with some of the office staff at Broadheath.

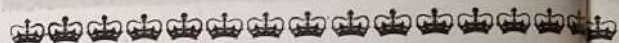


Terry Hope

Above, Her Royal Highness chats with Mr Tighe, manager at Broadheath, and the Chief Commissioner, centre.



BY HER ROYAL HIGHNESS THE



Manchester Evening News

Left to right, Chief Commissioner, Mrs Owen Walker, JP, Mrs P M Toll (County Commissioner, Greater Manchester West), Princess Margaret, Brownie Guide Elizabeth Roe, from Altrincham South, and Mrs Owen Ashmore (Chief Commissioner, North West England) applaud the finale of the 'Noah's Ark' playlet.



Left, all the staff at Broadheath had the opportunity of at least a glimpse of the princess.



On arrival, the Princess was met by Mrs Owen Ashmore, Chief Commissioner for North West England. Behind the Princess is Lady Juliet Townsend, Lady-in-Waiting.



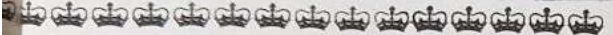
Above, Her Royal Highness who was wearing for the occasion of her visit to Broadheath an outfit in aquamarine with matching accessories, receives a posy from Brownie Guide Alison Cutts, from Wigan.

From the inside looking out . . . Her Royal Highness is pictured here watching the mysteries of camp cooking unfolded by this group of Guides.



HEATH AND ASHLEY

The PRINCESS MARGARET



Wilmslow Advertiser

Her Royal Highness is escorted by Brownie Guide Angela King past a group of Guides who are demonstrating that 'Guides keep fit'.



Wilmslow Advertiser

Home-made refreshments provided by this group of Guides are admired by the Princess.



Wilmslow Advertiser



Above, Princess Margaret with (on her right) Lady Juliet Townsend (lady in waiting), the Chief Commissioner, Mrs Owen Walker, JP, and Mrs P M Toll (County Commissioner, Greater Manchester West) watch a playlet, 'Noah's Ark'.

Manchester Evening News



These Brownies tell the Princess about what they know of the care of domestic pets, left.



Terry Hope

Princess Margaret chats with handicapped Guide Diana Thomond, from Urmston, after presenting her with a Star of Merit.



Manchester Evening News

The pride of this Brownie, Ghislaine Taylor, from Leigh, is obvious as the Princess takes her hand to walk around the precinct.

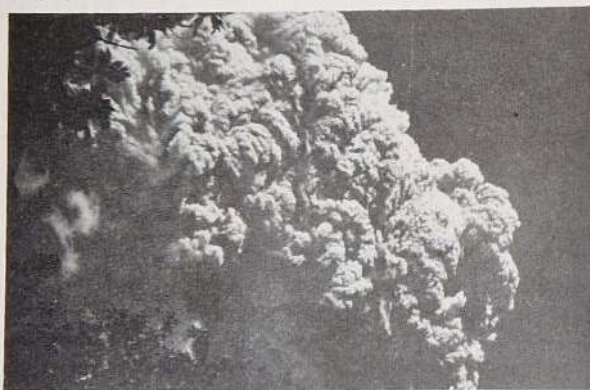
La Soufrière volcano erupts on St Vincent

THE following account of the violent volcanic eruptions in the Island of St Vincent which started on Good Friday, 13th April, was sent to me by the Commissioner for St Vincent, Mrs June Russell. I am sure that we must all feel proud that the Members of our Branch Association in St Vincent showed such a true Guiding spirit in such a natural emergency.

Readers, no doubt, will be pleased to learn that the Girl Guide Friendship Fund sent a donation to the Girl Guide Association in St Vincent on behalf of all Members in the United Kingdom.

Mrs R Vaughan-Cox
Commissioner for Branch Associations.

ON the Caribbean island of St Vincent, Girl Guides awoke on Good Friday, 13th April, to the news that their volcano, La Soufrière, was erupting violently. While clouds of steam and ash billowed up into the sky and mushroomed over the entire island, plans were put into action to evacuate the northern half of St Vincent.



St Vincent's volcano, 'La Soufrière', erupting.

This is not the first time that the volcano has been active in the last decade. In 1971/1972 a quiet eruption formed a lava island in the volcano's crater lake. Many people were evacuated from their homes then, in case an explosive eruption occurred. The older residents of St Vincent recall the 1902 explosive eruption which killed over 2,000 people. As eruptions continued on the 13th and 14th April, sending steam and ash to a height of over 40,000 feet in the air, Vincentians feared that an eruption of that scale would occur again.

Guides from Georgetown and Sandy Bay were among the estimated 20,000 evacuees, housed in schools, community halls and private homes in the southern part of the island. Guides were mobilised to assist operations wherever and whenever required. Their work has included office work for Central Emergency Relief Committee; distributing supplies to evacuation centres; making nose and mouth masks, preparing meals for evacuees, caring for the many evacuated children, and generally giving comfort and reassurances to everyone. The Guides have given generously of their time and received high praise from the community for their efforts. Evacuated Guides demonstrated the true Guiding spirit by volunteering their assistance as soon as they were settled in centres.

On the night of 25th/26th, St Vincent was shaken by the twentieth explosive eruption. Kingstown, the capital of St Vincent located 12¼ miles south of the volcano, received a heavy fall of dust and ash. The next day the beautiful blue Caribbean sky was lost behind a dusty grey haze. Dust swirled everywhere and irritated eyes, nose and throat. Most shops, offices and schools were closed by afternoon.

The activity of the Soufrière has now changed. On 6th May, a dome of lava was sighted in the crater and it has continued to grow quietly. Meanwhile some evacuees are being allowed to return home — but not to the immediate environs of the volcano.

Vincentians have the mammoth task ahead of rebuilding their economy. Many of the bananas (accounting for 65 per cent of the island's exports) are ruined, as are some of the other crops. Much effort will be needed before the disrupted lives of many islanders return to normal.

St Vincent Girl Guides were encouraged by the messages of concern received from Guides in other countries and from Headquarters in London. As scientists maintain their observations of our 'unpredictable' volcano, our Guides will continue to put their many skills to use until St Vincent has recovered from the effects of La Soufrière. **Pamela Morphet**



... A Project to



help the 'boat people'





.... In the International Year of The Child



Just before Easter we learned that Wolverhampton was to receive some of the recent refugees from Vietnam at Oxley House, a large old house in Stafford Road. A number of Guides came to Oxley House to help prepare for their arrival.

They sorted clothing and household linen, washed up endless quantities of cups, saucers and plates, as well as making beds, polishing furniture, cleaning windows, indoors and out, and raking over the garden in case of any broken glass which might have been there, which could have hurt the children when out playing.

After 'our' group of refugees had arrived, the Guides taught the children some traditional British games, while for the adults, there were bunches of daffodils as a welcoming gesture. Each member of the group had been through a terrible time, and all were deeply appreciative of friendly faces and of our desire to help them settle in. There were a number of small children and tiny babies in the group. All of them, as well as being undernourished, were obviously physically and mentally exhausted.

The Ockenden Venture charity which has been instrumental in providing the refugees with their immediate needs, and helping them in other ways, was impressed by the work of our Guides; representatives of the Venture have asked if they will prepare for another group of 'boat people' who were to arrive in August. The Police, fire service and District nurses are all involved, too; but the Guides can help the children to get over their ordeal by offering them friendship and understanding through games and activities.

By the time this article is in print, this, our 'first' group will have moved to other parts of the country to settle more permanently, and the second group will, we hope, be well on the way to becoming acclimatised.

In this, the International Year of the Child, we feel privileged to have had the opportunity to play an active part in helping these refugees, and to have worked with another international organisation which helps people all over the world.

Elizabeth Barrett

Children in The Local Community

Has your Unit done anything to mark the International Year of the Child yet? There is still time to do something really worthwhile and memorable before the year runs out. Have you planned the Unit's programme for this term, or are you still mulling over ideas? How about challenging the Unit to keep their Ranger Promise to 'be of service in the community' by completing a project this term which will help children in your own area.

Here are some ideas for your Unit programme:

- 1) Invite a Social Worker or someone from the NSPCC or Dr Barnardo's or another charity concerned with children, to talk to the Unit about the needs of children and to suggest ways in which you could help.
- 2) Do you have a Day Nursery nearby? The staff are often very grateful for help, particularly after school, until the mothers come from work to collect the children. Some Primary Schools and Adventure Playgrounds run clubs and activities after school so that children can enjoy themselves in safety instead of being at home all alone or playing in the street. Again the staff are often very grateful for help and your offer might make the difference between a project getting off the ground, and it not starting at all.
- 3) Christmas is not so far away, and every mother knows the difficulties of trying to shop with small children. How about running a crèche on Saturday mornings before Christmas, so that mothers can shop unencumbered? Talk to the local Playgroup supervisor before you start so that she can advise you.
- 4) How about setting up a babysitting rota, perhaps for the families at church, or for the Guides in your District or Division?
- 5) Could you help to decorate the children's ward at the local hospital for Christmas, or make some toys for the children there?
- 6) Children's parties can be tremendous fun to run. How about running one for the Brownies, or the Sunday School, or local children in need?
- 7) In some areas at Christmas, Rangers and Venture Scouts organise the collecting, sorting and mending of second-hand toys and deliver them to the children of poor families who otherwise would get no presents at all. This is done in co-operation with the Social Services Department. You would probably need to persuade other local Units to join with you in this project, or it could even become a county-wide project for Rangers.
- 8) There are many clubs for mentally and physically handicapped children, and the organisers are usually very grateful for help, since the children often need attention on a one-to-one basis.
- 9) The GGA is known for its outdoor activities. How about sharing your skills and knowledge by taking a group of children on a nature walk in autumn? Or how about setting up a nature trail for Brownies and Guides at your local campsite or Pack Holiday house?
- 10) Could your Unit offer to help in a special way at a District, Division or County event?
- 11) There have been terrible reports recently about the cruelty and violence inflicted on some children, partly as

over —



Pack Holiday Panics

This is the tale of little Tink,
Who, though quite happy at the sink,
the cooker found she quite a trial,
and sometimes she forgot to smile!
At home she uses North Sea Gas,
So let us now the facts amass.
She stacked the plates and heated water,
and did things good Brown Owl had taught her.
But when it came to cooking stew,
Her face took on a pallid hue.
Of scrambled egg she made the most,
and then forgot to make the toast!
Then came the macaroni cheese —
Said Brown Owl 'Is it ready, please?'
But all around was great commotion,
Cried Tink, her voice choked with emotion.
'I think I've let the saucepan burn,
And Washing up — it's Brown Owl's turn!'
Although with knobs and dials she toiled,
the darn thing simply boiled and boiled.
Next year, if duties Tink could choose,
Could be she's opt to clean the loos,
Sweep the floors, burn up the litter,
neatly fold away each sitter,
And do first aid, look after purses,
or sit and think up silly verses!
So Brown Owl, when at sites you're looking,
make sure it's not electric cooking!
But when at last all's said and done,
Pack holidays are rather FUN!

(or 'It's not
as easy
as you'd
Tink')

(Mrs) H Steere,
Assistant Brownie Guider,
3rd Banstead Pack
Surrey.

Footnote: this rhyme relates to an experience back in 1976,
but we suspect that problems with strange cookers are a
recurring nightmare!

International Year of the Child 1979 International Year



Children for Children



a result of ignorance
about how to care for
them, and about how
they develop. How
about inviting a Health

Visitor to come and talk
to you about child
development and how
to care for young
children?

Find out what the needs of children are in your area.
Use your eyes, listen to people talking, ask those
involved in the care and education of children, and then
DO something to meet those needs, however small it
might seem.

And if you feel that you cannot do much on your own,
perhaps you could help with an IYC project organised by
another organisation. The Social Services Department
will probably know of such projects.

The aim of the International Year of the Child is to
bring to light and do something to meet the needs of
children all over the world. Let's make sure that in 1979,
Rangers make a definite and worthwhile contribution to
that aim.

Margaret Byrom

Nominations for the Council of the Association

THE Royal Charter (supplemental Charter 1960) states, 'the Council of the Association should be constituted in such a manner as to make its membership more representative of all those persons who are engaged in the work of the Association...'. The Council and the Executive Committee are very anxious that every opportunity should be given to Guiders (POR abbreviations — page 7 refers) to put forward names for election to the Council and each year, about this time, you will be reminded in *GUIDER* that you are entitled to make a nomination if you know of a particular Commissioner or Guider whose contribution to the Association as a whole would be valuable on the Council. Nominations are now being sought for vacancies which will occur at the Annual General Meeting in the spring of 1980.

The Girl Guides Association is governed by a Council and has its affairs managed and regulated by an Executive Committee appointed by the Council. The functions of the Council and the Executive Committee are controlled by the Royal Charter granted by King George V in 1922. In order to meet the changing needs of the Association, supplemental Chapters were granted by King George VI in 1949, and by Queen Elizabeth II in 1960. In addition to the Charter, there are 46 Bye-Laws which give the method of carrying out the provisions of the Charter. At a meeting of the Council in November, 1974 an Ad Hoc Committee was set up to examine the constitution and functions of the Council and the Executive Committee. Certain recommendations necessitating alterations to the Charter and Bye-Laws were agreed by the Council. Any alterations to the Charter and Bye-Laws must be authorised by the Council and must then be submitted to the Privy Council for final approval. The proposed changes affecting the Bye-Laws have recently been approved by the Privy Council, and when the alterations to the Charter itself have been approved a new booklet will be put in hand.

Nominations for the Council must:

- 1) be made on the official 'Nomination for Election to the Council' form obtainable from District Commissioners. (District Commissioners can obtain the forms from County Secretaries.)
- 2) be made by two Commissioners and/or Guiders who hold appointments in the Country/Region concerned, the permission of the nominee having first been obtained.
- 3) be sent on the completed form to the County Secretary, via the District and Division Commissioner by a date to be decided by the County concerned.

County Commissioners must arrange for a secret ballot at a meeting of the County Executive Committee to select one name from among those nominations received for forwarding to Country/Region Headquarters by mid-December.

Qualifications for a candidate for election to the Council

One of the proposed changes to the Bye-Laws is that 'At the time of election a Council Member must be over the age of 18 but must not have reached her 61st birthday', and this should be borne in mind when making a nomination.

The suitability of a candidate is left to the judgement of those who nominate and elect.

A candidate put forward from any one Country or Region is not subject to any geographical qualification. The essential two-way representation of views between the Council and members of the Movement in each District is carried out by the Country/Region Chief Commissioners working through the chain of District, Division, County and Country/Region Committees. These channels are of great importance, and nothing should be allowed to mask or diminish this importance.

Council members have the opportunity and the duty to appoint the Chief Commissioner of the Association, the deputy Chief Commissioner(s) and the Treasurer; to elect a

r vacancies on he Girl Guides n in 1980

proportion of members of the Council in addition to those elected by the Countries/Regions; to assess reports made to them; to initiate discussion and to make all their decisions in the light of what in their judgement is the greatest good for the Association as a whole.

Members of the Council have usually, but not invariably, been people with current or very recent experience as Commissioners or Guiders. Knowledge and experience gained in circles other than Guiding are obviously needed to enrich an individual contribution and to bring added wisdom to decisions made on behalf of the Association.

The most important considerations in selecting a candidate are probably sound judgement, a broad viewpoint and wide experience.

The Work of CHQ's Finance Committee

THE Finance Committee's responsibilities are many and various. It is a Sub-Committee of the Executive Committee and its primary duty is the making of recommendations to the Executive Committee on all matters financial. These are, very broadly speaking, on the procurement of such funds as the Association deems it needs on the one hand and on the other the disbursement of those funds in the furtherance of the Association's purposes. In discharging these responsibilities due regard must be paid at all times to the requirements of the Royal Charter and the legal limitations imposed by the Charity Commissioners on the administration of charities. There are fiduciary obligations, both legal and moral, incumbent upon the Honorary Treasurer and the Finance Committee in their role of Stewardship of that part of the Association's assets which can be measured in material terms.

These very general statements though do no more than sum up what amounts in each fiscal year to a very great deal of exceedingly wide-ranging activity. For instance the Finance Committee has the task of insuring almost 900,000 members of the Movement under its Indemnity and Personal Accident and Medical Expenses policies; and a considerable amount of buildings and other property against all manner of foreseeable perils.

Over 180 men and women work for the Movement, at Commonwealth Headquarters, at the Trading Service at Broadheath, at the Training Centres and Camp Sites, and in the Association's five shops up and down the country. The Finance Committee has responsibility for making recommendations to the Executive about their employees, for instance, on pensions, salaries, conditions of service and so forth.

The care and maintenance of the fabric of all these buildings and the upkeep of their grounds are also a charge upon its funds and take much time and thought. Two of these properties are very beautiful old buildings — Foxlease in Hampshire and Waddow in Lancashire, both of which are used as Training Centres. Glenbrook in Derbyshire is the Association's flourishing Outdoor Activities Centre and Ynysgarn in North Wales and Blacklands in Sussex are

campsites set in delightful countryside.

Opening the nutshell on the income side, the first thing to be seen is the Subscription and then the Trading Service profits. No less than 85 per cent of all the Association's income comes from these two vitally important sources. The Finance Committee is responsible for a Trading Service that falls in the official classification of a 'Small Business'. This, though, should not mislead anyone into bracketing it with the little shop on the corner. Its annual turnover is approaching £2,000,000 a year and provides a valuable service direct to members and through the Shops and 131 Guide Depots. The remaining 15 per cent comes from grants from various sources and from the investment income on monies covenanted and donated, and from legacies.

The expenditure of the Association is controlled by a system of annual estimates and budget monitoring, common to most large organisations in this day and age. Mr Micawber's well-known definition of economic happiness still holds good but the order of magnitude has changed somewhat since Charles Dickens' day.

Other duties that fall upon the Committee are the considerations of the financial aspect of recommendations from other Sub-Committees of the Executive and advising the Executive on these; and the provision of financial and investment advice on request to all levels of the Movement. All manner of queries involving money are received from Units, Countries and Regions each year. The work of the Committee also embodies the administration of many diverse Trusts and Funds.

There also has to be a constant examination of possible new sources of income and a sensible scrutiny of current expenses. Working practices, too, have to be kept under supervision. New techniques and machinery appear on the scene hard upon the heels of each other.

Like all those outside Guiding who spend their days with figures, the Finance Committee has to have as much regard as it possibly can to the future. Forward planning without a crystal ball is no easy undertaking in times that are nearly as inflationary as they were in the reign of Edward the Confessor but it must be undertaken. It was the Wise Virgins who had the light when they needed it.

FROM THE COMMITTEE CHAIRMAN Kinn McIntosh



Terence William Hope



Come to Mexico and stay at OUR CABAÑA

THE FIRST CHQ PARTY TO OUR CABAÑA, MEXICO

Our Cabaña is one of the four centres of the World Association of Girl Guides and Girl Scouts and is set in the fascinating countryside of Mexico. We offer a package which will include attending a session at this Centre.

Applicants must be the age of 18 years or over and be members of our Association (Trefoil Guild included).

A maximum of 10 participants from each National Association is accepted at a session so we shall have to limit our parties to that number and selection will be based on the order in which applications are received.

Party A

10 Persons to attend the Elisa Cordova Memorial Arts and Crafts Session

(Our Cabaña)
Inclusive of travelling to/from London-Mexico
25.2.80-7.3.80 (11 nights)
7.3.80-11.3.80 (4 nights) (Guide House,
Ticalli, Mexico City)

Who may attend

Aged 18 or over and members of our Association (Trefoil Guild included)

Party B

10 Persons Programme Workshop Session

(Our Cabaña)
Inclusive of travelling to/from London-Mexico
8.3.80-18.3.80 (10 nights)
18.3.80-23.3.80 (5 nights) (Guide House,
Ticalli, Mexico City)

Who may attend

Guiders, Commissioners and Trainers who currently hold a warrant.

All participants must be physically fit, and will be required to have a medical form completed and signed by their doctor.

ACCOMMODATION

Our Cabaña has four dormitories each

accommodating 18 participants. The Patrol System is basic to life at the Centre. Participants will be in different Patrols, each Patrol being responsible for a share of the housekeeping assignments. Sessions will include flag ceremonies, camp fires, swimming, service projects, sightseeing to historic places and shopping trips.

In Mexico City our parties will stay at the Guías de México Guide House 'Ticalli' where accommodation is in dormitories and double rooms.

Sessions

Elisa Cordova Memorial Arts and Craft Festival

(26.2.80-7.3.80)

Is dedicated to a much loved former member of staff. A session of fun, friendship, laughter and a wealth of arts and crafts such as paper cutting, painting on 'amate' bark, making a pinata for the Mexican fiesta, weaving a God's eye, designing a picture from straw. Consultants and Cabaña staff will be on hand to make this Festival a TRULY MEMORABLE EXPERIENCE.

Visits to Puebla, Taxco, Tepoztlán and Cuernavaca and a chance to join in Our Cabaña's recreation project with children from Gualupita.

PROGRAMME WORKSHOP

This session will include an exchange of Programme ideas and sharing of skills and teaching when working with girls and other adults. Some training will be given by Our Cabaña staff, but it is primarily a workshop, so together participants and staff will plan, prepare and carry out sessions.

There will be visits to local places of interest.

Cost:

Air Travel low season	
Apex London/Mexico	
City/London	£435 approx.
(Tickets subject to certain restrictions and cannot be cancelled or changed) must be booked well in advance	
(or Excursion Ticket)	(£542 approx)
Mexican departure tax (payable locally)	£2 approx
Travel from Airport/Mexico City/Our Cabaña and return	£10 approx
Tours and Crafts from Our Cabaña (\$25)	£12 approx
Board and lodging at Our Cabaña \$12 per day	£62 approx
Accommodation in Mexico City (including only breakfast) \$6 per night approx	£14 approx
Insurance GGA Policies	£6.25
Administration	£1
	£543.25 or (£649.25)

These costs do not include:

Travel to and from London Airport, food during the days spent in Mexico City, excursions from Mexico City, and spending money, nor accommodation in London if required.

Fares quoted have had expected increases added.

All dates and costs are, of course, subject to slight alteration. Applications to the International Secretary CHQ via Country/Region Offices on nomination forms obtainable from your County Commonwealth and International Advisers.



Right, the Cactus garden and the Craft House at Our Cabaña.



Photo: Hethe Smith

One Happy Family!

Brownies and Guides just don't mix at camp, but Brownies and Physically Handicapped Guides — impossible!

This was the reaction when, 12 months ago, I suggested taking the Brownies of the 3rd Hoylake URC Pack and the 6th West Kirby (Convalescent Home) Guide Coy away on a joint holiday.

The preparation was the most arduous part of the camp, with much complicated paper work — parents' consent forms, permission from the various Education Authorities, G21 medical certificates and applications for financial assistance. The details of the camp then had to be worked out fully. The Brownies and Guides would follow a different programme during the day but would combine for the evening meal and activities. In this way the Brownies would enjoy a successful Pack Holiday and the Guides would be able to camp to the best of their abilities. We decided on central cooking for the Brownies and Patrol cooking for the Guides, using Calor Gas stoves for the safety of the two wheelchair-bound Guides. Originally, seven adults were to help run the camp — myself as Guider-in-charge, an SRN as First Aider, a QM, two Brownie helpers and two Guide helpers, one of whom would be assistant First Aider. Unfortunately the numbers dropped to five and we were left without an assistant First Aider or a QM. The nurse coped magnificently without an assistant and I took over the job of QM. Luckily, I enjoy cooking!

After all the preparation, we eventually arrived at the Tarporley Community Centre, Tarporley, Cheshire, on Saturday,

26th May, 1979, spending most of the first day setting up the Pack Holiday House and camp. The next few days were spent decorating the hall — the theme of the week was 'The Court of Henry VIII' and rehearsing for a concert planned for the Round Table and Ladies' Circle in return for a Barbecue they were to give us on Friday night. The Guides were successfully cooking their breakfast and lunch and learning the necessary camp craft for their Camper's Badge, then joining the Brownies in the evening.

At the end of the week, we spent the day in Chester. Our visit included a boat trip down the river, and two seats were taken out of the boat to allow us to take all the children. In the afternoon we visited the Cheshire Workshop, Buwardsley, Cheshire, where the girls were treated to a short demonstration on candle-making.

Friday was spent striking camp and storing the equipment away, ready for the final clear up on Saturday and getting ready for the Barbecue planned for the evening. The evening began with an 'It's a Knockout' competition and then we all dressed in our costumes of the 'Court of Henry VIII'. We were all treated to a delicious meal and the evening ended with the children's short concert. It was a wonderful finish to the week.

I cannot conclude this report without mentioning the many kind people of Tarporley who contributed so much to the success of this joint holiday. To them all we offer our sincere thanks.

Carol O'Neill
Brownie and Guide Guider



An impossible task? These handicapped Guides (far left) seem to be having no difficulty in tackling the problem of setting up camp in the grounds of Tarporley Community Centre.

Left, concentration, preparation for a challenge needs careful consideration, as the intent looks on the faces of these Guides show.

Below, at the Court of Henry VIII, Guides and Brownies went to a lot of trouble to put together these colourful costumes.

Carol O'Neill

Right, enjoying their lunch, some of the Brownies taking part in the joint camp.



Carol O'Neill

Seats were taken out of the boat to allow all the members of the camp to enjoy a trip down the River Dee on a day out to Chester, below.



Carol O'Neill



Carol O'Neill



Carol O'Neill



Carol O'Neill

Left, Chester ... lunch was taken in beautiful Grosvenor Park and afterwards, these Guides and Brownies took the opportunity to look around. Above ... Do as you're told! Guides receiving instruction during the camp's 'It's a Knockout' Quiz.

CHQ Rogues' Gallery (5)

The Personnel and Services Departments

Eileen Earnshaw Personnel Manager

My ambition from an early age was to be a dress designer, but I followed my mother's advice and took a secretarial course which I have found to be a distinct advantage to me over the years. My first job was as Secretary to the Publicity Manager of Roneo, the office equipment firm. My boss was an artist and encouraged me on the art side of his department (often giving my secretarial work to one of the artists!) so really I had the best of both worlds and had a wonderful time.

Towards the end of the war we moved to Bournemouth and I was 'directed' into the Ministry of Supply — those were the days when you were not free to choose where you worked. I married quite young, a RAF pilot who had been seconded to British Overseas Airways Corporation (as it was then). I then joined the staff of the Midland Bank Trustee Department until I left to take up the important role of 'Mum'. In due course Robert was born.

It is quite clear that up to this time (and for some time after) I had no ambitions to be a career girl! I led a very busy life but had plenty of time to indulge myself sculpting, entertaining, cooking, sketching, gardening, renewing my interest in music and reading. This covered three years of my life; things changed when I entered the world of Hotel Management.

Over a period of 13 years I learnt every aspect of managing our own 28-bed-roomed Hotel (initially under a very capable Manager) situated on the cliff top in Bournemouth and in particular a great deal about personnel work.

During this period my second son, John, was born.

After the Hotel was sold I did a variety of things — I travelled (Italy, Beirut, Amman); I managed a small hotel in Mayfair for three years, working for the Grand Metropolitan Group; I joined the Save the Children Fund and spent three years — a happy, rewarding time this — working with Isobel Hurgon, who many years earlier had increased sponsorships from a few to a vast network covering centres all over the world. Then, in 1972, when Isobel Hurgon (who had taken over as Head of Personnel and Reception at CHQ) decided to move to pastures new, I took over from her.

Somewhere along the line my sons grew up. Robert is now UK Manager for Training and Personnel with the Holiday Inns Group of Hotels having first qualified as a Hotel Manager and spent four years in South Africa. He returned to this country in September bringing me a very precious gift — a daughter, Jackie — his wife.

John left college two years ago and is

now a VDU operator. We have become a very close and happy family.

I am a member of the Institute of Personnel Management. I was a Brownie,

Guide and for a brief spell a Ranger. I have really enjoyed my years with the Association and above all value the many friends I have made.



Mrs Earnshaw pictured left at her home in Teddington.

I was born into a large family in Camberwell; I have four sisters and one brother. I lived in Camberwell until my marriage, and consequently well remember the damage and devastation caused to parts of London during the Blitz, when Anderson shelters sprang up like mushrooms.

The men in my family have been drawn to the 'forces' — my father remained in the army after the war, and my brother, too, was in the army for many years, and has served in Hong Kong, Cyprus and Germany.

My first job was at the Ministry of Fuel and Power, as it was in those war-time days; I remained there for eight years. During this period, I got married, and changed my status to housewife, for I decided to stay at home after my son, David, was born. I returned to work after he had finished his time at Secondary School.

When I decided to return to work, it

was to be only part-time, initially. I saw an advertisement in my local paper, and I came for interview at Headquarters. I was employed in the Services Department on the understanding that I would go to the GPO Training Centre where I would learn to operate a switchboard. This I did, on release from work. My first pay packet was, I think, about £3.10/-!

CHQ has always had a fund of 'characters', and one amusing incident which I remember is when one employee caused quite an upset by his habit of having an illicit after lunch snooze in his office. The back door receptionist came to look for me, in a great fluster, and gasped out: 'It's Mr ———, — I think he must be dead — I've just looked in to his office, and he's lying flat on the floor'.

However, needless to say, life isn't like that in the Services Department, where I am in charge of a staff of seven!

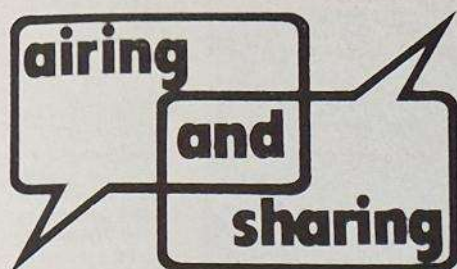
Out of working hours, my hobbies are gardening and dancing.

Gladys Province

Services Department



PHOTOGRAPHED BY



The Other Half

I have been interested in following recent correspondence in your 'Airing and Sharing' columns in *GUIDER*, where reference has been made by your correspondents to the value of Programme ideas in *SCOUTING*.

Comparison is rarely fair. *SCOUTING* is the only magazine available to members of the Scout Association. It aims to offer a service primarily to Leaders, Venture Scouts, older Scouts and supporters but, regrettably, we do not have magazines for the younger age groups.

I would support your contention expressed in your July issue that Members of your Association who are looking for Programme ideas should subscribe to *TODAY'S GUIDE* and *THE BROWNIE* in addition to *GUIDER*.

But perhaps throughout the correspondence there is a very healthy sign. I am encouraged to think that many Leaders in your Association read *SCOUTING* regularly, and this is great. It must benefit both our Associations if our Leaders are reading each other's journals. Let's use the best ideas from both our Movements to provide even better Scouting and Guiding for youngsters!

Ron Jeffries,
General Editor and Editor,
SCOUTING
Congratulations to *SCOUTING* on its 70th anniversary, and on the recent award of a BAIE Certificate of Merit.
Editor.

Swimmer Badge

I am worried by the new item included in the Brownie Swimmer Badge. Up to now, I have considered it a very well balanced Badge, and Brownies have enjoyed working for it. The reasons for my surprise at the new requirement of A STAND-ING DIVE, are twofold. In the area in which I live, most primary schools have swimming pools which have been provided by local Parents' Associations, and these are teaching pools in which children are for-

bidden to dive because the water is rather shallow. Whereas teachers had been happy to test for this badge, they now can't as the dive cannot be performed.

Why, anyway, should a child of 7-10 years be required to perform a *standing dive*? A child can save lives by swimming, and entry into the water seems so unimportant. Even when taking the 'personal survival' test, no standing dive is required.

I have tried to get this altered in my own District, but have been told that this would have to be sanctioned at a higher level. Rather than improving the quality of our Badge, I think that this has been a very shortsighted decision. I would like to know what other Brownie Guiders think.

Wendy Stafford
Brownie Guider,
Downhall District,
Rayleigh,
Essex.

We regret an error was made when the new requirements for this Badge were published. A sitting dive, not a standing one, is required.

Programme Secretary, CHQ

Distorted Image?

Last year, while on holiday in Wales, I was horrified at the notice on view in several shops which read 'no Guides, Scouts, Cubs, Brownies or other youth groups, please'. When I asked what was the reason for this, I was told that the local shopkeepers couldn't cope with large groups of children, as so much shop-lifting was done by youngsters.

I do hope that Guiders emphasise and re-emphasise the importance and significance of the Guide Promise to the children in their charge.

I felt so sad to think our Movement was regarded with suspicion, and I only hope that the shopkeepers concerned were quite wrong in their estimation of the behaviour of Guide and Scout groups.

One final thing; I think that Brownies should retain their Brownie dress, but that a brown skirt should also be available to them to wear over it in the winter; these would be an inexpensive optional addition to the present Brownie uniform.

Frances Trigger,
Yeovil,
Somerset.

Shortsighted?

As a keen Guider in my early twenties, I am becoming increasingly frustrated by the narrow-minded attitude of the older, more influential members of the Movement.

Our Division Commissioners have just decided that the Holiday Permit Test for Guides must be taken at an indoor holiday centre other than at a Youth Hostel, as that is the easy option. As I will never take my Guides on a holiday other than Youth Hostelling or camping, this seems totally ridiculous. It also means that they will be deprived of a week's holiday Youth Hostelling in the summer.

If this is general policy, surely there should be a Youth Hostelling permit, as well as a Holiday permit.

I would be interested to hear other Guiders' comments.

(Miss) C Jeffery
Cheltenham, Glos

All Tied Up

In reply to Sylvia Stamp's letter (July *GUIDER*) about Brownie ties, may I suggest a solution. Either move the button to the end, or if the Brownie concerned is very big, try using a piece of elastic and a press stud sewn on the ends of the tie. The Brownie Tie will then fit the largest girl with ease, and the collar won't be puckered.

(Mrs) Gwen Jones,
Assistant Brownie Guider,
1st Sands Pack,
High Wycombe,
Bucks.

More . . .

I feel I must put pen to paper straight away and protest at the opinion voiced in a recent 'Airing and Sharing' page, that the present Brownies' tie should be replaced by one of similar design to the Guide tie. Heaven forbid! As a long-standing Brownie Guider and Guide's mother, I find that the Guide tie looks untidy more often than not.

As far as the Brownie one being too small for the

larger girl is concerned, I have always found that this problem can be surmounted by the simple expedient of moving the button.

(Mrs) Jane Goater,
1st Newton Brownie Pack,
Notts.

. . . And More

I reply to Sylvia Stamp's letter in July's *GUIDER* about Brownie ties, and suggest to her — and to other Brownie Guider readers — that she remedies the problem in the following way: loop an elastic band over the button, through the buttonhole and back on to the button. This ensures freedom of movement, and it cannot be seen, as it is under the collar. I hope this helps Brownie Guiders who have encountered this problem with children in their Packs.

(Miss) Hilary Porter,
Assistant Brownie Guider,
1st Welling Pack,
Kent.

Rambler Badge

May I support Ms S Briggs' request for a Brownie Rambler Badge? Perhaps this could include:

- Know the Country Code
- Know what to take on a ramble (food, clothes, first aid)
- Know what to do if lost.

Rambling can have its hazards. My Brownies (all 24 of them) and I were caught in Trent Park Woods last year during a terrifying thunderstorm when some players on the adjacent golf course were hit by lightning. The incident made the National Press and Television. Do you think Brownie Guiders would be interested in an article in *GUIDER*, giving advice to those taking Brownies out and about? I should welcome one.

And whilst I have pen to paper (albeit a one fingered exercise on my daughter's typewriter) are there any other Brownie Guiders like me who want to be able to

- Buy cassettes for:
 - Sing a Song for Sixes
 - Music Time for Brownies
 - Musical Fun with the Pack
 - Singing Games from Far and Near
- Buy single pencils in the colours needed for the Brownie Round the World Painting Books and not sets which include colours we never use?

Joan Charlton
Potters Bar,
Herts.

continued on page 423

mainly for rangers

British Rail turned up trumps — and bang on time — for Ranger Lorna Davidson (front) and her friends.

The girls decided on Investiture at top speed — they boarded the Inter City 125 in Bristol as Girl Guides — and disembarked as Rangers.

The ceremony took place as the train sped on its way from Temple Meads to Parkway — with the girls, the rest of their Ranger Unit and the County Commissioner, Mrs Peggy Chermiside, the only passengers.

All six of the new Bristol Rangers — from left Lorna Davidson (14), of Bishopsworth; Sarah Fletcher (14), of Highridge; Caroline Taylor (15), of Bishopsworth; Elizabeth Allen (16), of Hartcliffe; Christine Loring (14), of Bekminster Down and Joanne Long (14) — seemed delighted with the overland Investiture. All the girls are members of the 128th St Oswalds Ranger Unit.



Below and left the Rangers, about to embark upon their unique journey



Margaret Paterson

Margaret Paterson



Margaret Paterson

Ranger ramble around the Scottish Islands 9th — 16th April, 1979

The aim was to provide Scottish Rangers and Young Leaders with a chance to meet one another, and explore together an area not known to most of them, and also to give them an opportunity to increase their skills and to have fun together. The 10 to 12 girls in each group soon settled into the Units formed for the trip. Great care was taken in adequately equipping the girls who would be taking part. Kit lists

were made up and menu plans discussed, and patterns were issued for making waterproof trousers and 'woolly bags'. Thank you, Outdoor Activity Advisers, for your help.

There was a total of 18 groups of Rangers; seven for the whole week, eight from Monday to Friday, and three from Friday to Monday.

The accommodation we had available to us was a



Margaret Paterson



Margaret Paterson

From Elizabeth Paterson

the airport. We also went on historical tours and went pony trekking, while in the evening there were slide shows, country dancing evenings and sing songs.

All the different groups were named after islands, and the following extracts from the log book from Skye, Rona, Eigg, Staffa and Barra.

From Ferry Cottage, Jura

We arrived off the ferry at 10 o'clock and left our packs in Ferry Cottage.



The Great Children's Party, Hyde Park, London — a Brownies' eye view.

We all travelled up to London on the train free of charge. On the Underground, there were so many children that it made us feel dizzy looking at them all coming up the escalators.

We were all given a ticket with our name and address on the back which we hung round our necks in case we got lost. We were also given a programme with a list of events and a map inside.

While we were waiting outside to have our tickets checked, we saw a Brownie crying. She was lost. She was not Enrolled so we could not find out the name of her Pack. We looked after her all the morning and for most of the afternoon.

Inside the park there were many displays, shows and things to do but we went to see everything.

We saw...

... a performance by the Royal Horse Artillery. Six horses pulled each gun carriage. They rode round and round in the ring and then lined up in the middle. Each gun went off in turn and then all went off together with a bang.

... parachutists holding red smoke flares. They all landed safely.

... a two-mile sausage. It was fried by the Scouts on a frying pan 51 feet long and most of it was given away.

... Indian dancers, wearing costumes of pink and gold or green and gold. We thought they were very good.

... Kermit the Frog. He was 58 feet high and had a pink

mouth, a bright red tongue and a yellow collar.

... a shire horse and four other ponies giving rides. The shire horse had horse brasses and yellow ribbons in his mane.

There was lots of activity in the tents dotted around the Park. In one we made necklaces out of coloured beads and a piece of leather; in another a lady gave us some hazelnuts and raisins and a bar of fruit and nut in a wrapper — they were delicious! Some of us had our faces painted with hearts, flowers, spots and stripes.

The most exciting part of the party was seeing the Queen. She came in a carriage drawn by four black horses and was accompanied by the Household Cavalry. The Queen was wearing blue and Prince Philip wore a beige raincoat and a bowler hat.

A band came along and then, from behind the crowd came Mickey and Minnie Mouse and many other Disney characters. Mickey and Minnie were very quaint and we liked them best because they shook hands with people and stayed near our part of the path for quite a while.

As we left a Scout put sticky badges on our noses and we all agreed that it had been a very exciting day.

4th Princes Risborough Pack
Princes Risborough,
Aylesbury,
Bucks.

We were each handed a survival bag and a huge road-worker's sou'wester to put in our day packs, even though we protested that we had managed perfectly well without them so far! We then set off to 'do' the Inver walk. On the way, we passed a herd of highland cattle, and our two Belgians, Isabelle and Danielle, were greatly intrigued by them. They took pictures of them and tried to stalk them so as to get close enough to be able to pet them!

We had lunch in a barn near the raised beach. Some of us walked farther along to where there was a waterfall and caves. These were worth the extra walk; it was quite a sight to see the waterfall

cascading down the cliffs in a series of steps. The caves had dry grass and straw placed in them for the deer to lie on. There were also sea arches which we could walk under, and the colour of the sea varied from aquamarine where the sand underneath shone through, to deep royal purple where there was seaweed and rocks.

From Easter Ellister Wildfowl Reserve

Rona and Eigg were here today. First, they were shown round the wild fowl trust area by John, and they all enjoyed seeing the ducks and geese. Some of us weeded in the nursery, or moved trees to be

replanted (heavy work). The muddiest job of all, though, was ditching and making drains!

John and Paul, who directed the work, came to us from the Nature Conservancy Corps. In the evening they showed slides — not just of Easter Ellister — so that we all had the opportunity to learn more about conservation projects.

From the gardener's cottage at Ellibus

As sleeping areas go, this must have been one of the best; the cooking area was good, while the toilets were very 'interesting'. The cottage has a fine, warm, homely fire, and we have our very own mouse — but we have not

seen it yet!

From Torrobus

We went by minibus to accommodation at Torrobus, which was a byre. We dropped our packs and continued on foot to Bonahaven, then we walked along the coast to the lighthouse at Rhuval. We were shown around, and climbed the 160 stairs to the top, where we were photographed with the keepers who were in their full uniform. Back along the coast, exploring some caves en route, lunch, and then arriving back at Torrobus about six. Slept reasonably well that night in the byre, with only slight disturbance from the sounds and smells of the cows next door!



Margaret Paterson



Above, waking up after a night's sleep in Craighouse village hall. Left, Islay Museum — two Rangers in the old kitchen. Right, examining an old Christian tombstone at Islay Museum.



Margaret Paterson

Why haven't we printed YOUR DESIGN on our T-SHIRTS & SWEATSHIRTS?

**DIRECT PRINTING
NOT TRANSFERS**

- ★ Minimum Order merely 20 Garments.
- ★ All garments are Fully Washable and available in all sizes and colours.
- ★ Fast & Efficient service.
- ★ Full Artwork facilities provided.
- ★ Up to 8 colour printing.
- ★ Our colourfast inks include... Fluorescents, Gold & Silver metallics, Embossed & Luminous.
- ★ Promotional inquiries welcome... Our latest Precision Multi-Printers can produce 30,000 garments per day.
- ★ Worldwide Exporters & a major supplier to the Armed Forces.



IDEAL FOR...
Pubs, Clubs, Teams,
Companies, Schools,
Groups, Societies,
Fund Raising....
YOU NAME IT!!

Dee Gee guarantee to Create and Reproduce your Own Design on to Superior Quality T-Shirts & Sweatshirts with the same Care & Dedication whether you Order a large or small quantity.

deegee

*Reflection of
Perfection at Prices
Everyone can Afford!*

DEE GEE T-SHIRTS LTD, FREEPOST, 27 YARMOUTH ROAD, NORWICH NR7 0BR
TEL: NORWICH (0603) 37734 (5 Lines) TELEX: 97467 DEE GEE G

GDR

**FREEPOST
NO STAMP NEEDED**

POST, WRITE OR PHONE TODAY FOR A FREE
DEE GEE COLOUR BROCHURE & PRICE LIST.

Name (Mr/Mrs/Miss) _____

Address _____

Tel. No. _____

(CAPITAL LETTERS PLEASE)

MONEY BACK GUARANTEE

Letters.....

Camping Down under!

I was looking through some old Guiding magazines when I saw a poem all about the 'Lone Koonge' camp last January, here in Sydney.

This reminded me of my day at the Camp with my friend Heather Bedell, who is lone Adviser for Queensland, Australia. Heather took me around her camp sites and I met many Guiders from various countries, and shared ideas with them.

Heather laughed when she told me that many were wondering why we stressed the importance of taking gum boots to camp in summer. The answer is very easy (especially at Glen-garry, which has a very high rainfall). I took a group to camp there in May this year — and we were washed out — water was running down the hills like creeks and rivers!

A week later, I went to our Lodge in the Snowy mountains, and my pen friend, Joyce Godliman (an English Guider) and Monica Catling (an English Ranger Guider, who was at the Lone Koonge) were with us, and taught us many things about the UK. Monica taught us country dances.

My Guides still remember the week we had and they asked me if I would write to them to thank them. At this moment I have lost Monica's address, and would like to thank her through *GUIDER* magazine for what she taught the girls, and for all her help.

(Miss) Pauline Lloyd

(Leader),

2nd Avalon Beach Coy,
Sydney, Australia

Methodist camp

From 25th-28th May, the first ever National Methodist Scout and Guide Camp was held. Three hundred Scouters, Guiders, Scouts and Guides from Penarth, Qadby, Dartford and Northampton met at Close Camp Site, Berkswell, near Coventry, and, worked, played, learned and worshipped together, bound by a common promise. Despite the rain and mud, spirits were not dampened and the memory of

the success of the camp will live on.

We held competitions and many activities in which everyone had an opportunity to take part. There was a Cookery Competition and a Ballista Competition. The best sedan chair was made by a Guide Patrol, the nicest table decoration by a Scout, and some wonderful Log Books were produced.

Rev C Hughes Smith, the Chairman of the Birmingham Methodist District, conducted our Sunday morning service and two tireless Scouters led our Camp Fires. We sang endlessly and Guides as well as Scouts enjoyed songs and yells.

Surely we need more activities such as these. The Scout and Guide spirit was at its best here and the Leaders gave of their utmost.

Miss R Harris,
Northampton

Congratulations!

I recently returned from a holiday in the Interlaken district of Switzerland, after spending a very happy week there with my husband. While we were there, we saw quite a number of Guide groups. Having myself accompanied a similar party a few years ago, I know what a lot of hard work and careful preparation is needed beforehand. All the groups we saw were well equipped, very smart, and beautifully behaved. I spoke to one young Guide in the wood carver's shop in Brienz, and she told me she was from Surrey. I would like to offer my congratulations to those Guiders who were in the Interlaken area during the week of the 26th May-2nd June, for whether in the shops, streets or on top of the Schilthorn, your Guides were a credit to you and to our Movement. It certainly made this Division Commissioner very proud!

Audrey Gibson-Poole,
Division Commissioner,
Sussex West

Wrong Ring!

GUIDER readers might be amused at the following incident which took place at a recent Pow-Wow here in Salisbury, Zimbabwe-Rhodesia. It shows, I think, that our Brownies have their priorities right.

A postcard arrived from our dearly loved 'Tawny', who was on holiday in the UK. It was passed around, without comment, until everybody had seen it.

'Where was Tawny when she wrote the card?' 'In London.' 'How do you know?' 'Because of the red buses.' 'Who has been to London?' 'Nobody had, but some of their mums had.' 'What else tells you it's London?' 'We can see Big Ben.'

What is Big Ben, what does it do?

'It plays Brownie Bells.'

(Mrs) Joanna Harwin,
Brownie Guider,
Salisbury,
Zimbabwe-Rhodesia

Can Your Unit Help?

Has any generous Guide Company any spare Guide uniforms the members could give to a Guide Company for handicapped Guiders in Worcestershire?

The girls in this school Company come from badly off homes in Birmingham and some of the girls are maladjusted and 'exceptionally difficult misfits'.

The headmistress is very anxious to have a well run Guide Company, but funds for uniforms are nil. Any offers of help would be gratefully received and should be sent as soon as possible to the Headmistress Miss Clarke, Cropwood School, Spirehouse Lane, Blackwell, Bromsgrove.

Spare copies of the Guide Handbook would also be appreciated.

Thora Wallis Myers
Secretary of the Communities' Guild within the Treadwell Guild

(to whom this appeal was made by a member of the Communities' Guild who had visited the school recently with Dr Elizabeth Treadwell, Adviser for the Handicapped, Worcester-shire).

Many Thanks!

May I, through your magazine, express my thanks to some unknown Guide Leaders travelling between Preston and London on Thursday, 24th May by train. When, at Warrington station,

a misunderstanding arose over reserved seats, I found myself in the difficult situation of having to see my mother on to a crowded train where she might be obliged to vacate her seat for passengers with a prior claim.

Since my mother suffers from angina and was becoming agitated, I asked a Guide Leader, seated nearby, if she would kindly 'keep an eye on her' for me.

This she did with great kindness and consideration, taking mum with her when the Guide group was transferred to another part of the train.

My own children are both Guides in Appleton District in Cheshire, and if the considerate behaviour of those Guiders is typical of Guides as a whole, I could not wish for my children to belong to a more worthwhile Movement. Thank you, ladies!

(Mrs) S E Nix,
Warrington, Cheshire

Kidney Appeal

I was pleased to read the letter from Mrs Elizabeth Ward of the British Kidney Patients' Association. My Guide Company (5th Worsley Coy, Greater Manchester West, has been raising funds for kidney patients for some time now.

Suzanne, one of our Guiders, had a kidney transplant in April, and is doing very well, apart from problems caused by high blood pressure.

From October, 1977 until July, 1978 we had in our fund approximately £18,000. Much of it had been raised through the Guide Movement, but friends and neighbours also helped considerably. We sponsored a hospital bed at Booth Hall Hospital, Manchester, this accounted for £3,100, and gave £2,000 to research. We now propose to have a water purifier installed at Booth Hall; water should be clean for the use of the machines, and government funds to the NHS do not always run to equipment of this kind. Until we are quite sure that Suzanne's transplant has been successful, we are paying her family's telephone rental, since ready access to the telephone is vital at this time.

Many thanks to all those who have helped. We will be sending our donation at Christmas to the GGFF, plus extra for the International Year of the Child Fund.

Elsie M Lindley
Guider, 5th Worsley Coy,
Greater Manchester West



Summer's too short to shorten

This is the life! And you're not going to miss a moment of it — no matter what time of the month it is. Because you've discovered Tampax tampons.

Designed to give you protection you can depend on, they're made with a soft, highly absorbent material. And uniquely shaped to conform to individual body contours.

So go ahead and do all the things you're able to do now that you have Tampax tampons. And the self-confidence that goes with them.

The internal protection more women trust



MADE ONLY BY TAMPAX LIMITED, HAVANT, HAMPSHIRE



Your Centres for the Best Buys!

Beginner or experienced camper — you'll always find the service, the choice and the value you want at your local Camping & Outdoor Centre. Over 70 years of specialist experience in equipping customers for the outdoor life! Top quality and keenest prices. Try beating us for value!

Romany Tent



£90.50

"Robust design and high standard of manufacture" — Camping, Dec '78

Two-man lightweight tent with transverse pole for stability. Flysheet and groundsheet in polyurethane proofed nylon. Inner tent in silicone proofed breathable nylon. Large bells of flysheet ideal for storing gear. Colour — green. Weight: 3 kg (6 1/2 lb).

Lynx 25Z Rucsac



£26.75

53 litre single compartment with two side and one hip pocket. Padded hip belt. Cotton back panel. Inverted 'V' Dorsal pad and internal steel frame. Made especially for Camping & Outdoor Centres by Karmor.

Tramp Boots



£29.95

Lighter weight boot with chrome leather uppers and padded tongue. Leather lined throughout. Soft leather ankle cuffs. Rubber block sole. Made in Italy to our rigorous specification. Ideal for moorland walking and most other terrains.

Prices apply to U.K. only.

Over 70 years camping experience — try beating us for quality and value

Main stockists of Scout and Guide Uniforms and Equipment.

Branches at:

London: 27 Buckingham Palace Road, SW1, Tel: 01-834 9007. 134 Regent Street, E.C.1, Tel: 01-826 7277. 104 Hinds Road, Harrow Tel: 01-427 3808. Preston: 23 Miller Arcade, Tel: 50247. Leeds: 62 The Headrow, Tel: 457273. Peterborough: 97 Bridge Street, Tel: 01509. Nottingham: 23-24 Tanners Walk, Broadmarsh Shopping Centre, Tel: 52606. Oxford: 17 Rut Street, Tel: 47110. Ipswich: 7-9 Tacket Street, Tel: 54764. Brighton: 24 St. James Street, Tel: 884281. Worthing: 20-22 Brighton Road, Tel: 32028. York: 10 Derwentgate, Tel: 53951. Wolverhampton: 40 Queen Street, Tel: 27012.

SEND FOR FREE BROCHURE FOR ALL YOUR CAMPING NEEDS.

To: Camping & Outdoor Centres (Dept G9) Churchill Industrial Estate, Lancing, Sussex.



A Daring Venture

How The Association went "into trade"

Question: What had sales of £1,200 in 1913 (which it multiplied by 1,479 to sales of £1,770,000 in 1978), is based at Altrincham, and recently presented a teni peg mallet to a member of the Royal Family?

Answer: The Girl Guides Trading Service.

Just before the first World War, when the Trading Service was started in a small room in a flat at 116 Victoria Street in London (at one point the room was divided by a hessian screen to separate the stock from the customers), the venture capital with which the project was launched was £100 advanced by the Founder, Lord Baden-Powell.

Among wartime vicissitudes was a fire in November 1916 when all the stock was destroyed. There were moves to 76 Victoria Street and again in 1917 to 84 Victoria Street, when the first shop, staffed by five people, was opened. Although in the opinion of the Founder this was 'a daring venture from the financial point of view' the war period was a time of rapid growth, because turnover in 1918 reached £20,700.

Throughout the 1920s, the Trading Service was based at the Scout Association Headquarters at 25 Buckingham Palace Road, and considerably assisted by the Wembley Exhibition and the World Camp in 1924, turnover seems to have grown steadily throughout the decade. The first of the Branch Shops was opened in Liverpool, and a tailoring shop opened in London. The next decade opened with the move to 17/19 Buckingham Palace Road, and the opening of the splendid modern shop which we still have. It is recorded that during her visit in 1931 to open the new premises HM Queen Mary inspected the stockroom, packing department and the shop, and it was at this point that the Trading Service took the shape which was to change little for nearly half a century. During this long period additional shops were opened (and one or two closed), in the mid-thirties there is a reference to a 'fall in trade', and the problems of the Second World War were surmounted, and it may be assumed that during this long time there were downs as well as ups.

Towards the end of the 1960s it was becoming increasingly obvious that there was just not the space in the Headquarters building to accommodate the steadily rising wholesaling and mail order turnover. Supplementary warehouse premises, firstly in Victoria and secondly in Fulham, were tried, but those solutions were not efficient. In addition, staff availability and costs were impeding progress. The first major milestone in the history of the Trading Service since its founding in 1913 was coming into view.

By late in 1974 it had become clear that if the Trading Service was to continue to play its big part in the Association's affairs, questions of modernisation would have to be faced. The decision was taken to look for new premises to accommodate under one roof all the warehousing, order processing and buying functions. The North West was chosen as being a centre for the textile trade with excellent communications, and because Government relocation grants were available. After a search, contracts were exchanged during the course of 1975 for the purchase of a new shell building in Lyon Road, Altrincham. This building had to be substantially modified internally to meet our requirements, and a completely new staff recruited. All this had to be synchronised with the running down of the activities in London. Fortunately, most of the HQ staff were either due to retire, or were happy to be re-absorbed in other HQ Departments.

With the new premises opening for business in January 1976 another 'daring venture' was launched. The new Management appointees had received training in London during the preceding months, and in the early part of 1976 many of the supervisors and managers from the London staff

spent extended periods in the new premises in Altrincham 'running in' the new systems. It was a period of pressure, many problems arose which had not been fully foreseen, and there was no doubt some falling off in the standard of service to the Movement. Fortunately, the great loyalty shown by Guiders and Depots up and down the Country in supporting us during these trying times was of great help in carrying us through them just as was the support of our shop managers. 1977 and 1978 were years of consolidation. Many of the people who joined the new staff at Altrincham at the end of 1975 are still with us, and we believe that the problems associated with the relocation are now surmounted.

Today, the Association owns a good quality commercial freehold in Altrincham, which represents a sound long-term investment of reserves and a reliable hedge against inflation. With a turnover which we expect will exceed £2m per annum shortly, and assets of some three quarters of a million pounds, the Trading Service is a substantial business in its own right. Down the years it has been cherished and fostered as a major element in the Association's affairs, and many outstandingly able people have left their mark upon it. The visit this summer by HRH The Princess Margaret not only seals the consolidation of the imaginative and courageous step taken in 1975, but also challenges us to use our new and up-to-date resources to take the Trading Service to levels of effectiveness and service to Guiding surpassing anything accomplished in the past.

Will you help us to do this?



Above, Despatch staff at CHQ in 1958.



Left, the CHQ shop as it was in 1957.

CHQ STAFF VACANCIES

— convenient to fast Victoria Line, major stores and St James's Park



— SHOP MANAGER/ESS —

— Urgently required for Palmers Green

Since moving to new and better premises in 1978 t/o has improved dramatically and should reach £70,000 this year. We are looking for an enthusiastic Manager/ess with both Commercial and Guiding/Scouting experience. Hours of work are 35 per week over 5 days.

TRAINING DEPARTMENT. Typist to work on Outdoor Activities, Courses and Conferences etc.

CHQ SHOP. Stock Clerk (part time) to assist generally. Hours by arrangement.

GENERAL Vacancies in all Departments occur from time to time. You are welcome to enquire for current list — there may be one that is just what you have been looking for.

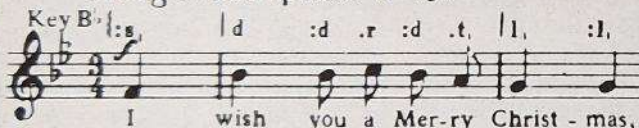
IN ADDITION to good salaries (with annual salary review) we offer: London Weighting Allowance; House Luncheon Vouchers; Staff Restaurant; Contributory Pension Scheme and 20-25 days annual leave (plus extra under certain circumstances).

WRITE OR TELEPHONE Mrs Earnshaw, Personnel Manager, The Girl Guides Association, 17/19 Buckingham Palace Road, London SW1W 0PT. Tel: 01-834 6242, Ext 46, **DO IT NOW!**

THE MALCOLM SARGENT CANCER FUND FOR CHILDREN

was launched in March, 1968, as a lasting and practical memorial to the much loved British musician whose name it bears

Allegro con spirito ♩ = 132



The Festive Season for most of us means family parties and presents. For children in the Fund's care it can mean much less.

Donations (which will be gratefully acknowledged) can help to bring a little Christmas joy, but there are other ways in which you can help:

CHRISTMAS CARDS — Eight different designs in packs of six cards and envelopes from 35p to 73p per pack.

CALENDAR — "Pictorial Britain" — 12 colour photographs £1.80 inc. postage.

"GREENSLEEVES" — Stereo LP, including "Greensleeves", "Clair de Lune", "Trumpet Voluntary", "The Swan", etc., etc., £2.60, plus 40p postage and packing. **SOLOISTS** include: — John Williams (guitar), John Wilbraham (trumpet), Jack Brymer (clarinet), Leon Goossens (oboe), Sidonie Goossens (harp).

Requests for the Christmas Card brochure, orders for the record, Calendars and/or donations should be addressed to:

THE MALCOLM SARGENT CANCER FUND FOR CHILDREN,
Department G G,
6 SYDNEY STREET, LONDON SW3 6PP.

Telephone: 01-352 6884

THANK YOU

First Part of Promise

I promise that I will do my best to do my duty to God. This part of the Promise is very difficult for some Brownies because God is such an intangible being. At this age children can understand that which they can see and hear, but God, whom they cannot see, touch or hear, poses a problem. Brownies tend to think of God as someone 'up there' who looks down and watches what we do.

If we are going to help Brownies towards a greater understanding of God, we as adults need to stop and ask ourselves 'What does God mean to me?' Do we really think about God at any time other than Sunday service and prayers at a Brownie meeting? Do we have doubts and are we prepared to bring out these doubts into the open? I think we need to question what we do and in what we believe, because it is only in so doing, that our own understanding of God and his place in our lives, becomes a reality.

What then of a girl of Brownie age? Does she have doubts or does she think about God at all? In some families God is never mentioned and He only comes into the life of a Brownie at school and at the Pack meeting.

I feel that what we are trying to get across is that God is always there in everything we do and is not there just at school and Brownie prayers.

A 'Thank-you God' Walk is a way to get Brownies talking. The idea behind the walk is to look for 'things' for which we especially thank God. Things man has not made, eg, the sun, the wind, the rain, the clouds, etc. Obviously such an exercise needs to be preceded by a talk in Pow-Wow. On returning from the walk, pictures can be drawn and each Six could make their own Thank-you God book. At the same time each Brownie could also draw whatever interested them more than anything else. This might well be the sweet shop, the ice cream van, a certain car, etc. By sitting and talking to the Brownies one could pose the question 'Did God have

anything to do with making these?' In all probability the answer will be 'No, a man or men made it'. The next question is 'How did men learn?', 'Who helped them?' 'Was it the teacher at school, but then who helped her?' I have found that eventually the Brownies realise that there is always someone helping even though that someone cannot be seen. That someone who gave us the ability to learn and that someone is God. He is part of everything we do.

You may say this is beyond the understanding of Brownies. However I think if you try the activity you will be surprised at the results. Choose your questions carefully and use words the Brownies understand.

Fortunately, in this day and age God is considered to be a loving God and yet, all around them children see a lack of love. Not many children understand 'Duty' but they do understand 'Help' and that God needs help in loving everyone. The Brownie age is the age for collecting. Perhaps the Brownies could collect pictures of as many different people as possible. With suggestions and encouragement from you the collection could be very varied in respect of race, colour, sex, age. A caption could then be written to go with each

picture, eg, we love you because you look lonely; we love you because you are little; etc. They will come to understand that by trying to love everyone they are helping God.

Love and friendship go hand in hand and perhaps by helping Brownies to look upon God as a friend this will encourage them to go to their own church. They visit school friends in their house so why not visit God in His house? God likes to hear all their news just as their school friends do. Priests, vicars, and ministers are understanding people and if approached in the right way and in good time they will be more than willing to meet you and the Brownies. The Brownies could write out their most interesting piece of news that they want to share with God and take it and leave it in church. Do remember, that if you feel this activity will help some of your Brownies, you must first have the permission of their parents.

We all, as members of the Guide Movement, make the same promise but according to age and maturity have different levels of understanding. Our responsibility as Guiders is summed up in 'A Handbook for Guiders — Brownie Guide Section' page 36:

'As with practically everything else in the Pack, it is you yourself who will influence the Brownie most, both in the understanding and the carrying out of the Promise. Small children are very perceptive and can soon tell whether a belief is part of an adult's life or merely something to which she gives lip service. This is a frightening thought, but any Guider, whatever her limitations, who is making an honest attempt to keep the Promise herself, and who prays for the Brownies in her care, will definitely be helping them.'

Netta Willsheer



BROWNIE training

Duty to God

I promise that I will do my best to do my Duty to God — this is the first part of the Guide Promise which is the foundation of the Guide Movement. The interpretation of Duty to God varies from Guide to Guide according to the beliefs of herself and her family. The problem that often arises for Guiders is not necessarily that of personal belief but how to help Guides keep the first part of their Promise.

One of the ways we can do this is by making Church Parades, Guides' Own service and prayers at Company meetings regular and acceptable parts of our Programme. Prayers at Guide meetings are best understood if they are basic and simple and many Guides enjoy writing their own prayers. Patrol prayer books can be built up containing items written or collected by the girls; suitable poems and excerpts from other books (are they available actually at Company meetings?). A similar principle applies to prayers used in camp.

Wherever it is held, a Guides' Own is an opportunity for Guides and Guiders to join together in the praise of God, but should not be a substitute for attending church or other places of worship. A Guides' Own is usually held in camp but can, and should, be used on suitable occasions at meetings and other events. The ingredients can vary according to likes and dislikes of the participants. It is usual to include



some of the following hymns, songs, prayers, poems, a Bible or other story, often arranged around a theme to which the Guides can relate. It could be an aspect of Nature, Saints or maybe a popular song. It is helpful if hymns or songs are learned beforehand during the planning and preparation; otherwise there could be confusion over words or tune. The Guides may write their own story, or enact a scene relating to the theme. It should, when possible, be a real Guides' Own and not a service in camp taken by a Minister — this is something different. Twenty to 30 minutes is long enough and should be held when everyone concerned can concentrate and not be worrying about burnt stew or dried-out puddings. It is helpful, too, if the setting is quiet and peaceful.

For some Guides attendance at church is a regular part of life, for others Church Parade may be the only time they go to a place of worship. In helping Guides to keep the first part of the Promise we should encourage attendance at a place of worship of their religion. Members of some churches may not take part in any form of worship with members of a different faith. It is therefore important to understand the commitments of individual Guides and help them to fulfil their duty in their own way.

A Guide within a Company who is of a different religion to the majority must never be made to feel awkward in any way. If there is a lack of understanding between Guide and Guider or between Guides themselves about the differ-

ing commitments from church to church, there could be some embarrassing situations. For instance, one Guide may have to leave camp to attend a place of worship; another may not be allowed to eat certain dishes, or to eat at all on certain days; another may be obliged to wash her hands before eating even a mid-morning biscuit; small details but important to her.

Activities related to the Promise for the individual, Patrol or more than one Patrol, can often be useful and can be fitted into the girls' own Programme if planned beforehand and/or offered as help to a Patrol Leader with less experience dealing with a recruit or maybe to extend the understanding of someone further on in her four-year, eight-point programme. These activities can take various forms, the following have been found useful ways of drawing attention to Duty to God — a Patrol discussion on what 'duty' actually means (a handy dictionary is useful).

Discussing ways of doing their Duty to God in various places and on different occasions gives food for thought — eg

- (a) In school on a Wednesday morning
- (b) Taking the dog for a walk
- (c) Shopping for Mother/Grandmother/Neighbour
- (d) Taking part in school sports, etc.

We must always take the opportunity to draw attention to the wonders of nature or the kindness of one person towards another as being part of the way we can keep the first part of our Promise.

We, ourselves, must stop at intervals and consider our own beliefs and understanding. Do we read, talk and listen in order to stretch ourselves? The Guide Association has many booklets and books to help us, and we must pray that we may grow in our understanding of Duty to God in order to enable us to help the girls in our care to do their best to do theirs.

J Knott



GUIDE training

Doing Our Best

I promise that I will do my best to do my Duty to God. . . . This makes a Promise Ceremony a very individual thing as each person's BEST is quite different and only the Ranger herself will know if she is fulfilling her Promise. Fortunately a Ranger may wear her uniform before she is Invested so no pressure is put on her to 'hurry up' so she can identify with the others.

Our Unit has members of several denominations although only half of them are regular churchgoers, so in small groups with a Guider they have attended evening service at various churches. This provided a good basis for discussion. What is the difference between a Minister — a Vicar — a Priest? Why do some churches read their prayers while in others, prayers are spontaneous? Which do the Rangers prefer? Would they choose to marry in church? Is baptism of babies essential? Would they send their children to Sunday School? This brought forth many other topics, from inter-racial marriages to whether religion should be taught in school or at home — I intervened at this point to define Religious Education and Faith in God, finding Chapter Six of the Ranger Guider's Handbook most useful.

Recently we were reminding ourselves of the Country Code prior to an expedition which brought to mind an incident of several years ago. A parent, claiming to be an

atheist, questioned the saying of Grace in a nursery but when asked how she explained to her children the 'wonder' of flowers growing from seed and baby birds hatching, she had no reply. One group of Rangers used 'Exploring Essex Churches' as the purpose for their Duke of Edinburgh expedition, similarities were noted and reference made to part of a quotation seen in a churchyard. '... you are nearer God's heart in a garden, than anywhere else on earth.' How true this is at camp or on holiday, when many a confidence is shared and singing Taps is a must. We have astonished many a youth hostel and passing canal boat with our rendering at bedtime.

When taking part in church services we prefer to hunt for suitable readings among the works of Eleanor Steiner Rice, Patience Strong, Michael Quoist etc and if we are unable to find anything suitable we compose our own verses. An ideal challenge for Training yourself to Think; Chapter 15, Ranger Handbook. Service to others can be a real labour of love, especially if helping the elderly or the handicapped. Rangers don't always realise that while serving the community they are serving God. Do cheerfulness, unselfishness and reliability count also? The principles of our Movement are illustrated clearly in the scriptures. Joseph's loyalty to his brothers, the courage

of Daniel, the friendship of David and Jonathan, and there are many more examples.

Careers play a large part in our programme with the first taste of adult life being the Saturday Job, and you will be asked for a reference. Give the Rangers a reference sheet for the Guiders, carry out mock interviews — the results may surprise you. . . . Loyalty, Honesty, Appearance, Punctuality, Politeness, familiar words to us because they relate to our Law but also comments an employer understands. I wonder what the response would be if I write 'Doing her best to fulfil her Duty to God' on the next reference I am asked for.

It is difficult for a Guider to maintain her own standards and set the example she feels she should, but remember we have also promised to do our BEST, we are not paragons of virtue. This is why our Rangers can talk to us and help us to understand them. Will they be able to maintain their ideals in an adult world and resist the temptation to join the crowd? A chance remark about the abuse of drugs — sex — alcohol — can spark off a discussion followed by a visit from the appropriate authority.

Prayer is a very personal thing which Rangers may not discuss freely but reasons for prayer differ. Help; forgiveness; thanks. Can your Unit find some more? We have a prayer which I found in an old Guide Annual, bought at a Jumble Sale, which we think is applicable to us. . . .

Sometimes in the hush of evening, when the sun has gone to rest, We gather round and bow our heads and wonder, Have we done our BEST, Have we helped each other find, joy, contentment, peace of mind?"

Joyce Provan



JOYCE PROVAN

RANGER training

Commissioner First Part of Promise

The nature of God is a circle whose centre is everywhere and whose circumference is nowhere.

A regular feature in the *GUIDER* magazine is the Airing and Sharing page, where we read of other Guiders' feelings, thoughts, suggestions and criticisms on various points — getting to know one another on a fairly impersonal level. At District Level this becomes a much more personal CARING and SHARING, where we come to know each other's strengths and weaknesses, Gifts and Talents and Personalities.

The District Commissioner's role, as I see it, is like that of a 'Mum' of a large family. It is her job to help the various members understand and appreciate each other's qualities, to encourage self-confidence in the more timid, and occasionally perhaps to calm the exuberance of the more extrovert.

In the District family, as in any other, there are the differences of Age and Experience, ideas on how 'IT' should be done — the newer members feeling that everyone else knows ALL about EVERYTHING, and that she never will.

Our District, as in others, has

those who love camping, are good at tying knots — and others who can't tell one knot from another, those who are ARTISTIC, MUSICAL, ORGANISERS, GOOD COOKS — all with the common desire to care for the girls who come regularly (or not so regularly) to their Units. ALL, to my mind equally important in GUIDING them, through the use of work and play, through Challenges, Games, Badges, to learn to live and work together. In fact training them for a 'WAY OF LIFE', which we feel to be a good one, to become in due course, useful and responsible citizens.

Our Eight Point Programme (so often called 'NEW') reminds me of the Parable of the Talents, where the recipients were commended for increasing the value of their gold, and not for keeping it safely hidden. So, I believe, should we use our gifts and encourage those in our care to find and use theirs, and in this small way we will be doing, as the first part of our Promise bids us, Our duty to God.

Training helps all of us to make the most of our abilities, whether it be through the officially organised weekends, days or evenings, or just learning from one another 'around the District' or during 'coffee and cake time' after Official Business at the District Meeting. Recently, a suggestion made during this informal 'Training' time, was to have a District Brownie Handcraft Competition — this gradually evolved into each Pack planning, designing and making Dolls' Houses from 'Junk' materials. These houses, complete with 'families' and furniture (including plumbing!) were judged by our Local Association at their regular meeting and are to go to a Local Children's Home for badly Handicapped children. From this one suggestion, many individuals had much fun in working together, were very thrilled as they saw their little bit take its place in the whole creation, the LA were delighted to be included and many less able children will be able to have the pleasure of playing with them. Not a world-shattering event, but one enabling many individuals to see and know that their contribution was important to the whole project.

To sum up my thoughts, may I quote a verse, written by a local Guider:

A pebble dropped within a pond
Sends ripples to the farthest shore
It seems that we shall never know
How God will use the priceless store

Of faith and love He's granted us
For we have seen the ripples start
To spread across the pond of life
And waken joy in other hearts

So help us, Lord, through all our days
To share Thy gifts of love and praise.



Illustrations: Jean de Lemos



DISTRICT training

Vi Brazier

20

- ②

F 1	L 2	D 3	C 4	F 5	N 6	B 7	R 8	Q 9	A 10	E 11	F 12	P 13	O 14	B 15	T 16	I 17	C 18	T 19	M 20
D 21	A 22	Q 23	N 24	E 25	J 26	I 27	K 28	Q 29	D 30	G 31	J 32	I 33	K 34	T 35	A 36	D 37	B 38	C 39	Q 40
F 41	H 42	P 43	A 44	M 45	O 46	S 47	R 48	G 49	T 50	P 51	M 52	A 53	I 54	K 55	J 56	Q 57	O 58	H 59	R 60
A 61	T 62	S 63	F 64	E 65	T 66	A 67	B 68	L 69	R 70	H 71	P 72	N 73	B 74	G 75	F 76	C 77	J 78	S 79	N 80
H 81	J 82	B 83	Q 84	L 85	G 86	J 87	S 88	F 89	O 90	H 91	D 92	L 93	D 94	I 95	T 96	T 97	O 98	H 99	P 100
N 101	L 102	A 103	K 104	L 105	J 106	B 107	K 108	T 109	G 110	B 111	E 112	F 113	P 114	I 115	Q 116	M 117	K 118	L 119	A 120
A 121	T 122	M 123	D 124	J 125	G 126	S 127	F 128	C 129	T 130	E 131	K 132	R 133	M 134	G 135	L 136	O 137	F 138	L 139	B 140
R 141	J 142	F 143	K 144	C 145	S 146	J 147	B 148	P 149	A 150	D 151	L 152	M 153	T 154	D 155	J 156	M 157	B 158	M 159	P 160
T 161	O 162	G 163	M 164	H 165	P 166	H 167	K 168	R 169	M 170	D 171	D 172	O 173	E 174	B 175	D 176	Q 177	P 178	G 179	

A	21	26	121	120	63	74	150	103	69	10	61	
B	8	148	79	74	107	68	38	140	18	43	111	158
C	39	129	*	77	18	145						
D	3	181	87	155	94	151	176	172	124	92	21	3
E	50	12	124	181	25	11						
F	76	12	5	158	113	145	89	41	128	64	1	
G	84	126	163	135	174	49	31	75	110			
H	99	81	145	71	42	91	47	59	159			
I	115	33	54	27	95	17						
J	145	147	82	28	141	146	24	82	82	142	56	156
K	34	104	28	118	182	144	145	55	105			
L	139	145	134	152	69	2	102	93	119	85		
M	153	52	20	170	134	117	45	144				
N	157	101	80	73	244	123	6					
O	173	70	46	157	98	14	58					
P	49	144	43	140	75	72	51	100	114	13		
Q	29	41	20	57	9	84	23	142	10	177		
R	149	133	48	60	70	8						
S	47	88	63	127	77	144						
T	16	14	109	62	154	85	93	50	66	122	150	94

The Small Miracle, by Paul Gallico

TRAINING

FOXLEASE Lyndhurst, Hants SO4 7DG Tel: (Lyndhurst) 042-128 2638		WADDOW Clitheroe, Lancs BB7 3LD Tel: (Clitheroe) 0200 23186		NETHERURD HOUSE Blyth Bridge, West Linton, Peeblesshire. Tel: 096 88 208		
Sept	7-9 14-16	Sussex West General Training — All Sections (places for Guiders with Handi- capped members in their Unit)	7-9 14-16	New to Guiding (District Commissioners, Brownie and Guide Guiders)	7-9 14-16	Trainers Brownie and Guide Guiders (in- cluding booking from Inverness- shire)
	21-23 28-30	Surrey West Making the Most of the District (District Commissioners with up to seven of their Guiders)	21-23 28-30	Warwickshire General Training — All Sections. (places for Guiders with Handi- capped members in their Units)	21-23 28-30	Brownie and Guide Guiders (including booking from Fife) Brownie and Guide Guiders
Oct	5-7 12-14 19-21 26-28	Dorset General Training Kent West Somerset	5-7 12-14 19-21 26-28	County Durham and South Tyne Derbyshire Greater Manchester North Newcastle (Please note: Newcastle County Weekend dates given in July GUIDER were incorrect.)	5-7 12-14 19-21 26-28	Brownie and Guide Guiders Districts Brownie and Guide Guiders (including booking from Banff and Buchan) Public Relations Advisers Residential Training
	2-4 9-11 16-18 23-25 30-2 Dec	London and South East England (by allocation) London South East General Training Hampshire East South West England (by allocation)	2-4 9-11 16-18 23-25	West Yorkshire West Lancashire East 1. Ranger Guiders 2. County Leadership Advisers General Training	2-4 9-11	Chairmen of County Training Committees Ranger Guiders
Dec	7-9 30-6+ Jan 1980	1. Music in the Guide Company 2. Camp Fire Leaders and Pros- pectives New Year House Party			For details of future programme, apply to the Guider-in-Charge.	
	11-13 18-20 25-27	General Training Planning Ahead Part I (Guiders of all Sections who have held a Warrant for at least 3 years) London and South East England (by allocation)	3-7+ 11-13 18-20 25-27	Queen's Jubilee Community Leadership Course (by invitation) General Training North West England (by allocation) Greater Manchester North		
Jan	1-3 8-10 15-17 29-2 March	Making the Most of the District (District Commissioners with up to seven of their Guiders) Oxfordshire Commissioner Teams (by alloca- tion) General Training (Brownie and Guide Guiders who have held a Warrant for at least five years)	1-3 8-10 15-17 29-2 March	General Training — the Pro- gramme through Camps and Pack Holidays 1. Music in the Brownie Pack 2. Music in the Pack Certificate General Training (Brownie and Guide Guiders who have held a Warrant for at least five years) Greater Manchester West		
	'GENERAL' TRAININGS AT ALL CENTRES ARE FOR BROWNIE AND GUIDE GUIDERS					
Fees at Foxlease and Waddow Shared room, per day £4.50 Double room, per day £5.00 Single room, per day £5.50 Deposit £2.00 cheque or postal order only. + Subject to VAT. These prices are for members of the Girl Guides and Scout Associations only. For a full week prices are subject to a 15% discount.		Change to fees at Foxlease and Waddow We regret that, owing to rising costs, the fees at Foxlease and Waddow will increase from 1st January, 1980 as follows: Shared room per day £5.50 Double room per day £6.00 Single room per day £6.50		Fees at Netherurd Shared room per day £4.00 Double room per day £4.25 Single room per day £4.50 Deposit £1.00 Training for non-residents per weekend £0.50p		

CALENDAR

BRONEIRON Llandinam, Mont, Powys SY17 5DE Tel: Caersws 204		LORNE Craigavad, Co Down, Ulster. Tel: Holywood 0231 3180	GLENBROOK Bamford, Nr. Sheffield, S30 2AL Tel: (Bamford) 043 34 567
21-23 Welsh Ranger Guiders Training Conference	15 Ranger Day	21-23 Hillwalking and Climbing (groups for Guiders and Rangers)	Glenbrook may also be booked for week-ends or mid-week periods by self-catering groups.
28-30 General Training (places reserved for Carmarthenshire and Pembrokeshire)	28-30 Ranger/Young Leaders		
5-7 General Training (places reserved for Gwent)	5-7 Ulster Commissioners Conference	19-21 Hillwalking and Caving, Pony-trekking optional (groups for Guiders and Rangers)	
12-14 General Training (places reserved for West Glamorgan)	12-14 Fermanagh		
19-21 Welsh Outdoor Activities Conference	19-21 International		
26-28 General Training (places reserved for Central Glamorgan)	26-28 North Belfast		
2-4 International Training (by invitation)	2-4 South Belfast	9-11 Leadership in the Hills — Stage III (groups for Guiders only)	
9-11 Training for Commissioners, Brownie and Guide Guiders — 'Basics'	9-11 New to the Job		
16-18 Camp and Pack Holiday Training	16-18 International		
23-25 International Training (by invitation)	23-25 Tyrone		
30-2 General Training — for experienced Brownie and Guide Guiders who have held a Warrant for at least two years	30-2 North Antrim		
	Dec		
	7-9 Ulster Trainers	No CHQ courses at Glenbrook during December.	
	15 East Belfast — Day		
Fees at Broneiron	Fees at Lorne	18-20 Trainers and Instructors	
Shared room, per day £3.00	Per day (Ulster Guiders only) £3.50		
Double room, per day £3.25	Per day (others) £5.00		
Single room, per day £3.50			
Deposit £1.00			
Change to fees at Broneiron	Change to fees at Glenbrook	15-17 International Weekend — a Programme linked to Thinking Day (for Guiders and Rangers)	
Owing to rising costs, it is regretted that Broneiron will have to increase its fees from 1st January by £1. The new fees will be as follows:	Owing to recent rises in costs, the fees at Glenbrook will be increased from 1st January, 1980 as follows:	Fees at Glenbrook	
Single room per day £4.50	Shared room (for weekend course) £10.00.	Shared room per day £4.32	
Double room per day £4.25	(All activities, equipment and VAT are included. Optional activities extra)	(Activities, equipment and VAT inclusive, optional activities extra)	
Shared room per day £4.00		Deposit £2.00 cheque or postal order only.	
Deposit: £2.00			

How to apply to a Training Centre

Any Guider may herself apply to attend a training course at the Centres, provided she has reached the age of 18 years. (At the discretion of the Commissioner a member aged 17½ who is working on the Adult Leader's Certificate may also apply for a Guider course.)

An application to attend a Guider Training Centre should be sent direct to the appropriate Guider-in-Charge, and must be accompanied by the correct amount of deposit and a sae. Applicants should also state the type of training for which they are attending, as there may be several different courses running at any one weekend. As many Guiders have to leave on Sunday, training sessions at a two-day weekend will stop at tea-time on that day unless otherwise stated. If sufficient notice is given that it is wanted, every effort will be made to provide sessions for a group until Monday. Individuals able to stay over until Monday to enjoy the surrounding country and other amenities of the Centre are welcome to do so.

BURSARY HELP AVAILABLE

For full details of how to apply, and who is eligible for Bursaries, District Commissioners should write to the Training Secretary, CHQ (Scottish Commissioners should apply to Scottish Headquarters). Applications must reach CHQ at least two weeks before the date of the Training. Bursaries cannot be issued in retrospect.

The Fee Bursary entitles the Guider to £3.00 for a two-day weekend and £1 for each additional day. This is deducted from the fees at the Training Centre.

The Fare Bursary (available only for travel to the nearest Training Centre) carries a rebate of a Guider's travel expenses in excess of £3.00. This is paid at the Training Centre.

The Angela Thompson Bursary is available to any Guider attending a Promise and Law or similar Training (not necessarily at a Training Centre).

Begin planning now for a summer camp in

SWITZERLAND or LUXEMBOURG in 1980



ONCE AGAIN WE ARE OFFERING AN EXPANDED PROGRAMME OF TOURS TO SWITZERLAND AND LUXEMBOURG FOR THE 1980 SEASON.



Hundreds of Guide parties have now taken part in our tours during the last seven years and, while many now return regularly, most had not, previously taken a party abroad and were surprised at how simple it could be. We give you your very own holiday chalet with all amenities for self-catering, either amidst the superb Alpine scenery of the Bernese Oberland or else surrounded by the more gentle beauty of the rolling hills and woodland of the Grand Duchy of Luxembourg. Parties of most sizes from 15 to 50 persons can be accommodated.

Each tour provides nine nights in the chosen centre and during your stay you have the services of our own young representatives always at your disposal. Without intruding they will be able to help and advise you to make the most of your stay according to your budget and interests.

You make your own way to London, although we can help with this too if you wish, and from there we take you in one of our super-luxury touring coaches quickly and comfortably to your destination, with no overnight coach travel, in the hands of our mature and very competent drivers.

Prices for 1980 will range from about £47.00 in Luxembourg and £68.00 in Switzerland, according to age. Surely tremendous value for money! Full details are now available and firm bookings can be made. Send the coupon now for full details and see how easy it could be to give your Company a truly happy and memorable summer camp in Europe.



camptours Summer Camps in Europe

To: Camptours, Devon House, High Street, Cranleigh, Surrey, GU6 8AG. Tel: (04866) 3027.
Please send me details of your 1980 programme of tours to Switzerland and Luxembourg.

Name

Address

GU9

karrimor

Tailor your own pack frame and sac

...karrimor's range allows this because...
10 packsacs and 3 adjustable frames
give 30 combinations.

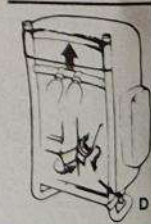
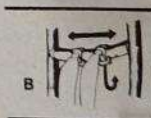
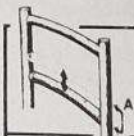
The range is from Annapurna 1 with 45 litres to Annapurna 4 with 90 litres capacity. You can choose pocket style, 1 or 2 compartments, with or without accessories, large or small.

A pack frame may be used without a pack sac to carry large or abnormally shaped loads which will not fit into a sac.



(Illustrated left)
Annapurna 1 - showing the spare frame space.

(Illustrated right)
Annapurna 4 - a large sac on a small frame.



Diagrams:

A & B: You can alter the length of the frame and the width of the harness attachment to ensure maximum comfort.

C: With a 'U' tube, no frame is necessary.

D: Fitting a frame to a pack-sac.

Versatility

FOR EACH MEMBER OF THE FAMILY

It all means a personal fit....



...whatever the use you want to put it to !!

Write for Technical Guide to: Mr.G.Craig, Karrimor International Ltd., Avenue Parade, Accrington, Lancashire, England.

Camps and Holidays

Foxlease Annexe

Available for holidays in summer holiday period. Apply to the Secretary, enclosing sae.

Beaverbrook Lodge

Applications should be sent to the Secretary, Foxlease, giving alternative dates and enclosing an initial deposit of £1.00 (which is non-returnable) and a foolscap SAE. Priority will be given to applicants who have not already stayed in Beaverbrook Lodge. Applications for the period 1st April-30th September, 1980 are now being accepted.

Waddow Cottage and Caravan

Both available for bookings throughout the year. Apply to the Secretary enclosing foolscap sae.

Waddow Pack Holiday House

Enquiries about the Pack Holiday House should be sent to the Secretary, enclosing foolscap sae. Applications for Pack Holidays must be accompanied by a written recommendation from the Guider's PHA or CA.

Glenbrook

Accommodation available in the house for 30, or in the flat upstairs for 10. Groups must be self catering, and must guarantee 20 in the house or six in the flat. A number of activities are available, including canoeing, hillwalking, rock climbing, etc. For details contact the Guider-in-Charge, enclosing a sae.

Blacklands Farm, East Grinstead, Sussex

Equipped and unequipped sites available. Also "Restrop", a furnished bungalow for 25, and "Barkly Cottage", accommodation for 16 in single and bunk beds. For details write to the Warden, enclosing sae.

Brownsea Island

Eight sites are available for Guide and Scout Camps from Easter to 1st October, and South Shore Lodge sleeping 18, plus Leaders. For full details apply to Mrs B Duffield, 16 Talbot Drive, Poole, Dorset, BH12 5ED (enclosing foolscap sae).

Netherurd Camp Sites, Brownie House and Caravan

Applications for camp-sites and the Brownie House will be taken now. During Scottish school holidays priority will be given to Scottish Packs. A 3-berth caravan is also available. Apply to the Secretary, enclosing a sae.

Lorne

Lorne will be open as a holiday centre during July and August. Apply to the Secretary.

Irene McKibbin Memorial College, Lorne

Available for Ranger holidays. Apply to Miss Hilda Hirst, 119 Haypark Avenue, Belfast, 9, enclosing sae.

Broneirion

Holiday flats available all year round for self-catering parties. Apply to the Guider-in-Charge.

Ynysgarn, Criccieth,

North Wales

Applications can be made to Mrs Griffith, Swn-Y-Gwynt, Penrhynedeu-draeth, Gwynedd, enclosing foolscap sae.

book reviews

Freewoman, by Claire Evans, Becket publications, £1.95.

Claire Evans in *Freewoman* brings a clear perception to the fact of being a woman. No militant, forceful, domineering or male-dominating female here. Only the essentials of inner strength, resilience, loving, giving and sharing. She sees woman as a moving force with enormous potential for good or evil in her own dimensions.

How refreshing it is not to have woman's lib thrust before one. As she has aptly said "for each a path to follow which is her own. We are not isolated individuals. We are the possessors of immense power which we choose to use day after day for good or evil. There lies our freedom."

LW

Six Men, by Alistair Cooke, Penguin, 95p.

Letter from America, by Alistair Cooke, is one of the most hallowed institutions of the B.B.C., and his TV series on America in 1972 brought his incisive personality millions of admirers. There must be many who look forward to his weekly reports on the radio for his superbly constructed prose as much as for the subject matter. Delivered in a truly transatlantic accent, which sounds

American to us but British from the other side, his talks are a formidable example of the journalist's craft.

This collection of six profiles of famous men encountered by Alistair Cooke in his long career contains all the qualities one most admires in this brilliant journalist. From Charlie Chaplin to Bertrand Russell, they have all made an indelible mark on the Twentieth century. A fascinating sextet.

JVR

Give Happiness a Chance, by Phil Bosmans, Exley, £2.65.

This is not an easy book to review; in fact it is impossible to convey its feeling in a few lines. It is a compilation of thoughts, reflections, poems and photographs, adding up to a quite unique outlook on life. The author is a priest living in Antwerp, where is the leader of the Bond Zonder Naam (organisation without a name). Comparable perhaps with the Samaritans, this organisation has the simple aim of giving hope to those who have lost heart. This book is for those people, and for the rest of us who perhaps do not think far enough beyond our own situation.

Here are two quotations from *Give Happiness a*

Chance, taken at random. On loneliness: 'Step down from the heights of your self-sufficiency to the valley of the people who are alone and who suffer; never be hard. Never judge them.' On the affluent society: 'When I am thoroughly satiated, my eyes are glued shut and my heart stands still. On the highest step of consumption, of luxury and of wealth, I die as a human being.'

JVR

What is Guiding? Girl Guides Association, 25p.

It is obvious from the title that this booklet is sure to be in great demand in its latest edition. New Guides will find it sets out clearly the full picture of Guiding in all its meanings, and friends who are hovering on the brink of joining will no doubt realise that Guiding offers a new outlet on life with all its varied activities and interests.

OMC

Hints on Guide Badges, Girl Guides Association, 50p; Laundress by Doreen Skiven; Needlewoman by Christine Brown.

This is an invaluable booklet for any Guide who is keen to tackle either or both of these

Badges. The clauses are set out at the beginning of each Badge followed by detailed information to help explain their meaning. Once a Guide has obtained these two badges, she is well equipped to care for and make many of her own articles of clothing as well as household articles. Useful experience can be gained by helping at home and then later on putting it into practice in a home of her own.

OMC

Walks for Motorists, Chilterns South Area, Chilterns Northern Area, South Downs, Snowdonia Northern Area, Warne Books, £1.25 each.

There are 30 walks described in each of these handy little booklets which have primarily been designed for the motorist. Cars may be parked at the start and finish of each walk. It is encouraging to note that the walks are non-strenuous and are intended for those who wish to enjoy the peace and beauty of the countryside. Sketch maps are provided with each and the comprehensive text gives fascinating insight to the history and customs of individual areas.

AMM

The Trefoil Tourney

ON THURSDAY, the 19th of July, the Royal Tournament audience at Earl's Court, which included HRH The Princess Margaret, were treated to a medieval tournament spectacular. The lighthearted approach to the entertainment was indicative of the wish to portray Guiding as fun and creative with an element of glamour, as well as involvement with all that is practical.

The Oxford Dictionary definition of a tournament is 'a meeting at an appointed time for knightly sports and exercises'. The performers certainly did a great deal of the latter as they walked, ran and danced around the vast arena which required approximately 250 Guides, from all areas of England and Wales to fill. Each area had a Producer and a Wardrobe Mistress to help the Designer of the show, David Dean and Brian Cook, Producer. A list of characters required from each region included children with a maypole, four acrobats (ie, children able to do cartwheels and handstands, etc), stilt walkers, jugglers, wrestlers, a dancing bear, Nuns, hawkers, a Lord Mayor, A Royal entourage (supplied by Wales) and lastly, but most important of all to the whole pageant, attendants with their horses and the two knights themselves in their shining armour!

On the afternoon, the eight-minute performance was colour-
ful, spectacular and very entertaining. Unfortunately, it is not
possible to reproduce colour photographs in this magazine, so
the costumes provided deserved to be shown in their true
splendour. The large props were created by a team from SW
England and seemed truly authentic and included a canopy for
the Royal entourage, banners, herald trumpets, hobby horses
and tents. The busy scenes in the huge arena which took place
before a large audience, were a thrill to watch, and the only
regret of those present was that eight minutes was not really
long enough to admire and do justice to the tremendous
amount of work each individual put into the performance. The
actual joust itself, between the black and the white knight, was
a masterpiece of comedy provided by the Guides in the horses'
costumes who reared, strutted and charged in such a realistic
manner, that had there been a fence nearby one felt convinced
they would be able to jump it!

Everyone involved in this project must be congratulated and thanked on such a superb effort, including *Messrs Webb Ivory Ltd* for their generous donation towards the cost of the performance.

ABC

ABC



1

The Black Knight and her attendants hold the horse back (above) and, below, some pensive maidens pause around the Maypole.



Learn About

A busy scene at the morning dress rehearsal



Journal of Management Education 32(1)

A
Knight
(well, afternoon)
to remember

Above, right, some golden-costumed heralds trumpet the arrival of the Girl Guide royal entourage and (right), the White Knight appears before the regal group under the canopy. These two pictures were taken outside the Earl's Court and the medieval costumes certainly caused a stir amongst the on-lookers.



PROGRAMME NOTES

OCTOBER 1979 — MARCH 1980

Foxlease — Waddow — Glenbrook

AT FOXLEASE AND WADDOW

General Training

These weekends, unless marked especially, are always for Brownie and Guide Guiders, new and experienced. Your application form asks you to list those things on which you would most like help, and as the programme for the weekend is built upon these requests please make use of this opportunity and — most important — return the form quickly so that there is plenty of time for planning the programme to suit everyone.

There will always be help with running your Unit, carrying out the Programme for the Section with which you are working, skills and activities, the Promise in the Programme, as well as other aspects such as decision-making in Packs and Companies and the place and role of Young Leaders.

Some special weekends for Section training have also been arranged at both Centres.

Planning Ahead (Part I) for all Sections

Foxlease 18th-20th January
Waddow 28th-30th March

These are special 'double' opportunities for Guiders of all Sections **who have held a warrant for at least three years**, to get help with the planning of Unit programmes, the progress of the girls, and relating their need through both individual and group activities.

Those who attend Part I are invited to come back later on to Part II, to meet the same group and the same training team, to share the result of the plans they made and discuss ideas and suggestions for the future.

From the letters we received, the first of this series was a great success for all concerned, especially the chance of a follow-up weekend. Where more than one Guider from an area came together they seem to have found it increased the enjoyment of the experience. Dates for Part II at the Centres are:

Foxlease 16th-18th May, Waddow 27th-29th June

Making the Most of the District

Foxlease 1st-3rd February
28th-30th March
Waddow 11th-13th April

These weekends are for Commissioners with a party of up to seven of their Guiders of any Section. The aim is not for everyone only to 'do their own thing', but to be a way of creating a real District family feeling.

Each group has the opportunity to work together and to discover the support that members of a District can give each other; they also receive help with programme planning and other matters of common interest, while time is given for discussion on points which are of importance to the Commissioners, and to the Guiders of each Section.

For Ranger Guiders and County Leadership Advisers

Waddow 16th-18th November

There are two separate groups at this weekend, each dealing in detail with the help needed for their job but with obvious opportunities for joint discussions on Rangers and Young Leaders.

As there have been requests for such opportunities we hope that Ranger Guiders and County Leadership Advisers will support this weekend, which could, if found useful, be the forerunner of other such events.

Help with the Programme

Foxlease — 21st-23rd March

The Programme through the Out of Doors.

Waddow — 1st-3rd February

The Programme through Camps and Pack Holidays.

Throughout the year there will be General Training Weekends at Foxlease and Waddow which will give particular help on certain aspects of the Programme. The above dates are opportunities for Brownie and Guide Guiders.

For Experienced Guiders

Foxlease 29th February-2nd March
Waddow 15th January-7th February

These are two opportunities for Brownie and Guide Guiders **who have held a warrant for at least five years**. Where Guiders of mixed experience come together there is always a need to deal with 'first things first' for the new Guiders, so we see these two weekends as being particularly for those who have been warranted for several years.

Some Guiders may have had little chance to go to a residential weekend at a Training Centre — perhaps since working for their Adult Leader's Certificate? — and may welcome an opportunity to share successes and problems with others of similar experience.

For the Musical Guider

Foxlease	1. Music in the Guide Company
7th-9th December	2. Campfire Leaders and Prospectives
Waddow	1. Music in the Brownie Pack
8th-10th February	2. Music in the Pack Certificate.

Two weekends with groups for those interested in using music as part of their Unit programme, and for those who hold or wish to gain one of the Association's Certificates.

AT GLENBROOK

The monthly courses run by CHQ offer various activities for enjoyment, training and assessment. The course fee for the weekend covers everything, including provision of the necessary equipment; where there is an optional activity there is an extra charge for those who wish to take part.

There are usually groups for Guiders and Rangers (unless marked otherwise) and it is helpful to know what experience (or expectations) participants have for the course they wish to join.

Hillwalking and Climbing

21st-23rd September

For Guiders and Rangers — geared to the complete beginner or those with some experience.

Hillwalking and Caving (Pony-trekking optional)

19th-21st October

For Guiders and Rangers, as for September. There will be an extra charge for those who wish to go pony-trekking.

Leadership in the Hills

9th-11th November and 14th-16th March

For Guiders only. Details from the Guider in Charge.

Trainers and Instructors

18th-20th January

All trainers and instructors who have helped at Glenbrook during the year are warmly welcome at this weekend. In addition to discussions on the courses, training, equipment etc, about which we would like your comments and suggestions, there will be the opportunity to meet friends and take part in activities.

International Weekend

15th-17th February

For Guiders and Rangers, to enjoy a weekend at Thinking Day time exploring different aspects of the international scene, to gain something for themselves as well as to get ideas to pass on to their Units. There will be opportunities to explore the district and take part in various activities — depending on your energy and the weather.

Trophies for all occasions.

21972 Wooden Shield—Chrome centre piece with Guide Badge—5½" £1.87
(Also available with Brownie Badge 21980 £1.87)
22111 Wooden Shield—Chrome centre piece with Guide Badge—7½" £3.20
(Also available with Brownie Badge 22129 £3.20)
22368 Miniature Shield—With Guide Badge £0.53p
(Also available with World Badge 20040 £0.53p or Brownie Badge 22376 £0.53p)
22160 Sports Trophy in brown polished plastic with centre chrome area for engraving and swivel top 6" high with Guide Badge £1.66
(Also available with Brownie Badge 22178 £1.66)
22186 Guide 12 year Challenge Shield 10½" £9.85
(Also available with Brownie Badge 22194 £9.85)



Please tick in the appropriate square the item you require. If you require more than one, write the number in the square. Add 50p (small order charge) for all orders under £10. Allow 14 days for delivery. Money refunded if not entirely satisfied.

☐ 21972 ☐ 21980 ☐ 22111 ☐ 22129 ☐ 22368 ☐ 20040 ☐ 22376
☐ 22160 ☐ 22178 ☐ 22186 ☐ 22194

Print your name and address clearly in this coupon and send it with your cheque/PO made payable to the Girl Guides Association Trading Service (no stamps please) to the address right. Full colour catalogue free on request.

Name _____
Address _____



GIRL GUIDES ASSOCIATION

Girl Guides Association Trading Service
Atlantic Street, Broadheath, Altrincham,
Cheshire WA14 5EQ Tel: 061 941 2237
9.00 a.m. to 4.30 p.m. Monday to Friday

These items are also available at any of the Girl Guides shops in London, Birmingham, Cardiff and Liverpool.

When you buy from the movement we all benefit

The battle against pain...



- **SIX MILLION SUFFERERS.** One million people, including children, suffer from Rheumatoid Arthritis; and five million, including two out of every three people over 65, are handicapped by Osteoarthritis. For them crippling pain is a daily experience and it can be so severe as to be barely tolerable.
- **NO SURRENDER.** The Arthritis and Rheumatism Council for Research is dedicated to the conquest of these cruel diseases. Over 100 research projects are now being undertaken and progress is encouraging. Provided that sufficient funds are made available, this is a battle that can be won.
- **HOW YOU CAN HELP.** The Council is spending over £14 million annually on research and relies entirely on voluntary support to find this money. Please help us to maintain the momentum of the research programme by giving a donation or supporting your local Branch of ARC. We will gladly provide a speaker, literature and display material, or arrange a showing of the Council's film "No Surrender - The Battle Against Arthritis". Please write for further information, or send your subscription to:-

THE ARTHRITIS AND RHEUMATISM COUNCIL FOR RESEARCH

FARADAY HOUSE, 8/10 CHARING CROSS ROAD, LONDON WC2H 0HN

Patron: HRH The Duchess of Kent

H.Q. NOTICES...

CHQ Awards Good Service

Beaver Award

Miss I Anderson, Guide Guider, 1st Hatton Company, Warwickshire.

Mrs S M Wooldridge, Commissioner for British Guides in Germany. (Due to a printer's error, both of these awards were erroneously placed under the heading 'Laurel' when published in July's GUIDER).

Laurel Award

Miss K Moore, Guide Guider, 6th Morecambe, Ranger Guider, 1st Morecambe Joint Unit, Lancashire West.

Mrs M Wellock, Division Commissioner, Lancaster and Morecambe, Lancashire West.

Meritorious Conduct Star Of Merit

Diane Thomond, Patrol Leader aged 14, 1st Flixton Company, Greater Manchester West.

Despite undergoing many operations which have been followed by intensive treatment and often great pain, Diane has always remained cheerful and uncomplaining. Over the years her courage and high standards have been a great example to the Brownies and Guides in the Units of which she has been a member. By her efforts to adapt herself to any situation and determination to overcome her disability she has won the respect, admiration and friendship from all who know her. Turn to page 393 for a photograph of Diana receiving her Star from Her Royal Highness, Princess Margaret.

The Brownie Pack Flag

The Executive Committee of the Association has agreed that a Brownie Flag should be introduced as an alternative to the pennant, the manufacture of which will be phased out over the next three years. The flag, a yellow Brownie badge on a brown background, mounted on an anodised aluminium pole, will be available in September of this year.

It has further been agreed by the Executive Committee that, like the pennant, the Brownie flag should not be carried in public parades, but should be used by Packs in the same way as the pen-

nant — see 'Ceremonial Occasions' page 2.

Each flag when received will be accompanied by a statement from the Brownie Consultant, explaining the ceremonial which will be used for the flag.

Brownie Birthday Card

A special birthday card, designed with Brownies in mind, has recently been produced by the Association.

The card, designed by Peter Curry, which depicts a Brownie with an elephant, will be available from all Association shops, price 15p.



the Movement please keep the Archivist informed of their activities, both inside and outside the Movement, so that records can be kept up to date.

Please note that this should be a continuous process and not something to be done once and for all time!

Minibus Permits

Guiders are reminded that if they are proposing to charge Members of the Movement for travelling in a minibus, they must obtain a Minibus Permit. In the first place they should apply to their Country or Region who will send them a copy of the Act and other information, together with application forms which should be returned to the Region concerned with the fee of £2. If

Pictured left is the Brownie Birthday card, which is now on sale. The greeting inside reads, 'Best wishes from'

in order, the application form will be sent to CHQ who will issue the Permit. Guiders should therefore apply in good time before they wish to use the minibus.

Royal Commonwealth Society Essay Competition

The work of two Members of the Movement was commended by the judges of the recent Royal Commonwealth Society Essay competition. These were:

Commended Certificate: Class B Andrea McLean, 1st Barrhead Rangers.

Highly Commended Certificate: Class C Lisa Almond, 3rd Tilehurst Guide Company.

Scout and Guide Singing Group

Following the success of the experimental gathering last year, it has been decided to hold a further one day's gathering for adult members, Rangers and Venture Scouts, to attempt a scratch performance of Handel's 'Messiah'. This will be held at Baden-Powell House, Scout Hostel, on Saturday, 3rd November 1979, between

11.00 and 21.00 hours. There will be a small charge of 30p per head to cover administrative expenses. Lunch and/or dinner can be provided at B-P House at a cost of 96p for each meal.

If you wish to attend, please write to the Activities Secretary, The Scout Association, Gilwell Park, Chingford, London, E4 7QW stating type of voice, and forwarding the appropriate remittance to cover the gathering and any meals you may require. Please bring a copy of 'Messiah'.

Has Your Present Job Lost Its Challenge?

If you are between 20 and 30 years of age, have a deep understanding of Guiding, and are an active member of the Movement, the Programme and Training Department at CHQ can offer you an exciting challenge in many different aspects of leadership.

Whether or not you have experience, this may be the post you have been seeking. Those selected will receive training while working for the Association.

For those interested there will be a Selection Day at CHQ on 3rd November, 1979.

All enquiries should be addressed to Miss KM Dongworth, Programme and Training Secretary, Girl Guides Association, 17-19 Buckingham Palace Road, London SW1W 0PT, and application forms, available now from the Programme and Training Secretary, must be returned by 1st October, 1979.

Safer Boating For Children

The British Standards Institution has introduced a revised standard of BS4474 for safety harnesses and safety lines for use by children in boats, in particular yachts and motor cruisers, which are often owned or hired by families for weekends or holidays on sheltered water and sea.

Children, who may become drowsy through unaccustomed amounts of fresh air, are at risk not only in rough weather. The answer is a harness or line to prevent adults or children falling overboard or, at worst, providing the maximum chance of survival.

Since the standard was first introduced, it has prevented many potentially serious accidents.

Short Term Investment Service

Monthly interest rate after deduction of management commission.

April	11.31%
May	11.175%
June	12.437%

Additional 0.5% pa for deposits of £2,500 and above.

Scout & Guide Trust Fund

On 30th June 1979 the value of a share in the above Fund was:

for selling purposes	54.26p
for buying purposes	57.02p

income yield	5.34%
--------------	-------

The income yield is based on the previous two dividends paid and the price on the date stated.

The Interim Dividend for 30th June, 1979 was 1.50p per unit, payable in July 1979.

Plea From The Archivist

Would senior members of



Top Tents

Tents for Mountain, Moorland and Meadow.

Our tents have proved rugged in all weather conditions and offer the Mountaineer, Backpacker and Hillwalker the best possible protection and comfort. There is a choice of nine models - please write for catalogue to:-

ROBERT SAUNDERS

(Chigwell) Limited.

Five Oaks Lane, CHIGWELL,
ESSEX, England.

Something Exclusive To your Pack



Sweat Shirts & T Shirts printed with your design

*New Ten shirt minimum — Free design service
For details:

Say Shirts Ltd. DEPT. G/55
130 Heathfield Ind. Estate,
Honiton, Devon. EX14 8BB.
Tel. Honiton (0404) 41148

TUDOR HOUSE

Modelled in the beauty of real wood
**THE COMPLETE KIT FOR MODELLERS
OF ALL AGES**



Only
£9.50
incl. VAT
p.p.

Recreate an authentic Tudor house in the beauty of real wood. This 1:25 scale model of a handsome Tudor building provides hours of enjoyment for beginner and expert alike. Suitable for any age groups from 10 years upwards, it provides great scope for many variations on the basic kit. Kit contains all you need to make up the house including craft knife, glue, sandpaper, stain etc.

Delivery within 21 days approx. If you are not delighted, return the kit unstarted and your money will be refunded in full.

TUDOR MODELS
Leaflet available

Please send me _____
Tudor House model kit/s @ £9.50 each incl. VAT, p.p.
I enclose a cheque/P.O. made payable to Tudor Models for £ _____
Access/Bankcard No. _____
Name _____ Signature _____
Address _____
Post to: Tudor Models, 10 Spencer Road, Belper, Derbyshire. G.9.79



BUKTA MAKES YOU A WINNING OUTFIT



SPORTWEAR

Send today for your free full colour brochure to: Bukta, Brinksway
Stockport, Cheshire SK4 1ED enclosing stamp to cover postage.

Walking (for) the Dog...

Streatham Common District Brownies and Guides lap up the kilometres (and the cash)

Early this year, Streatham Common district decided to hold a sponsored walk on Streatham Common in aid of the Guide Dogs for the Blind Association, the object being to raise £250. This sum buys the option for youth and other organisations to choose the name of a puppy in training.

We were given the name of a blind lady living locally, a Mrs Joan Fielding, who visited Streatham to speak to some of our Units, bringing with her her dog 'Questa' a beautiful golden labrador. She told the girls about the many aspects of the training of guide dogs and answered their many questions, and 'Questa', on being released from her harness, became the friend of all.

The walk took place on Streatham Common on Sunday 6th May from 12 to 4 pm. The day was dry but a little chilly, and over 100 Brownies and Guides from each of our 12 Units took part, mostly walking the maximum 10 laps for Brownies and 15 laps for Guides. After valiant efforts with a calculator, one of our Guiders announced at the

end of the afternoon that the girls had raised a potential sum of over £900!

It was decided that a suitable occasion to present the sponsor money would be following our Brownie Sports afternoon on 23rd June, to which all Guides who had taken part were invited. Once again Mrs Fielding was asked to come to Streatham to receive the cheque. Money was still being received on the afternoon of Sports Day, and we were all delighted to be able to hand to Mrs Fielding a cheque for £1,000.

We have received from the Guide Dogs for the Blind Association photographs of the four dogs we have helped to sponsor, one black labrador, two golden labradors and a golden retriever, their names being Alma, Bart, Captain and Lancer.

We are all delighted to have been able to raise such a large sum for the Association, and our girls are to be heartily congratulated for their splendid efforts.

Margaret Lea
District Commissioner,
Streatham Common.

Pictured below are just a few of the children from Streatham Common District who took part in the sponsored walk described above. The occasion, however, is somewhat different — the presentation to the Brownies of some carpet squares by the Rev Patrick Lidgett and Mr Norman Perrott of the local United Reformed Church.



Anthony James

airing and sharing

Continued from p 401

The More the Merrier?

How much I agreed with June GUIDER's Training page articles on Rules. However, there is one point which I would like to air with regard to the various references to the maximum numbers for Units. Far from wanting more girls in the groups which I work, I would be happier to see the maximum reduced, especially for Guides. The need is constantly stressed to 'note the progress of each Guide, and the possibility that with large numbers it is difficult to make personal contact with each individual during the short weekly meeting. Would it not be better to give sufficient individual attention to 24 children, rather than to bestow a passing glance on each Member of a group of 36? The 11-14 age group is much more diverse and difficult to stimulate than the Brownie group, and consequently more demanding on the Guider.

Although for the reasons, given, I would much prefer to close admission to a Guide Company at 24 girls, I feel obliged to keep the doors open until we reach the limit of 36. Admittedly, the knowledge that many Brownies want to go on to Guides immediately, has a bearing on the decision.

Ideally, of course, we want more Companies so that each one may cater for a smaller number of girls — but Guiders do not grow on trees. Therefore should we not concentrate our efforts on the quality of the Guiding we offer the girls in our Units, rather than offering a slightly shoddier product to a greater number?

(Mrs) K L Harding
Brownie and Guide Guider,
Tavistock,
Devon.

Change for the sake of it

I agree we must have guidelines to help us try and keep conformity of behaviour throughout the country. I would go so far as to say

they are vital to the Movement. I do not agree that it is essential continually to alter them without apparent rhyme or reason with just an edict handed down to District level by the long suffering D.C. that in future all Guides 'must or must not' as the case may be.

To quote but one example — the Camper's Badge testing. When the third edition of the Guide Handbook was printed, it was clearly stated that this badge may only be tested by someone holding a Camper's Licence or with adequate camping experience. Why should this have been changed so quickly and why could not the reasons for this change be printed in GUIDER?

The article in the July edition of TODAY'S GUIDE concludes: 'If you are almost ready for your Camper Badge...'. It makes no mention of the fact that CAs are very busy people; consequently Guides might have to wait until next year if they have missed this year's dates for testing.

In our particular district it will either mean parent participation, a thing that is in short supply, or several long and difficult bus journeys to visit the CA (which might necessitate asking the way from strangers, a thing which has so many disastrous results if one reads the news papers).

We have the necessary amenities locally and did have the qualifications before this latest edict. Does it seem to other Guiders that sometimes changes are made just for the sake of change with no one benefiting from the result?

**Name and address
supplied.**

The Editor reserves the right to cut and otherwise amend letters where appropriate. Opinions expressed on letters and airing and sharing pages are not necessarily shared by the Editor.



Thinking About Canoeing?

Building your own glassfibre canoes give dramatic cost savings over buying ready made. Trylon offer a full range of moulds for purchase or hire, with all materials and accessories. And we can show you how to do it! Send now for free details.



NEW
for
1979

The Ardeche: a touring double design.

Trylon Limited, Wollaston,
Northants. NN9 7QJ.
Tel. Wellingborough (0933) 664275
Canoes, Kits and Materials

TOP QUALITY PENS

Diestamped with 30 Gold Letters and Spaces

£3.45
PER 100 PENS
(VAT PAID)

* STANDARD CHARGE
* POST & PACKING
* 80 PENCE

Minimum order for pens 200

DIARIES ALSO AVAILABLE

ORDERS DESPATCHED SAME DAY

Sale or return — full refund on pens returned

Samples 2 x 10p stamps — please try before you buy
(Supplied to the U.K. only)

ABBNEY WHOLESALE

974-976 LONDON ROAD, TRENT VALE,
STOKE-ON-TRENT, ST4 5NX

NEED TO RAISE MONEY?? WE CAN HELP!

The easiest way to Raise Funds for your Good Cause is with our help. Hundreds of charities and voluntary organisations have found our service increasingly invaluable. Far better than begging letters and please give appeals, BAKER ROSS offers you the opportunity of making at least 25% profit easily. The selection of Stationery, Toys, Fancy Goods and School Supplies you will find described in our catalogue will be readily re-sold to your supporters and friends. We also have an enormous range of goods ideal for Bran-Tubs, Lucky-Dips, Raffles and Tombolas. To publicise your society and earn profits we have fully guaranteed gold printed pens and pencils. Request our detailed WHOLESALE Price-List today and start MAKING MONEY. Send see to: Baker Ross, Dept. GU9, 2A Handsworth Road, London N17 6DD. Tel: 01-808 6948.

TOW A TRAILER!

tel: Bolton (24 hours) 0204 593209

for recorded trailer & local depot information
and how to obtain free colour brochure —
or speak to our sales team on Bolton 58434.

Find out why a million motorists tow trailers. SAVE big money on D.I.Y.

150 page book gives fully illustrated
details all about trailers and towing.
Price 35p + 25p post from Depots or
Mechanical Services, Belmont Road,
Bolton.



Indespension
The National Trailer Company.

BOOKS BADGES INSIGNIA GAMES

5 Panmure Street,
Dundee DD1 2BW
Tel: Dundee 22262

16 Coates Crescent,
Edinburgh EH3 7AH
Tel: 031-225 3483

SCOTTISH GUIDE SHOPS

15 Elmbank Street,
Glasgow G2 4PB
Tel: 041-248 4200

11 Albyn Place,
Aberdeen AB1 1YE
Tel: Aberdeen 20875

UNIFORM CAMP EQUIPMENT

JOHN MERRILL LECTURE TOUR "TURN RIGHT AT LAND'S END"

John Merrill's own story of his epic 7,000-mile British Coastal Walk, January — November 1978, illustrated by over 200 superb colour slides.

Lectures in 31 centres from Redruth to Wick, between October 8th and November 17th, with an additional lecture at the Wembley Conference Centre on December 5th. Tickets £1 (Wembley £1.50).

For details of lecture venues and ticket agents, apply to:
Mrs Sheila Milne, or Mrs Christine Reeve,
23 Muirpark Way, 20 Gritstone Road,
Drymen, Matlock,
(Tel. 036-06 427) (Tel. 0629-55106)

it's all bloody history!

The London Dungeon



BTA award-winning exhibition

PARTY RATES (20 or more) 50p each person (Adults & children)

34 Tooley Street, London, SE1. 01-403 0606

FILM
of

The Chief Guide's Thanksgiving Service

18 minute 16mm colour film. Includes Thanksgiving Service and more than 100 scenes illustrating Lady Baden-Powell's life and work for the Scout and Guide Movements in this country and overseas.

Hire charge £9.00
(Inc. postage on outward journey)

Please apply to:
Central Film Library,
Bromyard Avenue,
Acton W.3.

Tel: (01) 743 5555



All the work is finished — alterations done, new items added and the Activities Room (left) is ready for the Brownies.

From Dream to Reality

It began almost two years ago with a suggestion from the husband of a Brownie Guider that we might consider looking for a redundant school to convert into a Pack Holiday House. It has become a reality as FRIENDSHIP LODGE, an activities centre for use by all members of the Movement.

North Tyneside is a small county, formed in 1973; there are only 3,000 of us altogether. Our "town house" — administrative Headquarters, home of our Depot, much used for business meetings and trainings of all kinds — had been acquired and paid for. Was it not perhaps time to rest on our oars? But the prospect of a second home in the country proved irresistible, especially when in the Northumbrian village of Kirkwhelpington, we found a stone-built, single-storey building which, with a little imagination and a lot of faith, did hold out possibilities.

The surveyor's report was promising. We put in a tender, subject to planning permission, and anxiously awaited developments. Tender accepted, planning permission granted and we were away! An entirely new storey had to be provided for dormitory and bedroom accommodation, and much conversion work was required at ground level.

All was not, of course, plain sailing. We had our anxious moments and our worries, of which the raising of the necessary finance was not the smallest! But throughout the venture we received generous and unstinting help from a variety of people, who gave their vision, their skills and talents, their money and their muscle power. We made slow but steady progress, and eventually, the task was accomplished.

On Saturday and Sunday, 19th and 20th May, Friendship Lodge was thrown open for inspection and we had a splendid weekend. On the Saturday morning came the "Friends of Kirkwhelpington", to see what it was they had been supporting! Then in the afternoon we welcomed the village residents, who were most interested to see what we had made of their old school, and who seem to have taken us to their hearts.

The following afternoon Friendship Lodge was officially declared open by Councillor Harry Sowerby and blessed by the Vicar of Kirkwhelpington, the Rev J K Young. A Guard of Honour was formed outside the house by Brownie, Guide and Ranger representatives from each Division, and the ceremony was attended by

many guests, among whom we were delighted to welcome the Mayor and Mayoress of North Tyneside and the Chairman of Kirkwhelpington Parish Council. After tea we held another "open house" session for those whom we had not been able to invite to the official opening, and again people streamed in. In all we showed some 200 people round Friendship Lodge during the weekend, dispensed innumerable cups of coffee, tea and squash, and demolished quantities of home-made scones and biscuits.



Councillor H. Sowerby with his wife and Miss Dorothy Postle at the opening speech.

Our dream is now a reality, and the reality exceeds our expectations, but, of course, the story does not end there. We are bound to have teething troubles. But already Friendship Lodge is in use and the people of Kirkwhelpington are happy to have children around in the old school building once again. I am confident that many members of the Movement, young and adult alike, will indeed find friendship and fellowship there.



The moment they have all been waiting for . . .

If you would like to know more, and even perhaps to visit a delightful and unspoilt part of Northumbria, why not write to our **Booking Secretary, Mrs J Newson, 50 Derwent Road, North Shields, Tyne and Wear, NE30 3AH.**

Dorothy Postle
County Commissioner,
North Tyneside

~HOME & AWAY~

Children's Growth Foundation



If you are small, you always have to shorten the legs of new trousers, the latest baggy clothes make you look like a sack of potatoes and you are the butt of innumerable 'jokes' — 'What's the weather like down there? (ha ha) — and I'm 5ft 3in, hardly a dwarf!

Imagine the problems, then, for the one in 4,000 children, who without help, are destined never to grow above four foot. These growth disorders, the result of hormone imbalance, particularly in the pituitary gland, the centre of growth, do not only stop the child's development; sometimes, there is an abnormal growth rate, resulting in gigantism.

The Children's Growth Foundation has been established to research into growth disorders and to help affected children, because, though rarely fatal, the symptoms can lead to considerable physical, social and psychological problems. One of the Foundation's main targets is to set in motion a pituitary donor scheme. If you would like to hear more of the Foundation's work or to send a donation, write to **Alan Dutton Honorary Treasurer, The Children's Growth Foundation, 'Straight Mile', Rudgeway, nr Bristol, BS12 2SB.**

FoE Poster

Modern packaging seems to be designed to thwart the consumer. Packets of biscuits are so tightly packaged that half the contents are crushed before you get the wrapper off; tubes of face cream are buried beneath plastic moulds and pieces of cardboard, and any man will tell you that buying a shirt nowadays is fraught with peril — you never seem to get *all* the pins and pieces of stiffening out. In addition to all this wasteful packaging, we use many throwaway goods — paper cups and plates, non-returnable bottles. We throw away about 19 million tonnes of rubbish a year, most of which is buried in the ground, which creates problems of disposal as well as wasting precious resources, a fact which The Friends of the Earth point out in a recently produced poster pack. Entitled 'It's a Shame to Throw It Away', the pack contains four posters, information and details of the Friends of the Earth resources campaign. The pack can be obtained from the Friends of the Earth, 9 Poland Street, London W1, price £1.45.

Women's Farm and Garden Association



Jumeirah Pack

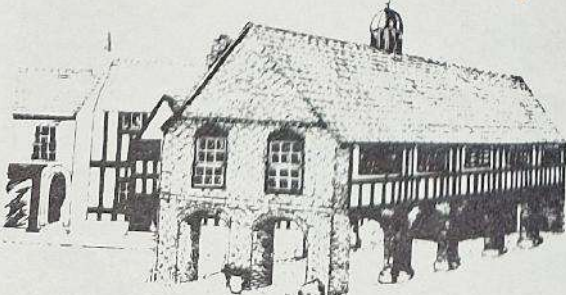
It seems that wherever two or three young children are gathered together, you just can't help a Brownie Pack forming.

In Jumeirah, Dubai, for example, the 1st Jumeirah Brownie Pack was formed in October, 1977 at Jumeirah English-Speaking school by Brownie Guider Margaret Detmar, — and since it was formed, the Pack has gone from strength to strength. The '1st' Pack had to be divided last November, when a second Pack was started under Chris Frost.

The Pack Leader to the 1st Jumeirah Brownies was Maureen Harrison, who is aged fourteen, and a member of the Lone Guide Scheme. Maureen had helped with the running of the Pack, but she left recently because she started boarding school in England this month. Best wishes to her, and we hope she is settling in well.

Brownie Pack meetings are held at Jumeirah English speaking school every Thursday afternoon from 4 pm until 5.30 pm.

Information: Margaret Detmar, Brownie Guider, and 'Gulf News'.



Pictured above, Llandiloe's Market Hall on Glyndwr's Way, the only surviving black and white market hall in Wales.

Recreational Paths

Recreational paths established by local councils under the auspices of the Countryside Commission, offer an alternative to people who enjoy a stroll in the country but do not necessarily want to trek up hill and down dale on a long distance path.

The paths are ideal for a family (or Guide?) outing. All are properly way-marked and it is often possible to link up with trains or buses along the route if you do not want to travel the whole length of the path (none is shorter than nine miles). Most of the paths cover relatively easy country, although some can be tough in parts and strong footwear is always recommended.

A Countryside Commission booklet 'Recreational Paths' lists each path, county by county, and gives brief details of each one including grid references, the length of each path and an address from which to obtain a relevant guide.

The booklet is available free of charge from the Countryside Commission, John Dower House, Crescent Place, Cheltenham, Glos, GL50 3RA.

Annual Award

Of recent years, the Women's Farm and Garden Association has offered an award of £100 to a chosen agricultural or horticultural student wishing to widen his/her area of study abroad or to work on a specific specialised project.

Any reader who might be eligible for this award and who wishes to apply, should write to: **The Secretary, WFGA, Lilac Cottage, Birch Green, Colchester, Essex** as soon as possible. Further information is also obtainable from the same address.

Applicants should enclose a well-planned itinerary stating the aims and objects of the proposed project with names of places and people they intend to visit.

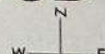
A detailed written report is expected in due course from the award winner after the project has been completed; this will be considered for publication.

The award this year went to a fourth-year veterinary student at Liverpool University, Peter Jeffries, who plans ultimately to specialise, as a vet, in fish diseases.



SILVA-GOOD GUIDES

SILVA COMPASSES
(LONDON) LTD
10 The Causeway, Teddington, TW11 0HE
Middlesex
Tel: 01-943 0135



Pure New Wool

Aran Natural and Coloured and Double Knitting

All at 38p per 50 gm ball. Post Free

Send SAE for Samples to:

D. Sutton (Wools) Ltd., (Dept Gdr), 15 Sutton Drive, Cullingworth, Bradford BD13 5BQ

On the cards

IN Suffolk recently we held a 'postcard design' competition at County level. It proved to be highly popular, giving scope for the artistic, humorous and 'pop' artists among us and providing great fun for all who took part. Those who have been expressing the opinion 'we need ideas' in *GUIDER's* Airing and Sharing pages recently might find this a suitable occupation for at least one wet evening's meeting.

The competition was 'Guiding is . . .' (could be

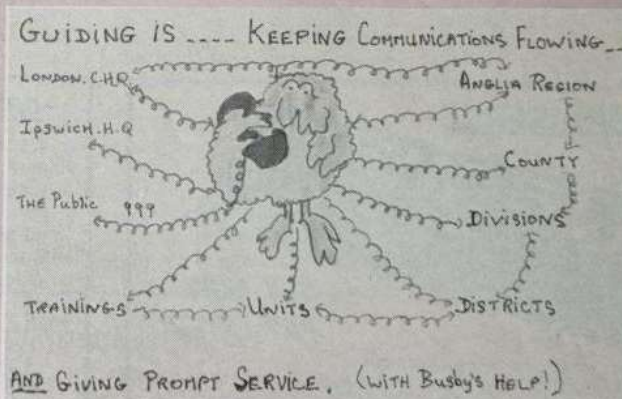
rather along the lines of the 'Love is . . .' cartoons which appear in a national daily newspaper).

In our case, the District winners were all displayed at the County Agricultural show in the centre of our Guide Marquee. We were pleased to see that our marquee was filled to overflowing on both days, and we were particularly pleased to meet 'Guiding people' from Essex, Norfolk, Cambridgeshire and Stafford.

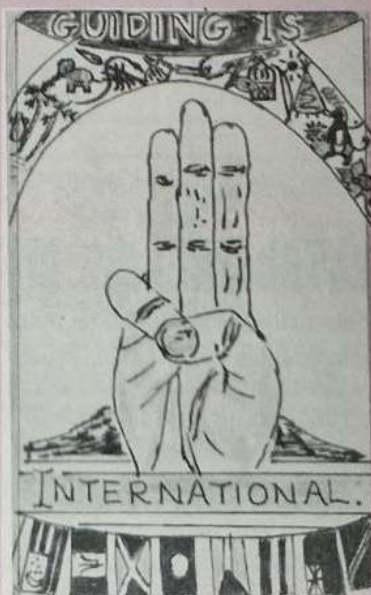
Freda Rush

Minimum rules

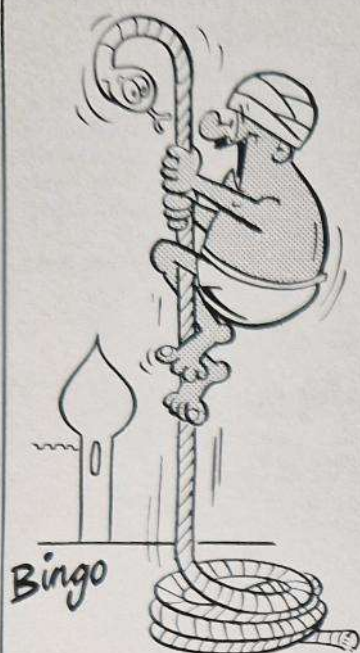
1. Draw on a postcard what you think Guiding is.
2. Head the postcard 'Guiding is . . .'
3. Any medium — eg felt pens, ball-point pens, crayons, paints, may be used.
4. The name of the entrant, the Pack, Company or Ranger Guide Unit from which she comes must be written clearly on the back of the postcard.
5. A closing date should be decided upon, and the address to which to send the postcard for judging.
6. If you decide to hold the competition open to all sections of the Movement, you should decide on how the entries should be sorted into groups for judging; perhaps three sections would be sufficient; eg (i) Brownies, (ii) Guides, and (iii) Rangers, Young Leaders and adult members including Local Association and Trefoil Guild members.
7. At District level, in order to eliminate the possibility of high postage costs, select the best entry from each section. These three cards should be sent on by the District Commissioner to the judge's address, before the closing date. Make sure that entrants know that work other than on postcards, or on postcard-sized pieces of card, will be disqualified.



Pictured here are some of the entries in the Suffolk County Postcard competition (see above). Top Right, a popular Brownie theme, this entry won first prize for Hayley Woods, of the 1st Bealing's Pack. Above, Busby keeps communications flowing in an entry by Mrs Freda Rush, Division Commissioner for Mid-Suffolk. Right, Rosemary Young, of the 1st Stowmarket Guide Coy, stresses the international aspect, while, left, the 1st Britannia Ranger Unit says it all.



CARTOON TIME



FUNDRAISERS!



**BUY NOW-
PAY LATER!**

DELIVERY FREE
to your front door

Net profit
£15.00 per min. order

Send for full details to:

LANE & PARTNERS LTD
59 SOUTH AUDLEY STREET, LONDON, W.1.

IDEAL FUND RAISERS FOR YOUR UNIT

We supply ten various ball pens, nylon tip pens, combs, pencils, key fobs, rainhoods, p.v.c. goods, nine various types of diaries, calendars, various rules, set squares, book matches, wallets, bookmarks, coin purses, etc. All are excellent Fund-Raisers, Good Quality.

We give Full Guarantee. All orders are completed within seven days of receipt. Send now for our price list. Please send 13p on a self-addressed label-envelope.



L. Thompson (Advertising) Ltd.,
Dept. G/13,
North Tyne Industrial Estate,
Whitley Road, Longbenton,
Newcastle upon Tyne NE12 9SN.
Telephone 0632 669511/2

A novel fund-raising item which will sell at any time of the year.

PRINTED YELLOW DUSTERS

Every housewife, every motorist a potential buyer!

Our stock designs of Trees in Britain, Horses in Britain, Birds in Britain, etc, are designed to incorporate your local wording.

Send for details and prices today!

GEO. O'BRIEN BAKER LTD.

Dept. 100

4/6/8 Tapster Street, Barnet, Herts EN5 5TX
Tel: 01-449 2424.

HAS YOUR UNIT VISITED
OUR WORLD CENTRE
IN LONDON?

OLAVE HOUSE

welcomes Guide/Girl Scout
visitors from all over the world.
Come and make friends and explore London.
Good base for sightseeing trips, theatres, shopping, etc.

All details from:
The Guider-in-Charge
Olave House
45 Longridge Road
London SW5. Tel: 01-370 2574
Please enclose 7p stamp.





THE GIRL GUIDE FRIENDSHIP FUND

Dear Guiders,

What an exciting summer this has been for the Girl Guide Friendship Fund, with both summer projects over-taking our target figures by the end of July! First news from Bangladesh is that because of your support they are now ready to launch their pilot-scheme and I hope to tell you more next month.

And now for news of our Christmas Good Turns which have also been especially chosen for the International Year of the Child.

Family holidays is again the theme of one project, and this year we want to help families who have a child with kidney failure and who needs regular dialysis. For these families, holidays are usually impossible. To go away would mean one member of the family having to go into hospital while the rest go away to enjoy themselves — and how many parents would do that? But there is to be a solution and the Girl Guide Friendship Fund has undertaken to be responsible for one of the four children's dialysis units to be equipped at a holiday camp. These units, which will be the first of their kind in the United Kingdom, will mean that families from anywhere in the country will be able to have a

holiday together. The units will be under the professional care of Guy's Hospital, so that the parents can relax and enjoy their holiday.

The organisation behind this solution is, of course, the British Kidney Patient Association, and I know that many of you already support them by raising funds to help buy kidney machines. If you do, you will know what a tremendous job the BKPA does, and I hope that you will give them further help this Christmas by supporting the GGFF Good Turn.

OUR unit will need a dialysis machine costing approximately £5,000, plus furniture and furnishings, and items like a television set, books and toys to amuse and occupy the time spent by the child receiving life-giving treatment.

Negotiations with the owners of the holiday camp group are well advanced, the only point not finalised at the time of writing is which camp will have the units, but it will be somewhere on the south coast. It is planned to have these units ready when the season opens in May 1980 and OUR unit will have a plaque showing that it was equipped by the members of the Girl Guides Association, through the GGFF.

Our second project sounds

less glamorous, but it is equally important. We want to support research by the Asthma Research Council into the causes of asthma in children.

If you have ever witnessed a child (or an adult) in an asthmatic attack, you will know that it can be an alarming experience. It is not always realised that asthma kills every year about 1,000 people under the age of 35, many of them children, they die after hours of desperate struggling to breathe. Research has led to the discovery of many new medicines and forms of treatment, and to some of the many causes of asthma, but there is still a lot to be done, especially for children. In fact, asthma is on the increase and more and more children are being affected.

As asthma is one form of allergy, research is also taking place into other types of allergy, such as hay fever and dermatitis. The urgent need is to discover and conquer the allergy causing asthma — will you help to fight asthma?

Two projects for your consideration and for discussion with your Guides and Brownie Guides; two projects which we know you will want to be associated with, and this early announcement will,

I hope, give you time to plan your fund-raising effort. If you would like more details, please send for an information sheet, enclosing an 8p stamp for the return postage to:

**The Girl Guide Friendship Fund,
17-19 Buckingham Palace Road,
London SW1W 0PT.**

RC

Radio microphone hearing aids

Last Christmas the Girl Guide Friendship Fund organised a project to provide a bank of radio microphone hearing aids for students with profound hearing loss to use on loan from the Royal National Institute for the Deaf.

In addition to these aids, the GGFF Committee decided to use a very generous legacy to purchase two further aids for the use of members of the Movement with profound hearing loss going on to places of further education. If you know of a Ranger or young Guider in this category who would benefit from the use of this type of hearing aid will you draw her attention to this scheme and ask her to get in touch as soon as possible with the Royal National Institute for the Deaf, 105 Gower Street, London WC1E 6AH.

In Memoriam

Due to an unfortunate error, the name of Mr Craze, lately gardener at Foxlease, was printed throughout as Mr Gage in the obituary which appeared in the July issue of GUIDER. In the same issue, the name of Mr Archibald Sanderson was printed as Archibald Sanderson. We apologise for any distress which may have been caused, and the obituary is reprinted in full below.

With the death of Mr Craze, Foxlease has lost one of its oldest and most faithful friends. He joined the staff of Mr Archibald Sanderson, the then owner, in 1913 and was Head Gardener. When times changed and the gardens and grounds were put to other use, he organised the growing of more fruit and vegetables and fewer flowers with a greatly reduced staff. In the war, Land Girls helped him and Indian corn grew in the herbaceous border, but Mr Craze always ensured that Foxlease was never entirely without the flowers that have always been a feature of the place.

indoors as well as out. Mr Craze retired in 1953 and was very active at his garden at the Link until he became infirm. He was lovingly cared for by his wife, to whom and to their family, all lovers of Foxlease offer their sympathy.

EH

At the AGM of Friends of Foxlease it was agreed that a leather bound book be donated in memory of Mr Craze, to be used to record the names of those whose friends wish to have them remembered through the Garden Memorial Fund. Donations to be sent to The Treasurer, Friends of Foxlease, c/o Foxlease, Lyndhurst, Hants.

Readers will be saddened to learn of the death on June 6th of Colonel A H Maude CMG, DSO, TD, DL (County of London) at the age of ninety-three. Colonel Maude was not only a distinguished soldier (during the First World War he was mentioned twice in despatches), but

also a distinguished journalist.

When he was appointed the first editor of the Girl Guides Gazette in April 1914 after, as he put it, 'a rather terrifying interview with Mrs Lumley Holland', (then Chairman of the Headquarters Committee), he brought with him the invaluable knowledge and advice of a professional journalist. He had previously been editor of 'Isis' at Oxford and night sub-editor of the 'Daily Chronicle'. After the war he was to spend thirty years on the editorial staff of 'The Times'. Unfortunately the outbreak of war in August 1914 put an end to Colonel Maude's editorship of the Girl Guides Gazette, but not before he had ensured that the magazine would henceforth be run on a professional basis.

Colonel Maude had strong family links with the Girl Guides Association — his wife used to do drawings for the Gazette and his sister, Nesta Ashworth, was one of the first to receive a Silver Fish.

JMH

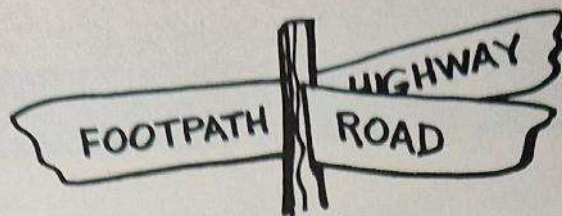
The death of 'Parthy Winters' on April 30th was a sad one for Gloucestershire Girl Guides.

'Parthy' came to Gloucestershire from Birmingham, having served the Movement in many capacities — as Ranger and Guide Guider, District then Division Commissioner, and as Diploma'd Trainer. Gloucestershire benefited from this store of Guiding knowledge when she became Vice-Chairman of County Training Committee, Young Leaders' Adviser and latterly, Commonwealth and International Adviser.

For the first five years of residence in Gloucestershire, 'Parthy' returned to Birmingham every week to continue running the 187th Brandwood, King's Heath Guide Coy, which she ran for 30 years in all.

A thanksgiving service for 'Parthy' in May was attended by Guiding friends both from Gloucestershire and from Birmingham.

PG



**BROWNIE GUIDERS
ARE YOUR BROWNIES ON
the right track? They are if
they buy**

THE BROWNIE
their very own magazine
every week, price 8p



**All the above, and more
in**

THE BROWNIE

Obtainable from ALL NEWSAGENTS or better still have your copy posted to you straight from the printer. Details from Periodicals Department, The Girl Guides Association, 17-19 Buckingham Palace Road, London SW1W 0PT.

CLASSIFIED

STAMPS

100 different Scout/Guide stamps £1.00. S.a.e. for Lists, samples etc. J R Hoggarth, Thorneywaite, Glaisdale, Whitby, North Yorkshire.

FOR SALE/FUND RAISING

Attention Brownie Guiders! Totems (Toadstools) available. Red tops with white spots in fibreglass, 18ins high with detachable tops £14.85 each plus 75p p&p, cash with order. From: T G Higgins, Spread Eagle, Rishworth, Sowerby Bridge, West Yorkshire. Tel: 042-289 3655.

Ridge Tents. New, direct from manufacturer. 11ft x 7ft x 6ft 6in high. Walls 3ft. Zip door. Mud walls. £62.00. Also 9ft version of above tent £49.95. 14ft version of above tent £77.00. Top quality materials 7½ oz. For brochure telephone 01-445 6253.

Duplicators — new and secondhand. Save up to 60% repairs, exchanges. OMM 54, Huntingdon Rd, Cleveleys, Lancs. Also typewriters.

Advertising Pencils. Ball Pens, Combs, Diaries, etc gold-stamped. Company name. Raise funds quickly, easily: Bran Tub Toys, details: Northern Novelties, Spencer House, 26/28 Spring Gardens, Bradford BD1 3HE.

The people for Dehydrated and Specialised Lightweight Foods are Springlow Sales Ltd, Dept G, Green Street, Oldham. See for local stockist or mail order catalogue.

Sale or Return. Offering 100% profit on cost. Costume Jewellery parcels sent post free without obligation. Ideal fund raisers.

Details: Caritas Jewellery, 356 Uxbridge Road, London W12 7LL.

remnants

PRINTED COTTON — A huge variety of attractive designs on quality cotton materials. Suitable for patchwork, cushions, pinnies. A large parcel for only £3.95

VELVET — Deep pile, luxurious velvet pieces in a variety of rich, self-coloured shades. For patchwork, cushion covers, bags, skirts. £3.30

SKIRTS — Pure wool and wool mixture remnants. Plain and woven designs in lengths suitable for skirts. £4.75

FELT — A wide variety of colours in quality felts. All useful size pieces for toy-making and other hobbies. Mixed parcel £2.75

FUR FABRIC — Excellent quality materials for cuddly toys, etc. Mainly dark shades. A large parcel for only £3.00

ALL POST FREE

Send cheques and P.O.s to:

REMNANTS

Dept UD4, 29 Green St.
BURNLEY, Lancs
STAMP FOR LIST OF
OTHER REMNANTS

Knitting Packs. Each pack contains a variety of different types and colours of knitting yarns. Suitable for knitted patchwork, hats, tea cosies, gloves and other knitting hobbies. Beginners Pack £2.90. Large Pack £4.20. Giant Pack £5.50. Post Free. R Adams, Dept UD3, 31 Green Street, Burnley, Lancashire.

Blanket Badges and Pennants with bright colours for Brownie outings, Girl Guide camps, rallies and all those special events for which souvenirs are required, printed to your own design. Minimum 50 badges. EMBROIDERED badges for schools, swimming clubs and all purposes. Send stamped addressed envelope with sketch (or sample) and indicate colours, size and

quantity required, for our quotation. NO PRICE LISTS. Russell King, East Down Mill, East Down, Barnstaple, Devon. (Tel: Combe Martin 3629.)

Make your own waterproof clothing. polarwear, wetsuits, tracksuits, sweatshirts, duvets, sleeping bags, tents, flysheets, covers, rucksacks, etc. Materials and accessories for all requirements. Specialist suppliers trade and retail since 1964. Tremendous savings on shop prices. See for details and samples: Penline Boats, Hardknott, Holmbridge, Huddersfield.

At Least 200% Profit on your outlay with our quick selling range of imprinted pens and other easy sellers. 8p stamp for catalogue and sample. JA&V Jeffers, Berkhamsted, Herts. (Tel: 6527.)

TRANSIT FOR HIRE

Mini-Bus 12 seater. Unlimited mileage. October to April, weekly rate £85, daily rate £14. May to September, weekly rate £95, daily rate £16. **Crewbus 12 seater.** Unlimited mileage. October to April, weekly rate £80, daily rate £13.50. May to September, weekly rate £90, daily rate £15.50. **Transit Vans.** 18/22 cwt, weekly rate £40, daily rate £8.30 30 cwt, weekly rate £50, daily rate £10. Deposit £25. Mileage charge, 5p per mile, 15% VAT on all above charges (excluding deposit). Deposit £25. Four Point Garage Ltd, 110 High Street, Feltham, Middlesex. Tel: 01-890 9931.

TRAINING COURSES

Thinking of a Training Weekend or out-of-season indoor

'camp'? Large building. Rural Notts. For details ring Radcliffe on Trent 3966.

CAMPING/HOLIDAYS

Camping Afloat. Travel the English Canals on a real narrow boat specially adapted for comfortable living, steered by a helpful and experienced boatman to ensure your trip goes smoothly. We cater for groups of all sizes and offer a choice of routes to suit everyone's taste. Costs can be as low as £8 per person per week, including VAT, or if you prefer self steer boats are available. Write or phone for fully illustrated brochure to: Union Canal Carriers, Canal Side, Little Braunston, Daventry, Northants. NN11 7HJ. Telephone Rugby 890784.

Buckmore Park, Maidstone Road, Chatham, Kent ME5 9QG. A District Camp Site and Activity Site for members of the Guide and Scout Associations. Open all year for Day Visitors, weekend and week's campers. Indoor Units, heating and hot water, refrigerators, 53 Camp Sites in over 200 acres of woodland. Indoor heated Swimming Pool, indoor Roller Skating, Rifle Ranges, Archery, Abseiling and Climbing, Five-A-Side, Tennis, Karting, Assault Course, Pioneering, Scout and Guide Club, Hot Showers, fully stocked Shop and Restaurant. Write for details.

Activity Centre available, sleeps 20 — suit Brownies, Guides, Rangers. Close to Southport. Booking now for January, 1980 onwards. Details — ring Southport 214268.

cont on p 432

Tent Cloth & Zips

Manufacturers Bargains. 36" MATERIAL Blue, Orange 75p yd., 90 8p yd. TEN ZIPS Twin puller 25p ft. any 10 15p, 8p each. 48" PVC GROUND SHEETING or Mudwelling 75p yd., 60" 9p yd. 60" DOUBLE PROOFED NYLON various colours £1.00 yd. 100 9p yd. MANY MANY MATERIALS IN STOCK. Clear PVC, Window Netting, Tape, Nylon-backed PVC, Polyester, eyelets, etc. Cash with order or S.A.E. for free cloth samples.

TARLINGS (Dept. GU.1, 170 Romford Road, Aveley, Essex RM15 4PJ)

The Girl Guides Association takes no responsibility for statements made in any advertisements here or elsewhere in the magazine, or for any subsequent correspondence in connection therewith. The right is also reserved to refuse any advertisement not considered suitable. Advertisements for the sale of secondhand clothing cannot be accepted (except uniforms). Uniforms for sale should not be sent to CHQ, advertisers receive communications from applicants. **ALL COPY MUST BE RECEIVED BY 21st OF THE SECOND MONTH PRECEDING PUBLICATION (eg 21st SEPTEMBER FOR THE NOVEMBER ISSUE). ALL CHARGES 10p per word (from January, 1980 12p per word). BOX NUMBER 40p EXTRA; PLEASE SEND REMITTANCE WITH ADVERTISEMENT TO: Miss A M Martin, Advertisement Manager, The Girl Guides Association, 17/19 Buckingham Palace Road, London SW1W 0PT. 10% discount for series of 12. To reply to a Box Number, address your envelope to Box Number concerned c/o GUIDER. Please enclose SAE when replying to Box Numbers.**

CLASSIFIED - - -

Cont from p 431

CAMPING/HOLIDAYS

Come camping on the canals — Charter a traditional narrow boat, fully fitted to accommodate 12 people in camping standard; 24 per 'pair' of boats, with first class skippers to make everyone's holiday really enjoyable. Or self-drive a luxury 4 or 6 berth. Full details from: Foxton Boat Services Ltd, Bottom Lock, Foxton, Market Harborough, Leicestershire. Tel: Kibworth 2285.

Alderney, the unsophisticated, unspoilt Channel Island. Small Guest House, owner operated, offers escape to tranquillity and friendship. Farm Court, Alderney, CI 2075.

'Our Chalet', for details of low cost inclusive arrangements to the International Guide Centre at Adelboden, contact the official agents, YHA Travel, 14 Southampton Street, London WC2E 7HY. 01-836 8541.

Felin Bach (Caernarvonshire County Camp-site) Caethraw, Gwynedd. Large unequipped camping area, for Guides and Rangers, and indoor Accommodation for Pack Holidays, available all the year round. Snowdonia National Park half-a-mile. Climbing and hill-walking within easy reach. Safe bathing at Dinas Dinlle.

or Bangor Baths. Apply to Mrs P Jones, Bryn Meurig, Celyn Avenue, Penmaenmawr Gwynedd LL34 6LR, with foolscap Sae.

Petersfield Pack Holiday Indoor Centre. Excellent facilities, near swimming pool, county park. £40 per week inclusive. Weekends. Write: 1 Hazelbank Close, Petersfield, Hants. Sae (foolscap).

BADGES

Exchange County Badges, Anne Simmons, Tookeys Farm, Astwood Bank, Red-ditch.

EDUCATIONAL

Write and Sell Children's stories. Mail tuition. Sales assistance. Free booklet; children's features (G) 5/9 Bexley Square, Salford, Manchester M3 6DB.

INSURANCE

Insurance. Reduced motor premiums for Guiders, Scouters, Civil Servants, Advanced Motorists Professional advice for all classes of insurance. We welcome enquiries for Group vehicles and premises, your home, life, mortgage, pension and investment require-

ments. Morden Park Insurance Brokers Ltd, 12 Colman Parade, Southbury Road, Enfield, EN1 1YA. Tel: 01-366 1312/3.

Special reduction in premium for Guiders on motor and other insurances. We can also insure your personal camping equipment if you insure your household contents with us. For free quotations contact: Orchard Glen Insurance Services, 82a, High Street, Sandgate, Folkestone, Kent, CT20 3BX. Phone: 0303-30265.

COMING EVENTS

1st Crookham (Hants) Guiders. Golden Jubilee, November 10th. Former Guiders or Guiders contact: Mrs K Smith, 28 Darset Avenue, Fleet, Hants.

20th Bromley (St Augustine's) Guiders. 21st Birthday celebrations November 1979. Former Guiders or Guiders please contact: Mrs Layton, 11 Ruskin Walk, Bromley, Kent.

1st Sheet St Mary's Brownies' Silver Jubilee November 1979. Former Guiders or Brownies contact Mrs Kendall, 10 Torberry Drive, Petersfield, Hants.

UNIFORM

Guider's uniform trevira suit, as new, size 20, £10; also skirt, size 20, £3. Dittisham 281.

MODELLING

Models: Girls (16 and over). Our courses in fashion and television modelling could lead you to top money and an exciting life. Call or send *now* IPO for model magazine, Katie U Hughes, London Academy of Modelling, 143 New Bond Street, London W1H 0LE. Tel: 01-499 4751.

ARCHERY

Scout and Guide Indoor Archery League. For all standards of archers, a postal league, shoot at your own HQ or club. Further details send sae to: John Rowley, 92 Monkwood Avenue, Waltham Abbey, Essex.

LATE UNCLASSIFIED

The Girl Guides Association, London and South East England. Applications are invited for the position of Assistant to the General Secretary. The Regional Headquarters are situated in East Croydon and are the centre for the 19 Guide Counties of London and South East England. The General Secretary is responsible to the Chief Commissioner for the administration of the Region. Candidates for the appointment of Assistant need good shorthand and typing skills combined with a tactful and sympathetic approach to other people. Some Guiding experience would be preferred. Salary dependent on age and experience. Application forms and further details from: The General Secretary, The Girl Guides Association, 14 Barclay Road, Croydon CR0 1JN. Tel: 01-688 2473.

BALLOONS PLAIN FEATHERED ADVERTISING

BALLOON RACE A SPECIALITY

LUCKY DIP POCKET MONEY & LARGER TOYS

JOKES NOVELTIES & FAIRGROUND LINES

DOLLS FOR DRESSING WOOD BALLS FUR GONKS

FUND RAISING PENS & PUNCH BOARDS

XMAS CRACKERS D.I.Y. SNAPS MOTTOS HATS

JELLY CASES PAPER PLATES STRAWS

XMAS DECORATIONS & TOYS FOR SANTA

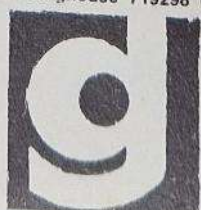
MAIL ORDER GUARANTEE

Assortments for Small Buyers

DO NOT MISS THIS CHANCE TO OBTAIN OUR CATALOGUE AND BOOST YOUR FUNDS

Send large S.A.E. for your FREE Trade List

To: D. Glover (Wholesale Toys) Ltd, Branhholme Mills, Dept. GD Bradford Rd, Brighouse, Yorkshire
Tel. Brighouse 719298 (STD 0484)



GOOD PROMPT SERVICE

FOR INFORMATION REGARDING ADVERTISING IN **GUIDER**, TODAY'S **GUIDE AND THE BROWNIE**, DISPLAY AND CLASSIFIED, PLEASE CONTACT MISS A M MARTIN — 01-834 6242.

When replying to advertisements please mention **GUIDER**

Please note: all advertisements for Venture Scouts/Ranger events published in **GUIDER** must be accompanied by the signature of the Guide County Commissioner.

WHAT'S ON

London Craftsmanship

An exhibition at the Museum of London, London Wall, EC2, running simultaneously to 'Police 150' (reviewed last month) is 'London Craftsmanship' (the work of London craftsmen during the period 1680-1780). Included in the exhibition are textiles, watches, silver, porcelain and glass, including a clock-maker's workshop, complete with bench and tools.

The exhibition is quite small, but includes the rather unusual feature of two large, working musical clocks (one by George Pyke, from about 1760 and the other by William Bull, of about 1780), and a working Tompion bracket clock. The Pyke clock's 'dumb show' mechanism goes into action every day at 12 o'clock and 4 o'clock for the benefit of visitors.

The Museum of London's opening hours are: Tuesday-Saturday 10.00-18.00, and Sunday 14.00-18.00. Admission is free.



John Merrill's Lecture Tours

This country's greatest walker, John Merrill, is willing to relate his own story of his epic coastal walk, which started in January 1978 and which he completed last November, raising in the process over £40,000 for the Royal Commonwealth Society for the Blind. The lectures he will be giving from next month will be illustrated by over 200 superb colour slides. Lectures will be given in 31 centres from Redruth to Wick, between 8th October and 17th November, with an additional lecture at the Wembley Conference Centre on 5th December. Tickets £1 evenings, 50p afternoons (except for Wembley — £1.50 — but 75p for children and OAPs.)

For details of lecture venues and ticket agents, apply to: **Mrs Sheila Milne**, 23 Muirpark Way, Drymen (tel 036-06-427) or **Mrs Christine Reeve**, 20 Gritstone Road, Matlock, (tel 0629-55106).

The Plotters of Cabbage Patch Corner

From 9th October, a two week schools' matinee season of **The Plotters of Cabbage Patch Corner** by David Wood is running at the famous **Sadlers Wells Theatre**. All seats will be £1.25, with one free seat for every 15 purchased. Following the season at Sadlers Wells, Whirligig Theatre tours to Stevenage, Wolverhampton, Darlington, Sunderland, Poole, Newark, Hull and Liverpool.

Clark's, who are contributing to the running cost of this season's production, have also donated a set of gifts

for children who attend; every child in the audience will receive a cut out toy theatre based on the play, plus a comic with scenes from the play and ideas for follow-up projects, and also a Whirligig Theatre badge.

The play is set in the miniature world of insects, and concerns the continuous conflict between the 'pretty' insects (Red Admiral, Ladybird and Bumble Bee) and the 'ugly' ones (slug, greenfly and maggot). But when the garden paradise of the insects is under threat, all the insects reconcile their differences and set to save it together, in a common effort.

Schools performances at Sadlers Wells Theatre are at 10.30 am and 2.00 pm on weekdays from 10th-19th October inclusive, and public performances take place on Saturday, 13th October and Saturday, 20th October at 2.00 pm and 5.00 pm. For further details, telephone the Box Office (01-837 1672).

Paco Peña

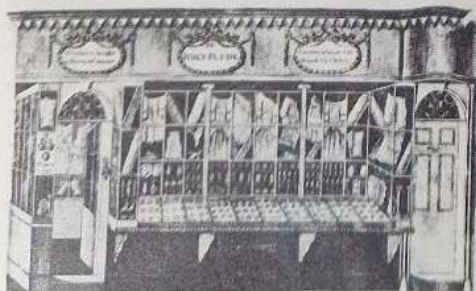
Paco Peña, the celebrated Flamenco guitarist, brings a touch of Latin colour to the Sadlers Wells Theatre this month when he returns to Britain for a two-week run.

The Cordoban guitarist, who brings with him his Flamenco group of dancers, singers and musicians, is dedicated to the preservation of pure Flamenco, an art form developed in Andalucia and based on many different origins — Spanish, Gypsy and Moorish, among others. Most of us are familiar with the fiery dancing associated with Flamenco, but Paco Peña's company also shows the many other facets of this fascinating piece of Spanish culture — the haunting laments and the brilliant guitar playing. The season starts on 24th September, and continues until 6th October. Ticket prices range from 80p to £5.50, and for parties of ten or more, tickets cost £2.50.

For further information, write to **Sadlers Wells Theatre, Rosebery Avenue, London EC1R 4TN. Tel: 01-278 6563.**



Above, some fine examples of Stuart silver from the Museum of London's exhibition. Shown here are a toilet mirror by Benjamin Pyne, a baptismal bowl by Joseph Ward and some straining spoons for Baptismal and Communion services dating from about 1700.



John Flude & Co
PAWNBROKER and SILVERSMITH

Left is pictured the trade card of John Flude, who combined two no doubt complementary careers (Pawnbroker and Silversmith). Late 18th century, from the 'London Craftsmanship' exhibition, which runs until 7th October.

Right, Paco Peña and his Flamenco Company with dancers (left to right) Margarita de Cordoba, Fairquillo de Cordoba and Loli Flores.



Student Scout And Guide Organisation

Scout and Guide Clubs exist at several places of further education throughout the country. They are similar to mixed Ranger/Venture units, but have the added informality and scope of activities which student life allows. Clubs are run entirely by their members, and the programme is generally made up of a wide range of social, activity and service events. Many club members also attend National Rallies, one of which is held each term. Each Rally is organised by a different Scout and Guide Club, and invariably offers a weekend packed with activities.

There are Scout and Guide Clubs at the following colleges and universities:

Aberystwyth: Irena Horak, SSAGO, Students' Union, Laura Place, Aberystwyth.

Aston: Andrew Lyle, University of Aston in Birmingham Scout and Guide Clubs, Guild of Students, Gosta Green, Birmingham B4 7ET

Bangor: Russell Barry, 3 Garth Hill Cottages, Upper Garth Road, Bangor, Gwynedd.

Birmingham: Tessa Whitworth, c/o Scout and Guide Club, Students' Union, Edgbaston Park Road, Edgbaston, Birmingham B15.

Bristol: Janet Bamford, Ground Floor Flat, 45 St John's Road, Bristol BS8

Cambridge: Ruth Richardson, Girton College, Cambridge

Durham: H Kate Leigh, Scout and Guide Club, Dunelm House, New Elvet, Durham

Exeter: Suzanne Kelsey, C H Letter Rack, Lafrowd, St Germans Road, Exeter

Leeds Polytechnic: Ruth Vearncombe, c/o Scout and Guide Club, the Students' Union, Leeds Polytechnic, Calverley Street, Leeds 1

Leeds University: Ann Hopkinson, Scout and Guide Society, Students' Union, Leeds University, Leeds

Leicester: Julie Hopkins, Scout and Guide Club, Students' Union, Leicester University, Mayor's Walk, University Road, Leicester

Liverpool: Dave Allott, Liverpool University Scout and Guide Club, Students' Union, 2 Bedford Street North, Liverpool L7 7BD

London: Blackheath: Peter Wells, Wilson Carile College, 27, Vanbrugh Park, Blackheath, London SE3 7AG. Imperial College: Paul Fairbrother, Scout and Guide Club, Imperial

College Union, Prince Consort Road, London SW7. University of London: Caroline Simpson, Scout and Guide Club, University of London Union, Malet Street, London WC1

Loughborough: Noel Gray, Scout and Guide Club, Loughborough Students' Union Building, Ashby Road, Loughborough, Leicestershire LE11 3TO

Manchester: Annette Chalkley, Greystoke Hall, 194 Palatine Road, Didsbury, Manchester M20 8UL

Newcastle: Nina Pearson, c/o the Union, King's Walk, Newcastle upon Tyne.

Norwich: Hella O'Shaughnessy, School of Environmental Sciences, 2 University Plain, University of East Anglia, Norwich

Nottingham: Bill Kilbart, Scout and Guide Club, Students' Union, the University, Nottingham.

Oxford: Mike Wigney, Magdalen College, Oxford.

Ripon: Jane Lawton, The College, College Road, Ripon

St Andrews: Anna Dickens, Scout and Guide Club, Students' Union, St Mary's Place, St Andrews, Fife

Salford: Mary Worsley, Scout and Guide Club, Students' Union, Salford University, Manchester

Sheffield: Judith Bannan, 32 Wood Road, Sheffield S6

Southampton: Julia Davenport, 127 Askham Lane, Acomb, York YO2 3HH

Winchester: Gillian Johnson, King Alfred's College, Winchester, Hants

York: Yvonne Waters, Scout and Guide Club, the College of Ripon and York (St John's), Lord Mayor's Walk, York YO3 7EX

Information about the Student Scout and Guide Organisation is available from the following:

Chairman: Russell Barry, 3 Garth Hill Cottages, Upper Garth Road, Bangor, Gwynedd

Secretary: Mike Wigney, Magdalen College, Oxford.

Treasurer: Richard Mason, King Alfred's College, Winchester.

Assistant/International Secretary: Karen Lynn, 16, Goodwood Close, Cowplain, Portsmouth PO8 8BG

At Commonwealth Headquarters, Mrs Anita Maunsell, Head of Press and Public Relations Department, handles matters concerning individual clubs and the Student Scout and Guide Organisation.

WHAT'S ON

The Art of the Book

A small exhibition of fine books made up from the museum's permanent collection is now being held at the Victoria and Albert Museum.

The exhibition traces the historical development of fine book production from the Middle Ages to the present century and shows some beautiful examples of books from each period. There are medieval illuminated manuscripts, some early printed books from Italy and Germany, and many examples of changing styles of decoration and technique during the 17th, 18th, 19th and 20th centuries.

The Art of the Book continues until 28th October and admission is free. The

Victoria and Albert Museum is open every day except Friday.



Above is a beautiful example of bookbinding. The *Servant Book of Hours* is bound in brown calf with gold tooling.

In Brief

1 Blackpool — Blackpool Illuminations start. Light up at dusk daily.

9 Stowmarket Country Fair, Honey Show and Threshing Demonstration. Museum of East Anglia, Stowmarket Suffolk.

12-22 Leamington Spa — Medieval Entertainment to celebrate the 700th Anniversary of a Great Concourse of 100 Knights, in displays in jousting.

15 Egremont — Egremont Crab Fair and World Gurning Championships.

19 Ipswich — Ipswich Antiques and Collectors' Fair.

28-30 Fauld — Fauld Steam and Preservation Rally. Fauld nr Uttoxeter.

30 Shuttleworth Collection. Air Pageant. Old Warden Aerodrome, Biggleswade, Herts.

FOLK FEST 9

Produced and Directed by Ian Grant

International Scout & Guide Folk Festival



Royal Albert Hall London
Saturday 24th November 1979 at 7pm

Booking form alongside
Box Office opens 1st September 1979



Apply to Folk Fest 9 Box Office
The Scout Association, Gilwell Park, Chingford, London E4 7QW

Please supply tickets as follows:

Number	Seats	Price	Amount
	Grand Tier Box £4.00 each	£	£
	Loggia Box £2.50 each	£	£
	2nd Tier Box £2.50 each	£	£
	Stalls £2.00 each	£	£
	Arena £2.00 each	£	£
	Orchestra £1.50 each	£	£
	Balcony £1.50 each	£	£
	Balcony £1.00 each	£	£
	Total		£

To avoid disappointment in the event of your first choice being sold out,
please state your second choice of seats below:

I enclose a cheque/postal order payable to THE SCOUT ASSOCIATION
for a total remittance of £..... together with a STAMPED
ADDRESSED ENVELOPE.

Name:

Address:

Telephone No:

SUPER FREE GIFTS

mrs s irving

from Miller Leswyn-Britain's Finest Fund Raising Service

Here are 2 beautiful gifts which can be yours, absolutely FREE. Just look at the tremendous quality and value they offer. There's a top quality real leather purse and notecase (ideal as raffle prizes or presents) and an invaluable Big Ben repeater alarm by Westclox, with 30 hour movement and a 2 year guarantee.

Yes here's another great FREE offer from Miller Leswyn and here's how you can find out more about obtaining these outstanding top quality items, absolutely FREE.

Look for the separate Miller Leswyn colour leaflet in this issue.

Then, complete the post-paid coupon, fold and return. By return we will send — free of charge — details of the super Miller Leswyn fund raising service including all the information on how you obtain the FREE offers.

Look for the colour leaflet in this issue. See what it says. Fill in the post-paid coupon. You're on your way to the FREE gifts already.

Miller Leswyn

Miller Leswyn Limited, Queensbridge Works,
Queen Street, Burton-on-Trent, Staffs. DE14 3LP



Britain's Finest Fund Raising Service —
the one that will work best for you.