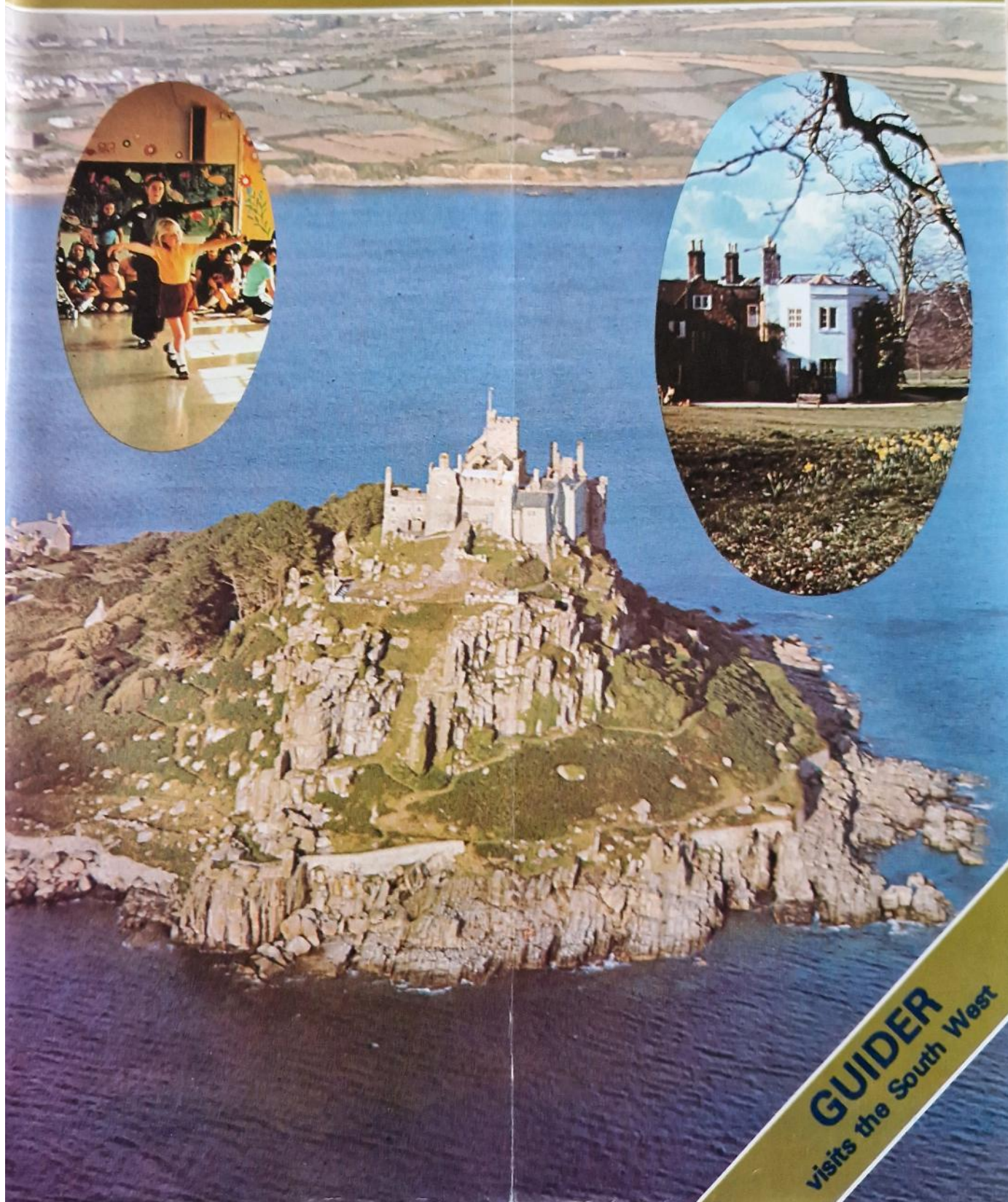


# Guider



Volume 67  
Number Five  
May 1980  
30p



**GUIDER**  
visits the South West



# "Webb Ivory swept away our Fund Raising problems"



The Guides, Rangers and Brownies of the Bishopbriggs Division, Glasgow, work hard to keep their two splendidly equipped Halls in good trim — and they're just as energetic when it comes to raising the funds needed for their upkeep. It's a good thing, too, because with 7 Guide Companies and several Ranger Units and Brownie Packs using the Halls each week, running costs are naturally pretty steep — around £2,000 a year.

Fortunately the Bishopbriggs Guides know from long experience that they can rely on the Webb Ivory Fund Raising Service to produce the regular income they need. They've been using the service for around 15 years now, and last year alone they profited by £1,800. Initially, the money raised helped to build the Halls.

Now, says Mr. Alan Simpson, who co-ordinates the Webb Ivory fund raising effort on behalf of the Division's supporters' Association "Webb Ivory helps pay for heating, lighting, painting the Halls, not to mention all the camping equipment — it's definitely our biggest single source of income."

Perhaps the nicest tribute to Webb Ivory's role in the Bishopbriggs Division's fund raising success comes in this poem written by one of the Guides:

*"Parents and friends answered our call,  
Bought from Webb Ivory to pay for our Halls,  
As the years roll by,  
They continue to buy,  
So Guiding in Bishopbriggs will never die."*

Those words sum up everything that the Webb Ivory Fund Raising Service is doing for Guide Companies all over the country — and all that it could do to benefit you, too. **Complete and post the coupon to find out more, and entirely without obligation we'll send you full details by return post, including, free of charge, our guide, 'Fund Raising for Profit and Pleasure.'**



**Webb Ivory Limited, FREEPOST**  
Fine Art House, Little Cornbow, Halesowen, West Midlands B63 1EP

## Webb Ivory - A Great Guiding Service

Please send me details of the Webb Ivory Fund Raising Service, including, FREE of charge, "Fund Raising for Profit and Pleasure."

Name (Mr./Mrs./Miss) \_\_\_\_\_

Address \_\_\_\_\_

Postcode \_\_\_\_\_

I am over 18

EM2E



# Guider

OFFICIAL MAGAZINE OF THE GIRL GUIDES ASSOCIATION  
(incorporated by Royal Charter)

## PATRONS

HM THE QUEEN  
HM QUEEN ELIZABETH, THE QUEEN MOTHER

## PRESIDENT

HRH THE PRINCESS MARGARET, COUNTESS OF SNOWDON

## WORLD CHIEF GUIDE, 1930-1977

OLAVE, LADY BADEN-POWELL, GBE

## CHIEF COMMISSIONER

MRS OWEN WALKER, JP

## Contents

Roundabout	4, 5
World Children's Day	6
Items of Interest from Executive Committee Meetings	6, 7
Thinking Day, 1980	8, 9
Out and About in the South West	10, 11, 13, 14
Letters	15
Duke of Edinburgh's Award-Expeditions	16
Practical PR/ Results of Survival Aid Competition	17
Mainly for Rangers	18, 19
A Working Holiday in Scotland	20
Foxlease — A Guiding Nucleus	21
Airing and Sharing	22
Book Reviews	23
Training Pages	25, 26, 27, 28
Double Acrostic 28	29
Training Calendar	30, 31
Camps and Holidays	33
In Memoriam	34
Home and Away	34, 35
HQ Notices	37, 40
Insurance — the Great Cover-up	39, 41
Oberammergau Passion Play / Girl Guide Friendship Fund	42, 43
Classified	46, 47
Thursday's Guider	49
What's On	50

## Cover

This month's cover shows St Michael's Mount, in Cornwall, at high tide. Photo: British Tourist Authority. Inset are pictured Gosport Brownies and Guides from a Unit for the handicapped, taking part in an Arts Weekend in Hampshire recently. (Photo: Sue Stevens). The remaining inset photograph is of Foxlease Training Centre in Hampshire — a familiar and well-loved venue for many southern Guiders.

EDITOR: JEAN V RUSH

ASSISTANT EDITOR: ALYSON COOK

SUB EDITOR: MATTHEW HOLGATE

ADVERTISEMENT MANAGER: ANN M MARTIN

ALL COMMUNICATIONS TO: Guider GIRL GUIDES ASSOCIATION

17-19 BUCKINGHAM PALACE ROAD, LONDON SW1W 0PT 01-834 6242

## Appointment of a New Chief Commissioner



Mrs  
Owen  
Walker

At the meeting of the Council of The Girl Guides Association held on 15th November, 1979, The Chief Commissioner reminded the Council that the period of five years for which she — as with all Commissioners — had been appointed would be completed in 1980 and that it was for the Council to decide whether this should be extended or not.

After discussion, the Council agreed to require that only if at least two-thirds of its members wished Mrs Walker to remain in office should she do so, and that voting on this matter should be confidential and by post.

As there was not a two-thirds majority of Council Members who wished to extend her appointment, Mrs Walker will be handing over to a new Chief Commissioner later this year.

*Sheila Walker.*  
The Chief Commissioner.



# GUIDING Roundabout



Above, tucking in! members of the 1st Ankara Brownie Pack, Turkey, enjoy a picnic in the sunshine. Fathers and husbands did the barbecuing. Right, a shopping spree for 450. Two of the 450 disabled people from Tameside who were assisted in their shopping by volunteers, in this case local Guides. Below, three members of the 2nd Crowborough Rangers with their local vet after a practical session in Animal Care for their Bronze Duke of Edinburgh's Award Badge.



North Cheshire Herald

Kent & Sussex Courier



Below left, Guiders being shown the ropes at STAGA '79, the joint training day for Scouters and Guiders held in Avon last year. Below right, thank-you time... two members of the Leominster Pack present a clock to the local Scout Group in appreciation for the use of the Scout Hall for their meetings.

Mud everywhere as the 1st Cults Guides decide to practise a novel form of make-up on their summer camp at Felagie near Braemar.



Aberdeen Journals Ltd

Jean Little



Hereford Times Ltd





Above, not the Artful Dodger and his cronies, despite appearances. This is a scene from the 1st Barrington Pack's belated Christmas Party held in January. Uniforms were abandoned and everyone dressed as tramps. Right, two Brownies of the 1st Carcroft Pack during a sponsored 'hush-in' which helped raise money towards Pack funds.



Far left, Roughton Mill in Norfolk which is about to receive a new lease of life as a Scout and Guide Headquarters. Near left, Mrs Edna Crooks of Rodley near Leeds on her first visit to the city centre for 11 years. She is being ably assisted by two Leeds Rangers. Below, the Swallow Patrol of the 2nd Bromham Guides with Division Commissioner Mrs B Leckie, who had just presented them with this nest of billies for raising the most money in the Division towards a new campsite.



Deryck Guyler, better known to TV viewers as Corky the friendly policeman, pictured here with his wife and two Guides at the opening of a new day centre for the blind in Croydon last year.

Gina Cameron, Guider to the 1st Lour Coy, Forfar, being presented with the Chairman's Cup and Shield by Wallace Monaghan, Chairman of Fine Fare. In January, Gina was named 'Fine Fare's Master Merchandiser'.



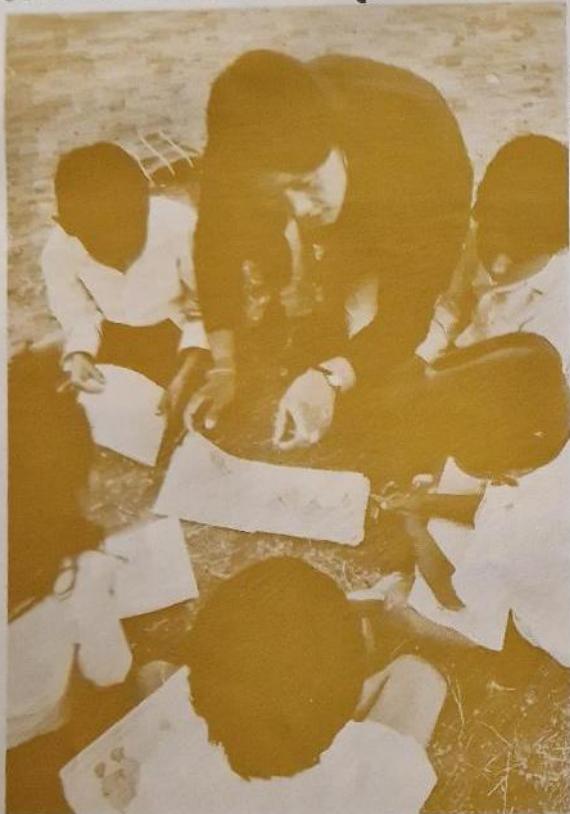


'Learning for Life' is our theme this year.

In Nepal there is a great shortage of schools, equipment, and teachers, particularly women. The teacher below, for instance, is taking a class out of doors, and using a book she has had to design and make herself. In the winter, if the sun is shining, it can be warmer out of doors than inside the school!

Only fifty-six out of every hundred boys go to school in Nepal, and only eight out of every hundred girls. The reasons for this are the lack of women teachers, the problem of persuading parents to send their daughters to school when it seems to them they can be more use at home and working in the fields, and the difficulties of getting to what schools there are in a wild and mountainous country where roads are almost non-existent. Children often have to walk for hours to get to school and are taught in four hour shifts to cope with the numbers who come, the first shift starting at 6 a.m.

## World Children's Day, 15th June



UNICEF/Abigail Heyman. ICEF Series 6715-6727

The Nepalese Government, with assistance from UNESCO and UNICEF, initiated a teacher training project for women in 1971. The project's goals are to increase the enrolment of girls in the schools, to provide incentives for women to join the teaching professions as well as facilities to train them, and to ensure, as far as possible, their employment under favourable conditions.

The United Nations Children's Fund is helping the Government of Nepal to provide incentives for women to become teachers and the facilities to train them; to persuade parents to send their daughters to school as well as their sons and to build and equip more schools of a simple and practical kind. The villages provide the local material and labour required, and UNICEF the roofing and trusses. The Fund has also started a text book production plant with printing and binding equipment to overcome the chronic shortage of text books. Even so these will more often than not be distributed to the schools by a man with a pack of books on his back because of the poor road system in this part of the world.

There is a free illustrated leaflet available from the UK Committee for UNICEF (46/48 Osnaburgh Street, London NW1 3PU) which gives further information on the work UNICEF is doing in Nepal and all over the world to help Governments provide a better education for their children. Please persuade your Guides and Brownies to do what they can on World Children's Day this year to help UNICEF to continue and expand this important work.

Jean Erskine

## Items of Interest from the Executive Committee Meeting held on 6th December, 1979

After opening the Meeting with a Prayer, The Chief Commissioner welcomed Lady Beevor as the new International Commissioner, Mrs Keppie, Vice-Chairman of the Finance Commissioner, Miss McIntosh, who will retire at the end of the year, and Mrs Manasseh representing Mrs Thompson, the newly-elected President of the Trefoil Guild.

The Chief Commissioner announced that Miss Audrey Bickersteth has accepted the invitation to become a Vice-President of the Association, and Mrs Swinburne-Johnson has accepted to continue as Vice-Chairman of the Executive until the middle of March 1980.

The Executive Committee learned that this was Mrs Birkbeck's last meeting as the Association's P R Adviser, but that she has been asked to carry out Public Relations work for the World Centre in London, Olave House, and would continue to represent the Association on the National Council for Voluntary Youth Services and other voluntary bodies. As a token of the Association's gratitude for her long and varied outstanding services to Guiding, The Chief Commissioner presented her with the Beaver Award.

### Commissioner for Branch Associations

- (a) **Pacific Conference**  
Mrs Vaughan-Cox reported that the Pacific Conference in Fiji was due to start and she has sent a cable on behalf of the Association wishing them well.
- (b) **Commissioner for British Guides in Germany**  
Mrs E A Burgess has been appointed Commissioner for British Guides in Germany (vice Mrs A. G. Wooldrige) with effect from November, 1979.
- (c) **Deputy Commissioner for Bermuda**  
Mrs Felicity Lunn has been appointed Deputy Commissioner for Bermuda.
- (d) **Girl Guide Friendship Fund — Dominica**  
Dominica would receive £500 from the Girl Guide Friendship Fund following the recent hurricane, and money received from United Kingdom Units would be added to the total.

### The Chief Commissioner

- (a) **Training Adviser**  
Miss Marjorie Edwards has agreed to continue in her appointment as Training Adviser for one further year with effect from 1st January, 1980.
- (b) **Hillwalking Consultant to the Outdoor Activities Adviser**  
Miss Margaret Staines has been appointed Hillwalking Consultant to the Outdoor Activities Adviser for an initial period of three years with effect from 1st November, 1979.
- (c) **Chairman, Foxlease House Committee**  
Mrs W. Robson has been re-appointed as Chairman of the Foxlease House Committee for a further two years with effect from 1st January, 1980.
- (d) **Arts Adviser**  
Mrs J. Richards has agreed to continue in her appointment as Arts Adviser until 31st August, 1980.

### Date of Next Meeting

It was confirmed that the next Meeting of the Executive Committee of the Council would be held on Wednesday, 6th February at 11.00 a.m. and Thursday, 7th February, 1980, at 10.30 a.m. at Commonwealth Headquarters.

### Any Other Business

The Chairman sadly recorded that this was Miss Mitchell's last meeting and members wished her well on her retirement. The Chairman wished all members a Happy Christmas and peaceful New Year.



## Items of Interest from the Executive Committee following a meeting held on 7th February, 1980

After opening the Meeting with a prayer, Mrs Swinburne-Johnson reported that The Chief Commissioner had received letters of appreciation from Dr. Laird, Dr. Benson-Evans and Mrs Birkbeck, all of whom had recently received Association awards. Letters of thanks had also been received from Miss Mitchell and Mrs Manasseh, and it was agreed that a letter of appreciation be sent to Mrs Manasseh for all she had done as President of the Trefoil Guild and as a member of the Executive Committee.

### Commissioner for Branch Associations

#### Girl Guide Friendship Fund — Projects

Mrs Vaughan-Cox reported that there had been an excellent response to the projects and that to date over £13,000 had been received for the British Kidney Patients' Association, which will provide two dialysis machines at a holiday centre, together with a Parker Knoll chair and TV set to each room. Approximately £7,000 has been received for the Asthma Research project.

#### Bangladesh Scheme

Mrs Vaughan-Cox has recently heard that the scheme is now working and an initial sum of money will be sent from the Girl Guide Friendship Fund.

### World Association of Girl Guides and Girl Scouts

#### WAGGGS International Commissioners' Meeting, France 1981

Following the decision taken at the 23rd World Conference, arrangements have been made for the WAGGGS International Commissioners to meet in France immediately before the 24th World Conference in 1981.

The meeting will be held from Friday, 22nd August, to Tuesday, 26th August, 1981 inclusive, at La Source University, Orleans (Loiret), France. At the request of the Executive Committee, Lady Beevor accepted the invitation to represent the United Kingdom at the meeting.

### Commonwealth Headquarters

#### Chairmen's and Advisers' Reports for 1979

The Committee expressed appreciation of the excellent reports and recorded their thanks for all the work that Chairmen and Advisers had done for the Association during 1979.

A  
ROYAL  
END  
TO  
1979

Photo:  
Tony Rose



#### Royal Jubilee Project

Miss Nixon and Mrs Scropton, the project co-ordinators, were welcomed to the meeting and provided the Executive Committee with most inspiring reports. The Pilot Scheme is currently being carried out in two cities, Glasgow and London, although Countries and Regions have now been invited to develop their own projects.

In London, day camps are being arranged in Croydon, a multi-racial area, and a playbus has recently been acquired for children in Crawley, an overspill area for people from tower blocks.

In Glasgow, a play scheme for children during the summer holidays is being planned and a group of unemployed youngsters will be doing 'street theatre'.

The course held at Waddow in January for all the young people involved in the project had been exciting, successful and revealing.

The Executive Committee was thanked for the vision which had brought the project to life.

### ... Appointments

#### Education Consultant to the Programme Adviser

Mrs J. Thorpe has been appointed Education Consultant to the Programme Adviser for an initial term of three years with effect from 1st November, 1979.

#### Movement and Dance Consultant to the Arts Adviser

Miss Netta Willsheer has been appointed Movement and Dance Consultant for an initial term of three years with effect from 1st January, 1980.

#### Visual Arts and Crafts Consultant to the Arts Adviser

Miss Margaret Brotheridge has been appointed Visual Arts and Crafts Consultant with effect from 1st January, 1980 for an initial term of three years.

#### Guide Consultant to the Programme Adviser

Miss Elizabeth Smith has been appointed Guide Consultant to the Programme Adviser for an initial term of three years with effect from 1st January, 1980.

#### Ranger Consultant to the Programme Adviser

Mrs Carol Hughes has been appointed Ranger Consultant to the Programme Adviser for an initial term of three years with effect from 1st January, 1980.

#### Programme Adviser — Re-appointment

Miss Marjorie Emsley has been re-appointed as Programme Adviser for one further year with effect from 1st September, 1979.

### Date of Next Meeting

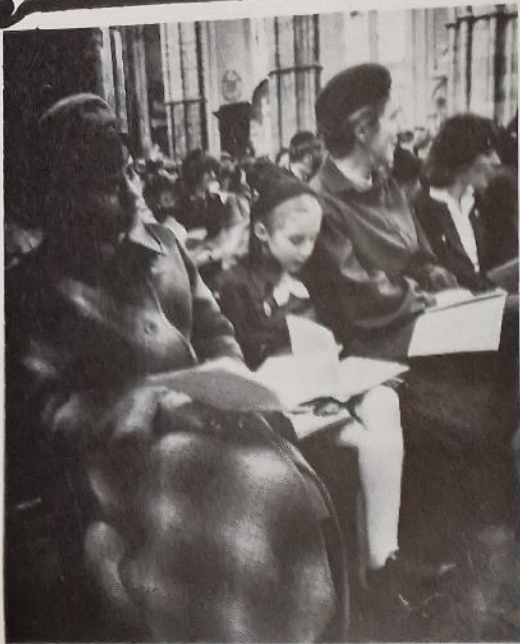
The next Meeting of the Executive Committee of the Council will be held on Thursday, 10th April, 1980, at 10.30 am in the Council Chamber at Commonwealth Headquarters.

The President of The Association, Her Royal Highness Princess Margaret, attended the meeting on 6th December; left, the Princess arrives for the meeting (entering CHQ via the shop).

*Lynne Whitaker*

General Secretary, CHQ





## Thinking Day

Thousands of girls gathered at Westminster Abbey and St. Margaret's on February 23rd this year, eagerly clutching the tickets which they knew would assure them of a place at the Thinking Day services. The early morning queues of young hopefuls, braving the cold, were nowhere to be seen this time. Instead, the ticket holders assembled inside as soon as they arrived, to join in the singing before the service. As always, the







enthusiasm of those girls able to attend the national celebration of their Founders' birthdays, was impressive. It seemed that they, together with the many thousands celebrating the day in local services all over the country, were determined to demonstrate that Guiding is just as valid and exciting as ever, no matter how many years after the first Thinking Day.

# 1980



*All photographs:  
Terry Hope*





Out and  
About in . . .

## The South West

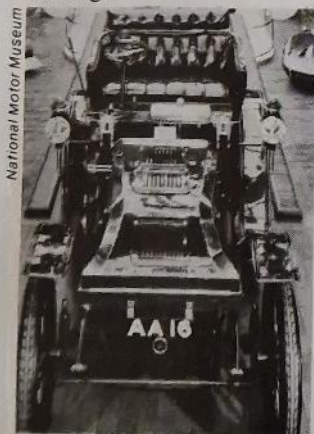
by Matthew Holgate

For the third of our series we go to the South West, an area abounding in delightful scenery, museums and historical buildings. The Region stretches from the rural splendour of the Cotswolds to the windswept beauty of Dartmoor and the tranquillity of the New Forest.

It includes such beautiful buildings as Salisbury and Exeter Cathedrals, Longleat House and the late Lord Mountbatten's house, Broadlands. There is hardly any subject not covered by at least one museum, whether one is interested in vintage cars or prehistoric remains.

### Hampshire and Dorset

What better way to discover the beauties of the New Forest than taking a New Forest wagon ride? These wagons travel through the enclosures where cars are prohibited and are an enjoyable and relaxing way of seeing parts of the forest which would otherwise only be accessible on foot or on horseback. Within the area covered by the forest are many museums and historic buildings: Beaulieu National Motor Museum being arguably one of the most famous. Situated in the picturesque village of Beaulieu, it contains over 200 vintage cars, commercial vehicles and motorcycles, and is open daily. The Abbey ruins in the village are also worth visiting.

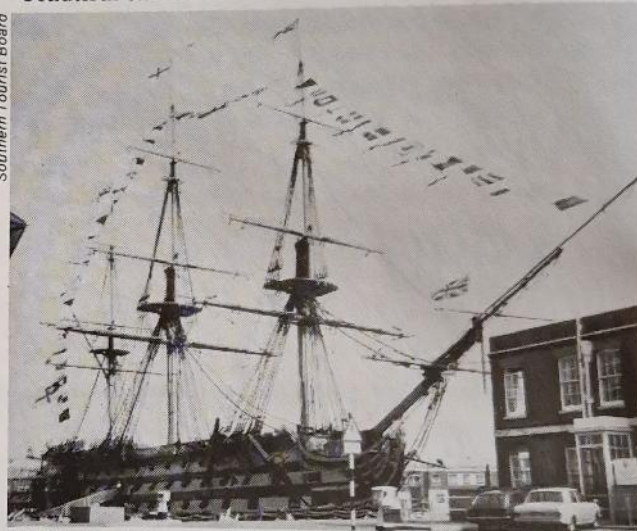


Beaulieu Motor Museum

Travelling down the estuary brings us to Buckler's Hard, home of a spectacular Maritime Museum featuring models and exhibits of ships that were built here for Nelson's fleet. Further inland lies the splendid Breamore House which is open to the public. As an added attraction, its stables house a Carriage Museum, exhibiting perfectly preserved 19th century carriages.

Portsmouth has always been famous for its naval connections and also offers a wealth of entertainment. Here it is possible to visit HMS Victory, Nelson's flagship and the Portsmouth Royal Naval Museum, both of which house many personal relics of the great Sea Lord. Among other attractions are Dickens' Birthplace Museum, Southsea Castle and the Cumberland House Natural History Museum and Aquarium.

In order to get to know some of the smaller villages and towns in the area the Southern Tourist Board publish a wide selection of 'Visitors' Trails' which are most worthwhile (price 10p, available from the Southern Tourist Board). A good example of these is their trail guide to Winchester which highlights its beautiful cathedral.



HMS Victory in Portsmouth

Dorset is 'Hardy Country', which his novels so perfectly depict. One can visit the famous novelist's cottage at Higher Bockhampton, although it is necessary to arrange an appointment to view the interior. There are many castles, art galleries and museums in this area, too many to do them all justice in so few words. Details, however, can readily be obtained by contacting **The Southern Tourist Board, Old Town Hall, Leigh Road, Eastleigh, Hampshire**. When doing so please mention *GUIDER*.

### Devon, Cornwall and Somerset

Possibly the most outstanding feature in Somerset is the Cheddar Gorge. Amidst this craggy scenery, one can visit caves that are known to have been inhabited by man many thousands of years ago. The Cheddar and Wookey Hole Caves are both open daily throughout the year and provide an unforgettable visit.

The town of Glastonbury is also connected with ancient times, albeit in a more mystical and less scientific fashion. The Abbey is the oldest Christian sanctuary in the British Isles and the Tor (inextricably linked with Arthurian legend) is one of the finest sights in this part of the world.

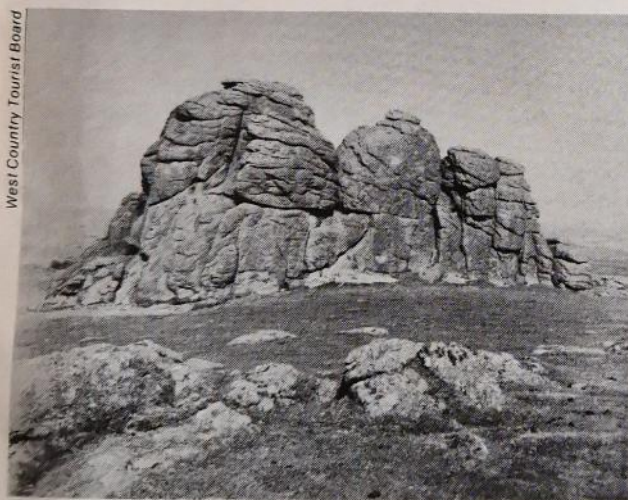


Famous old houses and cottages abound in Somerset including S T Coleridge's cottage at Nether Stowey where the famous poet wrote his masterpiece, 'The Ancient Mariner'. Museums are well in evidence. The Fleet Air Arm Museum at Yeovilton traces the history of Naval Aviation and Concorde 002 is on display. Rural crafts and archaeological remains can be viewed at Glastonbury and Taunton respectively.



The Cheddar Gorge

Travelling west one comes to Devon, home of Dartmoor National Park. This extends over 365 square miles of magnificent countryside, a mixture of granite tors, moorland, streams and wooded valleys. If one's time in Devon is limited then a visit here is certainly something to include.



Haytor, Dartmoor

Exeter, the county town, features a magnificent Gothic cathedral with a beautifully carved west front, although sadly shrouded now in scaffolding, being under repair, but it is still worth a visit.

The city was once a flourishing port and has the first locked ship canal in Britain; a superb Quay (where parts of the 'Onedin Line' have been filmed) and a Maritime Museum which houses the largest collection of old and interesting boats in Europe.

Other places of interest are the Dartington Glass Works, the Dart Valley Railway, the Devon Museum of Mechanical Music at Holsworthy and the Elizabethan House in Plymouth.

Cornwall has a magnificent coastline with a marked contrast between the wild surfing beaches on the North coast and the sheltered coves and estuaries of the South.

GUIDER May 1980



Exeter Cathedral

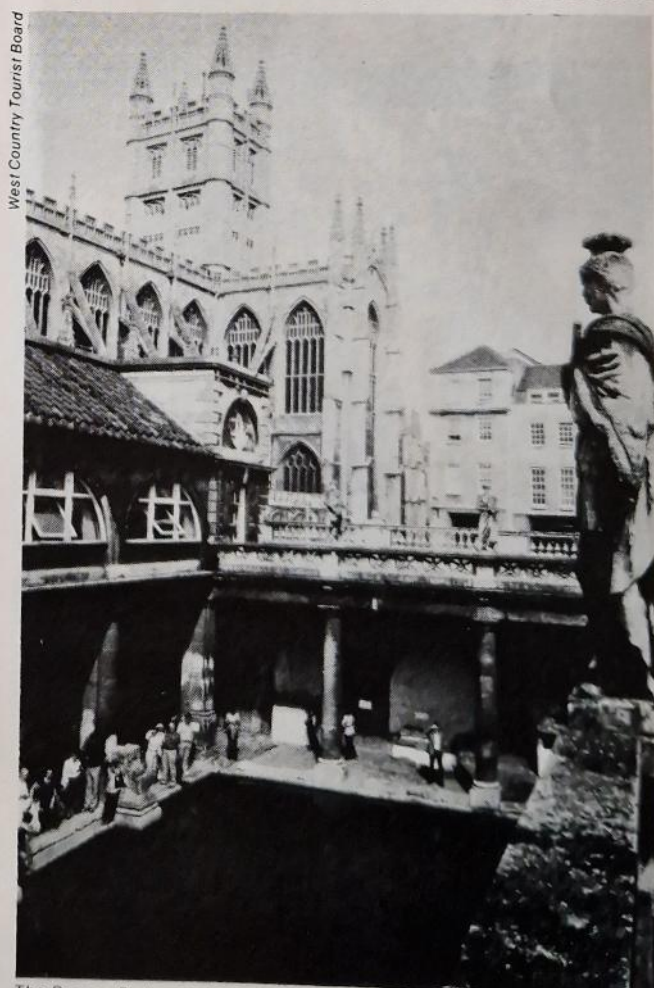


Exeter Maritime Museum

St Michael's Mount, off Penzance, can be reached on foot by causeway at low tide and is well worth a visit. The towns and villages in Cornwall are charming and have many attractions; for further information on the West Country, please contact: **The West Country Tourist Board, Trinity Court, Southernhay East, Exeter EX1 1QS**, mentioning *GUIDER*.

## Avon and the Bath Festival of the Arts

In Bristol, the largest city in the West Country, there is much to see and do: a zoo at Clifton; Isambard Kingdom Brunel's Clifton suspension bridge; the Bristol City Museum and Art Gallery; the Industrial Museum



The Roman Baths. Bath

continued on page 13



**T-SHIRTS AND SWEATSHIRTS  
PRINTED TO YOUR OWN DESIGN  
BY PROFESSIONAL  
SILK SCREEN PRINTERS**



- ★ Free Art service
- ★ Minimum Quantity only 12 Shirts per design
- ★ Unbeatable Value
- ★ World Wide service

## Premier T-Shirts

- ★ Send for your **FREE** Information Brochure and Price List



**PREMIER T-SHIRTS Dept. GDR Freepost  
Wroxham Norwich NR12 8BR Tel. (06053) 2111**

MR/MRS/MISS

GDR

ADDRESS

COMPANY etc.

(CAPITAL LETTERS PLEASE)

NO POSTAGE STAMP NECESSARY—WE PAY THE POSTAGE



Your own design on top quality Sweatshirts, T' Shirts, Hooded Sweatshirts, Track Suits, Sports Shirts and Lambswool Sweaters. Ideal for club, college, regiment, pub, team etc.

FREE BROCHURE—

- ONLY 10 GARMENT MINIMUM ORDER.
- NO CHARGE FOR ARTWORK OR SCREENS.
- DIRECT SCREEN PRINTING—NOT TRANSFERS.
- UP TO 6 COLOUR PRINTING.
- ALL SHIRT SIZES & COLOURS AVAILABLE.
- FAST SERVICE—APPROX 2 WEEKS.
- MONEY BACK GUARANTEE.

**Say Shirts Ltd**  
DEPT. G25  
130 HEATH PARK  
INDUSTRIAL ESTATE,  
HONITON, DEVON.  
Tel: HONITON (0404) 41148.



## Have a big day out at BRISTOL ZOO

See our famous lowland gorillas, including Samson—now a grandfather—and a huge variety of other exciting animals from every part of the globe.

Open daily: weekdays 9 a.m., Sundays 10 a.m. (No pets admitted).



## Out and About in... The South West

continued from page 11

and the splendid Arnolfini Complex, with exhibition galleries for the visual arts, music and cinema. Another of Brunel's masterpieces is on view at the Great Western Dock: the ss Great Britain. This was the first iron-built and screw-propeller driven ship in the world and is quite awe-inspiring.

Near Bristol is the beautiful Georgian city of Bath, famous for its lavish annual Festival of the Arts. This year the Festival commences on 23rd May and continues until 8th June. The 1980 Festival builds on the success of the lengthened 1979 Festival, with 47 main events and



Pics. Bath Festival

Extemporaneous Dance Company



Nola Rae

a supporting Fringe programme that ranges from a lecture on 17th century babies' clothes through an evening with 'Instant Sunshine' (a humorous musical quartet in dinner jackets) to an Elizabethan picnic at Longleat to celebrate the 400th anniversary of that historic house.

The main themes of the 1980 Festival are the music of Purcell, Haydn and Handel, with a strong representation of Schubert, Mozart and Bach. Contemporary classical music is also well represented as is the dance (by the Extemporaneous Dance Company) and mime (Nola Rae). There will also be a dozen exhibitions in the city, ranging from watercolour paintings to bookbinding and heraldry. For more information on the Festival, please write to **The Bath Festival Office, Linley House, 1 Pierrepont Place, Bath BA1 1JY**, mentioning *GUIDER*.

There are many other attractions in Bath: the Roman Baths, the Geology Museum and the Museum of Costume to name a few. Another special event will also be taking place in May: the West of England Antiques Fair will be held from 13th-17th May and more than 35 dealers are expected to have stands. For details of these and other events in this area, please contact the **West Country Tourist Board** (address above).



West Country Tourist Board

Stonehenge

*GUIDER* May 1980



Longleat House

## Wiltshire and The Cotswolds

Wiltshire boasts what are probably the most baffling relics left to us by our forefathers: Stonehenge and Avebury Ring. These huge stone circles still defy explanation and are well worth seeing.

Longleat House is a magnificent old country house open to the public. The grounds house the famous safari park, with lions prowling at large. In summer, other attractions are opened such as the world's largest maze. Reduced rates of admission for parties are available. For further details, please contact: **The Comptroller, Longleat House, Warminster, Wilts BA12 7NN**, mentioning *GUIDER*.



West Country Tourist Board

Salisbury Cathedral

Other sights worth seeing in Wiltshire include Salisbury and its splendid cathedral, the Wilton carpet factory (visits by appointment) and the Fox Talbot Museum of Photography. The West Country Tourist Board will be happy to supply more details.

The beauty of the Cotswolds can be appreciated to its full extent by taking advantage of some of the long distance footpaths, notably the Cotswold Way and the Oxfordshire Way. Gloucester cathedral and its brass-rubbing centre are notable, as is the City Museum and Art

Gallery. Not far away, in Cirencester, the Corinium Museum contains one of England's finest collections of Roman remains.

The Winchcombe Railway Museum and the model village at Bourton-on-the-Water (which actually contains a village within a village within a village...) are also worth a visit. The Wildfowl Trust at Slimbridge is the world's largest wildfowl collection and was the subject of a special feature in *GUIDER* (November 1979). For more information on the Cotswolds and its attractions, please write to: **The Heart of England Tourist Board, Old Bank House, Bank Street, Worcester WR1 2EW**, mentioning *GUIDER*. Next month, *GUIDER* goes out and about in York and the North East.



*In the shadows of  
Salisbury Cathedral . . .*

## **SOUTH WEST ENGLAND GUIDE HEADQUARTERS**

'Oh to be in England, now that April's there' . . . so says the Poet, and what better place than the South West, comprising as it does both the truly rural and the urban; a rich tapestry.

The 16 Guide Counties which make up South West England enjoy many notable tourist attractions, including Windsor Castle, Winchester Cathedral and the Naval tradition of Portsmouth with Lord Nelson's Flag Ship, 'Victory'. To compile a complete list of the attractions would be, it seems, an almost impossible task.

A great deal of enthusiastic Guiding is undertaken in the towns and the cities, as well as in our rural areas; it is this sharp contrast that makes Guiding here so fascinating, with a rich reward for old and young alike.

At the heart of South West England is the Regional Headquarters; a somewhat forbidding title for 'Ladywell', the charming house inside the Cathedral Close in Salisbury. A small garden, reminiscent of bygone ages, leads the visitor towards the front door and on into a comfortable home. A welcome awaits all callers — the staff are keenly aware that it is the Region's 'home' for Commissioners, Guiders, Rangers, Young Leaders, Guides, Brownies, Trefoil Guild, Link, Local Associations and friends of the Movement. Many of the rooms look out on the cathedral spire and the two little attic bedrooms are known as *Cathedral* and *Choristers' Green* on account of the views from their respective windows. On the first floor is the Committee room, where all Regional meetings are held, as well as a bathroom, general office and the General Secretary's room. On the ground floor is the office of the Registrations Secretary. Wisely situated, this; if she worked in an upstairs room, she and the records drum, through sheer bulk of paperwork, might well one day come plummeting through the floor. Registrations Secretary Miss Viney (in her time a Brownie, Guide, Guider and District Commissioner) is the first to welcome the visitor to Ladywell. On the other side of the front door lies the Chief Commissioner's room which is also used for small meetings. The room houses some of the Region's Archives and many visitors have spent an hour or two delving through the interesting records.

A downstairs cloakroom, a sitting room in which to

enjoy coffee, snack luncheons and tea, a kitchen and a room leading on to the inner courtyard (used as an additional sitting-room whilst large scale meetings are in progress), help to make Ladywell the happy place it is.

One can conjure up many of the delightful 'personalities' — young and old — who have contributed to events since the start of Regionalisation. One of the brightest glimpses of Ladywell is to be had on a day when

Brownies descended upon us. They are literally given the freedom of the house; the front and back staircases are discovered, ghosties looked for in the bedrooms, the old-fashioned brass bells admired in the kitchen quarters, as are the General Secretary's tiny china animals on the mantelpiece. As one Brownie said: 'Isn't she lucky to have so many toys to play with!'

Guiding goes from strength to strength. In 1971 the membership census in S W England was 96,769. By 1979, the figure had increased to 113,312. We all have our pet theories on why Guiding is successful, and why it will continue to be so. Throughout Guiding there is always the spirit of friendship, whether between Counties, Regions, Countries, or the world — but S W England has achieved in full measure the friendship, happiness and challenge to take Guiding into the 80s. 'Ladywell' has its origins in the reign of Queen Elizabeth I, a span of four hundred years to our present Sovereign Lady, Queen Elizabeth II, and the Girl Guides Association South West England can look forward with confidence to maintaining the principles of good citizenship in the present generation of Elizabethans.

**C Cooke,  
Gen Sec.**





# PRACTICAL P.R.

## HOW THE PAPERS SAY IT

Many newspaper reporters and sub editors who are handed press releases complain that they have to waste time converting the contents to newspaper style. Many newspapers have their own style books which aim to protect the individual publication's literary standards. While these vary from paper to paper, it is useful to writers of press releases to have some knowledge of editors' dislikes. The following examples stem from experience with a number of newspapers.

They do **not** apply to headlines in which words barred from text are allowed for purposes of brevity (phone instead of telephone).

### DON'T USE

anticipate  
commence  
proceed, proceeded  
loaned  
terminate  
etc  
upon  
whilst  
personnel  
prior to  
residence  
monies  
high-ranking  
ex-officer (except where dismissed or cashiered)  
vivacious  
luncheon  
donated  
aeroplane  
centred around  
deceased  
in connection with  
said Mr Jones  
Rev Jones

### USE INSTEAD

expect  
begin, start  
go, went  
lent  
end  
and so on  
on  
while  
people, workers  
before  
home  
money, moneys  
senior  
retired or former officer

lunch  
gave  
plane, aircraft

concerning  
Mr Jones said  
Mr Jones (*Rev may only be used with initials or first name: Rev Tom Jones.*)

**Numbers:** one to nine written, after that in figures except when used in percentages (3 per cent).

**Spelling:** most newspapers use 's' in place of 'z' (nationalisation). They like net (as in free from deductions) not to be spelt nett. There is no such word as alright.

**AVOID** useless clusters of words (but for the fact that, the question as to whether)

**AVOID** unknown quantities (very, really, truly — how much is very?)

**AVOID** thoughtless expressions like meteoric rise (meteors fall)

**AVOID** 'company reports' jargon like bottoming out, brought on steam, this moment in time, by and large

**AVOID** American jargon like "PanAm reported no upturn in traffic flow yesterday. 'There's been no onrush,' said a spokesman."

Exclamation marks should be used only in reported speech (Was my face red!), in titles (Oliver!) in exclamations (Poppycock!) but in little else. An exclamation mark cannot tell a reader that a sentence is funny. The most it can tell him is that it was meant to be.



## Did YOU win through

Results of January's Survival Aid Competition (Part 1)

<b>Entries</b>	Guiders	16
	Rangers/Young Leaders	10

**General Standard** Very high. Great ingenuity was shown in finding miniature components so as to get the maximum into the match boxes. Some entries had obviously taken many hours to prepare.

**An example** A small sized (Bryant & May) matchbox containing 3 waxed matches, 1 candle, waterproof paper cup, plastic bag 7" x 8", 2 water sterilising tablets, barley sugar, anadin tablet, 2 salt tablets, plaster, mirror, 3 yards nylon line, magnetised needle, paper clip, razor blade, whistle. The whole box was covered in white paper on which was written an emergency aide-memoire covering hypothermia, heatstroke, frostbite, sprains, blisters, snakebite, fractures, cuts, burns, unconsciousness, shock, choking, contents list and instructions. All the box, inside and out, was covered in Fablon and the matchbox striker was covered with a peel off waterproof strip.

**Useful ideas** from among the other entries. Matches waterproofed with nail varnish instead of wax. Lengthy instructions written on tissue paper. Paper "water bombs" or waxed bags for carrying water. Match striker on inside of match box. Not including a 5p piece "because one can always dial 999".

**Funnies** One entry was packed in a kitchen sized match box and included a full bottle of water. One entrant suggested 'suicide' as one of the possible uses for her razor blade. Another entrant was going to fly her orange Peter Storm trousers in an emergency!

**Prizewinners** Deciding on prizewinners was very difficult because of the general high standard. In the Guider category we decided to award two first prizes (3 packs each) and three 3rd prizes (1 pack each).

### Prizewinners

#### Ranger/Young Leader Section

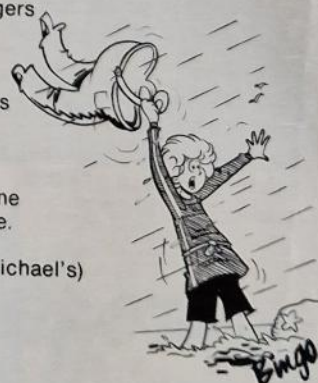
1st	Wendy Harrison 8th Chesterfield Rangers
2nd	Linda Briggs Stafford Division
3rd	Daphne Hine Cheam Valley Rangers

#### Guider Section

Joint 1st	Mrs Heather Dixon Cambridge Programme & Training Committee. Mrs Alison Shields 8th Shrewsbury (St Michael's)
Joint 3rd	Mrs June Frith 9th Chadwell Heath Mrs Elaine May 1st Cross Inn Guides Mrs Betty Johnson 1st New Malden Guide Company

**Judging** Unfortunately Eddie McGee has disappeared off to the Jungles of Indonesia. I had his guide lines to work on, and used these to judge the competition myself with the help of my staff.

Nick Steven  
Survival Aids Ltd,  
Cumbria.





# mainly for rangers

## Ranger Road Show — Foxlease.

6th to 13th August, 1980  
Singer? Dancer? Player?  
Actress? Want to enjoy  
yourself being all these  
things and do some service  
too?

Join us at Foxlease for a week from August 6th to 13th, 1980, and spend some of your holiday having fun and making some old people a bit happier — they won't get much of a summer holiday. The idea is to spend the first few days putting together the sort of show that can go 'on tour' and to take it on the road to various Old People's Homes and hospitals in the remaining time — plus, of course, enjoying swimming and walking in the beautiful setting of Foxlease, and seeing some of the country and seaside of Hampshire.

Why not come as a group from your unit? Cost: £30. Places will be limited to the house accommodation at Foxlease, so if you are interested write now for application forms which must be returned by May 30th, 1980 to: The Programme Secretary, The Girl Guides Association, 17-19 Buckingham Palace Road, London SW1W 0PT.

**Young Leaders' Week**  
Foxlease  
27th August to  
1st September

**Netherurd 12th to  
17th August**

Calling anyone working  
on the Young Leaders'

Scheme. If you are able to go to Foxlease or Netherurd next August, you will learn much to your advantage. You will be living and working with other Young Leaders with similar aims and outlook. The course will give you opportunities to challenge yourself and to get help and ideas for your work with the Packs and Companies who you help. It should be fun. Apply to the Guider-in-Charge, Foxlease, Lyndhurst, Hampshire SO4 7DG, or the Guider-in-Charge, Netherurd, West Linton, Peeblesshire, Scotland. — applications accepted now.

*Preparing for the opening ceremony for Heritage Tour '79.*



*Above, Heritage Tour Bus 3 with all its passengers*

## Western Australia Heritage Tour 1979 — to celebrate the 150th Anniversary of the founding of Western Australia.

The UK contingent to this heritage tour set off for Perth, Western Australia, on the 16th August last year. There had been a 16-hour delay, so it was not the most auspicious of starts.

On arrival at Perth, we were met by some District Commissioners and by our host families. Janet Rawlings from Kent, and I were to stay with a family of 'new Australians' — the Barker family, who had only emigrated from Sandy, Bedfordshire two years previously.

On my second day with the Barker family, we went to visit a beef cattle stud at Byford, and had a barbecue lunch at the Serpentine dam.

One day, the UK contingent went on an exploratory visit of Perth, and in the afternoon had the honour of visiting Parliament House to have tea with the President, as well as a tour of the Government Buildings.

On another trip, we caught a ferry over to Rottnest Island (a 2-hour journey by ferry and boat from Perth). Once there, we waded in the Indian Ocean in a beautiful bay with white sand, and fed the quokkas — these strange animals are kangaroo rats, unique to Rottnest Island.

Back in Perth, we met the other Guiding contingents from, among other places, Korea, Hong Kong, Bangladesh, Japan, the USA and Canada.

One day, Janet and I went to school with Deborah and Erica Barker, children of our host family. The Australian children were intrigued by us, and we were asked 'Have you met the Queen?' and 'Are the buses really red, with two storeys?'

The 26th August saw the beginning of our tour — we left the hospitality of the Barker family home for Paxwold, the permanent Guide Camping centre just outside Perth, and thence for a tour of the area. I was to be in a group which was to take the island route to Albany, while the other groups — also travelling to Albany — were to take the coast road. At Albany, we were to spend three days together and then we were once again to separate into groups, to return to Perth by the route we had not yet 'done'.

For my first night before this journey, I slept in a dormitory at Paxwold. The following afternoon saw the official opening of Heritage Tour '79. A flag borne from each contingent stood under the Paxwold Guide Flag, and Lady Kyfe — Commissioner for Western Australia, led the ceremony. There was tea and welcoming speeches, and a campfire with the opportunity to learn new songs from other parts of the world. At the end of the day we watched films about the areas we were to visit — Albany and Bunbury.

Next day we were to make our way to 'Our Barn' — a Guide house at York. We boarded the coaches, and had an enjoyable trip, stopping off at places of interest en route.

Once at the Barn, we were interested to see that the patchwork quilts there had been made by previous visitors and so we had to set to and make one of our own to immortalise the members of our Heritage Tour Coach!

Next morning, we were taken on several interesting visits. The first on the list was a trip to a settler's house in the oldest part of York. In the afternoon, at Beverley Research Station, we enjoyed a visit to the agricultural museum section, where we were shown how to shear sheep, Australian style. Much of the rest of the day was spent window shopping or relaxing, and in the evening at the Barn, we had a fancy dress party in which we had to make our costumes by adapting our equipment and any bits and pieces which would suit our purpose. Even our coach driver dressed up as a Ranger Commissioner!



Next day we finally reached our destination, Albany, where our accommodation was the 'Centennial Oval' building, which is an entertainment and sports centre. The building was filled with camp beds and mattresses, and it looked like a war-time air raid shelter! In the evening we went to the Agradome, which is a huge building; here we learned more about the wool industry. We were told how wool is graded and defined, and the evening ended with a fashion show of the latest fashions in wool.

Another interesting trip which our group enjoyed was to the former whaling station at Cheyne beach. We were shown around the museum of whaling equipment, and saw photos of the whaling station as it had looked when it was fully operational.

That same day, we were given an official reception by the Mayor at the Town Hall. The press turned out in force, and representatives from each country gathered together for photographs and interviews. The Mayor gave a speech, and the Canadian leader among us presented him with a Canadian flag, which shortly afterwards could be seen flying next to the Australian one on top of the Town Hall! Some of the girls were interviewed by radio reporters and we sat and listened to them speaking live over our coach radio.

Next day, we saw the results of the previous day's press reception. We heard announcements about the Heritage Tour both on Channel 2 television and on National Radio.

On the morning of the 1st September, we got up at 6 am and packed the coach for the long drive we had ahead of us. Mid-morning we stopped at the Gloucester tree. This is a huge tree — 200 feet high — used as a fire-lookout post. Sixteen of the girls made the climb. We saw kookaburra in the trees, and watched them feed and take mud-baths. The rest of the day was spent driving to Bunbury, and we stopped for the night in comfortable accommodation, normally used by a Sea Scout Unit.

After visiting Bunbury, we drove on to Pinjarra, where we were once again greeted by the Mayor, as well as by Brownies and Guides. That night was spent at Paxwold.

Next day, I wondered whether I was going down with 'flu, as I was not feeling too well. However, I enjoyed the entertainment in the afternoon, in which all members of the Heritage Tour took part. Mrs Renshaw Jones, Chief Commissioner for Australia, introduced the entertainment, with each participating country presenting something of its own. The UK contingent did four country dances and then presented a shield from the Metropolitan Police, a scrapbook about Britain, and a tea towel from each region of our contingent members. In return, we received certificates of attendance from the Western Australia State Commissioner, Mrs Firstenburg, and Western Australia 150th Anniversary Badges. After a buffet dinner we assembled for the evening campfire and closing ceremony.

On 5th September, we went once again into home hospitality; so Janet and I were welcomed back into the Barker household. Next day, I witnessed the entertaining sight of a neighbour fitting a roo-bar to his car. This is necessary because when driving at night, the kangaroos are attracted to the car lights. They bound towards them, and without a roo-bar, the car (and the animal) could be seriously damaged. That evening, we went to our farewell camp party, where we were shown a cine film of the tour, and had great fun, laughing at ourselves. However, I was still feeling a bit off-colour. I collapsed into bed, feeling quite weak.

Next day, I woke up not knowing what had hit me. In fact, it was pleurosy and pneumonia, so I was taken into hospital. There I remained for seven days; but I wasn't lonely — I had three telegrams, nine letters, 22 cards, four phone calls and six bunches of flowers!

Despite the unexpected and less than pleasant end to my holiday — it had still been the trip of a lifetime. I rang the Barkers as soon as I got home on the 22nd September, and it seemed hard to believe that only twenty-four hours before, I had been in their home, 11,000 miles away, after recuperating from my illness.

**Carol Swithinbank, Ranger Guide, 1st Fulbourne Unit, Anglia.**



Australia photos: Carol Swithinbank



*Above, a sign put up in our honour, just outside Albany. Left, a typical Australian barbecue.*

### Homesteading Made Easy

Some time ago, a laudable scheme was initiated by the Greater London Council enabling people to buy dilapidated or derelict houses and convert them. If one finds a run-down house for sale valued at less than £19,000 that needs at least £2,000 spending on it at con-

tractors' prices then, if one can afford it, the GLC will buy it for you and resell it to you with a 100 per cent mortgage. The repayment terms of this mortgage will depend on how much work needs doing. This scheme serves the dual purpose of enabling people to own their own homes whilst at the same time removing unsightly derelict houses from London streets. For more information please write to: **Directorate of Home Ownership (Home-Steading), 20 Albert Embankment, London SE1.**

*Another kind of 'paper house' ... the Home-Steading section of the Greater London Council's stand at the Ideal Home Exhibition this year.*



Associated Newspapers Ltd

*mainly for*  
**rangers**





# A Working Holiday in Scotland

**A** afraid of hard work? Then don't read on!

The Trefoil Holiday and Adventure Centre for the Handicapped is a charity which provides special accommodation and leisure facilities for disabled people from all over Britain and Europe who want to enjoy an adventure holiday near Edinburgh. It has special links with The Girl

such activities organised for our disabled guests as discos, barbecues, swimming, outings etc. The girls, Sharon and Stella, were a terrific help — and they survived the ordeal smiling! — so we want to repeat the experience this year.

**What we offer:** is free board and accommodation in a twin-bedded room with washbasin, a sitting room shared with Trefoil's resident staff, and laundry facilities.

taking part in indoor and outdoor games as well as doing the housework. This year there will be all these activities and some new ones like canoeing, visits to a glass-making factory, candle workshop, deer farm, outings on the River Forth and Union Canal etc. — and if you want to polish up your German, come from 15th to 27th June when a party of disabled schoolchildren from Bavaria will be



Guides' Association because it was Scottish Guiders who founded the Trefoil School for Handicapped Children — out of which the Holiday Centre grew — and the Centre is still run with the help of Guiders who sit on Trefoil's controlling Committees.

**So where do you come in?** Well, any time this summer will do.

The Centre is a non-profit making charity which receives no government help, and we keep down the charges by fund-raising, getting donations from the public — and especially from members of the Association — and by relying on as many responsible voluntary helpers as we can get. Last summer we had two Rangers from London with us for two weeks, helping with the domestic chores and taking part in

**What we want:** are responsible Rangers aged 16 or over who are capable of starting work at 7.30 am every other day, who can help with cleaning and setting tables and washing up, and who are prepared to chat to people and take part in whatever activities are going on. The girls should come in pairs for companionship and be able to stay for at least two weeks so that they can help us and also have at least a day-off together each week to see something of Scotland.

Last year Sharon and Stella had a very varied programme, going on sightseeing trips with our disabled guests to places like Callender, the Trossachs, Stirling, St. Andrew's and the Borders, attending the Military Tattoo during the Edinburgh Festival in August, and

staying with us!

**No qualifications?** If you've read this far, you've probably got the qualifications we need — an interest in people, stamina, cheerfulness and the willingness to mix in and get on with the job. You must be a responsible person, but you won't be left to take the sole responsibility for our guests' welfare because an experienced member of Trefoil's staff will always be around to supervise, help and advise.

If you are interested in a working holiday, then come and join us as a summer volunteer. Send details of yourself and the times you are available to: **The Warden, Miss M. V. Blackwell, The Trefoil Centre, Gogarbank, Edinburgh EH12 9DA,** or telephone 031-339 3148.

**Tent Cloth & Zips**

Manufacturers Bargains: 36" MATERIAL Blue, Orange 95p yd., pp 9p yd. TENT ZIPS Twin puller 25p ft. any length, pp 5p each, 48" PVC GROUND SHEETING or Mudwalling 76p yd., pp 9p yd. 60" DOUBLE PROOFED NYLON various colours £1.60 yd., pp 9p yd. MANY MANY MATERIALS IN STOCK. Clear PVC, Window Netting, Tape, Nylon-backed PVC, Polyester, eyelets, etc. Cash with order or S.A.E. for free cloth samples.

**TARLINGS**

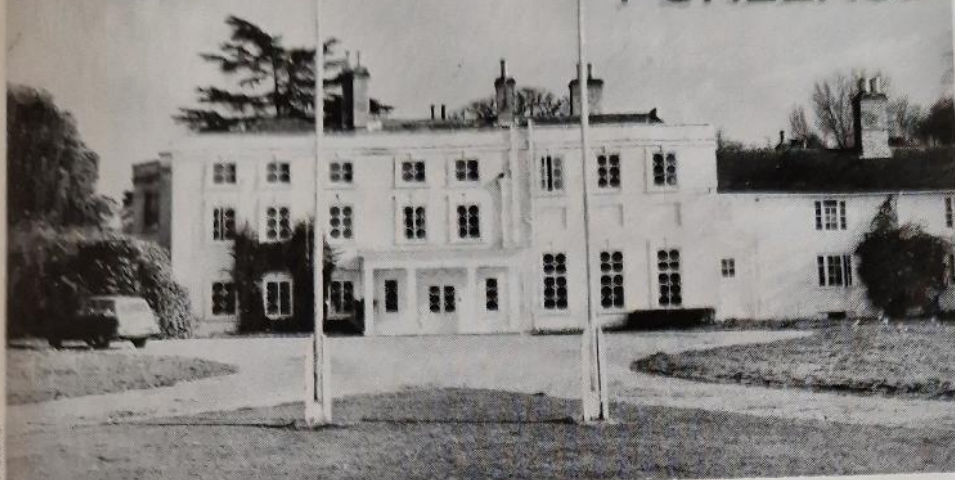
(Dept. GU), 170 Romford Road, Aveley, Essex RM15 4PJ

**M. V. Blackwell  
Warden**





# A Guiding Nucleus in the New Forest... FOXLEASE



R. Fletcher

Princess Mary House, Foxlease, is situated in the easterly part of the South-West Region, in the heart of the New Forest, and less than a mile out of Lyndhurst on the way to Brockenhurst. A welcome awaits all who come through the front door into the low ceilinged hall which, together with the office and the Quiet Rooms upstairs, is part of the original Forest Keeper's Lodge and dates back to the 16th century. The rooms leading off the hall are spacious and elegant, built in Adam style by Sir Phillip Jennings-Clarke in 1775. One is ornately decorated in gold leaf. Through the well proportioned windows visitors enjoy the open parkland, used for camping, and the gardens which surround the house. Foxes, and very occasionally, deer can also be seen.

Foxlease was given to the Association in 1922 by Mrs Archbold Saunderson of Washington D.C. on the occasion of the marriage of the President, HRH The Princess Royal. Gifts from all parts of the empire flowed in and the house, which had been empty for several

years, became the first home of Guiding.

By this time Guiding had spread to many parts of the world, and in 1924 the first-ever World Camp took place when delegates from over 40 countries spent a week under canvas. Records show that trainings were of at least a week's duration, when those attending would have been ladies of leisure — today the pattern of training has changed. The majority of Guiders are married with a family, have a job and still find the time to attend a Training Weekend. To these Guiders and their husbands we say 'thank you'.

The estate covers 65 acres and includes 10 camp sites. In addition, the grounds are used extensively in the summer months for Brownie Revels and sports, for District, Division and sometimes County events. In 1970, following a donation from the Beaverbrook Foundation, permission was given to fund raise and so make possible the modernisation of the building known up until then as 'Bridges', previously the cowsheds. The centre was opened in

1971, renamed Beaverbrook Lodge, and is used as an outdoor pursuit centre for Brownie Pack



The Western Gazette, Yeovil

At the opening of Beaverbrook Lodge in 1971

and other holidays. It is also used by schools and colleges for field study courses. Work has recently commenced on the redevelopment of the Barn area to provide another centre

we shall be missing a great opportunity.'

Words as true today as they were then — may we be ready to rise to the occasion, whenever and whatever it may be.

**Marjorie King,**  
Guider-in-  
Charge.



HRH Princess Mary on a visit to Foxlease in the early 1920's. Also pictured are Mrs Mark Kerr and Miss Agnes Baden-Powell.





# airing and sharing

## Harrassed Guiders rule, OK!

By the time I reach the end of my copy of *GUIDER*, I generally feel thoroughly discouraged by all those marvellous Guiders who seem to have time to do so many wonderfully interesting and uplifting projects with their girls — all of whom, it seems, can carry out so many difficult tasks in such an adult fashion!



Jeun de Lemos

Fully prepared to return my Warrant (albeit reluctantly) in order to make way for one of these Guiding paragons, I then read *Airing & Sharing*. What a relief! Somewhere out there, other Guiders are encountering problems too. Thus encouraged, and with my Warrant now firmly replaced, I set about thinking of ways in which I can improve my Company; perhaps we are not too bad after all.

Please don't ever take those letters from 'ordinary' Guiders out of the magazine — they really are a lifeline!

(Mrs) S C Casey,  
Guide Guider,  
2nd Hanworth (All Saints')  
Coy.,  
Middlesex.

We are pleased that readers see *Airing and Sharing* as a valuable aid to their Guiding. Editor.

## Starstruck!

We are very disturbed at the removal of the Stargazer Badge Syllabus from the new edition of the Guide Hand-

book. Our Company's enthusiasm for this Badge began when one Guide with an interest in horoscopes started working for it. Since then, many of us have taken and passed the Badge, which we felt to be very important as it is one of the few Outdoor Badges that can be enjoyed by girls living in towns. Although many of us work for the Badge, we will not be writing up for the syllabus, as we already have a copy. We are therefore worried that the Badge might be dropped, which we feel would be a great shame.

Rowena Morgan,  
on behalf of  
16th Cheltenham  
Guide Coy.

Although the number of requests for starred syllabuses is monitored, it is the sale of Badges, among other considerations, which is used to assess their popularity. The fact that a syllabus is starred does not mean necessarily that interest will wane and the syllabus dropped at a later stage. Skier, which was starred is now printed in the Handbook. There is also evidence that Guiders are not deterred from writing in — quite the opposite, in fact!

Programme Secretary,  
CHQ.

## A Heady Thought

The fact that neither the Ranger nor her Guider were wearing hats on the cover of February *GUIDER* has made me think about the financial practicality of our uniform. Is it not time we tried to lower the cost of uniforms and thus help those who really can't afford it? Perhaps abandoning hats and adopting a sash worn over the blouse for badges would be a start. Also, what about reverting to the more robust triangular neckerchief? What do other Guiders think?

Doreen Mart  
Guide Guider  
1st Godmanchester Coy.  
Cambs.



## RATIONING TIME

### Airing Ideas . . .

. . . I would not like to see anything remotely resembling an Attendance Badge. If we make our Meetings relevant enough to the girls, then there should be no problem in ensuring their regular attendance.

. . . When reporting on conferences, international events, etc., could we have more information about their subject matter, and less concerning merely the fact that they happened.

. . . It would be interesting to read a few reports on different Companies' methods of electing PLs and choosing Patrols, and how the method of choosing affected their choice of projects, and the way in which these were carried out.

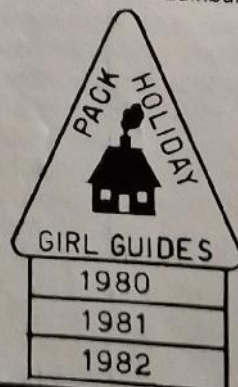
Jenni Ferrans,  
Assistant Guider,  
Borehamwood,  
Herts

### Holiday Badge

A Pack Holiday Badge would indeed, I think, be a good idea. I understand that a Badge of this type is available in some other countries (eg Australia).

A Badge along the lines of that pictured below would, I think, be suitable and inexpensive (the different, dated or numbered bars under the Badge would differentiate the old hands from the new Brownie Holidaymakers). What do other Guiders think?

Muriel V Gilligan,  
Brownie Guider,  
Edinburgh.



### And Sharing ideas

Three points:

1) Can anyone suggest a suitable title by which Guiders should be addressed at Meetings? Mrs and Miss seem too much like school, and names of TV characters, for example, are fine for Camp — but not for everyday meetings.

2) I endorse the request (A & S, February) for a cloth 8-point Badge instead of the metal one we now have.

3) The suggestion that Brownies be permitted to wear brown skirts over their Brownie dresses is, I think, an excellent one.

P Armstrong,  
Guide Guider,  
2nd Bingley Coy,  
W Yorks.

### Flag Feelings

Concerning the new Brownie Flag — had one section of the pole been made the same length as the flag, unsightly creasing could have been avoided when the flag is packed away. At the moment, one must either 'bunch' the flag on the pole or fold it over to fit it in the case. Also, my (average-size) Brownies do not think the flag is at all heavy.

Pamela Morrish (Miss),  
Brownie Guider  
1st Uplyme Pack  
Dorset.

### No Priority

In reply to a letter (February A & S) regarding the comparative significance of the Promise and the Eight Point Badges, I would say they were *equally important*. The Promise Badge represents a limited understanding of the Programme and commitment to the Promise.

Each Eight Point Badge should represent at least a year's progress in the understanding and carrying out of this Promise through the whole programme.

Jennifer Peltrel,  
Trainer,  
Middlesex East.



## 23





# GUIDERS!

This year to celebrate  
our 10th year of service  
to the Guide Movement, we  
are offering three great ways for  
you and your family and friends to  
visit wonderful **SWITZERLAND**

## 1. Autumn Tours to Adelboden

For the third consecutive year we are offering Guiders the opportunity to make an autumn visit to Adelboden, but this year you have a choice of arrangements.

Our regular tour departs Thursday, 25th September, in the evening, and arrives back on the morning of Thursday, 2nd October. The Channel crossing in each direction is overnight, with comfortable cabins arranged, and we spend five nights in Adelboden at the splendid Hotel Beau Site, where the Sternimann family always look after us so well. Excursions, and all meals during your stay, are included in the overall price of about £145 per person.

Our second tour departs on 1st October and arrives home again on the 10th. It is again based on overnight ferries with cabins provided, but this time allows for a stay of six nights at the Hotel Beau Site, plus one night and a day in Paris on the homeward journey. All meals at the hotel, some meals en route, and excursions during your stay are again included and the overall price is about £175.

In each case the journey is made from London in one of our own excellent touring coaches, travelling only by day, in the capable hands of our mature and competent driver/guides. We travel outward from Sheerness, and thence via Brussels and the Ardennes to Luxembourg, and through the vineyards of Alsace to the Swiss border at Basle. The homeward journey is by a different route, via Lake Neuchâtel and the Jura Hills to Dijon, and thence on to Paris and Le Havre for the boat to Southampton. Excursions during your stay include the old Swiss capital of Berne, and visits to Interlaken and Grindelwald, as well as a chance to explore Adelboden itself and to visit "Our Chalet".

The autumn is a splendid time to visit the Alps, with nature's colours at their best in the crystal-clear mountain air, and what better way to enjoy such a tour than amongst those with whom you have a common interest? Send the coupon below for full details.

## 2. Super-value family holidays at Autumn half-term

A few miles to the south of Adelboden, beyond the Bernese Alps, lies the valley of the River Rhône, and the district known as the "Valais". Here they enjoy the finest sunshine record in Europe north of the main Alpine range and the autumn months are particularly dry and sunny, especially October when the grape-pickers descend upon the vineyards which cover the south-facing slopes.

This, then, is the ideal destination for an autumn holiday and we have arranged this tour to co-incide with the October half-term week, departing on the evening of Friday, 24th October and arriving home again on Sunday, 2nd November.

Our main aim in arranging this tour has been to enable individual families, both couples and those with children, to enjoy an autumn break amidst the wonderful Alpine scenery at a modest price, and our accommodation is, therefore, of a self-catering nature. We have a wide selection of chalets and apartments to offer, with anything from 2 to 10 beds, all in the amazing space-age resort of Anzère, high above the regional capital of Sion and enjoying a sunny south-facing location with superb views across the valley to the Pennine Alps beyond. Each one is very nicely furnished and is equipped with all the utensils, crockery and cutlery you will need. And in the cool of the evening you can sit in front of your own blazing log fire!

The resort includes an indoor swimming pool (to which you will have free access), and all the shops you will need, as well as some very attractive bars and restaurants in case you would like to "eat out" once or twice.

We shall be arranging several excursions to nearby places of interest at very modest prices and you will also be able to enjoy walking through the mountain meadows and woodlands and just soaking up the pure Alpine sunshine and those amazing views, not to mention a little of the local wine!

The price? You won't believe them! Depending upon the type of accommodation required, the cost per adult can be less than £90, while accompanying children (up to age 20) go at about half price.

This includes transport from London (we hope to be able to offer provincial departures also) by super-luxury coach and all local taxes, cleaning costs, heating, etc. These arrangements are not restricted to "Guiding families" only so you can invite friends and relatives to join you. Why not share one of the larger chalets together?

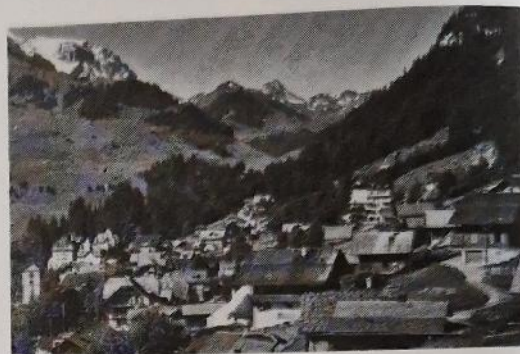
We think this is a really super opportunity for a short family holiday before the winter sets in, and we're hoping for a big response! So don't delay, send the coupon below for full details.

## 3. The Oberland Express

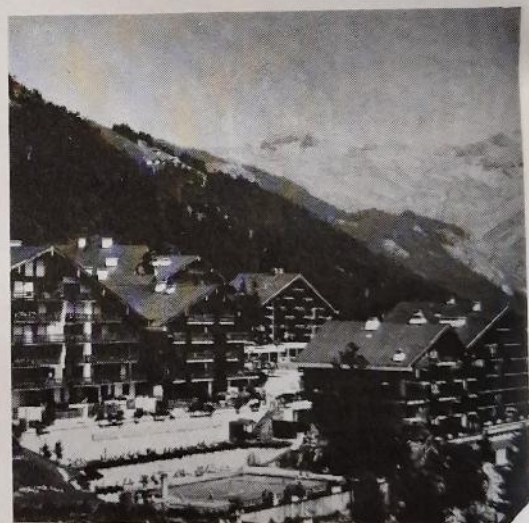
During July and August we take hundreds of Guide and Scout parties to our various group chalets in the Bernese Oberland region of Switzerland, including Interlaken, Adelboden, Grindelwald, and Gstaad, and our super-luxury coaches depart from London almost every day throughout this period, operating as a fully licensed express service. On many of these coaches we have some spare seats available, usually just two or three but sometimes up to eight or so, and these we can offer to individuals, families, or small groups, at the amazing fare of just £35 return, with a £5 reduction for children under 16 travelling with their parents. This compares with a rail fare of about £90!

The Oberland region undoubtedly offers the finest concentrated area of lakeland and mountain scenery in Europe with wonderful opportunities for hiking, climbing and excursions of all kinds.

We can't offer to arrange accommodation for you, but we can provide leaflets with details of hotels, youth hostels, private chalets, apartments and campsites, from which you can choose your own arrangements. Or you may be able to arrange to stay at "Our Chalet" at Adelboden. Whatever you do, you will find that Switzerland is no longer anything like as expensive as it was a few years ago, neither will it ever again be so cheap to get there. Send now for our special leaflet.



Adelboden



Anzère — destination for  
our Autumn tour for  
families.

**GO SWISS WITH  
Camptours**



To: Camptours, Devon House, High Street, Cranleigh, Surrey GU6 8AG. Tel: (04866) 3027. GUS

Please send me details of your offers 1 / 2 / 3 (delete as applicable)

NAME \_\_\_\_\_

ADDRESS \_\_\_\_\_



# DOUBLE ACROSTIC

28

- A. A thoughtful celebration. (8, 3)  
 B. Amount of electrical resistance. (6)  
 C. Cleopatra's? (5)  
 D. Drone's habitation (3, 4)  
 E. Call again. (7)  
 F. Are these sins worse than those we commit? (8)  
 G. Within the law eight might swing the balance. (5)  
 H. Soft and friable. (4)  
 I. Some joint (8, 2, 6)  
 J. Certainly. (6)  
 K. Mouse trap? (6)  
 L. Sounds like Peter's captain and myself (4, 3, 3)  
 M. His low appearance, wearing glasses? (6)  
 N. Delicacy which may contain something of value. (6)  
 O. Law men row (anag.) (4, 5)  
 P. One of the titles of the 'Lord High Everything else'? (6)  
 Q. Excommunicated person. (8)  
 R. 'And all our ----- have lighted fools the way to dusty death'. Macbeth. (10)  
 S. Is it believing? (6)  
 T. Typical of Regency architecture (3, 6)  
 U. Pertaining to you. (4)  
 V. Was he the first monotheist in history? (8)  
 W. '--- and Becks and wreathed Smiles', Milton. (4)

A	43	47	8	35	123	21	195	5	58	28	11
B	18	94	45	40	92	2					
C	29	189	68	129	12						
D	57	180	117	85	41	171	4				
E	203	16	80	52	22	46	62				
F	19	100	128	140	200	65	151	7			
G	34	177	132	91	113						
H	146	119	38	92							
I	166	127	96	25	169	75	30	198	63	15	119
J	9	136	26	101	17	36					
K	48	131	69	197	174	116					
L	1	77	175	145	10	47	95	37	23	182	
M	188	78	18	90	164	134					
N	84	142	51	71	79	32					
O	89	74	191	64	149	44	20	81	65		
P	42	56	159	176	202	24					
Q	6	27	86	93	138	54	158	109			
R	193	104	39	133	59	92	110	154	187	61	
S	98	108	88	170	50	137					
T	31	49	112	185	194	70	153	99	126		
U	111	143	14	190							
V	60	199	167	124	105	139	147	156			
W	97	102	153	66							
X	141	130	157	179							
Y	73	94	163								
Z	120	192	160	201							
a	196	107	135	178	186	122	148	58			
b	114	3	173	125	106	168	165	204			
d	150	184	144	181	115	162	152	87	172	161	

- X. A curse. (4)  
 Y. A mixed drink in shelter. (3)  
 Z. Dotted, it makes 'A'. (4)  
 a. Old Brownie Guider (5, 3)  
 b. Discarded. (8)  
 d. 'But chiefly -----'. (10)

The winner of Acrostic No. 26 (March GUIDER) is Mrs A Moran, of Wolstanton, Newcastle-under-Lyme.

L 1	B 2	6 3	D 4	A 5	Q 6	F 7	A 8	T 9	L 10	A 11	C 12	B 13	U 14	I 15	E 16	J 17	M 18	F 19	O 20
A 21	E 22	L 23	P 24	I 25	J 26	Q 27	A 28	C 29	I 30	T 31	N 32	I 33	G 34	A 35	J 36	L 37	H 38	R 39	B 40
D 41	P 42	A 43	O 44	B 45	E 46	L 47	K 48	T 49	S 50	N 51	E 52	A 53	Q 54	O 55	P 56	D 57	a 58	R 59	V 60
R 61	E 62	I 63	O 64	F 65	W 66	A 67	C 68	K 69	T 70	N 71	B 72	Y 73	O 74	I 75	B 76	L 77	M 78	N 79	E 80
O 81	R 82	I 83	N 84	J 85	Q 86	d 87	S 88	O 89	M 90	G 91	H 92	Q 93	Y 94	L 95	I 96	W 97	S 98	T 99	F 100
J 101	W 102	I 103	R 104	V 105	b 106	a 107	S 108	Q 109	R 110	U 111	T 112	G 113	b 114	d 115	K 116	D 117	I 118	H 119	Z 120
I 121	a 122	A 123	V 124	b 125	T 126	I 127	F 128	C 129	X 130	K 131	G 132	R 133	M 134	a 135	J 136	S 137	Q 138	V 139	F 140
X 141	N 142	U 143	d 144	L 145	H 146	V 147	a 148	O 149	d 150	F 151	d 152	T 153	R 154	I 155	V 156	X 157	Q 158	P 159	Z 160
d 161	d 162	Y 163	M 164	b 165	I 166	V 167	b 168	I 169	S 170	D 171	d 172	B 173	K 174	L 175	P 176	G 177	a 178	X 179	D 180
d 181	L 182	W 183	d 184	T 185	a 186	R 187	M 188	C 189	U 190	O 191	Z 192	R 193	T 194	A 195	a 196	K 197	I 198	V 199	200
Z 201	P 202	E 203	b 204																

## Solution to Acrostic 27 (April GUIDER)

'There rose before his eyes a picture of his sister Bernadette with a Belgian store detective attached to each arm and stolen goods dribbling out of all her pockets being hauled to the office of a manager who would not be an old college friend of his.'

The Girl in Blue  
P G Wodehouse



# TRAINING

	FOXLEASE Lyndhurst, Hants SO4 7DG Tel: (Lyndhurst) 042-128 2638	WADDOW Clitheroe, Lancs BB7 3LD Tel: (Clitheroe) 0200 23186	NETHERURD HOUSE Blyth Bridge, West Linton, Peeblesshire. Tel: 096 88 208
<b>May</b>	2-5 Preparing for the Training Licence — Certificate and Specialist trainers and tutors (by allocation) 9-11 1. General Training 2. Dance Side Group 16-18 General Training 23-31 Family Week (Guiders with their husbands and children aged 2-8 years) Bank Holiday	2-5 London North East 9-11 North Yorkshire South 16-18 General Training 23-27 Duke of Edinburgh's Gold Award course (for girls from any Operating Authority) Bank Holiday 30-1 1. Preparing for the Training Licence — Certificate and Specialist Trainers and tutors (by allocation) June 2. Drama Group *	2-4 Scottish Programme and Training Committee 9-11 Brownie and Guide Guiders (including booking from North Tyne side) 16-18 Brownie and Guide Guiders 23-25 Edinburgh Braid and other Training Guilds
<b>June</b>	6-8 General Training 13-15 Ranger Guiders (General Training including help on expedition planning) 20-22 Middlesex North West 27-29 Making the Most of the District (District Commissioners with up to seven of their Guiders)	6-8 General Training 12-15 Friends of Waddow 20-22 Hertfordshire 27-29 1. Planning Ahead Part II (Guiders of all Sections who have held a Warrant for at least three years) 2. General Training	6-8 Scottish Handcraft Circle 13-15 Lightweight Camping for Ranger Guiders and Rangers 27-29/30 Patrol Leaders.
<b>July</b>	11-13 Friends of Foxlease 14-21 Holiday Week (Guiders, Trefoil Guild and members, their friends and mothers) 26-2 South West England (by allocation) Aug	4-6 1. Ranger Guiders 2. Dance — with a Ranger bias 11-13 1. Music in the Guide Company 2. Campfire Leaders and Prospectives 18-26 Holiday Period (Guiders with up to nine of their Guides or Rangers)	4-7 Patrol Leaders 11-18 1. Patrol Leaders' Week (by invitation) 2. Patrol Leaders — Pioneering plus camp 25-26 Aug 1. Patrol Leaders' Week (by invitation) 2. Patrol Leaders Pioneering plus camp
<b>August</b>	6-13 Ranger Road Show — an event for girls (by allocation) 16-23 Duke of Edinburgh's Gold Award course (girls from any operating authority) 27-1 Young Leaders' Week Sept	1-9 Patrol Week 13-29 Holiday Week (Guiders, Trefoil Guild members, their friends and mothers) Bank Holiday	12-18 Young Leaders' Week (including visit to the Edinburgh Military Tattoo on the Saturday night) 22-24 Music in the Programme — to Guiders of all Sections 29-29 Sept 5 Trefoil Guilds — Holiday Week
<b>September</b>	12-14 General Training 19-21 Sussex East 26-28 London North West For fees at Foxlease please see column 5 (Lorne)	5-7 Making the Most of the District (District Commissioner with up to seven of their Guiders) 12-14 West Yorkshire South 19-21 Midlands (by allocation) 26-28 Nottinghamshire For fees at Waddow please see column 5 (Lorne)	12-14 Brownie and Guiders — with up to two years' experience (including booking from Angus) 19-21 Brownie and Guide Guiders 26-28 Brownie and Guide Guiders (including booking from Cleveland County) Note: Applications for Patrol Leaders' events will be accepted now.
<b>October</b>	3-5 1. Music Workshop 2. Heraldry for beginners 10-12 General Training 17-19 London & South East England (by allocation) 24-26 General Training (The Programme through the Home Arts)	3-5 General Training 10-12 Durham and South Tyne 17-19 Midlands (by allocation) 24-26 General Training * Previously advertised as General Training	<b>Fees at Netherurd</b> Shared room per day £4.00 Double room per day £4.50 Single room per day £4.00 Deposit £1.00 Training for non-residents per weekend £0.00

## BURSARY HELP AVAILABLE

For full details of how to apply, and who is eligible for Bursaries, District Commissioners should write to the Training Secretary, CHQ (Scottish Commissioners should apply to Scottish Headquarters). Applications must reach CHQ at least two weeks before the date of the Training. Bursaries cannot be issued in retrospect.

The Fee Bursary entitles the Guider to £3.00 for a two-day weekend and £1 for each additional day. This is deducted from the fees at the Training Centre.

The Fare Bursary (available only for travel to the nearest Training Centre) carries a rebate of a Guider's travel expenses in excess of £3.00. This is paid at the Training Centre.

The Angela Thompson Bursary is available to any Guider attending a Promise and Law or similar Training (not necessarily at a Training Centre).



# CALENDAR

## BRONEIRION

Llandinam, Mont, Powys SY17 5DE  
Tel: Caersws 204

- 25 Young Leaders
- 26-27 General Training (places reserved for Hereford)
- 17 County Personnel Day Conference
- 18-20 General Training (Sunday to Tuesday)
- 24-25 Patrol in Action (Groups of not less than four Guides from a Patrol)

### Bank Holiday

- 30-1 General Training (places reserved for Cardiff and East Glamorgan)

- 6-8 General Training (places reserved for Stafford)
- 13-15 'Training the Trainer' follow-up — by invitation
- 20-22 Commissioners' Training
- 28 Friends of Broneirion
- 29 Welsh County Personnel Day Conference

- 4-6 Welsh Trainer's Conference
- 11-13 General Training (places reserved for Wrekin Division)
- 19-24 Guiders with PLs
- 27-31 Come and lend a hand with a 'Residential Project' (can qualify for D of E) — 16yrs and over.

- 2-9 Outside Booking
- 14-19 (Thurs-Tues) Patrol Leaders
- 22-29 French-Welsh Week — (by invitation)

### Fees at Broneirion

Shared room per day	£4.00
Double room per day	£4.25
Single room per day	£4.50
Deposit	£2.00

- 5-7 Ranger Guiders
- 12-14 General Training (places reserved for Central Glamorgan)
- 19-21 'Basics' for Brownie, Guide and Ranger Guiders
- 21-23 (Sun-Tues) General Training
- 26-28 General Training (places reserved for Carmarthenshire)

- 3-5 General Training (places reserved for West Glamorgan)
- 10-12 International Training (by invitation)
- 17-19 Welsh Outdoor Activities Conference
- 21-26 Patrol Leaders
- 29 General Training (Wed)
- 31-2 Nov General Training (places reserved for Merioneth and Breconshire)

## LORNE

Craigavad, Co Down,  
Ulster. Tel: Holywood 0231 3180

No training weekend in this period, as from June-September Lorne is available for holidays.

### Fees at Lorne

Per day (Ulster Guiders only)	£3.50
Per day (others)	£5.00

## 'GENERAL' TRAINING AT ALL CENTRES ARE FOR BROWNIE AND GUIDE GUIDERS

## GLENBROOK

Bamford, Nr Sheffield, S30 2AL  
Tel: (Bamford) 043 34 567

- 16-18 Adventure Course (for Rangers who have not been to Glenbrook)

- 20-22 An Introduction to Glenbrook (for Adult Leaders who have not been to Glenbrook) See HQ Notices

Glenbrook may also be booked for weekends or mid-week periods by self-catering groups.

### Fees at Glenbrook

Shared room (for weekend course) £10.00. All activities, equipment and VAT are included. Optional activities extra. Deposit of £2.00 cheque or postal order only.

- 13-20 Activities Week for Guides (aged 12 and over)

- 12-14 1. Hillwalking and Caving  
2. Pony Trekking (optional activity)  
(Groups for Guiders and Rangers)

### Glenbrook

- 17-19 1. Canoe Training and Assessment (Groups for Guiders and Rangers)  
2. Hillwalking and Rockclimbing (Groups for Guiders and Rangers)

### How to apply to a Training Centre

Any Guider may herself apply to attend a training course at the Centres, provided she has reached the age of 18 years. (At the discretion of the Commissioner a member aged 17½ who is working on the Adult Leader's Certificate may also apply for a Guider course.)

An application to attend a Guider Training Centre should be sent direct to the appropriate Guider-in-Charge, and must be accompanied by the correct amount of deposit and a sae. Applicants should also state the type of training for which they are attending, as there may be several different courses running at any one weekend. As many Guiders have to leave on Sunday, training sessions at a two-day weekend will stop at tea-time on that day unless otherwise stated. If sufficient notice is given that it is wanted, every effort will be made to provide sessions for a group until Monday. Individuals able to stay over until Monday to enjoy the surrounding country and other amenities of the Centre are welcome to do so.



# Why haven't we printed YOUR DESIGN on our T-SHIRTS & SWEATSHIRTS?

**DIRECT PRINTING  
NOT TRANSFERS**

- ★ Minimum Order merely 20 Garments.
- ★ All garments are Fully Washable and available in all sizes and colours.
- ★ Inexpensive with Substantial quantity discounts.
- ★ Full Artwork facilities provided.
- ★ Up to 8 colour printing.
- ★ Our colourfast inks include... Fluorescents, Gold & Silver metallics, Embossed & Luminous.
- ★ Promotional and Trade inquiries welcome... Our latest Precision Multi-Printers can produce 30,000 garments per day.
- ★ Contract Printing available.
- ★ Worldwide Exporters & a major supplier to the Armed Forces.



**IDEAL FOR...**  
Pubs, Clubs, Teams,  
Companies, Schools,  
Groups, Societies,  
Fund Raising....  
**YOU NAME IT!!**

Dee Gee guarantee to Create and Reproduce your Own Design, however intricate, on to Superior Quality T-Shirts & Sweatshirts, with the same Care & Dedication whether you Order a large or small quantity.

**dee gee**

*Reflection of  
Perfection at Prices  
Everyone can Afford!*

**MONEY BACK GUARANTEE**

DEE GEE T-SHIRTS LTD, FREEPOST, 27 YARMOUTH ROAD, NORWICH NR7 0BR  
TEL: NORWICH (0603) 37734 (5 Lines) TELEX: 97467 DEE GEE G

GDR

**FREEPOST  
NO STAMP NEEDED**

POST, WRITE OR PHONE TODAY FOR A FREE  
DEE GEE COLOUR BROCHURE & PRICE LIST.

Name (Mr/Mrs/Miss) \_\_\_\_\_

Address \_\_\_\_\_

Tel. No. \_\_\_\_\_

(CAPITAL LETTERS PLEASE)



## Camps and Holidays

### Beaverbrook Lodge

Applications should be sent to the Secretary, Foxlease, giving alternative dates and enclosing an initial deposit of £1.00 (which is non-returnable) and a foolscap sae. Priority will be given to applicants who have not already stayed in Beaverbrook Lodge. Applications for the period 1st October, 1980-31st March, 1981 are now being accepted.

### Foxlease Annexe

Makes an ideal centre for Rangers. Available Easter, Spring Holiday and periods in the summer. For details apply to The Secretary, Foxlease, Lyndhurst, Hants, enclosing a sae.

### Foxlease Camp-sites

Applications for sites will be considered now. They should be addressed to the Secretary and the envelope marked 'Camp'. Suggested dates with alternatives and approximate numbers should be stated, and whether an equipped site is required. Camps may begin on any weekday. Some sites are suitable for the handicapped.

A 50p deposit (which is forfeited if the booking is cancelled) and a foolscap sae should be enclosed.

### Waddow Cottage and Caravan

Both are available for bookings throughout the year. For details apply to the Secretary enclosing sae.

### Waddow Camp-sites

Applications for sites will be considered now. They should be addressed to the Secretary and the envelope marked 'Camp'. Suggested dates with alternatives and approximate numbers should be stated and whether an equipped site is required. It is preferred that Camps begin on Saturday.

A 50p deposit (which is forfeited if the booking is cancelled) and a foolscap sae should be enclosed.

### Waddow Pack Holiday House.

Applications for Pack Holidays in 1980 will be considered now, and should be sent to the Secretary. The application must include a written recommendation from the Guider's CA or Pack Holiday Adviser and a foolscap sae.

### Glenbrook, near Sheffield

Applications for 1981 will be accepted now and should be sent to the Guider-in-Charge, Glenbrook, giving alternative dates and enclosing a foolscap sae. Priority is given to applicants who have not previously stayed at Glenbrook.

Accommodation available in the house for 30, or in the flat upstairs for ten. Groups must be self-catering, and must guarantee 20 in the house or six in the flat. A number of activities are available, including canoeing, hill-walking, rock climbing, etc.

### Glenbrook Camp-sites

Six campsites available, two suitable for handicapped members, situated in partly wooded grounds. All sites are un-equipped. For information about camping and activities available, write to the Secretary enclosing a foolscap sae.

### Blackland Farm, East Grinstead, Sussex

Equipped and un-equipped sites available with facilities for swimming and pioneering (for which equipment can be borrowed). Also 'Restrop', a furnished bungalow for 25 (bunk beds for 20), and 'Barkly Cottage' with accommodation for 16 in single and bunk beds. For details write (with sae) to the Warden.

### Brownsea Island

Eight sites are available for Guide and Scout Camps from Easter to 1st October, and South Shore Lodge sleeping 18 plus Leaders. For details apply to Mrs B Duttfield, 16 Talbot Drive, Poole, Dorset, BH12 5ED (with foolscap sae).

### Broneirion, Llandinam, Powys

Holiday flats available all the year round for family holidays or parties of up to 12 Rangers plus Guider. Self-catering, fully equipped, with metered electricity. Apply to Guider-in-Charge, Broneirion.

### Broneirion Camp-site and Brownie House

Applications for the Brownie House will be considered from 1st November each year and for the camp-site from 1st January each year. Applications to: Miss P Lynch, 3c Pentwyn Court, Cardiff CF4 7BY (with sae.) Bookings for the Brownie House (outside school holidays) and for Guide and Ranger groups should be sent to the Guider-in-Charge, Broneirion.

### Ynysgarn, Criccieth, North Wales

Applications for the use of two un-equipped sites within a few minutes of the sea can be made to: Mrs Griffith, Swyn-y-Gwynt, Penrhynedraeth, Gwynedd, enclosing a foolscap sae for site information sheet.

### Netherurd Camp-sites, Brownie House and Holiday Caravan

Applications for campsites will be taken now. One site is suitable for the handicapped.

Applications for the Brownie House will be taken now (form of application available). During Scottish school holiday periods (Easter, July, half August), priority will be given to Scottish Packs. This is suitable for handicapped Brownies.

A three - berth caravan is also available.

### Holiday at Lorne

Lorne will be open as a holiday centre during July and August. In pleasant grounds with lovely views and quiet surroundings on the shore of Belfast Lough. Lorne is only six miles from Belfast and is a good centre for sight-seeing tours.

Special terms for parties of Guides taking the house and wishing to do their own catering.

Full details from the Guider-in-Charge, Lorne, Craigavad, Co Down, Ulster.

### Lorne Camp-sites

Lorne offers fully equipped or un-equipped camp-sites with solid shelter. Calor gas available. Applications should be sent to Mrs F Hartley, 1 Station View, Carnalea, Bangor, Co Down. Tel: Bangor 67088.

### Irene McKibbin Memorial Cottage, Lorne

A cottage available for Ranger holidays. For details apply to Miss Hilda Hirst, 119 Haypark Avenue, Belfast 9, enclosing sae.

### Magilligan Camp-sites

Three fully equipped sites with double calor gas stoves for 25 to 30 campers. Two miles of sands. Large three-room hut with an open fireplace. For details apply to Mrs R F Scott, Derrymore House, 54 Bolea Road, Limavady, Co Londonderry, enclosing sae.

### Glen Road Camp-sites (nr Lorne)

Fully equipped for 40 campers (one large and two small camps). Excellent hut for solid shelter and electricity. Bookings should be sent to Mrs F R Lee, 45 Gortland Park, Belfast BT5 7NO, enclosing sae.

### Olave House and Baden Powell House, London

Due to problems arising over non-receipt of Holiday Forms, please could all forms for parties at Baden-Powell House and Olave House be sent to Miss Sadler (see Campsites and Holiday Houses book, p65 London North West).

## Camp Activity Advisers

Camp Activity Advisers are needed for Foxlease, Waddow, Glenbrook and Blackland Farm during the peak camping weeks during Spring Bank Holiday (at the end of May) and from July to the last weekend in August.

We would be happy to receive offers from Guiders for one or more weeks. At Foxlease and Waddow you will live in the house, and at Blackland Farm and Glenbrook you have a caravan. Two friends working together are very welcome. All expenses are paid, so if you can get to any of these places, please apply!

Those who have done this job before have thoroughly enjoyed themselves, and Camp Activity Advisers are free to suggest and organise any type of outdoor activity, craft, etc., which will appeal to the Guiders and are suitable for the sites. Guiders will need to have had some experience, and if you are applying for the first time, would you please enclose a recommendation from your CA. If you would like details, please write giving the place in which you are interested and the dates you can offer, to Miss S Armstrong, Training Secretary, CHQ.

## SCOUT STAMPS COLLECTORS CLUB

are holding an International Exhibition of Scout & Guide philately at Baden-Powell House, Queen's Gate, London, S.W.7, on the following days:—

Friday 9th May 1980

Saturday 10th May 1980

Sunday 11th May 1980

From 2 pm - 7 pm.

10 am - 6 pm.

10 am - 4 pm.

The Exhibition will be called SCOUTS 1980 and will comprise approximately 100 frames from our world-wide membership.

A special postmark has been approved by the Post Office and the following souvenirs will be available —

Cacheted postcard with Exhibition postmark

30p

Unused postcard

10p

Souvenir sheet with Exhibition logo and reproduction of Jubilee

Jamboree 1/3d stamp

25p

Souvenir sheet on special cover with handstamp and Exhibition postmark

50p

Orders to Peter J. Duck, 59 Gilpin Crescent, Whitton, Middlesex TW2 7BP.

(Postage extra for items to be sent under separate cover.)

ENTRY TO THE EXHIBITION IS FREE OF CHARGE.



## In Memoriam



Left, Miss Greta Collins, MBE, pictured in 1965

Greta Collins, who died on 2nd March, 1980, knew not only what it was like to be a child in the Movement, but as an adult she was (successfully) a leader in every kind of Unit we have, and this made her an ideal choice as a Commissioner in Edinburgh. Training, too, was clearly her direction, and she held both a Camp Diploma and a Guide Diploma, and in 1958 was

awarded the Chief's Diploma. From 1953 to 1958 she was Scotland's Training Adviser, and these were the years in which she set up mobile training, chiefly for more remote areas and for islands. Always her experience was a widening one, she attended the World Conference in Brazil in 1957, later went as a guest Trainer to Macy in USA, and presided over the Pacific

Trainers' Conference in New Zealand in 1964. One training tour took her to Hong Kong for a year, and another year's tour led her to New Zealand; in both these countries she set up training teams. In 1961 she attended the Africa Conference in Uganda.

Her gifts and service were recognised by both Guiding and her country; in 1943 she was awarded the Beaver, and in 1965 the MBE. But not everyone recognised that she was also blessed with artistic gifts. She was a founder member of the Scottish Handcraft Circle; in addition she held a Licentiate in elocution granted by the Guildhall School of Music.

Compassion, and the knowledge she gained from her membership of the Scottish Advisory Council on Probation, as well as the many committees connected with the Youth Service on which she served devotedly, led to her setting up during the war years the Square Centres for adolescent boys and girls, and later to training full-time leaders for these. This is recognised as preceding the Guide International Service as one of the first outgoing experiments in Guide development work, that is to say, work which takes our ideals and principles out into an uncommitted community that needs us. So it was with intense interest that, along with other Guide leaders, she visited the special villages in Greece where work was carried on with repatriated children after the war. There she spoke eagerly to and with the children's leaders. Her last official appointment was as General Secretary for Scotland from 1962 to 1969.

We still build on foundations she laid, and our gratitude for the gifts she shared so selflessly with Guiding is deep.

She flung a skilful but cheerful challenge to us all, and the measure of her success is that we cheerfully accepted it, and continue to accept it on behalf of the young for whom she cared so much.

Mary M Nixon

Ann Child (née Cass) of High Wycombe, Bucks, died on 4th February, 1980, and our sympathy goes out to her husband, her two young children, and her parents. Her friends in Guiding all feel the poorer for her loss, but are thankful that she is now at peace after a long illness, gallantly borne.

Ann, who joined the Movement as a girl, was first warranted in 1962 as Tawny Owl in her mother's Pack, 1st Kingshill Brownies. Then she became Lieutenant and later, Guide Guider of the 1st Kingshill Company. Ten years later she started the Kingshill Ranger Unit.

In the last few years she really spread her wings in High Wycombe Division. She had been District Assistant for Hughenden District, she was a Holder of the Campfire Leaders' Certificate, and at the time of her death was Young Leader Liaison Guider for the Division.

Ann had a way of making contact with new members of a Unit, and overcoming their initial shyness, equally she held her own with wisdom at a Division discussion. She was a keen member of Bucks Singers, our County Choir.

Above all Ann was a camper, who made camping a wonderful and exciting experience, by her

campcraft and her ability and enthusiasm. **LEP**

'O Jesus I have promised, to serve thee to the end'

No one present in the tiny Delford church on that sunny afternoon who knew Pat Melkleyjohn as a personal friend and fellow Guide could fail to 'Sing for Pat', her favourite hymn with tears and admiration for her courage and Christian faith.

Her husband, John, who bravely read the lesson, her four daughters: Lynne, Anne, Jean, Kaye, and her mother must have received solace from that thanksgiving for her wonderful life of service.

Pat had been a Brownie, Guide, Ranger, and Guider of the Delford Village Unit and an enthusiastic camper and campfire leader.

For many years she was Division Secretary, County Registration Secretary, and latterly Pershore West District Commissioner. Pat will be remembered in the Pershore District by a commemorative rose bowl to be used as a Challenge Trophy.

A posthumous award of the Certificate of Good Service has been made to her family.

A short life (she was only 49), a full life — called to higher service. **MEL**



## Friends to the Deaf

Guide Companies which include girls who are interested in taking the Friends to the Deaf Badge, are advised to contact the National Deaf Children's Society (tel. 01-659 0099), who will put them in touch with their nearest branch, who can help them in their work towards the Badge.

Readers may be interested to know that the week of May 4th has been designated National Deaf Children's Week.

## Wrong Number

We apologise for a misprint which appeared on p. 41 of April's GUIDER. Under the heading 'A Chance of a Lifetime', a contact telephone number was incorrectly given as 584-8315. This should have read 584 9315.

## Peak '80

Peak '80, Derbyshire's International Scout and Guide Camp, is to be held at Chatsworth (the home of the Duke of Devonshire) from 26th July-2nd August this year. With some 600 members of the two Movements, from home and overseas, resident at Chatsworth for the week, Peak '80 will be one of the most significant youth events to be held in the United Kingdom during 1980. Further details may be obtained by contacting P.J. Mitchell, 3 Hollies Road, Allestree, Derby (Tel: Derby 59745).





# HOME & AWAY

## Cotton Clean

The Space-Saving Bed Centre has recently introduced a range of upholstery fabrics which are fluid repellent and dust resistant, called 'Cotton Clean'. Spilt fluids such as coffee, fruit juices etc form drops on the surface of the material which can then be wiped off with a cloth. A wide range of furniture incorporating this new fabric is on show at the Space-Saving Bed Centre's showrooms situated at **13-14 Golden Square, London W1**. Callers are welcome and more details can be obtained by writing to the address above.

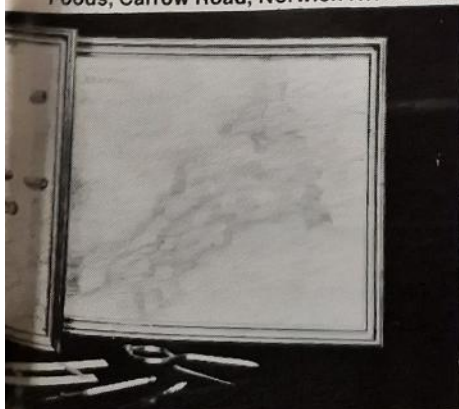
## A House of Cards

The Church of England Children's Society is collecting postcards old and new, written on or otherwise, for Britain's Postcard Sale, planned for 1981. 1981 is to be the International Year of the Disabled Person, and the proceeds of the sale will help provide more Holiday Homes for the handicapped. The provision of such holiday homes will help ease the strain on those families whose handicapped members are normally cared for continuously at home. It would be appreciated if members of the Movement willing to part with postcards would send them to: **John Pensom, Esq., Regional Director Eastern England, Church of England Children's Society, 3 Kingston Drive, Ollerton, Newark, Notts.**

*\*If some readers manage to acquire a substantial number of postcards, for which postal charges would be hefty, some arrangement for the collection of such parcels may be made by telephoning Mr Pensom on Mansfield 822778.*

## Map Offer

Colman Foods are celebrating the centenary of OK Sauce this year with a special on-pack offer. A free map of any county in England, Scotland, Ireland or Wales will be sent in return for two labels from OK Mint, Spicy or Fruity Sauce. The maps have never been made available before and are reproductions of 19th century originals in the British Library — drawn at about the same time that OK Sauce was first being made. The offer will continue until the middle of 1980. To obtain your map, please send your labels to: **Dept. OK 100, Colman Foods, Carrow Road, Norwich NR1 2WD.**



## Conservation: turn over a new leaf

There has been correspondence in *GUIDER* recently about the desirability or otherwise of breaking branches off trees, in order to make campfires. What is not, however, in question, is the fact that dead branches only should be used — for 'A Guide . . . respects all living things'.

This being so, and conservation being not only sensible but also a highly fashionable topic at the moment, conservation projects are bound to appeal to many Guide Companies and Ranger Units — even Brownie Packs can have great fun, and be of service by becoming Wombles for a time, and taking part in, say, a sponsored litter-pick.

The British Trust for Conservation Volunteers recently produced a Conservation Project Pack containing six booklets, with the titles: *School Nature Areas, Community Projects, How to make a small pond, Tree Nurseries, Trees and Shrubs* and *Hand Tools*. 'Community Projects', particularly, is an invaluable booklet which gives details about how to set about carrying out projects for local authorities, and case histories of projects actually carried out by schoolchildren. The set of six booklets contains virtually all the information anybody keen to have a go at cleaning up or improving his environment might require. Addresses to contact for any further advice or help are also supplied.

The Conservation Project pack, recommended by Botanist David Bellamy, is available from **The British Trust for Conservation Volunteers, 10-14 Duke Street, Reading, Berkshire**, at a price of £3.15 (including 65p postage and packing) — or for further information, ring the BTCV on Reading 596171.

Incidentally, the BTCV had the image of being an organisation primarily directed towards young people. This is more by accident than by design (remember their working camp holidays are open to physically fit people between the ages of 16 and 70). Virtually anyone with an interest in conservation can join the BTCV, so Trefoil Guilds, please note!

## It's easy to complain about advertisements.

Every week, millions of advertisements appear in the press, on posters or in the cinema.

Most of them comply with the rules contained in the British Code of Advertising Practice and are legal, decent, honest and truthful.

But if you find one that, in your opinion, is wrong in some way, please write to us at the address below.

We'd like you to help us keep advertising up to standard.

## The Advertising Standards Authority. ✓

A.S.A. Ltd., Brook House, Torrington Place, London WC1E 7HN.

## Twice the fun — for half the cost

— build your own boat, a range of CANOES, KAYAKS and PUNTS to suit most individual needs and specifications. Kits are complete, including varnish etc., and can easily be assembled, without any previous woodwork experience in the course of two weekends plus a few evenings.

### ALL MODELS ALSO AVAILABLE READY BUILT

20% Discounts available to Youth Organisations.  
Large stocks held.  
Callers welcome — Open Monday to Saturday

SEND FOR ILLUSTRATED BROCHURES



**GRANTA BOATS (G) RAMSEY HUNTINGDON TEL: (0487) 813777**



# BINLEY'S PATROLS LEADERS



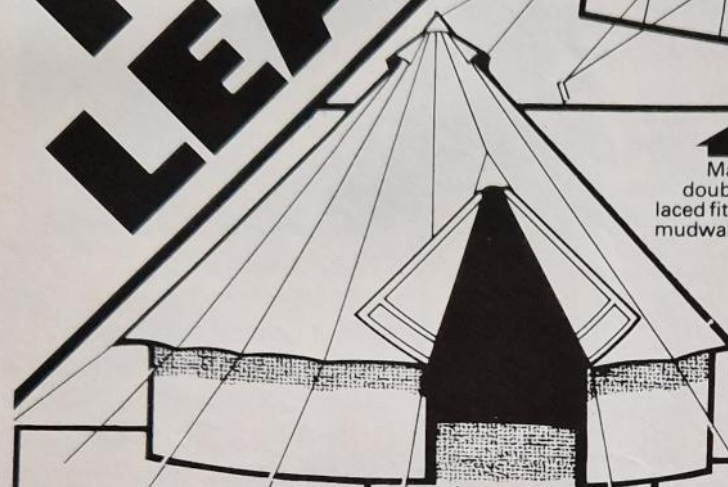
## VANGO PATROLS

Manufactured from R8 Green 10oz Super Quality cotton duck, double reinforced at all straining points, doors at both ends with laced fittings, large ventilators in roof, 3' walls with 6" double eaves, mudwalling, brailing tapes, storm guys, poles, wooden pegs, mallet and carrying valise.

Patrol	Length	Width	Height	Walls	Weight	PRICE
10'	10'	8'	7'	3'	56lbs	£132.00
12'	12'	8'	7'	3'	70lbs	£142.00
14'	14'	8'	7'	3'	81lbs	£162.00

### Optional extras:

Flysheets:	Groundsheets:
10' £49.95	10' x 8' £14.40
12' £59.95	12' x 8' £17.28
14' £69.95	14' x 8' £20.16

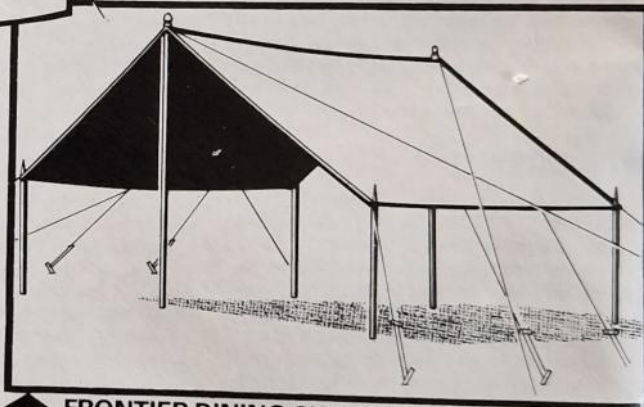


## VANGO PATROL BELL TENT

Manufactured by Vango from the best quality 12oz proofed green cotton duck which has proved over many years to be the right material and makes an excellent bell tent for Guides, Scouts and other organisations. 42' circumference with 2'3" walls, 9'9" high and 6" eaves.

Comes complete with guys, pegs, mallet, wooden pole and valise.

**BINLEYS PRICE: £132.00**



## FRONTIER DINING SHELTER

Manufactured from closely woven tent canvas, water and rot proofed. Two metal uprights and ridge pole, four corner poles, complete with guy lines, pegs and mallet. Colour: green. Sheet: 12' x 9'. Height: 6'6".

**PRICE: £47.00**

**PRICE POLICY:** We believe we offer the largest range of tents in the country at the best possible prices. In the unlikely event that any other advertiser in this magazine is offering a tent at a lower price than us please let us know prior to purchase, to give us the opportunity of equalling their price. Subject to availability. Prices subject to change. VAT included at 15%.

**MAIL ORDER:** To order any items listed please send cheque or postal order, or write for mail order form and financial details. Carriage £4.00 per tent and £2.50 per equipment order. Access/Barclaycard orders can be taken on Kettering 81071 and 81072 (24hr answering service).

**BINLEYS' LEISURE '80** A superb new leisure guide for campers, caravanners and outdoor people in true Binleys tradition offering Buyer's Guide, Hints, Competitions, Features and Mail Order. (At great prices too!) Available nationwide from all branches of W.H. Smith or direct from Binleys 50p inc. post and packing which is fully redeemable with first order.

(Head Office, Mail Order and large Showroom)  
Victoria Street, Kettering, Northamptonshire NN16 0BU.  
Tel: Kettering (0536) 81071 & 81072

(24hr ans. service)  
Also at Ashburnham Road, Northampton.  
Tel (0604) 715259. Outdoor displays at Cosgrove Lodge Park. Tel (0908) 566618 and Billing Aquadrome (0604) 405705 from April to September.



# BINLEY'S

LEISURE GROUP

## WALKER NYLON RIDGE

Europe I	£26.95
Europe II	£29.95
Europe III	£37.50
Mercury	£47.50

## NYLON RIDGE TENT EXTENSION

Size 1	Height 110cm	£18.95
Size 2	Height 130cm	£21.50
Size 3	Height 150cm	£25.50
Size 4	Height 175cm	£29.95

## POLYWARM HIGH ANDES SLEEPING BAGS

Trekker	£32.50	Climber	£49.95
Rambler	£33.95	Pioneer	£52.50
Hiker	£38.95		

## VANGO FRAME TOILET TENT DELUXE

A super deluxe toilet tent made in medium weight cotton - special features, rear vent, zip doorway, rings at corners for security, rubber guys, guy lines for safety in high winds.

Size:  
Ground area 3'6" x 3'  
Height at front 6'3"  
Height at rear 5'9"  
Weight 9lbs  
Colours Blue and Brown  
**BINLEYS PRICE £24.50**



# H.Q. NOTICES...

## CHQ Awards Meritorious Conduct Star of Merit

Claire Rookes, Brownie  
Guide, aged 9, 2nd Chilwell  
Pack, Nottinghamshire.

## International Scout and Guide Club

The club meets at Baden-  
Powell House each Monday  
evening at 8 pm. The  
programme for this month  
is as follows:

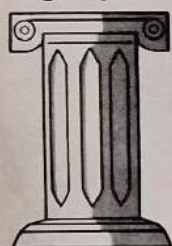
### This month:

- 5th Bank Holiday: No meet-  
ing
- 12th Annual General Meeting
- 19th USA: Jamboree Visit
- 26th Bank Holiday: No meet-  
ing

## Blackland Farm

It is regretted that no further  
bookings can be accepted for  
Barkly Cottage at Blackland  
Farm as this has now reverted  
to accommodating staff.

## Adult support groups



Information Leaflet No. 2  
from The Girl Guides Association

## PR Information Leaflet

**Adult Support Groups** — a  
new information leaflet  
containing basic information  
about Link, Trefoil Guild,  
Local Associations, Sup-  
porters' Committees, and  
student Guiding and Scout-  
ing organisations — is  
available from the Press and  
Public Relations Department,  
CHQ. Send 16½p in stamps  
for 20 free copies. Orders  
over 20-2p each plus postage  
and packing.

## Heraldry for Beginners

Foxlease 3rd-5th October  
Waddow 7th-9th November

An introduction for those  
with little or no knowledge,  
and to whet the appetites of  
those who wish to gain more!

If you are interested apply  
now to the Guider-in-charge  
concerned.

## An Introduction to Glenbrook 20th-22nd June

(For Adult Leaders who have  
not been to Glenbrook.)

Visit the County of Derby-  
shire which has much to offer  
to the active and not so active  
at Glenbrook, situated within  
easy reach of hills, edges,  
pot-holes, show caves, scenic  
beauty and stately homes.

A programme will be  
arranged for you to fit in as  
many activities and visits as  
you would like. Walks will be  
arranged according to  
inclination and ability, but  
rock climbing, caving and  
canoeing will be for begin-  
ners only. If there is a heat  
wave there is an open air  
swimming pool three miles  
down the road!

## Campsite and Holiday Houses 1980

**Important:** Will all users of  
this publication please note  
that applications should not  
be made for any site not  
appearing in the 1980 list  
(even if it was included in  
1979). Local goodwill could  
be adversely affected if this  
unwritten rule is disregarded,  
so please don't use an out-of-  
date edition — the 1980  
edition is now on sale to  
Advisers and Commissioners  
who do not receive a copy  
through other channels.  
Please apply as last year to  
your **Country/Region HQ**  
enclosing a cheque/postal  
order for **36p** (made payable  
to the Girl Guides Associa-  
tion), and a **1st or 2nd class**  
**stamp**.

## Calling All Patrol Leaders

### Patrol Weeks at Waddow

#### Waddow 1st-9th August

#### TO ALL GUIDE GUIDERS

Would you like to combine  
training for yourself with an  
opportunity for one of your  
Patrols to make progress  
through having fun with other  
Patrols from different parts of  
the country?

The invitation is for one  
Patrol from your Unit to  
spend a week in the house at  
Waddow with you and/or one  
of your Assistant Guiders.  
The aim of the weeks is to get  
the youngsters, through  
working as a Patrol alongside  
other Patrols, to progress as  
individuals and as a group.

Your training sessions,  
separate from the Patrol  
sessions, will provide you  
with opportunities to:

- a) Study the Patrol System  
in theory and practice
- b) Plan the follow-up on  
return to your Unit, so  
that all members of it  
may benefit from your  
experience and that of  
the Patrol you bring with  
you.

It is essential that you bring  
an actual Patrol and not one  
made up of girls from dif-  
ferent Patrols (you must all be  
prepared to stay the whole  
week) in your Unit. At least  
four members of the Patrol  
must be able to attend, one of  
whom should be the Patrol  
Leader if at all possible. If  
new members join the Patrol  
between the time of your  
application and Patrol Week,  
it might be possible for them  
to have places if there are  
spare ones.

Cost will be £26 per person  
per week. Places are limited  
so early application is ad-  
visable to avoid disappoint-  
ment. Application Forms may  
be obtained from Waddow on  
receipt of a stamped  
addressed envelope.

The Patrol Week Course of  
Foxlease has been cancelled  
due to insufficient numbers.

## Waddow Holiday Period 18th-26th July

This is a golden opportunity  
for Guiders wishing to take  
up to nine of their Guides or  
Rangers for a holiday at Wad-  
dow, on the edge of the York-  
shire moors. Planning your  
programme during the  
holiday will be entirely your or  
your girls' responsibility.

At Waddow you could walk  
over the hills, explore the  
Witch Country and many  
fascinating villages, visit  
abbeys, castles and Roman  
remains, go bird watching or  
fossil hunting by the river, or  
follow nature trails. Guiders  
need not hold a Holiday  
Licence as qualified  
experienced Guiders will be  
present to comply with POR,  
but this could be used as  
experience towards your  
Licence. However, you need  
the consent of your Commis-  
sioner before applying. For  
details write to **Guider-in-  
Charge, Waddow**.

## Enjoy a Working Holiday at Woodlark's Campsite

Offers of help from Guiders,  
Rangers and Young Leaders  
would be welcomed at Camps  
for physically handicapped  
adults and children. If you are  
interested, please contact the  
Camp Leader at the address  
given (please enclose an aae).

### May 31st-June 7th Hants Trefoil Extensions

Mrs M. E. Slade,  
22 Fowler Road,  
Cove, Farnborough,  
Hants.

(Tel: Farnborough 48418)

Note: Helpers of any age  
group welcomed and more  
room for more disabled in  
need of a holiday.

### July 19th-26th Birmingham Handicapped Guides

Miss V. Greene,  
3 Inverclyde Road,  
Birmingham B20 2LE  
(Tel: 021-554 6185)

### July 26th-2nd August Chailey Heritage Guides

Miss S. Blades,  
c/o Chailey Heritage Craft  
School,  
North Chailey,  
Lewes, Sussex  
(Tel: Newick 2112)

### August 9th-16th Pathfinders (Guides and others)

Miss A. Cann,  
20 Southlands Road,  
Weymouth,  
Dorset

### August 16th-23rd Hampshire and Dorset Handicapped Rangers

Miss Luxon,  
14 Macbeth Close,  
Hartford,  
Huntingdon, Cambs PE17 7PB

## Short Term Investment Service

Monthly interest rate after  
deduction of management  
commission:

December '79	15.92%
January '79	16.775%
February '80	16.906%
Additional 0.5% p.a. for deposits of £2,500 and above.	

## Scout and Guide Trust Fund

On 29th February, 1980, the  
value of a share in the above  
Fund was:

for selling purposes	58.94p
for buying purposes	61.92p
income yield	5.65%

The income yield is based on  
the previous two dividends  
paid and the price on the date  
stated.

continued on page 40



# TRAVEL LIGHT, SLEEP TIGHT.



Now that the better weather's on its way, you'll be looking forward to enjoying the outdoor life again soon. And if you want to travel light, you couldn't do better than choose from this range of rucksacks, specially designed to keep weight to a minimum. Then if you want to bed down at the end of a long day, you won't find a more comfortable place to spend the night than snug and warm inside one of our sleeping bags. Start planning your hike now, and take the first steps by filling in the coupon.

Please tick in the appropriate square the items you require. If you require more than one, please write the number in the square. Add 50p (small order charge) for all orders under £10. Allow 14 days for delivery. Money refunded if not entirely satisfied.

- |  |                                       |   |                                     |
|--|---------------------------------------|---|-------------------------------------|
| <input type="checkbox"/> 80606 (A) Backsack<br>A day sack made from proofed nylon. Folds up into carrying pouch. Assorted colours<br>Height 1ft 3in Width 1ft  | £3.35                                 | <input type="checkbox"/> (L) Small Stuff Sack<br>Proofed nylon, with weather flap and drawstring top.<br>Length 1ft 6in Diameter 8in.   | £1.20                               |
| <input type="checkbox"/> (B) Super Lightweight Rucksack<br>In rainproof nylon with adjustable shoulder straps. Folds down into zipped front pocket.<br>Length 1ft 6in Width 1ft 3in                          | £2.90                                 | <input type="checkbox"/> 80739 Orange   | <input type="checkbox"/> 80721 Blue |
| <input type="checkbox"/> 80580 Blue  | <input type="checkbox"/> 80598 Orange | <input type="checkbox"/> 80556 (M) Weekender<br>Front pocket with zip fastener. Large hood, adjustable straps.<br>Height 1ft 4in Width 1ft 2in  | £4.55                               |
| <input type="checkbox"/> 80333 (C) Large Stuff Sack<br>Nylon, drawstring top. Blue.  | £2.15                                 | <input type="checkbox"/> 80754 (N) Blanket Strap<br>Strong webbing. Length 3ft 10in. Not illustrated.   | £1.00                               |
| <input type="checkbox"/> 80531 (D) Fellman<br>A very practical rucksack, made from polyurethane backed nylon. Front zipped pocket, foam filled tubular nylon shoulder harness.<br>Height 1ft 3in Width 1ft   | £8.65                                 | <input type="checkbox"/> 85506 (O) Bacpac Sleeping Bag<br>The perfect backpacking bag. Terylene filled in woven nylon lining. Drawstring hood doubles as carry sack/pillow. Short zip.  | £18.95                              |
| <input type="checkbox"/> 84061 (E) Frameless Rucksack<br>Canvas, with leather straps. Blue.<br>Height 1ft 9in Width 2ft  | £6.25                                 | <input type="checkbox"/> 80283 (P) GGA Supreme Sleeping Bag<br>A real luxury bag filled with 30oz polyester. Full length zip for conversion to quilt.   | £16.50                              |
| <input type="checkbox"/> 80762 (F) Kitbag<br>Nylon, with drawstring top.<br>Length 2ft 6in Width 1ft 3in   | £3.75                                 | <input type="checkbox"/> 85514 (Q) SB100 Sleeping Bag<br>Filled with 38oz Terylene, this nylon sleeping bag is fine value. Wine outer, pink inner.  | £8.50                               |
| <input type="checkbox"/> 80622 (G) Challenge Rucksack<br>A good value rucksack, featuring a button back for a comfortable carry. Front and sides in blue nylon, two pockets.<br>Height 1ft 5in Width 1ft 3in | £5.25                                 | <input type="checkbox"/> 80317 (R) Icelandic Standard Sleeping Bag<br>Filled with duck down, walled and quilted. Cover royal blue cambric, lined sky blue. Tapered, rolls into very small self contained bag. A truly excellent sleeping bag.<br>Size open: Length 6ft 8in, Width (top) 2ft 9in, (bottom) 1ft 8in. Packed: 1ft x 10in x 7in. Weight 3lb 2oz | £55.32                              |
| <input type="checkbox"/> 80630 (H) Brownie Haversack<br>PVC Nylon. Press button fastener, adjustable sling with buckle.<br>Brown. 9in x 8in x 3in  | £1.90                                 | <input type="checkbox"/> 84053 (S) Kon-tiki Sleeping Bag<br>Hollofill filling, rolls into its own carrysack, cover and lining in woven nylon. Yellow.   | £28.85                              |
| <input type="checkbox"/> 80747 (I) Passport and Money Belt<br>Adjustable waist belt, two compartment pouch. Denim. Not illustrated.  | £1.85                                 | <input type="checkbox"/> 80424 (T) Sport Union Camp Bed<br>A sturdy, lightweight camp bed, easily assembled.<br>Length 6ft Width 2ft Height 7 1/2in   | £9.54                               |
| <input type="checkbox"/> 84095 (J) Frame Rucksack<br>Nylon with two side pockets. Frame has platform for sleeping bag etc.<br>Height 2ft 2in Width 1ft 3in   | £16.50                                | <input type="checkbox"/> 80408 (U) Karmmat<br>A revolutionary insulating ground pad, made from closed cell foam. Gold.  | £5.65                               |
| <input type="checkbox"/> 80770 (K) Kit Holdall<br>Sturdy nylon, with two handles all the way round for even dispersal of weight. Strong zip fastener. Blue.<br>Height 2ft 3in                                | £4.35                                 | <input type="checkbox"/> 80481 (V) Survival Bag. Polythene<br>6ft x 3ft Orange  | £0.95p                              |
|  |                                       | <input type="checkbox"/> 83428 (W) Bubble Pad<br>Lightweight camping pad. Waterproof  | £2.58                               |

Print your name and address clearly in this coupon and send it with your cheque/PO made payable to the Girl Guides Association Trading Service (no stamps please) to the address below. Full colour catalogue free on request.

Name \_\_\_\_\_

Address \_\_\_\_\_



**GIRL GUIDES  
ASSOCIATION**

Girl Guides Association Trading Service,  
Atlantic Street, Broadheath, Altrincham,  
Cheshire WA14 5EQ Tel. 061 941 2237  
9.00am to 4.30pm Monday to Friday

These items are also available at any of the Girl Guides Association Shops at 17/19 Buckingham Palace Road, London SW1W 0PT, 130 Green Lane, Palmers Green, London N13 5UN, 5 Ryder Street, Birmingham B4 7NE, 209 City Road, Roath, Cardiff CF2 3XX, 20 Richmond Street, Liverpool L1 1EG, who can supply all your Guiding requirements.

**When you buy from the movement we all benefit**







# WHEN YOU'RE CAMPING, FISHING, TREKKING OR MOUNTAINEERING DON'T GO WITHOUT GRANGERS.

For greater health, safety and enjoyment, whatever your outdoor interest, take the right Grangers products with you. We're the outdoor experts.



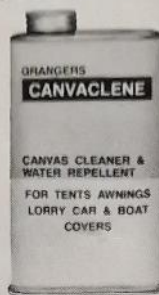
**FABSIL AEROSOL**  
ALL THE BENEFITS OF FABSIL SOLUTION, IN A CONVENIENT SPRAY CAN. LARGE ECONOMY SIZE.



**FABSIL**  
A COLOURLESS, MILDEW-RESISTANT WATER-PROOFER FOR COTTON, NYLON AND TERYLENE. PROTECTS TENTS, SAILS, ANORAKS. 1, 2 1/2 & 5 LITRE CANS.



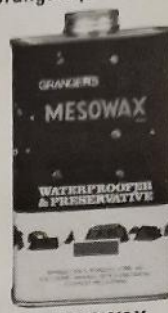
**NYLOPRUF**  
A CONCENTRATED SILICONE WATER-PROOFER FOR ALL SYNTHETICS. A SINGLE COAT WILL PROTECT CAGOULES, ANORAKS, COATS, OVERTROUSERS, JACKETS, TENTS, AEROSOL AND, FOR THOSE WHO PREFER APPLICATION BY HAND, IN 1 Ltr. CANS.



**CANVACLENE**  
A WATER-PROOFER AND CLEANING AGENT IN ONE PROCESS FOR CANVAS OF ALL TYPES: LIKE TENTS, AWNINGS, COVERS, CAR HOODS etc. 1 & 5 LITRE CANS.



**TREKDRY**  
OUR CONDITIONER AND WATER REPELLENT WITH OILS AND SILICONE, TO PROTECT SHOES, BOOTS AND EVEN NON-SUEDE COATS. ALSO IMPROVES SUPPLENESS AND DURABILITY OF LEATHERS.



**MESOWAX**  
WATERPROOFS WEATHERED AND POROUS COTTON CANVAS, BUT ALLOWS IT TO BREATHE. FOR TENTS, COVERS, SAILS, CARAVAN AWNINGS etc. COLOURLESS OR COLOUR CHOICE. 1, 2 1/2 & 5 LITRE CANS.



**PATCHKIT**  
A KIT CONTAINING ADHESIVE & COLOURED CANVASSES. FOR REPAIRING HOLES, TEARS OR BURNS AROUND TENTS, CAR HOODS, COVERS etc.



**SEAMSEAL**  
A WAX BASED SEAM SEALANT FOR ALL NATURAL FABRICS. ALSO LP85, A SPECIAL SEALER FOR LIGHTWEIGHT SYNTHETICS LIKE SLEEPING BAGS AND CLOTHING.



**GRANGERSOL** - FRIENDS OF THE OUTDOOR FAMILY.

Imperial Way, Watford, Herts.

Quality products only from Grangersol.

## STAFF VACANCIES at

### Commonwealth Headquarters

Our needs change from month to month. We may have just the sort of work you seek. Vacancies occur from time to time in the following departments:

Commonwealth/International .....  
Programme/Training .....  
Public Relations .....  
Publishing .....  
Periodicals .....  
Personnel .....  
Services .....  
Shop .....

We would be happy to discuss our current vacancies if you will write to: *Mrs. Eileen Earnshaw, 17-19 Buckingham Palace Road, London SW1W 0PT, or telephone 01-834 6242 Ext. 46.*

## GUIDES and BROWNIES T-Shirts OR Sweat shirts



Top quality washable shirts. Range of super colours, including White, Sky, Navy, Scarlet, Yellow, Green. Prompt delivery.

**SPECIAL PERSONALISING SERVICE!** Have YOUR Unit name and emblem embossed on the shirt at 5p per letter extra. Special discounts for Group orders.

Design service available for SPECIAL EMBLEMS if required. Shirts contain varying proportions of cotton/viscose/ polyester according to availability. Details on request.

Prices (complete with emblem)

**T SHIRTS** (Sizes 22"-30") £2.10  
(Sizes 32"-40") £2.40, (Sizes 42"-44") £2.65 P & P 35p.

**SWEAT SHIRTS** (Sizes 26"-30") £4.25, (Sizes 32"-44") £4.95 P & P 40p  
State colour required (give alternative choice) AND EXACT CHEST SIZE.

**CREWMASTER** (Dept GB5), 27/41 Oldfield Circus, NORTHOLT, MIDDLESEX. Tel: 01-422 3344

FROM  
**£2.10**





Contains Simple Recipes, in *STRIP* Form, featuring our cartoon character **SOUPERKOOK**. Instructive for the 7-10 year old Brownie. Ideal for Pack Holiday.

PRICE 50p

Please send me \_\_\_\_\_ copy/copies of  
SOUPERKOOK'S Book for Brownies

I enclose \_\_\_\_\_ PO/cheque/sterling money order  
(no stamps please) made payable to  
The Girl Guides Association Trading Service

Name \_\_\_\_\_  
Address \_\_\_\_\_  
\_\_\_\_\_

Please add 20p per copy for postage and packing.  
Post to The Girl Guides Association Trading Service,  
Atlantic Street, Broadheath, Altrincham, Cheshire  
WA14 5EQ. Tel: 061-941 2237

G5

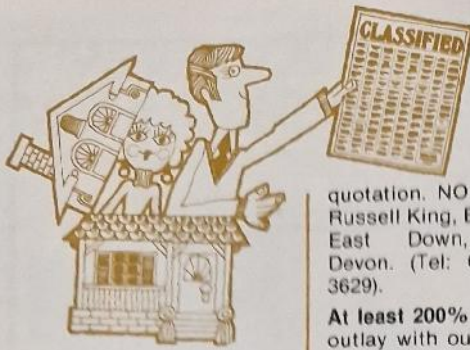
Obtainable from GUIDE SHOPS

OR BY

MAIL  
ORDER  
from  
THE  
GIRL  
GUIDES  
ASSOCIATION  
TRADING  
SERVICE







#### FOR SALE/FUND RAISING

**Ridge Tents.** New, direct from manufacturer. 11ft x 7ft x 6ft 6in high Walls 3ft. Zip door. Mud walls, £73. Also 9ft version of above tent £58.50. 14ft version of above tent £90. Top quality materials 7½ oz. For brochure, telephone 01-445 6253.

**Advertising Pencils.** Ball Pens, Combs, Diaries, etc gold-stamped Company name. Raise funds quickly, easily: Bran Tub Toys, details: Northern Novelties, Spencer House, 26/28 Spring Gardens, Bradford BD1 3HE.

**Sale or Return.** Offering 100% profit on cost. Costume Jewellery parcels sent post free without obligation. Ideal fund raisers. Details: Caritas Jewellery, 356 Uxbridge Road, London W12 7LL.

**Attention Brownie/Guiders!** Totems (Toadstools) available. Red tops with white spots in fibreglass, 18 ins high with detachable tops £14.85 each plus £1.25 p&p, cash with order. From: T G Higgins, Spread Eagle, Rishworth, Sowerby Bridge, West Yorkshire. Tel: 042-289 3655.

**'Happiness is being a Brownie'** embroidered badge. Give your girls a surprise in 1980 — every Brownie should have one of these colourful, washable 3in. diameter badges with bound edge. Suitable for blankets, jackets, jeans, anoraks, etc. Send today for your badges, minimum 4 at 30p each, 50 at 25p each, 100 at 22p each plus postage and VAT. Limited stock. Suitable for sale at camp sites. Blanket badges and Pennants with bright colours for Brownie outings, Girl Guide camps, rallies and all those special events for which souvenirs are required, printed to your own design. Minimum 50 badges. **EMBROIDERED** badges for schools and swimming clubs and all purposes. Send stamped addressed envelope with sketch (or sample) and indicate colours, size and quantity required, for our

quotation. **NO PRICE LISTS.** Russell King, East Down Mill, East Down, Barnstaple, Devon. (Tel: Combe Martin 3629).

**At least 200% Profit** on your outlay with our quick selling range of imprinted pens and other easy sellers. 10p stamp for catalogue and sample. JA&V Jeffers, Berkhamsted, Herts. (Tel: 6527).

**Duplicators.** For sale and repairs. Lists free. Griffiths, 54 Huntingdon Road, Cleveleys, Lancs. Tel: 867122.

**A Matter of Life or Death,** 60,000 people have read it, — BUT have you? In the opinion of many, the best short emergency First Aid book ever written. Available from Guide Shops. Price 40p

#### STAMPS

**200 different Scout/Guide Stamps, £2.25.** Sae for lists, etc. J R Hoggarth, Thorneywaite, Glaisdale, Whitby YO21 2QU.

#### TRANSIT FOR HIRE

**Minibus 12 seater. Unlimited mileage.** October to April, weekly rate: £95, daily rate: £18. May to September, weekly rate: £125, daily rate: £21. **Crewbus 12 seater. Unlimited mileage.** October to April, weekly rate: £90, daily rate: £19. May to September, weekly rate: £115, daily rate: £19. **Transit Vans, 18/22cwt** weekly rate: £60, daily rate: £10. 30cwt, weekly rate: £70, daily rate: £13. 35cwt, weekly rate: £80, daily rate: £17. Deposit £25. Mileage charge 6p per mile. 15% VAT on all above charges (excluding deposits). Deposit £25. Four Point Garage Ltd, 110 High Street, Feltham, Middlesex. Tel: 01-890 9931.

#### CAMPING/HOLIDAYS

**Cruise the Bristol Avon.** Exciting, inexpensive cruises aboard 12-berth narrowboat. Learn steering and lockwork under experienced supervision. Also available, 6-berth self-steer narrowboat. Weekend, short or long period bookings. Brochure: Bristol Narrowboats, 4 Whitland Avenue, Bristol, BS13 9QQ. Tel: 0272-641075.

**Canal Cruising** aboard our fleet of fully equipped narrow boats operated by helpful

experienced skippers. 'Economy' 12-berth camping craft with comfortable bunks, full size cooker and sink unit, electric light and a full inventory of pots, pans, cutlery and crockery. 'Luxury converted 12 berth boats with the above facilities plus fridge, shower and central heating. 'Economic' rates — from about £10.50 per head for a full week, £6.70 per head for a weekend. Brochure from Warwickshire Fly Boat Co, 149 Hollyfast Road, Coventry CV6 2AF. 0203-33 4228.

**Pony Trekking Camp.** Secluded Farm Site in the Welsh Mountains. Trekking in high wild country on bomb-proof ponies, perfect for beginners. Absolutely no experience necessary. 'Ponies of Britain' approved. Private lake. Country drives by Pony and Trap. Full Trekking Holiday including site fees — £17.75 per person. Sae for brochure to L A Gale, Brynamlwg, Penrhyw, Tregaron, Dyfed. (Tel: Llangeitho 629).

**Belchamps Scout Camp,** Holyoak Lane, Hawkwell, Essex. Where real camping means something, over 40 sites set in 30 acres of pleasant countryside, with the use of 350 acres of adjoining Hockley Woods. Unlimited supply of fire and gadget wood, regular camp fires, plenty of water points, three female ablutions blocks, two with free hot water and showers. Indoor rock-climbing and abseiling wall, badminton, trampolining, assault course, ski-slope and 400 yds walk, a modern indoor swimming pool. Indoor accommodation for winter use by Guides or summer use for Brownies consists of a 48-bedded hostel, large dining hall and fully-equipped kitchen and a splendid large activities hall. Fully stocked providore, unrivalled pioneering equipment (with free instruction). Open all year with a full-time resident warden and wife in charge and a very helpful service crew. Come to where the action is: Belchamps, the friendly site. Sae for details.

**Camping Afloat.** Travel the English Canals on our traditional narrowboats steered by a helpful and experienced boatman to ensure your trip goes smoothly. We cater for groups of all sizes and offer a choice of routes. Costs can be as low as £12 per person per week, including VAT, self steer boats are available.

Write or phone for fully illustrated brochure to: Union Canal Carriers, Canal Side, Little Braunston, Daventry, Northants, NN11 7HJ. Telephone Rugby 890784.

**Reeds Educational Travel Service,** The Old Rectory, All Saints, Hastings, Sussex. Tel: Hastings 427995. Sunny Hastings from 2nd August (Saturday to Saturday) 7 days for £32.50 (2 leaders free with 25 Guides). Full board and accommodation in large house and garden near sea, swimming pool and lovely walks, includes day trip to Brighton, Optional day trip to France £13 extra. Extra adults £8. Reeds Educational Travel Service.

**Buckmore Park,** Maidstone Road, Chatham, Kent ME5 9QG. A District Camp Site and Activity Site for members of the Guide and Scout Associations. Open all year for Day Visitors, weekend and week's campers. Indoor Units, heating and hot water, refrigerators, 53 Camp Sites in over 200 acres of woodland. Indoor heated Swimming Pool, indoor Roller Skating, Rifle Ranges, Archery, Abseiling and Climbing. Five-A-Side, Tennis, Karting, Assault Course, Pioneering, Scout and Guide Club. Hot Showers; fully-stocked Shop and Restaurant. Write for details.

**Felin Bach** (Caernarvonshire County Camp-site) Caethraw, Gwynedd, Large unequipped camping area, for Guides and Rangers, and indoor Accommodation for Pack Holidays, available all the year round. Snowdonia National Park half-a-mile. Climbing and hill-walking within easy reach. Safe bathing at Dinas Dinlle or Bangor Baths. Apply to Mrs P Jones, Bryn Meurig, Celyn Avenue, Penmaenmawr Gwynedd LL34 6LR, with foolscap sae.

**Cumbria — Six berth caravan** to let. Private farm site. Apply Mrs Taylor, Borrett, Sedbergh. Tel: Sedbergh 20440.

**Canadian Canoe Trail.** A 7-day canoe/camping journey covering 50 miles of the scenic R Wye. Lightweight camping at riverside campsites. Ideal adventure holiday for young people with basic and continuing instruction. Food and equipment provided. Brochure: Outdoor Leisure, Glasbury on Wye, Hereford HR3 5LX. Tel: Glasbury (04974) 483.

**Fairfield Division HQ** accommodation, Radcliffe Road, East Croydon, suitable Pack Holidays. Available from Spring Bank Holiday. Also





grounds for small camp. Contact Mrs Brimble, 35 Farnfields, Sanderstead, Surrey.

**Come camping on the canals** — Charter a traditional narrow boat, fully fitted to accommodate 12 people in camping standard; 24 per 'pair' of boats, with first class skippers to make everyone's holiday really enjoyable. Or self-drive a luxury 4 or 6 berth. Full details from: Foxton Boat Services Ltd, Bottom Lock, Foxton, Market Harborough, Leicestershire. Tel: Kibworth 2285

**Alderney**, the unsophisticated, unspoilt Channel Island. Small Guest House, owner operated offers escape to tranquility and friendship. Farm Court, Alderney, CI 2075.

**'Our Chalet'**, for details of low cost inclusive arrangements to the International Guide Centre at Adelboden, contact the official agents, YHA Travel, 14 Southampton

Street, London WC2E 7HY. 01-836 8541.

**Adventure and Activity Holidays** for boys and girls at homely centres in North Yorkshire. Holidays include Outward Bound, Riding, Sailing, Canoeing, Piano and Guitar. Unusual and interesting activities for Guides and Rangers. Parties catered for. For brochure, write Northern Field and Activity Centres, Larpool Hall, Whitby. Tel: 4073 (10am to 1pm).

**Holiday guests** B/B, H/B, F/B comfortable home, good for Bournemouth, Poole, New Forest, Dorset Coast, open all year. Also bungalow to let any 2 weeks Sept. Lawton, 2 April Close, Bournemouth BH11 9DD.

**New Outdoor Pursuits Centre.** Cecil Lodge opened in 1978. Accommodation for 32 persons, all year. Pursue your own Outdoor Pursuits, Field Studies, Activities or Visits. Details from Sue and Mike Colton, Cecil Lodge, Spa Road, Llandrindod Wells, Mid Wales. Tel: 3292.

**Activity Centre.** Equipped. Sleeps 20. Suit Brownies, Guides, Rangers, Handicapped. Close to Southport. Sae foolscap to Mrs Chester,

202 Fleetwood Road, Southport, Merseyside.

#### COMING EVENTS

**1st Chulmleigh Guides and Brownies** would like former Guides and Brownies to contact them so that they may receive an official invitation to Anniversary celebrations to be held later in the year. They would also like to hear from anyone with old uniforms, badges, photographs, etc, to lend for Exhibition of Guiding past and present. Please contact: Mrs Croucher, 12 Beacon Rise, Chulmleigh, Devon EX18 7BP.

**Sedan Chair Rally** 26th/28th September, Gilwell, Barn Dance, Disco, Activities plus the Race. Sae to Mrs M A Crisp, 52 Wilson Gardens, Harrow, Middlesex.

#### INSURANCE

**Special camping equipment insurance** now available for Guide Companies. An exclusive low-cost insurance plan designed to cover camping equipment all year round. This policy will enable you to have complete protection against loss or damage including storm damage for your camping equipment from as little as £5.00. Telephone or write for proposal form to: Fennell Turner and Taylor Ltd, Pinners Hall, Austin Friars, London EC2 2HE. Tel: 01-638 0721.

**Insurance.** Reduced motor premiums for Guiders, Scouters, Civil Servants, Advanced Motorists. Professional advice for all classes of insurance. We welcome enquiries for Group vehicles and premises, your home, life, mortgage, pension and investment requirements. Morden Park Insurance Brokers Ltd, 12 Colman Parade, Southbury Road, Enfield EN1 1YA. Tel: 01-366 1312/3.

**Special reduction in premium** for Guiders on motor and other insurances. We can also insure your personal camping equipment if you insure your household contents with us. For free quotations contact: Orchard Glen Insurance Services, 82a, High Street, Sandgate, Folkestone, Kent CT20 3BX. Phone: 0303 30265.

#### UNIFORM

**Guider's Trevira Suit**; nearly new. Size 12, length 24ins. Hat, two blouses, £15 plus postage. Box No.54.

**Wanted, Guider's Summer Dress.** Size 16. Tel: Dartmouth 2955 (reverse charges).

#### EDUCATIONAL

**Write and Sell Children's stories.** Mail tuition. Sales assistance. Free booklet; Children's Features (G) 5/9 Bexley Square, Salford, Manchester M3 6DB.

The Girl Guides Association takes no responsibility for statements made in any advertisements here or elsewhere in the magazine, or for any subsequent correspondence in connection therewith. The right is also reserved to refuse any advertisement not considered suitable. Advertisements for the sale of secondhand clothing cannot be accepted (except uniforms). Uniforms for sale should not be sent to CHQ, advertisers receive communications from applicants. **ALL COPY MUST BE RECEIVED BY 21st OF THE SECOND MONTH PRECEDING PUBLICATION (eg 21st MAY FOR THE JULY ISSUE). ALL CHARGES 12p per word. BOX NUMBER 40p EXTRA; PLEASE SEND REMITTANCE WITH ADVERTISEMENT TO: Miss A M Martin, Advertisement Manager, The Girl Guides Association, 17/19 Buckingham Palace Road, London SW1W 0PT. 10% discount for series of 12. To reply to a Box Number, address your envelope to Box Number concerned c/o GUIDER. Please enclose SAE when replying to Box Numbers.**

## 'BRAN TUB TOYS'

### BALLOON RACE A SPECIALITY

**BALLOONS PLAIN FEATHERED ADVERTISING & LARGER TOYS**

**JOKES NOVELTIES & FAIRGROUND LINES**

**DOLLS FOR DRESSING WOOD BALLS**

**FUND RAISING PENS & PUNCH BOARDS**

**XMAS CRACKERS D.I.Y. SNAPS MOTTOS HATS**

**JELLY CASES PAPER PLATES STRAWS**

**XMAS DECORATIONS & TOYS FOR SANTA**

**MAIL ORDER GUARANTEE**

### ASSORTMENTS FOR SMALL EVENTS TO HELP BOOST YOUR FUNDS

Send large S.A.E. for your FREE Trade List

TO: D. Glover (Wholesale Toys) Ltd, Braxholme Mills, Dept. GD80, Bradford Road, Brighouse, Yorkshire.

Tel. Brighouse 719298 (STD 0484)



GOOD PROMPT SERVICE

#### LATE UNCLASSIFIED

**Outdoor Materials.** New range buckles webbing, cuffing, zips, carry-all bags. Wider range materials for polarwear tracksuits, sweatshirts, wet-suits, tents, rucksacks, covers. Make all your own gear and save. Sae details special offers: Pennine Boats, Hard Knott, Holmbridge, Huddersfield.

**Please note:** all advertisements for Venture Scouts/Ranger events published in GUIDER must be accompanied by the signature of the Guide County Commissioner.

**When replying to advertisements please mention GUIDER**



# ROBERT SAUNDERS

(Chigwell) Limited.

Five Oaks Lane, CHIGWELL,  
ESSEX, England.

Our tents have proved rugged in all weather conditions and offer the Mountaineer, Backpacker and Hillwalker, the best possible protection and comfort. There is a choice of thirteen models — Please write for catalogue to the above address, enclose 10p for postage.

## Tents for Mountain Moor and Meadow



### Top Tents

# CALIPAK SELF-INFLATING MATTRESS

ONLY  
£15.95  
INCL. P & P

A comfortable foam filled mattress that inflates by itself in just over three minutes—ideal for general camping, cycle and motorcycle campers and use with caravan awnings. Lightweight and waterproof, Calipak measures 74" x 22" x 2" fully inflated. Available in two attractive colours — blue or brown gingham.



CYCLE & MOTORCYCLE CAMPING



BACKPACKING

- Inflates itself — no need for pumping.
- Foam filled for insulation and comfort.
- Tough double layer P.V.C. cover — beats cold and damp.
- Packs away in under two minutes into a compact roll.
- Supplied in sturdy polythene bag.

Special backpacker's size 46" x 18" x 2", only 2 lbs 5 ozs approx. also available — price £10.95 including p + p.

Multi-purpose Calipak — never lets you down.

Send cheque or P.O. or your Access/Bardcard No. for your Calipak now to:

Caligen Foam Limited,  
Dept (G1) Broad Oak,  
Accrington, Lancs., BB5 2BS  
Tel: Accrington (0254) 37411  
Leaflet available.



# ! LOOK !

A CHANCE TO CANOE THE BEAUTIFUL WYE



IN THE



## THREE COUNTIES L.D. CANOE RACE

ON SUNDAY 5th OCTOBER, 1980  
3 COURSES OVER 7, 14 & 21 MILES

ALL CANOE CLASSES  
AGE GROUPS FROM 11YRS TO LEADERS  
AWARDS FOR ALL CLASSES AND AGE GROUPS  
CAMPING FACILITIES AVAILABLE

ORGANISED BY:—  
HEREFORD DISTRICT/AVON/WEST MERCIA

DETAILS & ENTRY FORMS FROM:—

G. C. JONES, 100 BELMONT ROAD,  
HEREFORD HR2 7JS.

TELE. (0432) 4175

ADVERTISEMENT SPONSORED BY:—  
STRAND GLASSFIBRE  
BRITAINS LEADING DISTRIBUTORS OF GLASS  
FIBRE MATERIALS, TOOLS & ACCESSORIES

## IDEAL FUND RAISERS FOR YOUR UNIT

We supply ten various ball pens, nylon tip pens, combs, pencils, key fobs, rainhoods, p.v.c. goods, nine various types of diaries, calendars, various rules, set squares, book matches, wallets, bookmarks, coin purses, etc. All are excellent Fund-Raisers. Good Quality. We give Full Guarantee. All orders are completed within seven days of receipt. Send now for our price list. Please send 13p on a self-addressed label-envelope.



L. Thompson (Advertising) Ltd.,  
Dept. G/13,  
North Tyne Industrial Estate,  
Whitley Road, Longbenton,  
Newcastle upon Tyne NE12 9SN.  
Telephone 0632 669511/2

A novel fund-raising item which will sell at any time of the year.

## PRINTED YELLOW DUSTERS

Every housewife, every motorist a potential buyer! Our stock designs of Instruments of the Orchestra, Horses in Britain, Birds in Britain, etc, are designed to incorporate your local wording.

Send for details and prices today!  
**GEO. O'BRIEN BAKER LTD.**

Dept. 100  
4/6/8 Tapster Street, Barnet, Herts EN5 5TX  
Tel: 01-449 2424.



# OUR CABAÑA

Apartado Postal 406  
Cuernavaca, Morelos, México  
**PROGRAM WORKSHOP**  
**SEPTEMBER 18-27, 1980**

Are you looking for new program ideas?  
Have you some ideas to share with  
other leaders?

**THEN: Come to Our Cabaña, Mexico**  
**FOR: A PROGRAM WORKSHOP**  
**FROM: September 18-27, 1980.**

Aimed at Troop/Company leaders, this session will include an exchange of program ideas, and a sharing of skills and techniques useful when working with girls and other adults. Some training will be given by Cabaña staff, but this session is primarily a workshop, so, together, participants and staff will plan, prepare and carry out sessions. Sightseeing trips to local places of interest will be offered.

Participants need to be at least 18 years of age and a registered member of their National Organization, and with an ACTIVE involvement in Girl Guide/Girl Scout programming. A maximum of 10 participants from each National Organization will be accepted.

## Adult Adventure Session — Guiding Around the World October 30 to November 9, 1980.

Wake up! Get busy! You have only the one life day to live, so make the best of every minute of it! **LORD BADEN-POWELL.**

Yes, make the best of every minute! Don't miss this opportunity to share your ideas on the relevancy of Girl Guiding/Girl Scouting in today's world with participants from other countries. Explore handbooks, publications on Guiding from all parts of the world, and Our Cabaña's unique collection of books written by and about the Founder, Lord Baden-Powell.

What does Guiding/Girl Scouting mean to you? Join us for an in depth look at the basics of our Movement, which now has 98 member countries!

Trips to Cuernavaca, Taxco, Toluca and Tepoztlan; and participation in our recreational projects will make this session a rewarding and memorable experience for you.

## Adult Adventure Session — Our Cabaña Reunion — November 12-22, 1980.

"Make new Friends, but keep the old, one is silver and the other gold".

Why not take advantage of this reunion to meet up with old friends? Come and share your memories, your slides, your photos, your ideas and experience gained since your last visit.

Try something different — take a trip to Amecameca a small village at the foot of Popocatepetl; discover Zempoala, a pine-clad national park; swim and relax in the warm sulphur springs at Atotonilco; or just enjoy the beauty, peace and sunshine at Our Cabaña.

A very warm welcome awaits "old friends and new friends".

**DON'T DELAY** in making your reservation to treat yourself to a "different" Cabaña experience.

For further information and application, write **NOW** by airmail to:

**OUR CABAÑA**  
Apartado Postal 406  
Cuernavaca, Morelos  
MÉXICO



## Thursday's Guider

*A little Guiding on Thursdays  
goes a long, long way.*

IT'S Thursday evening again and that can mean only one thing — Guides. I rush tea, leaving myself with indigestion and my long suffering husband with a sink full of washing up. Then I charge upstairs — why oh why can't I remember to clean my Badge before the weekly rush? The telephone rings yet again — that makes five times this afternoon — 'what are we doing to-night?' 'I shall be late because mummy has lost the car keys again,' or 'I can't come as I have too much homework.' They are all familiar phone calls; every Thursday I answer with 'it doesn't matter', leaving a cooling cup of tea sitting on the table. No one else in the family answers the ringing tones on Thursday because they all know they are for 'Mrs Guider'!

Picking up my Guide bags, the 'hut' key and my car keys I kiss a quick goodbye to my husband and climb into my ageing car. For the next five minutes I work out some form of programme while manoeuvring myself through the traffic. Our 'hut' is in fact a long wooden building that is falling down through lack of loving care. It is also a magnet for the attention of the local lads with their paint sprays. Inside, though, it is pleasant, with each Patrol's corner personalised with the girls' own drawings and posters on the walls.

As usual when I arrive a small cluster of keen early girls are waiting for me outside the door. I open the door to find as always that the neighbour's cat has climbed through a broken window and was unable to get back out — so I have to clean up the offending mess and shoo the big moggy out.

Can anyone imagine what it is like to listen to a cacophony of 36 voices telling you all at the same time about their new kitten, baby sister and teacher or enquiries about Badges, Badge Testers and Uniforms? Pandemonium erupts around my ears as I try to listen to each Guide and give the appropriate answer while at the same time one Patrol is embarking upon a noisy game. The Assistant Guider does her best to restore calm, but every Thursday, inevitably the first fifteen minutes are

chaos — come to think of it the whole evening is chaos!

Slowly the Guides amble to their Patrol Corners and start on whichever Project they have chosen for that evening.

Helpers arrive to take various Guides through Badge syllabuses and all too quickly I find that time has run out — the cars are waiting outside and mothers are knocking on the door. I have not had time to see the Guide about whose ailing mother I meant to ask, or the sisters to see if they are ready to take the Child Nurse Badge. I have forgotten to remind them about the Brownie disco and to ask who wanted to take the Patrol Camper's Permit — still next week will do.

Prayers and Taps and then everyone can go home. Not everyone does though — there is always someone still waiting for her mother half an hour later. I have even had two sisters go home in their father's car only to come rushing back ten minutes later for the third sibling who was in floods of tears at having been forgotten. My assistant slowly picks up her bags, looks at me wearily and asks if I have any aspirin!

Why do we do it week after week? why do our families put up with the hectic Thursdays and with being put out to grass for one week a year while we go to Camp? And why oh why don't I get myself more organised? Why do the Guides come each week? Could it possibly be that they enjoy themselves and find fun in Camping in the mud or arguing in their Patrols? All I know is that we will be there next Thursday, so will the Guides; and I dare say someone's sister will ask if there is room for her to join the Company as well.



Illustrations: Jean de Lemos



# WHAT'S ON

## Japan Style at the V&A

At the Victoria and Albert Museum until 20th July is a spectacular exhibition showing life in present day Japan. Brightly coloured banners, kites and lanterns, masks and toys are shown alongside the very latest Japanese hi-fi equipment. There is a reconstruction of a Japanese kitchen, bookshop and snack-bar (where delicacies such as raw fish are served) as well as a display of plastic food used by Japanese restaurants to illustrate their menus. A typical room for



Victoria & Albert Museum

Putting the finishing touches to plastic food samples used by restaurants to advertise their menus.

the famous Japanese Tea Ceremony has been reconstructed and here there will be lectures and demonstrations relating to the Tea Ceremony during the exhibition. There will also be a video show on Japanese culture including films on traditional festivals, kites, kabuki theatre and puppet drama. Full details are in a leaflet available from the Education Office, V & A, South Kensington, London SW7.

Admission to the Japan Style exhibition is £1.35, but only 60p for children, pensioners and students, and only 50p each for parties of 12 or more. Disabled visitors are welcome. The Museum is open daily except Fridays: closed 5th May (Bank Holiday). JVR



Full colour guide-packed with best buys in printed T-Shirts and Sweatshirts — saves £££'s on club shirts. The Sussex T-Shirt Company FREEPOST, Littlehampton, W. Sussex, BN17 5BR.

## Open Day at RAF Waddington

RAF Waddington is once again holding an Open Day this year on 7th June. Regarded by many as one of the premier events in the air display calendar, it provides an interesting and wide-ranging outing for all ages and tastes.

The gates will be open from 10 am until 6 pm, allowing ample time to view at leisure the large static display of aircraft, equipment and station activities, as well as the stunning flying display. Provision has been made for entertaining the very young in the form of a funfair and a Noddy train.

Pedestrian admission is 20p for adults and 10p for children. Cars are admitted for £2 and coaches for £10 (including occupants). The Community Relations Officer will be pleased to answer any queries; he may be contacted on Lincoln (0522) 720271 or at RAF Waddington, Lincoln LN5 9NB.

## Berkshire Festival of Guiding

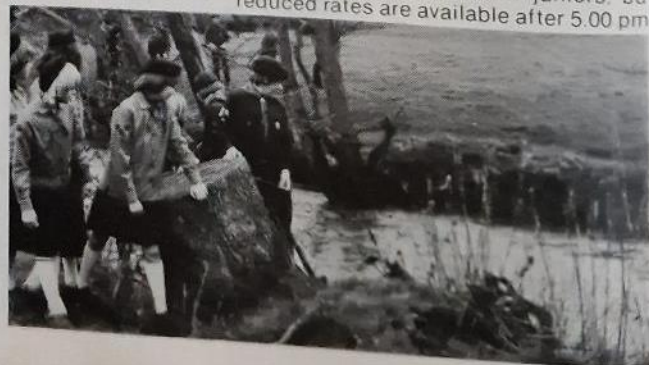
This will be held at the Silver Ring, Ascot, on 5th July to commemorate 70 years of Guiding in Berkshire. Ten thousand uniformed members of the Movement bearing some 600 Colours, Flags and Pennants will attend the opening ceremony. It is hoped that many members of the public as well as those involved with Guiding will attend; the object being to raise money for Wokingham Guide Dogs for the Blind Training Centre and for a County Camp-site.

Many attractions are promised: displays illustrating all aspects of Guiding; sideshows and such diverse activities as welly throwing and bowling for a pig. Why not go along and help put Guiding across to the public? For further information please contact: Mr D. Kelly, PR Adviser, 64 Brougham Road, London E8.

## Town and Country

The fourth annual touring exhibition consisting of 22 French 19th century

Members of the survey party view with approval the River Creedy which bounds one of the fields marked down for the St Boniface Jamboree.



paintings of Town and Country will be on show at various galleries throughout the country in the coming months. The paintings are on loan from the National Gallery and can be seen at the following places:

Portsmouth City Museum and Art Gallery 4th April-11th May  
Nottingham University Art Gallery 22nd May-14th June  
Stoke City Museum and Art Gallery 28th June-26th July

Bowes Museum, Barnard Castle (Co Durham) 2nd August-7th September  
Dismayed by the prevailing materialism of the times, many French artists moved to the country in the 1830's and painted, almost exclusively, peasant life and rural scenes. The pictures on show illustrate this and also show how artists gradually moved back to the cities and started painting urban scenes again. The exhibition includes works by such famous artists as Manet, Monet and Pissarro.

## St Boniface International Scout and Guide Jamboree

This will be held from 2nd-9th August in Crediton, Devon, to celebrate the 13th centenary of St Boniface, sometime Bishop of Crediton. The large site will accommodate over 6000 Rangers, Venture Scouts, Guides, Scouts and their Leaders in Unit Camps; 500 coming from more than 15 overseas countries.

All troops and companies camping will be allocated sufficient materials to construct an Anglo-Saxon hut, which it is hoped will be lived in for a day or two. This is the main activity (for which there is a first prize of £100) but there will be many others: archery, leatherwork and skin-curing to name a few. For more details, please contact: Mr Harold Goldman, Press Officer, 27 Tower Gardens, Deep Lane, Crediton, Devon.

## Britain's International Stamp Exhibition

Arguably one of the best philatelic exhibitions in the world, this International Stamp Exhibition opens on 6th May at the Earls Court Exhibition Centre, London, and runs until 14th May.

The exhibition features over 4,000 frames of stamps from the premier private collections of the world. In addition, the organisers have decided to designate each day as a 'Special Day', featuring one aspect of philately. For example, 13th May is dedicated to the Commonwealth.

The standard cost of entry will be £1.50 for adults and £1 for juniors, but reduced rates are available after 5.00 pm.

St Boniface Jamboree



## YELLOW TEE SHIRTS

All sizes now in stock!  
IDEAL FOR BROWNIE AND GUIDE UNITS  
100% COTTON  
**TEE SHIRTS**

Super Quality  
LADIES' OR  
MEN'S  
**£1.75**

or 3 for £5.00  
(post free)



KIDS'  
**£1.40**

or 3 for £4.00  
(post free)

Short sleeve round neck.  
Colours: White, Black,  
Navy, Red, Sky, Yellow,  
Bottle, and Sage.  
Send cheque, P/order to: SHIRTS LTD., Dept. GDR,  
34A London Road, Romford, Essex. (Allow 14 days  
for delivery).

Sizes: Ladies' 10, 12, 14, 16,  
Men's 36, 38, 40, 42,  
Kids' 22, 24, 26, 28, 30, 32.  
State colours 1st and 2nd  
choice in reply.

**ASK ABOUT OUR QUANTITY DISCOUNT!**

## TOP QUALITY PENS

Diastamped with 30 Gold Letters and Spaces

£3.68  
PER 100 PENS  
(VAT PAID)

★ STANDARD CHARGE  
★ POST & PACKING  
★ 80 PENCE

Minimum order for pens 200

DIARIES ALSO AVAILABLE

ORDERS DESPATCHED SAME DAY

Sale or return - full refund on pens returned

Samples 2 x 10p stamps - please try before you buy  
(Supplied to the U.K. only)

## ABBNEY WHOLESALE

974-976 LONDON ROAD, TRENT VALE,  
STOKE-on-TRENT, ST4 5NX

Camping  
Climbing  
Cycling  
Maps  
Hostelling  
Caving  
Canoeing  
Travel  
Backpacking  
Walking  
Ski-ing

# YHA

## SHOPS

LONDON  
14 Southampton Street  
London WC2E 7HY  
Telephone 01 836 8541  
MANCHESTER  
166 Deansgate  
Manchester M3 3FE  
Telephone 061 834 7119  
BIRMINGHAM  
35 Cannon Street  
Birmingham B2 5EE  
Telephone 021 643 5180

## TOW A TRAILER

Contact your local depot at: Bolton tel 593209, Swansea  
tel 0792 812913, Bournemouth tel 893010, London tel  
(Redhill) 68185, Newcastle tel 761162, Glasgow tel 965 3055  
Bristol tel 669870, Norwich  
tel 412334, Birmingham  
tel 5506330, Nottingham  
tel 865187.



24 hour telephone or  
send 35p + 25p post  
for our 200 page  
Trailer Manual  
which gives full  
details on Trailers and Towing, to

Mechanical Services Ltd., Belmont Rd., Bolton.



**Indespension**  
The National Trailer Company.

## Starting point



Youth hostels are the ideal base for those first independent holidays. For 50 years the YHA has been providing friendly, inexpensive accommodation for young travellers. We now have 268 hostels in town and countryside throughout England and Wales. Our introductory scheme enables youth groups to sample hostelling for up to three nights before they join, providing the leader is a YHA member.

Please send the coupon for free details.

To YHA (England and Wales)  
Trevelyan House, St Albans, Herts.

Please send number of leaflets indicated:

### Come Hostelling

Basic information about hostelling for individuals,  
with map and enrolment form. ☐

### Introduction To Adventure

Details of group introductory scheme for those wishing to  
introduce parties of under 21-year-olds to hostelling. ☐

Name.....

Address.....

GO4



# Get ahead...

with this beautiful FREE GIFT from Miller Leswyn  
— Britain's finest Fund Raising Service



Here's a valuable free gift from Miller Leswyn that makes a super raffle prize or present. It's a top quality Pifco Jet lightweight hairdryer — ideal for all the family to use.

Don't miss this great FREE offer from Miller Leswyn — find out now how you can obtain this outstanding Pifco hairdryer absolutely FREE.

## **SIMPLY COMPLETE AND SEND OFF THE COUPON**

and by return of post we'll send you full details of the Miller Leswyn Fund Raising Service, entirely free of charge and without obligation. Included will be our beautiful colour catalogue, packed with hundreds of low priced birthday and greeting cards, gifts for all the family, household and kitchen items — and **every item contains up to 25 per cent fund raising profit for your Company.**

Also included will be all the information you need on how to obtain this top value gift.

Complete the coupon now and you could soon be on your way to your FREE Pifco hairdryer and big fund raising profits for your Company.

# Miller Leswyn

Britain's Finest  
Fund Raising Service —  
the one that will work  
best for you.

Miller Leswyn Limited, Queensbridge Works,  
Queen Street, Burton-on-Trent, Staffs. DE14 3LP

Please send me FREE details of the Miller Leswyn Fund Raising Service and how I can obtain the free Pifco hairdryer.

Name \_\_\_\_\_

Address \_\_\_\_\_  
\_\_\_\_\_  
\_\_\_\_\_

I am over 18.

Q7