

Guidero

Volume 69 Number 7 July 1982 45p



"All this..."



...and more."



Webb Ivory - A Great Guiding Service

Please send me details of the Webb Ivory Fund Raising Service, including, FREE of charge, "Fund Raising for Profit and Pleasure".

Name (Mr./Mrs./Miss) _____

Address _____

Postcode _____

I am over 18

GP 20

The First Sutton-at-Hone Guides near Dartford have a lot to thank Webb Ivory for. The Scout Hall in which they meet was built in 1966 thanks in part to funds raised through Webb Ivory.

And now Webb Ivory is helping raise the money they need — not just to maintain the hall, but to buy all kinds of extras — tents, flags, tables, chairs, PE mats, netball equipment, tee shirts and camping gear.

"Our girls are really keen campers, and the money we've raised through Webb Ivory has helped make camping trips possible. It really is the best way of raising funds I know," says Mrs Naylor, Guide Leader.

Find out more about how Webb Ivory can help your group raise funds. Fill in and post the coupon today.



Webb Ivory Limited,
FREEPOST
Fine Art House, Little Combow,
Halesowen,
West Midlands, B63 1BB

Guider

OFFICIAL MAGAZINE OF THE GIRL GUIDES ASSOCIATION
(Incorporated by Royal Charter)

PATRONS

HM THE QUEEN
HM QUEEN ELIZABETH, THE QUEEN MOTHER

PRESIDENT

HRH THE PRINCESS MARGARET, COUNTESS OF
SNOWDON

WORLD CHIEF GUIDE, 1930—1977

OLAVE, LADY BADEN-POWELL, GBE

CHIEF COMMISSIONER

THE LADY BADEN-POWELL

CONTENTS

Roundabout and Pick of the Press	4, 5, 6
Anglia Arts	7
Ralph Reader Appreciation	8
Queen's Telegram/The Chief Commissioner in The Caribbean	9
Water Baby	10
Easter Link-up	11
Airing, Sharing and Caring	12, 13, 23
Amendments to POR	15
Our Chalet	17, 32
PL Extra/Feedback	18
Mainly for Rangers	19, 23
Betty Clay/Denmark	21, 32
Training Pages	25, 26, 27, 28
Double Acrostic (54)	29
Training Calendar/July Laugh-In	31
Walking Safety	33
HQ Notices	34
GGFF/Ventures and Rangers on the Track	35
Heraldry (17)	37
Book Reviews	39, 41
In Memoriam	41
Gilwell	42
Wilderness	43
Classified Advertisements	44, 45
Home and Away	46, 47
What's On	48, 49, 50

The Royal Baby

AT the time of going to press, the Royal baby is almost due. On behalf of Guides everywhere, we send loyal greetings to their Royal Highnesses, the Prince and Princess of Wales.

Editor



Cover

This month's cover photo is very close to home! It shows our Public Relations Secretary, Yvette Worth, with her French husband, Eric Sanson, on the day of their wedding.

Photo: Nigel Worth



EDITOR: JEAN RUSH

ASSISTANT EDITOR: SHIREEN BONNER

SUB EDITOR: DEBBI SCHÖLES

ADVERTISEMENT MANAGER: ANN M MARTIN

ALL COMMUNICATIONS TO: Guider, THE GIRL GUIDES ASSOCIATION
17-19 BUCKINGHAM PALACE ROAD, LONDON SW1W 0PT. 01-834 6242

Printed by The Riverside Press Ltd, London and Whitstable and published by The Girl Guides Association. Subscriptions, including postage £7.50 for 12 months Great Britain, £7.68 overseas. Trade Agents, Sumridge Dawson & Co (Productions) Ltd, 136-142 New Kent Road, London SE1.

Roundabout & Pick of the Press



TOPPING OUT

This delightful photo was taken at Patteson Lodge, the new Outdoor Activity Centre at Gt Hautbois, near Norwich.

The 'Topping Out' Ceremony was held in April of this year, and the N Walsham Brownies 'Up On The Roof' are Susan Collins and Angela Thistle, with Coltshall Brownies Nicola Pye and Helen Bradshaw.

Photo courtesy the Eastern Daily Press.



In Style

16-year-old Katherine Ballard of Thatcham certainly showed initiative when she knew she was to receive an investiture as a Ranger Guide. She decided to hold the ceremony somewhere different and unusual — such as a submarine! Katherine wrote to the Royal Navy Submarine Command to ask if this could be arranged and after a few months the Royal Navy obliged — in style.

In January Katherine and her Ranger Unit, Kennet Vale District travelled from Newbury to Gosport for the ceremony which was held on board the patrol submarine HMS Finwhale. HMS Finwhale is a Porpoise class submarine and is based at HMS Dolphin the home of the 1st Submarine Squadron. *Photo courtesy Newbury Weekly News.*



Roundabout & Pick of the Press



Can Can!

Guides and Brownies from Ichen District stole the whole show at 'Spotlight 82' held at Ichen College, Southampton earlier this year. The audience was treated to a full programme of songs and dances which boasted all the expertise and confidence of a professional show.

The Guides and Brownies rehearsed every week to get the show 'just right' and the show-stopper came at the end of the first section when the whole cast of 130 crowded onto the stage for 'Come Follow the Band' from 'Barnum'. A spectacular can-can, shown here, in rehearsal, and the 2nd Weston Brownies' 'Snow White and the Seven Dwarfs' brought the house down. There is a possibility that the show may have a re-run in 1984, if everyone can wait that long! Photo courtesy Southern Newspapers Ltd, Southampton.

Pram Push

1st and 7th Hardway Brownies from Gosport, Hants, raised the grand sum of £150 at their coffee morning.

Gift stalls and a sponsored Pram Push helped to raise this amount on Saturday, March 27th. The money was raised in aid of Pier House, an Old People's Home, at Lee-on-Solent, Gosport. Photo Courtesy Portsmouth and Sunderland Newspapers Ltd.



Front Page

Visiting the offices of the 'Banffshire Journal' recently to see how a newspaper is produced are members of the newly-formed MacDuff Ranger Guides Unit.

Diane Smith is sitting expectantly at the type-setting machine as Rangers and Leaders look on. Photo courtesy Andrew G Taykr.

continued over

Roundabout & Pick of the Press

Continued from Page 5



Gang Show

January 1982 and it's rehearsal time again for another Gang Show at Ipswich. This year's show was extra special as it commemorated 75 years of Scouting, which meant hard work and plenty of rehearsals.

The show was made up of old songs and routines from the past shows, such as 'Doctor and the Little Black Bag' and 'Mr Brown and Miss Suzanne'. As well as the old favourites, Ralph Reader had written one new song, 'It's a Long, Long Run'. The rehearsals for the show were held on Saturdays for three hours. Ranger Sally Ann Webb took part in this year's show — her third time — and describes how the rehearsal progressed from simply becoming used to the songs to finally being word-perfect for the sketches and shows which suddenly seemed to lead to the dress rehearsal and then first night! Once the lights are shining and the music plays all the nerves evaporate and everything falls into place. The twins who are shown in this photo have just received their Queen's Guide Award. Please see page 8.

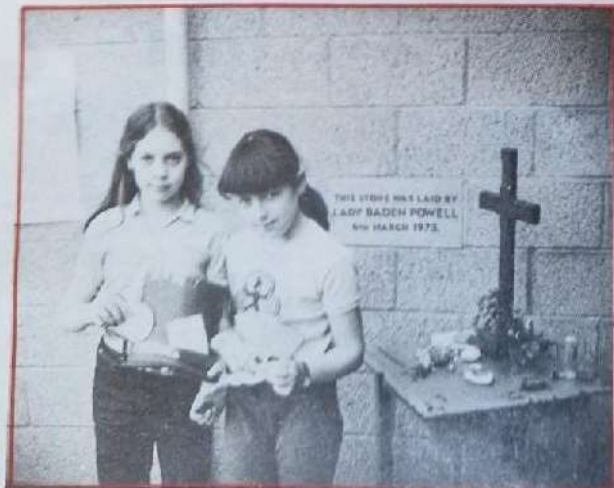
MINI ARTS

These photos were taken at a Mini Arts Workshop organised by Mary Toll, 7th Hale St Peter's Brownie Easter Pack Holiday was held at Ashley Training Centre, Breach House Lane, Cheshire.

The theme was 'Alice in Wonderland', and Brownies sent invitations to various guests, in-

cluding County, Division and District Commissioners and husbands to attend a Mad Hatter's Tea Party on Easter Sunday. A word with the Pack Leaders produced a few costumes, and Mary Toll prepared a script. There were several craft sessions to make the Mad Hatter's Hat and hats for all the remaining

Brownies who were to be the chorus. Props were also made, as well as special programmes in the shape of a hat for all the guests. The performance lasted about 20 minutes, starting with the chorus singing 'Hello, and Welcome to Wonderland!', and at the end the chorus danced a Birdie Dance with Alice.



Anglia Arts Camp

*Article and Photos published
by kind permission of Evening
Post Echo, Hemel Hempstead*

Genie Ann Marie Stoner brewed up a magic potion full of eastern promise.

And with a band of belly dancers, 14-year-old Ann Marie cast a spell over an enchanted audience.

These bewitching beauties were not members of an Oriental travelling theatre — just ordinary Guides on summer camp!

Seventy-five Guides from nine Counties, including Bedfordshire and Hertfordshire, gathered at Haverings Camp Site, in Lancing Road, Luton, for a week for the Anglia Guides Arts Camp.

And they sent any old-fashioned ideas of Guides up in a puff of

smoke with their camp show, An Eastern Interlude.

The musical was devised entirely by the girls and their 30 Guiders, and spirited the audience of parents and friends off on a guided tour of the mystical East of magic carpets and street bazaars.

The girls provided their own orchestra and made their own exotic costumes and props themselves.

Bedfordshire County camp adviser, Mrs Rhona Anderson, was full of praise for the show.

She said: 'It is marvellous how they put it all together in a week.'



Ralph Reader

Below is an Appreciation of Ralph Reader, who died on May 13th. His name is synonymous with Gang Shows and his talents and unfailing energy will always be remembered.

By The Lord Baden-Powell

When asked once why he gave so much of his time and talent to the writing and production of Gang Shows when he could make money by continuing with his successful career in Show business, Ralph Reader's answer was typical: 'I enjoy it, it's fun; but this covered up a true motive and that was that he loved children and young people. Ralph Reader was a warm extrovert who had a wonderful talent; he revelled in that talent and tried to share it with as many people as possible. He was also a perfectionist and lived by the code that if a thing was worth doing it was worth doing well. As a Scout Leader he was appalled at the low quality of Scout 'Shows' put on by local Scouts to raise money and he set out to try to improve the quality of the material and production. He ensured that the songs were tuneful and that the sketches were within the compass of even the shyest Cub or the most unimaginative producer. From this precept grew the Gang Shows which were colourful, tuneful and great fun for both audiences and the participants. He saw his contribution to Scouting as both a fine training experience for the young people who took part and a thoroughly professional way to raise funds. Anyone who ever went to a rehearsal or back stage



Ralph Reader Thanksgiving Service

A Service of Thanksgiving for the life of Ralph Reader CBE, founder of the Gang Shows, will take place at 3.00 pm on **Saturday, 10th July, at St Martin-in-the-Fields, Trafalgar Square, London.**

The Service will be conducted by the Vicar, the Rev Austen-Williams, and the occasion is being organised by Ralph Reader's friends in the Forces, Entertainment and Scouting. Because attendance is expected to exceed the capacity of St Martin-in-the-Fields, the Service will be relayed to the Churchyard outside.

Admission to both the Church and Churchyard will be by ticket only, and applications by post, enclosing stamped, addressed envelope, should be sent to:

'Ralph Reader Thanksgiving Service', Baden-Powell House, Queen's Gate, London, SW7 5JS.



during the run of a London Gang Show was immediately aware of a tremendous feeling of cameraderie and fun mixed with an underlying atmosphere of almost ruthless dedication to professionalism, and the source of this was transparently Ralph Reader. His overwhelming love for young people always shone through both in the production itself and in his relationship to the cast and all those involved. This country was fortunate that such a talented man made his home here, but how much more fortunate were we that he chose to lavish these talents in the direction that he did. Guiding and Scouting will be the poorer for the loss of the man, but his material lives on for present and future generations of young people to discover, enjoy and share again. The undoubted pleasure and personal fulfilment that that material will give will be the memorial posterity can lay at the feet of this happy man.

Water • Baby Swims Her Way To New Zealand



No water wings for Amanda Owen who, waving goodbye to her native Coventry on a cold February morning, and turning her back on the snowbound British Isles, emerged 13,000 miles later to the strains of Rolf Harris's guitar, halcyon beaches sporting 15 ft waves and the sweltering heat of an Australian summer.

Amanda, a Guide from Coventry, with her winning smile and fish-like agility in the water, was one of three lucky youngsters, and the only girl, to receive a personal invitation from Rolf Harris to star in a water safety video film shot on location in New Zealand, which will be released for sale or hire to the general public this summer. The film is particularly suitable for schools and colleges, and includes Rolf's drawings, songs and fast-moving location sequences. Its message: 'Water can be fun but it can also be dangerous.' Its aims: to put over the serious water safety message 'in an amusing, but memorable way'.

The trip was organised as part of a comprehensive DER-funded water safety campaign by the Royal Society for the Prevention of Accidents in celebration of its Home Safety Golden Jubilee Year. 'Nearly 1,000 people are drowned every year in Britain,' said Mr Tom Sanders, Water Safety Adviser for ROSPA. 'Thousands more are put at serious risk because they don't take precautions when they or their families are near water. More than half of those people who drown never intended to be in water in the first place and they are the ones at whom our campaign is principally directed.'

An extensive publicity campaign combined with countryside tours of radio stations by Rolf resulted in 1,000 applications from children under the age of 12. DER arranged a video audition at London's Skyline Sheraton Hotel on 6th January for 20 finalists, then flew the lucky three out to New Zealand on 13th February, for two weeks, to take part in the

film. The first two days of the trip were spent sampling the delights of Coogee Beach at Sydney, where the three winners received Scuba instruction and a tour of the city before departing by Jumbo for Auckland, capital of New Zealand's North Island. There they were housed with local families, and as well as filming, a heady agenda of sight-seeing and outdoor activities was arranged, including horseriding, swimming, canoeing, fruit picking and visits to hot springs. The film sequences were shot at the scenes of potential accidents. The children asked Rolf questions, and in his answers he would bring out the principles of water safety in a comprehensive way.

The film is divided into three parts, each dealing with different aspects of water safety:

- i Spot the dangers — identifying water hazards
- ii Boating and cold water — the danger of hypothermia and how to prevent it

- iii Helping others — rescue and resuscitation

Safety in the air was one item left off the agenda. But who could have foreseen that the Jumbo bound for Sydney on the first leg of the return trip would drop an engine at Auckland, forcing a lightning switch to a Pan Am flight which just made it in time for the scheduled Philippine Airlines connection for London after a lightning dash across the tarmac. Unfortunately the luggage failed to follow as swiftly and everyone arrived back bereft of all but the clothing on their backs. I trust they had changed out of their swimsuits by then, for England still supplied the coldest weather on record, boasting night-time temperatures lower than minus 20°C!



For details of the video and water safety booklet, contact Tom Sanders, ROSPA Water Safety Adviser. Tel: 021 233 2461.

Easter Link-up 1982

Susan Ramsey
Oakwood Link (hosts)

MAIDEN'S bridge, London, found itself under previously unknown strains on Good Friday morning as all manner of vehicles, visibly overlaid with Link members and their tents, headed enthusiastically for their bi-annual Link-Up. Joyously, they winged their way across the newly-built motorway to rejoin the old Roman Road (still complete with pot-holes) which led them to their destination, a campsite in the grounds of Theobalds Park (originally the site of the palace of James I — for which he exchanged Hatfield House with Robert Cecil).

By late afternoon, most of the Units had gathered, from such diverse regions as Dorset, New Forest, Marple, near Manchester, Bristol and Hull, and were ready to sample the delights of Oakwood Link cuisine (ably prepared by our resident QMs Jill and John), eagerly thrusting forward over-sized plastic mugs for a ladleful of Chris's Gluhwein! Once the last contingent had been revived, following their long journey from Pembroke, we spent the evening exchanging news of events of the past six months.

Saturday was excursion day, with the choice between a rural trip to Hatfield House, taking the scenic route, or a day out in Central London. Most of us opted to visit the big metropolis and partook of such diverse activities as shopping at Harrods, perusing the Art Galleries and Museums and observing a strange breed of busker in the piazza at Covent Garden. Four o'clock heralded a quick dash back to camp via tube and minibus to catch the committee meeting at 5.30 p.m. Two or three representatives from each Unit attended, as well as Lady Alport and other Guide representatives, who stayed on for the barbeque tea afterwards in the marquee. The Dorset Coastal Unit honoured this event disguised as Arab sheiks, while Philip from Pembroke stuck to his true heritage sporting a crown full of leeks. This was followed by a stroll down to the 'Pied Bull' where we witnessed the incredible and unexpected performance by the Lea Valley 'Mummers' of a spectacle which left us all mouths agape in wonder at the most welcome addition to our evening's entertainment.



▲ Preparing for windsurfing

Sunday morning brought an early start for those partaking of such arduous activities as windsurfing, canoeing and dry-slope skiing, but for those of a more relaxed disposition, the ramble took off (is that too energetic a phrase?) at a fairly civilised hour. Though that's not to say that we didn't exert ourselves in this activity — far from it — many reported severe neck ache from straining to read the graffiti on Temple Bar. They were, however, sufficiently consoled by a visit to the 'King and Tinker' en route followed by an ample ploughman's lunch back at the campsite. While some of us rambled or sported, the Bramley Hill handicapped Unit followed a cultural route to visit Forty Hall, the local stately home, but with the steep hills on the way, it proved to be a more strenuous outing than most

other activities! The afternoon's pursuits ranged from horse-riding and archery to a visit to the local wave-pool and were followed on return to camp by an impromptu game of three-legged football and a new form of rugby, which involved the men playing on their knees!

Monday morning meant it was time to say our fond farewells, but not before the compulsory welly-throwing competition, won this year by an unmatched feat of mastery on behalf of Marple Linnet Link. Camp was then struck with all haste before making lunch when we said our final adieux. So, once again, our increasingly large and happy family disbanded to their various corners of the country, not to be reunited until August . . . roll on Ironbridge!

▼ Wellie throwing!



Training on a land simulator ▼



Airing, Caring, Sharing.

The Editor reserves the right to cut letters or publish extracts

Strong Views!

We are a small Ranger Unit, but have strong views about the new change in the Guide uniform. We feel our Ranger blouses are lacking something, and the new neckerchief could be the answer. This view, we feel, is shared by many Rangers throughout the country. Please, please, could you consider our opinion, even if the neckerchief is made optional?

St Gabriel's Rangers
17th Crewe (Coppemall)
Cheshire.

Birthday Party

On July 31st, 1982, the 1st Monchen-Gladbach Guide Company celebrate their 21st birthday. We would love to hear from anyone who has had anything to do with the Company in the past. We would be glad to welcome anyone who would like to come to our birthday party, if they are able. We will also be having commemorative T-shirts printed if anyone is interested.

Anita Cochrane
Guide Guider
1st Monchen-Gladbach
PRU RAF G HQ

Own Up!

Recently at a jumble sale I noticed a log book of the third Bayswater Guide Company dated summer term 1930. It is a Guide's attempt at her scribe's Badge — her name is Stella Instone age 14½. It is in very good condition and well written with illustrations and comments by the Guide Captain Doris Simindus. Also in the book are some loose pages, Stella's invitations and handprinted Guide Law which is slightly different to the present one. It covers the period from May 7th to June 25th, 1930. It is a large book 9in by 7in, and 1½in thick, and only a quarter of the book has been used so it could be brought up to date. If, through GUIDER, the present Guide Guider would like me to present it or send it to her, she would be welcome to it.

G W Kelland,
Commandant/Instructor
British Red Cross
Society, London



Smart Scarves

I feel that I must write concerning some of the comments relating to the new Guide scarf. When I first saw the new design my reactions and feelings were rather mixed. However, as the scarves were here to stay, my Guides were duly presented with theirs. They have now been the proud owners of new scarves for some weeks, and I feel that they look very smart. The scarves are not merely — 'slung round the neck and tucked in a woggle' (B E Firmen, May GUIDER), but folded correctly and fixed with the woggle. We found that by opening the woggle and then placing it around the scarf a far tidier appearance was achieved.

My Company is very pleased with the new-style uniform and neckwear, and I am proud of the way everyone looks. What about the Guiders?

Sue Carr (Mrs)
8th Haggerston Guides
Hackney Division
London NE

days there. On this particular Saturday, the Brownies, with about 120 adults, including Leaders, guests, organisers and helpers, helped to celebrate the birthday by participating in the many side-shows provided for the day. Teams from the local gymnastics and dog-training clubs entertained the many visitors with very enjoyable demonstrations. The Brownies made birthday cards for display throughout the house and many cakes were baked and decorated.

After such an enjoyable and unique day as this, we should give a thought to the hard-working members of the committee who run the house so well and thus enable Brownies to enjoy memorable holidays there. We all look forward to another ten years as good as the last.

Caroline J Uff
Aylesbury East Division
Public Relations Adviser
Buckinghamshire



Happy Pack

The happiness that a Brownie can gain from being away on Pack Holiday is very obvious and the following is an account showing the success of our own County Pack Holiday House.

On Saturday, 24th April, over 280 Brownies representing Packs from all over Buckinghamshire met at the Pack Holiday House at Butler's Cross, near Aylesbury, to celebrate its 10th anniversary. The house, formerly a village school, was altered and opened in 1972. It has been in constant use ever since. Last year over 1000 Brownies spent Pack Holi-

Limited

At a recent District Meeting, Guiders (of all sections) were saddened and disappointed to learn that there is now an age limit (18 years) on the wearing of the Queen's Guide Badge. While we understand that it is the work, commitment and experience gained in preparing for the award that is of primary importance to the Guide, we also feel that the award is something of which she can be proud, and that she will wish to wear with satisfaction and pride.

Of course, it could be argued that the wearing of the Badge sets a girl 'apart' from her sister Guiders; but I was always led to believe that a



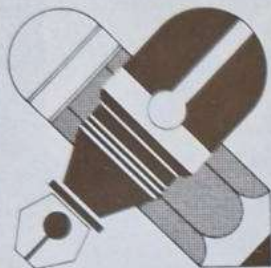
We would be glad to welcome anyone who would like to come to our birthday party.

Airing, Caring, Sharing.

The Editor reserves the right to cut letters or publish extracts

Queen's Guide was someone special! There seems little point in making such an award, if the recipient hasn't had to excel to gain it!

Lydia E Goodliffe
Assistant Brownie Guider
and Secretary to Pontop
District
Derwentside
Durham and South Tyne



Layered Look

Is it now possible to look at the Brownie Guide uniform with regard to its suitability and practicality?

I have been involved recently in discussion with Brownie Mothers, Guiders and Brownies on this subject and most seem of the opinion that a cotton dress is just not suitable. The British weather in the main is too cold for cotton dresses and we see Brownies with jumpers under and over skirts in order to

keep warm! A dress is also impractical from the growth point as Brownies grow out of a dress considerably faster than a top and skirt or trousers. I have also seen Brownies wearing trousers under their uniforms, I assume because of religious demands.

Could we not change to trousers and/or skirt and top (many of our European sisters now incorporate trousers). This would certainly be warmer and last longer and I believe that without all the miscellaneous garments, it would look smarter.

If we choose a fairly plain skirt which parents and even older Brownies could make themselves, the cost need not be excessive.

Anne Harrison (Mrs)
Brownie Guider
2nd Barcombe Pack
East Sussex.



Patchy

Some of our Guiders are, happily, very keen on working together on Patrol Purpose Patches. This is fine, but might I suggest that instead of collecting several Patches, a system is devised whereby it would be possible to indicate the number of Patches received by means of a smaller Badge to be sewn on above the original Patch, like the old Brownie Year Badge or something similar.

Guiders who have large numbers of Badges have some difficulty in finding space for more than one Patch, particularly if they also happen to be Pack Leaders, and I feel the smaller Badge might be tidier.

J Blade
Assistant Guide Guider
1st Meadvale Coy
Surrey.

Overwhelming Response

As you were kind enough to print details of our Girl Guide Stamp Souvenir Cover in the February edition of *GUIDER*, I thought you would be interested to know that we had an overwhelming response from all parts of the country totalling 1,100 requests. As a result, we had a very successful fund raising venture from what originated as a publicity idea.

J V Ede
County Publicity Adviser
Greater London Croydon

Stamp Duty

OUR Unit has recently been given a large quantity of used postage stamps which we are informed we can sell to raise funds. Can anyone suggest a dealer who might be interested in buying our stamps? I have scanned the advertising pages of back issues of *GUIDER*, but can't find anything.

I would appreciate your help on this. Funds are hard to raise in small country Units, and I think I could encourage the Guiders to collect more stamps during the year if we can find a buyer.

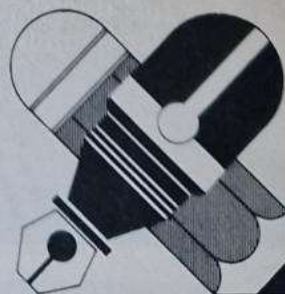
E J Everitt (Mrs),
Guider,
1st Maylandsea Coy
Essex.

Pat on the Back

I have thought for quite some time that I ought to write and thank you for the huge improvement, particularly of the front cover, of *THE BROWNIE*.

Normally I wait until the summer holidays when we have no meetings, when I spend the usual Pack meeting evening making games from the contents and removing the Interest Badge and Journey sections for use in the various groups. This year, however, I could not wait to make up the dominoes and Bingo cards, etc, and we had a splendid Thinking Day meeting using all the material.

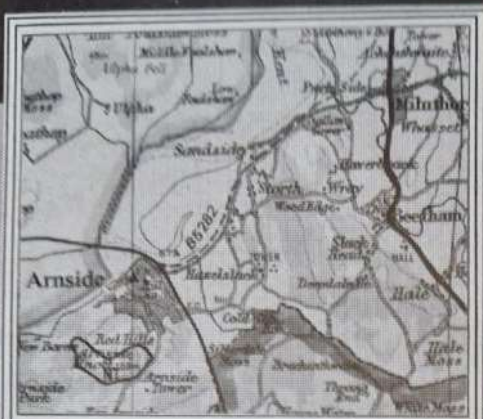
Instead of giving the Brownies a list of things to bring, I made out a luggage label, asking them to bring a photograph of themselves and something from an overseas country, together with pencil, biro, felt pens or crayons. When they arrived I took 'subs' as the airport tax, presented them with their passport, using the adhesive World Badge for the front cover and having outlined a flag on each following page, leaving the 1st side for Colour of eyes, Six, Pack, District and Division, etc.



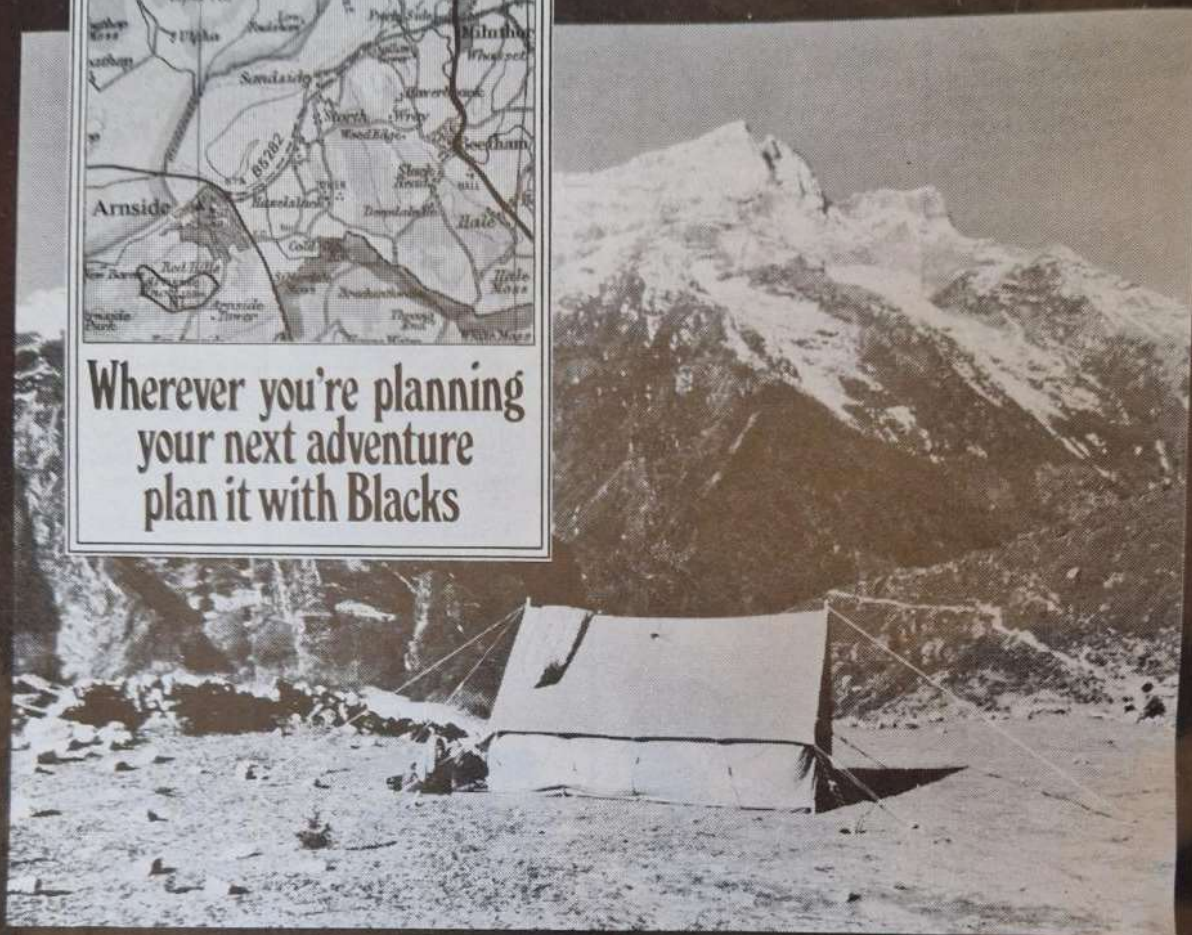
continued on page 23 ▶



... in the main is too cold for cotton dresses.



Wherever you're planning
your next adventure
plan it with Blacks



Blacks Patrol Tents, the choice of experience!

Blacks Patrol Tents have been supplying the needs of youth organisations for almost half a century.

Choose from The Icelandic, The Stormhaven or The Nijer.

Every Blacks Tent is produced to the most demanding specification which guarantees years of reliable, trouble free use.

For full details, visit your local Blacks stockist or mail the coupon today.

PATROL TENTS
from BLACKS

For full details of BLACKS PATROL TENTS, mail this coupon to:
Sales Office, PO Box 6, Industrial Estate, Port Glasgow PA14 5BE

Name.....
Address.....

G 7/82



Amendments to POR

In recent years amendments to *POR* have been published annually in the March issue of *GUIDER* and thereafter have been available in leaflet form on request from the GGA Trading Service.

At their April 1982 meeting, the Executive Committee decided that future amendments to *POR* would be printed in *GUIDER* during the year, as and when they were agreed. Readers would thus get early notice of changes and be able to keep their copy of *POR* up to date.

The past year's amendments, however, will still be

published each spring and it is hoped that these will be largely in the form of complete replacement pages. They will be available, as now, through the Trading Service, and a further announcement regarding the 1983 leaflet will be made in due course.

The first amendments issued under the new system are to be found below. For easy identification all future amendments will appear under 'HQ Notices' and will be highlighted with the *POR* logo as used in this issue.



Amendments to POR July 1982

21.1. The Council
Page 32 Chart: Commonwealth Headquarters
Committee Structure

Between Awards and Country/Region committees add a further vertical line leading to Girl Guide Friendship Fund (This is now a sub-committee of the Executive Committee.)

61. The Guide Uniform
1. Uniform

After Woggle official pattern Brown add leather or cord

After Shoes add or School Sandals

62. The Brownie Uniform
1. Uniform

After Socks White to read, fawn or dark brown

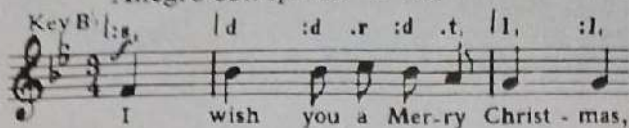
After Shoes add or School Sandals

After Brown add of a suitable pattern

THE MALCOLM SARGENT CANCER FUND FOR CHILDREN

was launched in March, 1968, as a lasting and practical memorial to the much loved British musician whose name it bears

Allegro con spirito $\text{♩} = 132$



This is how last year's July advertisement started. This year the Christmas greeting will appear in the September issue. However, please write NOW for the Fund's Christmas Card brochure to the address below.

Meanwhile, as an indication of how the Fund's work is appreciated (work which is greatly helped by your donations), below is an extract from a letter from a Malcolm Sargent Social Worker.

"It is impossible to find new ways of saying thank you, but it is good to take the opportunity of attempting to convey — however inadequately — my sincere gratitude and appreciation to the Fund for the compassion and understanding towards our patients and their parents. I cannot recall one instance when a cry for help has gone unheard. A recently bereaved parent tried to tell me how much this help had mattered: 'It was the only chink of light in a long dark tunnel. You couldn't help to cure my daughter, but you were there when I needed you.' She was referring to the practical help I was able to give her through the Fund."

PLEASE help the Fund to continue to give help of this nature. Donations, which will be gratefully acknowledged, may be sent to:

THE MALCOLM SARGENT CANCER FUND FOR CHILDREN,
Department G G,
6 SYDNEY STREET, LONDON SW3 6PP

Telephone: 01-352 6884

THANK YOU

LOOK SMART-FEEL GOOD

with your own Patrol, Company, Camp, etc, etc. NAMES, CRESTS, DESIGNS - WHATEVER YOU REQUIRE

Expertly **PRINTED** on the very best quality English **T-SHIRTS and SWEATSHIRTS**

100% guaranteed - machine washable

Also **EMBROIDERED** designs on **SWEATSHIRTS and JUMPERS**

SUSSEX T-SHIRT CO.

FREEPOST, Littlehampton, W. Sussex BN17 5BR
(no stamp required) Tel (09064) 7298 & 23843

16th GUIDE

16

SUSSEX T-SHIRT CO.

582 CAMP

ENGLISH SWEATSHIRTS (50% COTTON) 11.00
ENGLISH T-SHIRTS (100% COTTON) 5.00
Also - 100% ACRYLIC JUMPERS 12.00
BEST QUALITY IN 17 COLOURS & 12 SIZES (22" to 48")
HOODED TOPS

Send for **FREE** colour brochure and price list **NOW**

OUR CHALET, SWITZERLAND WINTER SEASON 1982-1983: 19th December — 7th April

19th Dec- CHRISTMAS AND 1st Jan- NEW YEAR

The Christmas holidays are very popular, and preference is given to young, active participants who can stay for the whole length of the session.

1st Jan- SKIING HOLIDAYS 25th Mar

Within this period individuals and groups are invited to spend international skiing holidays at Our Chalet. Often individuals find it too expensive to travel on their own, and it is hoped that National Headquarters will encourage more members to come, by organising groups and travel during this period.

13th Mar- CROSS COUNTRY WEEK 20th Mar

Again, this year, a week of cross-country skiing with instruction, beginning on Monday is planned. Arrangements will be made about hiring equipment. This is your chance to try a new sport.

13th Mar- FRIENDS OF OUR 25th Mar- CHALET AND TREFOIL GUILD SESSION

This session is intended for Friends of Our Chalet, Trefoil Guild members and others (husbands are welcome) who are interested in spending a holiday in the mountains enjoying the international friendship, snow and sunshine. During the day the main programme will be ski-ing, cross country and downhill skiing, but it will also be possible to go on short walks.

27th Mar- EASTER 7th Apr

The Easter holidays are very popular and the main programme is skiing. Preference will be given to young, active participants who are able to stay for the whole session.



In winter, Our Chalet has no special sessions, and groups and individuals may apply for any dates between 19th December and 7th April, 1983. The main programme is downhill skiing and ski instruction is given daily, free of charge, by Our Chalet staff. To benefit most from a stay at Our Chalet in winter, applicants should be encouraged to stay at Our Chalet for at least 8-10 days. After 3rd January there is normally room and it is hoped that national organisations will make this fact known, so that more members, past and present, will come to Our Chalet, and enjoy an active skiing holiday in the mountains. When Our Chalet is not fully booked, Scouts are also welcome to spend a winter holiday, sleeping in the Squirrel House.

VISITORS

Approximately 4000 people visit Our Chalet during the year. Visitors are always welcome when Our Chalet is open. It would be appreciated if visitors would notify the Guider-in-Charge, in good time, of their intended visit.

PLEASE NOTE THAT OUR CHALET IS CLOSED DURING THE FOLLOWING PERIODS FOR CLEANING AND HOLIDAYS AND THAT NO VISITORS CAN BE SHOWN AROUND:

7th April-5th June
6th October-20th December
and the following SATURDAYS: 18th June; 2nd July; 16th July; 30th July; 13th August; 27th August; 10th September; 24th September.

During the holidays (May and November) only urgent mail will be answered and a 3-4 week delay can be expected.

For further details, contact your County Commonwealth and International Adviser. Please be sure to always enclose an International Reply Coupon when writing overseas. (Obtainable from your General Post Office.)

OUR CHALET, SWITZERLAND SUMMER SEASON 1983: 5th June — 6th October

6th Jun- HOLIDAY SESSION AND 16th Jun- FRIENDS OF OUR CHALET SESSION

This session is for guests who would like to meet spring in the mountains and are interested in mountain flowers. Places will be reserved for Friends of Our Chalet, and it is hoped that many old and new friends will be able to come and join us.

19th Jun- HOLIDAY SESSION 30th Jun

Anybody over 14 years of age is invited to participate in the international holiday sessions. The programme will consist of hiking in the mountains, and bus trips to get to know other parts of Switzerland.

3rd Jul- HOLIDAY SESSION AND 14th Jul- WOOL WORKSHOP

During this session, 12 places will be reserved for guests who are interested in working with fleece. Help and instruction will be given in carding, spinning, and dyeing wool with natural plants found around the Chalet. Toving and simple weaving will also be taught. No experience is needed.

continued on page 32

..... next month in **TODAY'S GUIDE**
..... next month in **THE BROWNIE**

TODAY'S GUIDE — Help your Patrols to use the Centre Pages

by Sheila Bamber

The Patrol pages in *Today's Guide* in August are mainly about 'noticing nature'. Very often Guides will not spontaneously suggest this type of activity for themselves, but the suggestions given might spark them off into some other activity of their own choice. Perhaps you could get things moving by challenging them to 'do something from *TODAY'S GUIDE* this week'.

Most of the suggested activities require very few materials apart from paper and pencil and some simple reference books. If neither you nor the Unit possess and suitable books, the children's section of the local library can probably help. Try to choose books with clear coloured pictures and a minimum of text, and if possible it helps to have some idea of the scale of drawings. You may find that once you have started a Patrol off, the Guides will bring along books of their own from home.

Both the centre page activities involve close contact with insects and other 'creepie-crawlies'. Overcome your worst fears (remember laws 5 and 10); these are

very interesting creatures and, on the whole, harmless. An 'Oh, isn't this an interesting . . . ' approach is much healthier and kinder than an indiscriminate 'Ugh — squash', and will stand the Guides in good stead when they encounter wildlife 'at home' during camps and outdoor plays. Guides learn a lot by example . . .

The 'Can you find . . . ' quiz on the fourth page could easily be adapted as an inter-Patrol competition, or a challenge between individuals (score 5 or 10 for each item, total scores and compare at the end of a given time). With some additions and alterations it could be adapted for any environment or season, and would be particularly useful as a camp challenge, helping the girls to actually look at their surroundings. In this case, a master list pinned up somewhere and some means of recording individual finds is all that is needed. Try to include some less usual things — like fungi or unusual insects or birds.

Chapter 12 of the Guide Guider's handbook gives lots more ideas for short and long term nature activities to challenge the individual and the Patrol.

Holiday fun with THE BROWNIE

During the month of August *THE BROWNIE* magazine is filled from cover to cover with Holiday ideas and fun. Starting with the 4th August issue there is a centre spread showing the Brownies how to pack a suitcase, helpful for preparing for their own holiday or Pack holiday and at the same time completing the Road Challenge. The Help at Home charts, 4th and 11th August, show the Brownies how to make coconut cakes and the correct way to use a frying pan. Both charts are well illustrated, with easy-to-follow instructions, and can be used in connection with the House Orderly Badge. Also the cookery cards will give simple and delicious summer holiday recipes throughout the month. For Brownies lucky enough to have a long-haired cat, Terry Mills explains the correct way of looking after it in the Pets Corner article. When Brownies think of holidays, the seaside always comes to mind, with parents, a school outing or Pack Holiday. If they are spending some time at the coast there is a beautifully illustrated chart titled 'Things to find on the beach'. It tells them the correct name of the different shells and seaweeds that they find on the beach or in the rock pools. If your Brownies are collecting shells they can follow the 'Brownies make things' idea and make a sea shell treasure chest. They will need to collect the smaller shells for this and will need strong cardboard. There are two stories this month for holiday reading, and they are titled 'Gillie's first night' and 'Heroine by mistake'. The second and third clause of the Collector Badge appears in the 4th and 11th issues (How about collecting shells and the first clause

of the Pathfinder badge begins on the 18th. They will find a special holiday feature each week, as well as summer ventures, puzzles, games and a picture to paint. With all of these things to offer it makes sense to remind your Brownies not to forget to order their own magazine for the holiday period.

SH

TODAY'S GUIDE in holiday mood

The August issue of *TODAY'S GUIDE* is liable to catch most of its readers on holiday — whether at camp, away with the family, or at home. The pages are packed with items on a holiday theme, and things to do whether the weather is wet or fine. The double page spread series on Camper Badge continues, and in a lighter vein Jean de Lemos gives a double page feature on making an illustrated scrapbook of your family holiday. Yet another topical double page spread comes from Rosalie Brown, on things to do at the seaside, and Andrew Liston's valuable series deals this month with the DIY scheme from page 196 of the Guide Handbook: find out about a place of interest. There's a chart by Anne Malone entitled 'at a loose end?', and Jean de Lemos contributes a chart to help Patrols with a Patrol Purpose Plan from page 224 of the Handbook; make smoke prints. Talking of smoke, Doug Millband continues his valuable series on Firefighter Badge, and Friend to Animals and Pathfinder Badge series continue. There's an article on London ceremonies, and our regular features such as readers' letters, Growing Up is Fun, recipe page, nature notebook, and our double page of overseas Guiding 'It's a Small World' make this issue, as always, add up to a magazine which is packed with fun and information for every Guide.

mainly for rangers

News ★

Suffolk Ranger Guide Activities

Following the report in the January *GUIDER* of Northamptonshire's activities I would like to report on the hectic life of Rangers in Suffolk.

For Rangers only on a County basis last year's programme included a Dabble Afternoon which was especially geared towards our handicapped Units. A choice of 8 different activities included: sweet making, broomstick crochet, enamelling and Danish embroidery thus giving the opportunity to 'dabble' in two areas of one's own choice. The able-bodied were a great help to the handicapped and came away with a greater understanding of handicapped Guiding and its implications. At the annual Suffolk Show the Rangers organised a crèche on an Ipswich Playbus. A sailing and canoeing weekend was held at Southwold, where a lot of certificates were gained. The annual Ranger Sports Day was held at a school in Stowmarket. At this event the Rangers compete for the Suffolk Ranger Cup. This year's activities included hockey, netball, badminton, darts and an indoor gym course. We also have the Barbara Allin Shield, which was donated by a long-serving and very enthusiastic Ranger Guider of the same name when she retired from Ranger Guiding but still comes back to present the shield, which on this occasion was competed for in a 'Give us a Clue' competition.

We are very privileged in Suffolk in having an extremely good relationship with the Venture Scouts both at Unit level and county level thus keeping the number of mixed Units down to 9. We have a Venture/Ranger committee which is made up of 1 Ranger and 1 Venture from each Unit plus 2 Ranger Guiders and 2 Venture Scout Leaders, the ACC for Venture Scouts and the County Ranger Coordinator. The Chairman, Secretary and Treasurer are elected by the Units at the AGM held in September. The county programme planned by this committee started off last year with a New Year's Disco and this was followed by 3 more discos during the year and a Barn Dance which are the main fund raising events. An indoor games competition took place between January and April. This is done between the individual Units on a knock-out basis and gives the chance of visiting a Unit which normally wouldn't have been visited. A day in London was next, sightseeing during the day and the show 'Evita' in the evening. This was followed by a long weekend in Belgium, staying at a Scout Hostel in Merkenvaeld and taking in visits to Bruges, Ghent, Brussels, and calling in at Sluis in Holland on the way back to the boat. A sponsored walk of the Essex Way raised £1,000 of which a quarter went to the participating Units funds, a quarter to the county Venture/Ranger fund, and a half to the Evelyn Fison Lodge for the handicapped in Ipswich to purchase a video unit. Our summer expedition took us to the Brecon Beacons where we camped for a week. Activities included rock climbing, abseiling, canoeing, sailing, grass-skiing, swimming, archery, walking, pony trekking, a visit to a drug factory and a medieval banquet at Caldicote Castle. The annual service weekend camp was organised for us by the Suffolk Heritage Coast and they had us clearing ponds, cutting down trees, building bridges etc. This was the second year running that we had worked for them. A residential weekend was held in November and was centred in Stowmarket where we stayed in various Scout Head-

quarters and met each day at the local High School where the theme of the weekend was 'Rustic Crafts', which included basket making, slate engraving, spinning and weaving, and traditional cooking at which the Ventures and Rangers made a broth and bread for the medieval banquet on the Saturday evening. The weekend was rounded off by a Venture/Ranger Own, organised by the committee. For the third year running we had a Carol Service and the church was so full last year that we have got to find a new venue for this year. We also have a Venture/Ranger trophy to be competed for called the Roger Hammond Trophy which last year took the form of a sports day. A new venture was an Orienteering Day in Thetford Forest which was very well attended. Our greatest aim last year was to raise enough money for a county minibus which we did with the help of a donation from the Queen's Silver Jubilee Trust and some of our members had the pleasure of meeting Princess Anne when she came to Suffolk to see some of the projects which the trust had helped. Our aim this year is to own a cabin cruiser on the broads which Units can hire out with a qualified person in charge for a weekend or week. We have the boat but it needs quite a bit of work done on it which knowing Suffolk Ventures and Rangers they will pull together and their enthusiasm will soon get the job done.

Lorraine Farr
Suffolk Ranger Coordinator.

Suffolk Venture Scouts and Rangers presenting a video unit to the Ipswich Evelyn Fison Lodge for the handicapped.



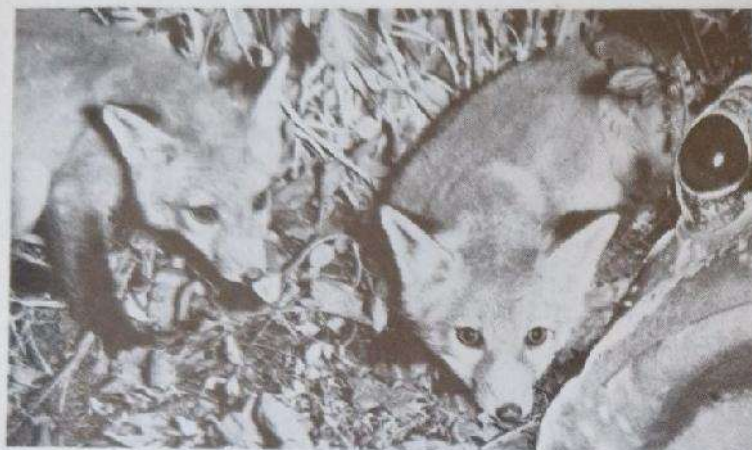
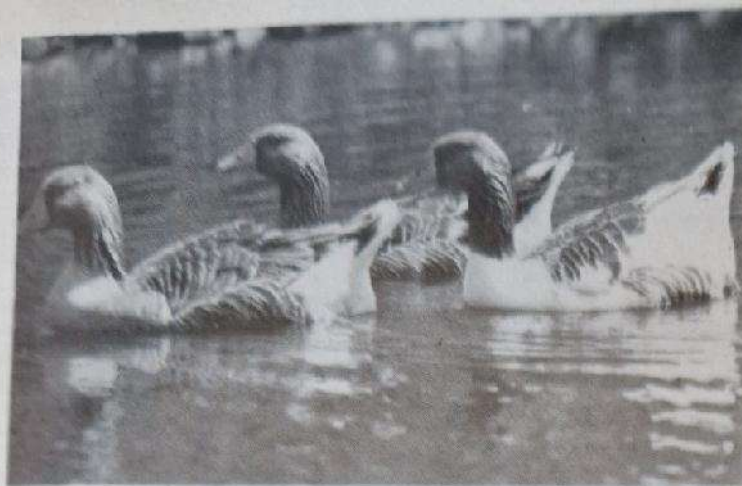
Annual Competition for Young Navigators

The Royal Institute of Navigation runs an annual competition for young people (under 18) interested in navigation. The scope is very wide. Any activity that includes movement from one place to another — potholing, climbing, sailing, flying — requires navigation and if you take part in these activities you are already a navigator. But you could write about other forms of navigation — say bird navigation, or how Columbus discovered America, or navigating to the Moon.

All competitors are invited to a special prize-giving meeting at the end of the year, which includes a series of talks by eminent navigators. Prizes in the past have included binoculars, a round-trip in a merchant ship and flight in Concorde.

The closing date for entries is 1 October 1982. Further details and entry forms from: The Royal Institute of Navigation, 1 Kensington Gore, London SW7 2AT (Tel: 01-589 5021).

continued page 2



They all run on electricity.

The Electricity Supply Industry believes in making the most of natural resources. Which is why we've turned the land adjoining some of our establishments in Britain into protected environmental areas; including nature trails and reserves, field study centres and fish hatcheries.

Our aims are to preserve the environment in its unspoilt state and to allow bird, plant and animal life to thrive.

But we also open some of these unspoilt natural areas, by arrangement, for the enjoyment of the public and for school educational visits.

So if you would like more information about the wilder side of the Electricity Supply Industry, just send off the coupon.

Please send me information on the Electricity Supply Industry's nature trails and reserves, field study centres and fish hatcheries. Post to the Electricity Council, Section N.T., 30 Millbank, London SW1P 4RD.

Name _____

Address _____

64NT

THINK ELECTRIC

The Electricity Council, England and Wales.

A Visit To Canada

MY husband and I went to Canada in February, at the invitation of the Boy Scouts, to join in their celebration of 'Founder's Day' (Thinking Day to us) in this 75th year of the Scout. We visited six places: Windsor, Hamilton, Toronto, Kitchener, Niagara Falls, and London. I can't tell you what the countryside is like, because it was all covered in snow, but I can tell you what the people are like: friendly, and welcoming, full of fun, energy and enthusiasm.

We got a wonderful welcome from everybody wherever we went, from the Mayor of the City to the smallest Beaver (Beavers are 'pre-Cubs' aged 5 to 7). We were also most touched by the generous presents we were given, which we will treasure as souvenirs of a memorable visit.

Most of the events were for Adult Leaders in the two Movements, and their supporters, including the Scout Ladies' Auxiliaries and the Guide Local Associations and Trefoil Guild. I was thrilled to be told by a large number of people 'I met your mother' and 'I saw your father', with the recurring phrases 'I've never forgotten him... he gave me new enthusiasm... I'd thought of giving up but look! I'm still in!' and there they were, giving splendid support to today's Leaders.

We saw lots of today's Guides too, ranging from a small group of Brownies and Guides at their weekly meeting in a Church hall — so very similar to ours here — to the Annual Meeting of the Ontario Provincial Council at their fine modern national Headquarters.

This report is by Betty Clay, daughter of the Founder and the Chief Guide, who visited Canada with her husband Gervas Clay in February of this year. Right, Gervas and Betty Clay meeting some Brownies.



A cheery occasion was an indoor Camp Fire in a school hall, where hundreds of Brownies, Guides, Pathfinders, Rangers, Cadets, and Guiders sang and mimed and laughed their way through a most enjoyable afternoon. Then came a moment when a Brownie and a Guide stepped out of the crowd and advanced towards us, and solemnly presented each of us with a beautifully wrapped gift. 'Open it!' everybody shouted, so we did so, to reveal boxes of the famous Guide Cookies, biscuits in a decorated box which are sold all over Canada for Guide funds. 'May we eat one now?' we asked. 'Yes!' so we ate one, then Gervas leant over and gave one to the Brownie nearest to him, then tossed one to a Guide beyond, then stood up and threw one to a Ranger further back... then pandemonium broke out as hands reached out and biscuits spiralled through the air as far as we could throw. The pictures of laughing Guides remains with us, on the empty boxes we brought home as well as in our memories. A sequel: next day, Gervas was jokingly criticised by a small Brownie: 'you ate the last Cookie, and I thought you were going to throw it to me!'

It was on the programme as 'March Past', on their way to the hall where they were each to be given a bottle of 'pop' and some cake (already cut into a thousand pieces), and as they moved slowly past us it seemed natural and easy to shake hands with them all; we were glad this was *before* they received the cake... One small Beaver noticed my Beaver Award and said 'I see you've got a Beaver too' which I thought was very observant of him.

Another impressive occasion was at an Anglican Cathedral, when more than a thousand members of our two Movements attended a fine Service. In my talk, I quoted to them what my father had written: 'I'm certain that God wants us to be happy, and I am equally certain that one of the best ways for being happy is to do all we can to make other people happy...'. Perhaps the whole spirit of that day was summed up by a small Guide who came up to me afterwards, shook my hand, and said 'I'm happy to be here, and I'm happy in Guides'.

And this was the impression I got of all that I saw of Guiding in Canada in 1982.

5th Patcham Guide Company's Trip to Denmark

WE knew we were in for an exciting trip when one of our party was trapped by her rucksack frame in a seat on Liverpool Street station!

We had left Brighton at 12 noon on Monday, the 13th May, for a fortnight's visit to Denmark, and after all the months of planning and preparation, sixteen Guides, one Young Leader and three Guiders were all feeling pretty excited about the prospect.

Our sea crossing was rather a rough one — people really do turn green! — but we finally arrived safely at Helsinor station at seven o'clock on Tuesday evening. Our Guide hosts were there to meet and greet us and to organise our journey to the Scout Houses which were to be our homes for the next two weeks. A hot meal and a 'cuppa' were waiting for us, and the chance to sit a while and collect ourselves. It had been a very long journey. The houses were set among tall silver birch trees, alive with birds and beautiful red squirrels and very luxurious — central heating and double glazing.

All slept well, and on Wednesday we went to visit Kronborg Castle in Helsinor — the fictional setting for

Shakespeare's Hamlet. We looked round the town and visited Saint Olai Cathedral.

Many apprehensive faces were to be seen, but once we had been introduced to our hosts who were so friendly, charming and obviously delighted to meet us, it was smiles all round and 'cheerio' until Saturday. When we met up

continued on page 32





The Girl Guides Association C.H.Q.

Assistant in The Programme and Training Department

There is a vacancy in this Department for someone to help in co-ordinating the work connected with the training material for 'Guider' magazine.

The job will also entail working as an Assistant to the Training Secretary and supervising the work-flow in the Training Office.

The successful applicant will be an active member of the Movement, preferably over 25 years of age.

A good standard of written English and an ability to type are essential.

If you are interested in this post please apply in writing to:

Hazel Douglas,
Head of Personnel,
The Girl Guides Association,
17-19 Buckingham Palace Road,
London SW1W 0PT.



FILL IN COUPON OR DIAL 100
AND ASK FOR FREEPHONE 9219
FOR FREE COLOUR BROCHURE

Your own design on top quality
Sweatshirts, T-Shirts, Hooded
Sweatshirts, Track Suits, Sports
Shirts and Lambswool Sweaters.
Ideal for club, college, regiment,
pub, team etc.

- ONLY 10 GARMENT MINIMUM ORDER.
- NO CHARGE FOR ARTWORK OR SCREENS.
- DIRECT SCREEN PRINTING - NOT TRANSFERS.
- UP TO 6 COLOUR PRINTING.
- ALL SHIRT SIZES & COLOURS AVAILABLE.
- FAST SERVICE - APPROX 2 WEEKS.
- MONEY BACK GUARANTEE.

Say Shirts 130 HEATHPARK IND. ESTATE,
HONITON, DEVON. Tel. HONITON (0404) 41148

MR / MRS / MISS

G 20

ADDRESS

Tel. No.

(capitals please)

Airing, Caring, Sharing.

continued from page 13

Between the Passport Control and the Luggage desk, where they deposited the Overseas item (later a Museum) we had an Information desk, with sets of Badges, uniforms, flags, painting books, etc, available for use as a check point during the evening.

Ten tables were scattered around the Brownie room, each having a game or a tape with a song to learn and on the table the flag of a country and the name, so the Brownies could find the colours and complete the flag in their passport, having played the game.

As we boarded the aeroplane for the return journey we sang the song we had learnt on our travels.

The most travelled Brownie received an Owl paper clip (for a book mark).

F Walker (Mrs)
Brown Owl,
42nd Bradford South Brownie
Pack,
Div YL Adviser

We all hoped that the cover Games would make Brownies' and Guiders' fingers itch to make the games and play them as soon as possible. It seems to be working most successfully.

Your Thinking Day meeting sounds really interesting and most original.

Editor

Overall Approval?

I must say how nice I think the new Guide uniform looks. I visited a Unit recently and thought how neat and tidy they all looked with their new neckerchiefs and blouses tucked in skirts, so much smarter than the old over-blouses, which in my opinion, always looked sloppy. Now that the Guides have been 'smartened up' please can something be done about the Guiders' uniform dress? Please can we have a dress

that looks more like a uniform and less like an overall? Something tailored, with long sleeves and without those awful pockets which always bulge with numerous odds and ends, or the Guiders' hands rammed into them!

Kit Lawrence
Essex East North
Essex Division



without those awful pockets which always bulge with numerous odds and ends.

If you wish to contribute to **GUIDER** please bear in mind that it is necessary to submit your article at least two months in advance of the issue you require.

The opinions expressed in these pages are not necessarily those of the Editor.

continued from page 19

Duke of Edinburgh's Gold Award Courses

Glenbrook (Expedition Section) 21st-28th August, 1982.

This course will offer training for the Expedition Section of the Gold Award.

For those who reach the necessary standards of training and experience, it is hoped to arrange a practice expedition. Apply to the Guider-in-Charge for details.

Young Leaders' Week

Foxlease
24th-31st August, 1982

Calling anyone working on the Young Leaders' Scheme. If you are able to go to Foxlease in August, you will hear much to your advantage. You will be living and working with other Young Leaders of similar aims and outlook. The course will give you opportunities to challenge yourself and to get help and ideas for your work with the Packs and Companies whom you help. It should be fun. Apply to the **Guider-in-Charge, Foxlease, Lyndhurst, Hampshire, SO4 7DG.**

Book Now! ★ Rock Climbing For Youngsters At Derwentwater, Lake District

21-28 August

A week's course for 12-16 year olds who want a good grounding in the sport. Based at Derwentwater Youth Hostel, near Keswick, the course will tackle some of the 'fun' climbs in the Borrowdale area.

Price: £75 including food and accommodation.

I would like to know more about BMC's 1982 courses. Please send me more information about

Rock Climbing ☐

Mountaineering (Skye) ☐

Ailefroide ☐

Chamonix ☐

Derwentwater ☐

Name _____

Address _____

Send this to Christopher Dodd, BMC, Crawford House, Precinct Centre, Booth Street East, Manchester, M13 9RZ or 'phone 061-273 5839

PRICE BLITZ '82

A FEW EXAMPLES (Inc. V.A.T.)

PATROL TENTS	
10' x 8' Icelandic 1st Size	£203*
12' x 8' Icelandic 2nd Size	£233*
12' x 8' Stormhaven Special	£264*
10' x 7' Niger	£226*
12' x 8' Plysheet	£140.25*
12' x 8' Budget Patrol (Aspen)	£189

RIDGE TENTS

RIDGE TENTS	
Special Prices Apply	
Vango Ten (Complete range & spares stocked)	
Black's Solite	£59.00
Black's Meritite	£79.50
Good Companion Std.	£72.50
Good Companion Major	£85.00
Atlas Motorist	£99.00
Saunders Fairlight	£66.50
Saunders Backpacker II	£89.50
Saunders Basecamp	£99.50

* Special extra discounts available to Bone Fide Groups and Organisations

MARQUEES

12' x 12' Black's Flame Retardant	£499.67
16' x 16' Black's Flame Retardant	£695.75
20' x 20' Black's Flame Retardant	£834.90
30' x 15' Black's Flame Retardant	£1125.85
40' x 20' Black's Flame Retardant	£1467.40

SLEEPING BAGS

Black's Glacier Mummy	£85.00
Black's Icelandic Backpacker	£56.00
Black's Icelandic Crest (No zip)	£42.75
Black's Pat-o-Mine (No zip)	£29.50
Black's Good Companion (No zip)	£22.75
Black's Highland 66 L	£44.50
Black's Summit	£44.00

SUNDRIES

Vango Dining Shelter 12'x8'x6'8"	£52.50
Vango De Luxe Toilet Tent	£20.50
Vango Standard Toilet Tent	£17.50
Elsan Mini Toilet	£13.65
Elsan Bristol Toilet	£25.00

ADDITIONAL QUANTITY DISCOUNTS: UP TO 10% EXTRA AVAILABLE



COTSWOLD CAMPING

Mail Order Dept., Broadway Lane, South Carney, Cirencester, Glos. GL7 5UQ
Cut out this coupon today or phone (0285) 860612
New showrooms now open. (Follow signs to caravan park)

Please send by return your 1982 comprehensive special terms price list together with leaflets on:

Patrol Tents ☐ Ridge Tents ☐ Marquees ☐ Sleeping Bags ☐

Rucksacs ☐ or ☐

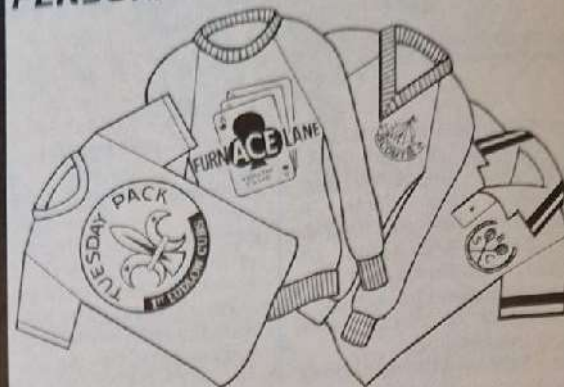
NAME

GUIDE COMPANY OR ORGANISATION

ADDRESS

PHONE

PERSONALISED LEISUREWEAR



T-Shirts Sweat Shirts Sport Shirts

Crew Neck / V-Neck / Hooded

FOR CLUBS, TEAMS, FUNDRAISING EVENTS

Send for details today or phone 05882 2703 for more information

FREE CARRIAGE

FREE DESIGN SERVICE

MINIMUM ORDER - ONLY 12

I am interested in: Shirts ☐ Ties, Hats, Lighters, Socks & Badges ☐

Name

Address

Phone *freepost* Dept. G No Stamp Req'd

Interprint

DALE STREET, CRAVEN ARMS, SHROPSHIRE SY7 9NY.
TEL. CRAVEN ARMS (05882) 2703 & 2502

Please forward your current
FREE STOCK LIST TO:

TEL:
(0484) 719298

BRAN TUB TOYS

A SPECIALITY

Larger Toys for Stalls & Galas,
Masks, Streamers, Blowouts,
Dolls for Dressing, Party-Hats,
Fund-Raising Pens, Punchboards,
Cracker Snaps, Mottos & Hats,
Jelly Cases, Paper Plates, Straws,
Xmas Decorations,
Toys for Santa Gifts,
Jam Pot Covers, Raffle Tickets,
Play School Paints, Toys etc.

I enclose
a large
S.A.E.

Wood
Balls
Crepe paper
Pipe cleaners
Calendar Tabs

CLIP OUT AND SEND THE COUPON FOR YOUR LIST

BALLOONS
FOR SELLING AT
GALAS-FETES
RACE BALLOONS
AND CARDS

ASSORTMENTS
FOR
SMALL EVENTS
TO HELP
BOOST YOUR FUNDS



G2

MONEY REFUNDED IF
GOODS ARE NOT SUITABLE
PLUS COST OF POSTAGE

D. Glover (Wholesale Toys) Ltd.,
Dept G2, Branxholme Mills,
Baillif Bridge, Brighouse,
West Yorkshire.

YOUR OWN DESIGN

PRINTED ON TO
EXCELLENT QUALITY
JOGGING SUITS
TEE SHIRTS-SWEATER SHIRTS
SPORTS & MILITARY SHIRTS

Standard and up to the
minute fashion styles
Sizes 24 ins to Ex Ex
Large in a wide range
of colours

* MONEY BACK
UNDERTAKING

For FREE details

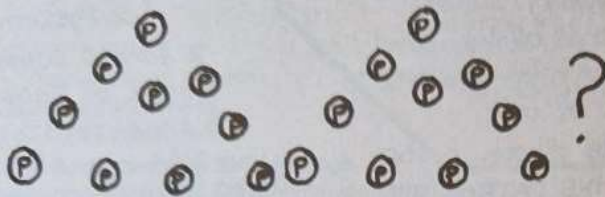
Contact:
PREMIER T-SHIRTS
Dept GDR, FREEPOST,
Bowthorpe, Norwich,
Norfolk. NR5 9BR.
Tel: Norwich (0603) 745018

Premier
The best of
British Leisurewear

LEISUREWEAR

Guiders from London and SE England

Does Training Stop Here?



Promise— Practice— Progress—

How many of us have been lucky enough to take our Units up to London to visit Headquarters and then Buckingham Palace? Perhaps some of us have had the privilege of watching the Changing of the Guard in the forecourt itself, of experiencing the thrill of being at the heart of such a tradition with all its pageantry, its ceremony and its respect for the Sovereign.

'Pussy cat, pussy cat where have you been?
I've been up to London, to see The Queen.'

If we were content to be just spectators, then our enjoyment would be shallow and short-lived. Remember, the wise rhyme continues,

'Pussy cat, pussy cat, what did you there?

I caught a little mouse under her chair.'

Pussy did not gaze, he got down to work in the most useful way he knew. He did what was required; he served The Queen.

Brownies pick up litter, would love to make her tea. How do we use our talents to serve The Queen?

It's a District meeting. We're about to launch into 'Apologies'. Instead, let's launch into a Brownie game. We'll call it 'Mind your P's and Q's'.

The Queen is to visit the District. What aspects would you consider in making your arrangements.

List them and discuss.

Well, there might be etiquette or smartness, activities — even tea! Whatever the details, the scheme of action will follow a pattern. First there'll be Questions, then will come Plans, the What's and the How's.

The Queen, herself, must spend time planning, far ahead, and her timing shows a respect for the time of others. So with our everyday District and Unit planning. When things are not going to plan it's because there never was a plan. A District Commissioner who before a meeting liaises with her Secretary over queries, times and places, will find 'admin' quickly disposed of. There'll be more time for Plans, and for delegation too. Groups within the meeting can purposefully discuss specific aspects relevant to them and be encouraged to do tasks best suited to their skills.

It's easier to serve sometimes than let others serve us, and many people like to be asked to help, so let's use the specialists, or the helpers or Local Association members who may be better at origami than we are or who may have more time to make the equipment needed for a new Brownie game. After all, today's helper may become tomorrow's Guider.

The Queen has a wealth of ministers and advisers. We know too, how much time she spends on the 'homework' of her job. It's attention to detail that makes a difficult task look so easy.

Is this why we as Leaders must be tidily dressed?

Is this why we do not let the flag trail on the floor?

Why do we bother with hats?

Why do we stand to attention when 'God save The Queen' is played?

So when we wave our flags as she leaves our District, we'll take another leaf out of the Brownie book and at our next meeting:

More P's and Q's.

Look at the Royal Picture Gallery; study the pictures.

List the qualities she brings to her task.

There's Dignity and Respect, and Cheerfulness and Charm, and Patience and Tact. How do you rate them? It's not only in what we do that we serve The Queen, but also in how we do it.

As Sir Winston Churchill once said, 'We love her as our Queen; we love her as herself'. We must feel proud to belong to an organisation which promises to serve The Queen.

Remember — Cut out these pages — File them — Index them — Use them — Solve the?

ARE YOU...

...jumping the Union Jack? Have you tried getting the Patrols to make a jigsaw quiz for another Patrol? ie Postcard of Union Jack cut up with questions on the back re: composition, flying it at half mast, relevant dates and legends...

Have you a World Flag? Could another Patrol make a jigsaw of the Badge and include questions on its symbolism and significance?

Have you a Patrol whose recruit would like a flag promise ceremony? Could the Patrol organise it using 'Flag Ceremonial' and 'Ceremonial Occasions'?

Have you a Patrol who could find an attractive tree and hoist the World Flag with appropriate ceremony?

THE SKYLON - A flagpole which doesn't touch the ground!

Materials required:

1 x 8 ft Bamboo cane or thin Hazel stick.

4 x 3 ft sturdy canes or wooden stakes

Approx. 60 ft. thin cord or thick string

1 mallet

A patrol size flag

Cleat (on flagpole 3' from ground)

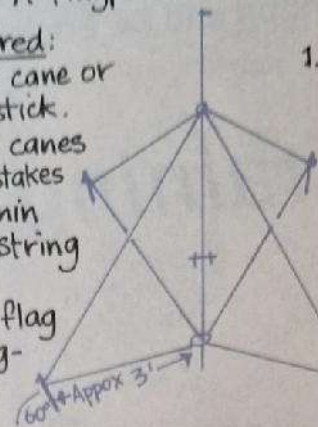
Halyards of thin cord. Curtain ring - attached to top of pole.

Guide H'book p.130

CAN THE PATROL SIT UNDER THE FLAGPOLE?

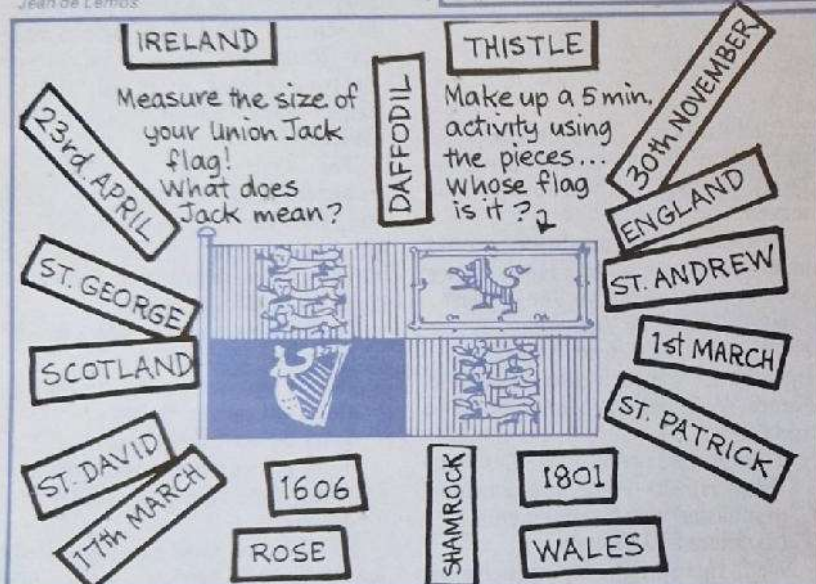
Method:

1. Prepare the flagpole i.e. (a) Attach curtain ring to top using W. country whipping (P.130) (b) Attach cleat use square lashing (P.128) (c) Put halyards through ring & wind round cleat.
2. Position stakes to form a square round base of flagpole.
3. Attach cord to pole, use clove hitches and to stakes using round turn and 2 half hitches as in diagram.



Jean de Lemos

Jean de Lemos



PRACTICE PURPOSE and PROGRESS...

(Further ideas for Patrol Programmes II)

a) In your local Parish Church or in buildings of historical interest, make a Patrol collection of sketches or photographs of any regimental flags or heraldic devices you can find.

b) Do any of these appear on tombstones, can you find any interesting stone inscriptions?

(See PPP on page 88 in Guide Handbook).

c) Have you a local expert whom the patrol could invite to its meeting?

FOR THE PATROL LEADER

When you have made Patrol plans and targets, make a record of what you have done and get everyone in the Patrol to assess any progress they have made and record it!

WAS IT FUN?

Have your Patrols their own flag? Do they know the origin of their Patrol name...? The legend of the forget me not is amusing and romantic! Challenge them to find out... Do you have to know the answer?

(See PPP page 141 Guide Handbook).

Have your Patrols their own bunting? Could it be made from coloured plastic carrier bags?

Have you a County or Division Standard? Could a Patrol invite someone to bring it to a Patrol meeting and talk about its composition?



Jean de Lemos

FLAG RAIDING - A 'WILD' GAME FOR CAMP!

AN ORIGAMI WATER BOMB!

Equipment:

1. Each patrol to provide its own flag.

2. Wool/cotton 'lives' (preferably not nylon wool.)

3. Each patrol to supply own water/flour bombs

Rules

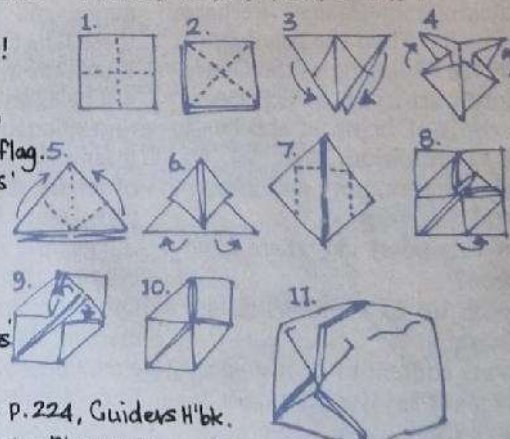
1. Read notes on p.224, Guiders H'bk.

2. Decide with your PLS (a) Boundaries

(b) Emergency signals (c) A 'safe' circle (d) Exciting story!

(e) Time limits.

After this game, a patrol might like to 'devise + play a camp put door game' Guide H'bk p.141.



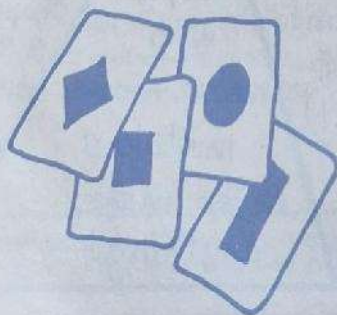
Jean de Lemos

What have a spider, August and our Programme in common? Yes, of course, it's easy; the number eight. The Programme for Brownies is the eight-point programme, interpreted specially for the Brownie age-group. It is presented to the Brownies themselves (on pages 4 and 5 of their Handbook) in a series of pictures showing Brownies busily *doing* things. At this age the child delights in doing rather than sitting or listening. We use a variety of ways to put this Programme across — ventures, journeys, interest badges, Six activities, games etc. These ingredients are all mixed together but the most important is FUN. On this page you will find four more Games with a Point which we hope your Brownies will enjoy playing.

Our weekly meetings need to be well-balanced and so need to be planned. A long term plan is very helpful, perhaps covering the next school term. Having put in special events, we can work backwards from these, leaving sufficient time for preparations.

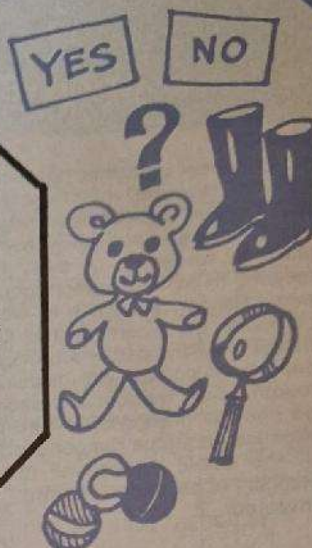
TREBLE FIRST

Sets of cards with various shapes on them are placed around the room. Each card has one shape on and there are three shapes of each Six colour, eg. three diamonds, three squares. Brownies hold hands in a circle, with the Sixers in the middle of the circle. Brownies skip round singing to the tune of 'Boys and Girls come out to play'. Brownies here we are to play Looking for our shapes today. At the end the Guider calls out the name of one of the shapes. Brownies go to find *one* card of stated shape in their Six colour and take it to their Sixer. First Sixer to have all three cards calls out stop. Brownies with cards still in their hands put them back. Sixer keeps cards and the game continues until all shapes have been called.



BROWNIE OUTING

A set of pictures for each Six, of things you would/ would not take on an outing, are placed face down on the floor at one end of the hall. Brownies, in Sixes, at the other end of the hall. Each Six has a card marked YES and another marked NO, a die and a card stating what sort of outing it is. The Sixer reads the outing details to her Six. The Brownies then take turns to throw the die. Each time a six is thrown the Brownie may go and get a picture card. The Six then decide whether the picture is something needed for the outing or not. The picture is then placed under either the YES or NO card. Game continues until all the cards are used up. Discussion follows.



OBSERVERS and ARTISTS

Using Brownie Uniform Charts give each Six three Brownies from other countries. Position charts at some distance from Six. Three artists remain in Six home, one observer for each artist runs up, looks at the Brownie from her country and describes her to the artist, who draws her. The observer may make as many trips as she needs to look at the Uniform Chart but the artist must remain in her Six home. To what use could you put the finished pictures? Could you adapt to other topics? Flags? Badges? Road Signs?

Surprises are fun too! What about a theme meeting for a change?

NATURE TIDDLEYWINKS

Each Six needs a polystyrene tray or a piece of card marked in squares and each square numbered, a set of cards, each with a nature question on one side and a number on the other side (one question is needed for each square you have on the tray), and Tiddlewinks. Brownies in Sixes with tray in middle of Six. Question cards also on floor, number side up. (No looking at questions before the games starts.) Brownies in turn flip counters onto tray. When counter lands on a number the corresponding question card is picked up and the Brownie tries to answer it. If she cannot, the rest of her Six may have a go. Brownie runs to Guider with answer.



CHOICE...

in the Ranger Unit does not mean doing nothing! However, much useful discussion and planning can be achieved over a cup of coffee — and activities may take place at weekends or away from the meeting hall and meeting night. But not every Ranger will want to work for a particular certificate or the Challenge Badge — taking part in activities may be enough. Also as we discussed last month, much thought and decision will go into the making or re-making of the Promise, though a Ranger can take part in the whole programme (except the Ranger Challenge) before she is invested.

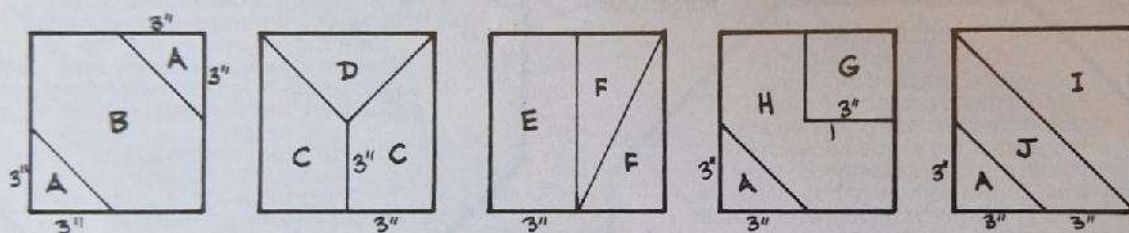
ONE REASON WHY THINGS MAY NOT BE GOING ACCORDING TO PLAN IS —

THERE NEVER WAS A PLAN ! ?

PLANNING...WHEN IDEAS FAIL TO COME FROM EVERYONE...

1. Make a list (2/3 things) to choose from — enough for new units!
2. Divide into Threes — each invite the most interesting visitor they can to the meeting.
3. Each Ranger lists something she can teach; wants to learn; wants to do with others — mix them up and see how many you can include!
4. Have a theme evening — base it on objects — for instance an egg, Scissors etc.
5. 'PLAN BACK' If you have an aim there may be many things you need to learn/make/plan on the way — include these in your planning.
6. Choose a section of the alphabet and write things they would like to do against the letters. eg Archery or Knotting. Give each 2 or 3 votes and make a selection. (Other people's ideas may seem more attractive, + with no limit you could get ideas for two years!)
7. While discussing generally, offer an activity eg. sweet-making — it is sometimes easier to talk when you're busy!
8. Have a table with interesting magazines etc.

TRY this activity — what does it tell you about groups working together, about give and take, and about communication?
"SILENT SQUARES" 6" Squares — cut as below:



Jean de Lemos

Place pieces in 5 envelopes as follows:

1. — I, H, E
2. — A, A, A, C
3. — A, J Give one envelope to each of 5 group members.
4. — D, F
5. — G, B, F, C

N.B. The letters have no significance to the finished squares — they only help sort out pieces!

Each Group of 5 (with own set of Squares) without speaking or sign language tries to end with an equal-sized square in front of each number. Pieces may be offered to another player but not grabbed or asked for! The group has not finished until each person has completed their square.

Remember to leave room for Dist./County/Division Activities — and leave time to tell others what you are/ do as Rangers.



Remember the one who is Different — she will have much to offer and must sometimes get her minority choice in the programme.

PLAN • TRAIN/LEARN
ACT • RECOVER •
ASSESS —

and move on!
(not a post-mortem!)
!

To get a "balance" of activities, read again Chapter 8, Ranger H'book
People who never make mistakes never make anything!

Jean de Lemos

Double Acrostic No 54

by Brenda Hughes

- A. *Lee that is vigorous in body.* (7)
 B. *Enduring unimpaired.* (7)
 C. *With nothing to lose, we relax.* (5)
 D. *The rate for the stage.* (7)
 E. *Where the tennis ball is served, at risk.* (6)
 F. *Imaginative penetration.* (7)
 G. *An old English traitor.* (7)
 H. *The grating is broiled.* (5)
 I. *The street where Paul waited.* (8)
 J. *Remove the roofing.* (8)
 K. *Lion man by name.* (7)
 L. *'Then give three -----' (Gilbert).* (6)
 M. *Harmony of proportion.* (9)
 N. *They said they all led to Rome.* (5)
 O. *Choked, and the supply of air was cut off.* (9)
 P. *Gen Dave to be vindicated.* (7)
 Q. *A Toad-flax.* (3-6)
 R. *The pole of Pooh's 'exposition'.* (5)
 S. *Drink for lovers?* (7)
 T. *'My ----- is as the ----- of ten. Because my heart is pure.'* (Tennyson). (8)
 U. *It sounds rather as if one is adding up on the golf course, to sign the pledge.* (8)
 V. *Soft and voluptuous, certainly not manly.* (10)
 W. *A batter cake which talks incessantly?* (6)
 X. *Get down and come by chance.* (6)
 Y. *He gathers up the sail.* (6)
 Z. *Beat out.* (6)
 a. *A chemist shop which sounds as though it ought to be a chiropodist.* (5)
 b. *Coarsely rouged.* (7)
 d. *A place of rest and pleasure in the midst of toil and gloom.* (5)
 e. *Worst mac in the garden.* (8)
 f. *For evergreen sewing?* (6)

Double Acrostic Rules

Solve the clues and write the answer in the numbered grid on the right. Transfer the clues to the corresponding numbered squares in the grid below. When this is complete, you will have a quotation from a book (or poem etc), the title and author of which will be found in the initial letters of the answers to the clues.

A small prize will be awarded for the first correct entry opened on the 20th of each month.

Please send entries to: 'Acrostic', The Editor, GUIDER, The Girl Guides Association, 17-19 Buckingham Palace Road, London SW1W 0PT. It would also be appreciated if readers could attach to their entries a brief note about their preferred reading material. A photostat of the Double Acrostic page will be perfectly acceptable from those readers not wishing to damage their copies of GUIDER.

Solution to Guest Acrostic (June GUIDER)

This he peremptorily refused as unjust and cruel. Sensible that the poor Indians, who could not brook even the landing of a small party on their coast would have made vigorous efforts to defend their property.

Voyages of Discovery
James Cook

A	31	13	2	44	58	10	38
B	6	53	313	34	44	23	77
C	19	11	23	204	55		
D	1	14	76	41	30	52	93
E	53	60	194	29	62	208	
F	69	29	175	78	8	35	51
G	61	18	90	87	65	96	135
H	123	186	83	103	161		
I	34	70	145	72	102	125	108
J	95	107	86	97	153	78	16
K	118	39	31	164	122	160	176
L	100	128	111	3	148	168	
M	182	152	143	17	68	127	145
N	67	94	193	191	167		
O	74	101	140	142	81	144	188
P	88	64	139	130	163	149	172
Q	147	112	154	204	176	198	46
R	50	137	57	157	185		
S	34	120	195	166	153	130	170
T	158	178	103	146	183	192	89
U	169	15	117	119	206	133	203
V	129	12	77	106	84	7	196
W	156	187	141	140	211	136	
X	109	205	174	197	138	184	
Y	79	95	131	207	47	99	
Z	82	68	37	113	124	43	
a	149	170	207	197	115		
b	114	179	110	104	162	150	20
d	134	126	80	121	73		
e	71	171	21	159	42	65	33
f	177	98	34	4	187	45	

The winner of Double Acrostic No. 52 (May GUIDER) is Miss Millbanke from Sunderland.

D	1	A	2	L	3	f	4	Q	5	B	6	V	7	F	8	T	9	A	10	C	11	V	12	A	13	D	14	U	15	J	16	M	17	G	18	C	19	h	20		
E	21	V	22	B	23	I	24	A	25	B	26	A	27	F	28	E	29	D	30	K	31	C	32	E	33	S	34	F	35	f	36	Z	37	A	38	K	39	W	40		
D	41	E	42	Z	43	B	44	f	45	Q	46	Y	47	M	48	P	49	R	50	F	51	D	52	B	53	I	54	E	55	C	56	R	57	Z	58	J	59	E	60		
G	61	E	62	G	63	P	64	E	65	A	66	N	67	M	68	F	69	I	70	E	71	I	72	d	73	O	74	J	75	D	76	V	77	F	78	Y	79	d	80		
O	81	Z	82	H	83	V	84	Y	85	J	86	G	87	P	88	T	89	6	90	J	91	D	92	M	93	N	94	J	95	G	96	B	97	f	98	Y	99	L	100		
O	101	I	102	H	103	b	104	T	105	V	106	J	107	I	108	X	109	b	110	L	111	Q	112	Z	113	b	114	a	115	O	116	U	117	K	118	U	119	S	120		
d	121	K	122	H	123	Z	124	I	125	d	126	M	127	L	128	V	129	S	130	Y	131	Q	132	U	133	d	134	B	135	W	136	R	137	X	138	P	139	O	140		
W	141	O	142	M	143	O	144	M	145	T	146	Q	147	L	148	a	149	b	150	J	151	M	152	S	153	Q	154	V	155	W	156	R	157	T	158	e	159	K	160		
H	161	b	162	P	163	K	164	I	165	S	166	N	167	L	168	U	169	a	170	E	171	P	172	F	173	X	174	K	175	Q	176	f	177	T	178	b	179	P	180		
O	181	M	182	T	183	X	184	R	185	H	186	W	187	O	188	f	189	S	190	N	191	T	192	H	193	E	194	S	M	V	196	X	197	Q	198	a	199	V	200		
C	201	E	202	U	203	Q	204	X	205	U	206	Y	207	E	208	a	209	U	210	W	211	B	212																		

29

You'd be surprised how much you can get out of us.



Did you realise the Girl Guides Association Trading Service belongs to you?

It exists simply to provide you with everything you need for all your Guiding activities, including uniforms, camping equipment, accessories, books etc.

Whenever you buy from the Trading Service, you can be sure of obtaining good quality at realistic prices, together with helpful and considerate service.

But apart from this, you'll also be helping your fellow Guides, because the income that the Trading Service receives is used to help the Movement. Which is why we have this slogan, "When you buy from the Movement we all benefit."

If there isn't an official Girl Guide shop where you live, you can do your shopping just as conveniently by post.

Fill in the coupon and we'll send you our free illustrated catalogue detailing the full range of uniforms and equipment.

In many areas items from this catalogue can be

obtained from local Guide Depots.

DIVISION COMMISSIONERS.

Have you considered a Guide Depot in your area? Send the coupon for details of how to have Uniform & Equipment readily available and increase Division funds.



GIRL GUIDES ASSOCIATION

Girl Guides Association Trading Service,
Atlantic Street, Broadheath,
Altrincham, Cheshire WA14 5EQ.



Write your name and address in the space provided and send to the Girl Guides Association Trading Service, Atlantic Street, Broadheath, Altrincham, Cheshire WA14 5EQ

☐ Catalogue

☐ Depot Information

Name _____

Address _____

When you buy from the Movement, we all benefit.

Training Information

BRONEIRION

Llandinam, Powys, SY17 5DE
Tel: Caersws (Powys) 068 684 204

August

- 11-15 'A Taste of Wales' — for Guides 14+, Rangers and Young Leaders
18-22 'Four Fun Days for Guides'
27-31 Young Leaders

September

- 3-5 Llais y Ddraig (Welsh Junior Council)
10-12 General Training (places reserved for Central Glamorgan)
17-19 General Training (places reserved for Carmarthenshire)
24-26 International Training (by invitation)

Fees at Broneirion

Shared room per day	£5.00
Double room per day	£5.25
Single room per day	£5.50
Deposit	£2.00

NETHERURD HOUSE

Blyth Bridge, West Linton,
Peeblesshire. Tel: (Dolphinton) 096 88 208

August

- 20-22 Music in the Programme

Fees at Netherurd

Shared room per day	£5.00
Double room per day	£5.25
Single room per day	£5.50
Deposit	£2.00

WADDOW

Clitheroe, Lancs BB7 3LD
Tel: (Clitheroe) 0200 23186

August

- 15-30 Holiday Period (Guiders, Trefoil Guild members, their friends and mothers)

September

- 3-5 General Training
10-12 West Yorkshire South
17-19 Midlands (by allocation)
24-26 Newcastle-upon-Tyne

GLENBROOK

Bamford, Nr Sheffield, S30 2AL
Tel: (Hope Valley) 0433 51567

August

- 21-28 Duke of Edinburgh's Gold Award (Expedition Section) Course

September

- 24-26 Walking Safely (Basic and Intermediate — Guiders only)

Fees at Glenbrook

Shared room (for weekend course) £12.50. All activities, equipment and VAT are included. Optional activities extra. Deposit of £2.00 cheque or postal order only.

FOXLEASE

Lyndhurst, Hants SO4 7DG
Tel: (Lyndhurst) 042-128 2638

August

- 4-11 Holiday Weeks (for Guiders with up to nine of their Guiders or and Rangers)
13-20 Rangers
24-31 Young Leaders Week

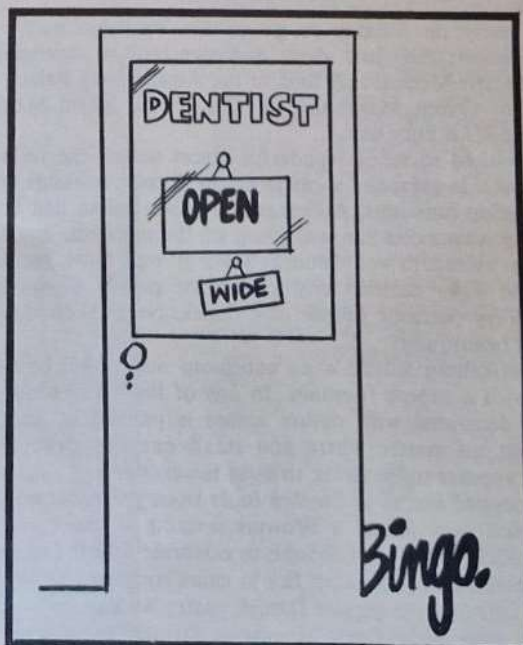
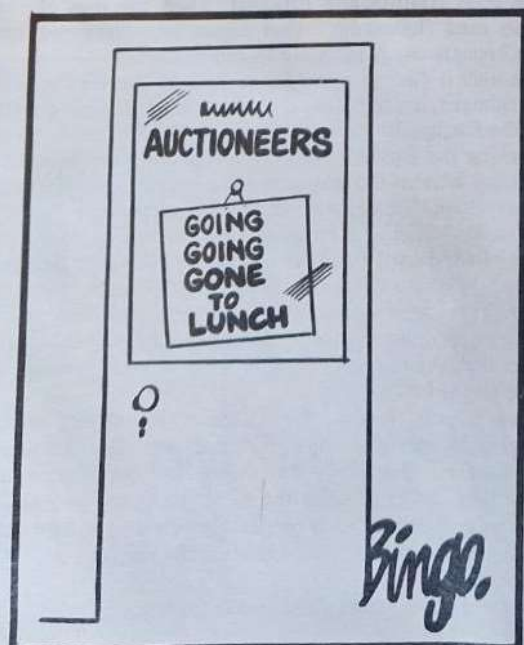
September

- 10-12 Making the Most of the District (District Commissioners with up to seven of their Guiders)
17-19 General Training (All Sections — places for Guiders with handicapped members in their units)
24-26 Sussex East

Fees at Foxlease and Waddow

Shared room per day	£7.00
Double room per day	£7.50
Single room per day	£8.00
Deposit of £2.00 cheque or postal order only	

July Laugh-In



OUR CHALET, continued from page 17

17th Jul-
28th Jul

HOLIDAY SESSION AND WALKING AND CLIMBING SESSION

Places will be reserved for participants who are keen to take part in long mountain walks and simple climbing. No climbing experience is necessary, but participants must be used to walking and be physically fit.

31st Jul-
11th Aug

HOLIDAY SESSION

14th Aug-
25th Aug

HOLIDAY SESSION

28th Aug-
8th Sept

HOLIDAY SESSION

11th Sept-
23rd Sept

JULIETTE LOW

SEMINAR for young trainers in the age group 20-30 years.

Organised by the World Association of Girl Guides and Girl Scouts, further information will be sent out in October 1982.



26th Sept-
6th Oct

HOLIDAY SESSION

Autumn is a beautiful time in the mountains, and members of Trefoil Guild/St George's Guilds and their husbands, and anyone else, are invited to enjoy Our Chalet at a more peaceful time of year. Husbands will be accommodated in a nearby Chalet.

In summer, 10-day sessions will take place at Our Chalet and preference will be given to participants who can stay for a whole session. All programme is based on the out-of-doors and although hikes will be organised according to the physical abilities of our guests, it is important to remember that Our Chalet is situated in the mountains and guests should be physically fit and keen to do some hiking. The ordinary holiday sessions are open to all members over 14 years of age. When Our Chalet is not fully booked, Scouts are welcome and will be accommodated in the Squirrel House or on the campsite.

← continued from page 21

again on Saturday evening it was quite apparent that everyone had spent a wonderful time and made many new friends.

Up early on Sunday to go to the English Church in Copenhagen; then just about everyone took a photograph of the Little Mermaid. A look at the Amalienberg Palace — home of Queen Margrethe. A visit to the Royal Stables finished off a busy day.

We visited so many wonderful places during the following week: Jaegerspris, a castle in the forest; Roskilde (the Viking ship museum). A French Canadian Indian had been building a canoe in the workshop of the museum, and the day we visited it was 'launch day'. It was quite exciting with the T.V. cameras and crowds of people all waving flags. Very patriotic people, the Danes. Needless to say, it floated beautifully!

Frederiksborg Castle is an enormous and rather sombre place with a superb fountain. In one of the many rooms a ceiling decorated with nature scenes is painted in such a way that no matter where you stand one particular bird always appears to be flying straight towards you.

We popped across to Sweden (only twenty minutes on the ferry) and then joined a Brownie meeting in the evening. Donna Kirby was lucky enough to celebrate a birthday, and in the evening during camp fire in came some of our Guide friends carrying the biggest Danish pastry we had ever seen, covered with little flags, singing a Danish equivalent of

'Happy Birthday to you'.

Donna was presented with a bunch of daffodils and four large flags (Danish and English). Then big jugs of 'varm kakao med flodeskum' (hot cocoa with whipped cream) were brought in. A birthday to remember!

Thursday was set aside for a visit to the Guide H.Q. in Copenhagen, to the Round Tower, and to buying presents for the family. In the evening we went to a Guide meeting. Watching the Guides together, it was quite obvious that the language barrier did not exist. We had been perfecting our Maori Stick Game and this was performed to a rapt audience — hardly a dropped stick to be heard! A framed print of the Royal Pavilion was presented to the Scouts as a 'thank you' to hang in one of their Houses, and various other gifts were given and received, including a Guide uniform. A team danced 'Brighton Camp', then tea and cakes and Auld Lang Syne in English and Danish — far more verses in Danish!

Our friends were at the station to see us off on Friday morning. Kisses and hugs all round, and they ran alongside the train as we pulled away from Helsingør Station waving little flags and practically the whole company in tears!

Everyone had been so helpful, generous and had made us feel so welcome and wanted. It was indeed a sad 'Farvel' for us all.

Another two weeks would have been a good idea.

Pat Pinkney

Walking Safely

The booklet *Walking Safely* had not been published in January 1981 when I went along to the first Walking Safely training, so I was not at all sure what I was letting myself in for. I had never done a great deal of walking, most of it being done while in camp. I knew the basic things about clothing and equipment, and I knew how to use a compass to find North, and had attended trainings on compass work, but never retained the knowledge, probably because I have never put theory into practice.

The first part of the training was taken up with an explanation of the whole scheme. Basically this covers the same topics but progresses to the required standard in each stage — Basic, Intermediate and Advanced. The Basic training was completed in two evening trainings. Then, after two more indoor trainings, when clothing, equipment, first aid kits and maps had been discussed, came the first walk where we were to follow a map using tracks and well-defined paths — at least they were well-defined on the map, but not in reality. Great debates took place between us before we decided where the path was.

From January to October I attended all six indoor trainings and three walks (one was cancelled due to snow) and the end of our training to Intermediate standard culminated in a walk on Ilkley Moors in mid-November when we walked on bearings and found we were not as good as we thought, only one Guider finding 'home'.

Once I had decided that the Walking Safely Scheme was something I wanted to do then problems arose as to what



had priority. Twice there were Church Parades, one at night, and one on a Sunday: I decided, rightly or wrongly, to go to Walking Safely, but did not tell my Patrol Leaders I would not be at Church and why. Going off for the full day meant the shopping and chores had to be squeezed in and meals planned that my family could cook and have ready for my return! I am fortunate that my husband is very understanding. My sons, aged 18 and 20, think it is a big laugh, Mum wanting to go off walking.

I found the trainings great fun. The pace of the walks was always easy and many stops made for coffee and eats, or just to get our breath back. The object of the walks was never forgotten, and we spent a lot of time consulting our maps and finding landmarks. The trainers were so patient with us.

Lunch in the Old Shooting Hut.



Starting off.

Reaching the Cairn Circle, Ilkley Moor.

I have gained confidence in my map reading and at last can walk on a compass bearing and know I will get to where I am heading. Among other things I have learned how to make out a Route Card before I take a group walking and that good planning beforehand makes a walk more enjoyable.

At the beginning of the trainings I felt sure that I would have done all I could cope with when the Intermediate stage was finished, but I am now going on to tackle the Advanced. There were between 15 and 18 Guiders at most of the sessions, most of whom went through to complete the intermediate stage. Six of us have decided to carry on with the Advanced which will probably takes us about 3 or 4 years to complete.

In order to get enough walking practice a walking club, 'CLODS' (County of Leeds Out-of-doors Club) has been formed, and I have been on two walks with them and have another one to do before I can qualify for the illustrious badge and pay my membership fee.

A whole new world has opened up for me and I have had great pleasure in the walking, companionship and new knowledge. I hope I shall be able to go on and lead my Guiders on more outings and expeditions than before so they will enjoy the out-of-doors more fully.

HQ notices

The Association's Awards

Good Service Laurel

Mrs J Burgess, Former Commissioner, British Guides in Germany.
Miss A L Cleaver, County Outdoor Activities Adviser, and Assistant Brownie Guider, Northamptonshire.
Miss M W Foster, Chairman of Programme and Training and Division Commissioner, Avon South.
Miss E Gillam, Assistant County Commissioner, Shropshire.
Miss R A Miles, County Young Leaders Adviser, Northamptonshire.

Meritorious Conduct

Star of Merit

Rosaleen Bell, Sixer, 6th Nailsea North, Avon South.

Rosaleen is a keen Brownie who never misses a meeting except when she is in hospital. She is cheerful and uncomplaining, and always ready to help others, particularly the elderly. Although in a wheelchair she likes to try everything, and she leads her Six by example and encouragement, showing herself to be a born leader.

Susan Bartlett, Patrol Leader, aged 15, 1st Stotfield, Hertfordshire.

In spite of her handicaps, Susan has been a most enthusiastic Brownie and Guide. She has had long spells in hospital and is now confined to a wheelchair, but this has not prevented her working very hard at all aspects of Guiding. She has become a very competent camper and has gained a number of badges, her craft work being of a particularly high standard. She has been a Patrol Leader since 1979 and is much liked for her humour and determination.

Certificate of Merit

Julie Sales, Brownie Guide, aged 9½, 8th Wetherby (St James), Leeds.

CHQ Holiday Party to Sangam 1983

The CHQ Holiday Party to Sangam, India has now been re-scheduled to take place as follows:

Overall 24.7.83 — 18.8.83 approx

Depart London approx 24.7.83.
Arrive Bombay, 25.7.83.
(Discover India Session) 27.7.82 - 2.8.83
(followed by
(East Meets West Session) 3.8.83 - 16.8.83
Depart from India (Bombay) 17.8.83 pm.

Further information and details will be circulated to your County Commonwealth and International Adviser as soon as they are available.

News from NCVYS

One advantage of belonging to an umbrella organisation such as NCVYS is that there is opportunity to benefit from the various publications and/or activities of the affiliated members, here are some items which may be useful.

Elaine Arnold
PR Adviser

Eight Games for Group Leaders

This handbook of games written by Martin Goodlad and Eric Whitton of the General Synod is published by the Methodist Church Division of Education and Youth, and available from them, price £2.00 at: 2 Chester House, Pages Lane, Muswell Hill, London, N10 1PR.

Religious Faiths

The Scout Association has produced a useful series of one-page information sheets on 'An Introduction to: The Hindu, the Muslim, the Sikh and Buddhism'. Available for an sae from: Tony Allen, The Scout Association, Baden-Powell House, Queen's Gate, London, SW7 5JS.

Enjoy A Working Holiday At Woodlark's Campsite

Offers of help from Guiders, Rangers and Young Leaders would be welcomed at camps for physically handicapped adults and children. If you are interested please contact the Camp Leader at the address given (please enclose SAE).

31st July-7th August **Chailey Heritage Guides**
Miss S Blades,
12 Summerfield Close,
Minchinhampton, Glos. GL6 9JX.
(Brinscombe 884549)

NOTE: This camp is in need of a Lifesaver and a Guider with boating or canoeing certificate. Can anyone help?

14th-21st August **Birmingham Handicapped Guides**
Miss L Bateman,
127a Short Heath Road,
Erdington,
Birmingham B23 6LH.
(021 382 3775)

21st-28th August **Hampshire and Dorset Handicapped Rangers**
Miss S Luxon,
16 Crediton Close,
Devon Park, Bedford MK40 6LH.

Young and Healthy

This is the title of a handy leaflet on Health Education for Youth Workers available from:

Greater London SCVYO,
68 Chalton Street,
London, NW1 1JR.
(single copies free, 50 pence per 50 copies in bulk)

Foxlease and Waddow Holiday Periods

Foxlease 4th — 11th, 13th — 20th Aug.
Waddow 30th July — 10th August

This is a golden opportunity for Guiders wishing to take up to nine Guides or Rangers for a holiday at Foxlease or Waddow. Planning your programme during the holiday will be entirely your, or your girls' responsibility.

At Foxlease you can enjoy the forest and the seashore. At Waddow you could walk over the hills, explore the Witch country and many fascinating villages, visit abbeys, castles and Roman remains, go bird watching or fossil hunting by the river, or follow nature trails. Guiders will be present to comply with POR, but this could be used as an experience towards your Holiday Licence. However, you need the consent of your Commissioner before applying. For details write to the Guider-in-Charge at Foxlease and Waddow.

Short Term Investment Service

Monthly interest rate after deduction of management commission.

February	13.40%
March	12.90%
April	12.28%

Additional 0.5% pa for deposits of £2,500 and above.

Scout & Guide Trust Fund

On 30th April, 1982, the value of a share in the above Fund was:

for selling purposes	71.42p
for buying purposes	74.98p
income yield	6.13%

The income yield is based on the previous two dividends paid and the price on the date stated.

New from Publishing Dept. CHQ

A new white card with an embossed blue Trefoil on the front is now available price 20p including VAT, and for 30p a chart demonstrating how to pitch and strike a bell tent. Both are available from the GGA Trading Service (50p postage and packing) and Guide Shops. The Amendments to POR 1982 leaflet is also available free from the Trading Service with an SAE.



The Girl Guide Friendship Fund

Neckstrap, Pig or Ramp for Christmas

They took their pick and between them came up with more than £15,000 to brighten the lives of some of Britain's estimated 5 million mentally and physically handicapped people. The event, The Girl Guide Friendship Fund Annual Good Turn, whose presentation on Thursday March 25th marked the climax of a year's foot-slogging, tongue-holding, entertaining and events, when hundreds of Brownies, Guides and Rangers held tongues in sponsored silences, rubbed aching legs after sponsored walks, held coffee evenings, side-shows, stalls and mini-markets in a bid to raise money for the project of their choice.

£5,082 is providing equipment for Riding For The Disabled Association, for the safety, comfort and assistance of disabled riders.

£6606.53 has been raised to buy animals for 3 new homes for the mentally handicapped for Operation Farmyard — brainchild of The Home Farm Trust. The homes form compact family units with emphasis upon self-help, and animals are regarded as a vital part of their therapeutic care.

£3819.46 for Ynysgain — the conversion of the 'Long Barn' at Ynysgain, the Association's campsite in Wales into a holiday home for the disabled, including the provision of raised toilet seats, chromium handrails, ramps for wheelchairs, adjustable washbasins etc.

Representatives from each organisation received their cheques from Brownies, Guides and Rangers whose names were literally pulled out of a hat. The lucky few were also recipients of a brightly hand painted wooden elephant each —

presents from grateful Sri Lankan Guides in response to funds raised by the Girl Guide Friendship Fund in the previous year which provided them with a duplicator and the additional bonus of a typewriter with money left over due to a favourable rate of exchange.

The presentation was followed by a splendid buffet lunch which gave everyone a chance to talk. While tucking into my rum flavoured chocolate cake I was struck by the enormously important achievements of organisations such as The Home Farm Trust and Riding for The Disabled Association in bridging the gap of an inadequate state system to meet the real needs of the mentally and physically handicapped in providing the ideal structure to enable them to reach their full potential.

Marilyn Daish, Assistant to Publicity Secretary CHQ



Mr Dick Moss, Director of Riding for the Disabled Association receiving his cheque from Karen Pickworth, Ranger 2nd Wigston Joint Unit. With them is Mrs V Vaughan-Cox, then Hon Chairman of The Girl Guide Friendship Fund and Mrs R Cawwell, then Secretary of The Girl Guide Friendship Fund. Also in the photo are Lisa Mills, Guide 2nd Wigston Guide Company and Sophie Barrowcliffe, Brownie 3rd Wigston Brownie Pack. Photo: Tony Rose.

Ventures and Rangers on the track

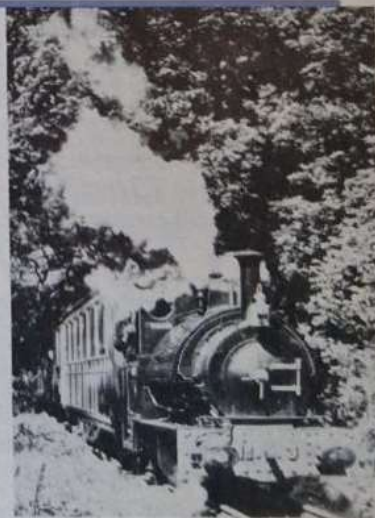


'Working on the railway' is how the Dell Joint Venture Scout/Ranger Guide Unit, from Stoneleigh, South West London spent part of their Easter Camp this year. Eight Rangers and eight Scouts camped for four days by Rhydyronen Station on the Talyllyn Railway. This is near Tywyn on the Welsh coast, not far from Cader Idris, the highest peak in mid-Wales.

The Unit spent two days hill-walking and two on the railway. The narrow-gauge preserved railway, with its five steam engines (two over a hundred years

old), was the first in the world to be taken over by a voluntary conservation society. It was in 1951 when the railway was about to be sold for scrap that it was saved by the Talyllyn Railway Preservation Society, which now owns and runs it on behalf of its volunteer members. With the help of a very small permanent staff the volunteers fire, drive and clean the engines, maintain the coaches and the track, and work in the engineering as well as the retail shop.

The railway and stock have been almost completely rebuilt while retaining as many original features as possible consistent with safety. For the railway carries up to 180,000 passengers a year. This year Brownies and Cubs will find the railway particularly well worth a visit. The Talyllyn has 'borrowed' an engine 'Sir Handel' from the Skarloey Railway made famous by the well-known children's railway books written by Rev W Awdry and based on this Welsh narrow gauge railway.



The Dell Unit helped the railway volunteers in maintaining forest footpaths, hedging and ditching, and in digging a trench for signal and telephone cables: real conservation work on the edge of the Snowdonia National Park. An excellent way for Ventures and Rangers to camp, to hillwalk, and at the same time do some useful work in preserving both our natural and man-made heritage. There is also the attraction of free rides on the railway to and from 'work'. Anyone interested should contact The Railway Press Officer, David Potter on 01-211 0389 or General Manager David Woodhouse 0654 710472.

**YOU, YOUR COMPANY,
PACK, GROUP, ETC.,**

CAN BE NOTICED With the **VERY BEST** **PERSONALISED** **SWEATSHIRTS**

QUANTITY
DISCOUNTS



OTHER PRODUCTS

INCLUDE:- Cloth &
Metal Badges, Ties,
Pennants, Embroidered
Jumpers, Stickers,
Umbrellas Etc.

CUSTOMER
PROTECTION
TRUST
ACCOUNT

**DIRECT PRINTING
NOT TRANSFERS**

& TEE-SHIRTS

Printed with **YOUR OWN DESIGN**

Minimum Quantity ONLY 15

*** MASTER TEE ***
OF LEICESTER

MASTER TEE, MAIL ORDER DIVISION
DEPT. 17 FREEPOST, NORWICH,
NR3 3BR. Telephone (0603) 619411

Please send me your **FREE Brochure & Price List**

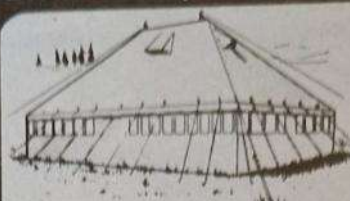
Name

Club, Company etc.

Address

Tel No.
(BLOCK CAPITALS ONLY)

British Army UNIVERSAL MARQUEES



Re-issued but in
excellent condition
with all accessories.
28ft x 20ft.

£475

(Carriage £25)

All tentage supplied ready to erect, complete with 2 Roof Ends — One Roof Section — Four 27ft walls — or 11 small walls — Eight Bracing Lines — Two Quad Weather Lines — Pin Valise — Two Mallets — One 9ft Ridge Pole (in one section) — Two 12ft Upright Poles (in two sections) — 32 Wall Poles — 8 Large Stakes and all necessary pegs — One Large Valise. All Marquees are 12ft high and have 5ft 6in side walls. * **CAMP BEDS** Ex-Officers' issue, genuine Houndsfield Safari BIGSA model, grade 1 condition. £12.50 p/p £2.30.

MARQUEE MIDDLE SECTION SHELTERS

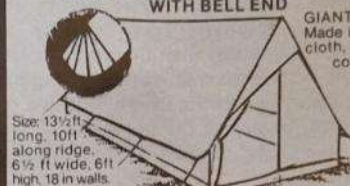
Comprising of one marquee centre section, 9ft along ridge by 21ft overall. One 9ft ridge pole, one 12ft upright pole in 2 sections, two canvas walls 10½ft long, 6 side wall poles, one double weather line, 2 bracing lines, 6 pegs, one large valise. **ONLY £150 complete** (carr. £25)

* These shelters can be extended to any length required by adding further 9ft sections.

*** MARQUEE SPARES ***

Roofend Outer.....£120 (carr. £3.85) Side Wall poles£2 (carr. 85p)
Roof Section outer£75 (carr. £3.85)
Weather line double rope£7 (carr. £2.20)
Upright pole 12ft (in two sections).....£22 (carr. £3.85)
Weather line quad rope.....£14 (carr. £2.75)
Pulley ropes 30ft.....£3 (carr. 85p) Ridge pole 9ft (one piece) £18 (carr. £2.20)

GIANT RIDGE TENT £67.50 (Plus carr. £2.75)



GIANT in size, SUPERB in quality. Made in renowned TENCATE storm-cloth, will stand up to most weather conditions.

* Built-in groundsheet
* All-round zip doors
* Hooded porch
* Ample storage space in bell end.
* British galvanised steel poles.
* Guy ropes are nylon with rubber tension.

* ALSO AVAILABLE:

The renowned **Relum GIANT PEARL** in blue Terka canvas. £75 (same size as Giant Ridge Tent above). Carr. £2.75

Smaller model **The PEARL £55** (carr. £2.75) Length 10ft (incl. 3ft 6in bell end), 6ft 3in wide, 6ft high and 30in mudguard walls
Relum RUBY, sleeps 3/4, 10ft x 6ft 3in x 6ft high. £47.50 (Carr. £2.75)

2-MAN SPECIAL ONLY £19.75

complete with stormproof flysheet. (Carr. £2.20)

Made in hardwearing proofed nylon. Complete with substantial built-in groundsheet, 3-way zip doors, protective mesh vent with stormproof outer flaps and fasteners. Supplied with aluminium poles and ridge pole, pegs and guy lines. Approx. size 6ft long 4ft wide, 3½ft high with 9in mudguard walls.

* ALSO AVAILABLE: — **DE LUXE** model with bell end 8ft 6in long, 4ft 6in wide, 3ft 6in high. Complete with Stormproof flysheet, £28 (carr. £2.20)

ARMY 160 POUNDER

14ft. RIDGE TENT

Superb ex-Govt. tentage, guaranteed stormproof, 14ft long, 14ft wide, 7ft high, 27in walls. Dutch lacing doorways each end, can be rolled up. Supplied with accessories: — Pegs, Poles, Mallet and Valise 14ft Ridge Tent Spare poles (three 7ft uprights and one 14ft ridge pole). £22.50 Carr. £3.50. **FLYSHEET** re-issue condition 14ft x 19ft £59 (Carr. £5.50) **UNUSED GROUND SHEET** 14ft x 14ft water rot and tear resistant £29.50 (Carr. £1.65). Also available in PVC £12.50 (Carr. £1.65).



£175 (Carr. £5.00)

Also available:
Brand new ex-factory
£275 (Carr. £5.00)

*** DINING SHELTER £75** (carr. £5.00)

14ft x 14ft complete with pegs, poles, mallet, main lines and valise.

**** FLUSHING SANITARY TOILETS ****

Porta Potti Model '22' (gives 22 flushes).....£19.50
Porta Potti Model '33' (gives 33 flushes).....£29.50
Porta Potti Model '44' (gives 44 flushes).....£35.00
Porta Potti Model '60' (gives 60 flushes).....£37.50
Porta Potti Model '240' (gives 97 flushes).....£37.50
Racasan 470 Cruiser.....£27.50

ALSO AVAILABLE: NON-FLUSHING MODELS

Elsan model 'Mini'.....£12.50
Elsan model 'Bristol'.....£22.50
The 'Panco' Large Swedish model.....£12.50

Please add £2.50 carriage each item

All measurements shown are approx • Cash orders by return, cheque 7 days.

• Goods despatched U.K. only

ORDER WITH CONFIDENCE. ESTABLISHED OVER 30 YEARS
25 YEARS AT THIS ADDRESS. WE GUARANTEE YOU A FAIR DEAL

H.C. BRIGGS (Camping Equipment) Ltd 88 Forest Road, Walthamstow, London. E17 6JH. Tel: 01-420 2705

HERALDRY (17)

This month, by request, I am beginning a series of articles on the standard used by Countries/Regions/Countries.

The first article features the 'George' which was the standard for England and was designed for use by the Chief Commissioner for England before the days of the present Country/Region organisation of the United Kingdom.

Apart from that of the President of the Association and the one belonging to the late Chief Guide, who bear personal standards, all Guide standards represent an area and may be used by the Commissioner holding the appointment for that area during her term of office.

Although 'England' no longer exists as far as Guiding is concerned, there are still two Regions which have no standard of their own at the time of writing, although they are in the process of being made, and their Chief Commissioners continue to use 'The George' as this standard is affectionately known.

It was designed by the Hon. Rachel Kay-Shuttleworth who was herald to the Girl Guides Association for 20 years and who supervised the making which took 6,000 hours to complete.

Heraldic Description

At the hoist, quarterly first and fourth the Cross of St George, second and third azure (blue) a Guide Trefoil or

(gold); at the fly, divided per fess azure (for the sky and Guide uniforms) and vert (for fields and the outdoor life) St George in armour, argent (silver) surcoat and mantle or mounted on a horse or, with harness and trappings gules (red) slaying the dragon, also or, between 3 lozenges, two and one, bearing the Cross of St George: two motto bands or lettered azure — one Persevere (motto of Mrs Percy Birley who was the Chief Commissioner for England when the Standard was planned and started) the other Be Prepared for the Girl Guides Association.

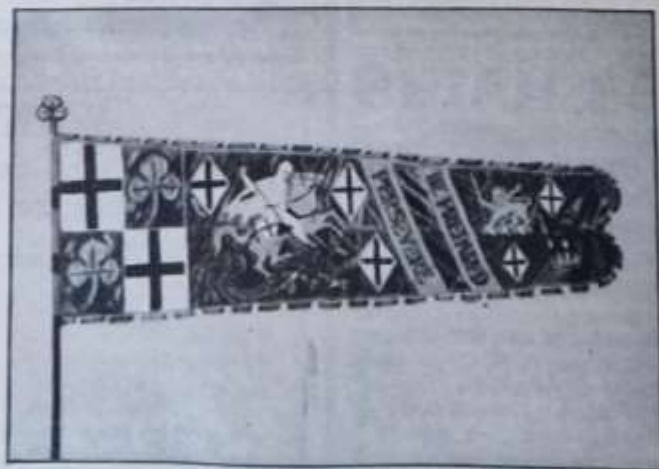
Beyond the Motto Bands, in chief the Powell crest — a lion passant or, in the paw a broken tilting spear in bend proper, pendent therefrom by a riband gules an escutcheon (shield) resting on the wreath, sable, charged with a pheon gold; a lozenge bearing the Cross of St George. In base a second lozenge as above and the Baden crest — out of a crown vallery or, a demi-lion gules on the head a like crown, charged on the shoulder with a cross patée argent and supporting with the paws a sword erect proper, pommel and hilt gold. The standard is finished with a fringe, vert, gules, white and azure.

There are some interesting points about the standard. One is the position of George and the dragon. It is an heral-

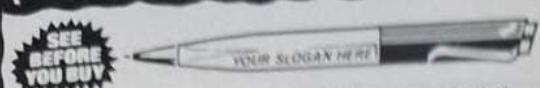
dic rule that all animals on flags and standards should face the hoist. However, here we have two animals, so St George on his horse as coming from the light, faces the dragon, which, on facing the light, dies.

Today we would insist that the Guide Trefoil should be placed in the first and fourth quarters with the Cross of St George placed second and third. The reason for this being that this is a Guide Standard representing just one area in which Guiding takes place. We would not allow two motto bands as the second, in this case represents a person whereas the standard represents an area. On occasions we do allow the motto band on the reverse to bear the name of the District/Division but we prefer that only the motto of the Girl Guides Association be used. Also fringes are no longer customary, a border company azure and or (that is alternate sections in blue and gold) made in the material of the standard, or a twisted cord in blue and gold, are preferred.

It will be sad when there is no longer any use for 'The George' because it is a superb example of heraldic standard and of the art of embroidery.



QUALITY FUND RAISING and ADVERTISING PENS

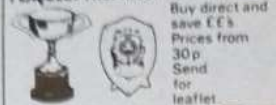


Send 50p P.O. for 16-page colour catalogue and assorted samples or 15 1/2p stamp for leaflet only.

Lapel Badges



PLAQUES! TROPHIES! CUPS! MEDALS!



Buy direct and save 50%
Prices from 30p
Send for leaflet

WESTFIELD LTD

DEPT 23 WESTFIELD HOUSE
HELENA ST B HAM B1 2RJ.

DESIGNED FOR YOU!

OUR "COTSWOLD" PATROL TENT



WE MANUFACTURE THIS SUPERB
QUALITY PRODUCT IN GREEN FLAME
RETARDANT MATERIAL

BUY DIRECT

FOR ONLY £192.00 INC. VAT. CARRIAGE PAID

Length	Width	Height	Walls	Weight	Canvas Weight	Poles
12'	8'	6'6"	3	61 lbs	10 oz	Wood
366 cm	244 cm	198 cm	91 cm	28 kg approx	340 gr F R	3 uir

JOHN ATTWOOLL & CO (TENTS) LTD.
WHITMINSTER, GLOS. Tel (0452) 740278

GUIDES and BROWNIES T-Shirts or Sweat shirts

Top quality washable shirts. Range of super colours, including White, Sky, Navy, Scarlet, Yellow, Green. Prompt delivery.

SPECIAL PERSONALISING SERVICE!

Have YOUR Unit name or emblem embossed on the shirt at 5p per letter extra.

Special discounts for Group orders. Design service available for SPECIAL EMBLEMS if required. Shirts contain varying proportions of cotton/viscose/polyester according to availability. Details on request.

Prices (complete with emblem) T Shirts (Sizes 22-30) £2.45, (Sizes 32-40) £2.95, (Sizes 42-44) £3.25 P & P 50p SWEAT SHIRTS (Sizes 26-30) £4.75, (Sizes 32-44) £5.75 P & P 60p. State colour required (give alternative choice) AND EXACT CHEST SIZE

CREWMASTER (Dept GB7) 27/41 Oldfield Circus,
NORTHOLT, MIDDLESEX. Tel: 01-422 3344

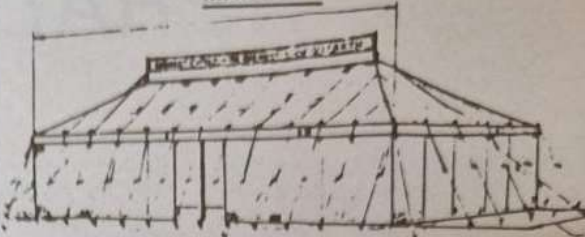


EMBOSSED
WITH YOUR
EMBLEM

BRADCOT BRADFORD

FOR
MARQUEES
RIDGE TENTS
COOKHOUSES

MARQUEE



12' x 12'	£317.40
15' x 15'	£449.65
20' x 20'	£696.90
40' x 20'	£1129.30
60' x 20'	£1608.85

Other sizes and colours are available. All complete with poles, pegs, guys and valise, made in best Cotton Duck. Fire proofed. Lightweight Nylon also.

Send for brochure to:

**BRADFORD COVER & TWINE
CO. LTD.,**

44 Chapel Street, Bradford BD1 5BY
Tel: 28469/27112

INSTANT IRON-ON

NAME TAPES

DESPATCHED IN THREE DAYS

only £2.25 inc. P&P for 75 labels (all same name)



- Ideal for school clothes, Laundry & Uniforms
- Attached in seconds
- Guaranteed Permanent
- Withstands washing
- Strong white tape printed in black

MONEY BACK GUARANTEE

FREE ORDER FORMS FOR DISTRIBUTION TO PARENTS AND GROUPS

DECOREPRINT LTD

FREEPOST, London, N16 7BR
Reg No. 500333

STACKING CHAIRS



- * Best Quality
- * Choice of Colours
- * Cheapest Prices
- * Stacking Tables
- * Extra Robust Construction

Buy
Direct at
BUDGET
Prices!

Complete this coupon and send today for full details

BUDGET FURNITURE CO. Dept. 49
St. Jude's Church Dulwich Rd.
London SE24 0PB Tel: 01-737 1371

Name:

Address:

budget
furniture

WANTED!

Groups who can save waste
paper for sale to us

For details contact your nearest depot:

Ashford (Kent)	Tel: 0233 21554
Gosport (Hants)	Tel: 01-689 0964
Croydon (Surrey)	Tel: 07017 82327
Pye Bridge (Derbys)	Tel: 0773 604316

**CARFAX WASTE PAPER
Co. Ltd.**

BOOK REVIEWS · BOOK REVIEWS

Ambridge, an English Village Through the Ages, by Jennifer Aldridge and John Tregorran. Methuen, £3.50.

This lush paperback is for those who want to carry their devotion to the Archers one stage further. This longest running soap opera provides a daily dose of village life to the weary commuter, and a ready made family to thousands of lonely people. Here we have a history of Ambridge, complete with vintage photographs, to authenticate the fantasy. No mention of the recently emerged principals Eddie and Clarrie Grundy, so presumably this text predates the latest episodes. Nevertheless, it's a gift that Archer addicts will treasure.

JVR

The Duke Of Edinburgh's Award

The Expedition Guide. Price £2.00.

Once again this Guide succeeds in being both attractive and informative. As the title implies it is intended to give guidance to all people concerned with the Expedition Section of the Duke of Edinburgh's Award Scheme. It caters mainly for the adults who are training, supervising and assessing in the scheme. However, it acknowledges in the Foreword (by John Hunt) that it could also be of great assistance to young people taking part in the scheme. I would go further and say it could be of great interest and value to all adults, including Guiders, who are concerned with expeditions. This new edition includes information on ventures of all types on land and on water, walking, cycling, horse-riding, canoeing, sailing and rowing.

Two thirds of the Guide is still allocated to the training and preparation required for 'The Expedition' and for the new concept — 'The Exploration'. The book also provides a full interpretation of the various ventures that are mentioned in the 'Expedition' section of the D of E Handbook. There are very few references to 'Bronze' and 'Silver'. In fact you will have to refer to the D of E Handbook, page 47, in order to check the requirements for the Preliminary Training for

Bronze and Silver Expeditions. From the Guide, the reader must select the training information necessary for ventures in normal country at Bronze and Silver levels.

It is pleasing to read that the major success of any venture is still attributed to the fundamental importance of good group work and self-discipline in living together (Introduction by John Disley). Also the emphasis is again given to Safety and to Training which we greatly acknowledge in the GGA. The contents are once more clear, well presented and fully comprehensive. The use of script writing, and bold, modern drawings are very attractive. It will make a valuable addition to the book shelves of many Guiders, particularly those taking part in the Advanced Training of the Walking Safely Training Scheme.

MS

Line of Succession by Jiri Louda and Michael MacLagan. Orbis Publishing. Price £12.50.

Here is a book for the specialist. Anyone really interested in heraldry will find it fascinating. It traces the lines of succession and illustrates the heraldry of the Royal Families of Europe.

The book begins with a brief introduction to heraldry. Then follow thirty seven chapters devoted to either the history of a European country or state or to a dynasty, past or present.

The text is very readable and is well illustrated in black and white with maps and photographs. It describes the historical background to each of the family trees and shows how events are reflected in the design of the royal coats of arms. The wealth of interest for the heraldist lies in the one hundred and fifty tables showing the family trees giving the genealogical history of European royalty which are profusely illustrated with coats of arms in full colour.

The result would be a fascinating addition to any collection of books on heraldry and fills a long-felt need of students of European royal heraldry.

BH

Collins British Birds, text by John Gooders, paintings by Terence Lambert. Collins. £12.95.

This is a really beautiful book, the paintings are exquisite, the text is descriptive and full.

There are chapters on identification, songs and calls, habitats, nests, foods, distribution and migration; as well as brief details of the rarer birds the keen birdwatcher may be fortunate enough to spot. The last 30 pages of the book contain a wealth of other useful information.

The pages in the section 'The Birds' give clear descriptions of nearly 250 birds regularly found in Britain, each description is illustrated with a truly beautiful painting of the bird, and in many cases this is amplified with other drawings of the bird in flight or of a feature which distinguishes it from another very similar bird. Maps show the distribution of the species throughout the UK, as well as specific details of its song, its habitat, its movements.

Collins British Birds is a book any serious Birdwatcher would be delighted to possess; at £12.95 it seems expensive, but for the wealth of information and the sheer beauty of the paintings, it is well worth the price.

JMT

Birdwatch Round Britain with Robert Dougall & Herbert Axell. Collins Harvill, £8.95.

Birdwatching is becoming an increasingly popular hobby, and this book gives details of the birds which can be expected to be seen at various bird reserves around Britain.

Twenty-four chapters give details of seasonal visitors from the bird world who can be anticipated in each area. Clear maps point out the best places for viewing and details of which Nature Conservation organisation is responsible for the reserve are given together with details of how and where to apply for a visitor's permit.

For the family there is also information about other places of interest in the area of the reserve, so part of the family can visit a Stately

Home, Cathedral or other places of interest, while the birdwatchers of the family visit the Reserve.

A super book if you want to explore Britain's Bird Reserves, it's not out of reach of the pocket, and a useful bookshelf gift for a keen birdwatcher.

JMT

His Holiness Pope John Paul II, by Joan Collins. Ladybird. 50p.

Inevitably a Ladybird book, very lavishly illustrated, can have only a brief text, but in His Holiness Pope John Paul II Joan Collins has drawn a lively and stimulating picture.

Starting with an explanation of the procedure when a new Pope is appointed, the book goes on to give an inspiring account of the gifted boy from a poor Polish home who was called to this most honoured and demanding position. The second half of the book describes his life and remarkable travels as Pope and the reader meets a human, lovable and loving man, deeply conscious of the needs of the world, never sparing himself in his efforts to give help. The numerous pictures are excellent and one only wishes there could be a short glossary of words perhaps not familiar to many children of Guide and Brownie age. That omission need not prevent their enjoying and appreciating a very good publication.

RW

The Second Challenge Book of Brownie Stories by Robert Moss. Startish Books Ltd. £5.00.

Robert Moss was formerly the Editor of the Brownie Annual and this is his second Challenge Book of Brownie Stories, the first Challenge Book of Stories being a huge success. This new book has a collection of fourteen stories covering a wide range of topics and all written for and

GUIDER • TODAY'S GUIDE • THE BROWNIE

CLASSIFIED ADVERTISING — Official Form on which all classified advertisements must be submitted.

All Classified Advertisements must be **PRE-PAID**.
CHARGES: 20p per word. Semi-display box rule £3.00 extra. Box Number £1.00.
10% discount for 12 consecutive issues.
Advertisements, plus remittance, to be addressed to:

Miss A. M. Martin, Advertisement Manager,
The Girl Guides Association,
17/19 Buckingham Palace Road,
London SW1W 0PT. Telephone: (01) 834 6242 Ext 63.

Please make cheques payable to The Girl Guides Association.

All copy must be received by the 18th of the second month preceding publication (eg 18th July for the September issue).

All copy is subject to the approval of the Association which reserves the right to refuse, cancel or suspend any advertisement. Advertisements for the sale of secondhand clothing cannot be accepted (except uniform). Uniforms for sale should not be sent to CHQ, advertisers receive communications from applicants.

Advertisements for camp-sites, activity centres and Pack Holiday Houses must be countersigned by the County Camp Adviser indicating that in her opinion the site/centre/house is satisfactory.

COUNTY CAMP ADVISER (Signature)

Advertisements for joint Ranger/Venture Scouts Events must be countersigned by the Guide County Commissioner indicating her approval of the event.

GUIDE COUNTY COMMISSIONER (Signature)

Application to advertise in
..... (Periodical)
.....

Issue/s

NAME (BLOCK CAPITALS)

ADDRESS to which receipt should be sent (BLOCK CAPITALS)

.....

.....

Your day-time telephone number

PLEASE WRITE YOUR ADVERTISEMENT BELOW IN CAPITAL LETTERS

.....

.....

.....

.....

Number of words..... Remittance herewith.....

I confirm that the information contained in the above advertisement is correct and I ask that it be inserted in..... and enclose cheque/PO for.....

(Signature)

In Memoriam

Jenny Lochhead died very suddenly at her home on 7th April aged 77 years. She had been a Brownie and Guide Guider in Hampstead from 1924.

Jenny was a Camp Adviser and later Hampstead's Division Commissioner.

She held both Green and Blue Cord Diplomas and for many years ran the Hampstead Cadet Company.

In 1959 she was awarded the Medal of Merit.

At Heysham Private School in Hampstead she taught children of many different nationalities. Known as Kim throughout the Guide fraternity one could not fail to be inspired by her enthusiasm for the Patrol system — camping, music and drama and many practical skills.

She encouraged young people and adults alike to be interested and enjoy these activities. Another hobby was swimming with the handicapped.

Kim retired from Heysham School in 1965 and went to live in East Preston, Sussex where she continued as CHO Adviser for Universities and Colleges and attended many of their camps and conferences.

Kim's enthusiasm was infectious — her standards were high — her sense of humour, kindness and friendliness will long be remembered and passed on to

other people. She was a great encourager and her influence will continue to be felt for many years.

JM

Selina Thomas, better known as 'Tommie', died peacefully on 25th March, aged 83, in a home where she had been for eighteen months. She was enrolled in 1911 in the 1st Westminster (YWCA) Guide Company — strangely enough in the room where she was born, since the house in Elizabeth Street had been sold to the YWCA. She worked at Guide Headquarters in Victoria Street (the first Guide to do so) from 1913 to 1915, and was always ready to tell anecdotes of the early days. When she was the beloved 'Loot' of the 4th Westminster Company (St Stephen's, Rochester Row) for ten years, the interest in woodcraft which continued all her life first began to be apparent. She was subsequently Captain of the 8th Fulham Company for four years, but ill health kept her out of Guiding for several years. During the war, when her firm was evacuated to Westminster, she became a Commandant in the GTC, and later

when she moved to Lewes she became Guide District Commissioner for Lewes District until 1961. She was then appointed Extension Adviser for Sussex, and when the County was divided in 1965 continued as Extension Adviser for both East and West Sussex for a short time. She retired in 1977.

Tommie had the gift of making things from waste materials such as wood from hedges, string and paper. In 1950 she won her training certificate for handcraft, having perfected a very special way of using raffia — for which she won the National Federation of Women's Institutes Design Award in 1970. She was a good demonstrator and teacher, not only of Guides but also of Women's Institutes and Townswomen's Guilds, and many people will remember exciting sessions continuing into the small hours in her bedroom at Conferences and Trainings.

She was always interested in people less able to get about than she was, with her 'Traveller Car' always loaded with handcraft materials, so the Extension job was one she loved. She also worked with the East Sussex Association for the Disabled.

In 1960 when a human cake was devised by Mrs Canadine for a display in Sussex — attended by the Princess Royal — she made

50 very realistic candles, and at twenty-four hours' notice added four extinguishers. She helped with props at many events, and made the judges' discs and the beads for the World Camp at Windsor Park, and the woggles and cords for the camp held in conjunction with the 1975 World Conference. In 1961 she was awarded the Medal of Merit.

Nothing was ever too much trouble for Tommie, and she would cheerfully go anywhere she was wanted as Camp Adviser; no camp or Pack holiday took place in the Division without a real welcome from her and help when required. She was regarded as one of the foundation stones of Westminster Guiding, and having met B-P in the early days, always put into practice his saying that 'nothing is impossible'. We shall miss a person who was a real Guide in every way — Guides and Brownies loved her visits, and many Guiders have benefited from her training and practical help.

CLA

BOOK REVIEWS · BOOK REVIEWS

about Brownies. There are adventures galore in this brand new book from smugglers to 'Having a puma for a pet', and it is well illustrated. A lovely book to have in your Brownie library and for reading to the Brownies at story time or on a Pack Holiday. This hard backed version could be thought expensive as it is available in paperback, but bear in mind it would last a lot longer in the hard backed form.

SH

The Spur Book of Family Camping, by Philip Pond. *Frederick Warne Ltd. £3.50.*

This book is part of a new series of Spur Family Guides. It is a comprehensive guide to family camping especially for the beginner who has a baby and/or very young children. It includes camping abroad and ends with check lists for equipment and extensive addresses of clubs, offices and companies that could be of assistance, as well as lists of books and guides that

would be of use. As its name implies it is not applicable to Ranger or Guide camping.

AD

Migrating Birds, by Peter Gill. *Dinosaur Publications Ltd. Paperback 70p, Hardback £2.25.*

This is another little book in the Althea's Nature Series and is again excellent value

for money. The book describes the migratory habits of birds in clear, simple terms and tells of the journeys made by many of them and the hazards they have to face. The illustrations by the author are not only beautiful but are so accurate and clear that they are ideal for identification purposes. This would make an ideal gift for a child interested in birds and yet would also be a delight for any adult.

BH

BOOK REVIEWS · BOOK REVIEWS

Guides at Gilwell — on the air for Thinking Day — An Activity Weekend

LAST August *GUIDER* ran an article by Terry Lockyer on the Gilwell Scout Amateur Radio Group and how they helped Guides from Hallingbury and Romford 'talk' to New Zealand on Sunday, 22nd February, 1981. This year an Activity weekend was planned along similar lines.

Over a period of several months, letters were sent to possible contacts in the Faroe Islands, Sweden, Holland, Germany, Canada, Texas (USA), New Zealand and Australia and times, frequencies and call signs exchanged.

The weekend for the 6th and 8th Chingford Guides and 18th Romford Guides (also present last year) was planned in November, 1981, at a Patrol Leaders' and Leaders' meeting. Activities were divided into four main areas in order that Patrols could work together. A typical programme read: Friday: — getting to know you, and a slide and cassette of Our Cabana shown by Brownie Guide Guider Sally Bentley, who visited Our Cabana in the summer of 1980. Sally was the First Aider for the weekend. Saturday: — Service for Thinking Day in Westminster Abbey, radio communication, orienteering, Promise ceremony, fancy dress, marzipan sweets, pancakes from many lands, peg dolls and a camp fire. Sunday: — tracking, computer games and a wide game.

Heather Walker (*Guide Guider 13th Romford*) arranged the catering which included (Friday) French onion soup and bread, (Saturday) cowboy breakfast, ploughmans lunch, Chilli Con Carne, baked potatoes, sweet corn and rice pudding with dried fruit, nuts and caramel, all recipes from South America. (Sunday) South African breakfast (Liz, a Guider from South

Africa, attended the weekend and shared several skills and camp fire songs new to the Guides), lunch: — lasagne from Italy and Pekin pears from China completed a varied menu. The winning fancy dress was won by Americas Patrol (Miss USA).

The time spent with the radio teams (Ian and friends from Northampton joined the Gilwell team) was very interesting and many Guides would have liked more time playing with the computers. The contacts made during the Saturday were mainly with Brazil, Italy and Germany, but there were no pre-arranged contacts. On Sunday, we were lucky to reach our contact in Sweden, and Bill spoke to him for 20 minutes. We could just hear Po in Holland and a telephone call from him confirmed that he could just hear G3WGP (Gilwell) in amongst the busy frequencies, but we were unable to copy. Several VE (Canada) contacts were made but not our friends in the Regina Area who were running a similar weekend in Saskatchewan. Several letters to Audrey Forrest (Regina Area Council) had confirmed their interest in joining us for the weekend.

In spite of little success this year, the interest world-wide has been very encouraging, and we hope to run a similar weekend next Thinking Day.

If any Guider would be interested in how to join next year's efforts, please send a stamped addressed envelope to Mrs Jacqueline Wolstenholme, Gilwell Park, Chingford, London E4 7QW, who will be very happy to share this exciting activity with you.

Let's have Guides — On The Air for Thinking Day, and we could then consider a Badge in Communications.

Camp Near Wilderness

• Katy Middleton •

Last summer I had the opportunity, in the time between school and university, of working for eight weeks as a Counsellor at Camp Near Wilderness, run by the Central New York Council of the Girl Scouts of America.

New York State runs northward from New York City to the Canadian border, Camp Near Wilderness being in the northern half, about fifty miles east of Syracuse, south of Lake Ontario.

My first impressions, hazy from jet lag, were of immense size. I felt that I would never find my way around and the campers and I would be lost together. The site covers a hundred and seventy-nine acres, about half the area of Hyde Park, with the use of North Pond, a mile-wide lake.

There were five camping Units, set in clearings in the trees, each containing eight tents and a washing shelter arranged in a circle, with a picnic table, benches and a cooking shelter at the centre. The campers and counsellors sleep four to a platform tent, with walls and roof made of canvas on a wooden framework and platform base. The Units where the youngest girls sleep have lean-to huts instead. Near the entrance are the buildings used by the whole camp, a kitchen and dining room, a craft hut, nurse's cabin, shower house, the office and a staff house. Just outside the site is a warden's house and along the track some lake-side cabins, otherwise there are very few houses nearer than the town of Parish, about fifteen miles away. All distances are big in America, and this was not considered unusually remote.

My first week was spent training. Each Unit of twenty-eight campers had four counsellors, all students of about my age, under the two Camp Directors. In addition there were a Waterfront Director, two Arts and Crafts specialists, five kitchen and dining room staff, two maintenance men and a secretary, all students, and a qualified nurse. One other counsellor was not American, Maybritt, from Denmark. Most counsellors moved to different Units at the end of a week, in order to widen their experience.

In each Unit the campers slept with their friends, but were divided for some daytime activities into three Patrols, with a counsellor. Every Unit was different, for example Mariner, closest to the lake, concentrated on aquatics, swimming, rowing, canoeing and sailing. Another Unit, Forester, was for first-time campers from seven to nine years old. Except in Mariner, very few of the girls were older than twelve, and every week there were some who were not Girl Scouts.

Campers arrived on Sunday afternoon, greeted by counsellors wearing our camp uniform of green T-shirts with the Camp Near Wilderness symbol, green or blue shorts or blue trousers.



Chris Sheridan

The day began at 7.00 am, ready for 8.00 am breakfast, and then came kapers (camp chores). All the wood needed for cooking and the campfire was picked up under the trees on the site. Each latrine, disinfected every day, was a hole, deep enough to last for several years, inside a wooden cubicle and covered by a toilet with a lid. Unofficially, the youngest campers went inside in twos, one to hold the lid open for the other, in case it slammed shut. The last Patrol's kaper was to be hoppers, or waitresses, at the meals eaten in the camp dining room. However, every Patrol was expected to eat out, that is to cook for themselves, at least three times during the week — the experienced campers, on the Primitive weeks in Twin Oaks Unit, prepared almost all their own meals.

After kapers came activities. The campers were organised on a 'buddy' system, that is whenever they were off the Unit, especially in or on the water and at night, each girl must be with a buddy. This was a safety precaution. For example, two blows on the whistle during free swimming time meant that linked hands should rise in the air. If one hand was alone, its owner knew the name of the missing girl.

Lunch was at 12.30 pm, but the counsellors had to allow for the walk to the dining room, twenty-five minutes from Mariner, the Unit furthest away. 'Get in a buddy line, time for lunch,' we called. When we reached the dining room we sat on the logs outside and sang until it was time, including a practice of the Grace. Although I took a book of English Guide songs I did not use it, and have come home with a repertoire of American Girl Scout songs.

After lunch we went straight on with activities. As well as aquatics, arts and crafts, drama and music we used material prepared by OBIS, Outdoor Biological Instructional Strategies,

which taught the campers about wild life through games; in the waterfront area we used H2OBIS. The campers very seldom passed a whole Badge at camp, but all went home with a number of clauses completed.

We did as much backwoods craft as possible. Nearly every day we cooked out of doors, sometimes without pans, for example hot dogs, bacon or eggs on a green stick, or eggs or even bacon and egg in a paper bag. In the Unit kitchen shelter we built reflector ovens and used the Dutch ovens.

Rest hour, known as Me-time, came at the end of the afternoon, at 4.30 pm, and then we had dinner, at 6.00 pm, which was a hot meal. It began to get dark soon after 8 o'clock and by 9 it was complete, in a way unknown in England, because the electricity stopped at the kitchen and the nearest street lights were fifteen miles away. In each Unit a kerosene lantern was hung on the counsellors' tent, and others on each set of latrines, but without a flashlight it was easy to wander off the trail and be lost among the trees.

We shared the site with American wild life. When we ate outdoors numbers of chipmunks always came to find the scraps, like small squirrels in an English park. We saw skunks, which are as big as cats, fairly frequently, and always tried to scare them away without frightening them. Even larger was a raccoon that came during one night and overturned a dustbin. We all slept under mosquito nets, to keep off deer flies as well as mosquitoes. Also there were bats, mice, salamanders, a few harmless snakes, and shoals of fish in the lake. There were fewer birds than in England, and I learnt that cuckoos are unknown in America, in fact most campers thought they were imaginary.

As a general counsellor in charge of ten children my job was to organise their activities and come to know them as individuals. I was one of them, but a little more responsible, someone to turn to at 2.00 am, when homesickness begins. I was there to let them do things impossible at home, not just night walks and star gazing, twilight swimming, outdoor cooking and fire building, but also splashing in puddles, water fights, painting each other with washable pens and eating jungle breakfast. I tried to enlarge their horizons with new crafts and foods and to tell them about England.

After seven different groups of campers it was September and time to go home. It was an experience I shall always remember, a glimpse of the American way of life and some knowledge of Girl Scouting. I made good friends among the counsellors, and have arranged American pen friends for Guides in my own Company, lasting mementoes of my eight happy weeks at Camp Near Wilderness.



COMING EVENTS

27th Bradford (B.G.G.S.) 60th Birthday celebrations, July 12th. For details contact Mike Marks, 11kley 608665.

WANTED

Wanted, Old Promise Badges: 1 Silver, 1 Gold. Mrs Crawford, 220 Squirrels Lane, London N3 2QT. Tel: 01-348 0563.

FOR SALE

Ridge Tents. New, direct from manufacturer, 11ft x 7ft x 8ft 6in high. Walls 3ft. Zip door. Mud walls. £82. Also 9ft version of above tent, £101. Top quality materials 7 1/2 oz. Toilet Tent, £19.95; Wash Tent, £24.95. For brochure, telephone 01-445 8253.

Screen Printed T-Shirts, Sweatshirts, top quality all cotton, fibre mix, free design service. 10 garments minimum. Payment after delivery. Write, phone Tradesigns, 12 Rockville Avenue, Anchorage, Blackpool (0253) 860399.

Printed Yellow Dusters for fund raising (minimum 50). Stock designs illustrating Birds, Horses, Musical Instruments, etc., can incorporate your wording. Details Geo. O'Brien Baker Ltd, (Dept 200), 4-6 Tapster Street, Barnet, Herts. Tel: 01-449 2424.

Attention Brownie/Guides! Totems (Toadstools) available. Red tops with white spots in fibreglass, 18ins high with detachable tops £15.60 each plus £1.70 p&p, cash with order. From: T G Higgins, Spread Eagle, Rishworth, Sowerby Bridge, West Yorkshire. Tel: 0422-823655.

Draw Ticket Printing a speciality. Write for samples, price list and discount offer to: Walden, 52 Newark Lane, Ripley, Surrey.

Make your own equipment, waterproof clothing, fibrepile

wear sweatshirts, quilted clothing, sleeping bags, carry-all bags. Widest range. Prompt service. See samples. Pennine Outdoor, Holmbridge, Huddersfield.

Towels direct from manufacturer, sheets, pillowcases etc. Send stamped addressed envelope for price list. East Lancashire Towel Company, Park Mill, Barrowford, Nelson, Lancashire, BB9 6HJ.

At least 200% Profit on your outlay with our quick selling range of imprinted pens and other easy sellers. 12 1/2p stamp for catalogue and sample. J A & V Jeffers, Aston Clinton, Bucks. (Tel: Aylesbury 631345).

Advertising Pencils, Ball Pens, Combs, Diaries, etc, gold-stamped Company name. Raise funds quickly, easily. Bran Tub Toys, details: Northern Novelties, GG, Spencer House, 26/28 Spring Gardens, Bradford BD1 3HE.

Sale or Return. Offering 100% profit on cost. Costume Jewellery parcels sent post-free without obligation. Ideal fund raisers. Details: Caritas Jewellery, 356 Uxbridge Road, London W12 7LL.

Embroidered washable anorak badges "I've been on Pack Holiday" £20.00. "Camping is fun O.K." £23.00. "Guiding is Great" £29.00. Brownie £17.00. Prices per hundred. Any four plus 10 all different smaller overlocked badges for £2.00. Printed felt on cotton polyester blanket badges your design for camp sites, annual camps, Jubilees, Rallies. Also printed pennants. Embroidered badges for schools, clubs, organisations. Send stamped addressed envelope and sketch with details size, colours, quantity for quotation. No price lists. Russell King, Eastdown Mill, Eastdown, Barnstaple, Devon. (Telephone Combe Martin 3629.)

Fundraising? Sell Seeds-By-Size, 97 Green End Road, Hemel Hempstead, Hertfordshire.

D.I.Y. saves money. Make and repair your equipment on ordinary sewing machine. Free sewing instructions given. Canvases, Waterproof Materials, Zips, Poles, and accessories. See for samples. Barnes (GG) Hawksfold, Fernhurst, Haslemere, Surrey. Phone Haslemere 53332. Established 1928.

GOVT. SURPLUS!!
RACASAN
 PORTABLE CHEMICAL TOILET

ONLY £7.50
 Carriage £2.50

Direct from Ministry of Health, Brand New and in original carton.

Made in Holland! Good, light, portable, easy to use! Safe, hygienic, odourless, germ free. Completely portable for plumbing. Strong galvanized 5 gal. container. Easy carry handle. Comfortable seat and no cover. Perfect for use in rooms, caravans, boats, camping, building sites, etc. Waste water is easily and clearly disposed of - simply rinse away! Use normal chemical fluid obtainable everywhere. Size 18 1/2" x 15 1/2" x 14 1/2". Overall approx. weight approx. 11 lbs.

TOILET TENT
Only £14.50

p/p £2.50

Finished in top quality waterproofed, rot proof, tear resistant material. 20" x 20" x 6 1/2" high at front. 10" at back. Vent at rear. With sectional metal poles. Inside 60 litres capacity.

H.C. BRIGGS (Camp. Equip.) LTD
 (Dept. G) 88 Forest Road,
 Walthamstow, London, E17 6JH
 Tel: 01-520 2705

Badges. Badges. Badges! — embroidered, printed, all kinds — produced to YOUR design. Send rough sketch for quotation to the friendly specialists: Webb-Tolley Ltd., 26a High Street, Halesowen, West Midlands.

CAMPING/HOLIDAYS

Cruise the Kennet & Avon Navigation. 12-berth skippered or 6-berth self-steer narrowboat. Weekend, short or long period booking. Brochure: Bristol Narrowboats, 4 Whitland Avenue, Bristol BS13 9QQ. Tel: 0272 641075.

Lake District. Bed/Breakfast. Light supper. £5.50 per night. £70 per week per couple. Quiet surroundings yet near village. August-September first two weeks October still available. Hayes, Yewbarrow, West Crescent, Windermere 09662 3789.

Canterbury. 10 minutes City Centre. 5 bedded Ground Floor Flat. Car Space. Touring Centre Kent/Sussex. Short/Long Let. See Young, 1 St Augustine's Road, Canterbury.

Ilfracombe. Relaxing, restful breaks. Own quiet secluded grounds, next to National Trust, situated overlooking sea and town. Excellent varied menu. Residents licensed bar. Central heating. Car parking. BB & EM £77-£91 inclusive of VAT. Westwell Hall, Torrs Park. (0271 62792).

Cornwall. Georgian Farmhouse. Close Coast/Helford River/Falmouth. Home of Guider providing Bed/Breakfast/Evening Meal. Children and Pets welcome. Mawnan Smith 250 260.

Alderney, the unsophisticated, unspoilt Channel Island. Small Guest House, owner operated, offers escape to tranquility and friendship. Farm Court, Alderney, CI 2075.

'Our Chalet', for details of low cost inclusive arrangements to the International Guide Centre at Adelboden, contact the official agents, YHA Travel, 14 Southampton Street, London WC2E 7HY. 01-836 8541.

Holiday House — near Southport. Equipped, sleeps 21. Suit Brownies, Guides, Rangers, handicapped. See foot-cap to Mrs Chester, 202 Fleetwood Road, Southport, Merseyside.

Canal Cruising aboard our fleet of skippered narrowboats. Economy camping or luxury converted 12-berth craft, all with comfortable bunks, catering saucepans, crockery, cutlery, etc. Luxury boats have fridges, showers, flush toilets and central heating. Warwickshire Fly Boat Co, 149 Hollyfast Road, Coventry, 0203 33 4228, or our base on Southam 2093.

Come camping on the canals — Charter a traditional narrow boat, fully fitted to accommodate 12 people in camping standard; 24 per pair of boats, with first-class skippers to make everyone's holiday really enjoyable. Or self-drive a luxury 4- or 6-berth. Full details from: Foxton Boat Services Ltd, Bottom Lock, Foxton, Market Harborough, Leicestershire. Tel: Kibworth 2285.

Bed and Breakfast in Guider's home between Norwich and Broads. Three double bedrooms, ample parking. Mrs June Craft, Heathfield, Norwich Road, Salhouse, Norwich 720947.

Alpheton Youth Hostel opens 2nd July. 16 beds, members' kitchen, camping. Enquiries: Warden, Monks' Croft, Alpheton, Sudbury, Suffolk.



EDUCATIONAL

Write and Sell Children's stories. Mail tuition. Sales assistance. Free booklet: Children's Features (G) 5/9 Bexley Square, Salford, Manchester M3 6DB.

Handchime Bases. Essentially similar to handbells in use. Handchimes are ideal for 10+ players in 1 hr sessions. We will run bases free of charge at training days, jamborees etc or provide instruments, music and training to enable you to do so (subject to reasonable conditions.) Enquiries in good time please to Toby Henz-Smith, The Handchime Company, FREEPOST, Exeter EX1 1AZ or call 0392-37883 at any time.

INSURANCE

Special camping equipment insurance now available for Guide Companies. An exclusive low-cost insurance plan designed to cover camping equipment all year round. This policy will enable you to have complete protection against loss or damage, including storm damage, for your camping equipment from as little as £6.00. Telephone or write for proposal form to: Fennell Turner and Taylor Ltd, Pinners Hall, Austin Friars, London EC2 2HF. Tel: 01-638 0721.

Insurance. Reduced motor premiums for Guiders, Scouters, Civil Servants, Advanced Motorists, Professional advice for all classes of insurance. We welcome enquiries for Group vehicles and premises, your home, life, mortgage, pension and investment requirements. Morden Park Insurance Brokers Ltd, 12 Colman Parade, Southbury Road, Enfield EN1 1YA. Tel: 01-366 1312/3.

PATROL TENTS from stock

AT BARGAIN PRICES

We offer from stock, at very keen prices, Patrol Tents by "Blacks of Greenock", also Marquees in selected sizes. We also Hire Patrol Tents, and as we replace our Hire Stock each year, can offer ex-hire tents at very low prices. Toilet tents also available in 2 models of 1981 design.

EXAMPLES

STANDARD TOILET TENT with metal frame	our price £14.95
DELUXE TOILET TENT with metal frame	our price £18.95
EX-HIRE STORMHAVEN 12ft Patrol Tent	£175 to £188.50
NEW STORMHAVEN 12ft Patrol Tent Export model with extra heavy roof, colour blue	our price £230.00
ICELANDIC 12ft Patrol Tent "slightly imperfect"	£225.00
MARQUEE Standard 16ft x 16ft complete	£885.00
CARRIAGE extra at cost	

Please call or phone for further details offered subject to being unsold prior

BLACKS CAMP HIRE

(A Member of the Black & Edgington P.L.C. Group)

146/148, THE GROVE, STRATFORD, LONDON
LONDON E15
Tel: 01-519 1313

The Girl Guides Association takes no responsibility for statements made in any advertisements here or elsewhere in the magazine, or for any subsequent correspondence in connection therewith. The right is also reserved to refuse any advertisement not considered suitable. Advertisements for the sale of secondhand clothing cannot be accepted (except uniforms). Uniforms for sale should not be sent to CHQ. Advertisers receive communications from applicants. **ALL COPY MUST BE RECEIVED BY 17th OF THE SECOND MONTH PRECEDING PUBLICATION (eg 17th JULY FOR THE SEPTEMBER ISSUE). ALL CHARGES 20p per word; BOX NUMBER £1.00 extra. PLEASE SEND REMITTANCE WITH ADVERTISEMENT TO: Miss A M Martin, Advertisement Manager, The Girl Guides Association, 17/19 Buckingham Palace Road, London SW1W 0PT. 10% discount for series of 12. To reply to a Box Number, address your envelope to Box Number concerned c/o GUIDER. Please enclose SAE when replying to Box Numbers.**

Please note: all advertisements for Venture Scouts/Ranger events published in GUIDER must be accompanied by the signature of the Guide County Commissioner, and all advertisements for camp sites, Pack Holiday Houses and Activity Centres **MUST HAVE THE SIGNATURE OF THE COUNTY CAMP ADVISER**

Would Readers please note that all classified advertisements must be submitted on the official form — SEE PAGE 39 OF THIS ISSUE.

QUALITY OUTDOOR EQUIPMENT AT REASONABLE PRICES PLUS DISCOUNTS FOR GUIDE UNITS

Write for Mail Order Catalogue and Bargains news-sheet.
White and Bishop Ltd., 13/17 Bridge Street, Northampton.
Telephone: (0604) 35929.
50 years of service and reliability

Tent Cloth & Zips

Manufacturer's Bargains: 36" MATERIAL Blue, Orange £1.75 yd. pp 15p per yd. TENT ZIPS Twin puller 30p ft. any length, pp 15p each, 50" PVC GROUND SHEETING or Mudwalling £1.95 per yd. pp 15p per yd. 60" DOUBLE PROOFED NYLON various colours £1.95 yd. pp 15p. MANY, MANY MATERIALS IN STOCK. Clear PVC Window Netting, Tape, Nylon-backed PVC, Polyester, eyelets, etc. Cash with order or S.A.E. for free cloth samples.

TARLINGS (Dept. GU) 8 Milton Street, Waltham Abbey, Essex.

HAVE YOU RENEWED YOUR SUBSCRIPTION FOR GUIDER YET? For full details contact: Subscriptions, Periodicals Department, The Girl Guides Association, 17/19 Buckingham Palace Road, London SW1W 0PT.

HOME & AWAY

Free Winnie The Pooh Wash 'n' Wipe 'Memory Jogger' Board From Gale's Honey

There's no excuse to forget anything with this Winnie the Pooh 'Memory Jogger' Board, which is being offered free of charge in exchange for two 1lb or four 1/2lb labels from Gale's Honey, plus 32p postage and packaging.

The 'wash 'n' wipe' board comes complete with its own special pen and adhesive pads to stick it on to the wall.

The offer — on both set and clear honey — is in the shops now, and will be available while stocks last.



Look Out For Overhead Lines

CB and amateur radio enthusiasts are warned not to endanger their own lives and the lives of others by putting up aerials too near overhead lines.

Tall 'whip' aerials present a special hazard, but extreme care should be taken with all aerials. Safety clearances from electrical equipment, especially overhead lines, vary considerably and depend on such factors as the voltage of the equipment, ground contours, aerial height, wind strength and air temperature. An aerial does not even have to touch a power line to conduct electricity, as it can, through a spark, jump gaps.

If an aerial is to be erected within a distance of three times the overall aerial height from overhead electrical equipment, there is potential danger,

so contact the Electricity Board for their free advice if there is any doubt. Also remember that any permanently sited aerial of more than three metres will require planning permission from the local authority.

It is not only aerials that can be dangerous if used too close to overhead power lines. Aluminium ladders, tent poles and sailing dinghy masts, kites, line-controlled model aeroplanes and fishing rods and lines all need careful handling to avoid a tragic accident.

The Mill At Sonning

On July 22nd the Mill at Sonning, a 200-seat theatre restaurant, will open with a production of *Murder, Dear Watson*, a new Sherlock Holmes comedy thriller by actor John Kane, directed by Peter Egan. The Mill will provide Sonning with its first theatre and Britain with its first dinner theatre, and it will make a notable addition to the theatres in the area, which include the Watermill at Newbury, Windsor's Theatre Royal and the Hexagon at Reading.

Artistic director Peter Egan, who recently starred with Richard Briers in *Arms and the Man* at the Lyric Theatre, London, and the Administrator Robert Selbie are planning this first season of six productions, which will include at least three plays new to this country. Each play will run for four weeks, with leading theatre and television names in the casts. Once established, it is intended that the theatre will be open for ten months of the year, from March to December. A series of Sunday evening celebrity concerts is also planned.

At about £16 a head, the price of the ticket will include a three-course dinner in the Mill restaurant after the show. A Theatre Society is being formed, membership of which will offer priority booking facilities and access to other privileges.

The theatre, which receives no public subsidy, is owned by a local, private, building company, and has been developed and designed by two of the directors, Tim and Frank Richards.

Parts of the Mill, which is on the border of Berkshire and Oxfordshire, date from the eighteenth century, and there is evidence that there has been a mill on the site as far back as the Domesday Book. The conversion has been carried out to the highest specifications; the most up-to-date fire precautions have been installed to meet the latest safety regulations.

In addition to the theatre, with its thrust stage and sharply raked seating arranged in a semi-circle, there are

seven dressing rooms, green room, a scenery store and workshops, residential accommodation for the actors, ample restaurant, bar and kitchen space, and easy, free car parking. The Mill is built on a quiet backwater overlooking the Thames, and is in a perfect and idyllic setting. Please phone Reading 696039.



1982 Student & Youth Travel Brochure

NUS Marketing and the National Association of Student Travel Offices annually produce a free travel brochure for students and young people.

This year the range of the brochure has been extended to include more essential information useful to students and young travellers — including details about insurance, charter flights and student fares on coaches, trains and ferries.

There is also important information about the International Student Identity Card, and many useful addresses and contacts.

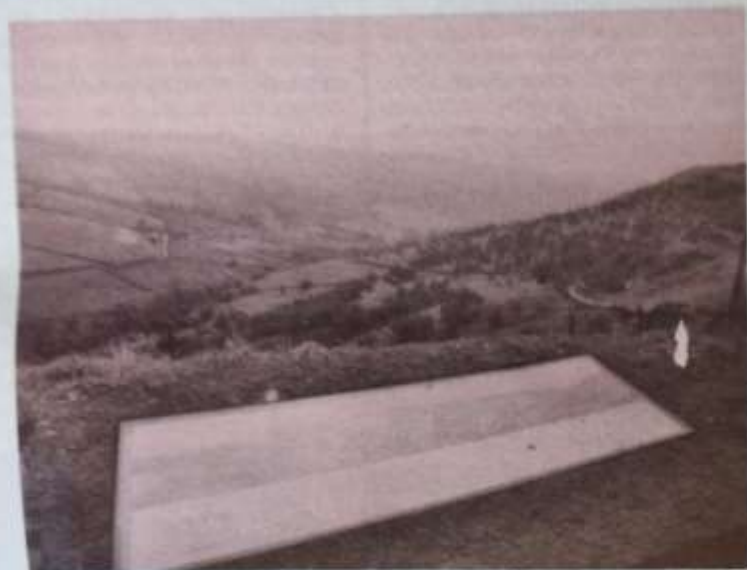
The handbook includes detailed information on over 40 countries most likely to be visited, and is available free from NUS Marketing, PO Box 190, London WC1E 7HR (a large sae should be enclosed).

For further information contact: John Faircloth, NUS Marketing, University of London Union, Malet Street, London WC1.

New Travel Scheme Ideal For Ramblers 'Cyclists

Ramblers, cyclists and possibly climbers in the Greater Manchester area will be pleased to learn of a new

HOME & AWAY



travel scheme just started which will be known as the 'Peak Wayfarer'.

The new scheme allows people from within GMC to travel to and from any area of the Peak District quickly and cheaply on a day return basis using all forms of public transport.

Peak Wayfarer is ideally suited to ramblers of all types. For backpackers there is, amongst other strenuous walks, the Gritstone Trail, and for people who just want a gentle stroll that can be completed in an afternoon there are Wayfarer Walks. These are pre-planned nature trails varying in length from one to five miles. They are described in leaflets, which tell you which buses to catch, where to start, how long the walk will take, etc.

Co-ordinated by Greater Manchester Transport, the Peak Wayfarer ticket is valid on most scheduled services offered by GMT, British Rail, National Bus Company subsidiaries Crosville, Trent and East Midlands, and independent operator Silver Service. The ticket is designed to be self-dating — this allows travellers to buy a ticket when they choose, and validate it themselves on their selected day of travel. For further information, contact: Mr Les Lumisdon, Greater Manchester Transport, Devonshire Street North, Ardwick, Manchester.

Now that situation has changed, with the introduction of a unique product which blends the advantages of fluorescent colours with built-in miniature reflectors. This material is sold under the trade name of Flecto and consists of broad lengths of tape in which four circular reflective lenses have been incorporated — or alternatively Flecto may be obtained in packs consisting of two triangles and two circles, each with its own individual reflector.

The base colour of Flecto is available in either 'dayglo' yellow or 'dayglo' red — each highly visible even under dull lighting conditions. The yellow version includes white reflectors, the red Flecto has red reflectors, thus may be used at both the front or sides and rear of vehicles.

The dual purpose nature of Flecto, which has a self-adhesive backing, makes it ideal for applying to clothing for pedestrians, while many parents will appreciate the safety it can provide for their children when applied to satchels or other items of hand luggage.

Cyclists and motorcyclists can apply it to the rear of their machines, while it is also equally suitable for illuminating parked vehicles or protecting road works and builders' skips. Price is 80p per pack.

There are five of the new Flymo GME electric cultivators to be won; these manoeuvrable machines make light work of digging, weeding, ridging and trenching.

There are also over 200,000 runners-up prizes of Fisons garden products and vouchers worth 10p off a pack of Fisons Leaf Shine Wipes.

Lucky tickets are given free at most good garden centres stocking Liquinure or Tomorite. There are no coupons to fill in or slogans to write — just open the envelope and you'll see at once whether you've won!

Runners-up will be able to collect their prizes 'on the spot' from the garden centre, whilst winners of Flymo cultivators will be presented with their prize within 28 days of Fisons receiving their winning ticket.

Using Their Feel

Parents complain nowadays about being unpaid taxi drivers, but the YHA still believes that young people can walk. Holiday tours with a leader are arranged in areas like the Isle of Wight, the Yorkshire Dales, the South Devon coasts, for £79 a week all in. For boys and girls aged 11 to 17 all the dates are in July and August. Distances are short enough to allow plenty of time for sight-seeing and picnics.

Over 16 walkers can pick their own pace because all tours are graded. Bearing in mind that rucksacks have to be carried, it is obviously not a good idea to opt for the Cairngorms and Grampians if you normally just stroll down to the bus stop. For fine scenery without tortured leg muscles, a tour of Lakeland in autumn offers low level walks of 10 to 12 miles a day. Even easier is a tour in the Malvern Hills and Wye Valley, with a stay at 12th century St Briavel's Castle Hostel thrown in. For those who would like to work up to tougher tours, there are courses in hillcraft based on Edale Hostel in the Derbyshire Peak District. At first the walks are gentle, but they become more demanding as the week goes on. Tuition outdoors and during the evening covers such subjects as equipment and clothing, navigation and route planning, mountain weather, basic first aid and survival. Those who have the nerve can try their hands — and feet — at elementary rock climbing.

Hillcraft courses at Edale cost £122 a week for adults, and there are two special weeks in August when families are welcome. Full details from YHA Adventure Holidays, Trevelyan House, St Albans, Herts AL1 2DY. Tel St Albans 55215.

Bright Idea

While many organisations have been exhorting various road users — especially children, cyclists and motorcyclists — to wear bright clothing to increase their conspicuousness during periods of poor visibility, there have been very few materials available that were equally effective during both daylight and at night time.

Fisons Gardening Spectacular

Fancy a more spectacular garden this summer? One way to achieve it is by giving your plants regular liquid feeds.

And people choosing Fisons Liquinure and Tomorite this season may 'get lucky' on the Fisons £20,000 Garden Spectacular.

ON · WHAT'S ON · WHAT'S ON · WHAT

Edinburgh International Festival

For anyone lucky enough to be in Edinburgh between 22nd August and 11th September, 1982, a visit to the Edinburgh Festival will surely prove a must.

This year the festival is celebrating its 36th year, and the highlights of the programme will include eight orchestras, four opera companies, five theatre companies and two major art exhibitions (British Watercolours and Circles of the World).

1982 is designated 'Italian Year', and the Italian influence on the festival will be seen in the companies, artists, writers and composers represented. Three centuries of Italian theatrical tradition will be seen: the seventeenth century in the *Commedia dell'Arte* antics of American Repertory Theatre, the eighteenth century in the *Metastasio*, *L'Olimpiade* and the nineteenth century in the re-created production of the *Colla Marionettes*.

The festival opens with Claudio Abbado conducting the London Symphony Orchestra in two performances of Verdi's *Requiem* and a new production by the Dresden State Opera of *Ariadne auf Naxos*.

The Welsh National Opera makes its first ever appearance at the festival with Handel's *Tamburlaine* and La Piccola Scala, Milan, with orchestra and chorus of The Scala, Milan will perform *La Pietra del Paragone* by Rossini. It is interesting that *La Pietra* has only been performed twice in the last half-century.

Scottish Opera will present the first-ever full-length Puccini opera in the history of the festival — *Manon Lescaut*. This will be conducted by Sir Alexander Gibson.

Concerts also include performances by the Philadelphia Orchestra, The Dresden Staatskapelle; the Scottish Chamber Orchestra; the Philharmonia Orchestra and the London Philharmonic Orchestra conducted by Sir Georg Solti

in Mahler's *Symphony No. 3*. Sir Georg last appeared at the Festival in 1978.

Chamber Concerts will include the Medici Quartet; The Monteverdi Choir; The London Early Music Group; The Scottish Baroque Ensemble; I Musici and the Nash Ensemble. The New Music Group of Scotland will present two world premieres.

Recitals will be given, by among others, Julian Bream, Elisabeth Söderström, Radu Lupu and Jessye Norman.

Dance this year is represented by the Geneva Opera Ballet, which will perform *Tango*. A spectacular two-hour fantasy on the street life of South America set to the rhythm of the tango. The remarkable Sankai Juku of Japan will dance *Kintan Shonen* (The Dream of the Boy with the Shaven Head). This company received a 15 minute standing ovation in Paris earlier this year.

Theatre is represented by the Theatre Music Theatre with *The Marriage* (Mussorgsky/Ustinov); the American Repertory Theatre; the Cooperativa Teatromusica, Rome; the Akroama, Sardinia and the Compagnia Marionettistica, Milan.

The festival will also include one-man shows, street events and ten associated exhibitions.

The Military Tattoo takes place on the Castle Esplanade, 20th August-11th September, with pipes and drums opening the 1982 Tattoo in time-honoured fashion.

Fireworks — a special open-air festival concert with music and a firework display from the castle will be given by The Scottish Chamber Orchestra.

For further information, including festival souvenirs, details of ticket vouchers, postal, personal and credit card bookings please apply to: Edinburgh Festival Society Ltd, 21 Market Street, Edinburgh EH1 1BW.

AMM

British Stained Glass To Shine At Chartres

A major exhibition of British stained glass, held at the recently-opened Centre International du Vitrail at Chartres, France, until 31st October 1982 will give British Glass Painters a chance to dazzle the world.

Possibly the first exhibition of British glass held outside the UK, it will consist of glass prepared specially for the event, important work of the last 30 years (some borrowed from collections) and promising work from students of Art Colleges. Pieces chosen include work by John Piper, Lawrence Lee, Alfred Fisher, Patrick Reyntjens, Brian Clarke, Carl Edwards and his daughter Caroline Benyon, Alan Younger, Anthony Holloway, David Snelling, Caroline Swash and a selection by students at Swansea College of Art.

The British Society of Master Glass-Painters are responsible for the organisation of the exhibition until it reaches France, where erection and presentation will be in the hands of the French authorities, under the guidance of Mme Françoise Perrot, Directrice of the Centre du Vitrail, who, with Lawrence Lee and Michael Archer (Assistant Keeper of Ceramics and Glass at the V & A) made the final selection of 30 pieces at Glaziers' Hall on 15th April.

The exhibition at Chartres will be open all day, 10.00 am to 6.00 pm daily except Tuesday. Admission: 5 francs. Sponsors of this exciting British Exhibition are the Crafts Council, The British Council, The Worshipful Company of Glaziers and the glass suppliers, Hetleys and the manufacturers, Hartley Wood & Company.



British Museum PR Office

Vasna: Inside An Indian Village

One of the two British Museum exhibitions coinciding with the Festival of India, 'Vasna: Inside an Indian Village' is at the Museum of Mankind.

Over 80% of all Indians live in villages, and their way of life preserves traditions which reach back hundreds and sometimes thousands of years. It is against this remarkable background of cultural continuity that great empires, artistic styles and systems of thought have taken shape in the course of Indian history. It is therefore highly appropriate that the wide-ranging exhibitions of Indian art, taking place elsewhere during the Festival of India, should be complemented by an exhibition at Burlington Gardens devoted to contemporary village life.

Vasna is an exhibition which conveys to the lay visitor the authentic atmosphere of an Indian village, typical of one small part of that vast sub-continent. Based on a group of settlements about 20 miles from the great, bustling textile city of Ahmedabad, in Gujarat State, the exhibition focuses on the ordinary rather than the unrepresentative aspects of village life. Together with carefully modelled reconstructions, a comprehen-

▼ Kintan Shonen

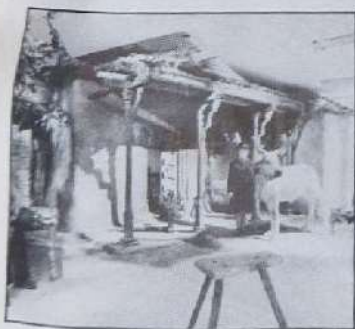


ON · WHAT'S ON · WHAT'S ON · WHAT

sive array of local artefacts, all recently acquired in Gujarat, are used to present a weaver's house, a potter's working area, a scene with a small, white-stucco temple, and a spectacular cart of brass-bound wood, yoked to a pair of bullocks.

No attempt is made in the selection or presentation of artefacts to enhance artificially their impact on the visitor; the aim is simply to offer a sequence of authentic scenes of local life. As in most villages, modern objects produced in factories or semi-mechanised workshops may be found alongside other items of traditional design. The village is not an art gallery; it reflects the shifting tastes and opportunities of its inhabitants in the routine of daily life. Yet in terms of aesthetic and functional quality, the finest objects on display in the exhibition speak for themselves: the deeply-carved, iron-studded front door of the weaver's house; the great ceramic *kothi* jars, shoulder high and brimful with grain; the lively embroidered *toran*, suspended above a door to welcome the auspicious visitor and repel evil; and the bullock-cart itself, probably the only example of its kind outside India. The cart not only represents a special form of transport now in decline, but also symbolises the ancient way of life which is adapting to the new conditions of India today.

India: Past Into Present is published by British Museum Publications, price £2.95, from the Museum bookstalls, £5.00 from bookshops. Admission to the exhibition is free.



214th Summer Exhibition At The Royal Academy

Each year the artists who serve on the Council of the Royal Academy constitute the Selection and Hanging Committee for the Summer Exhibition. This year they were faced with the most daunting task for 25 years, as 5,365 artists brought their works of art to Burlington House, the highest number since the Handling Fee was introduced in 1957 and over five hundred more than last year. 12,698 paintings, drawings, prints, sculptures and architectural designs

were seen by the Committee and of these 1,531 will be included in the 214th Summer Exhibition.

Well-known artists, young painters, students and people who have never had the opportunity to exhibit their work before are represented. Elizabeth Lalou-schek and Harriet Lasalles are among the promising young artists whose works hang alongside the more regular exhibitors and, no doubt, the small painting by Spike Milligan in the Large South Room will catch the attention of the public.

Though the interest and quality of work is retain throughout the galleries, each has its own, specific character. In Gallery VII the paintings are also hung from floor to ceiling but here they create a disturbing atmosphere, many of them depicting strange figures and supernatural happenings, while the adjacent room, filled with prints, has a quieter, cooler mood. From time to time, particular themes emerge in the exhibition — there is a certain preponderance of wintry scenes amongst the landscapes and there are several Venetian pictures including an evocative painting of St Mark's by Ken Howard.

The architectural exhibits, which are shown in a single gallery towards the end of the exhibition, include proposals for sites which have recently been in the public eye. Beyond this, in a new Gallery XI, is a room of fine paintings to close the exhibition. The former Gallery XI has been transformed by Leonard Manasseh, RA, into the new and permanent home for the Royal Academy Shop. So, while visitors will discern many changes in the selection and presentation of the Summer Exhibition in 1982, they will also find evidence of other more temporal changes taking place within the Academy at the same time. The show runs until 15th August and the hours are 10 am - 6 pm daily. **Admission:** £2; students, OAPs, groups of over 10, registered unemployed and registered disabled, and until 1.45 pm on Sundays £1.35.

Paris Opera Ballet To Visit At Covent Garden

Royal Opera House is delighted to announce that *Le Ballet De L'Opera De Paris* is to visit Covent Garden for a two-week engagement commencing 27th July this year. The season is only the second this famous company, whose personal history forms a basic chapter in the universal history of dance, has paid to the Opera House; the first being in 1954.

Le Ballet De L'Opera De Paris, under the artistic direction of Rosella Hightower, will present two full-length works during the season. The opening ballet, which will be given six performances in the first week, will be *La Sylphide*, choreographed by Pierre Lacotte after Philippe Taglioni, with music by Jean Schneitzhoeffer. The décor is by Marie-Claire Musson after Cicari, and the

costumes by Michel Fresney after Eugène Lauri. This version is of great interest to ballet lovers, since its success launched the Romantic era in ballet after its première at the Paris Opera in 1832, and led to the Bournonville production which has been so much admired in London.

Le Songe d'une Nuit d'Eté, choreographed by John Neumeier, will be seen in the second week. Neumeier's balletic treatment of Shakespeare's play was first choreographed for his company in Hamburg in 1974, and only enters the repertoire of the Paris Opera Ballet in May. The ballet has music by Felix Mendelssohn-Bartholdy and Georgiji Ligeti, and the décor and costumes are by Jürgen Rose.

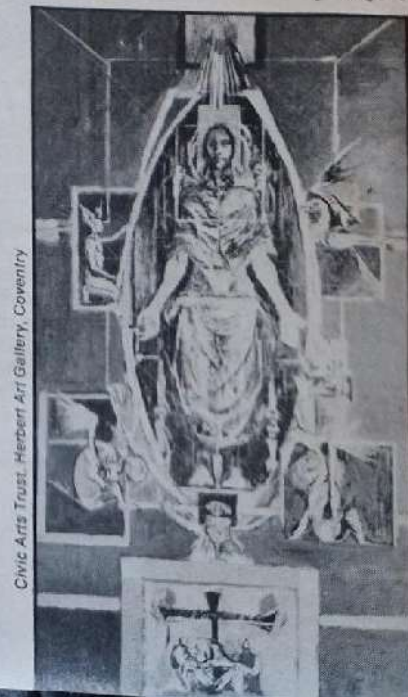
The performance times will be: evenings at 7.30 pm and matinées each Saturday at 2.00 pm. For further information, please contact: 01-240 1200.

Graham Sutherland

There's still time to rush along to the Tate Gallery (Millbank, London SW1) to see the largest ever exhibition of work by Graham Sutherland, which is scheduled to close on 4th July. In addition to a delightful series of paintings for London Transport posters in the 1930s, you can see some of Sutherland's paintings as a war artist, his many works on the Crucifixion theme, and the cartoons for his great tapestry commissioned for Coventry Cathedral. Surprising, to those whose idea of a Sutherland work is spiky and angular, is the delicacy of his nature drawings, particularly of insects. There is a whole section devoted to Pembroke-shire themes. Admission to the Tate Gallery is, of course, free, but the charge for this special exhibition is £1, or 50p for children, pensioners and unemployed.

JVR

► page 50



Civic Arts Trust, Herbert Art Gallery, Coventry

ON · WHAT'S ON · WHAT'S ON · WHAT'S ON · WHAT'S ON

► Page 49

Beach club idea Blossoms Again

Beach clubs, which were run on a selection of Britain's major resort beaches for the first time last year, will be extended this summer. Organised free entertainment for children is the name of the game. The sponsors, The Outspan Organisation, are financing Outspanners Beach Clubs at Scarborough, Margate, Weymouth, Rhyl, Southport, Clacton and Swansea. Last year's clubs, which hitherto exclusively had been a feature of Continental holidays — notably the Mickey clubs on French beaches — were instantly successful with British children, not to mention their grateful parents.

Cricket, volleyball, quoits, rounders, football and sandcastle building are typical of the fun and games organised by qualified instructors from brightly-coloured permanent sites on the most popular parts of the beach. Badges, hats and oranges are among the rewards for participants. The seven beach clubs will operate for six weeks from mid-July to the end of August. Usual opening times are from 10.00 am until 4.30 pm, six or seven days a week. Club membership is free to 5-16-year-old children. The Outspan Organisation pays for the majority of the club running costs, while the operation of the facilities is supervised by the respective local authorities. For further information please contact: **Roger Jupe or David James, Richmond Towers Public Relations Limited, 26 Fitzroy Square, London W1P 6BT. Tel: 01-388 7421.**

Poacher '82

An opportunity to obtain a special postal cover issued by the Scouts and Guides in this, The Year of the Scout, and bearing British Postage Stamps which themselves especially depict Youth Organisations, including the Scouts and Cubs, and the Guides and Brownies.

Poacher '82 is an International Scout and Guide Camp, being held on the Lincolnshire Showground from 31st July to 7th August 1982.

Two thousand Scouts and Guides from Lincolnshire and South Humberside will be hosts to a further two thousand brother Scouts and sister Guides from all over the United Kingdom and Overseas. To mark the occasion a commemorative cover is being issued, bearing the date, the 6th August 1982.

The cover, printed with the Poacher '82 official badge, which was the winning entry in a design competition open to Scouts and Guides of the host area, will carry the 29p (Guide and Brownie) and 26p (Scout and Cub Scout) denomination stamps from the 'Youth Organisations' issue of 24th March 1982. The stamps will be cancelled by a pictorial hand-stamp designed for the occasion.

A cachet mark will be applied to confirm that the cover was posted in the special posting box located on the Poacher camp site.

A limited number of covers will be signed by Regional and District Scouting and Guiding Officers, who will visit Poacher, and it is hoped that these covers will be conveyed in the VIPs' helicopter transport en route to the special camp site posting box. A second cachet will be applied to these covers, confirming the limited edition number. In the event of over subscription for these special covers, a ballot will be held.

All covers will contain a printed information card about POACHER, the stamps, etc. The covers can be obtained by Postal Application, or for those attending POACHER, from the postal cover sales unit resident on the camp-site.

All prices include protected return postage: **Standard Cover** — UK, Northern Ireland, Irish Republic, Isle of Man, Channel Islands, £1.00, Overseas, £1.25; **Limited Edition, Signed Cover** — U.K., Northern Ireland, Irish Republic, Isle of Man, Channel Islands, £5.00, Overseas, £5.50.

The closing date for Postal Applications is 28th July 1982. If ordering Limited Edition as well as standard covers by post you must enclose separate payments for each category so that in the event of a ballot because of over subscription, your money can be economically refunded if you are unsuccessful. **All postal applicants must enclose** a stamped addressed envelope at least 9 in. x 4 in. This is required for administration purposes. All Cheques, Postal Orders etc. to be made payable to POACHER '82. Orders and all correspondence (SAE enclosed please): to **Poacher '82 Postal Covers, c/o K A M Urquhart, 1 Bruce Close, Broughton, BRIGG, South Humberside, DN20 0SA.**

Swan Lake

London Festival Ballet's lavish new production of *Swan Lake*, given its premiere in the presence of HRH The Princess Margaret in May, can be seen at the Royal Festival Hall this month, from 27th and continuing until August 7th. This most well-known and popular of all classical ballets has had many new

productions and different interpretations since it was first performed in Moscow in 1877, at which time it met with little success. The latest production, with its superb decor and costumes, would make an ideal treat for any age. Party rates are from only £3 per seat, and there are a number of performances offering half price for children and senior citizens. London Festival Ballet concludes its season with *La Sylphide*, from 9th to 14th August. For details apply to the **Box Office, Royal Festival Hall, London SE1.**

Fantasia

Forty years after it first appeared, this great classic appears fresher and better than ever. Re-released this month *Fantasia* now has entirely new sound track recorded in the latest Dolby stereophonic sound and digital audio recording. It seems difficult to believe that there's anyone left who doesn't know about this delightful programme of cartoon interpretations of popular classical music. Mickey Mouse as the Sorcerer's Apprentice is well remembered from childhood days, but seeing the film again in later years one is struck above all by the inspired version of the creation of the world. To Stravinsky's Rite of Spring. At the opposite extreme, the Dance of the Hours is the most hilarious and accurate send-up of classical ballet. In one or two places the mixture is a little rich, but by and large *Fantasia* can truthfully be described as a masterpiece.

JVR



Walt Disney Productions

In Brief . . .

. . . Late opening at the National Gallery

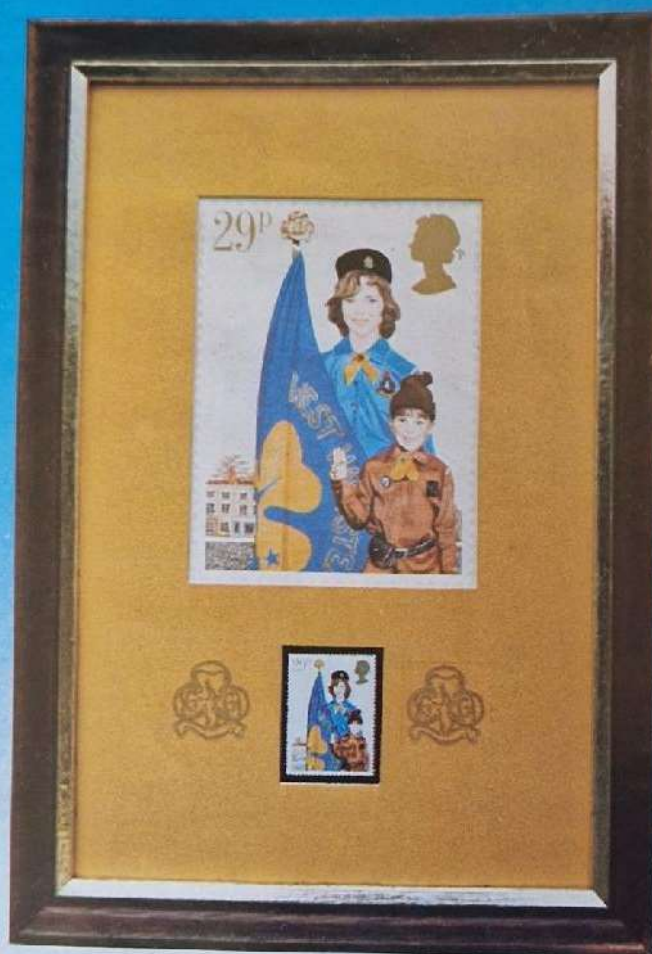
The gallery will remain open until 8.00 pm on Wednesdays during July and August, allowing visitors another two hours to enjoy the paintings in the main exhibition floor. On that day the restaurant and shop will remain open until 7.00 pm and 7.30 pm respectively. Phone 01-839 3526.

. . . **Summer Events** at the National Army Museum for young people and their families, 26th July to 13th August, weekdays 10 am to 12.30 pm. This year's programme includes advice on plastic modelmaking from experts of the British Model Soldier Society, a plastic modelmaking competition, feature films, the opportunity to examine old weapons and learn more about them, and the chance to join leading wargamers in directing tabletop battles in miniature. Phone 01-730 0717.

. . . **Chinese Traditional Painting** at the Royal Academy of Arts from Saturday 10th July to Sunday 28th August. Phone 01-734 9052.

THE GIRL GUIDES

Unique Commemorative Souvenir



**HELP THE GUIDES AND PROUDLY DISPLAY THIS
COMMEMORATIVE PHILATELIC PICTURE IN YOUR
HOME.**

This unique philatelic picture will only be available for a limited period and will never be issued again. Result – guaranteed appreciable value.

Each picture consists of a mint condition commemorative British postage stamp and matching post card, set in aperture cut mat with gold printed Girl Guides Crest which is finished in a Walnut and Gold frame.

This offer is only available by mail order and priced at £3.95 (incl. VAT) plus post and packing at £1.20. Money back guarantee if not completely satisfied. Allow 28 days for delivery.

Don't be disappointed – order early.

Post this coupon along with payment to PIPESTONE LTD,
1 SILVER ROAD, NORWICH, NORFOLK NR3 1UB.

Please send me . . . Girl Guides Commemorative Philatelic Picture(s) as illustrated @ £3.95 (incl. VAT) plus post and packing £1.20. Total price £5.15 each. I enclose my cheque/postal order for £ . . . made payable to PIPESTONE LTD.

NAME _____

ADDRESS _____

Allow 28 days for delivery. Money back guarantee if not completely satisfied.

PLEASE ORDER PROMPTLY AS LIMITED
NUMBER WILL BE MANUFACTURED.





Raise the funds you need...easily.

What's the easiest way of raising funds?
It is to give people something they appreciate in exchange for their money.

That's why so many fundraisers succeed with Miller.

We have many years of experience in providing what people like, through our fundraiser's catalogue. If you haven't got a copy already, you certainly ought to have one.

**CARDS, PRESENTS,
GIFTS - ALL AT
BARGAIN PRICES
FOR CHRISTMAS.**

We manufacture, buy in and import cards, presents and gifts from all over the world.

They represent outstanding value - yet still allow a good margin for your fund. As much as 25%...sometimes more!

And, it's possible for you to

get extra gifts, absolutely free, which you can raffle off, or keep yourself as a "pat on the back" for your efforts, or for your helpers?

THE CATALOGUE DOES THE WORK FOR YOU

We take immense pains to produce a lively colourful catalogue. It's big, too... crammed with items that people like.

For example, why should people go elsewhere for Christmas cards, when we supply them for as little as 4 pence each - and that includes a 25% margin!

You just let people have the catalogue to browse through, and they order through you. We do all the management and deliver direct to your door.

It works for over 15,000 others...it can work for you.

Miller Fundraising

Britain's Finest Fund Raising Service.



£1,196 Cancer Research Campaign fundraiser, Betty Simms, raised £1,196... with orders still pouring in.



£520 Mrs. Thea King has already presented the 15th Burton Shobnall Scout Group with a much-needed £520.00... with more to come this year.



£1,172 Mrs. Enid Nailer recruited the help of Disabled Drivers Association members, and together they raised over £1,172 in 1981 alone. This year they hope to raise even more.

✂

NO RISK. NO OBLIGATION.
To: Miller Fundraising, Queen Street,
Burton-Upon Trent DE14 3LP.
Please send me FREE details of the Miller
Fundraising Service and how I can obtain
the Super Free Gifts. (I am over 18 years)

Name _____
Address _____
Postcode _____ **SJ7X**

**FREE
92 PAGE
CHRISTMAS
CATALOGUE**

**LOOK- news of these
and other FREE GIFTS
once you
get started.**



This Pump-a-Drink
can be yours.
Details by return.
This Alarm Clock
can be yours...
we tell you how
when you reply.



© Miller Fundraising