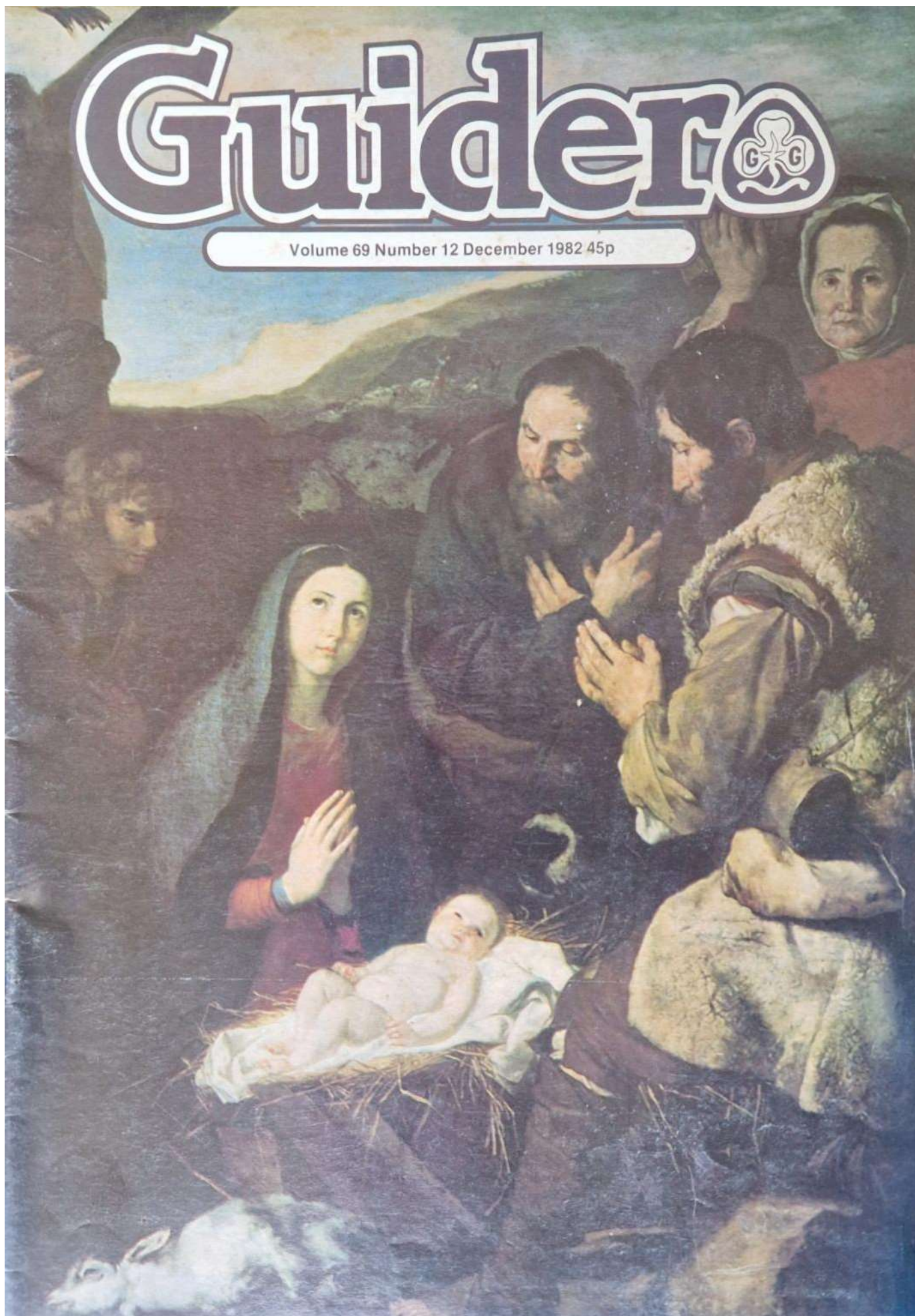


Guidero

Volume 69 Number 12 December 1982 45p



We wish you a

**MERRY
CHRISTMAS**

and a

HAPPY NEW YEAR



Webb Ivory

Webb Ivory Limited

Fine Art House, Little Cornbow, Halesowen, West Midlands B63 3AG.

Guidero

OFFICIAL MAGAZINE OF THE GIRL GUIDES ASSOCIATION
(Incorporated by Royal Charter)

PATRONS

HM THE QUEEN
HM QUEEN ELIZABETH, THE QUEEN MOTHER

PRESIDENT

HRH THE PRINCESS MARGARET, COUNTESS OF
SNOWDON

WORLD CHIEF GUIDE, 1930—1977

OLAVE, LADY BADEN-POWELL, GBE

CHIEF COMMISSIONER

THE LADY BADEN-POWELL

CONTENTS

Roundabout	4, 5
Brownie Hands Across The Sea/News For Rangers	6
GUIDING: 1983/Mrs Chermiside	7
Airing, Sharing, Caring	8, 9
A Girl In The Eighties	10, 11
The Maple Trail/Band German Tour	12
Dutch at Gilwell/Partners In Crime	13
AGM 1982/Heraldry (21)	14
Festival '83/Thinking Day at the Commonwealth Institute	15
Our Chalet /Boys' Brigade Council AGM	16
Ramrod 1982	17
Help Your Patrols/Next Month in TODAY'S GUIDE and THE BROWNIE	19, 21
Animals Aiding Us	21
Christmas Acrostic	23
Training Pages	25, 26, 27, 28
Programme Notes	29
Training Calendar	30, 31
Camps and Holidays	32
Pack Holiday Pandemonium	33
Books for Christmas	34, 35, 37
HQ Notices	39
Classified Ads	40, 44, 48
No Pets For Christmas/Shere Guides	41
Home and Away	42, 43
Hot Stuff	45
What's On for Christmas and the New Year	46, 47, 49, 50

Our loved ones and friends are the more precious to us at the end of a year marked by moments of crisis, horror and wonderful bravery and steadfastness.

At this time when Christians remember the Holy family and the birth of a Saviour and leader of goodness and love, I trust you will find joy in this season of goodwill and unity.

My kindest good wishes to you all for a **Happy Christmas.**

Next month brings the start of a New Year, it will also be the start of a new look magazine. This magazine, which is produced for Young Leaders and Ranger Guides as well as our Adult Leaders, will, from the next issue, change its name to **GUIDING** and have a new format and content composition.

We hope it will bring you helpful items, information and enjoyable reading.

Patience Baden-Powell

Christmas Message from The Chief Commissioner



Tony Rose

Cover

Our cover this month is the painting of the **Adoration of the Shepherds** by Ribera. The painting is on loan from the Louvre, Paris, to the Royal Academy as part of its exhibition *Painting in Naples from Caravaggio to Giordano*. The exhibition has been sponsored by Martini and Rossi, and runs until 12 December.

We are grateful to Messrs Webb Ivory Ltd for sponsoring this month's cover.



Price Increases

We very much regret that the prices of our periodicals will increase with effect from January 1983 as follows: **GUIDING**, 50p, **TODAY'S GUIDE**, 40p and **THE BROWNIE**, 18p. We are sure you will continue to find these magazines good value for money.

Editor

EDITOR: JEAN RUSH
ASSISTANT EDITOR: SHIREEN BONNER
SUB EDITOR: DEBBI SCHOLLES
ADVERTISEMENT MANAGER: ANN M MARTIN
ALL COMMUNICATIONS TO: **Guidero**, THE GIRL GUIDES ASSOCIATION
17-19 BUCKINGHAM PALACE ROAD, LONDON SW1W 0PT, 01-834 6242

Roundabout & Pick of the Press



Wedding Bells!

This delightful photograph was taken on the occasion of the marriage of Guider Alison Craddock, of the 3rd Chalfont St Giles Guide Company, and Gary Senior.

Her Guide Guard of Honour gave Alison a wonderful send-off — Alison has moved from Buckinghamshire to Surrey and is working with a Guide Company there.

Photo: courtesy of F and J Hare



Grand Opening

Two years and £140,000 after Norfolk first launched their Outdoor Activities Centre appeal, 'Patteson Lodge', near Coltishall, was formally opened in July by the County Commissioner, Mrs Denise Beattie, before a great gathering of 2,000 Guides, Brownies and their friends and supporters, headed by Lady Bacon, their President, and the Hon Beryl Cozens-Hardy.

The greater part of this sum

was raised by the Guides themselves through activities ranging from big County events such as a Christmas Fair, a Flower Festival, and a sponsored Beach Clean down through Division and District events, sponsored walks and knit-ins, to many, many individual Unit efforts, to say nothing of the Trefoil Guild.

Norfolk now has a Centre of which it can be justly proud. Already the Booking Secretary is snowed under, and there can be no doubt that it is fulfilling a great need.

Photo: courtesy of Eastern Daily Press

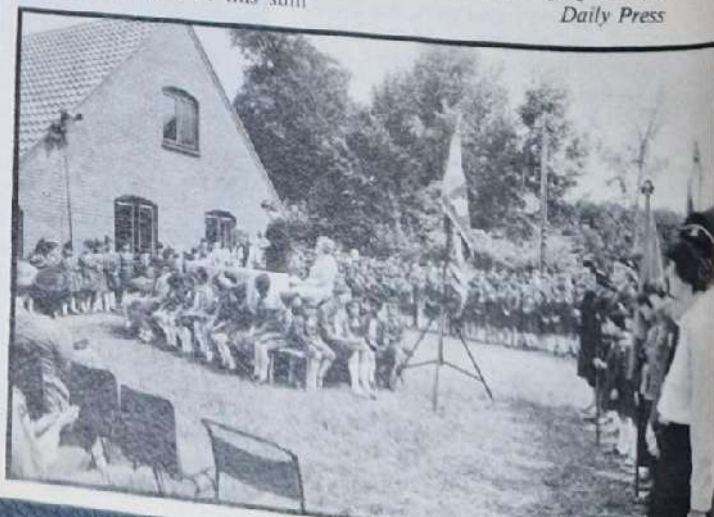


House of Cards

The Britwell Carnival '82 had a stall appropriately called The House of Cards! The stall was held by the 3rd Britwell Guide Company and as well as the giant playing cards that decorated the stall itself, the Guides dressed up as the cards,

with their leader as Queen of Hearts. At the stall, people could pick a card, and if lucky win a prize. In fact the 3rd Britwell Guide Company won a cup as a prize for their efforts.

Photo: courtesy of D Brownbridge.



Roundabout & Pick of the Press



HEARTFELT



The 10th Formby Raven Meols School Brownie Pack of Formby, Merseyside, raised £130 towards a Maternity Unit Heart Monitoring Machine at Fazakerley Hospital, Liverpool. The Brownies raised the money by holding a sponsored word spell which involved making as many different words as possible from 'Brownie Guides'.

During their visit to the hospital to present the cheque, the three Brownies who made the most words were taken to see some of the mothers and babies and saw one baby only a few hours old.

In the photograph, Brownie Sally Walsh is shown presenting the cheque to Senior Nursing Officer Miss Barbara Heisby, also present from the hospital Mrs M Oakley and Mr P Bousfield, Guiders Mrs A Button and Mrs S Colquhoun with Brownies Louise Hannah and Lucy Parker.

Photo: courtesy of Sefton Newspapers of Southport.



America, America

When Laker Airways closed, among the many people to have been disappointed were members of the Chichester Guides, who lost £6,000-worth of tickets to America. The trip was planned well in advance for this dream holiday, and the Guides wasted no time and effort in arranging fund-raising events, with their friends and family, and launched a public appeal to replace the lost tickets.

Within five months they had raised more than £4,000 and £2,000 was raised by their American hosts, a Guide Company in Long Island, New York. The 20 Guides who went on the trip are seen here outside their Guide HQ in Whyke Lane on the day of their departure.

Photo: courtesy of Portsmouth and Sunderland Newspapers Ltd.

Diamond Jubilations

On September 12, a service was held on the occasion of the Diamond Jubilee of the 1st Calverley Brownie Pack, Leeds County.

Miss Irene Turner, who has been Brownie Guider of the Pack for 26 years, and has been connected with the Pack since she joined as a Brownie about 45 years ago, was presented with the Good Service Brooch.

Photo: courtesy of B Nicholson.



Fancy Playgroup!

Guides and Guiders from North Shields and Wallsend Divisions helped with the children of the Pre-school Playgroup Association on Saturday, 22nd May, 1982 at Beaconsfield, Tynemouth.

Shown here are some of the girls helping with the fancy dress parade. It was said that the blue uniforms kept popping up all over to help, not least with the cleaning of the field towards the end of the very successful day!

Photo: courtesy of John Elliott.



Brownie Hands Across The Sea

A welcome celebration for their Italian Brownie friends has won first prize for the 4th Brickhill (St Marks) Brownie Pack, Bedford, in the Kelloggs Brownie Cooks Competition, the finals of which were held at the Kensington Close Hotel, London, on Saturday 18th September, 1982. Among the judges was Blue Peter presenter Sarah Greene.

The 4th Brickhill Brownie Pack were drawn from six finalists selected for their creative plans for a celebration tea party. Entries flooded in from all over the United Kingdom on themes as varied as a Butterfly Party to a Royal Baby celebration. Mrs Jean Rush, Managing Editor of *THE BROWNIE*,

through which the competition was run, said: 'Without question, this is one of the best and most rewarding competitions we have ever run. The standard was exceptionally high.' Their imaginative tea party, with a Maritime England bias, has won the Brickhill Brownies £250 for their unit. The 2nd prize of £100 was won by the Promise Ceremony celebration of the 25th Newcastle English Martyrs Brownie Pack, and the 3rd prize of £75 by the 13th Cliftonville Brownie Pack's Golden Teddy Bears Anniversary Party. Runners-up to these each received £50. Each Unit was also awarded a two-ring hotplate, used for the competition, by Berry Magicoal Ltd.



Judges Victoria Lloyd-Davies, Sarah Greene and David Clarke sample the delights on the table!



Above, the winners of the competition, and below the Royal Wedding Anniversary Party.



Details of Participants

1st Prize £250 4th Brickhill (St Marks) Brownie Pack, Bedford; 2nd Prize £100 25th Newcastle English Martyrs Pack; 3rd Prize £75 13th Cliftonville Brownie Pack.

Runners-up £50 prizes: 7th Altrincham St Vincent's Pack — 1st Royal Wedding Anniversary; 1st Braemar Brownie Pack — Butterfly Party; 183rd Birmingham Brownie Pack — Birthday Party for the Pack.

Judges:

Miss Natalie Webber — Representing The Chief Commissioner, The Girl Guides Association; Sarah Greene — Blue Peter Presenter; David Clarke — Kelloggs Consumer Marketing Manager; Jean Rush — Managing Editor *THE BROWNIE*; Victoria Lloyd-Davies — Home Economist; Phyllis Oberman — On behalf of Berry Magicoal Ltd.

On the right, preparing the Butterfly Party food.



News For Rangers

Duke of Edinburgh's Gold Award Course

Waddow (Girls from any Operating Authority) 31st March-4th April, 1983 (Easter)

A residential course over the Easter weekend for the Gold Duke of Edinburgh's Award, open to girls from any Operating Authority. Apply to the Guider-in-Charge for details.

Duke of Edinburgh's Gold Award Course

Foxlease (Girls and boys from any Operating Authority) 31st March-4th April, 1983 (Easter)

A residential course over the Easter weekend for the Gold Duke of Edinburgh's Award, open to girls and boys from any Operating Authority. Apply to the Guider-in-Charge for details.

Young Leader's Weekend

Waddow — 27th-30th May, 1983

Calling all Young Leaders. Why not go to Waddow next May, especially if you have not been there before. You will be living and working with other Young Leaders from different parts of the country who share similar aims and outlook. The course will give you opportunities to challenge yourself, to get help and ideas for your work with the Pack or Company which you help, and to have fun. Apply to the Guider-in-Charge, Waddow Hall, Clitheroe, Lancs, BB7 3LD.

Applications for these three events accepted after December.

Mrs Peggy Chermside was appointed Programme & Training Adviser on 1st December, 1981, and by now many of you have met her and had her charming and cheerful smile beamed at you.

She brings to her job a wealth of experience not only from her background of Guiding, but from her career as a teacher, her service as a JP and her life as mother of a son and two daughters, one of whom has followed her footsteps and is a Brownie Guider in a London district.

Mrs Chermside started Guiding as it were from scratch. She was a Brownie and flew up to Guides. For a time Guiding was interrupted when she married and was fully occupied looking after her young family, but the call came again when in moving to Bristol from London there was a shortage of Brownie Leaders. She returned as Mum with her daughters and saved the Brownie Pack from closure. She became a Brownie Guider for five years and served in a residential area and then followed some interesting and challenging appointments. She was District Commissioner for two years on a housing estate, County Commissioner for Bristol for four years, County Commissioner for Avon North six years, Vice-Chairman of SW England Executive for six years, Deputy Chief Commissioner SW England one year and Chairman of Interlink Camp SW Region & Branch Association 1980.

With such a busy Guiding life one might be tempted to think that Mrs Chermside did nothing else, but this would be entirely wrong. She trained as a teacher at the Bedford PE College, and in 1949 represented Great Britain in The Gymnastic Team in Sweden. She is a JP for County Avon which she knows so well, having lived in Bristol for 20 years. She now lives in a Cotswold Village, near Badminton. She is Governor of two schools for girls including her old school, Cheltenham Ladies College, and two boys schools but also takes an interest in those children who are in trouble, and is a member of the Board of Visitors of Pucklechurch Church Remand Centre.

Further community service involved her as a member of the IBA General Advisory Council and its Complaints Review Board. And has she any time for hobbies you may well ask? She certainly has, as anyone who meets her walking two golden labradors can testify, and from her very attractive garden. Still finding time for others she is archery instructor to Avon North Girl Guides County.

Mrs Peggy Chermside

Mrs Chermside seen here launching the New Mirror Dinghy named 'Peggy' after her.

Bristol United Press



Elaine Arnold

Press and Public Relations Adviser, CHO



Guiding 1983

Great changes are in store for our venerable magazine, which enters its 70th year of continuous publication in 1983. Starting as the *Girl Guides Gazette*, it soon changed to *The Guider*, and a few years ago the definite article was dropped leaving the title *GUIDER*. In January 1983 a new era will be ushered in with a new title *GUIDING*, and unfortunately an inevitable 5p price increase. At 50p *GUIDING* still represents unbeatable value for money.

The magazine has been completely redesigned to give it a more cohesive image. To go with the new layout, the content will change substantially in accordance with decisions taken after much discussion by the Executive Committee. Most noticeable will be the absence of material which has in the past been designed to give the Guider a digest of what is happening in the outside world, which may help in planning Guiding activities of a wide ranging nature. These features will be replaced by more pages provided by our Programme and Training Department, intended to offer training material directly related to the programme. Features planned for next month are: *Towards Thinking Day in the District*

Young Leader — first of a monthly double-page series; *Glenbrook Thinking Day Weekend*; and a double-page chart of practical activities for cold weather. The training pages will no longer be in the middle of the magazine, but will be spread throughout the issue. This is in furtherance of our view that every page of the magazine has training content if looked at from the right viewpoint, and training articles as such should not be segregated. The centre pages will henceforth contain the Training Calendar, with programme notes and camps and holidays occupying the reverse sides, thus giving a pull-out four page section of information. From January onward some features are discontinued including obituaries and What's On, some (such as the Acrostic) will appear less frequently, while the book review feature will be confined mainly to Guiding subjects. News pages and pictures will be as before, and we hope readers will continue to write in with their views, reports and pictures of their Guiding activities.

Jean Rush
Editor

Airing, Caring, Sharing.

The Editor reserves the right to cut letters or publish extracts

Happy Birthday

The 115th Edinburgh Guide Company are having their 60th birthday party in December. Former Guides and Guiders associated with the Company are particularly welcome. For more details please contact Miss Fiona Burton c/o GUIDER magazine.
Fiona Burton
Edinburgh



The 115th Edinburgh Guide Company are having their 60th birthday party in December.

Missing Brownies

Among my holiday slides received from Kodak is a delightful slide of a Brownie Pack and a vicar about to board a coach. The coach is white with a wide yellow stripe around it. It is such a happy picture, I would like the rightful owners to receive it.

If someone recognises the description and would like to claim the photo please write to me c/o GUIDER magazine.

Marion Hailstone (Mrs)
Ledbury, Hertfordshire.

Find-a-Friend

I was wondering if through GUIDER I could possibly trace any of my Brownie and Guidefriends.

Known then as Margaret Kear, I was a Brownie in the 5th South Battersea Pack on 25th February 1953. I believe my Brown Owl's name was Mrs Crosby. Having gained my wings I flew up to Guides and was enrolled in the 2nd South Battersea (St Marks) Company on 10th May 1955. I became a second class Guide, Patrol Second and Leader, then Company Leader. I also became a Pack Leader. In 1959 I was one of the fortunate Guides in South Battersea to be chosen to go to Switzerland and visited Our Chalet, something never to be forgotten along with other

happy memories of my Brownie and Guide days. Are any of those who came to Switzerland with me still in the Movement? If anybody knows these people, or if you are reading this I would be delighted to hear from you c/o GUIDER.

M Chalice (Mrs)
Brownie Guider,
20th Stevenage (Lodge Farm)
Brownie Pack

Sisters

Regarding the letter in August GUIDER entitled Falklands Nurse, I am delighted to let you know that I have the pleasure of having the sister of ex-Ranger Bronwen Williams, Janet Lloyd, as a Brownie Guider in my District. Janet came forward when the former Brown Owl felt like a break after many years of Guiding and the Pack was desperate. Our thanks to Mrs Williams for her daughters.

Sylvia Kingsley (Mrs)
District Commissioner
Kenton South, Middlesex

Celebrations

The 11th Loughton Brownie Pack, based at St. Gabriel's Church in Loughton, Essex was inaugurated on the 17th September 1957.

Our 25th anniversary was celebrated at our weekly meeting this month, when we held a large party for invited parents and other guests. These included the clergy from the district, past and present Guiders and Rangers, our County Commissioner, Pat Noble, our Divisional Commissioner, Gill Mapley, and our District Commissioner, Annette Cheshier. The present Pack gave a singing concert during the evening which was well received by everyone present.

The evening went very well but also very quickly and was enjoyed by everyone there. The Brownies acted as hostesses during the evening and also helped in running the raffle. The food and drinks were supplied and served by the Local Association. A large trefoil shaped cake had been specially baked and decorated by an ex Ranger and this was ceremoniously cut and distributed at the end of the evening.

E. Hannibal (Mrs)
Assistant Guider
11th Loughton Brownies

Going Strong

I thought that you might be interested to know of someone who has been a member of the Guide movement for a very long time. I refer to my Aunt, Miss Florrie Coapes, of 15, Highbury Road, Darlington, Co. Durham, who was 87 years old in July this year, and who enrolled as a Girl Guide in September, 1910.

My Aunt still has her enrolment card, and is still associated with Guides as a member of the Trefoil Guild, so she has completed 72 years — so far. She became a Lieutenant in July, 1912, and remembers Miss Baden Powell, then Chief Guide, visiting the Company. Other memories include taking Guides to camp, and sleeping in tents, barns and empty cottages.

Other milestones were receiving Captain's Warrant in May, 1918, and becoming District Commissioner in October, 1937, and Division Badge Secretary in February, 1950, and being awarded the Certificate of Merit for Good Service 1918-1950.

I think you will agree that this is a record of service to be proud of, and wonder if my Aunt is, perhaps, the oldest Guide in the world. I would be most interested to learn of any other Guide who can match this 72 years of unbroken service to Guiding. Incidentally, my Aunt is still very active, living a busy and independent life, and coping with very little help with a garden that is beautifully tidy and full of colour.

Rosemary Fisher (Mrs)
Lincs

Epaulets

I refer to the letter 'Sticky Problem' in September GUIDER. When I was a Ranger (not so long ago) I bought a pair of removable epaulets which slide over the sewn on ones, after undoing the buttons, onto which I stuck my 'sticky pieces of scrap material'. The epaulets could then be removed before washing my blouse. I do not know whether these are still available.

I was also very extremely disappointed when I received my paper Badges and would rather have had a metal one and paid for it myself. It is not always right to expect a Badge for everything but when a Ranger works hard for a Badge I think that it should

be one that they can be proud to wear and keep as a Guider. I still have my paper Badges stuck on my epaulets after 12 years but keep them in a box all on their own instead of keeping them with the rest of my Badges. They would certainly not last long on a camp blanket.

Judith Benson (Mrs)
Brownie Guider,
4th Beverley
(Yorkshire St Mary's) Pack
The Trading Service have epaulets at 25p per pair not including p&p. Editor

The Answer

Having seen the Quiz on page 32 of the September GUIDER, I thought it would be useful to get the thoughts of the Guide Company — average age 12 years. I feel very often that Guiders impose their ideas and thoughts on the children without finding out how they are thinking. This could be a helpful check list for a Guider to find out what needs discussing and emphasising. We have obviously slipped up in some areas. The results I had are as follows:

Why did I join the Guide Movement — why do I still belong?

1st (most popular answer) C — 2nd) D and B.

How does Guiding differ from other Youth Organisations?

1st) C — 2nd) D.

What is the Guide Promise?

1st) A — 2nd) B and C

What does 'Duty to God' mean to me?

1st) D — 2nd) A and C.

What is helping other people?

1st) A and C — 2nd) D.

How can I serve the Queen?

1st) D — 2nd) A.

What is the Guide Law?

1st) A — 2nd) D.

E Prater (Miss)
District Commissioner and
Acting Guide Guider
Wythall, Birmingham

Take a Bow

I have recently been on holiday in Italy and while in Venice, towards the end of July, noticed Guides from the 4th Workington (St Michael) Unit amongst the tourists.

May I say how impressed I was with their conduct and how smart and tidy they were. I was proud to belong to the same Movement and perhaps someone could pass my comments on to them!

J T Jenkins (Mr)
District Commissioner
Westhill Scout Group,
Aberdeen

Airing, Caring, Sharing.

The Editor reserves the right to cut letters or publish extracts

Aim High

Following a discussion at Rangers, we came to the conclusion that there is a lack of awards for the older and more experienced Rangers to aim for. Admittedly we do have the Ranger Challenge and we realise that this has been devised to suit all interests and activities within the Unit. However, when seen in comparison to the Queen's Scout Award and the recognition of excellence that the achievement of this award brings, we feel that a Guide who has been awarded her Queen's Guide or a Ranger who has finished her Ranger Challenge should have something to aim for.

We know that there are all the possibilities of entering into Leadership (both young and adult) and the satisfaction this can bring, but, not all of the older Rangers want to enter this area immediately and they can quickly lose interest when not having something positive to aim for. In all the areas of Guiding and Scouting, the similarities between the different awards can be seen — except at this important level. The difficulties experienced by Units losing girls to Venture Scouts and the, sometimes, lack of interest shown by older girls could maybe be explained by this.

We want equality and recognition that we too are more than capable of achieving excellence. Do any other Ranger Units feel the same way?

47th Croydon Ranger Unit
Norbury

Watch It?

I wonder if any Guider can help me trace the owner of a digital watch, found at Blackland Farm during the week August 21-28. One of my Guides picked it up thinking it was hers and it wasn't until she arrived home and her mother unpacked her kit that we realised she hadn't taken her watch in the first place. She is a young Guide, first time away from home and these things can so easily happen. Unfortunately we have only just returned to Guides as I caught whooping cough in camp and so nothing could be done until now. The watch is gold plated, has a black strap (with sellotape on it) and the make of the watch appears to be Trafalgar. If any Guide or

Guider recognises the watch as belonging to them please contact me via GUIDER.

Yvonne Grainger
Guider, Brighton

Going Up?

When I was a Brownie I went with my Pack,

On hikes and on Ventures, but always came back.

Brown Owl never lost us, we didn't stray far.

I tried very hard and I won my Gold Bar.

When I was a Guide it was my joy and pride,

To go under canvas and light fires outside,

I tried to make breakfast and burnt all the porridge, 'You'll not get your Cooks Badge' they said 'We must forage'.

When I was a Ranger we had lots of fun,

Canoeing and skiing, awards to be won,

But, alas, years went by in the way that they do,

I was too old for Rangers and had to pass through.

When I was a Guider my head was a whirl,

The only help I had was one little girl,

I taught Brownies knots and I taught them their Law

But, alas, the time came I could stand it no more

When I was Commissioned I carried the buck,

If things went awry that was just my bad luck,

At last I grew ancient and had to retire —

But I joined up with Trefoil and sang in the choir.

For Guiding and Guiders are right in my blood,

I couldn't forsake them, try as I would,

So as long as my heart and my legs take the load,

I'll go swinging along to the end of the road.

Clare Pierson (Mrs)
Harrogate, N. Yorkshire

Take Note

I should like to try and express a feeling that I know a few Guiders have, with regard to taking part in other activities besides the weekly meetings.

Although we do not attend church regularly or every other training or every other fund raising event or every other social, it does not mean we do not give of our best to the girls in our Pack/Company, or enjoy being with them. We attend what we can without disrupting our own family life. The fact that we support our own children and our husbands' activities, besides some of the Movements, gives us a much broader outlook on things. I am not criticising Guiders who 'give their all', only trying to point out that we are not all so dedicated as some; but in our own way and within the rules and regulations we are 'Doing Our Best'.

This may not satisfy some Guiders; but people like us are better than nothing, or I would like to think so, at least we know our limitations.

C A Morris

2nd Downley Brownie Pack

Thanks

This is a letter from the former Guider-in-Charge at Waddow, Miss Moira Walker following her retirement recently.

I had contemplated writing to everyone who contributed to the wonderful cheque and to all who have given me such beautiful presents when I retired but it would be an impossible task. All your names are recorded in a delightfully illustrated book.

I am completely overwhelmed. How often I have suggested to others that one must learn to be as good a receiver as a giver, how I have

been made to eat my words. I am surrounded by gifts that remind me of you all. I needed no reminding as I have such wonderful memories of all the love and care you showered on all of us at Waddow during these last 15 years. These would have been all I would have asked.

I am so looking forward to my trip to Perth in Australia that you have made possible. It will be a joy I never thought I would have.

Thank you all again for everything and may I ask you to go on supporting Waddow as you have so generously done in the past.

Moira Walker (Miss)
Clitheroe, Lancs



—TOM WILLIAMS—

are much too large in the body for the average child.

New Uniform

At a recent meeting of our Brownie Parents the question of Brownie Uniform was raised. It was felt by all that the present dress is impracticable and out of date and a pinafore skirt in crimplene or similar material worn with a blouse in summer and polo neck sweater in winter would be much better. Interest Badges to be worn on a sash, across one shoulder.

We find that the present larger size dresses are much too large in the body for the average child. A size 30 and 33 was fitted on one of our Brownies, the larger being much too big across the shoulders whilst the length if taken up would last her for a couple of years, she is not a thin girl either. With the present economic climate such things need to be considered.

Please let us have a better Brownie Uniform.

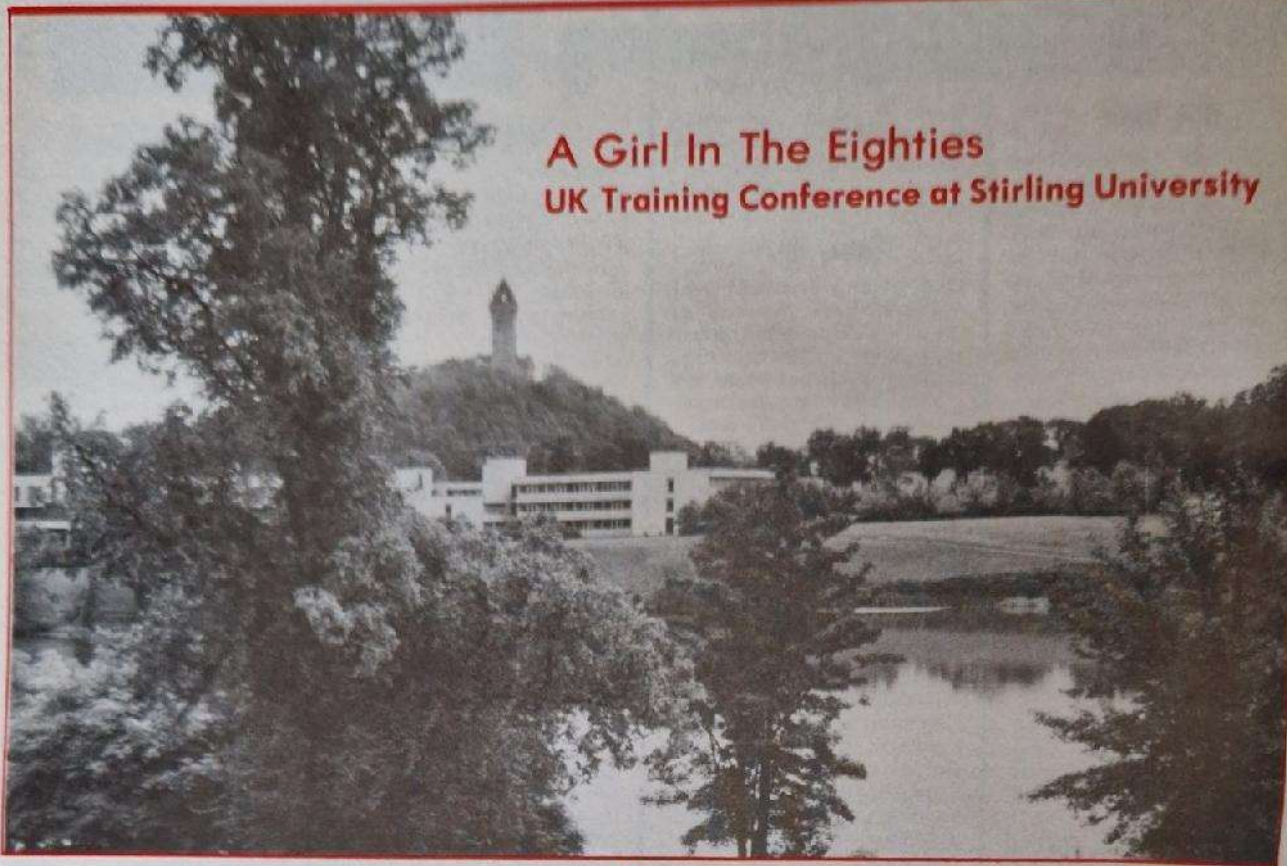
S Vickrage
Brownie Guider
1st East Dereham
(St Nicholas) Brownie Pack

The opinions expressed in these pages are not necessarily those of the Editor.



—TOM WILLIAMS—

I tried to make breakfast and burnt all the porridge.



A Girl In The Eighties

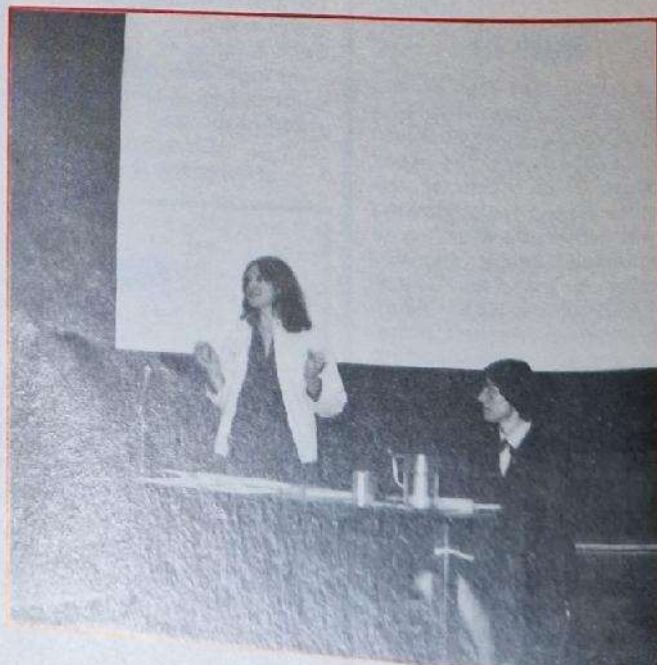
UK Training Conference at Stirling University

The Chief Commissioner, The Lady Baden-Powell, together with the Scottish Chief Commissioner Mrs Maureen Reid and Mrs Anderson, a Forth Valley Commissioner, welcomed over 200 delegates, Commissioners, Trainers and Advisers from throughout the UK to the first national conference to be held in Scotland. The Training Conference was held at the University of Stirling, from 3rd to 5th September 1982. The Conference was chaired by Miss Mary Nixon, OBE, MA, (Hons St A) Dip Ed. Discussion at the Conference was based on the consideration of Guiding as it relates to the situation of women and girls in the 1980s — Main Speakers on this theme were Ms Kath Davies of the Scottish Convention of Women and Mrs Janet Hunt, from ILEA.

A Guide is a sister to all Guides. How unfeeling and uncaring that now sounds, not at all in keeping with the Guide image. Surely sisterhood is far wider than other Guides. Surely it must encompass all girls, whatever their needs. Guiding must not be the closed organisation it seems to be. It has so much to offer others; let it not be selfish, but let it offer its resources to the wider community.' This was the challenge issued to delegates at the Training Conference at Stirling University by Janet Hunt, Youth Adviser and Inspector to the Inner London Education Authority. If you are tempted to ask how she dared to preach to such a caring organisation, don't. The challenge not to waste our resources, the regular weekly contact with young girls facing an uncertain future, a troubled world and high and rising unemployment, is a very real one, and should not be brushed aside — Janet called for the use of the screwdriver and spanner in the teaching of arts, along with the camping gadgets and tips. 'The handbook tells you how to carry someone over a cliff,' she said. 'What if you don't live near any cliffs? Are you also teaching girls to change car wheels or decorate the bedsits they are likely to leave home to live in?' She also called for a more political approach to today's issues. Not party

All Photos: Ann Moffatt

Below, Ms Kath Davies, Scottish Convention of Women.



political, just a firm standpoint on the issues which matter — rape, abortion, unemployment and equality. A sensitive approach is fine, but the alternative to a standpoint is no opinion at all. Are we even helping girls to reach their own conclusions? Or do we sweep these things under the carpet?



You might think that this supposed criticism met with a stony silence. Not so. The Scottish chill of the weather that weekend was suddenly dispelled by the warmth of Janet's reception, as Guiders embraced wholeheartedly the suggestions which she put forward. Everyone seemed relieved; she had obviously spoken the thoughts of many present that weekend; the time for a new challenge and a new approach is now. Let's not miss the boat, we simply have too much to offer to let it go to waste.

After many people had rushed up to thank and congratulate Mrs Hunt on her talk, I managed to speak to her. She had spent the whole weekend with us, and had thought hard before issuing what were hard-hitting challenges. 'I nearly didn't quite have the courage to say all that,' she told me. 'Oh

A group photo which includes The Lady Baden-Powell, Mrs Iversen, Mrs Davies, Mrs Hunt, from the ILEA, Dr Edge of the Scout Association, Mrs Fisher, a Guider in Australia, and Mr Grisbrook, Professional Adviser for INSTEP (In-service Training and Education Panel).



I'm glad you did,' several voices replied. She looked encouraged. 'There are a lot of good people in this room,' she said. We really can't afford to prove her wrong, can we?

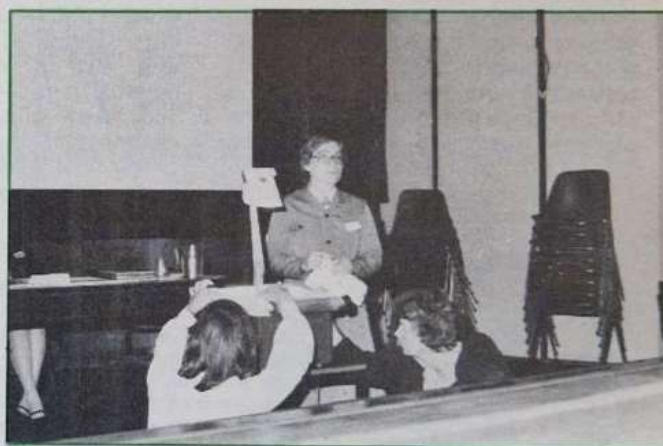
One ally that Janet would have in her statement, is Mrs Bente Iversen, a Trainer from Norway, who brought news of new developments in her country's Guiding Programme in which the Patrol system is being reorganised to enable girls of differing ages to work together and learn from each other. She too, was warmly received, and at CHQ, we received a letter from her soon after the conference, bringing greetings which she would like us to share with all who were there at Stirling. 'Dear all new friends,

In this way I want to thank the Girl Guides Association for everything you have given me.

First the opportunity to come to Stirling and your conference. Thanks for your kind hospitality!

Second thanks to all you nice Guiders from the Headquarter that took so good care of me during the weekend.

And last, but not least: I really want to send a big Norwegian TAKK and greeting to all Guiders at the conference. I was met in such a way that I still



Mrs Bente Iversen

— after a week — feel warm inside. You gave me a good smile, some nice words, and I felt your interest for me and Norwegian Girl Guides.

If any of you come to Bergen I hope we will meet again. I would have liked to show you my city.

If you ever are asked to travel as a Guider to another country, travel alone, then you really have the opportunity to meet new friends! A big thank you to you all — and please, S Armstrong, give my thanks away to everyone. Bente Iversen.'

A big thank-you should also go to guest speaker Ms Kath Davies, of the Scottish Convention for Women, who also spoke of the great, and as yet untapped, resources within Guiding; and to Miss Mary Nixon, the conference chairman.

Was the Training Conference at Stirling heralding a new, rejuvenated, more professional approach to Guiding, as the sessions, such as group discussions and The Commissioner as Manager, would suggest? It will be exciting to find out.

Yvette Sanson

A group of English and Canadian Guides and Guiders are seen here on Lake Miac, outside Dartmouth, Nova Scotia. The Canadians are in check shirts. Sarah Trinick from Devon and Sally Warwick from Hampshire West are in the canoe. Penelope Emps, from Devon, is in the water by the canoe. Kim Hollister and Elizabeth Roper, Guiders from Devon, are standing with the Canadians.

The Maple Trail, 18th July to 8th August 1982



Sixty-one Guides and Guiders from South West England have just returned from a three week visit to Nova Scotia, Canada. The Guide Association in Nova Scotia made us most welcome and arranged halls for our accommodation in three different areas and arranged many interesting outings.

After the flight to Halifax, the group divided into three and used hired minibuses for travel. A week was spent 200 miles north of Halifax, at Antigonish, sleeping in the Parish Hall. This is a very Scottish part, where Highland games and dancing competitions are held annually. The local Guides entertained the Group at a camp, to BBQs, swimming and campfires. Sightseeing trips around this most attractive forested area included a trip to Cape Breton Island and the fortress town, Louisbourg, restored to the 1740 period.

A second week was spent in

Bridgewater, a town on the south shore of Nova Scotia. Here accommodation was in a well equipped Guide Hall. Canoeing was enjoyed by all on various lakes in the area, the weather and water being particularly warm. Sightseeing in this area included old fishing villages and a most interesting fishing museum at Lunenburg. There was also a visit to Kejikkujik national park — an area of forest and lakes with nature, hike and canoe trails.

The final week was spent in the metropolis of Halifax, staying in the

Youth Hostel. Here we imbibed history from their excellent film and sound exhibits and city museum. We also crossed the harbour to Dartmouth, another large city.

We met many people and saw and did a great deal, all due to the kindness and generosity of our many Guide hostesses, who made this a most memorable trip for us all. We look forward to enjoying having a group of Canadian Guides here in a couple of years time.

*Elizabeth Gill
International Adviser
Hampshire West*

National Scout & Guide Concert Band German Tour

The 54 members of the Band chosen to go to Germany gathered at Plumstead on 19th August. Here we spent the next few days rehearsing, and we gave a very successful concert in the church next door on the Saturday night.

On Monday we left England for Germany, from Harwich to the Hook of Holland, which took 5½ hours. We gave two concerts during the crossing which were very well received. We arrived in Holland around 8.00pm Dutch time. The next day we played a concert for the soldiers and their families on the camp, including some Brownies and Cubs. The following day was free so we went sightseeing. We visited Paderborn and its beautiful cathedral, after which we went to Schwalenberg where all the houses and woodwork are decorated with carvings and paintings. Then we went to Hameln where the story of the pied piper comes from.

On the Wednesday we played a concert in Bielefeld market place which was very successful, and

we spent the rest of the afternoon looking around the town. Thursday we had a long coach drive up to Höhne, and we had lunch at a camp of Cubs and Scouts of northern Germany. In the afternoon we visited Belsen concentration camp which was extremely distressing. We then played a tea time concert at the campsite which the Chief Scout Major-General Michael Walsh attended. In the evening we played a concert in Höhne, and the concert hall was packed full of Scouts and Guides who all seemed to thoroughly enjoy themselves; The Chief Scout was also present.

On Sunday the majority of us decided to go to Catholic Mass in Paderborn cathedral. It was a wonderful experience, but obviously it was difficult to understand as it was in a mixture of German and Latin. In the afternoon we went to play in Bad Salzfuzen, a German spa town, where we had an audience of over 2,000. The next day we had a rehearsal in the morning to practise some new music, and then in the afternoon we played a concert in Detmold market square.

On the Tuesday we had to pack the coach, a mammoth task; and then we set off for Dortmund. We went via the famous Möhnesee dam which 636 squadron destroyed with the

bouncing bomb in the Second World War. We then went to meet our army escort on the autobahn who took us to our next barracks where we were staying with the 22 Air Defence Regiment, Royal Artillery. We were made to feel very welcome, we slept in tents but ate and socialised in the sergeants' mess.

The next day we were given a guided tour of the barracks. That evening we were playing a concert at a smart nightclub in Dortmund called Renoldi's for an Anglo-German friendship evening. This was a super evening and afterwards we sat and talked to the audience while eating open sandwiches. On Thursday we had a concert in Apelbeck in the morning in the town square, after which we had lunch on the house in Macdonalds. Then we went to Westfalen park and up the radio tower where we had a fantastic view. Afterwards we were allowed to look around the park.

This year Dortmund is celebrating its '1100 Jahre' anniversary so we went to join in the festivities, starting off by playing a concert; thousands of people came, even the President of the Federal Republic of West Germany, who said he thought it was extremely good. Then we spent the rest of the day sightseeing and generally jollifying in the celebrations. In the evening we

were presented with the coat of arms of the 22 Air Defence Regiment, RA which was a great honour.

Saturday, the last day of our tour, we all dressed in best uniforms after breakfast, and at 11.30 we went to the lawn in front of the Officers' mess. Then a helicopter landed in a nearby field and a Mercedes drove up and out stepped the Commander-in-Chief of the British Army for Europe, Major General Gow. A marching band did a display and then all the officials went into lunch, for which we played, and the Commander-in-Chief came to speak to us all. After lunch we went to an international athletics match, and then we went onto our Grande Finale at Westfalen park, for the 1100 Jahre of Dortmund festivities. 10,000 people turned up to our concert, and we played for an extra half hour as the audience was enjoying it so much. We all had a marvellous time in Germany, it was a wonderful experience and I'm just glad I was part of it as a member of the Band and the Scout & Guide Movement.

Alison P Mann



Dutch at Gilwell

The telephone rang! Could the Sawbridge-worth Guide Headquarters be used for one night's accommodation for a small group of Dutch Scouts from Stadskanaal in Holland. Twelve Dutch Scouts, five girls and seven boys would require overnight accommodation as they were hiking from Potters Bar to Gilwell. After the District Commissioner had checked the insurance with the Supporters Committee, a letter was written to the

Scout Leader in Holland, confirming that we would be delighted to welcome them at the HQ and enclosing a number of maps which had been given by a local estate agent. A friendly bank manager offered to obtain a number of promotional gifts and the Scout Group Leader offered to present Scout Badges.

The Local Association were asked to provide refreshments and after much deliberation, it was decided that a fish and

chip supper would be ideal. During the evening of our visitors' arrival and after all the visitors had freshened themselves after the trek from Potters Bar, our Local Association Secretary arrived with 12 steaming parcels of fish and chips. After supper Badges were exchanged and the hosts were presented with a pair of personally designed clogs decorated with the joint Scout and Guide insignia as there is a common section for Scouts and

Guides in Holland. The following morning saw the departure of the visitors to Gilwell Park where the international Camp was taking place for handicapped Scouts to celebrate the 75 years of Scouting. We all felt very delighted to have helped with this 'Brief Encounter'.

Barbara Wagland
District Commissioner
Sawbridge-worth and
High Wych District

Partners In Crime

The old Iranian Embassy crumbles quietly in the heat of a blazing June afternoon. The Royal College of General Practitioners, at number 14 Princes Gate, seems at first sight to be deserted. One or two large lorries stand discreetly at the end of the road. Through the open door of number 14, I can see a cool marble floor, and a further room, with sheeting spread over the carpet. No one is about, and so I wander inside. Suddenly, from the open terrace doors, a lady in 'twenties dress and a large picture hat emerges and flits into a side room. Stepping out on the terrace from which she had appeared, I am transported to another time. In the blazing sunshine, gentlemen in top hats, stiff wing-collars, striped trousers and tail coats chat with exquisitely dressed ladies in real silk stockings, giant hats, cut-work and lace dresses and an occasional fox fur. White coated waiters circulate with silver trays of well-balanced cocktails. It is 1926, and I am suddenly a gate crasher at the American Embassy garden party. An Arabian prince adjusts his headgear, and ladies chatter brightly, twirl their parasols and flutter their fans. The Stars and

Stripes flutter in the welcome breeze, and the terrace is draped in red, white and blue to match. A beautiful gathering for a beautiful afternoon.

The illusion is soon shattered. On the far side of the garden a young man in jeans and T-shirt peers through a movie camera. A man in an open-necked checked shirt waves his hands at a couple of well dressed guests, a gentleman dons a pair of 1982 sunglasses, and one very elegant lady complains forcibly about the state of her feet. Apparently the shot is not quite right. It will have to be done again. I am not at the Embassy garden after all, but on location for the filming of London Weekend Television's forthcoming series, 'Partners in Crime', from a book of short stories by Agatha Christie. A 1926 Guide Captain mops her brow and pushes back the hat borrowed from CHQ's archives. She is one of the many garden party guests in Episode six, *The Ambassador's Boots*. The Ambassador, played by T P McKenna, sits in the shade of the trees, telling theatrical anecdotes to Francesca Annis, the series' lovely lady sleuth, who sits quietly sewing dresses for her small daughter. Her 'Partner in Crime', actor James Warwick, chats



with Catherine Schell, who plays the exotic Hollywood actress, Miss La Strange, who has been saved from danger and abduction by our two intrepid detectives. 'Isn't she spiffing?' Mr Warwick asks the camera as Miss Schell thanks her rescuers and departs for the film studios. One really must agree; the whole series promises to be absolutely spiffing from beginning to end. Mystery, intrigue, colour and drama, you can find them all on your television screen this winter. This is only your first clue!

Yvette Sanson

Annual General Meeting 1982

At the Annual General Meeting held on 25th May the following appointments were announced:

Vice-President: Mrs T A Dickson, JP

Election to The Council: Miss B E Towle
Mrs D Carnegie-Arbuthnott (Scotland)
Miss F H Thomas (Wales)
Mrs W B Loane — re-elected (Ulster)
Miss V J Walker (North East England)
Mrs A Rimmer (North West England)
Mrs M C Hahn — re-elected (Midlands)
Miss S I Morris (Anglia)
Mrs B N Howell (South West England)
Mrs D E Swanwick — re-elected (London and South East England)

Election to The Executive Committee: Mrs M C Hahn
Mrs R Howell
Mrs M P D Lawrence

Headquarters Appointments — The following appointments have been announced by The Executive Committee:

Chairman, Blackland Farm Committee: Mrs J Hewitt re-appointed for 2 years from 1 October 1982.

Chairman, 1985 Jubilee Committee: Mrs R B Walker, JP appointed from 1 December 1982.

Executive Committee Representative on The Trefoil Guild Central Council:

Mrs D A H Coates (with Mrs W Kwantes, previously appointed).

The following appointments have been noted:

Camp Consultant to the Outdoor Activities Adviser: Miss A Donnell re-appointed for 1 year from 1 April 1982.

Vice-Chairman of The Executive Committee: Mrs L M Yates, JP re-appointed for 1 year from 1 October 1982.

Music Consultant to Arts Adviser: Mrs J Holmes appointed for 3 years from 1 October 1982.

Walking Consultant to the Outdoor Activities Adviser: Miss M Staines re-appointed for 1 year from 1 November 1982.

International Commissioner: Mrs M P D Lawrence appointed for 3 years from 1 December 1982.

Mrs J Potter will now be known as Community Development Adviser and not Community Relations Adviser.

British Virgin Islands: Mrs Margaret Barwick has been appointed President.

British Youth Council: Miss Pamela Edwards has been elected Vice-Chairperson.

The General Secretary

Brenda Hughes

Heraldry (21)



This month we are looking at the standard for North West England — another one in the best traditions of heraldry.

Blazon —

At the hoist — 1. Azure, a world trefoil Or for the world family of Guiding

2. Vert, St George Or mounted on a white horse caparisoned Gules, slaying the dragon Gules, for England

3. The motto band Argent and Azure. (On the reverse 'North West England' in place of 'Be Prepared')

The fly — Azure, in chief a book Gules and White for learning;

a tree proper for the forests, lakes and mountains of the area;

a bee proper for industry;

in base a lymphhad (ancient ship) Or and White for the waterways and commerce;

a garb (wheatsheaf) Or for agriculture

all bordered with a cord — Azure and Or.

1983 Folk Fest Will Have A New Look— Festival 83

When the first Scout and Guide Folk Fest was held at Baden-Powell House in 1968 before an audience of families and friends of the cast, nobody present can have imagined that a time would come when audiences would fill the Royal Albert Hall and that the programme might include Scouts and Guides from many parts of the world. But that is what happened, and it is an impressive indication of how both Movements have broadened their activities in the field of entertainments.

It has happened in other ways, of course. There is now a Scout and Guide Symphony Orchestra, a Scout and Guide Concert Band, some of the best of the country's youth bands have Scout and Guide membership. And all over the country music is playing an increasingly important part in local Scout and Guide activities.

The special appeal of Folk Fests has been the way in which they have introduced both performers and au-

diences to some of the traditional music of ordinary people. The sort of music they performed for their own pleasure and entertainment, before the radio, records and cassettes took over.

What a rich variety they have offered! From the United Kingdom there have been singers of Scottish ballads, clog-dancers from Lancashire, close harmony singers from Kent, a Welsh choir — of course, Somerset handbell ringers and many more exponents of the great store of representative music that exists in every part of the country. Likewise the Festival has attracted participation from overseas. There have been choirs from Germany and Belgium, singers from Australia and the Caribbean, dancers from Japan and Holland and many others. Standards have been amazingly high and a wonderful tribute to the efforts of the performers in developing their skills and to the Leaders and teachers who have encouraged them.

If Folk Fests have managed to bring to light so much musical talent, how much more might be achieved were the programme to be opened up still further? This is what the organisers hope to find out in 1983 and to underline the fact, the event will have a new name to indicate the whole range of Scout and Guide entertainment — **Festival '83 on Saturday, 22nd October** — at the Royal Albert Hall in London.

The intention is that the programme will no longer be confined to what may be considered broadly as music but should include entertainment of every kind. The only stipulation is that performances, even though by amateurs, should be of the highest quality.

So, it will not matter whether you sing Mozart or McCartney, are a ballet, sword or Morris dancer, play a solo instrument or are in a group, perform on anything from a cello to a xylophone, or take part in amateur dramatics. The aim is to offer

the audience a feast of varied entertainment which will show off Scout and Guide performing standards at their very best.

The prospect is exciting and the organisers are anxious to lose no time in preparing an outline programme and arranging auditions, which are scheduled for the weekend **26th/27th February 1983 in Glasgow; Saturday 5th March, 1983 in the Midlands and Sunday 6th March, 1983 in London**. So, if in your Scout or Guide District, or Unit you have members, individuals or a performing act, whose standards you think deserve consideration in a Scout and Guide Festival in 1983, please let us know by writing to either the Programme Secretary of The Girl Guides Association or The Activities Secretary of The Scout Association, to obtain further details and application forms. The application for auditions will close on **28th January, 1983**.

Thinking Day Service

Saturday 19th February 1983

Visiting London on the occasion of the Thinking Day Service? Then don't forget to look in on the lovely exhibitions of the 46 Commonwealth countries at the **Commonwealth Institute**.

Gorgeous traditional Chinese wedding costumes will be paraded as part of a programme to remind you that the Institute now has a new exhibition on Hong Kong and that the 1983 Chinese New Year opened the previous weekend — the Year of the Pig.

Guiders can book for either the 12.00 noon or 3.00 pm programmes.

Admission is free. For further details and to book please write to: **The Education Centre, Commonwealth Institute, Kensington High Street, London W8 6NQ. Tel. 01-602 3252 Ext 283.**

**No Pets for Christmas —
See page 41**



Report on Boys' Brigade Council AGM 3-5th September 1982

The Brigade President, The Earl of Elgin, and the Boys' Brigade make their AGM of the Council a memorable occasion. This I experienced at Keele University, September 3-5th when I was invited by the Brigade President, The Earl of Elgin and Kincardine and Brigade Executive as the Association's representative.

The North Staffordshire Battalion was host to 707 Officers of the Brigade, assembled from the various districts throughout the United Kingdom, along with representatives of the Methodist Church, Church of Scotland, Baptist World Mission NCVYS and Staffordshire County Girl Guides.

At the Civic welcome by the Lord Mayor of Stoke-on-Trent and the Mayor of Newcastle under Lyme, amusing quips were exchanged about membership in the Brigade and the Scouts, and these served to highlight the similarity of aims of those working with young people.

The programme of Boys' Brigade vintage films dating back to the 1950's revived scenes of International camps and celebrations not only in Britain but in different parts of the world such as Nigeria and Jamaica. Some council members present experienced the thrill of seeing themselves as they were several years ago.

The soaring voices of all assembled singing the hymn 'Morning has broken, like the first morning' started the opening service and the Reverend H B Kirkpatrick MA BD, Chaplain 3rd North Staffs Company, in his address stressed the importance of (a) Communication within an organisation

and having 'the right words' (b) a *Sense of Direction*. Then followed the message of loyal greetings to Her Majesty The Queen, Patron of the Brigade, to which Her Majesty's reply came later in the morning.

The Business of the Council was conducted in a democratic way with time for division to vote on important issues, one of which was the necessity for raising annual contributions to Brigade Funds — an issue not unfamiliar to our own organisation. But it was not all work and no play; at the end of a full working day on Saturday, there was a show in which North Staffs members were the stars. Tours were laid on for delegates' accompanying members.

The Brigade is busy preparing for its centenary in 1983 when the Council's AGM will be hosted by Glasgow where the Movement started. Naturally there was excitement and anticipation, for who does not look forward to birthdays? To have survived 100 years is an achievement of which the Brigade is justifiably proud.

Our Association has been invited to participate in an international camp at Scone Palace, Scotland, from 20-30th August 1983, and a National Centenary event for Seniors and Young Leaders 13-20th August 1983 — at Durham University. Regional Commissioners have been informed of these events.

It was very heartening to hear from a wide number of Brigade members of their contact and involvement with the Girl Guides Association; with children who are members of one or other of our Units in the three age ranges.

Our Chalet CHQ Ski Party 1983

Have you ever wanted to learn to ski? Have you ever wanted to visit Switzerland or Our Chalet in the wintertime? Do you prefer to travel with other people rather than alone? Then this holiday may be exactly what you are looking for!

Dates: Saturday 15th January, 1983 — Sunday 30th January, 1983 (due to an early morning departure on Sunday 16th January, you may wish to travel to London on Saturday 15th January and stay overnight in suitable accommodation)

Cost: Travel from London Gatwick or London Heathrow (depending upon numbers), departing on 16th January to Switzerland, return by air on 30th January, 1983.

Full board and dormitory accommodation at Our Chalet:

Insurance: GGA Policies

Administration:

Not included: Hire of skis and boots if required.
Ski lifts and spending money.

Overnight accommodation in London if required before departure.

If accommodation in a superior type of room is requested the following supplements per person, per night, are payable direct to the Guider-in-Charge, Our Chalet, while in Switzerland.

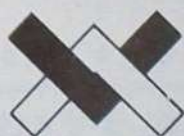
Bed in 7 room	2.00 SF	Bed in 3 room	6.60 SF
Bed in 5 room	4.60 SF	Bed in single room	9.60 SF

Who may apply:

Any member of the Girl Guides Association aged 16 years and over. Applications as soon as possible please (if possible by 14.12.82). To apply please complete a **Nomination Form** (in triplicate) obtainable from your County Commonwealth and International Adviser.

Approx:
£217.25
£6.00
£1.00

Muriel Dunn
International Secretary



Ramrod 1982 — Diary Of A *LINK* Sail Training Trip



Ramrod is a 45-foot cutter built in 1959 and owned by the Colchester Scout Sail Training Scheme. It was this yacht which a group of eight from *LINK* used for an adventure holiday.

Saturday 10th July We met at Fareham railway station and then went to Gosport to be introduced to our skipper Andy, and the mates Jeff and Keith, all very experienced sailors who soon put us at our ease.

We began work straight away by stowing our bags and organising ourselves into work groups for the week. We decided to be called Port and Starboard — very appropriate! We then prepared our menus, checked the sails and equipment and finally set off for our first mooring a quarter of a mile away. That was easy sailing! We had a quick trip ashore to build up energy for the following days and back again in the dinghy.

Sunday 11th July We set sail early to cross the Channel to Cherbourg, a journey of about 12 hours. The crossing was very enjoyable with brilliant sunshine and a cool breeze. We sailed fast

... leaning to one side!



which was exciting as it made us lean to one side. Everyone was eager to learn and gain experience — for most of us this was the first time.

We all took turns at the helm, changing the sails, keeping a lookout and learning various nautical terms under the instruction of the skipper.

Monday 12th July Today we went ashore in the pouring rain. The weather was getting worse so we had a quick look at Napoleon's statue and found a café and cake shop. Once we had purchased our duty free goods we decided to return to England and, hopefully, better weather.

We left at 7pm and sailed into the mist. The

work groups took turns at being on watch every four hours which was quite an experience as we sailed through thunder, lightning, mist and darkness.

Tuesday 13th July When dawn broke the better weather came and eventually we could see the English coastline. Most of us were exhausted after our night passage, however Dartmouth was very peaceful and picturesque. As we sailed into the harbour under blue skies and brilliant sunshine our 19-hour trip diminished into memory — never to be forgotten.

Once we had recovered, washed and dried our clothes we went ashore. After this the rest of the week will be plain sailing.

Wednesday 14th July Luckily the weather was good as we set off for Salcombe. En route we had sailing exercises. The skipper and mates decided to have the day off and Bill and Jeremy were in charge. *Help!* Can we get off? All hands on deck! We soon learned the decisions which had to be made to sail successfully.

Eventually we arrived, despite my roundabout steering, and anchored in the beautiful harbour near the beach. We were able

to swim ashore from the boat and laze in the sun.

Thursday 15th July Today we set off for Fowey. We were pleased with our previous day's efforts and keen to learn more. We passed Eddystone lighthouse and learned how to navigate and estimate the ship's position on the chart. Again it was a lovely day and we had a clear view of the coastline. We had a man overboard exercise using a fender. Eventually we arrived in Fowey, completing another successful day and ready for our visit ashore to explore this quaint port.

Friday 16th July Today we headed for our last port of call — Falmouth. During the morning I took my turn at the helm for the last time and the strong wind made it difficult for me to keep a straight course. Eventually we arrived after many circular tours! To celebrate our successful trip and to conclude our varied and filling menus we had a cream tea and then went ashore for our last night together.

Saturday 17th July After cleaning the boat and packing our bags onto a trolley we said our farewells and made our way along the marina to the mini-bus. All too soon we were on our way. We made a lot of friends and had many happy memories to take home with us. Everyone had thoroughly enjoyed this adventure holiday.

Diane E Wilkinson
Haltemprice LINK Unit
(Hull) Southella District
Ranger Leader

Below, the skipper and crew



GUIDE YOUR GIRLS TO GREAT READING!



GUIDING

FOR RANGERS TO COMMISSIONERS

50p

TODAY'S GUIDE

40p

THE BROWNIE

18p

FROM YOUR NEWSAGENT
OR

SUBSCRIPTION DETAILS FROM:
Periodicals Subscriptions Dept.,
The Girl Guides Association,
17-19 Buckingham Palace Road,
London SW1W 0PT.
Tel: 01-834 6242.

..... next month in **TODAY'S GUIDE**
..... next month in **THE BROWNIE**

TODAY'S GUIDE — Help your Patrols to use the Patrol Pages

by Coral Tomlin

The January edition of *TODAY'S GUIDE* will have a new look in the Patrol pages. The Patrol project entitled 'Have a shot at . . .' will be printed on two sides of a single page, thus allowing the project to be removed from the magazine folded in half and put into their Patrol file for ease of use.

January's project will be Thinking Day cards for the Patrol to make and send. The idea suggested will be for the Patrols to print their own design using polystyrene meat trays as the 'Master'. They will perhaps need ideas for designs, and the Guide Handbook has plenty of illustrations which can be copied. Do encourage the Patrols to be inventive, the best designs are the ones they devise together.

If the printing idea does not appeal, you may like to suggest they try making individually created cards. 'Handcrafts for all Seasons' by Rosalie Brown has many ideas which can be adapted for Thinking Day cards, for example, cut paperwork, silhouettes, paper mosaics, spatter prints, stencils etc, all of which are most effective. In March 1982, *TODAY'S GUIDE* had an article on making stained glass windows, and this could be adapted for Thinking Day, perhaps using a candle as a theme.

Dryad Press have a useful booklet entitled 'Greeting Cards' which contains a host of ideas for both unusual cards and hints on good lettering.

As with all 'craft' activities, it is important to ensure that the Patrol does work together as a group, sharing materials, resources and talents, and you may need to remind the PL about this before they commence their planning.

Three new series will also start in the Patrol pages in January. 'Are you the Patrol . . .' will be aimed at helping the girls in the Patrol carry out their special jobs more competently. January's issue will have the introduction followed by the Patrol Treasurer in February. Another new series will be 'Be a Badge Spotting Patrol'. This will help the patrol recognise the different badges worn by both Guides and Guiders, and will also have an article on what **not** to wear in uniform. At the end of the article each month will be a fun score to fill in when the badges in the article are spotted being worn. There will also be a page of ideas for the Patrol to fill in the odd minute of their Patrol time with, but this is not designed to fill up the whole of Patrol time.

Make a new year's resolution to ensure all your Patrols either have their own copy of *TODAY'S GUIDE* each month, or at least see a copy on a regular basis. This is something for **you** to bring up at the next PLC — have you ever shown the Patrols their own magazine or do you keep all the ideas up your sleeve for the Unit programme?

TODAY'S GUIDE New Year Review

To start off the New Year *TODAY'S GUIDE* has covered a complete range of interests and activities. With Thinking Day next month the Guides are given plenty of new and exciting ideas for things to do, like planning a competition evening for other Patrols, an International evening and arranging a party for Brownies or even the Trefoil Guild. Also in the series Guiding Around the World there is a map of the Commonwealth Countries and this is linked to the first clause of the Commonwealth Badge. This is the ideal time of the year to get Guides interested in this Badge, being so close to Thinking Day. If your Guides like cooking, the Cook Badge also begins this month (try a simple international recipe with them to coincide with Thinking Day and Clause 4b of the Commonwealth Badge). How about the Music Lover Badge — this can also be worked into the Programme and fits in nicely with the ideas already given. Challenges are always part of our New Year customs of keeping a resolution. 'Challenge yourself to overcome a food fad' or 'Keep a diary' — Why and How. Both of these will get the Guides thinking. There is also a well illustrated chart on New Year customs and an interesting article to read. 'Diamonds at Work'. For some lighthearted reading on a wet or cold day there is the

story 'Something harmful'. Lastly, 'Growing up is fun' tells the Guides how to obtain a new look and, getting themselves into shape after all that delicious Christmas food, to keep fit. Also the latest fashions in keep fit and dance wear. If any Guides are thinking of doing the Carpenter Badge clause 3 appears in this issue and there is a double page spread on the tools carpenters use. Clauses 1 and 2 were in the November and December issues and can be obtained from the Subscription Department at headquarters. Besides the articles already mentioned there are the popular puzzle pages, star scene and letters. Encourage your Guides to make full use of their magazine by helping them use the ideas mentioned.

21st BROWNIE Birthday Review

What a fantastic way to start the New Year. *THE BROWNIE* is 21 years old and we have lots of super things happening in the 5th January issue of the magazine, which has a new look. There is a 21st centre spread, beautifully illustrated, together with an article on this special occasion and also to celebrate a T-shirt competition which we hope your Brownies will enter. The first

Page 21 ▶

Merry Christmas and a Happy New Year.

The Girl Guides Trading Service would like to wish all its customers and all the members of the Movement a very Happy Christmas and a Prosperous New Year, and to express our thanks for your support during 1982.

Our new 1983 Catalogue will be published early in the new year with page after page full of Uniform Clothing, Camping requirements, Gifts and Stationery together with the full range of Girl Guides Association Publications and it's yours absolutely free if you send the coupon.

Remember, if you have already written for the 1982 Catalogue, you will already be on our 1983 mailing list.

**When you buy from the
Movement we all benefit.**



Please send my new free catalogue.

Name _____

Address _____



**GIRL GUIDES
ASSOCIATION**

9.00a.m. to 4.30p.m.
Monday to Friday

Girl Guides Association Trading Service, Atlantic Street, Broadheath,
Altrincham, Cheshire WA14 5EQ. Tel: 061 941 2237
Also available from any of the Girl Guides shops in London,
Birmingham, Cardiff, Liverpool and Manchester.



**ROYAL
ALBERT HALL,
LONDON**

Festival

83

**Saturday 22nd
October 1983**

Festival '83, successor to Folk Fest will present the tops in Scout and Guide entertainment. A lucky dip of soloists, groups, bands and excerpts from Shows!

Auditions will be held:

Glasgow:	26/27 February 1983
Stoke on Trent:	5th March 1983
London:	6th March 1983

Send off the coupon NOW to find out more.
Requests for preferential seat bookings can also be made now.

To: The Activities Secretary, The Scout Association, Gilwell Park, Chingford, London E4 7QW

Please send me preliminary details of:

- ★ Festival '83 auditioning
- ★ Preferential seat booking
(delete whichever does not apply)

Name

Address

Animals Aiding US

The following article was written in response to that of Hilary Nimmo in the September GUIDER, entitled *Animal Aid*, a background for discussion. Heather Dixon presents here the opposing viewpoint, which may possibly prompt an interesting discussion at future Unit meetings. The views expressed here are personal and do not necessarily represent those of Anglia region.

The article by Hilary Nimmo gave her reasons for opposing the use of animals in research. It is right that we should concern ourselves, as individuals, in controversial issues such as this, but as 'background for discussion' the article did not give both sides of the case.

Perhaps we should start with our concept of human and animal life. Do we value mankind more than animal life? Do we want to see improvements in the quality of life — both animal and human? Should we support efforts to eradicate some of the most crippling, painful, progressive and killing diseases? Should new drugs be developed to combat disease-producing organisms which have become resistant to known drugs? Do we wish to feel confident when using new products in the home? If the answer to any of the questions is 'Yes' then research must go on.

But must animals be used? As yet there are no known alternatives to using whole, living animals for many specific tests and for the production of life-saving stimulants of immunity, such as antitoxines and vaccines. Scientists are continually striving to use as few animals as possible and there has been a steady decline in the numbers used over the last five years, in particular those dealing with the demands from the cosmetic and non-medical industry.

Until comparatively recently leprosy was almost untreatable. Now early treatment with drugs, carefully tested for safety in animals, can prevent the development of crippling deformities accompanied by the prospect of life as an outcast. The recent discovery that the armadillo can be used as a host to the leprosy bacillus holds the promise that vaccines may soon be available to prevent the disease at the source. Leprosy, the British Leprosy Relief Association, has kindly supplied photographs illustrating the benefit of treatment received by an Indian.

Of animal experiments, 80% are done on rats and mice, while only 0.25% are on dogs and 0.14% on cats. We must keep the figures in perspective; for example the RSPCA kills many more abandoned pet dogs and cats than this each year. And, more disturbing, 17 million children died last year in the poorest countries



Photos: courtesy of the British Leprosy Relief Association.

Before ...



...and after treatment for leprosy

of the world, from malnutrition, disease and lack of health care.

All research involving animals is controlled by law, with Home Office inspections and licences granted for specific work. By law an animal must be killed quickly and painlessly if it, a) is suffering severe pain, or b) is likely to suffer any pain for an extended period. "83% of experiments are carried out without anaesthesia". The active response to a drug is likely to be quite different under anaesthetic and the result unreliable. Most experiments do not inflict any pain and anaesthesia would be irrelevant. Some tests cannot be done under anaesthetic — how can you feed a new diet to an unconscious mouse?

We must remember that animals kept in laboratories normally receive an ample and nutritious diet and hardly ever suffer the severe deprivation or cruel death which are normal for animals in the wild state.

Yes, we ought to be concerned in the welfare of all living animals and a visit to a research laboratory inevitably poses questions and the heart-strings are pulled but a visit to a home for severely disabled children makes my heart bleed.

Maybe we are doing too few animal experiments to help them and to protect future generations.

(Further information can be obtained from the Research Defence Society, Grosvenor Gardens House, Grosvenor Gardens, London SW1W 0BS.)

Heather Dixon

Chairman, Awards Committee, Anglia Region,
formerly Chairman of Training Committee,
Cambridgeshire East

The subtitle 'background for discussion' was intended to provoke the opposing view point, and I am delighted it has done so!

Editor

Page 19

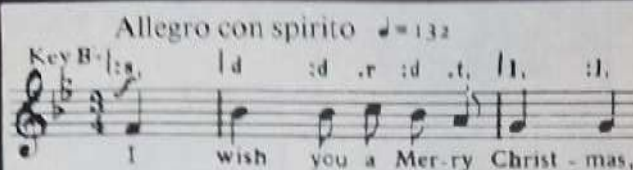
issue gives you a brand new handcraft idea, a Model Village made entirely out of plastic washing-up liquid bottles. Later, there will be a complete floor plan with instructions, followed by directions for making 'A Mouse House', 'Paper' Trees, and a 'House in a shoe'. In the following issues other ideas will follow to give you a really super model village. You can also think up ideas of your own, so start now by asking the Brownies to collect the bottles. Needleworker starts off the Badges next year and the Brownies will find the clauses explained in a very clear way. Brownies can keep fit and help at home with the useful helpful charts. Also there is a new series of cookery cards to collect with tempting new recipes. Story time for Brownies starts off with Part

One of 'A new sister', which should, as with all the stories coming in the New Year, keep them waiting in anticipation for the next instalment. Try a ten minute storytime at the Brownie meeting! All the favourites will appear throughout the month, ideas for Ventures, special interest articles, Almost a Guide, Pictures to Paint, Pack photographs (don't forget to send yours) and Pack's Post Bag. We like to hear all about your Pack activities and so do all the other Brownies who read the magazine, so keep on sending in those super letters. Make sure you order your January copies now.

SH

THE MALCOLM SARGENT CANCER FUND FOR CHILDREN

was launched in March, 1968, as a lasting and practical memorial to the much loved British musician whose name it bears



The Festive Season for most of us means family parties and presents. For children in the Fund's care it can mean much less.

CHRISTMAS IS COMING!

You can assist the Fund's work by supporting the Christmas Campaign.

CHRISTMAS CARDS

Six designs from 59p — £1.25 per pack
(Six cards and envelopes)

SLIMLINE POCKET DIARY

(In association with the RSPB)
£1.65 (inc. UK postage & packing)
£2.40 (overseas surface mail)

"WILD BIRDS OF BRITAIN" CALENDAR

an attractive gift
12 Beautiful Colour Photographs
in full colour
£2.25 (inc. UK postage & packing)
£3.75 (overseas surface mail)

DONATIONS (which will be gratefully acknowledged), Calendar/Diary orders and requests for the Christmas Card brochure should be addressed to:

THE MALCOLM SARGENT CANCER FUND FOR CHILDREN,
Department G G,
6 SYDNEY STREET, LONDON SW3 6PP

Telephone: 01-352 6884

THANK YOU

LEISUREWEAR

WHY NOT HAVE

YOUR OWN GROUP DESIGN

Silkscreen printed on to our excellent Quality Standard and Fashion Garments — Sweatershirts — Jogging Suits — Sportshirts — Military Style Sweatershirts — Tee-Shirts

- ★ Minimum order only 12 shirts.
- ★ Money back undertaking
- ★ We offer Special terms of trading for your movement

Premier
THE BEST OF BRITISH
LEISUREWEAR

FREE
DETAILS
PHONE NOW!

NORWICH (0603) 745018 OR WRITE
PREMIER T-SHIRTS DEPT GDR FREEPOST
BOWTHORPE NORWICH NORFOLK NR5 9BR



Christmas Acrostic No 58

by Brenda Hughes

- A. *In the old days of sail, sailors
————— up a wind. (8)*
- B. *Now antique but it was useful when
writing. (8)*
- C. *If you net her properly, you will
find the lower region. (6)*
- D. *Is it always a doorstep? (9)*
- E. *Thrilling. (8)*
- F. *The colossus which explored
Africa. (6)*
- G. *I dice with a tribe for a tent. (9)*
- H. *We celebrate it now. (8)*
- I. *For knowledge or water? (6)*
- J. *Towelling material. (9)*
- K. *Fired, mixed up with a pound but
ransacked. (6)*
- L. *Has this occurred every time a
cassock is removed. (9)*
- M. *It used to have an orange in the toe.
(8)*
- N. *Two people or a wagon and
horses? (7)*
- O. *Fancy paper. (4,4)*
- P. *Soften. (6)*
- Q. *Close of daytime. (7)*
- R. *A sea urchin. (7)*
- S. *A door usually has one and a bed
used to. (3)*
- T. *A twisted German tells where He
was laid. (6)*
- U. *Inhabitant. (9)*
- V. *Saint Nicholas or Father
Christmas. (5,5)*
- W. *He fought with a rapier. (9)*
- X. *Asked politely. (9)*
- Y. *She rejoiced with Mary at the
conception of Jesus. (9)*
- Z. *Fisherman or geometrician. (6)*
- a. *Hung up, just now. (11)*

Double Acrostic Rules

Solve the clues and write the answer in the numbered grid on the right. Transfer the clues to the corresponding numbered squares in the grid below. When this is complete, you will have a quotation from a book (or poem etc), the title and author of which will be found in the initial letters of the answers to the clues.

A small prize will be awarded for the first correct entry opened on the 20th of each month.

Please send entries to: 'Acrostic', The Editor, GUIDER, The Girl Guides Association, 17-19 Buckingham Palace Road, London SW1W 0PT. It would also be appreciated if readers could attach to their entries a brief note about their preferred reading material. A photostat of the Double Acrostic page will be perfectly acceptable from those readers not wishing to damage their copies of GUIDER.

A	60	10	192	36	43	22	20	1
B	187	62	4	108	55	29	27	17
C	15	40	86	102	113	48		
D	105	138	91	130	8	33	200	64
E	153	131	46	61	114	98	68	28
F	142	184	172	66	151	118		
G	26	12	185	158	53	77	75	133
H	176	106	51	119	19	76	78	164
I	32	190	139	194	54	101		
J	44	23	137	15	82	70	109	128
K	21	124	97	180	135	141		
L	201	144	123	34	148	173	84	65
M	207	165	115	132	174	157	30	120
N	79	199	189	179	37	6	169	
O	100	49	145	182	152	193	204	196
P	39	85	159	16	117	171		
Q	57	112	92	99	11	5	162	
R	74	183	203	160	121	35	202	
S	149	18	110					
T	52	90	42	177	168	107		
U	116	161	136	94	58	24	71	143
V	7	95	188	155	72	198	163	126
W	87	156	111	147	186	104	81	195
X	83	129	88	181	41	170	9	191
Y	103	140	175	73	197	167	80	134
Z	67	127	38	25	45	96		
a	31	14	150	166	56	2	59	122

The winner of Double Acrostic No. 56 (September *GUIDER*) is Miss D Mitchell of Salisbury.

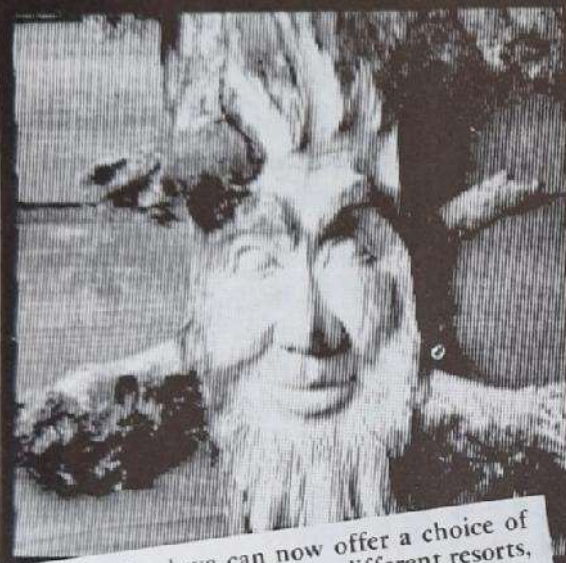
Solution to Double Acrostic No 57

'This process,' Joyce admits, 'is a full-time job but the rewards of studying, praying and seeing evidence of God's goodness are in proportion to our desire to learn and experience the "be still and know" feeling.'

Joyce by herself
and her friends.

Wooden't you be smiling on a Camptours Summer Camp?

There's plenty to make you smile in the new
CAMPTOURS '83 brochure



In Switzerland we can now offer a choice of nearly twenty chalets in eight different resorts, each fully equipped for self-catering, and suitable for groups of anywhere between ten and fifty in number.

In Brittany our ready-erected, fully equipped campsite presents a great opportunity for a summer camp abroad at lowest possible cost.

And, new for '83, we can now offer you your very own cruise boat, complete with captain and cook, for an exciting and unusual holiday exploring the rivers Rhine and Moselle.

Price increases have been kept as low as possible and there are now huge discounts for the first half of July — great news for Scottish and Irish groups!

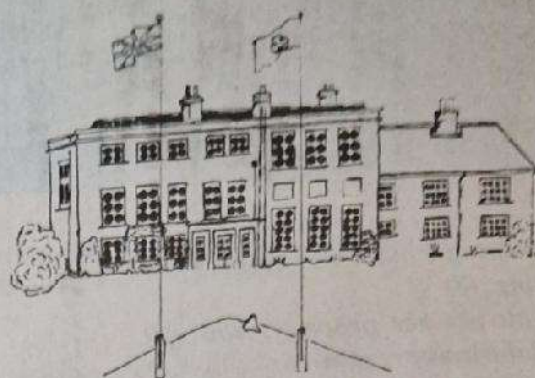
Full details are yours for the cost of a stamp — just send the coupon below:

To CAMPTOURS, Warren House, High St, Cranleigh
Surrey GU6 8AJ. Telephone Cranleigh (0483) 273027
Please send me details of your 1983 programme of tours

NAME _____

ADDRESS _____

GU 12



FOXLEASE TRAINING CENTRE in the beautiful New Forest near Lyndhurst

Young Assistants are required. If you have three months or more time to fill in between leaving school and commencing training for your career, why not spend this doing a worthwhile job at Foxlease?

If you would like to live in gracious surroundings whilst leading a busy active life, apply for further details to:

Guider-in-Charge,
Foxlease,
Lyndhurst,
Hants SO4 7DE

London Festival Ballet The Nutcracker

Sponsored by National Westminster Bank

Music by Tchaikovsky

Christmas season
27 December 1982 -
12 January 1983

Evenings 7.30 pm Matinées 3.00 pm
Booking opens November

Greater London Council
ROYAL FESTIVAL HALL
General Administrator: Michael Kaye

Box Office telephone: 01-928 3191
Credit Cards: 01-928 6544/5

CHRISTMAS IN THE UNITS

JANE: Ask the Vicar to announce in church that we will provide a Saturday afternoon of activities for small children in the church hall so that parents can do their Christmas shopping.



PAM: find out how different ethnic groups in this country celebrate Christmas and invite some of them to share some special Christmas activity with us.



ARLENE: Invite Patrol leaders and seconds or first ten available Guides to join us for mince-pies, chocolate biscuits and juice, play crazy games and show slides of last camp. How's that for good publicity?

Right everyone — as your Chairman let me tell you that you've now talked for fifty-five minutes and still haven't produced any concrete suggestions. So far we all agree that we would like to do something different at Christmas and we've all had a good moan about money or the lack of it. Fortunately Pam, here reminded us that as members of a Christian community we are celebrating God's gift to us so whatever we do or give the real value lies in the joy and love that goes into it — right Pam? Well then, no more talk, you've all got pencils and paper so please could I have nine constructive suggestions as to how we as a Ranger Unit can celebrate Christmas 1982.

NICOLA: Make shortbread together (my house if you like) everyone bring some ingredients then go carol singing at the children's home and hand over the shortbread (if it's fit to eat!)



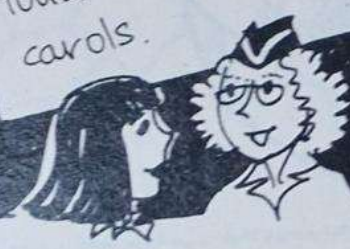
SANDRA: Be well-groomed for Christmas. Have a make-up and hair styling session. Then invite the venture scouts for supper.



DIANE: Make Christmas cards to send to the people who have helped our Unit during the year

JENNIFER: As a group go to Evensong at the Cathedral on the Sunday before Christmas. Fit in a good long walk by moonlight or starlight if possible.

JILL: Everyone bring a poem or reading connected with Christmas. Share them and make toast and sing carols.



LINDA: Make up grocery baskets, buying a little ourselves and asking friends to supply just one small item. Ask Health visitor to tell us where they will be useful.

CHRISTMAS IN

Something



Take One Bar of Soap

Materials Required:

- A bar of toilet soap
- Cling wrap
- A sheet of wrapping paper with a small repeating motif
- A glue stick
- Scissors
- A small packet of foam sticky-tabs from a stationers



Equipment Required:

- 1 Sheet of Christmas Paper with a suitable snowman motif.
- 1 small carton decorated to hold the snowball treasure.
- 1 Packet of any snowball type sweets for treasure.
- Cut out snowmen and glue on to thin cardboard.
- Number cards 1-9 and also give each snowman a name.
- On card No. 9 also write the words "Please take one".
- Now hide the cards around the Brownie Hall — placing the snowball treasure beside card No. 9.
- Tell the Brownies that nine little snowmen on their way home to the North Pole for Christmas have gone astray and can they please help to find them.
- The Brownies in groups of 2 or 3 armed with paper and pencil, search the hall and try to make a complete list of the names of the lost snowmen.
- Don't forget to check lists at the end of the Hunt to make sure all the snowmen have been found.
- Maybe give an extra "Snowball" to the Brownies who have been able to find all nine snowmen.

Something

Cut out the chosen motif from the wrapping paper — allowing for each 3 Dimensional picture 2 complete and 2 incomplete figures.

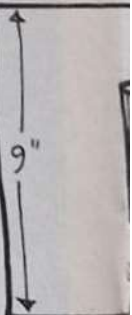
Take the bar of soap and stick onto the flat side 1 complete motif and allow to dry.

Cover the soap with a square of cling wrap — sealing it well on the under side of bar.

Take the second complete motif and stick three or four little bits of the sticky-tab to the back. Now place the motif carefully over the base picture and stick down.

Take the first incomplete motif and using little bits of sticky-tab now place on top of the picture — now your picture is having a 3 Dimensional effect.

Finally add the second incomplete motif and any other little flowers etc you like and your picture is now complete.



IN THE UNIT

to play

Carol Singers Scramble
You will need two piles of clothes for carol singers i.e. Wellingtons, overcoat, gloves, scarf, hat, hymn-book. Line up your two teams opposite these piles. One member of each team is chosen to be the carol singer.

On the word go, the first member of the team runs up and fetches one item of clothing from the pile and puts it on the carol singer. Together they must sing one verse of a carol before the next person can go. A different carol must be sung each time. The winning team is the one which dresses the carol singer first.

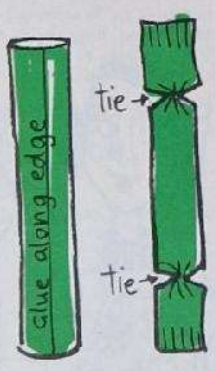
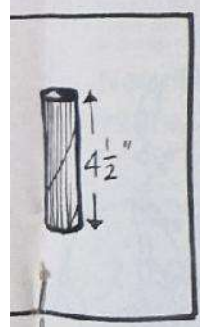


to give

Christmas Crackers

You will need
crepe paper
glue
scissors
cardboard cylinder from the centre of a toilet roll
christmas wrapping string
gift

1. Cut a piece of crepe paper twice the length of the cylinder and wide enough to cover it allowing $\frac{1}{2}$ " extra. (fig. 1)
2. Put gift in the cylinder.
3. Place cylinder (containing gift) on centre of crepe paper and fold paper around it. (fig. 2)
4. Glue along edge of paper and press other edge on top.
5. With string tie the cracker at both ends of cylinder — making the cracker shape. (fig. 4)
6. Cut the paper at each end of the cracker in narrow strips about 1" long to give a fringe look.

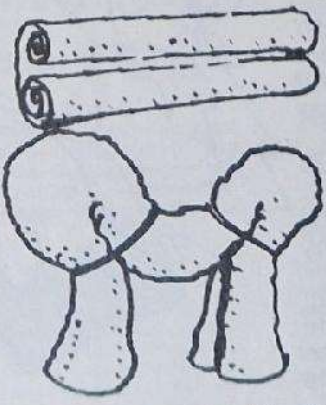


A Little Lamb Gift to Tie on the Tree

Buy a plain fine white face cloth and roll both sides towards the middle

Bend it to form a largeloop for the head and a small one for the tail. Secure with elastic bands.

With black felt make ears and nose and stick lightly in position. Finish off with ribbon.



Cheering The District



You're sitting there with a glazed expression on your face. It's break — the time when we should be chatting as we gulp our coffee but by your face I gather you're thinking.

Yes, and inspiration isn't forthcoming. Tell me, how am I going to spread a little cheer in my Guide District this Christmas, having left it rather late as usual.

Does your District need any cheering? I thought you were all pretty busy already between good turns, Carol Services and parties for old and young.

That's true, the units are doing a lot but what about the Guiders themselves? I feel they need something to bring them together a bit, not just work. They are so busy, especially at Christmas and they won't want a "no-purpose" meeting even though I may think it has a purpose.

What about holding a turkey boning party? That's seasonal, different and quite practical. I'll guarantee barriers will vanish as you struggle with the sinews in a turkey's legs together. It will be a messy, hilarious experience with a worthwhile end product.

Do you really think it could be done with Guiders? Hold on though, Mrs Jones' husband is now redundant and Mary will probably just be cooking for herself and her mother, could we settle for a chicken?

Certainly, it's just as well that you're aware of these things, a chicken it will be.

Here's the crunch — are you going to show us how? You've always steered clear of my Guiding activities before.

Touché, but Christmas is a time of giving. You've always said that Guiding looks wide and makes use of expertise outside the movement. Aren't you lucky to work beside an expert in something.

This get-together is taking shape. I could send a note to all the Guiders explaining that a friend has offered to show us how to bone a chicken and they are invited to come along to watch or to try it out. If the latter they should bring . . . what?

A chicken, a sharp pointed knife and some stuffing. You could send them my three recipes. I used them all last year at the same time and the result was delicious. We could serve tea and mince pies for supper.

Help, I'll have to tidy my kitchen.

Of course. We could put up my old trestle table and cover all available surfaces with plastic for those wishing to work and those watching could make unlimited tea.

Oh dear, what happens if no one turns up?

Some will surely come, even for a little while and if not, well our two households will be a stuffed chicken and some mincepies nearer Christmas, so be of good cheer.



Written by a group
of Guiders from
Ulster.



Recipe. BASIC STUFFING

- 1 chopped onion.
- 25g. butter.
- 375g. fresh white breadcrumbs.
- 125g. shredded suet.
- finely-grated rind of 1 lemon.
- 2 level tsp. salt.
- fresh ground black pepper.
- 2 eggs, size 3.
- 2 tbs. milk.

Cook onion in butter until soft then add to the rest of the ingredients

Programme Notes

December 1982—May 1983

Foxlease — Waddow — Glenbrook

General Training

Unless these weekends are marked especially for Guiders of one Section a General Training weekend is for both Brownie and Guide Guiders, new and experienced. The aim of the training is to give you practical help with running your Unit and carrying out the Programme for the Section with which you are working. Your application form invites you to list the things on which you would like help, so please make use of this opportunity and return the form quickly so that the trainers can include as many as possible of your requests when planning the programme.

Making the Most of the District

Foxlease — 14th-16th January, 11th-13th February,
8th-10th April
Waddow — 21st-23rd January

These weekends are intended to help the District as a whole and aim to give each group a chance to work together, and discover the support members of a District can give each other in working as a team. For Guiders there is help in understanding the unity of the Programme across the Sections and other matters of common concern (the Promise, self-programming, working in groups) and time is set aside for points which relate particularly to the Commissioner's role, both as leader and representative of her District, and what training in the District involves.

Commissioners are invited to bring a group of Guiders of all levels of experience and all Sections. If your District has no Ranger Unit perhaps the Ranger Guider of the Unit which serves your District could be asked to join you?

Trainers' and Instructors' Weekend

Glenbrook — 21st-23rd January

All Trainers and Instructors who have already been to Glenbrook during the year are welcome to this weekend. In addition to providing a good opportunity to meet and talk, to discuss equipment, new techniques, the Programme etc. there will be opportunities to meet friends and take part in various activities.

International Weekend

(a programme linked to Thinking Day)

Glenbrook — 18th-20th February

Exploring different aspects of the International scene, to gain something for themselves as well as to get fresh ideas to pass to their Units. There will be opportunities to explore the district and join in various activities — depending on your energy and the weather.

New Guiders and Guiders with 3-5 years' experience

Foxlease — 25th-27th February

This weekend is for Brownie and Guide Guiders. We hope that by having gatherings of those 'new to the job' and others 'with experience' you may all be able to cover more ground than might otherwise be possible.

Some new members feel a bit anxious about attending a training where everyone else has had experience on the job; others may be new to the Movement and need help with unfamiliar terms, to say nothing of 'channels'.

Whether you are experienced or new, please list on your application form the things for which you most need help so that the trainers can plan your weekend to suit you.

International Weekend for C.C.I.A.s

Foxlease — 13th-15th May, 1983

This weekend is designed to help CCIA's promote knowledge and understanding of World Guiding within their Counties. It will include ideas for trainings and activities, for Brownies, Guides, Rangers and Guiders, and should help the CCIA to see her job in relation to the needs of her County and in the general development of the girl.

Ranger Guiders

Foxlease — 7th-9th January

These weekends offer Ranger Guiders an opportunity to train together as a separate group. In answer to requests for more such events, we are endeavouring to have two weekends a year, one at the beginning and one at the end of the year. We do hope that Ranger Guiders will come along (perhaps one or two from the same County?) so that the weekends are well supported and the training, therefore, more enjoyable for all.

Leadership in the Hills

Glenbrook — 18th-20th March

These weekends are for Guiders only and are linked to the Walking Safely Training Scheme. Please note that these weekends are for those who have reached Advanced Training.

Partnership in Training

(Commissioners and Trainers) Waddow 22nd-24th July

Foxlease — 4th-6th March

Who helps a Guider gain the Adult Leader's Certificate? or a Pack Holiday Licence? who helps her make full use of the Handbooks? or plan a meeting — or chair a PL's Council? or use the local opportunities for service projects? or understand the group system or badge standards or what's meant by progress? or how to pay more than lip service to the Promise?

Many people do, and this weekend will be an opportunity for Commissioners and trainers to think about the overall job of helping Guiders to offer the best possible Guiding to girls in their Units, and to explore their own contribution to the training help needed for different purposes and at different stages.

District Commissioners and District Assistants

Foxlease

10th-12th June, 1983

This weekend will explore another aspect of the many 'partnerships' in Guiding — the work of the District Commissioner and the support she needs from her team of helpers 'to enable the affairs of the District to prosper' (Commissioner's Handbook).

This weekend will give everyone an opportunity to share experiences, to compare notes with other Commissioners and District Assistants and to see their respective jobs in the perspective of the District as a whole.

While there would be great benefit from a Commissioner and her Assistant coming together, any District Commissioner and any District Assistants will be very welcome.

Canoeing (Training and Assessment)

Glenbrook

17th-19th June, 1983

For Guiders and Rangers. These weekends are for those who have some experience and would like further help towards gaining a canoeing qualification.

Walking Safely (Basic and Intermediate)

Glenbrook

15th-17th July, 1983

Many Guiders, experienced or new to the job, may have become interested in the Walking Safely training scheme which is for everyone — whether you live in a rural area or an inner-city one. Preparations and training are needed whether you and your Pack or Company go out for a day in the country, or to a city for day's 'exploring'.

As an 'extra' to the help you will receive in areas near your home Glenbrook offers you the opportunity to take part in training, at your level of experience, combined with the hospitality of the House and the companionship of other Guiders from all parts of the UK.

Caving and Rock Climbing

Glenbrook — 15th-17th April

A weekend for Guiders and Rangers going up or going down! Just in case you feel like trying something else we are offering pony trekking as an optional activity.

Family Week

Foxlease — 27th May-3rd/4th June

For those who really find it difficult to arrange to get away to a residential training, this is a pleasant mixture of training, and time with your family. Husbands, and children aged two to eight years, are welcome.

There will be training sessions in the morning, while husbands take care of the children, but the afternoon will be free for family activities; there will also be some optional activities and sessions for those who wish to join them. Write to the Guider-in-Charge, Foxlease.

Guide Week

Glenbrook — 28th May-4th June, 1983

An opportunity for Guides aged 12 or over (up to four from any one Unit). For details see February 1983 issue of TODAY'S GUIDE.

JAN

Lorne
Craigavon, Co Down
Ulster. Tel: (Holywood) 02317 3180

FEB

Broneirion
Llandinam, Powys
SY17 5DE. Tel: Caersws 204

MARCH

Netherurd
Blyth Bridge, West Linton,
Peeblesshire. Tel: 096 88 208

Foxlease

- January**
7-9 1. General Training
2. Ranger Guiders *not cancelled*
14-16 Making the Most of the District
(District Commissioners with
up to seven of their Guiders)
21-23 Arts Training — (by allocation)
28-30 Advisers for Handicapped
Members

Waddow

- January**
7-9 General Training
14-16 North West England
21-23 Making the Most of the District
(District Commissioners with
up to seven of their Guiders)
28-30 Greater Manchester North

Glenbrook

- January**
21-23 Trainers and Instructors Week-
end

Lorne

- January**
7-9 International
14-16 New to the Job
21-23 South Down
28-30 Ranger Guiders and County
Young Leaders Advisers

Broneirion

- January**
14-16 "Looking at a Training Quali-
fication" (by invitation)
28-30 Development Project special
training (by invitation)

Foxlease

- February**
4-6 South West England (by alloca-
tion)
11-13 Making the Most of the District
(District Commissioners with
up to seven of their Guiders)
25-27 1. New Guiders
2. Guiders with 3-5 years ex-
perience

Waddow

- February**
4-6 North West England
11-13 Lancashire East
25-27 Worcestershire

Glenbrook

- February**
18-20 International Weekend (a pro-
gramme linked to Thinking
Day)

Lorne

- February**
4-6 North Down
11-13 Brownie Guiders
18-20 Armagh
25-27 Arts Weekend

Broneirion

- February**
5-6 Welsh Advisers with Chief
Commissioner
11-13 Joint Scout and Guide Associa-
tions Conference (by invitation)
16-23 'Fun Days for Guiders'
25-27 Craft in the Unit

Foxlease

- March**
4-6 Partnership in Training (Com-
missioners and Trainers)
18-20 London North West
25-27 London and South East
England (by allocation)

Waddow

- March**
4-6 Loughborough Division
11-13 General Training
18-20 Cheshire Forest
25-27 Merseyside

Glenbrook

- March**
18-20 Leadership in the Hills (Ad-
vanced)

Lorne

- March**
4-6 Tyrone
11-13 West Belfast
18-20 Ulster Junior Council
25-27 South East Belfast

Broneirion

- March**
5 General Training for Brownie
and Guide Guiders
11-13 'Music in Guiding'
18-20 General Training (places re-
served for Beauvale Division,
Nottinghamshire)
25-27 Patrol Project (by invitation)
31- Patrol Leaders
April 5

BURSARY HELP AVAILABLE

For full details of how to apply, and who is eligible for Bursaries, District Commissioners should write to the Training Secretary, C.H.O. (Scottish Commissioners should apply to Scottish Headquarters). Applications must reach C.H.O. at least two weeks before the date of the Training. Bursaries cannot be issued in retrospect.

The Fee Bursary entitles the Guider to £3.00 for a two-day weekend and £1 for each additional day. This is deducted from the fees at the Training Centre.

The Fare Bursary (available only for travel to the nearest Training Centre) carries a rebate of a Guider's travel expenses in excess of £3.00. This is paid at the Training Centre.
Note: These cannot be issued for Regional Weekends at the Training Centres or for courses at Glenbrook.

The Angela Thompson Bursary is available to any Guider attending a Promise and Law similar Training (not necessarily at a Training Centre).

The Outdoor Activities Bursary is worth up to £30.00 for Guiders attending training/assessment courses to achieve National qualifications. Applications to County/Region Headquarters.

How to apply to a Training Centre

Any Guider may herself apply to attend a training course at the Centres, provided she has reached the age of 18 years. (At the discretion of the Commissioner a member aged 17½ who is working on the Adult Leader's Certificate may also apply for a Guider course).

An application to attend a Guider Training Centre should be sent direct to the appropriate Guider-in-Charge, and must be accompanied by the correct amount of deposit and a SAE. Applicants should also state the type of training for which they are attending, as there may be several different courses running at any one weekend. As many Guiders have to leave on Sunday, training sessions at a two day weekend will stop at tea-time on that day unless otherwise stated. If sufficient notice is given that it is wanted, every effort will be made to provide for a group until Monday. Individuals able to stay over until Monday to enjoy the surrounding country and other amenities of the Centre are welcome to do so.

CALENDAR

APRIL

Foxlease,
Lyndhurst, Hants SO4 7DG.
Tel. (Lyndhurst 042-128-2638)

Foxlease

March 31-

- April 4 Duke of Edinburgh's Gold Award Course (*Girls and boys from any Operating Authority*)
8-10 Making the Most of the District (*District Commissioners with up to seven of their Guiders*)
15-17 General Training
22-24 Cornwall
29-2 General Training
May

Waddow

March 31-

- April 4 Duke of Edinburgh's Gold Award Course (*Girls from any Operating Authority*)
8-10 West Yorkshire North
15-17 Bedfordshire
22-24 Birmingham
29-2 London North East
May

Glenbrook

April

- 15-17 1. Caving
2. Rock Climbing

Lorne

April

- 1-3 Easter Week-end
15-17 Guide Guiders (*Experienced*)
22-24 Ulster Executive Committee

Broneirion

April

- 6-10 Young Leaders
15-17 Welsh Trainers Conference
22-24 General Training (*places reserved for Anglesey and Pembrokeshire*)
29- West Glamorgan Girls Course
May 1

Due to a printing error the Fee Bursary published in September and October *GUIDER* read £5.00. Please note that this should read £3.00.

MAY

Waddow,
Clitheroe, Lancs, BB7 3LD
Tel: (Clitheroe) 0200 23186

Foxlease

May

- 6-8 London South West
13-15 International Weekend for CCIA's
20-22 Essex East
27-3-4 Family Week (*Guiders with their husbands and children aged 2-8 years*)
June

Waddow

May

- 6-8 Cheshire Border
13-15 Middlesex East
20-22 General Training
27-30 Young Leaders Week

Glenbrook

May

- 28-4 Guide Week (*up to four Guides aged 12 or over from any one Unit*)
June

Lorne

May

- 13-15 Belfast Trefoil Guild

Netherurd

Netherurd House is closed for alterations and improvements and trainings are being organised on a local basis meantime

Broneirion

May

- 7-8 Welsh County Personnel
13-15 General Training (*places reserved for Gwent*)
20-22 General Training (*places reserved for Cardiff and East Glamorgan*)
28-1 'Patrol in Action' (*groups of not less than four Guides from a Patrol*)
June

Glenbrook,
Bamford, Nr Sheffield, S30 2AL
Tel: (Bamford) 0433 51567

Foxlease

June

- 10-12 District Commissioner and District Assistants
17-19 General Training
24-26 Friends of Foxlease

Waddow

June

- 3-5 Greater Manchester West
9-13 Friends of Waddow
17-19 Northamptonshire
24-26 Wirral

Glenbrook

June

- 17-19 Canoeing (*training and assessment*)

Fees at Foxlease and Waddow

Shared room per day	£7.00
Double room per day	£7.50
Single room per day	£8.00
Deposit of £2.00 cheque or postal order only.	

As from 1st January 1983

Shared room per day	£7.50
Double room per day	£8.00
Single room per day	£8.50

Fees at Glenbrook

Shared room (for weekend course)
£12.50. All activities, equipment and VAT are included. Optional activities extra. Deposit of £2.00 cheque or postal order only.

As from 1st January 1983

Shared room (for weekend course)	£14.00
----------------------------------	--------

Fees at Lorne per Weekend

Ulster Guiders	£8.50
(Guiders other than Ulster)	£12.50
Ulster Trefoil Guilds	£8.50
Other Trefoil Guilds	£15.00

Fees at Broneirion

Shared room per day	£5.00
Double room per day	£5.25
Single room per day	£5.50
Deposit	£2.00

Change of Fees at Broneirion

Owing to rising costs, it is much regretted that fees at Broneirion will, from 1st January, 1983, be as follows:

Shared room, per day	£6.00
Double room per day	£6.25
Single room per day	£6.50
Deposit	£2.00

CAMPS &



The Barn and Beaverbrook Lodge, Foxlease

Applications should be sent to the Secretary, Foxlease, Lyndhurst, Hants SO4 7DE, giving alternative dates and enclosing an initial deposit of £1.00 (which is non-refundable) and a foolscap SAE. Priority will be given to applicants who have not already stayed in either The Barn or Beaverbrook Lodge. Applications for the period 1st April-30th September, 1983 are now being accepted. The accommodation is suitable for handicapped members.

Foxlease Annexe

Makes an ideal Centre for Rangers. Available Easter, Spring Holiday and periods in the summer. For details apply to the Secretary, Foxlease, Lyndhurst, Hants, enclosing a SAE.

Foxlease Camp-Sites

Applications for sites for 1983 should be addressed to The Secretary, Foxlease, Lyndhurst, Hants, SO4 7DE and the envelope marked 'Camp'. Suggested dates and approximate numbers should be stated, and whether an equipped or unequipped site is required. Camps begin on any weekday. Some sites are suitable for the handicapped. A £1.00 deposit (which is forfeited if the booking is cancelled) and a foolscap SAE should be included. Applications will be accepted from the 1st October, 1982.

Waddow Caravan

The Caravan is available for bookings throughout the year. For details apply to the Secretary, enclosing SAE.

Ribble Cottage

Will be available for bookings in the New Year — Monday to Friday only. Applications to the Secretary.

Waddow Camp-Sites

Applications for sites will be considered in the first week of January and should be addressed to the Secretary and the envelope marked 'Camp'. Suggested dates and approximate numbers should be stated, and whether an equipped site is required.

It is preferred that Camps begin on Saturday.

A 50p deposit (which is forfeited if the booking is cancelled) and a foolscap SAE should be enclosed.

Waddow Pack Holiday House

Applications for Pack Holidays should be sent to the Secretary. The application must be accompanied by a written recommendation from the Guider's CA

or Pack Holiday Adviser and a foolscap SAE enclosed. The accommodation is suitable for handicapped members.

Glenbrook, near Sheffield

Accommodation available in the house for thirty or in the flat upstairs for ten. Groups must be self-catering and must guarantee twenty in the house or six in the flat. A number of activities are available, including canoeing, walking, caving, rock climbing, etc. For details, contact the Guider-in-Charge enclosing SAE.

Glenbrook Camp-Sites

Six camp sites available; two suitable for handicapped members. Situated in partly wooded grounds. All sites are unequipped. For further information about camping and activities available, write to the Secretary, Glenbrook enclosing a foolscap SAE.

Blackland Farm, East Grinstead, Sussex

Equipped and unequipped sites available in 175 acres of fields and woodland, with swimming pool, simple rock climbing and pioneering facilities (equipment may be borrowed). Canoeing on nearby reservoir, Restrop and Wagtail Lodge, furnished bungalows for 27, the latter specially adapted for the handicapped, are on the site and in addition a six berth caravan is sometimes available. For details, write to the Warden enclosing SAE.

Brownsea Island

Eight sites are available for Guide and Scout Camps from Easter to 1st October and South Shore Lodge sleeping eighteen plus leaders. For details apply to Mrs D Press, Green Gables, 55 Forest View Drive, Staplehill, Wimborne, Dorset.

Scotland

Netherurd

Camp Sites Applications for equipped sites (two) will be considered after 9th January 1983.

Brownie House Bookings for the Brownie House will be considered now. During Scottish school holidays priority will be given to Scottish Packs.

Ranger Bothy Sleeping accommodation for eight Rangers/two Guiders.

One Camp Site, Brownie House and Ranger Bothy are suitable for handicapped members.

Holiday Caravan — 3-berth is available for Guiders and friends.

Apply to Secretary, Netherurd, enclosing foolscap SAE.

Wales

Ynysgarn, Criccieth, North Wales

Applications for the use of three unequipped sites, all suitable for the handicapped. Ti Ni, a fully equipped (except for bedding) Brownie House, Ysgubor Hir, a single storey house, fully equipped (except for bedding) and suitable for the handicapped — can be made

to: Mrs J P Griffith, Swyn y Gwynt, Penrhyneddraeth, Gwynedd LL48 6RH, telephone: 0766 770355, enclosing a foolscap SAE for site information. Ynysgarn is within a few minutes of the sea.

Broneirion, Llandinam, Powys

Holiday flats are available all the year round for family holidays or for parties of up to twelve Rangers with their Guider. Self-catering, fully equipped, with metered electricity. Apply to Guider-in-Charge, Broneirion.

Broneirion, Camp-Site and Brownie House

Applications for Camp Site and Brownie House will be considered from 1st January 1983, and should be sent to: Miss P Lynch, 3c Pentwyn Court, Whitchurch, Cardiff, CF4 7BY, enclosing SAE.

Bookings for the Brownie House, outside school holidays, and for Guide and Ranger groups, should be sent to the Guider-in-Charge, Broneirion.

Ulster

Note

Units wishing to book any of the facilities at the places listed below, and to include handicapped members in their party, are asked to give details when applying.

Holiday at Lorne

Lorne will be open as a holiday centre during July and August 1983. In pleasant grounds with lovely views and quiet surroundings on the shores of Belfast Lough, Lorne is only six miles from Belfast and is a good centre for sight-seeing tours.

Special terms for parties of Guiders taking the house and wishing to do their own catering.

Full details from the Guider-in-Charge, Lorne, Craigavad, Co. Down, Ulster.

Lorne Camp-Sites

Lorne offers fully equipped or unequipped camp-sites with solid shelter. Calor gas available. Applications should be sent to Mrs F Hartley, 1 Station View, Carnalea, Bangor, Co. Down, Tel. Bangor 67088.

Irene McKibbin Memorial Cottage, Lorne

A cottage available for Ranger holidays. For details apply to Miss Hilda Hirst, 119 Haypark Avenue, Belfast 9, enclosing SAE.

Magilligan Camp-Sites

Three fully equipped sites with double Calor gas stoves for twenty-five to thirty campers. Two miles of sands. Large three room hut with an open fireplace. For details apply to Mrs R F Scott, Derrymore House, Limavady, Co. Londonderry, enclosing SAE.

Glen Road Camp-Sites (nr Lorne)

Fully equipped for forty campers (one large and two small camps). Excellent hut for solid shelter and Calor gas. Bookings should be sent to Mrs F R Lee, 45 Gortland Park, Belfast, BT5 7NO, enclosing SAE.

—Pack • Holiday— PANDEMONIUM!

'Has anyone seen my handbag?' Mad Hatter asked, a note of desperation creeping into her voice.

No one answered her. We were all far too busy. There were 24 camp beds to be erected and 24 suitcases to be reunited with their owners.

It had seemed a good idea back in January when a District Pack Holiday had been suggested at a Guiders' Meeting. Ours is a small District comprising two Guide Companies and four Brownie Packs. The idea was that a Guider from each Unit would choose six of her own Brownies to take on the holiday. We were also to be accompanied by our District Commissioner, thus making a full complement of five Guiders and 24 Brownies.

What had originally been planned as a seven day venture to be held during the hopefully warm weather in June, had due to an oversight in the booking arrangements, become in reality a four-day break at the end of October 1981.

The theme chosen for our venture was 'Alice in Wonderland', so consequently our Holiday Organiser rejoiced in the name of 'Mad Hatter'. A title that, as it turned out, was to prove quite apt.

Name badges had been issued to everyone on the coach as we headed towards our destination, and after a few hours we had all become quite accustomed to them.

This was my very first experience of a Pack Holiday and I soon found that there could be some quite embarrassing moments attached to our holiday names. I now know that is one thing to be called 'Dormouse' (my own unfortunate title) in the confines of the holiday 'home'. It is quite another to be forced to respond to it in the middle of Woolworths. Especially when it is being called out loudly by an over agitated Brownie who firmly believes herself to be lost. You get some very odd looks from passers-by, don't you?

It was much later in the evening when the subject of Mad Hatter's handbag cropped up again. This time we listened to her. Especially when she pointed out in a voice bordering on the edge of panic that it contained the train tickets for Monday's scheduled outing to Cromer.

At midnight, having virtually ransacked the entire building, we concluded that there was only one place the missing handbag could possibly be, where Mad Hatter had last seen it, sitting on the floor of the coach, in the coach station, over 40

miles away. There was nothing that we could do about it until Monday morning.

Sunday for we anxious Guiders crept by. The planned trip was an essential part of Monday's programme. It had long been agreed that three Guiders would accompany the girls on the outing while two would stay behind to prepare a surprise party for their return. It was to have been called a Mad Hatter's Tea Party and that was what it rapidly looked like becoming.

We racked our brains, but try as we might we could see no way of preparing a 'surprise party' under the curious gaze of 24 pairs of eyes. It was a challenge that we all thought we could do without.

Promptly at nine o'clock Monday morning we telephoned the proprietors of the coach company. Yes! The handbag had been handed in. That piece of information hardly solved our immediate problems though. The handbag — missing no more was still over 40 miles away.

Suddenly inspired, Mad Hatter telephoned her teenaged daughter, who being a hairdresser, fortunately for us, had Mondays as her day off. Driving at speeds we preferred not to think about, she covered the miles in record time, meeting us at the railway station with literally minutes to spare.

Happily the train ride, a new experience for many of the girls, and later the surprise party, were both a resounding success.

The remaining day of the holiday passed busily if uneventfully. My own little Unit had been the first to board the coach on the Saturday morning and so were the last to reach home on Tuesday evening.

When at last the Brownies had been collected by their welcoming parents, I tottered wearily homeward counting up my 'trophies' on the way. Being the last to leave the coach I seemed to have acquired one Brownie hat (without a tassel) one blue wellington boot, and a black plastic bucket, the latter containing several homemade balls, made from mother's cast off tights.

Somehow this motley collection of articles seemed to sum up for me at any rate the entire chaotic, albeit enjoyable, weekend.

Pat Rissen



Christmas Books

Christmas is the perfect time to give books to friends and family as gifts. In this festive issue of *GUIDER* members of Periodicals staff have chosen their personal selection of books to give as gifts or to buy for yourself. The topics are various, so you should find something here to please every taste! Also reviewed are some books which may not seem obvious Christmas gift material, but which nevertheless deserve a mention here because of the importance of their subjects.

Action Cats. Marshall & Paul. Methuen, £4.95.

Pop-up books were a great favourite in my childhood, and I have always been particularly fond of cats. So here is a book which I can highly recommend as a gift for all ages. Not only do the cats 'pop-up' on every page, but tabs can be pulled and pushed to work most realistic effects, including a cats' chorus (one can almost hear it!) and mother cat in bed with her kittens. My favourites are the goldfish leaping out of the bowl to bite a marauding feline, and the cat flap revealing several kittens falling over each other to get in all at once. A really delightful, beautifully designed and executed book.

Home Wine Making, Brewing and other drinks. by Charles Foster. Ward Lock, £6.95 hardback, £3.50 paperback.

It is estimated that more than three million people in this country make their own wine or brew their own beer. This does not indicate that we enthusiasts are heavy drinkers. On the contrary, home wine-makers tend on the whole to be abstemious people, and include a large number of Guiders of my acquaintance. The fun of experimenting, the satisfaction of a good result, and even the drama of an occasional exploding cork in the middle of the night, makes this a rewarding hobby, and one of the least time consuming. The wine once started off can be left to pop away gently for weeks on end. The results can be given as gifts, or perhaps used for a fund raising wine and cheese party — although homemade wine must not be sold.

There are many books available, but this one can be recommended. It gives precise instructions for the beginner, hints for the enthusiast, many good recipes, and a complete explanation of the technical terms and processes involved.

The Mary Rose. by Margaret Rule. Conway Maritime Press, £12.50 hardback, £4.95 paperback.

The excavation and raising of Henry VIII's flagship, which sank off Portsmouth in 1545, has captured the public's imagination. Margaret Rule, the archaeological director of the Mary Rose Trust, tells in this superb book the whole story from the circumstances of the sinking, the discovery of the wreck 400 years later, and how the many thousands of relics brought to the surface over the past few years give us a perfect picture of life on board ship in Tudor times.

Margaret Rule has dived over 800 times on site, and HRH the Prince of Wales has joined her each year to inspect the progress on the sea bed. He has written a foreword to the book which shows clearly that he regards this as a most important project for future generations, particularly as the artefacts are in excellent condition, having been preserved deep in mud for centuries.

The book, with its hundreds of colour pictures and detailed diagrams, helps us to share the discovery of the world's greatest underwater excavation. A book to treasure. JVB

peal especially to Guide age readers as they will remember the pleasure they gained through reading these delightful stories. The book begins with a story — 'My Naughty Little Sister at the Party' and continues with pages set out like a diary. Each date has two lines for the individual to record birthdays, anniversaries or dates of note he or she wishes to remember.

Shirley Hughes' lovely, nostalgic illustrations are delicately pencilled and will appeal to even bigger sisters, cousins and aunts!

Caring for the Sick. by Dorling Kindersley, authorised by St John Ambulance, St Andrew's Ambulance Association, and the British Red Cross. £5.95 hardback, £3.95 paperback.

There was a time when a patient who had undergone an operation, major or otherwise, would have been encouraged to stay in hospital for the full recuperation period. However today, with the acute shortage of hospital beds and the long waiting lists, patients are discharged from their wards after a matter of days rather than weeks.

This is excellent in one respect, for a patient without

Caring for the Sick is a manual full of common sense ideas. Things to do and things not to do. Its contents include planning a sick room, patients home from hospital, activities for the convalescent, giving medicines, nutrition in illness, storing drugs, looking after the incontinent patient and assisting the mentally ill. There is a most comprehensive chapter on helping the patient who is dying and how relatives might be called upon to give practical aid.

All in all an excellent manual which will serve a very useful purpose.

AMM

I like presents with a future — my favourite last year was a handful of lace bobbins that gave me a lot of learning and work to do — so books that introduce a new skill or develop an interest are ideal to give or to receive.

The Spur Book of Birdwatching. by Peter Conder. Frederick Warne, £7.25.

People who go for walks are very likely to catch an interest in birds. At first, identification will be the main need but many will want to take the interest further. You'll be surprised to read that a bird-watcher would do well to dress and behave like a hunter but it makes sense if you want to have a long close look at a very shy creature. If you are not attracted to the idea of travelling around the country to collect a long list of 'birds seen' you might find it fascinating to study the behaviour of birds in your own home neighbourhood and to learn why they come and go or stay. This small book is full of excellent suggestions of things to do.



My Naughty Little Sister's Birthday Book. from the stories by Dorothy Edwards, illustrated by Shirley Hughes. Methuen, £3.50.

Little sisters of the 1950's and early 1960's will now have grown into big sisters! For it was in the late fifties and early sixties that the books of Dorothy Edwards were first published.

This Birthday Book will ap-

doubt can only benefit by being nursed at home and in familiar surroundings. But, and it is a big but, the onus must necessarily fall on the family (and usually on an individual member) or a volunteer to 'take over' the nursing duties. This, although rewarding, can be strenuous, traumatic, and some without nursing experience might find, almost impossible.



Peter Conder

books to read and helpful organisations that will take a 'bird spotter' well on the way to being a real ornithologist.

Walking and Youth Hostelling. Ramblers Association and Youth Hostels Association. EP Publishing Ltd, 95p. Some seasoned walkers will be asking 'Who needs to be taught how to walk?' They may remember with pride how they progressed through the pain barrier of blisters and sore shoulders to their present prowess. There are however, too many others who do not care to remember how they met this barrier and were put off walking for life. Pain and misery are not compulsory and this latest addition to the Know the Game series makes it perfectly clear that there is no need to learn by suffering. There is sensible advice about distances, clothing, boots and 'what to take with you'. Novices are not misled into thinking that they can tackle mountain walks without experience and there is a brief but sound outline of Ramblers' First Aid. Going for a walk is much more than just covering a certain distance and there are several sections on planning rambles, what to look for and how to record your finds. Enthusiasm is encouraged with a very good introduction to the Youth Hostels Association which describes what hostelling life is like.

This would make a very welcome present for anyone of any age (including Youth Hostels) who is just discovering the joys of walking.

Finding Out About Our Earth. Usbourne, £1.00. Apart from wild life, walking brings people up against geology even if it's only in the form of a stone in your shoe or mud on your boots. Adults will often be surprised by the sort of questions an alert youngster asks about the sur-

rounding countryside and the answers often lead to the creation of the mountains and the whole spinning globe. 'Our Earth' is full of these questions with the answers in colourful pictures beginning with the Earth as planet in space, explaining about mountains, the seas and the sky, coming closer to home with the weather.

This is one of a series of books for curious youngsters of older Brownie age who might enjoy something more than the usual sugary fare for Christmas holidays.

NAS

Peter Pan in colour, by J M Barrie/Nadir Quinto, £2.95; Stories of the Arabian Nights. Illustrated Giannini, £4.95; Animal Antics, by Peter Mad-docks, £2.95; Hodder and Stoughton.

The adventures of Peter Pan and Wendy in Never-Neverland is an old favourite which children have enjoyed for generations, and this new edition will be no exception. Each page carries several delightful colourful illustrations by Nadir Quinto which add to the charm of the story and are sure to capture the child's imagination as he or she is led through a world of pirates, mermaids and ticking crocodiles, where children can fly and are always saved from danger just in the nick of time.

Stories of the Arabian Nights are perhaps not so well known, but are certainly no less enthralling. The tales of Ali Baba or Sinbad the Sailor will quickly become favourites which are re-read time and time again. The beautiful exotic illustrations of princesses, sultans, pirates and exotic creatures will keep children entranced for hours.

Animal Antics contains three stories, all of which are told in cartoon form. There is Bruce the Bionic Bear who thwarts the plans of Captain Pushover; Arthur the Alligator

who yearns to be a head waiter in a smart restaurant, and Gustav von Gnu, special investigator, who sets out to find a missing shadow. This would be a good book to read to younger children, perhaps as bedtime stories, as they could easily follow the story by the many illustrations.

Party Food and Party Games. Ladybird, 60p each.

For anyone still thinking up ideas for a Christmas Party for their Brownie Packs or young families, these two books may be just what you need to give you some quick and easy ideas. There are seven different themes in the Party Food book, but many of the recipes are adaptable enough to be used on any occasion. All are clearly written with a colour illustration.

The party games book contains over 40 games, and is divided into three sections for different age groups, ranging from three to seven years. There are many old favourites included, and some newer games, with words and music where appropriate. There are patterns for making five different party hats as well. Together these two books provide enough ideas for a very successful children's party.

KB

The MacDonald Encyclopaedia of Aquaria. MacDonald, £4.95.

This is a beautifully illustrated reference book for the aquarium enthusiast, covering freshwater and marine fish and invertebrates, plants, amphibians and reptiles. It contains over 300 entries each with a splendid colour photograph, a full description of the species and details of environment, feeding habits, distribution and biology.

Each entry has an individual guide to water temperature, pH value and illumination requirements which makes it easy to understand and helpful to aquarium enthusiasts of all ages. Instructions for assembling your own tank, how to feed and care for the aquarium and a useful guide for treating diseases are also included within the encyclopaedia as well as a full glossary explaining the terms used.

This would make an ideal birthday or Christmas present for any aquarium enthusiast.

I Need All The Friends I Can Get, by Charles M Schulz. Collins, £1.95.

This is just one in a new series of books based on the lovable Peanut characters. It takes on a new enlarged format of the original Snoopy books which were published

in 1964, and is certainly very bright and eye-catching.

Throughout the book's 60 pages is a heart-warming collection of sayings about the value of friends. For example, 'A friend is someone who answers your letters' or 'A friend is someone you can trust' which are coupled with beautifully apt illustrations of Snoopy and the rest of the Peanut gang in vivid colours.

This book would make the ideal Christmas gift for the avid Snoopy fan of any age without making a large hole in your pocket.

SJP

Presents, 100 Gift Ideas to make at Home. Edited by Pam Darlaiston. David & Charles, £7.95.

The Pooh Craft Book, by Carol S Friedrichsen. Methuen Children's Books, £4.95.

In good time for Christmas we have two new craft books full of clever ideas for nimble fingers. Among the 100 gifts there are simple inexpensive presents easy to make and some exquisitely made gifts which need more needlework skill. Choose from items in patchwork and appliqué and delightful soft toys or wall hangings using dried flowers, collage and macramé. The section on dolls includes a very wide choice with a minutely detailed bustle doll in Victorian dress and a cute beanbag mermaid. Colourful photographs illustrate all the ideas.

The Pooh craft book has detailed and easy to follow instructions for making Pooh and many of his friends in felt, including Rabbit, Eeyore, Kanga and Roo. These realistic miniature animals can be used as toys for gifts or as attractive decorations.

OMC

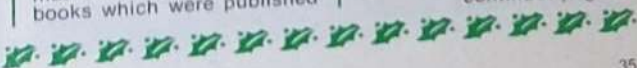
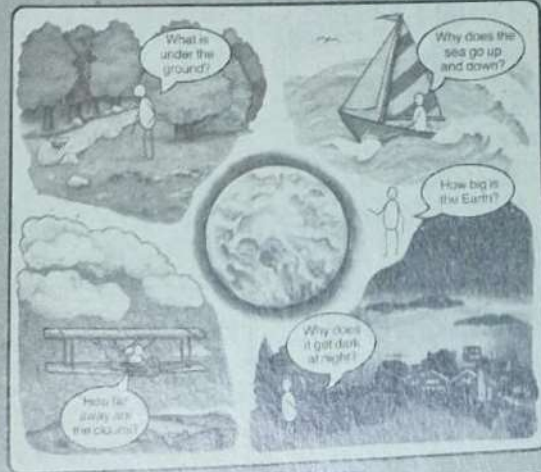
First Books of Petcare, approved by the RSPCA. Usbourne, £1.00 each.

Christmas is not the time to have a new pet in the house and so I hope you will not give an animal as a Christmas present unless you are absolutely sure it is really wanted and that the new owner and all the family are prepared to arrange the Christmas festivities so that the animal has a peaceful introduction to its new home. If you do give or receive a new pet one of the Usbourne First Books of Pet Care, all approved by the RSPCA, would be an ideal extra.

'Dogs and Puppies' is beautifully illustrated in colour and gives sound advice on choosing a dog or puppy; how to look after him, feeding, training, and playing; keeping him groomed and about vaccination and vet care.

continued page 37

Finding Out About OUR EARTH



PERSONALISED SWEATSHIRTS & TEE-SHIRTS

QUANTITY DISCOUNTS



Printed with YOUR OWN DESIGN

OTHER PRODUCTS INCLUDE:- Cloth & Metal Badges, Ties, Pennants, Embroidered Jumpers, Stickers, Umbrellas Etc.

DIRECT PRINTING NOT TRANSFERS

MASTER TEE, MAIL ORDER DIVISION DEPT. 17 FREEPOST, NORWICH, NR3 3BR. Telephone (0603) 619411

Please send me your FREE Brochure & Price List

Name

Club, Company etc

Address

Tel No.

17

PRICE BLITZ '82

A FEW EXAMPLES: (inc. V.A.T.)

PATROL TENTS	
10' x 8' Icelandic 1st Size	£203*
13' x 8' Icelandic 2nd Size	£233*
12' x 8' Stormhaven Special	£254*
10' x 7' Nijer	£225*
13' x 8' Flysheet	£140.25*
12' x 8' Budget Patrol (Appin)	£159

RIDGE TENTS	
Vango Special Prices Apply	
Force Ten (Complete range & spares stocked)	£59.00
Blacks Solite	£79.50
Good Companion Std.	£72.50
Good Companion Major	£85.00
Atlas Motorist	£99.00
Saunders Fellaine	£66.50
Saunders Backpacker II	£89.50
Saunders Basecamp	£99.50

* Special extra discounts available to Bona Fide Groups and Organisations

MARQUEES

12' x 12' Blacks Flame Retardant	£499.67
16' x 16' Blacks Flame Retardant	£595.75
20' x 20' Blacks Flame Retardant	£834.90
30' x 15' Blacks Flame Retardant	£1125.85
40' x 20' Blacks Flame Retardant	£1467.40

SLEEPING BAGS

Blacks Glacier Mummy	£85.00
Blacks Icelandic Backpacker	£95.00
Blacks Icelandic Crest (No zip)	£42.75
Blacks Pal-o-Mine (No zip)	£29.50
Blacks Good Companion (No zip)	£22.75
Blacks Highland 68 L	£44.50
Blacks Summit	£44.00

SUNDRIES

Vango Dining Shelter 12'x9'x6'5"	£62.50
Vango De Luxe Toilet Tent	£20.50
Vango Standard Toilet Tent	£17.50
Elsan Mini Toilet	£13.65
Elsan Bristol Toilet	£25.00

ADDITIONAL QUANTITY DISCOUNTS: UP TO 10% EXTRA AVAILABLE



COTSWOLD CAMPING

Mail Order Dept., Broadway Lane, South Cerney, Cirencester, Glos. GL7 5UQ
Cut out this coupon today or phone (0285) 860612
New showrooms now open. (Follow signs to caravan park)

Please send by return your 1982 comprehensive special terms price list together with leaflets on:

Patrol Tents ☐ Ridge Tents ☐ Marquees ☐ Sleeping Bags ☐

Rucksacs ☐ or ☐

NAME

GUIDE COMPANY OR ORGANISATION

ADDRESS

PHONE

PERSONALISED LEISUREWEAR



T-Shirts Sweat Shirts Sport Shirts

FOR CLUBS, TEAMS, FUNDRAISING EVENTS

Send for details today or phone 05882 2703 for more information

**FREE CARRIAGE
FREE DESIGN
SERVICE
MINIMUM
ORDER-ONLY 12**

I am interested in Shirts ☐ Ties, Hats, Lighters, Stickers & Badges ☐

Name

Address

Phone

freepost Dept. G No Stamp needed

Interprint

DALE STREET, CRAVEN ARMS, SHROPSHIRE SY7 9NY.
TEL. CRAVEN ARMS (05882) 2703 & 2502

HOW CAN WE GET SWEATSHIRTS LIKE YOURS PRINTED FOR OUR COMPANY?



GO DIRECT TO THE MANUFACTURERS-SWEATSHIRT EXPRESS THEY'LL EVEN PRINT YOU A FREE SAMPLE.

Not only do we permanently screen print your designs to the highest standards on sweatshirts and T-shirts, we also manufacture the garments ourselves. Which means a very good deal for you.

Firstly, by selling direct, we can offer exceptionally attractive prices and accept minimum orders of only 10.

By making up in only top quality fabric, you can be assured of a smart and durable garment. What's more our sweatshirts are produced in generous sizes, so that you are assured of an exceptionally good fit.

Simply supply us with a rough drawing of your design or lettering-and we'll make sure your order gets prompt attention.

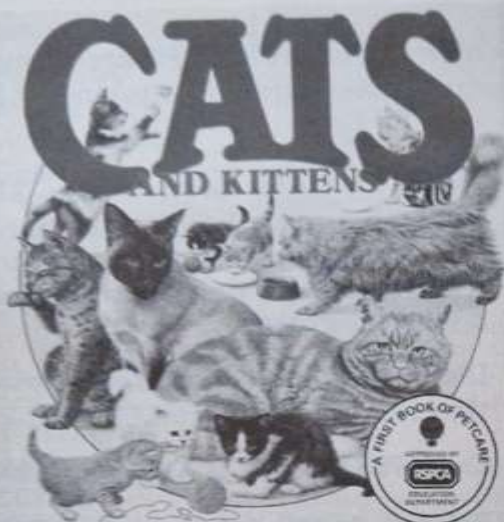
Indeed, so confident are we of our quality and service, that we're happy to send you a free sample. Just phone 061 431 3427 or write freepost to: Dept G

Sweatshirt Express, Freeport (No stamp needed), P.O. Box 22, Stockport, SK5 7DB

Sweatshirt Express

'Cats and Kittens' is similar to 'Dogs and Puppies' and 'Small Pets' tells all you need to know about caring for small pets such as hamsters, rabbits, gerbils and budgerigars, on housing, cleaning, feeding and looking after them.

JEL



The Colour Book of Knots. One of the 'This Is' Nautical books, by Floris Hin. Photography, Theo Kampa & Jaap Hille. Macmillan, £6.95. This is one of the best knotting books I have ever seen and while it has a nautical bias there is a lot in it to interest the macramé enthusiast.

The author begins with a section on suitable tools, and the properties and construction of ropes of all types. The terms used in connection with rope work are clearly explained but the outstanding feature of the book is the colour illustrations, of which there are over 150, for all knots and bends in the volume.

The turks head, which makes a first class woggle to wear on the Guide scarf, is so clearly illustrated that it becomes positively simple.

For the sailor who likes to have everything ship shape and Bristol fashion, this book would be a very welcome present. This is an excellent publication to add to a Company or Unit library.

FKRA

The Fox, The Spider, by Margaret Lane. Methuen/Walker, £3.95 each.

'Animal Lives' is a new series of informative and imaginative books written by the naturalist, Margaret Lane. Margaret Lane is the well known author of the biography of Beatrix Potter and in this series she successfully combines her wide knowledge of wildlife with her

understanding of children. Each book deals with all aspects of the animal's life from its habitat, hunting ground, prey, food and breeding to its enemies. The facts are presented in a straightforward but imaginative way, answering questions that children are likely to ask. Both the text and the beautiful and naturalistic colour illustrations by Kenneth Lilly

and Barbara Firth respectively, portray a fascinating animal world, full of marvels and adventure. These hard-back books would make a perfect introduction to animals, and are a definite inspiration to look further afield into the subject. Other titles in the series are The Frog, The Squirrel, The Stickleback and The Beaver.

Air by David Lloyd, Fire by John Satchwell. Methuen/Walker, £3.95.

Another informative series from Methuen/Walker is 'The Elements'. These two books introduce children to the elusive elements air and fire and explain exactly what they are and how they affect our lives in every way. The use of realistic illustration and the minimum amount of thought-provoking text makes what could be rather dull subjects into fascinating ones. The books deal with all aspects of the elements — from oxygen to windmills in 'Air' from candles to volcanoes in 'Fire'. They succeed in portraying our planet as a fascinating one — full of wonders which can be scientifically explained, but which still remain awesome, especially to children.

SB

The Wizard of Oz, by L. Frank Baum. Methuen Children's Books, £8.95.

One of the most famous fairy stories in the world has been re-published and beautifully illustrated just in time for



Christmas. The Wizard of Oz has perhaps come to most peoples' notice on the cinema screen but the book is quite different. All the characters are there of course, Dorothy, the Cowardly Lion, The Tin Man and the Scarecrow but they are involved in so many more adventures than in the film. This book, although quite expensive, would make an ideal Christmas gift for children of all ages.

Riding for Beginners, by Richard and Lavinia Drew. Collins, £2.50.

My choice for a good Christmas present which is bound to be a big hit with many young girls is this detailed book illustrated with step-by-step photographs showing the rudiments of horse riding and pony care. The book takes the reader through mounting, trotting, jumping and grooming and on to all the essentials for the first gymkhana. A section on the pony's equipment points out that short cuts in this area are

often false economy and, more important still, can lead to accidents. Even for the child who does not own a pony the book is both informative and entertaining.

DS

The Joy Of Birth. A Book for Parents and Children, by Camilla Jessel. Methuen, £5.95.

A well illustrated, clearly written comprehensive book describing the various stages of reproduction from conception, through pregnancy to childbirth.

Being so comprehensive limits its value, in my opinion, to children. Such teaching on this subject is an ongoing one, and one which of necessity must vary according to the age of the child. Some of the text and photographs in this book could easily frighten a child.

On the other hand the contents may be of great interest and value to the first time expectant parents who may find them helpful and reassuring.

JP-B



the very best quality English 100% GUARANTEED - MACHINE WASHABLE

T-SHIRTS & SWEATSHIRTS

Expertly **PRINTED**

WITH YOUR OWN NAMES, CRESTS, DESIGNS, SLOGANS - WHATEVER YOU REQUIRE

LOOK SMART - FEEL GOOD

Also EMBROIDERED designs on SWEATSHIRTS & JUMPERS



M. NICOL & CO. LTD.

131 GREAT HOWARD ST.
LIVERPOOL 3.

051-236-5169

051-236-3366

**Manufacturers and Hirers of mar-
quees and camping equipment for
over 80 years.**

Place an order with us by **31st
December** for your anticipated
1983 camp hire requirements and
we will allow a **generous discount**
on our hire rates.

Distance no object, marquee erection service if required.

Our 1983 hire list is now available.

Repairs to all types and sizes of
marquees and tents undertaken.



GIRL GUIDE SHOPS IN SCOTLAND



UNIFORMS BOOKS CAMP EQUIPMENT
BADGES GIFTS

Personal Shoppers made welcome at all shops

Edinburgh
16 Coates Crescent
Edinburgh EH3 7AH
Tel: 031-225 3483

Aberdeen
11 Albyn Place
Aberdeen AB1 1YE
Tel: 0224 20875

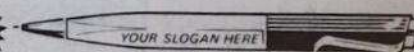
Glasgow
15 Elmbank Street
Glasgow G2 4PB
Tel: 041-248 4200

Dundee
6 Panmure Street
Dundee DD1 2BW
Tel: 0382 22262

When you buy from the **Guide Shops** the whole **Movement** benefits.
Mail orders only from Edinburgh

QUALITY FUND RAISING and ADVERTISING PENS

**SEE
BEFORE
YOU BUY**



Send 50p P.O. for 16-page colour catalogue and assorted
samples or 15 1/2p stamp for leaflet only.

Lapel Badges



Your own design made to order.
Send for colour catalogue

PLAQUES! TROPHIES! CUPS! MEDALS!

Buy direct and
save ££s.
Prices from
30p.
Send
for
leaflet.

WESTFIELD LTD

DEPT 23 WESTFIELD HOUSE
HELENAST B'HAM B1 2RJ.



GROUP TRAVEL

We have been specialists in group and
adventure travel for some 25 years now,
and we can quote the keenest prices for
your summer camp tour in 1983. What-
ever your requirements worldwide, our
specialist group department will be de-
lighted to give you a free quotation. You
will find us hard to beat! For further
details, please phone Chris Murr on
01-462-1105.



ATOL
303B



KESTOURS LTD., TRAVEL HOUSE, KINGSWAY,
WEST WICKHAM, KENT BR4 9JB.

JEWELLERY MAKING

Ask about our latest introduction **SHALLOWCAST
EMBEDDING RESIN EM 400 PA.**

Write or phone for a free information pack including
details of our one day training courses.

TRYLON LTD., WOOLLASTON, NORTHANTS NN9 7QJ.
Tel: Wellingborough (0933) 664275.

Don't forget
the 21st Birthday issue of
THE BROWNIE,
out on 5 January.

HQ notices

The Association's Awards

Meritorious Conduct

Certificate of Merit

Catherine James, Brownie Sixer, aged 10, 3rd Newton Hall, Durham and South Tyne.

National Scout & Guide Orchestral Course - Concert

The National Scout & Guide Orchestra will be giving a concert at the conclusion of their course on **Friday 31st December, 1982** at the Royal College of Music, London, at 3.00 pm.

Application for tickets, £1.00 each, should be made to the **Programme Secretary, GGA, 17-19 Buckingham Palace Road, London SW1W 0PT**, accompanied by an SAE.

Tickets will not be available from the Royal College of Music.

Badge Charts

Charts of the World Badge and Brownie Badge suitable for tapestry or embroidery are available from the Programme and Training Dept. CHQ World Badge chart 10p and Brownie Badge 14p. Please send stamped addressed envelope 6 1/2 in x 4 1/2 in.

CHQ Ski Party 1983

15.1.83-30.1.83 further details from Country/Region Offices or CCIA.

Amended Christmas Closures

Date	Key: DiO Day Off S/T Stock Take						
	CHQ	P Green	Cardiff	Liverpool	Manchester	BHam	
22.12.82	Open	Open	Closed DiO	Open	Open	Open	Wed
23.12.82	Open	Closed DiO	Open	Closed DiO	Open	Open	Thur
24.12.82	Closed	Closed	Closed	Closed	Closed	Closed	Fri
25.12.82	Closed	Closed	Closed	Closed	Closed	Closed	Sat
26.12.82	Closed	Closed	Closed	Closed	Closed	Closed	Sun
27.12.82	Closed	Closed	Closed	Closed	Closed	Closed	Mon
28.12.82	Closed	Closed	Closed	Closed	Closed	Closed	Tues
29.12.82	Open	Open	Closed DiO	Closed S/T	Open	Open	Wed
30.12.82	Open	Closed DiO	Closed S/T	Closed S/T	Open	Closed S/T	Thur
31.12.82	Closed S/T	Closed S/T	Closed S/T	Closed DiO	Closed S/T	Closed S/T	Fri
1.1.83	Closed	Closed	Closed	Closed	Closed	Closed	Sat
2.1.83	Closed	Closed	Closed	Closed	Closed	Closed	Sun
3.1.83	Closed	Closed	Closed	Closed	Closed	Closed	Mon
4.1.83	Open	Open	Open	Open	Open	Open	Tues

Thinking Day/ Founder's Day Service

11 am, 19 February 1983

Important - Please Note admission to Westminster Abbey and St Margaret's Church, Westminster, will be by **ticket only**.

Requests for tickets should be addressed to The General Secretary's Department at Commonwealth Headquarters, stating the number of tickets required (a maximum of 12 per Unit) and the name or names of the Unit or Units involved. It is stressed that a ticket does not guarantee a seat.

All requests will be held until 13 December and on that day dealt with on a 'first out of the hat' basis. Please enclose a stamped addressed envelope measuring not less than 4 1/2 x 6 1/2.

The same form of Service will be held in both places of worship. Further details will appear in future editions of all magazines.

Scout & Guide Trust Fund

On 30th September 1982 the value of a share in the above Fund was:

for selling purposes 80.08p
for buying purposes 84.13p
income yield 5.47%

The income yield is based on the previous two dividends paid and the price on the date stated.

Short Term Investment Service

Monthly interest rate after deduction of management commission.

July 1982 11.50%
August 1982 10.37%
September 1982 9.96%
Additional 0.5% p.a. for deposits of £2,500 and above.

Campsites and Holiday Houses List 1983

Important: Will all users of this publication please note that applications should not be made for any site not appearing in the 1983 list (even if it was included in 1982). Local goodwill could be adversely affected if this unwritten rule is disregarded, so please don't use an out-of-date edition - please use the 1983 edition. Copies are available for sale to Advisers, Commissioners and Duke of Edinburgh's Award Co-ordinators who have not received copies from their Region, and can be obtained

from the Training Secretary CHQ enclosing a cheque/postal order for 86p (including postage) made payable to the Girl Guides Association.

Carol Singing in Trafalgar Square

A choir of the Association will be singing carols in Trafalgar Square on **Monday, 20th December, 1982** between 4.00 and 5.00 pm. The carols will be mainly traditional and the choir will be using the Bethlehem Carol Sheet - 29th edition. If you intend to bring your Unit to Trafalgar Square it would be helpful if they had copies of this carol sheet. Many churches use it, but in case of difficulty it can be obtained from **The Bible Lands Society, PO Box 50, High Wycombe, Bucks.** Please make sure everyone is warmly dressed and that there is a sufficient number of adults to children in your party.

Country Weekends in 1984

Counties wishing to book for a County weekend at Foxlease and Waddow should apply in writing to the Training Secretary at Headquarters not later than the 1st March, 1983. The programme for the whole of 1984 is drawn up after this date and once this is completed no further applications can be considered.

Owing to the increase in the number of requests received each year, a priority will be given in 1984 to applicants from Counties which have not had a booking in 1983.

Olave House and Baden-Powell House, London

Permission forms are required for parties staying at these Centres and must be completed in the usual way. Completed forms should be sent to: Miss C Pryce, 11, Riverains, 71 Vicarage Crescent, London, SW11. Telephone (01) 228 6763.



EMPLOYMENT OFFERED

GUIDES CYMRU, the Girl Guides Association in Wales, invite applications for a **FULL-TIME TRAINER** to work throughout Wales. We are looking for a suitably qualified person with a Guiding background. Salary negotiable but a minimum of £5,000 is anticipated plus expenses. Further information and application form from **The General Secretary, Guides Cymru**, 209 City Road, Cardiff.

Vacancy for resident Joint Wardens at Girl Guides Campsite, Cudham, near Sevenoaks, Kent. Post available to married couple, one of whom can follow own occupation. Details and application form from G.G.A. London & S.E. England, 14 Barclay Road, Croydon, CR0 1JN.

UNIFORM

Guider's Suit. Serge lined. Hat, 2 blouses. Size 12. £12. Box No. 83.

Complete Guider's uniform, summer dress, raincoat, size 12. Tel: 0252-722491.

COMING EVENTS

5th Carshalton Guide Company 50th birthday celebrations 1983. Previous Guiders and Guides contact: Mrs Beeton, 26 St Mary Avenue, Wallington, Surrey SM6 7JH, for details.

FOR SALE

Fund Raising. 100% profit from incredibly life-like 3D posters. Favourite pets, birds, wild-life, etc. Send 70p PO for specimen and bargain pack lists. Simon Tilley Marketing, The Headland, Headland Road, Warwickshire CV37 8ER. Tel: (0789) 750627.

Sale or Return. Offering 100% profit on cost. Costume jewellery parcels sent post-free without obligation. Ideal fund raisers. Details: Caritas Jewellery, 356 Uxbridge Road, Shepherd's Bush London W12 7LL.

Printed Yellow Dusters for fund raising (minimum 50). Stock designs illustrating Birds, Horses, Musical Instruments, etc. (minimum 300 can incorporate your wording). Details Geo O'Brien Baker Ltd. (Dept 200), 4-6 Tapster Street, Barnet, Herts. Tel: 01-449 2424.

At least 200% Profit on your outlay with our quick selling range of imprinted pens and other easy sellers. 12½p stamp for catalogue and sample. J A & V Jeffers, Aston Clinton, Bucks. (Tel: Aylesbury 631345.)

Towels direct from manufacturer, sheets, pillowcases, etc. Send stamped addressed envelope for price list. East Lancashire Towel Company, Park Mill, Barrowford, Nelson, Lancashire BB9 6HJ.

Ridge Tents. New, direct from manufacturer. 11ft x 7ft x 6ft 6in high. Walls 3ft. Zip door. Mud walls, £82. Also 9ft version of above tent, £65. 14ft version of above tent, £101. Top quality materials. 7½ oz. Toilet Tent, £19.95; Wash Tent, £24.95. For brochure, telephone 01-445 6253.

Fundraising? Sell Seeds-By-Size, 97 Green End Road, Hemel Hempstead, Hertfordshire.

Advertising Pencils. Ball Pens, Combs, Diaries, etc. gold-stamped Company name. Raise funds quickly, easily. Bran Tub Toys, details: Northern Novelities (GG), Spencer House, 26/28 Spring Gardens, Bradford BD1 3HE.

Printed Teeshirts and Sweat-shirts. British teeshirts £2.25 and Sweatshirts £5.25, all sizes, screen-printed with your Company/Pack name, number and Guiding motif free of charge and no minimum order required under our special 'Guiding Scheme'. For full details, write or telephone to Dee Branigan, Printemps Limited (The School Specialists), Turpins Yard, Oaklands Road, London, NW2 1YB. Tel: 01-450-9588.

Attention Brownie Guiders! Totems (Toadstools) available. Red tops with white spots in fibreglass, 18ins high with detachable tops £15.60 each plus £1.70 p&p, cash with order. From: T G Higgins, Spread Eagle, Rishworth, Sowerby Bridge, West Yorkshire. Tel: 0422-823655.

Waterproof materials, fibre-pile, prequilted duvet materials, by metre. Largest range available for outdoor gear. SAE samples. Pennine Outdoor, Holmbridge, Huddersfield.

Badges. Badges. Badges! — embroidered, printed, all kinds — produced to YOUR design. Send rough sketch for quotation to the friendly specialists: Webb-Tolley Ltd, 26a High Street, Halesowen, West Midlands.

Screen Printed T-Shirts. Sweatshirts, top quality all cotton, fibre mix, free design service. 10 garments minimum. Payment after delivery. Write, phone Tradesigns, 12 Rockville Avenue, Anchorage, Blackpool (0253) 860399.

CAMPING HOLIDAYS

Holiday House — near Southport. Equipped, sleeps 21. Suit Brownies, Guides, Rangers, handicapped. SAE foolscap to Mrs Chester, 202 Fleetwood Road, Southport, Merseyside.

Come camping on the canals — Charter a traditional narrow boat, fully fitted to accommodate 12 people in camping standard; 24 per 'pair' of boats, with first-class skippers to make everyone's holiday really enjoyable. Or self-drive a luxury 4- or 6-berth. Full details from: Foxton Boat Services Ltd, Bottom Lock, Foxton, Market Harborough, Leicestershire. Tel: Kibworth 2285.

Cruise the Kennet & Avon navigation. Exciting, inexpensive cruises aboard 12-berth narrowboat. Learn boat handling from experienced supervision. Also, 6-berth self-steer narrowboat. Weekend, short or long bookings. Brochure: Bristol Narrowboats, 4 Whitland Avenue, Bristol BS13 9QQ. Tel: 0272-641075.

Camp Afloat. Travel the English Canals on our traditional converted narrow boats steered by skippers experienced in working with young people. We cater for groups of all sizes and offer a wide choice of routes. 12-berth self-steer camping, economy, quality boats all comprehensively fitted to a high standard. Write or phone for fully illustrated brochure: Union Canal Carriers Ltd, Canal Side, Little Braunston, Daventry, Northants. Tel: Rugby (0788) 890784.

Canal Adventure Cruises aboard our fleet of 12-berth skippered camping or luxury standard narrow boats. Some of our skippers are qualified life-savers. You need to bring just sleeping bags and food. WFB Co, 149 Hollyfast Road, Coventry. 0203-33-4228 or our base on 092-681 2093.

Come and camp in the Grand-Duchy of Luxembourg. We have three places to offer you: 1. Our Centre International for Guides in Luxembourg City; 2. Our Training Centre of Colpach-Bas near the Belgian border, five miles from Arlon; 3. Our Guides' home in Esch-Alzette, near the French border. For further details, please apply to: Association des Girl Guides Luxembourgeoises (AGGL), 61a route de Trèves, L-2630 Luxembourg.

Felin Bach (Caernarfonshire County Camp-site). Caeathraw, Gwynedd. Large un-equipped camping area, for Guides and Rangers, and indoor accommodation in 2 hostels for Pack Holidays, or handicapped Guides in one. Available all year round. Snowdonia National Park half a mile; climbing and hill walking. Apply to Mrs P Jones, Bryn Meurig, Celyn Avenue, Penmaenmawr, Gwynedd LL34 6LR for new brochure, enclosing sae (foolscap).

Isle of Man. Adventure training 9 to 15 yrs. Coast, mountain, pioneering based activities. No experience, equipment reqd. F/Board accommodation in converted farm, up to 42 and 8 leaders. This maximises time for 40 offered activities. Ideal Guides, Rangers. Free Colour Brochure from Venture Centre, Maughold, Isle of Man 0624-814240.

continued on page 44

No Pets For Christmas, Please!

The People's Dispensary for Sick Animals again appeals to the public this year not to give puppies, kittens or other pets as Christmas presents, although it may be very tempting.

In many cases every year so many are abandoned or neglected as soon as the new arrival ceases to be a novelty, is found to be expensive to feed, or becomes too demanding in terms of time and general care. All too often animals suffer in the home at Christmas time because of the festive confusion and noise, and because they are played with too roughly and for too long by enthusiastic young children.

The PDSA also asks those who already have pets to keep them out of the way, preferably where it is reasonably quiet, and try to soothe them if they seem frightened, worried, or in any way disturbed. Animals can be extremely sensitive, and any disturbance can affect their behaviour and even eating patterns for days.

Special precautions should also be taken to prevent young animals at the festive season from being burnt, scalded, trodden upon, frightened by exploding crackers, or confused by exuberant party behaviour. *The risk to domestic pets is always far greater wherever a number of people are busy enjoying themselves.*

Pet ownership confers a special obligation to ensure the contentment, security and well-being of a living, feeling creature, and parents of young children must bear the ultimate moral and legal responsibility.



Your pets are always deserving of the best care so, please see that Christmas does not mean that they receive less consideration than usual.

The PDSA was founded in 1917 to provide free professional veterinary treatment for the sick and injured animals of those unable to afford private veterinary fees. It is dependent entirely upon public support and receives no state aid and if you feel your Unit may like to help please write to: PDSA, PDSA House, South Street, Dorking, Surrey.

Miss Clarisse Warren who founded the 1st Shere Guides in 1917, shows her Silver Fish award.

In spite of a violent shower which sent everyone dashing for shelter in tents or the old squash court, Shere Guides spent a happy afternoon celebrating their 65th birthday at Coombe End, home of the founder, Captain, Miss Clarisse Warren and the first recruit, her sister Miss Rachel Warren. Miss Warren later founded the Trefoil Guild at Shere nearly 30 years ago and among the Guides and guests were many Trefoil Guild members who provided a sumptuous tea.

All admired Miss Warren's original Guide hat and were much impressed by her silver fish, awarded for services at home and overseas, the highest award of the Guide Movement.

The Guides had pitched a minicamp on the lawn, showing with pride their modern equipment, much admired by Trefoil Guild members.



The afternoon began with a service when the Rev P Seale, rector of Shere, thanked the Misses Warren for their long service to Guiding, and ended with a camp fire.

A Francis

★ Shere Guides ★ 65th Anniversary



HOME & AWAY

Magazine For 16-18 Year Olds To Accompany BBC TV Series

A magazine for young people, covering many of the themes of the programme of 16 UP, the BBC TV series, has been published by the National Youth Bureau for the BBC Continuing Education Department. It contains articles, quizzes, drawings and poems by young people who took part in the programmes, together with factual information, photos and cartoons prepared by the BBC Continuing Education Department, the National Extension College and the National Youth Bureau.

The magazine is designed to stimulate thought and discussion, for use in conjunction with the TV programmes. However, it can also be used in the youth club, school or home as an introduction to contemporary issues of concern to 16-19 year olds, or read solely as a general interest magazine written by young people for young people, and it should certainly provide subjects for discussion at Ranger meetings.

16 Up magazine is available from the National Youth Bureau, 17-23 Albion Street, Leicester LE1 6GD, price 65p inclusive of postage (cash with order).



Join The Green Gold Treasure Hunt Against Cancer

The Cancer Research Campaign will celebrate Christmas this year by challenging its supporters to seek the millions of pounds worth of unredeemed Green Shield Stamps, believed to be buried in attics, cellars, trunks and drawers throughout the country.

Guidance notes, prepared by a supporter who has already achieved considerable success in this quest, are being circulated to the Campaign's 1,000 Local Committees (including 65 Youth Action Local Committees) who are being asked to find as much of this green gold as possible, in order to present the Campaign with a memorable Christmas Box.



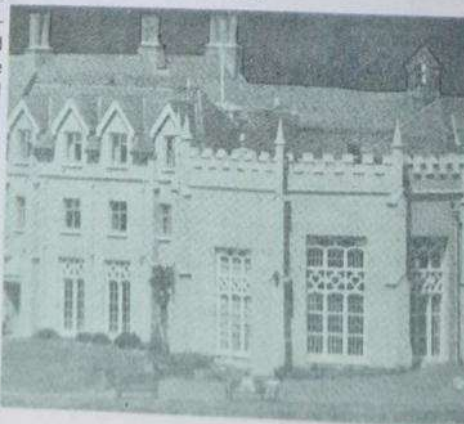
Members of the public are also invited to join this unique Treasure Hunt. If you would like to aid the fight against cancer please search your home and ask your relatives, friends and neighbours, and everyone in your Unit, to do the same. Stamps should be sent either to the nearest Campaign Local Committee (address in local telephone directory under Cancer Research Campaign) or to **Headquarters at 2 Carlton House Terrace, London SW1Y 6AR.**

The Cancer Research Campaign is the leading supporter of research into all forms of cancer, including leukaemia, and is now spending more than £17 million a year on over 600 projects in 98 centres throughout the United Kingdom. The Campaign has one of the lowest expense-to-income ratios of any charity. In fact, 92 pence out of every pound donated is spent on research. The Campaign is entirely dependent on donations and legacies for its income, so please help it if you can — any donation, however small, is appreciated.

Lee Abbey Weekend for Scouters and Guiders

'Christian Leadership in Scouting and Guiding', 21-23 January 1983, is a weekend for Commissioners, Scouters and Guiders to discover some of the implications of being a Christian Leader, and to strengthen one's own faith. All members of the Movement over 17½ years are welcome to apply and there are some spaces for husbands, wives and children, who would not wish to take part in the sessions.

The fully inclusive cost will be £25.00 for each person, including VAT, and includes the £10.00 booking fee which must be sent with the application form. There are reductions for children, clergy, deaconesses, students and missionaries, plus a limited number of Angela Thompson Bursaries for Guiders. For further details please apply for leaflet and booking form to: **The Booking Office, Lee Abbey, Lynton, North Devon EX35 6JJ.**



Daily Dozen

Danskin, makers of dance and keep-fit wear, have created an effective exercise routine especially with the busy woman in mind — and that generalisation must surely include Guiders! You only need to devote 10 or 15 minutes every day to follow the Danskin Daily Dozen and you'll keep supple and trim. The exercises are explained, with photographs, on a conveniently sized chart — large enough for a wall, but small enough to slip into your pocket, should you feel the urge to do some spontaneous exercise on Pack Holiday! The photographs show the correct positions you should be adopting, but remember to start slowly. It really is a good idea to wear a leotard and tights every time you exercise, and the Danskin fit and cut allow complete freedom of movement and show clearly your outline while exercising. To send off for this chart write to: **Danskin Press Office, 1 Harewood Place, London W1R 0PQ,** enclosing a SAE no smaller than 6in x 9in.

Making The Best Better

Berghaus, the Newcastle-based mountain equipment manufacturers, have announced improvements to their unique AB Rucsac, keeping the design ahead in all world markets. First launched in 1980 the AB (Adjustable Back) Rucsac was a design lead for Berghaus which has yet to be imitated by competitors.

The registered AB design offers a unique adjustable back length to suit varying wearers, and also offered is an unusually good airflow across the users back while carrying full loads. Now comes the second generation sac, offering all the earlier advantages with two additional ones. The first is increased stability, achieved by new configurations of top tension straps and adjustments, eliminating relative movement between sac and harness. A new conical hip fin has also been added, giving greater comfort and safety in hard climbing conditions.



HOME & AWAY

A new development in sac design centres around the problem of a fully laden high rucksack restricting the wearer's head movement. This new AB sac features an 'Occipital Cavity', giving free head movement even with the rucksack fully laden.

These 'high technology' refinements have been the result of both comment by users in the field, and by constant field work conducted by joint managing directors Peter Lockey and Gordon Davison, who spend at least one day per week on the hills testing current and planned products to the full.

All the standard features of the AB system remain intact, including dual density foam shoulder straps, chest strap facility, and foam padded lumbar pad. Within the AB range are sacs for back packing, skiing, trekking and climbing. The rucksack is available from all good sports shops and mountaineering equipment shops.



Teacher's Pack from the Royal Academy

In conjunction with four major exhibitions at the Royal Academy, a Teacher's Pack has been compiled, giving background information to each exhibition. It focuses on both the historical and art historical importance of the period represented by each exhibition and the pack has been designed to help the teacher convey the political, social and artistic situation appertaining to each era, enabling a better appreciation of the exhibition when visited by students.

This is the first time such a detailed pack has been produced, and in conjunction with the pack, the Royal Academy are instituting a 'teacher's preview' which will enable teachers and leaders to visit the exhibitions before



In the Vegetable Garden by Anton Mauve

they open to the public, free of charge, in order to acquaint themselves with the contents and structure of the exhibition. It is hoped that the previews will encourage teachers to bring their students, and pre-booked school parties can gain admission at half the normal cost.

The exhibitions concerned are Paintings in Naples from Caravaggio to Giordano (ends 12th December) and Treasures of Ancient Nigeria (ends 23rd January) — the previews for these exhibitions are over; and Bartholomé Esteban Murillo, 15th January-27th March 1983, The Hague School: Dutch Masters of the 19th Century, 16th April-10th July 1983. Contact the RA on 01-734 9052 for details of the Pack and previews.



In Trier Cathedral 1867 by Johannes Bosboom

Durabeam Torches

New from Duracell are these slim and stylish Durabeam Torches. The beam will switch on automatically when the head is opened and can be swivelled to direct light when you need it. The handy pocket size measures only 3½ in x 1½ in and costs £2.75 including 2 x MN1500 Duracell batteries. The standard size, 5¼ in x 2¼ in is £3.95 and includes 2 x MN1400 Duracell batteries. These torches are available from larger Boots branches, hardware and department stores.

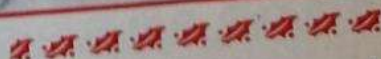


New Trailer Laws Booklet

The new regulations affecting braked and unbraked trailers became operative on 1st October of this year.

Present UK law has evolved over many years and those concerned with road vehicles, their construction and safe use are contained within the Motor Vehicles (construction and use) Regulations, and it is this collection of regulations to which the changes take place.

Introduction of the changes brings us more in line with the EEC regulations already in use by the majority of our European partners and goes a long way to ensure that safer trailers appear on our roads. Reading and understanding the regulations can be laborious, and to help the layman, Mechanical Services, the manufacturers of Indespension trailer equipment, have produced a booklet to ease the understanding and explain the changes. The booklet is available free to readers and is extremely useful to have. Write to: Mechanical Services Ltd, Belmont Road, Bolton BL1 7AQ, or phone 0204-58434.





continued from page 40

Alderney, the unspoilt Channel Island. Small Guest House offers escape to tranquility and friendship. Farm Court, Alderney, C1 2075.

Somerset Guide/Scout Centre in beautiful Quantock Hills. Equipped 24 (16 + 3 + 2). SAE Briggs, 36 Old Road, N. Petherton, Bridgwater.

Gaddesden Row Guide Centre. Equipped Pack Holiday indoor centre with campsite. Suitable Brownies, Guides, Rangers. Near Whipnade, easy reach London. Booking now. SAE Miss Webb, 8 Flint Cottages, High Street Green, Hemel Hempstead, Herts.

'Our Chalet', for details of low cost inclusive arrangements to the International Guide Centre at Adelboden, contact the official agents, YHA Travel, 14 Southampton Street, London WC2E 7HY. 01-240-5236.

Brownies. Westbourne (Sussex village), Church Hall available 1983. Charges £10 per day, £50 per week. Details: Miss Watson, Brambletye, Westbourne, Emsworth, Hants.

A Scout Hostel in Dinard (Brittany) — Ker Charles, 8 Boulevard L'hotelier — would welcome a Guide party or individuals all the year round. 5 minutes from the sea and shopping centre.

Sunny Hastings. July and August 1983. Saturday to Saturday £39.50 with full board and accommodation including heated swimming pool. Group Leader free. This includes day trip to France (Dieppe or Boulogne). Write Reed, The Old Rectory, All Saints, Hastings.

'Fircones' — Cumbria North Holiday House, nestling at the foot of the Pennines — near small tarn, sailing facilities — ideal for walking — Roman wall. SAE for details: Mrs Cowan, Wellfield, Nickies Hill, Walton, Brampton CA8 2BA.

Farnham, Surrey. Herons Wey, Surrey West County Camp-site. Nine sites, solid shelter, permanent toilets. Woodland, river. Bookings from 1st January. Details: Mrs Bunyan, Pilgrims Progress, Rosemary Avenue, Ashvale, Aldershot, Hants.

South Newton Training and Camping Centre, Kilmacoll, Renfrewshire — House suitable for Brownies, Guides and Rangers. Fully equipped for 18 girls and 4 leaders. 3 Campsites, equipment available. Good location for tours, boat trips, outdoor pursuits. For details apply to — House: Mrs McLeod, Glenside Cottages, Millbrae, Bridge of Weir. Campsites: Miss Barker, 70 Park Road, Bridge of Weir.

Camp Sites. Warren Farm, Beaulieu, Hants. Solid shelter. Toilets. Private beach. Apply Miss Stevens, 25 New Zealand Avenue, Salisbury, Wilts.

Gower, S Wales. Providence Hall, Bishopston. Ideal for Pack Holidays, near beautiful bays and walks. Bookable for all school holidays. For details, send sae to: Mrs M Edwards, 39 Pennard Road, Kittle, nr Swansea, S Wales.

Pony Trekking Camp. Secluded Farm Site in the Welsh Mountains. Trekking in high wild country on bomb-proof ponies, perfect for beginners. Absolutely no experience necessary. 'Ponies of Britain' approved. Private lake. Country drives by Pony and Trap. Full Trekking Holiday including site fees — £23.75 per person. Sae for brochure to L A Gale, Brynamlwg, Penwch, Tregaron, Dyfed. (Tel. Llangeitho 629.)

Christmas in Ludlow. Cosy self-catering cottage sleeps four (056 886) 396.

South West Area. Wootton Fitzpaine Village Hall available for Pack Holidays (Spring Bank Holiday week excepted). In beautiful country; 1½ miles by field path from the sea at Charmouth. Charge £50 per week, plus electricity. For particulars, apply to: Mrs Kennedy, Tempest House, Hawkchurch, Axminster, Devon.

Seaton, East Devon. Scout/ Guide Headquarters available for Pack Holidays. Sae please for details to: Mrs M Hardwick, 'Seaview', 18 Townsend Road, Seaton EX12 2BD.

Glasgow Girl Guide campsite, Gartocharn. Overlooking Loch Lomond, large camping area, including four equipped sites. No solid shelter. Applications from 1st February to: Miss J Renfrew, 150 Aros Drive, Glasgow G52 1TJ.

Midlothian Guide Training Centre, Vogrie Estate Country Park, Gorebridge, nr Edinburgh. Pack Holiday House, fully equipped for 32, electric cooking, Calor gas heating. Apply Mrs H Turner, 2 Manse Road, Carrington, Gorebridge, Midlothian. Also fully equipped camp site with solid shelter for 30. Apply Mrs Armstrong, 36 Lanark Road West, Currie Midlothian.

Chigwell Row Camp Site, Oaklands Farm, Chigwell Row, Essex, has equipped and unequipped sites available for 1983. Solid shelter on each site, flush toilets, tuck shop and well-stocked canteen. Bread, milk, meat, frozen foods, etc, supplied by arrangement with Warden. Swimming pool on site. Canoeing and archery can be arranged. Chigwell is a delightful site only a short bus ride from Hainault station which is on the Central Line direct to the West End of London. It is an ideal site for units wishing to visit London from camp. Details from: The Warden, Chigwell Row Camp Site, Oaklands Farm, Chigwell Row, Essex. Large sae please. Illustrated brochure 55p.

Packington Village Hall. 1½ miles Ashby-de-la-Zouch. Welcomes Brownie Packs. Equipped kitchen. Enquiries (stamp please) to: Mr C G Westwood, 46 High Street, Packington, Leics. Tel: Ashby 415123.

Looking for a camp-site or Brownie Holiday House near London? Bentley Heath, Potters Bar, Herts. Hertfordshire Girl Guide Site. Easy walking distance to trains, bus routes to Hatfield House, Whipsnade Zoo, St Albans. Booking Secretary: K Wells, 8 Dove Lane, Potters Bar EN6 2AX. Tel: Potters Bar 57980.

Lake District. Near historic Cartmel village, exclusive use of sites on small estate. Ideal for Patrol or larger camps. Running water, toilets; barn for occasional use. Quiet, secluded surroundings. Outdoor pursuits/pony trekking arranged. Sae Hill Farm, Cartmel, Grange-over-Sands, Cumbria. Tel: 044-854477.

'Topstones', Leicestershire. Several sites available. 10 miles from Leicester. Sae to Miss N Abbott, 46 Craven Street, Melton Mowbray, for details.

Beattock Outdoor Centre — Dumfriesshire. The Centre, a former school, is administered by Dumfries District Scout Council and is available for 1983. Solid shelter on Guides and other youth organisations. Ideal for Cub Scout and Brownie Guide Pack Holidays. Electrically heated building — modern kitchen with electric and calor gas cookers. All crockery, cutlery and cooking utensils available. The Centre has one large dormitory with bunk beds for 22 and a Leaders' room to accommodate six. Separate toilet and shower facilities. Users must provide sleeping bags or sheets, and pillow slip. Good base for outdoor activities — hill walking, nature studies, Pony Treks. From Beattock Village A701 19 miles to Dumfries — two miles from Moffat and is convenient for M6 and A74. Sae for details and booking form from: — Mrs M Crosbie, 5 Corberry Avenue, Dumfries DG2 7QH. Tel: Dumfries 0387-3519.

continued on page 48

Colman's *of Norwich*

★ Hot Stuff ★

Colman's was founded in Norwich over 150 years ago, and is still an entirely British owned company making mustard from locally grown mustard seed. Their range has grown over the years to other condiments and sauces, but a large proportion of the ingredients are still contract farmed by East Anglia farmers. Colman's played a most interesting part in industrial history, having been the first company to employ a trained industrial nurse, and the first to provide a works canteen. They were also among the first to build a school for employees' children, and at the other end of life each employee was given a splendid oak coffin! This fact became known by chance when someone queried the term 'coffin oak' on a recent building specification. It emerged that great quantities of oak are still in stock, the free coffins no longer required!

Such an old established company clearly has a most interesting history, and a recently completed audio visual film makes use of many original documents and illustrations. The company having been in the same family since its inception, a surprising number of early records are preserved. The film is shown to visitors at the Norwich factory.

Mustard Museum

Anyone taking a group of Guides or Brownies to Norwich should make a point of visiting the Mustard Shop in Brideswell Alley, Norwich. This also houses the Mustard Museum, containing all sorts of interesting facts about this most British of products. Many Victorian style artefacts are on show and for sale.

How's this for a sauce?

Colman's are justifiably proud of their history and their products. In recent years they have developed more adventurous mustards containing various herbs and even horseradish (this is my favourite). Now they have launched an



entirely new range of four sachet sauce mixes: *Béarnaise*, *Bordelaise*, *Provençale* and *Mornay*. To introduce these sauces, Colman's are offering two packets entirely free to readers of *GUIDER*. You are invited to choose two mixes from the range and apply to:

Master Sauce Offer
Colman's of Norwich
PO Box 43
Carrow
Norwich NR1 2DD

Postage and packing is free, but please write your name and address clearly. Only one application per household please.

Recipe Cards

Another innovation is the 'Colman's Kitchen Collection' of full colour recipe cards giving an original recipe idea for all 50 products in the Colman's range. Recipes from quick snacks to family casseroles are each illustrated with a colour photograph. They aim to show wider use for products traditionally used on the side of the plate.

The recipe card collection is housed in an attractive, slim, wipe clean box and is available for £1 to cover postage and packing. This is a real bargain. Please send £1 and an addressed label to:

Colman's Kitchen
121 Gloucester Place
London W1H 3PJ

This should provide a number of ideas for a theme meeting or a group outing.



Joan Rush, Editor

ON · WHAT'S ON · WHAT'S ON · WHA!

Show Business

Show Business is the first of a series of exhibitions to be staged by the Theatre Museum in temporary galleries at the *Victoria and Albert Museum* before opening in its own building — the converted Flower Market in Covent Garden — in 1985.

The exhibition shows not just that the Theatre Museum is concerned with all the live performing arts — theatre, opera, ballet, circus, music hall, variety and rock — but also the enormous diversity of its collections.

Performers from four centuries are featured, from David Garrick to David Bowie, together with costumes, designs, props, posters and programmes.

Exhibits include Sheridan's manuscript of *'The School for Scandal'*, Elton John's *'Bicycle John'* costume, Garrick's trick dagger, a rare Ballet Russe poster by Cocteau, Pete Townsend's broken guitar and Mistinguette's pink ostrich feather fan, along with work by artists and designers like Gordon Craig, Parigi, Erté, Robert Fraser, de Louthembourg, Bakst and David Oxtoby.

A book, called *'Images of Show Business'* from the Theatre Museum, V&A, has been written by the staff of the Theatre Museum, and is being published by Methuen London Ltd to coincide with the exhibition.

The exhibition opened on 17th November and runs until 17th April 1983. Admission to the exhibition is free, for further information please call 01-589 6371.



Royal Ballet

Cinderella

During the week 7th-11th December, the Royal Opera House celebrates the 250th anniversary of the opening of the first Covent Garden Theatre on the present site. Her Majesty Queen Elizabeth the Queen Mother, and HRH the Prince of Wales will attend separate galas on December 2nd and 8th respectively, but both will see the same Royal Ballet programme. This will include the premiere of *The Tempest*, Rudolf Nureyev's first original work for the company, followed by one of the oldest classical works *Konservatoriet*, created for the Royal Danish Ballet by Bournonville in 1820. A member of the Danish company will mount the work for the Royal Ballet who are dancing it for the first time. The programme ends with *Raymonda Act III*, revived by Nureyev. This sparkling triple bill can be seen on non-gala (therefore cheaper) dates as follows: 3rd, 18th, 22nd December, 4th 6th and 12th January. One can hardly imagine a more exciting Christmas outing for all ages than a visit to the Royal Opera House in its 250th anniversary month to see *Cinderella*. This glorious full length ballet will be performed on December 23rd, 27th (matinée and evening), 30th, (matinée and evening) January, 1st, 7th, 10th, 13th, 15th and 18th (matinée and evening).

A visit to Covent Garden need be no more expensive than the cinema. Prices start at £1 and good seats from £3.50. Young people under 18 can obtain half price tickets by post, students and senior citizens may buy unsold seats at reduced rates one hour before each performance, and discounted rail fares are available. The Opera House is in the middle of the exciting newly restored part of London which for many years contained the famous fruit and vegetable market. It now houses the Transport Museum, and dozens of quaint shops and interesting landmarks. Covent Garden has a tube station and many bus services. For details of booking, and the above concessions, write to the Box Office Manager, Royal Opera House, 48 Floral Street, London WC2. Telephone: 01-240 1066.

Barbican Aid

A bus to Charing Cross, Waterloo and Victoria stations now leaves the Barbican Centre's Level 3 roadway, 15 minutes after performances in the Barbican Hall and Barbican Theatre. Tickets are available on the evening, from 45 minutes before performances, from the Level 3 cloakroom. Early purchase on the evening is recommended.

Free parking for the disabled is now available in the Barbican Centre's car park. Vouchers, obtainable from points throughout the Centre, may be presented on departure in lieu of payment: drivers are not restricted to the special 'disabled' parking spaces. A separate system to pre-book parking bays is operated by the Box Office when making seat reservations: car park vouchers, though available in advance, do not constitute a reservation.



Santa's Train-deer

All children who travel on the steam engine at the Didcot Railway Centre will receive a present from Santa Claus on Sundays 5th and 12th December. The whole family will be able to enjoy a traditional Christmas lunch by making reservations on the Great Western Railway's two salon carriages 'Princess Elizabeth' and 'Queen Mary'. Reservations may be made in advance by telephoning 0628 31767. There will also be a New Year Steaming on Sunday 2nd January. These special attractions are accompanied by all the usual attractions including the recently opened Small Relics Museum displaying an array of GWR memorabilia.

The entrance is through Didcot British Railway Station, or by road, it is on the A4130 two miles from the A34 with car parking available.



The first Santa-train, at Haworth.

ON · WHAT'S ON · WHAT'S ON · WHAT'S ON

Holiday on Ice '83

The world-famous *Holiday on Ice* is back this year at Wembley Arena with a new presentation for 1983. A huge cast is involved in the Show including some of the world's finest skaters providing the thrills and breathtaking artistry that has become synonymous with *Holiday on Ice* — the show which is specially devised as all-round family entertainment, opening on Monday 27th December and running until 27th February 1983.

Among the top names due to appear are **Ondrej Nepela** from Czechoslovakia — with more National, European, World and Olympic titles to his name than any other young skater, and Britain's **Karen Richardson**, a young and dynamic champion who has attracted the attention of audiences around the world.

Holiday on Ice '83, produced specially for the spacious Wembley Arena, has many highlights. Included in the new presentation are **Memories of Judy Garland** when the dancers in stunning rainbow-fan costumes remember the melodies of the singer and **Cossack Festival** with its exhilarating rhythms and traditions of old Russia. **The Enchanted Toy Shop** is sure to be a great hit with Brownies and Guides as the clockwork soldiers step out and the cuddly bears and far from raggedy dolls scurry around the ice.

The show promises to be Wembley's best yet — an impressive mixture of the traditional and modern.

Now booking at Wembley Box Office, tickets for *Holiday on Ice '83* range from £2.50 to £6.00 with reduced prices for children and Senior Citizens to all performances, including Saturday and the two shows each Sunday. For additional information or Box Office enquiries telephone 01-902 1234 or see advertisement in *October Guider*.



James Heard as Seurat.

The National Gallery's Christmas Fare

For the third year this Christmas, a famous artist from the past is to be reincarnated at the National Gallery. This time the French 19th-century painter **Georges-Pierre Seurat** (alias **James Heard**) will be discovered by his young audiences in a recreation of his studio. He will explain how his painting, *Bathing Scene at Asnières*, is progressing, and he will discuss his latest ideas about colour.

Performances will take place on December 29th, 30th, 31st and January 4th-7th inclusive at 2.30 pm for the general public. Queue tickets will be issued 30 minutes before the start of each performance and priority will be given to children.

Throughout December and January there will be special *Meet the Artists* performances which may be booked by school, Guide and Brownie parties. Guiders and teachers wishing to bring a group should telephone the Education Department.

From December 8th to January 15th, the other Christmas event will look at music in National Gallery paintings. There will be a quiz for children, information sheets for adults, an audio-visual programme and specially-devised musical performances.

Lecture recitals for families will be given on Saturday afternoons by **Dr Mary Remnant**, an authority on early music. She will demonstrate instruments shown in National Gallery paintings and talk about their use.

Seating is limited to 120. Performances are at 2.30 and 4.00 pm on December 11th and 18th; January 8th and 15th.

Admission is free to both these events and further information can be obtained from the **National Gallery, Trafalgar Square, London WC2N 5DN**, telephone 01-839 3321.

The International Scout and Guide Club

The Club meets at Baden-Powell House every Monday at 7.45pm, usually in the Library on the second floor, when Scout and Guide visitors are always welcome.

Varied programmes are provided; including guest speakers, films, travel talks, national evenings, socials, etc.

Weekends away from London include International Days run for Scout and Guide Districts, potholing, walking and sightseeing. Apart from Monday evenings, which provide a hospitality venue for any overseas visitors, the Club's prime service in the London area, is to provide International Evenings for Scout and Guide Units.

There is a small charge for visitors, but if you wish to become a member, the full subscription is £8.00. Associate Members (full-time students and those living over 25 miles from London) pay £4.00. All members receive the Club magazine containing news of the Club and its members, and details of International Scout/Guide events etc.

Way Upstream

The *'Way Upstream'* proved to be a hilarious and somewhat hysterical experience for two couples setting out on a week's cruise to Armageddon Bridge. They are obviously not experienced and when the cabin cruiser goes aground a plausible rogue helps out and he and his crazy girl friend eventually take over the cruiser. Mutiny breaks out and during a realistic thunderstorm and driving rain one of the crew is marooned and another has to walk the plank. When the cruiser finally reaches Armageddon Bridge only two people are aboard. The staging with a cabin cruiser riding on a stretch of river amid natural looking grassy banks is as impressive as the excellent cast. **Tony Haygarth** (of TV's 'Rosie' fame) as the blustering Keith knowing everything and nothing about boats, and his vain complaining wife June (**Susan Fleetwood**) almost steal the show.

This is only one production of the National Theatre complex which has three auditoriums, Olivier, Lyttelton and Cottesloe. They present over 20 productions each year and there are reduced prices for groups of 15 or more and special rates for school parties and pensioners. Daily Tours can be arranged, again with reduced prices for groups. In the foyer there are free exhibitions all day and live music before all evening performances and Saturday matinees free of charge.

Forthcoming attractions in December include *Guys and Dolls*, *Hiawatha*, *Don Quixote* (Olivier), *The Importance of Being Earnest*, *Major Barbara* (Lyttelton), *The Beggar's Opera*, and *Midsummer Night's Dream* (Cottesloe).

OMC



continued on page 49



continued from page 44

Hove, approved for Pack Holidays. Church Hall. Large kitchen, Guiders' room, 3 toilets, 5 mins beach, parks. Sae Odom, 82 St Leonard's Road, Hove N3 4QS.

Aberdeen Guide Campsite, Crathes Castle, Deeside. National Trust property approx. 12 miles from Aberdeen. Fully equipped 12 Patrols. Ample woodland, free use of passes to Castle and Nature Trails. Apply Mrs E McConnach, 57 Beech-hill Gardens, Aberdeen, enclosing sae.

Cottage to let in Old Village, Shanklin, Isle of Wight. 1 double bedroom, 1 twin-bedded with H&C. Bathroom with shower and toilet. Kitchen/diner and lounge with TV. Bed linen provided. Terms from £100 per week. Mr D Parker, 32 Porter Court, Lake, I.O.W. Sandown 404131.

Good Brownie Pack Holiday Home — Rowlands Castle Scout and Guide Headquarters. Spacious, convenient for trains and buses plus many lovely walks and local attractions. 10 miles from Portsmouth. Phone Mrs Collins, Rowlands Castle 2991.

Lancaster and Morecambe Division Camp Site (Silver Sapling). Two fully equipped camp sites for 24 campers. Available for 1983. For details, write to Mrs M Y Midwinter, 4 Thirlmere Drive, Morecambe, Lancs LA4 4NP. Enclose foolscap sae.



BE SAFE BE SEEN AT NIGHT

The perfect gift for Guides and Brownies — or for anyone who needs to be seen at night by motorists. The Pedlite is lightweight and easy to wear on the arm, shoulder or leg and is ideal for activities such as walking, cycling, riding or jogging. The bright red light at the back warns motorists while the white light in the front lights up your path.

Give a Pedlite for Christmas — it could save a life!

Only £4 inc. p & p from:
Department G1, Lingard Trading, Westminster Road,
Wareham, DORSET BH20 4SP

Norton Bury Scout & Guide Activity Centre. A converted centrally-heated farmhouse with camp site adjacent, situated in rural surroundings on the edge of Letchworth Garden City, North Herts. 35 miles from London, 28 miles from Cambridge. Residential accommodation for 40. Resident warden at week-ends. Self-catering. For further details, contact Mrs H Frankland, 26 Hillshott, Letchworth, Herts SG6 1SB, enclosing a large stamped addressed envelope.

EDUCATIONAL

Write & Sell Children's stories. Mail tuition. Sales assistance. Free booklet: Children's Features (G), 5/9 Bexley Square, Salford, Manchester M3 6DB.

INSURANCE

Insurance. Reduced motor premiums for Guiders, Scouters, Civil Servants, Advanced Motorists. Professional advice for all classes of insurance. We welcome enquiries for Group vehicles and premises, your home, life, mortgage, pension and investment requirements. Morden Park Insurance Brokers Ltd, 12 Colman Parade, Southbury Road, Enfield EN1 1YA. Tel: 01-366 1312/3.

Special camping equipment Insurance now available for Guide Companies. An exclusive low-cost insurance plan designed to cover camping equipment all year round. This policy will enable you to have complete protection against loss or damage, in-

cluding storm damage, for your camping equipment from as little as £6.00. Telephone or write for proposal form to: Fennell Turner and Taylor Ltd, Pinners Hall, Austin Friars, London EC2 2HF. Tel: 01-638 0721.

Please note: all advertisements for Venture Scouts/Ranger events published in *GUIDER* must be accompanied by the signature of the Guide County Commissioner, and all advertisements for camp sites, Pack Holiday Houses and Activity Centres **MUST HAVE THE SIGNATURE OF THE COUNTY CAMP ADVISER**

The Girl Guides Association takes no responsibility for statements made in any advertisement here or elsewhere in the magazine, or for any subsequent correspondence in connection therewith. The right is also reserved to refuse any advertisement not considered suitable. Advertisements for the sale of secondhand clothing cannot be accepted (except uniforms). Uniforms for sale should not be sent to CHQ, advertisers receive communications from applicants. **ALL COPY MUST BE RECEIVED BY 17th OF THE SECOND MONTH PRECEDING PUBLICATION (eg 17th DECEMBER FOR THE FEBRUARY ISSUE). ALL CHARGES 25p per word, BOX NUMBER £1.00 extra. PLEASE SEND REMITTANCE WITH ADVERTISEMENT TO: Miss A M Martin, Advertisement Manager, The Girl Guides Association, 17/19 Buckingham Palace Road, London SW1W 0PT. 10% discount for series of 12. To reply to a Box Number, address your envelope to Box Number concerned c/o GUIDER. Please enclose SAE when replying to Box Numbers.**

Would Readers please note that all classified advertisements must be submitted on the official form — SEE PAGE 32 of OCTOBER GUIDER.

No Pets for Christmas — see page 41



ON · WHAT'S ON · WHAT'S ON · WHAT

continued from page 47

Ballet Salad

On 7th January at the Sadler's Wells Theatre, the **Sadler's Wells Royal Ballet** Company perform Sir Frederick Ashton's *Pas de Legumes*. The ballet was created for the EMI film, *Stories from a Flying Trunk*, and marked Ashton's token of regret at the departure of the vegetable market at Covent Garden. In the December 1979 issue of *TODAY'S GUIDE* there was a competition to design a vegetable costume for the EMI film *Stories from a Flying Trunk*.

In the same programme with *Pas de Legumes* is given the revival of Massine's *La Boutique Fantasque*. In a toyshop on the Mediterranean, two tourist families unwittingly incur havoc when they try to purchase, and thus separate, a pair of Can-can dolls.

Together with Fokine's *Les Sylphides* and Hans van Manen's *5 Tangos*, this programme can be seen on 7th, 8th and 10th of January 1983.

For tickets please contact: Box Office, Sadler's Wells Theatre, Rosebery Avenue, London EC1R 4TN.



Nicholas Ringham and Iain Webb as *Petits Pois*.

R B Education Officer

Miss Kate Castle has been appointed Education Officer for the Royal Ballet and Sadler's Wells Royal Ballet. Originally with the Company, she has in recent years been teaching in schools, youth centres and adult education, and choreographing for community dance groups. Miss Castle will continue to establish and maintain the educational policy of the Royal Ballet Companies. For information about their activities write to her at the Royal Opera House, Covent Garden WC2.



Dick Whittington

Dick Whittington, the traditional family pantomime, will open at the Shaw Theatre on Monday, 13th December, presented by the London Borough of Camden. Tim Brooke-Taylor, making his first ever appearance as Dame, will star as Sarah the Cook.

Tickets for Dick Whittington will be £4.00 for adults and £2.00 for children. If you are taking your party of Guides or Brownies there is a reduction of one half price ticket free for each group of 10 persons, saving £2 pounds.

Please contact the Camden Box Office, Shaw Theatre, St Pancras Library, 100 Euston Road, London NW1. Telephone 01-388 7727/1394 or for group sales: 01-387 6293.



Marion Tait as *La Princesse* from *Pas de Legumes*.



Andria Hall as the Snow Queen in *The Nutcracker*.



Sadler's Wells Royal Ballet Tour

The company will be appearing in the regions as follows: Sadler's Wells, London, 29th December to 15th January; Palace Theatre, Manchester, 31st January to February 5th; Theatre Royal, Glasgow, 7th February to 12th; Pavilion, Bournemouth, 14th February to 19th; Congress, Eastbourne, 1st to 26th February; Theatre Royal, Norwich, 28th February to 5th March; Birmingham Hippodrome, 7th to 12th March; Bristol Hippodrome, 21st to 26th March; Empire, Liverpool, 28th March to 2nd April; Grand, Leeds, 4th to 9th April.



The Nutcracker at Festival Hall

London Festival Ballet's Christmas production at the Royal Festival Hall, is *The Nutcracker*. The *Nutcracker* has delighted audiences of children and adults alike for nearly 100 years and the Festival Ballet's production by Ronald Hynd with designs by Peter Docherty is one of the most popular anywhere.

The production starts on 27th December 1982 and runs until 12th January 1983. Ticket prices range from £3-£9 with party reductions for groups of 20 and over. Phone 01-928 3002 for further details.

continued on next page

ON · WHAT'S ON · WHAT'S ON · WHAT'S ON · WHAT'S ON

Continued from page 49

Afro-Portuguese Ivories

Some of the Museum of Mankind's greatest treasures from Africa are displayed in a new exhibition. All the items in this exhibition are superbly carved ivories produced by Africans for Portuguese patrons at the end of the fifteenth and the beginning of the sixteenth century.

In the fifteenth century the Portuguese explored the coast of West Africa in search of trade, treasure and political influence. In many regions they encountered societies with long-established traditions of artistic creativity: from some of these they began to commission luxury works for use in Europe. Out of this contact between radically different cultures developed one of the earliest and finest 'tourist' arts ever created, that of the elaborate and beautiful Afro-Portuguese ivories. The two most striking sorts of these ivories are the great hunting horns, two to three feet in length, their surfaces covered with delicate carvings, and the enigmatic two- or three-part lidded vessels, usually interpreted as salt-cellars, their bowls and tops decorated with humans and animals. Other sorts of items were also made for the Portuguese: delicate spoons, with paper-thin bowls, forks, knife handles and objects whose purpose is now uncertain.

The great majority of Afro-Portuguese ivories seemed to have been made for the Portuguese royal court and its dependents and allies; many bear European coats of arms. Many must have been destroyed in the centuries since they were made but those which survive cannot fail to impress by their delicacy and complexity. The Museum of Mankind has one of the world's best collections of these early treasures from Africa and all will be on exhibition. Among these will be its most recent acquisition: a superb lidded vessel recently purchased from the Society of Antiquaries of Newcastle-upon-Tyne in whose possession it had been for well over 100 years. **Telephone:** 01-437 2224.

British Museum



Arte Italiana 1960-82

The Arts Council is presenting the largest exhibition of new Italian art ever staged outside Italy at the Hayward Gallery, South Bank, London, where paintings, sculptures and installations will be shown. It will run until 9th January next year.

The exhibition has been organised by the City of Milan in return for the exhibition of British art, *Arte Inglesi Oggi*, which took place there in 1976. It has been selected by the Italian critics Guido Ballo, Renato Barilli, Flavio Caroli, Vittorio Fagone and Roberto Sanesi.

Over 100 artists are included, ranging from the key figures Lucio Fontana (1899-1968) and Piero Manzoni (1933-1963) to new groups such as Magazzini Criminali and Falso Movimento who present a total spectacle of words, images, music, projection and dance.

Contemporary Italian art has deservedly been fashionable in recent years. It shows the same style and flair we associate with Italian design, architecture and cinema. But few artists have been shown here and the importance of the exhibitions at the Hayward Gallery and the Institute of Contemporary Arts is the broad picture of recent Italian art they will present. Opening times: Mon-Thurs 10-8, Fri-Sat 10-6, Sun 12-6. Adults £1.60, children, students OAP's and registered unemployed 80p. Half price all day Monday.



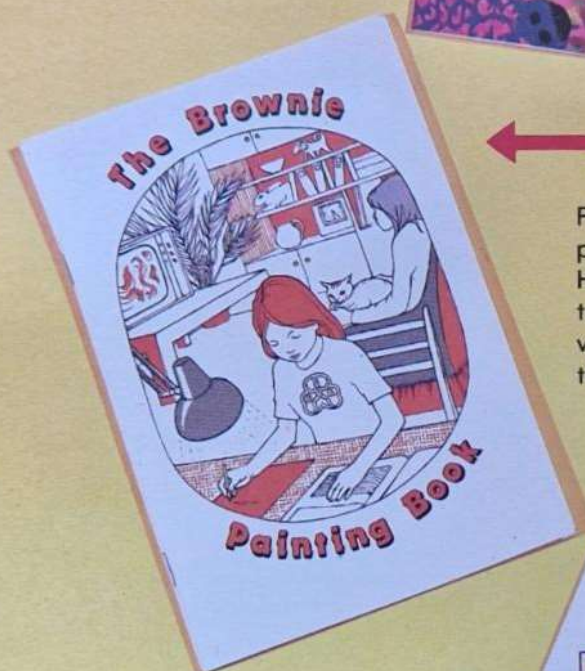
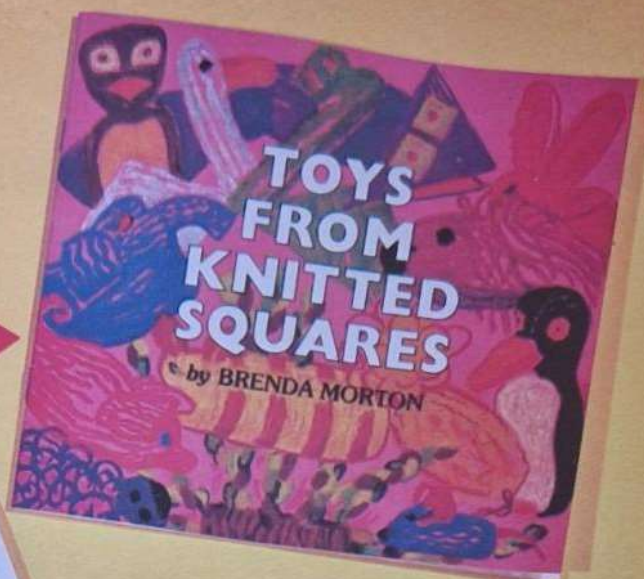
Arts Council of Great Britain

Above, Michelangelo Pistoletto, assembling his *Venus of the Rags*, 1967.

In Brief . . .

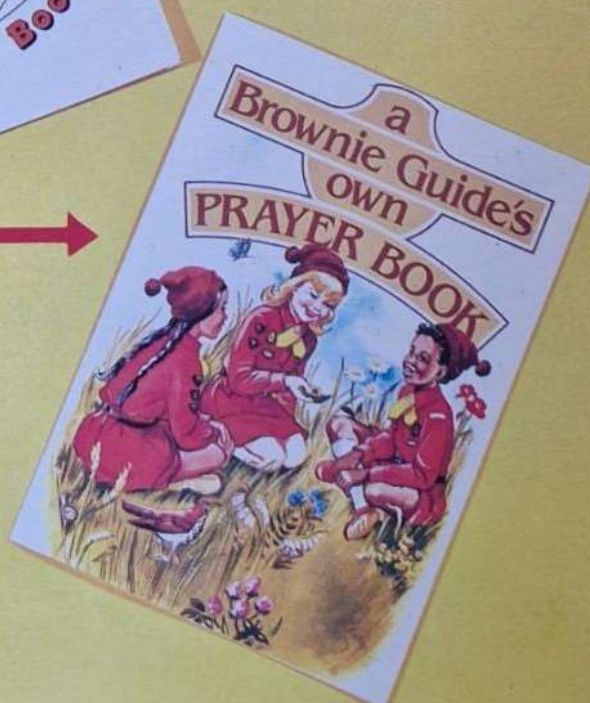
- . . . the Sadler's Wells Royal Ballet Company's performance of *Coppelia* runs from 28th-30th of December at the Sadler's Wells Theatre. Phone 01-278 8961.
- . . . Christmas productions for children in provincial theatres are as follows:
- . . . *Jack and the Beanstalk* at the Chichester Festival Theatre, 17th Dec — 15th Jan, party bookings one person free for every 10 seats booked. Phone (0243) 781312.
- . . . Octagon Theatre, Bolton, *Jack and Jill* and *The Magic Secret*, 1st Dec — 22nd Jan. Special concessions for party bookings in the stalls. Phone (0204) 20661.
- . . . Neptune Theatre, Liverpool, presenting *Charlie and the Chocolate Factory*, from 20th Dec — 8th Jan. Party concessions on party of over 15. Phone (051) 709 7844.
- . . . Hastings White Rock Pavilion, *Jack and the Beanstalk* from 22nd Dec — 8th Jan. Party booking concessions available. Phone (0424) 421840.
- . . . Norwich Theatre Royal is showing *Mother Goose* from 17th Dec — 12th Feb, concessions available on party bookings outside school holidays. Phone (0603) 28205.
- . . . At the National Theatre until 15th January, *Painted Tales*, an exhibition of children's book illustrations. Admission is free.
- . . . *Educating Rita* is on at the Key Theatre, Embankment Road, Peterborough, Cambridge from 24-29th January.
- . . . On 26th January, The Wisbech Music Society Concert performs *Sing Me Shakespeare* at the Wisbech Grammar School, North Brink, Wisbech, Cambridge.

Price 60p, all the toys are knitted in garter stitch from oddments of double-knitting wool. Simple to make with diagrams showing how the toys are completed.



Price 45p, the theme of this painting book is 'Keeping Healthy'. Brownies read how to keep themselves fit and well, and have fun colouring the illustrations.

Price 85p, for Brownies when they are on their own rather than in the Pack. With many prayers for different occasions, it also encourages the Brownie to think of prayers of her own. Illustrated in full colour.



BOOKS FOR CHRISTMAS

Published by the GGA, available from Guide Shops or through the Trading Service — please include 50p per book p/p.



Raise the funds you need...easily.

What's the easiest way of raising funds?

It is to give people something they appreciate in exchange for their money.

That's why so many fundraisers succeed with Miller.

We have many years of experience in providing what people like, through our fundraiser's catalogue. If you haven't got a copy already, you certainly ought to have one.

CARDS, PRESENTS, GIFTS - ALL AT BARGAIN PRICES FOR CHRISTMAS.

We manufacture, buy in and import cards, presents and gifts from all over the world.

They represent outstanding value - yet still allow a good margin for your fund. As much as 25%... sometimes more!

And, it's possible for you to

get extra gifts, absolutely free, which you can raffle off, or keep yourself as a "pat on the back" for your efforts, or for your helpers?

THE CATALOGUE DOES THE WORK FOR YOU

We take immense pains to produce a lively colourful catalogue. It's big, too... crammed with items that people like.

For example, why should people go elsewhere for Christmas cards, when we supply them for as little as 4 pence each - and that includes a 25% margin!

You just let people have the catalogue to browse through, and they order through you. We do all the management and deliver direct to your door.

It works for over 15,000 others...it can work for you.

Miller Fundraising

Britain's Finest Fund Raising Service.



£1,196 Cancer Research Campaign fundraiser, Betty Simms, raised £1,196... with orders still pouring in.



£520 Mrs. Thea King has already presented the 15th Burton Shobnall Scout Group with a much-needed £520.00... with more to come this year.



£1,172 Mrs. Enid Nailer recruited the help of Disabled Drivers Association members, and together they raised over £1,172 in 1981 alone. This year they hope to raise even more.

✂

NO RISK. NO OBLIGATION.
To: Miller Fundraising, Queen Street,
Burton-Upon-Trent DE14 3LP.
Please send me FREE details of the Miller
Fundraising Service and how I can obtain
the Super Free Gifts. (I am over 18 years)

Name _____
Address _____
Postcode _____ SJ8Y

FREE 92 PAGE CHRISTMAS CATALOGUE

LOOK - news of these and other FREE GIFTS once you get started.



This Pump-a-Drink can be yours. Details by return. This Alarm Clock can be yours... we tell you how when you reply.

