



Guiding

VOLUME 70 NUMBER SIX JUNE 1983

50p

KEEP UP TO 25% PROFIT

The ideal way to raise funds for your scout or guide group, school, church or any other good cause.

Yes — whether you want to raise £50, £100, £1,000 or more, you can do it with Webb Ivory! Now you can offer a service that friends and supporters really appreciate, and the profits for your good cause will start to flow in.

Every family has a recurring need for Christmas cards, Birthday cards, wrapping paper, gifts for special occasions, and household items.

The easy, sociable way to raise funds.

By providing you with a superbly illustrated full-colour catalogue brimming with good value, Webb Ivory enables you to satisfy this demand. And on every purchase you can keep up to 25% of the catalogue price for your worthy cause. All you do is leave the catalogue with your friends and the orders start pouring in. Is it any wonder that thousands of people use this service to raise £50...£100...£500...£1,000 and even more.

- No risk • No unwanted stocks
- No financial outlay needed

Send in the coupon today and discover for yourself how easy it is to raise funds for your good cause or favourite charity. You'll be delighted when you receive your FREE Christmas Catalogue and see the huge selection of Christmas cards, gifts and household items...everything to make your cause a winner! You'll also receive a FREE BOOKLET, 'Your Guide to Fund Raising Success', full of helpful advice, PLUS exciting details about how you can qualify for one of THREE FREE GIFTS — a beautiful jewellery box, a Ewbank carpet sweeper or a 7-piece coffee set — yours to keep or raffle.

With Webb Ivory, you can keep up to £2.50 in every £10 for your worthy cause.



See how much money we made



£655

Mrs Jane Mansell for the Otterdown Parent, Teachers and Friends Association. "Just a bit of teamwork and we worked wonders. Three cheers for Webb Ivory & all our supporters."



£526

Mrs Beryl Baird for Bexley Heath Methodist Church. "We were delighted to raise such a lot for the new extension to our church hall — and it's so easy with Webb Ivory!"



£786

Mr J. Davey, for the 40th Rossendale Scout Group, Lancashire. "Imagine us raising all that money — and having a great time too! Everyone in the community seemed glad to help."

Over 65,000 success stories

Send for
FREE
Fund Raising
Guide & 100-page
Christmas
Catalogue.

Your Guide to Fund Raising Success

Greetings Cards from only 4p each + 100s of gifts!

POST TODAY — NO OBLIGATION

To: Webb Ivory Limited, Little Cornbow, Halesowen, West Midlands B63 3AG.

Please send me, without obligation, my FREE Colour Christmas Catalogue and FREE Webb Ivory Fund Raising Guide, plus details of how I can qualify for one of three FREE GIFTS.

HR1K

(I AM OVER 18)

NAME (MR/MRS/MS) INITIAL S SURNAME

ADDRESS

POSTCODE

FREE jewellery box, Ewbank carpet sweeper or coffee set can be yours. Send now for details



Webb Ivory

BRITAIN'S PREMIER FUND RAISING SERVICE

Guiding

Published 1st of each month

OFFICIAL MAGAZINE
OF THE GIRL GUIDES
ASSOCIATION

(Incorporated by Royal
Charter)

PATRONS

HM THE QUEEN
HM QUEEN ELIZABETH, THE QUEEN MOTHER

PRESIDENT

HRH THE PRINCESS MARGARET, COUNTESS OF SNOWDON

WORLD CHIEF GUIDE, 1930—1977
OLAVE, LADY BADEN-POWELL, GBE

CHIEF COMMISSIONER
THE LADY BADEN-POWELL

CONTENTS

Bursary Awards	4
Junior Council/Guides and Brownies Help BR	5
Roundabout	6, 7
Airing, Sharing and Caring	8, 9
Olave Centre	10
Brownies and Blue Peter	11
Memories Of ...?	13
Thinking Day In St Lucia/GGFF	15
Unit Guiders Conference	16, 17
Practical Pages	18, 19
Visit to Bermuda	21
Walking Safely/News For Rangers and Young Leaders	22, 23
Programme Notes	25
Training Calendar	26, 27
Camps and Holidays	28
Grab The Chance	29, 31
Double Acrostic No 61	33
Next month in TODAY'S GUIDE and THE BROWNIE/Help Your Patrols	34, 35
Young Leaders	37, 38
HQ Notices/Heraldry (27)	39
Denmark	42
Thailand	43
Classified Ads	44, 45
Grapevine	47, 50
Book Reviews	49

Royal Telemessages

The following telemessage was sent to Her Majesty
The Queen on the occasion of her birthday on April 21:

H.M. THE QUEEN, BUCKINGHAM PALACE LONDON
MEMBERS OF THE GIRL GUIDES ASSOCIATION SEND YOUR MAJESTY CONGRATULATIONS
AND LOYAL LOVING GREETINGS ON THE OCCASION OF YOUR BIRTHDAY
PATIENCE BADEN-POWELL
CHIEF COMMISSIONER

Below is her reply

ER
22 April 1983
TELEMESSAGE
THE CHIEF COMMISSIONER
GIRL GUIDES ASSOCIATION
17 BUCKINGHAM PALACE ROAD
LONDON
SW1
I THANK YOU AND THE MEMBERS OF THE GIRL GUIDES ASSOCIATION
MOST SINCERELY FOR YOUR KIND CONGRATULATIONS ON MY BIRTHDAY.
ELIZABETH R.

Cover

Our cover photograph this month reflects the summer mood — Brownies from the Westgate and Birchington District are seen here celebrating their annual Brownie Revels. Photo: Ian Andrews.

We are grateful to Messrs Webb Ivory Ltd for sponsoring this month's cover.



EDITOR: JEAN RUSH
ASSISTANT EDITOR: SHIREEN BONNER
SUB EDITOR: DEBBI SCHOLES
ADVERTISEMENT MANAGER: ANN M MARTIN
ALL COMMUNICATIONS TO: Guiding, THE GIRL GUIDES ASSOCIATION, 17-19 BUCKINGHAM PALACE ROAD, LONDON SW1W 0PT.
01-834 6242

Bursary Awards

Olave
Baden-
Powell
Fund



Dream House — Green House!



Thank you for making my Dream Come True. I never thought I would ever own my own greenhouse. It arrived at the end of July and I helped my Dad to erect it. I was his apprentice. He has also made me a table for inside, which I need to work on. Friends have been very kind and given me plants and seeds to start me off. It will be next year before any advantages of the greenhouse will be seen, but for me it will be a year of happiness. I enclose a picture taken by our County photographer, Margaret Stephenson.

I thought you would like to know that I have passed my first year exam in Floristry Practical. I think this must be one of my happiest and luckiest years.

At present I am saving cartons for the Brownies to plant bulbs later, as Brown Owl is going into hospital and this is one way I can help her.

Once my greenhouse is well under way I may write to you again and tell you what I am growing.

Thank you again for making my dream come true.

Fiona Bisset,
10th Monkseaton
Rangers'
Tyne and Wear.

Sailing

The bursary which I was granted from the Olave Baden-Powell Fund went towards a Sail Training Cruise on the 'Malcolm Miller', a 150 ft three-masted top sail schooner (see March *GUIDING*), which carried a permanent crew of 16 and 39 trainees (including myself) who hadn't sailed the ship before.

I joined the ship for three weeks. The first week was spent 'in port' at Southampton doing maintenance work.

We set sail on the Monday of the second week. Once the sails were all hoisted and set (a lengthy and confusing process the first time!) it looked as though we were in for a gentle 'first sail' as we drifted down

Southampton Water. As we rounded the Isle of Wight, however, the wind began to pick up and it wasn't long before there was a line of 'bodies' hung over the rail as seasickness set in!

Our minds were taken off our own worries on Wednesday when a distress flare was spotted. Soon we were dragging aboard a 'lone yachtsman' whose yacht sank within minutes of us rescuing him.

During the next week we began to get into the routine of sailing. The weather was mostly good, although we had an afternoon of sailing in thick fog, which caused a few anxious moments when the radar picked up other ships nearby. We each tried all aspects

of sailing, managing the sails (including climbing the rigging), helming, navigating and so on, as well as day-to-day maintenance work. We visited French and Channel Island ports, and it made quite a change to see everyone 'dressing up' to go out in the evenings!

The cruise provided us with a great variety of experiences which I will remember for many years to come.

Jenny Phillips
(Wetherby
Ranger/Venture
Unit),
Yorks.

CANADA



Thank you so much for the money you sent, you cannot imagine what pleasure it brought me — not only did the trip widen my knowledge about Canada but also about Guiding.

There were sixteen in our party, all Guides, Rangers or Venture Scouts who were or had been members of the 1st Keston Company.

The trip took three weeks, in which time we travelled through the prairies, the Rockies, the Coastal Mountains, Vancouver Island and Banff and Jasper National Parks.

We flew to Edmonton, travelled to Drumheller, Calgary, Banff and Jasper, through the spectacular scenery of the Rocky Mountains, with the St Albert Pathfinders, on a charter bus. On this part of the journey we somehow found time to visit a Heritage Park, visit many museums, go on walks in parks and up mountains, meet a Mountie, do square dancing and swim in hot springs.

We caught the Greyhound coach to Prince George, BC, where we stayed with families. I was lucky enough to stay with three families, who were very kind hosts.

We then met up with the Pathfinders who were going to camp with us. The camp was in log cabins on the side of a beautiful lake. This was very easy camping, as we had hot showers, a cooker, fridge and flushable loos! We canoed and swam nearly all day. We also visited an Indian Reserve and other interesting places.

After five days we travelled on to my pen-friend's home town of Prince Rupert, on the West Coast. There we stayed for a couple of days, then flew down the coast to Vancouver, caught a ferry to Victoria, Vancouver Island, where we stayed in a Guide house for two days. When we returned to Vancouver we realised that we sadly had finished our unbelievable holiday, having covered thousands of miles across the beautiful and spectacular country of Canada.

This holiday made me realise what Guiding is all about — the bond between people, although strangers, is so great because they are united as a family.

Going to an unknown country as a Guide is like going to a country of friends.

Once again, thank you, you have been like fairy godmothers to me.

Sarah Starky,
Guide,
Lincoln.



JUNIOR COUNCIL MEETING

MARCH 1983

5

6

By Penny Farbrother —
Member of the Junior Council

March 5th once again saw young Guiders, Rangers and Young Leaders arriving in London from each Country and Region of the United Kingdom for a weekend meeting of the Junior Council. The Junior Council has been very active since its first meeting three years ago, with two busy meetings a year; one over a weekend and one on a Saturday. This weekend proved no exception as far as being busy was concerned!

The meeting opened with a welcome from our Chairman, Ishbel Hartley. We then received a report from The Chief Commissioner, who unfortunately could not be with us, and a verbal one from Ishbel. The first item for discussion on our agenda was Press and Publicity. Mrs Fitzpatrick, the Public Relations Secretary, and Mrs Arnold, the Public Relations Adviser, were able to give us the background concerning Public Relations work, and much lively discussion followed, most people having, at some time or another, been frustrated by internal communication channels which can cause problems in an Association as large and dispersed as ours. We also discussed the difficulties involved in getting good media publicity for the Association. Some very constructive ideas were put forward on the subject, particularly with regard to the need for effective pub-

licity, at all levels, on our 75th Anniversary in 1985.

Next on the agenda came *LINK*. The Chairman of *LINK*, Jeremy Barber, spoke to us about this 'lesser known' sector of the Movement, which does much valuable work in the background, providing support for lots of Guiding and Scouting projects, and other pursuits. *LINK* is a non-uniformed part of the Guide Association for young people of either sex aged between 18 and 30.

Unemployment was another item on our agenda, and there was much discussion about practical ways in which The Girl Guides Association could become more involved in this very important area and, while acknowledging the valuable work which has already been done at all levels of the Association, it was considered important to see how the rôle of the Association could be extended further.

As always, a weekend barely seemed to give us enough time to scratch the surface of the issues we discussed, but I am sure that the rôle of the Junior Council is an important one, which gives an opportunity for the 'younger' part of the leadership a chance to be involved in national level discussions, and a chance to put forward ideas from the viewpoint of a younger person.

Guides and Brownies Help British Rail — and Raise £1,100 For Themselves

By helping British Rail sell bargain family train travel, Guides and Brownies in the York area have raised £1,100 towards building their own camp centre and Pack Holiday house, and a place from which handicapped girls can take part in camp and outdoor activities.

The girls boosted their own building fund and helped BR publicise the Family Railcard by playing the 'Family Rail Game', a rail and general knowledge quiz open to their families, friends and neighbours; and 40 of them have also won valuable family train travel prizes. These were presented on Monday 11 April when The Chief Commissioner visited York as a guest of Mr Frank Paterson, General Manager of BR's Eastern Region.

The Lady Baden-Powell was greeted by a Guard of Honour at York Railway

Station, and reviewed a parade of Guides and Brownies outside the Station before going to the Royal Station Hotel to hand over the rail travel prizes.

Mrs Barbara Semmens, County Commissioner for North Yorkshire South, said: 'We were delighted to help British Rail sell the very popular and very useful Family Railcard. It was also a marvellous community effort because the girls were able to help others as well as themselves. The visit of The Chief Commissioner is a tribute to the efforts of the Guides and Brownies in the towns and villages of this County.'

To play the 'Family Rail Game', the Guides and Brownies had each to raise £1 by some form of service to the community. Some of them knitted blankets for old people's homes, some made draught excluders, and

others helped by performing general household and gardening duties. Several organised coffee mornings, cake stalls or jumble sales, while others used their pocket money or took part in sponsored knits and skips. One Guide Unit raised a sub-

stantial sum from commission from a kitchenware house party and some Brownies raised cash by selling Easter baskets in a department store.

The Guides and Brownies building fund, launched last year, now stands at £4,000.



North of England Newspapers

The Chief Commissioner greeting a Brownie.



Colourful!

Seen here are Colour Parties at the Annual Jewish Thinking Day Service held on Sunday 13 February in Crosshill Synagogue, Glasgow. The County Commissioner for Glasgow was there along with all the Division Commissioners as well as Mrs Naomi Benson, Chairman of the Jewish Guide Advisory Council. Several Units took part and the Guides, Brownies and Scouts participated throughout the service.

Photo: courtesy of Lewis Segal Photography

Tribute Abroad



World Fare



Beauclerk District (Fylde South) Guides and Brownies held a 'fare round the world' to celebrate WAGGGS Week 1982. The photograph shows a group of Guides and Brownies dressed in uniform and national costumes from around the world.

A country was chosen by each Unit and they put on a display and provided food for tasting from each country represented. The Guides and Brownies then had a quiz to complete about the countries they had 'visited' and the evening was successfully rounded off with a camp fire.

Photo: courtesy of W Lancashire Evening Gazette

Mrs Pamela Brooking, County Commissioner for British Guides in Germany, is seen here presenting tokens of appreciation to Lady Margaret Kennedy, wife of the CinC RAF Germany and CO President of the Movement there, who left Germany in April.

Guide Commissioners in British Forces Germany were assembled in Rheinlanden, for a study ses-

sion with the Guide Association's Programme and Training Adviser from the United Kingdom, and the opportunity was taken to pay tribute to Lady Kennedy's efforts in promoting and supporting Guiding in Germany. Presidency is an honorary position which falls to the wives of Commanders in Chief.

Photo: courtesy British Army of the Rhine



Ravenous Revels

Ripley District Brownie Revels was the occasion for this feast! Guides Susan Riley and Katherine Lawrence, both members of the 1st Ripley Company, are enjoying their own tea after serving a hungry Brownie Pack with sausage and baked beans. The Revels took place at Amberley Farm, Pentrich, Derbyshire and an excellent time was had by all.

Photo: courtesy of B Watson

Arts to see '83

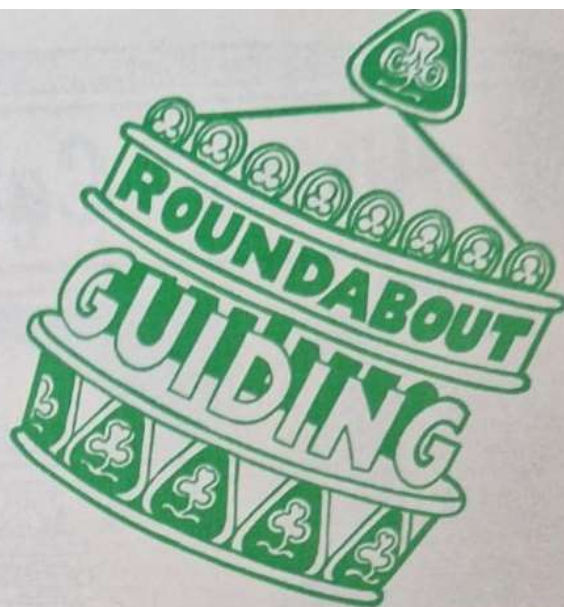


This photograph was taken at South West Region's 'Arts to see '83' at Bournemouth School for Girls in February.

The day was very successful and Brownies, Guides and Rangers took part in many varied classes of singing, dancing and mime. Many

countries were depicted and the costumes were very realistic and colourful. Displays of Home Arts and Crafts showed an exceptionally high standard. Selected groups and items were shown again in Salisbury Cathedral in May.

Photo: courtesy of Sue Cardwell



New Guide HQ



One of the earliest Guide Trainers, Phyllis Stewart Brown, Red and Green Cord Diploma'd Guider and Chairman of Training for the Guide International Service, was remembered proudly by the Gerrards Cross Guides at the opening of their new Guide Headquarters in March, 1983. When Phyllis was a very young Guider, her father gave her a plot of building land in the centre of Gerrards Cross, on which in 1920, a Guide Hut was built.

After life-long service to the Guide Movement, Phyllis died in 1980 and she left the land to the Guides. In 1981 it became evident that the hut needed replacing. In the meantime, the road had been developed with multi-storey blocks of offices and shops and the land was extremely valuable. In spite of tempting offers for it, the Guides were determined to keep Miss Stewart Brown's gift. After many money-raising events and generous grants from Bucks County Council and the Gerrards Cross Parish Council, they now have a system-built Banbury building with a brick façade, which by its excellent proportions, holds its own amidst its towering neighbours.

The Guides invited Phyllis' niece, Miss Christine Stewart Munro to perform the opening ceremony. No better tribute could have been paid to Phyllis' memory than this new home for Guiding. Seen in the photo are, left to right: Mrs R A M Pearce, County Commissioner, Mrs G Berg, Mr A Frost, Miss Christine Stewart Munro and Mrs J Stewart, District Commissioner.

Airing - Caring - Sharing

Views

This is the first time I have ever written to a magazine but I feel so strongly about the proposed new syllabus for Guides who want to work for their Queens Guide Badge that I just have to write.

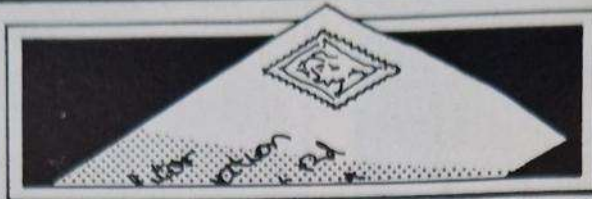
We have a fantastic Guide Company and we have had 29 Queen's Guides since I started the Company in 1968. The Company had been suspended for over a year through a lack of enthusiasm. Now we have keen, lively Guides; we camp every year and help our church and other people. Many Guides enjoy working for their Queen's Guide Badge while they are young and have no commitments (or very few) to school, homework etc. At the suggested age of 16, to start on the new syllabus, girls are usually totally involved in homework and have hardly any spare time. I think that this new idea will just phase the Queen's Guide Certificate right out of Guiding altogether, there will be so few girls to take it on. I enclose some comments from my Guides on the subject.

By the age of 16 I will be doing my 'O' levels or looking for a job. By the age of 16 most girls have left Guides and lost all interest in Guiding. I am a very lucky Guide for I have nearly completed my Queen's Guide syllabus. At the moment I am very busy studying and I am also working on my Commonwealth Badge. This takes up all my time and although I enjoy it, it is very hard work. I really think that it is ridiculous that you aren't (in future) able to do your syllabus until you are 16. This is very wrong because at 16 I know that I will be at college studying for my future career and I know that I wouldn't have any time at all to fit in Guide work.

Joan Peel (Mrs)
Guide Guider 1st Yeadon (St Andrews) Company, Leeds.

Consultation

Whenever we have a Training conference, the need to consult the Guides on every aspect of Guiding and to allow them to make the



Girls are usually totally involved in homework and have hardly any spare time.

decisions is stressed over and over again.

Therefore, why are major policy decisions made in secret at top level and handed down to us, the Guiders, to pass on to the girls. For example; new uniform, new Programme, Queen's Guide Award etc.

How does one answer the question posed by the girl 'Why didn't you ask us what we wanted?' This is difficult when we, the Guiders, haven't been asked ourselves. Our own Commissioners and District Commissioners are in no way to blame as, I believe, they are actually forbidden to discuss these matters with us until they are officially released as a 'fait accompli'.

The result of these decisions is not only that the Guides think that their Leaders are either stupid or untruthful, but we are also left with stocks of equipment, ties, handbooks which are out of date and for which we receive no refund.

Ann J Denton (Mrs)
11th St. Clement Company,
Jersey.

In 1979 County Commissioners were asked to discuss the Queen's Guide Award within their Counties, and send in their views to Headquarters, and I am sure these will have been discussed in Jersey. I can assure you that consideration was given to every comment and suggestion received.

P Chermiside
Programme and
Training Adviser.

Time to Change

I am writing to complain about the new Guide Badge Syllabus and would like to mention two points which have occurred to me. The first and major point concerns the new age groups. A Brownie going straight on to Guides will have time to gain the Baden-Powell Trefoil Badge but, if a girl joins Guides later on, she will not have had the chance to take the Red Trefoil Badge required for the Baden-Powell Trefoil Badge. My second point concerns the two books. Not only will these probably cost more but they will be very awkward to carry. For many Guide meetings you need a lot of equipment and the handbook is a very important part of this equipment. I hope it's not too late to change things.

Jennifer Clifford
Patrol Leader
11th Kenton Guide Company
Harrow, Middlesex.

A girl who joins Guides later on will be able to begin with the Green or Red Trefoil Badges, depending on her age, and then go on to take the Baden-Powell Trefoil.

The new books will be of a handy size, will not cost more and should not prove awkward to carry.

Programme and
Training Adviser.

Swap-Shop

As a comparatively new Brown Owl, I feel that it would be beneficial to be able to contact other Guiders to 'swap' popular games, handcrafts etc. With this in mind a small group of us have got together who wish to start a 'Correspondence Guiders Group', which we hope will be of interest to other readers. Approximately six Guiders from different areas will pool ideas. This involves one letter plus one lot of postage every six weeks. We feel that not only Guiders but Brownies would profit from the combined experience.

If any one who is interested in joining this idea would like to write to me c/o GUIDING I would be pleased to fit them into groups.

Lesley Jacks
Brownie Guider,
6th Brondesbury (St Anne's)
Park, London

Lost and Found

Over a period of a few years we have accumulated a wardrobeful of lost property, which includes a complete Guide outfit, several skirts, blouses, pullovers, anoraks, kagoules, toilet bags (one with money in), shoes and so on.

The space these articles occupy is required for more useful purposes and unless claims are made by the end of June, all articles will be taken to the local Oxfam shop. The articles are labelled with date and bedroom and claimants are asked to make a fair description of their belongings.

We will be happy to post articles other than shoes, but would be most grateful if an assessment of possible postage could be made and included with the claim.

If, after the closing date for claims, any local Guider would like to take advantage of second hand Guide skirts/blouses, please phone first to make enquiries. (See Training Calendar for number).

Eileen Cramp
Acting Guider in Charge,
Waddow.

The Editor reserves the right to cut letters or publish extracts

Airing - Caring - Sharing



Over a period of a few years we have accumulated a wardrobeful of lost property.

Libber's Blues

I have just received a new Warrant which has been made out in my husband's name, with 'Mrs' attached to the front. At a recent training we were being encouraged to look at our Programme with the intention of bringing it in to line with the needs of modern girls in a changing society: do we, for instance, introduce traditionally masculine skills like changing a car wheel or a fuse? I am sure that we all want to encourage Guides to be happy, whole people in their own right. Why, then, does Guiding in Britain stick to the outmoded belief that a woman is nothing but an appendage to her husband? I hope that the new changes will take this into consideration and I look forward to hearing more views on this subject.

Diana Brockbank (Mrs)
Moray, Scotland.

Necker Please

Now that the Guides have been given a 'necker' can the Guiders be given the option of wearing one too? Please!

I would much prefer a neckerchief to the current ribbon; it could be of the Company colour with woggles to denote warrant, or a certain colour for each warrant. What do other Guiders think?

Assistant Guider
N Yorks West.



Sing along

Hatherleigh and Okehampton — Devon Guides, Brownies, Leaders and friends would like to thank the Alfoa District Rangers, Guides and Brownies for providing them with the excuse to organize a most enjoyable event, namely a Marathon Sing Song, lasting 25½ hours. An unforgettable experience!

We took up the challenge after reading about the Scottish Units in November *GUIDER*. We made contact with them and received a very helpful letter from the District Commissioner, Mrs Ferguson.

Unfortunately for her and to our delight we broke the 24 hour record. Starting at 5pm on 11 February with a handful of girls singing 'God save the Queen' we continued until 6.45 pm on Saturday, 12 February.

We sang 899 songs, some noisily and some very sleepily.

The experience was something we wouldn't have missed for anything, the girls' enthusiasm was incredible, we were not sure who was keeping who going towards the end.

We finished up with 'Peace' in a quiet mood and a few seconds silence before the cheer went up.

Cathie Andrew
1st Okehampton Guide Coy
Margaret Tonkin
Hatherleigh Guide Coy
Devon

We sang 899 songs, some noisily and some very sleepily.

Time Waster?

I often wonder how much time some Packs spend on 'Brownie Work' — challenges for their journeys, preparations for making their Promise, Ventures and Interest Badges — when I read in your columns the number of fund raising and sponsored events these Packs undertake. Our Pack raises funds for our own funds, National Children's Homes through their Sunny Smiles each year, and, for our Christmas Good Turn, we make small gifts for our old People's Hospital. With the District, over the past four years, we have helped Blue Peter's Bring and Buy Sales and raised money for our new activities Centre at Coltsall. I feel that this is enough, we should be giving our girls as wide as possible a Programme. As regards Badges and awards for Lend A Hand projects, surely this is a very important part of the Brownie Promise and a Brownie should not need further badges for something that she promises to do everyday. Her Promise Badge is her reminder of this.

Anne Eckersley (Mrs)
Brownie Guider
1st Suffield Park Pack
Cromer, Norfolk.

The opinions expressed in these pages are not necessarily those of the Editor.



Knitted Out

I thought readers may be interested in the photograph above. The dolls have been dressed by myself and belong to my daughter. I designed the pattern and knitted them last year, but, unfortunately, made the wrong Guide tie.

Beryl Jembrell
Guide Guider
18th Derringham Bank
Methodist Company, Hull.

Enthusiasm

Knighton is a small market town sited on Offas Dyke — the border between England and Wales. In the past the town has had Brownie, Guide and Ranger Units but these all folded up several years ago as there were no Guiders to run them. In 1981 Joan Parker, the County Commissioner for Radnor launched a new era in Guiding here and we now have two Brownie Packs (both full) and a thriving Guide Company backed by an enthusiastic District Association. Enthusiasm is such that it is hoped to start a Ranger Unit soon.

The Brownies have had several fund raising events including a sponsored silence (amazing!), Christmas Bazaar, jumble sales and a sponsored run and as a result have been able to donate money to several charities as well as boosting Pack funds.

We are now well into our second year as a District; all our Guiders are warranted and the enthusiasm and support remains. Long may it continue!

Kay Taylor
District Commissioner
Knighton
Powys



FORMER MEMBERS



AND THE OLAVE BADEN-POWELL CENTRE

What wonderful support members of the Trefoil Guild are giving to the Olave Centre! But there must be a very large number of former Guides who are not members of the Trefoil Guild.

These are such an important potential source of funds for the Olave Centre that I want to mention them once again. I believe that there must be 100 million former Guides and Girl Scouts throughout the world, many of them 'lost' former members — by which I mean people who are no longer active in the Movement and are not members of the Trefoil Guild. We only have to find one out of every 25 former members who will give £1 (or four who will give 25p), and we shall have all the money we need.

Many of them enjoyed their time in the Movement, and would be only too

pleased to help build the Olave Centre, if only they knew about it, as a 'thank you' for Guiding, and as a tribute to Olave Baden-Powell. Some will gladly give more than £1.

How can we reach all the former members in the United Kingdom? Most of them will be found by the readers of *GUIDING* — the Guiders of today — who will be able to think of friends who used to be Guiders or Commissioners, or who were with them when they were Brownies, Guides or Rangers, and of relations and people with whom they work.

Printed below is a simple statement about the Olave Centre which should help when approaching former members and asking for their help. Will you give this plan your backing and think of all the possible ways in which

you could use it? If you want more copies of this statement, ask for them, quoting WB 2136, through your County or direct from the World Bureau. Your active support will be much appreciated.

Each One Find Two is the slogan for this particular way of raising money to build the Olave Baden-Powell Centre!

Taxpayers may covenant their donation. Any amount from £1 a year upwards can be covenanted, with great advantages to the Fund (£10 per annum for the minimum period of four years costs the donor a total of £40 and donates £57.20 in order to build the Olave Centre). A special Covenant Form is necessary, obtainable from the World Bureau.

Beryl Cozens-Hardy,
Chairman of Fund Raising.



The World Association of Girl Guides and Girl Scouts (WAGGGS) is building a new Centre in Hampstead, London, in order to replace existing out-dated premises. It is named in memory of Olave Baden-Powell, World Chief Guide, who died in 1977.

The first phase is new offices for the World Bureau, the International Secretariat of The WAGGGS; work has begun, and the World Bureau should be in its new home early in 1984. The second phase will be new international residential accommodation, to replace the present Olave House; work on this phase will follow, and will take eighteen months to complete.

Members, former members and their families from the 104 countries which belong to WAGGGS will be able stay at the Olave Centre when they visit London, and it will also be used for training courses, programmes, conferences and seminars. Special facilities are being included for the disabled. Meanwhile, the present Olave House at 45 Longridge Road, London, remains open.

Brownies, Guides, Girl Scouts and Adult Members all over the world are being asked to try to raise £1 sterling each (or equivalent in other currencies) in order to raise the money to build The Olave Baden-Powell Centre. This will be easy for some, but very difficult for others, however hard they try. So **your** help, as a former member who enjoyed friendship and fun in the Movement, or as a supporter of the Girl Guide/Girl Scout Movement, is needed.

Will you help? If so, please send a donation to:

The World Chief Guide Memorial Fund, 132 Ebury Street, London SW1W 9QQ, England.

Brownies and Blue Peter

*Knock, Knock — who's there?
No joking — it's Blue Peter!*

Imagine the thrill of getting a telephone call asking you to appear on 'Blue Peter', Britain's top favourite children's television show.

That's what happened to 14 lucky Brownies whose Packs had submitted jokes for the Brownie Joke Book just published by Sparrow.

There was no time for misgivings. The call went out from the BBC on the Monday and from Northern Ireland, Scotland, Wales and all parts of the country they flocked to London's White Lane Studios for the Thursday show.

The long journey prevented none of them from enjoying every single minute of the experience, from rehearsals and recordings in the morning to being live 'on air' in the afternoon.

The girls and Guiders alike were surprised by the size of the huge studio — so different to what it looks on screen — and the number of the production crew involved: cameramen, lighting and sound engineers, as well as producers and floor managers, not counting the behind-the-scene team.

So many 'takes' too. Not the fault of the Brownies, who were soon as word perfect as any professional, but because the technical department's 'gongs' at the end of each joke had to be phased in with precise timing.

So much preparation for what seemed so little time on air!

The greatest thrill of all for the girls was meeting Blue Peter's famous trio of presenters: Peter Duncan pictured here sampling one of the jokes, Sarah Greene and Simon Groom who, like everyone else on Blue Peter, made their day so memorable.

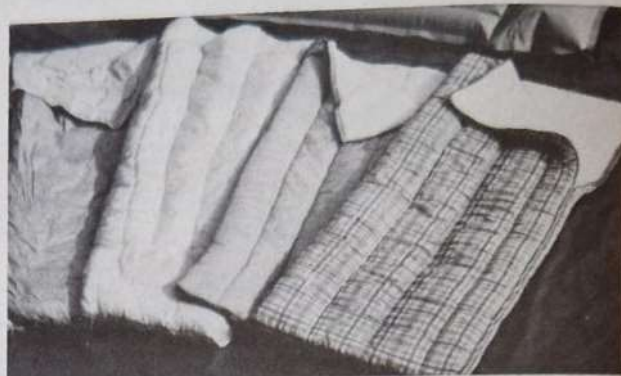
Patricia Fitzpatrick,
Press and Publicity Secretary
CHQ

Photo: Courtesy of Blue Peter, BBC TV.



WE'LL MAKE YOU MORE COMFORTABLE NIGHT AND DAY.

Whether you're out walking for the day or camping for a week, you're sure to be carefree and comfortable with these superb quality rucksacks and sleeping bags specially chosen by the Girl Guides Association.



Please tick in the appropriate square the items you require. If you require more than one, please write the number in the square. Add 50p (small order charge) for all orders under £10. Allow 14 days for delivery. Money refunded if not entirely satisfied.

RUCKSACKS

80556 Weekender Rucksack

Zip fastened front pocket. Large hood, adjustable nylon straps. Assorted colours. Height 16in. Width 15in. £5.45

80622 Challenge Rucksack

An economical sack with nylon front and comfortable cotton duck back. Features two pockets and generous lip. Colour Blue. Height 17in. Width 14in. £6.25

80606 Cobmaster Backpack

Strong proofed nylon day sack. Folds into carrying pouch. Assorted colours. Height 15in. Width 12in. £3.45

Super Lightweight Rucksack

Proofed nylon sack, generous lip and adjustable shoulder strap. Added feature folds into front pocket. 80580 Blue. 80598 Red £3.15

86892 Venturer Rucksack

This is a new, moderately priced addition to the range. In sturdy proofed nylon with canvas back, this excellent day sack has padded shoulder straps. Colour Brown. Capacity 18 litres £6.95

Fellman/Tacpac Range by Karrimor

Ideal for day and weekend use. Features padded shoulder harness. Capacity in litres. 80531 Fellman 18 litre - one front pocket All nylon. Colour Blue or Red. £8.45

86348 Tacpac 27 litres - one front pocket, nylon, back in cotton duck. Colour Blue/Brown. £13.95

86355 Fellman 35 litre - two side pockets, in nylon. Back in cotton duck with sit mat and belt. Colour Red or Green. £21.50

86330 Laurentian Frame Rucksack

A most popular large frame Rucksack designed to cater for all grades of backpack. In dark blue, with aluminium alloy frame and Aglon Plastic - loc for maximum strength and life. Dimensions 21in x 15in x 7in. Weight 2lb 12oz. £17.50

84061 Frameless Rucksack

Canvas rucksack with two front pockets and leather straps. Colour Blue. Height 21in. Width 24in. £7.95

86363 Skypac Frame Rucksack

A superior nylon 'Junior' Rucksack with reinforced, lightweight frame, two side pockets, elasticated top cover and with strong web straps. Colour Dark Green

with black edging and pocket flaps. Dimensions 18in x 13in x 8in

86645 Karrimor 'Diddy' 2 Rucksack

This is a strong, reliable, well designed day sack. Features include padded shoulder harness, plus cotton duck back. £7.95

CARRY BAGS

86371 Canvas Haversack

A handy heavy cotton duck shoulder bag with adjustable strap. Colour Olive Green. Size 12in x 10in x 4in. £1.30

80770 Kit Holdall

Strong nylon two handled holdall designed for an even dispersal of weight. Strong zip fastener. Colour Blue. Length 2ft 3in. £4.75

BARREL BAGS

This new addition to our range will prove invaluable for everyday as well as camp use. In sturdy PVC coated nylon with polypropylene carrying handles and nylon zip, both sizes of the bag have 'D' rings to which an optional, adjustable shoulder strap can be fitted. Colour Wine, with white handles/strap.

86777 small. Length 17in. Diameter 9in. £4.75

86785 medium. Length 21in. Diameter 11 1/2in. £5.95

86900 large. Length 26in. Diameter 12in. £6.95

86793 Adjustable Shoulder Strap, with clips. £0.85

80630 Brownie Haversack

Brown PVC nylon, press button fastener. £2.55

80333 Large Stuff Sack

Blue nylon bag with drawstring top. £2.15

80762 Nylon Kit Bag

Proofed nylon with drawstring top. Colour Blue. Length 30in. Diameter 12in. £3.99

complete with stuff sack. 78in long. 30in Wide tapering to 23in. Full weight 3lb 15oz. £29.95

85506 Bacpac Sleeping Bag

A superb lightweight sleeping bag. Terylene filled in woven nylon with knitted nylon lining. Drawstring hood enables easy carriage and also doubles up as pillow. Short zip. Colour Blue. £19.95

85514 SB100 Sleeping Bag

A great value sleeping bag. 100% nylon filled with 38oz polyester. Colour Blue. £9.95

80283 GGA Supreme Sleeping Bag

This luxury bag is filled with 38oz polyester and is covered with nylon/warmlon weave. Full Zip. Assorted colours. Stuff sack supplied. £16.95

86389 Convertible Sleeping Bag

A de-luxe quality bag in pleasing colour combinations, printed cotton, lined with plain cotton. Filled with 38oz polyester. £13.95

86884 Trailmate Sleeping Bag

The standard lightweight Backpacker - covered in woven nylon. Polyester filled. Brown outer, yellow inner. £13.75

Print your name and address clearly in this coupon and send it with your cheque/PO made payable to the Girl Guides Association Trading Service (no stamps please) to the address below. Full colour catalogue free on request.

Name _____

Address _____



GIRL GUIDES ASSOCIATION

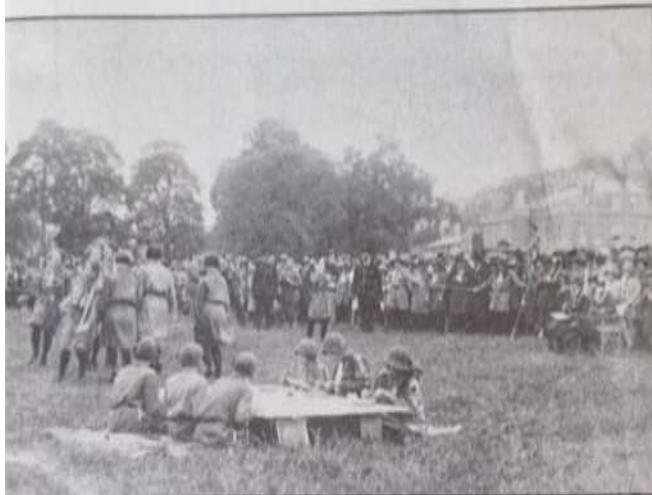
Girl Guides Association Trading Service,
Atlantic Street, Broadheath,
Altrincham, Cheshire WA14 5EQ Tel. 061-941 2237
9.00am to 4.30pm Monday to Friday.

These items are also available at any of the Girl Guides Association Shops at 17/19 Buckingham Palace Road, London SW1W 0PT, 130 Green Lane, Palmers Green, London N13 5UN, 5 Ryder Street, Birmingham B4 7NE, 209 City Road, Roath, Cardiff CF2 3XX, 117 St George's Way, St John's Precinct, Liverpool L1, and 14 Faraday Street, Manchester, who can supply all your Guiding requirements.

When you buy from the Movement, we all benefit

MEMORIES OF...?

These three photographs were sent to our Archivist, Tin Forbes, by Mr Philip Brooke. They belonged to Mr Brooke's mother, Norah Brooke, who was, he believes, at one time County Camp Adviser for Berkshire. Our Archivist believes the photographs are of the Berkshire County Rally held on June 11, 1929, but is not absolutely certain. Do any of our readers know if this is correct? If you recognise these photographs please write directly to Miss Tin Forbes, Archivist, address on page three. She will be delighted to hear from you!





THE GIRL GUIDES ASSOCIATION

invites applications for the post of

GENERAL SECRETARY

The Girl Guides Association is one of Britain's largest Youth Organisations with a current membership of approximately 870,000.

The General Secretary is the senior member of staff of the Association and is based in London. The principal duties of the post include the administration of the Headquarters through Heads of Departments, and servicing The Council and The Executive Committee of the Council. The General Secretary is responsible for 200 staff in the Headquarters, Trading Service and Training Centres.

The successful applicant will have proven administrative and managerial skills, and an understanding of voluntary organisations and committee procedures. **Membership of the Guide Movement would be a considerable advantage.** Applicants should be aged between 40 and 50 years.

The benefits of the post include a salary which is by arrangement according to experience, a contributory pension scheme and five weeks' holiday per annum. The normal retirement age of staff employed by the Association is 60 years.

If you would like to be considered for this challenging post, please apply, giving full career details, to:

The Chairman of the Finance Committee,
The Girl Guides Association,
17-19 Buckingham Palace Road,
London, SW1W 0PT
marking the envelope 'Personal'



'Out of Town' is a new independent monthly magazine for all who love and care about the British Countryside.

It offers 80 pages of informative and entertaining articles and comment, plus superb colour photography.

A special 16-page section, 'The Country on Show', provides a comprehensive guide to the hundreds of events taking place each month throughout rural Britain.

To subscribe to 'Out of Town', simply complete the coupon and return it with the appropriate remittance - to 'Out of Town', Bourne House, 34 Beckenham Road, Beckenham, Kent BR3 4TU, United Kingdom.

ALL THOSE WHO LOVE THE COUNTRYSIDE, SIGN HERE.

ANNUAL SUBSCRIPTION RATES (12 issues) including postage.

For address in:	Normal rates	Special rates to National Trust members (for self or as gift)
UK	£12.50	£9.50
Western Europe, USA or Canada*	£15.00*	£12.50*
All other countries*	£18.00*	£15.00*

*Includes despatch by Accelerated Surface Post.

I am/am not[†] a member of The National Trust.
Please supply subscription(s) for myself/as a gift.[†]

My name

(Mr/Mrs/Miss[†])

My address

Send gift subscription to:

G1

Name

(Mr/Mrs/Miss[†])

Address

Post Code

Please enter details of other gift subscriptions on a separate sheet of paper.

I enclose cheque/postal order[†] for £ made payable to 'Out of Town'.

Please debit my American Express/Diners Club/Visa[†] account number

Signed

Date

[†]Delete as applicable.

After completing the relevant sections please return to:

OUT of TOWN

Bourne House, 34 Beckenham Road, Beckenham,
Kent BR3 4TU, United Kingdom.

OVERSEAS

NEWS

Thinking Day In St Lucia

Margaret McHugh



Thinking day (or week — as it was for me), February 1982, was very special this year, as I spent it not in our cold Guide hut in Cowley, Oxford, but on the beautiful, warm, sunny island of St Lucia with my family and some very special Guiding friends.

Miss Sonia George, Commissioner for St Lucia, took me to a Guide meeting near Castries, run by Rosaline Philogene, Commissioner of District Three Northern Area. They had a lovely evening planned for me, with games, songs and dances, a little play, and ice-cold refreshments.

It was delightful to see all the smiling faces that welcomed me, and although a little apprehensive at being the only white person at the meeting, the girls very soon made me feel at home, and indeed, by the end of the meeting had all learnt our Company's favourite camp fire song, 'Kippers', and were performing it beautifully around a make-believe camp fire in the heat of their evening sun!!! I collected many names and addresses of girls wishing to become pen-friends with girls from my Company, and I do hope that at least some of them will stay friends for a long time, as I hope Sonia and I will.

Sonia was very busy preparing for the visit of The Lady Baden-Powell the following week, and also the Thinking Day church parade, which was due to take place the following Sunday; nevertheless, she still found time to bring some of her own Brownie Pack to the airport on the day my family and I were leaving, to wish us well and wave us farewell.

What a beautiful island, and what a wonderful way to spend Thinking week. I know that every February, wherever I am, I shall always remember those smiling, friendly faces in St Lucia, and the true Guiding welcome they gave me.

The Girl Guide Friendship Fund



Help The Branch Associations Grow

After your overwhelming response to the Christmas projects we now turn again to within our own Guiding world for the summer fund-raising appeal. In fact, to the fundamental purpose of the Girl Guide Friendship Fund — to help the Branch Associations.

There are 24 of these, mostly tiny places scattered around the Atlantic, the Pacific and the Caribbean — those small islands that can be so difficult to find on the map for Clause 2 of The Commonwealth Badge!

Many of them need our financial help to encourage the growth of Guiding, indeed, to buy such basic things as uniforms, books and badges. For example, handbooks are needed in Tonga, badges and uniforms in Belize and Grenada. In Vanuatu (formerly the New Hebrides) Guiding relies entirely on the girls' contributions — they have no other money source. Blank cassettes are needed in the Pacific area, to be used, for instance, by a Commissioner to 'talk' to her Guiders, who may be 700 miles away.

Among other places that need your help are St Helena, Montserrat, Turks and Caicos Islands and St Kitts.

Far away places with interesting names. But if you were to visit any of the Branch Associations you would find Unit meetings very like your own — Guides using handbooks and following a similar programme, Brownies and Guides often wearing the same uniform and badge that you wear, singing the same camp-fire songs and enjoying very similar activities.

Through the GGFF you can help Guiding in these areas to grow. Our summer appeal runs from 1st June to 30th September, 1983, and we welcome your donations, big or small. Please send cheques or postal orders, made payable to the Girl Guide Friendship Fund, to:

**The Girl Guide Friendship Fund,
17-19 Buckingham Palace Road,
London SW1W 0PT.**

For more information on the Branch Associations please write to the above address, enclosing a stamped, addressed envelope.

NR

TODAY'S WORLD



A REPORT ON THE UNIT GUIDERS

The Unit Guiders' Conference 1983 was held at the Froebel Institute College in South West London. 271 delegates were welcomed on Friday evening by Mrs E Burbidge, Chief Commissioner for London and South East England, and Miss J Barker, County Commissioner for London South West. Both ladies gave us a thumbnail sketch of Guiding in the area. A group of Welsh Guides then entertained us with dance, singing and narrative depicting activities which today's teenagers enjoy — adventure, sport, discos, holidays abroad, motor bikes and fast food. This was amusingly interspersed with flashbacks to the past. The obvious enthusiasm and enjoyment of the performers made a delightful start to the conference.

After prayers on Saturday morning The Lady Baden-Powell welcomed the delegates and, in particular, the overseas visitors and the two members of the Scout Association. She took the opportunity to introduce to the conference her Advisers and Consultants, who take the important decisions affecting us all. To find that those who had hitherto been names on a page, were keen, enthusiastic Guiders, many with Units and problems like ourselves, was most reassuring and an excellent piece of internal 'public relations'.

Mrs Peggy Cherm-side, Programme and

Training Adviser, introduced the changes in the Programme and spoke about the Queen's Guide badge. She traced the history of the badge from its inception in 1946 to the present day and explained the lengthy discussions and careful thought which have taken place before taking the momentous decision to change the syllabus and make it once again a prestigious award for the Ranger and Young Leader. Mrs Cherm-side outlined the changes in the Guide Section to include the more structured Programme for which many Guiders have asked.

Mrs Jane Lewes, Training Adviser, told us that with the changes it was time to look at our Training Programme. The rôles of many people would become changed and enhanced as they assisted potential Queen's Guide candidates. Not a Guide in the country would be unaffected by the changes, and all Guiders should be encouraged to attend trainings to equip themselves to implement the changed Programme. We were urged to make full use of resource material, to write away for information, but to make sure it was up-to-date.

Mrs Sheila Steele, Programme Adviser, told us that our Programme must be a mixture of traditional B-P Scouting and modern social needs. She described how a speaker

Mrs Sheila Steele speaking at the conference on Saturday morning.



at a European Seminar had vehemently attacked Scouting as being out-of-date and yet at the same Seminar a Swedish Venture Scout had criticised the technology used at a camp-fire, saying that the charm of nature had been driven away. Is there no longer sufficient excitement in a field and a wood for a camp site? What happened to all the exciting activities described in 'Scouting for Boys'? We must be realistic: Guiding is not the answer for all children but it is still a strong influence for good to many girls.

At this point the conference divided into sectional groups under the leadership of the sectional Consultants.

The Senior Section discussed the Queen's Guide syllabus and the implications for Rangers, Young Leaders and their Guiders. It was thought that a Unit would benefit, through a widening of experiences, by having a Queen's Guide candidate in their midst.

The delegates in the Guide Section were eager to hear of the Programme changes, and later discussed the implications of these changes for themselves and their girls. Miss E Smith, Guide Consultant, stated that the *Guide Handbook*, published in 1968, had broken with tradition and established a new way of looking at things. The Programme gave the opportunity

TOMORROW'S

GIRL

CONFERENCE

By Margaret Green

for girls to work in Patrols and work out relationships in smaller groups, this was a good foundation for adult life. The amended Programme will strengthen the Patrol system and give a basic structure for all Guide Companies. More emphasis on the Guide Promise and the opportunity for Guides to talk to their leaders about their Promise and progress should help our youngsters.

Late on Saturday afternoon we were to be subjected to a session on Unit finance: a daunting prospect! However we were in for a pleasant surprise. First of all, Miss Jean Greenfield from the Trading Service gave a short talk urging us to buy from the Association as the profits of the Trading Service helped to keep down the amount of our subscriptions; a point close to all our hearts! Then after an introduction by Mrs L M Yates, Vice Chairman of the Executive Committee, in which the importance of keeping up-to-date and detailed accounts were emphasised, came the surprise.

Instead of a boring session on Unit Accounts we were given a little light relief with a sketch showing the pitfalls a Guider can fall into through not keeping proper accounts. It was all very humorous and light-hearted but the point was well-made and will be remembered: a Guider is responsible for the Unit's money.

In the evening many of us took the opportunity as we were in London, to visit the theatre and enjoy an evening out. Those who remained behind entertained themselves singing along with the Music Consultant, Mrs Jane Holmes.

On Sunday morning after an Act of Worship we enjoyed an international bazaar. International crafts, recipes, songs and dance were displayed in the form of a bazaar; Guiders circulated freely trying out whichever ideas appealed to them.

Following this we heard two dynamic speakers, both young Guiders, Miss Alison Fyfe and Mrs Pam Edwards, giving personal views of the adolescent's response to the Programme. Alison questioned the age grouping and suggested that 13-16 year olds might welcome joint meetings and activities with Scouts. She suggested that we ought to publicise our activities in an attempt

to redeem the stereotyped label which has been stuck to us for far too long.

The key to Pam Edwards' talk was 'participation'. Referring to the Thompson Report on the Youth Service in England and Wales she suggested that The Girl Guides Association should take an active part in Local Youth Councils. The report suggested that the Youth Service should provide more in terms of political and social education. Pam defined this as meaning 'responsible citizenship' as outlined in the WAGGGS policy document. She suggested that 'service as a citizen' in the new Queen's Guide syllabus was in line with the recommendations of the Thompson report. Greater levels of participation and more effective use of our decision-making structures should be a way forward for the future and highlighted in the Training of our leaders.

The conference

ended with a dramatic presentation by Rangers and Venture Scouts starting with a magnified heart beat, choral speaking and the 'Prayer before Birth'. We followed the development of the 'girl' from 'birth' through childhood and adolescence and noted the pressures upon her. Finally another poem exhorting youngsters to preserve their inner freedoms, ending with the question: 'But how?'

This is a time of change for the Senior Section and particularly the Guide Section. We, the Unit Guiders, must seize our opportunities and present our Programme in such a way that the youngsters find it exciting to be a Guide and by taking a full part in our activities, not only develop more fully their individual personalities and abilities, but more importantly, experience the joy of working and playing harmoniously with others.

A group of Welsh Guides entertained the delegates with dance, song and narrative, depicting activities which today's teenagers enjoy.



PRACTICAL



SIZE, SHAPE AND TOUCH

During the lighter, warmer evenings take the opportunity to get out-of-doors to look at the world around us. Rural Units will need no prompting about where to go, and school grounds, local parks, spinneys and waste ground provide plenty of scope for town Units. Do remember, however, to tell the girls not to wander off on their own, and to stay at least in two's. A first aid kit is also essential.

Most of these ideas need few, if any, materials and require very little fore-thought or planning — they are ideal for the unexpected beautiful evening.

- Find as many different-shaped natural objects as possible. Here are some shapes you may not have thought of:

round	diamond	triangle	heart
oblong	crescent	straight	mis-shapen
square	oval	curved	zig-zag edge
pointed	pyramid	trefoil	???

- Collect as many different-shaped leaves as you can and then grade them in size from the smallest to the largest. How many can you identify? What sort of fruits does the tree bear? What are the wood-burning qualities of the trees? Take some reference books with you to aid identification.

- Find as many 'mini's' as possible: the tiniest insect; the smallest leaf; the tiniest petal; the thinnest stem; the smallest stone; the tiniest feather...

- Give each girl a leaf, twig or a flower and ask her to find another one as nearly the same as possible.

- Make a list of different textures and find a natural specimen to fit each one:

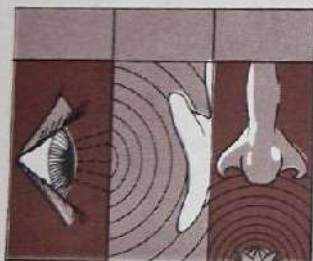
hard	rough	polished	velvet	sticky
soft	smooth	prickly	satiny	slimy

- Find as many 'superlatives' as you can: the smoothest leaf; the roughest piece of bark; the knobbliest twig; the strangest-shaped twig; the most velvety petal; the stickiest leaf; the prickliest prickly; the most satiny leaf or piece of bark...

- Collect branches, sticks, stones etc which resemble animals, birds and insects and build up a zoo. You may need some labels to aid identification or you can all practise stretching your imagination to its limits!

- Do a 'tree analysis': make a chart showing as many different details of a tree that can be defined by size, shape and touch:

fruit outline	height of tree	bark rubbing
tree outline	girth of trunk	texture of leaf
leaf outline	length of leaf	texture of bud



SIGHT, SOUND AND SMELL

- Gather natural specimens of as many different shades of green as possible and arrange them in a row with the lightest at one end and working up to the darkest. Colour charts from your local paint shop can be very useful here: is there a leaf for every shade of green?

- Collect natural specimens to match each of the colours in given pieces of wool or material, in all the colours of the rainbow, or the colours worn by the members of the Six or Patrol.

- How many different colours of soil can you find?

- Paint a picture using only natural colours: fold a leaf roughly in half and rub it on paper until you get the green colour. Each leaf will produce a different shade of green. Experiment with flower petals, pieces of bark etc, until you find the brightest colours. Identify the best leaves and petals and make a colour chart and register for future use.
- Set up a Listening Post: make a list of all natural sounds heard within a ten-minute period. Reference books will be useful for birds and insects.
- Walk through a wood and listen for sounds: dead leaves crunching underfoot; leaves or ferns rustling in the wind; raindrops pattering on the leaves; a pine cone dropping; birds singing; a bird's alarm call; gorse pods popping; a stream trickling; the whirr of a bird's wings.
- How many smells can you find? Pine needles; garlic; mosses; ferns. Do all the leaves smell alike when crumbled and held near your nose? Which flower has the strangest scent?

SEE ALSO:

THE BROWNIE magazine for centre spread on flowers, autumn and hibernation; also how to make floral brooches.
TODAY'S GUIDE in June for 'Challenge Yourself to Learn the Country Code' as useful preparation for your evenings out-of-doors.
Walking Safely Training Scheme (article in April GUIDING) for advice and help when taking the girls out.



IDEAS FOR PACK HOLIDAYS

1. **M**ake a loosely plaited necklace from three lengths of string or wool. Decorate with leaves or flowers, fixing the stalks into the plaiting.
2. Make a miniature garden in a small foil case, empty matchbox or half an orange skin. Put a layer of peat, moss or soil in the bottom and plant flowers, leaves or pine cones etc.
3. Have a dandelion 'clock' race. Hold the 'clock' up in the breeze or blow it and see whose fluffly bit goes the farthest before touching the ground.
4. Make a Giant's Museum displaying the grandest specimens you can find: the longest blade of grass; the largest leaf; the flower with the most petals; the tallest flower; the bunch with the most berries; the largest feather; the biggest spider; the largest fir cone; the longest worm; the biggest piece of sheep's wool.
5. Play Nature Detectives, looking for strange or unusual things, or clues, or reasons why: a dead leaf; a leaf with a hole in it; a flower with more than six petals; moss; a climbing plant; a prickly.
6. Find a worm and put it on the ground or a piece of damp wood. Watch it moving and look at the shape of the body. Does the shape change as it crawls? Measure 30 cm and see how long it takes the worm to crawl that far. If you let the worm crawl over your hand what can you feel as it begins to move forward? When you put the worm on some soft ground how long does it take to burrow down and disappear?
7. Set a table for tea for two people using only natural objects for your cups and plates etc.



IDEAS FOR CAMP

1. **C**hallenge each Patrol to compile a Nature Newspaper written by animal or bird reporters. The headlines could be about an invasion of 'blue humans'. There could be animal, bird or insect 'Family Announcements' columns, good food scavenging tips, a woodland sports page, cartoons, photos and even a crossword. Give each Patrol sheets of lining paper, pencils and crayons and two or three days to complete it. This is an ideal activity for a wet camp.
2. Collect and press leaves of different shapes and colours. Use them to make a picture, eg an owl, using the leaves as feathers, acorns for eyes, seeds for the beak and twigs for a perch. Overlap the leaves to make the desired shape and then glue on to card. Press under a heavy weight and then cover with clear polyurethane varnish or clear plastic.
3. Design a complete outfit of clothes for a particular occasion, in the colours of nature. Draw your design and collect specimens to show the actual colours used.
4. Choose a flower or leaf and design a piece of material suitable for: a. curtains b. a child's dress c. an evening skirt d. a carpet.
5. Have a fancy dress parade with all costumes made from natural materials including the string and pins.
6. Adopt a tree and record the following things: shape; height, trunk dimensions; types of twigs; bark pattern; holes; colour; insects; birds; arrangement of twigs and leaves; shape of leaves; colour of stalks; veins; flowers, fruit etc.



ARTHRITIS RESEARCH

Arthritis is the greatest cause of disability in the United Kingdom today

The Arthritis and Rheumatism Council is the only national voluntary organization financing research into Rheumatoid Arthritis, Osteoarthritis, Ankylosing Spondylitis, Juvenile Arthritis and 200 other rheumatic diseases. At a cost of over £3m annually, the Council supports 170 research projects at universities and hospitals throughout the United Kingdom and also provides the main finances of the Kennedy Institute of Rheumatology in London.

Much progress has been made in diagnosis, in treatment and in understanding, and there is now ever hope that the major rheumatic diseases can be conquered.

Please help us to win the battle by advising your clients to remember the Council in their will: we rely entirely on voluntary support and **legacies are our most important source of income.** Forms of bequest are available from the address below:

The Appeals Secretary

THE ARTHRITIS AND RHEUMATISM COUNCIL FOR RESEARCH

41 EAGLE STREET, LONDON WC1R 4AR

Patron of the Council: Her Royal Highness The Duchess of Kent

***24 HOUR EXPRESS SERVICE**



COTSWOLD CAMPING '83

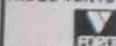
*** Over 80% despatched same day**

A FEW SHATTERING PRICE EXAMPLES
PHONE (0285) 860612 FOR FULL DETAILS AND FREE LIST - OR FILL IN THE COUPON

CLEARANCE LINES

NEW BLACKS PATROL TENTS
12' x 8' x 7' Blacks Appin **£145**
14' x 8' x 7' Blacks Galloway **£175**

RIDGE TENTS



VANGO
Mk 3 Std. £96.50
Mk 4 Std. £115.00
Mk 5 Std. £138.00
Mk 2 Lw. £95.00
Mk 3 Lw. £106.00
Mk 4 Lw. £96.00
Mk 3 Cn. £107.00
Mk 4 Cn. £113.00
Mk 5 Cn. £128.00
Mk 2/3 Extn. £157.00
Mk 4 Extn. £157.00
Mk 5 Extn. £157.00
Etc., Etc.
Phoenix Phantom £87.50
Phoenix Phreaz £99.75
Phoenix Phlegger £76.50
Phoenix Phlegger £123.50
All Gore-Tex Bivy Bag £82.50

PATROL TENTS

10' x 8' Islandic 1st size £199.00
12' x 8' Islandic 2nd size £245.00
12' x 8' Stormhaven Special £258.00
10' x 7' Niger £235.00
BLACKS TENTS
Good Comp. Std. £95.00
Good Comp. Std. Fly £52.00
Good Comp. Major £109.00
Good Comp. Major Fly £60.00
H.D. GROUND SHEETS
10' x 8' £23.50
12' x 8' £28.19
13' x 8' £30.50
14' x 8' £32.60
DINING SHELTER
12' x 9' x 8' Vango £62.50

SAUNDERS TENTS

Backpacker I £68.45
Backpacker II £24.50
Backpacker G.C. 2 £103.50
Backpacker G.C. 2 Plus £74.10
Backpacker 5 £103.50
Basecamp £112.95
Jelppine £69.50
Hillpacker £103.50
Mountain Tent (S.F.) £145.50
Mountain Dome II £142.50
Jepacker £94.50

TOILET TENTS

De Luxe Cotton £23.75
Standard Nylon £17.50

TOILETS

Elsan Mini £13.65
Elsan Bristol £27.50

KARRIMATS

45 x 145 £5.30
55 x 185 £8.50
55 x 185 (5 Season) £13.50
55 x 185 £18.95

RUSSACS

KARRIMOR

Jaguar 2 £47.50
Jaguar 4 £50.95
Jaguar 6 £47.45
Jaguar 7 £46.50
Lynx 152 £23.50
Lynx 252 £24.75
Lynx 302 £29.95
Fellman 18 £9.95
Tropic 27 £12.50

BERGHAUS

AB 75 £59.50
Delta 30 £16.50

SLEEPING BAGS

Good Companion £22.75
Palo Mine £20.50
Extrem £67.50
Lhotse £82.50
Snow Fox £41.50
Mountain Fox £47.95
Firebird £39.95

COTSWOLD "TRANQUILLITY" SLEEPING BAGS

- 1) "TRANQUILLITY 900" by Helly-Hansen, 4 Season - 900gm. Duck down filling. Mummy shape - wall quilted - draw hood. Cotton inner - nylon outer. Full length - 2way zip. L or R hand. Total Wt. incl. Stuff Sac 4lbs. **£74.50**
- 2) "TRANQUILLITY 450" As above but 2-3 Season. 450gm - Duck down filling. No zip. **£52.50**
- 3) "COTSWOLD TRANQUILLITY" Excellent quality 2-3 Season Mummy Bag - 100oz hollow fibre filling - glazed nylon outer. Cotton feel inner. Generous size - 230cm length - Circular foot - strong stuff sac. Weight 1.57kg - Just the bag for scouts and guides. **ONLY £24.95**

NEW SPECIAL TERMS LIST OUT NOW

Send for your FREE copy - packed full of information - new products and super, super new buying terms for your group.

Cut out the coupon and send to Mail Order Dept.

Please forward your latest free special terms list and put my name on your mailing list.

Name _____ G/6/83
Group _____
Address _____

Now open in
LONDON
42 UXBRIDGE RD., SHEPHERDS BUSH W.12
TEL. (01) 743 2976

Mail Order and Head Office:
Broadway Lane, South Cerney, Cirencester, Glos. GL7 5UQ
Tel. (0285) 860612 24 hour Ansafone
Also at: 27 Eign Road, Hereford Tel. (0432) 271200



OVERSEAS

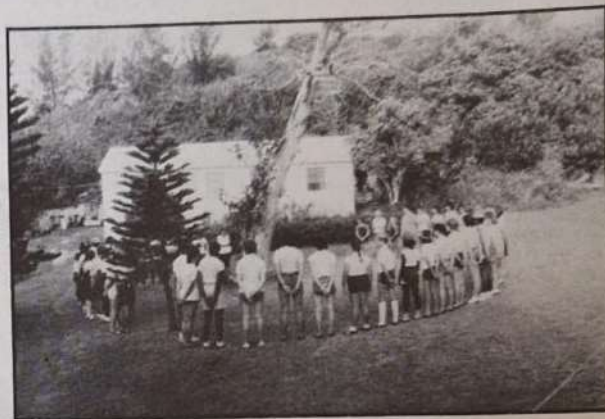
NEWS

Visit to Bermuda

— a report by Evelyn Eyre, Division Commissioner — West Division, and Sue Thornton-Grimes, CCIA, on their trip to Bermuda last year with the party from Dorset.



Dorset and Bermuda Guides with Bermuda Guiders.



Colours, early morning on Ports Island.

On 27 July, 1982, 30 Guides, Rangers, Young Leaders and Guiders left Heathrow Airport en route for Bermuda. After a seven-hour flight, which included a visit to the flight deck of the Tristar aircraft, we arrived in Bermuda, and were met by the hostess families from all over the island, with whom we were to stay for the first five days. Two of these were public holidays, during which a cricket match is played between St George's Cricket Club and Southampton Cricket Club, this year the match being played on the Southampton ground in the east of the island. Everything stops for this match; shops close, and people who do not go to the match spend their time at home or on one of the many beautiful beaches around the island.

In this first hostess period, many of us were able to sunbathe, go swimming and sightseeing in St George's (the old capital), visit the Crystal Caves, the Dolphin Show, the Perfume Factory and the Pottery. We visited Hamilton (the present capital) with its Birdcage policeman, cruise ships, Government and Senate Houses, familiar ceremonies like 'Beating the Retreat' and the famous Front Street.

On 2 August, we all met up with our hosts, the Bermuda Girl Guides Association, on Allbuys Point in Hamilton, to catch the boats to Ports Island, where

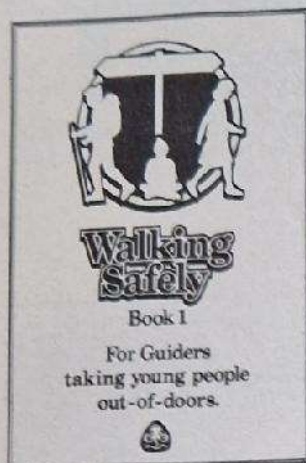
we camped with the Bermudian Guides for 10 days. During our time in camp, we enjoyed activities such as sailing, swimming, snorkelling, canoeing and exploring the island itself, which had been, among other things, a convict camp, yellow fever settlement and a Navy centre during the last war. The graveyard, in which some of the victims of yellow fever are buried, was cleared of weeds and undergrowth by some of the Rangers and Young Leaders as part of their project for the Duke of Edinburgh's Award. Other activities included craft using natural materials, Dorset buttons, camp fires with new and old songs being sung and learned, folk dancing, and an evening spent looking at and learning about the evening sky with a local amateur astronomer.

There were several trips off the Island, too, including a visit to Paget Marsh to see Bermuda's vegetation as it was before man came to the Island, and a visit to the Botanical Gardens and Camden House, the Premier's official residence, where all furniture, doors, panels and windows are made from Bermuda Cedar; this house is now used for receptions and parties given by the Premier. During a trip round the western half of the Island, the party also visited the Aquarium, St George's and St Catherine's Fort.

After our 10-day camp, we returned to the mainland and once again stayed with various local families for the final few days. During this time a Brownie Revels was organised by some of the Dorset girls, who help with Brownie Packs in England, and 40 Bermudian Brownies enjoyed a morning of games and activities. Many of the group went on a trip on a glass-bottomed boat to view the world of the coral reefs and exotic fish. A barbecue was arranged for hostess families and their guests by one of the Local Associations, and the final event was a Parade Service at St Peter's Church in St George's, this church being the oldest active Anglican church in the western hemisphere. Bermudian and Dorset Girl Guides paraded their respective flags and standards, and a number of officials from local youth and Scout groups also attended.

All too soon, the final day arrived, and we boarded our flight for England, having spent a most enjoyable three weeks of Guiding activities, cementing our links with the Bermuda Girl Guides Association, and making friendships that will continue for long years to come. Thanks must go to all those who made the trip possible, and to the Bermuda Girl Guides Association for their hospitality and work in making our stay such an enjoyable one.

WALKING SAFELY



Advanced Training For Difficult Country Enjoyment Of The Hills And Mountains Is A Valuable Part Of Our Outdoor Programme In The Guide Movement *by Margaret Staines Walking Consultant*

For safety, **Good** leadership in the hills is essential — just to lead is not sufficient. Good training and experience in the hills are needed in order to achieve the combination of enjoyment and safety. Leaders must have a love of the countryside, and have experienced the personal joys of walking in the hills. A well prepared group, with trained and experienced leaders, will achieve the best results — that is a safe, happy and contented party. In the hills, it is good for the group to be small. The leader must know the group well and understand the needs of each member.

Many Guiders will not wish to lead young people in the hills, but this should not prevent you from taking part in Advanced training, gaining expertise and confidence, which will help leadership in **Medium** country. During each stage of the training scheme you will be encouraged to make a realistic assessment of your own ability in each topic, and your leadership skills in the different types of country.

In the **Advanced** training, you will need as much practical experience as possible, so go to the hills at every opportunity, with as many different individuals and groups as possible. In our County, we have formed a Walking Club called CLODS (County of Leeds Out of Doors). On reaching Intermediate standard, Guiders are invited to join the club, and take part in a programme of day walks and a weekend. This provides Guiders with practical walking experience, and the additional opportunity of working with other Guiders with similar interests.

The Walking Safely Training Scheme can provide you with the training necessary as preparation for the MLTB Awards. In the latter stages of Advanced Training it is advisable to get experience in a variety of areas, and it is often the time to look outside the Guide Movement for additional experience.

ADVANCED TRAINING FOR DIFFICULT COUNTRY PATHS



WHERE ONE OR MORE OF THE FOLLOWING POINTS MAY APPLY



Few features to assist route finding, there is little protection from wind, rain or cold, inclement weather, the height of the countryside or the degree of isolation could present problems.

Advanced Training — Essential Points as training information at this level is more readily available from sources outside the Guide Movement

Clothing and Equipment Essential Items:

Boots
Windproof clothing
Good gaiters and overtrousers

A plentiful supply of high sugar foods, e.g. glucose, chocolate, raisins etc.

Share the carrying of emergency items amongst the group.

First Aid

Attend a recognised Training Course

Keep up-to-date

Practice skills in the hills

Have a good knowledge of Hypothermia

Map and Compass

Become familiar with every aspect of the OS 1:25 000 map.

Practise using map and compass

- in all types of terrain
- in all types of weather and conditions.

Route Planning

Do not over-estimate capabilities of the group.

Plan carefully and prepare accurate route card.

Allow plenty of time in case of emergencies.

Navigation

Practice and Experience is essential:

- in different types of terrain
- in all kinds of weather.



Leadership Responsibilities

Positive Leadership is essential in hills and mountains.

Party Organisation and Management

Suggested Group Size

2 adults

Maximum 8 young people.

For many expeditions a smaller group is advisable.

Safety Precautions

Have a working knowledge of:

- The Mountain Code
- the International Distress Signal
- the Accident Procedure.

Walking Skills

Group members learn these skills from a good leader.

Practise moving in all types of terrain.

Learn how to conserve energy.

Weather

Use reliable sources for forecasts.

Before expeditions obtain up-to-date local forecasts.

Use the advice received and make any necessary alterations to route.

News for Rangers and Young Leaders

Young Leaders' Week Glenbrook 20th-27th August

If you are working on the Young Leaders' Scheme, then come to Glenbrook for a week in August. You will live and work with other Young Leaders with similar aims and outlook, and the course will give you opportunities to challenge yourself and to get help and ideas for your work with the Packs and Companies you help. It should be fun. Apply to the Guider-in-Charge, Glenbrook, Bamford, Nr Sheffield, S30 2AL.

Expedition Training (Rangers only)

Glenbrook 20th-27th August

Come and join in a fun, fit and friendly week at Glenbrook, and take part in training for the Expedition Section of the Duke of Edinburgh's Gold Award. There will be opportunities to gain skills in mapping compass work, lightweight camping etc, and it is hoped to arrange a practice expedition. Apply to the Guider-in-Charge, Glenbrook, Bamford, Nr Sheffield, S30 2AL.

Duke of Edinburgh's Gold Award Course Foxlease (Girls only) 25th-29th August

A residential course over the August Bank Holiday weekend for the Gold Duke of Edinburgh's Award, open to girls from any Operating Authority. Apply to the Guider-in-Charge for details.

Young Leaders

The Young Leaders' Series by Anne Bloomer is to be extended for a further two months, thus making it an eight-part series. You can read Part Six in this issue on pages 37 and 38. The author would be interested to know your reaction to her series. Please send your comments to: Miss Anne Bloomer, c/o Programme and Training Department, 17-19 Buckingham Palace Road, London SW1W 0PT.

Festival '83



Produced and Directed by
IAN GRANT

Royal Albert Hall London

General Manager D. Cameron McNichol

October 22nd 1983

presented by



The Scout Association

The Girl Guides Association

2.30

Please supply tickets as follows

7.30

Afternoon Performance

Evening Performance

No.	Amount	Price	Seats in	Price	Amount	No.
		£5.00	GRAND TIER BOXES	£5.00		
		£4.00	LOGGIA BOXES	£5.00		
		£4.00	2nd TIER BOXES	£5.00		
		£3.00	STALLS	£4.00		
		£3.00	ARENA BLOCK ABCD	£4.00		
		£2.50	ARENA BLOCK EF	£3.00		
		£1.50	BALCONY	£2.00		
		£1.50	UPPER ORCHESTRA	£2.00		
£					£	

In order to avoid disappointment should your first choice not be available, please state a second choice of seats:— (in BLOCK LETTERS please)

Performance _____

Seats in _____

No _____ Price _____

I enclose a cheque/postal order made payable to THE SCOUT ASSOCIATION and a stamped addressed envelope.

Name _____

Address _____

Day Telephone No _____

Festival '83 Box Office, The Scout Association, Gilwell Park, Chingford, London E4 7QW.

Opens 1st July

If you can do everything in one day



then you've missed something

INCLUDES

NEW Treasure Island · History of Man Scenes · Model World · 1st World War Aircraft Exhibit · **NEW** English Architectural History Exhibit · Schneider Trophy Seaplane Exhibit · Water Gardens / Bird Sanctuary · Thorpe Farm · **NEW** Nature Trail · Land Trains · Farm Ferry · Waterbuses · **NEW** Phantom Fantasia · Cinema 180 · Roller Rink · Children's Rides · **NEW** Magic Mill · Pedal Boats · Rowing Boats · Go Karts · **NEW** Riverboat Restaurant · Water Bugs · Live Entertainment · Japanese Garden ·

ALSO AVAILABLE AT ADDITIONAL COST

NEW Cable Water Ski Tow · Board Sailing · Water Skiing · Water Ski Simulator · **NEW** Jet Skis · Trout Fishing · Coin Operated Amusements · Radio Controlled Boats · Skate Hire · Bars · Restaurants · Ice Cream Parlour ·

ADMISSION RATES

INDIVIDUAL Adults £3.50 · Children (under 14 years) £2.50 · Senior Citizens £2.50 · Children (under 3 years) FREE ·

GROUP (20 persons or more) Adults £3.00

· Children (under 14 years) £2.00 · Senior Citizens £2.00 · Children (under 3 years) FREE ·

OPENING DETAILS

The Park opens on Sunday, 27th March, 1983 (Weekends only from 16th April — 28th May inclusive) and closes on Sunday, 11th September, 1983.

Thorpe Park, Staines Road, Chertsey, Surrey KT16 8PN.
Telephone Chertsey (09328) 62633.

A MEMBER OF THE RMC GROUP

**NEW FOR 1983
INCLUSIVE
ADMISSION
PRICE**

PROGRAMME NOTES

General Training

Unless these weekends are marked especially for Guiders of one Section a General Training weekend is for both Brownie and Guide Guiders, new and experienced. The aim of the training is to give you practical help with running your Unit and carrying out the Programme for the Section with which you are working. Your application form invites you to list the things on which you would like help, so please make use of this opportunity and return the form quickly so that the trainers can include as many as possible of your requests when planning the programme.

A 'General Training' weekend is the most suitable training for new Guiders.

Making the Most of the District

Foxlease — 1st-3rd July, 9th-11th September, 21st-23rd October
Waddow — 15th-17th July, 2nd-4th December

These weekends are intended to help the District as a whole and aim to give each group a chance to work together, and discover the support members of a District can give each other in working as a team. For Guiders there is help in understanding the unity of the Programme across the Sections and other matters of common concern (the Promise, self-programming, working in groups) and time is set aside for points which relate particularly to the Commissioner's role, both as leader and representative of her District, and what training in the District involves.

Although this is not the most suitable weekend for very new Guiders, Commissioners are invited to bring a group of Guiders of all levels of experience and all Sections. If your District has no Ranger Unit perhaps the Ranger Guider of the Unit which serves your District could be asked to join you?

Walking Safely (Basic and Intermediate)

Glenbrook — 15th-17th July

Many Guiders, experienced or new to the job, may have become interested in the Walking Safely Training Scheme which is for everyone — whether you live in a rural area or an inner-city one. Preparations and training are needed whether you and your Pack or Company go out for a day in the country, or to a city for a day's exploring!

As an 'extra' to the help you will receive in areas near your home Glenbrook offers you the opportunity to take part in training, at YOUR level of experience, combined with the hospitality of the house and the companionship of other Guiders from all parts of the UK.

District Commissioners and District Assistants

Foxlease — 10th-12th June

This weekend will explore another aspect of the many 'partnerships' in Guiding — the work of the District Commissioner and the support she needs from her team of helpers 'to enable the affairs of the District to prosper' (Commissioner's Handbook).

This weekend will give everyone an opportunity to share experiences, to compare notes with other Commissioners and District Assistants and to see their respective jobs in the perspective of the District as a whole.

While there would be great benefit from a Commissioner and her Assistant coming together, any District Commissioner and any District Assistants will be very welcome.

Walking Safely Training Scheme

Glenbrook — 14th-16th October

This weekend is by allocation and all Counties and Regions are being invited to take up three places. For further details contact your Outdoor Activities Adviser.

Family Week

Foxlease — 27th May-3rd/4th June, 27th July-3rd August

For those who really find it difficult to arrange to get away to a residential training, this is a pleasant mixture of training, and time with your family. Husbands, and children aged two to eight years, are welcome.

There will be training sessions in the morning, while husbands take

care of the children, but the afternoon will be free for family activities; there will also be some optional activities and sessions for those who wish to join them. Write to the Guider-in-Charge, Foxlease.

Ranger Guiders

Waddow — 2nd-4th September
Foxlease — 25th-27th November

These weekends offer Ranger Guiders an opportunity to train together as a separate group and to find help with the many (and new) aspects of the job. Why not get together with other Ranger Guiders in your County and come as a group? The more, the merrier.

Holiday Week

Foxlease — 17th-23rd August *Waddow — 6th-13th August*

This is a golden opportunity for Guiders wishing to take up to nine Guides or Rangers for a holiday at Foxlease or Waddow. Planning your programme during the holiday will be entirely your, or your girls' responsibility.

At Foxlease you can enjoy the forest and the seashore. At Waddow you could walk over the hills, explore the Witch country and many fascinating villages, visit abbeys, castles and Roman remains, go bird watching or fossil hunting by the river, or follow nature trails. Guiders will be present to comply with POR, but this could be used as an experience towards your Holiday Licence. However, you need the consent of your Commissioner before applying. For details write to the Guider-in-Charge at Foxlease or Waddow.

International Weekend (CCIAs and Trainers)

Waddow — 8th-10th July

The purpose of this weekend is to help CCIAs and Trainers to see their joint responsibility in encouraging and developing exciting international aspects of Guiding for both Guiders and girls of all sections.

Canoeing (Training and Assessment)

Glenbrook — 23rd-25th September

For Guiders and Rangers. These weekends are for those who have some experience and would like further help towards gaining a canoeing qualification.

Caving and Rock Climbing

Glenbrook — 11th-13th November

Open to both Guiders and Rangers, the weekend offers an opportunity to try something new, or to gain further experience. For those who wish there is also pony trekking as an optional extra.

Music in the Guiding Programme

Foxlease — 2nd-4th December

This weekend is intended for Guiders who would like help with the Music in the Pack and Campfire Leader's Certificates, and also for Guiders wishing to extend their song repertoire and to increase their music skills.

Arts Training (Music, Dance and Drama)

Waddow — 18th-20th November

The aim of this weekend is to help those who want to arouse enthusiasm in Guiders to make Music, Dance and Drama integral parts of their Unit programme. It is intended primarily for County Arts Advisers, their Assistants and prospective Registered Experts. The accent will be on the active pleasure to be derived from Arts activities and the need to give Guiders confidence. There will be specialist and general sessions. (Craft is only omitted because of the Training at Alnwick in October.)



JUL

TRAINING

AUG

SEP

Broneirion
Llandinam, Powys
SY17 5DE. Tel: (Caersws) 068 684 204

Foxlease

- July
1-3 Making the Most of the District (District Commissioners with up to seven of their Guiders)
- 9-23 Holiday Period (Guiders, Trefoil Guild Members, their friends and mothers)
- 27- Family Week (Guiders with their husbands and children aged 2-8 years)
- 3 Aug

Waddow

- July
1-3 Gloucestershire
- 8-10 International Weekend (CC/As and Trainers)
- 15-17 Making the Most of the District (District Commissioners with up to seven of their Guiders)
- 29-31 General Training

Glenbrook

- July
15-17 Walking Safely (Basic and Intermediate)

Broneirion

- July
1-3 Tutors' Weekend (by allocation)
- 8-10 Ranger Guiders Training Conference
- 17 Welsh Executive Committee
- 23-30 Pack Holiday Training — Wales (by allocation)
- 30- Pack Holiday Training — Wales (by allocation)
- 6 Aug

Netherurd

- July
1-4 Patrol Leaders
- 11-16 Exploring the Arts for Guides (by invitation)
- 19-26 Patrol Leaders' Week (by invitation)
- 19-26 Pioneering Plus Camp

Netherurd
Blyth Bridge, West Linton,
Peeblesshire. Tel: 096 88 208

Foxlease

- August
17-23 Holiday Week (for Guiders with up to nine of their Guides or Rangers)
- 25-29 Duke of Edinburgh's Gold Award Course (Girls from any Operating Authority)

Glenbrook

- August
20-27 1 Expedition Training (Rangers only)
2 Young Leaders Week

Waddow

- August
6-13 August Holiday Week (Guiders with up to nine of their Guides or Rangers)
- 16-30 Holiday Period (Guiders, Trefoil Guild members, their friends and mothers)

Broneirion

- August
10-14 Guides Cymru Wind Sinfonia
- 15-19 'Try Something New' — event for Guides

Netherurd

- August
2-9 Patrol Leaders' Week (by invitation)
- 2-9 Pioneering Plus Camp
- 20-27 Trefoil Guild Holiday Week

Fees at Netherurd

Shared room for day	£5.00
Double room for day	£5.25
Single room for day	£5.50
Deposit	£2.00
Training for non-residents	£0.50

Fees at Broneirion

Shared room per day	£6.00
Double room per day	£6.25
Single room per day	£6.50
Deposit	£2.00

Fees at Lorne per Weekend

Ulster Guiders (Guiders other than Ulster)	£8.50
Ulster Trefoil Guilds	£12.50
Other Trefoil Guilds	£8.50
	£15.00

Foxlease,
Lyndhurst, Hants SO4 7DG.
Tel. (Lyndhurst) 042-128-2638

Foxlease

- September
9-11 Making the Most of the District (District Commissioners with up to seven of their Guiders)
- 16-18 General Training
- 23-25 Kent West
- 30- Sussex Central
- 2 Oct

Waddow

- September
2-4 1. General Training
2. Ranger Guiders
- 9-11 West Mercia
- 16-18 Cleveland
- 23-25 Midlands (by allocation)
- 30- Sefton
- 2 Oct

Glenbrook

- September
23-25 Canoeing (training and assessment)

Broneirion

- September
2-4 Llais-Ddraig — Welsh Junior Council
- 9-11 General Training (places reserved for Carmarthenshire)
- 16-18 General Training (places reserved for Central Glamorgan)
- 23-25 International Training (by invitation)
- 30- General Training (places reserved for Clwyd)
- 2 Oct

Netherurd

- September
2-4 Music in the Programme
- 9-11 Brownie and Guide Guiders (includes booking from Banff and Buchan)
- 16-18 Brownie and Guide Guiders (includes booking from Fife) (To be confirmed)
- 23-25 Brownie and Guide Guiders
- 30-2 Oct (includes booking from City of Aberdeen)

CALENDAR

OCT NOV DEC

MON TUE WED
23 31

Waddow,
Clitheroe, Lancs, BB7 3LD
Tel: (Clitheroe) 0200 23186

Foxlease

October

- 7-9 General Training
- 14-16 Dorset
- 21-23 Making the Most of the District
(District Commissioners with
up to seven of their Guiders)
- 28-30 Isle of Wight

Waddow

October

- 7-9 North Yorkshire
- 14-16 Stafford
- 21-23 Cumbria South
- 28-30 County Durham and South
Tyne

Glenbrook

October

- 14-16 Walking Safely Training
Scheme (by allocation)

Broneirion

October

- 7-9 General Training (places
reserved for West Glamorgan)
- 14-16 International Training (by
invitation)
- 21-23 Welsh Outdoor Activities Con-
ference
- 24-28 'Four days of fun' (event for
Guides)
- 28-30 Venture Scout/Ranger Guide
Joint Event (by invitation)

Netherurd

October

- 7-9 Brownie and Guide Guiders
(includes booking from East
Lothian)
- 14-16 Junior Council
- 21-23 Prospective Trainers
- 28-30 Brownie and Guide Guiders
(includes booking from Glas-
gow North-West Division)

Fees at Foxlease and Waddow

Shared room per day	£7.50
Double room per day	£8.00
Single room per day	£8.50
Deposit of £2.00 cheque or postal order only.	

Fees at Glenbrook

Shared room (for weekend course)
£14.00. All activities, equipment and VAT
are included. Optional activities extra.
Deposit of £2.00 cheque or postal order
only.

Glenbrook,
Bamford, Nr Sheffield, S30 2AL
Tel: (Bamford) 0433 51567

Foxlease

November

- 4-6 Avon North
- 11-13 South West England (by allo-
cation)
- 18-20 London and South East Eng-
land (by allocation)
- 25-27 General Training

Waddow

November

- 4-6 Advisers for Handicapped
Members and Trainers (by allo-
cation)
- 11-13 Leeds
- 18-20 Arts Training (Music, Dance
and Drama)
- 25-27 Greater Manchester North

Glenbrook

November

- 11-13 1. Rock Climbing
2. Caving

Broneirion

November

- 5 Welsh Programme and Train-
ing Committee
- 6 Welsh Executive Committee
- 11-13 Young Leaders
- 18-20 Welsh Trainers' Conference
- 25-27 Welsh Development Project
Event

HOW TO APPLY TO A TRAINING CENTRE

Any Guider may herself apply to attend a training course at the Centres, provided she has reached the age of 18 years. (At the discretion of the Commissioner a member aged 17½ who is working on the Adult Leader's Certificate may also apply for a Guider course).

An application to attend a Guider Training Centre should be sent direct to the appropriate Guider-in-Charge, and must be accompanied by the correct amount of deposit and a SAE. Applicants should also state the type of training for which they are attending, as there may be several different courses running at any one weekend. As many Guiders have to leave on Sunday, training sessions at a two-day week-end will stop at teatime on that day unless otherwise stated. If sufficient notice is given that it is wanted, every effort will be made to provide for a group until Monday. Individuals able to stay over until Monday to enjoy the surrounding country and other amenities of the Centre are welcome to do so.

Note... for further details about training weekends, see the Programme Notes overleaf.

Lorne
Craigavad, Co Down
Ulster. Tel: (Holywood) 02317 3180

Foxlease

December

- 2-4 General Training (including
Music in the Pack and Com-
pany)

Waddow

December

- 2-4 Making the Most of the Dis-
trict (District Commissioners
with up to seven of their
Guiders)

Broneirion

December

- 2-4 Leaders and Assistants for In-
ternational events (by in-
vitation)
- 9-11 Christmas Arts

BURSARY HELP AVAILABLE

For full details of how to apply, and who is eligible for Bursaries, District Commissioners should write to the Training Secretary, C.H.Q. (Scottish Commissioners should apply to Scottish Headquarters). Applications must reach C.H.Q. at least two weeks before the date of the Training. Bursaries cannot be issued in retrospect.

The Fee Bursary entitles the Guider to £3.00 for a two-day weekend and £1 for each additional day. This is deducted from the fees at the Training Centre.

The Fare Bursary (available only for travel to the nearest Training Centre) carries a rebate of a Guider's travel expenses in excess of £3.00. This is paid at the Training Centre.

Note: These cannot be issued for Regional Weekends at the Training Centres or for courses at Glenbrook.

The CHQ Training Centres Bursary entitles Guiders to two-thirds of the fee for a two-day weekend training at Foxlease, Waddow and Glenbrook. The bursary is deducted from the fees at the Centre.

The Angela Thompson Bursary is available to any Guider attending a Promise and Law similar Training (not necessarily at a Training Centre).

The Outdoor Activities Bursary is worth up to £30.00 for Guiders attending training/assessment courses to achieve National qualifications. Applications to County/Region Headquarters.

CAMPS AND HOLIDAYS



England

The Barn and Beaverbrook Lodge, Foxlease

Applications should be sent to the Secretary, Foxlease, Lyndhurst, Hants SO4 7DE, giving alternative dates and enclosing an initial deposit of £1.00 (which is non-returnable) and a foolscap SAE. Priority will be given to applicants who have not already stayed in either The Barn or Beaverbrook Lodge. Applications for the period 1st October-31st March, 1984 will be accepted from 1st April, 1983. The accommodation is suitable for handicapped members.

Foxlease Annexe

Makes an ideal Centre for Rangers. Available Easter, Spring Holiday and periods in the summer. For details apply to the Secretary, Foxlease, Lyndhurst, Hants, enclosing a SAE.

Waddow Caravan

The Caravan is available for bookings throughout the year. For details apply to the Secretary, enclosing SAE.

Waddow Pack Holiday House

Applications for Pack Holidays should be sent to the Secretary. The application must be accompanied by a written recommendation from the Guider's CA or Pack Holiday Adviser and a foolscap SAE enclosed. The accommodation is suitable for handicapped members.

Glenbrook, near Sheffield

Accommodation available in the house for thirty or in the flat upstairs for ten. Groups must be self-catering and must guarantee twenty in the house or six in the flat. A number of activities are available, including canoeing, walking, caving, rock climbing, etc. For details, contact the Guider-in-Charge enclosing SAE.

Glenbrook Camp-Sites

Six camp sites available, two suitable for handicapped members. Situated in partly wooded grounds. All sites are un-equipped. For further information about camping and activities available, write to the Secretary, Glenbrook enclosing a foolscap SAE.

Blackland Farm, East Grinstead, Sussex

Equipped and un-equipped sites available in 175 acres of fields and woodland, with swimming pool, simple rock climb-

ing and pioneering facilities (equipment may be borrowed). Canoeing on nearby reservoir. Restrop and Wagtail Lodge, furnished bungalows for 27, the latter specially adapted for the handicapped, are on the site and in addition a six berth caravan is sometimes available. For details, write to the Warden enclosing SAE.

Brownsea Island

Eight sites are available for Guide and Scout Camps from Easter to 1st October and South Shore Lodge sleeping eighteen plus leaders. For details apply to Mrs D Press, Green Gables, 55 Forest View Drive, Staplehill, Wimborne, Dorset.

Olave House and Baden-Powell House, London

Permission forms are required for parties staying at these Centres and must be completed in the usual way. Completed forms should be sent to: Miss C Pryce, 11, Riverains, 71 Vicarage Crescent, London, SW11. Telephone (01) 228 6763.

Scotland

Netherurd

Camp Sites. Applications for equipped sites (two) are being considered now.

Brownie House. Bookings for the Brownie House from Easter onwards are being considered now. During Scottish school holidays priority will be given to Scottish Packs.

Ranger Bothy. Sleeping accommodation for eight Rangers/two Guiders.

One Camp Site, Brownie House and Ranger Bothy are suitable for handicapped members.

Holiday Caravan — 3-berth is available for Guiders and friends.

Apply to Secretary, Netherurd, enclosing foolscap SAE.

Wales

Ynysgarn, Criccieth, North Wales

Applications for the use of three un-equipped sites, all suitable for the handicapped. Ti Ni, a fully equipped (except for bedding) Brownie House. Ysgubor Hir, a single storey house, fully equipped (except for bedding) and suitable for the handicapped — can be made to: Mrs J P Griffith, Swyn y Gwynt, Penrhynedraeth, Gwynedd LL48 6RH, tele-

phone: 0766 770355, enclosing a foolscap SAE for site information. Ynysgarn is within a few minutes of the sea.

Broneirion, Llandinam, Powys

Holiday flats are available all the year round for family holidays or for parties of up to twelve Rangers with their Guider. Self-catering, fully equipped, with metered electricity. Apply to Guider-in-Charge, Broneirion.

Broneirion, Camp-Site and Brownie House

Applications for Camp Site and Brownie House are being considered now, and should be sent to: Miss P Lynch, 3c Pentwyn Court, Whitchurch, Cardiff, CF4 7BY, enclosing SAE.

Bookings for the Brownie House, outside school holidays, and for Guide and Ranger groups, should be sent to the Guider-in-Charge, Broneirion.

Ulster

Note

Units wishing to book any of the facilities at the places listed below, and to include handicapped members in their party, are asked to give details when applying.

Holiday at Lorne

Lorne will be open as a holiday centre during July and August 1983. In pleasant grounds with lovely views and quiet surroundings on the shores of Belfast Lough. Lorne is only six miles from Belfast and is a good centre for sight-seeing tours.

Special terms for parties of Guiders taking the house and wishing to do their own catering.

Full details from the Guider-in-Charge, Lorne, Craigavad, Co. Down, Ulster.

Lorne Camp-Sites

Lorne offers fully equipped or un-equipped camp-sites with solid shelter. Calor gas available. Applications should be sent to Mrs F Hartley, 1 Station View, Carnalea, Bangor, Co. Down. Tel. Bangor 67088.

Irene McKibbin Memorial Cottage, Lorne

A cottage available for Ranger holidays. For details apply to Miss Hilda Hirst, 119 Haypark Avenue, Belfast 9, enclosing SAE.

Magilligan Camp-Sites

Three fully equipped sites with double Calor gas stoves for twenty-five to thirty campers. Two miles of sands. Large three room hut with an open fireplace. For details apply to Mrs R F Scott, Derrymore House, Limavady, Co. Londonderry, enclosing SAE.

Glen Road Camp-Sites (nr Lorne)

Fully equipped for forty campers (one large and two small camps). Excellent hut for solid shelter and Calor gas. Bookings should be sent to Mrs F R Lee, 45 Gortland Park, Belfast, BT5 7NU, enclosing SAE.

Grab the Chance—

Make the most of your District

Is belonging to your District a bit like being a member of your own family? Do you feel the other members of the District are your friends to whom you can turn when things aren't going so well in your Unit? Is your District supporting you and sometimes even propping you up? Are they a sounding board and a group who give you the opportunity to really let your feelings be known? It may not change the Movement, but you'll feel better for airing your feelings afterwards!

Could someone in your District stand in for you on the night you can't get to your meeting because your husband is expecting you to be with him? As many of us these days seem to be working single-handed, more than anything else we need someone to discuss our meetings with — those small successes, and steps in the right direction as well as the problems. Ever had that feeling that there are just no more ideas for new games that work, quick and easy crafts for that next Fair, or quick 'Be Prepared' items up your sleeve to pop into your next meeting?

The opportunity to really get to know one another in your Districts needs to be taken but it is not always very easy. Some Districts are able to get together for social occasions, but for most busy Guiders, District meetings need to be kept as short as possible, and the social chit-chat kept to a minimum so those who need to get home are able to do

so. 'Making the Most of the District' weekends,* at the Training Centres, advertised as being for a District Commissioner with up to seven of her Guiders, will give you the opportunity to really get to know one another in a relaxed atmosphere. No one will need to be pondering at the back of her mind, 'what shall we have for dinner tomorrow', or 'I must iron that shirt for tomorrow'. You will have the opportunity to discover that the other Guiders in your District really do have the same frustrations as you and that possibly there is someone who is good at outdoor activities and someone who has a mother who is willing to do flower arranging with a small number of girls. The list of useful things you'll discover is endless — and that's from just among yourselves!

Before the weekend you may well hear from the trainers who will be taking your weekend, and they may give you some indication of the programme for the weekend, and of anything they may want you to take with you or do beforehand. Obviously you will not be able to take everyone from your District, but do try to include at least some Guiders from each Section if at all possible. It is important to remember on your return home too that not everyone was able to go — you will need to think how to 'share' the weekend on your return.

On arrival (and one of the nice things about these weekends is the opportunity to be able to travel together) you will be



'Other Guiders in the District have the same frustrations as you.'

shown to your rooms, sharing with others in your District if you wish. The house groups for doing light jobs around the house during the weekend are usually District based. This means you will be free at the same times. These weekends have little Section training as such: there is often one session, and two at the most, where you are given the opportunity to air your particular 'Section' problem. Therefore on the training team there will always be a Brownie and Guide Trainer, and wherever possible a Ranger Trainer, who will be able to help with your specific 'Sectional' queries. If your query doesn't come up during a session or it has come up since sending in your blue form (*don't forget* to use this opportunity to request things you would like included), make a beeline to sit next to your trainer at a meal time, and, whatever happens, don't go home without at least giving your problem an airing — you won't forgive yourself if you don't! Included in this type of weekend is an opportunity to understand how the Programme and the skills incorporated in it develop from Brownies to Guides to Rangers, and in particular how this helps the individuals in your particular

'Really get to know one another in a relaxed atmosphere.'



Illustrations — Jean de Lemos

* Note: see page 31

DAILY TO SWITZERLAND — especially for you!

Just
£44.50



THE CAMPTOURS PROGRAMME of summer camps in Switzerland has grown steadily over the last 13 years to the point where we now have a departure from London, for the Bernese Oberland almost every day from late June until early September.

Our big Volvo coaches, with reclining seats and video, make easy work of the 500-mile journey, leaving from London each evening, and arriving the next afternoon. The homeward journey commences in the morning and arrives home the following morning. The precise destination varies but is never more than a few miles from Adelboden or Interlaken, and all coaches pass through Basle and Bern.

The service is intended primarily for groups staying in our own chalets (ask for our brochure if you'd like details) but inevitably we don't have every coach full and rather than waste spare seats remaining we offer them to members of the Scout and Guide Movements, their families and friends for just £44.50 return (under 16s £39.50).

With a few exceptions there are not normally more than 10 seats available on any one date, so we can't usually take large groups at these terms. But for family groups, venture units, or other small parties, here is a great opportunity to visit the superb lakes and mountains of Switzerland at an incredibly low price.

No accommodation is offered so you must arrange your own guest-house, hotel, or youth hostel booking, or perhaps take your own lightweight camping gear. We'll give you the addresses to write to.

Take advantage of this super opportunity — send the coupon below for full details.

camptours

SUMMER CAMPS IN EUROPE

To: Camptours, Warren House, High Street, Cranleigh, Surrey, GU6 8AJ, Tel. 0483 273027.

Please send me details of your coach service to Switzerland/your summer camp brochure (delete as applicable)

Name

Address

GU6

CAMPING BARGAINS!

ARMY 160 POUNDER
£175 (Carr. £7.50)

144' RIDGE
TENT

Superb ex-Govt. tentage, guaranteed stormproof, 14ft long, 14ft wide, 7ft high, 27in walls. Dutch lading doorways each end, can be rolled up. Supplied with accessories: — Pegs, Poles, Mattel and Valise 14ft Ridge Tent Spare poles (three 7ft uprights and one 14ft ridge pole). £22.50 Carr. £3.50. FLYSHEET re-issue condition 14ft x 14ft £50 (Carr. £5.50).

UNUSED GROUND SHEET 14ft x 14ft water rot and tear resistant £29.50 (Carr. £1.65). Also available in PVC £12.50 (Carr. £1.65).

Also available:
Brand new ex-factory
£275 (Carr. £7.50)

* DINING SHELTER £75 (Carr. £5.00)
14ft x 14ft complete with pegs, poles, mattel, main lines and valise.

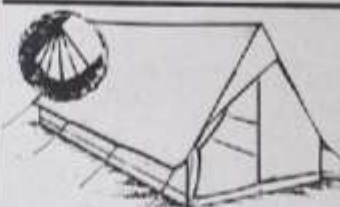
* MARQUEE SPARES *

Roofend Outer £120 (Carr. £3.85) Side Wall poles £2 (Carr. 65p)
Roof Section outer £75 (Carr. £3.85)
Weather line double rope £7 (Carr. £2.20)
Upright pole 12ft (in two sections) £22 (Carr. £3.85)
Weather line quad rope £14 (Carr. £2.75)
Pulley ropes 33ft £3 (Carr. 65p) Ridge pole 9ft (one piece) £18 (Carr. £2.20)

* Ex Govt. MISCELLANEOUS STORES *

Camp Beds, ex Army officers issue, genuine Houndsfield, safari Bysa model, Grade 1 condition £12.50 p/p £2.30
Aluminium Dishes, 30 pint, unused, complete with lid £14.00 p/p £1.75
and steel carrying handle £7.50 p/p £1.75
Metal Dishes, 5 gallon capacity £7.50 p/p £1.75
Bed rolls, officers issue, waterproof canvas, blanket line £5.00 p/p £1.15
Army officers groundsheet 6ft x 3ft £2.75 p/p 90p
Stuff bags, large, white cotton duck with drawstring £2.50 p/p 90p
Backpacks, Army and Airforce style, brand new 10 for £1.00 p/p 80p
Webbing straps, white, 30in long, 1in wide £2.50 p/p 90p
PVC Waterproof sheets, 6ft x 8ft, heavyweight £4.50 p/p 90p
PVC Waterproof sheets, 12ft x 8ft, eyeletted, ideal all purpose £4.50 p/p 90p
Glider Tow Rope, Terylene, 7/16ft dia. Service issue, any length supplied up to 1000ft, (1000 lb breaking strain) per foot 15p p/p £1.00
Cape Groundsheets, ex-Army issue, grade 1 in perfect condition 6ft x 3ft with cape attachment, in strong rubberised canvas £2.75 p/p 90p
Kil Bags — Khaki, with carrying handle and sling (USED) £3.25 p/p 90p
RAF Kil bags in blue (NEW) £3.75 p/p 90p
Camping Holdall in water resistant cotton duck, zip top, 22in long, reinforced stitched carrying handles £2.75 p/p £1.00
Camping Holdall, larger size in heavy brown proofed canvas 24in long, 36in circ. with zip side pocket £4.75 p/p £1.00
Pullovers, Army, Navy and Airforce issue, 100% wool, NEW 34/36in £9.50, 38/40in £10.50, 42/44in £11.50 and 46in £12.50 p/p £1.25
Mess tins, Genuine other ranks issue, Two-piece £1.50 p/p 90p
Army Ponchos, strong rubberised fabric, grade 1, size 7ft x 8ft £3.50 p/p £1.50
Entrenching tools with original handles £4.50 p/p £1.15
Nylon ropes 1in circ. for above pulley blocks, 50in £2.25 p/p 60p
32ft blue £2.25 p/p 60p, 90ft green £3.75 p/p 60p, 102ft red £4.25 p/p £1.15

* PLUS HUNDREDS OF EX GOVT LINES.
GIVE US CALL YOU COULD SAVE £££'s



RELUM PEARL
GIANT
RIDGE TENT
Only £75
(plus £2.75 carr.)

TREMENDOUS VALUE! ONE OF OUR BEST OFFERS!

GIANT in size! SUPERB in quality! Made in 9 oz. Blue TERKA canvas. It will stand up to most weather conditions. * Built-in groundsheet * All-round zip doors * Hooded porch * Ample storage space in bell end * British galvanised steel poles * Guy ropes are nylon with rubber tension. Approx weight 35lb. Size 13½ft long, 10ft along ridge, 6½ft wide, 6ft high and 18in walls.

ALSO AVAILABLE:

Smaller model THE PEARL £55 (Carr. £2.75) 10ft long (incl. 3ft 6in bell end) 6ft 3in wide, 6ft high and 30in mudguard walls.
Relum RUBY £47.50 (Carr. £2.75) 10ft long, 6ft 3in wide, 6ft high. Sleeps 3/4

** FLUSHING SANITARY TOILETS **

Porta Potti Model 22' (gives 22 flushes) £19.50
Porta Potti Model 33' (gives 33 flushes) £29.50
Porta Potti Model 44' (gives 44 flushes) £35.00
Porta Potti Model 60' (gives 60 flushes) £37.50
Porta Potti Model 240' (gives 97 flushes) £37.50
Placasan 470 Cruiser £27.50

ALSO AVAILABLE: NON-FLUSHING MODELS

Sisan model 'Mini' £12.50
Elsan model 'Bristol' £22.50
The 'Panco' Large Swedish model £12.50
Please add £2.50 carriage each item

All measurements shown are approx. * Cash orders by return, cheque 7 days
* Goods despatched U.K. only
ORDER WITH CONFIDENCE. ESTABLISHED OVER 30 YEARS
25 YEARS AT THIS ADDRESS. WE GUARANTEE YOU A FAIR DEAL.

H. C. BRIGGS Ltd 88 Forest Road, Walthamstow, London, E17 6JH. Tel: 01-520 2705

Grab the Chance

Make the most of YOUR District

continued from p 29

District. Self-programming plays a greater part in the Programme as the girl gets older, and your District will be given the opportunity to see how District events can be used to encourage rather than, as sometimes happens, cut across this. Hopefully you will be given the opportunity to think about how this happens and what you can do together as a team to encourage the other 'teams' at all age levels in your District.

Often Districts have time to plan an event (which indeed we hope may well take place) and you may be asked beforehand to have given this some thought or to have asked the Guiders or girls in the District at home for any ideas they may have. It has been a pleasure in the past to be invited to subsequent events planned during one of these weekends!

These weekends can be ideal in helping you as an adult to think about exactly what your Promise means to you today, and to consider if you are growing in your faith, or are, at the moment, at a bit of a stand-still, or perhaps even for some reason slipping backwards. To have understanding friends to talk to about this — perhaps sparked off by something someone has said during a session, out on a stroll or over the washing-up — can be most helpful. District Commissioners will be given the opportunity to understand their rôles as leader and repre-

sentative of the District. They will be given help to recognise if Guiding as such is taking place in the Units in the District, or if in fact they are a series of youth clubs. Advice is also given on how they can help with further training for their Guiders. Obviously, the flavour of your weekend will vary according to the training team — as indeed the flavour of each District at the weekend will vary. Get to know the other Districts — pick their brains as to what District events they have, how they try to give every girl in the District the opportunity to have at least one night away a year; how they manage with transport problems in the country, or walking home problems in the city, and how we all manage with fewer adults than we should like.

Your training team may help you work together as a District over the weekend by having a special international evening, a 'getting on with people' ploy, or possibly an adventurous wide game or an expedition (walk?!). To get you all 'Walking Safely' — you never know. Obviously it depends on the skills of the trainers, as indeed it does in your District, but you can rest assured that at the end of the weekend you will go home feeling more 'family' — knowing a little better what makes each member of your team 'tick' and how you can continue to work together to benefit each and every girl in your District.

'The opportunity to travel together.'



'Development of a skill.'

I hope that by the end of these weekends you will all go home as 'Good Fruit Salad':

Quote 'A Japanese husband stood with his wife and their son and daughter on the platform at a meeting. In his staccato Japanese-style English he said; "I am father. I am like coconut. You know coconut? Hard outside — soft inside. This is mother. She is like peach. You know peach? Soft and lovely outside — hard inside. This is son. He is like banana. You know banana? Soft outside, soft inside, not straight and very slippery. This is daughter. She is like Chestnut. Prickly outside and she explodes when heated."

But now we are all changed. We make good fruit salad."

Helen Ryan

* After January 1984 'Making the Most of the District' weekends will be advertised in GUIDING magazine under the new name: 'The District Team'.

THE MALCOLM SARGENT CANCER FUND FOR CHILDREN

was launched in March, 1968, as a lasting and practical memorial to the much loved British musician whose name it bears

HAVE YOU ARRANGED YOUR SUMMER HOLIDAY?

WILL YOU BE GOING TO THE SEASIDE, CAMPING IN THE COUNTRY OR EVEN ABROAD THIS YEAR?

Whatever you have planned, please give a thought to some of the many children in the Fund's care who, only with its financial help, will be able to enjoy a holiday (possibly their last) this year.

YOU KNOW YOUR HOLIDAY COSTS MONEY!

So too do the holidays the Fund provides for young sufferers of cancer, leukaemia or Hodgkins's disease and their families.

PLEASE HELP a child to have a holiday this year by sending a donation, which will be gratefully acknowledged, to:

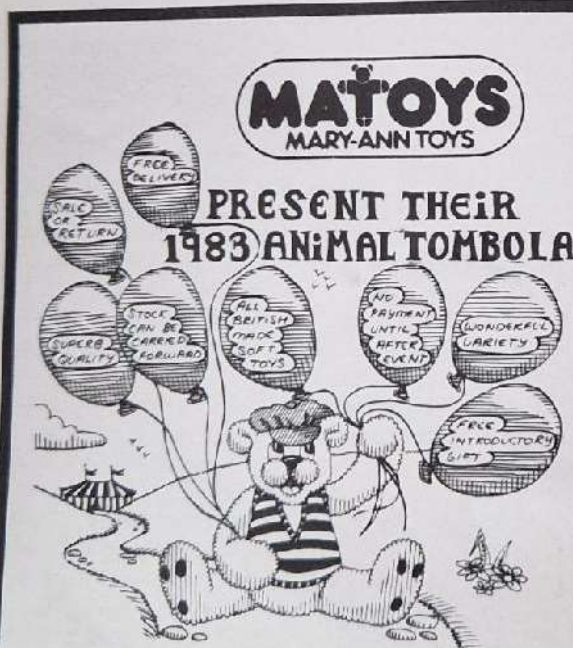
THE MALCOLM SARGENT CANCER FUND FOR CHILDREN,

Department GG,

6 Sydney Street, London SW3 6PP

Telephone: 01-352 6884

THANK YOU



While writing I would like to thank you for the supply of our previous order for our event in July, which was very successful. The "Animal Parade" tombola went very well and people remarked how very nice the cuddly toys were.

MR D. J. HART
1st BAR HILL SCOUT GROUP

Thank you for your very prompt service — the stall was a great success.

W. COTTAM
HEADMASTER
St Richard's RC School, Atherton

Thanking you again for your marvellous service. The stall was a great success.

A. HARWOOD
BROADBRIDGE HEATH GALA ASSOCIATION

Our stall was a great success and I'm sure all will contact you again in the future.

J. E. GERMAN
CHELMSFORD SEA CADETS

Thank you once again for an excellent choice of toys which were enjoyed by all winners.

C. SLOAN
Your toys are still to be a very good standard and selection of animals.
R. NUNN
TS DREADNOUGHT NTC

Send for details to:

FREEPOST MARY-ANN TOYS 2, SOUTH SQUARE, BOSTON, LINCOLNSHIRE. PE21 6BR
TELEPHONE: (0205) 67081 (Office) (0205) 66175 (Factory)

Details to:

MATTOYS
MARY-ANN TOYS

Double Acrostic No 61

by Brenda Hughes

- A. Done on some holidays. (10)
 B. Reprove, but gently. (8)
 C. Did he found a lottery? (7)
 D. Home of the Minotaur? (7)
 E. In much ado we'll find a rod. (5)
 F. I put in my exemption from punishment. (8)
 G. Framework of tissues. (8)
 H. A satirical, humorous, biographical poem. (8)
 I. Might contain a pearl when opened. (6, 5)
 J. A planet watched according to Christopher Fry. (5, 8)
 K. They themselves give little folk. (5)
 L. Chatters for clicks and paws. (8)
 M. These impressions produce property. (7)
 N. The old ash tree produces a stroke of a pen. (4)
 O. It deals us langour. (9)
 P. Swiss cheese. (8)
 Q. An animal's inside out! (5)
 R. The study of coins. (11)
 S. One of the Channel Islands. (8)
 T. A small civet. (5)
 U. Malignant. (8)
 V. A young animal on the leg. (4)
 W. Devastate. (3, 5)
 X. Flowers or sea creatures? (8)
 Y. A bull roarer sounds like a geometric shape. (7)
 Z. Shaping a flint? Sounds sleepy. (8)

Double Acrostic Rules

Solve the clues and write the answer in the numbered grid on the right. Transfer the clues to the corresponding numbered squares in the grid below. When this is complete, you will have a quotation from a book (or poem etc), the title and author of which will be found in the initial letters of the answers to the clues.

A small prize will be awarded for the first correct entry opened on the 20th of each alternate month.

Please send entries to: 'Acrostic', The Editor, GUIDING, The Girl Guides Association, 17-19 Buckingham Palace Road, London SW1W 0PT. It would also be appreciated if readers could attach to their entries a brief note about their preferred reading material. A photostat of the Double Acrostic page will be perfectly acceptable from those readers not wishing to damage their copies of GUIDING.

The winner of Double Acrostic No 59 (February GUIDING) is Mrs J Tupper of Dorset.

A	190	114	28	64	57	18	6	75	40	48
B	10	166	25	11	84	102	92	30		
C	24	118	17	160	38	62	110			
D	94	165	97	1	142	79	114			
E	41	100	92	108	138					
F	60	63	158	187	93	88	119	73		
G	44	131	3	22	70	182	15	124		
H	29	151	7	109	139	54	146	117		
I	194	87	78	133	47	189	155	116	162	11
J	101	13	76	23	69	126	129	183	34	121
K	190	156	145	167	95					
L	65	31	61	137	134	152	5	91		
M	20	185	80	192	92	197	136			
N	125	149	171	90						
O	150	2	115	8	170	169	196	179	181	
P	199	50	122	55	174	145	66	96		
Q	51	21	141	91	12					
R	72	130	99	43	37	91	144	89	132	67
S	195	172	77	68	112	103	123	153		
T	86	26	154	42	120					
U	161	194	148	106	59	36	160	44		
V	143	177	35	52						
W	113	39	198	127	71	176	53	164		
X	173	32	49	56	157	168	95	147		
Y	105	19	94	9	193	16	186			
Z	4	178	135	163	188	27	33	104		

Solution to Double Acrostic No 60

'By God, man,' Irvine broke out. 'Where have you been? Do you know in what days we live, when the whole of the North is out against Her Majesty?' 'I am perfectly aware of it,' Nicholas said, coming a little closer. 'Nevertheless, it was the man's right to have a trial.' Irvine's temper was now up.

The Bright Pavilions Hugh Walpole

D	1	O	2	Q	3	Z	4	L	5	A	6	H	7	O	8	Y	9	B	10	I	11	Q	12	J	13	D	14	G	15	Y	16	C	17	A	18	Y	19	M	20
Q	21	G	22	J	23	C	24	B	25	T	26	Z	27	A	28	H	29	B	30	L	31	X	32	Z	33	J	34	V	35	U	36	R	37	C	38	W	39	A	40
E	41	T	42	R	43	G	44	P	45	U	46	I	47	A	48	X	49	P	50	Q	51	V	52	W	53	H	54	P	55	X	56	A	57	I	58	U	59	F	60
L	61	C	62	F	63	A	64	L	65	P	66	R	67	S	68	J	69	G	70	W	71	R	72	F	73	D	74	A	75	J	76	S	77	I	78	D	79	M	80
L	81	M	82	J	83	B	84	X	85	T	86	I	87	F	88	R	89	N	90	Q	91	B	92	F	93	Y	94	K	95	P	96	D	97	E	98	R	99	E	100
J	101	B	102	S	103	Z	104	Y	105	U	106	J	107	E	108	H	109	C	110	B	111	S	112	W	113	A	114	O	115	I	116	H	117	C	118	F	119	T	120
J	121	P	122	S	123	G	124	N	125	J	126	W	127	R	128	J	129	R	130	G	131	R	132	I	133	L	134	Z	135	M	136	L	137	E	138	H	139	C	140
Q	141	D	142	V	143	R	144	K	145	H	146	X	147	U	148	N	149	O	150	H	151	L	152	S	153	T	154	I	155	K	156	X	157	F	158	P	159	U	160
U	161	I	162	Z	163	W	164	D	165	B	166	K	167	X	168	O	169	O	170	N	171	S	172	X	173	P	174	J	175	W	176	V	177	Z	178	O	179	A	180
O	181	G	182	J	183	I	184	M	185	Y	186	F	187	Z	188	I	189	K	190	R	191	M	192	Y	193	U	194	S	195	O	196	M	197	W	198				

COMING

COMING

COMING

TODAY'S GUIDE — July Review

July's **TODAY'S GUIDE** continues with the theme Open Air and Enjoying the Out-of-doors. The Interest Badges Map-reader, Woodman, Stalker and Hiker continue, and the DIY scheme challenges the Guides to clean windows. Two double page spreads appear in this issue in line with the theme 'Packing a Rucksack' and 'Britain's Colourful Coastline'. The story for the month is 'Cancelled Camp for the Canaries'. For general interest the Guides can read about the 'History of Earrings' and 'The Passport Story', and they can read about the latest news in the music and book world, solve puzzles and learn how to make the best of themselves with the help of the 'Growing Up is Fun' article. This month concentrates on suntan lotions, new make-up and fragrances. 'Guiding Round The World' has more interesting things from Overseas, and for the Patrol Leaders the PL activity pages suggest things to attempt within the Patrol. For the Pack Leader ideas are given for organising sports events in the Brownie Pack and activities for the light evenings out-of-doors.

SH

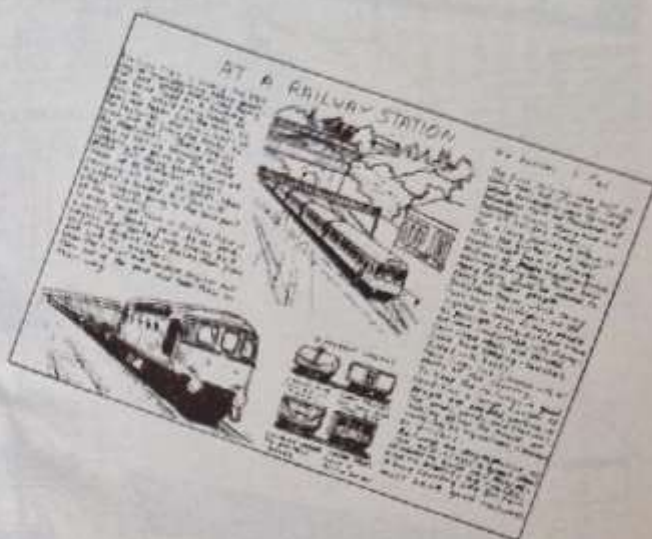


BROWNIE — July Review

The new Brownie Badge, Conservation, begins this month, and each week the Brownies are shown, in detail, and with plenty of information, how to go about gaining it. Handcrafts include things to make while on Pack Holiday, 'A Sea Shell Treasure Chest' and 'A Floating Lighthouse' for those visiting the seaside. Also included are 'A Fold-over House' and a 'Climbing Plant Trainer'. Materials to start collecting are corks — different sizes, washing-up bottle tops, polystyrene, garden and basketry cane. The story this month is 'I Don't Want to Take Badges' — How many have Brownies who say this? Maybe it will be a good story for the Brownie meeting. There are two cover games — 'Up, Up and Away' and 'Monkey Business'. If you want some extra activities for rainy days on Pack Holiday these are worth collecting. The Help at Home charts are helpful for Brownies of all ages, and well illustrated; this month they show Brownies 'How to Wash Socks' (House Orderly), and 'Making A Holiday Check List' can help with preparing to go away. You can link this with Pack Holiday and the Road Badge — packing a suitcase. Centrespreads this month include 'See How Clever Plants Are' and a 'Trip To The Railway Station'. Throughout the month general interest articles appear, and one especially comes from Terry Mills on animals seen around Chichester, the Isle of Wight, and the surrounding beaches. Also included each week are puzzle pages, painting competitions, Ventures and Rainbow Corner, so don't forget to remind your Brownies to order their own copy.

SH





by Coral Tomlin

Have you tried singing on the coach in an alphabetical order, one song for each letter? What about a theme singing session, including songs from the Top Twenty? This exercise may involve the Patrol in learning a few new songs ready for the journey to fill in the gaps — who will be the first Patrol to sing the song starting with X?

Happy journeys.

JR PATROL LEADERS

PATROLS

Manufactured from Green Super Quality cotton duck, double reinforced at all straining points, doors at both ends with lace fittings, large ventilators in roof, 3 walls, mudwaling, breasting tapes, storm guys, poles, wooden pegs, mallet and carrying vases.

Patrol	Length	Width	Height	Walls	Weight	PRICE
10'	10'	8'	7'	3'	55lbs	£130
12'	12'	8'	7'	3'	61lbs	£140
14'	14'	8'	7'	3'	70lbs	£160

Optional Extras:

Flysheet	Groundsheet
10' x 8' £16	
12' x 8' £19	
14' x 8' £22	



PATROL BELL TENT

Manufactured from the best quality 12oz proofed green cotton duck which has proved over many years to be the right material and makes an excellent bell tent for Guides, Scouts and other organisations. 42" circumference with 2 1/2" walls, 9'5" high and 6" eaves. Comes complete with guys, pegs, mallet, wooden pole and vases.

JR PRICE
£165.00

DELUXE FRAMED TOILET TENT

A super deluxe toilet tent made in medium weight cotton - special features: rear vent, rib doorway, rings at corners for security, rubber guys, guy lines for safety in high winds.

JR PRICE
£25.95

DOUBLE FRAMED TOILET TENT

Manufactured to the same high standard as the fully framed Deluxe but with two completely separate compartments, each having its own zip doorway. Each outside has ventilators which are covered by separate flaps each one being guyed to the ground. Height at front 6'4", Height at rear 6", width 5'9", Depth 2'9".

JR PRICE
£49.95

DINING SHELTERS

Manufactured from closely woven tent canvas, water and rot proofed. Two metal uprights and ridge pole, four corner poles, complete with guy lines, pegs and mallet. Colour green.

Size 1: length 12' width 9' height 6'6" **£49.95**
Size 2: length 12' width 15' height 7' **£69.95** (size 2 has additional side poles)



STROMEYER SAHARA BELL TENT

Manufactured from cotton duck 8.85oz (approx) with one central pole and an A frame doorway and complete with pegs and guy lines.

Extras: Pack sack £5.00, Groundsheet, £30.00

JR PRICE
£119.00

STORAGE TENT

Manufactured with a PVC coated roof with Box cotton canvas walls, this fully framed tent is ideal as a sleeping, storage or dining unit.

Central height: 220cm (7'3")
Wall height: 180cm (6")
8 legged frame weight: 40kg (88lbs)
Extras: Pack Sack £5.00, Groundsheet £39.00

JR PRICE
£235.00

ALL AVAILABLE BY MAIL ORDER CARRIAGE FREE FOR ORDER OVER £100

JR camping and leisure

FORMERLY BINLEY'S LEISURE GROUP

Indoor centres also at:
LEICESTER: Byron Street, OH Lee Cucke Tel: (0533) 24425
BRISTOL: Castle House, Duce Road, Lawrence Hill Tel: (0272) 555161
MANLEY: 42 Byron Street, Manley, Stoke-on-Trent Tel: (0922) 272021
NOTTINGHAM: 76-78 Lower Parliament Street Tel: (0602) 582595
LONDON: 324 Brixton Road, London SW9 Tel: 01 733 1199
NORTHAMPTON: Ashburnham Road, Northampton Tel: (0604) 715299

Send for full colour 40 page catalogue
Binley House Victoria Street, Kettering, NN16 0BU
Tel (0536) 81071

All items subject to availability

PREMIER PRINTED T-SHIRTS

Find out what quality's about
We offer Special terms of trading for your movement

Top quality 100% British personalised leisurewear

**Tee-Shirts
SweatShirts
Running Vests
Jogging Suits
Fashion Shirts
Sportshirts**

Minimum quantity only 12 shirts printed with your own design

FREE DETAILS PHONE NOW!
Norwich
(0603) 745018

*** or write**
PREMIER LEISUREWEAR
Dept GDR Jarrold Way
Bowthorpe Norwich
Norfolk NR5 9JD



Blacks of Greenock EXPORT QUALITY TENTS Patrol Size

Complete with Flysheet!!

FOR ONLY **£175.00 each** PLUS £6.50 CARR & PACKING

M/s Blacks of Greenock have a small surplus of their Export Disaster Relief Tents and Flysheets, which we are able to offer exclusively at an extremely low price.

MORE THAN HALF ALREADY SOLD

Specification:
Tent approx size 9' long x 11'6" wide x 6'6" high, made from Export Quality 12 oz Cotton Duck. Sand Colour. Doorway one end, lace closure, roof ventilator, roll-up walls. Complete with pegs, Flysheet in same high quality fabric with porch each end. Complete with guys and pegs.

BLACKS/VANGO DINING SHELTERS
COMPLETE WITH ALLOY POLES 12' x 9'
RRP £99.50. OUR PRICE £69.50 + CARR.

OTHER BARGAINS
Ex-hire Stormhaven tents 12' £215.00
Few only 1982 Model Icelandic Patrol Tents 13'
Toilet Tents Cotton only £235.00
..... only £19.95

Write for full lists of special offers

BLACKS CAMP HIRE

(A Member of the Black & Edgington P.L.C. Group)
146/148, The GROVE, STRATFORD,
LONDON E15
Tel: 01-519 1313

Opportunities at Home or Overseas

Every year there are many opportunities for Young Leaders to take part in events further afield than their own area. Often there are invitations to camps, gatherings or special interest groups overseas or in other parts of the United Kingdom. Those who are fortunate to attend such events usually have a rigorous selection procedure beforehand, but you should not let that deter you from trying. The selectors are not looking for *Superwoman* but for someone who can talk in an interesting way about Guiding in her own area, who has other interests and activities, who will mix well with the other participants and who will benefit from and contribute to the opportunity. Each County has its own way of circulating details of these opportunities, which often arise at very short notice. You may read about them in a County bulletin or newsletter, see them in the pages of *GUIDING*, or be shown details by your Commissioner, or an Adviser.

County Commonwealth & International Advisers can tell you about the overseas opportunities, and how any selections are arranged in your County. There may be occasions each year when those who are interested in these events have a chance to meet and learn of some possibilities.

The **Junior Council** of the Association consists of Rangers, Young Leaders and young Guiders, half of whom retire every two years. The vacancies are filled by Counties/Regions who select their delegates on the Council not as representatives of their area but as people who can represent the interests and concerns of their age-group. There are also Junior Councils in several Counties/Regions within the United Kingdom and experience gained through membership of these has often proved invaluable for many aspects of life outside Guiding. Your Commissioner or County Young Leader Adviser can help you find out about any of these opportunities.

The **British Youth Council** has delegates from a very wide variety of groups involving young people. There is a delegation of nine members of the GGA, who meet alongside members of church groups, youth clubs and organisations, Young Farmers', students, party political groups and local youth councils. Articles about the work of our delegates are currently appearing in *GUIDING*.

The **National Council of Voluntary Youth Services**, together with many local councils affiliated to it, provides a forum for many of the voluntary groups and organisations (i.e. excluding those organised by local authorities and the political parties) concerned with the 14-18 age group. These councils include adult leaders (unlike BYC, which has an upper age limit of 30) but there are sometimes vacancies for young members to serve on their local councils.

This completes the sixth part of the series for Young Leaders, but there will be two additional instalments, each with distinct themes, but related to this series: a much more general look at various aspects of leadership, and then a look at the roles played by adults within the Young Leader's Scheme. The series will shortly be re-printed in booklet form; any suggestions for changes or additions to be incorporated at this stage will be welcomed.

(2) cont. Think for Yourself

Some examples of topics are given on the Young Leader card, others include: *Provision of Facilities in Your Area* — youth clubs, sports clubs. Is it good? If so, why? If not, how could the area be improved? What about the cost and who pays for things? Should the money be spent on a children's playground or old people's centre? Similarly for pre-school play groups, local shops etc.

Changing Scenes in Your Town — do the new buildings fit in with their surroundings? So much money was spent preserving that old church but was it money well spent? Are there too few car parks or too many, should one be grassed over as a green space?

Political Parties have different plans for what they would do if elected. In another year or two you will have a vote to use. Which set of plans do you prefer for the future development of your area? Why do you prefer these to the others? Are they from the same party whose policy you like for the local schools, or the roads and the bus services? If not, how will you decide which way to use your vote?

The Choice is Yours — *Nuclear Power*, *Aid to the Third World*, *Modern Poetry & Drama*, *Advertising*, *Convenience Foods*... Etc Etc.

(3) Improve your Skill: Learn a skill that is new to you or extend an existing skill.

Here you must choose which of the Eight Points are included, since they are all possible, and many combinations of two or more. If this clause does not stretch your capabilities in any way — then your choice was too easy! Will you join a group of Rangers working on a project, an interest group for the Duke of Edinburgh Award Scheme, an evening class, a local club or society or seek a chance to go away and climb mountains or ski down them?

(4) Accept a Challenge: Plan and carry out an overnight expedition with two friends for a particular purpose.

Or Carry out an alternative expedition giving equal opportunity for adventure, enjoyment and resourcefulness.

First decide with whom you will share this challenge, then choose your purpose. That must be done before you can plan how to carry it out: is it to be a shopping expedition to London or Liverpool, followed by seeing the sights, a cycle ride to rub brasses in several churches, a dawn assault upon your local mountain or afloat on the river, a theatre visit to Stratford, staying at a youth hostel nearby, a country ramble to practise photography or a fitness challenge such as an orienteering competition?

Your plans should include maps, equipment, food, timetables, special needs related to the object of your expedition, safety considerations. The latter are vital for everyone else's peace of mind whilst you are away, and they may be crucial for your enjoyment of the expedition. Consult your Commissioner in good time about your plans and, if specialist help is needed for any aspect of your plans, she can point you in the right direction for that. Keep a log book of your project — to include the facts, your thoughts about it (both there and then and on reflection afterwards), quick sketches and/or photographs. You could even write a brief report and send it to **GUIDING** in the hope of seeing your name in print.



Looking Wider

So far in this series, we have focused upon the specific challenges which form the basis of the Young Leader's Scheme. Let us turn now to consider some other targets which you may choose to reach, and some openings for which you may be eligible, through your membership of The Girl Guides Association.



The Duke of Edinburgh's Award Scheme:

As a Young Leader you are probably the sort of person who enjoys taking some responsibility and following a variety of different interests and activities. If, for example, you play a musical instrument, help with Brownies and take some regular exercise, then you are already fulfilling three of the four requirements for the Duke of Edinburgh's Award.

This Scheme is designed for those between the ages of 14 and 25 years and is operated through youth clubs, schools, places of work and youth organisations, thus including both the Girl Guides and the Scout Associations. The aims are to encourage and stimulate the energies and enthusiasms of young people through a challenging programme of activities. The Award, which is widely recognised throughout the country, has three levels — *Bronze, Silver and Gold* — and for each of these the participant has to complete the requirements in four sections: *Service, Expedition, Skills and Physical Recreation*. For the Gold Award, there is an additional section requiring a residential qualification. If you are old enough, you may enter the Scheme directly for the Silver (age 15) or Gold (age 16) Awards.

The Award syllabus is not intended to be completed in a hurry and in the minimum possible time but to be enjoyed over a longer period. Thus you should not be deterred by the fact that there are now so many other demands upon your time, with exams possibly always around the corner. You can enter the Scheme at any time before your 23rd birthday, although most participants start the Silver and Gold Awards at age 16 or 17. Successful completion of the Young Leader's Scheme fulfils the Service requirement for the Gold Award, and completion of certain clauses of the Young Leader's Scheme fulfils the requirement for the Silver Award — but you can only count your training as a Young Leader once and you must be registered with the D of E Award Scheme before commencing any of the activities which you wish to count towards an Award.

If you are interested in finding out more about the Scheme, consult the Guide who is Duke of Edinburgh's Award Scheme Adviser within your Guiding County. If you do not know who that is, then ask your Commissioner or Young Leader Adviser to help you find out.

22



The Queen's Guide: (after 1st September 1983)

The new syllabus for this was printed in *GUIDING* (March 1983) from which you will have seen that the challenges completed for the Queen's Guide Award will represent a very considerable achievement. Before starting to work towards this goal, you must be recommended for it by your Ranger Unit if you are a Ranger, or otherwise by your Young Leader Group and Brownie/Guide Guide. This Group may be within a District, a Division or any appropriate area, depending upon how many Young Leaders there are within your County, so as to have between 10-20 Young Leaders in each area.

Guidelines and notes about the new syllabus, which is open equally to Rangers and Young Leaders, are now in preparation and so it would be premature to say anything further here. If you are interested in this challenge, you could start talking about it within your Young Leader Group now and planning what you might wish to do, but you must realise that your Young Leader Adviser will not have any new supporting material or resources to help you until after the Summer holidays and that you cannot start on the syllabus itself before September.

If you wish to aim towards both the Queen's Guide and the Duke of Edinburgh's Awards, you will find that several of your activities can fit into both syllabuses — but this will need very careful planning beforehand to ensure that the two different sets of requirements are both met in full.

Special Interest Certificates:

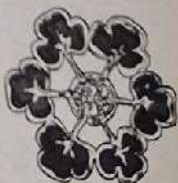
These can be obtained in a wide variety of subjects, of which the most popular ones, and those most generally useful within the context of Guiding activities are: *Ranger/Young Leader Camp Permit*: This will enable you to take charge of a small camp for Rangers/Young Leaders or for Guides of the Company with which you are working. Full details are in the booklet *Notes on Camps & Holidays* (1980).

Boating Permits: for rowing, canoeing, sailing — racing or cruising. There are many different permits for different types of boat, levels of expertise and difficulty of the area of water concerned. Full details are in the booklet *Notes on Boating & Holidays Afloat* (1982), which shows the correspondence between the qualifications of the recognised bodies, the BCU for canoeing and the RYA for sailing, with the Association's own Charge Permits.

Hill-Walker Certificate: This will show your knowledge and experience of walking in open country and provide a good foundation for the adult qualifications of the Mountain Leader Training Board or the three progressive stages of the Association's Walking Safety Scheme. There is a separate booklet about this scheme and the syllabus for the certificate is in the Ranger Handbook.

Life Saver Certificate: If you are aged 17 or over, hold this certificate (details in PQF) and keep it up-to-date regularly, you could be in great demand as a life-saver for many camps and holidays.

First Aid Certificates: The adult certificate, available to those aged 16 or over, from one of the nationally recognised societies requires a thorough knowledge of first aid and what you should do in case of an accident. (The Health & First Aid Certificate of the GGA, is for those aged 18 or over and it includes some basic nursing and knowledge of common childhood ailments in addition to the basic first aid.)



23

HQ NOTICES

The Association's Awards

Good Service

Laurel

Miss Joan Beryl Bates, Division Camp Adviser/Guide Guider, 7th Rochester, Kent West

Gallantry

Gilt Cross

Mrs Audrey Turner, District Commissioner/Guide Guider, 4th Faversham, Kent East
Mrs Turner was a passenger in a coach which was travelling along a motorway, when the driver suddenly fainted. With great presence of mind she stepped over him and regained control as the coach veered towards the fast lane. Thanks to her prompt action, the lives of many people were undoubtedly saved and the danger to other vehicles was also averted.

Greater London West

Fun Day

June 18th. 10.45-4.30.

at Heyswood, Portsmouth Road, Cobham (A3). Stalls, Sideshows, Swimming, Games, Fancy Dress (Alice in Wonderland Characters), Refreshments, Scout Band. Admission 10p. Parking free.

International Scout & Guide Club Dates 1983

(Club meets at B-P House each Monday at 7.45 pm).

June 6th The Battle Of Waterloo took place on 18/6/1815. Tony Burton is our guide in history.

June 13th The Vikings Are Coming! The Norwegian Vikings this time, introduced by Wendy Cotton.

June 20th International Dance by Wendy Cotton. Join in this exciting mid-summer dance. Refreshments, courtesy of Club-

committee, brings the first half of this year to a pleasant end.

June 27th Polish Evening — by Jan Wenzel, our resident Pole.

July 4th Independence Day B-B-Q at Olave House.

Important Announcement

In order to dispel any possible rumours, there will be no changes in uniform to coincide with forthcoming changes in the Programme. We shall be grateful if all Guiders and Commissioners will spread the word as quickly as possible.

Alnwick Craft Weekend

14th-16th October 1983

This weekend in Alnwick, Northumberland, is for Guiders of all Sections who wish to learn new craft skills and pass on their knowledge to other Guiders in their

home area. Although mainly residential, there are a limited number of places for day trainees. For further information and an application form send an SAE to the Training Secretary, Programme and Training Dept, The Girl Guides Association, 17-19 Buckingham Palace Rd., London SW1W 0PT. Applications must be returned after completion by 5th August.

Catholic Guide Guild Annual

Parade and Mass

Sunday 26th June 1983 at St George's Cathedral, Southwark

Rehearsal for Colour Parties and Readers at the Cathedral at 1.15 pm. Brownies and Guides should assemble at 2.15 pm. Mass at 3 pm. For further details write to Miss M Crayford (Honorary Secretary), 34 Rodway Road, Bromley, Kent BR1 3JL.

Heraldry (27)

Two more standards from London & South East England

Middlesex East — standard designed by Mrs Kathleen Thomas and worked by Miss Joan Ewing. It was dedicated on 29th November 1970.

Azure — a trefoil Or for Guiding, the badges of Greater London and Middlesex, in chief an heraldic fountain (a roundel barry wavy Azure and Argent) bordered Gules for the River Thames, thereon a torteau (a roundel Gules) bearing a Saxon crown Or for Greater London, in base a lozenge Gules, 3 seaxes proper hilts and pommels Or and in chief a Saxon crown Or.

The Motto Band — of the field, fimbriated and lettered Or.

The fly — at fess point a fire proper representing the flame of friendship, between in dexter chief a Paschal Lamb Proper for Barnet, in sinister chief 2 seaxes in saltire Proper, hilts and pommels Or enfiled through a Saxon crown Or for Brent; in dexter base eight rays of lightning issuing from a centre point Or and in sinister base an enfield rampant Gules for Enfield. All bordered with a fringe Azure and Or. (An enfield is an heraldic monster having a fox's head and ears, a wolf's body, hind-legs and tail and eagle's shanks and talons as its forelegs).

Brenda Hughes

London — Over-The-Border — dedicated 12th June 1954.

At the hoist — Azure a trefoil Or for Guiding; Gules the County badge of London, The White Tower of London above a bar wavy Azure bordered by two barrulets wavy Argent for the River Thames.

The fly — per fess Azure and Or, the orb Proper on a cushion Azure (as the standard was dedicated within the year of the coronation) above the representation of the River Thames which is continued through to the Motto Band.

The Motto Band — counterchanged with the field Or and Azure lettered Argent.

In fess point — a roundel ermine for East Ham thereon crossed croziers Or for Barking, between in dexter chief a ship in full sail Proper for the docks of West Ham, in sinister chief a bunch of grapes Proper for the Hampton Court vine which came originally from Ilford, in dexter base a manche Gules (sleeve) for Walthamstow and in sinister base a lion rampant Gules for Leyton. Both these last two symbols are derived from the arms of the one-time Lords of the Manors of Walthamstow and Ruckholt. The latter passed into the hands of the Wellesley family, prominent citizens of Wanstead.



GREAT SUMMER BARGAINS

£10 FREE TO SPEND ON EQUIPMENT WHEN YOU BUY THE VOYAGER MK5

NO-HASSLE
2 YEAR
GUARANTEE
ON ALL OUR
TENTS



VOYAGER MK5 FAMILY TOURING TENT

A giant size tent giving frame tent size at touring tent weight. Lots of space for the average family at a very affordable price, and now with this £10 voucher as well. Inner tent dimensions: 8' 2" long 8' wide and 6' 3" high at the front. Weight 18lbs (8.2Kg.) and the flysheet extends 6' beyond the inner.

£79.95 ONLY

LIMITED OFFER UNTIL 31ST AUGUST 1983

ENJOY YOUR HOLIDAY
THE EASY WAY!
ONLY £8 PER MONTH
ON OUR BUDGET A/C.

A.P.R. 30.6% ASK FOR WRITTEN DETAILS.

VOUCHER

CAN BE USED AGAINST ALL OTHER PURCHASES AT NORMAL RETAIL PRICES
WHEN PRESENTED WITH A VOYAGER GUARANTEE CERTIFICATE. VALID UNTIL 31ST AUGUST 1983.

£10

WHEN YOU BUY A VOYAGER MARK 5 TENT

OFFICE
USE ONLY

DATE
REDEEMED

GOODS
PURCHASED

CAMPING & OUTDOOR CENTRE

HURRY AND TAKE
THIS VOUCHER
TO YOUR LOCAL
CENTRE OR POST
WITH YOUR ORDER!

START AT OUR CENTRES!



CHIEFTAN 200

Ideal for one adult or two children. Nylon flysheet and door. Viscose inner and polyethylene groundsheet. Length 6'2" + 12" shaped and Width 4'3". Height 3'3". Weight 7 1/2 lbs (3.4 kg).

£24 ONLY

EXCLUSIVE TO CAMPING & OUTDOOR CENTRE



RAMBLER 240 TENT

Nylon flysheet and door. Viscose inner and polyethylene groundsheet. Length 6'2" + 12" shaped and Width 4'3". Height 10'6". Weight 10 lbs (4.5 kg).

£32 ONLY

NO-HASSLE 5 YEAR GUARANTEE

RAMBLER 240 EXTENSION **£14 ONLY**



CAMPARI CYCLIST MINI PACK TENT

Ideal for one person. Only 5 lbs 2 1/2" high. 4'6" wide. 7' long. A low single skin tent with P.U. coated roof panels to prevent heat reflection.

£19 ONLY

NO-HASSLE 2 YEAR GUARANTEE ON ALL OUR TENTS

HIGHDOWN SLEEPING BAG

A really super down and feather sleeping bag with 70% pure down and 30% soft feather. Above average size with nylon outer and cotton inner.

£49 ONLY

EXCLUSIVE TO CAMPING & OUTDOOR CENTRE



TELEMARK SLEEPING BAG

BY SNUGGLEDOWN. NORMAL PRICE £29.95. Three season bag. 10'2" long. Nylon outer, viscose inner. Full length zip. Temperature range +25°C. to -5°C.

£26 ONLY

EXCLUSIVE

GIPSY BOOTS

Leather P.U. bonded upper and injected sole. Made in Italy.

£21 ONLY

UNBEATABLE VALUE SAVE £3

NEW for '83

SAVE OVER £9 ON THE RRP

TILLEY TITAN

A strong yet slim two burner and grill stove with legs that tuck away for easy carriage and storage. Comes with grillpan.

£29.95 ONLY R.R.P. £39.30

SAVE OVER £9 ON THE RRP

TILLEY TROJAN

A high pressure, lightweight, compact double burner stove. Tilley quality at an economical price.

£19 ONLY

EXCLUSIVE

TRAMP BOOTS

Tough, extra light. Padded tongue and leather cuff. Made in Italy.

£32 ONLY



OUR EXPERT STAFF ARE ALWAYS READY TO GIVE ADVICE TO ENSURE YOU CHOOSE & USE YOUR EQUIPMENT CORRECTLY!

THE ORDERING SERVICE. 0800 700021. CREDIT CARD. CASH ON DELIVERY.

MAIL ORDER UP TO £25 P&P £1.50 OVER £25 P&P £2.50. To order by post send money, credit card name and no. cheque P.O. to: CAMPING & OUTDOOR CENTRE, FREEPOST, CHURCHILL INDUSTRIAL ESTATE, LANCING, WEST SUSSEX BN15 8UG. Allow up to 14 days for delivery, goods returned unused. After 7 day trial period, money refunded immediately. All goods subject to availability. Prices apply to UK only. Most branches have a complete Guide and Brochure department. Suppliers of the total Scout and Cub range of uniforms, insignia, flags, accessories and trophies. The Retail Division of Scout Shops Ltd.

camping & outdoor centre OVER 10 YEARS CAMPING EXPERIENCE. THE OUTDOOR LEISURE SPECIALISTS.

BRANCHES AT: LONDON 27 Buckingham Palace Road, SW1. Tel: 01 834 6007. CITY 124 Newgate Street, EC1. Tel: 01 606 7277. HARROW 104 Hendon Road, Tel: 01 427 3808. BIRMINGHAM 62 Frew Street, Tel: 021 643 0805. BOURNEMOUTH 163 Old Christchurch Road, Tel: 28297. BRIGHTON 24 St. James Street, Tel: 644281. CROYDON 37 39 St. George's Walk, Tel: 01 688 1730. IPSWICH 7 9 Tackett Street, Tel: 54704. LEEDS 62 The Headrow, Tel: 457273. MAIDSTONE 2 4 Granada House, Gabriels Hill, Tel: 0622 63008. MANCHESTER 12 14 St. Mary's Gate, Tel: 061 835 1016. NOTTINGHAM Broadmarsh Shopping Centre, 2324 Sanners Walk, Tel: 526036. OXFORD 17 Tull Street, Tel: 247110. PETERBOROUGH 97 Bridge Street, Tel: 61000. PLYMOUTH 4 6 Royal Parade, Tel: 662614. PRESTON 73 Miller Arcade, Tel: 50242. SUTTON COLDFIELD 16 Birmingham Road, Tel: 021 254 3881. WOLVERHAMPTON 40 Queen Street, Tel: 27012. WORTHING 20 22 Brighton Road, Tel: 32026. YORN 10 Dargygate Centre, Tel: 53567. AND IN SCOTLAND: ABERDEEN 20-24 George Street, Tel: 01224 637773. EDINBURGH 77 South Bridge, Tel: 031 225 3339.

OVERSEAS

NEWS

A Visit to Denmark— by Frances Parrett, Leader SW England Party July 1982



A small party of twelve; ten Guides and Rangers and two Leaders was the delegation from SW Region of England to Denmark's YWCA National Camp which was held in a small village called Englerupgaard near Ringsted. The village was totally swamped by the invasion of Danish 'spejderes' — there were 10,000 campers on a site that could be measured by miles rather than metres and needless to say the organisation had to be superb for such a population. It was more than superb; the mammoth task of providing facilities for Denmark's entire spejdere force had been undertaken with the efficiency of an army's military expertise. Water had been laid above ground, huge loo and shower blocks built, and in the central area there was a bank, post office, supermarket, huge spejdere shop, doctor, camp police, coffee bar and restaurant.

An extraordinary quantity of pine trees

had been provided for pioneering (has someone lost a pine forest?). Each Unit had constructed its own dining table — using tripods that stretched 8 to 10 feet into the sky and each district had a large impressive gateway. Each subcamp had a look-out tower for the bugler to use twice a day and an ultra-modern arrangement of poles as their own church and gathering.

Food was distributed centrally from each subcamp; each Unit cooked its own meals on wood with an endless variety of cooking fire arrangements.

The theme of the camp was Energy — man's use of the world's resources and his own personal potential. There was an activity-filled programme interspersed with vast, extremely professional camp-fires and services. Denmark was experiencing a heat-wave all the time we were there.

The camp was honoured by a visit from Princess Bene-

dikte and all the International leaders were invited to a reception to meet her. She was very informed on the subject of British Guiding, spoke excellent English and I was thrilled to be able to talk with her.

The Danes are warm, friendly people, and their songs tend to be rather hearty, loud and in unison and the camping capabilities of all the spejderes was very impressive.

The camp finally ended, and poignant goodbyes were said amid the flurry of striking. We still had an-

were treated royally; I personally had an insight into Danish farming and fell in love with the Danish countryside and culture. After a final day in Copenhagen — seeing 'the sights' — we flew back to Heathrow feeling that we had left behind a lot of very good friends. Our first taste of world Guiding had been exciting; the warmth of the sisterhood of Guiding had permeated our experiences and filled us with enthusiasm. The badge and address exchanges were but a



Two Danish spejderes finish off their washing-up gadget.

other 10 days to spend in Denmark however, so our packing up was prelude to a journey to the small island of Falster. The spejderes of Falster had been our hostesses during the camp and took us back home with them. We

token of the real genuine feelings felt by everyone at that camp — the hand extended in friendship seemed possible for the world, not just those 10,000 young people at that particular time at that specific place.

OVERSEAS

NEWS

Thailand — 1982

On the occasion of the 25th Anniversary of Guiding in Thailand, the United Kingdom sent a party of eight Guiders and one Ranger to take part in the celebrations. They were: Miss Christine Martin, Middlesex East; Mrs Jill Jones, Essex West; Miss Nicola Care, Norfolk; Miss Jane Cox (Ranger), Newcastle upon Tyne; Miss Sheila La Riviere, Dorset; Miss Christine Marvin, Western Isles; Miss Lynne Ralph, Humberside North; Miss Angela Sammons, Greater London West; Miss Helen Shuttleworth, Lancashire East.

We left London Airport on a typical November day. The fog kept us on the ground for three hours after our scheduled departure time. Eventually we were off, all a little apprehensive at the prospect of camping in a country so different from our own. The flight took twenty hours, and we were unable to get off the aeroplane until we reached Bangkok. There the heat hit us.

We were able to spend three nights in Bangkok before going on to the camp at Sri Racha, about 140 kilometres south. This gave us a chance to recover from 'jet lag' and get used to the heat.

The site is a permanent one which covers several acres and belongs to the Boy Scout Association of Thailand. Owing to traffic delays we arrived, along with the delegations from Australia, New Zealand, Japan and the United States, only just in time for the opening Ceremony, where the Camp Director and the Minister of Education made speeches of welcome — the only problem was that it was all in Thai! (We were given a transcript later.) The flags of the twelve participating countries and the World Flag were raised as we all sang the World Song.



We were put into our sub camps and met the people with whom we would be sharing the next six days.

Camping in Thailand is very different from the UK. Can you imagine erecting a mosquito net every night and sweeping out the ants before putting down the bedding? In November and December rain is scarce, but we did have a typical English deluge, but no kagoules were needed as everything dries very quickly.

The kit list we received before leaving home had suggested we bring a swimming suit and a bathing costume. We all decided that they were the same thing and that it was a typing error. We were soon to discover that they are quite different. A swimming suit is self evident, but a bathing costume is what you use to bath — or shower — in. It is a length of cloth which is wound round the body. You then go to the bath house where there is a large concrete bath full of water, and, using a silver bowl as a ladle, you pour water over yourself. The camp site became a mass of washing lines where 'bathing costumes' hung to dry.

One of the big shocks was the short time the Guides slept. Often the evening activities went on until 10.30 pm or later, and yet the girls were all expected to be up for exercise at 6.00 am. Throughout the night they took it in turns to do guard duty, so rarely did the leaders get longer than a two-hour stretch of sleep.

The Thais were very aware that we couldn't manage rice at every meal and did their utmost to provide food we could enjoy. Nonetheless we ate some strange things. Perhaps the biggest surprise was on the day when we opened our packed lunch boxes to find bacon and egg — and rice, of course. It was all cold but very palatable.

The six days were packed with activity, culminating in the celebrations with fireworks on the last evening to honour the King's birthday, and to celebrate the Silver Jubilee of Guiding in Thailand. From camp the International party went to stay at the Naval Base at Sattahip Bay. We were not expecting the luxurious accommodation overlooking the sea. The Navy laid on entertainment and a pleasant boat trip around Sattahip Bay, which included a lunch break at Pra Island, the SEAL Unit Base (Sea Air and Land Unit). Here some of our party went scuba diving.

Then we returned to Bangkok and

spent two nights with our host families. During the day we were taken to see all the sights, including a visit to the Grand Palace. While there we were allowed into chambers not normally open to the public; one more indication of the special privileges we were afforded throughout our stay.

Later that day all the International visitors had the honour of being presented at Court to the Princess Chulabhorn, the King's youngest daughter. Each delegation presented her with a small gift. We decided to give her one of our red neckerchiefs, on to which we had sewn our nine county badges.

Two more days finishing our shopping brought this memorable trip to an end. We have learned a great deal, and we hope that we have given something in return by teaching our crafts and by passing on ideas we use in camp at home. We have made many friends from around the World: from Finland to New Zealand, from Taiwan to the USA.

The Thai people made us most welcome and taught us a great deal. The Guide Movement in Thailand has established training centres around the country to educate girls in various crafts. The goods they make are marketed through the Association Headquarters in Bangkok. The Movement is also involved in a project to help slum areas around the capital. There is a great deal of poverty in Thailand, and it is good to know that the Guides are helping in practical ways. We have much to learn from our Thai sisters, and we feel privileged to have had the opportunity to share their Silver Jubilee Celebrations with them.

Sheila La Riviere



SOLD
POSITION FILLED
LEAD
WINNER

CLASSIFIEDS



EMPLOYMENT OFFERED

Job opportunity at Our Cabaña — PROGRAMME DIRECTOR. Salary range \$6,600.00 — \$10,800.00 Dtls. Guaranteed in USA Dtls. Plus room and board and travel expenses. Our Cabaña needs a Programme Director starting January, 1984. The Programme Director is responsible for the planning, directing and supervising of the Programme Activities at Our Cabaña. **Qualifications:** 1. Be at least 25 years of age in good health; 2. Experienced in working with teenage girls and adults; 3. Have administrative experience; 4. Have knowledge of programme ideas and training techniques as well as ability to develop creative programmes; 5. Be able to speak and write English. Some knowledge of Spanish desirable; 6. Be an active member of the Girl Guide/Girl Scout Movement; 7. Have knowledge of First Aid; 8. Be willing to reside at Our Cabaña except when on vacation; 9. Minimum contract two years. **How to apply:** Write directly to Miss Maria Laura Avila, Guider-in-Charge, Our Cabaña, Apartado Postal 406, Cuernavaca, Morelos, Mexico. Applications and reference forms will be sent upon request. Applications must be submitted with signature of Council President/Executive Director, or State/Provincial International Commissioner. All applications must be received at Our Cabaña by November 1st, 1983.

FOR SALE

Waterproof materials, fibre-pile, prequilted duvet materials by metre. Largest range available for outdoor gear. SAE samples, Pennine Outdoor, Holmbridge, Widdersfield.

Pipe Cleaners, Bran Toys, Balloon Race equipment. Ring Brighouse (0484) 719298 for stock list.

Towels direct from manufacturer. Sheets, pillowcases, etc. 33% profit from selling below shop prices. Send stamped addressed envelope for list. East Lancashire Towel Co, Park Mill, Barrowford, Nelson, Lancs BB9 6HJ.

FUND RAISING

**top quality ball pens
diestamped with
30 GOLD LETTERS
£4.37 per 100 VAT paid**
Standard charge p&p £1.15
ORDERS DESPATCHED
SAME DAY

Sales or return — Full Refund on Pens returned — Coloured Brochure on Request — Pencils also available — Supplied to the U.K. only. Min. order for pens 300.
Diaries also Available
ABBIEY WHOLESALE
974-976 LONDON ROAD,
TRENT VALE,
STOKE-ON-TRENT, ST4 5NX

Fund Raising. Soap and sponges with your badge make useful Fund Raisers. Soaps with any personal names also make acceptable gifts, all despatched within 7 days of order. Send for free brochure: Home Concern Ltd, Freepost, Alexandria, Dunbartonshire G83 8BR.

At least 200% Profit on your outlay with our quick selling range of imprinted pens and other easy sellers. 12 1/2p stamp for catalogue and sample. J A & V Jeffers, Aston Clinton, Bucks. (Tel: Aylesbury 631345.)

Printed Teeshirts and Sweatshirts. British teeshirts £2.25 and sweatshirts £5.25 all sizes, screen-printed with your Company/Pack name, number and our Guiding or Scouting motif free of charge under our special 'Guiding and Scouting Schemes'. For full details, write or telephone to Karyn Myers, Printemps Ltd (The School Specialists), Turpins Yard, Oaklands Road, London NW2 1YB. Tel: 01-450 9588.

Badges! Badges! Badges! — embroidered, printed, all kinds — produced to YOUR design. Send rough sketch for quotation to the friendly specialists: Webb-Tolley Ltd, 11 High Street, Halesowen, Midlands.

FUND RAISERS

Soft Toys & Gifts
Football & Toys
Full Sale or Return
Wholesale Prices
Pay After Event

**SEND FOR FREE
BROCHURE TO
V. WEBSTER**

HARFREYS IND. ESTATE
GT. YARMOUTH
NORFOLK
NR31 0LU
Telephone (0493) 51111

Sale or Return. Offering 100% profit on cost. Costume Jewellery parcels sent post-free without obligation. Ideal fund raisers. Details: Caritas Jewellery, 356 Uxbridge Road, Shepherd's Bush, London W12 7LL.

Advertising Pencils. Ball Pens, Combs, Diaries, etc., gold-stamped Company name. Raise funds quickly, easily. Bran Tub Toys, details: Northern Novelties (GG), Spencer House, 26/28 Spring Gardens, Bradford BD1 3HE.

Attention Brownie Guiders! Totems (Toadstools) available. Red tops with white spots in fibreglass, 18ins high with detachable tops £15.60 each plus £1.70 p&p cash with order. From: T G Higgins, Spread Eagle, Rishworth, Sowerby Bridge, West Yorkshire. Tel: 0422-823655.

Dolls for Dressing, wood balls, novelties etc. Send large 16p SAE for stock list. D. Glover Ltd, GD831, Branholme Mills, Bailiff Bridge, Brighouse. 0484 719298.

Bran Tub Toys and many carnival lines. Send 16p large SAE for stock list. D. Glover, Dept GD 832, Branholme Mills, Bailiff Bridge, Brighouse.

Printed Yellow Dusters for fund raising (minimum 50). Stock designs illustrating Birds, Horses, Musical Instruments, etc (minimum 300, can incorporate your wording). Details Geo. O'Brien Baker Ltd. (Dept 200), 4-6-8 Tapster Street, Barnet, Herts. Tel: 01-449 2424.

Ridge Tents. New, direct from manufacturer. 11ft x 7ft x 8ft 6in high. Walls 3ft. Zip door. Mud walls, £90. Also 9ft version of above tent, £72. 14ft version of above tent, £114. Top quality materials 7 1/2 oz. Toilet Tent, £25. Wash Tent, £29. For brochure, telephone 01-445 6253.

Fund Raising. Free sample silver-plated cage pendant with real amethyst with every enquiry. We can supply on sale or return approximately 100 low-cost items of our attractive semi-precious gemstone and silver jewellery. High profits with no capital outlay. Pay only for what you sell. Thousands of satisfied customers. Send for details and sample enclosing two first class stamps. Gemstone Products, Dept G, PO Box 51, Paignton, Devon.

GUIDERS WANTED

Experienced Guider requires help for Pack Holiday at Boreham Wood, Hertfordshire, 23rd July to 29th July. Mrs Burbridge, 77 Westwood Drive, Little Chalfont, Bucks. Telephone 02404 5176.

QM required Pack Holiday Bedfordshire August 20-27. Box No 85.

CAMPING/HOLIDAYS

Canal Adventure Cruises aboard our fleet of 12-berth, skippered camping or luxury standard narrow boats. Some of our skippers are qualified life-savers. You need to bring just sleeping bags and food. WFB Co, 149 Hollyfast Road, Coventry. 0203-33-4228 or our base on 092-681 2093.

Ride/Activity holiday, 7-17-year-olds, special party rates, weekends. Brochure Hantbury Riding Centre, Bishops Frome, Worcs. Tel. Bosbury 312.

Outdoor Pursuits. Canoeing, Rock Climbing, Mountain Walks, Pony Trekking, Orienteering. All equipment provided. Fully qualified and insured. SAE Mike Scott, Croeso, Belgrave Road, Fairbourne, Gwynedd. Tel. 0341 250613.

SOLD
POSITION FILLED
LET
WINNER

CLASSIFIEDS



Felin Bach (Caernarfonshire County Camp-site), Caeathraw, Gwynedd. Large un-equipped camping area, for Guides and Rangers, and indoor accommodation in 2 hostels for Pack Holidays, or handicapped Guides in one. Available all year round. Snowdonia National Park half a mile: climbing and hill walking. Late Bookings. Still vacancies (camp and holiday). Felin Bach, M. Wales. SAE Mrs P Jones, Bryn Meurig, Celyn Avenue, Penmaen-mawr, Gwynedd.

Cruise the Kennet & Avon navigation. Exciting, inexpensive cruises aboard 12-berth narrowboat. Learn boat handling from experienced supervision. Also, 6-berth self-steer narrowboat. Weekend, short or long bookings. Brochure: Bristol Narrowboats, 4 Whitland Avenue, Bristol BS13 9QQ. Tel: 0272-641075.

Come camping on the canals — Charter a traditional narrow boat, fully fitted to accommodate 12 people in camping standard; 24 per 'pair' of boats, with first-class skippers to make everyone's holiday really enjoyable. Or self-drive a luxury 4- or 6-berth. Full details from: Foxton Boat Services Ltd, Bottom Lock, Foxton, Market Harborough, Leicestershire. Tel: Kibworth 2285.

Cornwall, Georgian Farmhouse. Close coast/Helford River/Falmouth. Home of Guide providing Bed/Breakfast/Evening Meal. Children and pets welcome. Mawnan Smith 250 260.

Holiday House — near Southport. Equipped, sleeps 21, Suit Brownies, Guides, Rangers, handicapped. SAE foolscap to Mrs Chester, 202 Fleetwood Road, Southport, Merseyside.

Dinard / A Scout Hostel (Brittany), 8 Boulevard L'hotelier, would welcome Guide parties or individuals all the year round. Five mins from the sea and shopping centre.

Adventure Holiday for 13/16-year-olds 13th/20th August 1983. Full board, multi activity Course. Round the clock adult supervision. Adventure activities with qualified and experienced instructors. Only £90. For full details write to: Mountbatten Adventure Programme, 'Newlands', Machynlleth, Powys, Wales.

Adventure Holidays. House available for self-catering. Maximum 45. Open all year. Dormitory accommodation. Suitable school parties, uniformed groups, fieldwork, self-programming groups. Brochure available: 'Newlands', Machynlleth, Powys, Wales. Telephone 0654 3166.

Lake District Group Holiday Accommodation: Troutbeck, Windermere, Cumbria. Troutbeck School accommodates 24 people on a self-catering basis. Dormitory for 20 and two staff rooms, dining room, fully equipped kitchen, central heating. Open all year. £2.50 per person per night — minimum charge £35.00. Please write for full details to: The Secretary, Troutbeck Charitable Trust, 14 Church Street, Ambleside, Cumbria.

Cornwall — Comfortable 4-berth caravan. Helford River area. Secluded site. Private woodland. Tel: 0326-40752.

South Devon, Topsham Bridge Bed/Breakfast/Evening meal. Fishing available on farm. Children and pets welcome. Smith, Loddswell 586.

Cumbria. Fully equipped 4-berth caravan to let, Crosby-on-Eden 318.

Survival Training — Suitable for leaders of small groups to wilderness places at home and abroad. SAE to Wessex Expedition & Survival Training, White Horse Hotel, Exford, Somerset. Tel Exford 560.

Six-berth Caravan, farm site, Yorkshire Dales/Lake District area. Tel: 0587 20440.

'Our Chalet', for details of low cost inclusive arrangements to the International Guide Centre at Adelboden, contact the official agents, YHA Travel, 14 Southampton Street, London WC2E 7HY. 01-240 5236.

Isle of Man. Adventure training 9 to 15 yrs. Coast, mountain, pioneering based activities. No experience, equipment reqd. F/Board accommodation in converted farm, up to 42 and 8 leaders. This maximises time for 40 offered activities. Ideal Guides, Rangers. Free Colour Brochure from Venture Centre, Maughold, Isle of Man 0624-814240.

Ex-Guider offers reduced holiday rates for Movement members at Springvale Hotel, Seaview, Isle of Wight. On sea front overlooking Solent. Brochure available.

Alderney, the unspoilt Channel Island. Small Guest House offers escape to tranquillity and friendship. Farm Court, Alderney, C.I. 2075.

EDUCATIONAL

Write and Sell Children's stories. Mail tuition. Sales assistance. Free booklet: Children's Features (G), 5/9 Bexley Square, Salford, Manchester M3 6DB.

INSURANCE

CAMPING EQUIPMENT INSURANCE

Annual insurance cover for Guide equipment, whilst in store, transit or in use. Premiums from £7.00. Apply for details to:

Fennel Turner and Taylor Limited
107 Brighton Road,
Coulson, Surrey.

(Telephone 01-868 0035)

YOUR DESIGN PRINTED

ON HIGH QUALITY

T-SHIRTS & SWEATSHIRTS

English made guaranteed will not shrink

Also EMBROIDERED SWEATERS & SWEATSHIRTS

Send for FREE colour guide and price list now.

THE SUSSEX T-SHIRT COMPANY

FREEPOST, Littlehampton, W. Sussex BN17 5BR

Tel (09064) 7298 & 23843 (no stamp required)



The Girl Guides Association takes no responsibility for statements made in any advertisement here or elsewhere in the magazine, or for any subsequent correspondence in connection therewith. The right is also reserved to refuse any advertisement not considered suitable. Advertisements for the sale of secondhand clothing cannot be accepted (except uniforms). Uniforms for sale should not be sent to CHQ, advertisers receive communications from applicants. **ALL COPY MUST BE RECEIVED BY 17th OF THE SECOND MONTH PRECEDING PUBLICATION (eg 17th JUNE FOR THE AUGUST ISSUE). ALL CHARGES 25p per word, BOX NUMBER £1.00 extra. PLEASE SEND REMITTANCE WITH ADVERTISEMENT TO: Miss A M Martin, Advertisement Manager, The Girl Guides Association, 17/19 Buckingham Palace Road, London SW1W 0PT. 10% discount for series of 12. To reply to a Box Number, address your envelope to Box Number concerned c/o GUIDING. Please enclose SAE when replying to Box Numbers.**

NEW LOOK

PROJECT

Adopt & Cherish 83

There are 8 hundred thousand of you and 8 hundred million untidy corners of Britain waiting for your broom, shovel, pick or hoe. All you have to do is 'adopt' a piece of your local environment and 'cherish' it, this year and preferably for the next few years. Last year saw the conversion of a car park into a beauty spot by Brownies; restoration of polluted watercress beds for commercial production by Rangers; clearing, tidying, planting, restoring - graveyards, ponds, rivers, wasteland. Your project can be large or small - a telephone box or a village green. What does your community need? If you would like to make it a more Beautiful Britain in 1983 read on for Adopt & Cherish New Look: Lloyds Bank are again sponsoring New Look Adopt & Cherish with -



Special Prizes for an exciting new Logbook Entry - to stretch the imagination!
More Prizes Totalling £5,120
Badges for all
For 'New Look' parts 1 and 2 - read on:

Part 2 - Logbook

A New Look Britain needs you to ask why, not just how. Why do people spoil it all? 100 years ago what did your town/village look like? Have you spoken to the oldest person in your town/village; the librarian, district nurse or social worker - collected samples of your local stone and wondered how it all began? Marks will be given for research and artistic content and there is a special Essay writing competition. For these and other exciting plans we have lined up for your Logbook enter New Look Adopt & Cherish '83.

Part 1

- unit entry (as previously, pack/company/unit)
- group entry (patrol, six, ranger group)
Where only a few members of a unit wish to take part or where several patrols all wish to do separate projects as smaller groups.
- 'Cherish' entry (for 'cherishing' projects begun in 1981/82)

HOW TO ENTER Fill in the coupon and send with a stamped (32p) & self addressed envelope.
 measuring at least 12" x 8½" to: **Publicity Department**
(Adopt & Cherish Project) The Girl Guides Association,
17-19 Buckingham Palace Road, London SW1W 0PT

You will then receive a project sheet,
 posters, information and guidance leaflets
 on Project Sheet and Logbook entries
 together with your free badges.

..... ✂

Name of Guider

Address

Tel no

State category (pack/company/unit) (patrol/six/Ranger Group)

Guide County

Country/Region

GRAPEVINE



With a Little Help

A new film explains the work of two of the Church of England Children's Society's Family Centres. 'With a Little Help' demonstrates how the problems of children and families living on estates usually labelled as dumping grounds can be tackled through centres which respond to the strengths of the community.

Unemployment, delinquency, vandalism and isolation can destroy family life. The Children's Society's Family Centres aim to prevent family break-up to support each member and to encourage both mutual and self help. No child can be treated in isolation from its family or environment, so it is vital for centres to become part of everyday life.

As one of the project leaders says very clearly in the film: 'Happy families make happy children'. And that's what The Children's Society aims for.

The film, which the Society loans free, is 16mm full colour, 18½ mins, and is available from **PR Department: Church of England Children's Society, Old Town Hall, Kennington Road, London SE11 4QD, 01-735 2441.**

New Concept in Personal Safety

The Lifesaver Personal Beacon from Harrier Marketing Ltd is a new concept in signalling equipment and of particular interest to those concerned with personal safety.

The lightweight British-designed unit consists of an internationally recognised strobe beacon combined with a map reading/torch light. The strobe light flashes at two second intervals for up to seven hours, emitting a powerful beacon three hundred times stronger than an electric torch.

Visible to the naked eye at half a mile, the distance extends to two miles with binoculars. For practical reasons, the map light is separate from the flash unit. Smaller than a man's hand, the Lifesaver Personal Beacon has an impact resistant

case and built-in strap to carry it on the wrist or belt, leaving both hands free. The waterproof lamp will float if it is dropped into water, and also has a built-in magnetic plate which enables it to be attached to a vehicle or a rucksack frame.

The Lifesaver Personal Beacon is an indispensable piece of equipment for clubs, societies, organisations and individuals who participate in outdoor sports or activities where personal safety is a risk factor. It is available from retailers at approximately £13, or direct from **Harrier Marketing Limited, PO Box 1, Crofton, Wakefield, West Yorkshire WF4 1UZ.**

Craft Competition To Help Blind Children

Get your knitting and sewing needles ready because this year's Sunshine Fund craft competition is now open and entries must be received by **5 September**. All entries will be considered as donations and once judged, put on show at the Royal National Institute for the Blind at 224 Great Portland Street, London, and sold to raise money for the blind children in RNIB's Sunshine nurseries and schools.

The competition has four categories for craft work — *soft toys; knit and crochet; stitch and sew and tapestry and macrame*, with three age-groups. First, second and third prizes will be awarded for each category in the adult and senior citizen sections and three overall prizes for the under 16 age-group.

Last year's winners included an embroidered picture, a matinee jacket, hen with chicks, a Victorian doll, a beautifully dressed rabbit, and the overall prize went to the maker of an exquisite Fair Isle jumper.

Entry is free; entry forms and further information are available from the **Sunshine Fund Craft Competition, 224 Great Portland Street, London W1N 6AA.**



Facilities for the Disabled and Visually Handicapped at National Trust Properties

Each year the National Trust provides more facilities for the disabled and visually handicapped at its properties. The publication named in this heading is the Trust's annual booklet on the subject. About 50,000 of these free booklets

are distributed every year.

Facilities for disabled visitors at the Trust's houses and open spaces are both practical and imaginative. Ideas range from improving existing facilities, including wheelchair access, and supplying more wheelchairs, special lavatories and ramps at properties, to building bird hides for disabled bird-watchers, installing wheelchair walkways to beauty spots and viewpoints and at some properties, providing scented flower arrangements when visually handicapped visitors are expected.

The Trust now has about a dozen Braille guidebooks — and some taped commentaries for the visually handicapped are available; notably at Cliveden Garden, Buckinghamshire, and at several properties in Northern Ireland.

Guided tours for the visually handicapped are organised at Murlough Nature Reserve, Northern Ireland, and a nature trail for the disabled has been opened at Ebbor Gorge, Somerset.

At Clumber Park, Nottinghamshire a fishing platform has been remade to incorporate a concrete ramp and raised rail sides which permit safe fishing from a wheelchair; and at the Giant's Causeway in Northern Ireland a bus has been fitted with a special wheelchair hoist.

The Trust will continue to improve, extend and add to these facilities; it is determined that every effort is made to encourage and welcome disabled and visually handicapped visitors to as many of its properties as possible.

Copies of 'Facilities for the Disabled and Visually Handicapped in 1983' are available, free, on receipt of a stamped addressed envelope (not smaller than 8½ x 4½ in). The booklet should be used with the annual 'Properties Open' booklet, which can be obtained by sending 60p (including 25p postage) to: **The National Trust, 42 Queen Anne's Gate, London SW1H 9AS.**

The Responsible Society

Set up in 1979, the Society consists of people who are concerned about the damage being done to human dignity, welfare and happiness by the mis-use of new social freedoms — particularly the exploitation of sex.

Readers can help the Society by becoming a member at a minimum annual subscription of £5.00. Those who cannot afford this sum can become supporters for a minimum of £1.00 a year. Schools and other institutions can become Associate members for £7.50 or £15.00 per annum according to size.

The Society will enable you to perform an educational role among your family or within the Guide or Ranger Unit by passing on the results of their research, together with informed opinions of medical and social workers. Leaflets published by the Responsible Society in-

continued on page 50

WE DON'T LIKE YOU

missing out on the chance of winning a prize in our **SUPER "WORD BUILDING" COMPETITION**. It needs a fair degree of intelligence, which makes it ideal for a team effort. No charge for entries!

£5,000 must be won by voluntary **FUND RAISING** organisations. **ONE HUNDRED CASH PRIZES** of **£50** each to be shared among the winners. Find out how your local Guide Company can participate by sending for our **FREE superb FUND RAISING FOLDER NOW!**

ALTERNATIVE CHOICE LTD, Dept 2,
P.O. BOX 1, KINGSWINFORD,
WEST MIDLANDS, DY6 8JW.

Name

Address

.....

Organisation



Your own designs on machine washable Sweatshirts, and 'T' Shirts, ideal for clubs, colleges, regiments, ships, pubs and teams etc.

- * CASH ON DELIVERY SERVICE
- * MINIMUM ORDER ONLY 10 GARMENTS
- * NO CHARGE FOR ARTWORK OR SCREENS
- * DIRECT SCREEN PRINTING - NOT TRANSFERS
- * UP TO 5 COLOUR PRINTING
- * ALL SHIRT SIZES & COLOURS IN STOCK
- * FAST SERVICE - APPROX 2 WEEKS
- * MONEY BACK GUARANTEE

BOSTON TEE SHIRT CO. LTD
1 Hennock Road
Marsh Barton Ind. Estate,
Exeter EX2 8ND.
Tel. Exeter (0392) 30 994

POST COUPON OR PHONE FOR FREE COLOUR BROCHURE

MR/MRS/MISS	GD1
ADDRESS	
Tel. No.	
(capitals please)	

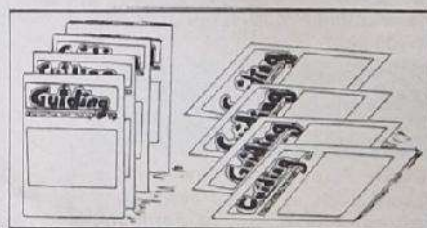
GUIDING * GUIDING * GUIDING * GUIDING

DID YOU KNOW

... That the most reliable way to receive your **GUIDING** magazine is directly from the printer on a six- or twelve-month subscription?

... That multiple copies of each issue posted together saves postage and on 10 or more copies you receive **33 1/3% discount** on the cover price of 50p? So why not order multiples and share them with your friends?

2 copies	£1.33
3 copies	£2.01
4 copies	£2.63
10 copies (with 33 1/3 % discount)	£4.81



... That March **GUIDING** contains the details of the new Baden-Powell Trefoil and Queen's Guide Syllabuses? We still have a few copies and every Guider should be aware of the changes.

Single copy 71p inc. postage. (Overseas 77p.)

So ... for further details write to:
Periodicals Subscription Department, The Girl Guides Association,
17-19 Buckingham Palace Road, London SW1W 0PT.

GUIDING * GUIDING * GUIDING * GUIDING

REVIEWS

Backpacking, Don Robinson, EP Publishing, £3.75.

I think this book will prove to be a most useful addition to the Ranger Unit library. Don Robinson writes from extensive personal experience, backed up by sound technical knowledge. He progresses through from bivouacking, using the minimum of equipment, to more sophisticated lightweight camping/backpacking techniques, covering in the process the basic areas of shelter, equipment, catering, navigation, clothing and First Aid. Throughout he emphasises the need to respect the environment, and thus centres the readers' thoughts on to wider ecological issues related to the backpacking scene. This certainly adds to the value of the book for the Ranger Unit, for it takes the reader on to consider the application of the skills suggested to an ever-changing scene which is ours to enjoy, not to destroy.

This book is easy to read, the illustrations are clear, and there is a wealth of information here, which will give the reader not only technical knowledge, but also the reasons why the suggested action should be followed. I enjoyed it.

WEG

Cornish Coastal Walks for Motorists, Eleanor Smith, Warne, £1.95.

This book contains 30 circular walks for motorists around the Cornish coastline. It covers the North and South coasts from Boscastle to Fowey, and also includes three walks over the moors. Each walk, ranging from three to seven miles, has an excellent diagram and a short history of the area. At the start of each walk there is a suitable place to leave a car.

One of my favourite North coast walks is from Portreath to Porthtowan and back. Portreath was once an important tin exporting port. This is a seven mile walk for the experienced walker. The route takes you up the old tramway from Scorrier, looking across at Carn Brea and back along the top of the towering cliffs, where the scenery is magnificent.

On the South coast one of the best walks is around Fowey. This four mile walk

takes you from Lankelly Lane down over the fields towards Menabilly, once the home of Daphne du Maurier, who wrote such novels as *Rebecca* and *Frenchman's Creek*. At the bottom of the hill you join the coastal footpath through Lankelly Woods, with fine views of Polruan. Afterwards a visit to picturesque Fowey is a must.

The book finishes with three moorland walks. The Cheesewring at Minions, on Bodmin Moor, is worth visiting, and this walk takes you past the ancient stone ring known as The Hurlers and up to the Cheesewring. These natural piles of flat granite rocks are a fascinating sight to see towering above you.

If you are visiting Cornwall this summer this book is vital for seeing some of the beautiful unspoilt Cornish scenery.

SJP

The Kremlin Cat And The Bomb, K G Babington, Oriel Press Ltd, £6.95.

Feliski the Kremlin Mouser is chosen to infiltrate the Pentagon. After going to Spy School he is sent to Washington. His loyalty is based on the belief that American leaders are cruel and ruthless, out to destroy Russia. After CIA mice capture him, he is sent back to Moscow but soon begins to reflect on men's suicidal policies. He organises a meeting of the Kremlin mice and the American mice in Bali, explaining each country is wrong in thinking the other aggressive. The animals then launch a fantastic plan to totally disarm both sides. Feliski is the trained leader but in the end it is mouse power that wins the day!

This witty satire showing the human race learning from the animals has many levels of meaning — carrying the message of peace rather than pacifism.

OMC

Peter Rabbit's Gardening Book, Sarah Garland, Frederick Warne, £2.50

Food from the Garden, Denis and Elsie Wrigley, Dinosaur, Paperback 95p, Hardback £2.75

These two books together explain all about the planting, care and growing of vege-

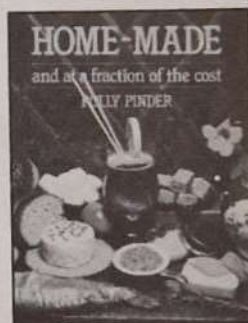
tables, fruit, flowers and bulbs.

'Food from the Garden' tells how they grow, the parts that we eat, harvesting, storage and how insects pollinate illustrated throughout in colour.

'Peter Rabbit's Gardening Book' with illustrations in colour taken from the Beatrix Potter Peter Rabbit series has easy to follow instructions on how to grow most of the flowers, fruit and vegetables mentioned in the Tales, for both indoor and outdoor gardening.

There is also information on how to prepare the soil, watering and germination and how to grow herbs and more advice besides for Brownie-age gardeners.

SEB



Home-Made and at a Fraction of the Cost, Polly Pinder, Search Press, £8.95.

The more the world embraces modern technology, the more we tend to look back and hanker for the traditional ways of the past. This trend has turned into something of a cult carried to extremes, but the basic truth is that in many cases home-made products are not only better but save a great deal of money. This book, of under 150 pages, is itself expensive, but is packed with ideas that not only save money but offer many hours of creative pleasure, many of them ideal for use by Guiders with their Units.

In addition to the expected chapters on growing herbs, making pickles and preserves, there are clearly illustrated instructions on how to make soft cheese, smoking and curing, sweets, nature drinks, scents and pomanders, cosmetics and unusual soaps from sage and cucumber to strawberry! The

book is lavishly illustrated with really beautiful colour photographs and would make a perfect gift.

Birds Of Britain And Europe; Trees Of Britain And Europe; Butterflies Of Britain And Europe; Freshwater Fishes Of Britain And Europe, Kingfisher Books Ltd, £1.95 each.

As outdoor activities increase once again, Brownies and Guides will be noticing their surroundings and wanting to know more. Not every Guider can be an expert on all facets of natural history but knowing 'where to look it up' will be a great help in fostering a new interest.

Kingfisher Books publish a series of field guides which are small enough for pockets and excellently illustrated in colour with a very good descriptive text. The Tree guide gives an outline of the shape of the trees in winter as well as in full leaf with flowers and fruits; all the variations in the Butterflies appear in full detail. The guide to Birds shows changes of plumage in different seasons and every one has a distribution map to show habitats. The guide to Freshwater Fishes will open up a new world for many who have so far seen only flickers in the water.

When a creature can vanish as soon as it's aware of you, it's very difficult to find the right page in any book to make an identification (plants are much easier!). In most of the books you have more success if you already have some idea of what you are looking for, although the guide to Butterflies has solved this problem by printing a page showing the general appearance of ten different families which will send you to the detailed sections. It's always better to learn to observe very closely so that you can carry the image in your head to look it up later. These books would make very welcome additions to Unit or camp libraries, ideal for study both before going out and afterwards.

Other titles in the list include Wild Flowers, Mushrooms and Toadstools, Horses and Ponies, Mammals, Fossils, Minerals and Rocks, Stars and Planets.

NAS



continued from page 47

clude 'Saying No Isn't Always Easy' (featured in May GUIDING) and 'Sex, the Child and the Family'. For further information write to: **The Hon Secretary, The Responsible Society — Family and Youth Concern, Wicken, Milton Keynes, Bucks MK19 6BU.**

London Festival Ballet

This company's education and community unit was set up three years ago. Wherever the company is performing, the education unit arranges special demonstrations and events in which local schools and youth groups can take part. They also arrange workshops and master classes, and are always keen to discuss ways in which they can do more by setting up a special event to suit the needs of a particular youth group. They also have some very attractive project packs about three of their best-known productions. **Romeo and Juliet** has the story described in a full colour folder which opens out into a large poster of one of the most dramatic scenes from the ballet. It also gives a detailed production chart, a brief introduction to dance notation, and a 'blunder ballet' picture strip quiz of what not to do on stage! **The Sleeping Beauty** project kit also opens into a beautiful colour poster; it tells the story of the ballet, something about the ballerina and the designer, and gives a quiz in which captions must be matched up with scenes from the ballet. Inside is a sheet of puzzles and a sheet of figures to cut out to make a scene from the ballet. Both these are very suitable for younger Guides, and the most recent pack, on the new production of **Swan Lake**, is ideal for those aged 12 and over. In addition to a poster and production notes, this beautifully designed pack has sheets on the story, and history, the production, and resources for study. The packs are available to teachers at 30p each plus 20p postage and packing for the first two, 75p plus 20p p&p for **Swan Lake**. Orders for 10 or more packs are free of postage and packing. If you would like to do a ballet project with your Unit write to: **Education and Community Unit, London Festival Ballet, 39 Jay Mews, London SW7 2ES.**

Sadler's Wells Royal Ballet

If you are planning your first visit to ballet and would like to know more about what you are going to see, Kate Castle is always willing to send you information and literature about any individual ballet. She is also happy to arrange a lecture/demonstration on all aspects of dance, costumes, etc, or to consider any suggestion for a special evening on dance for any group of Guides or other young people.

Miss Castle has also made a most generous offer of free copies of beautifully illustrated booklets on the Royal Ballet and Sadler's Wells Royal Ballet, for readers of GUIDING. They contain all sorts of interesting articles and photographs, but as they are rather bulky, postage is difficult. However, if your Unit is planning a visit to London at any time, Miss Castle is quite happy to leave bundles of these booklets, 20 or 30 at a time, at the stage door for your collection.

For further information write to **Miss Kate Castle, Information Officer, Royal Ballet, Royal Opera House, Covent Garden, London WC2.**

Help World Wildlife Fund

Anyone who loves chocolate (or knows someone else who does) can help the World Wildlife Fund raise £10,000 to save jungle animals!

Honey bears, leopards and orangutans, elephants, rhinos and tigers, are some of the chocolate jungle animals featured on Animal Bar milk chocolate. And for every standard size Animal Bar wrapper collected during the coming months, Nestle are donating 1p to WWF up to a target of £10,000.

As a special thank you to everyone who supports this appeal and saves eight or more standard size Animal Bar wrappers, Nestle have produced a free full colour height chart, illustrated with lots of jungle animals. The height chart measures 42 x 120cm and even if some chocolate eaters already stand more than 4ft high, it still makes a lovely gift for a young child.

For that special treat — or for grown-up appetites — Nestle make a large size Animal Bar. For each large size bar wrapper Nestle are donating 2p to WWF so only four wrappers need to be saved for a free height chart. Animal Bar also comes in multipacks of four standard size bars which could give the whole family a chance to join in the jungle fun and help WWF.

Out and About

The Sports Council have information for those over 50 who would like to start a

sport or other physical activity but are not aware of the possibilities available or who consider themselves to be 'past it'. Anyone who is not sure of their health should, of course, check with their doctor before undertaking anything too strenuous, and then check with your local library, Town Hall, or Sports Centre for details of clubs and organisations. Failing that, contact **The Sports Council** at: **16 Upper Woburn Place, London WC1H 0QP.**



Atishoo

Animals from the African savanna, the jungles and the world's oceans have been captured on the boxes of new Kleenex Wildlife tissues.

Three strikingly illustrated boxes featuring six of the world's most popular animals have been specially designed for the Kleenex Wildlife tissues range, produced by Kimberly Clark in association with the World Wildlife Fund.

For every box of Kleenex Wildlife tissues sold, Kleenex are making a donation to the World Wildlife Fund. For those who would like to learn more about the six animals featured on the boxes, Kleenex and WWF have produced a folder of three, full colour fact sheets, which are packed with lots of interesting information about these and some of the other animals living in the savannas, jungles and oceans. To receive the fact sheet pack, just collect three Kleenex Wildlife tissues box tops and send them with 50p to the address on the bottom of the box. Everyone sending for the fact sheets also receives a free badge.

Erratum May GUIDING

Under Imperial Collection we misquoted the telephone number — this should have read 222 0770. We apologise for this error.

Pips . . .

.....

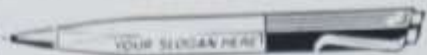
.....

Masquerade, an exhibition running from 12 July - 2 October at the Museum of London, highlights the popularity of this entertainment in the city through paintings, prints and souvenirs etc. Phone 01-600 3699.

The Henry Cole Wing, the V & A's first extension in over 70 years, has opened. The new wing contains a selection of over a million works of the Department of Prints, Drawings and Photographs and Paintings. These include paintings of Constable in a daylight setting, the 1824 Panorama of Rome by Caracciolo, on display for the first time, and a double exhibition of Photography.

QUALITY FUND RAISING and ADVERTISING PENS

SEE
BEFORE
YOU BUY



Send 50p P.O. for 16-page colour catalogue and assorted samples or 10p stamp for leaflet only.

Lapel Badges



Your own design made to order. Send for colour catalogue.

PLAQUES! TROPHIES! CUPS! MEDALS!



Buy direct and save 10%. Prices from 30p. Send for leaflet.

WESTFIELD LTD

DEPT 23 WESTFIELD HOUSE
HELENA ST B HAM B1 2RJ.

GIRL GUIDE SHOPS IN SCOTLAND

Uniforms, Books, Camp Equipment, Badges, Gifts



Personal Shoppers made welcome at all shops

EDINBURGH
16 Coates Crescent,
Edinburgh, EH3 7AH.
Tel: 031-225 3483

ABERDEEN
11 Albyn Place,
Aberdeen, AB1 1YE.
Tel: 0224 20875

GLASGOW
15 Elmbank Street,
Glasgow, G2 4PB.
Tel: 041-248 4200.

DUNDEE
6 Panmure Street,
Dundee, DD1 2BW.
Tel: 0382 22262

When you buy from the Guide Shops the whole Movement benefits!
Mail order only from Edinburgh

GUIDES and BROWNIES T-Shirts or Sweat shirts

Top quality washable shirts. Range of super colours, including White, Sky, Navy, Saffron, Yellow, Green. Prompt delivery.

SPECIAL PERSONALISING SERVICE!
Have YOUR Unit name or emblem embroidered on the shirt at 5p per letter extra.

Special discounts for Outpost orders. Design service available for SPECIAL EMBLEMS if required. Shirts contain varying proportions of cotton/viscose/polyester according to availability. Details on request.

Prices (complete with emblem) T-Shirts (Sizes 22-30) £2.45. (Sizes 32-40) £2.95. (Sizes 42-44) £3.25 P & P 50p SWEAT SHIRTS (Sizes 26-30) £4.75. (Sizes 32-44) £5.75 P & P 50p. State colour required (give alternative choices) AND EXACT CHEST SIZE.

CREWMASTER (Dept GB6) 27/41 Oldfield Circus,
NORTHOLT, MIDDLESEX. Tel: 01-422 3344

EMBOSSED
WITH YOUR
EMBLEM



Alpine Adventure Club

SUMMER 1983 -
WINTER 1983/4

Situated high in the French Alps in Tignes

Les Boisses we offer all the year round skiing. Summer activity holidays include mountaineering, canoeing, tennis, swimming, etc., all under the careful eye of our own qualified guides and instructors.

Our Club centre is ideal for all schools, colleges and youth groups.

For further information please contact:
ALPINE ADVENTURE CLUB

91 Wembley Park Drive, Wembley, Middlesex.
01-200 6080 01-903 4444

"C.O.L.A. separates the good buys from the bad buys"

For all your outdoor needs, shop where you see this sign. Guaranteed quality from people who care. We only approve dealers who give you a good deal!



CAMPING AND
OUTDOOR LEISURE
ASSOCIATION

APPROVED MEMBER

1 West Ruislip Station, Ruislip, Middlesex HA4 7DW
Telephone: Ruislip 34191

BE PREPARED! Order now for Spring

Patrol Tents £152 COMPLETE



12oz
WATER PROOF
COY. VON
TENCE

Quality at unbeatable prices

Betta-Tents 1982/83 PRICES

Size	Price
9' x 8' x 6'6" x 3' wall	£152.00
12' x 8' x 6'6" x 3' wall	£167.00

Prices shown plus VAT and Carriage

Tents open back ends. Other sizes and materials longer. Ground sheets available.

The Betta-Tent by **S. Bett & Sons**

Dept. DG 13 Church Street, Leath, Lincolnshire LN11 8BS. Telephone (0507) 602644

CLOSING DOWN SALE

An opportunity to Guide Groups to buy our Tent Canvases, Poles, Zips, Groundsheeting and Waterproof materials at discount prices. Retiring from business (not bankrupt). Camp equipment can be made on ordinary sewing machine at a fraction of normal price. S.A.E. for details and Samples.

Edward Barnes, Hawksfold, Fernhurst, Haslemere, Surrey.
25 years regular advertiser in *Guides* Phone Haslemere 53332

QUALITY OUTDOOR EQUIPMENT AT REASONABLE PRICES

PLUS DISCOUNTS FOR GUIDE UNITS

Write for Mail Order Catalogue and Bargains news-sheet.
White and Bishop Ltd., 13/17 Bridge Street, Northampton.
Telephone: (0604) 35929.
50 years of service and reliability



Mrs Joy Harden, fundraiser for the Costessey Girl Guide Company raised £400 last year with a bit of help from Miller Fundraising.

The Costessey Guides can do it...and so can you!

Can you imagine raising £400? In one year? Well, that's what Joy achieved. And so easily that now she's busy raising funds for a guide dog for the blind.

How did Joy find it so simple? 'No trouble', says Joy 'with your Miller catalogues...they're packed with super products that sell themselves!' This Christmas Joy is going to find it easier than ever before to raise the funds she needs. For our new Christmas catalogue is even bigger and brighter.

196 pages just crammed full of ideas. Beautiful cards, super gifts all temptingly displayed in full colour. Get your Miller catalogue as soon as you can. It's ready now. Raise £'s for your special cause and help your friends with their Christmas shopping at the same time.



£1,500 raised with the help of Miller by Mrs. Valene Fabh. Altogether, she has raised an amazing £12,500 for the Great Ormond Street Hospital for Sick Children.

CHRISTMAS CARDS FROM LESS THAN 4p. GIFTS FROM AS LITTLE AS 79p.

Christmas is a busy time for everyone. And for those who can't leave their homes...the elderly and the disabled...it can be a most frustrating time. So you're sure to get a great welcome from friends, neighbours and relations when you help them to do their Christmas shopping from your bumper, new Miller Fundraising Catalogue. What's more, they'll like to know they're helping towards a good cause.

YOU MAKE A PROFIT OF UP TO £2.50 IN EVERY £10 FOR YOUR GOOD CAUSE.

It's a fact. For every £10-worth of cards and gifts you sell from your Miller catalogue you'll make up to £2.50. And there's more...you

could get extra free gifts, to keep or to raffle for your cause.

YOU'RE IN GREAT COMPANY WITH MILLER FUNDRAISERS.

Our research team seeks around the world for beautiful cards and original gifts, some of which you won't find in the shops. And you can be sure your friends will buy them because our fundraisers have proved their success.

Super gifts, beautiful cards and Christmas gift wrapping papers...you'll succeed with these, and make a really good profit for your cause.

Send the coupon now. You hand out the catalogues and we do the rest...we deliver the things you order right to your door.

Miller Fundraising

Britain's Finest Fund Raising Service.

Queen Street, Burton-upon-Trent DE14 3LP.

FREE - 196-page Christmas catalogue in full colour.

NO RISK. NO OBLIGATION.

Post to: Miller Fundraising, Queen Street, Burton-upon-Trent DE14 3LP. Please send me FREE details of the Miller Fundraising Service. I am also looking forward to receiving details of how I can obtain my SUPER FREE GIFTS. (I am over 18 years).

NAME

ADDRESS

POSTCODE

TROM



* Astra 110 Instant Camera. Ideal for indoor and outdoor photography.



* Salter bathroom scales. (with non-slip surface). Great for all the family.



* Ladies' watch - with a champagne face and smart 'baton' numerals and real leather strap.

These super gifts could be yours **FREE!**

The moment you start raising funds—with the help of Miller Fundraising