


DECEMBER 2000 £1.40

Guiding

magazine

**Happy
Christmas**
To all our readers



 **THE GUIDE
ASSOCIATION**



Contact information:



THE GUIDE
ASSOCIATION
a registered charity

Welcome

This millennium year may have flown by, but we have certainly packed a lot into it — at both a national and local level.

The changes to the Guide Section Programme and Guide wear have continued to generate interest in the media — see pages 4/5 — as does the Reach Out and Recruit campaign. In May, the *Today's Girl, Tomorrow's Woman* report demonstrated that The Guide Association knows about girls, and in June, the STOMP celebrations showed that its members know how to have fun. The year culminates with GIG 2K — a fantastic event that will really put Guiding on the map.

But hey, the year isn't over yet — there's still lots of time for some great unit activities. In this month's Activate you'll find activity ideas based on the Promise, some musical fun to bring harmony to your unit and inspiration for Valentine's day. And once you've read pages 14/15, you'll never look at a plastic cup in the same way again.

In the rest of the magazine, on pages 12/13, one County explains the background to its move to a new HQ at a business park, and our main feature, on pages 14/15, looks at how important it is to plan activities that are fun, but that also help girls to develop.

Plus, as a special treat, this month, we have a whole page of giveaways, including three stylish handbags. Happy Christmas!

FRONT COVER

Our cover girls are from the 38th Croydon (St Albans) Guide unit
COVER PHOTOGRAPHER:
MOOSE AZIM



Inside...

UPDATE

Keep up to date with Association news.
How funds raised for World Thinking Day will make a difference worldwide and the latest on the Brownie Review

4

DEVELOPMENT

Practical advice. Motivating your team, thinking creatively about training, working with visually impaired girls, Lone Guiding and how one County's community action made a difference

8

SOURCES AND RESOURCES

Packed with information about training, resources, places to go and things to do. This month find out about the new Guide Association Climbing Scheme

20

NEWS AND VIEWS

Over to you — your opinions, ideas, achievements and Guiding experiences. Plus a whole page of great giveaways

24

FEATURES

Cricket batty
Fun ways to introduce your girls to cricket

How a child develops
Planning activities to help girls develop

Fun and friendship
Camp and Brownie holiday photo round-up

11

14

18

ACTIVATE

Our great pull-out section is packed full of brilliant ideas for you to use with girls across all the sections. This month, love is in the air — with great activities to help you celebrate Valentine's day.

Guiding magazine

17-19 Buckingham Palace Road, London SW1W 0PT

VOLUME 88 NUMBER 12
DECEMBER 2000 £1.40

The official magazine of The Guide Association (incorporated by Royal Charter) Published on the last Thursday of every month. ISSN 0265-2706

The views expressed in *Guiding magazine* are not necessarily endorsed by The Guide Association. Registered charity number 306016.

Patrons: HM The Queen HM Queen Elizabeth, The Queen Mother. President: HRH The Princess Margaret, Countess of Snowdon. World Chief Guide 1930-1977: Olave, Lady Baden-Powell GBE. Chief Guide: Bridget Towle

Publications Manager: Anne Moffat. **Editor:** Jan Clappett. **Activate Editor:** Victoria Wheeler. **Sub-editor:** Vanessa Richmond. **Editorial Assistant:** Mandy Ivens-Brown. **Design Team Manager:** Gillian Webb. **Studio:** David Jones, Cathy Summers, Quentin Radburn, Jade Garner, Alex Vally, Janie Barton. **Production Manager:** Stuart Poole. Published by: The Guide Association, 17-19 Buckingham Palace Road, London SW1W 0PT. Tel: 020 7834 6242 Fax: 020 7828 8317.

All editorial communications to: the Editor, *Guiding magazine*, at the address below.

Advertisement Agency: Mongoose Communications Ltd, Victory House, Leicester Square, London WC2H 7QH. Tel: 020 7306 0300 Fax: 020 7306 0301. **Mongoose Sales Executive:** Neil Walldett. **Photographic Repro:** by: Graphic Facilities. **Printed by:** St Ives PLC. **Distributors:** Seymour, Windsor House, 1270 London Road, Norbury, London SW16 4DH

Subscriptions: Annual 12 issues (including postage): British Isles and BFPO £16.80; Overseas £27.60; Zone I £39.36; Zone II £41.40. For all subscription enquiries write to: The Guide Association, PO Box 706, FREEPOST ANG7031, Bedford, MK45 5YG. Tel: 01525 711494 Fax: 01525 716789 or e-mail: subscriptions@guides.org.uk Cheques/POs should be made payable to The Guide Association.

Guiding magazine is sold subject to the following conditions, namely that it shall not, without written consent of the publishers first given, be lent, resold, hired out or otherwise disposed of by way of trade at more than the recommended selling price shown on the cover and that it shall not be lent, resold, hired out or otherwise disposed of in mutilated cover or in any unauthorised cover by way of trade or affixed to or as part of any publication or advertising, literary or pictorial matter whatsoever. The Guide Association takes no responsibility for statements made in any advertisement or from any matter arising whatsoever.

Readers should be aware that neither *Guiding magazine* nor The Guide Association is in a position to endorse either the goods or services advertised in the magazine. The inclusion of any advertisement should not be taken as an indication that the goods or services concerned have been investigated or approved. Responsibility for the failure of any advertiser to fulfil his or her obligations to customers gained from an advertisement or insert in *Guiding magazine* cannot, and will not, be accepted by The Guide Association or *Guiding magazine*.

Note: Copy for inclusion in March's *Guiding magazine* should reach CHQ by December 25. Please address contributions to the Editor. Anyone wishing to have photographs sent to the magazine returned, must include a sae.

Guiding magazine e-mail address: guiding@guides.org.uk
Note CHQ e-mail address: chq@guides.org.uk
World Wide Web site address: <http://www.guides.org.uk>

NEWSNEWSNEWSNEWS

Permit available

The Senior Section Permit and Overnight Permit certificate is now available as a Group B item through the Trading Service. This means that it will be available through County channels to Assessors and Leaders. Order code: 64873.

Royal award

Congratulations to Mrs Barbara Taylor of Rochdale, who has been appointed by His Majesty King Harald V of Norway as Officer of the Royal Norwegian Order of Merit.

Barbara, who is the Secretary of Friends of Waddow, has been given the award in recognition of her hard work at the Royal Norwegian Consulate based in Manchester.

Laurel Award winner

Mrs Helen Thomson, Brownie Guider, District Commissioner and Scottish Brownie Trainer from Kincardine and Deeside Region, has been awarded the Laurel Award.

Correction

On page 8 of November's *Guiding magazine*, Rainbow Guiders were invited to apply in writing to attend the Rainbow Forum on March 16-18 2001.

The deadline for applications was given as January 31. Due to unforeseen circumstances the deadline has been brought forward to December 31.

BGIG equipment

British Guides In Germany would like to thank all Guiders who have contacted them about their spare equipment.

They have had a huge response but have now allocated the equipment. However, there are still some Brownie flags and some 'old style' Guide flags available. See the October issue of *Guiding magazine* for contact details.

Message from South Africa

The South African Chief Commissioner contacted CHQ recently, to send best wishes on behalf of the South African Guides to all members of the UK Guide Association who were affected by the flooding and bad weather.



Let the Games begin

Did you know that the Commonwealth Games are taking place in Manchester in July/August 2002?

Members of The Guide Association will be able to get involved in all sorts of ways. Watch this space for more information. In the meantime, visit www.commonwealthgames2002.org.uk to find out more about volunteering opportunities.

Educare Programme

There are still places left on the NSPCC Educare Child Protection Awareness Programme.

There are no meetings involved and participants can complete the course at home. The aim of the course is to improve people's awareness of child protection.

To take part in the project, contact Ann Matthews at CHQ by calling 020 7834 6242 ext. 201, or e-mail AnnM@guides.org.uk.

Young ambassador

A 16-year-old Young Leader from Hertfordshire has become the UK's youngest Goodwill Ambassador for the United Nations. In doing so, Laura Sweeting joins the likes of celebrities Michael Douglas and Geri Halliwell. Geri sent a note of congratulation to Laura, telling her that she loved working for the UN and was sure that Laura would too.

In her capacity as UN Ambassador – an appointment which lasts for life – Laura will single-handedly promote the work of the UN's water4life appeal, which raises awareness of the 5,000 children who die every day in developing countries as a result of having no clean water.

She impressed the UN with her idea to do this through 'Pupil Power' – by creating an international network of schools on the Internet to raise awareness and encourage fund raising. Her ambassadorial work now entails travelling to schools and youth groups – including Guide units and Brownie Packs – to tell children about the appeal.

Laura's appointment came as a result of her contacting the national Press to draw attention to the blend of 36 nationalities present at her school. This caught the eye of the UN, who asked the school to be part of the water4life project. Laura became a member of the project's committee, and soon after its first meeting, a UN official who had been present contacted her to ask if she would like to front the campaign as a Goodwill Ambassador.

Laura told *Guiding magazine*, 'It's great that I'm involved in a children's campaign. As I love kids, the fact that one dies every eight seconds because they have no clean water, shocks me, and I feel very strongly about helping to save children's lives.'

If you would like to help support water4life, donations can be made at branches of Lloyds TSB, quoting the 'water4life appeal', or by credit card through the Web site www.water4life.co.uk. To find out more, call the fund raising HQ on 01423 568656.



Laura Sweeting has joined celebrities like Geri Halliwell as a UN Goodwill Ambassador

Managerial vacancy

Can you see yourself as the Programme Manager at a WAGGGS World Centre?

WAGGGS is seeking someone to fill this senior staff position at Sangam in India. The job

involves the planning, implementation and evaluation of events that are open mainly to members aged 15 and over. You need to be energetic and enthusiastic with a flair for motivating others, and have training experience.

For further information and application forms, contact the World Centre Manager, Sangam World Centre, Alandi Road, Yerawada, PUNE 411 006, India. Tel +91 (0)20 6693252, or e-mail sangamwaggs@vni.vni.com.

Applications should be received by March 31.

THE GUIDE ASSOCIATION



There is an opportunity to live and work at Sangam – one of the WAGGGS World Centres

Guiding in the news

Members of The Guide Association have appeared in print, on screen and been heard on the airwaves again recently.

On October 18 you might have seen Pauline Jackson from the Programme Department at CHQ appearing on Channel 5's *Breakfast News*, in a feature on the new Guide Programme.

Guides might have spotted the *Go For It!* competition winners in the early October issue of *Mizz*.

The seven girls, from the 1st Lurgan Guides in Northern Ireland, had their hair and make-up done by professionals and tried on lots of different outfits for a photoshoot.

In addition, there have also been features about The Guide Association on 20 local radio stations across the UK — from Argyll to Somerset.

Come to Ma-Buyu

One very good reason for taking up the Commonwealth Community Challenge is that it gives you the chance to attend the Ma-Buyu Youth Forum.

The forum will be held close to where the Commonwealth Games are taking place in Manchester at the same time, and participants will be able to attend the opening ceremony and other events, and to meet athletes.

Each Country will select a team to represent them at the forum, which takes place from **July 25 to August 4, 2001**.

Ma-Buyu — which means 'the meeting place' in Zimbabwean — will be a chance to celebrate with young people from the 54 Commonwealth countries. A Senior Section camp will take place at Waddow immediately afterwards, so the celebrations can continue.

For further information contact Rosemary Mills at CHQ by calling **020 7834 6242**. Alternatively, send an e-mail to RosemaryM@guides.org.uk.

Commonwealth comp

The Royal Commonwealth Society 2001 Commonwealth Essay Competition is an international competition for all young people in the Commonwealth, aged up to 18 years.

The first prize is a study tour for two people in a Commonwealth country.

Full details of the classes and topics can be obtained from the News section of the Association's Web site, or by writing to the International Department at CHQ — please enclose a sae.

The closing date is **January 31**.

Ambassadors' Reception

The Guide Association held a special evening reception in November for Ambassadors appointed by CHQ staff. The Ambassadors — who came from a range of backgrounds — received their badges and were thanked for their support by Chief Executive, Terry Ryall.

Guests included MPs from the all-party parliamentary group. Nicholas Winterton, MP for Macclesfield, has a long-standing connection with The



Radio personality Sally Boazman poses with Guides and the Guider who nominated her to be an Ambassador

Guide Association. He said that as an Ambassador he intended to '...carry on promoting The Guide Association, encouraging adults to join or to come back, and asking organisations to finance and sponsor, where desirable.'

Representing the media, were *Mizz* agony aunt Tricia Kreitman and Radio 2 presenter Sally Boazman, who is hoping to give Guiding a plug on air.

Other guests came from companies and organisations consulted by, or connected to, the Association. Mary-Ann Stephenson, Director of the Fawcett Society — which campaigns for the equality of men and women — said, 'I was really flattered to be asked. I do a lot of speaking work, so I will have lots of opportunity to tell people about how The Guide Association is doing great things.'

Renewal encouraged

Tom Wylie, the Chief Executive of the National Youth Agency and a Guide Association Ambassador, has praised the Chief Guide, Bridget Towle and the Chief Executive, Terry Ryall for spearheading changes in the Association.

Writing in the November issue of *Young People Now* — a magazine for youth work professionals — he said that Guiding was re-inventing itself by going through 'a time of energetic renewal'.

New Foxlease vacancy

A vacancy exists for a Youth Programme Coordinator at Foxlease. The appointee will be responsible for coordinating the youth programmed events.

This challenging new post will involve attracting over 500 young people to take part in events at Foxlease in 2001, telling them about it on the Web page and making sure there are volunteers to support them, activity instructors to teach them and an exciting programme for them to take part in.

For further details and a job description, contact the Personnel Department at CHQ at the address on page 3.

Hopathon winners

Lots of Rainbows, Brownies and Guides hopped to it for the NSPCC this summer, with £54,000 collected so far. Hopathon entrants were entered into a prize draw, with different prizes for each section.

The first prize for Rainbows and Brownies — a trip to Disney World — went to Emma Brinsdon of the 4th Caerleon Brownies, Gwent. The first prize for Guides — a laptop computer — was won by Natasha Alexander of the 2nd Oakham Guides, West Mercia.

Other winners have won prizes including a Nintendo 64, a trip to watch a TV show being filmed, roller blades, a makeover, a £200 gift voucher and a Sony minidisc player.



Fun and fund raising: The NSPCC Hopathon was a great success

Worldwide fundraising

By Jan Clampett

*Support the work of adult volunteers across the world
by raising funds for the World Thinking Day 2001 Fund*

Next year has been designated the International Year of Volunteers. This makes World Thinking Day 2001 the perfect opportunity to celebrate the fact that The Guide Association is part of an international movement.

The World Association of Girl Guides and Girl Scouts (WAGGGS) – which has 140 member countries – develops and supports volunteers worldwide.

WAGGGS is encouraging members to celebrate the cultural diversity of our movement by organising an 'International Day to Remember' as part of their World Thinking Day celebrations. This would involve dedicating the day to another member country, and learning about this country's culture, customs, food and music. You could invite parents and members of the public – and perhaps your Unit Ambassador – to join your celebrations and raise money for the World Thinking Day 2001 Fund by charging an entrance fee.

World Thinking Day Fund

The quality of Girl Guiding and Girl Scouting offered to girls depends on the training given to adults. The money raised for the

fund will be used to train adult volunteers and your contributions will equip them to make a difference to the lives of girls and young women across the world.

One regional training costs around £10,000 and a regional conference around £20,000. Last year, Thinking Day contributions raised nearly £200,000, with the UK Guide Association contributing £50,000 – that's a lot of training!

If this year's target of £225,000 is reached, WAGGGS would be able to fund:

- A Regional conference for member organisations in each of the five Regions.
- Two Regional trainings in each of the five Regions for leaders, Commissioners and International Commissioners.
- A training for WAGGGS representatives at the United Nations.

Fundraising ideas

WAGGGS has put together a few fundraising suggestions that you might like to consider. Whatever method you use, be sure to explain what it is you are raising funds for.

- Holding a fundraising feast, cooking foods from a variety of countries, is a great way to involve young people and adults.

Make posters to advertise your feast. Charge a minimum amount to cover the cost of food and expenses and then encourage people to make an extra contribution towards the work of WAGGGS volunteers. Or you could organise an official collection during the feast.

- You could hold a World Thinking Day raffle and sell tickets to the local community. Make sure that you explain what it is you are raising money for.

Approach local businesses and ask them to donate raffle prizes. You could mention the names of their companies during the presentation of prizes.

Make sure you will be complying with any legal requirements or local restrictions.

- You could also, of course, organise a sponsored event, that is appropriate to your local community.

Supporting resources

WAGGGS has produced a pack to support World Thinking Day 2001. The pack includes personal testimonies from WAGGGS volunteers and their visions for the future. These can be found on the Web site at www.wagggsworld.org.uk.

Something in the air



Calling all Guides: World Thinking Day is an opportunity to spread friendship across the airwaves

New Guiding friendships will be forged during Thinking Day on the Air 2001

As well as celebrating World Thinking Day at Global Footsteps events around the country, there are also a great many opportunities to spread the friendship of Guiding across the airwaves.

Thinking Day on the Air (TDOTA) – which next year takes place over the weekend of February 24-25 – links members of the Guide Movement throughout the UK, and beyond, by amateur radio.

Special concessions permit Guide Association members to speak to other members far and wide, under the supervision of a licensed radio amateur. Every station is different, but all aim to promote friendship in Guiding.

In February 2000, over 2,000 participants in the UK enjoyed chatting to each other across the airwaves – from Rainbows to Link members and the Trefoil Guild.

Brownie Section Review

Research is underway, but there are still plenty of opportunities to get involved

By Helen Mason
Programme Team, CHQ

The Brownie Review is under way, and many members of The Guide Association have already been involved in the initial research.

Research methods

A variety of methods for research have been used, including:

- Brownie questionnaires for girls;
- Journeys and Ventures questionnaires for Guiders;
- External research into girls' views;
- Focus groups held in Countries and Regions on Journeys and Ventures;
- Questionnaires on adult perceptions of needs, desires and abilities of Brownies;
- A Brownie Forum held at Waddow in February 2000, which explored the Brownie Programme through practical activities for the Brownies and discussions with Guiders;
- The Innovate Forum in June which gave young women from the Senior Section the opportunity to input their views about resources for the Brownie Section and the Brownie Story.

Initial results

The response from Brownies and Guiders has been excellent. The Association has received lots of useful information from its research to date, which is still being analysed.

The Brownie Steering Group met again in September and began to consider the initial results of the research. From the preliminary research a number of issues have arisen which the Steering Group feels require more detailed investigation.



Brownie fun: Pilot projects will test out new programme ideas

Pilot projects

The Brownie Steering Group is currently constructing a series of pilot projects which will enable some of the initial findings to be further explored. These pilot projects will allow new ideas and alternative methods to be tried out with 'grass roots' Guiders who can comment on their relevance, value and practicality.

It is important to stress at this stage that the purpose of the pilots is

purely to help the Association formulate further ideas, and that nothing has been decided or changed at present.

Representing diversity

The draft pilots which are being developed will be sent out to Brownie Advisers in Countries and Regions for implementation in January.

The Advisers will be helping to ensure that the pilots are undertaken by a range of units across the UK – urban and rural, large and small – so that the Association's findings represent the diversity across the Association.

Get involved

If you would like to be involved in the pilot projects, please contact your Country or Region Brownie Adviser.

Keep up to date

The Association will keep you regularly updated on the progress of the Brownie Review in *Guiding magazine* and *Brownie*.

Stations were also active in countries such as Iceland, Japan, Hong Kong, Germany, Switzerland, Kuwait, Canada and the Netherlands.

How to take part

If you would like to take part in TDOTA you will need to co-opt the services of a licensed radio amateur. This person does not need to have links to the Association, as long as they are willing to operate a station, and abide by the Safe From Harm policy. Local amateur clubs may also be willing to

assist. Scouts who operate Jamboree on the Air (JOTA) may know of local radio amateurs. You can enquire about local clubs from the Radio Society of Great Britain or from your local library services.

More information

For an information pack about TDOTA 2001 please send an A4 sae to: Thinking Day on the Air, Programme Team, The Guide Association, 17-19 Buckingham Palace Road, London, SW1W 0PT.

Short Term Investment Service

The monthly interest rate after deduction of management commission was:

| | |
|----------------|----------------|
| July..... | 4.656 per cent |
| August..... | 4.813 per cent |
| September..... | 4.766 per cent |

An additional 0.5 per cent per annum is paid for all deposits of £5,000 and above.

On September 30, the value of a share in the Scout and Guide Trust Fund was:

| | |
|---------------------|---------------|
| Selling price..... | 553.13p |
| Purchase price..... | 581.16p |
| Income yield..... | 2.24 per cent |

The income yield is based on the previous two dividends paid and the price on the date stated.

Team spirit

Simple ways to motivate your District team

By The Commissioner Support Writing Group

The keyword for any District team is 'enthusiasm'! Enthusiasm is catching — if you are enthusiastic and positive, the Guiders in your District will often take the cue from you.

Targeted information

You can enthuse your team just by the way you pass on information. For example, do you usually just say something like, 'Oh, and there are some forms here for the County Training Day...'? It's just as easy — and far more effective — to direct this information by saying: 'I've now got the forms for the County Training Day, and there are some really good sessions.

Jean, you've been asking about inter-

national ideas for Rainbows, there's a session here for you, and Pam, I know you like singing, so the music for Brownies session sounds right for you...' and so on.

Getting to know you

Of course, you can only do this if you know your Guiders really well. Take the time to get to know them — their interests, concerns, needs, skills and the areas in which they feel the least confident.

A Guider who feels that her District Commissioner is really interested in her as a person will feel valued, and not like just another Guider.

Try to ensure that your Guiders get to know each other, too. Not only at District

meetings, but also at social events where you meet as friends, rather than just as Guiders. The most successful Districts are often those where the Guiders enjoy a meal out together, a tenpin bowling session, or even just meeting for coffee at your home.

If your Guiders really feel that they are a part of the District 'family', it will be much easier for them to work as a team. Guiders sometimes feel that they are working in isolation with their units and it is up to you as District Commissioner to show them that they are not alone.

Share together

Encourage them to share ideas for unit meetings, activities, crafts and games; to

Open to question

Susan Wieck
Chairman, Adult
Support Group

Participants did some innovative thinking at a recent Trainers' Forum

Guide Association Trainers from all over the UK gathered at Loughborough University, one weekend in September. The forum was an opportunity for them to think and talk about the Association's plans for training in the future.

The forum also included a variety of workshops which gave Trainers the opportunity to get up to date with current Association initiatives and to brush up on their own training skills.

Fresh thinking

In their invitation to attend the forum Trainers were invited to: '...influence the future of training in The Guide Association' and to, 'Share your burning issues. How does training need to change to enable Counties to meet the needs of girls and women of today? What resources do Trainers need to move Guiders from programme ideas to people skills?'

These questions were designed to encourage original, positive thinking, and to produce new ideas to break the traditional training mould.

Brainstorming

Anthony Lawton, Deputy Director of the National Youth Agency, got the whole process off to a good start at his lively introduction to the forum.

His brief was: 'To provide the key to open the door to innovative thinking in the

field of training; to give Trainers the spur to take a critical look at what and how training takes place within The Guide Association, and to come up with something new.

The innovative thinking was kicked off with a huge brainstorming event — called 'Open Space Technology'. This effectively gathered all the participants' thinking together. What made this different from other brainstorming sessions, was that the people coming up with the suggestions were also responsible for taking them further — through discussion with like-minded people — and then making recommendations.

Sharing outcomes

Twenty or so topics were debated thoroughly during the day. Reports and recommendations were typed up, so that by noon on Sunday every delegate had a complete resumé of the outcomes to take away with them and to share immediately with fellow Trainers in their Counties and Support Groups.

What difference will this make? As a result of the forum, there

are messages for those responsible for training at all levels: The Association's Adult Support Group at CHQ will be responding to the recommendations and Counties are challenged to make use of the material that is already out there to be creative in their training provision in the coming months.

Forum feedback

- 'It was wonderful to talk freely with other Trainers.'
- 'Valuable, invigorating.'
- 'A brilliant idea, well carried out, and a good experience.'
- 'Great to be treated with respect and feel involved at national level.'
- 'Good to get together with like-minded people.'
- 'A lot of positive ideas were forthcoming.'
- 'I hope to see some of the recommendations becoming reality in the future.'
- 'A stimulating weekend which will have an impact on my training, tutoring and organisation of training events.'

discuss their concerns and any problems they may have, and to support each other.

Try new things. You don't have to come up with something wildly innovative — ask your Guiders for their ideas instead, and then involve them in the planning and organising of the event.

If each Guider (or perhaps the Guiders from each unit) takes on one aspect of a District event — for example arranging the venue, producing information flyers and forms about the event, organising refreshments, running one of the sessions and so on — the workload is shared and your District is working together as a team.

Revitalise your team

To revitalise a jaded Guider, you first need to know why she is feeling that way!

Is she feeling stale with the weekly running of her unit meeting? Does she need more adult help? Is she having problems with any of her girls? Does she

feel under-valued? Perhaps she is looking for a new challenge?

Once you know the reason, you or other Guiders in the District may be able to help. For example, if the Guider needs a new

challenge, an additional qualification to work towards, a role in the District or Division team, or acting as a Mentor to a new Guider might be the next step. Or perhaps she would enjoy moving to a different section?

It could be that the Guider needs a short break from the weekly commitment — perhaps for personal, family or career reasons. In which case, the other Guiders in the District might be able to take it in turns to run the unit for a term or half-term, to give her that break.

Even if she prefers not to continue with her unit, she may be willing to take on a job in the District which does not require the regular commitment, or to act as a 'standby' Guider who is willing to help with other units if necessary, for example, if a Guider is ill or needs an extra adult for an event. In this way, her involvement can be continued, and her skills and enthusiasm are not lost to Guiding.



Meet socially as friends, and not just at Guiding events

Inside Guiding

By Vanessa Richmond

Meet Karen O'Connor — the Chair of The Guide Association's BYC delegation

Karen O'Connor is a young woman with a mission...

After being elected Chair of The Guide Association's British Youth Council (BYC) delegation earlier this year, she is determined to raise its profile within Guiding. 'I want the delegation to be well known, so that everyone knows what it is, what it does, and so everyone wants to be in it,' she said.

Dynamic delegation

She has high hopes for the delegation members, too. 'I hope that everyone in the delegation can achieve their full potential, and become confident young women,' she said, 'and that teamwork will become second nature to them.'

'It's a large delegation,' she added. 'I want it to become a more active part of the BYC — to sustain its influence, to help the BYC create a workable policy document.'

Delegates have decided to change this core policy statement, because it is no longer effective — 'it contains policies that date back to 1978!' Karen says. She is full of ideas for changing the BYC. She particularly wants to see a revamp of the rules, and a review of how delegates relate to their Regions and Counties.

Personal challenge

She obviously relishes her new role. She said that she was ecstatic when chosen. 'It was a great honour. I never imagined that I would become Chair when I joined four years ago. I also feel apprehensive — it's an important role to play.'

Heading up the 15-strong delegation means that she has to lead meetings and make sure that all the issues are covered. But the job should hold no fear for her — her background as an Assistant Guide Guider and the leader of a Christian Fellowship group means that she is well experienced. This summer, she was one of 30 people from 90 countries who attended a WAGGS International Leadership Seminar in Slovenia.

Other ambitions

The BYC isn't Karen's only passion. She loves working with children, and spent the summer teaching English to youngsters from all over the world. She is also a keen trampolinist, and plays the clarinet and piano.

For her, the future holds a career in law. She completed a law degree at Aberdeen University this summer, and has recently returned there to do a Diploma in Legal Practice, before starting a traineeship in a Glasgow law firm.

Karen obviously has a busy time ahead of her!



Karen O'Connor: Full of ideas for the delegation, and ambition for her career as a lawyer

Lones lowdown

By Jane Mason
Adult Support, CHQ

Find out more about Lone Guiding

When I was first asked to get involved in Lone Guiding, like many Guiders, I didn't know much about it. However, a training weekend at Waddow answered many of my queries.

Who are Lone Guides?

Lone Guides are girls who wish to be involved in Guiding, but are not able to attend weekly meetings. This may be because of the remoteness of where they live, a long-term illness or a disability, attendance at boarding school or university, or simply a lack of units in their locality. Most are Guides, Rangers or Young Leaders, but a few are Brownies.

Sailing on by

Three travelling Lones have proved that Guiding rules the waves

By Sue Jiggins

PRA, British Guides in Foreign Countries

One Lone Brownie and two Lone Guides are currently taking part in the Blue Water round-the-world yacht rally.

Christina Sawyer aged nine, Charlotte Pinder aged ten and Emma Curtis aged 11, left the UK in August last year. The girls are on separate yachts — Christina on the 'Ten K', Emma on the 'Seventh Wave' and Charlotte on the 'Sara Jane'. They meet up regularly whenever they are in port.

Special ceremony

Emma and Charlotte worked through their pre-Promise Challenges while at sea. After a very stormy start to their journey, they

What do they do?

As far as is possible, they follow the same programme as others in their section. This includes working for badges and attending camps and holidays.

What about Guiders and Advisers?

Guiders look after a Patrol or, sometimes even a unit, in a certain area. They correspond with members by newsletter, post, e-mail or telephone and try to meet individuals if possible — perhaps at a camp.

Advisers are responsible for a larger area, usually a Country or Region. They help with information and contacts.

Both Guiders and Advisers promote the Lones scheme whenever they can through displays and other forms of PR, so that as many people as possible get to hear about it.

What support do they receive?

As well as help at a local level and through Countries and Regions, Guiders and Advisers also receive assistance from a member of staff at CHQ and The Guide Association Adviser.

In Scotland, for example, there are annual training weekends, and national gatherings are held every other year. I attended one of these, and during the weekend sessions were held on *Go For It!*, marketing and external relations, the Internet and IT, international, arts and crafts, and the Senior Section.

put into port in Gibraltar in October.

The Gibraltar Guide Commissioner, Monica Ritchie, very kindly arranged a wonderful Guide Promise Ceremony for the girls on The Rock — an occasion they are unlikely to forget!

Guiding on the move

After Gibraltar, there was a brief stop in Tenerife, then the yachts set sail for Antigua. Here, Charlotte's 13-year-old cousin, Jesnie, joined the 'Sara Jane', and became a Lone Guide for the duration of her visit.

The girls have worked on their Weather, Reader's and Stargazer's badges. Charlotte has also done her Knotter's and Cook's badge stage one, and Jesnie has finished her Yellow Trefoil.

Guiders and Advisers had the opportunity to display their newsletters and swap ideas and concerns. Everyone enjoyed the chance to meet up with colleagues and found the sessions very helpful.

Guiding on the Net

A new pilot scheme has recently been launched online for girls and young women — aged seven to 26 — who are not able to attend unit meetings but who have Internet access.

The Programme is delivered through an exciting Web site — called NetGuides — where each section has its own virtual unit, with appointed Guiders and Assistants, and a secure, members-only mailing list.

Girls can communicate through the mailing list with their leaders and also collaborate on projects with other members. Patrols or groups can take part in live discussions, with a trained Adult Leader or Senior Section member on hand to moderate the chatting and make sure the phone bills are kept down!

Check it all out at the Web site: www.netguides.org.uk.

More information

If you, or someone you know, would like to find out more about Lone Guiding, please contact Jane Mason at CHQ, on 020 7834 6242 ext 273, or e-mail JaneM@guides.org.uk.

Charlotte's experience

In a letter from Gibraltar, Charlotte said: 'When we decided to sail round the world I was looking forward to it, but knew I would miss all my friends. I really enjoyed going to Brownies, and was pleased when my mum found out about Lone Brownies and Guides.'

Over the months, she has sent postcards to *Brownie*, detailing her exploits. Highlights have included Christmas in the Caribbean, getting up close to the wildlife on the Galápagos Islands, watching black pearl farming in French Polynesia, and the birth of a baby brother — Harry.

After celebrating Christmas and the New Year in Thailand, the sailors will return to Gibraltar via Sri Lanka, Israel, Suez and Crete.

Cricket batty

By Vanessa Richmond
Additional material by
Pauline Roots

The profile of women's cricket has never been so high. Veteran players like Rachel Heyhoe-Flint have finally earned their place as members of the MCC, and a new crop of young women are showcasing their talents this month at the 2000 women's cricket World Cup in New Zealand.

Women's cricket has a long history — in fact it was a woman who invented overarm bowling (her skirts made the underarm technique tricky). But in the last two years there has been a 19 per cent rise in the number of women playing the game. So why not get your unit in on the action — there's coaching available at every level and for every age.

Kwik Cricket

Kwik Cricket is a shortened, easy-to-understand version of the game, designed for children aged five upwards. It can be played indoors or outdoors.

All you need is a set of Kwik Cricket equipment, which has been specially designed for small hands and is durable. One set — consisting of bats, balls, wickets and a bag — costs from £50 to £70, depending on the size you need. A number of kits are available from the England and Wales Cricket Board (ECB) at special subsidised rates — just ring the ECB for an application form (see the Contact details box at the bottom of this page).



One of your girls could make it to the top — like England's world-class opener Barbara Daniels

Your maidens will be bowled over by the sport that more and more women are taking up

The booklet that comes with the kit contains different game formats — short games that are recognisably like cricket, but without the complex rules. You can adapt the games for as few as two children to as many as 32, and make them fill one hour or a whole day.

Inter Cricket

Inter Cricket bridges the gap between Kwik Cricket and the traditional hardball game. It is best for children aged around 12-14, and can be played indoors or outdoors — on hard or grass surfaces.

Inter Cricket is designed to be fun, fast and exciting, and to develop genuine cricket skills. Unlike Kwik Cricket, a fielding zone is adopted as well as a free hit rule after a wide or no-ball — thus introducing one-day cricket style regulations.

Coloured bibs are worn, with coloured pads and gloves, coloured bats and a white rubberised ball with a stitched seam. At the time of going to press, sets of Inter Cricket equipment were about to become available, priced around £200. Call the ECB for details of how to get one.

Activity session

Girls from Kent Weald tried a one-and-a-half-hour session of cricket coaching with their local County Cricket coach at their County Camp this summer.

Fourteen Guides and Young Leaders bravely took part, using plastic bats, stumps and ball, and had a superb afternoon learning the art of batting, bowling and fielding. They played a variety of games — including Kwik Cricket — practiced throwing and catching techniques, and found that the activities could easily be used again at unit meetings.

Local coaching

This year, for the first time, the ECB has appointed four Women's Cricket Development Officers to promote women's and girls' cricket. To organise a visit to a unit meeting or camp, contact the officer for your region (see the Contact details box below left).

Cricket taster sessions can be organised by contacting your local ECB County Cricket Development Officer.

Contact details

Women's Cricket Development Officers:

- North: Pauline Peel, telephone 0191 388 3550.
- East Midlands: Helen Pugh, tel: 0115 982 3000, ext 328.
- Home Counties: Jenny Day, tel: 01494 462513.
- South West: Jackie Summers, tel: 01364 652588.
- Northern Ireland Women's Cricket Association: Contact Miss S Owens on 028 9028 2575.
- To get in touch with your local County Cricket Development Officer, see www.ecb.co.uk for a list of contacts, or call the ECB on 020 7432 1200, and they will give you contact details for your area.

Further information

- For more information about Kwik Cricket sets, call the Kwik Cricket Action Line on 0800 214 314.
- For information on the 2000 Women's Cricket World Cup, click on the Web site: www.2000.cricinfo.com.

Environmental impact

Your sterling efforts in the Environment Challenge will reap benefits well into the future

By Vanessa Richmond

The Guide Association's Environment Challenge may have ended in February, but the real impact of the contribution made by 10,000 units on environmental and wildlife projects around the UK is only now being felt.

The four charities chosen to benefit from the funds raised by recycling aluminium cans have now received their money and have decided how to spend it. And the partner organisations who set the challenges have given their response to the success of the initiative.

Energy target smashed

This initiative – organised with the National Energy Action charity (NEA) – was the most successful part of the Environment Challenge, and the charity's most successful collaboration yet.

Guides smashed their target to save one million kilograms of CO₂ by saving ten times that amount – enough to light a house for 22.5 million hours! They carried out audits of their homes and other buildings, to identify ways in which energy was wasted, and took action to put a stop to it.



Whale of a time: Brownies, Guides and leaders met with something of a much larger scale last week at the Tamarisk Festival in Newquay, Cornwall

'The resource materials we were provided with were excellent, offering numerous games, surveys, crafts, stories and debates and community service ideas for the girls.'

Barbara Mackenzie, Guider, 6th Horley Brownies.

NEA reception

Some of the Guides and Brownies from Horley, West Sussex, who took part in the challenge, met representatives of the NEA, the Chief Guide Bridget Towle and the Energy Efficiency Minister, Lord Whitty, at a reception at CHQ recently.

Lord Whitty told them, 'The Government is always setting itself targets but you've actually done ten times better. If everybody did what you did, we wouldn't have an energy problem.'

Continuing success

One reason for the project's great success, was the training offered by NEA to Guiders in the issues behind energy saving, and the resource pack with games, crafts,

stories and community service ideas.

If you would like someone from the NEA to attend a training that you are organising, either contact Elizabeth Maytom at CHQ by calling 020 7834 6242, e-mail ElizabethM@guides.org.uk, or the NEA's Education Officer Louise Stott on 0191 261 5677.

Saving the whale

The Guide Association has recently presented a cheque for £2,000 to the Whale and Dolphin Conservation Society (WDSCS), as a result of collecting and recycling over one million aluminium cans.

The charity, which is the global voice for the protection of whales, dolphins and porpoises, will spend the donation on its UK-based projects. Rachel Daniel of Alcan Aluminium Can Recycling – one of The Guide Association's partners in the challenge – said, 'It is fantastic that aluminium drink cans that would usually be thrown away have been recycled to raise £2,000 for such a worthy cause.'

Recycling for wildlife

Other charities that have benefited from the recycling efforts of members of The Guide Association include the World



Team effort: Girls who undertook the challenge pose (l-r) with William Gillis, Lord Whitty and the Chief Guide

Businesslike *Guiding*

Clackmannanshire County has set up its HQ in the heart of the professional community

By Allison Rae and the Commissioner Pilot Team

Clackmannanshire has established its County HQ in a business centre, alongside local companies. The arrangement has fulfilled the County's need for an administrative centre with particular criteria, and raised the profile of Guiding among both the people working there and their visitors.

The move was precipitated by the County Secretary no longer being able to provide space in her house for their computer and photocopier. Involvement in the Commissioner pilot scheme and administering the new Leadership Qualification made finding new premises an urgent matter.

Finding premises

A review of local premises was carried out. Eventually, an office was chosen at a business park in Alloa — the main town in the County.

The office is centrally located, easily accessible, and with a rent that is within the County's means. Members there now have access to committee rooms, overhead projectors and video equipment — all without charge. The park also has a well-lit car park complete with 24-hour security surveillance.

In addition, the team also successfully negotiated the use of a conference facility at a reduced rate for larger trainings, such as County Day Trainings.

Funds and equipment

The County is in the process of setting up a 200-Club type of fundraiser, in which 200 people take out a membership at a set cost per year, and at least 50 per cent of this is used to fund three cash prizes each month. The remaining money will pay the rent of the new HQ. The group bought office furniture at a knockdown price from a local company which was closing down, and cleaned and transported it themselves.

After circulating a questionnaire to all Guiders in the County to find out the times they were most likely to want to use the office, a rota was set up to man the HQ at these times. The office opened on July 10, and if recent months are anything to go by, the new HQ will be well used by local Guiders.



Members in Clackmannanshire County at the opening of their new HQ

Advice for others

If you are thinking about setting up a new County headquarters, Clackmannanshire County members recommend taking the following steps:

- Carefully assess your County's need for a headquarters.
- Investigate what the options are financially, and decide which is the best for you.
- When the decision has been made, just go for it!
- With enthusiasm and coverage in the local media, raise the profile of Guiding in your County.

Wide Fund for Nature (WWF), St Tiggywinkles — the wildlife hospital in Aylesbury — and the Talnotry Avian Care Trust (TACT), a small wildlife sanctuary in Northern Ireland.

The WWF received £2,000, which will be used to buy tracking equipment for their tiger and rhino project. St Tiggywinkles is planning to spend its £2,600 donation on a pulse oxymeter — for measuring the heart rate, oxygen levels and temperature of an animal — and a drip monitor. TACT has been given £300, and usually uses donations to buy feed.

Replenished woods

For the third part of the Environment Challenge, members took up their spades and planted 200,000 trees, in association with the Forestry Commission and The Woodland Trust's Woods on Your Doorstep scheme.

Anne Jappie of the Woodland Trust said, 'Lots of community groups have supported Woods on Your Doorstep, but the Guides were out in good and bad weather, working hard at nearly every event we held. That's a record almost no other organisation can claim.'

She went on to invite Guide Association members to turn out again between now and March 2001, to help reach the target of 250 Woods on Your Doorstep community woods.

'The energy saving part of the Environment Challenge was really good fun and made us aware of the things we should cut down on.'

Catherine Wilson, 7th Horley (St Francis) Guides.

How children

By Isobel Durrant

Recognising the different stages of development will help you tailor activities to the right age group

Shakespeare famously divided the whole of a person's life into seven stages, but Guiders could probably come up with that many just for girls and young women aged five to 18.

One of the great secrets of running a successful unit is catering for all ages and abilities. This is no mean feat. It can involve hours of careful preparation, differentiating activities to meet the varied needs of the group. Experienced Guiders, informed by years of watching girls acquire new skills, will do this almost instinctively. But it can be reassuring to know what the experts say, and interesting to see how your practice supports and helps girls through their social and cognitive development.

Rainbows and Brownies

Although no two girls' rate of development is exactly the same, it is true to say that, within age groups, they share common behaviours, capabilities and needs that differ from other age groups. The younger the girls, the more frequent the changes. This is particularly noticeable in the area of physical development. Rainbows' milestones come thick and fast — they acquire 'gross' motor skills such as riding a bike one day and catching a ball one-handed the next, simultaneously clocking up new achievements in their 'fine' motor skills such as learning to write.

As their coordination increases they learn to dress themselves unsupervised, although shoelaces may still prove a problem. They enjoy using climbing apparatus, kicking a ball

at a target and a whole range of physical activities such as jumping and learning dance sequences. This is a good time to introduce team games — perhaps throwing a beanbag into a box. To encourage the fine motor skills you might ask younger Rainbows to make mosaics or collages using glue and small bits of paper or material. Older Rainbows and younger Brownies will enjoy using papier mâché to make toys and crafts.

As they progress through Brownies, girls achieve much greater control over their physical movements and enjoy perfecting their new skills from constant practice. You'll see them repeating an action such as jumping on and off a bench over and over again. They will benefit from more complex games with rules, refining their fine motor skills by modelling with clay or other materials and using tools such as cutters and rollers.

Guides and the Senior Section

By the time they reach the Guides, they're on the verge of adolescence, with good coordination and endurance. The Guide programme, with its built-in flexibility, lends itself to the very different needs of the youngest members of the unit to the older girl who is reaching physical maturity. Obviously, if they are working towards Baden-Powell or Duke of Edinburgh Awards, the tasks are already graded in difficulty and girls can tackle them when they are ready.

Development rarely occurs at an equal rate across all areas. Girls' emotional and social development is much harder to assess than their physical development. It involves the girls' self-image and identity as well as their relationships with others and the acquisition of social skills. In adolescence, as everyone familiar with teenage girls knows, the process of becoming increasingly independent, concerns with body image, forming relationships with boys, and needing peer approval, seldom makes for an easy time. They may become shy and awkward, covering anxieties with displays of bravado. If they are teased by adults for being inconsistent, or have their feelings dismissed, it's harder for them to move on successfully.



Brownie-age girls perfect their new skills through repetition

Publications and courses

- The Guiding Development department at CHQ is currently working on optional training modules including two on child development. One focuses on children up to the age of ten, the other on children over ten. The first of these two will be ready by the end of the year. Watch out for more details in future issues of *Guiding* magazine.
- *Human Growth and Development* by Hilary Thomson and Carolyn Meggitt is a comprehensive volume covering birth to old age. Published by Hodder and Stoughton, ISBN 0-340-683262-7.
- *Helping Young Children to Develop* by Jackie Harding and Liz Meldon-Smith covers child development from birth to eight years. Published by Hodder and Stoughton, ISBN 0-340-72078-6.

develop

Part of the process of self-discovery and identity is hypersensitivity to criticism.

As their developmental progress is also dependent on their relationships with others, it is vital that they feel confident they'll be listened to with respect, so they can test out their thoughts and feelings rather than keep silent through fear of ridicule.

It's important to realise that developmental stages are progressive and can't be skipped. If, for whatever reason, a child gets stuck at a certain stage of development, she will need to complete it before she can move on to the next stage. The cause may be something sinister, such as abuse or neglect. Or it may be the result of a bad illness, a significant event in her family such as the death of a grandparent or the birth of a sibling, or simply the lack of opportunities to mix with other children.

Guiding activities

All of this helps us to plan suitable activities to help girls along the way. Sometimes the basic idea behind an activity remains remarkably consistent whether it's organised for five or 15-year-olds. Generally speaking, five-year-olds

play cooperatively and show their understanding of events and stories by acting them out.

They enjoy making up short plays using simple puppets and performing it to an audience. This sort of activity also encourages their growing vocabulary. Ten years on, girls will still be exploring their world and expressing themselves with increasing complexity. They too benefit from making up short plays and performing in front of an audience.

However, in the intervening ten years they will have covered an immense amount of ground, physically, emotionally, intellectually, morally and socially.

They will move from being very family orientated to attaching most importance to the relationships they have with their peers; from revelling in their newly-acquired coordination, and confidence in their physical ability, to self-consciousness and awkwardness. All children learn through a variety of means; their senses, their social environment and experiences, through play and everyday activities, through exploring and experimenting, through imitating and observing, through making mistakes and, last but not least, through encouragement, praise and guidance. All of which girls will encounter as members of The Guide Association.

Balancing act: Ensuring that activities are appropriate to the age of the girls involves careful preparation

No two girls' rate of development is exactly the same...

Most five-year-old girls...

- show a preference for using their left or their right hand
- have an attention span of 15-20 minutes
- will follow instructions and accept supervision
- can tie knots in string when shown how
- can copy circles, squares and triangles
- can cut on the line
- can colour within lines
- understand around 6,000 words
- use around 2,500 words
- can classify words and objects into groups
- like to conform
- enjoy competitive and boisterous games
- enjoy cooperative play in small groups
- can give a word that rhymes after being given an example.

Most ten-year-old girls...

- have many passing interests
- are casual and relaxed
- have one best friend and like to be in with the crowd
- are concerned with style
- have a strong sense of justice
- like to develop their strength, skills and speed
- enjoy team games
- enjoy more complicated craft activities
- enjoy collecting things
- are increasing their independence and dependability
- are developing more quickly than boys of the same age.

Most 15-year-old girls...

- are reaching sexual and physical maturity
- have an attention span of 20-30 minutes
- thrive on arguments and discussions
- can reason logically and understand abstract concepts
- need to feel important in the world
- are idealistic and need to believe in something
- worry about their appearance and their popularity
- attach a great deal of importance to attractiveness
- withdraw from their parents
- want less interaction with their families
- look to their peer group for approval rather than adults
- socialise with a large group of friends
- have a strong sense of right and wrong.



MERL HOUSTAF

Special needs

Welcoming a visually impaired girl into your unit

By Sue Norton

With support and understanding, sight loss is not a barrier to full inclusion within the unit. Indeed, your unit will be richer as a result. Here are some guidelines.

Individual needs

The causes and levels of impaired vision are many, so it is important to meet the girl before she joins the unit, to discuss her individual needs.

For instance, some children with partial vision may have very minor difficulties, while others may almost need to learn Braille. Those who have had sight will be able to grasp concepts more easily than those who have never been able to see.

Your meeting place

When the meeting place is empty, help the girl to familiarise herself with the layout – including the cloakroom and toilets – and describe the general movement that goes on during the meeting.

Make simple adaptations such as marking stair edges with white paint or tape, and highlighting glass doors. Put white paper on tables so that objects stand out. Think about improving lighting, bearing in mind that some conditions are sensitive to glare. Avoiding shiny surfaces and materials will

help — as will using blinds or anti-glare curtains.

Keep the floor free of obstacles, and avoid moving chairs, tables and equipment. Give advance warning of any changes.

Introductions

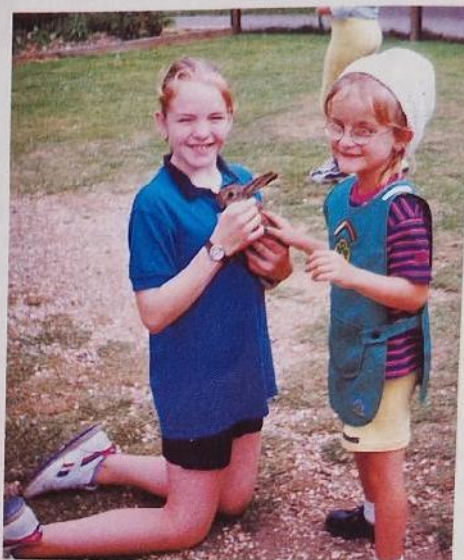
Find out how the girl would like to be introduced — would she prefer to meet a small number to begin with, or have a 'buddy' to help her settle in?

Prepare the other Guides by discussing what visual impairment is, and teaching them the correct leading procedures. Let them voice their concerns, and make sure they know that the girl will be a full participant in the unit — and not seen as a 'good turn' opportunity.

When they meet, teach the Guides to use their name, so that in conversation the girl knows who is speaking to her.

How you can help

Encourage the girl to try everything and be as independent as possible. Keep her involved by reading anything written down aloud or recording it on tape. Also read out notes to be taken home.



JANE MASON

Girls with visual impairment can fully participate in unit activities

Try to convey meaning by tone of voice. She may miss an approving smile, so a verbal 'Well done!' is needed. Remember, too, that a visually-impaired person may not use conventional body language or look at you when she is talking to you. It may seem that she is not paying attention when she probably is.

Further information

- See The Guide Association publication *Including Disabilities*.
- Seek advice from your local Adviser for Members with Disabilities.






Stacking Steel Upholstered Polypropylene

Chairs in Oak • Beech • Birch • Ash
WOOD OR STEEL TABLES • FOLDING TABLES
FREE LITERATURE BY RETURN OF POST

KIRKHOUSE PRODUCTIONS
50 CHEVIOT VIEW, PONTELAND, NEWCASTLE UPON TYNE NE20 9 BW
TEL 01661 860690 or FAX 01661 860691
Email: info@kirkhouse.co.uk Website: www.kirkhouse.co.uk

Playchutes from SeamStress Ltd.



For active fun all year round!

Parachute play encourages:
co-operation,
integration
social interaction
and it's great fun!

Playchutes are individually made to your requirements. Choose your own colours and size. Logos can be appliquéd. For information please contact:

SeamStress Ltd., 23 Banbury Road, Byfield, Northants. NN11 6XJ Tel/Fax: 01327-263933



December 2000

Activate

*Wishing you a Merry Christmas
and an active new year!*

What's in

If you like fascinating facts, animals and creepy crawlies, see our Natural History Museum giveaway on page 4.

What's hot

Brownie Guider, Teresa Ellis, sent in an idea and won a prize for her unit — see page 4.

If you've got something crafty to share, send the instructions, along with a couple of clear photos, to *You made it!*/Guiding magazine.

Contents

Welsh wonders 2

Valentines with a difference

You made it! 4

A reader's craft takes centre stage

Hidden values 6

A closer look at the Promise and Law

Hogmanay 9

New Year — Celtic style

Glam Guides 10

Go girlie with glitter and shine

Music maestro 12

Bang! Crash! Wallop!

Plastic fantastic 14

The ultimate recycling challenge

For Rainbows

Turn to pages 12 and 13 to find the perfect musical project for Rainbows. You will find noisy instruments to make and tuneful songs to sing.

Pull out and keep



Be mine

Let's go all pink and slushy to celebrate St Valentine's Day on February 14

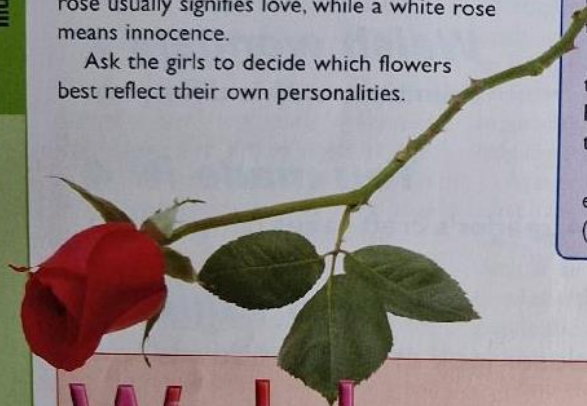
Hearts and flowers

Flowers are a big part of Valentine's Day.

Run a competition in your unit to see who can come up with the funniest version of *Roses are Red, Violets are Blue...*

Did you know that flowers are sometimes given a special meaning. For example, a red rose usually signifies love, while a white rose means innocence.

Ask the girls to decide which flowers best reflect their own personalities.



Got the bug

Make these cute love bugs into magnets or an ornament for a desk. They are suitable for all sections to make and love!

Mix up the plaster of Paris. Fill up the bowl of a plastic dessert spoon and then level it off with a knife. Leave it to set.

Girls who are making fridge magnets should embed the magnet into the wet plaster.

Tap the spoon so that the plaster shape falls out. Paint the smooth, rounded side to look like a bug.

When the paint is dry, stick the joggle eyes in place. You can then give the bug a coat of PVA glue (avoiding the eyes), to varnish it.

You will need

- Plaster of Paris and tub to mix it in
- Water
- Plastic dessert spoons (one for each girl)
- Plastic knives
- A pair of joggle eyes for each girl
- Acrylic paint and brushes
- PVA glue
- Small magnets (optional)
- Strong glue (Copydex or a glue gun)



Welsh wonders

Visit the Welsh Valleys to learn about the language of the love spoons...

Love spoons

Love spoons are a traditional, hand-carved expression of affection given by Welshmen to their sweethearts.

Girls can make their own version (it doesn't involve carving!) and find out all about the hidden messages of love...

- 1 First, girls should design their Welsh love spoons on paper. Draw an outline of a spoon about 15-20cm long, with a handle around 1.5-2cm thick. This is a good basis to work from.

You will need

- Card
- Paper
- Ribbon
- Colouring pens
- Scissors
- A hole punch

The design can be made up of simple drawings or it could have more elaborate cut-out pieces such as hearts or flowers.

Transfer the design on to card, then colour it in and cut it out. Punch a hole in the top of the handle and tie a ribbon bow through it.

The love spoon makes an unusual bookmark for mums and dads or friends.

Guiders' note

Symbols that appear on traditional love spoons, have a deeper meaning.

- Twisted stem — two people as one
- Bell — weddings or anniversaries
- Chain links — number of children or years spent together
- Diamond — wealth
- Flowers — friendship
- Heart — love
- Horseshoe — luck
- Knot — together forever

Phrase book

Woo the love of your life with some handy Welsh phrases...

- Good morning — Bore da
- Good night — Nos da
- How are you — Sut dach chi?
- All right, thanks — Gweddych chi?
- It's lovely — Mae'n hyfryd

Secret admirer

This fantastic padded heart card is just the thing to send to a secret love.

Fold a piece of wrapping paper and cut out two hearts around 10cm high and 10cm wide.

Draw a thin line of glue around the edge of one heart — but leave a gap at the top. Then stick the hearts together.

Scrunch up some tissue paper and push a little inside the heart to lightly pad it out. Close up the gap with a little more glue.

Tear up some little pieces of red tissue paper



You will need

- A4 coloured card
- Red tissue paper
- Plain wrapping paper (to coordinate with red)
- Glue
- Glitter
- Sticky fixers
- Scissors

20 mins

and glue them around the edge of the heart (just on one side).

Now glue on a little bit of glitter to add some sparkle. While the heart is drying, fold the card in half and write a verse inside.

Remember to tell the girls not to write their names as a Valentine's card should be a secret!

Finally, use a sticky fixer to attach the heart to the front of the card. Perfect!



Ideas to go

■ Plan a pink party with pink food and pink clothes. Festoon your meeting place with paper hearts and pink balloons.

■ Trim a T-shirt, hair slide or bag, with pink, feathery marabou. This costs around £1.20 a metre in haberdashery departments.

■ Use your favourite biscuit recipe to make heart-shaped cookies. Decorate them with icing and take them home.

■ Read *Rainbows* a fabulous story about family love — *Guess How Much I Love You* by Sam McBratney, is published by Walker Books.

■ Offer your very own top secret, confidential Valentine card delivery service to friends and family.



St Dwynwen

St Dwynwen is the Welsh patron saint of friendship and love. St Dwynwen's Day is celebrated on January 25.

Dwynwen lived in the 5th Century. She was a beautiful girl who was hurt very badly by someone she loved. As a result she decided to devote her life to God and become the patron saint of lovers.

■ Send a St Dwynwen card instead of a Valentine card.

■ Ask the girls who the patron saint of Wales is and what date his life is celebrated (St David, March 1).

■ Find out about other patron saints, such as Jerome, the patron saint of Librarians, or Cecilia, the patron saint of musicians!



Further info

- To find out more about Welsh culture, visit the **Museum of Welsh Life, St Fagans, Cardiff CF5 6XB**. Telephone: 029 205 73500. Web site: www.nmgw.ac.uk/mwl/index.en
- First stop for anyone who wants general information about Wales, is the **Wales Tourist Board, Brunel House, 2 Fitzalan Road, Cardiff CF24 0UY**. Telephone: 029 2049 9909. Web site: www.tourism.wales.gov.uk
- For daily Welsh news, check out the online newspaper: www.totalwales.com
- If you'd like to learn to speak Welsh, check out this linguistic course online: www.cs.brown.edu/fun/welsh/welsh-main
- If you want to know more about saints, have a look at *Lives and Legends of the Saints* by Carole Armstrong, published by Francis Lincoln Publishing, ISBN: 071121672X.

For Rainbows

Love letter

You may have forgotten all about this particular traditional game. If you have, dust it off and teach it to your Rainbows...

All the girls sit on the floor in a circle. One is chosen to be the post lady, she holds a clean handkerchief or something similar.

Everyone sings the following song to the tune of *Yankee Doodle*, while the post lady skips round the circle.

**I sent a letter to my love,
But on the way I dropped it,
One of you has picked it up
And put it in your pocket.**

When the singing stops, the post lady walks round and drops the handkerchief in front of one of the other Rainbows. The girls then race each other around the circle and back to the empty space.

The post lady then 'retires' and the new girl takes her place.

Keep playing for as long as you like.

You made. *it*

The 2nd Cannock Brownies 'bugged' us to feature their fantastic craft...

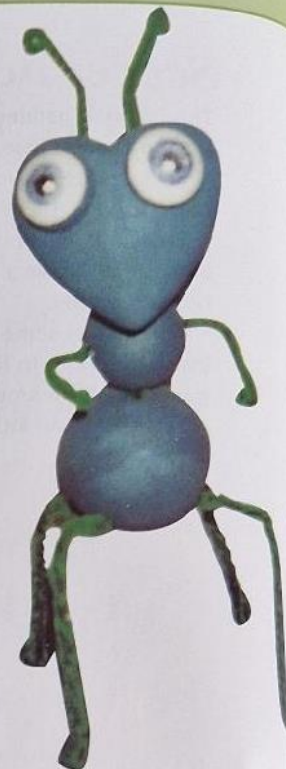
Brownie Guider, Teresa Ellis, wrote to *Activate* to tell us all about her Pack's brilliant craft idea.

As part of their bug-themed Brownie Holiday, the girls made these fabulous crawly creatures. We thought that they were so good, you'd like to make them too!

The 2nd Cannock Brownies won a bundle of books for their idea. If your unit has something to share, tell us all about it, and, if we use your idea, a surprise bundle could be winging its way to you!

Send your ideas, along with a clear photo or a sample of your craft, to:

You made it! *Activate*, The Guide Association, 17-19 Buckingham Palace Road, London SW1W 0PT.



- 1 Cut the 3cm ball in half and paint eye-balls on to the rounded side.
Paint all your other polystyrene shapes in the colour of your choice.

- 2 Take four chenille pipe-cleaners. Fold each one in half and twist together to make four legs. At the end of each leg, leave a small loop to form the feet.
Take the fifth pipe-cleaner and cut it into four equal parts — making two arms and two feelers.

- 3 Once all the polystyrene shapes are dry, take the last pipe-cleaner, fold it in half and twist it together.

Push one end into the back of the heart, at its widest point. Then make a hole straight through the 4cm polystyrene ball and push the pipe-cleaner through that.

Finally, push the end of the pipe-cleaner into the wide part of the egg, so the pointy bit faces backwards.

The picture will help if you are having doubts about how to put the bug together!

- 4 Use a dab of latex glue to hold all the ends of the pipe-cleaners in place.

Push the four legs into the egg, then put the arms and feelers in place too.

Glue on the eyes that you made right at the beginning. Finally, finish off by drawing a mouth with a felt-tipped pen.

You will need

For each bug:

- 8cm polystyrene heart (head)
- 8cm polystyrene egg (bottom body)
- 4cm polystyrene ball (middle body)
- 3cm polystyrene ball (eyes)
- 6 chenille pipe-cleaners
- Latex glue (for example, Copydex)
- Acrylic paint
- A felt-tipped pen
- A paint brush

60 mins

Make it easier...

Before the girls start, you can make holes in the shapes as well as folding and twisting the pipe-cleaners for them.



The 2nd Cannock Brownies show off their boggle-eyed bugs

Guiders' notes

- The polystyrene shapes are available from most craft and hobby stores. If you are having trouble finding a stockist, try the following:
Panduro: Freeport, Transport Avenue, Brentford, Middlesex TW8 8BR. Write, on headed paper, for a mail order catalogue with 15 per cent discount on Guide Association orders.
Hobbycraft: Tel: 01202 596 100, ask for details of your nearest craft superstore.
- Only use acrylic paint as poster paint eats into the polystyrene.
- The bug should cost no more than £1.50 per girl — making it an ideal Brownie holiday craft.

TERESA ELLIS

Creepy crawly giveaway

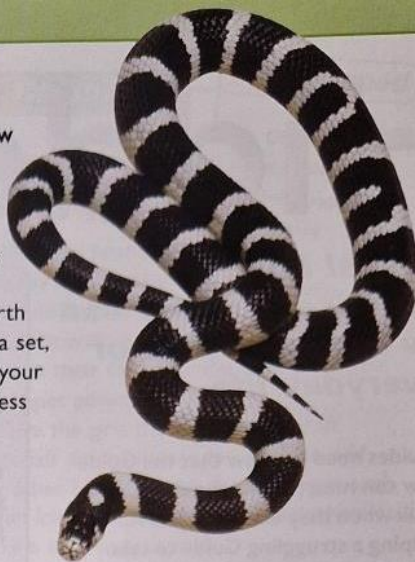
If your unit likes the creepy crawly world of nature, then they will love these new *Weird and Wonderful Guides* endorsed by the Natural History Museum.

Published by Oxford University Press, *Zooming and Creeping*; *Mega and Micro*; *Scary and Sneaky* and *Going Going Gone*, are packed full of photos and facts about our planet's most interesting creatures. Each book costs £5.99.

We have two sets of *Weird and Wonderful Guides* (worth around £24 each) to give away. For a chance to win a set, send your answer to the following question, with your details, to Activate/Weird Competition at the address on page 3.

Which of the following is not the title of a *Weird and Wonderful Guide*?

- ☐ Zooming and Creeping
- ☐ Mega and Micro
- ☐ Slippery and Slimy



Together games

Get together to play games that will help you work well as a team

Mirrors

Get the girls to pair up for this cooperation game.

One girl in each pair puts her hands out in front of her and her partner does exactly the same — with about 2cm space in between them.

The first girl takes the lead and moves around the room. Her partner reflects her movements just like a mirror image.

They should keep going for a couple of minutes and then swap roles.

How did the girls find this activity? Did they feel in control? Talk about how the girls felt.

Pass the object

For this activity, groups of 10-12 girls sit in a circle.

Explain that you are going to pass an imaginary object around the circle — such as a piece of sticky gum, a hot potato, a kitten and so on.

The girls must pass the object on in a suitable manner. It can be changed into something else if the girls feel like it.

Add more interest to the game by pretending to be someone else and pass the objects on as if you were a naughty child, an elderly lady and so on.

Did the girls feel silly doing this activity?



Balloon sandwich

This is a racing game for pairs of girls.

First of all, the girls need to pair off. Each pair needs to have a balloon.

The girls stand back to back with a balloon sandwiched between them, at one end of the room.

On the word 'go', the girls must move, as fast as they can, to the finishing line — without dropping their balloon. Anyone who does drop it must go back to the start.

Swap partners and play again. This game can be really funny if a very short person and a very tall person pair off together!

Did everyone manage to coordinate their movements?

Into extra time

Play pass the orange too. Girls have to pass an orange to each other without using their hands — by holding it between their chin and their chest!

Melt-me tag

This tag game gets everyone working as a team.

Divide the girls into Sixes or Patrols. One team is chosen to be the ice-queens. The ice-queens have to run around tagging as many girls from other teams as they can.

Anyone who is tagged must stand 'frozen' with her arms and legs stretched out. She can only be 'defrosted' by a member of her own team crawling through her legs.

Play for a few minutes at a time. Blow a whistle and give a token to anyone who is not frozen at that time.

Let another group have a go at being the ice-queens. When everyone has had a go, count up the tokens. The team with the most tokens wins.

Guiders' note

'Mirrors' and 'Pass the object' first appeared in The Guide Association's So far ...and yet so near activity pack.

Hidden values

Reveal how our Promise and Law can be a natural part of everyday life

'Guides need to know that the Guide Law can mean taking the dog for a walk when they don't feel like it, helping a struggling Guide to take part in a Patrol activity or coming home at an arranged time...' (Notes for Guiders: Guide Section, The Guide Association, 2000.)

All of the activities on this page have something to do with the Promise and Law.

You may like to get together for a short discussion after you have finished each one, or you could just let the activities speak for themselves.

You can find more practical information on the Promise and Law in chapter 3 of the *Guider Handbook*.

New Year

The New Year is almost here — can you believe that Y2K went by so quickly?

Ask your Guides to think about some New Year's resolutions that can be related to one of the six parts of the Guide Law.

Each Patrol could then make their own fancy scroll to show off a 'declaration of pledges'.

On the scroll, each Patrol member writes down a Law-related pledge that she will carry out in the next three months.

Display the scrolls in your meeting place so that everyone can see what you are doing!

Here are some examples of pledges to help give the girls a little inspiration.

■ I will visit a Rainbow unit, every two weeks, to read them a story. (A Guide is helpful and uses her time and abilities widely.)

■ I will give up my seat on the bus for anyone who needs it more than I do. (A Guide is polite and considerate.)

■ I will help out at the local animal rescue centre for one Saturday every month. (A Guide respects all living things and takes care of the world around her.)

Make it easier...

Brownies can carry out this activity by relating pledges to their own Law.

Whose God?

This is a special project that could take up a whole term, depending on how in-depth you want to make it.

When we make our Promise, we make a pledge to love 'my God'. Each group (Sixes, Patrols or Senior Section) can choose a religion that this phrase could apply to and then find out more about it.

Top tip

If the girls are going to look at this project closely, a good starting-point is to write letters of introduction to individual, religious leaders in your area.

Explain what you are doing and ask if they would be willing to help — perhaps by sending information, or coming to visit.

Fun file

Every Six or Patrol needs a file to keep all their very important bits of paper in.

The girls cut out pictures and words that they feel reflect or describe Guiding. Then they can stick them on to the front of the ring binder and cover it with clear sticky-backed plastic.

You will need

- Old magazines
- Glue
- Scissors
- Clear sticky-backed plastic
- A ring binder or a cardboard document wallet for each Six/Patrol

25 mins

Letter law

Ask each Six to write the word **BROWNIE** in big letters.

The groups then have to think of words to describe a Brownie, using every letter of the word itself.

For example: **B**rave, **R**eady, **O**pen, **W**elcoming...

If it helps, the girls can make up sentences instead. Each sentence can take the form of a Brownie 'rule'. For example: **B**e kind, **R**aring to go, **O**pen your eyes and so on.

How do the girls' finished acronyms relate to the Promise and Law?

DIANA AYNAI



Top tip

You can give this activity to Guides but do remember to change the initial word!

Word fun

Find all the words that are connected to the Promise and the Law.

The leftover letters, when read from left to right, will reveal the Law made by Brownies (Wolf Cubs) in Italy.

| | | | |
|---------|-------|-----------|---------|
| Kind | Queen | Helpful | Love |
| Sisters | Best | Country | Polite |
| Others | God | Respects | Promise |
| Turn | Law | Challenge | |

Top tip

The Italian Brownie Law is: *The Wolf Cub listens to the old wolf; The Wolf Cub never gives in to herself.*



For Rainbows

You will need

- Old socks — clean and not too holey!
- Felt scraps
- Buttons
- Glue
- Wool scraps

30 mins

Puppet power

I will do my best to love my God and be kind and helpful.

Rainbows can explore their own Promise with a little bit of puppet power.

Give the girls the selection of craft materials on the list — you can also add any other bits and bobs that you have, such as fun foam, sequins and so on. Ask them to make a sock puppet each.

At your next meeting, the girls can make up short puppet plays to show ways of being kind and helpful.

Make it harder...

Other sections could make their own, more sophisticated, puppets and put on plays to show Rainbows what fun Brownies have.

Girls could even make a 'Super Brownie' story into a play.

Dilemmas

Act out some of our dilemma dramas, based on skills and relationships

The dramas are suitable for Guides and members of the Senior Section. Girls should work in small groups.

The emergency

On a cold winter's evening, you are all wrapped up in warm clothes and taking a walk along a towpath with a group of friends.

Suddenly you hear a scream and a splash. Looking around, you see that a stranger has fallen in the water. Two of you are really good swimmers ...

■ What would you do next? Use the drama to lead into a discussion about water safety and emergency procedure.

Trouble at work

Helen and Lizzie are doing work experience as receptionists for a firm of solicitors.

The head of reception leaves the two girls in charge while she pops out for 15 minutes.

Helen files her nails and ignores the phone. Lizzie is polite, helpful and deals with people who call and visit in the appropriate manner.

Meanwhile, the director of the firm is watching ...

Act out the scene, including what happens when the Director takes action.

■ Lead into a discussion about how to treat visitors and new people who come along to your unit.

Babysitter

Zoe's older sister, Sarah, turns up at 7pm on a Thursday night. She asks Zoe to look after her baby nephew right at that moment, and then leaves.

Zoe was about to go out to take some Geography notes to a boy she really likes. She puts her nephew to bed and he immediately falls fast asleep.

Zoe's friend, Alice, comes in to say that the boy is waiting for Zoe at the end of the road ...

What happens next? Decide what Zoe should do and act it out.

■ When you have finished, lead a discussion about responsibility.

Top tip

Base a drama and discussion evening on lots of issues you have thought of yourselves — such as boys, drugs, crime...



BUBBLES/FRANS ROMBOUT

Acknowledgement: Marion Gow

Card games

Take a pack of playing cards and you have the essential ingredient for a whole meeting!



Full house

You will need two or three packs of cards to play this fabulous bingo game.

Take a pack of cards — or two packs if you have more than 17 players. Shuffle the pack and give each girl three cards.

The girls place their cards in front of them, face up. Now take another pack of cards and shuffle them. Deal them in front of you, one at a time, calling out the name of each card as you go.

When a girl has one of the cards that you have called out, she turns it over. The first person to turn over all three of her cards, shouts 'BINGO!'.

You may award a prize, such as a sweet if you like. Otherwise, just play the game again.

Card sharp

Be card sharp with this simple relay game suitable for any age.

Divide the unit into four teams. Each team then lines up at one end of the room, and every girl is given a playing card.

The first girl in each team throws her card, frisbee style, as far as it will go. The girl who throws her card the furthest gets to keep all the cards that have just been thrown.

The next girl throws her card and the game carries on until everyone has had a go — or all the cards have been used up. The winner is the team with the highest number of cards.

Into extra time

Distribute all the cards and keep going until they have all been used up.



Swap tag

Have a fast and frantic game of tag, to see who can hang on to the King card!

Remove all the picture cards — except one Jack, Queen and King — from a pack. Distribute the rest of the cards so that everyone has one each.

One girl is chosen to be It. Everyone runs around the playing space while It tags as many people as she can. Every time a tag takes place the girls swap cards.

Let the game run for about five minutes before signalling the girls to stop. Whoever has the King is the winner and takes the next turn to be It.

Wheeler dealer

■ Challenge groups to build the tallest house of cards possible.

■ Play Snap and Happy Families using different suits.



Higher or lower

This is a good game for small groups — such as Sixes and Patrols — to play on their own during a spare moment.

Each group has a pack of cards. One girl shuffles them, turns over the top card, and places it in front of her, face up.

The girl to her left says whether the next card will be higher or lower.

If she guesses correctly, she keeps the cards. If she is wrong, the cards go in the middle. The girl to the right of the dealer then takes over dealing the cards.

Keep playing until all the cards have been used.

The person with the most cards, wins the game.



Group wise

Cards are a very useful tool to organise girls into groups for other activities.

■ Take out equal numbers of each suit and hand them out to the girls. Everyone must then organise themselves into four groups.

■ Distribute pairs of each number, girls then have to find their partner.

■ Take out equal numbers of red and black cards. Give the cards out and let the girls organise themselves into two groups.



W
E
Z
I
T
O
H

What is Gift Aid?

New Gift Aid is a government scheme to encourage giving to charities like us that is far more flexible and helpful than previous schemes. It means that Guide Association subscriptions are now eligible for tax relief.

How can my unit benefit?

You can claim money back from the Inland Revenue on the subs paid by each girl, for every year she is in your unit. For example, if the total subs paid by a girl in a year amounts to £45, you can claim back £12.60, for every year she is in your unit — it works out at around 28 per cent. So, if you have 20 girls in your unit, you could increase your unit funds by £256 per annum — an amount well worth having. The money can only be claimed on total subs.

Other payments received for camp fees or outings cannot be included.

Claiming money back

Setting up the scheme does involve some work, but much of this is a one-off exercise. To make the process as easy as possible, The Guide Association has put together an information pack explaining what you need to do. See the next page, for details of how to get a pack.

Essentially there are six steps to claiming Gift Aid:

Step 1

Find someone to help you do the administration such as a parent if you feel that you do not have enough time to set up the scheme.

Step 2

Write to the Inland Revenue for a Charity Reference number

A sample letter is included in the pack. Fill in your unit name and contact details and send this off to the relevant address.

Step 3

Set up a gift aid records file with four sections.

Step 4

Check your unit bookkeeping records to ensure they record all the information you need. If not, add an extra column for subscriptions that have been 'gift aided'.

Step 5

Get the Gift Aid Declarations signed by parents/guardians and file them very safely — they are worth money to you.

Step 6

Once a year, or more often if you wish, **fill in the Inland Revenue Claim forms** to obtain your tax repayment.

Keep your records filed safely in your gift aid records file

Get a little extra help...

We hope your unit will be able to take advantage of the new Gift Aid relief. The Association is delighted that the rules now mean that our subscriptions are eligible for tax relief under the scheme — it is a great way to be able to increase your unit funds. If you feel that you don't have enough time to set up the scheme, why not ask a parent to help you out.



Hotline December 2000

How to get hold of the information pack

If you have access to the Internet, you can receive the information pack electronically via the Guide Association Web site. Receiving the pack in this way will help you to get up and running faster. If you don't have access yourself, there may be someone in your unit who does, who could help you. If not, copies of the pack, which can be photocopied, can be obtained from your County during January 2001.

Contents of the information pack

1. How to apply for a Gift Aid number for your unit
2. How to keep the necessary records and filing system
3. Gift Aid Declarations — advice and guidance on how to get these signed
4. A step-by-step guide to making a claim
5. How to write an explanatory leaflet for parents
6. Where to find help — useful telephone numbers and addresses.

To download a copy from The Guide Association Web site, visit www.guides.org.uk



Adult Members in The Guide Association

Introducing Affiliate Membership

The role that adults play in Guiding is vital to the success of the organisation. Many adult volunteers work directly with girls and young women and there are many other volunteers who offer background support to keep Guiding going at a local level.

There may be many adult volunteers who currently consider themselves members but they have not been counted as part of the organisation. The Association would like to recognise the contribution made by adults who are involved. In addition, recent changes in external regulations affecting charities require the Association to hold accurate data on all adults who volunteer for the organisation.

The Executive Committee has decided to create an optional category of Affiliate Membership that enables it to recognise properly all adults, both male and female, who volunteer for The Guide Association. This may be of particular interest to those adults who are currently Unit Helpers, as well as many others who give individual assistance at local level.

The Executive Committee has clarified the difference between those adult volunteers who are counted as Full Members and those who could become Affiliate Members by listing criteria for each category. Volunteers will belong to the category that reflects their role in Guiding.

Who can be a Full Adult Member?

A Full Member is a woman who:

- makes the Promise and wears the Promise badge.
- is between her 18th and 65th birthdays.
- holds a current appointment (e.g. Unit Guider, Commissioner, Adviser).
- wears uniform.
- signs up to the aims of Guiding and the mission of The Guide Association as set out in *The Guiding Manual*.
- abides by the Association's code of conduct for all adults involved in Guiding.
- registers with the Association at unit, District, Division, County, Country or Region or CHQ as appropriate.
- completes child protection procedures as required by the Association.
- gives permission for her details to be held on a database of membership.
- pays an annual subscription to the Association.



Who can be an Affiliate Adult Member?

An adult volunteer who plays an individual active support role in the unit, District, Division, County, Country or Region or the Association can apply to be an Affiliate Member. This category of membership is optional.

An Affiliate Member is a man or woman who:

- has a card of membership and can wear an Affiliate Member badge.
- is aged 18 years or over.
- signs up to the aims of Guiding and mission of The Guide Association as set out in *The Guiding Manual*.
- abides by the Association's code of conduct for all adults involved in Guiding.
- registers with the Association at unit, District, Division, County, Country or Region or CHQ as appropriate.
- completes child protection procedures as required by the Association.
- gives permission for his/her details to be held on a database of membership.
- pays an annual subscription to the Association (see below).

Existing arrangements for specific roles set out in *The Guiding Manual* continue to apply to Affiliate Members e.g. terms of office for locally-appointed treasurers, age limits for Unit Helpers etc. The Association retains the right to:

- refuse an affiliate membership application.
- review at regular intervals the eligibility of an individual to remain an Affiliate Member.

This follows the procedure for other Guiding appointments.

Suggested local roles for Affiliate Members

An individual who fulfils one or more active support roles may apply to be an Affiliate Member. Some roles have recognised titles such as Unit Helper or District Treasurer. Others will relate to local circumstance and to traditional support functions provided locally e.g. the person who regularly helps out at camp or indoor holidays or who is a general District helper. Suggestions of roles are given below but this list is not exhaustive and there may be other local roles where an individual could apply to be an Affiliate Member.

Unit Helper

District Helper

District Administrator

County Treasurer

Depot Manager

Badge Tester

Division President

Instructor

Campsite Secretary

Camp/Holiday Staff

Members of Property Committees or Fundraising Committees



W
N
T
H
O
I

Senior Section Members

It is possible for a young woman aged between her 18th and 26th birthdays to be eligible for either full or affiliate membership. She should choose her form of membership, depending on the kind of role she wishes to undertake in Guiding at that time. This may be particularly helpful for a young woman who is studying away from home or who is beginning her working life in a new area and has not yet decided on her preferred Guiding commitment.

Trefoil Guild

The Guide Association recognises the enormous contribution that Trefoil Guilds make to Guiding at a local level.

Individuals who are members of the Trefoil Guild may also choose to apply to be an Affiliate Member of the Association where they fulfil an individual active support role at a local level. These forms of membership are mutually compatible and not mutually exclusive. If the individual chooses to be a member of both organisations, separate subscriptions to both organisations apply. (See below.)

Recruiting Affiliate Members

There are many adult volunteers already working in an active support role at local level especially Unit Helpers. This is a great opportunity for effective recruitment at unit level, e.g. a Guider could invite a Unit Helper to apply to become an Affiliate Member. The most effective form of recruitment is face-to-face contact and potential Affiliate Members will be easy to find as many of them have been helping for years!

To assist with recruitment a leaflet will be produced encouraging adult volunteers to consider affiliate membership.

Application

Application to become an Affiliate Member will follow the same procedure currently used for full membership.

Initially Affiliate Members will complete an application form, and if applicable, child protection procedures (W/R or W/In forms). Application forms will be available from the local Commissioner. A new Affiliate Member will receive a membership card after references are checked.

Where practical this card should be handed to the person by the relevant local Commissioner. This is an ideal opportunity to thank the person for his/her interest and commitment to Guiding and recognise the value of his/her contribution. An Affiliate Member badge will also be available.



ENLIGHTEN

December Hotline 2000

Census

The 2001 census forms have been adjusted so Affiliate Members can be recorded. It is hoped that this will encourage existing volunteers to consider applying for affiliate membership.

Subscription

As an incentive in 2001, Affiliate Members will not be asked by the Association to pay a subscription.

Further opportunities for Affiliate Members

The Association welcomes Affiliate Members for the active support they give to the trained volunteers who run units. Although Affiliate Members do not require formal training, it is hoped they will be invited to participate in local training opportunities.

Additionally, they should also be included in the distribution list for information circulated to Guiders in the local area.

Implementation

The Association is pleased to introduce this opportunity for affiliate membership with effect from January 2001. A presentation will be made to County Commissioners at the Briefing Day at CHQ on 9 December 2000.

Trading Service will be happy to supply from early February 2001, Affiliate Member badges, Individual Membership brochures including the membership cards as well as promotional leaflets. More details will be published in January 2001 *Guiding magazine*.

For further information on affiliate membership please contact Denise King, Deputy Chief Executive at Commonwealth Headquarters, 17-19 Buckingham Palace Road, London SW1W 0PT. Or visit the Association web site www.guides.org.uk or phone 020 7834 6242 for more details.



Marketing and External Relations Committee

seeks
Volunteers with (professional) skills in
Public Relations
Marketing
Corporate sponsorship or corporate marketing
Media

To serve on the MER Committee and take on a specific remit, or on a working group on behalf of the Association.

These roles are open to anyone aged over 18 including Unit Guiders, Commissioners, Unit Helpers, 'resting' members and affiliate members.

The Committee term is three years and would begin sometime in 2001. The Committee meets four times per year usually on a Saturday. Additional meetings may be required for working groups. Expenses for travel and subsistence are paid in line with the Association expenses policy.

For more information, a role description and an application form please contact **Susan Kay-Williams, Head of Marketing and External Relations on 020 7834 6242.**



THE GUIDE
ASSOCIATION

Finance and General Purposes Committee

seeks
Volunteers with skills and experience in
Warehousing
Mail order businesses
General finance

To serve on the Finance and General Purposes Committee on behalf of the Association.

These roles are open to members aged over 18 with a good knowledge of Guiding at unit or Commissioner level.

The Committee term is three years and would begin sometime in 2001. The Committee meets four times a year usually on a weekday. Expenses for travel and subsistence are paid in line with the Association expenses policy.

For more information, a role description and an application form please contact **Simon Evans, Head of Finance on 020 7834 6242.**



THE GUIDE
ASSOCIATION



Guiding Development

Seeks

Volunteers with skills and experience in any of the following to help with reviews and development projects;

Narrow boating

Rowing

Personal, Social and Health Education

Early years (education or play)

Child Development (capabilities of today's 5 & 6 year olds)

Working with minority ethnic communities

Citizenship education/projects

These roles are open to members aged 18 or over with a good knowledge of Unit Guiding.

The groups/projects needing members vary, but most will be set up during 2001.

Some will be short term commitments, others may last up to a year.

For more information please send details of your skills and experience to

Jennie Lamb, c/o Guiding Development at CHQ or email JennieL@guides.org.uk

Guiding Development is also seeking

Volunteer Writers

Do you enjoy writing?

Can you get points across in a positive, jargon free way?

Can you explain background thinking to other adults, without confusing them further?

Would you be interested in writing resources for adults in Guiding?

Would you like an opportunity to develop your writing skills?

Yes? Then we'd be interested to hear from you.

During 2001 we need to convene small groups of writers to prepare support materials including articles for *Guiding magazine*. Writers will be producing draft materials to support pilot projects, text for publications etc. Both short and long term projects are available.

These roles are open to members aged 18 or over with a good knowledge of Unit Guiding.

For more information please send a written description of your current role in Guiding to

Jennie Lamb c/o Guiding Development at CHQ or email JennieL@guides.org.uk

The International Team seeks

A dedicated Guider with experience of large-scale mixed Scout and Guide events, long haul international travel and the Senior Section to co-ordinate the UK Guide Association delegation to the 20th World Scout Jamboree in Thailand, 2003.

She will be called upon to join The Scout Association planning team where she will perform a number of duties on behalf of the Joint UK contingent as well as representing the interests of The Guide Association members.

All candidates should have the support of both their County and Country/Region International Adviser. It is also suggested that as this role is intensive, it would not fit well with a large number of other commitments. Nevertheless this is an exceptional opportunity for an outstanding individual to participate in the event of a lifetime.

For more information about this event, a person specification, a job description and an application form please contact

Kirsty Hardcastle, c/o Guiding Development at CHQ or email kirstyh@guides.org.uk

N.B. This is a voluntary position however financial support is available from both The Guide Association and The Scout Association with regards to preparatory meetings and the event itself.

Hogmanay

**It's nearly time
to welcome in
the New Year
with a Scottish
celebration**

Hogmanay is the Scottish celebration of New Year. The origin of the word Hogmanay is thought to be from an old French word meaning 'gift'.

The Gaelic words for Hogmanay are Oidche Challainn which mean 'evening of the oatcake'!

Highland haggis

Have the girls in your unit your unit ever tried haggis? In fact, do they even know what haggis is?

If you live anywhere but Scotland, there's a good chance that you haven't tried this traditional Scottish delicacy.

Most supermarkets sell haggis at this time of year. 'Proper' haggis has a skin of sheep's stomach, filled with a delicious mix of oatmeal and offal!

Scottish people often tease people from other countries by saying that the haggis is, in fact, an elusive furry animal that runs around the Highlands.

- Buy a haggis to try — you may be surprised at how tasty it is!
- If a haggis were a real animal, what do you think it would look like? Make models and draw pictures.
- Black bun and bannocks are two more Scottish delicacies. Find a recipe and make them in your meeting.

First footing

Many households in Scotland and the North of England observe the tradition of first footing.

The custom means that the first person to visit a house after the stroke of midnight must be male, tall and dark and carrying special gifts.

These gifts are variations on the following: money, so that the house will prosper in the new year; bread, so the family will not go hungry; coal, so that they will be warm.

- Invite a tall, dark man to first foot your first meeting of the New Year.
- Think of some original 21st century first footing gifts to replace the traditional ones.

■ Other Scottish Hogmanay customs include cleaning the house and paying back any money you owe. What new Hogmanay customs would the girls introduce for everyone to observe?

Into extra time

Robert Burns (known affectionately as Rabbie Burns) wrote many poems during his lifetime.

Discover more of his work, including *Address to a Haggis*, which is ceremoniously recited on special occasions, before a haggis is eaten!

Auld Lang Syne

Robert Burns (1759-1795), Scotland's most famous poet, wrote the words and music to the very famous song sung at New Year — *Auld Lang Syne*.

Auld Lang Syne is now sung at the stroke of midnight all over the world, from Carlisle to California. The words are written in an old Scottish dialect and the title translates roughly as 'old long ago' — or the old days.

Here is the first verse and the chorus for you to sing together.

Should auld acquaintance be forgot,
And never brought to mind?
Should auld acquaintance be forgot,
And auld lang syne?

For auld lang syne my dear,
For auld lang syne.
We'll tak a cup of kindness yet,
For auld lang syne!



SCOTLAND IN FOCUS/MCGOWEN

Web watch

- www.rabbie-burns.com — life and times of the Scottish bard.
- www.edinburghshogmanay.org — official site for Edinburgh's celebrations.

- www.scotland.net — Scottish daily newspaper and gateway to Scotland on the World Wide Web.
- www.lochness.scotland.net — search for the monster on this webcam.
- www.tartans.scotland.net — learn all about the famous Scottish fabric.

Glam Guides

Guides can use the ideas on these two pages to add to their Go For It! Parties activities

To ensure that your Guides look totally cool and glamorous for the party season, here are some mega-trendy home-made bath treats, cosmetics and accessories that won't break the bank.

You can use this feature to extend the use of Go For It! Parties — just photocopy it and give it to Patrols.

Body glitter

Add a touch of sparkle to your unit with some fabulous body glitter.

This simple recipe will make enough glitter for one Patrol.

All you have to do is mix the Aloe vera gel and glycerine together well, then stir in the glitter.

Spoon the glitter gel into small containers and label them. The glitter is ready to use straight away!

Remember, the finer the glitter, the better it will look.

You will need

- 100ml Aloe vera gel
- 1 tsp glycerine
- 1 tsp fine glitter (fine polyester glitter is best)
- 5 empty film canisters or single-serving size jam jars
- Sticky labels and a pen

15 mins

Bath bombs

They're much more fun than bubble bath, so try the latest craze in bathing luxury — bath bombs!

Bath bombs are fragranced balls which fizz in water, making your bath water soft and beautifully smelly. They are a very trendy gift and a great treat for yourselves.

The quantities shown here will make two bombs, that cost a fraction of the price of shop-bought ones! Before you start, make sure that all the utensils you will be using are clean and dry — any moisture will ruin the bombs.

In a large bowl, thoroughly mix the bicarbonate of soda with the citric acid. Add a tablespoon of sweet almond oil to the powders, along with two or three drops of fragrance oil. Quickly work it in with your fingers, as if you were making a crumble.

The mixture should start to come together. Gradually add the other tablespoon of oil, until you are able to squeeze the mixture together without it crumbling. Using your hands, mould half the mixture into a tight ball. Lay it on a piece of clingfilm and leave it to dry overnight.

Cut out a square of tissue or tulle (netting) to cover the ball. Gather the corners together and secure with a ribbon.

Repeat with the remaining mixture and you have the perfect treat or gift.

You will need

- 250g bicarbonate of soda
- 50g of citric acid
- 1-2 tbsps sweet almond oil
- A few drops of fragranced oil (not pure essential oil)
- Cling film
- Tissue paper or tulle
- Ribbon

Guider's notes

Aloe vera gel is available from chemists and health food shops — it is used as an after-sun lotion and general skin care cream.

As with all body glitter, do be careful that it doesn't get near the eyes or other sensitive places! While it is unlikely that anyone will be allergic to Aloe vera, do check beforehand.

Warning

Only use polyester glitter, never use the metal variety — it is very abrasive.

Top tip

- For extra special bath bombs, add a teaspoon or two of dried rose petals.
- Fill an egg box with little bath bombs for a chocolate-free Easter gift.

Beauty bonus

Making beauty products and top fashion accessories is a fun way to work as a Patrol.

Get inspiration from things you see in shops. Check out the ingredients and materials used to see how you can recreate the look yourself.



MOOSE AZIM

Lip shine

This clear lippy will keep your lips soft and shiny.

The quantities shown are sufficient for one Guide. All you have to do is mix the two ingredients together!

If you want to add a fruit flavouring you can.

Use a cocktail stick to add no more than a drop or two.

Finally, put the lip shine in the little pot.

You will need

- 1 tsp Aloe vera gel
- 1 tsp petroleum jelly (Vaseline)
- Orange or lemon cake flavouring (optional)
- A tiny pot

10 mins

You will need

- 1 tbsp almond oil
- 10 fresh cranberries
- 1 tsp honey
- A tiny pot to put the gloss in

15 mins

Warning

This lip gloss contains nut oil.

Berry gloss

This delicious gloss will add a natural colour and shine to every pair of lips.

The quantities given will make enough for one girl.

Mix the ingredients together and then put them into a heat resistant bowl. They need to be heated to almost boiling point. This can be done in a bowl set over boiling water.

When it is hot, remove it from the heat, stir the mixture well and then gently mash the cranberries. Leave it for five minutes to cool.

Strain the mixture through a sieve to remove all the bits of berry. When it is cool, spoon it into a clean container.

If the girls want a bit more shine, stir up to a teaspoon of petroleum jelly into the finished product.

Beady choker

This trendy knotted and beaded choker is made from a Boatswain's Weave — don't worry, it's not as scary as it sounds!

The quantities given will make a beady choker for one Guide.

1 Cut a length of cord that is long enough to fit loosely around your neck twice, with 12cm to spare. Cut a length of different coloured cord that is twice as long as the first thread.

Fold the two lengths together in the middle and then tie them with an overhand knot.

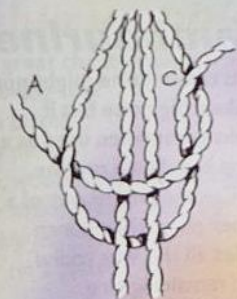
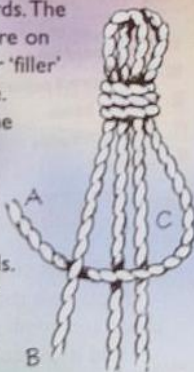
2 Tape the loop to the work surface. You are now ready to start knotting.

This knot is called a Boatswain's Weave. You will find it on page 63 of The Guide Association Knot Book. But the instructions are here in case you haven't got a copy yet!

3 Spread out the four cords. The longer, working, cords are on the outside. The shorter 'filler' cords stay in the middle.

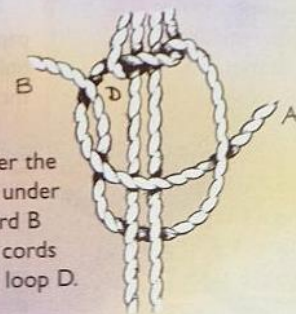
In the illustrations, the working cords are labelled A and B. You may find it more helpful to put coloured tips on the ends of the cords.

Pass cord A over the filler cords and under working cord B, leaving a loop C.



4 Take cord B under the filler cords and up through loop C. Pull the cords tight.

5 Take cord A over the filler cords and under B. Then take cord B under the filler cords and up through loop D.



You will need

- Thin cord in your two favourite colours
- Two small beads and a slightly larger one
- Six small beads
- Sticky tape
- Scissors

45 mins

6 Repeat the steps until the weaving is half the finished length. Hold the middle two filler cords together, and thread on the three beads — two small ones and one slightly larger. Then separate the strands again underneath the beads, and carry on weaving as before.

When you are weaving, remember that the green cord always goes over the fillers, and the orange cord goes behind.

When the choker is long enough, make a knot to secure the threads. Tie a small bead about 5cm from the end of each cord and then trim the ends.

The beady choker is now ready to wear!

Top tip

Make a matching bracelet or even a zip-pull for your bag!



Music maestro

Drum in the New Year with some noisy ideas for younger members

Bongo rock

Body-rocking bongos make a brilliant beat for all sorts of music.

Cut the long neck off a balloon. Stretch the remaining piece over the open end of a stiff cardboard pot or plastic tub.

Quickly stretch a rubber band around the top of the pot to stop the balloon popping off. The girls may need another person to help with this — one holds the balloon on and the other puts the band on.

Paint the outside of the pot with a simple design — stripes and zig-zags are good.

When the paint is dry, the bongos are ready to play.

You will need

- Strong balloons
- Rubber bands
- Ready-mixed paint
- Brushes
- Scissors
- Stiff cardboard pots (such as short crisp tubes) and rigid plastic tubs — no more than 10cm in diameter

30 mins



You will need

- Cardboard tubes
- Greaseproof paper
- Rubber bands
- Felt-tipped pens
- Scissors

10 mins

Kazoo

All the best marching bands have a kazoo section.

Decorate a tube with colouring pens. Cover one end of the tube with a square of greaseproof paper held in place with an elastic band. Trim off the excess paper.

To play the kazoo, use the open end to cover your mouth. Make a humming 'ooh ooh' noise. With a bit of practice, you should be able to make a distinctive kazoo sound.

If you have trouble getting a noise from a kazoo, have a go with a paper and comb. Fold a piece of greaseproof paper over a comb.

Hold it to your lips and make the same humming 'ooh' sound, letting the noise vibrate through your lips on to the paper.

Top tip

Have a go at making your own beaters. An easy way to do this is by sticking a cotton pulp ball on top of a pencil or a piece of dowel.

Ideas to go

- Make posters featuring cut-out pictures of various musical instruments.
- Learn about the different sections that musical instruments fall into — woodwind, string, brass, and percussion.
- Listen to a famous piece of classical music. What do the girls think of it?
- Talk about your favourite bands and singers and explain why you like them so much.
- Dress up as pop stars for an evening.

Tambourine

This tambourine might not make a big noise but it looks great when used as a prop in a dance routine.

Cut the centre out of a paper plate, then punch holes all the way round the remaining ring.

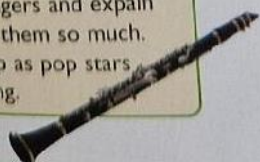
Punch holes in the milk bottle tops. Thread two or three of them through each hole in the card circle.

Finally, add two crêpe paper streamers on to each side of the tambourine. Let the dancing begin!

You will need

- Paper plates
- Milk bottle tops or circles cut from clean foil containers
- Wool or embroidery thread
- Crêpe paper
- Sticky tape
- Scissors
- A hole punch

20 mins



Maracas

Make a Spanish-style shaker to put rhythm into your movements.

Put a handful of beans into one of the yoghurt pots. Put the other pot on top of it and join them together with plenty of masking tape.

Cover up the writing on the pots with strips of sticky-backed plastic.

Now you can shake away to your heart's content.

You will need

- Two identical yoghurt pots
- Dried beans or lentils
- Masking tape
- Sticky-backed plastic

15 mins

Sing and dance

Use your instruments to sing and dance along to these groovy songs with a Latin beat.

- *Living on a Prayer* — Ricki Martin
- *La Bamba* — Los Lobos
- *Dr Beat* — Miami Sound Machine
- *Chico Latino* — Geri Halliwell
- *Mambo Number Five* — Lou Bega
- *Spice up your Life* — The Spice Girls
- *La Isla Bonita* — Madonna

Swinging songs

Get set to sing along with some camp fire favourites

Rainbow song

Janet Eaton, Guider with Kemsing Rainbows, Kent, sent us her unit's favourite song to share with you.

It's sung to the tune of *Sing a Song of Sixpence* — don't forget to put the name of your own unit in.

We are Kemsing Rainbows,
We meet to talk and share,
Playing games and making things
And showing that we care.
We love the world around us
And try our best to be
As kind and helpful as we can
To friends and family.

Top tip

Guiders! Do you have a special unit song? If you do, then let us know.

Can a woman?

This song is enjoyed by Girl Scouts of the USA. Sing it to the tune of *She'll be Coming Round the Mountain*.

Can a woman fly an airplane?
Yes she can!
Can a woman build a building?
Yes she can!
Can a woman fight a fire?
Can a woman change a tyre?
Can a woman lead a choir?
Yes she can!

Can a woman be a lawyer?
Yes she can!
Can a woman fix an engine?
Yes she can!
Can a woman be a drummer?
Can a woman be a plumber?
Can she play ball in the summer?
Yes she can!

Can a woman be a doctor?
Yes she can!
Can a woman drive a tractor?
Yes she can!
Can a woman lead a nation?
Can she run a TV station?
Can she head a corporation?
Yes she can!

The Bear and the Mountain

Sing this rhyme to the tune of *For He's a Jolly Good Fellow*.

The bear went over the mountain,
The bear went over the mountain,
The bear went over the mountain,
To see what he could see.

And all that he could see,
And all that he could see,
Was the other side of the mountain,
The other side of the mountain,
The other side of the mountain,
Was all that he could see!

Wibble wobble

This is a great chant when you just feel like being silly!

Jelly on a plate!

Jelly on a plate!

Wibble, wobble, wibble, wobble

(girls shake all over like a big wobbly jelly).

Jelly on a plate!

Top tip

As well as your home-made instruments, swing along with whistles, bells, jangling keys and much, much more.



Just you wait until we're older,
Then you'll see,
We'll be women in tomorrow's history!
As we grow up through the years,
We'll sing out loud and clear,
Can we start the process here?
Yes we can. YES WE CAN!

Words by Iris Hirsch, Girl Scouts Central Maryland, USA



Plastic fantastic

Just look at what you can do with a plastic cup!

These activities have come from a County Trainer Support Group. Their idea was to think of as many Guiding activities as possible, using plastic cups.

See if you can come up with activity ideas using other single items — perhaps plastic squash bottles or a pile of newspapers ...

Crazy golf

Girls can have great fun making up a crazy golf course, using the cups as holes.

It will help if you use masking tape to fix the cups, on their sides, to the floor. Make your own clubs from cardboard tubes and any other bits of card you have handy. Don't use real balls, use newspaper ones or ping-pong balls.

See who can get round the course with the least hits.

You will need

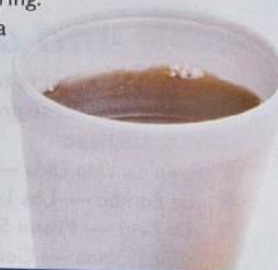
- Plastic cups
- Masking tape
- Ping pong balls or ball made from newspaper
- Long cardboard tubes and other pieces of cardboard



Quick ideas

- Put things with distinctive smells — such as garlic, coffee and lemon — into several different cups. Blindfold girls and ask them to identify the odours.
- Use plastic cups in place of skittles.
- Decorate cups and use them to hold gifts, such as sweets or pencils.
- Make a 'telephone' from two cups and a length of string.
- Use cups as a vase for a paper flower posy.

VERONICA BALLARD



Party hats

Fun party hats are great to make at any time of the year, or you could save them for an Easter bonnet competition.

Using a paper plate, a plastic cup and any other scraps that you can find, make the wackiest hats that you can.

Use the elastic to keep your creations on your heads. Give out home-made rosettes to the best — and worst — designs.

You will need

- Plastic cups
- Paper plates
- Thin elastic
- Tissue paper, material scraps and so on
- Glue



Daisy, daisy...

Who would have thought that an old cup could look so pretty?

Cut slits at 1 cm intervals along the length of the cup. The slits should start at the rim and finish a few millimetres from the bottom.

Press the slits down to make flower petals, then glue coloured cotton wool balls, or sunflower seeds, to the centre. Finally, attach a stalk to the back of the daisy.

These daisies are ideal for everyone to make and are a quirky decoration for a potted plant.

You will need

- A plastic cup
- Coloured cotton wool balls or sunflower seeds
- Scissors
- A green garden stick or a straw
- Sticky tape
- Glue



Ball and cup

Make an old-fashioned game from disposable items.

Decorate a plastic cup with any scraps that you have available, such as coloured paper, felt and so on.

Scrunch up a piece of newspaper into a ball that will drop into the cup easily. Use sticky tape to fasten one end of the string to the newspaper ball.

Fasten the other end of the string to the cup. It's best to punch a hole through and then tie the string through that.

How many times can you get the ball into the cup in 30 seconds?

You will need

- A plastic cup
- Newspaper
- A 30cm length of string
- Scraps and glue for decoration
- Sticky tape



Hoop-la

Hold a fairground theme evening and make your own hoop-la game.

Put a wrapped sweet inside a number of small cups. You could put a bigger prize, such as an eraser, in one of the cups.

Cut rings of plastic from a big pop bottle. They should be big enough to fit over the cups with room to spare.

Set out the cups on a table, in a circle. Girls can then try their hand at tossing the rings over the cups. If they succeed, they win the prize in the cup.

Let each girl have three goes each.

Kitty cat

Be inspired by our feline friends for some purrfect activities



Cat's cradle

Do you know how to make a cat's cradle? Cat's cradle is a game involving two people and lots of string.

The string is wound around the players' hands in an intricate pattern and then transferred from one person to another. These 'string figures' are thought to date back to the Stone Age, and they are still played by people all over the world.

If you want to know more, have a look in the library for books that include string games. Alternatively, look at www.isfa.org. This Web site is the home of the International String Figures Association and has everything you need to know about string games.



Bookmarks

This cute cat will keep your place when you put your book down.

Draw a simple outline of a cat – without a tail – on to thin card. You might like to draw a template for younger girls. The cat shouldn't really be any bigger than 6cm wide and 8cm long. Punch a hole in the bottom, near where the tail would be.

Colour in one side of the bookmark to look like the back of a cat and the other side to look like the front.

Cut a piece of wool about 22cm long. This is the cat's tail. Fold the wool in half and tie it through the punched hole – a Lark's Head knot is the neatest way to do this.

The cat will have a double tail.

Now the cute cat is all ready to pop into your reading book.

You will need

- Thin card
- Wool
- Felt-tipped pens
- Scissors
- A hole punch

Feline faces

Rainbows can go on the prowl wearing these fetching moggy masks.

Each girl needs a paper plate to transform into a cat mask. Before they start, cut out the eyeholes to save any problems later.

The girls can then glue on torn tissue paper to resemble a furry cat's face.

Add features with a black pen, and pipe-cleaner whiskers. You could also stick on a pink paper tongue if you want to.

Finish off by stapling on a length of elastic to keep the mask in place.



You will need

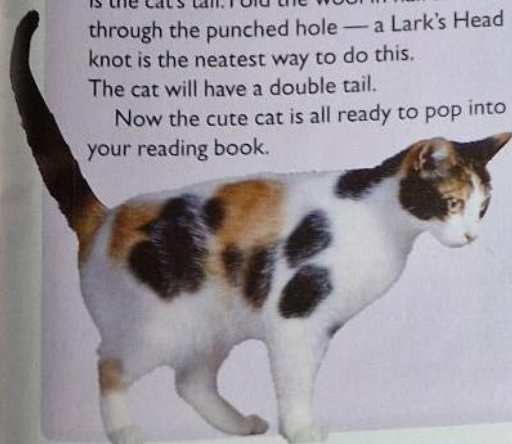
- Paper plates
- Thin elastic
- Pipe-cleaners
- Tissue paper – brown, orange, white and black are good colours
- Glue
- A black pen
- A stapler

Kitty catch

Three girls are chosen to be the cats. Everyone else closes their eyes while the cats prowls around the room.

When the cats shout 'Kitty! Kitty!', the other girls open their eyes and run away from the cats.

The cats catch as many girls as they can. The last three to be caught become the new cats in the next game.





Glasgow Scout Shop

Top brand outdoor gear, clothing & camp equipment at **unbeatable** prices

VANGO, LOWE ALPINE, KARRIMOR, BERGHAUS,
TERRA NOVA, RONHILL, SCARPA, ANIMAL...

Freephone Orderline
0800 980 7988

PAYMENT BY CREDIT CARD, SWITCH OR CHEQUE

Contract enquires welcome
Free returns - order with complete confidence
Ask about our 14 day price promise

21 Elmbank Street, Glasgow G2 4PB

PANDURO

Craft and Hobby Catalogue

Including our latest Christmas selection



SEND
FOR YOUR
FREE COPY
TODAY!

The latest Panduro catalogue with 1200 new products added this year, contains 416 full colour pages packed with over 12,500 items, many unavailable from any other source. With everything from craft rubber to craft pegs, coloured papers to card blanks, paints and paint brushes to pens and pencils, plus special discounts up to 15%, Panduro has something for everyone. Panduro Hobby is Europe's largest mail order supplier of craft and hobby products offering the most comprehensive selection in the U.K.

•The new Panduro catalogue is FREE to all properly constituted groups, clubs, organisations etc. upon receipt of proof of status.



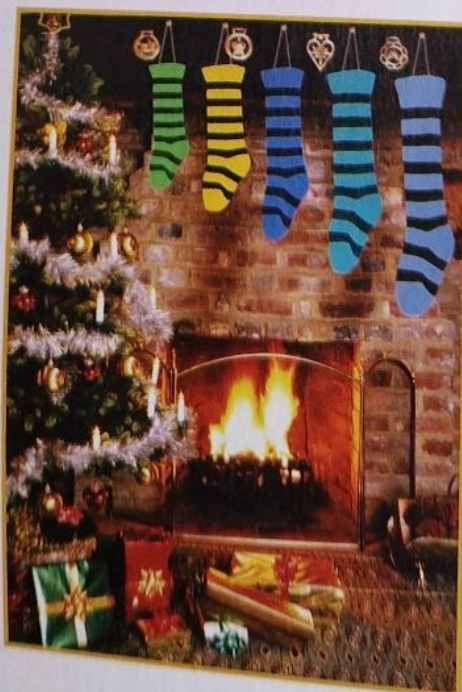
With so much to choose from Panduro is simply the BEST!

To obtain your FREE copy send or Fax (with proof of status) to:-

Panduro Hobby, Freepost, Transport Ave.
Brentford, Middlesex TW8 8BR
or Fax: (020) 8847 5073



A Merry Christmas & A Happy New Year
from The Association's Trading Service



With thanks
for your support



THE GUIDE
ASSOCIATION

Making a difference

How one County kick-started Community Action in their area



By Su Hassall Community Action Adviser, Buckinghamshire

As an initiative to promote Community Action, Buckinghamshire Guide Association held its first ever Community Action activity day in May — Make a Difference Day 2000. The day was designed to include all sections and to involve local organisations as partners.

It proved to be a good springboard for stimulating interest in incorporating Community Action into section programmes. As a result, attendance at training on Community Action has increased and the variety of Community Action happening in the County has changed.

How it all started

The idea for the initiative came about from a chat I had with members of the South Bucks Young Carers' Association.

We were discussing ways in which Guiding and Young Carers could work together and decided on an activity day for young carers using Guide Association members' skills.

From this, the idea developed to include more organisations that could either provide activities for Guide Association members or that were in need of their skills.

Senior Section members acted as buddies when Young Carers tackled a climbing wall



SU HASSALL

Local organisations

It really wasn't that difficult to get community involvement up and running once I got going. Working on a County level meant that we could command the interest of organisations that would find it difficult to meet the needs of individual units.

Having written to around 30 local organisations such as the RSPCA, wildlife concerns, human rights groups, youth organisations and disabled clubs, six were able to be involved on the day.

Balance of activities

Coordination of the day was crucial, and matching units to the different projects took time and plenty of re-adjustment. But the final result was a balance of one-day projects for Rainbows through to Senior Section members.

Rainbows and Brownies tried out activities from The Hawk and Owl Trust about bird preservation, and activities related to 'who is in our community?' devised and delivered by Guiders from the Community Action team.

Guides worked to clear a site at a school for a wildlife garden in partnership with the local council Ranger Service.

Senior Section members assisted members with disabilities at their annual Games, went on a community exploration around the town, made life more comfortable for the hedgehogs at St Tiggywinkle's Animal Hospital and acted as buddies to the Young Carers on a climbing wall, directed by the Scouts.

Guiders had a session with the RSPCA on the Animal Welfare badges.

Getting involved

It was fantastic to see Guides of all ages contributing to their community in some way. Whether it was through the



SU HASSALL

Guides helped to clear a site for a wildlife garden

acquisition of new skills or practical service, citizenship was developed that day.

By involving everyone rather than having an adults-only training, it stimulated interest in people who would otherwise have not attended training on Community Action. It meant that the girls were part of the experience and the learning, so, hopefully, they will be keen to get involved next time their Guider suggests a Community Action project.

Future action

A couple of the projects have continued beyond the activity day itself. One Ranger Unit has taken the Young Carers canoeing as a follow-up to the climbing activity. They are using this as the basis for their participation in the Commonwealth Community Action Challenge.

The school wildlife garden still has plenty of opportunities for work. The pupils are involved along with the Guides and the council Rangers, so this has become a three-way partnership involving many elements of the community.

Now, of course, the County is busy planning the next Make a Difference Day in 2001. Hopefully it will be even bigger and better, with more projects in partnership with local organisations and more diversity.

Making a splash: Guides and Scouts thought that Poacher 2000 was 'Out of This World'



DIANA GREEN

GILL RAWORTH



Safety first: Getting ready for some fun on the water at Cosmic 2000

Fun and frien

This year, once again, Guide leaders gave girls across the UK – and beyond – the opportunity to go on camps or Brownie holidays.

There were large international camps for thousands, and small intimate unit holidays. Themes varied from Mardi Gras to the Circus, Out of This World to Back to the Future.

A variety of adventurous activities were on offer including: quad biking; land yachting; abseiling; orienteering; caving; parascending; sailing; golf ...plus many more.

For some, the sun shone all the way, while others put on a happy face despite the grey skies. But one thing was common to all – the girls had a great time and made new friends. All thanks to the hard work and commitment of you, their Guide leaders. Well done!

Alveston Guides enjoyed a raft of activities at their summer camp



LESLEY READ

LIZ FOSSEY



Clowning around: The 3rd Plymstock Brownies had great fun gaining their Circus Skills badges while on Brownie holiday



LUZ SMITH

Brownies from Lincolnshire South had a great time learning about Native Americans at their Brownie camp

SHEFFIELD GUIDING



Soaking up the fun during the 'It's a Knockout' final at Sheffield County's Back to the Future camp

Cementing international relations: Girls from France, the United States and the UK at Mercia 2000



CAROLINE WILLIAMS

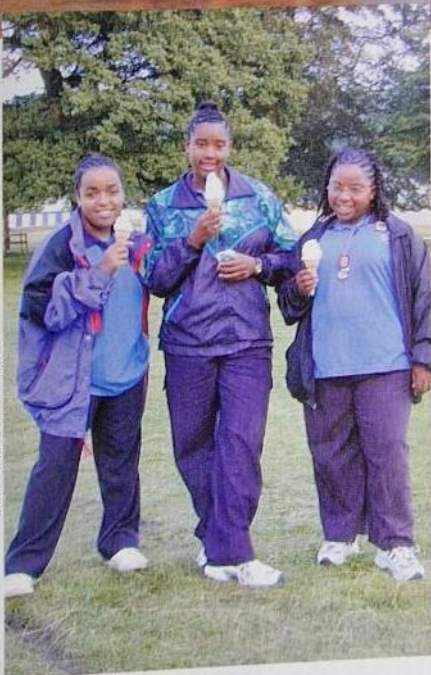
friendship

H STARNES



We do like to be beside the seaside: The 1st Hayward Heath Pack on Brownie holiday in Lancing, West Sussex

IAN AND JUDY PARKER



These girls from Bermuda are sampling the delights of Peak 2000, the international camp held in Derbyshire



EMMA DAVIS

Getting to know you: Making friends at the Russian Jamboree, Volga 2000



THERESA ARCHIBALD

All bunched up: A fruitful time for the 3rd Selsden Guides

Nice and sweet

The National Autistic Society and Hartley's Jam have joined up to encourage amateur bakers to put on their aprons and rise to the Nice and Sweet Challenge — the charity's annual bake-a-thon. All the money raised will go to help autistic children.

Free Challenge packs — which will whip up your enthusiasm — are available until Christmas. These contain folders, stickers, posters and money-off vouchers for jam, as well as a special selection of Jane Asher's mouth-watering recipes.

To obtain your pack, call 0845 234 0005 or write to: The National Autistic Society, 72 Maid Marion Way, Nottingham, NG1 6BJ. Alternatively, e-mail nice&sweet@nas.org.uk.



Raise funds — and your calorie count — with Jane Asher's delicious recipes

NATIONAL AUTISTIC SOCIETY

Local Heritage Grants

The Countryside Agency is inviting local communities, groups and societies to submit new grant applications to the Local Heritage Initiative (LHI).

The aim of the initiative is to encourage communities to take practical action to care for their local heritage — and gain support from local organisations to ensure the sustainability of their project.

Around £450,000 has already been awarded to 39 local groups and societies to carry out a wide range of heritage work — from community plays to conserving local flowers, investigating archeological remnants to surveying hedgerows.

For more details of the initiative and an application form, call the LHI information line on 01226 719019 or visit www.lhi.org.uk.

Discovery nights

The Look Out Discovery Centre in Bracknell, Berks is extending its opening times from 5pm to 8pm during designated weeks in February, March and May.

So Guides, Brownies, Rainbows and other youth groups, will have the opportunity to

visit this exciting hands-on, science and nature exhibition in the evening.

Over 70 bright, interactive exhibits have been designed to test powers of logic, skill, creativity, coordination and teamwork.

Entrance costs £2.30 per child with one adult per eight children allowed in free. Additional adults cost £3.85.

For more information, call 01344 354400 or visit the Web site at www.bracknell-forest.gov.uk/lookout.



Brownies find out more about the human body at The Look Out Discovery Centre in Bracknell

20

The residential opportunities listed below are open to any Association member — Guiders, Young Leaders, Commissioners, Guides or Brownies — as relevant. For more details of content and cost please phone the appropriate centre.

TRAINING AND ACTIVITY CENTRES

LORNE

028 090 423180

Crafts for all Jan 12-14
Training for Mentors Jan 26-28
Guide Guiders Feb 9-11
How does your garden grow? Feb 16-18
World Thinking Day Feb 24
1st Response March 2-3/3-4
A real taste of Ulster March 16-18
Londonderry County March 23-25

FOXLEASE

02380 282638

PLs & their Guiders Jan 5-7
New Guiders Jan 12-14
Why do we do it? Feb 16-18
9 & 10 year-old Brownies with their Guide Feb 20-22
Global Footsteps Feb 23-25
Brownie Guiders March 2-4
Guide Renewal March 9-11
Residential event for Guides aged 12+ April 12-14

HAUTBOIS

01603 737357

Go For It!/B-P Challenge Jan 5-7
First Aid Renewal Jan 12-14
Guitar courses Jan 22-24
Guiders' club 18-30 Feb 2-4
Crafts with a difference Feb 9-11
Journey round the world Feb 16-18
First Aid March 9-11
Family activities April 13-15

BLACKLAND FARM

01342 810493

GA Climbing Training (level 1) Jan 13-14
GA Climbing Training (level 1) Feb 17-18
GA Climbing Training (level 2) March 10-11

BRONEIRION

01686 688204

Global Footsteps Feb 23-25
PR Training March 16-18
County/Division/District Administrators March 20-22
Musical fun for Guides April 13-15

Patrol Leaders and their Guiders April 20-22

WADDOW

01200 423186

Guiders and Guides: the new programme so far Jan 5-7
Programme ideas: Rainbows Feb 2-4
Commissioners Feb 9-11
Global Footsteps Feb 23-25
Get Away Internationally in Guiding March 16-18
Self-esteem April 6-8

NETHERURD

01968 682208

Develop your training skills Jan 26-28
Global Footsteps Feb 23-25
Mentoring for DCs April 27-29
Mystery Theme weekend June 19-21

ASSOCIATION NEWSASSOCIATION NEWS

Hold your tongue!

On February 9 children will be urged to hold their tongues for just 10 minutes in aid of the charity Macmillan Cancer Relief.

It's great fun for children, as well as an excellent opportunity to raise awareness of cancer issues.

Last year children all over the UK raised £180,000 during the nationwide silence. This year the target is £250,000.

To register for this year's event, or to receive a free cancer education pack, please call 0845 601 1716.

Wizard outing



MIKE FIELDHOUSE

Dobson as the Wicked Witch.

And for two performances, Association members can get a special group discount where groups of 10 or more pay £6 per ticket (normally £9) and a leader gets in free. The offer is only valid for performances on January

Will you be off to see *The Wizard of Oz* at Richmond Theatre?

Theatre-goers young and old will be off to see the Wizard, Dorothy, Scarecrow, the Lion and Tin Man at Richmond Theatre, in London, in a production of *The Wizard of Oz* from December 14 to January 21.

The show features all the songs from the famous movie, and stars Anita

17 at 7pm and January 21 at 5.30pm.

To obtain your special discount, call the box office at Richmond Theatre on 020 8939 9228 and quote 'Rainbow Group Offer'. Don't worry, this is just the theatre's name for the offer, it applies to all sections — not just Rainbows!

Painting the town...

If your girls would like a larger canvas to express themselves on, why not encourage them to take part in the Young Pavement Artists Competition 2001?

This year, the competition — which is run by the Muscular Dystrophy Campaign — has an environmental theme of Mountains and Moors. There are five age categories for the four to 18-year-old entrants, and the first part of the competition is staged locally by youth clubs, schools or councils, on or before June 9.

Free resources — including chalks, prizes and posters — are supplied, as well as advice about holding the competition. Money raised through the £1 entry fees will be shared equally between the local organiser and the Muscular Dystrophy Campaign.

Photographs of the local winning entries are sent off to be judged by members of Tate Britain and the Royal Academy of Arts. The national winner will receive a trophy and a cheque

for £200, and three runners-up will each receive an inscribed plate and a cheque for £100.

For a free information pack, write to Barbara Bate, Organiser, Vine Farm House, Lower Street, Tilmanstone, Deal CT14 0JD. Tel/fax: 01304 611428. Visit www.youngpavement-artist.co.uk to see last year's winning entries.

Last year's winning entry in the Young Pavement Artists competition



YFAC

Sing-a-long

If your Rainbows like a good sing song, you might want to get hold of a copy of the singing games resource book, *In a Cottage in a Wood*.

The book contains the words, music and actions to classics such as *Ring a Ring 'o Roses* and *Baa, Baa, Black Sheep* as well as lesser-known songs like *Three Blind Jelly Fish* and *A Baby Bumble Bee*.

The book costs £5, plus £1 p&p, and is available from the Folk Camps Society, Greengarth, Nether Stowey, Bridgewater, Somerset TA5 1NL. Tel: 01278 732202 or e-mail alan@bcorkett.freemove.co.uk.

Craze watch

Top ten toys for Christmas...

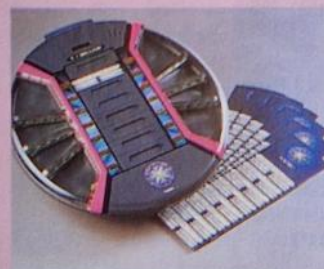
A dog may be for life but it's also likely to be for Christmas, according to a recent forecast made by the British Association of Toy Retailers.

The association's list of top 10 toys most likely to be found in a Christmas stocking was dominated by a new generation of robotic toys.

Leaders of the pack are Poo-chi, an electronic dog which sings *Jingle Bells* and is so realistic, it suffers mood swings, and Teksta, a cyberpuppy that responds to its owner's touch.

Other contenders include a doll called Amazing Ally

which can be programmed to learn about her owner's tastes in music and clothes and 'Who Wants to be a Millionaire?' an interactive game that comes complete with Chris Tarrant's voice.



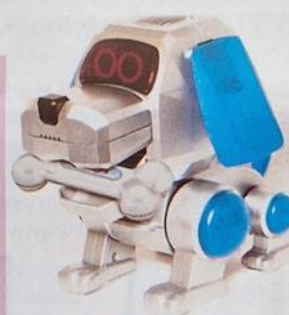
Who Wants to be a Millionaire interactive game

Christmas top ten

- 1) Scooters
- 2) Teksta
- 3) Who wants to be a Millionaire?
- 4) Thunderbirds Tracey Island
- 5) Amazing Ally
- 6) Bob the Builder 12" figure
- 7) Princess Bride Barbie
- 8) Poo-Chi
- 9) Pokémon Pokedex
- 10) Baby Annabel



PLAYMATES



Poo-Chi

TIGER ELECTRONICS

Issued by the BATR Press office © 2000.

Web watch

Web sites worth a visit...

www.bbc.co.uk/essentials

This Web site, newly-launched by the BBC, provides information and advice on a range of topics, including: work, study, travel, finding a mortgage, writing your CV, money and personal issues such as sex, drugs and leaving home.

www.channel4.com/brilliantcareers

This Channel 4 Web site supports the My Brilliant Career series and is packed with useful information and career advice — from personality tests to profiles of people in a variety of careers. It also includes an A to Z of jobs.

www.youthinformation.com

Packed with helpful information, this National Youth Agency site is a comprehensive 'information toolkit' for young people.

With details of over 1,200 national organisations that provide support for young people, the site is also a valuable resource for youth workers.

www.thehungersite.com

Click on the 'donate food' button on this UN site and somewhere in the world a hungry person will get a meal, courtesy of a corporate sponsor. Only one click per person will be registered each day — so why not do it every day?

www.doingyourbit.org.uk

This site contains information about small changes we can make to our daily lives that can make a big difference to the environment. Includes factsheets, ideas and games.

www.theideabox.com

Educational activities, games and songs.

Wish upon a pin

The Make-A-Wish Foundation UK® has granted around 250 wishes this year to children aged three to 18 who have life-threatening illnesses.

To fund its continuing work, the Foundation is holding another National Wish Pin Week from January 15-21 next year.

To find out more about the work of the Foundation, or how you could get involved in fund raising, just call 01276 24127.



Television presenter Keith Chegwin is supporting National Wish Pin Week

Dorothy.com book



If your Brownies have been reading about missdorothy.com, they may like to know that Dot has her very own book.

The book tells the story of Dot's first exciting adventure in cyberspace. It costs £4.99, 10 per cent of which goes to Dot's favourite charity — the Nelson Mandela Children's Fund.

Copies are available from the Miss Dorothy.com Fan Club, PO Box 5963, Coggeshall, Colchester CO6 1WW.

Housing advice

Over 10,000 young people who phoned Shelterline last year were sleeping rough on the streets.

This shocking statistic has prompted the homeless charity Shelter, and its partner Nescafé, to launch *Wise Up*, a major new initiative aimed at reducing the number of 16-25 year olds who end up on the streets.

Dubbed Shelter's housing survival guide, *Wise Up* outlines the housing problems young people face, how to negotiate the perils of renting and where to get help.



Copies of the *Wise Up* guide are available free from Virgin Megastores or college welfare officers. You can also get hold of one by calling Shelter on 020 7505 4699.

m:power your girls

Would you like to motivate and inspire your girls about global issues? A new resource pack from Christian Aid will help you to do just that.

The m:power:2000 video aims to challenge young people's images of other countries through thought-provoking activities.

To find out more about this and other m:power resources, call Sandra Bailey on 020 7523 2074.

The Enchanted Wood

The Enchanted Wood is one of Enid Blyton's most delightful stories from the classic Faraway Tree series, and was actress Kate Winslet's favourite childhood story.



CHORION

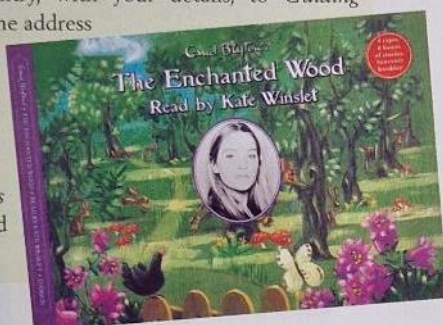
The Oscar-nominated film star, and new mother, is now the captivating voice behind *The Enchanted Wood*, a new Chorion audio book, priced at £14.99.

With four cassettes – adding up to almost five hours listening time – it would make an ideal Christmas present, introducing a new generation of children to this classic story. It is the first in a series of three Faraway Tree audio books read by Kate Winslet.

Guiding magazine has 10 of these delightful audio books to give away. For the chance to win one, simply answer the question below and send your entry, with your details, to *Guiding magazine*/Enid Blyton at the address on page 3, or e-mail guiding@guides.org.uk.

All entries to arrive before December 31.

How many cassettes does the *The Enchanted Wood* audio book contain?



Bag a prize!

This month, we're delighted to offer three luxurious Tula leather handbags as giveaway prizes, because we think you deserve it!

Accessories add the finishing touch to any outfit, but the right bag should be practical and durable too.



Tula makes the kind of bags that women are proud to own.

Tula is renowned for its expertise in leather and each handbag is produced to the highest standard using the best quality materials available. The Tula team of British designers has become well-known for their attention to detail and their designs combine classic elements

with quirky features that mark them out from the crowd.

Guiding magazine has three large, black soft-leather Tula Sling bags, worth £60 each, to give away.

For a chance to win one, simply answer the question below and send in your entry, along with your details, to *Guiding magazine*/Tula at the address on page 3, or e-mail guiding@guiding.org.uk.

All entries to arrive before December 31.

What have Tula designers become well known for?

Millennium Yearbook

Forty eight of the UK's most innovative and exciting projects have been brought to life as part of Royal Mail's 2000 Millennium Collection.

From the Web of Life at London Zoo to Church Floodlighting, these Royal Mail special stamps have captured a snapshot of the nation's millennium projects.

The 80-page Yearbook – which costs £25.95 – features specially-commissioned photographs and gives the inside stories about the projects. The Yearbook can be purchased from selected Post Office branches, the Royal Mail orderline on 08457 641 641 or online at www.royalmail.com/christmasgifts.

Guiding magazine has five Yearbooks and 25 Christmas Stamp Presentation Packs to give away. For a chance to win one, send your answer to the question below, along with your details, to *Guiding magazine*/Royal Mail at the address on page 3, or e-mail guiding@guides.org.uk. The first five entries drawn will win the Yearbooks, and the next 25 the presentation packs.

All entries to arrive before December 31.



Spirit & Faith
(Christmas)
Issue date - 7 November 2000

How many stamps does the Royal Mail 2000 Yearbook contain?



Baking bonanza

Great news for chocoholics! Cadbury's has launched eight new baking mixes, so you can bake your own delicious treats.



The cakes are easy to make – some of the mixes even include the baking tray and only need water adding. The mixes are an ideal way to start children baking.

Our favourites are the special Cadbury Land range comprising of Fudge Cakes mix, Creamy White Buttons Cakes mix and Peanut & Raisin Brownie mix.

The mixes start at around £1.99 each and *Guiding magazine* has 20 sets of our favourite three from the Cadbury Land range to give away.

For the chance to win a Cadbury's baking goody pack, simply send in your answer to the question below, along with your details, to *Guiding magazine*/Cadburys at the address on page 3, or e-mail guiding@guides.org.uk

All entries to arrive before December 31.

Some of the baking mixes only require the addition of one ingredient. What is it?



classifieds

SOUTH OF ENGLAND

THRIFTWOOD

International Scout Camp Site
and Activity Centre
Brentwood, Essex.

40 secluded and well grassed sites in 76 acres of woodland. Within easy reach of London and the sea. Full time staff. Large Pack Holiday Centre, sleeping 32. Mains toilets, hot water, free showers. Wood fires allowed. Souvenir shop.

On Site Activities:

Climbing, abseiling, archery, canoeing, rafting, swimming, fishing, air rifles, cork guns, pioneering equipment, orienteering, nature trail, adventure playground, sports.

Phone 01277 226571 Fax: 01277 215429
or E Mail: thriftwood@btinternet.com
www.thriftwood.org.uk

Details from: Bill Hindley, Deskrie Shiel,
Alexander Lane, Brentwood, CM13 1AG
Site visits always welcome



Chalfont Heights Scout Camp

Denham Lane Chalfont St Peter Bucks SL9 0QJ

Chalfont Heights promises you a real Scouting welcome.

- Camping in secluded woodland or open fields
- 3 Accommodation Units available
- A wide range of on site activities to keep you busy including a Heated Outdoor Pool
- Well stocked shop and 24hr Vending Machines
- Full Disabled and Special Needs Facilities inc. Showers
- On site Laundry and separate Leaders Showers
- Water Activities available near by
- London only 12 miles and lots of local attractions available

See our Internet Site www.chalfont.org Or for a colour information pack
Tel: 01753 882640 Fax: 01753 884108 email: warden@chalfont.org

Chalfont Heights is owned and operated by G.L.M.W. SCOUT COUNCIL Reg Charity No 303887

SOUTH OF ENGLAND

Guideacres, Thundersley, Essex

A secluded, 4 acre, wooded campsite, easily accessible from the A13. Sleeps 18 girls in new bunks, and 4 leaders. Excellent activity centre. Swimming pool five minutes walk. On bus route to Southend (9 miles). Only school summer holidays bookings available well in advance; limited availability for rest of year, after Jan.1st.
For further information phone 01268 754716

NOWHURST CAMPSITE Horsham West Sussex

3 Unequipped sites in our 14 acre woodland Guide camp site.

Enquiries:

Mrs G New, 51 Crawley Rd,
Horsham, West Sussex, RH12 4DS
SAE Please

PHASELS WOOD SCOUT CAMP AND ACTIVITY CENTRE

Rucklers Lane,
Kings Langley,
Herts WD4 9NA



- * PHASELS WOOD SCOUT CAMP has everything you want in a Camp Site: Woodland, Meadow, open field, Pack Holiday Centres, Modern toilets and showers. Friendly welcome! Countryside hikes.
- * 8 Activities including Climbing, Potholing, Sledging, Canoeing;
- * Outdoor Chapel, Camp Fire Circle.
- * 10 mins drive - Themed Leisure Pool, Cinemas, Ten-pin bowling, Ice-skating, Dri Ski-ing.
- * For more information send large SAE to:
The Warden, KEVIN MCKAY, at the above address.
Tel: 01442 252851 Fax: 01442 252162
www.phaselswood.sagehost.co.uk

TOLMERS SCOUT CAMP AND ACTIVITY CENTRE

Set in 100 acres of pastures and woodland, Tolmers is an ideal site for groups of all sizes. Indoor accommodation sleeping 12 and newly refurbished Pembroke sleeping 36. Two toilet blocks with hot water and free showers. Separate free showers for leaders.

On-site activities include Archery, Abseiling, Assault Course, BMX Bikes, Climbing, Canoeing, Jump Mat, Orienteering, Pioneering, Rafting, Radio Communications Centre, Rifle shooting and Splash Pool. Extra activities such as Quad Bikes & Sailing can be arranged for groups offsite. We have a large marquee measuring 90ft by 30ft complete with mains electricity for use on district or county events. Swimming pools are situated 15 minutes away. Central London is 30 minutes away by train with the station being under 1 mile from the campsite.

From traditional camping to a fun packed activity camp you will find a warm welcome awaiting you at Tolmers Scout Camp.

**STUCK FOR IDEAS FOR YOUR SUMMER CAMP, THEN
WHY NOT COME TO TOLMERS ACTIVITY FORTNIGHT.
28TH JULY TO 11TH AUGUST 2001.**

Over 40 activities available on and off site each day including Quad biking, Sailing, Ten pin bowling, Swimming, Skiing, Archery, Climbing and Abseiling. Plus many, many more. Evening entertainment each night including campfires, wide games, videos, displays and the famous Friday night disco.

Fully inclusive price of £42.00 per week. The price includes, camp fees, on and offsite activities and coaches to and from the offsite activities.

We look forward to welcoming you to Tolmers and the C.T.T Experience.

For more details please contact: Andy Lanham, Tolmers Scout Camp and Activity Centre,
Tolmers Road, Cuffley, Hertfordshire. EN8 4JS
Tel: (01707) 872900 Fax: (01707) 872960 Email: tolmers@bigfoot.com

Belchamps



30 acres of pasture and woodland. Indoor accommodation for 48, 24 and smaller groups. Open all year. Archery, shooting ranges, assault course, climbing, pioneering. Hot showers. Local 360 acre public woodlands, sports complex minutes away. Excellent site shop and woodpiles. **DAILY ELSAN EMPTYING SERVICE, AND NIGHT SECURITY ROUNDS.**
SAE for brochure: Kevin Wilson
The warden, Belchamps, Holyoak Lane,
Hawkeley, Essex. Tel/Fax: 01702 205 081

BLACKLAND FARM CAMP SITE

Offers fully-equipped and unequipped camp sites, some with flush toilets and showers.

Activities available are:

Canoeing, climbing, abseiling, archery (all with instructor), swimming, orienteering, nature trail, assault course, grass sledges, rifle range.

Further details from:
Blackland Farm
Grinstead Lane
EAST GRINSTEAD, SUSSEX RH19 4HP
Telephone 01342 810493 or 07860 393 026
or FAX 01342 811206
Email blackland@guides.org.uk

IN THE HEART OF THE NEW FOREST "FERNY CROFTS"

Hampshire County Scout Centre. Open throughout the year.
31 acres of ground camping or indoor accommodation.
Full or Self-catering. Ideal for all guiding activities.
(Adventure Course and Mountain Bike Hire). Easy access by motorway to Portsmouth, Southampton & Poole.

Details: Ferny Crofts, Beaulieu,
Brockenhurst, Hampshire, SO42 7YQ.
Tel: 01703 845092 Fax: 01703 848186
Internet: <http://www.scouts-hants.org.uk/ferny/>
Email: fernycrofts@bigfoot.com

EXPERIENCE LONDON

Stay at Pax Lodge! which is situated in leafy Hampstead and discover a WAGGGS World Centre.
Affordable rates for groups and individuals. Or come as a participant to one of our many sessions.

For more information, please contact us at

Pax Lodge
Olive Centre
12c Lyndhurst Road
London NW3 5PQ



PAX LODGE

EMAIL: Pax.Lodge@BTInternet.com

WEBSITE: www.paxlodge.org

Tel: 020 7435-2202

Fax: 020 7431-3825



"We've got
what you want"

Avon Scout County
Camping and Activity Centre
(North of Bristol near M5 (Junction 16))

- 36 acres fields and woodland.
- Full time warden.
- Flush toilets, washrooms showers.
- Pack Holiday Centre.
- On-site activities: archery, abseiling, climbing, rifle shooting, sports pitch, orienteering, pioneering.
- Off-site, nearby Leisure Centre, canoeing, canoeing, sailing, visits.
- Convenient for Severn Estuary, Mendips, Forest of Dean, Bristol, Bath, Weston-Super-Mare.

A friendly welcome assured, enquiries to:
Booking Secretary, Avon Scout County,
Woodhouse Park, Almondsbury,
South Glos. BS32 4LX
Tel: 01454 813006 (office hours)
or 01454 813259 (out of hours)
E-mail: office@avonscouts.org.uk

Camping at Kingsdown is as easy as A, B, Sea!

- First class indoor accommodation and camping in White Cliffs Country
- Overlooking the English Channel with superb views across to France
- Indoor climbing wall and other challenging activities on site
- Interesting local attractions; castles, museums and seaside fun

For information pack please contact:
Charlie Leadbetter at
Kingsdown International Scout Campsite,
The Avenue, Kingsdown,
Deal, Kent CT14 8DU
Tel: 01304 373713
Fax: 01304 375202
email: kingsdown@scout.com
www.kingsdownscoutcamp.org.uk



TAW BOTTOM DEVON COUNTY CAMPSITE

- Devon Guide campsite is situated in the Dartmoor National Park, in 16 acres of woodland, South Tawton, Nr, Okehampton.
- There are four campsites, each site has a solid shelter, flush toilets and mains water.
- There is a longhouse and equipped kitchen for hire (not for sleeping). Day bookings are available.
- Camping equipment can also be hired, for 24.

For further details contact
Mrs. B. Hinchliff, 46 Ferndale Road
Feignmouth, Devon TQ14 8NQ

NORTH OF ENGLAND

GUY'S FARM ACTIVITY CENTRE

LANCASHIRE WEST AND LANCASHIRE NORTH WEST GUIDE ASSOCIATIONS

INDOOR ACCOMMODATION

Barn-for 30, House-for 20,
Other Accommodation-for 14,
all fully equipped.

OUTDOOR ACCOMMODATION

Top & Bottom Meadows-for 30,
Orchard-for 20, all fully equipped,
3 unequipped sites.



ON SITE ACTIVITIES

Archery, Trim Trail,
Assault Course,
Orienteering, Treasure Hunt,
Games.

NEARBY ACTIVITIES

Swimming, Riding,
Canoeing.

We are situated in North Lancashire, Near Lancaster.

For bookings and enquiries: Mrs A Holt, 9 Great Tunstead, Longton, Preston, Lancs, PR4 5ZX
Tel: 01772 614925

ALDWARKE



Central Yorkshire
Scout Activity
Centre

Eight miles north-west
of historic York on the
banks of the River Ure.
Superb 54-bed hostel.
Camping for 100.
Open all year round.

Full water activities for
50 plus with tuition,
safety cover and equipment
during summer
weekends.

Excellent base for the
Dales, north Yorkshire
Moors, York and the
East Coast.

Information available

from:

P.O. Box 98

WAKEFIELD WF3 1XH

or telephone

0113 252 5269 (24 hours)

FOREST CAMP AND BIRCHWOOD ACTIVITY CENTRE, CHESHIRE

Cheshire's County Camp Site & Activity Centre.
70 acres of woodland. Troop and Patrol sites.
Natural pool for canoeing and swimming.
Orienteering, Nature Trail, Climbing Wall.
Flash toilets. Three accommodation blocks for
Pack Holidays and Scout winter activities, etc.
Well positioned for off-site visits and expeditions.

Details from Camp Warden,

Forest Camp, Kennel lane, SANDIWAY,
Cheshire CW8 2EA. (S.A.E.)
Tel: 01606 882709
www.forestcamp.org.uk

♦ ATTENTION ♦

Brownie Guiders! Totems (Toadstools)
manufactured in red fibreglass with
white spots and green detachable
stems - 18ins high £39.50 including
packaging/postage. Cheques with
order to Mr. E W Booth "Barbon", 43
Bagislate Moor Road, Rochdale OL11
5XT Lancs. Tel: 01706 642156 or
365591.

MIDLANDS & WALES

Warwickshire Scout Council

presents

WAGS 2001

Proyle Spa Centre, Leamington Spa,
29th February - 3rd March, 2001
Evenings 7.30pm. Saturday Matinee 2.30pm.

Contact: WAGS, 24 Aveston Grove, Knowle,
Solihull, West Midlands. B93 9HX.
Telephone/Fax: 01564 775489
Email: wags@netlink.net

HORSES AND WALES!

Pony Trekking and camping in the Black Mountains.
Free camp field if riding. Days and half days available.
Join in grooming and tacking up.

WAGS Approved and Trek Leader Award
A.A.A. Registered for Trekking
W.B. Accredited. Established 43 years

SAE to Grange Trekking Centre (G.I.)
Capel-y-Yfanc, Aberystwyth, Mon NP7 7NP
Phone 01873 896215
Fax 01873 896157

26

DRUMHILL DERBYSHIRE COUNTY CAMP SITE

17 hectares of woodland and fields,
2 Pack Holiday Centres plus new
low-cost 10-bed Cameron Lair for
older Guides and Rangers.

Wet weather facility for Brownies
or day visits. New Picnic Patio.
Air rifles, Archery, Abseiling,
Junior X-bows, Orienteering and
Pioneering on site. National Tramway
Museum, American Adventure,
Alton Towers, Derbyshire Dales and
Gritstone Edges within easy reach.

Phone 01332 831233,

Fax 01332 830302,

email:

DrumHill.ScoutCamp.Derby@pmail.net

Write: PO Box 153 Derby DE21 5ZY

BRING YOUR UNIT TO THE HISTORIC CITY OF YORK

White Rose House is a Guide county
property situated in a picturesque
village 8 miles from the city centre and
is fully equipped for 24 people.
(full central heating installed)

For further details send SAE to Mrs
Margaret Peel, 5 Moor Lane,
Murton, York YO19 5UH.

♦ YORKSHIRE DALES ♦

And now for a real gem. Situated high
in the hills above Heriot Country, this
tastefully converted farmhouse, much
used by Guides/Brownies, has a com-
fortable and cosy atmosphere. Purpose
built camp fire/BBQ area.

FREE heating, electricity, hot water,
logs. Free promotional video available,
see for yourself! The Warden, The Toc H
Centre, Colsterdale, Nr Ripon. N.Yorks
HG4 4NN.

Tel: 01765-689382 (anytime).

MIDLANDS & WALES

BOATING FOR ALL

AFFORDABLE HOLIDAYS UNDER CANVAS FOR
YOUNG PEOPLE IN HISTORIC HARBORBOATS
BURN BIRDS, RUNNING WATER, FLUSH TOILETS.
QUALIFIED STEERERS WITH TEACHING
AND GUIDING EXPERIENCE.

FROM £35 WEEKLY,
RING 01773 780385 OR 0966 429322
OR WRITE TO:
BOATING FOR ALL
71 HOBBS CLOSE, BRINSLEY,
NOTTINGHAM, NG16 5AX

MIDLANDS & WALES

CAMPING AFLOAT

For your next camp, hire one of our 12-berth
traditional canal boats for an exciting holiday
to remember.

- Best choice of routes.
- Wide variety of activities and visits
- Economical prices from-£45.50pppw
- Skippers provided for your peace of mind

Colour Brochure available from
B & MCCC Ltd., Gas Street,
BIRMINGHAM, B1 2JT
Tel: 0121 236 7057

SUPPLIERS

ADVERTees

TOP BRAND
ACTIVEWEAR

Printed / Embroidered with your Design

- TEE SHIRTS • FLEECE JACKETS
- POLO SHIRTS • TRAINING TOPS
- RUGBY SHIRTS • SWEATSHIRTS
- FUND RAISING TEA TOWELS
- B.B. & LEGIONNAIRES CAPS, SUN HATS

Minimum Re-Order only 6 Shirts.

FOR OUR FREE COLOUR BROCHURE

PRICE LIST & FRIENDLY ADVICE

FREEPHONE

0800 731 7461

FAX: 01872 561044

ron@adverttees.co.uk

www.adverttees.co.uk

Adverttees, East Hill,

Blackwater, Truro,

Cornwall, TR4 8HW

14 Days Credit

PRINTED PENS

From 7p + FREE delivery

DIARIES, MUGS, ADDRESS BOOKS,
RULES, NOTE BOOKS, LASTIC
CARDS, BOX TOPS, T-SHIRTS,
BADGES, SCOUT VESTS, LAYERS
CARDS, LICENSING

Send for colour brochure & samples or visit

BOSTON PROMOTIONAL GIFTS UK

Dept GG, 26 Station Road, Droycot,

Derby DE72 3GB

Tel: 01332 875350

Fax: 01332 875353

SPECIAL A5 MILLENNIUM EDITION

The "CONSOLIDATED CATALOGUE

and LIST of GUIDE BADGES (UK)"

Fully illustrated Badge Check List

for Reference Libraries, Archivists,

Badge Collectors, Guiders, Students,

and Dealers. Fully illustrated. 500pp.

600 indexed items, 1520 identified

badges, 20 colour plates, 22 charts.

Only £25 (inc P&P world-wide service)

Also "COLLECTING GUIDE MEMORABILIA"

A4 130 pages, fully illustrated. £13 inc P&P

Only from Thelma NEWELL,

"Spindles, Hackwood Road, Basingstoke,

RG21 3AF,

Tel/Fax 01256 354565

or ask for them in your Public Library

BONE CHINA BEAKERS

For fundraising & commemorative events. Superb
design service, competitively priced, excellent quality,
prompt delivery. Wide selection of other lines available.

Jim Truter Agencies, 33 Lower Oxford Rd

Basford, Newark, Nottinghamshire ST5 0PB

Tel: 01782 618115 Fax: 01782 634498

SUPPLIERS

Fundraisers Souvenirs Express Service

Pocket money items all printed
to your requirements

Teddies * Key Fobs

Woggles * Mugs

Coasters * Bookmarks

Pens * Pencils etc.

Tel. 01274 878488

e-mail: sales@goldpress.co.uk

Goldpress, 1 Lower Green Ave.

Scholes, Cleckheaton, BD19 6PB

SCREENPRINTING & EMBROIDERY

T-Shirts Sweatshirts Polos

Jog pants Fleece Jackets

Tea Towels Caps Ties & more

* High Quality Clothing

* Fast Turnaround

* Efficient, friendly service

Kingfisher Leisurewear

e-mail: kingfisherleisurewear@btinternet.com

http://www.kingfisher-leisurewear.co.uk

Fax: 01584 876399

Freephone: 0800 137948

12b&c Orleton Road, Ludlow Business Park,

Ludlow, Shropshire SY8 1XF

♦ SIMPLY CRACKERS ♦

Make Your Own Crackers: All materi-
als supplied. For details send S.A.E.
with 1st class stamp to: Simply Crack-
ers, 2 Camborne Avenue, Crag Bank,
Carnforth LA5 9TS.

BADGES RKB

Estb. over 40 yrs

Anniversary, District, Camp, Jubilee badges

embroidered, woven and printed. Pennants - Printed

Ties - woven small or large quantities, Phone, fax or

post your Sketch/Design, to:

RKB (Russell King Badges)

Pagoda Lodge, Longhurst, Nr. Morpeth NE61 3LJ

Tel/Fax 01670 790696

♦ PRINTFORCE BOOKS ♦

Practical publications for adults working
with children. Available from good
Guide and Scout Shops or catalogue
from Drovers' Way, Ufgord, Wilton,
Wilts SP2 0EB.

Tel: 01722 743295

♦ RAISE £1000s ♦

For your funds and help the environ-
ment. Collect used Laser printer car-
tridges. For details call LASER
EXCHANGE 01873 859901.

Ocarina Workshop

Freepost N40368, Kettering NN15 5BR

Tel: 01536 485963 Fax: 01536 485051

Ask for your exciting fact

pack on the music Brownies

and Guides love to play ...



Rainbow magic

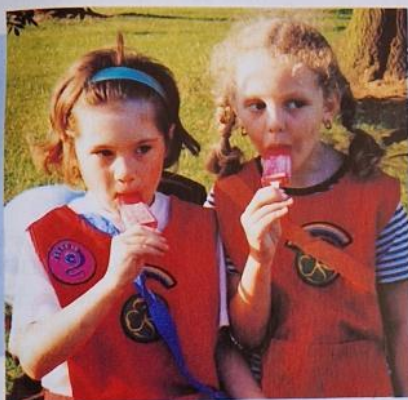
Five-year-old Hannah Hardman is the youngest of the 1st Wimbledon Park Rainbows and is shown here enjoying her very own millennium rainbow garden which she discovered on a visit to Pecorama in Beer, Devon.

MRS J HARDMAN

Ice-breaker

Jessica and Rachel, from Mackworth Rainbows are taking a well-earned rest following joint activities with the Kingsway Rainbows.

At least this will cool them down before the fun begins again!



CLAIRE WARSOP



STAR PHOTO

Holy ground

To fit into their Aboriginal theme for their camp at Lorne this year, the girls from the 7th Bangor Guides were challenged to construct a sacred watering hole on a plate.

There were points for the most inspired creations and the girls had a whole lot of fun!

Family support

Nearly ten years ago my twin daughters flew up to Guides. At the time I didn't want them to start — as a busy mother, I selfishly wanted a night off from the taxi run.

They enjoyed all the new challenges and within two years I had started to help at various events and camps. After three years I had become a Unit Helper.

After four years, my daughter Debbie had left Guides and Claire was presented with her Baden-Powell Trefoil at Our Chalet. I had gone into uniform as an Assistant Guider. Debbie returned as a Young Leader and they have both now passed their Queen's Guide Award.

But it wasn't until last year that I realised how much of a family Guiding was. My husband died very suddenly, and if it wasn't for the friendship and support of our fellow Guiders, life would have been a lot lonelier for the three of us.

The caring has come not only from our District, but also from Division and County level. It makes me very proud to

be a member of such a large family.

During the Reach Out and Recruit campaign I hope that other people will join us, and find out about the fun, friendship, and sense of achievement that Guiding has to offer everyone — whatever their age and involvement.

Ann Miller
Surrey District

Shirt issue

During the past few years I have been to many large camps, some international, all of which had an official camp T-shirt or polo shirt.

These have been in many colours and none of them were blue. Whilst I am happy to wear them on non-uniform occasions I would also like to be able to wear them at camp when camp uniform is expected to be worn.

Could we now change the idea of camp uniform from just blue to include any shirt from a Guiding event?

Chris Adamson
Surrey West

Grateful thanks

The Sierra Leone Girl Guides Association thanks you most sincerely for your generous financial support during the last three years.

And for all the Promise badges you sent us at a time when we needed them most, the Guides and Brownies are very grateful.

We are struggling on to keep the Guiding light shining in the face of all the difficulties we have encountered over the last four years.

Our warmest greetings and best wishes are sent to you all in The Guide Association of the UK.

Jeanne L John
Chief Commissioner
Sierra Leone Girl
Guides Association

Panto success

I read with interest the panto script for this Christmas in October's *Guiding* magazine.

This got me thinking of the pantomime our Guides and Brownies put on in the



MRS WINCH

Tyrre...ific!!

The 5th Desborough Brownies went on an activity day recently at the John Lawther Scout Centre in Northamptonshire.

Members of the Pack took to the tyres to start the assault course and clambered their way through taking Tawny and Brown Owl with them!

Brownie line-up

These Plumpton Brownies are all lined up and ready to brave the assault course at Blackland Farm during a visit to see the Plumpton Guides.



DEBORAH PHILLIPS



MRS EILEEN HARVEY

Scrub a dub dub

These 1st Eastwood Rainbows had fun dressing up for a spring cleaning evening recently.

On went the Nora Batty-style rollers and headscarves as they did the washing the old-fashioned way.

spring. We used the script of *Cindy and her Strikingly Gorgeous StepSisters* from last year and adapted it to be suitable for April 1 (the date of our presentation).

We found parts for all our Guides and Brownies by including disco and line-dancing into the ballroom scene and a sing-song during the interval.

We put the panto on to raise money for our church buildings extension project. The church hall was full and everyone said how good it was, and how funny.

The children had a great time presenting it and worked very hard to learn lines, dances and so on. We raised £300!

So many people worked so hard to make the evening a success but the ultimate accolade must go to *Guiding magazine* for providing the script.

Maureen Casserley &

Briony Symonds

Guide & Brownie Leaders,
2nd Kingswinford Guides
& Brownies, West Midlands

- The plaudits belong to Gillian Ellis, who wrote the pantomime mentioned.

Service record?

On September 27, 2000, present and past members of The Guide Association in Oldham celebrated with Hilda Bedford, Guider of the 3rd Oldham Guides

(Hollins Methodist Church) her 46 years of service in that role.

When Hilda first joined the Movement as a 13-year-old Guide, her mother gave her opinion that Hilda wouldn't like it and wouldn't stick to it. Fifty two years later, we reflect on how wrong you can be!

We believe Hilda's service to be a record and would be interested to hear if anyone else can match it.

Marion Gow

PRA, Oldham West Division

Too little recognition

I felt that I had to write to express my concern about the new badges for Pack Holiday/Camp Licence/Camp Caterer and First Aid.

Quite apart from not liking them, I do not believe that one badge should represent so many important awards.

I am a young Guider (22) who is not willing to give up the opportunity of earning badges just yet. In fact, are we ever too old or experienced not to need recognition for our hard work? I don't think so.

I am distressed to think that it will soon be impossible to identify at a glance who is, for example, a qualified First Aider, by looking at a Leader's badge tab. Surely this is wrong, and a safety issue? At a large event, people who can be easily identified as a First Aider are a reassuring sight.

Finally, a friend of mine has just passed her Pack Holiday Licence — not that it matters, because she is already wearing that same badge for her new First Aid Qualification.

Never before have I seen such a high standard for a Pack Holiday — her work is being used for County trainings now. But where is the recognition? Where's the incentive?

Gemma Downes

Guider, 2nd Witney Guides,
Oxfordshire

- The badges for First Aid and Caterer are still different. Anyone who has gained these qualifications should be wearing the bar with the wording on to show First Aider/Caterer. Anyone who gains a qualification in the Training Opportunities Camp and Holiday Scheme, wears the new-style badge which is the same for all qualifications available in this scheme.

Mobile message

As a Guider — and a mobile phone user — I am writing with reference to the letter published in October's *Guiding magazine* along with the comment that followed



CHRISTINE BUTTERY

Heidi hi!

The West Moors Guides and Young Leaders from Dorset had a great time high on the hills of Silleren for Swiss National Day.

The girls climbed every mountain on a 'gondola' and yodelled all the way down to Our Chalet where they were staying.

Please keep sending in your Guiding photos, we love to see them. Each month there's a special prize for the star photo and £5 for every other photo we print. Please include a sae.

about taking mobile phones into trainings and meetings.

Whilst I accept that mobile phones have become a vital means of contact for many people, and that this allows Guiders with children to leave them with a baby-sitter or relative while they attend Guiding meetings and trainings, I do not find it necessary for the mobile phones to be on at all times.

Virtually every mobile phone make and tariff has some kind of voice-mail service that can be set up for times when you can't answer your phone.

With this in mind, I feel that mobile phones must be turned off during meetings and trainings to avoid disruption to not only the Trainer, but everyone else too, and that those who need to check for messages or phone home can do so during the breaks.

There can only really be very exceptional times when a mobile may need to be on 'just in case' at these types of events.

Whilst I freely admit that I have left my phone on at times when I shouldn't have, a gentle reminder at the beginning of the training session along the lines of 'to avoid disruption during this meeting, could you all please ensure any mobile phones are turned off', should be more than enough.

Rachel Sear
Brownie Guider
Received via e-mail

Fire fire!

The 7th Huddersfield St Cuthbert's Brownie Pack was invited to the local fire training ground recently after a visit to the unit from one of the firefighters who tested the girls on their Fire Safety badge.

They were treated to a demonstration of how to put out a chip pan fire, what happens when an aerosol is thrown into a fire — and even had a 'hands-on' demonstration of how to use fire extinguishers.



SHARON HURST



Carnival fun

Rainbow Abigail Pope is playing 'you can't see me!' for the photographer whilst sitting on the 5th Codsall Rainbow's float at the local carnival.

Abigail is a bit of a tomboy and was not impressed to find she had to wear a skirt, and flowers in her hair!

Nevertheless, she enjoyed herself immensely, as did all the other girls — and they took home third prize for their efforts.

MURIEL BARRETT



MRS W SCRIVEN

Star challenge

These girls from 1st Colchester South Division's 'Shooting Star Ranger Group' have taken up a challenge given to them by Essex North East County.

The girls were chal-

lenged to appear in *Guiding magazine* during 2000 — and they've just made it!

Here they are trying to build a stairway to heaven, using milk crates.

Perhaps they'll reach the milky way!

Messing about on the river...

Here are the 1st Greasley Brownies enjoying themselves on board a canal boat for their holiday on Erewash Canal.

Not only did the sun shine brightly, but they were also able to enjoy traditional boating crafts such as knotting, painting and mastering the locks.



JO MORLEY



CHRISTINE GREGORY

Taking the plunge!

Guide Guider Liz Aidey had a new take on window shopping when she abseiled down all eight floors of Rackhams department store in Birmingham recently.

The intrepid Guider dropped around 150 feet into Temple Row for the charity event in aid of the CRAB appeal — Cancer Research at Birmingham.

Liz, of the 172nd Birmingham Guide unit, said: 'Even our youngest five-year-old members are encouraged to do a good turn for another person every day. This is my way of keeping my Promise.'

LETTERS LETTERS LETTERS

SUPPLIERS



EMBROIDERED • WOVEN • PRINTED
SUPPLYING GUIDES FOR OVER 30 YEARS.

To your own design, whatever you need.
Just send a sketch for a prompt competitive quotation.
We can be relied upon for top quality and an efficient service.

WEBB, TOLLEY & CO. LTD.

12 CHURCH STREET, STOURBRIDGE, WEST MIDLANDS DY8 1LY - ENGLAND
Telephone: 01384 820040 Fax: 01384 820050 email: info@webbtolley.co.uk

**BADGES, HATS
T & SWEAT SHIRTS
CAMP & EVENT SCARVES
PLASTIC MUGS,
LOGO BUGS**
Leisure Lines
Unit 18/19 Coopies Haugh
Morpeth NE61 6JN
Phone or Fax 01670 510777

WOVEN, EMBROIDERED & METAL BADGES AND SHIRTS

County and Division Standards, County, special events, camp and anniversary badges manufactured to your design in small quantities. Also printed 'T' shirts and embroidered polo, sweat, rugby shirts and fleece jackets. For an instant quotation: Manor Enterprises, 1 Swan Close Blakedown, Worcs DY10 3JT Phone/Fax 01562 700345

SCOTLAND

SCOTLAND'S NATIONAL ACTIVITY CENTRES

3 distinctive Centres providing a multitude of options for Scouting adventure and fun.

The Lochgoilhead Centre

Lochgoilhead is a fully licensed Centre under the Activity Centres (Young Persons Safety) Act 1995

- indoor accommodation for up to 170
- leaders accommodation en-suite
- all meals provided
- full or partial programming
- specialists in water activities
- outdoor skills courses
- rock climbing, abseiling... and more!



The Lochgoilhead Centre
Shelter Park
Lochgoilhead
Cairndow
Argyll PA24 8AQ
Tel: +44 (0) 1301 703217
Fax: +44 (0) 1301 703562

Fordell Firs

Just over the Forth Bridge in central Fife only 30 minutes from the centre of Edinburgh

- indoor accommodation for 66
- large camping and recreation areas
- climbing wall, abseiling, bouncy castle
- caving simulation complex
- archery, orienteering, sports
- assault course, pioneering
- all weather activity hall

Maggernie

A converted farmhouse on the banks of the River Lyon at Bridge of Balgie, Perthshire

- self-catering residential area
- indoor accommodation for 24
- spectacular Highland setting
- summer and winter hillwalking
- ideal for outdoor activities

Tel/Fax: +44 (0) 1887 866231

CONTACT: The Scout Association SHQ, Fordell Firs, Hillend Dunfermline Fife KY11 7HQ
Tel: +44 (0) 1383 419073 Fax: +44 (0) 1383 414892
e-mail: shq@scouts-scotland.org.uk

Auchengillan

International Outdoor Centre

For spectacular Scottish scenery you won't find better than Auchengillan. Try our fantastic climbing tower with para drop, mountain biking, quad motorbikes, archery, swimming, kayaking, sledge cresta run, adventure fort and many more. We offer a great choice of camping grounds and modern indoor accommodation. Whether traditional activity or tourist based, Auchengillan offers it all!

For a free colour brochure contact
Andy Wilson, Auchengillan, Blane Field, Stirlingshire G63 9AU
Tel: 01360 770256 • Fax: 01360 771197
Email: centre@auchengillan.com
AUCHENGILLAN - It's where the action is!

EVENTS



**East Lancashire
International
Scout & Guide
Camp
21-28 July 2001**

Want to join in exciting activities, make new friends from around the world and have fun?

Then get your brochure now from:
Bookings Secretary, 1 Stockwood Close,
Blackburn, Lancs. BB2 7QW
Please include SAE (A5)
Website: www.bowlerie.co.uk
Email: campchief@bowlerie.co.uk

30

EVENTS

WALESBY FOREST SCOUT CENTRE



BIG SITE, BIG EVENTS, BIG CROWDS EXPECTED !!

Nottinghamshire Emergency Scout Support Team

Challenge Walk & Cub Ramble

20th January 2001

Join over 2000 Cubs, Scouts, Guides, Venture Scouts & Leaders as we play host to one of the UK's biggest annual events

QUEEN'S GOLDEN JUBILEE ACTIVITY CAMP

Spring Bank Holiday 25th - 28th May 2002

Just worry about getting here and then leave all the activities to us and all for an unbelievable inclusive price

If you would like more information on the above events, camping and activities in general or a copy of our new brochure, then contact:

Walesby Forest Scout Centre
Brake Road, Walesby, Newark, Nottinghamshire NG22 9NG

Tel: 01623 860202 Fax: 01623 836576

Email: admin@walesby-scout.demon.co.uk

IT'S EASY TO PLACE A CLASSIFIED ADVERT IN GUIDING MAGAZINE

1 Complete this form.

Name:..... Address:.....

Daytime telephone number:..... Signed:.....

Heading under which advert should appear:..... Issue(s):.....

2 Write your advert in the boxes below, putting one word in each box and using BLOCK CAPITALS.

Continue on a separate sheet if necessary. (Please note, a telephone number and its code are counted as two words.)

| | | | | | | | | | |
|--|--|--|--|--|--|--|--|--|--|
| | | | | | | | | | |
| | | | | | | | | | |
| | | | | | | | | | |
| | | | | | | | | | |
| | | | | | | | | | |
| | | | | | | | | | |
| | | | | | | | | | |
| | | | | | | | | | |
| | | | | | | | | | |
| | | | | | | | | | |

CLASSIFIED ADVERTISING RATES

Lineage: 80p per word (minimum 20 words); Semi-display (boxed advert): £16 per single column centimetre; Reversing out (white on black): 50% extra. Box number: £13 extra; More than one issue: there is a 10% discount on the above rates for insertions in 12 consecutive issues, and a 5% discount for insertions in 6 consecutive issues. Deduct the discount before you add VAT.

Please note: add VAT to all the above rates. All classified adverts must be prepaid.

3 Send your completed form, with payment - see rates above - to Classified Department, Guiding magazine, Mongoose Communications Ltd, Victory House, Leicester Square, London WC2H 7BZ. (Tel 020 7306 0300. Fax 020 7306 0301.)

Please make cheques/postal orders payable to Mongoose Communications Ltd. To find out more, or enquire about placing any other kind of advert in Guiding magazine or Brownie magazine, please call Neil Walklett on 020 7306 0300.

PLEASE NOTE

- All copy is subject to the approval of The Guide Association or its agents, who reserve the right to refuse, cancel or suspend any advert.
- The Guide Association takes no responsibility for statements made in adverts or for any matter arising therefrom.

To Advertise in
Guiding Classified
Please Call
Neil Walklett at
Mongoose on
020 7306 0300
or
Email:
nwalklett@mongoose.co.uk

Eye promise...

Twenty four 8th Wimbledon Guides and one attendant had a pod all to themselves recently when they took a trip with a difference on the London Eye.

It was to be a very special trip as ten of the girls were making their Promise and the London Eye had been their suggestion.

The girls made their Promise as they neared the top — giving them a Guide's eye view as they made their way down.



MRS RABAGLIATI

Tale of one village

To celebrate the Millennium, the village of Manuden, Herts put on a pageant and re-created scenes from Manuden's history.

The Brownies and Guides of the village were prominent in many of the scenes including a medieval fair, preparing for a visit from Queen Elizabeth I, a Silver Jubilee children's party, farm workers' revolt and 'tin kettling' (pictured) which went off with a bang, crash and clatter!



BRIAN CHADWICK

Meet Max

Here are members of the 1st Munich Rainbows — a unit which was set up in January this year.

The unit has a teddy backpack called Maximilian which they are using to make contact and share information with other units. So far, Max has travelled to Bern, in Switzerland and to Southampton.

Anyone wishing to meet Max can contact Anne Wallhouse by e-mailing CWallhouse@compuserve.com.



ANNE WALLHOUSE

Riot gear

The Chelford Brownies from Alderley Edge Division in Cheshire donned riot gear when they received a visit from their local policeman, PC Steve Davenport.

The girls were working on their Crime Prevention badge and spent an evening learning all about personal safety, home watch stickers, and identifying phone boxes in the village and the police house.



AUSON RICHARDSON

International friends

Two Trefoil Guild members and eight Guiders from Leicestershire enjoyed a trip of a lifetime earlier this year when they spent a 16-

day holiday at Our Cabaña, 50 miles south of Mexico City.

During their stay they focused on Thinking Day and forming international friendships, learning about other countries directly through other Guiders from Canada, USA, Norway, Peru and Argentina.

Here they are at the butterfly sanctuary, 150 miles north of Our Cabaña.



SHEILA SIMPSON

In January's

Guiding

magazine

Breathe easily

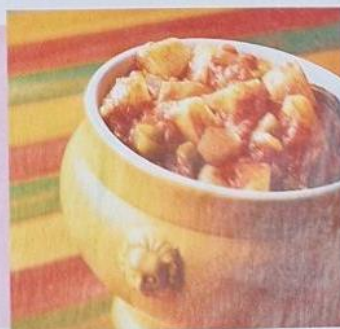
In our main feature, the National Asthma Campaign explains the symptoms and effects of asthma, and passes on some useful advice to Guiders.

Spread the word

Our super poster pull-out will help you to show everyone in your community what great fun Guiding is.

Fit and healthy

Packed with great ideas to keep your girls in tip top condition. Healthy eating advice, tasty potato recipes, and games to give those bodies a workout. Plus activities to help girls understand asthma.



Plus all the latest news, your views, and lots, lots more...

Security & Safety

LOW COST SERVICE

£6.99* per month

OPTION 1

If you are paying too much for your Prepay or GSM services we can supply you with a new Vodafone SIM to use in your existing handset. (This service is only available for GSM 900mhz handsets compatible with the Vodafone network). At just £6.99 a per month this service includes up to £25 worth of free off-peak calls every month!

FREE SIM Start-up pack
(SIM card and network services)

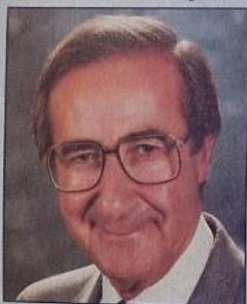
FREE Connection to Vodafone
Worth £35.00

FREE 500 minutes off-peak calls
every month Worth up to £25.00

FREE Itemised Call Listing
Every month

Key Account Benefits

- Vodafone GSM services
- Monthly credit account
- Full itemised statement
- Direct debit payment
- No hassle with vouchers
- International GSM roaming
- Full customer service
- Technical Support
- Low call costs
- Free calls every month



"I recently took advantage of a special offer from Phones Express that I spotted in my membership magazine. I have been so delighted with the excellent products and services from Phones Express that I agreed to tell you all to 'keep 'em peeled' for their great deals."

Shaw Taylor

Exclusive offer from
Phones Express

At Work

BUY & SAVE

£6.99* per month

OPTION 2

You can benefit the same huge service discount as with option 1 but also buy a Motorola T2288 WAP handset with accessory pack for just £59.99. Ideal for all your standard calling, but at a touch of a button you can visit the Internet and send & receive e-mail.

Our price **Motorola T2288 WAP**
£59.99 (handset, charger, battery, instructions)

FREE Connection to Vodafone
Worth £35.00

FREE Leather case
Worth £14.99

FREE Hands free
Worth £24.99

FREE Car charger
Worth £19.99

FREE Car Mount
Worth £9.99

FREE 500 minutes off-peak calls
every month Worth up to £25.00

At Play

FREE MOTOROLA WAP

£11.99 per month

OPTION 3

We can provide a comprehensive Motorola T2288 WAP handset and accessory pack absolutely free of charge. You just pay our all inclusive discounted rate of £11.99 per month and receive over 8 hours of free calls each month. Ideal for standard calls, visiting the internet and your e-mail.

FREE Motorola T2288 WAP
(handset, charger, battery, instructions)

FREE Connection to Vodafone
Worth £35.00

FREE Leather case
Worth £14.99

FREE Hands free
Worth £24.99

FREE Car charger
Worth £19.99

FREE Car Mount
Worth £9.99

FREE 500 minutes off-peak calls
every month Worth up to £25.00

INCLUDED WITH OPTIONS 2&3



Hands-Free



Leather Case



Car Charger



Car Mount

Budget Tariffs

| CALL CHARGES (Per Minute) | PEAK HOURS (8am-7pm Mon-Fri) | PEAK | OFF PEAK |
|---|---------------------------------|-----------------------------|----------|
| NATIONAL CALLS | | 34p | 2p |
| VODAFONE TO VODAFONE | | 10p | 5p |
| VODAFONE INCLUSIVE TALKTIME (Included for standard off-peak calls - NATIONAL & VODAFONE) | | 8HOURS 20MINS (Off-Peak) | |
| Service Options | | Monthly Cost | |
| Option 1 & 2 | | £6.99 | |
| Option 3 Includes itemised billing | | £11.99 | |
| All prices are shown including VAT at 17.5%. All calls are charged in one second increments. | | | |

WAP

- E-mail services in & out
- Browse WAP enabled web sites
- Up to date news, sport, lifestyle, competitions, traffic news, commerce, route finders

Specification

- Dual band
- WAP enabled
- Weight 135g
- Battery standby 135hrs
- Battery talktime 3.5hrs
- 4 line display
- Signal/battery display
- 11 Ring tones
- SIM/phone security
- Name & number memory
- Call registers/timers
- SMS/ message/divert

Vodafone



Calls From
2p
Per Minute

OUR FRIENDLY OPERATORS ARE READY TO HELP

0800 833129

* All prices shown including VAT at 17.5%. All calls are charged in one second increments. Offer is subject to availability. 12 month network agreement and subject to status and terms & conditions. Direct debit is mandatory. £6.99 monthly line service is achieved with our annual £60 cash back applied automatically as a £5 monthly discount from our regular charge of £11.99